



WELLINGTON INTERNATIONAL AIRPORT WLG

W14 Season Start IATA Report (International Traffic)

Key Statistics	W13 Operated	W14 - Season Start	Percentage Change
Air Transport Movements	2507	2,396	▼ -4.4%
Total Seats	426,576	408,032	▼ -4.3%
Seats per Passenger ATM	170	170	

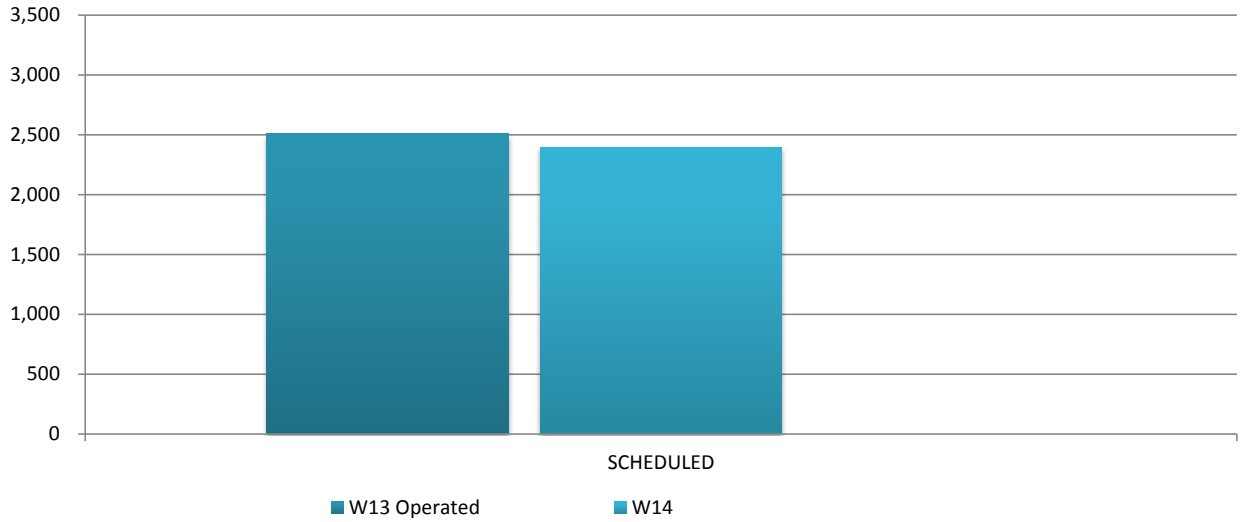
Contents	Page
Movements and Seats by Service Type	2
Peak Week Departure Frequencies by Carrier	3
Airlines by ATM's and Seats	4
Destinations by ATM's and Seats	5
Total Movements by Week	6
International Terminal - Passengers per 60 Minutes	7
Glossary	8

Data in this report is current as of 19 October 2014

No warranty whether expressed or implied as to the completeness, accuracy, fitness for purpose, or satisfactory quality is given by ACL regarding the information in this report, which is provided by third parties. Accordingly, ACL excludes all liability with regard to such data.

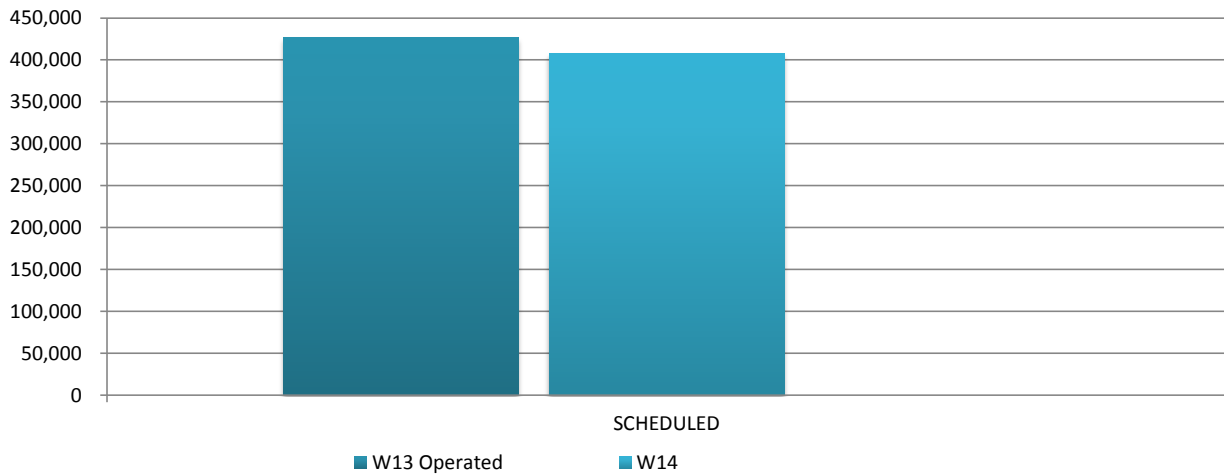
The contents of this report may not be reproduced without the written consent of ACL.

Full Season ATMs by Service Type



	W13 Operated	W14	% CHANGE W13 - W14
SCHEDULED	2,507	2,396	-4%
TOTAL	2,507	2,396	-4%

Full Season Seats by Service Type



	W13 Operated	W14	% CHANGE W13- W14
SCHEDULED	426,576	408,032	-4%
TOTAL	426,576	408,032	-4%

WELLINGTON INTERNATIONAL AIRPORT

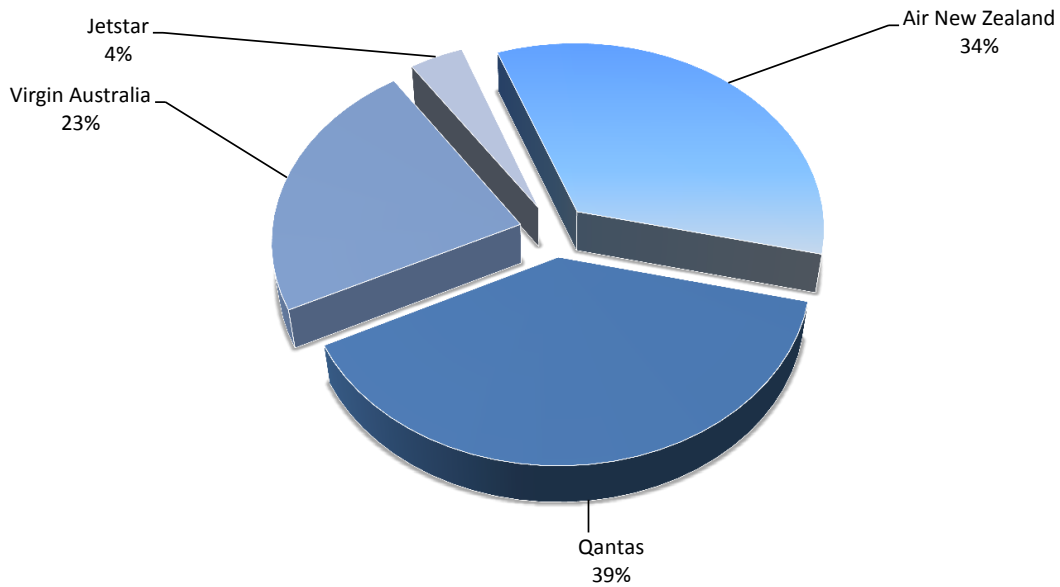
PEAK WEEK DEPARTURE FREQUENCIES - BY CARRIER

22 -28 Dec 2014

OPERATOR	AIRPORT	W13		W14		SEATS +/-	ATMS +/-		
		SEATS	ATMS	SEATS	ATMS				
JQ	Jetstar	OOL	Gold Coast Coolangatta	0	0	540	3	540	3
JQ Total				0	0	540	3	540	3
NZ	Air New Zealand	MEL	Melbourne	1,512	9	1,176	7	-336	-2
		SYD	Sydney Kingsford Smith	2,688	16	2,016	12	-672	-4
NZ Total				4,200	25	3,192	19	-1,008	-6
QF	Qantas	MEL	Melbourne	1,176	7	1,512	9	336	2
		SYD	Sydney Kingsford Smith	2,352	14	2,352	14	0	0
QF Total				3,528	21	3,864	23	336	2
VA	Virgin Australia	BNE	Brisbane International	2,640	15	2,288	13	-352	-2
VA Total				2,640	15	2,288	13	-352	-2

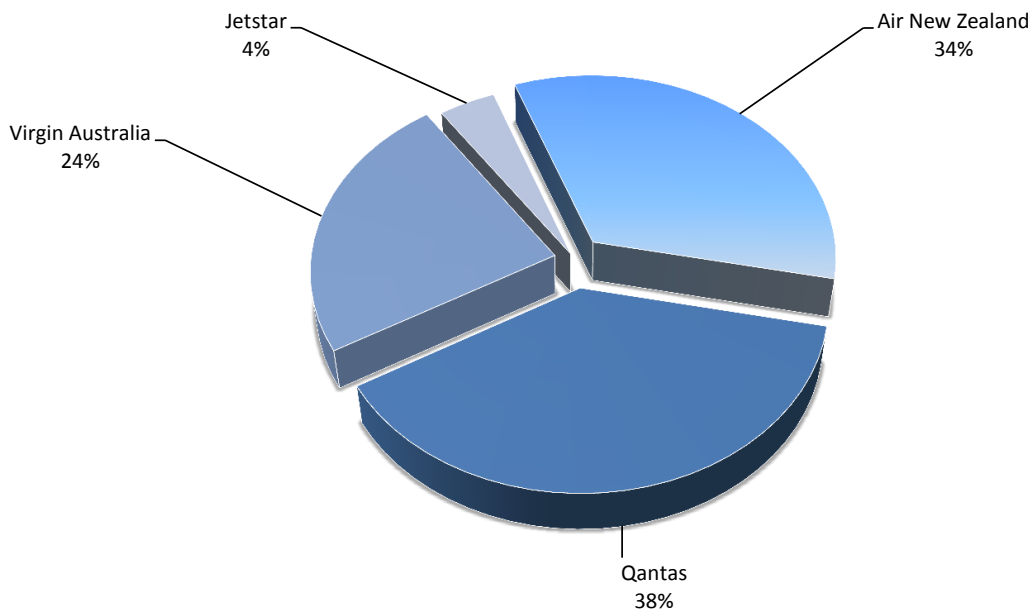
Airlines by Air Transport Movements (ATMs)

Airline	Movements
Air New Zealand	820
Qantas	934
Virgin Australia	550
Jetstar	92

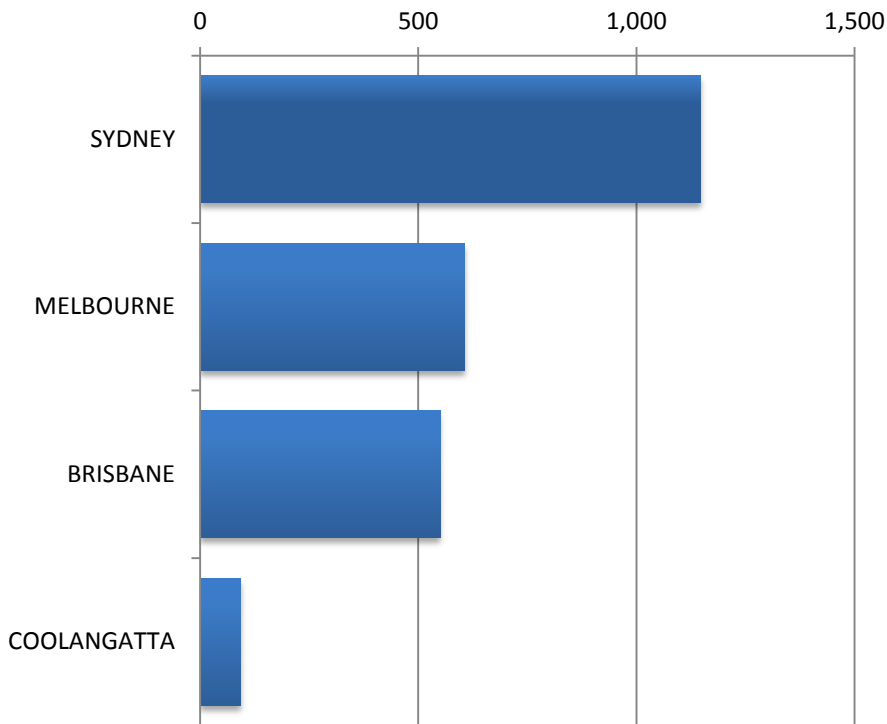


Airlines by Air Seats

Airline	Seats
Air New Zealand	137,760
Qantas	156,912
Virgin Australia	96,800
Jetstar	16,560

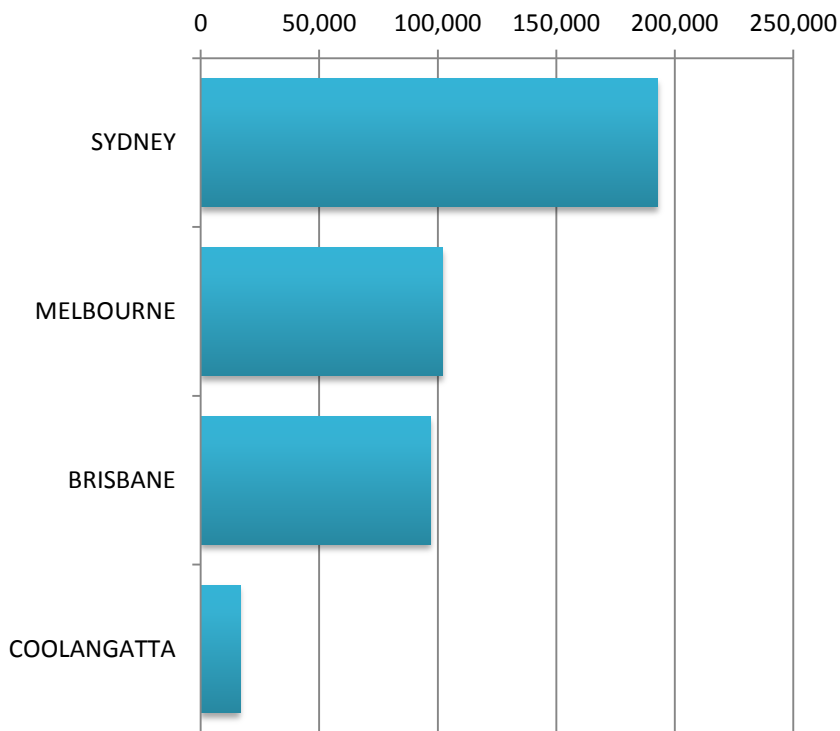


Air Transport Movements by Destination



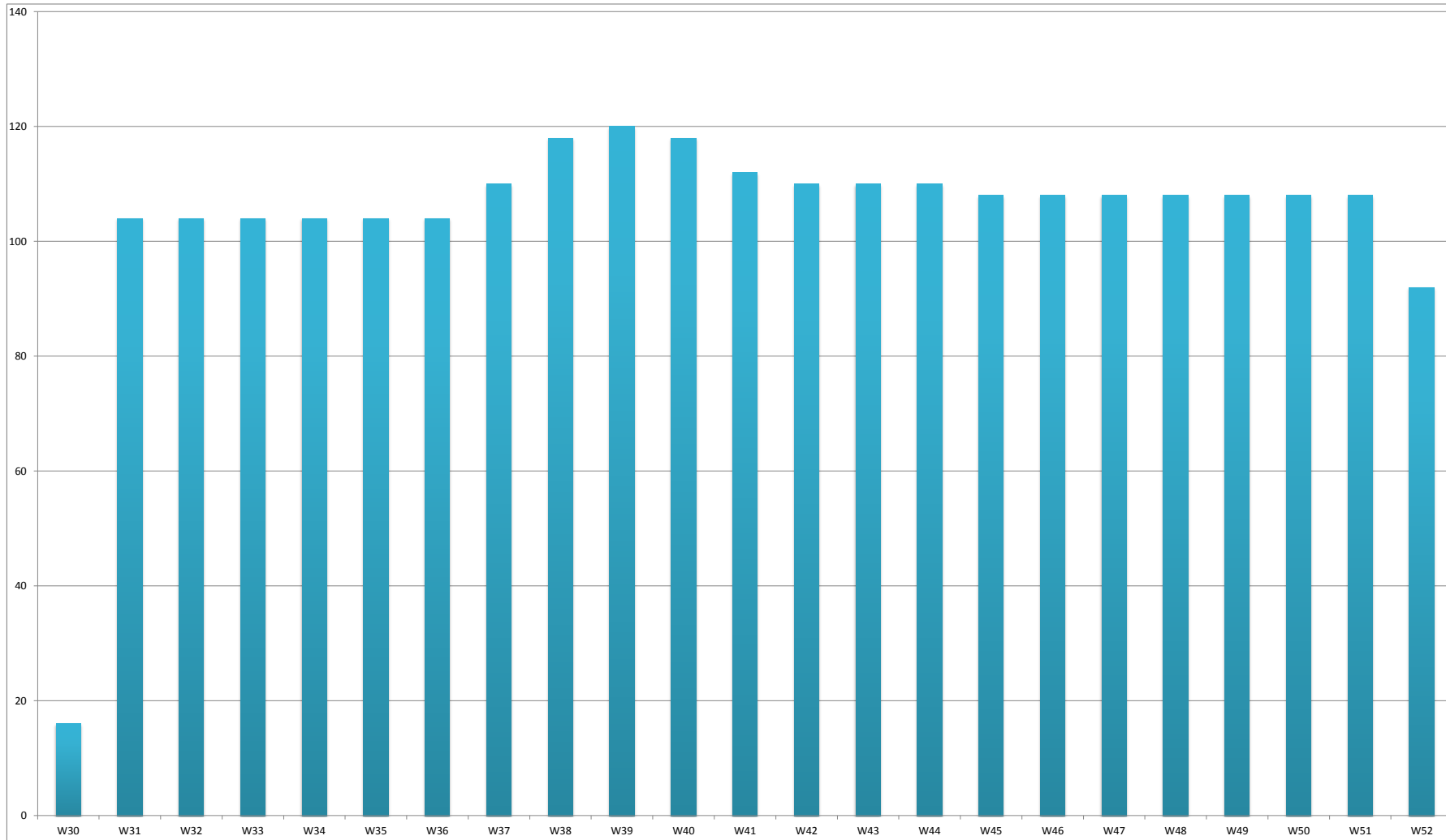
Destination	ATM'S
SYDNEY	1,148
MELBOURNE	606
BRISBANE	550
COOLANGATTA	92

Air Transport Seats by Destination



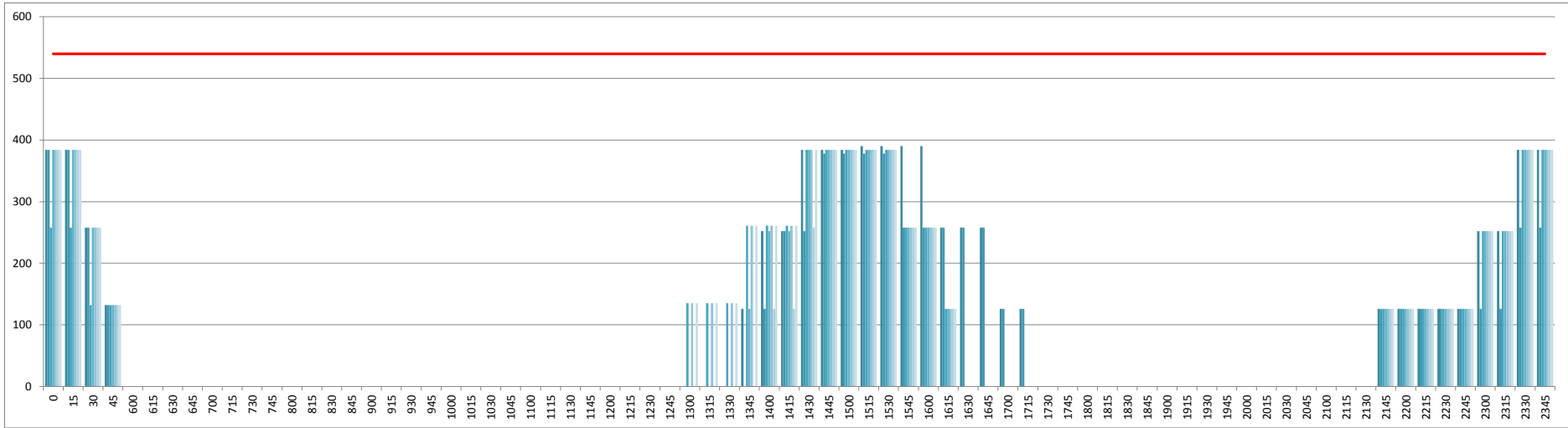
Destination	SEATS
SYDNEY	192,864
MELBOURNE	101,808
BRISBANE	96,800
COOLANGATTA	16,560

Air Transport Movements by Week for the W14 Season



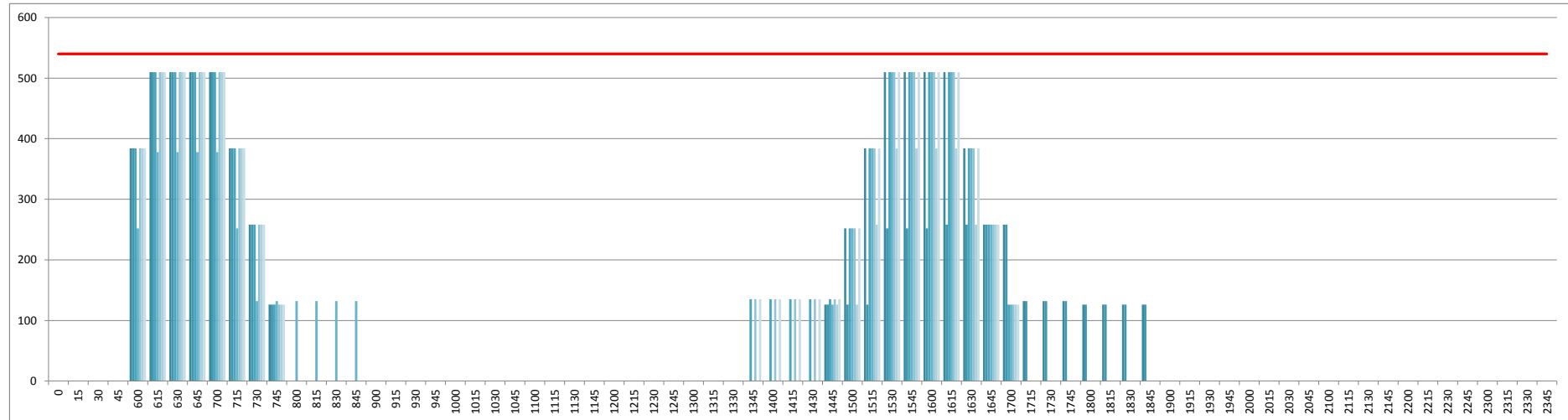
INTERNATIONAL TERMINAL ARRIVALS (PER 60 MINUTES)

Peak Week Movements per Hour - All times LOCAL



INTERNATIONAL TERMINAL DEPARTURES (PER 60 MINUTES)

Peak Week Movements per Hour - All times LOCAL



GLOSSARY OF TERMS

Air Transport Movement (ATM)	A scheduled or charter passenger or freight aircraft movement.
Allocation	The allocation of slots such that demand is constrained to fit within declared scheduling limits.
Common Travel Area (CTA)	Services to or from the Republic of Ireland and the Channel Islands.
Passenger ATM	aircraft movements).
Scheduling Limits	Limiting parameters declared by the Airport Operator used in the coordination process.
Seats	The number of seats based on the aircraft configuration advised by the airline.
Peak Week	The Peak Week for W14 is 22 - 28 December 2014
Data Snapshot	All data used for this report was as held 19 October 2014

GUIDE TO HISTOGRAMS

The histograms show the pattern of traffic by time of day against the appropriate scheduling limit. Each time period consist of seven columns representing the days-of-week, Monday through Sunday.