



# WELLINGTON INTERNATIONAL AIRPORT WLG

## W13 Season Start IATA Report (International Traffic)

Key Statistics	W12 Operated	W13 - Season Start	Percentage Change
Air Transport Movements	2517	2,567	▲ 2.0%
Total Seats	427,816	436,328	▲ 2.0%
Seats per Passenger ATM	170	170	

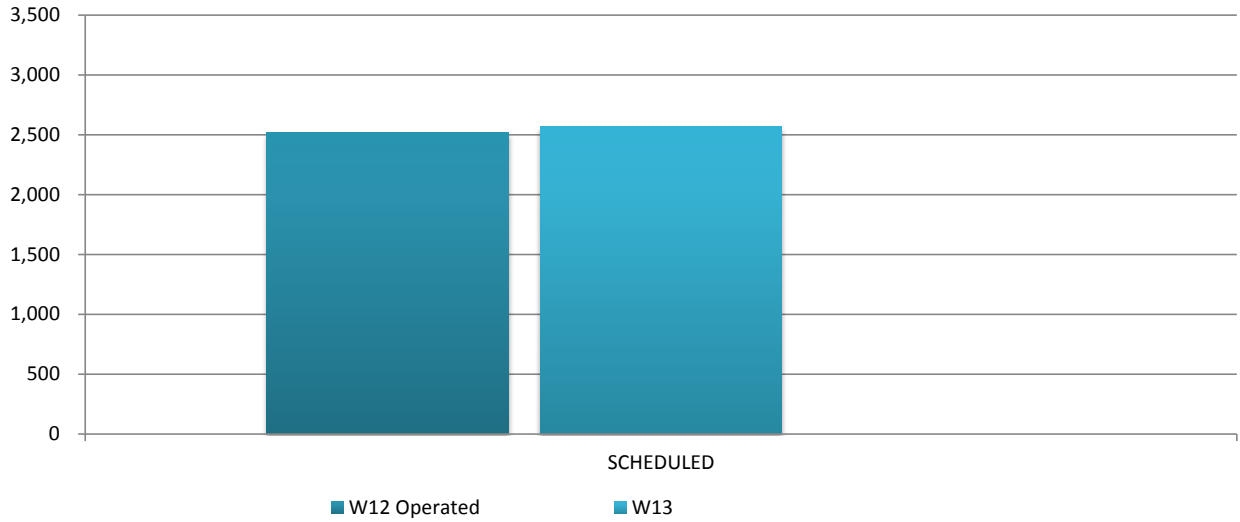
Contents	Page
Movements and Seats by Service Type	2
Peak Week Departure Frequencies by Carrier	3
Airlines by ATM's and Seats	4
Destinations by ATM's and Seats	5
Total Movements by Week	6
International Terminal - Passengers per 60 Minutes	7
Glossary	8

Data in this report is current as of 24 October 2013

No warranty whether expressed or implied as to the completeness, accuracy, fitness for purpose, or satisfactory quality is given by ACL regarding the information in this report, which is provided by third parties. Accordingly, ACL excludes all liability with regard to such data.

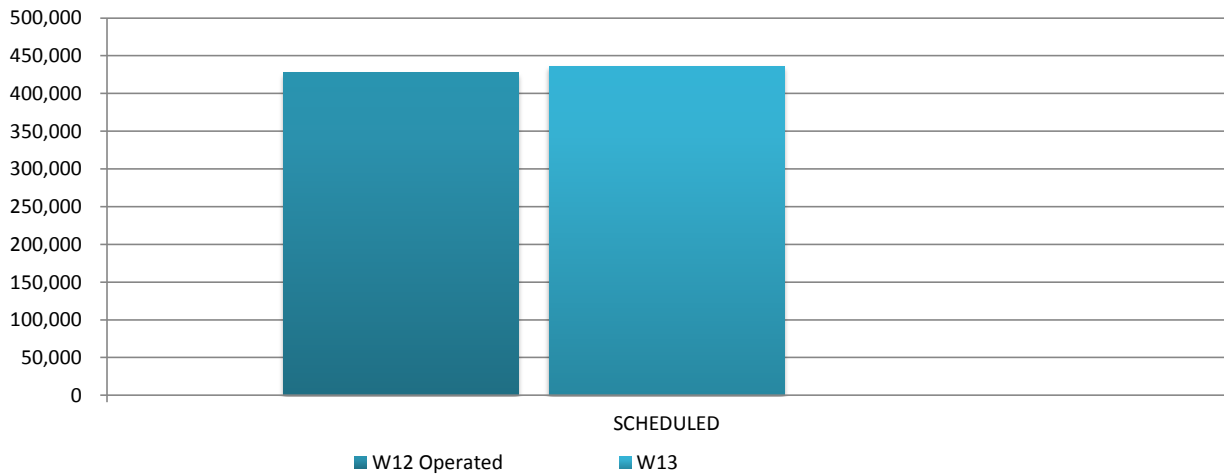
The contents of this report may not be reproduced without the written consent of ACL.

## Full Season ATMs by Service Type



	W12 Operated	W13	% CHANGE W12 - W13
<b>SCHEDULED</b>	2,517	2,567	2%
<b>TOTAL</b>	2,517	2,567	2%

## Full Season Seats by Service Type



	W12 Operated	W13	% CHANGE W12- W13
<b>SCHEDULED</b>	427,816	436,328	2%
<b>TOTAL</b>	427,816	436,328	2%

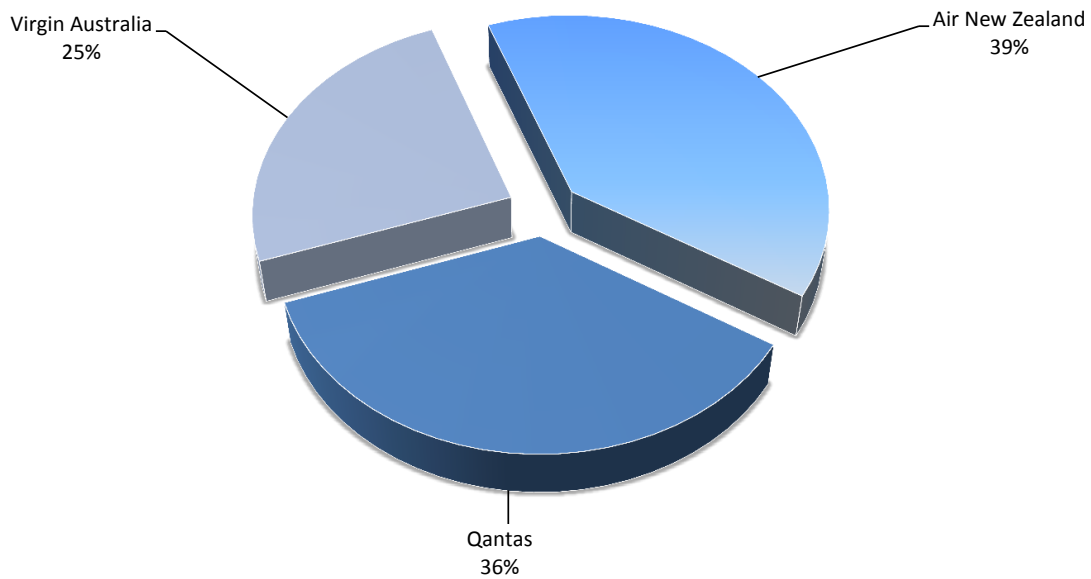
## WELLINGTON INTERNATIONAL AIRPORT

### PEAK WEEK DEPARTURE FREQUENCIES - BY CARRIER

				W12		W13			
OPERATOR		AIRPORT		SEATS	ATMS	SEATS	ATMS	SEATS +/-	ATMS +/-
NZ	Air New Zealand	MEL	Melbourne	3,024	18	3,024	18	0	0
		SYD	Sydney Kingsford Smith	5,040	30	5,376	32	336	2
NZ Total				8,064	48	8,400	50	336	2
QF	Qantas	MEL	Melbourne	2,352	14	2,352	14	0	0
		SYD	Sydney Kingsford Smith	4,704	28	5,376	32	672	4
QF Total				7,056	42	7,728	46	672	4
VA	Virgin Australia	BNE	Brisbane International	5,632	32	5,280	30	-352	-2
VA Total				5,632	32	5,280	30	-352	-2

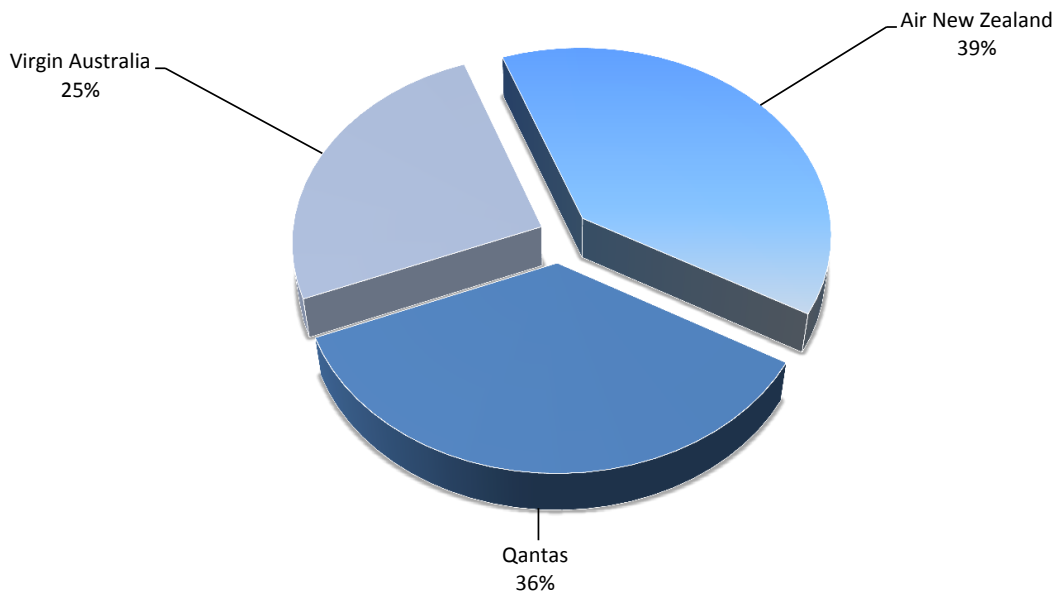
## Airlines by Air Transport Movements (ATMs)

Airline	Movements
Air New Zealand	1,008
Qantas	925
Virgin Australia	634

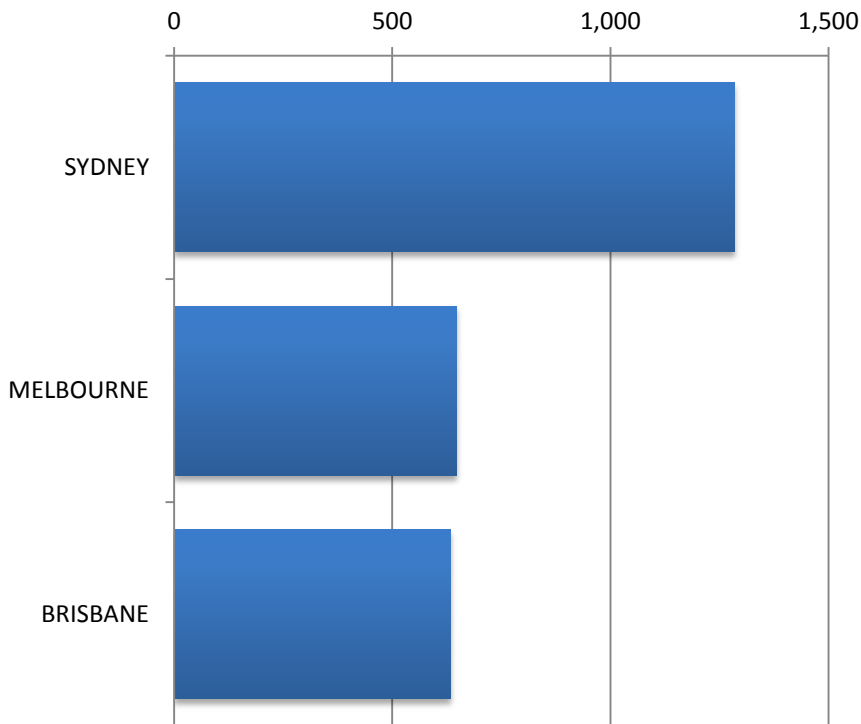


## Airlines by Air Seats

Airline	Seats
Air New Zealand	169,344
Qantas	155,400
Virgin Australia	111,584



## Air Transport Movements by Destination



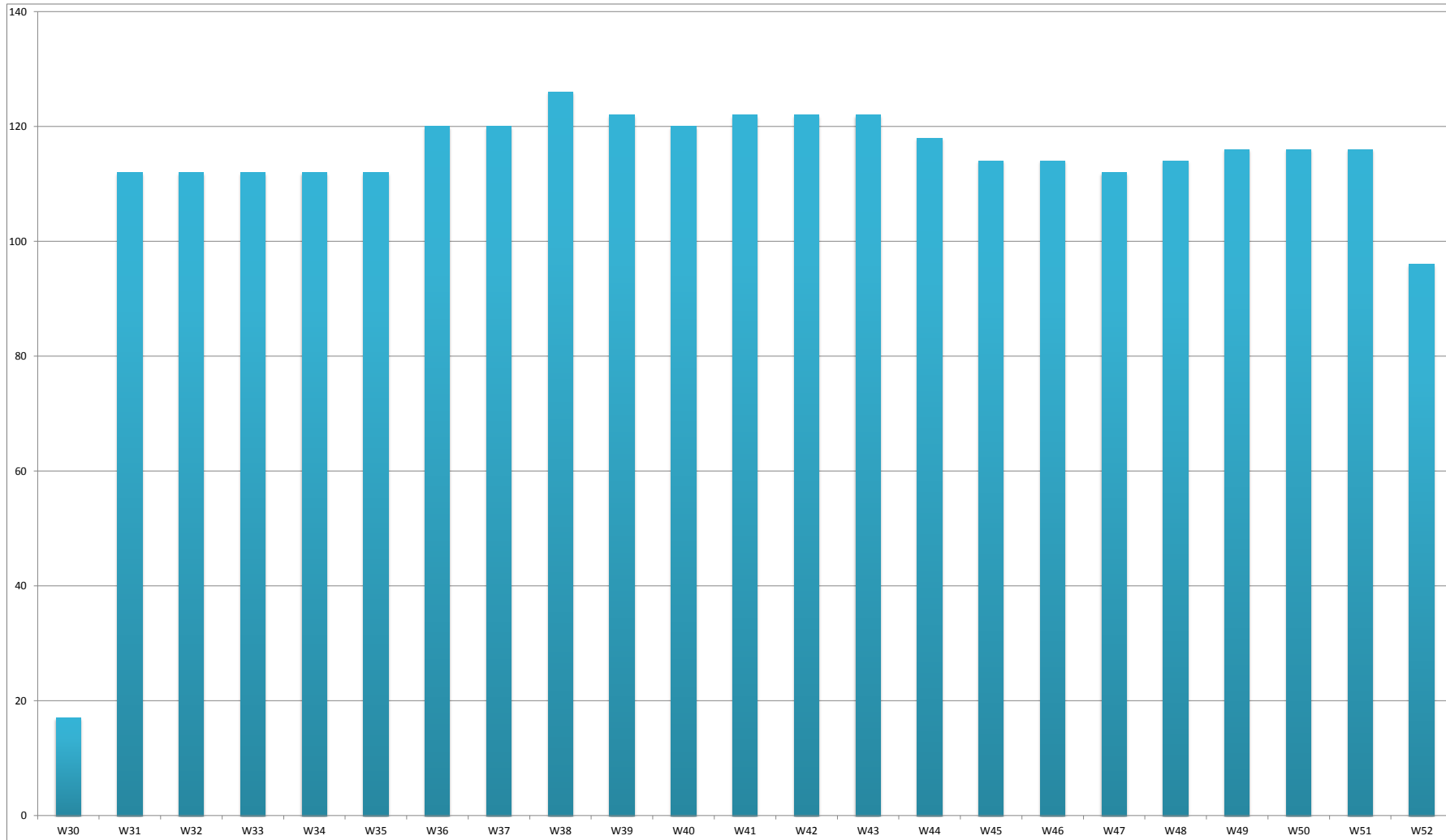
Destination	ATM'S
SYDNEY	1,285
MELBOURNE	648
BRISBANE	634

## Air Transport Seats by Destination



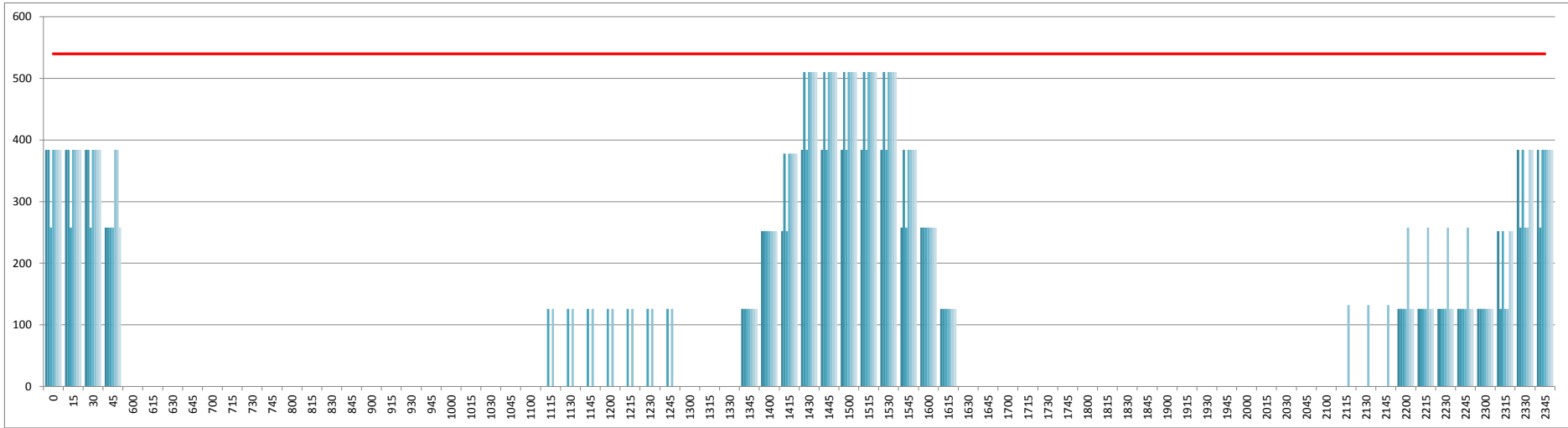
Destination	SEATS
SYDNEY	215,880
BRISBANE	111,584
MELBOURNE	108,864

## Air Transport Movements by Week for the W13 Season



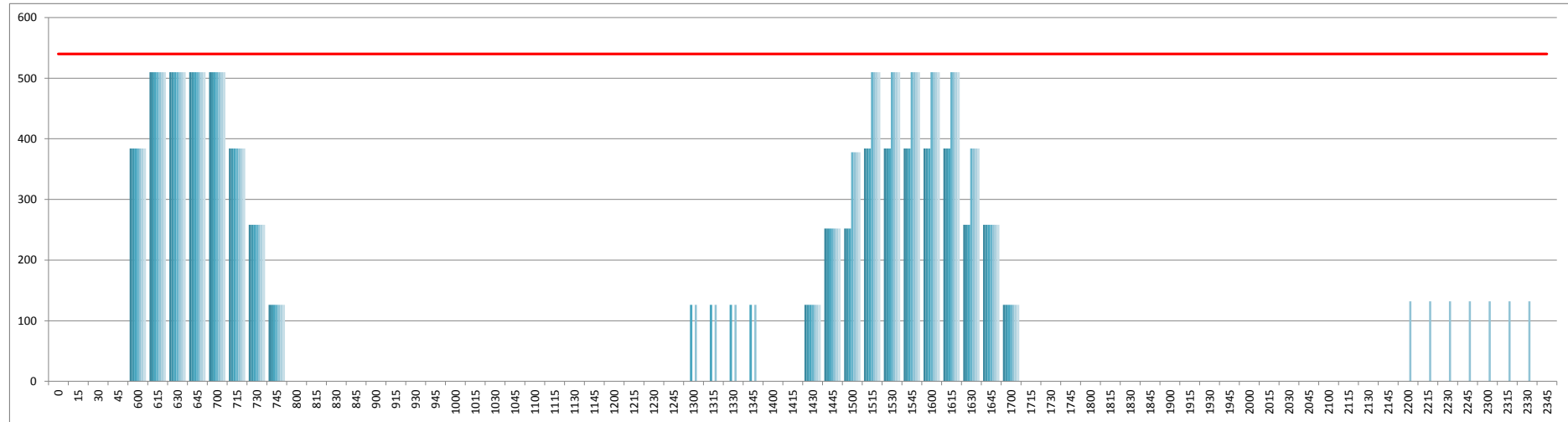
### INTERNATIONAL TERMINAL ARRIVALS (PER 60 MINUTES)

Peak Week Movements per Hour - All times LOCAL



### INTERNATIONAL TERMINAL DEPARTURES (PER 60 MINUTES)

Peak Week Movements per Hour - All times LOCAL



## GLOSSARY OF TERMS

---

<b>Air Transport Movement (ATM)</b>	A scheduled or charter passenger or freight aircraft movement.
<b>Allocation</b>	The allocation of slots such that demand is constrained to fit within declared scheduling limits.
<b>Common Travel Area (CTA)</b>	Services to or from the Republic of Ireland and the Channel Islands.
<b>Passenger ATM</b>	aircraft movements).
<b>Scheduling Limits</b>	Limiting parameters declared by the Airport Operator used in the coordination process.
<b>Seats</b>	The number of seats based on the aircraft configuration advised by the airline.
<b>Peak Week</b>	The Peak Week for W13 is 16 - 22 December 2013
<b>Data Snapshot</b>	All data used for this report was as held 24 October 2013

### GUIDE TO HISTOGRAMS

---

The histograms show the pattern of traffic by time of day against the appropriate scheduling limit. Each time period consist of seven columns representing the days-of-week, Monday through Sunday.