

WELLINGTON INTERNATIONAL AIRPORT

WLG

S15 Start of Season Report (International Traffic)

Key Statistics	S14 Operated	S15 - Season Start	Percentage Change
Air Transport Movements	3152	3,656	▲ 16.0%
Total Seats	536,528	625,488	▲ 16.6%
Seats per Passenger ATM	170	171	

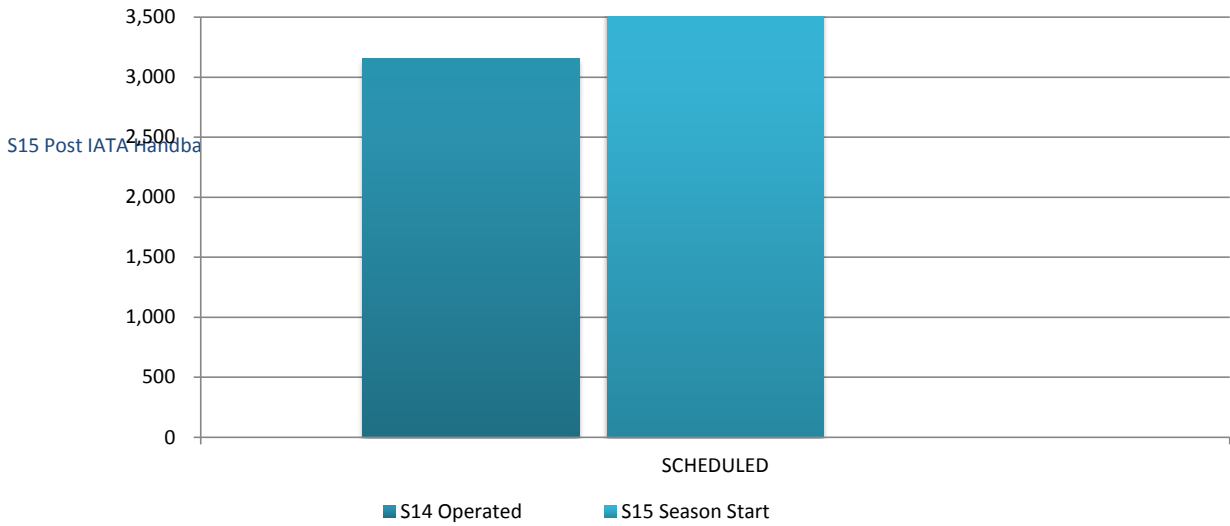
Contents	Page
Movements and Seats by Service Type	2
Peak Week Departure Frequencies by Carrier	3
Airlines by ATM's and Seats	4
Destinations by ATM's and Seats	5
Total Movements by Week	6
International Terminal - Passengers per 60 Minutes	7
Glossary	8

Data in this report is current as of 18 March 2015

No warranty whether expressed or implied as to the completeness, accuracy, fitness for purpose, or satisfactory quality is given by ACL regarding the information in this report, which is provided by third parties. Accordingly, ACL excludes all liability with regard to such data.

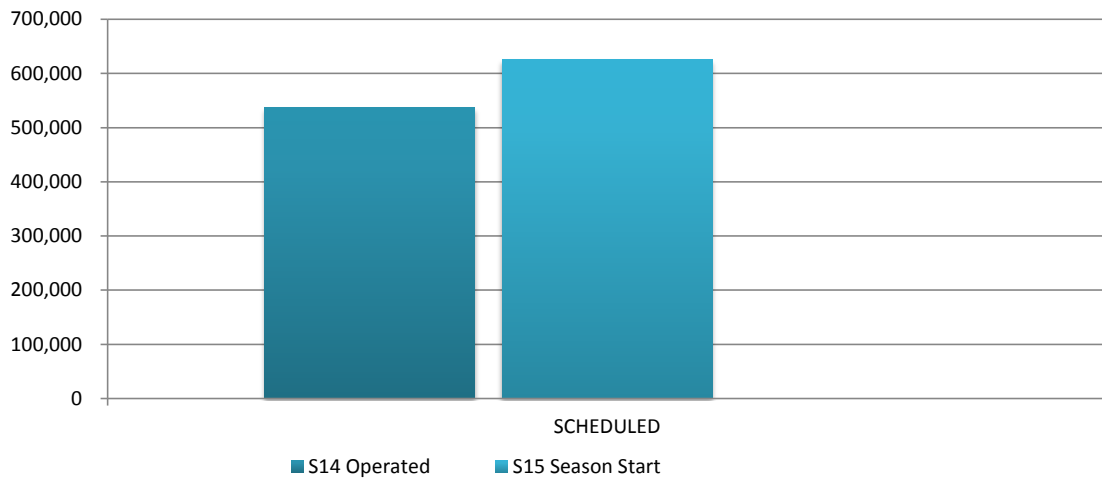
The contents of this report may not be reproduced without the written consent of ACL.

Full Season ATMs by Service Type



	S14 Operated	S15 Season Start	% CHANGE
SCHEDULED	3,152	3,656	▲ 16.0%
TOTAL	3,152	3,656	▲ 16.0%

Full Season Seats by Service Type



	S14 Operated	S15 Season Start	% CHANGE
SCHEDULED	536,528	625,488	▲ 16.6%
TOTAL	536,528	625,488	▲ 16.6%

WELLINGTON INTERNATIONAL AIRPORT

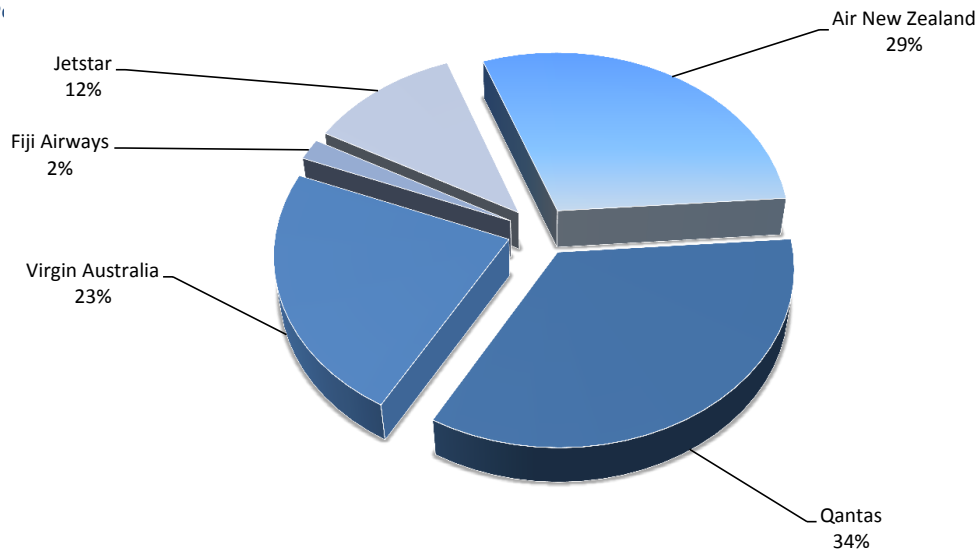
S15 WEEK DEPARTURE FREQUENCIES 13 to 19 July 2015 - BY CARRIER

OPERATOR	AIRPORT	S14		S15		SEATS +/-	ATMS +/-		
		SEATS	ATMS	SEATS	ATMS				
FJ	Air Pacific	NAN	Nadi International	0	0	324	2	324	2
FJ Total				0	0	324	2	324	2
JQ	Jetstar	MEL	Melbourne	0	0	720	4	720	4
		OOL	Gold Coast Coolangatta	0	0	540	3	540	3
S15 Post IATA Hand				0	0	1,260	7	1,260	7
NZ	Air New Zealand	MEL	Melbourne	840	5	1,008	6	168	1
		NAN	Nadi International	336	2	504	3	168	1
		SYD	Sydney Kingsford Smith	1,512	9	1,680	10	168	1
NZ Total				2,688	16	3,192	19	504	3
QF	Qantas	MEL	Melbourne	1,176	7	1,176	7	0	0
		SYD	Sydney Kingsford Smith	2,352	14	2,352	14	0	0
QF Total				3,528	21	3,528	21	0	0
VA	Virgin Australia	BNE	Brisbane International	2,464	14	2,464	14	0	0
VA Total				2,464	14	2,464	14	0	0

Airlines by Air Transport Movements (ATMs)

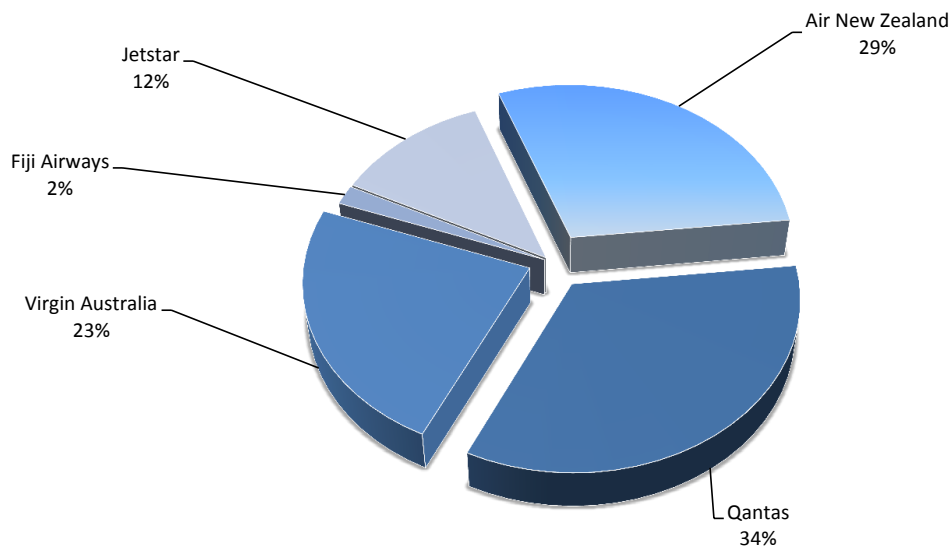
Airline	NS15 Movements	NS14	Diff
Air New Zealand	1,074	1,051	2%
Qantas	1,259	1,257	0%
Virgin Australia	834	846	-1%
Fiji Airways	70	0	100%
Jetstar	419	0	100%

S15 P1

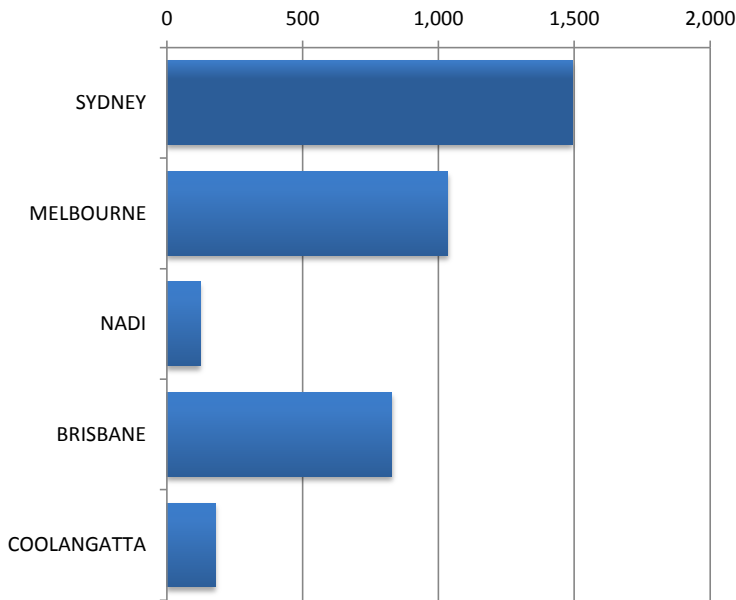


Airlines by Air Seats

Airline	NS15 Seats	NS14	Diff
Air New Zealand	180,432	176,400	2%
Qantas	211,512	211,176	0%
Virgin Australia	146,784	148,952	-1%
Fiji Airways	11,340	0	100%
Jetstar	75,420	0	100%

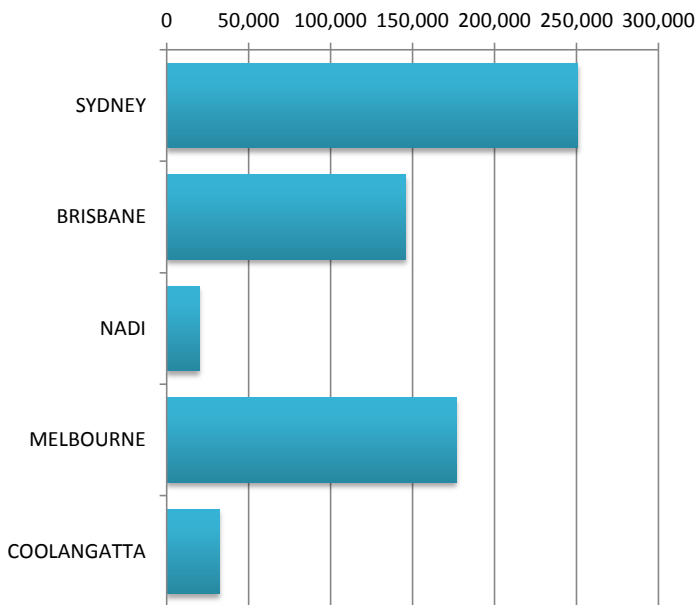


Air Transport Movements by Destination



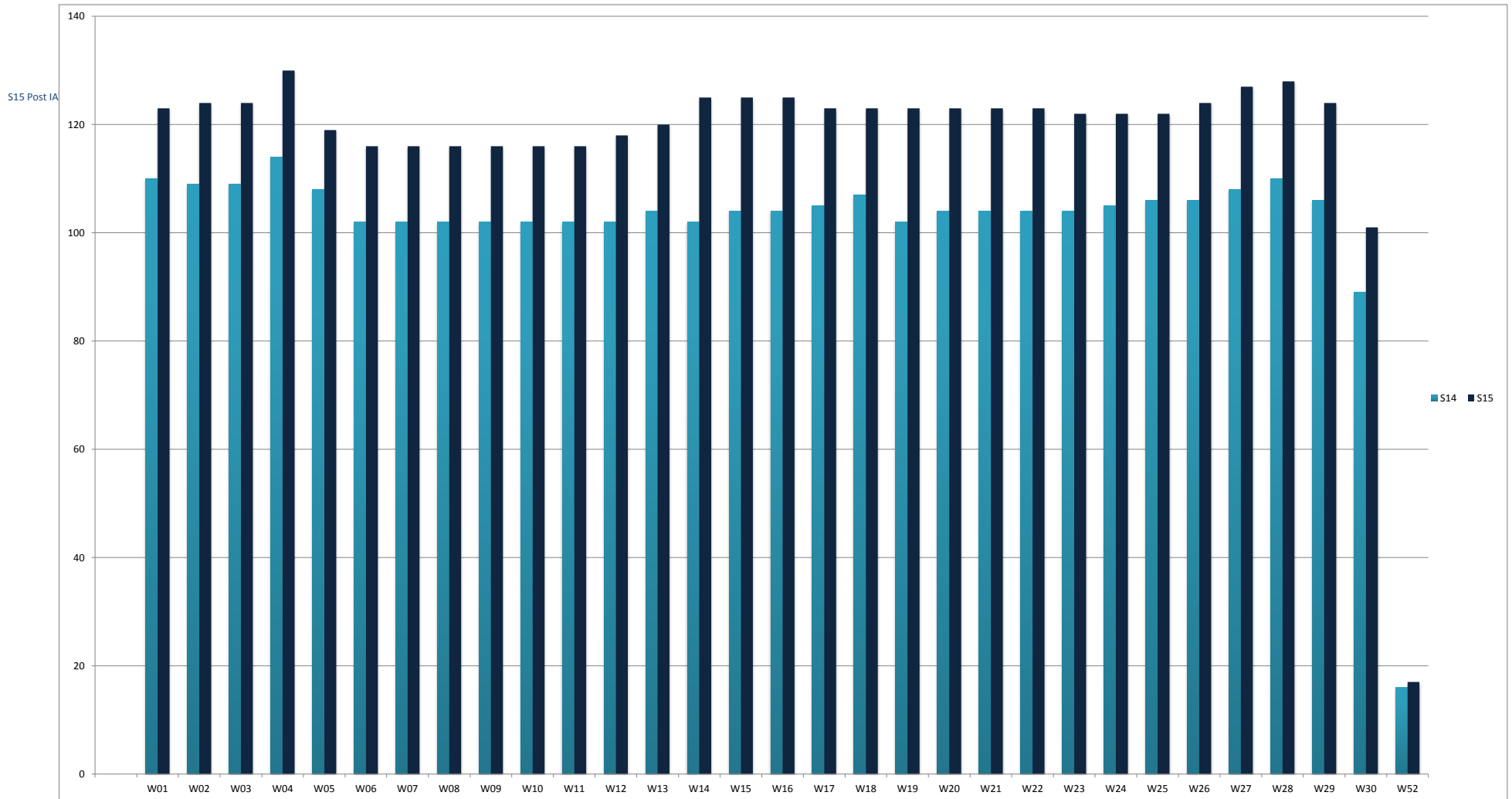
Destination	NS15 ATM'S	NS14	Diff
SYDNEY	1,493	1,482	1%
MELBOURNE	1,034	782	32%
NADI	122	48	154%
BRISBANE	828	842	-2%
COOLANGATTA	179	0	100%

Air Transport Seats by Destination



Destination	NS15 SEATS	NS14	Diff
SYDNEY	250,824	248,808	1%
BRISBANE	145,728	148,248	-2%
NADI	20,076	8,064	149%
MELBOURNE	176,640	131,408	34%
COOLANGATTA	32,220	0	100%

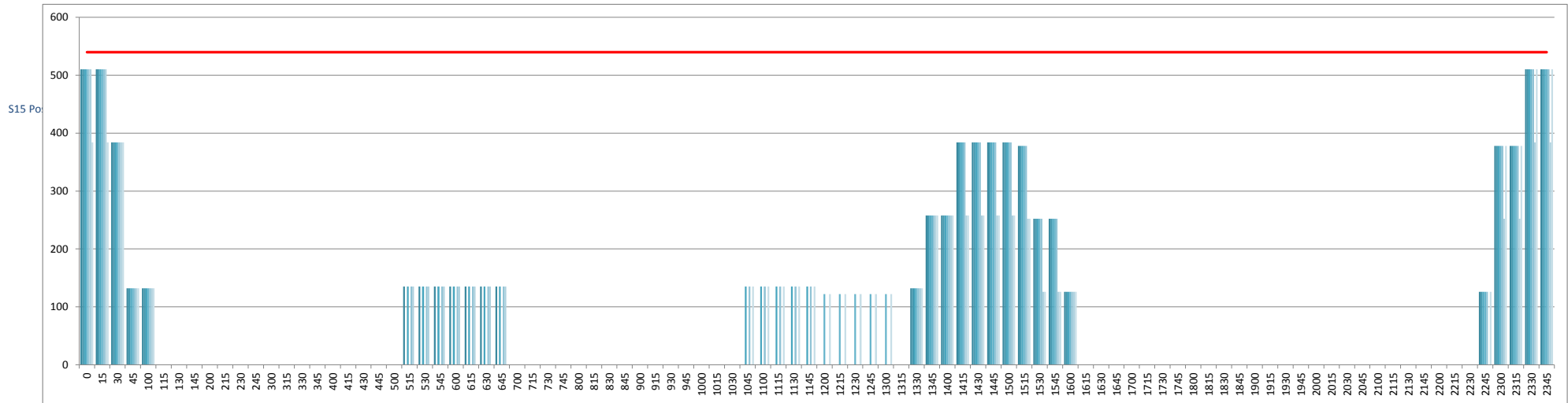
Air Transport Movements by Week for S14 vs S15 Season



INTERNATIONAL TERMINAL ARRIVALS (PER 60 MINUTES)

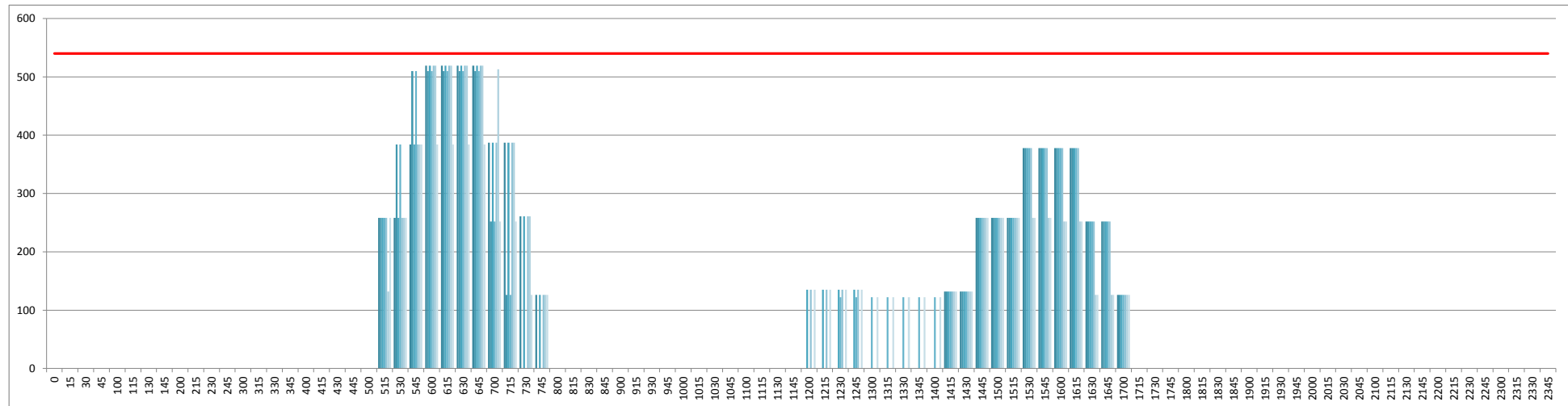
Peak Week Movements per Hour - All times LOCAL

Demand At Initial Submission



INTERNATIONAL TERMINAL DEPARTURES (PER 60 MINUTES)

Peak Week Movements per Hour - All times LOCAL



GLOSSARY OF TERMS

Air Transport Movement (ATM)	A scheduled or charter passenger or freight aircraft movement.
Allocation	The allocation of slots such that demand is constrained to fit within declared scheduling limits.
Passenger ATM	A scheduled or charter <u>passenger</u> aircraft movement (ie, excluding all-cargo aircraft movements).
S15 Post IATA Handback Report (International Traffic)	
Scheduling Limits	Limiting parameters declared by the Airport Operator used in the coordination process.
Seats	The number of seats based on the aircraft configuration advised by the airline.
Average Week	The average Week for S15 is 13 to 19 July 2015
Data Snapshot	All data used for this report was as held 18 March 2015

GUIDE TO HISTOGRAMS

The histograms show the pattern of traffic by time of day against the appropriate scheduling limit. Each time period consist of seven columns representing the days-of-week, Monday through Sunday.