

WELLINGTON INTERNATIONAL AIRPORT

WLG

S14 Start of Season (International Traffic)

Key Statistics	S13 Operated	S14 -Start of Season	Percentage Change
Air Transport Movements	3270	3,150	▼ -3.7%
Total Seats	557,544	536,024	▼ -3.9%
Seats per Passenger ATM	171	170	

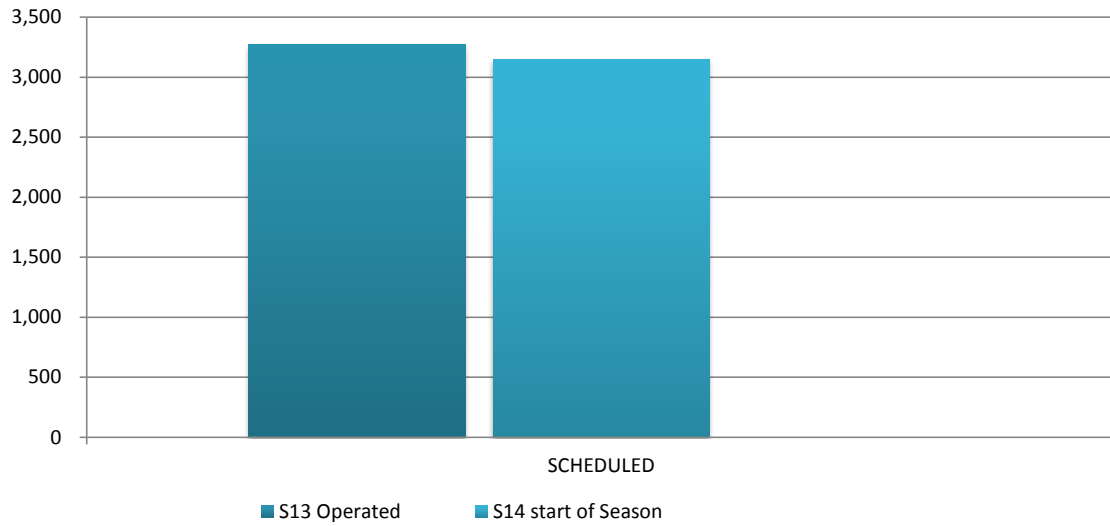
Contents	Page
Movements and Seats by Service Type	2
Peak Week Departure Frequencies by Carrier	3
Airlines by ATM's and Seats	4
Destinations by ATM's and Seats	5
Total Movements by Week	6
International Terminal - Passengers per 60 Minutes	7
Glossary	8

Data in this report is current as of 26 March 2014

No warranty whether expressed or implied as to the completeness, accuracy, fitness for purpose, or satisfactory quality is given by ACL regarding the information in this report, which is provided by third parties. Accordingly, ACL excludes all liability with regard to such data.

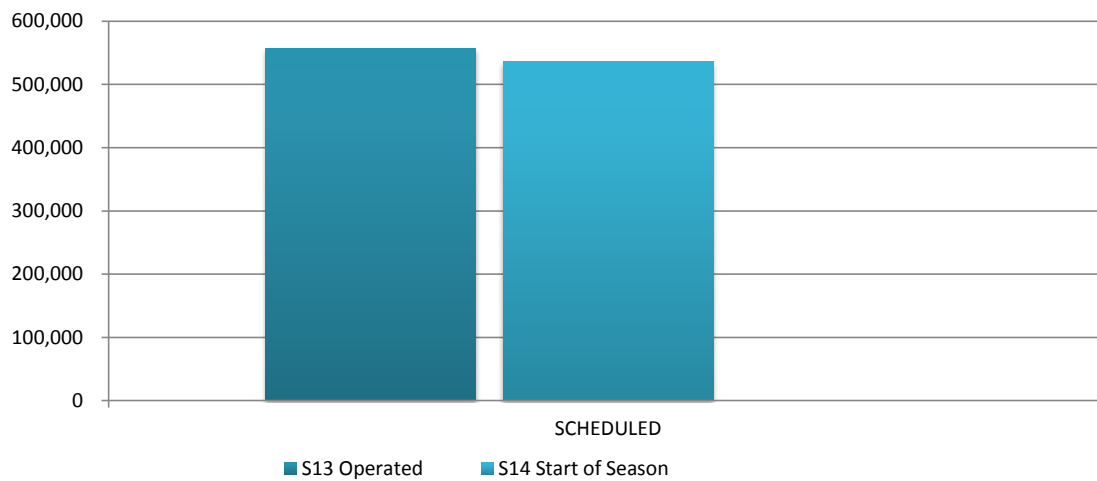
The contents of this report may not be reproduced without the written consent of ACL.

Full Season ATMs by Service Type



	S13 Operated	S14 start of Season	% CHANGE SHL- Start of Season
SCHEDULED	3,270	3,150	▲ -3.7%
TOTAL	3,270	3,150	▲ -3.7%

Full Season Seats by Service Type



	S13 Operated	S14 Start of Season	% CHANGE SHL- Start of season
SCHEDULED	557,544	536,024	-3.9%
TOTAL	557,544	536,024	-3.9%

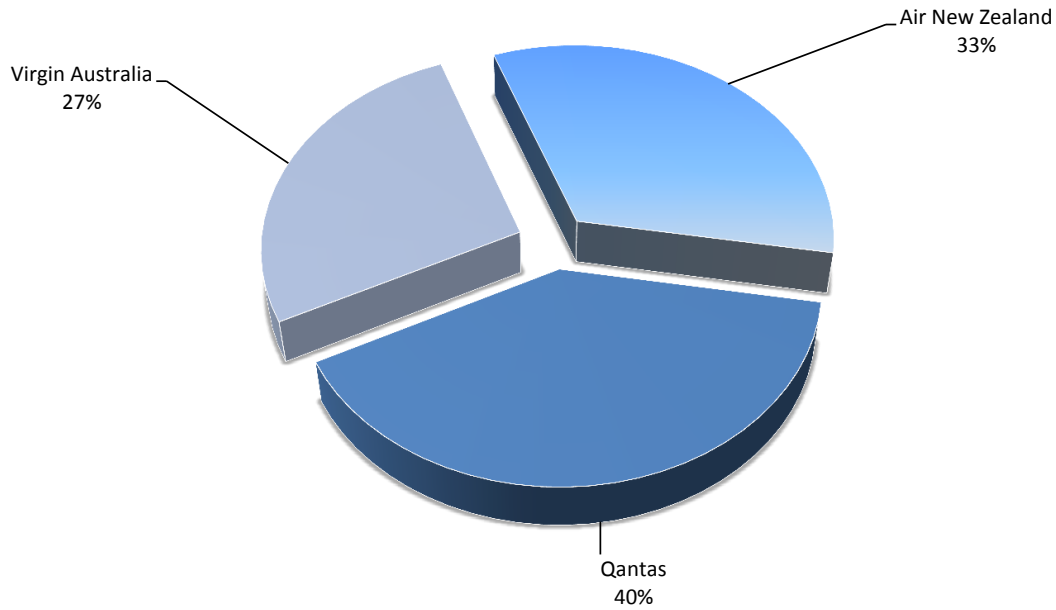
WELLINGTON INTERNATIONAL AIRPORT

PEAK WEEK DEPARTURE FREQUENCIES - BY CARRIER

OPERATOR	AIRPORT	S13		S14		SEATS +/-	ATMS +/-		
		SEATS	ATMS	SEATS	ATMS				
NZ	Air New Zealand	MEL	Melbourne	2,352	14	2,352	14	0	0
		SYD	Sydney Kingsford Smith	4,368	26	4,200	25	-168	-1
NZ Total				6,720	40	6,552	39	-168	-1
QF	Qantas	MEL	Melbourne	2,352	14	2,352	14	0	0
		SYD	Sydney Kingsford Smith	4,704	28	4,704	28	0	0
QF Total				7,056	42	7,056	42	0	0
VA	Virgin Australia	BNE	Brisbane International	5,220	29	4,928	28	-292	-1
		SYD	Sydney Kingsford Smith	720	4	0	0	-720	-4
VA Total				5,940	33	4,928	28	-1,012	-5

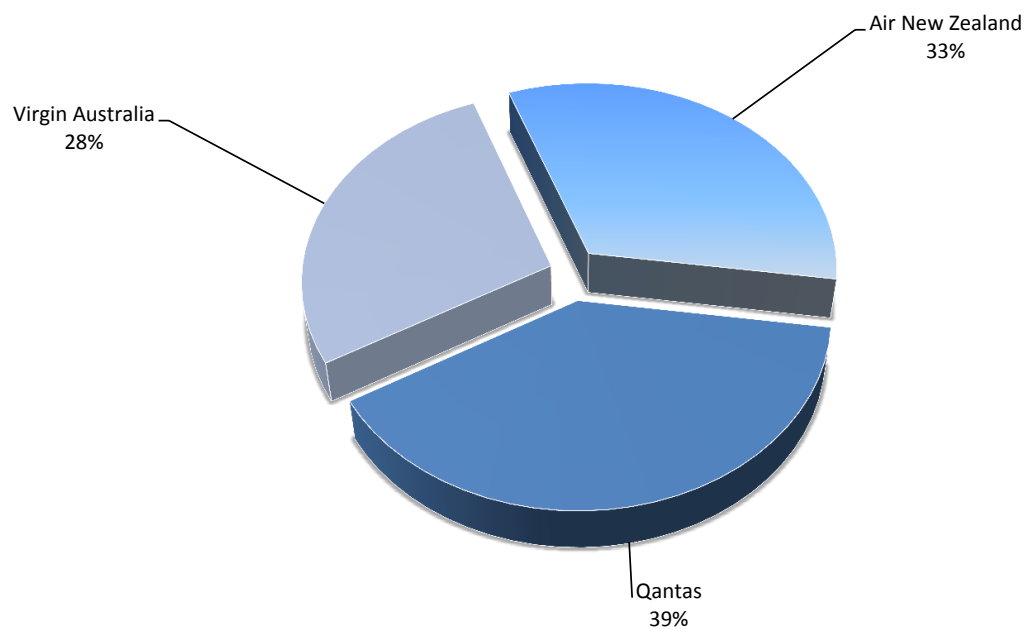
Airlines by Air Transport Movements (ATMs)

Airline	Movements
Air New Zealand	1,045
Qantas	1,259
Virgin Australia	846

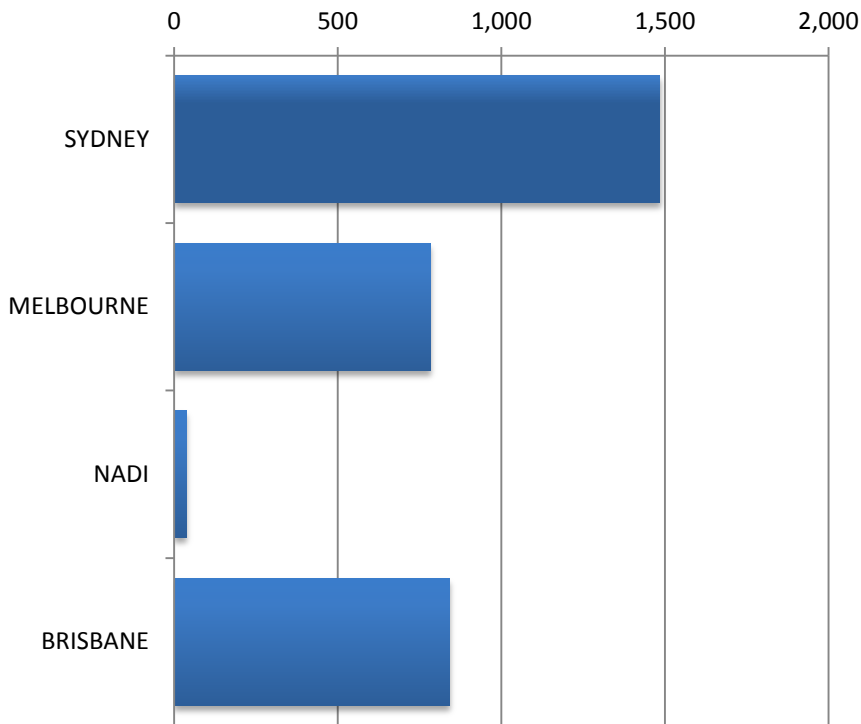


Airlines by Air Seats

Airline	Seats
Air New Zealand	175,560
Qantas	211,512
Virgin Australia	148,952

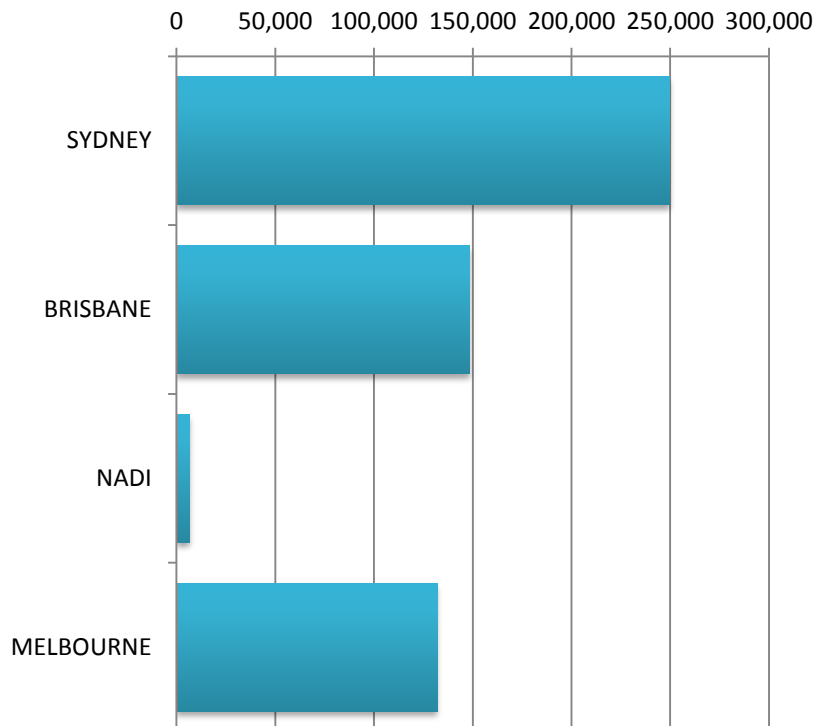


Air Transport Movements by Destination



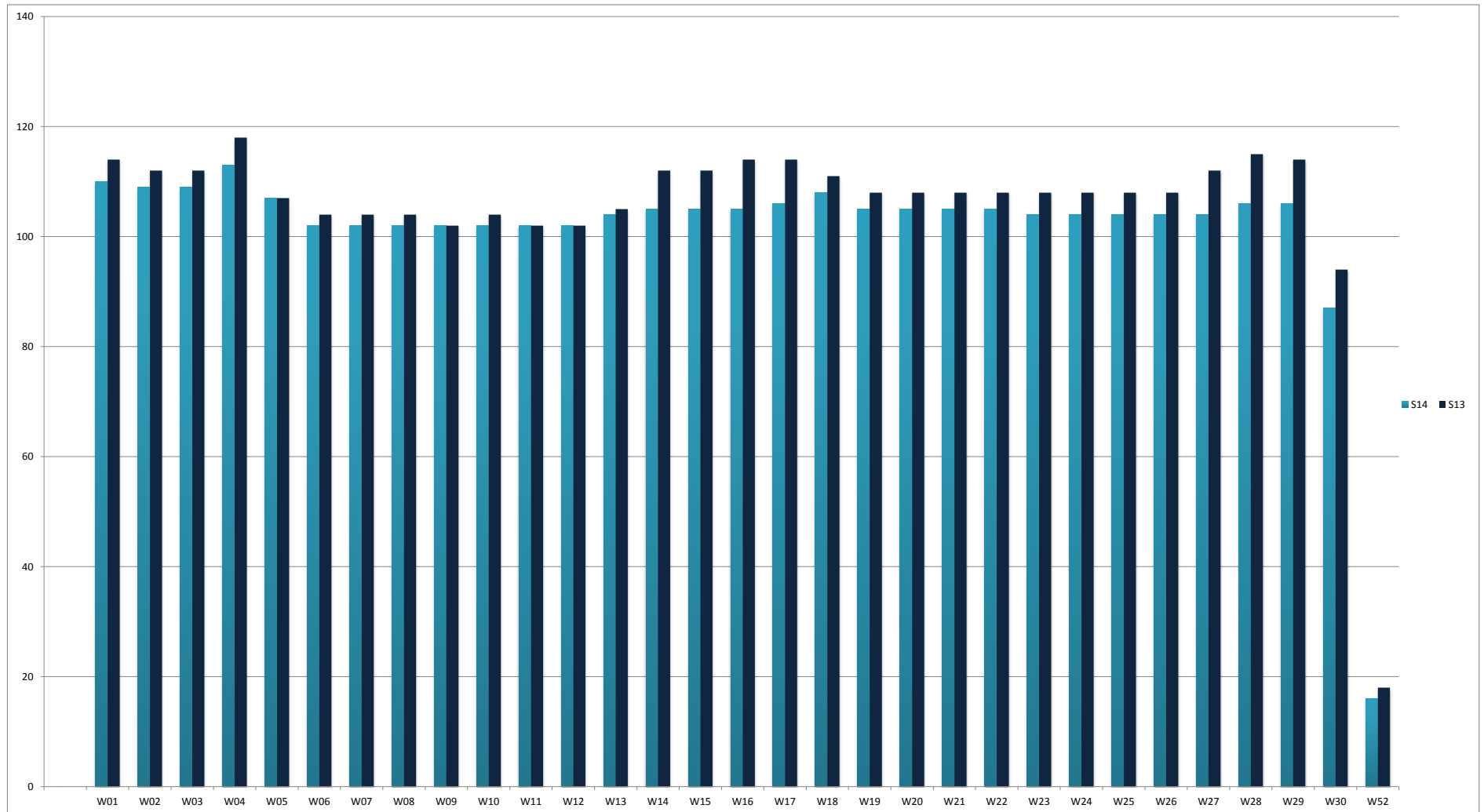
Destination	ATM'S
SYDNEY	1,485
MELBOURNE	785
NADI	38
BRISBANE	842

Air Transport Seats by Destination



Destination	SEATS
SYDNEY	249,480
BRISBANE	148,248
NADI	6,384
MELBOURNE	131,912

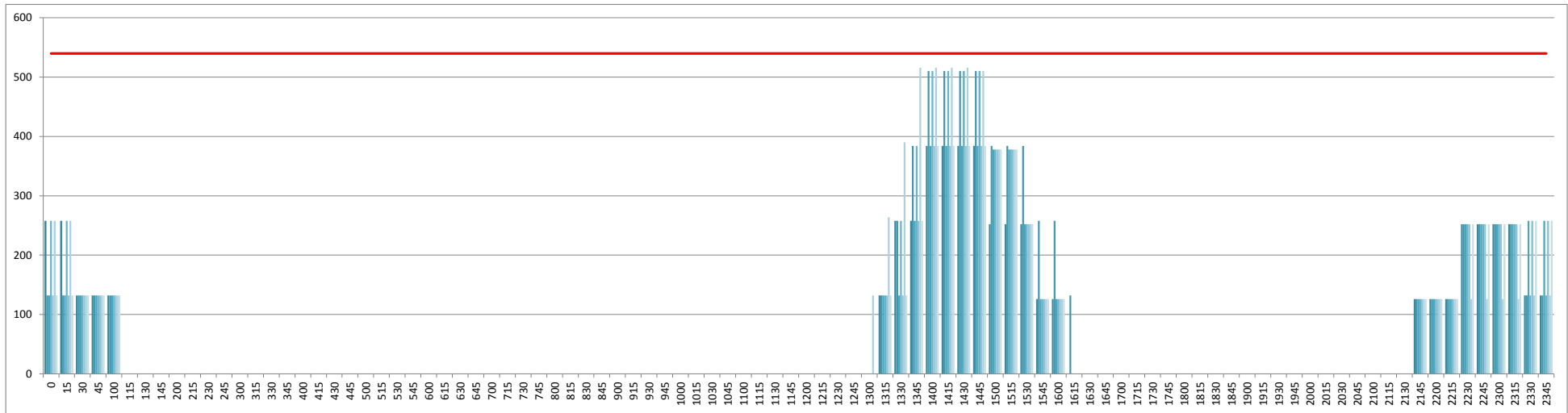
Air Transport Movements by Week for S14 vs S13 Season



INTERNATIONAL TERMINAL ARRIVALS (PER 60 MINUTES)

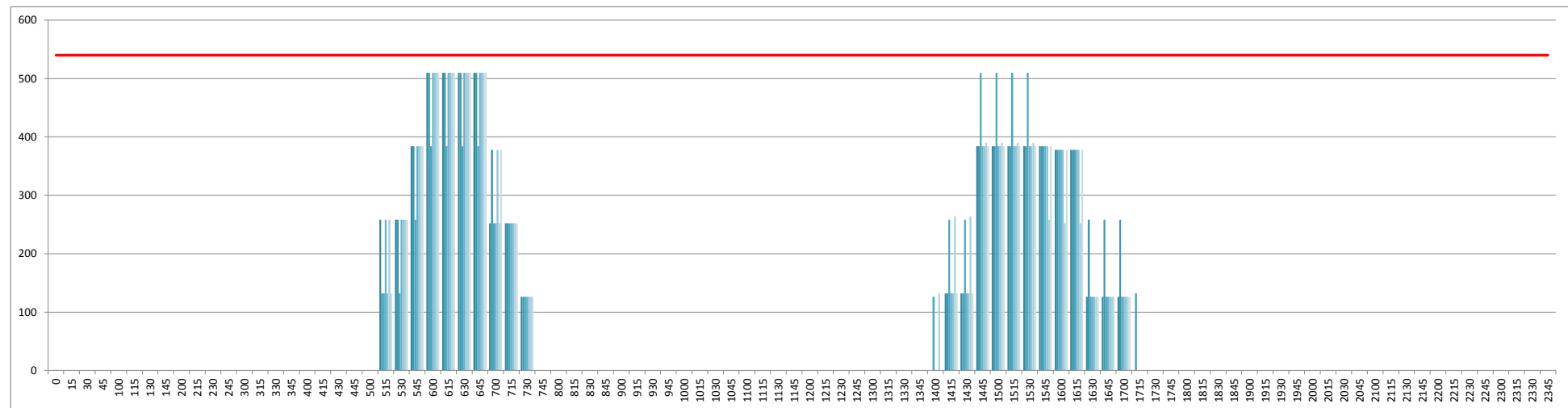
Peak Week Movements per Hour - All times LOCAL

Demand At Initial Submission



INTERNATIONAL TERMINAL DEPARTURES (PER 60 MINUTES)

Peak Week Movements per Hour - All times LOCAL



GLOSSARY OF TERMS

Air Transport Movement (ATM)	A scheduled or charter passenger or freight aircraft movement.
Allocation	The allocation of slots such that demand is constrained to fit within declared scheduling limits.
Passenger ATM	A scheduled or charter <u>passenger</u> aircraft movement (ie, excluding all-cargo aircraft movements).
Scheduling Limits	Limiting parameters declared by the Airport Operator used in the coordination process.
Seats	The number of seats based on the aircraft configuration advised by the airline.
Peak Week	The Peak Week for S14 is 21 to 27 April 2014
Data Snapshot	All data used for this report was as held 26 March 2014

GUIDE TO HISTOGRAMS

The histograms show the pattern of traffic by time of day against the appropriate scheduling limit. Each time period consist of seven columns representing the days-of-week, Monday through Sunday.