

# WARSAW FREDERIC CHOPIN AIRPORT

## EPWA / WAW

### WINTER 2014

### START OF SEASON REPORT

Winter 2014	Change from Winter 2013 (Start of Season)	Change from Winter 2013 (End of Season)
-------------	---	---

#### KEY STATISTICS

Air Transport Movements	52,597	↑ 10%	↑ 12%
Total Seats	5,582,854	↑ 11%	↑ 15%
Seats per Passenger ATM	106	→ 0%	→ 0%

#### CONTENT

	Page
SCHEDULING LIMITS	2
SCHEDULE ADJUSTMENT	3
TOP AIRLINES ANALYSIS	4
TOP ROUTES ANALYSIS	5
TOP 10 AIRCRAFT TYPE	6
RUNWAY R60 DEMAND & ALLOCATION HISTOGRAMS	7-8
RUNWAY R10 DEMAND & ALLOCATION HISTOGRAMS	9-10
TOTAL TERMINAL DEMAND & ALLOCATION	11-12
TERMINAL SCHENGEN DEMAND & ALLOCATION	13-14
TERMINAL NON SCHENGEN DEMAND & ALLOCATION	15-16
NIGHT MOVEMENT SUMMARY	17
GLOSSARY OF TERMS	18

Data in this report is current as of:

20 October 2014

No warranty whether expressed or implied as to the completeness, accuracy, fitness for purpose, or satisfactory quality is given by ACL regarding the information in this report, which is provided by third parties. Accordingly, ACL excludes all liability with regard to such data.

The contents of this report may not be reproduced without the written consent of ACL.

## RUNWAY SCHEDULING LIMITS

All times UTC

		ARRIVALS																		
		SEASON W14	05:00	06:00	07:00	08:00	09:00	10:00	11:00	12:00	13:00	14:00	15:00	16:00	17:00	18:00	19:00	20:00	21:00	
MONDAY - SUNDAY	R60	26	26	26	26	26	26	26	26	26	26	26	26	26	26	26	26	26	26	
	R10	6	6	6	6	6	6	6	6	6	6	6	6	6	6	6	6	6	6	
			DEPARTURES																	
	SEASON W14	05:00	06:00	07:00	08:00	09:00	10:00	11:00	12:00	13:00	14:00	15:00	16:00	17:00	18:00	19:00	20:00	21:00		
	R60	28	28	28	28	28	28	28	28	28	28	28	28	28	28	28	28	28	28	28
	nge from Winter 2013 (Start of Season)																			
	R10	6	6	6	6	6	6	6	6	6	6	6	6	6	6	6	6	6	6	6
			TOTALS																	
	SEASON W14	05:00	06:00	07:00	08:00	09:00	10:00	11:00	12:00	13:00	14:00	15:00	16:00	17:00	18:00	19:00	20:00	21:00		
	R60	38	38	38	38	38	38	38	38	38	38	38	38	38	38	38	38	38	38	38
R10	8	8	8	8	8	8	8	8	8	8	8	8	8	8	8	8	8	8	8	

## TERMINAL SCHEDULING LIMITS

Passengers per Hour (T60/30)

	SCHENGEN	NON SCHENGEN	TOTAL
ARRIVALS	1,600	1,300	1,600
DEPARTURES	1,700	1,500	1,700

## OTHER RESTRICTIONS

### Night quota:

The night quota period is defined for arrivals as 2100 - 0515 and for departures as 2045 - 0450 (UTC times inclusive).  
The Quota Count limit is set at 29 quota points during each night period.

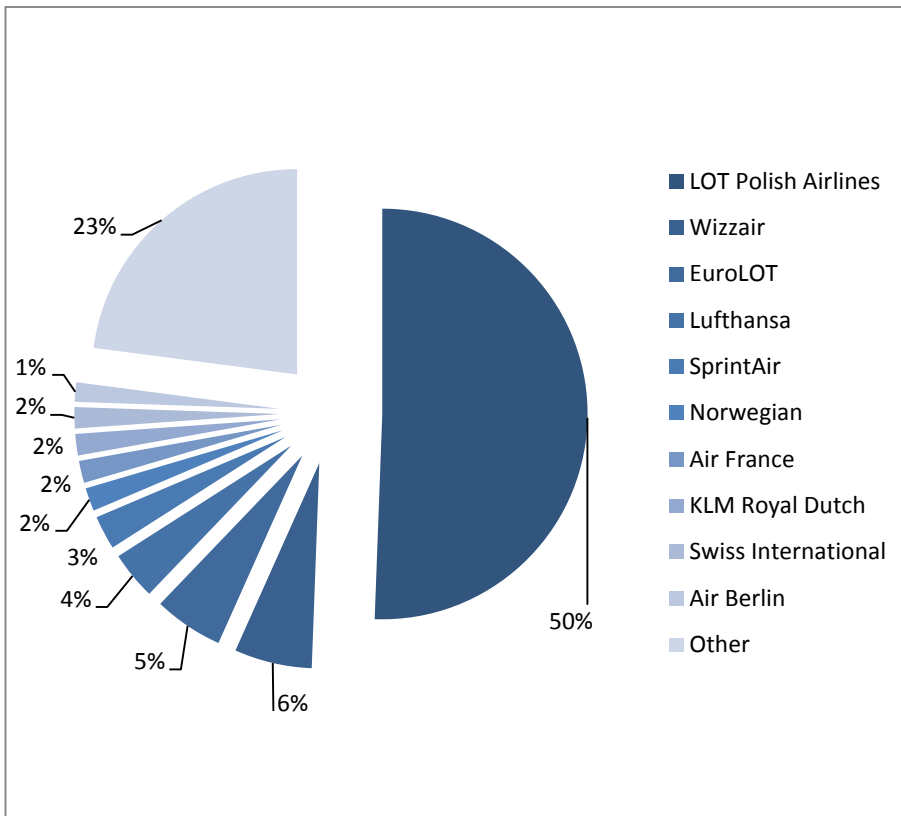
### Terminal and Runway Redevelopment:

Due to terminal redevelopment works between 01/08/12 - 30/04/2015 arrivals capped at 1,900 pax/h during Peak Hours and at 1,600 off peak.  
Arrivals peak hours were determined between 0800-0855 and 2000-2055 UTC.  
Departures limited to 1,700 pax/h off peak and 1,850 pax/h in peak hours.  
Departures peak hours were determined between 0600-0655 and 1500-1555 UTC.  
Additional restriction on the number of departing passenger flights set at 18 mvmt/h off peak and 21 mvmt/h during peak hours.  
Passenger departures peak hours were determined between 0600-0655 ; 0900-0955; 1500-1555 and 1800-1855 UTC.

## SCHEDULE ADJUSTMENTS BY CARRIER

Off Slot	0	5	10	15	20	25	30	45	0	5	10	15	20	30	45	Total
<b>Total</b>	<b>50328</b>	<b>1242</b>	<b>525</b>	<b>149</b>	<b>176</b>	<b>20</b>	<b>25</b>	<b>132</b>	<b>96%</b>	<b>2%</b>	<b>1%</b>	<b>0%</b>	<b>0%</b>	<b>0%</b>	<b>0%</b>	<b>52597</b>
LOT Polish Airlines	25516	781	270		22	20			96%	3%	1%		0%			26609
Wizzair	3190	22							99%	1%						3212
EuroLOT	1859	330	231	149	153		22	132	65%	11%	8%	5%	5%	1%	5%	2876
Lufthansa	1990								100%							1990
Sprint Air	1400								100%							1400
Norwegian	962								100%							962
Air France	916	er 2013	(Start of Season)						100%							916
KLM Royal Dutch	888								100%							888
Swiss International	880								100%							880
Air Berlin	804								100%							804
Austian Airlines	762								100%							762
Germanwings	716								100%							716
SAS Scandinavian	670								100%							670
Czech Airlines	642								100%							642
Aeroflot	610								100%							610
Finnair	610								100%							610
British Airways	604								100%							604
Enter Air	544	21	3						96%	4%	1%					568
Brussels Airlines	552								100%							552
Alitalia	528								100%							528
Small Planet	485	14	6		1		3		95%	3%	1%		0%	1%		509
Travel Service	420		15						97%		3%					435
Travel Service Polska	393	7							98%	2%						400
UPS	396								100%							396
Emirates	308								100%							308
Ukrainian International	308								100%							308
Qatar Airways	308								100%							308
JAT Airways	264								100%							264
Air Baltic	260								100%							260
FEDEX	220								100%							220
Belavia	176	44							80%	20%						220
Turkish Airlines	220								100%							220
Sprint Air Cargo	220								100%							220
Aegean Airlines	220								100%							220
TNT Airways	198	22							90%	10%						220
European Air Transport/DHL	218								100%							218
TAP Portugal	190								100%							190
Aer Lingus	176								100%							176
Vueling	154								100%							154
EI AI	135	1							99%	1%						136
TUI Netherlands	133								100%							133
Adria Airways	122								100%							122
Genex	88								100%							88
BA Cityflyer	19								100%							19
Onur Air	12								100%							12
WOW Air	12								100%							12
Air Dolomiti	10								100%							10
Nouvelair	4								100%							4
Hamburg Airways	4								100%							4
Air Explore	4								100%							4
Arkia Israeli Airlines	4								100%							4
Iberia	2								100%							2
Air Hop	2								100%							2

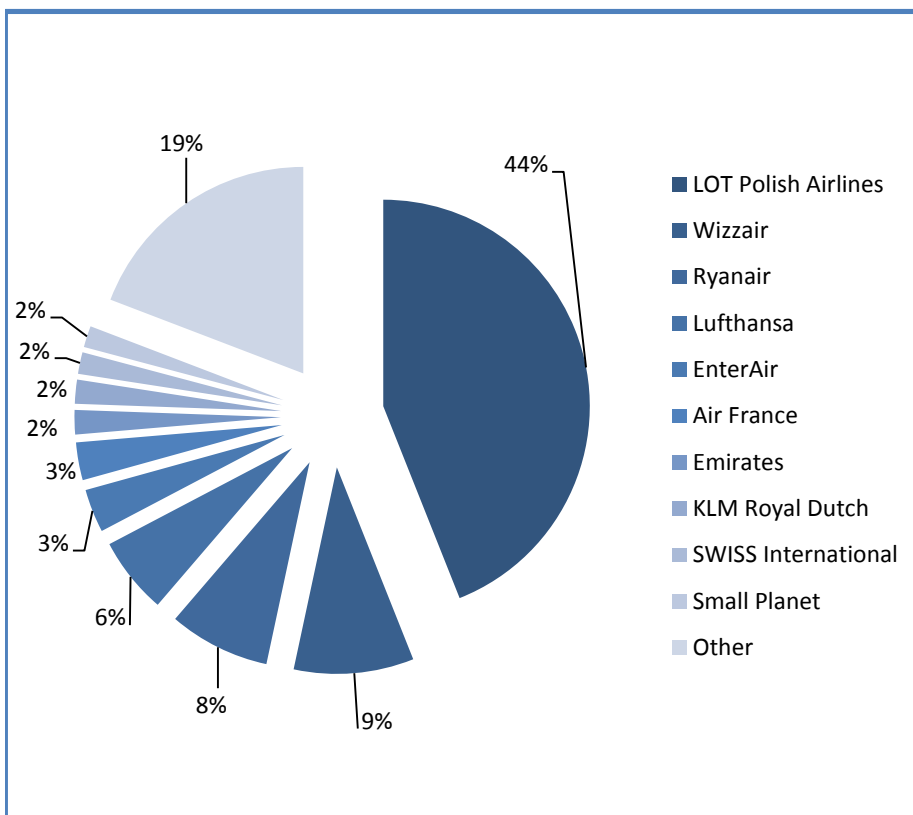
## TOP AIRLINES BY ATM



er 2013 (Start of Season)

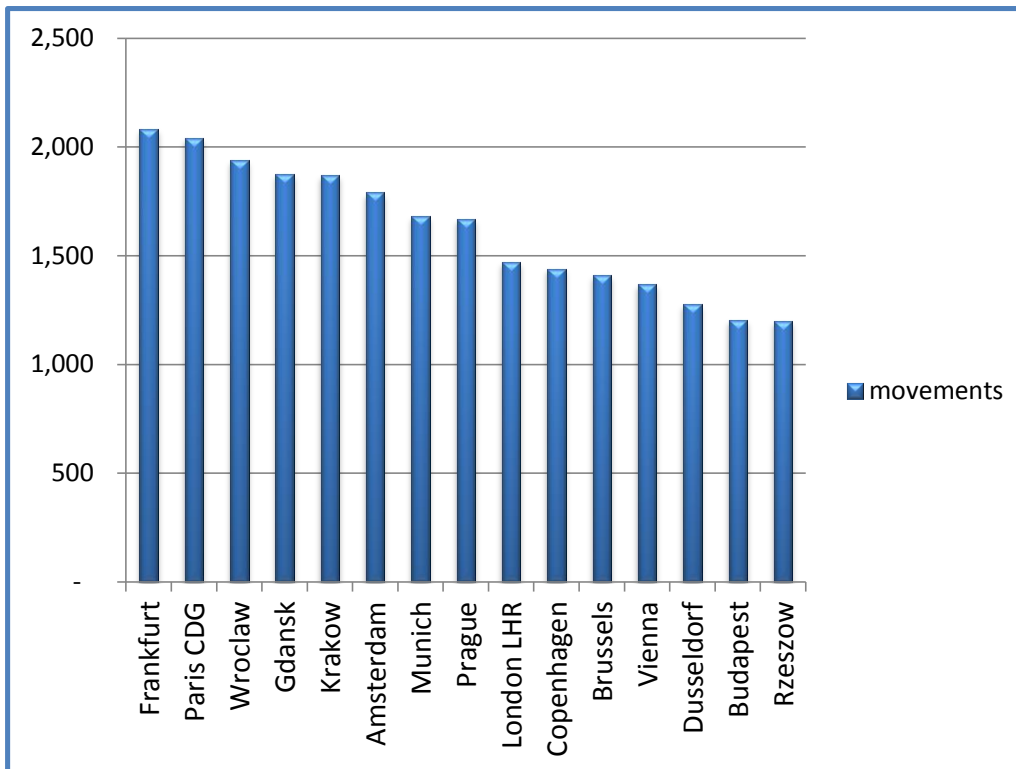
operator	movements
LOT Polish Airlines	26,609
Wizzair	3,212
EuroLOT	2,876
Lufthansa	1,990
SprintAir	1,400
Norwegian	962
Air France	916
KLM Royal Dutch	888
Swiss International	880
Air Berlin	804
Other	12,060

## TOP AIRLINES BY SEATS



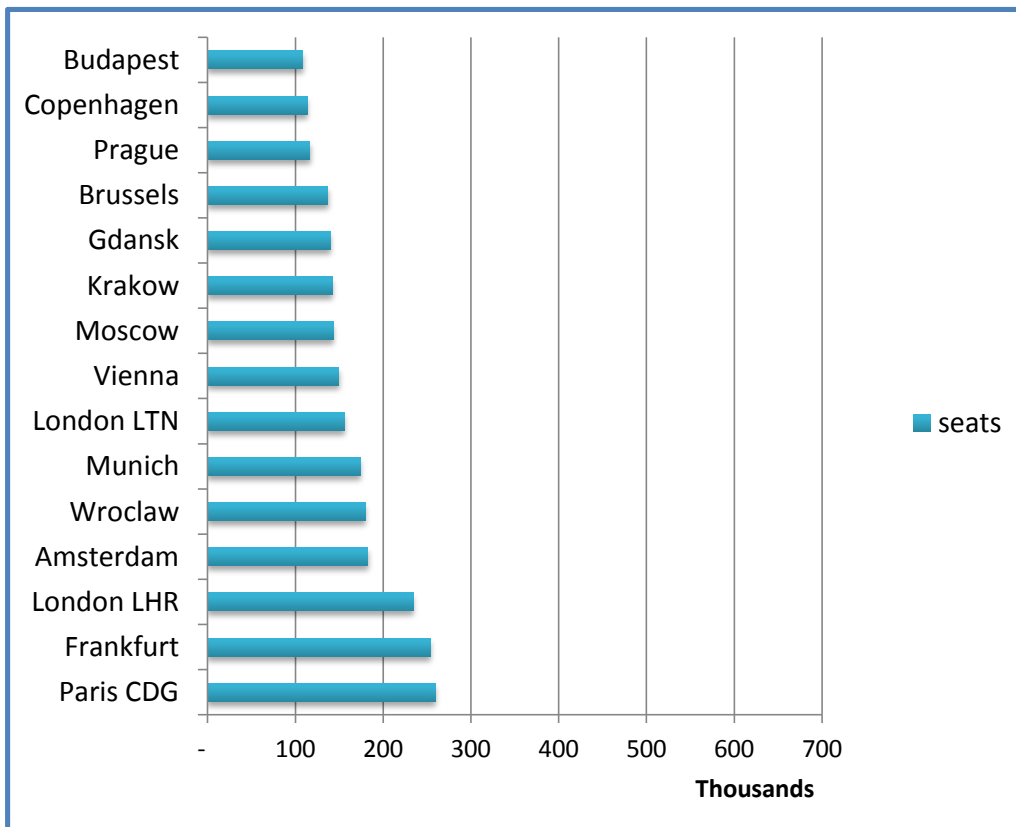
operator	seats
LOT Polish Airlines	2,478,301
Wizzair	578,160
Lufthansa	251,404
EuroLOT	220,818
Norwegian	178,932
Air France	167,694
KLM Royal Dutch	108,160
British Airways	101,472
Enter Air	99,939
Alitalia	94,956
Other	1,303,018

## TOP ROUTES BY ATM



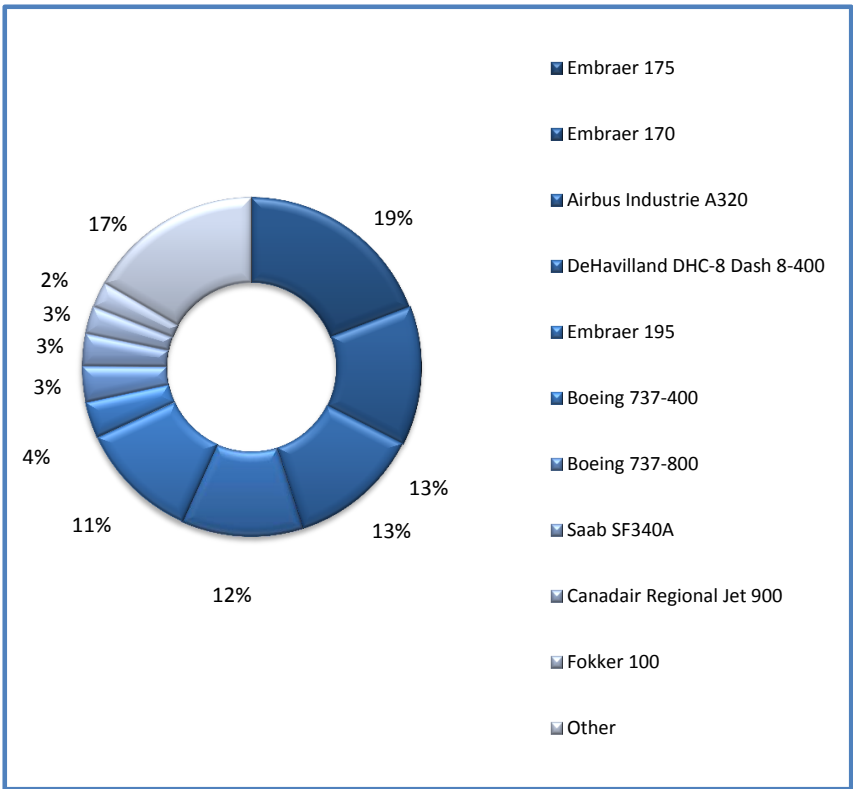
destination	movements
Frankfurt	2,080
Paris CDG	2,040
Wroclaw	1,939
Gdansk	1,876
Krakow	1,870
Amsterdam	1,789
Munich	1,680
Prague	1,668
London LHR	1,470
Copenhagen	1,440
Brussels	1,409
Vienna	1,367
Dusseldorf	1,278
Budapest	1,205
Rzeszow	1,198

## TOP ROUTES BY SEATS



destination	seats
Paris CDG	259,114
Frankfurt	253,922
London LHR	234,360
Amsterdam	182,294
Wroclaw	179,876
Munich	174,359
London LTN	156,240
Vienna	149,441
Moscow	143,002
Krakow	141,924
Gdansk	140,212
Brussels	137,103
Prague	116,478
Copenhagen	113,282
Budapest	108,227

# TOP 10 AIRCRAFT TYPE

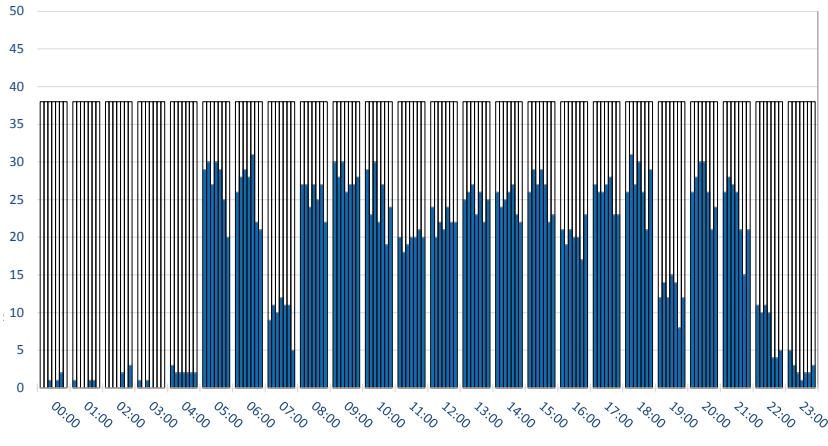


2013 (Start of Season)

aircraft	movements
Embraer 175	10,104
Embraer 170	6,967
Airbus Industrie A320	6,628
DeHavilland DHC-8 Dash 8-400	6,134
Embraer 195	6,021
Boeing 737-400	1,842
Boeing 737-800	1,801
Saab SF340A	1,620
Canadair Regional Jet 900	1,380
Fokker 100	1,310
Other	8,790

## RUNWAY MOVEMENT DEMAND - R60 TOTALS

Movements per Hour - All times UTC

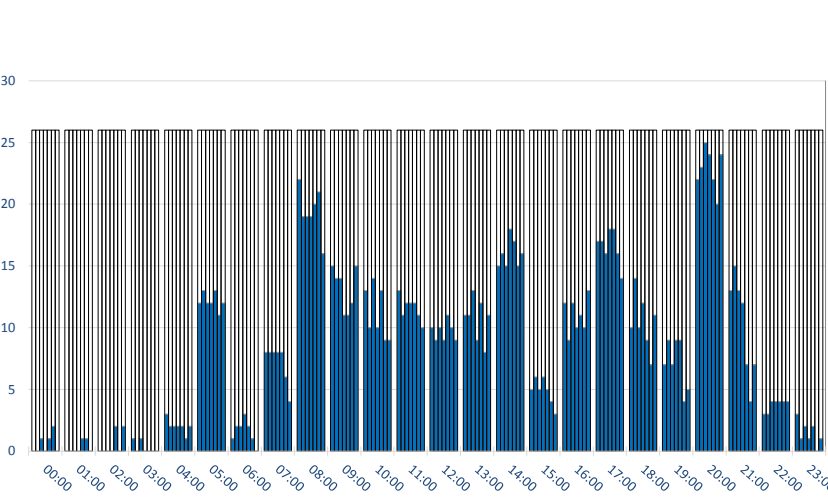


## PEAK WEEK (09-15 MAR)

	CAPACITY							DEMAND						
	Mon	Tue	Wed	Thu	Fri	Sat	Sun	Mon	Tue	Wed	Thu	Fri	Sat	Sun
00:00	38	38	38	38	38	38	38	0	0	1	0	1	2	0
01:00	38	38	38	38	38	38	38	1	0	0	0	1	1	0
02:00	38	38	38	38	38	38	38	0	0	0	0	2	0	3
03:00	38	38	38	38	38	38	38	1	0	1	0	0	0	0
04:00	38	38	38	38	38	38	38	3	2	2	2	2	2	2
05:00	38	38	38	38	38	38	38	29	30	27	30	29	25	20
06:00	38	38	38	38	38	38	38	26	28	29	28	31	22	21
07:00	38	38	38	38	38	38	38	9	11	10	12	11	11	5
08:00	38	38	38	38	38	38	38	27	27	24	27	25	27	22
09:00	38	38	38	38	38	38	38	30	28	30	26	27	27	28
10:00	38	38	38	38	38	38	38	29	23	30	22	27	19	24
11:00	38	38	38	38	38	38	38	20	18	19	20	20	21	20
12:00	38	38	38	38	38	38	38	24	20	22	21	24	22	22
13:00	38	38	38	38	38	38	38	25	26	27	23	26	22	25
14:00	38	38	38	38	38	38	38	26	24	25	26	27	23	22
15:00	38	38	38	38	38	38	38	26	29	27	29	27	22	23
16:00	38	38	38	38	38	38	38	21	19	21	20	20	17	23
17:00	38	38	38	38	38	38	38	27	26	26	27	28	23	23
18:00	38	38	38	38	38	38	38	26	31	27	30	26	21	29
19:00	38	38	38	38	38	38	38	12	14	12	15	14	8	12
20:00	38	38	38	38	38	38	38	26	28	30	30	26	21	24
21:00	38	38	38	38	38	38	38	26	28	27	26	21	15	21
22:00	38	38	38	38	38	38	38	11	10	11	10	4	4	5
23:00	38	38	38	38	38	38	38	5	3	2	1	2	2	3

## RUNWAY MOVEMENT DEMAND - R60 ARRIVALS

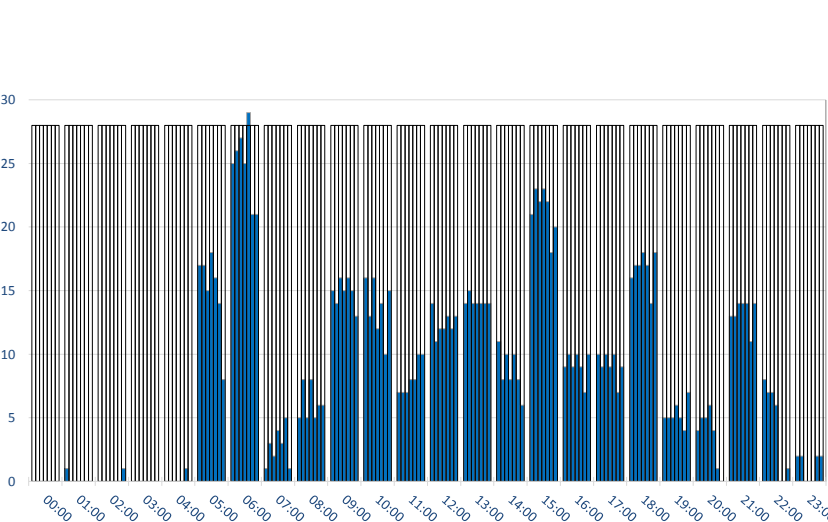
Movements per Hour - All times UTC



	CAPACITY							DEMAND						
	Mon	Tue	Wed	Thu	Fri	Sat	Sun	Mon	Tue	Wed	Thu	Fri	Sat	Sun
00:00	26	26	26	26	26	26	26	0	0	1	0	1	2	0
01:00	26	26	26	26	26	26	26	0	0	0	0	1	1	0
02:00	26	26	26	26	26	26	26	0	0	0	0	2	0	2
03:00	26	26	26	26	26	26	26	1	0	1	0	0	0	0
04:00	26	26	26	26	26	26	26	3	2	2	2	2	1	2
05:00	26	26	26	26	26	26	26	12	13	12	12	13	11	12
06:00	26	26	26	26	26	26	26	1	2	2	3	2	1	0
07:00	26	26	26	26	26	26	26	8	8	8	8	8	6	4
08:00	26	26	26	26	26	26	26	22	19	19	19	20	21	16
09:00	26	26	26	26	26	26	26	15	14	14	11	11	12	15
10:00	26	26	26	26	26	26	26	13	10	14	10	13	9	9
11:00	26	26	26	26	26	26	26	13	11	12	12	12	11	10
12:00	26	26	26	26	26	26	26	10	9	10	9	11	10	9
13:00	26	26	26	26	26	26	26	11	11	13	9	12	8	11
14:00	26	26	26	26	26	26	26	15	16	15	18	17	15	16
15:00	26	26	26	26	26	26	26	5	6	5	6	5	4	3
16:00	26	26	26	26	26	26	26	12	9	12	10	11	10	13
17:00	26	26	26	26	26	26	26	17	17	16	18	18	16	14
18:00	26	26	26	26	26	26	26	10	14	10	12	9	7	11
19:00	26	26	26	26	26	26	26	7	9	7	9	9	4	5
20:00	26	26	26	26	26	26	26	22	23	25	24	22	20	24
21:00	26	26	26	26	26	26	26	13	15	13	12	7	4	7
22:00	26	26	26	26	26	26	26	3	3	4	4	4	4	4
23:00	26	26	26	26	26	26	26	3	1	2	1	2	0	1

## RUNWAY MOVEMENT DEMAND - R60 DEPARTURES

Movements per Hour - All times UTC

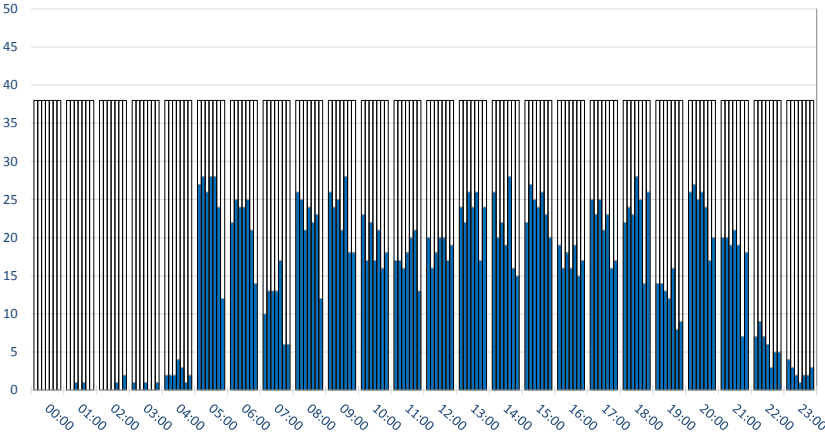


	CAPACITY							DEMAND						
	Mon	Tue	Wed	Thu	Fri	Sat	Sun	Mon	Tue	Wed	Thu	Fri	Sat	Sun
00:00	28	28	28	28	28	28	28	0	0	0	0	0	0	0
01:00	28	28	28	28	28	28	28	1	0	0	0	0	0	0
02:00	28	28	28	28	28	28	28	0	0	0	0	0	0	1
03:00	28	28	28	28	28	28	28	0	0	0	0	0	0	0
04:00	28	28	28	28	28	28	28	0	0	0	0	0	1	0
05:00	28	28	28	28	28	28	28	17	17	15	18	16	14	8
06:00	28	28	28	28	28	28	28	25	26	27	25	29	21	21
07:00	28	28	28	28	28	28	28	1	3	2	4	3	5	1
08:00	28	28	28	28	28	28	28	5	8	5	8	5	6	6
09:00	28	28	28	28	28	28	28	15	14	16	15	16	15	13
10:00	28	28	28	28	28	28	28	16	13	16	12	14	10	15
11:00	28	28	28	28	28	28	28	7	7	7	8	8	10	10
12:00	28	28	28	28	28	28	28	14	11	12	12	13	12	13
13:00	28	28	28	28	28	28	28	14	15	14	14	14	14	14
14:00	28	28	28	28	28	28	28	11	8	10	8	10	8	6
15:00	28	28	28	28	28	28	28	21	23	22	23	22	18	20
16:00	28	28	28	28	28	28	28	9	10	9	10	9	7	10
17:00	28	28	28	28	28	28	28	10	9	10	9	10	7	9
18:00	28	28	28	28	28	28	28	16	17	17	18	17	14	18
19:00	28	28	28	28	28	28	28	5	5	5	6	5	4	7
20:00	28	28	28	28	28	28	28	4	5	5	6	4	1	0
21:00	28	28	28	28	28	28	28	13	13	14	14	14	11	14
22:00	28	28	28	28	28	28	28	8	7	7	6	0	0	1
23:00	28	28	28	28	28	28	28	2	2	0	0	0	2	2

# RUNWAY MOVEMENT ALLOCATION - R60 TOTALS

PEAK WEEK (09-15 MAR)

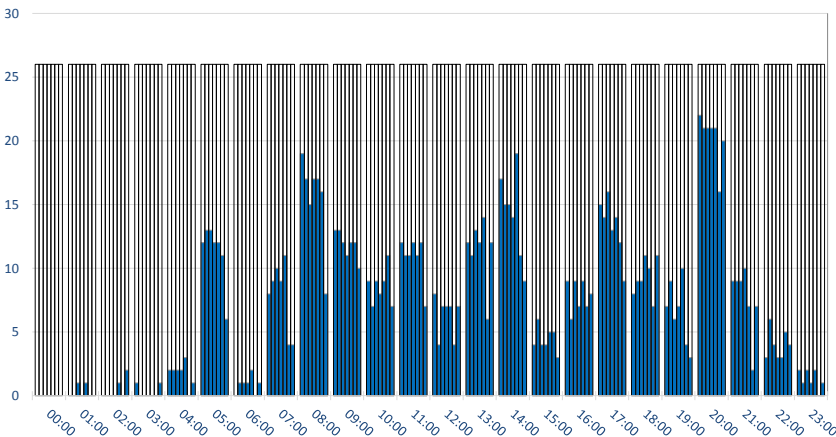
Movements per Hour - All times UTC



	CAPACITY							ALLOCATION						
	Mon	Tue	Wed	Thu	Fri	Sat	Sun	Mon	Tue	Wed	Thu	Fri	Sat	Sun
00:00	38	38	38	38	38	38	38	0	0	0	0	0	0	0
01:00	38	38	38	38	38	38	38	0	0	1	0	1	0	0
02:00	38	38	38	38	38	38	38	0	0	0	0	1	0	2
03:00	38	38	38	38	38	38	38	1	0	0	1	0	0	1
04:00	38	38	38	38	38	38	38	2	2	2	4	3	1	2
05:00	38	38	38	38	38	38	38	27	28	26	28	28	24	12
06:00	38	38	38	38	38	38	38	22	25	24	24	25	21	14
07:00	38	38	38	38	38	38	38	10	13	13	13	17	6	6
08:00	38	38	38	38	38	38	38	26	25	21	24	22	23	12
09:00	38	38	38	38	38	38	38	26	24	25	21	28	18	18
10:00	38	38	38	38	38	38	38	23	17	22	17	21	16	18
11:00	38	38	38	38	38	38	38	17	17	16	18	20	21	13
12:00	38	38	38	38	38	38	38	20	16	18	20	20	17	19
13:00	38	38	38	38	38	38	38	24	22	26	24	26	17	24
14:00	38	38	38	38	38	38	38	26	20	22	19	28	16	15
15:00	38	38	38	38	38	38	38	22	27	25	24	26	23	20
16:00	38	38	38	38	38	38	38	19	16	18	16	19	25	17
17:00	38	38	38	38	38	38	38	25	23	25	21	23	16	17
18:00	38	38	38	38	38	38	38	22	24	23	28	25	14	26
19:00	38	38	38	38	38	38	38	14	14	13	12	16	8	9
20:00	38	38	38	38	38	38	38	26	27	25	26	24	17	20
21:00	38	38	38	38	38	38	38	20	20	19	21	19	7	18
22:00	38	38	38	38	38	38	38	7	9	7	6	3	5	5
23:00	38	38	38	38	38	38	38	4	3	2	1	2	2	3

# RUNWAY MOVEMENT ALLOCATION - R60 ARRIVALS

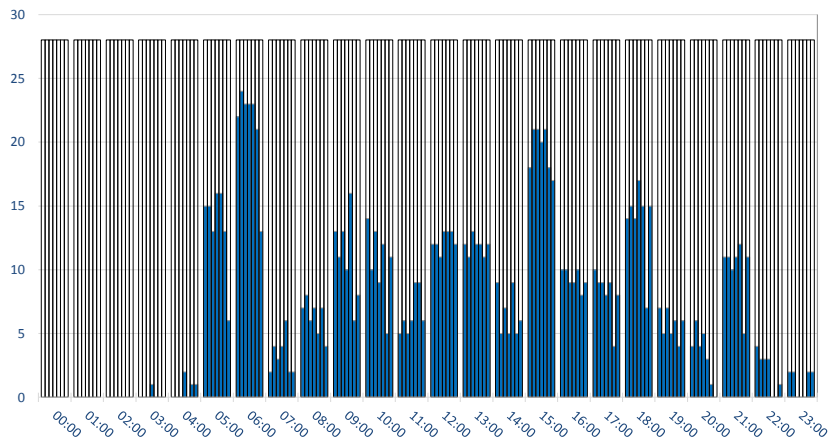
Movements per Hour - All times UTC



	CAPACITY							ALLOCATION						
	Mon	Tue	Wed	Thu	Fri	Sat	Sun	Mon	Tue	Wed	Thu	Fri	Sat	Sun
00:00	26	26	26	26	26	26	26	0	0	0	0	0	0	0
01:00	26	26	26	26	26	26	26	0	0	1	0	1	0	0
02:00	26	26	26	26	26	26	26	0	0	0	0	1	0	2
03:00	26	26	26	26	26	26	26	1	0	0	0	0	0	1
04:00	26	26	26	26	26	26	26	2	2	2	2	3	0	1
05:00	26	26	26	26	26	26	26	12	13	13	12	12	11	6
06:00	26	26	26	26	26	26	26	0	1	1	1	2	0	1
07:00	26	26	26	26	26	26	26	8	9	10	9	11	4	4
08:00	26	26	26	26	26	26	26	19	17	15	17	17	16	8
09:00	26	26	26	26	26	26	26	13	13	12	11	12	12	10
10:00	26	26	26	26	26	26	26	9	7	9	8	9	11	7
11:00	26	26	26	26	26	26	26	12	11	11	12	11	12	7
12:00	26	26	26	26	26	26	26	8	4	7	7	7	4	7
13:00	26	26	26	26	26	26	26	12	11	13	12	14	6	12
14:00	26	26	26	26	26	26	26	17	15	15	14	19	11	9
15:00	26	26	26	26	26	26	26	4	6	4	4	5	5	3
16:00	26	26	26	26	26	26	26	9	6	9	7	9	7	8
17:00	26	26	26	26	26	26	26	15	14	16	13	14	12	9
18:00	26	26	26	26	26	26	26	8	9	9	11	10	7	11
19:00	26	26	26	26	26	26	26	7	9	6	7	10	4	3
20:00	26	26	26	26	26	26	26	22	21	21	21	21	16	20
21:00	26	26	26	26	26	26	26	9	9	9	10	7	2	7
22:00	26	26	26	26	26	26	26	3	6	4	3	3	5	4
23:00	26	26	26	26	26	26	26	2	1	2	1	2	0	1

# RUNWAY MOVEMENT ALLOCATION - R60 DEPARTURES

Movements per Hour - All times UTC



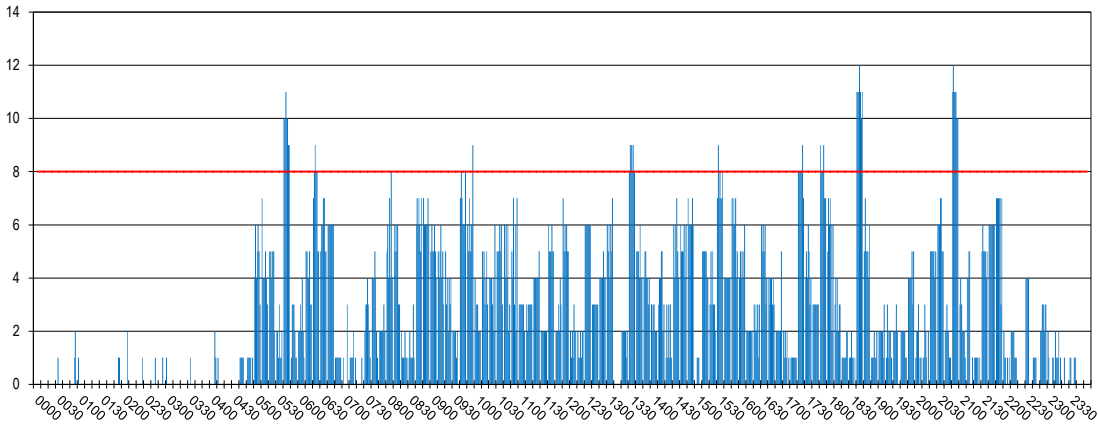
	CAPACITY							ALLOCATION						
	Mon	Tue	Wed	Thu	Fri	Sat	Sun	Mon	Tue	Wed	Thu	Fri	Sat	Sun
00:00	28	28	28	28	28	28	28	0	0	0	0	0	0	0
01:00	28	28	28	28	28	28	28	0	0	0	0	0	0	0
02:00	28	28	28	28	28	28	28	0	0	0	0	0	0	0
03:00	28	28	28	28	28	28	28	0	0	0	1	0	0	0
04:00	28	28	28	28	28	28	28	0	0	0	2	0	1	1
05:00	28	28	28	28	28	28	28	15	15	13	16	16	13	6
06:00	28	28	28	28	28	28	28	22	24	23	23	23	21	13
07:00	28	28	28	28	28	28	28	2	4	3	4	6	2	2
08:00	28	28	28	28	28	28	28	7	8	6	7	5	7	4
09:00	28	28	28	28	28	28	28	13	11	13	10	16	6	8
10:00	28	28	28	28	28	28	28	14	10	13	9	12	5	11
11:00	28	28	28	28	28	28	28	5	6	5	6	9	9	6
12:00	28	28	28	28	28	28	28	12	12	11	13	13	13	12
13:00	28	28	28	28	28	28	28	12	11	13	12	12	11	12
14:00	28	28	28	28	28	28	28	9	5	7	5	9	5	6
15:00	28	28	28	28	28	28	28	18	21	21	20	21	18	17
16:00	28	28	28	28	28	28	28	10	10	9	9	10	8	9
17:00	28	28	28	28	28	28	28	10	9	9	8	9	4	8
18:00	28	28	28	28	28	28	28	14	15	14	17	15	7	15
19:00	28	28	28	28	28	28	28	7	5	7	5	6	4	6
20:00	28	28	28	28	28	28	28	4	6	4	5	3	1	0
21:00	28	28	28	28	28	28	28	11	11	10	11	12	5	11
22:00	28	28	28	28	28	28	28	4	3	3	3	0	0	1
23:00	28	28	28	28	28	28	28	2	2	0	0	0	2	2



# RUNWAY MOVEMENT DEMAND - R10 TOTALS

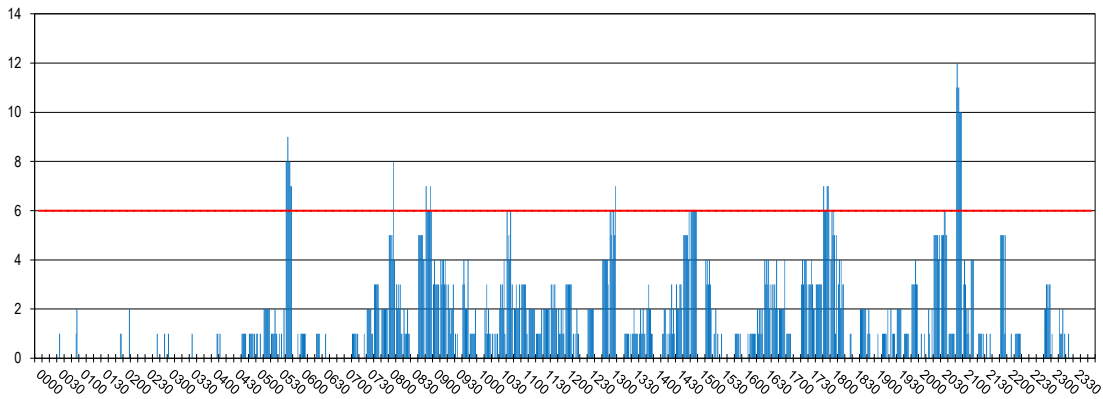
PEAK WEEK (09-15 MAR)

Peak Week Movements per 10 min - All times UTC



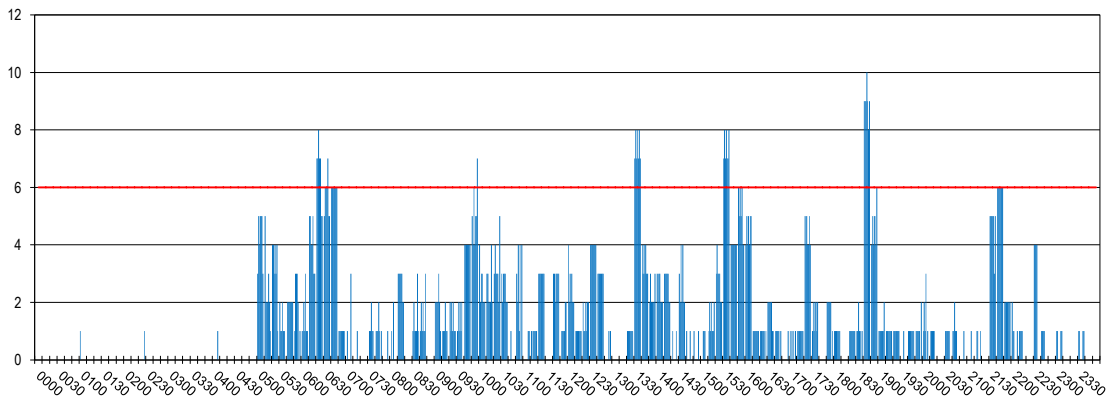
# RUNWAY MOVEMENT DEMAND - R10 ARRIVALS

Peak Week Movements per 10 min - All times UTC



# RUNWAY MOVEMENT DEMAND - R10 DEPARTURES

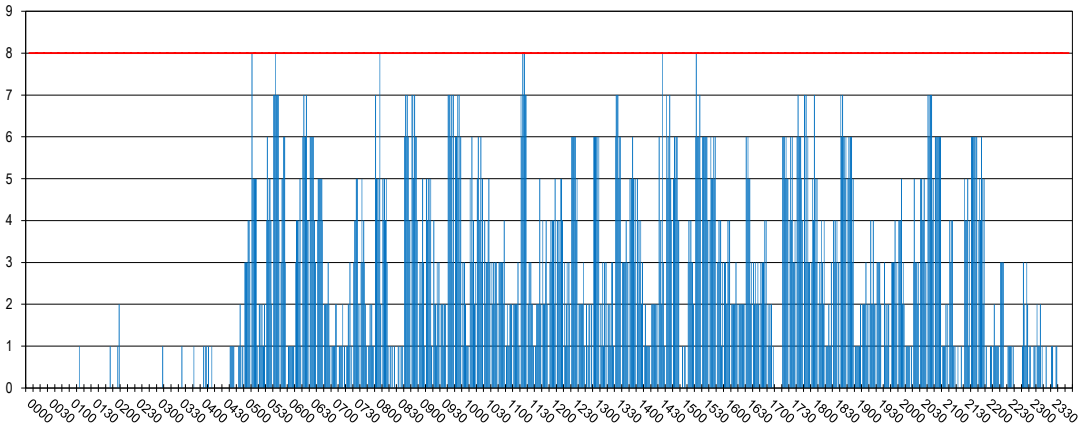
Peak Week Movements per 10 min - All times Local Time



# RUNWAY MOVEMENT ALLOCATION - R10 TOTALS

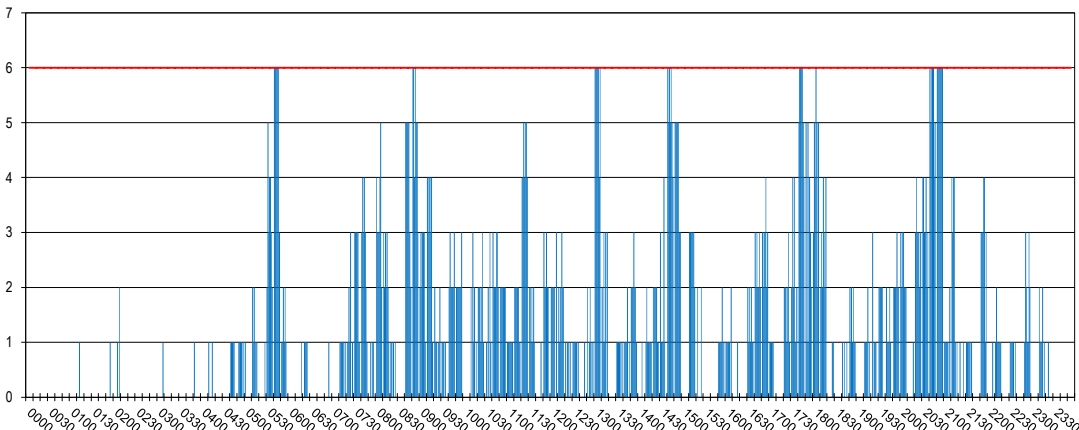
PEAK WEEK (09-15 MAR)

Peak Week Movements per 10 min - All times UTC



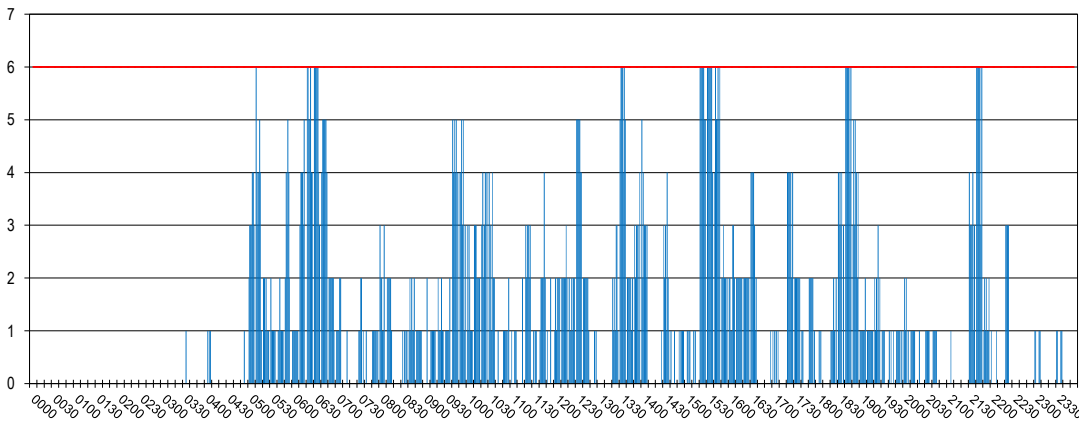
# RUNWAY MOVEMENT ALLOCATION - R10 ARRIVALS

Peak Week Movements per 10 min - All times UTC



# RUNWAY MOVEMENT ALLOCATION - R10 DEPARTURES

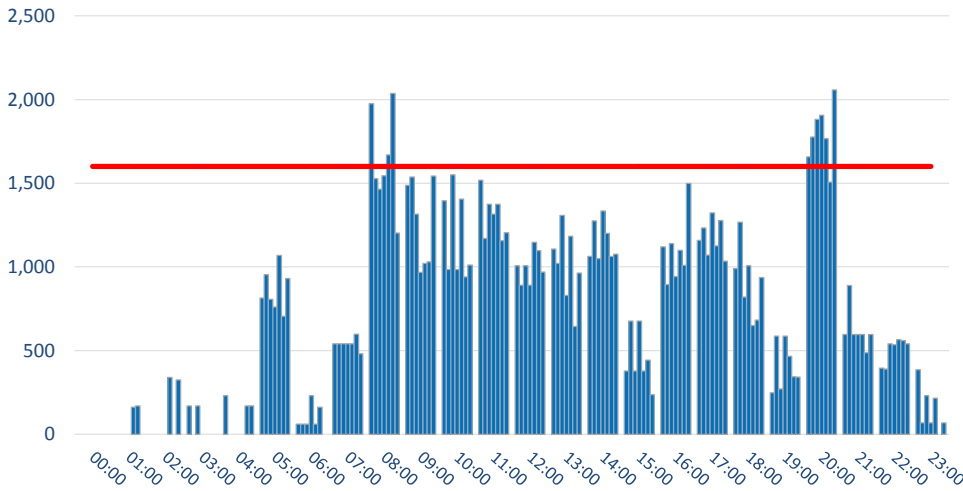
Peak Week Movements per 10 min - All times Local Time



# TERMINAL - TOTAL ARRIVALS DEMAND

PEAK WEEK (09-15 MAR)

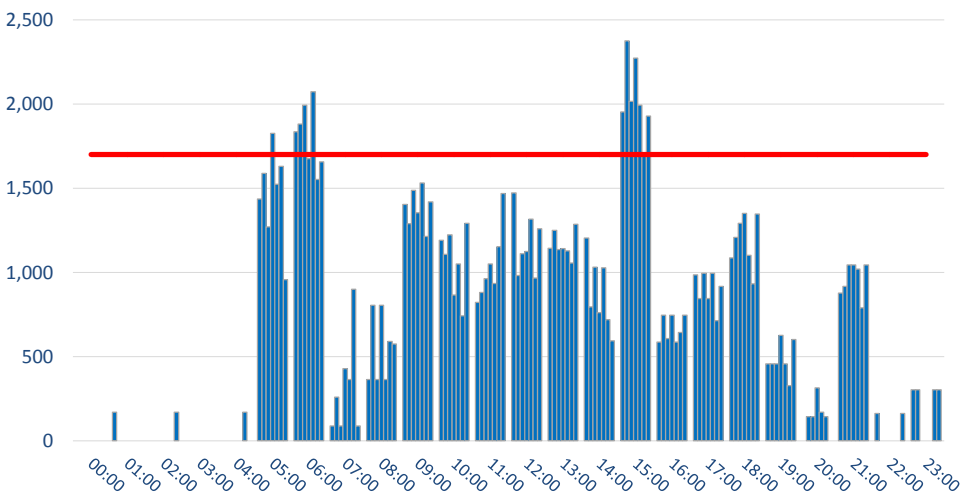
Passengers per Hour - All times UTC



	DEMAND							Capacity
	Mon	Tue	Wed	Thu	Fri	Sat	Sun	Limit
00:00	0	0	0	0	0	0	0	1600
01:00	0	0	0	0	162	170	0	1600
02:00	0	0	0	0	340	0	324	1600
03:00	170	0	170	0	0	0	0	1600
04:00	230	0	0	0	0	170	170	1600
05:00	814	954	806	761	1069	705	931	1600
06:00	61	61	61	231	61	162	0	1600
07:00	540	540	540	540	540	598	482	1600
08:00	1975	1527	1465	1544	1669	2036	1202	1600
09:00	1488	1537	1316	968	1020	1030	1543	1600
10:00	1396	985	1551	985	1406	940	1011	1600
11:00	1519	1170	1374	1315	1374	1157	1204	1600
12:00	1007	890	1007	890	1147	1097	969	1600
13:00	1106	1021	1307	830	1184	644	964	1600
14:00	1063	1276	1050	1334	1200	1062	1077	1600
15:00	379	676	379	676	379	443	236	1600
16:00	1121	894	1140	943	1099	1009	1498	1600
17:00	1158	1234	1071	1323	1126	1278	1035	1600
18:00	990	1267	820	1007	650	682	937	1600
19:00	249	586	271	586	466	343	341	1600
20:00	1658	1777	1881	1906	1766	1507	2057	1600
21:00	596	888	596	596	596	487	596	1600
22:00	395	389	541	535	565	559	541	1600
23:00	385	69	231	69	215	0	69	1600

# TERMINAL -TOTAL DEPARTURES DEMAND

Passengers per Hour - All times UTC

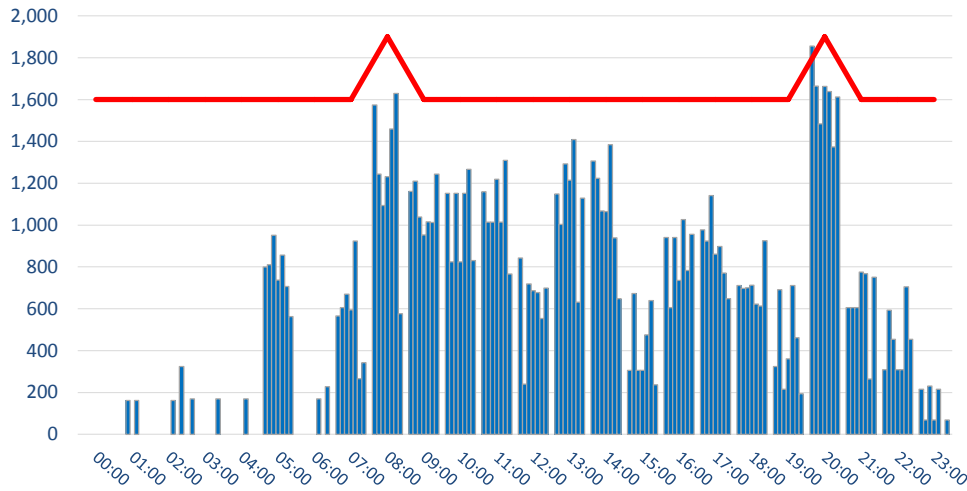


	DEMAND							Capacity
	Mon	Tue	Wed	Thu	Fri	Sat	Sun	Limit
00:00	0	0	0	0	0	0	0	1700
01:00	170	0	0	0	0	0	0	1700
02:00	0	0	0	0	0	0	170	1700
03:00	0	0	0	0	0	0	0	1700
04:00	0	0	0	0	0	170	0	1700
05:00	1436	1588	1270	1826	1523	1631	957	1700
06:00	1836	1882	1994	1675	2073	1553	1657	1700
07:00	88	258	88	428	364	899	88	1700
08:00	364	805	364	805	364	590	574	1700
09:00	1403	1289	1488	1355	1532	1213	1419	1700
10:00	1190	1107	1224	865	1051	741	1291	1700
11:00	822	880	963	1050	934	1153	1468	1700
12:00	1472	982	1111	1125	1316	966	1259	1700
13:00	1143	1249	1136	1142	1128	1056	1285	1700
14:00	1204	795	1031	761	1028	720	593	1700
15:00	1954	2376	2017	2273	1994	1708	1929	1700
16:00	585	746	607	746	585	643	746	1700
17:00	985	845	994	845	994	713	917	1700
18:00	1087	1208	1292	1351	1102	933	1347	1700
19:00	456	456	456	626	456	327	602	1700
20:00	0	143	143	313	170	143	0	1700
21:00	877	916	1044	1044	1020	790	1044	1700
22:00	162	0	0	0	0	0	162	1700
23:00	302	302	0	0	0	302	302	1700

# TERMINAL - TOTAL ARRIVALS ALLOCATION

PEAK WEEK (09-15 MAR)

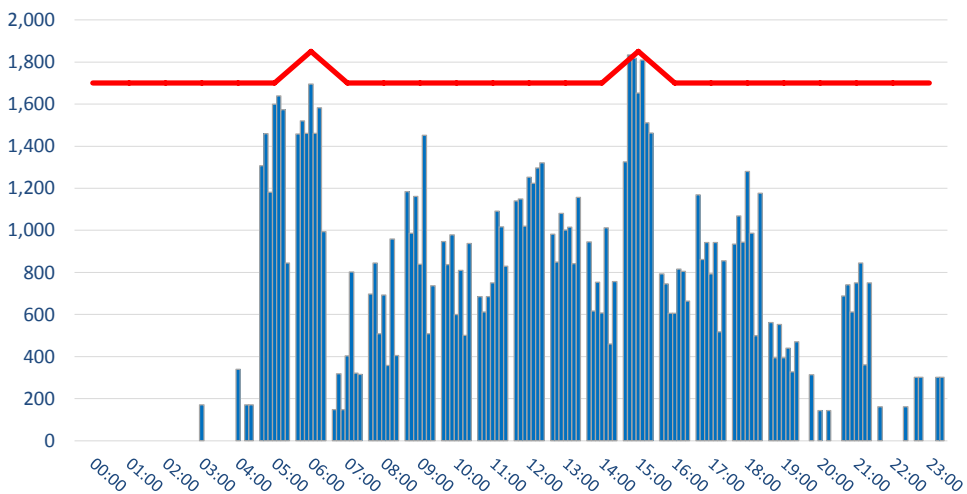
Passengers per Hour - All times UTC



	DEMAND							Capacity Limit
	Mon	Tue	Wed	Thu	Fri	Sat	Sun	
00:00	0	0	0	0	0	0	0	1600
01:00	0	0	162	0	162	0	0	1600
02:00	0	0	0	0	162	0	324	1600
03:00	170	0	0	0	0	0	170	1600
04:00	0	0	0	0	170	0	0	1600
05:00	800	811	952	737	857	707	563	1600
06:00	0	0	0	0	170	0	227	1600
07:00	565	605	669	595	924	266	342	1600
08:00	1574	1244	1093	1231	1460	1629	577	1900
09:00	1161	1210	1039	953	1015	1012	1244	1600
10:00	1152	825	1151	825	1152	1267	831	1600
11:00	1159	1014	1014	1219	1014	1309	766	1600
12:00	843	240	718	686	677	553	699	1600
13:00	1148	1003	1293	1215	1409	631	1128	1600
14:00	1306	1223	1067	1065	1385	939	648	1600
15:00	306	673	306	306	476	639	236	1600
16:00	940	606	940	736	1027	783	956	1600
17:00	978	924	1141	861	898	771	649	1600
18:00	711	698	701	713	622	613	926	1600
19:00	324	691	216	361	711	461	194	1600
20:00	1856	1664	1483	1663	1638	1373	1612	1900
21:00	605	605	605	775	767	264	751	1600
22:00	308	594	454	308	308	705	454	1600
23:00	215	69	231	69	215	0	69	1600

# TERMINAL - TOTAL DEPARTURES ALLOCATION

Passengers per Hour - All times UTC

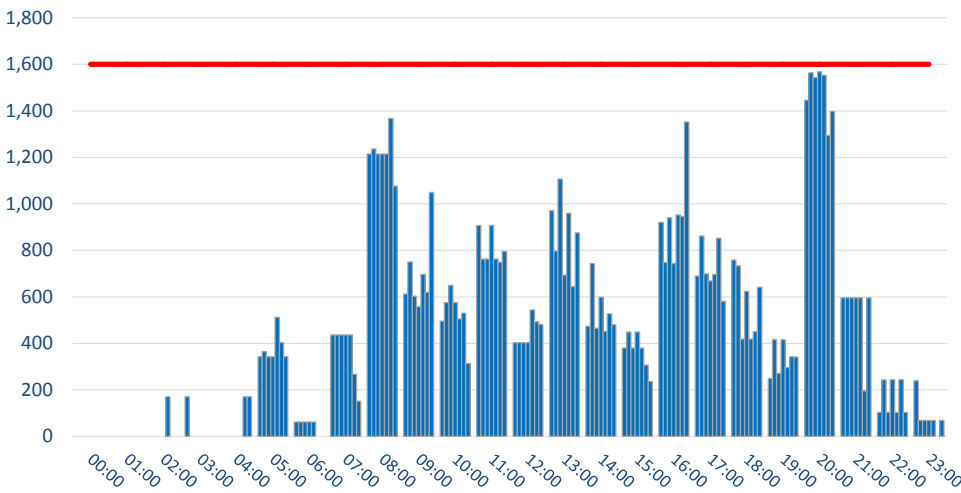


	DEMAND							Capacity Limit
	Mon	Tue	Wed	Thu	Fri	Sat	Sun	
00:00	0	0	0	0	0	0	0	1700
01:00	0	0	0	0	0	0	0	1700
02:00	0	0	0	0	0	0	0	1700
03:00	0	0	0	170	0	0	0	1700
04:00	0	0	0	340	0	170	170	1700
05:00	1307	1459	1181	1599	1639	1573	845	1700
06:00	1458	1521	1461	1695	1461	1582	993	1850
07:00	148	318	148	403	802	321	315	1700
08:00	697	844	508	693	357	958	405	1700
09:00	1184	986	1161	839	1452	509	736	1700
10:00	947	837	978	599	810	500	938	1700
11:00	685	612	685	751	1091	1016	829	1700
12:00	1140	1149	1020	1253	1223	1296	1321	1700
13:00	982	849	1081	1001	1015	841	1157	1700
14:00	945	617	754	607	1012	459	757	1700
15:00	1326	1833	1819	1653	1809	1511	1462	1850
16:00	793	745	606	606	816	805	663	1700
17:00	1169	862	942	793	942	517	856	1700
18:00	934	1068	943	1280	986	499	1177	1700
19:00	561	394	552	394	440	327	471	1700
20:00	0	313	0	143	0	143	0	1700
21:00	688	741	612	751	844	360	751	1700
22:00	162	0	0	0	0	0	162	1700
23:00	302	302	0	0	0	302	302	1700

# TERMINAL - SCHENGEN ARRIVALS DEMAND

PEAK WEEK (09-15 MAR)

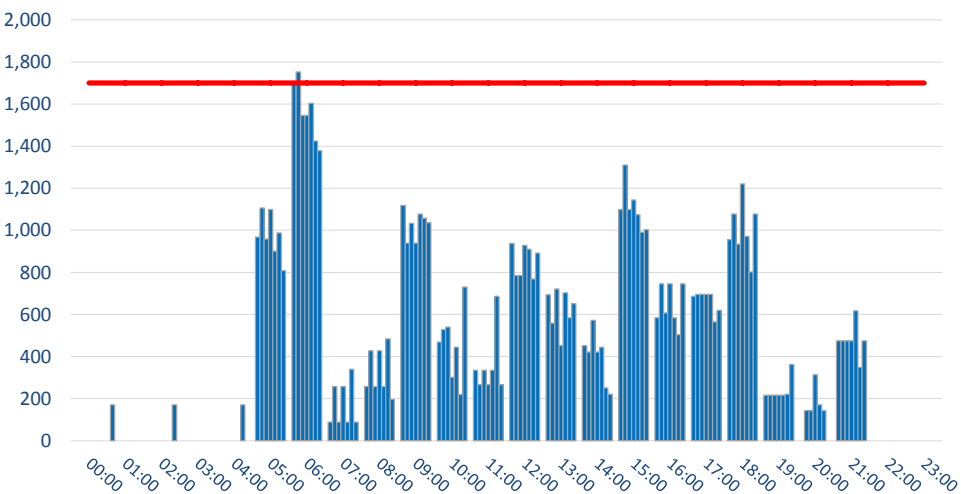
Passengers per Hour - All times UTC



	DEMAND							Capacity
	Mon	Tue	Wed	Thu	Fri	Sat	Sun	Limit
00:00	0	0	0	0	0	0	0	1600
01:00	0	0	0	0	0	0	0	1600
02:00	0	0	0	0	170	0	0	1600
03:00	170	0	0	0	0	0	0	1600
04:00	0	0	0	0	0	170	170	1600
05:00	342	365	342	342	512	403	342	1600
06:00	61	61	61	61	61	0	0	1600
07:00	436	436	436	436	436	267	151	1600
08:00	1214	1236	1214	1214	1214	1367	1076	1600
09:00	613	750	603	557	697	619	1049	1600
10:00	495	575	650	575	505	530	314	1600
11:00	907	762	762	907	762	749	796	1600
12:00	403	403	403	403	543	493	482	1600
13:00	970	797	1107	694	960	644	876	1600
14:00	474	743	465	598	451	527	480	1600
15:00	379	449	379	449	379	307	236	1600
16:00	921	748	940	743	953	945	1352	1600
17:00	689	862	699	669	696	852	581	1600
18:00	758	733	418	624	418	450	641	1600
19:00	249	416	271	416	296	343	341	1600
20:00	1445	1564	1543	1568	1553	1294	1398	1600
21:00	596	596	596	596	596	195	596	1600
22:00	103	243	103	243	103	243	103	1600
23:00	239	69	69	69	69	0	69	1600

# TERMINAL - SCHENGEN DEPARTURES DEMAND

Passengers per Hour - All times UTC

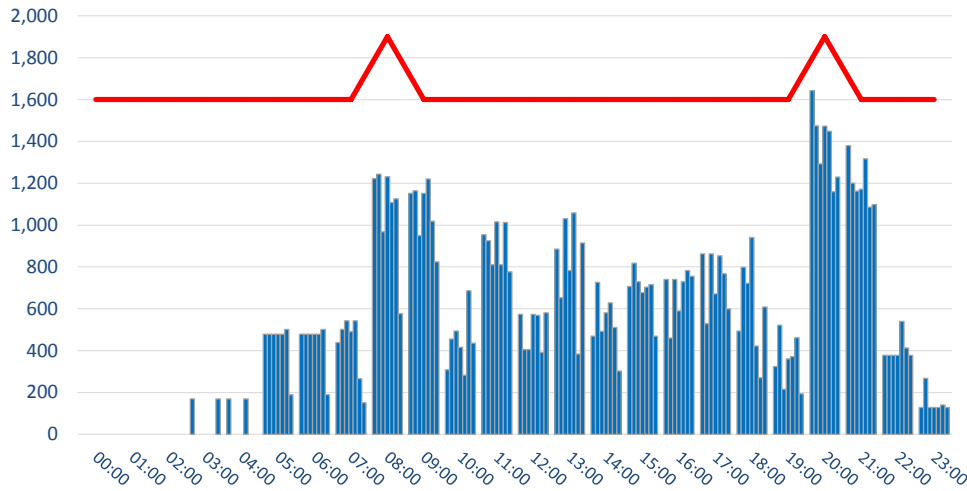


	DEMAND							Capacity
	Mon	Tue	Wed	Thu	Fri	Sat	Sun	Limit
00:00	0	0	0	0	0	0	0	1700
01:00	170	0	0	0	0	0	0	1700
02:00	0	0	0	0	0	0	170	1700
03:00	0	0	0	0	0	0	0	1700
04:00	0	0	0	0	0	170	0	1700
05:00	968	1107	959	1098	901	988	808	1700
06:00	1707	1753	1546	1546	1604	1424	1379	1700
07:00	88	258	88	258	88	340	88	1700
08:00	258	428	258	428	258	484	197	1700
09:00	1119	939	1034	939	1078	1057	1036	1700
10:00	468	528	541	302	444	219	730	1700
11:00	335	266	335	266	335	686	266	1700
12:00	937	785	785	928	910	769	892	1700
13:00	694	559	721	452	703	585	651	1700
14:00	452	422	572	422	445	251	220	1700
15:00	1098	1311	1098	1145	1075	991	1003	1700
16:00	585	746	607	746	585	504	746	1700
17:00	687	696	696	696	696	564	619	1700
18:00	956	1077	934	1220	971	802	1077	1700
19:00	216	216	216	216	216	221	362	1700
20:00	0	143	143	313	170	143	0	1700
21:00	475	475	475	475	618	349	475	1700
22:00	0	0	0	0	0	0	0	1700
23:00	0	0	0	0	0	0	0	1700

# TERMINAL - SCHENGEN ARRIVALS ALLOCATION

PEAK WEEK (09-15 MAR)

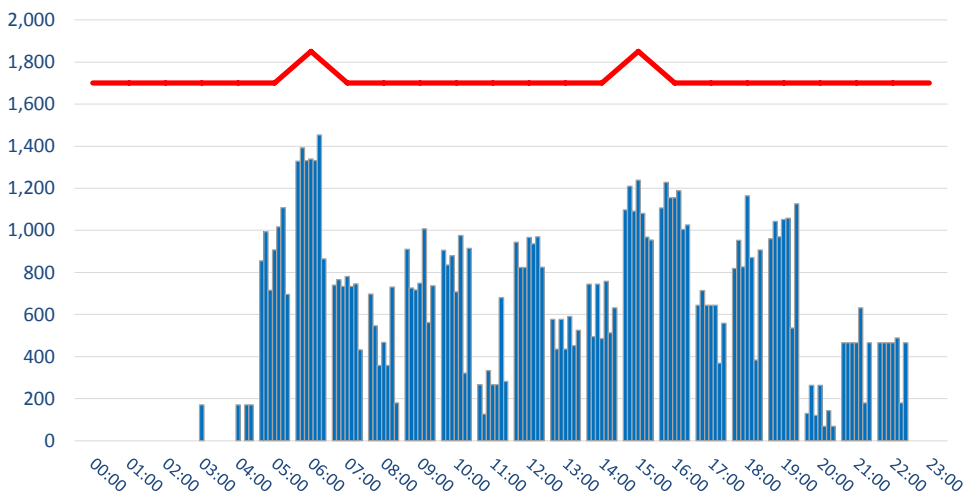
Passengers per Hour - All times UTC



	DEMAND							Capacity Limit
	Mon	Tue	Wed	Thu	Fri	Sat	Sun	
00:00	0	0	0	0	0	0	0	1600
01:00	0	0	0	0	0	0	0	1600
02:00	0	0	0	0	0	0	0	1600
03:00	170	0	0	0	0	0	170	1600
04:00	170	0	0	0	170	0	0	1600
05:00	479	479	479	479	479	502	189	1600
06:00	479	479	479	479	479	502	189	1600
07:00	439	501	543	491	543	266	151	1600
08:00	1222	1244	968	1231	1108	1126	577	1900
09:00	1151	1164	949	1151	1220	1019	825	1600
10:00	309	455	494	415	282	687	436	1600
11:00	955	926	810	1015	810	1012	777	1600
12:00	573	405	405	573	568	392	581	1600
13:00	886	653	1031	783	1059	384	914	1600
14:00	470	726	493	581	629	510	302	1600
15:00	707	818	730	678	704	716	469	1600
16:00	740	460	740	590	730	783	756	1600
17:00	863	529	863	671	853	768	599	1600
18:00	494	799	721	941	422	270	608	1600
19:00	324	521	216	361	371	461	194	1600
20:00	1643	1474	1293	1473	1448	1160	1229	1900
21:00	1380	1201	1162	1172	1317	1086	1098	1600
22:00	378	378	378	378	540	413	378	1600
23:00	128	268	128	128	128	140	128	1600

# TERMINAL - SCHENGEN DEPARTURES ALLOCATION

Passengers per Hour - All times UTC

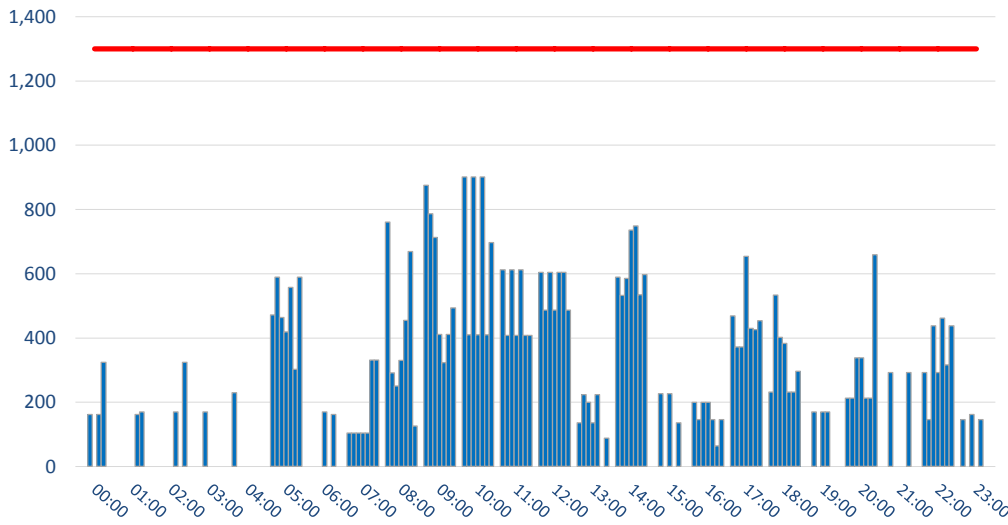


	DEMAND							Capacity Limit
	Mon	Tue	Wed	Thu	Fri	Sat	Sun	
00:00	0	0	0	0	0	0	0	1700
01:00	0	0	0	0	0	0	0	1700
02:00	0	0	0	0	0	0	0	1700
03:00	0	0	0	170	0	0	0	1700
04:00	0	0	0	170	0	170	170	1700
05:00	855	994	716	907	1017	1108	696	1700
06:00	1329	1392	1332	1339	1332	1453	864	1850
07:00	740	766	734	780	734	745	432	1700
08:00	697	546	357	467	357	731	179	1700
09:00	910	726	717	749	1008	562	736	1700
10:00	905	836	880	707	975	321	914	1700
11:00	266	127	334	266	266	680	282	1700
12:00	943	823	823	966	936	970	825	1700
13:00	577	435	577	435	591	452	525	1700
14:00	744	494	744	485	758	513	631	1700
15:00	1097	1210	1091	1239	1081	968	954	1850
16:00	1106	1228	1155	1155	1188	1004	1025	1700
17:00	644	713	644	644	644	368	558	1700
18:00	818	952	827	1164	870	383	907	1700
19:00	960	1042	969	1051	1058	536	1126	1700
20:00	130	264	121	264	69	143	69	1700
21:00	466	466	466	466	632	180	466	1700
22:00	466	466	466	466	489	180	466	1700
23:00	0	0	0	0	0	0	0	1700

# TERMINAL - NON SCHENGEN ARRIVALS DEMAND

Passengers per Hour - All times UTC

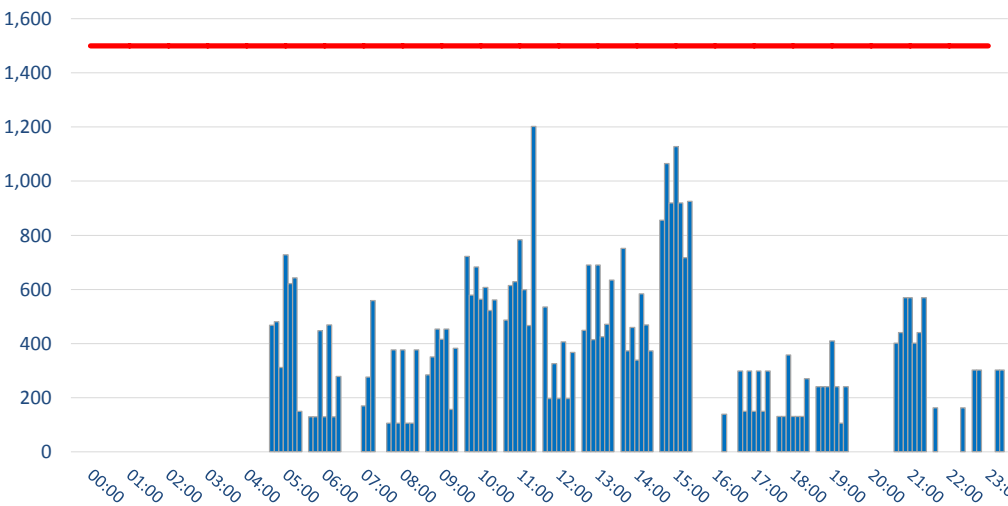
PEAK WEEK (09-15 MAR)



	DEMAND							Capacity
	Mon	Tue	Wed	Thu	Fri	Sat	Sun	Limit
00:00	0	0	162	0	162	324	0	1300
01:00	0	0	0	0	162	170	0	1300
02:00	0	0	0	0	170	0	324	1300
03:00	0	0	170	0	0	0	0	1300
04:00	230	0	0	0	0	0	0	1300
05:00	472	589	464	419	557	302	589	1300
06:00	0	0	0	170	0	162	0	1300
07:00	104	104	104	104	104	331	331	1300
08:00	761	291	251	330	455	669	126	1300
09:00	875	787	713	411	323	411	494	1300
10:00	901	410	901	410	901	410	697	1300
11:00	612	408	612	408	612	408	408	1300
12:00	604	487	604	487	604	604	487	1300
13:00	136	224	200	136	224	0	88	1300
14:00	589	533	585	736	749	535	597	1300
15:00	0	227	0	227	0	136	0	1300
16:00	200	146	200	200	146	64	146	1300
17:00	469	372	372	654	430	426	454	1300
18:00	232	534	402	383	232	232	296	1300
19:00	0	170	0	170	170	0	0	1300
20:00	213	213	338	338	213	213	659	1300
21:00	0	292	0	0	0	292	0	1300
22:00	292	146	438	292	462	316	438	1300
23:00	146	0	162	0	146	0	0	1300

# TERMINAL - NON SCHENGEN DEPARTURES DEMAND

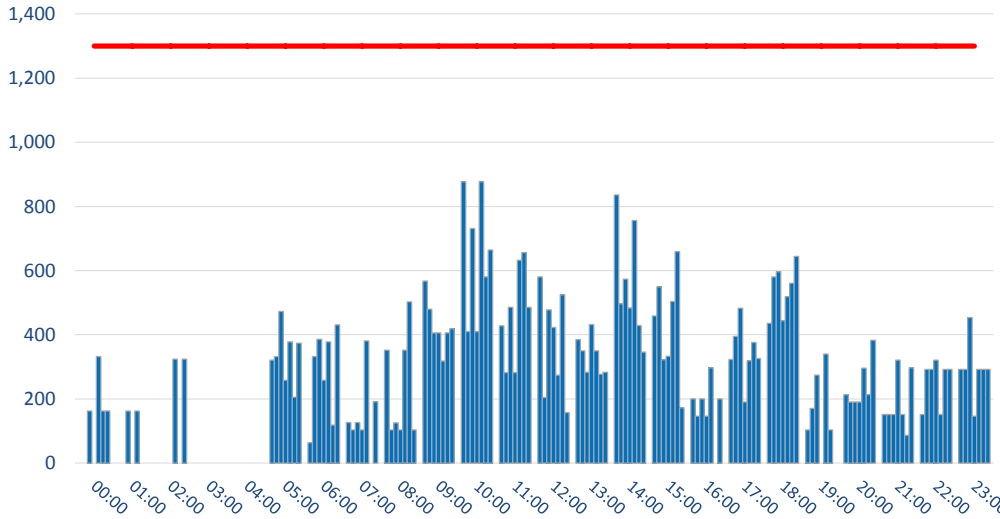
Passengers per Hour - All times UTC



	DEMAND							Capacity
	Mon	Tue	Wed	Thu	Fri	Sat	Sun	Limit
00:00	0	0	0	0	0	0	0	1500
01:00	0	0	0	0	0	0	0	1500
02:00	0	0	0	0	0	0	0	1500
03:00	0	0	0	0	0	0	0	1500
04:00	0	0	0	0	0	0	0	1500
05:00	468	481	311	728	622	643	149	1500
06:00	129	129	448	129	469	129	278	1500
07:00	0	0	0	170	276	559	0	1500
08:00	106	377	106	377	106	106	377	1500
09:00	284	350	454	416	454	156	383	1500
10:00	722	579	683	563	607	522	561	1500
11:00	487	614	628	784	599	467	1202	1500
12:00	535	197	326	197	406	197	367	1500
13:00	449	690	415	690	425	471	634	1500
14:00	752	373	459	339	583	469	373	1500
15:00	856	1065	919	1128	919	717	926	1500
16:00	0	0	0	0	0	139	0	1500
17:00	298	149	298	149	298	149	298	1500
18:00	131	131	358	131	131	131	270	1500
19:00	240	240	240	410	240	106	240	1500
20:00	0	0	0	0	0	0	0	1500
21:00	402	441	569	569	402	441	569	1500
22:00	162	0	0	0	0	0	162	1500
23:00	302	302	0	0	0	302	302	1500

# TERMINAL - NON SCHENGEN ARRIVALS ALLOCATION

Passengers per Hour - All times UTC

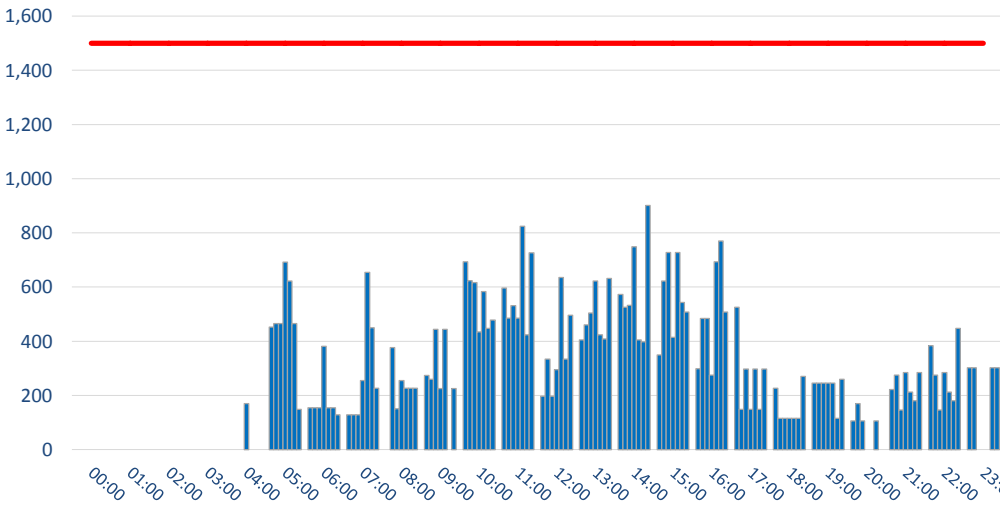


# PEAK WEEK (09-15 MAR)

	DEMAND							Capacity Limit
	Mon	Tue	Wed	Thu	Fri	Sat	Sun	
00:00	0	0	162	0	332	162	162	1300
01:00	0	0	162	0	162	0	0	1300
02:00	0	0	0	0	324	0	324	1300
03:00	0	0	0	0	0	0	0	1300
04:00	0	0	0	0	0	0	0	1300
05:00	321	332	473	258	378	205	374	1300
06:00	64	332	386	258	378	118	431	1300
07:00	126	104	126	104	381	0	191	1300
08:00	352	104	125	104	352	503	104	1300
09:00	568	480	406	406	318	406	419	1300
10:00	877	410	731	410	877	580	664	1300
11:00	428	282	486	282	632	656	486	1300
12:00	580	204	478	423	274	525	157	1300
13:00	385	350	283	432	350	277	283	1300
14:00	836	497	574	484	756	429	346	1300
15:00	459	550	322	333	504	659	172	1300
16:00	200	146	200	146	297	0	200	1300
17:00	323	395	483	190	319	376	326	1300
18:00	436	580	596	444	519	561	644	1300
19:00	104	170	274	0	340	104	0	1300
20:00	213	190	190	190	296	213	383	1300
21:00	151	151	151	321	151	87	297	1300
22:00	151	292	292	321	151	292	292	1300
23:00	292	292	454	146	292	292	292	1300

# TERMINAL - NON SCHENGEN DEPARTURES ALLOCATION

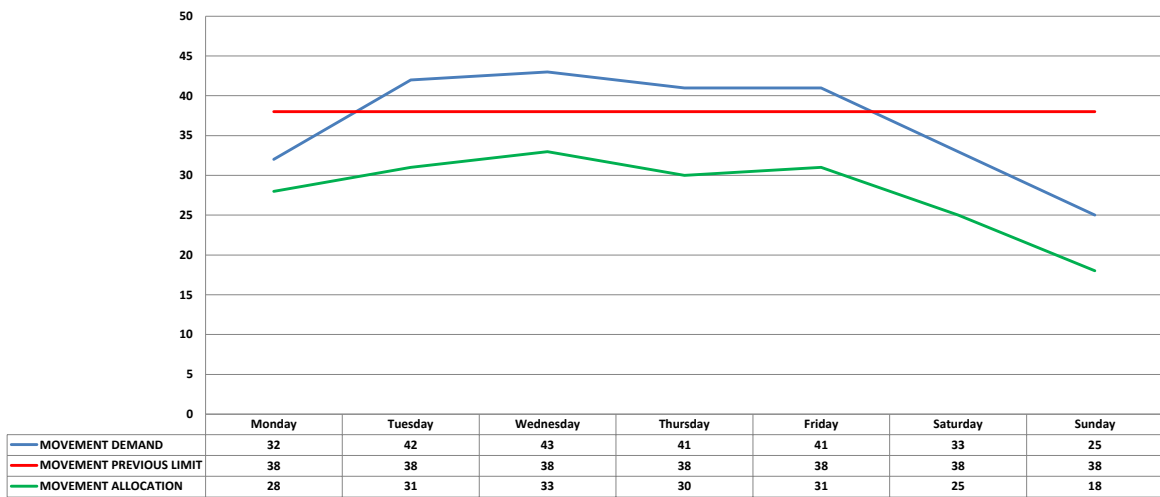
Passengers per Hour - All times UTC



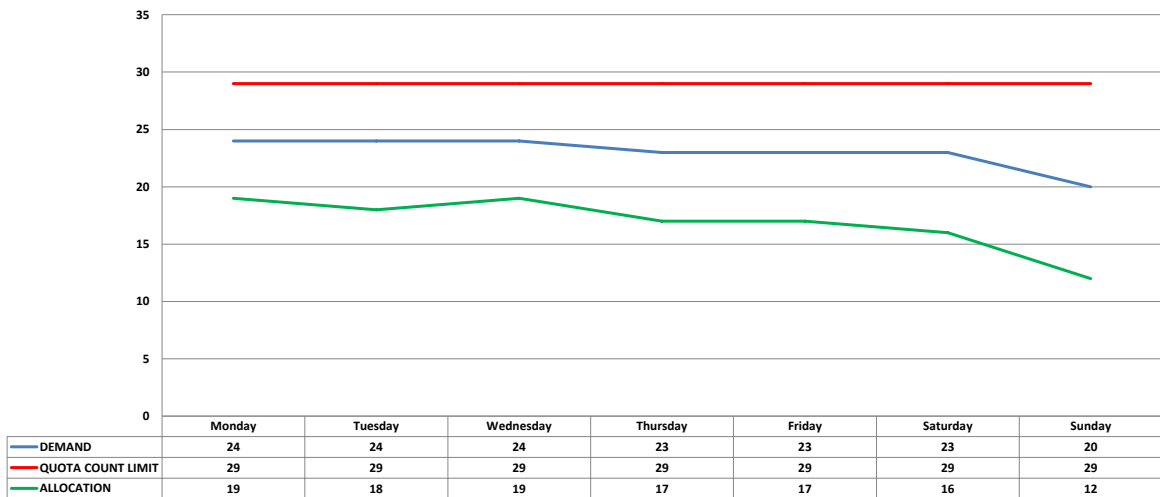
	DEMAND							Capacity Limit
	Mon	Tue	Wed	Thu	Fri	Sat	Sun	
00:00	0	0	0	0	0	0	0	1500
01:00	0	0	0	0	0	0	0	1500
02:00	0	0	0	0	0	0	0	1500
03:00	0	0	0	0	0	0	0	1500
04:00	0	0	0	170	0	0	0	1500
05:00	452	465	465	692	622	465	149	1500
06:00	154	154	154	381	154	154	129	1500
07:00	129	129	129	255	654	450	227	1500
08:00	0	377	151	255	227	227	227	1500
09:00	274	260	444	226	444	0	226	1500
10:00	693	624	617	434	584	448	478	1500
11:00	597	485	531	485	825	424	726	1500
12:00	197	334	197	295	635	334	496	1500
13:00	405	461	504	622	424	408	632	1500
14:00	573	525	533	749	405	398	901	1500
15:00	349	623	728	414	728	543	508	1500
16:00	299	484	484	275	693	770	508	1500
17:00	525	149	298	149	298	149	298	1500
18:00	227	116	116	116	116	116	270	1500
19:00	245	245	245	245	245	116	260	1500
20:00	106	170	106	0	0	106	0	1500
21:00	222	275	146	285	212	180	285	1500
22:00	384	275	146	285	212	180	447	1500
23:00	302	302	0	0	0	302	302	1500



ALLOCATION OF MOVEMENTS WITHIN NIGHT QUOTA LIMIT



QUOTA COUNT DEMAND VS. ALLOCATION



## GLOSSARY OF TERMS

---

<b>Air Transport Movement (ATM)</b>	A scheduled or charter passenger or freight aircraft movement.
<b>Allocation</b>	The allocation of slots such that demand is constrained to fit within declared scheduling limits.
<b>Demand</b>	The unconstrained demand for slots, prior to any schedule adjustments.
<b>Passenger ATM</b>	A scheduled or charter <u>passenger</u> aircraft movement (ie, excluding all-cargo aircraft movements)
<b>Schedule Adjustment by Carrier</b>	Off slot allocation (excluding General Aviation)
<b>Scheduling Limits</b>	Limiting parameters declared by the Airport Operator used in the coordination process.
<b>Seats</b>	The number of seats based on the aircraft configuration advised by the airline.
<b>Peak Week</b>	The Peak Week for W14 is Week 50 (09-15 MAR 2015)
<b>Peak Hour</b>	Peak Hours during W14 terminal redevelopment: - Arriving Pax : 0800-0855; 2000-2055 UTC - Departing Pax : 0600-0655; 1500-1555 UTC - Departing Pax Flights: 0500-0555; 1000-1055; 1500-1555; 1800-1855 UTC

## GUIDE TO HISTOGRAMS

---

The histograms show the pattern of traffic by time of day against the appropriate scheduling limit. Each time period consist of seven columns representing the days-of-week, Monday through to Sunday.