

WARSAW FREDERIC CHOPIN AIRPORT

EPWA / WAW

WINTER 2013

START OF SEASON REPORT

Winter 2013		Change from Winter 2012 (Start of Season)		Change from Winter 2012 (End of Season)
-------------	--	---	--	--

KEY STATISTICS

Air Transport Movements	48,721	→	0%	↓	-1%
Total Seats	5,217,845	↑	10%	↑	7%
Seats per Passenger ATM	107	↑	10%	↑	5%

CONTENT

	Page
SCHEDULING LIMITS	2
SCHEDULE ADJUSTMENT	3
TOP AIRLINES ANALYSIS	4
TOP ROUTES ANALYSIS	5
TOP 10 AIRCRAFT TYPE	6
RUNWAY R60 DEMAND & ALLOCATION HISTOGRAMS	7-8
RUNWAY R10 DEMAND & ALLOCATION HISTOGRAMS	9-10
TERMINAL SCHENGEN DEMAND & ALLOCATION	11-12
TERMINAL NON SCHENGEN DEMAND & ALLOCATION	13-14
NIGHT MOVEMENT SUMMARY	15
GLOSSARY OF TERMS	16

Data in this report is current as of:

24 October 2013

No warranty whether expressed or implied as to the completeness, accuracy, fitness for purpose, or satisfactory quality is given by ACL regarding the information in this report, which is provided by third parties. Accordingly, ACL excludes all liability with regard to such data.

The contents of this report may not be reproduced without the written consent of ACL.

RUNWAY SCHEDULING LIMITS

All times UTC

		ARRIVALS																		
		SEASON W13	05:00	06:00	07:00	08:00	09:00	10:00	11:00	12:00	13:00	14:00	15:00	16:00	17:00	18:00	19:00	20:00	21:00	
MONDAY - SUNDAY	R60	26	26	26	26	26	26	26	26	26	26	26	26	26	26	26	26	26	26	
	R10	6	6	6	6	6	6	6	6	6	6	6	6	6	6	6	6	6	6	
			DEPARTURES																	
	SEASON W13	05:00	06:00	07:00	08:00	09:00	10:00	11:00	12:00	13:00	14:00	15:00	16:00	17:00	18:00	19:00	20:00	21:00		
	R60	28	28	28	28	28	28	28	28	28	28	28	28	28	28	28	28	28	28	28
	R10	6	6	6	6	6	6	6	6	6	6	6	6	6	6	6	6	6	6	6
			TOTALS																	
	SEASON W13	05:00	06:00	07:00	08:00	09:00	10:00	11:00	12:00	13:00	14:00	15:00	16:00	17:00	18:00	19:00	20:00	21:00		
	R60	38	38	38	38	38	38	38	38	38	38	38	38	38	38	38	38	38	38	38
	R10	8	8	8	8	8	8	8	8	8	8	8	8	8	8	8	8	8	8	8

TERMINAL SCHEDULING LIMITS

Passengers per Hour (T60/30)

	SCHENGEN	NON SCHENGEN	TOTAL
ARRIVALS	1,600	1,300	1,600
DEPARTURES	1,700	1,500	1,700

OTHER RESTRICTIONS

Night quota:

Night quota limits apply at EPWA/WAW. The night quota period is defined as 2100 - 0500 (UTC) and the limitation based on the Quota Count System may not exceed 29 quota points during each night period. Previous night movement restriction has been removed.

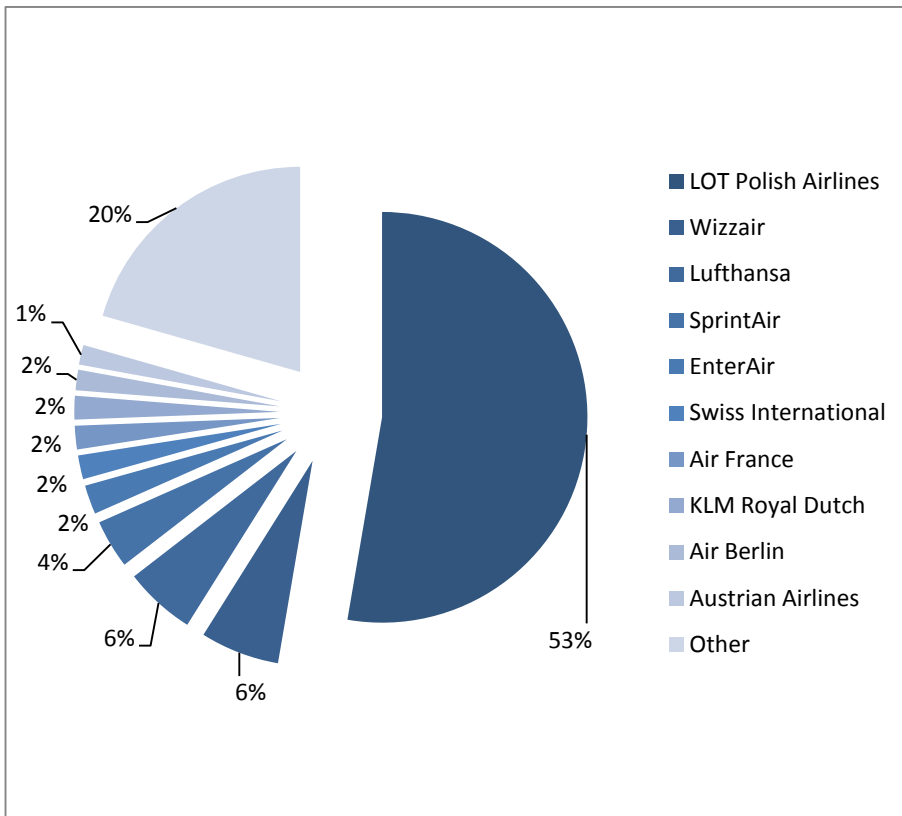
Terminal and Runway Redevelopment:

Due to terminal closures between 01/08/12 - 30/04/2015 arrivals capped at 1,900 pax/h during Peak Hours and at 1,600 off peak. Departures limited to 1,700 pax/h off peak and 1,850 pax/h in peak hours. Additionally number of passenger movements limited to 18 mvt/h off peak and 21 mvt/h during peak hours.

SCHEDULE ADJUSTMENTS BY CARRIER

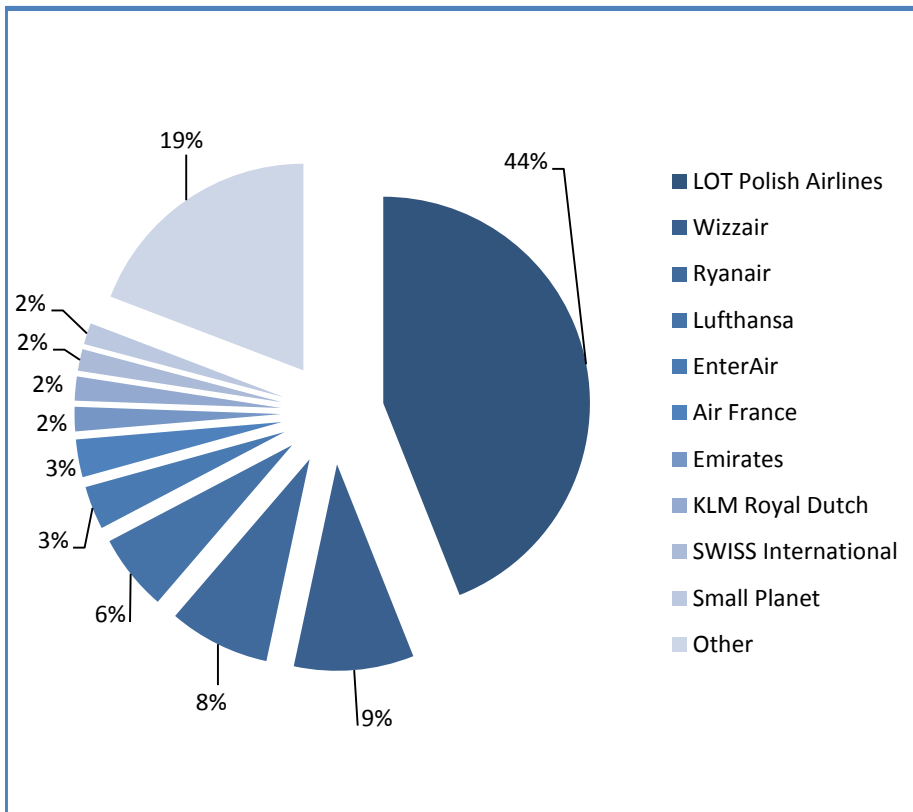
Off Slot	0	5	10	60+	Grand Total	0	5	10	60+	Grand Total
3V	418				418	100%				100%
3Z	346				346	100%				100%
A3	176				176	100%				100%
AB	784				784	100%				100%
AF	906				906	100%				100%
AY	742				742	100%				100%
AZ	309			1	310	100%			0%	100%
B2	172				172	100%				100%
BA	604				604	100%				100%
BCS	216				216	100%				100%
BGY	254				254	100%				100%
BT	260				260	100%				100%
DY	452				452	100%				100%
EI	172				172	100%				100%
EK	308				308	100%				100%
ENT	1118				1118	100%				100%
FX	218				218	100%				100%
GNX	44	44			88	50%	50%			100%
K2	526				526	100%				100%
KL	906				906	100%				100%
LH	2732				2732	100%				100%
LO	25254	304	84	36	25678	98%	1%	0%	0%	100%
LX	916				916	100%				100%
LY	146				146	100%				100%
OHY	26				26	100%				100%
OK	632				632	100%				100%
OS	758				758	100%				100%
P7	468				468	100%				100%
PS	306				306	100%				100%
QR	308				308	100%				100%
QS	520	42			562	93%	7%			100%
SAR	218				218	100%				100%
SK	708				708	100%				100%
SRN	1867				1867	100%				100%
SU	608				608	100%				100%
TK	183	1			184	99%	1%			100%
TP	184				184	100%				100%
UPS	396				396	100%				100%
W6	3032				3032	100%				100%
X9	12				12	100%				100%
XC	4				4	100%				100%
Grand Total	48209	391	84	37	48721	99%	1%	0%	0%	100%

TOP AIRLINES BY ATM



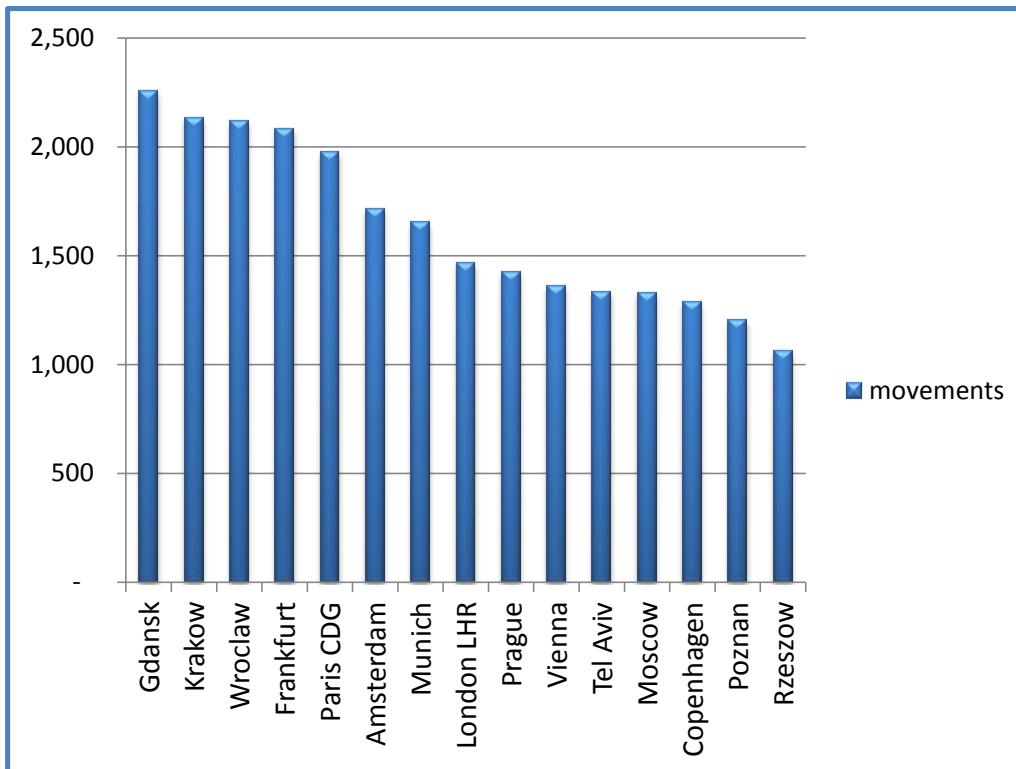
operator	movements
LOT Polish Airlines	25,676
Wizzair	3,032
Lufthansa	2,732
SprintAir	1,867
EnterAir	1,118
Swiss International	916
Air France	906
KLM Royal Dutch	906
Air Berlin	784
Austrian Airlines	758
Other	10,026

TOP AIRLINES BY SEATS



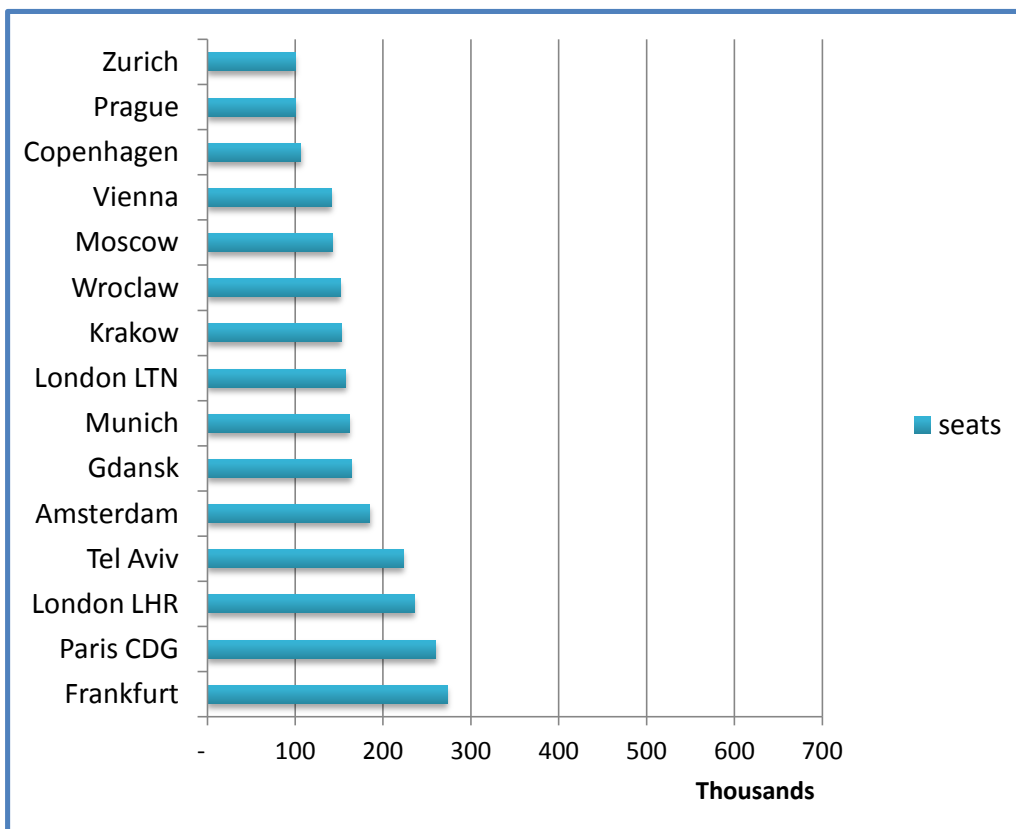
operator	seats
LOT Polish Airlines	2,403,122
Wizzair	545,760
Lufthansa	352,510
EnterAir	199,458
Air France	173,308
KLM Royal Dutch	110,120
Travel Service	105,840
Swiss International	100,002
British Airways	97,848
Aeroflot	91,588
Other	1,038,289

TOP ROUTES BY ATM



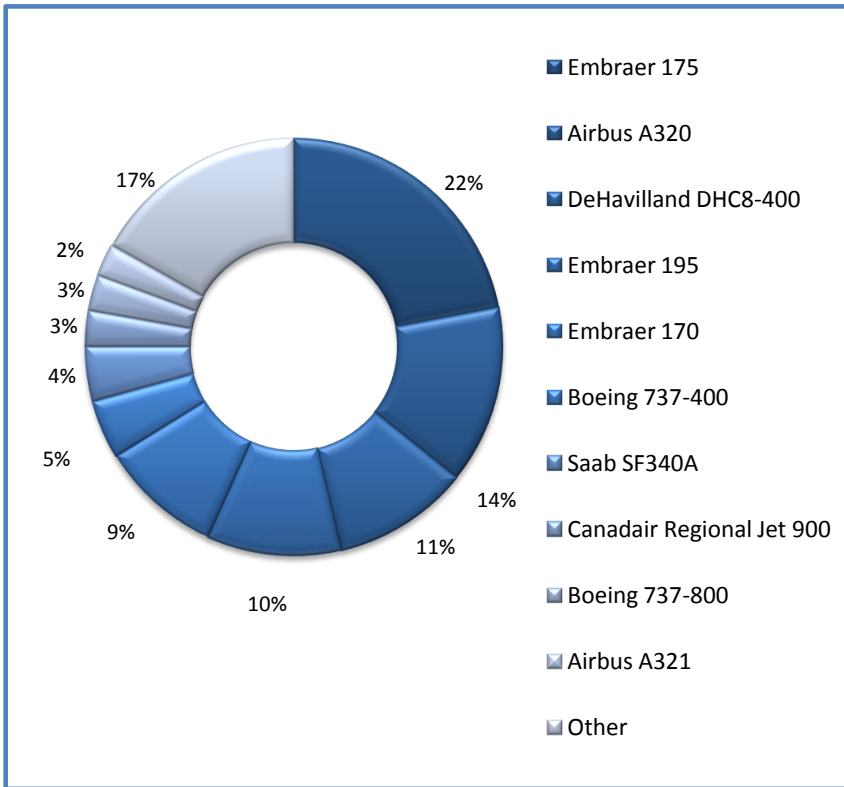
destination	movements
Gdansk	2,257
Krakow	2,131
Wroclaw	2,116
Frankfurt	2,086
Paris CDG	1,976
Amsterdam	1,714
Munich	1,654
London LHR	1,468
Prague	1,426
Vienna	1,360
Tel Aviv	1,332
Moscow	1,331
Copenhagen	1,288
Poznan	1,205
Rzeszow	1,060

TOP ROUTES BY SEATS



destination	seats
Frankfurt	272,906
Paris CDG	260,104
London LHR	235,872
Tel Aviv	223,068
Amsterdam	185,030
Gdansk	163,778
Munich	161,264
London LTN	157,680
Krakow	152,524
Wroclaw	151,170
Moscow	142,054
Vienna	141,056
Copenhagen	106,308
Prague	100,486
Zurich	100,002

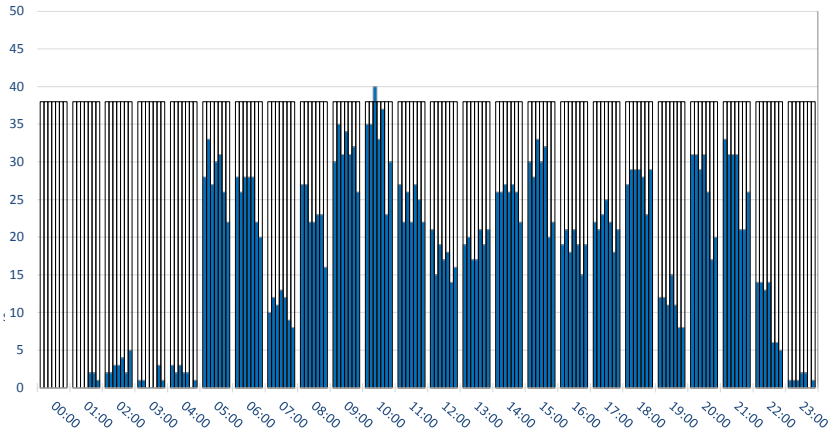
TOP 10 AIRCRAFT TYPE



aircraft	movements
Embraer 175	10,701
Airbus A320	6,730
DeHavilland DHC8-400	5,132
Embraer 195	5,080
Embraer 170	4,629
Boeing 737-400	2,224
Saab SF340A	2,039
Canadair Regional Jet 900	1,366
Boeing 737-800	1,364
Airbus A321	1,228
Other	8,228

RUNWAY MOVEMENT DEMAND - R60 TOTALS

Movements per Hour - All times UTC

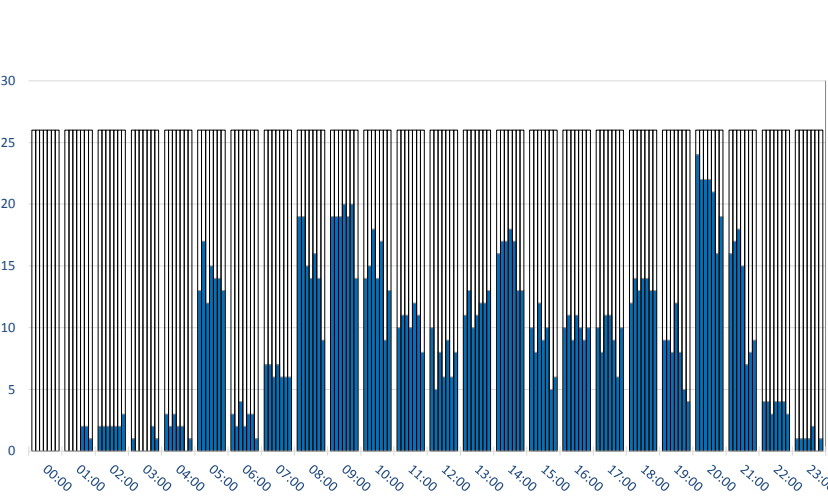


PEAK WEEK (18-24 NOV)

	CAPACITY							DEMAND						
	Mon	Tue	Wed	Thu	Fri	Sat	Sun	Mon	Tue	Wed	Thu	Fri	Sat	Sun
00:00	38	38	38	38	38	38	38	0	0	0	0	0	0	0
01:00	38	38	38	38	38	38	38	0	0	0	0	0	2	2
02:00	38	38	38	38	38	38	38	2	2	3	3	4	2	5
03:00	38	38	38	38	38	38	38	1	1	0	0	0	0	3
04:00	38	38	38	38	38	38	38	3	2	3	2	2	0	1
05:00	38	38	38	38	38	38	38	28	33	27	30	31	26	22
06:00	38	38	38	38	38	38	38	28	26	28	28	28	22	20
07:00	38	38	38	38	38	38	38	10	12	11	13	12	9	8
08:00	38	38	38	38	38	38	38	27	27	22	22	23	23	16
09:00	38	38	38	38	38	38	38	30	35	31	34	31	32	26
10:00	38	38	38	38	38	38	38	35	35	40	33	37	23	30
11:00	38	38	38	38	38	38	38	27	22	26	22	27	25	22
12:00	38	38	38	38	38	38	38	21	15	19	17	18	14	16
13:00	38	38	38	38	38	38	38	19	20	17	17	21	19	21
14:00	38	38	38	38	38	38	38	26	26	27	26	27	26	22
15:00	38	38	38	38	38	38	38	30	28	33	30	32	20	22
16:00	38	38	38	38	38	38	38	19	21	18	21	19	15	19
17:00	38	38	38	38	38	38	38	22	21	23	25	22	18	21
18:00	38	38	38	38	38	38	38	27	29	29	29	28	23	29
19:00	38	38	38	38	38	38	38	12	12	11	15	11	8	8
20:00	38	38	38	38	38	38	38	31	31	29	31	26	17	20
21:00	38	38	38	38	38	38	38	33	31	31	31	21	21	26
22:00	38	38	38	38	38	38	38	14	14	13	14	6	6	5
23:00	38	38	38	38	38	38	38	1	1	1	2	2	0	1

RUNWAY MOVEMENT DEMAND - R60 ARRIVALS

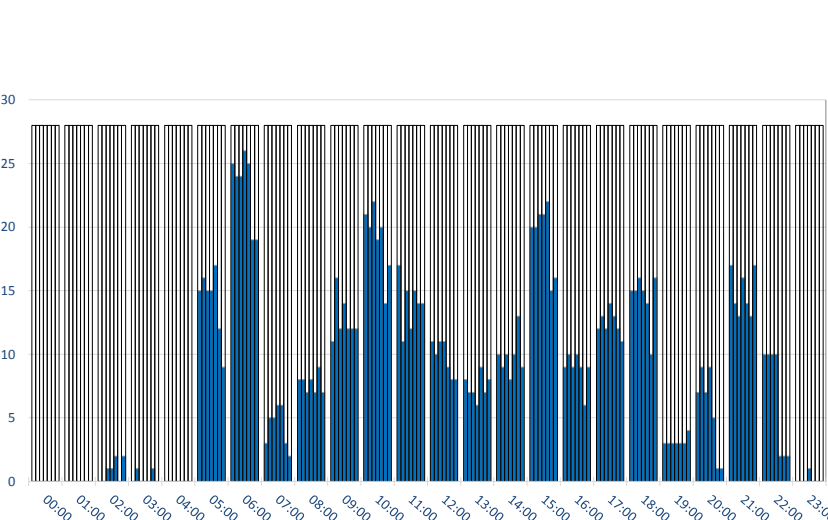
Movements per Hour - All times UTC



	CAPACITY							DEMAND						
	Mon	Tue	Wed	Thu	Fri	Sat	Sun	Mon	Tue	Wed	Thu	Fri	Sat	Sun
00:00	26	26	26	26	26	26	26	0	0	0	0	0	0	0
01:00	26	26	26	26	26	26	26	0	0	0	0	2	2	1
02:00	26	26	26	26	26	26	26	2	2	2	2	2	2	3
03:00	26	26	26	26	26	26	26	1	0	0	0	0	2	1
04:00	26	26	26	26	26	26	26	3	2	3	2	2	0	1
05:00	26	26	26	26	26	26	26	13	17	12	15	14	14	13
06:00	26	26	26	26	26	26	26	3	2	4	2	3	3	1
07:00	26	26	26	26	26	26	26	7	7	6	7	6	6	6
08:00	26	26	26	26	26	26	26	19	19	15	14	16	14	9
09:00	26	26	26	26	26	26	26	19	19	19	20	19	20	14
10:00	26	26	26	26	26	26	26	14	15	18	14	17	9	13
11:00	26	26	26	26	26	26	26	10	11	11	10	12	11	8
12:00	26	26	26	26	26	26	26	10	5	8	6	9	6	8
13:00	26	26	26	26	26	26	26	11	13	10	11	12	12	13
14:00	26	26	26	26	26	26	26	16	17	17	18	17	13	13
15:00	26	26	26	26	26	26	26	10	8	12	9	10	5	6
16:00	26	26	26	26	26	26	26	10	11	9	11	10	9	10
17:00	26	26	26	26	26	26	26	10	8	11	11	9	6	10
18:00	26	26	26	26	26	26	26	12	14	13	14	14	13	13
19:00	26	26	26	26	26	26	26	9	9	8	12	8	5	4
20:00	26	26	26	26	26	26	26	24	22	22	22	21	16	19
21:00	26	26	26	26	26	26	26	16	17	18	15	7	8	9
22:00	26	26	26	26	26	26	26	4	4	3	4	4	4	3
23:00	26	26	26	26	26	26	26	1	1	1	1	2	0	1

RUNWAY MOVEMENT DEMAND - R60 DEPARTURES

Movements per Hour - All times UTC

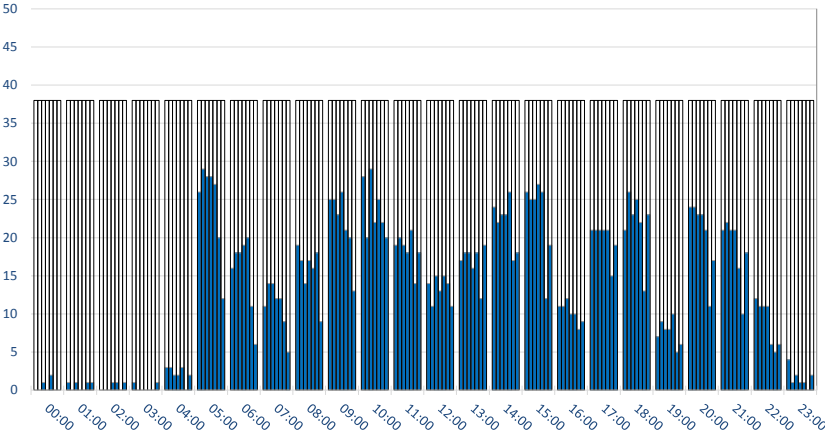


	CAPACITY							DEMAND						
	Mon	Tue	Wed	Thu	Fri	Sat	Sun	Mon	Tue	Wed	Thu	Fri	Sat	Sun
00:00	28	28	28	28	28	28	28	0	0	0	0	0	0	0
01:00	28	28	28	28	28	28	28	0	0	0	0	0	0	0
02:00	28	28	28	28	28	28	28	0	0	1	1	2	0	2
03:00	28	28	28	28	28	28	28	0	1	0	0	0	1	0
04:00	28	28	28	28	28	28	28	0	0	0	0	0	0	0
05:00	28	28	28	28	28	28	28	15	16	15	15	17	12	9
06:00	28	28	28	28	28	28	28	25	24	24	26	25	19	19
07:00	28	28	28	28	28	28	28	3	5	5	6	6	3	2
08:00	28	28	28	28	28	28	28	8	8	7	8	7	9	7
09:00	28	28	28	28	28	28	28	11	16	12	14	12	12	12
10:00	28	28	28	28	28	28	28	21	20	22	19	20	14	17
11:00	28	28	28	28	28	28	28	17	11	15	12	15	14	14
12:00	28	28	28	28	28	28	28	11	10	11	11	9	8	8
13:00	28	28	28	28	28	28	28	8	7	7	6	9	7	8
14:00	28	28	28	28	28	28	28	10	9	10	8	10	13	9
15:00	28	28	28	28	28	28	28	20	20	21	21	22	15	16
16:00	28	28	28	28	28	28	28	9	10	9	10	9	6	9
17:00	28	28	28	28	28	28	28	12	13	12	14	13	12	11
18:00	28	28	28	28	28	28	28	15	15	16	15	14	10	16
19:00	28	28	28	28	28	28	28	3	3	3	3	3	3	4
20:00	28	28	28	28	28	28	28	7	9	7	9	5	1	1
21:00	28	28	28	28	28	28	28	17	14	13	16	14	13	17
22:00	28	28	28	28	28	28	28	10	10	10	10	2	2	2
23:00	28	28	28	28	28	28	28	0	0	0	1	0	0	0

RUNWAY MOVEMENT ALLOCATION - R60 TOTALS

PEAK WEEK (18-24 NOV)

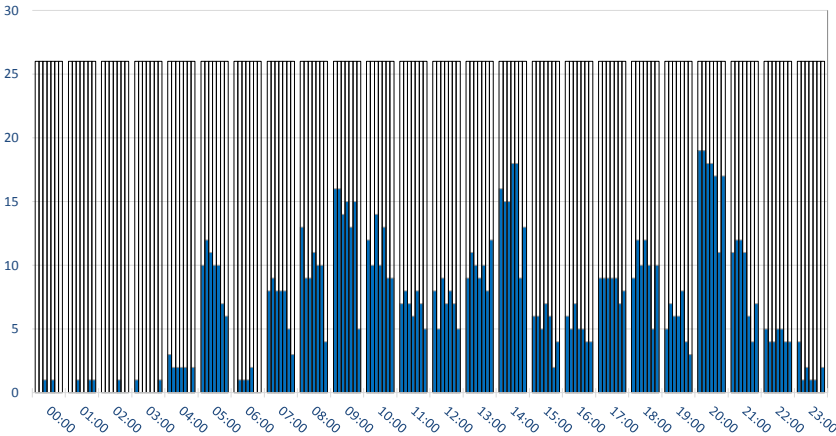
Movements per Hour - All times UTC



	CAPACITY							ALLOCATION						
	Mon	Tue	Wed	Thu	Fri	Sat	Sun	Mon	Tue	Wed	Thu	Fri	Sat	Sun
00:00	38	38	38	38	38	38	38	0	0	1	0	2	0	0
01:00	38	38	38	38	38	38	38	1	0	1	0	0	1	1
02:00	38	38	38	38	38	38	38	0	0	0	1	1	0	1
03:00	38	38	38	38	38	38	38	1	0	0	0	0	0	1
04:00	38	38	38	38	38	38	38	3	3	2	2	3	0	2
05:00	38	38	38	38	38	38	38	26	29	28	28	27	20	12
06:00	38	38	38	38	38	38	38	16	18	18	19	20	11	6
07:00	38	38	38	38	38	38	38	11	14	14	12	12	9	5
08:00	38	38	38	38	38	38	38	19	17	14	17	16	18	9
09:00	38	38	38	38	38	38	38	25	25	23	26	21	20	13
10:00	38	38	38	38	38	38	38	28	20	29	22	25	22	20
11:00	38	38	38	38	38	38	38	19	20	19	18	21	14	18
12:00	38	38	38	38	38	38	38	14	11	15	13	15	14	11
13:00	38	38	38	38	38	38	38	17	18	18	16	18	12	19
14:00	38	38	38	38	38	38	38	24	22	23	23	26	17	18
15:00	38	38	38	38	38	38	38	26	25	25	27	26	12	19
16:00	38	38	38	38	38	38	38	11	11	12	10	10	8	9
17:00	38	38	38	38	38	38	38	21	21	21	21	21	15	19
18:00	38	38	38	38	38	38	38	21	26	23	25	22	13	23
19:00	38	38	38	38	38	38	38	7	9	8	8	10	5	6
20:00	38	38	38	38	38	38	38	24	24	23	23	21	11	17
21:00	38	38	38	38	38	38	38	21	22	21	21	16	10	18
22:00	38	38	38	38	38	38	38	12	11	11	11	6	5	6
23:00	38	38	38	38	38	38	38	4	1	2	1	1	0	2

RUNWAY MOVEMENT ALLOCATION - R60 ARRIVALS

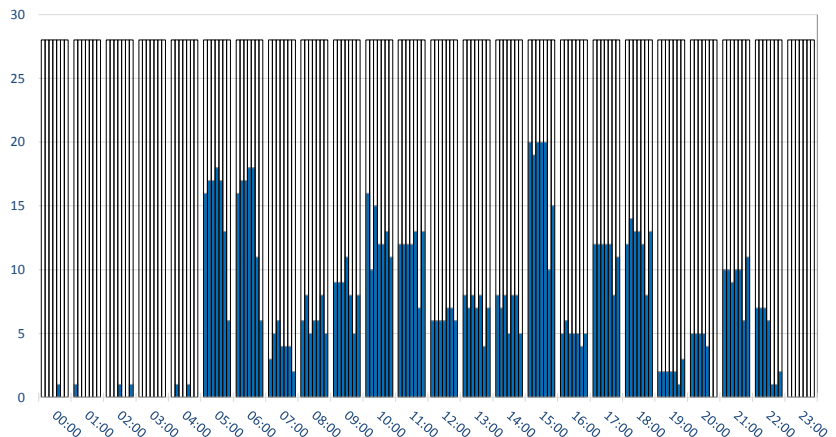
Movements per Hour - All times UTC



	CAPACITY							ALLOCATION						
	Mon	Tue	Wed	Thu	Fri	Sat	Sun	Mon	Tue	Wed	Thu	Fri	Sat	Sun
00:00	26	26	26	26	26	26	26	0	0	1	0	1	0	0
01:00	26	26	26	26	26	26	26	0	0	1	0	0	1	1
02:00	26	26	26	26	26	26	26	0	0	0	0	1	0	0
03:00	26	26	26	26	26	26	26	1	0	0	0	0	0	1
04:00	26	26	26	26	26	26	26	3	2	2	2	2	0	2
05:00	26	26	26	26	26	26	26	10	12	11	10	10	7	6
06:00	26	26	26	26	26	26	26	0	1	1	1	2	0	0
07:00	26	26	26	26	26	26	26	8	9	8	8	8	5	3
08:00	26	26	26	26	26	26	26	13	9	9	11	10	10	4
09:00	26	26	26	26	26	26	26	16	16	14	15	13	15	5
10:00	26	26	26	26	26	26	26	12	10	14	10	13	9	9
11:00	26	26	26	26	26	26	26	7	8	7	6	8	7	5
12:00	26	26	26	26	26	26	26	8	5	9	7	8	7	5
13:00	26	26	26	26	26	26	26	9	11	10	9	10	8	12
14:00	26	26	26	26	26	26	26	16	15	15	18	18	9	13
15:00	26	26	26	26	26	26	26	6	6	5	7	6	2	4
16:00	26	26	26	26	26	26	26	6	5	7	5	4	4	4
17:00	26	26	26	26	26	26	26	9	9	9	9	9	7	8
18:00	26	26	26	26	26	26	26	9	12	10	12	10	5	10
19:00	26	26	26	26	26	26	26	5	7	6	6	8	4	3
20:00	26	26	26	26	26	26	26	19	19	18	18	17	11	17
21:00	26	26	26	26	26	26	26	11	12	12	11	6	4	7
22:00	26	26	26	26	26	26	26	5	4	4	5	5	4	4
23:00	26	26	26	26	26	26	26	4	1	2	1	1	0	2

RUNWAY MOVEMENT ALLOCATION - R60 DEPARTURES

Movements per Hour - All times UTC

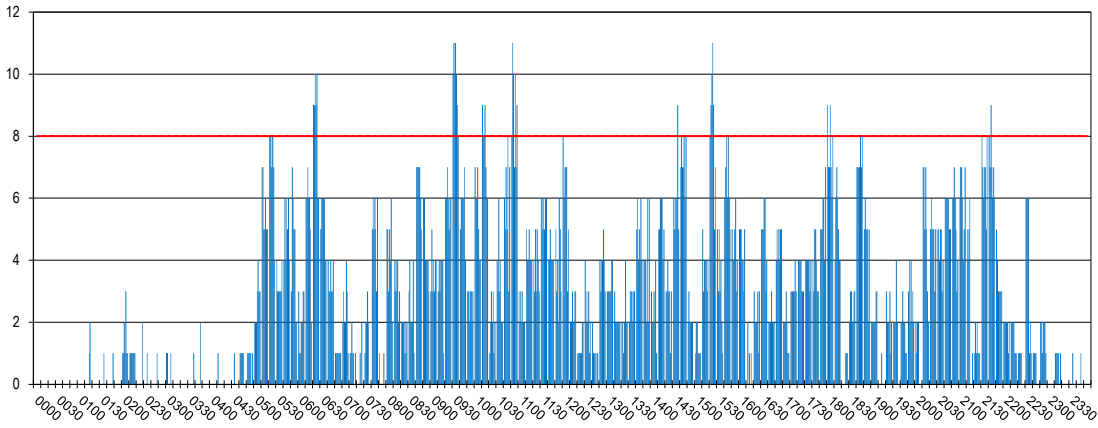


	CAPACITY							ALLOCATION						
	Mon	Tue	Wed	Thu	Fri	Sat	Sun	Mon	Tue	Wed	Thu	Fri	Sat	Sun
00:00	28	28	28	28	28	28	28	0	0	0	0	1	0	0
01:00	28	28	28	28	28	28	28	1	0	0	0	0	0	0
02:00	28	28	28	28	28	28	28	0	0	0	0	1	0	1
03:00	28	28	28	28	28	28	28	0	0	0	0	0	0	0
04:00	28	28	28	28	28	28	28	0	1	0	0	1	0	0
05:00	28	28	28	28	28	28	28	16	17	17	18	17	13	6
06:00	28	28	28	28	28	28	28	16	17	17	18	18	11	6
07:00	28	28	28	28	28	28	28	3	5	6	4	4	4	2
08:00	28	28	28	28	28	28	28	6	8	5	6	6	8	5
09:00	28	28	28	28	28	28	28	9	9	9	11	8	5	8
10:00	28	28	28	28	28	28	28	16	10	15	12	12	13	11
11:00	28	28	28	28	28	28	28	12	12	12	12	13	7	13
12:00	28	28	28	28	28	28	28	6	6	6	6	7	7	6
13:00	28	28	28	28	28	28	28	8	7	8	7	8	4	7
14:00	28	28	28	28	28	28	28	8	7	8	5	8	8	5
15:00	28	28	28	28	28	28	28	20	19	20	20	10	15	15
16:00	28	28	28	28	28	28	28	5	6	5	5	5	4	5
17:00	28	28	28	28	28	28	28	12	12	12	12	12	8	11
18:00	28	28	28	28	28	28	28	12	14	13	13	12	8	13
19:00	28	28	28	28	28	28	28	2	2	2	2	2	1	3
20:00	28	28	28	28	28	28	28	5	5	5	5	4	0	0
21:00	28	28	28	28	28	28	28	10	10	9	10	10	6	11
22:00	28	28	28	28	28	28	28	7	7	7	6	1	1	2
23:00	28	28	28	28	28	28	28	0	0	0	0	0	0	0

RUNWAY MOVEMENT DEMAND - R10 TOTALS

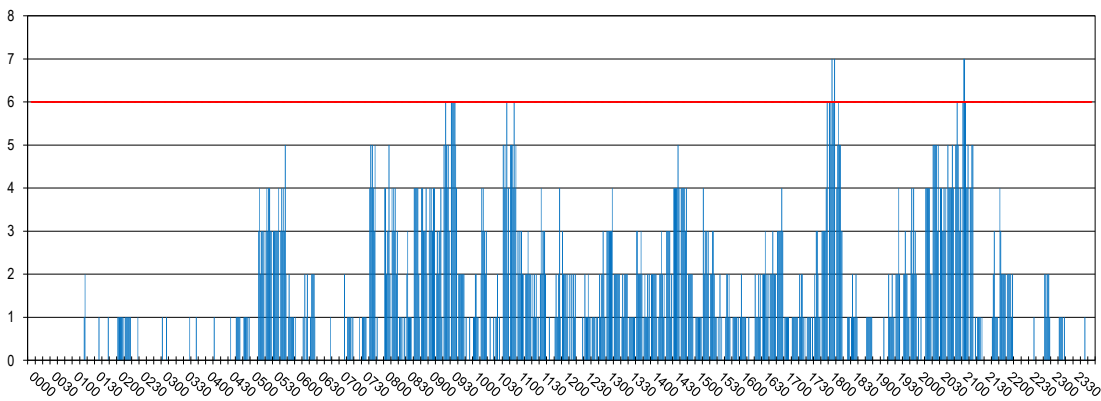
PEAK WEEK (18-24 NOV)

Peak Week Movements per 10 min - All times UTC



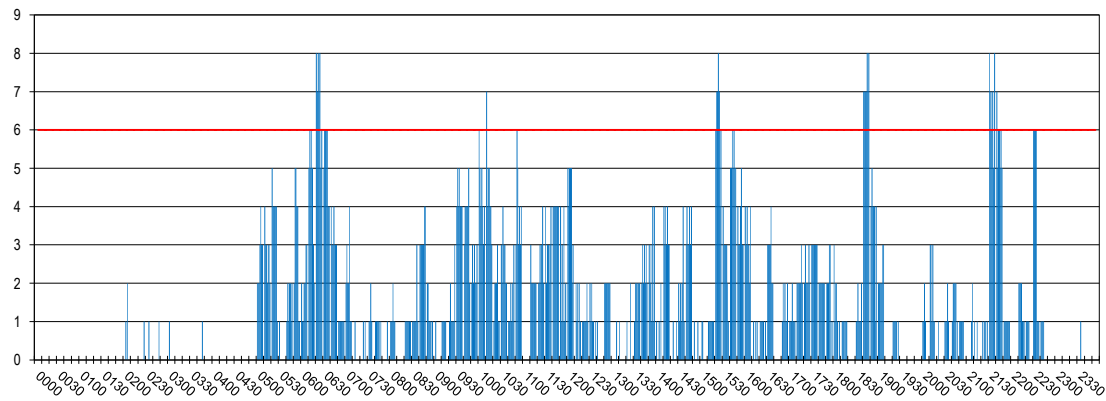
RUNWAY MOVEMENT DEMAND - R10 ARRIVALS

Peak Week Movements per 10 min - All times UTC



RUNWAY MOVEMENT DEMAND - R10 DEPARTURES

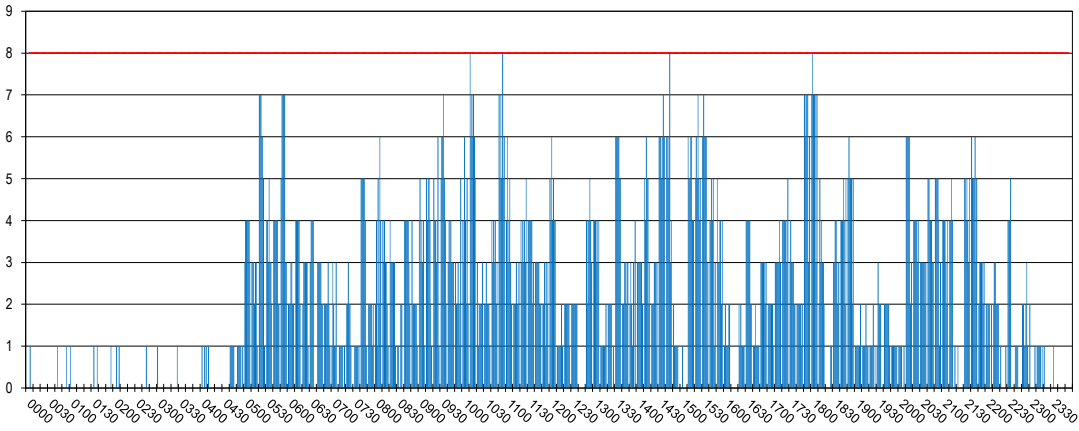
Peak Week Movements per 10 min - All times Local Time



RUNWAY MOVEMENT ALLOCATION - R10 TOTALS

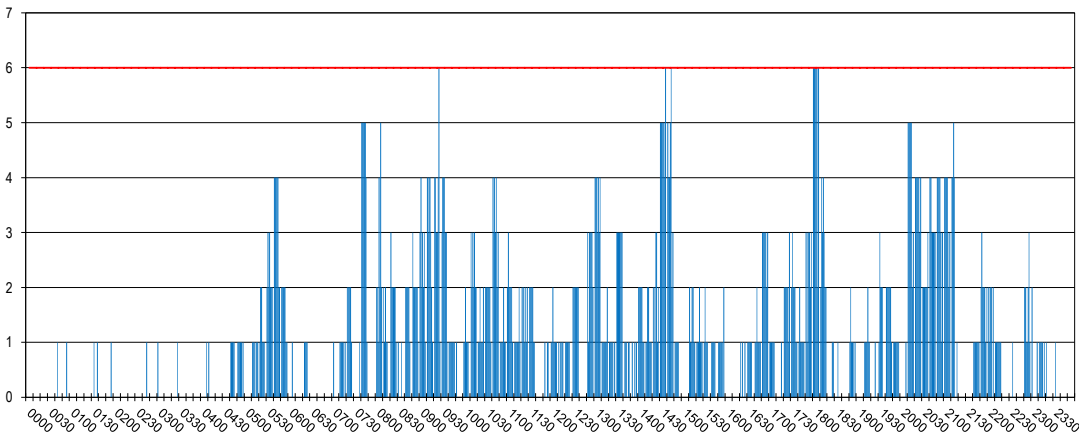
PEAK WEEK (18-24 NOV)

Peak Week Movements per 10 min - All times UTC



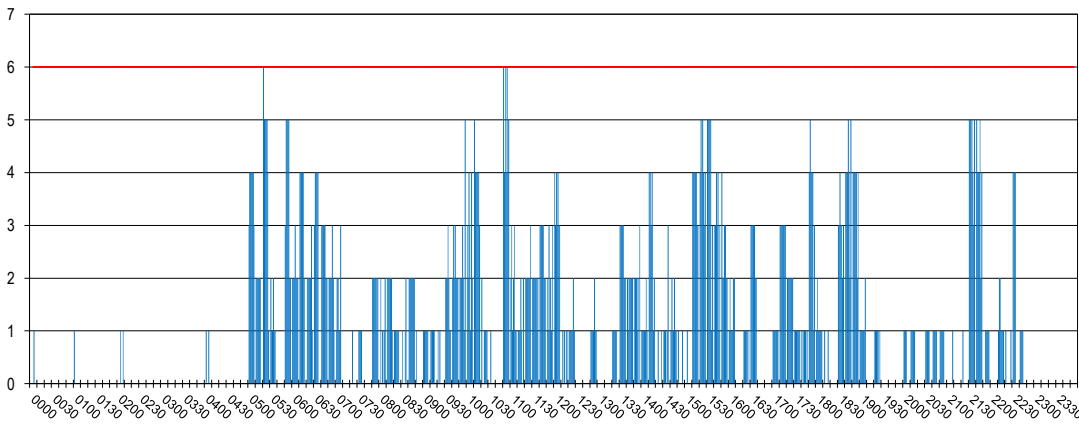
RUNWAY MOVEMENT ALLOCATION - R10 ARRIVALS

Peak Week Movements per 10 min - All times UTC



RUNWAY MOVEMENT ALLOCATION - R10 DEPARTURES

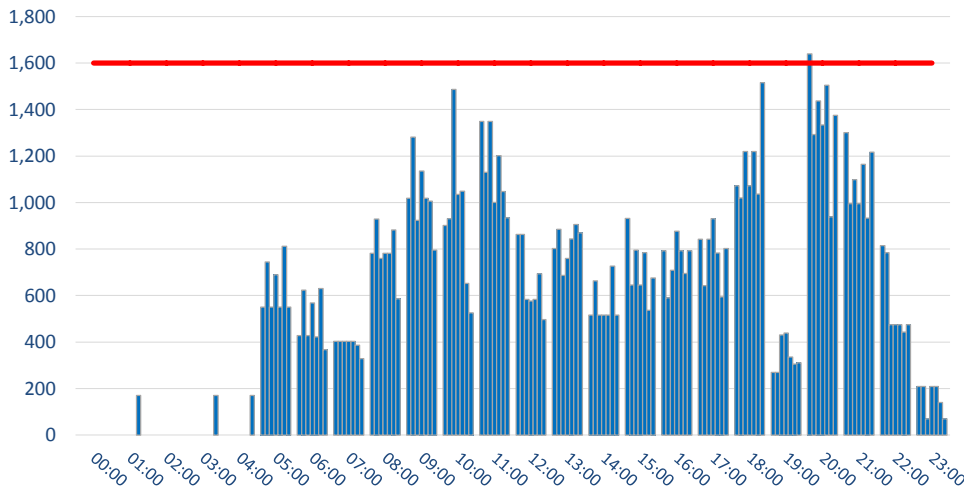
Peak Week Movements per 10 min - All times Local Time



TERMINAL - SCHENGEN ARRIVALS DEMAND

PEAK WEEK (18-24 NOV)

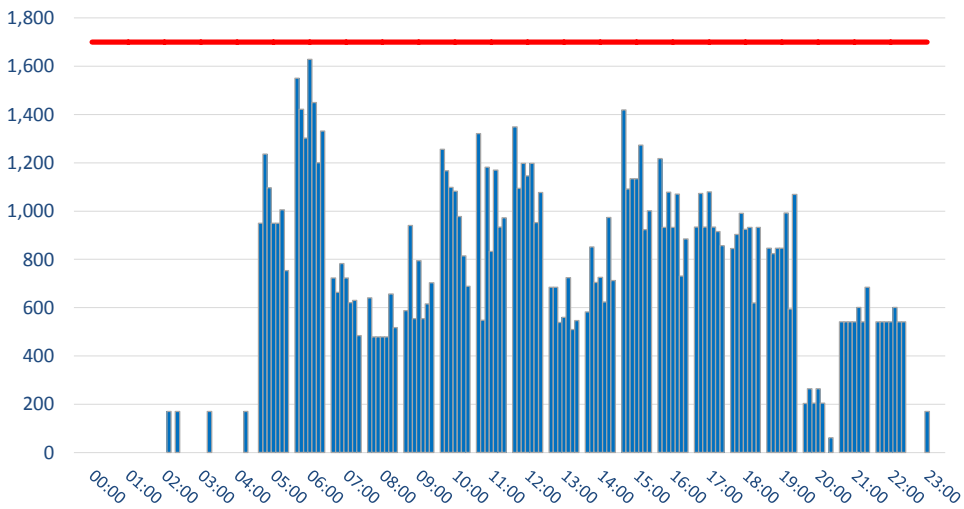
Passengers per Hour - All times UTC



	DEMAND							Capacity Limit
	Mon	Tue	Wed	Thu	Fri	Sat	Sun	
00:00	0	0	0	0	0	0	0	1600
01:00	0	0	0	0	0	0	170	1600
02:00	0	0	0	0	0	0	0	1600
03:00	0	0	0	0	0	0	170	1600
04:00	0	0	0	0	0	0	170	1600
05:00	550	745	550	690	550	812	550	1600
06:00	428	623	428	568	422	630	367	1600
07:00	403	403	403	403	403	386	328	1600
08:00	782	929	760	782	782	882	586	1600
09:00	1019	1282	923	1135	1019	1006	795	1600
10:00	902	930	1486	1035	1049	652	525	1600
11:00	1349	1130	1349	1000	1202	1048	935	1600
12:00	863	863	583	576	583	694	497	1600
13:00	802	885	686	759	843	906	870	1600
14:00	516	663	516	516	516	727	516	1600
15:00	932	645	795	645	785	536	676	1600
16:00	792	590	708	877	792	695	792	1600
17:00	842	643	842	930	783	594	802	1600
18:00	1072	1020	1219	1072	1219	1036	1515	1600
19:00	269	269	431	439	336	305	311	1600
20:00	1640	1292	1437	1334	1504	939	1375	1600
21:00	1301	995	1098	995	1165	933	1217	1600
22:00	814	784	474	474	474	443	474	1600
23:00	209	209	69	209	209	140	69	1600

TERMINAL - SCHENGEN DEPARTURES DEMAND

Passengers per Hour - All times UTC

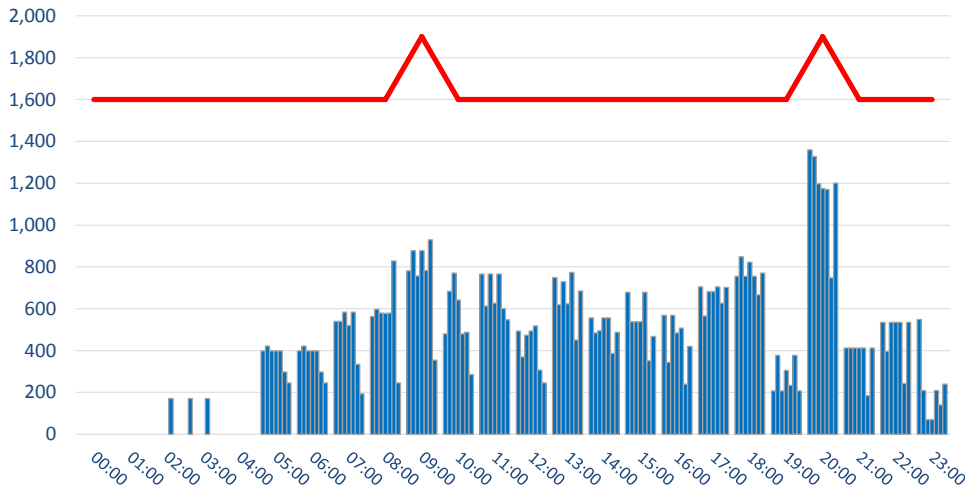


	DEMAND							Capacity Limit
	Mon	Tue	Wed	Thu	Fri	Sat	Sun	
00:00	0	0	0	0	0	0	0	1700
01:00	0	0	0	0	0	0	0	1700
02:00	0	0	0	0	170	0	170	1700
03:00	0	0	0	0	0	170	0	1700
04:00	0	0	0	0	0	170	0	1700
05:00	950	1236	1097	950	950	1006	753	1700
06:00	1551	1422	1302	1629	1449	1200	1331	1700
07:00	723	663	783	723	621	630	484	1700
08:00	641	479	479	479	479	657	517	1700
09:00	588	941	555	795	555	615	703	1700
10:00	1256	1167	1098	1082	977	815	689	1700
11:00	1321	548	1182	833	1170	934	972	1700
12:00	1349	1094	1198	1146	1198	952	1077	1700
13:00	685	685	539	560	725	509	547	1700
14:00	583	851	705	726	623	974	713	1700
15:00	1419	1092	1134	1134	1273	923	1001	1700
16:00	1217	932	1078	932	1071	731	885	1700
17:00	934	1073	934	1080	934	915	857	1700
18:00	845	903	991	925	932	620	932	1700
19:00	846	824	846	846	992	595	1069	1700
20:00	203	264	204	264	204	0	61	1700
21:00	541	541	541	541	601	541	684	1700
22:00	541	541	541	541	601	541	541	1700
23:00	0	0	0	170	0	0	0	1700

TERMINAL - SCHENGEN ARRIVALS ALLOCATION

PEAK WEEK (18-24 NOV)

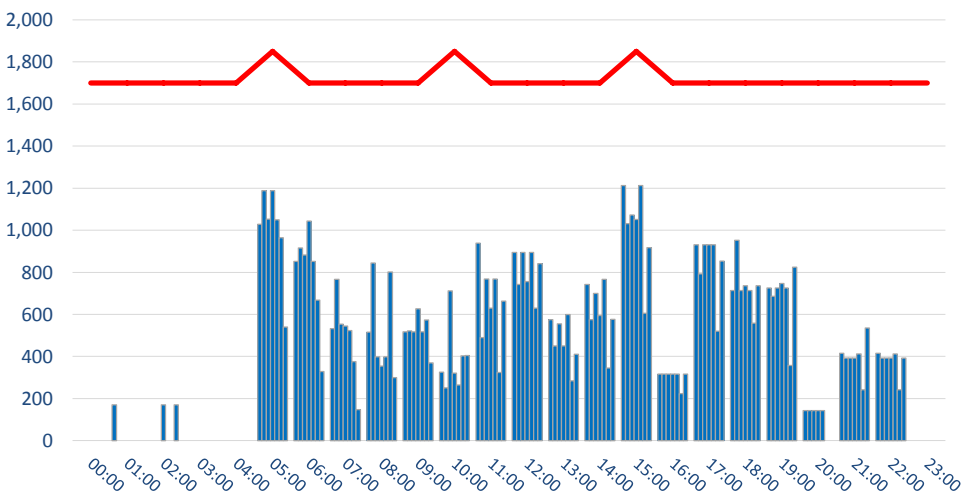
Passengers per Hour - All times UTC



	DEMAND							Capacity
	Mon	Tue	Wed	Thu	Fri	Sat	Sun	Limit
00:00	0	0	0	0	0	0	0	1600
01:00	0	0	0	0	0	0	0	1600
02:00	0	0	0	0	170	0	0	1600
03:00	170	0	0	0	170	0	0	1600
04:00	0	0	0	0	0	0	0	1600
05:00	399	422	399	399	399	297	245	1600
06:00	399	422	399	399	399	297	245	1600
07:00	539	539	584	519	584	334	193	1600
08:00	562	597	580	577	580	828	246	1600
09:00	782	877	756	878	783	930	354	1900
10:00	480	684	770	642	480	488	286	1600
11:00	766	613	766	626	766	600	547	1600
12:00	493	369	473	493	518	307	245	1600
13:00	749	619	729	623	774	451	685	1600
14:00	557	485	495	557	557	386	487	1600
15:00	678	538	538	538	678	351	468	1600
16:00	569	344	568	484	507	240	420	1600
17:00	705	565	682	682	705	627	702	1600
18:00	755	848	755	822	755	667	771	1600
19:00	208	378	208	305	233	378	208	1600
20:00	1359	1328	1197	1175	1170	748	1200	1900
21:00	413	413	413	413	413	184	413	1900
22:00	535	395	535	535	535	243	535	1600
23:00	549	209	69	69	209	140	239	1600

TERMINAL - SCHENGEN DEPARTURES ALLOCATION

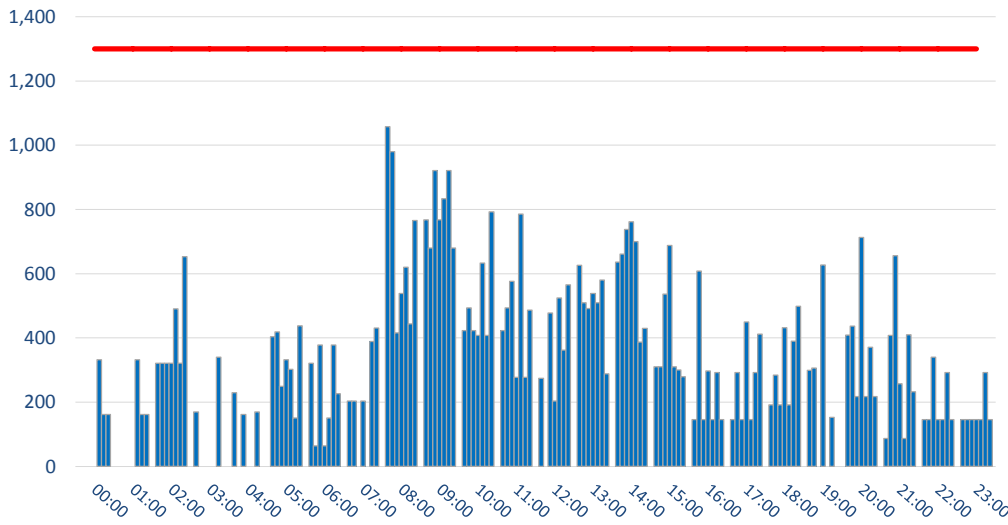
Passengers per Hour - All times UTC



	DEMAND							Capacity
	Mon	Tue	Wed	Thu	Fri	Sat	Sun	Limit
00:00	0	0	0	0	0	0	0	1700
01:00	170	0	0	0	0	0	0	1700
02:00	0	0	0	170	0	0	170	1700
03:00	0	0	0	0	0	0	0	1700
04:00	0	0	0	0	0	0	0	1700
05:00	1029	1188	1052	1188	1049	964	540	1850
06:00	852	916	883	1044	852	668	329	1700
07:00	532	766	554	545	523	375	148	1700
08:00	516	845	399	354	399	801	299	1700
09:00	517	521	517	627	517	573	369	1700
10:00	326	251	712	321	265	403	404	1850
11:00	938	490	768	629	768	324	663	1700
12:00	895	743	895	756	895	629	841	1700
13:00	575	450	555	450	600	285	410	1700
14:00	742	575	699	594	767	345	576	1700
15:00	1212	1032	1073	1051	1212	606	918	1850
16:00	316	316	316	316	316	223	316	1700
17:00	931	792	931	931	931	520	854	1700
18:00	714	953	714	736	714	558	736	1700
19:00	725	686	725	747	725	357	824	1700
20:00	143	143	143	143	143	0	0	1700
21:00	415	392	392	392	412	241	535	1700
22:00	415	392	392	392	412	241	392	1700
23:00	0	0	0	0	0	0	0	1700

TERMINAL - NON SCHENGEN ARRIVALS DEMAND

Passengers per Hour - All times UTC

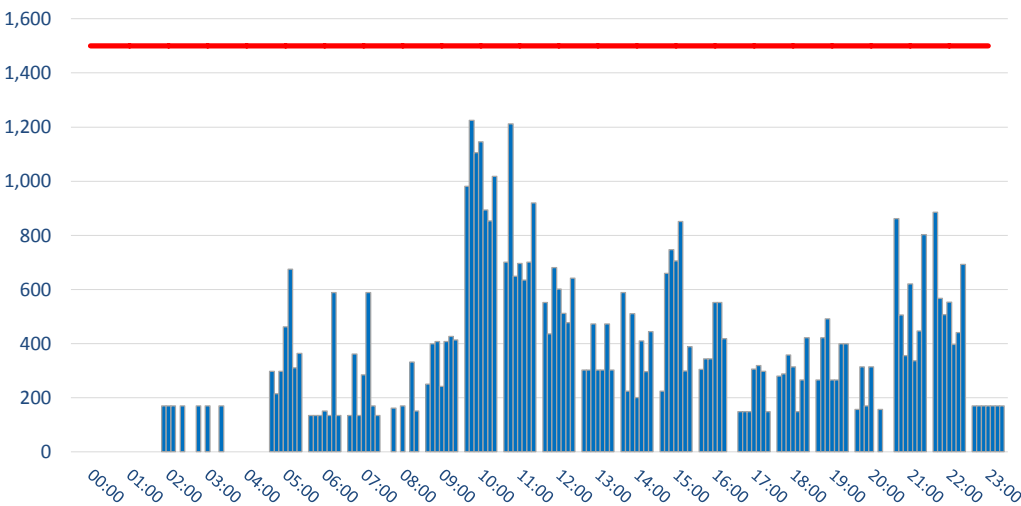


PEAK WEEK (18-24 NOV)

	DEMAND							Capacity
	Mon	Tue	Wed	Thu	Fri	Sat	Sun	Limit
00:00	0	0	0	0	332	162	162	1300
01:00	0	0	0	0	332	162	162	1300
02:00	321	321	321	321	491	321	653	1300
03:00	170	0	0	0	0	340	0	1300
04:00	230	0	162	0	0	170	0	1300
05:00	404	419	249	332	302	151	438	1300
06:00	321	64	378	64	151	378	227	1300
07:00	204	204	0	204	0	389	431	1300
08:00	1058	980	416	539	620	444	766	1300
09:00	768	680	921	768	833	921	680	1300
10:00	423	494	423	408	633	408	793	1300
11:00	423	494	576	277	786	277	487	1300
12:00	274	0	478	204	525	362	565	1300
13:00	626	510	492	539	510	580	288	1300
14:00	636	661	738	762	700	387	430	1300
15:00	310	310	537	688	310	300	279	1300
16:00	146	608	146	297	146	292	146	1300
17:00	146	292	146	450	146	292	412	1300
18:00	192	284	192	432	192	390	499	1300
19:00	299	306	0	627	0	153	0	1300
20:00	409	437	218	713	218	371	218	1300
21:00	87	408	656	257	87	410	233	1300
22:00	146	146	340	146	146	292	146	1300
23:00	146	146	146	146	146	292	146	1300

TERMINAL - NON SCHENGEN DEPARTURES DEMAND

Passengers per Hour - All times UTC

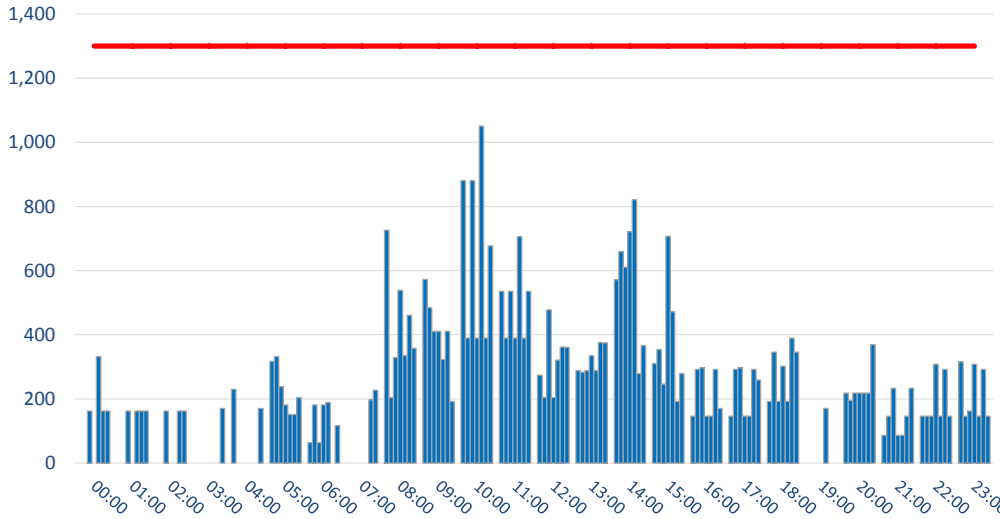


	DEMAND							Capacity
	Mon	Tue	Wed	Thu	Fri	Sat	Sun	Limit
00:00	0	0	0	0	0	0	0	1500
01:00	0	0	0	0	0	0	0	1500
02:00	0	0	170	170	170	0	170	1500
03:00	0	170	0	170	0	0	170	1500
04:00	0	0	0	0	0	0	0	1500
05:00	298	215	298	462	675	311	364	1500
06:00	134	134	134	151	134	588	134	1500
07:00	134	361	134	285	588	170	134	1500
08:00	0	162	0	170	0	332	151	1500
09:00	250	399	407	242	407	426	413	1500
10:00	981	1225	1105	1145	894	853	1018	1500
11:00	701	1212	649	696	634	701	920	1500
12:00	552	436	681	601	511	477	642	1500
13:00	302	302	472	302	302	472	302	1500
14:00	588	224	510	200	410	296	444	1500
15:00	224	660	747	705	851	299	389	1500
16:00	304	343	343	552	552	418	0	1500
17:00	149	149	149	306	319	298	149	1500
18:00	280	288	358	314	149	265	422	1500
19:00	265	422	492	265	265	399	399	1500
20:00	157	314	170	314	0	157	0	1500
21:00	862	506	356	620	336	447	802	1500
22:00	885	567	507	553	397	441	693	1500
23:00	170	170	170	170	170	170	170	1500

TERMINAL - NON SCHENGEN ARRIVALS ALLOCATION

PEAK WEEK (18-24 NOV)

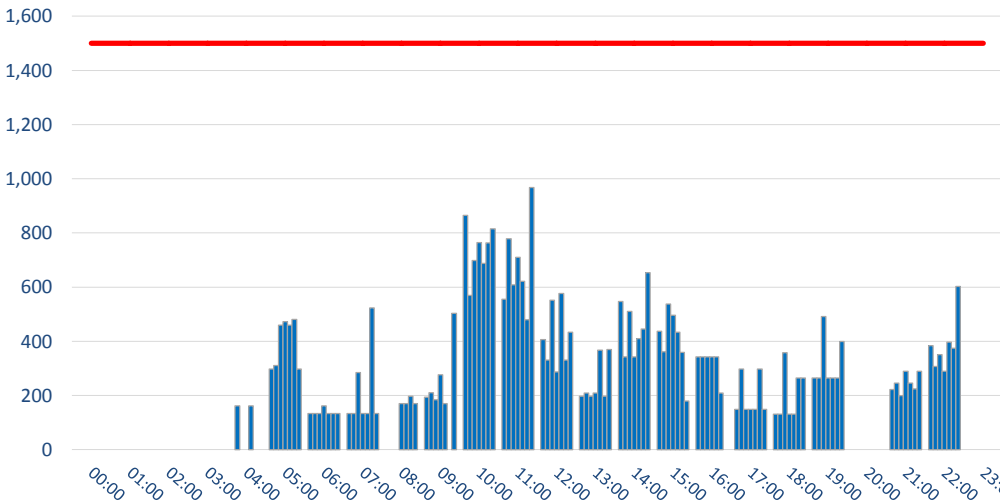
Passengers per Hour - All times UTC



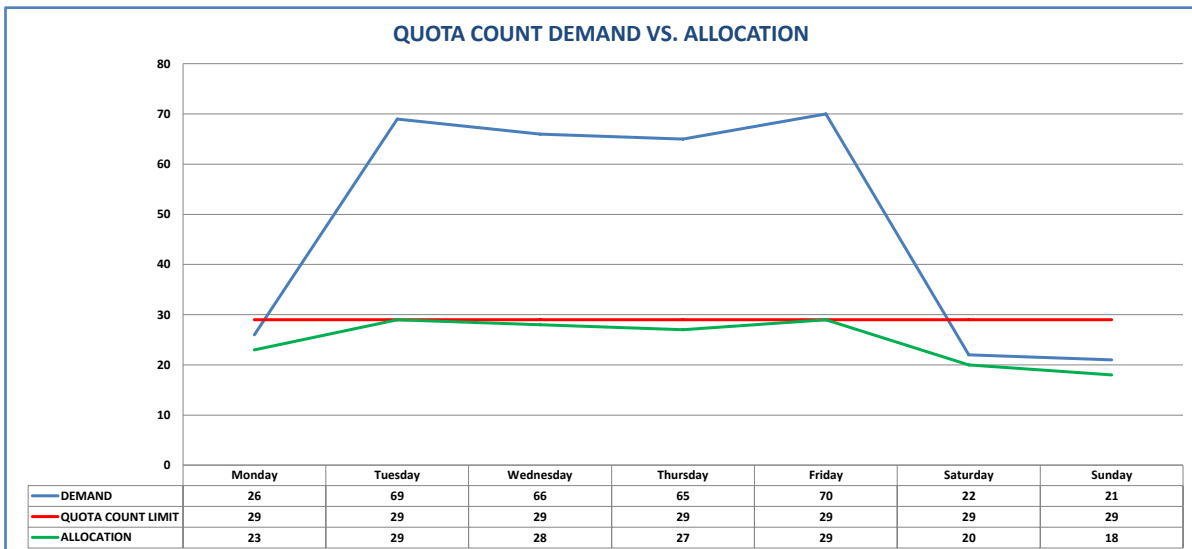
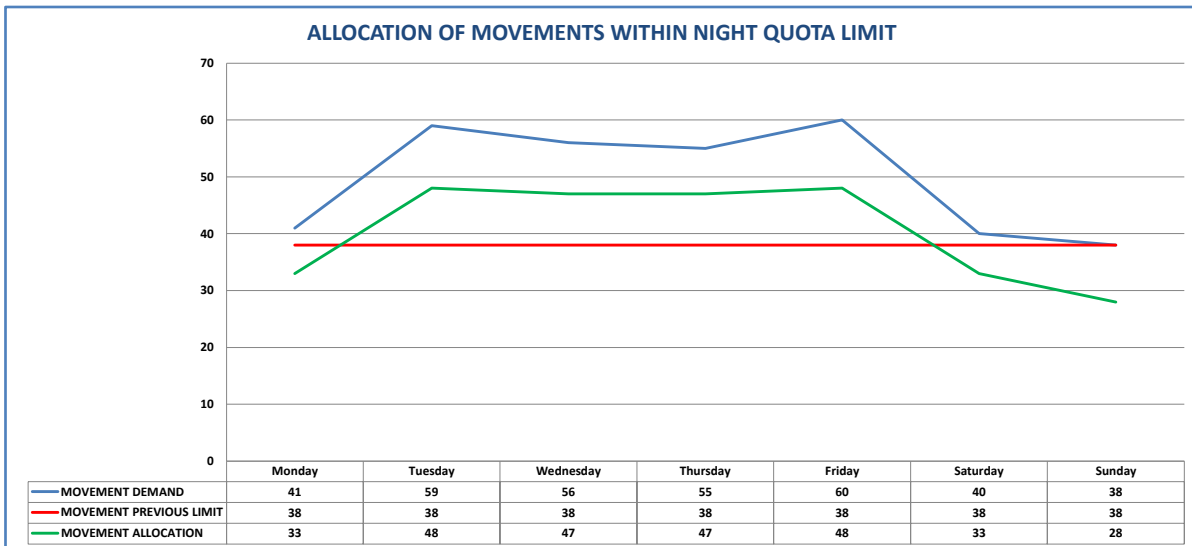
	DEMAND							Capacity Limit
	Mon	Tue	Wed	Thu	Fri	Sat	Sun	
00:00	0	0	162	0	332	162	162	1300
01:00	0	0	162	0	162	162	162	1300
02:00	0	0	162	0	0	162	162	1300
03:00	0	0	0	0	0	0	170	1300
04:00	230	0	0	0	0	0	170	1300
05:00	317	332	238	181	151	151	204	1300
06:00	64	181	64	181	189	0	117	1300
07:00	0	0	0	0	0	197	227	1300
08:00	726	204	329	539	335	461	358	1300
09:00	573	485	411	411	323	411	192	1300
10:00	881	390	881	390	1051	390	677	1300
11:00	536	390	536	390	706	390	536	1300
12:00	274	204	478	204	321	362	361	1300
13:00	288	283	288	335	288	376	375	1300
14:00	572	659	610	721	821	279	366	1300
15:00	310	354	246	707	472	192	279	1300
16:00	146	292	297	146	146	292	170	1300
17:00	146	292	297	146	146	292	259	1300
18:00	192	346	192	302	192	390	346	1300
19:00	0	0	0	0	170	0	0	1300
20:00	218	195	218	218	218	218	369	1300
21:00	87	146	233	87	87	146	233	1300
22:00	146	146	146	308	146	292	146	1300
23:00	316	146	162	308	146	292	146	1300

TERMINAL - NON SCHENGEN DEPARTURES ALLOCATION

Passengers per Hour - All times UTC



	DEMAND							Capacity Limit
	Mon	Tue	Wed	Thu	Fri	Sat	Sun	
00:00	0	0	0	0	0	0	0	1500
01:00	0	0	0	0	0	0	0	1500
02:00	0	0	0	0	0	0	0	1500
03:00	0	0	0	0	0	0	0	1500
04:00	0	162	0	0	162	0	0	1500
05:00	298	311	460	473	460	481	298	1500
06:00	134	134	134	162	134	134	134	1500
07:00	134	134	285	134	134	523	134	1500
08:00	0	0	0	170	170	197	170	1500
09:00	194	210	184	276	170	0	503	1500
10:00	865	569	698	764	688	763	815	1500
11:00	555	779	608	710	621	480	968	1500
12:00	406	331	552	287	576	331	433	1500
13:00	197	209	197	209	367	197	370	1500
14:00	547	343	510	343	410	445	653	1500
15:00	437	362	538	496	433	359	180	1500
16:00	343	343	343	343	343	209	0	1500
17:00	149	298	149	149	149	298	149	1500
18:00	131	131	358	131	131	265	265	1500
19:00	265	265	492	265	265	265	399	1500
20:00	0	0	0	0	0	0	0	1500
21:00	222	246	200	290	246	224	290	1500
22:00	384	307	351	290	397	375	603	1500
23:00	0	0	0	0	0	0	0	1500



GLOSSARY OF TERMS

Air Transport Movement (ATM)	A scheduled or charter passenger or freight aircraft movement.
Allocation	The allocation of slots such that demand is constrained to fit within declared scheduling limits.
Demand	The unconstrained demand for slots, prior to any schedule adjustments.
Passenger ATM	A scheduled or charter <u>passenger</u> aircraft movement (ie, excluding all-cargo aircraft movements)
Schedule Adjustment by Carrier	Off slot allocation (excluding General Aviation)
Scheduling Limits	Limiting parameters declared by the Airport Operator used in the coordination process.
Seats	The number of seats based on the aircraft configuration advised by the airline.
Peak Week	The Peak Week for W13 is Week 34 (18-24 November 2013)
Peak Hour	Peak Hours during W13 terminal redevelopment: - Arriving Pax : 0900-0955; 2000-2055 UTC - Departing Pax Flights: 0500-0555; 1000-1055; 1500-1555 UTC

GUIDE TO HISTOGRAMS

The histograms show the pattern of traffic by time of day against the appropriate scheduling limit. Each time period consist of seven columns representing the days-of-week, Monday through to Sunday.