

WARSAW FREDERIC CHOPIN AIRPORT

EPWA / WAW

SUMMER 2015

START OF SEASON REPORT

Summer 2015		Change from Summer 2014 (Start of Season)		Change from Summer 2014 (End of Season)
-------------	--	---	--	--

KEY STATISTICS

Air Transport Movements	85,176	↑	2%	↑	7%
Total Seats	9,935,207	↑	6%	↑	7%
Seats per Passenger ATM	117	↑	5%	↑	7%

CONTENT

	Page
SCHEDULING LIMITS	2
SCHEDULE ADJUSTMENT	3
TOP AIRLINES ANALYSIS	4
TOP ROUTES ANALYSIS	5
RUNWAY R60 DEMAND & ALLOCATION HISTOGRAMS	6-7
RUNWAY R10 DEMAND & ALLOCATION HISTOGRAMS	8-9
TOTAL TERMINAL DEMAND & ALLOCATION	10-11
TERMINAL SCHENGEN DEMAND & ALLOCATION	12-13
TERMINAL NON SCHENGEN DEMAND & ALLOCATION	14-15
NIGHT MOVEMENT SUMMARY	16
GLOSSARY OF TERMS	17

Data in this report is current as of:

10 March 2015

No warranty whether expressed or implied as to the completeness, accuracy, fitness for purpose, or satisfactory quality is given by ACL regarding the information in this report, which is provided by third parties. Accordingly, ACL excludes all liability with regard to such data.

The contents of this report may not be reproduced without the written consent of ACL.

RUNWAY SCHEDULING LIMITS

All times UTC

		ARRIVALS																	
		04:00	05:00	06:00	07:00	08:00	09:00	10:00	11:00	12:00	13:00	14:00	15:00	16:00	17:00	18:00	19:00	20:00	
MONDAY - SUNDAY	SEASON S15	26	26	26	26	26	26	26	26	26	26	26	26	26	26	26	26	26	
	R60	26	26	26	26	26	26	26	26	26	26	26	26	26	26	26	26	26	
	R10	6	6	6	6	6	6	6	6	6	6	6	6	6	6	6	6	6	
			DEPARTURES																
	SEASON S14	28	28	28	28	28	28	28	28	28	28	28	28	28	28	28	28	28	28
	R60	28	28	28	28	28	28	28	28	28	28	28	28	28	28	28	28	28	28
	R10	6	6	6	6	6	6	6	6	6	6	6	6	6	6	6	6	6	6
			TOTALS																
	SEASON S14	38	38	38	38	38	38	38	38	38	38	38	38	38	38	38	38	38	38
	R60	38	38	38	38	38	38	38	38	38	38	38	38	38	38	38	38	38	38
	R10	8	8	8	8	8	8	8	8	8	8	8	8	8	8	8	8	8	8

TERMINAL SCHEDULING LIMITS

Passengers per Hour (T60/30)

	SCHENGEN	NON SCHENGEN	TOTAL
ARRIVALS	3,100	1,300	3,100
DEPARTURES	2,400	1,600	2,700

Other Restrictions

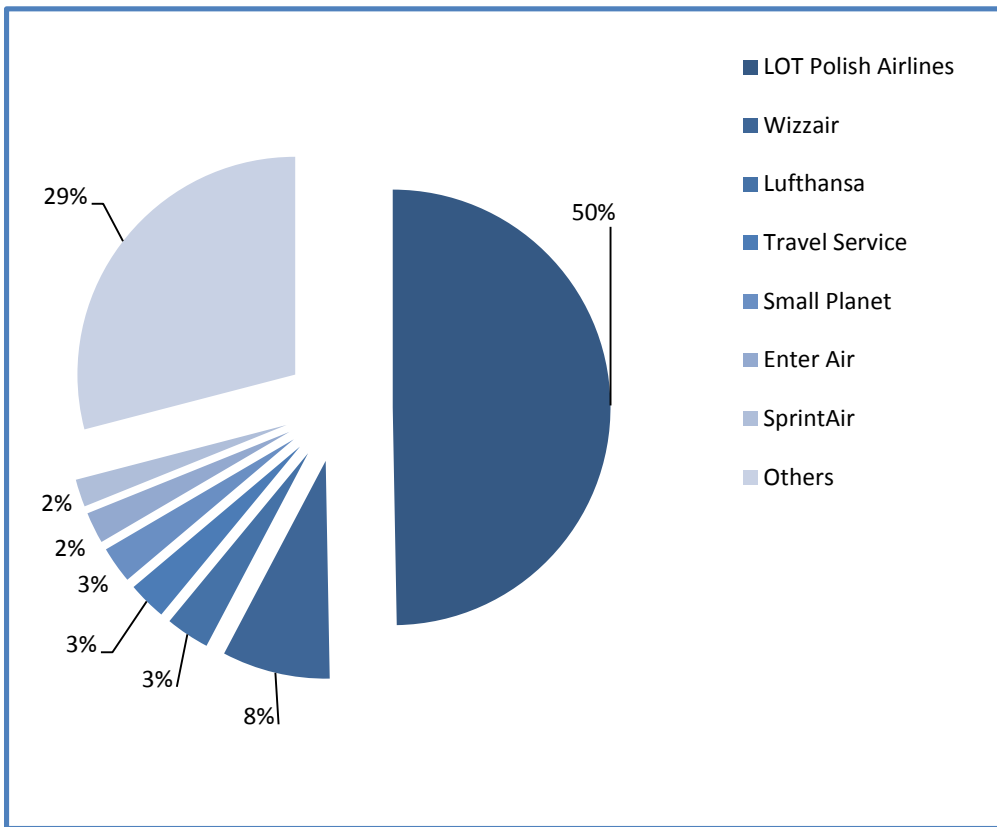
Night quota:

Night quota limits apply at EPWA/WAW to the value of 29 Quota Points. The night quota period is defined as 2000 - 0400 (UTC)

SCHEDULE ADJUSTMENTS BY CARRIER

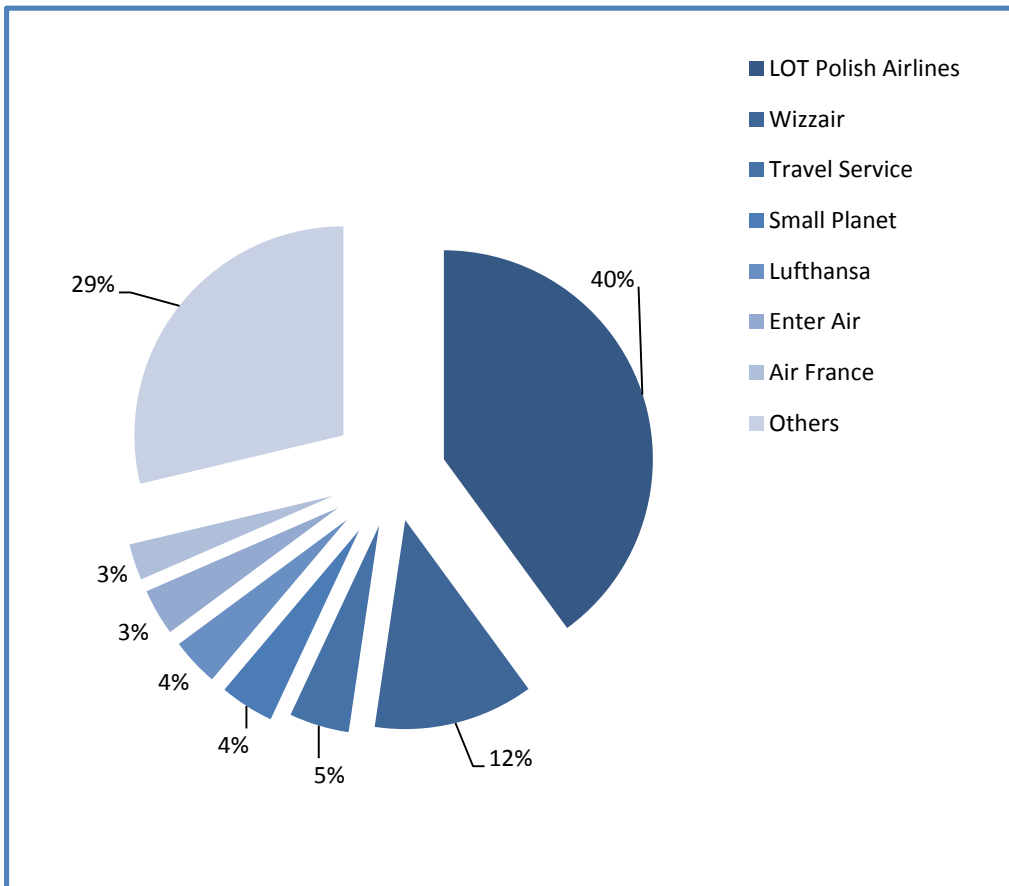
Off Slot	0	5	10	15	20	25	40	50	55	60+	Grand Total	0	5	10	15	20	25	40	50	55	60+	Grand Total		
Grand Total	80475	3283	1047	62	106	19	42	64	18	60	85176	94%	3.9%	1.2%	0.1%	0.1%	0.0%	0.0%	0.1%	0.0%	0.1%	0.1%	85176	
LOT Polish Airlines	38894	2599	753		90						42336	92%	6%	2%		0%							42336	
Wizzair	6832										6832	100%												6832
Lufthansa	2778										2778	100%												2778
Travel Service	2178	85	61	53	1	16				18	25	2437	89%	3%	3%	2%	0%	1%				1%	1%	2437
Small Planet	2282	32	2									2316	99%	1%	0%									2316
Enter Air	1988											1988	100%											1988
Sprint Air	1746											1746	100%											1746
Air France	1411		209									1620	87%		13%									1620
Air Berlin	1502											1502	100%											1502
Norwegian	1482											1482	100%											1482
Travel Service Polska	1222	115	2	1	15						34	1389	88%	8%	0%	0%	1%						2%	1389
KLM Royal Dutch	1258											1258	100%											1258
Austrian Airlines	1250											1250	100%											1250
SWISS International	1168											1168	100%											1168
SAS Scandinavian	1020											1020	100%											1020
Czech Airlines	836	134										970	86%	14%										970
Aeroflot	840											840	100%											840
British Airways	840											840	100%											840
Finnair	840											840	100%											840
Brussels Airlines	780											780	100%											780
Air Baltic	708											708	100%											708
Alitalia	696											696	100%											696
Germanwings	614											614	100%											614
UPS	540											540	100%											540
TNT Airways	363	42					42	63				510	71%	8%				8%	12%					510
JAT Airways	420											420	100%											420
Emirates	420											420	100%											420
Ukrainian International	300	120										420	71%	29%										420
Qatar Airways	420											420	100%											420
TAP Portugal	396											396	100%											396
EL AL	331	29				1		1		1		363	91%	8%			0%		0%			0%		363
Nouvelair	328	26		8								362	91%	7%	2%									362
Pegasus Airlines	296	26										322	92%	8%										322
Turkish Airlines	300											300	100%											300
FEDEX	300											300	100%											300
Belavia	300											300	100%											300
Sprint Air Cargo	298											298	100%											298
Vueling	298											298	100%											298
European Air Transport/DHL	298											298	100%											298
Aegean Airlines	278						2					280	99%				1%							280
Sunexpress Turkey	242		18									260	93%		7%									260
Aer Lingus	180	60										240	75%	25%										240
Adria Airways	182											182	100%											182
Corendon Airlines	146											146	100%											146
Tarom	130											130	100%											130
Air Cairo	120											120	100%											120
WOW Air	114											114	100%											114
Bulgaria Air	96											96	100%											96
Bulgarian Air Charter	76											76	100%											76
EuroLOT	49	15	2									66	74%	23%	3%									66
Air Malta	42											42	100%											42
Tailwind Airlines	27											27	100%											27
Farnair	20											20	100%											20

TOP AIRLINES BY ATM



operator	movements
LOT Polish Airlines	42,336
Wizzair	6,832
Lufthansa	2,778
Travel Service	2,437
Small Planet	2,316
Enter Air	1,988
SprintAir	1,746
Others	24,743

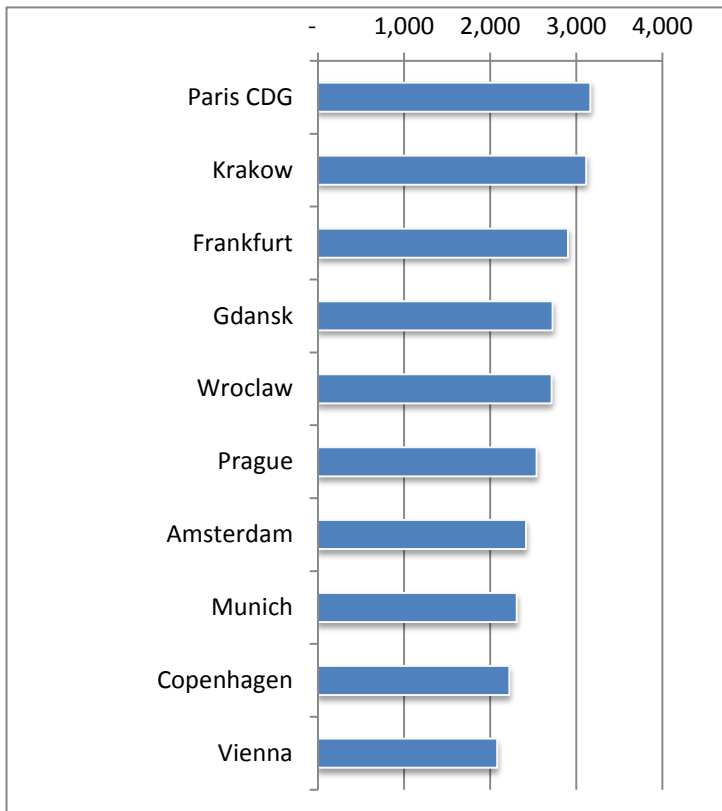
TOP AIRLINES BY SEATS



operator	seats
LOT Polish Airlines	3,970,001
Wizzair	1,229,760
Travel Service	460,575
Small Planet	416,880
Lufthansa	367,714
Enter Air	357,510
Air France	278,664
Others	2,854,103

AIR TRANSPORT MOVEMENTS BY DESTINATION

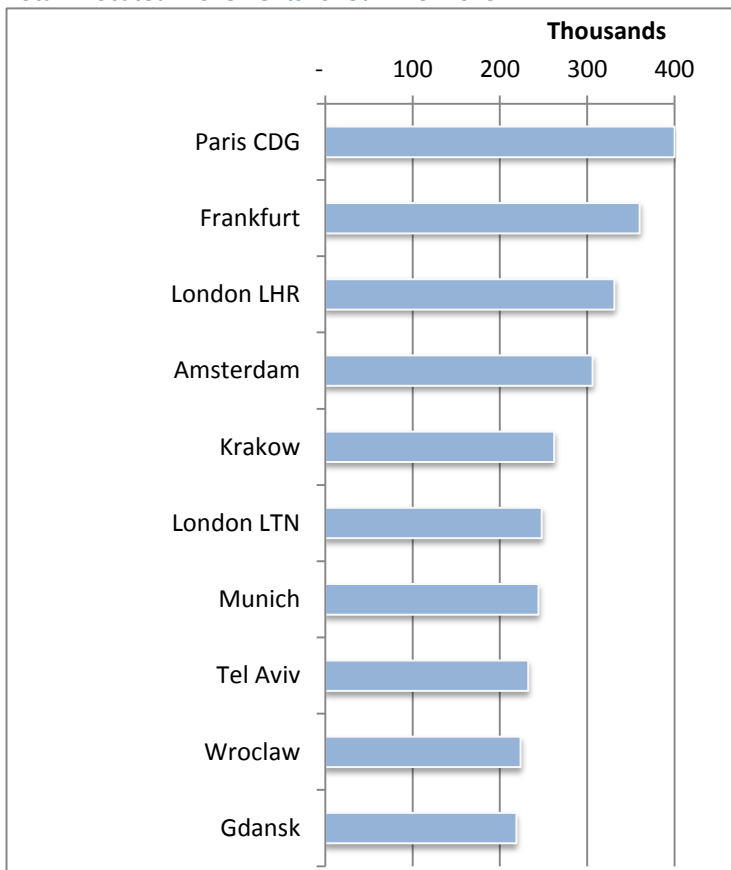
Total Allocated Movements for Summer 2015



Summer 2015	ATMs
Paris CDG	3,164
Krakow	3,116
Frankfurt	2,904
Gdansk	2,726
Wroclaw	2,712
Prague	2,540
Amsterdam	2,416
Munich	2,308
Copenhagen	2,221
Vienna	2,080

AIR TRANSPORT SEATS BY DESTINATION

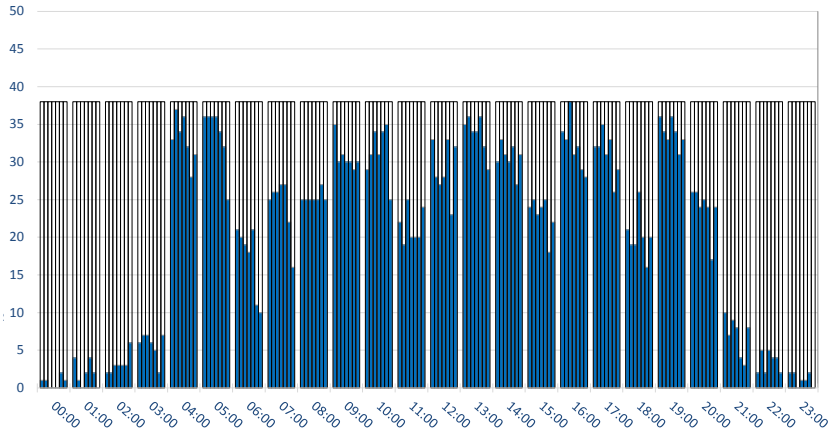
Total Allocated Movements for Summer 2015



Summer 2015	Seats
Paris CDG	400,062
Frankfurt	359,933
London LHR	331,104
Amsterdam	306,192
Krakow	262,209
London LTN	248,040
Munich	244,321
Tel Aviv	232,393
Wroclaw	223,792
Gdansk	218,720

RUNWAY MOVEMENT DEMAND - R60 TOTALS

Movements per Hour - All times UTC

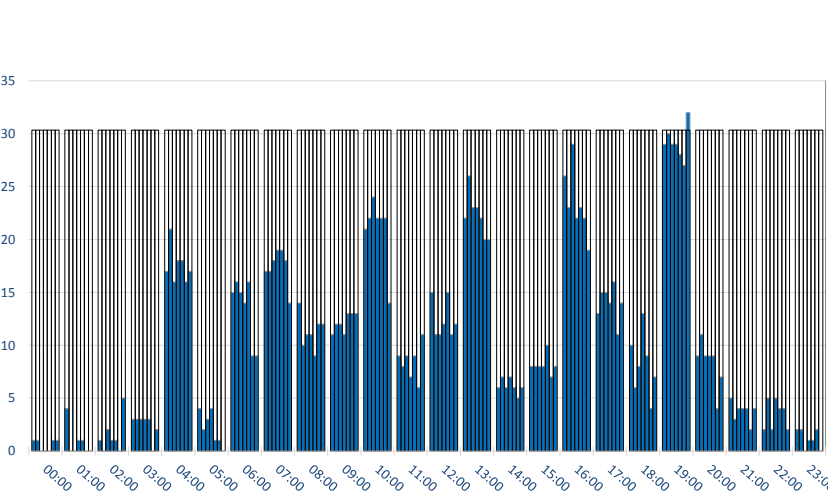


PEAK WEEK (31AUG - 06SEP)

	CAPACITY							DEMAND						
	Mon	Tue	Wed	Thu	Fri	Sat	Sun	Mon	Tue	Wed	Thu	Fri	Sat	Sun
00:00	38	38	38	38	38	38	38	1	1	0	0	0	2	1
01:00	38	38	38	38	38	38	38	4	1	0	2	4	2	0
02:00	38	38	38	38	38	38	38	2	2	3	3	3	3	6
03:00	38	38	38	38	38	38	38	6	7	7	6	5	2	7
04:00	38	38	38	38	38	38	38	33	37	34	36	32	28	31
05:00	38	38	38	38	38	38	38	36	36	36	36	34	32	25
06:00	38	38	38	38	38	38	38	21	20	19	18	21	11	10
07:00	38	38	38	38	38	38	38	25	26	26	27	27	22	16
08:00	38	38	38	38	38	38	38	25	25	25	25	25	27	25
09:00	38	38	38	38	38	38	38	35	30	31	30	30	29	30
10:00	38	38	38	38	38	38	38	29	31	34	31	34	35	25
11:00	38	38	38	38	38	38	38	22	19	25	20	20	20	24
12:00	38	38	38	38	38	38	38	33	28	27	28	33	23	32
13:00	38	38	38	38	38	38	38	35	36	34	34	36	32	29
14:00	38	38	38	38	38	38	38	30	33	31	30	32	27	31
15:00	38	38	38	38	38	38	38	24	25	23	24	25	18	22
16:00	38	38	38	38	38	38	38	34	33	38	31	32	29	28
17:00	38	38	38	38	38	38	38	32	32	35	31	33	26	29
18:00	38	38	38	38	38	38	38	21	19	19	26	20	16	20
19:00	38	38	38	38	38	38	38	36	34	33	36	34	31	33
20:00	38	38	38	38	38	38	38	26	26	24	25	24	17	24
21:00	38	38	38	38	38	38	38	10	7	9	8	4	3	8
22:00	38	38	38	38	38	38	38	2	5	2	5	4	4	2
23:00	38	38	38	38	38	38	38	2	2	0	1	1	2	0

RUNWAY MOVEMENT DEMAND - R60 ARRIVALS

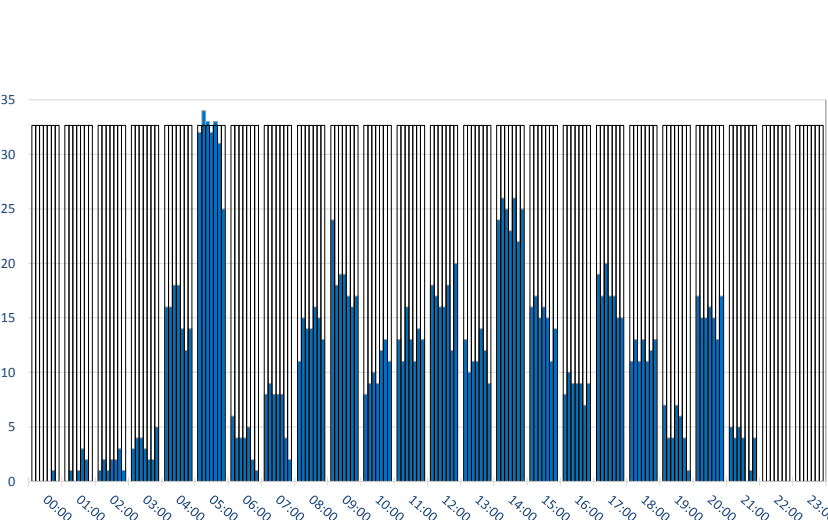
Movements per Hour - All times UTC



	CAPACITY							DEMAND						
	Mon	Tue	Wed	Thu	Fri	Sat	Sun	Mon	Tue	Wed	Thu	Fri	Sat	Sun
00:00	26	26	26	26	26	26	26	1	1	0	0	0	1	1
01:00	26	26	26	26	26	26	26	4	0	0	1	1	0	0
02:00	26	26	26	26	26	26	26	1	0	2	1	1	0	5
03:00	26	26	26	26	26	26	26	3	3	3	3	3	0	2
04:00	26	26	26	26	26	26	26	17	21	16	18	18	16	17
05:00	26	26	26	26	26	26	26	4	2	3	4	1	1	0
06:00	26	26	26	26	26	26	26	15	16	15	14	16	9	9
07:00	26	26	26	26	26	26	26	17	17	18	19	19	18	14
08:00	26	26	26	26	26	26	26	14	10	11	11	9	12	12
09:00	26	26	26	26	26	26	26	11	12	12	11	13	13	13
10:00	26	26	26	26	26	26	26	21	22	24	22	22	22	14
11:00	26	26	26	26	26	26	26	9	8	9	7	9	6	11
12:00	26	26	26	26	26	26	26	15	11	11	12	15	11	12
13:00	26	26	26	26	26	26	26	22	26	23	23	22	20	20
14:00	26	26	26	26	26	26	26	6	7	6	7	6	5	6
15:00	26	26	26	26	26	26	26	8	8	8	8	10	7	8
16:00	26	26	26	26	26	26	26	26	23	29	22	23	22	19
17:00	26	26	26	26	26	26	26	13	15	15	14	16	11	14
18:00	26	26	26	26	26	26	26	10	6	8	13	9	4	7
19:00	26	26	26	26	26	26	26	29	30	29	29	28	27	32
20:00	26	26	26	26	26	26	26	9	11	9	9	9	4	7
21:00	26	26	26	26	26	26	26	5	3	4	4	4	2	4
22:00	26	26	26	26	26	26	26	2	5	2	5	4	4	2
23:00	26	26	26	26	26	26	26	2	2	0	1	1	2	0

RUNWAY MOVEMENT DEMAND - R60 DEPARTURES

Movements per Hour - All times UTC

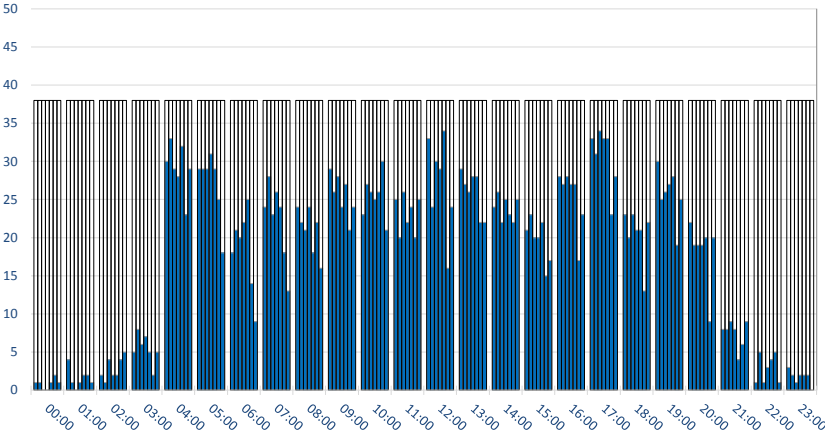


	CAPACITY							DEMAND						
	Mon	Tue	Wed	Thu	Fri	Sat	Sun	Mon	Tue	Wed	Thu	Fri	Sat	Sun
00:00	28	28	28	28	28	28	28	0	0	0	0	0	1	0
01:00	28	28	28	28	28	28	28	0	1	0	1	3	2	0
02:00	28	28	28	28	28	28	28	1	2	1	2	2	3	1
03:00	28	28	28	28	28	28	28	3	4	4	3	2	2	5
04:00	28	28	28	28	28	28	28	16	16	18	18	14	12	14
05:00	28	28	28	28	28	28	28	32	34	33	32	33	31	25
06:00	28	28	28	28	28	28	28	6	4	4	4	5	2	1
07:00	28	28	28	28	28	28	28	8	9	8	8	8	4	2
08:00	28	28	28	28	28	28	28	11	15	14	14	16	15	13
09:00	28	28	28	28	28	28	28	24	18	19	19	17	16	17
10:00	28	28	28	28	28	28	28	8	9	10	9	12	13	11
11:00	28	28	28	28	28	28	28	13	11	16	13	11	14	13
12:00	28	28	28	28	28	28	28	18	17	16	16	18	12	20
13:00	28	28	28	28	28	28	28	13	10	11	11	14	12	9
14:00	28	28	28	28	28	28	28	24	26	25	23	26	22	25
15:00	28	28	28	28	28	28	28	16	17	15	16	15	11	14
16:00	28	28	28	28	28	28	28	8	10	9	9	9	7	9
17:00	28	28	28	28	28	28	28	19	17	20	17	17	15	15
18:00	28	28	28	28	28	28	28	11	13	11	13	11	12	13
19:00	28	28	28	28	28	28	28	7	4	4	7	6	4	1
20:00	28	28	28	28	28	28	28	17	15	15	16	15	13	17
21:00	28	28	28	28	28	28	28	5	4	5	4	0	1	4
22:00	28	28	28	28	28	28	28	0	0	0	0	0	0	0
23:00	28	28	28	28	28	28	28	0	0	0	0	0	0	0

RUNWAY MOVEMENT ALLOCATION - R60 TOTALS

PEAK WEEK (31AUG - 06SEP)

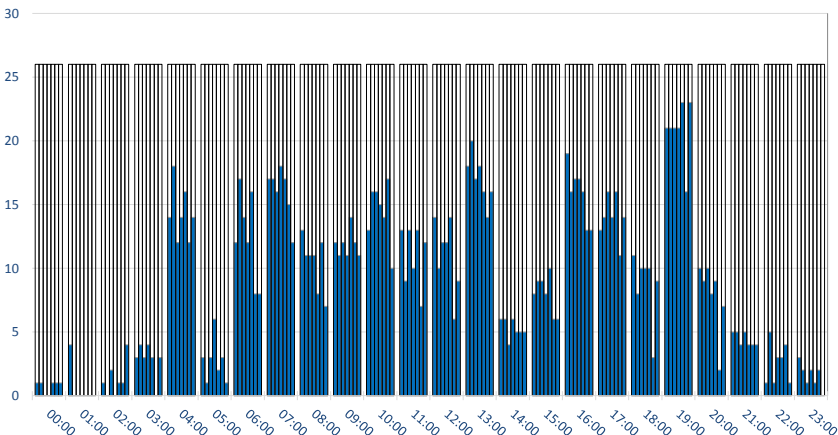
Movements per Hour - All times UTC



	CAPACITY							ALLOCATION						
	Mon	Tue	Wed	Thu	Fri	Sat	Sun	Mon	Tue	Wed	Thu	Fri	Sat	Sun
00:00	38	38	38	38	38	38	38	1	1	0	0	1	2	1
01:00	38	38	38	38	38	38	38	4	1	0	1	2	2	1
02:00	38	38	38	38	38	38	38	2	1	4	2	2	4	5
03:00	38	38	38	38	38	38	38	5	8	6	7	5	2	5
04:00	38	38	38	38	38	38	38	30	33	29	28	32	23	29
05:00	38	38	38	38	38	38	38	29	29	29	31	29	25	18
06:00	38	38	38	38	38	38	38	18	21	20	22	25	14	9
07:00	38	38	38	38	38	38	38	24	28	23	26	24	18	13
08:00	38	38	38	38	38	38	38	24	22	21	24	18	22	16
09:00	38	38	38	38	38	38	38	29	26	28	24	27	21	24
10:00	38	38	38	38	38	38	38	23	27	26	25	26	30	21
11:00	38	38	38	38	38	38	38	25	20	26	22	24	20	25
12:00	38	38	38	38	38	38	38	33	24	30	29	34	16	24
13:00	38	38	38	38	38	38	38	29	27	26	28	28	22	22
14:00	38	38	38	38	38	38	38	24	26	22	25	23	22	25
15:00	38	38	38	38	38	38	38	21	23	20	20	22	15	17
16:00	38	38	38	38	38	38	38	28	27	28	27	27	17	23
17:00	38	38	38	38	38	38	38	33	31	34	33	33	23	28
18:00	38	38	38	38	38	38	38	23	20	23	21	21	13	22
19:00	38	38	38	38	38	38	38	30	25	26	27	28	19	25
20:00	38	38	38	38	38	38	38	22	19	19	19	20	9	20
21:00	38	38	38	38	38	38	38	8	8	9	8	4	6	9
22:00	38	38	38	38	38	38	38	1	5	1	3	4	5	1
23:00	38	38	38	38	38	38	38	3	2	1	2	2	2	0

RUNWAY MOVEMENT ALLOCATION - R60 ARRIVALS

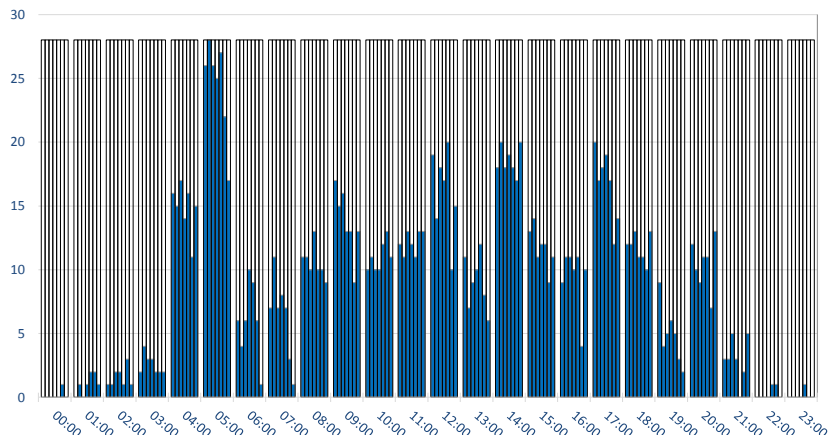
Movements per Hour - All times UTC



	CAPACITY							ALLOCATION						
	Mon	Tue	Wed	Thu	Fri	Sat	Sun	Mon	Tue	Wed	Thu	Fri	Sat	Sun
00:00	26	26	26	26	26	26	26	1	1	0	0	1	1	1
01:00	26	26	26	26	26	26	26	4	0	0	0	0	0	0
02:00	26	26	26	26	26	26	26	1	0	2	0	1	1	4
03:00	26	26	26	26	26	26	26	3	4	3	4	3	0	3
04:00	26	26	26	26	26	26	26	14	18	12	14	16	12	14
05:00	26	26	26	26	26	26	26	3	1	3	6	2	3	1
06:00	26	26	26	26	26	26	26	12	17	14	12	16	8	8
07:00	26	26	26	26	26	26	26	17	17	16	18	17	15	12
08:00	26	26	26	26	26	26	26	13	11	11	11	8	12	7
09:00	26	26	26	26	26	26	26	12	11	12	11	14	12	11
10:00	26	26	26	26	26	26	26	13	16	16	15	14	17	10
11:00	26	26	26	26	26	26	26	13	9	13	10	13	7	12
12:00	26	26	26	26	26	26	26	14	10	12	12	14	6	9
13:00	26	26	26	26	26	26	26	18	20	17	18	16	14	16
14:00	26	26	26	26	26	26	26	6	6	4	6	5	5	5
15:00	26	26	26	26	26	26	26	8	9	9	8	10	6	6
16:00	26	26	26	26	26	26	26	19	16	17	17	16	13	13
17:00	26	26	26	26	26	26	26	13	14	16	14	16	11	14
18:00	26	26	26	26	26	26	26	11	8	10	10	10	3	9
19:00	26	26	26	26	26	26	26	21	21	21	21	23	16	23
20:00	26	26	26	26	26	26	26	10	9	10	8	9	2	7
21:00	26	26	26	26	26	26	26	5	5	4	5	4	4	4
22:00	26	26	26	26	26	26	26	1	5	1	3	3	4	1
23:00	26	26	26	26	26	26	26	3	2	1	2	1	2	0

RUNWAY MOVEMENT ALLOCATION - R60 DEPARTURES

Movements per Hour - All times UTC

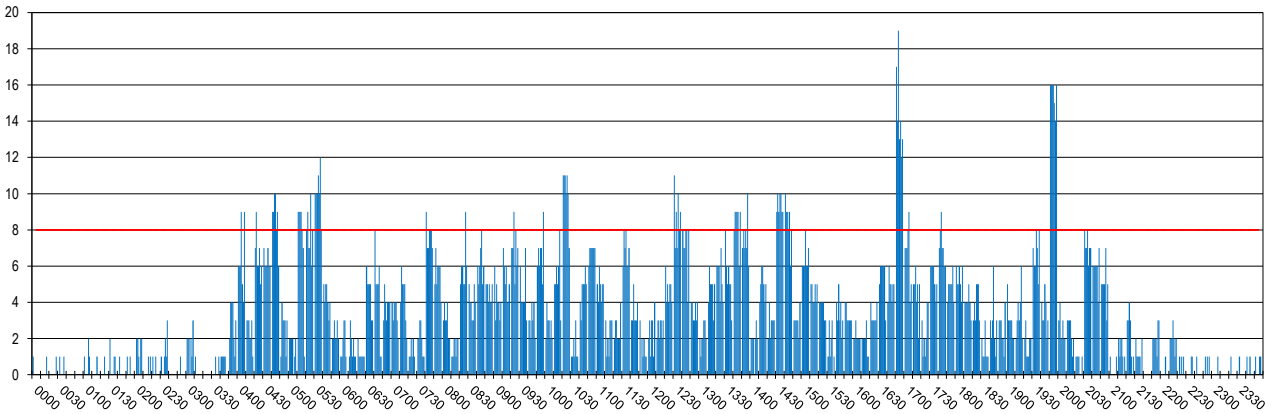


	CAPACITY							ALLOCATION						
	Mon	Tue	Wed	Thu	Fri	Sat	Sun	Mon	Tue	Wed	Thu	Fri	Sat	Sun
00:00	28	28	28	28	28	28	28	0	0	0	0	0	1	0
01:00	28	28	28	28	28	28	28	0	1	0	1	2	2	1
02:00	28	28	28	28	28	28	28	1	1	2	2	1	3	1
03:00	28	28	28	28	28	28	28	2	4	3	3	2	2	2
04:00	28	28	28	28	28	28	28	16	15	17	14	16	11	15
05:00	28	28	28	28	28	28	28	26	28	26	25	27	22	17
06:00	28	28	28	28	28	28	28	6	4	6	10	9	6	1
07:00	28	28	28	28	28	28	28	7	11	7	8	7	3	1
08:00	28	28	28	28	28	28	28	11	11	10	13	10	10	9
09:00	28	28	28	28	28	28	28	17	15	16	13	13	9	13
10:00	28	28	28	28	28	28	28	10	11	10	10	12	13	11
11:00	28	28	28	28	28	28	28	12	11	13	12	11	13	13
12:00	28	28	28	28	28	28	28	19	14	18	17	20	10	15
13:00	28	28	28	28	28	28	28	11	7	9	10	12	8	6
14:00	28	28	28	28	28	28	28	18	20	18	19	18	17	20
15:00	28	28	28	28	28	28	28	13	14	11	12	12	9	11
16:00	28	28	28	28	28	28	28	9	11	11	10	11	4	10
17:00	28	28	28	28	28	28	28	20	17	18	19	17	12	14
18:00	28	28	28	28	28	28	28	12	12	13	11	11	10	13
19:00	28	28	28	28	28	28	28	9	4	5	6	5	3	2
20:00	28	28	28	28	28	28	28	12	10	9	11	11	7	13
21:00	28	28	28	28	28	28	28	3	3	5	3	0	2	5
22:00	28	28	28	28	28	28	28	0	0	0	0	1	1	0
23:00	28	28	28	28	28	28	28	0	0	0	0	1	0	0

RUNWAY MOVEMENT DEMAND - R10 TOTALS

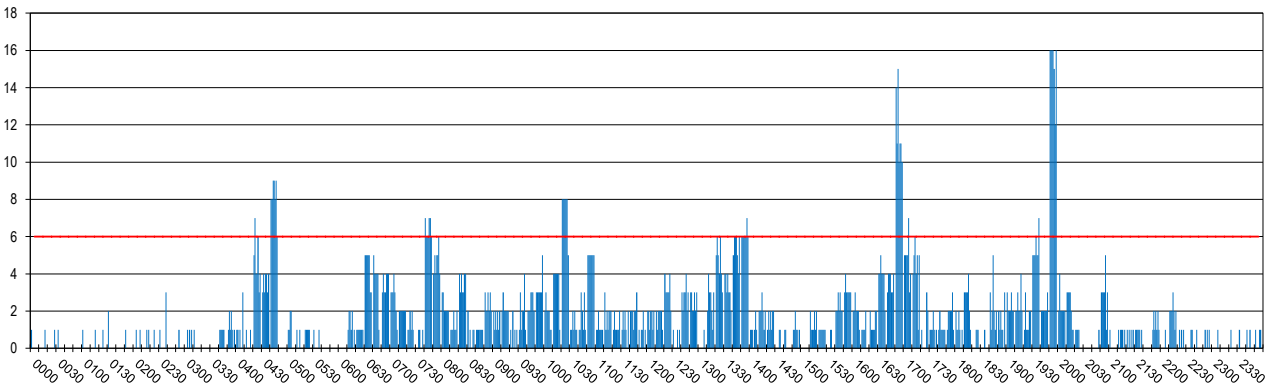
PEAK WEEK (31AUG - 06SEP)

Peak Week Movements per 10 min - All times UTC



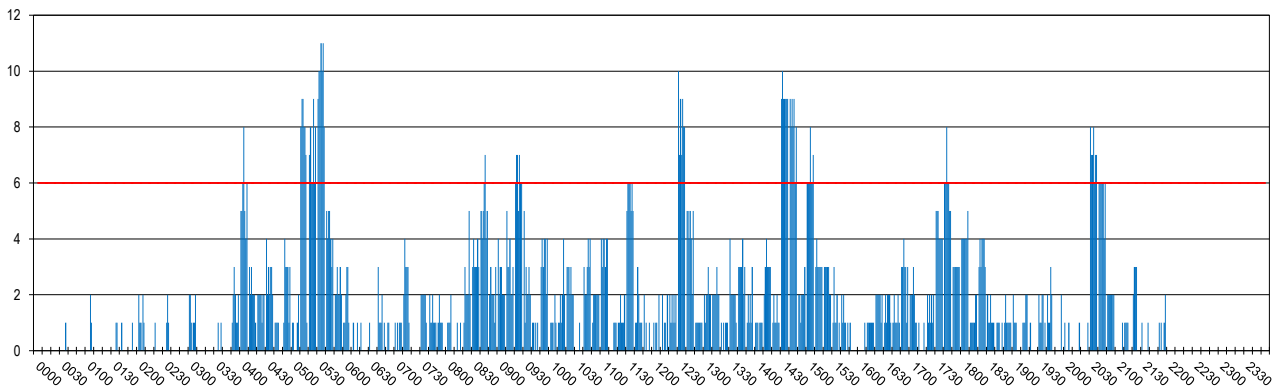
RUNWAY MOVEMENT DEMAND - R10 ARRIVALS

Peak Week Movements per 10 min - All times UTC



RUNWAY MOVEMENT DEMAND - R10 DEPARTURES

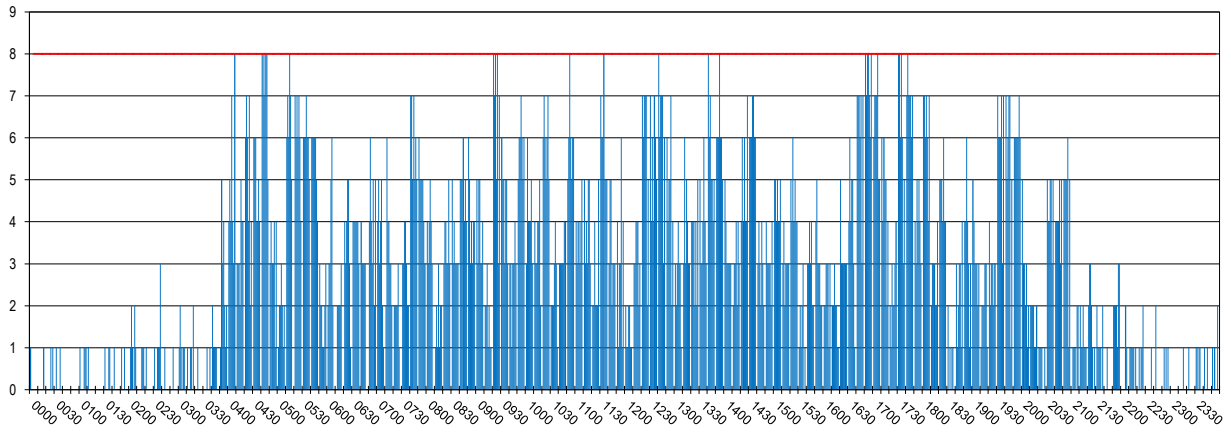
Peak Week Movements per 10 min - All times UTC



RUNWAY MOVEMENT ALLOCATION - R10 TOTALS

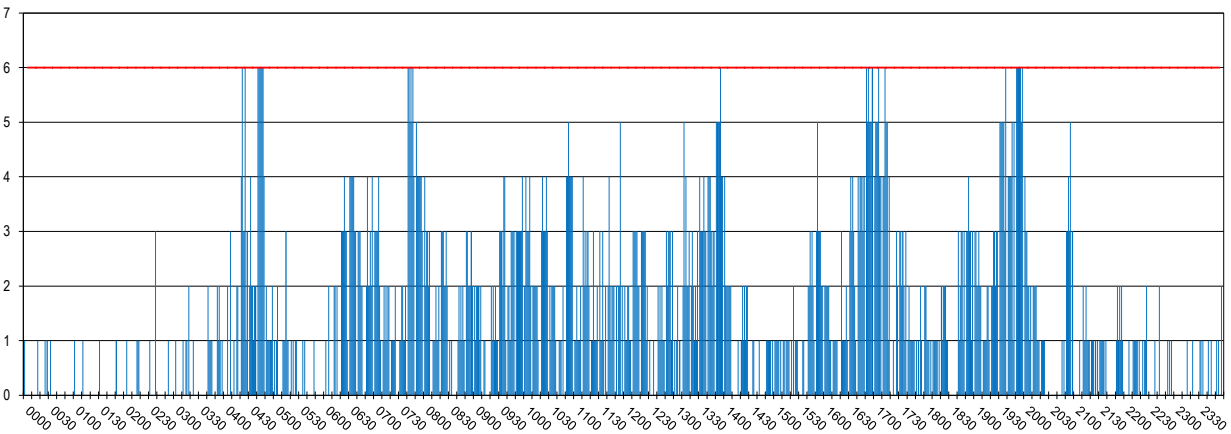
PEAK WEEK (31AUG - 06SEP)

Peak Week Movements per 10 min - All times UTC



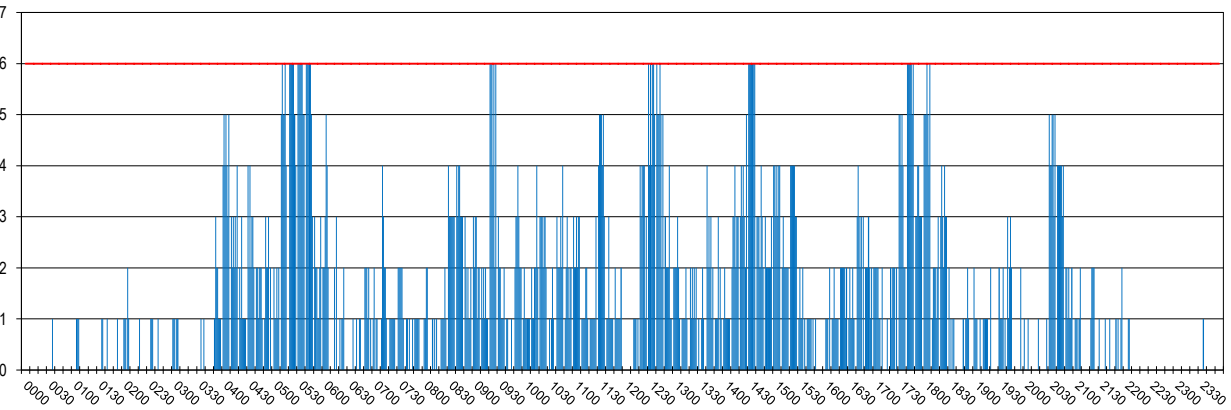
RUNWAY MOVEMENT ALLOCATION - R10 ARRIVALS

Peak Week Movements per 10 min - All times UTC



RUNWAY MOVEMENT ALLOCATION - R10 DEPARTURES

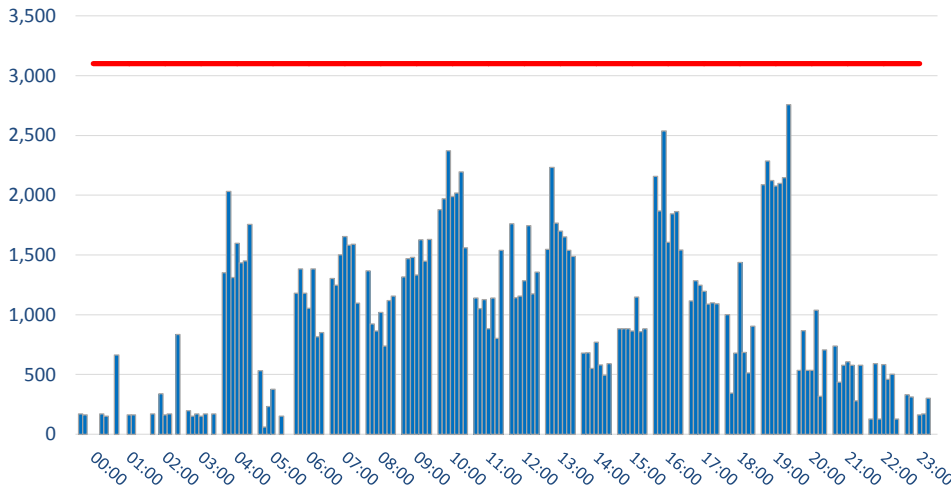
Peak Week Movements per 10 min - All times UTC



TERMINAL - TOTAL ARRIVALS DEMAND

PEAK WEEK (31AUG - 06SEP)

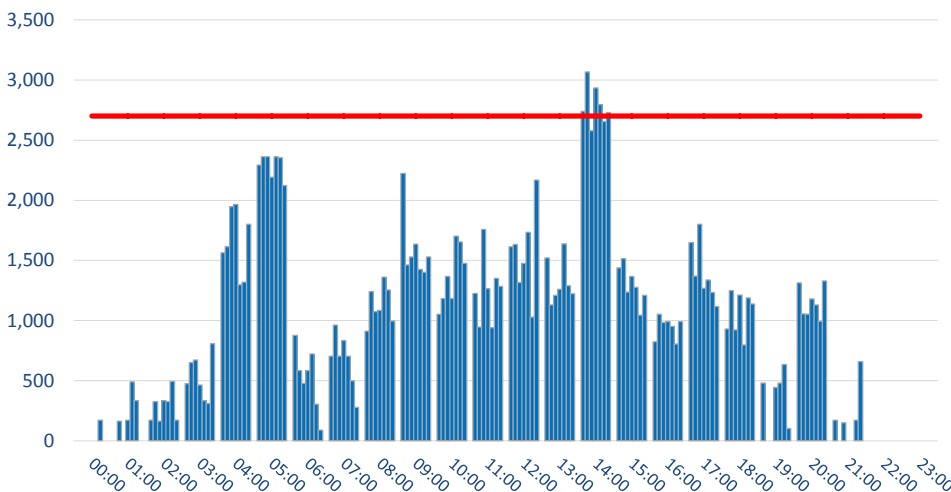
Passengers per Hour - All times UTC



	DEMAND							Capacity Limit
	Mon	Tue	Wed	Thu	Fri	Sat	Sun	
00:00	170	162	0	0	0	170	151	3100
01:00	664	0	0	162	162	0	0	3100
02:00	170	0	340	162	170	0	834	3100
03:00	197	153	170	153	170	0	170	3100
04:00	1352	2032	1311	1597	1435	1450	1756	3100
05:00	531	61	231	377	0	151	0	3100
06:00	1180	1384	1180	1055	1384	817	851	3100
07:00	1304	1246	1501	1654	1583	1590	1098	3100
08:00	1367	922	865	1019	739	1119	1157	3100
09:00	1317	1468	1479	1334	1627	1449	1630	3100
10:00	1878	1970	2372	1989	2018	2196	1560	3100
11:00	1139	1051	1126	882	1139	803	1538	3100
12:00	1761	1142	1155	1285	1746	1175	1356	3100
13:00	1548	2233	1767	1700	1651	1538	1488	3100
14:00	680	681	550	770	580	495	592	3100
15:00	884	884	884	865	1147	858	884	3100
16:00	2157	1867	2537	1606	1845	1863	1542	3100
17:00	1117	1284	1247	1195	1089	1100	1092	3100
18:00	1000	344	679	1437	685	514	903	3100
19:00	2089	2285	2123	2078	2099	2146	2758	3100
20:00	535	867	535	535	1037	319	705	3100
21:00	739	437	577	607	577	280	577	3100
22:00	128	590	128	582	460	502	128	3100
23:00	332	313	0	162	170	302	0	3100

TERMINAL - TOTAL DEPARTURES DEMAND

Passengers per Hour - All times UTC

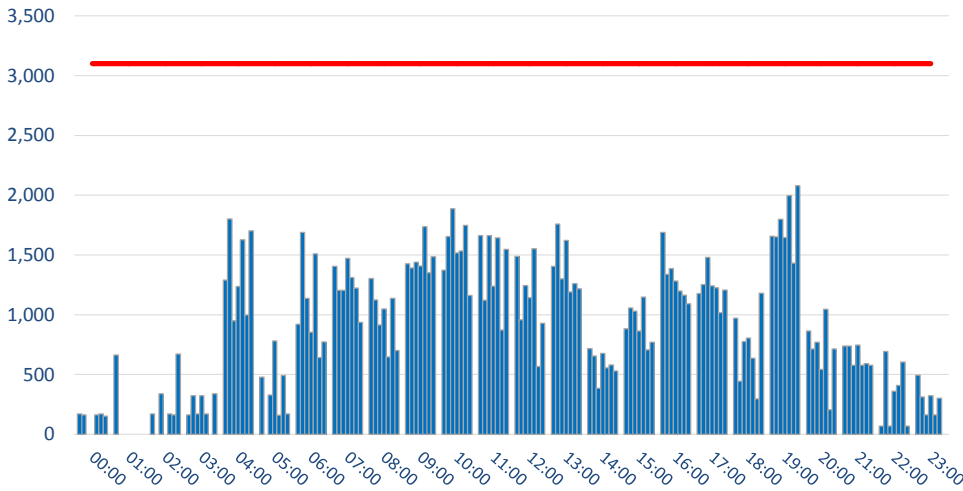


	DEMAND							Capacity Limit
	Mon	Tue	Wed	Thu	Fri	Sat	Sun	
00:00	0	0	0	0	0	170	0	2700
01:00	0	162	0	170	491	332	0	2700
02:00	170	324	162	332	324	494	170	2700
03:00	475	649	672	464	332	309	807	2700
04:00	1562	1614	1947	1965	1296	1318	1800	2700
05:00	2292	2361	2361	2191	2361	2354	2123	2700
06:00	875	582	477	582	721	305	88	2700
07:00	703	962	703	834	703	497	276	2700
08:00	912	1242	1074	1084	1360	1254	997	2700
09:00	2225	1463	1528	1634	1424	1401	1530	2700
10:00	1053	1182	1366	1182	1701	1654	1475	2700
11:00	1224	945	1757	1266	941	1349	1284	2700
12:00	1615	1633	1315	1476	1734	1027	2169	2700
13:00	1521	1128	1208	1259	1639	1288	1222	2700
14:00	2740	3067	2578	2935	2796	2655	2729	2700
15:00	1437	1516	1236	1365	1276	1045	1209	2700
16:00	822	1052	984	992	951	805	992	2700
17:00	1649	1369	1800	1267	1336	1234	1116	2700
18:00	929	1250	921	1211	796	1188	1137	2700
19:00	479	0	0	442	479	634	102	2700
20:00	1314	1055	1053	1181	1128	994	1329	2700
21:00	170	0	149	0	0	170	659	2700
22:00	0	0	0	0	0	0	0	2700
23:00	0	0	0	0	0	0	0	2700

TERMINAL - TOTAL ARRIVALS ALLOCATION

PEAK WEEK (31AUG - 06SEP)

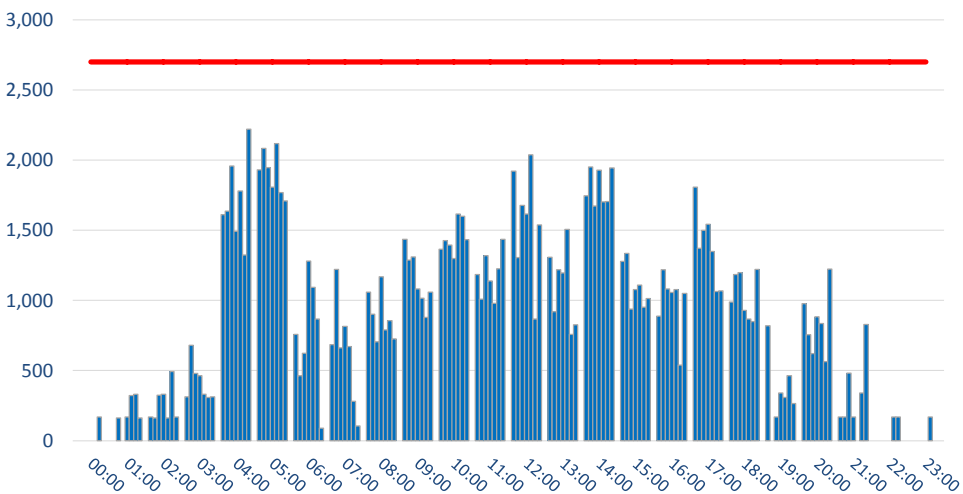
Passengers per Hour - All times UTC



	ALLOCATION							Capacity Limit
	Mon	Tue	Wed	Thu	Fri	Sat	Sun	
00:00	170	162	0	0	162	170	151	3100
01:00	664	0	0	0	0	0	0	3100
02:00	170	0	340	0	170	162	672	3100
03:00	162	323	170	323	170	0	340	3100
04:00	1289	1800	949	1236	1626	998	1702	3100
05:00	478	0	329	780	159	491	170	3100
06:00	920	1690	1138	853	1509	642	774	3100
07:00	1405	1204	1203	1473	1312	1222	937	3100
08:00	1304	1124	914	1048	647	1138	702	3100
09:00	1426	1392	1441	1409	1736	1352	1484	3100
10:00	1372	1653	1888	1517	1534	1748	1162	3100
11:00	1663	1120	1661	1239	1642	871	1546	3100
12:00	1487	959	1244	1142	1553	568	929	3100
13:00	1404	1758	1300	1621	1191	1261	1218	3100
14:00	717	656	385	676	555	581	530	3100
15:00	884	1056	1030	865	1147	706	770	3100
16:00	1689	1339	1386	1283	1200	1163	1092	3100
17:00	1178	1252	1481	1242	1226	1017	1207	3100
18:00	971	444	776	806	637	296	1179	3100
19:00	1658	1651	1798	1647	1998	1432	2081	3100
20:00	865	714	770	544	1046	205	714	3100
21:00	739	739	577	747	577	590	577	3100
22:00	69	693	69	361	409	605	69	3100
23:00	494	313	162	324	162	302	0	3100

TERMINAL - TOTAL DEPARTURES ALLOCATION

Passengers per Hour - All times UTC

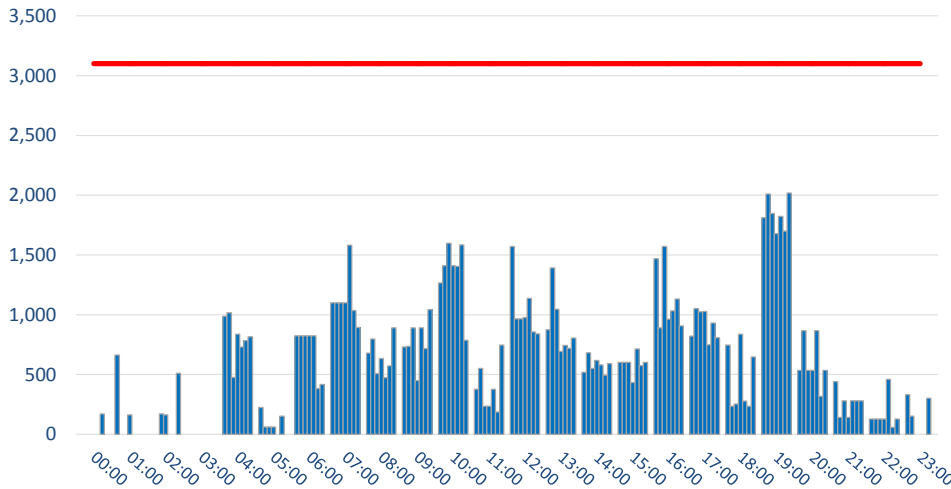


	ALLOCATION							Capacity Limit
	Mon	Tue	Wed	Thu	Fri	Sat	Sun	
00:00	0	0	0	0	0	170	0	2700
01:00	0	162	0	170	321	332	162	2700
02:00	170	162	324	332	162	494	170	2700
03:00	313	680	479	464	332	309	313	2700
04:00	1611	1636	1959	1493	1781	1324	2222	2700
05:00	1932	2084	1948	1809	2118	1769	1710	2700
06:00	757	464	623	1280	1094	867	88	2700
07:00	685	1222	661	816	671	280	106	2700
08:00	1059	902	706	1169	790	857	726	2700
09:00	1435	1287	1311	1081	1016	879	1059	2700
10:00	1364	1427	1394	1299	1617	1600	1433	2700
11:00	1185	1010	1319	1138	980	1225	1436	2700
12:00	1923	1305	1678	1617	2039	867	1538	2700
13:00	1309	920	1218	1197	1506	757	826	2700
14:00	1747	1951	1674	1928	1703	1706	1944	2700
15:00	1279	1336	939	1078	1109	952	1014	2700
16:00	888	1220	1083	1058	1077	539	1049	2700
17:00	1809	1372	1499	1542	1348	1063	1068	2700
18:00	988	1185	1198	928	868	849	1222	2700
19:00	819	0	170	340	309	464	264	2700
20:00	976	755	622	883	836	563	1223	2700
21:00	170	170	481	170	0	340	829	2700
22:00	0	0	0	0	170	170	0	2700
23:00	0	0	0	0	170	0	0	2700

TERMINAL - SCHENGEN ARRIVALS DEMAND

PEAK WEEK (31AUG - 06SEP)

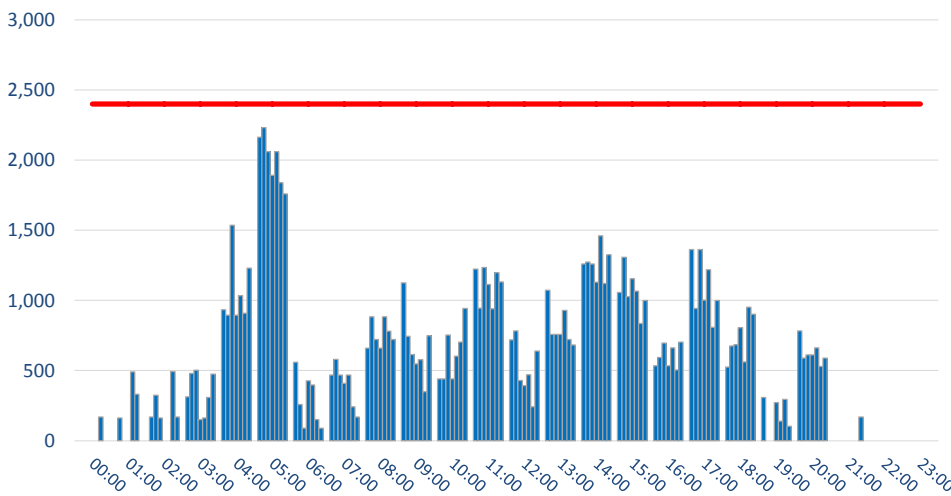
Passengers per Hour - All times UTC



	DEMAND							Capacity Limit
	Mon	Tue	Wed	Thu	Fri	Sat	Sun	
00:00	0	0	0	0	0	170	0	3100
01:00	664	0	0	162	0	0	0	3100
02:00	0	0	170	162	0	0	510	3100
03:00	0	0	0	0	0	0	0	3100
04:00	986	1016	476	838	729	785	815	3100
05:00	223	61	61	61	0	151	0	3100
06:00	825	825	825	825	825	383	417	3100
07:00	1100	1100	1100	1100	1583	1036	894	3100
08:00	679	796	509	634	472	572	890	3100
09:00	730	735	892	450	892	716	1043	3100
10:00	1266	1411	1598	1411	1406	1584	786	3100
11:00	376	551	236	236	376	186	746	3100
12:00	1572	966	966	977	1136	856	840	3100
13:00	875	1391	1045	692	744	720	805	3100
14:00	518	681	550	619	580	495	592	3100
15:00	602	602	602	432	714	576	602	3100
16:00	1470	892	1572	963	1032	1133	908	3100
17:00	821	1052	1025	1027	749	932	807	3100
18:00	745	235	254	837	279	235	648	3100
19:00	1813	2009	1847	1677	1823	1700	2017	3100
20:00	535	867	535	535	867	319	535	3100
21:00	442	140	280	140	280	280	280	3100
22:00	128	128	128	128	460	59	128	3100
23:00	332	151	0	0	0	302	0	3100

TERMINAL - SCHENGEN DEPARTURES DEMAND

Passengers per Hour - All times UTC

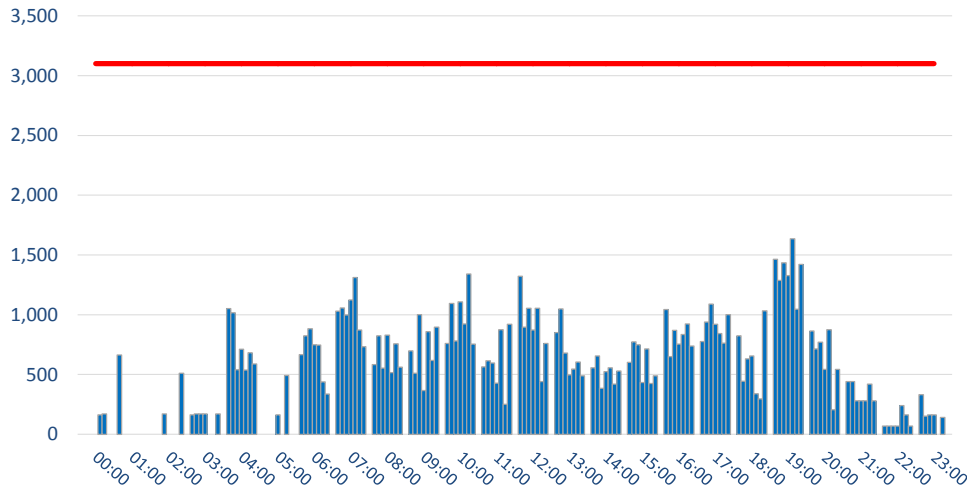


	DEMAND							Capacity Limit
	Mon	Tue	Wed	Thu	Fri	Sat	Sun	
00:00	0	0	0	0	0	170	0	2400
01:00	0	162	0	0	491	332	0	2400
02:00	170	324	162	0	0	494	170	2400
03:00	313	479	502	151	162	309	475	2400
04:00	934	896	1537	896	1035	908	1231	2400
05:00	2163	2232	2062	1892	2062	1839	1759	2400
06:00	559	258	88	428	397	151	88	2400
07:00	469	579	469	409	469	242	170	2400
08:00	660	883	721	660	883	780	721	2400
09:00	1125	744	615	549	578	349	748	2400
10:00	440	440	753	440	602	703	942	2400
11:00	1224	945	1235	1115	941	1198	1133	2400
12:00	720	783	430	392	470	242	640	2400
13:00	1072	759	759	759	929	721	683	2400
14:00	1259	1273	1259	1130	1462	1120	1327	2400
15:00	1058	1307	1027	1156	1067	836	1000	2400
16:00	534	594	696	534	663	504	704	2400
17:00	1363	942	1363	1002	1220	807	1000	2400
18:00	524	675	686	806	561	953	902	2400
19:00	309	0	0	272	139	294	102	2400
20:00	783	590	612	612	663	529	590	2400
21:00	0	0	0	0	0	0	170	2400
22:00	0	0	0	0	0	0	0	2400
23:00	0	0	0	0	0	0	0	2400

TERMINAL - SCHENGEN ARRIVALS ALLOCATION

PEAK WEEK (31AUG - 06SEP)

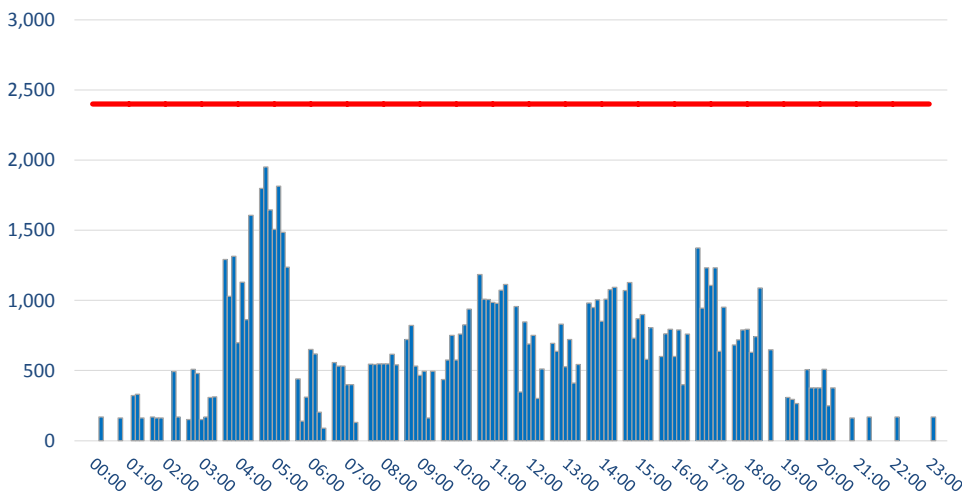
Passengers per Hour - All times UTC



	ALLOCATION							Capacity Limit
	Mon	Tue	Wed	Thu	Fri	Sat	Sun	
00:00	0	0	0	0	162	170	0	3100
01:00	664	0	0	0	0	0	0	3100
02:00	0	0	170	0	0	0	510	3100
03:00	162	170	170	170	0	0	170	3100
04:00	1051	1018	541	711	538	683	588	3100
05:00	0	0	0	162	0	491	0	3100
06:00	665	824	883	749	747	438	336	3100
07:00	1031	1058	999	1123	1312	872	733	3100
08:00	583	824	554	829	517	757	561	3100
09:00	698	511	1000	366	860	619	897	3100
10:00	760	1094	782	1109	922	1340	754	3100
11:00	564	616	597	427	875	250	920	3100
12:00	1321	895	1055	873	1055	442	759	3100
13:00	852	1049	680	497	546	605	488	3100
14:00	555	656	385	525	555	419	530	3100
15:00	602	774	748	432	714	424	488	3100
16:00	1043	651	869	755	834	922	739	3100
17:00	776	939	1089	921	843	762	1002	3100
18:00	825	444	630	655	340	296	1033	3100
19:00	1464	1287	1434	1328	1634	1045	1422	3100
20:00	865	714	770	544	876	205	544	3100
21:00	442	442	280	280	280	420	280	3100
22:00	69	69	69	69	239	162	69	3100
23:00	332	151	162	162	0	140	0	3100

TERMINAL - SCHENGEN DEPARTURES ALLOCATION

Passengers per Hour - All times UTC

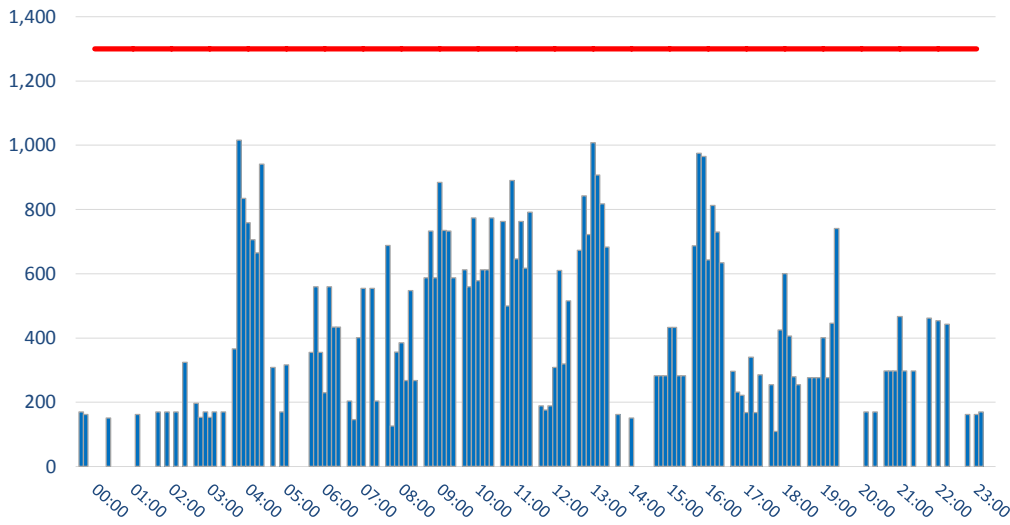


	ALLOCATION							Capacity Limit
	Mon	Tue	Wed	Thu	Fri	Sat	Sun	
00:00	0	0	0	0	0	170	0	2400
01:00	0	162	0	0	321	332	162	2400
02:00	170	162	162	0	0	494	170	2400
03:00	151	510	479	151	170	309	313	2400
04:00	1292	1030	1316	698	1130	864	1607	2400
05:00	1799	1951	1645	1506	1815	1485	1237	2400
06:00	441	140	310	650	619	203	88	2400
07:00	557	533	533	399	399	131	0	2400
08:00	546	543	549	549	549	617	540	2400
09:00	721	821	532	466	495	162	495	2400
10:00	437	576	750	576	761	827	939	2400
11:00	1185	1010	1006	987	980	1074	1115	2400
12:00	957	346	846	690	752	302	511	2400
13:00	694	638	831	528	721	412	544	2400
14:00	981	949	1004	852	1008	1078	1094	2400
15:00	1070	1127	730	869	900	581	805	2400
16:00	600	762	795	600	789	400	761	2400
17:00	1375	945	1232	1107	1232	636	952	2400
18:00	683	720	789	795	629	743	1089	2400
19:00	649	0	0	0	309	294	264	2400
20:00	507	376	376	376	510	250	376	2400
21:00	0	0	162	0	0	0	170	2400
22:00	0	0	0	0	170	0	0	2400
23:00	0	0	0	0	170	0	0	2400

TERMINAL - NON SCHENGEN ARRIVALS DEMAND

PEAK WEEK (31AUG - 06SEP)

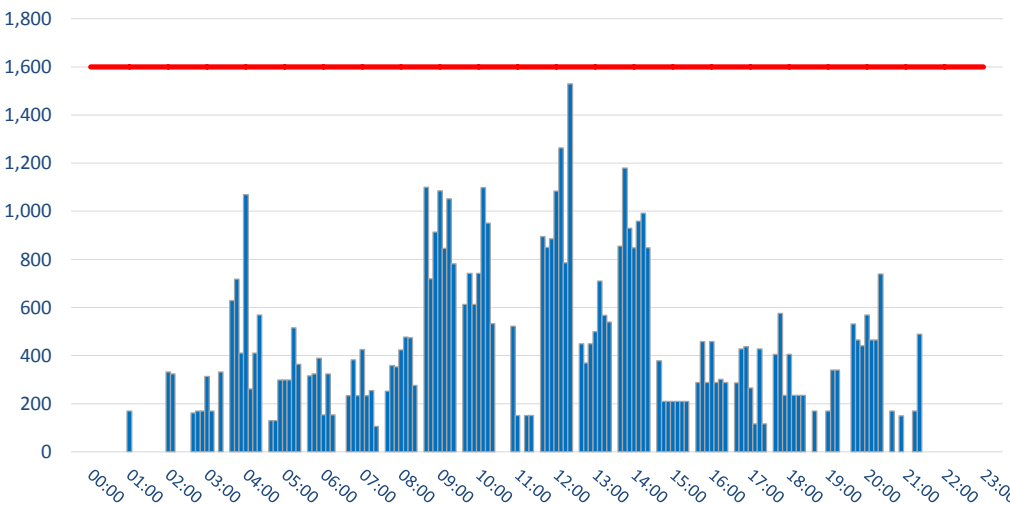
Passengers per Hour - All times UTC



	DEMAND							Capacity Limit
	Mon	Tue	Wed	Thu	Fri	Sat	Sun	
00:00	170	162	0	0	0	0	151	1300
01:00	0	0	0	0	162	0	0	1300
02:00	170	0	170	0	170	0	324	1300
03:00	197	153	170	153	170	0	170	1300
04:00	366	1016	835	759	706	665	941	1300
05:00	308	0	170	316	0	0	0	1300
06:00	355	559	355	230	559	434	434	1300
07:00	204	146	401	554	0	554	204	1300
08:00	688	126	356	385	267	547	267	1300
09:00	587	733	587	884	735	733	587	1300
10:00	612	559	774	578	612	612	774	1300
11:00	763	500	890	646	763	617	792	1300
12:00	189	176	189	308	610	319	516	1300
13:00	673	842	722	1008	907	818	683	1300
14:00	162	0	0	151	0	0	0	1300
15:00	282	282	282	433	433	282	282	1300
16:00	687	975	965	643	813	730	634	1300
17:00	296	232	222	168	340	168	285	1300
18:00	255	109	425	600	406	279	255	1300
19:00	276	276	276	401	276	446	741	1300
20:00	0	0	0	0	170	0	170	1300
21:00	297	297	297	467	297	0	297	1300
22:00	0	462	0	454	0	443	0	1300
23:00	0	162	0	162	170	0	0	1300

TERMINAL - NON SCHENGEN DEPARTURES DEMAND

Passengers per Hour - All times UTC

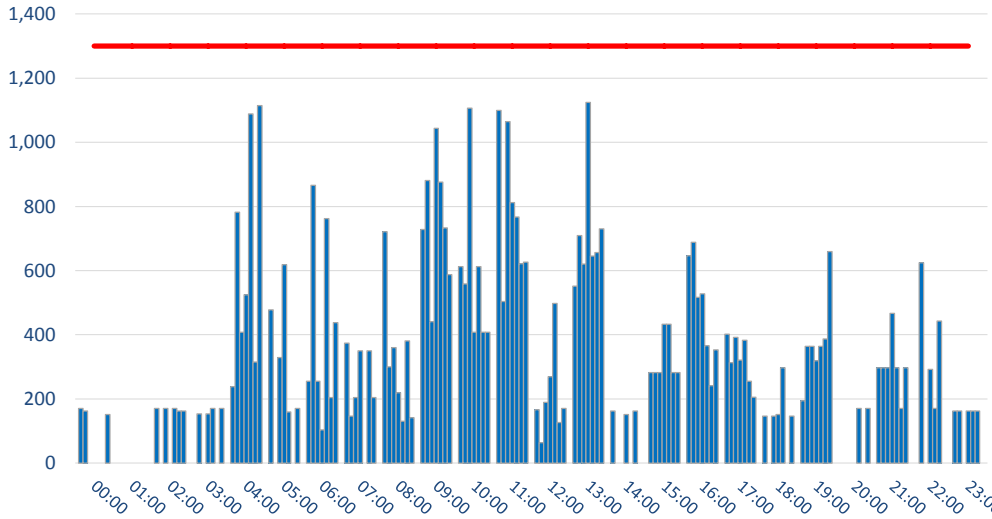


	DEMAND							Capacity Limit
	Mon	Tue	Wed	Thu	Fri	Sat	Sun	
00:00	0	0	0	0	0	0	0	1600
01:00	0	0	0	170	0	0	0	1600
02:00	0	0	0	332	324	0	0	1600
03:00	162	170	170	313	170	0	332	1600
04:00	628	718	410	1069	261	410	569	1600
05:00	129	129	299	299	299	515	364	1600
06:00	316	324	389	154	324	154	0	1600
07:00	234	383	234	425	234	255	106	1600
08:00	252	359	353	424	477	474	276	1600
09:00	1100	719	913	1085	846	1052	782	1600
10:00	613	742	613	742	1099	951	533	1600
11:00	0	0	522	151	0	151	151	1600
12:00	895	850	885	1084	1264	785	1529	1600
13:00	449	369	449	500	710	567	539	1600
14:00	855	1180	929	848	958	992	848	1600
15:00	379	209	209	209	209	209	209	1600
16:00	288	458	288	458	288	301	288	1600
17:00	286	427	437	265	116	427	116	1600
18:00	405	575	235	405	235	235	235	1600
19:00	170	0	0	170	340	340	0	1600
20:00	531	465	441	569	465	465	739	1600
21:00	170	0	149	0	0	170	489	1600
22:00	0	0	0	0	0	0	0	1600
23:00	0	0	0	0	0	0	0	1600

TERMINAL - NON SCHENGEN ARRIVALS ALLOCATION

PEAK WEEK (31AUG - 06SEP)

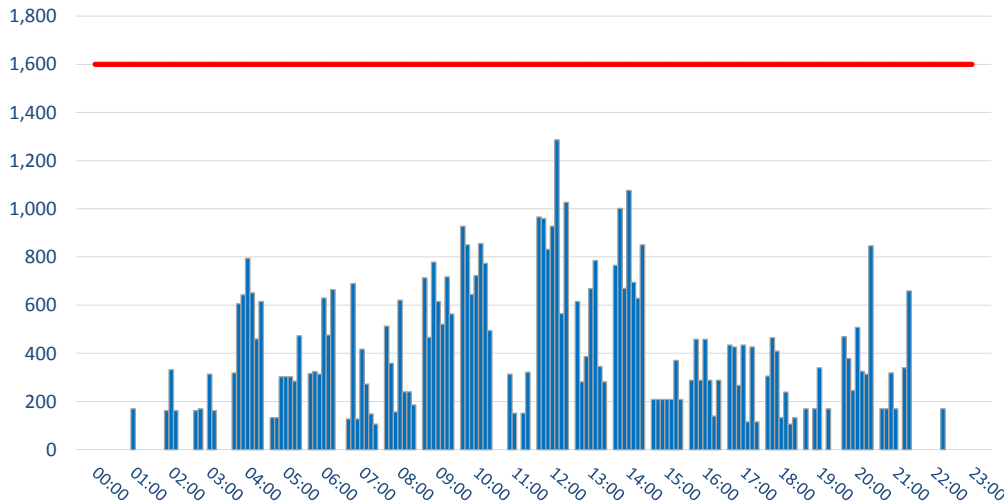
Passengers per Hour - All times UTC



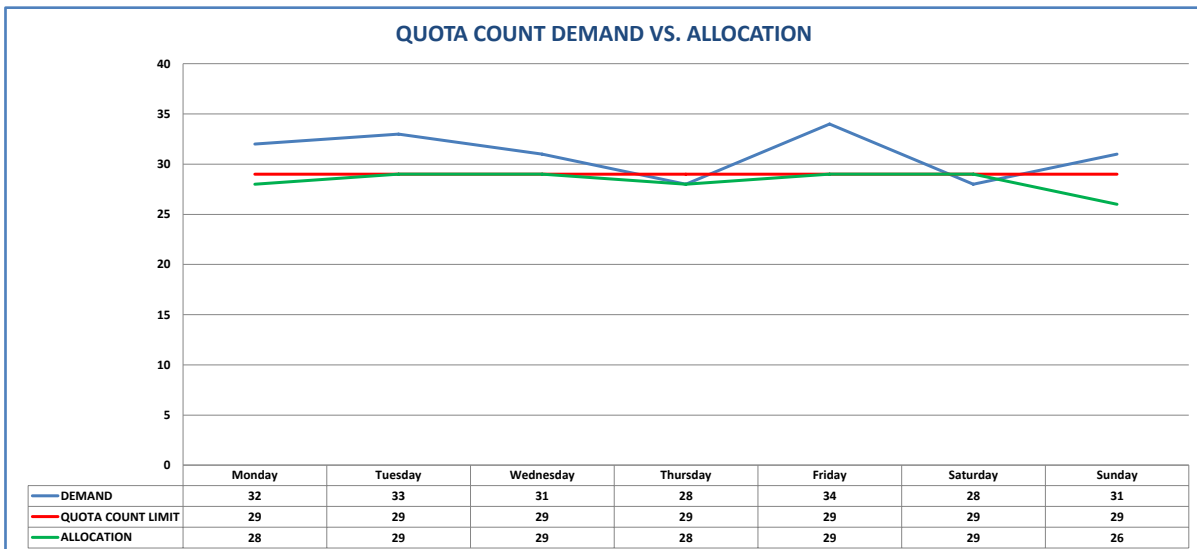
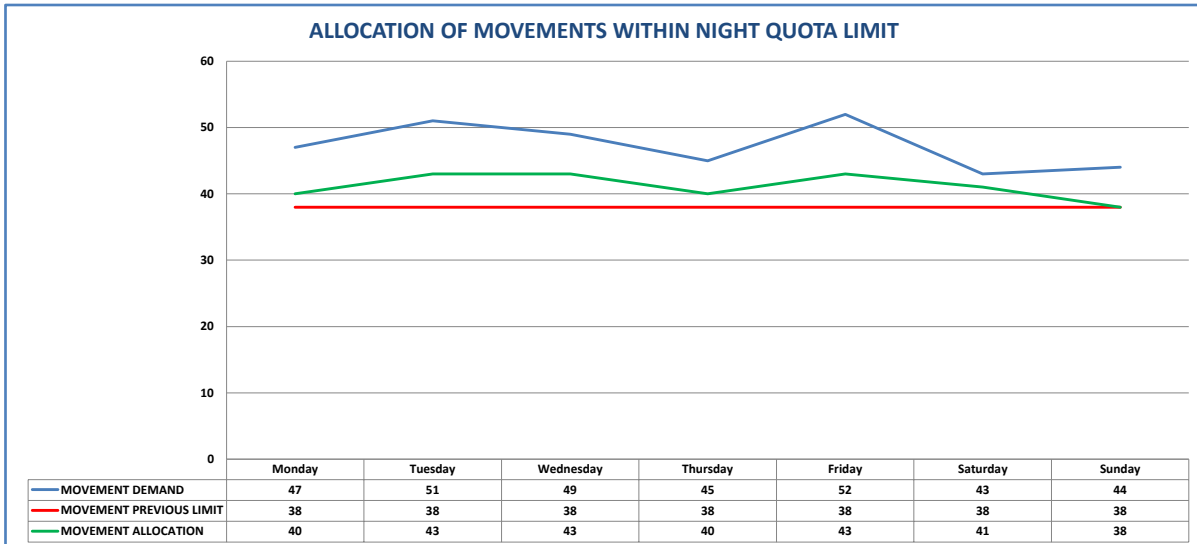
	ALLOCATION							Capacity Limit
	Mon	Tue	Wed	Thu	Fri	Sat	Sun	
00:00	170	162	0	0	0	0	151	1300
01:00	0	0	0	0	0	0	0	1300
02:00	170	0	170	0	170	162	162	1300
03:00	0	153	0	153	170	0	170	1300
04:00	238	782	408	525	1088	315	1114	1300
05:00	478	0	329	618	159	0	170	1300
06:00	255	866	255	104	762	204	438	1300
07:00	374	146	204	350	0	350	204	1300
08:00	721	300	360	219	130	381	141	1300
09:00	728	881	441	1043	876	733	587	1300
10:00	612	559	1106	408	612	408	408	1300
11:00	1099	504	1064	812	767	621	626	1300
12:00	166	64	189	269	498	126	170	1300
13:00	552	709	620	1124	645	656	730	1300
14:00	162	0	0	151	0	162	0	1300
15:00	282	282	282	433	433	282	282	1300
16:00	646	688	517	528	366	241	353	1300
17:00	402	313	392	321	383	255	205	1300
18:00	146	0	146	151	297	0	146	1300
19:00	194	364	364	319	364	387	659	1300
20:00	0	0	0	0	170	0	170	1300
21:00	297	297	297	467	297	170	297	1300
22:00	0	624	0	292	170	443	0	1300
23:00	162	162	0	162	162	162	0	1300

TERMINAL - NON SCHENGEN DEPARTURES ALLOCATION

Passengers per Hour - All times UTC



	ALLOCATION							Capacity Limit
	Mon	Tue	Wed	Thu	Fri	Sat	Sun	
00:00	0	0	0	0	0	0	0	1600
01:00	0	0	0	170	0	0	0	1600
02:00	0	0	162	332	162	0	0	1600
03:00	162	170	0	313	162	0	0	1600
04:00	319	606	643	795	651	460	615	1600
05:00	133	133	303	303	303	284	473	1600
06:00	316	324	313	630	475	664	0	1600
07:00	128	689	128	417	272	149	106	1600
08:00	513	359	157	620	241	240	186	1600
09:00	714	466	779	615	521	717	564	1600
10:00	927	851	644	723	856	773	494	1600
11:00	0	0	313	151	0	151	321	1600
12:00	966	959	832	927	1287	565	1027	1600
13:00	615	282	387	669	785	345	282	1600
14:00	766	1002	670	1076	695	628	850	1600
15:00	209	209	209	209	209	371	209	1600
16:00	288	458	288	458	288	139	288	1600
17:00	434	427	267	435	116	427	116	1600
18:00	305	465	409	133	239	106	133	1600
19:00	170	0	170	340	0	170	0	1600
20:00	469	379	246	507	326	313	847	1600
21:00	170	170	319	170	0	340	659	1600
22:00	0	0	0	0	0	170	0	1600
23:00	0	0	0	0	0	0	0	1600



GLOSSARY OF TERMS

Air Transport Movement (ATM)	A scheduled or charter passenger or freight aircraft movement.
Allocation	The allocation of slots such that demand is constrained to fit within declared scheduling limits.
Demand	The unconstrained demand for slots, prior to any schedule adjustments.
Passenger ATM	A scheduled or charter <u>passenger</u> aircraft movement (ie, excluding all-cargo aircraft movements).
Scheduling Limits	Limiting parameters declared by the Airport Operator used in the coordination process.
Seats	The number of seats based on the aircraft configuration advised by the airline.
Peak Week	The Peak Week for S15 is WK22 (31AUG-06SEP)
Data Snapshot	All data used for this report was as held 10 March 2015

GUIDE TO HISTOGRAMS

The histograms show the pattern of traffic by time of day against the appropriate scheduling limit. Each time period consist of seven columns representing the days-of-week, Monday through Sunday.