

WARSAW FREDERIC CHOPIN AIRPORT

EPWA / WAW

SUMMER 2014

START OF SEASON REPORT

Summer 2014	Change from Summer 2013 (Start of Season)	Change from Summer 2013 (End of Season)
-------------	---	--

KEY STATISTICS

Air Transport Movements	82,983	↓ -4%	→ 1%
Total Seats	9,199,714	↓ -5%	→ 1%
Seats per Passenger ATM	111	↓ -2%	→ 0%

CONTENT

	Page
SCHEDULING LIMITS	2
SCHEDULE ADJUSTMENT	3
TOP AIRLINES ANALYSIS	4
TOP ROUTES ANALYSIS	5
TOP 10 AIRCRAFT TYPE	6
RUNWAY R60 DEMAND & ALLOCATION HISTOGRAMS	7-8
RUNWAY R10 DEMAND & ALLOCATION HISTOGRAMS	9-10
TERMINAL SCHENGEN DEMAND & ALLOCATION	11-12
TERMINAL NON SCHENGEN DEMAND & ALLOCATION	13-14
NIGHT MOVEMENT SUMMARY	15
GLOSSARY OF TERMS	21

Data in this report is current as of:

07 March 2014

No warranty whether expressed or implied as to the completeness, accuracy, fitness for purpose, or satisfactory quality is given by ACL regarding the information in this report, which is provided by third parties. Accordingly, ACL excludes all liability with regard to such data.

The contents of this report may not be reproduced without the written consent of ACL.

RUNWAY SCHEDULING LIMITS

All times UTC

		ARRIVALS																	
		04:00	05:00	06:00	07:00	08:00	09:00	10:00	11:00	12:00	13:00	14:00	15:00	16:00	17:00	18:00	19:00	20:00	
MONDAY - SUNDAY	SEASON S14	21	21	21	21	21	21	21	21	21	21	21	21	21	21	21	21	21	
	R60	21	21	21	21	21	21	21	21	21	21	21	21	21	21	21	21	21	
	R10	6	6	6	6	6	6	6	6	6	6	6	6	6	6	6	6	6	
			DEPARTURES																
	SEASON S14	21	21	21	21	21	21	21	21	21	21	21	21	21	21	21	21	21	21
	R60	21	21	21	21	21	21	21	21	21	21	21	21	21	21	21	21	21	21
	R10	6	6	6	6	6	6	6	6	6	6	6	6	6	6	6	6	6	6
			TOTALS																
	SEASON S14	33	30	30	30	30	30	30	30	30	30	30	30	30	30	30	30	30	30
	R60	33	30	30	30	30	30	30	30	30	30	30	30	30	30	30	30	30	30
	R10	8	8	8	8	8	8	8	8	8	8	8	8	8	8	8	8	8	8

TERMINAL SCHEDULING LIMITS

Passengers per Hour (T60/30)

	SCHENGEN	NON SCHENGEN	TOTAL
ARRIVALS	1,600	1,300	1,600
DEPARTURES	1,700	1,500	1,700

Other Restrictions

Night quota:

Night quota limits apply at EPWA/WAW to the value of 29 Quota Points. The night quota period is defined as 2000 - 0400 (UTC)

Terminal and Runway Redevelopment:

Single Runway capacity declaration due to planned investment works completion on 30 September 2014.

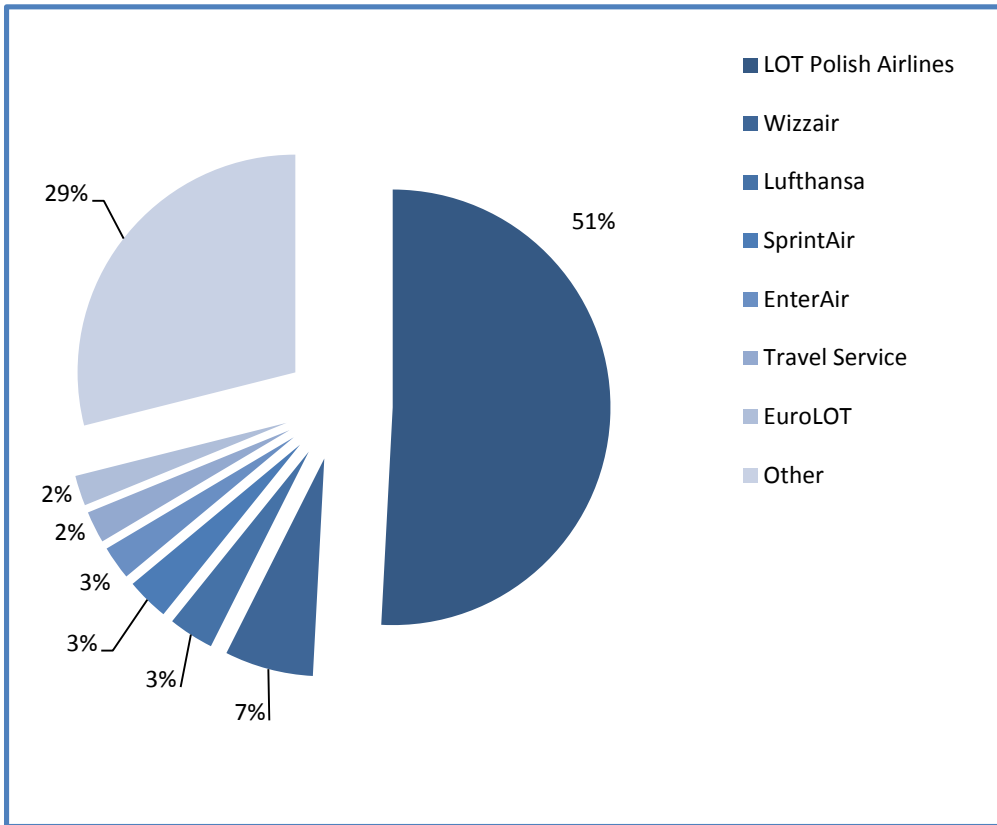
Due to terminal closures between 01/08/12 - 30/04/2015 arrivals capped at 1,900 pax/h during Peak Hours and at 1,600 off peak.

Departures limited to 1,700 pax/h with peak capacity at 1850 pax/h, additionally number of passenger movements limited to 18 mvt/h off peak and 21 mvt/h during Peak Hours.

SCHEDULE ADJUSTMENTS BY CARRIER

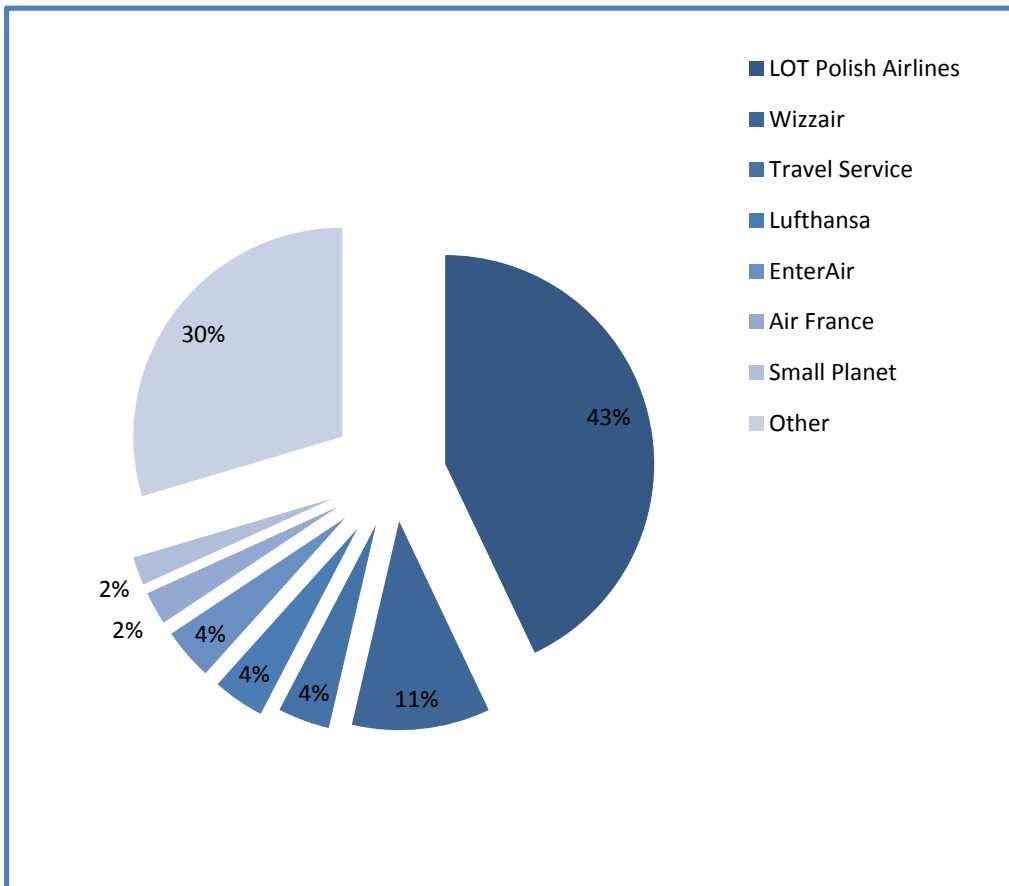
Off Slot	0	5	10	15	20	25	30	35	40	50	60+	Grand Total	0	5	10	15	20	25	30	35	40	50	60+	Grand Total	
Total	82113	448	157	8	19	15	2	1	1	129	76	82983	99%	0.5%	0.2%	0.0%	0.0%	0.0%	0.0%	0.0%	0.0%	0.0%	0.2%	0.1%	100%
LO	41483	382	141			18	15	1	1	129	18	42188	98.3%	1%	0.3%			0.04%	0.04%	0.00%	0.00%	0.31%	0.04%	100%	
W6	5461											5461	100%												100%
LH	2802											2802	100%												100%
SRN	2628											2628	100%												100%
ENT	2061	16										2077	99%	1%											100%
QS	1954		1		8							1963	99.5%		0.1%		0.4%								100%
K2	1864											1864	100%												100%
AF	1534											1534	100%												100%
4U	1356											1356	100%												100%
OS	1264											1264	100%												100%
LX	1260											1260	100%												100%
KL	1258											1258	100%												100%
AB	1138											1138	100%												100%
P7	1094	16									13	1123	97%	1%										1%	100%
OK	1014											1014	100%												100%
DY	970											970	100%												100%
SK	968											968	100%												100%
3Z	915			14								929	98%			2%									100%
SU	840											840	100%												100%
BA	840											840	100%												100%
AY	840											840	100%												100%
AZ	736										44	780	94%											6%	100%
3V	600											600	100%												100%
UPS	540											540	100%												100%
PS	466											466	100%												100%
QR	420											420	100%												100%
EK	420											420	100%												100%
BT	418											418	100%												100%
LY	393								1			394	99.7%							0.3%					100%
TP	319	34	15									368	87%	9%	4%										100%
SAR	300											300	100%												100%
BCS	300											300	100%												100%
JU	300											300	100%												100%
FX	300											300	100%												100%
B2	294											294	100%												100%
A3	240											240	100%												100%
JP	240											240	100%												100%
TK	240											240	100%												100%
EI	240											240	100%												100%
SM	238											238	100%												100%
PC	230											230	100%												100%
BGY	206											206	100%												100%
VY	158											158	100%												100%
SN	155										1	156	99%											1%	100%
SYA	150											150	100%												100%
CAI	150											150	100%												100%
BJ	124											124	100%												100%
OHY	104											104	100%												100%
WW	84			1		1						86	98%			1%		1%							100%
DLN	84											84	100%												100%
KM	60											60	100%												100%
BUC	60											60	100%												100%

TOP AIRLINES BY ATM



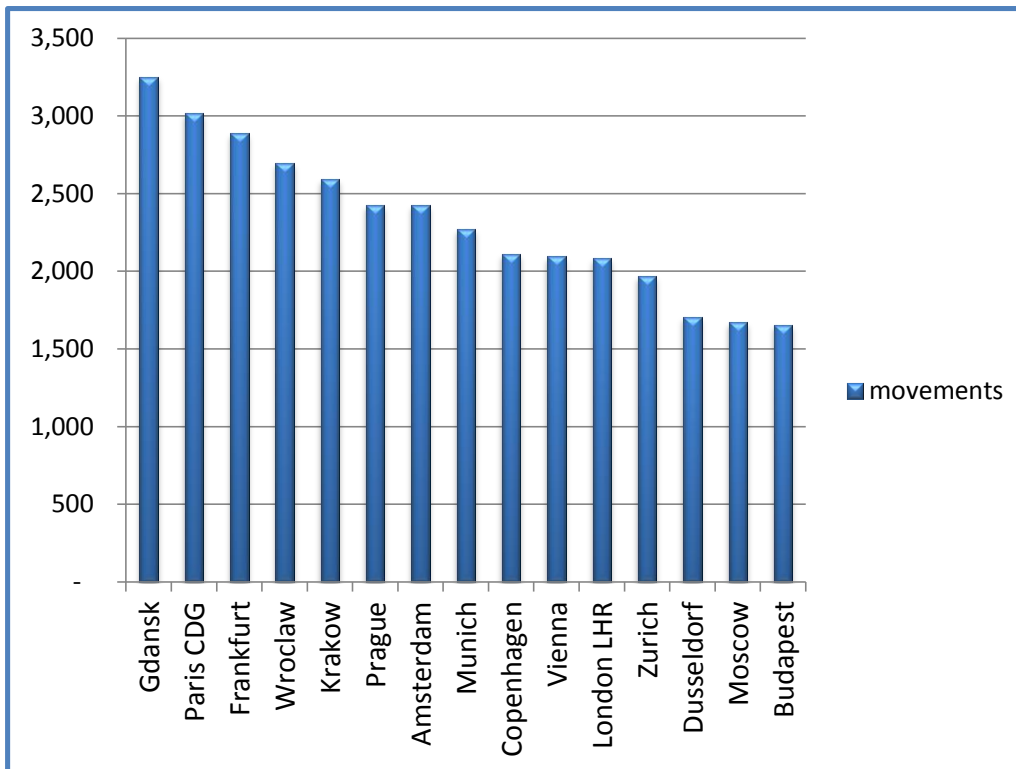
operator	movements
LOT Polish Airlines	42,188
Wizzair	5,461
Lufthansa	2,802
SprintAir	2,628
EnterAir	2,077
Travel Service	1,963
EuroLOT	1,864
Other	24,000

TOP AIRLINES BY SEATS



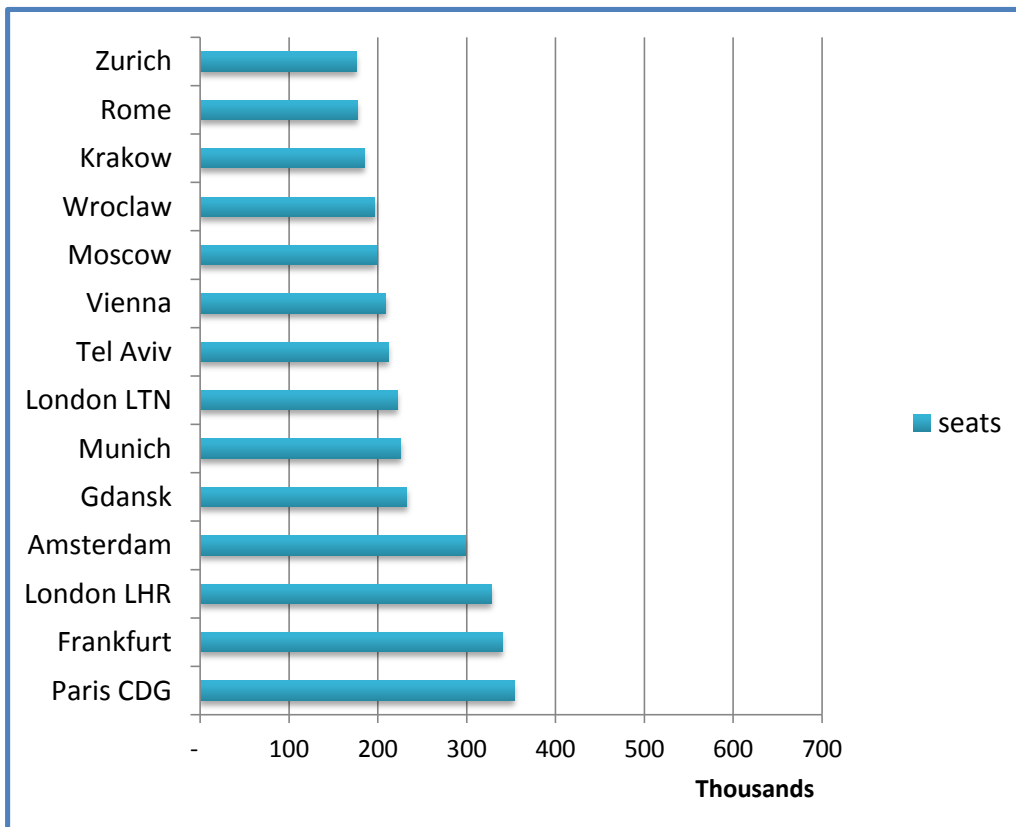
operator	seats
LOT Polish Airlines	3,951,240
Wizzair	982,980
Travel Service	369,791
Lufthansa	367,896
EnterAir	367,689
Air France	236,373
Small Planet	200,880
Other	2,722,865

TOP ROUTES BY ATM



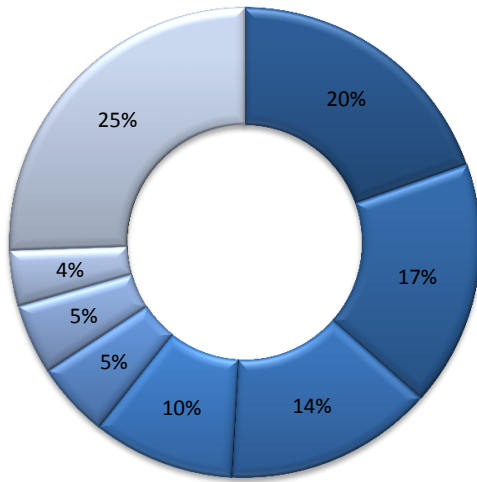
destination	movements
Gdansk	3,247
Paris CDG	3,017
Frankfurt	2,890
Wroclaw	2,695
Krakow	2,593
Prague	2,426
Amsterdam	2,423
Munich	2,272
Copenhagen	2,110
Vienna	2,094
London LHR	2,086
Zurich	1,968
Dusseldorf	1,702
Moscow	1,670
Budapest	1,651

TOP ROUTES BY SEATS



destination	seats
Paris CDG	353,842
Frankfurt	340,268
London LHR	327,384
Amsterdam	298,157
Gdansk	232,458
Munich	225,908
London LTN	221,760
Tel Aviv	212,122
Vienna	208,910
Moscow	198,192
Wroclaw	196,486
Krakow	185,066
Rome	177,144
Zurich	175,676
Copenhagen	173,076

TOP 10 AIRCRAFT TYPE



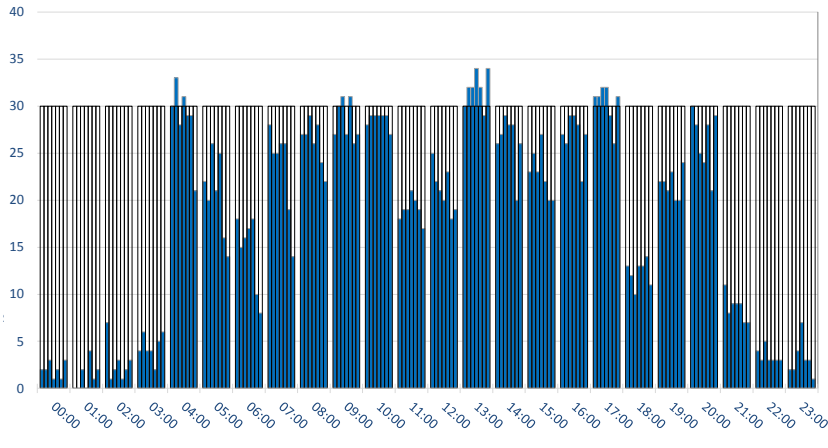
- Embraer 170
- Embraer 175
- Airbus A320
- Embraer 195
- Boeing 737-800
- Boeing 737-400
- Airbus A319
- Other

aircraft	movements
Embraer 170	16,259
Embraer 175	14,078
Airbus A320	11,906
Embraer 195	8,097
Boeing 737-800	4,278
Boeing 737-400	3,996
Airbus A319	3,176
Other	21,193

RUNWAY MOVEMENT DEMAND - R60 TOTALS

PEAK WEEK (15 SEP-21 SEP)

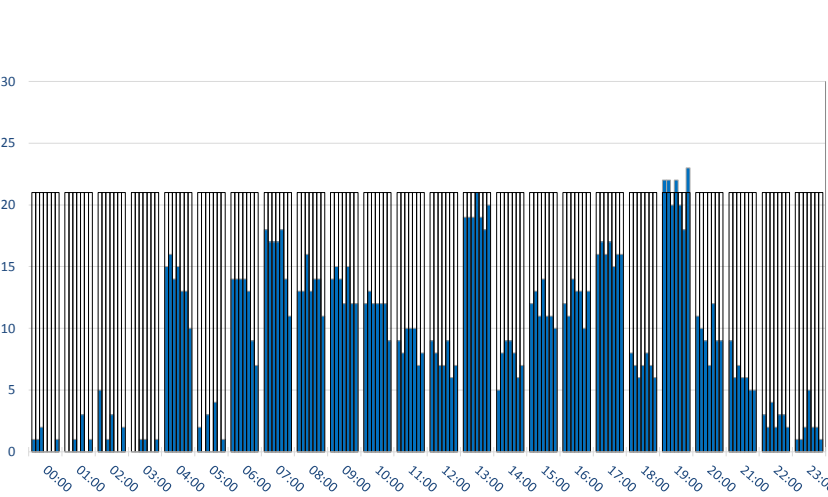
Movements per Hour - All times UTC



	CAPACITY							DEMAND						
	Mon	Tue	Wed	Thu	Fri	Sat	Sun	Mon	Tue	Wed	Thu	Fri	Sat	Sun
00:00	30	30	30	30	30	30	30	2	2	3	1	2	1	3
01:00	30	30	30	30	30	30	30	0	0	2	0	4	1	2
02:00	30	30	30	30	30	30	30	7	1	2	3	1	2	3
03:00	30	30	30	30	30	30	30	4	6	4	4	2	5	6
04:00	30	30	30	30	30	30	30	30	33	28	31	29	29	21
05:00	30	30	30	30	30	30	30	22	20	26	21	25	16	14
06:00	30	30	30	30	30	30	30	18	15	16	17	18	10	8
07:00	30	30	30	30	30	30	30	28	25	25	26	26	19	14
08:00	30	30	30	30	30	30	30	27	27	29	26	28	24	22
09:00	30	30	30	30	30	30	30	27	30	31	27	31	26	27
10:00	30	30	30	30	30	30	30	28	29	29	29	29	29	27
11:00	30	30	30	30	30	30	30	18	19	19	21	20	19	17
12:00	30	30	30	30	30	30	30	25	22	21	20	23	18	19
13:00	30	30	30	30	30	30	30	30	32	32	34	32	29	34
14:00	30	30	30	30	30	30	30	26	27	29	28	28	20	26
15:00	30	30	30	30	30	30	30	23	25	23	27	22	20	20
16:00	30	30	30	30	30	30	30	27	26	29	29	28	22	27
17:00	30	30	30	30	30	30	30	31	31	32	32	29	26	31
18:00	30	30	30	30	30	30	30	13	12	10	13	13	14	11
19:00	30	30	30	30	30	30	30	22	22	21	23	20	20	24
20:00	30	30	30	30	30	30	30	30	28	25	24	28	21	29
21:00	30	30	30	30	30	30	30	11	8	9	9	9	7	7
22:00	30	30	30	30	30	30	30	4	3	5	3	3	3	3
23:00	30	30	30	30	30	30	30	2	2	4	7	3	3	1

RUNWAY MOVEMENT DEMAND - R60 ARRIVALS

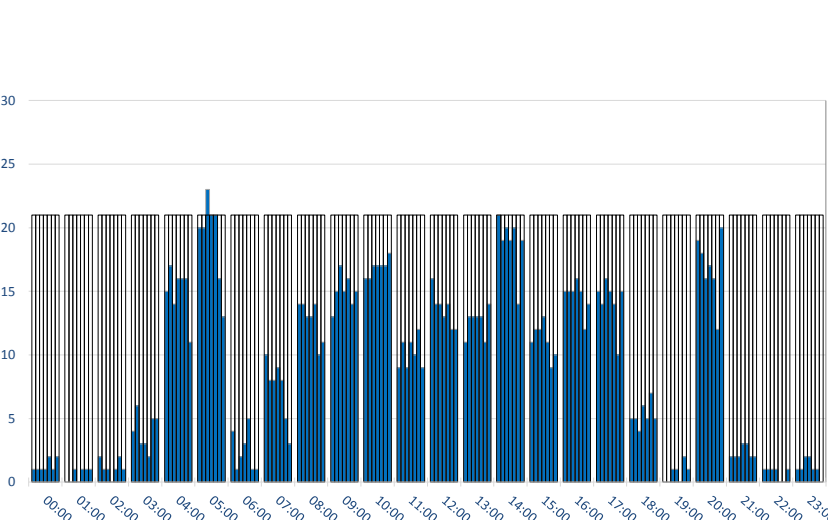
Movements per Hour - All times UTC



	CAPACITY							DEMAND						
	Mon	Tue	Wed	Thu	Fri	Sat	Sun	Mon	Tue	Wed	Thu	Fri	Sat	Sun
00:00	21	21	21	21	21	21	21	1	1	2	0	0	0	1
01:00	21	21	21	21	21	21	21	0	0	1	0	3	0	1
02:00	21	21	21	21	21	21	21	5	0	1	3	0	0	2
03:00	21	21	21	21	21	21	21	0	0	1	1	0	0	1
04:00	21	21	21	21	21	21	21	15	16	14	15	13	13	10
05:00	21	21	21	21	21	21	21	2	0	3	0	4	0	1
06:00	21	21	21	21	21	21	21	14	14	14	14	13	9	7
07:00	21	21	21	21	21	21	21	18	17	17	17	18	14	11
08:00	21	21	21	21	21	21	21	13	13	16	13	14	14	11
09:00	21	21	21	21	21	21	21	14	15	14	12	15	12	12
10:00	21	21	21	21	21	21	21	12	13	12	12	12	12	9
11:00	21	21	21	21	21	21	21	9	8	10	10	10	7	8
12:00	21	21	21	21	21	21	21	9	8	7	7	9	6	7
13:00	21	21	21	21	21	21	21	19	19	19	21	19	18	20
14:00	21	21	21	21	21	21	21	5	8	9	9	8	6	7
15:00	21	21	21	21	21	21	21	12	13	11	14	11	11	10
16:00	21	21	21	21	21	21	21	12	11	14	13	13	10	13
17:00	21	21	21	21	21	21	21	16	17	16	17	15	16	16
18:00	21	21	21	21	21	21	21	8	7	6	7	8	7	6
19:00	21	21	21	21	21	21	21	22	22	20	22	20	18	23
20:00	21	21	21	21	21	21	21	11	10	9	7	12	9	9
21:00	21	21	21	21	21	21	21	9	6	7	6	6	5	5
22:00	21	21	21	21	21	21	21	3	2	4	2	3	3	2
23:00	21	21	21	21	21	21	21	1	1	2	5	2	2	1

RUNWAY MOVEMENT DEMAND - R60 DEPARTURES

Movements per Hour - All times UTC

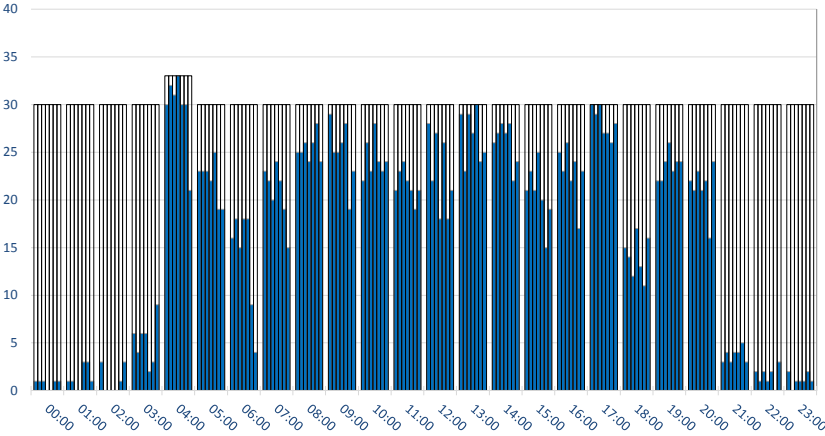


	CAPACITY							DEMAND						
	Mon	Tue	Wed	Thu	Fri	Sat	Sun	Mon	Tue	Wed	Thu	Fri	Sat	Sun
00:00	21	21	21	21	21	21	21	1	1	1	1	2	1	2
01:00	21	21	21	21	21	21	21	0	0	1	0	1	1	1
02:00	21	21	21	21	21	21	21	2	1	1	0	1	2	1
03:00	21	21	21	21	21	21	21	4	6	3	3	2	5	5
04:00	21	21	21	21	21	21	21	15	17	14	16	16	16	11
05:00	21	21	21	21	21	21	21	20	20	23	21	21	16	13
06:00	21	21	21	21	21	21	21	4	1	2	3	5	1	1
07:00	21	21	21	21	21	21	21	10	8	8	9	8	5	3
08:00	21	21	21	21	21	21	21	14	14	13	13	14	10	11
09:00	21	21	21	21	21	21	21	13	15	17	15	16	14	15
10:00	21	21	21	21	21	21	21	16	16	17	17	17	17	18
11:00	21	21	21	21	21	21	21	9	11	9	11	10	12	9
12:00	21	21	21	21	21	21	21	16	14	14	13	14	12	12
13:00	21	21	21	21	21	21	21	11	13	13	13	13	11	14
14:00	21	21	21	21	21	21	21	21	19	20	19	20	14	19
15:00	21	21	21	21	21	21	21	11	12	12	13	11	9	10
16:00	21	21	21	21	21	21	21	15	15	15	16	15	12	14
17:00	21	21	21	21	21	21	21	15	14	16	15	14	10	15
18:00	21	21	21	21	21	21	21	5	5	4	6	5	7	5
19:00	21	21	21	21	21	21	21	0	0	1	1	0	2	1
20:00	21	21	21	21	21	21	21	19	18	16	17	16	12	20
21:00	21	21	21	21	21	21	21	2	2	2	3	3	2	2
22:00	21	21	21	21	21	21	21	1	1	1	1	0	0	1
23:00	21	21	21	21	21	21	21	1	1	2	2	1	1	0

RUNWAY MOVEMENT ALLOCATION - R60 TOTALS

PEAK WEEK (15 SEP-21 SEP)

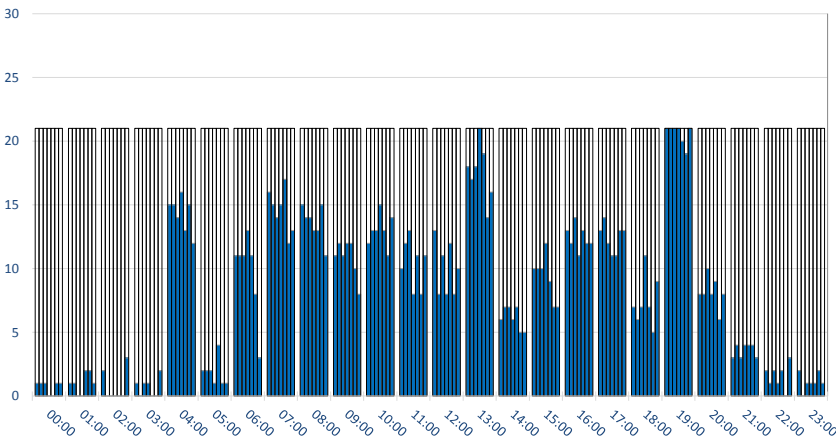
Movements per Hour - All times UTC



	CAPACITY							ALLOCATION						
	Mon	Tue	Wed	Thu	Fri	Sat	Sun	Mon	Tue	Wed	Thu	Fri	Sat	Sun
00:00	30	30	30	30	30	30	30	1	1	1	0	0	1	1
01:00	30	30	30	30	30	30	30	1	1	0	0	3	3	1
02:00	30	30	30	30	30	30	30	3	0	0	0	0	1	3
03:00	30	30	30	30	30	30	30	6	4	6	6	2	3	9
04:00	33	33	33	33	33	33	33	30	32	31	33	30	30	21
05:00	30	30	30	30	30	30	30	23	23	23	22	25	19	19
06:00	30	30	30	30	30	30	30	16	18	15	18	18	9	4
07:00	30	30	30	30	30	30	30	23	22	20	24	22	19	15
08:00	30	30	30	30	30	30	30	25	25	26	24	26	28	24
09:00	30	30	30	30	30	30	30	29	25	25	26	28	19	23
10:00	30	30	30	30	30	30	30	22	26	23	28	24	23	24
11:00	30	30	30	30	30	30	30	21	23	24	22	21	19	21
12:00	30	30	30	30	30	30	30	28	22	27	18	26	18	21
13:00	30	30	30	30	30	30	30	29	23	29	27	30	24	25
14:00	30	30	30	30	30	30	30	26	27	28	27	28	22	24
15:00	30	30	30	30	30	30	30	21	23	21	25	20	15	19
16:00	30	30	30	30	30	30	30	25	23	26	22	24	17	23
17:00	30	30	30	30	30	30	30	30	29	30	27	27	26	28
18:00	30	30	30	30	30	30	30	15	14	12	17	13	11	16
19:00	30	30	30	30	30	30	30	22	22	24	26	23	24	24
20:00	30	30	30	30	30	30	30	22	21	23	21	22	16	24
21:00	30	30	30	30	30	30	30	3	4	3	4	4	5	3
22:00	30	30	30	30	30	30	30	2	1	2	1	2	0	3
23:00	30	30	30	30	30	30	30	2	0	1	1	1	2	1

RUNWAY MOVEMENT ALLOCATION - R60 ARRIVALS

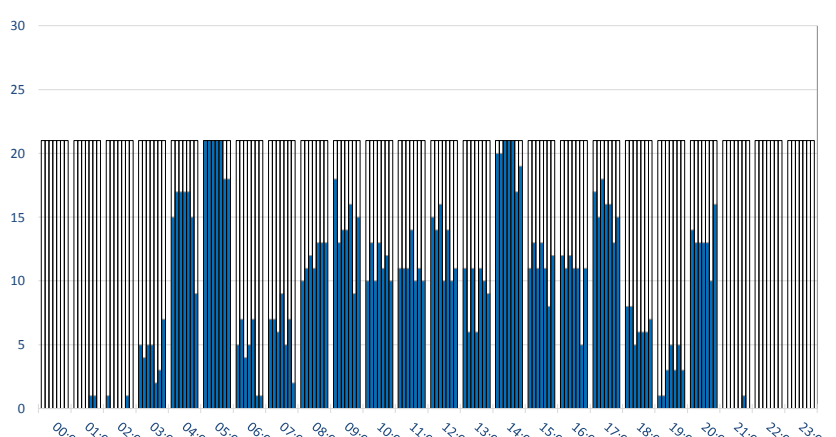
Movements per Hour - All times UTC



	CAPACITY							ALLOCATION						
	Mon	Tue	Wed	Thu	Fri	Sat	Sun	Mon	Tue	Wed	Thu	Fri	Sat	Sun
00:00	21	21	21	21	21	21	21	1	1	1	0	0	1	1
01:00	21	21	21	21	21	21	21	1	1	0	0	2	2	1
02:00	21	21	21	21	21	21	21	2	0	0	0	0	0	3
03:00	21	21	21	21	21	21	21	1	0	1	1	0	0	2
04:00	21	21	21	21	21	21	21	15	15	14	16	13	15	12
05:00	21	21	21	21	21	21	21	2	2	2	1	4	1	1
06:00	21	21	21	21	21	21	21	11	11	11	13	11	8	3
07:00	21	21	21	21	21	21	21	16	15	14	15	17	12	13
08:00	21	21	21	21	21	21	21	15	14	14	13	13	15	11
09:00	21	21	21	21	21	21	21	11	12	11	12	12	10	8
10:00	21	21	21	21	21	21	21	12	13	13	15	13	11	14
11:00	21	21	21	21	21	21	21	10	12	13	8	11	8	11
12:00	21	21	21	21	21	21	21	13	8	11	8	12	8	10
13:00	21	21	21	21	21	21	21	18	17	18	21	19	14	16
14:00	21	21	21	21	21	21	21	6	7	7	6	7	5	5
15:00	21	21	21	21	21	21	21	10	10	10	12	9	7	7
16:00	21	21	21	21	21	21	21	13	12	14	11	13	12	12
17:00	21	21	21	21	21	21	21	13	14	12	11	11	13	13
18:00	21	21	21	21	21	21	21	7	6	7	11	7	5	9
19:00	21	21	21	21	21	21	21	21	21	21	21	20	19	21
20:00	21	21	21	21	21	21	21	8	8	10	8	9	6	8
21:00	21	21	21	21	21	21	21	3	4	3	4	4	4	3
22:00	21	21	21	21	21	21	21	2	1	2	1	2	0	3
23:00	21	21	21	21	21	21	21	2	0	1	1	1	2	1

RUNWAY MOVEMENT ALLOCATION - R60 DEPARTURES

Movements per Hour - All times UTC

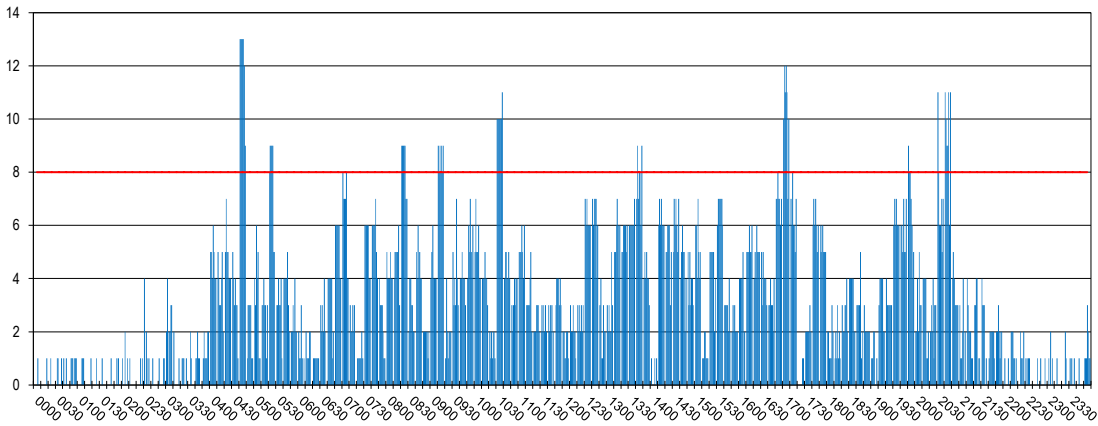


	CAPACITY							ALLOCATION						
	Mon	Tue	Wed	Thu	Fri	Sat	Sun	Mon	Tue	Wed	Thu	Fri	Sat	Sun
00:00	21	21	21	21	21	21	21	0	0	0	0	0	0	0
01:00	21	21	21	21	21	21	21	0	0	0	0	1	1	0
02:00	21	21	21	21	21	21	21	1	0	0	0	0	1	0
03:00	21	21	21	21	21	21	21	5	4	5	5	2	3	7
04:00	21	21	21	21	21	21	21	15	17	17	17	17	15	9
05:00	21	21	21	21	21	21	21	21	21	21	21	21	18	18
06:00	21	21	21	21	21	21	21	5	7	4	5	7	1	1
07:00	21	21	21	21	21	21	21	7	7	6	9	5	7	2
08:00	21	21	21	21	21	21	21	10	11	12	11	13	13	13
09:00	21	21	21	21	21	21	21	18	13	14	14	16	9	15
10:00	21	21	21	21	21	21	21	10	13	10	13	11	12	10
11:00	21	21	21	21	21	21	21	11	11	11	14	10	11	10
12:00	21	21	21	21	21	21	21	15	14	16	10	14	10	11
13:00	21	21	21	21	21	21	21	11	6	11	6	11	10	9
14:00	21	21	21	21	21	21	21	20	20	21	21	21	17	19
15:00	21	21	21	21	21	21	21	11	13	11	13	11	8	12
16:00	21	21	21	21	21	21	21	12	11	12	11	11	5	11
17:00	21	21	21	21	21	21	21	17	15	18	16	16	13	15
18:00	21	21	21	21	21	21	21	8	8	5	6	6	6	7
19:00	21	21	21	21	21	21	21	1	1	3	5	3	5	3
20:00	21	21	21	21	21	21	21	14	13	13	13	10	16	16
21:00	21	21	21	21	21	21	21	0	0	0	0	0	1	0
22:00	21	21	21	21	21	21	21	0	0	0	0	0	0	0
23:00	21	21	21	21	21	21	21	0	0	0	0	0	0	0

RUNWAY MOVEMENT DEMAND - R10 TOTALS

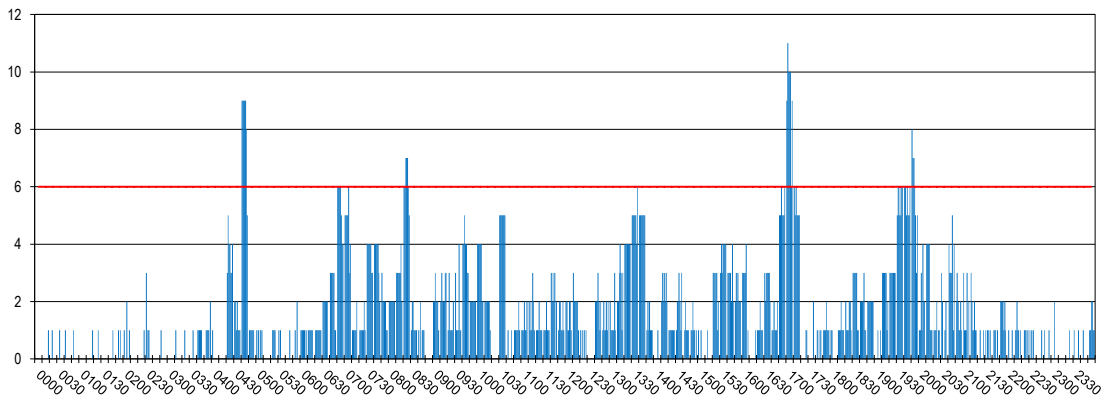
PEAK WEEK (15 SEP-21 SEP)

Peak Week Movements per 10 min - All times UTC



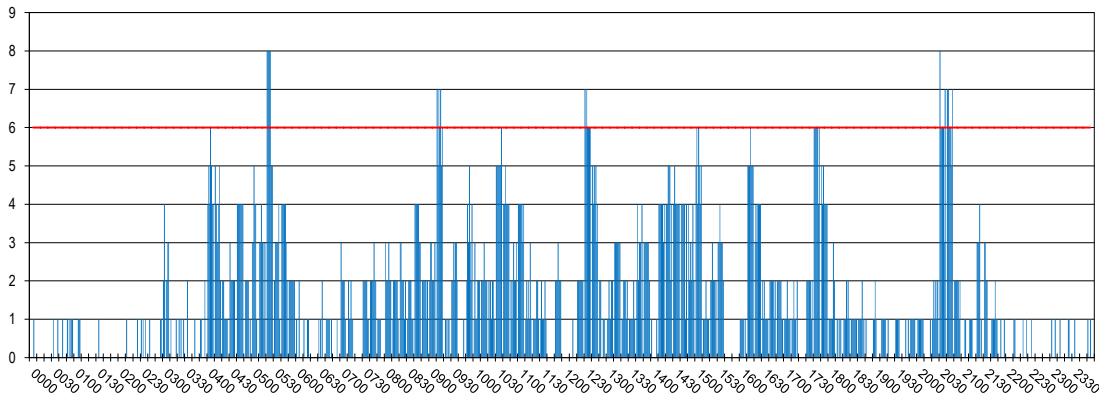
RUNWAY MOVEMENT DEMAND - R10 ARRIVALS

Peak Week Movements per 10 min - All times UTC



RUNWAY MOVEMENT DEMAND - R10 DEPARTURES

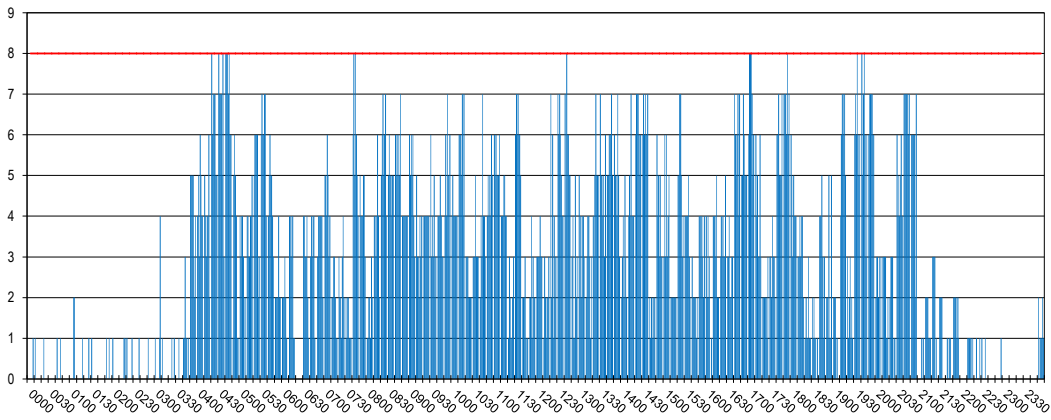
Peak Week Movements per 10 min - All times Local Time



RUNWAY MOVEMENT ALLOCATION - R10 TOTALS

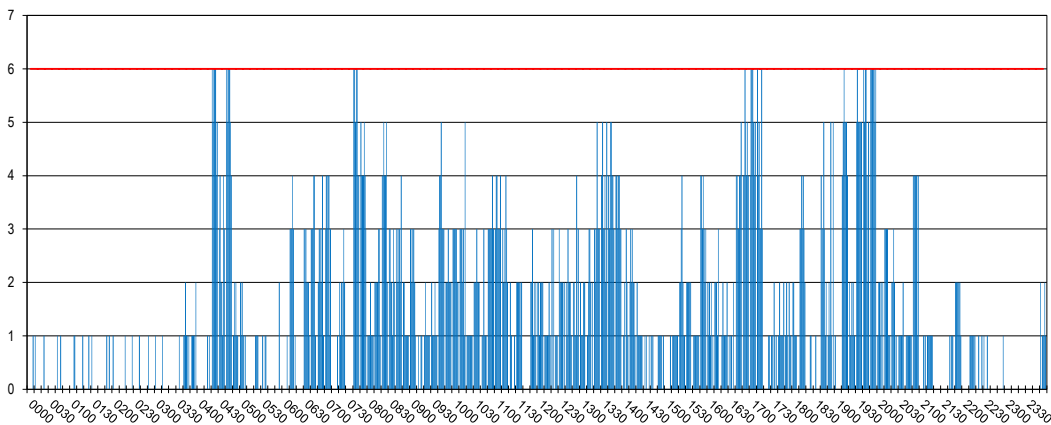
PEAK WEEK (15 SEP-21 SEP)

Peak Week Movements per 10 min - All times UTC



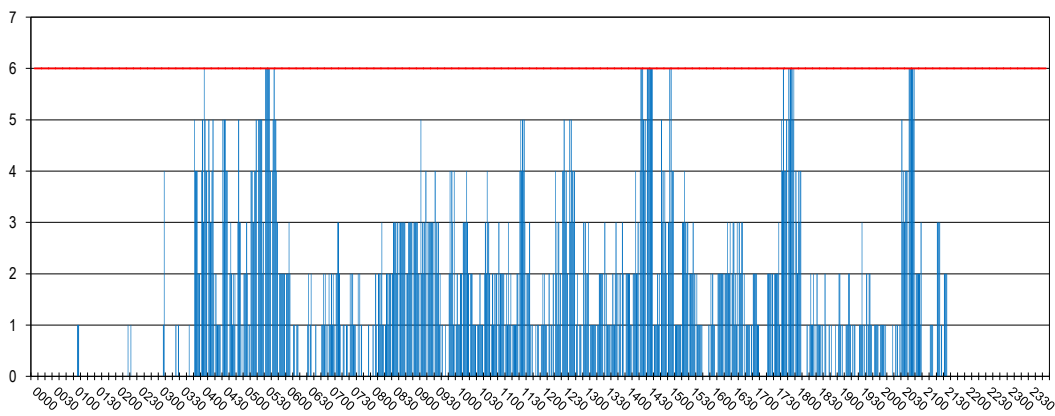
RUNWAY MOVEMENT ALLOCATION - R10 ARRIVALS

Peak Week Movements per 10 min - All times UTC



RUNWAY MOVEMENT ALLOCATION - R10 DEPARTURES

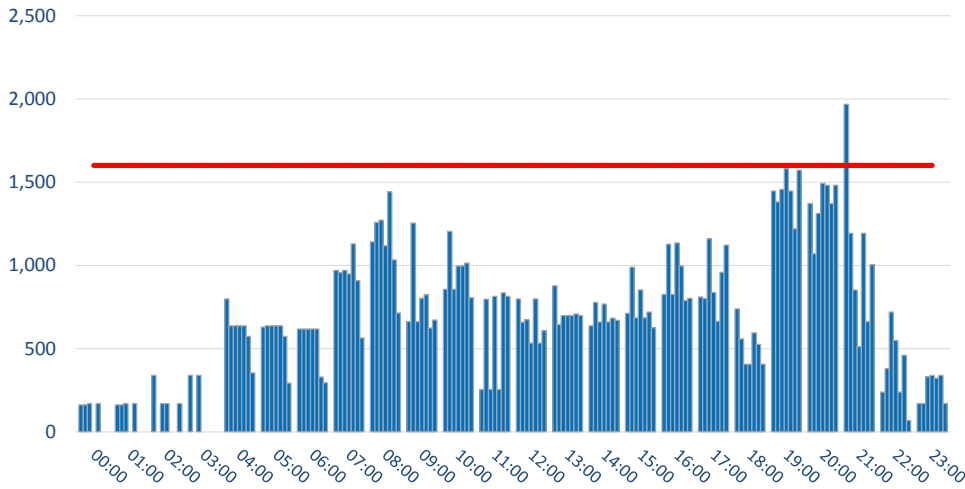
Peak Week Movements per 10 min - All times Local Time



TERMINAL - SCHENGEN ARRIVALS DEMAND

PEAK WEEK (15 SEP-21 SEP)

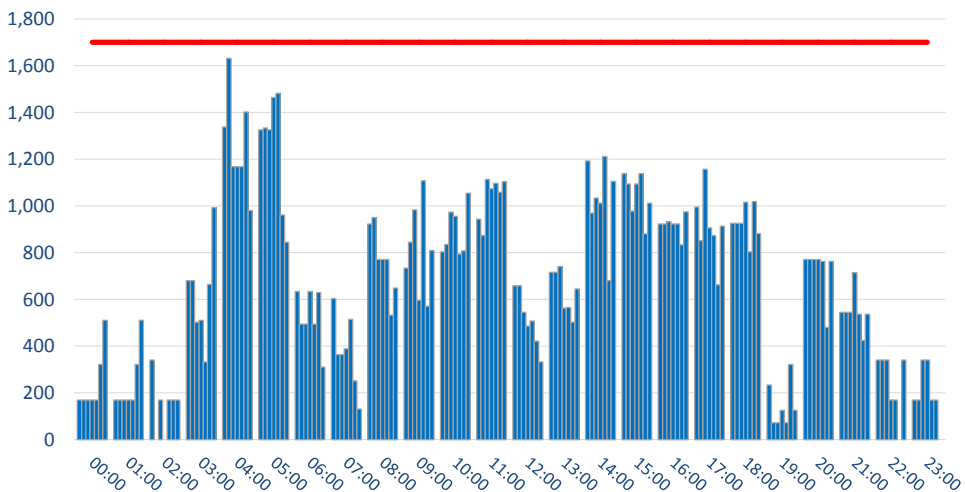
Passengers per Hour - All times UTC



	DEMAND							Capacity Limit
	Mon	Tue	Wed	Thu	Fri	Sat	Sun	
00:00	162	162	170	0	170	0	0	1600
01:00	162	162	170	0	170	0	0	1600
02:00	340	0	170	170	0	0	170	1600
03:00	340	0	340	0	0	0	0	1600
04:00	799	638	638	638	638	574	354	1600
05:00	629	638	638	638	638	574	293	1600
06:00	617	617	617	617	617	329	295	1600
07:00	970	957	970	948	1130	908	564	1600
08:00	1140	1258	1271	1118	1442	1033	715	1600
09:00	662	1254	662	802	824	623	672	1600
10:00	857	1204	857	997	997	1014	806	1600
11:00	255	797	255	814	255	836	814	1600
12:00	799	659	673	533	799	534	609	1600
13:00	878	644	698	698	698	709	698	1600
14:00	638	778	660	768	660	683	669	1600
15:00	712	988	686	852	686	720	625	1600
16:00	826	1128	826	1136	996	789	803	1600
17:00	810	801	1161	838	665	958	1121	1600
18:00	739	558	407	407	594	525	407	1600
19:00	1446	1382	1456	1582	1446	1220	1572	1600
20:00	1372	1070	1312	1492	1482	1372	1482	1600
21:00	1967	1193	853	513	1193	663	1004	1600
22:00	239	379	719	549	239	461	69	1600
23:00	170	170	332	340	321	340	170	1600

TERMINAL - SCHENGEN DEPARTURES DEMAND

Passengers per Hour - All times UTC

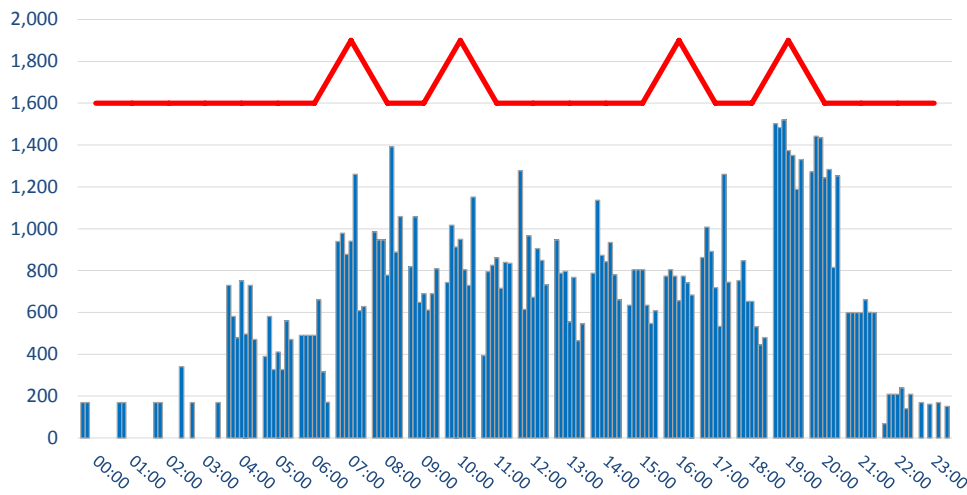


	DEMAND							Capacity Limit
	Mon	Tue	Wed	Thu	Fri	Sat	Sun	
00:00	170	170	170	170	170	321	510	1700
01:00	170	170	170	170	170	321	510	1700
02:00	340	0	170	0	170	170	170	1700
03:00	680	680	502	510	332	664	993	1700
04:00	1338	1631	1168	1168	1168	1402	980	1700
05:00	1325	1334	1325	1464	1482	961	845	1700
06:00	633	494	494	633	494	629	310	1700
07:00	603	364	364	389	515	252	131	1700
08:00	922	950	771	771	771	532	649	1700
09:00	734	844	983	595	1108	570	809	1700
10:00	803	835	973	956	794	807	1054	1700
11:00	943	874	1113	1073	1096	1058	1104	1700
12:00	658	658	544	486	507	422	333	1700
13:00	716	716	741	562	565	502	644	1700
14:00	1193	969	1033	1011	1212	680	1105	1700
15:00	1137	1094	977	1094	1137	880	1011	1700
16:00	923	923	932	923	923	833	974	1700
17:00	995	852	1157	906	874	663	913	1700
18:00	925	925	925	1016	804	1019	881	1700
19:00	234	72	72	125	72	321	125	1700
20:00	771	771	771	771	762	480	762	1700
21:00	545	545	545	715	536	424	536	1700
22:00	340	340	340	170	170	0	340	1700
23:00	170	170	340	340	170	170	0	1700

TERMINAL - SCHENGEN ARRIVALS ALLOCATION

PEAK WEEK (15 SEP-21 SEP)

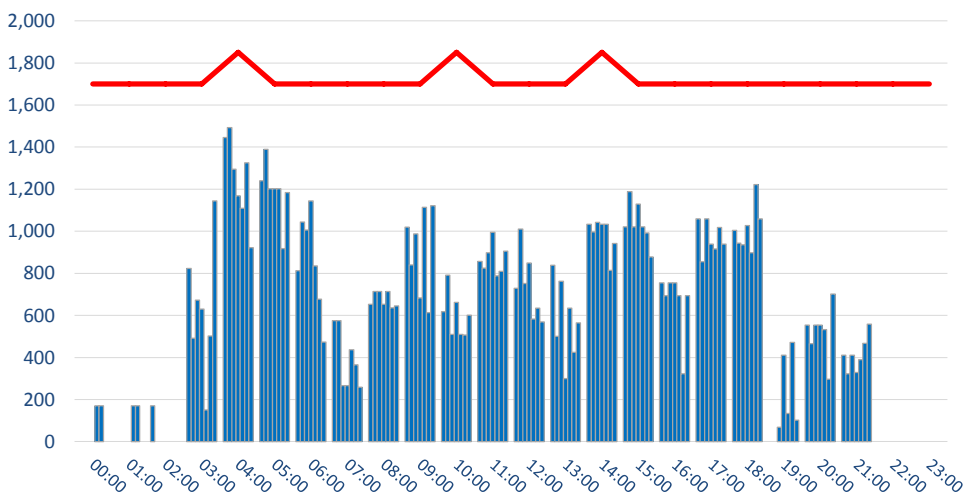
Passengers per Hour - All times UTC



	DEMAND							Capacity Limit
	Mon	Tue	Wed	Thu	Fri	Sat	Sun	
00:00	170	170	0	0	0	0	0	1600
01:00	170	170	0	0	0	0	0	1600
02:00	170	170	0	0	0	0	340	1600
03:00	170	0	0	0	0	0	170	1600
04:00	729	581	478	751	497	729	471	1600
05:00	389	581	327	411	327	559	471	1600
06:00	491	491	491	491	661	316	171	1600
07:00	939	979	878	940	1261	608	628	1900
08:00	985	946	946	778	1392	889	1058	1600
09:00	818	1056	648	690	611	690	809	1600
10:00	743	1017	913	949	804	729	1152	1900
11:00	394	795	825	861	716	839	835	1600
12:00	1277	615	966	673	905	849	732	1600
13:00	946	787	796	555	767	464	546	1600
14:00	788	1137	873	843	934	780	660	1600
15:00	634	804	804	804	634	548	609	1600
16:00	774	804	774	656	774	741	683	1900
17:00	863	1008	892	718	533	1261	744	1600
18:00	753	847	653	653	532	445	480	1600
19:00	1502	1483	1521	1374	1351	1189	1330	1900
20:00	1273	1443	1435	1244	1283	815	1252	1600
21:00	599	599	599	599	660	601	599	1600
22:00	69	209	209	209	239	140	209	1600
23:00	170	0	162	0	170	0	151	1600

TERMINAL - SCHENGEN DEPARTURES ALLOCATION

Passengers per Hour - All times UTC

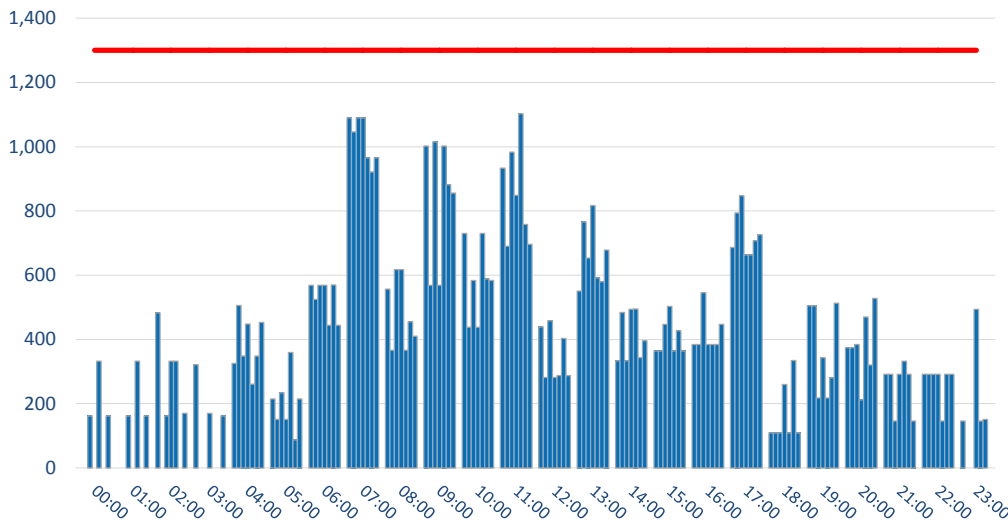


	DEMAND							Capacity Limit
	Mon	Tue	Wed	Thu	Fri	Sat	Sun	
00:00	0	0	0	0	170	170	0	1700
01:00	0	0	0	0	170	170	0	1700
02:00	170	0	0	0	0	0	0	1700
03:00	823	491	672	630	151	502	1144	1700
04:00	1446	1492	1295	1169	1109	1326	922	1850
05:00	1240	1389	1202	1202	1202	918	1184	1700
06:00	812	1044	1005	1144	835	677	473	1700
07:00	575	575	266	266	436	365	258	1700
08:00	652	713	713	652	713	636	645	1700
09:00	1020	840	988	683	1113	613	1121	1700
10:00	617	791	509	662	509	506	601	1850
11:00	856	825	898	995	788	810	906	1700
12:00	729	1011	752	849	582	634	569	1700
13:00	838	500	762	299	635	424	565	1700
14:00	1033	996	1042	1033	1033	814	942	1850
15:00	1021	1189	1021	1129	1021	992	878	1700
16:00	754	694	754	754	694	322	694	1700
17:00	1059	855	1059	939	916	1018	938	1700
18:00	1004	943	935	1027	898	1222	1059	1700
19:00	0	0	69	411	134	472	102	1700
20:00	554	465	554	554	532	297	702	1700
21:00	411	322	411	328	389	467	559	1700
22:00	0	0	0	0	0	0	0	1700
23:00	0	0	0	0	0	0	0	1700

TERMINAL - NON SCHENGEN ARRIVALS DEMAND

PEAK WEEK (15 SEP-21 SEP)

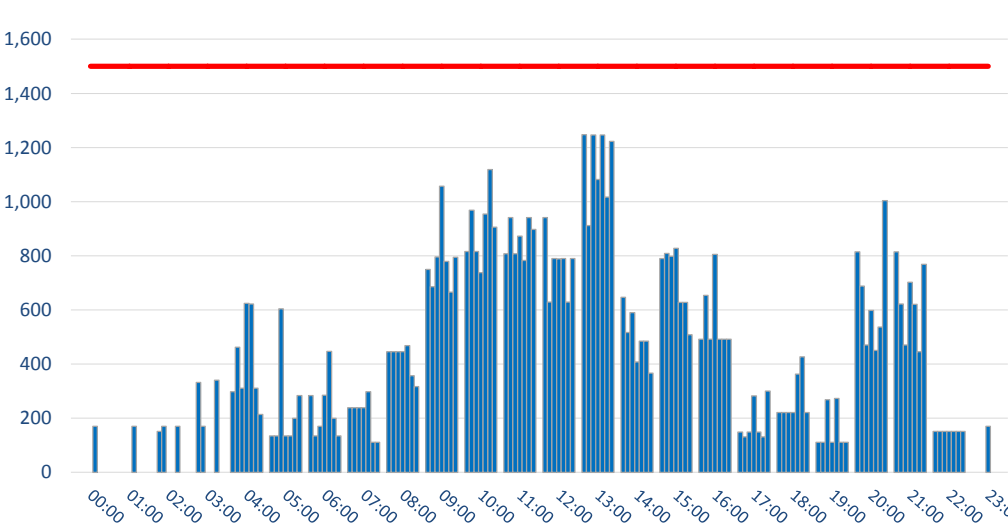
Passengers per Hour - All times UTC



	DEMAND							Capacity Limit
	Mon	Tue	Wed	Thu	Fri	Sat	Sun	
00:00	0	0	162	0	332	0	162	1300
01:00	0	0	162	0	332	0	162	1300
02:00	483	0	162	332	332	0	170	1300
03:00	321	0	0	170	0	0	162	1300
04:00	325	506	348	448	261	348	453	1300
05:00	215	151	234	151	359	87	215	1300
06:00	569	525	569	569	444	570	444	1300
07:00	1090	1046	1090	1090	965	921	965	1300
08:00	557	366	617	617	366	455	410	1300
09:00	1002	569	1015	569	1002	882	856	1300
10:00	730	438	584	438	730	589	584	1300
11:00	933	690	983	849	1103	758	696	1300
12:00	439	282	458	282	288	403	288	1300
13:00	551	766	653	817	592	580	678	1300
14:00	333	484	333	494	495	343	396	1300
15:00	364	364	447	503	364	427	364	1300
16:00	384	384	546	384	384	384	447	1300
17:00	686	794	848	663	663	707	726	1300
18:00	109	109	109	260	109	334	109	1300
19:00	505	505	218	343	218	281	513	1300
20:00	374	374	384	212	470	320	528	1300
21:00	292	292	146	292	332	292	146	1300
22:00	292	292	292	292	146	292	292	1300
23:00	146	0	0	494	146	151	0	1300

TERMINAL - NON SCHENGEN DEPARTURES DEMAND

Passengers per Hour - All times UTC

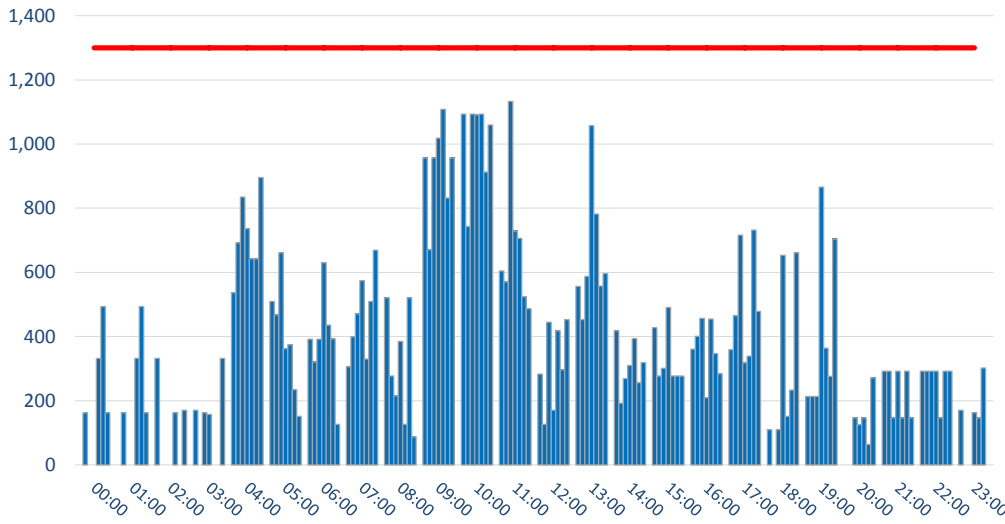


	DEMAND							Capacity Limit
	Mon	Tue	Wed	Thu	Fri	Sat	Sun	
00:00	0	0	0	0	170	0	0	1500
01:00	0	0	0	0	170	0	0	1500
02:00	0	151	170	0	0	170	0	1500
03:00	0	332	170	0	0	340	0	1500
04:00	298	462	311	624	622	311	214	1500
05:00	134	134	604	134	134	199	283	1500
06:00	283	134	170	285	447	199	134	1500
07:00	239	239	239	239	298	111	111	1500
08:00	445	445	445	445	468	357	317	1500
09:00	749	685	796	1057	779	665	794	1500
10:00	816	968	816	738	954	1119	906	1500
11:00	807	941	807	873	783	941	897	1500
12:00	941	629	790	788	790	629	790	1500
13:00	1248	912	1246	1082	1246	1017	1222	1500
14:00	647	516	590	407	485	485	366	1500
15:00	790	808	798	827	628	628	508	1500
16:00	492	654	492	805	492	492	492	1500
17:00	149	131	149	282	149	131	300	1500
18:00	221	221	221	221	363	427	221	1500
19:00	111	111	268	111	273	111	111	1500
20:00	814	688	470	598	450	536	1004	1500
21:00	814	622	470	702	620	446	768	1500
22:00	151	151	151	151	151	151	151	1500
23:00	0	0	0	170	0	0	0	1500

TERMINAL - NON SCHENGEN ARRIVALS ALLOCATION

PEAK WEEK (15 SEP-21 SEP)

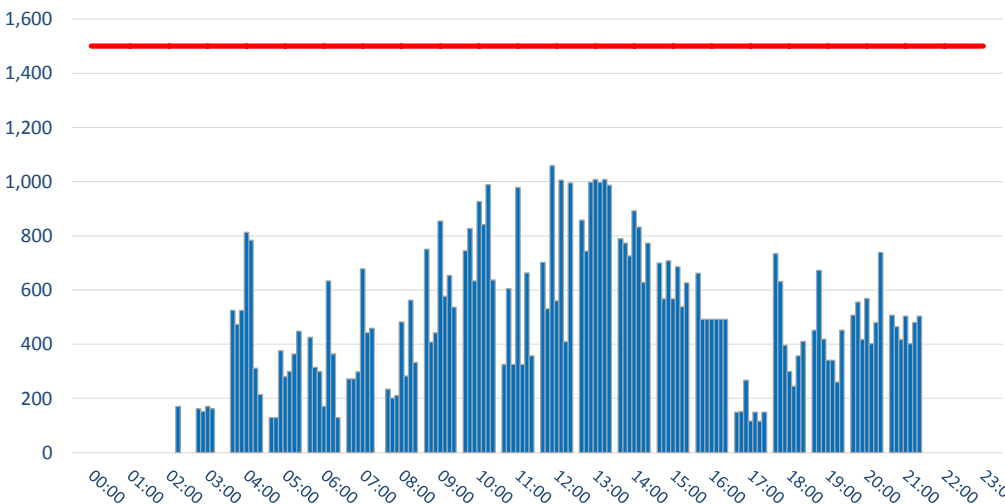
Passengers per Hour - All times UTC



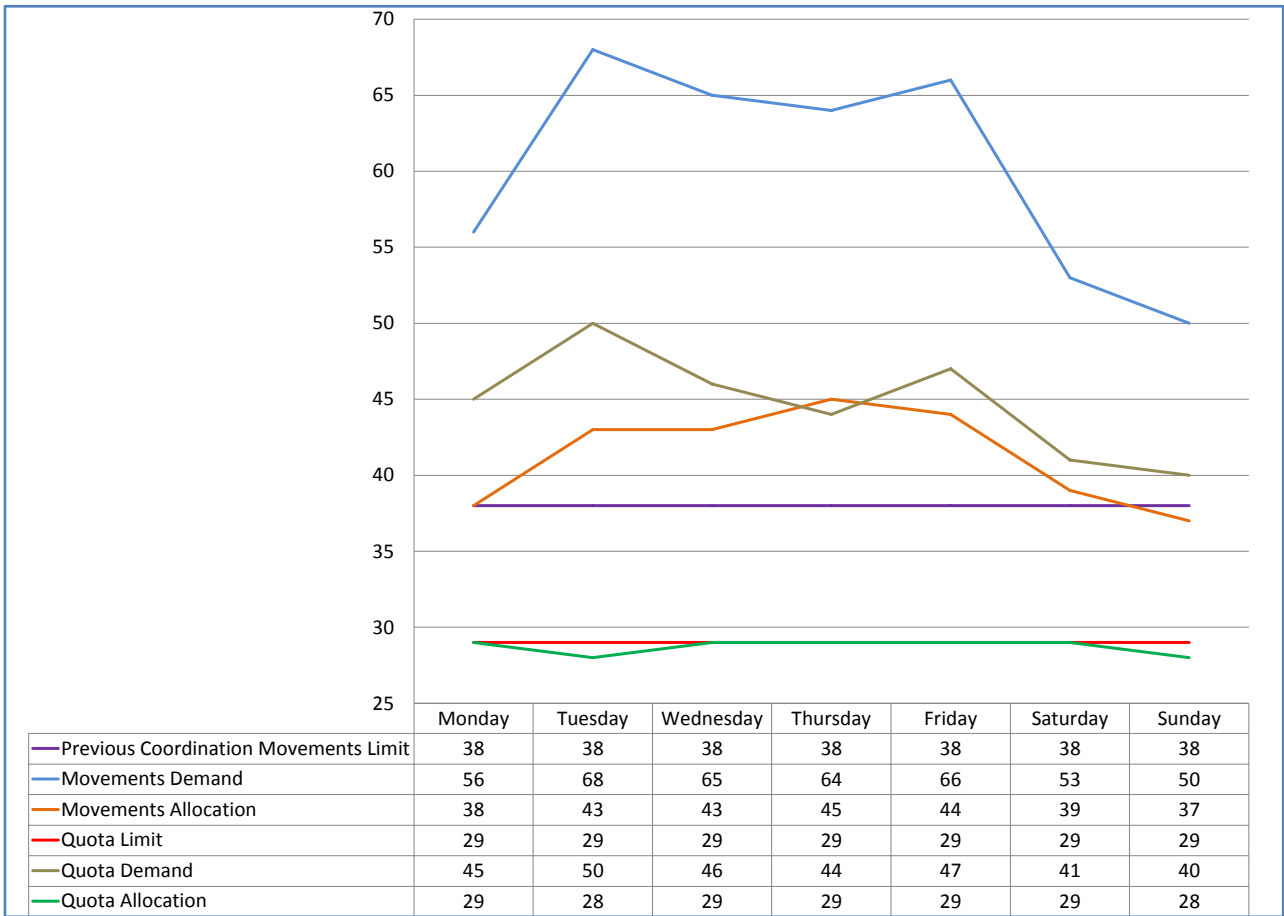
	DEMAND							Capacity Limit
	Mon	Tue	Wed	Thu	Fri	Sat	Sun	
00:00	0	162	0	0	332	494	162	1300
01:00	0	162	0	0	332	494	162	1300
02:00	332	0	0	0	162	0	170	1300
03:00	170	0	162	157	0	0	332	1300
04:00	536	692	835	736	642	642	896	1300
05:00	510	468	661	362	375	234	151	1300
06:00	392	321	392	630	436	393	126	1300
07:00	306	400	471	574	330	510	669	1300
08:00	521	277	215	385	126	521	87	1300
09:00	957	670	957	1018	1108	832	957	1300
10:00	1093	743	1093	1091	1093	913	1059	1300
11:00	604	570	1133	729	706	525	487	1300
12:00	283	126	445	170	418	296	453	1300
13:00	556	453	587	1057	782	557	596	1300
14:00	418	192	269	310	394	256	319	1300
15:00	428	277	301	491	277	277	277	1300
16:00	361	401	457	209	455	347	284	1300
17:00	359	465	716	318	339	732	479	1300
18:00	109	0	109	653	151	233	661	1300
19:00	213	213	213	866	364	276	704	1300
20:00	0	0	146	125	146	63	271	1300
21:00	292	292	146	292	146	292	146	1300
22:00	292	292	292	292	146	292	292	1300
23:00	170	0	0	162	146	302	0	1300

TERMINAL - NON SCHENGEN DEPARTURES ALLOCATION

Passengers per Hour - All times UTC



	DEMAND							Capacity Limit
	Mon	Tue	Wed	Thu	Fri	Sat	Sun	
00:00	0	0	0	0	0	0	0	1500
01:00	0	0	0	0	0	0	0	1500
02:00	0	0	0	0	0	0	170	1500
03:00	0	162	151	170	162	0	0	1500
04:00	525	473	525	813	784	311	214	1500
05:00	129	129	376	280	299	364	448	1500
06:00	426	314	299	170	633	364	129	1500
07:00	272	272	298	679	442	459	0	1500
08:00	234	201	210	482	283	563	332	1500
09:00	751	408	442	854	577	654	537	1500
10:00	745	827	633	927	842	989	637	1500
11:00	325	605	325	979	325	663	357	1500
12:00	702	531	1059	560	1006	409	995	1500
13:00	858	743	997	1008	997	1008	987	1500
14:00	790	773	726	892	832	628	773	1500
15:00	700	567	708	567	686	538	627	1500
16:00	662	492	492	492	492	492	492	1500
17:00	149	151	267	116	149	116	149	1500
18:00	734	631	396	299	245	357	410	1500
19:00	451	672	419	340	340	260	451	1500
20:00	507	555	417	569	402	480	739	1500
21:00	507	465	417	503	402	480	503	1500
22:00	0	0	0	0	0	0	0	1500
23:00	0	0	0	0	0	0	0	1500



GLOSSARY OF TERMS

Air Transport Movement (ATM)	A scheduled or charter passenger or freight aircraft movement.
Allocation	The allocation of slots such that demand is constrained to fit within declared scheduling limits. DEPARTURES
Demand	The unconstrained demand for slots, prior to any schedule adjustments.
Passenger ATM	A scheduled or charter <u>passenger</u> aircraft movement (ie, excluding all-cargo aircraft movements)
Schedule Adjustment by Carrier	Off slot allocation (excluding General Aviation)
Scheduling Limits	Limiting parameters declared by the Airport Operator used in the coordination process.
Seats	The number of seats based on the aircraft configuration advised by the airline.
Peak Week	The Peak Week for S14 is Week 25 (15-21 SEPTEMBER 2014)
Peak Hour	Peak Hours during S14 redevelopment: - Arriving Pax : 0700-0755; 1000-1055; 1600-1655; 1900-1955 UTC - Departing Pax: 0330-0425; 1000-1055; 1400-1455 UTC -Departing Pax Flights: 0500-0555; 1000-1055; 1400-1455 UTC

GUIDE TO HISTOGRAMS

The histograms show the pattern of traffic by time of day against the appropriate scheduling limit. Each time period consist of seven columns representing the days-of-week, Monday through to Sunday.