

WARSAW FREDERIC CHOPIN AIRPORT

EPWA / WAW

SUMMER 2013

START OF SEASON REPORT

	Summer 2013	Change from Summer 2012 (Start of Season)	Change from Summer 2012 (End of Season Excluding EURO 2012)	Change from Summer 2012 (End of Season Excluding EURO 2012 and W6/FR)
Air Transport Movements	86,263	↓ -8%	↑ 6%	↓ -6%
Total Seats	9,731,479	↓ -8%	↑ 12%	↓ -7%
Seats per Passenger ATM	113	↓ -14%	→ 3%	→ -3%

KEY STATISTICS

CONTENT

	Page
SCHEDULING LIMITS	2
SCHEDULE ADJUSTMENT	3
TOP AIRLINES ANALYSIS	4
TOP ROUTES ANALYSIS	5
TOP 10 AIRCRAFT TYPE	6
RUNWAY R60 DEMAND & ALLOCATION HISTOGRAMS	7-8
RUNWAY R10 DEMAND & ALLOCATION HISTOGRAMS	9-10
TERMINAL SCHENGEN DEMAND & ALLOCATION	11-12
TERMINAL NON SCHENGEN DEMAND & ALLOCATION	13-14
NIGHT MOVEMENT SUMMARY	15
MODLIN AIRPORT CLOSURE IMPACT ON RUNWAY AND TERMINAL UTILIZATION	16-20
GLOSSARY OF TERMS	21

Data in this report is current as of:

19 March 2013

No warranty whether expressed or implied as to the completeness, accuracy, fitness for purpose, or satisfactory quality is given by ACL regarding the information in this report, which is provided by third parties. Accordingly, ACL excludes all liability with regard to such data.

The contents of this report may not be reproduced without the written consent of ACL.

RUNWAY SCHEDULING LIMITS

All times UTC

		ARRIVALS																	
		04:00	05:00	06:00	07:00	08:00	09:00	10:00	11:00	12:00	13:00	14:00	15:00	16:00	17:00	18:00	19:00	20:00	
MONDAY - SUNDAY	SEASON S13	19	19	19	19	19	19	19	19	19	19	19	19	19	19	19	19	20	
	R60	19	19	19	19	19	19	19	19	19	19	19	19	19	19	19	19	20	
	R10	6	6	6	6	6	6	6	6	6	6	6	6	6	6	6	6	6	
	DEPARTURES																		
	SEASON S13	19	21	19	19	19	19	19	19	19	19	19	19	19	19	19	19	19	
	R60	19	21	19	19	19	19	19	19	19	19	19	19	19	19	19	19	19	
	R10	6	6	6	6	6	6	6	6	6	6	6	6	6	6	6	6	6	
	TOTALS																		
	SEASON S13	34	36	34	34	34	34	34	34	34	34	34	34	34	34	34	34	36	34
	R60	34	36	34	34	34	34	34	34	34	34	34	34	34	34	34	34	36	34
R10	8	8	8	8	8	8	8	8	8	8	8	8	8	8	8	8	8	8	

TERMINAL SCHEDULING LIMITS

Passengers per Hour (T60/30)

	SCHENGEN	NON SCHENGEN	TOTAL
ARRIVALS	1,600	1,300	1,600
DEPARTURES	1,700	1,500	1,700

Other Restrictions

Night quota:

Night quota limits apply at EPWA/WAW. The night quota period is defined as 2000 - 0400 (UTC) and the number of movements may not exceed 38 operations within that period.

Terminal and Runway Redevelopment:

Single Runway operation due to planned investment works RW 15/33 closure: April - September 2013.

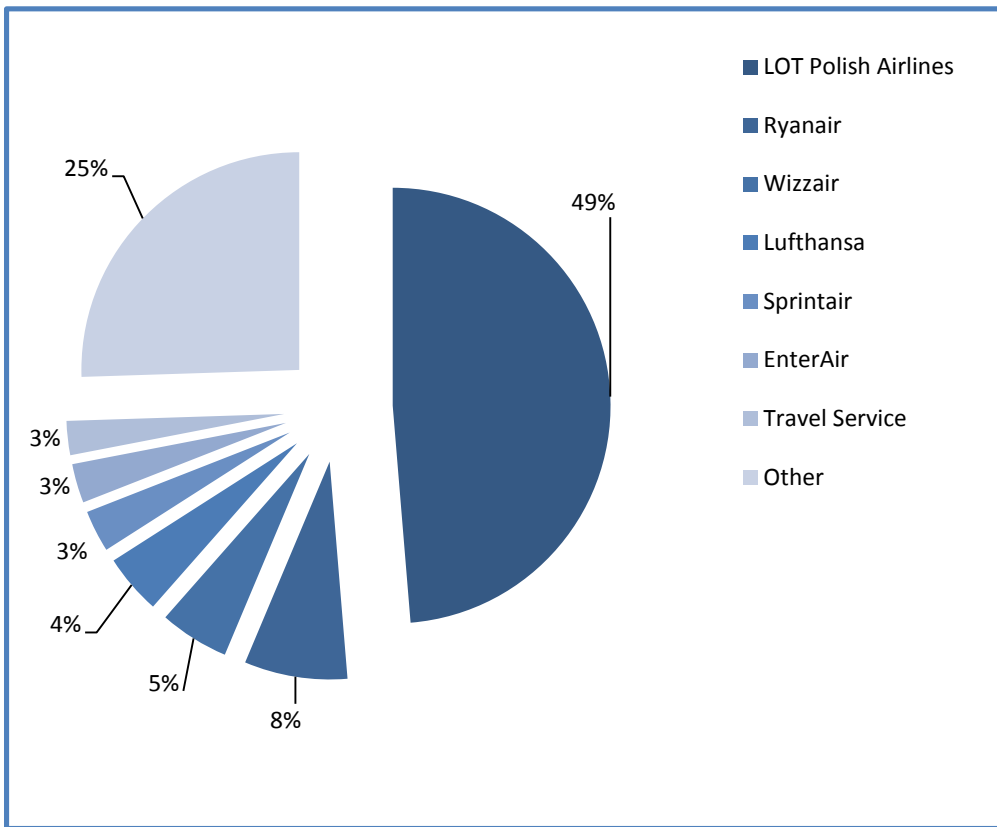
Due to terminal closures between 01/08/12 - 30/04/2015 arrivals capped at 1,900 pax/h during Peak Hours and at 1,600 off peak.

Departures limited to 1,700 pax/h, additionally number of passenger movements limited to 18 mvt/h off peak and 21 mvt/h during Peak Hours.

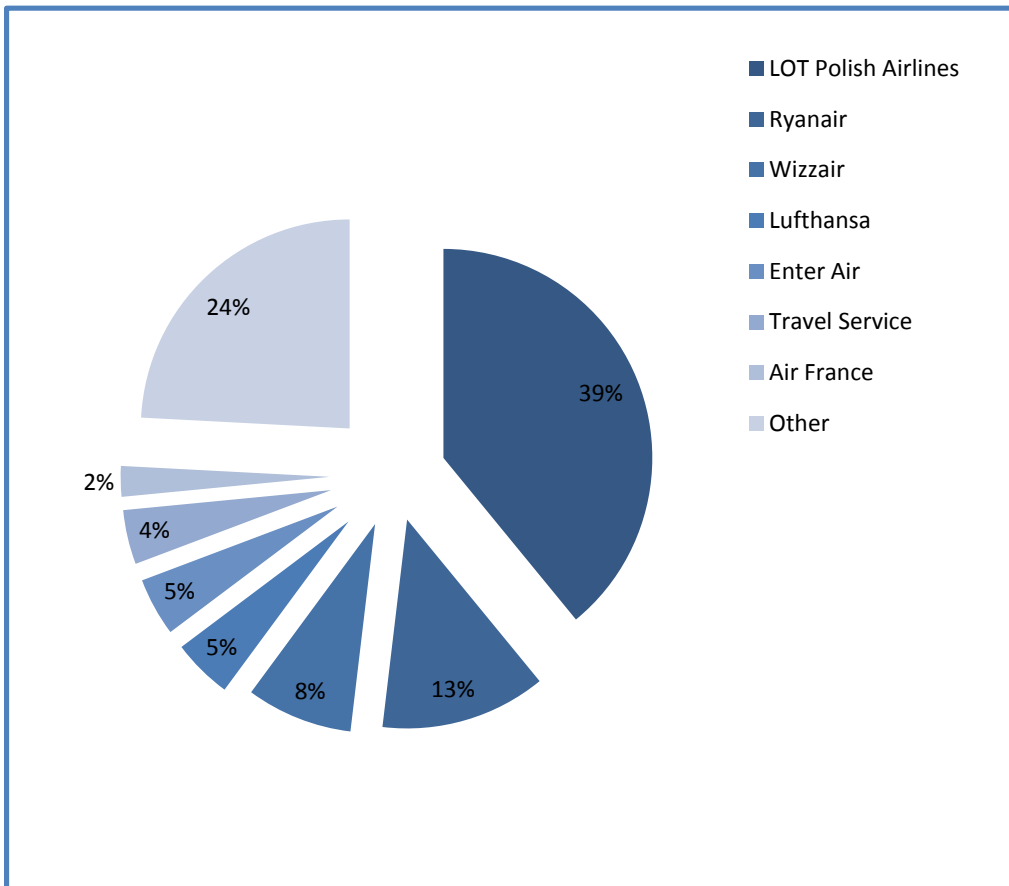
SCHEDULE ADJUSTMENTS BY CARRIER

Off Slot	0	5	10	15	20	25	30	35	40	45	50	55	60+	0	5	10	15	20	25	30	35	40	45	50	55	60+	Grand Total
Total	84118	264	175	280	97	43	92	101	71	15	55	72	880	98%	0%	0%	0%	0%	0%	0%	0%	0%	0%	0%	0%	1%	86263
LO	41725	94	83				60		1			25	14	99%	0%	0%				0%		0%			0%	0%	42002
FR	6104	43		138	57		32	64	44		55	21	42	92%	1%		2%	1%		0%	1%	1%		1%	0%	1%	6600
W6	4018	33	43	28	12	27						25	44	95%	1%	1%	1%	0%	1%						1%	1%	4230
LH	3837													100%													3837
SRN	2680													100%													2680
ENT	2509													100%													2509
AF	1542													100%													1542
K2	1498	1												100%	0%												1499
QS	1057			23		1		20	20	15		1	187	80%			2%		0%		2%	2%	1%		0%	14%	1324
LX	1260													100%													1260
KL	1258													100%													1258
OS	1254													100%													1254
AY	1136													100%													1136
AB	1080													100%													1080
LLP	864	1	15	15	28	15		16	6				118	80%	0%	1%	1%	3%	1%		1%	1%				11%	1078
OK	1066													100%													1066
SK	878													100%													878
3Z	538	1											318	63%	0%											37%	857
BA	840													100%													840
SU	840													100%													840
BGY	579											157		79%												21%	736
3V	600													100%													600
DY	596													100%													596
UPS	536													100%													536
BT	330	90												79%	21%												420
EK	420													100%													420
PS	360		30	30										86%		7%	7%										420
QR	420													100%													420
AZ	392		4											99%	1%												396
TP	350													100%													350
FX	300													100%													300
SAR	300													100%													300
EI	298													100%													298
LY	296	1						1						99%	0%						0%						298
BCS	292													100%													292
B2	240													100%													240
TK	240													100%													240
WU	218													100%													218
A3	216													100%													216
SYA	194													100%													194
AP	174													100%													174
BJ	160													100%													160
CAI	158													100%													158
PC	147													100%													147
GNX	120													100%													120
X9	70													100%													70
ZY	68													100%													68
BUC	60													100%													60
OG				46													100%										46

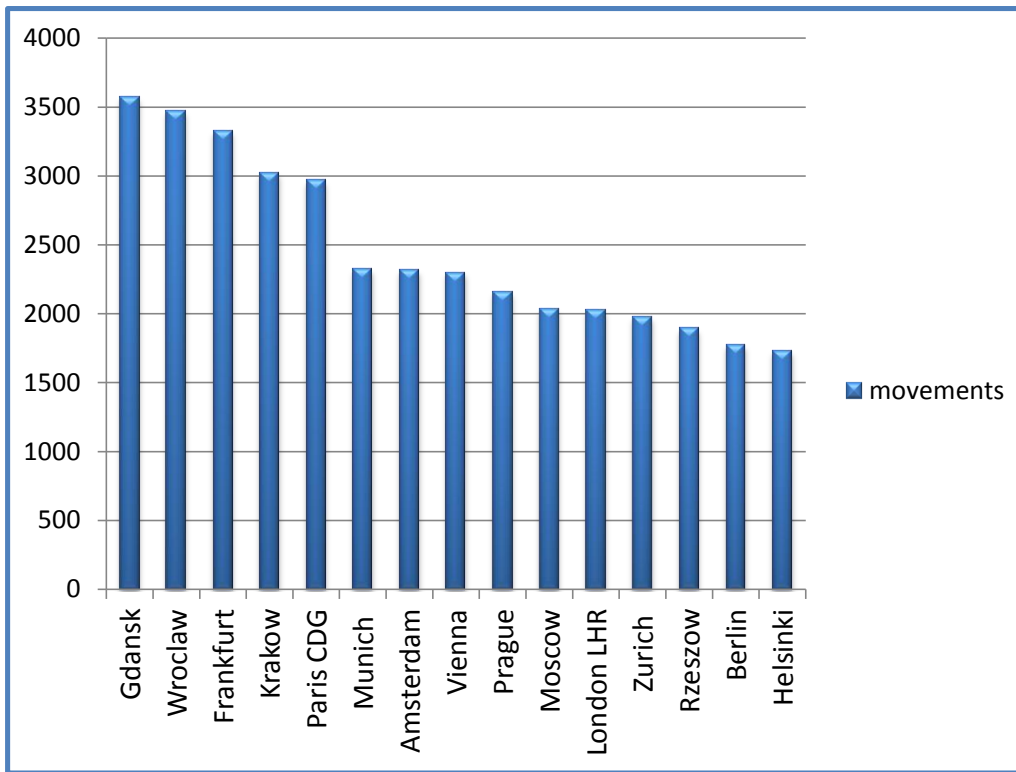
TOP AIRLINES BY ATM



TOP AIRLINES BY SEATS

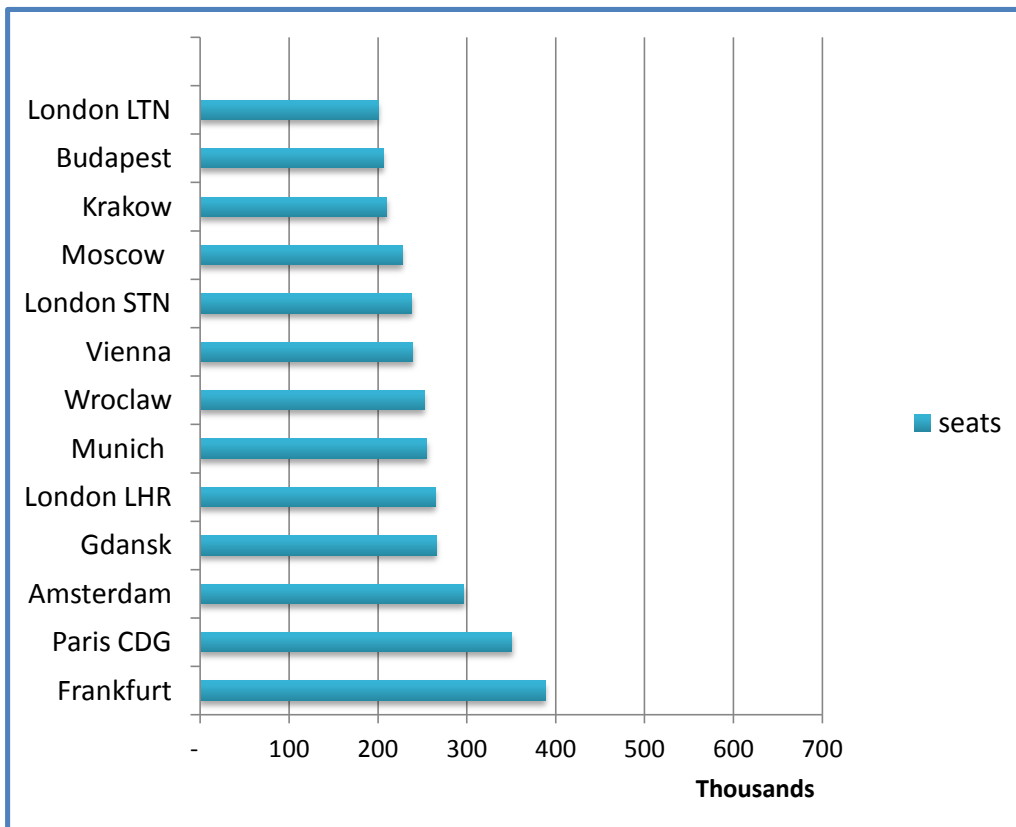


TOP ROUTES BY ATM



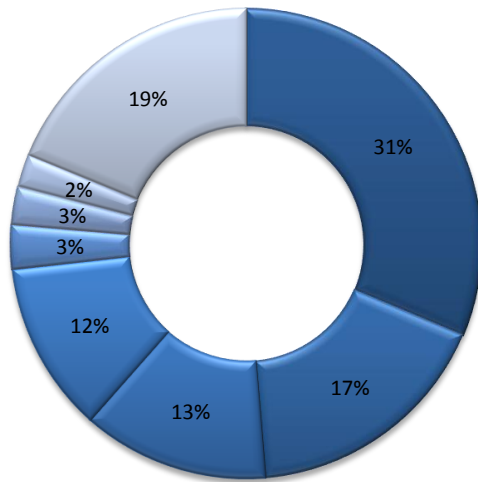
destination	movements
Gdansk	3571
Wroclaw	3471
Frankfurt	3325
Krakow	3018
Paris CDG	2964
Munich	2322
Amsterdam	2315
Vienna	2300
Prague	2156
Moscow	2034
London LHR	2028
Zurich	1974
Rzeszow	1891
Berlin	1772
Helsinki	1727

TOP ROUTES BY SEATS



destination	seats
Frankfurt	388,455
Paris CDG	350,676
Amsterdam	296,598
Gdansk	265,416
London LHR	264,384
Munich	255,078
Wroclaw	252,174
Vienna	239,112
London STN	238,140
Moscow	227,400
Krakow	209,920
Budapest	206,064
London LTN	200,160

TOP 10 AIRCRAFT TYPE

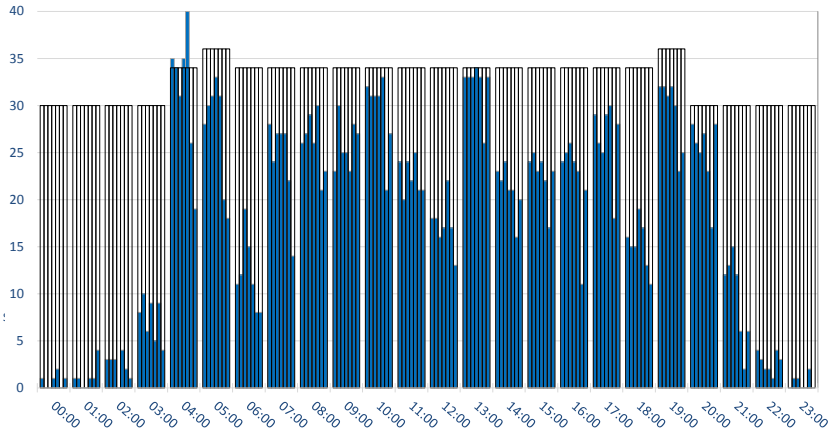


- Embraer 195
- DeHavilland DHC-8
- Boeing 737-800
- Airbus A320
- Saab SF340A
- Airbus A319
- Embraer 170
- Other

aircraft	movements
Embraer 195	27,629
DeHavilland DHC-8	15,304
Boeing 737-800	11,328
Airbus A320	10,319
Saab SF340A	2,742
Airbus A319	2,286
Embraer 170	1,986
Other	16,593

RUNWAY MOVEMENT DEMAND - R60 TOTALS

Movements per Hour - All times UTC

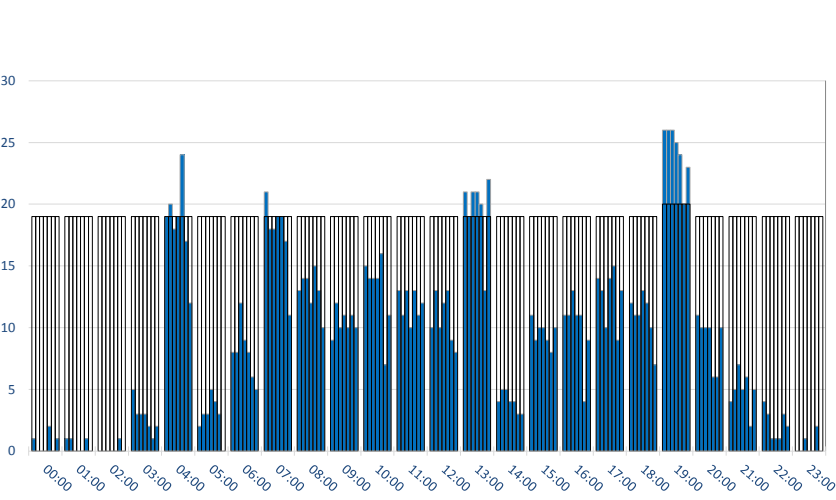


PEAK WEEK (02 SEP-08 SEP)

	CAPACITY							DEMAND						
	Mon	Tue	Wed	Thu	Fri	Sat	Sun	Mon	Tue	Wed	Thu	Fri	Sat	Sun
00:00	30	30	30	30	30	30	30	1	0	0	1	2	0	1
01:00	30	30	30	30	30	30	30	1	1	0	0	1	1	4
02:00	30	30	30	30	30	30	30	3	3	3	0	4	2	1
03:00	30	30	30	30	30	30	30	8	10	6	9	5	9	4
04:00	34	34	34	34	34	34	34	35	34	31	35	40	26	19
05:00	36	36	36	36	36	36	36	28	30	31	33	31	20	18
06:00	34	34	34	34	34	34	34	11	12	19	15	11	8	8
07:00	34	34	34	34	34	34	34	28	24	27	27	27	22	14
08:00	34	34	34	34	34	34	34	26	27	29	26	30	21	23
09:00	34	34	34	34	34	34	34	23	30	25	25	23	28	27
10:00	34	34	34	34	34	34	34	32	31	31	31	33	21	27
11:00	34	34	34	34	34	34	34	24	20	24	22	25	21	21
12:00	34	34	34	34	34	34	34	18	18	16	17	22	17	13
13:00	34	34	34	34	34	34	34	33	33	33	34	33	26	33
14:00	34	34	34	34	34	34	34	23	22	24	21	21	16	20
15:00	34	34	34	34	34	34	34	24	25	23	24	22	17	23
16:00	34	34	34	34	34	34	34	24	25	26	24	23	11	21
17:00	34	34	34	34	34	34	34	29	26	25	29	30	18	28
18:00	34	34	34	34	34	34	34	16	15	15	19	17	13	11
19:00	36	36	36	36	36	36	36	32	32	31	32	30	23	25
20:00	30	30	30	30	30	30	30	28	26	25	27	23	17	28
21:00	30	30	30	30	30	30	30	12	13	15	12	6	2	6
22:00	30	30	30	30	30	30	30	4	3	2	2	1	4	3
23:00	30	30	30	30	30	30	30	0	1	1	0	0	2	0

RUNWAY MOVEMENT DEMAND - R60 ARRIVALS

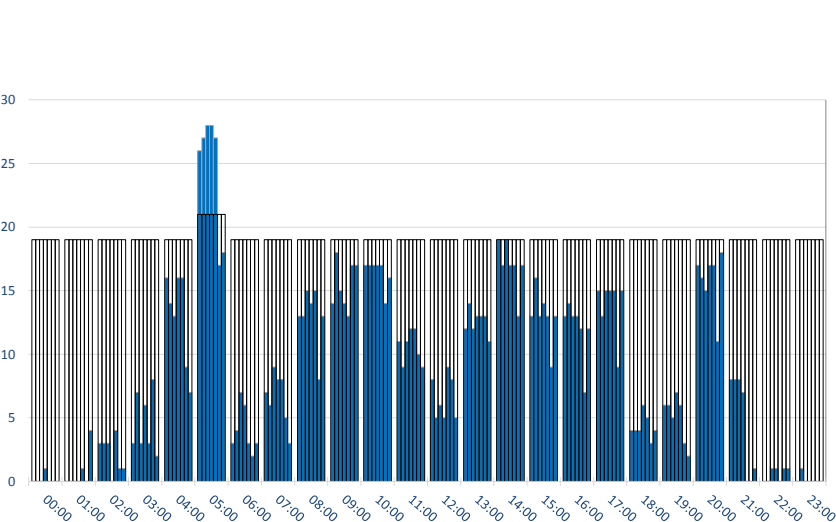
Movements per Hour - All times UTC



	CAPACITY							DEMAND						
	Mon	Tue	Wed	Thu	Fri	Sat	Sun	Mon	Tue	Wed	Thu	Fri	Sat	Sun
00:00	19	19	19	19	19	19	19	1	0	0	0	2	0	1
01:00	19	19	19	19	19	19	19	1	1	0	0	0	1	0
02:00	19	19	19	19	19	19	19	0	0	0	0	0	1	0
03:00	19	19	19	19	19	19	19	5	3	3	3	2	1	2
04:00	19	19	19	19	19	19	19	19	20	18	19	24	17	12
05:00	19	19	19	19	19	19	19	2	3	3	5	4	3	0
06:00	19	19	19	19	19	19	19	8	8	12	9	8	6	5
07:00	19	19	19	19	19	19	19	21	18	18	19	19	17	11
08:00	19	19	19	19	19	19	19	13	14	14	12	15	13	10
09:00	19	19	19	19	19	19	19	9	12	10	11	10	11	10
10:00	19	19	19	19	19	19	19	15	14	14	14	16	7	11
11:00	19	19	19	19	19	19	19	13	11	13	10	13	11	12
12:00	19	19	19	19	19	19	19	10	13	10	12	13	9	8
13:00	19	19	19	19	19	19	19	21	19	21	21	20	13	22
14:00	19	19	19	19	19	19	19	4	5	5	4	4	3	3
15:00	19	19	19	19	19	19	19	11	9	10	10	9	8	10
16:00	19	19	19	19	19	19	19	11	11	13	11	11	4	9
17:00	19	19	19	19	19	19	19	14	13	10	14	15	9	13
18:00	19	19	19	19	19	19	19	12	11	11	13	12	10	7
19:00	20	20	20	20	20	20	20	26	26	26	25	24	20	23
20:00	19	19	19	19	19	19	19	11	10	10	10	6	6	10
21:00	19	19	19	19	19	19	19	4	5	7	5	6	2	5
22:00	19	19	19	19	19	19	19	4	3	1	1	1	3	2
23:00	19	19	19	19	19	19	19	0	0	1	0	0	2	0

RUNWAY MOVEMENT DEMAND - R60 DEPARTURES

Movements per Hour - All times UTC

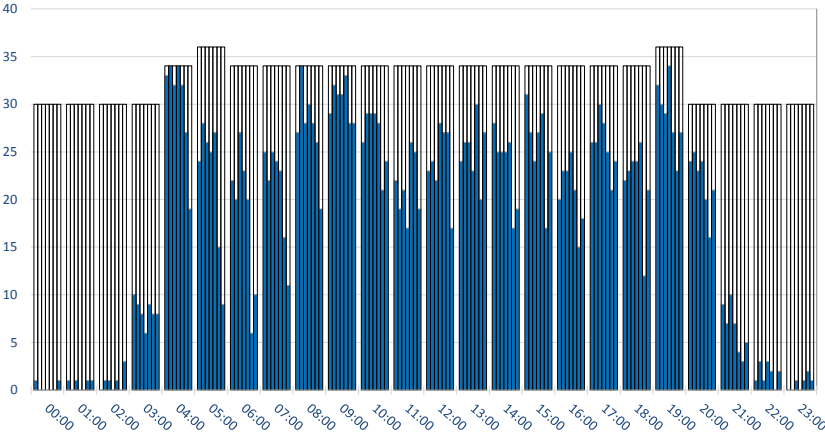


	CAPACITY							DEMAND						
	Mon	Tue	Wed	Thu	Fri	Sat	Sun	Mon	Tue	Wed	Thu	Fri	Sat	Sun
00:00	19	19	19	19	19	19	19	0	0	0	1	0	0	0
01:00	19	19	19	19	19	19	19	0	0	0	0	1	0	4
02:00	19	19	19	19	19	19	19	3	3	3	0	4	1	1
03:00	19	19	19	19	19	19	19	3	7	3	6	3	8	2
04:00	19	19	19	19	19	19	19	16	14	13	16	16	9	7
05:00	21	21	21	21	21	21	21	26	27	28	28	27	17	18
06:00	19	19	19	19	19	19	19	3	4	7	6	3	2	3
07:00	19	19	19	19	19	19	19	7	6	9	8	8	5	3
08:00	19	19	19	19	19	19	19	13	13	15	14	15	8	13
09:00	19	19	19	19	19	19	19	14	18	15	14	13	17	17
10:00	19	19	19	19	19	19	19	17	17	17	17	17	14	16
11:00	19	19	19	19	19	19	19	11	9	11	12	12	10	9
12:00	19	19	19	19	19	19	19	8	5	6	5	9	8	5
13:00	19	19	19	19	19	19	19	12	14	12	13	13	13	11
14:00	19	19	19	19	19	19	19	19	17	19	17	17	13	17
15:00	19	19	19	19	19	19	19	13	16	13	14	13	9	13
16:00	19	19	19	19	19	19	19	13	14	13	13	12	7	12
17:00	19	19	19	19	19	19	19	15	13	15	15	15	9	15
18:00	19	19	19	19	19	19	19	4	4	4	6	5	3	4
19:00	19	19	19	19	19	19	19	6	6	5	7	6	3	2
20:00	19	19	19	19	19	19	19	17	16	15	17	17	11	18
21:00	19	19	19	19	19	19	19	8	8	8	7	0	0	1
22:00	19	19	19	19	19	19	19	0	0	1	1	0	1	1
23:00	19	19	19	19	19	19	19	0	1	0	0	0	0	0

RUNWAY MOVEMENT ALLOCATION - R60 TOTALS

PEAK WEEK (02 SEP-08 SEP)

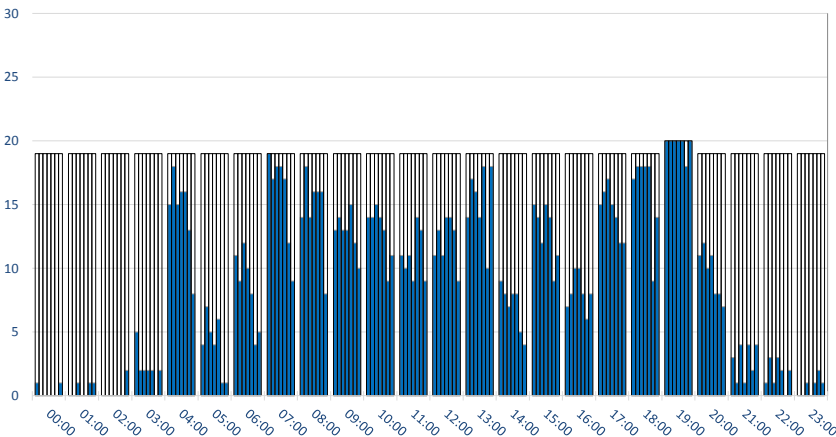
Movements per Hour - All times UTC



	CAPACITY							ALLOCATION						
	Mon	Tue	Wed	Thu	Fri	Sat	Sun	Mon	Tue	Wed	Thu	Fri	Sat	Sun
00:00	30	30	30	30	30	30	30	1	0	0	0	0	0	1
01:00	30	30	30	30	30	30	30	1	0	1	0	0	1	1
02:00	30	30	30	30	30	30	30	0	1	1	0	1	0	3
03:00	30	30	30	30	30	30	30	10	9	8	6	9	8	8
04:00	34	34	34	34	34	34	34	33	34	32	34	32	27	19
05:00	36	36	36	36	36	36	36	24	28	26	25	27	15	9
06:00	34	34	34	34	34	34	34	22	20	27	23	20	6	10
07:00	34	34	34	34	34	34	34	25	22	25	24	23	16	11
08:00	34	34	34	34	34	34	34	27	32	28	30	28	26	19
09:00	34	34	34	34	34	34	34	29	32	31	31	33	28	28
10:00	34	34	34	34	34	34	34	26	29	29	29	28	21	24
11:00	34	34	34	34	34	34	34	22	19	21	17	26	25	19
12:00	34	34	34	34	34	34	34	23	24	22	28	27	27	17
13:00	34	34	34	34	34	34	34	24	26	26	23	30	20	27
14:00	34	34	34	34	34	34	34	28	25	25	25	26	17	19
15:00	34	34	34	34	34	34	34	31	27	24	27	29	17	25
16:00	34	34	34	34	34	34	34	20	23	23	25	21	15	18
17:00	34	34	34	34	34	34	34	26	26	30	28	25	21	24
18:00	34	34	34	34	34	34	34	22	23	24	24	26	12	21
19:00	36	36	36	36	36	36	36	32	30	29	34	27	23	27
20:00	30	30	30	30	30	30	30	24	25	23	24	20	16	21
21:00	30	30	30	30	30	30	30	9	7	10	7	4	3	5
22:00	30	30	30	30	30	30	30	1	3	1	3	2	0	2
23:00	30	30	30	30	30	30	30	0	0	1	0	1	2	1

RUNWAY MOVEMENT ALLOCATION - R60 ARRIVALS

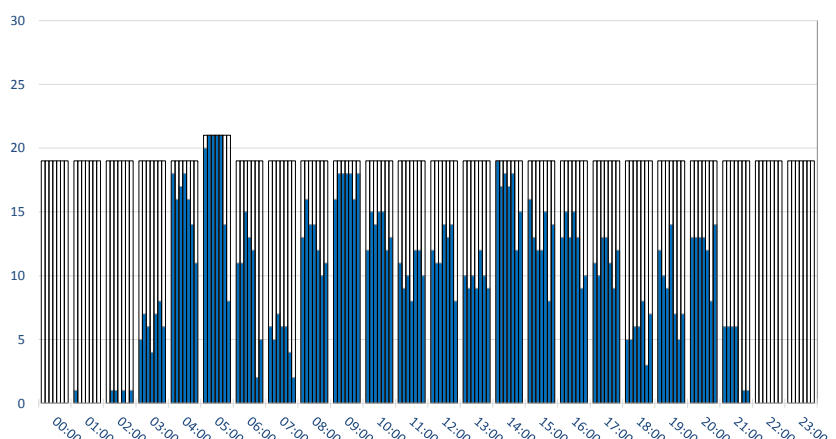
Movements per Hour - All times UTC



	CAPACITY							ALLOCATION						
	Mon	Tue	Wed	Thu	Fri	Sat	Sun	Mon	Tue	Wed	Thu	Fri	Sat	Sun
00:00	19	19	19	19	19	19	19	1	0	0	0	0	0	1
01:00	19	19	19	19	19	19	19	0	0	1	0	0	1	1
02:00	19	19	19	19	19	19	19	0	0	0	0	0	0	2
03:00	19	19	19	19	19	19	19	5	2	2	2	2	0	2
04:00	19	19	19	19	19	19	19	15	18	15	16	16	13	8
05:00	19	19	19	19	19	19	19	4	7	5	4	6	1	1
06:00	19	19	19	19	19	19	19	11	9	12	10	8	4	5
07:00	19	19	19	19	19	19	19	19	17	18	18	17	12	9
08:00	19	19	19	19	19	19	19	14	18	14	16	16	16	8
09:00	19	19	19	19	19	19	19	13	14	13	13	15	12	10
10:00	19	19	19	19	19	19	19	14	14	15	14	13	9	11
11:00	19	19	19	19	19	19	19	11	10	11	9	14	13	9
12:00	19	19	19	19	19	19	19	11	13	11	14	14	13	9
13:00	19	19	19	19	19	19	19	14	17	16	14	18	10	18
14:00	19	19	19	19	19	19	19	9	8	7	8	8	5	4
15:00	19	19	19	19	19	19	19	15	14	12	15	14	9	11
16:00	19	19	19	19	19	19	19	7	8	10	10	8	6	8
17:00	19	19	19	19	19	19	19	15	16	17	15	14	12	12
18:00	19	19	19	19	19	19	19	17	18	18	18	18	9	14
19:00	20	20	20	20	20	20	20	20	20	20	20	20	18	20
20:00	19	19	19	19	19	19	19	11	12	10	11	8	8	7
21:00	19	19	19	19	19	19	19	3	1	4	1	4	2	4
22:00	19	19	19	19	19	19	19	1	3	1	3	2	0	2
23:00	19	19	19	19	19	19	19	0	0	1	0	1	2	1

RUNWAY MOVEMENT ALLOCATION - R60 DEPARTURES

Movements per Hour - All times UTC

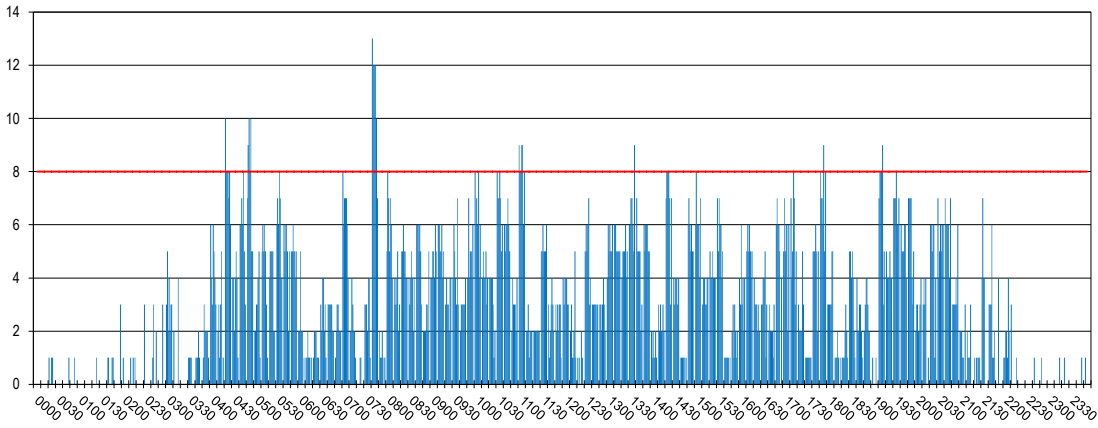


	CAPACITY							ALLOCATION						
	Mon	Tue	Wed	Thu	Fri	Sat	Sun	Mon	Tue	Wed	Thu	Fri	Sat	Sun
00:00	19	19	19	19	19	19	19	0	0	0	0	0	0	0
01:00	19	19	19	19	19	19	19	1	0	0	0	0	0	0
02:00	19	19	19	19	19	19	19	0	1	1	0	1	0	1
03:00	19	19	19	19	19	19	19	5	7	6	4	7	8	6
04:00	19	19	19	19	19	19	19	18	16	17	18	16	14	11
05:00	21	21	21	21	21	21	21	20	21	21	21	21	14	8
06:00	19	19	19	19	19	19	19	11	11	15	13	12	2	5
07:00	19	19	19	19	19	19	19	6	5	7	6	6	4	2
08:00	19	19	19	19	19	19	19	13	16	14	14	12	10	11
09:00	19	19	19	19	19	19	19	16	18	18	18	18	16	18
10:00	19	19	19	19	19	19	19	12	15	14	15	15	12	13
11:00	19	19	19	19	19	19	19	11	9	10	8	12	12	10
12:00	19	19	19	19	19	19	19	12	11	11	14	13	14	8
13:00	19	19	19	19	19	19	19	10	9	10	9	12	10	9
14:00	19	19	19	19	19	19	19	19	17	18	17	18	12	15
15:00	19	19	19	19	19	19	19	16	13	12	12	15	8	14
16:00	19	19	19	19	19	19	19	13	15	13	15	13	9	10
17:00	19	19	19	19	19	19	19	11	10	13	13	11	9	12
18:00	19	19	19	19	19	19	19	5	5	6	6	8	3	7
19:00	19	19	19	19	19	19	19	12	10	9	14	7	5	7
20:00	19	19	19	19	19	19	19	13	13	13	13	12	8	14
21:00	19	19	19	19	19	19	19	6	6	6	6	0	1	1
22:00	19	19	19	19	19	19	19	0	0	0	0	0	0	0
23:00	19	19	19	19	19	19	19	0	0	0	0	0	0	0

RUNWAY MOVEMENT DEMAND - R10 TOTALS

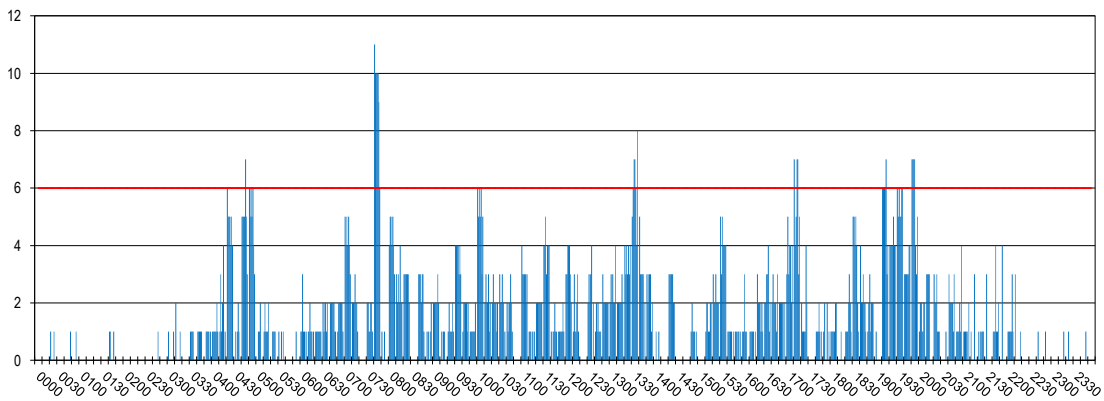
PEAK WEEK (02 SEP-08 SEP)

Peak Week Movements per 10 min - All times UTC



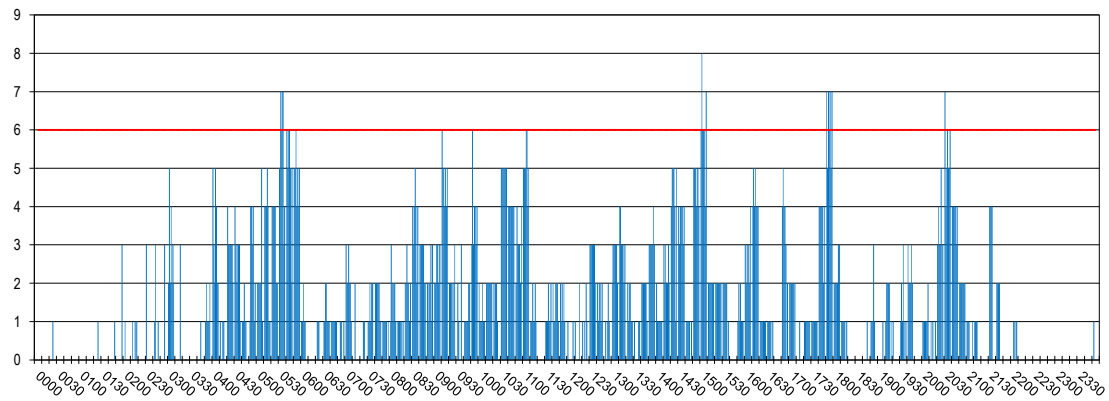
RUNWAY MOVEMENT DEMAND - R10 ARRIVALS

Peak Week Movements per 10 min - All times UTC



RUNWAY MOVEMENT DEMAND - R10 DEPARTURES

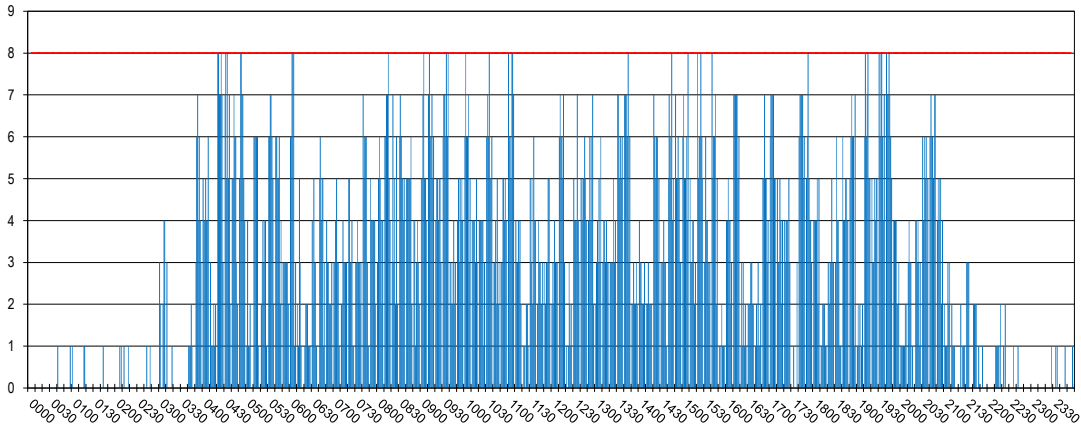
Peak Week Movements per 10 min - All times Local Time



RUNWAY MOVEMENT ALLOCATION - R10 TOTALS

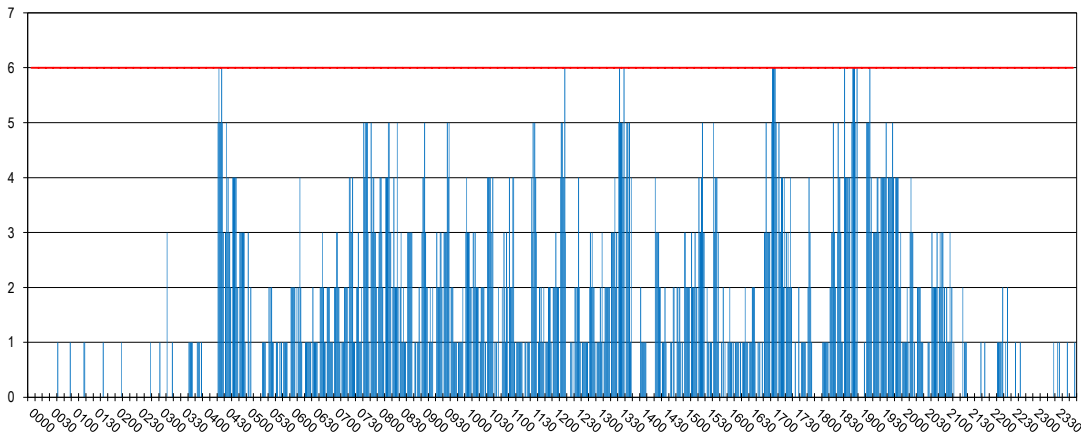
PEAK WEEK (02 SEP-08 SEP)

Peak Week Movements per 10 min - All times UTC



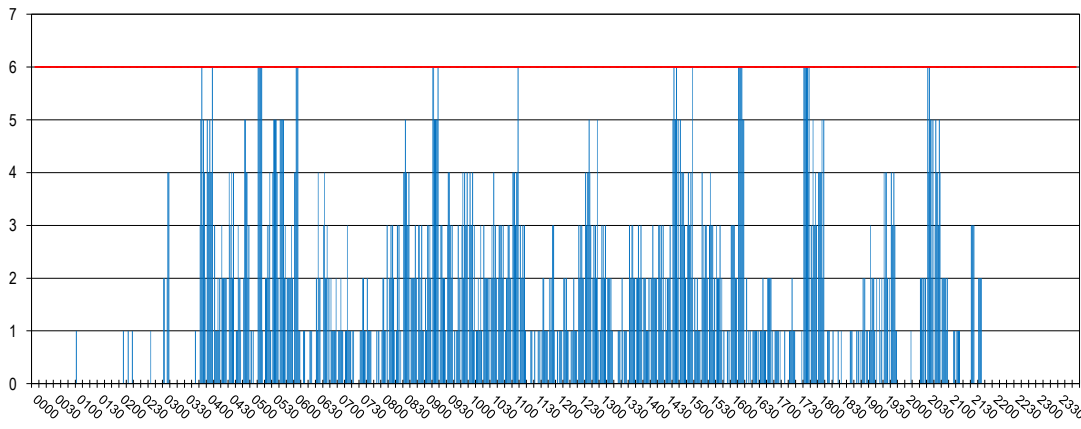
RUNWAY MOVEMENT ALLOCATION - R10 ARRIVALS

Peak Week Movements per 10 min - All times UTC



RUNWAY MOVEMENT ALLOCATION - R10 DEPARTURES

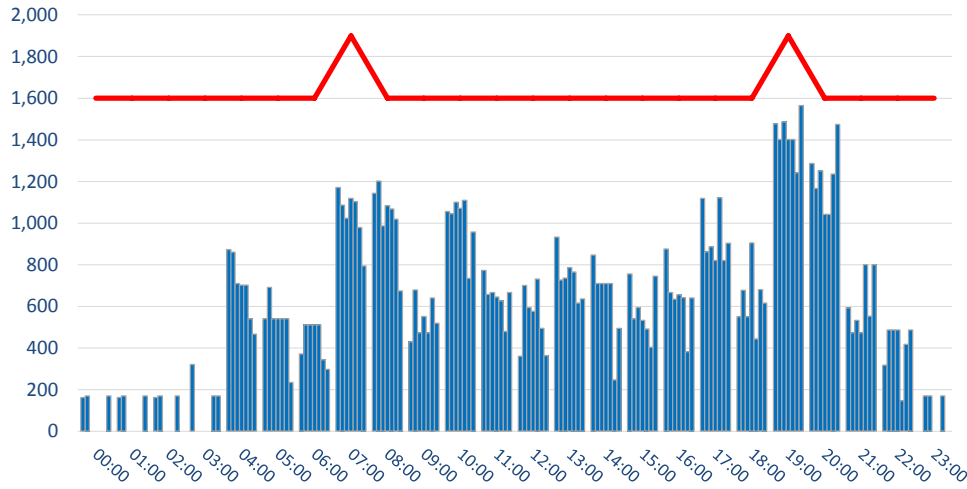
Peak Week Movements per 10 min - All times Local Time



TERMINAL - SCHENGEN ARRIVALS DEMAND

PEAK WEEK (02 SEP-08 SEP)

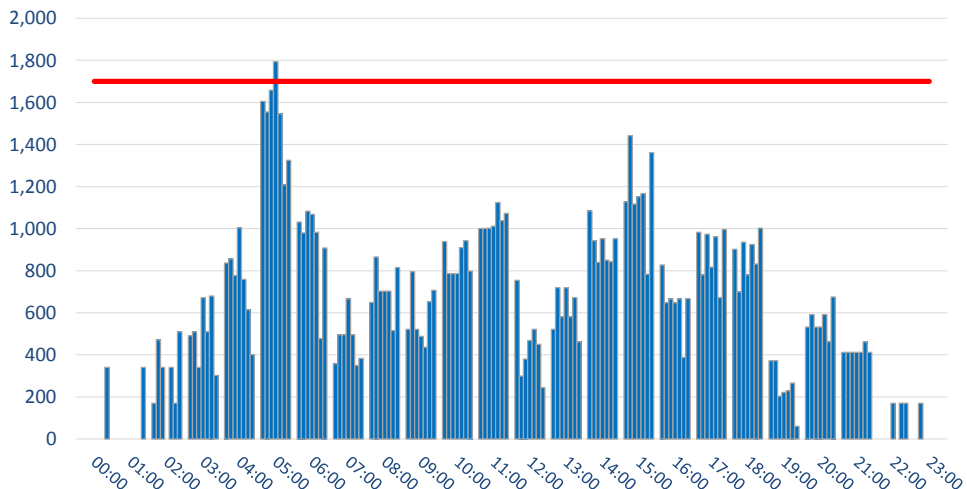
Passengers per Hour - All times UTC



	DEMAND							Capacity
	Mon	Tue	Wed	Thu	Fri	Sat	Sun	Limit
00:00	162	170	0	0	0	0	170	1600
01:00	162	170	0	0	0	0	170	1600
02:00	162	170	0	0	0	0	170	1600
03:00	321	0	0	0	0	170	170	1600
04:00	872	861	710	702	702	540	466	1600
05:00	540	691	540	540	540	540	235	1600
06:00	371	511	511	511	511	343	298	1600
07:00	1171	1087	1023	1119	1104	979	794	1900
08:00	1144	1202	987	1083	1068	1018	674	1600
09:00	429	679	473	551	473	640	519	1600
10:00	1056	1045	1100	1071	1109	734	957	1600
11:00	772	657	666	645	626	479	666	1600
12:00	360	701	594	575	731	494	363	1600
13:00	933	726	735	787	765	616	635	1600
14:00	847	710	710	710	710	246	494	1600
15:00	755	540	594	533	491	403	745	1600
16:00	875	667	634	656	642	382	640	1600
17:00	1119	862	887	820	1121	821	904	1600
18:00	550	678	550	905	444	680	616	1600
19:00	1477	1402	1486	1402	1402	1241	1564	1900
20:00	1286	1167	1251	1041	1041	1235	1474	1600
21:00	593	473	532	473	801	553	801	1600
22:00	317	487	487	487	147	418	487	1600
23:00	0	170	170	0	0	170	0	1600

TERMINAL - SCHENGEN DEPARTURES DEMAND

Passengers per Hour - All times UTC

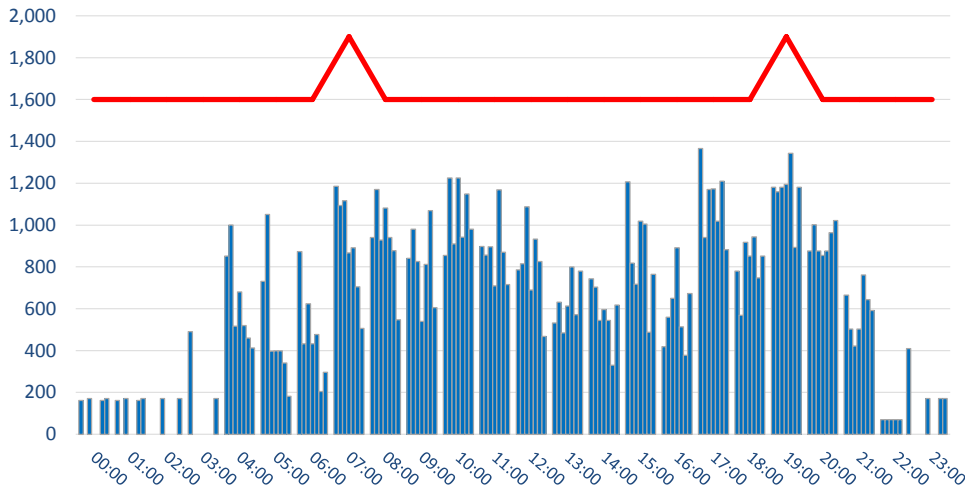


	DEMAND							Capacity
	Mon	Tue	Wed	Thu	Fri	Sat	Sun	Limit
00:00	0	0	0	0	0	0	340	1700
01:00	0	0	0	0	0	0	340	1700
02:00	170	472	340	0	340	170	510	1700
03:00	491	510	340	672	510	680	302	1700
04:00	837	857	778	1004	759	615	401	1700
05:00	1605	1555	1658	1794	1546	1208	1325	1700
06:00	1032	980	1083	1068	982	478	908	1700
07:00	357	496	496	666	496	350	383	1700
08:00	650	865	703	703	703	516	815	1700
09:00	522	796	522	488	436	652	707	1700
10:00	938	787	787	787	910	943	798	1700
11:00	1001	1001	1003	1012	1124	1038	1073	1700
12:00	755	299	380	469	521	450	245	1700
13:00	522	720	581	720	581	673	462	1700
14:00	1084	943	840	952	851	842	952	1700
15:00	1128	1443	1117	1151	1167	784	1361	1700
16:00	827	648	666	648	666	387	667	1700
17:00	983	781	973	817	962	672	996	1700
18:00	902	700	936	780	925	832	1002	1700
19:00	373	373	203	222	230	266	60	1700
20:00	532	592	532	532	592	462	675	1700
21:00	412	412	412	412	412	462	412	1700
22:00	0	0	0	170	0	170	170	1700
23:00	0	170	0	0	0	0	0	1700

TERMINAL - SCHENGEN ARRIVALS ALLOCATION

PEAK WEEK (02 SEP-08 SEP)

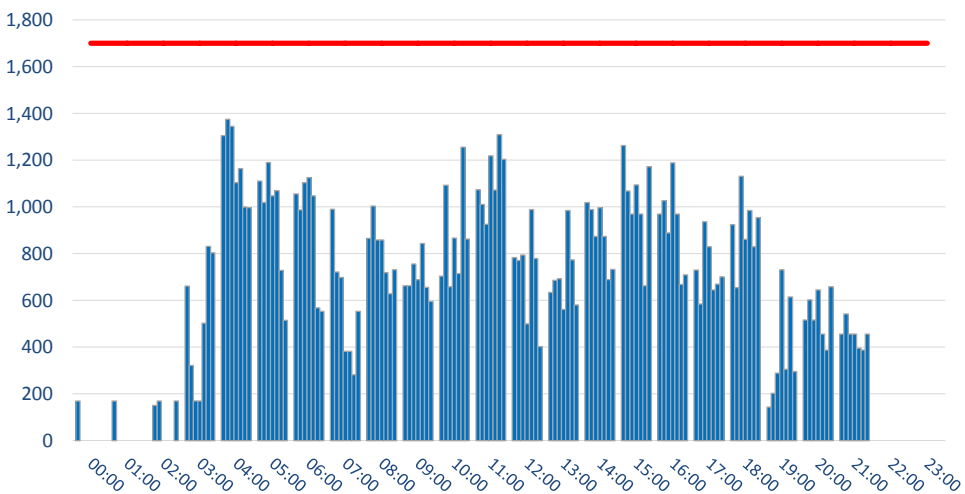
Passengers per Hour - All times UTC



	DEMAND							Capacity Limit
	Mon	Tue	Wed	Thu	Fri	Sat	Sun	
00:00	162	0	170	0	0	162	170	1600
01:00	162	0	170	0	0	162	170	1600
02:00	0	0	170	0	0	0	170	1600
03:00	491	0	0	0	0	0	170	1600
04:00	851	1000	517	681	519	460	413	1600
05:00	731	1050	397	399	399	340	182	1600
06:00	873	432	623	432	476	205	296	1600
07:00	1185	1094	1116	867	891	704	506	1900
08:00	941	1170	928	1081	941	878	547	1600
09:00	841	980	826	539	812	1069	606	1600
10:00	855	1225	909	1225	942	1148	980	1600
11:00	897	856	896	709	1168	870	715	1600
12:00	786	815	1088	689	933	825	467	1600
13:00	532	632	485	613	799	571	779	1600
14:00	743	703	544	596	544	330	618	1600
15:00	1207	818	717	1019	1004	487	765	1600
16:00	419	559	650	891	514	377	673	1600
17:00	1366	941	1170	1173	1019	1209	882	1600
18:00	779	568	918	851	943	747	852	1600
19:00	1181	1159	1181	1195	1343	893	1181	1900
20:00	876	1001	876	854	876	964	1021	1600
21:00	665	503	422	503	762	644	592	1600
22:00	69	69	69	69	69	0	409	1600
23:00	0	0	170	0	0	170	170	1600

TERMINAL - SCHENGEN DEPARTURES ALLOCATION

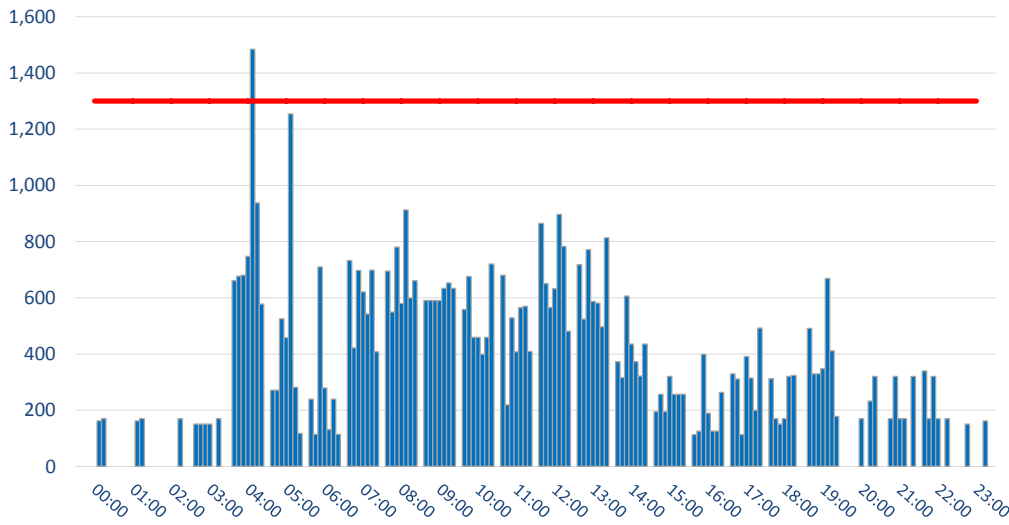
Passengers per Hour - All times UTC



	DEMAND							Capacity Limit
	Mon	Tue	Wed	Thu	Fri	Sat	Sun	
00:00	170	0	0	0	0	0	0	1700
01:00	170	0	0	0	0	0	0	1700
02:00	0	151	170	0	0	0	170	1700
03:00	661	321	170	170	502	831	804	1700
04:00	1305	1375	1345	1103	1164	1000	997	1700
05:00	1111	1018	1190	1047	1069	729	514	1700
06:00	1056	987	1104	1126	1047	568	553	1700
07:00	990	722	698	382	382	282	553	1700
08:00	865	1004	858	858	719	629	731	1700
09:00	662	662	756	689	844	656	596	1700
10:00	704	1093	658	867	714	1256	862	1700
11:00	1074	1011	926	1218	1072	1309	1204	1700
12:00	783	771	794	500	989	779	403	1700
13:00	634	686	693	561	985	773	581	1700
14:00	1019	988	873	997	873	689	732	1700
15:00	1262	1068	970	1094	970	663	1172	1700
16:00	970	1027	888	1189	970	668	709	1700
17:00	730	584	937	829	645	669	701	1700
18:00	924	654	1131	861	985	829	954	1700
19:00	143	203	289	731	305	615	295	1700
20:00	516	602	516	645	456	387	659	1700
21:00	456	542	456	456	396	387	456	1700
22:00	0	0	0	0	0	0	0	1700
23:00	0	0	0	0	0	0	0	1700

TERMINAL - NON SCHENGEN ARRIVALS DEMAND

Passengers per Hour - All times UTC

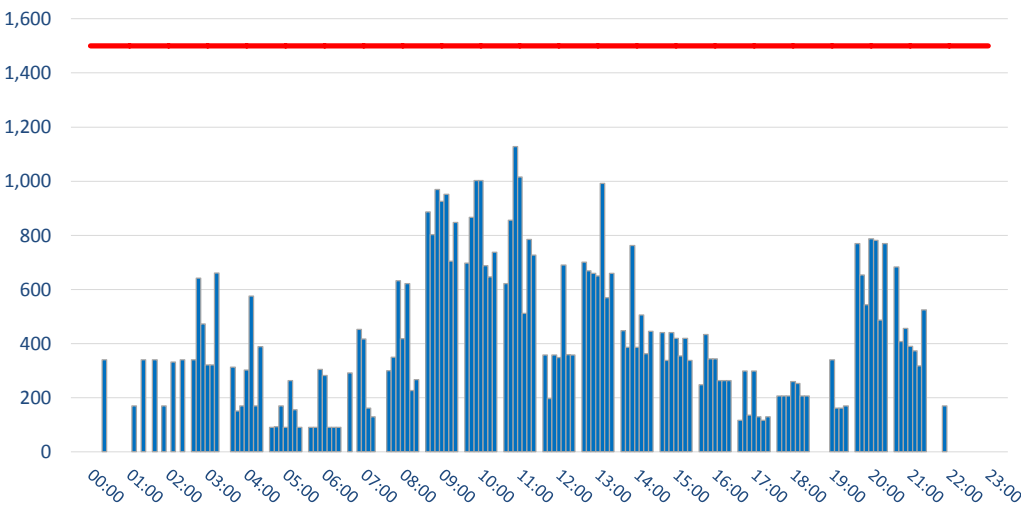


PEAK WEEK (02 SEP-08 SEP)

	DEMAND							Capacity Limit
	Mon	Tue	Wed	Thu	Fri	Sat	Sun	
00:00	0	0	0	0	162	170	0	1300
01:00	0	0	0	0	162	170	0	1300
02:00	0	0	0	0	0	170	0	1300
03:00	151	151	151	151	0	170	0	1300
04:00	661	677	680	748	1484	938	578	1300
05:00	272	272	525	458	1254	282	118	1300
06:00	240	114	710	279	131	240	114	1300
07:00	733	422	698	621	543	699	408	1300
08:00	695	549	781	580	913	599	661	1300
09:00	590	590	590	590	634	653	634	1300
10:00	559	676	459	459	399	459	720	1300
11:00	680	219	529	408	565	570	409	1300
12:00	865	651	565	632	897	783	481	1300
13:00	718	524	771	587	581	497	814	1300
14:00	373	316	606	436	373	322	436	1300
15:00	195	257	195	321	257	257	257	1300
16:00	113	126	399	190	126	126	264	1300
17:00	329	311	113	391	315	200	492	1300
18:00	313	170	151	170	321	324	0	1300
19:00	491	329	329	348	669	411	178	1300
20:00	0	0	0	170	0	233	321	1300
21:00	0	170	321	170	170	0	321	1300
22:00	340	170	321	170	0	170	0	1300
23:00	0	151	0	0	0	162	0	1300

TERMINAL - NON SCHENGEN DEPARTURES DEMAND

Passengers per Hour - All times UTC

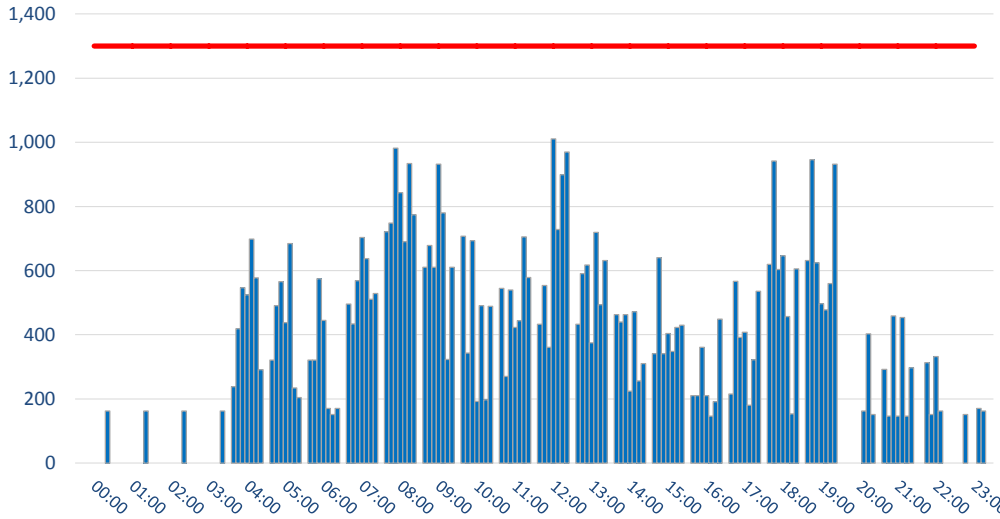


	DEMAND							Capacity Limit
	Mon	Tue	Wed	Thu	Fri	Sat	Sun	
00:00	0	0	0	0	0	0	340	1500
01:00	0	0	0	0	170	0	340	1500
02:00	340	0	170	0	332	0	340	1500
03:00	340	642	472	321	321	661	0	1500
04:00	313	151	170	302	576	170	389	1500
05:00	90	93	170	90	263	155	90	1500
06:00	90	90	305	282	90	90	90	1500
07:00	291	0	453	417	162	129	0	1500
08:00	300	349	632	418	621	226	267	1500
09:00	887	803	969	926	952	704	847	1500
10:00	697	866	1002	1002	688	647	737	1500
11:00	621	856	1128	1016	512	785	727	1500
12:00	358	197	358	348	690	359	358	1500
13:00	701	669	660	650	992	570	660	1500
14:00	448	386	762	386	506	362	445	1500
15:00	440	338	440	419	354	419	338	1500
16:00	248	433	344	344	263	263	263	1500
17:00	116	299	135	299	129	116	129	1500
18:00	206	206	206	260	252	206	206	1500
19:00	0	0	0	340	162	162	170	1500
20:00	770	653	543	787	781	487	770	1500
21:00	683	407	456	390	373	317	524	1500
22:00	0	0	170	0	0	0	0	1500
23:00	0	0	0	0	0	0	0	1500

TERMINAL - NON SCHENGEN ARRIVALS ALLOCATION

PEAK WEEK (02 SEP-08 SEP)

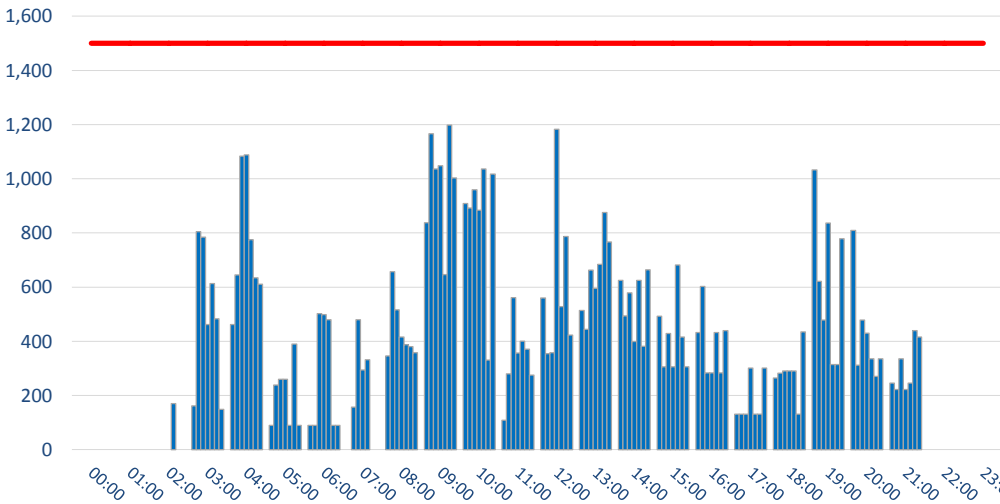
Passengers per Hour - All times UTC



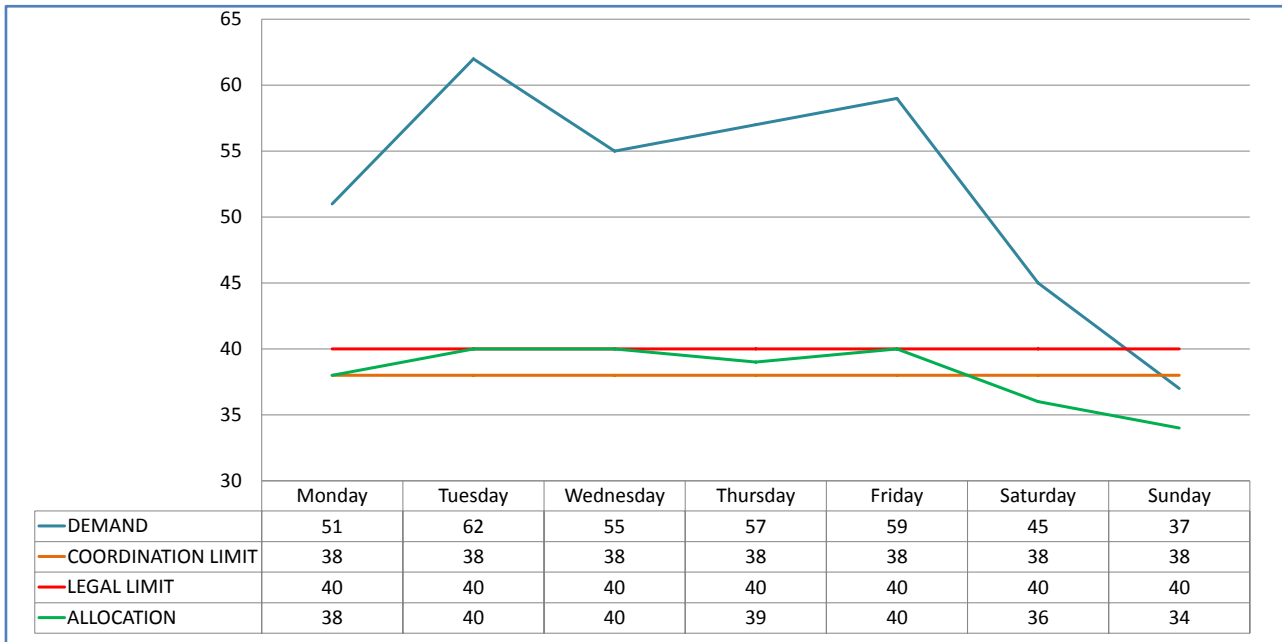
	DEMAND							Capacity Limit
	Mon	Tue	Wed	Thu	Fri	Sat	Sun	
00:00	0	0	0	0	0	0	162	1300
01:00	0	0	0	0	0	0	162	1300
02:00	0	0	0	0	0	0	162	1300
03:00	0	0	0	0	0	0	162	1300
04:00	238	419	547	525	698	578	291	1300
05:00	321	491	566	438	684	234	204	1300
06:00	321	321	575	445	170	151	170	1300
07:00	496	434	569	703	637	511	529	1300
08:00	721	748	982	843	690	934	774	1300
09:00	610	678	610	932	780	323	610	1300
10:00	707	343	693	192	491	197	489	1300
11:00	545	270	540	423	444	705	579	1300
12:00	433	554	361	1011	728	899	970	1300
13:00	433	591	617	375	719	494	631	1300
14:00	463	440	463	224	472	256	310	1300
15:00	341	640	341	404	348	423	430	1300
16:00	210	210	361	210	146	191	449	1300
17:00	215	567	392	408	180	322	536	1300
18:00	619	942	603	646	457	153	605	1300
19:00	631	946	624	497	478	560	932	1300
20:00	0	0	0	0	162	403	151	1300
21:00	292	146	459	146	454	146	297	1300
22:00	0	313	151	332	162	0	0	1300
23:00	0	151	0	0	170	162	0	1300

TERMINAL - NON SCHENGEN DEPARTURES ALLOCATION

Passengers per Hour - All times UTC



	DEMAND							Capacity Limit
	Mon	Tue	Wed	Thu	Fri	Sat	Sun	
00:00	0	0	0	0	0	0	0	1500
01:00	0	0	0	0	0	0	0	1500
02:00	0	0	0	0	0	170	0	1500
03:00	162	804	785	462	613	483	149	1500
04:00	462	645	1083	1088	775	635	611	1500
05:00	90	239	260	260	90	390	90	1500
06:00	90	90	502	499	480	90	90	1500
07:00	0	157	480	294	332	0	0	1500
08:00	346	657	516	416	387	380	358	1500
09:00	838	1166	1036	1048	646	1198	1003	1500
10:00	908	892	959	884	1036	331	1017	1500
11:00	109	280	561	357	400	371	275	1500
12:00	560	354	358	1183	528	787	423	1500
13:00	514	444	663	595	684	876	767	1500
14:00	625	494	579	399	625	382	664	1500
15:00	493	306	429	306	682	416	306	1500
16:00	432	602	283	283	432	283	440	1500
17:00	131	131	131	301	131	131	301	1500
18:00	265	282	291	291	291	131	435	1500
19:00	1033	622	478	837	314	314	779	1500
20:00	809	312	478	430	336	270	336	1500
21:00	246	222	336	222	246	440	416	1500
22:00	0	0	0	0	0	0	0	1500
23:00	0	0	0	0	0	0	0	1500



NOTE: Slots allocated up to the legal limit are on non historic basis due to Modlin Airport closure with permission of PPL

MODLIN AIRPORT CLOSURE IMPACT

RUNWAY R60 TOTALS UTILIZATION

(peak week 02-08 SEP)

Hour UTC	RUNWAY HOURLY UTILIZATION - TOTALS							OF WHICH CARRIERS FROM MODLIN						
	Mon	Tue	Wed	Thu	Fri	Sat	Sun	Mon	Tue	Wed	Thu	Fri	Sat	Sun
00:00	3%	0%	0%	0%	0%	0%	3%	0%	0%	0%	0%	0%	0%	0%
01:00	3%	0%	3%	0%	0%	3%	3%	0%	0%	0%	0%	0%	0%	0%
02:00	0%	3%	3%	0%	3%	0%	10%	0%	0%	0%	0%	0%	0%	0%
03:00	33%	30%	27%	20%	30%	27%	27%	0%	0%	0%	3%	3%	0%	3%
04:00	97%	100%	94%	100%	94%	79%	56%	9%	6%	12%	3%	6%	9%	9%
05:00	67%	78%	72%	69%	75%	42%	25%	0%	3%	0%	0%	0%	0%	0%
06:00	65%	59%	79%	68%	59%	18%	29%	15%	3%	6%	3%	0%	0%	0%
07:00	74%	65%	74%	71%	68%	47%	32%	12%	9%	6%	0%	6%	3%	3%
08:00	79%	100%	82%	88%	82%	76%	56%	15%	24%	12%	24%	9%	26%	15%
09:00	85%	94%	91%	91%	97%	82%	82%	9%	12%	15%	18%	6%	15%	12%
10:00	76%	85%	85%	85%	82%	62%	71%	3%	12%	12%	12%	9%	9%	15%
11:00	65%	56%	62%	50%	76%	74%	56%	12%	12%	12%	6%	26%	15%	0%
12:00	68%	71%	65%	82%	79%	79%	50%	6%	15%	9%	18%	12%	26%	3%
13:00	71%	76%	76%	68%	88%	59%	79%	0%	6%	6%	0%	9%	0%	15%
14:00	82%	74%	74%	74%	76%	50%	56%	15%	3%	3%	9%	3%	0%	0%
15:00	91%	79%	71%	79%	85%	50%	74%	29%	18%	9%	15%	24%	12%	15%
16:00	59%	68%	68%	74%	62%	44%	53%	3%	6%	3%	6%	3%	6%	3%
17:00	76%	76%	88%	82%	74%	62%	71%	9%	0%	15%	3%	6%	0%	0%
18:00	65%	68%	71%	71%	76%	35%	62%	9%	9%	18%	15%	21%	6%	18%
19:00	89%	83%	81%	94%	75%	64%	75%	6%	8%	6%	6%	3%	11%	14%
20:00	80%	83%	77%	80%	67%	53%	70%	3%	13%	3%	7%	3%	13%	3%
21:00	30%	23%	33%	23%	13%	10%	17%	7%	3%	3%	3%	7%	3%	3%
22:00	3%	10%	3%	10%	7%	0%	7%	0%	0%	0%	0%	0%	0%	0%
23:00	0%	0%	3%	0%	3%	7%	3%	0%	0%	0%	0%	0%	0%	0%

MODLIN AIRPORT CLOSURE IMPACT

RUNWAY R60 ARRIVALS UTILIZATION

(peak week 02-08 SEP)

Hour UTC	RUNWAY HOURLY UTILIZATION - ARRIVALS							OF WHICH CARRIERS FROM MODLIN						
	Mon	Tue	Wed	Thu	Fri	Sat	Sun	Mon	Tue	Wed	Thu	Fri	Sat	Sun
00:00	5%	0%	0%	0%	0%	0%	5%	0%	0%	0%	0%	0%	0%	0%
01:00	0%	0%	5%	0%	0%	5%	5%	0%	0%	0%	0%	0%	0%	0%
02:00	0%	0%	0%	0%	0%	0%	11%	0%	0%	0%	0%	0%	0%	0%
03:00	26%	11%	11%	11%	11%	0%	11%	0%	0%	0%	0%	0%	0%	0%
04:00	79%	95%	79%	84%	84%	68%	42%	0%	0%	0%	0%	0%	0%	0%
05:00	21%	37%	26%	21%	32%	5%	5%	0%	0%	0%	0%	0%	0%	0%
06:00	58%	47%	63%	53%	42%	21%	26%	16%	5%	5%	0%	0%	0%	0%
07:00	100%	89%	95%	95%	89%	63%	47%	11%	11%	11%	0%	5%	5%	5%
08:00	74%	95%	74%	84%	84%	84%	42%	11%	16%	5%	26%	11%	26%	11%
09:00	68%	74%	68%	68%	79%	63%	53%	11%	11%	16%	11%	5%	11%	16%
10:00	74%	74%	79%	74%	68%	47%	58%	0%	11%	11%	11%	5%	5%	11%
11:00	58%	53%	58%	47%	74%	68%	47%	11%	16%	11%	11%	26%	16%	0%
12:00	58%	68%	58%	74%	74%	68%	47%	5%	11%	11%	11%	11%	21%	5%
13:00	74%	89%	84%	74%	95%	53%	95%	0%	5%	5%	0%	5%	0%	11%
14:00	47%	42%	37%	42%	42%	26%	21%	16%	0%	0%	11%	5%	0%	0%
15:00	79%	74%	63%	79%	74%	47%	58%	26%	21%	11%	16%	21%	16%	16%
16:00	37%	42%	53%	53%	42%	32%	42%	0%	0%	0%	0%	0%	0%	0%
17:00	79%	84%	89%	79%	74%	63%	63%	11%	0%	16%	5%	11%	0%	0%
18:00	89%	95%	95%	95%	95%	47%	74%	11%	16%	21%	16%	16%	11%	26%
19:00	100%	100%	100%	100%	100%	90%	100%	0%	0%	0%	0%	0%	5%	5%
20:00	58%	63%	53%	58%	42%	42%	37%	5%	16%	5%	11%	5%	16%	5%
21:00	16%	5%	21%	5%	21%	11%	21%	11%	5%	5%	5%	11%	5%	5%
22:00	5%	16%	5%	16%	11%	0%	11%	0%	0%	0%	0%	0%	0%	0%
23:00	0%	0%	5%	0%	5%	11%	5%	0%	0%	0%	0%	0%	0%	0%

MODLIN AIRPORT CLOSURE IMPACT

RUNWAY R60 DEPARTURES UTILIZATION

(peak week 02-08 SEP)

Hour UTC	RUNWAY HOURLY UTILIZATION - DEPARTURES							OF WHICH CARRIERS FROM MODLIN						
	Mon	Tue	Wed	Thu	Fri	Sat	Sun	Mon	Tue	Wed	Thu	Fri	Sat	Sun
00:00	0%	0%	0%	0%	0%	0%	0%	0%	0%	0%	0%	0%	0%	0%
01:00	5%	0%	0%	0%	0%	0%	0%	0%	0%	0%	0%	0%	0%	0%
02:00	0%	5%	5%	0%	5%	0%	5%	0%	0%	0%	0%	0%	0%	0%
03:00	26%	37%	32%	21%	37%	42%	32%	0%	0%	0%	5%	5%	0%	5%
04:00	95%	84%	89%	95%	84%	74%	58%	16%	11%	21%	5%	11%	16%	16%
05:00	95%	100%	100%	100%	100%	67%	38%	0%	5%	0%	0%	0%	0%	0%
06:00	58%	58%	79%	68%	63%	11%	26%	11%	0%	5%	5%	0%	0%	0%
07:00	32%	26%	37%	32%	32%	21%	11%	11%	5%	0%	0%	5%	0%	0%
08:00	68%	84%	74%	74%	63%	53%	58%	16%	26%	16%	16%	5%	21%	16%
09:00	84%	95%	95%	95%	95%	84%	95%	5%	11%	11%	21%	5%	16%	5%
10:00	63%	79%	74%	79%	79%	63%	68%	5%	11%	11%	11%	11%	11%	16%
11:00	58%	47%	53%	42%	63%	63%	53%	11%	5%	11%	0%	21%	11%	0%
12:00	63%	58%	58%	74%	68%	74%	42%	5%	16%	5%	21%	11%	26%	0%
13:00	53%	47%	53%	47%	63%	53%	47%	0%	5%	5%	0%	11%	0%	16%
14:00	100%	89%	95%	89%	95%	63%	79%	11%	5%	5%	5%	0%	0%	0%
15:00	84%	68%	63%	63%	79%	42%	74%	26%	11%	5%	11%	21%	5%	11%
16:00	68%	79%	68%	79%	68%	47%	53%	5%	11%	5%	11%	5%	11%	5%
17:00	58%	53%	68%	68%	58%	47%	63%	5%	0%	11%	0%	0%	0%	0%
18:00	26%	26%	32%	32%	42%	16%	37%	5%	0%	11%	11%	21%	0%	5%
19:00	63%	53%	47%	74%	37%	26%	37%	11%	16%	11%	11%	5%	16%	21%
20:00	68%	68%	68%	68%	63%	42%	74%	0%	5%	0%	0%	0%	5%	0%
21:00	32%	32%	32%	32%	0%	5%	5%	0%	0%	0%	0%	0%	0%	0%
22:00	0%	0%	0%	0%	0%	0%	0%	0%	0%	0%	0%	0%	0%	0%
23:00	0%	0%	0%	0%	0%	0%	0%	0%	0%	0%	0%	0%	0%	0%

MODLIN AIRPORT CLOSURE IMPACT

TERMINAL T60 ARRIVALS UTILIZATION

(peak week 02-08 SEP)

Hour UTC	TERMINAL HOURLY UTILIZATION - ARRIVALS							OF WHICH CARRIERS FROM MODLIN						
	Mon	Tue	Wed	Thu	Fri	Sat	Sun	Mon	Tue	Wed	Thu	Fri	Sat	Sun
00:00	0%	0%	11%	0%	0%	10%	11%	0%	0%	0%	0%	0%	0%	0%
01:00	0%	0%	11%	0%	0%	10%	11%	0%	0%	0%	0%	0%	0%	0%
02:00	0%	0%	0%	0%	0%	0%	21%	0%	0%	0%	0%	0%	0%	0%
03:00	31%	0%	0%	0%	0%	0%	11%	0%	0%	0%	0%	0%	0%	0%
04:00	68%	89%	67%	75%	76%	65%	44%	0%	0%	0%	0%	0%	0%	0%
05:00	33%	56%	33%	23%	42%	9%	11%	0%	0%	0%	0%	0%	0%	0%
06:00	63%	45%	72%	52%	35%	18%	27%	28%	10%	9%	0%	0%	0%	0%
07:00	88%	80%	89%	83%	80%	64%	54%	15%	15%	15%	0%	8%	8%	8%
08:00	76%	104%	73%	92%	90%	103%	63%	19%	27%	10%	45%	18%	46%	18%
09:00	91%	92%	90%	92%	99%	87%	76%	18%	19%	27%	19%	9%	18%	27%
10:00	92%	86%	100%	87%	81%	74%	80%	0%	18%	19%	18%	10%	9%	18%
11:00	73%	63%	73%	54%	101%	81%	60%	18%	28%	18%	19%	46%	28%	0%
12:00	73%	84%	69%	91%	93%	92%	63%	9%	18%	18%	18%	18%	37%	9%
13:00	55%	76%	69%	54%	84%	47%	88%	0%	6%	7%	0%	7%	0%	18%
14:00	56%	44%	33%	47%	43%	21%	20%	28%	0%	0%	19%	10%	0%	0%
15:00	93%	90%	66%	89%	84%	57%	75%	45%	37%	18%	27%	36%	27%	27%
16:00	30%	41%	58%	60%	40%	36%	59%	0%	0%	0%	0%	0%	0%	0%
17:00	91%	94%	98%	79%	66%	81%	61%	18%	0%	25%	9%	16%	0%	0%
18:00	87%	94%	95%	94%	88%	56%	91%	19%	29%	37%	28%	28%	19%	47%
19:00	71%	70%	71%	70%	88%	76%	79%	0%	0%	0%	0%	0%	8%	8%
20:00	42%	51%	33%	42%	54%	61%	42%	9%	27%	9%	18%	9%	27%	9%
21:00	28%	9%	32%	9%	33%	19%	34%	18%	9%	9%	9%	18%	9%	9%
22:00	4%	24%	4%	25%	14%	0%	15%	0%	0%	0%	0%	0%	0%	0%
23:00	0%	0%	11%	0%	11%	21%	11%	0%	0%	0%	0%	0%	0%	0%

MODLIN AIRPORT CLOSURE IMPACT

TERMINAL T60 DEPARTURES UTILIZATION

(peak week 02-08 SEP)

Hour UTC	TERMINAL HOURLY UTILIZATION - DEPARTURES							OF WHICH CARRIERS FROM MODLIN						
	Mon	Tue	Wed	Thu	Fri	Sat	Sun	Mon	Tue	Wed	Thu	Fri	Sat	Sun
00:00	10%	0%	0%	0%	0%	0%	0%	0%	0%	0%	0%	0%	0%	0%
01:00	10%	0%	0%	0%	0%	0%	0%	0%	0%	0%	0%	0%	0%	0%
02:00	0%	9%	10%	0%	10%	0%	10%	0%	0%	0%	0%	0%	0%	0%
03:00	48%	66%	56%	37%	66%	77%	56%	0%	0%	0%	9%	9%	0%	9%
04:00	94%	90%	97%	102%	87%	87%	86%	25%	16%	34%	8%	16%	25%	25%
05:00	71%	73%	74%	75%	68%	60%	36%	0%	9%	0%	0%	0%	0%	0%
06:00	62%	56%	93%	74%	67%	8%	33%	17%	0%	9%	8%	0%	0%	0%
07:00	31%	23%	41%	30%	23%	17%	8%	17%	9%	0%	0%	9%	0%	0%
08:00	71%	98%	81%	75%	65%	59%	64%	26%	43%	26%	26%	9%	35%	26%
09:00	78%	95%	94%	102%	87%	92%	90%	8%	18%	17%	35%	8%	26%	8%
10:00	77%	97%	95%	94%	103%	93%	87%	9%	17%	18%	17%	18%	17%	26%
11:00	68%	47%	64%	47%	68%	77%	59%	17%	9%	17%	0%	34%	18%	0%
12:00	79%	66%	68%	99%	87%	92%	49%	9%	26%	9%	36%	17%	44%	0%
13:00	55%	44%	51%	41%	65%	54%	58%	0%	9%	9%	0%	17%	0%	26%
14:00	97%	87%	85%	82%	88%	54%	82%	18%	9%	9%	9%	0%	0%	0%
15:00	85%	61%	56%	53%	78%	39%	72%	43%	18%	9%	18%	35%	9%	18%
16:00	60%	78%	60%	78%	60%	47%	50%	8%	16%	8%	16%	8%	16%	8%
17:00	51%	42%	63%	66%	46%	47%	59%	9%	0%	17%	0%	0%	0%	0%
18:00	27%	29%	37%	37%	54%	23%	41%	9%	0%	18%	18%	35%	0%	9%
19:00	69%	49%	45%	92%	36%	45%	63%	18%	28%	18%	18%	9%	27%	37%
20:00	50%	54%	50%	49%	47%	39%	59%	0%	9%	0%	0%	0%	9%	0%
21:00	0%	0%	0%	0%	0%	10%	10%	0%	0%	0%	0%	0%	0%	0%
22:00	0%	0%	0%	0%	0%	0%	0%	0%	0%	0%	0%	0%	0%	0%
23:00	0%	0%	0%	0%	0%	0%	0%	0%	0%	0%	0%	0%	0%	0%

GLOSSARY OF TERMS

Air Transport Movement (ATM)	A scheduled or charter passenger or freight aircraft movement.
Allocation	The allocation of slots such that demand is constrained to fit within declared scheduling limits. DEPARTURES
Demand	The unconstrained demand for slots, prior to any schedule adjustments.
Passenger ATM	A scheduled or charter <u>passenger</u> aircraft movement (ie, excluding all-cargo aircraft movements)
Schedule Adjustment by Carrier	Off slot allocation (excluding General Aviation)
Scheduling Limits	Limiting parameters declared by the Airport Operator used in the coordination process.
Seats	The number of seats based on the aircraft configuration advised by the airline.
Peak Week	The Peak Week for S13 is Week 23 (02-08 SEP 2013)
Peak Hour	Peak Hours during S13 redevelopment: - Arriving Pax : 0700-0755; 1900-1955 UTC - Departing Pax Flights: 0500-0555; 0800-0855; 1400-1455 UTC

GUIDE TO HISTOGRAMS

The histograms show the pattern of traffic by time of day against the appropriate scheduling limit. Each time period consist of seven columns representing the days-of-week, Monday through to Sunday.