

Stansted Airport (STN)

Summer 2015 (S15)



Start of Season Report

Report Date: Wed 11-Mar-2015

Headlines

	S15 Start	vs. S14 Start	vs. S14 End
Total Air Transport Movements (Passenger & Freight)	96,645	▲ 8.7%	▲ 8.0%
Total Passenger Air Transport Movements	90,025	▲ 9.0%	▲ 8.3%
Total Passenger Air Transport Movement Seats	16,185,827	▲ 9.0%	▲ 8.6%
Average Seats per Passenger Air Transport Movement	179.8	▼ 0.0%	▲ 0.2%
Percentage of allocated slots cleared as requested (OK)	96.3%		

Contents

Page	Content
2	Runway Scheduling Limits
3	ATM Allocation by Operator (Full season and Peak Week Comparison)
4	Peak Week - Allocation and Slot Adjustment Distribution by Operator
5	Significant Route Changes
6	Full Season - ATM Analysis
7	Full Season - PATM Seats Analysis
8	Full Season - Terminal Analysis
9	Full Season - Aircraft Size Analysis
10	Full Season - Seasonality
11	Peak Week - Hourly Runway Demand
12	Peak Week - Hourly Runway Allocation
13	Peak Week - Hourly Runway Allocation Comparison (S15 Start vs. S14 Start)
14	Peak Week - Hourly Runway Allocation Comparison (S15 Start vs. S14 End)
15	Peak Week Histogram - Departure Passengers (T60) - All terminals - All Operators
16	Peak Week Histogram - Departure Passengers (T60/30) - All terminals - All Operators
17	Peak Week Histogram - Departure Passengers (T120/15) - All terminals - All Operators
18	Peak Week Histogram - Arrival Passengers (T60) - 1I - All Operators
19	Peak Week Histogram - Arrival Passengers (T60/30) - 1I - All Operators
20	Peak Week Histogram - Arrival Passengers (T120/15) - 1I - All Operators
21	Glossary

S14 scheduling season runs from Sun 30-Mar-2014 to Sat 25-Oct-2014 (210 days).

S15 scheduling season runs from Sun 29-Mar-2015 to Sat 24-Oct-2015 (210 days).

Disclaimer

No warranty whether expressed or implied as to the completeness, accuracy, fitness for purpose, or satisfactory quality is given by ACL regarding the information in this report, which is provided by third parties. Accordingly, ACL excludes all liability with regard to such data.

The contents of this report may not be reproduced without the written consent of ACL.

Runway Scheduling Limits



Declared Hourly Movement Capacity

S14 Arrivals								Change: S14 to S15							S15 Arrivals								
Hour	Mon	Tue	Wed	Thu	Fri	Sat	Sun	Hour	Mon	Tue	Wed	Thu	Fri	Sat	Sun	Hour	Mon	Tue	Wed	Thu	Fri	Sat	Sun
UTC	1	2	3	4	5	6	7	UTC	1	2	3	4	5	6	7	UTC	1	2	3	4	5	6	7
00	24	24	24	24	24	24	24	00								00	24	24	24	24	24	24	24
01	24	24	24	24	24	24	24	01								01	24	24	24	24	24	24	24
02	24	24	24	24	24	24	24	02								02	24	24	24	24	24	24	24
03	24	24	24	24	24	24	24	03								03	24	24	24	24	24	24	24
04	24	24	24	24	24	24	24	04								04	24	24	24	24	24	24	24
05	24	24	24	24	24	24	24	05								05	24	24	24	24	24	24	24
06	28	28	28	28	28	28	28	06								06	28	28	28	28	28	28	28
07	25	25	25	25	25	25	25	07								07	25	25	25	25	25	25	25
08	24	24	24	24	24	24	24	08								08	24	24	24	24	24	24	24
09	25	25	25	25	25	25	25	09								09	25	25	25	25	25	25	25
10	28	28	28	28	28	28	28	10								10	28	28	28	28	28	28	28
11	28	28	28	28	28	28	28	11								11	28	28	28	28	28	28	28
12	24	24	24	24	24	24	24	12								12	24	24	24	24	24	24	24
13	24	24	24	24	24	24	24	13								13	24	24	24	24	24	24	24
14	28	28	28	28	28	28	28	14								14	28	28	28	28	28	28	28
15	28	28	28	28	28	28	28	15								15	28	28	28	28	28	28	28
16	28	28	28	28	28	28	28	16								16	28	28	28	28	28	28	28
17	30	30	30	30	30	30	30	17								17	30	30	30	30	30	30	30
18	28	28	28	28	28	28	28	18								18	28	28	28	28	28	28	28
19	27	27	27	27	27	27	27	19								19	27	27	27	27	27	27	27
20	24	24	24	24	24	24	24	20								20	24	24	24	24	24	24	24
21	31	31	31	31	31	31	31	21								21	31	31	31	31	31	31	31
22	27	27	27	27	27	27	27	22								22	27	27	27	27	27	27	27
23	24	24	24	24	24	24	24	23								23	24	24	24	24	24	24	24

S14 Departures								Change: S14 to S15							S15 Departures								
Hour	Mon	Tue	Wed	Thu	Fri	Sat	Sun	Hour	Mon	Tue	Wed	Thu	Fri	Sat	Sun	Hour	Mon	Tue	Wed	Thu	Fri	Sat	Sun
UTC	1	2	3	4	5	6	7	UTC	1	2	3	4	5	6	7	UTC	1	2	3	4	5	6	7
00	24	24	24	24	24	24	24	00								00	24	24	24	24	24	24	24
01	24	24	24	24	24	24	24	01								01	24	24	24	24	24	24	24
02	24	24	24	24	24	24	24	02								02	24	24	24	24	24	24	24
03	24	24	24	24	24	24	24	03								03	24	24	24	24	24	24	24
04	24	24	24	24	24	24	24	04								04	24	24	24	24	24	24	24
05	35	35	35	35	35	35	35	05								05	35	35	35	35	35	35	35
06	31	31	31	31	31	31	31	06								06	31	31	31	31	31	31	31
07	28	28	28	28	28	28	28	07								07	28	28	28	28	28	28	28
08	24	24	24	24	24	24	24	08								08	24	24	24	24	24	24	24
09	25	25	25	25	25	25	25	09								09	25	25	25	25	25	25	25
10	28	28	28	28	28	28	28	10								10	28	28	28	28	28	28	28
11	28	28	28	28	28	28	28	11								11	28	28	28	28	28	28	28
12	24	24	24	24	24	24	24	12								12	24	24	24	24	24	24	24
13	24	24	24	24	24	24	24	13								13	24	24	24	24	24	24	24
14	28	28	28	28	28	28	28	14								14	28	28	28	28	28	28	28
15	28	28	28	28	28	28	28	15								15	28	28	28	28	28	28	28
16	28	28	28	28	28	28	28	16								16	28	28	28	28	28	28	28
17	30	30	30	30	30	30	30	17								17	30	30	30	30	30	30	30
18	28	28	28	28	28	28	28	18								18	28	28	28	28	28	28	28
19	28	28	28	28	28	28	28	19								19	28	28	28	28	28	28	28
20	24	24	24	24	24	24	24	20								20	24	24	24	24	24	24	24
21	24	24	24	24	24	24	24	21								21	24	24	24	24	24	24	24
22	24	24	24	24	24	24	24	22								22	24	24	24	24	24	24	24
23	24	24	24	24	24	24	24	23								23	24	24	24	24	24	24	24

S14 Totals								Change: S14 to S15							S15 Totals								
Hour	Mon	Tue	Wed	Thu	Fri	Sat	Sun	Hour	Mon	Tue	Wed	Thu	Fri	Sat	Sun	Hour	Mon	Tue	Wed	Thu	Fri	Sat	Sun
UTC	1	2	3	4	5	6	7	UTC	1	2	3	4	5	6	7	UTC	1	2	3	4	5	6	7
00	36	36	36	36	36	36	36	00								00	36	36	36	36	36	36	36
01	36	36	36	36	36	36	36	01								01	36	36	36	36	36	36	36
02	36	36	36	36	36	36	36	02								02	36	36	36	36	36	36	36
03	36	36	36	36	36	36	36	03								03	36	36	36	36	36	36	36
04	36	36	36	36	36	36	36	04								04	36	36	36	36	36	36	36
05	45	45	45	45	45	45	45	05								05	45	45	45	45	45	45	45
06	50	50	50	50	50	50	50	06								06	50	50	50	50	50	50	50
07	44	44	44	44	44	44	44	07								07	44	44	44	44	44	44	44
08	38	38	38	38	38	38	38	08								08	38	38	38	38	38	38	38
09	41	41	41	41	41	41	41	09								09	41	41	41	41	41	41	41
10	50	50	50	50	50	50	50	10								10	50	50	50	50	50	50	50
11	46	46	46	46	46	46	46	11								11	46	46	46	46	46	46	46
12	38	38	38	38	38	38	38	12								12	38	38	38	38	38	38	38
13	41	41	41	41	41	41	41	13								13	41	41	41	41	41	41	41
14	44	44	44	44	44	44	44	14								14	44	44	44	44	44	44	44
15	42	42	42	42	42	42	42	15								15	42	42	42	42	42	42	42
16	47	47	47	47	47	47	47	16								16	47	47	47	47	47	47	47
17	50	50	50	50	50	50	50	17								17	50	50	50	50	50	50	50
18	48	48	48	48	48	48	48	18								18	48	48	48	48	48	48	48
19	42	42	42	42	42	42	42	19								19	42	42	42	42	42	42	42
20	38	38	38	38	38	38	38	20								20	38	38	38	38	38	38	38
21	38	38	38	38	38	38	38	21								21	38	38	38	38	38	38	38
22	36	36	36	36	36	36	36	22								22	36	36	36	36	36	36	36
23	36	36	36	36	36	36	36	23								23	36	36	36	36	36	36	36

Air Transport Movement Allocation by Operator

Comparison between S14 End vs. S15 Start



Operator	FULL SEASON ALLOCATION							PEAK WEEK ALLOCATION								
	S14 ATMs	S15 ATMs	+/- change	S15 Rank	S14 Seats	S15 Seats	+/- change	S15 Rank	S14 ATMs	S15 ATMs	+/- change	S15 Rank	S14 Seats	S15 Seats	+/- change	S15 Rank
ABX Air	285	-	-285	43	-	-	0	29	10	-	-10	33	-	-	0	20
Adria Airways	6	2	-4	38	384	96	-288	28	-	-	0	33	-	-	0	20
Aer Lingus	2	-	-2	43	226	-	-226	29	-	-	0	33	-	-	0	20
Air Berlin	316	-	-316	43	24,852	-	-24,852	29	-	-	0	33	-	-	0	20
Air Bright	3	-	-3	43	-	-	0	29	-	-	0	33	-	-	0	20
Air Europa	2	-	-2	43	372	-	-372	29	-	-	0	33	-	-	0	20
Air Moldova	121	170	49	19	13,680	21,732	8,052	10	4	6	2	17	528	796	268	10
AirExplore	2	-	-2	43	336	-	-336	29	-	-	0	33	-	-	0	20
Albastar	1	-	-1	43	170	-	-170	29	-	-	0	33	-	-	0	20
Antonov Airlines	3	-	-3	43	-	-	0	29	-	-	0	33	-	-	0	20
Asiana Airlines	120	120	0	20	-	-	0	29	4	4	0	21	438	-	-438	20
Astra Airlines	-	46	46	27	-	8,280	8,280	13	-	2	2	25	-	360	360	14
Astral Aviation	88	120	32	20	-	-	0	29	4	4	0	21	228	-	-228	20
Atlantic Airways	48	-	-48	43	5,632	-	-5,632	29	-	-	0	33	-	-	0	20
Atlas Air	173	180	7	17	-	-	0	29	4	6	2	17	144	-	-144	20
Aurigny Air Services	627	436	-191	14	45,202	31,392	-13,810	9	28	18	-10	13	1,872	1,296	-576	9
Austrian Airlines	3	3	0	37	315	348	33	22	-	-	0	33	-	-	0	20
BH Air	14	22	8	29	2,692	3,960	1,268	15	2	2	0	25	62	360	298	14
Binair	4	-	-4	43	-	-	0	29	-	-	0	33	-	-	0	20
Blue Islands	-	40	40	28	-	1,840	1,840	19	-	2	2	25	-	92	92	19
Bluebird Cargo	3	-	-3	43	-	-	0	29	-	-	0	33	-	-	0	20
Bmi Regional	12	-	-12	43	588	-	-588	29	-	-	0	33	-	-	0	20
British Airways	63	4	-59	35	126	392	266	21	-	-	0	33	-	-	0	20
Bulgarian Air Charter	-	20	20	30	-	3,280	3,280	16	-	2	2	25	-	328	328	17
CAL Cargo Air Lines	2	-	-2	43	-	-	0	29	-	-	0	33	-	-	0	20
Cargolux	144	100	-44	24	-	-	0	29	6	2	-4	25	378	-	-378	20
Cathay Pacific	2	-	-2	43	-	-	0	29	-	-	0	33	-	-	0	20
China Southern	-	102	102	23	-	-	0	29	-	6	6	17	-	-	0	20
Cityjet	3	2	-1	38	195	-	-195	25	1	-	-1	33	-	-	0	20
Corendon Airlines	9	12	3	32	1,701	2,268	567	18	3	2	-1	25	549	378	-171	13
Cyprus Airways	86	-	-86	43	13,944	-	-13,944	29	-	-	0	33	-	-	0	20
Denim Air	4	2	-2	38	300	200	-100	23	-	-	0	33	-	-	0	20
Dubai Air Wing	30	-	-30	43	-	-	0	29	-	-	0	33	-	-	0	20
EasyJet	13,008	11,418	-1,590	2	2,064,840	1,821,720	-243,120	2	444	394	-50	2	69,936	62,856	-7,080	2
Emirates	4	-	-4	43	-	-	0	29	-	-	0	33	-	-	0	20
Ethiopian Airlines	2	-	-2	43	470	-	-470	29	-	-	0	33	-	-	0	20
Etiad Regional	699	-	-699	43	35,262	-	-35,262	29	35	-	-35	33	1,986	-	-1,986	20
EuroAtlantic Airways	1	-	-1	43	-	-	0	29	-	-	0	33	-	-	0	20
Europe Airpost	5	-	-5	43	735	-	-735	29	-	-	0	33	-	-	0	20
Eurowings	2	-	-2	43	180	-	-180	29	-	-	0	33	-	-	0	20
Farnair Europe	6	-	-6	43	-	-	0	29	1	-	-1	33	50	-	-50	20
Federal Express	2,095	2,161	66	4	-	-	0	29	72	72	0	4	378	-	-378	20
Flybe	652	2,058	1,406	5	20,212	160,524	140,312	7	22	70	48	5	620	5,460	4,840	7
Freebird Airlines	29	10	-19	33	5,220	1,800	-3,420	20	2	-	-2	33	50	-	-50	20
Gabon Airlines Cargo	1	-	-1	43	-	-	0	29	-	-	0	33	-	-	0	20
Germania	-	48	48	26	-	7,104	7,104	14	-	2	2	25	-	296	296	18
Germanwings	2,133	2,334	201	3	306,794	339,324	32,530	3	87	78	-9	3	11,676	11,148	-528	5
Global Supply Systems	1	-	-1	43	-	-	0	29	-	-	0	33	-	-	0	20
Hermes Airlines	3	-	-3	43	393	-	-393	29	-	-	0	33	-	-	0	20
Hi Fly Airline	-	1	1	41	-	-	0	29	-	-	0	33	-	-	0	20
HOP!	2	-	-2	43	200	-	-200	29	-	-	0	33	-	-	0	20
Jet Time Airways	2	-	-2	43	296	-	-296	29	-	-	0	33	-	-	0	20
Jet2.com	1,171	593	-578	12	189	148	-41	26	41	20	-21	11	-	-	0	20
Jetairfly	-	1	1	41	-	148	148	26	-	-	0	33	-	-	0	20
Kalitta Air	4	-	-4	43	-	-	0	29	-	-	0	33	-	-	0	20
Loganair	-	660	660	10	-	20,460	20,460	11	-	22	22	10	-	682	682	12
Lufthansa	-	6	6	34	-	-	0	29	-	-	0	33	-	-	0	20
Luxair	7	-	-7	43	1,311	-	-1,311	29	-	-	0	33	-	-	0	20
Martinair	194	180	-14	17	-	-	0	29	6	6	0	17	286	-	-286	20
Meridiana	-	-	0	43	-	-	0	29	-	-	0	33	-	-	0	20
MNG Airlines	3	-	-3	43	-	-	0	29	-	-	0	33	-	-	0	20
Monarch Airlines	3	-	-3	43	613	-	-613	29	-	-	0	33	-	-	0	20
MyCargo Airlines	32	-	-32	43	-	-	0	29	-	-	0	33	-	-	0	20
Nordic Global Airlines	29	-	-29	43	-	-	0	29	1	-	-1	33	-	-	0	20
Norwegian Air Shuttle	5	-	-5	43	930	-	-930	29	-	-	0	33	-	-	0	20
Nouvelair	12	-	-12	43	2,124	-	-2,124	29	-	-	0	33	-	-	0	20
Onur Air	63	-	-63	43	13,643	-	-13,643	29	2	-	-2	33	-	-	0	20
Pegasus Airlines	1,181	1,179	-2	9	223,164	222,831	-333	6	43	40	-3	9	7,749	7,560	-189	6
Qatar Airways	254	300	46	16	-	-	0	29	10	10	0	15	378	-	-378	20
RAF-Avia	3	-	-3	43	-	-	0	29	-	-	0	33	-	-	0	20
Ravenair	8	-	-8	43	-	-	0	29	-	-	0	33	-	-	0	20
Ruby Star	1	-	-1	43	-	-	0	29	-	-	0	33	-	-	0	20
Ryanair	61,090	68,160	7,070	1	11,543,821	12,858,024	1,314,203	1	2,067	2,286	219	1	390,565	431,760	41,195	1
Saudia	2	-	-2	43	-	-	0	29	-	-	0	33	-	-	0	20
SIavia	4	-	-4	43	196	-	-196	29	-	-	0	33	-	-	0	20
Silk Way West Airlines	82	120	38	20	-	-	0	29	2	4	2	21	-	-	0	20
Singapore Airlines	2	-	-2	43	-	-	0	29	-	-	0	33	-	-	0	20
Sky Taxi	1	-	-1	43	-	-	0	29	-	-	0	33	-	-	0	20
Small Planet Airlines	1	16	15	31	148	2,880	2,732	17	-	2	2	25	-	360	360	14
Star Air	14	-	-14	43	-	-	0	29	1	-	-1	33	-	-	0	20
SunExpress	1	-	-1	43	189	-	-189	29	-	-	0	33	-	-	0	20
Swiftair	1	-	-1	43	-	-	0	29	-	-	0	33	-	-	0	20
Swiss International	7	-	-7	43	659	-	-659	29	2	-	-2	33	97	-	-97	20
Tailwind Airlines	-	50	50	25	-	9,450	9,450	12	-	4	4	21	-	756	756	11
Thomas Cook (UK)	1,224	1,452	228	7	268,201	327,388	59,187	4	58	66	8	6	12,320	15,168	2,848	3
Thomson Airways	1,491	1,566	75	6	281,901	295,614	13,713	5	58	62	4	7	10,969	11,700	731	4
Titan Airways	838	1,435	597	8	27,843	44,234	16,391	8	31	52	21	8	1,306	1,872	566	8
TNT Airways	76	468	392	13	-	-	0	29	1	10	9	15	130	-	-130	20
Turkish Airlines	3	-	-3	43	495	-	-495	29	1	-	-1	33	220	-	-220	20
Ukraine Air Alliance	4	-	-4	43	-	-	0	29	1	-	-1	33	189	-	-189	20
ULS Airlines Cargo	2	-	-2	43	-	-	0	29	-	-	0	33	-	-	0	20
UPS Airlines	582	624	42	11	-	-	0	29	20	20	0	11	189	-	-189	20
VLM Airlines	2	4	2	35	100	200	100	23	-	-	0	33	-	-	0	20
West Atlantic Cargo	300	420	120	15	-	-	0	29	12	15	3	14	-	-	0	20
Wind Rose Aviation	-	-	0	43	-	-	0	29	-	-	0	33	-	-	0	20
TOTAL	89,518	96,645	7,127		14,910,844	16,185,827	1,274,983		3,086	3,291	205		513,293	553,228	39,935	

Operators with 0 'ATMs' in both S14 End & S15 Start schedules are included in the table due to holding slots in the S14 Start schedule.

Peak Week - Allocation and Slot Adjustment Distribution by Operator



Schedule: S15 Start

Operator	S15 allocated ATMs	SLOT ADJUSTMENTS (MINUTES OFF REQUESTED TIME)														Requests with NO slot allocated	
		0	5	10	15	20	25	30	35	40	45	50	55	60	>60		
ABX Air	-																-
Air Berlin	-																-
Air Moldova	6	100.0%	0.0%	0.0%	0.0%	0.0%	0.0%	0.0%	0.0%	0.0%	0.0%	0.0%	0.0%	0.0%	0.0%	0.0%	-
Asiana Airlines	4	100.0%	0.0%	0.0%	0.0%	0.0%	0.0%	0.0%	0.0%	0.0%	0.0%	0.0%	0.0%	0.0%	0.0%	0.0%	-
Astra Airlines	2	100.0%	0.0%	0.0%	0.0%	0.0%	0.0%	0.0%	0.0%	0.0%	0.0%	0.0%	0.0%	0.0%	0.0%	0.0%	-
Astral Aviation	4	100.0%	0.0%	0.0%	0.0%	0.0%	0.0%	0.0%	0.0%	0.0%	0.0%	0.0%	0.0%	0.0%	0.0%	0.0%	-
Atlas Air	6	100.0%	0.0%	0.0%	0.0%	0.0%	0.0%	0.0%	0.0%	0.0%	0.0%	0.0%	0.0%	0.0%	0.0%	0.0%	-
Aurigny Air Services	18	100.0%	0.0%	0.0%	0.0%	0.0%	0.0%	0.0%	0.0%	0.0%	0.0%	0.0%	0.0%	0.0%	0.0%	0.0%	-
BH Air	2	100.0%	0.0%	0.0%	0.0%	0.0%	0.0%	0.0%	0.0%	0.0%	0.0%	0.0%	0.0%	0.0%	0.0%	0.0%	-
Blue Islands	2	100.0%	0.0%	0.0%	0.0%	0.0%	0.0%	0.0%	0.0%	0.0%	0.0%	0.0%	0.0%	0.0%	0.0%	0.0%	-
Bulgarian Air Charter	2	100.0%	0.0%	0.0%	0.0%	0.0%	0.0%	0.0%	0.0%	0.0%	0.0%	0.0%	0.0%	0.0%	0.0%	0.0%	-
Cargolux	2	100.0%	0.0%	0.0%	0.0%	0.0%	0.0%	0.0%	0.0%	0.0%	0.0%	0.0%	0.0%	0.0%	0.0%	0.0%	-
China Southern	6	100.0%	0.0%	0.0%	0.0%	0.0%	0.0%	0.0%	0.0%	0.0%	0.0%	0.0%	0.0%	0.0%	0.0%	0.0%	-
Cityjet	-																-
Corendon Airlines	2	100.0%	0.0%	0.0%	0.0%	0.0%	0.0%	0.0%	0.0%	0.0%	0.0%	0.0%	0.0%	0.0%	0.0%	0.0%	-
EasyJet	394	100.0%	0.0%	0.0%	0.0%	0.0%	0.0%	0.0%	0.0%	0.0%	0.0%	0.0%	0.0%	0.0%	0.0%	0.0%	-
Etiyah Regional	-																-
Farnair Europe	-																-
Federal Express	72	100.0%	0.0%	0.0%	0.0%	0.0%	0.0%	0.0%	0.0%	0.0%	0.0%	0.0%	0.0%	0.0%	0.0%	0.0%	-
Flybe	70	100.0%	0.0%	0.0%	0.0%	0.0%	0.0%	0.0%	0.0%	0.0%	0.0%	0.0%	0.0%	0.0%	0.0%	0.0%	-
Freebird Airlines	-																-
Germania	2	100.0%	0.0%	0.0%	0.0%	0.0%	0.0%	0.0%	0.0%	0.0%	0.0%	0.0%	0.0%	0.0%	0.0%	0.0%	-
Germanwings	78	100.0%	0.0%	0.0%	0.0%	0.0%	0.0%	0.0%	0.0%	0.0%	0.0%	0.0%	0.0%	0.0%	0.0%	0.0%	-
Jet2.com	20	100.0%	0.0%	0.0%	0.0%	0.0%	0.0%	0.0%	0.0%	0.0%	0.0%	0.0%	0.0%	0.0%	0.0%	0.0%	-
Loganair	22	100.0%	0.0%	0.0%	0.0%	0.0%	0.0%	0.0%	0.0%	0.0%	0.0%	0.0%	0.0%	0.0%	0.0%	0.0%	-
Martinair	6	100.0%	0.0%	0.0%	0.0%	0.0%	0.0%	0.0%	0.0%	0.0%	0.0%	0.0%	0.0%	0.0%	0.0%	0.0%	-
Nordic Global Airlines	-																-
Onur Air	-																-
Pegasus Airlines	40	100.0%	0.0%	0.0%	0.0%	0.0%	0.0%	0.0%	0.0%	0.0%	0.0%	0.0%	0.0%	0.0%	0.0%	0.0%	-
Qatar Airways	10	100.0%	0.0%	0.0%	0.0%	0.0%	0.0%	0.0%	0.0%	0.0%	0.0%	0.0%	0.0%	0.0%	0.0%	0.0%	-
Ryanair	2,286	94.8%	2.2%	1.0%	0.8%	0.1%	0.3%	0.1%	0.0%	0.0%	0.2%	0.0%	0.0%	0.0%	0.0%	0.0%	-
Silk Way West Airlines	4	100.0%	0.0%	0.0%	0.0%	0.0%	0.0%	0.0%	0.0%	0.0%	0.0%	0.0%	0.0%	0.0%	0.0%	0.0%	-
Small Planet Airlines	2	100.0%	0.0%	0.0%	0.0%	0.0%	0.0%	0.0%	0.0%	0.0%	0.0%	0.0%	0.0%	0.0%	0.0%	0.0%	-
Star Air	-																-
Swiss International	-																-
Tailwind Airlines	4	100.0%	0.0%	0.0%	0.0%	0.0%	0.0%	0.0%	0.0%	0.0%	0.0%	0.0%	0.0%	0.0%	0.0%	0.0%	-
Thomas Cook (UK)	66	100.0%	0.0%	0.0%	0.0%	0.0%	0.0%	0.0%	0.0%	0.0%	0.0%	0.0%	0.0%	0.0%	0.0%	0.0%	-
Thomson Airways	62	100.0%	0.0%	0.0%	0.0%	0.0%	0.0%	0.0%	0.0%	0.0%	0.0%	0.0%	0.0%	0.0%	0.0%	0.0%	-
Titan Airways	52	100.0%	0.0%	0.0%	0.0%	0.0%	0.0%	0.0%	0.0%	0.0%	0.0%	0.0%	0.0%	0.0%	0.0%	0.0%	-
TNT Airways	10	100.0%	0.0%	0.0%	0.0%	0.0%	0.0%	0.0%	0.0%	0.0%	0.0%	0.0%	0.0%	0.0%	0.0%	0.0%	-
Turkish Airlines	-																-
Ukraine Air Alliance	-																-
UPS Airlines	20	100.0%	0.0%	0.0%	0.0%	0.0%	0.0%	0.0%	0.0%	0.0%	0.0%	0.0%	0.0%	0.0%	0.0%	0.0%	-
West Atlantic Cargo	15	100.0%	0.0%	0.0%	0.0%	0.0%	0.0%	0.0%	0.0%	0.0%	0.0%	0.0%	0.0%	0.0%	0.0%	0.0%	-
TOTAL	3,291	96.4%	1.5%	0.7%	0.6%	0.1%	0.2%	0.1%	0.0%	0.0%	0.1%	0.0%	0.0%	0.0%	0.2%	-	

Operators with 0 'allocated ATMs' and 0 'Requests with NO slot allocated' in S15, are included in this list due to having slots allocated in either S14 Start or S14 End schedules.

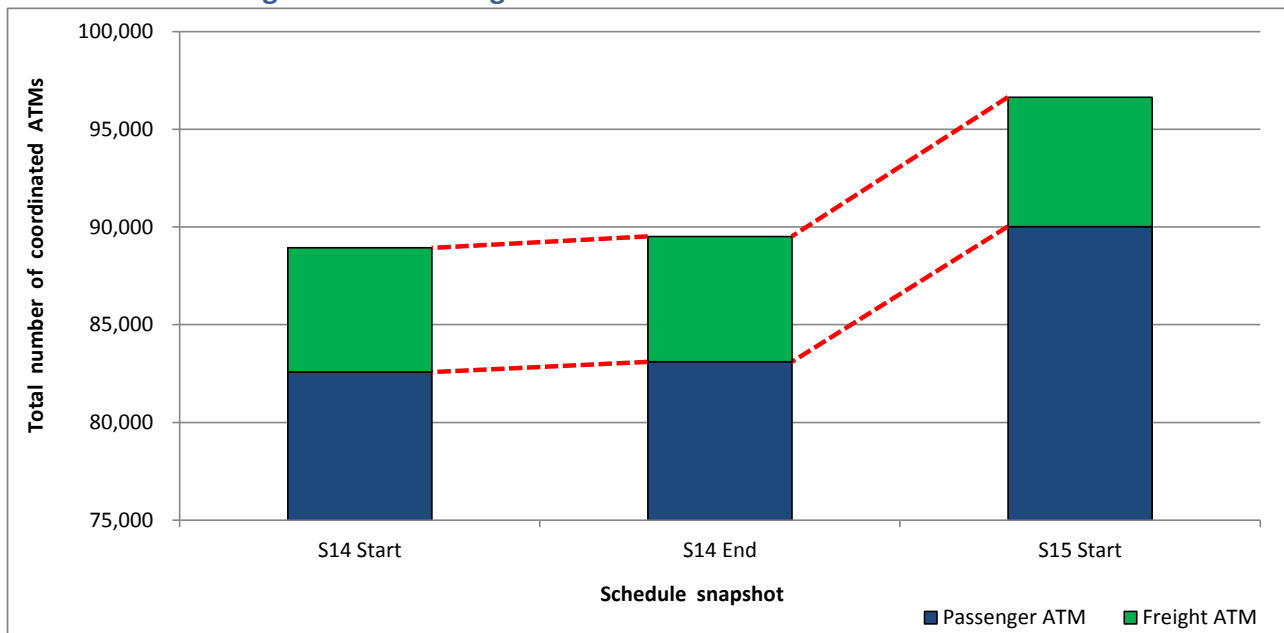
Significant Route Changes

Operator	Category	Description of change from S14 schedule to S15 schedule
Astra Airlines	NEW	x1 Weekly service to Tel Aviv
Atlantic Airways	CANCELLED	Services to Faroe Islands
Aurigny Air Services	CANCELLED	Services to Jersey
Blue Islands	NEW	Services to Jersey
China Southern	NEW	x3 Weekly services to Guangzhou
Flybe	NEW	Services to Isle of Man/ Newcastle and Newquay
Germania	NEW	x1 Weekly service to Enfidha
Ryanair	NEW	Services to Deauville/ Edinburgh/ Gothenburg and Ponta Delgada
Ryanair	CANCELLED	Services to Malmo/ Milan Malpensa/ Toulon
Tailwind Airlines	NEW	X2 Weekly service to Antalya
Thomas Cook (UK)	NEW	Services to Cancun/ Las Vegas & Orlando
Thomas Cook (UK)	CANCELLED	Service to Heraklion
Thomson Airways	CANCELLED	Service to Agadir
Titan Airways	NEW	Services to Preveza and Hassi Messoud

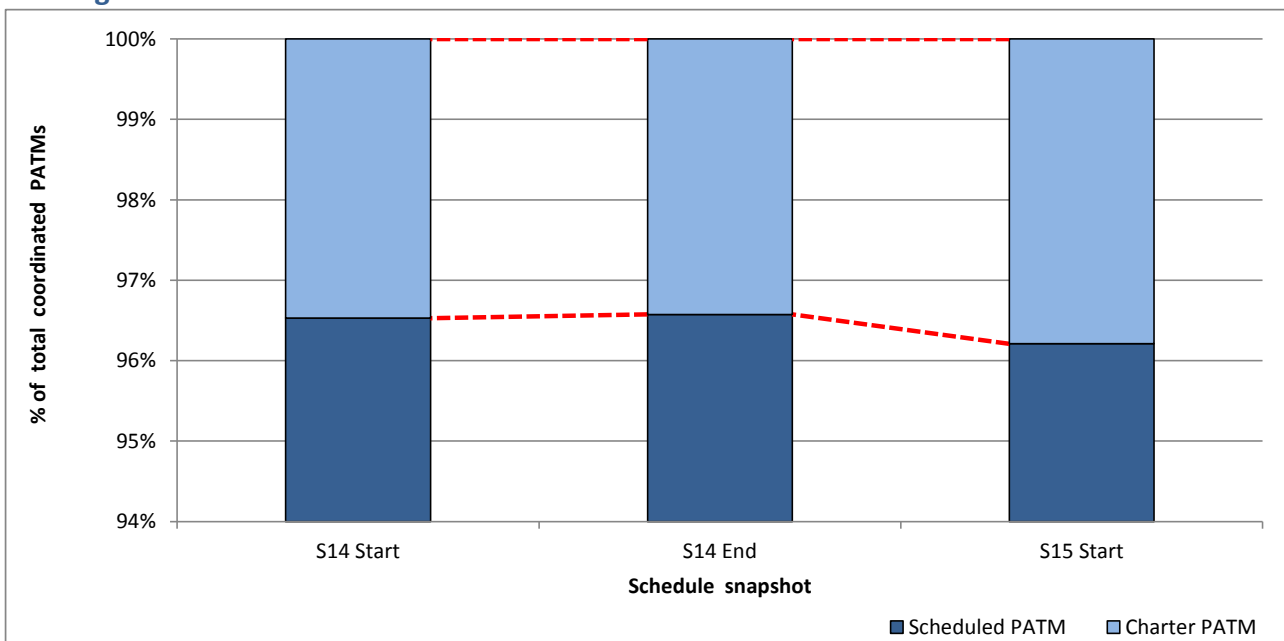
Full Season - ATM Analysis



Total ATMs: Passenger ATMs vs. Freight ATMs



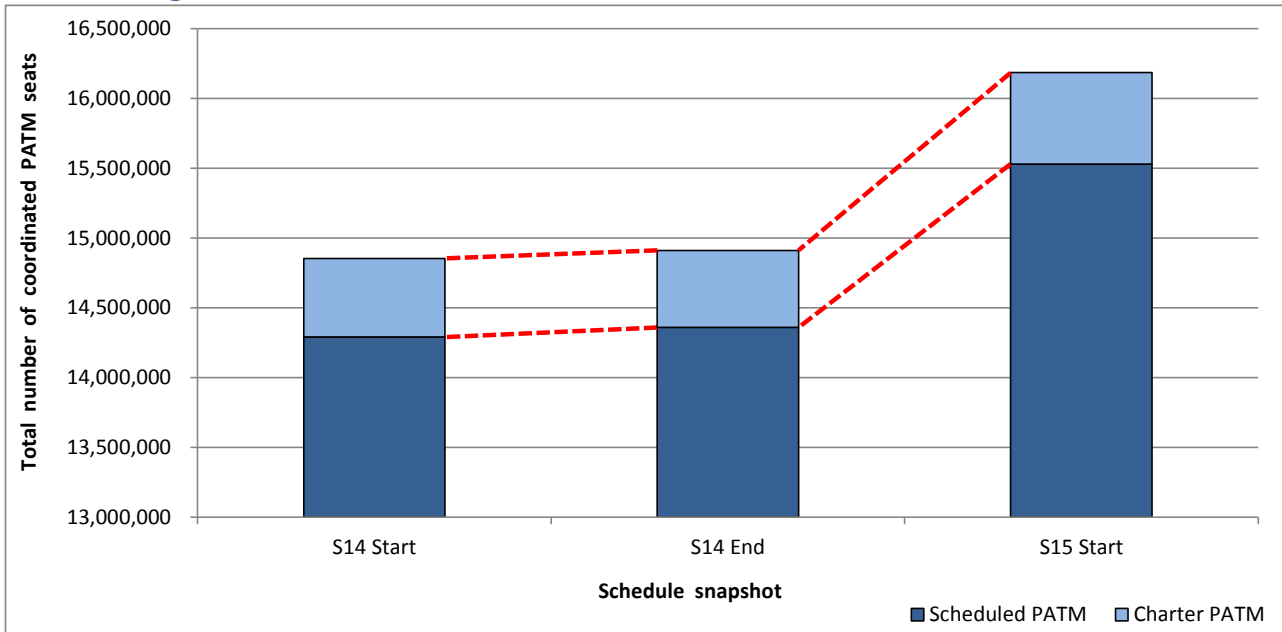
Passenger ATMs: Scheduled vs. Charter



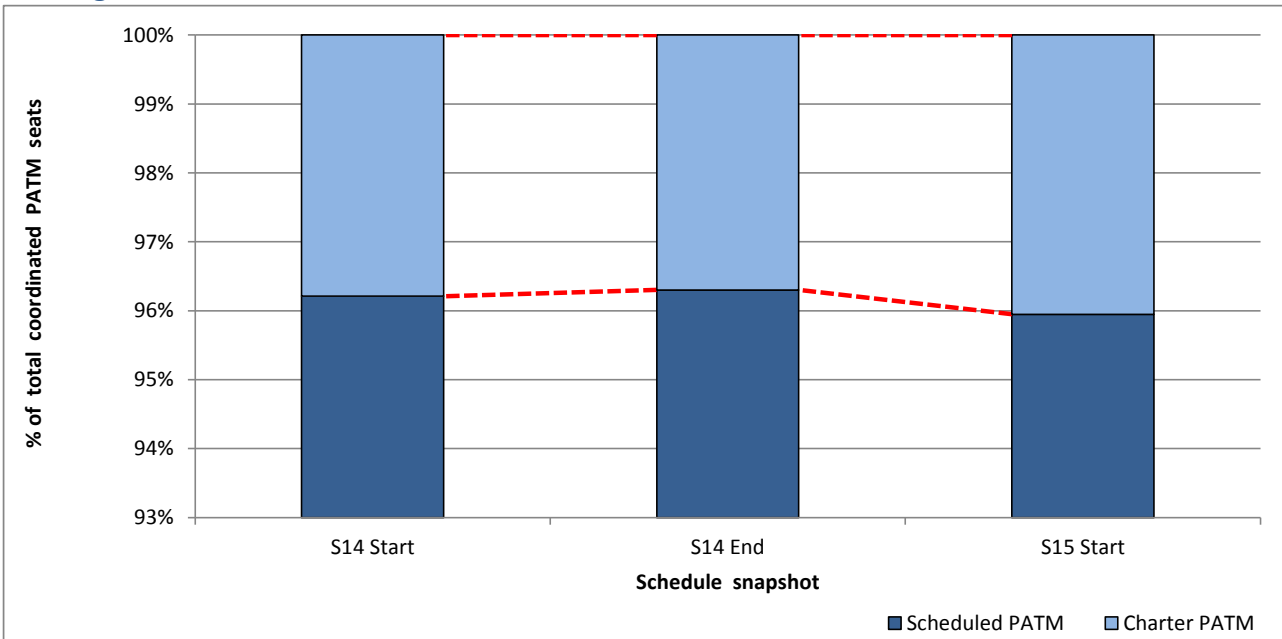
Full Season - PATM Seats Analysis



Total Passenger ATM seats: Scheduled vs. Charter



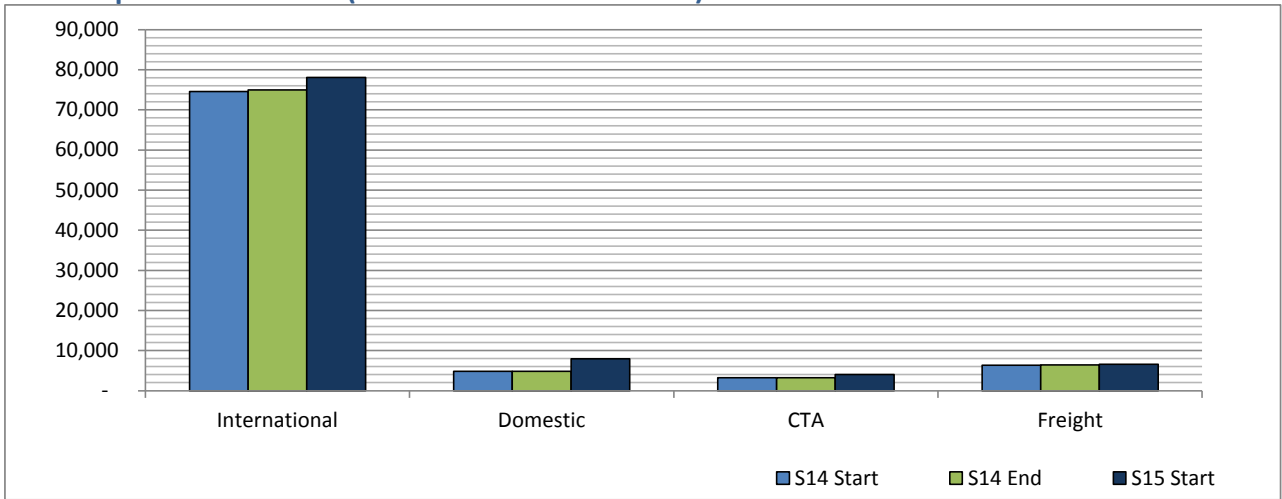
Passenger ATM seats: Scheduled vs. Charter



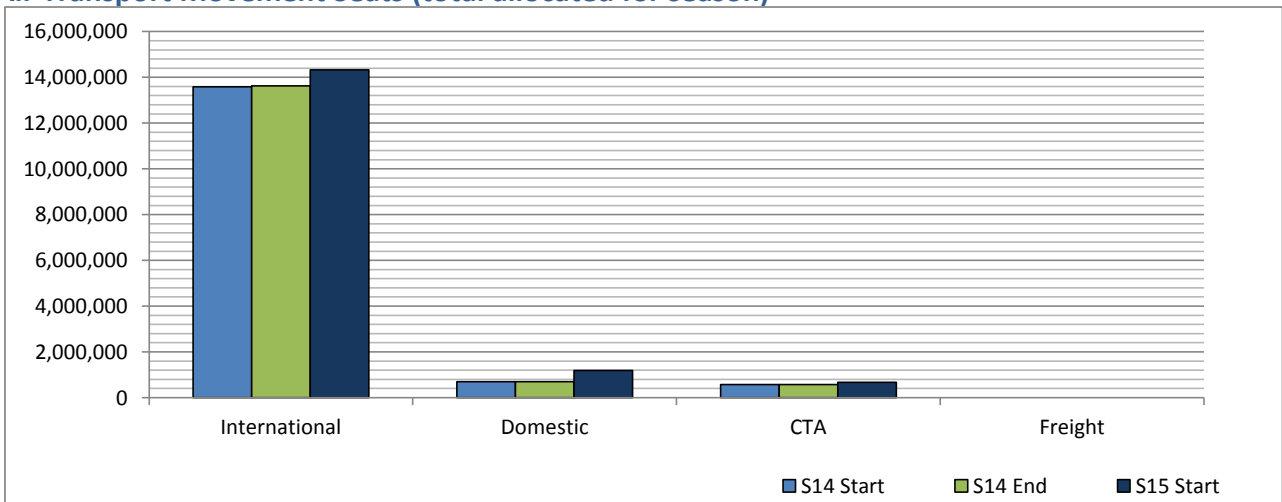
Full Season - Terminal Analysis



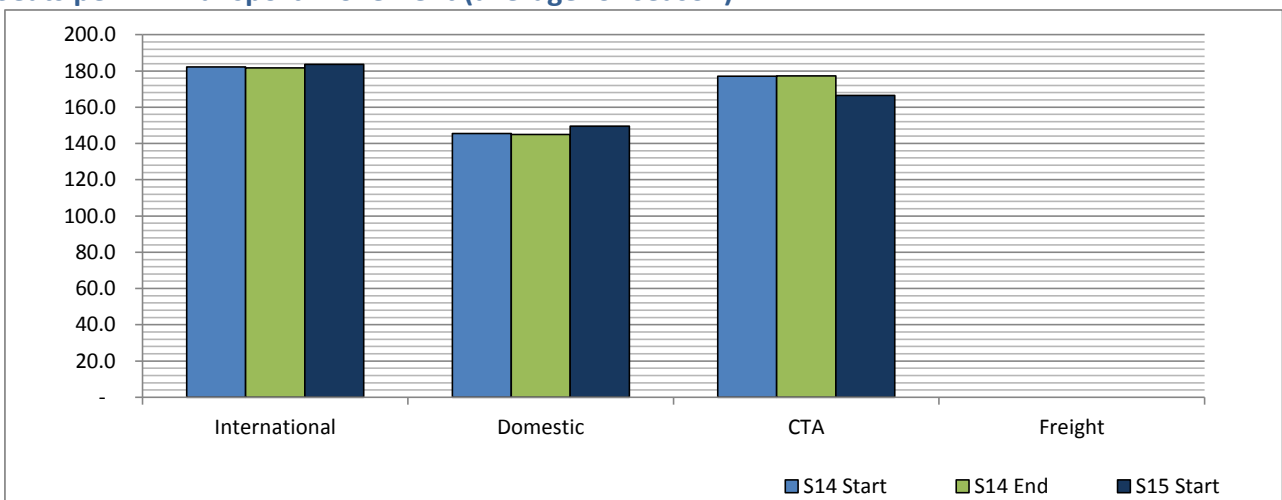
Air Transport Movements (total allocated for season)



Air Transport Movement Seats (total allocated for season)



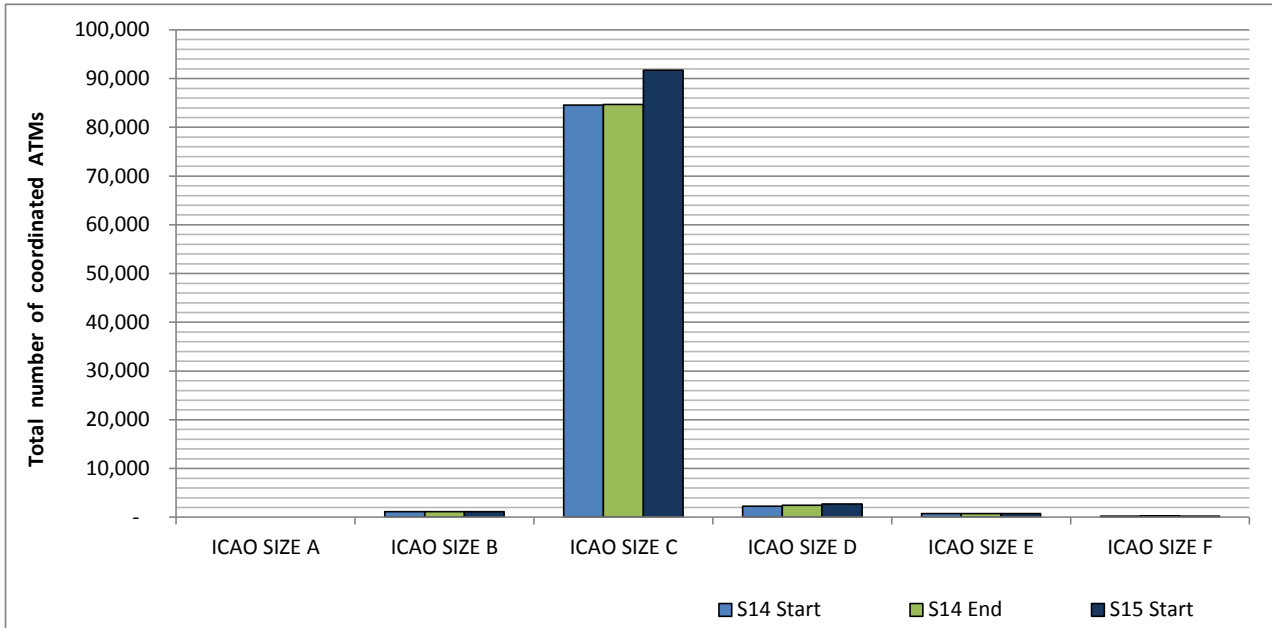
Seats per Air Transport Movement (average for season)



Full Season - Aircraft Size Analysis

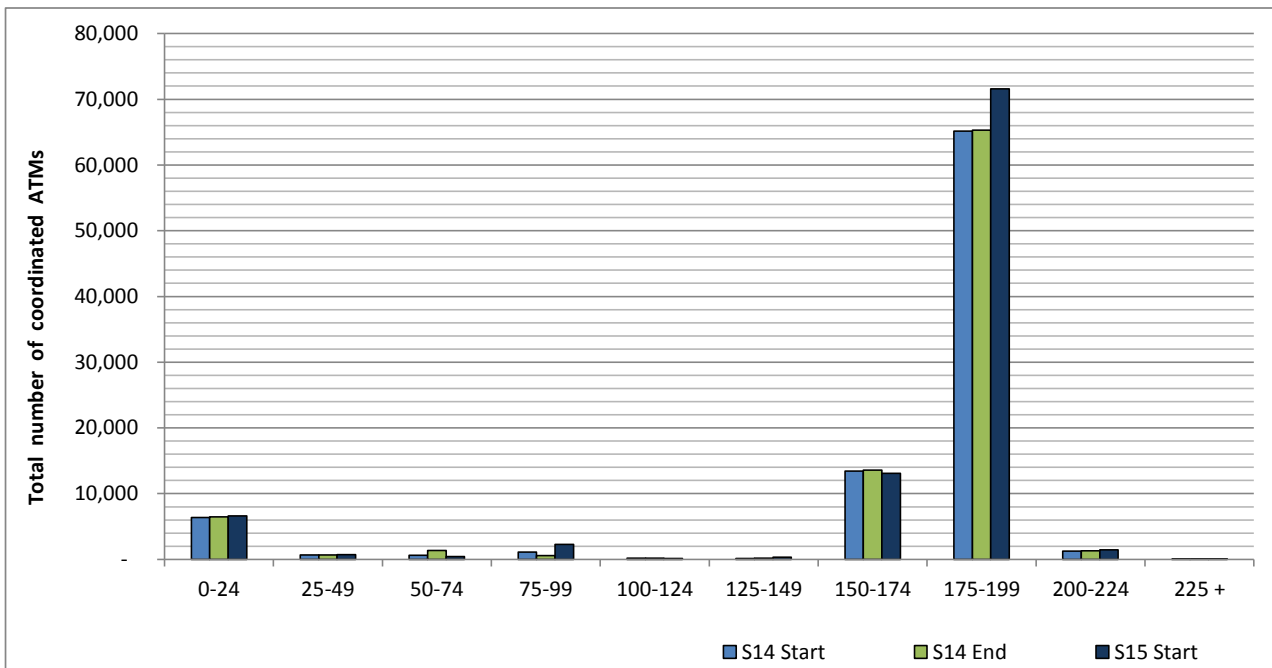


ICAO size designation



Note: See Glossary for definitions of ICAO SIZE groupings

Air Transport Movement seat distribution

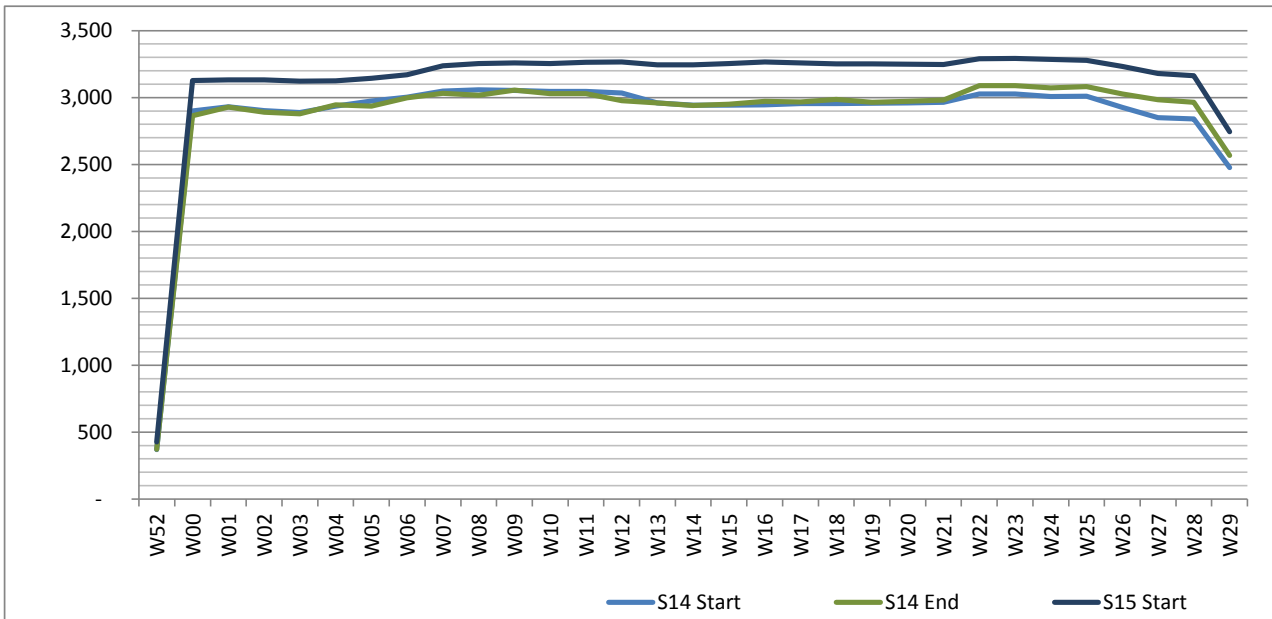


Note: FREIGHT-ONLY services with 0 seats are included in the first seat band '0-24'

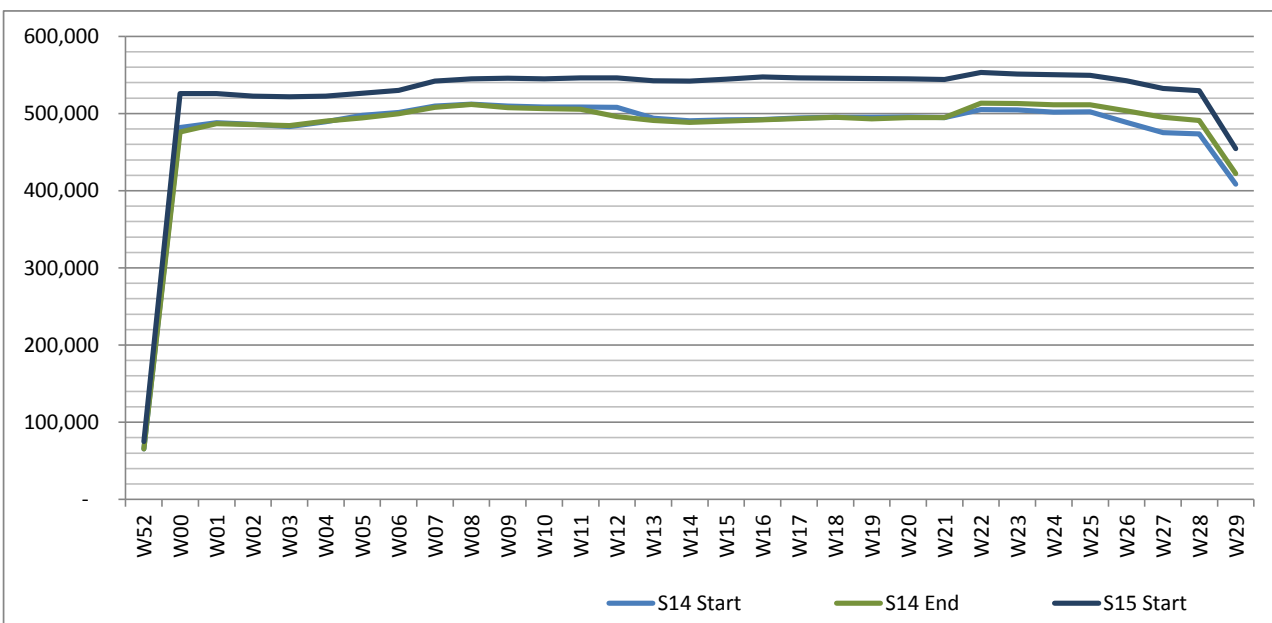
Full Season - Seasonality



Air Transport Movements by week of season



Air Transport Movement Seats by week of season



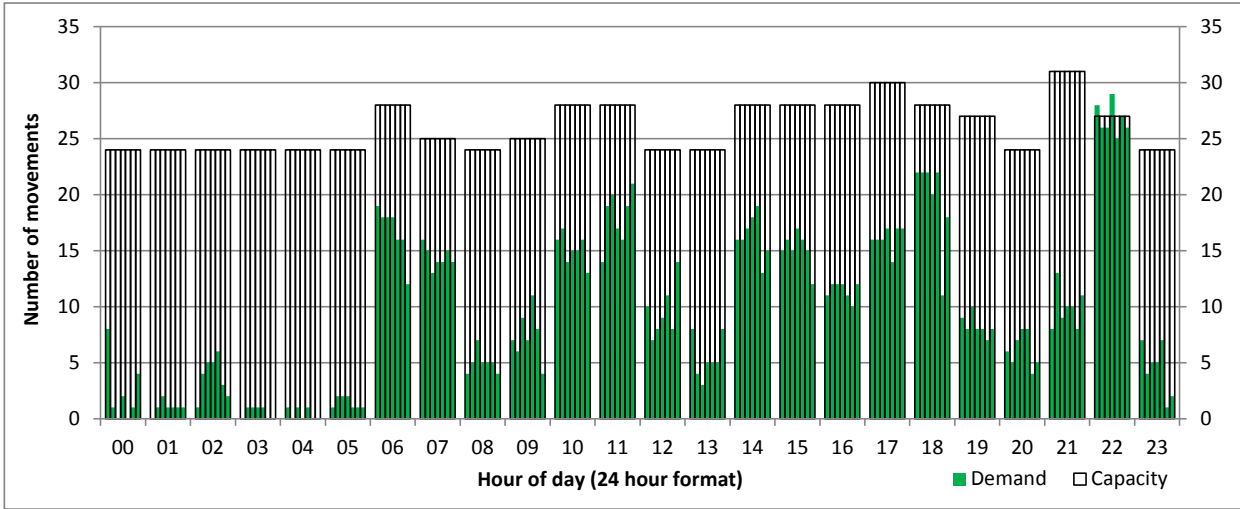
Peak Week - Hourly Runway Demand

Schedule: S15 Start



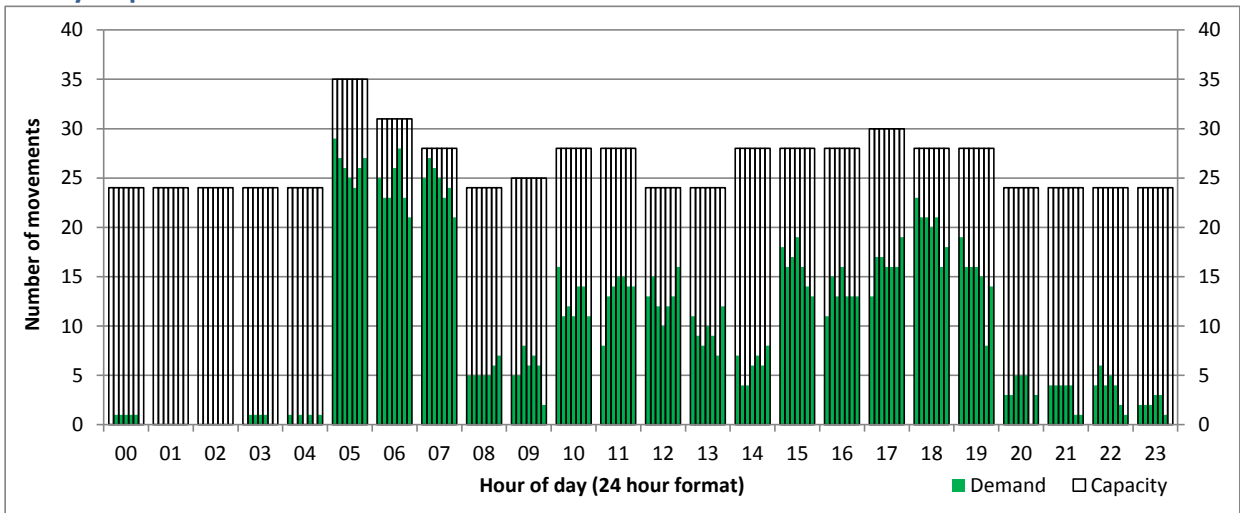
Hourly Arrival Demand

Time: UTC



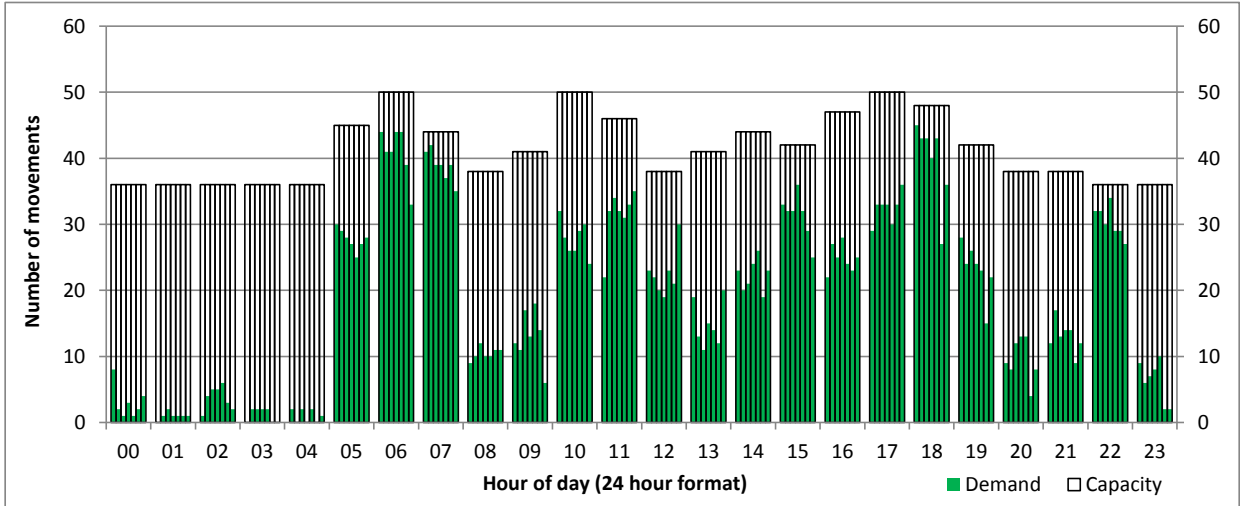
Hourly Departure Demand

Time: UTC



Combined Hourly Arrival & Departure (Total) Demand

Time: UTC



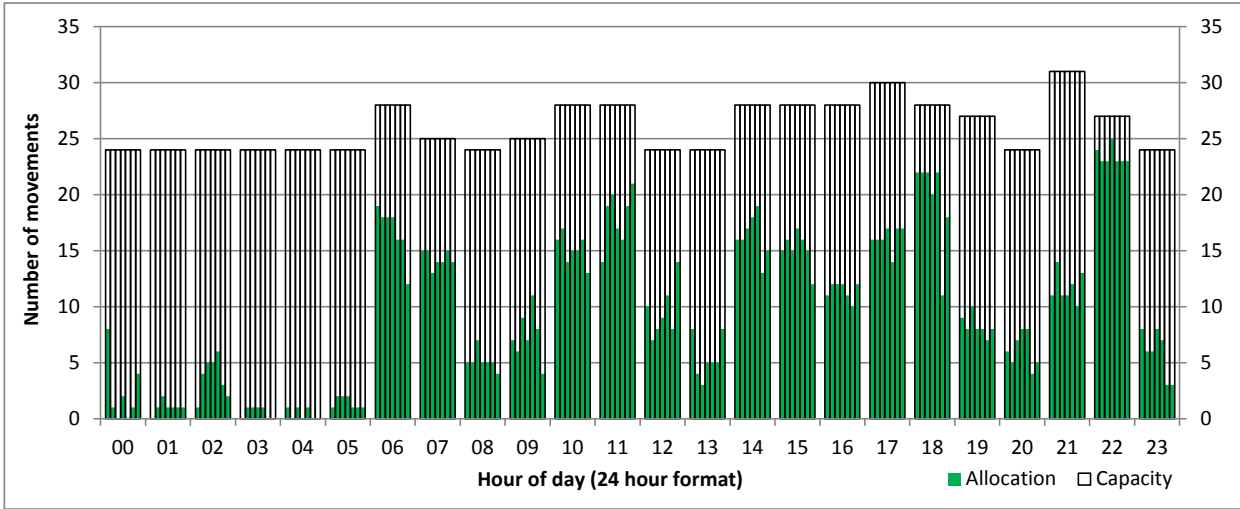
Peak Week - Hourly Runway Allocation

Schedule: S15 Start



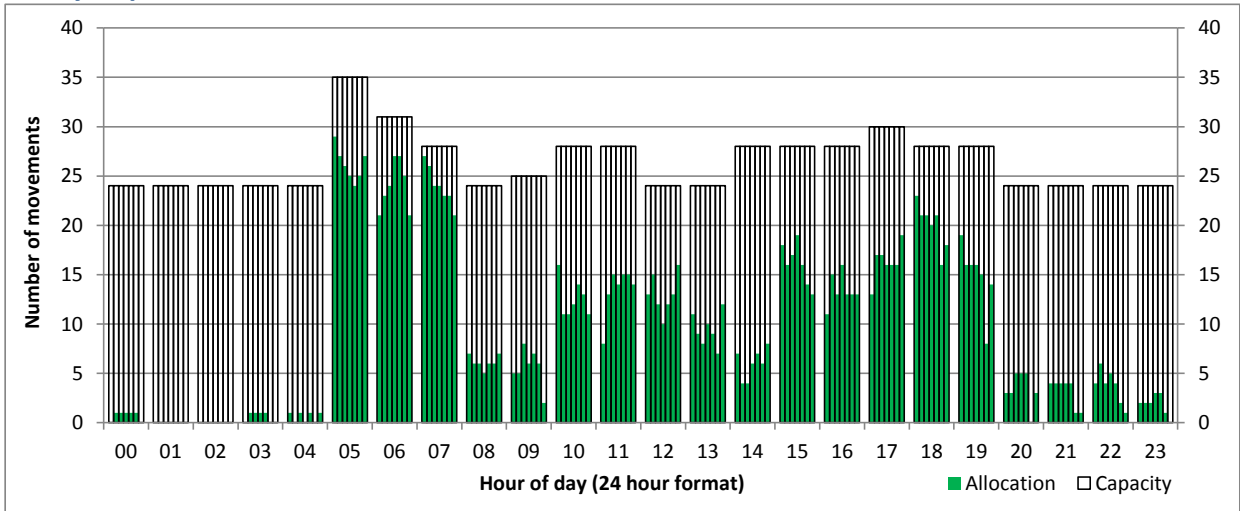
Hourly Arrival Allocation

Time: UTC



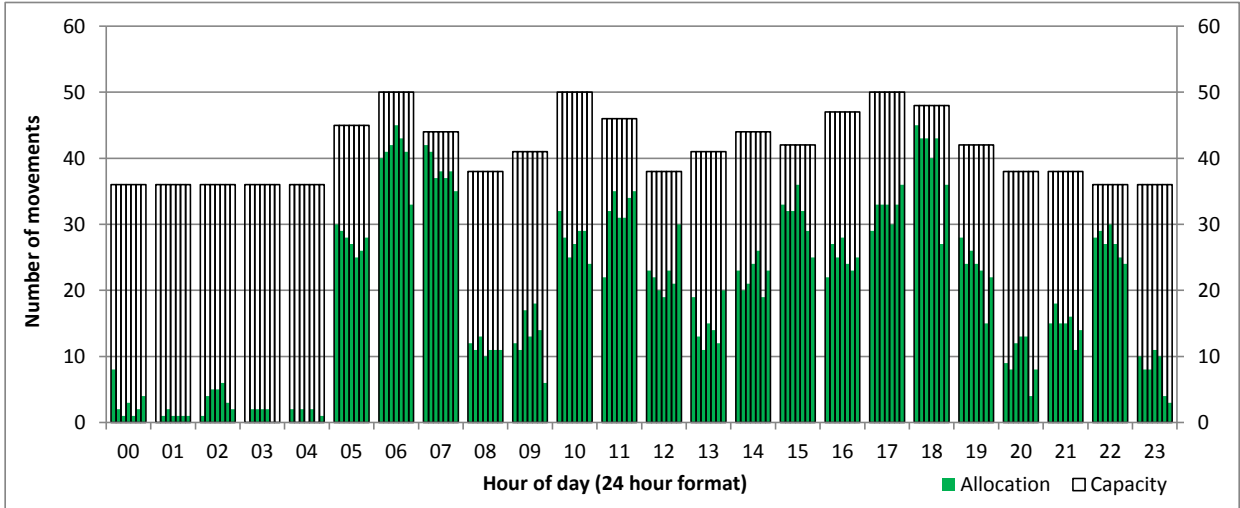
Hourly Departure Allocation

Time: UTC



Combined Hourly Arrival & Departure (Total) Allocation

Time: UTC



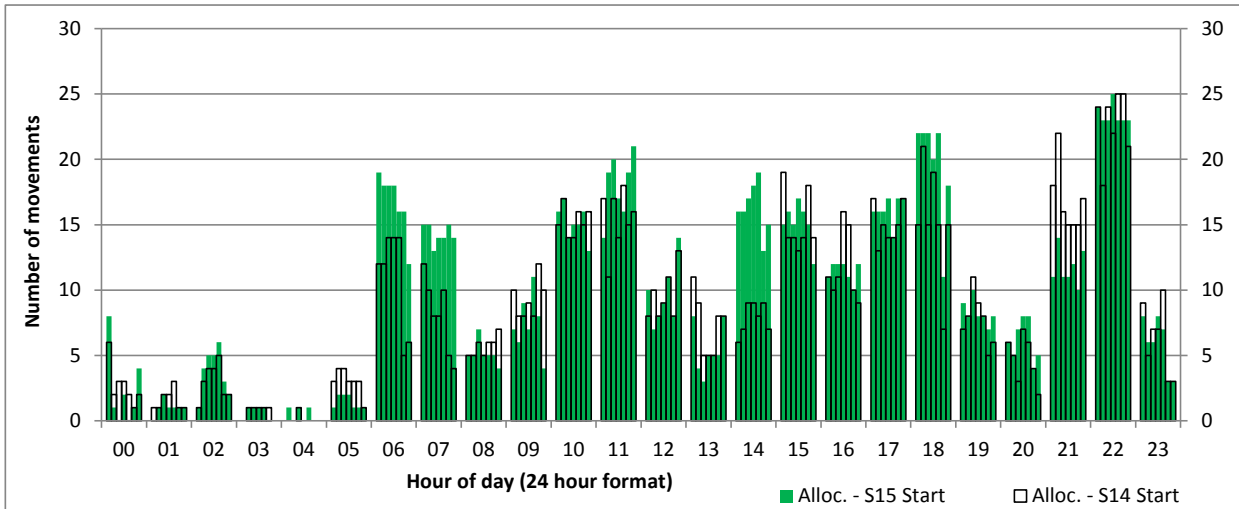
Peak Week - Runway Allocation Comparison

Comparison of S15 Start vs. S14 Start



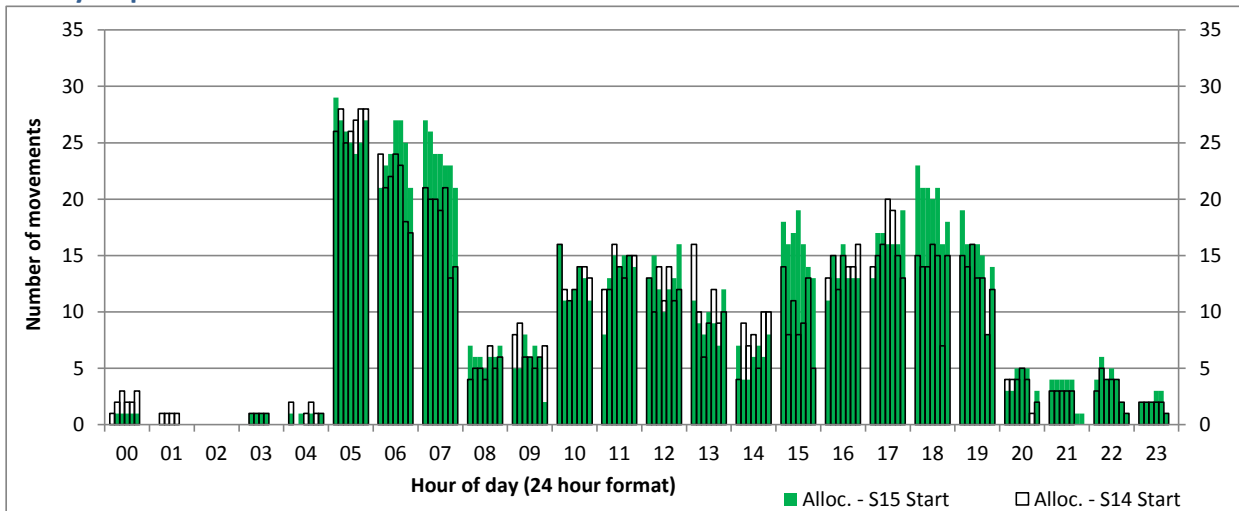
Hourly Arrival Allocation

Time: UTC



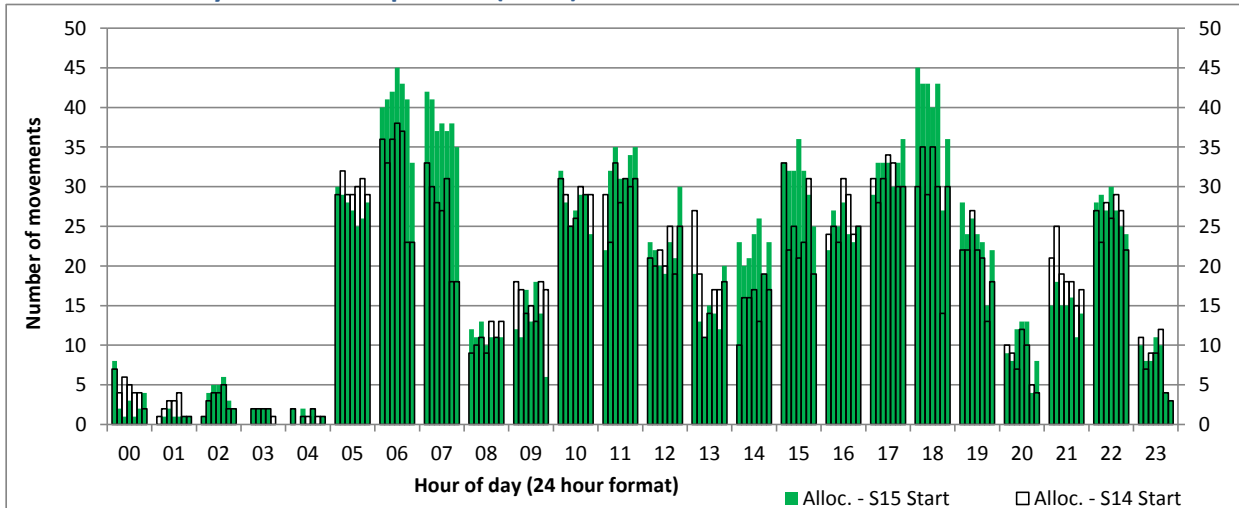
Hourly Departure Allocation

Time: UTC



Combined Hourly Arrival & Departure (Total) Allocation

Time: UTC



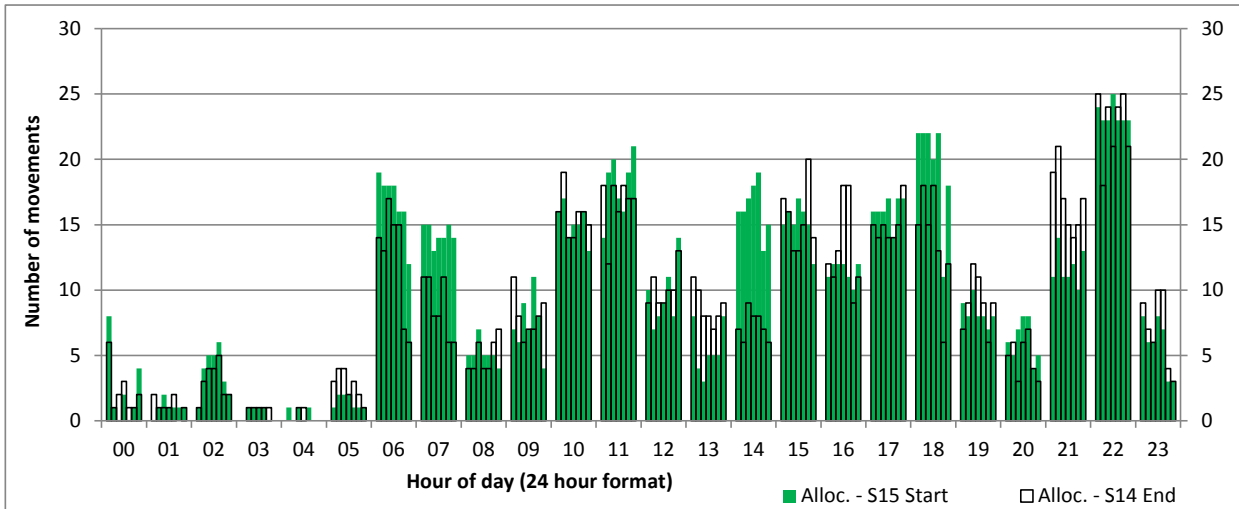
Peak Week - Runway Allocation Comparison

Comparison of S15 Start vs. S14 End



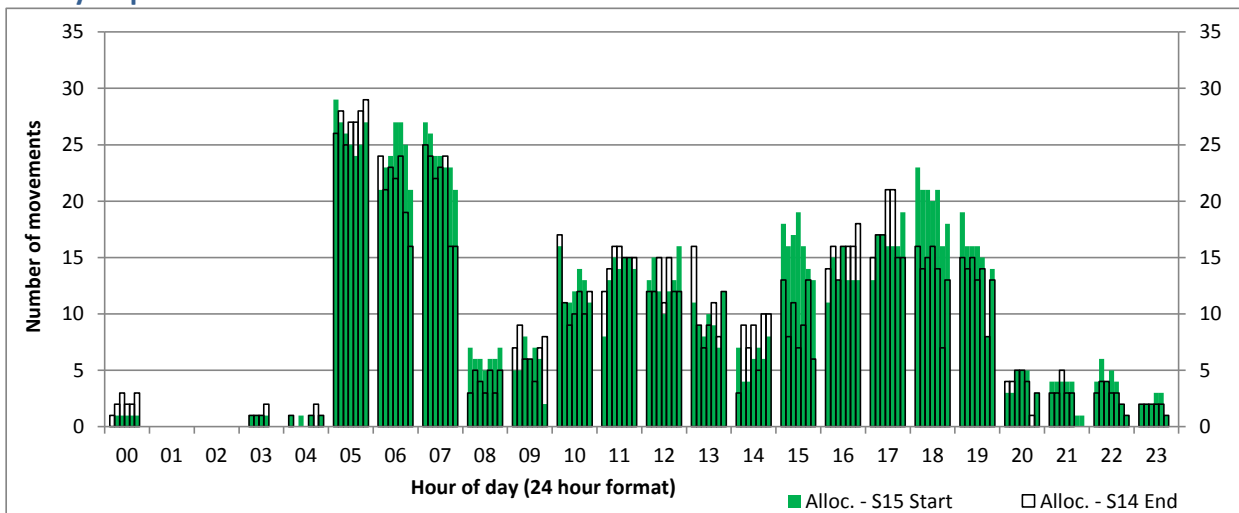
Hourly Arrival Allocation

Time: UTC



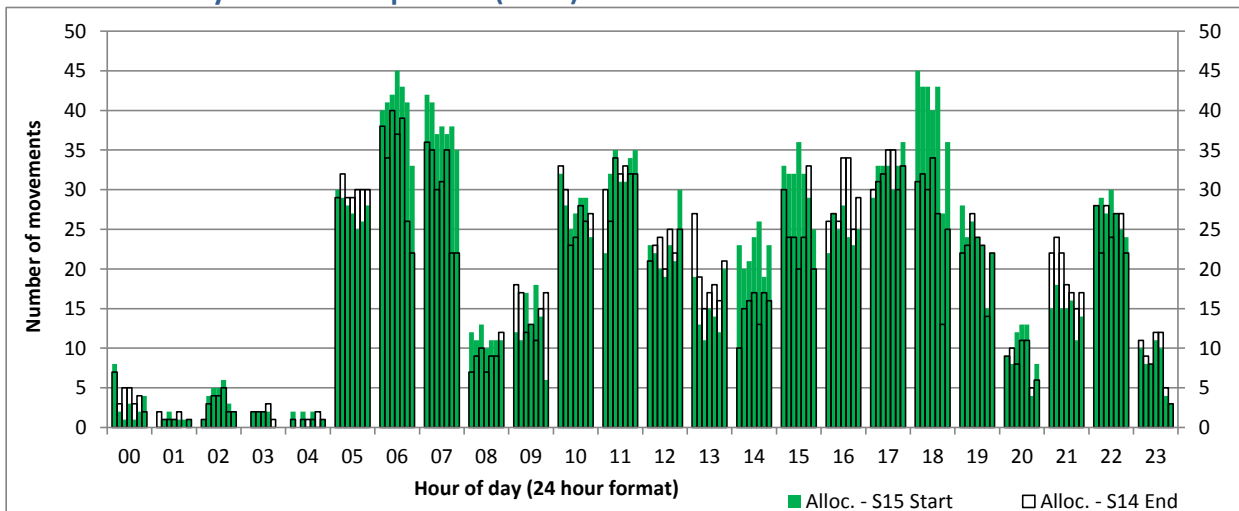
Hourly Departure Allocation

Time: UTC



Combined Hourly Arrival & Departure (Total) Allocation

Time: UTC



Peak Week - Passengers Histogram

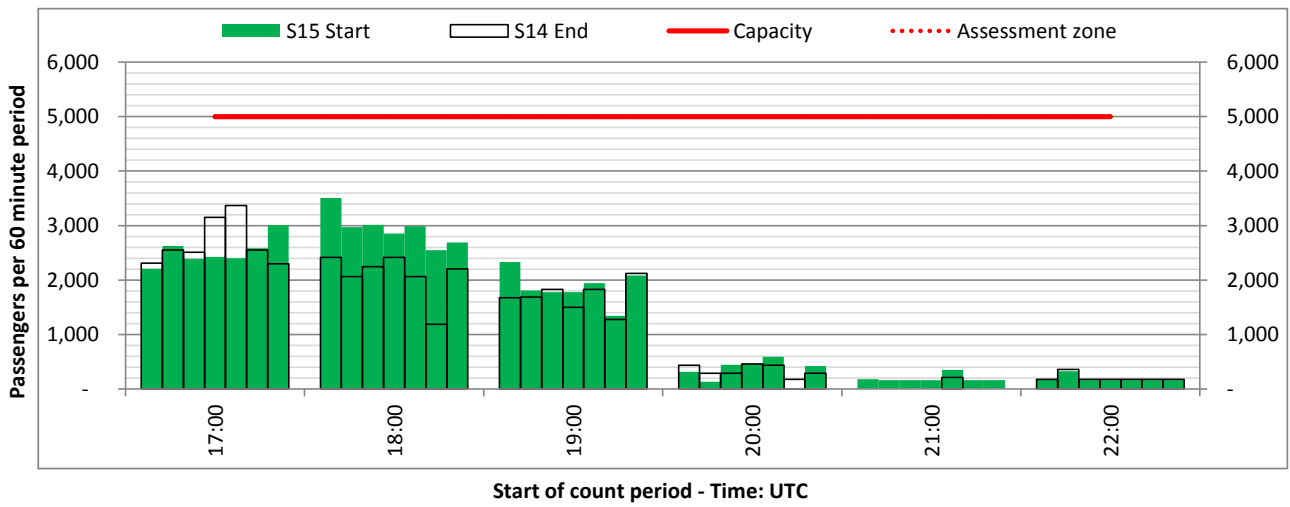
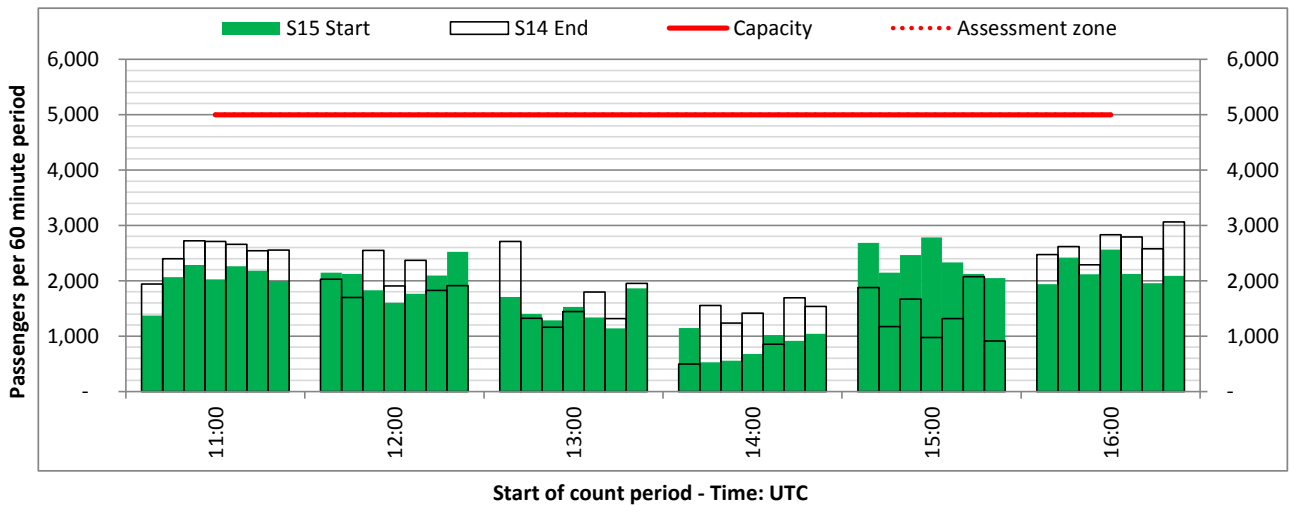
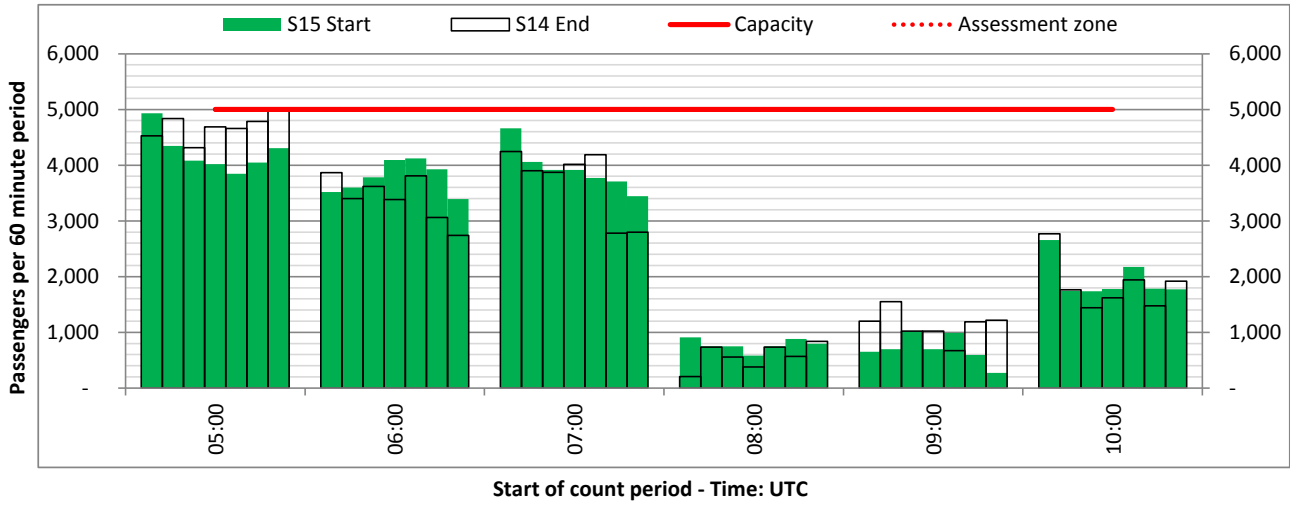
DEPARTURE - 60 minute count rolling every 60 mins (T60)



Terminals: All terminals

Operators: All Operators

Days: 1234567



Peak Week - Passengers Histogram

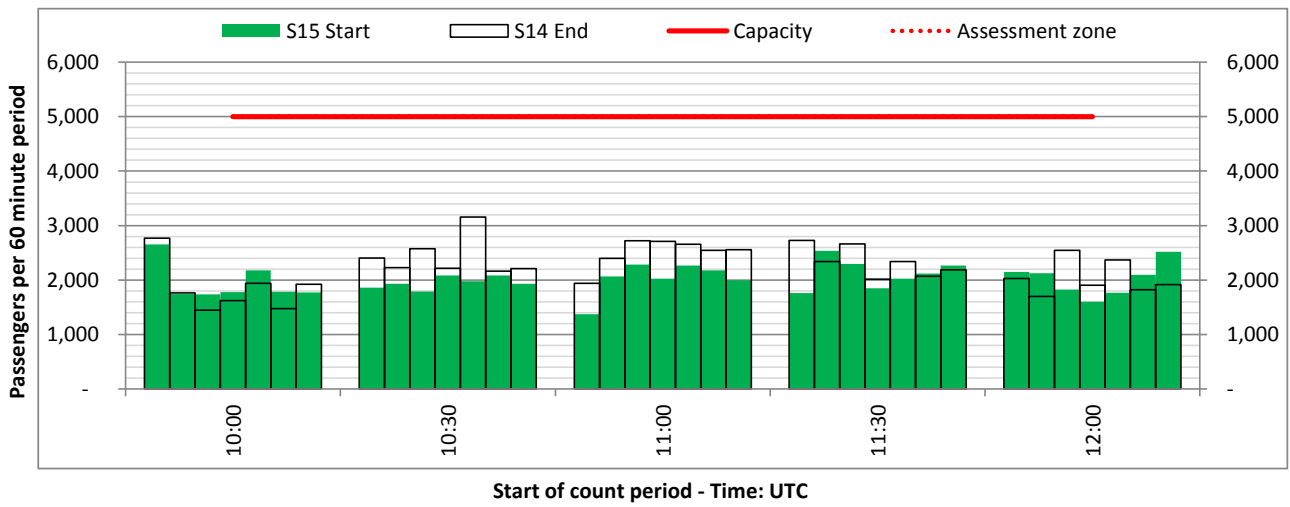
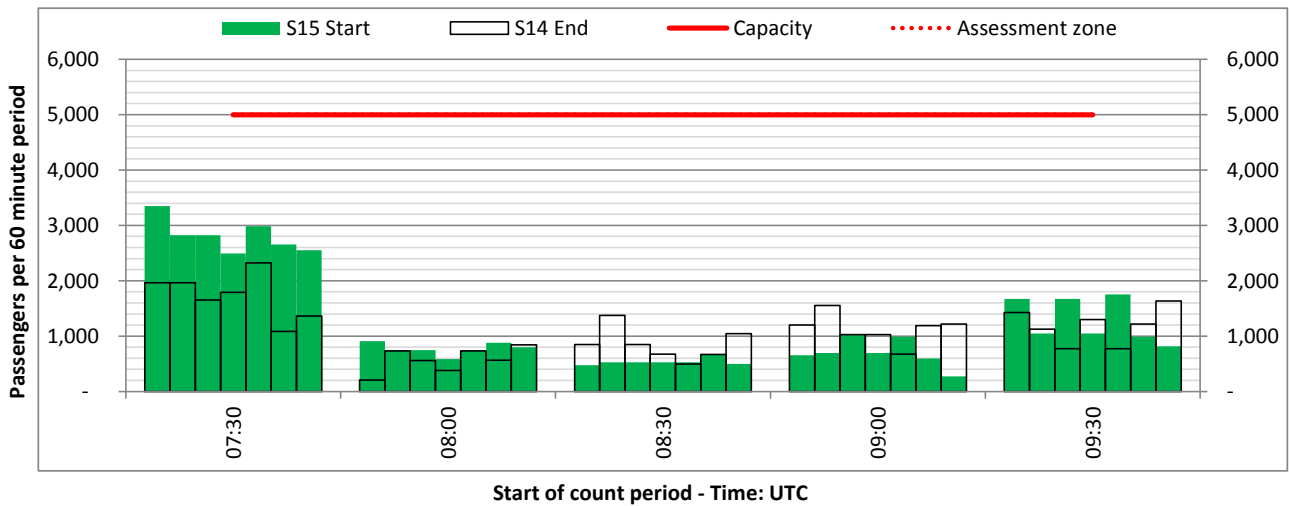
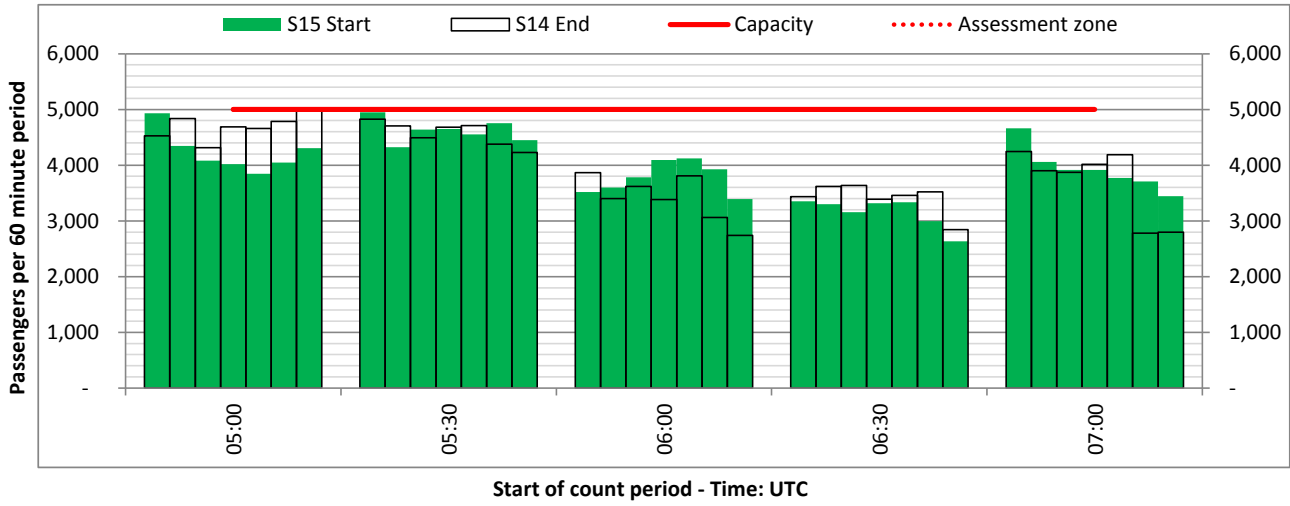
DEPARTURE - 60 minute count rolling every 30 mins (T60/30)



Terminals: All terminals

Operators: All Operators

Days: 1234567



Peak Week - Passengers Histogram

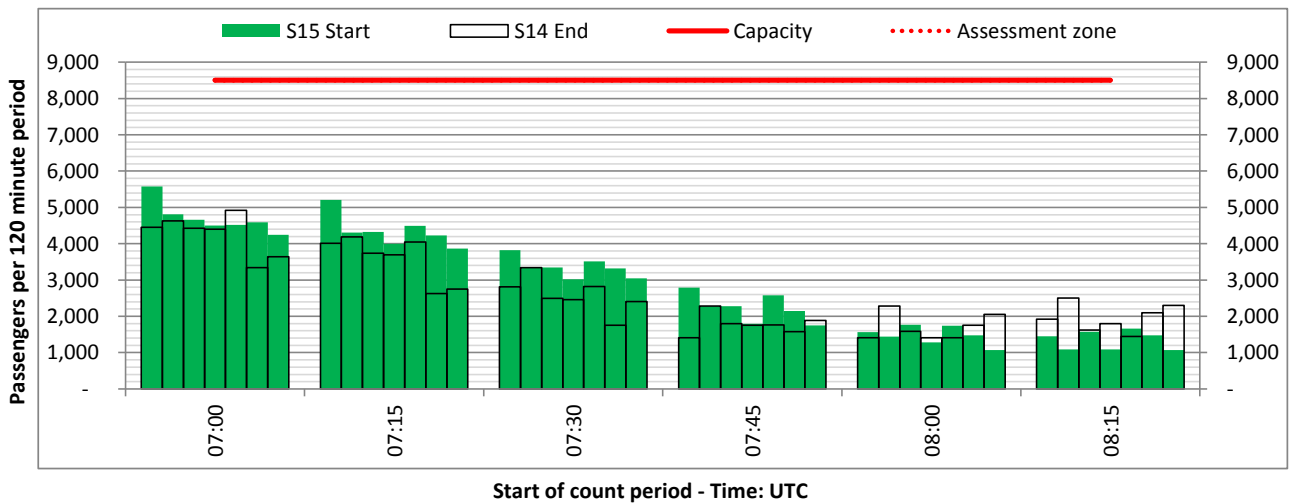
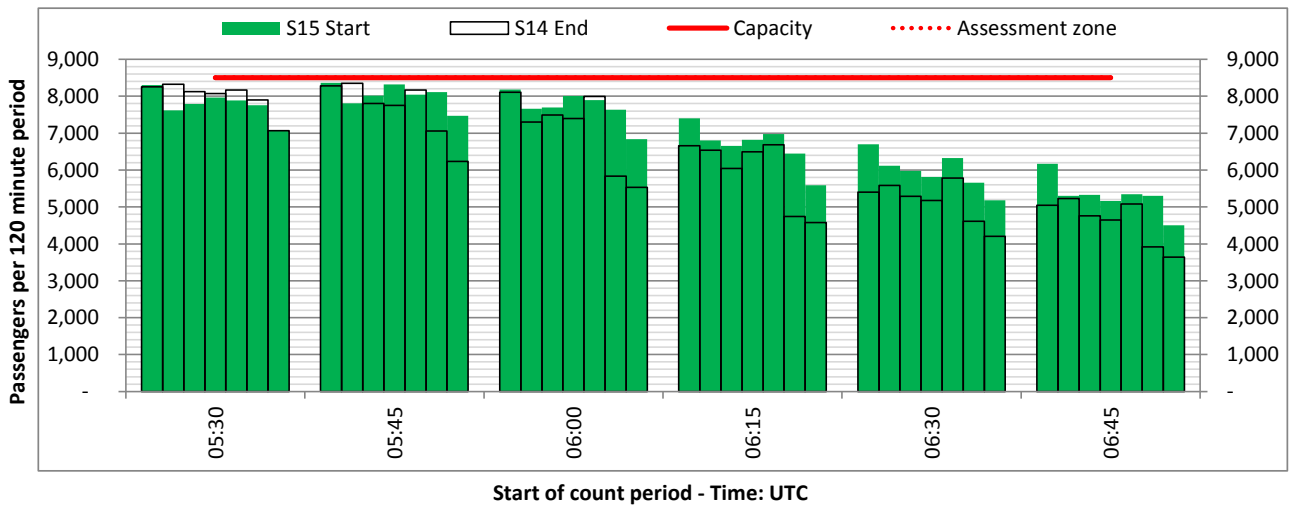
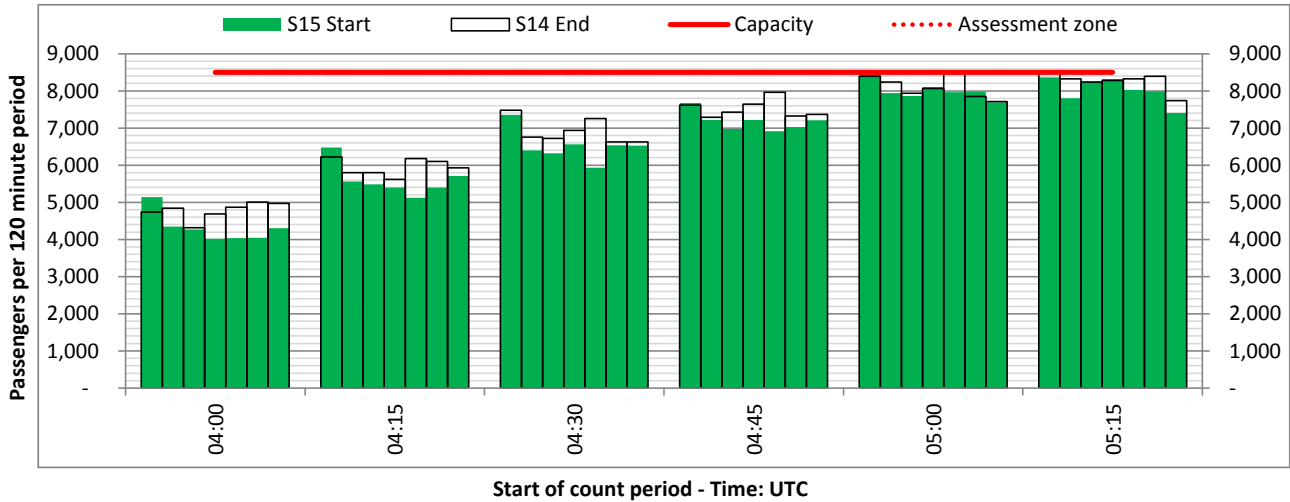
DEPARTURE - 120 minute count rolling every 15 mins (T120/15)



Terminals: All terminals

Operators: All Operators

Days: 1234567



Peak Week - Passengers Histogram

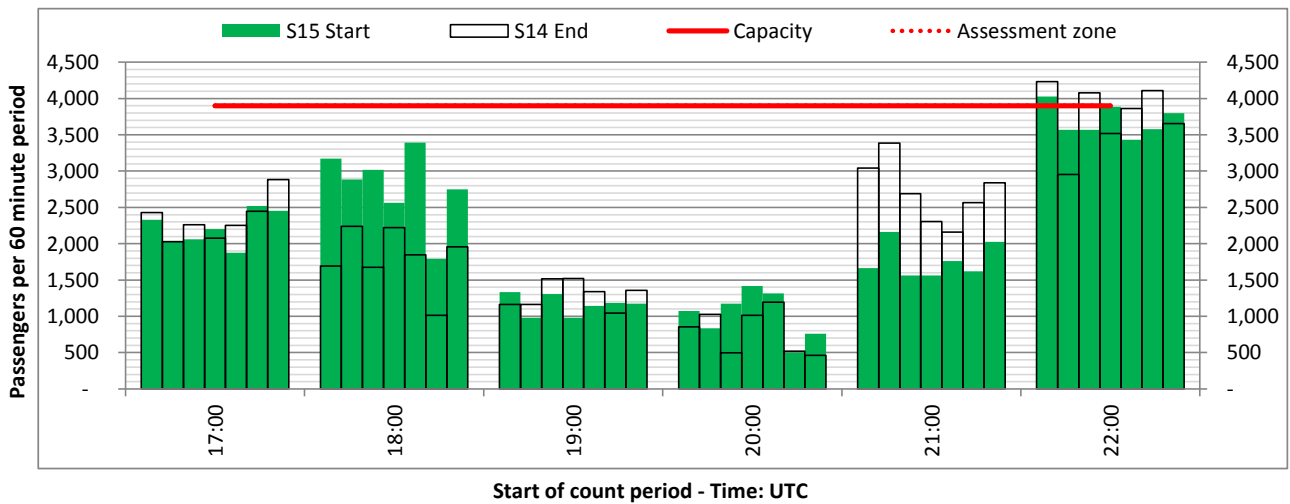
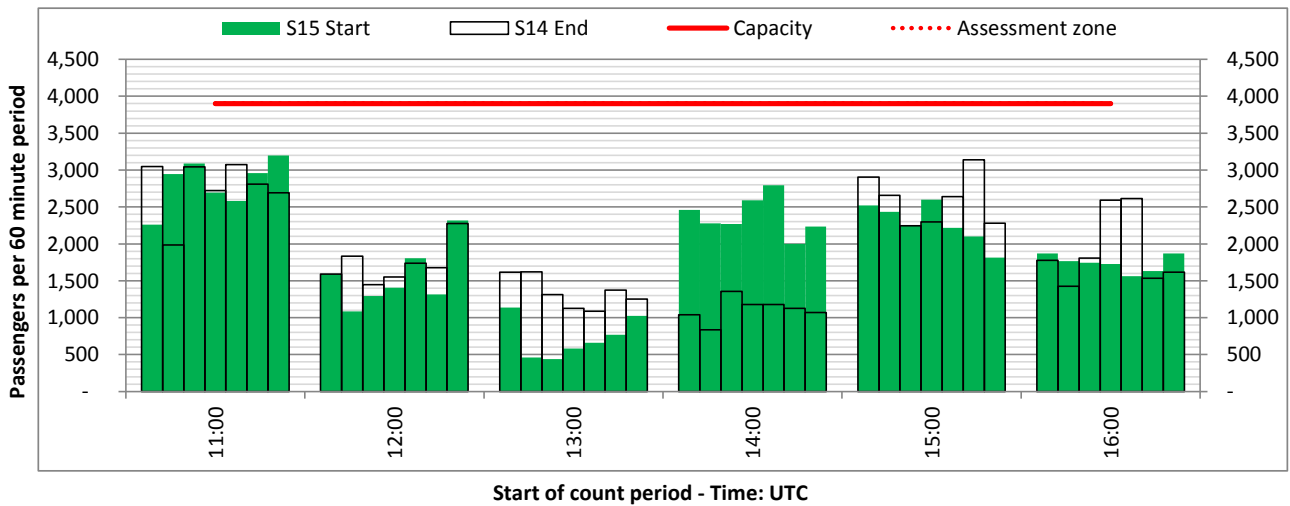
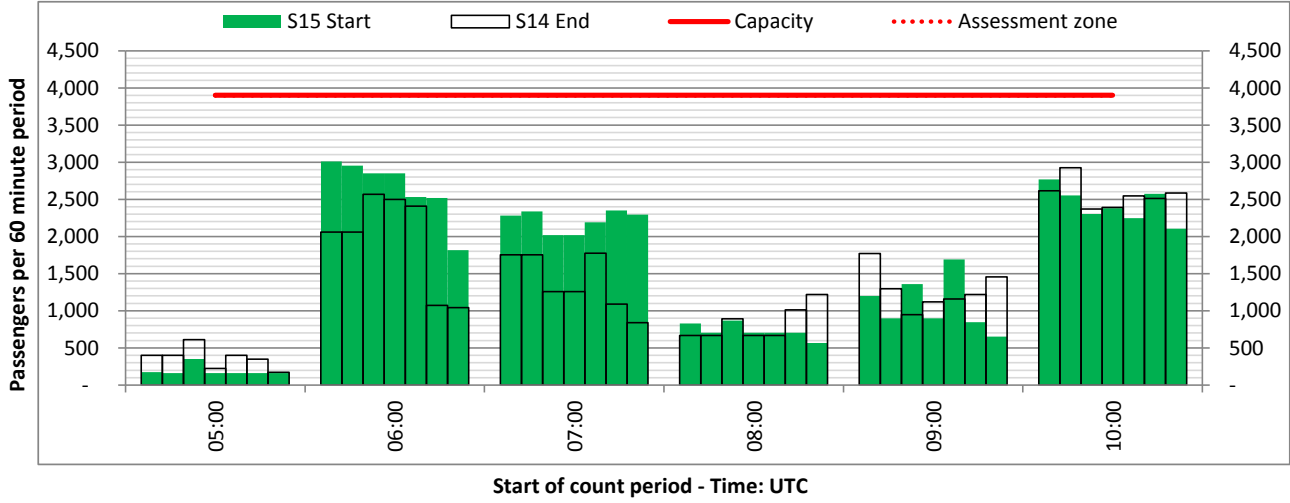
ARRIVAL - 60 minute count rolling every 60 mins (T60)



Terminals: 11

Operators: All Operators

Days: 1234567



Peak Week - Passengers Histogram

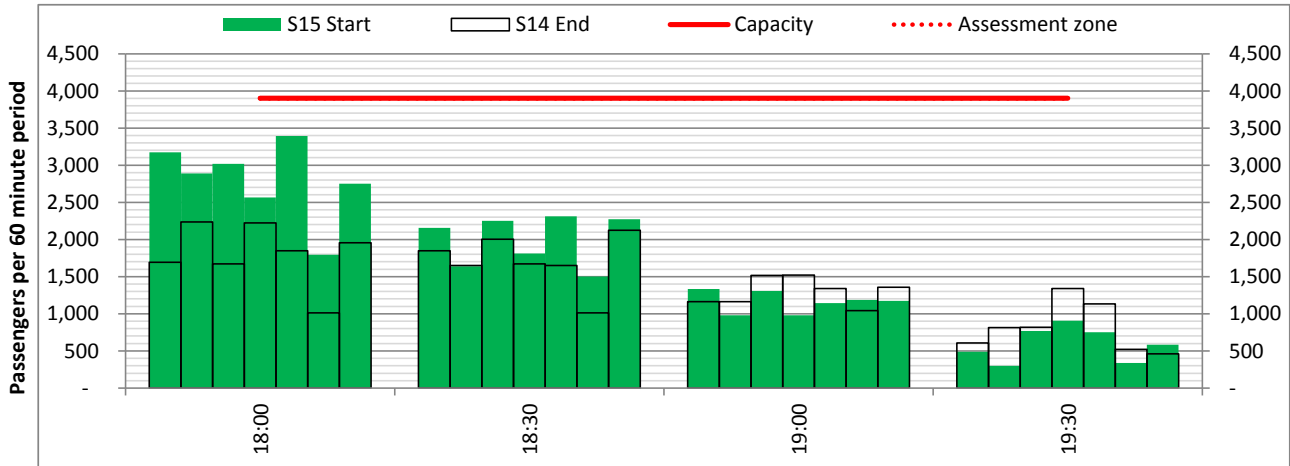
ARRIVAL - 60 minute count rolling every 30 mins (T60/30)



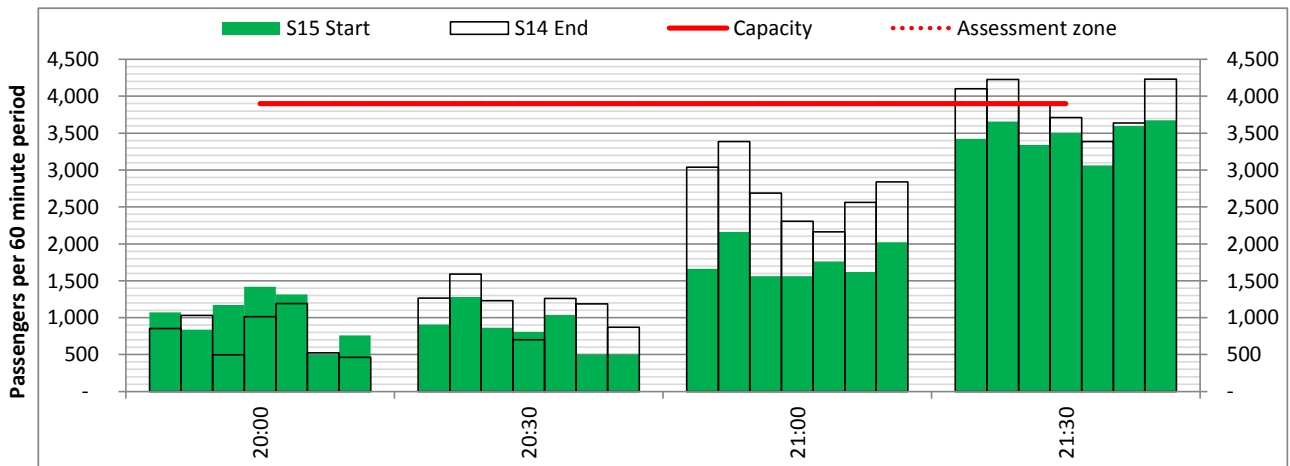
Terminals: 11

Operators: All Operators

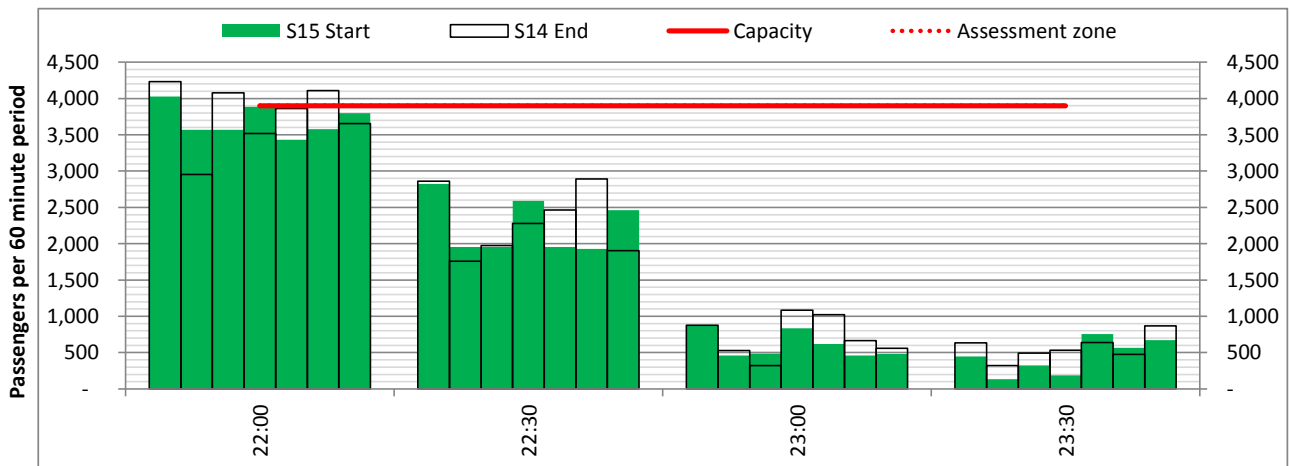
Days: 1234567



Start of count period - Time: UTC



Start of count period - Time: UTC



Start of count period - Time: UTC

Peak Week - Passengers Histogram

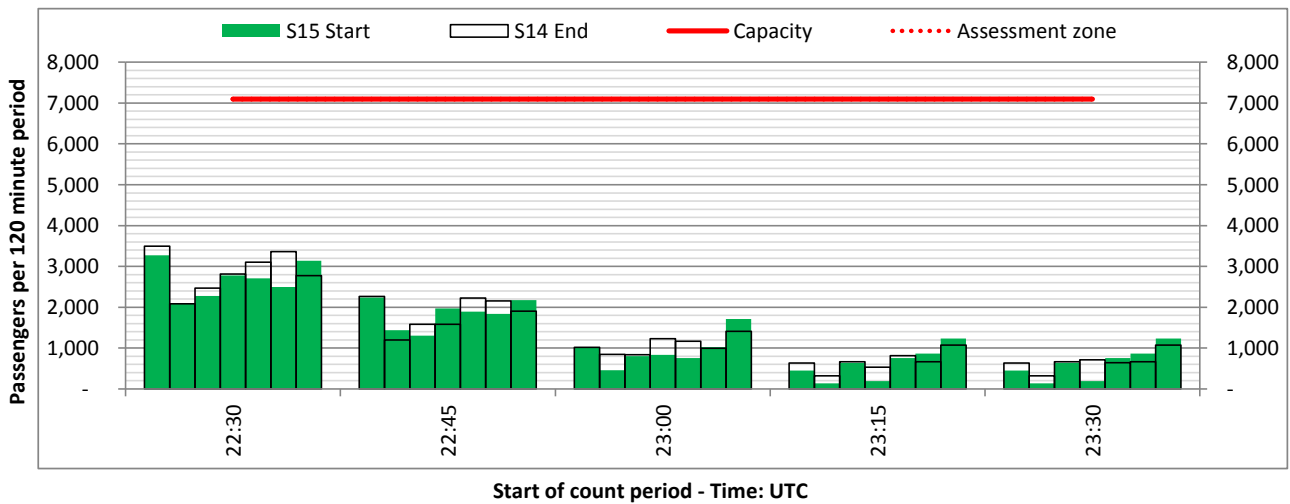
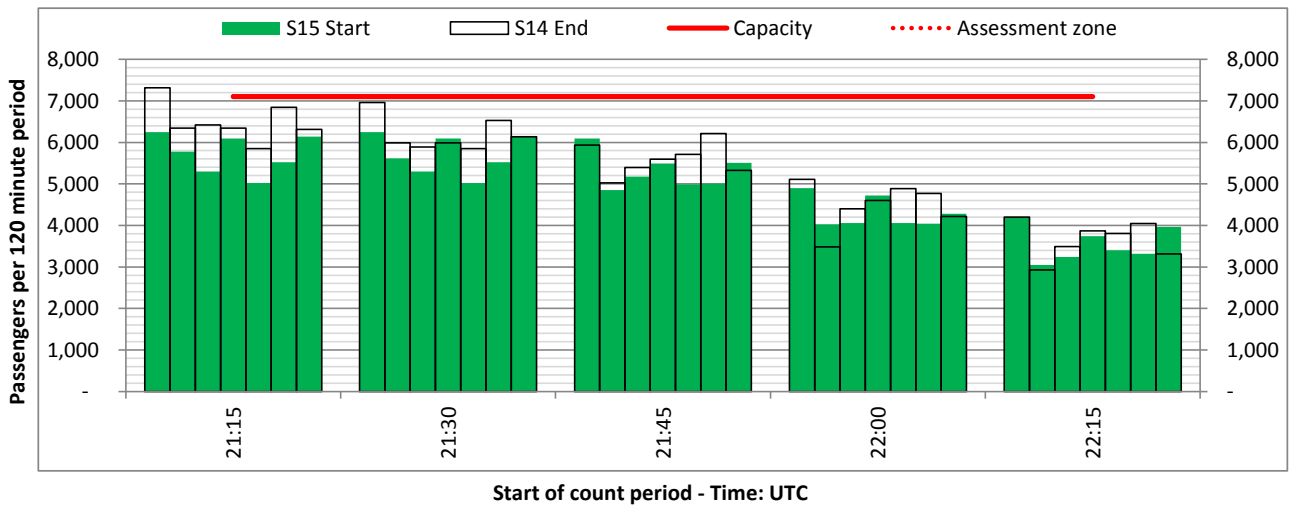
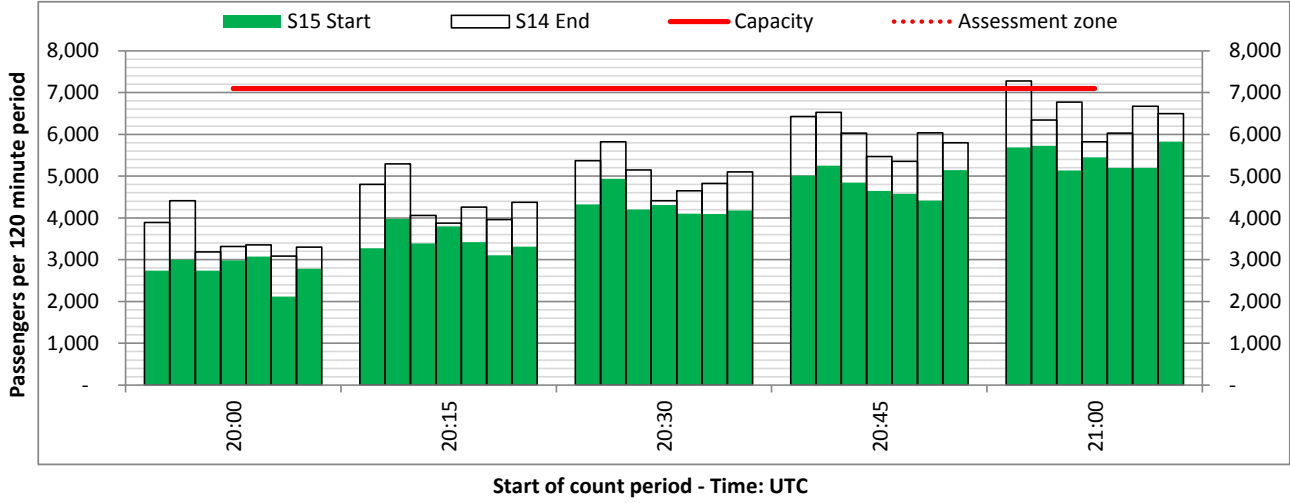
ARRIVAL - 120 minute count rolling every 15 mins (T120/15)



Terminals: 11

Operators: All Operators

Days: 1234567



Glossary



Air Transport Movement (ATM)	Any aircraft movement which is either a scheduled or chartered passenger or cargo flight.
Common Travel Area (CTA)	Origin or Destination is in Republic of Ireland or the Channel Islands.
Demand	Unconstrained demand before any schedule adjustments have been made.
"Fill-in"	These are gaps in a historic series of slots which the carrier requests to "Fill-in" at Initial Submissions - Fill-ins will be recognisably part of the historic series and will have the same flight details to qualify as a "Fill-in".
Hist (SHL)	Snapshot of historic schedule rolled over from end of the previous equivalent season - as advised to airlines in the SHLs.
ICAO Size A	Aircraft with wingspan between 0.00m - 14.99m.
ICAO Size B	Aircraft with wingspan between 15.00m - 23.99m.
ICAO Size C	Aircraft with wingspan between 24.00m - 35.99m.
ICAO Size D	Aircraft with wingspan between 36.00m - 51.99m.
ICAO Size E	Aircraft with wingspan between 52.00m - 64.99m.
ICAO Size F	Aircraft with wingspan between 65.00m - 80.00m.
Init Coord	Snapshot of schedule immediately after Initial Coordination is completed - as advised to airlines in the SALs.
Passenger Air Transport Movement (PATM)	Any aircraft movement which is either a scheduled or chartered passenger flight.
Start	Snapshot of schedule shortly before the start of the scheduling season (exact date given below where used).
Time: Local	Times shown are in LOCAL time for the airport/scheduling season.
Time: UTC	Times shown are in Universal Time Constant (UTC).

Data snapshot descriptions

S14 Start	S14 schedule as cleared on Sun 30-Mar-14.
S14 End	S14 schedule as cleared on Thu 15-Aug-13.
S15 Start	S15 schedule as cleared on Wed 11-Mar-15.

Peak Week	Peak week for S14 is Mon 01-Sep-14 to Sun 07-Sep-14. Peak week for S15 is Sun 31-Aug-14 to Sat 06-Sep-14.
------------------	--

For ACL use

	Airport-Season-Branch-Resource	From date	To date	Time
Full Season Rep 1	STN-S14-Start of Season 30MAR-Standard	Sun 30-Mar-2014	Sat 25-Oct-2014	UTC
Full Season Rep 2	STN-S14-Live-Standard	Sun 30-Mar-2014	Sat 25-Oct-2014	UTC
Full Season Rep 3	STN-S15-SOS-Standard	Sun 29-Mar-2015	Sat 24-Oct-2015	UTC
	Airport-Season-Branch-Resource	From date	To date	Time
Peak Week Rep 1	STN-S14-Start of Season 30MAR-Standard	Mon 01-Sep-2014	Sun 07-Sep-2014	UTC
Peak Week Rep 2	STN-S14-Live-Standard	Mon 01-Sep-2014	Sun 07-Sep-2014	UTC
Peak Week Rep 3	STN-S15-SOS-Standard	Sun 31-Aug-2014	Sat 06-Sep-2014	UTC