

London Stansted

STN

Winter 2011

START OF SEASON REPORT

KEY STATISTICS	Winter 2011	Change From Winter 2010
Air Transport Movements	46,710	-1.8%
Total Seats	7,362,707	-7.9%
Seats per Passenger ATM	158	

CONTENTS	Page
Summary of Changes - ATM's and Seats by Carrier	2 to 9
Scheduling Limits	10
Total ATM's & Seat Figures	11
Charter ATM's and Seats	12
Top 20 Airlines ATM's & Seats by Destination	13
Top 10 Aircraft types & Movements by ATM	14
Top 10 Airlines by Seats	15
Hourly Runway Allocation	16
Terminal Allocation Histograms	17 to 19
Glossary	20

Data in this report is current as of: 10 October 2011

No warranty whether expressed or implied as to the completeness, accuracy, fitness for purpose, or satisfactory quality is given by ACL regarding the information in this report, which is provided by third parties. Accordingly, ACL excludes all liability with regard to such data.

LONDON STANSTED AIRPORT WINTER 2011

MOVEMENT AND SEAT CHANGES SUMMARY - BY CARRIER

OPERATOR	AIRPORT	W10		W11		SEATS +/-	ATMS +/-		
		SEATS	ATMS	SEATS	ATMS				
MON	MONARCH AIRLINES Ltd	AKT	Akrotiri RAF	428	2	0	0	-428	-2
		DUB	Dublin	348	2	0	0	-348	-2
		FCO	Rome/Fiumicino	348	2	0	0	-348	-2
		FDH	Friedrichshafen	348	2	0	0	-348	-2
		GVA	Geneva/Geneve-Cointrin	5,564	26	5,992	28	428	2
		MUC	Munich/Franz Josef Strauss	348	2	348	2	0	0
MON Total				7,986	39	6,340	30	-1,646	-9
3V	TNT AIRWAYS SA	LGG	Liege/Bierset	0	0	0	404	0	404
3V Total				0	0	0	404	0	404
4U	GERMANWINGS GMBH	CGN	Cologne/Bonn	100,800	672	101,700	678	900	6
		HAJ	Hanover Arpt	78,600	524	75,300		-3,300	-22
		STR	Stuttgart/Echterdingen	74,388	496	77,100	514	2,712	18
4U Total				253,788	1,692	254,100	1,694	312	2
AB	AIR BERLIN GmbH Co Luftverkehrs KG	DUS	Dusseldorf	76,750	502	57,000	750	-19,750	248
		FMO	Muenster	39,824	524	304	4	-39,520	-520
		HAJ	Hanover Arpt	52,294	348	148	1	-52,146	-347
		NUE	Nuremberg	42,788	281	288	2	-42,500	-279
		PAD	Paderborn	22,040	290	304	4	-21,736	-286
		SZG	Salzburg/W.A. Mozart	20,108	134	0	0	-20,108	-134
AB Total				254,092	2,081	58,044	761	-196,048	-1,320
AWC	TITAN AIRWAYS Ltd	BFS	Belfast Intl Arpt	0	404	0	420	0	16
		BZZ	Brize Norton/RAF Station	0	3	0	0	0	-3
		EDI	Edinburgh/Turnhouse	0	372	0	416	0	44
		EXT	Exeter	0	202	0	210	0	8
		PIK	Glasgow/Prestwick	0	15	0	0	0	-15
AWC Total				198	1,001	0	1,046	-198	45
BA	BRITISH AIRWAYS Plc	ATL	Atlanta	0	38	0	21	0	-17
		BAH	Bahrain International	0	2	0	0	0	-2
		BLL	Billund	128	4	0	0	-128	-4
		CGN	Cologne/Bonn	0	21	0	42	0	21
		DAC	Dhaka/Zia International	0	2	0	0	0	-2
		DEL	Delhi/Indira Gandhi Intl	0	94	0	21	0	-73
		DMM	Dammam/King Fahad Int'l	0	22	0	0	0	-22
		DXB	Dubai	0	3	0	42	0	39
		FRA	Frankfurt/International	0	128	0	84	0	-44
		HKG	Hong Kong Int'l	0	34	0	105	0	71

LONDON STANSTED AIRPORT WINTER 2011

MOVEMENT AND SEAT CHANGES SUMMARY - BY CARRIER

OPERATOR	AIRPORT		W10		W11		SEATS +/-	ATMS +/-	
			SEATS	ATMS	SEATS	ATMS			
	IAH	Houston	0	17	0	0	0	-17	
	LHR	London/Heathrow	852	4	0	0	-852	-4	
	LYS	Lyon	0	3	0	0	0	-3	
	MAA	Chennai	0	50	0	21	0	-29	
	ORD	Chicago/O'Hare International	0	0	0	63	0	63	
	PVG	Shanghai/Pu Dong	0	0	0	42	0	42	
	ZAZ	Zaragoza	0	21	0	21	0	0	
BA Total			980	447	0	462	-980	15	
CAI	CORENDON AIRLINES	AYT	Antalya	0	0	10,206	54	10,206	54
CAI Total			0	0	10,206	54	10,206	54	
CCS	EURO AIR CARGO	ATH	Athens/Athinai	0	0	1,650	10	1,650	10
CCS Total			0	0	1,650	10	1,650	10	
		EDI	Edinburgh/Turnhouse	0	430	0	350	0	-80
		NCL	Newcastle Airport	0	200	0	210	0	10
EXS Total			0	632	0	560	0	-72	
EZY	EASYJET AIRLINE Co Ltd	AGP	Malaga	48,672	312	42,744	274	-5,928	-38
		ALC	Alicante	46,176	296	43,056	276	-3,120	-20
		AMS	Amsterdam-Schiphol	157,712	1,011	161,304	1,034	3,592	23
		BCN	Barcelona	45,708	293	44,616	286	-1,092	-7
		BFS	Belfast Intl Arpt	170,196	1,091	192,816	1,236	22,620	145
		BIO	Bilbao	45,708	293	44,616	286	-1,092	-7
		BJV	Bodrum./Milas Airport	312	2	312	2	0	0
		CAG	Cagliari/Elmas	20,280	130	20,280	130	0	0
		CPH	Copenhagen Airport	118,248	758	109,824	704	-8,424	-54
		DLM	Dalaman	312	2	624	4	312	2
		EDI	Edinburgh/Turnhouse	213,876	1,371	198,432	1,272	-15,444	-99
		FAO	Faro	45,552	292	35,880	230	-9,672	-62
		FNC	FUNCHAL	32,604	209	624	4	-31,980	-205
		FUE	Fuerteventura	12,792	82	13,104	84	312	2
		GLA	Glasgow International	198,588	1,273	188,760	1,186	-9,828	-87
		GNB	Grenoble/Saint Geoirs	14,664	94	7,488	48	-7,176	-46
		GVA	Geneva/Geneve-Cointrin	75,192	482	72,072	462	-3,120	-20
		IBZ	Ibiza	624	4	624	4	0	0
		IVL	Ivalo	312	2	0	0	-312	-2
		LGW	London/Gatwick	1,116	9	0	0	-1,116	-9
		LJU	Ljubljana/Brnik	36,504	234	32,760	210	-3,744	-24

LONDON STANSTED AIRPORT WINTER 2011

MOVEMENT AND SEAT CHANGES SUMMARY - BY CARRIER

OPERATOR	AIRPORT	W10		W11		SEATS +/-	ATMS +/-
		SEATS	ATMS	SEATS	ATMS		
	LTN London/Luton Airport	634	4	0	0	-634	-4
	LYS Lyon	45,084	289	43,368	278	-1,716	-11
	MUC Munich/Franz Josef Strauss	82,212	527	68,016	436	-14,196	-91
	NAP Naples	47,892	307	42,744	274	-5,148	-33
	NCE Nice/Cote D'Azur	20,904	134	27,456	176	6,552	42
	NCL Newcastle Airport	84,500	542	0	0	-84,500	-542
	OVD Asturias	32,136	206	23,712	152	-8,424	-54
	PMI Palma Mallorca	26,988	173	29,016	186	2,028	13
	PRG Prague/Ruzyne	65,520	420	60,528	388	-4,992	-32
	TLL Tallinn/Ulemiste	45,084	289	35,256	226	-9,828	-63
EZY Total		1,736,727	11,136	1,540,032	9,848	-196,695	-1,288
FR	RYANAIR Ltd						
	AAR Aarhus/Tirstrup	37,422	198	32,130	170	-5,292	-28
	ACE Lanzarote	25,893	137	24,570	130	-1,323	-7
	AGA Agadir Almassira	15,876	84	0	0	-15,876	-84
	AGP Malaga	55,377	293	57,078	302	1,701	9
	AHO Alghero/Fertilia	28,350	150	24,948	132	-3,402	-18
	AOC Altenburg Nobitz	18,144	96	0	0	-18,144	-96
	AOI Ancona/Falconara	33,264	176	32,130	170	-1,134	-6
	BCN Barcelona	0	0	91,098	482	91,098	482
	BDS Brindisi/Papola Casale	24,570	130	18,144	96	-6,426	-34
	BGY Milan/Orio Al Serio	163,107	863	167,832	888	4,725	25
	BIQ Biarritz Parme	24,192	128	16,254	86	-7,938	-42
	BLL Billund	109,242	578	127,008	672	17,766	94
	BLQ Bologna/Guglielmo Marconi	85,050	450	56,700	300	-28,350	-150
	BRE Bremen	103,383	547	101,304	536	-2,079	-11
	BRI Bari/Palese	25,704	136	33,642	178	7,938	42
	BRQ Brno	55,188	292	57,834	306	2,646	14
	BTS Bratislava/Ivanka	105,651	559	89,586	474	-16,065	-85
	BZG Bydgoszcz	38,556	204	33,642	178	-4,914	-26
	CCF Carcassonne/Salvaza	23,436	124	15,120	80	-8,316	-44
	CFU Kerkyra/I. Kapodistrias	0	0	6,048	32	6,048	32
	CIA Rome/Ciampino	165,564	876	172,746	914	7,182	38
	CQM Ciudad Real	1,890	10	0	0	-1,890	-10
	CUF Cuneo/Levaldigi	5,292	28	0	0	-5,292	-28
	DNR Dinard/Pleurtuit	25,704	136	23,436	124	-2,268	-12
	DUB Dublin	377,244	1,996	373,086	1,974	-4,158	-22

LONDON STANSTED AIRPORT WINTER 2011

MOVEMENT AND SEAT CHANGES SUMMARY - BY CARRIER

OPERATOR	AIRPORT	W10		W11		SEATS +/-	ATMS +/-
		SEATS	ATMS	SEATS	ATMS		
EGC	Bergerac/Roumanieres	26,082	138	12,096	64	-13,986	-74
EIN	Eindhoven	109,242	578	124,740	660	15,498	82
FAO	Faro	54,810	290	32,508	172	-22,302	-118
FEZ	Fez/Sais	15,876	84	16,632	88	756	4
FKB	Karlsruhe/Baden Baden/Soellingen	58,590	310	53,676	284	-4,914	-26
FMM	Memmingen-Allgau	55,944	296	54,054	286	-1,890	-10
FUE	Fuerteventura	15,876	84	16,632	88	756	4
GDN	Gdansk/Rebiechowo	57,834	306	58,968	312	1,134	6
GNB	Grenoble/Saint Geoirs	26,082	138	14,742	78	-11,340	-60
GOA	Genoa/Cristoforo Colombo	24,570	130	23,436	124	-1,134	-6
GRO	Gerona/Costa Brava	71,442	378	0	0	-71,442	-378
GRZ	Graz/Thalerhof	31,752	168	24,948	132	-6,804	-36
HAU	Haugesund	22,680	120	23,436	124	756	4
HHN	Frankfurt/Hahn	148,932	788	128,142	678	-20,790	-110
IBZ	Ibiza	11,340	60	0	0	-11,340	-60
KIR	Kerry County Airport	32,130	170	32,508	172	378	2
KLU	Klagenfurt	24,192	128	30,996	164	6,804	36
KRK	Krakow/J. Paul II Balice Intl	95,823	507	114,156	604	18,333	97
KTW	Katowice/Pyrzowice	57,645	305	58,590	310	945	5
KUN	Kaunas	55,566	294	57,834	306	2,268	12
LBA	Leeds/Bradford	378	2	0	0	-378	-2
LBC	Luebeck/Blankensee	54,432	288	0	0	-54,432	-288
LCJ	Lodz Lublinek	41,769	221	40,824	216	-945	-5
LDE	Lourdes/Tarbes/Tarbes Ossun Lourdes	4,536	24	15,498	82	10,962	58
LDY	Londonderry/Eglinton	54,810	290	71,820	380	17,010	90
LEJ	Leipzig Arpt	0	0	38,934	206	38,934	206
LGW	London/Gatwick	198	2	0	0	-198	-2
LIG	Limoges/Bellegarde	26,460	140	23,436	124	-3,024	-16
LNZ	Linz/Hoersching	23,814	126	23,814	126	0	0
LPA	Las Palmas/Arpt De Gran Canaria	24,192	128	16,632	88	-7,560	-40
LRH	La Rochelle/Laleu	23,814	126	23,814	126	0	0
LTN	London/Luton Airport	378	2	0	0	-378	-2
MAD	Madrid/Barajas	109,809	581	112,644	596	2,835	15
MJV	Murcia/San Javier	23,436	124	23,058	122	-378	-2
MMX	Malmo/Sturup	0	0	54,432	288	54,432	288
MRS	Marseille	52,164	276	54,810	290	2,646	14

LONDON STANSTED AIRPORT WINTER 2011

MOVEMENT AND SEAT CHANGES SUMMARY - BY CARRIER

OPERATOR	AIRPORT	W10		W11		SEATS +/-	ATMS +/-
		SEATS	ATMS	SEATS	ATMS		
NOC	Knock International	55,566	294	57,834	306	2,268	12
NRN	Neiderrhein	109,242	578	80,136	424	-29,106	-154
NYO	Stockholm/Skavsta	116,901	604	111,888	592	-5,013	-12
OPO	Porto	94,878	502	98,280	520	3,402	18
ORK	Cork	111,699	591	114,912	608	3,213	17
PDV	Plovdiv	17,766	94	17,010	90	-756	-4
PEG	Perugia/Sant Egidio	24,570	130	23,814	126	-756	-4
PIK	Glasgow/Prestwick	69,930	370	0	0	-69,930	-370
PIS	Poitiers/Biard	23,436	124	23,058	122	-378	-2
PMF	Milan/Parma	23,814	126	23,058	122	-756	-4
PMI	Palma Mallorca	15,876	84	15,876	84	0	0
PMO	Palermo/Punta Raisi	0	0	24,948	132	24,948	132
POZ	Poznan/Lawica	57,456	304	57,456	304	0	0
PSA	Florence/Gal Galilei	94,122	498	87,318	462	-6,804	-36
PSR	Pescara/Liberi	29,862	158	31,374	166	1,512	8
PUF	Pau/Uzein	23,436	124	0	0	-23,436	-124
RAK	Marrakech/Menara	0	0	15,498	82	15,498	82
RDZ	Rodez/Marcillac	18,144	96	15,498	82	-2,646	-14
REU	Reus	4,158	22	0	0	-4,158	-22
RIX	Riga	107,730	570	113,778	602	6,048	32
RMI	Rimini/Miramare	23,814	126	23,058	122	-756	-4
RYG	Oslo	108,864	576	109,620	580	756	4
RZE	Rzeszow/Jasionka	38,556	204	33,642	178	-4,914	-26
SCQ	Santiago De Compostela	12,096	64	24,570	130	12,474	66
SDR	Santander	32,886	174	33,642	178	756	4
SKG	Thessaloniki/Makedonia Apt.	0	0	26,082	138	26,082	138
SNN	Shannon	86,184	456	94,122	498	7,938	42
SUF	Lamezia-Terme/S Eufemia	1,512	8	32,508	172	30,996	164
SVQ	Sevilla	54,432	288	31,374	166	-23,058	-122
SXF	Berlin/Schoenefeld	150,822	799	60,102	318	-90,720	-481
SZG	Salzburg/W.A. Mozart	59,724	316	45,360	240	-14,364	-76
SZZ	Szczecin/Goleniow	24,570	130	24,948	132	378	2
TFS	Tenerife/Sur Reina Sofia	32,130	170	33,642	178	1,512	8
TLN	Toulon/Hyeres	6,804	36	0	0	-6,804	-36
TMP	Tampere-Pirkkala	32,508	172	24,948	132	-7,560	-40
TPS	Trapani/Birgi	32,886	174	0	0	-32,886	-174

LONDON STANSTED AIRPORT WINTER 2011

MOVEMENT AND SEAT CHANGES SUMMARY - BY CARRIER

OPERATOR		AIRPORT		W10		W11		SEATS +/-	ATMS +/-
				SEATS	ATMS	SEATS	ATMS		
		TRF	Oslo/Sandefjord	55,188	292	54,810	290	-378	-2
		TRN	Turin/Citta Di Torino	71,064	376	69,552	368	-1,512	-8
		TRS	Trieste	37,422	198	30,996	164	-6,426	-34
		TSF	Treviso	99,414	526	70,308	372	-29,106	-154
		TUF	Tours/St Symphorien	17,766	94	23,436	124	5,670	30
		VCE	Venice	0	0	23,436	124	23,436	124
		VLC	Valencia	28,350	150	30,618	162	2,268	12
		VLL	Valladolid	23,058	122	23,436	124	378	2
		VNO	Vilnius	0	0	57,456	304	57,456	304
		VRN	VERONA	25,326	134	23,436	124	-1,890	-10
		VST	VASTERAS	37,422	198	32,130	170	-5,292	-28
		WRO	Wroclaw/Strachowice	59,724	316	56,322	298	-3,402	-18
		XRY	Jerez De La Frontera/La Parra	5,670	30	0	0	-5,670	-30
		ZAZ	Zaragoza	30,996	164	31,374	166	378	2
FR Total				5,338,602	28,234	5,132,862	27,158	-205,740	-1,076
FX	FEDEX	AMS	Amsterdam-Schiphol	0	154	0	168	0	14
		CDG	Paris/Ch. De Gaulle	0	325	0	328	0	3
		CGN	Cologne/Bonn	0	0	0	128	0	128
		DUB	Dublin	0	171	0	189	0	18
		EWR	Liberty International (Newark)	0	52	0	60	0	8
		GLA	Glasgow International	0	157	0	168	0	11
		HKG	Hong Kong Int'l	0	19	0	21	0	2
		IND	Indianapolis/International	0	83	0	79	0	-4
		MAN	Manchester/International	0	153	0	168	0	15
		MEM	Memphis/International	0	265	0	273	0	8
FX Total				0	1,425	0	1,624	0	199
GR	AURIGNY AIR SERVICES Ltd	EMA	Nottingham/East Midlands	204	3	0	0	-204	-3
		GCI	Guernsey	12,654	191	14,532	216	1,878	25
		JER	Jersey/States	6,720	101	0	0	-6,720	-101
GR Total				19,578	295	14,532	216	-5,046	-79
L9	AIR LOGISTICS LLC	PRN	Pristina	0	0	12,096	84	12,096	84
L9 Total				0	0	12,096	84	12,096	84
LBY	BELLE AIR	TIA	Tirana/Rinas	8,352	58	18,144	126	9,792	68
LBY Total				8,352	58	18,144	126	9,792	68
OHY	ONUR AIR Tasimacilik AS	DLM	Dalaman	0	0	7,560	42	7,560	42
OHY Total				0	0	7,560	42	7,560	42

LONDON STANSTED AIRPORT WINTER 2011

MOVEMENT AND SEAT CHANGES SUMMARY - BY CARRIER

OPERATOR	AIRPORT	W10		W11		SEATS +/-	ATMS +/-		
		SEATS	ATMS	SEATS	ATMS				
OS	AUSTRIAN AIRLINES	INN	Innsbruck/Kranebitten	0	0	2,415	23	2,415	23
OS Total				368	2	2,415	23	2,047	21
PC	PEGASUS AIRLINES	ADB	Izmir/Adnan Menderes Arpt	0	0	15,876	84	15,876	84
		SAW	SABIHA GOKCEN INTL AIRPORT	68,040	360	79,380	420	11,340	60
TCX	THOMAS COOK Airlines UK Ltd	ACE	Lanzarote	4,790	26	5,940	33	1,150	7
		AYT	Antalya	2,395	13	2,080	11	-315	-2
		BGI	Bridgetown/Grantley Adams Intl	638	2	0	0	-638	-2
		DLM	Dalaman	670	4	460	2	-210	-2
		FUE	Fuerteventura	3,890	21	3,420	19	-470	-2
		GLA	Glasgow International	560	2	0	0	-560	-2
		KTT	Kittila	540	3	0	0	-540	-3
		LGW	London/Gatwick	550	2	0	0	-550	-2
		LPA	Las Palmas/Arpt De Gran Canaria	3,260	17	3,420	19	160	2
		MAN	Manchester/International	1,620	9	0	0	-1,620	-9
		MIR	Monastir/Habib Bourguiba Int'l	2,812	16	0	0	-2,812	-16
		MXP	Milan/Malpensa	1,300	6	0	0	-1,300	-6
		NBE	Enfidha/ Zine El Abidine Ben Ali	0	0	3,420	19	3,420	19
		PFO	Paphos/International	0	0	900	5	900	5
		PUJ	Punta Cana	646	2	0	0	-646	-2
		RVN	Rovaniemi	1,620	9	0	0	-1,620	-9
		SOF	Sofia/Vrazhdebna	217	2	0	0	-217	-2
		SSH	Sharm El Sheikh/Ophira	470	2	0	0	-470	-2
		STN	London/Stansted	0	0	360	2	360	2
		TFS	Tenerife/Sur Reina Sofia	6,895	39	4,915	28	-1,980	-11
		YYC	Calgary/International	646	2	0	0	-646	-2
TCX Total				36,130	189	25,095	139	-11,035	-50
TOM	Thomson Airways	ACC	Accra/Kotoka	0	0	466	2	466	2
		BCN	Barcelona	436	2	0	0	-436	-2
		BGI	Bridgetown/Grantley Adams Intl	566	2	0	0	-566	-2
		CMF	Chambery	466	2	0	0	-466	-2
		CPH	Copenhagen Airport	360	2	0	0	-360	-2
		FAO	Faro	189	1	180	1	-9	0
		FUE	Fuerteventura	1,323	7	1,323	7	0	0
		INN	Innsbruck/Kranebitten	5,256	29	5,525	29	269	0
		KRK	Krakow/J. Paul II Balice Intl	466	2	466	2	0	0
		KTT	Kittila	360	2	378	2	18	0

LONDON STANSTED AIRPORT WINTER 2011

MOVEMENT AND SEAT CHANGES SUMMARY - BY CARRIER

OPERATOR		AIRPORT		W10		W11		SEATS +/-	ATMS +/-
				SEATS	ATMS	SEATS	ATMS		
		LPA	Las Palmas/Arpt De Gran Canaria	7,686	42	7,920	42	234	0
		PFO	Paphos/International	3,681	20	4,725	25	1,044	5
		RVN	Rovaniemi	0	0	378	2	378	2
		SSH	Sharm El Sheikh/Ophira	8,108	44	7,749	42	-359	-2
		STN	London/Stansted	720	4	0	0	-720	-4
		SZG	Salzburg/W.A. Mozart	4,585	24	5,970	26	1,385	2
		TFS	Tenerife/Sur Reina Sofia	15,372	84	15,867	84	495	0
TOM Total				69,229	375	70,216	366	987	-9
UPS	UPS AIRLINES	CGN	Cologne/Bonn	0	192	0	210	0	18
		EWR	Liberty International (Newark)	0	69	0	84	0	15
		PHL	Philadelphia/International	0	19	0	21	0	2
		SDF	Louisville	0	99	0	105	0	6
UPS Total				0	379	0	420	0	41
WW	BMIBABY LTD	BHD	Belfast City Airport	0	0	77,848	526	77,848	526
WW Total				0	0	77,848	526	77,848	526
GTI	ATLAS AIR Inc	ATL	Atlanta	0	7	0	0	0	-7
		FRA	Frankfurt/International	0	10	0	0	0	-10
		HSV	Huntsville/Madison County	0	57	0	63	0	6
		IAH	Houston	0	4	0	0	0	-4
		LUX	Luxembourg	0	57	0	63	0	6
		MEX	Mexico City/Juarez International	0	1	0	0	0	-1
GTI Total				0	136	0	126	0	-10
ZT	TITAN AIRWAYS Ltd	AGP	Malaga	0	2	0	0	0	-2
		BFS	Belfast Intl Arpt	0	2	0	0	0	-2
		BZZ	Brize Norton/RAF Station	265	2	0	0	-265	-2
		CAG	Cagliari/Elmas	260	2	0	0	-260	-2
		CBG	Cambridge	0	2	0	0	0	-2
		CMF	Chambery	19,468	110	20,224	120	756	10
		DXB	Dubai	396	2	0	0	-396	-2
		FCO	Rome/Fiumicino	328	2	0	0	-328	-2
		GLO	Gloucestershire	0	2	0	0	0	-2
		GVA	Geneva/Geneve-Cointrin	260	2	0	0	-260	-2
		SIR	Sion	5,480	60	8,464	92	2,984	32
		SZG	Salzburg/W.A. Mozart	260	2	0	0	-260	-2
		ZRH	Zurich	260	3	0	0	-260	-3
ZT Total				27,735	203	28,688	212	953	9

RUNWAY SCHEDULING LIMITS

Movements per Hour (R60) - All times UTC

MONDAY - SUNDAY	ARRIVALS																		
	SEASON	06:00	07:00	08:00	09:00	10:00	11:00	12:00	13:00	14:00	15:00	16:00	17:00	18:00	19:00	20:00	21:00	22:00	23:00
	Winter 2010	24	28	25	24	25	28	28	24	24	28	28	28	28	28	20	27	31	27
	Capacity Change	0	0	0	0	0	0	0	0	0	0	0	0	0	0	0	0	0	0
	Winter 2011	24	28	25	24	25	28	28	24	24	28	28	28	28	28	20	27	31	27
	DEPARTURES																		
	SEASON	06:00	07:00	08:00	09:00	10:00	11:00	12:00	13:00	14:00	15:00	16:00	17:00	18:00	19:00	20:00	21:00	22:00	23:00
	Winter 2010	33	31	27	24	25	28	28	24	24	28	28	28	28	28	20	27	24	24
	Capacity Change	0	0	0	0	0	0	0	0	0	0	0	0	0	0	0	0	0	0
	Winter 2011	33	31	27	24	25	28	28	24	24	28	28	28	28	28	20	27	24	24
TOTALS																			
SEASON	06:00	07:00	08:00	09:00	10:00	11:00	12:00	13:00	14:00	15:00	16:00	17:00	18:00	19:00	20:00	21:00	22:00	23:00	
Winter 2010	44	48	44	38	40	50	44	38	38	44	42	44	50	48	34	38	39	36	
Capacity Change	0	0	0	0	0	0	0	0	0	0	0	0	0	0	0	0	0	0	
WINTER 2011	44	48	44	38	40	50	44	38	38	44	42	44	50	48	34	38	39	36	

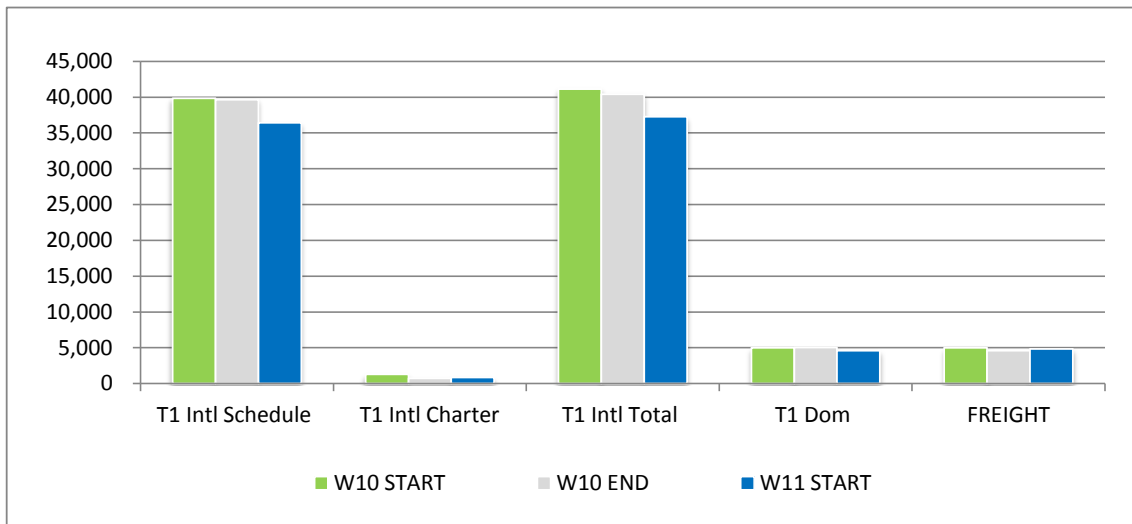
RUNWAY SCHEDULING LIMITS - Segmented Hour

TERMINAL SCHEDULING LIMITS

Passengers per Hour (T60)

TERMINAL 1	ARRS	DEPS
DOMESTIC	750	
INTERNATIONAL	3600	
COMBINED		4350

AIR TRANSPORT MOVEMENTS BY TERMINAL

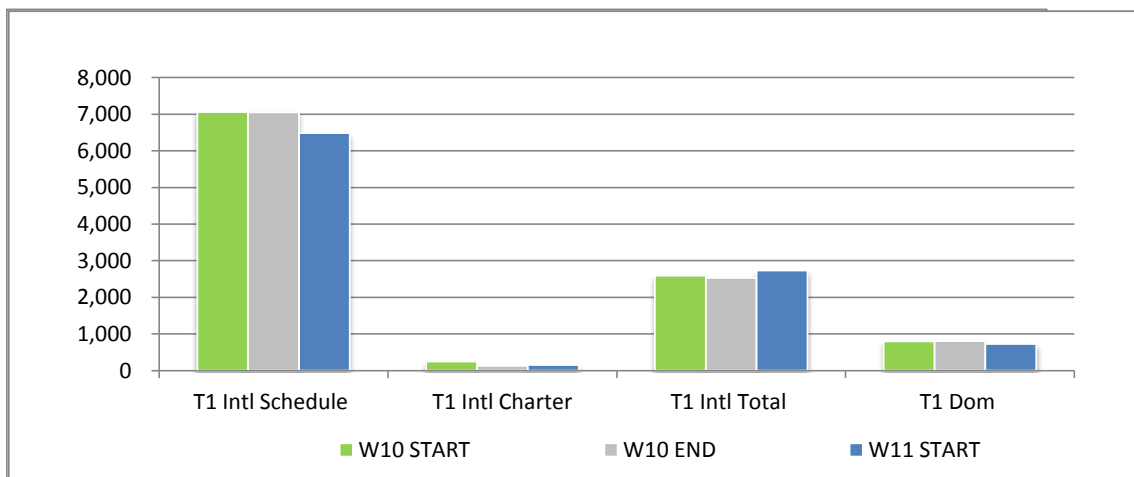


	W10 START	W10 END	W11 START	% CHANGE START - START	% CHANGE END - START
T1 Intl Schedule	39,865	39,663	36,428	-8.6%	-8.2%
T1 Intl Charter	1,282	734	832	-35.1%	13.4%
T1 Intl Total	41,147	40,397	37,260	-9.4%	-7.8%
T1 Dom	4,980	5,021	4,598	-7.7%	-8.4%
FREIGHT	5,000	4,590	4,852	-3.0%	5.7%
TOTAL	51,127	50,008	46,710	-8.6%	-6.6%

NOTES:

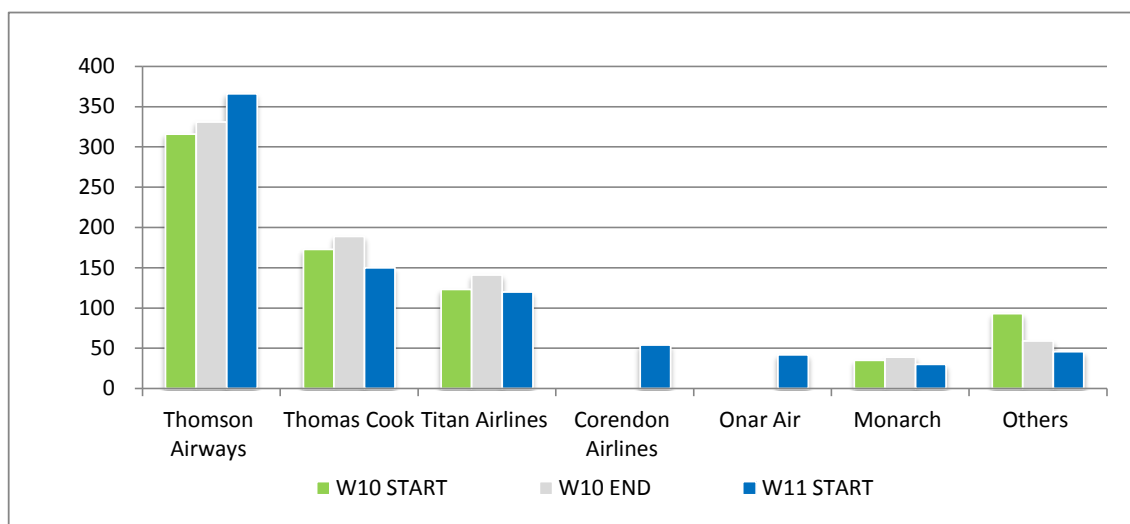
ALL DATA IS SHOWN WITH REFERENCE TO THE W11 SCHEDULING SEASON, WHICH IS 21 WEEKS LONG.
ALL DATA HAS BEEN ADJUSTED ACCORDINGLY.

TOTAL SEATS BY TERMINAL (000's)



	W10 START	W10 END	W11 START	% CHANGE START - START	% CHANGE END - START
T1 Intl Schedule	7,061	7,048	6,483	-8.2%	-8.0%
T1 Intl Charter	244	131	151	-38.1%	15.3%
T1 Intl Total	2,591	2,526	2,737	5.6%	8.4%
T1 Dom	798	807	729	-8.6%	-9.7%
TOTAL	8,103	7,986	7,363	-9.1%	-7.8%

CHARTER AIRLINE AIR TRANSPORT MOVEMENTS

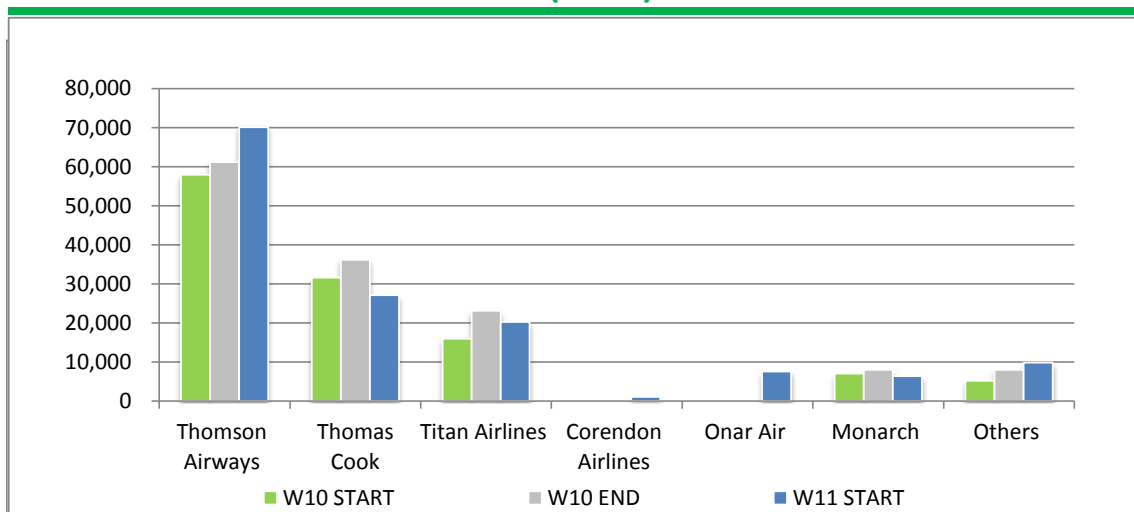


	W10 START	W10 END	W11 START	% CHANGE START - START	% CHANGE END - START
Thomson Airways	316	331	366	15.8%	10.6%
Thomas Cook	173	189	150	-13.3%	-20.6%
Titan Airlines	123	141	120	-2.4%	-14.9%
Corendon Airlines	0	0	54	100.0%	100.0%
Onar Air	0	0	42	100.0%	100.0%
Monarch	35	39	30	-14.3%	-23.1%
Others	93	59	46	-50.5%	-22.0%
TOTAL	216	200	220	1.9%	10.0%

NOTES:

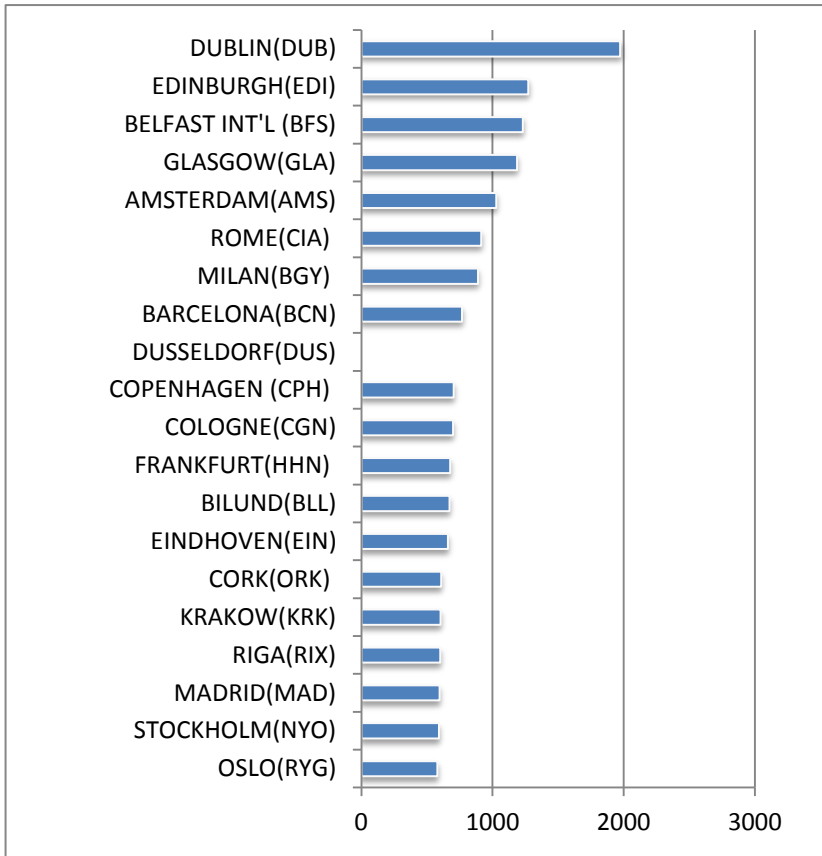
ALL DATA IS SHOWN WITH REFERENCE TO THE W11 SCHEDULING SEASON, WHICH IS 21 WEEKS LONG.
ALL DATA HAS BEEN ADJUSTED ACCORDINGLY.

CHARTER AIRLINE AIRLINE SEATS (000's)



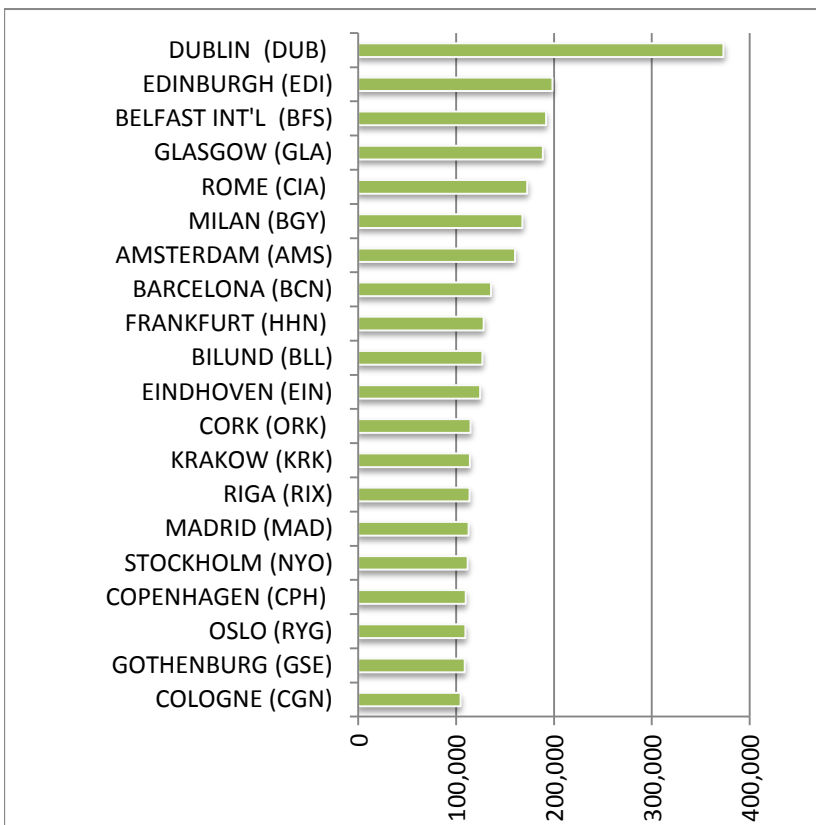
	W10 START	W10 END	W11 START	% CHANGE START - START	% CHANGE END - START
Thomson Airways	57,941	61,183	70,128	21.0%	14.6%
Thomas Cook	31,570	36,130	27,075	-14.2%	-25.1%
Titan Airlines	15,990	23,085	20,224	26.5%	-12.4%
Corendon Airlines	0	0	1,026	100.0%	100.0%
Onar Air	0	0	7,560	100.0%	100.0%
Monarch	7,036	7,986	6,340	-9.9%	-20.6%
Others	5,209	7,953	9,856	89.2%	23.9%
TOTAL	117,746	136,337	142,209	20.8%	4.3%

TOP 20 SCHEDULED AIR TRANSPORT MOVEMENTS BY DESTINATION



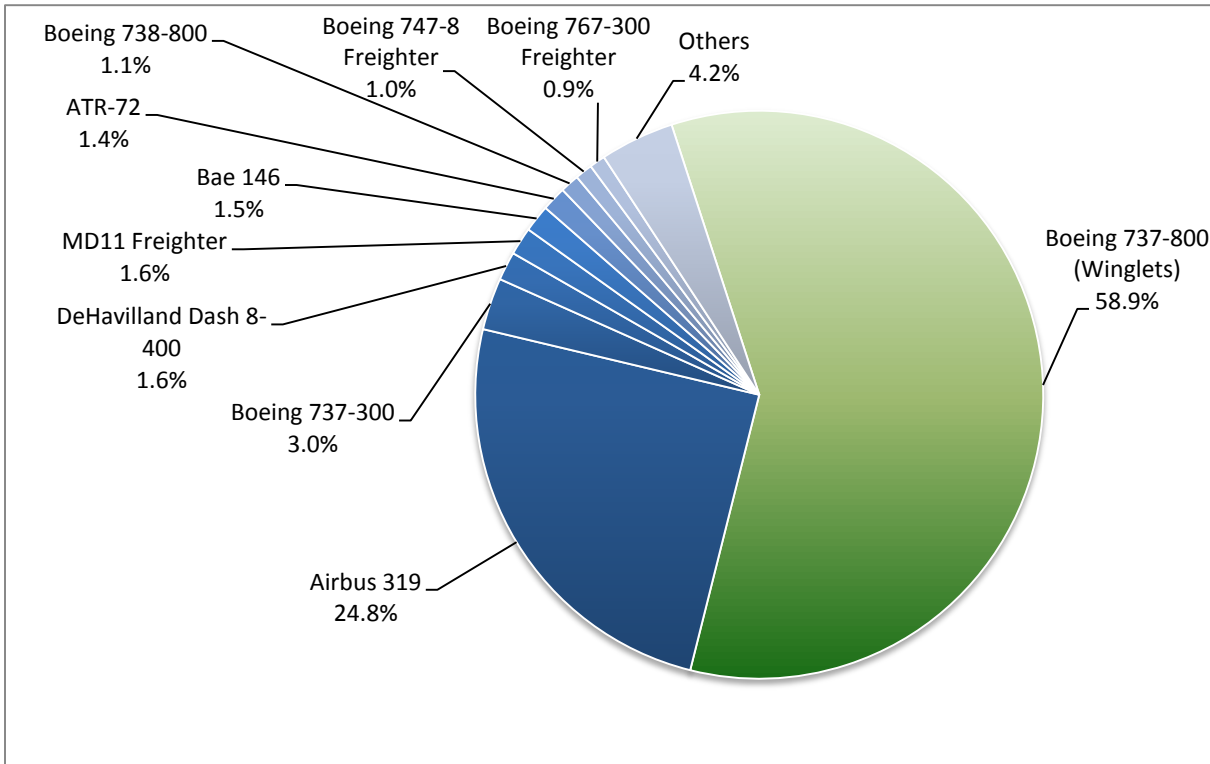
WINTER 2011	ATM'S
DUBLIN(DUB)	1,974
EDINBURGH(EDI)	1,272
BELFAST INT'L (BFS)	1,230
GLASGOW(GLA)	1,186
AMSTERDAM(AMS)	1,028
ROME(CIA)	914
MILAN(BGY)	888
BARCELONA(BCN)	768
DUSSELDORF(DUS)	754
COPENHAGEN (CPH)	704
COLOGNE(CGN)	698
FRANKFURT(HHN)	678
BILUND(BLL)	672
EINDHOVEN(EIN)	660
CORK(ORK)	608
KRAKOW(KRK)	604
RIGA(RIX)	602
MADRID(MAD)	596
STOCKHOLM(NYO)	592
OSLO(RYG)	580

TOP 20 SCHEDULED AIR TRANSPORT SEATS BY DESTINATION

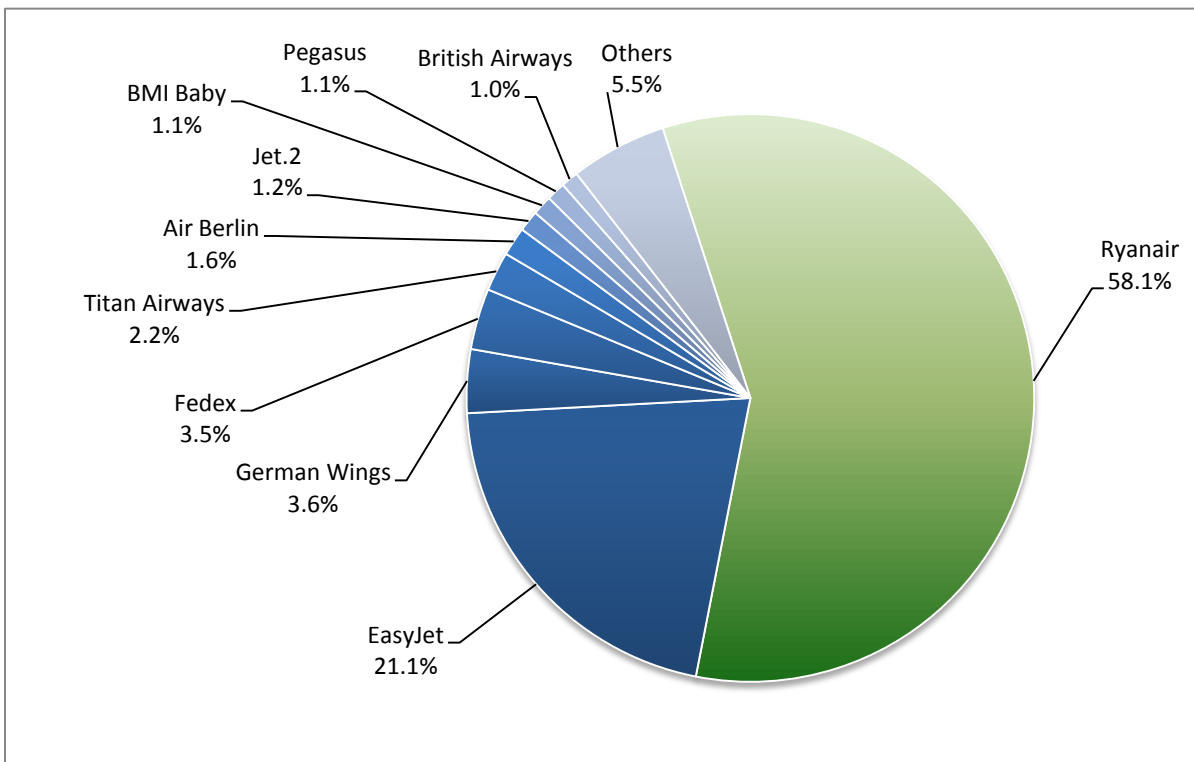


WINTER 2011	SEATS
DUBLIN (DUB)	373,086
EDINBURGH (EDI)	198,432
BELFAST INT'L (BFS)	191,880
GLASGOW (GLA)	188,760
ROME (CIA)	172,746
MILAN (BGY)	167,832
AMSTERDAM (AMS)	160,368
BARCELONA (BCN)	135,714
FRANKFURT (HHN)	128,142
BILUND (BLL)	127,008
EINDHOVEN (EIN)	124,740
CORK (ORK)	114,912
KRAKOW (KRK)	114,156
RIGA (RIX)	113,778
MADRID (MAD)	112,644
STOCKHOLM (NYO)	111,888
COPENHAGEN (CPH)	109,824
OSLO (RYG)	109,620
GOTHENBURG (GSE)	108,864
COLOGNE (CGN)	104,700

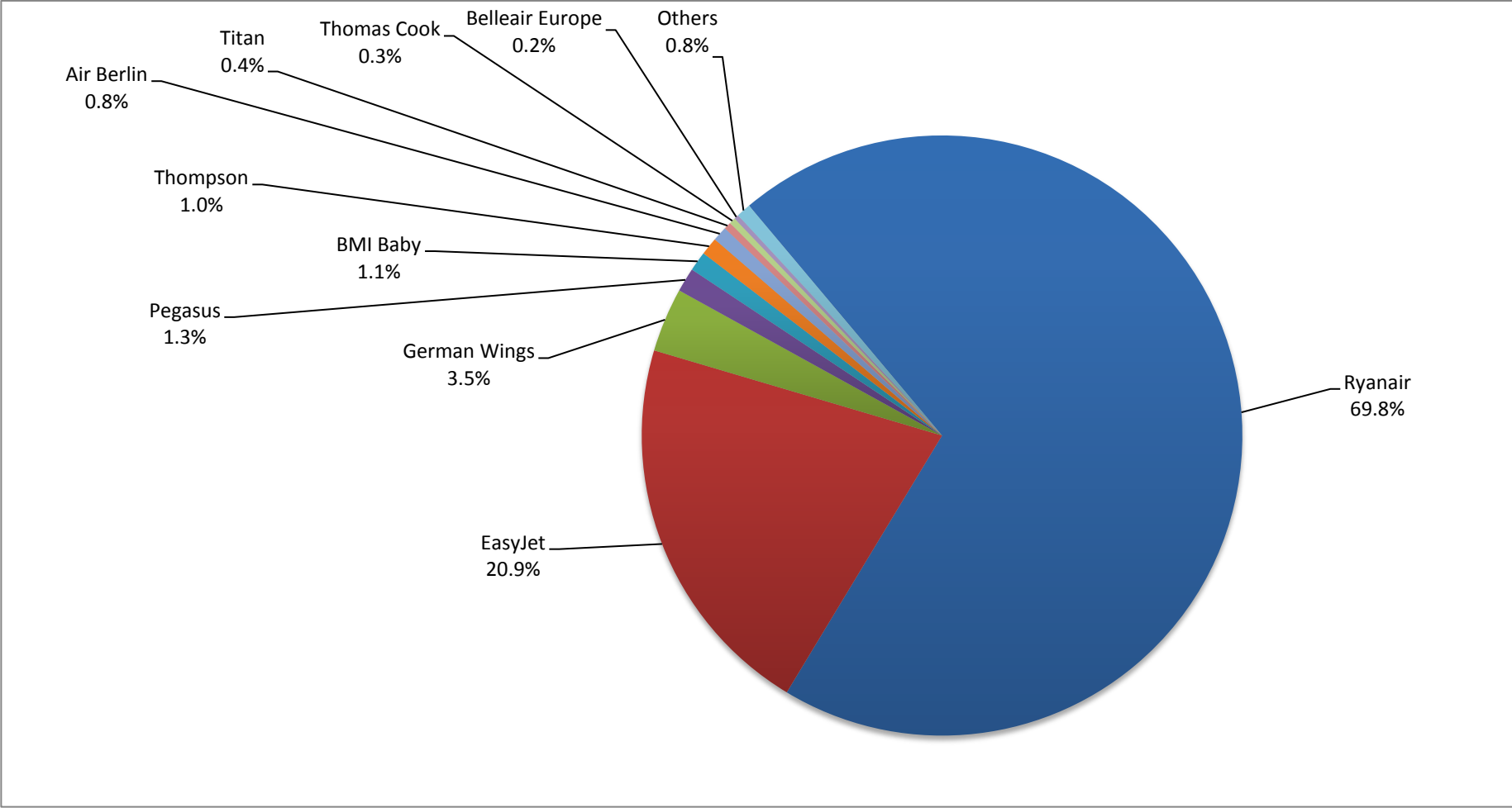
TOP 10 AIRCRAFT TYPES BY AIR TRANSPORT MOVEMENTS



TOP 10 AIRLINES BY AIR TRANSPORT MOVEMENTS

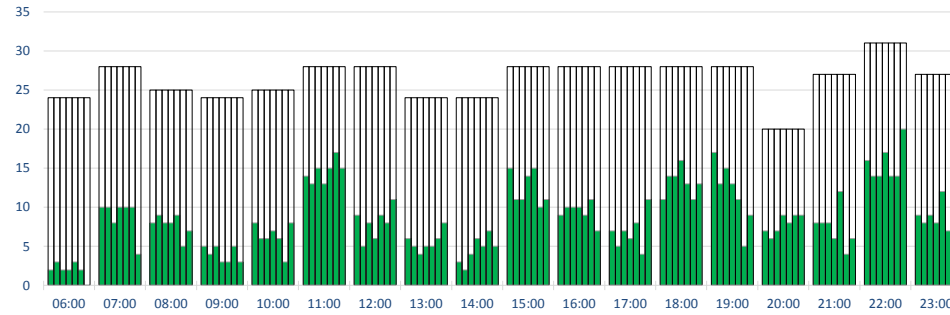


TOP 10 AIRLINES BY SEATS



RUNWAY HOURLY MOVEMENTS - ARRIVALS

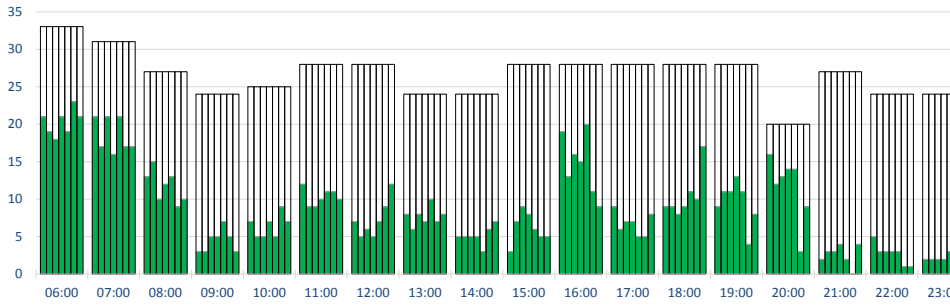
Peak Week Movements per Hour - All times UTC



	CAPACITY							ALLOCATION						
	Mon	Tue	Wed	Thu	Fri	Sat	Sun	Mon	Tue	Wed	Thu	Fri	Sat	Sun
06:00	24	24	24	24	24	24	24	2	3	2	2	3	2	0
07:00	28	28	28	28	28	28	28	10	10	8	10	10	10	4
08:00	25	25	25	25	25	25	25	8	9	8	8	9	5	7
09:00	24	24	24	24	24	24	24	5	4	5	3	3	5	3
10:00	25	25	25	25	25	25	25	8	6	6	7	6	3	8
11:00	28	28	28	28	28	28	28	14	13	15	13	15	17	15
12:00	28	28	28	28	28	28	28	9	5	8	6	9	8	11
13:00	24	24	24	24	24	24	24	6	5	4	5	5	6	8
14:00	24	24	24	24	24	24	24	3	2	4	6	5	7	5
15:00	28	28	28	28	28	28	28	15	11	11	14	15	10	11
16:00	28	28	28	28	28	28	28	9	10	10	10	9	11	7
17:00	28	28	28	28	28	28	28	7	5	7	6	8	4	11
18:00	28	28	28	28	28	28	28	11	14	14	16	13	11	13
19:00	28	28	28	28	28	28	28	17	13	15	13	11	5	9
20:00	20	20	20	20	20	20	20	7	6	7	9	8	9	9
21:00	27	27	27	27	27	27	27	8	8	8	6	12	4	6
22:00	31	31	31	31	31	31	31	16	14	14	17	14	14	20
23:00	27	27	27	27	27	27	27	9	8	9	8	12	7	9

RUNWAY HOURLY MOVEMENTS - DEPARTURES

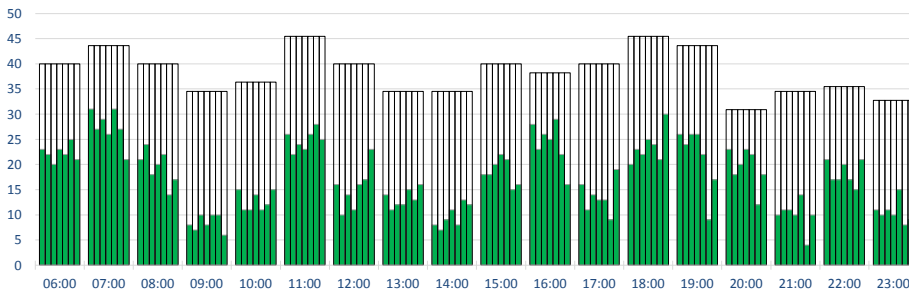
Peak Week Movements per Hour - All times UTC



	CAPACITY							ALLOCATION						
	Mon	Tue	Wed	Thu	Fri	Sat	Sun	Mon	Tue	Wed	Thu	Fri	Sat	Sun
06:00	33	33	33	33	33	33	33	21	19	18	21	19	23	21
07:00	31	31	31	31	31	31	31	21	17	21	16	21	17	17
08:00	27	27	27	27	27	27	27	13	15	10	12	13	9	10
09:00	24	24	24	24	24	24	24	3	3	5	5	7	5	3
10:00	25	25	25	25	25	25	25	7	5	5	7	5	9	7
11:00	28	28	28	28	28	28	28	12	9	9	10	11	11	10
12:00	28	28	28	28	28	28	28	7	5	6	5	7	9	12
13:00	24	24	24	24	24	24	24	8	6	8	7	10	7	8
14:00	24	24	24	24	24	24	24	5	5	5	5	3	6	7
15:00	28	28	28	28	28	28	28	3	7	9	8	6	5	5
16:00	28	28	28	28	28	28	28	19	13	16	15	20	11	9
17:00	28	28	28	28	28	28	28	9	6	7	7	5	5	8
18:00	28	28	28	28	28	28	28	9	9	8	9	11	10	17
19:00	28	28	28	28	28	28	28	9	11	11	13	11	4	8
20:00	20	20	20	20	20	20	20	16	12	13	14	14	3	9
21:00	27	27	27	27	27	27	27	2	3	3	4	2	0	4
22:00	24	24	24	24	24	24	24	5	3	3	3	3	1	1
23:00	24	24	24	24	24	24	24	2	2	2	2	3	1	0

RUNWAY HOURLY MOVEMENTS - TOTALS

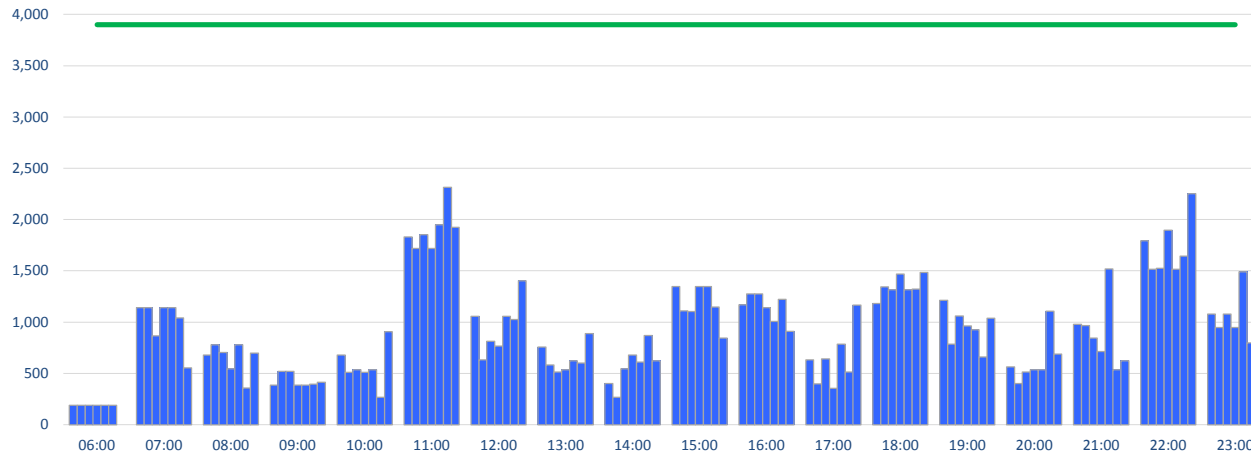
Peak Week Movements per Hour - All times UTC



	CAPACITY							ALLOCATION						
	Mon	Tue	Wed	Thu	Fri	Sat	Sun	Mon	Tue	Wed	Thu	Fri	Sat	Sun
06:00	44	44	44	44	44	44	44	23	22	20	23	22	25	21
07:00	48	48	48	48	48	48	48	31	27	29	26	31	27	21
08:00	44	44	44	44	44	44	44	21	24	18	20	22	14	17
09:00	38	38	38	38	38	38	38	8	7	10	8	10	10	6
10:00	40	40	40	40	40	40	40	15	11	11	14	11	12	15
11:00	50	50	50	50	50	50	50	26	22	24	23	26	28	25
12:00	44	44	44	44	44	44	44	16	10	14	11	16	17	23
13:00	38	38	38	38	38	38	38	14	11	12	12	15	13	16
14:00	38	38	38	38	38	38	38	8	7	9	11	8	13	12
15:00	44	44	44	44	44	44	44	18	18	20	22	21	15	16
16:00	42	42	42	42	42	42	42	28	23	26	25	29	22	16
17:00	44	44	44	44	44	44	44	16	11	14	13	13	9	19
18:00	50	50	50	50	50	50	50	20	23	22	25	24	21	30
19:00	48	48	48	48	48	48	48	26	24	26	26	22	9	17
20:00	34	34	34	34	34	34	34	23	18	20	23	22	12	18
21:00	38	38	38	38	38	38	38	10	11	11	10	14	4	10
22:00	39	39	39	39	39	39	39	21	17	17	20	17	15	21
23:00	36	36	36	36	36	36	36	11	10	11	10	15	8	9

T1 INTERNATIONAL ARRIVAL TERMINAL HOURLY

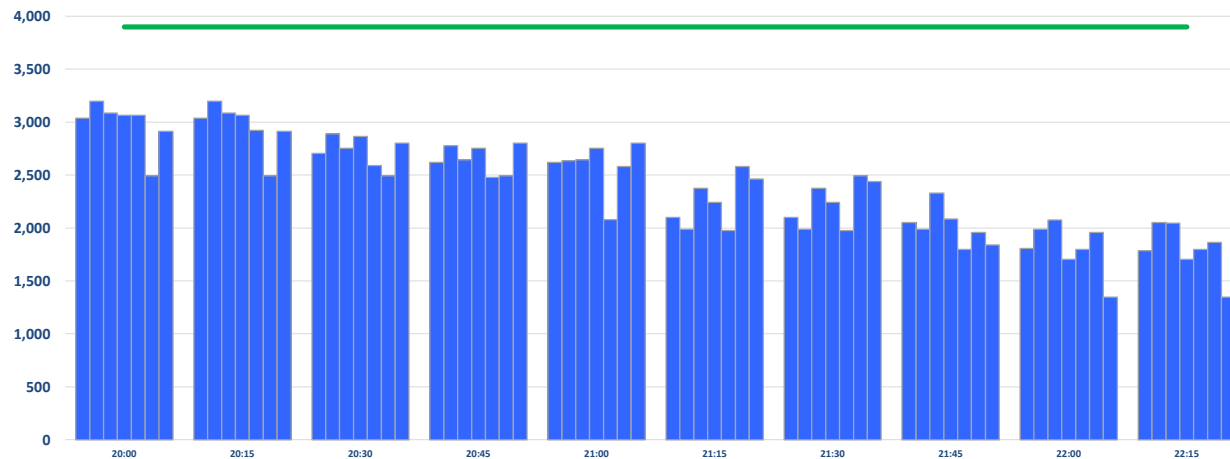
Peak Week Passengers per Hour - All times UTC



	ALLOCATION							Capacity Limit
	Mon	Tue	Wed	Thu	Fri	Sat	Sun	
06:00	188	188	188	188	188	188	0	3900
07:00	1141	1141	865	1141	1141	1042	553	3900
08:00	678	780	705	544	780	357	697	3900
09:00	387	521	521	387	387	396	413	3900
10:00	678	512	536	512	536	268	906	3900
11:00	1830	1719	1853	1719	1950	2313	1923	3900
12:00	1058	632	813	766	1058	1024	1403	3900
13:00	758	583	513	537	624	601	888	3900
14:00	402	268	544	678	609	869	624	3900
15:00	1348	1111	1103	1348	1348	1148	846	3900
16:00	1168	1275	1275	1141	1007	1223	909	3900
17:00	632	398	643	356	785	513	1165	3900
18:00	1183	1344	1317	1470	1317	1321	1485	3900
19:00	1214	785	1061	962	927	660	1039	3900
20:00	563	402	513	536	536	1108	687	3900
21:00	980	965	846	712	1520	536	624	3900
22:00	1792	1516	1524	1895	1516	1642	2251	3900
23:00	1080	946	1080	946	1490	798	1223	3900

T1 INTERNATIONAL ARRIVALS TERMINAL HOURLY/ 15MINS

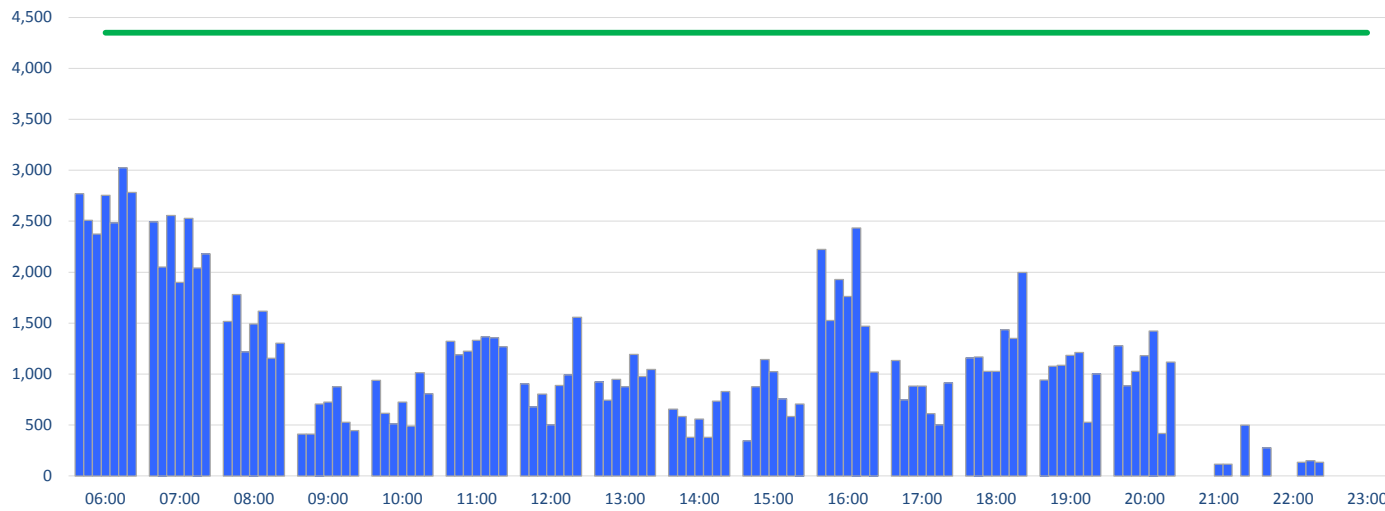
Passengers per rolling Hour - (late evening peak)



	ALLOCATION							Capacity Limit
	Mon	Tue	Wed	Thu	Fri	Sat	Sun	
20:00	3037	3198	3087	3064	3064	2492	2913	3900
20:15	3037	3198	3087	3064	2922	2492	2913	3900
20:30	2704	2888	2754	2865	2589	2492	2802	3900
20:45	2620	2777	2643	2754	2478	2492	2802	3900
21:00	2620	2635	2643	2754	2080	2580	2802	3900
21:15	2099	1988	2375	2241	1977	2580	2463	3900
21:30	2099	1988	2375	2241	1977	2494	2440	3900
21:45	2053	1988	2329	2084	1797	1958	1839	3900
22:00	1808	1988	2076	1705	1797	1958	1349	3900
22:15	1785	2053	2045	1705	1797	1864	1349	3900

TOTAL TERMINAL DEPARTURES (INT'L & DOMESTIC)

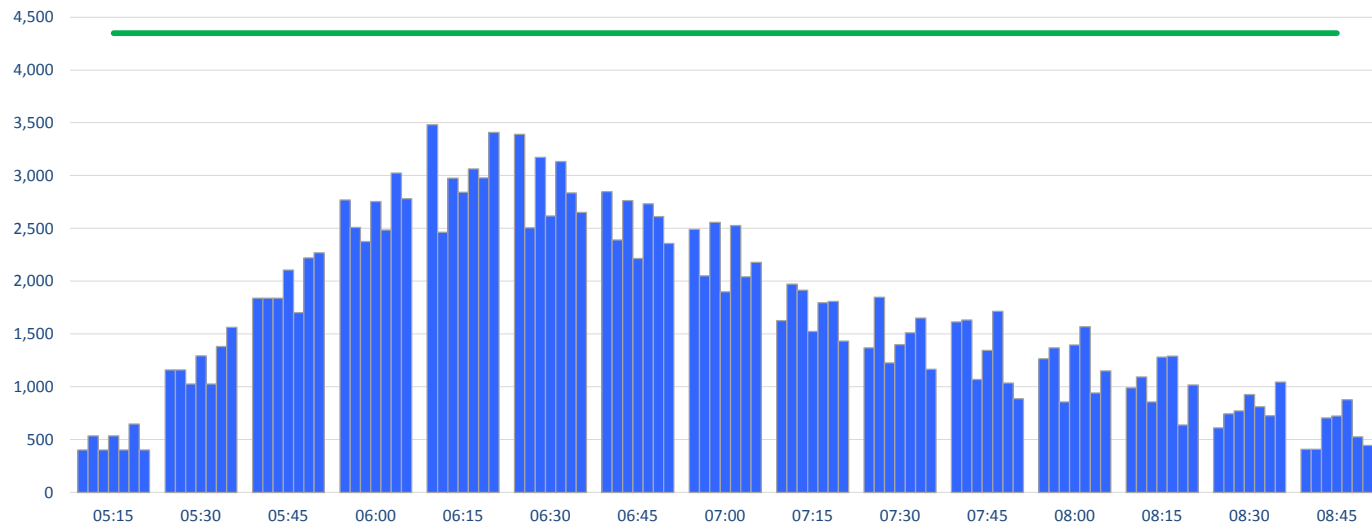
Peak Week Passengers per Hour - All times UTC



	ALLOCATION							Capacity Limit
	Mon	Tue	Wed	Thu	Fri	Sat	Sun	
06:00	2769	2508	2374	2753	2485	3024	2781	4350
07:00	2492	2052	2557	1899	2527	2041	2178	4350
08:00	1516	1779	1217	1493	1618	1157	1302	4350
09:00	410	410	705	724	877	527	446	4350
10:00	938	615	513	726	490	1014	808	4350
11:00	1323	1189	1224	1331	1367	1357	1268	4350
12:00	905	678	804	503	888	993	1558	4350
13:00	924	743	947	877	1192	977	1047	4350
14:00	655	583	379	560	379	735	829	4350
15:00	346	875	1143	1024	756	584	706	4350
16:00	2223	1526	1928	1763	2433	1468	1020	4350
17:00	1133	748	882	881	613	503	915	4350
18:00	1160	1168	1026	1026	1436	1351	1997	4350
19:00	943	1077	1085	1184	1211	527	1001	4350
20:00	1279	886	1028	1180	1421	419	1119	4350
21:00	0	0	0	117	117	0	498	4350
22:00	276	0	0	0	134	151	134	4350
23:00	0	0	0	0	0	0	0	4350

TOTAL TERMINAL DEPARTURES (INT'L & DOMESTIC)

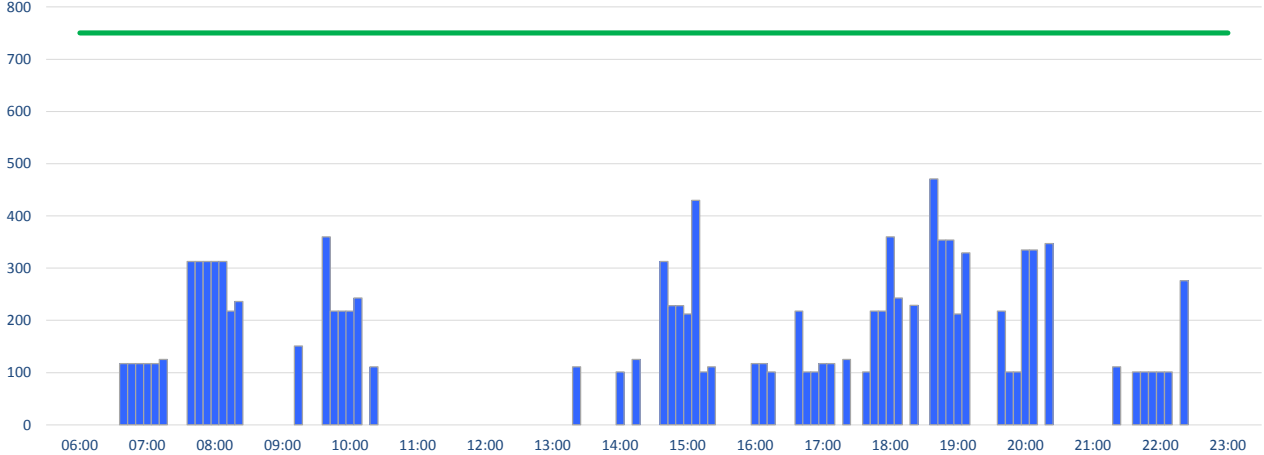
Passengers per rolling Hour - (Morning peak)



	ALLOCATION							Capacity Limit
	Mon	Tue	Wed	Thu	Fri	Sat	Sun	
05:15	402	536	402	536	402	647	402	4350
05:30	1160	1160	1026	1294	1026	1382	1562	4350
05:45	1838	1838	1838	2106	1704	2220	2268	4350
06:00	2769	2508	2374	2753	2485	3024	2781	4350
06:15	3481	2462	2975	2841	3063	2978	3409	4350
06:30	3391	2506	3172	2617	3134	2837	2651	4350
06:45	2847	2391	2762	2215	2732	2613	2358	4350
07:00	2492	2052	2557	1899	2527	2041	2178	4350
07:15	1627	1972	1914	1524	1796	1809	1433	4350
07:30	1369	1848	1227	1400	1511	1651	1165	4350
07:45	1614	1632	1070	1346	1716	1037	886	4350
08:00	1267	1369	857	1397	1568	941	1151	4350
08:15	991	1093	857	1282	1292	639	1017	4350
08:30	612	746	773	926	811	728	1044	4350
08:45	410	410	705	724	877	527	446	4350

DOMESTIC TERMINAL - ARRIVALS

Peak Week Passengers per Hour - All times UTC



	ALLOCATION							Capacity Limit
	Mon	Tue	Wed	Thu	Fri	Sat	Sun	
06:00	0	0	0	0	0	0	0	750
07:00	117	117	117	117	117	125	0	750
08:00	313	313	313	313	313	218	236	750
09:00	0	0	0	0	0	151	0	750
10:00	360	218	218	218	243	0	111	750
11:00	0	0	0	0	0	0	0	750
12:00	0	0	0	0	0	0	0	750
13:00	0	0	0	0	0	0	111	750
14:00	0	0	0	101	0	125	0	750
15:00	313	228	228	212	430	101	111	750
16:00	0	0	0	117	117	101	0	750
17:00	218	101	101	117	117	0	125	750
18:00	101	218	218	360	243	0	229	750
19:00	471	354	354	212	329	0	0	750
20:00	218	101	101	335	335	0	347	750
21:00	0	0	0	0	0	0	111	750
22:00	101	101	101	101	101	0	276	750
23:00	0	0	0	0	0	0	0	750

GLOSSARY OF TERMS

Air Transport Movement (ATM)	A scheduled or charter passenger or freight aircraft movement.
Allocation	The allocation of slots such that demand is constrained to fit within declared scheduling limits.
Common Travel Area (CTA)	Services to or from the Republic of Ireland and the Channel Islands.
Demand	The unconstrained demand for slots, prior to any schedule adjustments.
Passenger ATM	A scheduled or charter <u>passenger</u> aircraft movement (ie, excluding all-cargo aircraft movements).
Scheduling Limits	Limiting parameters declared by the Airport Operator used in the coordination process.
Seats	The number of seats based on the aircraft configuration advised by the airline.
Peak Week	The Peak Week for W11/12 is Week 49 (05-11 MAR 2012)
Data Snapshot	All data used for this report was as held 10 October 2011

GUIDE TO HISTOGRAMS

The histograms show the pattern of traffic by time of day against the appropriate scheduling limit. Each time period consist of seven columns representing the days-of-week, Monday through Sunday.