

# London Stansted

## STN

### Summer 2013

### START OF SEASON REPORT

KEY STATISTICS	Summer 2013	Change From Start of Summer 2012	Change From End of Summer 2012
Air Transport Movements	81,079	-3.1%	-1.9%
Passenger Air Transport Movements Allocated	74,126	-3.3%	-2.4%
Total Seats	13,325,966	-2.1%	-1.6%
Seats per Passenger ATM	180	1.3%	1.3%

#### CONTENTS

	Page
Scheduling Limits	2
Summary of Changes - ATM's and Seats by Carrier - Full Season	3 to 12
Summary of Changes - ATM's and Seats by Carrier - Busy Week	13 to 21
Total ATM Figures & Seats by Terminal	22
Charter ATM's and Seats	23
Top 20 ATM's Figures & Seats by Destination	24
Top 10 ATM's Airline and Seats	25
Top 10 ATM's Aircraft Types	26
Runway Allocation Histograms	27
Departure Terminal Allocation Histograms	28
Arrival Terminal Allocation Histograms	29
Glossary	30

Data in this report is current as of: 21 March 2013

## RUNWAY SCHEDULING LIMITS

Movements per Hour (R60) - All times UTC

MONDAY - SUNDAY	ARRIVALS																		CHANGE		
	SEASON	05:00	06:00	07:00	08:00	09:00	10:00	11:00	12:00	13:00	14:00	15:00	16:00	17:00	18:00	19:00	20:00	21:00	22:00	Ave	Total
	Summer 2012	24	28	25	24	25	28	28	24	24	28	28	28	30	28	27	24	31	27	26	477
	Capacity Change	0	0	0	0	0	0	0	0	0	0	0	0	0	0	0	0	0	0	0	0
	Summer 2013	24	28	25	24	25	28	28	24	24	28	28	28	30	28	27	24	31	27	26	477
	DEPARTURES																		Ave	Total	
	SEASON	05:00	06:00	07:00	08:00	09:00	10:00	11:00	12:00	13:00	14:00	15:00	16:00	17:00	18:00	19:00	20:00	21:00	22:00	Ave	Total
	Summer 2012	35	31	28	24	25	28	28	24	24	28	28	28	30	28	28	24	24	24	26	477
	Capacity Change	0	0	0	0	0	0	0	0	0	0	0	0	0	0	0	0	0	0	0	0
	Summer 2013	35	31	28	24	25	28	28	24	24	28	28	28	30	28	28	24	24	24	26	477
TOTALS																		Ave	Total		
SEASON	05:00	06:00	07:00	08:00	09:00	10:00	11:00	12:00	13:00	14:00	15:00	16:00	17:00	18:00	19:00	20:00	21:00	22:00	Ave	Total	
Summer 2012	45	50	44	38	41	50	46	38	41	44	42	47	50	48	42	38	38	36	42	759	
Capacity Change	0	0	0	0	0	0	0	0	0	0	0	0	0	0	0	0	0	0	0	0	
Summer 2013	45	50	44	38	41	50	46	38	41	44	42	47	50	48	42	38	38	36	42	759	

## RUNWAY SCHEDULING LIMITS - Segmented Hour

## TERMINAL SCHEDULING LIMITS

Passengers per Hour (T60)

TERMINAL 1	ARRS	DEPS
DOMESTIC	750	
INTERNATIONAL	3900	
COMBINED		5000

# LONDON STANSTED S13

## MOVEMENT AND SEAT CHANGES SUMMARY - BY CARRIER FULL SEASON

	OPERATOR	AIRPORT		S12		S13		SEATS +/-	ATMS +/-
				SEATS	ATMS	SEATS	ATMS		
3V	TNT AIRWAYS SA	LGG	Liege/Bierset	0	75	0	244	0	169
3V Total				0	75	0	244	0	169
4U	GERMANWINGS GMBH	CGN	Cologne/Bonn	141,097	941	132,360	884	-8,737	-57
		HAJ	Hanover Arpt	108,000	720	108,000	720	0	0
		STR	Stuttgart/Echterdingen	103,645	691	54,000	360	-49,645	-331
4U Total				352,742	2,352	294,360	1,964	-58,382	-388
9U	AIR MOLDOVA	KIV	Chisinau	0	0	13,680	120	13,680	120
9U Total				0	0	13,680	120	13,680	120
AB	AIR BERLIN GmbH Co Luftverkehrs KG	DUS	Dusseldorf	88,250	1,059	81,160	1,066	-7,090	7
AB Total				88,250	1,059	81,160	1,066	-7,090	7
AWC	TITAN AIRWAYS Ltd	BFS	Belfast Intl Arpt	0	577	0	596	0	19
		EDI	Edinburgh/Turnhouse	0	579	0	596	0	17
		EXT	Exeter	0	285	0	298	0	13
AWC Total				0	1,441	0	1,490	0	49
AZG	SILK WAY WEST AIRLINES	GYP	Heydar Aliyev Intl Airport	0	62	0	60	0	-2
AZG Total				0	62	0	60	0	-2
BA	BRITISH AIRWAYS Plc	ATL	Atlanta	0	30	0	30	0	0
		BOM	Mumbai	0	3	0	0	0	-3
		DEL	Delhi/Indira Gandhi Intl	0	21	0	0	0	-21
		DXB	Dubai	0	4	0	0	0	-4
		FRA	Frankfurt/International	0	63	0	63	0	0
		HKG	Hong Kong Int'l	0	266	0	295	0	29
		IAH	Houston	0	0	0	25	0	25
		JNB	Johannesburg Int'l	0	59	0	60	0	1
		ORD	Chicago/O'Hare International	0	88	0	63	0	-25
		PVG	Shanghai/Pu Dong	0	112	0	64	0	-48
BA Total				0	646	0	600	0	-46
CV	CARGOLUX AIRLINES	HKG	Hong Kong Int'l	0	0	0	60	0	60
		LUX	Luxembourg	0	0	0	60	0	60
CV Total				0	0	0	120	0	120
CY	CYPRUS AIRWAYS Ltd	LCA	Larnaca	10,734	72	0	0	-10,734	-72
CY Total				10,734	72	0	0	-10,734	-72
ESG	NORDIC AIR SWEDEN	CPH	Copenhagen Airport	0	0	1,748	23	1,748	23

# LONDON STANSTED S13

## MOVEMENT AND SEAT CHANGES SUMMARY - BY CARRIER FULL SEASON

OPERATOR		AIRPORT		S12		S13		SEATS +/-	ATMS +/-
				SEATS	ATMS	SEATS	ATMS		
		SFT	Skelleftea	0	0	6,536	86	6,536	86
		UME	Umea	0	0	3,572	47	3,572	47
<b>ESG Total</b>				<b>0</b>	<b>0</b>	<b>11,856</b>	<b>156</b>	<b>11,856</b>	<b>156</b>
<b>EXS</b>	<b>JET2.COM LTD</b>	EDI	Edinburgh/Turnhouse	0	583	0	600	0	17
		NCL	Newcastle Airport	0	292	0	300	0	8
<b>EXS Total</b>				<b>0</b>	<b>875</b>	<b>0</b>	<b>900</b>	<b>0</b>	<b>25</b>
<b>EZY</b>	<b>EASYJET AIRLINE Co Ltd</b>	AGP	Malaga	106,432	682	91,728	588	-14,704	-94
		ALC	Alicante	112,018	718	42,576	272	-69,442	-446
		AMS	Amsterdam-Schiphol	190,212	1,204	193,128	1,200	2,916	-4
		BCN	Barcelona	65,671	421	0	0	-65,671	-421
		BFS	Belfast Intl Arpt	206,946	1,325	203,640	1,270	-3,306	-55
		BIO	Bilbao	111,817	718	117,312	724	5,495	6
		BJV	Bodrum./Milas Airport	25,409	163	26,052	167	643	4
		CAG	Cagliari/Elmas	65,520	420	63,024	404	-2,496	-16
		CPH	Copenhagen Airport	122,334	786	126,048	780	3,714	-6
		DBV	Dubrovnik	22,947	147	23,088	148	141	1
		DLM	Dalaman	33,817	217	37,632	232	3,815	15
		EDI	Edinburgh/Turnhouse	233,094	1,459	228,792	1,408	-4,302	-51
		FAO	Faro	3,472	22	0	0	-3,472	-22
		GLA	Glasgow International	234,766	1,459	235,920	1,464	1,154	5
		GNB	Grenoble/Saint Geoirs	2,114	14	1,248	8	-866	-6
		GVA	Geneva/Geneve-Cointrin	15,399	99	9,048	58	-6,351	-41
		IBZ	Ibiza	92,392	592	85,176	526	-7,216	-66
		LJU	Ljubljana/Brnik	64,661	414	65,520	420	859	6
		LYS	Lyon	66,426	426	64,728	414	-1,698	-12
		MUC	Munich/Franz Josef Strauss	120,248	769	86,424	554	-33,824	-215
		NAP	Naples	143,768	921	135,768	862	-8,000	-59
		NCE	Nice/Cote D'Azur	63,306	406	63,648	408	342	2
		OVD	Asturias	70,049	449	66,768	428	-3,281	-21
		PMI	Palma Mallorca	104,772	672	98,856	630	-5,916	-42
		PRG	Prague/Ruzyne	62,590	401	62,400	400	-190	-1
		RAK	Marrakech/Menara	0	0	28,080	180	28,080	180
		SOF	Sofia/Vrazhdebna	0	0	20,064	120	20,064	120

# LONDON STANSTED S13

## MOVEMENT AND SEAT CHANGES SUMMARY - BY CARRIER FULL SEASON

OPERATOR	AIRPORT		S12		S13		SEATS +/-	ATMS +/-
			SEATS	ATMS	SEATS	ATMS		
	SPU	Split	21,437	137	18,720	120	-2,717	-17
	SSH	Sharm El Sheikh/Ophira	0	0	21,600	120	21,600	120
	TLL	Tallinn/Ulemiste	28,080	180	0	0	-28,080	-180
<b>EZY Total</b>			<b>2,389,695</b>	<b>15,222</b>	<b>2,216,988</b>	<b>13,905</b>	<b>-172,707</b>	<b>-1,317</b>
<b>FHY</b>	<b>FREEBIRD AIRLINES</b>	<b>DLM Dalaman</b>	<b>0</b>	<b>0</b>	<b>3,600</b>	<b>20</b>	<b>3,600</b>	<b>20</b>
<b>FHY Total</b>			<b>0</b>	<b>0</b>	<b>3,600</b>	<b>20</b>	<b>3,600</b>	<b>20</b>
<b>FR</b>	<b>RYANAIR Ltd</b>	<b>AAR Aarhus/Tirstrup</b>	<b>77,917</b>	<b>412</b>	<b>64,638</b>	<b>342</b>	<b>-13,279</b>	<b>-70</b>
		<b>ACE Lanzarote</b>	<b>51,213</b>	<b>271</b>	<b>48,762</b>	<b>258</b>	<b>-2,451</b>	<b>-13</b>
		<b>AGP Malaga</b>	<b>170,466</b>	<b>902</b>	<b>171,612</b>	<b>908</b>	<b>1,146</b>	<b>6</b>
		<b>AHO Alghero/Fertilia</b>	<b>50,481</b>	<b>267</b>	<b>47,250</b>	<b>250</b>	<b>-3,231</b>	<b>-17</b>
		<b>ALC Alicante</b>	<b>141,567</b>	<b>749</b>	<b>162,540</b>	<b>860</b>	<b>20,973</b>	<b>111</b>
		<b>AOI Ancona/Falconara</b>	<b>89,623</b>	<b>474</b>	<b>90,720</b>	<b>480</b>	<b>1,097</b>	<b>6</b>
		<b>BCN Barcelona</b>	<b>159,675</b>	<b>845</b>	<b>150,822</b>	<b>798</b>	<b>-8,853</b>	<b>-47</b>
		<b>BDS Brindisi/Papola Casale</b>	<b>54,505</b>	<b>288</b>	<b>48,384</b>	<b>256</b>	<b>-6,121</b>	<b>-32</b>
		<b>BGY Milan/Orio Al Serio</b>	<b>249,663</b>	<b>1,321</b>	<b>236,250</b>	<b>1,250</b>	<b>-13,413</b>	<b>-71</b>
		<b>BIQ Biarritz Parme</b>	<b>86,513</b>	<b>458</b>	<b>82,782</b>	<b>438</b>	<b>-3,731</b>	<b>-20</b>
		<b>BLL Billund</b>	<b>158,943</b>	<b>841</b>	<b>158,760</b>	<b>840</b>	<b>-183</b>	<b>-1</b>
		<b>BLQ Bologna/Guglielmo Marconi</b>	<b>81,209</b>	<b>430</b>	<b>79,380</b>	<b>420</b>	<b>-1,829</b>	<b>-10</b>
		<b>BRE Bremen</b>	<b>130,593</b>	<b>691</b>	<b>136,080</b>	<b>720</b>	<b>5,487</b>	<b>29</b>
		<b>BRI Bari/Palese</b>	<b>56,151</b>	<b>297</b>	<b>49,140</b>	<b>260</b>	<b>-7,011</b>	<b>-37</b>
		<b>BRQ Brno</b>	<b>79,380</b>	<b>420</b>	<b>66,528</b>	<b>352</b>	<b>-12,852</b>	<b>-68</b>
		<b>BTS Bratislava/Ivanka</b>	<b>160,955</b>	<b>852</b>	<b>123,228</b>	<b>652</b>	<b>-37,727</b>	<b>-200</b>
		<b>BUD Budapest/Ferihegy</b>	<b>156,382</b>	<b>827</b>	<b>186,732</b>	<b>988</b>	<b>30,350</b>	<b>161</b>
		<b>BZG Bydgoszcz</b>	<b>79,563</b>	<b>421</b>	<b>79,380</b>	<b>420</b>	<b>-183</b>	<b>-1</b>
		<b>CCF Carcassonne/Salvaza</b>	<b>89,623</b>	<b>474</b>	<b>84,672</b>	<b>448</b>	<b>-4,951</b>	<b>-26</b>
		<b>CFU Kerkyra/I. Kapodistrias</b>	<b>25,980</b>	<b>138</b>	<b>26,082</b>	<b>138</b>	<b>102</b>	<b>0</b>
		<b>CHQ Chania/Souda</b>	<b>24,143</b>	<b>128</b>	<b>24,570</b>	<b>130</b>	<b>427</b>	<b>2</b>
		<b>CIA Rome/Ciampino</b>	<b>228,080</b>	<b>1,207</b>	<b>236,250</b>	<b>1,250</b>	<b>8,170</b>	<b>43</b>
		<b>CUF Cuneo/Levaldigi</b>	<b>1,097</b>	<b>6</b>	<b>0</b>	<b>0</b>	<b>-1,097</b>	<b>-6</b>
		<b>DLE Dole/Tavaux</b>	<b>0</b>	<b>0</b>	<b>22,680</b>	<b>120</b>	<b>22,680</b>	<b>120</b>
		<b>DNR Dinard/Pleurtuit</b>	<b>66,760</b>	<b>353</b>	<b>68,040</b>	<b>360</b>	<b>1,280</b>	<b>7</b>
		<b>DUB Dublin</b>	<b>531,700</b>	<b>2,813</b>	<b>527,688</b>	<b>2,792</b>	<b>-4,012</b>	<b>-21</b>
		<b>EFL Kefallinia/Argostolion</b>	<b>0</b>	<b>0</b>	<b>22,680</b>	<b>120</b>	<b>22,680</b>	<b>120</b>

# LONDON STANSTED S13

## MOVEMENT AND SEAT CHANGES SUMMARY - BY CARRIER FULL SEASON

OPERATOR	AIRPORT	S12		S13		SEATS +/-	ATMS +/-
		SEATS	ATMS	SEATS	ATMS		
EGC	Bergerac/Roumanieres	87,976	465	84,294	446	-3,682	-19
EIN	Eindhoven	170,100	900	146,286	774	-23,814	-126
FAO	Faro	136,263	721	136,836	724	573	3
FCO	Rome/Fiumicino	10,060	53	0	0	-10,060	-53
FEZ	Fez/Sais	20,302	107	22,680	120	2,378	13
FKB	Karlsruhe/Baden Baden/Soellingen	79,380	420	71,064	376	-8,316	-44
FMM	Memmingen-Allgau	80,660	427	71,064	376	-9,596	-51
FUE	Fuerteventura	34,569	183	44,982	238	10,413	55
GDN	Gdansk/Rebiechowo	79,380	420	110,754	586	31,374	166
GNB	Grenoble/Saint Geoirs	1,097	6	1,512	8	415	2
GOA	Genoa/Cristoforo Colombo	77,917	412	68,040	360	-9,877	-52
GPA	Patras/Araxos Airport	22,680	120	0	0	-22,680	-120
GRO	Gerona/Costa Brava	79,563	421	79,380	420	-183	-1
GRZ	Graz/Thalerhof	45,177	239	0	0	-45,177	-239
GSE	Gothenburg/Saeve	158,760	840	146,286	774	-12,474	-66
HAU	Haugesund	34,020	180	34,020	180	0	0
HHN	Frankfurt/Hahn	181,440	960	168,588	892	-12,852	-68
IBZ	Ibiza	88,159	466	84,294	446	-3,865	-20
KGS	Kos	19,754	105	22,680	120	2,926	15
KIR	Kerry County Airport	45,360	240	66,528	352	21,168	112
KLU	Klagenfurt	34,203	181	34,020	180	-183	-1
KRK	Krakow/J. Paul II Balice Intl	156,382	827	146,286	774	-10,096	-53
KTW	Katowice/Pyrzowice	79,563	421	112,644	596	33,081	175
KUN	Kaunas	79,380	420	79,380	420	0	0
LCJ	Lodz Lublinek	79,380	420	73,332	388	-6,048	-32
LDE	Lourdes/Tarbes/Tarbes Ossun Lour	24,509	130	24,570	130	61	0
LDY	Londonderry/Eglinton	100,963	534	98,658	522	-2,305	-12
LEI	Almeria	37,678	199	37,422	198	-256	-1
LEJ	Leipzig Arpt	79,380	420	50,274	266	-29,106	-154
LIG	Limoges/Bellegarde	84,318	446	83,160	440	-1,158	-6
LNZ	Linz/Hoersching	42,068	223	15,120	80	-26,948	-143
LPA	Las Palmas/Arpt De Gran Canaria	45,360	240	55,188	292	9,828	52
LRH	La Rochelle/Laleu	48,652	257	47,250	250	-1,402	-7

# LONDON STANSTED S13

## MOVEMENT AND SEAT CHANGES SUMMARY - BY CARRIER FULL SEASON

OPERATOR	AIRPORT		S12		S13		SEATS +/-	ATMS +/-
			SEATS	ATMS	SEATS	ATMS		
LUZ	Lublin	0	0	45,360	240	45,360	240	
MAD	Madrid/Barajas	155,468	823	146,286	774	-9,182	-49	
MJV	Murcia/San Javier	115,412	611	116,802	618	1,390	7	
MLA	Malta/Luqa	48,652	257	46,872	248	-1,780	-9	
MMX	Malmo/Sturup	79,380	420	50,274	266	-29,106	-154	
MRS	Marseille	80,112	424	79,380	420	-732	-4	
MST	Maastricht/Aachen	0	0	55,188	292	55,188	292	
NOC	Knock International	79,380	420	99,414	526	20,034	106	
NRN	Neiderrhein	98,768	523	158,760	840	59,992	317	
NUE	Nuremberg	0	0	79,380	420	79,380	420	
NYO	Stockholm/Skavsta	148,517	787	152,334	806	3,817	19	
OPO	Porto	134,617	712	137,970	730	3,353	18	
ORK	Cork	180,160	953	178,416	944	-1,744	-9	
OSR	Ostrava/Mosnov	0	0	23,814	126	23,814	126	
PDV	Plovdiv	25,606	135	28,350	150	2,744	15	
PEG	Perugia/Sant Egidio	59,992	317	60,102	318	110	1	
PFO	Paphos/International	37,312	197	56,700	300	19,388	103	
PGF	Perpignan/Llabanere	62,919	333	61,992	328	-927	-5	
PIS	Poitiers/Biard	49,384	261	46,872	248	-2,512	-13	
PMF	Milan/Parma	35,849	190	34,020	180	-1,829	-10	
PMI	Palma Mallorca	134,434	711	129,654	686	-4,780	-25	
PMO	Palermo/Punta Raisi	81,575	432	81,270	430	-305	-2	
POZ	Poznan/Lawica	79,380	420	79,380	420	0	0	
PSA	Florence/Gal Galilei	240,335	1,272	238,140	1,260	-2,195	-12	
PSR	Pescara/Liberi	58,327	309	60,102	318	1,775	9	
PUY	Pula	28,899	153	26,460	140	-2,439	-13	
RAK	Marrakech/Menara	22,680	120	22,680	120	0	0	
RDZ	Rodez/Marcillac	47,372	251	41,202	218	-6,170	-33	
REU	Reus	55,603	294	54,810	290	-793	-4	
RHO	Rhodes/Diagoras Airport	27,070	143	26,460	140	-610	-3	
RIX	Riga	107,547	569	106,974	566	-573	-3	
RJK	Rijeka	6,219	33	6,426	34	207	1	
RMI	Rimini/Miramare	28,533	151	0	0	-28,533	-151	

# LONDON STANSTED S13

## MOVEMENT AND SEAT CHANGES SUMMARY - BY CARRIER FULL SEASON

OPERATOR	AIRPORT		S12		S13		SEATS +/-	ATMS +/-
			SEATS	ATMS	SEATS	ATMS		
RYG	Oslo		155,468	823	229,824	1,216	74,356	393
RZE	Rzeszow/Jasionka		82,672	437	81,270	430	-1,402	-7
SCQ	Santiago De Compostela		47,189	250	47,250	250	61	0
SDR	Santander		78,100	413	77,490	410	-610	-3
SKG	Thessaloniki/Makedonia Apt.		36,946	195	37,422	198	476	3
SNN	Shannon		162,052	857	151,200	800	-10,852	-57
SUF	Lamezia-Terre/S Eufemia		48,652	257	46,872	248	-1,780	-9
SVQ	Sevilla		76,092	404	68,040	360	-8,052	-44
SXB	Strasbourg/Entzheim		0	0	34,020	180	34,020	180
SXF	Berlin/Schoenefeld		118,521	627	89,208	472	-29,313	-155
SZG	Salzburg/W.A. Mozart		46,457	246	45,738	242	-719	-4
SZZ	Szczecin/Goleniow		45,360	240	45,360	240	0	0
TFS	Tenerife/Sur Reina Sofia		81,575	432	80,892	428	-683	-4
TKU	Turku		34,020	180	0	0	-34,020	-180
TLL	Tallinn/Ulemiste		0	0	45,360	240	45,360	240
TLN	Toulon/Hyeres		38,775	205	37,422	198	-1,353	-7
TMP	Tampere-Pirkkala		34,020	180	34,020	180	0	0
TRF	Oslo/Sandefjord		79,380	420	79,380	420	0	0
TRN	Turin/Citta Di Torino		79,380	420	81,648	432	2,268	12
TRS	Trieste		77,917	412	66,528	352	-11,389	-60
TSF	Treviso		155,834	825	129,654	686	-26,180	-139
TUF	Tours/St Symphorien		44,628	236	45,360	240	732	4
VLC	Valencia		91,086	482	83,160	440	-7,926	-42
VLL	Valladolid		34,020	180	0	0	-34,020	-180
VNO	Vilnius		79,380	420	79,380	420	0	0
VRN	Verona		43,897	232	0	0	-43,897	-232
VST	Vasteras		55,237	292	50,274	266	-4,963	-26
WAW	Warsaw/Okecie		0	0	104,328	552	104,328	552
WMI	Warsaw/Modlin		76,819	406	89,208	472	12,389	66
WRO	Wroclaw/Strachowice		101,877	539	113,400	600	11,523	61
XRY	Jerez De La Frontera/La Parra		47,006	249	47,250	250	244	1
ZAD	Zadar		40,970	217	35,532	188	-5,438	-29
ZAZ	Zaragoza		55,603	294	50,274	266	-5,329	-28



# LONDON STANSTED S13

## MOVEMENT AND SEAT CHANGES SUMMARY - BY CARRIER FULL SEASON

OPERATOR		AIRPORT		S12		S13		SEATS +/-	ATMS +/-
				SEATS	ATMS	SEATS	ATMS		
<b>FR Total</b>				<b>9,805,068</b>	<b>51,882</b>	<b>9,950,850</b>	<b>52,650</b>	<b>145,782</b>	<b>768</b>
<b>FX</b>	<b>FEDEX</b>	<b>AMS</b>	<b>Amsterdam-Schiphol</b>	0	219	0	238	0	19
		<b>CAN</b>	<b>Guangzhou/Baiyun</b>	0	30	0	60	0	30
		<b>CDG</b>	<b>Paris/Ch. De Gaulle</b>	0	459	0	479	0	20
		<b>DUB</b>	<b>Dublin</b>	0	263	0	269	0	6
		<b>EWR</b>	<b>Liberty International (Newark)</b>	0	78	0	0	0	-78
		<b>GLA</b>	<b>Glasgow International</b>	0	213	0	240	0	27
		<b>HKG</b>	<b>Hong Kong Int'l</b>	0	30	0	30	0	0
		<b>IND</b>	<b>Indianapolis/International</b>	0	105	0	210	0	105
		<b>KIX</b>	<b>Osaka/Kansai International</b>	0	30	0	0	0	-30
		<b>MAN</b>	<b>Manchester/International</b>	0	223	0	240	0	17
		<b>MEM</b>	<b>Memphis/International</b>	0	389	0	390	0	1
<b>FX Total</b>				<b>0</b>	<b>2,038</b>	<b>0</b>	<b>2,156</b>	<b>0</b>	<b>118</b>
<b>GB</b>	<b>ABX AIR INC (TNT)</b>	<b>LGG</b>	<b>Liege/Bierset</b>	0	282	0	300	0	18
<b>GB Total</b>				<b>0</b>	<b>282</b>	<b>0</b>	<b>300</b>	<b>0</b>	<b>18</b>
<b>GR</b>	<b>AURIGNY AIR SERVICES Ltd</b>	<b>GCI</b>	<b>Guernsey</b>	27,391	414	23,628	358	-3,763	-56
		<b>JER</b>	<b>Jersey/States</b>	8,048	122	4,356	66	-3,692	-56
<b>GR Total</b>				<b>35,439</b>	<b>536</b>	<b>27,984</b>	<b>424</b>	<b>-7,455</b>	<b>-112</b>
<b>GTI</b>	<b>ATLAS AIR Inc</b>	<b>HSV</b>	<b>Huntsville/Madison County</b>	0	91	0	90	0	-1
		<b>LUX</b>	<b>Luxembourg</b>	0	91	0	90	0	-1
<b>GTI Total</b>				<b>0</b>	<b>182</b>	<b>0</b>	<b>180</b>	<b>0</b>	<b>-2</b>
<b>HCC</b>	<b>HOLIDAY CZECH AIRLINES</b>	<b>KEF</b>	<b>Reykjavik/Keflavik International</b>	7,821	44	0	0	-7,821	-44
<b>HCC Total</b>				<b>7,821</b>	<b>44</b>	<b>0</b>	<b>0</b>	<b>-7,821</b>	<b>-44</b>
<b>KK</b>	<b>ATLASJET INTERNATIONAL AIRWAYS</b>	<b>AYT</b>	<b>Antalya</b>	8,195	50	0	0	-8,195	-50
		<b>IST</b>	<b>Istanbul/Ataturk</b>	47,009	290	0	0	-47,009	-290
<b>KK Total</b>				<b>55,204</b>	<b>341</b>	<b>0</b>	<b>0</b>	<b>-55,204</b>	<b>-341</b>
<b>LBY</b>	<b>BELLE AIR EUROPE</b>	<b>TIA</b>	<b>Tirana/Rinas</b>	17,907	122	25,560	154	7,653	32
<b>LBY Total</b>				<b>17,907</b>	<b>122</b>	<b>25,560</b>	<b>154</b>	<b>7,653</b>	<b>32</b>
<b>LZ</b>	<b>BELLE AIR</b>	<b>TIA</b>	<b>Tirana/Rinas</b>	17,377	119	25,560	154	8,183	35
<b>LZ Total</b>				<b>17,377</b>	<b>119</b>	<b>25,560</b>	<b>154</b>	<b>8,183</b>	<b>35</b>
<b>MP</b>	<b>MARTINAIR</b>	<b>AMS</b>	<b>Amsterdam-Schiphol</b>	0	89	0	90	0	1
		<b>BOG</b>	<b>Bogota/Eldorado</b>	0	88	0	90	0	2
<b>MP Total</b>				<b>0</b>	<b>177</b>	<b>0</b>	<b>180</b>	<b>0</b>	<b>3</b>

# LONDON STANSTED S13

## MOVEMENT AND SEAT CHANGES SUMMARY - BY CARRIER FULL SEASON

OPERATOR	AIRPORT	S12		S13		SEATS +/-	ATMS +/-		
		SEATS	ATMS	SEATS	ATMS				
OHY	ONUR AIR Tasimacilik AS	AYT	Antalya	6,831	38	13,248	71	6,417	33
		DLM	Dalaman	0	0	3,942	18	3,942	18
<b>OHY Total</b>				<b>6,831</b>	<b>38</b>	<b>17,190</b>	<b>89</b>	<b>10,359</b>	<b>51</b>
OV	ESTONIAN AIR	AJR	Arvidsjaur	0	0	684	9	684	9
<b>OV Total</b>				<b>0</b>	<b>0</b>	<b>684</b>	<b>9</b>	<b>684</b>	<b>9</b>
OZ	ASIANA AIRLINES Inc	ICN	Seoul Incheon Intl	0	120	0	120	0	0
<b>OZ Total</b>				<b>0</b>	<b>120</b>	<b>0</b>	<b>120</b>	<b>0</b>	<b>0</b>
PC	PEGASUS AIRLINES	ADB	Izmir/Adnan Menderes Arpt	45,360	240	34,020	180	-11,340	-60
		BJV	Bodrum./Milas Airport	6,767	36	8,316	44	1,549	8
		SAW	Sabiha Gokcen Intl Airport	165,162	874	159,894	846	-5,268	-28
<b>PC Total</b>				<b>217,289</b>	<b>1,150</b>	<b>202,230</b>	<b>1,070</b>	<b>-15,059</b>	<b>-80</b>
QS	TRAVEL SERVICE AIRLINES/SMART WINGS	ACE	Lanzarote	0	0	3,780	20	3,780	20
		LPA	Las Palmas/Arpt De Gran Canaria	0	0	8,316	44	8,316	44
<b>QS Total</b>				<b>0</b>	<b>0</b>	<b>12,096</b>	<b>64</b>	<b>12,096</b>	<b>64</b>
RC	ATLANTIC AIRWAYS P/F	FAE	Faroe Islands/Vagar	546	6	0	0	-546	-6
<b>RC Total</b>				<b>546</b>	<b>6</b>	<b>0</b>	<b>0</b>	<b>-546</b>	<b>-6</b>
TCX	THOMAS COOK Airlines UK Ltd	ACE	Lanzarote	13,006	70	11,280	60	-1,726	-10
		AYT	Antalya	30,368	160	32,560	170	2,192	10
		BJV	Bodrum./Milas Airport	9,077	47	9,700	51	623	4
		DLM	Dalaman	29,265	153	28,320	148	-945	-5
		FUE	Fuerteventura	11,265	60	1,620	9	-9,645	-51
		IBZ	Ibiza	8,206	43	8,620	45	414	2
		LPA	Las Palmas/Arpt De Gran Canaria	1,568	9	0	0	-1,568	-9
		MAH	Menorca	8,342	43	15,520	80	7,178	37
		NBE	Enfidha/ Zine El Abidine Ben Ali	10,045	53	12,840	68	2,795	15
		PFO	Paphos/International	2,265	13	0	0	-2,265	-13
		ZTH	Zakinthos Is	6,039	31	7,400	38	1,361	7
<b>TCX Total</b>				<b>149,216</b>	<b>785</b>	<b>147,520</b>	<b>772</b>	<b>-1,696</b>	<b>-13</b>
TK	TURKISH AIRLINES	ESB	Ankara/Esenboga	3,335	21	0	0	-3,335	-21
<b>TK Total</b>				<b>3,335</b>	<b>21</b>	<b>0</b>	<b>0</b>	<b>-3,335</b>	<b>-21</b>
TOM	THOMSON AIRWAYS	ACE	Lanzarote	11,340	60	11,340	60	0	0

# LONDON STANSTED S13

## MOVEMENT AND SEAT CHANGES SUMMARY - BY CARRIER FULL SEASON

OPERATOR		AIRPORT		S12		S13		SEATS +/-		ATMS +/-	
				SEATS	ATMS	SEATS	ATMS	SEATS +/-	ATMS +/-		
	AGA	Agadir Almassira	0	0	9,639	51	9,639	51			
	AYT	Antalya	18,473	98	18,900	100	427	2			
	CFU	Kerkyra/I. Kapodistrias	12,620	67	13,608	72	988	5			
	DLM	Dalaman	18,290	97	19,278	102	988	5			
	EFL	Kefallinia/Argostolion	8,779	46	9,261	49	482	3			
	FAO	Faro	11,109	58	11,151	59	42	1			
	FUE	Fuerteventura	11,157	59	10,049	53	-1,108	-6			
	GNB	Grenoble/Saint Geoirs	915	5	0	0	-915	-5			
	HER	Heraklion/N. Kazantzakis Apt.	16,278	86	16,821	89	543	3			
	IBZ	Ibiza	17,925	95	18,522	98	597	3			
	INN	Innsbruck/Kranebitten	676	3	378	2	-298	-1			
	LCA	Larnaca	9,511	50	0	0	-9,511	-50			
	LPA	Las Palmas/Arpt De Gran Canaria	3,518	18	3,024	16	-494	-2			
	MAH	Menorca	18,290	97	18,900	100	610	3			
	NBE	Enfidha/ Zine El Abidine Ben Ali	9,511	50	9,639	51	128	1			
	PFO	Paphos/International	19,388	103	20,979	111	1,591	8			
	PMI	Palma Mallorca	29,447	156	30,429	161	982	5			
	RHO	Rhodes/Diagoras Airport	18,290	97	20,790	110	2,500	13			
	SSH	Sharm El Sheikh/Ophira	3,292	17	11,340	60	8,048	43			
	TFS	Tenerife/Sur Reina Sofia	14,266	75	14,364	76	98	1			
	ZTH	Zakinthos Is	7,682	41	8,127	43	445	2			
<b>TOM Total</b>			<b>260,759</b>	<b>1,378</b>	<b>276,539</b>	<b>1,463</b>	<b>15,780</b>	<b>85</b>			
<b>UPS</b>	<b>UPS AIRLINES</b>	<b>CGN</b>	<b>Cologne/Bonn</b>	0	320	0	298	0	-22		
		EMA	Nottingham/East Midlands	0	10	0	0	0	-10		
		EWR	Liberty International (Newark)	0	116	0	120	0	4		
		PHL	Philadelphia/International	0	42	0	29	0	-13		
		SDF	Louisville	0	147	0	149	0	2		
<b>UPS Total</b>			<b>0</b>	<b>635</b>	<b>0</b>	<b>596</b>	<b>0</b>	<b>-39</b>			
<b>WW</b>	<b>BMIBABY LTD</b>	<b>BHD</b>	<b>Belfast City Airport</b>	37,239	252	0	0	-37,239	-252		
<b>WW Total</b>			<b>37,239</b>	<b>252</b>	<b>0</b>	<b>0</b>	<b>-37,239</b>	<b>-252</b>			
<b>X9</b>	<b>AVIONEXPRESS (WOW)</b>	<b>KEF</b>	<b>Reykjavik/Keflavik International</b>	14,919	89	0	0	-14,919	-89		
<b>X9 Total</b>			<b>14,919</b>	<b>89</b>	<b>0</b>	<b>0</b>	<b>-14,919</b>	<b>-89</b>			
<b>ZT</b>	<b>TITAN AIRWAYS Ltd</b>	<b>BGO</b>	<b>Bergen/Flesland</b>	2,339	18	0	0	-2,339	-18		

## LONDON STANSTED S13

### MOVEMENT AND SEAT CHANGES SUMMARY - BY CARRIER FULL SEASON

OPERATOR	AIRPORT	S12		S13		SEATS +/-	ATMS +/-
		SEATS	ATMS	SEATS	ATMS		
CLY	Calvi/Ste Catherine	4,781	37	4,940	38	159	1
CMF	Chambery	3,555	21	3,450	21	-105	0
DLM	Dalaman	6,087	40	5,310	27	-777	-13
FSC	Figari/Sud Corse	4,781	37	0	0	-4,781	-37
LDE	Lourdes	9,465	68	10,080	72	615	4
SIR	Sion	654	8	0	0	-654	-8
<b>ZT Total</b>		<b>31,662</b>	<b>228</b>	<b>23,780</b>	<b>158</b>	<b>-7,882</b>	<b>-70</b>

# LONDON STANSTED S13

## MOVEMENT AND SEAT CHANGES SUMMARY - BY CARRIER - BUSY WEEK

	OPERATOR	AIRPORT		S12		S13		SEATS +/-	ATMS +/-
				SEATS	ATMS	SEATS	ATMS		
3V	TNT AIRWAYS SA	LGG	Liege/Bierset	0	2	0	2	0	0
3V Total				0	2	0	2	0	0
4U	GERMANWINGS GMBH	CGN	Cologne/Bonn	4,645	31	4,500	30	-145	-1
		HAJ	Hanover Arpt	3,484	23	3,600	24	116	1
		STR	Stuttgart/Echterdingen	3,484	23	1,800	12	-1,684	-11
4U Total				11,613	77	9,900	66	-1,713	-11
9U	AIR MOLDOVA	KIV	Chisinau	0	0	456	4	456	4
9U Total				0	0	456	4	456	4
AB	AIR BERLIN GmbH Co Luftverkehrs KG	DUS	Dusseldorf	2,880	35	2,736	36	-144	1
AB Total				2,880	35	2,736	36	-144	1
AWC	TITAN AIRWAYS Ltd	BFS	Belfast Intl Arpt	0	19	0	20	0	1
		EDI	Edinburgh/Turnhouse	0	19	0	20	0	1
		EXT	Exeter	0	10	0	10	0	0
AWC Total				0	48	0	50	0	2
AZG	SILK WAY WEST AIRLINES	GYD	HEYDAR ALIYEV INTERNATIONAL	0	4	0	2	0	-2
AZG Total				0	4	0	2	0	-2
BA	BRITISH AIRWAYS Plc	ATL	Atlanta	0	1	0	1	0	0
		DEL	Delhi/Indira Gandhi Intl	0	2	0	0	0	-2
		FRA	Frankfurt/International	0	1	0	2	0	1
		HKG	Hong Kong Int'l	0	9	0	10	0	1
		IAH	Houston	0	0	0	1	0	1
		JNB	Johannesburg Int'l	0	2	0	2	0	0
		ORD	Chicago/O'Hare International	0	3	0	2	0	-1
		PVG	Shanghai/Pu Dong	0	4	0	2	0	-2
		ZAZ	Zaragoza	0	1	0	0	0	-1
BA Total				0	22	0	20	0	-2
CV	CARGOLUX AIRLINES	HKG	Hong Kong Int'l	0	0	0	2	0	2
		LUX	Luxembourg	0	0	0	2	0	2
CV Total				0	0	0	4	0	4
CY	CYPRUS AIRWAYS Ltd	LCA	Larnaca	883	6	0	0	-883	-6
CY Total				883	6	0	0	-883	-6
ESG		CPH	Copenhagen Airport	0	0	76	1	76	1

# LONDON STANSTED S13

## MOVEMENT AND SEAT CHANGES SUMMARY - BY CARRIER - BUSY WEEK

OPERATOR	AIRPORT		S12		S13		SEATS +/-	ATMS +/-
			SEATS	ATMS	SEATS	ATMS		
	SFT	Skelleftea	0	0	76	1	76	1
<b>ESG Total</b>			<b>0</b>	<b>0</b>	<b>152</b>	<b>2</b>	<b>152</b>	<b>2</b>
<b>EXS</b>	<b>JET2.COM LTD</b>	<b>EDI Edinburgh/Turnhouse</b>	0	19	0	20	0	1
		<b>NCL Newcastle Airport</b>	0	10	0	10	0	0
<b>EXS Total</b>			<b>0</b>	<b>29</b>	<b>0</b>	<b>30</b>	<b>0</b>	<b>1</b>
<b>EZY</b>	<b>EASYJET AIRLINE Co Ltd</b>	<b>AGP Malaga</b>	3,321	21	2,808	18	-513	-3
		<b>ALC Alicante</b>	3,623	23	0	0	-3,623	-23
		<b>AMS Amsterdam-Schiphol</b>	6,132	39	6,432	40	300	1
		<b>BCN Barcelona</b>	2,114	14	0	0	-2,114	-14
		<b>BFS Belfast Intl Arpt</b>	6,643	43	6,744	42	101	-1
		<b>BIO Bilbao</b>	4,227	27	4,512	28	285	1
		<b>BJV Bodrum./Milas Airport</b>	906	6	936	6	30	0
		<b>CAG Cagliari/Elmas</b>	2,114	14	2,184	14	70	0
		<b>CPH Copenhagen Airport</b>	3,925	25	4,200	26	275	1
		<b>DBV Dubrovnik</b>	906	6	936	6	30	0
		<b>DLM Dalaman</b>	1,208	8	1,296	8	88	0
		<b>EDI Edinburgh/Turnhouse</b>	7,223	45	7,152	44	-71	-1
		<b>GLA Glasgow International</b>	6,573	41	7,008	44	435	3
		<b>IBZ Ibiza</b>	3,623	23	3,888	24	265	1
		<b>LJU Ljubljana/Brnik</b>	2,114	14	2,184	14	70	0
		<b>LYS Lyon</b>	2,114	14	2,184	14	70	0
		<b>MUC Munich/Franz Josef Strauss</b>	3,925	25	2,184	14	-1,741	-11
		<b>NAP Naples</b>	4,831	31	4,416	28	-415	-3
		<b>NCE Nice/Cote D'Azur</b>	2,114	14	2,184	14	70	0
		<b>OVD Asturias</b>	2,717	17	2,496	16	-221	-1
		<b>PMI Palma Mallorca</b>	3,623	23	3,432	22	-191	-1
		<b>PMO Palermo/Punta Raisi</b>	12	2	0	0	-12	-2
		<b>PRG Prague/Ruzyne</b>	1,812	12	1,872	12	60	0
		<b>RAK Marrakech/Menara</b>	0	0	936	6	936	6
		<b>SOF Sofia/Vrazhdebna</b>	0	0	672	4	672	4
		<b>SPU Split</b>	906	6	936	6	30	0
		<b>SSH Sharm El Sheikh/Ophira</b>	0	0	720	4	720	4

# LONDON STANSTED S13

## MOVEMENT AND SEAT CHANGES SUMMARY - BY CARRIER - BUSY WEEK

OPERATOR	AIRPORT		S12		S13		SEATS +/-	ATMS +/-
			SEATS	ATMS	SEATS	ATMS		
	TLL	Tallinn/Ulemiste	906	6	0	0	-906	-6
<b>EZY Total</b>			<b>77,609</b>	<b>495</b>	<b>72,312</b>	<b>454</b>	<b>-5,297</b>	<b>-41</b>
<b>FHY</b>	<b>FREEBIRD AIRLINES</b>	<b>DLM Dalaman</b>	<b>0</b>	<b>0</b>	<b>360</b>	<b>2</b>	<b>360</b>	<b>2</b>
<b>FHY Total</b>			<b>0</b>	<b>0</b>	<b>360</b>	<b>2</b>	<b>360</b>	<b>2</b>
<b>FR</b>	<b>RYANAIR Ltd</b>	<b>AAR Aarhus/Tirstrup</b>	<b>2,195</b>	<b>12</b>	<b>1,512</b>	<b>8</b>	<b>-683</b>	<b>-4</b>
		<b>ACE Lanzarote</b>	<b>2,195</b>	<b>12</b>	<b>2,268</b>	<b>12</b>	<b>73</b>	<b>0</b>
		<b>AGP Malaga</b>	<b>5,853</b>	<b>31</b>	<b>6,048</b>	<b>32</b>	<b>195</b>	<b>1</b>
		<b>AHO Alghero/Fertilia</b>	<b>2,195</b>	<b>12</b>	<b>1,890</b>	<b>10</b>	<b>-305</b>	<b>-2</b>
		<b>ALC Alicante</b>	<b>5,853</b>	<b>31</b>	<b>6,048</b>	<b>32</b>	<b>195</b>	<b>1</b>
		<b>AOI Ancona/Falconara</b>	<b>3,292</b>	<b>17</b>	<b>3,024</b>	<b>16</b>	<b>-268</b>	<b>-1</b>
		<b>BCN Barcelona</b>	<b>5,304</b>	<b>28</b>	<b>4,536</b>	<b>24</b>	<b>-768</b>	<b>-4</b>
		<b>BDS Brindisi/Papola Casale</b>	<b>2,195</b>	<b>12</b>	<b>2,268</b>	<b>12</b>	<b>73</b>	<b>0</b>
		<b>BGY Milan/Orio Al Serio</b>	<b>9,145</b>	<b>48</b>	<b>7,560</b>	<b>40</b>	<b>-1,585</b>	<b>-8</b>
		<b>BIQ Biarritz Parme</b>	<b>3,292</b>	<b>17</b>	<b>3,402</b>	<b>18</b>	<b>110</b>	<b>1</b>
		<b>BLL Billund</b>	<b>5,121</b>	<b>27</b>	<b>5,292</b>	<b>28</b>	<b>171</b>	<b>1</b>
		<b>BLQ Bologna/Guglielmo Marconi</b>	<b>2,561</b>	<b>14</b>	<b>2,646</b>	<b>14</b>	<b>85</b>	<b>0</b>
		<b>BRE Bremen</b>	<b>0</b>	<b>0</b>	<b>4,536</b>	<b>24</b>	<b>4,536</b>	<b>24</b>
		<b>BRI Bari/Palese</b>	<b>2,561</b>	<b>14</b>	<b>2,268</b>	<b>12</b>	<b>-293</b>	<b>-2</b>
		<b>BRQ Brno</b>	<b>2,561</b>	<b>14</b>	<b>1,890</b>	<b>10</b>	<b>-671</b>	<b>-4</b>
		<b>BTS Bratislava/Ivanka</b>	<b>5,853</b>	<b>31</b>	<b>3,780</b>	<b>20</b>	<b>-2,073</b>	<b>-11</b>
		<b>BUD Budapest/Ferihegy</b>	<b>5,121</b>	<b>27</b>	<b>4,914</b>	<b>26</b>	<b>-207</b>	<b>-1</b>
		<b>BZG Bydgoszcz</b>	<b>2,561</b>	<b>14</b>	<b>2,646</b>	<b>14</b>	<b>85</b>	<b>0</b>
		<b>CCF Carcassonne/Salvaza</b>	<b>3,658</b>	<b>19</b>	<b>3,780</b>	<b>20</b>	<b>122</b>	<b>1</b>
		<b>CFU Kerkyra/I. Kapodistriais</b>	<b>1,463</b>	<b>8</b>	<b>1,512</b>	<b>8</b>	<b>49</b>	<b>0</b>
		<b>CHQ Chania/Souda</b>	<b>1,097</b>	<b>6</b>	<b>1,134</b>	<b>6</b>	<b>37</b>	<b>0</b>
		<b>CIA Rome/Ciampino</b>	<b>7,682</b>	<b>41</b>	<b>7,560</b>	<b>40</b>	<b>-122</b>	<b>-1</b>
		<b>DLE Dole/Tavaux</b>	<b>0</b>	<b>0</b>	<b>756</b>	<b>4</b>	<b>756</b>	<b>4</b>
		<b>DNR Dinard/Pleurtuit</b>	<b>2,195</b>	<b>12</b>	<b>2,268</b>	<b>12</b>	<b>73</b>	<b>0</b>
		<b>DUB Dublin</b>	<b>16,461</b>	<b>87</b>	<b>16,632</b>	<b>88</b>	<b>171</b>	<b>1</b>
		<b>EFL Kefallinia/Argostolion</b>	<b>0</b>	<b>0</b>	<b>756</b>	<b>4</b>	<b>756</b>	<b>4</b>
		<b>EGC Bergerac/Roumanieres</b>	<b>3,658</b>	<b>19</b>	<b>3,780</b>	<b>20</b>	<b>122</b>	<b>1</b>
		<b>EIN Eindhoven</b>	<b>5,487</b>	<b>29</b>	<b>4,536</b>	<b>24</b>	<b>-951</b>	<b>-5</b>

# LONDON STANSTED S13

## MOVEMENT AND SEAT CHANGES SUMMARY - BY CARRIER - BUSY WEEK

OPERATOR	AIRPORT		S12		S13		SEATS +/-	ATMS +/-
			SEATS	ATMS	SEATS	ATMS		
FAO	Faro		5,853	31	6,048	32	195	1
FEZ	Fez/Sais		732	4	756	4	24	0
FKB	Karlsruhe/Baden Baden/Soellingen		2,561	14	1,890	10	-671	-4
FMM	Memmingen-Allgau		2,561	14	1,890	10	-671	-4
FUE	Fuerteventura		1,463	8	1,890	10	427	2
GDN	Gdansk/Rebiechowo		2,561	14	1,890	10	-671	-4
GOA	Genoa/Cristoforo Colombo		2,561	14	2,268	12	-293	-2
GPA	Patras/Araxos Airport		732	4	0	0	-732	-4
GRO	Gerona/Costa Brava		2,561	14	2,646	14	85	0
GRZ	Graz/Thalerhof		1,463	8	0	0	-1,463	-8
GSE	Göteborg/Säve		5,121	27	4,536	24	-585	-3
HAU	Haugesund		1,097	6	1,134	6	37	0
HHN	Frankfurt/Hahn		5,853	31	5,292	28	-561	-3
IBZ	Ibiza		2,926	15	2,646	14	-280	-1
KGS	Kos		732	4	756	4	24	0
KIR	Kerry County Airport		1,463	8	1,890	10	427	2
KLU	Klagenfurt		1,097	6	1,134	6	37	0
KRK	Krakow/J. Paul II Balice Intl		5,121	27	4,536	24	-585	-3
KTW	Katowice/Pyrzowice		2,561	14	2,268	12	-293	-2
KUN	Kaunas		2,561	14	2,646	14	85	0
LCJ	Lodz Lublinek		2,561	14	2,268	12	-293	-2
LDE	Lourdes		1,097	6	1,134	6	37	0
LDY	Londonderry/Eglinton		2,926	15	2,646	14	-280	-1
LEI	Almeria		1,829	10	1,890	10	61	0
LEJ	Leipzig Arpt		2,561	14	1,512	8	-1,049	-6
LIG	Limoges/Bellegarde		3,292	17	3,402	18	110	1
LNZ	Linz/Hoersching		1,097	6	0	0	-1,097	-6
LPA	Las Palmas/Arpt De Gran Canaria		1,463	8	1,890	10	427	2
LRH	La Rochelle/Laleu		1,829	10	1,890	10	61	0
LUZ	Lublin		0	0	1,512	8	1,512	8
MAD	Madrid/Barajas		4,755	25	4,536	24	-219	-1
MJV	Murcia/San Javier		4,755	25	4,536	24	-219	-1



# LONDON STANSTED S13

## MOVEMENT AND SEAT CHANGES SUMMARY - BY CARRIER - BUSY WEEK

OPERATOR	AIRPORT	S12		S13		SEATS +/-	ATMS +/-
		SEATS	ATMS	SEATS	ATMS		
MLA	Malta/Luqa	1,829	10	1,890	10	61	0
MMX	Malmo/Sturup	2,561	14	1,512	8	-1,049	-6
MRS	Marseille	2,561	14	2,646	14	85	0
MST	Maastricht/Aachen	0	0	1,512	8	1,512	8
NOC	Knock International	2,561	14	3,402	18	841	4
NRN	Neiderrhein	2,926	15	5,292	28	2,366	13
NUE	Nuremberg	0	0	2,646	14	2,646	14
NYO	Stockholm/Skavsta	4,024	21	4,914	26	890	5
OPO	Porto	4,390	23	4,914	26	524	3
ORK	Cork	5,670	30	5,292	28	-378	-2
OSR	Ostrava/Mosnov	0	0	1,134	6	1,134	6
PDV	Plovdiv	1,097	6	756	4	-341	-2
PEG	Perugia/Sant Egidio	2,561	14	2,646	14	85	0
PFO	Paphos/International	1,463	8	1,890	10	427	2
PGF	Perpignan/Llabanere	3,292	17	3,024	16	-268	-1
PIS	Poitiers/Biard	1,829	10	1,890	10	61	0
PMF	Milan/Parma	1,463	8	1,134	6	-329	-2
PMI	Palma Mallorca	5,121	27	5,292	28	171	1
PMO	Palermo/Punta Raisi	2,926	15	3,024	16	98	1
POZ	Poznan/Lawica	2,561	14	2,646	14	85	0
PSA	Florence/Gal Galilei	8,048	43	7,938	42	-110	-1
PSR	Pescara/Liberi	2,561	14	2,646	14	85	0
PUY	Pula	1,463	8	1,512	8	49	0
RAK	Marrakech/Menara	732	4	756	4	24	0
RDZ	Rodez/Marcillac	2,195	12	1,512	8	-683	-4
REU	Reus	1,829	10	1,512	8	-317	-2
RHO	Rhodes/Diagoras Airport	1,463	8	1,512	8	49	0
RIX	Riga	3,292	17	3,402	18	110	1
RJK	Rijeka	732	4	756	4	24	0
RMI	Rimini/Miramare	1,097	6	0	0	-1,097	-6
RYG	Oslo	4,390	23	7,560	40	3,170	17
RZE	Rzeszow/Jasionka	2,926	15	3,024	16	98	1

# LONDON STANSTED S13

## MOVEMENT AND SEAT CHANGES SUMMARY - BY CARRIER - BUSY WEEK

OPERATOR	AIRPORT	S12		S13		SEATS +/-	ATMS +/-		
		SEATS	ATMS	SEATS	ATMS				
	SCQ Santiago De Compostela	1,829	10	1,890	10	61	0		
	SDR Santander	2,561	14	2,268	12	-293	-2		
	SKG Thessaloniki/Makedonia Apt.	1,829	10	1,890	10	61	0		
	SNN Shannon	5,487	29	4,536	24	-951	-5		
	SUF Lamezia-Terme/S Eufemia	1,829	10	1,890	10	61	0		
	SVQ Sevilla	1,829	10	2,268	12	439	2		
	SXB Strasbourg/Entzheim	0	0	1,134	6	1,134	6		
	SXF Berlin/Schoenefeld	2,926	15	2,646	14	-280	-1		
	SZG Salzburg/W.A. Mozart	1,463	8	1,134	6	-329	-2		
	SZZ Szczecin/Goleniow	1,463	8	1,512	8	49	0		
	TFS Tenerife/Sur Reina Sofia	2,926	15	3,024	16	98	1		
	TKU Turku	1,097	6	0	0	-1,097	-6		
	TLL Tallinn/Ulemiste	0	0	1,512	8	1,512	8		
	TLN Toulon/Hyeres	1,829	10	1,890	10	61	0		
	TMP Tampere-Pirkkala	1,097	6	1,134	6	37	0		
	TRF Oslo/Sandefjord	2,561	14	2,646	14	85	0		
	TRN Turin/Citta Di Torino	2,561	14	2,646	14	85	0		
	TRS Trieste	2,561	14	1,890	10	-671	-4		
	TSF Treviso	5,121	27	4,158	22	-963	-5		
	TUF Tours/St Symphorien	1,463	8	1,512	8	49	0		
	VLC Valencia	4,024	21	3,402	18	-622	-3		
	VLL Valladolid	1,097	6	0	0	-1,097	-6		
	VNO Vilnius	2,561	14	2,646	14	85	0		
	VRN Verona	1,829	10	0	0	-1,829	-10		
	VST Vasteras	1,463	8	1,512	8	49	0		
	WMI Warsaw/Modlin	2,561	14	5,292	28	2,731	14		
	WRO Wroclaw/Strachowice	3,292	17	3,780	20	488	3		
	XRY Jerez De La Frontera/La Parra	1,829	10	1,890	10	61	0		
	ZAD Zadar	1,829	10	1,512	8	-317	-2		
	ZAZ Zaragoza	1,829	10	1,512	8	-317	-2		
<b>FR Total</b>		<b>333,615</b>	<b>1,765</b>	<b>335,286</b>	<b>1,774</b>	<b>1,671</b>	<b>9</b>		
<b>FX</b>	<b>FEDEX</b>	<b>AMS</b>	<b>Amsterdam-Schiphol</b>	<b>0</b>	<b>8</b>	<b>0</b>	<b>8</b>	<b>0</b>	<b>0</b>

# LONDON STANSTED S13

## MOVEMENT AND SEAT CHANGES SUMMARY - BY CARRIER - BUSY WEEK

OPERATOR		AIRPORT		S12		S13		SEATS +/-		ATMS +/-	
				SEATS	ATMS	SEATS	ATMS	SEATS +/-	ATMS +/-		
		CAN	Guangzhou/Baiyun	0	1	0	2	0	1		
		CDG	Paris/Ch. De Gaulle	0	15	0	16	0	1		
		DOV	Dover-Cheswold/Dover AFB	0	1	0	0	0	-1		
		DUB	Dublin	0	9	0	9	0	0		
		EWR	Liberty International (Newark)	0	3	0	0	0	-3		
		GLA	Glasgow International	0	8	0	8	0	0		
		HKG	Hong Kong Int'l	0	1	0	1	0	0		
		IND	Indianapolis/International	0	3	0	7	0	4		
		KIX	Osaka/Kansai International	0	1	0	0	0	-1		
		MAN	Manchester/International	0	8	0	8	0	0		
		MEM	Memphis/International	0	12	0	13	0	1		
<b>FX Total</b>				<b>0</b>	<b>68</b>	<b>0</b>	<b>72</b>	<b>0</b>	<b>4</b>		
<b>GB</b>	<b>ABX AIR INC</b>	<b>LGG</b>	<b>Liege/Bierset</b>	0	10	0	10	0	0		
<b>GB Total</b>				<b>0</b>	<b>10</b>	<b>0</b>	<b>10</b>	<b>0</b>	<b>0</b>		
<b>GR</b>	<b>AURIGNY AIR SERVICES Ltd</b>	<b>GCI</b>	<b>Guernsey</b>	915	14	792	12	-123	-2		
		<b>JER</b>	<b>Jersey/States</b>	255	4	264	4	9	0		
<b>GR Total</b>				<b>1,171</b>	<b>17</b>	<b>1,056</b>	<b>16</b>	<b>-115</b>	<b>-1</b>		
<b>GTI</b>	<b>ATLAS AIR Inc</b>	<b>HSV</b>	<b>Huntsville/Madison County</b>	0	4	0	3	0	-1		
		<b>LUX</b>	<b>Luxembourg</b>	0	4	0	3	0	-1		
<b>GTI Total</b>				<b>0</b>	<b>8</b>	<b>0</b>	<b>6</b>	<b>0</b>	<b>-2</b>		
<b>HCC</b>	<b>HOLIDAY CZECH AIRLINES (ICELAND EXPRESS)</b>	<b>KEF</b>	<b>Reykjavik/Keflavik International</b>	697	4	0	0	-697	-4		
<b>HCC Total</b>				<b>697</b>	<b>4</b>	<b>0</b>	<b>0</b>	<b>-697</b>	<b>-4</b>		
<b>KK</b>	<b>ATLASJET INTERNATIONAL AIRWAYS</b>	<b>AYT</b>	<b>Antalya</b>	306	2	0	0	-306	-2		
		<b>IST</b>	<b>Istanbul/Ataturk</b>	1,835	12	0	0	-1,835	-12		
<b>KK Total</b>				<b>2,141</b>	<b>14</b>	<b>0</b>	<b>0</b>	<b>-2,141</b>	<b>-14</b>		
<b>LBY</b>	<b>BELLE AIR EUROPE</b>	<b>TIA</b>	<b>Tirana/Rinas</b>	1,150	8	1,188	7	38	-1		
<b>LBY Total</b>				<b>1,150</b>	<b>8</b>	<b>1,188</b>	<b>7</b>	<b>38</b>	<b>-1</b>		
<b>LZ</b>	<b>BELLE AIR</b>	<b>TIA</b>	<b>Tirana/Rinas</b>	1,150	8	1,188	7	38	-1		
<b>LZ Total</b>				<b>1,150</b>	<b>8</b>	<b>1,188</b>	<b>7</b>	<b>38</b>	<b>-1</b>		
<b>MP</b>	<b>MARTINAIR</b>	<b>AMS</b>	<b>Amsterdam-Schiphol</b>	0	3	0	3	0	0		
		<b>BOG</b>	<b>Bogota/Eldorado</b>	0	3	0	3	0	0		
<b>MP Total</b>				<b>0</b>	<b>6</b>	<b>0</b>	<b>6</b>	<b>0</b>	<b>0</b>		

# LONDON STANSTED S13

## MOVEMENT AND SEAT CHANGES SUMMARY - BY CARRIER - BUSY WEEK

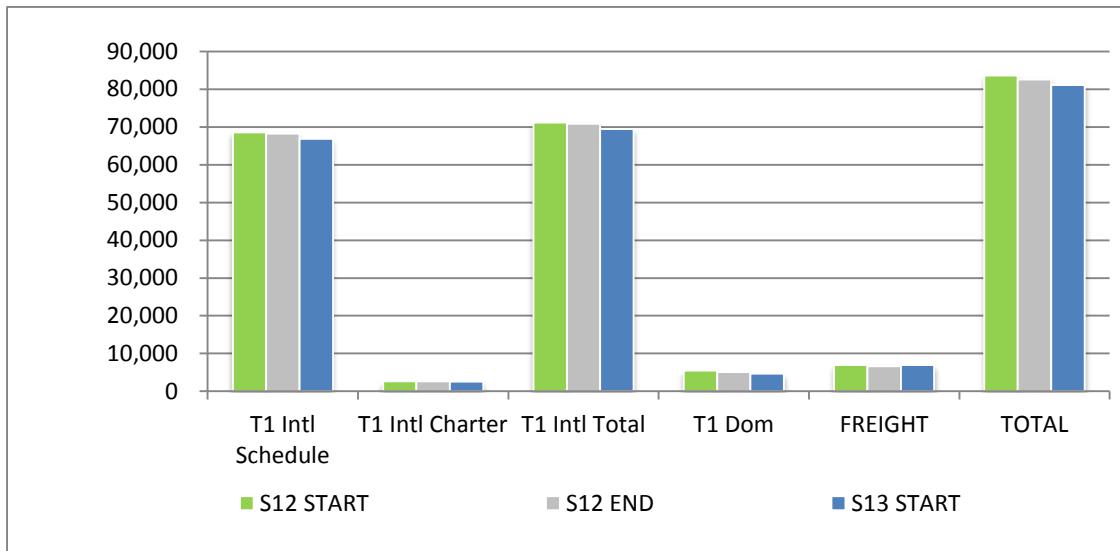
OPERATOR	AIRPORT	S12		S13		SEATS +/-	ATMS +/-	
		SEATS	ATMS	SEATS	ATMS			
OHY	ONUR AIR Tasimacilik AS	AYT Antalya	348	2	798	4	450	2
		DLM Dalaman	0	0	438	2	438	2
<b>OHY Total</b>			<b>348</b>	<b>2</b>	<b>1,236</b>	<b>6</b>	<b>888</b>	<b>4</b>
OZ	ASIANA AIRLINES Inc	ICN Seoul Incheon Intl	0	4	0	4	0	0
<b>OZ Total</b>			<b>0</b>	<b>4</b>	<b>0</b>	<b>4</b>	<b>0</b>	<b>0</b>
PC	PEGASUS AIRLINES	ADB Izmir/Adnan Menderes Arpt	1,463	8	1,134	6	-329	-2
		BJV Bodrum./Milas Airport	366	2	378	2	12	0
		SAW Sabiha Gokcen Intl Airport	5,121	27	5,670	30	549	3
<b>PC Total</b>			<b>6,950</b>	<b>37</b>	<b>7,182</b>	<b>38</b>	<b>232</b>	<b>1</b>
QS	TRAVEL SERVICE AIRLINES/SMART WINGS	ACE Lanzarote	0	0	378	2	378	2
		LPA Las Palmas/Arpt De Gran Canaria	0	0	378	2	378	2
<b>QS Total</b>			<b>0</b>	<b>0</b>	<b>756</b>	<b>4</b>	<b>756</b>	<b>4</b>
TCX	THOMAS COOK Airlines UK Ltd	ACE Lanzarote	426	2	440	2	14	0
		AYT Antalya	1,277	6	1,320	6	43	0
		BJV Bodrum./Milas Airport	426	2	440	2	14	0
		DLM Dalaman	1,626	8	1,320	6	-306	-2
		FUE Fuerteventura	426	2	0	0	-426	-2
		IBZ Ibiza	426	2	440	2	14	0
		MAH Menorca	426	2	880	4	454	2
		NBE Enfidha/ Zine El Abidine Ben Ali	426	2	440	2	14	0
		PMI Palma Mallorca	426	2	440	2	14	0
		TFS Tenerife/Sur Reina Sofia	426	2	440	2	14	0
<b>TCX Total</b>			<b>6,735</b>	<b>31</b>	<b>6,600</b>	<b>30</b>	<b>-135</b>	<b>-1</b>
TOM	THOMSON AIRWAYS	ACE Lanzarote	366	2	378	2	12	0
		AGA Agadir Almassira	0	0	378	2	378	2
		AYT Antalya	732	4	756	4	24	0
		CFU Kerkyra/I. Kapodistriais	732	4	756	4	24	0
		DLM Dalaman	732	4	756	4	24	0
		EFL Kefallinia/Argostolion	366	2	378	2	12	0
		FAO Faro	366	2	378	2	12	0
		FUE Fuerteventura	366	2	378	2	12	0

# LONDON STANSTED S13

## MOVEMENT AND SEAT CHANGES SUMMARY - BY CARRIER - BUSY WEEK

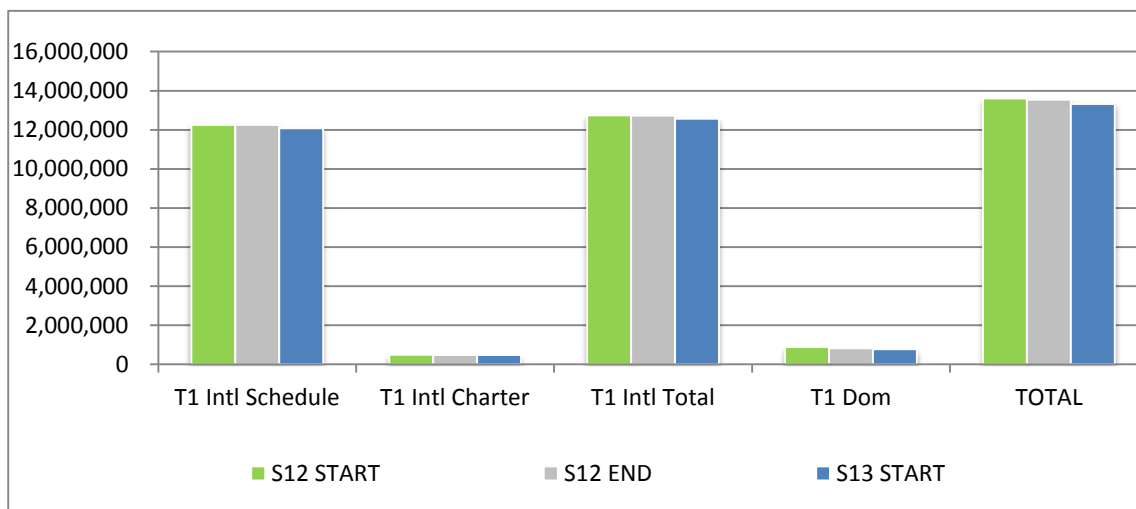
OPERATOR		AIRPORT		S12		S13		SEATS +/-		ATMS +/-	
				SEATS	ATMS	SEATS	ATMS	SEATS +/-	ATMS +/-		
		HER	Heraklion/N. Kazantzakis Apt.	732	4	756	4	24		0	
		IBZ	Ibiza	732	4	756	4	24		0	
		LCA	Larnaca	366	2	0	0	-366		-2	
		MAH	Menorca	732	4	756	4	24		0	
		NBE	Enfidha/ Zine El Abidine Ben Ali	366	2	378	2	12		0	
		PFO	Paphos/International	732	4	756	4	24		0	
		PMI	Palma Mallorca	1,097	6	1,134	6	37		0	
		RHO	Rhodes/Diagoras Airport	732	4	756	4	24		0	
		SSH	Sharm El Sheikh/Ophira	0	0	378	2	378		2	
		TFS	Tenerife/Sur Reina Sofia	366	2	378	2	12		0	
		ZTH	Zakynthos Is	366	2	378	2	12		0	
<b>TOM Total</b>				<b>9,877</b>	<b>52</b>	<b>10,584</b>	<b>56</b>	<b>707</b>		<b>4</b>	
<b>UPS</b>	<b>UPS AIRLINES</b>	CGN	Cologne/Bonn	0	14	0	10	0		-4	
		EMA	Nottingham/East Midlands	0	1	0	0	0		-1	
		EWR	Liberty International (Newark)	0	4	0	4	0		0	
		PHL	Philadelphia/International	0	4	0	1	0		-3	
		SDF	Louisville	0	5	0	5	0		0	
<b>UPS Total</b>				<b>0</b>	<b>27</b>	<b>0</b>	<b>20</b>	<b>0</b>		<b>-7</b>	
<b>X9</b>	<b>AVIONEXPRESS (WOW)</b>	KEF	Reykjavik/Keflavik International	975	6	0	0	-975		-6	
<b>X9 Total</b>				<b>975</b>	<b>6</b>	<b>0</b>	<b>0</b>	<b>-975</b>		<b>-6</b>	
<b>ZT</b>	<b>TITAN AIRWAYS Ltd</b>	CLY	Calvi/Ste Catherine	252	2	260	2	8		0	
		DLM	Dalaman	430	3	202	1	-228		-2	
		EXT	Exeter	126	1	0	0	-126		-1	
		FSC	Figari/Sud Corse	252	2	0	0	-252		-2	
		LDE	Lourdes	281	3	520	4	239		1	
<b>ZT Total</b>				<b>1,339</b>	<b>11</b>	<b>982</b>	<b>7</b>	<b>-357</b>		<b>-4</b>	

## AIR TRANSPORT MOVEMENTS BY TERMINAL



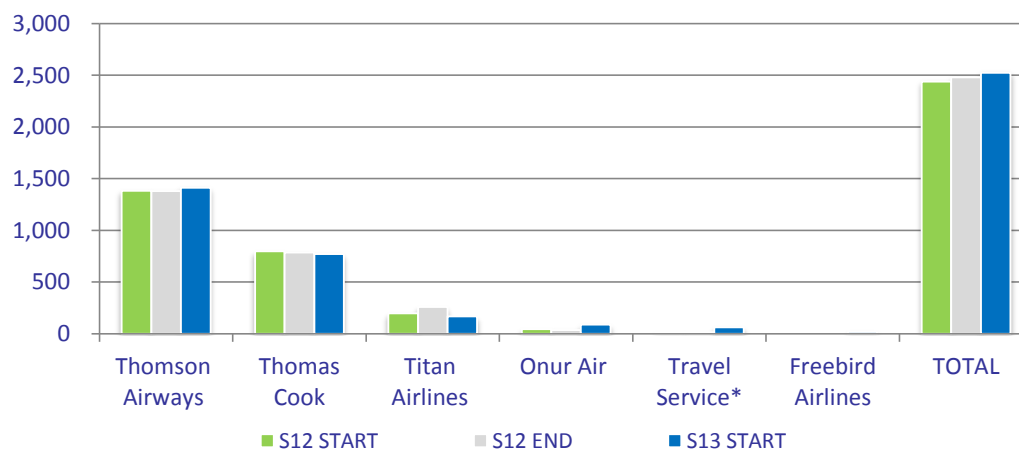
	S12 START	S12 END	S13 START	% CHANGE START-START	% CHANGE END-START
<b>T1 Intl Schedule</b>	68,587	68,279	66,894	-2.5%	-2.0%
<b>T1 Intl Charter</b>	2,611	2,604	2,563	-1.8%	-1.6%
<b>T1 Intl Total</b>	71,198	70,883	69,457	-2.4%	-2.0%
<b>T1 Dom</b>	5,453	5,072	4,669	-14.4%	-7.9%
<b>FREIGHT</b>	6,980	6,654	6,953	-0.4%	4.5%
<b>TOTAL</b>	<b>83,631</b>	<b>82,609</b>	<b>81,079</b>	<b>-3.1%</b>	<b>-1.9%</b>

## TOTAL SEATS BY TERMINAL (000's)



	S12 START	S12 END	S13 START	% CHANGE START-START	% CHANGE END-START
<b>T1 Intl Schedule</b>	12,250,890	12,243,834	12,081,001	-1.4%	-1.3%
<b>T1 Intl Charter</b>	482,565	473,533	477,353	-1.1%	0.8%
<b>T1 Intl Total</b>	12,733,455	12,717,367	12,558,354	-1.4%	-1.3%
<b>T1 Dom</b>	875,349	818,624	767,612	-12.3%	-6.2%
<b>TOTAL</b>	<b>13,608,804</b>	<b>13,535,991</b>	<b>13,325,966</b>	<b>-2.1%</b>	<b>-1.6%</b>

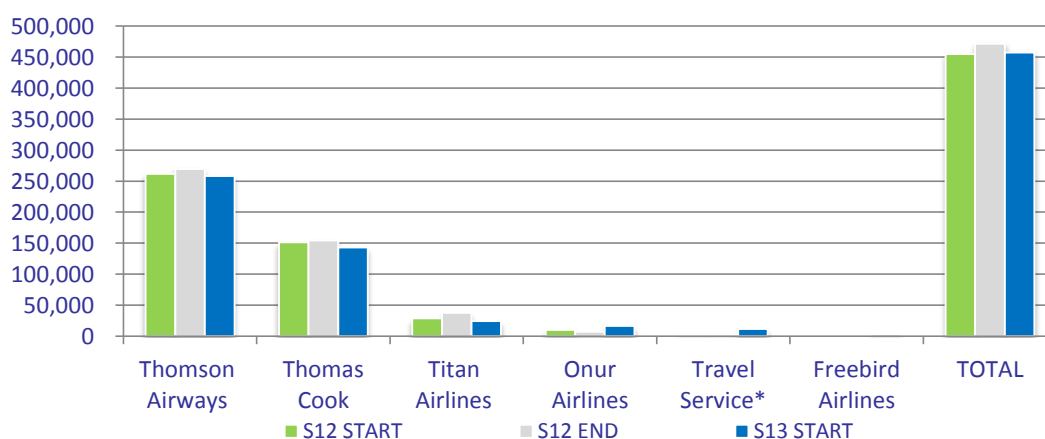
## CHARTER AIRLINE AIR TRANSPORT MOVEMENTS



	S12 START	S12 END	S13 START	% CHANGE START-START	% CHANGE END-START
<b>Thomson Airways</b>	1,384	1,380	1,412	2%	2.3%
<b>Thomas Cook</b>	797	788	773	-3%	-1.9%
<b>Titan Airlines</b>	198	260	168	-15%	-35.4%
<b>Onur Air</b>	46	38	89	93%	134.2%
<b>Travel Service*</b>	15	15	64	327%	326.7%
<b>Freebird Airlines</b>	0	0	20	100%	100.0%
<b>TOTAL</b>	<b>2,440</b>	<b>2,481</b>	<b>2,526</b>	<b>3.5%</b>	<b>1.8%</b>

\*Travel Service figures for S12 reflect Olympic charter traffic

## CHARTER AIRLINES SEATS

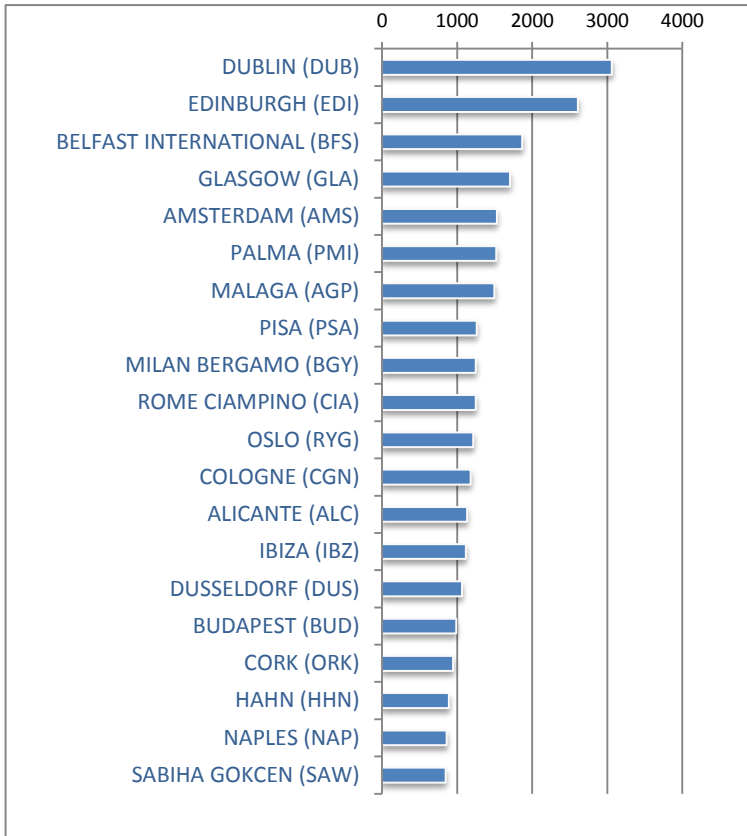


	S12 START	S12 END	S13 START	% CHANGE START-START	% CHANGE END-START
<b>Thomson Airways</b>	261,722	269,779	258,290	-1.3%	-4.3%
<b>Thomas Cook</b>	151,239	154,612	142,935	-5.5%	-7.6%
<b>Titan Airlines</b>	29,015	37,546	24,383	-16.0%	-35.1%
<b>Onur Airlines</b>	10,173	7,059	16,635	63.5%	135.7%
<b>Travel Service*</b>	2,926	2,936	11,706	300.1%	298.7%
<b>Freebird Airlines</b>	0	0	3,484	100.0%	100.0%
<b>TOTAL</b>	<b>455,075</b>	<b>471,932</b>	<b>457,433</b>	<b>0.5%</b>	<b>-3.1%</b>

\*Travel Service figures for S12 reflect Olympic charter traffic

## TOP 20 AIR TRANSPORT MOVEMENTS BY DESTINATION

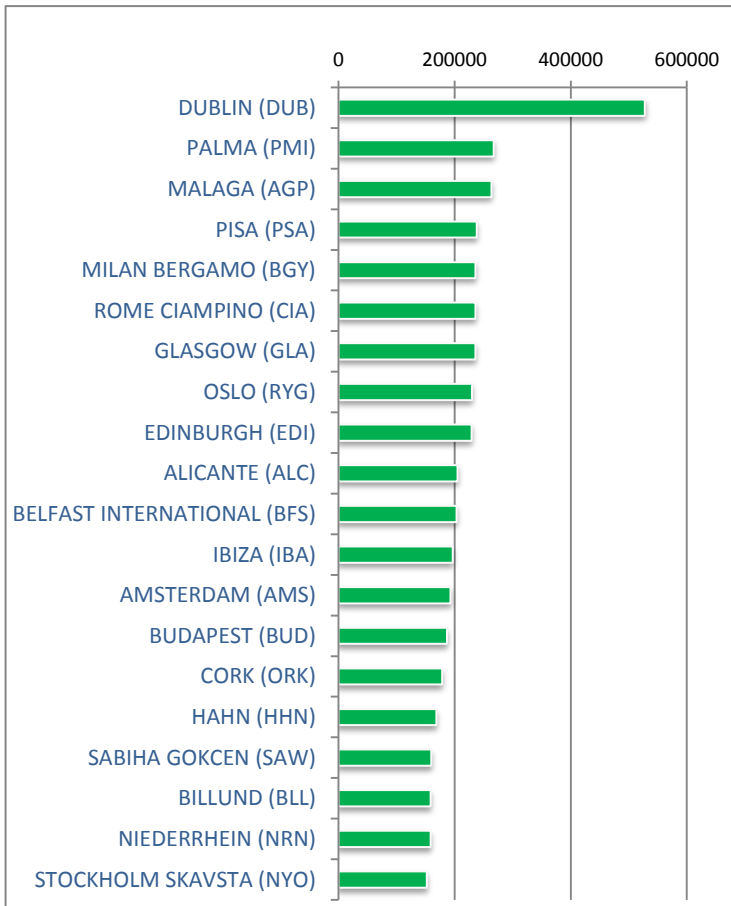
Total Allocated Movements For Season Summer 13



Summer 2013	ATM'S
DUBLIN (DUB)	3062
EDINBURGH (EDI)	2608
BELFAST INTERNATIONAL (BFS)	1866
GLASGOW (GLA)	1704
AMSTERDAM (AMS)	1528
PALMA (PMI)	1520
MALAGA (AGP)	1496
PISA (PSA)	1260
MILAN BERGAMO (BGY)	1250
ROME CIAMPINO (CIA)	1250
OSLO (RYG)	1216
COLOGNE (CGN)	1182
ALICANTE (ALC)	1132
IBIZA (IBZ)	1115
DUSSELDORF (DUS)	1066
BUDAPEST (BUD)	988
CORK (ORK)	944
HAHN (HHN)	892
NAPLES (NAP)	862
SABIHA GOKCEN (SAW)	846

## TOP 20 AIR TRANSPORT SEATS BY DESTINATION

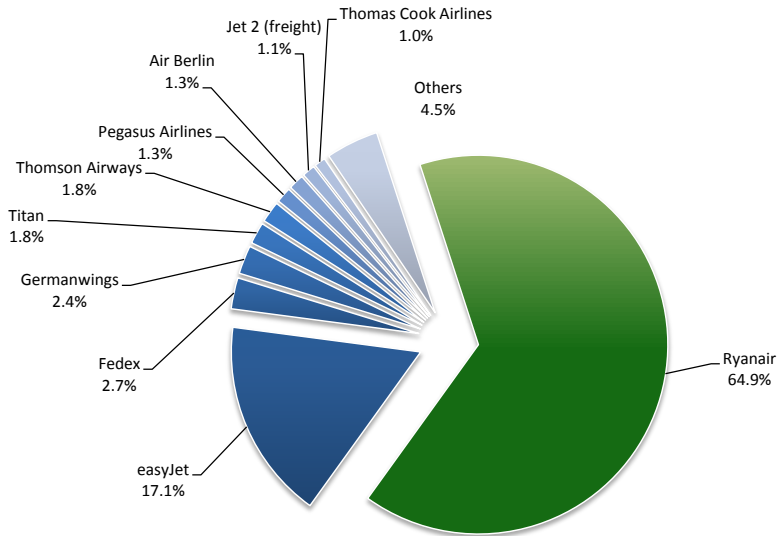
Total Allocated Movements For Season Summer 13



Summer 2013	SEATS
DUBLIN (DUB)	527688
PALMA (PMI)	267239
MALAGA (AGP)	263340
PISA (PSA)	238140
MILAN BERGAMO (BGY)	236250
ROME CIAMPINO (CIA)	236250
GLASGOW (GLA)	235920
OSLO (RYG)	229824
EDINBURGH (EDI)	229264
ALICANTE (ALC)	205116
BELFAST INTERNATIONAL (BFS)	203640
IBIZA (IBA)	196612
AMSTERDAM (AMS)	193128
BUDAPEST (BUD)	186732
CORK (ORK)	178416
HAHN (HHN)	168588
SABIHA GOKCEN (SAW)	159894
BILLUND (BLL)	158760
NIEDERRHEIN (NRN)	158760
STOCKHOLM SKAVSTA (NYO)	152334

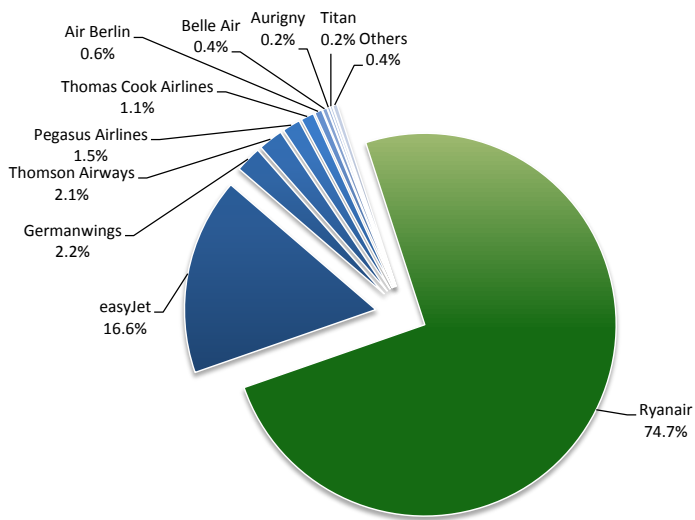


## TOP 10 AIRLINES BY MOVEMENTS - AIR TRANSPORT MOVEMENTS



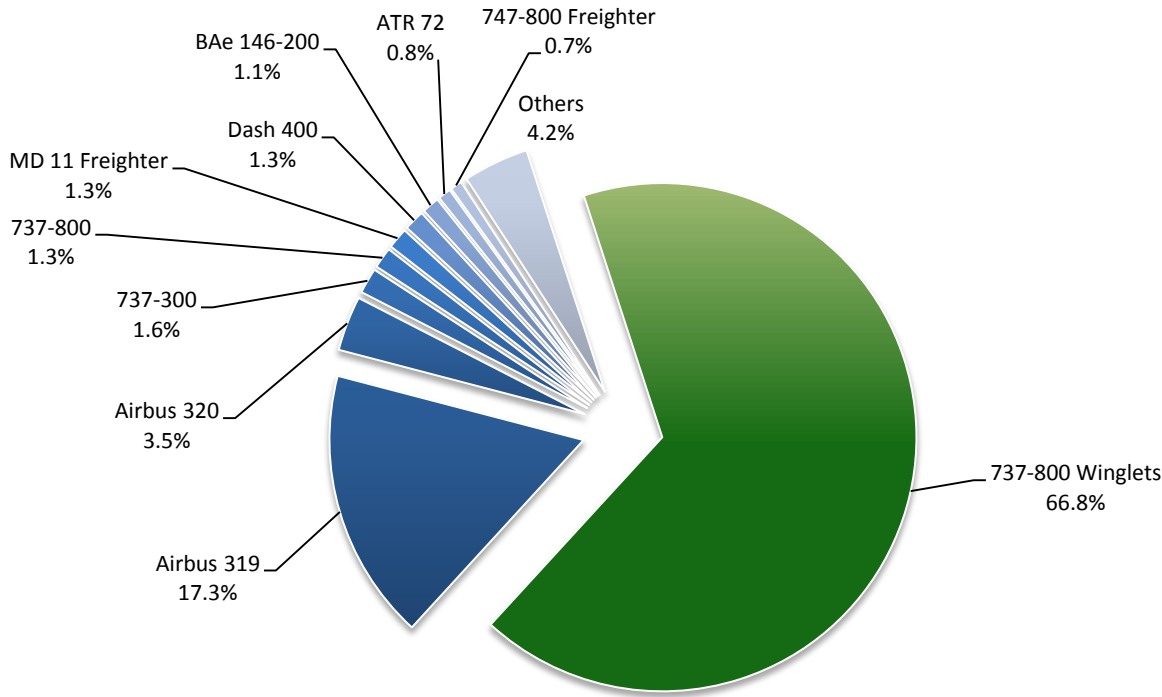
Airline	Movements
Ryanair	52650
easyJet	13905
Fedex	2156
Germanwings	1964
Titan	1490
Thomson Airways	1463
Pegasus Airlines	1070
Air Berlin	1069
Jet 2 (freight)	900
Thomas Cook Airlines	773
Others	3,639

## TOP 10 AIRLINES BY SEATS-PASSENGER AIR TRANSPORT MOVEMENTS



Airline	Seats
Ryanair	9950850
easyJet	2216988
Germanwings	294360
Thomson Airways	276539
Pegasus Airlines	202230
Thomas Cook Airlines	147700
Air Berlin	81940
Belle Air	51120
Aurigny	27984
Titan	25196
Others	51,059

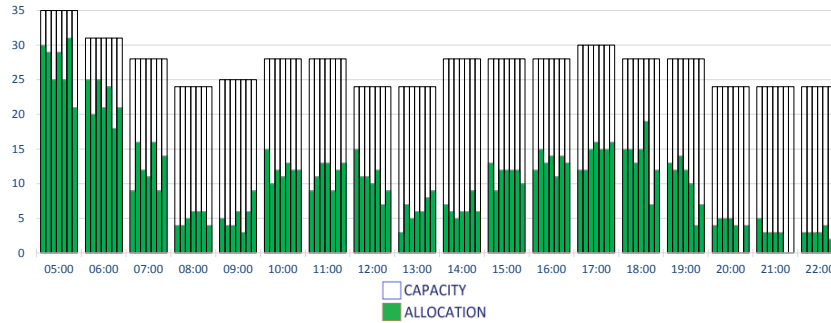
# TOP 10 AIRCRAFT TYPES - AIR TRANSPORT MOVEMENTS



Aircraft	Movements
737-800 Winglets	54166
Airbus 319	13997
Airbus 320	2825
737-300	1314
737-800	1080
MD 11 Freighter	1080
Dash 400	1064
BAe 146-200	896
ATR 72	666
747-800 Freighter	604
Others	3,387

### RUNWAY HOURLY MOVEMENTS - DEPARTURES

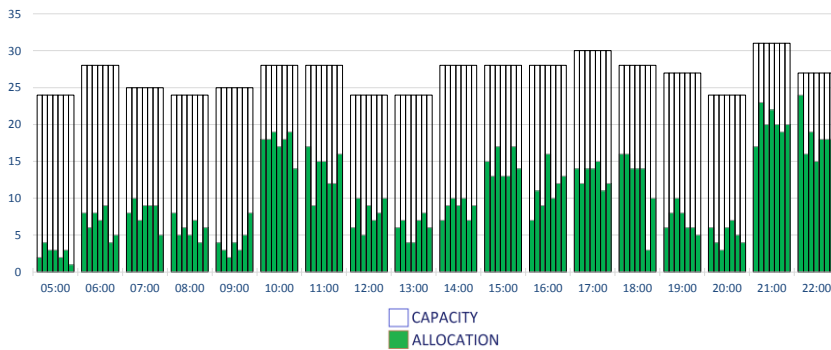
Peak Week Movements per Hour - All times UTC



	CAPACITY							ALLOCATION						
	Mon	Tue	Wed	Thu	Fri	Sat	Sun	Mon	Tue	Wed	Thu	Fri	Sat	Sun
05:00	35	35	35	35	35	35	35	30	29	25	29	25	31	21
06:00	31	31	31	31	31	31	31	25	20	25	21	24	18	21
07:00	28	28	28	28	28	28	28	9	16	12	11	16	9	14
08:00	24	24	24	24	24	24	24	4	4	5	6	6	6	4
09:00	25	25	25	25	25	25	25	5	4	4	6	3	6	9
10:00	28	28	28	28	28	28	28	15	10	12	11	13	12	12
11:00	28	28	28	28	28	28	28	9	11	13	13	9	12	13
12:00	24	24	24	24	24	24	24	15	11	11	10	12	7	9
13:00	24	24	24	24	24	24	24	3	7	5	6	6	8	9
14:00	28	28	28	28	28	28	28	7	6	5	6	6	9	6
15:00	28	28	28	28	28	28	28	13	9	12	12	12	10	10
16:00	28	28	28	28	28	28	28	12	15	13	14	11	14	13
17:00	30	30	30	30	30	30	30	12	12	15	16	15	15	16
18:00	28	28	28	28	28	28	28	15	15	13	15	19	7	12
19:00	28	28	28	28	28	28	28	13	12	14	12	10	4	7
20:00	24	24	24	24	24	24	24	4	5	5	5	4		4
21:00	24	24	24	24	24	24	24	5	3	3	3	3		3
22:00	24	24	24	24	24	24	24	3	3	3	3	4	2	1

### RUNWAY HOURLY MOVEMENTS - ARRIVALS

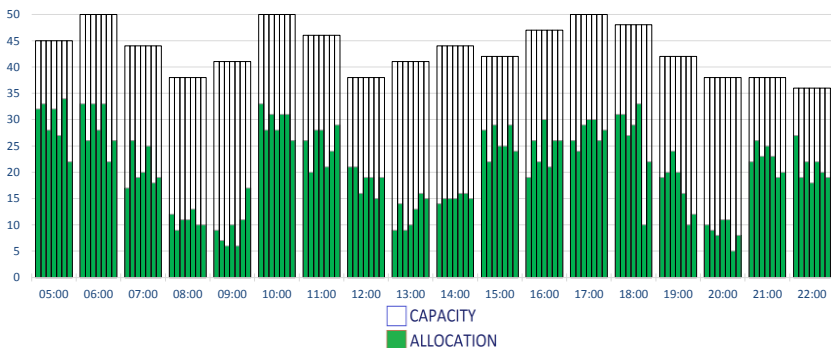
Peak Week Movements per Hour - All times UTC



	CAPACITY							ALLOCATION						
	Mon	Tue	Wed	Thu	Fri	Sat	Sun	Mon	Tue	Wed	Thu	Fri	Sat	Sun
05:00	24	24	24	24	24	24	24	2	4	3	3	2	3	1
06:00	28	28	28	28	28	28	28	8	6	8	7	9	4	5
07:00	25	25	25	25	25	25	25	8	10	7	9	9	9	5
08:00	24	24	24	24	24	24	24	8	5	6	5	7	4	6
09:00	25	25	25	25	25	25	25	4	3	2	4	3	5	8
10:00	28	28	28	28	28	28	28	18	18	19	17	18	19	14
11:00	28	28	28	28	28	28	28	17	9	15	15	12	16	16
12:00	24	24	24	24	24	24	24	6	10	5	9	7	8	10
13:00	24	24	24	24	24	24	24	6	7	4	4	7	8	6
14:00	28	28	28	28	28	28	28	7	9	10	9	10	7	9
15:00	28	28	28	28	28	28	28	15	13	17	13	13	17	14
16:00	28	28	28	28	28	28	28	7	11	9	16	10	12	13
17:00	30	30	30	30	30	30	30	14	12	14	14	15	11	12
18:00	28	28	28	28	28	28	28	16	16	14	14	14	3	10
19:00	27	27	27	27	27	27	27	6	8	10	8	6	6	5
20:00	24	24	24	24	24	24	24	6	4	3	6	7	5	4
21:00	31	31	31	31	31	31	31	17	23	20	22	20	19	20
22:00	27	27	27	27	27	27	27	24	16	19	15	18	18	18

### RUNWAY HOURLY MOVEMENTS - TOTALS

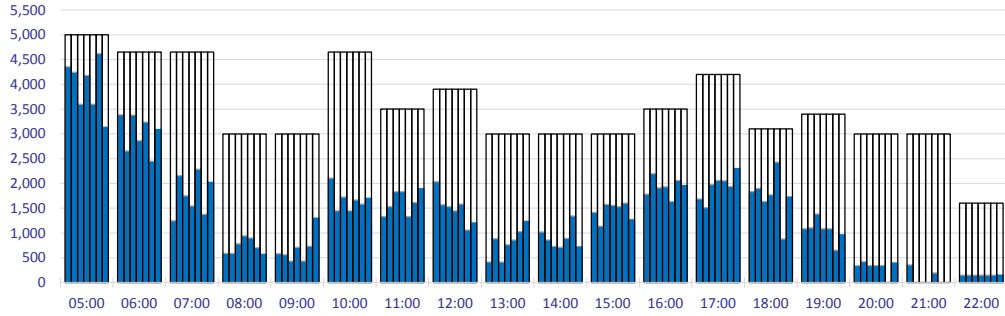
Peak Week Movements per Hour - All times UTC



	CAPACITY							ALLOCATION						
	Mon	Tue	Wed	Thu	Fri	Sat	Sun	Mon	Tue	Wed	Thu	Fri	Sat	Sun
05:00	45	45	45	45	45	45	45	32	33	28	32	27	34	22
06:00	50	50	50	50	50	50	50	33	26	33	28	33	22	26
07:00	44	44	44	44	44	44	44	17	26	19	20	25	18	19
08:00	38	38	38	38	38	38	38	12	9	11	11	13	10	10
09:00	41	41	41	41	41	41	41	9	7	6	10	6	11	17
10:00	50	50	50	50	50	50	50	33	28	31	28	31	31	26
11:00	46	46	46	46	46	46	46	26	20	28	28	21	24	29
12:00	38	38	38	38	38	38	38	21	21	16	19	19	15	19
13:00	41	41	41	41	41	41	41	9	14	9	10	13	16	15
14:00	44	44	44	44	44	44	44	14	15	15	15	16	16	15
15:00	42	42	42	42	42	42	42	28	22	29	25	25	29	24
16:00	47	47	47	47	47	47	47	19	26	22	30	21	26	26
17:00	50	50	50	50	50	50	50	26	24	29	30	30	26	28
18:00	48	48	48	48	48	48	48	31	31	27	29	33	10	22
19:00	42	42	42	42	42	42	42	19	20	24	20	16	10	12
20:00	38	38	38	38	38	38	38	10	9	8	11	11	5	8
21:00	38	38	38	38	38	38	38	22	26	23	25	23	19	20
22:00	36	36	36	36	36	36	36	27	19	22	18	22	20	19

### TOTAL TERMINAL HOURLY DEPARTURES (INT'L & DOMESTIC)

Peak Week Passengers per Hour - All times UTC

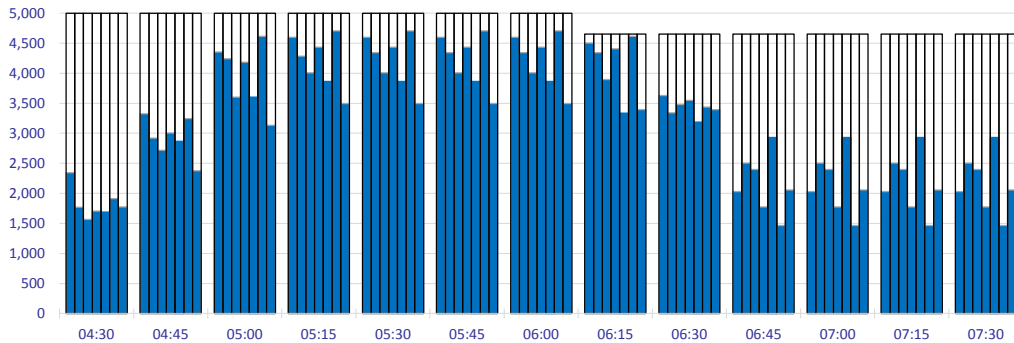


Capacity  
Allocation

	CAPACITY							ALLOCATION						
	Mon	Tue	Wed	Thu	Fri	Sat	Sun	Mon	Tue	Wed	Thu	Fri	Sat	Sun
05:00	5000	5000	5000	5000	5000	5000	5000	4352	4242	3600	4181	3600	4617	3133
06:00	4650	4650	4650	4650	4650	4650	4650	3384	2654	3382	2862	3235	2450	3090
07:00	4650	4650	4650	4650	4650	4650	4650	1247	2156	1753	1544	2286	1373	2021
08:00	3000	3000	3000	3000	3000	3000	3000	588	588	779	943	899	706	570
09:00	3000	3000	3000	3000	3000	3000	3000	581	563	434	710	434	729	1300
10:00	4650	4650	4650	4650	4650	4650	4650	2108	1445	1724	1445	1667	1583	1701
11:00	3500	3500	3500	3500	3500	3500	3500	1329	1533	1835	1837	1329	1612	1896
12:00	3900	3900	3900	3900	3900	3900	3900	2038	1571	1529	1445	1580	1057	1204
13:00	3000	3000	3000	3000	3000	3000	3000	416	883	416	761	857	1024	1235
14:00	3000	3000	3000	3000	3000	3000	3000	1022	857	728	710	892	1346	720
15:00	3000	3000	3000	3000	3000	3000	3000	1416	1135	1577	1558	1533	1604	1266
16:00	3500	3500	3500	3500	3500	3500	3500	1781	2197	1911	1930	1634	2062	1958
17:00	4200	4200	4200	4200	4200	4200	4200	1689	1514	1979	2064	2056	1937	2298
18:00	3100	3100	3100	3100	3100	3100	3100	1834	1900	1632	1770	2429	880	1726
19:00	3400	3400	3400	3400	3400	3400	3400	1086	1103	1380	1086	1086	653	964
20:00	3000	3000	3000	3000	3000	3000	3000	340	422	340	340	340	0	393
21:00	3000	3000	3000	3000	3000	3000	3000	355	0	0	0	191	0	0
22:00	1600	1600	1600	1600	1600	1600	1600	147	147	147	147	147	151	151

### TOTAL TERMINAL ROLLING HOUR DEPARTURES (INT'L & DOMESTIC)

Peak Week Passengers per rolling Hour - (Morning peak)

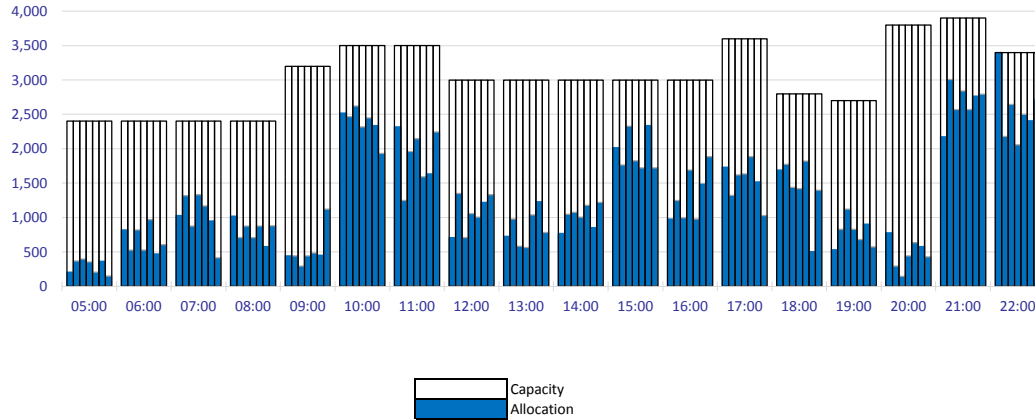


Capacity  
Allocation

	CAPACITY							ALLOCATION						
	Mon	Tue	Wed	Thu	Fri	Sat	Sun	Mon	Tue	Wed	Thu	Fri	Sat	Sun
04:30	5000	5000	5000	5000	5000	5000	5000	2346	1768	1567	1707	1689	1911	1774
04:45	5000	5000	5000	5000	5000	5000	5000	3323	2919	2718	3005	2865	3244	2378
05:00	5000	5000	5000	5000	5000	5000	5000	4352	4242	3600	4181	3600	4617	3133
05:15	5000	5000	5000	5000	5000	5000	5000	4599	4285	4009	4432	3862	4707	3494
05:30	5000	5000	5000	5000	5000	5000	5000	4599	4344	4009	4432	3862	4707	3494
05:45	5000	5000	5000	5000	5000	5000	5000	4599	4344	4009	4432	3862	4707	3494
06:00	5000	5000	5000	5000	5000	5000	5000	4599	4344	4009	4432	3862	4707	3494
06:15	4650	4650	4650	4650	4650	4650	4650	4503	4344	3896	4405	3333	4617	3392
06:30	4650	4650	4650	4650	4650	4650	4650	3629	3340	3480	3548	3186	3435	3392
06:45	4650	4650	4650	4650	4650	4650	4650	2031	2506	2397	1775	2930	1466	2057
07:00	4650	4650	4650	4650	4650	4650	4650	2031	2506	2397	1775	2930	1466	2057
07:15	4650	4650	4650	4650	4650	4650	4650	2031	2506	2397	1775	2930	1466	2057
07:30	4650	4650	4650	4650	4650	4650	4650	2031	2506	2397	1775	2930	1466	2057

## INTERNATIONAL TERMINAL HOURLY ARRIVALS

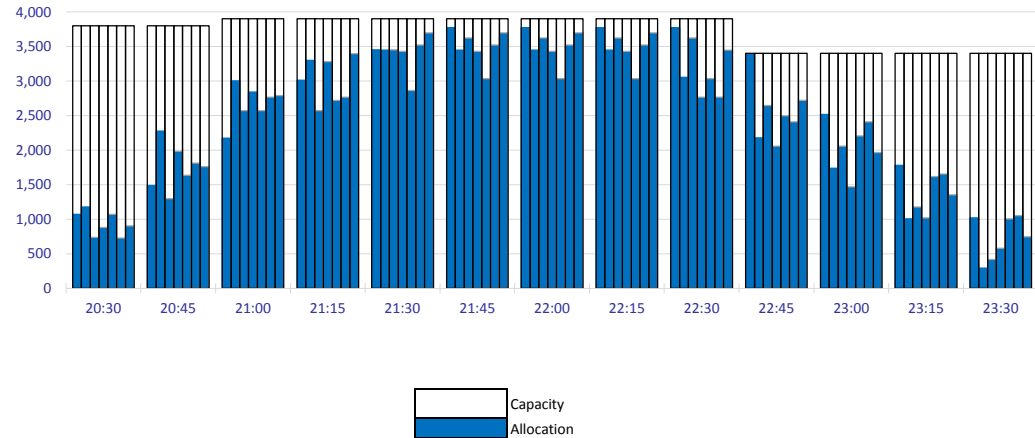
Peak Week Passengers per Hour



	CAPACITY							ALLOCATION						
	Mon	Tue	Wed	Thu	Fri	Sat	Sun	Mon	Tue	Wed	Thu	Fri	Sat	Sun
05:00	2400	2400	2400	2400	2400	2400	2400	206	370	397	353	206	363	151
06:00	2400	2400	2400	2400	2400	2400	2400	822	528	822	528	969	471	604
07:00	2400	2400	2400	2400	2400	2400	2400	1029	1316	875	1332	1169	952	417
08:00	2400	2400	2400	2400	2400	2400	2400	1022	710	875	710	875	578	880
09:00	3200	3200	3200	3200	3200	3200	3200	441	441	294	441	485	453	1123
10:00	3500	3500	3500	3500	3500	3500	3500	2518	2467	2621	2320	2449	2338	1930
11:00	3500	3500	3500	3500	3500	3500	3500	2320	1248	1958	2147	1593	1636	2243
12:00	3000	3000	3000	3000	3000	3000	3000	710	1349	710	1055	1004	1222	1333
13:00	3000	3000	3000	3000	3000	3000	3000	728	979	581	563	1039	1229	782
14:00	3000	3000	3000	3000	3000	3000	3000	769	1050	1077	1008	1180	854	1219
15:00	3000	3000	3000	3000	3000	3000	3000	2016	1764	2327	1825	1722	2338	1722
16:00	3000	3000	3000	3000	3000	3000	3000	979	1248	996	1689	979	1484	1885
17:00	3600	3600	3600	3600	3600	3600	3600	1732	1323	1619	1634	1886	1517	1031
18:00	2800	2800	2800	2800	2800	2800	2800	1690	1774	1437	1419	1820	502	1396
19:00	2700	2700	2700	2700	2700	2700	2700	533	827	1121	827	680	906	573
20:00	3800	3800	3800	3800	3800	3800	3800	779	294	147	441	632	578	427
21:00	3900	3900	3900	3900	3900	3900	3900	2174	3005	2571	2840	2571	2765	2791
22:00	3400	3400	3400	3400	3400	3400	3400	3398	2180	2646	2058	2499	2409	2718

## INTERNATIONAL TERMINAL ROLLING HOUR ARRIVALS

Peak Week Passengers per rolling Hour - (Evening peak)



	CAPACITY							ALLOCATION						
	Mon	Tue	Wed	Thu	Fri	Sat	Sun	Mon	Tue	Wed	Thu	Fri	Sat	Sun
20:30	3800	3800	3800	3800	3800	3800	3800	1073	1176	735	882	1073	729	906
20:45	3800	3800	3800	3800	3800	3800	3800	1489	2277	1298	1983	1636	1812	1760
21:00	3900	3900	3900	3900	3900	3900	3900	2174	3005	2571	2840	2571	2765	2791
21:15	3900	3900	3900	3900	3900	3900	3900	3012	3299	2571	3281	2718	2765	3395
21:30	3900	3900	3900	3900	3900	3900	3900	3453	3446	3453	3428	2865	3520	3697
21:45	3900	3900	3900	3900	3900	3900	3900	3772	3446	3625	3428	3037	3520	3697
22:00	3900	3900	3900	3900	3900	3900	3900	3772	3446	3625	3428	3037	3520	3697
22:15	3900	3900	3900	3900	3900	3900	3900	3772	3446	3625	3428	3037	3520	3697
22:30	3900	3900	3900	3900	3900	3900	3900	3772	3055	3625	2768	3037	2765	3447
22:45	3400	3400	3400	3400	3400	3400	3400	3398	2180	2646	2058	2499	2409	2718
23:00	3400	3400	3400	3400	3400	3400	3400	2516	1739	2058	1470	2205	2409	1963
23:15	3400	3400	3400	3400	3400	3400	3400	1781	1004	1176	1022	1617	1654	1352
23:30	3400	3400	3400	3400	3400	3400	3400	1021	294	416	581	1004	1050	748

## GLOSSARY OF TERMS

---

<b>Air Transport Movement (ATM)</b>	A scheduled or charter passenger or freight aircraft movement.
<b>Allocation</b>	The allocation of slots such that demand is constrained to fit within declared scheduling limits.
<b>Common Travel Area (CTA)</b>	Services to or from the Republic of Ireland and the Channel Islands.
<b>Demand</b>	The unconstrained demand for slots, prior to any schedule adjustments.
<b>Passenger ATM</b>	A scheduled or charter <u>passenger</u> aircraft movement (ie, excluding all-cargo aircraft movements).
<b>Scheduling Limits</b>	Limiting parameters declared by the Airport Operator used in the coordination process.
<b>Seats</b>	The number of seats based on the aircraft configuration advised by the airline.
<b>Peak Week</b>	The Peak Week for S13 is Week 19 (05-11 August)
<b>Data Snapshot</b>	All data used for this report was as held 21st March 2013 S12 is a 31 week season, S13 is a 30 week season, S12 data has been adjusted accordingly.

### GUIDE TO HISTOGRAMS

---

The histograms show the pattern of traffic by time of day against the appropriate scheduling limit. Each time period consist of seven columns representing the days-of-week, Monday through Sunday.