

# London Stansted

## STN

### Summer 2012

## START OF SEASON REPORT

<b>KEY STATISTICS</b>	<b>Summer 2012</b>	<b>Change From Summer 2011</b>
Air Transport Movements	<b>86,730</b>	<b>-4.7%</b>
Passenger Air Transport movements Allocated	<b>79,222</b>	<b>-4.1%</b>
Total Seats	<b>14,092,621</b>	<b>-3.4%</b>
Seats per Passenger ATM	<b>178</b>	<b>0.0%</b>

<b>CONTENTS</b>	<b>Page</b>
Scheduling Limits	2
Summary of Changes	3-6
ATM's and Seats by Terminal	7
Charter ATM's and Seats	8
Top 20 Scheduled Air Transport Movements and seats by Destination	9
Top 10 Aircraft types by ATM and Movements	10
Top 10 Airlines by Seats	11
Runway Allocation	12
Terminal Allocation Histograms	13-14
Glossary	15

Data in this report is current as of: 22 March 2012

No warranty whether expressed or implied as to the completeness, accuracy, fitness for purpose, or satisfactory quality is given by ACL regarding the information in this report, which is provided by third parties. Accordingly, ACL excludes all liability with regard to such data.

## RUNWAY SCHEDULING LIMITS

Movements per Hour - All times UTC

MONDAY - SUNDAY	ARRIVALS																			CHANGE	
	SEASON	05:00	06:00	07:00	08:00	09:00	10:00	11:00	12:00	13:00	14:00	15:00	16:00	17:00	18:00	19:00	20:00	21:00	22:00	AVE	Total
	Summer 2011	36	28	25	24	25	28	28	28	24	24	28	28	30	28	27	24	31	27	27	493
	Capacity Change	0	0	0	0	0	0	0	0	0	0	0	0	0	0	0	0	0	0	0	0
	Summer 2012	36	28	25	24	25	28	28	28	24	24	28	28	30	28	27	24	31	27	27	493
	DEPARTURES																				
	SEASON	05:00	06:00	07:00	08:00	09:00	10:00	11:00	12:00	13:00	14:00	15:00	16:00	17:00	18:00	19:00	20:00	21:00	22:00	Ave	Total
	Summer 2011	35	31	28	24	25	28	28	24	24	28	28	28	30	28	28	24	24	24	27	489
	Capacity Change	0	0	0	0	0	0	0	0	0	0	0	0	0	0	0	0	0	0	0	0
	Summer 2012	35	31	28	24	25	28	28	24	24	28	28	28	30	28	28	24	24	24	27	489
TOTALS																					
SEASON	05:00	06:00	07:00	08:00	09:00	10:00	11:00	12:00	13:00	14:00	15:00	16:00	17:00	18:00	19:00	20:00	21:00	22:00	Ave	Total	
Summer 2011	45	50	44	38	41	50	46	38	41	44	42	47	50	48	42	38	38	36	43	778	
Capacity Change	0	0	0	0	0	0	0	0	0	0	0	0	0	0	0	0	0	0	0	0	
Summer 2012	45	50	44	38	41	50	46	38	41	44	42	47	50	48	42	38	38	36	43	778	

## RUNWAY SCHEDULING LIMITS - Segmented Hour

(\*MAXIMUM LIMITS)

### TERMINAL SCHEDULING LIMITS

Passenger per Hour (T60)

TERMINAL 1	ARRS	DEPS
DOMESTIC	*750	
INTERNATIONAL	*3900	
COMBINED		*5000

## STANSTED AIRPORT SUMMER 2012

## MOVEMENT AND SEAT CHANGES SUMMARY - BY CARRIER

	OPERATOR	AIRPORT	S11		S12		SEATS +/-	ATMS +/-
			SEATS	ATMS	SEATS	ATMS		
3V	TNT AIRWAYS SA	DUB Dublin	0	4	0	0	0	-4
		EDI Edinburgh/Turnhouse	0	4	0	0	0	-4
		LGG Liege/Bierset	0	209	0	548	0	339
		SNN Shannon	0	3	0	0	0	-3
3V Total			0	221	0	548	0	327
4U	GERMANWINGS GMBH	CGN Cologne/Bonn	148,200	988	147,600	984	-600	-4
		HAI Hanover Arpt	111,600	744	111,600	744	0	0
		STR Stuttgart/Echterdingen	111,450	743	111,300	742	-150	-1
4U Total			371,250	2,475	370,500	2,470	-750	-5
AB	AIR BERLIN GmbH Co Luftverkehrs KG	CGN Cologne/Bonn	186	1	0	0	-186	-1
		DUS Dusseldorf	93,580	1,114	88,420	1,104	-5,160	-10
		FMO Muenster	36,656	478	0	0	-36,656	-478
		PAD Paderborn	33,160	424	0	0	-33,160	-424
		SZG Salzburg/W.A. Mozart	596	4	0	0	-596	-4
AB Total			164,949	2,025	88,420	1,104	-76,529	-921
AEA	AIR EUROPA Lineas Aereas SA	BCN Barcelona	8,165	40	0	1 to 11	-8,165	-40
AEA Total			8,165	40	0	12	-8,165	-28
AWC	TITAN AIRWAYS Ltd	BFS Belfast Intl Arpt	0	598	0	13	0	-585
		EDI Edinburgh/Turnhouse	0	590	0	14	0	-576
		EXT Exeter	0	295	0	15	0	-280
AWC Total			0	1,485	0	16	0	-1,469
	BRITISH AIRWAYS Plc	ATL Frankfurt/International	0	88	0	17	0	-71
		DEL Delhi/Indira Gandhi Intl	0	2	0	18	0	16
		FRA Frankfurt/International	0	81	0	63	0	-18
		HKG Hong Kong Int'l	0	356	0	310	0	-46
		IAH Houston	0	31	0	0	0	-31
		JNB Johannesburg Int'l	0	2	0	62	0	60
		ORD Chicago/O'Hare International	0	0	0	93	0	93
		PMI Palma Mallorca	6,700	84	0	0	-6,700	-84
		PVG Shanghai/Pu Dong	0	115	0	123	0	8
		VCE Venice	2,394	31	0	0	-2,394	-31
			10,008	803	0	682	-10,008	-121
	BALKAN HOLIDAYS AIR	BOJ Bourgas	7,080	40	0	0	-7,080	-40
			7,080	40	0	0	-7,080	-40
	CYPRUS AIRWAYS Ltd	LCA Larnaca	1,216	8	11,248	74	10,032	66
CY Total			1,216	8	11,248	74	10,032	66
D7	AIRASIA X	KUL Kuala Lumpur Int'l	118,624	363	0	0	-118,624	-363
D7 Total			118,624	363	0	0	-118,624	-363
EXS	JET2.COM LTD	EDI Edinburgh/Turnhouse	0	602	0	620	0	18
		NCL Newcastle Airport	0	299	0	310	0	11
EXS Total			0	901	0	930	0	29
EZY	EASYJET AIRLINE Co Ltd	AGP Malaga	166,452	1,067	109,824	704	-56,628	-363
		ALC Alicante	150,156	962	115,908	743	-34,248	-219
		AMS Amsterdam-Schiphol	242,940	1,550	196,104	1,240	-46,836	-310
		BCN Barcelona	135,684	868	67,704	434	-67,980	-434
		BFS Belfast Intl Arpt	252,720	1,620	213,168	1,364	-39,552	-256
		BIO Bilbao	108,024	686	116,376	746	8,352	60
		BJV Bodrum./Milas Airport	25,704	162	26,052	167	348	5
		CAG Cagliari/Elmas	67,704	434	67,704	434	0	0
		CPH Copenhagen Airport	183,192	1,174	126,672	812	-56,520	-362
		DBV Dubrovnik	21,216	136	23,712	152	2,496	16
		DLM Dalaman	39,192	246	34,944	224	-4,248	-22
		EDI Edinburgh/Turnhouse	276,756	1,769	241,320	1,508	-35,436	-261
		FAO Faro	137,940	883	3,432	22	-134,508	-861
		FNC FUNCHAL	38,736	248	0	0	-38,736	-248
		FUE Fuerteventura	19,584	124	0	0	-19,584	-124
		GLA Glasgow International	248,232	1,566	243,000	1,510	-5,232	-56
		GNB Grenoble/Saint Geoirs	2,808	18	2,184	14	-624	-4
		GVA Geneva/Geneve-Cointrin	21,528	138	15,912	102	-5,616	-36
		IBZ Ibiza	125,736	806	95,472	612	-30,264	-194
		LJU Ljubljana/Brnik	66,144	424	66,768	428	624	4
		LYS Lyon	68,016	436	69,888	448	1,872	12
		MUC Munich/Franz Josef Strauss	122,772	787	123,864	794	1,092	7
		NAP Naples	137,328	880	149,136	956	11,808	76
		NCE Nice/Cote D'Azur	76,176	488	65,520	420	-10,656	-68
		OVD Asturias	66,768	428	72,384	464	5,616	36
		PMI Palma Mallorca	126,360	810	108,576	696	-17,784	-114
		PRG Prague/Ruzyne	60,216	386	64,584	414	4,368	28
		SPU Split	21,216	136	22,152	142	936	6
		TFS Tenerife/Sur Reina Sofia	336	2	0	0	-336	-2
		TLL Tallinn/Ulemiste	48,408	310	29,016	186	-19,392	-124
EZY Total			3,059,810	19,559	2,471,376	15,736	-588,434	-3,823
FR	RYANAIR Ltd	AAR Aarhus/Tirstrup	82,026	434	80,514	426	-1,512	-8
		ACE Lanzarote	58,212	308	52,164	276	-6,048	-32
		AGA Agadir Almassira	23,436	124	0	0	-23,436	-124
		AGP Malaga	162,540	860	175,770	930	13,230	70
		AHO Alghero/Fertilia	50,274	266	52,164	276	1,890	10
		ALC Alicante	202,041	1,069	147,798	782	-54,243	-287
		AOI Ancona/Falconara	94,500	500	95,256	504	756	4
		BCN Barcelona	756	4	164,052	868	163,296	864
		BDS Brindisi/Papola Casale	49,518	262	55,566	294	6,048	32
		BER Berlin/ Metro Area	0	0	76,356	404	76,356	404
		BGY Milan/Orio Al Serio	246,078	1,302	252,882	1,338	6,804	36

## STANSTED AIRPORT SUMMER 2012

## MOVEMENT AND SEAT CHANGES SUMMARY - BY CARRIER

OPERATOR	AIRPORT	S11		S12		SEATS +/-	ATMS +/-
		SEATS	ATMS	SEATS	ATMS		
BIQ	Biarritz Parme	90,342	478	88,830	470	-1,512	-8
BLL	Billund	164,808	872	164,052	868	-756	-4
BLQ	Bologna/Guglielmo Marconi	81,648	432	82,026	434	378	2
BRE	Bremen	150,822	798	134,190	710	-16,632	-88
BRI	Bari/Palese	50,274	266	55,566	294	5,292	28
BRQ	Brno	82,026	434	82,026	434	0	0
BTS	Bratislava/Ivanka	164,052	868	156,114	826	-7,938	-42
BUD	Budapest/Ferihegy	0	0	161,406	854	161,406	854
BZG	Bydgoszcz	82,026	434	82,026	434	0	0
CCF	Carcassonne/Salvaza	94,122	498	91,854	486	-2,268	-12
CFU	Kerkyra/I. Kapodistrias	12,474	66	24,948	132	12,474	66
CHQ	Chania/Souda	0	0	23,436	124	23,436	124
CIA	Rome/Ciampino	254,394	1,346	246,078	1,302	-8,316	-44
CUF	Cuneo/Levaldigi	1,512	8	0	0	-1,512	-8
DNR	Dinard/Pleurtuit	68,796	364	70,308	372	1,512	8
DUB	Dublin	553,959	2,931	545,832	2,888	-8,127	-43
EGC	Bergerac/Roumanieres	91,854	486	92,232	488	378	2
EIN	Eindhoven	164,052	868	175,770	930	11,718	62
FAO	Faro	109,998	582	142,128	752	32,130	170
FEZ	Fez/Sais	35,154	186	23,436	124	-11,718	-62
FKB	Karlsruhe/Baden Baden/Soellingen	82,026	434	82,026	434	0	0
FMM	Memmingen-Allgau	82,026	434	82,026	434	0	0
FUE	Fuerteventura	41,580	220	35,154	186	-6,426	-34
GDN	Gdansk/Rebiechowo	82,026	434	82,026	434	0	0
GNB	Grenoble/Saint Geoirs	0	0	1,134	6	1,134	6
GOA	Genoa/Cristoforo Colombo	80,892	428	82,026	434	1,134	6
GPA	Patras/Araxos Airport	0	0	23,436	124	23,436	124
GRO	Gerona/Costa Brava	174,825	925	82,026	434	-92,799	-491
GRZ	Graz/Thalerhof	46,872	248	46,872	248	0	0
GSE	Göteborg/Säve	163,863	867	164,052	868	189	1
HAU	Haugesund	35,154	186	35,154	186	0	0
HHN	Frankfurt/Hahn	176,904	936	187,488	992	10,584	56
IBZ	Ibiza	90,342	478	93,744	496	3,402	18
KGS	Kos	0	0	23,436	124	23,436	124
KIR	Kerry County Airport	82,215	435	46,872	248	-35,343	-187
KLU	Klagenfurt	35,154	186	35,154	186	0	0
KRK	Krakow/J. Paul II Balice Intl	164,052	868	164,052	868	0	0
KTW	Katowice/Pyrzowice	82,215	435	82,026	434	-189	-1
KUN	Kaunas	87,885	465	82,026	434	-5,859	-31
LBC	Luebeck/Blankensee	46,872	248	0	0	-46,872	-248
LCJ	Lodz Lublinek	82,026	434	82,026	434	0	0
LDE	Lourdes/Tarbes/Tarbes Ossun Lour	25,326	134	23,436	124	-1,890	-10
LDY	Londonderry/Eglinton	103,572	548	100,170	530	-3,402	-18
LEI	Almeria	38,556	204	38,934	206	378	2
LEJ	Leipzig Arpt	0	0	82,026	434	82,026	434
LIG	Limoges/Bellegarde	86,940	460	87,318	462	378	2
LNZ	Linz/Hoersching	58,590	310	43,470	230	-15,120	-80
LPA	Las Palmas/Arpt De Gran Canaria	48,006	254	46,872	248	-1,134	-6
LRH	La Rochelle/Laleu	64,260	340	50,274	266	-13,986	-74
MAD	Madrid/Barajas	166,131	879	152,334	806	-13,797	-73
MJV	Murcia/San Javier	121,905	645	119,448	632	-2,457	-13
MLA	Malta/Luqa	0	0	46,872	248	46,872	248
MMX	Malmö/Sturup	0	0	82,026	434	82,026	434
MRS	Marseille	99,036	524	82,026	434	-17,010	-90
NOC	Knock International	85,050	450	82,026	434	-3,024	-16
NRN	Neiderrhein	103,572	548	102,060	540	-1,512	-8
NYO	Stockholm/Skavsta	199,584	1,056	153,468	812	-46,116	-244
OPO	Porto	140,805	745	139,104	736	-1,701	-9
ORK	Cork	168,966	894	185,976	984	17,010	90
PDV	Plovdiv	23,436	124	24,570	130	1,134	6
PEG	Perugia/Sant Egidio	60,102	318	61,992	328	1,890	10
PFO	Paphos/International	0	0	38,556	204	38,556	204
PGF	Perpignan/Llabanere	58,590	310	62,370	330	3,780	20
PIK	Glasgow/Prestwick	82,215	435	0	0	-82,215	-435
PIS	Poitiers/Biard	58,023	307	50,274	266	-7,749	-41
PMF	Milan/Parma	35,154	186	37,044	196	1,890	10
PMI	Palma Mallorca	155,169	821	136,080	720	-19,089	-101
PMO	Palermo/Punta Raisi	81,837	433	82,026	434	189	1
POZ	Poznan/Lawica	82,026	434	82,026	434	0	0
PSA	Florence/Gal Galilei	251,748	1,332	246,078	1,302	-5,670	-30
PSR	Pescara/Libero	61,992	328	61,992	328	0	0
PUY	Pula	36,666	194	28,350	150	-8,316	-44
RAK	Marrakech/Menara	23,247	123	23,436	124	189	1
RDZ	Rodez/Marcillac	48,384	256	49,140	260	756	4
REU	Reus	49,140	260	57,456	304	8,316	44
RHO	Rhodes/Diagoras Airport	34,020	180	36,666	194	2,646	14
RIX	Riga	164,241	869	117,180	620	-47,061	-249
RJK	Rijeka	21,546	114	6,426	34	-15,120	-80
RMI	Rimini/Miramare	35,154	186	35,154	186	0	0
RYG	Oslo	163,674	866	160,650	850	-3,024	-16
RZE	Rzeszow/Jasionka	82,026	434	85,428	452	3,402	18
SCQ	Santiago De Compostela	48,384	256	48,762	258	378	2
SDR	Santander	82,026	434	80,514	426	-1,512	-8

## STANSTED AIRPORT SUMMER 2012

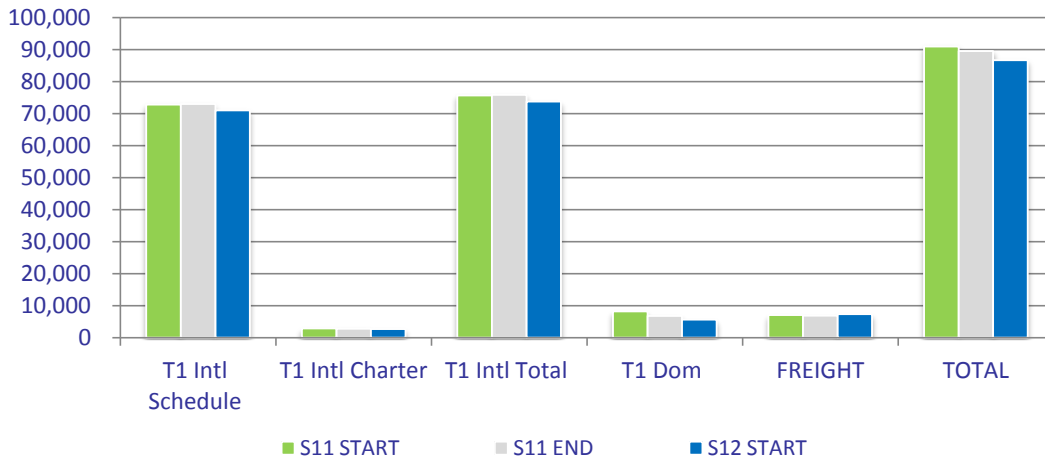
## MOVEMENT AND SEAT CHANGES SUMMARY - BY CARRIER

OPERATOR	AIRPORT	S11		S12		SEATS +/-	ATMS +/-
		SEATS	ATMS	SEATS	ATMS		
	SKG Thessaloniki/Makedonia Apt.	32,130	170	36,666	194	4,536	24
	SNN Shannon	138,348	732	162,540	860	24,192	128
	SUF Lamezia-Terme/S Eufemia	44,982	238	50,274	266	5,292	28
	SVQ Sevilla	82,404	436	78,624	416	-3,780	-20
	SXF Berlin/Schoenefeld	162,162	858	46,116	244	-116,046	-614
	SZG Salzburg/W.A. Mozart	58,779	311	48,006	254	-10,773	-57
	SZZ Szczecin/Goleniow	46,872	248	46,872	248	0	0
	TFS Tenerife/Sur Reina Sofia	85,617	453	82,026	434	-3,591	-19
	TKU Turku	0	0	35,154	186	35,154	186
	TLN Toulon/Hyeres	47,250	250	40,068	212	-7,182	-38
	TMP Tampere-Pirkkala	58,590	310	35,154	186	-23,436	-124
	TRF Oslo/Sandefjord	78,624	416	82,026	434	3,402	18
	TRN Turin/Citta Di Torino	79,758	422	83,160	440	3,402	18
	TRS Trieste	81,648	432	80,514	426	-1,134	-6
	TSF Treviso	49,896	264	161,028	852	111,132	588
	TUF Tours/St Symphorien	44,982	238	46,872	248	1,890	10
	VCE Venice	114,534	606	0	0	-114,534	-606
	VLC Valencia	119,070	630	94,122	498	-24,948	-132
	VLL Valladolid	35,154	186	35,154	186	0	0
	VNO Vilnius	68,418	362	82,026	434	13,608	72
	VRN VERONA	46,683	247	48,762	258	2,079	11
	VST VASTERAS	82,026	434	58,590	310	-23,436	-124
	WMI Modlin / Warsaw	0	0	39,312	208	39,312	208
	WRO Wroclaw/Strachowice	105,840	560	105,462	558	-378	-2
	XRY Jerez De La Frontera/La Parra	48,384	256	46,872	248	-1,512	-8
	ZAD Zadar	58,590	310	42,336	224	-16,254	-86
	ZAZ Zaragoza	46,872	248	57,456	304	10,584	56
<b>FR Total</b>		<b>9,926,091</b>	<b>52,519</b>	<b>10,062,738</b>	<b>53,242</b>	<b>136,647</b>	<b>723</b>
<b>FX FEDEX</b>	AMS Amsterdam-Schiphol	0	238	0	248	0	10
	ARN Stockholm/Arlanda	0	2	0	0	0	-2
	BOM Mumbai	0	3	0	0	0	-3
	CAN Guangzhou/Baiyun	0	26	0	31	0	5
	CDG Paris/Ch. De Gaulle	0	472	0	497	0	25
	CGN Cologne/Bonn	0	22	0	32	0	10
	DUB Dublin	0	279	0	279	0	0
	EWL Liberty International (Newark)	0	93	0	93	0	0
	FRA Frankfurt/International	0	0	0	186	0	186
	GLA Glasgow International	0	239	0	248	0	9
	HKG Hong Kong Int'l	0	31	0	31	0	0
	IND Indianapolis/International	0	93	0	93	0	0
	MAN Manchester/International	0	243	0	248	0	5
	MEM Memphis/International	0	407	0	402	0	-5
<b>FX Total</b>		<b>0</b>	<b>2,186</b>	<b>0</b>	<b>2,419</b>	<b>0</b>	<b>233</b>
<b>GB ABX AIR INC</b>	LGG Liege/Bierset	0	200	0	0	0	-200
<b>GB Total</b>		<b>0</b>	<b>200</b>	<b>0</b>	<b>0</b>	<b>0</b>	<b>-200</b>
<b>GR AURIGNY AIR SERVICES Ltd</b>	GCI Guernsey	28,602	432	28,380	430	-222	-2
	JER Jersey/States	8,014	121	8,448	128	434	7
<b>GR Total</b>		<b>36,616</b>	<b>553</b>	<b>36,828</b>	<b>558</b>	<b>212</b>	<b>5</b>
<b>KK ATLASJET INTERNATIONAL AIRWAYS</b>	AYT Antalya	0	0	8,216	52	8,216	52
	IST Istanbul/Ataturk	0	0	47,400	300	47,400	300
<b>KK Total</b>		<b>0</b>	<b>0</b>	<b>55,616</b>	<b>352</b>	<b>55,616</b>	<b>352</b>
<b>L9 AIR LOGISTICS LLC</b>	PRN Pristina	5,472	38	0	0	-5,472	-38
<b>L9 Total</b>		<b>5,472</b>	<b>38</b>	<b>0</b>	<b>0</b>	<b>-5,472</b>	<b>-38</b>
<b>LBY BELLE AIR</b>	TIA Tirana/Rinas	360	2	15,408	107	15,048	105
<b>LBY Total</b>		<b>360</b>	<b>2</b>	<b>15,408</b>	<b>107</b>	<b>15,048</b>	<b>105</b>
<b>LZ BELLE AIR</b>	TIA Tirana/Rinas	30,960	206	15,408	107	-15,552	-99
<b>LZ Total</b>		<b>30,960</b>	<b>206</b>	<b>15,408</b>	<b>107</b>	<b>-15,552</b>	<b>-99</b>
<b>OA OLYMPIC AIRLINES SA</b>	ATH Athens/Athinai	0	0	672	4	672	4
<b>OA Total</b>		<b>0</b>	<b>0</b>	<b>672</b>	<b>4</b>	<b>672</b>	<b>4</b>
<b>OHY ONUR AIR Tasimacilik AS</b>	BJV Bodrum./Milas Airport	2,190	10	0	0	-2,190	-10
	DLM Dalaman	10,293	47	10,512	48	219	1
<b>OHY Total</b>		<b>12,483</b>	<b>57</b>	<b>10,512</b>	<b>48</b>	<b>-1,971</b>	<b>-9</b>
<b>PC CONTINENTAL AIRWAYS JSC</b>	ADB Izmir/Adnan Menderes Arpt	43,356	234	12,096	64	-31,260	-170
	AYT Antalya	1,890	10	0	0	-1,890	-10
	BJV Bodrum./Milas Airport	7,938	42	7,749	41	-189	-1
	ECN Ercan	2,727	15	34,776	184	32,049	169
	SAW SABIHA GOKCEN INTL AIRPORT	110,187	583	178,416	944	68,229	361
<b>PC Total</b>		<b>166,098</b>	<b>884</b>	<b>233,037</b>	<b>1,233</b>	<b>66,939</b>	<b>349</b>
<b>QF QANTAS</b>	SYD Sydney/Kingsford Smith	0	0	2,312	6	2,312	6
<b>QF Total</b>		<b>0</b>	<b>0</b>	<b>2,312</b>	<b>6</b>	<b>2,312</b>	<b>6</b>
<b>TCX THOMAS COOK Airlines UK Ltd</b>	ACE Lanzarote	12,555	67	13,800	74	1,245	7
	AYT Antalya	28,725	157	32,060	169	3,335	12
	BJV Bodrum./Milas Airport	11,105	59	9,560	50	-1,545	-9
	DLM Dalaman	31,700	172	30,060	157	-1,640	-15
	FUE Fuerteventura	11,626	64	11,640	62	14	-2
	IBZ Ibiza	7,740	43	8,440	44	700	1
	KGS Kos	6,300	35	0	0	-6,300	-35
	LPA Las Palmas/Arpt De Gran Canaria	1,800	10	1,800	10	0	0
	MAD Madrid/Barajas	1,740	8	0	0	-1,740	-8
	MAH Menorca	9,910	52	7,860	41	-2,050	-11
	MAN Manchester/International	1,620	9	0	0	-1,620	-9
	MIR Monastir/Habib Bourguiba Int'l	1,800	10	0	0	-1,800	-10
	NBE Enfidha/ Zine El Abidine Ben Ali	540	3	10,380	55	9,840	52

## STANSTED AIRPORT SUMMER 2012

## MOVEMENT AND SEAT CHANGES SUMMARY - BY CARRIER

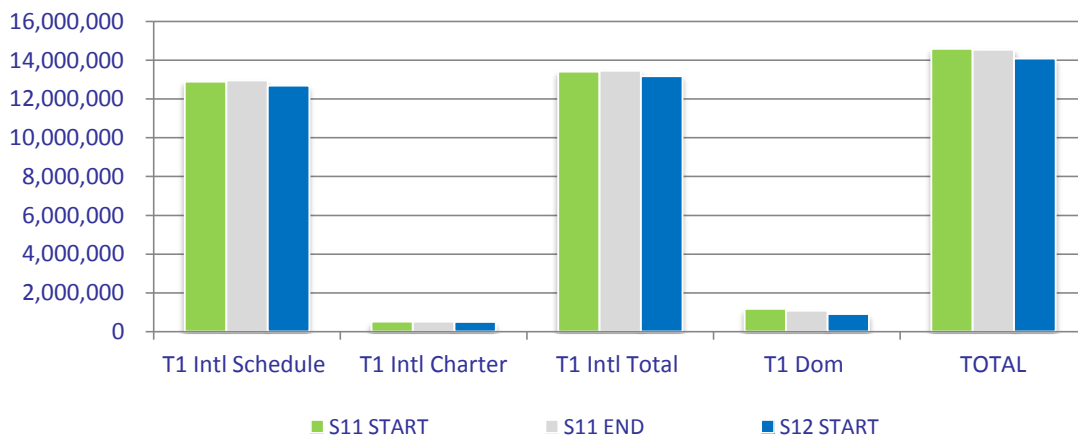
OPERATOR	AIRPORT	S11		S12		SEATS +/-	ATMS +/-		
		SEATS	ATMS	SEATS	ATMS				
	PFO Paphos/International	0	0	2,520	14	2,520	14		
	PMI Palma Mallorca	7,740	43	8,300	43	560	0		
	TFS Tenerife/Sur Reina Sofia	15,753	87	13,440	72	-2,313	-15		
	ZTH Zakynthos Is	6,300	35	6,600	34	300	-1		
<b>TCX Total</b>		<b>157,424</b>	<b>856</b>	<b>156,460</b>	<b>825</b>	<b>-964</b>	<b>-31</b>		
<b>TK</b>	<b>TURKISH AIRLINES</b>	<b>ESB</b>	<b>Ankara/Esenboga</b>	<b>35,793</b>	<b>225</b>	<b>54,646</b>	<b>342</b>	<b>18,853</b>	<b>117</b>
<b>TK Total</b>		<b>36,130</b>	<b>226</b>	<b>54,646</b>	<b>342</b>	<b>18,516</b>	<b>116</b>		
<b>TOM</b>	<b>Thomson Airways</b>	<b>ACE</b>	<b>Lanzarote</b>	<b>11,718</b>	<b>62</b>	<b>11,718</b>	<b>62</b>	<b>0</b>	<b>0</b>
		<b>AYT</b>	<b>Antalya</b>	<b>18,639</b>	<b>101</b>	<b>19,089</b>	<b>101</b>	<b>450</b>	<b>0</b>
		<b>CFU</b>	<b>Kerkyra/I. Kapodistrias</b>	<b>13,050</b>	<b>70</b>	<b>13,608</b>	<b>72</b>	<b>558</b>	<b>2</b>
		<b>DLM</b>	<b>Dalaman</b>	<b>19,467</b>	<b>103</b>	<b>18,900</b>	<b>100</b>	<b>-567</b>	<b>-3</b>
		<b>EFL</b>	<b>Kefallinia/Argostolion</b>	<b>9,000</b>	<b>50</b>	<b>9,261</b>	<b>49</b>	<b>261</b>	<b>-1</b>
		<b>FAO</b>	<b>Faro</b>	<b>10,773</b>	<b>57</b>	<b>11,151</b>	<b>59</b>	<b>378</b>	<b>2</b>
		<b>FUE</b>	<b>Fuerteventura</b>	<b>10,683</b>	<b>59</b>	<b>11,529</b>	<b>61</b>	<b>846</b>	<b>2</b>
		<b>GNB</b>	<b>Grenoble/Saint Geoirs</b>	<b>189</b>	<b>1</b>	<b>945</b>	<b>5</b>	<b>756</b>	<b>4</b>
		<b>HER</b>	<b>Heraklion/N. Kazantzakis Apt.</b>	<b>11,880</b>	<b>66</b>	<b>16,821</b>	<b>89</b>	<b>4,941</b>	<b>23</b>
		<b>IBZ</b>	<b>Ibiza</b>	<b>18,144</b>	<b>96</b>	<b>18,522</b>	<b>98</b>	<b>378</b>	<b>2</b>
		<b>INN</b>	<b>Innsbruck/Kranebitten</b>	<b>927</b>	<b>5</b>	<b>699</b>	<b>3</b>	<b>-228</b>	<b>-2</b>
		<b>LCA</b>	<b>Larnaca</b>	<b>9,000</b>	<b>50</b>	<b>9,828</b>	<b>52</b>	<b>828</b>	<b>2</b>
		<b>LPA</b>	<b>Las Palmas/Arpt De Gran Canaria</b>	<b>3,321</b>	<b>18</b>	<b>3,635</b>	<b>19</b>	<b>314</b>	<b>1</b>
		<b>MAH</b>	<b>Menorca</b>	<b>17,640</b>	<b>98</b>	<b>18,900</b>	<b>100</b>	<b>1,260</b>	<b>2</b>
		<b>MIR</b>	<b>Monastir/Habib Bourguiba Int'l</b>	<b>1,323</b>	<b>7</b>	<b>0</b>	<b>0</b>	<b>-1,323</b>	<b>-7</b>
		<b>NBE</b>	<b>Enfidha/ Zine El Abidine Ben Ali</b>	<b>9,360</b>	<b>52</b>	<b>9,828</b>	<b>52</b>	<b>468</b>	<b>0</b>
		<b>PFO</b>	<b>Paphos/International</b>	<b>21,546</b>	<b>114</b>	<b>20,034</b>	<b>106</b>	<b>-1,512</b>	<b>-8</b>
		<b>PMI</b>	<b>Palma Mallorca</b>	<b>33,831</b>	<b>184</b>	<b>30,429</b>	<b>161</b>	<b>-3,402</b>	<b>-23</b>
		<b>RHO</b>	<b>Rhodes/Diagoras Airport</b>	<b>9,450</b>	<b>50</b>	<b>19,089</b>	<b>101</b>	<b>9,639</b>	<b>51</b>
		<b>SSH</b>	<b>Sharm El Sheikh/Ophira</b>	<b>12,096</b>	<b>64</b>	<b>3,591</b>	<b>19</b>	<b>-8,505</b>	<b>-45</b>
		<b>TFS</b>	<b>Tenerife/Sur Reina Sofia</b>	<b>13,896</b>	<b>76</b>	<b>14,742</b>	<b>78</b>	<b>846</b>	<b>2</b>
		<b>ZTH</b>	<b>Zakynthos Is</b>	<b>8,505</b>	<b>45</b>	<b>8,127</b>	<b>43</b>	<b>-378</b>	<b>-2</b>
<b>TOM Total</b>				<b>264,438</b>	<b>1,430</b>	<b>270,446</b>	<b>1,431</b>	<b>6,008</b>	<b>1</b>
<b>UPS</b>	<b>UPS AIRLINES</b>	<b>CGN</b>	<b>Cologne/Bonn</b>	<b>0</b>	<b>297</b>	<b>0</b>	<b>341</b>	<b>0</b>	<b>44</b>
		<b>EWR</b>	<b>Liberty International (Newark)</b>	<b>0</b>	<b>119</b>	<b>0</b>	<b>124</b>	<b>0</b>	<b>5</b>
		<b>PHL</b>	<b>Philadelphia/International</b>	<b>0</b>	<b>25</b>	<b>0</b>	<b>62</b>	<b>0</b>	<b>37</b>
		<b>SDF</b>	<b>Louisville</b>	<b>0</b>	<b>149</b>	<b>0</b>	<b>155</b>	<b>0</b>	<b>6</b>
<b>UPS Total</b>				<b>0</b>	<b>590</b>	<b>0</b>	<b>682</b>	<b>0</b>	<b>92</b>
<b>WW</b>	<b>BMIBABY LTD</b>	<b>BHD</b>	<b>Belfast City Airport</b>	<b>115,144</b>	<b>778</b>	<b>106,560</b>	<b>720</b>	<b>-8,584</b>	<b>-58</b>
<b>WW Total</b>				<b>115,144</b>	<b>778</b>	<b>106,560</b>	<b>720</b>	<b>-8,584</b>	<b>-58</b>
<b>ZT</b>	<b>TITAN AIRWAYS Ltd</b>	<b>AGP</b>	<b>Malaga</b>	<b>0</b>	<b>4</b>	<b>0</b>	<b>0</b>	<b>0</b>	<b>-4</b>
		<b>AKT</b>	<b>Akrotiri RAF</b>	<b>661</b>	<b>3</b>	<b>0</b>	<b>0</b>	<b>-661</b>	<b>-3</b>
		<b>BGO</b>	<b>Bergen/Flesland</b>	<b>0</b>	<b>0</b>	<b>2,340</b>	<b>18</b>	<b>2,340</b>	<b>18</b>
		<b>CLY</b>	<b>Calvi/Ste Catherine</b>	<b>4,810</b>	<b>37</b>	<b>4,940</b>	<b>38</b>	<b>130</b>	<b>1</b>
		<b>CMF</b>	<b>Chambery</b>	<b>4,932</b>	<b>28</b>	<b>4,258</b>	<b>25</b>	<b>-674</b>	<b>-3</b>
		<b>DOK</b>	<b>Donetsk</b>	<b>0</b>	<b>0</b>	<b>808</b>	<b>4</b>	<b>808</b>	<b>4</b>
		<b>EXT</b>	<b>Exeter</b>	<b>130</b>	<b>1</b>	<b>260</b>	<b>2</b>	<b>130</b>	<b>1</b>
		<b>INV</b>	<b>Inverness</b>	<b>320</b>	<b>4</b>	<b>0</b>	<b>0</b>	<b>-320</b>	<b>-4</b>
		<b>JER</b>	<b>Jersey/States</b>	<b>0</b>	<b>0</b>	<b>260</b>	<b>2</b>	<b>260</b>	<b>2</b>
		<b>KBP</b>	<b>Kiev/Borispol</b>	<b>0</b>	<b>0</b>	<b>664</b>	<b>4</b>	<b>664</b>	<b>4</b>
		<b>KIV</b>	<b>Chisinau</b>	<b>0</b>	<b>0</b>	<b>404</b>	<b>2</b>	<b>404</b>	<b>2</b>
		<b>LDE</b>	<b>Lourdes/Tarbes/Tarbes Ossun Lour</b>	<b>9,898</b>	<b>73</b>	<b>14,138</b>	<b>95</b>	<b>4,240</b>	<b>22</b>
		<b>MUC</b>	<b>Munich/Franz Josef Strauss</b>	<b>0</b>	<b>0</b>	<b>202</b>	<b>1</b>	<b>202</b>	<b>1</b>
		<b>MXP</b>	<b>Milan/Malpensa</b>	<b>0</b>	<b>0</b>	<b>404</b>	<b>2</b>	<b>404</b>	<b>2</b>
		<b>NCE</b>	<b>Nice/Cote D'Azur</b>	<b>0</b>	<b>0</b>	<b>260</b>	<b>2</b>	<b>260</b>	<b>2</b>
		<b>RAK</b>	<b>Marrakech/Menara</b>	<b>1,113</b>	<b>6</b>	<b>0</b>	<b>0</b>	<b>-1,113</b>	<b>-6</b>
		<b>SIR</b>	<b>Sion</b>	<b>1,037</b>	<b>13</b>	<b>640</b>	<b>8</b>	<b>-397</b>	<b>-5</b>
		<b>VCE</b>	<b>Venice</b>	<b>0</b>	<b>0</b>	<b>404</b>	<b>2</b>	<b>404</b>	<b>2</b>
		<b>VIE</b>	<b>Vienna</b>	<b>0</b>	<b>0</b>	<b>0</b>	<b>1</b>	<b>0</b>	<b>1</b>
<b>ZT Total</b>				<b>24,772</b>	<b>186</b>	<b>29,982</b>	<b>206</b>	<b>5,210</b>	<b>20</b>



	S11 START	S11 END	S12 START	% CHANGE START - START	% CHANGE END - START
<b>T1 Intl Schedule</b>	72,837	73,003	71,027	-2.5%	-2.7%
<b>T1 Intl Charter</b>	2,855	2,847	2,702	-5.4%	-5.1%
<b>T1 Intl Total</b>	75,692	75,850	73,729	-2.6%	-2.8%
<b>T1 Dom</b>	8,188	6,765	5,634	-31.2%	-16.7%
<b>FREIGHT</b>	7081	6874	7367	4.0%	7.2%
<b>TOTAL</b>	<b>90,961</b>	<b>89,489</b>	<b>86,730</b>	<b>-4.7%</b>	<b>-3.1%</b>

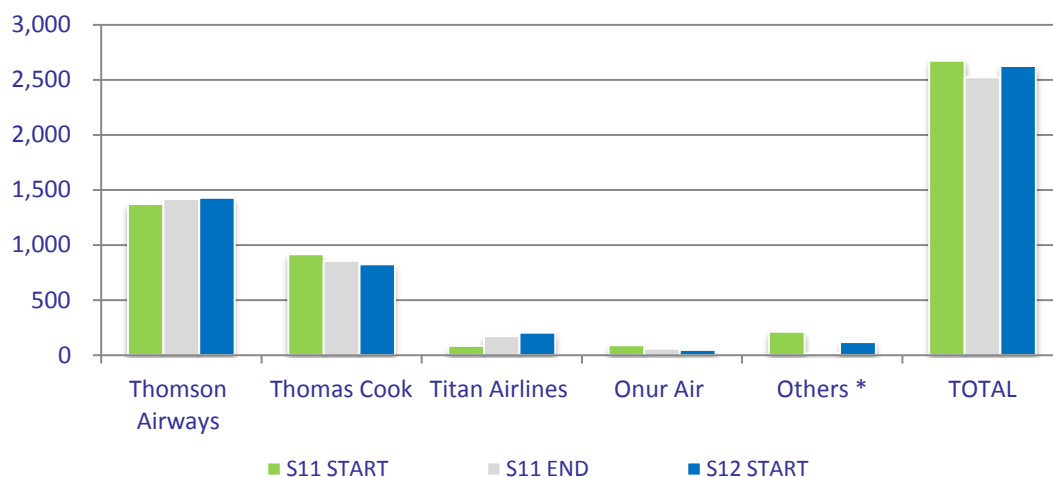
ALL DATA IS SHOWN WITH REFERENCE TO THE S12 SCHEDULING SEASON, WHICH IS 31 WEEKS LONG.

## TOTAL SEATS BY TERMINAL (000's)



	S11 START	S11 END	S12 START	% CHANGE START - START	% CHANGE END - START
<b>T1 Intl Schedule</b>	12,905,305	12,962,459	12,688,059	-1.7%	-2.1%
<b>T1 Intl Charter</b>	515,735	506,930	500,084	-3.0%	-1.4%
<b>T1 Intl Total</b>	13,421,040	13,469,389	13,188,143	-1.7%	-2.1%
<b>T1 Dom</b>	1,173,238	1,084,814	904,478	-22.9%	-16.6%
<b>TOTAL</b>	<b>14,594,278</b>	<b>14,554,203</b>	<b>14,092,621</b>	<b>-3.4%</b>	<b>-3.2%</b>

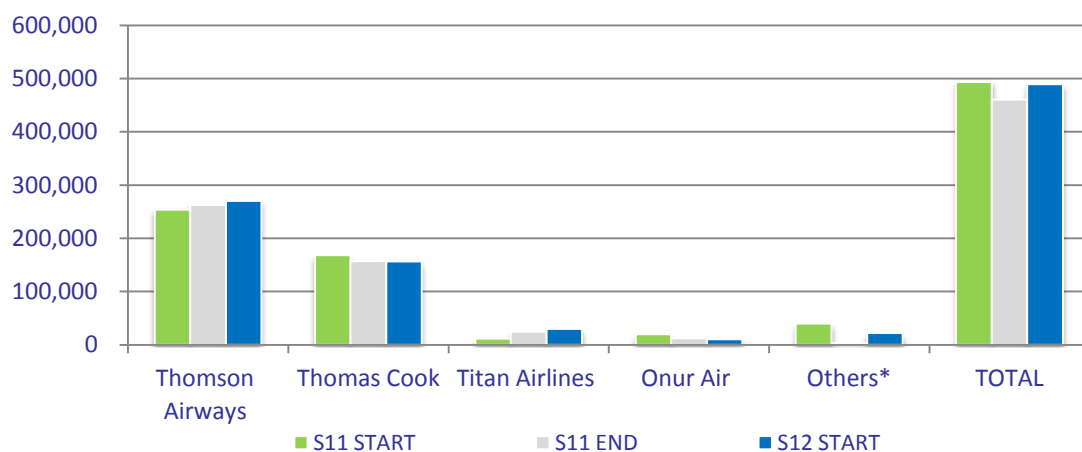
## CHARTER AIRLINE AIR TRANSPORT MOVEMENTS



	S11 START	S11 END	S12 START	% CHANGE START- START	% CHANGE END - START
Thomson Airways	1,373	1,418	1,430	4.2%	0.8%
Thomas Cook	915	856	825	-9.8%	-3.6%
Titan Airlines	84	173	205	144.0%	18.5%
Onur Air	90	57	48	-46.7%	-15.8%
Others *	212	19	118	-44.3%	521.1%
<b>TOTAL</b>	<b>2,674</b>	<b>2,523</b>	<b>2,626</b>	<b>-1.8%</b>	<b>4.1%</b>

ALL DATA IS SHOWN WITH REFERENCE TO THE S12 SCHEDULING SEASON, WHICH IS 31 WEEKS LONG.  
\* INCLUDES SKY AIRLINES CHANGES DURING S11 AND ADDITIONAL OLYMPIC CHARTER TRAFFIC FOR S12

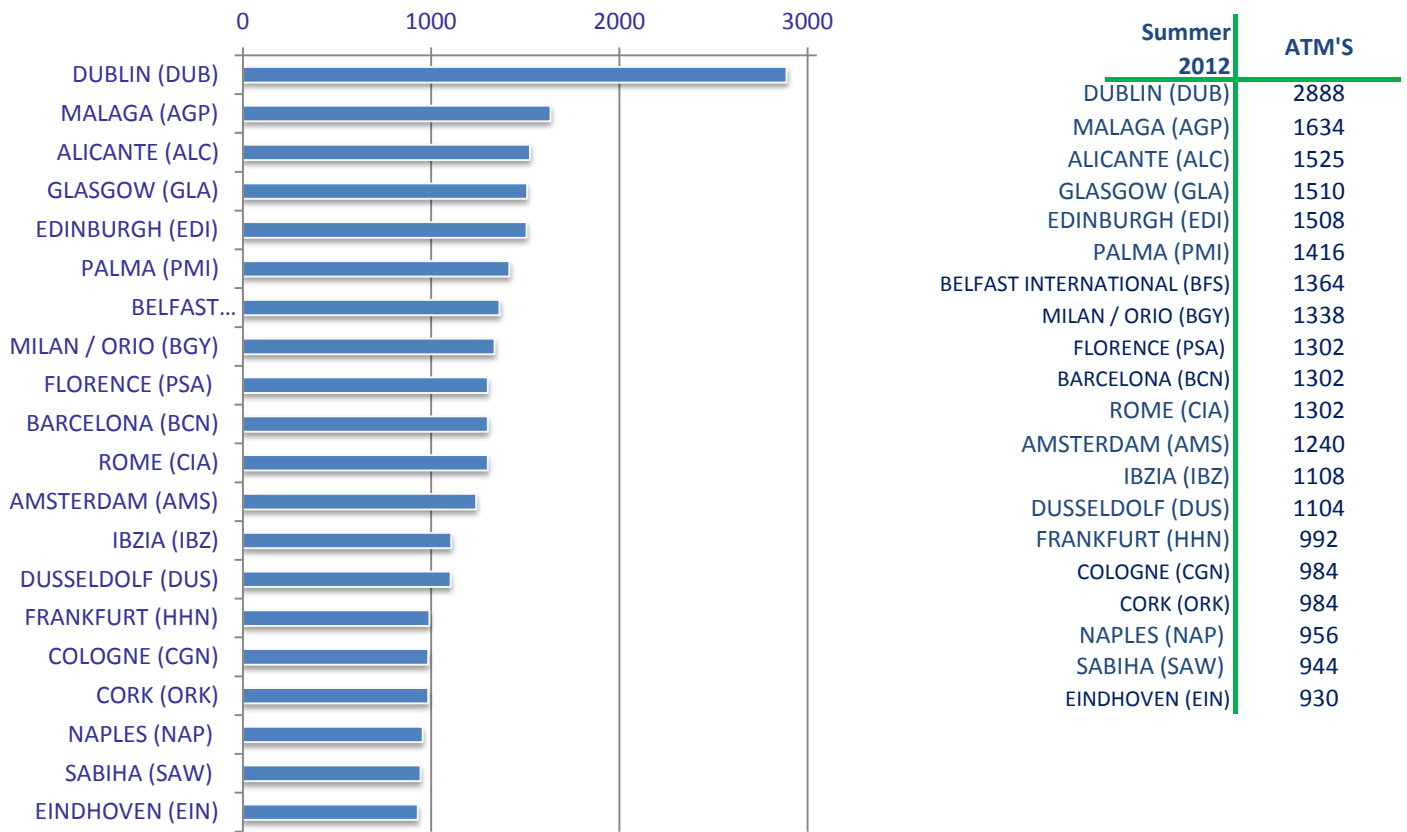
## CHARTER AIRLINES SEATS (000's)



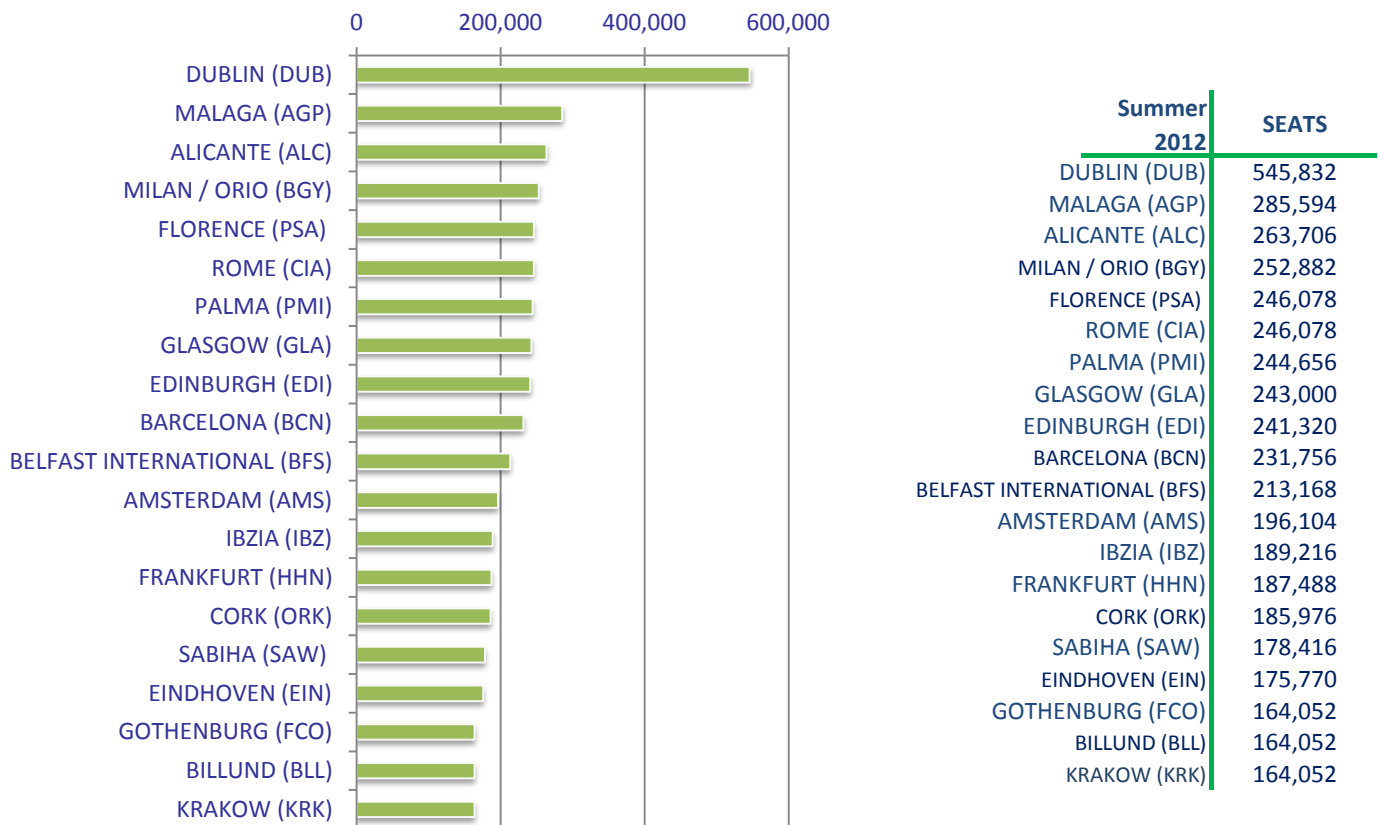
	S11 START	S11 END	S12 START	% CHANGE START- START	% CHANGE END - START
Thomson Airways	254,025	262,548	270,446	6.5%	3.0%
Thomas Cook	168,321	157,424	156,460	-7.0%	-0.6%
Titan Airlines	11,730	24,695	29,982	155.6%	21.4%
Onur Air	19,710	12,483	10,512	-46.7%	-15.8%
Others*	40,068	3,510	22,004	-45.1%	526.9%
<b>TOTAL</b>	<b>493,854</b>	<b>460,660</b>	<b>489,404</b>	<b>-0.9%</b>	<b>6.2%</b>



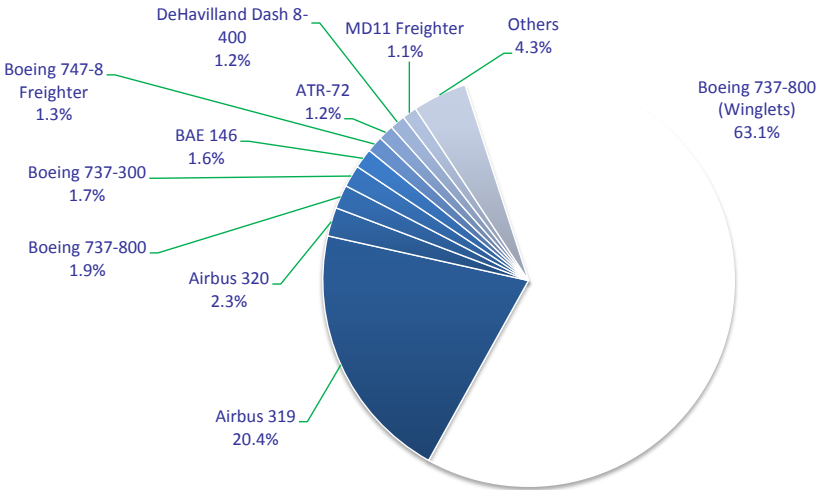
## TOP 20 SCHEDULED AIR TRANSPORT MOVEMENTS BY DESTINATION



## TOP 20 SCHEDULED AIR TRANSPORT MOVEMENTS BY SEATS

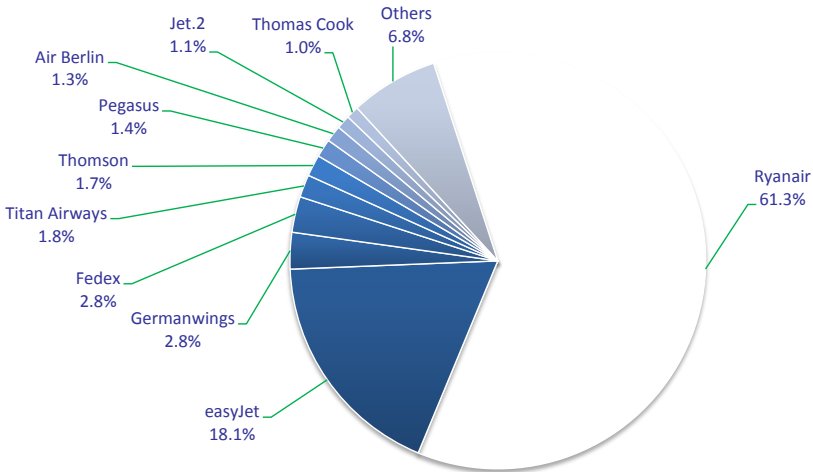


**TOP 10 AIRCRAFT TYPES BY AIR TRANSPORT MOVEMENTS**



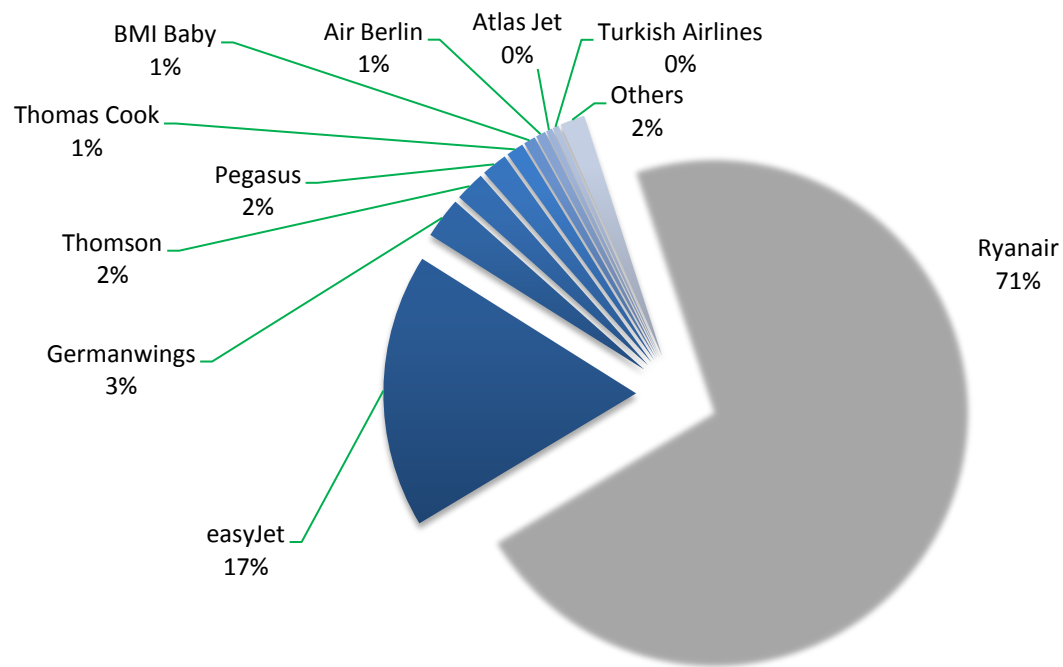
Aircraft	Movements
Boeing 737-800 (Winglets)	54780
Airbus 319	17733
Airbus 320	1961
Boeing 737-800	1621
Boeing 737-300	1502
BAE 146	1354
Boeing 747-8 Freighter	1114
ATR-72	1054
DeHavilland Dash 8-400	1044
MD11 Freighter	994
Others	3700

**TOP 10 AIRLINES BY AIR TRANSPORT MOVEMENTS**



Aircraft	Movements
Ryanair	53244
easyJet	15739
Germanwings	2470
Fedex	2419
Titan Airways	1530
Thomson	1449
Pegasus	1234
Air Berlin	1104
Jet.2	930
Thomas Cook	852
Others	5946

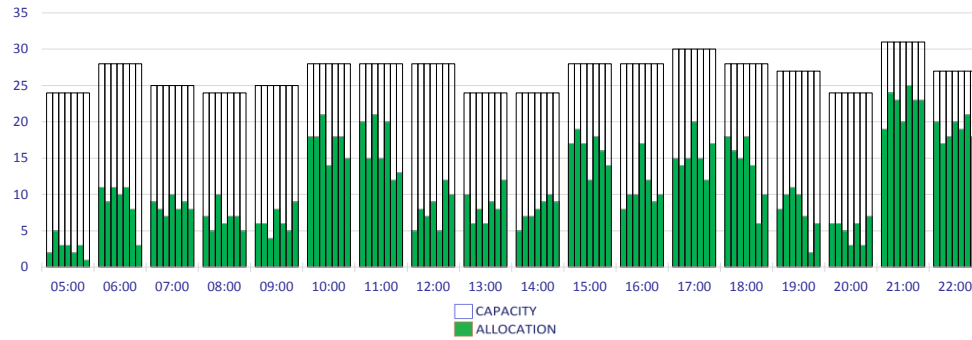
### TOP 10 AIRLINES BY SEATS



Aircraft	Movements
Ryanair	10,062,738
easyJet	2,471,376
Germanwings	370,500
Thomson	270,446
Pegasus	233,037
Thomas Cook	156,460
BMI Baby	106,560
Air Berlin	88,420
Atlas Jet	55,616
Turkish Airlines	54,646
Others	223067

### RUNWAY HOURLY MOVEMENTS - ARRIVALS

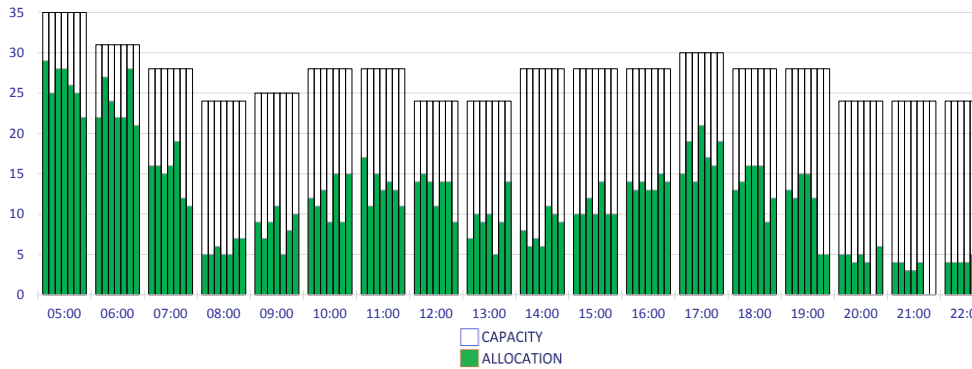
Peak Week Movements per Hour - All times UTC



	CAPACITY							ALLOCATION						
	Mon	Tue	Wed	Thu	Fri	Sat	Sun	Mon	Tue	Wed	Thu	Fri	Sat	Sun
05:00	24	24	24	24	24	24	24	2	5	3	3	2	3	1
06:00	28	28	28	28	28	28	28	11	9	11	10	11	8	3
07:00	25	25	25	25	25	25	25	9	8	7	10	8	9	8
08:00	24	24	24	24	24	24	24	7	5	10	6	7	7	5
09:00	25	25	25	25	25	25	25	6	6	4	8	6	5	9
10:00	28	28	28	28	28	28	28	18	18	21	14	18	18	15
11:00	28	28	28	28	28	28	28	20	15	21	15	20	12	13
12:00	28	28	28	28	28	28	28	5	8	7	9	5	12	10
13:00	24	24	24	24	24	24	24	10	6	8	6	9	8	12
14:00	24	24	24	24	24	24	24	5	7	7	8	9	10	9
15:00	28	28	28	28	28	28	28	17	19	17	12	18	16	14
16:00	28	28	28	28	28	28	28	8	10	10	17	12	9	10
17:00	30	30	30	30	30	30	30	15	14	15	20	15	12	17
18:00	28	28	28	28	28	28	28	18	16	15	18	14	6	10
19:00	27	27	27	27	27	27	27	8	10	11	10	7	2	6
20:00	24	24	24	24	24	24	24	6	6	5	3	6	3	7
21:00	31	31	31	31	31	31	31	19	24	23	20	25	23	23
22:00	27	27	27	27	27	27	27	20	17	18	20	19	21	18

### RUNWAY HOURLY MOVEMENTS - DEPARTURES

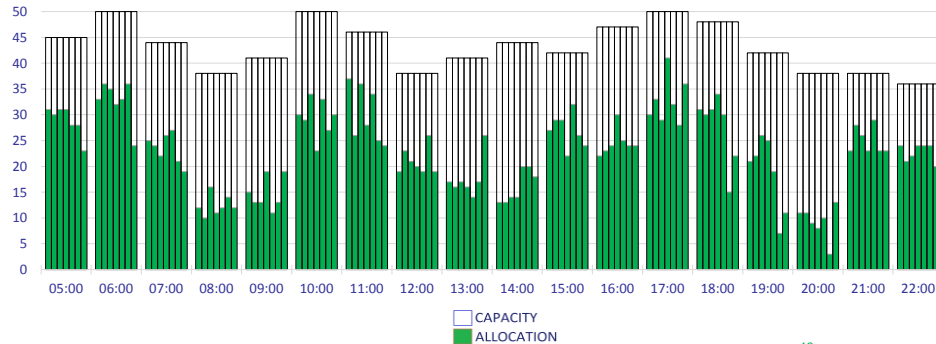
Peak Week Movements per Hour - All times UTC



	CAPACITY							ALLOCATION						
	Mon	Tue	Wed	Thu	Fri	Sat	Sun	Mon	Tue	Wed	Thu	Fri	Sat	Sun
05:00	35	35	35	35	35	35	35	29	25	28	28	26	25	22
06:00	31	31	31	31	31	31	31	22	27	24	22	22	28	21
07:00	28	28	28	28	28	28	28	16	16	15	16	19	12	11
08:00	24	24	24	24	24	24	24	5	6	5	5	7	7	7
09:00	25	25	25	25	25	25	25	9	7	9	11	5	8	10
10:00	28	28	28	28	28	28	28	12	11	13	9	15	9	15
11:00	28	28	28	28	28	28	28	17	11	15	13	14	13	11
12:00	24	24	24	24	24	24	24	14	15	14	11	14	9	9
13:00	24	24	24	24	24	24	24	7	10	9	10	5	9	14
14:00	28	28	28	28	28	28	28	8	6	7	6	11	10	9
15:00	28	28	28	28	28	28	28	10	10	12	10	14	10	10
16:00	28	28	28	28	28	28	28	14	13	14	13	13	15	14
17:00	30	30	30	30	30	30	30	15	19	14	21	17	16	19
18:00	28	28	28	28	28	28	28	13	14	16	16	16	9	12
19:00	28	28	28	28	28	28	28	13	12	15	15	12	5	5
20:00	24	24	24	24	24	24	24	5	5	4	5	4	0	6
21:00	24	24	24	24	24	24	24	4	4	3	3	4	0	0
22:00	24	24	24	24	24	24	24	4	4	4	4	5	3	2

### RUNWAY HOURLY MOVEMENTS - TOTALS

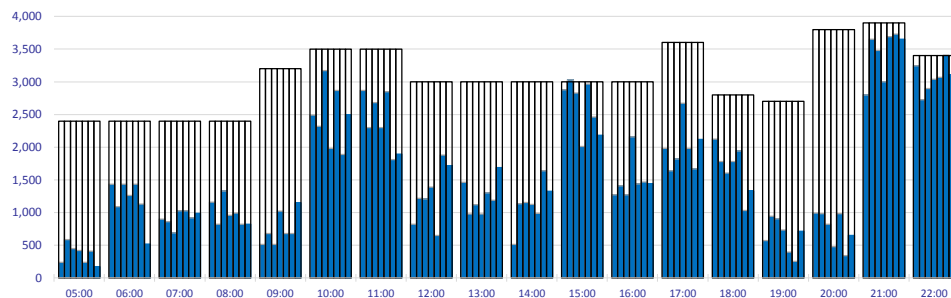
Peak Week Movements per Hour - All times UTC



	CAPACITY							ALLOCATION						
	Mon	Tue	Wed	Thu	Fri	Sat	Sun	Mon	Tue	Wed	Thu	Fri	Sat	Sun
05:00	45	45	45	45	45	45	45	31	30	31	31	28	28	23
06:00	50	50	50	50	50	50	50	33	36	35	32	33	36	24
07:00	44	44	44	44	44	44	44	25	24	22	26	27	21	19
08:00	38	38	38	38	38	38	38	12	10	16	11	12	14	12
09:00	41	41	41	41	41	41	41	15	13	13	19	11	13	19
10:00	50	50	50	50	50	50	50	30	29	34	23	33	27	30
11:00	46	46	46	46	46	46	46	37	26	36	28	34	25	24
12:00	38	38	38	38	38	38	38	19	23	21	20	19	26	19
13:00	41	41	41	41	41	41	41	17	16	17	16	14	17	26
14:00	44	44	44	44	44	44	44	13	13	14	14	20	20	18
15:00	42	42	42	42	42	42	42	27	29	29	22	32	26	24
16:00	47	47	47	47	47	47	47	22	23	24	30	25	24	24
17:00	50	50	50	50	50	50	50	30	33	29	41	32	28	36
18:00	48	48	48	48	48	48	48	31	30	31	34	30	15	22
19:00	42	42	42	42	42	42	42	21	22	26	25	19	7	11
20:00	38	38	38	38	38	38	38	11	11	9	8	10	3	13
21:00	38	38	38	38	38	38	38	23	28	26	23	29	23	23
22:00	36	36	36	36	36	36	36	24	21	22	24	24	24	20

**T1 INTERNATIONAL ARRIVAL TERMINAL HOURLY**

Peak Week Passengers per Hour - All times UTC

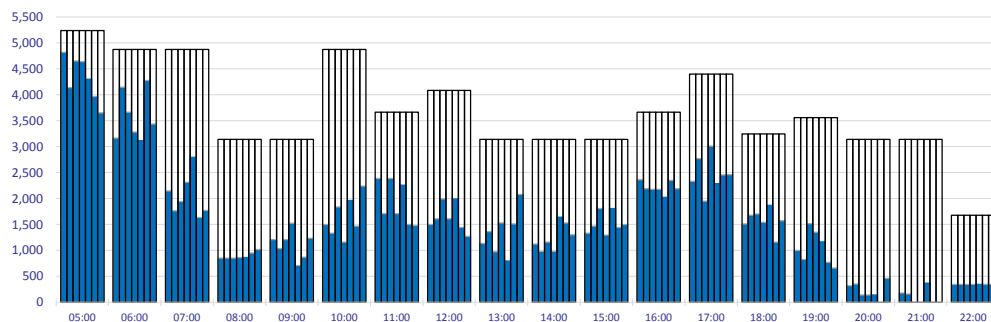


	CAPACITY							ALLOCATION						
	Mon	Tue	Wed	Thu	Fri	Sat	Sun	Mon	Tue	Wed	Thu	Fri	Sat	Sun
05:00	2400	2400	2400	2400	2400	2400	2400	238	588	447	418	238	408	170
06:00	2400	2400	2400	2400	2400	2400	2400	1432	1092	1432	1262	1432	1131	517
07:00	2400	2400	2400	2400	2400	2400	2400	898	858	688	1028	1028	917	988
08:00	2400	2400	2400	2400	2400	2400	2400	1160	820	1330	957	990	820	820
09:00	3200	3200	3200	3200	3200	3200	3200	510	680	510	1020	680	680	1147
10:00	3500	3500	3500	3500	3500	3500	3500	2490	2320	3170	1980	2869	1890	2498
11:00	3500	3500	3500	3500	3500	3500	3500	2869	2300	2680	2300	2850	1811	1892
12:00	3000	3000	3000	3000	3000	3000	3000	820	1219	1209	1389	650	1880	1719
13:00	3000	3000	3000	3000	3000	3000	3000	1461	979	1121	979	1301	1189	1690
14:00	3000	3000	3000	3000	3000	3000	3000	510	1135	1155	1125	985	1640	1324
15:00	3000	3000	3000	3000	3000	3000	3000	2879	3030	2830	2010	2964	2460	2180
16:00	3000	3000	3000	3000	3000	3000	3000	1270	1407	1270	2159	1440	1467	1440
17:00	3600	3600	3600	3600	3600	3600	3600	1980	1640	1820	2670	1980	1670	2120
18:00	2800	2800	2800	2800	2800	2800	2800	2123	1783	1603	1783	1943	1029	1328
19:00	2700	2700	2700	2700	2700	2700	2700	573	942	903	733	393	253	714
20:00	3800	3800	3800	3800	3800	3800	3800	990	982	820	480	982	340	650
21:00	3900	3900	3900	3900	3900	3900	3900	2800	3650	3480	3000	3689	3730	3650
22:00	3400	3400	3400	3400	3400	3400	3400	3247	2727	2897	3037	3067	3407	3106



**TOTAL TERMINAL DEPARTURES (INT'L & DOMESTIC)**

Peak Week Passengers per Hour - All times UTC

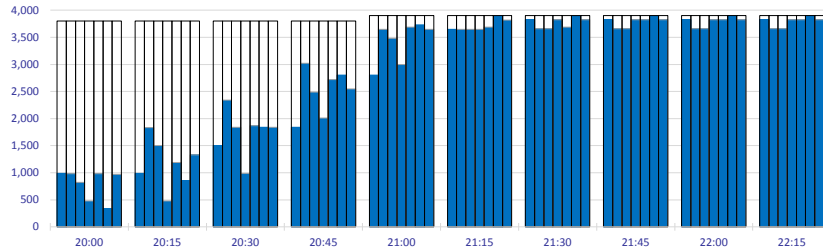


	CAPACITY							ALLOCATION						
	Mon	Tue	Wed	Thu	Fri	Sat	Sun	Mon	Tue	Wed	Thu	Fri	Sat	Sun
05:00	5000	5000	5000	5000	5000	5000	5000	4820	4140	4650	4640	4300	3970	3650
06:00	4650	4650	4650	4650	4650	4650	4650	3164	4145	3664	3285	3115	4275	3437
07:00	4650	4650	4650	4650	4650	4650	4650	2145	1765	1945	2314	2795	1635	1770
08:00	3000	3000	3000	3000	3000	3000	3000	850	850	850	860	860	948	1020
09:00	3000	3000	3000	3000	3000	3000	3000	1208	1038	1208	1525	698	868	1230
10:00	4650	4650	4650	4650	4650	4650	4650	1500	1330	1840	1160	1964	1470	2239
11:00	3500	3500	3500	3500	3500	3500	3500	2388	1708	2388	1708	2257	1499	1478
12:00	3900	3900	3900	3900	3900	3900	3900	1499	1610	1990	1610	1990	1442	1270
13:00	3000	3000	3000	3000	3000	3000	3000	1132	1361	972	1531	792	1510	2080
14:00	3000	3000	3000	3000	3000	3000	3000	1121	979	1160	979	1641	1529	1301
15:00	3000	3000	3000	3000	3000	3000	3000	1330	1465	1805	1295	1805	1440	1500
16:00	3500	3500	3500	3500	3500	3500	3500	2360	2190	2180	2180	2020	2350	2190
17:00	4200	4200	4200	4200	4200	4200	4200	2329	2767	1950	3009	2290	2457	2460
18:00	3100	3100	3100	3100	3100	3100	3100	1508	1678	1700	1540	1870	1160	1573
19:00	3400	3400	3400	3400	3400	3400	3400	998	828	1518	1349	1168	772	658
20:00	3000	3000	3000	3000	3000	3000	3000	320	349	140	140	140	0	461
21:00	3000	3000	3000	3000	3000	3000	3000	180	162	0	0	371	0	0
22:00	1600	1600	1600	1600	1600	1600	1600	347	347	347	347	347	347	347



**T1 INTERNATIONAL ARRIVALS TERMINAL HOURLY/ 15MINS**

Passengers per rolling Hour - (late evening peak)

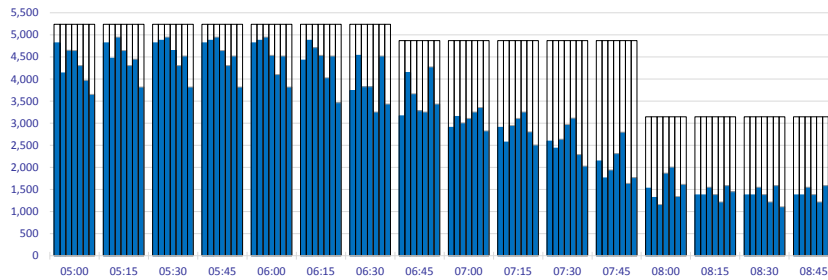


	CAPACITY							ALLOCATION						
	Mon	Tue	Wed	Thu	Fri	Sat	Sun	Mon	Tue	Wed	Thu	Fri	Sat	Sun
20:00	3800	3800	3800	3800	3800	3800	3800	990	982	820	480	982	340	971
20:15	3800	3800	3800	3800	3800	3800	3800	990	1832	1500	480	1191	850	1330
20:30	3800	3800	3800	3800	3800	3800	3800	1500	2342	1840	990	1871	1840	1840
20:45	3800	3800	3800	3800	3800	3800	3800	1840	3022	2490	2010	2721	2800	2550
21:00	3900	3900	3900	3900	3900	3900	3900	2800	3650	3480	3000	3689	3730	3650
21:15	3900	3900	3900	3900	3900	3900	3900	3650	3650	3650	3650	3689	3900	3820
21:30	3900	3900	3900	3900	3900	3900	3900	3827	3657	3657	3827	3689	3900	3827
21:45	3900	3900	3900	3900	3900	3900	3900	3827	3657	3657	3827	3827	3900	3827
22:00	3900	3900	3900	3900	3900	3900	3900	3827	3657	3657	3827	3827	3900	3827
22:15	3900	3900	3900	3900	3900	3900	3900	3827	3657	3657	3827	3827	3900	3827

Capacity Allocation

**TOTAL TERMINAL DEPARTURES (INT'L & DOMESTIC)**

Passengers per rolling Hour - (Morning peak)

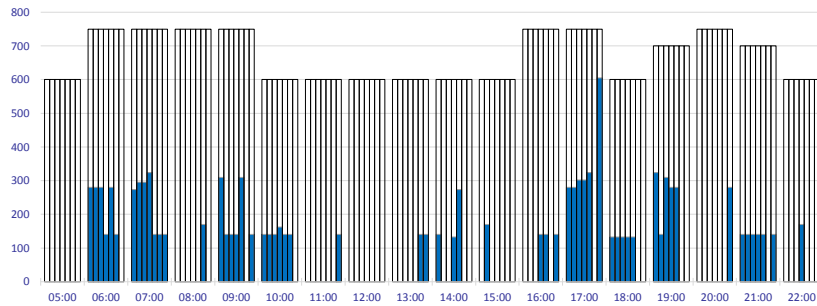


	CAPACITY							ALLOCATION						
	Mon	Tue	Wed	Thu	Fri	Sat	Sun	Mon	Tue	Wed	Thu	Fri	Sat	Sun
05:00	5000	5000	5000	5000	5000	5000	5000	4820	4140	4650	4640	4300	3970	3650
05:15	5000	5000	5000	5000	5000	5000	5000	4820	4470	4950	4640	4300	4450	3820
05:30	5000	5000	5000	5000	5000	5000	5000	4820	4878	4950	4640	4300	4518	3820
05:45	5000	5000	5000	5000	5000	5000	5000	4820	4878	4950	4640	4300	4518	3820
06:00	5000	5000	5000	5000	5000	5000	5000	4820	4878	4950	4538	4100	4518	3820
06:15	5000	5000	5000	5000	5000	5000	5000	4427	4878	4708	4538	4028	4518	3460
06:30	5000	5000	5000	5000	5000	5000	5000	3737	4538	3828	3828	3252	4518	3437
06:45	4650	4650	4650	4650	4650	4650	4650	3164	4145	3664	3285	3252	4275	3437
07:00	4650	4650	4650	4650	4650	4650	4650	2902	3150	3009	3111	3252	3355	2827
07:15	4650	4650	4650	4650	4650	4650	4650	2902	2572	2951	3111	3252	2802	2507
07:30	4650	4650	4650	4650	4650	4650	4650	2592	2432	2641	2971	3112	2292	2027
07:45	4650	4650	4650	4650	4650	4650	4650	2145	1765	1945	2314	2795	1635	1770
08:00	3000	3000	3000	3000	3000	3000	3000	1530	1320	1160	1869	2010	1344	1620
08:15	3000	3000	3000	3000	3000	3000	3000	1378	1378	1548	1388	1218	1587	1450
08:30	3000	3000	3000	3000	3000	3000	3000	1378	1378	1548	1388	1218	1587	1110
08:45	3000	3000	3000	3000	3000	3000	3000	1378	1378	1548	1388	1218	1587	1162

Capacity Allocation

**DOMESTIC TERMINAL - ARRIVALS**

Peak Week Passengers per Hour - All times UTC



	CAPACITY							ALLOCATION						
	Mon	Tue	Wed	Thu	Fri	Sat	Sun	Mon	Tue	Wed	Thu	Fri	Sat	Sun
05:00	600	600	600	600	600	600	600	0	0	0	0	0	0	0
06:00	750	750	750	750	750	750	750	280	280	280	140	280	140	0
07:00	750	750	750	750	750	750	750	273	295	295	324	140	140	140
08:00	750	750	750	750	750	750	750	0	0	0	0	0	170	0
09:00	750	750	750	750	750	750	750	310	140	140	140	310	0	140
10:00	600	600	600	600	600	600	600	140	140	140	162	140	140	0
11:00	600	600	600	600	600	600	600	0	0	0	0	0	0	140
12:00	600	600	600	600	600	600	600	0	0	0	0	0	0	0
13:00	600	600	600	600	600	600	600	0	0	0	0	0	0	140
14:00	600	600	600	600	600	600	600	140	0	0	133	273	0	0
15:00	600	600	600	600	600	600	600	0	170	0	0	0	0	0
16:00	750	750	750	750	750	750	750	0	0	0	140	140	0	140
17:00	750	750	750	750	750	750	750	280	280	302	302	324	0	605
18:00	600	600	600	600	600	600	600	133	133	133	133	133	0	0
19:00	700	700	700	700	700	700	700	324	140	310	280	280	0	0
20:00	750	750	750	750	750	750	750	0	0	0	0	0	0	280
21:00	700	700	700	700	700	700	700	140	140	140	140	140	0	140
22:00	600	600	600	600	600	600	600	0	0	0	170	0	0	0

Capacity Allocation

## GLOSSARY OF TERMS

---

<b>Air Transport Movement (ATM)</b>	A scheduled or charter passenger or freight aircraft movement.
<b>Allocation</b>	The allocation of slots such that demand is constrained to fit within declared scheduling limits.
<b>Common Travel Area (CTA)</b>	Services to or from the Republic of Ireland and the Channel Islands.
<b>Demand</b>	The unconstrained demand for slots, prior to any schedule adjustments.
<b>Passenger ATM</b>	A scheduled or charter <u>passenger</u> aircraft movement (ie, excluding all-cargo aircraft movements).
<b>Scheduling Limits</b>	Limiting parameters declared by the Airport Operator used in the coordination process.
<b>Seats</b>	The number of seats based on the aircraft configuration advised by the airline.
<b>Peak Week</b>	The Peak Week for S12 is week 18 (30JUL-05AUG)
<b>Data Snapshot</b>	All data used for this report was as held 22 March 2012

### GUIDE TO HISTOGRAMS

---

The histograms show the pattern of traffic by time of day against the appropriate scheduling limit. Each time period consist of seven columns representing the days-of-week, Monday through Sunday.