

London Stansted

STN

Summer 2011

START OF SEASON REPORT

KEY STATISTICS	Summer 2011	Change From Summer 2010
Air Transport Movements	91,225	-7.8%
Total Seats	14,628,526	-8.4%
Seats per Passenger ATM	164	-4.8%

CONTENTS	Page
Summary of Changes - ATM's and Seats by Carrier	2-14
Scheduling Limits	15
Charter airline operations and Seats	16-17
Total Seats by Service Type	18
Seats Per ATM	18
Air Transport Movements by Terminal	19
Air Transport Movements by Service Type	19
Air Transport Movements by Destination	20
Seats by Destination	20
Top 10 Airlines - Air Transport Movements and Seats	21
Top 10 Charter operators by Seats and Movements	22
Top 10 Aircraft Types	23
Total Runway Demand and Allocations	24
Arrival Runway Demand and Allocations	25
Departure runway demand and Allocations	26
Total Terminal Departures	27
International Terminal Arrivals	28
International Terminal Departures	29
Domestic Terminal Arrivals and Departures	30
Glossary	31

Data in this report is current as of: 17 March 2011

No warranty whether expressed or implied as to the completeness, accuracy, fitness for purpose, or satisfactory quality is given by ACL regarding the information in this report, which is provided by third parties. Accordingly, ACL excludes all liability with regard to such data.

LONDON STANSTED AIRPORT - SUMMER 2011

MOVEMENT AND SEAT CHANGES SUMMARY - BY CARRIER

	OPERATOR	AIRPORT	S10		S11		SEATS +/-	ATMS +/-
			SEATS	ATMS	SEATS	ATMS		
3V	TNT AIRWAYS SA	LGG Liege/Bierset	0	0	0	604	0	604
3V Total			0	0	0	604	0	604
4U	GERMANWINGS GMBH	CGN Cologne/Bonn	171,600	1,100	148,200	988	-23,400	-112
		HAJ Hanover Arpt	94,500	630	111,600	744	17,100	114
		STR Stuttgart/Echterdingen	117,420	740	111,600	744	-5,820	4
4U Total			383,520	2,470	371,400	2,476	-12,120	6
5W	ASTRAEUS	KEF Reykjavik/Keflavik International	0	0	1,184	8	1,184	8
5W Total			0	0	1,184	8	1,184	8
7M	MISTRAL AIR	PMO Palermo/Punta Raisi	626	4	626	4	0	0
7M Total			626	4	626	4	0	0
AB	AIR BERLIN GmbH Co Luftverkehrs KG	CGN Cologne/Bonn	0	0	174	1	174	1
		DUS Dusseldorf	155,218	1,072	89,732	1,115	-65,486	43
		FMO Muenster	60,108	788	47,560	500	-12,548	-288
		HAJ Hanover Arpt	118,682	792	0	0	-118,682	-792
		NUE Nuremberg	99,066	676	0	0	-99,066	-676
		PAD Paderborn	43,760	574	33,136	436	-10,624	-138
		SZG Salzburg/W.A. Mozart	0	0	576	4	576	4
AB Total			476,834	3,902	171,178	2,056	-305,656	-1,846
ABX	ABX AIR INC	LGG Liege/Bierset	0	299	0	0	0	-299
ABX Total			0	299	0	0	0	-299
AEU	ASTRAEUS	KEF Reykjavik/Keflavik International	8,850	56	0	0	-8,850	-56
AEU Total			8,850	56	0	0	-8,850	-56
AWC	TITAN AIRWAYS Ltd	BFS Belfast Intl Arpt	0	582	0	620	0	38
		BRS Bristol	0	3	0	0	0	-3
		EDI Edinburgh/Turnhouse	0	523	0	620	0	97
		EXT Exeter	0	290	0	310	0	20
		FZO Filton	9	1	0	0	-9	-1
		NCL Newcastle Airport	0	1	0	0	0	-1
		NWI Norwich Arpt	0	1	0	0	0	-1
		OST Ostend	0	1	0	0	0	-1
		STN London/Stansted	0	3	0	0	0	-3
		ZAZ Zaragoza	9	1	0	0	-9	-1
		ZZZ TEST ONLY	0	2	0	0	0	-2
AWC Total			18	1,408	0	1,550	-18	142
BA	BRITISH AIRWAYS Plc	ARN Stockholm/Arlanda	0	2	0	0	0	-2
		ATL Atlanta	0	120	0	93	0	-27

LONDON STANSTED AIRPORT - SUMMER 2011

MOVEMENT AND SEAT CHANGES SUMMARY - BY CARRIER

OPERATOR		AIRPORT		S10		S11		SEATS +/-		ATMS +/-	
				SEATS	ATMS	SEATS	ATMS				
		BAH	Bahrain International	0	32	0	0	0		-32	
		BCN	Barcelona	98	1	0	0	-98		-1	
		BOM	Mumbai	0	17	0	0	0		-17	
		BZZ	Brize Norton/RAF Station	0	1	0	0	0		-1	
		CGN	Cologne/Bonn	0	1	0	0	0		-1	
		DAC	Dhaka/Zia International	0	5	0	0	0		-5	
		DEL	Delhi/Indira Gandhi Intl	0	7	0	0	0		-7	
		DMM	Dammam/King Fahad Int'l	0	1	0	0	0		-1	
		DXB	Dubai	0	1	0	0	0		-1	
		FRA	Frankfurt/International	350	40	0	94	-350		54	
		HKG	Hong Kong Int'l	0	261	0	371	0		110	
		IAH	Houston	0	31	0	31	0		0	
		KHI	Karachi/Quaid-E-Azam Intl	0	1	0	0	0		-1	
		LCY	London City Airport	76	2	0	0	-76		-2	
		LHR	London/Heathrow	1,319	6	0	0	-1,319		-6	
		MAA	Chennai	0	32	0	0	0		-32	
		NCE	Nice/Cote D'Azur	77	1	0	0	-77		-1	
		NIM	Niamey	0	2	0	0	0		-2	
		ORD	Chicago/O'Hare International	0	1	0	0	0		-1	
		PVG	Shanghai/Pu Dong	0	123	0	124	0		1	
		YMX	Montreal/Mirabel	0	1	0	0	0		-1	
		ZAZ	Zaragoza	0	1	0	0	0		-1	
BA Total				1,920	690	0	713	-1,920		23	
BGH	BALKAN HOLIDAYS AIR	BOJ	Bourgas	7,080	40	7,080	40	0		0	
BGH Total				7,080	40	7,080	40	0		0	
BJ	NOUVELAIR	MIR	Monastir/Habib Bourguiba Int'l	2,124	12	0	0	-2,124		-12	
BJ Total				2,124	12	0	0	-2,124		-12	
CJ	BA CITYFLYER	BCN	Barcelona	438	2	0	0	-438		-2	
		PMI	Palma Mallorca	0	0	5,472	72	5,472		72	
		VCE	Venice	0	0	2,584	34	2,584		34	
CJ Total				438	2	8,056	106	7,618		104	
COE	COMTEL AIR Luftverkehrs GmbH	GIB	Gibraltar/North Front	0	0	12,896	104	12,896		104	
		VIE	Vienna	0	0	17,112	138	17,112		138	
COE Total				0	0	30,008	242	30,008		242	
CY	CYPRUS AIRWAYS Ltd	LCA	Larnaca	38,496	248	0	0	-38,496		-248	
CY Total				38,496	248	0	0	-38,496		-248	

LONDON STANSTED AIRPORT - SUMMER 2011

MOVEMENT AND SEAT CHANGES SUMMARY - BY CARRIER

	OPERATOR	AIRPORT		S10		S11		SEATS +/-	ATMS +/-
				SEATS	ATMS	SEATS	ATMS		
D7	AIRASIA X	KUL	Kuala Lumpur Int'l	130,416	456	121,644	372	-8,772	-84
D7 Total				130,416	456	121,644	372	-8,772	-84
ECA	EUROCYPRIA AIRLINES Ltd	HER	Heraklion/N. Kazantzakis Apt.	3,024	16	0	0	-3,024	-16
		LCA	Larnaca	4,914	26	0	0	-4,914	-26
		PFO	Paphos/International	3,780	20	0	0	-3,780	-20
ECA Total				11,718	62	0	0	-11,718	-62
EXS	JET2.COM LTD	EDI	Edinburgh/Turnhouse	0	604	0	620	0	16
		JER	Jersey/States	0	27	0	0	0	-27
		NCL	Newcastle Airport	0	300	0	310	0	10
EXS Total				0	931	0	930	0	-1
EZS	EASYJET SWITZERLAND SA	NCL	Newcastle Airport	159	1	0	0	-159	-1
EZS Total				159	1	0	0	-159	-1
EZY	EASYJET AIRLINE Co Ltd	AGP	Malaga	206,281	1,216	166,452	1,067	-39,829	-149
		ALC	Alicante	178,232	1,135	149,916	961	-28,316	-174
		AMS	Amsterdam-Schiphol	195,624	1,254	242,856	1,550	47,232	296
		BCN	Barcelona	130,718	837	135,600	868	4,882	31
		BFS	Belfast Intl Arpt	237,120	1,521	251,160	1,610	14,040	89
		BIO	Bilbao	91,104	584	108,072	686	16,968	102
		BJV	Bodrum./Milas Airport	22,776	146	25,704	162	2,928	16
		BRS	Bristol	0	1	0	0	0	-1
		CAG	Cagliari/Elmas	65,520	420	67,704	434	2,184	14
		CPH	Copenhagen Airport	188,136	1,206	183,456	1,176	-4,680	-30
		DBV	Dubrovnik	20,592	132	21,216	136	624	4
		DLM	Dalaman	30,264	194	39,192	246	8,928	52
		EDI	Edinburgh/Turnhouse	233,532	1,497	278,976	1,784	45,444	287
		FAO	Faro	150,588	961	138,096	884	-12,492	-77
		FNC	FUNCHAL	44,304	284	38,688	248	-5,616	-36
		FUE	Fuerteventura	19,032	122	19,536	124	504	2
		GLA	Glasgow International	240,396	1,537	249,480	1,574	9,084	37
		GNB	Grenoble/Saint Geoirs	0	0	2,808	18	2,808	18
		GVA	Geneva/Geneve-Cointrin	13,104	84	21,528	138	8,424	54
		IBZ	Ibiza	125,892	807	125,736	806	-156	-1
		LGW	London/Gatwick	336	2	0	0	-336	-2
		LJU	Ljubljana/Brnik	62,712	402	66,144	424	3,432	22
		LNZ	Linz/Hoersching	156	1	0	0	-156	-1
		LPL	Liverpool Intl Arpt	0	1	0	0	0	-1

LONDON STANSTED AIRPORT - SUMMER 2011

MOVEMENT AND SEAT CHANGES SUMMARY - BY CARRIER

OPERATOR		AIRPORT		S10		S11		SEATS +/-		ATMS +/-	
				SEATS	ATMS	SEATS	ATMS				
		LTN	London/Luton Airport	570	4	0	0	-570		-4	
		LYS	Lyon	64,740	415	68,952	442	4,212		27	
		MUC	Munich/Franz Josef Strauss	130,572	837	124,488	798	-6,084		-39	
		NAP	Naples	143,508	914	137,592	882	-5,916		-32	
		NCE	Nice/Cote D'Azur	63,024	404	76,128	488	13,104		84	
		NCL	Newcastle Airport	119,028	764	624	4	-118,404		-760	
		ORY	Paris/Orly	9	1	0	0	-9		-1	
		OVD	Asturias	68,328	438	67,704	434	-624		-4	
		PMI	Palma Mallorca	124,422	757	126,360	810	1,938		53	
		PRG	Prague/Ruzyne	63,960	410	60,216	386	-3,744		-24	
		SOF	Sofia/Vrazhdebna	180	1	0	0	-180		-1	
		SPU	Split	26,520	170	21,216	136	-5,304		-34	
		SSH	Sharm El Sheikh/Ophira	265	1	0	0	-265		-1	
		TLL	Tallinn/Ulemiste	48,984	314	48,360	310	-624		-4	
EZY Total				3,110,529	19,774	3,063,960	19,586	-46,569		-188	
FI	ICELANDAIR	KEF	Reykjavik/Keflavik International	0	0	1,830	10	1,830		10	
FI Total				0	0	1,830	10	1,830		10	
FR	RYANAIR Ltd	AAR	Aarhus/Tirstrup	81,081	429	82,026	434	945		5	
		ACE	Lanzarote	35,154	186	55,566	294	20,412		108	
		AGA	Agadir Almassira	22,680	120	23,436	124	756		4	
		AGP	Malaga	129,276	685	154,980	820	25,704		135	
		AHO	Alghero/Fertilia	57,078	302	48,762	258	-8,316		-44	
		ALC	Alicante	134,379	711	200,340	1,060	65,961		349	
		AOC	Altenburg Nobitz	80,892	428	0	0	-80,892		-428	
		AOI	Ancona/Falconara	96,957	513	95,256	504	-1,701		-9	
		BCN	Barcelona	189	1	0	0	-189		-1	
		BDS	Brindisi/Papola Casale	53,298	282	50,841	269	-2,457		-13	
		BGY	Milan/Orio Al Serio	243,621	1,289	246,078	1,302	2,457		13	
		BHD	Belfast City Airport	321,489	1,701	0	0	-321,489		-1,701	
		BIQ	Biarritz Parme	82,026	434	86,940	460	4,914		26	
		BLL	Billund	162,138	858	164,052	868	1,914		10	
		BLQ	Bologna/Guglielmo Marconi	114,534	606	82,026	434	-32,508		-172	
		BRE	Bremen	139,104	736	152,334	806	13,230		70	
		BRI	Bari/Palese	64,638	342	48,762	258	-15,876		-84	
		BRQ	Brno	46,494	246	82,026	434	35,532		188	
		BRS	Bristol	189	1	0	0	-189		-1	

LONDON STANSTED AIRPORT - SUMMER 2011

MOVEMENT AND SEAT CHANGES SUMMARY - BY CARRIER

OPERATOR	AIRPORT	S10		S11		SEATS +/-	ATMS +/-
		SEATS	ATMS	SEATS	ATMS		
BTS	Bratislava/Ivanka	162,351	859	164,052	868	1,701	9
BZG	Bydgoszcz	81,648	432	82,026	434	378	2
CCF	Carcassonne/Salvaza	96,957	513	85,428	452	-11,529	-61
CIA	Rome/Ciampino	256,473	1,357	254,772	1,348	-1,701	-9
CQM		25,704	136	0	0	-25,704	-136
CUF	Cuneo/Levaldigi	1,512	8	0	0	-1,512	-8
DNR	Dinard/Pleurtuit	61,992	328	69,174	366	7,182	38
DUB	Dublin	521,829	2,761	550,746	2,914	28,917	153
EGC	Bergerac/Roumanieres	91,854	486	82,026	434	-9,828	-52
EIN	Eindhoven	138,726	734	164,052	868	25,326	134
FAO	Faro	103,572	548	88,641	469	-14,931	-79
FCO	Rome/Fiumicino	189	1	0	0	-189	-1
FDH	Friedrichshafen	7,560	40	0	0	-7,560	-40
FEZ	Fez/Sais	29,106	154	35,154	186	6,048	32
FKB	Karlsruhe/Baden Baden/Soellingen	138,915	735	82,026	434	-56,889	-301
FMM	Memmingen-Allgau	81,270	430	82,026	434	756	4
FSC	Figari/Sud Corse	27,594	146	0	0	-27,594	-146
FUE	Fuerteventura	19,467	103	41,202	218	21,735	115
GDN	Gdansk/Rebiechowo	81,270	430	82,026	434	756	4
GNB	Grenoble/Saint Geoirs	4,914	26	0	0	-4,914	-26
GOA	Genoa/Cristoforo Colombo	81,081	429	82,026	434	945	5
GRO	Gerona/Costa Brava	164,241	870	164,052	868	-189	-2
GRX	Granada	7,938	42	0	0	-7,938	-42
GRZ	Graz/Thalerhof	58,212	308	46,872	248	-11,340	-60
GSE	Gothenburg/Saeve	162,162	858	164,052	868	1,890	10
HAU	Haugesund	34,020	180	35,154	186	1,134	6
HHN	Frankfurt/Hahn	217,161	1,149	164,052	868	-53,109	-281
IBZ	Ibiza	57,456	304	89,964	476	32,508	172
KIR	Kerry County Airport	80,514	426	82,026	434	1,512	8
KLU	Klagenfurt	34,776	184	35,154	186	378	2
KRK	Krakow/J. Paul II Balice Intl	162,729	861	164,052	868	1,323	7
KTW	Katowice/Pyrzowice	81,081	429	82,026	434	945	5
KUN	Kaunas	89,964	476	87,696	464	-2,268	-12
LBA	Leeds/Bradford	189	1	0	0	-189	-1
LBC	Luebeck/Blankensee	81,270	430	46,872	248	-34,398	-182
LCJ	Lodz Lublinek	104,517	553	82,026	434	-22,491	-119

LONDON STANSTED AIRPORT - SUMMER 2011
MOVEMENT AND SEAT CHANGES SUMMARY - BY CARRIER

OPERATOR	AIRPORT	S10		S11		SEATS +/-	ATMS +/-
		SEATS	ATMS	SEATS	ATMS		
LDE	Lourdes/Tarbes/Tarbes Ossun Lourdes	1,890	10	23,436	124	21,546	114
LDY	Londonderry/Eglinton	80,136	424	103,572	548	23,436	124
LEI	Almeria	40,068	212	40,257	213	189	1
LIG	Limoges/Bellegarde	92,421	489	82,026	434	-10,395	-55
LNZ	Linz/Hoersching	46,494	246	58,590	310	12,096	64
LPA	Las Palmas/Arpt De Gran Canaria	35,532	188	45,738	242	10,206	54
LPL	Liverpool Intl Arpt	189	1	0	0	-189	-1
LRH	La Rochelle/Laleu	46,305	245	57,456	304	11,151	59
MAD	Madrid/Barajas	162,729	861	164,052	868	1,323	7
MJV	Murcia/San Javier	126,630	670	121,716	644	-4,914	-26
MLA	Malta/Luqa	189	1	0	0	-189	-1
MRS	Marseille	79,191	419	99,792	528	20,601	109
NCE	Nice/Cote D'Azur	189	1	0	0	-189	-1
NOC	Knock International	80,136	424	82,026	434	1,890	10
NRN	Neiderrhein	162,162	858	105,462	558	-56,700	-300
NYO	Stockholm/Skavsta	219,996	1,164	199,206	1,054	-20,790	-110
OPO	Porto	138,726	734	140,616	744	1,890	10
ORK	Cork	162,162	858	152,334	806	-9,828	-52
PDV	Plovdiv	0	0	23,436	124	23,436	124
PEG	Perugia/Sant Egidio	49,896	264	60,102	318	10,206	54
PGF	Perpignan/Llabanere	63,126	334	58,968	312	-4,158	-22
PIK	Glasgow/Prestwick	242,676	1,284	82,026	434	-160,650	-850
PIS	Poitiers/Biard	46,494	246	55,566	294	9,072	48
PMF	Milan/Parma	38,178	202	35,154	186	-3,024	-16
PMI	Palma Mallorca	116,424	616	154,602	818	38,178	202
PMO	Palermo/Punta Raisi	0	0	82,026	434	82,026	434
POZ	Poznan/Lawica	104,517	553	82,026	434	-22,491	-119
PSA	Florence/Gal Galilei	243,243	1,287	246,078	1,302	2,835	15
PSR	Pescara/Liberi	62,370	330	60,480	320	-1,890	-10
PUF	Pau/Uzein	32,697	173	0	0	-32,697	-173
PUY	Pula	38,178	202	37,611	199	-567	-3
RAK	Marrakech/Menara	189	1	23,436	124	23,247	123
RDZ	Rodez/Marcillac	56,511	299	46,872	248	-9,639	-51
REU	Reus	56,322	298	46,872	248	-9,450	-50
RHO	Rhodes/Diagoras Airport	0	0	34,020	180	34,020	180
RIX	Riga	162,351	859	164,052	868	1,701	9

LONDON STANSTED AIRPORT - SUMMER 2011

MOVEMENT AND SEAT CHANGES SUMMARY - BY CARRIER

OPERATOR		AIRPORT		S10		S11		SEATS +/-		ATMS +/-	
				SEATS	ATMS	SEATS	ATMS	SEATS +/-	ATMS +/-		
RJK		Rijeka		0	0	21,546	114	21,546		114	
RMI		Rimini/Miramare		34,398	182	35,154	186	756		4	
RYG		Oslo		162,162	858	164,052	868	1,890		10	
RZE		Rzeszow/Jasionka		81,459	431	82,026	434	567		3	
SCQ		Santiago De Compostela		56,700	300	46,872	248	-9,828		-52	
SDR		Santander		80,136	424	82,026	434	1,890		10	
SKG		Thessaloniki/Makedonia Apt.		0	0	32,508	172	32,508		172	
SNN		Shannon		148,932	788	128,898	682	-20,034		-106	
STN		London/Stansted		1,323	7	0	0	-1,323		-7	
SUF		Lamezia-Terme/S Eufemia		0	0	43,092	228	43,092		228	
SVQ		Sevilla		80,892	428	82,026	434	1,134		6	
SXF		Berlin/Schoenefeld		196,371	1,039	164,052	868	-32,319		-171	
SZG		Salzburg/W.A. Mozart		52,920	280	58,590	310	5,670		30	
SZZ		Szczecin/Goleniow		46,494	246	46,872	248	378		2	
TFS		Tenerife/Sur Reina Sofia		47,310	251	84,672	448	37,362		197	
TLN		Toulon/Hyeres		41,391	219	47,250	250	5,859		31	
TMP		Tampere-Pirkkala		58,212	308	58,590	310	378		2	
TPS		Trapani/Birgi		80,514	426	0	0	-80,514		-426	
TRF		Oslo/Sandefjord		162,162	858	82,026	434	-80,136		-424	
TRN		Turin/Citta Di Torino		85,428	452	82,026	434	-3,402		-18	
TRS		Trieste		80,892	428	82,026	434	1,134		6	
TSF		Treviso		162,162	858	71,820	380	-90,342		-478	
TUF		Tours/St Symphorien		51,030	270	46,872	248	-4,158		-22	
VBS		Brescia/Montichiari		56,700	300	0	0	-56,700		-300	
VCE		Venice		0	0	92,232	488	92,232		488	
VLC		Valencia		129,087	683	118,881	629	-10,206		-54	
VLL		Valladolid		33,831	179	35,154	186	1,323		7	
VNO		Vilnius		0	0	68,418	362	68,418		362	
VRN		VERONA		0	0	46,872	248	46,872		248	
VST		VASTERAS		81,270	430	82,026	434	756		4	
WRO		Wroclaw/Strachowice		138,348	732	105,462	558	-32,886		-174	
XRY		Jerez De La Frontera/La Parra		56,889	301	46,872	248	-10,017		-53	
ZAD		Zadar		30,996	164	58,590	310	27,594		146	
ZAZ		Zaragoza		46,116	244	46,872	248	756		4	
FR Total				10,287,873	54,436	9,776,781	51,729	-511,092		-2,707	
FX	FEDEX	AMS	Amsterdam-Schiphol	0	233	0	248	0		15	

LONDON STANSTED AIRPORT - SUMMER 2011

MOVEMENT AND SEAT CHANGES SUMMARY - BY CARRIER

OPERATOR		AIRPORT		S10		S11		SEATS +/-		ATMS +/-	
				SEATS	ATMS	SEATS	ATMS	SEATS +/-	ATMS +/-		
		BGR	Bangor/International	0	1	0	0	0	0	-1	-1
		CAN	Guangzhou/Baiyun	0	31	0	31	0	0	0	0
		CDG	Paris/Ch. De Gaulle	0	523	0	486	0	0	-37	-37
		DUB	Dublin	0	262	0	279	0	0	17	17
		EWR	Liberty International (Newark)	0	91	0	93	0	0	2	2
		FRA	Frankfurt/International	0	1	0	0	0	0	-1	-1
		GLA	Glasgow International	0	238	0	248	0	0	10	10
		HKG	Hong Kong Int'l	0	0	0	31	0	0	31	31
		IND	Indianapolis/International	0	120	0	115	0	0	-5	-5
		KIX	Osaka/Kansai International	0	24	0	31	0	0	7	7
		LIS	Lisbon/Lisboa	0	1	0	0	0	0	-1	-1
		MAN	Manchester/International	0	234	0	246	0	0	12	12
		MEM	Memphis/International	0	406	0	403	0	0	-3	-3
		MUC	Munich/Franz Josef Strauss	0	1	0	0	0	0	-1	-1
		NCL	Newcastle Airport	0	2	0	0	0	0	-2	-2
		VCE	Venice	0	1	0	0	0	0	-1	-1
FX Total				0	2,169	0	2,211	0	0	42	42
GR	AURIGNY AIR SERVICES Ltd	EDI	Edinburgh/Turnhouse	0	2	0	0	0	0	-2	-2
		GCI	Guernsey	27,906	423	28,644	434	738	0	11	11
		JER	Jersey/States	28,002	424	8,184	124	-19,818	0	-300	-300
GR Total				55,908	849	36,828	558	-19,080	0	-291	-291
GTI	ATLAS AIR Inc	ATL	Atlanta	0	2	0	0	0	0	-2	-2
		HAJ	Hanover Arprt	0	1	0	0	0	0	-1	-1
		HSV	Huntsville/Madison County	0	92	0	93	0	0	1	1
		LUX	Luxembourg	0	93	0	93	0	0	0	0
GTI Total				0	188	0	186	0	0	-2	-2
KK	ATLASJET INTERNATIONAL AIRWAYS	AYT	Antalya	30,736	144	0	0	-30,736	0	-144	-144
		ESB	Ankara/Esenboga	20,152	94	0	0	-20,152	0	-94	-94
KK Total				50,888	238	0	0	-50,888	0	-238	-238
L9	BELLE AIR EUROPE	PRN	Pristina	0	0	6,912	48	6,912	0	48	48
L9 Total				0	0	6,912	48	6,912	0	48	48
LBY	BELLE AIR	TIA	Tirana/Rinas	0	0	5,400	30	5,400	0	30	30
LBY Total				0	0	5,400	30	5,400	0	30	30
LG	LUXAIR LUXEMBOURG AIRLINES	LUX	Luxembourg	0	0	141	1	141	0	1	1
LG Total				0	0	141	1	141	0	1	1
LS	JET2.COM LTD	BCN	Barcelona	296	2	0	0	-296	0	-2	-2

LONDON STANSTED AIRPORT - SUMMER 2011
MOVEMENT AND SEAT CHANGES SUMMARY - BY CARRIER

OPERATOR		AIRPORT		S10		S11		SEATS +/-		ATMS +/-	
				SEATS	ATMS	SEATS	ATMS	SEATS +/-	ATMS +/-		
		EDI	Edinburgh/Turnhouse	266	2	0	0	-266		-2	
		FAO	Faro	296	2	0	0	-296		-2	
		GVA	Geneva/Geneve-Cointrin	868	7	0	0	-868		-7	
		HAJ	Hanover Arpt	464	2	0	0	-464		-2	
		LDE	Lourdes/Tarbes/Tarbes Ossun Lourdes	272	2	0	0	-272		-2	
		MXP	Milan/Malpensa	1,520	8	0	0	-1,520		-8	
		NCL	Newcastle Airport	296	2	0	0	-296		-2	
LS Total				4,278	27	0	0	-4,278		-27	
LV	ALBANIAN AIRLINES MAK SHPK	EXT	Exeter	92	1	0	0	-92		-1	
		TIA	Tirana/Rinas	15,696	170	9,384	102	-6,312		-68	
LV Total				15,788	171	9,384	102	-6,404		-69	
LZ	BELLE AIR	TIA	Tirana/Rinas	0	0	31,032	208	31,032		208	
LZ Total				0	0	31,032	208	31,032		208	
MP	MARTINAIR	AMS	Amsterdam-Schiphol	0	88	0	93	0		5	
		BOG	Bogota/Eldorado	0	87	0	93	0		6	
		EZE	Buenos Aires/Ministro Pistarini	0	1	0	0	0		-1	
MP Total				0	176	0	186	0		10	
OHY	ONUR AIR Tasimacilik AS	ADB	Izmir/Adnan Menderes Arpt	0	0	9,198	42	9,198		42	
		AYT	Antalya	1,299	7	0	0	-1,299		-7	
		DLM	Dalaman	438	2	10,512	48	10,074		46	
OHY Total				1,737	9	19,710	90	17,973		81	
OZ	ASIANA AIRLINES Inc	ICN	Seoul Incheon Intl	0	120	0	124	0		4	
OZ Total				0	120	0	124	0		4	
PC	PEGASUS AIRLINES	ADB	Izmir/Adnan Menderes Arpt	0	0	46,494	246	46,494		246	
		AYT	Antalya	0	0	9,450	50	9,450		50	
		BJV	Bodrum./Milas Airport	8,883	47	9,450	50	567		3	
		SAW	SABIHA GOKCEN INTL AIRPORT	92,610	490	89,964	476	-2,646		-14	
PC Total				101,493	537	155,358	822	53,865		285	
RB	SYRIANAIR SYRIAN ARAB AIRLINES	DAM	Damascus/International	290	2	2,320	16	2,030		14	
RB Total				290	2	2,320	16	2,030		14	
RC	ATLANTIC AIRWAYS P/F	FAE	Faroe Islands/Vagar	5,640	60	5,640	60	0		0	
RC Total				5,640	60	5,640	60	0		0	
SGX	SAGA AIRLINES	AYT	Antalya	336	2	0	0	-336		-2	
		DLM	Dalaman	2,232	12	0	0	-2,232		-12	
		STN	London/Stansted	1,116	6	0	0	-1,116		-6	
SGX Total				3,684	20	0	0	-3,684		-20	

LONDON STANSTED AIRPORT - SUMMER 2011
MOVEMENT AND SEAT CHANGES SUMMARY - BY CARRIER

	OPERATOR	AIRPORT		S10		S11		SEATS +/-		ATMS +/-	
				SEATS	ATMS	SEATS	ATMS	SEATS +/-	ATMS +/-		
SZ	AIR SOUTHWEST	NQY	Newquay/St Mawgan	0	0	11,600	232	11,600	232		
		PLH	Plymouth	100	2	0	0	-100	-2		
SZ Total				100	2	11,600	232	11,500	230		
T3	EASTERN AIRWAYS Ltd	NWI	Norwich Arpt	0	0	51,600	1,032	51,600	1,032		
T3 Total				0	0	51,600	1,032	51,600	1,032		
TAY	TNT AIRWAYS SA	AMS	Amsterdam-Schiphol	0	1	0	0	0	-1		
		BRU	Brussels	0	1	0	0	0	-1		
		EMA	Nottingham/East Midlands	0	1	0	0	0	-1		
		LGG	Liege/Bierset	94	160	0	0	-94	-160		
		NWI	Norwich Arpt	0	1	0	0	0	-1		
		SNN	Shannon	0	1	0	0	0	-1		
TAY Total				94	165	0	0	-94	-165		
TCX	THOMAS COOK Airlines UK Ltd	ACE	Lanzarote	11,307	61	13,025	69	1,718	8		
		AYT	Antalya	29,250	147	30,205	165	955	18		
		BJV	Bodrum./Milas Airport	22,200	120	11,285	60	-10,915	-60		
		CUN	Cancun	0	1	0	0	0	-1		
		DLM	Dalaman	32,390	174	32,960	179	570	5		
		EMA	Nottingham/East Midlands	87	1	0	0	-87	-1		
		FUE	Fuerteventura	11,180	61	11,626	64	446	3		
		GLA	Glasgow International	180	1	0	0	-180	-1		
		IBZ	Ibiza	7,920	44	7,920	44	0	0		
		KGS	Kos	0	0	9,180	51	9,180	51		
		LAS	Las Vegas/Mccarran Intl	323	1	0	0	-323	-1		
		LCA	Larnaca	9,360	52	0	0	-9,360	-52		
		LGW	London/Gatwick	187	1	0	0	-187	-1		
		LPA	Las Palmas/Arpt De Gran Canaria	1,680	8	1,620	9	-60	1		
		MAH	Menorca	7,200	40	7,920	44	720	4		
		MAN	Manchester/International	652	2	3,600	20	2,948	18		
		MIR	Monastir/Habib Bourguiba Int'l	14,408	63	1,800	10	-12,608	-53		
		MXP	Milan/Malpensa	910	4	0	0	-910	-4		
		NBE		0	0	1,800	10	1,800	10		
PMI	Palma Mallorca	9,440	52	7,740	43	-1,700	-9				
SSH	Sharm El Sheikh/Ophira	4,230	18	2,585	11	-1,645	-7				
TFS	Tenerife/Sur Reina Sofia	12,920	71	16,835	92	3,915	21				
TLV	Tel Aviv Yafo/Ben Gurion Intl	652	2	0	0	-652	-2				
VNO	Vilnius	0	1	0	0	0	-1				

LONDON STANSTED AIRPORT - SUMMER 2011
MOVEMENT AND SEAT CHANGES SUMMARY - BY CARRIER

OPERATOR		AIRPORT		S10		S11		SEATS +/-		ATMS +/-	
				SEATS	ATMS	SEATS	ATMS	SEATS +/-	ATMS +/-		
		YVR	Vancouver	354	1	0	0	-354		-1	
		YYZ	Toronto/Pearson International	187	1	0	0	-187		-1	
		ZTH	Zakinthos Is	7,560	42	6,480	36	-1,080		-6	
TCX Total				184,577	969	166,581	907	-17,996		-62	
TK	TURKISH AIRLINES	ESB	Ankara/Esenboga	0	0	35,616	224	35,616		224	
		SAW	SABIHA GOKCEN INTL AIRPORT	67,272	422	71,610	434	4,338		12	
TK Total				67,272	422	107,226	658	39,954		236	
TOM	Thomson Airways	ACE	Lanzarote	11,907	64	11,718	62	-189		-2	
		AYT	Antalya	9,261	50	18,819	102	9,558		52	
		BGI	Bridgetown/Grantley Adams Intl	283	1	0	0	-283		-1	
		BJV	Bodrum./Milas Airport	8,127	44	0	0	-8,127		-44	
		CFU	Kerkyra/I. Kapodistrias	12,861	71	13,239	71	378		0	
		DLM	Dalaman	26,631	146	19,467	103	-7,164		-43	
		EFL	Kefallinia/Argostolion	9,180	51	8,460	47	-720		-4	
		FAO	Faro	9,639	51	10,773	57	1,134		6	
		FUE	Fuerteventura	9,953	55	10,503	58	550		3	
		GNB	Grenoble/Saint Geoirs	549	3	189	1	-360		-2	
		HER	Heraklion/N. Kazantzakis Apt.	8,820	50	12,420	69	3,600		19	
		IBZ	Ibiza	9,639	52	18,144	96	8,505		44	
		INN	Innsbruck/Kranebitten	567	3	927	5	360		2	
		LCA	Larnaca	9,000	51	9,180	51	180		0	
		LPA	Las Palmas/Arpt De Gran Canaria	3,141	19	3,501	19	360		0	
		MAH	Menorca	17,460	97	17,820	99	360		2	
		MIR	Monastir/Habib Bourguiba Int'l	9,180	52	1,323	7	-7,857		-45	
		NBE		0	0	9,360	52	9,360		52	
		PFO	Paphos/International	21,915	116	21,546	114	-369		-2	
		PMI	Palma Mallorca	29,695	163	34,218	186	4,523		23	
		REU	Reus	9,189	51	0	0	-9,189		-51	
		RHO	Rhodes/Diagoras Airport	8,127	43	9,639	51	1,512		8	
		SSH	Sharm El Sheikh/Ophira	11,340	62	11,718	62	378		0	
		TFS	Tenerife/Sur Reina Sofia	14,114	77	13,896	76	-218		-1	
		ZTH	Zakinthos Is	8,694	46	8,883	47	189		1	
TOM Total				259,272	1,418	265,743	1,435	6,471		17	
UPS	UPS AIRLINES	CGN	Cologne/Bonn	0	300	0	304	0		4	
		EWR	Liberty International (Newark)	0	119	0	122	0		3	
		PHL	Philadelphia/International	0	26	0	30	0		4	

LONDON STANSTED AIRPORT - SUMMER 2011
MOVEMENT AND SEAT CHANGES SUMMARY - BY CARRIER

OPERATOR		AIRPORT		S10		S11		SEATS +/-		ATMS +/-	
				SEATS	ATMS	SEATS	ATMS	SEATS +/-	ATMS +/-		
		SDF	Louisville	0	152	0	152	0	0	0	0
UPS Total				0	597	0	608	0	11		
V9	STAR 1 AIRLINES	VNO	Vilnius	37,592	254	0	0	-37,592	-254		
V9 Total				37,592	254	0	0	-37,592	-254		
VKH	Viking Hellas	LCA	Larnaca	0	0	6,120	34	6,120	34		
VKH Total				0	0	6,120	34	6,120	34		
WW	BMIBABY LTD	BHD	Belfast City Airport	0	0	140,600	950	140,600	950		
WW Total				0	0	140,600	950	140,600	950		
YK	KTHY KIBRIS TURK HAVA YOLLARI	ADB	Izmir/Adnan Menderes Arpt	4,578	26	0	0	-4,578	-26		
		AYT	Antalya	18,288	100	0	0	-18,288	-100		
		BJV	Bodrum./Milas Airport	4,648	26	0	0	-4,648	-26		
		DLM	Dalaman	4,748	26	0	0	-4,748	-26		
		GZT	OGUZELI APT - GAZIENTAP	5,438	30	0	0	-5,438	-30		
YK Total				37,700	208	0	0	-37,700	-208		
ZT	TITAN AIRWAYS Ltd	ABZ	Aberdeen/Dyce	0	3	0	0	0	-3		
		AQJ	Aqaba	530	2	0	0	-530	-2		
		ATH	Athens/Athinai	530	2	0	0	-530	-2		
		BFS	Belfast Intl Arpt	0	2	0	0	0	-2		
		BHX	Birmingham/International	0	4	0	0	0	-4		
		BZZ	Brize Norton/RAF Station	0	1	0	0	0	-1		
		CEG	Chester	0	1	0	0	0	-1		
		CLY	Calvi/Ste Catherine	4,810	39	4,940	38	130	-1		
		CMF	Chambery	2,876	24	3,942	23	1,066	-1		
		CPH	Copenhagen Airport	0	0	780	4	780	4		
		CTT	Le Castellet	0	1	0	0	0	-1		
		EDI	Edinburgh/Turnhouse	0	3	0	0	0	-3		
		EWR	Liberty International (Newark)	198	2	0	0	-198	-2		
		EXT	Exeter	130	2	0	0	-130	-2		
		FAO	Faro	0	1	0	0	0	-1		
		GRZ	Graz/Thalerhof	420	4	0	0	-420	-4		
		LBA	Leeds/Bradford	0	1	0	0	0	-1		
		LBG	Paris/Le Bourget	0	2	0	0	0	-2		
		LDE	Lourdes/Tarbes/Tarbes Ossun Lourdes	11,593	92	0	0	-11,593	-92		
		LED	St Petersburg	260	2	0	0	-260	-2		
		MXP	Milan/Malpensa	0	1	0	0	0	-1		
		NCE	Nice/Cote D'Azur	80	1	0	0	-80	-1		

LONDON STANSTED AIRPORT - SUMMER 2011
MOVEMENT AND SEAT CHANGES SUMMARY - BY CARRIER

OPERATOR	AIRPORT	S10		S11		SEATS +/-	ATMS +/-
		SEATS	ATMS	SEATS	ATMS		
	ORK Cork	0	1	0	0	0	-1
	RAK Marrakech/Menara	0	0	910	6	910	6
	SFJ Kangerlussuaq	130	1	0	0	-130	-1
	SIR Sion	699	9	960	12	261	3
	SXF Berlin/Schoenefeld	160	2	0	0	-160	-2
	TLV Tel Aviv Yafo/Ben Gurion Intl	530	2	0	0	-530	-2
	WAD Andriamena	0	2	0	0	0	-2
	WTN Waddington/RAF Station	0	1	0	0	0	-1
	ZZF UNK FOREIGN	0	1	0	0	0	-1
	ZZJ Mystery Night	0	2	0	0	0	-2
ZT Total		22,946	211	11,532	83	-11,414	-128
ZY	SKY AIRLINES						
	AYT Antalya	0	0	29,484	156	29,484	156
	GZT OGUZELI APT - GAZIENTAP	0	0	13,986	74	13,986	74
ZY Total		0	0	43,470	230	43,470	230

RUNWAY SCHEDULING LIMITS

Movements per Hour (R60) - All times UTC

MONDAY - SUNDAY	ARRIVALS																			
	SEASON	05:00	06:00	07:00	08:00	09:00	10:00	11:00	12:00	13:00	14:00	15:00	16:00	17:00	18:00	19:00	20:00	21:00	22:00	
	Summer 2010	24	28	25	24	25	28	28	24	24	28	28	28	30	25	27	24	31	27	
	Capacity Change														3					
	Summer 2011	24	28	25	24	25	28	28	24	24	28	28	28	30	28	27	24	31	27	
	DEPARTURES																			
	SEASON	05:00	06:00	07:00	08:00	09:00	10:00	11:00	12:00	13:00	14:00	15:00	16:00	17:00	18:00	19:00	20:00	21:00	22:00	
	Summer 2010	34	30	28	24	25	28	28	24	24	28	28	28	30	28	28	24	24	24	
	Capacity Change	1																		
	Summer 2011	35	30	28	24	25	28	28	24	24	28	28	28	30	28	28	24	24	24	
TOTALS																				
SEASON	05:00	06:00	07:00	08:00	09:00	10:00	11:00	12:00	13:00	14:00	15:00	16:00	17:00	18:00	19:00	20:00	21:00	22:00		
Summer 2010	45	50	44	38	41	50	46	38	41	44	42	47	50	48	42	38	38	36		
Capacity Change																				
Summer 2011	45	50	44	38	41	50	46	38	41	44	42	47	50	48	42	38	38	36		

TERMINAL SCHEDULING LIMITS

Passengers per Hour (T60)

TERMINAL 1	ARRS	DEPS
DOMESTIC	750	
INTERNATIONAL	3900	
COMBINED		5000

Other Restrictions

Cargo:

Only 3 aircraft stands are available at any one time for B.747 series aircraft on the main cargo apron.

Business Aviation:

Stansted is designated as fully coordinated airport and therefore each business and general aviation movement requires the prior allocation of a slot.

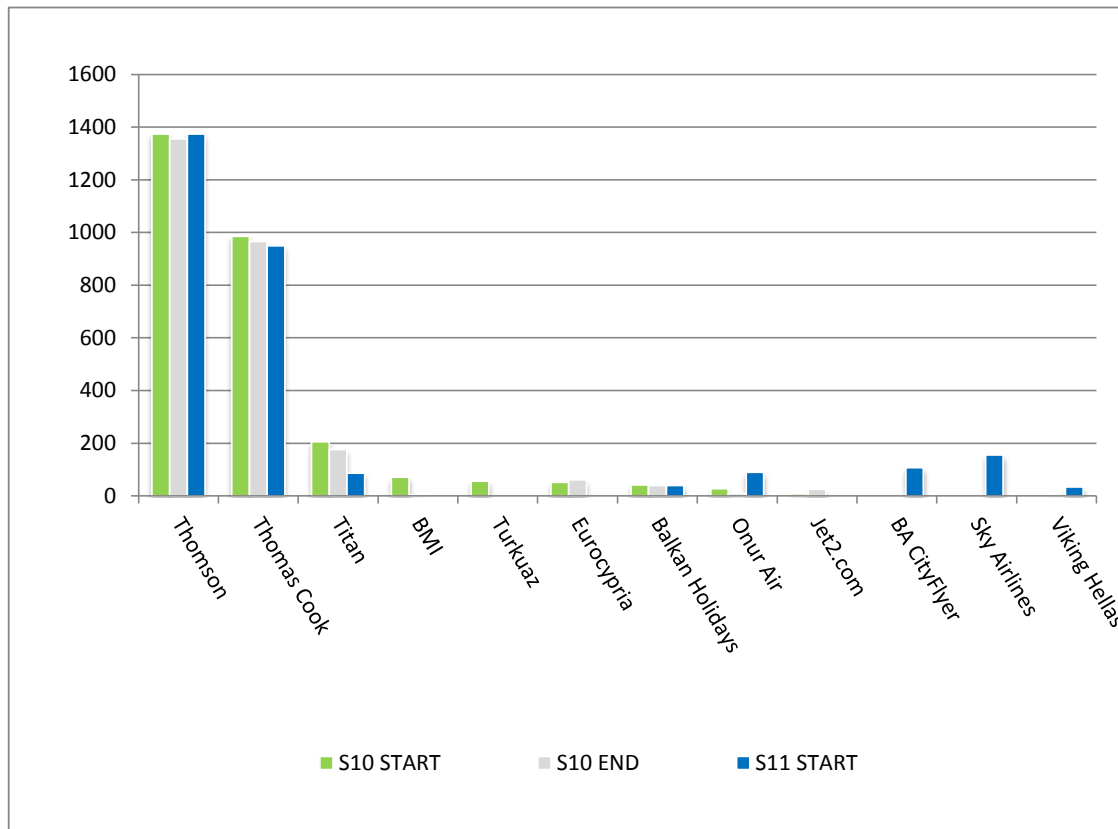
Night quota:

Night quota limits apply at Stansted. The night quota period is defined as 2230 - 0500 (GMT) during which DfT have determined that for the Summer 2011 season the number of movements will be restricted to 7000, and the maximum number of night quota points permitted to be 4700.

Air Noise Cap:

The area enclosed by the 57Db(A) Leq 16hr (0700-2300) contour, when calculated and measured by the km. Civil Aviation Authority's Aircraft Noise Contour Model 2.3, shall not exceed 33.9 sq

CHARTER AIRLINE OPERATIONS

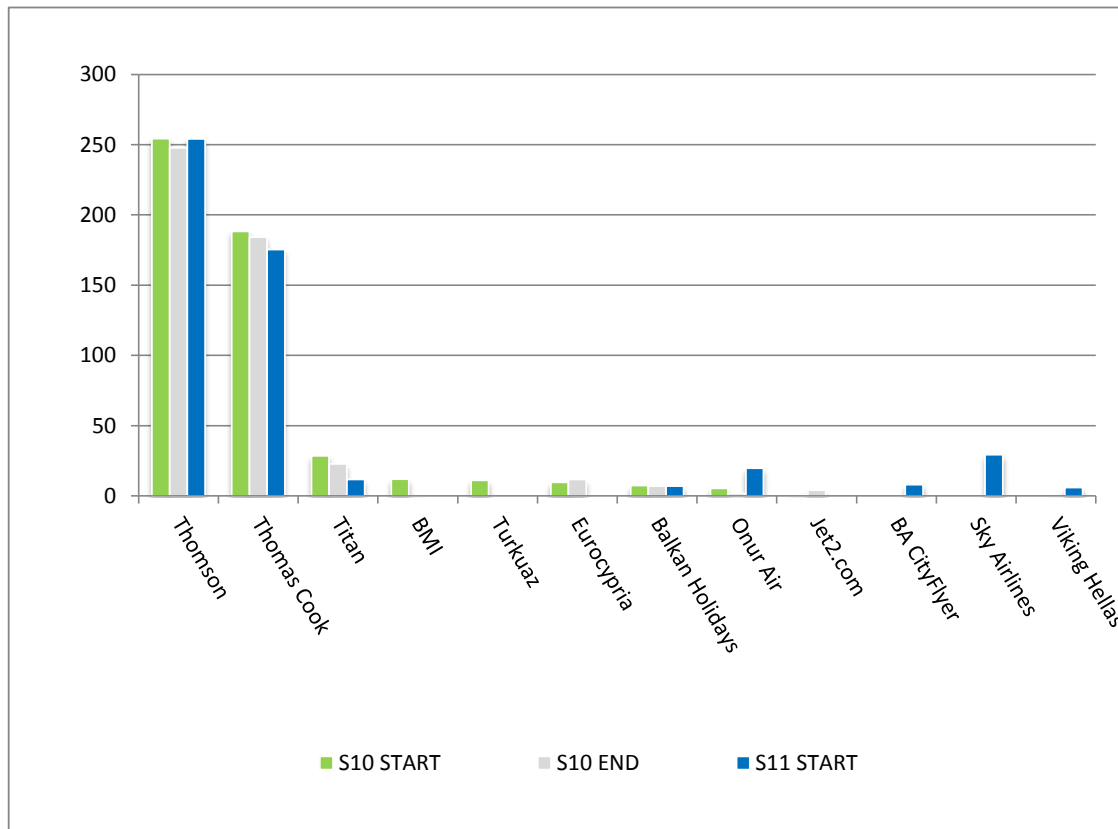


CARRIER	S10 START	S10 END	S11 START	% CHANGE START- START	% CHANGE END - START
Thomson	1374	1356	1374	0.0%	1.3%
Thomas Cook	986	966	950	-3.8%	-1.7%
Titan	206	177	87	-136.8%	-103.4%
BMI	72	4	0	-100.0%	-100.0%
Turkuaz	56	0	0	-100.0%	-100.0%
Eurocypria	52	62	0	-100.0%	-100.0%
Balkan Holidays	42	40	40	-5.0%	0.0%
Onur Air	28	9	90	68.9%	90.0%
Jet2.com	8	26	0	-100.0%	-100.0%
BA CityFlyer	0	0	108	100.0%	100.0%
Sky Airlines	0	0	156	100.0%	100.0%
Viking Hellenas	0	2	34	100.0%	94.1%
TOTAL	2824	2642	2839	0.5%	6.9%

NOTES:

ALL DATA IS SHOWN WITH REFERENCE TO THE S11 SCHEDULING SEASON, WHICH IS 31 WEEKS LONG.
ALL DATA HAS BEEN ADJUSTED ACCORDINGLY.

CHARTER AIRLINE SEATS (000'S)

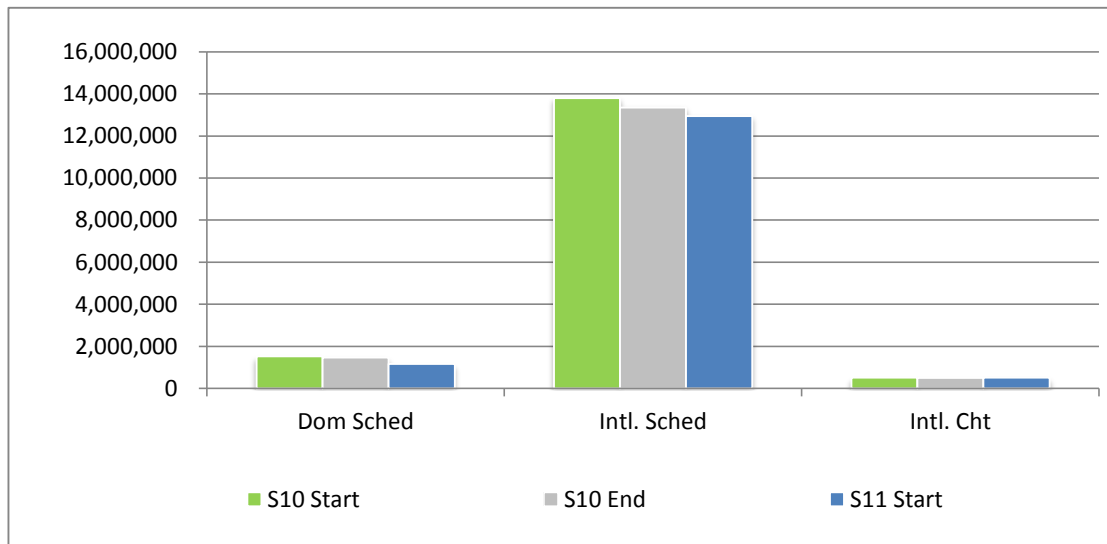


CARRIER	S10 START	S10 END	S11 START	% CHANGE START- START	% CHANGE END - START
Thomson	254.327	247.932	254.214	0.0%	2.5%
Thomas Cook	188.462	184.177	175.544	-7.4%	-4.9%
Titan	28.561	22.816	11.852	-141.0%	-92.5%
BMI	12.048	0.386	0	-100.0%	-100.0%
Turkuaz	11.232	0	0	-100.0%	-100.0%
Eurocypria	9.828	11.718	0	-100.0%	-100.0%
Balkan Holidays	7.434	7.08	7.08	-5.0%	0.0%
Onur Air	5.43	1.737	19.71	72.5%	91.2%
Jet2.com	0.992	4.13	0	-100.0%	-100.0%
BA CityFlyer	0	0	8.208	100.0%	100.0%
Sky Airlines	0	0	29.484	100.0%	100.0%
Viking Hellas	0	0.295	6.12	100.0%	95.2%
TOTAL	518.314	480.271	512.212	-1.2%	6.2%

NOTES:

ALL DATA IS SHOWN WITH REFERENCE TO THE S11 SCHEDULING SEASON, WHICH IS 31 WEEKS LONG.
ALL DATA HAS BEEN ADJUSTED ACCORDINGLY.

TOTAL SEATS BY SERVICE TYPE

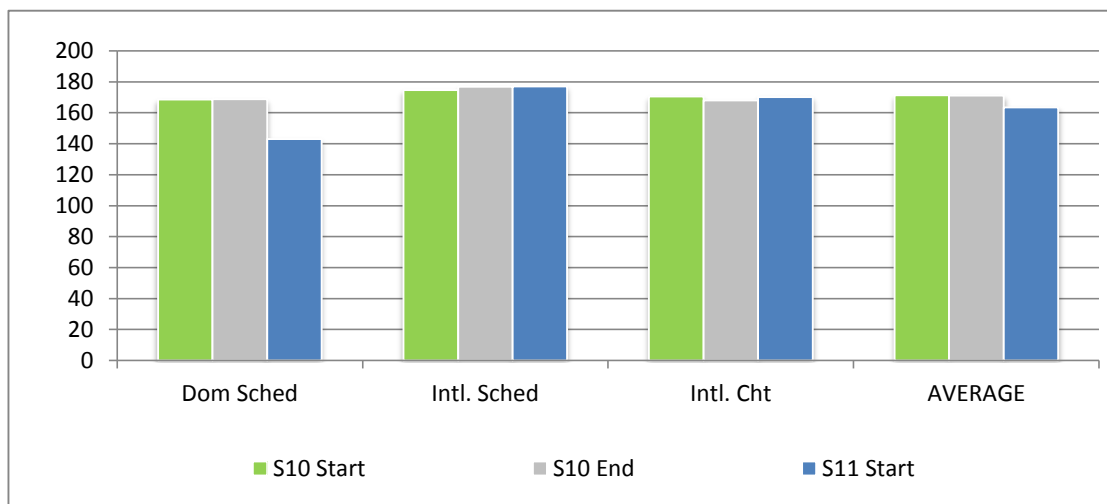


	S10 Start	S10 End	S11 Start	% CHANGE START-START	% CHANGE END-START
Dom Sched	1,526,688	1,478,656	1,169,638	-30.5%	-26.4%
Intl. Sched	13,805,546	13,346,975	12,943,647	-6.7%	-3.1%
Intl. Cht	519,464	499,258	515,241	-0.8%	3.1%
TOTAL	15,851,698	15,324,889	14,628,526	-8.4%	-4.8%

NOTES:

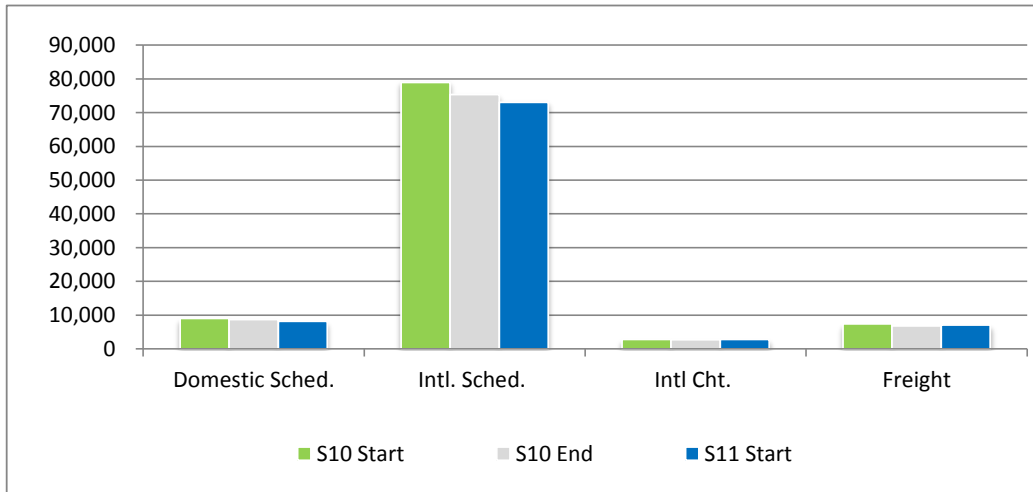
ALL DATA IS SHOWN WITH REFERENCE TO THE S11 SCHEDULING SEASON, WHICH IS 31 WEEKS LONG.
ALL DATA HAS BEEN ADJUSTED ACCORDINGLY.

SEATS PER PASSENGER ATM BY SERVICE TYPE



	S10 Start	S10 End	S11 Start	% CHANGE START-START	% CHANGE END-START
Dom Sched	169	169	143	-17.8%	-18.0%
Intl. Sched	175	177	177	1.3%	0.1%
Intl. Cht	171	168	170	-0.3%	1.3%
AVERAGE	171	171	164	-4.8%	-4.8%

AIR TRANSPORT MOVEMENTS BY TERMINAL

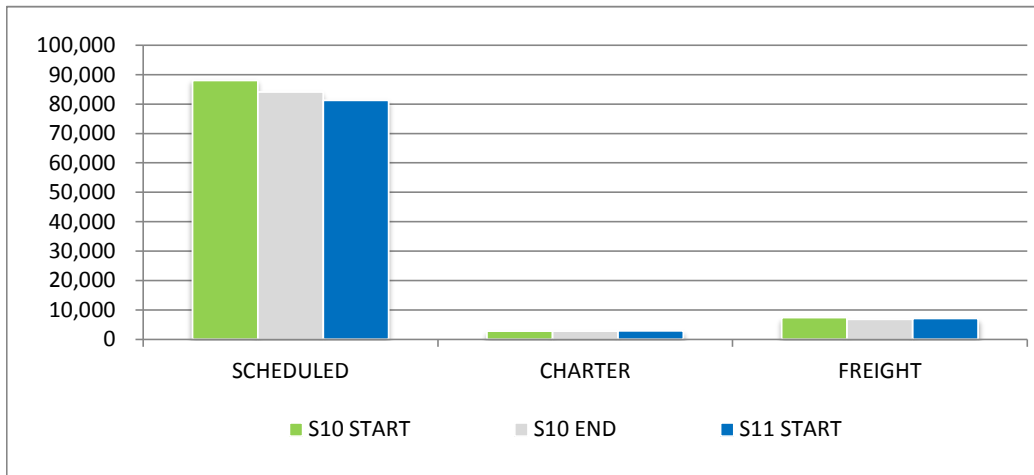


	S10 Start	S10 End	S11 Start	% CHANGE START- START	% CHANGE END - START
Domestic Sched.	9,052	8,754	8,168	-10.8%	-7.2%
Intl. Sched.	79,011	75,427	73,087	-8.1%	-3.2%
Intl Cht.	2,835	2,755	2,857	0.8%	3.6%
Freight	7,424	6,832	7,113	-4.4%	4.0%
TOTAL	98,322	93,768	91,225	-7.8%	-2.8%

NOTES:

ALL DATA IS SHOWN WITH REFERENCE TO THE S11 SCHEDULING SEASON, WHICH IS 31 WEEKS LONG.
ALL DATA HAS BEEN ADJUSTED ACCORDINGLY.

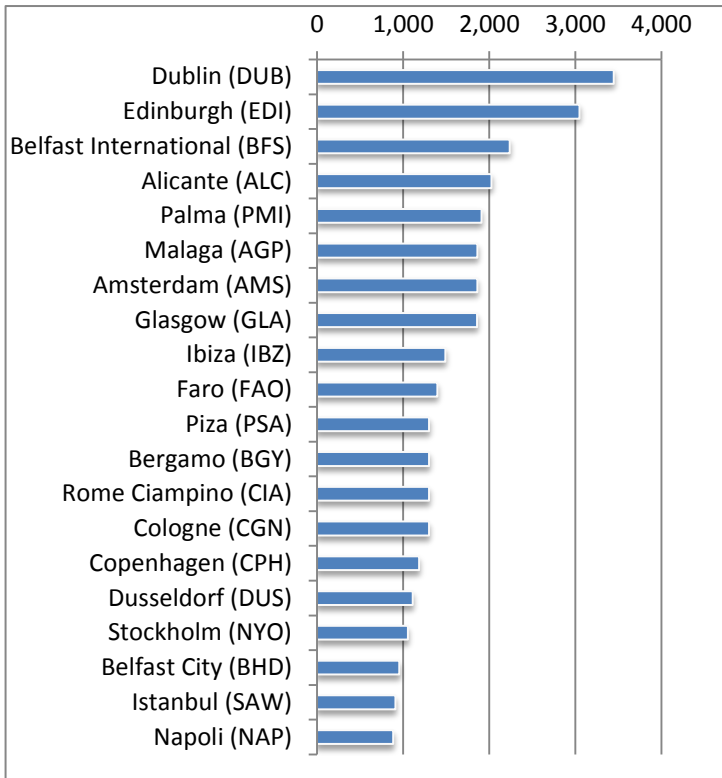
AIR TRANSPORT MOVEMENTS BY SERVICE TYPE



	S10 START	S10 END	S11 START	% CHANGE START- START	% CHANGE END - START
SCHEDULED	88,063	84,141	81,255	-8.4%	-3.6%
CHARTER	2,835	2,755	2,857	0.8%	3.6%
FREIGHT	7,424	6,832	7,113	-4.4%	4.0%
TOTAL	98,322	93,728	91,225	-7.8%	-2.7%

AIR TRANSPORT MOVEMENTS BY DESTINATION

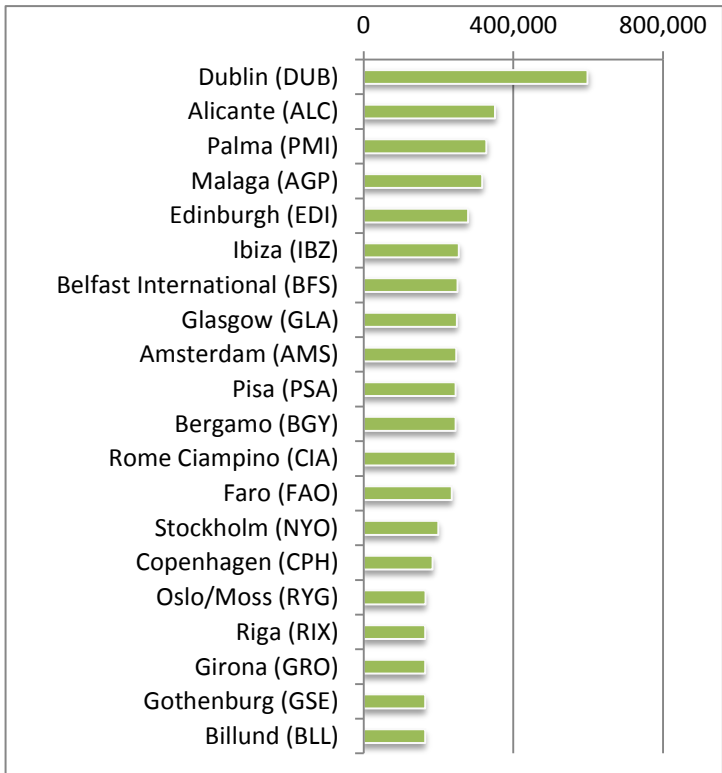
Total Allocated Movements For Season S11



Summer 2011	ATM'S
Dublin (DUB)	3,445
Edinburgh (EDI)	3,047
Belfast International (BFS)	2,237
Alicante (ALC)	2,026
Palma (PMI)	1,910
Malaga (AGP)	1,863
Amsterdam (AMS)	1,861
Glasgow (GLA)	1,860
Ibiza (IBZ)	1,490
Faro (FAO)	1,397
Piza (PSA)	1,302
Bergamo (BGY)	1,302
Rome Ciampino (CIA)	1,302
Cologne (CGN)	1,300
Copenhagen (CPH)	1,184
Dusseldorf (DUS)	1,112
Stockholm (NYO)	1,054
Belfast City (BHD)	956
Istanbul (SAW)	910
Napoli (NAP)	886

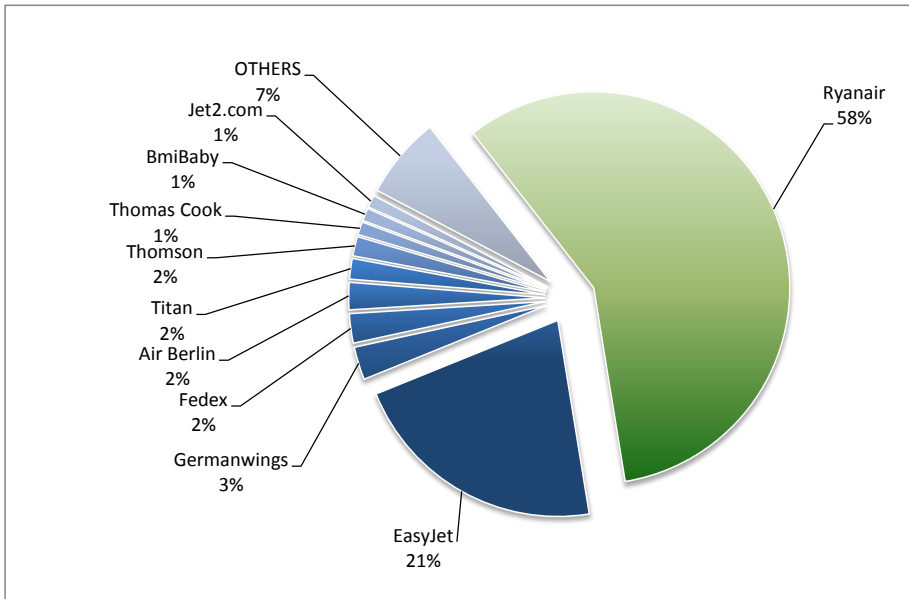
AIR TRANSPORT SEATS BY DESTINATION

Total Allocated Movements For Season S11



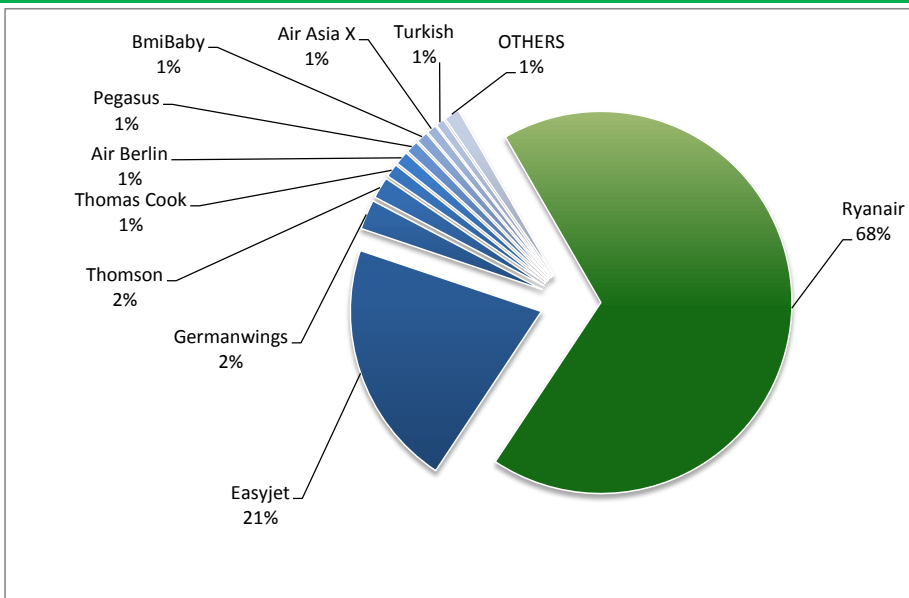
Summer 2011	SEATS
Dublin (DUB)	597,996
Alicante (ALC)	351,201
Palma (PMI)	328,302
Malaga (AGP)	316,530
Edinburgh (EDI)	278,976
Ibiza (IBZ)	254,616
Belfast International (BFS)	251,160
Glasgow (GLA)	249,480
Amsterdam (AMS)	247,800
Pisa (PSA)	246,078
Bergamo (BGY)	246,078
Rome Ciampino (CIA)	246,078
Faro (FAO)	235,298
Stockholm (NYO)	199,206
Copenhagen (CPH)	184,236
Oslo/Moss (RYG)	165,564
Riga (RIX)	164,052
Girona (GRO)	164,052
Gothenburg (GSE)	164,052
Billund (BLL)	164,052

TOP 10 AIRLINES - AIR TRANSPORT MOVEMENTS



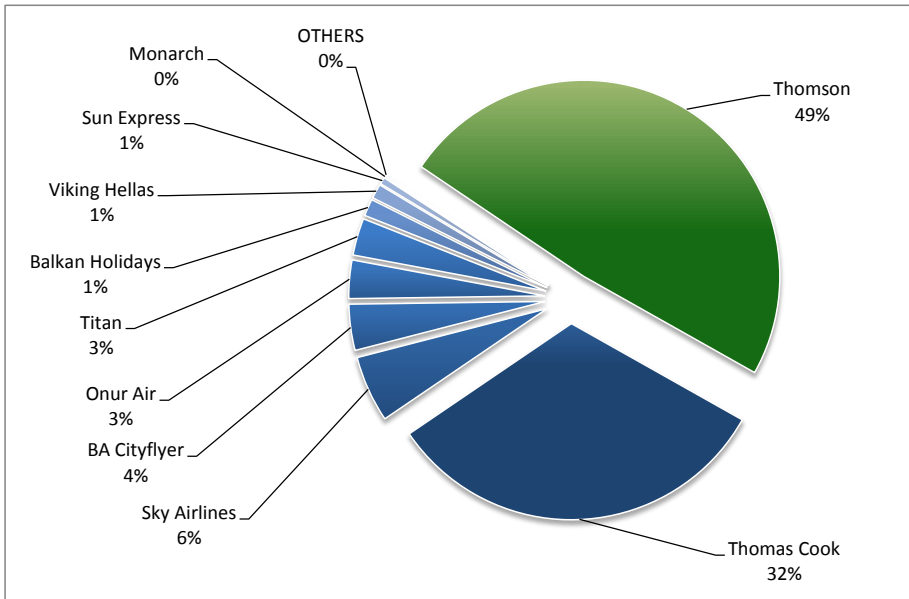
Aircraft	Movements
Ryanair	52,821
EasyJet	19,532
Germanwings	2,476
Fedex	2,211
Air Berlin	2,046
Titan	1,550
Thomson	1,455
Thomas Cook	974
BmiBaby	956
Jet2.com	930
OTHERS	6,139

TOP 10 AIRLINES BY SEATS



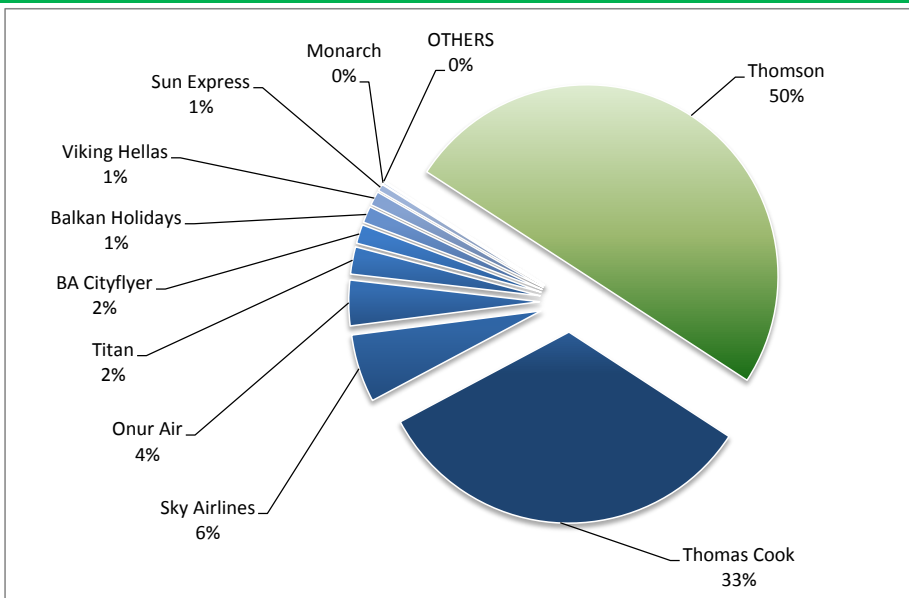
Aircraft	Seats
Ryanair	9,983,169
Easyjet	3,075,168
Germanwings	371,400
Thomson	268,164
Thomas Cook	169,264
Air Berlin	168,926
Pegasus	155,358
BmiBaby	141,488
Air Asia X	121,644
Turkish	107,226
OTHERS	193,861

TOP 10 CHARTER OPERATORS - AIR TRANSPORT MOVEMENTS



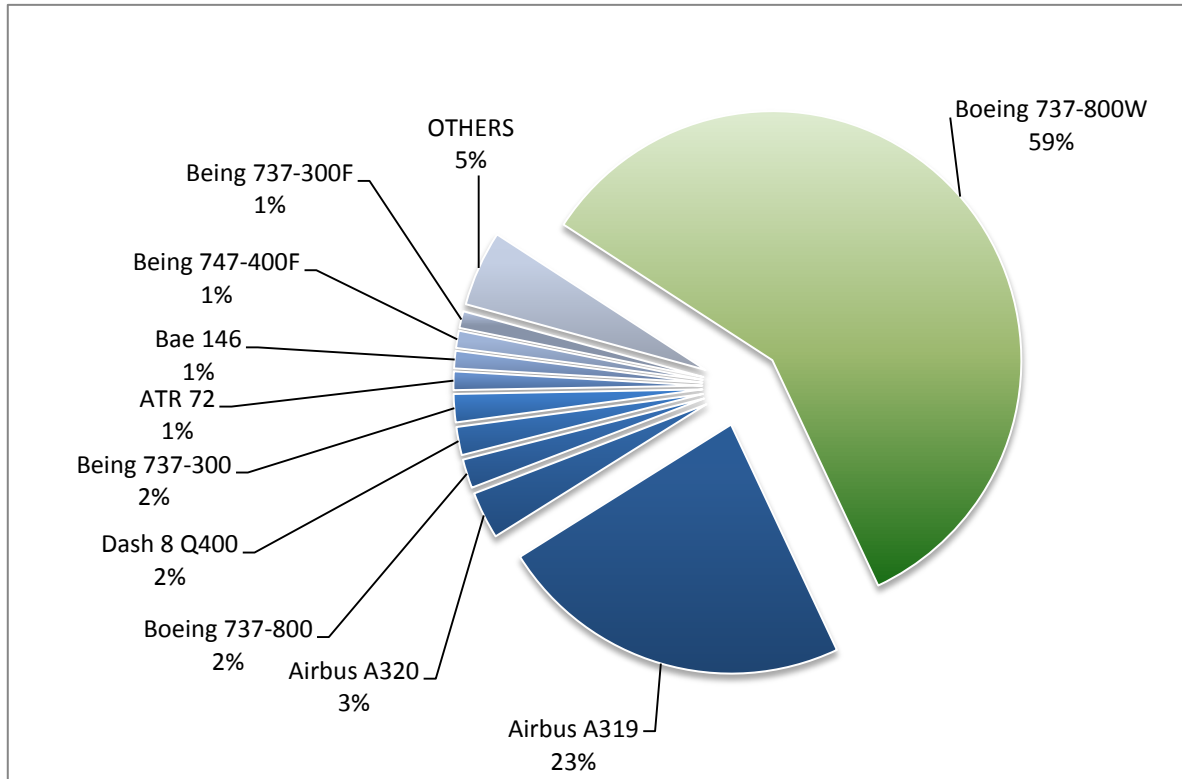
Aircraft	Movements
Thomson	1,386
Thomas Cook	920
Sky Airlines	156
BA Cityflyer	108
Onur Air	90
Titan	87
Balkan Holidays	40
Viking Hellas	34
Sun Express	16
Monarch	4
OTHERS	4

TOP 10 CHARTER OPERATORS BY SEATS



Aircraft	Seats
Thomson	256,446
Thomas Cook	169,264
Sky Airlines	29,484
Onur Air	19,710
Titan	11,852
BA Cityflyer	8,208
Balkan Holidays	7,080
Viking Hellas	6,120
Sun Express	3,024
Monarch	856
OTHERS	531

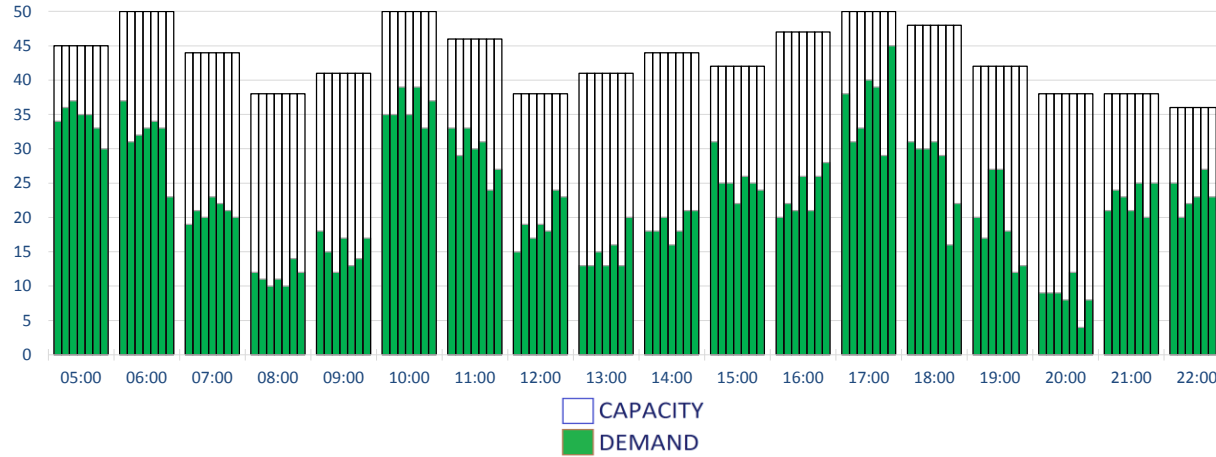
TOP 10 AIRCRAFT TYPES



Aircraft	Movements
Boeing 737-800W	53,600
Airbus A319	21,026
Airbus A320	2,797
Boeing 737-800	1,715
Dash 8 Q400	1,668
Boeing 737-300	1,666
ATR 72	1,100
Bae 146	1,032
Boeing 747-400F	1,023
Boeing 737-300F	994
OTHERS	4,469

RUNWAY MOVEMENT DEMAND - TOTALS

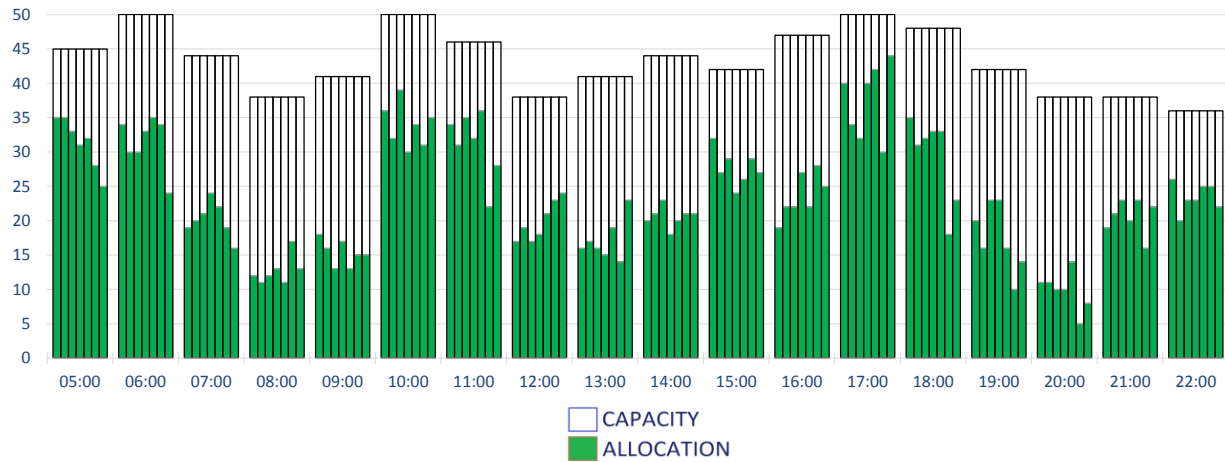
Peak Week Movements per Hour - All times UTC
Demand At Initial Submission



Hour	CAPACITY							DEMAND						
	Mon	Tue	Wed	Thu	Fri	Sat	Sun	Mon	Tue	Wed	Thu	Fri	Sat	Sun
05:00	45	45	45	45	45	45	45	34	36	37	35	35	33	30
06:00	50	50	50	50	50	50	50	37	31	32	33	34	33	23
07:00	44	44	44	44	44	44	44	19	21	20	23	22	21	20
08:00	38	38	38	38	38	38	38	12	11	10	11	10	14	12
09:00	41	41	41	41	41	41	41	18	15	12	17	13	14	17
10:00	50	50	50	50	50	50	50	35	35	39	35	39	33	37
11:00	46	46	46	46	46	46	46	33	29	33	30	31	24	27
12:00	38	38	38	38	38	38	38	15	19	17	19	18	24	23
13:00	41	41	41	41	41	41	41	13	13	15	13	16	13	20
14:00	44	44	44	44	44	44	44	18	18	20	16	18	21	21
15:00	42	42	42	42	42	42	42	31	25	25	22	26	25	24
16:00	47	47	47	47	47	47	47	20	22	21	26	21	26	28
17:00	50	50	50	50	50	50	50	38	31	33	40	39	29	45
18:00	48	48	48	48	48	48	48	31	30	30	31	29	16	22
19:00	42	42	42	42	42	42	42	20	17	27	27	18	12	13
20:00	38	38	38	38	38	38	38	9	9	9	8	12	4	8
21:00	38	38	38	38	38	38	38	21	24	23	21	25	20	25
22:00	36	36	36	36	36	36	36	25	20	22	23	27	23	21

RUNWAY MOVEMENT ALLOCATION - TOTALS

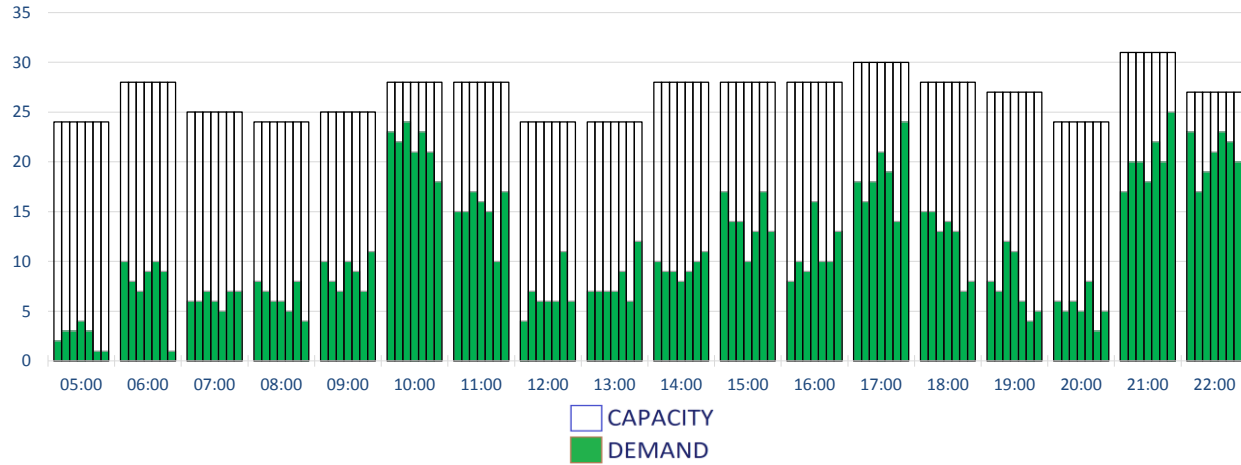
Peak Week Movements per Hour - All times UTC



Hour	CAPACITY							ALLOCATION						
	Mon	Tue	Wed	Thu	Fri	Sat	Sun	Mon	Tue	Wed	Thu	Fri	Sat	Sun
05:00	45	45	45	45	45	45	45	35	35	33	31	32	28	25
06:00	50	50	50	50	50	50	50	34	30	30	33	35	34	24
07:00	44	44	44	44	44	44	44	19	20	21	24	22	19	16
08:00	38	38	38	38	38	38	38	12	11	12	13	11	17	13
09:00	41	41	41	41	41	41	41	18	16	13	17	13	15	15
10:00	50	50	50	50	50	50	50	36	32	39	30	34	31	35
11:00	46	46	46	46	46	46	46	34	31	35	32	36	22	28
12:00	38	38	38	38	38	38	38	17	19	17	18	21	23	24
13:00	41	41	41	41	41	41	41	16	17	16	15	19	14	23
14:00	44	44	44	44	44	44	44	20	21	23	18	20	21	21
15:00	42	42	42	42	42	42	42	32	27	29	24	26	29	27
16:00	47	47	47	47	47	47	47	19	22	22	27	22	28	25
17:00	50	50	50	50	50	50	50	40	34	32	40	42	30	44
18:00	48	48	48	48	48	48	48	35	31	32	33	33	18	23
19:00	42	42	42	42	42	42	42	20	16	23	23	16	10	14
20:00	38	38	38	38	38	38	38	11	11	10	10	14	5	8
21:00	38	38	38	38	38	38	38	19	21	23	20	23	16	22
22:00	36	36	36	36	36	36	36	26	20	23	23	25	25	22

RUNWAY MOVEMENT DEMAND - ARRIVALS

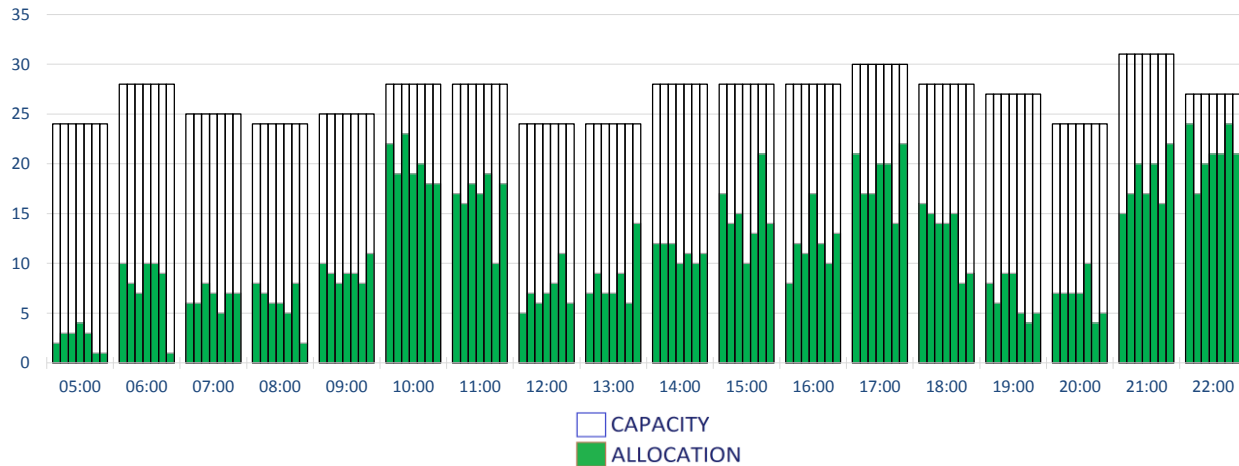
Peak Week Movements per Hour - All times UTC
Demand At Initial Submission



	CAPACITY							DEMAND						
	Mon	Tue	Wed	Thu	Fri	Sat	Sun	Mon	Tue	Wed	Thu	Fri	Sat	Sun
05:00	24	24	24	24	24	24	24	2	3	3	4	3	1	1
06:00	28	28	28	28	28	28	28	10	8	7	9	10	9	1
07:00	25	25	25	25	25	25	25	6	6	7	6	5	7	7
08:00	24	24	24	24	24	24	24	8	7	6	6	5	8	4
09:00	25	25	25	25	25	25	25	10	8	7	10	9	7	11
10:00	28	28	28	28	28	28	28	23	22	24	21	23	21	18
11:00	28	28	28	28	28	28	28	15	15	17	16	15	10	17
12:00	24	24	24	24	24	24	24	4	7	6	6	6	11	6
13:00	24	24	24	24	24	24	24	7	7	7	7	9	6	12
14:00	28	28	28	28	28	28	28	10	9	9	8	9	10	11
15:00	28	28	28	28	28	28	28	17	14	14	10	13	17	13
16:00	28	28	28	28	28	28	28	8	10	9	16	10	10	13
17:00	30	30	30	30	30	30	30	18	16	18	21	19	14	24
18:00	28	28	28	28	28	28	28	15	15	13	14	13	7	8
19:00	27	27	27	27	27	27	27	8	7	12	11	6	4	5
20:00	24	24	24	24	24	24	24	6	5	6	5	8	3	5
21:00	31	31	31	31	31	31	31	17	20	20	18	22	20	25
22:00	27	27	27	27	27	27	27	23	17	19	21	23	22	20

RUNWAY MOVEMENT ALLOCATION - ARRIVALS

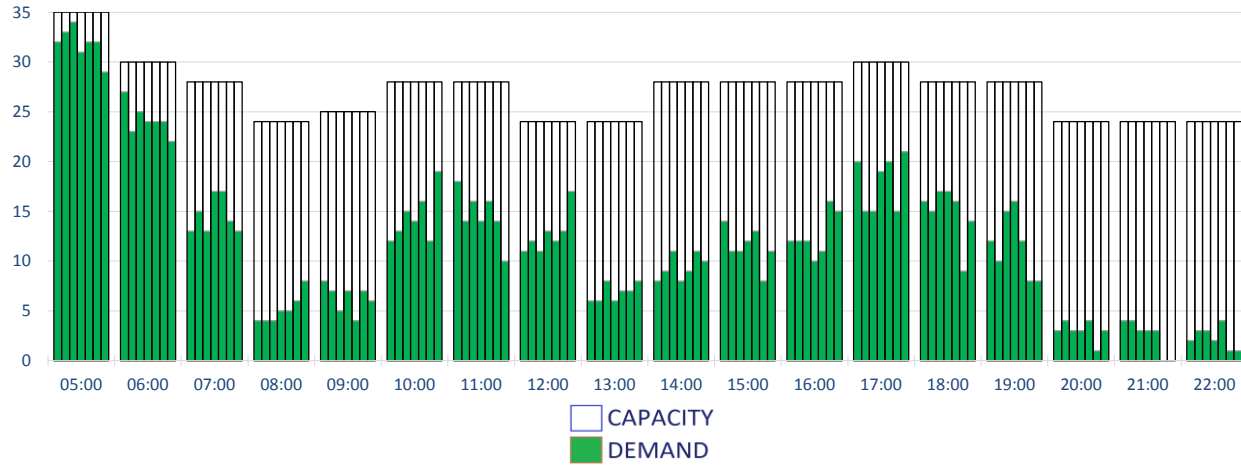
Peak Week Movements per Hour - All times UTC



	CAPACITY							ALLOCATION						
	Mon	Tue	Wed	Thu	Fri	Sat	Sun	Mon	Tue	Wed	Thu	Fri	Sat	Sun
05:00	24	24	24	24	24	24	24	2	3	3	4	3	1	1
06:00	28	28	28	28	28	28	28	10	8	7	10	10	9	1
07:00	25	25	25	25	25	25	25	6	6	8	7	5	7	7
08:00	24	24	24	24	24	24	24	8	7	6	6	5	8	2
09:00	25	25	25	25	25	25	25	10	9	8	9	9	8	11
10:00	28	28	28	28	28	28	28	22	19	23	19	20	18	18
11:00	28	28	28	28	28	28	28	17	16	18	17	19	10	18
12:00	24	24	24	24	24	24	24	5	7	6	7	8	11	6
13:00	24	24	24	24	24	24	24	7	9	7	7	9	6	14
14:00	28	28	28	28	28	28	28	12	12	12	10	11	10	11
15:00	28	28	28	28	28	28	28	17	14	15	10	13	21	14
16:00	28	28	28	28	28	28	28	8	12	11	17	12	10	13
17:00	30	30	30	30	30	30	30	21	17	17	20	20	14	22
18:00	28	28	28	28	28	28	28	16	15	14	14	15	8	9
19:00	27	27	27	27	27	27	27	8	6	9	9	5	4	5
20:00	24	24	24	24	24	24	24	7	7	7	7	10	4	5
21:00	31	31	31	31	31	31	31	15	17	20	17	20	16	22
22:00	27	27	27	27	27	27	27	24	17	20	21	21	24	21

RUNWAY MOVEMENT DEMAND - DEPARTURES

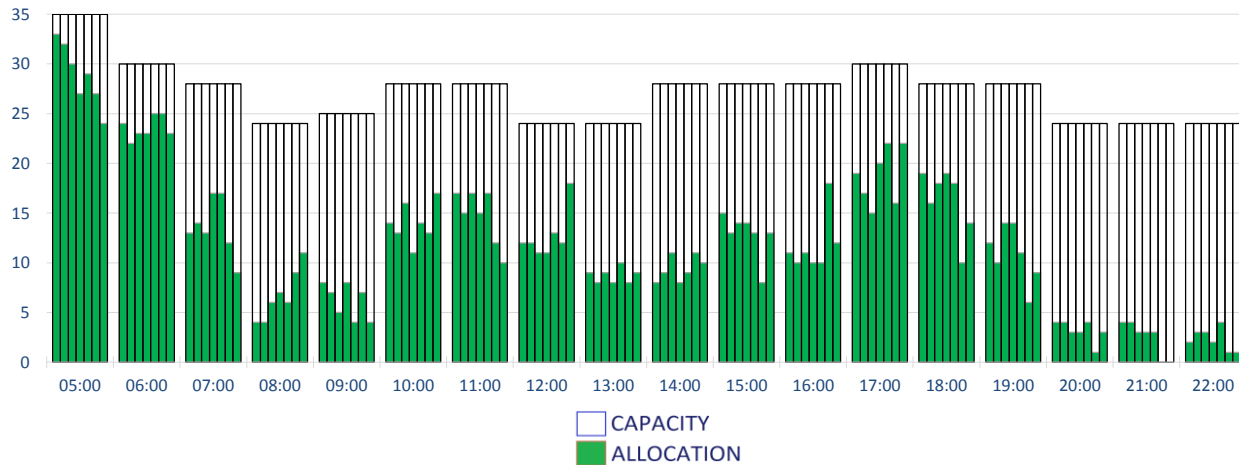
Peak Week Movements per Hour - All times UTC
Demand At Initial Submission



	CAPACITY							DEMAND						
	Mon	Tue	Wed	Thu	Fri	Sat	Sun	Mon	Tue	Wed	Thu	Fri	Sat	Sun
05:00	35	35	35	35	35	35	35	32	33	34	31	32	32	29
06:00	30	30	30	30	30	30	30	27	23	25	24	24	24	22
07:00	28	28	28	28	28	28	28	13	15	13	17	17	14	13
08:00	24	24	24	24	24	24	24	4	4	4	5	5	6	8
09:00	25	25	25	25	25	25	25	8	7	5	7	4	7	6
10:00	28	28	28	28	28	28	28	12	13	15	14	16	12	19
11:00	28	28	28	28	28	28	28	18	14	16	14	16	14	10
12:00	24	24	24	24	24	24	24	11	12	11	13	12	13	17
13:00	24	24	24	24	24	24	24	6	6	8	6	7	7	8
14:00	28	28	28	28	28	28	28	8	9	11	8	9	11	10
15:00	28	28	28	28	28	28	28	14	11	11	12	13	8	11
16:00	28	28	28	28	28	28	28	12	12	12	10	11	16	15
17:00	30	30	30	30	30	30	30	20	15	15	19	20	15	21
18:00	28	28	28	28	28	28	28	16	15	17	17	16	9	14
19:00	28	28	28	28	28	28	28	12	10	15	16	12	8	8
20:00	24	24	24	24	24	24	24	3	4	3	3	4	1	3
21:00	24	24	24	24	24	24	24	4	4	3	3	3	0	0
22:00	24	24	24	24	24	24	24	2	3	3	2	4	1	1

RUNWAY MOVEMENT ALLOCATION - DEPARTURES

Peak Week Movements per Hour - All times UTC

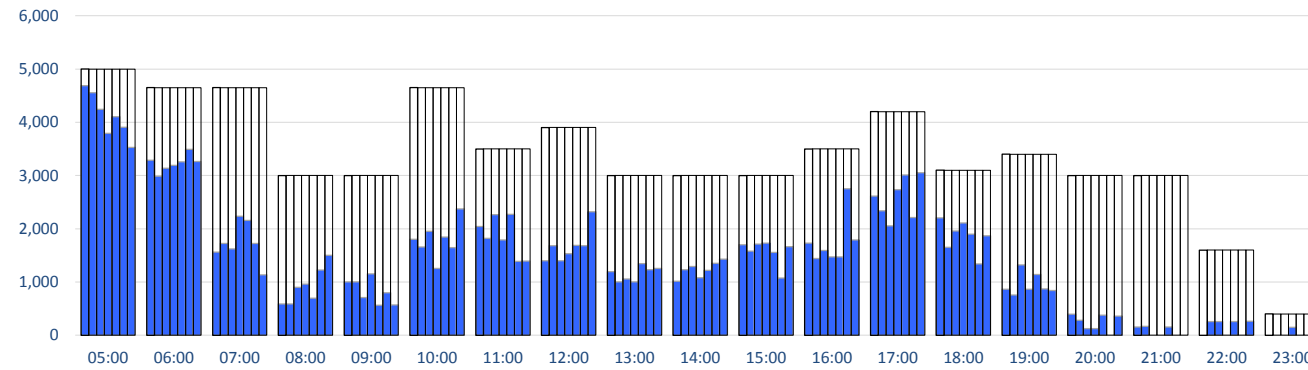


	CAPACITY							ALLOCATION						
	Mon	Tue	Wed	Thu	Fri	Sat	Sun	Mon	Tue	Wed	Thu	Fri	Sat	Sun
05:00	35	35	35	35	35	35	35	33	32	30	27	29	27	24
06:00	30	30	30	30	30	30	30	24	22	23	23	25	25	23
07:00	28	28	28	28	28	28	28	13	14	13	17	17	12	9
08:00	24	24	24	24	24	24	24	4	4	6	7	6	9	11
09:00	25	25	25	25	25	25	25	8	7	5	8	4	7	4
10:00	28	28	28	28	28	28	28	14	13	16	11	14	13	17
11:00	28	28	28	28	28	28	28	17	15	17	15	17	12	10
12:00	24	24	24	24	24	24	24	12	12	11	11	13	12	18
13:00	24	24	24	24	24	24	24	9	8	9	8	10	8	9
14:00	28	28	28	28	28	28	28	8	9	11	8	9	11	10
15:00	28	28	28	28	28	28	28	15	13	14	14	13	8	13
16:00	28	28	28	28	28	28	28	11	10	11	10	10	18	12
17:00	30	30	30	30	30	30	30	19	17	15	20	22	16	22
18:00	28	28	28	28	28	28	28	19	16	18	19	18	10	14
19:00	28	28	28	28	28	28	28	12	10	14	14	11	6	9
20:00	24	24	24	24	24	24	24	4	4	3	3	4	1	3
21:00	24	24	24	24	24	24	24	4	4	3	3	3	0	0
22:00	24	24	24	24	24	24	24	2	3	3	2	4	1	1

TOTAL TERMINAL DEPARTURES - INTERNATIONAL / DOMESTIC

Peak Week Passengers per Hour - All times UTC

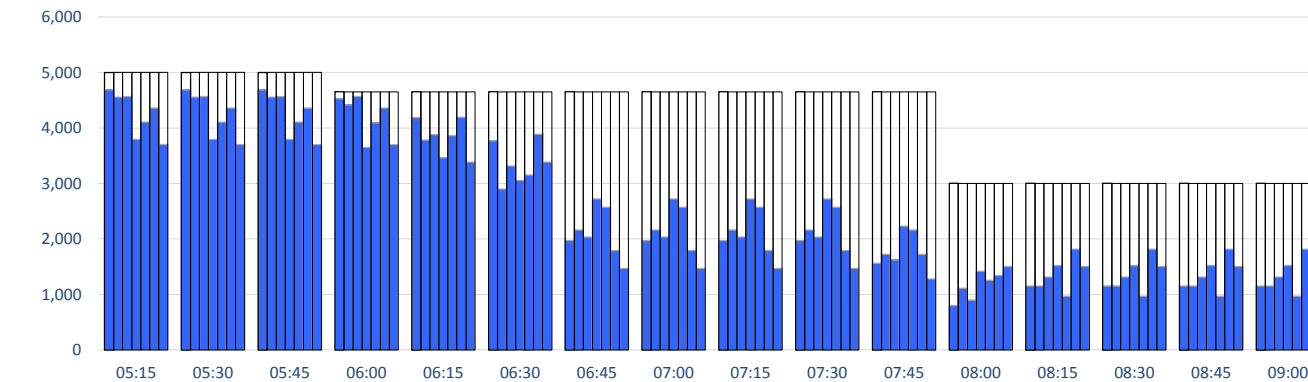
ALLOCATION



	ALLOCATION							Capacity
	Mon	Tue	Wed	Thu	Fri	Sat	Sun	LIMIT
05:00	4686	4556	4245	3794	4105	3907	3528	5000
06:00	3284	2988	3135	3192	3257	3490	3261	4650
07:00	1560	1724	1622	2232	2158	1722	1133	4650
08:00	588	588	899	958	697	1222	1501	3000
09:00	1004	1004	710	1151	563	798	571	3000
10:00	1803	1656	1950	1253	1841	1644	2375	4650
11:00	2041	1821	2262	1791	2272	1387	1390	3500
12:00	1396	1683	1396	1534	1690	1682	2316	3900
13:00	1196	1002	1059	1002	1345	1229	1252	3000
14:00	1015	1230	1289	1083	1217	1351	1430	3000
15:00	1702	1580	1712	1727	1555	1074	1662	3000
16:00	1727	1442	1592	1470	1470	2751	1791	3500
17:00	2614	2336	2054	2732	3012	2213	3054	4200
18:00	2203	1652	1959	2110	1896	1338	1867	3100
19:00	863	754	1321	863	1139	867	841	3400
20:00	395	279	122	122	378	0	359	3000
21:00	157	164	0	0	157	0	0	3000
22:00	0	255	255	0	255	0	262	1600
23:00	0	0	0	147	0	0	0	400

TOTAL TERMINAL DEPARTURES - INTERNATIONAL / DOMESTIC (EARLY MORNING PEAK)

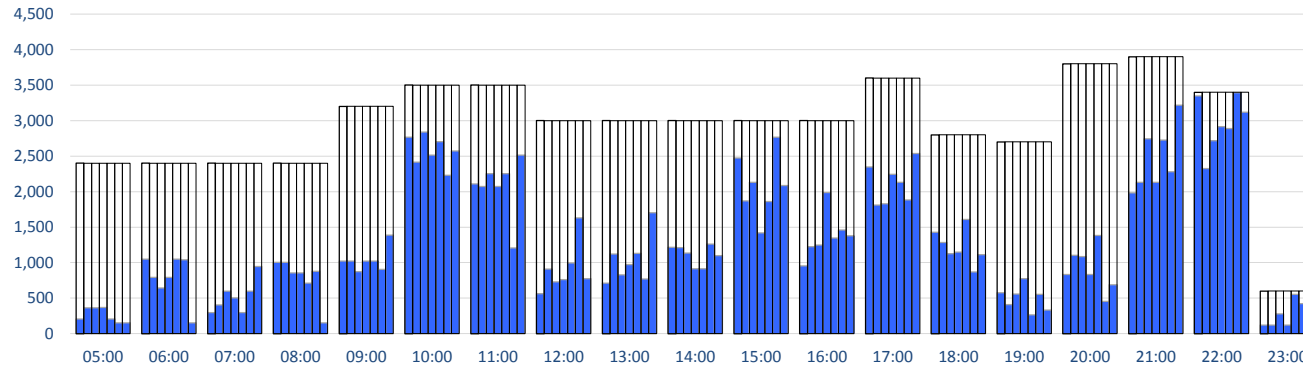
Peak Week Passengers per Hour - All times UTC



	ALLOCATION							Capacity
	Mon	Tue	Wed	Thu	Fri	Sat	Sun	LIMIT
05:15	4686	4556	4564	3794	4105	4360	3701	5000
05:30	4686	4556	4564	3794	4105	4360	3701	5000
05:45	4686	4556	4564	3794	4105	4360	3701	5000
06:00	4524	4417	4564	3647	4090	4360	3701	4650
06:15	4184	3781	3878	3462	3863	4192	3386	4650
06:30	3768	2899	3315	3056	3153	3885	3386	4650
06:45	1971	2163	2033	2718	2569	1790	1471	4650
07:00	1971	2163	2033	2718	2569	1790	1471	4650
07:15	1971	2163	2033	2718	2569	1790	1471	4650
07:30	1971	2163	2033	2718	2569	1790	1471	4650
07:45	1560	1724	1622	2232	2158	1722	1276	4650
08:00	801	1112	899	1416	1252	1340	1501	3000
08:15	1151	1151	1315	1521	966	1816	1501	3000
08:30	1151	1151	1315	1521	966	1816	1501	3000
08:45	1151	1151	1315	1521	966	1816	1501	3000
09:00	1151	1151	1315	1521	966	1816	1226	3000

TERMINAL 1 INTERNATIONAL - ARRIVALS

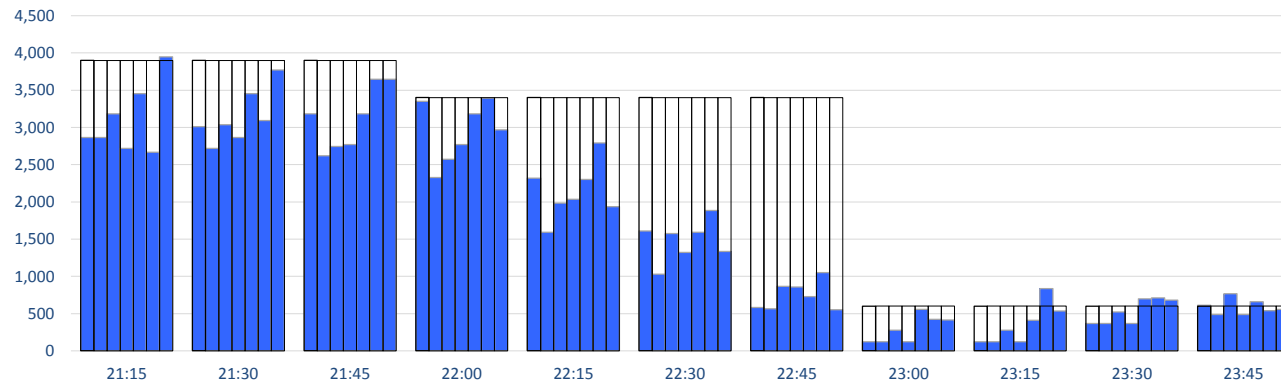
Peak Week Passengers per Hour - All times UTC
ALLOCATION



	ALLOCATION							Capacity
	Mon	Tue	Wed	Thu	Fri	Sat	Sun	LIMIT
05:00	206	363	363	370	206	151	151	2400
06:00	1051	792	645	792	1051	1038	151	2400
07:00	294	406	598	503	294	598	946	2400
08:00	1004	1004	857	857	710	880	151	2400
09:00	1022	1022	875	1022	1022	906	1386	3200
10:00	2766	2416	2840	2516	2703	2231	2572	3500
11:00	2108	2072	2255	2072	2255	1209	2516	3500
12:00	563	908	730	761	996	1630	772	3000
13:00	710	1121	827	974	1131	768	1701	3000
14:00	1218	1210	1135	916	916	1259	1098	3000
15:00	2476	1871	2130	1420	1861	2765	2088	3000
16:00	954	1223	1248	1985	1345	1458	1380	3000
17:00	2349	1811	1828	2244	2130	1885	2536	3600
18:00	1429	1282	1125	1150	1607	867	1113	2800
19:00	575	411	558	772	264	552	332	2700
20:00	832	1104	1087	832	1381	453	689	3800
21:00	1983	2130	2743	2130	2728	2282	3218	3900
22:00	3348	2327	2718	2915	2890	3395	3119	3400
23:00	122	122	279	122	555	422	414	600

TERMINAL 1 INTERNATIONAL - ARRIVALS (LATE EVENING PEAK)

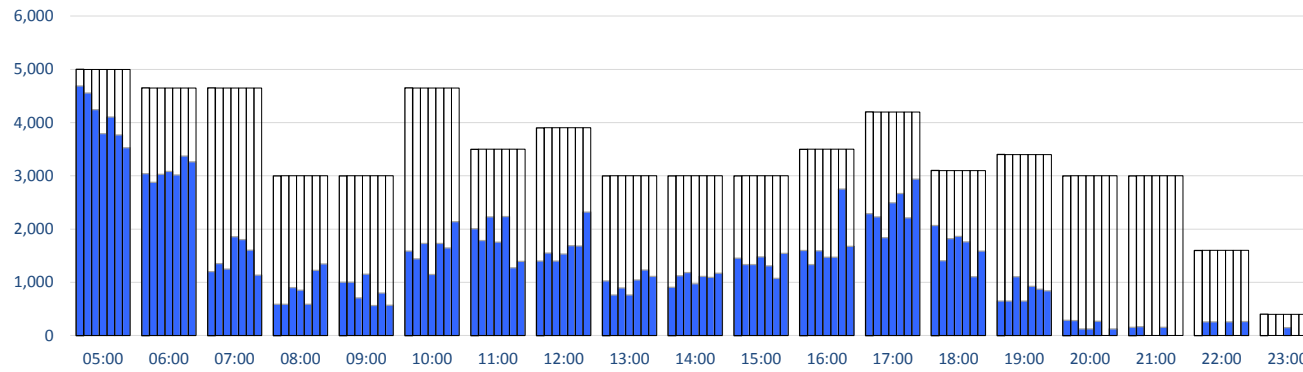
Peak Week Passengers per Hour - All times UTC



	ALLOCATION							Capacity
	Mon	Tue	Wed	Thu	Fri	Sat	Sun	LIMIT
21:15	2865	2865	3184	2718	3453	2666	3947	3900
21:30	3012	2718	3037	2865	3453	3093	3770	3900
21:45	3184	2621	2743	2768	3184	3645	3645	3900
22:00	3348	2327	2571	2768	3184	3395	2968	3400
22:15	2319	1592	1983	2033	2302	2791	1937	3400
22:30	1609	1029	1577	1323	1592	1885	1333	3400
22:45	580	563	867	857	727	1052	552	3400
23:00	122	122	279	122	555	422	414	600
23:15	122	122	279	122	408	836	536	600
23:30	366	366	523	366	697	711	680	600
23:45	610	488	767	488	658	539	555	600

TERMINAL 1 INTERNATIONAL - DEPARTURES

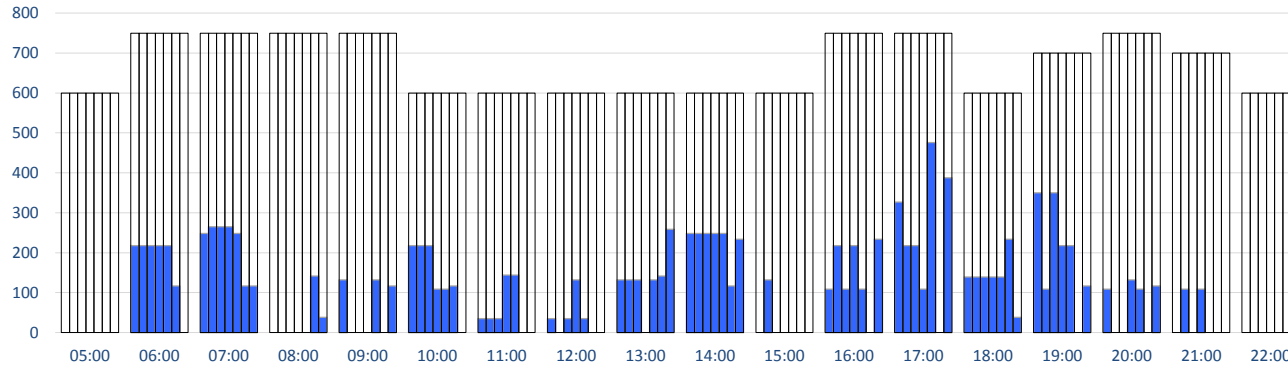
Peak Week Passengers per Hour - All times UTC
ALLOCATION



	ALLOCATION							Capacity
	Mon	Tue	Wed	Thu	Fri	Sat	Sun	LIMIT
05:00	4686	4556	4245	3794	4105	3765	3528	5000
06:00	3043	2879	3026	3083	3016	3373	3261	4650
07:00	1203	1350	1248	1858	1801	1605	1133	4650
08:00	588	588	899	849	588	1222	1346	3000
09:00	1004	1004	710	1151	563	798	571	3000
10:00	1585	1438	1732	1144	1732	1644	2141	4650
11:00	2006	1786	2227	1756	2237	1270	1390	3500
12:00	1396	1551	1396	1534	1690	1682	2316	3900
13:00	1029	761	892	761	1046	1229	1110	3000
14:00	906	1121	1180	974	1108	1092	1171	3000
15:00	1454	1332	1332	1479	1307	1074	1545	3000
16:00	1595	1333	1592	1470	1470	2751	1674	3500
17:00	2287	2227	1836	2491	2668	2213	2937	4200
18:00	2064	1404	1820	1862	1757	1104	1583	3100
19:00	645	645	1103	645	921	867	841	3400
20:00	286	279	122	122	269	0	125	3000
21:00	157	164	0	0	157	0	0	3000
22:00	0	255	255	0	255	0	262	1600
23:00	0	0	0	147	0	0	0	400

DOMESTIC TERMINAL ARRIVALS

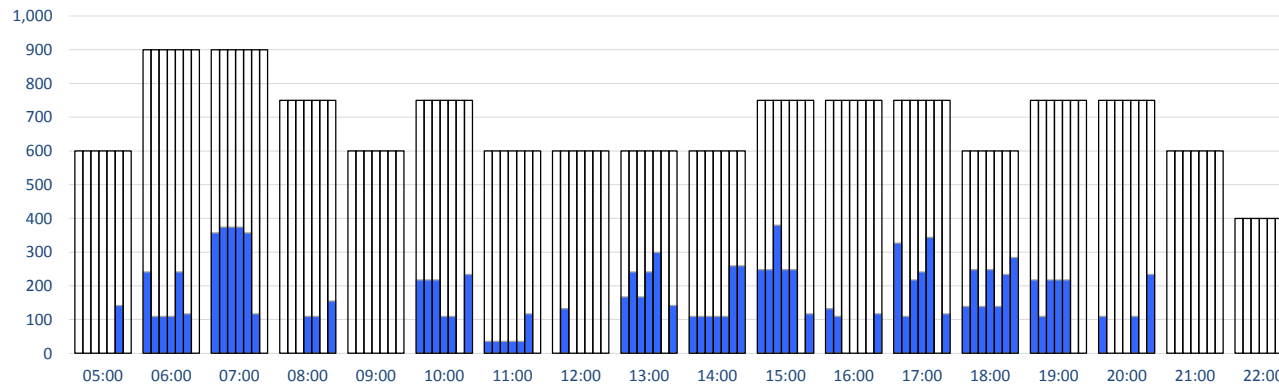
Peak Week Passengers per Hour - All times UTC
ALLOCATION



	ALLOCATION							Capacity
	Mon	Tue	Wed	Thu	Fri	Sat	Sun	LIMIT
05:00	0	0	0	0	0	0	0	600
06:00	218	218	218	218	218	117	0	750
07:00	248	265	265	265	248	117	117	750
08:00	0	0	0	0	0	142	38	750
09:00	132	0	0	0	132	0	117	750
10:00	218	218	218	109	109	117	0	600
11:00	35	35	35	144	144	0	0	600
12:00	35	0	35	132	35	0	0	600
13:00	132	132	132	0	132	142	259	600
14:00	248	248	248	248	248	117	234	600
15:00	0	132	0	0	0	0	0	600
16:00	109	218	109	218	109	0	234	750
17:00	327	218	218	109	476	0	388	750
18:00	139	139	139	139	139	234	38	600
19:00	350	109	350	218	218	0	117	700
20:00	109	0	0	132	109	0	117	750
21:00	0	109	0	109	0	0	0	700
22:00	0	0	0	0	0	0	0	600

DOMESTIC TERMINAL DEPARTURES

Peak Week Passengers per Hour - All times UTC



	ALLOCATION							Capacity
	Mon	Tue	Wed	Thu	Fri	Sat	Sun	LIMIT
05:00	0	0	0	0	0	142	0	600
06:00	241	109	109	109	241	117	0	900
07:00	357	374	374	374	357	117	0	900
08:00	0	0	0	109	109	0	155	750
09:00	0	0	0	0	0	0	0	600
10:00	218	218	218	109	109	0	234	750
11:00	35	35	35	35	35	117	0	600
12:00	0	132	0	0	0	0	0	600
13:00	167	241	167	241	299	0	142	600
14:00	109	109	109	109	109	259	259	600
15:00	248	248	380	248	248	0	117	750
16:00	132	109	0	0	0	0	117	750
17:00	327	109	218	241	344	0	117	750
18:00	139	248	139	248	139	234	284	600
19:00	218	109	218	218	218	0	0	750
20:00	109	0	0	0	109	0	234	750
21:00	0	0	0	0	0	0	0	600
22:00	0	0	0	0	0	0	0	400

GLOSSARY OF TERMS

Air Transport Movement (ATM)	A scheduled or charter passenger or freight aircraft movement.
Allocation	The allocation of slots such that demand is constrained to fit within declared scheduling limits.
Common Travel Area (CTA)	Services to or from the Republic of Ireland and the Channel Islands.
Demand	The unconstrained demand for slots, prior to any schedule adjustments.
Passenger ATM	A scheduled or charter <u>passenger</u> aircraft movement (ie, excluding all-cargo aircraft movements).
Scheduling Limits	Limiting parameters declared by the Airport Operator used in the coordination process.
Seats	The number of seats based on the aircraft configuration advised by the airline.
Peak Week	The Peak Week for S11 is Week 21 (22-28 AUGUST 2011)
Data Snapshot	All data used for this report was as held 17 March 2011

GUIDE TO HISTOGRAMS

The histograms show the pattern of traffic by time of day against the appropriate scheduling limit. Each time period consist of seven columns representing the days-of-week, Monday through Sunday.