

London Luton

LTN

Summer 2012

START OF SEASON REPORT

KEY STATISTICS	Summer 2012	Change From Summer 2011
Air Transport Movements	47,874	3.5%
Passenger Air Transport Movements Allocated	46,146	2.1%
Total Seats	8,001,719	3.3%
Seats per Passenger ATM	171	0.0%

CONTENTS	Page
Summary of Changes	2-3
Scheduling Limits	4
ATM's by Service type / Seats by Terminal	5
Seats Per ATM	6
Top 10 Airlines by Movements, Seats / Top 10 Aircraft by Seats	7
Scheduled Movements and Seats by Destination	8
Charter Movements and Seats by Destination	9
Peak Week Runway Allocations	10
Peak Week Terminal Allocations	11-12
Glossary	13

Data in this report is current as of: 22 March 2012

No warranty whether expressed or implied as to the completeness, accuracy, fitness for purpose, or satisfactory quality is given by ACL regarding the information in this report, which is provided by third parties. Accordingly, ACL excludes all liability with regard to such data.

OPERATOR		AIRPORT		S11		S12		SEATS +/-	ATMS +/-
				SEATS	ATMS	SEATS	ATMS		
MNB	MNG CARGO AIRLINES	IST	Istanbul/Ataturk	0	175	0	184	0	9
MNB Total				0	177	0	184	0	7
RE	AER ARANN	GWY	Galway/Carnmore	18,624	264	0	0	-18,624	-264
		WAT	Waterford	9,444	190	0	0	-9,444	-190
RE Total				28,068	454	0	0	-28,068	-454
TOM	Thomson Airways	ACE	Lanzarote	14,446	62	12,510	62	-1,936	0
		AGP	Malaga	21,333	101	19,979	95	-1,354	-6
		AYT	Antalya	18,900	100	11,883	51	-7,017	-49
		BJV	Bodrum./Milas Airport	9,450	50	11,883	51	2,433	1
		BOJ	Bourgas	7,182	38	7,938	42	756	4
		CFU	Kerkyra/I. Kapodistrias	9,828	52	9,828	52	0	0
		DLM	Dalaman	35,225	161	32,442	150	-2,783	-11
		EFL	Kefallinia/Argostolon	8,694	46	8,505	45	-189	-1
		EGC	Bergerac/Roumanieres	0	0	92	1	92	1
		FAO	Faro	19,278	102	18,711	99	-567	-3
		FNC	FUNCHAL	11,459	59	11,151	59	-308	0
		FUE	Fuerteventura	11,270	58	11,151	59	-119	1
		HER	Heraklion/N. Kazantzakis Apt.	9,639	51	9,261	49	-378	-2
		IBZ	Ibiza	19,089	101	18,900	100	-189	-1
		LCA	Larnaca	9,450	50	9,639	51	189	1
		LPA	Las Palmas/Arpt De Gran Canaria	11,780	60	11,679	59	-101	-1
		LYS	Lyon	466	2	0	0	-466	-2
		MAD	Madrid/Barajas	378	2	0	0	-378	-2
		MAH	Menorca	19,210	90	21,522	102	2,312	12
		MIR	Monastir/Habib Bourguiba Int'l	2,097	9	0	0	-2,097	-9
		NBE	Enfidha/ Zine El Abidine Ben Ali	9,828	52	13,747	59	3,919	7
		PFO	Paphos/International	23,456	112	25,949	121	2,493	9
		PMI	Palma Mallorca	56,136	260	56,525	273	389	13
		REU	Reus	9,450	50	9,639	51	189	1
		RHO	Rhodes/Diagoras Airport	11,650	50	11,883	51	233	1
		SKG	Thessaloniki/Makedonia Apt.	8,127	43	7,749	41	-378	-2
		SSH	Sharm El Sheikh/Ophira	16,931	79	13,292	68	-3,639	-11
		TFS	Tenerife/Sur Reina Sofia	14,804	76	23,876	124	9,072	48
		TLV	Tel Aviv Yafo/Ben Gurion Intl	1,367	7	888	4	-479	-3
		TXL	Berlin/Tegel	0	0	296	2	296	2
		VDA	Ovda	655	3	699	3	44	0
		ZTH	Zakynthos Is	9,874	52	9,639	51	-235	-1
TOM Total				401,904	1,989	401,445	1,976	-459	-13
W6	WIZZ AIR	ARW	Arad	0	0	77,580	431	77,580	431
		BBU	Bucharest/Baneasa	152,280	846	39,060	217	-113,220	-629
		BEG	Belgrade/Beograd	44,640	248	44,640	248	0	0
		BOJ	Bourgas	56,520	314	56,880	316	360	2
		BRQ	Brno	44,640	248	44,640	248	0	0
		BUD	Budapest/Ferihegy	234,900	1,305	229,320	1,274	-5,580	-31
		CLJ	Cluj-Napoca, Romania	63,180	351	66,960	372	3,780	21
		CND	Constanta/Kogalniceanu	0	0	78,120	434	78,120	434
		DBV	Dubrovnik	13,320	74	0	0	-13,320	-74
		DEB	Debrecen	0	0	20,160	112	20,160	112
		GDN	Gdansk/Rebiechowo	156,600	870	156,240	868	-360	-2
		IEV	Kiev	34,920	194	38,880	216	3,960	22
		KTW	Katowice/Pyrzowice	156,600	870	156,240	868	-360	-2
		LJL	Lodz Lublinek	7,740	43	33,480	186	25,740	143
		OTP	Bucharest/Otopeni International	0	0	117,180	651	117,180	651
		POZ	Poznan/Lawica	73,080	406	73,800	410	720	4
		PRG	Prague/Ruzyně	128,520	714	155,880	866	27,360	152
		RIX	Riga	56,160	312	75,240	418	19,080	106
		SKP	Skopje	24,480	136	31,320	174	6,840	38
		SOF	Sofia/Vrazhdebna	78,300	435	78,120	434	-180	-1
		SPU	Split	17,640	98	19,440	108	1,800	10
		TGM	Targu Mures International Airport	41,760	232	44,640	248	2,880	16
		TSR	Timisoara	33,480	186	39,960	222	6,480	36
		VAR	Varna	29,880	166	31,680	176	1,800	10
		VNO	Vilnius	50,400	280	95,040	528	44,640	248
		WAW	Warsaw/Okecie	233,820	1,299	145,980	811	-87,840	-488
		WMI		0	0	131,220	729	131,220	729
		WRO	Wroclaw/Strachowice	55,800	310	55,800	310	0	0
W6 Total				1,788,660	9,937	2,137,500	11,875	348,840	1,938
ZB	MONARCH AIRLINES Ltd	ACE	Lanzarote	36,284	186	14,052	78	-22,232	-108
		AGP	Malaga	91,345	475	48,252	258	-43,093	-217
		ALC	Alicante	70,178	367	73,520	360	3,342	-7
		BJV	Bodrum./Milas Airport	26,352	148	38,656	184	12,304	36
		CFU	Kerkyra/I. Kapodistrias	15,044	86	22,640	120	7,596	34
		DLM	Dalaman	37,848	212	60,384	296	22,536	84
		FAO	Faro	75,912	388	60,128	312	-15,784	-76
		FCO	Rome/Fiumicino	0	0	46,032	248	46,032	248
		GIB	Gibraltar/North Front	103,784	576	57,420	330	-46,364	-246
		LCA	Larnaca	78,734	401	46,346	239	-32,388	-162
		MAH	Menorca	34,602	163	35,096	164	494	1
		PMI	Palma Mallorca	71,140	335	64,544	336	-6,596	1
		TFS	Tenerife/Sur Reina Sofia	97,764	486	53,132	258	-44,632	-228
ZB Total				739,430	3,825	620,202	3,183	-119,228	-642

RUNWAY SCHEDULING LIMITS

Movements per Hour (R60) - All times UTC

MONDAY - SUNDAY	ARRIVALS																						CHANGE	
	SEASON	05:00	06:00	07:00	08:00	09:00	10:00	11:00	12:00	13:00	14:00	15:00	16:00	17:00	18:00	19:00	20:00	21:00	22:00	Ave	Total			
	Summer 2011	22	30	30	30	23	27	30	27	30	30	30	23	23	30	30	30	23	14	26.8	482			
	Capacity Change	1	2	2	-7	7	3	-7	3	0	0	-7	0	7	0	0	-7	0	0					
	Summer 2012	23	32	32	23	30	30	23	30	30	30	23	23	30	30	30	23	14	26.6	479				
	DEPARTURES																						Ave	Total
	SEASON	05:00	06:00	07:00	08:00	09:00	10:00	11:00	12:00	13:00	14:00	15:00	16:00	17:00	18:00	19:00	20:00	21:00	22:00					
	Summer 2011	19	19	19	19	14	17	19	17	19	19	19	14	14	19	19	19	14	14	17.4	313			
	Capacity Change	0	5	5	-5	5	2	-5	2	0	0	-5	0	5	0	0	-5	0	0					
	Summer 2012	19	24	24	14	19	19	14	19	19	19	14	14	19	19	19	14	14	17.6	317				
TOTALS																						Ave	Total	
SEASON	05:00	06:00	07:00	08:00	09:00	10:00	11:00	12:00	13:00	14:00	15:00	16:00	17:00	18:00	19:00	20:00	21:00	22:00						
Summer 2011	22	30	30	30	23	27	30	27	30	30	30	23	23	30	30	30	23	14	26.8	482				
Capacity Change	3	6	6	-7	7	3	-7	3	0	0	-7	0	7	0	0	-7	0	0						
Summer 2012	25	36	36	23	30	30	23	30	30	30	23	23	30	30	30	23	14	27.2	489					

RUNWAY SCHEDULING LIMITS - Segmented Hour

MON-SUN	CAPACITY IN EACH 15 MINUTE PERIOD OF EACH OF THE HOURS:																		
	SEASON	0500	0600	0700	0800	0900	1000	1100	1200	1300	1400	1500	1600	1700	1800	1900	2000	2100	2200
	ARRIVALS	9	9	9	9	9	9	9	9	9	9	9	9	9	9	9	9	9	4
	DEPARTURES	6	6	6	6	6	6	6	6	6	6	6	6	6	6	6	6	6	4
	TOTALS	9	10	10	9	9	9	9	9	9	9	9	9	9	9	9	9	9	4

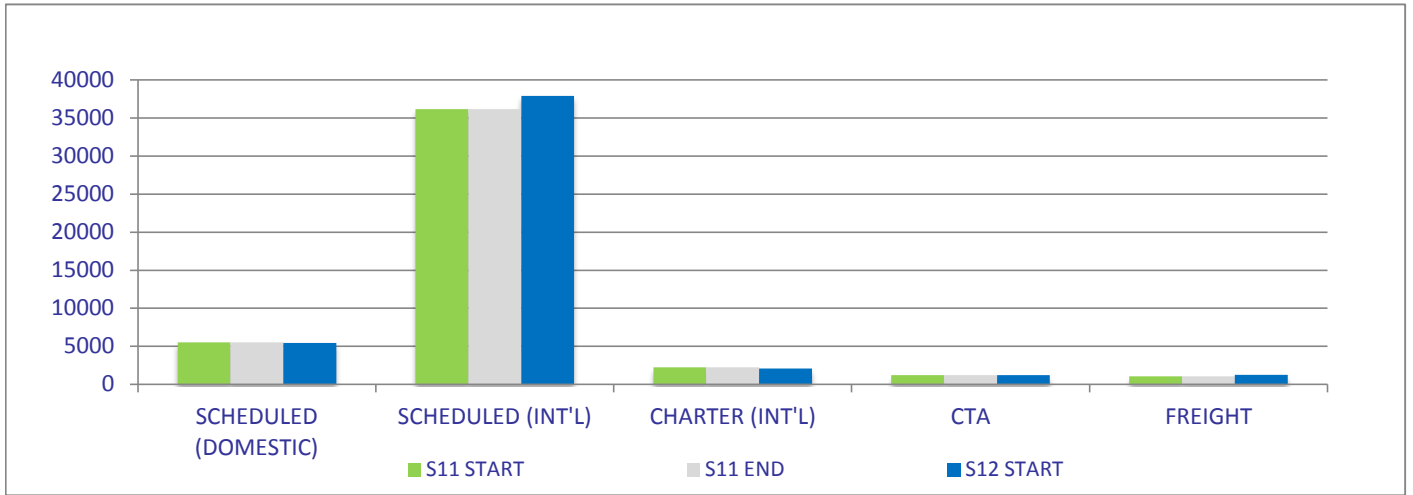
TERMINAL SCHEDULING LIMITS

Passengers per Hour (T60)

TERMINAL 1	ARRS	DEPS
DOMESTIC	600	
INTERNATIONAL	2170	
COMBINED		2840 (max)

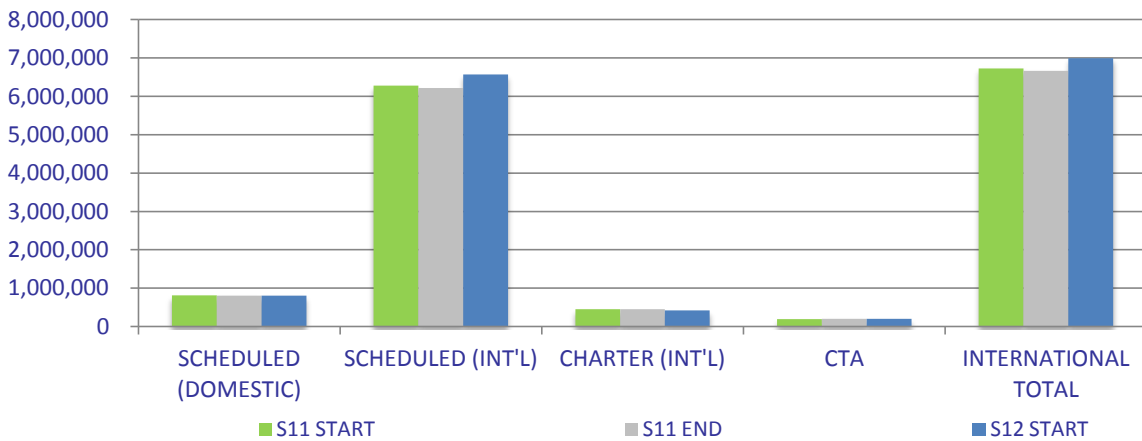
Other Restrictions

AIR TRANSPORT MOVEMENTS BY SERVICE TYPE



	S11 START	S11 END	S12 START	% CHANGE START- START	% CHANGE END - START
SCHEDULED (DOMESTIC)	5505	5505	5432	-1.3%	-1.3%
SCHEDULED (INT'L)	36167	36172	37904	4.8%	4.8%
CHARTER (INT'L)	2245	2246	2090	-6.9%	-6.9%
CTA	1228	1228	1210	-1.5%	-1.5%
FREIGHT	1057	1057	1238	17.1%	17.1%
TOTAL	46,202	46,208	47,874	3.6%	3.6%

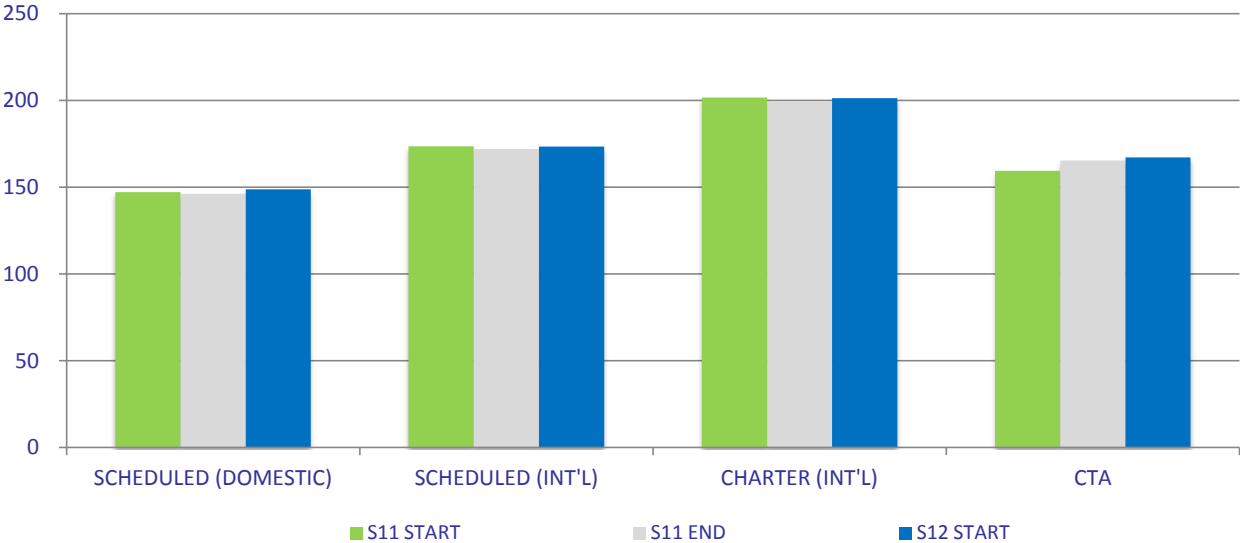
TOTAL SEATS BY TERMINAL



	S11 START	S11 END	S12 START	% CHANGE START- START	% CHANGE END - START
SCHEDULED (DOMESTIC)	810,150	804,643	807,852	-0.3%	0.4%
SCHEDULED (INT'L)	6,276,677	6,218,451	6,570,649	4.7%	5.7%
CHARTER (INT'L)	452,646	448,346	420,894	-7.0%	-6.1%
CTA	195,894	203,012	202,324	3.3%	-0.3%
INTERNATIONAL TOTAL	6,729,323	6,666,544	6,991,543	3.9%	4.9%
TOTAL	7,735,367	7,674,452	8,001,719	3.4%	4.3%

148.72091

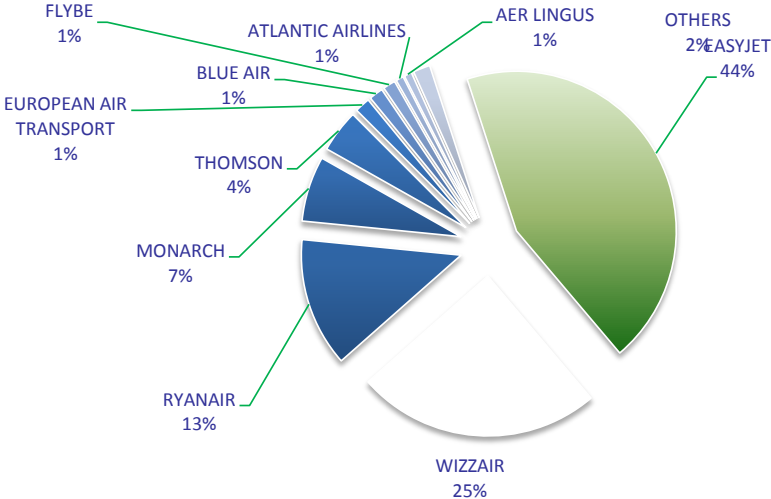
SEATS PER AIR TRANSPORT MOVEMENT



	S11 START	S11 END	S12 START	% CHANGE START- START	% CHANGE END - START
SCHEDULED (DOMESTIC)	147	146	149	1.1%	1.7%
SCHEDULED (INT'L)	174	172	173	-0.1%	0.8%
CHARTER (INT'L)	202	200	201	-0.1%	0.9%
CTA	160	165	167	4.8%	1.1%
TOTAL SEATS PER PASSENGER ATM	171	170	171	0.0%	0.6%

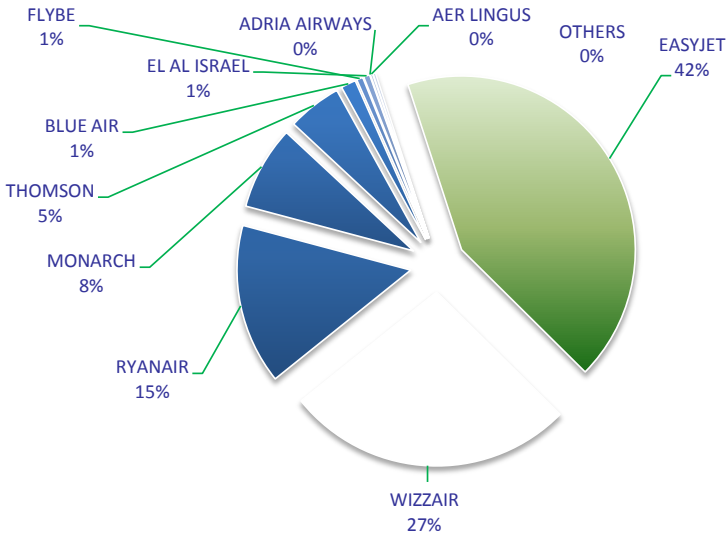
NOTES:
ALL DATA IS SHOWN WITH REFERENCE TO THE S12 SCHEDULING SEASON, WHICH IS 31 WEEKS LONG.

TOP 10 AIRLINES - BY AIR TRANSPORT MOVEMENTS



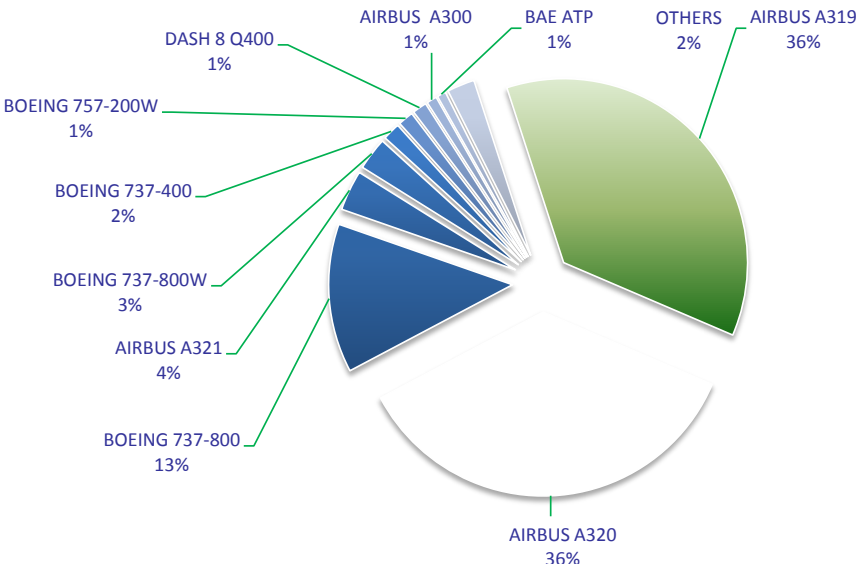
AIRLINE	MOVEMENTS
EASYJET	21085
WIZZAIR	11875
RYANAIR	6288
MONARCH	3183
THOMSON	2083
EUROPEAN AIR TRANSPORT	745
BLUE AIR	682
FLYBE	606
ATLANTIC AIRLINES	373
AER LINGUS	372
OTHERS	828

TOP 10 AIRLINES - BY SEATS



AIRLINE	SEATS
EASYJET	3379800
WIZZAIR	2137500
RYANAIR	1188432
MONARCH	620202
THOMSON	401445
BLUE AIR	111104
FLYBE	47268
EL AL ISRAEL	45912
ADRIA AIRWAYS	18
AER LINGUS	17856
OTHERS	19,523

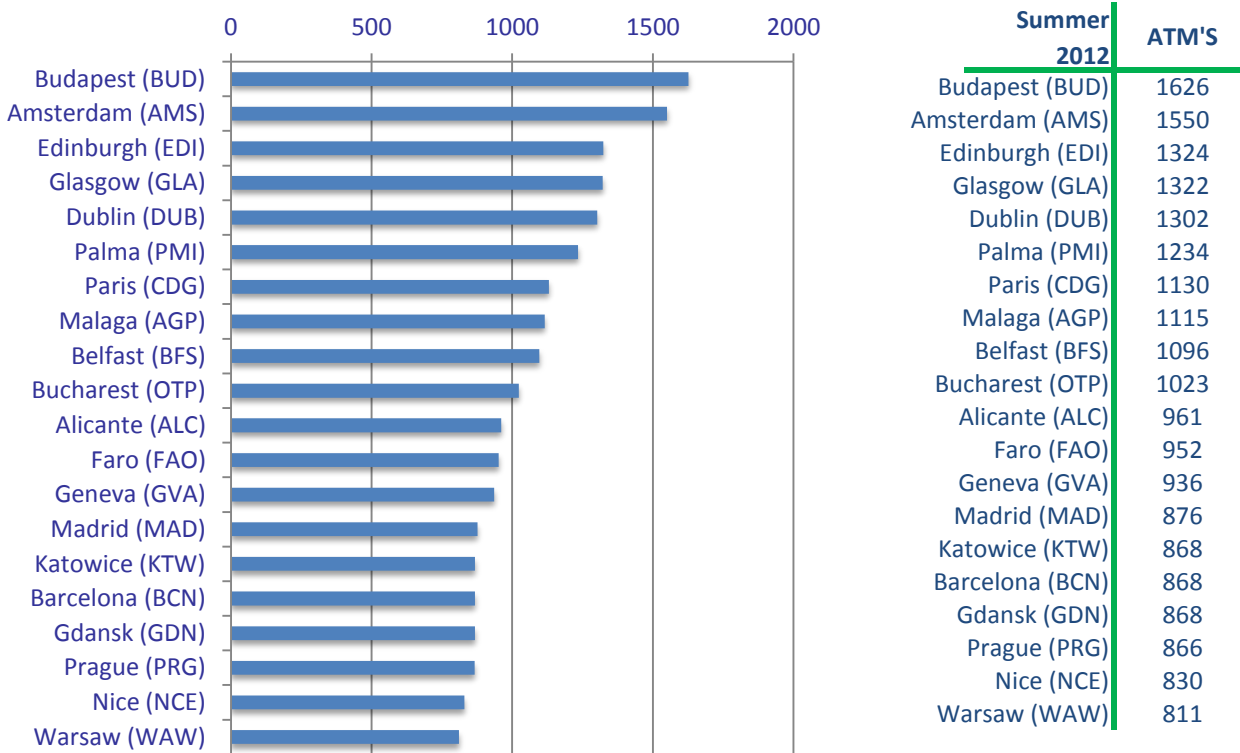
TOP 10 AIRCRAFT TYPES - BY AIR TRANSPORT MOVEMENTS



AIRCRAFT	MOVEMENTS
AIRBUS A319	17534
AIRBUS A320	17235
BOEING 737-800	6294
AIRBUS A321	1706
BOEING 737-800W	1379
BOEING 737-400	744
BOEING 757-200W	651
DASH 8 Q400	606
AIRBUS A300	434
BAE ATP	373
OTHERS	1,164

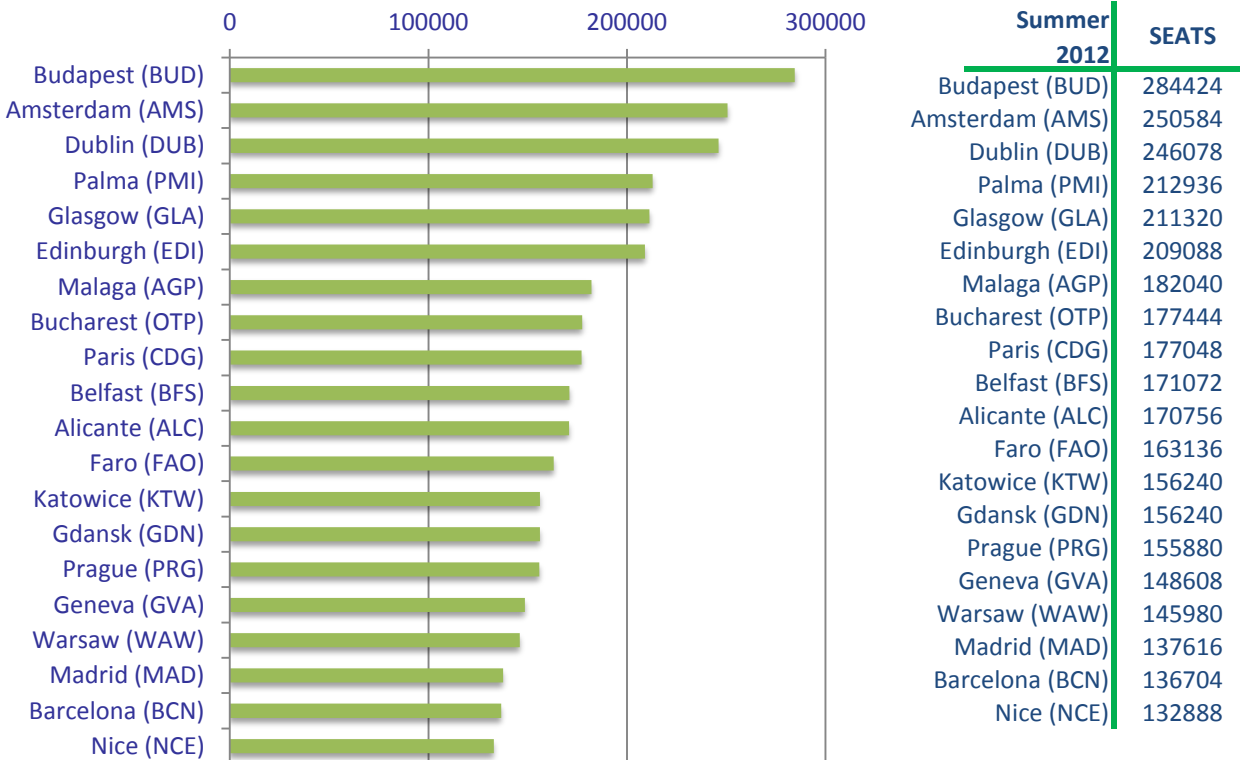
SCHELUED AIR TRANSPORT MOVEMENTS BY DESTINATION

Total Allocated Movements for Season S12



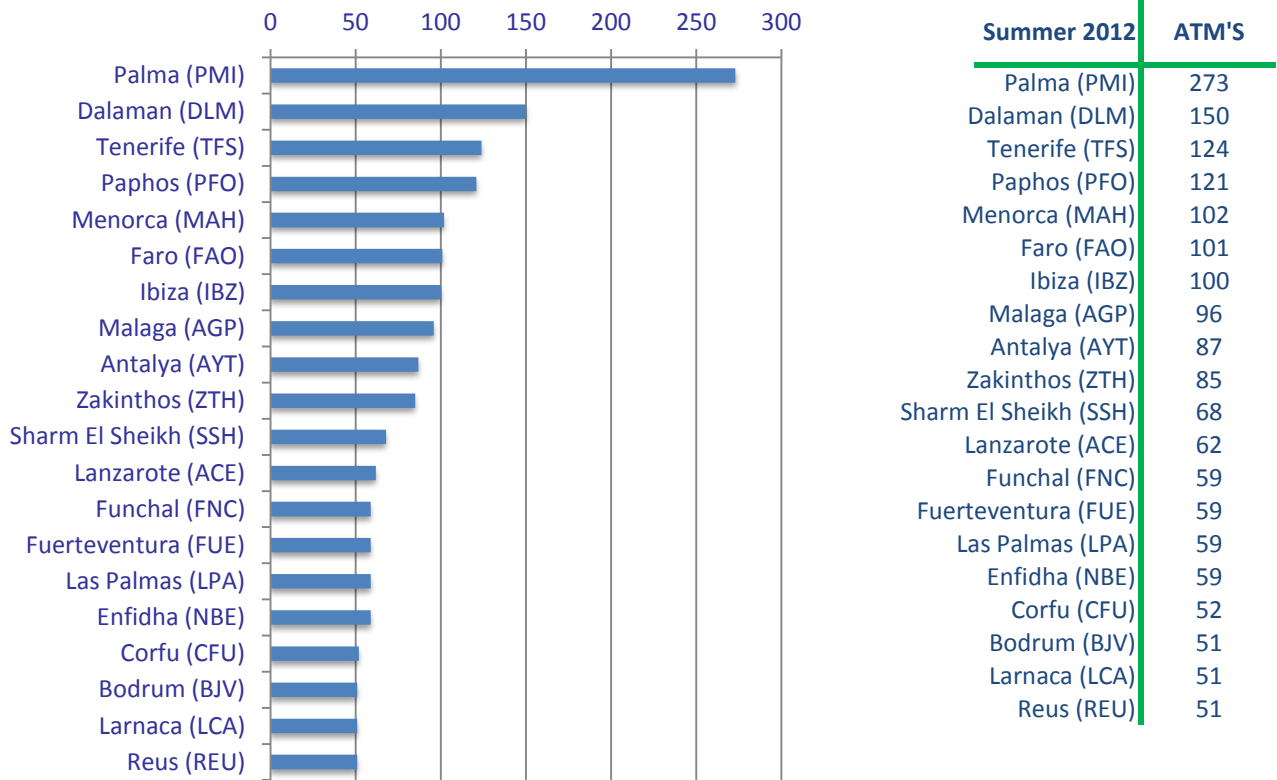
SCHEULED AIR TRANSPORT SEATS BY DESTINATION

Total Allocated Movements for Season S12



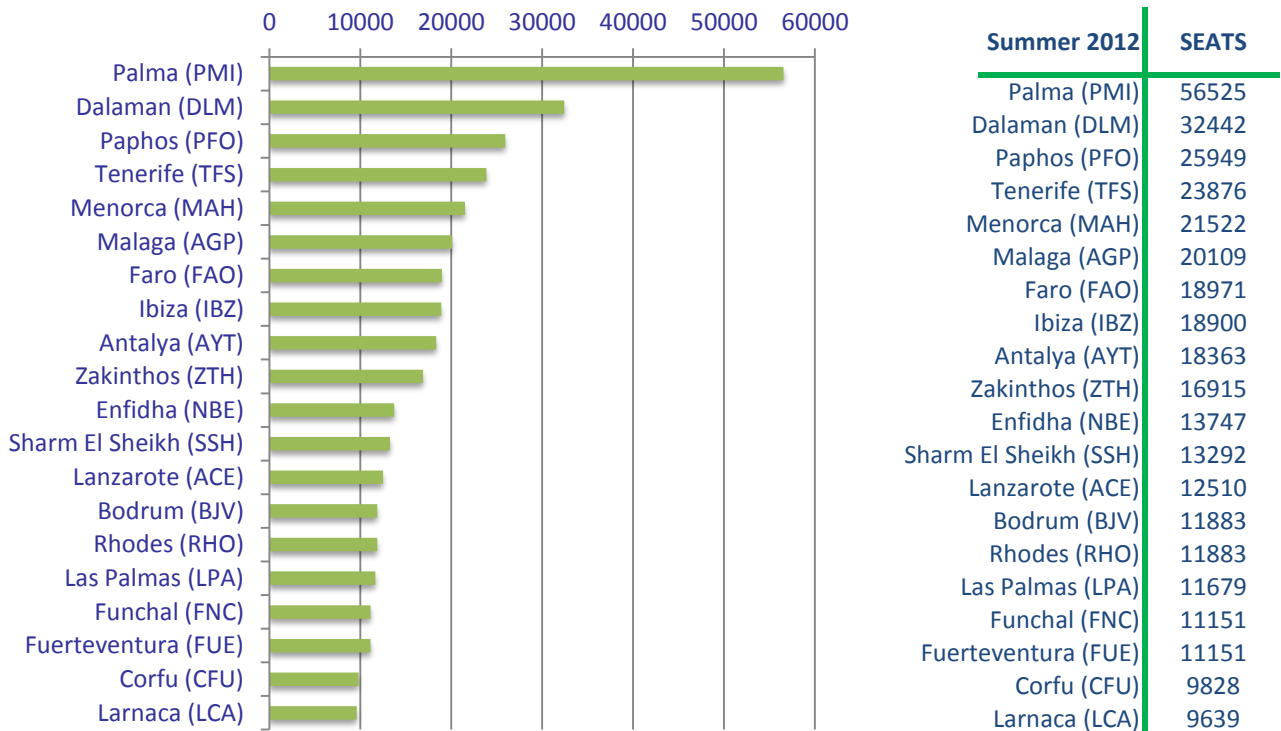
CHARTER AIR TRANSPORT MOVEMENTS BY DESTINATION

Total Allocated Movements for Season S12



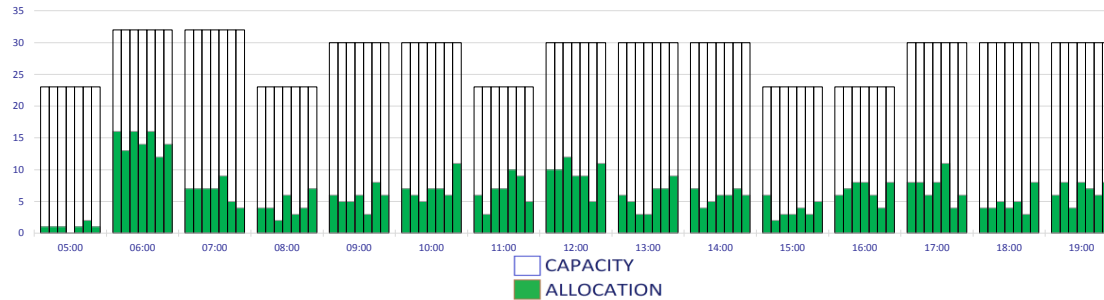
CHARTER AIR TRANSPORT SEATS BY DESTINATION

Total Allocated Movements for Season S12



RUNWAY MOVEMENT ALLOCATION - ARRIVALS

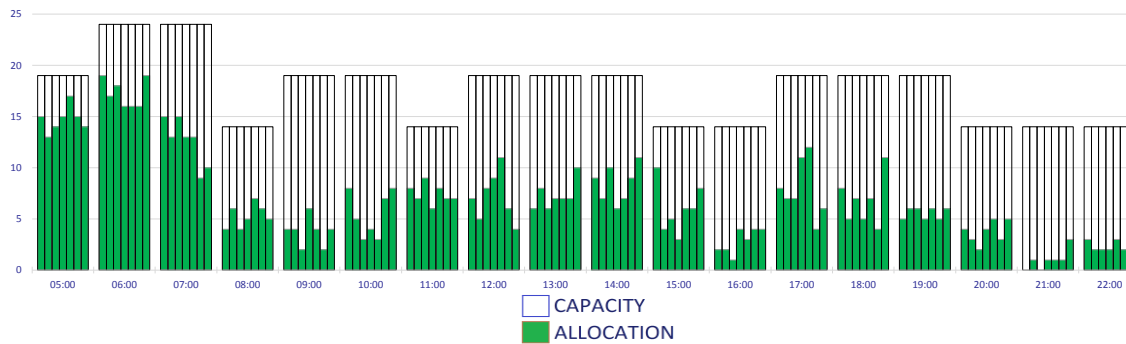
Peak Week Movements per Hour - All times UTC



	CAPACITY							ALLOCATION						
	Mon	Tue	Wed	Thu	Fri	Sat	Sun	Mon	Tue	Wed	Thu	Fri	Sat	Sun
05:00	23	23	23	23	23	23	23	1	1	1	0	1	2	1
06:00	32	32	32	32	32	32	32	16	13	16	14	16	12	14
07:00	32	32	32	32	32	32	32	7	7	7	7	9	5	4
08:00	23	23	23	23	23	23	23	4	4	2	6	3	4	7
09:00	30	30	30	30	30	30	30	6	5	5	6	3	8	6
10:00	30	30	30	30	30	30	30	7	6	5	7	7	6	11
11:00	23	23	23	23	23	23	23	6	3	7	7	10	9	5
12:00	30	30	30	30	30	30	30	10	10	12	9	9	5	11
13:00	30	30	30	30	30	30	30	6	5	3	3	7	7	9
14:00	30	30	30	30	30	30	30	7	4	5	6	6	7	6
15:00	23	23	23	23	23	23	23	6	2	3	3	4	3	5
16:00	23	23	23	23	23	23	23	6	7	8	8	6	4	8
17:00	30	30	30	30	30	30	30	8	8	6	8	11	4	6
18:00	30	30	30	30	30	30	30	4	4	5	4	5	3	8
19:00	30	30	30	30	30	30	30	6	8	4	8	7	6	8

RUNWAY MOVEMENT ALLOCATION - DEPARTURES

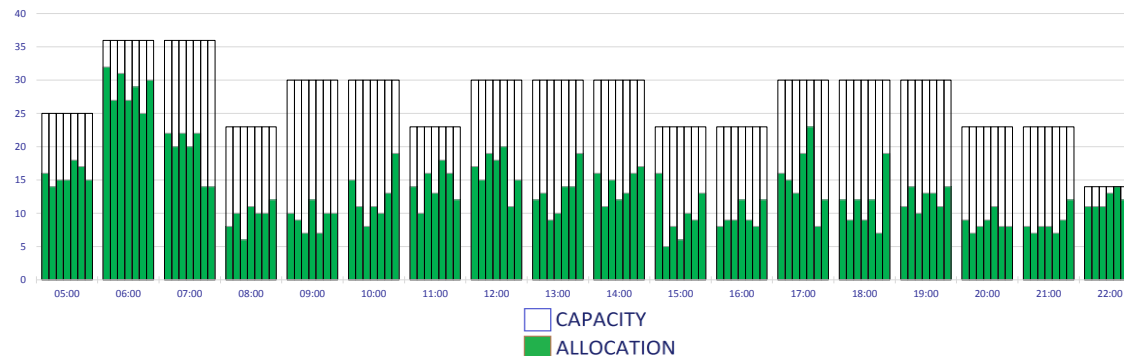
Peak Week Movements per Hour - All times UTC



	CAPACITY							ALLOCATION						
	Mon	Tue	Wed	Thu	Fri	Sat	Sun	Mon	Tue	Wed	Thu	Fri	Sat	Sun
05:00	19	19	19	19	19	19	19	15	13	14	15	17	15	14
06:00	24	24	24	24	24	24	24	19	17	18	16	16	16	19
07:00	24	24	24	24	24	24	24	15	13	15	13	13	9	10
08:00	14	14	14	14	14	14	14	4	6	4	5	7	6	5
09:00	19	19	19	19	19	19	19	4	4	2	6	4	2	4
10:00	19	19	19	19	19	19	19	8	5	3	4	3	7	8
11:00	14	14	14	14	14	14	14	8	7	9	6	8	7	7
12:00	19	19	19	19	19	19	19	7	5	8	9	11	6	4
13:00	19	19	19	19	19	19	19	6	8	6	7	7	10	10
14:00	19	19	19	19	19	19	19	9	7	10	6	7	9	11
15:00	14	14	14	14	14	14	14	10	4	5	3	6	6	8
16:00	14	14	14	14	14	14	14	2	2	1	4	3	4	4
17:00	19	19	19	19	19	19	19	8	7	7	11	12	4	6
18:00	19	19	19	19	19	19	19	8	5	7	5	7	4	11
19:00	19	19	19	19	19	19	19	5	6	6	5	6	5	6
20:00	14	14	14	14	14	14	14	4	3	2	4	5	3	5
21:00	14	14	14	14	14	14	14	0	1	0	1	1	1	3
22:00	14	14	14	14	14	14	14	3	2	2	2	3	2	3

RUNWAY MOVEMENT ALLOCATION - TOTALS

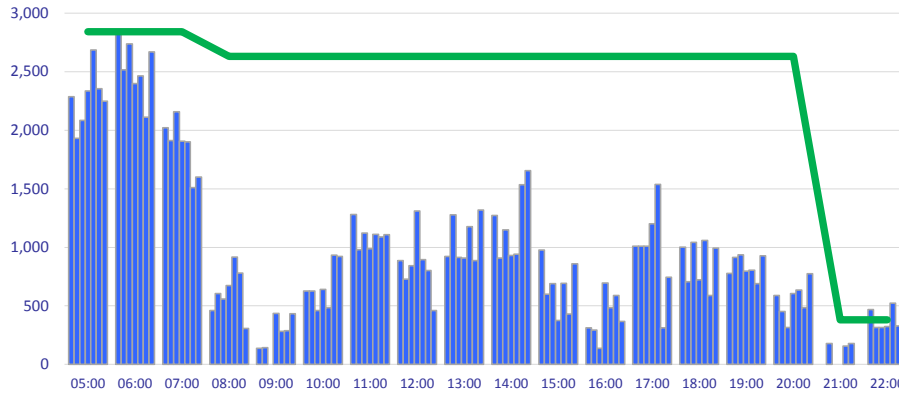
Peak Week Movements per Hour - All times UTC



	CAPACITY							ALLOCATION						
	Mon	Tue	Wed	Thu	Fri	Sat	Sun	Mon	Tue	Wed	Thu	Fri	Sat	Sun
05:00	25	25	25	25	25	25	25	16	14	15	15	18	17	15
06:00	36	36	36	36	36	36	36	32	27	31	27	29	25	30
07:00	36	36	36	36	36	36	36	22	20	22	20	22	14	14
08:00	23	23	23	23	23	23	23	8	10	6	11	10	10	12
09:00	30	30	30	30	30	30	30	10	9	7	12	7	10	10
10:00	30	30	30	30	30	30	30	15	11	8	11	10	13	19
11:00	23	23	23	23	23	23	23	14	10	16	13	18	16	12
12:00	30	30	30	30	30	30	30	17	15	19	18	20	11	15
13:00	30	30	30	30	30	30	30	12	13	9	10	14	14	19
14:00	30	30	30	30	30	30	30	16	11	15	12	13	16	17
15:00	23	23	23	23	23	23	23	16	5	8	6	10	9	13
16:00	23	23	23	23	23	23	23	8	9	9	12	9	8	12
17:00	30	30	30	30	30	30	30	16	15	13	19	23	8	12
18:00	30	30	30	30	30	30	30	12	9	12	9	12	7	19
19:00	30	30	30	30	30	30	30	11	14	10	13	13	11	14
20:00	23	23	23	23	23	23	23	9	7	8	9	11	8	8
21:00	23	23	23	23	23	23	23	8	7	8	8	7	9	12
22:00	14	14	14	14	14	14	14	11	11	11	13	14	12	14

TOTAL TERMINAL DEPARTURES ALLOCATION

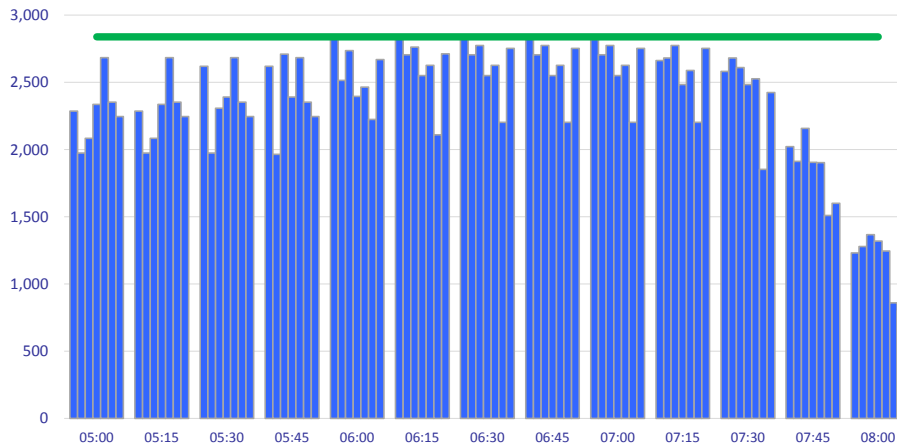
Peak Week Passengers per Hour - All times UTC



	ALLOCATION							Capacity
	Mon	Tue	Wed	Thu	Fri	Sat	Sun	Limit
05:00	2286	1931	2084	2336	2685	2354	2247	2840
06:00	2823	2516	2736	2397	2464	2111	2670	2840
07:00	2021	1912	2158	1905	1902	1510	1600	2840
08:00	461	606	559	674	917	780	307	2630
09:00	137	143	0	436	284	289	432	2630
10:00	627	627	461	642	486	934	921	2630
11:00	1281	979	1123	987	1112	1090	1108	2630
12:00	886	727	844	1310	896	803	459	2630
13:00	923	1277	913	909	1176	887	1319	2630
14:00	1273	909	1148	931	942	1534	1655	2630
15:00	978	601	690	376	694	429	859	2630
16:00	313	295	137	696	484	590	368	2630
17:00	1009	1009	1009	1202	1538	314	745	2630
18:00	1001	706	1042	722	1060	590	994	2630
19:00	777	914	935	796	806	690	928	2630
20:00	590	453	316	604	634	486	774	2630
21:00	0	180	0	0	158	180	0	380
22:00	469	316	316	324	523	328	368	380

TOTAL TERMINAL DEPARTURES ALLOCATION

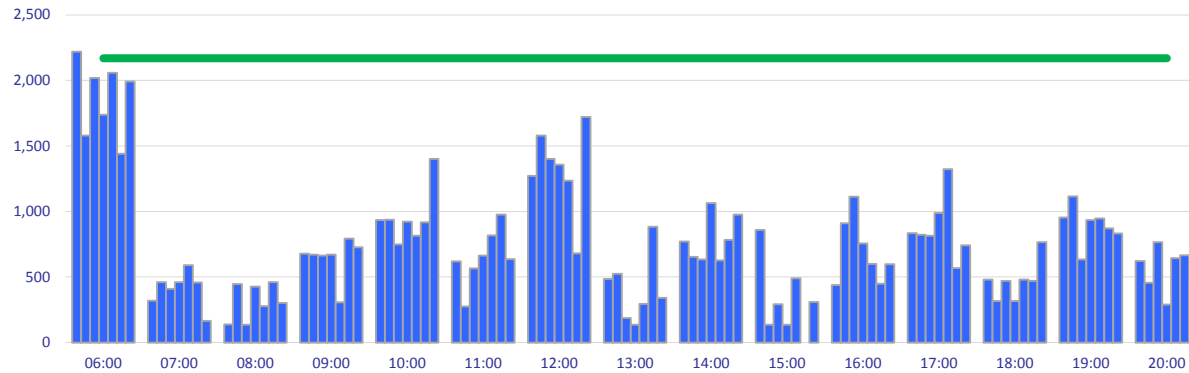
Peak Week Passengers Rolling Hour - All times UTC



	ALLOCATION							Capacity
	Mon	Tue	Wed	Thu	Fri	Sat	Sun	Limit
05:00	2286	1974	2084	2336	2685	2354	2247	2840
05:15	2286	1974	2084	2336	2685	2354	2247	2840
05:30	2621	1974	2308	2391	2685	2354	2247	2840
05:45	2621	1964	2710	2391	2685	2354	2247	2840
06:00	2823	2516	2736	2397	2464	2225	2670	2840
06:15	2823	2705	2763	2552	2627	2111	2712	2840
06:30	2823	2705	2776	2552	2627	2204	2754	2840
06:45	2823	2705	2776	2552	2627	2204	2754	2840
07:00	2819	2705	2776	2552	2627	2204	2754	2840
07:15	2662	2682	2776	2485	2588	2204	2754	2840
07:30	2581	2682	2611	2485	2528	1854	2425	2840
07:45	2021	1912	2158	1905	1902	1510	1600	2840
08:00	1231	1280	1368	1319	1246	860	800	2840

INTERNATIONAL TERMINAL ARRIVALS

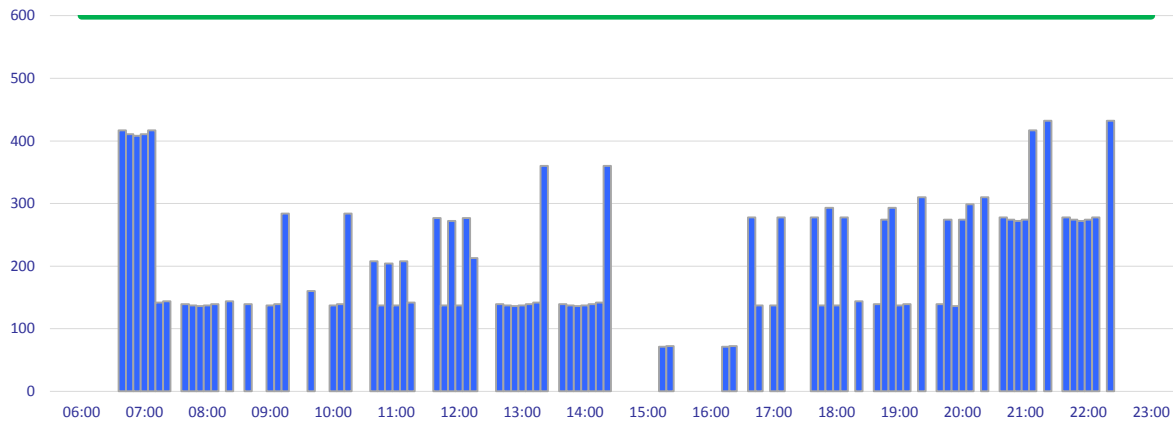
Peak Week Passengers per Hour - All times UTC



	ALLOCATION							Capacity Limit
	Mon	Tue	Wed	Thu	Fri	Sat	Sun	
06:00	2219	1580	2020	1738	2059	1440	1992	2170
07:00	320	461	410	461	589	458	166	2170
08:00	139	446	136	427	278	461	303	2170
09:00	678	670	663	670	307	792	728	2170
10:00	934	936	750	922	816	918	1400	2170
11:00	619	274	565	664	817	977	636	2170
12:00	1271	1580	1401	1357	1234	680	1722	2170
13:00	484	524	186	137	294	884	341	2170
14:00	771	654	635	1063	627	784	975	2170
15:00	860	137	293	137	489	0	310	2170
16:00	438	909	1113	756	600	448	598	2170
17:00	834	822	816	988	1322	568	742	2170
18:00	480	316	471	316	480	470	766	2170
19:00	955	1115	635	935	947	870	832	2170
20:00	622	456	766	290	643	666	470	2170

DOMESTIC TERMINAL ARRIVALS

Peak Week Passengers per Hour - All times UTC



	ALLOCATION							Capacity Limit
	Mon	Tue	Wed	Thu	Fri	Sat	Sun	
06:00	0	0	0	0	0	0	0	600
07:00	417	411	408	411	417	142	144	600
08:00	139	137	136	137	139	0	144	600
09:00	139	0	0	137	139	284	0	600
10:00	160	0	0	137	139	284	0	600
11:00	208	137	204	137	208	142	0	600
12:00	277	137	272	137	277	213	0	600
13:00	139	137	136	137	139	142	360	600
14:00	139	137	136	137	139	142	360	600
15:00	0	0	0	0	0	71	72	600
16:00	0	0	0	0	0	71	72	600
17:00	278	137	0	137	278	0	0	600
18:00	278	137	293	137	278	0	144	600
19:00	139	274	293	137	139	0	310	600
20:00	139	274	136	274	299	0	310	600
21:00	278	274	272	274	417	0	432	600
22:00	278	274	272	274	278	0	432	600
23:00	0	0	0	0	0	0	0	600

GLOSSARY OF TERMS

Air Transport Movement (ATM)	A scheduled or charter passenger or freight aircraft movement.
Allocation	The allocation of slots such that demand is constrained to fit within declared scheduling limits.
Common Travel Area (CTA)	Services to or from the Republic of Ireland and the Channel Islands.
Demand	The unconstrained demand for slots, prior to any schedule adjustments.
Passenger ATM	A scheduled or charter <u>passenger</u> aircraft movement (ie, excluding all-cargo aircraft movements).
Scheduling Limits	Limiting parameters declared by the Airport Operator used in the coordination process.
Seats	The number of seats based on the aircraft configuration advised by the airline.
Peak Week	The Peak Week for S12 is Week 18 (30JUL-05AUG)
Data Snapshot	All data used for this report was as held 22 March 2012

GUIDE TO HISTOGRAMS

The histograms show the pattern of traffic by time of day against the appropriate scheduling limit. Each time period consist of seven columns representing the days-of-week. Monday through Sunday.