

Heathrow Airport

LHR

Winter 2012

START OF SEASON REPORT

KEY STATISTICS	Winter 2012	vs Winter 2011 Start	vs Winter 2011 End
Air Transport Movements	194,486	-2.0%	0.1%
Total Seats (m)	40.1	0.1%	3.4%
Seats per Passenger ATM	207.2	2.1%	3.2%

CONTENTS	Page
Summary	1
ATM Allocation	2
Scheduling Limits	3
Air Transport Movements	4
Total Seats and Seats per Movement	5
Top Airline Analysis	6
Top Route Analysis	7
Aircraft Type Analysis	8
Runway Demand Histograms	9
Runway Allocation Histograms	10
Terminal Histograms	11-23
Glossary of Terms	24

Data in this report is current as of: 6th September 2012

No warranty whether expressed or implied as to the completeness, accuracy, fitness for purpose, or satisfactory quality is given by ACL regarding the information in this report, which is provided by third parties. Accordingly, ACL excludes all liability with regard to such data

The contents of this report may not be reproduced without the written consent of ACL

HEATHROW WINTER 2012/13 ALLOCATION OF AIR TRANSPORT MOVEMENTS

Code	Airline	WINTER 2012 Allocation		Code	Airline	WINTER 2012 Allocation	
9W	Jet Airways	42	0.5%	LH	Lufthansa	520	5.6%
A3	Aegean	34	0.4%	LN	Libyan Arab	4	0.0%
AA	American Airlines	200	2.2%	LO	LOT Polish Airlines	40	0.4%
AC	Air Canada	126	1.4%	LX	Swiss Airlines	182	2.0%
AF	Air France	154	1.7%	LY	El Al	22	0.2%
AH	Air Algerie	8	0.1%	ME	MEA	14	0.2%
AI	Air India	42	0.5%	MH	Malaysian Airlines	28	0.3%
AM	Aeromexico	6	0.1%	MK	Air Mauritius	8	0.1%
AT	Royal Air Maroc	18	0.2%	MS	Egyptair	30	0.3%
AY	Finnair	56	0.6%	MU	China Eastern	8	0.1%
AZ	Alitalia	119	1.3%	NH	All Nippon Airways	14	0.2%
BA	British Airways	4902	52.7%	NZ	Air New Zealand	28	0.3%
BCS	Euro Air Transport	19	0.2%	OS	Austrian Airlines	56	0.6%
BG	Biman Bangladesh	6	0.1%	OU	Croatia Airlines	18	0.2%
BI	Royal Brunei	14	0.2%	OZ	Asiana	14	0.2%
BR	EVA Air	14	0.2%	PK	PIA	20	0.2%
CA	Air China	14	0.2%	QF	Qantas	56	0.6%
CX	Cathay Pacific	62	0.7%	QR	Qatar Airways	70	0.8%
CY	Cyprus Airways	28	0.3%	RB	Syrian Arab	4	0.0%
DL	Delta Airlines	28	0.3%	RJ	Royal Jordanian	16	0.2%
EI	Aer Lingus	304	3.3%	RO	Tarom	14	0.2%
EK	Emirates	70	0.8%	SA	South African	42	0.5%
ET	Ethiopian Airlines	12	0.1%	SK	SAS	272	2.9%
EY	Etihad Airways	42	0.5%	SN	Brussels Airlines	28	0.3%
FB	Bulgaria Air	8	0.1%	SQ	Singapore Airlines	58	0.6%
FI	Icelandair	26	0.3%	SU	Aeroflot	36	0.4%
GF	Gulf Air	28	0.3%	SV	Saudia	28	0.3%
HY	Uzbekistan Airways	4	0.0%	T5	Turkmenistan Airlines	4	0.0%
IB	Iberia	154	1.7%	TG	Thai International	28	0.3%
IR	Iran Air	6	0.1%	TK	Turkish Airlines	60	0.6%
IT	Kingfisher	14	0.2%	TP	TAP Air Portugal	90	1.0%
J2	Azerbaijan Airlines	6	0.1%	TU	Tunis Air	8	0.1%
JJ	TAM Brazilia	20	0.2%	UA	United Airlines	210	2.3%
JL	Japan Airlines	14	0.2%	UL	Sri Lankan Airlines	24	0.3%
JU	Yugoslav Airlines	14	0.2%	US	US Airways	14	0.2%
KC	Air Astana	4	0.0%	VS	Virgin Atlantic	304	3.3%
KE	Korean Air	16	0.2%	W3	Arik Air	14	0.2%
KL	KLM	200	2.2%	WY	Omanair	14	0.2%
KM	Air Malta	28	0.3%				
KQ	Kenya Airways	14	0.2%				
KU	Kuwait Airways	20	0.2%				
					Total	9,296	

HEATHROW WINTER 2012 CAPACITIES

RUNWAY SCHEDULING LIMITS

Movements per Hour (R60) - All times UTC

Arrivals	Hour														Change				
	06	07	08	09	10	11	12	13	14	15	16	17	18	19	20	21	22	Ave	Total
Winter 2011 Start	36	36	34	42	39	36	43	40	42	44	44	40	40	39	38	41	22	38.6	656
Capacity change																			
Winter 2012	36	36	34	42	39	36	43	40	42	44	44	40	40	39	38	41	22	38.6	656

Departures	Hour														Change				
	06	07	08	09	10	11	12	13	14	15	16	17	18	19	20	21	22	Ave	Total
Winter 2011 Start	28	42	43	42	42	42	44	41	41	42	44	44	42	43	40	37	21	39.9	678
Capacity change			-1	1				1							-1	-1	1		
Winter 2012	28	42	42	43	42	42	44	42	41	42	44	44	42	43	39	36	22	39.9	678

Sub-constraint 10 minute limit (xx05-xx10, xx15-xx20, xx25-xx30, xx35-xx40, xx45-xx50, xx55-xx00) 7 arrivals per 10 minutes 0705-0930 UTC; 8 arrivals per 10 minutes at other times
Rolling hour limit 45 Departures/42 Arrivals (where hourly rate is less than rolling rate)

AIR TRANSPORT MOVEMENT CAP

9,296 air transport movements per week

TERMINAL SCHEDULING LIMITS

Passengers per Hour

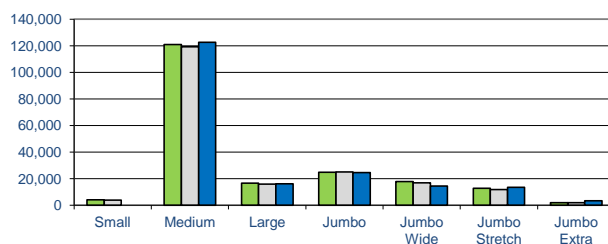
Terminal	Arrivals	Departures
Terminal 1		
Domestic	1500	
CTA	930	-
International	1600	-
Total	-	2200
Terminal 2	CLOSED	CLOSED
Terminal 3	3500	3000
Terminal 4	1800	1650
Terminal 5		
Domestic	-	-
International	3750	-
Total	-	4500

STAND SCHEDULING LIMITS

Stands available for scheduling purposes after deductions for outages and short term peaking

Apron	B(ER4)	C(319)	C(321)	D(752)	D(764)	E(772)	E(744)	E(346)	F(380)	Total
T1	1	5	6	7	0	2	0	6	0	27
T3	0	0	3	4	0	4	8	17	3	39
T1 + T3	1	5	9	11	0	6	8	23	3	66
T4 + Cargo	1	0	3	2	4	0	21	4	1	36
T5	0	1	14	0	4	0	12	14	11	56
Total Airport	2	6	26	13	8	6	41	41	15	158

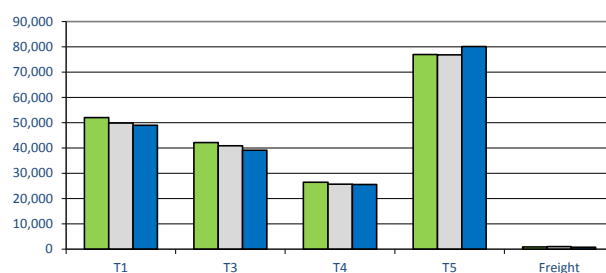
AIR TRANSPORT MOVEMENTS BY STAND SIZE



■ WINTER 2011 START Start of Season
■ WINTER 2011 START End of Season
■ WINTER 2012 Start of Season

	WINTER 2011 START Start of Season	WINTER 2011 START End of Season	WINTER 2012 Start of Season	% CHANGE Start-Start	% CHANGE End-Start
Small	4,069	3,713	0	-100.0%	-100.0%
Medium	120,873	119,150	122,699	1.5%	3.0%
Large	16,635	15,949	16,062	-3.4%	0.7%
Jumbo	24,690	24,975	24,480	-0.9%	-2.0%
Jumbo Wide	17,810	16,893	14,363	-19.4%	-15.0%
Jumbo Stretch	12,648	11,849	13,494	6.7%	13.9%
Jumbo Extra	1,814	1,811	3,388	86.7%	87.0%
Total	198,540	194,340	194,486	-2.0%	0.1%

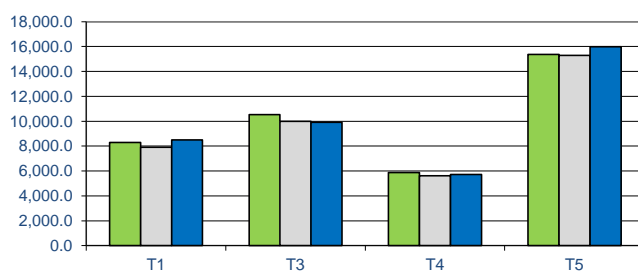
AIR TRANSPORT MOVEMENTS BY TERMINAL



■ WINTER 2011 START Start of Season
■ WINTER 2011 START End of Season
■ WINTER 2012 Start of Season

	WINTER 2011 START Start of Season	WINTER 2011 START End of Season	WINTER 2012 Start of Season	% CHANGE Start-Start	% CHANGE End-Start
T1	52,030	49,936	48,969	-5.9%	-1.9%
T3	42,137	40,906	39,109	-7.2%	-4.4%
T4	26,451	25,677	25,580	-3.3%	-0.4%
T5	76,930	76,807	80,058	4.1%	4.2%
Freight	991	1,013	770	-22.3%	-24.0%
Total	198,540	194,340	194,486	-2.0%	0.1%

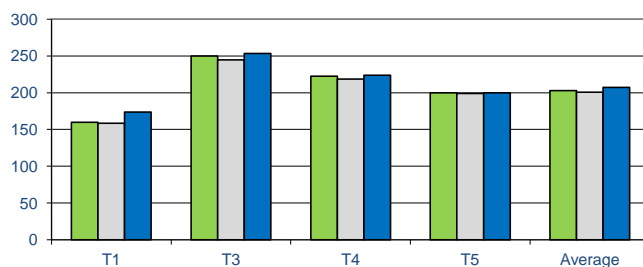
TOTAL SEATS (000s) BY TERMINAL



■ WINTER 2011 START Start of Season

	WINTER 2011 START Start of	WINTER 2011 START End of	WINTER 2012 Start of Season	% CHANGE Start-Start	% CHANGE End-Start
T1	8,304.0	7,914.4	8,511.7	2.5%	7.5%
T3	10,522.2	10,001.8	9,907.4	-5.8%	-0.9%
T4	5,884.8	5,614.2	5,722.5	-2.8%	1.9%
T5	15,367.5	15,296.5	15,993.9	4.1%	4.6%
Total	40,078.4	38,826.9	40,135.5	0.1%	3.4%

SEATS PER PASSENGER ATM BY TERMINAL



■ WINTER 2011 START Start of Season

	WINTER 2011 START Start of	WINTER 2011 START End of	WINTER 2012 Start of Season	% CHANGE Start-Start	% CHANGE End-Start
T1	160	158	174	8.9%	9.7%
T3	250	245	253	1.4%	3.6%
T4	222	219	224	0.6%	2.3%
T5	200	199	200	0.0%	0.3%
Average	203	201	207	2.1%	3.2%

AIR TRANSPORT MOVEMENTS BY OPERATOR

ATMs per week - Typical week

	START	% SHARE	WINTER 2012	% SHARE	% CHANGE
British Airways	4086	44.2%	4902	52.8%	20.0%
Lufthansa	780	8.4%	520	5.6%	-33.3%
Aer Lingus	318	3.4%	304	3.3%	-4.4%
Virgin Atlantic	286	3.1%	304	3.3%	6.3%
SAS	272	2.9%	272	2.9%	0.0%
United Airlines	210	2.3%	210	2.3%	0.0%
American Airlines	198	2.1%	200	2.2%	1.0%
KLM/Delta*	186	2.0%	200	2.2%	7.5%
Swiss	182	2.0%	182	2.0%	0.0%
Iberia	154	1.7%	154	1.7%	0.0%
Air France/Delta*	154	1.7%	146	1.6%	-5.2%
Air Canada	126	1.4%	126	1.4%	0.0%
Alitalia	132	1.4%	119	1.3%	-9.8%
TAP	90	1.0%	90	1.0%	0.0%
Others	2074	22.4%	1553	16.7%	-25.1%
Total	9248	100.0%	9282	100.0%	0.4%

* Delta Operate services as a joint operation with KLM/Air France, and in their own right. These figures are for Air France and KLM slot holding

SEATS BY OPERATOR

Seats per week - Typical week (top 14 operators by movements ranked by seat volume)

	WINTER 2011		WINTER 2012		% CHANGE
	START	% SHARE		% SHARE	
British Airways	800,243	43.0%	929,255	1.4%	16.1%
Virgin Atlantic	88,954	4.8%	92,826	6.6%	4.4%
Lufthansa	109,570	5.9%	83,460	4.4%	-23.8%
Aer Lingus	57,232	3.1%	54,492	3.8%	-4.8%
SAS	48,348	2.6%	50,342	2.6%	4.1%
American Airlines	46,094	2.5%	48,316	2.5%	4.8%
United Airlines	47,670	2.6%	47,418	2.5%	-0.5%
Emirates	31,766	1.7%	36,190	1.9%	13.9%
Iberia	30,270	1.6%	34,650	1.8%	14.5%
Air Canada	32,676	1.8%	32,028	1.7%	-2.0%
KLM/Delta*	30,892	1.7%	30,388	1.6%	-1.6%
Swiss	28,684	1.5%	30,328	1.6%	5.7%
Air France/Delta*	30,971	1.7%	29,726	1.6%	-4.0%
Singapore Airlines	16,212	0.9%	21,938	1.1%	35.3%
Others	460,886	24.8%	387,018	20.3%	-16.0%
Total	1,860,468	100.0%	1,908,375	100.0%	2.6%

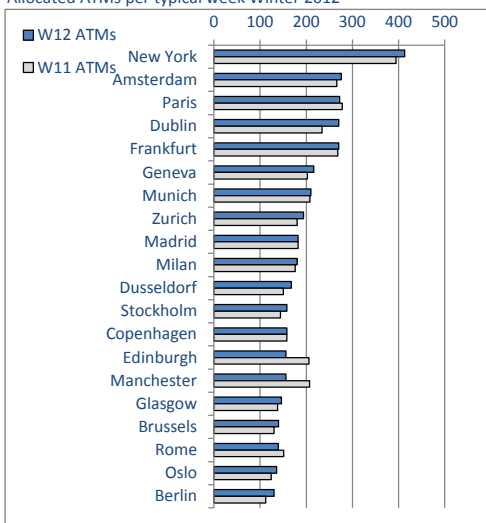
SEATS PER ATM BY OPERATOR

(top 14 operators by movements ranked by seats per ATM)

	WINTER 2011		WINTER 2012		% CHANGE
	START	% SHARE		% SHARE	
Virgin Atlantic	311.0	3.1%	305.3	3.3%	-1.8%
Air Canada	259.3	1.4%	254.2	1.4%	-2.0%
American Airlines	232.8	2.1%	241.6	2.2%	3.8%
United Airlines	227.0	2.3%	225.8	2.3%	-0.5%
Iberia	196.6	1.7%	225.0	1.7%	14.5%
Air France/Delta*	201.1	1.7%	203.6	1.6%	1.2%
British Airways	195.9	44.2%	189.6	52.8%	-3.2%
SAS	177.8	2.9%	185.1	2.9%	4.1%
Alitalia	175.8	1.4%	182.9	1.3%	4.1%
Aer Lingus	180.0	3.4%	179.3	3.3%	-0.4%
Swiss	157.6	2.0%	166.6	2.0%	5.7%
Lufthansa	140.5	8.4%	160.5	5.6%	14.3%
KLM/Delta*	166.1	2.0%	151.9	2.2%	-8.5%
TAP	151.2	1.0%	147.1	1.0%	-2.7%
Others	227.6	77.6%	262.7	83.2%	15.4%
Overall Average	200.0	100.0%	205.4	100.0%	2.7%

AIR TRANSPORT MOVEMENTS BY DESTINATION

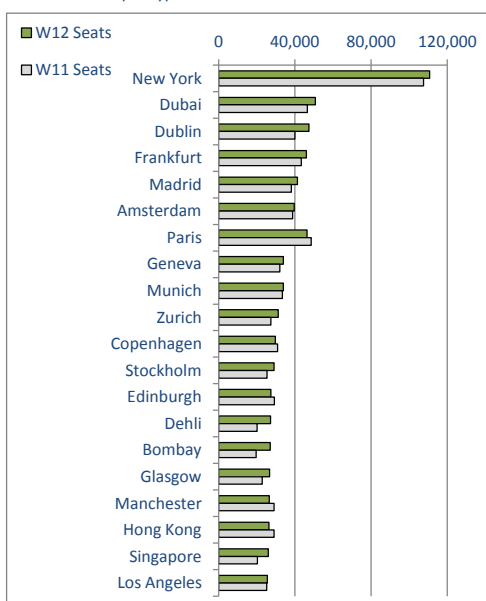
Allocated ATMs per typical week Winter 2012



Winter 2012	W12 ATMs	W11 ATMs
New York	413	394
Amsterdam	276	266
Paris	272	278
Dublin	270	234
Frankfurt	270	268
Geneva	216	202
Munich	210	208
Zurich	194	180
Madrid	182	182
Milan	180	176
Dusseldorf	168	150
Stockholm	158	144
Copenhagen	158	158
Edinburgh	156	206
Manchester	156	207
Glasgow	146	138
Brussels	140	130
Rome	139	151
Oslo	136	124
Berlin	130	112

AIR TRANSPORT SEATS BY DESTINATION

Allocated seats per typical week Winter 2012



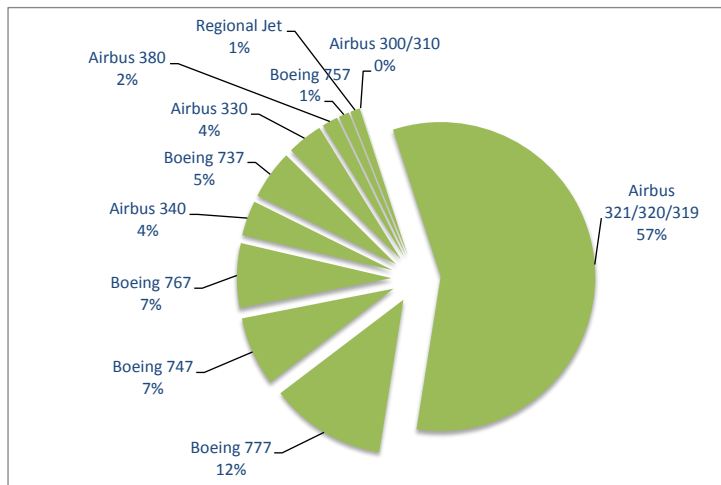
Winter 2012	W12 Seats	W11 Seats
New York	110,738	107,426
Dubai	50,764	46,606
Dublin	47,364	39,951
Frankfurt	46,152	43,416
Madrid	41,328	38,194
Amsterdam	39,720	38,784
Paris	46,344	48,515
Geneva	34,028	32,148
Munich	34,006	33,536
Zurich	31,380	27,468
Copenhagen	29,782	30,888
Stockholm	29,064	25,448
Edinburgh	27,374	29,201
Dehli	27,300	20,286
Bombay	27,160	19,656
Glasgow	26,690	22,890
Manchester	26,588	29,036
Hong Kong	26,376	29,036
Singapore	26,124	20,398
Los Angeles	25,578	25,284

TOP AIRCRAFT TYPES BY AIR TRANSPORT MOVEMENTS

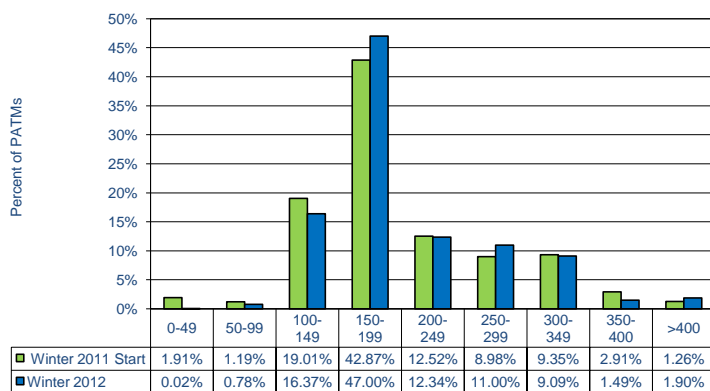
Allocated ATMs per typical week Winter 2012

Includes aircraft sub-types (eg, A320 includes A319/320/321)

Regional Jets include Fokker 100 / 70s, Avro RJs, Canadair RJs and Embrair RJs

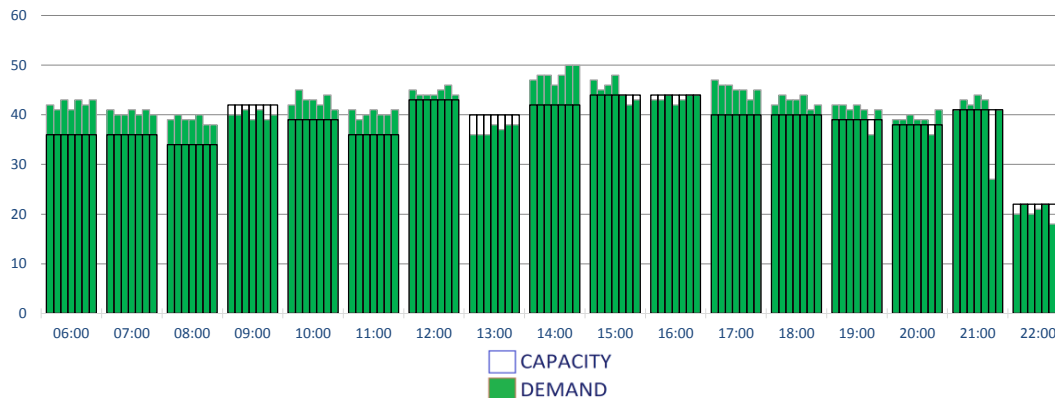


AIRCRAFT SEAT SIZE DISTRIBUTION



RUNWAY MOVEMENT DEMAND - ARRIVALS

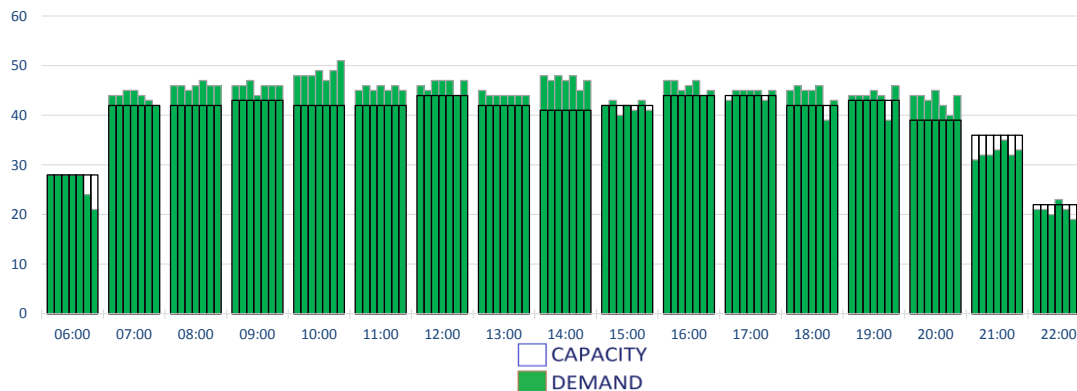
Peak Week Movements per Hour - All times UTC
Demand At Initial Submission



	CAPACITY							DEMAND						
	Mon	Tue	Wed	Thu	Fri	Sat	Sun	Mon	Tue	Wed	Thu	Fri	Sat	Sun
06:00	36	36	36	36	36	36	36	42	41	43	41	43	42	43
07:00	36	36	36	36	36	36	36	41	40	40	41	40	41	40
08:00	34	34	34	34	34	34	34	39	40	39	39	40	38	38
09:00	42	42	42	42	42	42	42	40	40	41	39	41	39	40
10:00	39	39	39	39	39	39	39	42	45	43	43	42	44	41
11:00	36	36	36	36	36	36	36	41	39	40	41	40	40	41
12:00	43	43	43	43	43	43	43	45	44	44	44	45	46	44
13:00	40	40	40	40	40	40	40	36	36	36	38	37	38	38
14:00	42	42	42	42	42	42	42	47	48	48	46	48	50	50
15:00	44	44	44	44	44	44	44	47	45	46	48	44	42	43
16:00	44	44	44	44	44	44	44	43	43	44	42	43	44	44
17:00	40	40	40	40	40	40	40	47	46	46	45	45	43	45
18:00	40	40	40	40	40	40	40	42	44	43	43	44	41	42
19:00	39	39	39	39	39	39	39	42	42	41	42	41	36	41
20:00	38	38	38	38	38	38	38	39	39	40	39	39	36	41
21:00	41	41	41	41	41	41	41	41	43	42	44	43	27	41
22:00	22	22	22	22	22	22	22	20	22	20	21	22	18	22
	656	656	656	656	656	656	656	713	711	709	716	710	686	710

RUNWAY MOVEMENT DEMAND - DEPARTURES

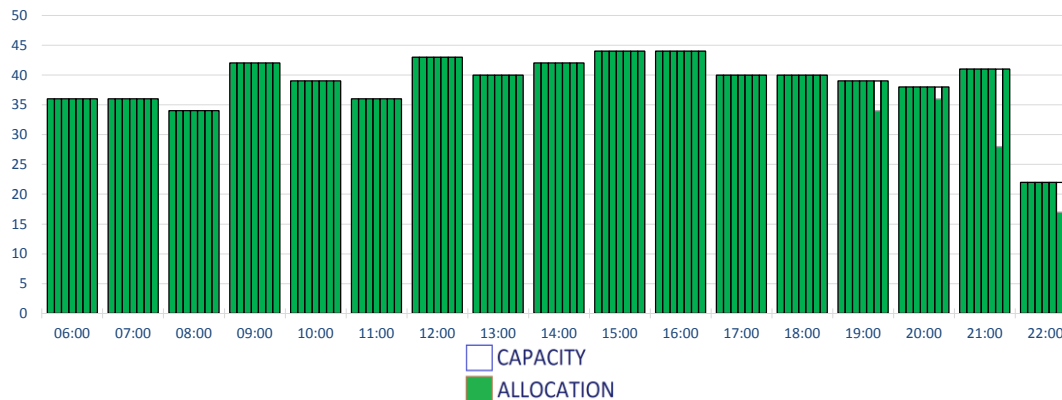
Peak Week Movements per Hour - All times UTC



	CAPACITY							DEMAND						
	Mon	Tue	Wed	Thu	Fri	Sat	Sun	Mon	Tue	Wed	Thu	Fri	Sat	Sun
06:00	28	28	28	28	28	28	28	28	28	28	28	28	24	21
07:00	42	42	42	42	42	42	42	44	44	45	45	44	43	42
08:00	42	42	42	42	42	42	42	46	46	45	46	47	46	46
09:00	43	43	43	43	43	43	43	46	46	47	44	46	46	46
10:00	42	42	42	42	42	42	42	48	48	48	49	47	49	51
11:00	42	42	42	42	42	42	42	45	46	45	46	45	46	45
12:00	44	44	44	44	44	44	44	46	45	47	47	47	44	47
13:00	42	42	42	42	42	42	42	45	44	44	44	44	44	44
14:00	41	41	41	41	41	41	41	48	47	48	47	48	45	47
15:00	42	42	42	42	42	42	42	42	43	40	42	41	43	41
16:00	44	44	44	44	44	44	44	47	47	45	46	47	44	45
17:00	44	44	44	44	44	44	44	43	45	45	45	45	43	45
18:00	42	42	42	42	42	42	42	45	46	45	45	46	39	43
19:00	43	43	43	43	43	43	43	44	44	44	45	44	39	46
20:00	39	39	39	39	39	39	39	44	44	43	45	42	40	44
21:00	36	36	36	36	36	36	36	31	32	32	33	35	32	33
22:00	22	22	22	22	22	22	22	21	21	20	23	21	19	19
	678	678	678	678	678	678	678	724	723	721	727	725	706	708

RUNWAY MOVEMENT ALLOCATION - ARRIVALS

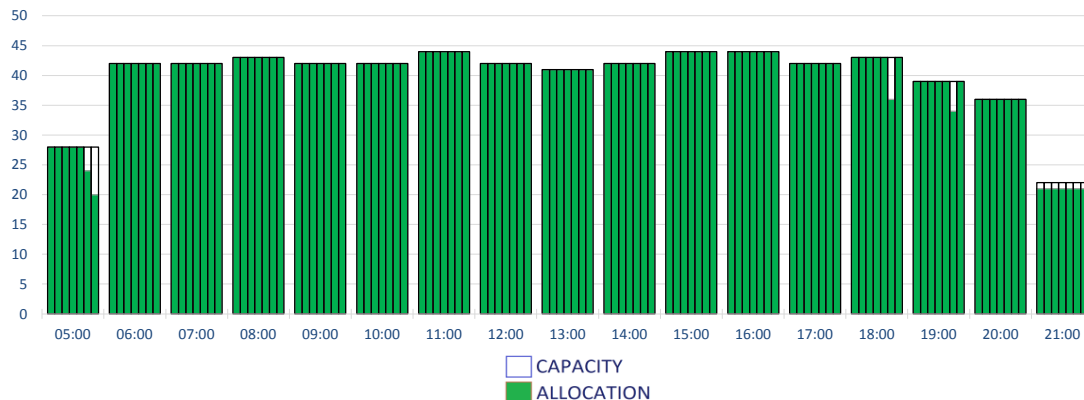
Peak Week Movements per Hour - All times UTC



	CAPACITY							ALLOCATION						
	Mon	Tue	Wed	Thu	Fri	Sat	Sun	Mon	Tue	Wed	Thu	Fri	Sat	Sun
06:00	36	36	36	36	36	36	36	36	36	36	36	36	36	36
07:00	36	36	36	36	36	36	36	36	36	36	36	36	36	36
08:00	34	34	34	34	34	34	34	34	34	34	34	34	34	34
09:00	42	42	42	42	42	42	42	42	42	42	42	42	42	42
10:00	39	39	39	39	39	39	39	39	39	39	39	39	39	39
11:00	36	36	36	36	36	36	36	36	36	36	36	36	36	36
12:00	43	43	43	43	43	43	43	43	43	43	43	43	43	43
13:00	40	40	40	40	40	40	40	40	40	40	40	40	40	40
14:00	42	42	42	42	42	42	42	42	42	42	42	42	42	42
15:00	44	44	44	44	44	44	44	44	44	44	44	44	44	44
16:00	44	44	44	44	44	44	44	44	44	44	44	44	44	44
17:00	40	40	40	40	40	40	40	40	40	40	40	40	40	40
18:00	40	40	40	40	40	40	40	40	40	40	40	40	40	40
19:00	39	39	39	39	39	39	39	39	39	39	39	39	39	39
20:00	38	38	38	38	38	38	38	38	38	38	38	38	38	38
21:00	41	41	41	41	41	41	41	41	41	41	41	41	28	41
22:00	22	22	22	22	22	22	22	22	22	22	22	22	17	22
	656	656	656	656	656	656	656	656	656	656	656	656	631	656

RUNWAY MOVEMENT ALLOCATION - DEPARTURES

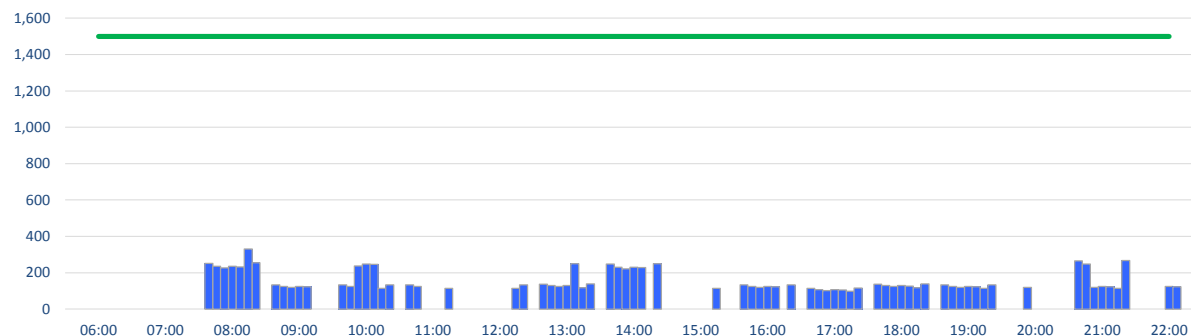
Peak Week Movements per Hour - All times UTC



	CAPACITY							ALLOCATION						
	Mon	Tue	Wed	Thu	Fri	Sat	Sun	Mon	Tue	Wed	Thu	Fri	Sat	Sun
05:00	28	28	28	28	28	28	28	28	28	28	28	28	24	20
06:00	42	42	42	42	42	42	42	42	42	42	42	42	42	42
07:00	42	42	42	42	42	42	42	42	42	42	42	42	42	42
08:00	43	43	43	43	43	43	43	43	43	43	43	43	43	43
09:00	42	42	42	42	42	42	42	42	42	42	42	42	42	42
10:00	42	42	42	42	42	42	42	42	42	42	42	42	42	42
11:00	44	44	44	44	44	44	44	44	44	44	44	44	44	44
12:00	42	42	42	42	42	42	42	42	42	42	42	42	42	42
13:00	41	41	41	41	41	41	41	41	41	41	41	41	41	41
14:00	42	42	42	42	42	42	42	42	42	42	42	42	42	42
15:00	44	44	44	44	44	44	44	44	44	44	44	44	44	44
16:00	44	44	44	44	44	44	44	44	44	44	44	44	44	44
17:00	42	42	42	42	42	42	42	42	42	42	42	42	42	42
18:00	43	43	43	43	43	43	43	43	43	43	43	43	36	43
19:00	39	39	39	39	39	39	39	39	39	39	39	39	34	39
20:00	36	36	36	36	36	36	36	36	36	36	36	36	36	36
21:00	22	22	22	22	22	22	22	21	21	21	21	21	21	21
	678	678	678	678	678	678	678	677	677	677	677	677	661	669

DOMESTIC TERMINAL ARRIVALS ALLOCATION

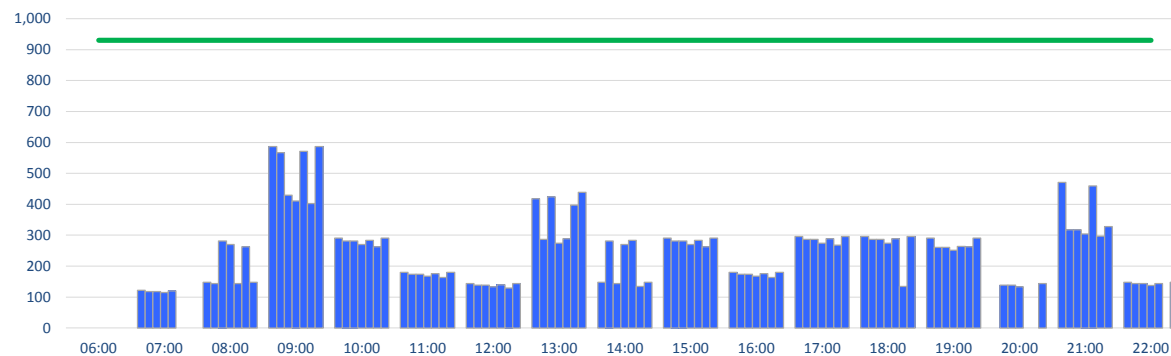
Peak Week Passengers per Hour - All times UTC



	ALLOCATION							Capacity
	Mon	Tue	Wed	Thu	Fri	Sat	Sun	Limit
06:00	0	0	0	0	0	0	0	1500
07:00	0	0	0	0	0	0	0	1500
08:00	251	236	226	236	232	330	254	1500
09:00	133	124	119	124	123	0	0	1500
10:00	133	124	238	248	246	114	134	1500
11:00	133	124	0	0	0	114	0	1500
12:00	0	0	0	0	0	114	134	1500
13:00	137	129	124	129	250	118	139	1500
14:00	247	231	221	231	228	0	249	1500
15:00	0	0	0	0	0	114	0	1500
16:00	133	124	119	124	123	0	134	1500
17:00	114	107	102	107	105	98	115	1500
18:00	137	129	124	129	127	118	139	1500
19:00	133	124	119	124	123	114	134	1500
20:00	0	0	119	0	0	0	0	1500
21:00	266	248	119	124	123	114	268	1500
22:00	0	0	0	124	123	0	0	1500

CTA TERMINAL ARRIVALS ALLOCATION

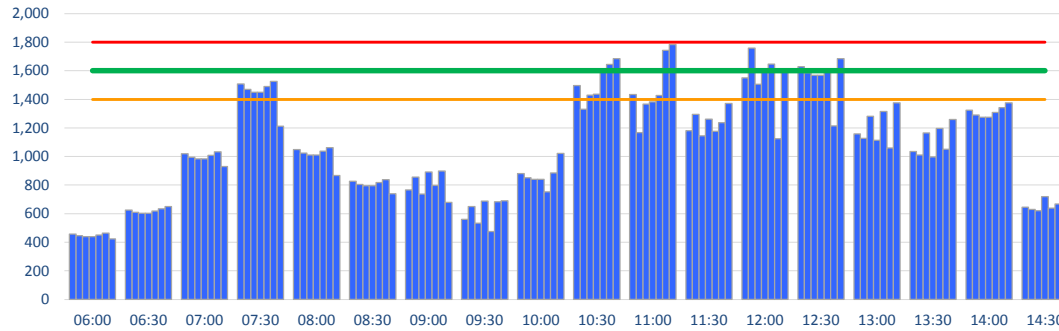
Peak Week Passengers per Hour - All times UTC



	ALLOCATION							Capacity
	Mon	Tue	Wed	Thu	Fri	Sat	Sun	Limit
06:00	0	0	0	0	0	0	0	930
07:00	122	118	118	114	120	0	0	930
08:00	148	143	281	270	144	263	148	930
09:00	587	567	429	411	571	402	587	930
10:00	291	281	281	270	283	263	291	930
11:00	180	174	174	167	176	163	180	930
12:00	143	138	138	133	139	129	143	930
13:00	418	286	424	274	288	397	439	930
14:00	148	281	143	270	283	134	148	930
15:00	291	281	281	270	283	263	291	930
16:00	180	174	174	167	176	163	180	930
17:00	296	286	286	274	288	268	296	930
18:00	296	286	286	274	288	134	296	930
19:00	291	261	261	251	264	263	291	930
20:00	0	138	138	133	0	0	143	930
21:00	471	317	317	304	459	297	328	930
22:00	148	143	143	137	144	0	148	930

TERMINAL 1 INTERNATIONAL ARRIVALS ALLOCATION

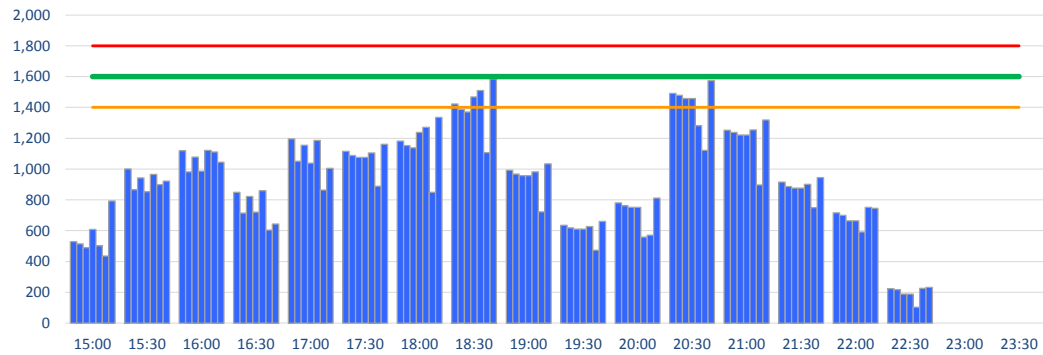
Peak Week Passengers per Hour - All times UTC



	ALLOCATION							Capacity Limit	Lower Referral	Upper Referral
	Mon	Tue	Wed	Thu	Fri	Sat	Sun			
06:00	457	445	440	440	451	463	423	1600	1400	1800
06:30	625	609	603	603	618	634	650	1600	1400	1800
07:00	1020	995	983	983	1009	1034	929	1600	1400	1800
07:30	1507	1470	1450	1450	1490	1526	1211	1600	1400	1800
08:00	1049	1024	1010	1010	1038	1062	867	1600	1400	1800
08:30	826	805	796	796	818	837	740	1600	1400	1800
09:00	766	857	738	892	797	898	678	1600	1400	1800
09:30	561	651	534	688	476	683	690	1600	1400	1800
10:00	880	851	841	841	753	884	1021	1600	1400	1800
10:30	1497	1331	1430	1436	1594	1644	1685	1600	1400	1800
11:00	1433	1168	1367	1383	1428	1744	1784	1600	1400	1800
11:30	1181	1296	1146	1262	1177	1236	1372	1600	1400	1800
12:00	1551	1758	1505	1611	1646	1124	1591	1600	1400	1800
12:30	1629	1587	1569	1569	1611	1214	1684	1600	1400	1800
13:00	1158	1127	1281	1114	1316	1059	1375	1600	1400	1800
13:30	1036	1010	1165	998	1197	1051	1259	1600	1400	1800
14:00	1323	1290	1274	1274	1309	1341	1376	1600	1400	1800
14:30	645	629	621	720	638	667	913	1600	1400	1800

TERMINAL 1 INTERNATIONAL ARRIVALS ALLOCATION

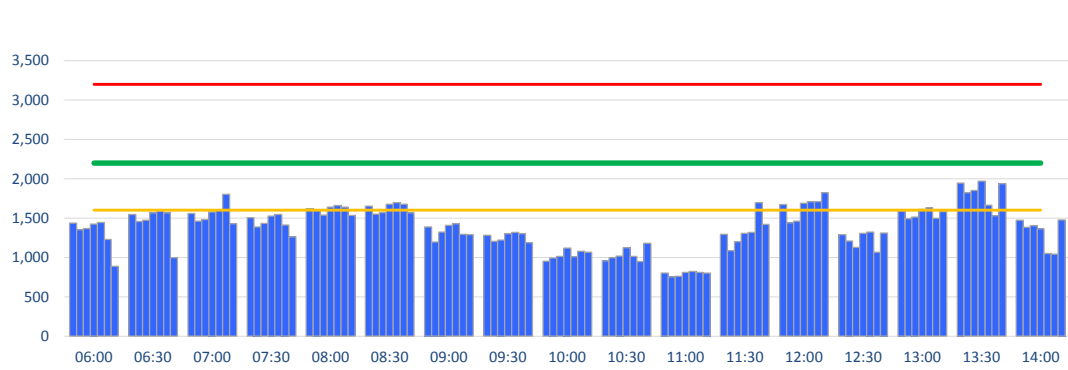
Peak Week Passengers per Hour - All times UTC



	ALLOCATION							Capacity Limit	Lower Referral	Upper Referral
	Mon	Tue	Wed	Thu	Fri	Sat	Sun			
15:00	528	515	489	608	502	436	793	1600	1400	1800
15:30	1000	866	942	854	966	899	922	1600	1400	1800
16:00	1119	983	1078	986	1122	1110	1045	1600	1400	1800
16:30	850	713	821	721	859	603	643	1600	1400	1800
17:00	1197	1050	1154	1038	1185	864	1004	1600	1400	1800
17:30	1115	1087	1075	1075	1104	889	1160	1600	1400	1800
18:00	1181	1152	1138	1237	1271	848	1335	1600	1400	1800
18:30	1422	1387	1370	1469	1509	1106	1585	1600	1400	1800
19:00	993	968	957	957	982	723	1033	1600	1400	1800
19:30	634	618	611	611	627	473	660	1600	1400	1800
20:00	781	762	752	752	558	571	812	1600	1400	1800
20:30	1492	1478	1458	1458	1282	1121	1574	1600	1400	1800
21:00	1252	1237	1222	1222	1254	897	1319	1600	1400	1800
21:30	915	886	876	876	900	750	945	1600	1400	1800
22:00	717	699	665	665	591	751	745	1600	1400	1800
22:30	223	217	189	189	102	226	232	1600	1400	1800
23:00	0	0	0	0	0	0	0	1600	1400	1800
23:30	0	0	0	0	0	0	0	1600	1400	1800

TERMINAL 1 TOTAL DEPARTURE ALLOCATION

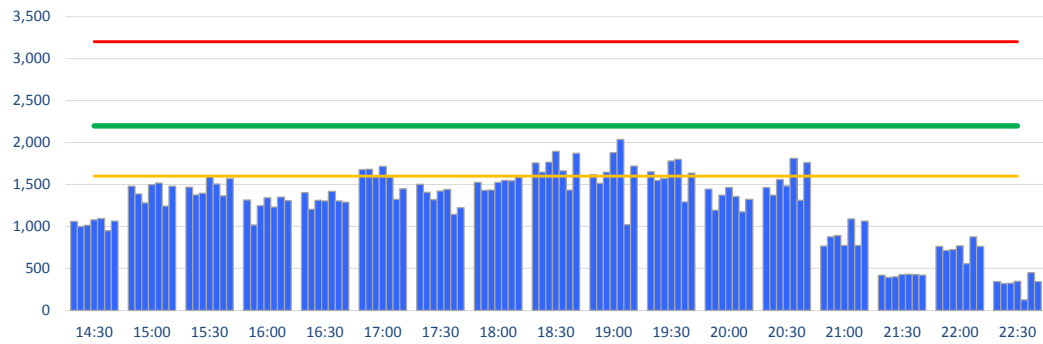
Peak Week Passengers per Hour - All times UTC



	ALLOCATION							Capacity Limit	Lower Referral	Upper Referral
	Mon	Tue	Wed	Thu	Fri	Sat	Sun			
06:00	1436	1352	1366	1426	1445	1230	886	2200	1600	3200
06:30	1547	1456	1472	1567	1587	1567	997	2200	1600	3200
07:00	1560	1462	1482	1580	1600	1804	1427	2200	1600	3200
07:30	1507	1390	1431	1526	1545	1411	1260	2200	1600	3200
08:00	1619	1603	1539	1640	1661	1640	1535	2200	1600	3200
08:30	1653	1551	1572	1675	1697	1675	1569	2200	1600	3200
09:00	1390	1197	1323	1409	1427	1294	1290	2200	1600	3200
09:30	1284	1204	1223	1301	1318	1301	1187	2200	1600	3200
10:00	953	994	1015	1120	1010	1080	1067	2200	1600	3200
10:30	956	997	1017	1122	1013	948	1181	2200	1600	3200
11:00	802	752	763	812	823	812	802	2200	1600	3200
11:30	1293	1085	1199	1305	1319	1699	1421	2200	1600	3200
12:00	1674	1442	1462	1690	1710	1711	1823	2200	1600	3200
12:30	1289	1207	1126	1305	1321	1066	1310	2200	1600	3200
13:00	1592	1492	1513	1612	1632	1497	1583	2200	1600	3200
13:30	1945	1824	1850	1971	1665	1529	1936	2200	1600	3200
14:00	1474	1385	1406	1364	1049	1041	1478	2200	1600	3200

TERMINAL 1 TOTAL DEPARTURES ALLOCATION

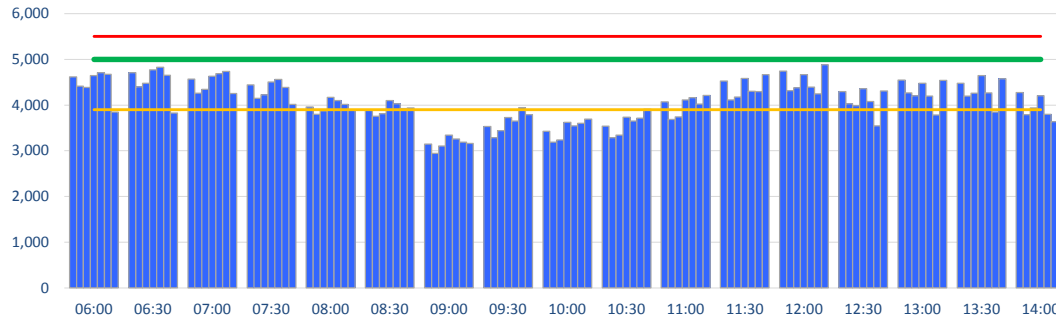
Peak Week Passengers per Hour - All times UTC



	ALLOCATION							Capacity Limit	Lower Referral	Upper Referral
	Mon	Tue	Wed	Thu	Fri	Sat	Sun			
14:30	1062	999	1014	1079	1093	949	1066	2200	1600	3200
15:00	1480	1388	1282	1499	1519	1245	1480	2200	1600	3200
15:30	1468	1377	1396	1593	1507	1367	1572	2200	1600	3200
16:00	1317	1020	1248	1342	1231	1351	1307	2200	1600	3200
16:30	1403	1207	1312	1304	1417	1304	1289	2200	1600	3200
17:00	1679	1681	1596	1717	1585	1322	1451	2200	1600	3200
17:30	1501	1409	1320	1423	1442	1143	1223	2200	1600	3200
18:00	1526	1432	1435	1526	1550	1545	1590	2200	1600	3200
18:30	1759	1649	1764	1896	1661	1433	1873	2200	1600	3200
19:00	1616	1516	1647	1880	2036	1024	1720	2200	1600	3200
19:30	1653	1548	1572	1781	1802	1292	1635	2200	1600	3200
20:00	1446	1194	1374	1464	1358	1176	1324	2200	1600	3200
20:30	1465	1374	1560	1485	1810	1312	1763	2200	1600	3200
21:00	765	877	894	775	1091	775	1063	2200	1600	3200
21:30	421	394	400	426	432	426	421	2200	1600	3200
22:00	763	714	725	772	557	876	763	2200	1600	3200
22:30	342	320	325	346	125	450	342	2200	1600	3200

TERMINAL 1 DEPARTURE ALLOCATION

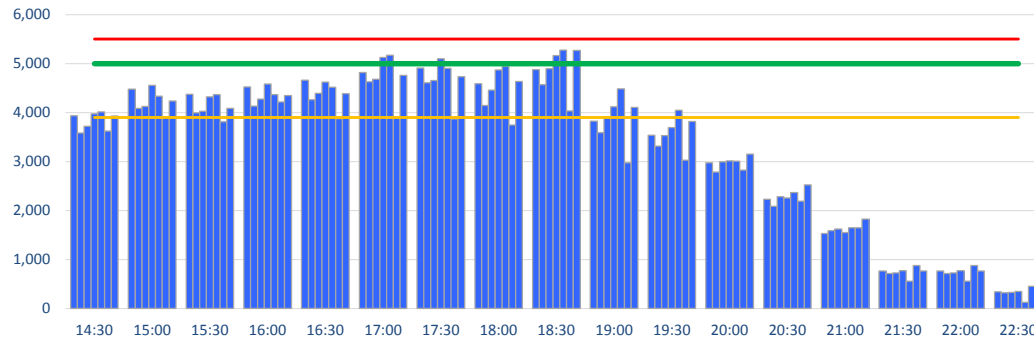
Peak Week Passengers per Hour - All times UTC



	ALLOCATION							Capacity Limit	Lower Referral	Upper Referral
	Mon	Tue	Wed	Thu	Fri	Sat	Sun			
06:00	4615	4417	4387	4646	4706	4674	3848	5000	3900	5500
06:30	4707	4397	4475	4768	4829	4653	3826	5000	3900	5500
07:00	4569	4262	4344	4629	4688	4738	4252	5000	3900	5500
07:30	4444	4145	4226	4502	4560	4387	4016	5000	3900	5500
08:00	3962	3794	3877	4169	4098	4014	3892	5000	3900	5500
08:30	3893	3752	3812	4098	4028	3924	3937	5000	3900	5500
09:00	3145	2943	3101	3341	3260	3186	3159	5000	3900	5500
09:30	3533	3286	3439	3728	3650	3948	3789	5000	3900	5500
10:00	3429	3188	3240	3622	3543	3603	3692	5000	3900	5500
10:30	3538	3289	3342	3732	3653	3713	3912	5000	3900	5500
11:00	4068	3686	3738	4114	4165	4020	4208	5000	3900	5500
11:30	4527	4116	4175	4581	4305	4294	4667	5000	3900	5500
12:00	4740	4319	4381	4666	4391	4249	4884	5000	3900	5500
12:30	4296	4030	3990	4355	4079	3544	4312	5000	3900	5500
13:00	4546	4265	4201	4475	4200	3783	4541	5000	3900	5500
13:30	4475	4200	4260	4643	4265	3845	4574	5000	3900	5500
14:00	4271	3793	3936	4205	3799	3637	4265	5000	3900	5500

TERMINAL 1 DEPARTURES ALLOCATION

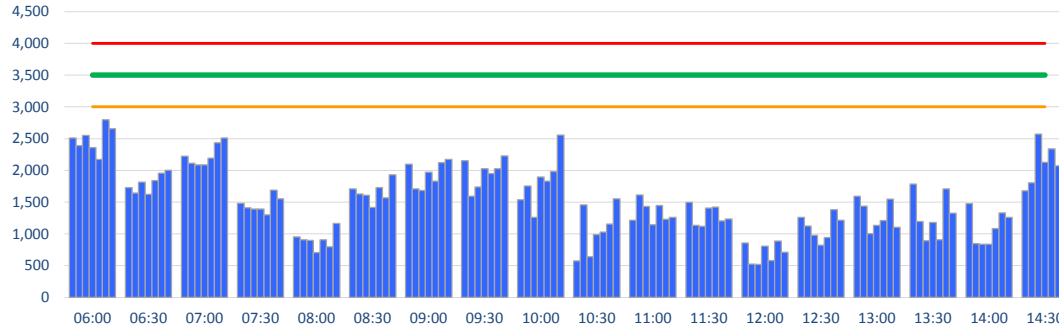
Peak Week Passengers per Hour - All times UTC



	ALLOCATION							Capacity Limit	Lower Referral	Upper Referral
	Mon	Tue	Wed	Thu	Fri	Sat	Sun			
14:30	3933	3583	3722	3976	4017	3620	3927	5000	3900	5500
15:00	4476	4089	4126	4558	4335	3918	4238	5000	3900	5500
15:30	4372	3993	4028	4320	4366	3814	4084	5000	3900	5500
16:00	4522	4133	4279	4585	4366	4218	4348	5000	3900	5500
16:30	4663	4265	4396	4623	4520	3880	4385	5000	3900	5500
17:00	4821	4629	4678	5123	5171	3891	4761	5000	3900	5500
17:30	4913	4606	4656	5100	4905	3868	4731	5000	3900	5500
18:00	4588	4142	4456	4870	4944	3745	4634	5000	3900	5500
18:30	4877	4571	4896	5162	5273	4037	5271	5000	3900	5500
19:00	3827	3587	3915	4119	4485	2975	4107	5000	3900	5500
19:30	3539	3316	3532	3692	4044	3030	3819	5000	3900	5500
20:00	2974	2785	2993	3011	3006	2827	3150	5000	3900	5500
20:30	2228	2088	2285	2257	2367	2188	2526	5000	3900	5500
21:00	1528	1591	1619	1547	1648	1651	1826	5000	3900	5500
21:30	763	714	725	772	557	876	763	5000	3900	5500
22:00	763	714	725	772	557	876	763	5000	3900	5500
22:30	342	320	325	346	125	450	342	5000	3900	5500

TERMINAL 3 INTERNATIONAL ARRIVALS ALLOCATION

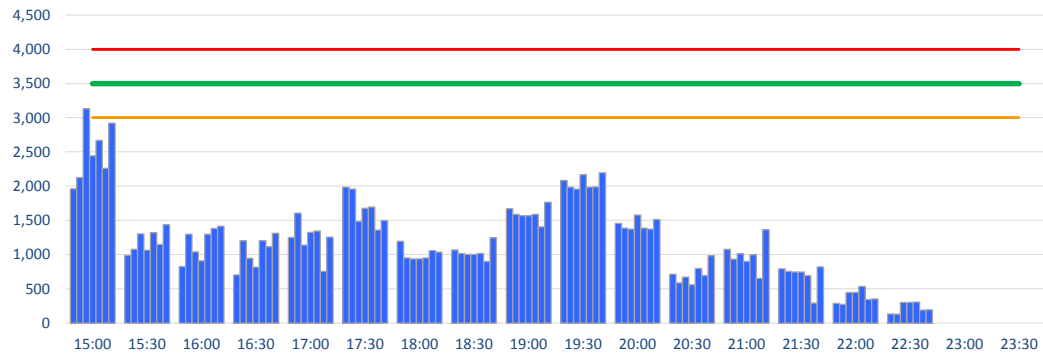
Peak Week Passengers per Hour - All times UTC



	ALLOCATION							Capacity Limit	Lower Referral	Upper Referral
	Mon	Tue	Wed	Thu	Fri	Sat	Sun			
06:00	2512	2388	2549	2359	2172	2798	2657	3500	3000	4000
06:30	1731	1646	1815	1625	1839	1956	2004	3500	3000	4000
07:00	2223	2114	2088	2088	2195	2437	2513	3500	3000	4000
07:30	1483	1411	1394	1394	1299	1688	1555	3500	3000	4000
08:00	953	908	897	704	908	798	1164	3500	3000	4000
08:30	1711	1630	1608	1415	1730	1566	1931	3500	3000	4000
09:00	2097	1708	1685	1971	1831	2122	2172	3500	3000	4000
09:30	2153	1595	1739	2025	1952	2027	2230	3500	3000	4000
10:00	1539	1755	1263	1896	1828	1983	2554	3500	3000	4000
10:30	573	1458	641	988	1030	1156	1552	3500	3000	4000
11:00	1216	1614	1430	1144	1447	1230	1260	3500	3000	4000
11:30	1496	1133	1120	1406	1423	1205	1235	3500	3000	4000
12:00	857	526	519	805	578	889	709	3500	3000	4000
12:30	1261	1124	977	823	945	1382	1213	3500	3000	4000
13:00	1593	1439	1002	1134	1208	1546	1105	3500	3000	4000
13:30	1787	1197	895	1181	907	1708	1326	3500	3000	4000
14:00	1477	847	835	835	1085	1332	1259	3500	3000	4000
14:30	1680	1803	2570	2126	2340	2074	2302	3500	3000	4000

TERMINAL 3 INTERNATIONAL ARRIVALS ALLOCATION

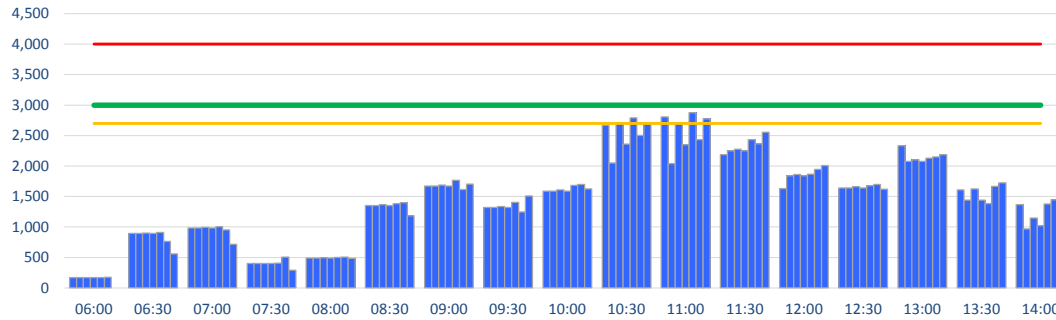
Peak Week Passengers per Hour - All times UTC



	ALLOCATION							Capacity Limit	Lower Referral	Upper Referral
	Mon	Tue	Wed	Thu	Fri	Sat	Sun			
15:00	1961	2127	3129	2445	2669	2263	2919	3500	3000	4000
15:30	989	1078	1302	1062	1321	1146	1437	3500	3000	4000
16:00	826	1300	1042	909	1300	1384	1415	3500	3000	4000
16:30	705	1205	949	816	1205	1117	1312	3500	3000	4000
17:00	1251	1606	1138	1328	1344	753	1255	3500	3000	4000
17:30	1984	1959	1486	1676	1697	1360	1500	3500	3000	4000
18:00	1196	950	937	937	950	1060	1035	3500	3000	4000
18:30	1067	1016	1003	1003	1016	899	1246	3500	3000	4000
19:00	1670	1589	1569	1569	1589	1406	1767	3500	3000	4000
19:30	2084	1983	1958	2167	1983	1991	2197	3500	3000	4000
20:00	1458	1388	1371	1580	1388	1373	1512	3500	3000	4000
20:30	714	586	671	559	798	693	984	3500	3000	4000
21:00	1078	933	1013	901	1000	652	1361	3500	3000	4000
21:30	794	756	747	747	694	291	822	3500	3000	4000
22:00	287	273	446	446	534	344	352	3500	3000	4000
22:30	134	128	302	302	306	189	194	3500	3000	4000
23:00	0	0	0	0	0	0	0	3500	3000	4000
23:30	0	0	0	0	0	0	0	3500	3000	4000

TERMINAL 3 DEPARTURE ALLOCATION

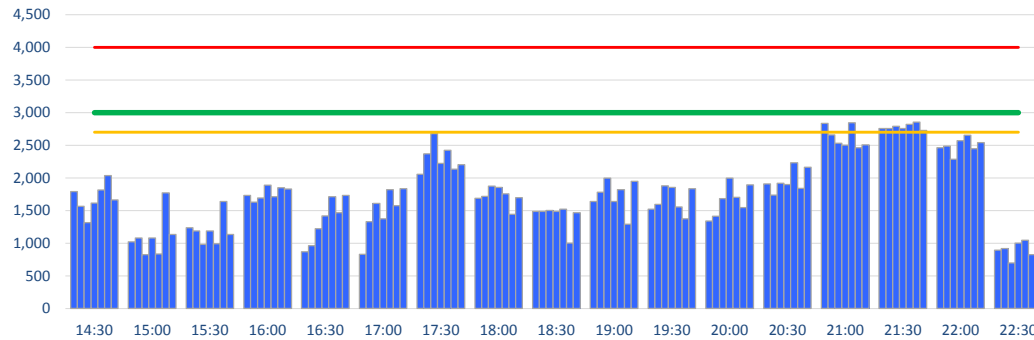
Peak Week Passengers per Hour - All times UTC



	ALLOCATION							Capacity	Lower	Upper
	Mon	Tue	Wed	Thu	Fri	Sat	Sun	Limit	Referral	Referral
06:00	168	168	170	168	172	174	0	3000	2700	4000
06:30	892	892	900	892	911	762	560	3000	2700	4000
07:00	985	985	994	985	1006	950	715	3000	2700	4000
07:30	399	399	403	399	408	505	291	3000	2700	4000
08:00	490	490	495	490	501	508	484	3000	2700	4000
08:30	1352	1352	1368	1352	1384	1401	1182	3000	2700	4000
09:00	1671	1671	1690	1671	1765	1612	1703	3000	2700	4000
09:30	1321	1321	1336	1321	1406	1248	1511	3000	2700	4000
10:00	1590	1590	1608	1590	1681	1700	1623	3000	2700	4000
10:30	2672	2048	2701	2360	2788	2499	2691	3000	2700	4000
11:00	2807	2038	2694	2350	2873	2435	2773	3000	2700	4000
11:30	2185	2247	2275	2247	2434	2367	2554	3000	2700	4000
12:00	1632	1839	1860	1839	1867	1943	2006	3000	2700	4000
12:30	1641	1641	1660	1641	1679	1698	1619	3000	2700	4000
13:00	2333	2077	2101	2077	2126	2150	2185	3000	2700	4000
13:30	1607	1439	1626	1439	1384	1664	1723	3000	2700	4000
14:00	1369	967	1147	1019	1380	1446	1173	3000	2700	4000

TERMINAL 3 DEPARTURES ALLOCATION

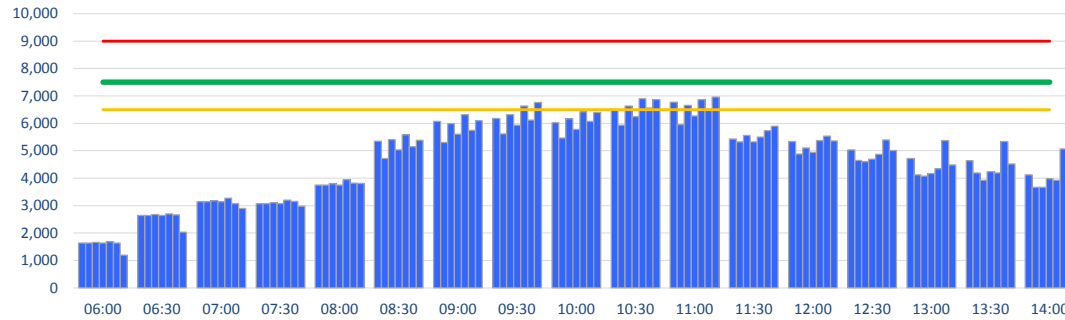
Peak Week Passengers per Hour - All times UTC



	ALLOCATION							Capacity	Lower	Upper
	Mon	Tue	Wed	Thu	Fri	Sat	Sun	Limit	Referral	Referral
14:30	1791	1563	1314	1615	1812	2033	1663	3000	2700	4000
15:00	1022	1077	824	1077	835	1771	1132	3000	2700	4000
15:30	1236	1187	982	1187	992	1636	1135	3000	2700	4000
16:00	1730	1626	1692	1888	1710	1850	1828	3000	2700	4000
16:30	869	962	1221	1415	1712	1465	1729	3000	2700	4000
17:00	829	1329	1608	1375	1818	1572	1832	3000	2700	4000
17:30	2055	2368	2676	2223	2423	2133	2203	3000	2700	4000
18:00	1688	1718	1875	1856	1758	1443	1697	3000	2700	4000
18:30	1488	1488	1502	1488	1521	1000	1468	3000	2700	4000
19:00	1640	1778	1995	1640	1817	1290	1948	3000	2700	4000
19:30	1522	1595	1879	1856	1557	1374	1834	3000	2700	4000
20:00	1338	1411	1681	1994	1700	1546	1892	3000	2700	4000
20:30	1910	1735	1919	1898	2229	1840	2162	3000	2700	4000
21:00	2834	2659	2529	2500	2845	2464	2507	3000	2700	4000
21:30	2755	2755	2790	2755	2820	2854	2724	3000	2700	4000
22:00	2462	2485	2287	2568	2652	2449	2540	3000	2700	4000
22:30	893	916	698	999	1046	824	989	3000	2700	4000

TERMINAL 3 - 3HOUR DEPARTURE ALLOCATION

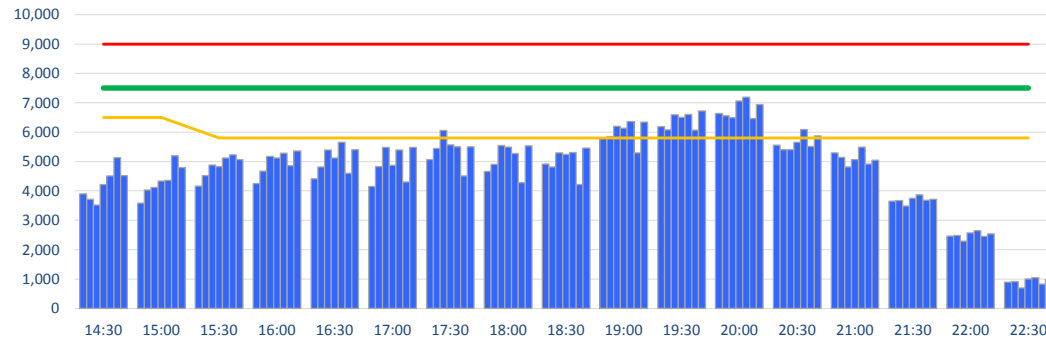
Peak Week Passengers per Hour - All times UTC



	ALLOCATION							Capacity Limit	Lower Referral	Upper Referral
	Mon	Tue	Wed	Thu	Fri	Sat	Sun			
06:00	1643	1643	1659	1643	1679	1632	1199	7500	6500	9000
06:30	2643	2643	2671	2643	2703	2668	2033	7500	6500	9000
07:00	3146	3146	3179	3146	3272	3070	2902	7500	6500	9000
07:30	3072	3072	3107	3072	3198	3154	2984	7500	6500	9000
08:00	3751	3751	3793	3751	3947	3820	3810	7500	6500	9000
08:30	5345	4721	5405	5033	5578	5148	5384	7500	6500	9000
09:00	6068	5299	5992	5611	6319	5747	6099	7500	6500	9000
09:30	6178	5616	6312	5928	6628	6114	6756	7500	6500	9000
10:00	6029	5467	6162	5779	6421	6078	6402	7500	6500	9000
10:30	6498	5936	6636	6248	6901	6564	6864	7500	6500	9000
11:00	6772	5954	6655	6266	6866	6528	6964	7500	6500	9000
11:30	5433	5327	5561	5327	5497	5729	5896	7500	6500	9000
12:00	5334	4883	5108	4935	5373	5539	5364	7500	6500	9000
12:30	5039	4643	4600	4695	4875	5395	5005	7500	6500	9000
13:00	4724	4121	4072	4173	4341	5367	4490	7500	6500	9000
13:30	4634	4189	3922	4241	4188	5333	4521	7500	6500	9000
14:00	4121	3670	3663	3984	3925	5067	4133	7500	6500	9000

TERMINAL 3 - 3HOUR DEPARTURE ALLOCATION

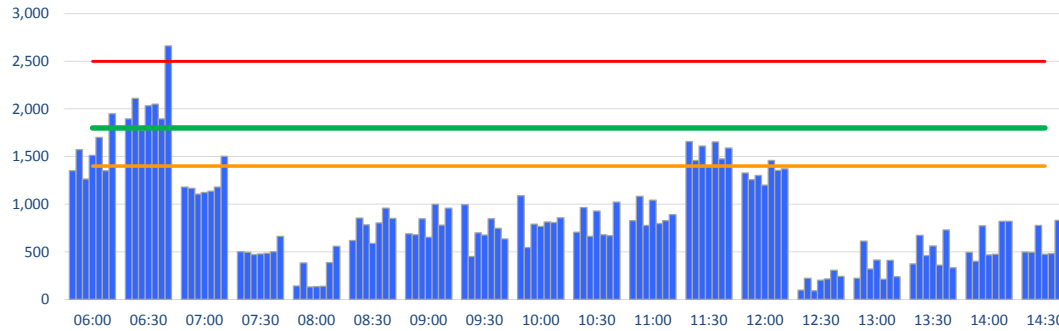
Peak Week Passengers per Hour - All times UTC



	ALLOCATION							Capacity Limit	Lower Referral	Upper Referral
	Mon	Tue	Wed	Thu	Fri	Sat	Sun			
14:30	3896	3712	3517	4217	4516	5134	4527	7500	6500	9000
15:00	3581	4032	4124	4340	4363	5193	4792	7500	6500	9000
15:30	4160	4517	4879	4825	5127	5234	5067	7500	5800	9000
16:00	4247	4673	5175	5119	5286	4865	5357	7500	5800	9000
16:30	4412	4818	5399	5126	5656	4598	5400	7500	5800	9000
17:00	4157	4825	5478	4871	5393	4305	5477	7500	5800	9000
17:30	5065	5451	6057	5567	5501	4507	5505	7500	5800	9000
18:00	4666	4907	5551	5490	5275	4279	5537	7500	5800	9000
18:30	4920	4818	5300	5242	5307	4214	5464	7500	5800	9000
19:00	5812	5848	6205	6134	6362	5300	6347	7500	5800	9000
19:30	6187	6085	6588	6509	6606	6068	6720	7500	5800	9000
20:00	6634	6555	6497	7062	7197	6459	6939	7500	5800	9000
20:30	5558	5406	5407	5652	6095	5518	5875	7500	5800	9000
21:00	5296	5144	4816	5068	5497	4913	5047	7500	5800	9000
21:30	3648	3671	3488	3754	3866	3678	3713	7500	5800	9000
22:00	2462	2485	2287	2568	2652	2449	2540	7500	5800	9000
22:30	893	916	698	999	1046	824	989	7500	5800	9000

TERMINAL 4 INTERNATIONAL 1HR ARRIVALS ALLOCATION

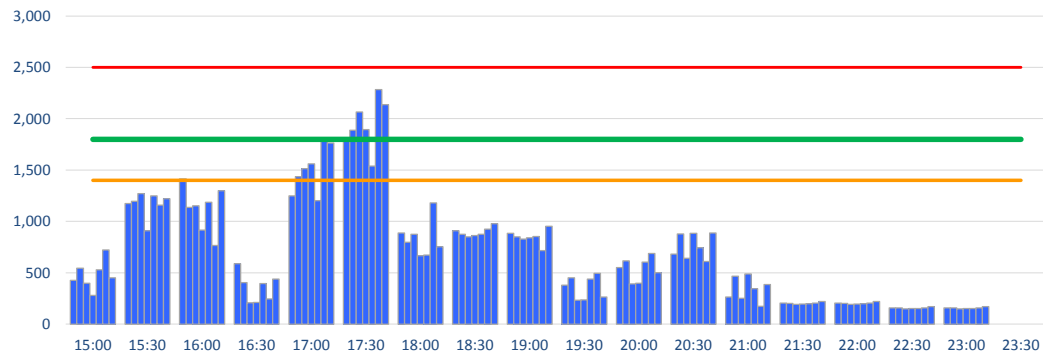
Peak Week Passengers per Hour - All times UTC



	ALLOCATION							Capacity	Lower	Upper
	Mon	Tue	Wed	Thu	Fri	Sat	Sun	Limit	Referral	Referral
06:00	1351	1573	1265	1514	1701	1351	1948	1800	1400	2500
06:30	1895	2111	1776	2032	2050	1895	2663	1800	1400	2500
07:00	1179	1165	1106	1122	1136	1179	1503	1800	1400	2500
07:30	501	495	470	477	483	501	663	1800	1400	2500
08:00	142	383	133	135	137	388	558	1800	1400	2500
08:30	619	854	782	589	803	958	850	1800	1400	2500
09:00	688	679	847	654	998	781	957	1800	1400	2500
09:30	994	450	700	675	848	748	636	1800	1400	2500
10:00	1090	545	790	767	812	806	856	1800	1400	2500
10:30	706	964	662	928	680	668	1021	1800	1400	2500
11:00	827	1084	775	1043	796	827	890	1800	1400	2500
11:30	1656	1458	1609	1404	1654	1476	1590	1800	1400	2500
12:00	1326	1257	1300	1199	1458	1354	1370	1800	1400	2500
12:30	98	222	92	202	216	306	241	1800	1400	2500
13:00	221	612	319	415	213	409	238	1800	1400	2500
13:30	373	674	462	560	360	729	334	1800	1400	2500
14:00	493	399	773	469	475	821	819	1800	1400	2500
14:30	499	493	778	474	480	830	893	1800	1400	2500

TERMINAL 4 INTERNATIONAL 1HR ARRIVALS ALLOCATION

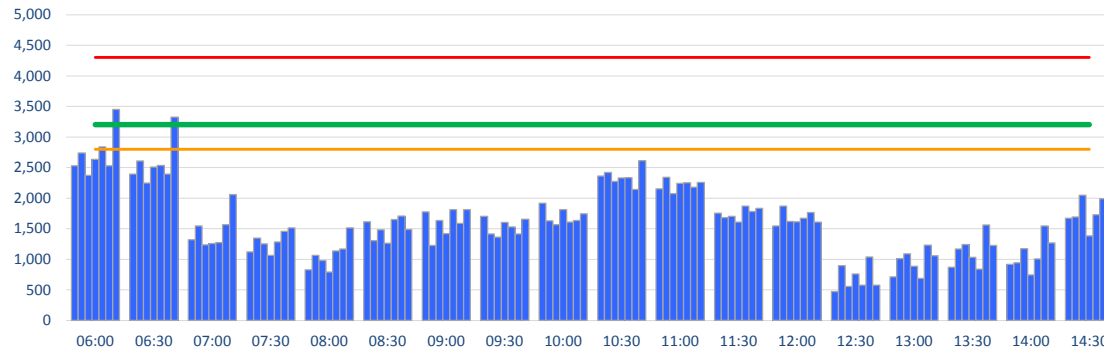
Peak Week Passengers per Hour - All times UTC



	ALLOCATION							Capacity	Lower	Upper
	Mon	Tue	Wed	Thu	Fri	Sat	Sun	Limit	Referral	Referral
15:00	426	543	399	278	530	722	449	1800	1400	2500
15:30	1173	1197	1270	909	1248	1159	1222	1800	1400	2500
16:00	1413	1135	1152	916	1187	766	1297	1800	1400	2500
16:30	587	403	207	210	393	246	439	1800	1400	2500
17:00	1247	1436	1515	1561	1201	1804	1762	1800	1400	2500
17:30	1784	1889	2064	1894	1538	2282	2138	1800	1400	2500
18:00	886	798	876	665	673	1181	752	1800	1400	2500
18:30	908	875	850	863	875	925	978	1800	1400	2500
19:00	884	851	828	840	852	714	952	1800	1400	2500
19:30	380	449	231	234	438	495	265	1800	1400	2500
20:00	550	617	390	396	602	686	501	1800	1400	2500
20:30	680	878	641	885	744	609	886	1800	1400	2500
21:00	264	467	251	489	343	172	385	1800	1400	2500
21:30	205	202	192	194	197	205	220	1800	1400	2500
22:00	205	202	192	194	197	205	220	1800	1400	2500
22:30	158	156	148	150	152	158	170	1800	1400	2500
23:00	158	156	148	150	152	158	170	1800	1400	2500
23:30	0	0	0	0	0	0	0	1800	1400	2500

TERMINAL 4 INTERNATIONAL 2HR ARRIVALS ALLOCATION

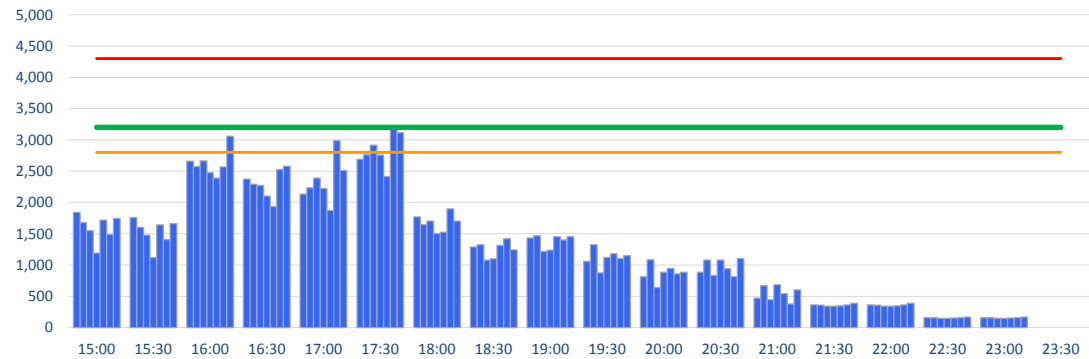
Peak Week Passengers per Hour - All times UTC



	ALLOCATION							Capacity Limit	Lower Referral	Upper Referral
	Mon	Tue	Wed	Thu	Fri	Sat	Sun			
06:00	2530	2738	2371	2636	2837	2530	3451	3200	2800	4300
06:30	2396	2606	2246	2509	2533	2396	3326	3200	2800	4300
07:00	1321	1548	1239	1257	1273	1567	2061	3200	2800	4300
07:30	1120	1349	1252	1066	1286	1459	1513	3200	2800	4300
08:00	830	1062	980	789	1135	1169	1515	3200	2800	4300
08:30	1613	1304	1482	1264	1651	1706	1486	3200	2800	4300
09:00	1778	1224	1637	1421	1810	1587	1813	3200	2800	4300
09:30	1700	1414	1362	1603	1528	1416	1657	3200	2800	4300
10:00	1917	1629	1565	1810	1608	1633	1746	3200	2800	4300
10:30	2362	2422	2271	2332	2334	2144	2611	3200	2800	4300
11:00	2153	2341	2075	2242	2254	2181	2260	3200	2800	4300
11:30	1754	1680	1701	1606	1870	1782	1831	3200	2800	4300
12:00	1547	1869	1619	1614	1671	1763	1608	3200	2800	4300
12:30	471	896	554	762	576	1035	575	3200	2800	4300
13:00	714	1011	1092	884	688	1230	1057	3200	2800	4300
13:30	872	1167	1240	1034	840	1559	1227	3200	2800	4300
14:00	919	942	1172	747	1005	1543	1268	3200	2800	4300
14:30	1672	1690	2048	1383	1728	1989	2115	3200	2800	4300

TERMINAL 4 INTERNATIONAL 2HR ARRIVALS ALLOCATION

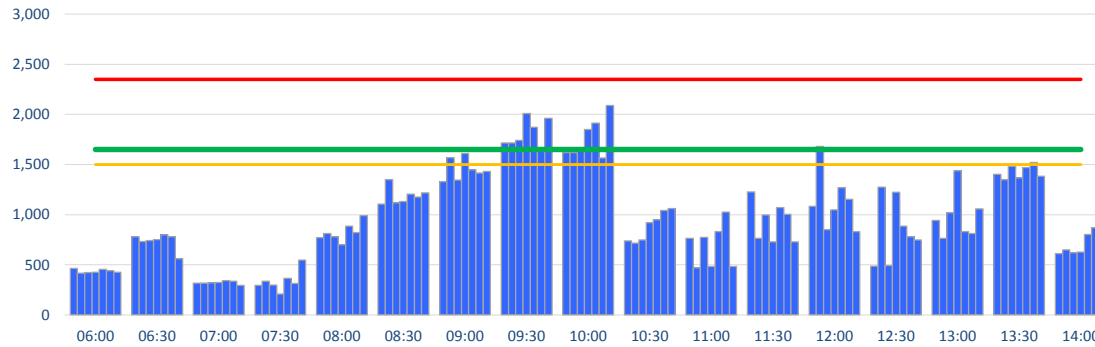
Peak Week Passengers per Hour - All times UTC



	ALLOCATION							Capacity Limit	Lower Referral	Upper Referral
	Mon	Tue	Wed	Thu	Fri	Sat	Sun			
15:00	1839	1678	1551	1194	1717	1488	1746	3200	2800	4300
15:30	1760	1600	1477	1119	1641	1405	1661	3200	2800	4300
16:00	2660	2571	2667	2477	2388	2570	3059	3200	2800	4300
16:30	2371	2292	2271	2104	1931	2528	2577	3200	2800	4300
17:00	2133	2234	2391	2226	1874	2985	2514	3200	2800	4300
17:30	2692	2764	2914	2757	2413	3207	3116	3200	2800	4300
18:00	1770	1649	1704	1505	1525	1895	1704	3200	2800	4300
18:30	1288	1324	1081	1097	1313	1420	1243	3200	2800	4300
19:00	1434	1468	1218	1236	1454	1400	1453	3200	2800	4300
19:30	1060	1327	872	1119	1182	1104	1151	3200	2800	4300
20:00	814	1084	641	885	945	858	886	3200	2800	4300
20:30	885	1080	833	1079	941	814	1106	3200	2800	4300
21:00	469	669	443	683	540	377	605	3200	2800	4300
21:30	363	358	340	344	349	363	390	3200	2800	4300
22:00	363	358	340	344	349	363	390	3200	2800	4300
22:30	158	156	148	150	152	158	170	3200	2800	4300
23:00	158	156	148	150	152	158	170	3200	2800	4300
23:30	0	0	0	0	0	0	0	3200	2800	4300

TERMINAL 4 DEPARTURE ALLOCATION

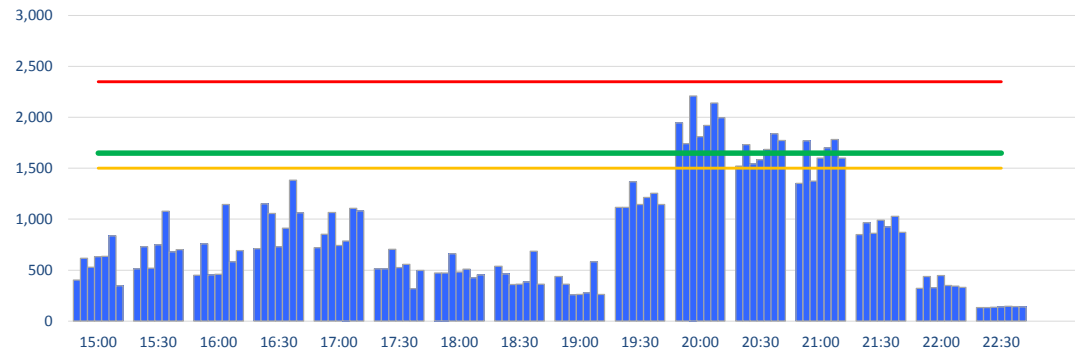
Peak Week Passengers per Hour - All times UTC



	ALLOCATION							Capacity Limit	Lower Referral	Upper Referral
	Mon	Tue	Wed	Thu	Fri	Sat	Sun			
06:00	465	416	421	427	454	443	427	1650	1500	2350
06:30	781	732	741	751	798	779	561	1650	1500	2350
07:00	316	316	320	324	344	336	296	1650	1500	2350
07:30	294	335	297	210	365	313	547	1650	1500	2350
08:00	771	812	780	699	885	821	991	1650	1500	2350
08:30	1105	1347	1119	1132	1204	1176	1219	1650	1500	2350
09:00	1328	1570	1346	1609	1448	1414	1433	1650	1500	2350
09:30	1716	1716	1740	2008	1872	1668	1962	1650	1500	2350
10:00	1621	1621	1643	1850	1914	1565	2089	1650	1500	2350
10:30	738	716	747	922	950	1041	1061	1650	1500	2350
11:00	763	471	773	483	831	1027	483	1650	1500	2350
11:30	1228	764	996	730	1071	1004	730	1650	1500	2350
12:00	1084	1680	849	1047	1268	1154	831	1650	1500	2350
12:30	486	1276	492	1224	884	779	747	1650	1500	2350
13:00	943	763	1018	1437	831	811	1059	1650	1500	2350
13:30	1402	1348	1483	1369	1469	1520	1382	1650	1500	2350
14:00	611	648	619	627	804	871	757	1650	1500	2350

TERMINAL 4 DEPARTURES ALLOCATION

Peak Week Passengers per Hour - All times UTC

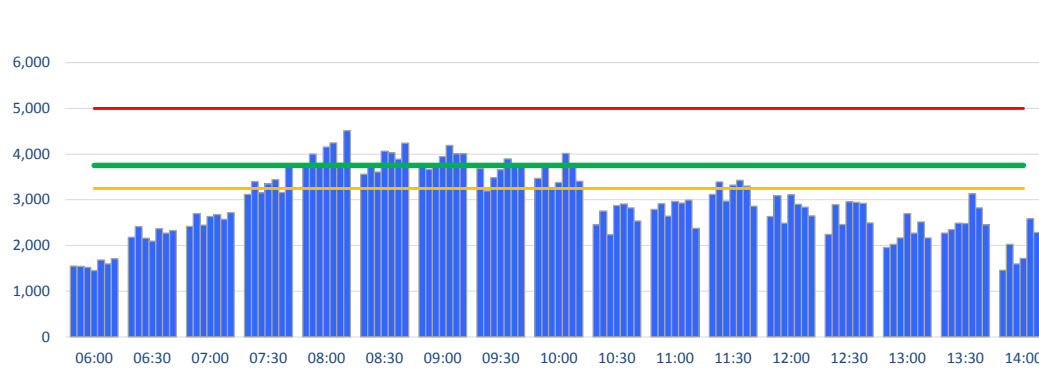


	ALLOCATION							Capacity Limit	Lower Referral	Upper Referral
	Mon	Tue	Wed	Thu	Fri	Sat	Sun			
14:30	357	268	483	367	589	626	367	1650	1500	2350
15:00	402	618	528	633	637	835	347	1650	1500	2350
15:30	513	729	519	747	1077	678	702	1650	1500	2350
16:00	449	757	454	460	1143	581	693	1650	1500	2350
16:30	712	1151	1057	731	912	1382	1062	1650	1500	2350
17:00	721	852	1067	741	787	1108	1080	1650	1500	2350
17:30	513	513	705	526	558	319	498	1650	1500	2350
18:00	471	471	662	482	511	425	454	1650	1500	2350
18:30	537	463	359	363	385	687	363	1650	1500	2350
19:00	437	363	258	261	277	581	261	1650	1500	2350
19:30	1115	1115	1368	1145	1215	1255	1145	1650	1500	2350
20:00	1946	1741	2210	1809	1920	2139	1997	1650	1500	2350
20:30	1521	1732	1543	1585	1685	1839	1773	1650	1500	2350
21:00	1353	1769	1373	1600	1702	1783	1600	1650	1500	2350
21:30	850	965	862	989	926	1027	871	1650	1500	2350
22:00	321	436	326	448	350	342	330	1650	1500	2350
22:30	134	134	136	138	146	143	138	1650	1500	2350

2

TERMINAL 4 - 3HOUR DEPARTURE ALLOCATION

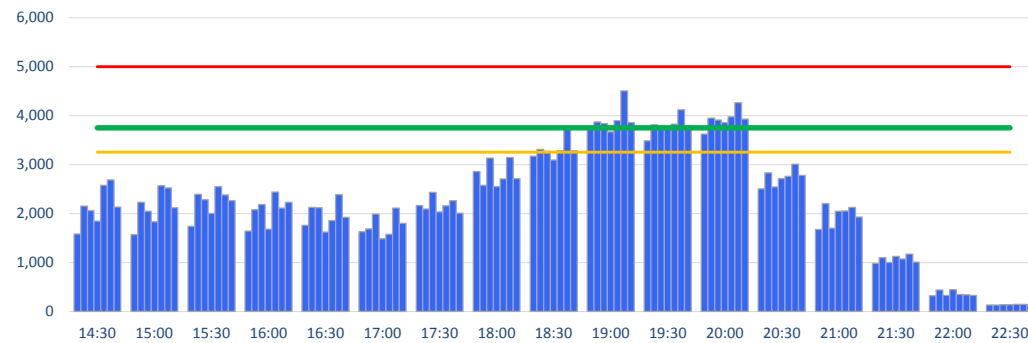
Peak Week Passengers per Hour - All times UTC



	ALLOCATION							Capacity Limit	Lower Referral	Upper Referral
	Mon	Tue	Wed	Thu	Fri	Sat	Sun			
06:00	1552	1544	1521	1450	1683	1600	1714	3750	3250	5000
06:30	2180	2414	2157	2093	2367	2268	2327	3750	3250	5000
07:00	2415	2698	2446	2632	2677	2571	2720	3750	3250	5000
07:30	3115	3398	3156	3350	3441	3157	3728	3750	3250	5000
08:00	3720	4003	3769	4158	4247	3800	4513	3750	3250	5000
08:30	3559	3779	3606	4062	4026	3885	4242	3750	3250	5000
09:00	3712	3662	3762	3942	4193	4006	4005	3750	3250	5000
09:30	3682	3196	3483	3660	3893	3713	3753	3750	3250	5000
10:00	3468	3772	3265	3380	4013	3746	3403	3750	3250	5000
10:30	2452	2756	2235	2876	2905	2824	2538	3750	3250	5000
11:00	2790	2914	2640	2967	2930	2992	2373	3750	3250	5000
11:30	3116	3388	2971	3323	3424	3303	2859	3750	3250	5000
12:00	2638	3091	2486	3111	2903	2836	2647	3750	3250	5000
12:30	2245	2892	2458	2960	2942	2925	2496	3750	3250	5000
13:00	1956	2029	2165	2697	2272	2517	2163	3750	3250	5000
13:30	2272	2345	2485	2483	3135	2824	2451	3750	3250	5000
14:00	1462	2023	1601	1720	2584	2287	1797	3750	3250	5000

TERMINAL 4 - 3HOUR DEPARTURE ALLOCATION

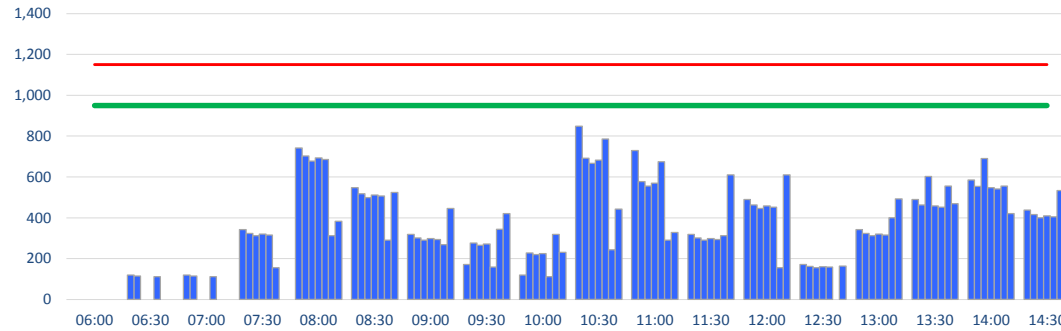
Peak Week Passengers per Hour - All times UTC



	ALLOCATION							Capacity Limit	Lower Referral	Upper Referral
	Mon	Tue	Wed	Thu	Fri	Sat	Sun			
14:30	1582	2148	2059	1845	2578	2686	2131	3750	3250	5000
15:00	1572	2227	2049	1834	2567	2524	2120	3750	3250	5000
15:30	1738	2393	2281	2004	2547	2379	2262	3750	3250	5000
16:00	1641	2080	2183	1683	2441	2114	2227	3750	3250	5000
16:30	1762	2127	2121	1620	1855	2388	1923	3750	3250	5000
17:00	1629	1686	1987	1484	1575	2114	1795	3750	3250	5000
17:30	2165	2091	2432	2034	2158	2261	2006	3750	3250	5000
18:00	2854	2575	3130	2552	2708	3145	2712	3750	3250	5000
18:30	3173	3310	3270	3093	3285	3781	3281	3750	3250	5000
19:00	3736	3873	3841	3670	3899	4503	3858	3750	3250	5000
19:30	3486	3812	3773	3719	3826	4121	3789	3750	3250	5000
20:00	3620	3946	3909	3857	3972	4264	3927	3750	3250	5000
20:30	2505	2831	2541	2712	2757	3009	2782	3750	3250	5000
21:00	1674	2205	1699	2048	2052	2125	1930	3750	3250	5000
21:30	984	1099	998	1127	1072	1170	1009	3750	3250	5000
22:00	321	436	326	448	350	342	330	3750	3250	5000
22:30	134	134	136	138	146	143	138	3750	3250	5000

TERMINAL 5 DOMESTIC ARRIVALS ALLOCATION

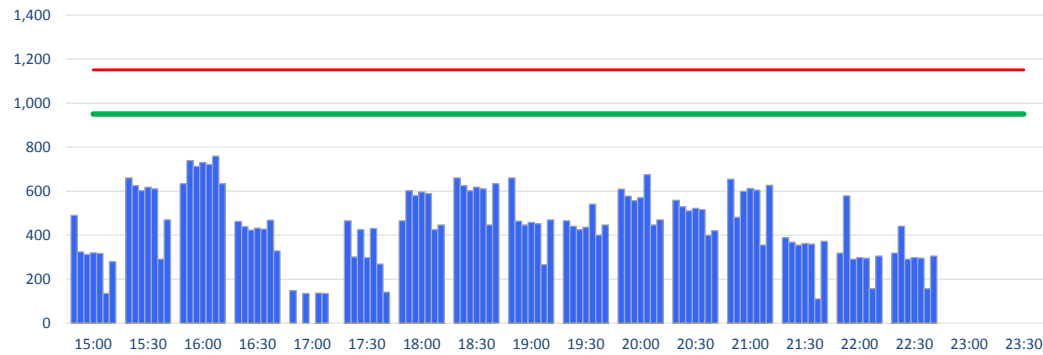
Peak Week Passengers per Hour - All times UTC



	ALLOCATION							Capacity Limit	Lower Referral	Upper Referral
	Mon	Tue	Wed	Thu	Fri	Sat	Sun			
06:00	0	0	0	0	0	0	0	950		1150
06:30	120	114	0	0	111	0	0	950		1150
07:00	120	114	0	0	111	0	0	950		1150
07:30	342	324	312	320	316	156	0	950		1150
08:00	742	703	677	694	686	312	383	950		1150
08:30	547	518	499	512	506	290	524	950		1150
09:00	318	301	290	298	294	268	446	950		1150
09:30	171	276	266	272	158	343	420	950		1150
10:00	120	228	220	224	111	319	230	950		1150
10:30	849	691	666	682	785	244	443	950		1150
11:00	729	577	556	570	674	290	328	950		1150
11:30	318	301	290	298	294	312	610	950		1150
12:00	489	463	446	458	452	156	610	950		1150
12:30	171	162	156	160	158	0	164	950		1150
13:00	342	324	312	320	316	400	492	950		1150
13:30	489	463	462	458	452	556	469	950		1150
14:00	585	554	690	548	541	556	420	950		1150
14:30	438	415	400	410	405	534	394	950		1150

TERMINAL 5 DOMESTIC ARRIVALS ALLOCATION

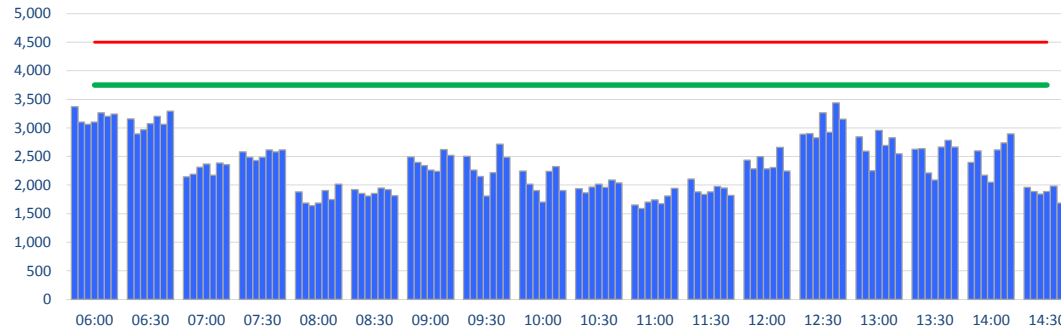
Peak Week Passengers per Hour - All times UTC



	ALLOCATION							Capacity Limit	Lower Referral	Upper Referral
	Mon	Tue	Wed	Thu	Fri	Sat	Sun			
15:00	489	324	312	320	316	134	279	950		1150
15:30	660	625	602	618	610	290	469	950		1150
16:00	633	739	712	730	721	758	633	950		1150
16:30	462	438	422	432	427	468	328	950		1150
17:00	147	0	134	0	136	134	0	950		1150
17:30	465	301	424	298	430	268	141	950		1150
18:00	465	602	580	596	588	424	446	950		1150
18:30	660	625	602	618	610	446	633	950		1150
19:00	660	463	446	458	452	266	469	950		1150
19:30	465	440	424	436	541	400	446	950		1150
20:00	609	577	556	570	674	446	469	950		1150
20:30	558	529	510	522	516	400	420	950		1150
21:00	654	481	598	612	605	354	627	950		1150
21:30	387	367	354	362	358	110	371	950		1150
22:00	318	579	290	298	294	156	305	950		1150
22:30	318	440	290	298	294	156	305	950		1150
23:00	0	0	0	0	0	0	0	950		1150
23:30	0	0	0	0	0	0	0	950		1150

TERMINAL 5 INTERNATIONAL ARRIVALS ALLOCATION

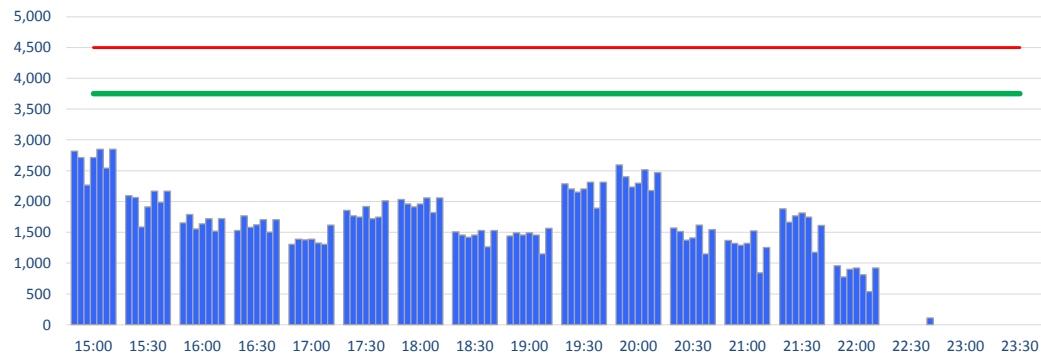
Peak Week Passengers per Hour - All times UTC



	ALLOCATION							Capacity Limit	Lower Referral	Upper Referral
	Mon	Tue	Wed	Thu	Fri	Sat	Sun			
06:00	3373	3104	3063	3104	3264	3201	3245	3750	4500	
06:30	3161	2897	2970	3076	3204	3066	3295	3750	4500	
07:00	2143	2193	2312	2372	2172	2384	2360	3750	4500	
07:30	2583	2489	2429	2489	2617	2583	2617	3750	4500	
08:00	1880	1684	1643	1684	1904	1747	2014	3750	4500	
08:30	1924	1854	1809	1854	1948	1924	1814	3750	4500	
09:00	2490	2399	2341	2261	2241	2623	2521	3750	4500	
09:30	2506	2265	2149	1812	2220	2716	2485	3750	4500	
10:00	2247	2016	1905	1701	2239	2324	1902	3750	4500	
10:30	1937	1866	1965	2015	1961	2092	2040	3750	4500	
11:00	1655	1593	1701	1742	1675	1810	1942	3750	4500	
11:30	2107	1881	1836	1881	1978	1952	1822	3750	4500	
12:00	2435	2286	2501	2286	2308	2660	2246	3750	4500	
12:30	2892	2902	2829	3268	2926	3440	3154	3750	4500	
13:00	2846	2591	2254	2957	2694	2829	2548	3750	4500	
13:30	2629	2640	2212	2091	2664	2783	2664	3750	4500	
14:00	2399	2597	2171	2048	2618	2738	2898	3750	4500	
14:30	1960	1889	1843	1889	1985	1684	1985	3750	4500	

TERMINAL 5 INTERNATIONAL ARRIVALS ALLOCATION

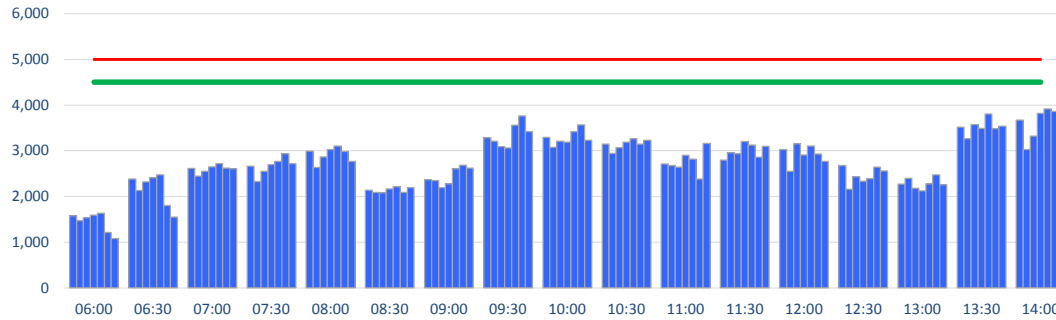
Peak Week Passengers per Hour - All times UTC



	ALLOCATION							Capacity Limit	Lower Referral	Upper Referral
	Mon	Tue	Wed	Thu	Fri	Sat	Sun			
15:00	2817	2713	2267	2713	2849	2541	2849	3750	4500	
15:30	2095	2063	1589	1914	2166	1987	2166	3750	4500	
16:00	1654	1789	1557	1640	1722	1521	1722	3750	4500	
16:30	1527	1770	1583	1621	1704	1502	1704	3750	4500	
17:00	1308	1389	1377	1389	1326	1308	1617	3750	4500	
17:30	1857	1768	1747	1917	1724	1749	2015	3750	4500	
18:00	2035	1960	1913	1960	2061	1819	2061	3750	4500	
18:30	1508	1455	1418	1455	1527	1267	1527	3750	4500	
19:00	1439	1492	1457	1492	1458	1152	1568	3750	4500	
19:30	2287	2203	2151	2203	2314	1892	2314	3750	4500	
20:00	2597	2400	2238	2296	2516	2177	2470	3750	4500	
20:30	1571	1515	1376	1411	1618	1151	1543	3750	4500	
21:00	1371	1321	1290	1321	1526	843	1253	3750	4500	
21:30	1881	1664	1770	1813	1746	1174	1612	3750	4500	
22:00	958	774	901	923	812	538	922	3750	4500	
22:30	0	0	0	0	0	0	110	3750	4500	
23:00	0	0	0	0	0	0	0	3750	4500	
23:30	0	0	0	0	0	0	0	3750	4500	

TERMINAL 5 DEPARTURE ALLOCATION

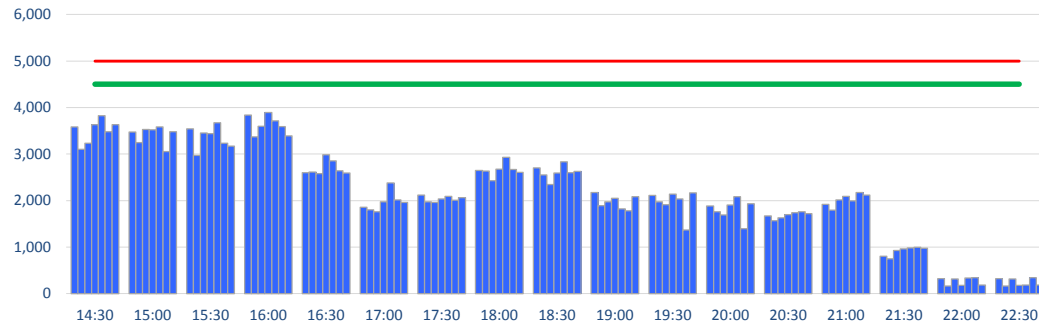
Peak Week Passengers per Hour - All times UTC



	ALLOCATION							Capacity Limit	Lower Referral	Upper Referral
	Mon	Tue	Wed	Thu	Fri	Sat	Sun			
06:00	1575	1470	1533	1595	1633	1213	1080	4500	5000	
06:30	2384	2129	2320	2413	2472	1800	1548	4500	5000	
07:00	2617	2445	2549	2651	2716	2623	2608	4500	5000	
07:30	2664	2330	2552	2701	2765	2936	2718	4500	5000	
08:00	2990	2633	2868	3030	3101	2988	2768	4500	5000	
08:30	2137	2092	2081	2166	2216	2091	2192	4500	5000	
09:00	2366	2349	2192	2280	2607	2686	2622	4500	5000	
09:30	3285	3210	3088	3062	3562	3761	3416	4500	5000	
10:00	3291	3079	3207	3187	3416	3567	3227	4500	5000	
10:30	3148	2944	3067	3191	3267	3148	3230	4500	5000	
11:00	2713	2674	2643	2899	2815	2383	3161	4500	5000	
11:30	2799	2956	2936	3202	3128	2859	3097	4500	5000	
12:00	3025	2550	3155	2909	3103	2928	2770	4500	5000	
12:30	2674	2156	2430	2336	2393	2639	2561	4500	5000	
13:00	2271	2396	2181	2125	2281	2476	2260	4500	5000	
13:30	3519	3267	3570	3492	3804	3482	3541	4500	5000	
14:00	3670	3026	3319	3820	3915	3857	3765	4500	5000	

TERMINAL 5 DEPARTURES ALLOCATION

Peak Week Passengers per Hour - All times UTC



	ALLOCATION							Capacity Limit	Lower Referral	Upper Referral
	Mon	Tue	Wed	Thu	Fri	Sat	Sun			
14:30	3582	3103	3233	3629	3825	3478	3633	4500	5000	
15:00	3476	3249	3529	3522	3583	3055	3480	4500	5000	
15:30	3541	2972	3450	3440	3673	3230	3168	4500	5000	
16:00	3842	3372	3600	3893	3714	3593	3394	4500	5000	
16:30	2602	2616	2582	2983	2855	2639	2595	4500	5000	
17:00	1859	1803	1757	1977	2380	2016	1960	4500	5000	
17:30	2115	1976	1958	2037	2088	2006	2065	4500	5000	
18:00	2645	2636	2431	2678	2927	2669	2607	4500	5000	
18:30	2703	2554	2346	2590	2836	2599	2625	4500	5000	
19:00	2172	1892	1972	2052	1819	1779	2081	4500	5000	
19:30	2111	1973	1913	2138	2038	1371	2167	4500	5000	
20:00	1882	1760	1691	1906	2084	1393	1932	4500	5000	
20:30	1674	1565	1631	1696	1737	1759	1716	4500	5000	
21:00	1918	1794	2013	2092	1991	2171	2118	4500	5000	
21:30	801	750	925	960	985	997	973	4500	5000	
22:00	323	165	316	179	336	340	181	4500	5000	
22:30	323	165	316	179	183	340	181	4500	5000	

GLOSSARY OF TERMS

Air Transport Movement (ATM)	A scheduled or charter passenger or freight aircraft movement.
Allocation	The allocation of slots such that demand is constrained to fit within declared scheduling limits.
Common Travel Area (CTA)	Services to or from the Republic of Ireland and the Channel Islands.
Demand	The unconstrained demand for slots, prior to any schedule adjustments.
Passenger ATM	A scheduled or charter <u>passenger</u> aircraft movement (ie, excluding all-cargo aircraft movements).
Scheduling Limits	Limiting parameters declared by the Airport Operator used in the coordination process.
Seats	The number of seats based on the aircraft configuration advised by the airline.
Peak Week	The Peak Week for Winter 2012/13 11-17 February
Data Snapshot	All data used for this report was as held 6th September 2012
Stand Sizes	
Jumbo Extra	ICAO type F; eg, A380
Jumbo Stretch	Long ICAO type E; eg, A340-600, B777-300
Jumbo Wide	Wide ICAO type E; eg, EB747-400, A340-500
Jumbo	Small ICAO type E; eg, B747-200, B777-200, A330/340, MD-11
Large	ICAO type D; eg, B757, B767, A300
Medium	ICAO type C; eg, A320, B737
Small	ICAO type B; eg, Embraer 145

GUIDE TO HISTOGRAMS

At Heathrow terminal capacity is shown with upper and lower referral capacity zones. Additional flights or increases in aircraft capacity that impinge the referral zone require a more detailed analysis of the schedule to assure the operation can be accommodated.

The histograms show the pattern of traffic by time of day against the appropriate scheduling limit. Each time period consist of seven columns representing the days-of-week, Monday through Sunday.

At Heathrow terminal capacity is shown with upper and lower referral capacity zones. Additional flights or increases in aircraft capacity that impinge the referral zone require a more detailed analysis of the schedule to assure the operation can be accommodated.

*please note: Winter 2012/13 is a 22 week season, the Winter 2011/12 ATM's and seats have been adjusted to reflect a 22 week season