

GATWICK AIRPORT

LGW

Winter 2011

START OF SEASON REPORT

KEY STATISTICS	Winter 2011	Change From Winter 2010 (Start)
Air Transport Movements	85,596	-5.9%
Total Seats	14,463,793	-5.2%
Seats per Passenger ATM	169	-4.6%

CONTENTS	Page
Scheduling Limits	1
Scheduled Route Analysis	2
Total ATM Figures	3
Total Seat Figures	4
Top 10 Airlines by ATM's	5
Top 10 Aircraft Types by ATM's	6
Passenger ATM Seat Size Distribution	7
Top 20 Destinations by ATM's and Seats	8
Top 20 Destination Country by ATM's and Seats	9
Runway Histograms - Hourly Total movements	10
Runway Histograms - Hourly Arrival movements	11
Runway Histograms - Hourly Departure movements	12
Terminal Histograms - South Terminal Domestic Arrivals	13
Terminal Histograms - South Terminal International Arrivals	14
Terminal Histograms - South Terminal Departures	15
Terminal Histograms - North Terminal Domestic Arrivals	16
Terminal Histograms - North Terminal International Arrivals	17
Terminal Histograms - North Terminal Departures	18
Glossary	19

Data in this report is current as of: 17 October 2011

No warranty whether expressed or implied as to the completeness, accuracy, fitness for purpose, or satisfactory quality is given by ACL regarding the information in this report, which is provided by third parties. Accordingly, ACL excludes all liability with regard to such data.

RUNWAY SCHEDULING LIMITS

Movements per Hour (R60) - All times UTC

MONDAY - FRIDAY	ARRIVALS																		
	SEASON	06:00	07:00	08:00	09:00	10:00	11:00	12:00	13:00	14:00	15:00	16:00	17:00	18:00	19:00	20:00	21:00	22:00	23:00
	WINTER 2010/11	15	25	26	21	22	25	26	24	23	23	21	26	30	28	24	26	26	24
	Capacity Change WINTER 2011/12	15	25	26	21	22	25	26	24	23	23	21	26	30	28	24	26	26	24
SATURDAY	ARRIVALS																		
	SEASON	06:00	07:00	08:00	09:00	10:00	11:00	12:00	13:00	14:00	15:00	16:00	17:00	18:00	19:00	20:00	21:00	22:00	23:00
	WINTER 2010/11	15	24	26	22	26	24	28	25	23	26	23	25	30	28	24	22	23	24
	Capacity Change WINTER 2011/12	15	24	26	23	26	26	28	25	23	26	23	25	30	28	24	22	23	24
SUNDAY	ARRIVALS																		
	SEASON	06:00	07:00	08:00	09:00	10:00	11:00	12:00	13:00	14:00	15:00	16:00	17:00	18:00	19:00	20:00	21:00	22:00	23:00
	WINTER 2010/11	17	24	24	22	24	26	28	24	24	26	23	30	28	29	24	24	28	24
	Capacity Change WINTER 2011/12	17	24	24	22	24	26	28	24	24	26	23	30	28	29	24	24	28	24
DEPARTURES																			
SEASON	06:00	07:00	08:00	09:00	10:00	11:00	12:00	13:00	14:00	15:00	16:00	17:00	18:00	19:00	20:00	21:00	22:00	23:00	
WINTER 2010/11	29	29	31	31	28	27	27	28	28	24	28	24	29	30	22	18	15	17	
Capacity Change WINTER 2011/12	29	29	31	31	28	27	27	28	28	24	28	24	29	30	22	18	15	17	
TOTALS																			
SEASON	06:00	07:00	08:00	09:00	10:00	11:00	12:00	13:00	14:00	15:00	16:00	17:00	18:00	19:00	20:00	21:00	22:00	23:00	
WINTER 2010/11	40	50	52	48	45	48	47	45	45	41	45	48	50	51	38	36	28	25	
Capacity Change WINTER 2011/12	40	50	52	48	45	48	47	45	45	41	45	48	50	51	38	36	28	25	
DEPARTURES																			
SEASON	06:00	07:00	08:00	09:00	10:00	11:00	12:00	13:00	14:00	15:00	16:00	17:00	18:00	19:00	20:00	21:00	22:00	23:00	
WINTER 2010/11	31	31	28	30	26	29	26	28	28	25	26	20	28	30	22	22	17	17	
Capacity Change WINTER 2011/12	32	31	28	31	26	29	26	28	28	25	26	20	28	30	22	22	17	17	
TOTALS																			
SEASON	06:00	07:00	08:00	09:00	10:00	11:00	12:00	13:00	14:00	15:00	16:00	17:00	18:00	19:00	20:00	21:00	22:00	23:00	
WINTER 2010/11	40	49	49	49	47	50	49	47	45	44	44	40	50	50	38	36	25	25	
Capacity Change WINTER 2011/12	40	49	49	52	47	51	49	47	45	44	44	40	50	50	38	36	25	25	
ARRIVALS																			
SEASON	06:00	07:00	08:00	09:00	10:00	11:00	12:00	13:00	14:00	15:00	16:00	17:00	18:00	19:00	20:00	21:00	22:00	23:00	
WINTER 2010/11	17	24	24	22	24	26	28	24	24	26	23	30	28	29	24	24	28	24	
Capacity Change WINTER 2011/12	17	24	24	22	24	26	28	24	24	26	23	30	28	29	24	24	28	24	
DEPARTURES																			
SEASON	06:00	07:00	08:00	09:00	10:00	11:00	12:00	13:00	14:00	15:00	16:00	17:00	18:00	19:00	20:00	21:00	22:00	23:00	
WINTER 2010/11	27	32	31	30	27	25	26	31	29	22	28	20	30	28	22	20	15	17	
Capacity Change WINTER 2011/12	27	34	31	30	27	26	26	31	29	22	28	20	30	28	22	20	15	17	
TOTALS																			
SEASON	06:00	07:00	08:00	09:00	10:00	11:00	12:00	13:00	14:00	15:00	16:00	17:00	18:00	19:00	20:00	21:00	22:00	23:00	
WINTER 2010/11	40	49	47	47	44	49	50	50	47	43	47	45	51	51	38	36	28	25	
Capacity Change WINTER 2011/12	40	49	47	1	44	49	50	1	1	43	47	45	51	51	38	36	28	25	

RUNWAY SCHEDULING LIMITS

Movements per 15 Minutes (R15) - All times UTC

Within each consecutive 15 minute period, starting at 10 minutes past the hour (55-05, 10-20, 25-35, 40-50), no more than 13 movements, consisting of no more than 8 arrivals or 8 departures should be scheduled.

In hours where the total movement limit is 50 or more, up to 14 movements may be scheduled into two 15 minute periods within the hour provided that they are not consecutive.

In hours where the arr/dep limit is 30 or more, up to 9 arr/dep may be scheduled into two 15 minute periods within the hour provided that they are not consecutive.

TERMINAL SCHEDULING LIMITS

Passengers per Hour (T60)

SOUTH TERMINAL	ARRS	DEPS
DOMESTIC	650	
INTERNATIONAL	3200	
COMBINED		3800

NORTH TERMINAL	ARRS	DEPS
DOMESTIC	800	
INTERNATIONAL	3000	
COMBINED		3300

South Terminal Domestic/CTA departures set at 8 deps per 45 minutes rolled every 5 minutes

ROUTE ANALYSIS

The following data is based on a comparison between Winter 2010 end of season and Winter 2011 as held on 17th October 2011.
The summary comprises New operators and Scheduled additions/dropping of routes. Charter services are not included.

CODE	OPERATOR	ROUTE	COMMENT	FREQUENCY	A/C TYPE	NOTES
→ EZY	Easyjet	ABZ	New Route	22 x Weekly	319	
→ EZY	Easyjet	AMM	New Route	6 x Weekly	320	
→ EZY	Easyjet	BLQ	New Route	14 x Weekly	319	
→ EZY	Easyjet	CTA	New Route	2 x Weekly	319	
→ EZY	Easyjet	SVQ	New Route	8 x Weekly	319	
→ EZY	Easyjet	VRN	New Route	14 x Weekly	320	
→ EZY	Easyjet	HEL	Route Ceased	14 x Weekly	319	
→ EZY	Easyjet	SAW	Route Ceased	8 x Weekly	319	
→ BE	Flybe	DUS	Route Ceased	24 x Weekly	DH4	
→ BE	Flybe	LBA	Route Ceased	34 x Weekly	DH4	
→ ZB	Monach Airlines	BCN	New Route	22 x Weekly	321	
→ ZB	Monach Airlines	MAH	New Route	2 x Weekly	320	
→ ZB	Monach Airlines	SSH	New Route	6 x Weekly	321	
→ ZB	Monach Airlines	FUE	Route Ceased	2 x Weekly	321	
→ ZB	Monach Airlines	LPA	Route Ceased	4 x Weekly	321	
→ DY	Norwegian	AAL	Route Ceased	6 x Weekly	73H	
→ DY	Norwegian	AES	New Route	4 x Weekly	73H	
→ DY	Norwegian	HEL	New Route	14 x Weekly	73H	
→ DY	Norwegian	TOS	Route Ceased	4 x Weekly	73H	
→ TP	TAP-Portugal	FNC	Route Ceased	14 x Weekly	320	
→ BA	British Airways	AGP	New Route	14 x Weekly	734	
→ BA	British Airways	LUX	Route Ceased	22 x Weekly	734	
→ BA	British Airways	MRU	New Route	6 x Weekly	772	
→ BA	British Airways	RAK	New Route	6 x Weekly	734	
→ BA	British Airways	SSH	Route Ceased	6 x Weekly	772	
→ BA	British Airways	SJU	New Route	4 x Weekly	772	
→ VS	Virgin Atlantic	SJU	Route Ceased	2 x Weekly	744	
→ FR	Ryanair	BGY	Route Ceased	14 x Weekly	73H	
→ FR	Ryanair	BLQ	Route Ceased	8 x Weekly	73H	
→ FR	Ryanair	CIA	Route Ceased	14 x Weekly	73H	
→ FR	Ryanair	FAO	Route Ceased	8 x Weekly	73H	
→ FR	Ryanair	GRO	Route Ceased	14 x Weekly	73H	
→ FR	Ryanair	OPO	Route Ceased	10 x Weekly	73H	
→ AB	Air Berlin	HAJ	Route Ceased	26 x Weekly	738	
→ EI	Aer Lingus	AGP	Route Ceased	26 x Weekly	320	
→ EI	Aer Lingus	FDH	Route Ceased	2 x Weekly	320	
→ EI	Aer Lingus	TRN	New Route	2 x Weekly	320	
→						

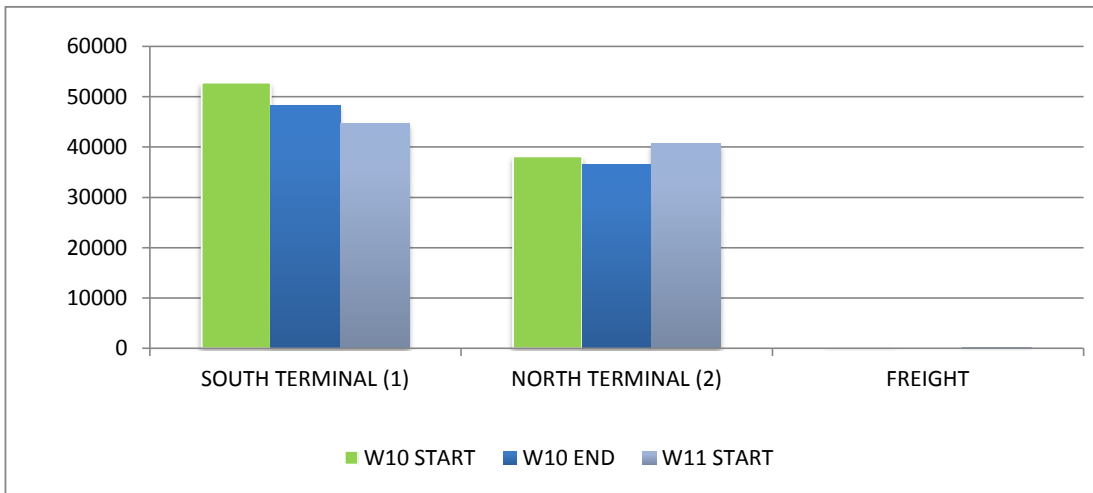
New Schedule Operators

→ LH	LUFTHANSA	FRA	New Operator	28 x Weekly	738	
→ VN	VIETNAM	Various	New Operator	8 x Weekly	772	
→ HX	HONG KONG EXPRESS	HKG	New Operator	14 x Weekly	330	
→ VK	MY NIGERIA	LOS	New Operator	14 x Weekly	343	
→ SW	AIR NAMIBIA	WDH	New Operator	6 x Weekly	319	
→ FV	ROSSIYA Russia	LED	Return Operator	10 x Weekly	319	
→ TK	TURKISH	IST	New Operator	14 x Weekly	73H	
→ D7	AIR ASIA X	KUL	New Operator	10 x Weekly	343	

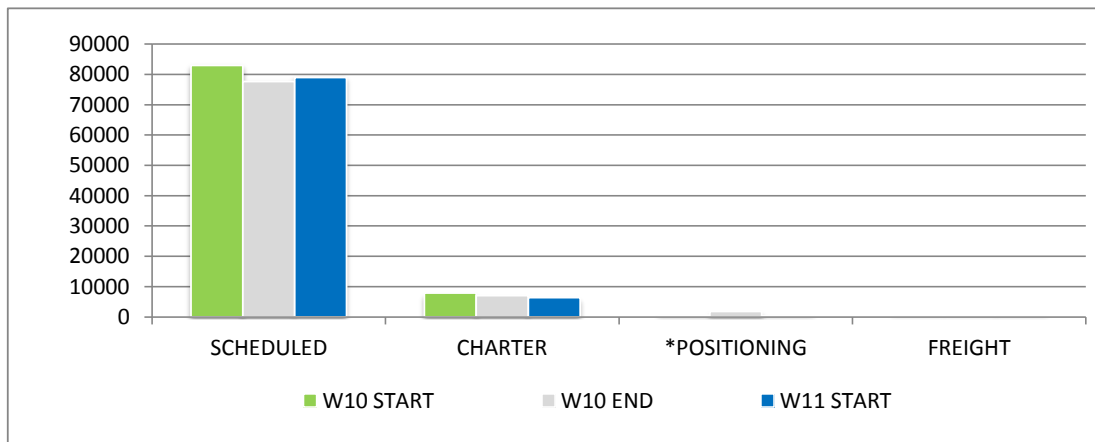
Operators Discontinued

4H	United Airways (BD)	DAC	Ceased Operations	2 x Weekly	313	
8U	Afriqiyah Airlines	TIP	Ceased Operations	14 x Weekly	320	
AT	Royal Air Maroc	Various	Ceased Operations	16 x Weekly	763	
MHK	Al Naser	BGW	Ceased Operations	2 x Weekly	734	
OA	Olympic	Various	Ceased Operations	10 x Weekly	319	
QR	Qatar Airways	DOH	Ceased Operations	14 x Weekly	330	
TU	Tunisair	DJE	Ceased Operations	2 x Weekly	736	
YM	Montenegro Airlines	TGD	Ceased Operations	6 x Weekly	Fokker 100	

AIR TRANSPORT MOVEMENTS BY TERMINAL



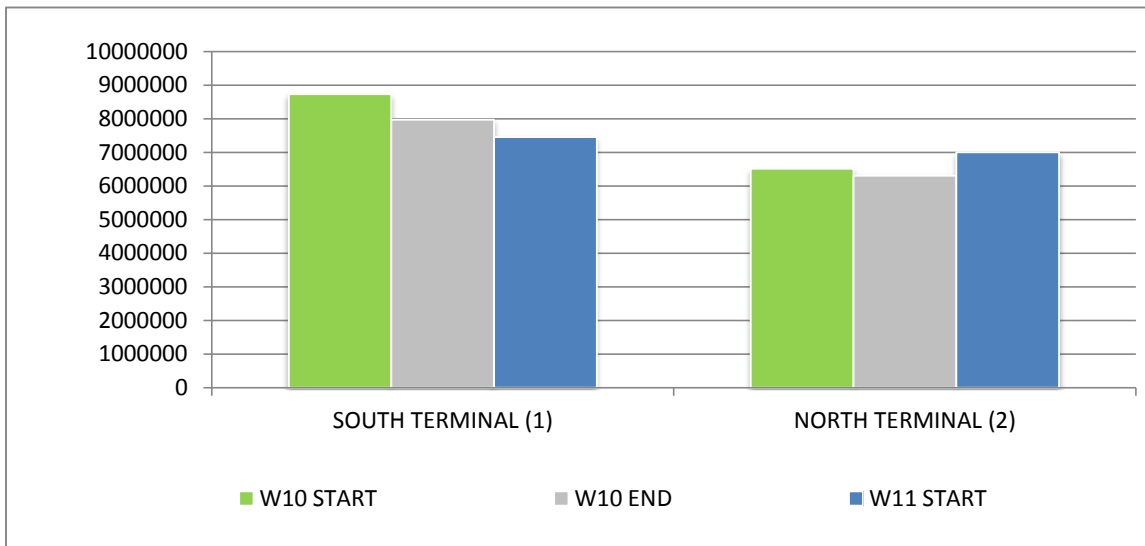
	W10 START	W10 END	W11 START	% CHANGE START-START	% CHANGE END-START
SOUTH TERMINAL (1)	52773	48235	44734	-15.2%	-7.3%
NORTH TERMINAL (2)	38132	36489	40690	6.7%	11.5%
FREIGHT	42	51	172	309.5%	237.3%
TOTAL	90,947	84,775	85,596	-5.9%	1.0%



	W10 START	W10 END	W11 START	% CHANGE START-START	% CHANGE END-START
SCHEDULED	83009	77661	79013	-4.8%	1.7%
CHARTER	7853	7017	6411	-18.4%	-8.6%
*POSITIONING	557	1806	421	-24.4%	-76.7%
FREIGHT	42	51	172	309.5%	237.3%
TOTAL	91,461	86,535	86,017	-6.0%	-0.6%

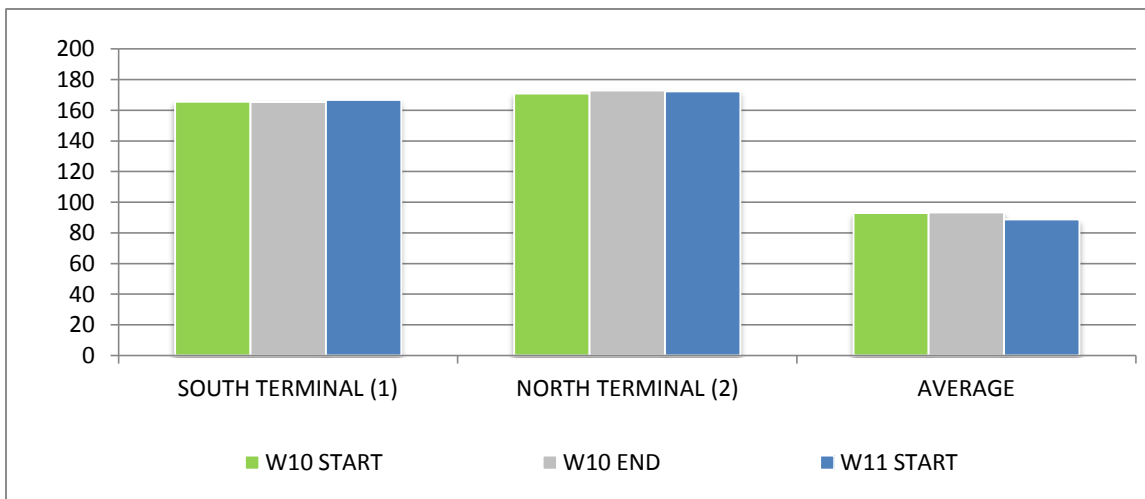
NOTES:

POSITIONING FLIGHTS DOES NOT COUNT AS ATMS



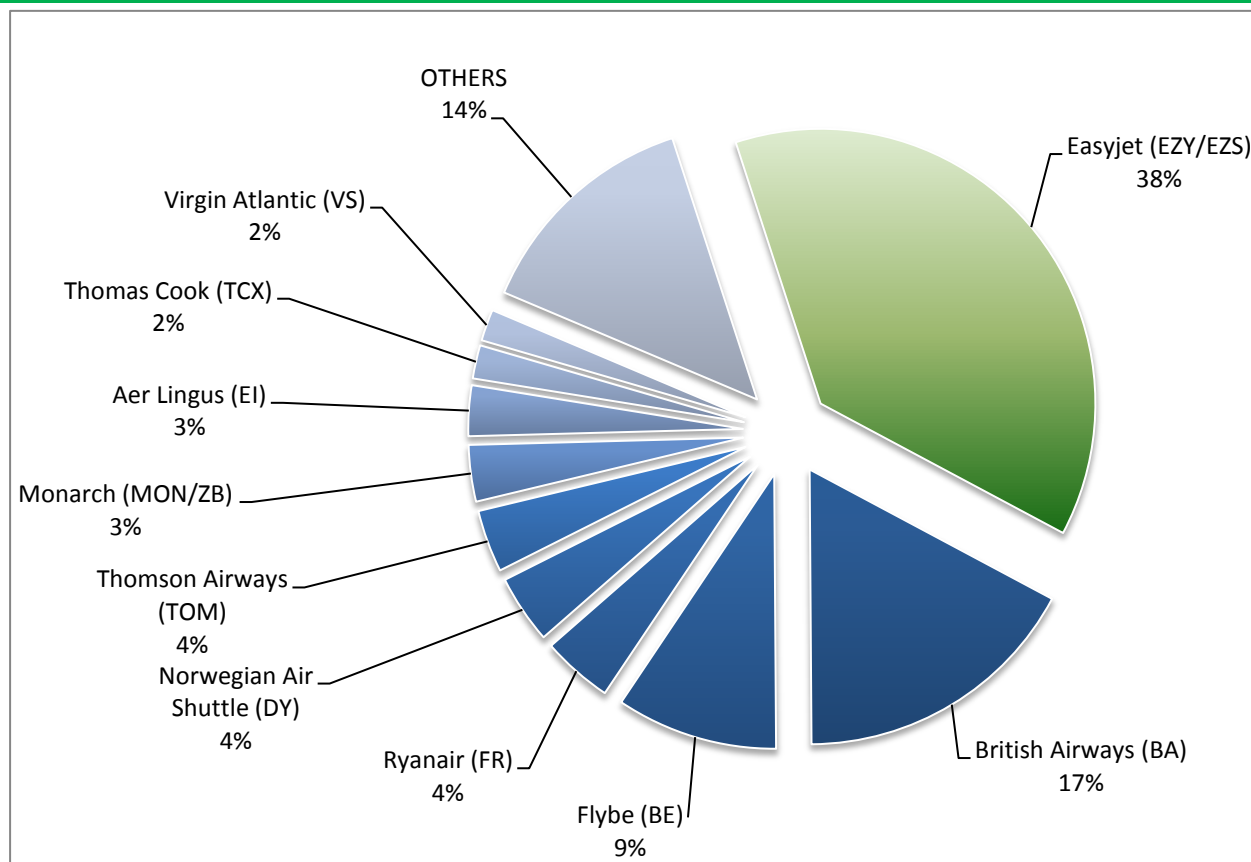
	W10 START	W10 END	W11 START	% CHANGE START-START	% CHANGE END-START
SOUTH TERMINAL (1)	8734664	7974108	7457918	-14.6%	-6.5%
NORTH TERMINAL (2)	6516237	6306789	7005875	7.5%	11.1%
TOTAL	15,250,901	14,280,897	14,463,793	-5.2%	1.3%

SEATS PER PASSENGER ATM BY TERMINAL



	W10 START	W10 END	W11 START	% CHANGE START-START	% CHANGE END-START
SOUTH TERMINAL (1)	166	165	167	0.7%	0.8%
NORTH TERMINAL (2)	171	173	172	0.8%	-0.4%
AVERAGE	93	93	89	-4.6%	-4.9%

TOP 10 AIRLINES BY MOVEMENTS - ALL SERVICE TYPES



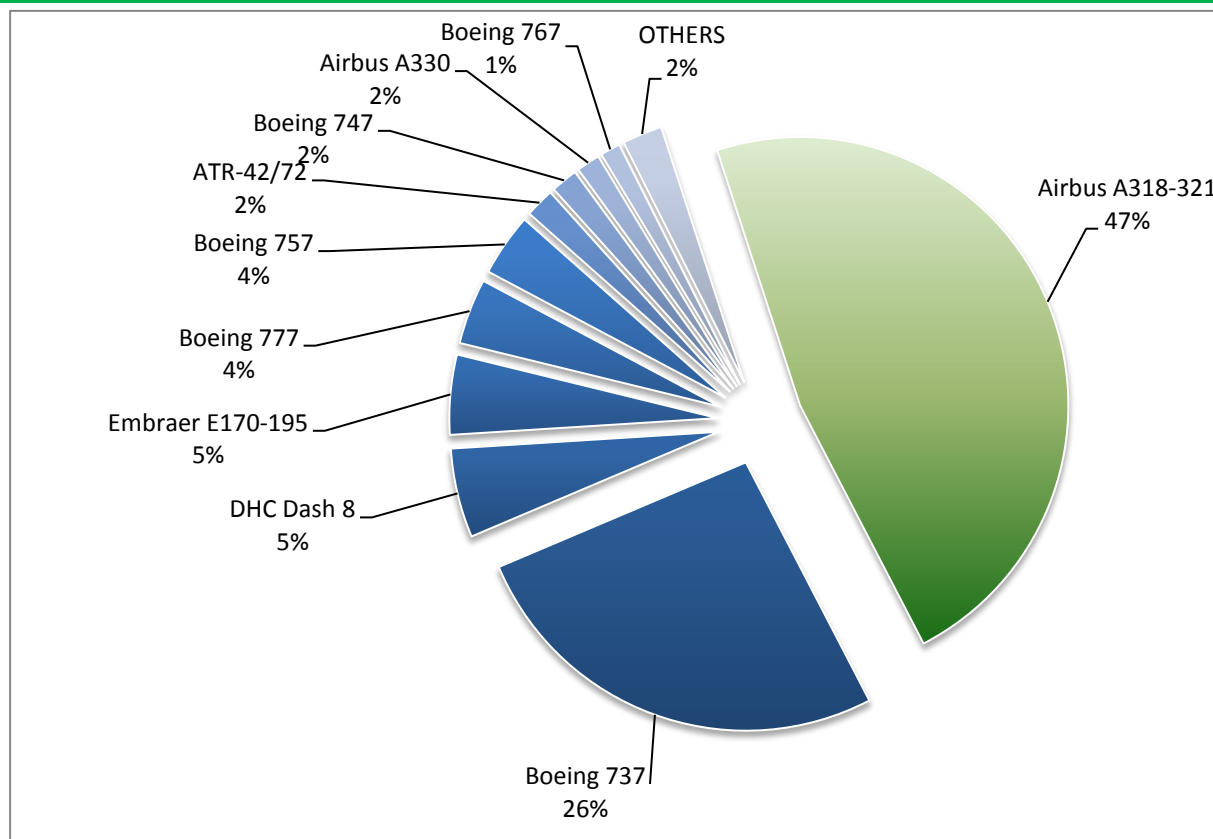
Aircraft	Movements
Easyjet (EZY/EZS)	32,356
British Airways (BA)	14,630
Flybe (BE)	8,138
Ryanair (FR)	3,564
Norwegian Air Shuttle (DY)	3,442
Thomson Airways (TOM)	3,138
Monarch (MON/ZB)	2,846
Aer Lingus (EI)	2,545
Thomas Cook (TCX)	1,680
Virgin Atlantic (VS)	1,587
OTHERS	11,670
TOTAL	85,596

NOTES:

Easyjet is the combined total for Easyjet (EZY) and Easyjet Switzerland (EZS) programmes.

Monarch is the combined total for Monarch Scheduled (ZB) and Monarch Charter (MON) programmes.

TOP 10 AIRCRAFT TYPES BY MOVEMENTS - ALL SERVICE TYPES

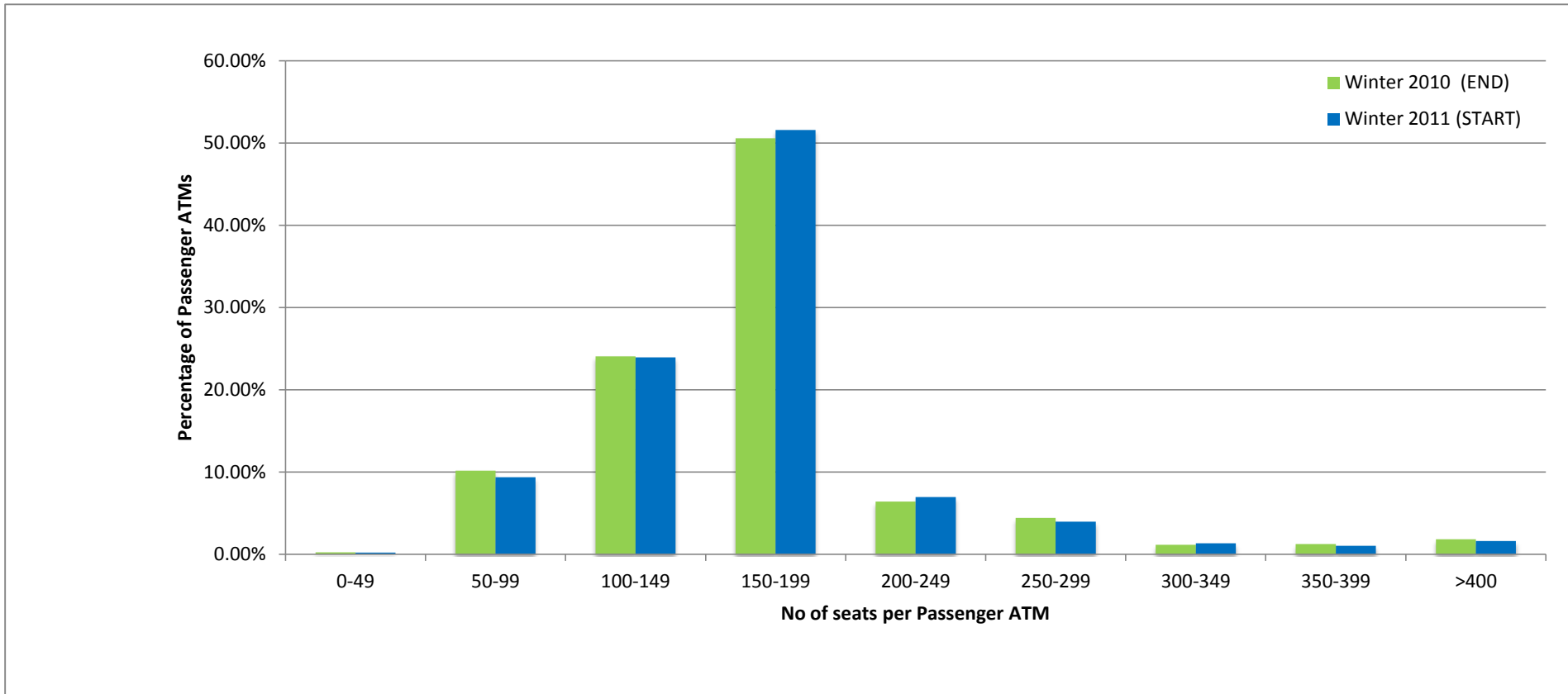


Aircraft	Movements
Airbus A318-321	40,560
Boeing 737	22,457
DHC Dash 8	4,607
Embraer E170-195	4,119
Boeing 777	3,383
Boeing 757	3,238
ATR-42/72	1,522
Boeing 747	1,389
Airbus A330	1,219
Boeing 767	1,039
OTHERS	2,063
TOTAL	85,596

NOTES:

Positioning flights are not included

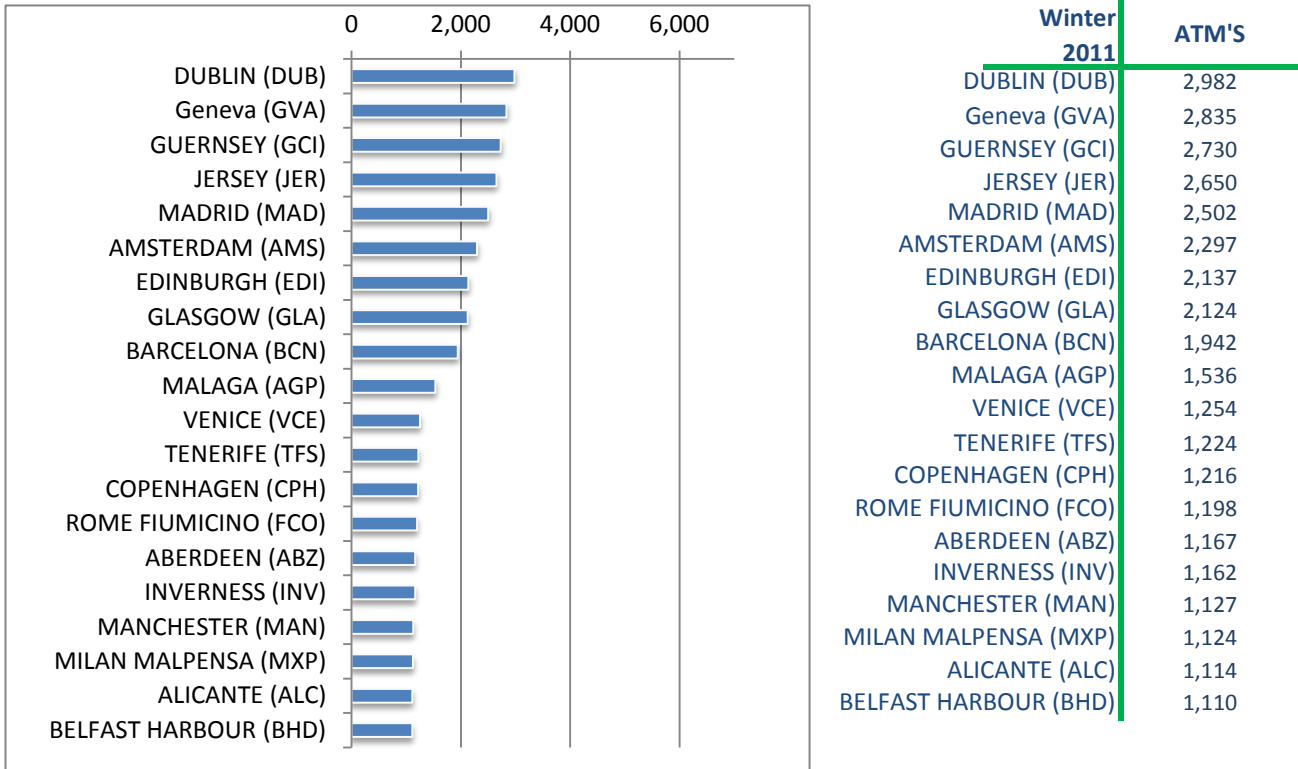
SEAT SIZE DISTRIBUTION - BY PASSENGER ATMS



Number of Seats	0-49	50-99	100-149	150-199	200-249	250-299	300-349	350-399	>400
Winter 2010 (END)	0.22%	10.15%	24.05%	50.57%	6.39%	4.43%	1.14%	1.24%	1.82%
Winter 2011 (START)	0.21%	9.36%	23.94%	51.57%	6.96%	3.96%	1.33%	1.04%	1.62%
PERCENTAGE SHARE	DECREASE	DECREASE	DECREASE	INCREASE	INCREASE	DECREASE	INCREASE	DECREASE	DECREASE

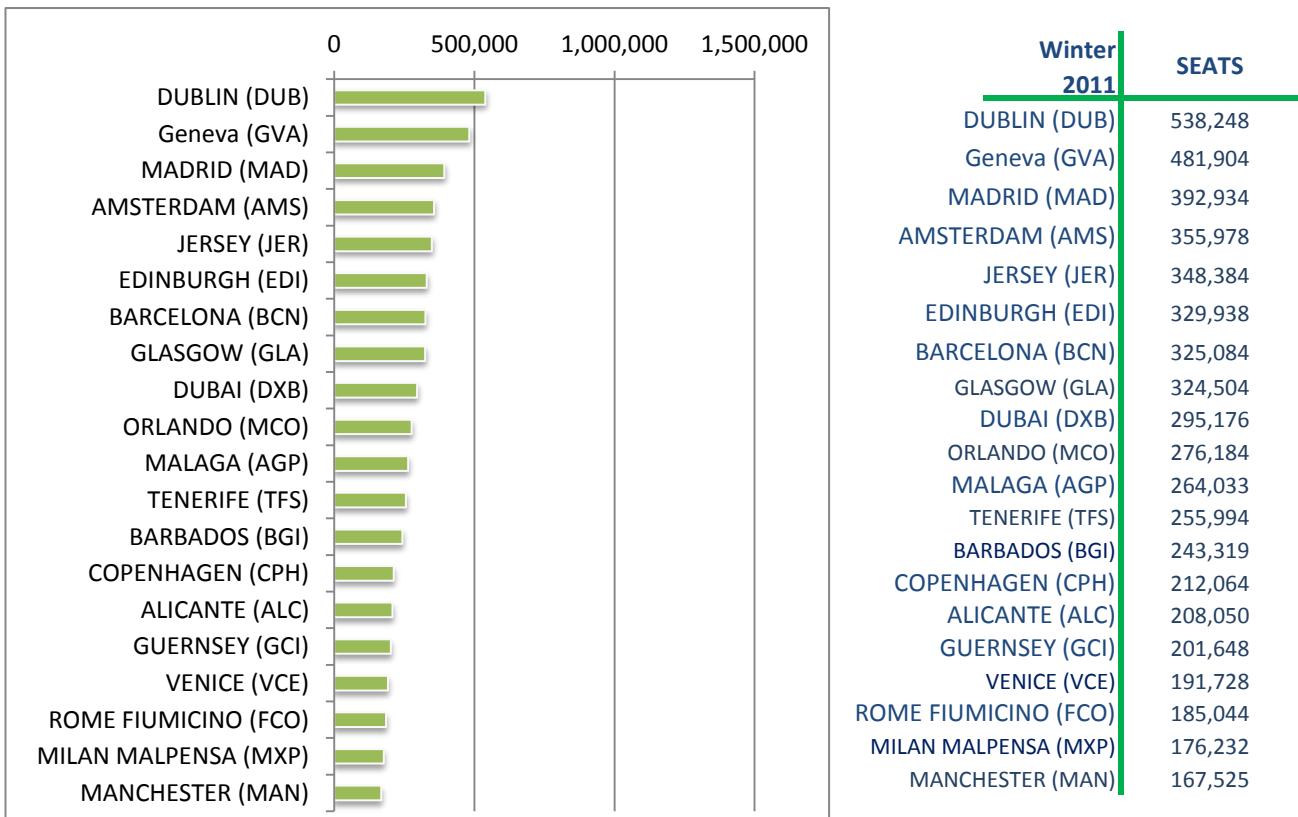
TOP 20 DESTINATIONS - BY AIR TRANSPORT MOVEMENTS

Total Allocated Movements For Season W11



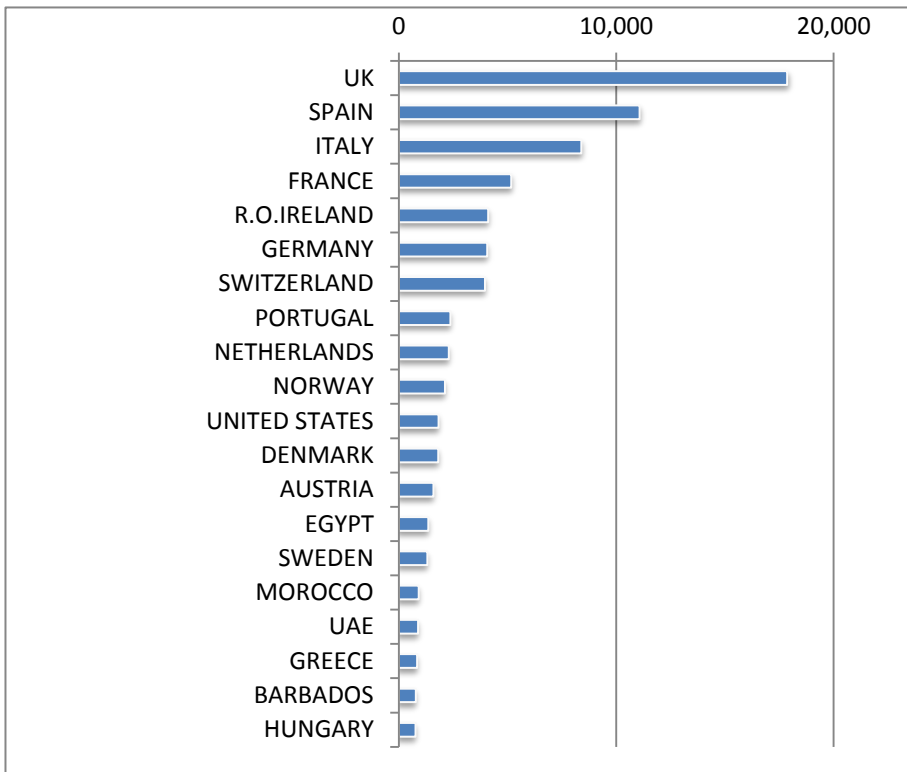
TOP 20 DESTINATIONS - BY AIR TRANSPORT SEATS

Total Allocated Movements For Season W11



TOP 20 DESTINATION COUNTRY - BY AIR TRANSPORT MOVEMENTS

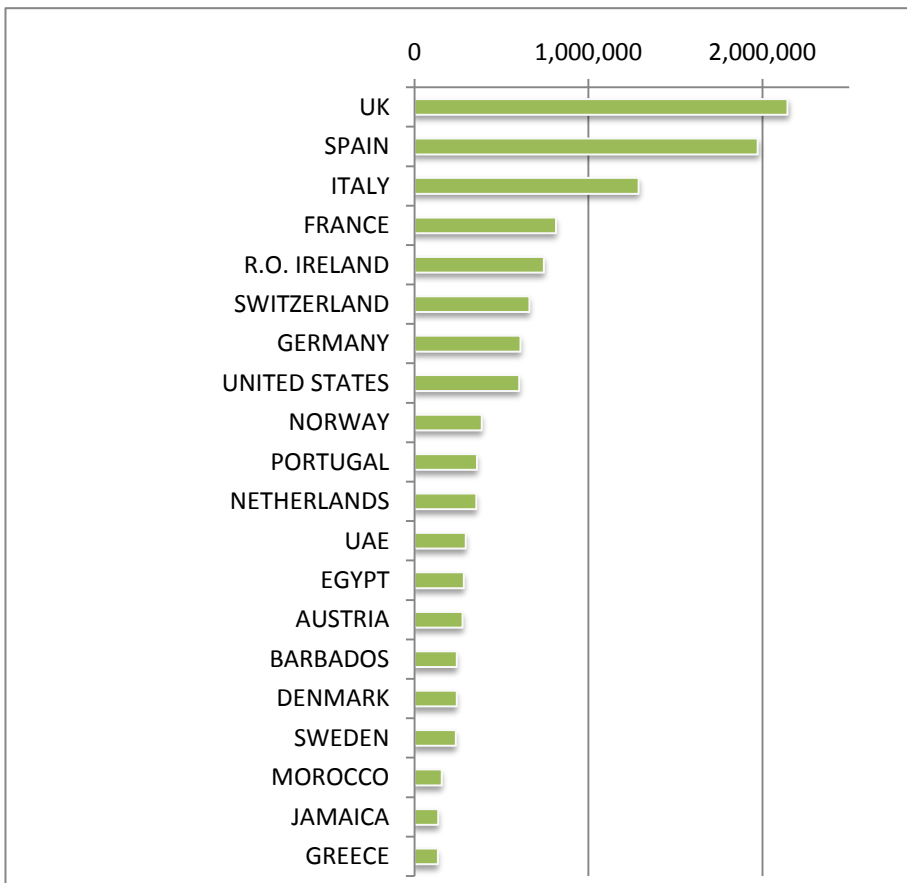
Total Allocated Movements For Season W11



Winter 2011	ATM'S
UK	17,861
SPAIN	11,070
ITALY	8,396
FRANCE	5,177
R.O.IRELAND	4,116
GERMANY	4,063
SWITZERLAND	3,964
PORTUGAL	2,372
NETHERLANDS	2,297
NORWAY	2,118
UNITED STATES	1,825
DENMARK	1,820
AUSTRIA	1,591
EGYPT	1,362
SWEDEN	1,307
MOROCCO	920
UAE	882
GREECE	847
BARBADOS	777
HUNGARY	766

TOP 20 DESTINATION COUNTRY - BY AIR TRANSPORT SEATS

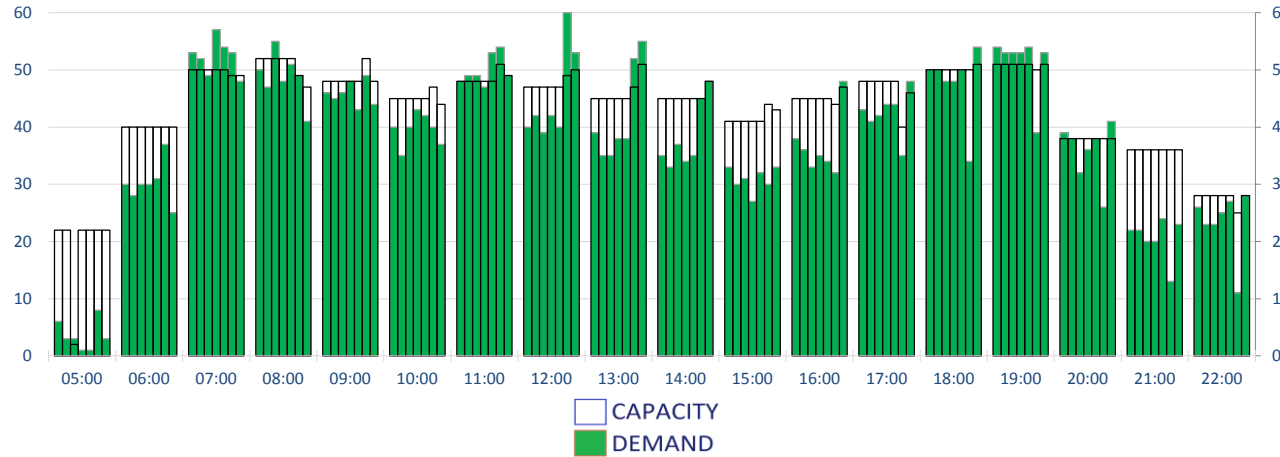
Total Allocated Movements For Season W11



Winter 2011	SEATS
UK	2,144,594
SPAIN	1,973,342
ITALY	1,288,449
FRANCE	812,893
R.O. IRELAND	743,640
SWITZERLAND	660,500
GERMANY	609,722
UNITED STATES	601,638
NORWAY	386,832
PORTUGAL	360,097
NETHERLANDS	355,978
UAE	295,176
EGYPT	283,578
AUSTRIA	277,175
BARBADOS	243,319
DENMARK	242,536
SWEDEN	237,003
MOROCCO	156,450
JAMAICA	137,305
GREECE	134,152

RUNWAY MOVEMENT DEMAND - TOTALS

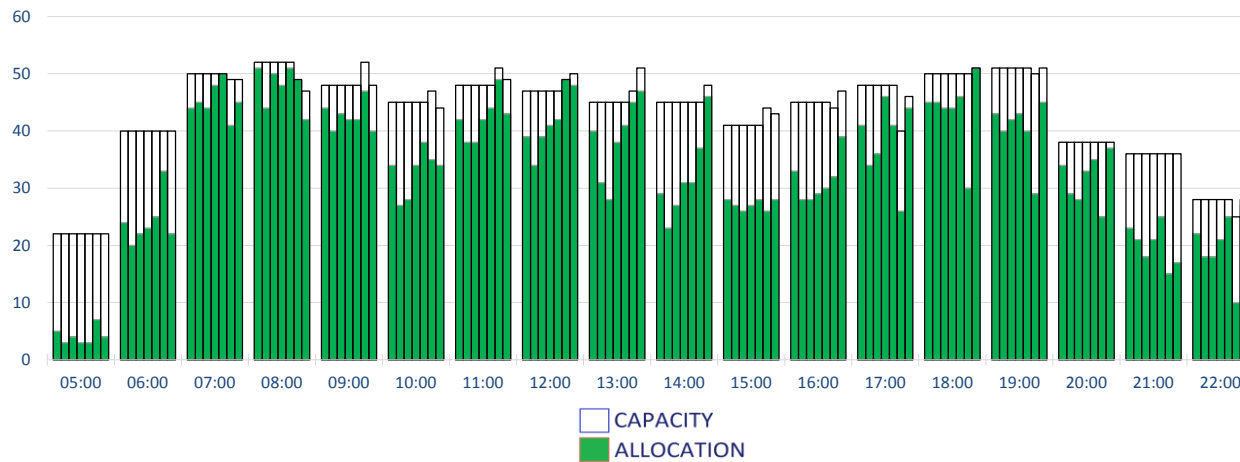
Peak Week Movements per Hour - All times UTC
Demand At Initial Submission



	CAPACITY							DEMAND						
	Mon	Tue	Wed	Thu	Fri	Sat	Sun	Mon	Tue	Wed	Thu	Fri	Sat	Sun
05:00	22	22	2	22	22	22	22	6	3	3	1	1	8	3
06:00	40	40	40	40	40	40	40	30	28	30	30	31	37	25
07:00	50	50	50	50	50	49	49	53	52	49	57	54	53	48
08:00	52	52	52	52	52	49	47	50	47	55	48	51	49	41
09:00	48	48	48	48	48	52	48	46	45	46	48	43	49	44
10:00	45	45	45	45	45	47	44	40	35	40	43	42	40	37
11:00	48	48	48	48	48	51	49	48	49	49	47	53	54	49
12:00	47	47	47	47	47	49	50	40	42	39	42	40	60	53
13:00	45	45	45	45	45	47	51	39	35	35	38	38	52	55
14:00	45	45	45	45	45	45	48	35	33	37	34	35	45	48
15:00	41	41	41	41	41	44	43	33	30	31	27	32	30	33
16:00	45	45	45	45	45	44	47	38	36	33	35	34	32	48
17:00	48	48	48	48	48	40	46	43	41	42	44	44	35	48
18:00	50	50	50	50	50	50	51	50	50	48	48	50	34	54
19:00	51	51	51	51	51	50	51	54	53	53	53	54	39	53
20:00	38	38	38	38	38	38	38	39	38	32	36	38	26	41
21:00	36	36	36	36	36	36	36	22	22	20	20	24	13	23
22:00	28	28	28	28	28	25	28	26	23	23	25	27	11	28

RUNWAY MOVEMENT ALLOCATION - TOTALS

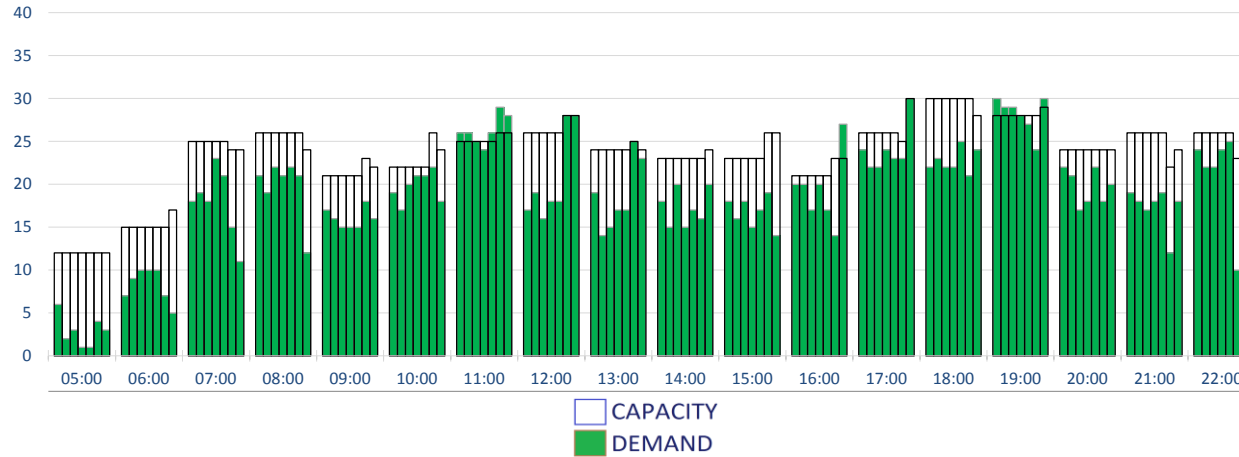
Peak Week Movements per Hour - All times UTC



	CAPACITY							ALLOCATION						
	Mon	Tue	Wed	Thu	Fri	Sat	Sun	Mon	Tue	Wed	Thu	Fri	Sat	Sun
05:00	22	22	22	22	22	22	22	5	3	4	3	3	7	4
06:00	40	40	40	40	40	40	40	24	20	22	23	25	33	22
07:00	50	50	50	50	50	49	49	44	45	44	48	50	41	45
08:00	52	52	52	52	52	49	47	51	44	50	48	51	49	42
09:00	48	48	48	48	48	52	48	44	40	43	42	42	47	40
10:00	45	45	45	45	45	47	44	34	27	28	34	38	35	34
11:00	48	48	48	48	48	51	49	42	38	38	42	44	49	43
12:00	47	47	47	47	47	49	50	39	34	39	41	42	49	48
13:00	45	45	45	45	45	47	51	40	31	28	38	41	45	47
14:00	45	45	45	45	45	45	48	29	23	27	31	31	37	46
15:00	41	41	41	41	41	44	43	28	27	26	27	28	26	28
16:00	45	45	45	45	45	44	47	33	28	28	29	30	32	39
17:00	48	48	48	48	48	40	46	41	34	36	46	41	26	44
18:00	50	50	50	50	50	50	51	45	45	44	44	46	30	51
19:00	51	51	51	51	51	50	51	43	40	42	43	40	29	45
20:00	38	38	38	38	38	38	38	34	29	28	33	35	25	37
21:00	36	36	36	36	36	36	36	23	21	18	21	25	15	17
22:00	28	28	28	28	28	25	28	22	18	18	21	25	10	27

RUNWAY MOVEMENT DEMAND - ARRIVALS

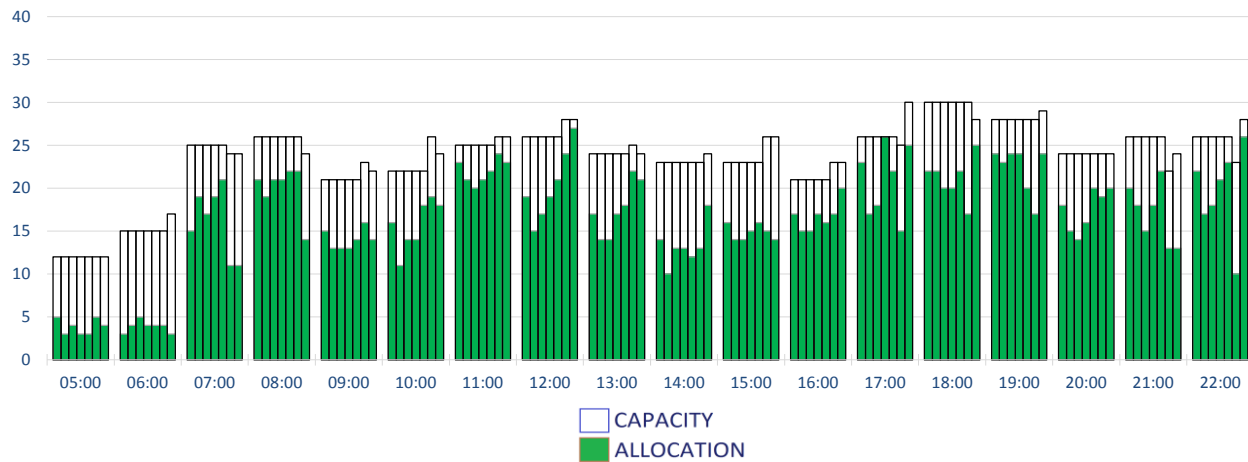
Peak Week Movements per Hour - All times UTC
Demand At Initial Submission



	CAPACITY							DEMAND						
	Mon	Tue	Wed	Thu	Fri	Sat	Sun	Mon	Tue	Wed	Thu	Fri	Sat	Sun
05:00	12	12	12	12	12	12	12	6	2	3	1	1	4	3
06:00	15	15	15	15	15	15	17	7	9	10	10	10	7	5
07:00	25	25	25	25	25	24	24	18	19	18	23	21	15	11
08:00	26	26	26	26	26	26	24	21	19	22	21	22	21	12
09:00	21	21	21	21	21	23	22	17	16	15	15	15	18	16
10:00	22	22	22	22	22	26	24	19	17	20	21	21	22	18
11:00	25	25	25	25	25	26	26	26	26	25	24	26	29	28
12:00	26	26	26	26	26	28	28	17	19	16	18	18	28	28
13:00	24	24	24	24	24	25	24	19	14	15	17	17	25	23
14:00	23	23	23	23	23	23	24	18	15	20	15	17	16	20
15:00	23	23	23	23	23	26	26	18	16	18	15	17	19	14
16:00	21	21	21	21	21	23	23	20	20	17	20	17	14	27
17:00	26	26	26	26	26	25	30	24	22	22	24	23	23	30
18:00	30	30	30	30	30	30	28	22	23	22	22	25	21	24
19:00	28	28	28	28	28	28	29	30	29	29	28	27	24	30
20:00	24	24	24	24	24	24	24	22	21	17	18	22	18	20
21:00	26	26	26	26	26	22	24	19	18	17	18	19	12	18
22:00	26	26	26	26	26	23	28	24	22	22	24	25	10	27

RUNWAY MOVEMENT ALLOCATION - ARRIVALS

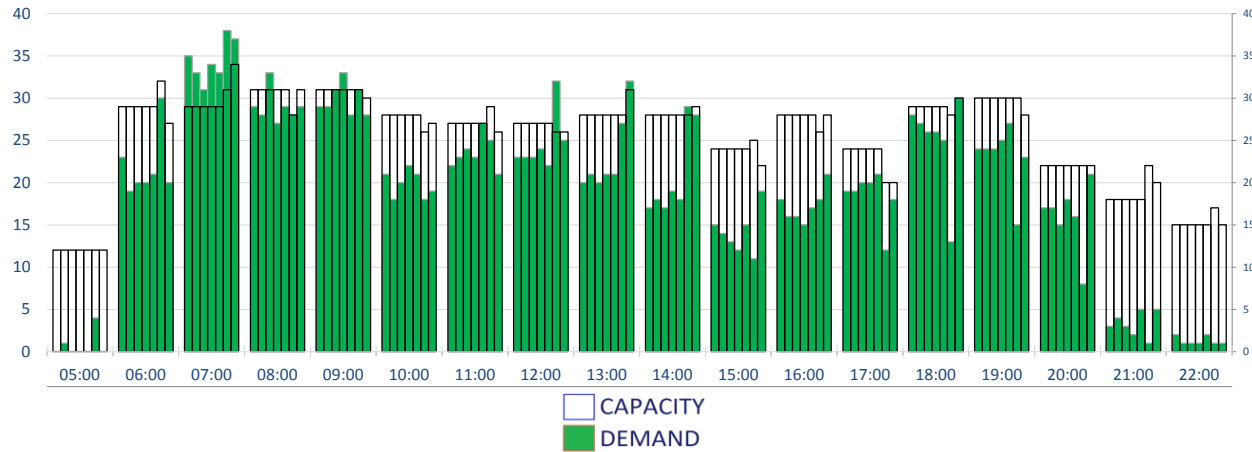
Peak Week Movements per Hour - All times UTC



	CAPACITY							ALLOCATION						
	Mon	Tue	Wed	Thu	Fri	Sat	Sun	Mon	Tue	Wed	Thu	Fri	Sat	Sun
05:00	12	12	12	12	12	12	12	5	3	4	3	3	5	4
06:00	15	15	15	15	15	15	17	3	4	5	4	4	4	3
07:00	25	25	25	25	25	24	24	15	19	17	19	21	11	11
08:00	26	26	26	26	26	26	24	21	19	21	21	22	22	14
09:00	21	21	21	21	21	23	22	15	13	13	13	14	16	14
10:00	22	22	22	22	22	26	24	16	11	14	14	18	19	18
11:00	25	25	25	25	25	26	26	23	21	20	21	22	24	23
12:00	26	26	26	26	26	28	28	19	15	17	19	21	24	27
13:00	24	24	24	24	24	25	24	17	14	14	17	18	22	21
14:00	23	23	23	23	23	23	24	14	10	13	13	12	13	18
15:00	23	23	23	23	23	26	26	16	14	14	15	16	15	14
16:00	21	21	21	21	21	23	23	17	15	15	17	16	17	20
17:00	26	26	26	26	26	25	30	23	17	18	26	22	15	25
18:00	30	30	30	30	30	30	28	22	22	20	20	22	17	25
19:00	28	28	28	28	28	28	29	24	23	24	24	20	17	24
20:00	24	24	24	24	24	24	24	18	15	14	16	20	19	20
21:00	26	26	26	26	26	22	24	20	18	15	18	22	13	13
22:00	26	26	26	26	26	23	28	22	17	18	21	23	10	26

RUNWAY MOVEMENT DEMAND - DEPARTURES

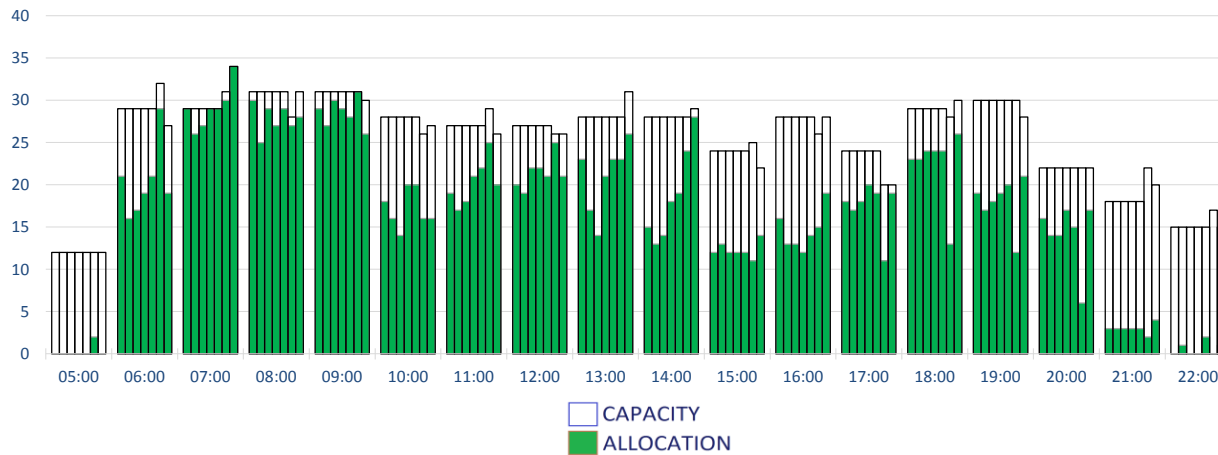
Peak Week Movements per Hour - All times UTC
Demand At Initial Submission



	CAPACITY							DEMAND								
	Mon	Tue	Wed	Thu	Fri	Sat	Sun	Mon	Tue	Wed	Thu	Fri	Sat	Sun		
05:00	12	12	12	12	12	12	12									
06:00	29	29	29	29	29	32	27	23	19	20	20	21	30	20		
07:00	29	29	29	29	29	31	34	35	33	31	34	33	38	37		
08:00	31	31	31	31	31	28	31	29	28	33	27	29	28	29		
09:00	31	31	31	31	31	31	30	29	29	31	33	28	31	28		
10:00	28	28	28	28	28	26	27	21	18	20	22	21	18	19		
11:00	27	27	27	27	27	29	26	22	23	24	23	27	25	21		
12:00	27	27	27	27	27	26	26	23	23	23	24	22	32	25		
13:00	28	28	28	28	28	28	31	20	21	20	21	21	27	32		
14:00	28	28	28	28	28	28	29	17	18	17	19	18	29	28		
15:00	24	24	24	24	24	25	22	15	14	13	12	15	11	19		
16:00	28	28	28	28	28	26	28	18	16	16	15	17	18	21		
17:00	24	24	24	24	24	20	20	19	19	20	20	21	12	18		
18:00	29	29	29	29	29	28	30	28	27	26	26	25	13	30		
19:00	30	30	30	30	30	30	28	24	24	24	25	27	15	23		
20:00	22	22	22	22	22	22	22	17	17	15	18	16	8	21		
21:00	18	18	18	18	18	22	20	3	4	3	2	5	1	5		
22:00	15	15	15	15	15	17	15	2	1	1	1	2	1	1		

RUNWAY MOVEMENT ALLOCATION - DEPARTURES

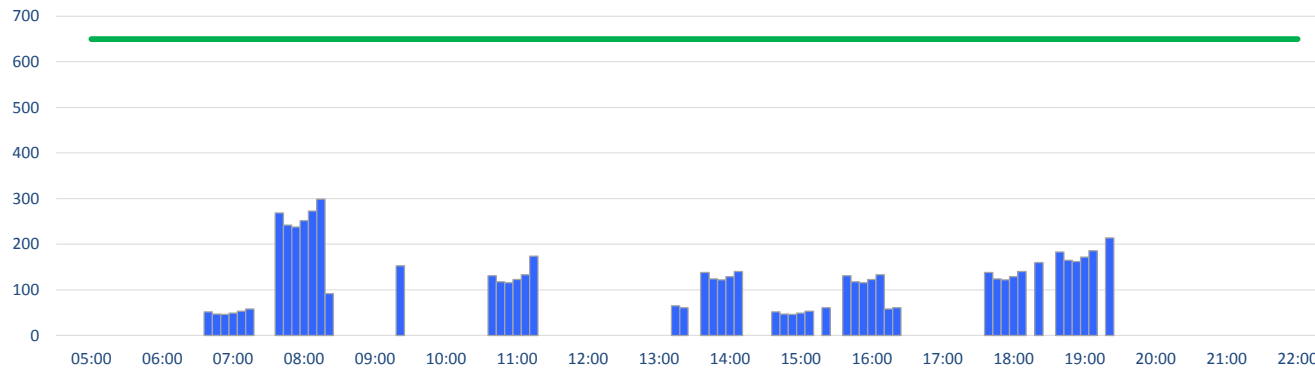
Peak Week Movements per Hour - All times UTC



	CAPACITY							ALLOCATION								
	Mon	Tue	Wed	Thu	Fri	Sat	Sun	Mon	Tue	Wed	Thu	Fri	Sat	Sun		
05:00	12	12	12	12	12	12	12									
06:00	29	29	29	29	29	32	27	21	16	17	19	21	29	19		
07:00	29	29	29	29	29	31	34	29	26	27	29	29	30	34		
08:00	31	31	31	31	31	28	31	30	25	29	27	29	27	28		
09:00	31	31	31	31	31	31	30	29	27	30	29	28	31	26		
10:00	28	28	28	28	28	26	27	18	16	14	20	20	16	16		
11:00	27	27	27	27	27	29	26	19	17	18	21	22	25	20		
12:00	27	27	27	27	27	26	26	20	19	22	22	21	25	21		
13:00	28	28	28	28	28	28	31	23	17	14	21	23	23	26		
14:00	28	28	28	28	28	28	29	15	13	14	18	19	24	28		
15:00	24	24	24	24	24	25	22	12	13	12	12	12	11	14		
16:00	28	28	28	28	28	26	28	16	13	13	12	14	15	19		
17:00	24	24	24	24	24	20	20	18	17	18	20	19	11	19		
18:00	29	29	29	29	29	28	30	23	23	24	24	24	13	26		
19:00	30	30	30	30	30	30	28	19	17	18	19	20	12	21		
20:00	22	22	22	22	22	22	22	16	14	14	17	15	6	17		
21:00	18	18	18	18	18	22	20	3	3	3	3	3	2	4		
22:00	15	15	15	15	15	17	15			1			2			

SOUTH TERMINAL DOMESTIC - ARRIVALS: DEMAND

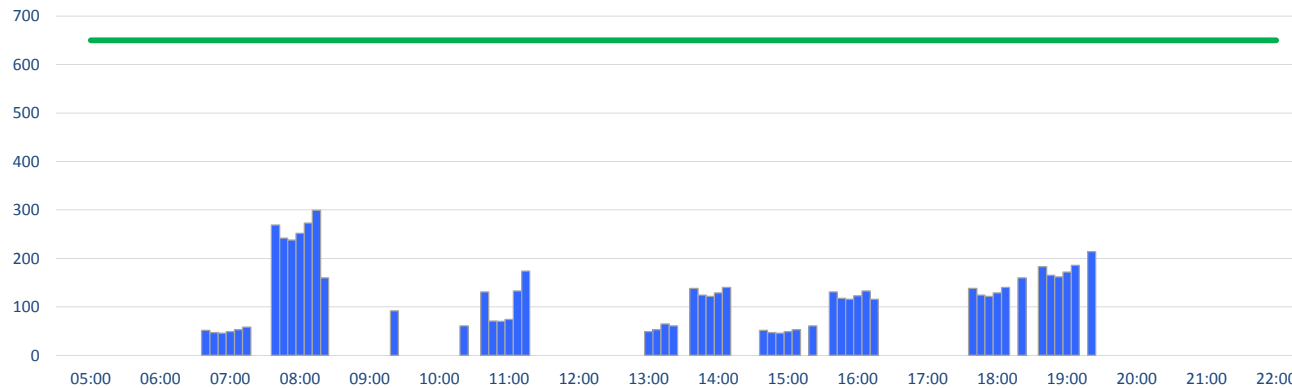
Peak Week Passengers per Hour - All times UTC
Demand At Initial Submission



	DEMAND							Capacity Limit
	Mon	Tue	Wed	Thu	Fri	Sat	Sun	
05:00								650
06:00								650
07:00	52	47	46	49	53	58		650
08:00	269	242	238	252	273	299	92	650
09:00							153	650
10:00								650
11:00	131	118	116	123	133	174		650
12:00								650
13:00						65	61	650
14:00	138	124	122	129	140			650
15:00	52	47	46	49	53		61	650
16:00	131	118	116	123	133	58	61	650
17:00								650
18:00	138	124	122	129	140		160	650
19:00	183	165	162	172	186		214	650
20:00								650
21:00								650
22:00								650

SOUTH TERMINAL DOMESTIC - ARRIVALS: ALLOCATED

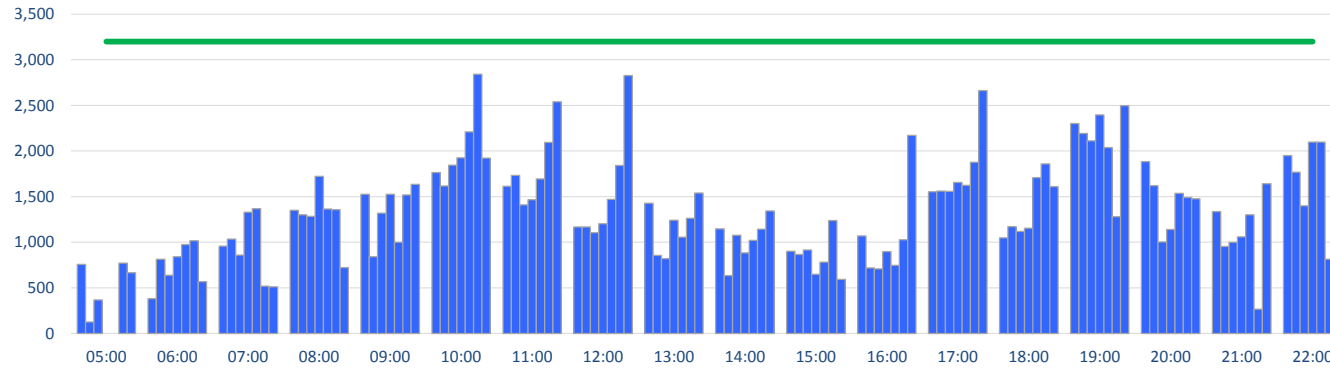
Peak Week Passengers per Hour - All times UTC



	ALLOCATION							Capacity Limit
	Mon	Tue	Wed	Thu	Fri	Sat	Sun	
05:00								650
06:00								650
07:00	52	47	46	49	53	58		650
08:00	269	242	238	252	273	299	160	650
09:00							92	650
10:00							61	650
11:00	131	71	70	74	133	174		650
12:00								650
13:00				49	53	65	61	650
14:00	138	124	122	129	140			650
15:00	52	47	46	49	53		61	650
16:00	131	118	116	123	133	116		650
17:00								650
18:00	138	124	122	129	140		160	650
19:00	183	165	162	172	186		214	650
20:00								650
21:00								650
22:00								650

SOUTH TERMINAL INTERNATIONAL - ARRIVALS: DEMAND

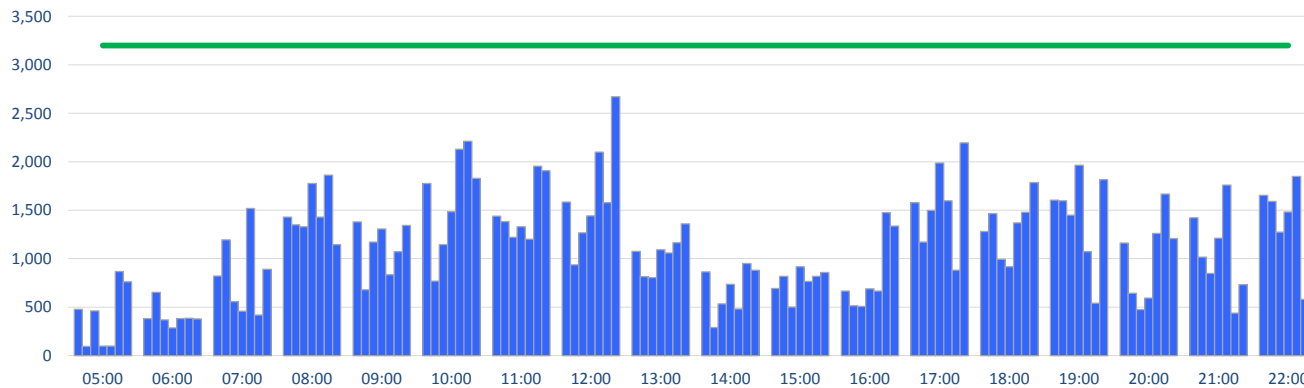
Peak Week Passengers per Hour - All times UTC
Demand At Initial Submission



	DEMAND							Capacity Limit
	Mon	Tue	Wed	Thu	Fri	Sat	Sun	
05:00	759	127	368		0	770	665	3200
06:00	381	815	638	840	976	1017	567	3200
07:00	959	1036	858	1331	1367	518	512	3200
08:00	1350	1301	1285	1724	1365	1357	721	3200
09:00	1527	843	1320	1527	1001	1518	1635	3200
10:00	1763	1616	1845	1927	2210	2843	1921	3200
11:00	1613	1733	1411	1467	1693	2096	2541	3200
12:00	1169	1169	1106	1204	1469	1842	2827	3200
13:00	1428	854	821	1242	1056	1264	1541	3200
14:00	1147	636	1075	883	1021	1143	1345	3200
15:00	903	865	915	647	781	1239	591	3200
16:00	1071	719	709	899	748	1029	2170	3200
17:00	1553	1562	1559	1656	1625	1878	2662	3200
18:00	1049	1170	1119	1153	1710	1861	1609	3200
19:00	2303	2192	2113	2396	2040	1282	2497	3200
20:00	1885	1622	1002	1141	1535	1492	1476	3200
21:00	1336	954	1000	1059	1302	265	1643	3200
22:00	1949	1769	1400	2098	2097	814	1475	3200

SOUTH TERMINAL INTERNATIONAL - ARRIVALS: ALLOCATED

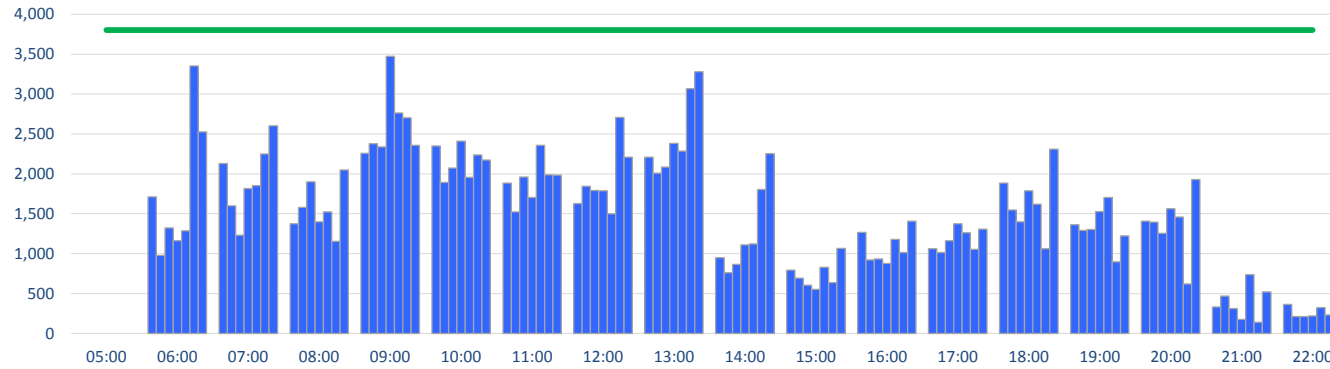
Peak Week Passengers per Hour - All times UTC



	ALLOCATION							Capacity Limit
	Mon	Tue	Wed	Thu	Fri	Sat	Sun	
05:00	479	96	463	98	99	869	763	3200
06:00	381	652	368	288	384	385	380	3200
07:00	823	1196	559	457	1517	418	892	3200
08:00	1429	1349	1331	1777	1428	1863	1144	3200
09:00	1381	680	1173	1308	834	1072	1343	3200
10:00	1777	768	1145	1487	2128	2211	1828	3200
11:00	1440	1383	1222	1331	1202	1955	1907	3200
12:00	1585	937	1267	1442	2099	1577	2671	3200
13:00	1076	815	804	1092	1058	1165	1361	3200
14:00	865	291	536	736	481	950	881	3200
15:00	693	819	501	918	765	819	859	3200
16:00	667	514	507	689	666	1475	1336	3200
17:00	1577	1173	1499	1988	1599	881	2196	3200
18:00	1282	1466	995	917	1369	1480	1785	3200
19:00	1603	1597	1450	1965	1071	541	1815	3200
20:00	1161	644	474	594	1261	1667	1209	3200
21:00	1424	1016	848	1212	1759	437	733	3200
22:00	1654	1592	1273	1481	1847	581	1495	3200

SOUTH TERMINAL DEPARTURES: DEMAND

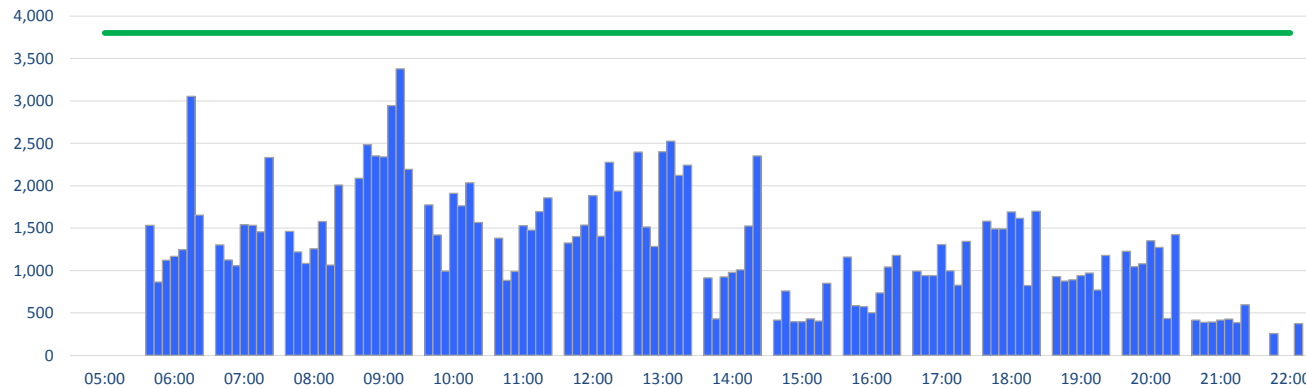
Peak Week Passengers per Hour - All times UTC
Demand At Initial Submission



	DEMAND							Capacity Limit
	Mon	Tue	Wed	Thu	Fri	Sat	Sun	
05:00								3800
06:00	1710	978	1324	1163	1285	3354	2528	3800
07:00	2128	1599	1230	1817	1854	2248	2603	3800
08:00	1375	1578	1899	1400	1524	1153	2050	3800
09:00	2258	2376	2337	3473	2761	2701	2357	3800
10:00	2351	1892	2072	2408	1957	2236	2175	3800
11:00	1884	1524	1962	1702	2357	1990	1986	3800
12:00	1627	1843	1793	1790	1500	2705	2210	3800
13:00	2210	2007	2085	2383	2286	3067	3281	3800
14:00	951	763	866	1109	1123	1804	2253	3800
15:00	793	692	603	552	828	637	1066	3800
16:00	1267	922	932	877	1178	1014	1409	3800
17:00	1062	1013	1164	1373	1261	1053	1308	3800
18:00	1886	1548	1398	1788	1621	1064	2309	3800
19:00	1363	1290	1302	1529	1703	896	1221	3800
20:00	1408	1396	1253	1565	1460	621	1930	3800
21:00	333	468	312	177	736	138	520	3800
22:00	366	212	212	221	326	230	232	3800

SOUTH TERMINAL DEPARTURES: ALLOCATED

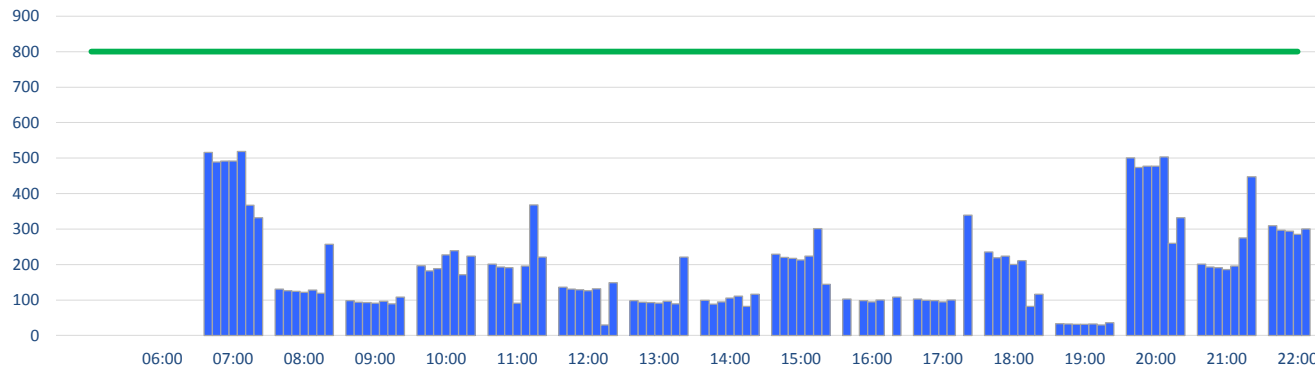
Peak Week Passengers per Hour - All times UTC



	ALLOCATION							Capacity Limit
	Mon	Tue	Wed	Thu	Fri	Sat	Sun	
05:00								3800
06:00	1534	865	1122	1166	1248	3054	1655	3800
07:00	1303	1125	1056	1542	1533	1456	2332	3800
08:00	1461	1221	1084	1258	1579	1064	2010	3800
09:00	2089	2483	2352	2342	2943	3377	2193	3800
10:00	1774	1418	994	1910	1765	2035	1566	3800
11:00	1383	883	990	1528	1475	1695	1857	3800
12:00	1324	1400	1537	1884	1405	2278	1935	3800
13:00	2398	1515	1284	2400	2527	2120	2242	3800
14:00	915	430	925	978	1008	1527	2351	3800
15:00	415	761	397	397	432	405	849	3800
16:00	1160	586	575	503	736	1041	1179	3800
17:00	995	942	940	1307	998	829	1346	3800
18:00	1582	1493	1491	1690	1617	823	1698	3800
19:00	930	876	890	942	971	772	1180	3800
20:00	1228	1048	1081	1353	1274	434	1422	3800
21:00	417	391	392	416	426	386	596	3800
22:00		257			375		282	3800

NORTH TERMINAL DOMESTIC - ARRIVALS: DEMAND

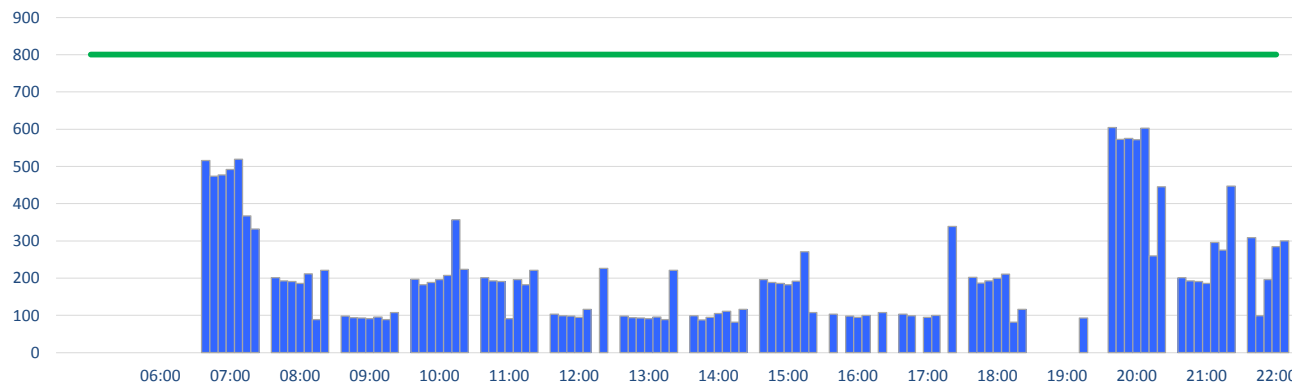
Peak Week Passengers per Hour - All times UTC
Demand At Initial Submission



	DEMAND							Capacity
	Mon	Tue	Wed	Thu	Fri	Sat	Sun	Limit
								800
06:00								800
07:00	516	489	492	492	519	367	332	800
08:00	131	126	124	122	128	119	257	800
09:00	98	94	93	91	96	89	108	800
10:00	197	182	188	227	239	171	224	800
11:00	201	193	191	91	196	368	221	800
12:00	136	131	129	126	132	30	149	800
13:00	98	94	93	91	96	89	221	800
14:00	99	88	95	105	111	82	116	800
15:00	229	220	217	213	224	301	144	800
16:00	103		98	95	100		108	800
17:00	103	99	98	95	100		339	800
18:00	235	219	224	200	211		82	116
19:00	33	32	31	31	32	30	36	800
20:00	501	474	477	477	503	260	332	800
21:00	201	193	191	186	196	275	447	800
22:00	309	297	294	285	300		452	800

NORTH TERMINAL DOMESTIC - ARRIVALS: ALLOCATED

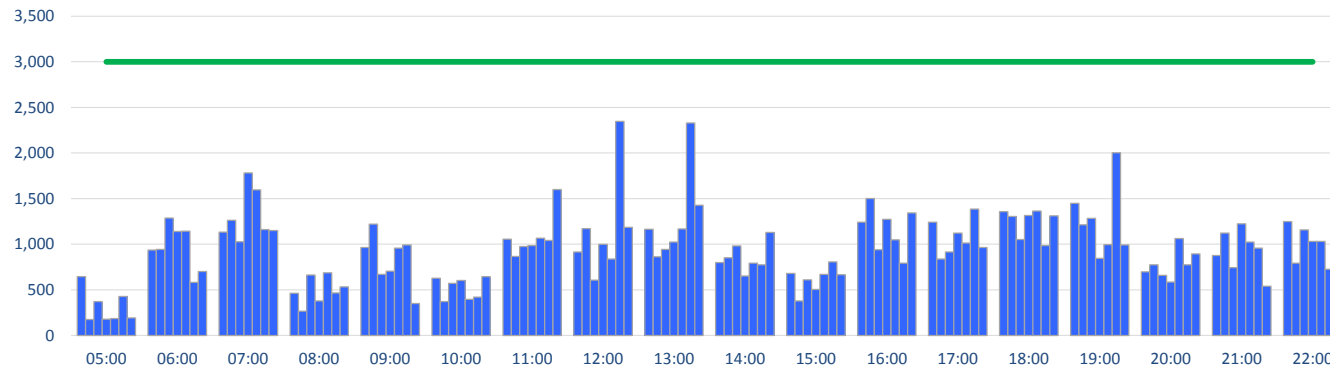
Peak Week Passengers per Hour - All times UTC



	ALLOCATION							Capacity
	Mon	Tue	Wed	Thu	Fri	Sat	Sun	Limit
								800
06:00								800
07:00	516	474	477	492	519	367	332	800
08:00	201	193	191	186	212	89	221	800
09:00	98	94	93	91	96	89	108	800
10:00	197	182	188	196	207	357	224	800
11:00	201	193	191	91	196	182	221	800
12:00	103	99	98	95	116		226	800
13:00	98	94	93	91	96	89	221	800
14:00	99	88	95	105	111	82	116	800
15:00	196	188	186	182	192	271	108	800
16:00	103		98	95	100		108	800
17:00	103	99		95	100		339	800
18:00	202	187	193	200	211		82	116
19:00							93	800
20:00	604	573	575	572	603	260	445	800
21:00	201	193	191	186	296	275	447	800
22:00	309	99	196	285	300		452	800

NORTH TERMINAL INTERNATIONAL - ARRIVALS: DEMAND

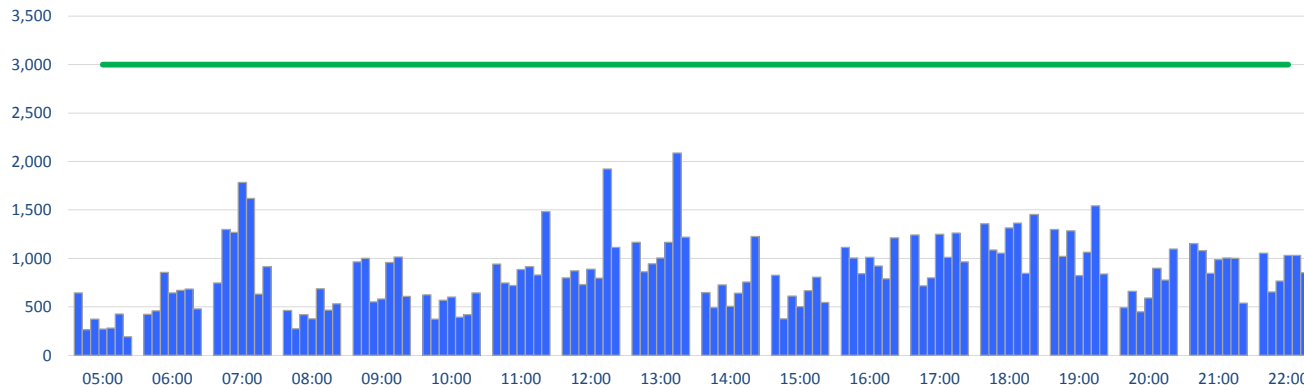
Peak Week Passengers per Hour - All times UTC
Demand At Initial Submission



	DEMAND							Capacity Limit
	Mon	Tue	Wed	Thu	Fri	Sat	Sun	
05:00	645	174	373	178	184	428	192	3000
06:00	936	945	1288	1140	1143	581	701	3000
07:00	1134	1262	1027	1783	1595	1160	1152	3000
08:00	462	267	661	377	687	467	533	3000
09:00	964	1222	668	706	958	994	350	3000
10:00	626	373	570	602	395	421	645	3000
11:00	1056	867	974	985	1065	1041	1599	3000
12:00	916	1173	606	998	837	2347	1184	3000
13:00	1166	861	944	1025	1168	2328	1429	3000
14:00	799	852	981	651	794	776	1129	3000
15:00	680	378	611	504	669	808	666	3000
16:00	1243	1502	941	1275	1050	791	1345	3000
17:00	1243	838	916	1123	1012	1384	965	3000
18:00	1357	1304	1053	1316	1364	986	1311	3000
19:00	1450	1212	1283	846	995	2003	994	3000
20:00	699	776	660	584	1064	776	894	3000
21:00	878	1122	745	1223	1024	959	540	3000
22:00	1247	792	1159	1031	1032	725	1812	3000

NORTH TERMINAL INTERNATIONAL - ARRIVALS: ALLOCATED

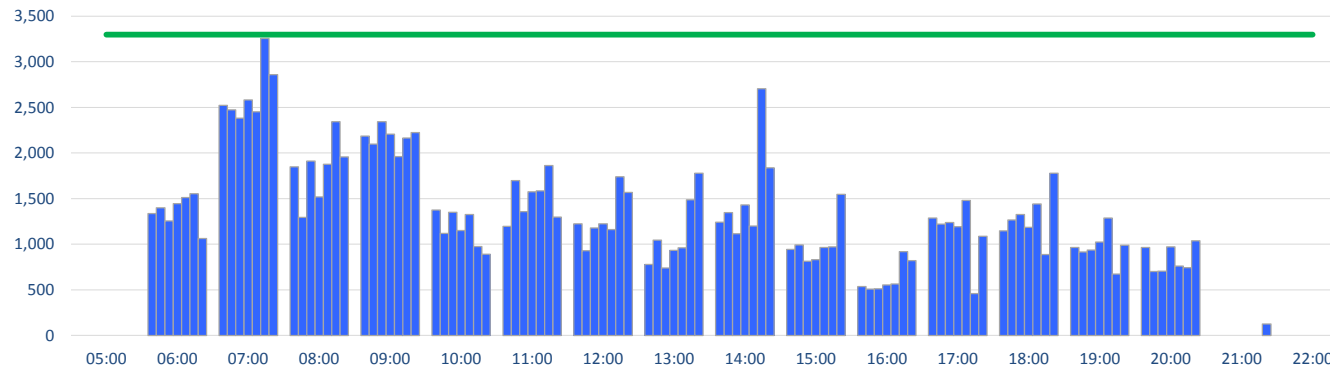
Peak Week Passengers per Hour - All times UTC



	ALLOCATION							Capacity Limit
	Mon	Tue	Wed	Thu	Fri	Sat	Sun	
05:00	645	266	373	272	282	428	192	3000
06:00	423	461	855	646	672	683	480	3000
07:00	747	1299	1268	1783	1618	633	914	3000
08:00	462	276	420	377	687	467	533	3000
09:00	964	1000	552	583	958	1014	609	3000
10:00	626	373	570	602	395	421	645	3000
11:00	942	747	722	886	916	828	1482	3000
12:00	801	872	729	888	797	1923	1114	3000
13:00	1166	861	944	1004	1168	2089	1219	3000
14:00	647	493	726	505	643	756	1226	3000
15:00	827	378	611	504	669	808	546	3000
16:00	1115	1004	843	1010	923	791	1212	3000
17:00	1243	718	800	1248	1012	1262	965	3000
18:00	1357	1088	1053	1316	1364	845	1453	3000
19:00	1298	1022	1286	823	1065	1542	838	3000
20:00	494	662	449	591	898	776	1098	3000
21:00	1153	1081	846	987	1004	1000	540	3000
22:00	1054	654	768	1031	1032	854	1888	3000

NORTH TERMINAL DEPARTURES: DEMAND

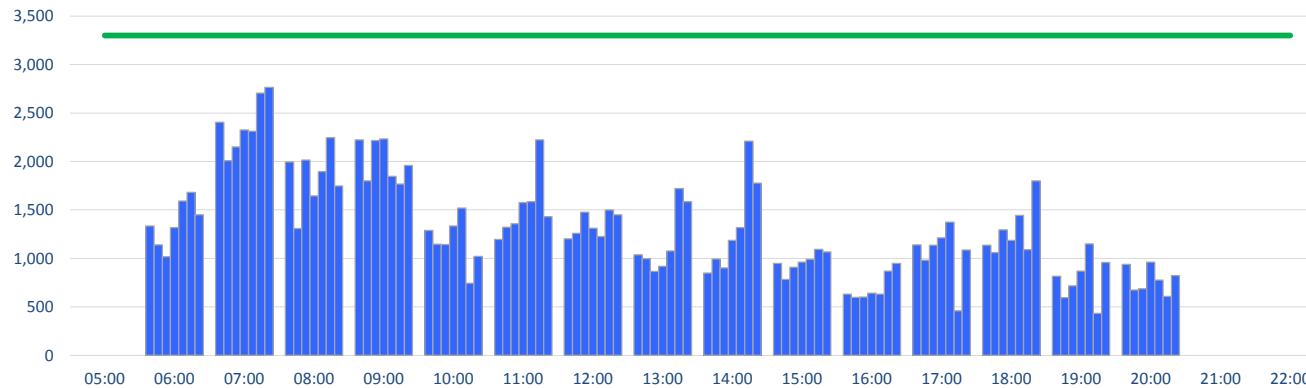
Peak Week Passengers per Hour - All times UTC
Demand At Initial Submission



	DEMAND							Capacity
	Mon	Tue	Wed	Thu	Fri	Sat	Sun	Limit
05:00								3300
06:00	1335	1398	1257	1444	1512	1553	1061	3300
07:00	2524	2475	2383	2583	2452	3256	2860	3300
08:00	1849	1294	1911	1520	1877	2342	1957	3300
09:00	2184	2099	2342	2206	1962	2163	2225	3300
10:00	1376	1119	1351	1150	1325	974	890	3300
11:00	1196	1698	1359	1576	1586	1864	1297	3300
12:00	1223	931	1177	1224	1161	1739	1569	3300
13:00	778	1046	740	932	961	1489	1778	3300
14:00	1242	1346	1116	1430	1199	2705	1840	3300
15:00	943	991	812	831	964	971	1546	3300
16:00	537	508	513	553	564	919	822	3300
17:00	1286	1219	1239	1192	1482	460	1088	3300
18:00	1148	1266	1326	1185	1443	886	1779	3300
19:00	965	914	938	1023	1286	673	990	3300
20:00	965	700	705	972	762	742	1038	3300
21:00							126	3300
22:00								3300

NORTH TERMINAL DEPARTURES: ALLOCATED

Peak Week Passengers per Hour - All times UTC



	ALLOCATION							Capacity
	Mon	Tue	Wed	Thu	Fri	Sat	Sun	Limit
05:00								3300
06:00	1335	1141	1019	1319	1594	1681	1449	3300
07:00	2404	2009	2151	2327	2312	2704	2766	3300
08:00	1995	1308	2016	1645	1897	2247	1748	3300
09:00	2224	1802	2217	2234	1846	1766	1960	3300
10:00	1288	1147	1142	1336	1519	744	1022	3300
11:00	1196	1322	1359	1576	1586	2222	1429	3300
12:00	1203	1258	1476	1313	1226	1500	1451	3300
13:00	1038	998	866	920	1077	1722	1587	3300
14:00	849	994	902	1185	1319	2210	1778	3300
15:00	950	783	908	963	991	1093	1069	3300
16:00	633	599	602	643	633	868	949	3300
17:00	1140	981	1138	1212	1376	460	1088	3300
18:00	1138	1061	1296	1185	1443	1090	1800	3300
19:00	816	596	719	870	1150	434	958	3300
20:00	938	676	687	961	776	609	824	3300
21:00								3300
22:00								3300

GLOSSARY OF TERMS

Air Transport Movement (ATM)	A scheduled or charter passenger or freight aircraft movement.
Allocation	The allocation of slots such that demand is constrained to fit within declared scheduling limits.
Common Travel Area (CTA)	Services to or from the Republic of Ireland and the Channel Islands.
Demand	The unconstrained demand for slots, prior to any schedule adjustments.
Passenger ATM	A scheduled or charter <u>passenger</u> aircraft movement (ie, excluding all-cargo aircraft movements).
Scheduling Limits	Limiting parameters declared by the Airport Operator used in the coordination process.
Seats	The number of seats based on the aircraft configuration advised by the airline.
Peak Week	The Peak Week for Winter 2011 is Week 47 (20-26 February 2012)
Winter 2011 Data Snapshot	All data used for this report was as held at 17th October 2011
Winter 2010 Data	W10 Start of Season was as held on 05 October 2010 W10 End of Season was as held on 17 October 2011

GUIDE TO HISTOGRAMS

The histograms show the pattern of traffic by time of day against the appropriate scheduling limit. Each time period consist of seven columns representing the days-of-week, Monday through Sunday.