



DUBAI INTERNATIONAL AIRPORT DXB

W15 Start of Season Report

Key Statistics

Full Season Comparison	W14 Full Season Live	W15 Full Season Live	Percentage Change
Operations	174,870	184,491	5.5%
Seats	47,951,834	50,920,432	6.2%

Peak Week Comparison	W14 Peak Week at End	W15 Peak Week End	Percentage Change
Operations	8,068	8,525	5.7%
Seats	2,207,158	2,357,854	6.8%

Contents

Page

Main Constraints by Terminal	2
Code F Arrivals and Departures - Peak Week	3
Declaration Utilisation Analysis	4
Schedule Changes and New Carriers - Peak Week	5
NAC Utilisation View - Peak Week	6
ATM Comparison - Peak Week	7
Seat Comparison - Peak Week	8
Distribution of Schedule Adjustments	9
Top 10 Airlines by ATM's and Seats - Peak Week	10
Top 20 Destinations by ATM's and Seats - Peak Week	11
R60 Peak Week Utilisation	12
R10 Peak Week Utilisation	13
Terminal 1 Peak Week Utilisation	14
Terminal 2 Peak Week Utilisation	15
Terminal 3 Peak Week Utilisation	16
Route Comparison by Carrier - Full Season W15 vs. W14	17-34
Glossary	35

Data in this report is current as of 28th October 2015

No warranty whether expressed or implied as to the completeness, accuracy, fitness for purpose, or satisfactory quality is given by ACL regarding the information in this report, which is provided by third parties. Accordingly, ACL excludes all liability with regard to such data.

The contents of this report may not be reproduced without the written consent of ACL.

PRIMARY CONSTRAINTS BY TERMINAL - PEAK WEEK

Arrival/Departure	OK	R60	R10	GRA	AA	GRD	Total
A	4,091	104	41		12	9	4,257
D	4,096	94	40	21		1	4,252
Grand Total	8,187	198	81	21	12	10	8,509

Percentage	OK	R60	R10	GRA	AA	GRD	Grand Total
A	96.1%	2.4%	1.0%	0.0%	0.3%		100.0%
D	96.3%	2.2%	0.9%	0.5%	0.0%		100.0%

Time UTC	0	100	200	300	400	500	600	700	800	900	1000	1100	1200	1300	1400	1500	1600	1700	1800	1900	2000	2100	2200	2300	Grand Total	
1I	89	72	51	37	44	91	142	132	133	73	76	91	112	75	173	142	133	161	156	114	68	106	105	106	2482	
OK	68	50	36	28	41	70	135	107	125	65	76	83	109	67	152	128	132	155	155	113	67	96	92	97	2247	
R60	20	15	10	2		15	7	15	7	7		8	1	8	12	9		5	1	1	1	2	6	7	159	
R10			1	1	7	3			10	1			2		9	1							7	7	2	52
GRA			6	2												4								1		14
GRD	1			2													1									10

Time UTC	0	100	200	300	400	500	600	700	800	900	1000	1100	1200	1300	1400	1500	1600	1700	1800	1900	2000	2100	2200	2300	Grand Total	
2I	105	60	106	104	85	119	91	150	106	121	75	70	54	130	124	120	111	118	114	73	83	40	103	69	2331	
OK	105	60	102	104	85	119	90	136	105	120	75	70	52	130	123	116	107	116	108	73	82	40	102	66	2286	
R60			4					1	5	1	1			2		1					1		1	1	20	
R10								2								4	2			3					2	13
AA								7									2		3							12

Time UTC	0	100	200	300	400	500	600	700	800	900	1000	1100	1200	1300	1400	1500	1600	1700	1800	1900	2000	2100	2200	2300	Grand Total	
3I	140	197	178	291	267	173	177	55	132	148	184	95	92	62	35	130	93	118	123	199	194	133	162	178	3556	
OK	140	197	178	282	260	166	177	54	132	147	184	94	91	62	35	130	93	118	123	199	194	133	161	178	3528	
R10				8	7			1																		16
GRA						7																				7
R60				1						1		1	1											1		5

Time UTC	0	100	200	300	400	500	600	700	800	900	1000	1100	1200	1300	1400	1500	1600	1700	1800	1900	2000	2100	2200	2300	Grand Total	
FRT			1		1	2	12	14	12	24	11	19	14		12	1	1	1		5	1			11	142	
OK			1		1	2	12	13	12	20	5	19	13		11	1		1		5	1			11	128	
R60								1		4	6		1		1		1									14

Grand Total	334	329	336	432	397	385	422	351	383	366	346	275	272	267	344	393	338	398	393	391	346	279	370	364	8511
-------------	-----	-----	-----	-----	-----	-----	-----	-----	-----	-----	-----	-----	-----	-----	-----	-----	-----	-----	-----	-----	-----	-----	-----	-----	------

Runway Reason Code	
R60	60 Min Runway Availability
R10	10 Min Runway Availability

Other Reason Code	
AA	Apron Capacity
GRA	Arr Affected by Dep
GRD	Dep Affected by Arr

Terminal Reason Code	
T60	60 Min Terminal Capacity rolling 30 Mins
R30	30 Mins gate Capacity rolling 5 Mins

CODE F ARRIVALS AND DEPARTURES

PEAK WEEK CODE F ARRIVALS AND DEPARTURES

Row Labels	0	100	200	300	400	500	600	800	900	1000	1100	1200	1300	1400	1500	1600	1700	1800	1900	2000	2100	2200	2300	Grand Total	
Code F Arrivals	7	63	42	35	14	3		7	14	14					38	28		14	49	77	7		14	426	
Emirates	7	63	35	28	14	3		7	14	14					38	28		14	42	70	7		14	398	
1	1	9	5	4	2			1	2	2					5	4		2	6	10	1		2	56	
2	1	9	5	4	2			1	2	2					6	4		2	6	10	1		2	57	
3	1	9	5	4	2			1	2	2					5	4		2	6	10	1		2	56	
4	1	9	5	4	2	1		1	2	2					6	4		2	6	10	1		2	58	
5	1	9	5	4	2	1		1	2	2					5	4		2	6	10	1		2	57	
6	1	9	5	4	2			1	2	2					6	4		2	6	10	1		2	57	
7	1	9	5	4	2	1		1	2	2					5	4		2	6	10	1		2	57	
Qantas			7	7															7	7				28	
1			1	1															1	1				4	
2			1	1															1	1				4	
3			1	1															1	1				4	
4			1	1															1	1				4	
5			1	1															1	1				4	
6			1	1															1	1				4	
7			1	1															1	1				4	
Code F Departures	7			42	77	45	42			42	21	21						7	7			17	28	70	426
Emirates	7			42	70	38	42			42	21	21						7	7			10	21	70	398
1	1			6	10	6	6			6	3	3						1	1			1	3	10	57
2	1			6	10	5	6			6	3	3						1	1			1	3	10	56
3	1			6	10	6	6			6	3	3						1	1			2	3	10	58
4	1			6	10	5	6			6	3	3						1	1			2	3	10	57
5	1			6	10	6	6			6	3	3						1	1			1	3	10	57
6	1			6	10	5	6			6	3	3						1	1			2	3	10	57
7	1			6	10	5	6			6	3	3						1	1			1	3	10	56
Qantas				7	7																	7	7		28
1				1	1																	1	1		4
2				1	1																	1	1		4
3				1	1																	1	1		4
4				1	1																	1	1		4
5				1	1																	1	1		4
6				1	1																	1	1		4
7				1	1																	1	1		4
Grand Total	14	63	42	77	91	48	42	7	14	56	21	21			38	28		7	21	49	77	24	28	84	852

DECLARATION USAGE ANALYSIS

Projected Declaration Usage Analysis for Peak Week

Time UTC	0	100	200	300	400	500	600	700	800	900	1000	1100	1200	1300	1400	1500	1600	1700	1800	1900	2000	2100	2200	2300
Arrivals																								
Average of Coordinated	94%	100%	100%	87%	75%	75%	90%	96%	100%	93%	85%	76%	77%	100%	96%	98%	100%	98%	100%	100%	100%	99%	93%	94%
Departures																								
Average of Coordinated	95%	60%	69%	100%	100%	100%	98%	91%	95%	96%	100%	98%	97%	70%	78%	93%	91%	100%	98%	99%	73%	73%	99%	99%
Totals																								
Average of Coordinated	94%	85%	88%	99%	90%	90%	95%	94%	98%	94%	96%	99%	99%	99%	94%	96%	96%	99%	99%	99%	89%	97%	97%	97%

PEAK WEEK SCHEDULE CHANGES - IATA TO LIVE

Zero Change	W15 Pre-IATA	W15	Change
QR	420	420	0.0%
IX	272	272	0.0%
GF	204	204	0.0%
AI	156	156	0.0%
EP	132	132	0.0%
QF	112	112	0.0%
J9	112	112	0.0%
Y9	108	108	0.0%
FX	104	104	0.0%
BA	84	84	0.0%
PA	84	84	0.0%
ET	84	84	0.0%
CX	84	84	0.0%
RJ	84	84	0.0%
IR	60	60	0.0%
SQ	60	60	0.0%
UPS	60	60	0.0%
KU	60	60	0.0%
IA	56	56	0.0%
4Q	56	56	0.0%
TK	56	56	0.0%
ME	56	56	0.0%
LH	56	56	0.0%
SU	56	56	0.0%
BI	56	56	0.0%
IY	36	36	0.0%
TG	28	28	0.0%
UA	28	28	0.0%
QS	28	28	0.0%
AF	28	28	0.0%
RA	28	28	0.0%
BG	28	28	0.0%
J2	28	28	0.0%
UL	28	28	0.0%
RQ	28	28	0.0%
PC	28	28	0.0%
5J	28	28	0.0%
WB	28	28	0.0%
MH	28	28	0.0%
KE	28	28	0.0%
HH	24	24	0.0%
AY	24	24	0.0%
T5	24	24	0.0%
LN	20	20	0.0%
AH	16	16	0.0%
RB	16	16	0.0%
SZ	12	12	0.0%
AC	12	12	0.0%
MU	12	12	0.0%
EW	12	12	0.0%
3J	12	12	0.0%
NV	12	12	0.0%
HY	12	12	0.0%
B8	12	12	0.0%
D3	8	8	0.0%
DT	8	8	0.0%

Cancelled Services	W15 Pre-IATA	W15	Change
OS	24		-100.0%

New Services	W15 Pre-IATA	W15	Change
D8		28	Post IATA Submission
3U		8	Post IATA Submission
Y7		4	Post IATA Submission

Cutbacks and Additions	W15 Pre-IATA	W15	Change
TU	4	8	100.0%
4H	8	16	100.0%
3V	24	48	100.0%
PR	28	56	100.0%
MS	56	84	50.0%
CA	20	28	40.0%
XY	140	192	37.1%
CZ	48	60	25.0%
6E	280	336	20.0%
KQ	44	52	18.2%
FG	24	28	16.7%
IV	28	32	14.3%
3S	32	36	12.5%
KL	36	40	11.1%
SG	204	224	9.8%
W5	156	168	7.7%
FZ	3594	3736	4.0%
PK	184	188	2.2%
SV	368	360	-2.2%
EK	8074	7488	-7.3%
9W	308	280	-9.1%
QB	64	56	-12.5%
NL	172	148	-14.0%
VS	28	24	-14.3%
U6	40	34	-15.0%
PS	52	44	-15.4%
WY	280	224	-20.0%
HV	20	16	-20.0%
KC	56	44	-21.4%
DHX	60	44	-26.7%
LX	84	56	-33.3%
RO	12	8	-33.3%
LC	28	16	-42.9%
DY	56	28	-50.0%
S7	8	4	-50.0%
DL	42	16	-61.9%
UN	68	20	-70.6%

NAC Utilisation View - Arrivals and Departures

ARRIVALS							
UTC	1	2	3	4	5	6	7
0	3	2	1	2	3	2	0
10	2	1	2	0	3	1	2
20	3	2	3	2	3	2	2
30	3	0	1	1	0	2	1
40	0	2	1	1	2	0	2
50	1	1	2	1	1	0	0
100	1	0	1	1	0	1	0
110	0	0	0	0	0	0	0
120	0	0	0	0	0	0	0
130	1	0	1	0	0	1	0
140	0	0	0	0	0	0	0
150	0	0	0	0	0	0	0
200	0	1	0	0	0	0	0
210	0	0	0	0	0	0	0
220	0	0	0	0	0	0	0
230	0	0	0	0	0	0	0
240	0	1	0	0	0	0	0
250	0	0	0	0	0	0	0
300	1	0	0	2	0	0	1
310	0	0	0	0	0	0	0
320	1	2	0	2	0	0	1
330	1	2	0	2	0	0	1
340	1	2	0	2	0	0	1
350	1	2	0	2	0	0	1
400	4	3	4	4	2	1	3
410	0	0	0	0	0	0	0
420	1	2	2	3	1	1	3
430	4	4	4	4	3	4	4
440	4	4	3	4	2	4	2
450	6	6	5	6	3	4	5
500	4	4	4	4	4	4	3
510	4	4	4	4	4	4	4
520	4	4	4	4	4	3	4
530	3	4	3	3	4	4	3
540	2	2	2	3	2	2	0
550	1	1	2	1	2	0	2
600	4	2	2	1	2	3	3
610	1	2	2	1	3	2	2
620	4	2	2	1	3	3	3
630	3	2	2	1	3	3	2
640	1	1	0	1	1	0	0
650	3	1	2	1	1	2	3
700	0	1	1	2	1	1	2
710	0	1	0	1	0	1	1
720	0	1	1	1	0	0	2
730	0	0	0	2	0	0	1
740	0	1	1	1	1	1	0
750	0	1	1	0	0	0	0

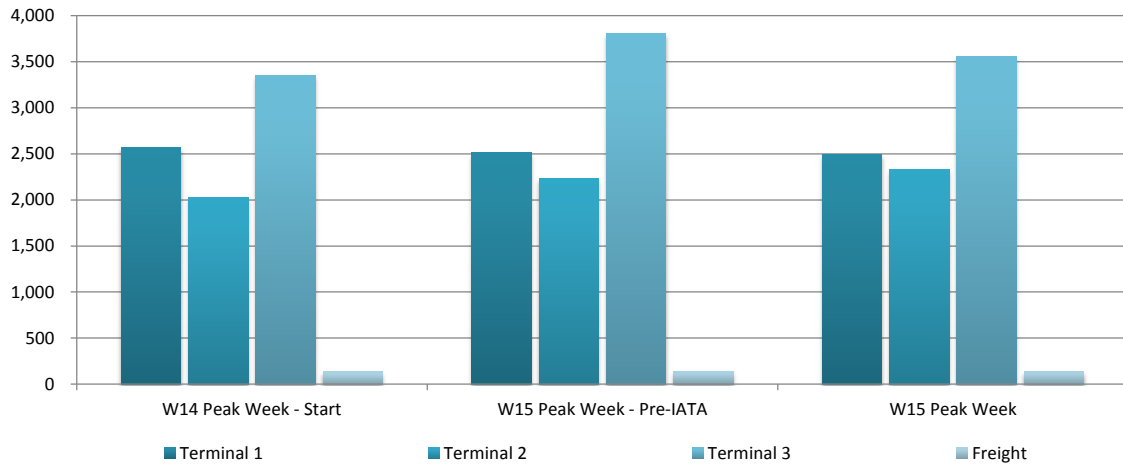
UTC	1	2	3	4	5	6	7
800	1	0	1	0	0	0	0
810	1	0	1	0	0	0	0
820	0	0	0	0	0	0	0
830	1	0	1	0	0	0	0
840	1	0	1	0	0	0	0
850	1	0	0	0	0	0	0
900	0	0	1	0	0	1	1
910	1	0	0	0	1	0	1
920	1	1	0	1	0	1	0
930	0	0	0	0	1	0	0
940	1	2	1	1	2	4	3
950	0	1	0	1	0	1	0
1000	2	1	2	1	1	2	2
1010	2	2	3	2	3	2	2
1020	2	1	1	2	1	2	2
1030	2	2	3	2	3	2	2
1040	2	2	3	2	3	2	2
1050	1	2	1	1	2	0	0
1100	1	0	0	0	0	0	1
1110	1	0	0	0	0	0	1
1120	1	0	0	0	0	0	1
1130	1	0	0	0	0	0	1
1140	1	0	0	0	0	0	1
1150	1	0	0	0	0	0	1
1200	1	0	1	0	0	2	1
1210	1	0	2	1	0	2	1
1220	1	0	2	1	0	2	1
1230	1	0	2	1	0	2	1
1240	1	0	2	1	0	2	1
1250	1	0	2	1	0	0	1
1300	0	0	1	0	0	0	0
1310	0	0	1	0	0	0	0
1320	0	0	1	0	0	0	0
1330	0	0	1	0	0	0	0
1340	0	0	1	0	0	0	0
1350	0	0	1	0	0	0	0
1400	0	0	1	1	1	0	1
1410	0	0	0	0	0	2	0
1420	2	1	1	1	2	2	1
1430	1	1	1	1	1	1	1
1440	2	1	1	1	2	1	0
1450	2	1	1	1	2	2	1
1500	0	0	0	0	0	0	0
1510	0	0	1	0	0	0	0
1520	0	0	1	0	0	0	0
1530	1	1	1	0	0	0	0
1540	0	0	0	0	0	0	0
1550	1	1	2	0	0	0	0

UTC	1	2	3	4	5	6	7
1600	0	0	0	0	0	0	0
1610	0	0	0	0	0	0	0
1620	0	0	0	0	0	0	0
1630	0	0	0	0	0	0	0
1640	0	0	0	0	0	0	0
1650	0	0	0	0	0	0	0
1700	1	0	0	0	1	1	1
1710	1	1	0	0	0	0	1
1720	0	0	0	1	1	1	0
1730	0	0	0	0	1	0	0
1740	2	1	0	0	0	1	0
1750	0	0	0	1	0	0	0
1800	0	0	0	0	0	0	0
1810	0	0	1	0	0	0	0
1820	0	0	0	0	0	0	0
1830	0	0	0	0	0	0	0
1840	0	0	1	0	0	0	0
1850	0	0	0	0	0	0	0
1900	0	0	0	0	0	0	0
1910	0	0	0	0	0	0	0
1920	0	0	0	0	0	0	0
1930	0	0	0	0	0	0	0
1940	0	0	0	0	0	0	0
1950	0	0	0	0	0	0	0
2000	0	0	0	0	0	0	0
2010	0	1	0	0	0	0	0
2020	0	0	0	0	0	0	0
2030	0	0	0	0	0	0	0
2040	0	0	0	0	0	0	0
2050	0	1	0	0	0	0	0
2100	0	0	0	0	1	0	0
2110	1	0	0	0	1	0	0
2120	1	0	0	0	1	0	0
2130	1	0	0	0	1	0	0
2140	1	0	0	0	1	0	0
2150	1	0	0	0	1	0	0
2200	1	0	1	0	1	0	2
2210	1	2	2	1	2	0	1
2220	1	2	2	1	2	0	2
2230	1	2	2	1	2	0	2
2240	1	2	2	1	2	0	2
2250	1	2	2	1	2	0	1
2300	1	1	2	1	1	2	1
2310	1	1	2	1	1	2	1
2320	1	1	2	1	1	2	1
2330	1	1	2	1	1	2	1
2340	1	1	2	1	1	2	1
2350	1	1	2	1	1	2	1

DEPARTURES							
UTC	1	2	3	4	5	6	7
0	0	2	1	2	3	2	0
10	0	1	2	0	3	1	2
20	0	2	3	2	3	2	2
30	0	0	1	1	0	2	1
40	0	2	1	1	2	0	2
50	0	1	2	1	1	0	0
100	1	0	1	1	0	1	0
110	5	0	0	0	0	0	0
120	6	0	0	0	0	0	0
130	5	0	1	0	0	1	0
140	5	0	0	0	0	0	0
150	5	0	0	0	0	0	0
200	4	1	0	0	0	0	0
210	5	0	0	0	0	0	0
220	4	0	0	0	0	0	0
230	5	0	0	0	0	0	0
240	5	1	0	0	0	0	0
250	4	0	0	0	0	0	0
300	0	0	0	2	0	0	1
310	0	0	0	0	0	0	0
320	0	2	0	2	0	0	1
330	0	2	0	2	0	0	1
340	0	2	0	2	0	0	1
350	0	2	0	2	0	0	1
400	0	3	4	4	2	1	3
410	1	0	0	0	0	0	0
420	1	2	2	3	1	1	3
430	0	4	4	4	3	4	4
440	0	4	3	4	2	4	2
450	0	6	5	6	3	4	5
500	0	4	4	4	4	4	3
510	0	4	4	4	4	4	4
520	1	4	4	4	4	3	4
530	0	4	3	3	4	4	3
540	0	2	2	3	2	2	0
550	1	1	2	1	2	0	2
600	1	2	2	1	2	3	3
610	0	2	2	1	3	2	2
620	0	2	2	1	3	3	3
630	0	2	2	1	3	3	2
640	1	1	0	1	1	0	0
650	1	1	2	1	1	2	3
700	3	1	1	2	1	1	2
710	3	1	0	1	0	1	1
720	2	1	1	1	0	0	2
730	3	0	0	2	0	0	1
740	3	1	1	1	1	1	0
750	3	1	1	0	0	0	0

UTC	1	2	3	4	5	6	7
800	2	0	1	0	0	0	0
810	2	0	1	0	0	0	0
820	1	0	0	0	0	0	0
830	2	0	1	0	0	0	0
840	2	0	1	0	0	0	0
850	2	0	0	0	0	0	0
900	2	0	1	0	0	1	1
910	2	0	0	0	1	0	1
920	2	1	0	1	0	1	0
930	2	0	0	0	1	0	0
940	1	2	1	1	2	4	3
950	0	1	0	1	0	1	0
1000	0	1	2	1	1	2	2
1010	0	2	3	2	3	2	2
1020	0	1	1	2	1	2	2
1030	0	2	3	2	3	2	2
1040	0	2	3	2	3	2	2
1050	0	2	1	1	2	0	0
1100	0	0	0	0	0	0	1
1110	0	0	0	0	0	0	1
1120	0	0	0	0	0	0	1
1130	0						

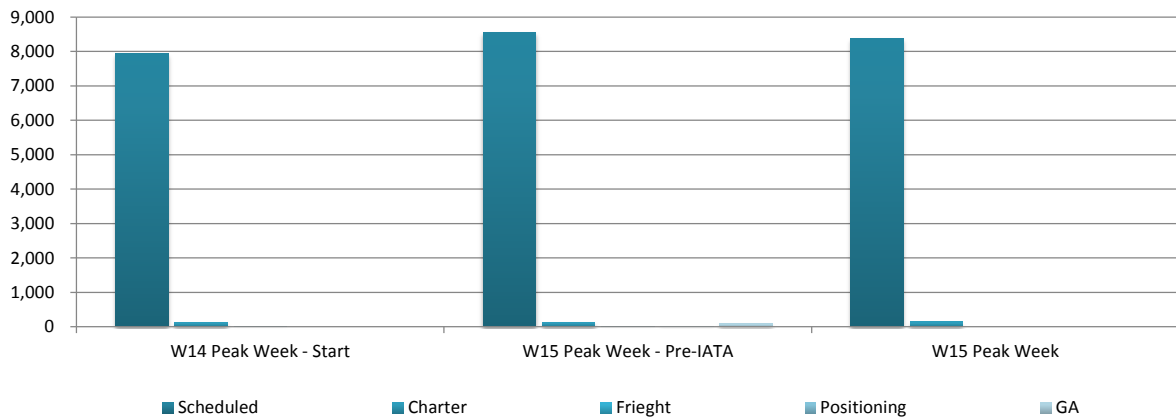
PEAK WEEK AIR TRANSPORT MOVEMENTS BY TERMINAL



Terminal	W14 Peak Week - Start	W15 Peak Week - Pre-IATA	W15 Peak Week	% Change W14 Start to W15	% Change W15 Pre-IATA - W15
Terminal 1	2,563	2,510	2,496	-2.6%	-0.6%
Terminal 2	2,021	2,230	2,331	15.3%	4.5%
Terminal 3	3,349	3,809	3,556	6.2%	-6.6%
Freight	135	140	142	5.2%	1.4%
Total	8,068	8,689	8,525	5.7%	-1.9%

Data Period	
W14	23 Feb - 01 Mar
W15	22-28 Feb

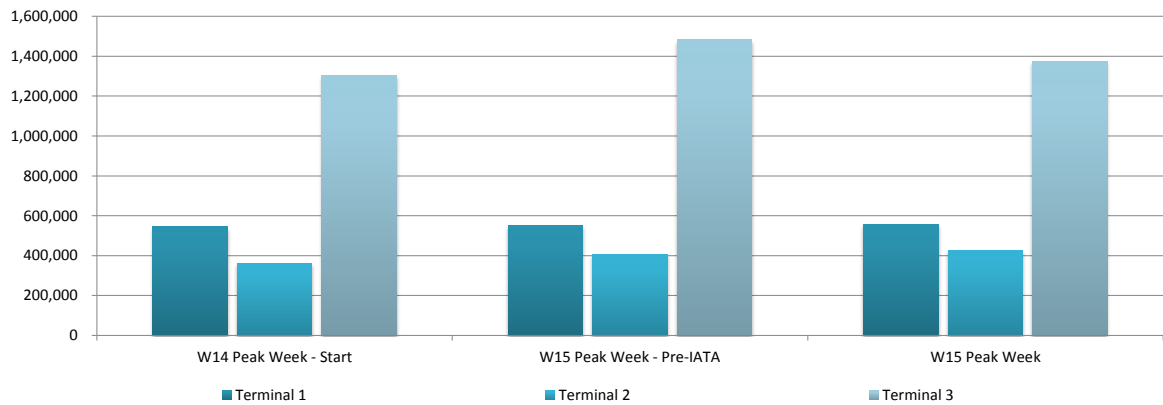
PEAK WEEK AIR TRANSPORT MOVEMENTS BY SERVICE TYPES



Service Type	W14 Peak Week - Start	W15 Peak Week - Pre-IATA	W15 Peak Week	% Change W14 Start to W15	% Change W15 Pre-IATA - W15
Scheduled	7,931	8,547	8,383	5.7%	-1.9%
Charter	135	140	142	-	-
Freight	2	2	-	-100.0%	-
Positioning	-	15	-	-	-
GA	-	94	-	-	-
Total	8,068	8,798	8,525	5.7%	-3.1%

Data Period	
W14	23 Feb - 01 Mar
W15	22-28 Feb

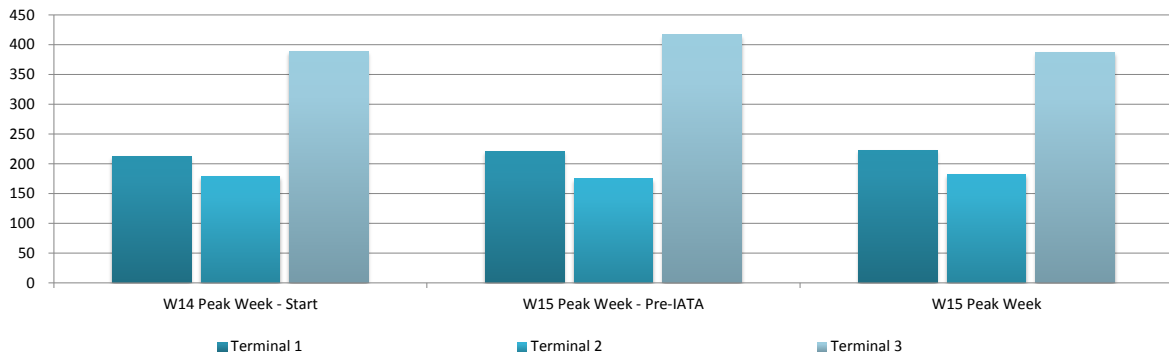
TOTAL SEATS BY TERMINAL



Terminal	W14 Peak Week - Start	W15 Peak Week - Pre-IATA	W15 Peak Week	% Change W14 Start to W15	% Change W15 Pre IATA - W15
Terminal 1	543,920	550,262	556,860	2.38%	1.20%
Terminal 2	360,152	407,242	425,721	18.21%	4.54%
Terminal 3	1,303,086	1,481,509	1,375,273	5.54%	-7.17%
Total	2,207,158	2,439,013	2,357,854	6.83%	-3.33%

Data Period	
W14	23 Feb - 01 Mar
W15	22-28 Feb

PASSENGER ATM BY TERMINAL

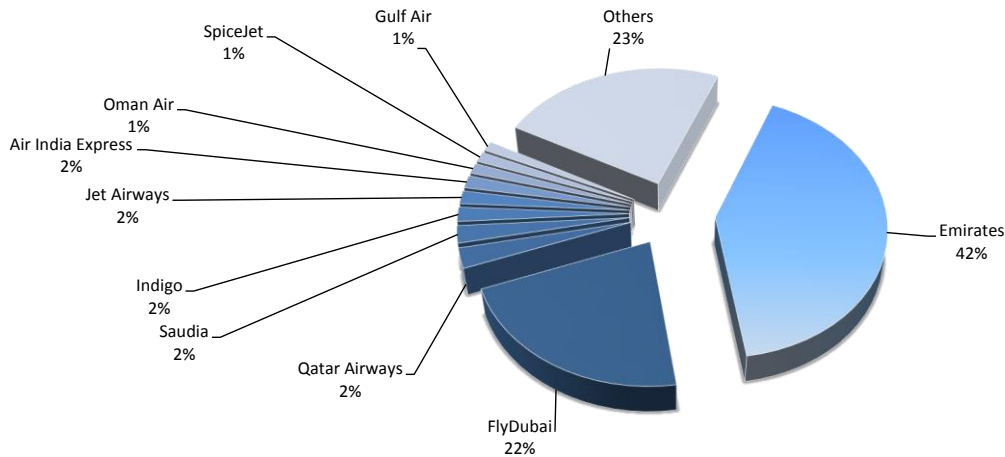


Terminal	W14 Peak Week - Start	W15 Peak Week - Pre-IATA	W15 Peak Week	% Change W14 Start to W15	% Change W15 Pre IATA - W15
Terminal 1	212	220	223	5.13%	1.20%
Terminal 2	178	175	183	2.49%	4.54%
Terminal 3	389	417	387	-0.60%	-7.17%
Average	260	271	264	1.66%	-2.38%

Data Period	
W14	23 Feb - 01 Mar
W15	22-28 Feb

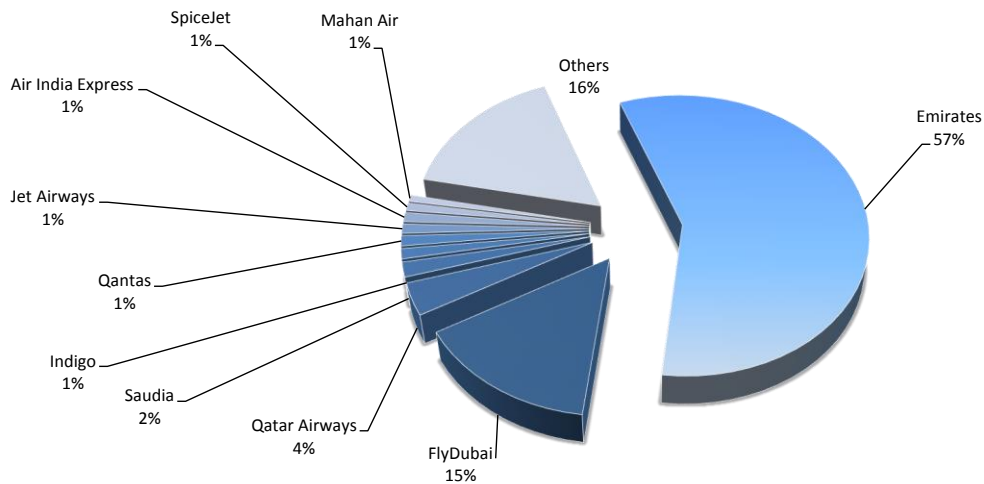
TOP 10 AIRLINES BY AIR TRANSPORT MOVEMENTS (ATMS)

Airline	Movements
Emirates	76,649
FlyDubai	40,206
Qatar Airways	4,608
Saudia	3,964
Indigo	3,300
Jet Airways	3,006
Air India Express	2,899
Oman Air	2,404
SpiceJet	2,343
Gulf Air	2,244
Others	43,062

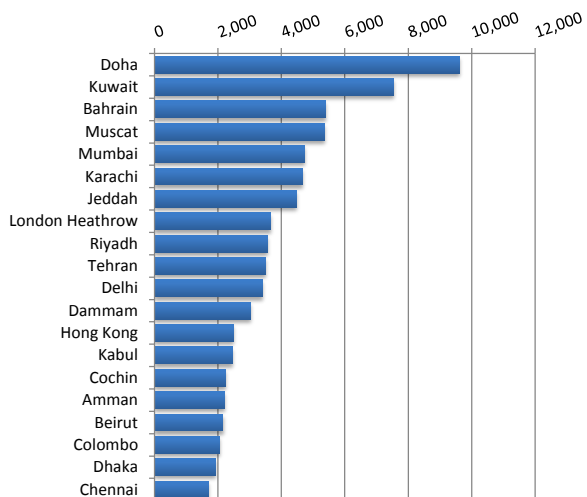


TOP 10 AIRLINES BY SEATS

Airline	Seats
Emirates	29,275,723
FlyDubai	7,577,538
Qatar Airways	1,866,160
Saudia	850,632
Indigo	594,000
Qantas	590,480
Jet Airways	536,892
Air India Express	536,315
SpiceJet	442,827
Mahan Air	380,632
Others	8,271,873

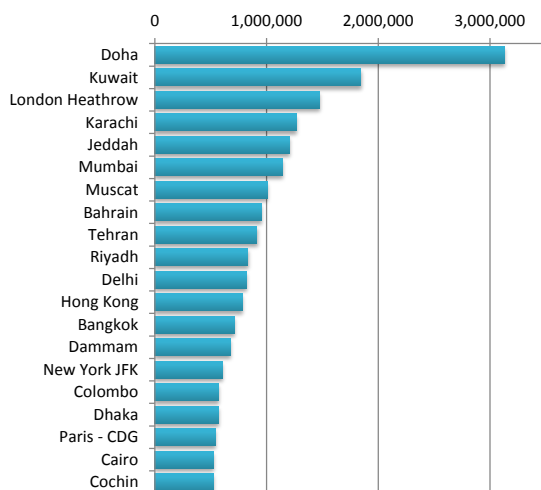


TOP 20 DESTINATIONS BY AIR TRANSPORT MOVEMENTS (ATMS)



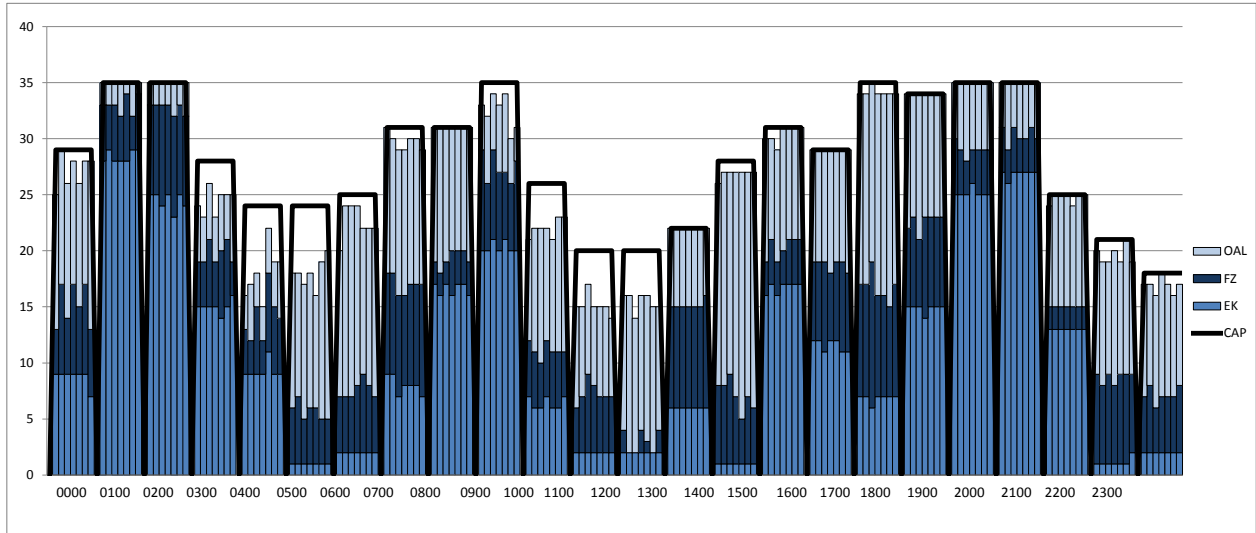
Destination	ATM'S
Doha	9,607
Kuwait	7,533
Bahrain	5,405
Muscat	5,361
Mumbai	4,716
Karachi	4,654
Jeddah	4,469
London Heathrow	3,656
Riyadh	3,569
Tehran	3,484
Delhi	3,391
Dammam	3,038
Hong Kong	2,488
Kabul	2,460
Cochin	2,250
Amman	2,211
Beirut	2,158
Colombo	2,051
Dhaka	1,907
Chennai	1,693

TOP 20 DESTINATIONS BY SEATS

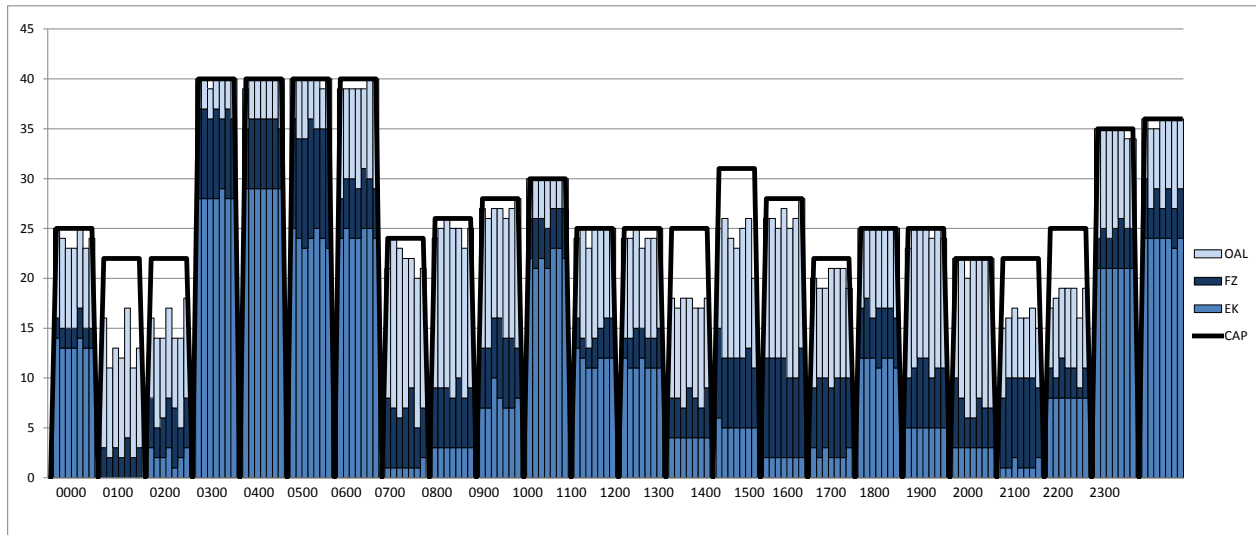


Destination	SEATS
Doha	3,132,485
Kuwait	1,844,736
London Heathrow	1,474,420
Karachi	1,266,715
Jeddah	1,204,716
Mumbai	1,145,083
Muscat	1,008,141
Bahrain	951,430
Tehran	914,772
Riyadh	832,961
Delhi	820,375
Hong Kong	782,190
Bangkok	713,193
Dammam	674,309
New York JFK	608,418
Colombo	571,747
Dhaka	571,652
Paris - CDG	543,536
Cairo	525,680
Cochin	522,006

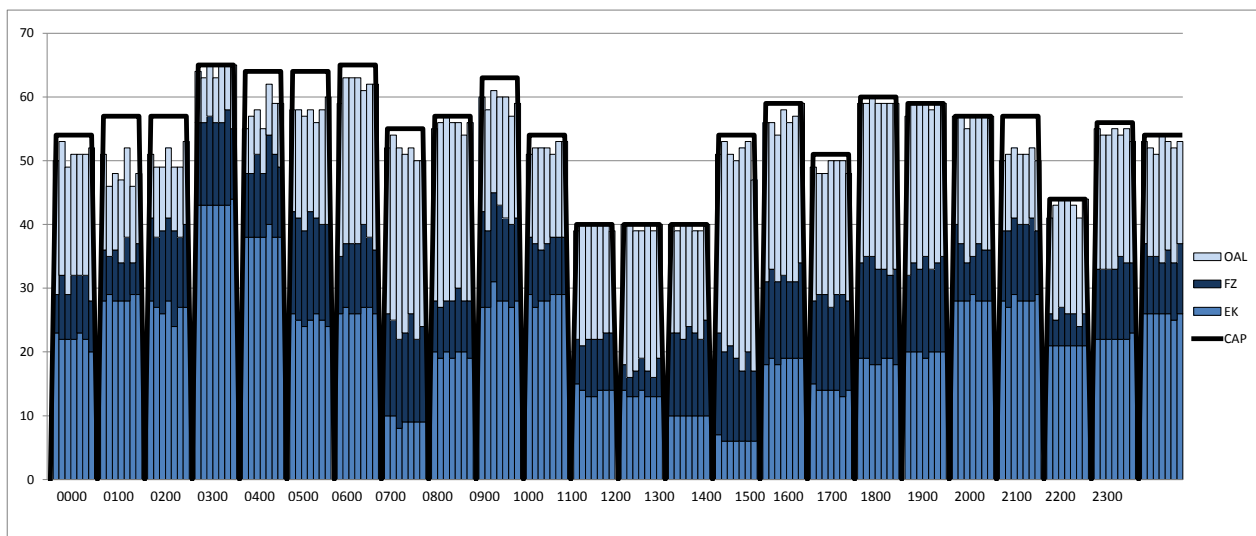
Peak Week Arrival Capacity - 60 Minute Period



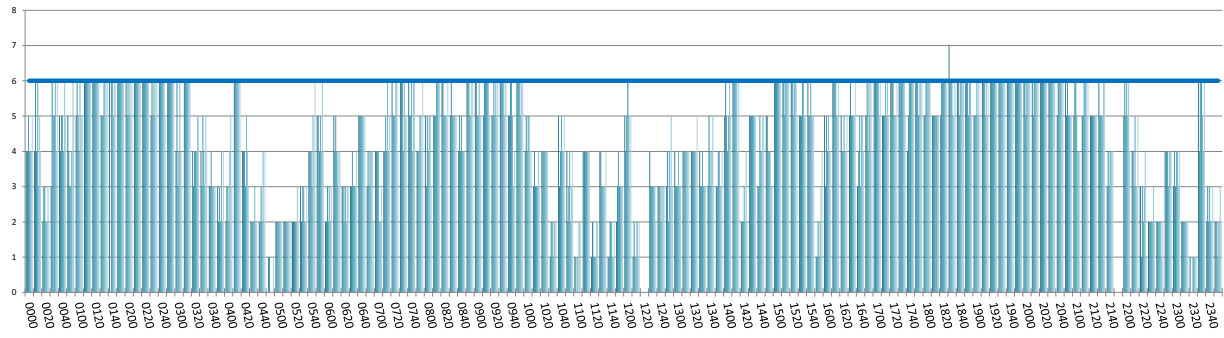
Peak Week Departure Capacity - 60 Minute Period



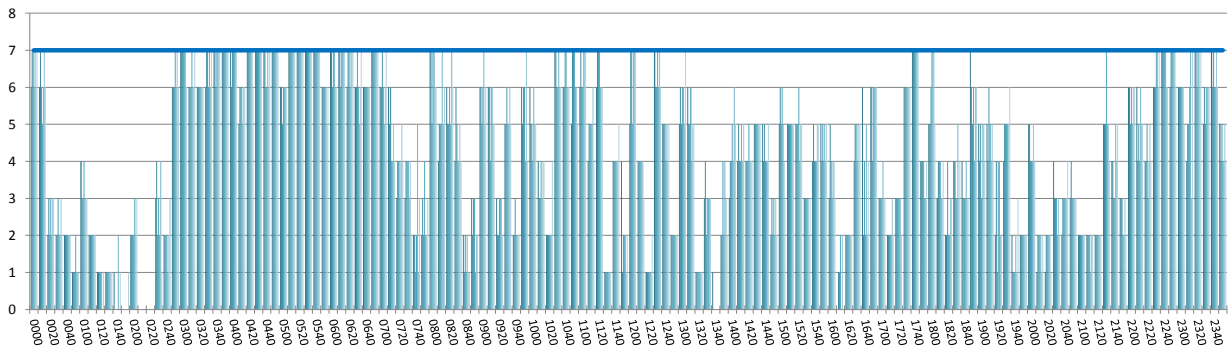
Peak Week Total Runway Capacity - 60 Minute Period



RUNWAY MOVEMENT ALLOCATION (R10) PEAK WEEK ARRIVALS

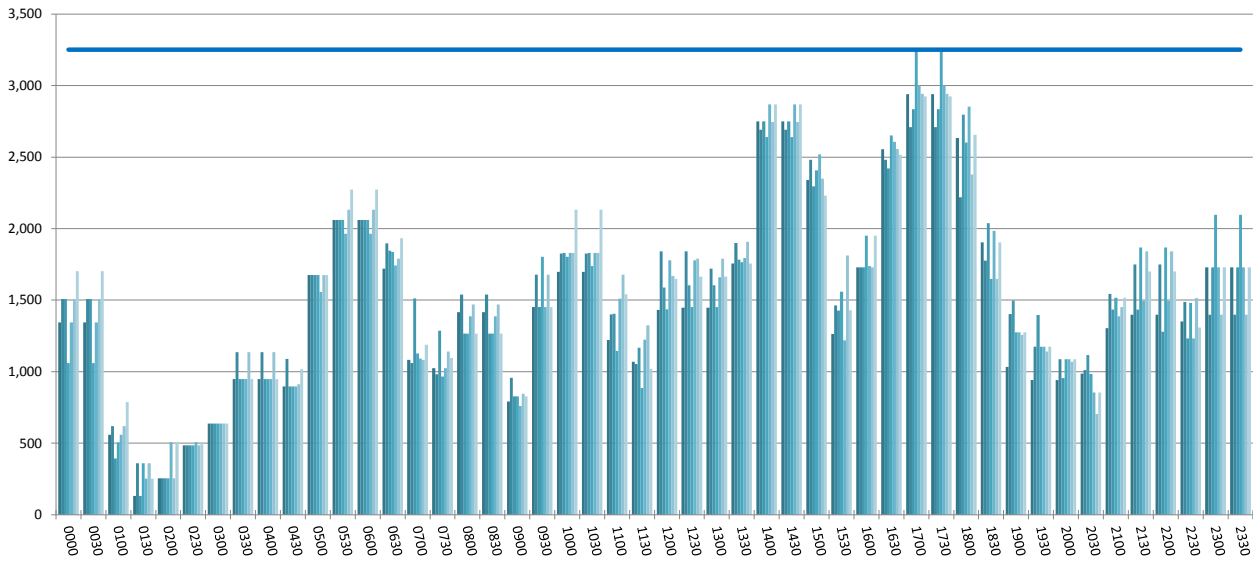


RUNWAY MOVEMENT ALLOCATION (R10) PEAK WEEK DEPARTURES



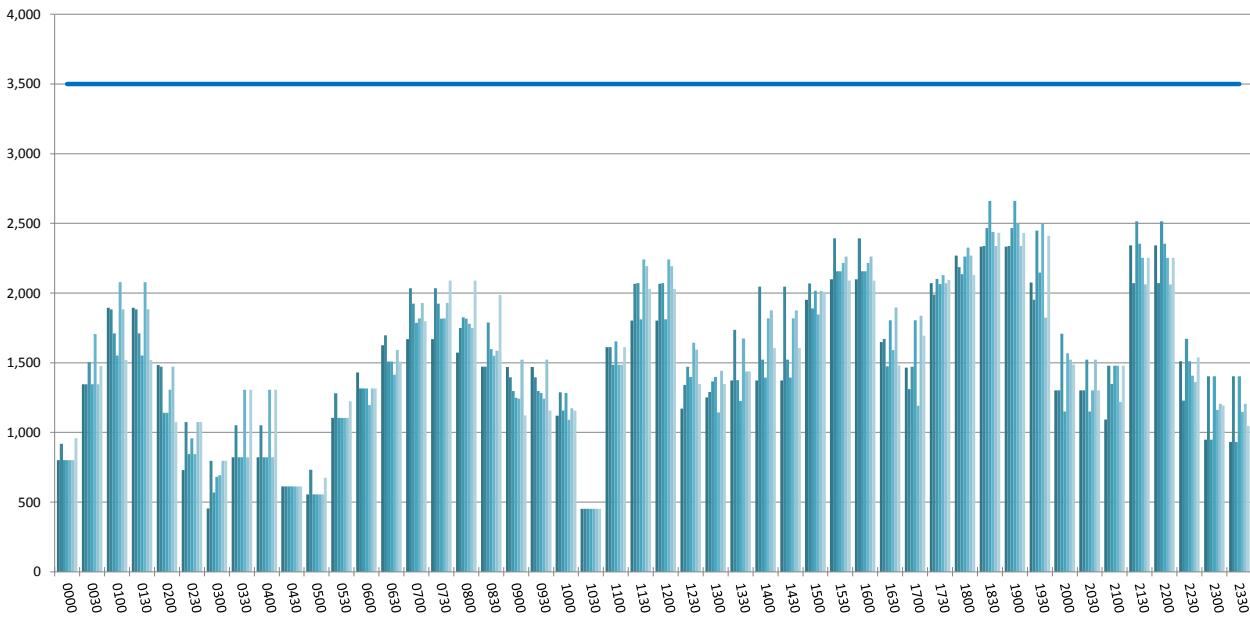
TERMINAL 1 - ARRIVALS

Peak Week Passenger Flows - All times UTC



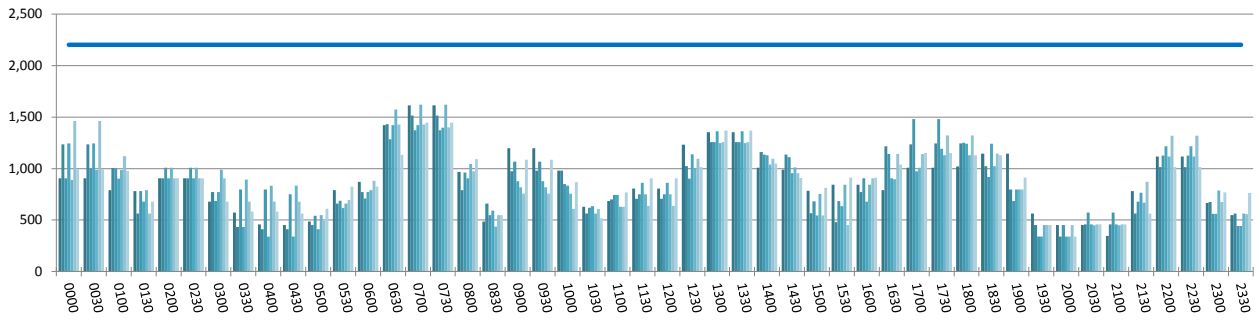
TERMINAL 1 - DEPARTURES

Peak Week Passenger Flows - All times UTC



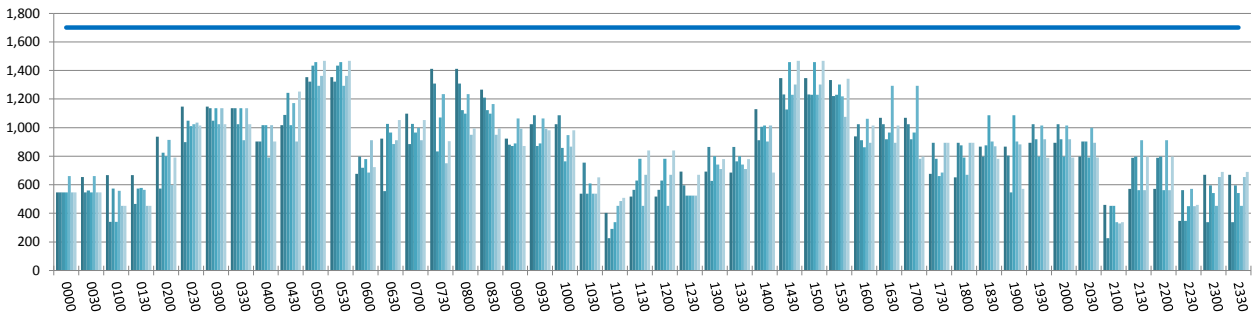
TERMINAL 2 - ARRIVALS

Peak Week Passenger Flows - All times UTC



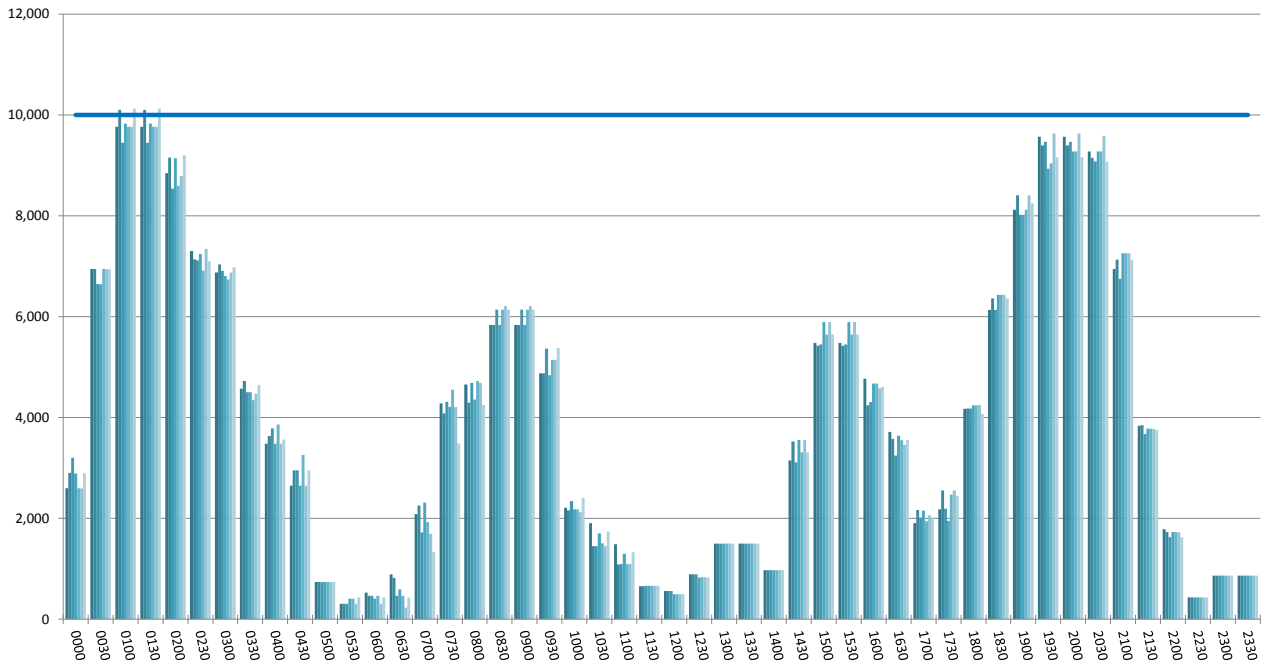
TERMINAL 2 - DEPARTURES

Peak Week Passenger Flows - All times UTC



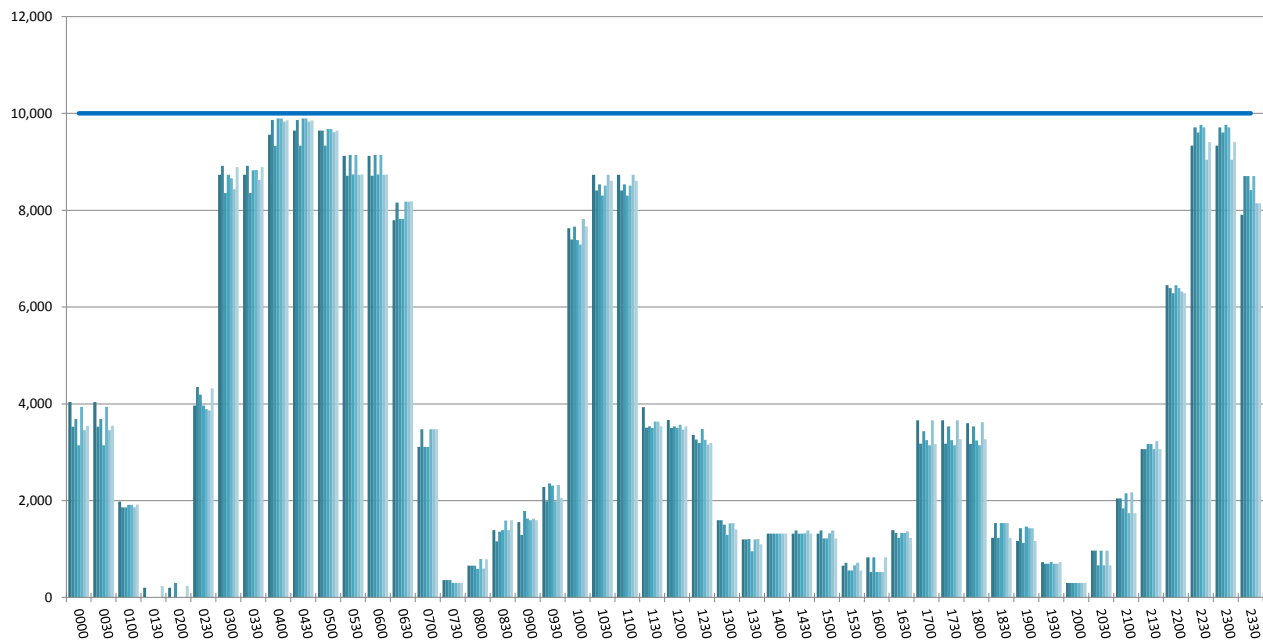
TERMINAL 3 - ARRIVALS

Peak Week Passenger Flows - All times UTC



TERMINAL 3 - DEPARTURES

Peak Week Passenger Flows - All times UTC



DXB - DUBAI INTERNATIONAL AIRPORT

PEAK WEEK FREQUENCIES - BY CARRIER

	OPERATOR	AIRPORT		W14		W15		SEATS +/-	ATMS +/-
				SEATS	ATMS	SEATS	ATMS		
2P	Air Philippines	MNL	Manila	5,796	14	0	0	-5,796	-14
2P Total				5,796	14	0	0	-5,796	-14
3J	Jubba Airways	HGA	Hargeisa	312	2	0	0	-312	-2
		JIB	Djibouti Ambouli	240	2	0	0	-240	-2
		MGQ	Mogadishu International	308	2	1,260	6	952	4
3J Total				860	6	1,260	6	400	0
3S	Aerologic	FRA	Frankfurt International	0	0	0	1	0	1
		HKG	Hong Kong International	0	8	0	9	0	1
		LEJ	Leipzig	0	8	0	8	0	0
3S Total				0	16	0	18	0	2
3U	Sichuan Airlines	CTU	Chengdu	0	0	1,204	4	1,204	4
3U Total				0	0	1,204	4	1,204	4
3V	Tnt Airways	HKG	Hong Kong International	0	12	0	12	0	0
		LGG	Liege Bierset	0	12	0	12	0	0
3V Total				0	24	0	24	0	0
4H	United Airways	DAC	Hazrat Shahjalal International	1,500	6	1,360	8	-140	2
4H Total				1,500	6	1,360	8	-140	2
4Q	Safi Airways	HEA	Herat Airfield	140	1	0	0	-140	-1
		KBL	Kabul Khwaja Rawash	4,748	38	3,360	28	-1,388	-10
		MZR	Mazari Sharif	144	1	0	0	-144	-1
4Q Total				5,032	40	3,360	28	-1,672	-12
5J	Cebu Pacific Air	MNL	Manila	6,104	14	6,104	14	0	0
5J Total				6,104	14	6,104	14	0	0
6E	Indigo	BLR	Bangalore Hindustan	2,520	14	2,520	14	0	0
		BOM	Mumbai	5,040	28	7,560	42	2,520	14
		CCJ	Kozhikode	2,520	14	2,520	14	0	0
		COK	Cochin	2,520	14	2,520	14	0	0
		DEL	Delhi Indira Gandhi International	5,040	28	5,040	28	0	0
		HYD	Hyderabad Begumpet	2,520	14	2,520	14	0	0
		IXC	Chandigarh International Airport	0	0	2,520	14	2,520	14
		MAA	Chennai	2,520	14	2,520	14	0	0
		TRV	Trivandrum International	2,520	14	2,520	14	0	0
6E Total				25,200	140	30,240	168	5,040	28

DXB - DUBAI INTERNATIONAL AIRPORT

PEAK WEEK FREQUENCIES - BY CARRIER

OPERATOR	AIRPORT	W14		W15		SEATS +/-	ATMS +/-		
		SEATS	ATMS	SEATS	ATMS				
8U	Afriqiyah Airlines Libya	BEN	Benghazi Benina International	460	2	0	0	-460	-2
		TIP	Tripoli International	1,380	6	0	0	-1,380	-6
8U Total				1,840	8	0	0	-1,840	-8
9W	Jet Airways India	BOM	Mumbai	11,900	70	15,456	84	3,556	14
		COK	Cochin	2,380	14	2,380	14	0	0
		DEL	Delhi Indira Gandhi International	4,760	28	4,760	28	0	0
		IXE	Bajpe Airport, Mangalore	2,380	14	2,380	14	0	0
9W Total				21,420	126	24,976	140	3,556	14
AC	Air Canada	YYZ	Toronto Pearson International	0	0	1,788	6	1,788	6
AC Total				0	0	1,788	6	1,788	6
AF	Air France	CDG	Paris Ch. De Gaulle	4,144	14	4,080	14	-64	0
AF Total				4,144	14	4,080	14	-64	0
AH	Air Algerie	ALG	Algiers Houari Boumediene	2,152	8	2,152	8	0	0
AH Total				2,152	8	2,152	8	0	0
AI	Air India	BLR	Bangalore Hindustan	976	8	976	8	0	0
		BOM	Mumbai	1,204	7	0	0	-1,204	-7
		CCJ	Kozhikode	2,408	14	2,548	14	140	0
		DEL	Delhi Indira Gandhi International	3,584	14	3,584	14	0	0
		GOI	Goa Dabolim	1,204	7	2,548	14	1,344	7
		MAA	Chennai	2,408	14	2,548	14	140	0
		VTZ	Vishakhapatnam	2,408	14	2,548	14	140	0
AI Total				14,192	78	14,752	78	560	0
AY	Finnair Oyj	HEL	Helsinki-Vantaa	2,090	10	2,508	12	418	2
AY Total				2,090	10	2,508	12	418	2
B8	Eritrean Airlines	ASM	Asmara International	816	6	816	6	0	0
B8 Total				816	6	816	6	0	0
BA	British Airways	LHR	London Heathrow	10,498	42	10,514	42	16	0
BA Total				10,498	42	10,514	42	16	0
BG	Biman Bangladesh Airlines	CGP	Chittagong Patenga	638	2	638	2	0	0
		DAC	Hazrat Shahjalal International	4,228	12	4,028	12	-200	0
BG Total				4,866	14	4,666	14	-200	0
BI	Royal Brunei Airlines	BWN	Bandar Seri Begawan Brunei International	3,556	14	3,556	14	0	0
		LHR	London Heathrow	3,556	14	3,556	14	0	0

DXB - DUBAI INTERNATIONAL AIRPORT

PEAK WEEK FREQUENCIES - BY CARRIER

OPERATOR		AIRPORT		W14		W15		SEATS +/-		ATMS +/-	
				SEATS	ATMS	SEATS	ATMS	SEATS +/-	ATMS +/-		
BI Total				7,112	28	7,112	28	0	0		
CA	Air China	PEK	Beijing Capital	3,010	10	4,214	14	1,204	4		
CA Total				3,010	10	4,214	14	1,204	4		
CX	Cathay Pacific	BAH	Bahrain International	3,388	14	4,438	14	1,050	0		
		HKG	Hong Kong International	6,776	28	8,876	28	2,100	0		
CX Total				10,164	42	13,314	42	3,150	0		
CZ	China Southern Airlines	CAN	Guangzhou Baiyun	3,850	14	3,962	14	112	0		
		SZX	Shenzhen	0	0	1,698	6	1,698	6		
		ZGC		936	8	1,170	10	234	2		
CZ Total				4,786	22	6,830	30	2,044	8		
D3	Daallo Airlines	HGA	Hargeisa	0	0	440	2	440	2		
		JIB	Djibouti Ambouli	524	4	440	2	-84	-2		
D3 Total				524	4	880	4	356	0		
D8	Norwegian (new designator)	HEL	Helsinki-Vantaa	0	0	2,604	14	2,604	14		
D8 Total				0	0	2,604	14	2,604	14		
DHX	Dhl Aviation	BAH	Bahrain International	0	16	0	17	0	1		
		DOH	Doha	0	1	0	1	0	0		
		KHI	Karachi Quaid-E-Azam International	0	1	0	0	0	-1		
DHX Total				0	18	0	18	0	0		
DL	Delta Air Lines	ATL	Atlanta	3,228	12	2,152	8	-1,076	-4		
DL Total				3,228	12	2,152	8	-1,076	-4		
DT	Taag Angola Airlines	LAD	Luanda 4 De Fevereiro	1,410	6	940	4	-470	-2		
DT Total				1,410	6	940	4	-470	-2		
DY	Norwegian (old designator)	ARN	Stockholm Arlanda	1,116	6	2,232	12	1,116	6		
		CPH	Copenhagen Airport	372	2	372	2	0	0		
		OSL	Oslo	1,116	6	0	0	-1,116	-6		
DY Total				2,604	14	2,604	14	0	0		
EA	East Horizon	KDH	Kandahar	888	6	0	0	-888	-6		
		OAI	Bagram Airport	1,184	8	0	0	-1,184	-8		
EA Total				2,072	14	0	0	-2,072	-14		
EK	Emirates	ABJ	Abidjan Felix Houphouet Boigny	5,040	14	5,040	14	0	0		
		ABV	Abuja International	4,438	14	3,836	14	-602	0		
		ADD	Addis Ababa Bole	3,318	14	3,318	14	0	0		

DXB - DUBAI INTERNATIONAL AIRPORT

PEAK WEEK FREQUENCIES - BY CARRIER

OPERATOR	AIRPORT	W14		W15		SEATS +/-	ATMS +/-
		SEATS	ATMS	SEATS	ATMS		
ADL	Adelaide	4,956	14	4,956	14	0	0
AKL	Auckland International	20,538	42	20,538	42	0	0
ALG	Algiers Houari Boumediene	4,248	12	3,907	11	-341	-1
AMD	Ahmedabad	6,040	20	5,534	22	-506	2
AMM	Amman	15,190	42	13,376	42	-1,814	0
AMS	Amsterdam-Schiphol	12,306	28	12,294	28	-12	0
ARN	Stockholm Arlanda	5,040	14	5,040	14	0	0
ATH	Athens Athinai	5,040	14	5,992	14	952	0
BAH	Bahrain International	18,298	56	14,134	56	-4,164	0
BCN	Barcelona	7,238	14	12,278	28	5,040	14
BEY	Beirut International	7,945	28	12,922	42	4,977	14
BGW	Baghdad Al Muthana	4,840	18	1,896	8	-2,944	-10
BHX	Birmingham International	11,984	28	17,976	42	5,992	14
BKK	Bangkok International	25,508	56	29,078	56	3,570	0
BLQ	Bologna Guglielmo Marconi	0	0	5,040	14	5,040	14
BLR	Bangalore Hindustan	13,832	42	13,228	42	-604	0
BNE	Brisbane International	5,040	14	5,040	14	0	0
BOM	Mumbai	26,334	70	25,474	70	-860	0
BOS	Boston Logan International	3,724	14	9,912	28	6,188	14
BRU	Brussels	5,040	14	5,040	14	0	0
BSR	Basra International	4,603	17	7,602	30	2,999	13
BUD	Budapest Ferihegy	5,026	14	5,096	14	70	0
CAI	Cairo International	11,984	28	12,308	33	324	5
CAN	Guangzhou Baiyun	5,992	14	5,992	14	0	0
CCJ	Kozhikode	7,612	22	0	0	-7,612	-22
CCU	Calcutta Netaji Subhas Chandra	7,472	24	6,762	26	-710	2
CDG	Paris Ch. De Gaulle	20,728	40	20,680	40	-48	0
CGK	Jakarta Soekarno-Hatta International	17,976	42	17,976	42	0	0
CHC	Christchurch International	4,956	14	4,956	14	0	0
CMB	Colombo Bandaranayake International	15,456	40	14,448	40	-1,008	0
CMN	Casablanca Mohamed V	10,074	28	5,040	14	-5,034	-14
COK	Cochin	10,192	28	12,028	38	1,836	10
CPH	Copenhagen Airport	5,992	14	8,610	14	2,618	0

DXB - DUBAI INTERNATIONAL AIRPORT

PEAK WEEK FREQUENCIES - BY CARRIER

OPERATOR	AIRPORT	W14		W15		SEATS +/-	ATMS +/-
		SEATS	ATMS	SEATS	ATMS		
CPT	Cape Town Internationa	9,996	28	9,996	28	0	0
DAC	Hazrat Shahjalal International	15,564	38	15,876	42	312	4
DAR	Dar Es Salaam International	8,898	28	8,414	28	-484	0
DEL	Delhi Indira Gandhi International	19,614	56	19,020	56	-594	0
DFW	Dallas Ft Worth International	6,846	14	6,874	14	28	0
DKR	Dakar Yoff	2,880	8	2,937	11	57	3
DME	Moscow Domodedovo	10,136	28	9,996	28	-140	0
DMM	Dammam King Fahad International	10,832	28	14,070	42	3,238	14
DOH	Doha	38,192	98	35,056	98	-3,136	0
DPS	Denpasar Bali Ngurah Rai	0	0	5,992	14	5,992	14
DUB	Dublin	10,080	28	10,080	28	0	0
DUR	Durban International	5,992	14	5,992	14	0	0
DUS	Dusseldorf	10,080	28	12,306	28	2,226	0
EBB	Entebbe	3,318	14	5,040	14	1,722	0
EBL	Erbil International Airport	0	0	2,452	10	2,452	10
EZE	Buenos Aires Ministro Pistarini	4,956	14	4,956	14	0	0
FCO	Rome Fiumicino	19,516	42	17,374	42	-2,142	0
FRA	Frankfurt International	17,178	42	19,480	42	2,302	0
GLA	Glasgow International	10,080	28	10,080	28	0	0
GRU	Sao Paulo Guarulhos International	4,956	14	4,956	14	0	0
GVA	Geneva Geneve-Cointrin	5,040	14	5,040	14	0	0
HAM	Hamburg Fuhlsbuettel	9,996	28	9,996	28	0	0
HKG	Hong Kong International	26,154	56	26,678	56	524	0
HKT	Phuket International	5,012	14	10,194	28	5,182	14
HND	Tokyo Haneda	3,724	14	3,724	14	0	0
HRE	Harare	3,738	14	3,738	14	0	0
HYD	Hyderabad Begumpet	12,740	42	13,992	42	1,252	0
IAD	Washington Dulles International	4,956	14	4,956	14	0	0
IAH	Houston	6,874	14	6,874	14	0	0
ICN	Seoul Incheon International	7,238	14	7,238	14	0	0
IKA	Imam Khomeini - Tehran	21,084	56	20,132	56	-952	0
ISB	Islamabad International	9,416	22	8,560	20	-856	-2
IST	Istanbul Ataturk	9,416	22	9,416	22	0	0

DXB - DUBAI INTERNATIONAL AIRPORT

PEAK WEEK FREQUENCIES - BY CARRIER

OPERATOR	AIRPORT	W14		W15		SEATS +/-	ATMS +/-
		SEATS	ATMS	SEATS	ATMS		
JED	Jeddah King Abdulaziz International	17,578	34	17,102	34	-476	0
JFK	New York John F Kennedy International	18,732	42	27,384	56	8,652	14
JNB	Johannesburg International	20,132	56	20,160	56	28	0
KBL	Kabul Khwaja Rawash	3,738	14	3,738	14	0	0
KHI	Karachi Quaid-E-Azam International	34,972	84	37,414	98	2,442	14
KIX	Osaka Kansai International	4,956	14	4,956	14	0	0
KRT	Khartoum Civil	1,896	8	1,896	8	0	0
KUL	Kuala Lumpur International	17,402	42	18,690	42	1,288	0
KWI	Kuwait International	39,914	98	37,216	98	-2,698	0
LAD	Luanda 4 De Fevereiro	5,040	14	5,004	14	-36	0
LAX	Los Angeles International	6,846	14	6,874	14	28	0
LED	St Petersburg	5,096	14	5,040	14	-56	0
LGW	London Gatwick	17,276	42	23,114	42	5,838	0
LHE	Lahore	9,416	22	8,560	20	-856	-2
LHR	London Heathrow	36,190	70	36,190	70	0	0
LIS	Lisbon Lisboa	5,040	14	10,080	28	5,040	14
LOS	Lagos Murtala Muhammed	10,080	28	10,080	28	0	0
LYS	Lyon	3,580	10	2,660	10	-920	0
MAA	Chennai	16,156	42	15,232	42	-924	0
MAD	Madrid Barajas	10,080	28	12,306	28	2,226	0
MAN	Manchester International	17,276	42	19,544	42	2,268	0
MCO	Orlando International	0	0	3,724	14	3,724	14
MCT	Muscat Seeb	13,300	42	10,394	42	-2,906	0
MED	Madinah Mohammad Bin Abdulaziz	5,012	14	4,192	14	-820	0
MEL	Melbourne	9,996	28	9,912	28	-84	0
MHD	Mashad	0	0	2,534	10	2,534	10
MLA	Malta Luqa	3,318	14	3,892	14	574	0
MLE	Male International	5,992	14	10,648	28	4,656	14
MNL	Manila	17,976	42	11,984	28	-5,992	-14
MRU	Mauritius S.Seewoosagur Ram.Int	14,504	28	14,504	28	0	0
MUC	Munich Franz Josef Strauss	14,504	28	19,124	42	4,620	14
MUX	Multan	0	0	2,912	8	2,912	8
MPX	Milan Malpensa	12,138	28	12,306	28	168	0

DXB - DUBAI INTERNATIONAL AIRPORT

PEAK WEEK FREQUENCIES - BY CARRIER

OPERATOR	AIRPORT	W14		W15		SEATS +/-	ATMS +/-
		SEATS	ATMS	SEATS	ATMS		
	NBO Nairobi Jomo Kenyatta International	10,052	28	10,136	28	84	0
	NCE Nice Cote D'Azur	5,040	14	5,040	14	0	0
	NCL Newcastle Airport	5,992	14	5,992	14	0	0
	NRT Tokyo Narita	4,956	14	4,956	14	0	0
	ORD Chicago O'Hare International	3,724	14	4,956	14	1,232	0
	OSL Oslo	5,040	14	4,956	14	-84	0
	PEK Beijing Capital	12,278	28	12,278	28	0	0
	PER Perth	14,420	42	11,886	28	-2,534	-14
	PEW Peshawar	3,580	10	2,370	10	-1,210	0
	PRG Prague Ruzyne	5,040	14	5,040	14	0	0
	PTY Panama City	0	0	5,012	14	5,012	14
	PVG Shanghai Pu Dong	12,222	29	12,194	28	-28	-1
	RUH Riyadh King Khaled International	11,060	28	11,032	28	-28	0
	SAH Sana'A International	3,892	14	0	0	-3,892	-14
	SEA Seattle	4,956	14	8,680	28	3,724	14
	SEZ Mahe Island Seychelles International	7,448	28	8,764	28	1,316	0
	SFO San Francisco International	6,846	14	6,874	14	28	0
	SGN Ho Chi Minh City	3,836	14	5,992	14	2,156	0
	SIN Singapore Changi	17,374	42	17,374	42	0	0
	SKT Sialkot International Airport	2,864	8	3,318	14	454	6
	SYD Sydney Kingsford Smith	6,874	14	6,846	14	-28	0
	TPE Taipei Chiang Kai Shek	4,984	14	5,992	14	1,008	0
	TRV Trivandrum International	6,672	24	7,768	28	1,096	4
	TUN Tunis Carthage	3,318	14	2,670	10	-648	-4
	VCE Venice Marco Polo	5,992	14	5,992	14	0	0
	VIE Vienna	10,066	28	10,068	28	2	0
	WAW Warsaw Okęcie	4,956	14	5,040	14	84	0
	YYZ Toronto Pearson International	3,126	6	2,946	6	-180	0
	ZRH Zurich	12,222	28	14,140	28	1,918	0
	ZZF Mystery Flight	2,450	7	1,659	7	-791	0
EK Total		1,277,918	3,297	1,348,169	3,500	70,251	203
EP	Iran Aseman Airlines						
	BDH Bandar Lengeh	128	2	391	4	263	2
	BND Bandar Abbas	1,090	10	1,012	13	-78	3

DXB - DUBAI INTERNATIONAL AIRPORT

PEAK WEEK FREQUENCIES - BY CARRIER

OPERATOR		AIRPORT		W14		W15		SEATS +/-	ATMS +/-
				SEATS	ATMS	SEATS	ATMS		
		BUZ	Bushehr	436	4	300	2	-136	-2
		IKA	Imam Khomeini - Tehran	1,168	6	0	0	-1,168	-6
		LFM	Lamerd Airport	128	2	346	4	218	2
		LRR	Lar Airport	1,436	14	1,011	11	-425	-3
		MHD	Mashad	1,250	8	218	2	-1,032	-6
		SYZ	Shiraz	1,962	18	1,818	16	-144	-2
		TBZ	Tabriz	436	4	0	0	-436	-4
		ZAH	Zahedan	218	2	218	2	0	0
		ZBR	Chah-Bahar	218	2	300	2	82	0
EP Total				8,470	72	5,614	56	-2,856	-16
ET	Ethiopian Airlines Enterprise	ADD	Addis Ababa Bole	11,144	42	11,144	42	0	0
ET Total				11,144	42	11,144	42	0	0
EW	Eurowings	CGN	Cologne Bonn	0	0	1,860	6	1,860	6
EW Total				0	0	1,860	6	1,860	6
FG	Ariana Afghan Airlines	KBL	Kabul Khwaja Rawash	2,912	14	2,912	14	0	0
FG Total				2,912	14	2,912	14	0	0
FX	Fedex	BLR	Bangalore Hindustan	0	10	0	10	0	0
		CAN	Guangzhou Baiyun	0	5	0	13	0	8
		CDG	Paris Ch. De Gaulle	0	13	0	16	0	3
		DEL	Delhi Indira Gandhi International	0	2	0	2	0	0
		HKG	Hong Kong International	0	1	0	1	0	0
		KIX	Osaka Kansai International	0	1	0	0	0	-1
		MEM	Memphis International	0	9	0	10	0	1
		NRT	Tokyo Narita	0	3	0	0	0	-3
FX Total				0	44	0	52	0	8
FZ	Flydubai	ADD	Addis Ababa Bole	1,512	8	1,134	6	-378	-2
		ADE	Aden International	1,701	9	0	0	-1,701	-9
		AHB	Abha	5,292	28	10,350	55	5,058	27
		AJF	Jouf	0	0	3,183	17	3,183	17
		ALA	Almaty	1,512	8	1,134	6	-378	-2
		AMD	Ahmedabad	756	4	756	4	0	0
		AMM	Amman	7,560	40	4,143	22	-3,417	-18
		ASB	Ashgabat	2,646	14	2,646	14	0	0

DXB - DUBAI INTERNATIONAL AIRPORT

PEAK WEEK FREQUENCIES - BY CARRIER

OPERATOR	AIRPORT	W14		W15		SEATS +/-	ATMS +/-
		SEATS	ATMS	SEATS	ATMS		
ASM	Asmara International	0	0	1,512	8	1,512	8
AWZ	Ahwaz	0	0	1,308	7	1,308	7
BAH	Bahrain International	12,096	64	10,758	57	-1,338	-7
BEG	Belgrade Beograd	1,323	7	1,134	6	-189	-1
BEY	Beirut International	8,316	44	5,292	28	-3,024	-16
BGW	Baghdad Al Muthana	2,646	14	5,292	28	2,646	14
BJM	Bujumbura International	0	0	756	4	756	4
BND	Bandar Abbas	0	0	1,701	9	1,701	9
BOM	Mumbai	1,890	10	3,213	17	1,323	7
BSR	Basra International	2,268	12	2,820	15	552	3
BTS	Bratislava Ivanka	756	4	1,308	7	552	3
CGP	Chittagong Patenga	3,780	20	4,128	22	348	2
CIT	Shimkent	756	4	378	2	-378	-2
CMB	Colombo Bandaranayake International	3,969	21	7,182	38	3,213	17
COK	Cochin	1,134	6	1,512	8	378	2
DAC	Hazrat Shahjalal International	5,481	29	5,262	28	-219	-1
DAR	Dar Es Salaam International	1,890	10	1,323	7	-567	-3
DEL	Delhi Indira Gandhi International	2,835	15	1,890	10	-945	-5
DMM	Dammam King Fahad International	8,316	44	10,758	57	2,442	13
DOH	Doha	29,106	154	24,321	129	-4,785	-25
DYU	Dushanbe	1,134	6	1,134	6	0	0
EBB	Entebbe	4,158	22	348	2	-3,810	-20
EBL	Erbil International Airport	2,646	14	3,168	17	522	3
ELQ	Gassim	4,536	24	9,261	49	4,725	25
EVN	Yerevan	1,890	10	1,890	10	0	0
FRU	Bishkek	1,890	10	1,860	10	-30	0
GIZ	Gizan	0	0	5,844	31	5,844	31
GOI	Goa Dabolim	1,890	10	2,034	11	144	1
GOJ	Nizhniy Novgorod	0	0	756	4	756	4
GYD	Baku Heydar Aliyev International Airport	1,890	10	1,512	8	-378	-2
HAS	Hail	1,323	7	2,994	16	1,671	9
HBE	Borg El Arab	6,804	36	6,018	32	-786	-4
HDM		0	0	885	5	885	5

DXB - DUBAI INTERNATIONAL AIRPORT

PEAK WEEK FREQUENCIES - BY CARRIER

OPERATOR	AIRPORT	W14		W15		SEATS +/-	ATMS +/-
		SEATS	ATMS	SEATS	ATMS		
HGA	Hargeisa	0	0	1,512	8	1,512	8
HOF		756	4	3,213	17	2,457	13
HRI		1,323	7	1,323	7	0	0
HYD	Hyderabad Begumpet	1,890	10	2,064	11	174	1
IEV	Kiev	3,969	21	2,646	14	-1,323	-7
IFN	Isfahan	0	0	1,134	6	1,134	6
IKA	Imam Khomeini - Tehran	3,969	21	1,860	10	-2,109	-11
ISU	Sulaymaniah	1,134	6	711	4	-423	-2
JED	Jeddah King Abdulaziz International	7,938	42	14,652	78	6,714	36
JIB	Djibouti Ambouli	1,323	7	1,323	7	0	0
JUB	Juba	1,701	10	1,890	10	189	0
KBL	Kabul Khwaja Rawash	7,938	42	7,938	42	0	0
KDH	Kandahar	5,103	27	2,646	14	-2,457	-13
KGL	Kigali Gregoire Kayibanda	0	0	1,323	7	1,323	7
KHI	Karachi Quaid-E-Azam International	5,292	28	11,280	60	5,988	32
KIV	Chisinau	1,512	8	0	0	-1,512	-8
KRR	Krasnodar	1,323	7	756	4	-567	-3
KRT	Khartoum Civil	6,048	32	5,292	28	-756	-4
KTM	Kathmandu Tribhuvan	6,048	32	5,451	29	-597	-3
KUF	Samara	1,323	7	756	4	-567	-3
KWI	Kuwait International	29,862	158	30,891	164	1,029	6
KZN	Kazan	1,512	8	756	4	-756	-4
LKO	Lucknow Amausi	1,701	9	1,134	6	-567	-3
LRR	Lar Airport	0	0	3,894	21	3,894	21
LYP	Faislabad	0	0	3,213	17	3,213	17
MAA	Chennai	0	0	1,308	7	1,308	7
MCT	Muscat Seeb	15,876	84	16,980	90	1,104	6
MED	Madinah Mohammad Bin Abdulaziz	2,646	14	3,780	20	1,134	6
MHD	Mashad	3,213	17	3,516	19	303	2
MLE	Male International	2,268	12	567	3	-1,701	-9
MRV	Mineralnye Vody	1,134	6	756	4	-378	-2
MUX	Multan	1,134	6	3,402	18	2,268	12
NJF	Najaf	1,701	9	2,835	15	1,134	6

DXB - DUBAI INTERNATIONAL AIRPORT

PEAK WEEK FREQUENCIES - BY CARRIER

OPERATOR	AIRPORT	W14		W15		SEATS +/-	ATMS +/-		
		SEATS	ATMS	SEATS	ATMS				
ODS	Odessa Central	945	5	756	4	-189	-1		
OTP	Bucharest Otopeni International	1,701	9	1,890	10	189	1		
OVB	Novosibirsk Tolmachevo	0	0	1,134	6	1,134	6		
PRG	Prague Ruzyne	1,512	8	1,686	9	174	1		
PZU	Port Sudan	567	3	378	2	-189	-1		
ROV	Rostov	945	5	756	4	-189	-1		
RUH	Riyadh King Khaled International	3,780	20	2,646	14	-1,134	-6		
SAH	Sana'A International	2,646	14	0	0	-2,646	-14		
SAW	Sabiha Gokcen International Airport	2,646	14	2,253	12	-393	-2		
SJJ	Sarajevo International	756	4	756	4	0	0		
SKP	Skopje	756	4	756	4	0	0		
SKT	Sialkot International Airport	1,134	6	4,158	22	3,024	16		
SLL	Salalah	1,890	10	2,949	16	1,059	6		
SOF	Sofia Vrazhdebna	189	1	1,656	9	1,467	8		
SVX	Ekaterinburg	2,079	11	1,686	9	-393	-2		
SYZ	Shiraz	0	0	1,134	6	1,134	6		
TBS	Tbilisi Novo Alexeyevka	3,780	20	3,561	19	-219	-1		
TBZ	Tabriz	0	0	1,845	10	1,845	10		
TIF	Taif	2,646	14	7,545	40	4,899	26		
TRV	Trivandrum International	1,134	6	1,308	7	174	1		
TSE	Astana	0	0	1,134	6	1,134	6		
TUU	Tabuk	756	4	2,646	14	1,890	10		
UET	Quetta	0	0	4,287	23	4,287	23		
UFA	Ufa, Bashkortostan	1,512	8	756	4	-756	-4		
VKO	Moscow Vnukovo	2,646	14	2,646	14	0	0		
VOG	Volgograd	756	4	0	0	-756	-4		
YNB	Yanbu	1,134	6	2,631	14	1,497	8		
ZAG	Zagreb Pleso	1,134	6	1,134	6	0	0		
ZNZ	Zanzibar Kisauni	0	0	930	5	930	5		
ZYL	Sylhet Civil	0	0	726	4	726	4		
ZZZ	Test Only	189	1	0	0	-189	-1		
FZ Total		292,572	1,549	349,443	1,857	56,871	308		
GF	Gulf Air Gsc	BAH	Bahrain International	14,426	102	13,872	102	-554	0

DXB - DUBAI INTERNATIONAL AIRPORT

PEAK WEEK FREQUENCIES - BY CARRIER

OPERATOR	AIRPORT	W14		W15		SEATS +/-	ATMS +/-	
		SEATS	ATMS	SEATS	ATMS			
GF Total		14,426	102	13,872	102	-554	0	
HH	Taban Airlines							
	IFN Isfahan	648	4	648	4	0	0	
	IKA Imam Khomeini - Tehran	648	4	648	4	0	0	
	MHD Mashad	648	4	648	4	0	0	
HH Total		1,944	12	1,944	12	0	0	
HV	Transavia Airlines Cv	AMS Amsterdam-Schiphol	1,890	10	1,512	8	-378	-2
HV Total		1,890	10	1,512	8	-378	-2	
HY	Uzbekistan Airways	TAS Tashkent Vostochny	1,476	6	1,476	6	0	0
HY Total		1,476	6	1,476	6	0	0	
IA	Iraqi Airways	BGW Baghdad Al Muthana	1,848	14	1,848	14	0	0
	BSR Basra International	792	6	792	6	0	0	
	EBL Erbil International Airport	560	8	0	0	-560	-8	
	ISU Sulaymaniah	280	4	280	4	0	0	
	NJF Najaf	528	4	528	4	0	0	
IA Total		4,008	36	3,448	28	-560	-8	
IR	Iran Air	AWZ Ahwaz	296	2	592	4	296	2
	BND Bandar Abbas	588	4	588	4	0	0	
	IFN Isfahan	588	4	588	4	0	0	
	IKA Imam Khomeini - Tehran	2,652	18	2,058	14	-594	-4	
	SYZ Shiraz	588	4	588	4	0	0	
IR Total		4,712	32	4,414	30	-298	-2	
IV	Caspian Airlines	IKA Imam Khomeini - Tehran	4,620	28	2,310	14	-2,310	-14
	ZBR Chah-Bahar	0	0	330	2	330	2	
IV Total		4,620	28	2,640	16	-1,980	-12	
IX	Air India Express	ATQ Amritsar Raja Sansi	2,590	14	2,590	14	0	0
	CCJ Kozhikode	2,590	14	2,590	14	0	0	
	COK Cochin	2,590	14	2,590	14	0	0	
	IXE Bajpe Airport, Mangalore	5,180	28	5,180	28	0	0	
	IXM	2,590	14	2,590	14	0	0	
	JAI Jaipur Sanganeer	1,480	8	1,480	8	0	0	
	LKO Lucknow Amausi	2,590	14	2,590	14	0	0	
	PNQ Poona Lohegaon	1,110	6	1,110	6	0	0	
	TRV Trivandrum International	1,850	10	1,850	10	0	0	

DXB - DUBAI INTERNATIONAL AIRPORT

PEAK WEEK FREQUENCIES - BY CARRIER

OPERATOR	AIRPORT		W14		W15		SEATS +/-	ATMS +/-
			SEATS	ATMS	SEATS	ATMS		
	TRZ	Civil Airfield, Tiruchirapally	2,590	14	2,590	14	0	0
IX Total			25,160	136	25,160	136	0	0
IY	Yemenia Yemen Airways	CGK Jakarta Soekarno-Hatta International	1,662	6	554	2	-1,108	-4
		KUL Kuala Lumpur International	554	2	554	2	0	0
		RIY Riyan Mukalla	0	0	300	2	300	2
		SAH Sana'A International	3,620	16	2,438	12	-1,182	-4
IY Total			5,836	24	3,846	18	-1,990	-6
J2	Azal Azerbaijan Airlines	GYD Baku Heydar Aliyev International Airport	5,838	28	2,520	14	-3,318	-14
J2 Total			5,838	28	2,520	14	-3,318	-14
J9	Jazeera Airways	KWI Kuwait International	8,904	56	8,904	56	0	0
J9 Total			8,904	56	8,904	56	0	0
KC	Air Astana	ALA Almaty	2,506	14	2,506	14	0	0
		TSE Astana	0	0	1,184	8	1,184	8
KC Total			2,506	14	3,690	22	1,184	8
KE	Korean Air	ICN Seoul Incheon International	2,180	10	3,052	14	872	4
KE Total			2,180	10	3,052	14	872	4
KL	Klm Royal Dutch Airlines	AMS Amsterdam-Schiphol	6,060	20	6,320	20	260	0
KL Total			6,060	20	6,320	20	260	0
KQ	Kenya Airways	NBO Nairobi Jomo Kenyatta International	4,146	20	6,248	26	2,102	6
KQ Total			4,146	20	6,248	26	2,102	6
KU	Kuwait Airways	KWI Kuwait International	5,856	28	6,960	30	1,104	2
KU Total			5,856	28	6,960	30	1,104	2
LC	EC Air	BZV Brazzaville Maya Maya	2,072	14	1,380	8	-692	-6
LC Total			2,072	14	1,380	8	-692	-6
LH	Lufthansa	FRA Frankfurt International	4,620	14	4,620	14	0	0
		MUC Munich Franz Josef Strauss	3,950	14	3,934	14	-16	0
LH Total			8,570	28	8,554	28	-16	0
LN	Libyan Airways	BEN Benghazi Benina International	1,060	4	1,060	4	0	0
		TIP Tripoli International	1,590	6	1,590	6	0	0
LN Total			2,650	10	2,650	10	0	0
LX	Swiss International Air Lines	MCT Muscat Seeb	3,304	14	3,304	14	0	0
		ZRH Zurich	3,304	14	3,304	14	0	0
LX Total			6,608	28	6,608	28	0	0

DXB - DUBAI INTERNATIONAL AIRPORT

PEAK WEEK FREQUENCIES - BY CARRIER

OPERATOR		AIRPORT		W14		W15		SEATS +/-	ATMS +/-
				SEATS	ATMS	SEATS	ATMS		
ME	Mea Middle East Airlines	BEY	Beirut International	5,502	28	5,122	28	-380	0
ME Total				5,502	28	5,122	28	-380	0
MH	Malaysia Airlines	KUL	Kuala Lumpur International	3,962	14	3,962	14	0	0
MH Total				3,962	14	3,962	14	0	0
MJ	Mihin Lanka	CMB	Colombo Bandaranayake International	2,544	12	0	0	-2,544	-12
MJ Total				2,544	12	0	0	-2,544	-12
MS	Egypt Air	CAI	Cairo International	9,058	28	11,704	42	2,646	14
MS Total				9,058	28	11,704	42	2,646	14
MU	China Eastern Airlines	PVG	Shanghai Pu Dong	2,620	10	1,392	6	-1,228	-4
MU Total				2,620	10	1,392	6	-1,228	-4
NL	Shaheen Air International	ISB	Islamabad International	1,640	10	1,968	12	328	2
		KHI	Karachi Quaid-E-Azam International	2,296	14	2,296	14	0	0
		LHE	Lahore	2,352	14	4,704	28	2,352	14
		MUX	Multan	984	6	984	6	0	0
		PEW	Peshawar	2,296	14	2,296	14	0	0
NL Total				9,568	58	12,248	74	2,680	16
NV	Naft Air	AWZ	Ahwaz	872	8	654	6	-218	-2
		BND	Bandar Abbas	654	6	0	0	-654	-6
NV Total				1,526	14	654	6	-872	-8
OS	Austrian Airlines	VIE	Vienna	2,250	10	0	0	-2,250	-10
OS Total				2,250	10	0	0	-2,250	-10
PA	Airblue	ISB	Islamabad International	1,320	8	1,320	8	0	0
		KHI	Karachi Quaid-E-Azam International	2,310	14	2,310	14	0	0
		LHE	Lahore	2,310	14	2,310	14	0	0
		PEW	Peshawar	990	6	990	6	0	0
PA Total				6,930	42	6,930	42	0	0
PC	Pegasus	SAW	Sabiha Gokcen International Airport	2,646	14	1,890	10	-756	-4
PC Total				2,646	14	1,890	10	-756	-4
PK	Pia Pakistan International Airlines	DEA	Dera Ghazi Khan Airport	472	4	632	4	160	0
		ISB	Islamabad International	3,045	15	4,974	29	1,929	14
		KHI	Karachi Quaid-E-Azam International	8,202	42	3,950	25	-4,252	-17
		LHE	Lahore	2,714	14	2,212	14	-502	0
PK Total				472	4	316	2	-156	-2

DXB - DUBAI INTERNATIONAL AIRPORT

PEAK WEEK FREQUENCIES - BY CARRIER

OPERATOR		AIRPORT		W14		W15		SEATS +/-	ATMS +/-
				SEATS	ATMS	SEATS	ATMS		
		PEW	Peshawar	1,849	13	3,160	20	1,311	7
		UET	Quetta	472	4	0	0	-472	-4
PK Total				17,226	96	15,244	94	-1,982	-2
PR	Philippine Airlines	JED	Jeddah King Abdulaziz International	0	0	2,484	6	2,484	6
		KWI	Kuwait International	0	0	3,312	8	3,312	8
		MNL	Manila	0	0	5,796	14	5,796	14
PR Total				0	0	11,592	28	11,592	28
PS	Ukraine International Airlines	KBP	Kiev Borispol	3,240	18	3,600	20	360	2
PS Total				3,240	18	3,600	20	360	2
QB	Air Qeshm	ABD	Abadan	400	4	0	0	-400	-4
		GSM	Gheshm	1,400	14	1,400	14	0	0
		IFN	Isfahan	400	4	0	0	-400	-4
		IKA	Imam Khomeini - Tehran	3,300	22	2,100	14	-1,200	-8
		LRR	Lar Airport	600	6	0	0	-600	-6
		SRY		600	4	0	0	-600	-4
		TBZ	Tabriz	600	4	0	0	-600	-4
QB Total				7,300	58	3,500	28	-3,800	-30
QF	Qantas	LHR	London Heathrow	12,584	26	13,552	28	968	2
		MEL	Melbourne	5,808	12	6,776	14	968	2
		SYD	Sydney Kingsford Smith	6,776	14	6,776	14	0	0
QF Total				25,168	52	27,104	56	1,936	4
QR	Qatar Airways	DOH	Doha	65,660	196	86,520	210	20,860	14
QR Total				65,660	196	86,520	210	20,860	14
QS	Travel Service Airlines/Smart Wings	PRG	Prague Ruzyne	2,016	12	2,352	14	336	2
QS Total				2,016	12	2,352	14	336	2
RA	Royal Nepal Airlines	KTM	Kathmandu Tribhuvan	0	0	2,212	14	2,212	14
RA Total				0	0	2,212	14	2,212	14
RB	Syrianair Syrian Arab Airlines	DAM	Damascus International	870	6	1,160	8	290	2
		LTK	Latakia	290	2	0	0	-290	-2
RB Total				1,160	8	1,160	8	0	0
RG	Rotana Jet	AZI	Abu Dhabi Bateen	1,700	34	0	0	-1,700	-34
		XSB	St Malo	300	6	0	0	-300	-6
RG Total				2,000	40	0	0	-2,000	-40

DXB - DUBAI INTERNATIONAL AIRPORT

PEAK WEEK FREQUENCIES - BY CARRIER

OPERATOR	AIRPORT	W14		W15		SEATS +/-	ATMS +/-		
		SEATS	ATMS	SEATS	ATMS				
RJ	Royal Jordanian	AMM	Amman	8,338	42	5,964	42	-2,374	0
RJ Total				8,338	42	5,964	42	-2,374	0
RO	Tarom	OTP	Bucharest Otopeni International	1,254	6	836	4	-418	-2
RO Total				1,254	6	836	4	-418	-2
RQ	Kam Air	KBL	Kabul Khwaja Rawash	2,268	14	2,100	14	-168	0
RQ Total				2,268	14	2,100	14	-168	0
S7	Siberia Airlines	OVB	Novosibirsk Tolmachevo	948	6	316	2	-632	-4
S7 Total				948	6	316	2	-632	-4
SG	Spicejet	AMD	Ahmedabad	2,646	14	2,646	14	0	0
		ATQ	Amritsar Raja Sansi	0	0	2,646	14	2,646	14
		BOM	Mumbai	3,969	21	2,646	14	-1,323	-7
		CCJ	Kozhikode	0	0	2,646	14	2,646	14
		COK	Cochin	2,646	14	2,646	14	0	0
		DEL	Delhi Indira Gandhi International	3,969	21	2,646	14	-1,323	-7
		IXE	Bajpe Airport, Mangalore	2,646	14	0	0	-2,646	-14
		IXM		2,646	14	2,646	14	0	0
		PNQ	Poona Lohegaon	2,646	14	2,268	12	-378	-2
SG Total				21,168	112	20,790	110	-378	-2
SQ	Singapore Airlines	JED	Jeddah King Abdulaziz International	2,280	8	2,280	8	0	0
		SIN	Singapore Changi	6,256	22	6,004	22	-252	0
SQ Total				8,536	30	8,284	30	-252	0
SU	Aeroflot Russian Airlines	SVO	Moscow Sheremetyevo	4,424	28	6,440	28	2,016	0
SU Total				4,424	28	6,440	28	2,016	0
SV	Saudia	DMM	Dammam King Fahad International	4,158	28	4,158	28	0	0
		ELQ	Gassim	2,112	20	1,584	12	-528	-8
		JED	Jeddah King Abdulaziz International	14,686	56	14,686	56	0	0
		MED	Madinah Mohammad Bin Abdulaziz	1,320	10	1,320	10	0	0
		RUH	Riyadh King Khaled International	16,916	74	16,916	74	0	0
SV Total				39,192	188	38,664	180	-528	-8
SZ	Somon Air	DYU	Dushanbe	1,104	6	1,104	6	0	0
SZ Total				1,104	6	1,104	6	0	0
T5	Turkmenistan Airlines	ASB	Ashgabat	1,280	8	1,920	12	640	4
T5 Total				1,280	8	1,920	12	640	4

DXB - DUBAI INTERNATIONAL AIRPORT

PEAK WEEK FREQUENCIES - BY CARRIER

OPERATOR	AIRPORT	W14		W15		SEATS +/-	ATMS +/-		
		SEATS	ATMS	SEATS	ATMS				
TG	Thai Airways International Public Lt	BKK	Bangkok International	4,186	14	4,186	14	0	0
TG Total				4,186	14	4,186	14	0	0
TK	Turkish Airlines	IST	Istanbul Ataturk	8,246	28	7,624	28	-622	0
TK Total				8,246	28	7,624	28	-622	0
TU	Tunisair	TUN	Tunis Carthage	948	6	760	4	-188	-2
TU Total				948	6	760	4	-188	-2
U6	Ural Airlines	CEK	Chelyabinsk	440	2	0	0	-440	-2
		GOJ	Nizhniy Novgorod	440	2	0	0	-440	-2
		KRR	Krasnodar	640	4	700	4	60	0
		KUF	Samara	760	4	440	2	-320	-2
		MRV	Mineralnye Vody	760	4	0	0	-760	-4
		PEE	Perm	440	2	880	4	440	2
		SVX	Ekaterinburg	1,640	8	1,140	6	-500	-2
U6 Total				5,120	26	3,160	16	-1,960	-10
UA	United Airlines	IAD	Washington Dulles International	3,766	14	3,766	14	0	0
UA Total				3,766	14	3,766	14	0	0
UL	Srilankan Airlines	CMB	Colombo Bandaranayake International	4,018	14	4,130	14	112	0
UL Total				4,018	14	4,130	14	112	0
UN	Transaero Airlines	DME	Moscow Domodedovo	4,684	12	0	0	-4,684	-12
		LED	St Petersburg	632	4	0	0	-632	-4
		OMS	Omsk	316	2	0	0	-316	-2
		OVB	Novosibirsk Tolmachevo	316	2	0	0	-316	-2
		TJM	Tyumen	316	2	0	0	-316	-2
		VKO	Moscow Vnukovo	3,876	12	1,292	4	-2,584	-8
UN Total				10,140	34	1,292	4	-8,848	-30
UPS	Ups Airlines	CGN	Cologne Bonn	0	16	0	15	0	-1
		CTU	Chengdu	0	3	0	0	0	-3
		HKG	Hong Kong International	0	8	0	7	0	-1
		PVG	Shanghai Pu Dong	0	2	0	5	0	3
		SZX	Shenzhen	0	2	0	2	0	0
		TPE	Taipei Chiang Kai Shek	0	1	0	1	0	0
UPS Total				0	32	0	30	0	-2
VL	Med-view Airline	LOS	Lagos Murtala Muhammed	1,638	6	0	0	-1,638	-6

DXB - DUBAI INTERNATIONAL AIRPORT

PEAK WEEK FREQUENCIES - BY CARRIER

OPERATOR	AIRPORT	W14		W15		SEATS +/-	ATMS +/-		
		SEATS	ATMS	SEATS	ATMS				
VL Total		1,638	6	0	0	-1,638	-6		
VS	Virgin Atlantic	LHR	London Heathrow	3,724	14	3,192	12	-532	-2
VS Total				3,724	14	3,192	12	-532	-2
W3	Arik Air	LOS	Lagos Murtala Muhammed	2,170	10	0	0	-2,170	-10
W3 Total				2,170	10	0	0	-2,170	-10
W5	Mahan Air	GSM	Gheshm	1,188	12	1,188	12	0	0
		IKA	Imam Khomeini - Tehran	11,424	56	13,112	50	1,688	-6
		KER	Kerman	396	4	396	4	0	0
		MHD	Mashad	816	4	816	4	0	0
		SYZ	Shiraz	2,856	14	2,856	14	0	0
W5 Total				16,680	90	18,368	84	1,688	-6
WB	RwandAir	KGL	Kigali Gregoire Kayibanda	2,156	14	2,156	14	0	0
WB Total				2,156	14	2,156	14	0	0
WY	Oman Air	MCT	Muscat Seeb	14,706	98	15,124	98	418	0
		SLL	Salalah	1,002	14	994	14	-8	0
WY Total				15,708	112	16,118	112	410	0
XY	FlyNAS	DMM	Dammam King Fahad International	0	0	2,296	14	2,296	14
		JED	Jeddah King Abdulaziz International	4,592	28	4,592	28	0	0
		RUH	Riyadh King Khaled International	6,888	42	8,856	54	1,968	12
XY Total				11,480	70	15,744	96	4,264	26
Y7	NordStar	KJA	Krasnojarsk	0	0	344	2	344	2
Y7 Total				0	0	344	2	344	2
Y9	Kish Air	KIH	Kish Island	6,000	42	8,640	54	2,640	12
Y9 Total				6,000	42	8,640	54	2,640	12

GLOSSARY OF TERMS

Air Transport Movement (ATM)	A scheduled or charter passenger or freight aircraft movement.
Allocation	The allocation of slots such that demand is constrained to fit within declared scheduling limits.
Demand	The unconstrained demand for slots, prior to any schedule adjustments.
Passenger ATM	A scheduled or charter <u>passenger</u> aircraft movement (ie, excluding all-cargo aircraft movements).
Scheduling Limits	Limiting parameters declared by the Airport Operator used in the coordination process.
Seats	The number of seats based on the aircraft configuration advised by the airline.
Peak Week	The Peak Week for W15 is 22 - 28 February 2016
Data Snapshot	All data used for this report was as held 27 October 2015.

GUIDE TO HISTOGRAMS

The histograms show the pattern of traffic by time of day against the appropriate scheduling limit. Each time period consist of seven columns representing the days-of-week, Monday through Sunday.