

Dubai International Airport (DXB)

Summer 2016 (S16)



Start of Season Report

Report Date: Fri 01-Apr-2016

Headlines

	S16 Start	vs. S15 Start	vs. S15 End
Total Air Transport Movements (Passenger & Freight)	258,987	▲ 0.5%	▲ 9.6%
Total Passenger Air Transport Movements	254,704	▲ 0.6%	▲ 9.7%
Total Passenger Air Transport Movement Seats	73,856,095	▲ 5.8%	▲ 14.1%
Average Seats per Passenger Air Transport Movement	290	▲ 5.2%	▲ 4.1%
Percentage of allocated slots cleared as requested (OK)	95.17%		

Contents

Page	Content
2	Runway Scheduling Limits
3	Coordinator's Report
4	ATM Allocation by Operator (Full season and Peak Week Comparison)
5	Peak Week - Allocation and Slot Adjustment Distribution by Operator
6	Significant Route Changes
7	Full Season - ATM Analysis
8	Full Season - PATM Seats Analysis
9	Full Season - Terminal Analysis
10	Full Season - Aircraft Size Analysis
11	Full Season - Seasonality
12	Peak Week - Hourly Runway Demand
13	Peak Week - Hourly Runway Allocation
14	Peak Week - Hourly Runway Allocation (incl. supplementary)
15	Actual Runway Utilisation (19-25 March - W15)
16	Peak Week - Hourly Runway Allocation Comparison (S16 Start vs. S15 Start)
17	Peak Week - Hourly Runway Allocation Comparison (S16 Start vs. S15 End)
18	Peak Week Histogram - Departure Movements (R10) - All Terminals - All Operators
19	Peak Week Histogram - Departure Movements (R10) - All Terminals - All Operators
20	Peak Week Histogram - Departure Movements (R10) - All Terminals - All Operators
21	Peak Week Histogram - Arrival Movements (R10) - All Terminals - All Operators
22	Peak Week Histogram - Arrival Movements (R10) - All Terminals - All Operators
23	Peak Week Histogram - Arrival Movements (R10) - All Terminals - All Operators
24	Peak Week Histogram - Departure Passengers - Terminal 1 - All Operators
25	Peak Week Histogram - Arrival Passengers - Terminal 1 - All Operators
26	Peak Week Histogram - Departure Passengers - Terminal 2 - All Operators
27	Peak Week Histogram - Arrival Passengers - Terminal 2 - All Operators
28	Peak Week Histogram - Departure Passengers - Terminal 3 - All Operators
29	Peak Week Histogram - Arrival Passengers - Terminal 3 - All Operators
30	Glossary

S15 scheduling season runs from Sun 29-Mar-2015 to Sat 24-Oct-2015 (210 days).

S16 scheduling season runs from Sun 27-Mar-2016 to Sat 29-Oct-2016 (217 days).

S15 full season data is adjusted by a factor of 1.03333 in order to directly compare against S16 full season data.

Disclaimer

No warranty whether expressed or implied as to the completeness, accuracy, fitness for purpose, or satisfactory quality is given by ACL regarding the information in this report, which is provided by third parties. Accordingly, ACL excludes all liability with regard to such data.

The contents of this report may not be reproduced without the written consent of ACL.

Runway Scheduling Limits



Declared Hourly Movement Capacity

S15 Arrivals								Change: S15 to S16								S16 Arrivals							
Hour	Mon	Tue	Wed	Thu	Fri	Sat	Sun	Hour	Mon	Tue	Wed	Thu	Fri	Sat	Sun	Hour	Mon	Tue	Wed	Thu	Fri	Sat	Sun
UTC	1	2	3	4	5	6	7	UTC	1	2	3	4	5	6	7	UTC	1	2	3	4	5	6	7
00	29	29	29	29	29	29	29	00	3	3	3	3	3	3	3	00	32	32	32	32	32	32	32
01	35	35	35	35	35	35	35	01	1	1	1	1	1	1	1	01	36	36	36	36	36	36	36
02	35	35	35	35	35	35	35	02								02	35	35	35	35	35	35	35
03	28	28	28	28	28	28	28	03								03	28	28	28	28	28	28	28
04	24	24	24	24	24	24	24	04	1	1	1	1	1	1	1	04	25	25	25	25	25	25	25
05	24	24	24	24	24	24	24	05	1	1	1	1	1	1	1	05	25	25	25	25	25	25	25
06	25	25	25	25	25	25	25	06								06	25	25	25	25	25	25	25
07	31	31	31	31	31	31	31	07	2	2	2	2	2	2	2	07	33	33	33	33	33	33	33
08	31	31	31	31	31	31	31	08	2	2	2	2	2	2	2	08	33	33	33	33	33	33	33
09	35	35	35	35	35	35	35	09								09	35	35	35	35	35	35	35
10	26	26	26	26	26	26	26	10								10	26	26	26	26	26	26	26
11	20	20	20	20	20	20	20	11								11	20	20	20	20	20	20	20
12	20	20	20	20	20	20	20	12								12	20	20	20	20	20	20	20
13	22	22	22	22	22	22	22	13								13	22	22	22	22	22	22	22
14	28	28	28	28	28	28	28	14	1	1	1	1	1	1	1	14	29	29	29	29	29	29	29
15	31	31	31	31	31	31	31	15	1	1	1	1	1	1	1	15	32	32	32	32	32	32	32
16	29	29	29	29	29	29	29	16	1	1	1	1	1	1	1	16	30	30	30	30	30	30	30
17	35	35	35	35	35	35	35	17								17	35	35	35	35	35	35	35
18	34	34	34	34	34	34	34	18								18	34	34	34	34	34	34	34
19	35	35	35	35	35	35	35	19								19	35	35	35	35	35	35	35
20	35	35	35	35	35	35	35	20								20	35	35	35	35	35	35	35
21	25	25	25	25	25	25	25	21								21	25	25	25	25	25	25	25
22	21	21	21	21	21	21	21	22	2	2	2	2	2	2	2	22	23	23	23	23	23	23	23
23	18	18	18	18	18	18	18	23	2	2	2	2	2	2	2	23	20	20	20	20	20	20	20

S15 Departures								Change: S15 to S16								S16 Departures							
Hour	Mon	Tue	Wed	Thu	Fri	Sat	Sun	Hour	Mon	Tue	Wed	Thu	Fri	Sat	Sun	Hour	Mon	Tue	Wed	Thu	Fri	Sat	Sun
UTC	1	2	3	4	5	6	7	UTC	1	2	3	4	5	6	7	UTC	1	2	3	4	5	6	7
00	25	25	25	25	25	25	25	00								00	25	25	25	25	25	25	25
01	18	18	18	18	18	18	18	01	4	4	4	4	4	4	4	01	22	22	22	22	22	22	22
02	20	20	20	20	20	20	20	02	2	2	2	2	2	2	2	02	22	22	22	22	22	22	22
03	40	40	40	40	40	40	40	03								03	40	40	40	40	40	40	40
04	40	40	40	40	40	40	40	04								04	40	40	40	40	40	40	40
05	40	40	40	40	40	40	40	05								05	40	40	40	40	40	40	40
06	40	40	40	40	40	40	40	06								06	40	40	40	40	40	40	40
07	24	24	24	24	24	24	24	07								07	24	24	24	24	24	24	24
08	26	26	26	26	26	26	26	08	2	2	2	2	2	2	2	08	28	28	28	28	28	28	28
09	28	28	28	28	28	28	28	09	2	2	2	2	2	2	2	09	30	30	30	30	30	30	30
10	30	30	30	30	30	30	30	10	2	2	2	2	2	2	2	10	32	32	32	32	32	32	32
11	25	25	25	25	25	25	25	11								11	25	25	25	25	25	25	25
12	25	25	25	25	25	25	25	12								12	25	25	25	25	25	25	25
13	25	25	25	25	25	25	25	13								13	25	25	25	25	25	25	25
14	31	31	31	31	31	31	31	14								14	31	31	31	31	31	31	31
15	28	28	28	28	28	28	28	15	1	1	1	1	1	1	1	15	29	29	29	29	29	29	29
16	22	22	22	22	22	22	22	16	1	1	1	1	1	1	1	16	23	23	23	23	23	23	23
17	25	25	25	25	25	25	25	17								17	25	25	25	25	25	25	25
18	25	25	25	25	25	25	25	18								18	25	25	25	25	25	25	25
19	22	22	22	22	22	22	22	19								19	22	22	22	22	22	22	22
20	22	22	22	22	22	22	22	20								20	22	22	22	22	22	22	22
21	25	25	25	25	25	25	25	21								21	25	25	25	25	25	25	25
22	35	35	35	35	35	35	35	22	2	2	2	2	2	2	2	22	37	37	37	37	37	37	37
23	36	36	36	36	36	36	36	23								23	36	36	36	36	36	36	36

S15 Totals								Change: S15 to S16								S16 Totals							
Hour	Mon	Tue	Wed	Thu	Fri	Sat	Sun	Hour	Mon	Tue	Wed	Thu	Fri	Sat	Sun	Hour	Mon	Tue	Wed	Thu	Fri	Sat	Sun
UTC	1	2	3	4	5	6	7	UTC	1	2	3	4	5	6	7	UTC	1	2	3	4	5	6	7
00	54	54	54	54	54	54	54	00	3	3	3	3	3	3	3	00	57	57	57	57	57	57	57
01	53	53	53	53	53	53	53	01	5	5	5	5	5	5	5	01	58	58	58	58	58	58	58
02	55	55	55	55	55	55	55	02	2	2	2	2	2	2	2	02	57	57	57	57	57	57	57
03	65	65	65	65	65	65	65	03								03	65	65	65	65	65	65	65
04	64	64	64	64	64	64	64	04	1	1	1	1	1	1	1	04	65	65	65	65	65	65	65
05	64	64	64	64	64	64	64	05	1	1	1	1	1	1	1	05	65	65	65	65	65	65	65
06	65	65	65	65	65	65	65	06								06	65	65	65	65	65	65	65
07	55	55	55	55	55	55	55	07	2	2	2	2	2	2	2	07	57	57	57	57	57	57	57
08	57	57	57	57	57	57	57	08	4	4	4	4	4	4	4	08	61	61	61	61	61	61	61
09	63	63	63	63	63	63	63	09	2	2	2	2	2	2	2	09	65	65	65	65	65	65	65
10	54	54	54	54	54	54	54	10	1	1	1	1	1	1	1	10	55	55	55	55	55	55	55
11	40	40	40	40	40	40	40	11								11	40	40	40	40	40	40	40
12	40	40	40	40	40	40	40	12								12	40	40	40	40	40	40	40
13	40	40	40	40	40	40	40	13								13	40	40	40	40	40	40	40
14	54	54	54	54	54	54	54	14	1	1	1	1	1	1	1	14	55	55	55	55	55	55	55
15	59	59	59	59	59	59	59	15	2	2	2	2	2	2	2	15	61	61	61	61	61	61	61
16	51	51	51	51	51	51	51	16	2	2	2	2	2	2	2	16	53	53	53	53	53	53	53
17	60	60	60	60	60	60	60	17								17	60	60	60	60	60	60	60
18	59	59	59	59	59	59	59	18								18	59	59	59	59	59	59	59
19	57	57	57	57	57	57	57	19								19	57	57	57	57	57	57	57
20	57	57	57	57	57	57	57	20								20	57	57	57	57	57	57	57
21	44	44	44	44	44	44	44	21								21							

Coordinator's Report



Total demand	261,244	slots		
Total slots allocated	258,987	slots	99.14%	of total demand
Number of slots cleared OK	246,475	slots	95.17%	of total slots cleared

Slots adjusted (not OK) due to:

RUNWAY constraints	10,412	slots	83.2%	of total slots adjusted
TERMINAL constraints	-	slots	0.0%	of total slots adjusted
STAND constraints	104	slots	0.8%	of total slots adjusted
NIGHT constraints	-	slots	0.0%	of total slots adjusted
OTHER constraints	1,554	slots	12.4%	of total slots adjusted
ARR/DEP TURNAROUND feasibility	442	slots	3.5%	of total slots adjusted

Stand Constraints

- Stands continue to be a constraining area, in particular around the peak times of the operation.

Other Constraints

- Other constraints consist of gate capacity restrictions in Terminal 2 and ground time adjustment (arrival and departure)

Air Transport Movement Allocation by Operator

Comparison between S15 End vs. S16 Start (excluding supplementary slots)



Operator	FULL SEASON ALLOCATION								PEAK WEEK ALLOCATION							
	S15 ATMs	S16 ATMs	+/- change	S16 Rank	S15 Seats	S16 Seats	+/- change	S16 Rank	S15 ATMs	S16 ATMs	+/- change	S16 Rank	S15 Seats	S16 Seats	+/- change	S16 Rank
Aeroflot	593	612	19	46	89,549	96,696	7,147	49	14	28	14	32	2,212	4,424	2,212	40
Aerologic	496	552	56	47	-	-	0	81	16	18	2	47	-	-	0	77
Afriqiyah Airways	128	-	-128	86	25,813	-	-25,813	81	8	-	-8	82	1,604	-	-1,604	77
Air Algeria	242	248	6	67	64,993	64,480	-513	57	8	8	0	66	2,152	2,080	-72	58
Air Asia	17	-	-17	86	2,976	-	-2,976	81	-	-	0	82	-	-	0	77
Air Astana	463	682	219	43	68,834	102,136	33,302	47	14	22	8	44	2,072	3,256	1,184	49
Air Canada	-	186	186	70	-	55,428	55,428	59	-	6	6	71	-	1,788	1,788	60
Air China	306	620	314	45	92,066	181,040	88,974	35	10	20	10	46	3,010	5,840	2,830	35
Air France	428	428	0	58	129,003	126,520	-2,483	43	14	12	-2	61	4,112	3,456	-656	46
Air India	2,346	2,852	506	11	431,127	536,300	105,173	10	78	92	14	11	14,192	17,300	3,108	10
Air India Express	3,779	5,352	1,573	6	699,097	990,120	291,024	6	122	180	58	6	22,570	33,300	10,730	6
Airblue	1,235	1,302	67	23	204,186	214,830	10,644	27	38	42	4	22	6,270	6,930	660	28
Ariana Afghan Airlines	482	424	-58	59	100,159	88,192	-11,967	51	21	14	-7	49	4,368	2,912	-1,456	52
Arik Air	28	-	-28	86	6,054	-	-6,054	81	-	-	0	82	-	-	0	77
AtlasGlobal	-	-	0	86	-	-	-	81	-	-	0	82	-	-	0	77
Austrian Airlines	223	-	-223	86	50,214	-	-50,214	81	-	-	0	82	-	-	0	77
Azerbaijan Airlines	397	436	39	51	63,667	78,480	14,513	55	14	14	0	49	2,316	2,520	204	55
Biman Bangladesh	395	434	39	53	164,738	181,846	17,108	34	16	14	-2	49	6,704	5,866	-838	33
British Airways	864	1,246	382	27	233,017	294,768	61,751	23	28	42	14	22	7,334	9,898	2,564	23
Caspian Airlines	-	-	0	86	-	-	-	81	-	-	0	82	-	-	0	77
Cathay Pacific	1,298	1,302	4	23	411,424	412,734	1,310	18	42	42	0	22	13,314	13,314	0	18
Cebu Pacific	395	866	471	34	172,104	377,576	205,472	19	12	28	16	32	5,232	12,208	6,976	19
China Eastern	141	186	45	70	35,092	43,152	8,060	64	4	6	2	71	928	1,392	464	64
China Southern	688	872	184	32	142,883	191,404	48,521	32	22	28	6	32	4,786	6,260	1,474	31
Daallo Airlines	135	160	25	77	29,619	34,318	4,699	69	6	6	0	71	1,320	1,284	-36	67
Delta Airlines	410	-	-410	86	110,444	-	-110,444	81	14	-	-14	82	3,766	-	-3,766	77
DHL Aviation	590	681	91	44	-	-	0	81	24	22	-2	44	-	-	0	77
EC Air	259	366	107	62	38,283	54,168	15,885	60	8	12	4	61	1,184	1,776	592	61
Egypt Air	1,110	1,282	172	26	313,846	421,978	108,132	17	36	42	6	22	9,492	13,902	4,410	15
Emirates	103,843	113,497	9,654	1	39,482,722	45,006,877	5,524,155	1	3,418	3,702	284	1	1,297,864	1,483,239	185,375	1
Eritrean Airlines	141	362	221	63	19,113	49,232	30,119	63	4	12	8	61	544	1,632	1,088	62
Ethiopian Airlines	1,134	1,298	164	25	310,533	372,492	61,959	20	40	42	2	22	10,437	12,054	1,617	20
Eurowings	-	14	14	85	-	3,936	3,936	80	-	-	0	82	-	-	0	77
Federal Express	1,363	1,364	1	21	-	-	0	81	44	44	0	21	-	-	0	77
Finnair	41	36	-5	84	8,639	7,524	-1,115	78	-	-	0	82	-	-	0	77
Flydubai	48,432	50,186	1,754	2	9,153,326	9,485,154	331,828	2	1,673	1,627	-46	2	316,167	307,503	-8,664	2
Flynas	2,060	2,592	532	13	337,917	425,088	87,171	15	74	84	10	13	12,136	13,776	1,640	16
Ghadames Air Transport	-	-	0	86	-	-	0	81	-	-	0	82	-	-	0	77
Gulf Air	3,125	3,158	33	10	448,227	443,678	-4,549	12	100	102	2	10	14,366	14,334	-32	12
Indigo	4,340	5,679	1,339	4	781,200	1,022,220	241,020	5	140	196	56	4	25,200	35,280	10,080	5
Iran Air	831	806	-25	39	122,109	118,482	-3,627	45	26	26	0	41	3,822	3,822	0	45
Iran Aseman Airlines	1,267	1,688	421	17	136,053	209,836	73,783	29	26	48	22	19	2,556	5,862	3,306	34
Iranian Naft Air	147	182	35	75	17,744	19,838	2,094	75	4	6	2	71	518	654	136	73
Iraqi Airways	1,170	1,116	-54	29	136,534	162,440	25,906	38	36	36	0	29	4,560	5,240	680	38
Jazeera Airways	1,471	1,610	139	18	233,963	255,990	22,027	25	56	56	0	16	8,904	8,904	0	24
Jet Airways	3,978	5,138	1,160	7	676,403	868,250	191,847	7	126	168	42	7	21,420	28,392	6,972	7
Jubba Airways	181	186	5	70	25,760	25,916	156	72	6	6	0	71	836	836	0	72
Kam Air	246	-	-246	86	40,333	-	-40,333	81	-	-	0	82	-	-	0	77
Kenya Airways	669	744	75	41	145,182	146,506	1,324	39	22	24	2	43	4,436	4,726	290	39
Kish Air	1,463	1,608	145	19	233,120	257,280	24,160	24	48	52	4	18	7,440	8,320	880	25
KLM Royal Dutch Airlines	248	436	188	51	78,864	137,072	58,208	40	8	14	6	49	2,544	4,336	1,792	41
Korean Air	384	414	30	60	84,403	90,252	5,849	50	14	14	0	49	3,052	3,052	0	50
Kuwait Airways	848	992	144	30	190,547	211,524	20,977	28	28	32	4	30	6,496	6,784	288	29
Libyan Airways	8	310	302	65	2,191	82,150	79,959	54	-	10	10	65	-	2,650	2,650	53
Lufthansa	781	458	-323	48	175,760	109,964	-65,796	46	26	14	-12	49	5,866	3,304	-2,562	48
Mahan Air	2,040	1,984	-56	14	410,378	443,552	33,174	13	62	64	2	14	13,030	14,288	1,258	13
Malaysia Airlines	432	-	-432	86	122,237	-	-122,237	81	14	-	-14	82	3,962	-	-3,962	77
Med-View Airline	-	-	0	86	-	-	0	81	-	-	0	82	-	-	0	77
Middle East Airlines	897	866	-31	34	155,277	177,962	22,685	36	29	28	-1	32	4,258	5,646	1,388	36
Nepal Airlines	-	172	172	76	-	27,176	27,176	71	-	8	8	66	-	1,264	1,264	68
Norwegian	118	124	6	79	21,911	23,064	1,153	73	-	-	0	82	-	-	0	77
Oman Air	3,420	3,468	48	9	377,520	528,554	151,034	11	112	112	0	9	12,274	17,070	4,796	11
Pegasus Airlines	312	438	126	50	58,981	82,776	23,795	53	10	14	4	49	1,890	2,646	756	54
Philippine Airlines	378	867	489	33	156,575	358,938	202,363	21	12	28	16	32	4,968	11,592	6,624	21
PIA Pakistan International	1,986	2,778	792	12	338,056	438,224	100,868	14	68	90	22	12	11,038	14,220	3,182	14
Qantas	1,736	1,736	0	16	840,224	840,224	0	8	56	56	0	16	27,104	27,104	0	8
Qatar Airways	6,803	6,508	-295	3	1,450,417	2,179,010	728,593	3	210	210	0	3	42,624	70,440	27,816	3
Qeshm Airlines	913	1,240	327	28	110,360	164,300	53,940	37	28	40	12	28	3,500	5,300	1,800	37
Royal Brunei Airlines	867	866	-1	34	220,210	219,964	-246	26	28	28	0	32	7,112	7,112	0	27
Royal Jordanian	1,350	1,342	-8	22	195,118	193,366	-1,752	31	44	42	-2	22	6,143	6,072	-71	32
Rwandair	461	434	-27	53	70,973	66,836	-4,137	56	15	14	-1	49	2,310	2,156	-154	57
S7 Airlines	45	54	9	82	7,184	8,532	1,348	76	4	2	-2	80	632	316	-316	75
Safi Airways	844	836	-8	38	101,880	100,320	-1,560	48	28	28	0	32	3,360	3,360	0	47
Saudia	5,402	5,502	100	5	1,117,761	1,152,334	34,573	4	188	188	0	5	39,620	39,822	202	4
Shaheen Air	1,771	1,952	181	15	342,062	325,080	-16,982	22	56	64	8	14	9,748	10,656	908	22
Sichuan Airlines	31	124	93	79	9,331	37,324	27,993	66	4	4	0	78	1,204	1,204	0	69
Singapore Airlines	831	702	-129	42	234,162	190,984	-43,178	33	26	26	0	41	7,312	7,116	-196	26
Somon Air	124	186	62	70	22,816	34,224	11,408	70	4	6	2	71	736	1,104	368	71
Spicejet	2,709	4,210	1,501	8	512,077	795,690	283,613	9	84	136	52	8	15,876	25,704	9,828	9
SriLankan Airlines	434	434	0	53	124,558	124,558	0	44	14	14	0	49	4,018	4,018	0	44
Swiss International	851	852	1	37	200,735	201,072	337	30	28	28	0	32	6,608	6,608	0	30
Syrian Air	207	238	31	68	29,967	34,510	4,543	68	8	8	0	66	1,160	1,160	0	70
TAAG Angola Airlines	122	-	-122	86	28,692	-	-28,692	81	4	-	-4	82	940	-	-940	77
Taban Air	196	126	-70	78	31,806	20,412	-11,394	74	6	4	-2	78	972	648	-324	74
Tarom	62	62	0	81	7,769	8,308	539	77	2	2	0					

Peak Week - Allocation and Slot Adjustment Distribution by Operator

Schedule: S16 Start



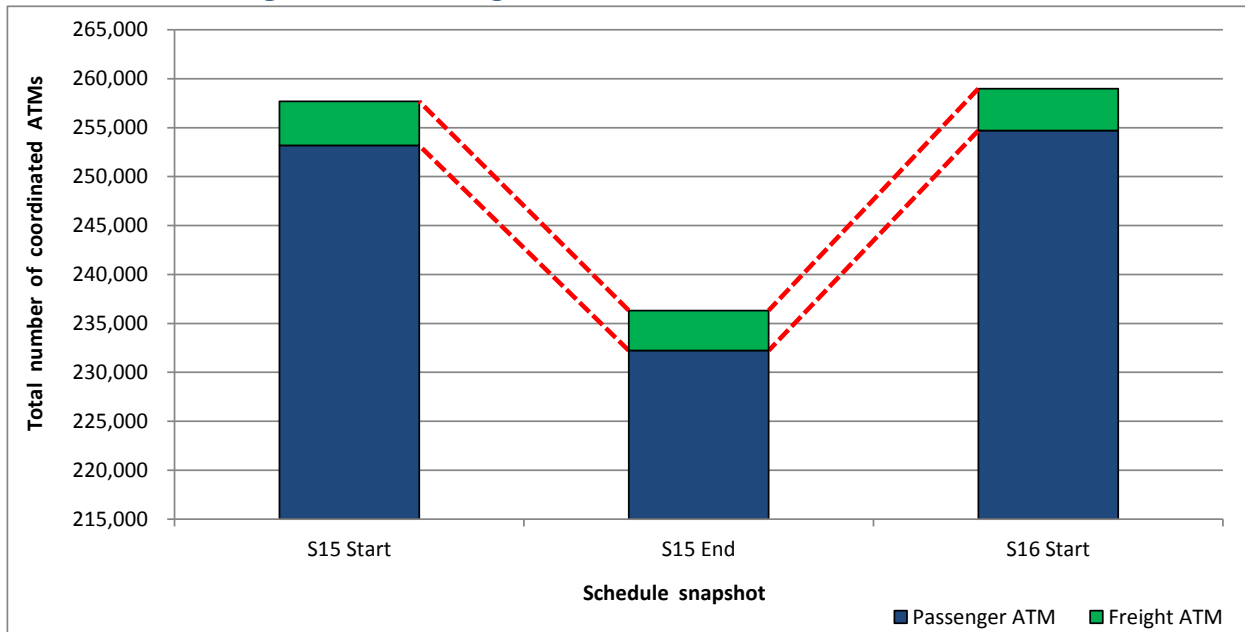
Operator	S16 allocated ATMs	SLOT ADJUSTMENTS (MINUTES OFF REQUESTED TIME)														Requests with NO slot allocated	
		0	5	10	15	20	25	30	35	40	45	50	55	60	>60		
Aeroflot	28	100.0%	0.0%	0.0%	0.0%	0.0%	0.0%	0.0%	0.0%	0.0%	0.0%	0.0%	0.0%	0.0%	0.0%	0.0%	-
Aerologic	18	88.9%	0.0%	0.0%	0.0%	0.0%	0.0%	0.0%	0.0%	0.0%	0.0%	0.0%	0.0%	0.0%	0.0%	11.1%	-
Afriqiyah Airways	-	-	-	-	-	-	-	-	-	-	-	-	-	-	-	-	-
Air Algerie	8	100.0%	0.0%	0.0%	0.0%	0.0%	0.0%	0.0%	0.0%	0.0%	0.0%	0.0%	0.0%	0.0%	0.0%	0.0%	-
Air Asia	-	-	-	-	-	-	-	-	-	-	-	-	-	-	-	-	-
Air Astana	22	100.0%	0.0%	0.0%	0.0%	0.0%	0.0%	0.0%	0.0%	0.0%	0.0%	0.0%	0.0%	0.0%	0.0%	0.0%	-
Air Canada	6	100.0%	0.0%	0.0%	0.0%	0.0%	0.0%	0.0%	0.0%	0.0%	0.0%	0.0%	0.0%	0.0%	0.0%	0.0%	-
Air China	20	75.0%	0.0%	0.0%	0.0%	0.0%	0.0%	0.0%	0.0%	0.0%	0.0%	5.0%	0.0%	0.0%	10.0%	0.0%	-
Air France	12	100.0%	0.0%	0.0%	0.0%	0.0%	0.0%	0.0%	0.0%	0.0%	0.0%	0.0%	0.0%	0.0%	0.0%	0.0%	-
Air India	92	84.8%	7.6%	0.0%	7.6%	0.0%	0.0%	0.0%	0.0%	0.0%	0.0%	0.0%	0.0%	0.0%	0.0%	0.0%	-
Air India Express	180	92.2%	0.0%	3.3%	3.3%	0.0%	0.0%	0.0%	0.0%	0.0%	0.0%	0.0%	0.0%	0.0%	0.6%	0.6%	-
Airblue	42	100.0%	0.0%	0.0%	0.0%	0.0%	0.0%	0.0%	0.0%	0.0%	0.0%	0.0%	0.0%	0.0%	0.0%	0.0%	-
Ariana Afghan Airlines	14	50.0%	0.0%	0.0%	0.0%	0.0%	0.0%	0.0%	0.0%	0.0%	0.0%	0.0%	0.0%	0.0%	50.0%	0.0%	-
Arik Air	-	-	-	-	-	-	-	-	-	-	-	-	-	-	-	-	14
AtlasGlobal	-	-	-	-	-	-	-	-	-	-	-	-	-	-	-	-	-
Austrian Airlines	-	-	-	-	-	-	-	-	-	-	-	-	-	-	-	-	-
Azerbaijan Airlines	14	100.0%	0.0%	0.0%	0.0%	0.0%	0.0%	0.0%	0.0%	0.0%	0.0%	0.0%	0.0%	0.0%	0.0%	0.0%	-
Biman Bangladesh	14	100.0%	0.0%	0.0%	0.0%	0.0%	0.0%	0.0%	0.0%	0.0%	0.0%	0.0%	0.0%	0.0%	0.0%	0.0%	-
British Airways	42	100.0%	0.0%	0.0%	0.0%	0.0%	0.0%	0.0%	0.0%	0.0%	0.0%	0.0%	0.0%	0.0%	0.0%	0.0%	-
Caspian Airlines	-	-	-	-	-	-	-	-	-	-	-	-	-	-	-	-	-
Cathay Pacific	42	100.0%	0.0%	0.0%	0.0%	0.0%	0.0%	0.0%	0.0%	0.0%	0.0%	0.0%	0.0%	0.0%	0.0%	0.0%	-
Cebu Pacific	28	75.0%	0.0%	0.0%	0.0%	0.0%	0.0%	0.0%	0.0%	0.0%	0.0%	0.0%	25.0%	0.0%	0.0%	0.0%	-
China Eastern	6	100.0%	0.0%	0.0%	0.0%	0.0%	0.0%	0.0%	0.0%	0.0%	0.0%	0.0%	0.0%	0.0%	0.0%	0.0%	-
China Southern	28	53.6%	0.0%	10.7%	10.7%	25.0%	0.0%	0.0%	0.0%	0.0%	0.0%	0.0%	0.0%	0.0%	0.0%	0.0%	-
Daallo Airlines	6	50.0%	0.0%	0.0%	0.0%	0.0%	16.7%	16.7%	0.0%	0.0%	0.0%	0.0%	0.0%	0.0%	16.7%	0.0%	-
Delta Airlines	-	-	-	-	-	-	-	-	-	-	-	-	-	-	-	-	-
DHL Aviation	22	100.0%	0.0%	0.0%	0.0%	0.0%	0.0%	0.0%	0.0%	0.0%	0.0%	0.0%	0.0%	0.0%	0.0%	0.0%	-
EC Air	12	50.0%	0.0%	0.0%	0.0%	0.0%	0.0%	0.0%	0.0%	0.0%	0.0%	25.0%	0.0%	25.0%	0.0%	0.0%	-
Egypt Air	42	100.0%	0.0%	0.0%	0.0%	0.0%	0.0%	0.0%	0.0%	0.0%	0.0%	0.0%	0.0%	0.0%	0.0%	0.0%	-
Emirates	3,702	99.5%	0.2%	0.2%	0.0%	0.0%	0.1%	0.0%	0.0%	0.0%	0.0%	0.0%	0.0%	0.0%	0.0%	0.0%	6
Eritrean Airlines	12	58.3%	0.0%	0.0%	0.0%	16.7%	0.0%	0.0%	0.0%	0.0%	0.0%	0.0%	0.0%	0.0%	25.0%	0.0%	-
Ethiopian Airlines	42	100.0%	0.0%	0.0%	0.0%	0.0%	0.0%	0.0%	0.0%	0.0%	0.0%	0.0%	0.0%	0.0%	0.0%	0.0%	-
Federal Express	44	88.6%	0.0%	2.3%	0.0%	0.0%	0.0%	0.0%	0.0%	4.5%	0.0%	4.5%	0.0%	0.0%	0.0%	0.0%	-
Flydubai	1,627	98.5%	0.4%	0.4%	0.1%	0.0%	0.0%	0.1%	0.0%	0.0%	0.1%	0.0%	0.0%	0.0%	0.4%	0.4%	3
Flynas	84	89.3%	0.0%	1.2%	0.0%	1.2%	0.0%	0.0%	0.0%	0.0%	0.0%	0.0%	0.0%	1.2%	7.1%	0.0%	6
Ghadames Air Transport	-	-	-	-	-	-	-	-	-	-	-	-	-	-	-	-	-
Gulf Air	102	100.0%	0.0%	0.0%	0.0%	0.0%	0.0%	0.0%	0.0%	0.0%	0.0%	0.0%	0.0%	0.0%	0.0%	0.0%	-
Indigo	196	71.4%	0.0%	7.1%	0.0%	0.0%	0.0%	0.0%	0.0%	0.0%	0.0%	0.0%	0.0%	3.6%	17.9%	0.0%	14
Iran Air	26	100.0%	0.0%	0.0%	0.0%	0.0%	0.0%	0.0%	0.0%	0.0%	0.0%	0.0%	0.0%	0.0%	0.0%	0.0%	-
Iran Aseman Airlines	48	100.0%	0.0%	0.0%	0.0%	0.0%	0.0%	0.0%	0.0%	0.0%	0.0%	0.0%	0.0%	0.0%	0.0%	0.0%	-
Iranian Naft Air	6	100.0%	0.0%	0.0%	0.0%	0.0%	0.0%	0.0%	0.0%	0.0%	0.0%	0.0%	0.0%	0.0%	0.0%	0.0%	-
Iraqi Airways	36	100.0%	0.0%	0.0%	0.0%	0.0%	0.0%	0.0%	0.0%	0.0%	0.0%	0.0%	0.0%	0.0%	0.0%	0.0%	-
Jazeera Airways	56	100.0%	0.0%	0.0%	0.0%	0.0%	0.0%	0.0%	0.0%	0.0%	0.0%	0.0%	0.0%	0.0%	0.0%	0.0%	2
Jet Airways	168	83.3%	0.0%	8.3%	0.0%	0.0%	0.0%	0.0%	0.0%	0.0%	8.3%	0.0%	0.0%	0.0%	0.0%	0.0%	-
Jubba Airways	6	100.0%	0.0%	0.0%	0.0%	0.0%	0.0%	0.0%	0.0%	0.0%	0.0%	0.0%	0.0%	0.0%	0.0%	0.0%	-
Kam Air	-	-	-	-	-	-	-	-	-	-	-	-	-	-	-	-	-
Kenya Airways	24	25.0%	29.2%	4.2%	0.0%	29.2%	0.0%	0.0%	0.0%	0.0%	0.0%	12.5%	0.0%	0.0%	0.0%	0.0%	-
Kish Air	52	96.2%	0.0%	0.0%	0.0%	0.0%	0.0%	0.0%	0.0%	0.0%	0.0%	0.0%	0.0%	1.9%	1.9%	0.0%	-
KLM Royal Dutch Airlines	14	100.0%	0.0%	0.0%	0.0%	0.0%	0.0%	0.0%	0.0%	0.0%	0.0%	0.0%	0.0%	0.0%	0.0%	0.0%	-
Korean Air	14	100.0%	0.0%	0.0%	0.0%	0.0%	0.0%	0.0%	0.0%	0.0%	0.0%	0.0%	0.0%	0.0%	0.0%	0.0%	-
Kuwait Airways	32	100.0%	0.0%	0.0%	0.0%	0.0%	0.0%	0.0%	0.0%	0.0%	0.0%	0.0%	0.0%	0.0%	0.0%	0.0%	-
Libyan Airways	10	100.0%	0.0%	0.0%	0.0%	0.0%	0.0%	0.0%	0.0%	0.0%	0.0%	0.0%	0.0%	0.0%	0.0%	0.0%	-
Lufthansa	14	100.0%	0.0%	0.0%	0.0%	0.0%	0.0%	0.0%	0.0%	0.0%	0.0%	0.0%	0.0%	0.0%	0.0%	0.0%	-
Mahan Air	64	87.5%	0.0%	0.0%	0.0%	0.0%	0.0%	12.5%	0.0%	0.0%	0.0%	0.0%	0.0%	0.0%	0.0%	0.0%	-
Malaysia Airlines	-	-	-	-	-	-	-	-	-	-	-	-	-	-	-	-	-
Med-View Airline	-	-	-	-	-	-	-	-	-	-	-	-	-	-	-	-	-
Middle East Airlines	28	100.0%	0.0%	0.0%	0.0%	0.0%	0.0%	0.0%	0.0%	0.0%	0.0%	0.0%	0.0%	0.0%	0.0%	0.0%	14
Nepal Airlines	8	100.0%	0.0%	0.0%	0.0%	0.0%	0.0%	0.0%	0.0%	0.0%	0.0%	0.0%	0.0%	0.0%	0.0%	0.0%	-
Oman Air	112	98.2%	0.0%	0.0%	0.0%	0.9%	0.0%	0.9%	0.0%	0.0%	0.0%	0.0%	0.0%	0.0%	0.0%	0.0%	-
Pegasus Airlines	14	71.4%	0.0%	14.3%	0.0%	0.0%	14.3%	0.0%	0.0%	0.0%	0.0%	0.0%	0.0%	0.0%	0.0%	0.0%	-
Philippine Airlines	28	57.1%	0.0%	0.0%	0.0%	0.0%	0.0%	0.0%	0.0%	0.0%	28.6%	0.0%	14.3%	0.0%	0.0%	0.0%	-
PIA Pakistan International	90	81.1%	7.8%	0.0%	0.0%	0.0%	0.0%	0.0%	0.0%	0.0%	4.4%	0.0%	0.0%	0.0%	0.0%	6.7%	-
Qantas	56	100.0%	0.0%	0.0%	0.0%	0.0%	0.0%	0.0%	0.0%	0.0%	0.0%	0.0%	0.0%	0.0%	0.0%	0.0%	-
Qatar Airways	210	96.7%	0.0%	3.3%	0.0%	0.0%	0.0%	0.0%	0.0%	0.0%	0.0%	0.0%	0.0%	0.0%	0.0%	0.0%	14
Qeshm Airlines	40	45.0%	10.0%	0.0%	0.0%	0.0%	0.0%	0.0%	0.0%	0.0%	0.0%	12.5%	0.0%	0.0%	32.5%	0.0%	-
Royal Brunei Airlines	28	100.0%	0.0%	0.0%	0.0%	0.0%	0.0%	0.0%	0.0%	0.0%	0.0%	0.0%	0.0%	0.0%	0.0%	0.0%	-
Royal Jordanian	42	100.0%	0.0%	0.0%	0.0%	0.0%	0.0%	0.0%	0.0%	0.0%	0.0%	0.0%	0.0%	0.0%	0.0%	0.0%	-
Rwandair	14	100.0%	0.0%	0.0%	0.0%	0.0%	0.0%	0.0%	0.0%	0.0%	0.0%	0.0%	0.0%	0.0%	0.0%	0.0%	-
S7 Airlines	2	100.0%	0.0%	0.0%	0.0%	0.0%	0.0%	0.0%	0.0%	0.0%	0.0%	0.0%	0.0%	0.0%	0.0%	0.0%	-
Safi Airways	28	85.7%	0.0%	0.0%	0.0%	0.0%	0.0%	0.0%	0.0%	0.0%	0.0%	0.0%	14.3%	0.0%	0.0%	0.0%	-
Saudia	188	85.1%	0.0%	0.0%	0.0%	0.0%	0.0%	3.2%	6.9%	0.0%	1.1%	2.7%	0.0%	0.0%	1.1%	0.0%	-
Shahen Air	64	76.6%	6.3%	1.6%	3.1%	0.0%	0.0%	0.0%	0.0%	0.0%	0.0%	0.0%	0.0%	3.1%	6.3%	0.0%	-
Sichuan Airlines	4	100.0%	0.0%	0.0%	0.0%	0.0%	0.0%	0.0%	0.0%	0.0%	0.0%	0.0%	0.0%	0.0%	0.0%	0.0%	-
Singapore Airlines	26	100.0%	0.0%	0.0%	0.0%	0.0%	0.0%	0.0%	0.0%	0.0%	0.0%	0.0%	0.0%	0.0%	0.0%	0.0%	-
Somon Air	6	66.7%	0.0%	16.7%	0.0%	0.0%	0.0%	0.0%	0.0%	0.0%	0.0%	0.0%	16.7%	0.0%	0.0%	0.0%	-
Spicejet	136	89.0%	0.0%	0.0%	0.0%	0.0%	0.0%	1.5%	2.2%	0.0%	0.0%	0.0%	0.0%	0.0%	0.0%	7.4%	-
SriLankan Airlines	14	100.0%	0.0%	0.0%	0.0%	0.0%	0.0%	0.0%	0.0%	0.0%	0.0%	0.0%	0.0%	0.0%	0.0%	0.0%	-
Swiss International	28	100.0%	0.0%	0.0%	0.0%	0.0%	0.0%	0.0%	0.0%	0.0%	0.0%	0.0%	0.0%	0.0%	0.0%	0.0%	-
Svrian Air	8	100.0%	0.0%	0.0%	0.0%	0.0%	0.0%	0.0%	0.0%	0.0%	0.0%	0.0%	0.0%	0.0%	0.0%	0.0%	-
TAAG Angola Airlines	-	-	-	-	-	-	-	-	-	-	-	-	-	-	-	-	-
Taban Air	4	100.0%	0.0%	0.0%	0.0%	0.0%	0.0%	0.0%	0.0%	0.0%	0.0%	0.0%	0.0%	0.0%	0.0%	0.0%	-
Tarom	2	100.0%	0.0%	0.0%	0.0%	0.0%	0.0%	0.0%	0.0%	0.0%	0.0%	0.0%	0.0%	0.0%	0.0%	0.0%	-
Thai Airways	14	100.0%	0.0%	0.0%	0.0%	0.0%	0.0%	0.0%	0.0%	0.0%	0.0%	0.0%	0.0%	0.0%	0.0%	0.0%	-
TNT Airways	28	89.3%	0.0%	0.0%	0.0%	0.0%	0.0%	0.0%	0.0%	0.0%	0.0%	0.0%	0.0%	0.0%	10.7%	0.0%	-
Transaero Airlines	-	-	-	-	-	-	-	-	-	-	-	-	-	-	-	-	-
Travel Service	16	100.0%	0.0%	0.0%	0.0%	0.0%	0.0%	0.0%	0.0%	0.0%	0.0%	0.0%	0.0%	0.0%	0.0%	0.0%	-
Tunisair	-	-	-	-													

Significant Route Changes



Operator	Category	Description of change from S15 schedule to S16 schedule
Air Astana	NEW	Service to TSE
Air Canada	NEW	Service to YYZ
Air China	NEW	Service to CKG
Air India	NEW	Service to COK
Air India Express	NEW	Services to BOM, DEL
Air India Express	CHANGE	Increased service to CCJ
British Airways	CHANGE	Increased service to LHR
Cebu Pacific	CHANGE	Increased service to MNL
China Southern	NEW	Service to SZX
Delta Airlines	CANCELLED	Service to ATL
Egypt Air	CHANGE	Service to CAI
Emirates	NEW	Services to BLQ, CEB, CRK, INC, RGN, SAW
Emirates	CHANGE	Decreased services to CMN, COK, DAR, TUN
Emirates	CHANGE	Increased services to AKL, ATH, BKK, BOS, CAN, CMB, CPT
Emirates	CHANGE	Increased services to GVA, HKT, LAX, LHR, LIS, MED, MUC, PVG, RUH
Emirates	CANCELLED	Service to EBL
Flydubai	NEW	Services to ASM, EBB, TSE
Flydubai	CHANGE	Decreased services to AMM, BEY, DOH, KTM, KWI, SLL
Flydubai	CHANGE	Increased services to BAH, CMB, ELQ, KRT, RUH
Flydubai	CANCELLED	Services to CIT, BJM, KZN, TBZ
Flynas	CHANGE	Increased service to RUH
Indigo	CHANGE	Increased services to BOM, DEL, IXC
Jet Airways	CHANGE	Increased services to BOM, DEL
Jet Airways	CANCELLED	Service to COK
Libyan Airways	NEW	Services to BEN, TIP
Lufthansa	CANCELLED	Service to MUC
Malaysia Airlines	CANCELLED	Service to KUL
Philippine Airlines	NEW	Services to JED, KWI
PIA Pakistan International	CHANGE	Services to ISB, KHI
Qatar Airways	CHANGE	Decreased service to DOH
Saudia	CHANGE	Decreased service to JED
Saudia	CHANGE	Increased service to RUH
TAAG Angola Airlines	CANCELLED	Service to LAD
Transaero Airlines	CANCELLED	Service to VKO
Travel Service	NEW	Service to PRG
Turkish Airlines	NEW	Service to SAW
United Airlines	CANCELLED	Service to IAD
Ural Airlines	NEW	Service to DME

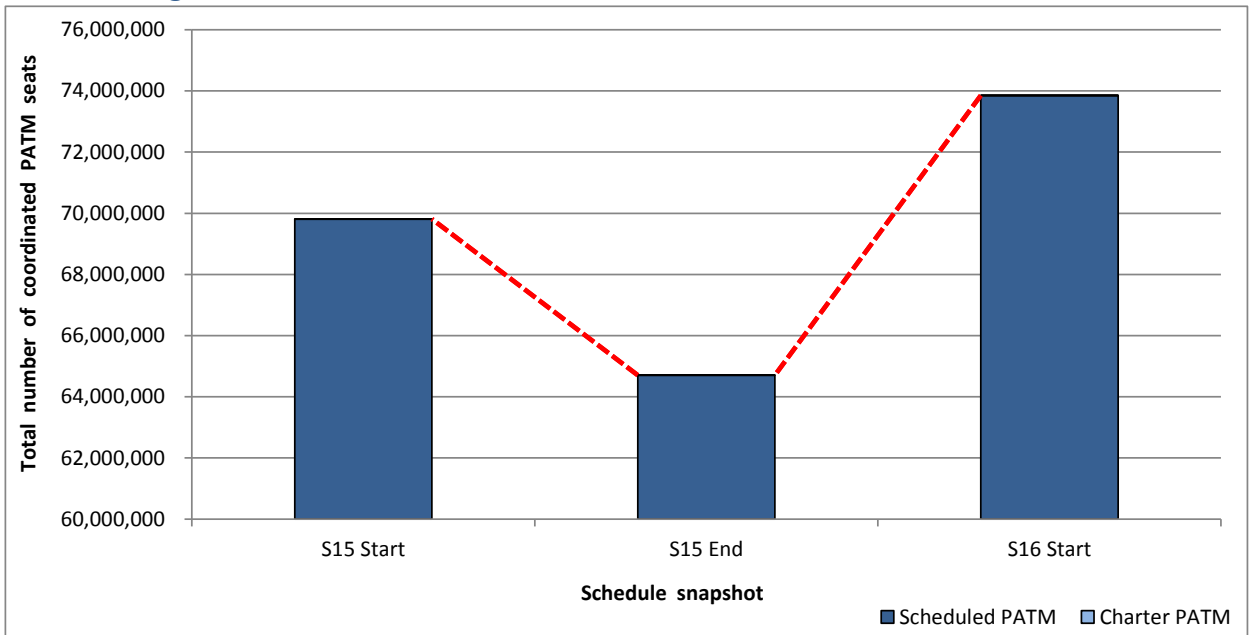
Total ATMs: Passenger ATMs vs. Freight ATMs



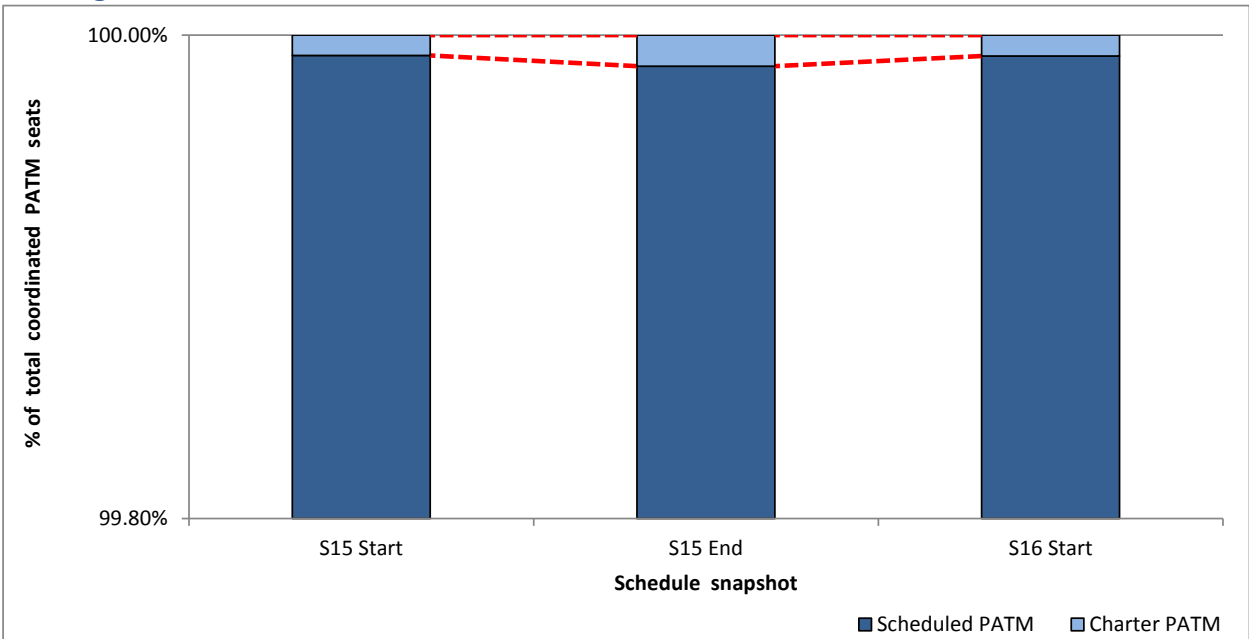
Full Season - PATM Seats Analysis



Total Passenger ATM seats: Scheduled vs. Charter



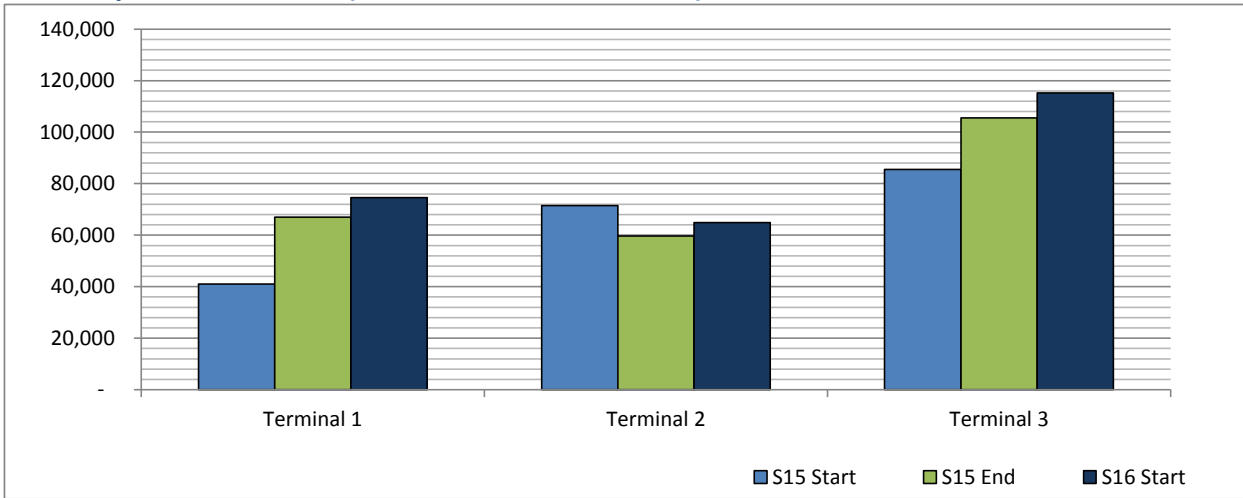
Passenger ATM seats: Scheduled vs. Charter



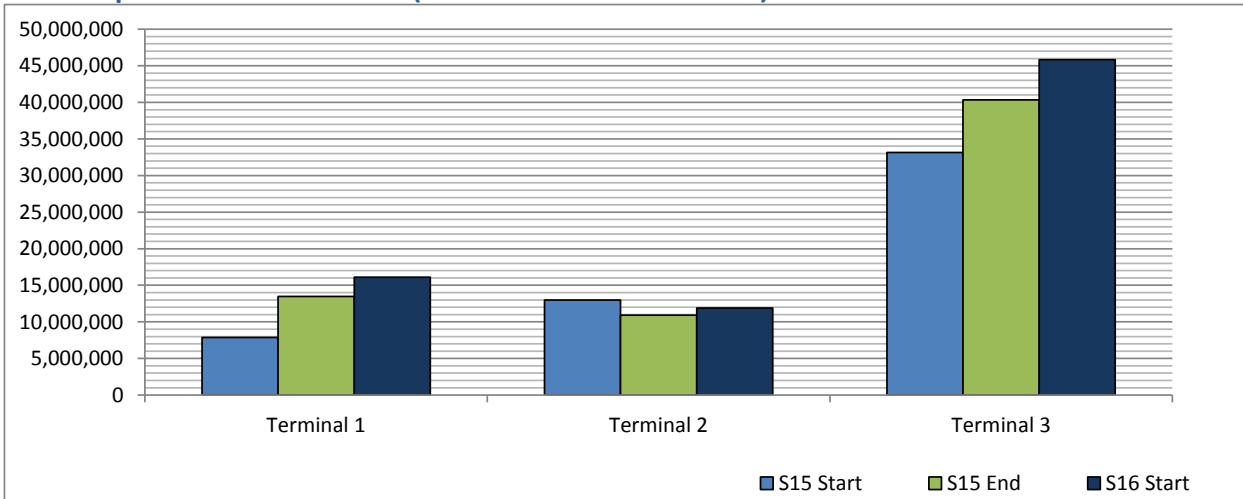
Full Season - Terminal Analysis



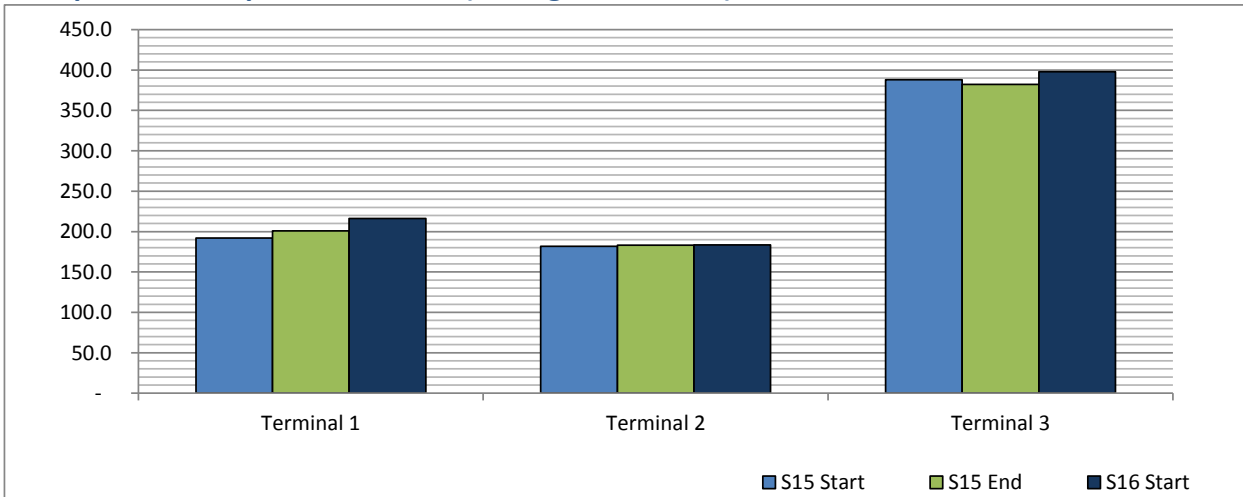
Air Transport Movements (total allocated for season)



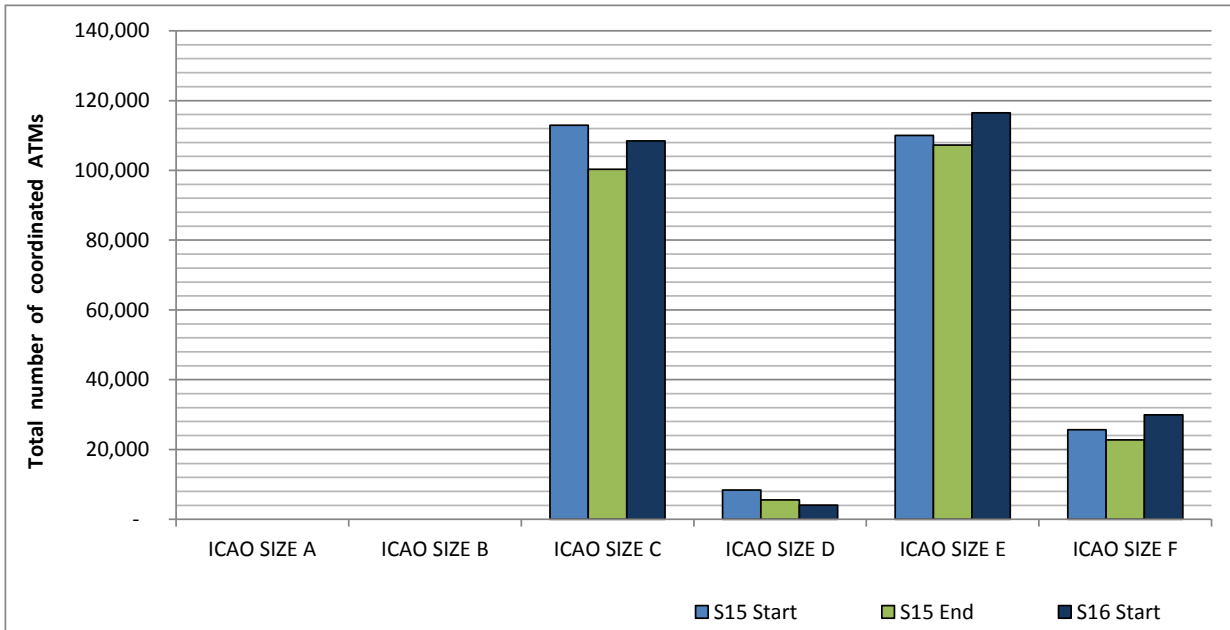
Air Transport Movement Seats (total allocated for season)



Seats per Air Transport Movement (average for season)

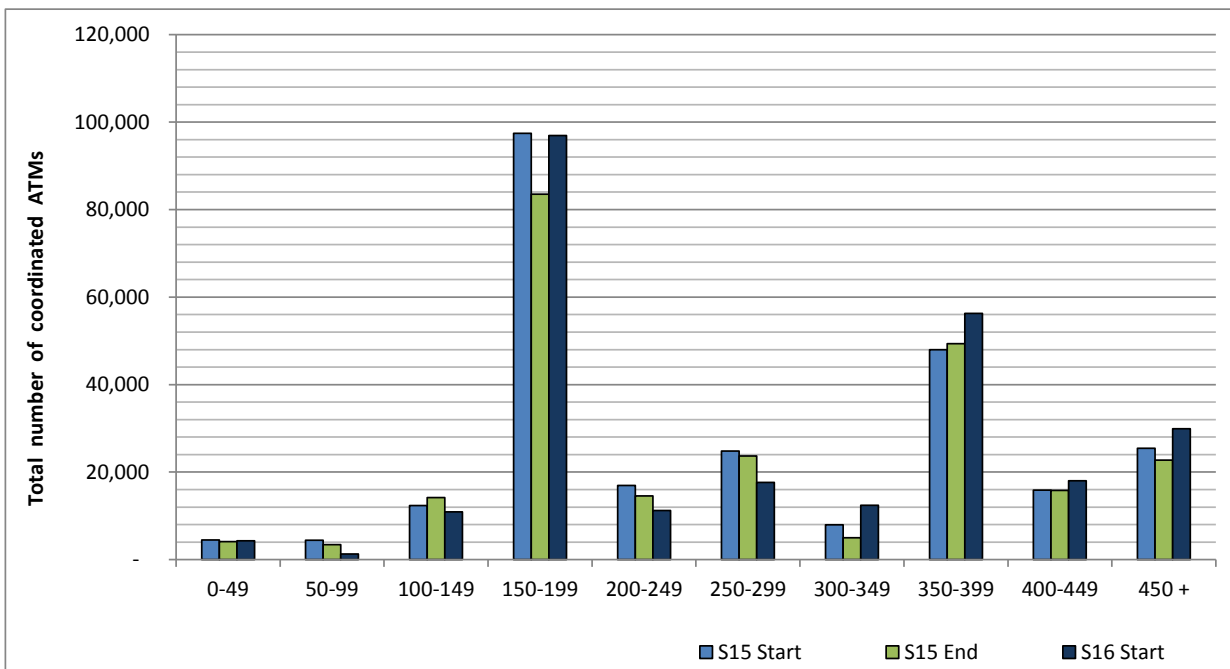


ICAO size designation



Note: See Glossary for definitions of ICAO SIZE groupings

Air Transport Movement seat distribution

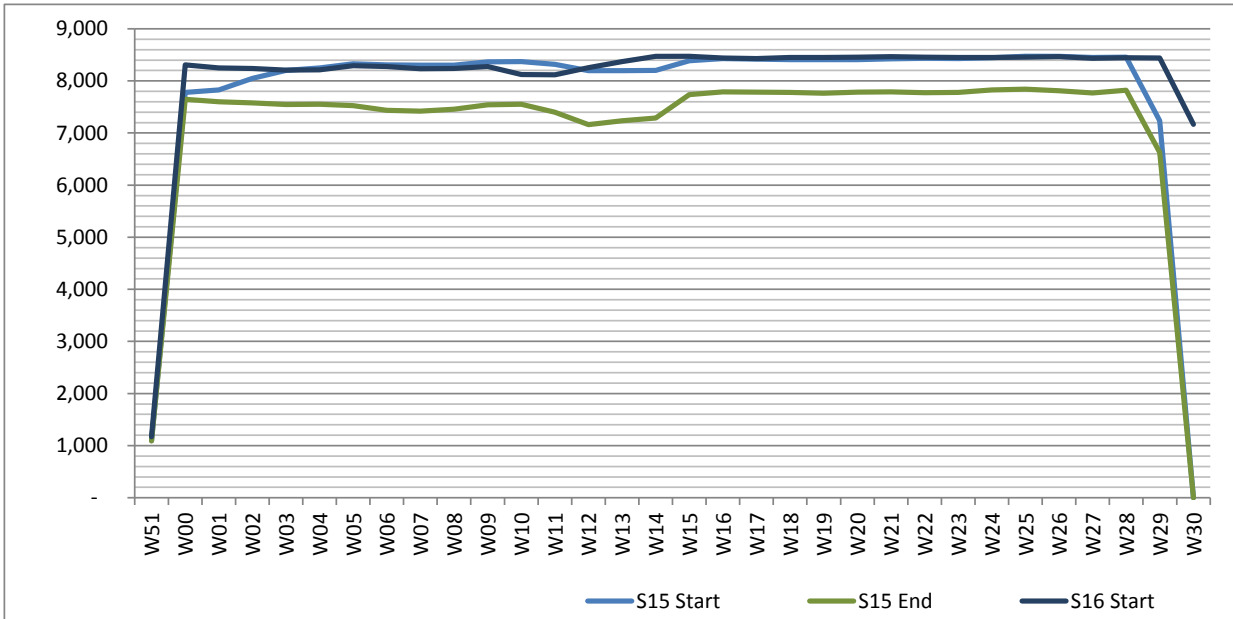


Note: FREIGHT-ONLY services with 0 seats are included in the first seat band '0-49'

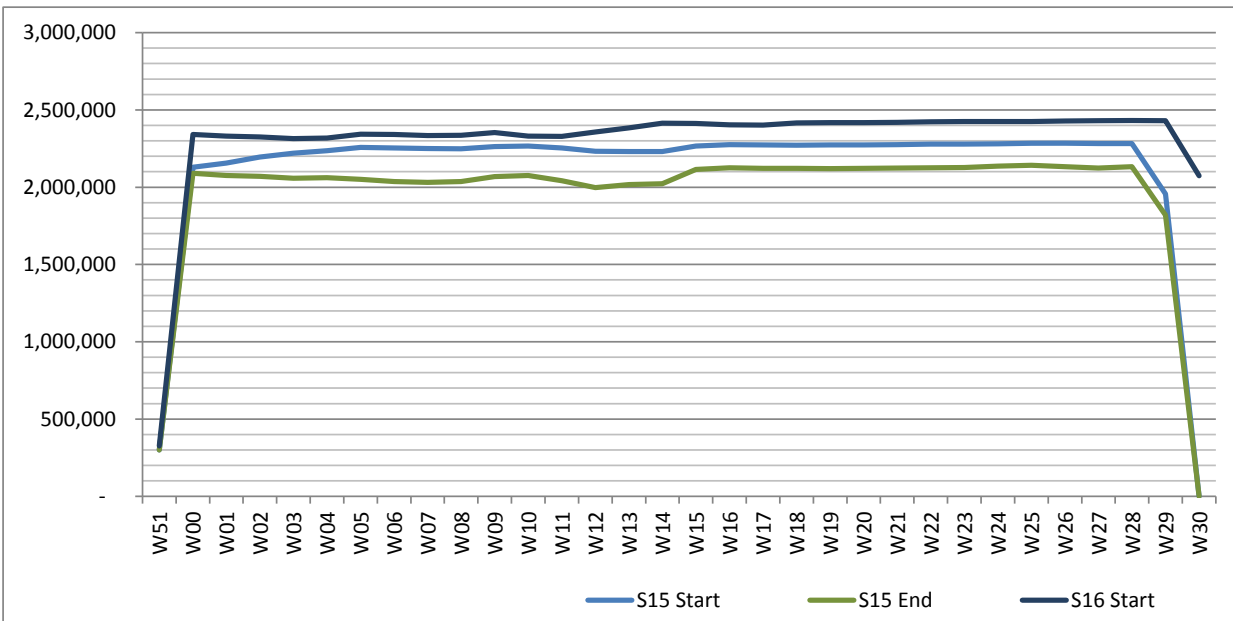
Full Season - Seasonality



Air Transport Movements by week of season



Air Transport Movement Seats by week of season



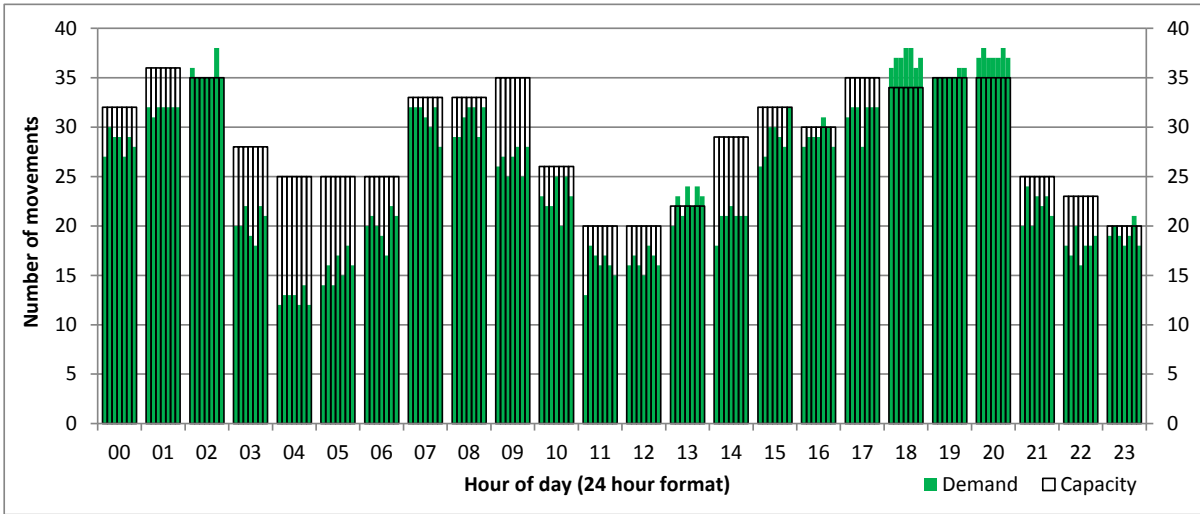
Peak Week - Hourly Runway Demand

Schedule: S16 Start



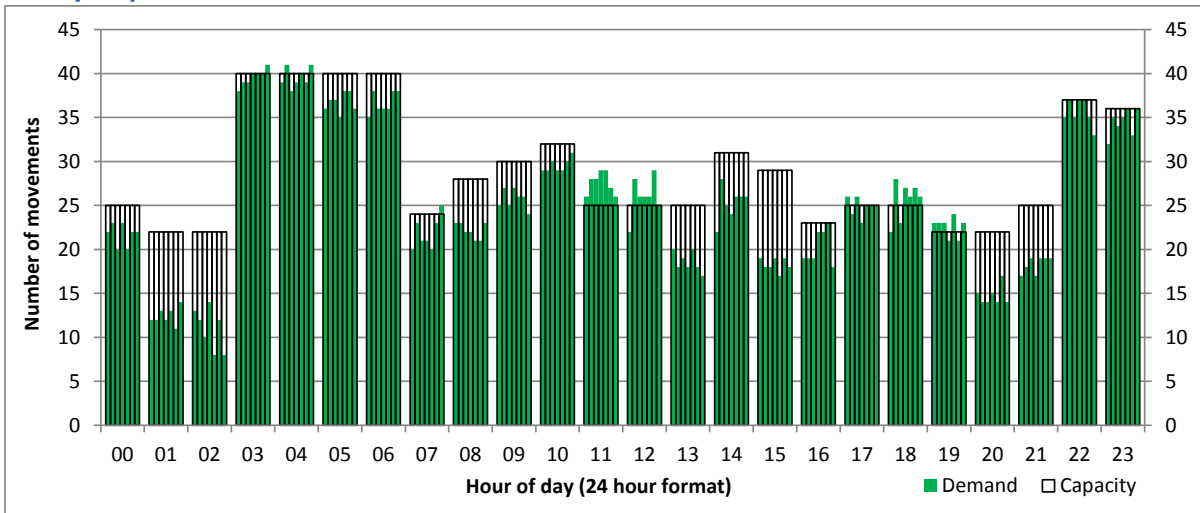
Hourly Arrival Demand

Time: UTC



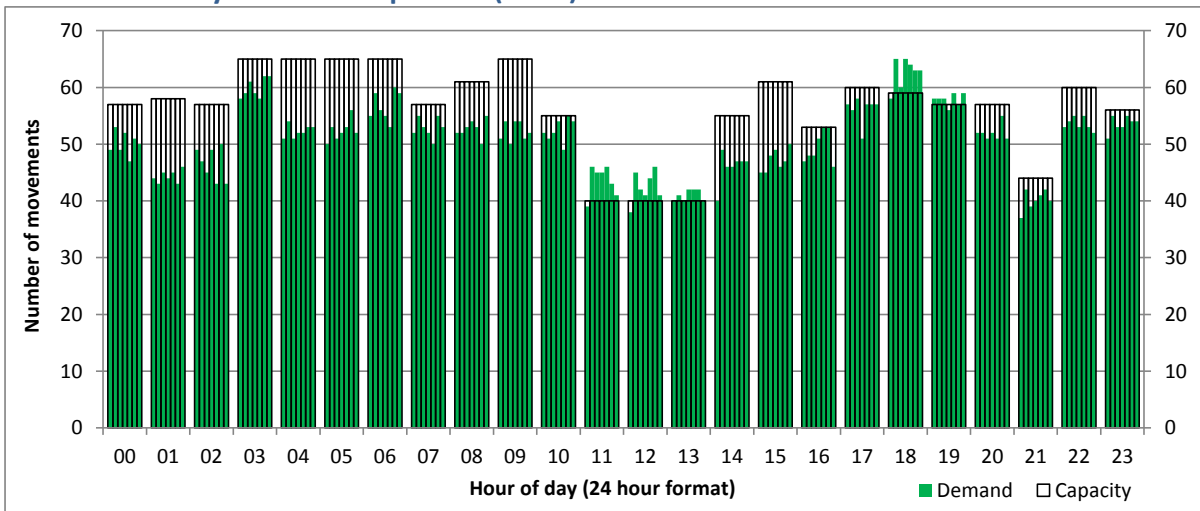
Hourly Departure Demand

Time: UTC



Combined Hourly Arrival & Departure (Total) Demand

Time: UTC



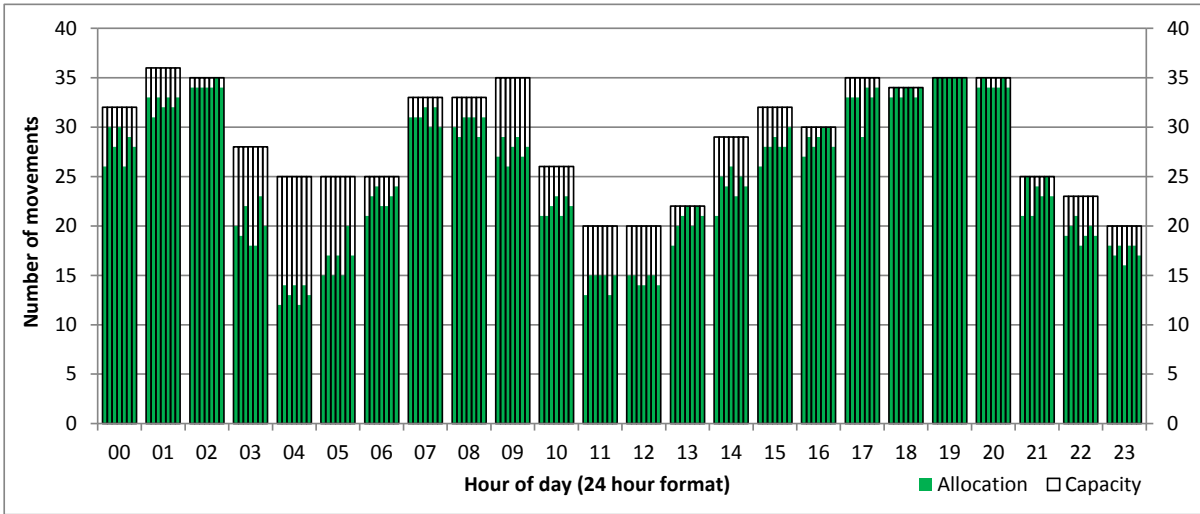
Peak Week - Hourly Runway Allocation

Schedule: S16 Start



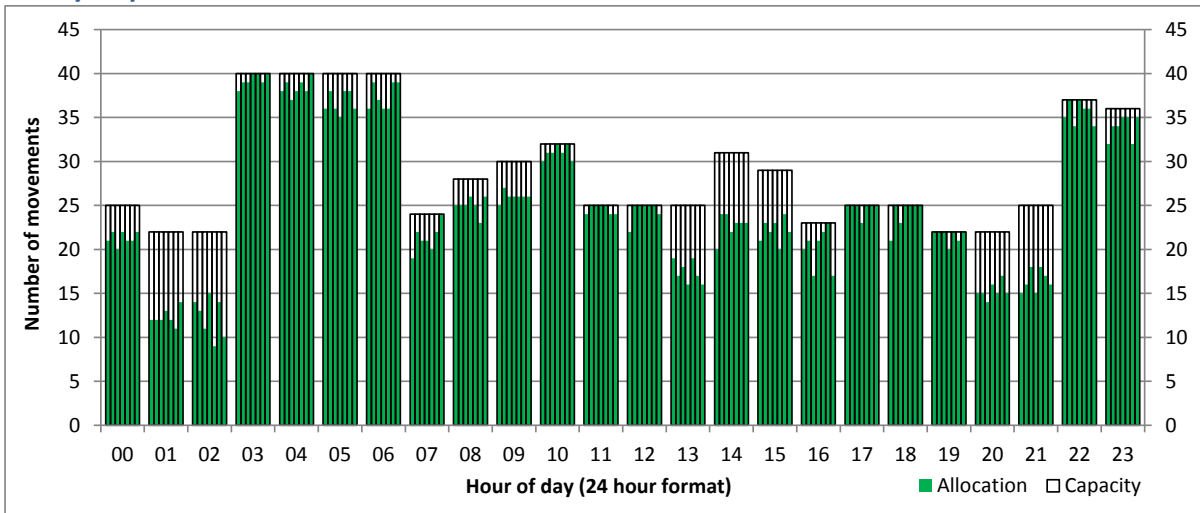
Hourly Arrival Allocation

Time: UTC



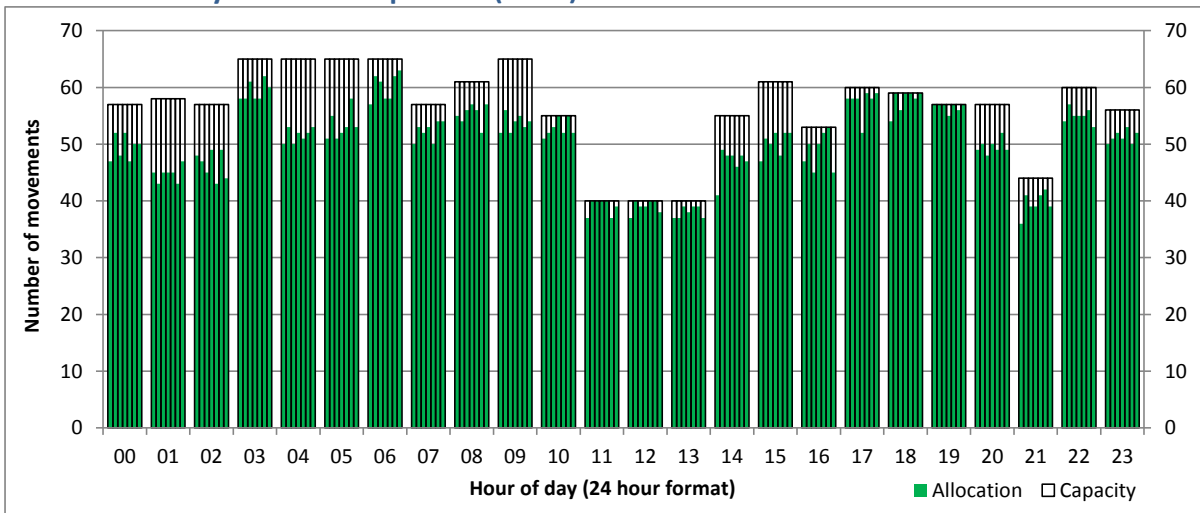
Hourly Departure Allocation

Time: UTC



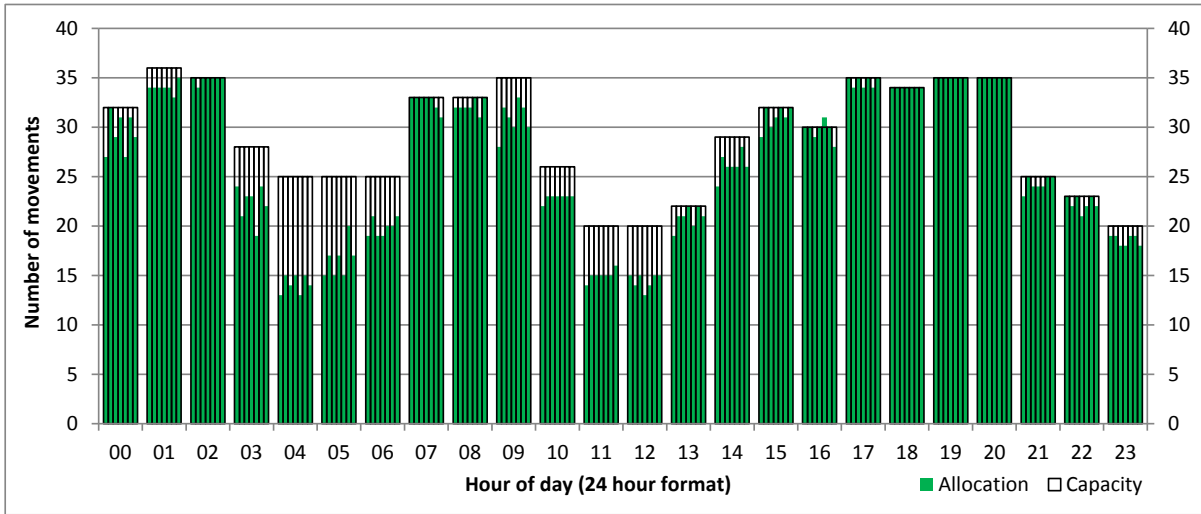
Combined Hourly Arrival & Departure (Total) Allocation

Time: UTC



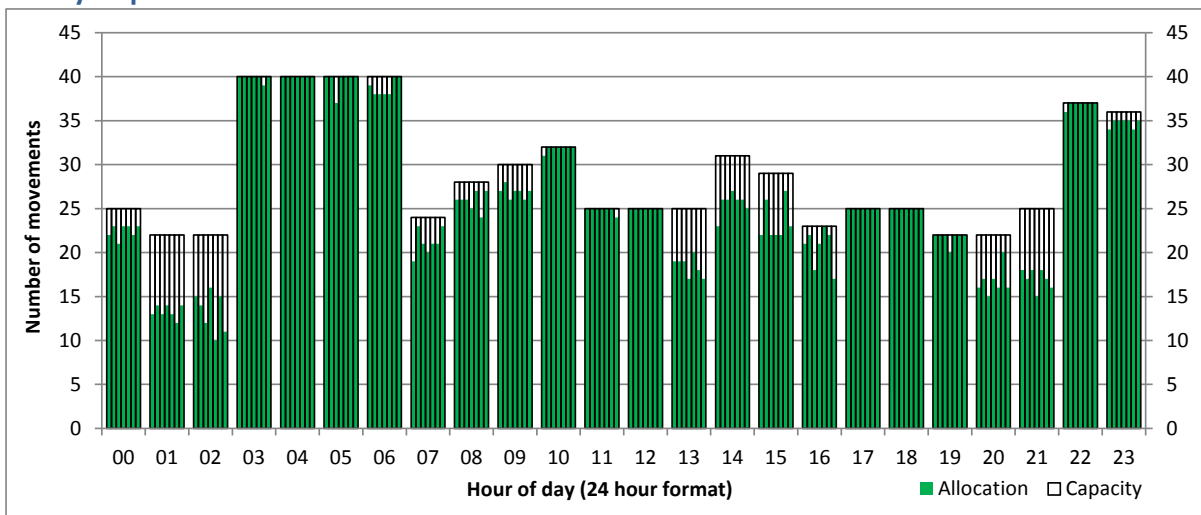
Hourly Arrival Allocation

Time: UTC



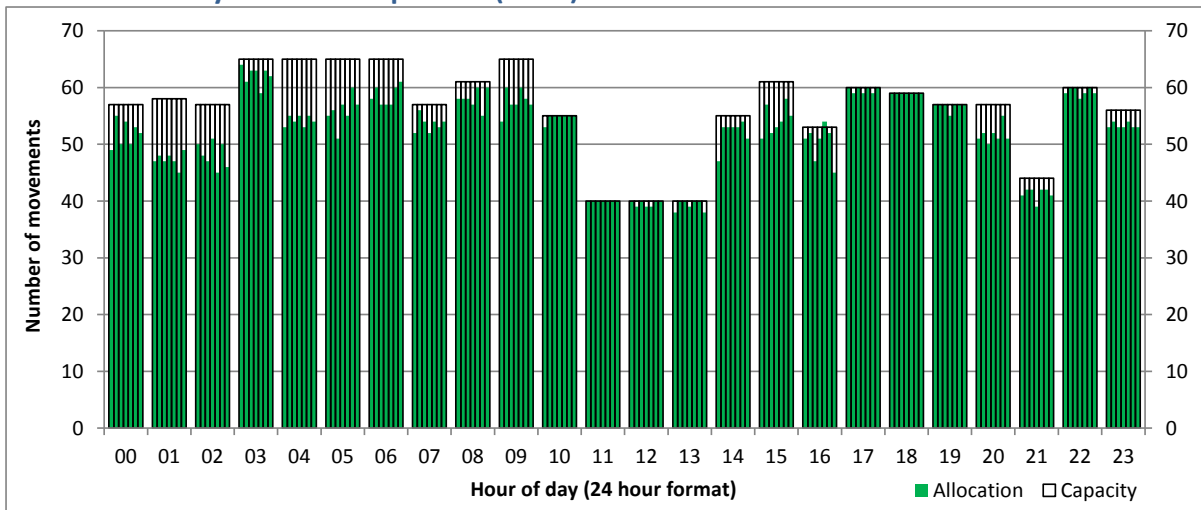
Hourly Departure Allocation

Time: UTC



Combined Hourly Arrival & Departure (Total) Allocation

Time: UTC

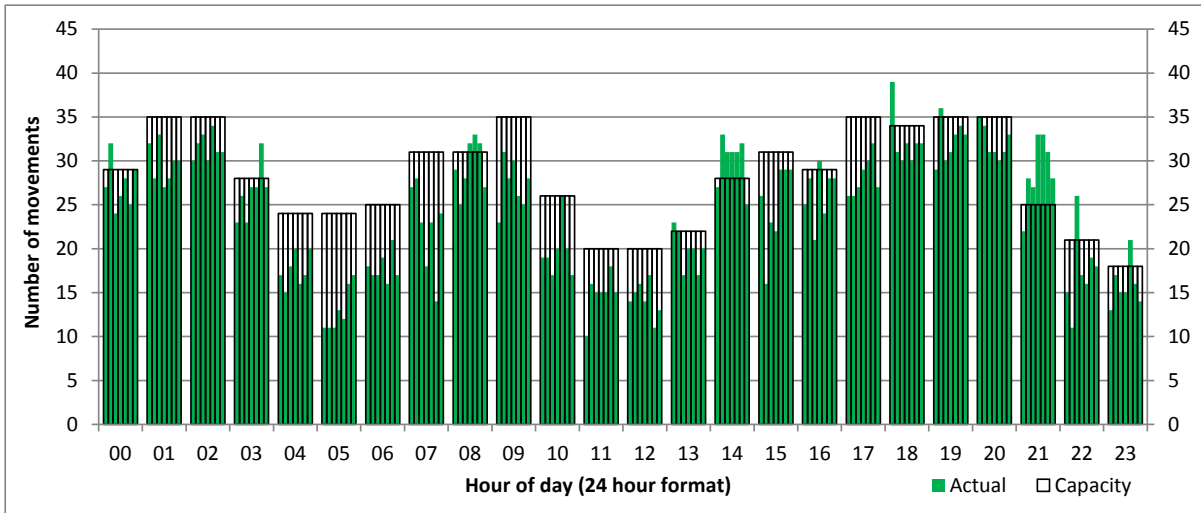


Actual Runway Utilisation (19 - 25 March 2016) - W15
 (Actual Movements vs. Capacity)



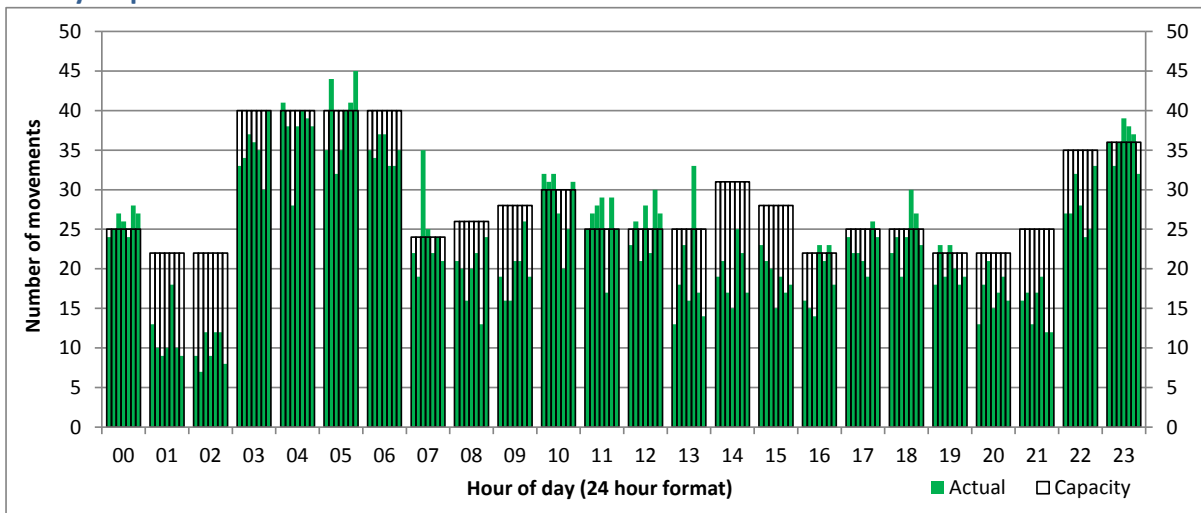
Hourly Arrival

Time: UTC



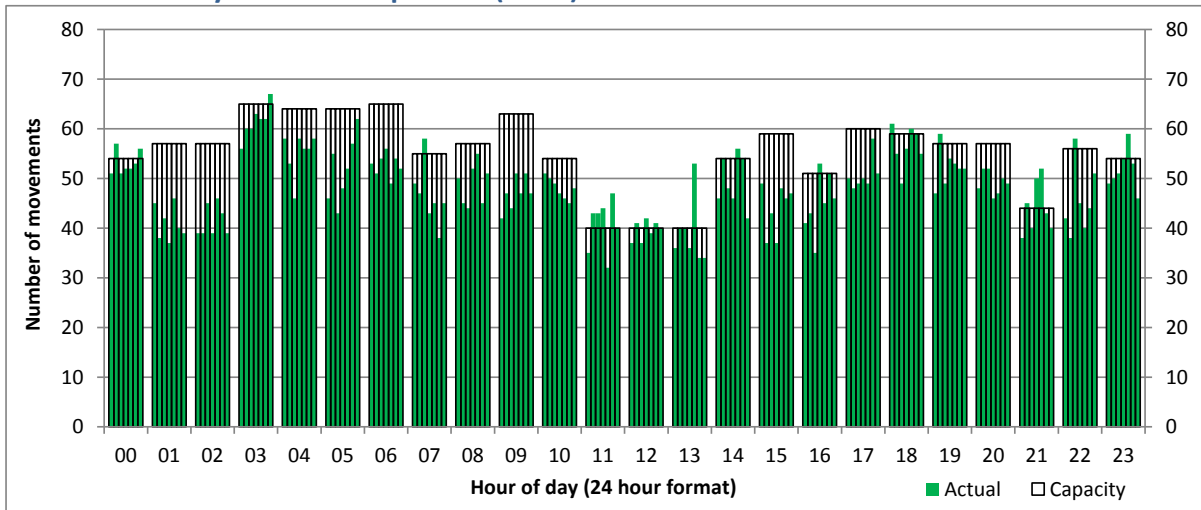
Hourly Departure

Time: UTC



Combined Hourly Arrival & Departure (Total)

Time: UTC



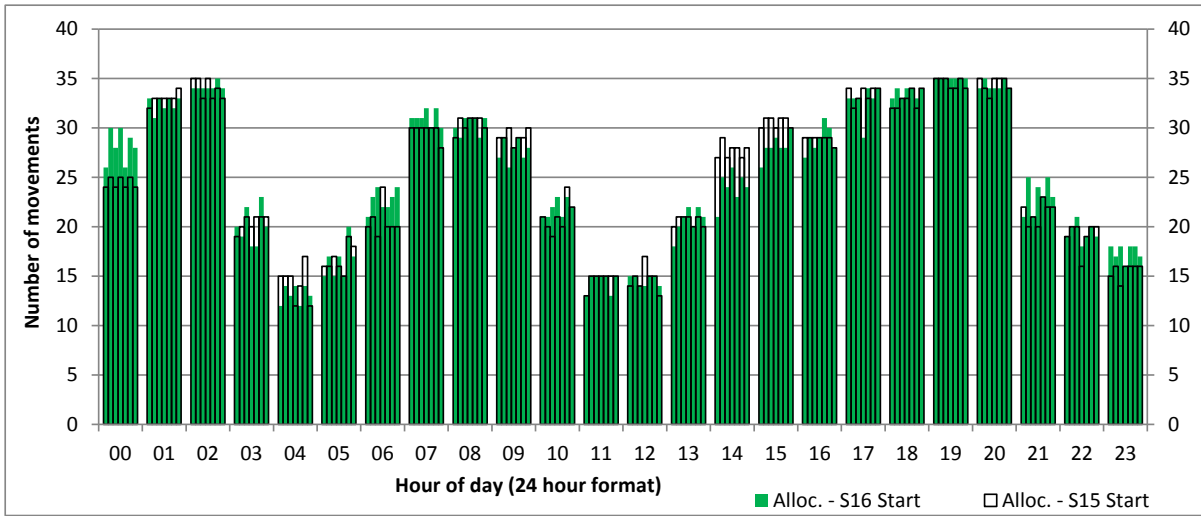
Peak Week - Runway Allocation Comparison

Comparison of S16 Start vs. S15 Start



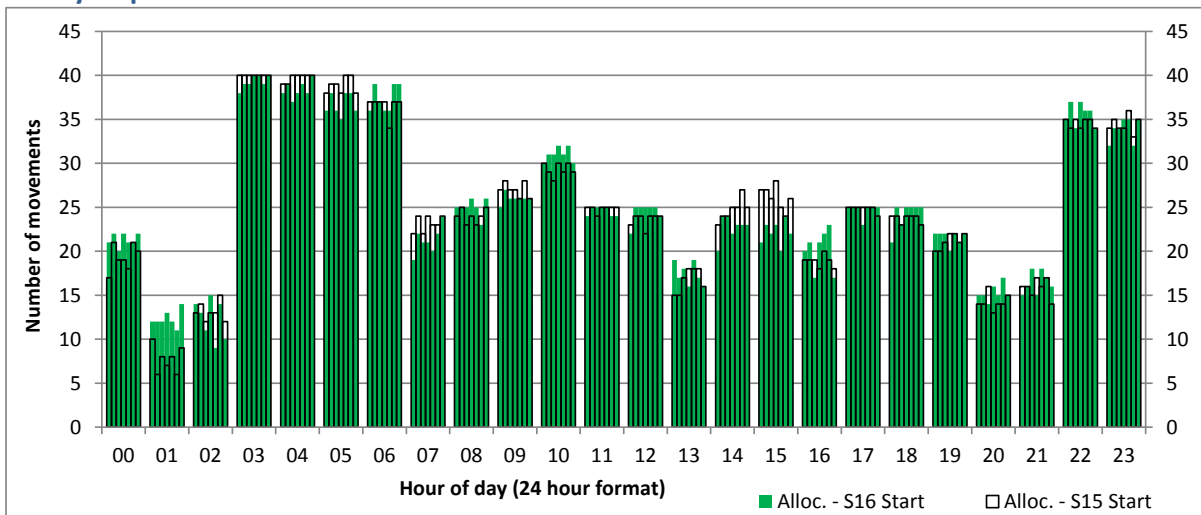
Hourly Arrival Allocation

Time: UTC



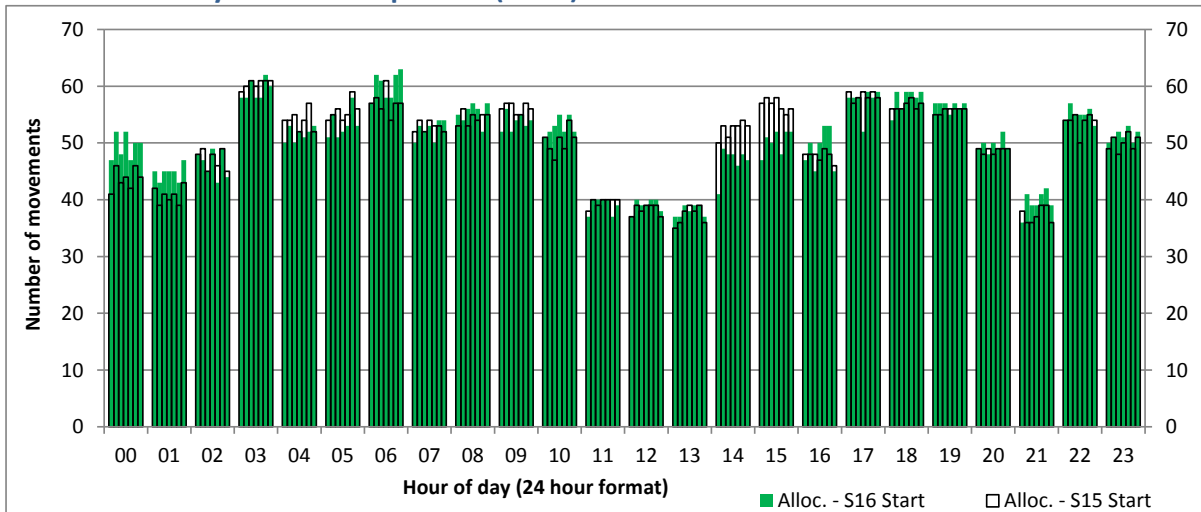
Hourly Departure Allocation

Time: UTC



Combined Hourly Arrival & Departure (Total) Allocation

Time: UTC



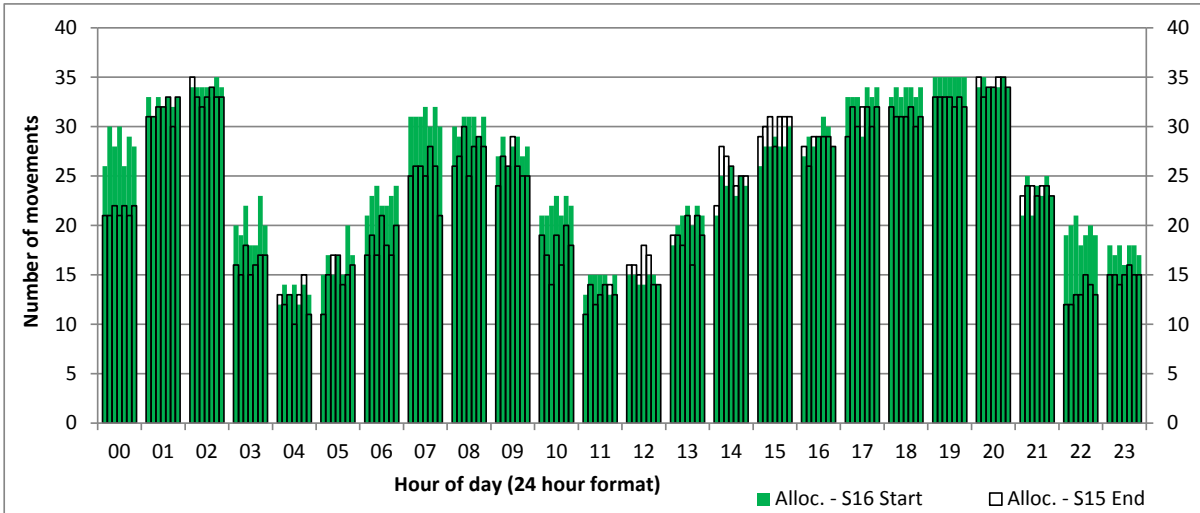
Peak Week - Runway Allocation Comparison

Comparison of S16 Start vs. S15 End



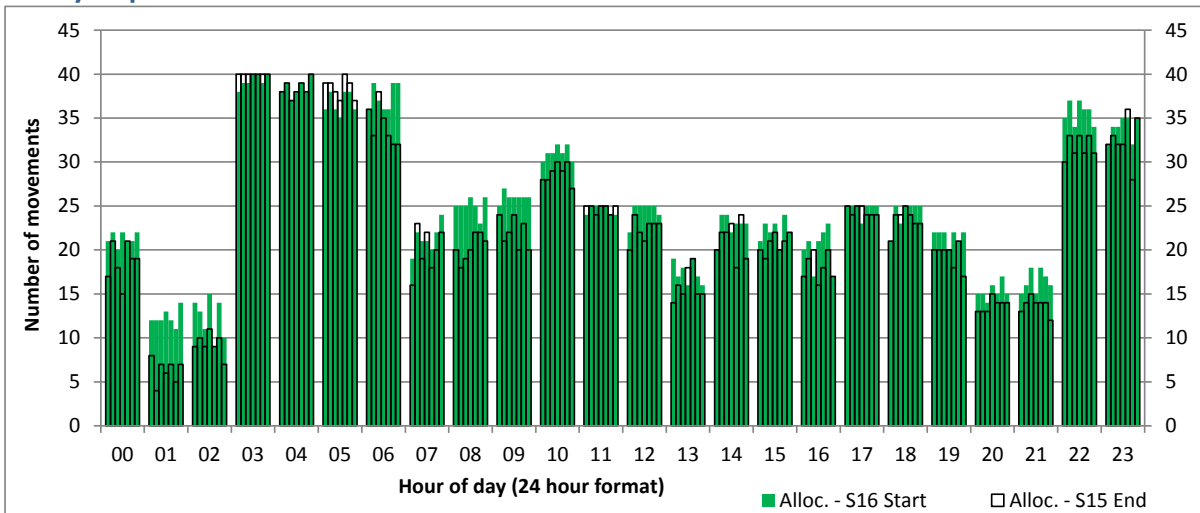
Hourly Arrival Allocation

Time: UTC



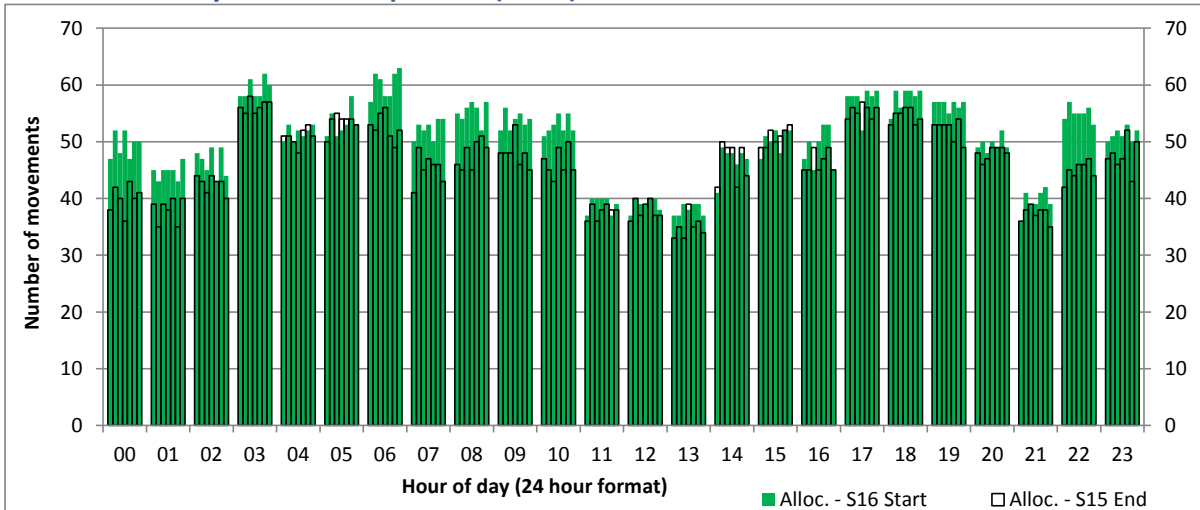
Hourly Departure Allocation

Time: UTC



Combined Hourly Arrival & Departure (Total) Allocation

Time: UTC



Peak Week - Movements Histogram

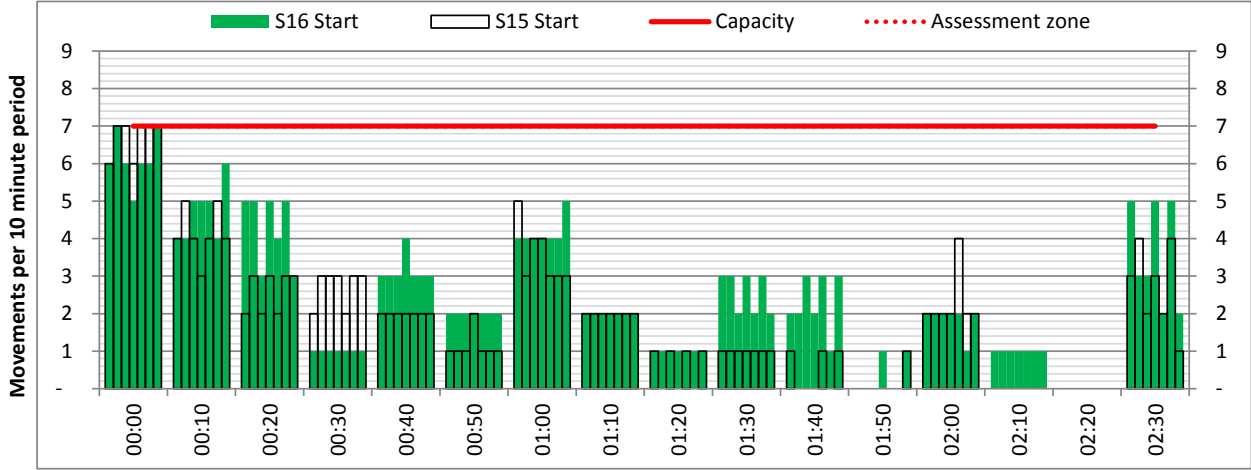
DEPARTURE - 10 minute count rolling every 10 mins (R10)



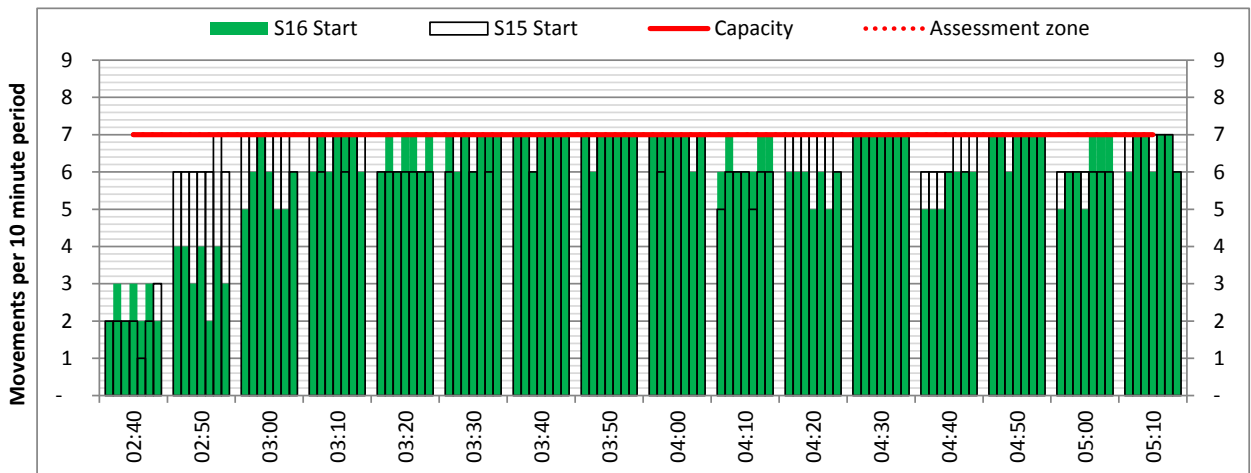
Terminals: All Terminals

Operators: All Operators

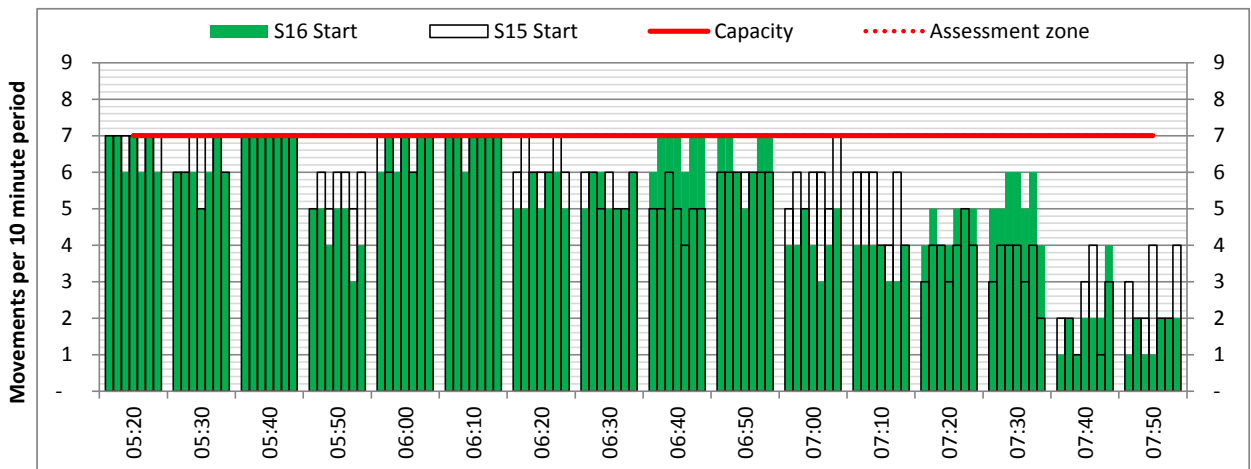
Days: 1234567



Start of count period - Time: UTC



Start of count period - Time: UTC



Start of count period - Time: UTC

Peak Week - Movements Histogram

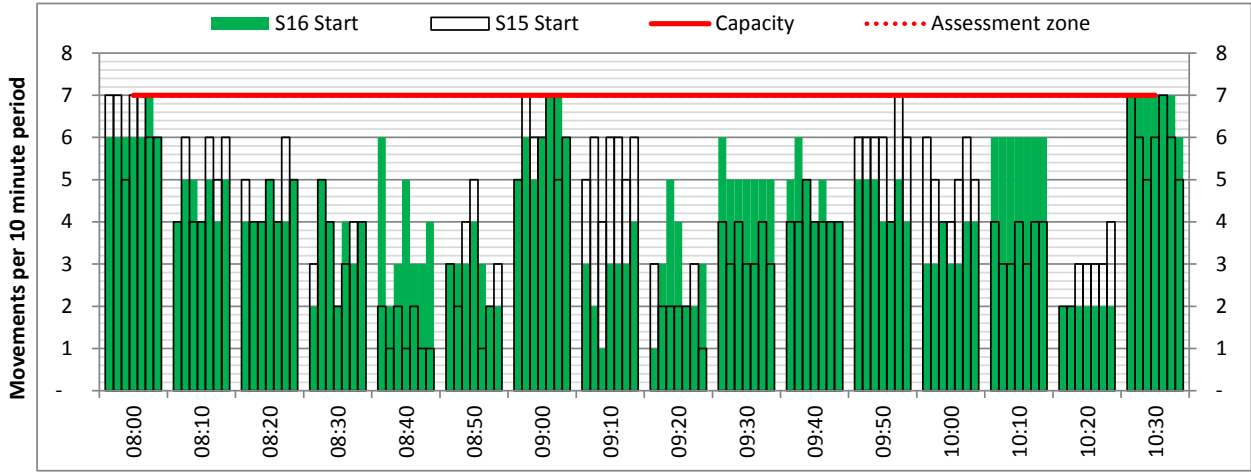
DEPARTURE - 10 minute count rolling every 10 mins (R10)



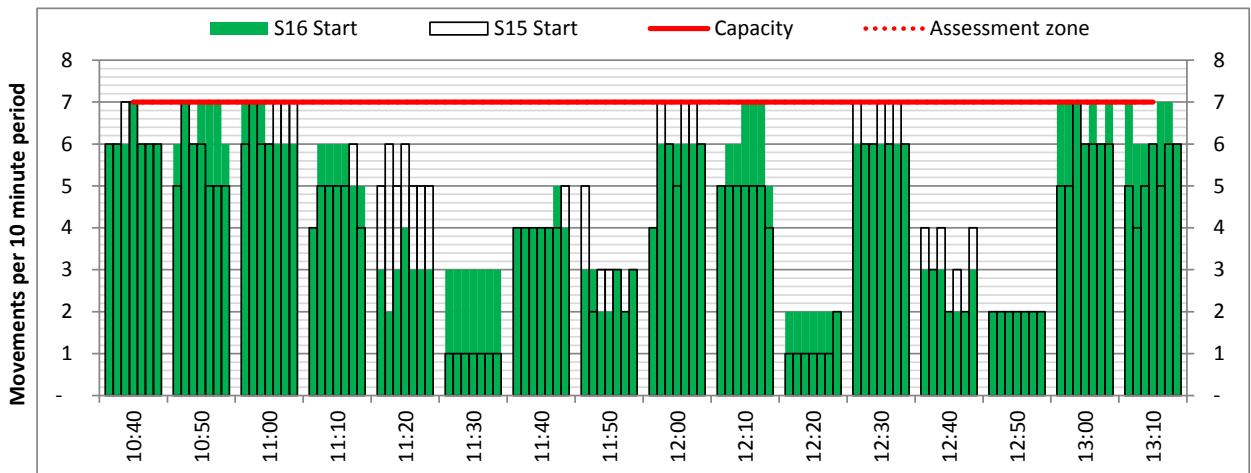
Terminals: All Terminals

Operators: All Operators

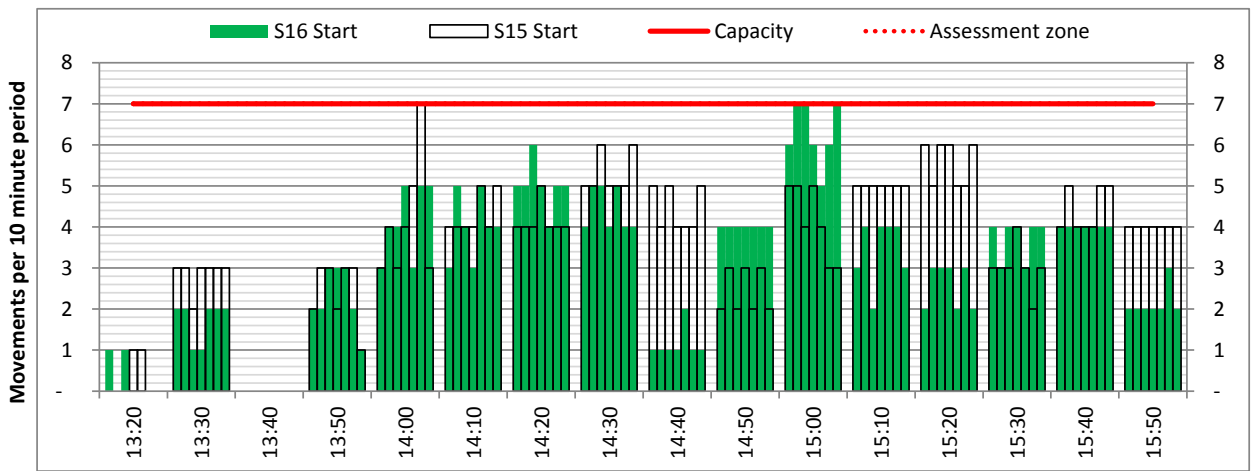
Days: 1234567



Start of count period - Time: UTC



Start of count period - Time: UTC



Start of count period - Time: UTC

Peak Week - Movements Histogram

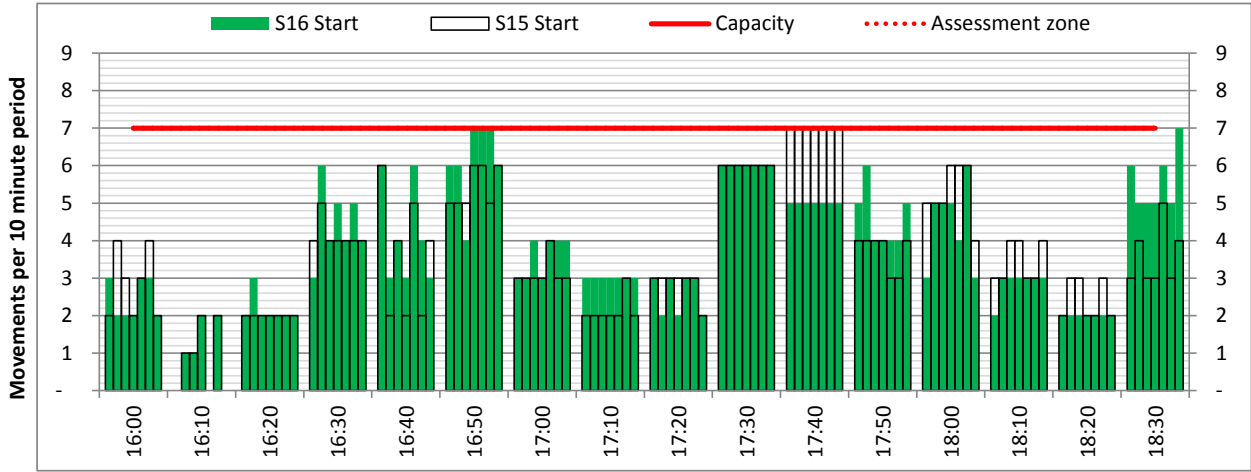
DEPARTURE - 10 minute count rolling every 10 mins (R10)



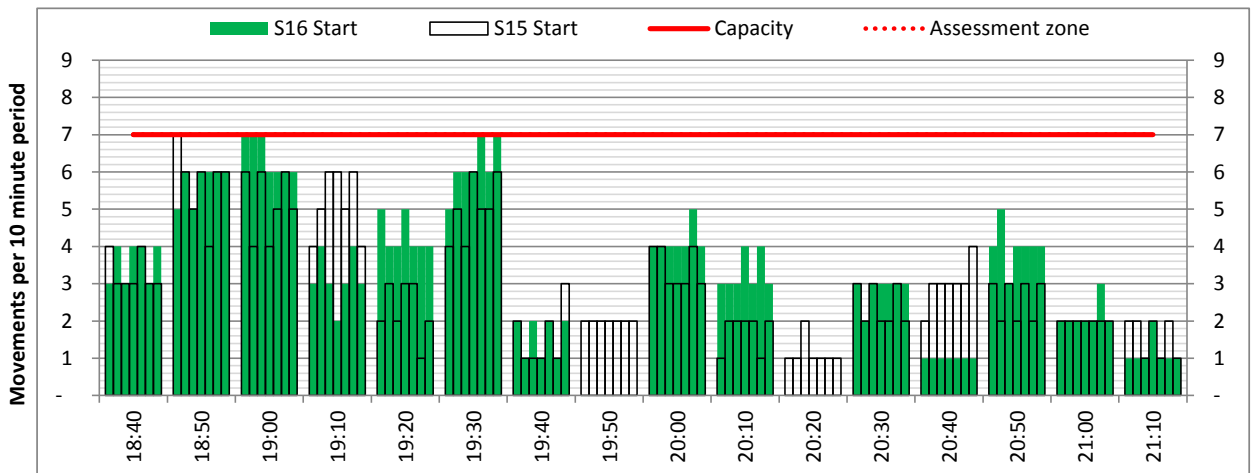
Terminals: All Terminals

Operators: All Operators

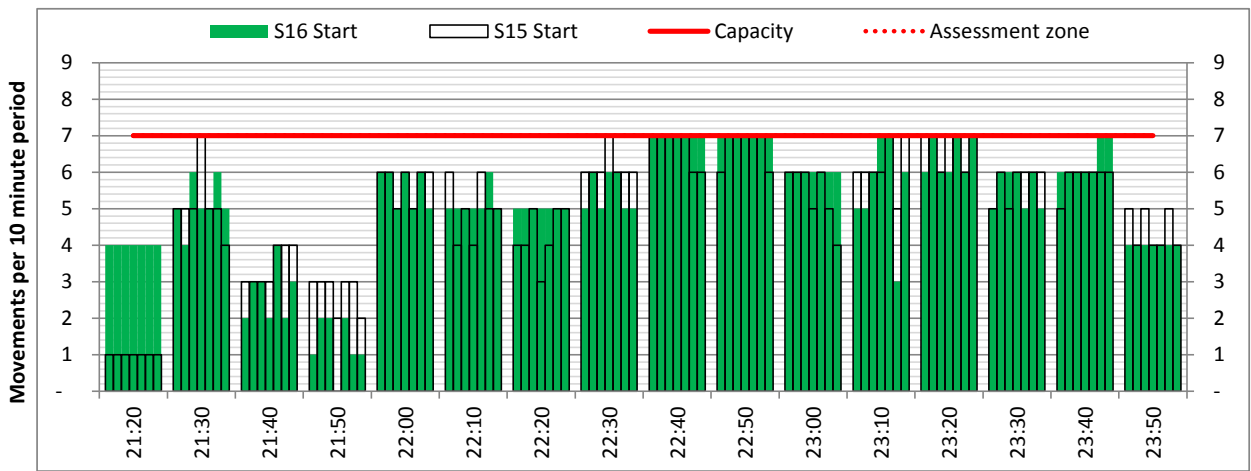
Days: 1234567



Start of count period - Time: UTC



Start of count period - Time: UTC



Start of count period - Time: UTC

Peak Week - Movements Histogram

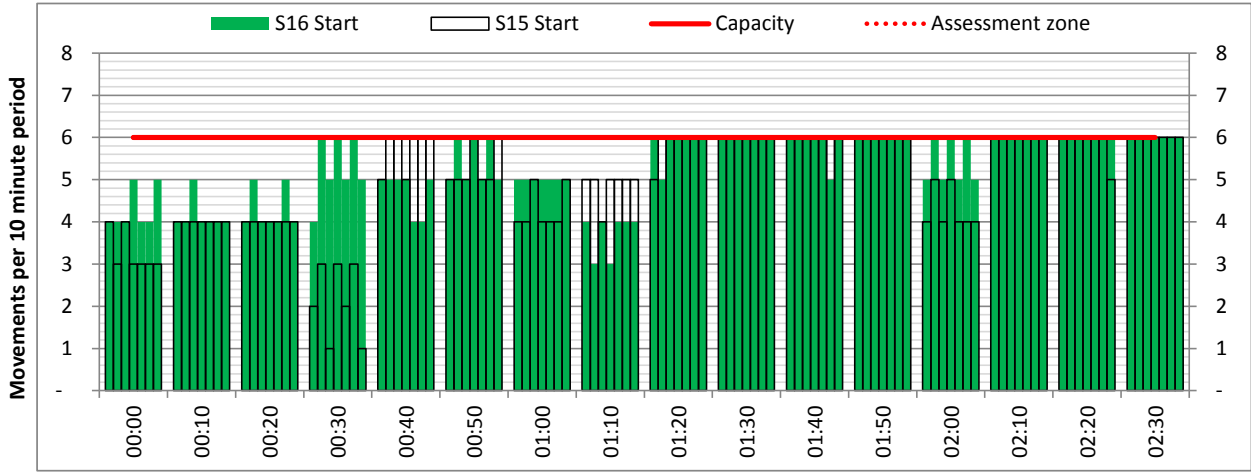
ARRIVAL - 10 minute count rolling every 10 mins (R10)



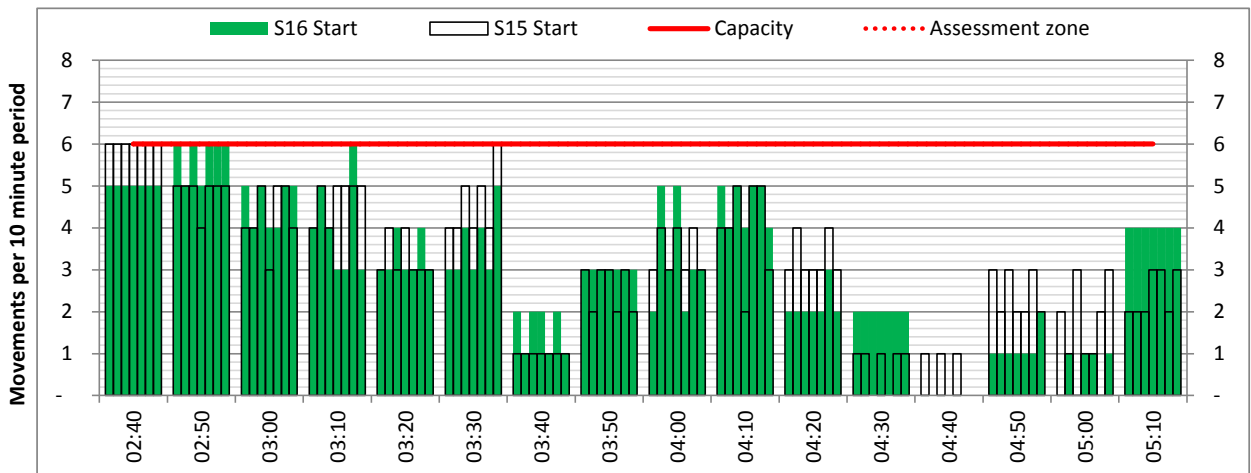
Terminals: All Terminals

Operators: All Operators

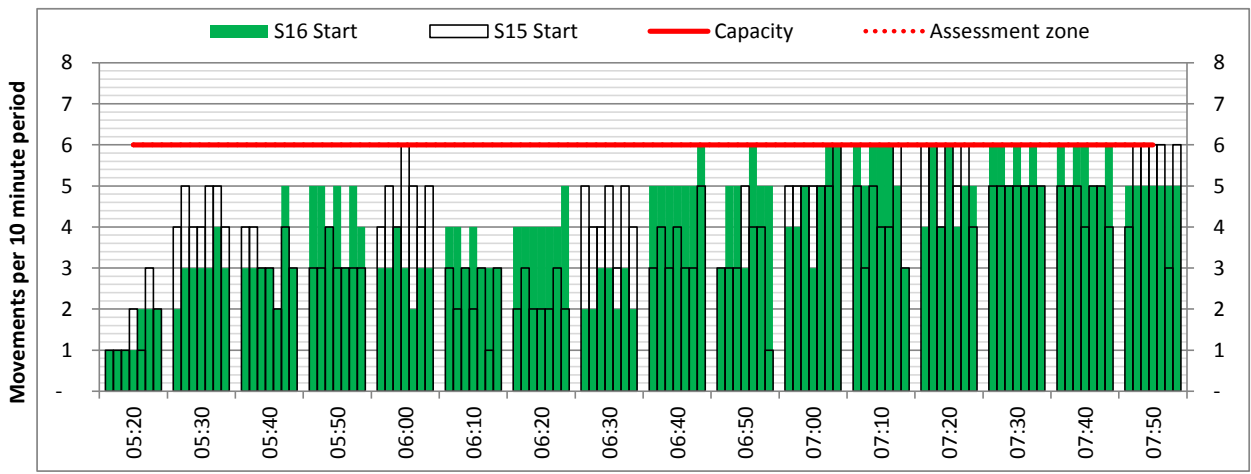
Days: 1234567



Start of count period - Time: UTC



Start of count period - Time: UTC



Start of count period - Time: UTC

Peak Week - Movements Histogram

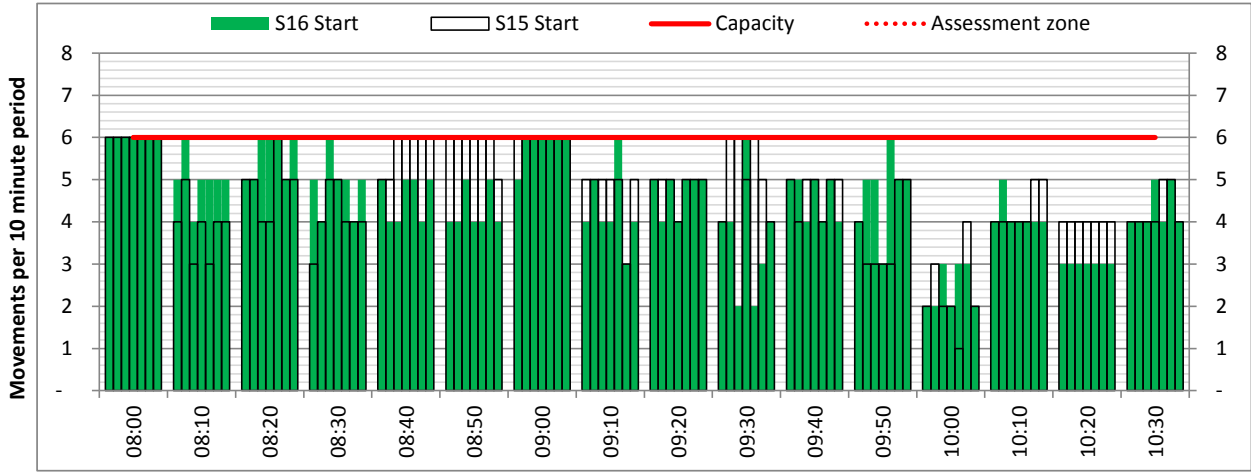
ARRIVAL - 10 minute count rolling every 10 mins (R10)



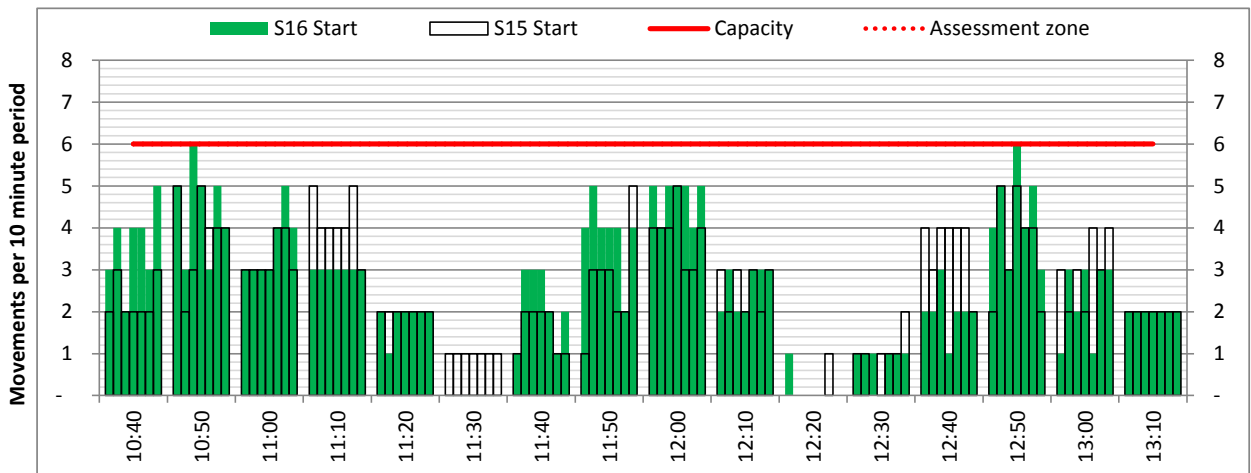
Terminals: All Terminals

Operators: All Operators

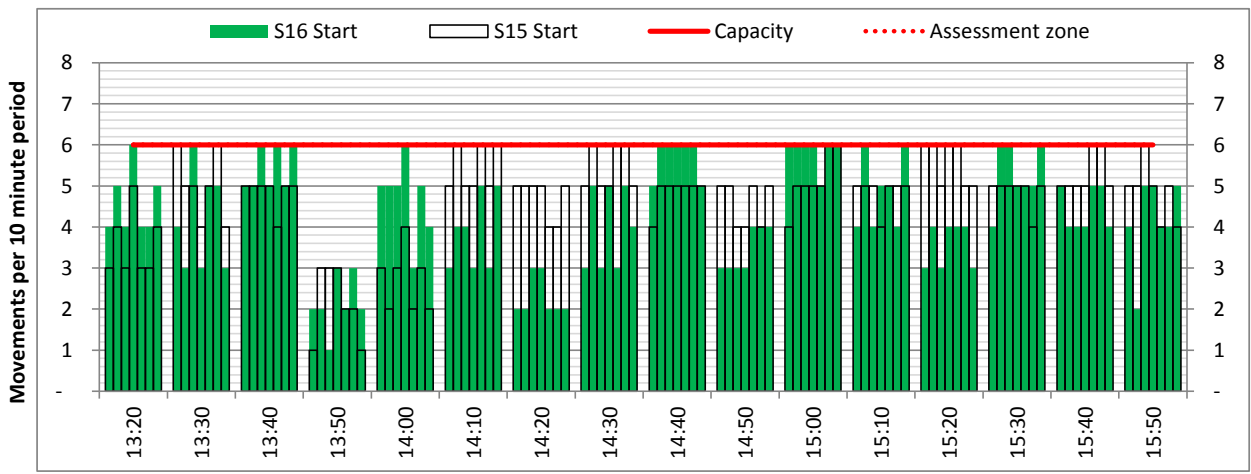
Days: 1234567



Start of count period - Time: UTC



Start of count period - Time: UTC



Start of count period - Time: UTC

Peak Week - Movements Histogram

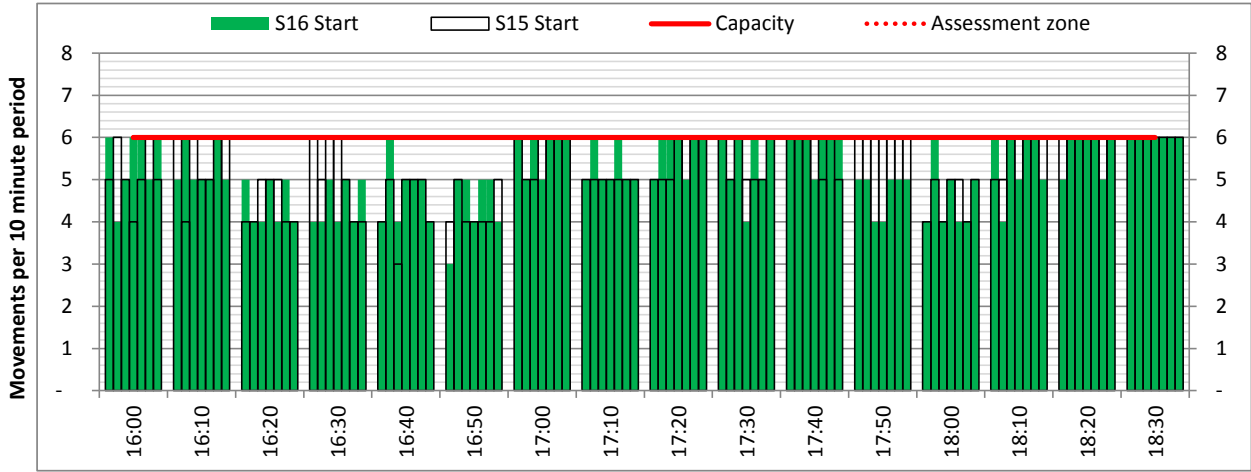
ARRIVAL - 10 minute count rolling every 10 mins (R10)



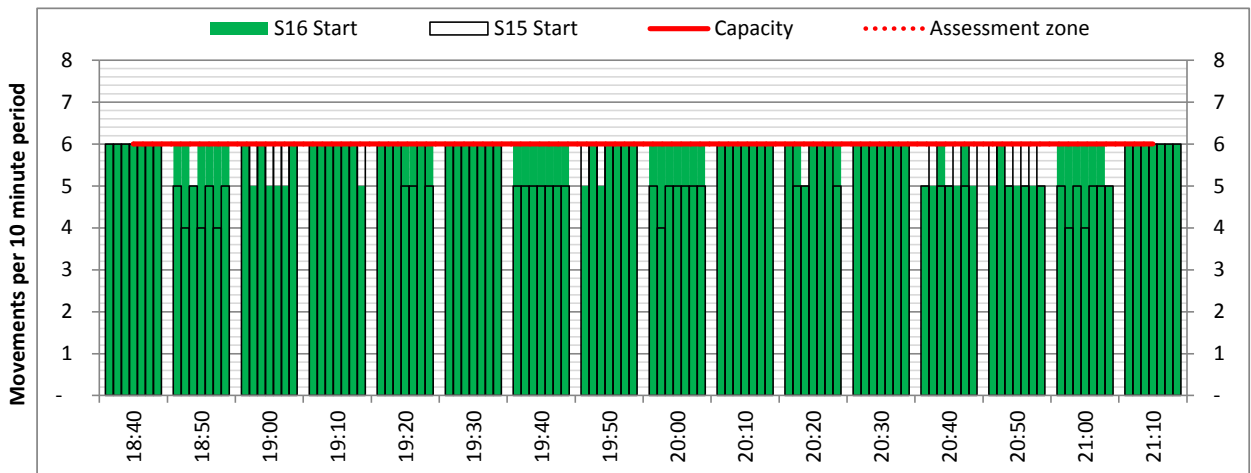
Terminals: All Terminals

Operators: All Operators

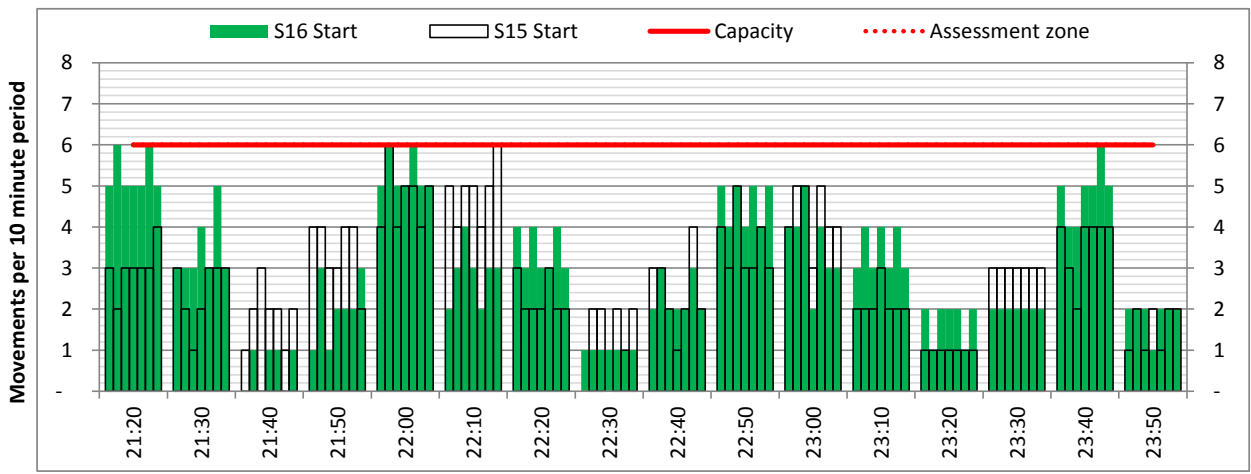
Days: 1234567



Start of count period - Time: UTC



Start of count period - Time: UTC



Start of count period - Time: UTC

Peak Week - Passengers Histogram

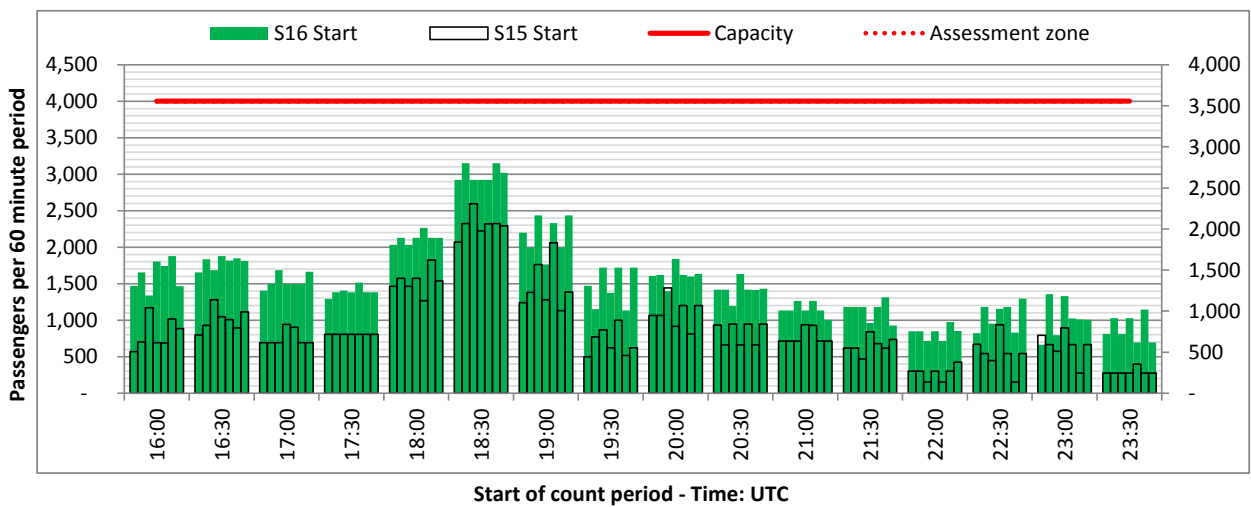
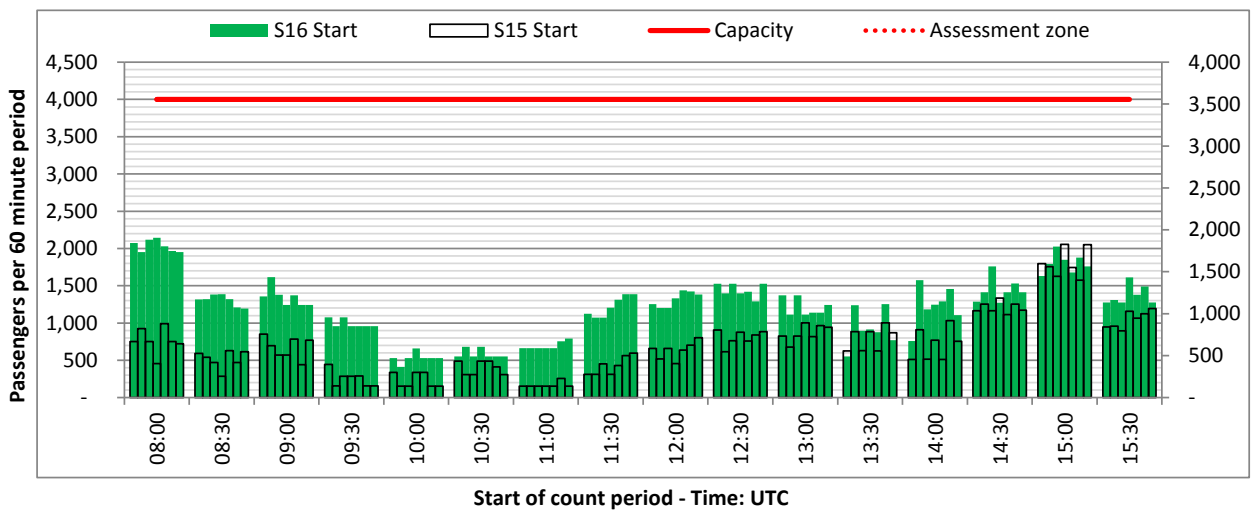
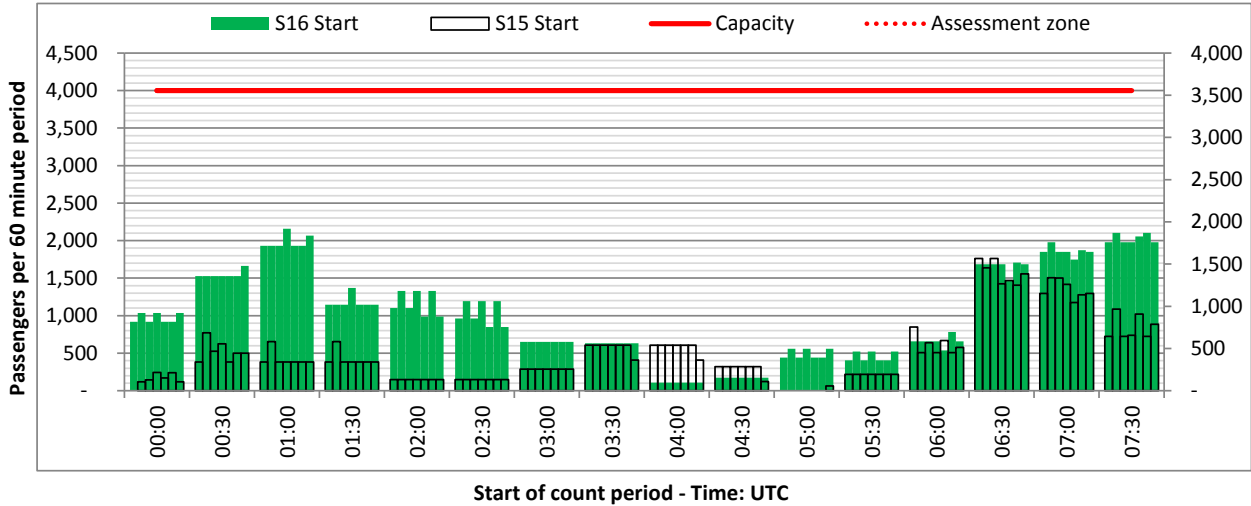
DEPARTURE - Terminal 1 (Start of 30 min period)



Terminals: 1I

Operators: All Operators

Days: 1234567



Peak Week - Passengers Histogram

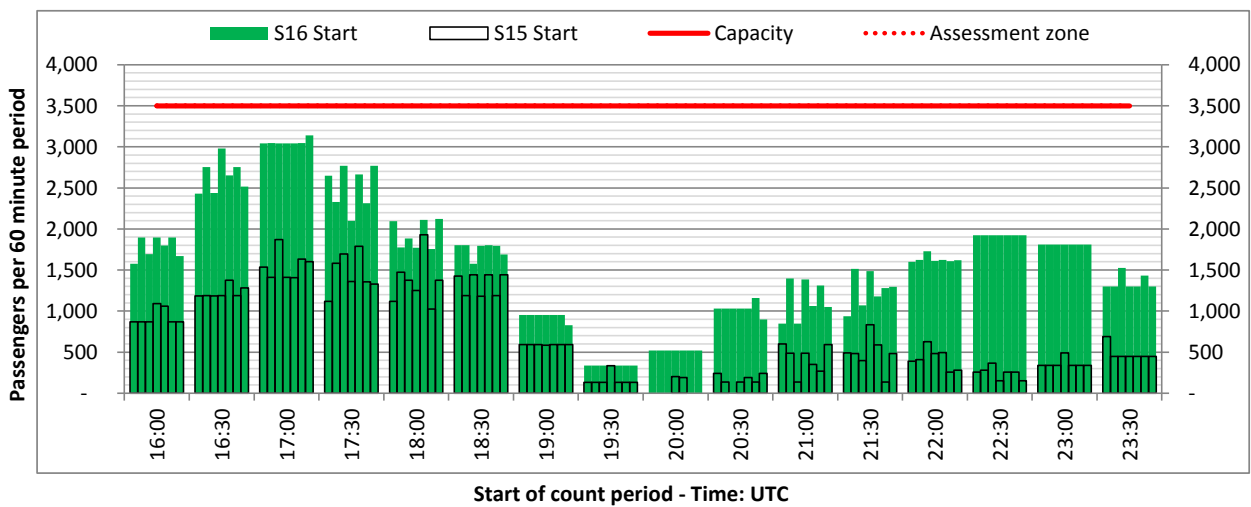
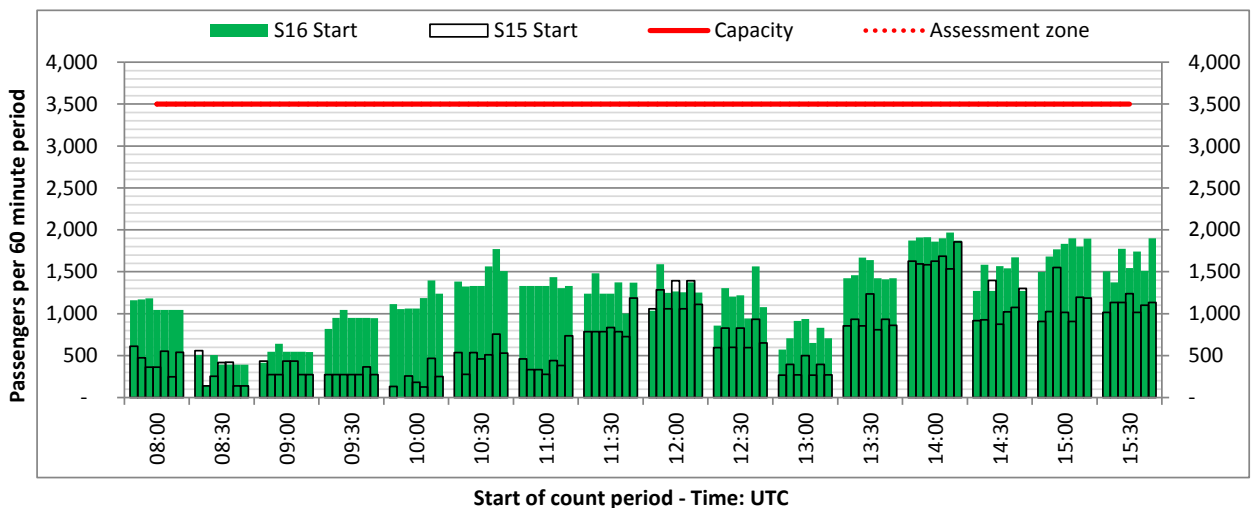
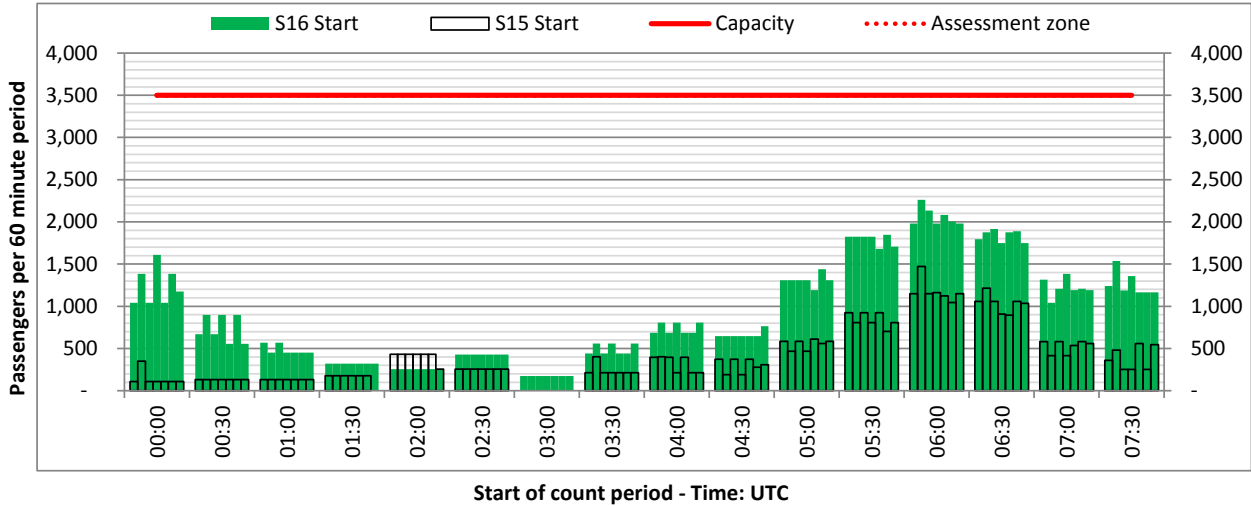
ARRIVAL - Terminal 1 (Start of 30 min period)



Terminals: 1I

Operators: All Operators

Days: 1234567



Peak Week - Passengers Histogram

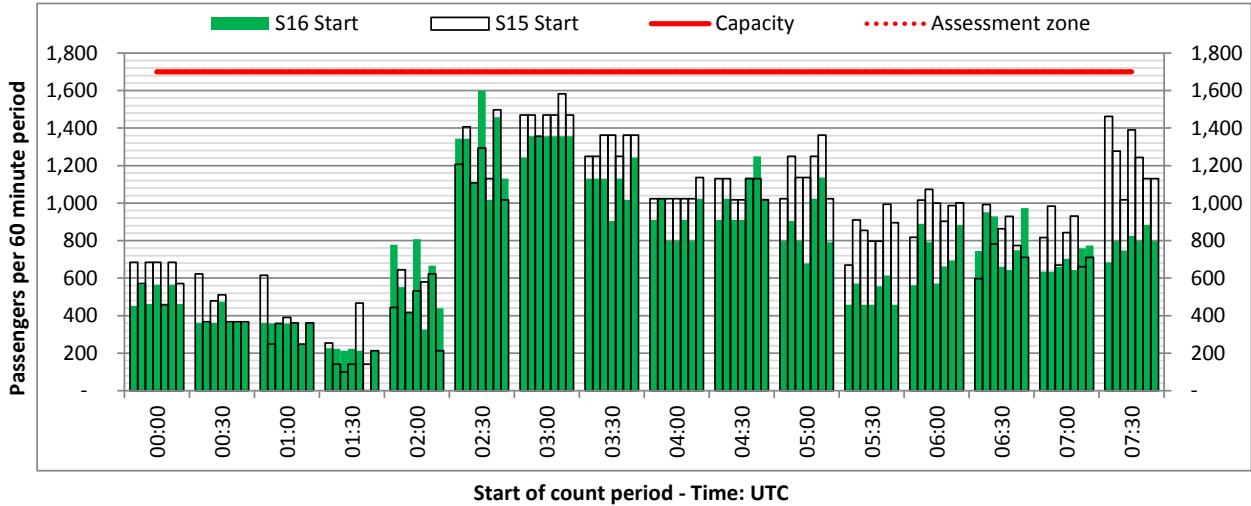
DEPARTURE -Terminal 2 (Start of 30 min period)



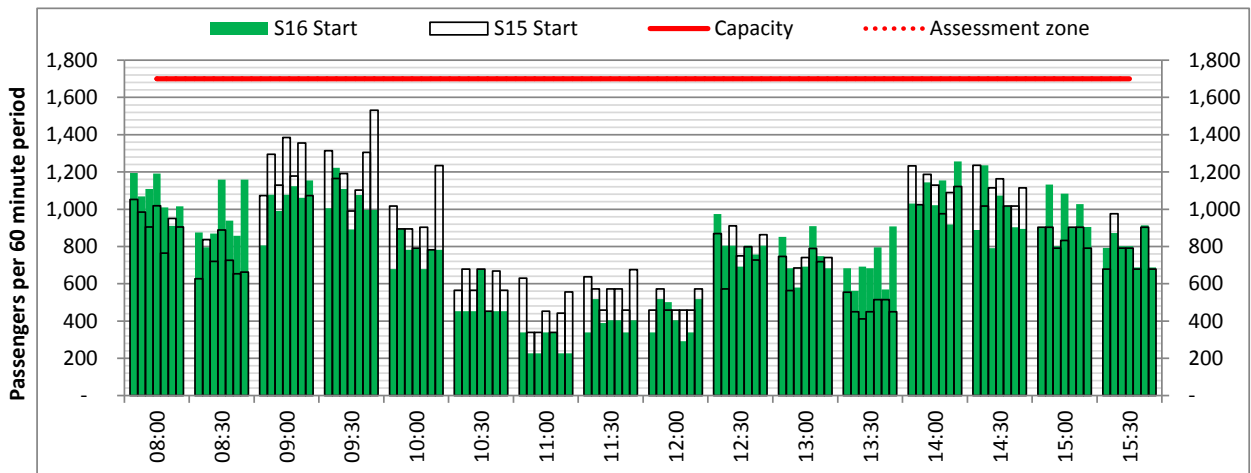
Terminals: 2I

Operators: All Operators

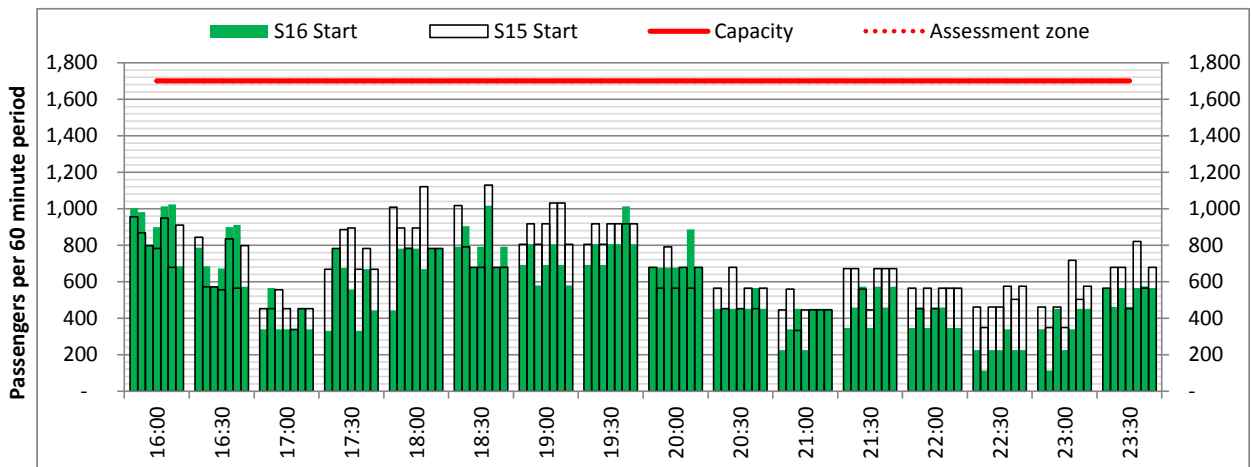
Days: 1234567



Start of count period - Time: UTC



Start of count period - Time: UTC



Start of count period - Time: UTC

Peak Week - Passengers Histogram

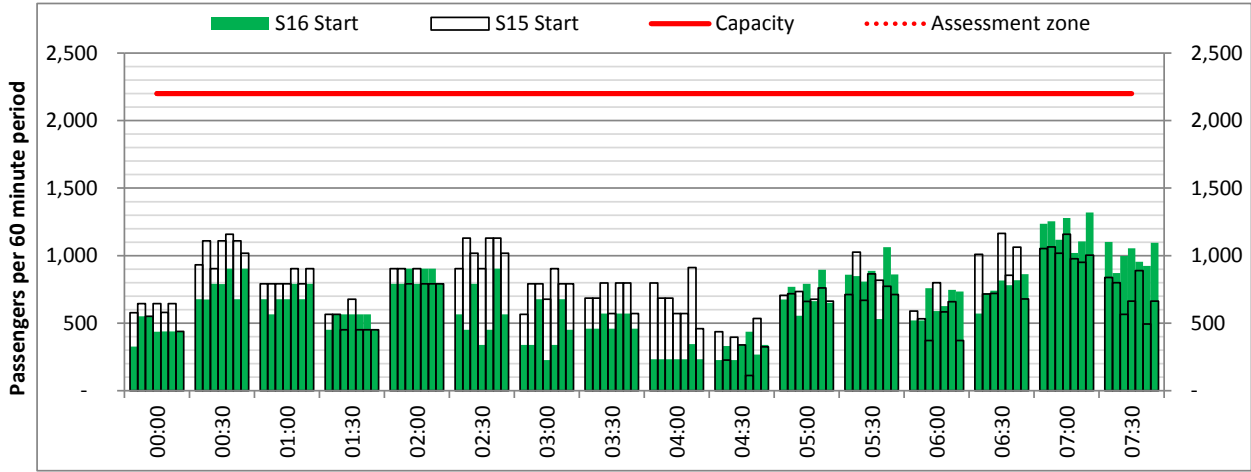
ARRIVAL - Terminal 2 (Start of 30 min period)



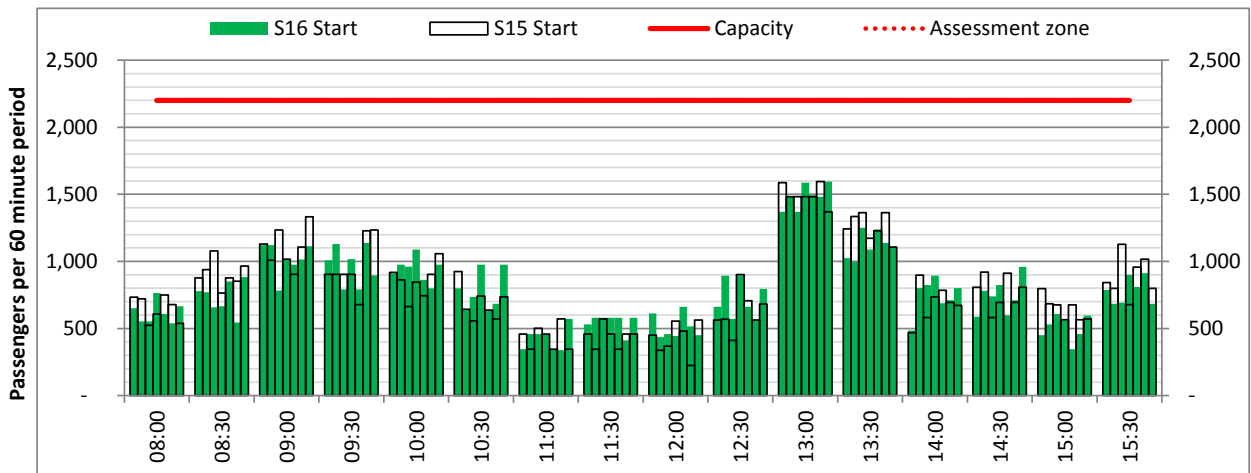
Terminals: 2I

Operators: All Operators

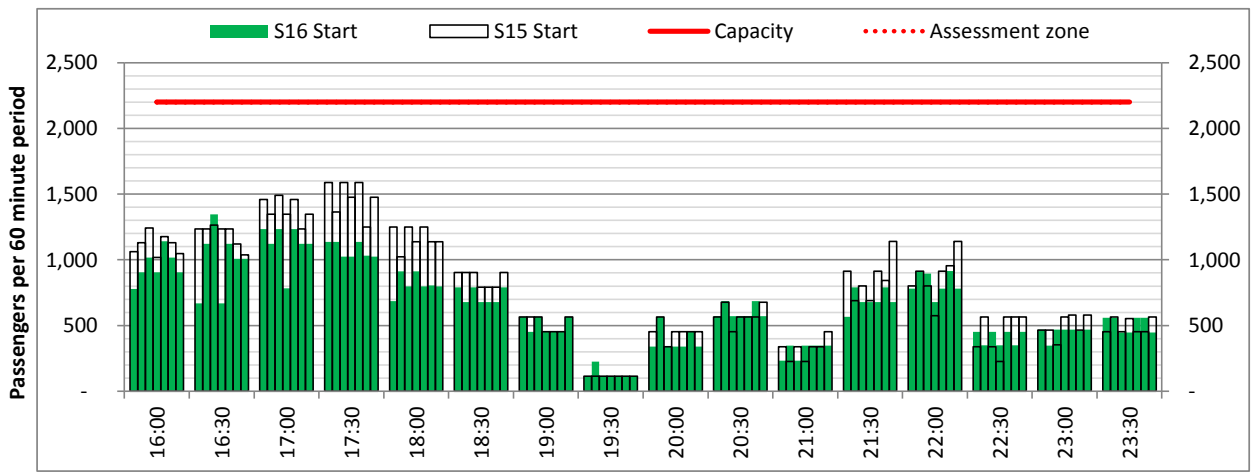
Days: 1234567



Start of count period - Time: UTC



Start of count period - Time: UTC



Start of count period - Time: UTC

Peak Week - Passengers Histogram

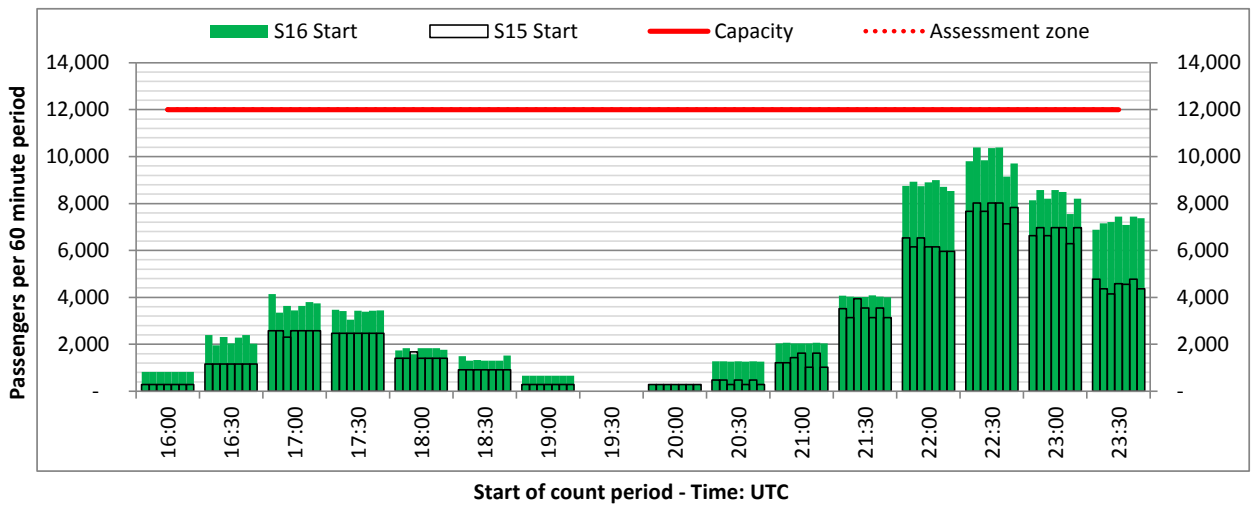
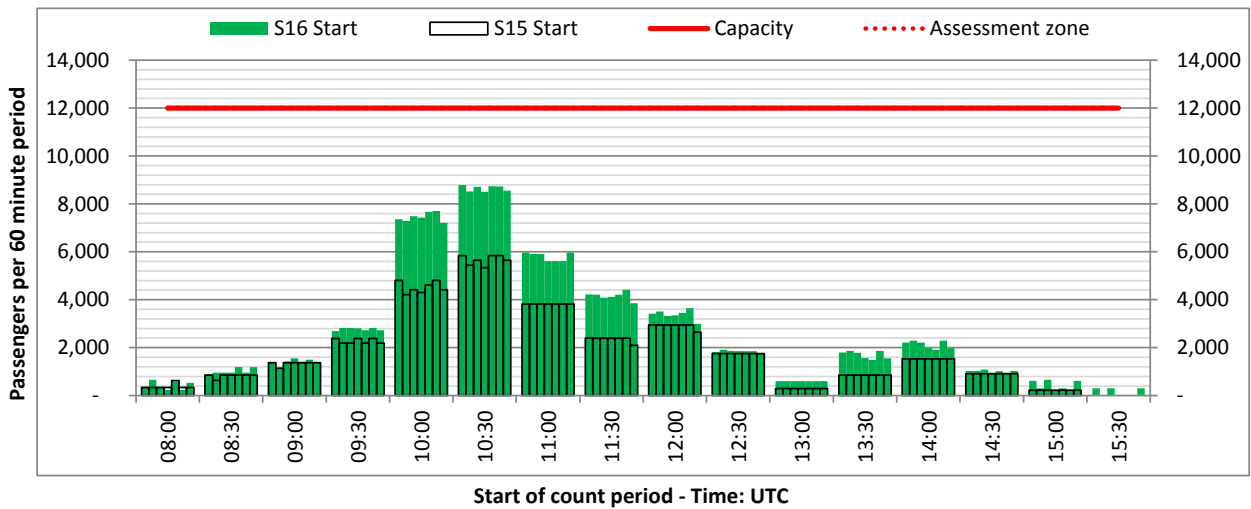
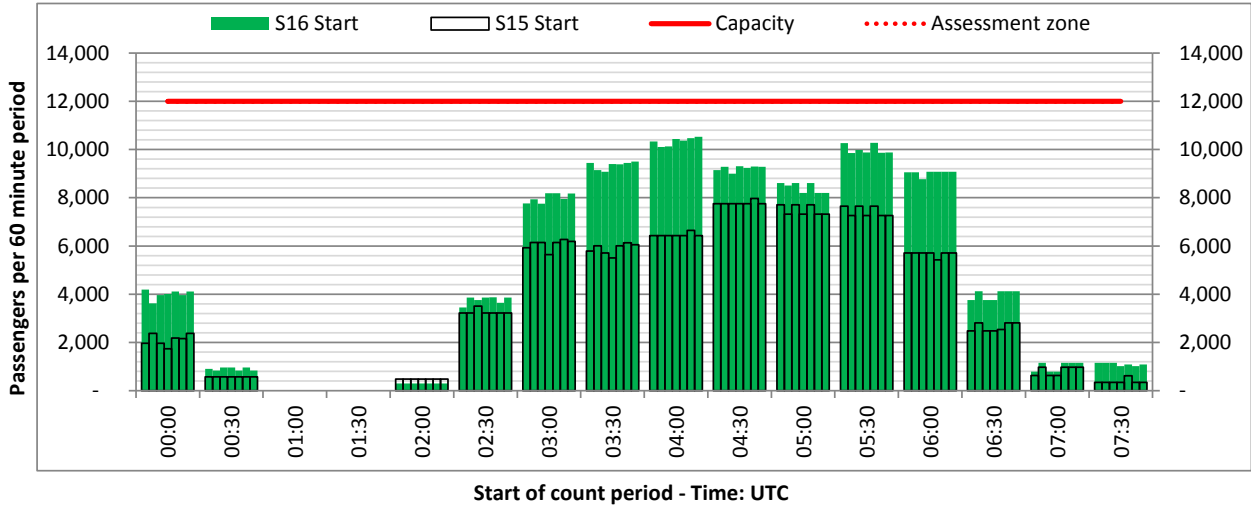
DEPARTURE - Terminal 3 (Start of 30 min period)



Terminals: 3I

Operators: All Operators

Days: 1234567



Peak Week - Passengers Histogram

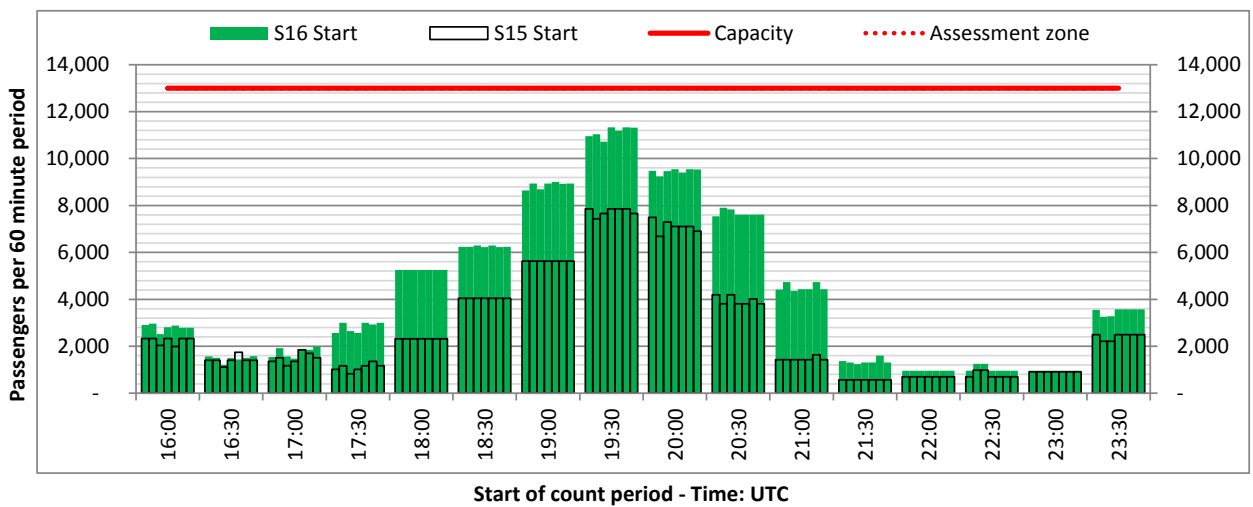
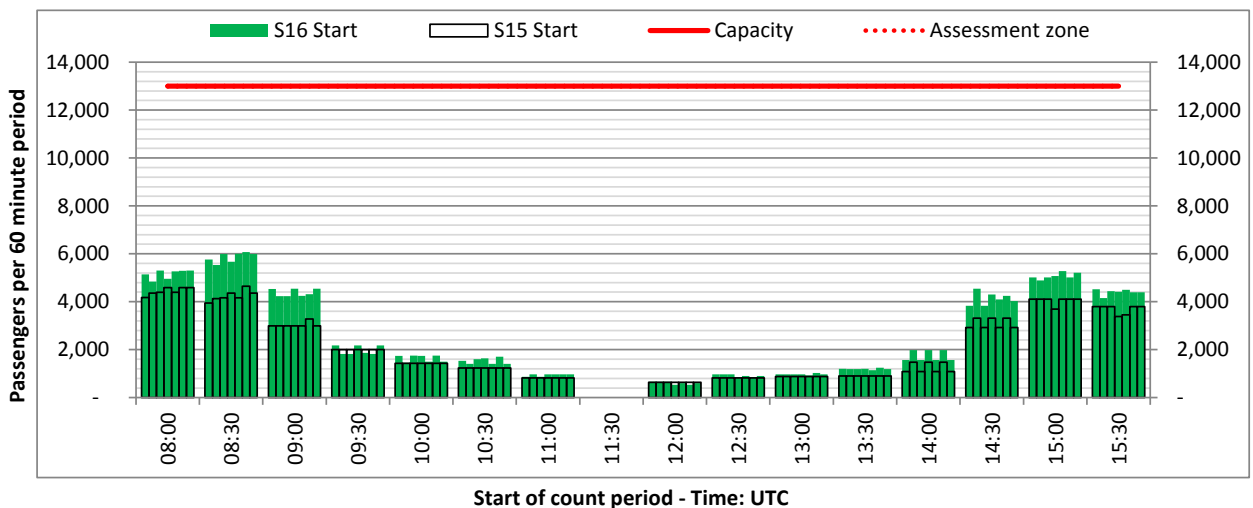
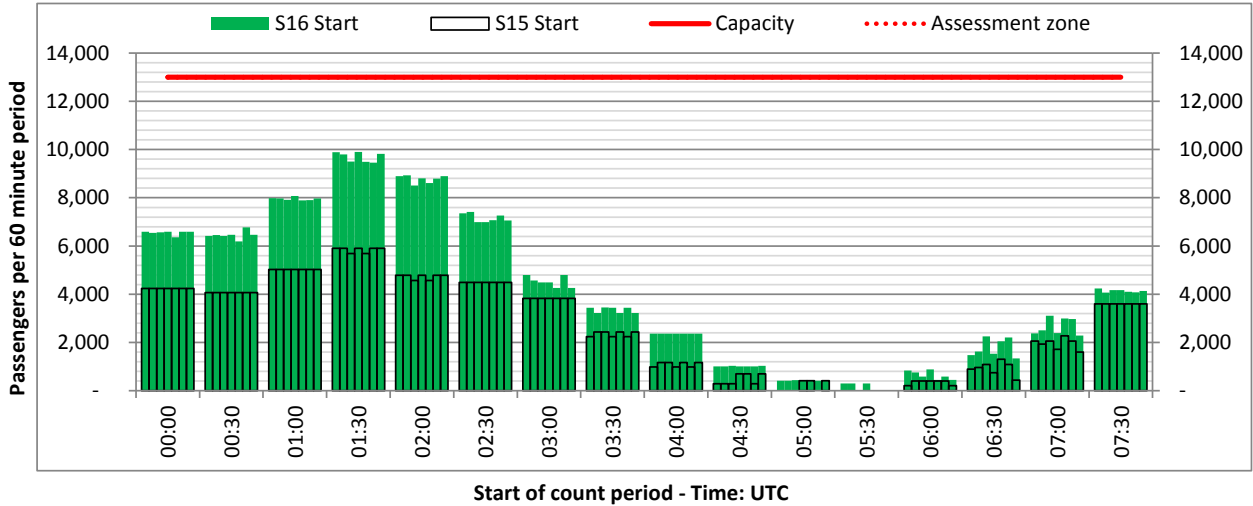
ARRIVAL - Terminal 3 (Start of 30 min period)



Terminals: 3I

Operators: All Operators

Days: 1234567



Air Transport Movement (ATM)	Any aircraft movement which is either a scheduled or chartered passenger or cargo flight.
Common Travel Area (CTA)	Origin or Destination is in Republic of Ireland or the Channel Islands.
Demand	Unconstrained demand before any schedule adjustments have been made.
"Fill-in"	These are gaps in a historic series of slots which the carrier requests to "Fill-in" at Initial Submissions - Fill-ins will be recognisably part of the historic series and will have the same flight details to qualify as a "Fill-in".
Hist (SHL)	Snapshot of historic schedule rolled over from end of the previous equivalent season - as advised to airlines in the SHLs.
ICAO Size A	Aircraft with wingspan between 0.00m - 14.99m.
ICAO Size B	Aircraft with wingspan between 15.00m - 23.99m.
ICAO Size C	Aircraft with wingspan between 24.00m - 35.99m.
ICAO Size D	Aircraft with wingspan between 36.00m - 51.99m.
ICAO Size E	Aircraft with wingspan between 52.00m - 64.99m.
ICAO Size F	Aircraft with wingspan between 65.00m - 80.00m.
Init Coord	Snapshot of schedule immediately after Initial Coordination is completed - as advised to airlines in the SALs.
Passenger Air Transport Movement (PATM)	Any aircraft movement which is either a scheduled or chartered passenger flight.
Start	Snapshot of schedule shortly before the start of the scheduling season (exact date given below where used).
Time: Local	Times shown are in LOCAL time for the airport/scheduling season.
Time: UTC	Times shown are in Universal Time Constant (UTC).

Data snapshot descriptions

S15 Start	S15 schedule as cleared on Mon 30-Mar-15.
S15 End	S15 schedule as cleared on Wed 26-Oct-16.
S16 Start	S16 schedule as cleared on Tue 22-Mar-16.

Peak Week	Peak week for S15 is Mon 14-Sep-15 to Sun 20-Sep-15. Peak week for S16 is Mon 19-Sep-16 to Sun 25-Sep-16.
------------------	--

For ACL use

	Airport-Season-Branch-Resource	From date	To date	Time
Full Season Rep 1	DXB-S15-Start-Standard	Sun 29-Mar-2015	Sat 24-Oct-2015	UTC
Full Season Rep 2	DXB-S15-End-Standard	Sun 29-Mar-2015	Sat 24-Oct-2015	UTC
Full Season Rep 3	DXB-S16-Live-Standard	Sun 27-Mar-2016	Sat 29-Oct-2016	UTC
	Airport-Season-Branch-Resource	From date	To date	Time
Peak Week Rep 1	DXB-S15-Start-Standard	Mon 14-Sep-2015	Sun 20-Sep-2015	UTC
Peak Week Rep 2	DXB-S15-End-Standard	Mon 14-Sep-2015	Sun 20-Sep-2015	UTC
Peak Week Rep 3	DXB-S16-Live-Standard	Mon 19-Sep-2016	Sun 25-Sep-2016	UTC