



DUBAI INTERNATIONAL AIRPORT DXB

S15 Start of Season Report

Key Statistics

Full Season Comparison	S14 Full Season Live	S15 Full Season Live	Percentage Change
Operations	191,149	250,496	31.0%
Seats	52,413,918	70,867,243	35.2%

Peak Week Comparison	S14 Peak Week at End	S15 Peak Week End	Percentage Change
Operations	7,073	8,408	18.9%
Seats	1,917,671	2,271,592	18.5%

Contents

Page

Main Constraints by Terminal	2
Code F Arrivals and Departures - Peak Week	3
Declaration Utilisation Analysis	4
Schedule Changes and New Carriers - Peak Week	5
NAC Utilisation View - Peak Week	6
ATM Comparison - Peak Week	7
Seat Comparison - Peak Week	8
Distribution of Schedule Adjustments	9
Top 10 Airlines by ATM's and Seats - Peak Week	10
Top 20 Destinations by ATM's and Seats - Peak Week	11
R60 Peak Week Utilisation	12
R10 Peak Week Utilisation	13
Terminal 1 Peak Week Utilisation	14
Terminal 2 Peak Week Utilisation	15
Terminal 3 Peak Week Utilisation	16
Route Comparison by Carrier - Full Season S13 vs. S14	17-38
Glossary	39

Data in this report is current as of March 9th, 2015.

No warranty whether expressed or implied as to the completeness, accuracy, fitness for purpose, or satisfactory quality is given by ACL regarding the information in this report, which is provided by third parties. Accordingly, ACL excludes all liability with regard to such data.

The contents of this report may not be reproduced without the written consent of ACL.

PRIMARY CONSTRAINTS BY TERMINAL - PEAK WEEK

Arrival/Departure	GRA	GRD	OK	R10	R60	Grand Total
A		12	4,028	78	112	4,230
D	18		4,009	60	142	4,230
Grand Total	18	12	8,037	138	254	8,460

Percentage	GRA	GRD	OK	R10	R60	Grand Total
A	0.0%	0.3%	95.2%	1.8%	2.6%	100.0%
D	0.4%	0.0%	94.8%	1.4%	3.4%	100.0%

Time UTC	0	100	200	300	400	500	600	700	800	900	1000	1100	1200	1300	1400	1500	1600	1700	1800	1900	2000	2100	2200	2300	Grand Total
1I	81	47	59	28	32	77	128	157	124	88	74	88	98	77	168	195	143	161	142	103	72	111	106	102	2461
OK	79	43	59	28	32	70	126	147	93	69	72	65	84	63	144	169	134	158	140	91	71	105	87	90	2219
R60	2	4						8	17	17	2	9	14	14	6	18	7	3		8	1	6	12	12	160
R10						7	2	2	7	2		14			8	7			2	2			7		60
GRA															10	1	2			2					15
GRD									7																7

Time UTC	0	100	200	300	400	500	600	700	800	900	1000	1100	1200	1300	1400	1500	1600	1700	1800	1900	2000	2100	2200	2300	Grand Total
2I	70	70	81	138	109	115	98	128	106	150	114	56	56	137	113	95	124	114	127	87	74	48	87	59	3355
OK	70	68	75	138	103	111	89	104	95	139	107	54	54	135	106	94	122	113	127	83	74	48	87	59	2255
R60			4		6	3	5	14	2	8	7	2	2	2	4	1	1								61
R10		2	2				1	9	8	1					3		1	1		4					32
GRA								1	1	1															3
GRD						1	3																		4

Time UTC	0	100	200	300	400	500	600	700	800	900	1000	1100	1200	1300	1400	1500	1600	1700	1800	1900	2000	2100	2200	2300	Grand Total
3I	160	166	191	257	240	188	164	66	130	136	159	120	104	41	87	107	68	134	128	188	199	103	186	172	3494
OK	153	166	183	256	240	188	164	59	123	127	159	120	99	35	87	107	61	133	126	181	192	102	185	171	3417
R60			1							7			5	6			7	1	2				1		30
R10	7		7	1				7	7	2										7	7			1	46
GRD																						1			1

Time UTC	0	100	200	300	400	500	600	700	800	900	1000	1100	1200	1300	1400	1500	1600	1700	1800	1900	2000	2100	2200	2300	Grand Total	
FRT		1		1	1	8	8	21	11	24	11	22	17	5	1	1		1		6					11	150
OK		1		1	1	8	8	21	11	21	11	22	17	5	1	1		1		6					11	147
R60										3																3

Grand Total	311	284	331	424	382	388	398	372	371	397	358	286	275	260	369	398	335	410	397	384	345	262	379	344	8460
-------------	-----	-----	-----	-----	-----	-----	-----	-----	-----	-----	-----	-----	-----	-----	-----	-----	-----	-----	-----	-----	-----	-----	-----	-----	------

Runway Reason Code	
R60	60 Min Runway Availability
R10	10 Min Runway Availability

Other Reason Code	
AA	Apron Capacity
GRA	g Affected by D
GRD	g Affected by /

Terminal Reason Code	
T60	Min Terminal Capacity rolling 30 M
R30	0 Mins gate Capacity rolling 5 Min

CODE F ARRIVALS AND DEPARTURES

PEAK WEEK CODE F ARRIVALS AND DEPARTURES

Row Labels	0	100	200	300	400	500	600	800	900	1000	1100	1200	1300	1400	1500	1600	1700	1800	1900	2000	2100	2200	2300	Grand Total
Code F Arrivals	42	35	42	35	7	3		7	21	14				3	48	7		7	63	70		7		411
Emirates	42	35	42	21	7	3		7	21	14				3	48	7		7	56	63		7		383
1	6	5	6	3	1			1	3	2					7	1		1	8	9		1		54
2	6	5	6	3	1			1	3	2				1	7	1		1	8	9		1		55
3	6	5	6	3	1			1	3	2					7	1		1	8	9		1		54
4	6	5	6	3	1	1		1	3	2				1	6	1		1	8	9		1		55
5	6	5	6	3	1	1		1	3	2					7	1		1	8	9		1		55
6	6	5	6	3	1			1	3	2				1	7	1		1	8	9		1		55
7	6	5	6	3	1	1		1	3	2					7	1		1	8	9		1		55
Qantas				14															7	7				28
1				2															1	1				4
2				2															1	1				4
3				2															1	1				4
4				2															1	1				4
5				2															1	1				4
6				2															1	1				4
7				2															1	1				4
Code F Departures	13			28	84	52	35			28	28	21	7				7	7			10	56	42	418
Emirates	13			28	84	38	35			28	28	21	7				7	7			3	49	42	390
1	2			4	12	6	5			4	4	3	1				1	1				7	6	56
2	2			4	12	5	5			4	4	3	1				1	1				7	6	55
3	2			4	12	6	5			4	4	3	1				1	1			1	7	6	57
4	1			4	12	5	5			4	4	3	1				1	1			1	7	6	55
5	2			4	12	6	5			4	4	3	1				1	1				7	6	56
6	2			4	12	5	5			4	4	3	1				1	1			1	7	6	56
7	2			4	12	5	5			4	4	3	1				1	1				7	6	55
Qantas						14															7	7		28
1						2															1	1		4
2						2															1	1		4
3						2															1	1		4
4						2															1	1		4
5						2															1	1		4
6						2															1	1		4
7						2															1	1		4
Grand Total	55	35	42	63	91	55	35	7	21	42	28	21	7	3	48	7	7	14	63	70	10	63	42	829

DECLARATION USAGE ANALYSIS

Projected Declaration Usage Analysis for Peak Week

Time UTC	0	100	200	300	400	500	600	700	800	900	1000	1100	1200	1300	1400	1500	1600	1700	1800	1900	2000	2100	2200	2300
Arrivals																								
Average of Coordinated	90%	100%	100%	81%	73%	71%	86%	99%	100%	90%	86%	75%	76%	98%	100%	100%	100%	99%	100%	100%	100%	98%	92%	98%
Departures																								
Average of Coordinated	85%	42%	66%	100%	100%	100%	99%	98%	96%	99%	100%	100%	99%	70%	82%	94%	92%	99%	100%	95%	86%	71%	100%	97%
Totals																								
Average of Coordinated	88%	80%	88%	96%	90%	89%	94%	98%	98%	94%	97%	100%	100%	98%	99%	97%	97%	99%	100%	98%	95%	96%	97%	97%

PEAK WEEK SCHEDULE CHANGES - IATA TO LIVE

Zero Change	S15 Pre-IATA	S15	Change
QR	392	392	0.0%
6E	280	280	0.0%
GF	204	204	0.0%
AI	156	156	0.0%
NL	116	116	0.0%
QF	112	112	0.0%
J9	112	112	0.0%
CX	84	84	0.0%
ET	84	84	0.0%
MS	72	72	0.0%
UPS	64	64	0.0%
KQ	56	56	0.0%
BI	56	56	0.0%
PQ	56	56	0.0%
3V	56	56	0.0%
TK	56	56	0.0%
LX	56	56	0.0%
BA	56	56	0.0%
ME	56	56	0.0%
IA	56	56	0.0%
CZ	48	48	0.0%
IY	48	48	0.0%
3S	32	32	0.0%
LC	30	30	0.0%
WB	30	30	0.0%
KC	28	28	0.0%
5J	28	28	0.0%
PC	28	28	0.0%
UL	28	28	0.0%
QS	28	28	0.0%
KL	28	28	0.0%
RA	28	28	0.0%
TG	28	28	0.0%
KE	28	28	0.0%
UA	28	28	0.0%
BG	28	28	0.0%
NV	28	28	0.0%
IV	28	28	0.0%
VS	28	28	0.0%
J2	28	28	0.0%
SU	28	28	0.0%
AF	28	28	0.0%
MH	28	28	0.0%
RQ	28	28	0.0%
DL	28	28	0.0%
CA	20	20	0.0%
W3	20	20	0.0%
LN	20	20	0.0%
AH	16	16	0.0%
PR	28	28	0.0%
PS	16	16	0.0%
RB	16	16	0.0%
8U	16	16	0.0%
D3	12	12	0.0%
B8	12	12	0.0%
HY	12	12	0.0%
TU	8	8	0.0%

Cancelled Services	S15 Pre-IATA	S15	Change
XU	12	0	-100.0%
4H	12	0	-100.0%
DY	4	0	-100.0%

New Services	S15 Pre-IATA	S15	Change
IR	0	60	Post IATA Submission
DT	0	8	Post IATA Submission
QB	0	64	Post IATA Submission

Cutbacks and Additions	S15 Pre-IATA	S15	Change
EP	68	148	117.6%
T5	16	28	75.0%
DHX	36	60	66.7%
KU	56	84	50.0%
3J	8	12	50.0%
U6	8	12	50.0%
XY	112	136	21.4%
PK	152	180	18.4%
RJ	88	104	18.2%
PA	96	112	16.7%
HH	24	28	16.7%
Y9	84	96	14.3%
SV	316	360	13.9%
W5	196	200	2.0%
WY	216	220	1.9%
EK	7334	7308	-0.4%
IX	276	272	-1.4%
FG	30	28	-6.7%
9W	280	252	-10.0%
SQ	68	60	-11.8%
FZ	4494	3950	-12.1%
FX	104	88	-15.4%
OS	24	20	-16.7%
SG	336	264	-21.4%
UN	32	24	-25.0%
LH	76	52	-31.6%
4Q	84	56	-33.3%
S7	12	8	-33.3%
SZ	12	8	-33.3%
RO	12	8	-33.3%
MU	20	12	-40.0%
VL	24	12	-50.0%

NAC Utilisation View - Arrivals and Departures

ARRIVALS							
UTC	1	2	3	4	5	6	7
0	1	0	0	1	0	0	0
10	2	1	2	3	2	1	2
20	5	3	5	4	5	3	4
30	5	3	4	4	5	3	4
40	4	3	4	4	4	3	4
50	6	3	5	5	6	3	4
100	2	4	3	3	4	4	4
110	5	5	5	5	5	5	5
120	6	7	6	7	6	7	6
130	5	5	5	5	5	5	5
140	5	6	6	6	5	6	5
150	7	7	7	7	7	7	6
200	5	5	5	5	3	5	5
210	7	6	7	6	7	5	7
220	7	6	7	6	7	5	7
230	3	2	4	3	4	2	5
240	5	5	5	5	6	5	4
250	1	1	1	0	1	0	1
300	0	0	0	0	0	0	0
310	0	0	0	0	0	0	0
320	0	0	0	0	0	0	0
330	0	0	0	0	0	0	0
340	0	0	0	0	0	0	0
350	0	0	0	0	0	0	0
400	0	0	0	0	0	0	0
410	0	0	0	0	0	0	0
420	0	0	0	0	0	0	0
430	0	0	0	0	0	0	0
440	0	0	0	0	0	0	0
450	0	0	0	0	0	0	0
500	0	0	0	0	0	0	0
510	0	0	0	0	0	0	0
520	0	0	0	0	0	0	0
530	1	1	0	2	0	0	0
540	0	0	0	0	0	0	0
550	1	0	0	0	0	0	0
600	0	1	0	0	0	0	0
610	0	0	0	0	0	0	0
620	2	0	1	1	0	0	1
630	0	0	1	0	1	1	0
640	1	1	0	1	1	1	1
650	0	0	0	0	0	0	0
700	1	0	2	0	2	1	0
710	1	0	1	0	2	1	0
720	1	0	2	0	2	1	0
730	1	0	2	0	2	1	0
740	1	0	2	0	2	1	0
750	1	0	2	0	2	1	0

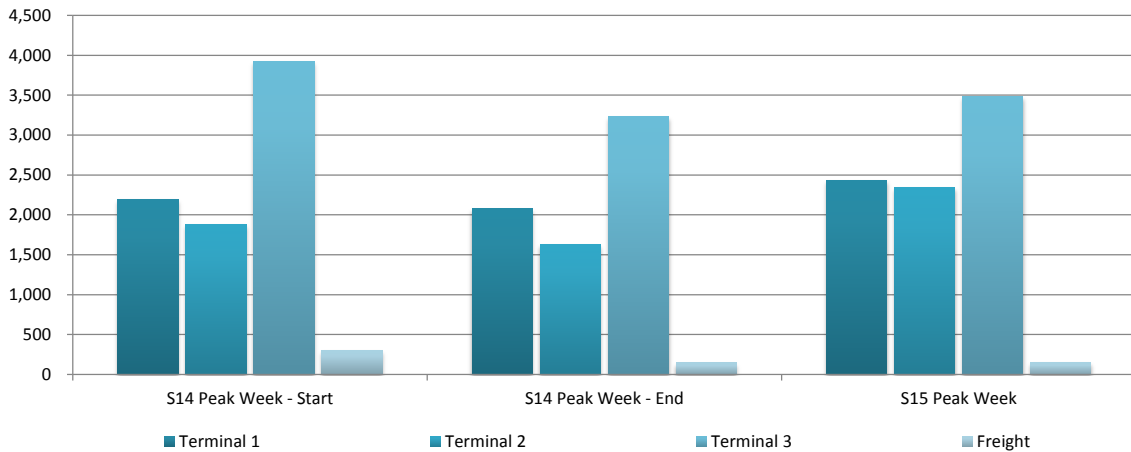
UTC	1	2	3	4	5	6	7
800	0	0	1	0	0	1	0
810	1	0	1	0	0	1	0
820	1	0	1	0	0	1	0
830	1	0	1	0	0	1	0
840	1	0	1	0	0	1	0
850	1	0	1	0	0	1	0
900	0	0	1	0	0	0	1
910	0	0	1	0	1	0	1
920	0	0	1	0	1	0	1
930	0	0	1	0	1	0	1
940	0	0	1	0	1	0	1
950	0	0	1	0	1	0	1
1000	0	0	1	0	1	0	0
1010	0	0	1	0	1	0	0
1020	0	0	1	0	1	0	0
1030	0	0	1	0	0	0	0
1040	0	0	0	1	0	0	0
1050	0	0	1	0	1	0	0
1100	0	0	0	0	0	0	0
1110	0	0	0	0	0	0	0
1120	0	0	0	0	0	0	0
1130	0	0	0	0	0	0	0
1140	0	0	0	0	0	0	0
1150	0	0	0	0	0	0	0
1200	1	0	0	0	0	0	0
1210	1	0	0	0	0	0	0
1220	1	0	0	0	0	0	0
1230	0	0	0	0	0	0	0
1240	1	0	0	0	0	0	0
1250	1	0	0	0	0	0	0
1300	2	1	0	0	0	0	0
1310	1	1	0	0	0	0	0
1320	3	1	0	0	0	0	1
1330	3	1	0	0	0	0	1
1340	3	1	0	0	0	0	1
1350	3	1	0	0	0	0	1
1400	3	0	2	0	1	0	1
1410	3	0	2	0	1	0	1
1420	2	0	2	0	1	0	1
1430	2	0	1	0	1	0	1
1440	2	0	2	0	1	0	1
1450	3	0	2	0	1	0	1
1500	1	1	2	0	3	4	2
1510	1	1	2	0	2	2	2
1520	1	1	1	0	2	2	1
1530	1	1	2	0	3	4	2
1540	1	1	2	0	2	1	1
1550	1	1	2	0	3	3	2

UTC	1	2	3	4	5	6	7
1600	1	2	2	3	0	2	3
1610	1	2	2	3	0	2	3
1620	1	2	2	3	0	2	3
1630	1	1	2	2	0	2	2
1640	1	2	2	3	0	2	3
1650	0	1	1	0	0	1	0
1700	0	0	0	0	0	0	1
1710	0	0	0	0	0	0	1
1720	0	0	0	0	0	0	1
1730	0	0	0	0	0	0	1
1740	0	0	0	0	0	0	0
1750	0	0	0	0	0	0	1
1800	0	1	0	0	0	0	0
1810	0	1	0	0	0	0	0
1820	0	1	0	0	0	0	0
1830	0	1	0	0	0	0	0
1840	0	1	0	0	0	0	0
1850	0	1	0	0	0	0	0
1900	0	0	0	0	0	0	0
1910	1	0	1	0	0	1	0
1920	1	0	1	0	0	1	0
1930	1	0	1	0	0	1	0
1940	1	0	1	0	0	1	0
1950	1	0	1	0	0	1	0
2000	3	3	4	4	4	3	4
2010	6	5	5	5	5	6	5
2020	6	6	5	6	6	6	6
2030	3	4	3	4	4	3	4
2040	5	4	4	4	4	4	3
2050	4	4	4	4	4	4	4
2100	0	0	3	1	0	0	3
2110	0	0	3	1	0	0	3
2120	0	0	3	1	0	0	3
2130	0	0	2	0	0	0	3
2140	0	0	3	1	0	0	2
2150	0	0	3	1	0	0	3
2200	0	1	0	1	0	0	1
2210	0	1	0	1	0	0	1
2220	0	1	0	1	0	0	1
2230	0	1	0	0	0	0	1
2240	0	0	0	0	0	0	1
2250	0	0	0	0	0	0	1
2300	0	0	0	1	0	1	1
2310	1	1	1	1	0	2	0
2320	0	0	1	0	0	1	0
2330	2	1	2	1	0	1	1
2340	2	1	1	1	0	1	1
2350	1	1	1	2	0	1	1

DEPARTURES							
UTC	1	2	3	4	5	6	7
0	1	2	1	2	2	1	2
10	2	2	2	2	2	1	2
20	1	1	1	1	1	1	1
30	3	2	3	2	3	1	3
40	1	0	0	1	0	0	0
50	1	1	1	0	1	1	0
100	2	2	1	2	2	2	1
110	0	0	0	0	0	0	0
120	1	0	0	0	0	0	0
130	0	0	0	0	0	0	0
140	0	0	0	0	0	0	0
150	0	0	0	0	0	0	0
200	0	0	1	0	1	1	1
210	0	0	0	0	0	0	0
220	0	0	0	0	0	0	0
230	0	0	0	0	0	0	0
240	0	0	0	0	0	0	0
250	0	0	1	0	1	1	1
300	2	2	1	2	1	1	2
310	2	1	2	1	1	1	1
320	3	2	3	2	2	3	3
330	2	2	1	2	1	2	0
340	3	3	3	3	2	3	3
350	3	4	3	3	2	3	3
400	2	1	2	1	2	1	2
410	1	1	0	3	0	0	2
420	3	2	3	3	3	2	3
430	4	4	5	4	5	4	4
440	5	6	5	6	5	5	6
450	2	3	2	3	3	2	3
500	5	5	3	5	5	4	3
510	3	3	3	3	3	3	3
520	5	5	5	4	5	3	4
530	2	1	2	2	1	1	2
540	1	1	2	2	3	1	2
550	3	3	2	3	3	3	3
600	1	1	2	0	2	2	1
610	2	3	2	0	2	4	2
620	3	3	4	0	4	3	4
630	0	1	1	0	2	0	1
640	3	2	3	0	3	3	1
650	2	2	2	0	0	1	4
700	1	1	1	1	1	1	0
710	1	1	1	1	1	0	3
720	0	0	1	0	1	0	2
730	1	1	1	1	1	1	1
740	0	0	0	1	0	0	1
750	1	0	0	0	0	1	0

UTC	1	2	3	4	5	6	7
800	0	0	0	0	0	0	0
810	1	0	0	0	0	0	0
820	1	0	0	0	0	0	0
830	1	0	0	0	0	0	0
840	1	0	0	0	0	0	0
850	0	0	0	0	0	0	0
900	0	0	0	0	0	0	0
910	0	0	0	0	0	2	0
920	0	0	0	1	0	0	0
930	2	0	0	1	0	1	2
940	0	1	1	0	1	0	0
950	2	2	3	3	3	1	1
1000	4	3	4	3	5	0	1
1010	1	1	1	1	1	0	0
1020	2	2	2	2	2	0	1
1030	2	2	2	2	1	0	1
1040	3	2	3	3	3	0	1
1050	2	4	3	1	2	0	1
1100	2	0	0	0	0	0	0
1110	1	0	0	0	0	0	0
1120	2	0	0	0	0	0	0
1130	2						

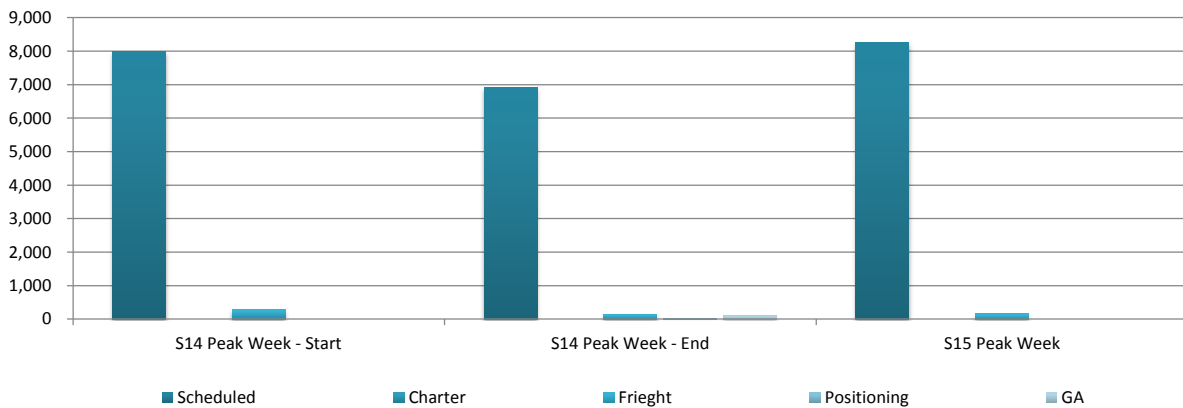
PEAK WEEK AIR TRANSPORT MOVEMENTS BY TERMINAL



Terminal	S14 Peak Week - Start	S14 Peak Week - End	S15 Peak Week	% Change S14 Start to S15	% Change S14 End - S15
Terminal 1	2,192	2,074	2,433	11.0%	17.3%
Terminal 2	1,880	1,626	2,340	24.5%	43.9%
Terminal 3	3,921	3,229	3,485	-11.1%	7.9%
Freight	296	144	150	-49.3%	4.2%
Total	8,289	7,073	8,408	1.4%	18.9%

Data Period	
S14	22-28 Sep
S15	21-27 Sep

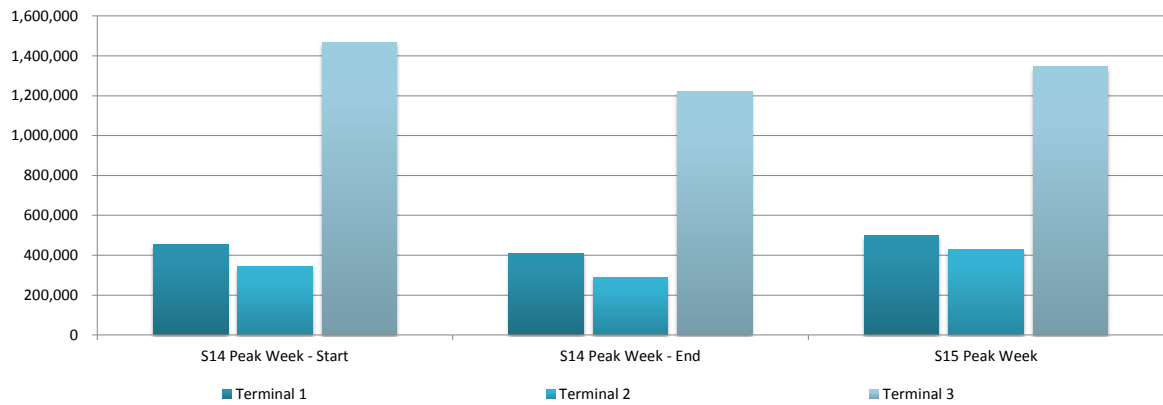
PEAK WEEK AIR TRANSPORT MOVEMENTS BY SERVICE TYPES



Service Type	S14 Peak Week - Start	S14 Peak Week - End	S15 Peak Week	% Change S14 Start to S15	% Change S14 End - S15
Scheduled	7,993	6,927	8,262	3.4%	19.3%
Charter	0	0	0	-	-
Freight	296	144	150	-49.3%	-
Positioning	15	15	15	-	-
GA	94	94	94	-	-
Total	8,289	7,180	8,412	1.5%	17.2%

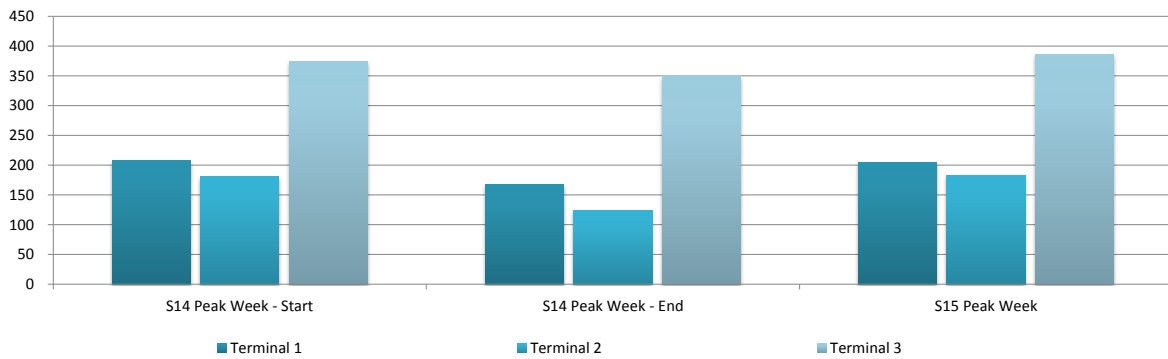
Data Period	
S14	22-28 Sep
S15	21-27 Sep

TOTAL SEATS BY TERMINAL



Terminal	S14 Peak Week - Start	S14 Peak Week - End	S15 Peak Week	% Change S14 Start to S15	% Change S14 End - S15	Data Period	
						S14	S15
Terminal 1	455,430	408,086	497,500	9.24%	21.91%	22-28 Sep	21-27 Sep
Terminal 2	341,353	289,535	429,155	25.72%	48.22%		
Terminal 3	1,469,257	1,220,050	1,344,937	-8.46%	10.24%		
Total	2,266,040	1,917,671	2,271,592	0.25%	18.46%		

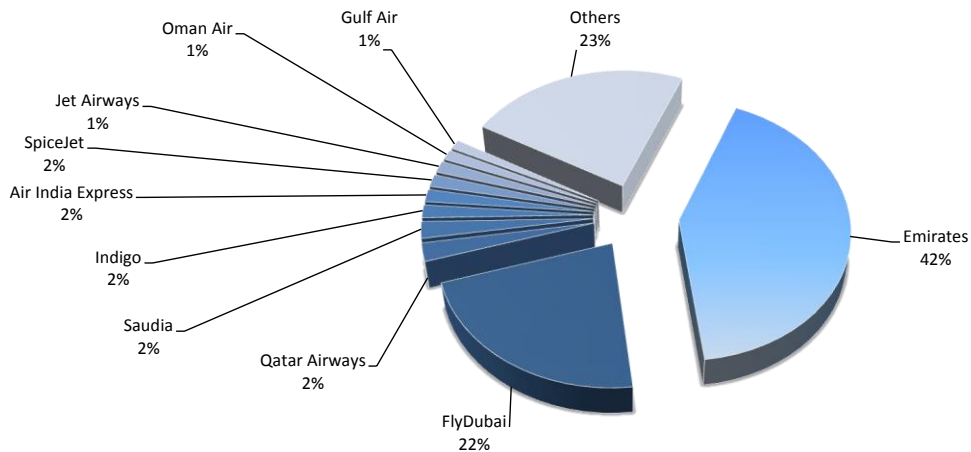
PASSENGER ATM BY TERMINAL



Terminal	S14 Peak Week - Start	S14 Peak Week - End	S15 Peak Week	% Change S14 Start to S15	% Change S14 End - S15	Data Period	
						S14	S15
Terminal 1	208	168	204	-1.58%	21.91%	22-28 Sep	21-27 Sep
Terminal 2	182	124	183	1.01%	48.22%		
Terminal 3	375	350	386	2.99%	10.24%		
Average	255	214	258	1.28%	20.61%		

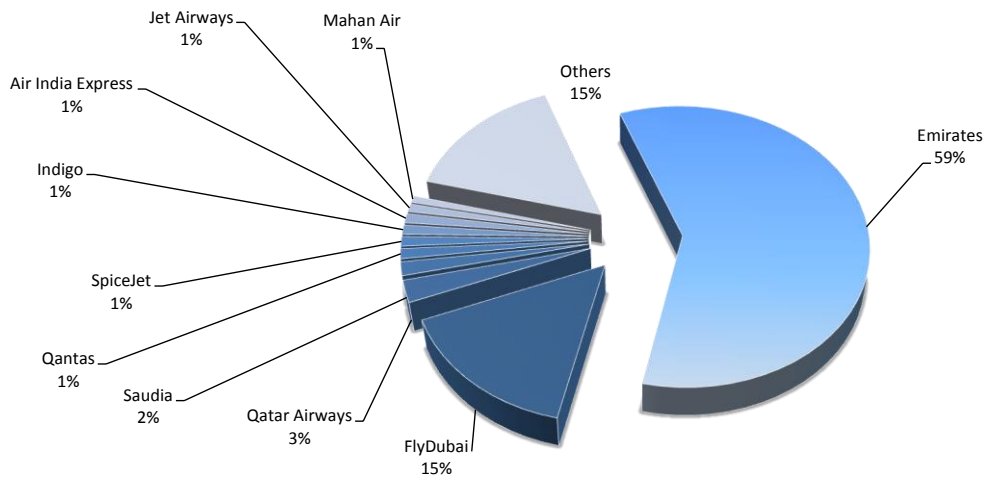
TOP 10 AIRLINES BY AIR TRANSPORT MOVEMENTS (ATMS)

Airline	Movements
Emirates	109,389
FlyDubai	57,870
Qatar Airways	5,878
Saudia	5,398
Indigo	4,199
Air India Express	4,080
SpiceJet	4,018
Jet Airways	3,779
Oman Air	3,297
Gulf Air	3,060
Others	59,545

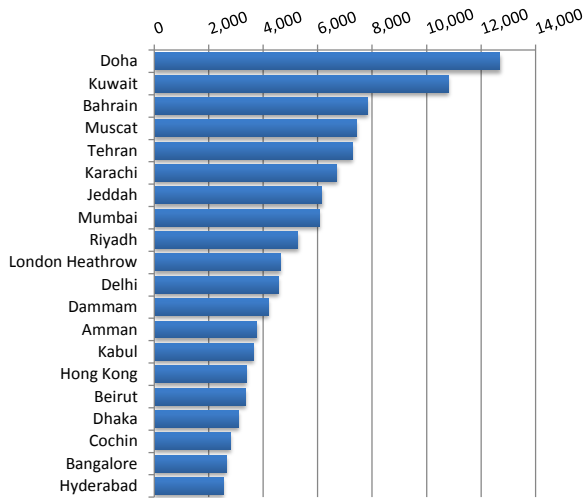


TOP 10 AIRLINES BY SEATS

Airline	Seats
Emirates	41,865,320
FlyDubai	10,937,430
Qatar Airways	1,767,191
Saudia	1,103,316
Qantas	813,120
SpiceJet	759,402
Indigo	755,820
Air India Express	754,800
Jet Airways	642,430
Mahan Air	539,922
Others	10,928,492

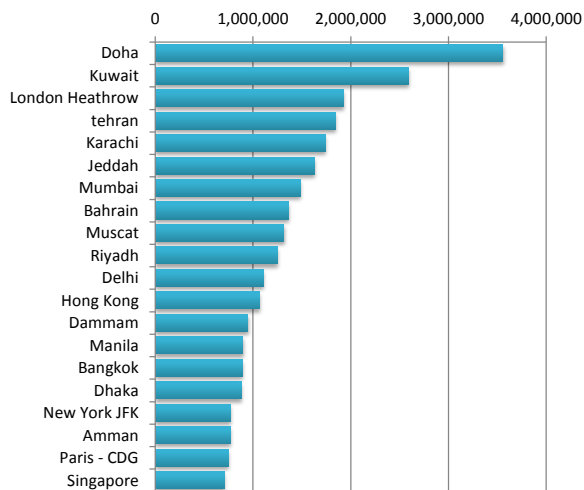


TOP 20 DESTINATIONS BY AIR TRANSPORT MOVEMENTS (ATMS)



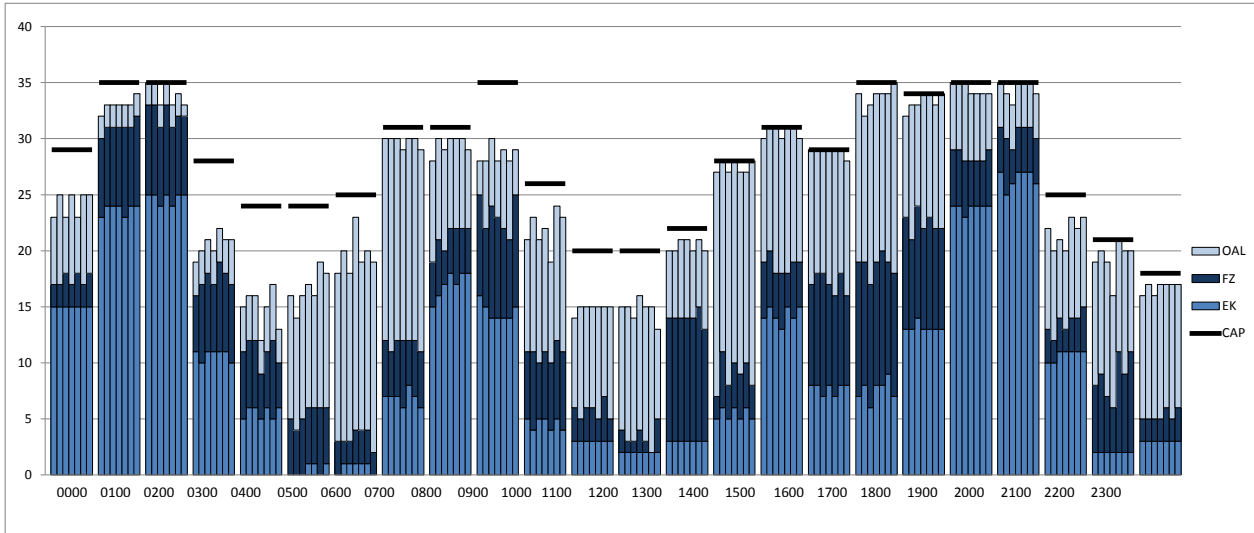
Destination	ATM'S
Doha	12,695
Kuwait	10,801
Bahrain	7,823
Muscat	7,411
Tehran	7,273
Karachi	6,709
Jeddah	6,159
Mumbai	6,059
Riyadh	5,277
London Heathrow	4,620
Delhi	4,559
Dammam	4,195
Amman	3,773
Kabul	3,656
Hong Kong	3,382
Beirut	3,364
Dhaka	3,105
Cochin	2,791
Bangalore	2,639
Hyderabad	2,550

TOP 20 DESTINATIONS BY SEATS

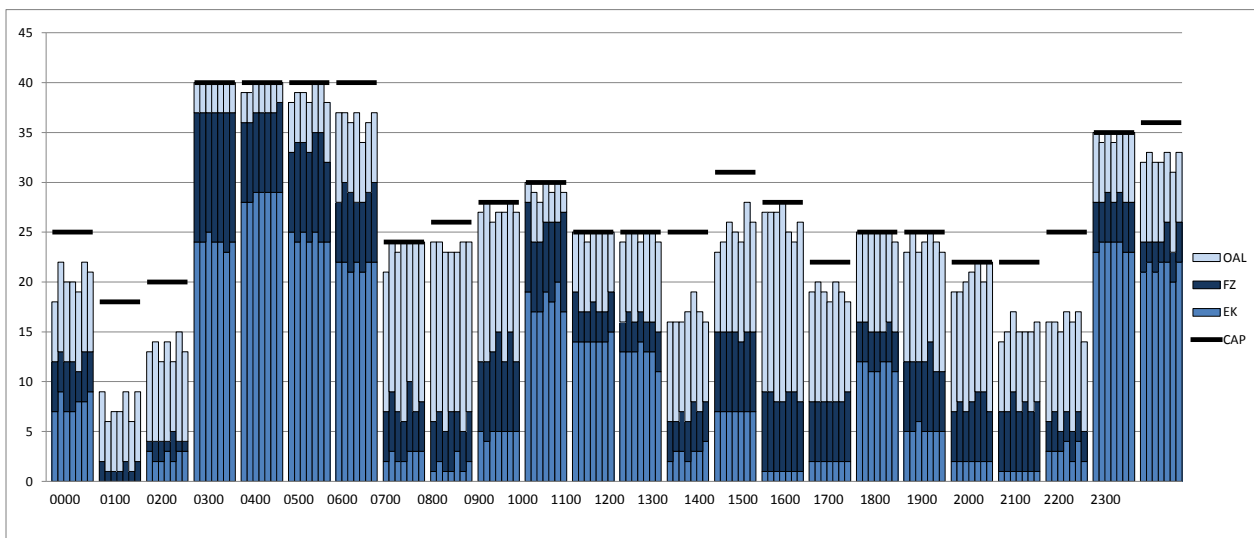


Destination	SEATS
Doha	3,557,562
Kuwait	2,592,449
London Heathrow	1,930,680
tehran	1,844,150
Karachi	1,744,803
Jeddah	1,629,041
Mumbai	1,486,420
Bahrain	1,364,192
Muscat	1,317,654
Riyadh	1,254,643
Delhi	1,109,640
Hong Kong	1,069,228
Dammam	948,675
Manila	896,708
Bangkok	890,820
Dhaka	880,185
New York JFK	767,340
Amman	766,254
Paris - CDG	746,383
Singapore	706,380

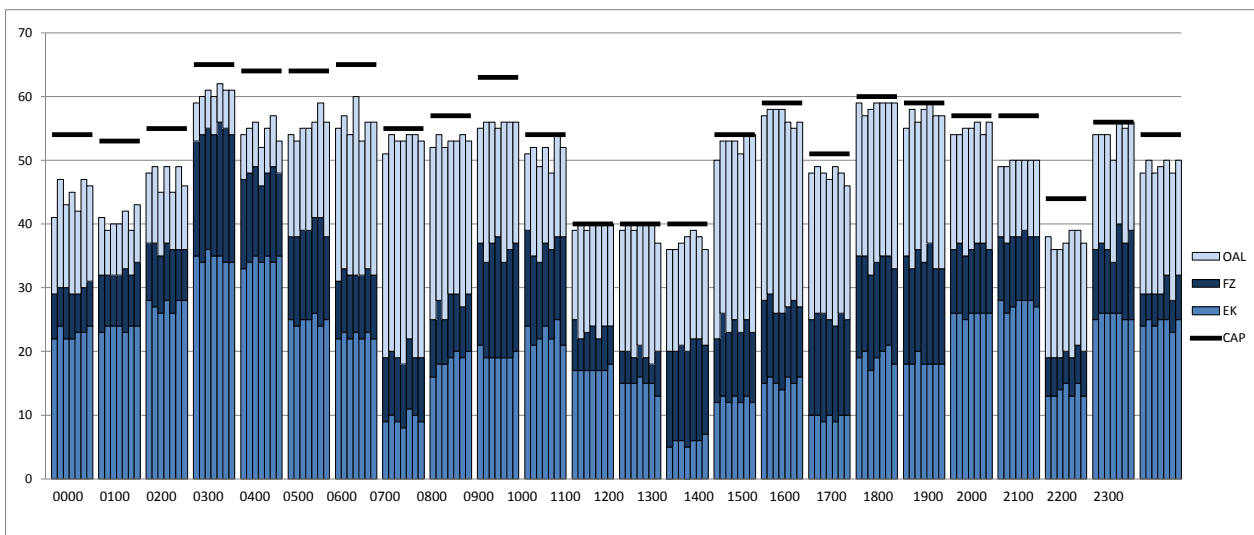
Peak Week Arrival Capacity - 60 Minute Period



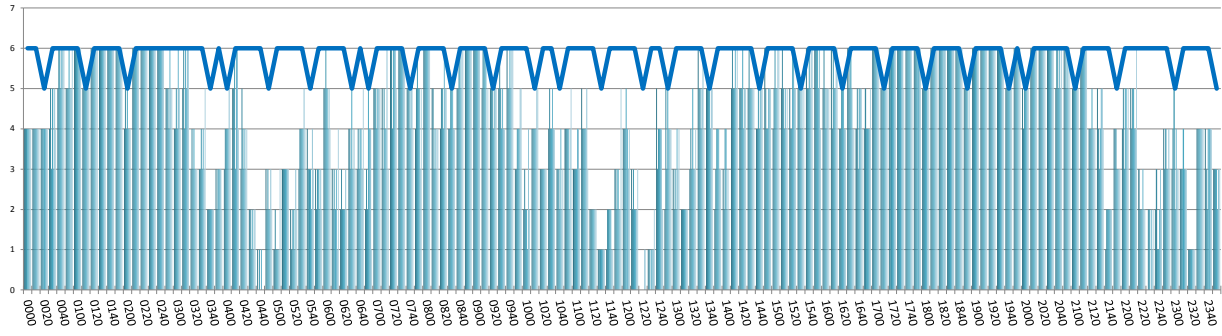
Peak Week Departure Capacity - 60 Minute Period



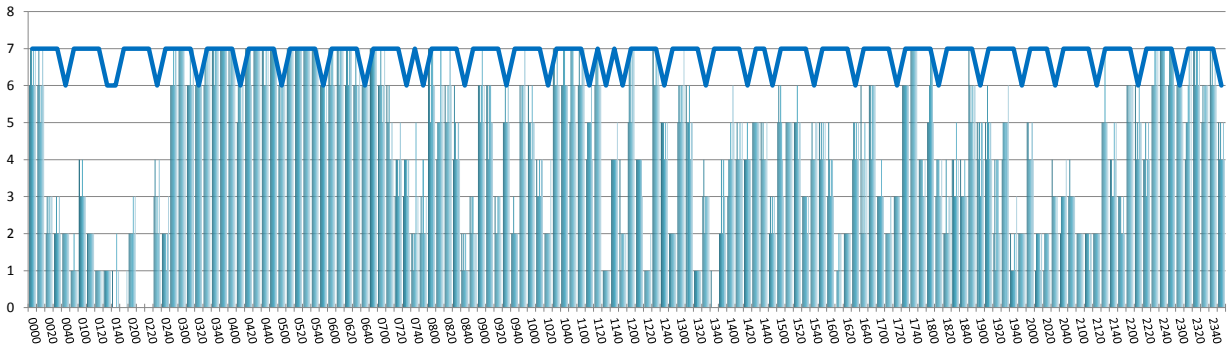
Peak Week Total Runway Capacity - 60 Minute Period



RUNWAY MOVEMENT ALLOCATION (R10) PEAK WEEK ARRIVALS

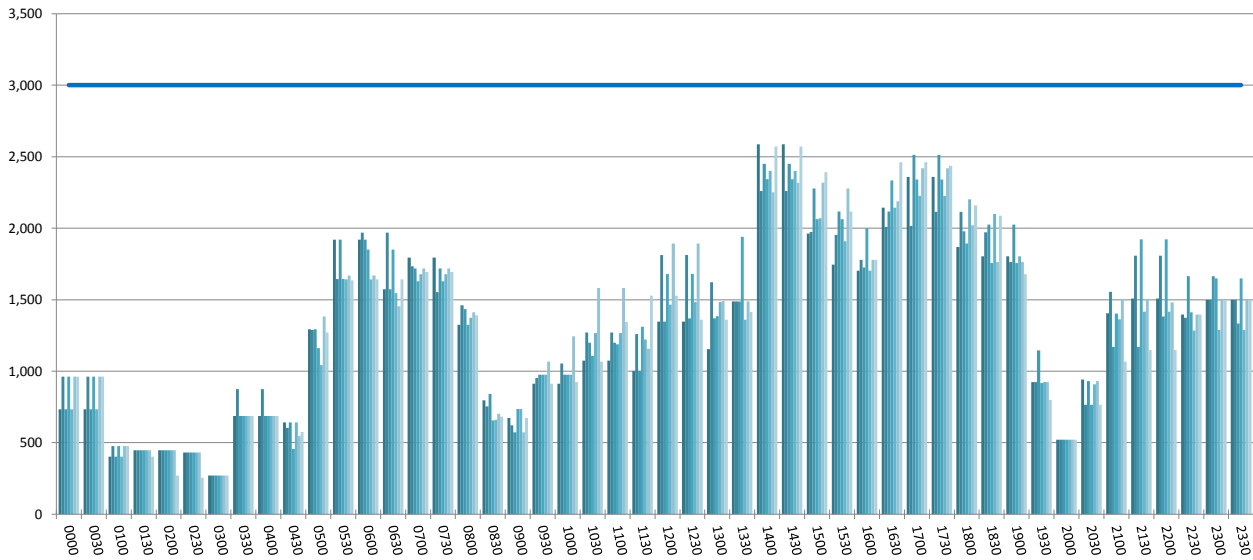


RUNWAY MOVEMENT ALLOCATION (R10) PEAK WEEK DEPARTURES



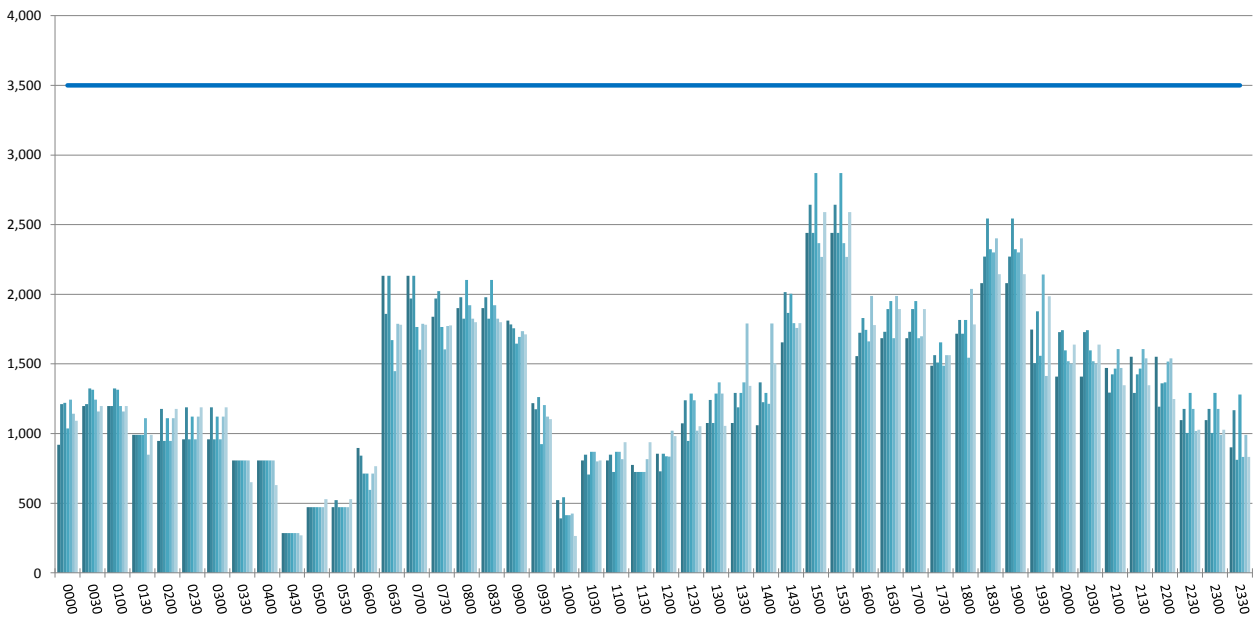
TERMINAL 1 - ARRIVALS

Peak Week Passenger Flows - All times UTC



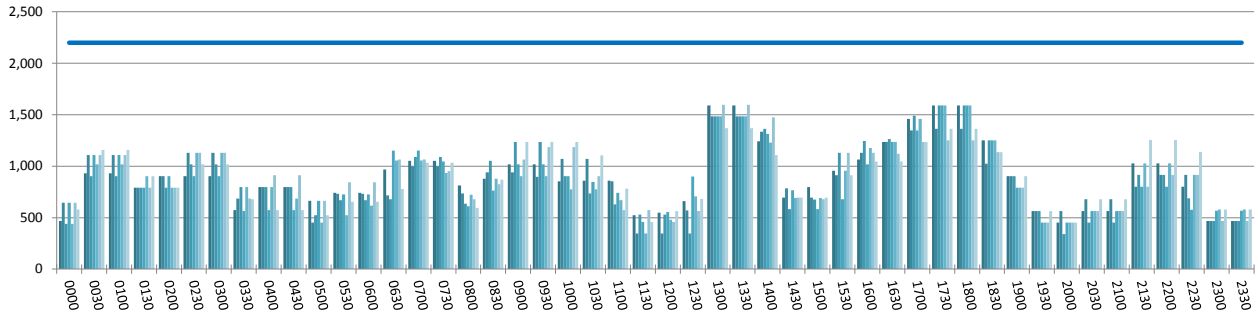
TERMINAL 1 - DEPARTURES

Peak Week Passenger Flows - All times UTC



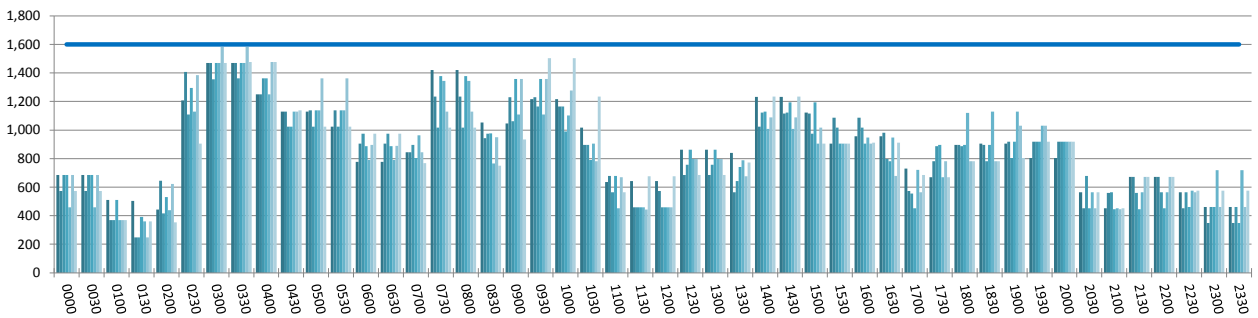
TERMINAL 2 - ARRIVALS

Peak Week Passenger Flows - All times UTC



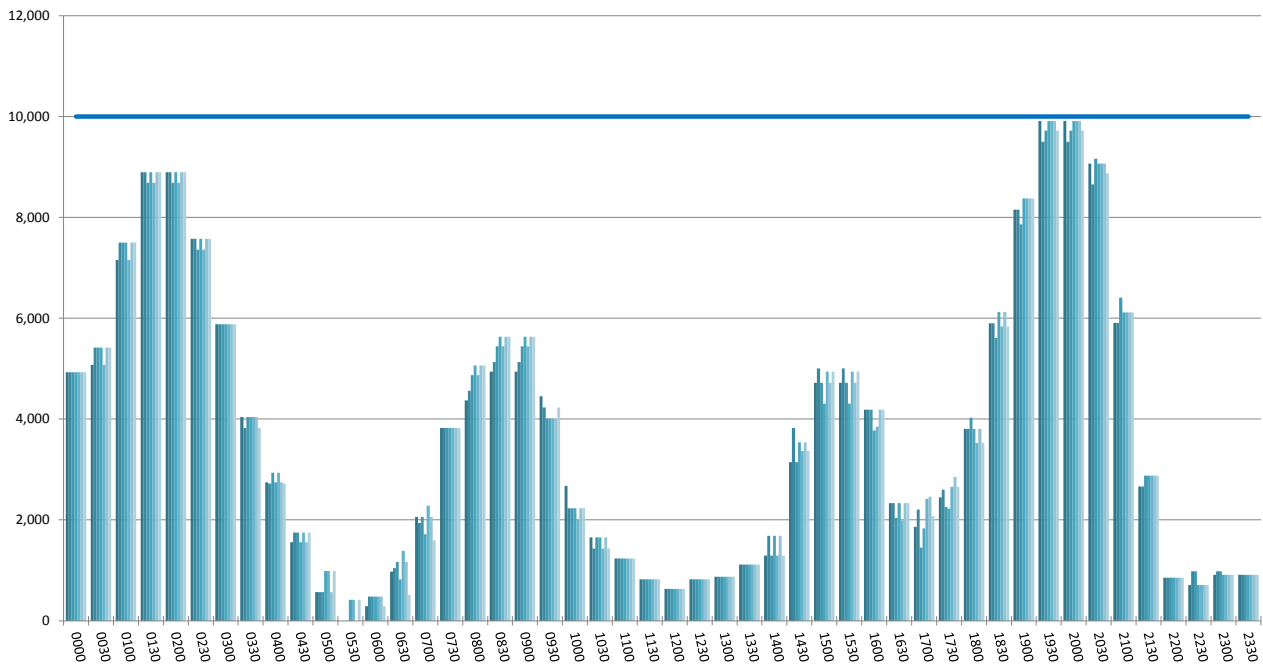
TERMINAL 2 - DEPARTURES

Peak Week Passenger Flows - All times UTC



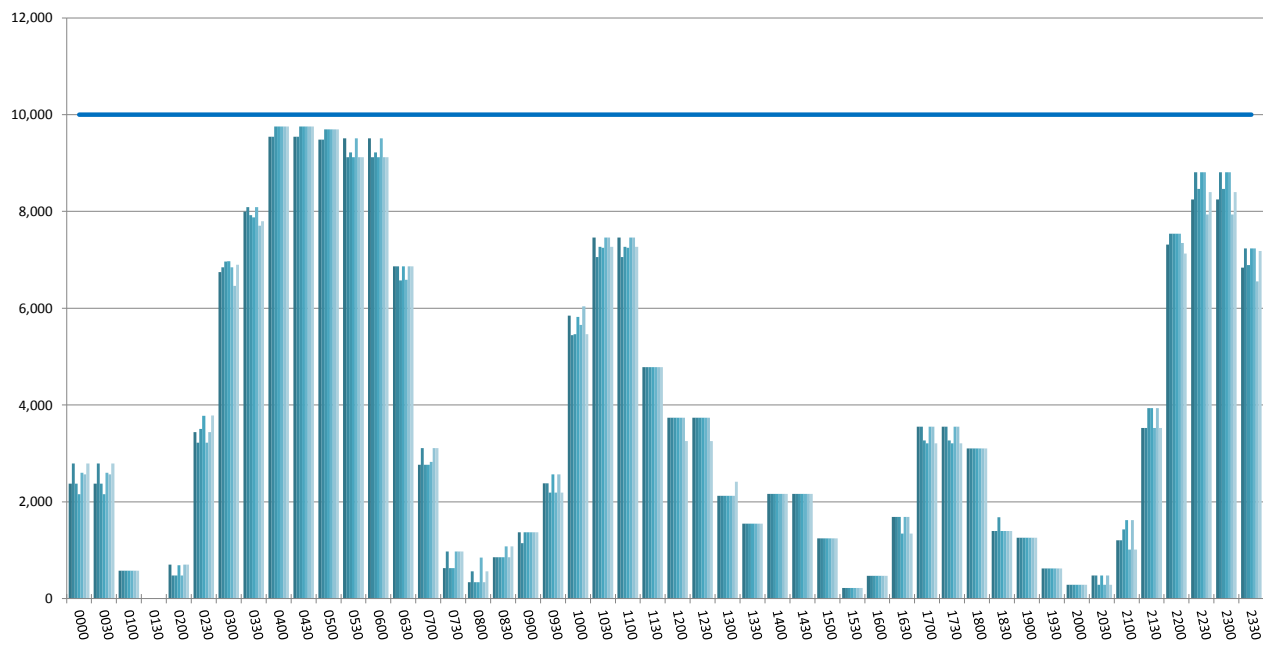
TERMINAL 3 - ARRIVALS

Peak Week Passenger Flows - All times UTC



TERMINAL 3 - DEPARTURES

Peak Week Passenger Flows - All times UTC



DUBAI INTERNATIONAL AIRPORT

PEAK WEEK FREQUENCIES - BY CARRIER - S14 Vs. S15

	OPERATOR	AIRPORT		S14		S15		SEATS +/-	ATMS +/-
				SEATS	ATMS	SEATS	ATMS		
3J	Jubba Airways	MGQ	Mogadishu International	560	4	836	6	276	2
3J Total				560	4	836	6	276	2
3S	Aerologic	HKG	Hong Kong International	0	9	0	8	0	-1
		LEJ	Leipzig	0	9	0	8	0	-1
3S Total				0	18	0	16	0	-2
3V	Tnt Airways	HKG	Hong Kong International	0	14	0	14	0	0
		LGG	Liege Bierset	0	14	0	14	0	0
3V Total				0	28	0	28	0	0
4H	United Airways	DAC	Hazrat Shahjalal International	1,000	4	0	0	-1,000	-4
4H Total				1,000	4	0	0	-1,000	-4
4Q	Safi Airways	KBL	Kabul Khwaja Rawash	4,032	28	3,360	28	-672	0
4Q Total				4,032	28	3,360	28	-672	0
5J	Cebu Pacific Air	MNL	Manila	4,360	10	6,104	14	1,744	4
5J Total				4,360	10	6,104	14	1,744	4
6E	Indigo	BLR	Bangalore Hindustan	0	0	2,520	14	2,520	14
		BOM	Mumbai	5,040	28	5,040	28	0	0
		CCJ	Kozhikode	0	0	2,520	14	2,520	14
		COK	Cochin	2,520	14	2,520	14	0	0
		DEL	Delhi Indira Gandhi International	5,040	28	5,040	28	0	0
		HYD	Hyderabad Begumpet	2,520	14	2,520	14	0	0
		MAA	Chennai	2,520	14	2,520	14	0	0
		TRV	Trivandrum International	2,520	14	2,520	14	0	0
6E Total				20,160	112	25,200	140	5,040	28
8U	Afriqiyah Airlines Libya	BEN	Benghazi Benina International	460	2	572	3	112	1
		TIP	Tripoli International	920	4	1,032	5	112	1
8U Total				1,380	6	1,604	8	224	2
9W	Jet Airways India	BOM	Mumbai	8,848	56	11,900	70	3,052	14
		COK	Cochin	2,380	14	2,380	14	0	0
		DEL	Delhi Indira Gandhi International	4,536	28	4,760	28	224	0
		IXE	Bajpe Airport, Mangalore	2,156	14	2,380	14	224	0
9W Total				17,920	112	21,420	126	3,500	14
AF	Air France	CDG	Paris Ch. De Gaulle	4,242	14	4,112	14	-130	0
AF Total				4,242	14	4,112	14	-130	0

DUBAI INTERNATIONAL AIRPORT

PEAK WEEK FREQUENCIES - BY CARRIER - S14 Vs. S15

OPERATOR	AIRPORT	S14		S15		SEATS +/-	ATMS +/-		
		SEATS	ATMS	SEATS	ATMS				
AGA	Agair	KDH	Kandahar	0	4	0	0	0	-4
		SHJ	Sharjah	0	4	0	0	0	-4
AGA Total				0	8	0	0	0	-8
AH	Air Algerie	ALG	Algiers Houari Boumediene	2,104	8	2,152	8	48	0
AH Total				2,104	8	2,152	8	48	0
AI	Air India	BLR	Bangalore Hindustan	976	8	976	8	0	0
		BOM	Mumbai	3,612	21	1,204	7	-2,408	-14
		CCJ	Kozhikode	2,408	14	2,408	14	0	0
		DEL	Delhi Indira Gandhi International	5,992	28	3,584	14	-2,408	-14
		GOI	Goa Dabolim	1,204	7	1,204	7	0	0
		MAA	Chennai	2,408	14	2,408	14	0	0
		VTZ	Vishakhapatnam	2,408	14	2,408	14	0	0
AI Total				19,008	106	14,192	78	-4,816	-28
B8	Eritrean Airlines	ASM	Asmara International	1,224	9	816	6	-408	-3
		LHE	Lahore	408	3	0	0	-408	-3
B8 Total				1,632	12	816	6	-816	-6
BA	British Airways	LHR	London Heathrow	7,350	28	7,334	28	-16	0
BA Total				7,350	28	7,334	28	-16	0
BG	Biman Bangladesh Airlines	CGP	Chittagong Patenga	2,100	6	1,676	4	-424	-2
		DAC	Hazrat Shahjalal International	2,100	6	4,190	10	2,090	4
BG Total				4,200	12	5,866	14	1,666	2
BI	Royal Brunei Airlines	BWN	Bandar Seri Begawan Brunei International	3,556	14	3,556	14	0	0
		LHR	London Heathrow	3,556	14	3,556	14	0	0
BI Total				7,112	28	7,112	28	0	0
CA	Air China	PEK	Beijing Capital	3,010	10	3,010	10	0	0
CA Total				3,010	10	3,010	10	0	0
CX	Cathay Pacific	BAH	Bahrain International	3,388	14	4,438	14	1,050	0
		HKG	Hong Kong International	6,776	28	8,876	28	2,100	0
CX Total				10,164	42	13,314	42	3,150	0
CZ	China Southern Airlines	CAN	Guangzhou Baiyun	3,948	14	3,850	14	-98	0
		ZGC		0	0	1,610	10	1,610	10
CZ Total				3,948	14	5,460	24	1,512	10
D3	Daallo Airlines	JIB	Djibouti Ambouli	1,104	8	880	4	-224	-4

DUBAI INTERNATIONAL AIRPORT

PEAK WEEK FREQUENCIES - BY CARRIER - S14 Vs. S15

OPERATOR		AIRPORT		S14		S15		SEATS +/-	ATMS +/-
				SEATS	ATMS	SEATS	ATMS		
D3 Total				1,104	8	880	4	-224	-4
DHX	Dhl Aviation	BAH	Bahrain International	0	16	0	28	0	12
		DOH	Doha	0	1	0	1	0	0
		KHI	Karachi Quaid-E-Azam International	0	1	0	1	0	0
		MCT	Muscat Seeb	0	2	0	0	0	-2
DHX Total				0	20	0	30	0	10
DL	Delta Air Lines	ATL	Atlanta	4,074	14	3,766	14	-308	0
DL Total				4,074	14	3,766	14	-308	0
DT	Taag Angola Airlines	LAD	Luanda 4 De Fevereiro	1,410	6	940	4	-470	-2
DT Total				1,410	6	940	4	-470	-2
DY	Norwegian	ARN	Stockholm Arlanda	372	2	372	2	0	0
DY Total				372	2	372	2	0	0
EA	East Horizon	KDH	Kandahar	1,036	7	0	0	-1,036	-7
		OAI	Bagram Airport	1,036	7	0	0	-1,036	-7
EA Total				2,072	14	0	0	-2,072	-14
EK	Emirates	ABJ	Abidjan Felix Houphouet Boigny	5,096	14	5,040	14	-56	0
		ABV	Abuja International	2,520	7	5,040	14	2,520	7
		ADD	Addis Ababa Bole	5,012	16	3,318	14	-1,694	-2
		ADL	Adelaide	4,956	14	4,956	14	0	0
		AKL	Auckland International	20,538	42	20,538	42	0	0
		ALG	Algiers Houari Boumediene	3,318	14	2,670	10	-648	-4
		AMD	Ahmedabad	5,560	20	5,560	20	0	0
		AMM	Amman	15,036	42	11,732	42	-3,304	0
		AMS	Amsterdam-Schiphol	12,236	36	12,292	28	56	-8
		ARN	Stockholm Arlanda	5,040	14	5,040	14	0	0
		ATH	Athens Athinai	5,096	14	9,310	28	4,214	14
		BAH	Bahrain International	12,054	44	14,994	56	2,940	12
		BCN	Barcelona	7,238	14	10,696	27	3,458	13
		BEY	Beirut International	7,224	31	7,056	28	-168	-3
		BGW	Baghdad Al Muthana	8,330	28	3,769	14	-4,561	-14
		BHX	Birmingham International	11,984	28	17,024	42	5,040	14
		BKK	Bangkok International	23,226	56	25,508	56	2,282	0
		BLR	Bangalore Hindustan	11,046	42	13,972	42	2,926	0

DUBAI INTERNATIONAL AIRPORT

PEAK WEEK FREQUENCIES - BY CARRIER - S14 Vs. S15

OPERATOR	AIRPORT	S14		S15		SEATS +/-	ATMS +/-
		SEATS	ATMS	SEATS	ATMS		
BNE	Brisbane International	5,040	14	5,040	14	0	0
BOM	Mumbai	21,868	72	26,306	70	4,438	-2
BOS	Boston Logan International	5,026	14	6,846	14	1,820	0
BRU	Brussels	0	0	5,040	14	5,040	14
BSR	Basra International	8,658	28	7,784	28	-874	0
BUD	Budapest Ferihegy	0	0	4,942	14	4,942	14
CAI	Cairo International	11,984	28	11,984	28	0	0
CAN	Guangzhou Baiyun	5,992	18	5,992	14	0	-4
CCJ	Kozhikode	7,612	22	8,556	24	944	2
CCU	Calcutta Netaji Subhas Chandra	6,672	24	7,172	26	500	2
CDG	Paris Ch. De Gaulle	19,738	40	20,680	40	942	0
CGK	Jakarta Soekarno-Hatta International	17,976	42	17,976	42	0	0
CHC	Christchurch International	4,956	14	4,956	14	0	0
CKY	Conakry	1,428	5	0	0	-1,428	-5
CMB	Colombo Bandaranayake International	15,384	40	14,504	40	-880	0
CMN	Casablanca Mohamed V	5,040	14	9,996	28	4,956	14
COK	Cochin	10,192	28	10,192	28	0	0
CPH	Copenhagen Airport	5,992	14	8,610	14	2,618	0
CPT	Cape Town Internationa	9,996	28	9,996	28	0	0
CRK	Diosdado Macapagal International	5,992	14	0	0	-5,992	-14
DAC	Hazrat Shahjalal International	11,984	32	15,876	42	3,892	10
DAM	Damascus International	6,713	21	0	0	-6,713	-21
DAR	Dar Es Salaam International	5,040	14	8,414	28	3,374	14
DEL	Delhi Indira Gandhi International	17,654	56	19,068	56	1,414	0
DFW	Dallas Ft Worth International	3,724	14	6,874	14	3,150	0
DKR	Dakar Yoff	1,426	6	2,670	10	1,244	4
DME	Moscow Domodedovo	14,084	28	12,306	28	-1,778	0
DMM	Dammam King Fahad International	14,620	42	14,266	42	-354	0
DOH	Doha	31,486	84	35,486	98	4,000	14
DPS	Denpasar Bali Ngurah Rai	0	0	5,992	14	5,992	14
DUB	Dublin	10,052	28	10,080	28	28	0
DUR	Durban International	5,992	14	5,992	14	0	0
DUS	Dusseldorf	10,136	28	10,080	28	-56	0

DUBAI INTERNATIONAL AIRPORT

PEAK WEEK FREQUENCIES - BY CARRIER - S14 Vs. S15

OPERATOR	AIRPORT	S14		S15		SEATS +/-	ATMS +/-
		SEATS	ATMS	SEATS	ATMS		
DXB	Dubai	3,222	9	0	0	-3,222	-9
EBB	Entebbe	3,612	15	4,956	14	1,344	-1
EBL	Erbil International Airport	5,352	27	2,534	10	-2,818	-17
EDL	Eldoret International Airport	0	3	0	0	0	-3
EZE	Buenos Aires Ministro Pistarini	4,956	14	3,724	14	-1,232	0
FCO	Rome Fiumicino	12,278	28	19,138	42	6,860	14
FRA	Frankfurt International	15,008	49	16,926	42	1,918	-7
GLA	Glasgow International	10,080	28	10,080	28	0	0
GOT	Gothenburg Landvetter	0	4	0	0	0	-4
GRU	Sao Paulo Guarulhos International	4,956	14	4,956	14	0	0
GVA	Geneva Geneve-Cointrin	5,040	14	5,040	14	0	0
HAM	Hamburg Fuhlsbuettel	10,080	28	9,996	28	-84	0
HAN	Hanoi Noibai	0	2	0	0	0	-2
HKG	Hong Kong International	24,444	94	26,782	56	2,338	-38
HKT	Phuket International	3,738	14	4,956	14	1,218	0
HND	Tokyo Haneda	5,012	14	5,012	14	0	0
HRE	Harare	4,956	14	4,956	14	0	0
HYD	Hyderabad Begumpet	11,284	42	14,434	42	3,150	0
IAD	Washington Dulles International	3,724	14	4,956	14	1,232	0
IAH	Houston	4,956	15	6,874	14	1,918	-1
ICN	Seoul Incheon International	7,238	16	7,238	14	0	-2
IKA	Imam Khomeini - Tehran	17,976	42	20,132	56	2,156	14
ISB	Islamabad International	11,128	26	9,416	22	-1,712	-4
IST	Istanbul Ataturk	9,416	22	9,416	22	0	0
JED	Jeddah King Abdulaziz International	21,714	42	17,214	34	-4,500	-8
JFK	New York John F Kennedy International	18,732	42	25,578	56	6,846	14
JNB	Johannesburg International	15,008	44	20,076	56	5,068	12
KAN	Aminu Kano International Apt	2,520	7	0	0	-2,520	-7
KBL	Kabul Khwaja Rawash	3,612	14	3,738	14	126	0
KBP	Kiev Borispol	3,612	14	0	0	-3,612	-14
KHI	Karachi Quaid-E-Azam International	29,064	70	33,579	84	4,515	14
KIX	Osaka Kansai International	4,956	14	4,956	14	0	0
KRT	Khartoum Civil	3,318	15	1,896	8	-1,422	-7

DUBAI INTERNATIONAL AIRPORT

PEAK WEEK FREQUENCIES - BY CARRIER - S14 Vs. S15

OPERATOR	AIRPORT	S14		S15		SEATS +/-	ATMS +/-
		SEATS	ATMS	SEATS	ATMS		
KUL	Kuala Lumpur International	15,652	42	17,402	42	1,750	0
KWI	Kuwait International	28,679	70	37,940	98	9,261	28
LAD	Luanda 4 De Fevereiro	5,040	14	5,040	14	0	0
LAX	Los Angeles International	6,846	15	6,846	14	0	-1
LED	St Petersburg	3,738	14	4,165	14	427	0
LGW	London Gatwick	15,092	42	18,347	42	3,255	0
LHE	Lahore	9,348	22	9,416	22	68	0
LHR	London Heathrow	36,190	74	36,190	70	0	-4
LIS	Lisbon Lisboa	4,956	14	5,040	14	84	0
LOS	Lagos Murtala Muhammed	10,080	30	10,080	28	0	-2
LYS	Lyon	2,660	10	2,660	10	0	0
MAA	Chennai	15,932	42	15,232	42	-700	0
MAD	Madrid Barajas	9,996	28	12,306	28	2,310	0
MAN	Manchester International	18,270	42	19,544	42	1,274	0
MCT	Muscat Seeb	10,836	28	11,522	42	686	14
MED	Madinah Mohammad Bin Abdulaziz	3,792	16	3,318	14	-474	-2
MEL	Melbourne	10,080	28	11,830	28	1,750	0
MEX	Mexico City Juarez International	0	1	0	0	0	-1
MLA	Malta Luqa	6,352	21	3,318	14	-3,034	-7
MLE	Male International	5,992	14	10,990	28	4,998	14
MNL	Manila	17,976	42	17,976	42	0	0
MRU	Mauritius S.Seewoosagur Ram.Int	12,334	28	14,084	28	1,750	0
MUC	Munich Franz Josef Strauss	14,476	28	14,084	28	-392	0
MXP	Milan Malpensa	8,414	28	12,306	28	3,892	0
NBC	Begishevo Airport	0	1	0	0	0	-1
NBO	Nairobi Jomo Kenyatta International	8,582	31	10,136	28	1,554	-3
NCE	Nice Cote D'Azur	5,096	14	5,040	14	-56	0
NCL	Newcastle Airport	5,992	14	5,992	14	0	0
NRT	Tokyo Narita	4,956	14	4,956	14	0	0
ORD	Chicago O'Hare International	3,724	18	4,956	14	1,232	-4
OSL	Oslo	5,012	14	4,382	14	-630	0
PEK	Beijing Capital	12,278	28	12,278	28	0	0
PER	Perth	16,002	42	16,954	42	952	0

DUBAI INTERNATIONAL AIRPORT

PEAK WEEK FREQUENCIES - BY CARRIER - S14 Vs. S15

OPERATOR	AIRPORT	S14		S15		SEATS +/-	ATMS +/-	
		SEATS	ATMS	SEATS	ATMS			
PEW	Peshawar	3,460	10	2,370	10	-1,090	0	
PRG	Prague Ruzyne	5,096	14	5,040	14	-56	0	
PVG	Shanghai Pu Dong	12,194	41	12,194	28	0	-13	
RUH	Riyadh King Khaled International	19,649	56	11,032	28	-8,617	-28	
SAH	Sana'A International	3,318	15	3,318	14	0	-1	
SEA	Seattle	4,956	14	7,434	21	2,478	7	
SEZ	Mahe Island Seychelles International	7,624	28	7,042	28	-582	0	
SFO	San Francisco International	4,956	14	6,874	14	1,918	0	
SGN	Ho Chi Minh City	5,992	14	5,012	14	-980	0	
SIN	Singapore Changi	18,270	43	17,374	42	-896	-1	
SKT	Sialkot International Airport	2,864	8	1,896	8	-968	0	
SYD	Sydney Kingsford Smith	6,846	17	6,846	14	0	-3	
TIP	Tripoli International	2,124	7	0	0	-2,124	-7	
TPE	Taipei Chiang Kai Shek	5,012	16	5,040	14	28	-2	
TRV	Trivandrum International	6,672	24	7,784	28	1,112	4	
TUN	Tunis Carthage	3,612	15	5,096	14	1,484	-1	
VCE	Venice Marco Polo	3,738	14	7,301	14	3,563	0	
VCP	Sao Paulo Viracopos	0	8	0	0	0	-8	
VIE	Vienna	8,856	28	10,080	28	1,224	0	
WAW	Warsaw Okecie	3,318	14	3,318	14	0	0	
YYZ	Toronto Pearson International	2,934	6	2,946	6	12	0	
ZAZ	Zaragoza	0	5	0	0	0	-5	
ZRH	Zurich	12,278	28	12,208	28	-70	0	
ZZF	Mystery Flight	187,948	534	2,860	8	-185,088	-526	
EK Total		1,415,049	3,954	1,318,145	3,430	-96,904	-524	
EP	Iran Aseman Airlines							
	BDH	Bandar Lengeh	128	2	128	2	0	0
	BND	Bandar Abbas	1,090	10	872	8	-218	-2
	BUZ	Bushehr	436	4	327	3	-109	-1
	IKA	Imam Khomeini - Tehran	4,560	6	1,988	12	-2,572	6
	LFM	Lamerd Airport	128	2	128	2	0	0
	LRR	Lar Airport	1,436	14	1,526	14	90	0
	MHD	Mashad	1,376	8	1,376	8	0	0
	SYZ	Shiraz	1,962	18	2,063	19	101	1

DUBAI INTERNATIONAL AIRPORT

PEAK WEEK FREQUENCIES - BY CARRIER - S14 Vs. S15

OPERATOR	AIRPORT		S14		S15		SEATS +/-	ATMS +/-
			SEATS	ATMS	SEATS	ATMS		
	TBZ	Tabriz	436	4	0	0	-436	-4
	ZAH	Zahedan	218	2	218	2	0	0
	ZBR	Chah-Bahar	218	2	518	4	300	2
EP Total			11,988	72	9,144	74	-2,844	2
ET	Ethiopian Airlines	ADD Addis Ababa Bole	11,578	43	12,054	42	476	-1
ET Total			11,578	43	12,054	42	476	-1
FG	Ariana Afghan Airlines	KBL Kabul Khwaja Rawash	2,496	12	2,912	14	416	2
FG Total			2,496	12	2,912	14	416	2
FGE	Flygeorgia	TBS Tbilisi Novo Alexeyevka	228	2	0	0	-228	-2
FGE Total			228	2	0	0	-228	-2
FX	Fedex	BLR Bangalore Hindustan	0	10	0	10	0	0
		CAN Guangzhou Baiyun	0	6	0	9	0	3
		CDG Paris Ch. De Gaulle	0	6	0	12	0	6
		DEL Delhi Indira Gandhi International	0	1	0	2	0	1
		HKG Hong Kong International	0	1	0	1	0	0
		MEM Memphis International	0	16	0	10	0	-6
		NRT Tokyo Narita	0	4	0	0	0	-4
FX Total			0	44	0	44	0	0
FZ	Flydubai	ADD Addis Ababa Bole	1,134	6	1,134	6	0	0
		ADE Aden International	0	0	1,512	8	1,512	8
		AHB Abha	5,859	31	6,426	34	567	3
		ALA Almaty	0	0	1,512	8	1,512	8
		AMD Ahmedabad	756	4	756	4	0	0
		AMM Amman	4,536	24	8,127	43	3,591	19
		ASB Ashgabat	2,835	15	1,323	7	-1,512	-8
		AWZ Ahwaz	0	0	567	3	567	3
		BAH Bahrain International	9,072	48	11,718	62	2,646	14
		BEG Belgrade Beograd	1,134	6	1,134	6	0	0
		BEY Beirut International	7,560	40	7,938	42	378	2
		BGW Baghdad Al Muthana	2,646	14	5,292	28	2,646	14
		BND Bandar Abbas	0	0	756	4	756	4
		BOM Mumbai	0	0	2,457	13	2,457	13
		BSR Basra International	3,213	17	2,646	14	-567	-3

DUBAI INTERNATIONAL AIRPORT

PEAK WEEK FREQUENCIES - BY CARRIER - S14 Vs. S15

OPERATOR	AIRPORT	S14		S15		SEATS +/-	ATMS +/-
		SEATS	ATMS	SEATS	ATMS		
BTS	Bratislava Ivanka	0	0	1,134	6	1,134	6
CGP	Chittagong Patenga	3,780	20	4,914	26	1,134	6
CIT	Shimkent	0	0	756	4	756	4
CMB	Colombo Bandaranayake International	6,237	33	3,969	21	-2,268	-12
COK	Cochin	0	0	1,512	8	1,512	8
DAC	Hazrat Shahjalal International	2,835	15	9,450	50	6,615	35
DAR	Dar Es Salaam International	0	0	2,835	15	2,835	15
DEL	Delhi Indira Gandhi International	0	0	1,890	10	1,890	10
DMM	Dammam King Fahad International	11,151	59	11,718	62	567	3
DOH	Doha	24,192	128	24,192	128	0	0
DOK	Donetsk	1,890	10	0	0	-1,890	-10
DXB	Dubai	0	0	189	1	189	1
DYU	Dushanbe	3,024	16	1,701	9	-1,323	-7
EAM	Nejran	0	0	1,512	8	1,512	8
EBB	Entebbe	0	0	3,402	18	3,402	18
EBL	Erbil International Airport	2,646	14	4,536	24	1,890	10
ELQ	Gassim	5,670	30	5,292	28	-378	-2
EVN	Yerevan	2,268	12	1,134	6	-1,134	-6
F24		189	1	0	0	-189	-1
FRU	Bishkek	1,512	8	1,890	10	378	2
GOI	Goa Dabolim	0	0	2,835	15	2,835	15
GYD	Baku Heydar Aliyev International Airport	2,835	15	1,890	10	-945	-5
HAS	Hail	1,512	8	1,890	10	378	2
HBE	Borg El Arab	4,347	23	10,584	56	6,237	33
HDM		0	0	189	1	189	1
HGA	Hargeisa	0	0	2,646	14	2,646	14
HOF		567	3	1,512	8	945	5
HRI		0	0	1,323	7	1,323	7
HRK	Kharkov	1,512	8	0	0	-1,512	-8
HYD	Hyderabad Begumpet	1,512	8	5,481	29	3,969	21
IEV	Kiev	2,646	14	2,646	14	0	0
IFN	Isfahan	0	0	945	5	945	5
IKA	Imam Khomeini - Tehran	756	4	2,457	13	1,701	9

DUBAI INTERNATIONAL AIRPORT

PEAK WEEK FREQUENCIES - BY CARRIER - S14 Vs. S15

OPERATOR	AIRPORT	S14		S15		SEATS +/-	ATMS +/-
		SEATS	ATMS	SEATS	ATMS		
ISU	Sulaymaniah	1,134	6	567	3	-567	-3
JED	Jeddah King Abdulaziz International	10,395	55	11,718	62	1,323	7
JIB	Djibouti Ambouli	3,402	18	2,646	14	-756	-4
JUB	Juba	2,646	14	3,969	21	1,323	7
KBL	Kabul Khwaja Rawash	8,127	43	8,505	45	378	2
KBP	Kiev Borispol	2,646	14	0	0	-2,646	-14
KDH	Kandahar	3,213	17	3,969	21	756	4
KHI	Karachi Quaid-E-Azam International	7,371	39	15,876	84	8,505	45
KIV	Chisinau	756	4	945	5	189	1
KRR	Krasnodar	1,134	6	378	2	-756	-4
KRT	Khartoum Civil	12,474	66	6,804	36	-5,670	-30
KTM	Kathmandu Tribhuvan	5,670	30	10,017	53	4,347	23
KUF	Samara	1,512	8	756	4	-756	-4
KWI	Kuwait International	40,257	213	34,398	182	-5,859	-31
KZN	Kazan	1,512	8	945	5	-567	-3
LKO	Lucknow Amausi	1,134	6	1,134	6	0	0
MAA	Chennai	0	0	1,134	6	1,134	6
MCT	Muscat Seeb	11,529	61	18,333	97	6,804	36
MED	Madinah Mohammad Bin Abdulaziz	2,646	14	2,646	14	0	0
MHD	Mashad	756	4	4,536	24	3,780	20
MLE	Male International	2,646	14	4,347	23	1,701	9
MRV	Mineralnye Vody	1,512	8	2,268	12	756	4
MUX	Multan	3,213	17	1,890	10	-1,323	-7
NJF	Najaf	1,323	7	4,536	24	3,213	17
OAI	Bagram Airport	3,024	16	1,512	8	-1,512	-8
OAZ	Camp Bastion	1,890	10	0	0	-1,890	-10
ODS	Odessa Central	1,134	6	756	4	-378	-2
OSS	Osh	189	1	0	0	-189	-1
OTP	Bucharest Otopeni International	1,134	6	1,512	8	378	2
PRG	Prague Ruzyne	0	0	1,512	8	1,512	8
PZU	Port Sudan	189	1	756	4	567	3
ROV	Rostov	1,512	8	756	4	-756	-4
RUH	Riyadh King Khaled International	12,474	66	4,725	25	-7,749	-41

DUBAI INTERNATIONAL AIRPORT

PEAK WEEK FREQUENCIES - BY CARRIER - S14 Vs. S15

OPERATOR		AIRPORT		S14		S15		SEATS +/-	ATMS +/-
				SEATS	ATMS	SEATS	ATMS		
		SAH	Sana'A International	1,890	10	567	3	-1,323	-7
		SAW	Sabiha Gokcen International Airport	1,890	10	2,457	13	567	3
		SJJ	Sarajevo International	0	0	1,134	6	1,134	6
		SKP	Skopje	756	4	756	4	0	0
		SKT	Sialkot International Airport	1,134	6	3,402	18	2,268	12
		SLL	Salalah	1,134	6	4,914	26	3,780	20
		SOF	Sofia Vrazhdebna	0	0	756	4	756	4
		SVX	Ekaterinburg	2,457	13	1,134	6	-1,323	-7
		SYZ	Shiraz	0	0	1,134	6	1,134	6
		TBS	Tbilisi Novo Alexeyevka	1,512	8	3,402	18	1,890	10
		TBZ	Tabriz	0	0	1,512	8	1,512	8
		TIF	Taif	2,646	14	2,835	15	189	1
		TRV	Trivandrum International	0	0	1,134	6	1,134	6
		TUU	Tabuk	756	4	1,323	7	567	3
		UFA	Ufa, Bashkortostan	1,512	8	378	2	-1,134	-6
		VKO	Moscow Vnukovo	0	0	2,646	14	2,646	14
		VOG	Volgograd	1,134	6	0	0	-1,134	-6
		YNB	Yanbu	1,134	6	1,701	9	567	3
		ZAG	Zagreb Pleso	0	0	1,323	7	1,323	7
		ZYL	Sylhet Civil	0	0	2,646	14	2,646	14
FZ Total				286,335	1,515	358,722	1,898	72,387	383
GF	Gulf Air Gsc	BAH	Bahrain International	14,598	102	14,638	102	40	0
GF Total				14,598	102	14,638	102	40	0
HH	Taban Airlines	IFN	Isfahan	0	0	972	6	972	6
		IKA	Imam Khomeini - Tehran	324	2	648	4	324	2
		MHD	Mashad	648	4	648	4	0	0
HH Total				972	6	2,268	14	1,296	8
HY	Uzbekistan Airways	TAS	Tashkent Vostochny	1,242	6	1,242	6	0	0
HY Total				1,242	6	1,242	6	0	0
IA	Iraqi Airways	BGW	Baghdad Al Muthana	1,188	9	1,848	14	660	5
		BSR	Basra International	792	6	792	6	0	0
		EBL	Erbil International Airport	280	4	0	0	-280	-4
		ISU	Sulaymaniah	280	4	280	4	0	0

DUBAI INTERNATIONAL AIRPORT

PEAK WEEK FREQUENCIES - BY CARRIER - S14 Vs. S15

OPERATOR	AIRPORT		S14		S15		SEATS +/-	ATMS +/-
			SEATS	ATMS	SEATS	ATMS		
	NJF	Najaf	528	4	280	4	-248	0
IA Total			3,068	27	3,200	28	132	1
IR	Iran Air	AWZ Ahwaz	412	4	584	4	172	0
		BND Bandar Abbas	588	4	588	4	0	0
		IFN Isfahan	588	4	588	4	0	0
		IKA Imam Khomeini - Tehran	2,058	14	2,058	14	0	0
		SYZ Shiraz	588	4	588	4	0	0
IR Total			4,234	30	4,406	30	172	0
IV	Caspian Airlines	IKA Imam Khomeini - Tehran	0	0	2,310	14	2,310	14
IV Total			0	0	2,310	14	2,310	14
IX	Air India Express	ATQ Amritsar Raja Sansi	2,590	14	2,590	14	0	0
		CCJ Kozhikode	2,590	14	2,590	14	0	0
		COK Cochin	2,590	14	2,590	14	0	0
		IXE Bajpe Airport, Mangalore	5,180	28	6,475	35	1,295	7
		IXM	0	0	1,295	7	1,295	7
		JAI Jaipur Sanganeer	1,480	8	1,480	8	0	0
		LKO Lucknow Amausi	2,590	14	2,590	14	0	0
		PNQ Poona Lohegaon	1,110	6	1,110	6	0	0
		TRV Trivandrum International	1,850	10	1,850	10	0	0
		TRZ Civil Airfield, Tiruchirapally	2,590	14	2,590	14	0	0
IX Total			22,570	122	25,160	136	2,590	14
IY	Yemenia Yemen Airways	CGK Jakarta Soekarno-Hatta International	277	1	831	3	554	2
		KUL Kuala Lumpur International	831	3	1,385	5	554	2
		SAH Sana'A International	2,120	10	3,528	16	1,408	6
IY Total			3,228	14	5,744	24	2,516	10
J2	Azal Azerbaijan Airlines	GYD Baku Heydar Aliyev International Airport	2,520	14	2,520	14	0	0
J2 Total			2,520	14	2,520	14	0	0
J9	Jazeera Airways	KWI Kuwait International	8,904	56	8,904	56	0	0
J9 Total			8,904	56	8,904	56	0	0
KC	Air Astana	ALA Almaty	0	0	2,072	14	2,072	14
KC Total			0	0	2,072	14	2,072	14
KE	Korean Air	ICN Seoul Incheon International	2,180	10	3,052	14	872	4
KE Total			2,180	10	3,052	14	872	4

DUBAI INTERNATIONAL AIRPORT

PEAK WEEK FREQUENCIES - BY CARRIER - S14 Vs. S15

	OPERATOR	AIRPORT		S14		S15		SEATS +/-	ATMS +/-
				SEATS	ATMS	SEATS	ATMS		
KL	Klm Royal Dutch Airlines	AMS	Amsterdam-Schiphol	4,452	14	4,152	14	-300	0
KL Total				4,452	14	4,152	14	-300	0
KQ	Kenya Airways	NBO	Nairobi Jomo Kenyatta International	5,054	28	5,306	28	252	0
KQ Total				5,054	28	5,306	28	252	0
KU	Kuwait Airways	KWI	Kuwait International	5,068	28	8,316	42	3,248	14
KU Total				5,068	28	8,316	42	3,248	14
LC	East Congo Airlines	BZV	Brazzaville Maya Maya	888	6	2,220	15	1,332	9
LC Total				888	6	2,220	15	1,332	9
LH	Lufthansa	FRA	Frankfurt International	3,724	14	3,094	14	-630	0
		MUC	Munich Franz Josef Strauss	2,652	12	2,652	12	0	0
LH Total				6,376	26	5,746	26	-630	0
LN	Libyan Airways	BEN	Benghazi Benina International	1,325	5	1,060	4	-265	-1
		TIP	Tripoli International	1,325	5	1,590	6	265	1
LN Total				2,650	10	2,650	10	0	0
LX	Swiss International Air Lines	MCT	Muscat Seeb	3,304	14	3,304	14	0	0
		ZRH	Zurich	3,304	14	3,304	14	0	0
LX Total				6,608	28	6,608	28	0	0
ME	Mea Middle East Airlines	BEY	Beirut International	4,172	28	5,312	28	1,140	0
ME Total				4,172	28	5,312	28	1,140	0
MH	Malaysia Airlines	KUL	Kuala Lumpur International	3,962	14	3,962	14	0	0
MH Total				3,962	14	3,962	14	0	0
MS	Egypt Air	CAI	Cairo International	8,428	28	9,058	28	630	0
		HBE	Borg El Arab	2,408	8	1,152	8	-1,256	0
MS Total				10,836	36	10,210	36	-626	0
MU	China Eastern Airlines	PVG	Shanghai Pu Dong	1,040	4	1,560	6	520	2
MU Total				1,040	4	1,560	6	520	2
NL	Shaheen Air International	ISB	Islamabad International	1,312	8	1,640	10	328	2
		KHI	Karachi Quaid-E-Azam International	2,296	14	2,344	14	48	0
		LHE	Lahore	2,646	14	2,352	14	-294	0
		MUX	Multan	656	4	984	6	328	2
		PEW	Peshawar	2,296	14	2,344	14	48	0
NL Total				9,206	54	9,664	58	458	4
NV	Naft Air	AWZ	Ahwaz	654	6	872	8	218	2

DUBAI INTERNATIONAL AIRPORT

PEAK WEEK FREQUENCIES - BY CARRIER - S14 Vs. S15

OPERATOR	AIRPORT	S14		S15		SEATS +/-	ATMS +/-
		SEATS	ATMS	SEATS	ATMS		
	BND Bandar Abbas	0	0	654	6	654	6
NV Total		654	6	1,526	14	872	8
OS Austrian Airlines	VIE Vienna	3,150	14	2,250	10	-900	-4
OS Total		3,150	14	2,250	10	-900	-4
PA Airblue	ISB Islamabad International	1,320	8	2,310	14	990	6
	KHI Karachi Quaid-E-Azam International	2,310	14	2,310	14	0	0
	LHE Lahore	2,310	14	2,310	14	0	0
	PEW Peshawar	990	6	990	6	0	0
	SKT Sialkot International Airport	0	0	1,744	8	1,744	8
PA Total		6,930	42	9,664	56	2,734	14
PC Pegasus	SAW Sabiha Gokcen International Airport	1,890	10	2,646	14	756	4
PC Total		1,890	10	2,646	14	756	4
PK Pia Pakistan International Airlines	DEA Dera Ghazi Khan Airport	472	4	472	4	0	0
	ISB Islamabad International	3,549	16	2,920	16	-629	0
	KHI Karachi Quaid-E-Azam International	5,628	28	6,988	42	1,360	14
	LHE Lahore	2,714	14	2,599	16	-115	2
	MUX Multan	472	4	596	4	124	0
	PEW Peshawar	1,085	6	833	4	-252	-2
	UET Quetta	236	2	596	4	360	2
PK Total		14,156	74	15,004	90	848	16
PQ Air Asia	CRK Diosdado Macapagal International	0	0	5,040	28	5,040	28
PQ Total		0	0	5,040	28	5,040	28
PR Philippine Airlines	MNL Manila	4,968	12	5,796	14	828	2
PR Total		4,968	12	5,796	14	828	2
PS Ukraine International Airlines	KBP Kiev Borispol	660	6	930	8	270	2
PS Total		660	6	930	8	270	2
QB Qeshm Air	GSM Ghesm	700	14	1,400	14	700	0
	IFN Isfahan	0	0	600	4	600	4
	IKA Imam Khomeini - Tehran	600	4	2,100	14	1,500	10
	KER Kerman	200	4	0	0	-200	-4
QB Total		1,500	22	4,100	32	2,600	10
QF Qantas	LHR London Heathrow	20,328	42	13,552	28	-6,776	-14
	MEL Melbourne	13,552	28	6,776	14	-6,776	-14

DUBAI INTERNATIONAL AIRPORT

PEAK WEEK FREQUENCIES - BY CARRIER - S14 Vs. S15

OPERATOR		AIRPORT		S14		S15		SEATS +/-	ATMS +/-
				SEATS	ATMS	SEATS	ATMS		
		SYD	Sydney Kingsford Smith	6,776	14	6,776	14	0	0
		ZZF	Unspecified	13,552	28	0	0	-13,552	-28
QF Total				54,208	112	27,104	56	-27,104	-56
QH	Kyrgyzstan Ojsc	FRU	Bishkek	292	2	0	0	-292	-2
QH Total				292	2	0	0	-292	-2
QR	Qatar Airways	DOH	Doha	55,370	182	58,926	196	3,556	14
QR Total				55,370	182	58,926	196	3,556	14
QS	Travel Service Airlines/Smart Wings	PRG	Prague Ruzyne	1,134	6	2,646	14	1,512	8
QS Total				1,134	6	2,646	14	1,512	8
RA	Royal Nepal Airlines	KTM	Kathmandu Tribhuvan	0	0	2,212	14	2,212	14
RA Total				0	0	2,212	14	2,212	14
RB	Syrianair Syrian Arab Airlines	DAM	Damascus International	1,160	8	870	6	-290	-2
		LTK	Latakia	0	0	290	2	290	2
RB Total				1,160	8	1,160	8	0	0
RG	Rotana Jet	AZI	Abu Dhabi Bateen	1,400	28	0	0	-1,400	-28
		XSB	St Malo	300	6	0	0	-300	-6
RG Total				1,700	34	0	0	-1,700	-34
RJ	Royal Jordanian	AMM	Amman	5,580	36	7,416	52	1,836	16
RJ Total				5,580	36	7,416	52	1,836	16
RO	Tarom	OTP	Bucharest Otopeni International	464	4	464	4	0	0
RO Total				464	4	464	4	0	0
RQ	Kam Air	KBL	Kabul Khwaja Rawash	2,400	16	2,296	14	-104	-2
RQ Total				2,400	16	2,296	14	-104	-2
S7	Siberia Airlines	OVB	Novosibirsk Tolmachevo	948	6	632	4	-316	-2
S7 Total				948	6	632	4	-316	-2
SG	Spicejet	AMD	Ahmedabad	2,646	14	2,646	14	0	0
		ATQ	Amritsar Raja Sansi	0	0	2,646	14	2,646	14
		BLR	Bangalore Hindustan	0	0	2,646	14	2,646	14
		BOM	Mumbai	2,646	14	2,646	14	0	0
		COK	Cochin	2,646	14	2,646	14	0	0
		DEL	Delhi Indira Gandhi International	4,158	22	2,646	14	-1,512	-8
		IXC	Chandigarh International Airport	2,646	14	0	0	-2,646	-14
		IXE	Bajpe Airport, Mangalore	0	0	2,646	14	2,646	14

DUBAI INTERNATIONAL AIRPORT

PEAK WEEK FREQUENCIES - BY CARRIER - S14 Vs. S15

OPERATOR	AIRPORT		S14		S15		SEATS +/-	ATMS +/-
			SEATS	ATMS	SEATS	ATMS		
		IXM	2,646	14	2,646	14	0	0
		PNQ Poona Lohegaon	0	0	3,780	20	3,780	20
SG Total			17,388	92	24,948	132	7,560	40
SQ	Singapore Airlines	CAI Cairo International	1,710	6	0	0	-1,710	-6
		JED Jeddah King Abdulaziz International	0	0	2,280	8	2,280	8
		SIN Singapore Changi	5,686	20	6,172	22	486	2
SQ Total			7,396	26	8,452	30	1,056	4
SU	Aeroflot Russian Airlines	SVO Moscow Sheremetyevo	2,800	20	4,424	28	1,624	8
SU Total			2,800	20	4,424	28	1,624	8
SV	Saudia	DMM Dammam King Fahad International	4,158	28	4,158	28	0	0
		ELQ Gassim	0	0	1,032	12	1,032	12
		JED Jeddah King Abdulaziz International	9,590	42	12,502	56	2,912	14
		MED Madinah Mohammad Bin Abdulaziz	1,056	8	1,320	10	264	2
		RUH Riyadh King Khaled International	16,090	70	17,774	74	1,684	4
SV Total			30,894	148	36,786	180	5,892	32
SZ	Somon Air	DYU Dushanbe	736	4	736	4	0	0
SZ Total			736	4	736	4	0	0
T5	Turkmenistan Airlines	ASB Ashgabat	1,008	8	2,240	14	1,232	6
T5 Total			1,008	8	2,240	14	1,232	6
TG	Thai Airways International Public Lt	BKK Bangkok International	4,186	14	4,186	14	0	0
TG Total			4,186	14	4,186	14	0	0
TK	Turkish Airlines	IST Istanbul Ataturk	9,072	28	9,436	28	364	0
TK Total			9,072	28	9,436	28	364	0
TU	Tunisair	TUN Tunis Carthage	912	8	1,064	4	152	-4
TU Total			912	8	1,064	4	152	-4
U6	Ural Airlines	KRR Krasnodar	0	0	320	2	320	2
		KUF Samara	312	2	312	2	0	0
		SVX Ekaterinburg	320	2	640	4	320	2
U6 Total			632	4	1,272	8	640	4
UA	United Airlines	DOH Doha	3,766	14	0	0	-3,766	-14
		IAD Washington Dulles International	3,766	14	3,766	14	0	0
UA Total			7,532	28	3,766	14	-3,766	-14
UL	Srilankan Airlines	CMB Colombo Bandaranayake International	4,018	14	4,018	14	0	0

DUBAI INTERNATIONAL AIRPORT

PEAK WEEK FREQUENCIES - BY CARRIER - S14 Vs. S15

OPERATOR		AIRPORT		S14		S15		SEATS +/-	ATMS +/-
				SEATS	ATMS	SEATS	ATMS		
UL Total				4,018	14	4,018	14	0	0
UN	Transaero Airlines	DME	Moscow Domodedovo	1,580	10	0	0	-1,580	-10
		VKO	Moscow Vnukovo	1,896	12	1,896	12	0	0
UN Total				3,476	22	1,896	12	-1,580	-10
UPS	Ups Airlines	CGN	Cologne Bonn	0	16	0	16	0	0
		CTU	Chengdu	0	3	0	1	0	-2
		HKG	Hong Kong International	0	8	0	8	0	0
		ICN	Seoul Incheon International	0	1	0	0	0	-1
		PVG	Shanghai Pu Dong	0	2	0	4	0	2
		SZX	Shenzhen	0	2	0	2	0	0
		TPE	Taipei Chiang Kai Shek	0	0	0	1	0	1
UPS Total				0	32	0	32	0	0
VL	Med View	LOS	Lagos Murtala Muhammed	0	0	1,638	6	1,638	6
VL Total				0	0	1,638	6	1,638	6
VS	Virgin Atlantic	LHR	London Heathrow	3,724	14	3,724	14	0	0
VS Total				3,724	14	3,724	14	0	0
W3	Arik Air	LOS	Lagos Murtala Muhammed	2,170	10	2,170	10	0	0
W3 Total				2,170	10	2,170	10	0	0
W5	Mahan Air	GSM	Gheshm	792	8	1,386	14	594	6
		IKA	Imam Khomeini - Tehran	7,344	36	11,424	56	4,080	20
		KER	Kerman	0	0	594	6	594	6
		MHD	Mashad	816	4	2,040	10	1,224	6
		SYZ	Shiraz	0	0	2,856	14	2,856	14
W5 Total				8,952	48	18,300	100	9,348	52
WB	Rwandair	KGL	Kigali Gregoire Kayibanda	1,540	10	2,310	15	770	5
		MBA	Mombasa Moi International	616	4	0	0	-616	-4
WB Total				2,156	14	2,310	15	154	1
WY	Oman Air	MCT	Muscat Seeb	13,770	94	11,138	96	-2,632	2
		SLL	Salalah	568	8	994	14	426	6
WY Total				14,338	102	12,132	110	-2,206	8
XU	African Express Airways	BBO	Berbera	308	2	0	0	-308	-2
		NBO	Nairobi Jomo Kenyatta International	616	4	0	0	-616	-4
XU Total				924	6	0	0	-924	-6

DUBAI INTERNATIONAL AIRPORT

PEAK WEEK FREQUENCIES - BY CARRIER - S14 Vs. S15

	OPERATOR	AIRPORT		S14		S15		SEATS +/-	ATMS +/-
				SEATS	ATMS	SEATS	ATMS		
XY	Fly NAS	JED	Jeddah King Abdulaziz International	2,520	14	4,264	26	1,744	12
		MED	Madinah Mohammad Bin Abdulaziz	0	0	328	2	328	2
		RUH	Riyadh King Khaled International	5,040	28	6,560	40	1,520	12
XY Total				7,560	42	11,152	68	3,592	26
Y9	Kish Air	IKA	Imam Khomeini - Tehran	640	4	0	0	-640	-4
		KIH	Kish Island	5,760	36	7,680	48	1,920	12
Y9 Total				6,400	40	7,680	48	1,280	8

GLOSSARY OF TERMS

Air Transport Movement (ATM)	A scheduled or charter passenger or freight aircraft movement.
Allocation	The allocation of slots such that demand is constrained to fit within declared scheduling limits.
Demand	The unconstrained demand for slots, prior to any schedule adjustments.
Passenger ATM	A scheduled or charter <u>passenger</u> aircraft movement (ie, excluding all-cargo aircraft movements).
Scheduling Limits	Limiting parameters declared by the Airport Operator used in the coordination process.
Seats	The number of seats based on the aircraft configuration advised by the airline.
Peak Week	The Peak Week for S15 is 21 - 27 September 2015
Data Snapshot	All data used for this report was as held 09 March 2015.

GUIDE TO HISTOGRAMS

The histograms show the pattern of traffic by time of day against the appropriate scheduling limit. Each time period consist of seven columns representing the days-of-week, Monday through Sunday.