

DUBAI INTERNATIONAL AIRPORT DXB

S14 Start of Season Report for Period 01 August - 25 October

Key Statistics	Summer 14 Start	Change from S13 Start	Change from Summer 13 End
Air Transport Movements	101,277	▲ 6.7%	▲ 15.5%
Total Seats	27,668,725	▲ 16.4%	▲ 27.3%
Average Seats per Passenger ATM	255	▲ 4.0%	▲ 24.4%

Contents	Page
CONSTRAINTS BY TERMINAL	2
CODE F AIRCRAFT ARRIVALS AND DEPARTURES	3-4
AIR TRANSPORT MOVEMENT STATISTICS	5
SEATS AND SEATS PER MOVEMENT STATISTICS	6
DISTRIBUTION OF SCHEDULE ADJUSTMENTS	7
TOP 10 AIRLINES BY ATMS AND SEATS	8
TOP 20 DESTINATIONS BY ATMS AND SEATS	9
RUNWAY MOVEMENT ALLOCATION - R60 - EMIRATES, FLYDUBAI AND OTHER CARRIERS	10
RUNWAY MOVEMENT ALLOCATION - R10	11
TERMINAL 1 PEAK WEEK HISTOGRAMS	12
TERMINAL 2 PEAK WEEK HISTOGRAMS	13
TERMINAL 2 GATE UTILISATION	14
TERMINAL 3 PEAK WEEK HISTOGRAMS	15
PEAK WEEK DEPARTURE FREQUENCIES BY CARRIER	16-32
GLOSSARY	33

Data in this report is current as of April 9th 2014. All data is for the period 01 August - 25 October.

No warranty whether expressed or implied as to the completeness, accuracy, fitness for purpose, or satisfactory quality is given by ACL regarding the information in this report, which is provided by third parties. Accordingly, ACL excludes all liability with regard to such data.

The contents of this report may not be reproduced without the written consent of ACL.

PRIMARY CONSTRAINTS BY TERMINAL

Reason Code	OK	R60	R10	AA	GRA	GRD	R15	Grand Tot
A	45,283	2,738	2,749	25			8	50,798
D	44,781	3,265	2,372	36	19		1	50,479
Grand Total	90,064	6,003	5,121	61	19	8	1	101,277

	OK	AA	R10	R60	T60	Others
Arrival	89.1%	0.0%	5.4%	5.4%	0.0%	0.1%
Departure	88.7%	0.0%	4.7%	6.5%	0.0%	0.1%

Terminal	Time											
	0000	0100	0200	0300	0400	0500	0600	0700	0800	0900	1000	1100
Terminal 1	842	640	676	406	404	694	1,121	1,547	1,393	1,082	671	1,213
OK	675	505	578	307	404	693	1,073	1,388	1,218	877	633	1,131
R60	152	123	86			1	23	104	138	133	38	38
R10	15		12	99			25	55	37	72		41
AA		12										
GRA												
GRD												3
Terminal 2	579	874	673	1,439	1,033	998	1,129	1,168	933	1,019	1,238	624
OK	309	740	351	1,320	883	883	862	895	692	799	1,053	562
R60	37	50	78	62	24	34	221	79	95	98	130	61
R10	233	84	244	57	113	81	41	182	146	122	43	
AA						13		12				12
R15												1
Terminal 3	2,573	2,272	2,913	3,328	2,980	2,424	2,338	1,177	2,001	1,877	2,296	1,229
OK	2,486	2,175	2,685	3,251	2,881	2,352	2,301	1,169	1,898	1,776	2,275	1,204
R60	13	86	187	12	74	48	37	8	103	15	9	25
R10	74	11	41	65	25	24				86	12	
Freight	91	47	129	124	121	111	240	497	190	521	124	283
OK	58	25	34	56	62	99	181	332	85	284	49	161
R60	12	10	95	40	22	12	17	6	105	164		36
R10	21	12		28	37		42	159		73	75	86
Grand Total	4,085	3,833	4,391	5,297	4,538	4,227	4,828	4,389	4,517	4,499	4,329	3,349

Terminal	Time												Grand Total
	1200	1300	1400	1500	1600	1700	1800	1900	2000	2100	2200	2300	
Terminal 1	1,095	1,120	1,721	1,821	1,638	1,781	1,760	963	869	1,191	1,093	992	26,733
OK	920	951	1,602	1,489	1,383	1,640	1,636	822	845	990	914	767	23,441
R60	74	169	107	300	243	36	124	41	24	79	81	164	2,278
R10	101		12	25	12	105		100		122	86	61	980
AA													12
GRA				7								12	19
GRD													3
Terminal 2	595	1,261	1,244	981	1,305	1,239	1,412	903	467	561	745	517	22,937
OK	482	1,114	982	770	1,067	1,031	1,081	632	431	499	466	418	18,322
R60	6	22	150	92	129	138	25	213	13	26	147	26	1,956
R10	95	125	112	119	109	70	306	58	23	36	132	73	2,604
AA	12												53
R15													1
Terminal 3	1,288	664	1,229	1,481	832	1,889	1,829	2,213	2,575	1,853	2,247	2,472	47,980
OK	1,202	664	1,154	1,396	789	1,845	1,753	2,156	2,502	1,830	2,117	2,356	46,217
R60	86		25		42	8		57	73	23		17	948
R10			50	85	1	36	76				130	99	815
FRT	199	118	139	63	33	32	25	73	13	84	158	212	3,627
OK	112	55	61	25	7	13	12	73	13	41	62	184	2,084
R60	36	63	54	26	6	6	13			10	76	12	821
R10	51		24	12	20	13				33	20	16	722
Grand Total	3,177	3,163	4,333	4,346	3,808	4,941	5,026	4,152	3,924	3,689	4,243	4,193	101,277

Runway Reason Code	
R60	60 Min Runway Availability
R10	10 Min Runway Availability

Other Reason Code	
AA	Apron Capacity
GRA	Arr Affected by Dep
GRD	Dep Affected by Arr

Terminal Reason Code	
T60	60 Min Terminal Capacity rolling 30 Mins
R30	30 Mins gate Capacity rolling 5 Mins

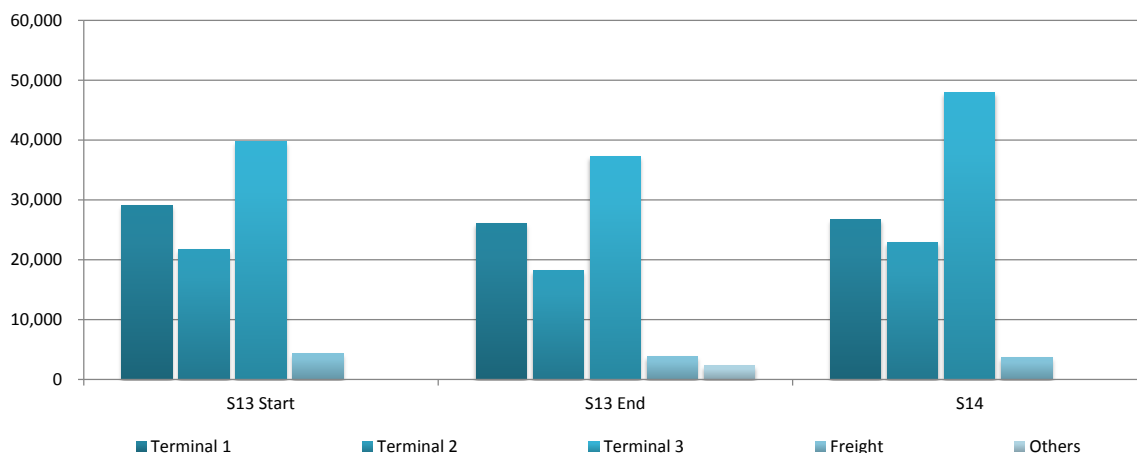
CODE F ARRIVALS AND DEPARTURES - 01 August - 25 October

Time (UTC)	0000	0100	0200	0300	0400	0500	0600	0700	0800	0900	1000	1100	1200	1300	1400	1500	1700	1800	1900	2000	2100	2200	2300	Grand Total
S14 Code F Arrivals	320	430	344	430	86	95			24	107	207				184	246	85	72	430	856	4	86		4006
Emirates	320	430	344	258	86	86			24	107	151				172	246	85	72	344	770	4	86		3585
Monday	48	60	48	36	12	12			3	15	21				24	36	12	10	48	108		12		505
Tuesday	36	60	48	36	12	12			3	15	21				24	36	12	10	48	108		12		493
Wednesday	36	60	48	36	12	12			3	15	21				24	36	12	10	48	104	4	12		493
Thursday	48	60	48	36	12	12			4	15	21				25	24	12	10	48	108		12		495
Friday	52	65	52	39	13	13			4	16	23				25	39	12	11	52	117		13		546
Saturday	52	65	52	39	13	13			4	16	23				26	39	13	11	52	117		13		548
Sunday	48	60	48	36	12	12			3	15	21				24	36	12	10	48	108		12		505
Qantas				172		9					56				12				86	86				421
Monday				24											12				12	12				60
Tuesday				24							9								12	12				57
Wednesday				24							12								12	12				60
Thursday				24		9													12	12				57
Friday				26							13								13	13				65
Saturday				26							13								13	13				65
Sunday				24							9								12	12				57
S14 Code F Departures	98			258	638	476	455	8	17	2	86	258	172	86	86			42	44		271	520	344	3861
Emirates	98			258	602	367	369				86	258	172	86	86			42	44		108	434	344	3354
Monday	12			36	84	58	36				12	36	24	12	12			9	3		15	60	48	457
Tuesday	12			36	84	46	48				12	36	24	12	12				12		15	61	48	458
Wednesday	12			36	84	58	48				12	36	24	12	12			12			15	61	48	470
Thursday	24			36	84	46	60				12	36	24	12	12				12		15	61	48	482
Friday	13			39	91	63	52				13	39	26	13	13				13		16	66	52	509
Saturday	13			39	91	50	65				13	39	26	13	13			9	4		17	65	52	509
Sunday	12			36	84	46	60				12	36	24	12	12			12			15	60	48	469
Qantas				36	109	86	8	17	2												163	86		507
Monday				3	21	12															24	12		72
Tuesday				1	12	12			11												21	12		69
Wednesday				12	12	12															24	12		72
Thursday				1	20	12			1	2											21	12		69
Friday				13	13	13															26	13		78
Saturday				4	14	13		8													26	13		78
Sunday				2	17	12			5												21	12		69
Grand Total (A&D)	418	430	344	688	724	571	455	8	41	109	293	258	172	86	270	246	85	114	474	856	275	606	344	7867

PEAK WEEK CODE F ARRIVALS AND DEPARTURES - 13-19 OCTOBER

Time (UTC)	0000	0100	0200	0300	0400	0500	0600	0700	0800	0900	1000	1100	1200	1300	1400	1500	1700	1800	1900	2000	2100	2200	2300	Grand Total	
S14 Code F Arrivals	26	35	28	35	7	7			7	14	10				15	20	7	7	35	62	1	7			323
Emirates	26	35	28	21	7	7			7	14	7				14	20	7	7	28	55	1	7			291
Monday	4	5	4	3	1	1			1	2	1				2	3	1	1	4	8		1			42
Tuesday	3	5	4	3	1	1			1	2	1				2	3	1	1	4	8		1			41
Wednesday	3	5	4	3	1	1			1	2	1				2	3	1	1	4	7	1	1			41
Thursday	4	5	4	3	1	1			1	2	1				2	2	1	1	4	8		1			41
Friday	4	5	4	3	1	1			1	2	1				2	3	1	1	4	8		1			42
Saturday	4	5	4	3	1	1			1	2	1				2	3	1	1	4	8		1			42
Sunday	4	5	4	3	1	1			1	2	1				2	3	1	1	4	8		1			42
Qantas				14							3				1				7	7					32
Monday				2											1				1	1					5
Tuesday				2															1	1					4
Wednesday				2							1								1	1					5
Thursday				2															1	1					4
Friday				2							1								1	1					5
Saturday				2							1								1	1					5
Sunday				2															1	1					4
S14 Code F Departures	8			21	51	40	37		2	1	7	21	14	7				2	5		25	42	28		311
Emirates	8			21	49	31	30				7	21	14	7				2	5		14	35	28		272
Monday	1			3	7	5	3				1	3	2	1					1		2	5	4		38
Tuesday	1			3	7	4	4				1	3	2	1					1		2	5	4		38
Wednesday	1			3	7	5	4				1	3	2	1				1			2	5	4		39
Thursday	2			3	7	4	5				1	3	2	1					1		2	5	4		40
Friday	1			3	7	5	4				1	3	2	1					1		2	5	4		39
Saturday	1			3	7	4	5				1	3	2	1					1		2	5	4		39
Sunday	1			3	7	4	5				1	3	2	1				1			2	5	4		39
Qantas				2	9	7		2	1												11	7			39
Monday						2	1														2	1			6
Tuesday						1	1		1												1	1			5
Wednesday				1	1	1															2	1			6
Thursday					1	1				1											1	1			5
Friday						2	1														2	1			6
Saturday					1	1	1														2	1			6
Sunday						1	1		1												1	1			5
Grand Total	34	35	28	56	58	47	37		9	15	17	21	14	7	15	20	7	9	40	62	26	49	28		634

AIR TRANSPORT MOVEMENTS BY TERMINAL

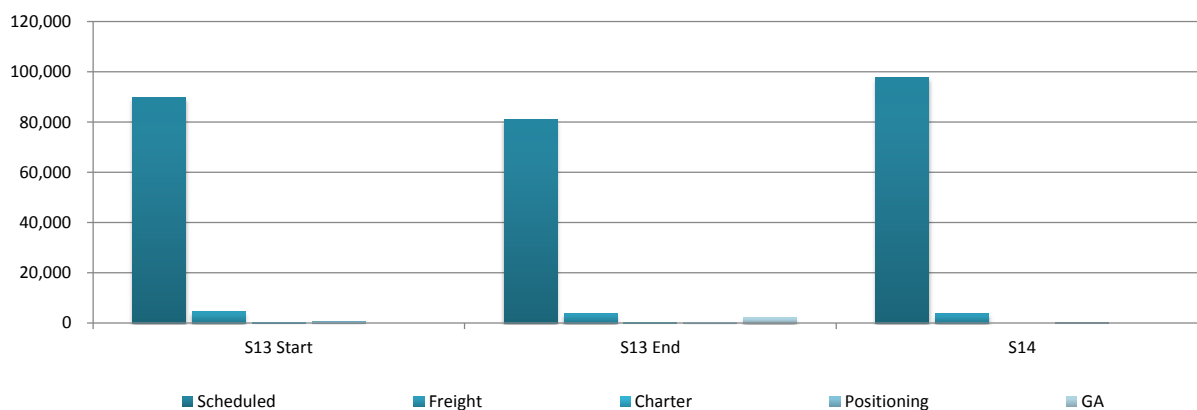


Terminal	S13 Start	S13 End	S14	% Change S14-S13 Start	% Change S14-S13 End
Terminal 1	29,067	26,071	26,733	-8.0%	2.5%
Terminal 2	21,700	18,194	22,937	5.7%	26.1%
Terminal 3	39,745	37,326	47,980	20.7%	28.5%
Freight	4,396	3,816	3,627	-17.5%	-5.0%
Others	-	2,257	-	-	-100.0%
Total	94,908	87,664	101,277	6.7%	15.5%

Data Period	
S13	02 Aug - 26 Oct
S14	01 Aug - 25 Oct

All values as at season start.

AIR TRANSPORT MOVEMENTS BY SERVICE TYPES

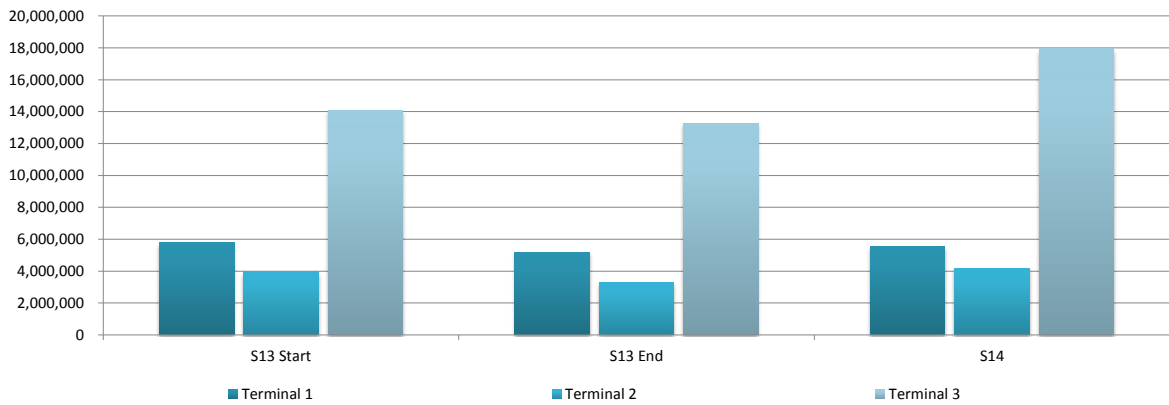


Service Type	S13 Start	S13 End	S14	% Change S14-S13 Start	% Change S14-S13 End
Scheduled	89,741	80,999	97,648	8.8%	20.6%
Freight	4,396	3,802	3,627	-17.5%	-4.6%
Charter	291	240	-	-100.0%	-100.0%
Positioning	480	336	2	-	-99.4%
GA	-	2,199	-	-	-100.0%
Others	-	84	-	-	-100.0%
Total	94,908	87,660	101,277	6.7%	15.5%

Data Period	
S13	02 Aug - 26 Oct
S14	01 Aug - 25 Oct

All values as at season start.

TOTAL SEATS BY TERMINAL

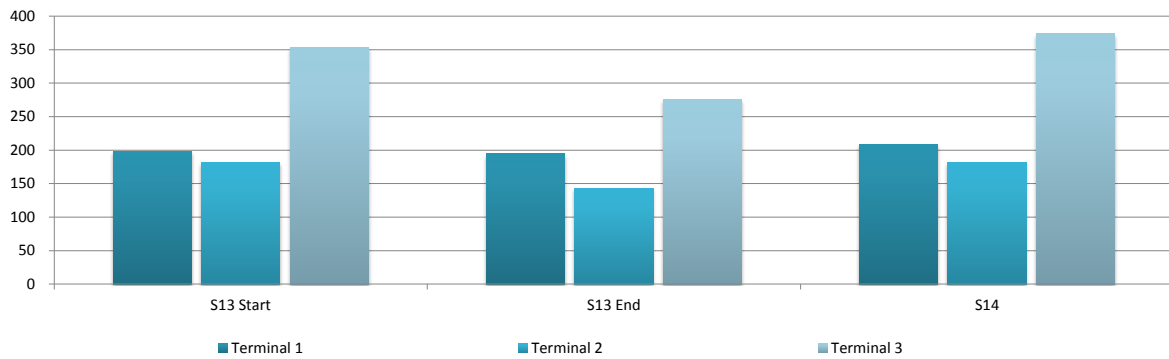


Terminal	S13 Start	S13 End	S14	% Change S14-S13 Start	% Change S14-S13 End
Terminal 1	5,767,250	5,196,208	5,567,826	-3.46%	7.15%
Terminal 2	3,946,331	3,288,263	4,170,458	5.68%	26.83%
Terminal 3	14,063,308	13,246,594	17,930,441	27.50%	35.36%
Total	23,776,889	21,731,065	27,668,725	16.37%	27.32%

Data Period	
S13	02 Aug - 26 Oct
S14	01 Aug - 25 Oct

All values as at season start.

SEATS PER PASSENGER ATM BY TERMINAL



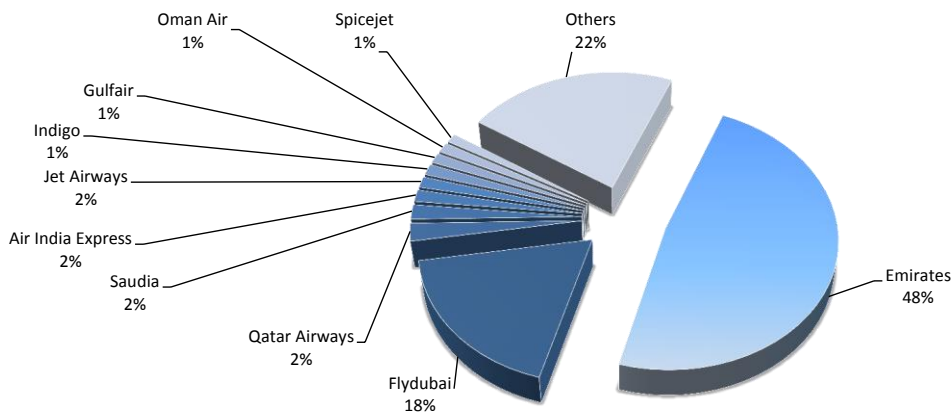
Terminal	S13 Start	S13 End	S14	% Change S14-S13 Start	% Change S14-S13 End
Terminal 1	198	194	208	4.97%	7.15%
Terminal 2	182	143	182	-0.02%	26.83%
Terminal 3	354	276	374	5.62%	35.36%
Average	245	205	255	4.05%	24.43%

Data Period	
S13	02 Aug - 26 Oct
S14	01 Aug - 25 Oct

All values as at season start.

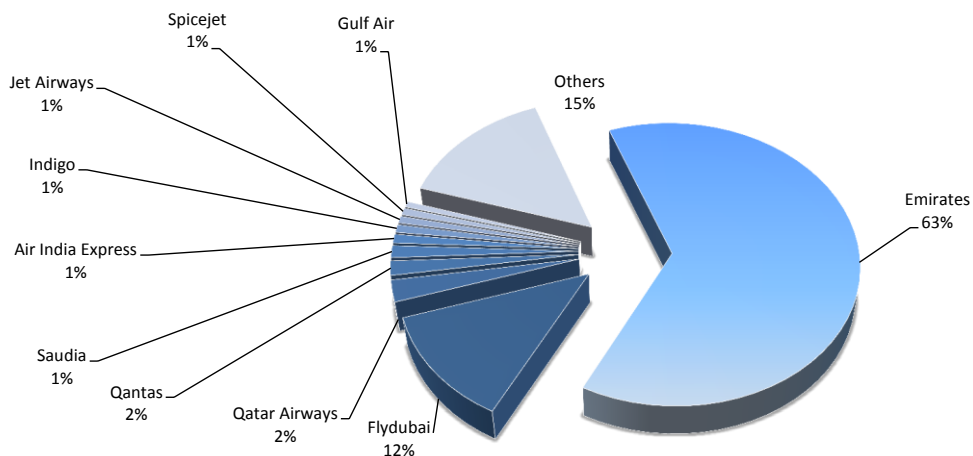
TOP 10 AIRLINES BY AIR TRANSPORT MOVEMENTS (ATMS)

Airline	Movements
Emirates	48,837
Flydubai	18,392
Qatar Airways	2,235
Saudia	1,820
Air India Express	1,496
Jet Airways	1,376
Indigo	1,374
Gulfair	1,254
Oman Air	1,251
Spicejet	1,129
Others	22,113

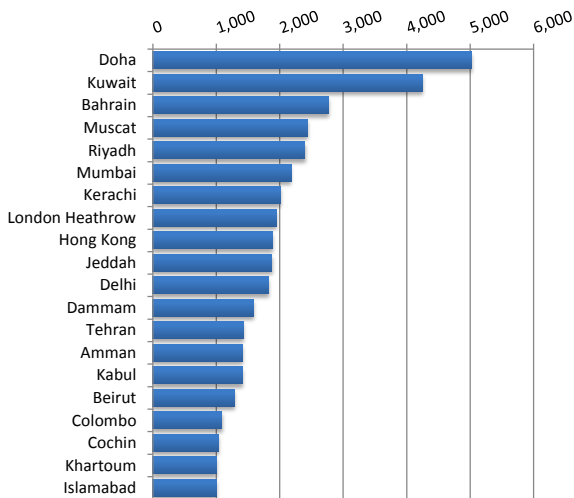


TOP 10 AIRLINES BY SEATS

Airline	Seats
Emirates	17,481,289
Flydubai	3,476,088
Qatar Airways	679,925
Qantas	449,152
Saudia	379,858
Air India Express	276,760
Indigo	247,320
Jet Airways	220,160
Spicejet	213,381
Gulf Air	178,886
Others	4,065,906

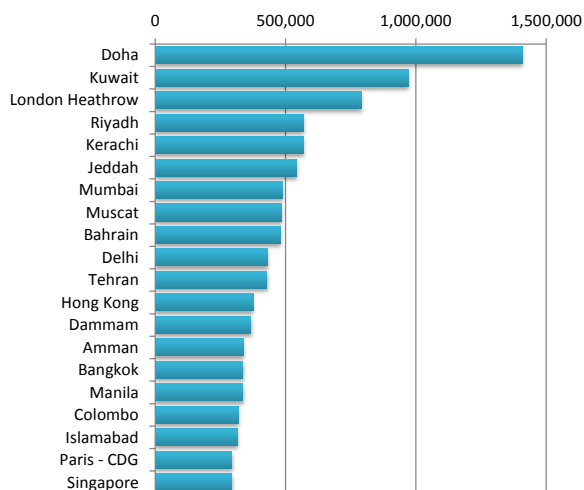


TOP 20 DESTINATIONS BY AIR TRANSPORT MOVEMENTS (ATMS)



Destination	ATM'S
Doha	5,023
Kuwait	4,249
Bahrain	2,762
Muscat	2,434
Riyadh	2,395
Mumbai	2,177
Kerachi	2,015
London Heathrow	1,941
Hong Kong	1,884
Jeddah	1,875
Delhi	1,828
Dammam	1,582
Tehran	1,427
Amman	1,419
Kabul	1,413
Beirut	1,293
Colombo	1,088
Cochin	1,030
Khartoum	1,005
Islamabad	1,000

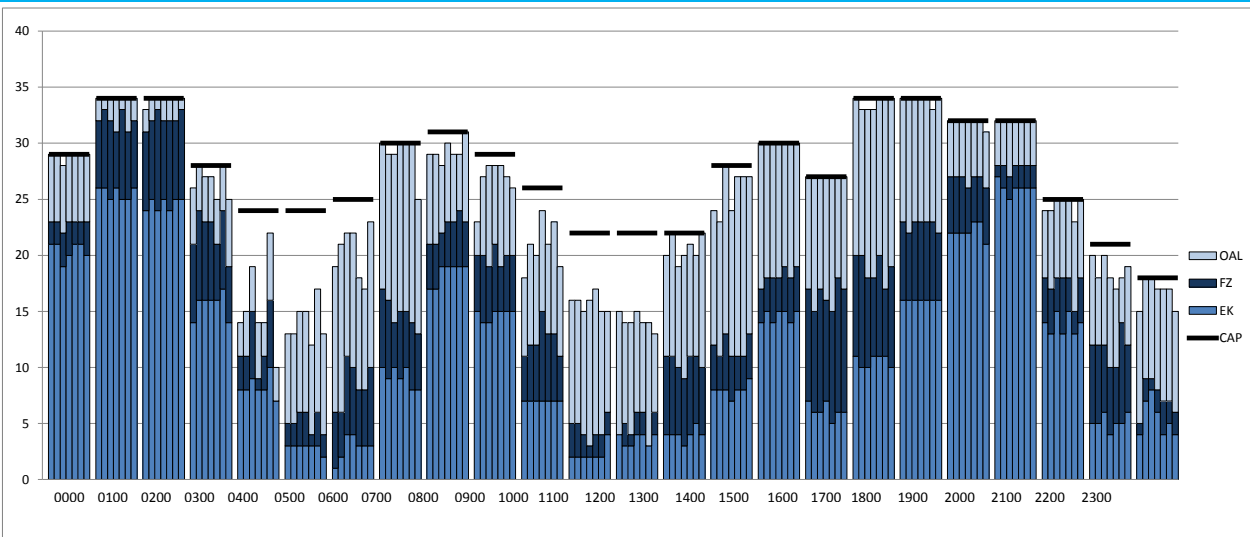
TOP 20 DESTINATIONS BY SEATS



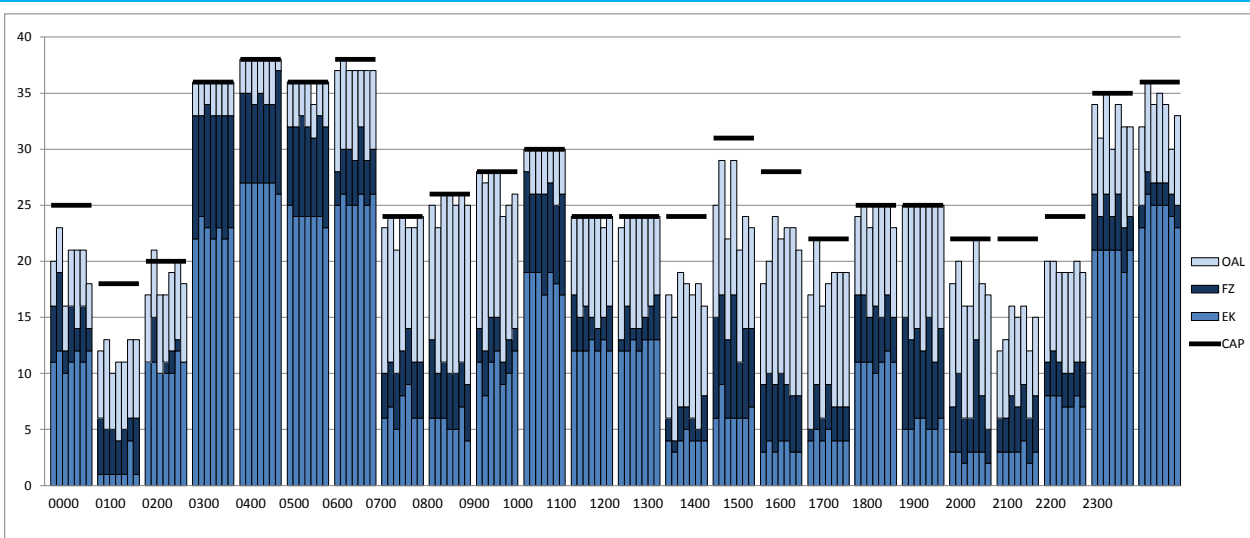
Destination	SEATS
Doha	1,409,940
Kuwait	969,922
London Heathrow	790,602
Riyadh	569,187
Kerachi	568,993
Jeddah	542,409
Mumbai	486,777
Muscat	482,763
Bahrain	481,624
Delhi	429,224
Tehran	428,903
Hong Kong	375,232
Dammam	366,931
Amman	336,942
Bangkok	336,776
Manila	336,184
Colombo	318,708
Islamabad	317,282
Paris - CDG	294,638
Singapore	294,398

Runway Movement Allocations

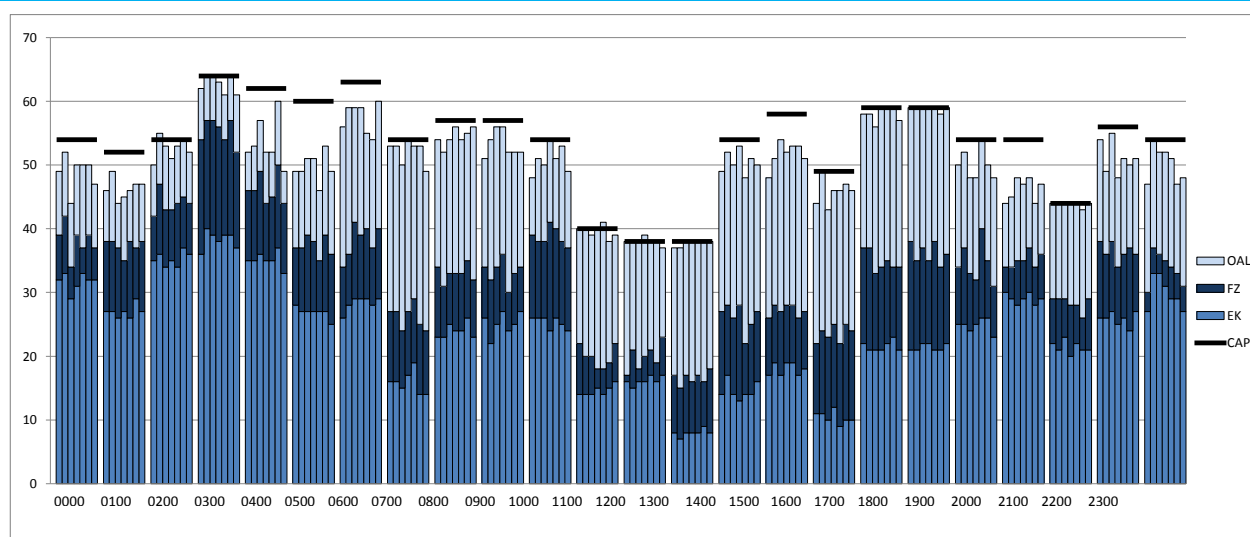
Peak Week Arrival Capacity - 60 Minute Period



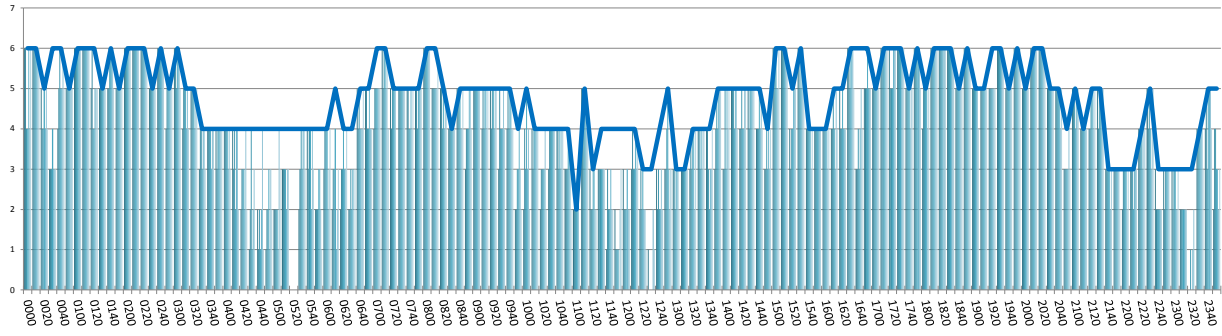
Peak Week Departure Capacity - 60 Minute Period



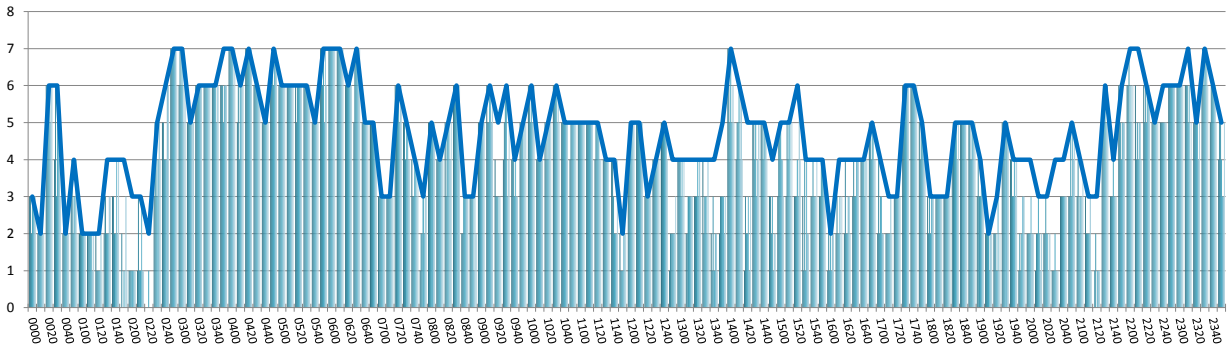
Peak Week Total Runway Capacity - 60 Minute Period



RUNWAY MOVEMENT ALLOCATION (R10) PEAK WEEK ARRIVALS

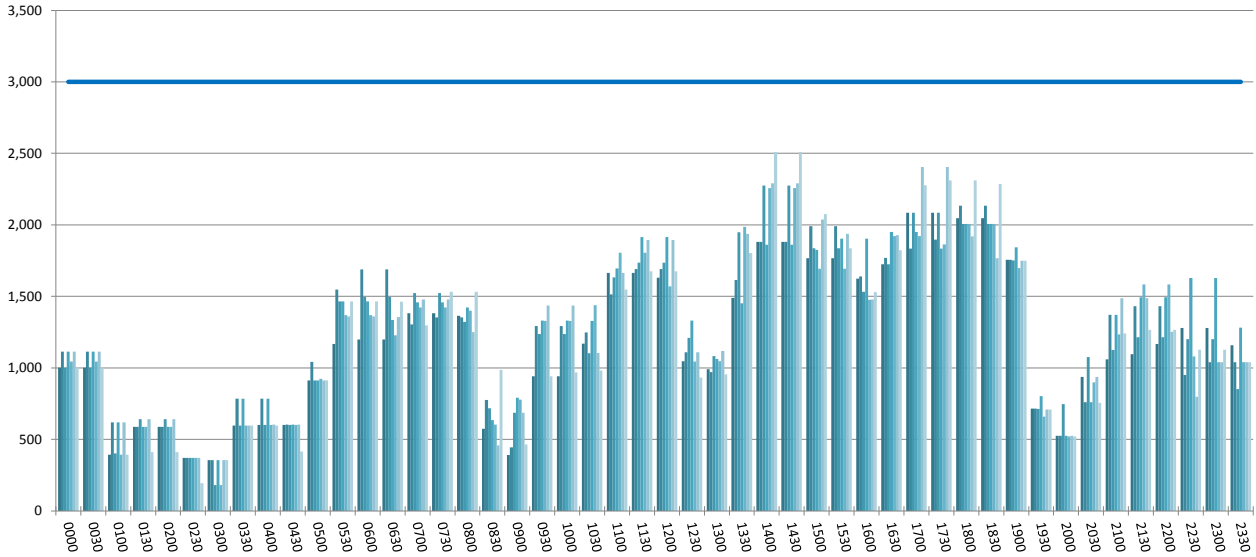


RUNWAY MOVEMENT ALLOCATION (R10) PEAK WEEK DEPARTURES



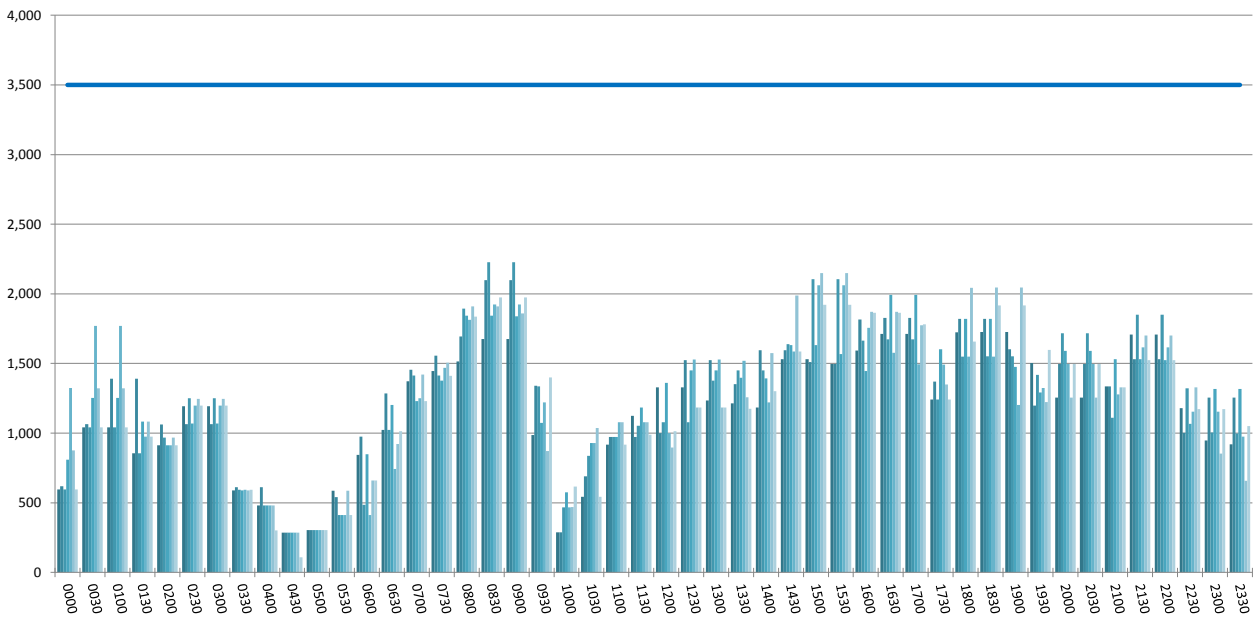
TERMINAL 1 - ARRIVALS

Peak Week Movements per Hour - All times UTC



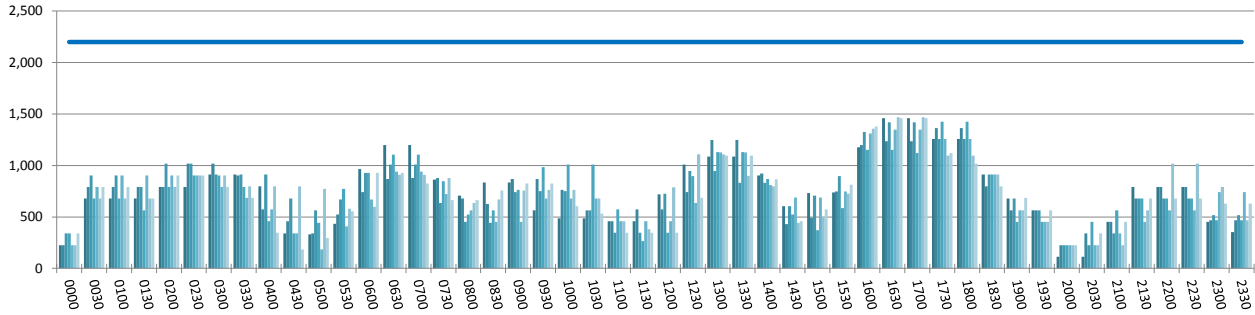
TERMINAL 1 - DEPARTURES

Peak Week Movements per Hour - All times UTC



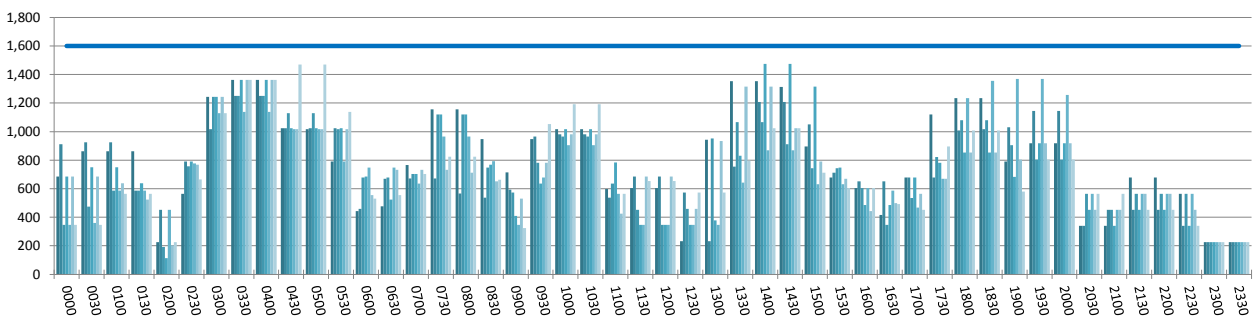
TERMINAL 2 - ARRIVALS

Peak Week Movements per Hour - All times UTC

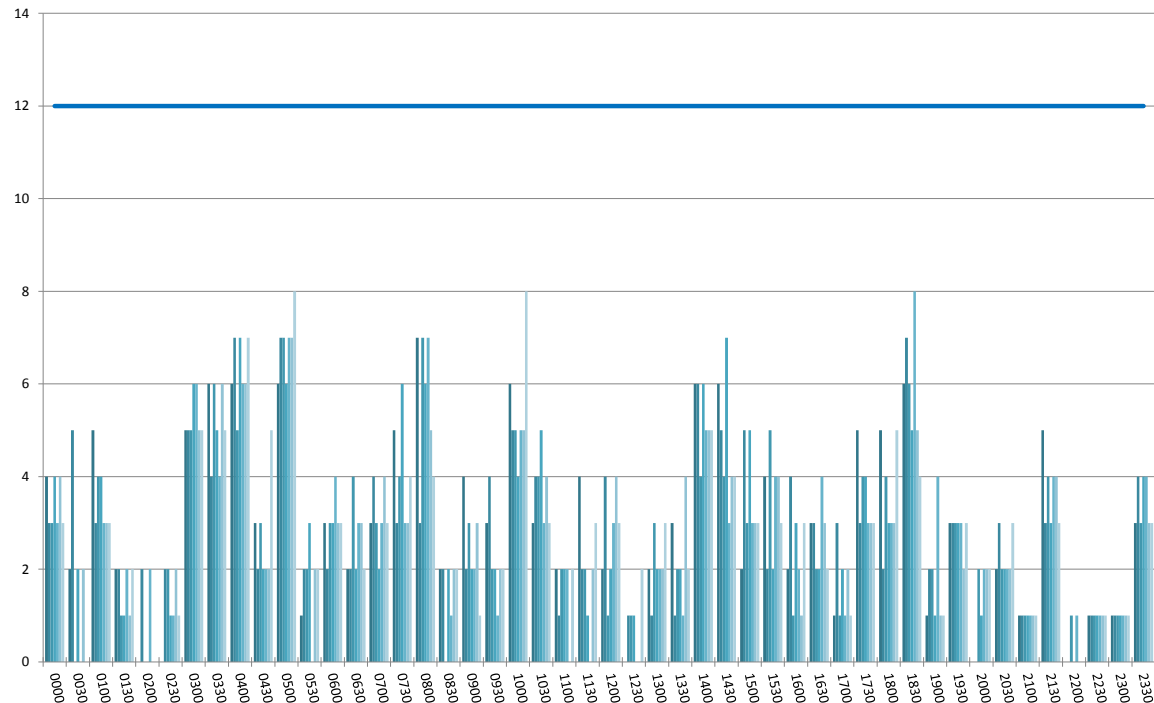


TERMINAL 2 - DEPARTURES

Peak Week Movements per Hour - All times UTC

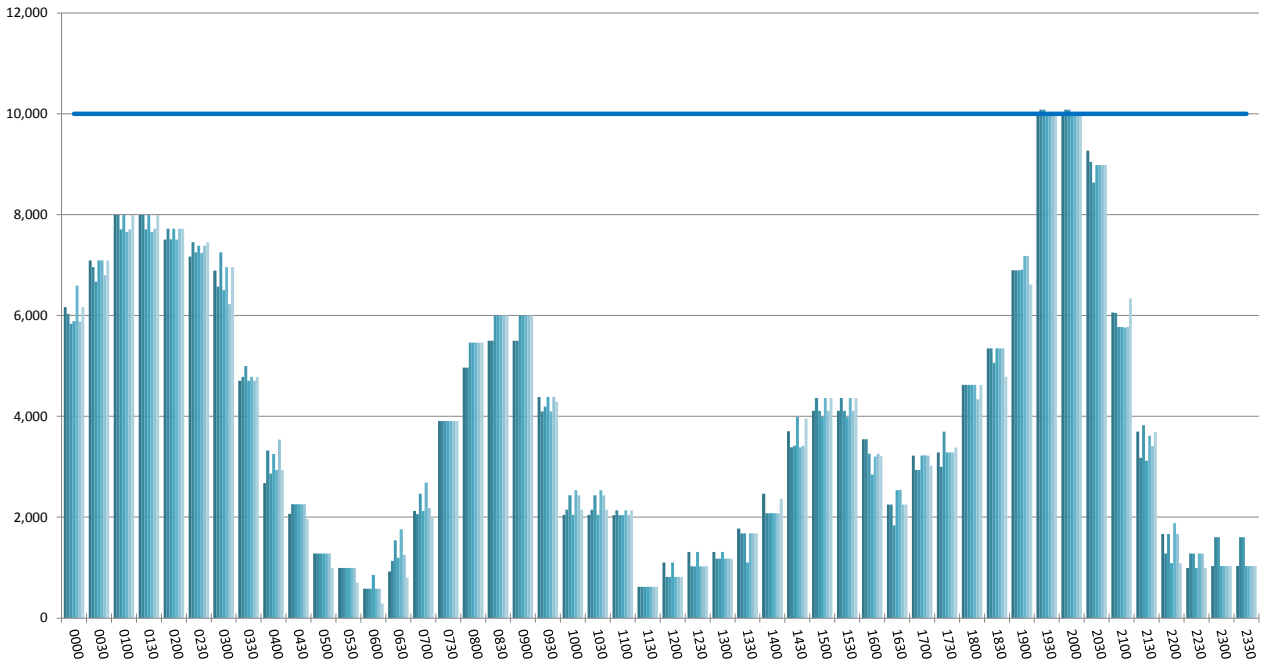


TERMINAL 2 - DEPARTURE GATE UTILISATION PER 30 MINUTES



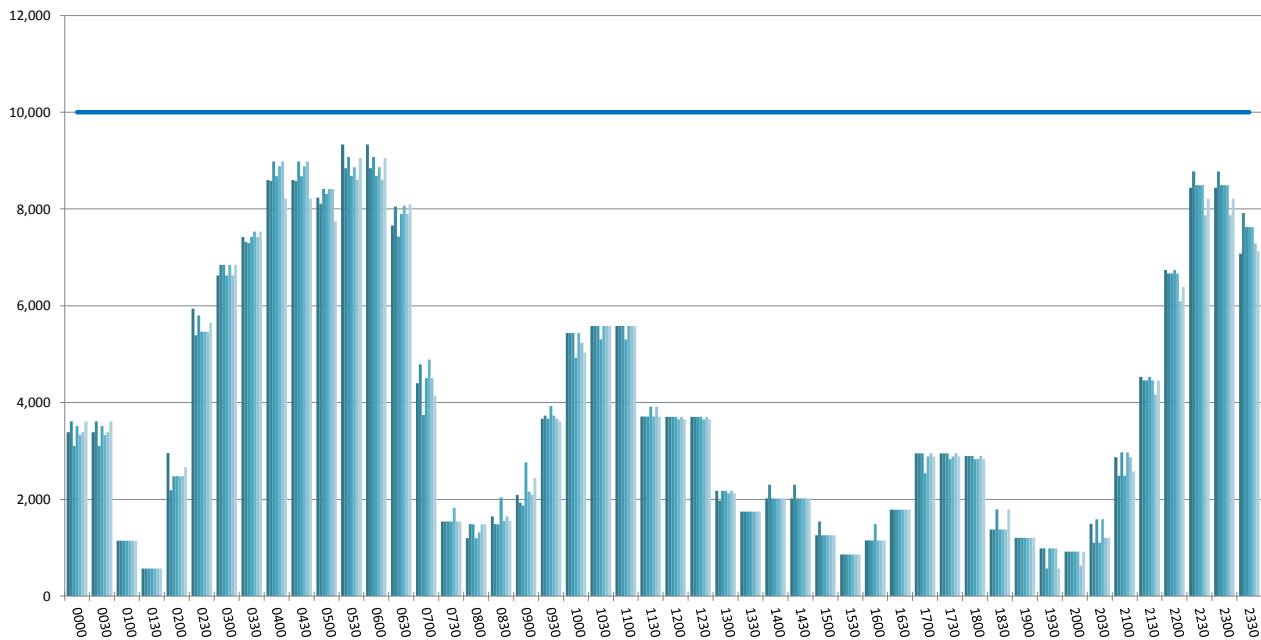
TERMINAL 3 - ARRIVALS

Peak Week Movements per Hour - All times UTC



TERMINAL 3 - DEPARTURES

Peak Week Movements per Hour - All times UTC



DUBAI INTERNATIONAL AIRPORT

PEAK WEEK DEPARTURE FREQUENCIES - BY CARRIER

	OPERATOR	AIRPORT		S13		S14		SEATS +/-	ATMS +/-
				SEATS	ATMS	SEATS	ATMS		
2P	Fly Pal Express	MNL	Manila	2,898	7	2,484	6	-414	-1
2P Total				2,898	7	2,484	6	-414	-1
3J	Jubba Airways	MGQ	Mogadishu International	420	3	280	2	-140	-1
3J Total				420	3	280	2	-140	-1
3S	Aerologic	HKG	Hong Kong International	0	4	0	4	0	0
		LEJ	Leipzig	0	5	0	5	0	0
3S Total				0	9	0	9	0	0
3V	TNT Airways	HKG	Hong Kong International	0	6	0	7	0	1
		LGG	Liege Bierset	0	6	0	7	0	1
3V Total				0	12	0	14	0	2
4H	United Bangladesh	DAC	Hazrat Shahjalal International	590	3	750	3	160	0
		JED	Jeddah King Abdulaziz International	750	3	0	0	-750	-3
4H Total				1,340	6	750	3	-590	-3
4J	Somon Air	DYU	Dushanbe	741	4	0	0	-741	-4
4J Total				741	4	0	0	-741	-4
4Q	Safi Airways	KBL	Kabul Khwaja Rawash	3,472	21	1,968	14	-1,504	-7
4Q Total				3,472	21	1,968	14	-1,504	-7
5J	Cebu Pacific Air	MNL	Manila	2,800	7	2,180	5	-620	-2
5J Total				2,800	7	2,180	5	-620	-2
6E	Indigo	BOM	Mumbai	2,520	14	2,520	14	0	0
		COK	Cochin	1,260	7	1,260	7	0	0
		DEL	Delhi Indira Gandhi International	2,520	14	2,520	14	0	0
		HYD	Hyderabad Begumpet	1,260	7	1,260	7	0	0
		MAA	Chennai	1,260	7	1,260	7	0	0
		TRV	Trivandrum International	1,260	7	1,260	7	0	0
6E Total				10,080	56	10,080	56	0	0
6P	Gryphon	KDH	Kandahar	147	1	0	0	-147	-1
6P Total				147	1	0	0	-147	-1
8U	Afriqiyah Airlines Libya	BEN	Benghazi Benina International	230	1	230	1	0	0
		TIP	Tripoli International	460	2	460	2	0	0
8U Total				690	3	690	3	0	0
9W	Jet Airways India	BOM	Mumbai	4,424	28	4,424	28	0	0
		COK	Cochin	0	0	1,190	7	1,190	7

DUBAI INTERNATIONAL AIRPORT

PEAK WEEK DEPARTURE FREQUENCIES - BY CARRIER

OPERATOR		AIRPORT		S13		S14		SEATS +/-		ATMS +/-	
				SEATS	ATMS	SEATS	ATMS				
		DEL	Delhi Indira Gandhi International	2,268	14	2,268	14	0	0		
		IXE	Bajpe Airport, Mangalore	1,078	7	1,078	7	0	0		
9W Total				7,770	49	8,960	56	1,190	7		
AF	Air France	CDG	Paris Ch. De Gaulle	1,953	7	2,121	7	168	0		
AF Total				1,953	7	2,121	7	168	0		
AGA	Agair	KDH	Kandahar	0	4	0	4	0	0		
AGA Total				0	4	0	4	0	0		
AH	Air Algerie	ALG	Algiers Houari Boumediene	1,315	5	1,052	4	-263	-1		
AH Total				1,315	5	1,052	4	-263	-1		
AI	Air India	BLR	Bangalore Hindustan	488	4	488	4	0	0		
		BOM	Mumbai	1,015	7	0	0	-1,015	-7		
		CCJ	Kozhikode	1,204	7	1,204	7	0	0		
		DEL	Delhi Indira Gandhi International	2,996	14	1,792	7	-1,204	-7		
		GOI	Goa Dabolim	1,204	7	1,204	7	0	0		
		MAA	Chennai	1,204	7	1,204	7	0	0		
		VTZ	Vishakhapatnam	1,204	7	1,204	7	0	0		
AI Total				9,315	53	7,096	39	-2,219	-14		
AY	Finnair	HEL	Helsinki-Vantaa	681	3	627	3	-54	0		
AY Total				681	3	627	3	-54	0		
B8	Eritrean Airlines	ASM	Asmara International	544	4	680	5	136	1		
		KHI	Karachi Quaid-E-Azam International	544	4	0	0	-544	-4		
		LHE	Lahore	1,088	8	136	1	-952	-7		
B8 Total				2,176	16	816	6	-1,360	-10		
BA	British Airways	HKG	Hong Kong International	0	1	0	0	0	-1		
		LHR	London Heathrow	3,675	14	3,675	14	0	0		
BA Total				3,675	15	3,675	14	0	-1		
BG	Biman Bangladesh Airlines	CGP	Chittagong Patenga	0	0	1,050	3	1,050	3		
		DAC	Hazrat Shahjalal International	2,419	8	1,050	3	-1,369	-5		
BG Total				2,419	8	2,100	6	-319	-2		
BI	Royal Brunei Airlines	BWN	Bandar Seri Begawan Brunei International	1,995	7	1,778	7	-217	0		
		LHR	London Heathrow	1,995	7	1,778	7	-217	0		
BI Total				3,990	14	3,556	14	-434	0		
CA	Air China	PEK	Beijing Capital	1,008	4	1,505	5	497	1		

DUBAI INTERNATIONAL AIRPORT

PEAK WEEK DEPARTURE FREQUENCIES - BY CARRIER

OPERATOR	AIRPORT	S13		S14		SEATS +/-	ATMS +/-
		SEATS	ATMS	SEATS	ATMS		
CA Total		1,008	4	1,505	5	497	1
CV	BKK Bangkok International	0	1	0	0	0	-1
	HKG Hong Kong International	0	1	0	0	0	-1
CV Total		0	2	0	0	0	-2
CX	Cathay Pacific						
	AMS Amsterdam-Schiphol	0	2	0	0	0	-2
	BAH Bahrain International	0	0	1,694	7	1,694	7
	FRA Frankfurt International	0	4	0	0	0	-4
	HKG Hong Kong International	3,388	23	3,388	14	0	-9
	JED Jeddah King Abdulaziz International	1,694	7	0	0	-1,694	-7
	MAN Manchester International	0	2	0	0	0	-2
	ZAZ Zaragoza	0	1	0	0	0	-1
CX Total		5,082	39	5,082	21	0	-18
CZ	China Southern Airlines						
	CAN Guangzhou Baiyun	1,974	7	1,974	7	0	0
CZ Total		1,974	7	1,974	7	0	0
D3	Daallo Airlines						
	JIB Djibouti Ambouli	240	2	276	2	36	0
D3 Total		240	2	276	2	36	0
DHX	DHL Aviation						
	BAH Bahrain International	0	8	0	9	0	1
	MCT Muscat Seeb	0	1	0	1	0	0
DHX Total		0	9	0	10	0	1
DL	Delta Air Lines						
	ATL Atlanta	1,883	7	2,037	7	154	0
DL Total		1,883	7	2,037	7	154	0
DT	Taag Angola Airlines						
	LAD Luanda 4 De Fevereiro	705	3	705	3	0	0
DT Total		705	3	705	3	0	0
DY	Norwegian						
	ARN Stockholm Arlanda	558	3	558	3	0	0
	CPH Copenhagen Airport	186	1	186	1	0	0
	OSL Oslo	558	3	558	3	0	0
DY Total		1,302	7	1,302	7	0	0
EA	East Horizon						
	KDH Kandahar	0	0	1,036	7	1,036	7
EA Total		0	0	1,036	7	1,036	7
EE	Eastern Skyjets						
	AKF Kufrah	156	1	0	0	-156	-1
	KDH Kandahar	1,477	10	0	0	-1,477	-10
	OAZ Camp Bastion	468	3	0	0	-468	-3
	RKT Ras Al Khaimah	468	3	0	0	-468	-3

DUBAI INTERNATIONAL AIRPORT

PEAK WEEK DEPARTURE FREQUENCIES - BY CARRIER

OPERATOR		AIRPORT		S13		S14		SEATS +/-	ATMS +/-
				SEATS	ATMS	SEATS	ATMS		
EE Total				2,569	17	0	0	-2,569	-17
EK	Emirates	ABJ	Abidjan Felix Houphouet Boigny	2,548	7	2,548	7	0	0
		ABV	Abuja International	0	0	1,440	4	1,440	4
		ACC	Accra Kotoka	0	2	0	0	0	-2
		ADD	Addis Ababa Bole	1,659	8	2,506	8	847	0
		ADL	Adelaide	2,478	7	2,478	7	0	0
		AKL	Auckland International	10,269	21	10,269	21	0	0
		ALG	Algiers Houari Boumediene	1,659	7	1,659	7	0	0
		AMD	Ahmedabad	2,780	10	2,780	10	0	0
		AMM	Amman	4,768	14	7,518	21	2,750	7
		AMS	Amsterdam-Schiphol	3,619	12	6,097	17	2,478	5
		ARN	Stockholm Arlanda	0	0	2,520	7	2,520	7
		ATH	Athens Athinai	2,548	7	2,548	7	0	0
		BAH	Bahrain International	5,650	21	6,027	22	377	1
		BCN	Barcelona	2,520	7	3,619	7	1,099	0
		BEY	Beirut International	3,570	14	3,612	16	42	2
		BGW	Baghdad Al Muthana	1,659	7	4,165	14	2,506	7
		BHX	Birmingham International	5,992	14	5,992	14	0	0
		BKK	Bangkok International	7,602	21	11,613	28	4,011	7
		BLR	Bangalore Hindustan	5,486	21	5,523	21	37	0
		BNE	Brisbane International	2,520	7	2,520	7	0	0
		BOM	Mumbai	10,652	36	10,934	36	282	0
		BOS	Boston Logan International	0	0	2,478	7	2,478	7
		BSR	Basra International	1,823	7	4,329	14	2,506	7
		CAI	Cairo International	4,884	14	5,992	14	1,108	0
		CAN	Guangzhou Baiyun	2,996	7	2,996	9	0	2
		CCJ	Kozhikode	3,466	11	3,806	11	340	0
		CCU	Calcutta Netaji Subhas Chandra	3,336	12	3,336	12	0	0
		CDG	Paris Ch. De Gaulle	9,398	20	9,398	20	0	0
		CGK	Jakarta Soekarno-Hatta International	8,988	21	8,988	21	0	0
		CHC	Christchurch International	2,478	7	2,478	7	0	0
		CKY	Conakry	0	0	1,428	5	1,428	5
		CMB	Colombo Bandaranayake International	5,184	14	7,692	20	2,508	6

DUBAI INTERNATIONAL AIRPORT

PEAK WEEK DEPARTURE FREQUENCIES - BY CARRIER

OPERATOR	AIRPORT	S13		S14		SEATS +/-	ATMS +/-
		SEATS	ATMS	SEATS	ATMS		
CMN	Casablanca Mohamed V	2,520	7	2,520	7	0	0
COK	Cochin	4,704	14	5,096	14	392	0
CPH	Copenhagen Airport	2,996	7	2,996	7	0	0
CPT	Cape Town Internationa	3,738	14	4,998	14	1,260	0
CRK	Diosdado Macapagal International	2,996	7	0	0	-2,996	-7
DAC	Hazrat Shahjalal International	7,938	22	5,992	16	-1,946	-6
DAM	Damascus International	4,165	14	2,506	7	-1,659	-7
DAR	Dar Es Salaam International	2,520	7	2,520	7	0	0
DEL	Delhi Indira Gandhi International	7,927	28	8,827	28	900	0
DFW	Dallas Ft Worth International	1,862	7	1,862	7	0	0
DKR	Dakar Yoff	1,068	4	0	1	-1,068	-3
DME	Moscow Domodedovo	6,139	14	7,042	14	903	0
DMM	Dammam King Fahad International	3,461	13	7,220	21	3,759	8
DOH	Doha	13,118	42	15,743	42	2,625	0
DUB	Dublin	2,520	7	5,026	14	2,506	7
DUR	Durban International	2,996	7	2,996	7	0	0
DUS	Dusseldorf	5,028	15	5,068	14	40	-1
DXB	Dubai	0	0	716	2	716	2
EBB	Entebbe	1,806	8	1,806	8	0	0
EBL	Erbil International Airport	1,422	10	2,856	14	1,434	4
EDL	Eldoret International Airport	0	0	0	1	0	1
EZE	Buenos Aires Ministro Pistarini	2,478	7	2,478	7	0	0
FCO	Rome Fiumicino	6,139	14	6,139	14	0	0
FRA	Frankfurt International	7,504	25	7,504	24	0	-1
GLA	Glasgow International	5,040	14	5,040	14	0	0
GOT	Gothenburg Landvetter	0	3	0	3	0	0
GRU	Sao Paulo Guarulhos International	2,478	7	2,478	7	0	0
GVA	Geneva Geneve-Cointrin	1,956	7	2,520	7	564	0
HAM	Hamburg Fuhlsbuettel	4,382	14	5,040	14	658	0
HAN	Hanoi Noibai	0	0	0	1	0	1
HKG	Hong Kong International	9,227	36	12,222	45	2,995	9
HKT	Phuket International	1,869	7	1,869	7	0	0
HND	Tokyo Haneda	1,862	7	2,506	7	644	0

DUBAI INTERNATIONAL AIRPORT

PEAK WEEK DEPARTURE FREQUENCIES - BY CARRIER

OPERATOR	AIRPORT	S13		S14		SEATS +/-	ATMS +/-
		SEATS	ATMS	SEATS	ATMS		
HRE	Harare	2,478	7	2,478	7	0	0
HYD	Hyderabad Begumpet	5,457	21	5,642	21	185	0
IAD	Washington Dulles International	2,478	7	1,862	7	-616	0
IAH	Houston	2,478	7	2,478	7	0	0
ICN	Seoul Incheon International	3,619	8	3,619	8	0	0
IKA	Imam Khomeini - Tehran	8,456	22	8,988	21	532	-1
ISB	Islamabad International	4,135	11	9,204	23	5,069	12
IST	Istanbul Ataturk	4,708	11	4,708	11	0	0
JED	Jeddah King Abdulaziz International	9,716	21	10,857	21	1,141	0
JFK	New York John F Kennedy International	9,366	21	9,366	21	0	0
JNB	Johannesburg International	7,504	22	7,504	22	0	0
KAN	Aminu Kano International Apt	0	0	1,080	3	1,080	3
KBL	Kabul Khwaja Rawash	0	0	1,806	7	1,806	7
KBP	Kiev Borispol	0	0	1,032	4	1,032	4
KHI	Karachi Quaid-E-Azam International	13,665	35	14,532	35	867	0
KIX	Osaka Kansai International	2,478	7	2,478	7	0	0
KRT	Khartoum Civil	1,659	8	1,659	7	0	-1
KUL	Kuala Lumpur International	7,826	21	7,826	21	0	0
KWI	Kuwait International	11,835	35	14,028	35	2,193	0
LAD	Luanda 4 De Fevereiro	1,080	3	2,520	7	1,440	4
LAX	Los Angeles International	2,478	7	3,423	7	945	0
LED	St Petersburg	1,659	7	1,869	7	210	0
LGW	London Gatwick	7,546	21	7,546	21	0	0
LHE	Lahore	4,708	11	4,708	11	0	0
LHR	London Heathrow	18,095	36	18,095	37	0	1
LIS	Lisbon Lisboa	1,862	7	2,478	7	616	0
LLW	Lilongwe International	0	1	0	0	0	-1
LOS	Lagos Murtala Muhammed	5,040	15	5,040	15	0	0
LYS	Lyon	1,290	5	1,330	5	40	0
MAA	Chennai	6,537	22	7,966	21	1,429	-1
MAD	Madrid Barajas	4,998	14	4,998	14	0	0
MAN	Manchester International	9,135	21	9,135	21	0	0
MCT	Muscat Seeb	3,860	14	5,418	14	1,558	0

DUBAI INTERNATIONAL AIRPORT

PEAK WEEK DEPARTURE FREQUENCIES - BY CARRIER

OPERATOR	AIRPORT	S13		S14		SEATS +/-	ATMS +/-
		SEATS	ATMS	SEATS	ATMS		
MED	Madinah Mohammad Bin Abdulaziz	2,370	10	1,659	7	-711	-3
MEL	Melbourne	5,040	14	5,040	14	0	0
MEX	Mexico City Juarez International	0	0	0	1	0	1
MLA	Malta Luqa	1,918	7	3,153	10	1,235	3
MLE	Male International	2,740	7	2,996	7	256	0
MNL	Manila	8,988	21	8,988	21	0	0
MRU	Mauritius S.Seewoosagur Ram.Int	5,096	14	6,097	14	1,001	0
MUC	Munich Franz Josef Strauss	6,167	14	7,238	14	1,071	0
MXP	Milan Malpensa	4,207	14	4,207	14	0	0
NBO	Nairobi Jomo Kenyatta International	4,228	15	4,291	15	63	0
NCE	Nice Cote D'Azur	2,548	7	2,548	7	0	0
NCL	Newcastle Airport	2,996	7	2,996	7	0	0
NRT	Tokyo Narita	3,423	7	2,478	7	-945	0
ORD	Chicago O'Hare International	0	0	1,862	9	1,862	9
OSL	Oslo	0	0	2,506	7	2,506	7
PEK	Beijing Capital	6,139	14	6,139	14	0	0
PER	Perth	7,518	21	8,001	21	483	0
PEW	Peshawar	1,403	5	1,730	5	327	0
PRG	Prague Ruzyne	2,548	7	2,548	7	0	0
PVG	Shanghai Pu Dong	5,445	20	6,097	21	652	1
RUH	Riyadh King Khaled International	8,170	28	6,083	14	-2,087	-14
SAH	Sana'A International	1,659	7	1,659	8	0	1
SEA	Seattle	1,862	7	2,478	7	616	0
SEZ	Mahe Island Seychelles International	3,612	14	3,812	14	200	0
SFO	San Francisco International	2,478	7	2,478	7	0	0
SGN	Ho Chi Minh City	2,422	7	2,996	7	574	0
SIN	Singapore Changi	6,615	15	9,135	22	2,520	7
SKT	Sialkot International Airport	0	0	1,432	4	1,432	4
SYD	Sydney Kingsford Smith	2,478	11	3,423	10	945	-1
TIP	Tripoli International	1,806	7	1,032	4	-774	-3
TPE	Taipei Chiang Kai Shek	0	2	2,506	8	2,506	6
TRV	Trivandrum International	3,336	12	3,336	12	0	0
TUN	Tunis Carthage	1,806	7	1,806	8	0	1

DUBAI INTERNATIONAL AIRPORT

PEAK WEEK DEPARTURE FREQUENCIES - BY CARRIER

OPERATOR	AIRPORT	S13		S14		SEATS +/-	ATMS +/-
		SEATS	ATMS	SEATS	ATMS		
	VCE Venice Marco Polo	3,318	14	1,869	7	-1,449	-7
	VCP Sao Paulo Viracopos	0	3	0	4	0	1
	VIE Vienna	4,068	13	4,428	14	360	1
	WAW Warsaw Okecie	1,659	7	1,659	7	0	0
	YYZ Toronto Pearson International	1,467	3	1,467	3	0	0
	ZAZ Zaragoza	0	3	0	2	0	-1
	ZRH Zurich	5,040	14	6,139	14	1,099	0
	ZZF Mystery Flight	27,030	80	99,808	279	72,778	199
EK Total		560,137	1,657	706,668	1,968	146,531	311
EP	Iran Aseman Airlines						
	BDH Bandar Lengeh	64	1	64	1	0	0
	BND Bandar Abbas	545	5	545	5	0	0
	BUZ Bushehr	218	2	218	2	0	0
	IKA Imam Khomeini - Tehran	1,248	5	2,280	3	1,032	-2
	KSH Shahid Ashrafi Esfahani	218	2	0	0	-218	-2
	LFM Lamerd Airport	64	1	64	1	0	0
	LRR Lar Airport	718	7	718	7	0	0
	MHD Mashad	688	4	688	4	0	0
	SYZ Shiraz	981	9	981	9	0	0
	TBZ Tabriz	0	0	218	2	218	2
	ZAH Zahedan	109	1	109	1	0	0
	ZBR Chah-Bahar	109	1	109	1	0	0
EP Total		4,962	38	5,994	36	1,032	-2
ET	Ethiopian Airlines Enterprise						
	ADD Addis Ababa Bole	5,789	30	5,789	21	0	-9
ET Total		5,789	30	5,789	21	0	-9
FG	Ariana Afghan Airlines						
	KBL Kabul Khwaja Rawash	1,456	7	1,456	7	0	0
FG Total		1,456	7	1,456	7	0	0
FGE	Flygeorgia						
	TBS Tbilisi Novo Alexeyevka	342	3	114	1	-228	-2
FGE Total		342	3	114	1	-228	-2
FX	Fedex						
	BLR Bangalore Hindustan	0	5	0	5	0	0
	CDG Paris Ch. De Gaulle	0	6	0	1	0	-5
	DEL Delhi Indira Gandhi International	0	1	0	1	0	0
	HKG Hong Kong International	0	1	0	1	0	0
	MEM Memphis International	0	0	0	10	0	10

DUBAI INTERNATIONAL AIRPORT

PEAK WEEK DEPARTURE FREQUENCIES - BY CARRIER

OPERATOR	AIRPORT		S13		S14		SEATS +/-	ATMS +/-
			SEATS	ATMS	SEATS	ATMS		
	NRT	Tokyo Narita	0	4	0	4	0	0
FX Total			0	17	0	22	0	5
FZ	Flydubai	ADD Addis Ababa Bole	567	3	567	3	0	0
		AHB Abha	2,646	14	2,646	14	0	0
		ALP Aleppo Nejrab	378	2	0	0	-378	-2
		AMD Ahmedabad	378	2	1,134	6	756	4
		AMM Amman	2,079	11	1,890	10	-189	-1
		ASB Ashgabat	1,323	7	1,323	7	0	0
		BAH Bahrain International	4,725	25	4,536	24	-189	-1
		BEG Belgrade Beograd	567	3	567	3	0	0
		BEY Beirut International	3,591	19	3,591	19	0	0
		BGW Baghdad Al Muthana	1,323	7	1,323	7	0	0
		BSR Basra International	945	5	1,890	10	945	5
		CGP Chittagong Patenga	2,646	14	1,890	10	-756	-4
		CMB Colombo Bandaranayake International	3,024	16	2,646	14	-378	-2
		DAC Hazrat Shahjalal International	1,701	9	2,646	14	945	5
		DAM Damascus International	1,512	8	0	0	-1,512	-8
		DMM Dammam King Fahad International	5,670	30	5,292	28	-378	-2
		DOH Doha	13,230	70	11,907	63	-1,323	-7
		DOK Donetsk	756	4	756	4	0	0
		DYU Dushanbe	0	0	1,701	9	1,701	9
		EBL Erbil International Airport	1,323	7	1,323	7	0	0
		ELQ Gassim	2,268	12	3,024	16	756	4
		EVN Yerevan	756	4	1,134	6	378	2
		FRU Bishkek	1,512	8	756	4	-756	-4
		GYD Baku Heydar Aliyev International Airport	567	3	1,512	8	945	5
		HAS Hail	378	2	756	4	378	2
		HBE Borg El Arab	2,079	11	2,835	15	756	4
		HOF Al Ahsa	0	0	378	2	378	2
		HRK Kharkov	567	3	756	4	189	1
		HYD Hyderabad Begumpet	756	4	756	4	0	0
		IEV Kiev	0	0	1,323	7	1,323	7
		IKA Imam Khomeini - Tehran	0	0	756	4	756	4

DUBAI INTERNATIONAL AIRPORT

PEAK WEEK DEPARTURE FREQUENCIES - BY CARRIER

OPERATOR	AIRPORT	S13		S14		SEATS +/-	ATMS +/-
		SEATS	ATMS	SEATS	ATMS		
ISU	Sulaymaniah	567	3	567	3	0	0
JED	Jeddah King Abdulaziz International	6,048	32	4,914	26	-1,134	-6
JIB	Djibouti Ambouli	1,323	7	2,457	13	1,134	6
JUB	Juba	756	4	1,323	7	567	3
KBL	Kabul Khwaja Rawash	5,859	31	4,158	22	-1,701	-9
KBP	Kiev Borispol	1,323	7	1,323	7	0	0
KDH	Kandahar	2,835	15	756	4	-2,079	-11
KHI	Karachi Quaid-E-Azam International	3,024	16	3,402	18	378	2
KIV	Chisinau	0	0	378	2	378	2
KRR	Krasnodar	0	0	567	3	567	3
KRT	Khartoum Civil	4,158	22	6,048	32	1,890	10
KTM	Kathmandu Tribhuvan	3,969	21	2,835	15	-1,134	-6
KUF	Samara	756	4	756	4	0	0
KWI	Kuwait International	12,096	64	21,735	115	9,639	51
KZN	Kazan	2,457	13	945	5	-1,512	-8
LKO	Lucknow Amausi	567	3	567	3	0	0
MCT	Muscat Seeb	6,426	34	6,615	35	189	1
MED	Madinah Mohammad Bin Abdulaziz	0	0	1,323	7	1,323	7
MLE	Male International	1,512	8	2,268	12	756	4
MRV	Mineralnye Vody	0	0	945	5	945	5
MUX	Multan	567	3	1,890	10	1,323	7
NJF	Najaf	567	3	945	5	378	2
OAI	Bagram Airport	0	0	1,701	9	1,701	9
OAZ	Camp Bastion	0	0	945	5	945	5
ODS	Odessa Central	0	0	378	2	378	2
OSS	Osh	0	0	189	1	189	1
OTP	Bucharest Otopeni International	567	3	567	3	0	0
PZU	Port Sudan	0	0	189	1	189	1
ROV	Rostov	378	2	756	4	378	2
RUH	Riyadh King Khaled International	6,615	35	7,749	41	1,134	6
SAH	Sana'A International	945	5	756	4	-189	-1
SAW	Sabiha Gokcen International Airport	756	4	945	5	189	1
SKP	Skopje	378	2	378	2	0	0

DUBAI INTERNATIONAL AIRPORT

PEAK WEEK DEPARTURE FREQUENCIES - BY CARRIER

OPERATOR	AIRPORT	S13		S14		SEATS +/-	ATMS +/-		
		SEATS	ATMS	SEATS	ATMS				
	SKT Sialkot International Airport	567	3	567	3	0	0		
	SLL Salalah	0	0	567	3	567	3		
	SVO Moscow Sheremetyevo	189	1	0	0	-189	-1		
	SVX Ekaterinburg	2,646	14	2,646	14	0	0		
	TBS Tbilisi Novo Alexeyevka	567	3	756	4	189	1		
	TIF Taif	1,323	7	1,323	7	0	0		
	TRV Trivandrum International	189	1	0	0	-189	-1		
	TUU Tabuk	378	2	567	3	189	1		
	UFA Ufa, Bashkortostan	2,079	11	756	4	-1,323	-7		
	VOG Volgograd	0	0	567	3	567	3		
	YNB Yanbu	567	3	567	3	0	0		
	ZZF Mystery Flight	2,268	12	0	0	-2,268	-12		
FZ Total		132,489	701	151,200	800	18,711	99		
GF	Gulf Air	BAH	Bahrain International	7,138	49	7,266	51	128	2
GF Total				7,138	49	7,266	51	128	2
H8	Hesa Airlines	BND	Bandar Abbas	104	2	0	0	-104	-2
		PGU	Khalije Fars (Persian Gulf) Airport	156	3	0	0	-156	-3
H8 Total				260	5	0	0	-260	-5
HH	Taban Airlines	IFN	Isfahan	324	2	0	0	-324	-2
		IKA	Imam Khomeini - Tehran	324	2	162	1	-162	-1
		MHD	Mashad	324	2	324	2	0	0
HH Total				972	6	486	3	-486	-3
HV	Transavia	AMS	Amsterdam-Schiphol	378	2	378	2	0	0
HV Total				378	2	378	2	0	0
HY	Uzbekistan Airways	NVI	Navoiy Airport	0	2	0	0	0	-2
		TAS	Tashkent Vostochny	621	3	621	3	0	0
HY Total				621	5	621	3	0	-2
IA	Iraqi Airways	BGW	Baghdad Al Muthana	924	7	528	4	-396	-3
		BSR	Basra International	396	3	396	3	0	0
		EBL	Erbil International Airport	140	2	140	2	0	0
		ISU	Sulaymaniah	140	2	140	2	0	0
		NJF	Najaf	264	2	264	2	0	0
IA Total				1,864	16	1,468	13	-396	-3

DUBAI INTERNATIONAL AIRPORT

PEAK WEEK DEPARTURE FREQUENCIES - BY CARRIER

OPERATOR	AIRPORT	S13		S14		SEATS +/-	ATMS +/-		
		SEATS	ATMS	SEATS	ATMS				
IR	Iran Air	AWZ	Ahwaz	103	1	206	2	103	1
		BND	Bandar Abbas	294	2	294	2	0	0
		IFN	Isfahan	294	2	294	2	0	0
		IKA	Imam Khomeini - Tehran	1,176	11	1,029	7	-147	-4
		SYZ	Shiraz	294	2	294	2	0	0
IR Total				2,161	18	2,117	15	-44	-3
IX	Air India Express	ATQ	Amritsar Raja Sansi	1,295	7	1,295	7	0	0
		BOM	Mumbai	1,295	7	0	0	-1,295	-7
		CCJ	Kozhikode	1,295	7	1,295	7	0	0
		COK	Cochin	1,295	7	1,295	7	0	0
		IXE	Bajpe Airport, Mangalore	2,590	14	2,590	14	0	0
		JAI	Jaipur Sanganeer	740	4	740	4	0	0
		LKO	Lucknow Amausi	1,295	7	1,295	7	0	0
		PNQ	Poona Lohegaon	555	3	555	3	0	0
		TRV	Trivandrum International	1,295	7	925	5	-370	-2
		TRZ	Civil Airfield, Tiruchirapally	1,295	7	1,295	7	0	0
IX Total				12,950	70	11,285	61	-1,665	-9
IY	Yemenia Yemen Airways	CGK	Jakarta Soekarno-Hatta International	831	3	277	1	-554	-2
		KUL	Kuala Lumpur International	277	1	277	1	0	0
		SAH	Sana'A International	1,614	7	1,060	5	-554	-2
IY Total				2,722	11	1,614	7	-1,108	-4
J2	Azal Azerbaijan Airlines	GYD	Baku Heydar Aliyev International Airport	1,260	7	2,520	14	1,260	7
J2 Total				1,260	7	2,520	14	1,260	7
J9	Jazeera Airways	KWI	Kuwait International	3,657	23	3,657	23	0	0
J9 Total				3,657	23	3,657	23	0	0
KE	Korean Air	ICN	Seoul Incheon International	1,305	5	1,090	5	-215	0
KE Total				1,305	5	1,090	5	-215	0
KL	Klm Royal Dutch Airlines	AMS	Amsterdam-Schiphol	2,226	7	2,226	7	0	0
KL Total				2,226	7	2,226	7	0	0
KQ	Kenya Airways	NBO	Nairobi Jomo Kenyatta International	2,595	13	2,527	15	-68	2
KQ Total				2,595	13	2,527	15	-68	2
KU	Kuwait Airways	KWI	Kuwait International	2,794	16	2,534	14	-260	-2
KU Total				2,794	16	2,534	14	-260	-2

DUBAI INTERNATIONAL AIRPORT

PEAK WEEK DEPARTURE FREQUENCIES - BY CARRIER

OPERATOR	AIRPORT	S13		S14		SEATS +/-	ATMS +/-		
		SEATS	ATMS	SEATS	ATMS				
LC	Equatorial Congo Airlines	BZV	Brazzaville Maya Maya	0	0	444	3	444	3
LC Total				0	0	444	3	444	3
LH	Lufthansa	FRA	Frankfurt International	2,408	7	1,862	7	-546	0
		MUC	Munich Franz Josef Strauss	1,547	7	1,326	6	-221	-1
LH Total				3,955	14	3,188	13	-767	-1
LN	Libyan Airways	BEN	Benghazi Benina International	304	2	795	3	491	1
		TIP	Tripoli International	456	3	530	2	74	-1
LN Total				760	5	1,325	5	565	0
LX	Swiss International Air Lines	MCT	Muscat Seeb	1,652	7	1,652	7	0	0
		ZRH	Zurich	1,652	7	1,652	7	0	0
LX Total				3,304	14	3,304	14	0	0
ME	Mea Middle East Airlines	BEY	Beirut International	2,086	14	2,086	14	0	0
ME Total				2,086	14	2,086	14	0	0
MH	Malaysian Airlines	KUL	Kuala Lumpur International	0	0	1,981	7	1,981	7
MH Total				0	0	1,981	7	1,981	7
MJ	Mihin Lanka	CMB	Colombo Bandaranayake International	1,050	5	0	0	-1,050	-5
MJ Total				1,050	5	0	0	-1,050	-5
MS	Egypt Air	CAI	Cairo International	4,214	15	4,214	14	0	-1
		HBE	Borg El Arab	1,204	4	1,204	4	0	0
MS Total				5,418	19	5,418	18	0	-1
MU	China Eastern Airlines	PVG	Shanghai Pu Dong	520	2	520	2	0	0
MU Total				520	2	520	2	0	0
NCR		OAI	Bagram Airport	3,444	21	0	0	-3,444	-21
NCR Total				3,444	21	0	0	-3,444	-21
NL	Shaheen Air International	ISB	Islamabad International	1,148	7	656	4	-492	-3
		KHI	Karachi Quaid-E-Azam International	1,148	7	1,148	7	0	0
		LHE	Lahore	1,323	7	1,323	7	0	0
		MUX	Multan	0	0	328	2	328	2
		PEW	Peshawar	1,148	7	1,148	7	0	0
NL Total				4,767	28	4,603	27	-164	-1
NV	Naft Air	AWZ	Ahwaz	327	3	327	3	0	0
NV Total				327	3	327	3	0	0
OR	Arkefly	AMS	Amsterdam-Schiphol	549	3	183	1	-366	-2

DUBAI INTERNATIONAL AIRPORT

PEAK WEEK DEPARTURE FREQUENCIES - BY CARRIER

OPERATOR	AIRPORT	S13		S14		SEATS +/-	ATMS +/-	
		SEATS	ATMS	SEATS	ATMS			
	KTM Kathmandu Tribhuvan	183	1	0	0	-183	-1	
OR Total		732	4	183	1	-549	-3	
OS	Austrian Airlines	VIE Vienna	1,575	7	1,575	7	0	0
OS Total			1,575	7	1,575	7	0	0
PA	Airblue	ISB Islamabad International	1,815	11	660	4	-1,155	-7
		KHI Karachi Quaid-E-Azam International	1,155	7	1,155	7	0	0
		LHE Lahore	1,155	7	1,155	7	0	0
		PEW Peshawar	495	3	495	3	0	0
PA Total			4,620	28	3,465	21	-1,155	-7
PC	Pegasus	SAW Sabiha Gokcen International Airport	945	5	945	5	0	0
PC Total			945	5	945	5	0	0
PK	PIA Pakistan International Airlines	BHV Bahawalpur	118	1	0	0	-118	-1
		DEA Dera Ghazi Khan Airport	236	2	236	2	0	0
		ISB Islamabad International	1,677	9	1,753	8	76	-1
		KHI Karachi Quaid-E-Azam International	3,202	14	2,814	14	-388	0
		LHE Lahore	1,514	8	1,357	7	-157	-1
		LYP Faislabad	118	1	0	0	-118	-1
		MUX Multan	118	1	236	2	118	1
		PEW Peshawar	799	4	564	3	-235	-1
		UET Quetta	236	2	118	1	-118	-1
PK Total			8,018	42	7,078	37	-940	-5
PR	Philippine Airlines	MNL Manila	2,898	7	0	0	-2,898	-7
PR Total			2,898	7	0	0	-2,898	-7
PS	Ukraine International Airlines	KBP Kiev Borispol	550	5	330	3	-220	-2
PS Total			550	5	330	3	-220	-2
QB	Qeshm Air	GSM Geshm	350	7	300	6	-50	-1
		IKA Imam Khomeini - Tehran	0	0	600	4	600	4
QB Total			350	7	900	10	550	3
QF	Qantas	LHR London Heathrow	6,776	14	6,776	14	0	0
		MEL Melbourne	3,388	7	3,388	7	0	0
		SYD Sydney Kingsford Smith	3,388	7	3,388	7	0	0
		ZZF Mystery Flight	0	0	5,324	11	5,324	11
QF Total			13,552	28	18,876	39	5,324	11

DUBAI INTERNATIONAL AIRPORT

PEAK WEEK DEPARTURE FREQUENCIES - BY CARRIER

OPERATOR	AIRPORT		S13		S14		SEATS +/-	ATMS +/-
			SEATS	ATMS	SEATS	ATMS		
QH	FRU	Bishkek	292	2	0	0	-292	-2
QH Total			292	2	0	0	-292	-2
QR	Qatar Airways	DOH Doha	20,916	81	27,685	91	6,769	10
QR Total			20,916	81	27,685	91	6,769	10
QS	Travel Service Airlines/Smart Wings	PRG Prague Ruzyne	0	0	1,134	6	1,134	6
QS Total			0	0	1,134	6	1,134	6
RB	Syrianair Syrian Arab Airlines	DAM Damascus International	1,015	7	580	4	-435	-3
RB Total			1,015	7	580	4	-435	-3
RG	Rotana Jet	AZI Abu Dhabi Bateen	0	0	700	14	700	14
		XSB St Malo	0	0	150	3	150	3
RG Total			0	0	850	17	850	17
RJ	Royal Jordanian	AMM Amman	2,790	19	3,059	18	269	-1
RJ Total			2,790	19	3,059	18	269	-1
RO	Tarom	OTP Bucharest Otopeni International	348	3	348	3	0	0
RO Total			348	3	348	3	0	0
RQ	Kam Air	KBL Kabul Khwaja Rawash	1,050	7	1,200	8	150	1
RQ Total			1,050	7	1,200	8	150	1
RV	Caspian Airlines	AWZ Ahwaz	330	2	0	0	-330	-2
		GSM Gheshm	495	3	0	0	-495	-3
		TBZ Tabriz	165	1	0	0	-165	-1
RV Total			990	6	0	0	-990	-6
S7	Siberia Airlines	OVB Novosibirsk Tolmachevo	474	3	474	3	0	0
S7 Total			474	3	474	3	0	0
SD		KRT Khartoum Civil	445	2	0	0	-445	-2
SD Total			445	2	0	0	-445	-2
SG	Spicejet	AMD Ahmedabad	1,323	7	1,323	7	0	0
		BOM Mumbai	1,323	7	1,323	7	0	0
		COK Cochin	1,323	7	1,323	7	0	0
		DEL Delhi Indira Gandhi International	1,323	7	2,079	11	756	4
		IXC Chandigarh International Airport	0	0	1,323	7	1,323	7
		IXM	0	0	1,323	7	1,323	7
SG Total			5,292	28	8,694	46	3,402	18
SQ	Singapore Airlines	CAI Cairo International	855	3	855	3	0	0

DUBAI INTERNATIONAL AIRPORT

PEAK WEEK DEPARTURE FREQUENCIES - BY CARRIER

OPERATOR		AIRPORT		S13		S14		SEATS +/-		ATMS +/-	
				SEATS	ATMS	SEATS	ATMS				
		SIN	Singapore Changi	2,843	10	2,843	10	0		0	
SQ Total				3,698	13	3,698	13	0		0	
SU	Aeroflot Russian Airlines	SVO	Moscow Sheremetyevo	1,960	14	1,960	14	0		0	
SU Total				1,960	14	1,960	14	0		0	
SV	Saudia	DMM	Dammam King Fahad International	2,079	14	2,079	14	0		0	
		JED	Jeddah King Abdulaziz International	4,795	21	4,795	21	0		0	
		MED	Madinah Mohammad Bin Abdulaziz	528	4	528	4	0		0	
		RUH	Riyadh King Khaled International	8,441	35	8,045	35	-396		0	
SV Total				15,843	74	15,447	74	-396		0	
SZ	Somon Air	DYU	Dushanbe	0	0	368	2	368		2	
SZ Total				0	0	368	2	368		2	
T5	Turkmenistan Airlines	ASB	Ashgabat	504	4	504	4	0		0	
T5 Total				504	4	504	4	0		0	
TG	Thai Airways International Public Lt	BKK	Bangkok International	2,093	7	2,093	7	0		0	
TG Total				2,093	7	2,093	7	0		0	
TK	Turkish Airlines	IST	Istanbul Ataturk	3,932	15	4,383	14	451		-1	
TK Total				3,932	15	4,383	14	451		-1	
TMA	Trans Mediterranean Air	BEY	Beirut International	0	2	0	0	0		-2	
TMA Total				0	2	0	0	0		-2	
TU	Tunisair	TUN	Tunis Carthage	530	5	456	4	-74		-1	
TU Total				530	5	456	4	-74		-1	
U6	Ural Airlines	CEK	Chelyabinsk	156	1	0	0	-156		-1	
		GOJ	Nizhniy Novgorod	160	1	220	1	60		0	
		KRR	Krasnodar	320	2	320	2	0		0	
		KUF	Samara	312	2	156	1	-156		-1	
		MRV	Mineralnye Vody	160	1	160	1	0		0	
		SVX	Ekaterinburg	320	2	540	3	220		1	
		UFA	Ufa, Bashkortostan	156	1	0	0	-156		-1	
U6 Total				1,584	10	1,396	8	-188		-2	
U8	Armavia	EVN	Yerevan	208	2	0	0	-208		-2	
U8 Total				208	2	0	0	-208		-2	
UA	United Airlines	DOH	Doha	1,883	7	1,883	7	0		0	
		IAD	Washington Dulles International	1,883	7	1,883	7	0		0	

DUBAI INTERNATIONAL AIRPORT

PEAK WEEK DEPARTURE FREQUENCIES - BY CARRIER

OPERATOR		AIRPORT		S13		S14		SEATS +/-	ATMS +/-
				SEATS	ATMS	SEATS	ATMS		
UA Total				3,766	14	3,766	14	0	0
UL	Srilankan Airlines	CMB	Colombo Bandaranayake International	2,309	9	2,009	7	-300	-2
		DME	Moscow Domodedovo	574	2	0	0	-574	-2
UL Total				2,883	11	2,009	7	-874	-4
UN	Transaero Airlines	CEK	Chelyabinsk	158	1	0	0	-158	-1
		DME	Moscow Domodedovo	2,693	8	2,238	6	-455	-2
		KUF	Samara	158	1	0	0	-158	-1
		KZN	Kazan	158	1	0	0	-158	-1
		LED	St Petersburg	316	2	0	0	-316	-2
		OMS	Omsk	316	2	0	0	-316	-2
		OVB	Novosibirsk Tolmachevo	316	2	0	0	-316	-2
		PEE	Perm	158	1	0	0	-158	-1
		ROV	Rostov	316	2	0	0	-316	-2
		SVX	Ekaterinburg	316	2	0	0	-316	-2
		TJM	Tyumen	316	2	0	0	-316	-2
		UFA	Ufa, Bashkortostan	158	1	0	0	-158	-1
		VKO	Moscow Vnukovo	0	0	948	6	948	6
UN Total				5,379	25	3,186	12	-2,193	-13
UPS	Ups Airlines	CGN	Cologne Bonn	0	10	0	10	0	0
		CTU	Chengdu	0	0	0	3	0	3
		HKG	Hong Kong International	0	5	0	1	0	-4
		PVG	Shanghai Pu Dong	0	0	0	1	0	1
		SZX	Shenzhen	0	1	0	1	0	0
UPS Total				0	16	0	16	0	0
VS	Virgin Atlantic	LHR	London Heathrow	1,680	7	1,862	7	182	0
VS Total				1,680	7	1,862	7	182	0
W3	Arik Air	LOS	Lagos Murtala Muhammed	0	0	1,085	5	1,085	5
W3 Total				0	0	1,085	5	1,085	5
W5	Mahan Air	GSM	Gheshm	495	5	396	4	-99	-1
		IKA	Imam Khomeini - Tehran	3,060	15	3,672	18	612	3
		MHD	Mashad	0	0	408	2	408	2
W5 Total				3,555	20	4,476	24	921	4
W6	Wizzair	BUD	Budapest Ferihegy	540	3	0	0	-540	-3

DUBAI INTERNATIONAL AIRPORT

PEAK WEEK DEPARTURE FREQUENCIES - BY CARRIER

OPERATOR		AIRPORT		S13		S14		SEATS +/-	ATMS +/-
				SEATS	ATMS	SEATS	ATMS		
W6 Total				540	3	0	0	-540	-3
WB	Rwandair	KGL	Kigali Gregoire Kayibanda	1,232	8	770	5	-462	-3
		MBA	Mombasa Moi International	0	0	308	2	308	2
WB Total				1,232	8	1,078	7	-154	-1
WU	Wizzair Ukraine	IEV	Kiev	540	3	0	0	-540	-3
WU Total				540	3	0	0	-540	-3
WY	Oman Air	MCT	Muscat Seeb	7,794	56	6,885	47	-909	-9
		SLL	Salalah	284	4	284	4	0	0
WY Total				8,078	60	7,169	51	-909	-9
XU	African Express Airways	BBO	Berbera	154	1	154	1	0	0
		NBO	Nairobi Jomo Kenyatta International	308	2	308	2	0	0
XU Total				462	3	462	3	0	0
XY	Nas Air	JED	Jeddah King Abdulaziz International	1,620	9	1,260	7	-360	-2
		RUH	Riyadh King Khaled International	3,240	18	2,520	14	-720	-4
XY Total				4,860	27	3,780	21	-1,080	-6
Y7	Taimyr Airlines	KJA	Krasnojarsk	680	4	0	0	-680	-4
Y7 Total				680	4	0	0	-680	-4
Y9	Kish Air	IKA	Imam Khomeini - Tehran	0	0	320	2	320	2
		KIH	Kish Island	3,360	21	2,880	18	-480	-3
Y9 Total				3,360	21	3,200	20	-160	-1

GLOSSARY OF TERMS

Air Transport Movement (ATM)	A scheduled or charter passenger or freight aircraft movement.
Allocation	The allocation of slots such that demand is constrained to fit within declared scheduling limits.
Demand	The unconstrained demand for slots, prior to any schedule adjustments.
Passenger ATM	A scheduled or charter <u>passenger</u> aircraft movement (ie, excluding all-cargo aircraft movements).
Scheduling Limits	Limiting parameters declared by the Airport Operator used in the coordination process.
Seats	The number of seats based on the aircraft configuration advised by the airline.
Peak Week	The Peak Week for S14 is 13 - 19 October 2013
Data Snapshot	All data used for this report was as held 6 April 2014 and is reported for the period 01 August - 25 October.

GUIDE TO HISTOGRAMS

The histograms show the pattern of traffic by time of day against the appropriate scheduling limit. Each time period consist of seven columns representing the days-of-week, Monday through Sunday.