

DUBAI INTERNATIONAL AIRPORT DXB

S13 Start of Season Report

Key Statistics	Summer 13 Start	Change from S12 Start	Change from Summer 12 End
Air Transport Movements	227,730	▲ 6.2%	▲ 16.6%
Total Seats	57,020,133	▲ 11.6%	▲ 26.0%
Average Seats per Passenger ATM	244	▲ 0.3%	▲ 3.7%

Contents	Page
CONSTRAINTS BY TERMINAL	2
CODE F AIRCRAFT ARRIVALS AND DEPARTURES	3
AIR TRANSPORT MOVEMENT STATISTICS	4
SEATS AND SEATS PER MOVEMENT STATISTICS	5
DISTRIBUTION OF SCHEDULE ADJUSTMENTS	6-7
TOP 10 AIRLINES BY ATMS AND SEATS	8
TOP 20 SESTINATIONS BY ATMS AND SEATS	9
RUNWAY MOVEMENT ALLOCATION - R60 - EMIRATES, FLYDUBAI AND OTHER CARRIERS	10
RUNWAY MOVEMENT ALLOCATION - R10	11
TERMINAL 1 PEAK WEEK HISTOGRAMS	12
TERMINAL 2 PEAK WEEK HISTOGRAMS	13
TERMINAL 2 GATE UTILISATION	13
TERMINAL 3 PEAK WEEK HISTOGRAMS	14
PEAK WEEK DEPARTURE FREQUENCIES BY CARRIER	15-21
GLOSSARY	22

Data in this report is current as of 14th March 2013

No warranty whether expressed or implied as to the completeness, accuracy, fitness for purpose, or satisfactory quality is given by ACL regarding the information in this report, which is provided by third parties. Accordingly, ACL excludes all liability with regard to such data.

The contents of this report may not be reproduced without the written consent of ACL.

PRIMARY CONSTRAINTS BY TERMINAL

	OK	AA	GRA	GRD	R10	R60	T60	V10	Grand Total
Arrival	109,885	22	1	118	2,930	1,210	38		114,255
Departure	110,628	26	2	36	1,254	1,479		30	113,475
Grand Total	220,513	48	3	154	4,184	2,689	38	30	227,730

	OK	AA	R10	R60	T60	Others
Arrival	96.2%	0.0%	2.6%	1.1%	0.0%	0.1%
Departure	97.5%	0.0%	1.1%	1.3%	0.0%	0.1%

Reason Code	TIME (UTC)											
	0000	0100	0200	0300	0400	0500	0600	0700	0800	0900	1000	1100
Terminal 1	2,370	2,131	1,873	1,127	947	2,173	2,961	3,665	3,694	2,734	2,222	3,220
OK	2,362	2,131	1,794	890	917	2,113	2,933	3,396	3,476	2,584	2,220	3,220
R60			79	27		60	19	90	68		2	
R10	8			210			9	179	150	150		
V10					30							
AA												
GRA												
GRD												
Terminal 2	1,151	1,572	1,785	3,312	1,946	2,309	2,578	2,395	2,170	2,272	2,674	1,189
OK	1,133	1,335	1,721	3,174	1,942	2,253	2,158	2,296	2,109	2,242	2,586	1,112
R60	9	14	26	33			30	69	30			
R10	9	223	38	105	4	27	361		31	30	87	32
AA												
GRA											1	
GRD						29	29	30				30
T60												15
Terminal 3	4,119	4,571	5,283	6,674	6,990	5,526	4,625	1,697	4,046	3,746	4,647	3,150
OK	4,119	4,571	5,283	6,671	6,990	5,345	4,624	1,667	3,928	3,567	4,647	3,150
R60				2		1	1					
R10				1		180		30	118	179		
Freight	285	231	390	345	417	490	545	879	481	961	618	462
OK	105	201	210	136	356	430	458	669	416	804	521	432
R60	60		120	89		60	60	150	5	120	60	30
R10	120	30	60	120	61		26	60	60	37	37	
GRD							1					
Grand Total	7,925	8,505	9,331	11,458	10,300	10,498	10,709	8,636	10,391	9,713	10,161	8,021

Reason Code	TIME (UTC)												Grand Total
	1200	1300	1400	1500	1600	1700	1800	1900	2000	2100	2200	2300	
Terminal 1	3,015	2,983	4,112	4,565	4,225	4,402	4,805	2,942	2,107	3,250	2,504	2,383	70,410
OK	2,950	2,952	4,089	4,562	4,222	4,380	4,796	2,931	1,898	3,247	2,425	2,381	68,869
R60		31		3	3		9	7		2	79		479
R10	63							4	209				982
V10													30
AA	2		22			22				1			47
GRA												2	2
GRD			1										1
Terminal 2	1,513	2,842	2,701	2,841	3,636	2,766	2,380	1,461	1,304	1,327	1,729	1,423	51,276
OK	1,375	2,568	2,641	2,538	3,123	2,665	2,337	1,416	1,304	1,311	1,639	1,333	48,311
R60	39	1	15	230	211					16	90	90	903
R10	91	269	30	73	302	100	43	45					1,900
AA						1							1
GRA													1
GRD		4											122
T60	8		15										38
Terminal 3	2,429	1,020	1,980	1,863	1,412	3,604	3,776	5,125	5,820	3,237	4,781	5,327	95,448
OK	2,429	1,020	1,980	1,861	1,410	3,604	3,774	5,125	5,820	3,232	4,776	5,327	94,920
R60				2	2		2			5	2		17
R10											3		511
Freight	544	540	338	390	270	163	158	305	60	420	397	807	10,496
OK	484	360	274	390	180	141	158	245	60	180	397	777	8,384
R60	60	150	64		30	22		60		150			1,290
R10		30			30					90		30	791
GRD					30								31
Grand Total	7,501	7,385	9,131	9,659	9,543	10,935	11,119	9,833	9,291	8,234	9,411	9,940	227,630

Runway Reason Code	
R60	60 Min Runway Availability
R10	10 Min Runway Availability

Other Reason Code	
AA	Apron Capacity
V10	Operator Voluntary Move
GRA	Arr Affected by Dep
GRD	Dep Affected by Arr

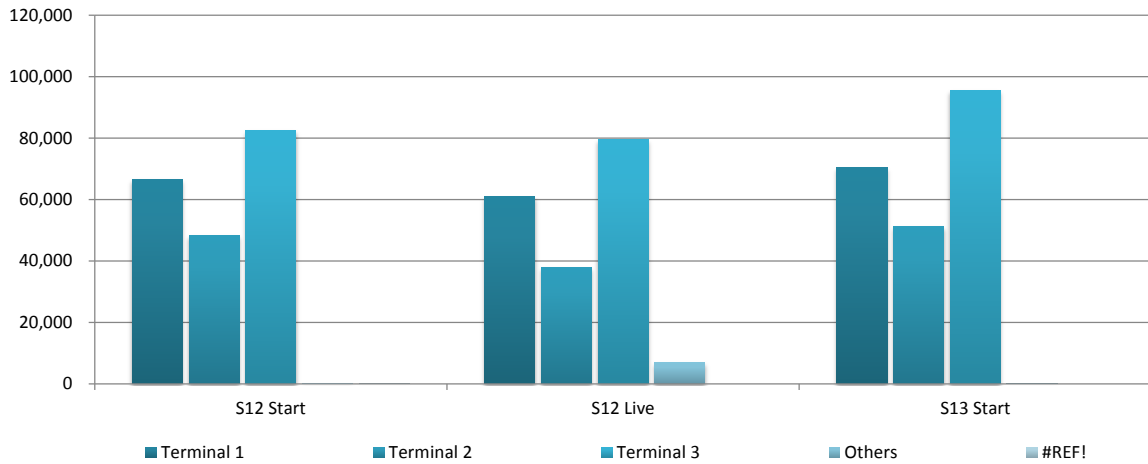
Terminal Reason Code	
T60	60 Min Terminal Capacity rolling 30 Mins
R30	30 Mins gate Capacity rolling 5 Mins

CODE F ARRIVALS AND DEPARTURES

S13 Code F Aircraft Arrivals	Day Of Week	TIME (UTC)																	Grand Total					
		0000	0100	0200	0300	0400	0500	0600	1000	1100	1200	1300	1400	1500	1700	1800	1900	2000		2100	2200	2300		
Emirates	TOTAL	774	572	629	211	210				210					300	210		210	637	1050		210	148	5371
	1	102	93	90	30	30				30					30	30		30	91	150		30	18	754
	2	124	72	90	30	30				30					60	30		30	91	150		30	30	797
	3	111	72	90	30	30				30					30	30		30	91	150		30	30	754
	4	90	94	90	30	30				30					60	30		30	91	150		30	17	772
	5	124	73	90	30	30				30					30	30		30	91	150		30	17	755
	6	103	94	90	30	30				30					60	30		30	91	150		30	18	786
	7	120	74	89	31	30				30					30	30		30	91	150		30	18	753
Qantas	TOTAL				209	209													210	210				838
	1				30	30													30	30				120
	2				30	30													30	30				120
	3				30	30													30	30				120
	4				30	30													30	30				120
	5				30	30													30	30				120
	6				30	30													30	30				120
	7				29	29													30	30				118
British Airways World Cargo	TOTAL																							30
	5																							30
Cathay Pacific Cargo	TOTAL																							19
	3																							19
Total		774	572	629	420	419				210					300	210	30	210	847	1,279		210	148	6,258

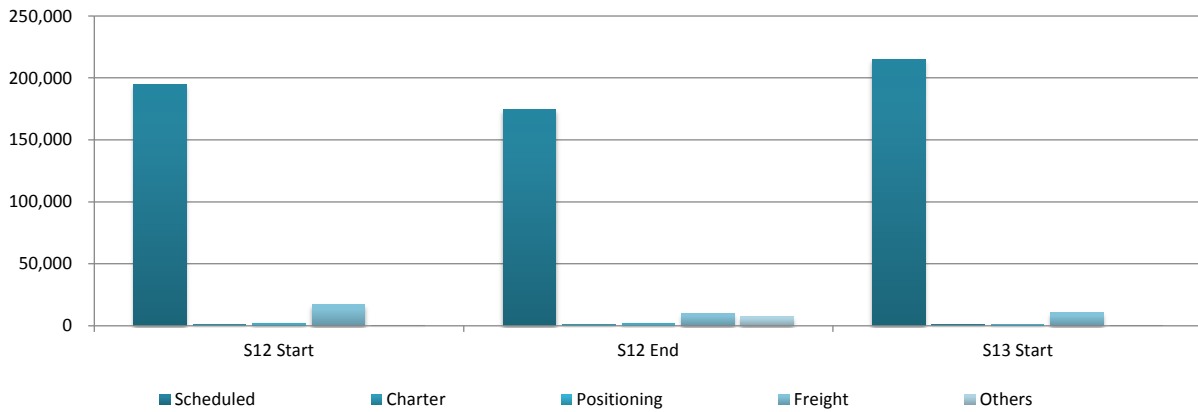
S13 Code F Aircraft Departures	Day Of Week	TIME (UTC)																	Grand Total							
		0000	0100	0200	0300	0400	0500	0600	1000	1100	1200	1300	1400	1500	1700	1800	1900	2000		2100	2200	2300				
Emirates	TOTAL	210			630	840	510	566	210	420	210	210										692	875	5373		
	1	30			90	120	90	93	30	60	30	30										90	121	784		
	2	30			90	120	60	94	30	60	30	30										111	130	785		
	3	30			90	120	90	64	30	60	30	30										90	121	755		
	4	30			90	120	60	94	30	60	30	30										111	130	785		
	5	30			90	120	90	64	30	60	30	30										90	121	755		
	6	30			90	120	60	94	30	60	30	30										110	131	785		
	7	30			90	120	60	63	30	60	30	30										90	121	724		
Qantas	TOTAL						418															210	210	838		
	1						60															30	30	120		
	2						60															30	30	120		
	3						60															30	30	120		
	4						60															30	30	120		
	5						60															30	30	120		
	6						60															30	30	120		
	7						58															30	30	118		
British Airways World Cargo	TOTAL																							30		
	5																							30		
Cathay Pacific Cargo	TOTAL																							19		
	3																							19		
Total		210			630	840	928	566	210	420	210	210										30	210	921	875	6,260

AIR TRANSPORT MOVEMENTS BY TERMINAL



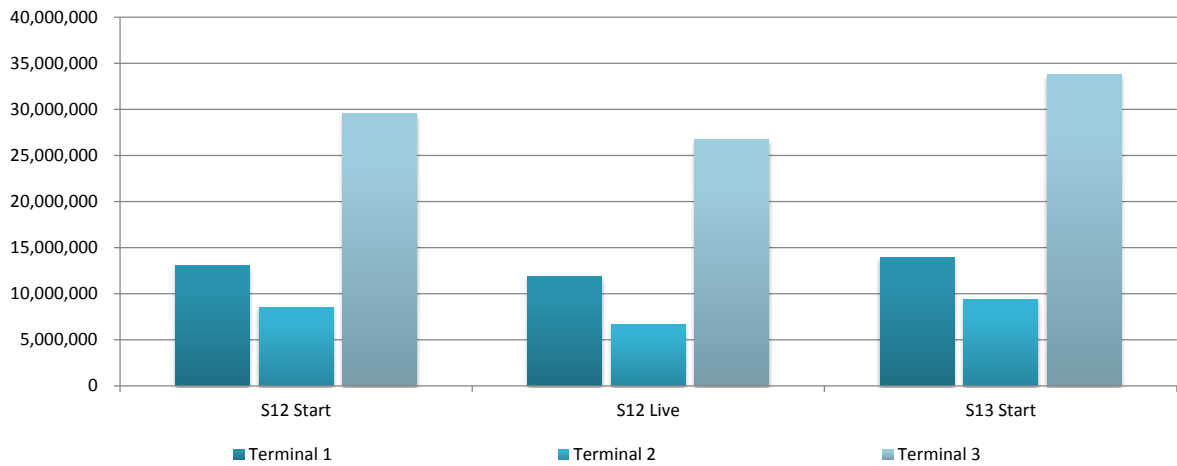
Row Labels	S12 Start	S12 Live	S13 Start	% Change Start-Start	% Change End - Start
Terminal 1	66,395	60,826	70,434	6.1%	15.8%
Terminal 2	48,367	37,823	51,322	6.1%	35.7%
Terminal 3	82,437	79,427	95,449	15.8%	20.2%
Freight	17,099	10,354	10,496	-38.6%	1.4%
Others	180	6,907	29	-83.9%	-99.6%
Total	214,478	195,338	227,730	6.2%	16.6%

AIR TRANSPORT MOVEMENTS BY SERVICE TYPES



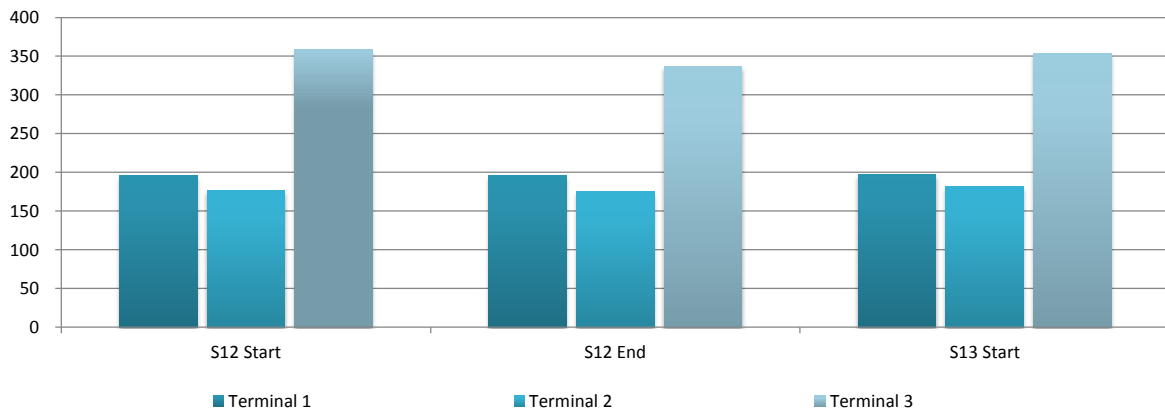
	S12 Start	S12 End	S13 Start	% Change Start-Start	% Change End - Start
Scheduled	194,384	174,605	215,179	10.7%	23.2%
Charter	910	1,112	753	-17.2%	-32.3%
Positioning	1,828	1,730	1,198	-34.5%	-30.8%
Freight	17,097	10,263	10,494	-38.6%	2.3%
Others	259	7,628	106	-59.1%	-98.6%
Total	214,478	195,338	227,730	6.2%	16.6%

TOTAL SEATS BY TERMINAL



Row Labels	S12 Start	S12 Live	S13 Start	% Change Start-Start	% Change End - Start
Terminal 1	13,013,137	11,901,767	13,942,677	7.1%	17.1%
Terminal 2	8,533,946	6,619,027	9,321,178	9.2%	40.8%
Terminal 3	29,560,128	26,744,166	33,756,278	14.2%	26.2%
Total	51,107,211	45,264,960	57,020,133	11.6%	26.0%

SEATS PER PASSENGER ATM BY TERMINAL



	S12 Start	S12 End	S13 Start	% Change Start-Start	% Change End - Start
Terminal 1	196	196	198	1.0%	1.2%
Terminal 2	176	175	182	2.9%	3.8%
Terminal 3	359	337	354	-1.4%	5.0%
Average	244	236	244	0.3%	3.7%

DISTRIBUTION OF SCHEDULE ADJUSTMENTS BY CARRIER (ACTUAL FLIGHTS)

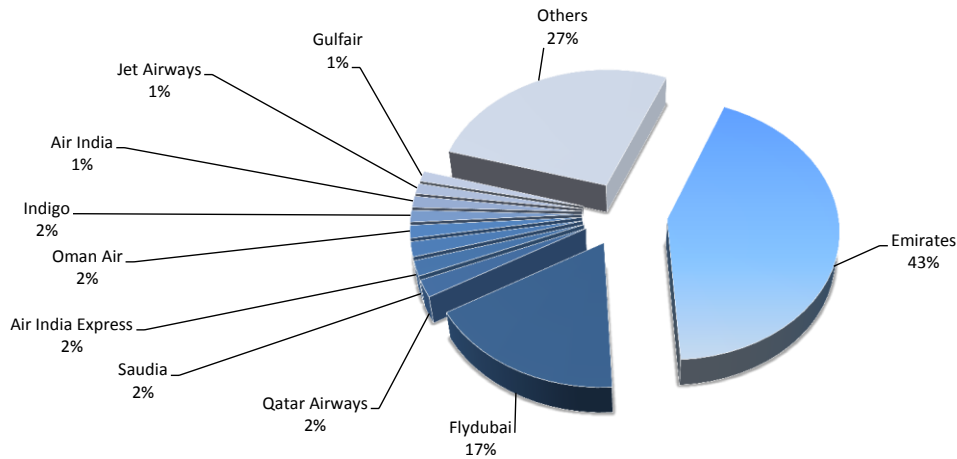
Carrier	Cleared OK	Minutes Off Slot													Grand Total
		5	10	15	20	25	30	35	40	45	50	55	60	60+	
EK Emirates	95,834	423	207	477	91	120	60	61	30	90	30	91	498	98,013	
FZ Flydubai	37,892	929	268	357	88	114	11	4	1	15	9		90	39,778	
QR Qatar Airways	4,832									7				4,846	
SV Saudia	4,278													4,278	
JX Air India Express	3,541	30	142				30						449	4,192	
WY Oman Air	3,594													3,594	
6E Indigo	3,359													3,359	
AI Air India	3,180													3,180	
9W Jet Airways India	2,100		210	210									420	2,940	
GF Gulf Air	2,940													2,940	
PK PIA Pakistan International Airlines	2,520													2,520	
EP Iran Aseman Airlines	2,163												126	2,290	
CX Cathay Pacific	1,918	1					22							1,940	
ET Ethiopian Airlines Enterprise	1,794													1,794	
SG Spicejet	1,680													1,680	
NL Shaheen Air International	1,680													1,680	
NCR National Air Cargo	1,678													1,678	
PA Airblue	1,678													1,678	
QF Qantas	1,676													1,676	
XY Nas Air	1,420	13					66						119	1,618	
EE Eastern Skyjets	1,193			63			120							1,376	
J9 Jazeera Airways	1,364													1,364	
4Q Safi Airways	1,260													1,260	
Y9 Kish Air	1,254													1,254	
RJ Royal Jordanian	799		419											1,218	
W5 Mahan Air	1,106								90				4	1,200	
MS Egypt Air	1,080			60										1,140	
IR Iran Air	1,058													1,058	
FX FedEx	1,020													1,020	
UPS Ups Airlines	960													960	
B8 Eritrean Airlines	960													960	
KU Kuwait Airways	658			300										958	
JA Iraqi Airways	956													956	
BA British Airways	902													902	
TK Turkish Airlines	900													900	
ME Mea Middle East Airlines	840													840	
UA United Airlines	840													840	
LX Swiss International Air Lines	840													840	
BI Royal Brunei Airlines	838													838	
LH Lufthansa	820													820	
KQ Kenya Airways	780													780	
SQ Singapore Airlines	780													780	
3V TNT Airways	480		120								120			720	
IY Yemenia Yemen Airways	660													660	
UL Srilankan Airlines	600													600	
SU Aeroflot Russian Airlines	580													580	
UN Transaero Airlines	542													542	
DHX DHL Aviation	420					30	30						60	540	
3S Aerologic	476								30		30			536	
BG Birman Bangladesh Airlines	480													480	
WB Rwandair	419		9		8								44	480	
2P Air Philippines	420													420	
V5 Virgin Atlantic	420													420	
TG Thai Airways International Public Lt	420													420	
DL Delta Air Lines	420													420	
PR Philippine Airlines	420													420	
J2 Azal Azerbaijan Airlines	420													420	
KL Klm Royal Dutch Airlines	420													420	
CZ China Southern Airlines	420													420	
QB Air Alma	420													420	
RB Syrianair Syrian Arab Airlines	420													420	
FG Ariana Afghan Airlines	418													418	
RO Air Engladina	418													418	
AF Air France	412		2											414	
RV Caspian Airlines	366													366	
HH Taban Airlines	362													362	
3J Jubba Airways	356													356	
4H United Bangladesh	176												180	356	
U6 Ural Airlines	344													344	
PS Ukraine International Airlines	327													327	
OS Austrian Airlines	317									1				318	
MJ Mihin Lanka	315													315	
6P Gryphon Airlines	300													300	
TU Tunisair	300													300	
LN Libyan Airways	270		30											300	
AH Air Algerie	300													300	
H8 Hesa Airlines	120		60										120	300	
PC Pegasus	300													300	
HY Uzbekistan Airways	300													300	
KE Korean Air	288													288	
AGA Agair	240													240	
4J Somon Air	240													240	
CA Air China	240													240	
T5 Turkmenistan Airlines	240													240	
D3 Daallo Airlines	188													188	
NV Naft Air	181				1	1		1						184	
W6 Wizz Air	180													180	
WU Tikal Jets Airlines	180													180	
RO Tarom	180													180	
DT Taag Angola Airlines	180													180	
FGE Flygeorgia	60				60			60						180	
8U Afriqiyah Airlines Libya	180													180	
XU African Express Airways	160													160	
TMA Tma - Trans Mediterranean Airways	120													120	
CV Cargolux	120													120	
UNO United Nations Organization	120													120	
U8 Armavia Aviacompany	120													120	
MU China Eastern Airlines	120													120	
SD Sudan Airways	29				59							30		118	
QH Kyrgyzstan Ojsc	118													118	
SJ Cebu Pacific Air	112													112	
S7 Siberia Airlines	92													92	
RLU Rusline	84													84	
DY Air Djibouti	26												14	88	
Y7 Trans Air Benin	34								8	4	24			88	
OR Crimea Air	55												3	58	
7W Wind Rose Aviation	48	6												54	
HV Transavia	38													38	
AY Finnair	36													36	
C8 Cargolux Italia	10													10	
NO Neos	2												6	8	
QS Travel Service Airlines/Smart Wings	8													8	
UTA Utair Aviation Joint-Stock	6													6	
AZ Alitalia	4													4	
K4 Kalitta Air	4													4	
CAI Corendon Airlines												2		2	
SFV Safi Airways	2													2	
VJS Vistajet	1													1	
PVT GABA Executive Flights	19													19	

DISTRIBUTION OF SCHEDULE ADJUSTMENTS BY CARRIER (PERCENTAGE OF FLIGHTS)

Carrier	Cleared OK	Minutes Off Slot													Grand Total	
		5	10	15	20	25	30	35	40	45	50	55	60	60+		
EK Emirates	219,588	97.8%	0.4%	0.2%	0.5%	0.1%	0.1%	0.1%	0.0%	0.1%	0.0%	0.0%	0.0%	0.1%	0.5%	100.0%
FZ Flydubai	99.7%	2.3%	0.7%	0.9%	0.2%	0.3%	0.0%	0.0%	0.0%	0.0%	0.0%	0.0%	0.0%	0.2%	100.0%	
QR Qatar Airways	99.7%									0.1%					100.0%	
SV Saudia	100.0%												0.1%		100.0%	
IX Air India Express	84.5%	0.7%	3.4%				0.7%								100.0%	
WY Oman Air	100.0%													10.7%	100.0%	
BE Indigo	100.0%														100.0%	
AI Air India	100.0%														100.0%	
9W Jet Airways India	71.4%		7.1%	7.1%										14.3%	100.0%	
GF Gulf Air	100.0%														100.0%	
PK PIA Pakistan International Airlines	100.0%														100.0%	
EP Iran Aseman Airlines	94.5%	0.0%												5.5%	100.0%	
CX Cathay Pacific	98.9%						1.1%								100.0%	
ET Ethiopian Airlines Enterprise	100.0%														100.0%	
SG Spicejet	100.0%														100.0%	
NL Shaheen Air International	100.0%														100.0%	
NCR National Air Cargo	100.0%														100.0%	
PA Airblue	100.0%														100.0%	
QF Qantas	100.0%														100.0%	
XY Nas Air	87.8%	0.8%					4.1%							7.4%	100.0%	
EE Eastern Skyjets	86.7%			4.6%			8.7%								100.0%	
J9 Jazeera Airways	100.0%														100.0%	
4Q Safi Airways	100.0%														100.0%	
Y9 Kish Air	100.0%														100.0%	
RJ Royal Jordanian	65.6%		34.4%												100.0%	
W5 Mahan Air	92.2%									7.5%				0.3%	100.0%	
MS Egypt Air	94.7%			5.3%											100.0%	
IR Iran Air	100.0%														100.0%	
FX FedEx	100.0%														100.0%	
UPS Ups Airlines	100.0%														100.0%	
B8 Eritrean Airlines	100.0%														100.0%	
KU Kuwait Airways	68.7%			31.3%											100.0%	
IA Iraqi Airways	100.0%														100.0%	
BA British Airways	100.0%														100.0%	
TK Turkish Airlines	100.0%														100.0%	
ME Mea Middle East Airlines	100.0%														100.0%	
UA United Airlines	100.0%														100.0%	
LX Swiss International Air Lines	100.0%														100.0%	
BI Royal Brunei Airlines	100.0%														100.0%	
LH Lufthansa	100.0%														100.0%	
KQ Kenya Airways	100.0%														100.0%	
SQ Singapore Airlines	100.0%														100.0%	
3V TNT Airways	66.7%		16.7%									16.7%			100.0%	
IY Yemenia Yemen Airways	100.0%														100.0%	
UL Srilankan Airlines	100.0%														100.0%	
SU Aeroflot Russian Airlines	100.0%														100.0%	
UN Transaero Airlines	100.0%														100.0%	
DHX DHL Aviation	77.8%					5.6%	5.6%							11.1%	100.0%	
3S Aerologic	88.8%								5.6%		5.6%				100.0%	
BG Birman Bangladesh Airlines	100.0%														100.0%	
WB Rwandair	87.3%		1.9%		1.7%									9.2%	100.0%	
2P Air Philippines	100.0%														100.0%	
NV Virgin Atlantic	100.0%														100.0%	
TG Thai Airways International Public Lt	100.0%														100.0%	
DL Delta Air Lines	100.0%														100.0%	
PR Philippine Airlines	100.0%														100.0%	
J2 Azal Azerbaijan Airlines	100.0%														100.0%	
KL Klm Royal Dutch Airlines	100.0%														100.0%	
CZ China Southern Airlines	100.0%														100.0%	
QB Air Alma	100.0%														100.0%	
RB Syrianair Syrian Arab Airlines	100.0%														100.0%	
FG Ariana Afghan Airlines	100.0%														100.0%	
RO Air Engladina	100.0%														100.0%	
AF Air France	99.5%		0.5%												100.0%	
RV Caspian Airlines	100.0%														100.0%	
HH Taban Airlines	100.0%														100.0%	
3J Jubba Airways	100.0%														100.0%	
4H United Bangladesh	49.4%													50.6%	100.0%	
U6 Ural Airlines	100.0%														100.0%	
PS Ukraine International Airlines	100.0%														100.0%	
OS Austrian Airlines	99.7%									0.3%					100.0%	
MJ Mihin Lanka	100.0%														100.0%	
6P Gryphon Airlines	100.0%														100.0%	
TU Tunisair	100.0%														100.0%	
LN Libyan Airways	90.0%		10.0%												100.0%	
AH Air Algerie	100.0%														100.0%	
HB Hesa Airlines	40.0%		20.0%											40.0%	100.0%	
PC Pegasus	100.0%														100.0%	
HY Uzbekistan Airways	100.0%														100.0%	
KE Korean Air	100.0%														100.0%	
AGA Agair	100.0%														100.0%	
4J Somon Air	100.0%														100.0%	
CA Air China	100.0%														100.0%	
T5 Turkmenistan Airlines	100.0%														100.0%	
D3 Daallo Airlines	100.0%														100.0%	
NV Naft Air	98.4%				0.5%	0.5%		0.5%							100.0%	
W6 Wizz Air	100.0%														100.0%	
WU Tikal Jets Airlines	100.0%														100.0%	
RO Tarom	100.0%														100.0%	
DT Taag Angola Airlines	100.0%														100.0%	
FGE Flygeorgia	33.3%				33.3%			33.3%							100.0%	
8U Afriqiyah Airlines Libya	100.0%														100.0%	
XU African Express Airways	100.0%														100.0%	
TMA Tma - Trans Mediterranean Airways	100.0%														100.0%	
CV Cargolux	100.0%														100.0%	
UNO United Nations Organization	100.0%														100.0%	
U8 Armavia Aviacompany	100.0%														100.0%	
MU China Eastern Airlines	100.0%														100.0%	
SD Sudan Airways	24.6%				50.0%								25.4%		100.0%	
QH Kyrgyzstan Ojsc	100.0%														100.0%	
SJ Cabo Pacific Air	100.0%														100.0%	
S7 Siberia Airlines	100.0%														100.0%	
RLU Rusline	100.0%														100.0%	
DY Air Djibouti	38.2%									5.9%	35.3%			20.6%	100.0%	
Y7 Trans Air Benin	58.6%								13.8%					27.6%	100.0%	
OR Crimea Air	94.8%													5.2%	100.0%	
7W Wind Rose Aviation	88.9%	11.1%													100.0%	
HV Transavia	100.0%														100.0%	
AY Finnair	100.0%														100.0%	
C8 Cargolux Italia	100.0%														100.0%	
NO Neos	25.0%													75.0%	100.0%	
QS Travel Service Airlines/Smart Wings	100.0%														100.0%	
UTA Utair Aviation Joint-Stock	100.0%														100.0%	
AZ Alitalia	100.0%														100.0%	
K4 Kalitta Air	100.0%														100.0%	
CAI Corendon Airlines	100.0%												100.0%		100.0%	
SFW Safi Airways	100.0%														100.0%	
VJS Vistajet	100.0%														100.0%	
PVT GABA Executive Flights	100.0%														100.0%	

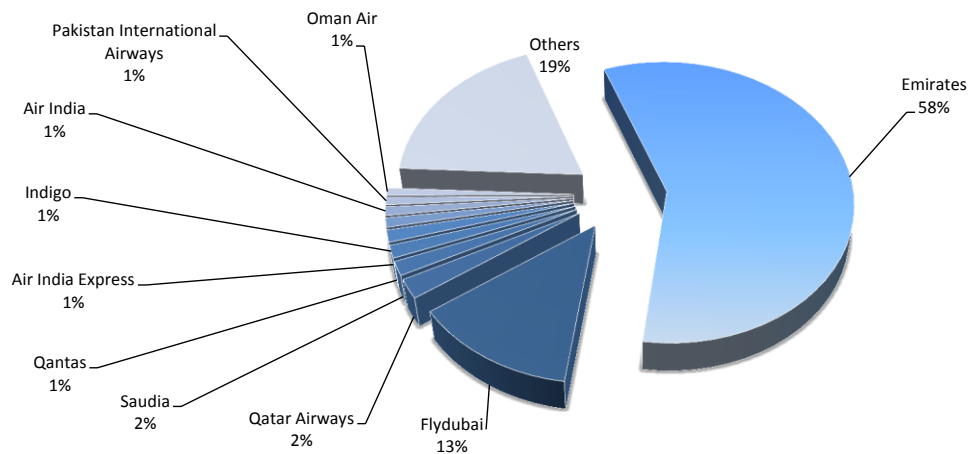
TOP 10 AIRLINES BY AIR TRANSPORT MOVEMENTS (ATMS)

Airline	Movements
Emirates	98,011
Flydubai	39,762
Qatar Airways	4,846
Saudia	4,278
Air India Express	4,200
Oman Air	3,594
Indigo	3,359
Air India	3,180
Jet Airways	2,940
Gulfair	2,940
Others	60,620

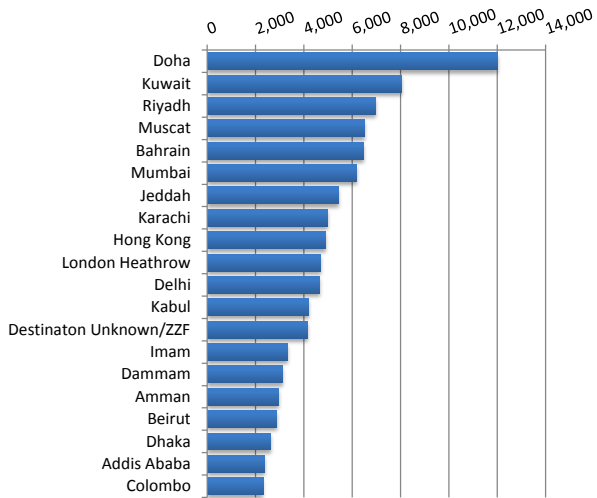


TOP 10 AIRLINES BY SEATS

Airline	Seats
Emirates	32,946,726
Flydubai	7,515,018
Qatar Airways	1,253,130
Saudia	917,480
Qantas	809,552
Air India Express	777,000
Indigo	604,620
Air India	558,900
Pakistan International Airways	487,745
Oman Air	483,922
Others	10,666,383

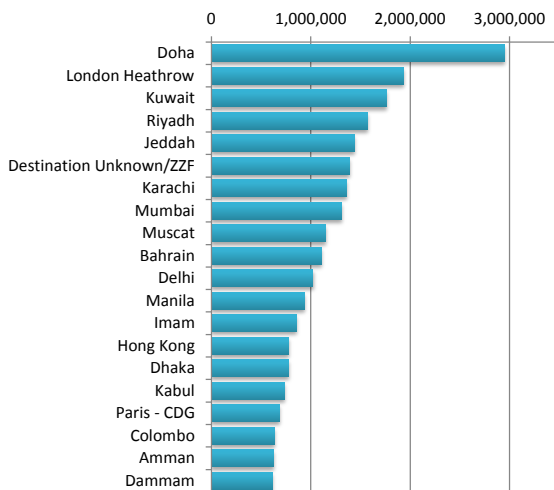


TOP 20 DESTINATIONS BY AIR TRANSPORT MOVEMENTS (ATMS)



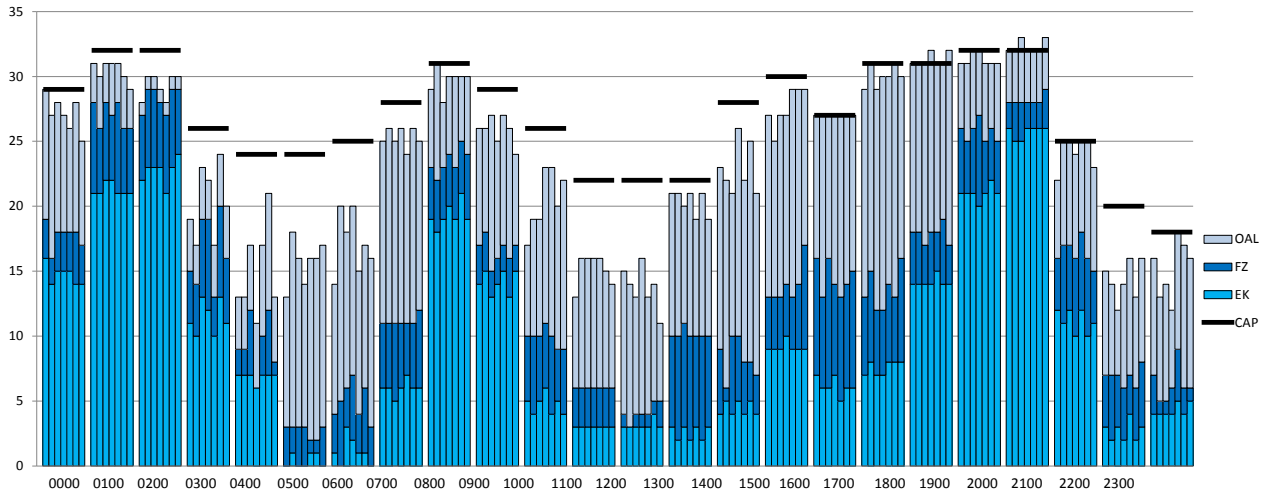
Destination	ATM'S
Doha	12,002
Kuwait	8,027
Riyadh	6,967
Muscat	6,502
Bahrain	6,470
Mumbai	6,182
Jeddah	5,410
Karachi	4,966
Hong Kong	4,874
London Heathrow	4,688
Delhi	4,650
Kabul	4,195
Destinaton Unknown/ZZF	4,140
Imam	3,330
Dammam	3,099
Amman	2,956
Beirut	2,876
Dhaka	2,598
Addis Ababa	2,383
Colombo	2,306

TOP 20 DESTINATIONS BY SEATS

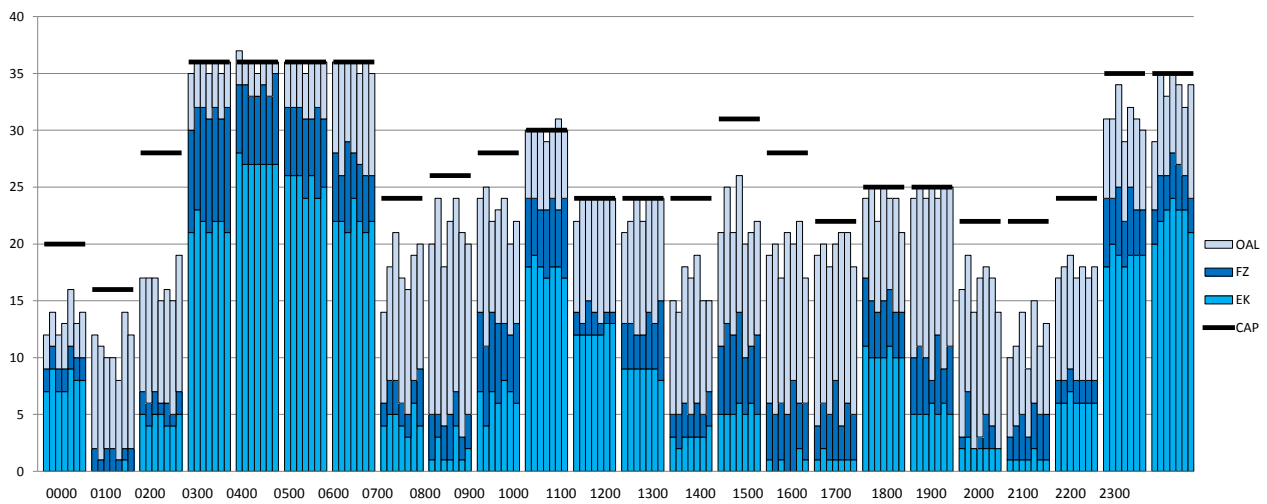


Destination	SEATS
Doha	2,945,098
London Heathrow	1,931,683
Kuwait	1,760,382
Riyadh	1,573,614
Jeddah	1,440,486
Destination Unknown/ZZF	1,389,461
Karachi	1,360,250
Mumbai	1,309,888
Muscat	1,149,133
Bahrain	1,104,807
Delhi	1,022,020
Manila	932,128
Imam	856,618
Hong Kong	778,770
Dhaka	778,284
Kabul	737,428
Paris - CDG	686,388
Colombo	632,037
Amman	623,830
Dammam	614,875

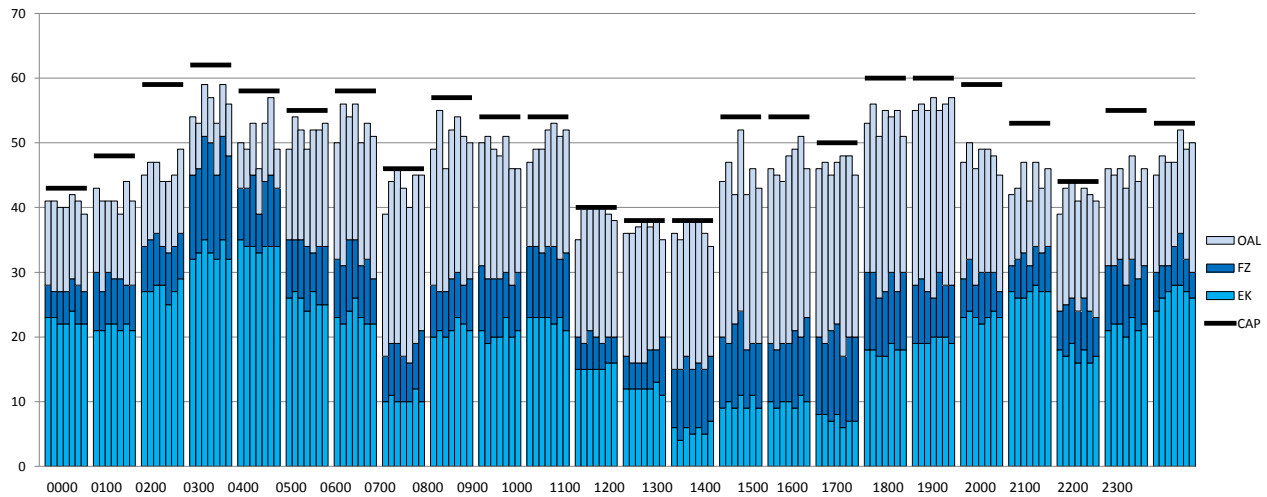
RUNWAY MOVEMENT ALLOCATION (R60) PEAK WEEK ARRIVALS



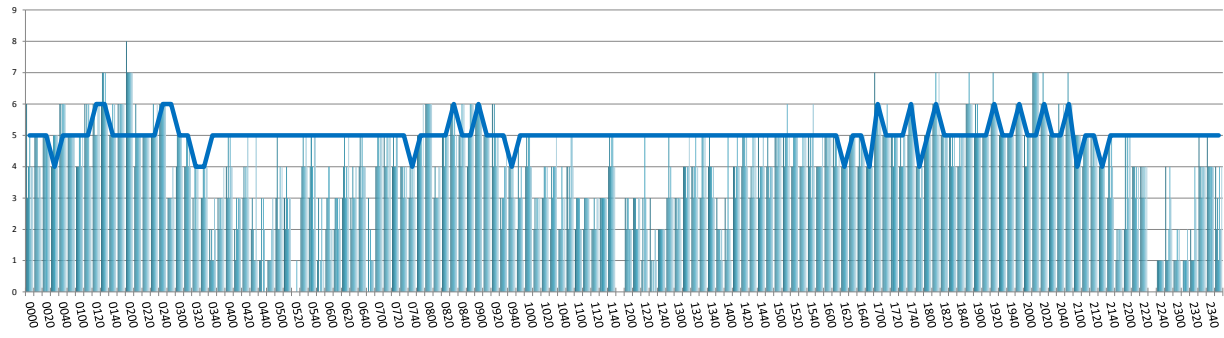
RUNWAY MOVEMENT ALLOCATION (R60) PEAK WEEK DEPARTURES



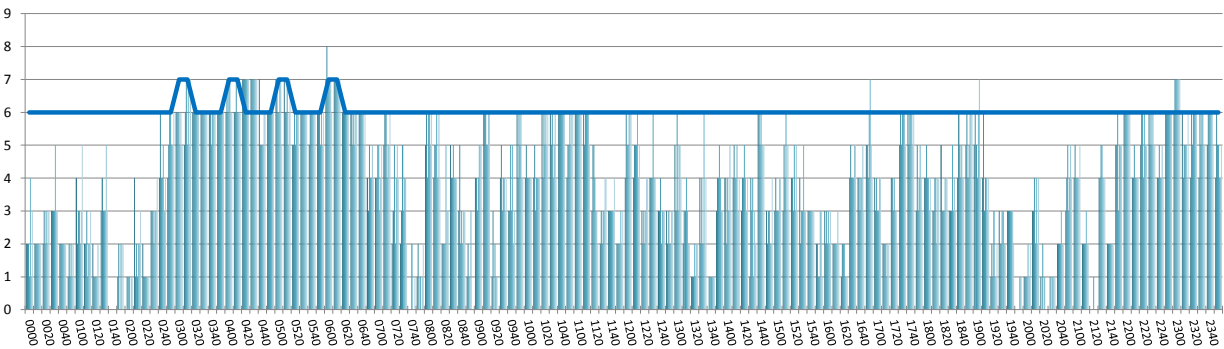
RUNWAY MOVEMENT ALLOCATION (R60) PEAK WEEK TOTALS



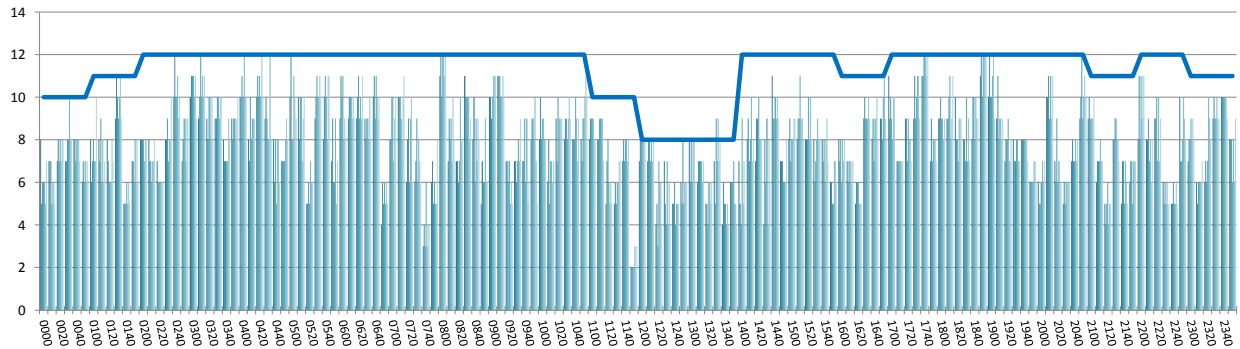
RUNWAY MOVEMENT ALLOCATION (R10) PEAK WEEK ARRIVALS



RUNWAY MOVEMENT ALLOCATION (R10) PEAK WEEK DEPARTURES

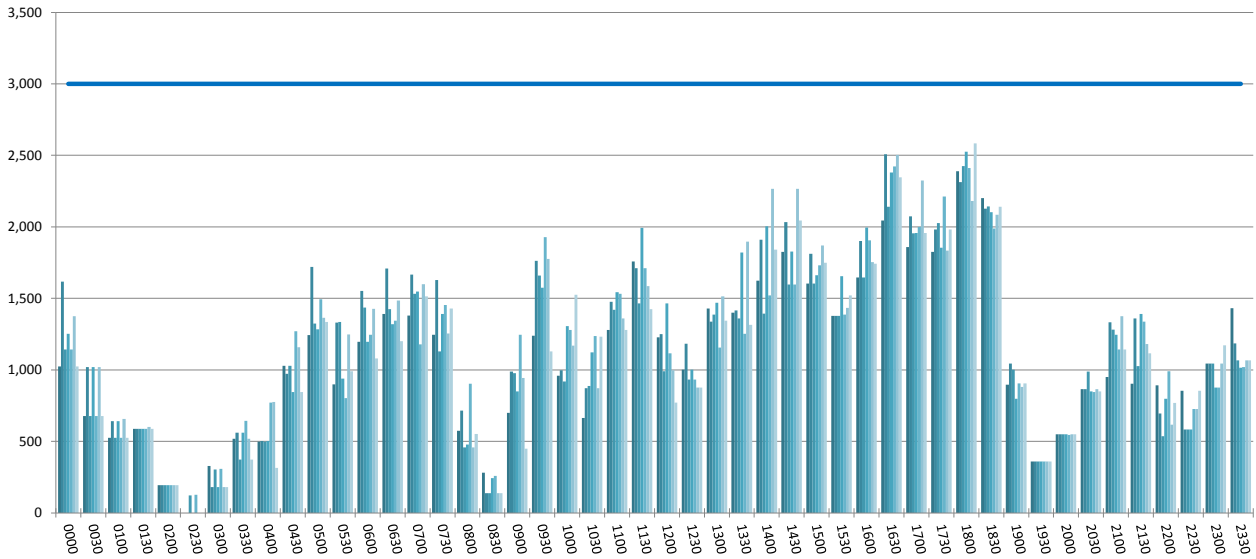


RUNWAY MOVEMENT ALLOCATION (R10) PEAK WEEK TOTALS



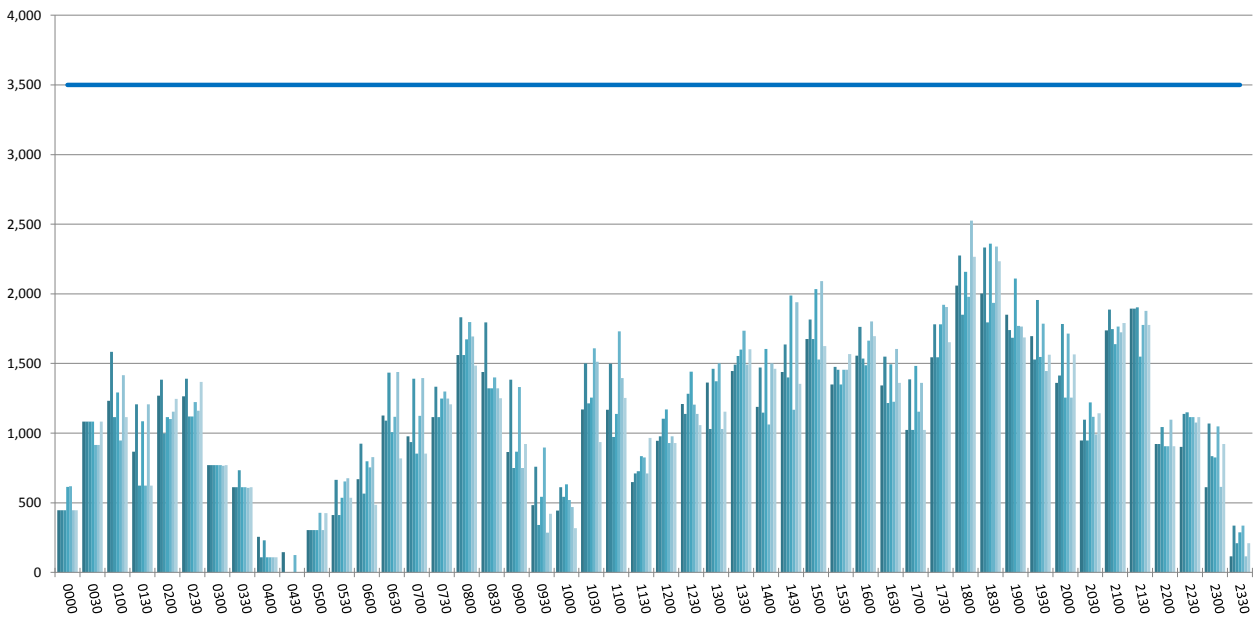
TERMINAL 1 - ARRIVALS

Peak Week Movements per Hour - All times UTC



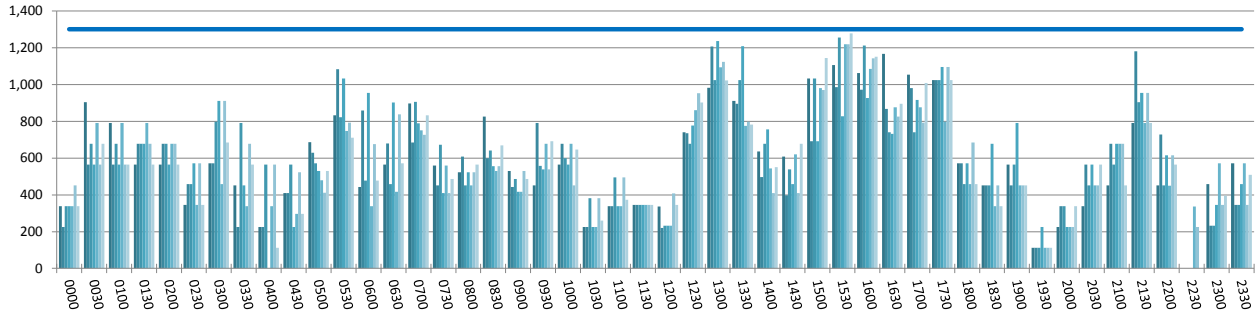
TERMINAL 1 - DEPARTURES

Peak Week Movements per Hour - All times UTC



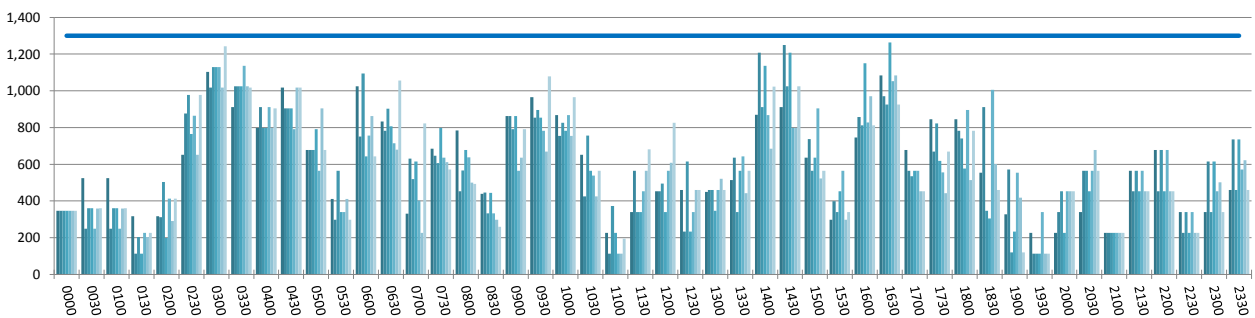
TERMINAL 2 - ARRIVALS

Peak Week Movements per Hour - All times UTC

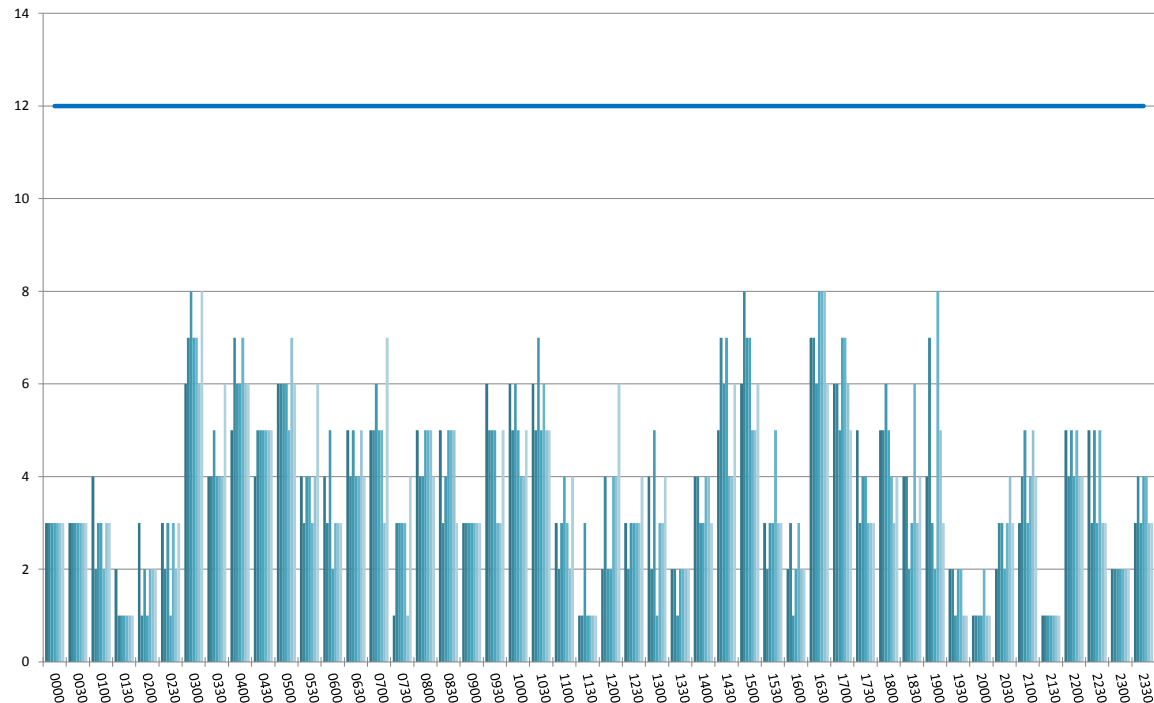


TERMINAL 2 - DEPARTURES

Peak Week Movements per Hour - All times UTC

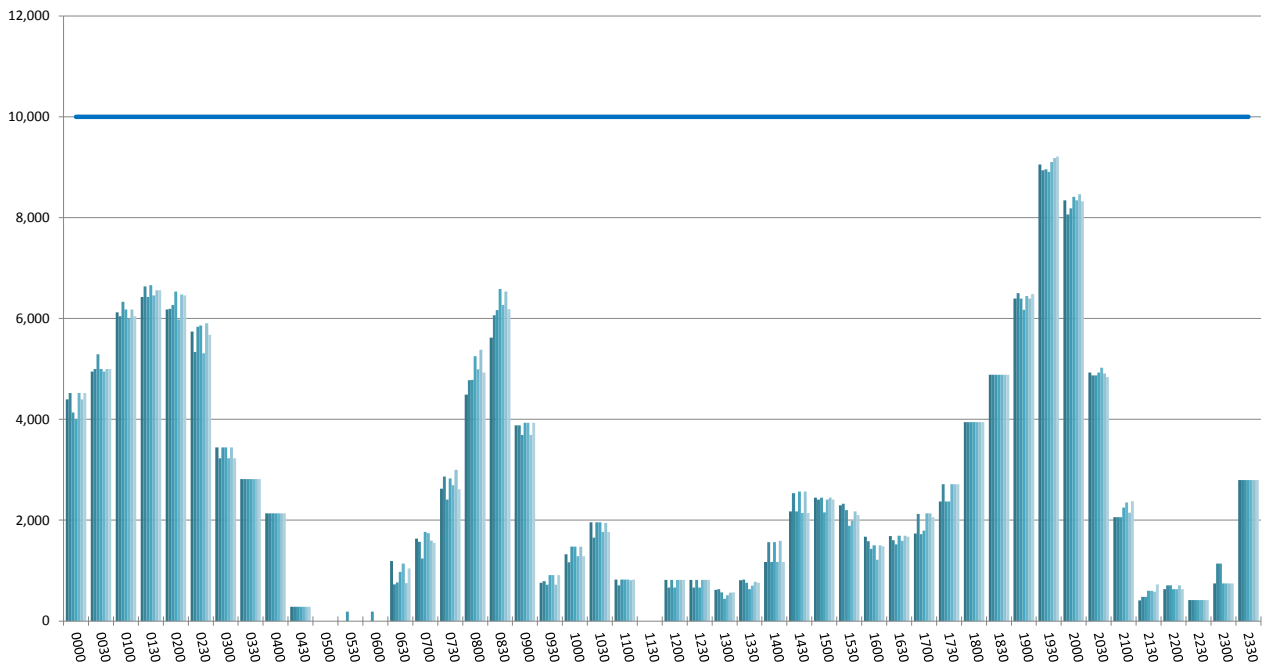


TERMINAL 2 - DEPARTURE GATE UTILISATION PER 30 MINUTES



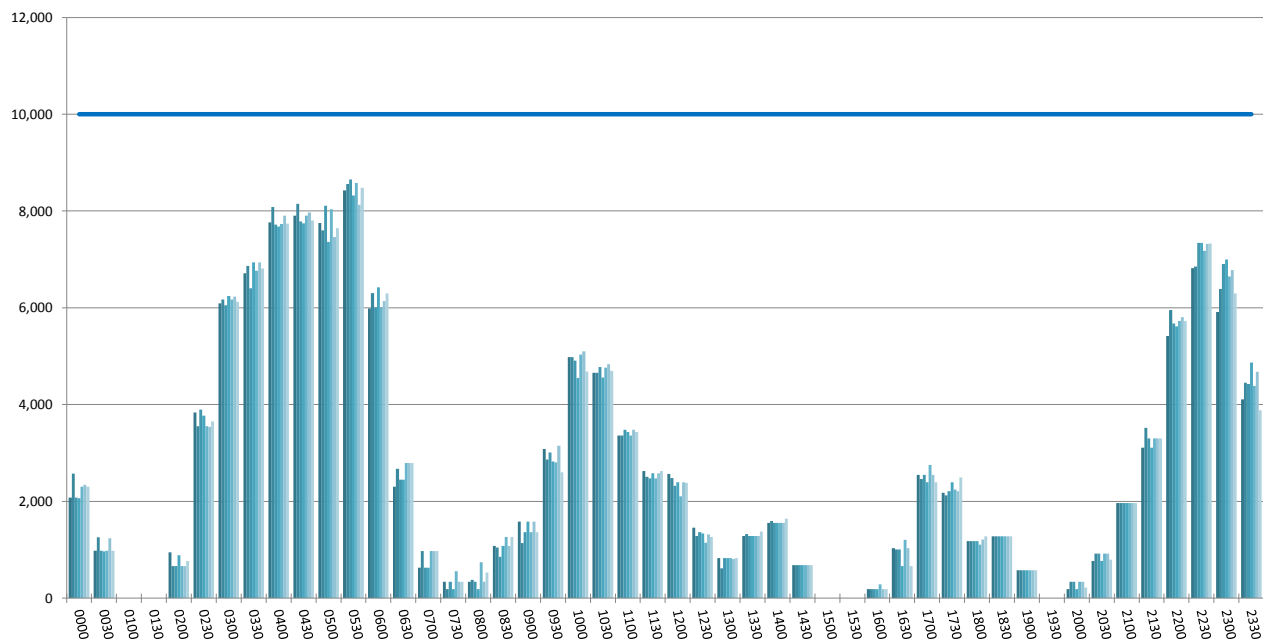
TERMINAL 3 - ARRIVALS

Peak Week Movements per Hour - All times UTC



TERMINAL 3 - DEPARTURES

Peak Week Movements per Hour - All times UTC



DUBAI INTERNATIONAL AIRPORT

PEAK WEEK DEPARTURE FREQUENCIES - BY CARRIER

	OPERATOR	AIRPORT		S12		S13		SEATS +/-	ATMS +/-
				SEATS	ATMS	SEATS	ATMS		
2P	Air Philippines	MNL	Manila	0	0	2,898	7	2,898	7
2P Total				0	0	2,898	7	2,898	7
3J	Jubba Airways	MGQ	Mogadishu International	120	1	420	3	300	2
3J Total				120	1	420	3	300	2
3S	Air Guyane Express	HKG	Hong Kong International	0	3	0	4	0	1
		LEJ	Leipzig	0	5	0	5	0	0
3S Total				0	8	0	9	0	1
3V	Tnt Airways	HKG	Hong Kong International	0	6	0	6	0	0
		LGG	Liege Bierset	0	6	0	6	0	0
3V Total				0	12	0	12	0	0
4H	Fly Linhas Aereas	DAC	Hazrat Shahjalal International	670	3	590	3	-80	0
		JED	Jeddah King Abdulaziz International	250	1	750	3	500	2
4H Total				920	4	1,340	6	420	2
4J	Alphaone Airways Uk	DYU	Dushanbe	344	2	741	4	397	2
4J Total				344	2	741	4	397	2
4Q	Aerolyon	KBL	Kabul Khwaja Rawash	2,016	14	3,472	21	1,456	7
4Q Total				2,016	14	3,472	21	1,456	7
5J	Cebu Pacific Air	MNL	Manila	0	0	2,800	7	2,800	7
5J Total				0	0	2,800	7	2,800	7
6E	Indigo	BOM	Mumbai	1,260	7	2,520	14	1,260	7
		COK	Cochin	1,260	7	1,260	7	0	0
		DEL	Delhi Indira Gandhi International	2,520	14	2,520	14	0	0
		HYD	Hyderabad Begumpet	1,260	7	1,260	7	0	0
		MAA	Chennai	1,260	7	1,260	7	0	0
		TRV	Trivandrum International	0	0	1,260	7	1,260	7
6E Total				7,560	42	10,080	56	2,520	14
6P	Gryphon Airlines	KDH	Kandahar	0	0	147	1	147	1
6P Total				0	0	147	1	147	1
7G	Global Jet Dubai	KDH	Kandahar	462	3	0	0	-462	-3
7G Total				462	3	0	0	-462	-3
7R	Red Sea Air	MCX	Makhachkala	50	1	0	0	-50	-1
7R Total				50	1	0	0	-50	-1
7W	Air Sk	DOK	Donetsk	180	1	0	0	-180	-1
		KBP	Kiev Borispol	840	4	0	0	-840	-4
7W Total				1,020	5	0	0	-1,020	-5
8U	Afriqiyah Airlines Libya	BEN	Benghazi Benina International	0	0	230	1	230	1
		TIP	Tripoli International	0	0	460	2	460	2
8U Total				0	0	690	3	690	3
9W	Jet Airways India	BOM	Mumbai	3,484	22	4,424	28	940	6
		DEL	Delhi Indira Gandhi International	1,078	7	2,268	14	1,190	7
		IXE	Bajpe Airport, Mangalore	0	0	1,078	7	1,078	7
9W Total				4,562	29	7,770	49	3,208	20
AF	Air France	CDG	Paris Ch. De Gaulle	1,953	7	1,953	7	0	0
AF Total				1,953	7	1,953	7	0	0
AGA	Agair	KDH	Kandahar	0	0	0	4	0	4
AGA Total				0	0	0	4	0	4
AH	Air Algerie	ALG	Algiers Houari Boumediene	789	3	1,315	5	526	2
AH Total				789	3	1,315	5	526	2
AI	Air India	BLR	Bangalore Hindustan	488	4	488	4	0	0
		BOM	Mumbai	1,015	7	1,015	7	0	0
		CCJ	Kozhikode	1,015	7	1,204	7	189	0
		DEL	Delhi Indira Gandhi International	1,792	7	2,996	14	1,204	7
		GOI	Goa Dabolim	1,204	7	1,204	7	0	0
		MAA	Chennai	1,204	7	1,204	7	0	0
		VTZ	Vishakhapatnam	1,204	7	1,204	7	0	0
AI Total				7,922	46	9,315	53	1,393	7
AY	Finnair	HEL	Helsinki-Vantaa	681	3	681	3	0	0
AY Total				681	3	681	3	0	0
B8	Eritrean Airlines	ASM	Asmara International	1,088	8	544	4	-544	-4
		KHI	Karachi Quaid-E-Azam International	544	4	544	4	0	0
		LHE	Lahore	544	4	1,088	8	544	4
B8 Total				2,176	16	2,176	16	0	0
BA	British Airways	HKG	Hong Kong International	0	1	0	1	0	0
		LHR	London Heathrow	3,903	14	3,675	14	-228	0
		PVG	Shanghai Pu Dong	0	1	0	0	0	-1
BA Total				3,903	16	3,675	15	-228	-1
BG	Biman Bangladesh Airlines	DAC	Hazrat Shahjalal International	1,801	7	2,419	8	618	1
BG Total				1,801	7	2,419	8	618	1
BI	Royal Brunei Airlines	BWN	Bandar Seri Begawan Brunei International	1,995	7	1,995	7	0	0
		LHR	London Heathrow	1,995	7	1,995	7	0	0
BI Total				3,990	14	3,990	14	0	0
BN	Bahrain Air	BAH	Bahrain International	2,184	13	0	0	-2,184	-13
BN Total				2,184	13	0	0	-2,184	-13
C8	Chicago Express Airlines	HKG	Hong Kong International	0	2	0	0	0	-2
C8 Total				0	2	0	0	0	-2
CA	Air China	PEK	Beijing Capital	1,260	5	1,008	4	-252	-1
CA Total				1,260	5	1,008	4	-252	-1
CV	Cargolux	BKK	Bangkok International	0	1	0	1	0	0
		HKG	Hong Kong International	0	1	0	1	0	0
CV Total				0	2	0	2	0	0
CX	Cathay Pacific	AMS	Amsterdam-Schiphol	0	1	0	2	0	1
		FRA	Frankfurt International	0	1	0	4	0	3
		HKG	Hong Kong International	3,868	19	3,388	23	-480	4

DUBAI INTERNATIONAL AIRPORT

PEAK WEEK DEPARTURE FREQUENCIES - BY CARRIER

OPERATOR	AIRPORT	S12		S13		SEATS +/-	ATMS +/-
		SEATS	ATMS	SEATS	ATMS		
	JED Jeddah King Abdulaziz International	2,020	7	1,694	7	-326	0
	MAN Manchester International	0	0	0	2	0	2
	ZAZ Zaragoza	0	1	0	1	0	0
CX Total		5,888	29	5,082	39	-806	10
CZ	China Southern Airlines						
	CAN Guangzhou Baiyun	1,974	7	1,974	7	0	0
	JED Jeddah King Abdulaziz International	1,028	4	0	0	-1,028	-4
	PEK Beijing Capital	1,028	4	0	0	-1,028	-4
CZ Total		4,030	15	1,974	7	-2,056	-8
D3	Daallo Airlines						
	JIB Djibouti Ambouli	240	2	240	2	0	0
D3 Total		240	2	240	2	0	0
DHX	DHL Aviation						
	BAH Bahrain International	0	8	0	8	0	0
	MCT Muscat Seeb	0	0	0	1	0	1
DHX Total		0	8	0	9	0	1
DL	Delta Air Lines						
	ATL Atlanta	1,932	7	1,883	7	-49	0
DL Total		1,932	7	1,883	7	-49	0
DT	Taag Angola Airlines						
	LAD Luanda 4 De Fevereiro	761	3	705	3	-56	0
DT Total		761	3	705	3	-56	0
DY	Air Djibouti						
	ARN Stockholm Arlanda	558	3	558	3	0	0
	CPH Copenhagen Airport	186	1	186	1	0	0
	OSL Oslo	558	3	558	3	0	0
DY Total		1,302	7	1,302	7	0	0
EE	Eastern Skyjets						
	AKF Kufrah	0	0	156	1	156	1
	KDH Kandahar	2,088	13	1,477	10	-611	-3
	OAI Bagram Airport	0	1	0	0	0	-1
	OAZ Camp Bastion	0	0	468	3	468	3
	RKT Ras Al Khaimah	168	1	468	3	300	2
EE Total		2,256	15	2,569	17	313	2
EK	Emirates						
	ABJ Abidjan Felix Houphouet Boigny	1,806	7	2,548	7	742	0
	ACC Accra Kotoka	0	0	0	2	0	2
	ADD Addis Ababa Bole	1,659	7	1,659	8	0	1
	ADL Adelaide	0	0	2,478	7	2,478	7
	AKL Auckland International	9,324	21	10,269	21	945	0
	ALA Almaty	0	1	0	0	0	-1
	ALG Algiers Houari Boumediene	0	0	1,659	7	1,659	7
	AMD Ahmedabad	2,739	10	2,780	10	41	0
	AMM Amman	3,866	14	4,768	14	902	0
	AMS Amsterdam-Schiphol	3,619	11	3,619	12	0	1
	ATH Athens Athinal	2,548	7	2,548	7	0	0
	BAH Bahrain International	5,264	21	5,650	21	386	0
	BCN Barcelona	2,520	7	2,520	7	0	0
	BEY Beirut International	3,486	14	3,570	14	84	0
	BGW Baghdad Al Muthana	1,659	7	1,659	7	0	0
	BHX Birmingham International	5,992	14	5,992	14	0	0
	BKK Bangkok International	5,096	14	7,602	21	2,506	7
	BLR Bangalore Hindustan	5,280	21	5,486	21	206	0
	BNE Brisbane International	2,520	7	2,520	7	0	0
	BOM Mumbai	10,604	36	10,652	36	48	0
	BSR Basra International	1,978	8	1,823	7	-155	-1
	CAI Cairo International	4,412	14	4,884	14	472	0
	CAN Guangzhou Baiyun	3,424	8	2,996	7	-428	-1
	CCJ Kozhikode	3,466	11	3,466	11	0	0
	CCU Calcutta Netaji Subhas Chandra	3,336	12	3,336	12	0	0
	CDG Paris Ch. De Gaulle	7,579	18	9,398	20	1,819	2
	CGK Jakarta Soekarno-Hatta International	5,992	14	8,988	21	2,996	7
	CHC Christchurch International	2,478	7	2,478	7	0	0
	CMB Colombo Bandaranayake International	5,048	14	5,184	14	136	0
	CMN Casablanca Mohamed V	2,520	7	2,520	7	0	0
	COK Cochin	4,549	14	4,704	14	155	0
	CPH Copenhagen Airport	2,520	7	2,996	7	476	0
	CPT Cape Town Internationa	2,520	7	3,738	14	1,218	7
	CRK Diosdado Macapagal International	0	0	2,996	7	2,996	7
	DAC Hazrat Shahjhal International	7,382	21	7,938	22	556	1
	DAM Damascus International	1,112	4	4,165	14	3,053	10
	DAR Dar Es Salaam International	1,806	7	2,520	7	714	0
	DEL Delhi Indira Gandhi International	7,897	28	7,927	28	30	0
	DFW Dallas Ft Worth International	1,862	7	1,862	7	0	0
	DKR Dakar Yoff	948	6	1,068	4	120	-2
	DME Moscow Domodedovo	4,326	14	6,139	14	1,813	0
	DMM Dammam King Fahad International	1,924	7	3,461	13	1,537	6
	DOH Doha	11,855	42	13,118	42	1,263	0
	DUB Dublin	2,520	7	2,520	7	0	0
	DUR Durban International	2,478	7	2,996	7	518	0
	DUS Dusseldorf	5,040	15	5,028	15	-12	0
	EBB Entebbe	1,659	8	1,806	8	147	0
	EBL Erbil International Airport	1,082	7	1,422	10	340	3
	EDL Eldoret International Airport	0	1	0	0	0	-1
	EZE Buenos Aires Ministro Pistarini	2,478	7	2,478	7	0	0
	FCO Rome Fiumicino	5,971	14	6,139	14	168	0
	FRA Frankfurt International	7,434	26	7,504	25	70	-1
	GLA Glasgow International	4,389	14	5,040	14	651	0
	GOT Gothenburg Landvetter	0	0	0	3	0	3
	GRU Sao Paulo Guarulhos International	2,478	7	2,478	7	0	0
	GVA Geneva Geneve-Cointrin	1,956	7	1,956	7	0	0

DUBAI INTERNATIONAL AIRPORT

PEAK WEEK DEPARTURE FREQUENCIES - BY CARRIER

OPERATOR	AIRPORT	S12		S13		SEATS +/-	ATMS +/-	
		SEATS	ATMS	SEATS	ATMS			
HAM	Hamburg Fuhlsbuettel	5,040	14	4,382	14	-658	0	
HKG	Hong Kong International	9,245	30	9,227	36	-18	6	
HKT	Phuket International	0	0	1,869	7	1,869	7	
HND	Tokyo Haneda	0	0	1,862	7	1,862	7	
HRE	Harare	1,659	7	2,478	7	819	0	
HYD	Hyderabad Begumpet	5,545	21	5,457	21	-88	0	
IAD	Washington Dulles International	2,478	7	2,478	7	0	0	
IAH	Houston	1,862	7	2,478	7	616	0	
ICN	Seoul Incheon International	3,619	7	3,619	8	0	1	
IKA	Imam Khomeini - Tehran	6,651	22	8,456	22	1,805	0	
ISB	Islamabad International	3,424	8	4,135	11	711	3	
IST	Istanbul Ataturk	4,380	11	4,708	11	328	0	
JED	Jeddah King Abdulaziz International	9,590	22	9,716	21	126	-1	
JFK	New York John F Kennedy International	5,901	14	9,366	21	3,465	7	
JNB	Johannesburg International	7,488	22	7,504	22	16	0	
KBL	Kabul Khwaja Rawash	0	1	0	0	0	-1	
KHI	Karachi Quaid-E-Azam International	12,014	35	13,665	35	1,651	0	
KIX	Osaka Kansai International	2,478	8	2,478	7	0	-1	
KRT	Khartoum Civil	1,659	7	1,659	8	0	1	
KUL	Kuala Lumpur International	6,083	14	7,826	21	1,743	7	
KWI	Kuwait International	11,367	35	11,835	35	468	0	
LAD	Luanda 4 De Fevereiro	1,080	3	1,080	3	0	0	
LAX	Los Angeles International	1,862	7	2,478	7	616	0	
LED	St Petersburg	1,869	7	1,659	7	-210	0	
LGW	London Gatwick	6,916	21	7,546	21	630	0	
LHE	Lahore	2,851	8	4,708	11	1,857	3	
LHR	London Heathrow	15,855	36	18,095	36	2,240	0	
LIS	Lisbon Lisboa	2,478	7	1,862	7	-616	0	
LLW	Lilongwe International	0	1	0	1	0	0	
LOS	Lagos Murtala Muhammed	4,326	15	5,040	15	714	0	
LUN	Lusaka	0	1	0	0	0	-1	
LYS	Lyon	0	0	1,290	5	1,290	5	
MAA	Chennai	6,473	22	6,537	22	64	0	
MAD	Madrid Barajas	4,998	14	4,998	14	0	0	
MAN	Manchester International	8,687	21	9,135	21	448	0	
MCT	Muscat Seeb	3,737	14	3,860	14	123	0	
MED	Madinah Mohammad Bin Abdulaziz	3,318	14	2,370	10	-948	-4	
MEL	Melbourne	4,992	14	5,040	14	48	0	
MLA	Malta Luqa	1,918	7	1,918	7	0	0	
MLE	Male International	2,804	7	2,740	7	-64	0	
MNL	Manila	5,992	14	8,988	21	2,996	7	
MRU	Mauritius S.Seewoosagur Ram.Int	4,004	11	5,096	14	1,092	3	
MUC	Munich Franz Josef Strauss	6,167	14	6,167	14	0	0	
MPX	Milan Malpensa	6,518	20	4,207	14	-2,311	-6	
NBO	Nairobi Jomo Kenyatta International	3,787	14	4,228	15	441	1	
NCE	Nice Cote D'Azur	1,869	7	2,548	7	679	0	
NCL	Newcastle Airport	2,996	7	2,996	7	0	0	
NRT	Tokyo Narita	3,423	7	3,423	7	0	0	
PEK	Beijing Capital	6,163	14	6,139	14	-24	0	
PER	Perth	4,382	14	7,518	21	3,136	7	
PEW	Peshawar	929	3	1,403	5	474	2	
PRG	Prague Ruzyně	2,548	7	2,548	7	0	0	
PVG	Shanghai Pu Dong	5,469	17	5,445	20	-24	3	
RUH	Riyadh King Khaled International	5,265	17	8,170	28	2,905	11	
SAH	Sana'A International	1,463	6	1,659	7	196	1	
SEA	Seattle	2,478	7	1,862	7	-616	0	
SEZ	Mahe Island Seychelles International	2,838	11	3,612	14	774	3	
SFO	San Francisco International	2,478	7	2,478	7	0	0	
SGN	Ho Chi Minh City	1,946	7	2,422	7	476	0	
SIN	Singapore Changi	4,410	17	6,615	15	2,205	-2	
SYD	Sydney Kingsford Smith	2,478	7	2,478	11	0	4	
TIP	Tripoli International	0	1	1,806	7	1,806	6	
TPE	Taipei Chiang Kai Shek	0	1	0	2	0	1	
TRV	Trivandrum International	3,336	12	3,336	12	0	0	
TUN	Tunis Carthage	1,806	7	1,806	7	0	0	
VCE	Venice Marco Polo	3,738	14	3,318	14	-420	0	
VCP	Sao Paulo Viracopos	0	0	0	3	0	3	
VIE	Vienna	4,026	13	4,068	13	42	0	
WAW	Warsaw Okęcie	0	0	1,659	7	1,659	7	
YYZ	Toronto Pearson International	1,467	3	1,467	3	0	0	
ZAZ	Zaragoza	0	3	0	3	0	0	
ZRH	Zurich	4,956	14	5,040	14	84	0	
ZZF	Mystery Flight	0	0	27,030	80	27,030	80	
EK Total		465,980	1,423	560,137	1,657	94,157	234	
EP	Iran Aseman Airlines							
	BDH	Bandar Lengeh	64	1	64	1	0	0
	BND	Bandar Abbas	391	4	545	5	154	1
	BUZ	Bushehr	218	2	218	2	0	0
	IKA	Imam Khomeini - Tehran	720	3	1,248	5	528	2
	KSH	Shahid Ashrafi Esfahani	218	2	218	2	0	0
	LFM	Lamerd Airport	64	1	64	1	0	0
	LRR	Lar Airport	718	7	718	7	0	0
	MHD	Mashad	562	4	688	4	126	0
	SYZ	Shiraz	827	8	981	9	154	1

DUBAI INTERNATIONAL AIRPORT

PEAK WEEK DEPARTURE FREQUENCIES - BY CARRIER

OPERATOR	AIRPORT	S12		S13		SEATS +/-	ATMS +/-		
		SEATS	ATMS	SEATS	ATMS				
	ZAH Zahedan	109	1	109	1	0	0		
	ZBR Chah-Bahar	109	1	109	1	0	0		
EP Total		4,000	34	4,962	38	962	4		
ET	Ethiopian Airlines	ADD	Addis Ababa Bole	3,674	23	5,789	30	2,115	7
ET Total		3,674	23	5,789	30	2,115	7		
FC	Falcon Express Cargo Airlines	BAH	Bahrain International	0	1	0	0	0	-1
		TTH	Thumrait	0	1	0	0	0	-1
FC Total		0	2	0	0	0	0	-2	
FG	Ariana Afghan Airlines	KBL	Kabul Khwaja Rawash	1,248	6	1,456	7	208	1
FG Total		1,248	6	1,456	7	208	1		
FGE	Flygeorgia	TBS	Tbilisi Novo Alexeyevka	0	0	342	3	342	3
FGE Total		0	0	342	3	342	3		
FV	Rossiya Russian Airlines	LED	St Petersburg	156	1	0	0	-156	-1
FV Total		156	1	0	0	-156	-1		
FX	Fedex	BLR	Bangalore Hindustan	0	4	0	5	0	1
		CDG	Paris Ch. De Gaulle	0	6	0	6	0	0
		DEL	Delhi Indira Gandhi International	0	5	0	1	0	-4
		HKG	Hong Kong International	0	1	0	1	0	0
		NRT	Tokyo Narita	0	0	0	4	0	4
FX Total		0	16	0	17	0	1		
FZ	Flydubai	ADD	Addis Ababa Bole	567	3	567	3	0	0
		AHB	Abha	1,323	7	2,646	14	1,323	7
		ALP	Aleppo Nejrab	0	0	378	2	378	2
		AMD	Ahmedabad	378	2	378	2	0	0
		AMM	Amman	1,890	10	2,079	11	189	1
		ASB	Ashgabat	945	5	1,323	7	378	2
		BAH	Bahrain International	4,536	24	4,725	25	189	1
		BEG	Belgrade Beograd	945	5	567	3	-378	-2
		BEY	Beirut International	2,646	14	3,591	19	945	5
		BGW	Baghdad Al Muthana	1,323	7	1,323	7	0	0
		BSR	Basra International	756	4	945	5	189	1
		CGP	Chittagong Patenga	1,134	6	2,646	14	1,512	8
		CMB	Colombo Bandaranayake International	1,323	7	3,024	16	1,701	9
		DAC	Hazrat Shahjalal International	1,323	7	1,701	9	378	2
		DAM	Damascus International	756	4	1,512	8	756	4
		DMM	Dammam King Fahad International	3,969	21	5,670	30	1,701	9
		DOH	Doha	11,718	62	13,230	70	1,512	8
		DOK	Donetsk	378	2	756	4	378	2
		EBL	Erbil International Airport	1,323	7	1,323	7	0	0
		ELQ	Gassim	1,323	7	2,268	12	945	5
		EVN	Yerevan	567	3	756	4	189	1
		FRU	Bishkek	567	3	1,512	8	945	5
		GYD	Baku Heydar Aliyev International Airport	945	5	567	3	-378	-2
		HAS	Hail	0	0	378	2	378	2
		HBE	Borg El Arab	1,323	7	2,079	11	756	4
		HRK	Kharkov	378	2	567	3	189	1
		HYD	Hyderabad Begumpet	756	4	756	4	0	0
		ISU	Sulaymaniah	567	3	567	3	0	0
		JED	Jeddah King Abdulaziz International	3,402	18	6,048	32	2,646	14
		JIB	Djibouti Ambouli	567	3	1,323	7	756	4
		JUB	Juba	0	0	756	4	756	4
		KBL	Kabul Khwaja Rawash	3,969	21	5,859	31	1,890	10
		KBP	Kiev Borispol	756	4	1,323	7	567	3
		KDH	Kandahar	2,646	14	2,835	15	189	1
		KHI	Karachi Quaid-E-Azam International	2,079	11	3,024	16	945	5
		KRT	Khartoum Civil	1,701	9	4,158	22	2,457	13
		KTM	Kathmandu Tribhuvan	2,457	13	3,969	21	1,512	8
		KUF	Samara	378	2	756	4	378	2
		KWI	Kuwait International	8,694	46	12,096	64	3,402	18
		KZN	Kazan	378	2	2,268	12	1,890	10
		LKO	Lucknow Amausi	567	3	567	3	0	0
		MCT	Muscat Seeb	4,158	22	6,426	34	2,268	12
		MLE	Male International	0	0	1,512	8	1,512	8
		MUX	Multan	0	0	567	3	567	3
		NJF	Najaf	567	3	567	3	0	0
		OTP	Bucharest Otopeni International	567	3	567	3	0	0
		ROV	Rostov	0	0	378	2	378	2
		RUH	Riyadh King Khaled International	5,292	28	6,615	35	1,323	7
		SAH	Sana'A International	756	4	945	5	189	1
		SAW	Sabiha Gokcen International Airport	567	3	756	4	189	1
		SKP	Skopje	0	0	378	2	378	2
		SKT	Sialkot International Airport	0	0	567	3	567	3
		SVO	Moscow Sheremetyevo	0	0	189	1	189	1
		SVX	Ekaterinburg	378	2	2,835	15	2,457	13
		TBS	Tbilisi Novo Alexeyevka	567	3	567	3	0	0
		TIF	Taif	1,323	7	1,323	7	0	0
		TRV	Trivandrum International	0	0	189	1	189	1
		TUU	Tabuk	0	0	378	2	378	2
		UFA	Ufa, Bashkortostan	567	3	2,079	11	1,512	8
		YNB	Yanbu	567	3	567	3	0	0
		ZZF	Mystery Flight	0	0	2,268	12	2,268	12
FZ Total		86,562	458	132,489	701	45,927	243		
GA	Garuda Indonesia	AMS	Amsterdam-Schiphol	888	4	0	0	-888	-4

DUBAI INTERNATIONAL AIRPORT

PEAK WEEK DEPARTURE FREQUENCIES - BY CARRIER

OPERATOR	AIRPORT	S12		S13		SEATS +/-	ATMS +/-
		SEATS	ATMS	SEATS	ATMS		
	CGK Jakarta Soekarno-Hatta International	888	4	0	0	-888	-4
GA Total		1,776	8	0	0	-1,776	-8
GF	Gulf Air BAH Bahrain International	7,385	52	7,138	49	-247	-3
GF Total		7,385	52	7,138	49	-247	-3
GST	Georgian Star International OAI Bagram Airport	0	5	0	0	0	-5
	SHJ Sharjah	0	4	0	0	0	-4
GST Total		0	9	0	0	0	-9
H8	Hesa Airlines BND Bandar Abbas	0	0	104	2	104	2
	PGU Khalije Fars (Persian Gulf) Airport	0	0	156	3	156	3
H8 Total		0	0	260	5	260	5
HH	Taban Airlines IFN Isfahan	0	0	324	2	324	2
	IKA Imam Khomeini - Tehran	330	2	324	2	-6	0
	MHD Mashad	330	2	324	2	-6	0
HH Total		660	4	972	6	312	2
HV	Transavia Airlines AMS Amsterdam-Schiphol	186	1	378	2	192	1
HV Total		186	1	378	2	192	1
HY	Uzbekistan Airways NVI Navoiy Airport	0	2	0	2	0	0
	TAS Tashkent Vostochny	384	2	621	3	237	1
HY Total		384	4	621	5	237	1
IA	Iraqi Airways BGW Baghdad Al Muthana	950	7	924	7	-26	0
	BSR Basra International	396	3	396	3	0	0
	EBL Erbil International Airport	140	2	140	2	0	0
	ISU Sulaymaniah	154	2	140	2	-14	0
	NJF Najaf	264	2	264	2	0	0
IA Total		1,904	16	1,864	16	-40	0
IR	Iran Air AWZ Ahwaz	0	0	103	1	103	1
	BND Bandar Abbas	294	2	294	2	0	0
	IFN Isfahan	294	2	294	2	0	0
	IKA Imam Khomeini - Tehran	1,176	10	1,176	11	0	1
	SYZ Shiraz	294	2	294	2	0	0
IR Total		2,058	16	2,161	18	103	2
IX	Air India Express ATQ Amritsar Raja Sansi	740	4	1,295	7	555	3
	BOM Mumbai	925	5	1,295	7	370	2
	CCJ Kozhikode	1,295	7	1,295	7	0	0
	COK Cochin	1,295	7	1,295	7	0	0
	IXE Bajpe Airport, Mangalore	2,035	11	2,590	14	555	3
	JAI Jaipur Sanganeer	370	2	740	4	370	2
	LKO Lucknow Amausi	555	3	1,295	7	740	4
	PNQ Poona Lohegaon	0	0	555	3	555	3
	TRV Trivandrum International	1,295	7	1,295	7	0	0
	TRZ Civil Airfield, Tiruchirapally	740	4	1,295	7	555	3
IX Total		9,250	50	12,950	70	3,700	20
IY	Yemenia Yemen Airways CGK Jakarta Soekarno-Hatta International	277	1	831	3	554	2
	KUL Kuala Lumpur International	0	0	277	1	277	1
	SAH Sana'A International	506	3	1,614	7	1,108	4
IY Total		783	4	2,722	11	1,939	7
J2	Azal Azerbaijan Airlines GYD Baku Heydar Aliyev International Airport	1,260	7	1,260	7	0	0
J2 Total		1,260	7	1,260	7	0	0
J9	Jazeera Airways KWI Kuwait International	3,816	24	3,657	23	-159	-1
J9 Total		3,816	24	3,657	23	-159	-1
KE	Korean Air ICN Seoul Incheon International	1,305	5	1,305	5	0	0
KE Total		1,305	5	1,305	5	0	0
KL	Klm Royal Dutch Airlines AMS Amsterdam-Schiphol	2,905	7	2,226	7	-679	0
KL Total		2,905	7	2,226	7	-679	0
KQ	Kenya Airways NBO Nairobi Jomo Kenyatta International	1,860	10	2,595	13	735	3
KQ Total		1,860	10	2,595	13	735	3
KU	Kuwait Airways KWI Kuwait International	2,274	13	2,794	16	520	3
KU Total		2,274	13	2,794	16	520	3
LH	Lufthansa FRA Frankfurt International	2,057	7	2,408	7	351	0
	MUC Munich Franz Josef Strauss	1,547	7	1,547	7	0	0
LH Total		3,604	14	3,955	14	351	0
LN	Libyan Airways BEN Benghazi Benina International	0	0	304	2	304	2
	TIP Tripoli International	0	0	456	3	456	3
LN Total		0	0	760	5	760	5
LX	Swiss International Air Lines MCT Muscat Seeb	1,652	7	1,652	7	0	0
	ZRH Zurich	1,652	7	1,652	7	0	0
LX Total		3,304	14	3,304	14	0	0
ME	Mea Middle East Airlines BEY Beirut International	2,682	18	2,086	14	-596	-4
ME Total		2,682	18	2,086	14	-596	-4
MJ	Mihin Lanka Airlines CMB Colombo Bandaranayake International	630	3	1,050	5	420	2
MJ Total		630	3	1,050	5	420	2
MS	Egypt Air CAI Cairo International	4,844	15	4,214	15	-630	0
	HBE Borg El Arab	725	5	1,204	4	479	-1
MS Total		5,569	20	5,418	19	-151	-1
MU	China Eastern Airlines PVG Shanghai Pu Dong	520	2	520	2	0	0
MU Total		520	2	520	2	0	0
NCR	National Air Cargo OAI Bagram Airport	984	6	3,444	21	2,460	15
NCR Total		984	6	3,444	21	2,460	15
NL	Shaheen Air International ISB Islamabad International	715	5	1,148	7	433	2
	KHI Karachi Quaid-E-Azam International	1,146	7	1,148	7	2	0
	LHE Lahore	945	5	1,323	7	378	2
	PEW Peshawar	839	5	1,148	7	309	2
NL Total		3,645	22	4,767	28	1,122	6

DUBAI INTERNATIONAL AIRPORT

PEAK WEEK DEPARTURE FREQUENCIES - BY CARRIER

OPERATOR	AIRPORT	S12		S13		SEATS +/-	ATMS +/-		
		SEATS	ATMS	SEATS	ATMS				
NV	Iranian Naft Air	AWZ	Ahwaz	218	2	327	3	109	1
NV Total				218	2	327	3	109	1
OR	Crimea Air	AMS	Amsterdam-Schiphol	540	3	549	3	9	0
		KTM	Kathmandu Tribhuvan	180	1	183	1	3	0
OR Total				720	4	732	4	12	0
OS	Austrian Airlines	VIE	Vienna	1,200	5	1,575	7	375	2
OS Total				1,200	5	1,575	7	375	2
PA	Airblue	ISB	Islamabad International	660	4	1,815	11	1,155	7
		KHI	Karachi Quaid-E-Azam International	1,155	7	1,155	7	0	0
		LHE	Lahore	1,155	7	1,155	7	0	0
		PEW	Peshawar	495	3	495	3	0	0
PA Total				3,465	21	4,620	28	1,155	7
PC	Pegasus	SAW	Sabiha Gokcen International Airport	0	0	945	5	945	5
PC Total				0	0	945	5	945	5
PK	Pia Pakistan International Airlines	BHV	Bahawalpur	118	1	118	1	0	0
		DEA	Dera Ghazi Khan Airport	0	0	236	2	236	2
		ISB	Islamabad International	1,330	7	1,677	9	347	2
		KHI	Karachi Quaid-E-Azam International	1,415	6	3,202	14	1,787	8
		LHE	Lahore	1,309	7	1,514	8	205	1
		LYP	Faisalabad	118	1	118	1	0	0
		MUX	Multan	0	0	118	1	118	1
		PEW	Peshawar	1,004	5	799	4	-205	-1
		UET	Quetta	118	1	236	2	118	1
PK Total				5,412	28	8,018	42	2,606	14
PR	Philippine Airlines	MNL	Manila	0	0	2,898	7	2,898	7
PR Total				0	0	2,898	7	2,898	7
PS	Ukraine International Airlines	KBP	Kiev Borispol	440	4	550	5	110	1
PS Total				440	4	550	5	110	1
QB	Air Alma	GSM	Gheshm	0	0	350	7	350	7
QB Total				0	0	350	7	350	7
QE	Fars Air Qeshm	GSM	Gheshm	696	6	0	0	-696	-6
QE Total				696	6	0	0	-696	-6
QF	Qantas	LHR	London Heathrow	0	0	6,776	14	6,776	14
		MEL	Melbourne	0	0	3,388	7	3,388	7
		SYD	Sydney Kingsford Smith	0	0	3,388	7	3,388	7
QF Total				0	0	13,552	28	13,552	28
QH	Kyrgyzstan OJSC	FRU	Bishkek	292	2	292	2	0	0
QH Total				292	2	292	2	0	0
QR	Qatar Airways	DOH	Doha	19,908	81	20,916	81	1,008	0
		SKT	Sialkot International Airport	0	1	0	0	0	-1
QR Total				19,908	82	20,916	81	1,008	-1
QS	Travel Service Airlines/Smart Wings	PRG	Prague Ruzyně	189	1	0	0	-189	-1
QS Total				189	1	0	0	-189	-1
RA	Royal Nepal Airlines	KTM	Kathmandu Tribhuvan	570	3	0	0	-570	-3
RA Total				570	3	0	0	-570	-3
RB	Syrianair Syrian Arab Airlines	DAM	Damascus International	290	2	1,015	7	725	5
RB Total				290	2	1,015	7	725	5
RJ	Royal Jordanian	AMM	Amman	2,873	19	2,790	19	-83	0
RJ Total				2,873	19	2,790	19	-83	0
RLU	Rusline	GOJ	Nizhny Novgorod	156	1	0	0	-156	-1
		KRR	Krasnodar	468	3	0	0	-468	-3
		MCX	Makhachkala	50	1	0	0	-50	-1
		MRV	Mineralnye Vody	312	2	0	0	-312	-2
		PEE	Perm	156	1	0	0	-156	-1
RLU Total				1,142	8	0	0	-1,142	-8
RO	Tarom	OTP	Bucharest Otopeni International	348	3	348	3	0	0
RO Total				348	3	348	3	0	0
RQ	Kam Air	KBL	Kabul Khwaja Rawash	624	4	1,050	7	426	3
		KDH	Kandahar	156	1	0	0	-156	-1
RQ Total				780	5	1,050	7	270	2
RV	Caspian Airlines	AWZ	Ahwaz	330	2	330	2	0	0
		GSM	Gheshm	495	3	495	3	0	0
		TBZ	Tabriz	165	1	165	1	0	0
RV Total				990	6	990	6	0	0
S7	Siberia Airlines	OVB	Novosibirsk Tolmachevo	316	2	474	3	158	1
S7 Total				316	2	474	3	158	1
SD	Sudan Airways	KRT	Khartoum Civil	0	0	445	2	445	2
SD Total				0	0	445	2	445	2
SG	Spicejet	AMD	Ahmedabad	0	0	1,323	7	1,323	7
		BOM	Mumbai	1,323	7	1,323	7	0	0
		COK	Cochin	0	0	1,323	7	1,323	7
		DEL	Delhi Indira Gandhi International	1,323	7	1,323	7	0	0
SG Total				2,646	14	5,292	28	2,646	14
SQ	Singapore Airlines	CAI	Cairo International	798	3	855	3	57	0
		RUH	Riyadh King Khaled International	854	3	0	0	-854	-3
		SIN	Singapore Changi	2,787	10	2,843	10	56	0
SQ Total				4,439	16	3,698	13	-741	-3
SU	Aeroflot Russian Airlines	SVO	Moscow Sheremetyevo	1,792	14	1,960	14	168	0
SU Total				1,792	14	1,960	14	168	0
SV	Saudia	DMM	Dammam King Fahad International	1,320	13	2,079	14	759	1
		JED	Jeddah King Abdulaziz International	4,099	21	4,795	21	696	0
		MED	Madinah Mohammad Bin Abdulaziz	762	3	528	4	-234	1
		RUH	Riyadh King Khaled International	6,511	33	8,441	35	1,930	2

DUBAI INTERNATIONAL AIRPORT

PEAK WEEK DEPARTURE FREQUENCIES - BY CARRIER

OPERATOR	AIRPORT	S12		S13		SEATS +/-	ATMS +/-		
		SEATS	ATMS	SEATS	ATMS				
SV Total		12,692	70	15,843	74	3,151	4		
T5	Turkmenistan Airlines	ASB	Ashgabat	536	3	504	4	-32	1
T5 Total		536	3	504	4	-32	1		
TG	Thai Airways	BKK	Bangkok International	2,093	7	2,093	7	0	0
TG Total		2,093	7	2,093	7	0	0		
TK	Turkish Airlines	IST	Istanbul Ataturk	4,094	15	3,932	15	-162	0
TK Total		4,094	15	3,932	15	-162	0		
TMA	Tma - Trans Mediterranean Airways	BEY	Beirut International	0	3	0	2	0	-1
TMA Total		0	3	0	2	0	-1		
TU	Tunisair	KWI	Kuwait International	106	1	0	0	-106	-1
		TUN	Tunis Carthage	424	4	530	5	106	1
TU Total		530	5	530	5	0	0		
U6	Ural Airlines	CEK	Chelyabinsk	156	1	156	1	0	0
		GOJ	Nizhny Novgorod	160	1	160	1	0	0
		KRR	Krasnodar	320	2	320	2	0	0
		KUF	Samara	312	2	312	2	0	0
		MRV	Mineralnye Vody	160	1	160	1	0	0
		SVX	Ekaterinburg	380	2	320	2	-60	0
		UFA	Ufa, Bashkortostan	156	1	156	1	0	0
U6 Total		1,644	10	1,584	10	-60	0		
U8	Armavia	EVN	Yerevan	294	3	208	2	-86	-1
U8 Total		294	3	208	2	-86	-1		
UA	United Airlines	DOH	Doha	1,883	7	1,883	7	0	0
		IAD	Washington Dulles International	1,883	7	1,883	7	0	0
UA Total		3,766	14	3,766	14	0	0		
UE	Nas Air	ASM	Asmara International	316	2	0	0	-316	-2
UE Total		316	2	0	0	-316	-2		
UL	Srilankan Airlines	CMB	Colombo Bandaranayake International	2,309	9	2,309	9	0	0
		DME	Moscow Domodedovo	574	2	574	2	0	0
UL Total		2,883	11	2,883	11	0	0		
UN	Transaero Airlines	CEK	Chelyabinsk	0	0	158	1	158	1
		DME	Moscow Domodedovo	1,594	8	2,693	8	1,099	0
		KUF	Samara	0	0	158	1	158	1
		LED	St Petersburg	0	0	316	2	316	2
		OMS	Omsk	158	1	316	2	158	1
		OVB	Novosibirsk Tolmachevo	158	1	474	3	316	2
		PEE	Perm	0	0	158	1	158	1
		ROV	Rostov	158	1	316	2	158	1
		SVX	Ekaterinburg	0	0	316	2	316	2
		TJM	Tyumen	158	1	316	2	158	1
UN Total		2,226	12	5,221	24	2,995	12		
UNO	United Nations Organization	KBL	Kabul Khwaja Rawash	100	2	100	2	0	0
UNO Total		100	2	100	2	0	0		
UPS	UPS	CGN	Cologne Bonn	0	10	0	10	0	0
		HKG	Hong Kong International	0	5	0	5	0	0
		SZX	Shenzhen	0	1	0	1	0	0
UPS Total		0	16	0	16	0	0		
VS	Virgin Atlantic	LHR	London Heathrow	2,156	7	1,680	7	-476	0
VS Total		2,156	7	1,680	7	-476	0		
W5	Mahan Air	GSM	Gheshm	0	0	495	5	495	5
		IKA	Imam Khomeini - Tehran	3,060	15	3,060	15	0	0
W5 Total		3,060	15	3,555	20	495	5		
W6	Wizz Air	BUD	Budapest Ferihegy	0	0	540	3	540	3
W6 Total		0	0	540	3	540	3		
WB	Rwandair	KGL	Kigali Gregoire Kayibanda	924	6	1,232	8	308	2
WB Total		924	6	1,232	8	308	2		
WU	Tikal Jets Airlines	IEV	Kiev	0	0	540	3	540	3
WU Total		0	0	540	3	540	3		
WY	Oman Air	MCT	Muscat Seeb	6,776	44	7,794	56	1,018	12
		SLL	Salalah	308	2	284	4	-24	2
WY Total		7,084	46	8,078	60	994	14		
XU	African Express Airways	BBO	Berbera	154	1	154	1	0	0
		NBO	Nairobi Jomo Kenyatta International	308	2	308	2	0	0
XU Total		462	3	462	3	0	0		
XY	Nas Air	JED	Jeddah King Abdulaziz International	1,260	7	1,620	9	360	2
		RUH	Riyadh King Khaled International	1,638	9	3,240	18	1,602	9
XY Total		2,898	16	4,860	27	1,962	11		
Y7	Trans Air Benin	KJA	Krasnojarsk	0	0	680	4	680	4
Y7 Total		0	0	680	4	680	4		
Y9	Kish Air	BND	Bandar Abbas	320	2	0	0	-320	-2
		IFN	Isfahan	320	2	0	0	-320	-2
		KIH	Kish Island	2,400	15	3,360	21	960	6
Y9 Total		3,040	19	3,360	21	320	2		

GLOSSARY OF TERMS

Air Transport Movement (ATM)	A scheduled or charter passenger or freight aircraft movement.
Allocation	The allocation of slots such that demand is constrained to fit within declared scheduling limits.
Common Travel Area (CTA)	Services to or from the Republic of Ireland and the Channel Islands.
Demand	The unconstrained demand for slots, prior to any schedule adjustments.
Passenger ATM	A scheduled or charter <u>passenger</u> aircraft movement (ie, excluding all-cargo aircraft movements).
Scheduling Limits	Limiting parameters declared by the Airport Operator used in the coordination process.
Seats	The number of seats based on the aircraft configuration advised by the airline.
Peak Week	The Peak Week for S13 is 07 - 13 October 2013
Data Snapshot	All data used for this report was as held 14 March 2013

GUIDE TO HISTOGRAMS

The histograms show the pattern of traffic by time of day against the appropriate scheduling limit. Each time period consist of seven columns representing the days-of-week, Monday through Sunday.