

AL MAKTOUM AIRPORT DWC

W15 Start of Season Report

Key Statistics	W15 Start	Change from W14 Start	Change from W14 End
Air Transport Movements	10,282	▲ 5.1%	▲ 12.5%
Total Seats	828,993	▲ 50.4%	▲ 72.0%
Average Seats per Passenger ATM	168		

Contents	Page
CONSTRAINTS BY TERMINAL	2
CODE F AIRCRAFT ARRIVALS AND DEPARTURES	3
AIR TRANSPORT MOVEMENT STATISTICS	4
SEATS AND SEATS PER MOVEMENT STATISTICS	5
DISTRIBUTION OF SCHEDULE ADJUSTMENTS	6
TOP 10 AIRLINES BY ATMS AND SEATS	7
TOP 20 DESTINATIONS BY ATMS AND SEATS	8
ROUTE FREQUENCIES BY OPERATOR	9-14
RUNWAY MOVEMENT ALLOCATION - R60	15
RUNWAY MOVEMENT ALLOCATION - R10	16
TERMINAL 1 PEAK WEEK HISTOGRAMS	17
GLOSSARY	18

Data in this report is current as of 09 November 2015

No warranty whether expressed or implied as to the completeness, accuracy, fitness for purpose, or satisfactory quality is given by ACL regarding the information in this report, which is provided by third parties. Accordingly, ACL excludes all liability with regard to such data.

The contents of this report may not be reproduced without the written consent of ACL.

PRIMARY CONSTRAINTS BY TERMINAL

Row Labels	OK	CLO	GRA	GRD	R60	Grand Total
Arrival	5051	43		4	43	5141
Departure	5074	41	1	1	24	5141
Total	10125	84	1	5	67	10282

Row Labels	OK	CLO	GRA	GRD	R60
Arrival	50%	0.4%	0.0%	0.0%	0.4%
Departure	50%	0.4%	0.0%	0.0%	0.2%
Total	100%	0.8%	0.0%	0.0%	0.7%

Runway Reason Code	
R60	60 Min Runway Availability
R10	10 Min Runway Availability

Other Reason Code	
AA	Apron Capacity
CLO	Runway Maintenance
GRA	Arr Affected by Dep
GRD	Dep Affected by Arr

Terminal Reason Code	
T60	60 Min Terminal Capacity rolling 30 Mins

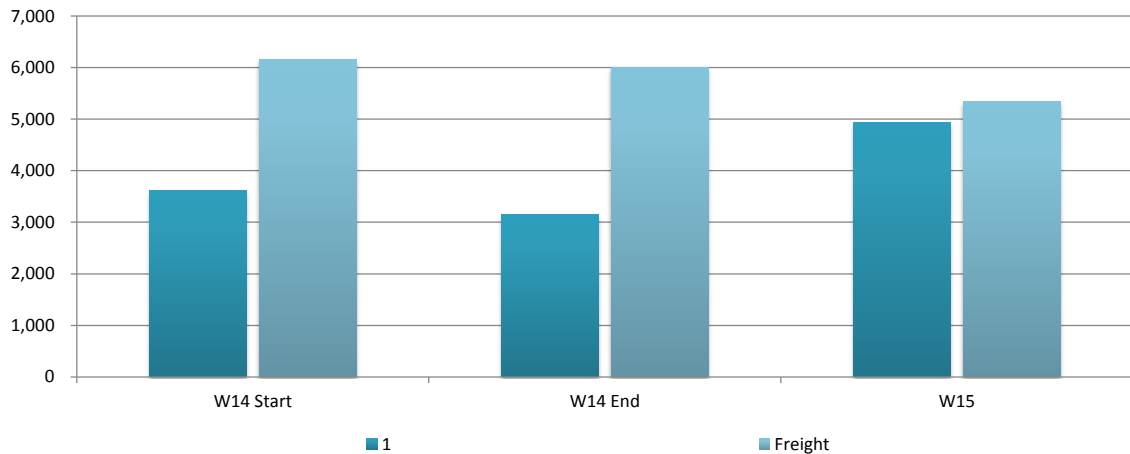
Terminal/ Reason Code	TIME UTC																							Grand Total	
	0	100	200	300	400	500	600	700	800	900	1000	1100	1200	1300	1400	1500	1600	1700	1800	1900	2000	2100	2200		2300
Terminal 1	16	173	172	202	561	350	204	186	182	36	47	31	72	5	306	388	540	501	243	310	159	64	3	183	4934
OK	16	173	172	202	559	348	204	186	177	30	47	10	71	4	306	388	540	501	243	310	159	64	3	183	4896
CLO						1			5	6			1	1											14
GRD					2																				2
R60						1						21													22
Freight	174	309	246	224	241	302	365	401	335	115	292	250	228	122	118	159	137	180	110	68	199	234	198	341	5348
OK	174	309	246	224	240	298	365	377	329	110	292	250	222	118	94	158	115	180	110	68	199	212	198	341	5229
CF										1					1										2
CLO						3		24	5	4			6	4									22		68
GRA															1										1
GRD					1				1							1									3
R60						1									22		22								45

CODE F ARRIVALS AND DEPARTURES

CODE F ARRIVALS/ Day of Week	TIME UTC																							Grand Total	
	0	100	200	300	400	500	600	700	800	900	1000	1100	1200	1300	1400	1500	1600	1700	1800	1900	2000	2100	2200		2300
A																									0
Cargolux																									0
3			22																						22
4													22												22
Cathay Pacific																									0
1																	2								2
2														2											2

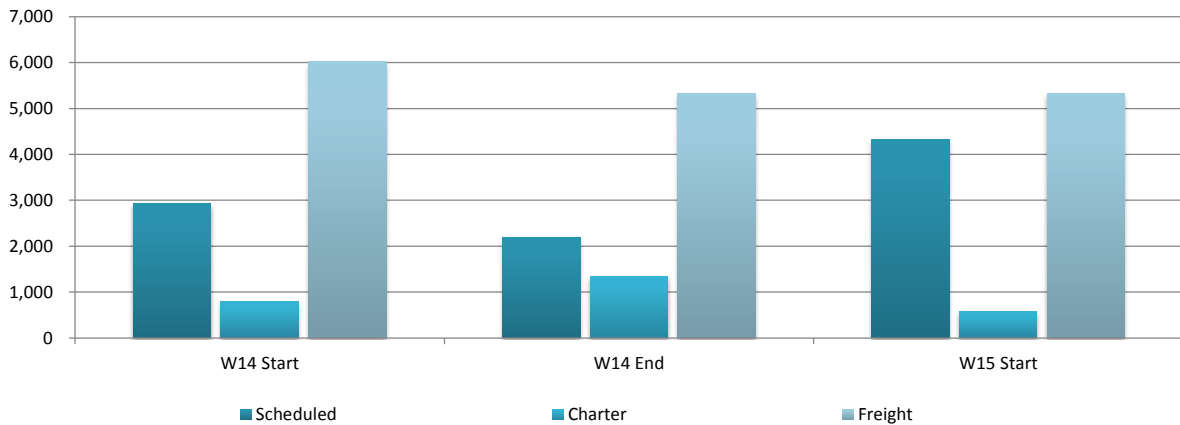
CODE F DEPARTURES/ Day of Week	TIME UTC																							Grand Total	
	0	100	200	300	400	500	600	700	800	900	1000	1100	1200	1300	1400	1500	1600	1700	1800	1900	2000	2100	2200		2300
D																									0
Cargolux																									0
3					22																				22
4															22										22
Cathay Pacific																									0
1																		2							2
2															2										2

AIR TRANSPORT MOVEMENTS BY TERMINAL



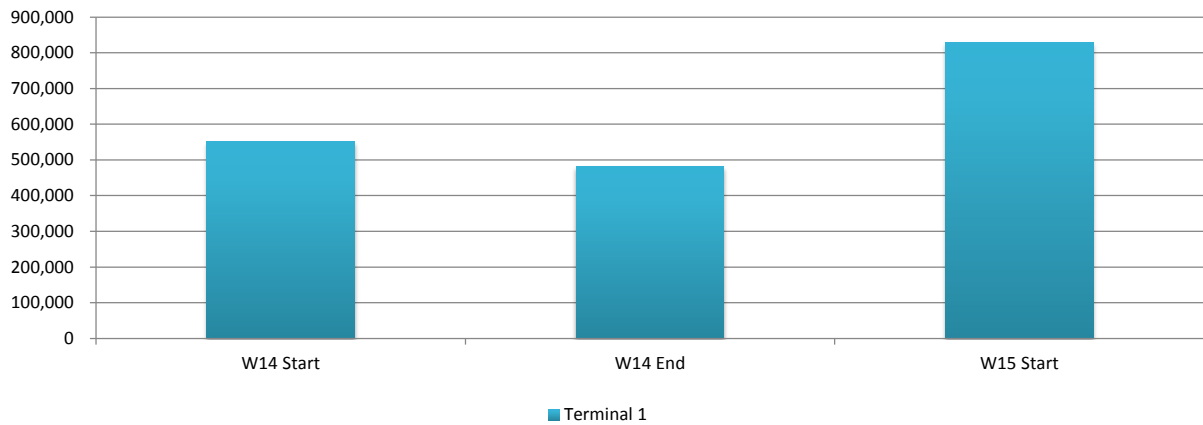
Terminal	W14 Start	W14 End	W15	% Change Start-Start	% Change End - Start
1	3,623	3,148	4,934	36.2%	56.7%
Freight	6,159	5,995	5,348	-13.2%	-10.8%
Total	9,782	9,143	10,282	5.1%	12.5%

AIR TRANSPORT MOVEMENTS BY SERVICE TYPES



Service Type	W14 Start	W14 End	W15 Start	% Change Start-Start	% Change End - Start
Scheduled	2,932	2,192	4,332	47.7%	97.6%
Positioning	39	278	31	-20.5%	-88.8%
Charter	798	1,338	585	-26.7%	-56.3%
Freight	6,013	5,335	5,334	-11.3%	0.0%
Total	9,782	9,143	10,282	5.1%	12.5%

PASSENGERS BY TERMINAL



	W14 Start	W14 End	W15 Start	% Change Start-Start	% Change End - Start
Terminal 1	551,136	481,970	828,993	50.4%	72.0%
Average	551,136	481,970	828,993	50.4%	72.0%

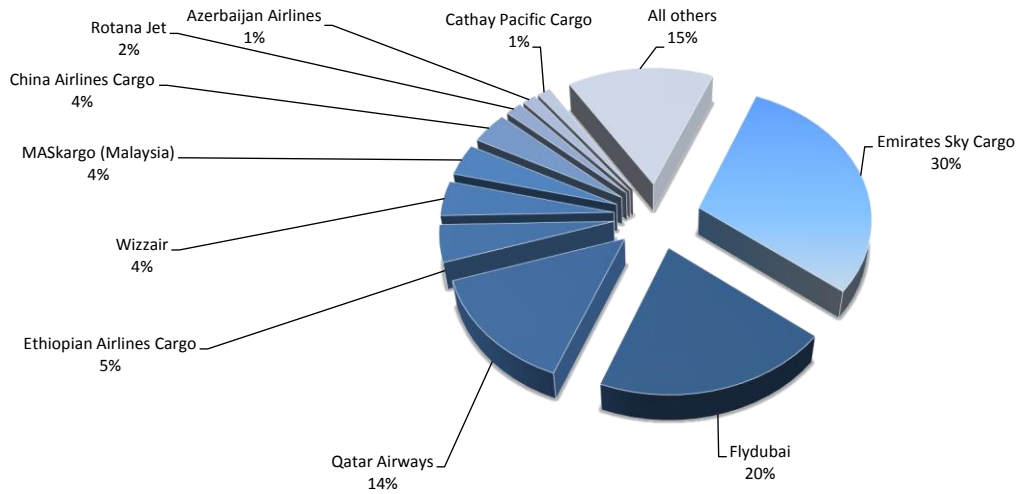
Schedule Adjustments by carrier

Carrier	Minutes off Slot											Grand Total		
	Clear	5	10	15	20	25	30	35	45	55	60+			
EK	Emirates	2978	1	22	22	1	2	3	1	3	5	3038		
FZ	Flydubai	2079					1				2	2082		
QR	Qatar Airways	1448									2	1450		
ET	Ethiopian Airlines	428									44	472		
W6	Wizz Air	440										440		
MH	Malaysia Airlines	398			2							400		
CI	China Airlines	391				2			1		2	396		
RJD	Rotana Jet Aviation	174							2			176		
J2	Azal Azerbaijan Airlines	146										146		
CX	Cathay Pacific	144										144		
MP	Martinair	130								2		132		
IR	Iran Air	131		1								132		
4R	Royal Flight (Russia)	120									10	130		
NO	Neos	126										126		
OR	Arkefly (Tui Netherlands)	102	2									104		
AY	Finnair	83					21					104		
CV	Cargolux	90										90		
TK	Turkish Airlines	86								2		88		
EY	Ethihad Airways	88										88		
HY	Uzbekistan Airways	87									1	88		
GF	Gulf Air	88										88		
DE	Condor Flugdienst	70										70		
J9	Jazeera Airways	68										68		
AB	Air Berlin	52										52		
C8	Cargolux Italia	44										44		
S5	Small Planet Airlines	36										36		
X3	TUIfly	34										34		
MYX	SmartLynx Airlines Estonia	16										16		
YC	UAS	8							1		1	10		
GAA	Global Africa Cargo	7										7		
ZAV	ZetAvia (Ukraine)	7										7		
OS	Austrian Airlines	6										6		
XQ	SunExpress	4										4		
GTI	Atlas Air	3										3		
NCR	National Air Cargo	2										2		
URS	Silk Road Cargo Business	2										2		
ADB	Antonov Airlines	2										2		
RSB	Ruby Star	2										2		
AHS	AHS Air International	2										2		
ZT	Titan Airways	1										1		
Grand Total		10123	1	2	23	24	3	24	3	1	4	9	65	10282

Carrier	Minutes off Slot														Grand Total
	Clear	5	10	15	20	25	30	35	45	55	60	60+			
EK	Emirates	98.0%	0.0%			0.7%	0.7%	0.0%	0.1%	0.1%		0.0%	0.1%	0.2%	100.0%
FZ	Flydubai	99.9%								0.0%				0.1%	100.0%
QR	Qatar Airways	99.9%												0.1%	100.0%
ET	Ethiopian Airlines	90.7%												9.3%	100.0%
W6	Wizz Air	100.0%													100.0%
MH	Malaysia Airlines	99.5%					0.5%								100.0%
CI	China Airlines	98.7%					0.5%				0.3%			0.5%	100.0%
RJD	Rotana Jet Aviation	98.9%									1.1%				100.0%
J2	Azal Azerbaijan Airlines	100.0%													100.0%
CX	Cathay Pacific	100.0%													100.0%
MP	Martinair	98.5%										1.5%			100.0%
IR	Iran Air	99.2%					0.8%								100.0%
4R	Royal Flight (Russia)	92.3%												7.7%	100.0%
NO	Neos	100.0%													100.0%
OR	Arkefly (Tui Netherlands)	98.1%					1.9%								100.0%
AY	Finnair	79.8%								20.2%					100.0%
CV	Cargolux	100.0%													100.0%
TK	Turkish Airlines	97.7%										2.3%			100.0%
EY	Ethihad Airways	100.0%													100.0%
HY	Uzbekistan Airways	98.9%											1.1%		100.0%
GF	Gulf Air	100.0%													100.0%
DE	Condor Flugdienst	100.0%													100.0%
J9	Jazeera Airways	100.0%													100.0%
AB	Air Berlin	100.0%													100.0%
C8	Cargolux Italia	100.0%													100.0%
S5	Small Planet Airlines	100.0%													100.0%
X3	TUIfly	100.0%													100.0%
MYX	SmartLynx Airlines Estonia	100.0%													100.0%
YC	UAS	80.0%									10.0%			10.0%	100.0%
GAA	Global Africa Cargo	100.0%													100.0%
ZAV	ZetAvia (Ukraine)	100.0%													100.0%
OS	Austrian Airlines	100.0%													100.0%
XQ	SunExpress	100.0%													100.0%
GTI	Atlas Air	100.0%													100.0%
NCR	National Air Cargo	100.0%													100.0%
URS	Silk Road Cargo Business	100.0%													100.0%
ADB	Antonov Airlines	100.0%													100.0%
RSB	Ruby Star	100.0%													100.0%
AHS	AHS Air International	100.0%													100.0%
ZT	Titan Airways	100.0%													100.0%
Grand Total		98.5%	0.0%	0.0%	0.2%	0.2%	0.0%	0.2%	0.0%	0.0%	0.0%	0.1%	0.6%	100.0%	

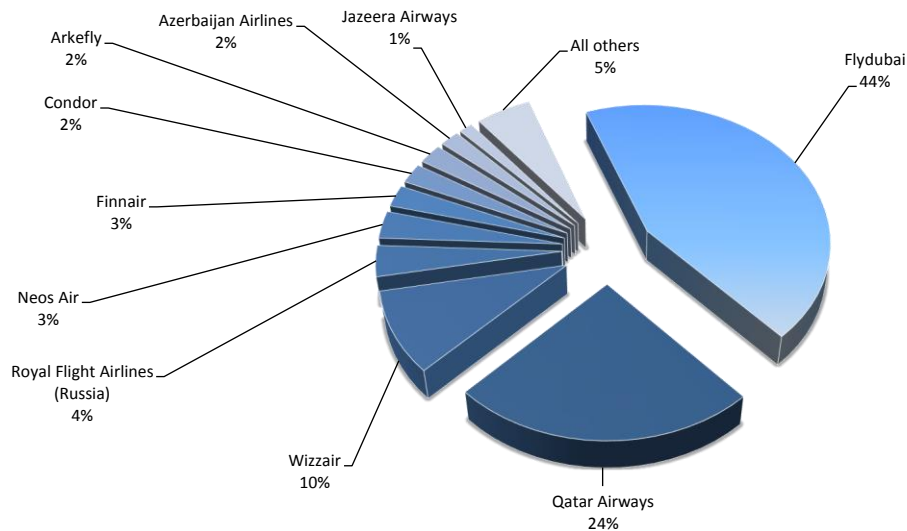
TOP 10 AIRLINES BY AIR TRANSPORT MOVEMENTS (ATMS)

Airline	Movements
Emirates Sky Cargo	3,038
Flydubai	2,082
Qatar Airways	1,450
Ethiopian Airlines Cargo	472
Wizzair	440
MASKargo (Malaysia)	400
China Airlines Cargo	396
Rotana Jet	176
Azerbaijan Airlines	146
Cathay Pacific Cargo	144
All others	1,538

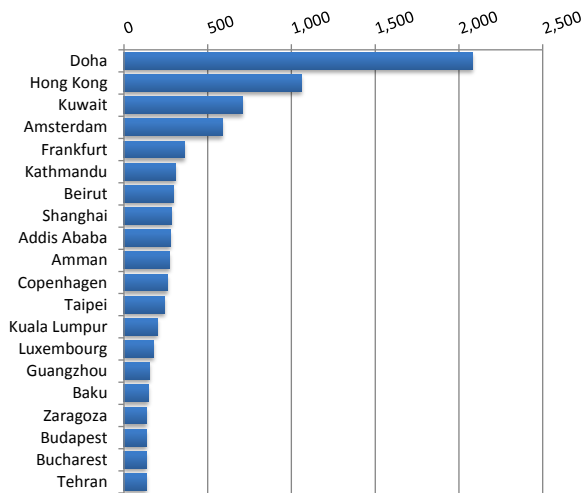


TOP 10 AIRLINES BY SEATS

Airline	Seats
Flydubai	361,920
Qatar Airways	202,620
Wizzair	79,200
Royal Flight Airlines (Russia)	29,802
Neos Air	26,180
Finnair	20,900
Condor	19,250
Arkefly	19,032
Azerbaijan Airlines	15,476
Jazeera Airways	10,812
All others	43,801

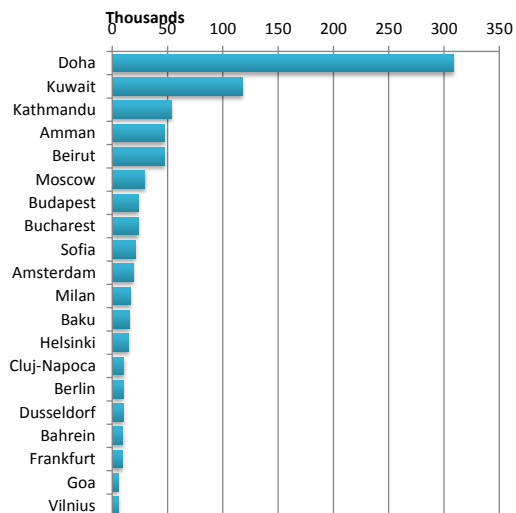


TOP 20 DESTINATIONS BY AIR TRANSPORT MOVEMENTS (ATMS)



Destination	ATM'S
Doha	2,080
Hong Kong	1,057
Kuwait	706
Amsterdam	587
Frankfurt	364
Kathmandu	308
Beirut	295
Shanghai	286
Addis Ababa	279
Amman	274
Copenhagen	262
Taipei	242
Kuala Lumpur	201
Luxembourg	177
Guangzhou	154
Baku	147
Zaragoza	133
Budapest	132
Bucharest	132
Tehran	132

TOP 20 DESTINATIONS BY SEATS



Destination	SEATS
Doha	308,412
Kuwait	117,996
Kathmandu	53,592
Amman	47,676
Beirut	47,676
Moscow	29,578
Budapest	23,760
Bucharest	23,760
Sofia	21,240
Amsterdam	19,032
Milan	16,508
Baku	15,476
Helsinki	15,048
Cluj-Napoca	10,440
Berlin	9,937
Dusseldorf	9,900
Bahrein	9,680
Frankfurt	9,350
Goa	5,852
Vilnius	5,760

Al Maktoum International Airport

Route Frequencies by Carrier

OPERATOR	AIRPORT	W14		W15		SEATS +/-	ATMS +/-		
		SEATS	ATMS	SEATS	ATMS				
4R	Royal Flight Airline (Russia)	SVO	Moscow Sheremetyevo	0	0	29,578	129	29,578	129
4R Total				0	0	29,578	129	29,578	129
7L	Silk Way Airlines	GYD	Baku Heydar Aliyev International Airpo	0	88	0	0	0	-88
7L Total				0	88	0	0	0	-88
AB	Air Berlin	BWE	Braunschweig	930	5	0	0	-930	-5
		TXL	Berlin Tegel - Closing Summer 2012	9,300	50	9,672	52	372	2
AB Total				10,230	55	9,672	52	-558	-3
AY	Finnair Oyj	GOI	Goa Dabolim	5,434	26	5,852	28	418	2
		HEL	Helsinki-Vantaa	14,630	70	15,048	72	418	2
AY Total				20,064	96	20,900	100	836	4
B9	Iran Air Tours	IKA	Imam Khomeini - Tehran	3,200	20	0	0	-3,200	-20
B9 Total				3,200	20	0	0	-3,200	-20
C8	Cargolux Italia	HKG	Hong Kong International	0	0	0	22	0	22
		MXP	Milan Malpensa	0	0	0	22	0	22
C8 Total				0	0	0	44	0	44
CI	China Airlines	AMS	Amsterdam-Schiphol	0	0	0	44	0	44
		FRA	Frankfurt International	0	0	0	22	0	22
		LUX	Luxembourg	0	0	0	132	0	132
		TPE	Taipei Chiang Kai Shek	0	0	0	198	0	198
CI Total				0	0	0	396	0	396
CV	Cargolux	HKG	Hong Kong International	0	40	0	44	0	4
		LUX	Luxembourg	0	48	0	45	0	-3
CV Total				0	88	0	89	0	1
CX	Cathay Pacific	CDG	Paris Ch. De Gaulle	0	6	0	0	0	-6
		FRA	Frankfurt International	0	119	0	68	0	-51
		HKG	Hong Kong International	0	130	0	72	0	-58
CX Total				0	255	0	140	0	-115
DE	Condor Flugdienst	DUS	Dusseldorf	23,320	88	9,900	36	-13,420	-52
		FRA	Frankfurt International	13,515	51	9,350	34	-4,165	-17
DE Total				36,835	139	19,250	70	-17,585	-69
EK	Emirates	ACC	Accra Kotoka	0	17	0	0	0	-17

Al Maktoum International Airport

Route Frequencies by Carrier

OPERATOR	AIRPORT	W14		W15		SEATS +/-	ATMS +/-
		SEATS	ATMS	SEATS	ATMS		
ADD	Addis Ababa Bole	0	12	0	22	0	10
ALG	Algiers Houari Boumediene	0	7	0	0	0	-7
AMS	Amsterdam-Schiphol	0	150	0	108	0	-42
ATL	Atlanta	0	74	0	0	0	-74
BAH	Bahrain International	0	23	0	22	0	-1
BEY	Beirut International	0	15	0	21	0	6
BOM	Mumbai	0	49	0	44	0	-5
BSL	Basel Mulhouse Euroairport Swiss	0	0	0	22	0	22
CAI	Cairo International	0	42	0	44	0	2
CAN	Guangzhou Baiyun	0	115	0	154	0	39
CDG	Paris Ch. De Gaulle	0	0	0	22	0	22
CGP	Chittagong Patenga	0	30	0	44	0	14
CMB	Colombo Bandaranayake International	0	6	0	0	0	-6
CPH	Copenhagen Airport	0	17	0	262	0	245
DAC	Hazrat Shahjalal International	0	43	0	44	0	1
DEL	Delhi Indira Gandhi International	0	24	0	0	0	-24
DKR	Dakar Yoff	0	19	0	44	0	25
DME	Moscow Domodedovo	0	17	0	22	0	5
DMM	Dammam King Fahad International	0	19	0	22	0	3
DOH	Doha	0	11	0	0	0	-11
DWC	Al Maktoum International Airport	0	12	0	0	0	-12
DXB	Dubai	0	11	0	0	0	-11
EBB	Entebbe	0	30	0	22	0	-8
EBL	Erbil International Airport	0	89	0	0	0	-89
EDL	Eldoret International Airport	0	11	0	45	0	34
EMA	Nottingham East Midlands	0	5	0	0	0	-5
FRA	Frankfurt International	0	99	0	240	0	141
HAN	Hanoi Noibai	0	84	0	88	0	4
HKG	Hong Kong International	0	593	0	791	0	198
IAH	Houston	0	37	0	0	0	-37
ICN	Seoul Incheon International	0	44	0	44	0	0

Al Maktoum International Airport

Route Frequencies by Carrier

OPERATOR	AIRPORT	W14		W15		SEATS +/-	ATMS +/-	
		SEATS	ATMS	SEATS	ATMS			
	ISB Islamabad International	0	8	0	0	0	-8	
	JIB Djibouti Ambouli	0	0	0	22	0	22	
	JNB Johannesburg International	0	23	0	22	0	-1	
	KAN Aminu Kano International Apt	0	20	0	0	0	-20	
	KRT Khartoum Civil	0	24	0	44	0	20	
	LAX Los Angeles International	0	45	0	0	0	-45	
	LCK Columbus Rickenbacker	0	9	0	0	0	-9	
	LHE Lahore	0	8	0	0	0	-8	
	LHR London Heathrow	0	81	0	88	0	7	
	LLW Lilongwe International	0	16	0	22	0	6	
	LOS Lagos Murtala Muhammed	0	11	0	44	0	33	
	LYS Lyon	0	0	0	22	0	22	
	MAA Chennai	0	14	0	22	0	8	
	MEX Mexico City Juarez International	0	49	0	0	0	-49	
	MNL Manila	0	17	0	0	0	-17	
	MPX Milan Malpensa	0	12	0	22	0	10	
	NBO Nairobi Jomo Kenyatta International	0	116	0	45	0	-71	
	NRT Tokyo Narita	0	7	0	0	0	-7	
	ORD Chicago O'Hare International	0	98	0	0	0	-98	
	OUA Ouagadougou	0	0	0	22	0	22	
	PVG Shanghai Pu Dong	0	239	0	286	0	47	
	SIN Singapore Changi	0	0	0	65	0	65	
	SYD Sydney Kingsford Smith	0	95	0	0	0	-95	
	TPE Taipei Chiang Kai Shek	0	34	0	44	0	10	
	VCP Sao Paulo Viracopos	0	47	0	0	0	-47	
	ZAZ Zaragoza	0	75	0	133	0	58	
EK Total		0	2,753	0	3,030	0	277	
ET	Ethiopian Airlines Enterprise	ADD	Addis Ababa Bole	0	229	0	257	28
		BRU	Brussels	0	0	0	86	86
		HAN	Hanoi Noibai	0	11	0	0	-11
		HKG	Hong Kong International	0	44	0	128	84

Al Maktoum International Airport

Route Frequencies by Carrier

OPERATOR	AIRPORT	W14		W15		SEATS +/-	ATMS +/-	
		SEATS	ATMS	SEATS	ATMS			
ET Total		0	284	0	471	0	187	
EY	Etihad Airways	AUH	Abu Dhabi International	0	7	0	0	-7
		DOH	Doha	0	22	0	22	0
		HHN	Frankfurt Hahn	0	7	0	0	-7
		JIB	Djibouti Ambouli	0	64	0	44	-20
		KWI	Kuwait International	0	18	0	22	4
		PVG	Shanghai Pu Dong	0	19	0	0	-19
EY Total				0	137	0	88	-49
FO	Felix Airways	SAH	Sana'A International	6,248	88	0	0	-6,248
FO Total				6,248	88	0	0	-6,248
FZ	Flydubai	AMM	Amman	0	0	47,676	274	47,676
		BEY	Beirut International	0	0	47,676	274	47,676
		DOH	Doha	0	0	105,792	608	105,792
		KTM	Kathmandu Tribhuvan	0	0	53,592	308	53,592
		KWI	Kuwait International	0	0	107,184	616	107,184
FZ Total				0	0	361,920	2,080	361,920
GF	Gulf Air Gsc	BAH	Bahrain International	8,140	74	9,680	88	1,540
GF Total				8,140	74	9,680	88	1,540
HY	Uzbekistan Airways	NVI	Navoiy Airport	0	86	0	88	0
HY Total				0	86	0	88	0
IG	Meridiana	FCO	Rome Fiumicino	1,632	6	0	0	-1,632
IG Total				1,632	6	0	0	-1,632
IR	Iran Air	IKA	Imam Khomeini - Tehran	0	84	0	132	0
IR Total				0	84	0	132	0
J2	Azal Azerbaijan Airlines	GYD	Baku Heydar Aliyev International Airpo	0	0	15,476	146	15,476
J2 Total				0	0	15,476	146	15,476
J9	Jazeera Airways	KWI	Kuwait International	12,720	80	10,812	68	-1,908
J9 Total				12,720	80	10,812	68	-1,908
JTG	Jet Time Airways	BLL	Billund	2,220	16	0	0	-2,220
		CPH	Copenhagen Airport	3,108	21	0	0	-3,108
		GAN	Gan Island Gan Seenu	2,220	16	0	0	-2,220

Al Maktoum International Airport

Route Frequencies by Carrier

OPERATOR		AIRPORT		W14		W15		SEATS +/-	ATMS +/-
				SEATS	ATMS	SEATS	ATMS		
JTG Total				7,548	53	0	0	-7,548	-53
K4	Kalitta Air	BAH	Bahrain International	0	5	0	0	0	-5
		KDH	Kandahar	0	24	0	0	0	-24
		OAI	Bagram Airport	0	110	0	0	0	-110
		PVG	Shanghai Pu Dong	0	5	0	0	0	-5
K4 Total				0	144	0	0	0	-144
MH	Malaysia Airlines	AMS	Amsterdam-Schiphol	0	92	0	199	0	107
		FRA	Frankfurt International	0	42	0	0	0	-42
		KUL	Kuala Lumpur International	0	134	0	200	0	66
MH Total				0	268	0	399	0	131
MNB	Mng Cargo Airlines	IST	Istanbul Ataturk	0	53	0	0	0	-53
MNB Total				0	53	0	0	0	-53
MP	Martinair	AMS	Amsterdam-Schiphol	0	183	0	132	0	-51
		HKG	Hong Kong International	0	54	0	0	0	-54
		SIN	Singapore Changi	0	33	0	0	0	-33
MP Total				0	270	0	132	0	-138
MYX	SmartLynx	TLL	Tallinn Ulemiste	2,520	14	2,520	14	0	0
MYX Total				2,520	14	2,520	14	0	0
NCR	National Air Cargo	KBL	Kabul Khwaja Rawash	0	5	0	0	0	-5
		KDH	Kandahar	0	24	0	0	0	-24
		KWI	Kuwait International	0	5	0	0	0	-5
		OAI	Bagram Airport	0	38	0	0	0	-38
		ROB	Monrovia Roberts International	0	19	0	0	0	-19
NCR Total				0	91	0	0	0	-91
NO	Neos	BLQ	Bologna Guglielmo Marconi	0	0	1,860	10	1,860	10
		FCO	Rome Fiumicino	0	0	2,604	14	2,604	14
		MXP	Milan Malpensa	18,912	86	16,508	74	-2,404	-12
		VRN	Verona	9,486	51	5,208	28	-4,278	-23
NO Total				28,398	137	26,180	126	-2,218	-11
OR	Arkefly	AMS	Amsterdam-Schiphol	19,764	108	19,032	104	-732	-4
OR Total				19,764	108	19,032	104	-732	-4

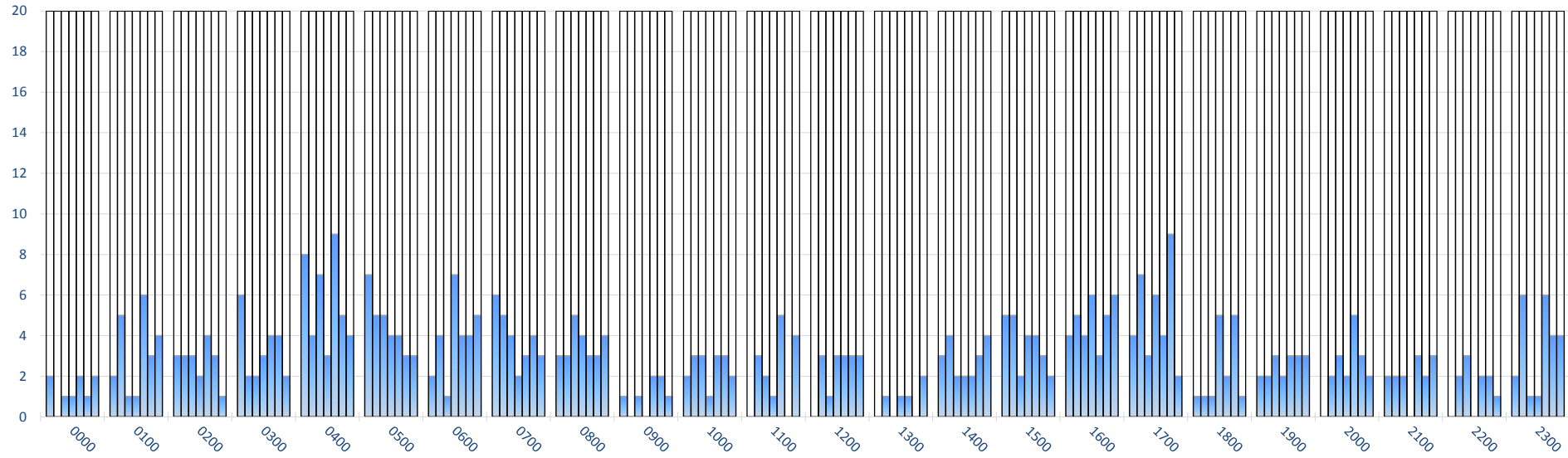
Al Maktoum International Airport

Route Frequencies by Carrier

OPERATOR	AIRPORT	W14		W15		SEATS +/-	ATMS +/-		
		SEATS	ATMS	SEATS	ATMS				
PF	Primera Air	ARN	Stockholm Arlanda	7,749	41	0	0	-7,749	-41
		GOT	Gothenburg Landvetter	4,158	22	0	0	-4,158	-22
PF Total				11,907	63	0	0	-11,907	-63
QH	Air Kyrgyzstan	FRU	Bishkek	4,144	28	0	0	-4,144	-28
QH Total				4,144	28	0	0	-4,144	-28
QR	Qatar Airways	DOH	Doha	207,844	1,354	202,620	1,450	-5,224	96
QR Total				207,844	1,354	202,620	1,450	-5,224	96
RJD	Rotana Jet	AUH	Abu Dhabi International	5,800	116	4,400	88	-1,400	-28
		XSB	St Malo	5,900	118	4,400	88	-1,500	-30
RJD Total				11,700	234	8,800	176	-2,900	-58
S5	Small Planet Airlines	VNO	Vilnius	3,240	18	5,760	32	2,520	14
S5 Total				3,240	18	5,760	32	2,520	14
TK	Turkish Airlines	BOM	Mumbai	0	21	0	0	0	-21
		IST	Istanbul Ataturk	0	48	0	88	0	40
		KWI	Kuwait International	0	13	0	0	0	-13
TK Total				0	82	0	88	0	6
URS	Silk Road Cargo Business	TAS	Tashkent Vostochny	0	24	0	0	0	-24
URS Total				0	24	0	0	0	-24
UZB	Uzbekistan Airways	TAS	Tashkent Vostochny	1,074	11	0	0	-1,074	-11
UZB Total				1,074	11	0	0	-1,074	-11
W6	Wizz Air	BUD	Budapest Ferihegy	24,480	136	23,760	132	-720	-4
		CLJ	Cluj-Napoca, Romania	0	0	10,440	58	10,440	58
		OTP	Bucharest Otopeni International	23,400	130	23,760	132	360	2
		SOF	Sofia Vrazhdebna	23,400	130	21,240	118	-2,160	-12
W6 Total				71,280	396	79,200	440	7,920	44
X3	TUIFly	HAJ	Hanover	5,434	38	4,862	34	-572	-4
X3 Total				5,434	38	4,862	34	-572	-4
YC	Yamal Airlines	TJM	Tyumen	0	0	1,148	7	1,148	7
YC Total				0	0	1,148	7	1,148	7

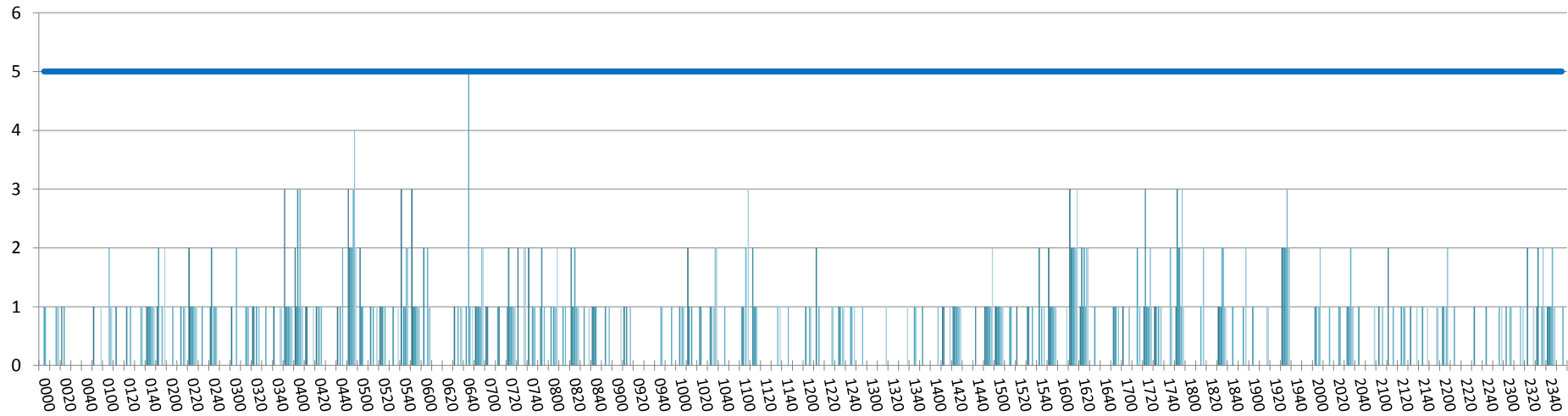
RUNWAY MOVEMENT ALLOCATION (R60) PEAK WEEK TOTALS

Peak Week Movements per Hour - All times UTC



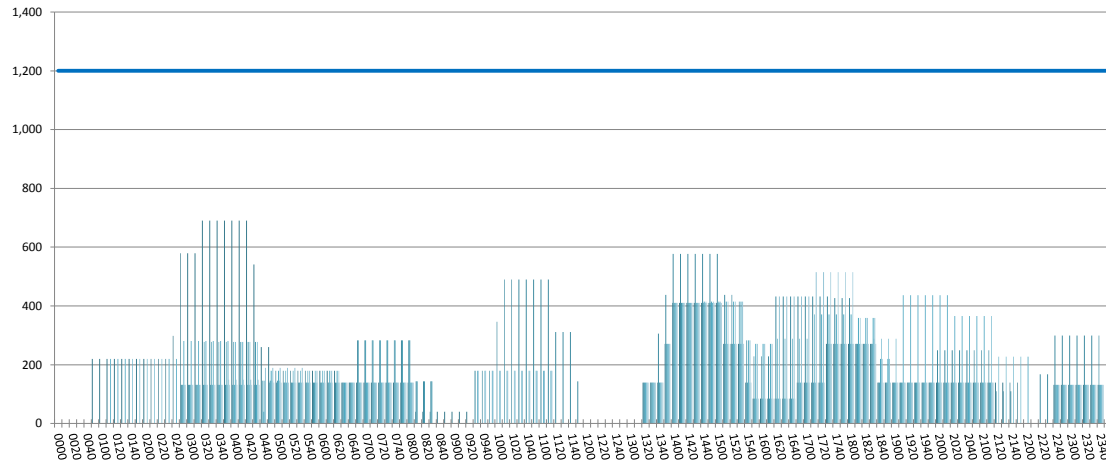
RUNWAY MOVEMENT ALLOCATION (R10) PEAK WEEK TOTALS

Peak Week Movements per 10 Minutes - All times UTC



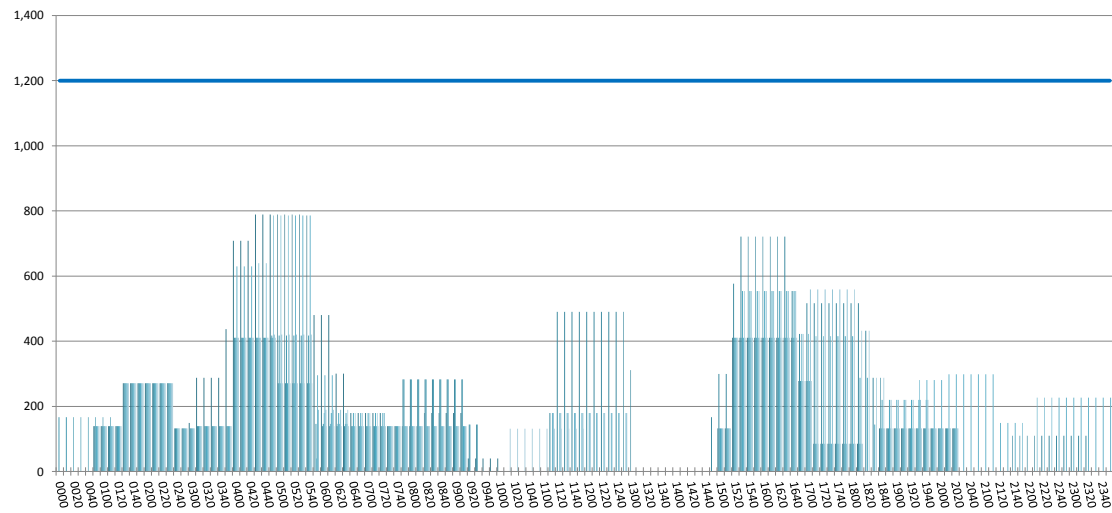
TERMINAL 1 - ARRIVALS

Peak Week Passengers per Hour - All times UTC



TERMINAL 1 - DEPARTURES

Peak Week Passengers per Hour - All times UTC



GLOSSARY OF TERMS

Air Transport Movement (ATM)	A scheduled or charter passenger or freight aircraft movement.
Allocation	The allocation of slots such that demand is constrained to fit within declared scheduling limits.
Demand	The unconstrained demand for slots, prior to any schedule adjustments.
Passenger ATM	A scheduled or charter <u>passenger</u> aircraft movement (ie, excluding all-cargo aircraft movements).
Scheduling Limits	Limiting parameters declared by the Airport Operator used in the coordination process.
Seats	The number of seats based on the aircraft configuration advised by the airline.
Peak Week	The Peak Week for W15 is 04-10 January 2016
Data Snapshot	All data used for this report was as held 09 November 2015

GUIDE TO HISTOGRAMS

The histograms show the pattern of traffic by time of day against the appropriate scheduling limit. Each time period consist of seven columns representing the days-of-week, Monday through Sunday.