



AL MAKTOUM AIRPORT DWC

W14 Start of Season Report

Key Statistics	W14 Start	Change from W13 Start	Change from W13 End
Air Transport Movements	9,786	▲ 61.7%	▲ 178.3%
Total Seats	548,172	▲ 108.4%	▲ 60.0%
Average Seats per Passenger ATM	154		

Contents	Page
CONSTRAINTS BY TERMINAL	2
CODE F AIRCRAFT ARRIVALS AND DEPARTURES	3
AIR TRANSPORT MOVEMENT STATISTICS	4
SEATS AND SEATS PER MOVEMENT STATISTICS	5
DISTRIBUTION OF SCHEDULE ADJUSTMENTS	6
TOP 10 AIRLINES BY ATMS AND SEATS	7
TOP 20 DESTINATIONS BY ATMS AND SEATS	8
OPERATOR COMPARISON PEAK WEEK 23	9-12
RUNWAY MOVEMENT ALLOCATION - R60	13
RUNWAY MOVEMENT ALLOCATION - R10	14
TERMINAL 1 PEAK WEEK HISTOGRAMS	15
GLOSSARY	16

Data in this report is current as of 29 October 2014

No warranty whether expressed or implied as to the completeness, accuracy, fitness for purpose, or satisfactory quality is given by ACL regarding the information in this report, which is provided by third parties. Accordingly, ACL excludes all liability with regard to such data.

The contents of this report may not be reproduced without the written consent of ACL.

PRIMARY CONSTRAINTS BY TERMINAL

Row Labels	OK	AA	CLO	GRA	R10	R60	Grand Total
Arrival	4922	2	93		3	15	5035
Departure	5083	3	21	21	2	3	5133
Total	10005	5	114	21	5	18	10168

Runway Reason Code	
R60	60 Min Runway Availability
R10	10 Min Runway Availability

Other Reason Code	
AA	Apron Capacity
CLO	Runway Maintenance
GRA	Arr Affected by Dep
GRD	Dep Affected by Arr

Row Labels	OK	AA	CLO	GRA	R10	R60	Grand Total
Arrival	49%	0.0%	0.9%	0.0%	0.0%	0.1%	100%
Departure	51%	0.0%	0.2%	0.2%	0.0%	0.0%	100%
Total	100%	100%	100%	100%	100%	100%	100%

Terminal Reason Code	
T60	0 Min Terminal Capacity rolling 30 Mir

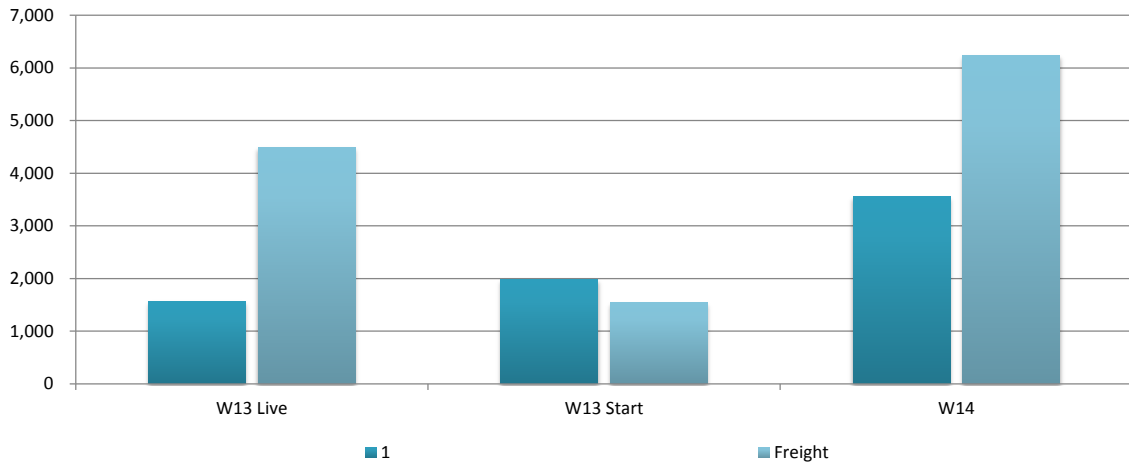
Terminal/ Reason Code	TIME UTC																								Grand Total
	0	100	200	300	400	500	600	700	800	900	1000	1100	1200	1300	1400	1500	1600	1700	1800	1900	2000	2100	2200	2300	
Terminal 1	1	41	186	44	227	458	229	9	172	167	40	23	19	89	227	188	219	272	545	186	38	61	20	179	3640
OK	1	41	186	44	227	458	229	9	172	166	40	23	19	89	226	188	219	272	544	186	38	59	19	179	3634
AA										1									1				1		3
R10																						1			1
R60															1							1			2
Freight	151	213	168	295	272	326	394	506	190	541	277	309	308	115	259	202	150	264	168	163	52	357	277	272	6229
OK	151	213	168	295	272	326	394	506	190	541	233	309	308	93	235	202	150	264	168	163	51	313	256	272	6073
AA															2										2
CLO											42			21	9							42			114
GRA																							21		21
R10											1										1	2			4
R60											1			1	13										15

CODE F ARRIVALS AND DEPARTURES

CODE F ARRIVALS/ Day of Week	TIME UTC																							Grand Total	
	0	100	200	300	400	500	600	700	800	900	1000	1100	1200	1300	1400	1500	1600	1700	1800	1900	2000	2100	2200		2300
A				42				22					22		24			2				22			134
Cargolux				22									22												44
3				22																					22
4													22												22
Cathay Pacific				20				22							2			2				22			68
1																	2					2			4
2															2										2
3																						20			20
6								22																	22
7				20																					20
Etihad Cargo															22										22
5															22										22

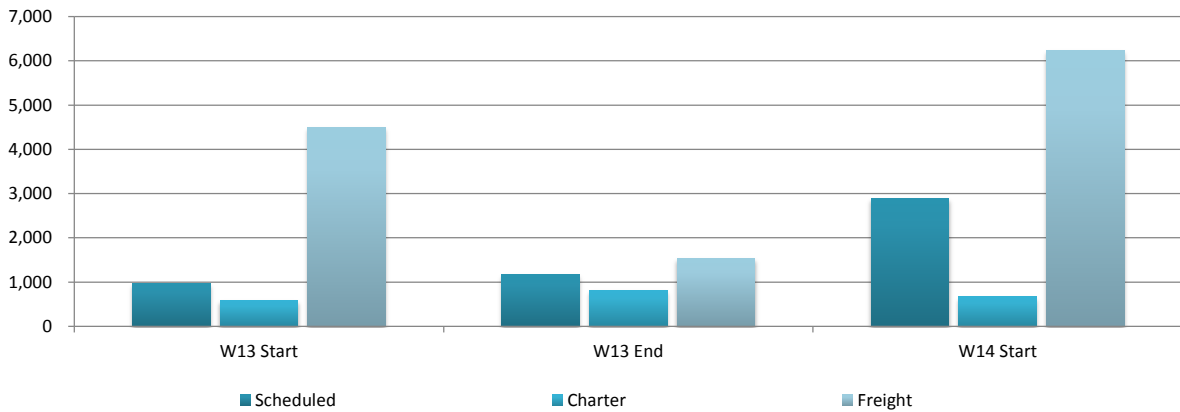
CODE F DEPARTURES/ Day of Week	TIME UTC																							Grand Total	
	0	100	200	300	400	500	600	700	800	900	1000	1100	1200	1300	1400	1500	1600	1700	1800	1900	2000	2100	2200		2300
D						42				22				22		24		2					22		134
Cargolux						22										22									44
3						22																			22
4																22									22
Cathay Pacific						20				22						2			2				22		68
1																		2					2		4
2																2									2
3																							20		20
6										22															22
7						20																			20
Etihad Cargo															22										22
6															22										22

AIR TRANSPORT MOVEMENTS BY TERMINAL



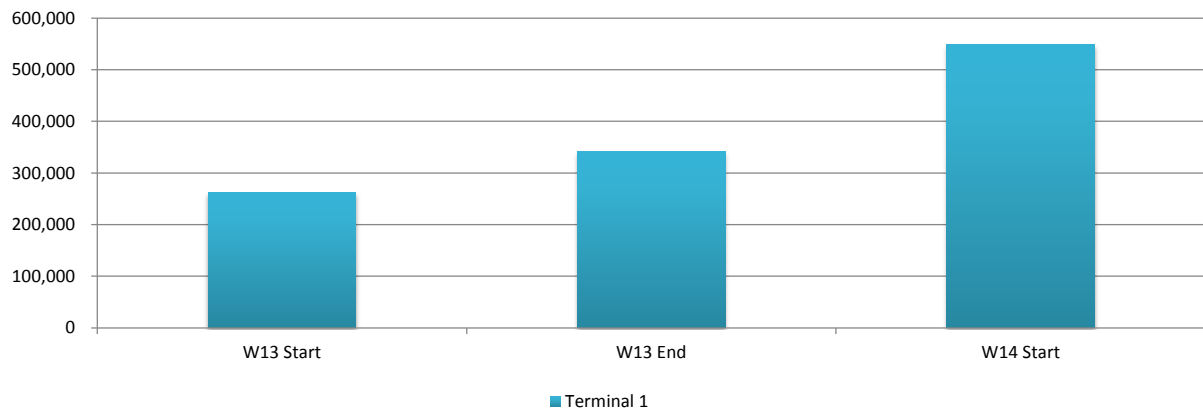
Terminal	W13 Live	W13 Start	W14	% Change Start-Start	% Change End - Start
1	1,558	1,978	3,561	128.6%	80.0%
Freight	4,495	1,538	6,225	38.5%	304.7%
Total	6,053	3,516	9,786	61.7%	178.3%

AIR TRANSPORT MOVEMENTS BY SERVICE TYPES



Service Type	W13 Start	W13 End	W14 Start	% Change Start-Start	% Change End - Start
Scheduled	975	1,176	2,896	197.0%	146.3%
Charter	583	802	665	14.1%	-17.1%
Freight	4,495	1,538	6,225	38.5%	304.7%
Total	6,053	3,516	9,786	61.7%	178.3%

PASSENGERS BY TERMINAL



	W13 Start	W13 End	W14 Start	% Change Start-Start	% Change End - Start
Terminal 1	263,028	342,520	548,172	108.4%	60.0%
Average	263,028	342,520	548,172	108.4%	60.0%

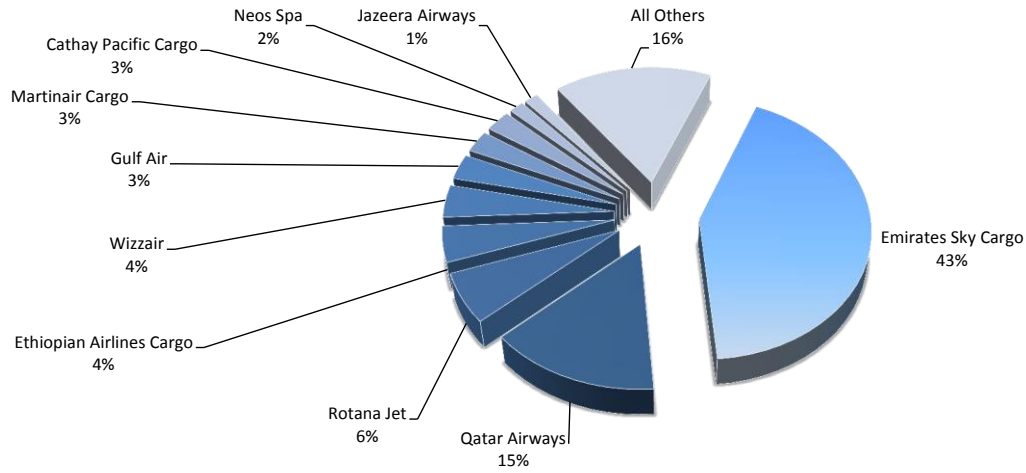
Schedule Adjustments by carrier

Carrier		Minutes off Slot									Grand Total
		Clear	5	10	15	30	50	55	60	60+	
EK	Emirates	4065	21		21	1	43			21	4172
QR	Qatar Airways	1448									1448
RJD	Rotana Jet Aviation	612									612
ET	Ethiopian Airlines Enterprise	396	42								438
W6	Wizz Air	394									394
GF	Gulf Air Company Gsc	308									308
MP	Martinair	265					1				266
CX	Cathay Pacific	258	2								260
NO	Neos Spa	150									150
J9	Jazeera Airways	144									144
DE	Condor Flugdienst	142									142
IR	Iran Air	132									132
MNB	Mng Cargo Airlines	132									132
HY	Uzbekistan Airways	140									140
OR	Arkefly (Tui Netherlands)	118									118
EY	Ethihad Airways	108	2								110
AY	Finnair Oyj	100									100
CV	Air Chathams Ltd	90									90
MH	Malaysia Airlines	88									88
PF	Primera Air Scandinavia	88									88
TK	Turkish Airlines	88									88
FO	Airlines Of Tasmania	88									88
AB	Air Berlin	52									52
AGA	Agair	44									44
X3	Tuifly.Com	38									38
JTG	Jet Time Airways	34									34
S5	Small Planet Airlines	20									20
UN	Transaero Airlines Jsc	20									20
UZ	Tesis Aviation Enterprise	18					1	1			20
LG	Luxair Luxembourg Airlines	16									16
MYX	Smartlynx Airlines Estonia	16									16
K4	Kalitta Air Llc	13									13
ZAV	Zetavia Of Ukraine	10									10
IAW	Iraqi Airways	8									8
ELN	Eleron Aviation Company	8									8
NCR	National Air Cargo	7									7
IG	Meridiana Spa	6									6
VDA	Volga Dnepr Airlines Jsc	6									6
URS	Silk Road Cargo Business	5							1		6
ADB	Antonov Airlines	4									4
RCH	Air Mobility Command	2									2
TZS	The Cargo Airlines	2									2
IAM	Italian Air Force	2									2
CAI	Corendon Airlines	2									2
AXM	Air Asia	2									2
7L	Silk Way Airlines	2									2
BGH	Balkan Holidays Air	2									2
MIX	Midex Airlines Ltd	1									1
BR	Eva Air								2		2
Grand Total		9694	23	44	21	1	43	1	3	23	9853

Carrier		Minutes off Slot										Grand Total
		Clear	5	10	15	30	50	55	60	60+		
EK	Emirates	97.44%	0.50%		0.50%	0.02%	1.03%				0.50%	100.00%
QR	Qatar Airways	100.00%										100.00%
RJD	Rotana Jet Aviation	100.00%										100.00%
ET	Ethiopian Airlines Enterprise	90.41%		9.59%								100.00%
W6	Wizz Air	100.00%										100.00%
GF	Gulf Air Company Gsc	100.00%										100.00%
MP	Martinair	99.62%						0.38%				100.00%
CX	Cathay Pacific	99.23%		0.77%								100.00%
NO	Neos Spa	100.00%										100.00%
J9	Jazeera Airways	100.00%										100.00%
DE	Condor Flugdienst	100.00%										100.00%
IR	Iran Air	100.00%										100.00%
MNB	Mng Cargo Airlines	100.00%										100.00%
HY	Uzbekistan Airways	100.00%										100.00%
OR	Arkefly (Tui Netherlands)	100.00%										100.00%
EY	Ethihad Airways	98.18%	1.82%									100.00%
AY	Finnair Oyj	100.00%										100.00%
CV	Air Chathams Ltd	100.00%										100.00%
MH	Malaysia Airlines	100.00%										100.00%
PF	Primera Air Scandinavia	100.00%										100.00%
TK	Turkish Airlines	100.00%										100.00%
FO	Airlines Of Tasmania	100.00%										100.00%
AB	Air Berlin	100.00%										100.00%
AGA	Agair	100.00%										100.00%
X3	Tuifly.Com	100.00%										100.00%
JTG	Jet Time Airways	100.00%										100.00%
S5	Small Planet Airlines	100.00%										100.00%
UN	Transaero Airlines Jsc	100.00%										100.00%
UZ	Tesis Aviation Enterprise	90.00%						5.00%	5.00%			100.00%
LG	Luxair Luxembourg Airlines	100.00%										100.00%
MYX	Smartlynx Airlines Estonia	100.00%										100.00%
K4	Kalitta Air Llc	100.00%										100.00%
ZAV	Zetavia Of Ukraine	100.00%										100.00%
IAW	Iraqi Airways	100.00%										100.00%
ELN	Eleron Aviation Company	100.00%										100.00%
NCR	National Air Cargo	100.00%										100.00%
IG	Meridiana Spa	100.00%										100.00%
VDA	Volga Dnepr Airlines Jsc	100.00%										100.00%
URS	Silk Road Cargo Business	83.33%							16.67%			100.00%
ADB	Antonov Airlines	100.00%										100.00%
RCH	Air Mobility Command	100.00%										100.00%
TZS	The Cargo Airlines	100.00%										100.00%
IAM	Italian Air Force	100.00%										100.00%
CAI	Corendon Airlines	100.00%										100.00%
AXM	Air Asia	100.00%										100.00%
7L	Silk Way Airlines	100.00%										100.00%
BGH	Balkan Holidays Air	100.00%										100.00%
MIX	Midex Airlines Ltd	100.00%										100.00%
BR	Eva Air								100.00%			100.00%
Grand Total		1100.00%	100.00%	100.00%	100.00%	100.00%	100.00%	100.00%	100.00%	100.00%	100.00%	100.00%

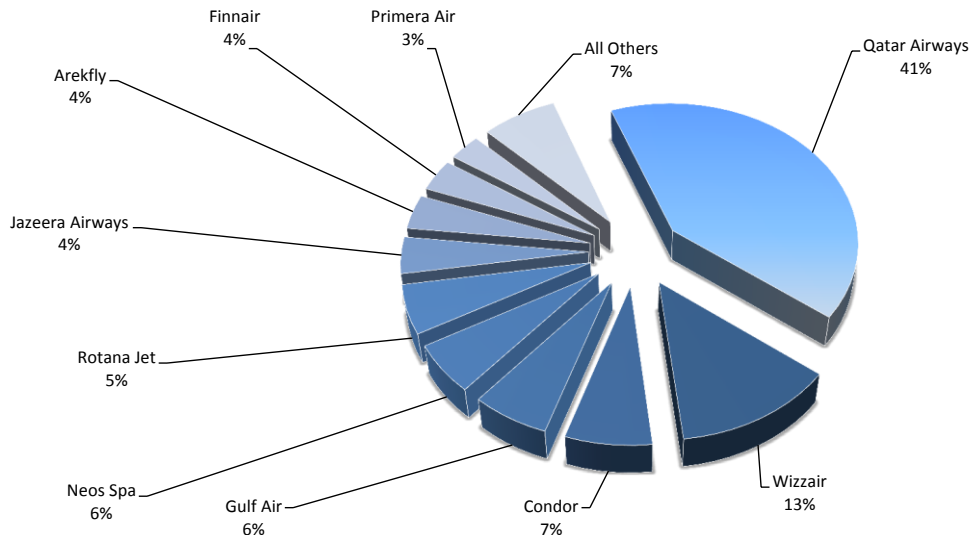
TOP 10 AIRLINES BY AIR TRANSPORT MOVEMENTS (ATMS)

Airline	Movements
Emirates Sky Cargo	4,172
Qatar Airways	1,448
Rotana Jet	612
Ethiopian Airlines Cargo	438
Wizzair	394
Gulf Air	308
Martinair Cargo	266
Cathay Pacific Cargo	260
Neos Spa	150
Jazeera Airways	144
All Others	1,594

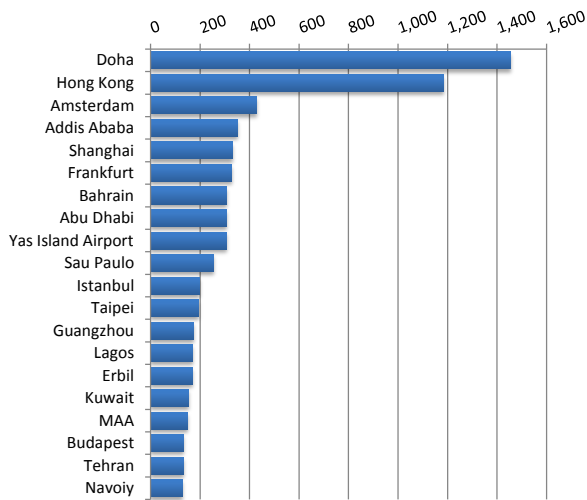


TOP 10 AIRLINES BY SEATS

Airline	Seats
Qatar Airways	224,016
Wizzair	70,920
Condor	37,630
Gulf Air	33,880
Neos Spa	31,036
Rotana Jet	30,600
Jazeera Airways	22,896
Arekfly	21,594
Finnair	20,064
Primera Air	16,632
All Others	38,904

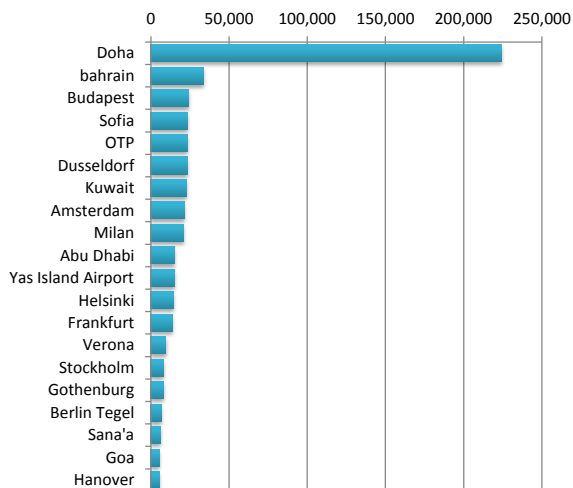


TOP 20 DESTINATIONS BY AIR TRANSPORT MOVEMENTS (ATMS)



Destination	ATM'S
Doha	1,453
Hong Kong	1,182
Amsterdam	428
Addis Ababa	350
Shanghai	332
Frankfurt	329
Bahrain	308
Abu Dhabi	306
Yas Island Airport	306
Sau Paulo	255
Istanbul	198
Taipei	192
Guangzhou	175
Lagos	170
Erbil	169
Kuwait	154
MAA	149
Budapest	134
Tehran	132
Navoiy	130

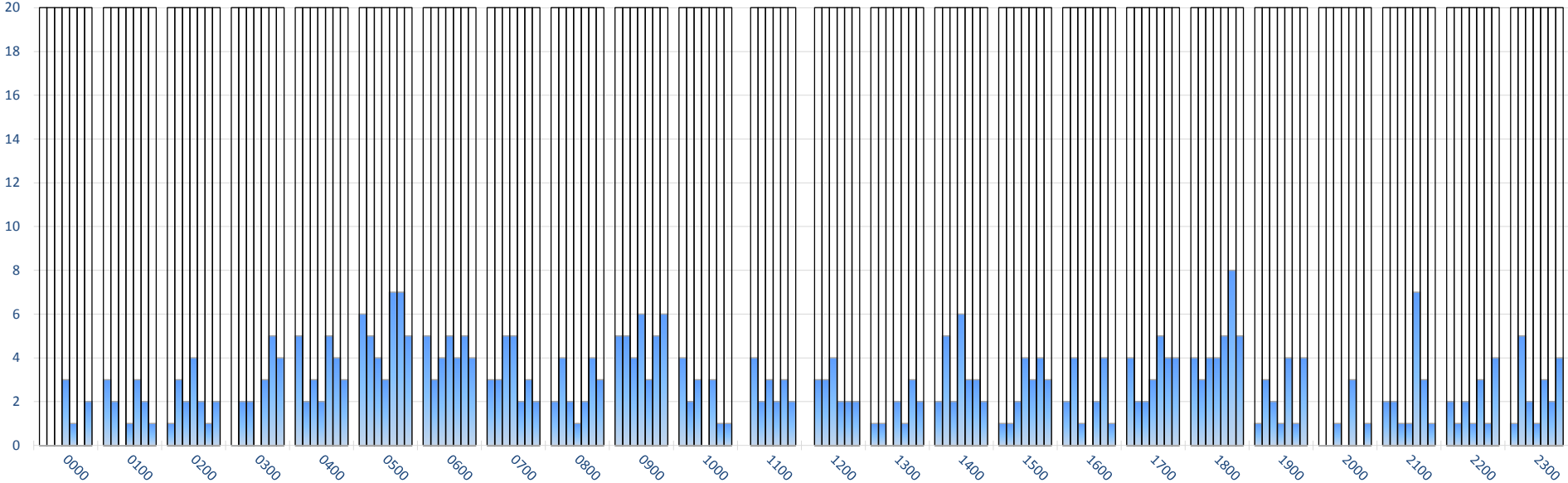
TOP 20 DESTINATIONS BY SEATS



Destination	SEATS
Doha	224,016
bahrain	33,880
Budapest	24,120
Sofia	23,400
OTP	23,400
Dusseldorf	23,320
Kuwait	22,896
Amsterdam	21,594
Milan	20,620
Abu Dhabi	15,300
Yas Island Airport	15,300
Helsinki	14,630
Frankfurt	13,780
Verona	9,672
Stockholm	8,316
Gothenburg	8,316
Berlin Tegel	7,068
Sana'a	6,248
Goa	5,434
Hanover	5,434

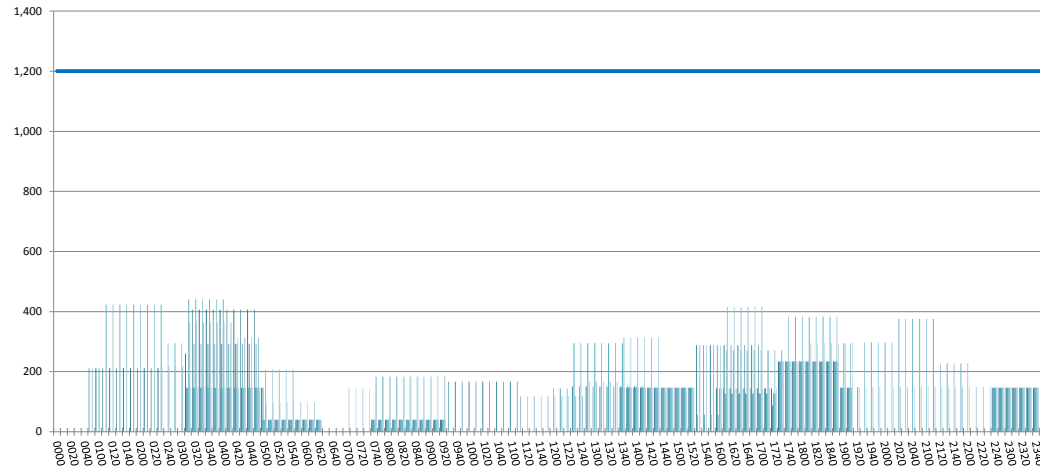
RUNWAY MOVEMENT ALLOCATION (R60) PEAK WEEK TOTALS

Peak Week Movements per Hour - All times UTC



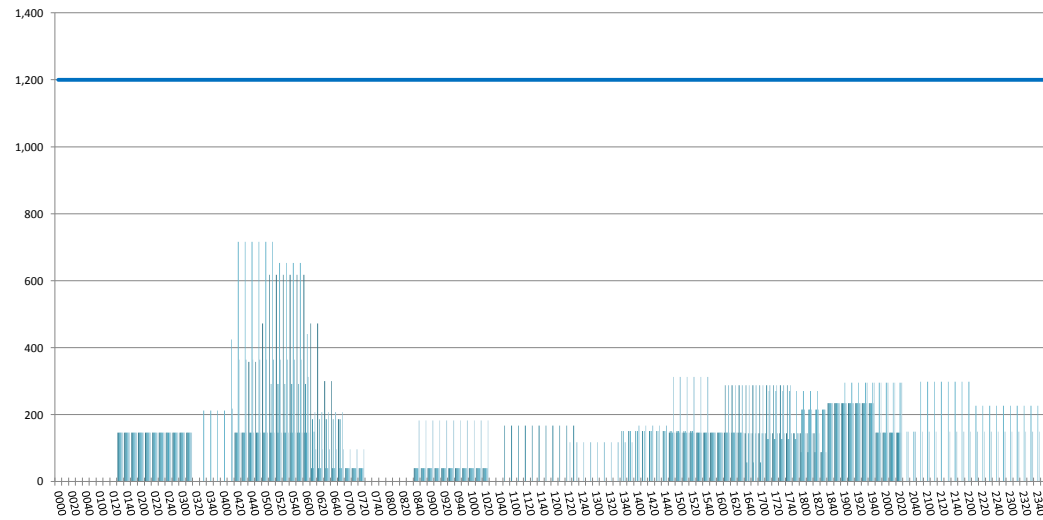
TERMINAL 1 - ARRIVALS

Peak Week Passengers per Hour - All times UTC



TERMINAL 1 - DEPARTURES

Peak Week Passengers per Hour - All times UTC



GLOSSARY OF TERMS

Air Transport Movement (ATM)	A scheduled or charter passenger or freight aircraft movement.
Allocation	The allocation of slots such that demand is constrained to fit within declared scheduling limits.
Demand	The unconstrained demand for slots, prior to any schedule adjustments.
Passenger ATM	A scheduled or charter <u>passenger</u> aircraft movement (ie, excluding all-cargo aircraft movements).
Scheduling Limits	Limiting parameters declared by the Airport Operator used in the coordination process.
Seats	The number of seats based on the aircraft configuration advised by the airline.
Peak Week	The Peak Week for W14 is 22-28 December 2014
Data Snapshot	All data used for this report was as held 29 October 2014

GUIDE TO HISTOGRAMS

The histograms show the pattern of traffic by time of day against the appropriate scheduling limit. Each time period consist of seven columns representing the days-of-week, Monday through Sunday.