

Dubai Al Maktoum Airport (DWC)

Summer 2016 (S16)



Start of Season Report

Report Date: Thu 14-Apr-2016

Headlines

	S16 Start	vs. S15 Start	vs. S15 End
Total Air Transport Movements (Passenger & Freight)	11,381	▼ -2.4%	▲ 1.6%
Total Passenger Air Transport Movements	5,034	▲ 42.4%	▲ 73.2%
Total Passenger Air Transport Movement Seats	871,839	▲ 57.8%	▲ 82.0%
Average Seats per Passenger Air Transport Movement	173	▲ 10.8%	▲ 5.0%
Percentage of allocated slots cleared as requested (OK)	99.46%		

Contents

Page	Content
2	Runway Scheduling Limits
3	Coordinator's Report
4	ATM Allocation by Operator (Full season and Peak Week Comparison)
5	Peak Week - Allocation and Slot Adjustment Distribution by Operator
6	Significant Route Changes
7	Full Season - ATM Analysis
8	Full Season - PATM Seats Analysis
9	Full Season - Terminal Analysis
10	Full Season - Aircraft Size Analysis
11	Full Season - Seasonality
12	Peak Week - Hourly Runway Allocation
13	Actual Runway Utilisation (19-25 March - W15)
14	Peak Week - Hourly Runway Allocation Comparison (S16 Start vs. S15 Start)
15	Peak Week - Hourly Runway Allocation Comparison (S16 Start vs. S15 End)
16	Glossary

S15 scheduling season runs from Sun 29-Mar-2015 to Sat 24-Oct-2015 (210 days).

S16 scheduling season runs from Sun 27-Mar-2016 to Sat 29-Oct-2016 (217 days).

S15 full season data is adjusted by a factor of 1.03333 in order to directly compare against S16 full season data.

Disclaimer

No warranty whether expressed or implied as to the completeness, accuracy, fitness for purpose, or satisfactory quality is given by ACL regarding the information in this report, which is provided by third parties. Accordingly, ACL excludes all liability with regard to such data.

The contents of this report may not be reproduced without the written consent of ACL.

Coordinator's Report



Total demand	11,383	slots		
Total slots allocated	11,381	slots	99.98%	of total demand
Number of slots cleared OK	11,319	slots	99.46%	of total slots cleared

Slots adjusted (not OK) due to:

RUNWAY constraints	1	slots	1.6%	of total slots adjusted
TERMINAL constraints	-	slots	0.0%	of total slots adjusted
STAND constraints	-	slots	0.0%	of total slots adjusted
NIGHT constraints	-	slots	0.0%	of total slots adjusted
OTHER constraints	59	slots	95.2%	of total slots adjusted
ARR/DEP TURNAROUND feasibility	2	slots	3.2%	of total slots adjusted

Other Constraints

Runway maintenance closure

Air Transport Movement Allocation by Operator

Comparison between S15 End vs. S16 Start



Operator	FULL SEASON ALLOCATION							PEAK WEEK ALLOCATION									
	S15 ATMs	S16 ATMs	+/- change	S16 Rank	S15 Seats	S16 Seats	+/- change	S16 Rank	S15 ATMs	S16 ATMs	+/- change	S16 Rank	S15 Seats	S16 Seats	+/- change	S16 Rank	
Abakan Air	43	-	-43	35	-	-	0	12	1	-	-1	15	-	-	0	6	
Air Almaty	2	-	-2	35	-	-	0	12	-	-	0	15	-	-	0	6	
Air Atlantique	-	4	4	23	-	-	0	12	-	-	0	15	-	-	0	6	
Air Berlin	-	4	4	23	-	744	744	8	-	-	0	15	-	-	0	6	
Air Cargo Global	-	4	4	23	-	-	-	0	12	-	-	0	15	-	-	0	6
Air International LTD	106	-	-106	35	-	-	0	12	4	-	-4	15	-	-	0	6	
Antonov Airlines	6	-	-6	35	-	-	0	12	-	-	0	15	-	-	0	6	
Arik Air	1	-	-1	35	-	-	0	12	-	-	0	15	-	-	0	6	
Arkefly	30	30	0	15	5,484	5,490	6	5	6	2	-4	13	1,098	366	-732	4	
Atlas Air	64	8	-56	20	-	-	0	12	2	-	-2	15	-	-	0	6	
Aviacon Zitotrans	10	-	-10	35	-	-	0	12	-	-	0	15	-	-	0	6	
Azurair	-	19	19	17	-	4,522	4,522	6	-	-	0	15	-	-	0	6	
Cargolux	147	125	-22	9	-	-	0	12	4	4	0	9	-	-	0	6	
Cargolux Italia	10	61	51	13	-	-	0	12	2	2	0	13	-	-	0	6	
Cathay Pacific	209	124	-85	10	-	-	0	12	8	4	-4	9	-	-	0	6	
Cavok Air	1	-	-1	35	-	-	0	12	-	-	0	15	-	-	0	6	
Cham Wings Airlines	2	-	-2	35	341	-	-341	12	-	-	0	15	-	-	0	6	
China Airlines	558	560	2	4	-	-	0	12	20	18	-2	4	-	-	0	6	
Condor	6	2	-4	29	1,705	550	-1,155	9	-	-	0	15	-	-	0	6	
EC Air	2	-	-2	35	-	-	0	12	-	-	0	15	-	-	0	6	
Eleron Aviation Company	51	-	-51	35	-	-	0	12	-	-	0	15	-	-	0	6	
Emirates SkyCargo	4,309	4,421	112	1	-	-	0	12	155	144	-11	1	-	-	0	6	
Ethiopian Airlines	426	186	-240	6	-	-	0	12	12	6	-6	6	-	-	0	6	
Ethiad Airways	204	3	-201	28	-	-	0	12	9	-	-9	15	-	-	0	6	
Federal Express	6	-	-6	35	-	-	0	12	-	-	0	15	-	-	0	6	
Finnair	8	9	1	19	1,728	1,881	153	7	1	-	-1	15	209	-	-209	6	
Flydubai	3	2,553	2,550	2	586	443,947	443,361	1	-	112	112	2	-	19,433	19,433	1	
Global Africa Cargo	134	46	-88	14	-	-	0	12	4	-	-4	15	-	-	0	6	
Grodno Aircompany	7	-	-7	35	-	-	0	12	-	-	0	15	-	-	0	6	
Gulf Air	403	-	-403	35	44,330	-	-44,330	12	14	-	-14	15	1,540	-	-1,540	6	
Iran Air	143	178	35	8	-	-	0	12	6	6	0	6	-	-	0	6	
Iran Airtour	17	-	-17	35	2,645	-	-2,645	12	-	-	0	15	-	-	0	6	
Jazeera Airways	246	-	-246	35	39,103	-	-39,103	12	2	-	-2	15	318	-	-318	6	
Jet Time Airways	8	-	-8	35	1,223	-	-1,223	12	2	-	-2	15	296	-	-296	6	
Kalitta Air	72	11	-61	18	-	-	0	12	-	-	0	15	-	-	0	6	
Malaysia Airlines	548	-	-548	35	-	-	0	12	18	-	-18	15	-	-	0	6	
Martinair	179	-	-179	35	-	-	0	12	3	-	-3	15	-	-	0	6	
Maximus Airlines	9	-	-9	35	-	-	0	12	-	-	0	15	-	-	0	6	
Midex Airlines	1	-	-1	35	-	-	0	12	-	-	0	15	-	-	0	6	
Motor Sich Airlines	1	-	-1	35	-	-	0	12	-	-	0	15	-	-	0	6	
National Air Cargo	117	7	-110	22	-	-	0	12	5	-	-5	15	-	-	0	6	
Neos	4	2	-2	29	965	372	-593	10	-	-	0	15	-	-	0	6	
Nordic Global Airlines	6	-	-6	35	-	-	0	12	-	-	0	15	-	-	0	6	
Pouya Cargo Air	-	4	4	23	-	-	0	12	-	-	0	15	-	-	0	6	
Primerair	-	-	0	35	-	-	0	12	-	-	0	15	-	-	0	6	
Qatar Airways	1,905	2,052	147	3	293,326	315,588	22,262	2	60	66	6	3	9,464	10,192	728	2	
Rotana Jet	100	184	84	7	5,012	9,200	4,188	4	4	6	2	6	200	300	100	5	
Royal Jordanian	2	-	-2	35	-	-	0	12	-	-	0	15	-	-	0	6	
Ruby Star	52	-	-52	35	-	-	0	12	6	-	-6	15	-	-	0	6	
Sahara Aero Services	-	-	0	35	-	-	0	12	-	-	0	15	-	-	0	6	
Saudia	4	-	-4	35	-	-	0	12	-	-	0	15	-	-	0	6	
Shar Ink	10	-	-10	35	-	-	0	12	-	-	0	15	-	-	0	6	
Silk Road Cargo	25	2	-23	29	-	-	0	12	-	-	0	15	-	-	0	6	
Silkway Airlines	97	2	-95	29	-	-	0	12	2	-	-2	15	-	-	0	6	
SKA SA Aircraft Leasing	-	2	2	29	-	-	0	12	-	-	0	15	-	-	0	6	
Sky Prim Airlines	103	-	-103	35	-	-	0	12	2	-	-2	15	-	-	0	6	
SW Italia	25	-	-25	35	-	-	0	12	-	-	0	15	-	-	0	6	
The Cargo Airlines	6	21	15	16	-	-	0	12	-	-	0	15	-	-	0	6	
Titan Airways	2	1	-1	34	548	265	-283	11	-	-	0	15	-	-	0	6	
TNT Airways	5	-	-5	35	-	-	0	12	-	-	0	15	-	-	0	6	
Tristar Air	1	-	-1	35	-	-	0	12	-	-	0	15	-	-	0	6	
TUfly	2	-	-2	35	296	-	-296	12	-	-	0	15	-	-	0	6	
Turkish Airlines	122	124	2	10	-	-	0	12	4	4	0	9	-	-	0	6	
Uls Airlines Cargo	1	-	-1	35	-	-	0	12	-	-	0	15	-	-	0	6	
Unique Air	2	4	2	23	-	-	0	12	-	-	0	15	-	-	0	6	
Uzbekistan Airways	126	124	-2	10	-	-	0	12	4	4	0	9	-	-	0	6	
Volga-Dnepr Airlines	9	8	-1	20	-	-	0	12	-	-	0	15	-	-	0	6	
Wizz Air	445	496	51	5	80,166	89,280	9,114	3	16	16	0	5	2,880	2,880	0	3	
Yemenia	11	-	-11	35	1,703	-	-1,703	12	-	-	0	15	-	-	0	6	
Zetavia	44	-	-44	35	-	-	0	12	-	-	0	15	-	-	0	6	
TOTAL	11,202	11,381	179		479,161	871,839	392,678		376	394	18		16,005	33,171	17,166		

Operators with 0 'ATMs' in both S15 End & S16 Start schedules are included in the table due to appearing in the S15 Start schedule (either with/without allocated slots).

Peak Week - Allocation and Slot Adjustment Distribution by Operator



Schedule: S16 Start

Operator	S16 allocated ATMs	SLOT ADJUSTMENTS (MINUTES OFF REQUESTED TIME)														Requests with NO slot allocated	
		0	5	10	15	20	25	30	35	40	45	50	55	60	>60		
Abakan Air	-																
Air International LTD	-																
Arkefly	2	100.0%	0.0%	0.0%	0.0%	0.0%	0.0%	0.0%	0.0%	0.0%	0.0%	0.0%	0.0%	0.0%	0.0%	0.0%	
Atlas Air	-																
Cargolux	4	100.0%	0.0%	0.0%	0.0%	0.0%	0.0%	0.0%	0.0%	0.0%	0.0%	0.0%	0.0%	0.0%	0.0%	0.0%	
Cargolux Italia	2	100.0%	0.0%	0.0%	0.0%	0.0%	0.0%	0.0%	0.0%	0.0%	0.0%	0.0%	0.0%	0.0%	0.0%	0.0%	
Cathay Pacific	4	100.0%	0.0%	0.0%	0.0%	0.0%	0.0%	0.0%	0.0%	0.0%	0.0%	0.0%	0.0%	0.0%	0.0%	0.0%	
Cham Wings Airlines	-																
China Airlines	18	100.0%	0.0%	0.0%	0.0%	0.0%	0.0%	0.0%	0.0%	0.0%	0.0%	0.0%	0.0%	0.0%	0.0%	0.0%	
Emirates SkyCargo	144	98.6%	0.7%	0.0%	0.0%	0.0%	0.0%	0.0%	0.0%	0.0%	0.0%	0.0%	0.0%	0.0%	0.0%	0.0%	
Ethiopian Airlines	6	100.0%	0.0%	0.0%	0.0%	0.0%	0.0%	0.0%	0.0%	0.0%	0.0%	0.0%	0.0%	0.0%	0.0%	0.0%	
Etihad Airways	-																
Finnair	-																
Flydubai	112	100.0%	0.0%	0.0%	0.0%	0.0%	0.0%	0.0%	0.0%	0.0%	0.0%	0.0%	0.0%	0.0%	0.0%	0.0%	
Global Africa Cargo	-																
Gulf Air	-																
Iran Air	6	100.0%	0.0%	0.0%	0.0%	0.0%	0.0%	0.0%	0.0%	0.0%	0.0%	0.0%	0.0%	0.0%	0.0%	0.0%	
Jazeera Airways	-																
Jet Time Airways	-																
Malaysia Airlines	-																
Martinair	-																
National Air Cargo	-																
Qatar Airways	66	100.0%	0.0%	0.0%	0.0%	0.0%	0.0%	0.0%	0.0%	0.0%	0.0%	0.0%	0.0%	0.0%	0.0%	0.0%	
Rotana Jet	6	100.0%	0.0%	0.0%	0.0%	0.0%	0.0%	0.0%	0.0%	0.0%	0.0%	0.0%	0.0%	0.0%	0.0%	0.0%	
Ruby Star	-																
Silkway Airlines	-																
Sky Prim Airlines	-																
Turkish Airlines	4	100.0%	0.0%	0.0%	0.0%	0.0%	0.0%	0.0%	0.0%	0.0%	0.0%	0.0%	0.0%	0.0%	0.0%	0.0%	
Uzbekistan Airways	4	100.0%	0.0%	0.0%	0.0%	0.0%	0.0%	0.0%	0.0%	0.0%	0.0%	0.0%	0.0%	0.0%	0.0%	0.0%	
Wizz Air	16	100.0%	0.0%	0.0%	0.0%	0.0%	0.0%	0.0%	0.0%	0.0%	0.0%	0.0%	0.0%	0.0%	0.0%	0.0%	
TOTAL	394	99.5%	0.3%	0.0%	0.0%	0.0%	0.0%	0.0%	0.0%	0.0%	0.0%	0.0%	0.0%	0.0%	0.0%	0.0%	0.3%

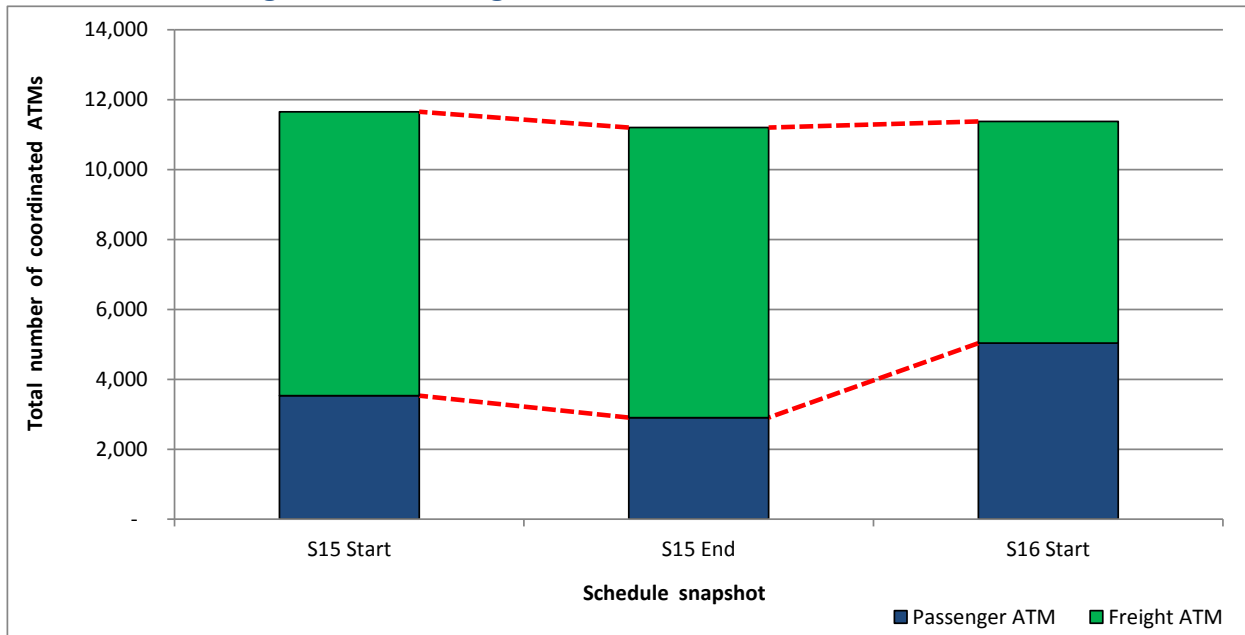
Operators with 0 'allocated ATMs' and 0 'Requests with NO slot allocated' in S16, are included in this list due to having slots allocated in either S15 Start or S15 End schedules.

Significant Route Changes



Operator	Category	Description of change from S15 schedule to S16 schedule
Arkefly	CHANGE	Increased service to/from AMS
Cargolux Italia	NEW	Service to/from HKG
Emirates SkyCargo	CHANGE	Increased services to/from CPH, FRA, HKG,
Emirates SkyCargo	CANCELLED	Service to/from ATL, ORD, MEX, TSN
Ethiopian Airlines	NEW	Service to/from BRU
Ethiopian Airlines	CANCELLED	Service to/from HKG
Etihad Airways	CANCELLED	Services to/from JIB, KWI, PVG
Flydubai	NEW	Services to/from AMM, BEY, DOH, KTM, KWI
Gulf Air	CANCELLED	Servie to/from BAH
Jazeera Airways	CANCELLED	Service to/from KWI
Malaysia Airlines	CANCELLED	Services to/from AMS, KUL, FRA
Qatar Airways	CHANGE	Increased service to/from DOH
Rotana Jet	NEW	Service to XSB
Turkish Airlines	CHANGE	Increased service to/from IST
Wizz Air	NEW	Service to/from CLJ

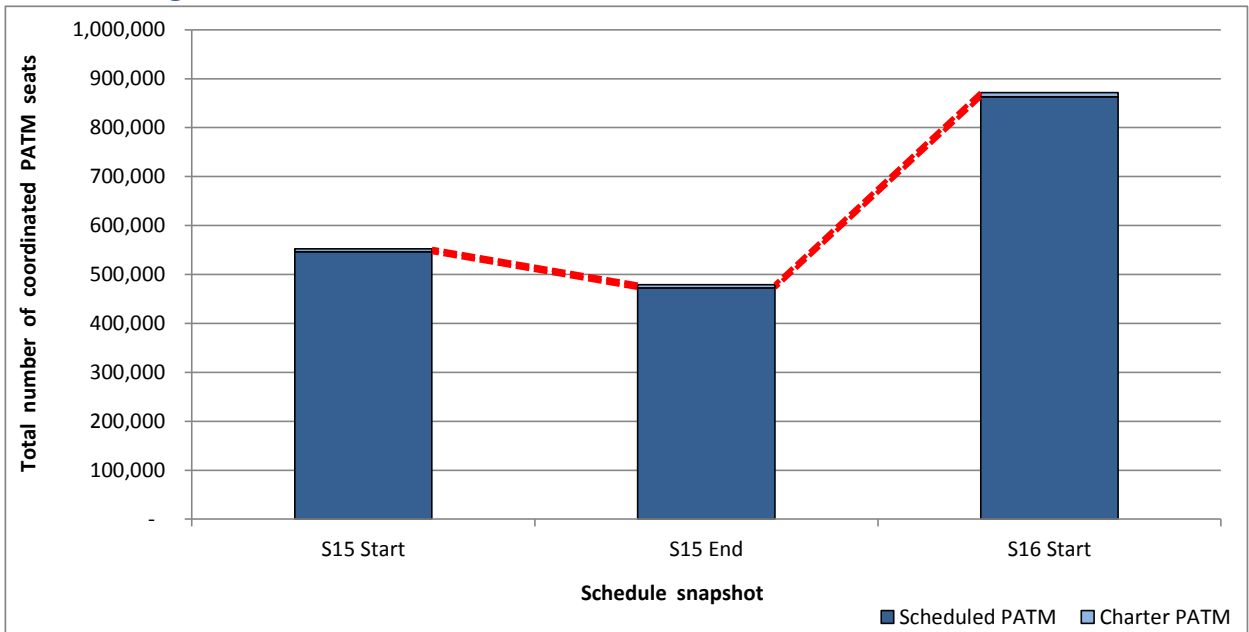
Total ATMs: Passenger ATMs vs. Freight ATMs



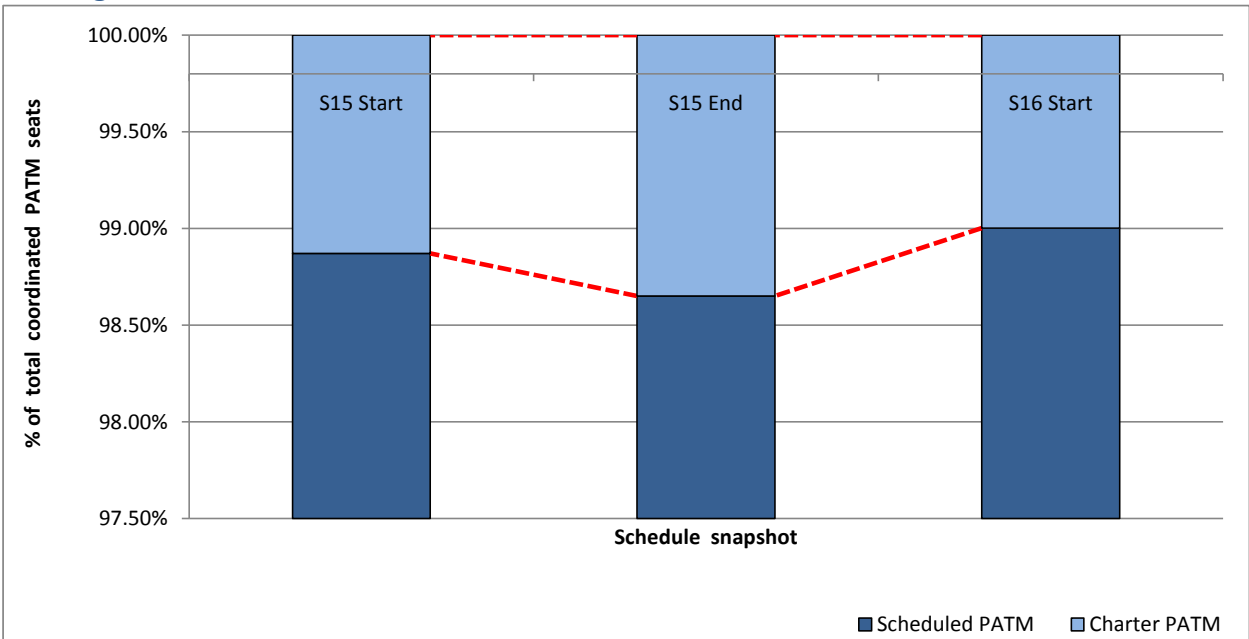
Full Season - PATM Seats Analysis



Total Passenger ATM seats: Scheduled vs. Charter



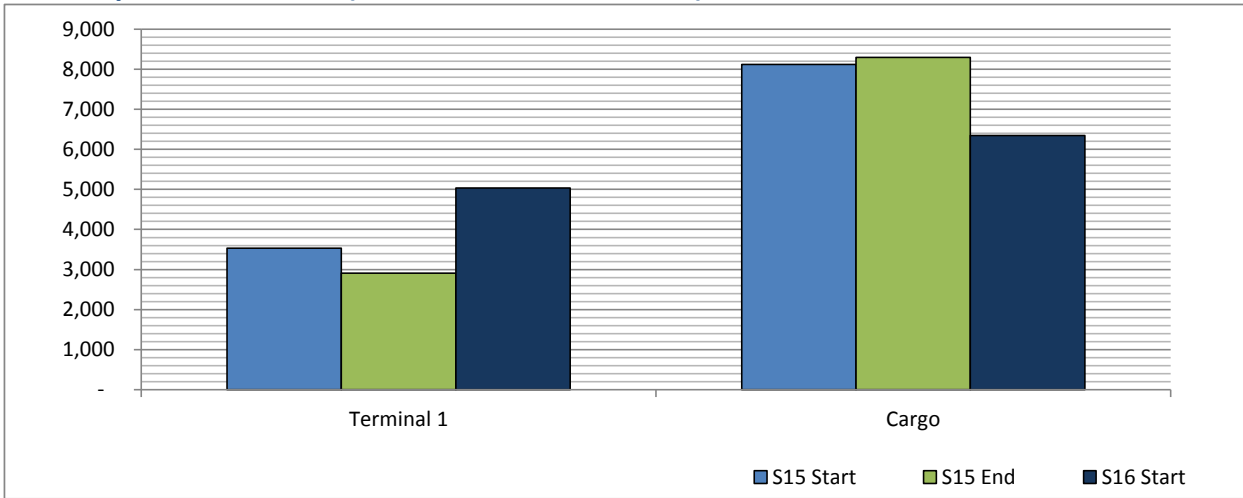
Passenger ATM seats: Scheduled vs. Charter



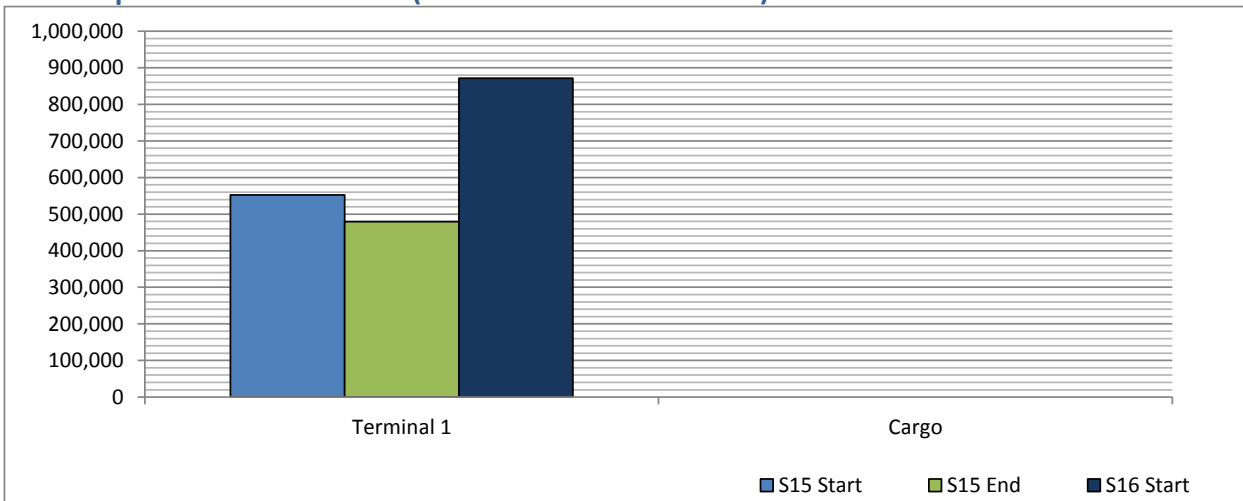
Full Season - Terminal Analysis



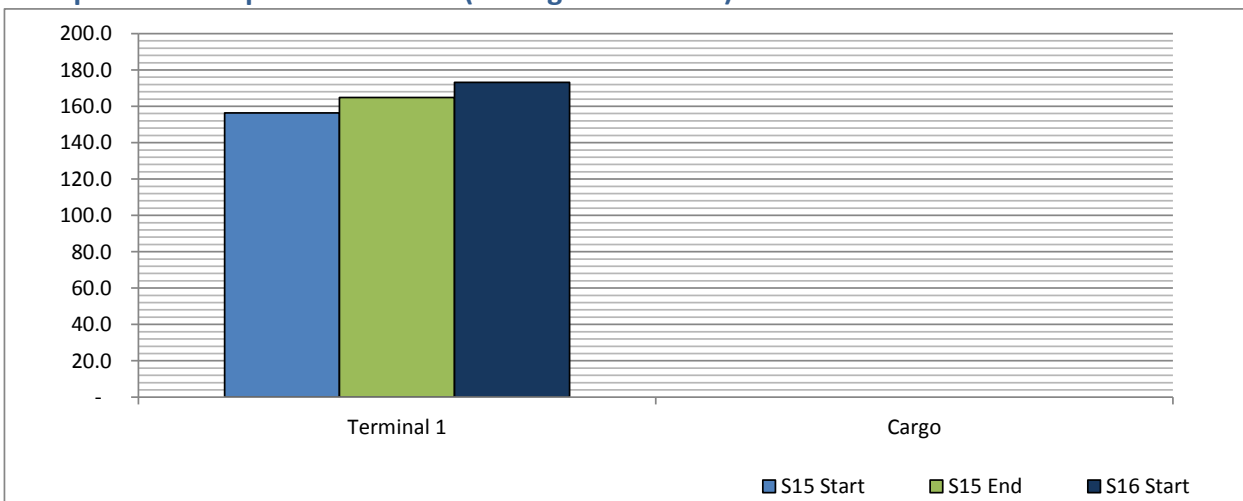
Air Transport Movements (total allocated for season)



Air Transport Movement Seats (total allocated for season)



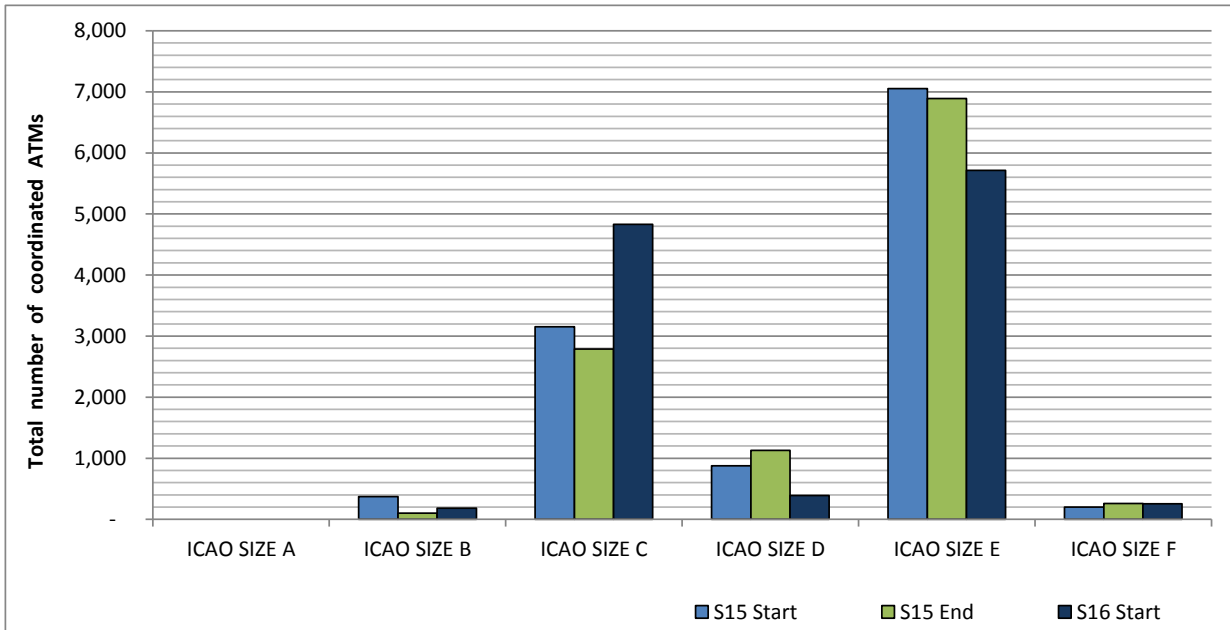
Seats per Air Transport Movement (average for season)



Full Season - Aircraft Size Analysis

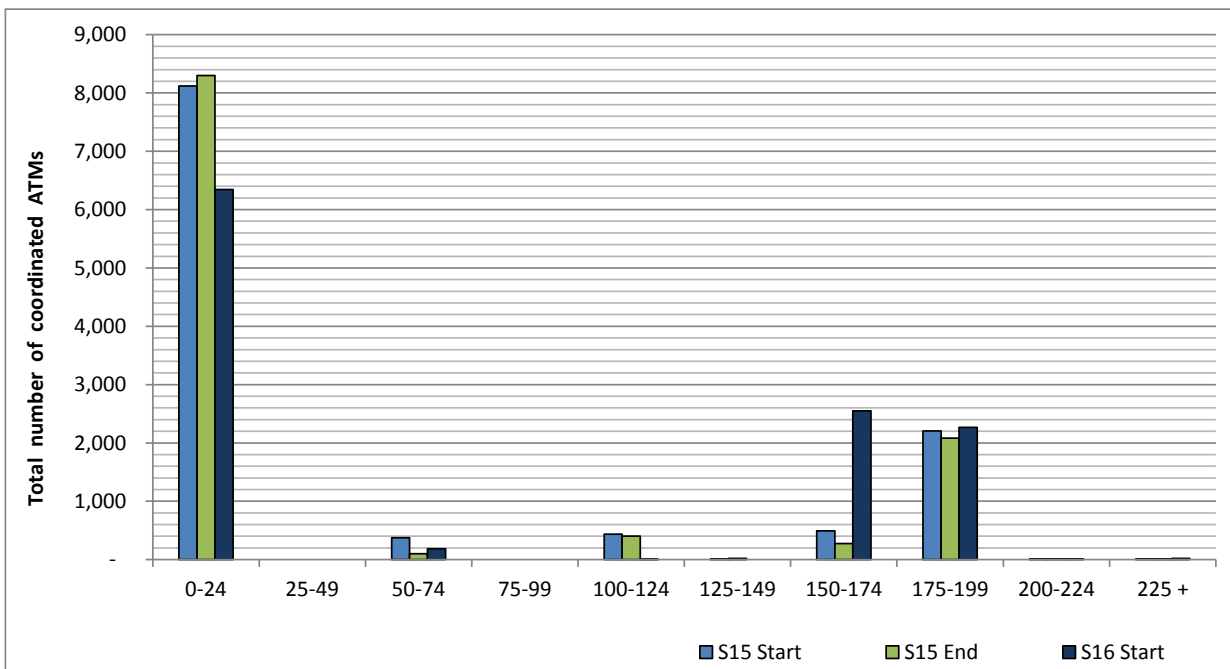


ICAO size designation



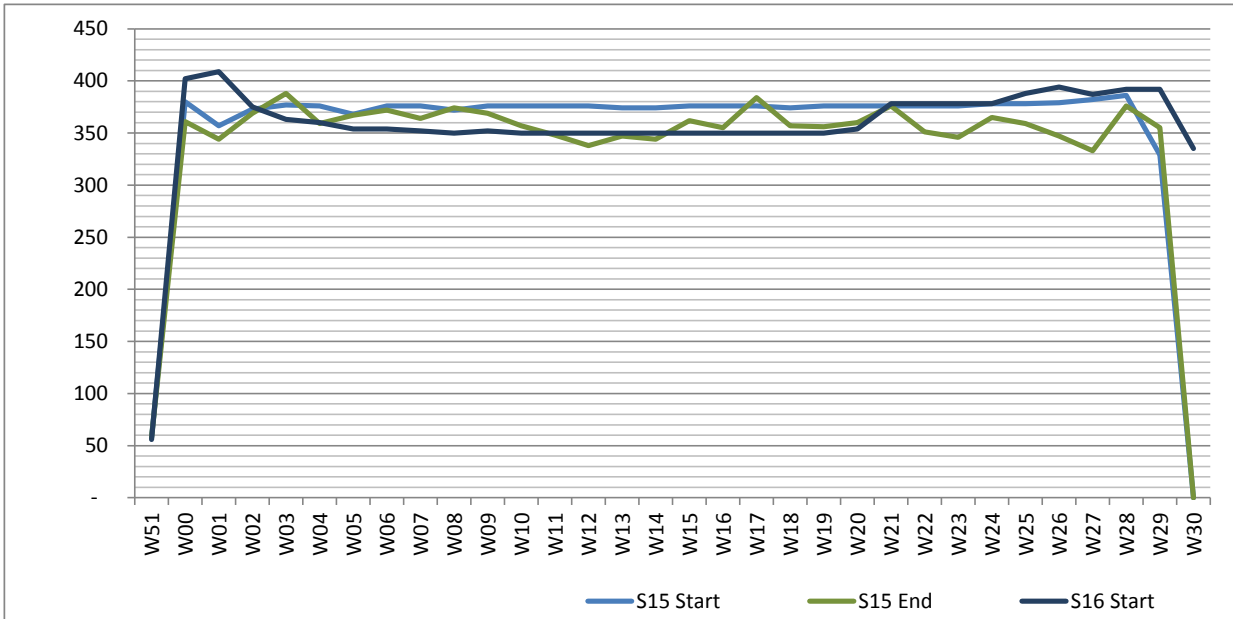
Note: See Glossary for definitions of ICAO SIZE groupings

Air Transport Movement seat distribution

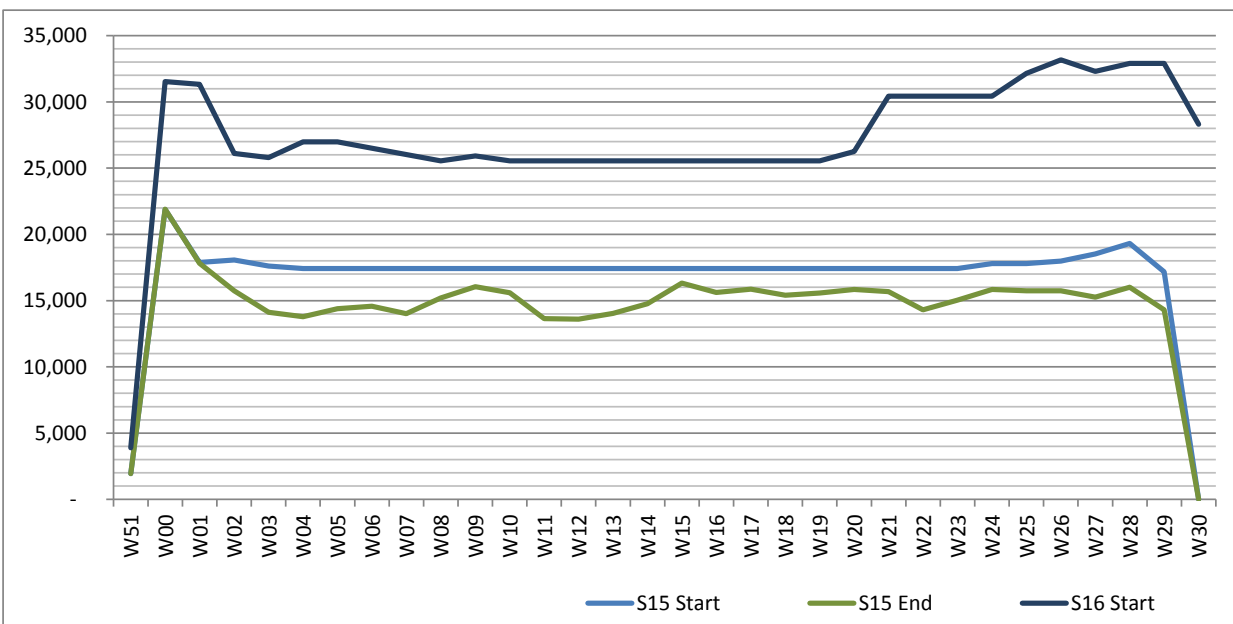


Note: FREIGHT-ONLY services with 0 seats are included in the first seat band '0-24'

Air Transport Movements by week of season



Air Transport Movement Seats by week of season



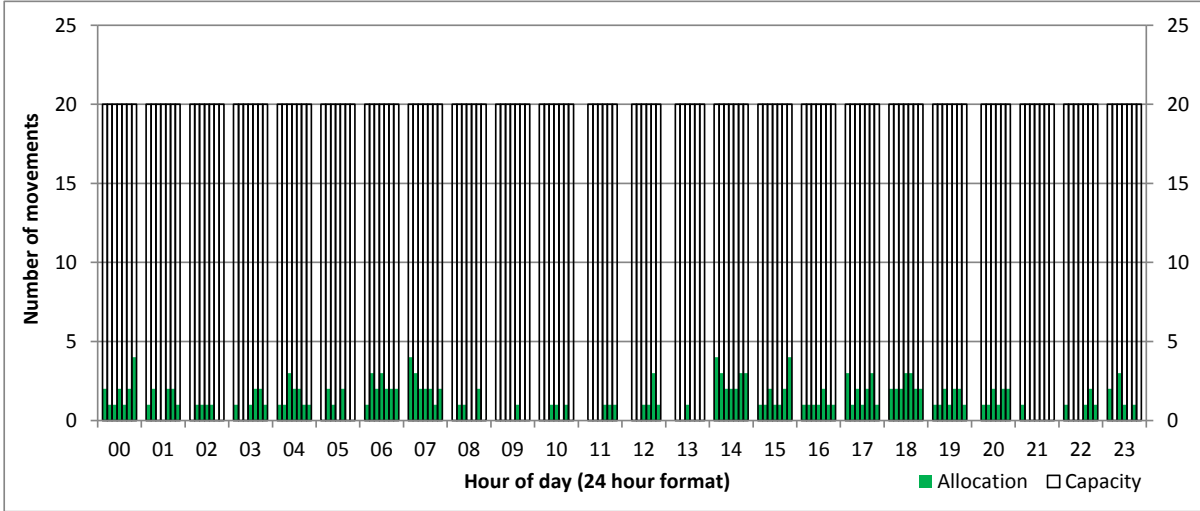
Peak Week - Hourly Runway Allocation

Schedule: S16 Start



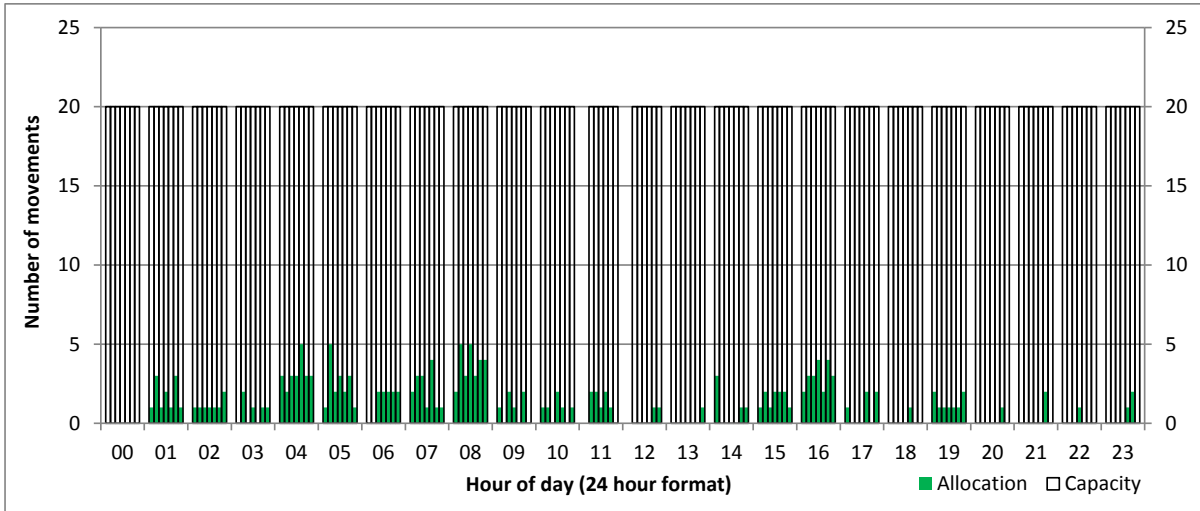
Hourly Arrival Allocation

Time: UTC



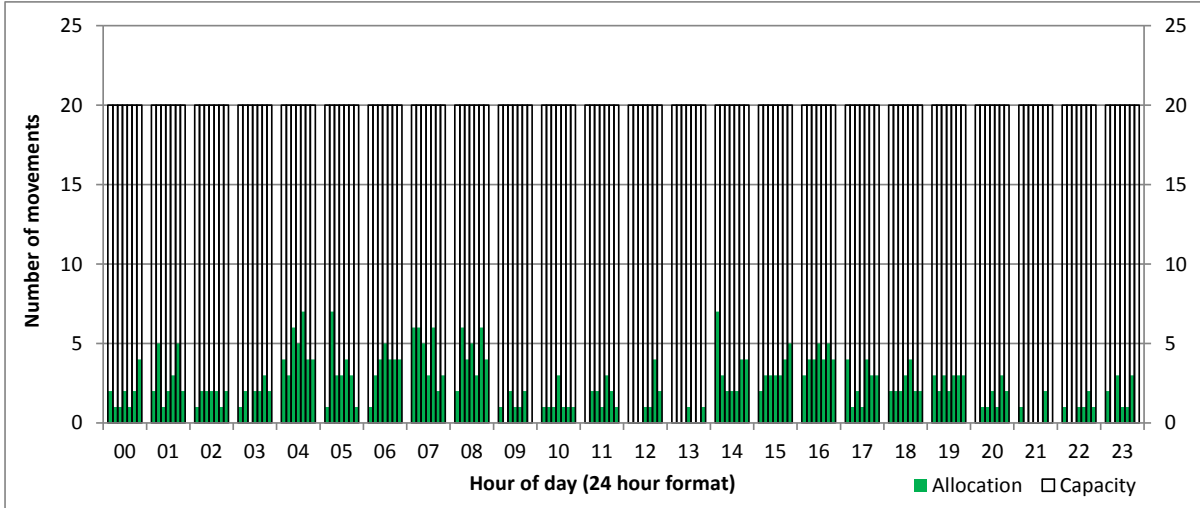
Hourly Departure Allocation

Time: UTC



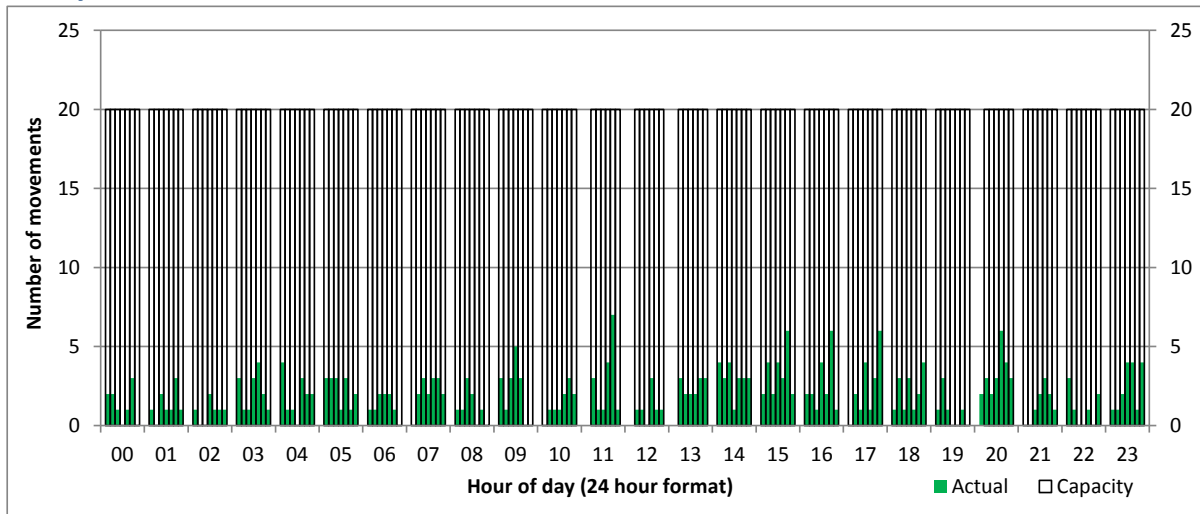
Combined Hourly Arrival & Departure (Total) Allocation

Time: UTC



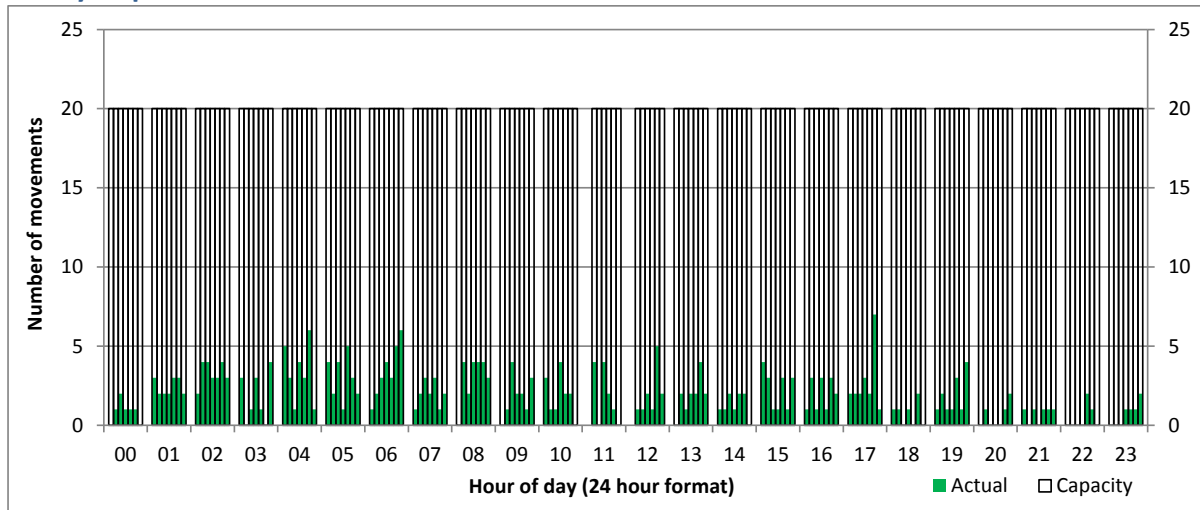
Hourly Arrival

Time: UTC



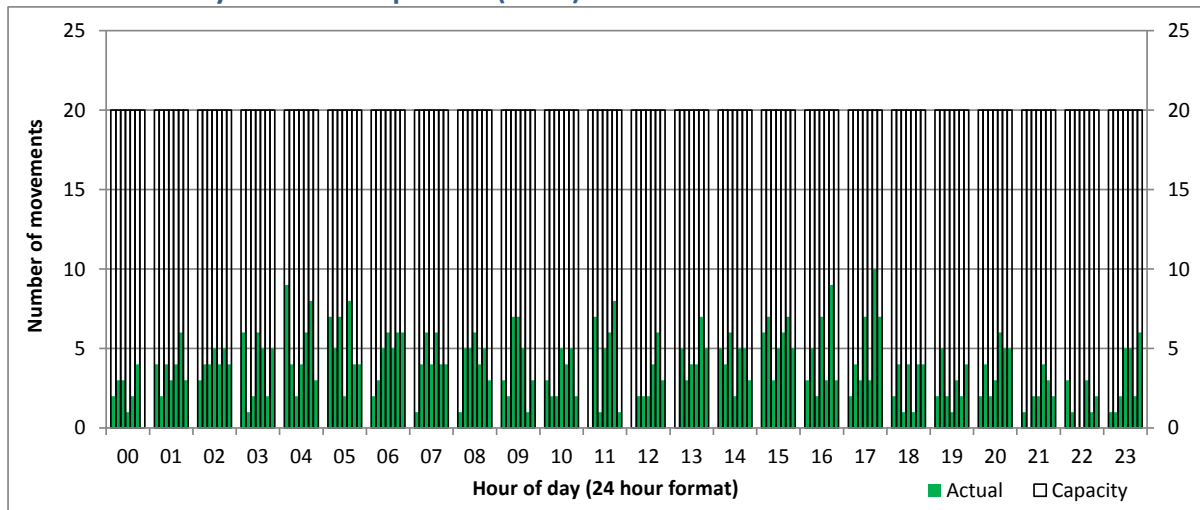
Hourly Departure

Time: UTC



Combined Hourly Arrival & Departure (Total)

Time: UTC



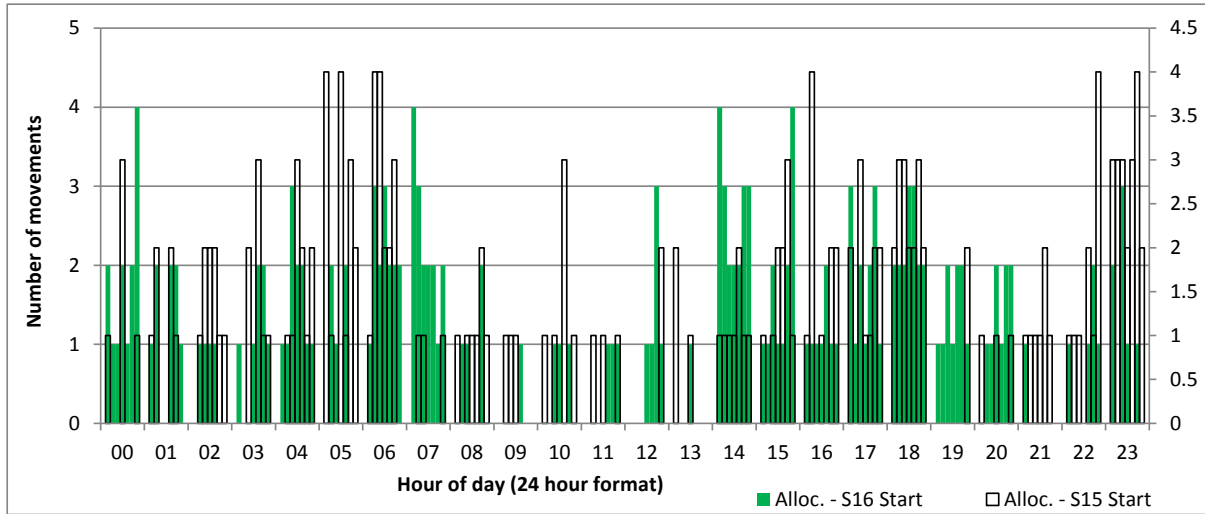
Peak Week - Runway Allocation Comparison

Comparison of S16 Start vs. S15 Start



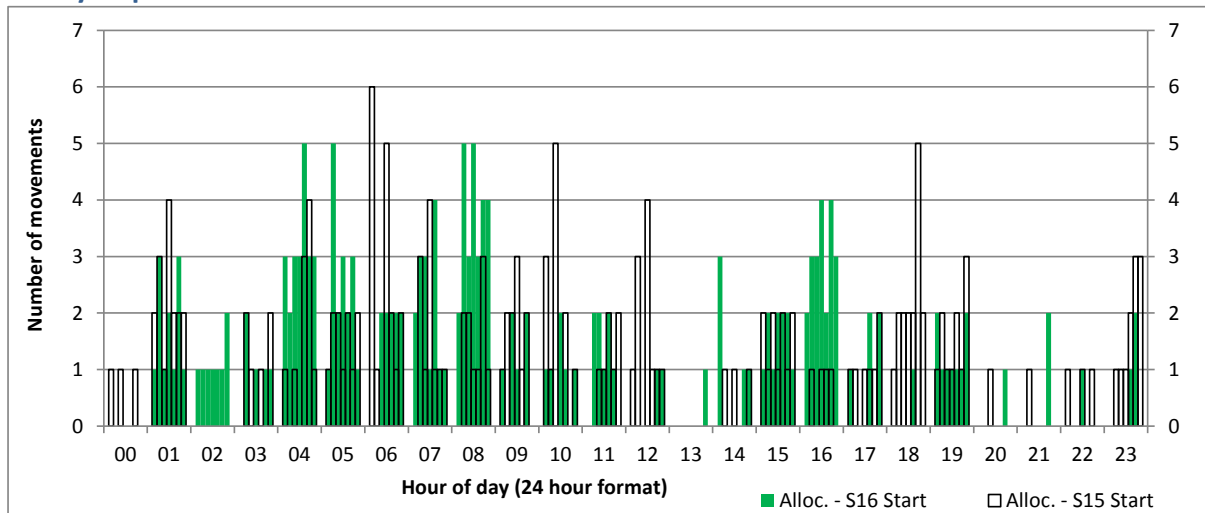
Hourly Arrival Allocation

Time: UTC



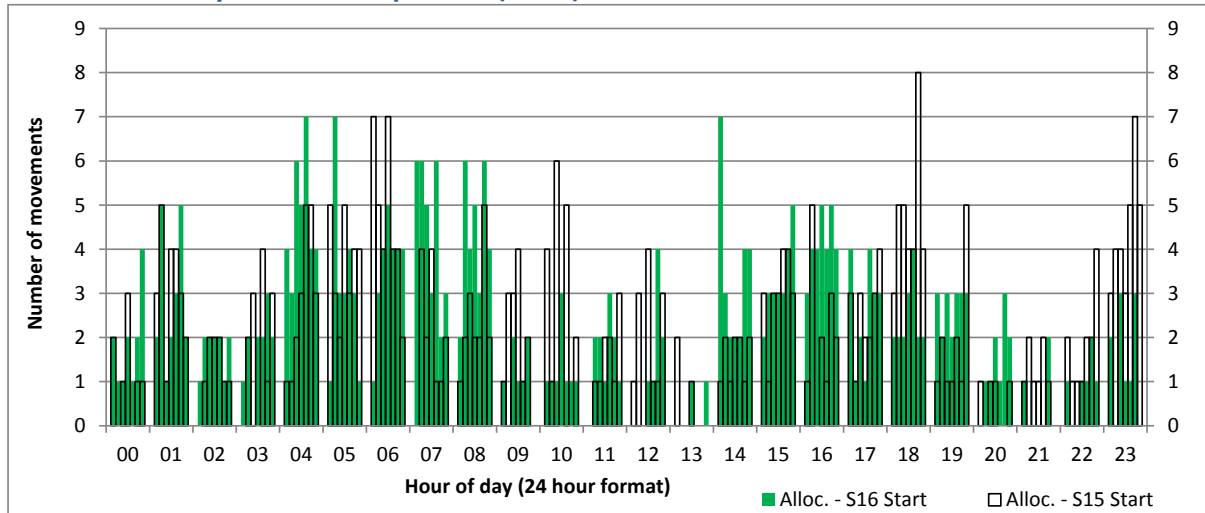
Hourly Departure Allocation

Time: UTC



Combined Hourly Arrival & Departure (Total) Allocation

Time: UTC



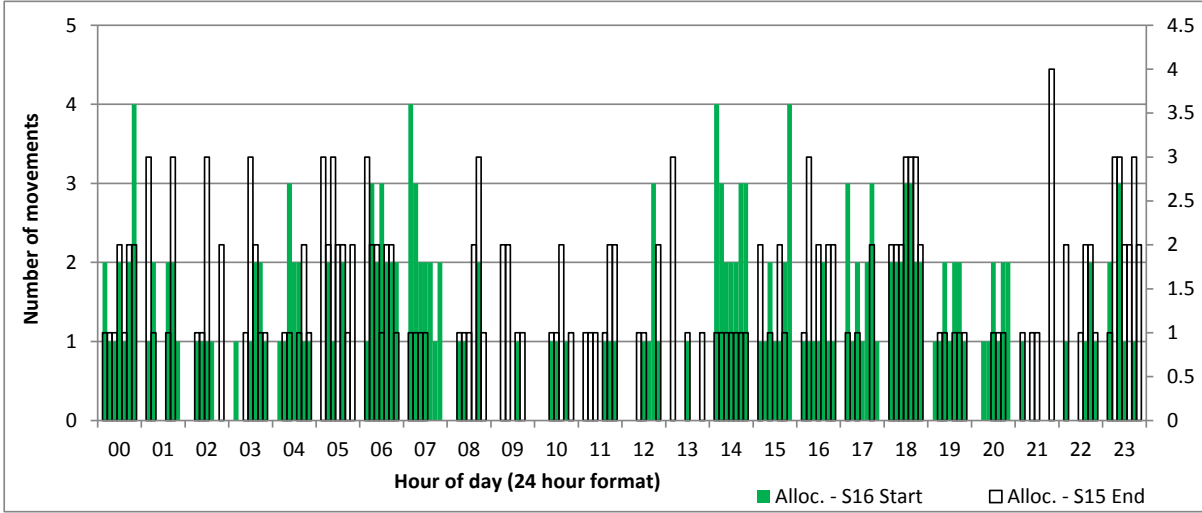
Peak Week - Runway Allocation Comparison

Comparison of S16 Start vs. S15 End



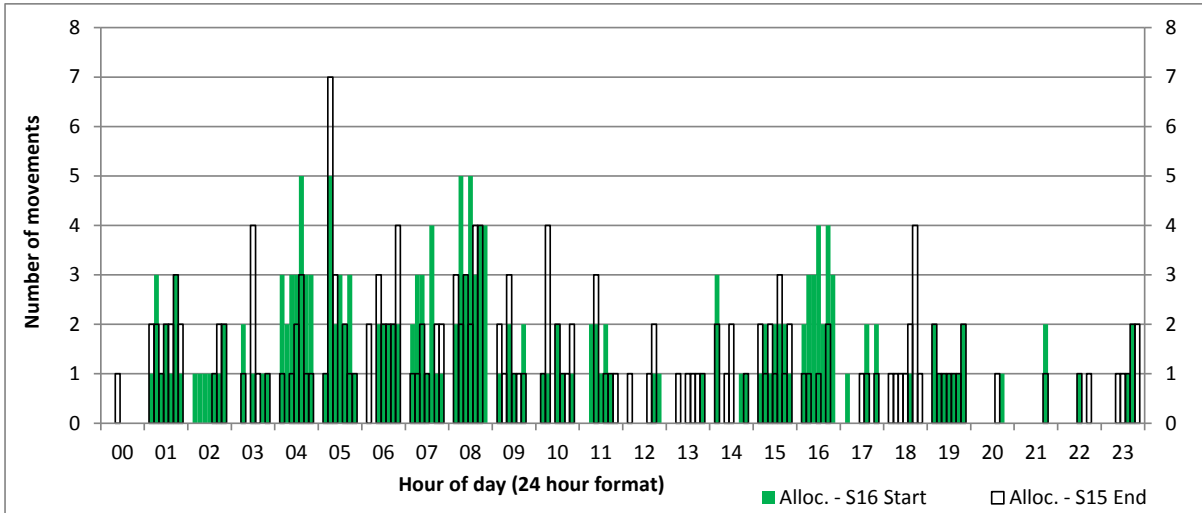
Hourly Arrival Allocation

Time: UTC



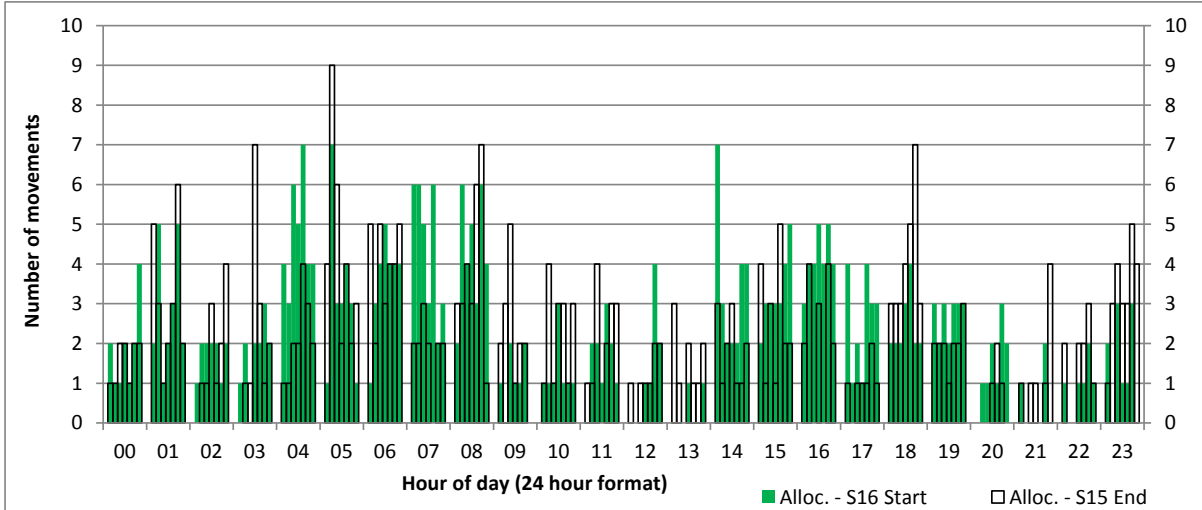
Hourly Departure Allocation

Time: UTC



Combined Hourly Arrival & Departure (Total) Allocation

Time: UTC



Air Transport Movement (ATM)	Any aircraft movement which is either a scheduled or chartered passenger or cargo flight.
Common Travel Area (CTA)	Origin or Destination is in Republic of Ireland or the Channel Islands.
Demand	Unconstrained demand before any schedule adjustments have been made.
"Fill-in"	These are gaps in a historic series of slots which the carrier requests to "Fill-in" at Initial Submissions - Fill-ins will be recognisably part of the historic series and will have the same flight details to qualify as a "Fill-in".
Hist (SHL)	Snapshot of historic schedule rolled over from end of the previous equivalent season - as advised to airlines in the SHLs.
ICAO Size A	Aircraft with wingspan between 0.00m - 14.99m.
ICAO Size B	Aircraft with wingspan between 15.00m - 23.99m.
ICAO Size C	Aircraft with wingspan between 24.00m - 35.99m.
ICAO Size D	Aircraft with wingspan between 36.00m - 51.99m.
ICAO Size E	Aircraft with wingspan between 52.00m - 64.99m.
ICAO Size F	Aircraft with wingspan between 65.00m - 80.00m.
Init Coord	Snapshot of schedule immediately after Initial Coordination is completed - as advised to airlines in the SALs.
Passenger Air Transport Movement (PATM)	Any aircraft movement which is either a scheduled or chartered passenger flight.
Start	Snapshot of schedule shortly before the start of the scheduling season (exact date given below where used).
Time: Local	Times shown are in LOCAL time for the airport/scheduling season.
Time: UTC	Times shown are in Universal Time Constant (UTC).

Data snapshot descriptions

S15 Start	S15 schedule as cleared on Mon 30-Mar-15.
S15 End	S15 schedule as cleared on Mon 26-Oct-15.
S16 Start	S16 schedule as cleared on Thu 20-Aug-15.

Peak Week	Peak week for S15 is Mon 12-Oct-15 to Sun 18-Oct-15. Peak week for S16 is Mon 26-Sep-16 to Sun 02-Oct-16.
------------------	--

For ACL use

	Airport-Season-Branch-Resource	From date	To date	Time
Full Season Rep 1	DWC-S15-Start-Standard	Sun 29-Mar-2015	Sat 24-Oct-2015	UTC
Full Season Rep 2	DWC-S15-End-Standard	Sun 29-Mar-2015	Sat 24-Oct-2015	UTC
Full Season Rep 3	DWC-S16-Live-Standard	Sun 27-Mar-2016	Sat 29-Oct-2016	UTC
	Airport-Season-Branch-Resource	From date	To date	Time
Peak Week Rep 1	DWC-S15-Start-Standard	Mon 12-Oct-2015	Sun 18-Oct-2015	UTC
Peak Week Rep 2	DWC-S15-End-Standard	Mon 12-Oct-2015	Sun 18-Oct-2015	UTC
Peak Week Rep 3	DWC-S16-Live-Standard	Mon 26-Sep-2016	Sun 02-Oct-2016	UTC