

DUBLIN INTERNATIONAL AIRPORT

DUB

S14 Start of Season Report

	Summer 2014	Change from Summer 2013 (End of Season)	Change from Summer 2013 (Start of Season)
Key Statistics			
Air Transport Movements	107,760	1.1%	4.9%
Total Seats	17,452,327	5.3%	4.7%
Seats per Passenger ATM	165	0.0%	1.8%
Slots Cleared OK	98.6%		

ATM AND TOTAL SEATS INCLUDE ALL SERVICE TYPES. SEATS PER PASSENGER ATM INCLUDE C/J/G SERVICE TYPE ONLY

Contents	Page
Distribution of schedule adjustments	2
Schedule Changes Summary	3
Top 10 airlines by ATMs	4
Top 10 airlines by seats	5
Top destinations	6
R60 movements allocated - Arrivals	7
R60 movements allocated - Departures	7
R60 movements allocated - Totals	8
R10 movements allocated - Arrivals	8
R10 movements allocated - Departures	9
R10 movements allocated - Totals	10
Terminal 1 T60/10 allocated - Arrivals	11
Terminal 1 T60/10 allocated - Departures	11
Terminal 2 T60/10 allocated - Arrivals (Weighted)	12
Terminal 2 T60/10 allocated - Departures (Weighted)	12
Terminal 2 T60/10 allocated - Arrivals (Non-Weighted)	13
Terminal 2 T60/10 allocated - Departures (Non-Weighted)	13

Data in this report is current as of 24 March 2014

No warranty whether expressed or implied as to the completeness, accuracy, fitness for purpose, or satisfactory quality is given by ACL regarding the information in this report, which is provided by third parties. Accordingly, ACL excludes all liability with regard to such data.

The contents of this report may not be reproduced without the written consent of ACL.

Distribution of Schedule Adjustments - Minutes

Carrier	Number of Operations Off Slot								Total
	0	5	10	15	20	25	30	35	
EI	46,774	518	306		90	30		30	47,748
FR	33,983	229	42						34,254
BA	3,100								3,100
WX	2,209	29							2,238
AF	2,160								2,160
BE	1,582								1,582
LH	1,462	30							1,492
SK	1,426								1,426
UA	940								940
LOG	840								840
AA	758								758
US	750								750
TK	724								724
DL	720	94							814
EY	718								718
TOM	610								610
SRR	600								600
EK	530								530
4U	480								480
DY	464								464
LX	456								456
ABR	415	1							416
IB	402								402
BCS	356								356
RO	330								330
AC	304								304
NPT	300								300
3V	300								300
BBD	300								300
FX	300								300
OB	282								282
LG	244								244
CWY	234								234
WS	224								224
TS	200								200
OHY	98								98
AEA	84								84
REV	60								60
TU	60								60
WI	56								56
HV	52		2	2					56
9U	42		50						92
7M	42								42
EZE	30	30							60
S7	24								24
JN	24								24
OU	18								18
FI	18								18
IZ	18								18
JQ	18								18
YW	16								16
HG	15		1						16
ZT	15	1							16
JP	11	1							12
BRU	10								10
AZ	8								8
FPO	7						1		8
OV	6								6
DTR	6								6
RC	4								4
ST	4								4
TCX	4								4
AXE	2								2
DK	2								2
RE	2								2
WF	2								2
WG	1								1
NVR	1								1
QS		36							36
Total	106,237	969	401	2	90	30	1	30	107,760

Distribution of Schedule Adjustments - Percentages

Carrier	Percentage of operations off slot - by minutes							
	0	5	10	15	20	25	30	35
EI	98.0%	1.1%	0.6%		0.2%	0.1%		0.1%
FR	99.2%	0.7%	0.1%					
BA	100.0%							
WX	98.7%	1.3%						
AF	100.0%							
BE	100.0%							
LH	98.0%	2.0%						
SK	100.0%							
UA	100.0%							
LOG	100.0%							
AA	100.0%							
US	100.0%							
TK	100.0%							
DL	88.5%	11.5%						
EY	100.0%							
TOM	100.0%							
SRR	100.0%							
EK	100.0%							
4U	100.0%							
DY	100.0%							
LX	100.0%							
ABR	99.8%	0.2%						
IB	100.0%							
BCS	100.0%							
RO	100.0%							
AC	100.0%							
NPT	100.0%							
3V	100.0%							
BBD	100.0%							
FX	100.0%							
OB	100.0%							
LG	100.0%							
CWY	100.0%							
WS	100.0%							
TS	100.0%							
OHY	100.0%							
AEA	100.0%							
REV	100.0%							
TU	100.0%							
WI	100.0%							
HV	92.9%		3.6%	3.6%				
9U	45.7%		54.3%					
7M	100.0%							
EZE	50.0%	50.0%						
S7	100.0%							
JN	100.0%							
OU	100.0%							
FI	100.0%							
IZ	100.0%							
JQ	100.0%							
YW	100.0%							
HG	93.8%	6.3%	6.3%					
ZT	93.8%	6.3%						
JP	91.7%	8.3%						
BRU	100.0%							
AZ	100.0%							
FPO	87.5%						12.5%	
OV	100.0%							
DTR	100.0%							
RC	100.0%							
ST	100.0%							
TCX	100.0%							
AXE	100.0%							
DK	100.0%							
RE	100.0%							
WF	100.0%							
WG	100.0%							
NVR	100.0%							
QS		100.0%						
Total	98.6%	0.9%	0.4%	0.0%	0.1%	0.1%	0.1%	0.1%

DUBLIN INTERNATIONAL AIRPORT

S14 Schedule Summary - Notable Changes

Aer Lingus	Overall Movements increased by 5.1%.
Air Canada	Increased Capacity on Toronto Pearson (YYZ).
American Airlines	American Airlines is now operating JFK Full Season. Chicago O'Hare (ORD) begins in May and runs to the end of the season.
Emirates	Emirates will now offer a daily late evening rotation from September to October
Eithad	Eithad will now operate 2x daily services from July (afternoon rotation increases to daily). On Monday 24th March IB announced that their Dublin route will be operated by Iberia Express (I2).
Iberia	
Loganair	As of writing, Loganair have not yet requested flight number changes to their BE codeshares
Minoan Air	Officially withdrawn services for S14.
Ryanair	Overall Movements increased by 5.3%. Leasing in four 737-400 series aircraft to facilitate various routes during the season. The configurations are 1x170 seat aircraft, 1x 168 seat
US Airways	Increased Capacity on Charlotte (CLT).

The above is a summary of major notable changes within the S14 schedule and is not exclusive. Information is correct at time of publication.

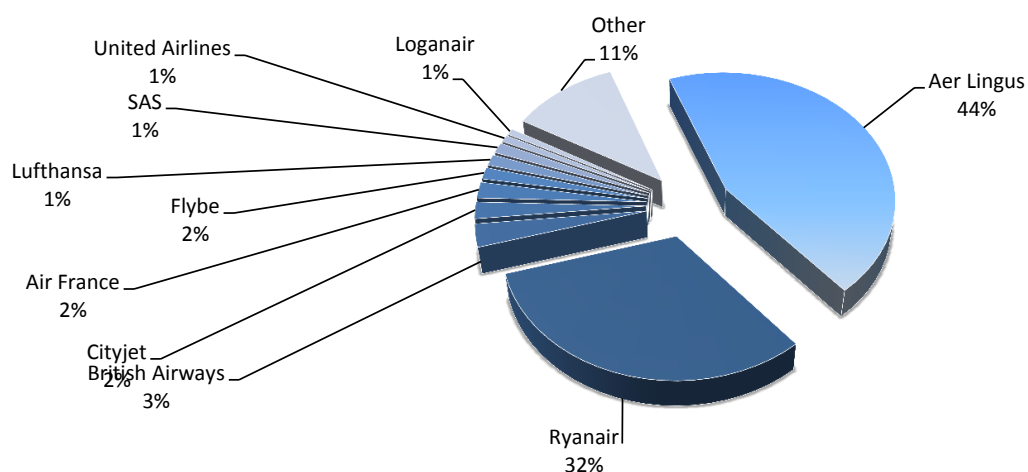
Data in this report is current as of 24 March 2014

No warranty whether expressed or implied as to the completeness, accuracy, fitness for purpose, or satisfactory quality is given by ACL regarding the information in this report, which is provided by third parties. Accordingly, ACL excludes all liability with regard to such data.

The contents of this report may not be reproduced without the written consent of ACL.

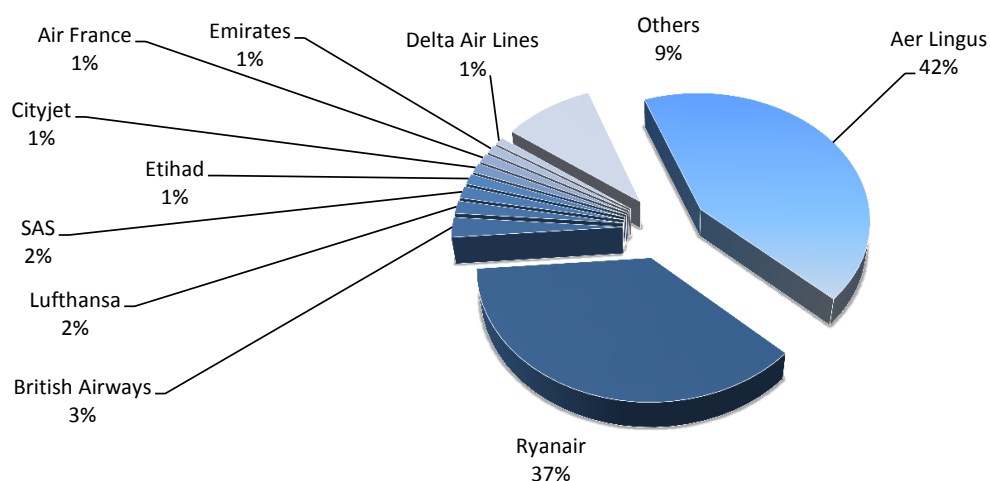
Top 10 Airlines by Air Transport Movements (ATMs)

Airline	Movements
Aer Lingus	47,748
Ryanair	34,254
British Airways	3,100
Cityjet	2,238
Air France	2,160
Flybe	1,582
Lufthansa	1,492
SAS	1,426
United Airlines	940
Loganair	840
Other	11,980

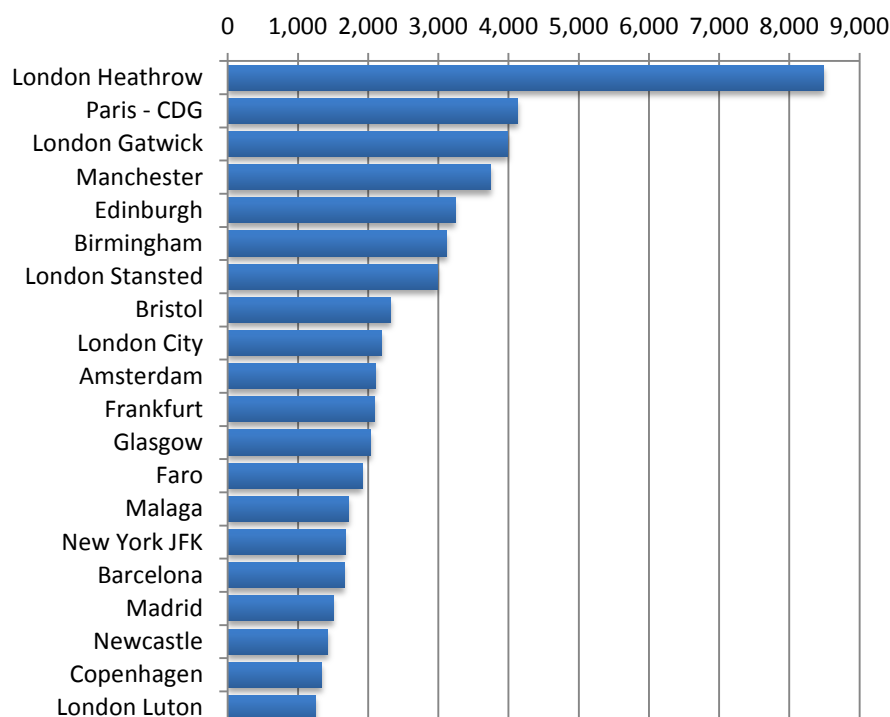


Top 10 Airlines by Seats

Airline	Seats
Aer Lingus	7,403,205
Ryanair	6,431,924
British Airways	433,392
Lufthansa	279,864
SAS	267,374
Etihad	229,888
Cityjet	211,660
Air France	199,500
Emirates	190,800
Delta Air Lines	169,228
Others	1,635,492

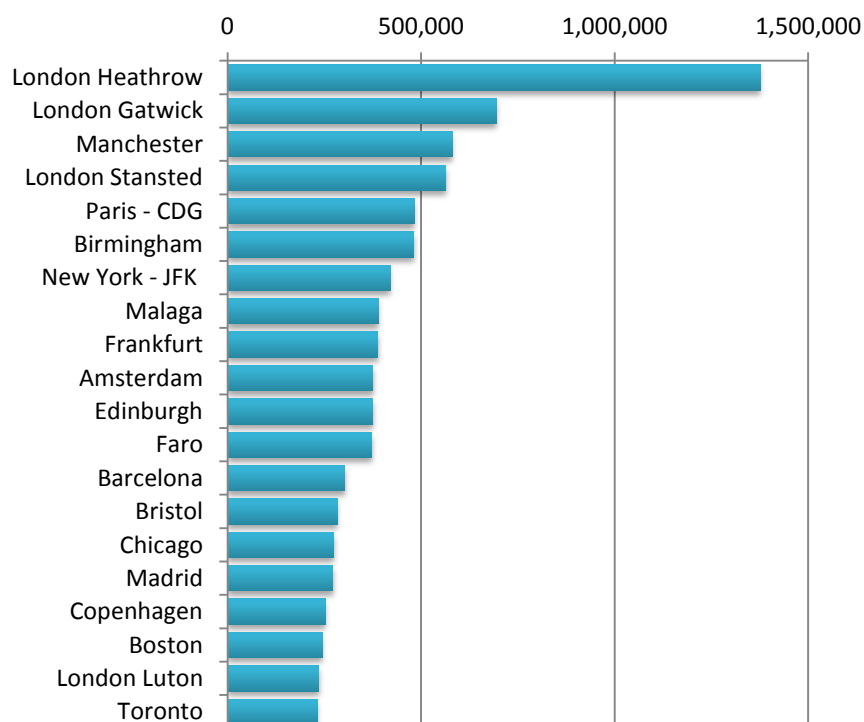


Top 20 Air Transport Movements by Destination



Destination	ATM'S
London Heathrow	8,488
Paris - CDG	4,127
London Gatwick	3,991
Manchester	3,749
Edinburgh	3,241
Birmingham	3,123
London Stansted	2,995
Bristol	2,326
London City	2,195
Amsterdam	2,114
Frankfurt	2,095
Glasgow	2,033
Faro	1,916
Malaga	1,727
New York JFK	1,674
Barcelona	1,662
Madrid	1,506
Newcastle	1,430
Copenhagen	1,344
London Luton	1,249

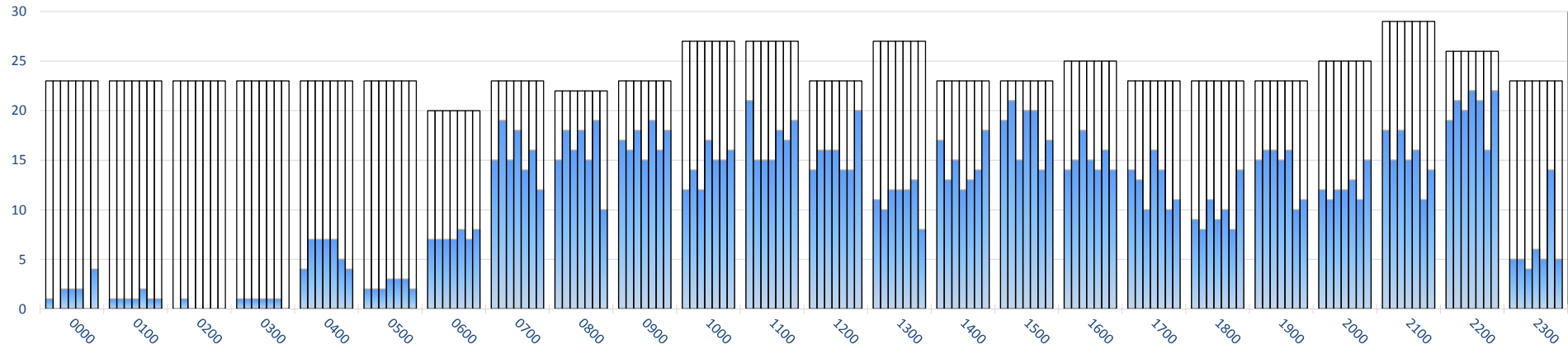
Top 20 Air Transport Seats by Destination



Destination	SEATS
London Heathrow	1,375,736
London Gatwick	694,586
Manchester	579,990
London Stansted	564,160
Paris - CDG	481,956
Birmingham	480,736
New York - JFK	420,084
Malaga	389,198
Frankfurt	388,189
Amsterdam	375,296
Edinburgh	374,932
Faro	372,214
Barcelona	301,804
Bristol	283,074
Chicago	273,900
Madrid	271,522
Copenhagen	252,792
Boston	244,282
London Luton	235,502
Toronto	231,662

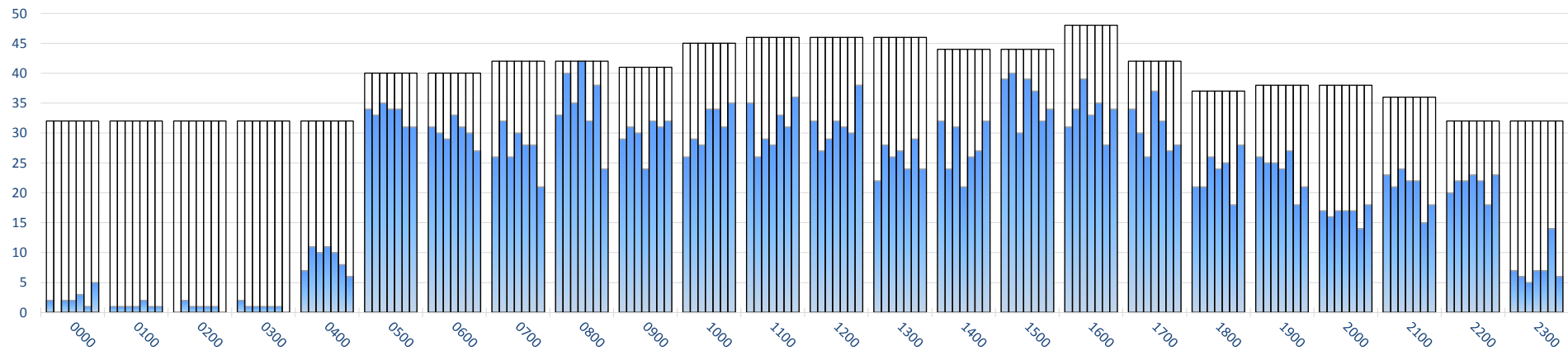
Peak Week Hourly Arrivals (28 July) as at 24 March 2014

Peak Week Movements per Hour - All times UTC



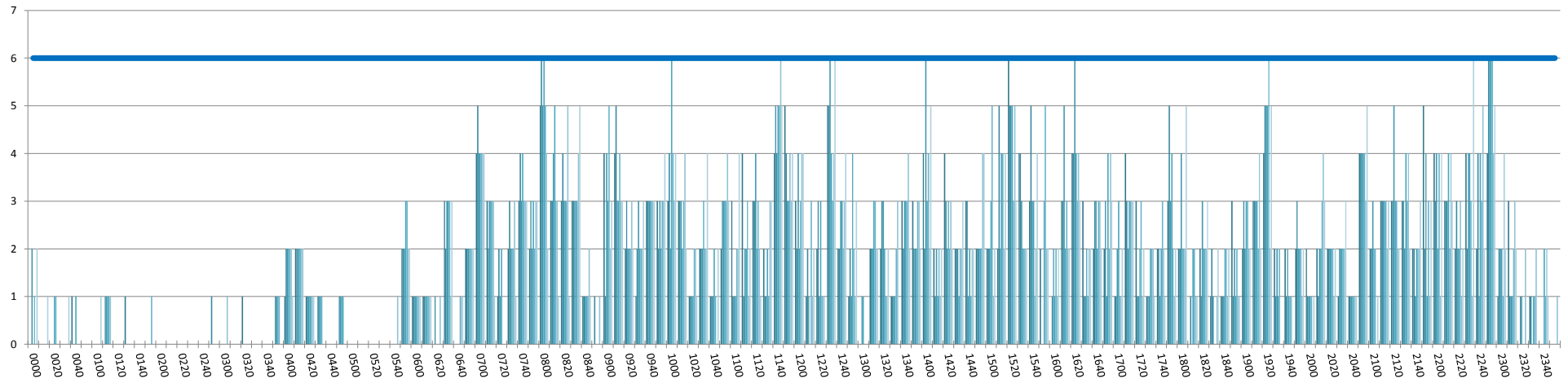
Peak Week Hourly Totals (28 July) as at 24 March 2014

Peak Week Movements per Hour - All times UTC



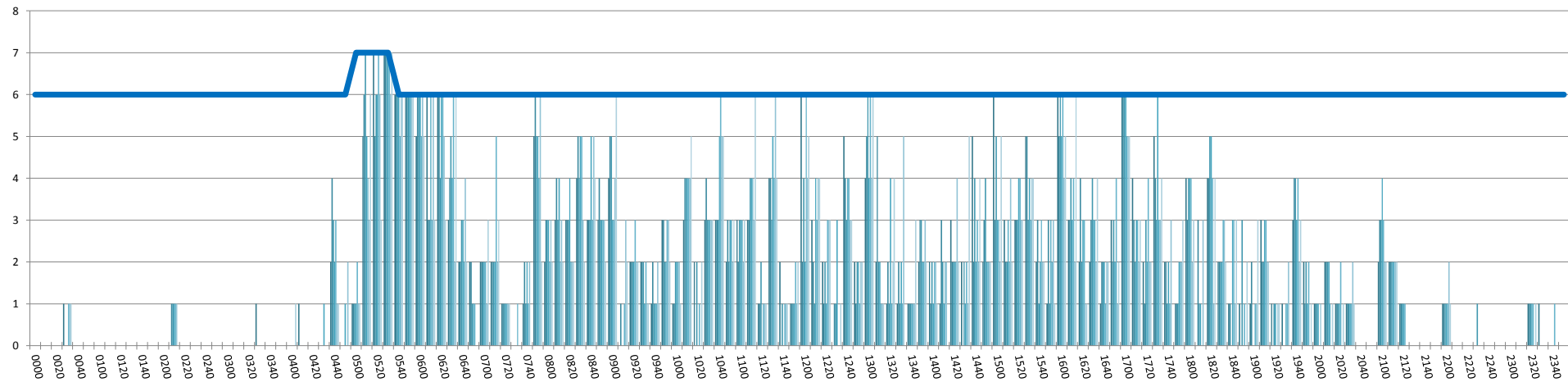
Peak Week Arrivals Per 10 Minutes (28 July) as at 24 March 2014

Peak Week Movements per Hour - All times UTC



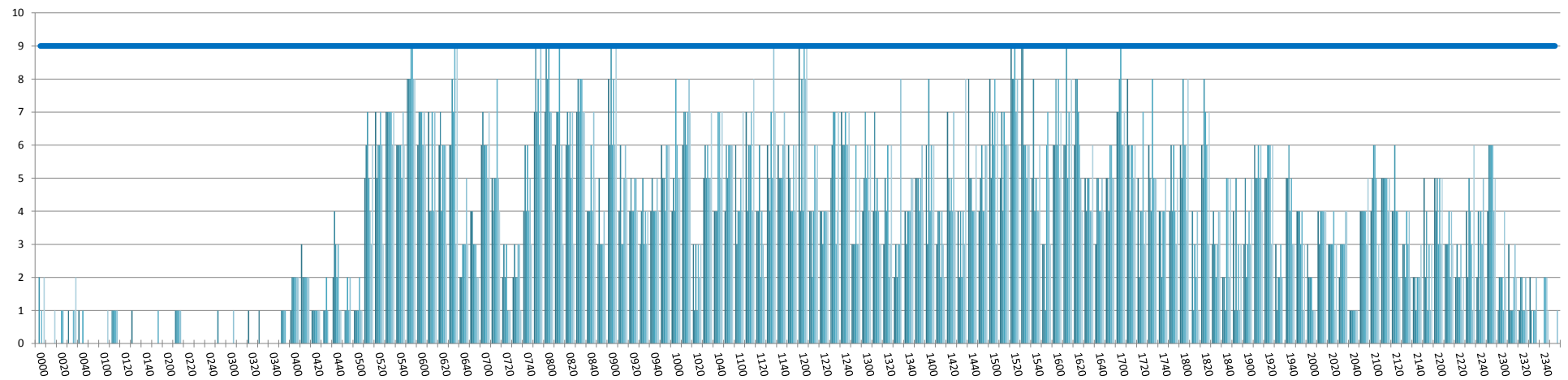
Peak Week Departures Per 10 Minutes (28 July) as at 24 March 2014

Peak Week Movements per Hour - All times UTC



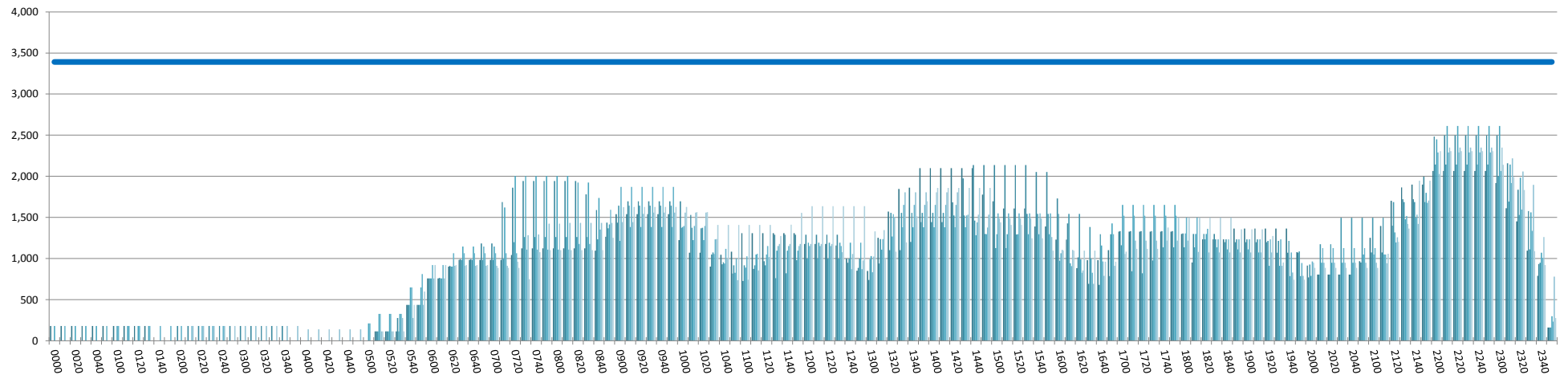
Peak Week Totals Per 10 Minutes (28 July) as at 24 March 2014

Peak Week Movements per Hour - All times UTC



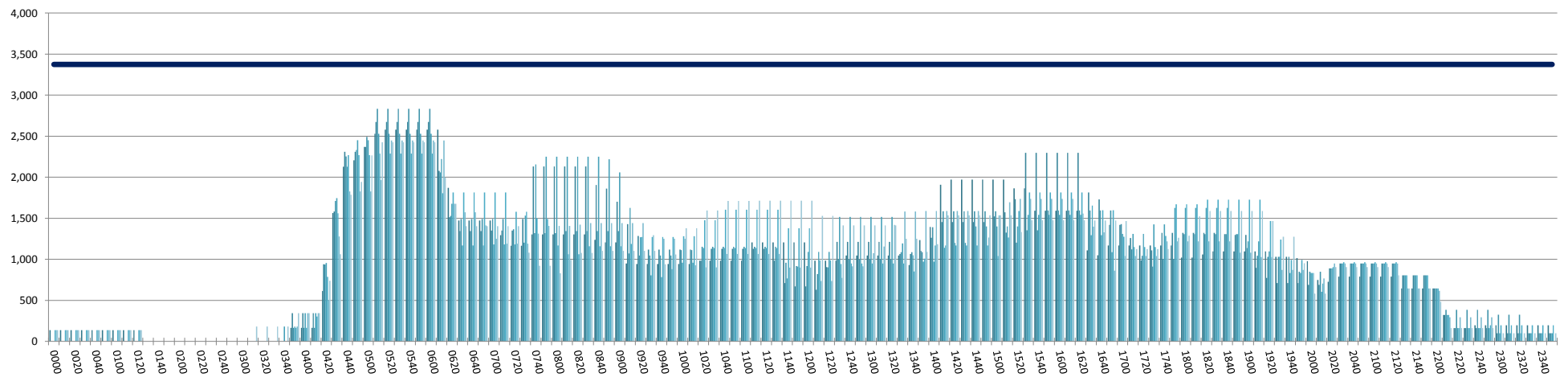
TERMINAL 1 HOURLY ARRIVALS AS AT 24 MARCH 2014

Peak Week Movements per Hour - All times UTC



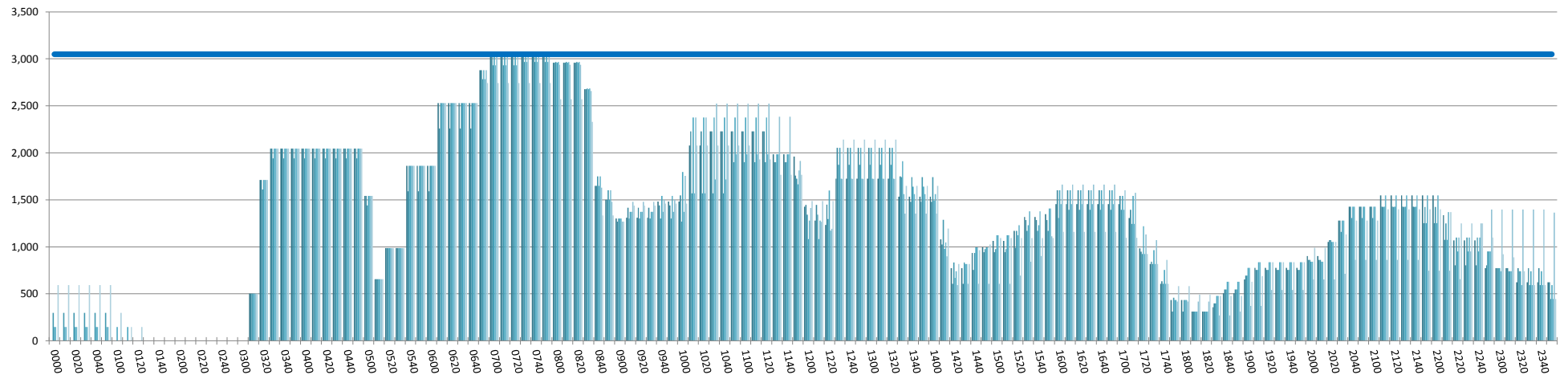
TERMINAL 1 HOURLY DEPARTURES AS AT 24 MARCH 2014

Peak Week Movements per Hour - All times UTC



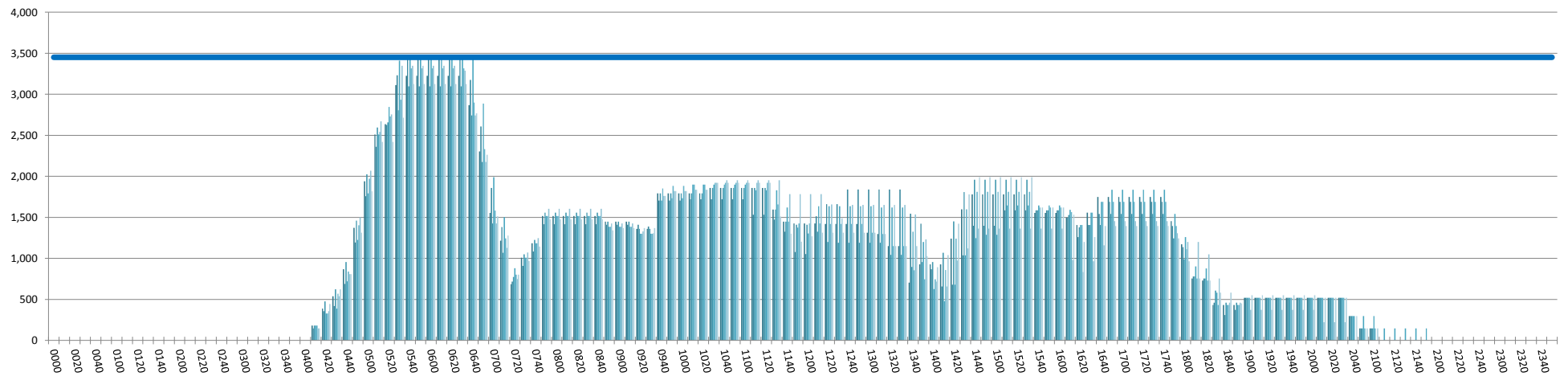
TERMINAL 2 HOURLY ARRIVALS AS AT 24 MARCH 2014 (WEIGHTED)

Peak Week Movements per Hour - All times UTC



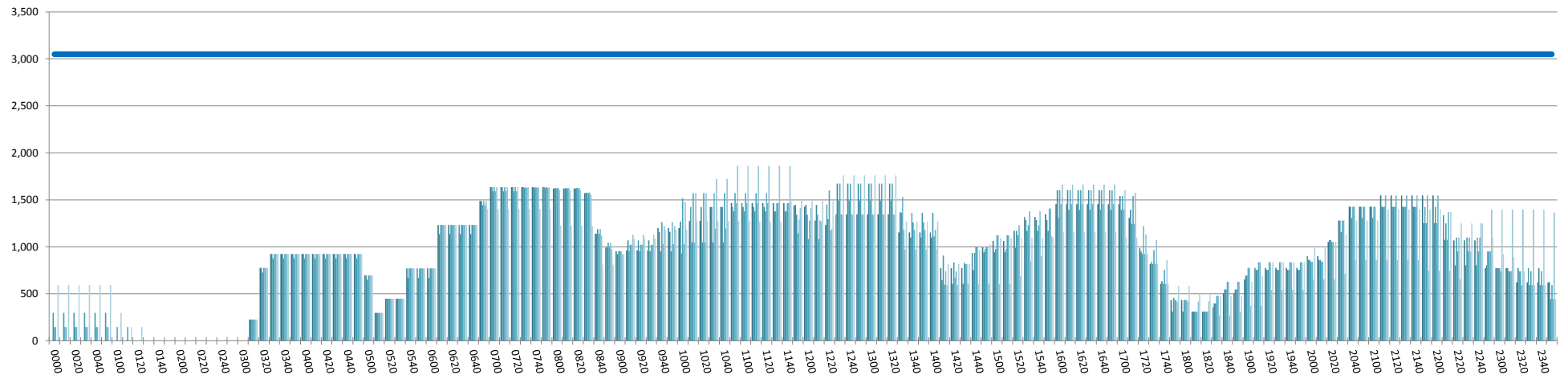
TERMINAL 2 HOURLY DEPARTURES AS AT 24 MARCH 2014 (WEIGHTED)

Peak Week Movements per Hour - All times UTC



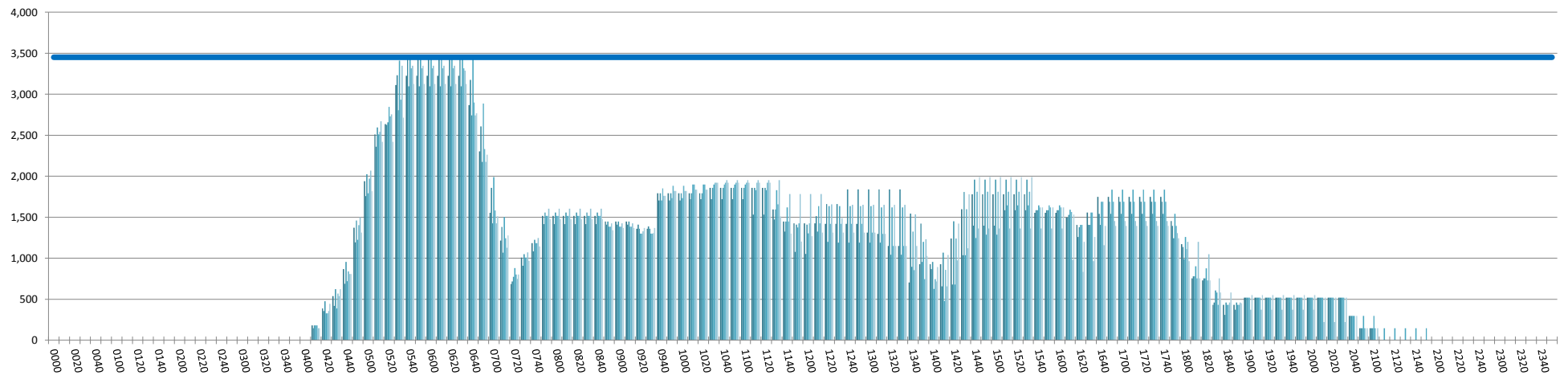
TERMINAL 2 HOURLY ARRIVALS AS AT 24 MARCH 2014 (NON-WEIGHTED)

Peak Week Movements per Hour - All times LOCAL



TERMINAL 2 HOURLY DEPARTURES AS AT 24 MARCH 2014 (NON-WEIGHTED)

Peak Week Movements per Hour - All times LOCAL



GLOSSARY OF TERMS

Air Transport Movement (ATM)	A scheduled or charter passenger or freight aircraft movement.
Allocation	The allocation of slots such that demand is constrained to fit within declared scheduling limits.
Common Travel Area (CTA)	Services to or from the Republic of Ireland and the Channel Islands.
Demand	The unconstrained demand for slots, prior to any schedule adjustments.
Passenger ATM	A scheduled or charter <u>passenger</u> aircraft movement (ie, excluding all-cargo aircraft movements).
Scheduling Limits	Limiting parameters declared by the Airport Operator used in the coordination process.
Seats	The number of seats based on the aircraft configuration advised by the airline.
Peak Week	The Peak Week for S13 is Week 17: 28 July - 03 August 2014
Data Snapshot	All data used for this report was as held 24th March 2014

GUIDE TO HISTOGRAMS

The histograms show the pattern of traffic by time of day against the appropriate scheduling limit. Each time period consist of seven columns representing the days-of-week, Monday through Sunday.