

CHRISTCHURCH INTERNATIONAL AIRPORT

CHC

W15 Start of Season Report (International Traffic)

Key Statistics	W14 Operated	W15 Season Start	Percentage Change	
Air Transport Movements	4,332	4,811	▲	11.1%
Total Seats	823,454	928,282	▲	12.7%
Seats per Passenger ATM	190	193		

Contents

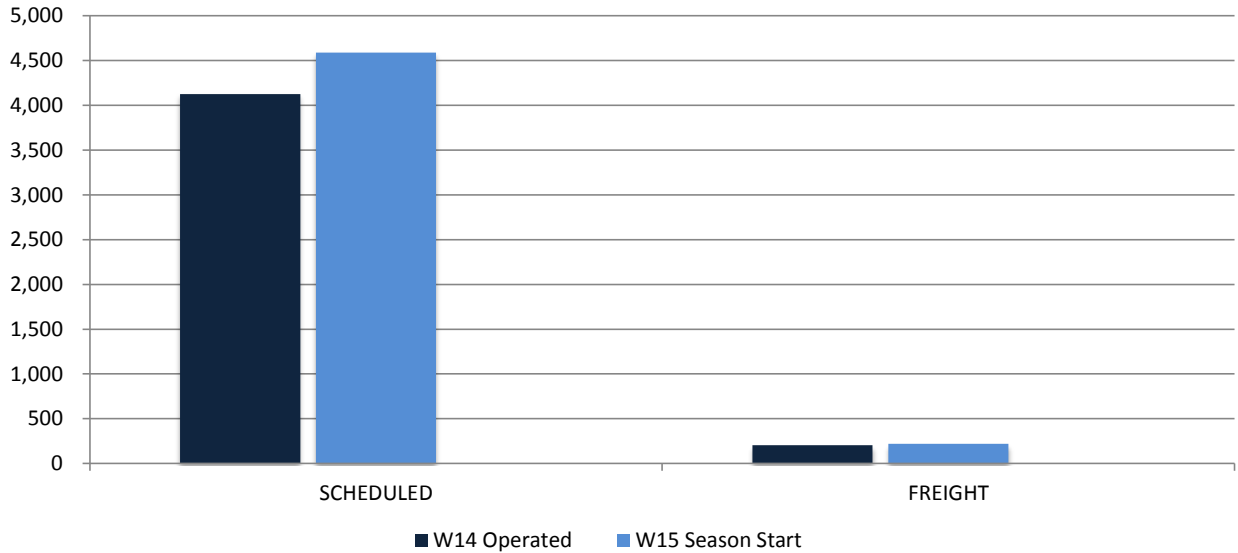
	Page
Movements and Seats by Service Type	2
Peak Week Departure Frequencies by Carrier	3
Top Airlines by ATM's and Seats	4
Top Destinations by ATM's and Seats	5
International Terminal - Passengers per 60 Minutes	6
Glossary	7

Data in this report is current as of 17 October 2015

No warranty whether expressed or implied as to the completeness, accuracy, fitness for purpose, or satisfactory quality is given by ACL regarding the information in this report, which is provided by third parties. Accordingly, ACL excludes all liability with regard to such data.

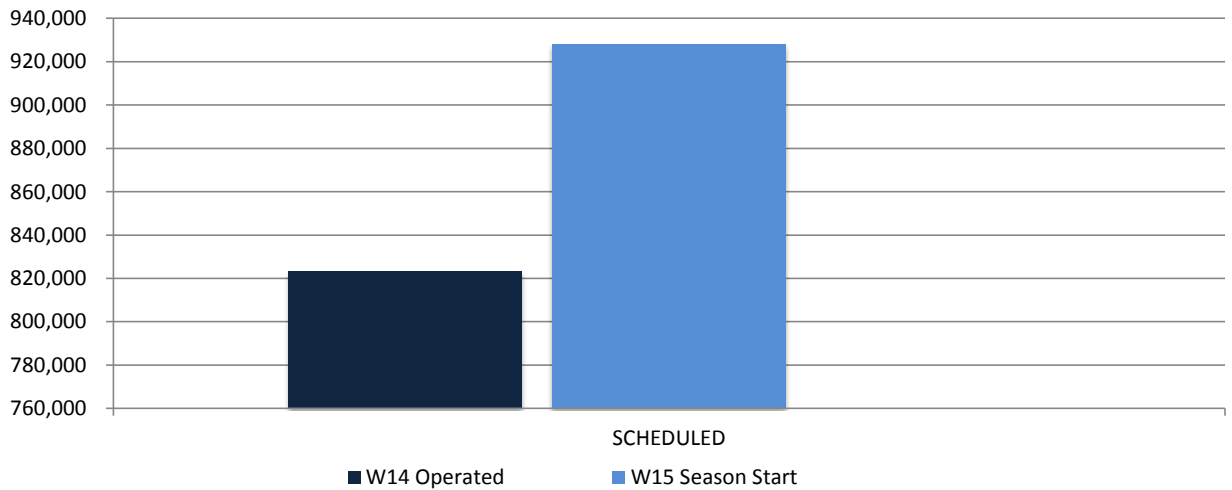
The contents of this report may not be reproduced without the written consent of ACL.

Full Season ATMs by Service Type



	W14 Operated	W15 Season Start	Percentage Change
SCHEDULED	4,126	4,590	▲ 11.2%
FREIGHT	206	221	▲ 7.3%
TOTAL	4,332	4,811	▲ 11.1%

Full Season Seats by Service Type



	W14 Operated	W15 Season Start	Percentage Change
SCHEDULED	823,454	928,282	▲ 12.7%
TOTAL	823,454	928,282	▲ 12.7%

CHRISTCHURCH INTERNATIONAL AIRPORT

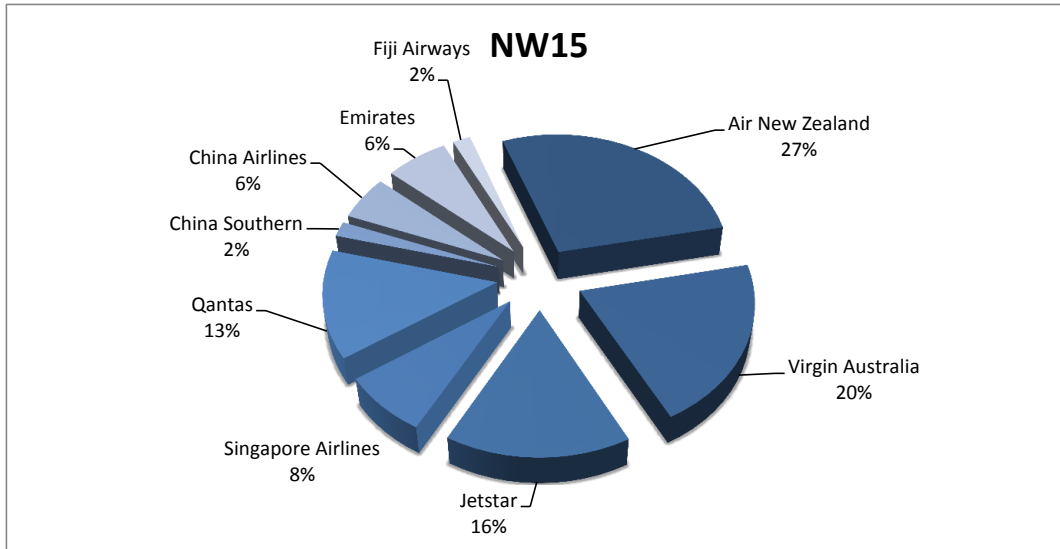
WEEK DEPARTURE FREQUENCIES - BY CARRIER

21 to 27 December 2015

	OPERATOR	AIRPORT	W14		W15		SEATS +/-	ATMS +/-
			SEATS	ATMS	SEATS	ATMS		
CI	China Airlines	TPE Taipei Chiang Kai Shek	939	3	1,842	6	903	3
CI Total			939	3	1,842	6	903	3
CZ	China Southern Airlines	CAN Guangzhou Baiyun	0	0	684	3	684	3
CZ Total			0	0	684	3	684	3
EK	Emirates	DXB Dubai	2,478	7	2,478	7	0	0
EK Total			2,478	7	2,478	7	0	0
FJ	Fiji Airways	NAN Nadi International	324	2	324	2	0	0
FJ Total			324	2	324	2	0	0
JQ	Jetstar	MEL Melbourne	1,620	9	2,160	12	540	3
		OOL Gold Coast Coolangatta	720	4	720	4	0	0
		SYD Sydney Kingsford Smith	1,620	9	1,620	9	0	0
JQ Total			3,960	22	4,500	25	540	3
NZ	Air New Zealand	BNE Brisbane International	1,512	9	1,344	8	-168	-1
		MEL Melbourne	1,680	10	1,680	10	0	0
		OOL Gold Coast Coolangatta	336	2	336	2	0	0
		PER Perth	468	2	468	2	0	0
		SYD Sydney Kingsford Smith	2,184	13	1,848	11	-336	-2
NZ Total			6,180	36	5,676	33	-504	-3
QF	Qantas	BNE Brisbane International	0	0	672	4	672	4
		SYD Sydney Kingsford Smith	1,512	11	1,512	14	0	3
QF Total			1,512	11	2,184	18	672	7
SQ	Singapore Airlines	SIN Singapore Changi	2,439	9	2,710	10	271	1
SQ Total			2,439	9	2,710	10	271	1
VA	Virgin Australia	BNE Brisbane International	1,408	8	1,408	9	0	1
		MEL Melbourne	1,232	7	1,408	8	176	1
		SYD Sydney Kingsford Smith	704	4	1,056	6	352	2
VA Total			3,344	19	3,872	23	528	4

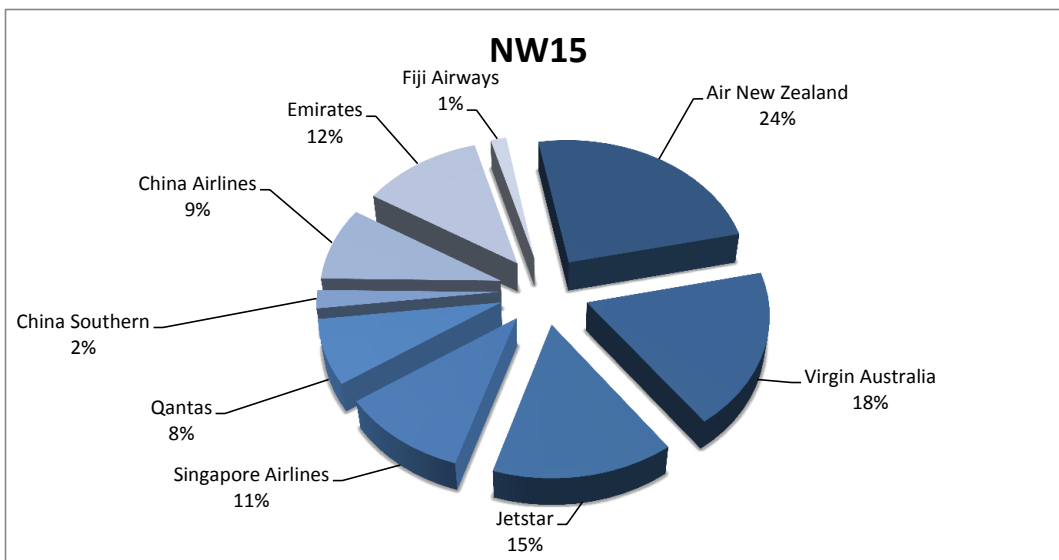
Airlines by Air Transport Movements (ATMs)

Airline	NW14	NW15
Air New Zealand	1,408	1,319
Virgin Australia	862	984
Jetstar	756	763
Singapore Airlines	354	365
Qantas	528	642
China Southern	6	88
China Airlines	86	262
Emirates	308	308
Fiji Airways	56	88

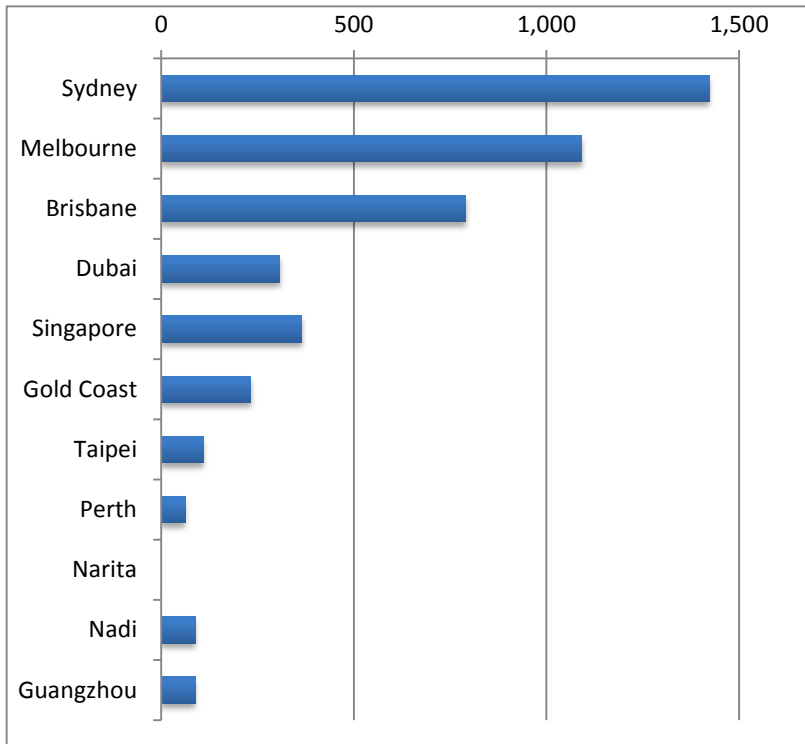


Airlines by Air Seats

Airline	NW14	NW15
Air New Zealand	244,062	225,012
Virgin Australia	145,904	171,600
Jetstar	135,900	137,340
Singapore Airlines	96,046	98,672
Qantas	54,096	70,896
China Southern	1,368	20,064
China Airlines	26,918	80,434
Emirates	109,032	109,032
Fiji Airways	9,072	14,256

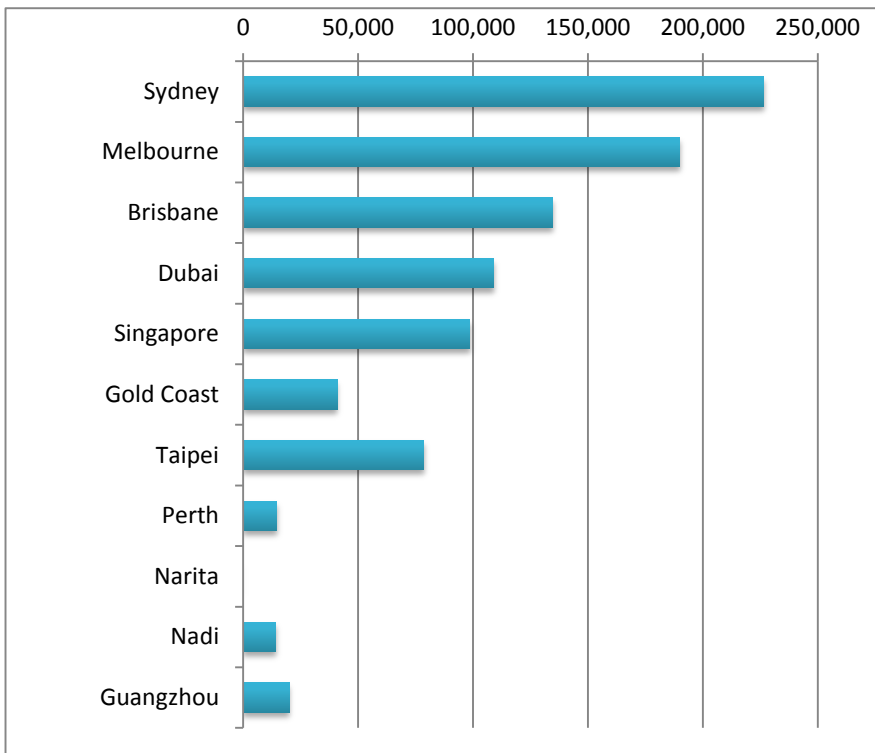


Air Transport Movements by Destination



Destination	NW14	NW15
Sydney	1,374	1,423
Melbourne	1,020	1,092
Brisbane	704	791
Dubai	308	308
Singapore	354	364
Gold Coast	231	233
Taipei	86	109
Perth	62	62
Narita	57	0
Nadi	56	88
Guangzhou	6	88

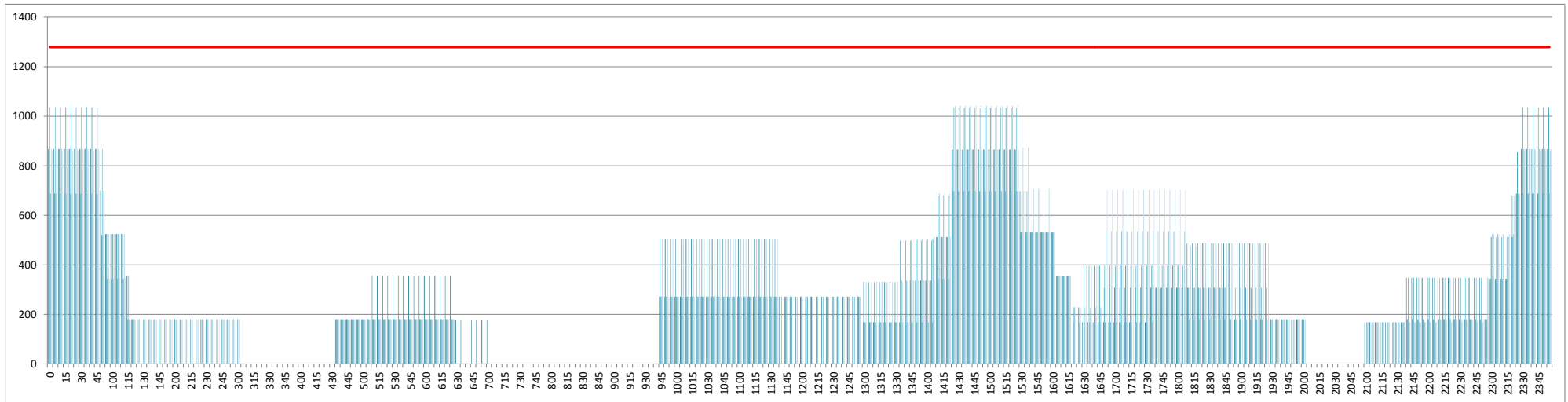
Air Transport Seats by Destination



Destination	NW14	NW15
Sydney	218,380	226,486
Melbourne	175,236	189,860
Brisbane	117,808	134,784
Dubai	109,032	109,032
Singapore	96,046	98,672
Gold Coast	40,524	40,884
Taipei	26,918	78,592
Perth	14,508	14,508
Narita	13,338	0
Nadi	9,072	14,256
Guangzhou	1,368	20,064

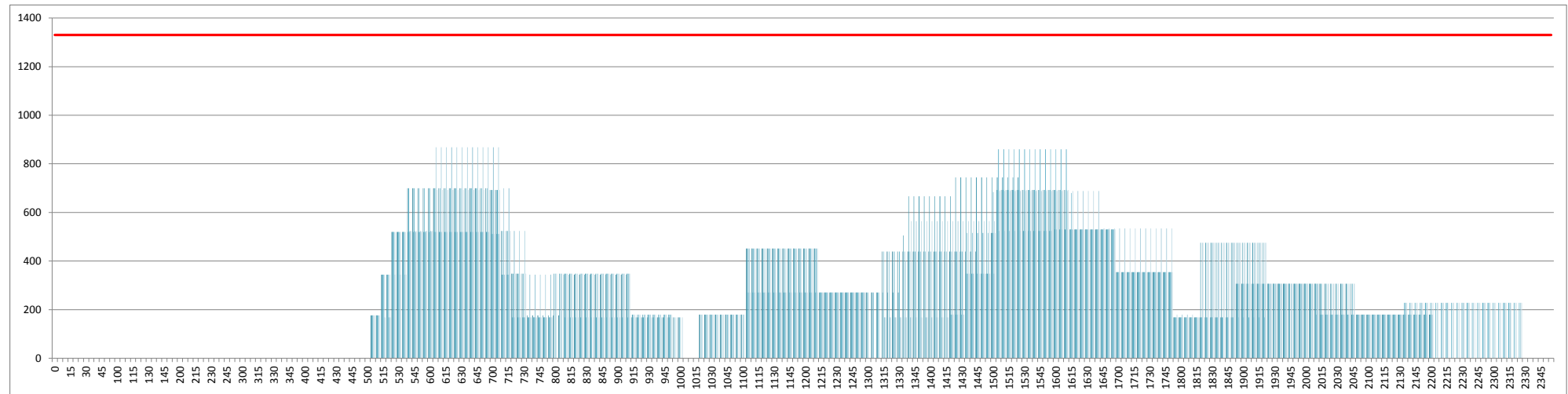
INTERNATIONAL TERMINAL ARRIVALS (PER 60 MINUTES)

Week Movements per Hour - All times LOCAL



INTERNATIONAL TERMINAL DEPARTURES (PER 60 MINUTES)

Week Movements per Hour - All times LOCAL



GLOSSARY OF TERMS

Air Transport Movement (ATM)	A scheduled or charter passenger or freight aircraft movement.
Allocation	The allocation of slots such that demand is constrained to fit within declared scheduling limits.
Common Travel Area (CTA)	Services to or from the Republic of Ireland and the Channel Islands.
Demand	The unconstrained demand for slots, prior to any schedule adjustments.
Passenger ATM	A scheduled or charter <u>passenger</u> aircraft movement (ie, excluding all-cargo aircraft movements).
Scheduling Limits	Limiting parameters declared by the Airport Operator used in the coordination process.
Seats	The number of seats based on the aircraft configuration advised by the airline.
Average Week	Week for W15 is 21 to 27 December 2015
Data Snapshot	All data used for this report was as held 17 October 2015

GUIDE TO HISTOGRAMS

The histograms show the pattern of traffic by time of day against the appropriate scheduling limit. Each time period consist of seven columns representing the days-of-week, Monday through Sunday.