

CHRISTCHURCH INTERNATIONAL AIRPORT

CHC

W14 Start of season Report (International Traffic)

Key Statistics	W13 Operated	W14 Start of Season	W13 Ops vs W14 Start of Season	
Air Transport Movements	3,914	4,331	▲	10.7%
Total Seats	738,560	819,790	▲	11.0%
Seats per Passenger ATM	189	189		

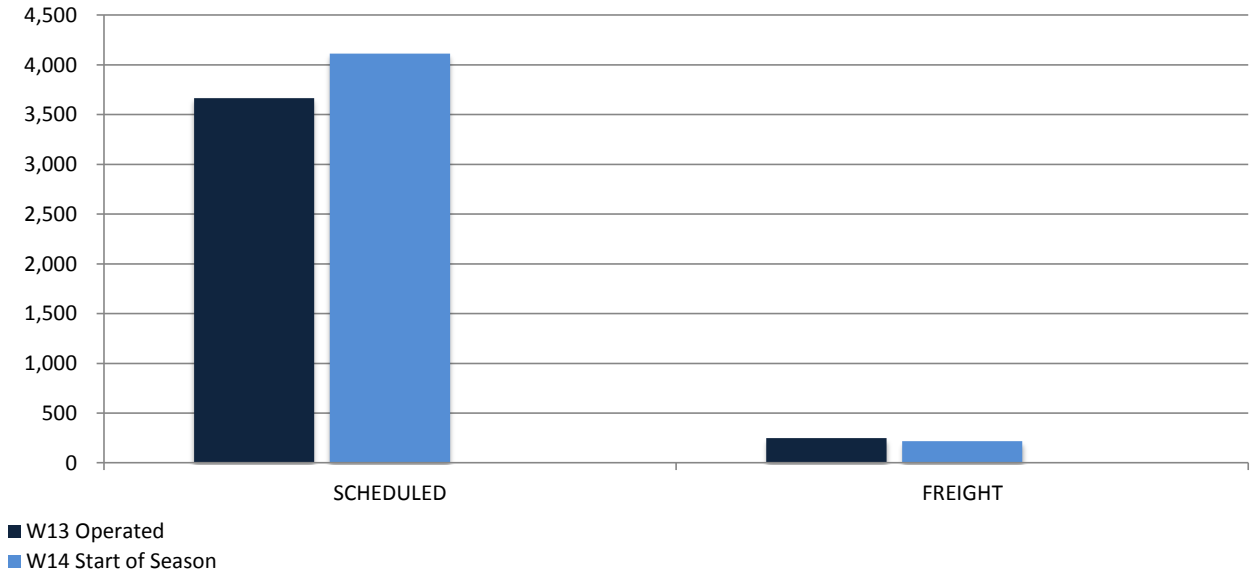
Contents	Page
Movements and Seats by Service Type	2
Peak Week Departure Frequencies by Carrier	3
Top Airlines by ATM's and Seats	4
Top Destinations by ATM's and Seats	5
International Terminal - Passengers per 60 Minutes	6
Glossary	7

Data in this report is current as of 20 October 2014

No warranty whether expressed or implied as to the completeness, accuracy, fitness for purpose, or satisfactory quality is given by ACL regarding the information in this report, which is provided by third parties. Accordingly, ACL excludes all liability with regard to such data.

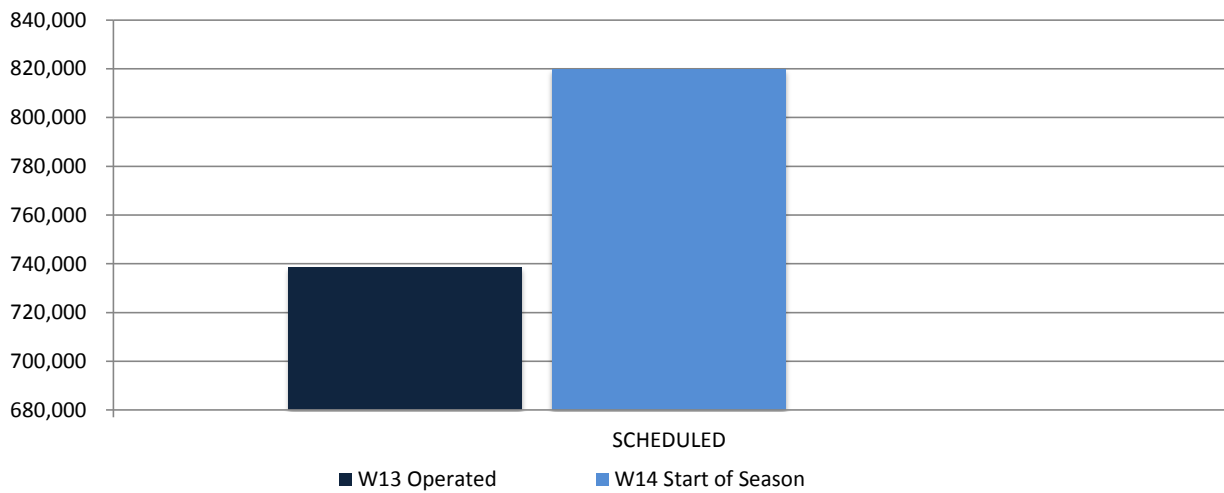
The contents of this report may not be reproduced without the written consent of ACL.

Full Season ATMs by Service Type



	W13 Operated	W14 Start of Season	% CHANGE W13 vs. W14 Start of Season	
SCHEDULED	3,666	4,113	▲	12.2%
FREIGHT	248	218	▼	-12.1%
TOTAL	3,914	4,331	▲	10.7%

Full Season Seats by Service Type



	W13 Operated	W14 Start of Season	% CHANGE W13 vs. W14 Start of Season	
SCHEDULED	738,560	819,790	▲	11.0%
TOTAL	738,560	819,790	▲	11.0%

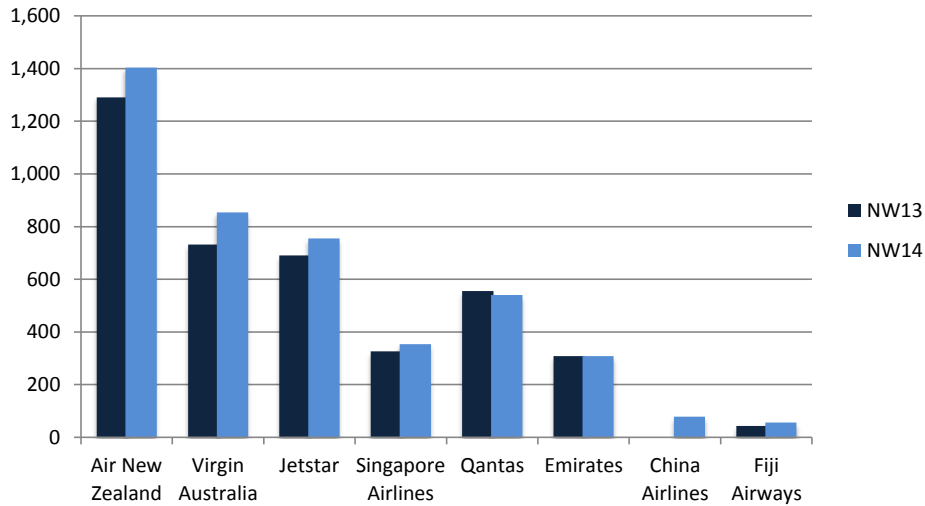
CHRISTCHURCH INTERNATIONAL AIRPORT

PEAK WEEK DEPARTURE FREQUENCIES - BY CARRIER

OPERATOR	AIRPORT	W13		W14		SEATS +/-	ATMS +/-		
		SEATS	ATMS	SEATS	ATMS				
CI	China Airlines	TPE	Taipei Chiang Kai Shek	0	0	939	3	939	3
CI Total				0	0	939	3	939	3
EK	Emirates	DXB	Dubai	2,478	7	2,478	7	0	0
EK Total				2,478	7	2,478	7	0	0
FJ	Air Pacific	NAN	Nadi International	120	1	324	2	204	1
FJ Total				120	1	324	2	204	1
JQ	Jetstar	MEL	Melbourne	1,593	9	1,620	9	27	0
		OOL	Gold Coast Coolangatta	711	4	720	4	9	0
		SYD	Sydney Kingsford Smith	1,419	8	1,620	9	201	1
JQ Total				3,723	21	3,960	22	237	1
NZ	Air New Zealand	BNE	Brisbane International	1,344	8	1,512	9	168	1
		MEL	Melbourne	1,512	9	1,680	10	168	1
		OOL	Gold Coast Coolangatta	504	3	336	2	-168	-1
		PER	Perth	468	2	468	2	0	0
		SYD	Sydney Kingsford Smith	1,812	10	2,016	12	204	2
NZ Total				5,640	32	6,012	35	372	3
QF	Qantas	SYD	Sydney Kingsford Smith	1,176	13	1,512	9	336	-4
QF Total				1,176	13	1,512	9	336	-4
SQ	Singapore Airlines	SIN	Singapore Changi	1,995	7	2,439	9	444	2
SQ Total				1,995	7	2,439	9	444	2
VA	Virgin Australia	BNE	Brisbane International	1,056	6	1,408	8	352	2
		MEL	Melbourne	1,056	6	1,232	7	176	1
		SYD	Sydney Kingsford Smith	528	3	704	4	176	1
VA Total				2,640	15	3,344	19	704	4

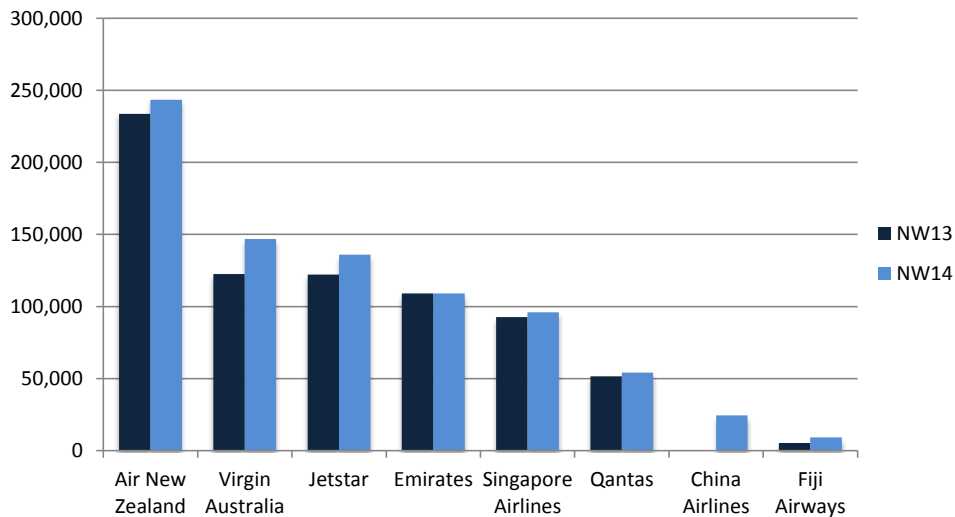
Airlines by Air Transport Movements (ATMs)

Airline	NW13	NW14
Air New Zealand	1,291	1403
Virgin Australia	732	854
Jetstar	690	755
Singapore Airlines	326	354
Qantas	555	540
Emirates	308	308
China Airlines	0	78
Fiji Airways	43	56

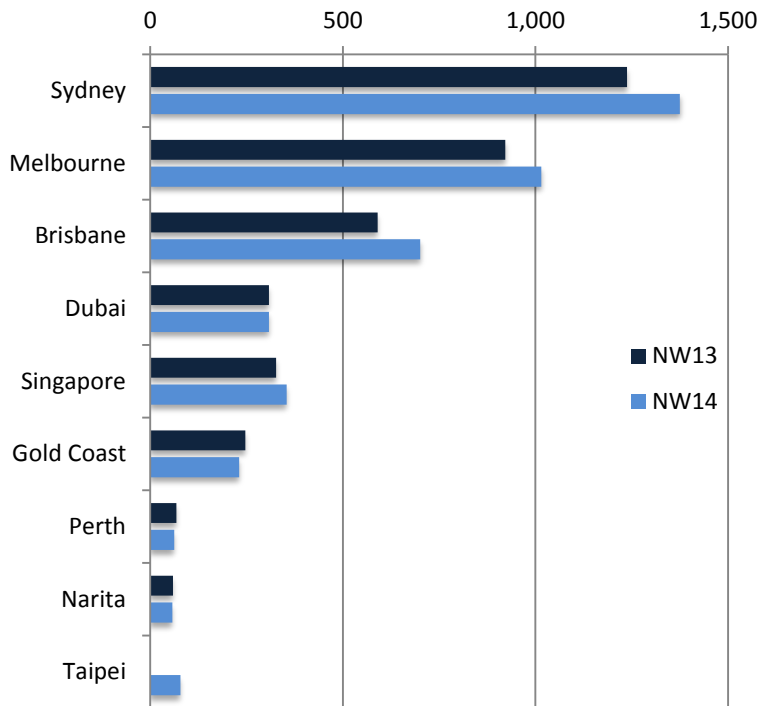


Airlines by Air Seats

Airline	NW13	NW14
Air New Zealand	233,698	243,390
Virgin Australia	122,496	146,784
Jetstar	122,208	135,900
Emirates	109,032	109,032
Singapore Airlines	92,630	96,046
Qantas	51,576	54,096
China Airlines	0	24,414
Fiji Airways	5,332	9,072

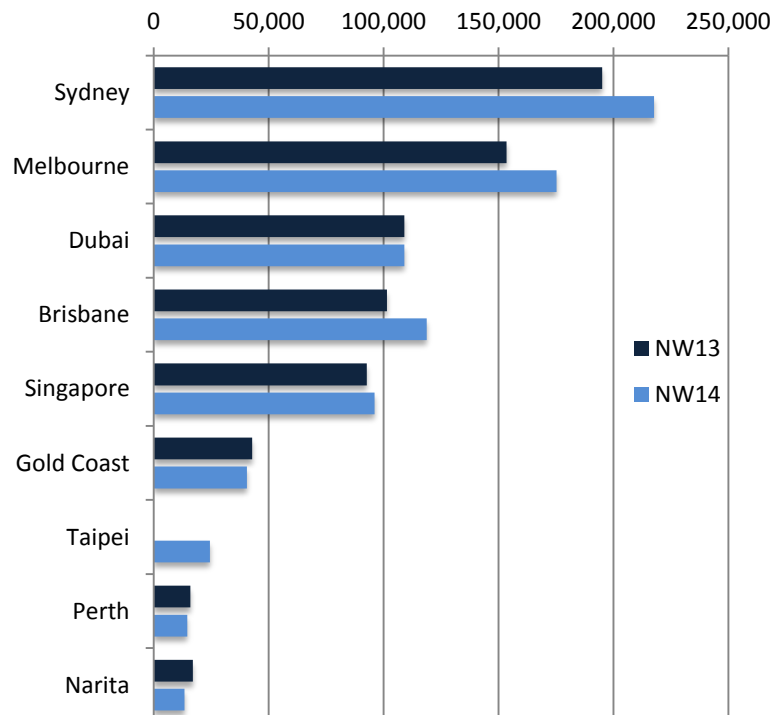


Air Transport Movements by Destination - Entire Season



Destination	NW13	NW14
Sydney	1,238	1,375
Melbourne	922	1,015
Brisbane	590	701
Dubai	308	308
Singapore	327	354
Gold Coast	247	231
Perth	68	62
Narita	59	57
Taipei	0	78

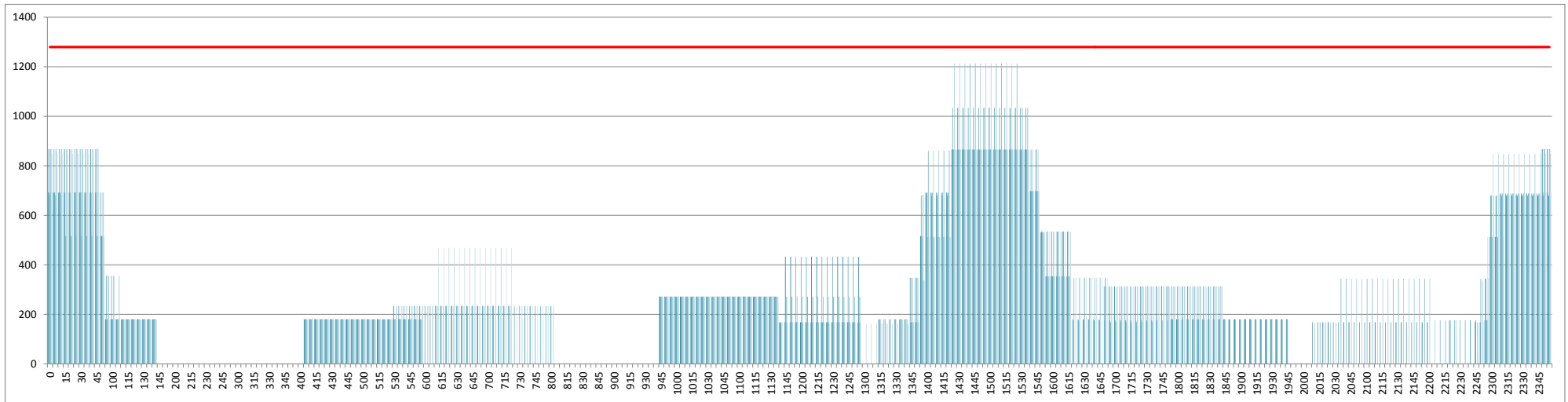
Air Transport Seats by Destination - Entire Season



Destination	NW13	NW14
Sydney	195,102	217,708
Melbourne	153,508	175,236
Dubai	109,032	109,032
Brisbane	101,456	118,688
Singapore	92,630	96,046
Gold Coast	42,828	40,524
Taipei	0	24,414
Perth	15,912	14,508
Narita	17,026	13,338

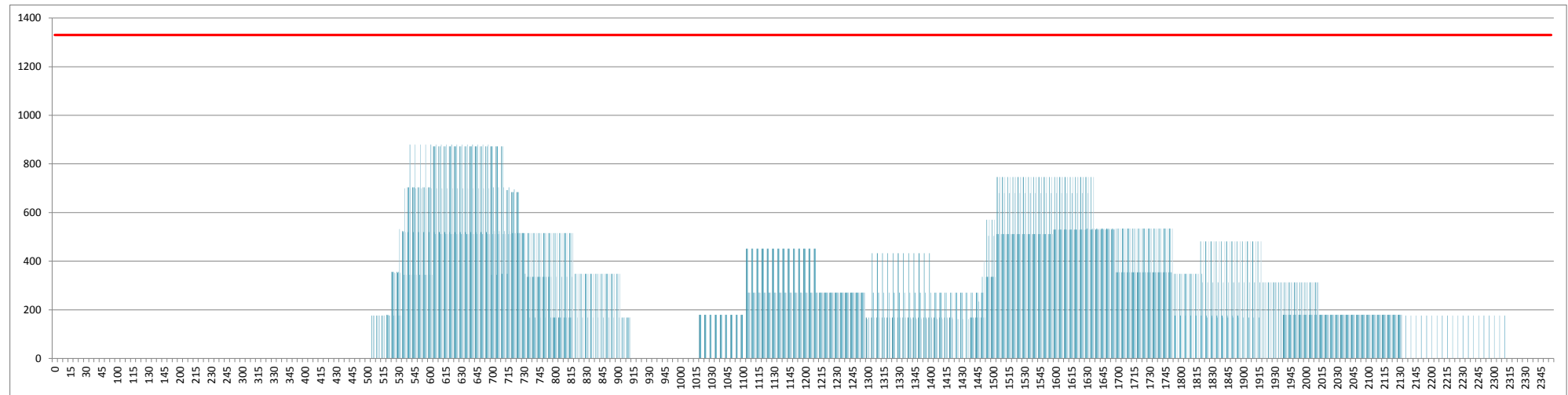
INTERNATIONAL TERMINAL ARRIVALS (PER 60 MINUTES)

Peak Week Movements per Hour - All times LOCAL



INTERNATIONAL TERMINAL DEPARTURES (PER 60 MINUTES)

Peak Week Movements per Hour - All times LOCAL



GLOSSARY OF TERMS

Air Transport Movement (ATM)	A scheduled or charter passenger or freight aircraft movement.
Allocation	The allocation of slots such that demand is constrained to fit within declared scheduling limits.
Common Travel Area (CTA)	Services to or from the Republic of Ireland and the Channel Islands.
Demand	The unconstrained demand for slots, prior to any schedule adjustments.
Passenger ATM	A scheduled or charter <u>passenger</u> aircraft movement (ie, excluding all-cargo aircraft movements).
Scheduling Limits	Limiting parameters declared by the Airport Operator used in the coordination process.
Seats	The number of seats based on the aircraft configuration advised by the airline.
Peak Week	The Peak Week for W14 is 22 to 28 December 2014
Data Snapshot	All data used for this report was as held 20 October 2014

GUIDE TO HISTOGRAMS

The histograms show the pattern of traffic by time of day against the appropriate scheduling limit. Each time period consist of seven columns representing the days-of-week, Monday through Sunday.