

# Christchurch International Airport CHC

## W13 Season Start Report (International Traffic)

Key Statistics	W12 Operated	W13 Planned	W12 Ops vs W13 Planned	
Air Transport Movements	3,797	4,009	▲	5.6%
Total Seats	717,260	760,068	▲	6.0%
Seats per Passenger ATM	189	190		

### Contents

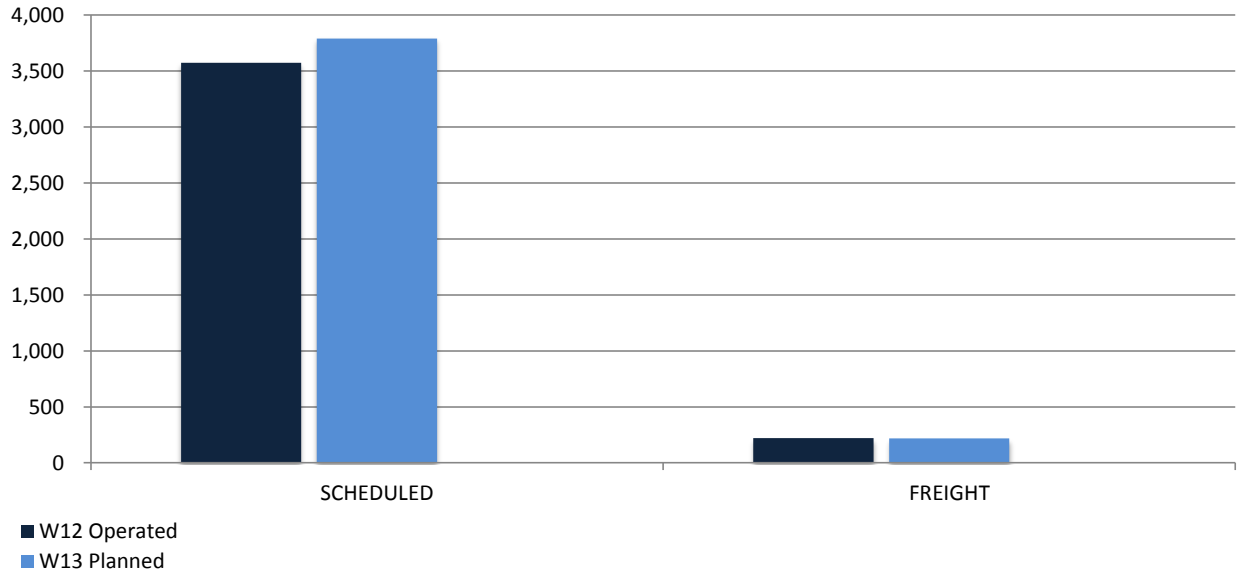
	Page
Movements and Seats by Service Type	2
Peak Week Departure Frequencies by Carrier	3
Top Airlines by ATM's and Seats	4
Top Destinations by ATM's and Seats	5
International Terminal - Passengers per 60 Minutes	6
Glossary	7

Data in this report is current as of 24 October 2013

No warranty whether expressed or implied as to the completeness, accuracy, fitness for purpose, or satisfactory quality is given by ACL regarding the information in this report, which is provided by third parties. Accordingly, ACL excludes all liability with regard to such data.

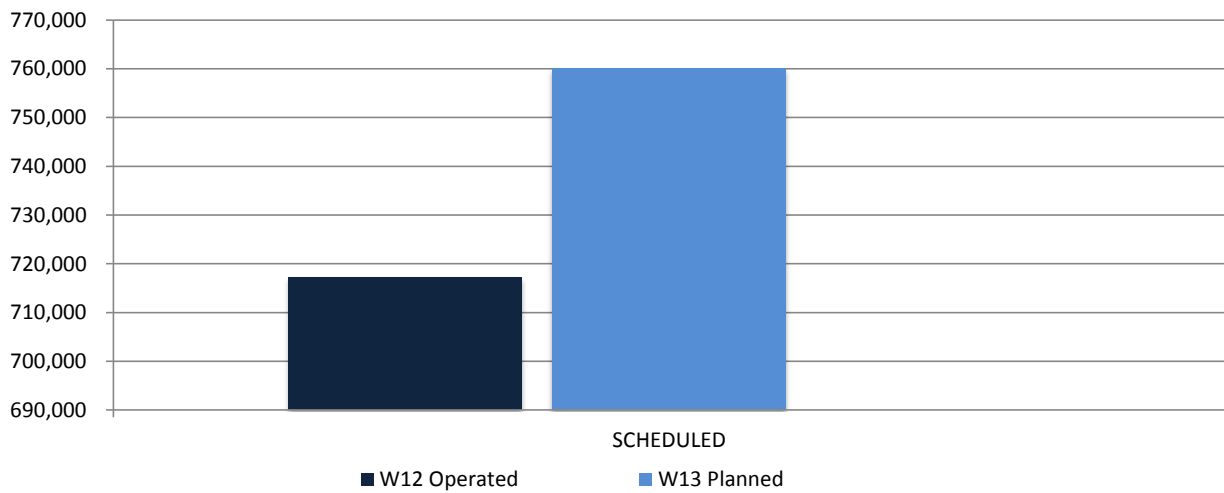
The contents of this report may not be reproduced without the written consent of ACL.

## Full Season ATMs by Service Type



	W12 Operated	W13 Planned	% CHANGE W12 vs. W13 Planned	
<b>SCHEDULED</b>	3,575	3,791	▲	6.0%
<b>FREIGHT</b>	222	218	▲	-1.8%
<b>TOTAL</b>	<b>3,797</b>	<b>4,009</b>	▲	<b>5.6%</b>

## Full Season Seats by Service Type



	W12 Operated	W13 Planned	% CHANGE W12 vs. W13 Planned	
<b>SCHEDULED</b>	717,260	760,068	▲	6.0%
<b>TOTAL</b>	<b>717,260</b>	<b>760,068</b>	▲	<b>6.0%</b>

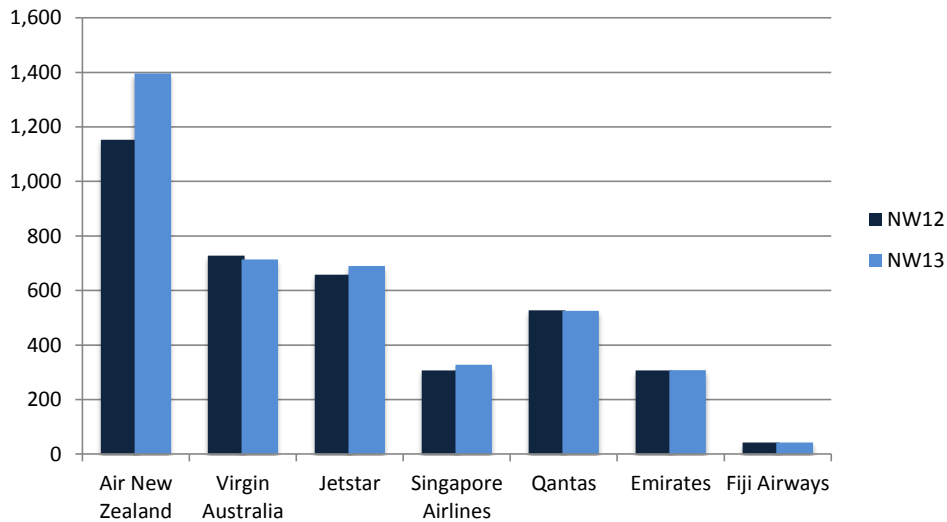
## Christchurch International Airport

### PEAK WEEK DEPARTURE FREQUENCIES - BY CARRIER

OPERATOR	AIRPORT	W12		W13		SEATS +/-	ATMS +/-		
		SEATS	ATMS	SEATS	ATMS				
EK	Emirates	DXB	Dubai	4,956	14	2,478	7	-2,478	-7
<b>EK Total</b>				<b>4,956</b>	<b>14</b>	<b>2,478</b>	<b>7</b>	<b>-2,478</b>	<b>-7</b>
FJ	Air Pacific	NAN	Nadi International	240	2	120	1	-120	-1
<b>FJ Total</b>				<b>240</b>	<b>2</b>	<b>120</b>	<b>1</b>	<b>-120</b>	<b>-1</b>
JQ	Jetstar	AKL	Auckland International	13,806	78	0	0	-13,806	-78
		MEL	Melbourne	2,832	16	1,593	9	-1,239	-7
		OOL	Gold Coast Coolangatta	1,062	6	711	4	-351	-2
		SYD	Sydney Kingsford Smith	2,658	15	1,419	8	-1,239	-7
		WLG	Wellington International	6,726	38	0	0	-6,726	-38
<b>JQ Total</b>				<b>27,084</b>	<b>153</b>	<b>3,723</b>	<b>21</b>	<b>-23,361</b>	<b>-132</b>
NZ	Air New Zealand	AKL	Auckland International	2,256	11	842	4	-1,414	-7
		BNE	Brisbane International	2,352	14	1,344	8	-1,008	-6
		MEL	Melbourne	3,696	22	2,016	12	-1,680	-10
		NRT	Tokyo Narita	912	3	0	0	-912	-3
		OOL	Gold Coast Coolangatta	672	4	504	3	-168	-1
		PER	Perth	0	0	468	2	468	2
		SYD	Sydney Kingsford Smith	3,696	22	1,812	10	-1,884	-12
<b>NZ Total</b>				<b>13,584</b>	<b>76</b>	<b>6,986</b>	<b>39</b>	<b>-6,598</b>	<b>-37</b>
QF	Qantas	AKL	Auckland International	0	5	0	0	0	-5
		SYD	Sydney Kingsford Smith	2,352	19	1,176	12	-1,176	-7
<b>QF Total</b>				<b>2,352</b>	<b>24</b>	<b>1,176</b>	<b>12</b>	<b>-1,176</b>	<b>-12</b>
SQ	Singapore Airlines	SIN	Singapore Changi	3,990	14	2,537	9	-1,453	-5
<b>SQ Total</b>				<b>3,990</b>	<b>14</b>	<b>2,537</b>	<b>9</b>	<b>-1,453</b>	<b>-5</b>
VA	Virgin Australia	BNE	Brisbane International	2,464	14	1,056	6	-1,408	-8
		MEL	Melbourne	2,112	12	1,056	9	-1,056	-3
		SYD	Sydney Kingsford Smith	1,056	6	528	3	-528	-3
<b>VA Total</b>				<b>5,632</b>	<b>32</b>	<b>2,640</b>	<b>18</b>	<b>-2,992</b>	<b>-14</b>

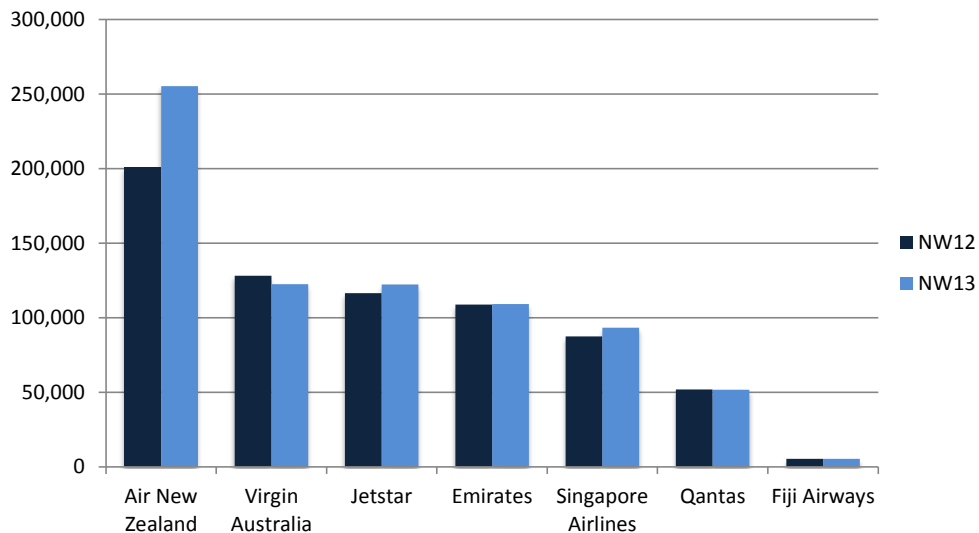
## Airlines by Air Transport Movements (ATMs)

Airline	NW12	NW13
Air New Zealand	1,153	1396
Virgin Australia	728	714
Jetstar	658	690
Singapore Airlines	307	328
Qantas	528	526
Emirates	307	308
Fiji Airways	43	43

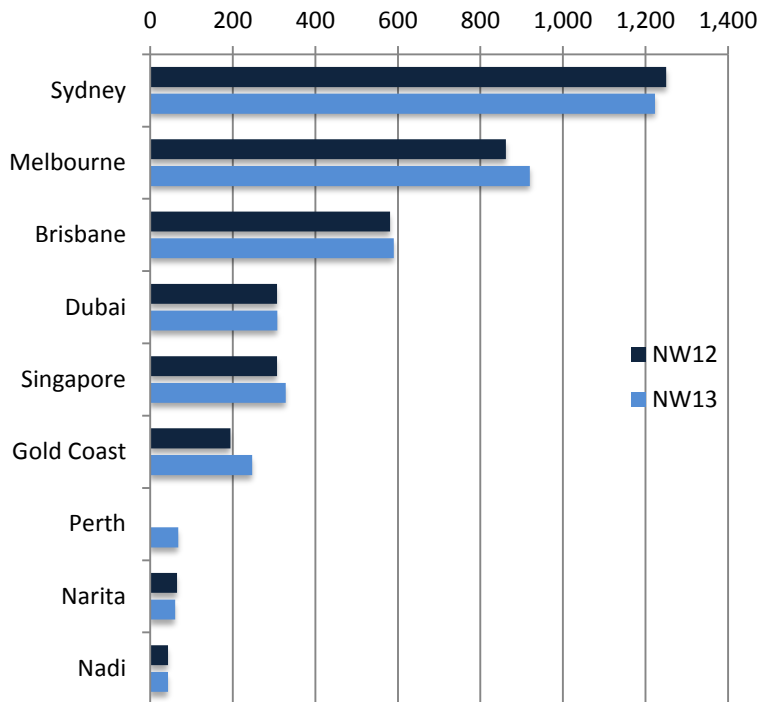


## Airlines by Air Seats

Airline	NW12	NW13
Air New Zealand	200,574	255,172
Virgin Australia	128,128	122,496
Jetstar	116,469	122,208
Emirates	108,678	109,032
Singapore Airlines	87,495	93,200
Qantas	51,912	51,576
Fiji Airways	5,370	5,328

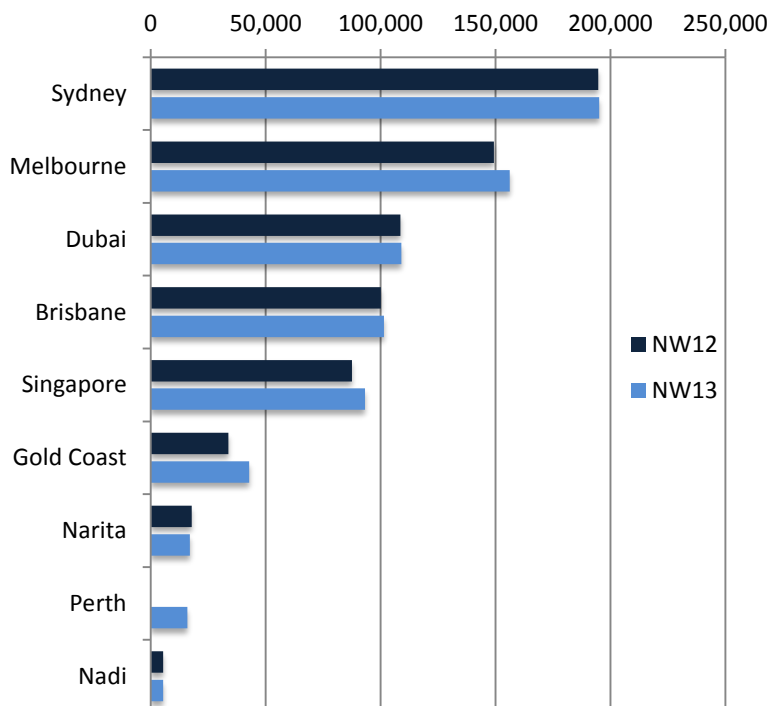


## Air Transport Movements by Destination - Entire Season



Destination	NW12	NW13
Sydney	1,250	1,223
Melbourne	862	920
Brisbane	581	590
Dubai	307	308
Singapore	307	328
Gold Coast	194	247
Perth	0	68
Narita	65	60
Nadi	43	43

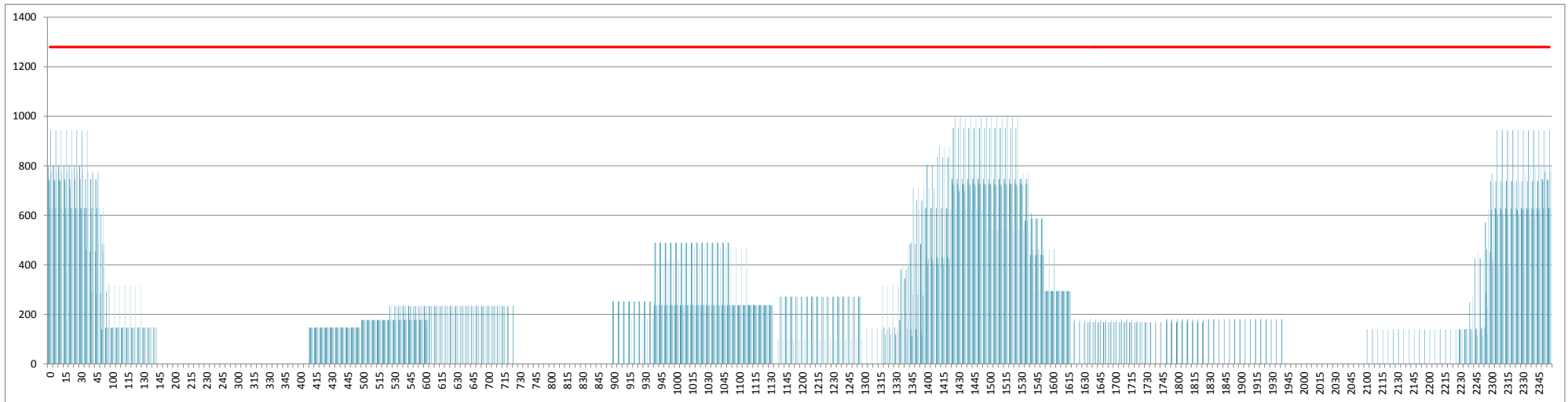
## Air Transport Seats by Destination - Entire Season



Destination	NW12	NW13
Sydney	194,706	195,102
Melbourne	149,303	156,196
Dubai	108,678	109,032
Brisbane	100,160	101,456
Singapore	87,495	93,200
Gold Coast	33,780	42,828
Narita	17,754	17,050
Perth	0	15,912
Nadi	5,370	5,328

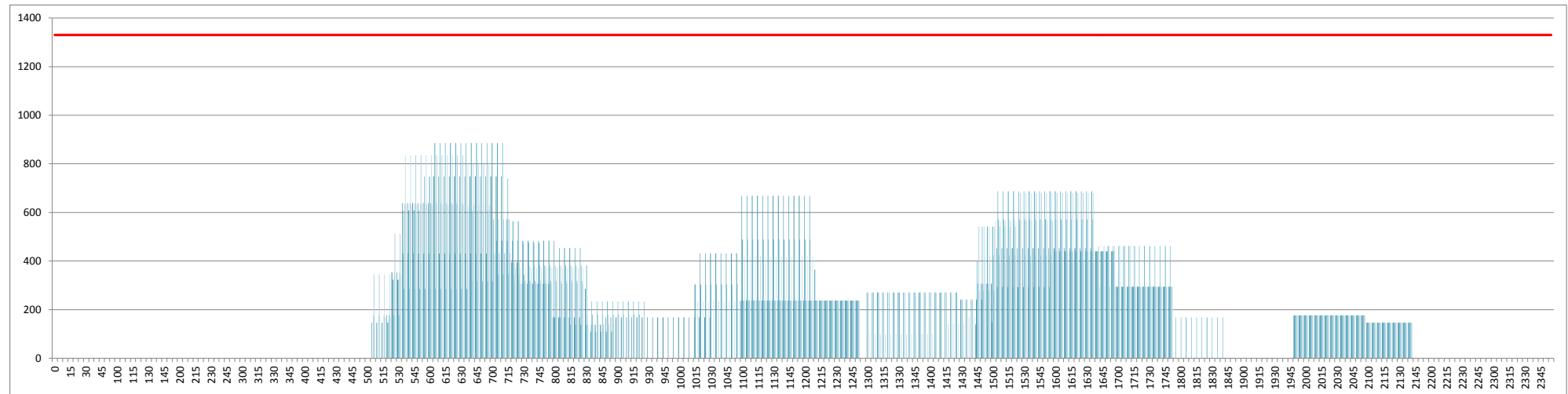
## INTERNATIONAL TERMINAL ARRIVALS (PER 60 MINUTES)

Peak Week Movements per Hour - All times LOCAL



## INTERNATIONAL TERMINAL DEPARTURES (PER 60 MINUTES)

Peak Week Movements per Hour - All times LOCAL



## GLOSSARY OF TERMS

---

<b>Air Transport Movement (ATM)</b>	A scheduled or charter passenger or freight aircraft movement.
<b>Allocation</b>	The allocation of slots such that demand is constrained to fit within declared scheduling limits.
<b>Common Travel Area (CTA)</b>	Services to or from the Republic of Ireland and the Channel Islands.
<b>Demand</b>	The unconstrained demand for slots, prior to any schedule adjustments.
<b>Passenger ATM</b>	A scheduled or charter <u>passenger</u> aircraft movement (ie, excluding all-cargo aircraft movements).
<b>Scheduling Limits</b>	Limiting parameters declared by the Airport Operator used in the coordination process.
<b>Seats</b>	The number of seats based on the aircraft configuration advised by the airline.
<b>Peak Week</b>	The Peak Week for W13 is 16-22 December 2013
<b>Data Snapshot</b>	All data used for this report was as held 24 October 2013

### GUIDE TO HISTOGRAMS

---

The histograms show the pattern of traffic by time of day against the appropriate scheduling limit. Each time period consist of seven columns representing the days-of-week, Monday through Sunday.