



AUCKLAND INTERNATIONAL AIRPORT AKL

W13 Season Start IATA Report (International Traffic)

Key Statistics	W12 Operated	W13 -Season Start	Percentage Change
Air Transport Movements	18,744	19761	▲ 5.4%
Total Seats	4,217,688	4,513,933	▲ 7.0%
Seats per Passenger ATM	225	228	

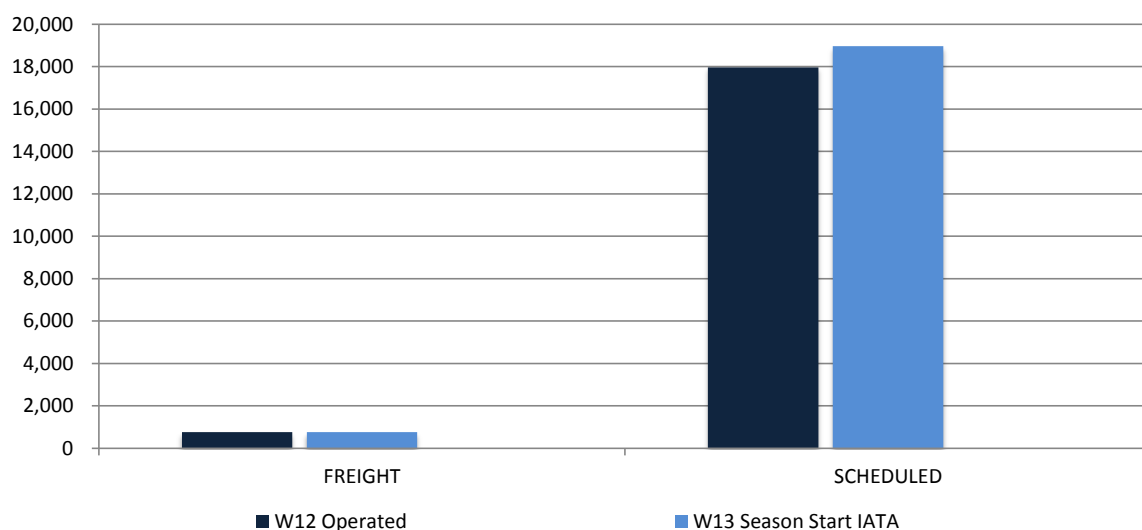
Contents	Page
Movements and Seats by Service Type	2
Peak Week Departure Frequencies by Carrier	3
Transit Routes	4
Top 10 Airlines by ATM's and Seats	5
Top 20 Destinations by ATM's and Seats	6
International Terminal - Passengers per 60 Minutes	7-8
International Arrivals - Passengers per 30 Minutes	9
Glossary	10

Data in this report is current as of 23 October 2013

No warranty whether expressed or implied as to the completeness, accuracy, fitness for purpose, or satisfactory quality is given by ACL regarding the information in this report, which is provided by third parties. Accordingly, ACL excludes all liability with regard to such data.

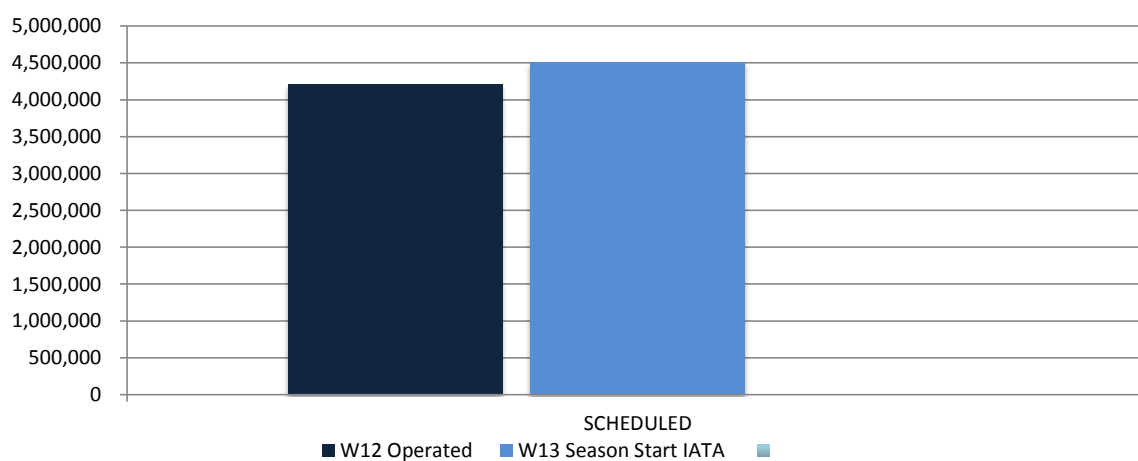
The contents of this report may not be reproduced without the written consent of ACL.

Full Season ATMs by Service Type



	W12 Operated	W13 Season Start IATA	% CHANGE W12 End Vs. W13
FREIGHT	761	760	▲ -0.1%
SCHEDULED	17,971	18,962	▲ 5.5%
TOTAL	18,732	19,722	▲ 5.3%

Full Season Seats by Service Type

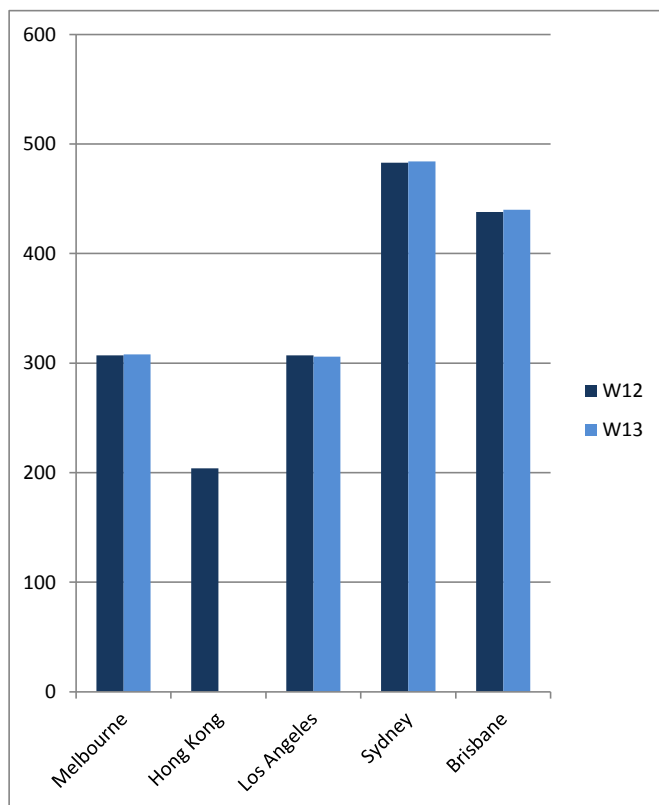


	W12 Operated	W13 Season Start IATA	% CHANGE W12 End Vs. W13
SCHEDULED	4,217,688	4,513,933	▲ 7.0%
TOTAL	4,217,688	4,513,933	▲ 7.0%

AUCKLAND INTERNATIONAL AIRPORT
PEAK WEEK DEPARTURE FREQUENCIES - BY CARRIER

	OPERATOR	AIRPORT	W12		W13		SEATS +/-	ATMS +/-
			SEATS	ATMS	SEATS	ATMS		
CI	China Airlines	TPE Taipei Chiang Kai Shek	2,149	7	2,395	7	246	0
CI Total			2,149	7	2,395	7	246	0
CX	Cathay Pacific	HKG Hong Kong Int'L	3,654	14	3,962	14	308	0
CX Total			3,654	14	3,962	14	308	0
CZ	China Southern Airlines	CAN Guangzhou Baiyun	1,519	7	2,280	10	761	3
CZ Total			1,519	7	2,280	10	761	3
EK	Emirates	DXB Dubai	9,324	21	10,269	21	945	0
EK Total			9,324	21	10,269	21	945	0
FJ	Air Pacific	NAN Nadi International	1,670	9	1,980	10	310	1
		SUV Nausori International Airport	240	2	240	2	0	0
FJ Total			1,910	11	2,220	12	310	1
FX	Fedex	CAN Guangzhou Baiyun	0	0	0	1	0	1
		PVG Shanghai Pu Dong	0	1	0	0	0	-1
FX Total			0	1	0	1	0	0
HA	Hawaiian Airlines	HNL Honolulu International	0	0	882	3	882	3
HA Total			0	0	882	3	882	3
HJ	Tasman Pacific Airlines	SYD Sydney Kingsford Smith	0	5	0	5	0	0
HJ Total			0	5	0	5	0	0
JQ	Jetstar	ADL Adelaide	0	0	540	3	540	3
		MEL Melbourne	0	0	1,593	9	1,593	9
		OOL Gold Coast Coolangatta	1,239	7	1,419	8	180	1
		SIN Singapore Changi	909	3	909	3	0	0
		SYD Sydney Kingsford Smith	1,239	7	1,431	8	192	1
JQ Total			3,387	17	5,892	31	2,505	14
KE	Korean Air	ICN Seoul Incheon Intl	2,345	7	2,555	7	210	0
KE Total			2,345	7	2,555	7	210	0
LA	Lan Airlines	SCL Santiago Arturo Merino Benitez	1,560	6	1,820	7	260	1
		SYD Sydney Kingsford Smith	1,560	6	1,820	7	260	1
LA Total			3,120	12	3,640	14	520	2
MH	Malaysia Airlines	KUL Kuala Lumpur Int'L	1,692	6	1,974	7	282	1
MH Total			1,692	6	1,974	7	282	1
NF	Air Vanuatu	VLV Vanuatu	340	2	340	2	0	0
NF Total			340	2	340	2	0	0
NZ	Air New Zealand	ADL Adelaide	1,176	7	1,176	7	0	0
		APW Apia Faleolo	1,818	8	1,514	7	-304	-1
		BNE Brisbane International	3,800	14	3,702	14	-98	0
		CNS Cairns	672	4	336	2	-336	-2
		HKG Hong Kong Int'L	0	0	2,128	7	2,128	7
		HNL Honolulu International	690	3	936	4	246	1
		IUE Niue International Airport	336	2	336	2	0	0
		KIX Osaka Kansai International	694	3	234	1	-460	-2
		LAX Los Angeles International	2,843	9	3,746	12	903	3
		LHR London Heathrow	4,452	14	2,324	7	-2,128	-7
		MEL Melbourne	4,874	21	4,809	21	-65	0
		NAN Nadi International	1,636	7	2,008	10	372	3
		NGO Nagoya Komaki Afb	0	0	234	1	234	1
		NLK Norfolk Island Airport	168	1	168	1	0	0
		NOU Noumea	504	3	504	3	0	0
		NRT Tokyo Narita	1,988	7	1,848	7	-140	0
		OOL Gold Coast Coolangatta	1,008	6	1,176	7	168	1
		PER Perth	2,128	7	2,128	7	0	0
		PPT Papeete Faaa	460	2	702	3	242	1
		PVG Shanghai Pu Dong	1,534	6	1,918	7	384	1
		RAR Rarotonga	1,523	7	1,514	7	-9	0
		SFO San Francisco International	2,653	7	2,653	7	0	0
		SYD Sydney Kingsford Smith	7,965	35	8,977	37	1,012	2
		TBU Nuku'Alofa Fua'Amotu Internationa	1,308	7	1,206	6	-102	-1
		VLV Vanuatu	168	1	168	1	0	0
		YVR Vancouver	1,556	5	1,824	6	268	1
NZ Total			45,954	186	48,269	194	2,315	8
QF	Qantas	BNE Brisbane International	2,352	14	2,520	15	168	1
		MEL Melbourne	3,528	22	3,528	22	0	0
		PER Perth	0	0	470	2	470	2
		PVG Shanghai Pu Dong	0	1	0	0	0	-1
		SYD Sydney Kingsford Smith	6,048	42	6,306	42	258	0
QF Total			11,928	79	12,824	81	896	2
SB	Aircalin Air Caledonie Int	NOU Noumea	563	3	558	3	-5	0
SB Total			563	3	558	3	-5	0
SQ	Singapore Airlines	GUM Guam A.B. Won Pat Int'L	0	1	0	0	0	-1
		SIN Singapore Changi	3,941	20	3,941	18	0	-2
SQ Total			3,941	21	3,941	18	0	-3
TG	Thai Airways International Public Lt	BKK Bangkok International	1,460	5	1,460	5	0	0
TG Total			1,460	5	1,460	5	0	0
TN	Air Tahiti Nui	LAX Los Angeles International	882	3	882	3	0	0
TN Total			882	3	882	3	0	0
VA	Virgin Australia	APW Apia Faleolo	1,056	6	1,232	7	176	1
		BNE Brisbane International	1,936	11	2,112	12	176	1
		MEL Melbourne	1,232	7	1,232	7	0	0
		OOL Gold Coast Coolangatta	1,232	7	1,232	7	0	0
		RAR Rarotonga	880	5	880	5	0	0
		SYD Sydney Kingsford Smith	1,056	6	1,232	7	176	1
		TBU Nuku'Alofa Fua'Amotu Internationa	352	2	352	2	0	0
VA Total			7,744	44	8,272	47	528	3

Transit Routes - Air Transport Movements (ATMs)



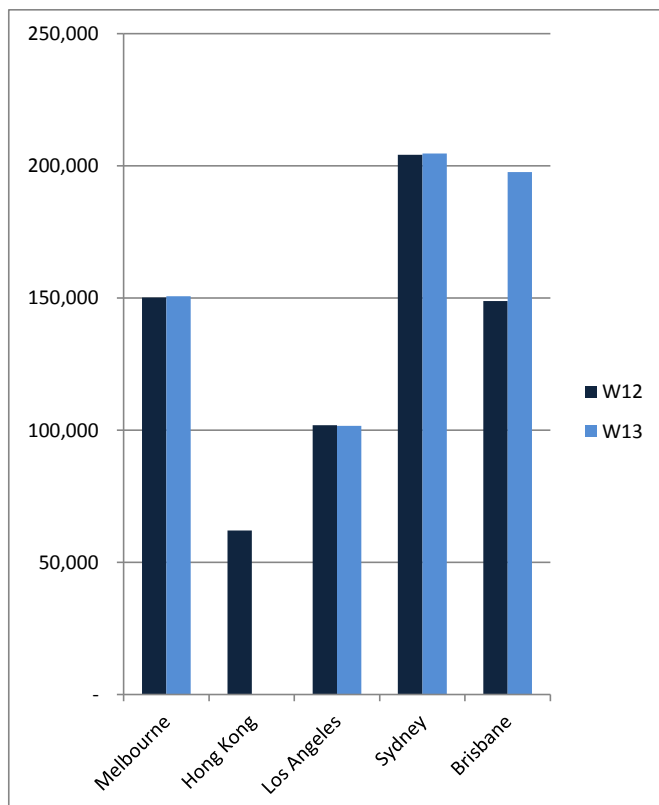
Emirates (Dubai)	Seasonal		Peak Week	
	W12	W13	W12	W13
Sydney	307	308	14	14
Melbourne	307	308	14	14
Brisbane	307	308	14	14
EK Total	921	924	42	42

China Airlines (Taipei)				
	W12	W13	W12	W13
Sydney	176	176	8	8
Brisbane	131	132	6	6
CI Total	307	308	14	14

Air New Zealand (London Heathrow)				
	W12	W13	W12	W13
Hong Kong	204	0	14	0
Los Angeles	307	306	14	14
NZ Total	511	306	28	14

Total transits for destinations served by more than one airline				
	W12	W13	W12	W13
Sydney	483	484	22	22
Brisbane	438	440	20	20
Total Transit Flights	1,739	1,538	84	70

Transit Routes - Seats



Emirates (Dubai)	Seasonal		Peak Week	
	W12	W13	W12	W13
Sydney	150,123	150,612	6,846	6,846
Melbourne	150,123	150,612	6,846	6,846
Brisbane	108,678	150,612	4,956	6,846
EK Total	408,924	451,836	18,648	20,538

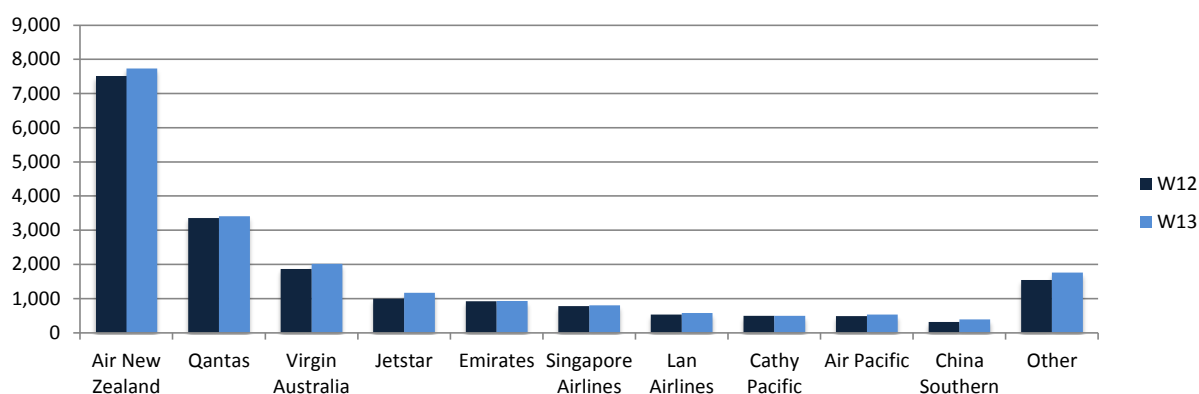
China Airlines (Taipei)				
	W12	W13	W12	W13
Sydney	54,032	54,032	2,456	2,456
Brisbane	40,217	47,084	1,842	2,334
CI Total	94,249	101,116	4,298	4,790

Air New Zealand (London Heathrow)				
	W12	W13	W12	W13
Hong Kong	62,044	0	4,256	0
Los Angeles	101,896	101,592	4,648	4,648
NZ Total	163,940	101,592	8,904	4,648

Total transits for destinations served by more than one airline				
	W12	W13	W12	W13
Sydney	204,155	204,644	9,302	9,302
Brisbane	148,895	197,696	6,798	9,180
Total Transit Seats	667,113	654,544	31,850	29,976

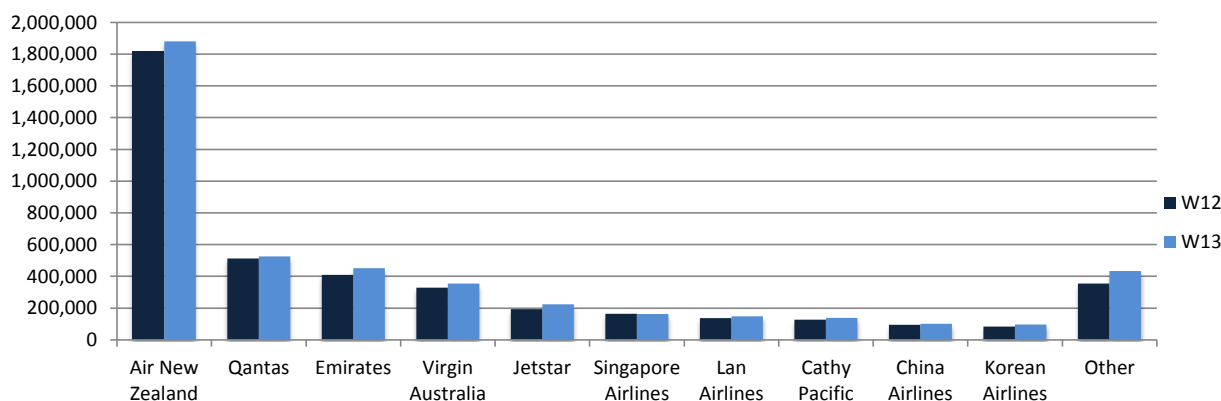
Top 10 Airlines by Air Transport Movements (ATMs)

Airline	W12	W13
Air New Zealand	7,492	7,726
Qantas	3,353	3,408
Virgin Australia	1,863	2,012
Jetstar	997	1,162
Emirates	921	926
Singapore Airlines	773	800
Lan Airlines	526	572
Cathy Pacific	488	488
Air Pacific	483	527
China Southern	308	384
Other	1,540	1,756

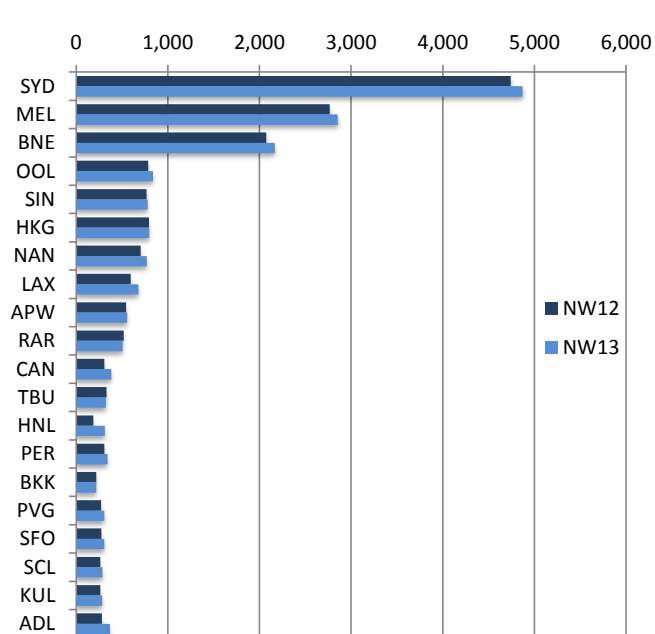


Top 10 Airlines by Air Seats

Airline	W12	W13
Air New Zealand	1,815,084	1,879,542
Qantas	512,064	524,950
Emirates	408,924	451,836
Virgin Australia	327,888	354,112
Jetstar	193,110	223,080
Singapore Airlines	163,429	163,144
Lan Airlines	136,760	148,720
Cathy Pacific	127,390	138,104
China Airlines	94,249	100,502
Korean Airlines	84,148	96,360
Other	354,642	433,583

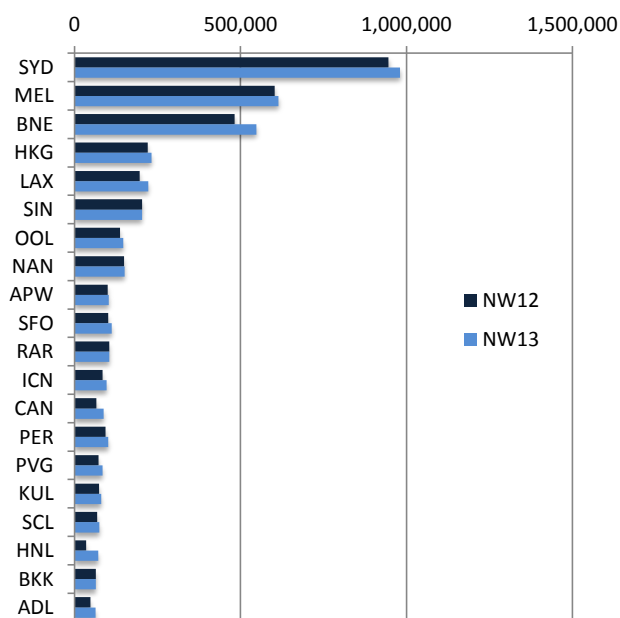


Air Transport Movements by Destination



Destination	NW12	NW13
SYD	4,742	4,869
MEL	2,767	2,856
BNE	2,075	2,168
OOL	786	840
SIN	769	779
HKG	794	797
NAN	705	772
LAX	594	679
APW	544	556
RAR	518	508
CAN	308	384
TBU	332	325
HNL	188	315
PER	308	342
BKK	220	219
PVG	273	308
SFO	275	308
SCL	263	288
KUL	263	284
ADL	282	369

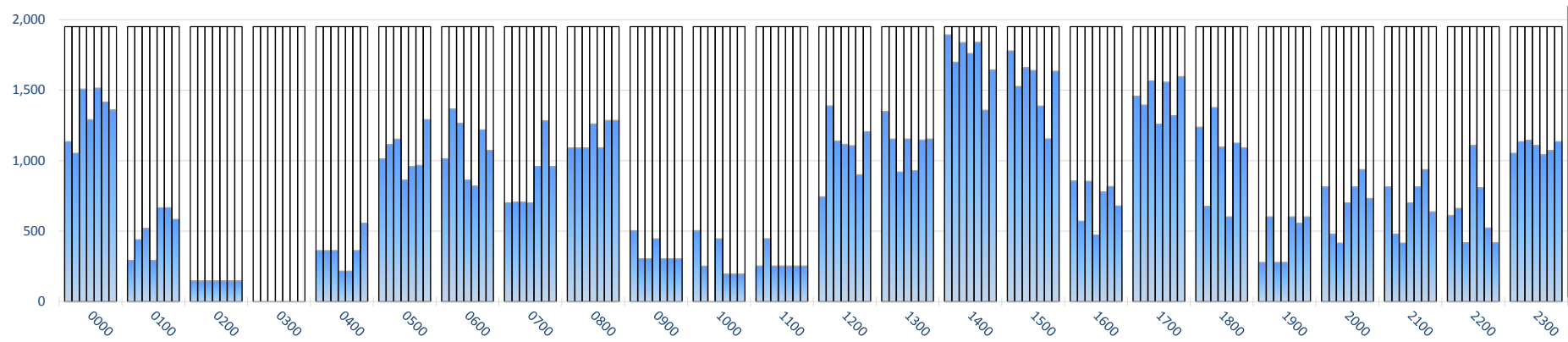
Air Transport Seats by Destination



Destination	NW12	NW13
SYD	945,790	980,587
MEL	602,521	614,639
BNE	482,090	547,512
HKG	220,138	231,736
LAX	196,054	222,012
SIN	203,738	203,140
OOL	137,017	146,554
NAN	148,833	151,065
APW	99,490	103,276
SFO	101,349	111,932
RAR	104,429	104,720
ICN	84,148	96,360
CAN	65,968	87,552
PER	93,641	101,622
PVG	72,298	84,106
KUL	74,166	80,088
SCL	68,380	74,880
HNL	34,772	71,334
BKK	64,240	63,948
ADL	47,636	63,048

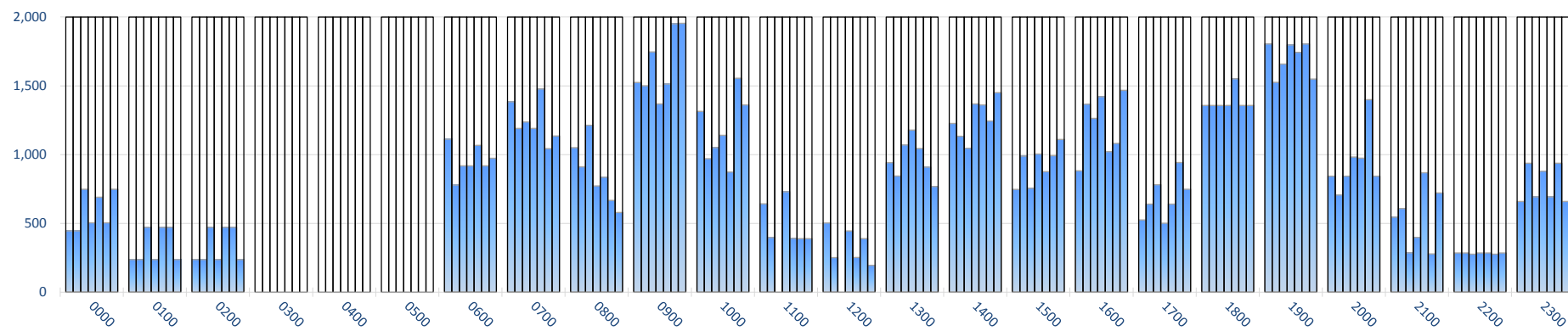
INTERNATIONAL TERMINAL ARRIVALS (PER 60 MINUTES, ROLLING EVERY 5 MINUTES)

Peak Week Movements per Hour - All times LOCAL



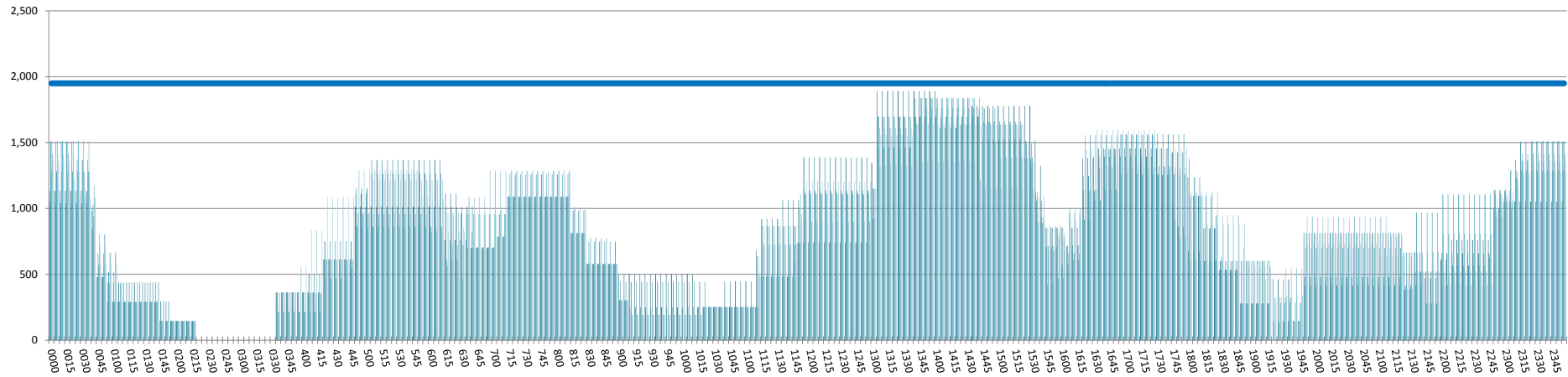
INTERNATIONAL TERMINAL DEPARTURES (PER 60 MINUTES, ROLLING EVERY 5 MINUTES)

Peak Week Movements per Hour - All times LOCAL



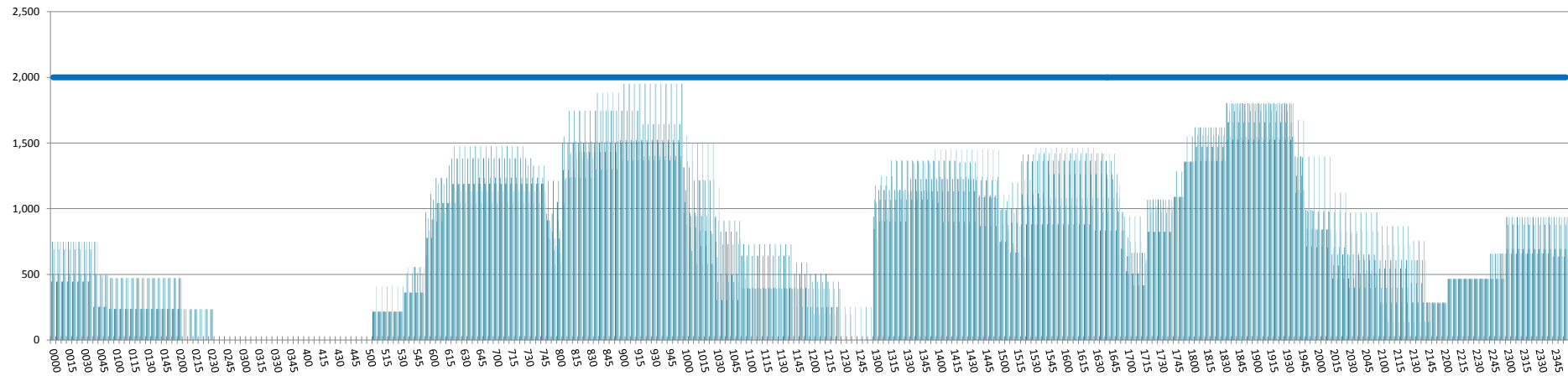
INTERNATIONAL TERMINAL ARRIVALS (PER 60 MINUTES, ROLLING EVERY 5 MINUTES)

Peak Week Movements per Hour - All times LOCAL



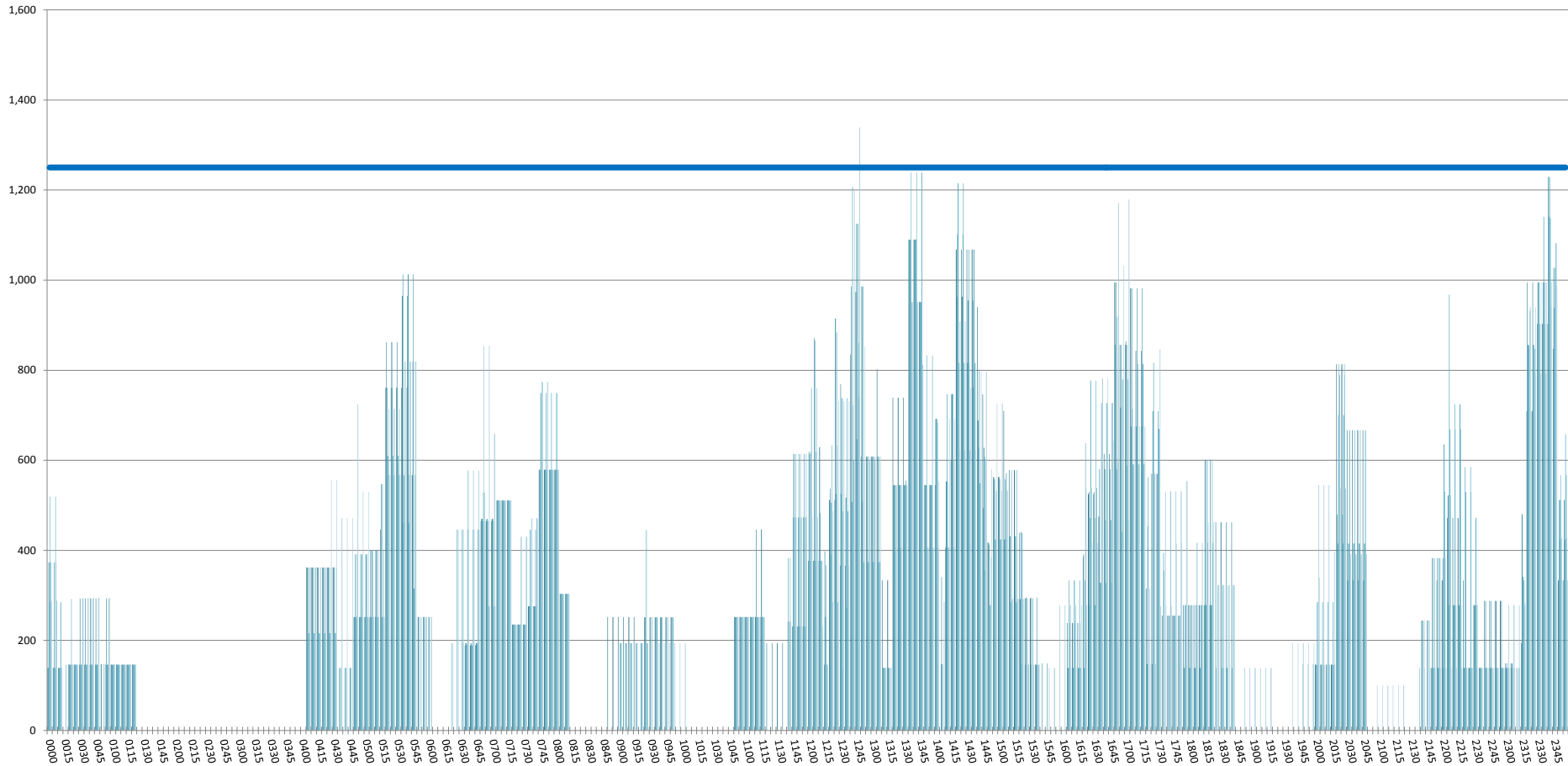
INTERNATIONAL TERMINAL DEPARTURES (PER 60 MINUTES, ROLLING EVERY 5 MINUTES)

Peak Week Movements per Hour - All times LOCAL



INTERNATIONAL TERMINAL ARRIVALS (PER 30 MINUTES, ROLLING EVERY 5 MINUTES)

Peak Week Movements - All times LOCAL



GLOSSARY OF TERMS

Air Transport Movement (ATM)	A scheduled or charter passenger or freight aircraft movement.
Allocation	The allocation of slots such that demand is constrained to fit within declared scheduling limits.
Common Travel Area (CTA)	Services to or from the Republic of Ireland and the Channel Islands.
Demand	The unconstrained demand for slots, prior to any schedule adjustments.
Passenger ATM	A scheduled or charter <u>passenger</u> aircraft movement (ie, excluding all-cargo aircraft movements).
Scheduling Limits	Limiting parameters declared by the Airport Operator used in the coordination process.
Seats	The number of seats based on the aircraft configuration advised by the airline.
Peak Week	The Peak Week for W13 is 16 -22 December 2013
Data Snapshot	All data used for this report was as held 23 October 2013

GUIDE TO HISTOGRAMS

The histograms show the pattern of traffic by time of day against the appropriate scheduling limit. Each time period consist of seven columns representing the days-of-week, Monday through Sunday.