

AUCKLAND INTERNATIONAL AIRPORT

AKL

S14 Start of Season Report (International Traffic)

Key Statistics	S13 Operated	S14 -Start of Season	Percentage Change
Air Transport Movements	25,684	26,869	▲ 4.6%
Total Seats	5,732,316	6,030,311	▲ 5.2%
Seats per Passenger ATM	223	224	

Contents

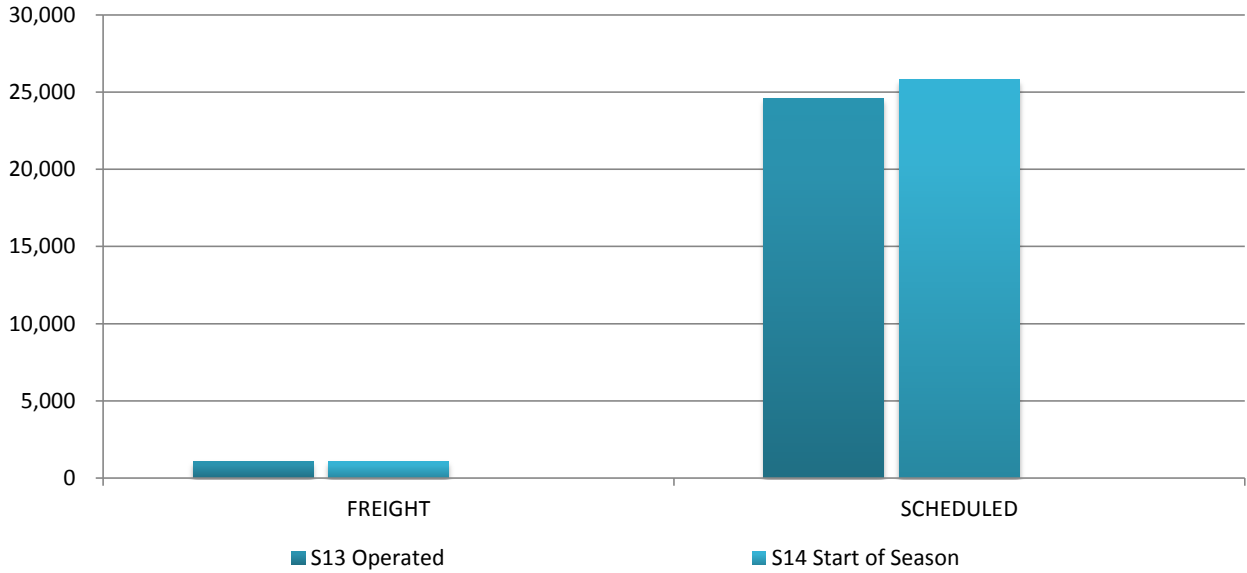
	Page
Movements and Seats by Service Type	2
Peak Week Departure Frequencies by Carrier	3-5
Top 10 Airlines by ATM's and Seats	6
Transit Routes	7
Top 20 Destinations by ATM's and Seats	8
International Terminal - Passengers per 60 Minutes	9-10
International Arrivals - Passengers per 30 Minutes	11
Glossary	12

Data in this report is current as of 26 March 2014

No warranty whether expressed or implied as to the completeness, accuracy, fitness for purpose, or satisfactory quality is given by ACL regarding the information in this report, which is provided by third parties. Accordingly, ACL excludes all liability with regard to such data.

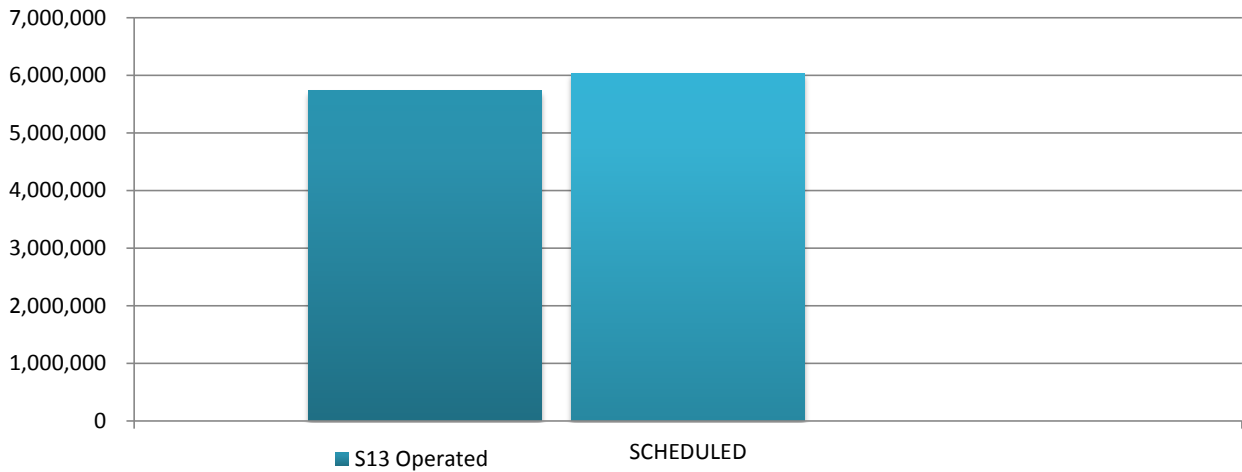
The contents of this report may not be reproduced without the written consent of ACL.

Full Season ATMs by Service Type



	S13 Operated	S14 Start of Season	% CHANGE S13 End vs S14 Start of Season
FREIGHT	1,076	1,073	▲ -0.3%
SCHEDULED	24,608	25,796	▲ 4.8%
TOTAL	25,684	26,869	▲ 4.6%

Full Season Seats by Service Type



	S13 Operated	S14 Start of Season	% CHANGE S13 End vs S14 Start of Season
SCHEDULED	5,732,316	6,030,311	▲ 5.2%
TOTAL	5,732,316	6,030,311	▲ 5.2%

AUCKLAND INTERNATIONAL AIRPORT

PEAK WEEK DEPARTURE FREQUENCIES - BY CARRIER

	OPERATOR	AIRPORT		S13		S14		SEATS +/-	ATMS +/-
				SEATS	ATMS	SEATS	ATMS		
CI	China Airlines	TPE	Taipei Chiang Kai Shek	2,149	7	2,149	7	0	0
CI Total				2,149	7	2,149	7	0	0
CX	Cathay Pacific	HKG	Hong Kong Int'L	1,981	7	1,981	7	0	0
CX Total				1,981	7	1,981	7	0	0
CZ	China Southern Airlines	CAN	Guangzhou Baiyun	1,519	7	2,280	10	761	3
CZ Total				1,519	7	2,280	10	761	3
EK	Emirates	DXB	Dubai	9,324	21	10,269	21	945	0
EK Total				9,324	21	10,269	21	945	0
FJ	Air Pacific	NAN	Nadi International	2,165	11	2,060	12	-105	1
		SUV	Nausori International Airport	240	2	244	2	4	0
FJ Total				2,405	13	2,304	14	-101	1
FX	Fedex	CAN	Guangzhou Baiyun	0	1	0	1	0	0
FX Total				0	1	0	1	0	0
HA	Hawaiian Airlines	HNL	Honolulu International	882	3	882	3	0	0
HA Total				882	3	882	3	0	0
HJ	Tasman Pacific (DHL)	SYD	Sydney Kingsford Smith	0	5	0	5	0	0
HJ Total				0	5	0	5	0	0
JQ	Jetstar Airways	ADL	Adelaide	0	0	531	3	531	3
		MEL	Melbourne	1,074	6	1,239	7	165	1
		OOL	Gold Coast Coolangatta	900	5	1,239	7	339	2
<u>* Cancelled from 23 July</u>		SIN	Singapore Changi	909	3	909	3	0	0
		SYD	Sydney Kingsford Smith	894	5	1,239	7	345	2
JQ Total				3,777	19	5,157	27	1,380	8
KE	Korean Air	ICN	Seoul Incheon Intl	1,044	4	1,044	4	0	0
KE Total				1,044	4	1,044	4	0	0
LA	Lan Airlines	SCL	Santiago Arturo Merino Benitez	1,560	6	1,820	7	260	1
		SYD	Sydney Kingsford Smith	1,560	6	1,820	7	260	1
LA Total				3,120	12	3,640	14	520	2
MH	Malaysia Airlines	KUL	Kuala Lumpur Int'L	1,692	6	1,974	7	282	1
MH Total				1,692	6	1,974	7	282	1
NF	Air Vanuatu	205,380	Vanuatu	340	2	340	2	0	0
NF Total		205,380		340	2	340	2	0	0
NZ	Air New Zealand	ADL	Adelaide	1,008	6	840	5	-168	-1

AUCKLAND INTERNATIONAL AIRPORT

PEAK WEEK DEPARTURE FREQUENCIES - BY CARRIER

OPERATOR	AIRPORT	S13		S14		SEATS +/-	ATMS +/-	
		SEATS	ATMS	SEATS	ATMS			
APW	Apia Faleolo	1,144	6	1,410	8	266	2	
BNE	Brisbane International	4,207	16	4,372	16	165	0	
CNS	Cairns	840	5	840	5	0	0	
DPS	Denpasar Bali Ngurah Rai	468	2	702	3	234	1	
HKG	Hong Kong Int'L	2,128	7	2,128	7	0	0	
HNL	Honolulu International	912	3	1,170	5	258	2	
IUE	Niue International Airport	336	2	336	2	0	0	
KIX	Osaka Kansai International	702	3	702	3	0	0	
LAX	Los Angeles International	2,834	9	2,862	9	28	0	
LHR	London Heathrow	2,324	7	2,324	7	0	0	
MCY	Sunshine Coast Airport	336	2	504	3	168	1	
MEL	Melbourne	4,608	19	4,508	20	-100	1	
NAN	Nadi International	3,028	13	3,028	13	0	0	
NLK	Norfolk Island Airport	168	1	168	1	0	0	
NOU	Noumea	402	2	504	3	102	1	
NRT	Tokyo Narita	2,058	7	1,988	7	-70	0	
OOL	Gold Coast Coolangatta	1,008	6	1,176	7	168	1	
PER	Perth	2,058	7	2,128	7	70	0	
PPT	Papeete Faaa	538	2	702	3	164	1	
PVG	Shanghai Pu Dong	1,848	7	1,848	7	0	0	
RAR	Rarotonga	2,458	11	2,622	11	164	0	
SFO	San Francisco International	2,578	7	2,484	7	-94	0	
SYD	Sydney Kingsford Smith	6,902	34	7,544	36	642	2	
TBU	Nuku'Alofa Fua'Amotu Internationa	1,074	6	1,140	6	66	0	
VLI	Vanuatu	504	3	504	3	0	0	
YVR	Vancouver	1,520	5	1,520	5	0	0	
NZ Total		47,991	198	50,054	209	2,063	11	
QF	Qantas							
	BNE	Brisbane International	2,352	14	2,352	14	0	0
	CNS	Cairns	0	0	0	1	0	1
	MEL	Melbourne	3,528	22	3,528	21	0	-1
	SYD	Sydney Kingsford Smith	5,880	41	5,880	41	0	0
QF Total			11,760	77	11,760	77	0	0
SB	Aircalin Air Caledonie Int							
	NOU	Noumea	417	2	412	2	-5	0

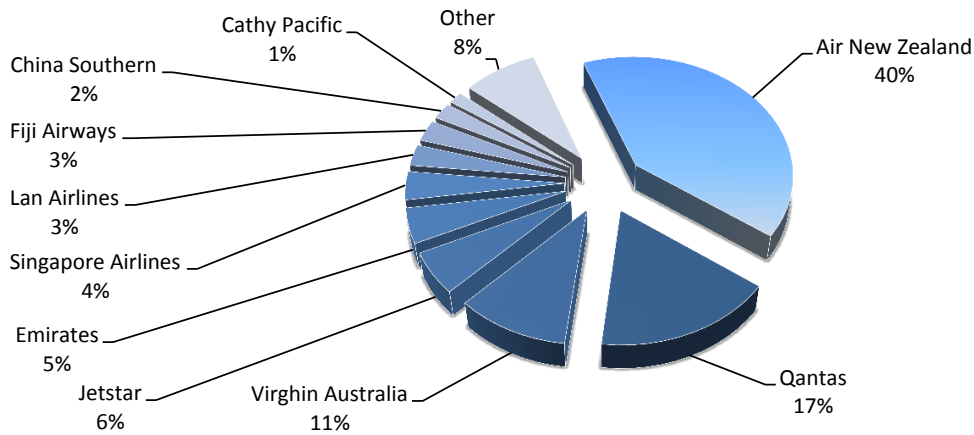
AUCKLAND INTERNATIONAL AIRPORT

PEAK WEEK DEPARTURE FREQUENCIES - BY CARRIER

OPERATOR	AIRPORT	S13		S14		SEATS +/-	ATMS +/-
		SEATS	ATMS	SEATS	ATMS		
SB Total		417	2	412	2	-5	0
SQ	Singapore Airlines						
	SIN Singapore Changi	3,371	17	3,371	16	0	-1
SQ Total		3,371	17	3,371	16	0	-1
TG	Thai Airways International Public Lt						
	BKK Bangkok International	1,460	5	1,168	4	-292	-1
TG Total		1,460	5	1,168	4	-292	-1
TN	Air Tahiti Nui						
	LAX Los Angeles International	588	2	882	3	294	1
TN Total		588	2	882	3	294	1
VA	Virgin Australia						
	APW Apia Faleolo	1,232	7	1,232	7	0	0
	BNE Brisbane International	2,288	13	2,464	14	176	1
	MEL Melbourne	1,232	7	1,232	7	0	0
	OOL Gold Coast Coolangatta	1,232	7	1,232	7	0	0
	RAR Rarotonga	880	5	880	5	0	0
	SYD Sydney Kingsford Smith	1,232	7	1,232	7	0	0
	TBU Nuku'Alofa Fua'Amotu Internationa	0	0	352	2	352	2
VA Total		8,096	46	8,624	49	528	3

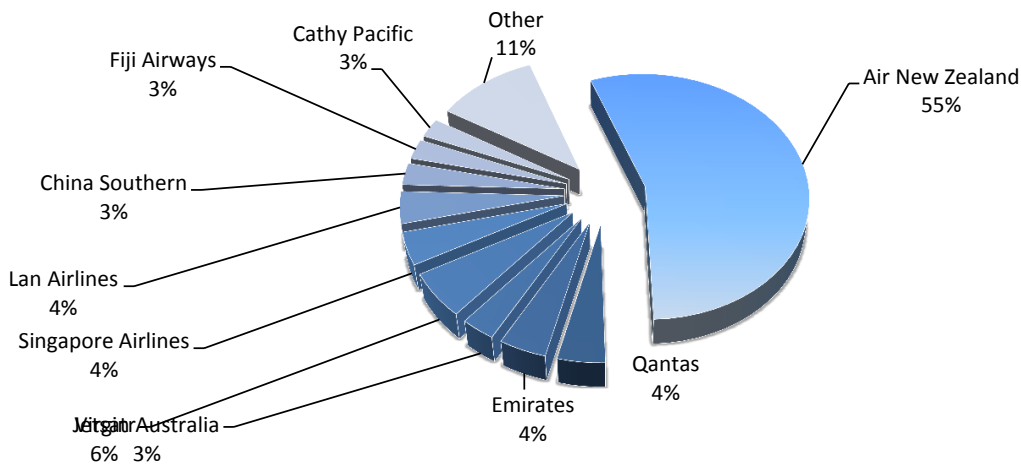
Top 10 Airlines by Air Transport Movements (ATMs)

Airline	Movements
Air New Zealand	10,874
Qantas	4,558
Virgin Australia	2,840
Jetstar	1,518
Emirates	1,260
Singapore Airlines	1,020
Lan Airlines	772
Fiji Airways	768
China Southern	600
Cathy Pacific	420
Other	2,239

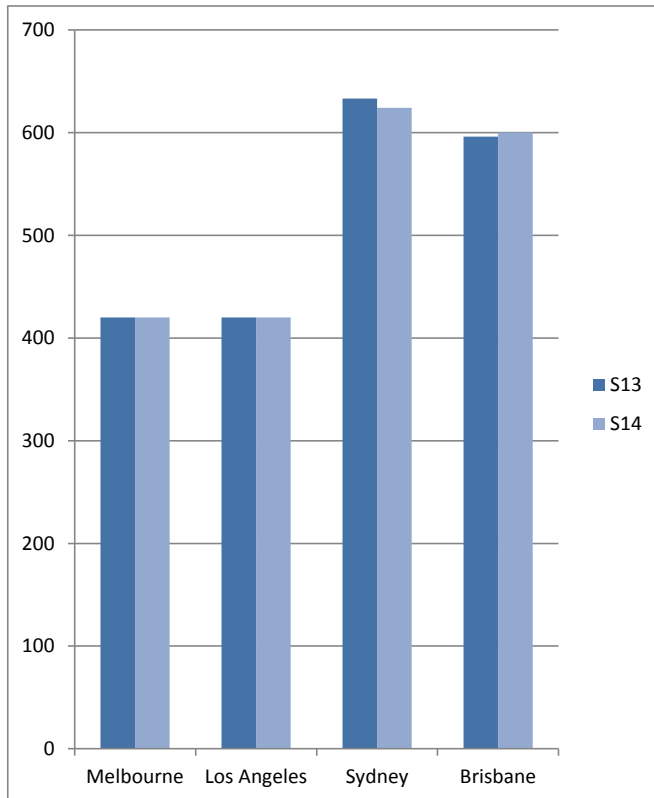


Top 10 Airlines by Air Seats

Airline	Seats
Air New Zealand	2,633,647
Qantas	205,380
Emirates	205,380
Virgin Australia	148,680
Jetstar	281,034
Singapore Airlines	202,260
Lan Airlines	199,680
China Southern	136,800
Fiji Airways	124,720
Cathy Pacific	118,860
Other	521,930



Transit Routes - Air Transport Movements (ATMs)



Emirates (Dubai)	Seasonal		Peak Week	
	S13	S14	S13	S14
Sydney	420	420	14	14
Melbourne	420	420	14	14
Brisbane	420	420	14	14
EK Total	1,260	1,260	42	42

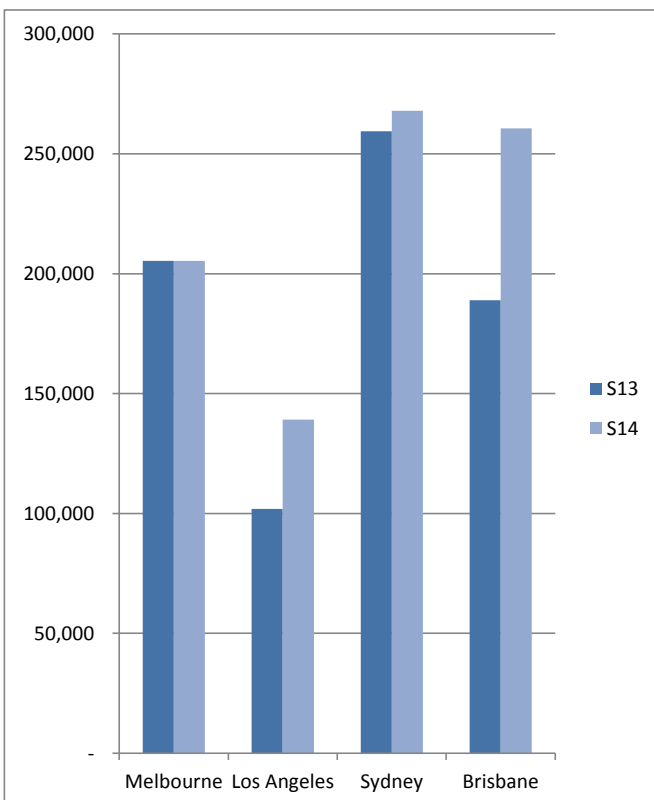
China Airlines (Taipei)				
	S13	S14	S13	S14
Sydney	213	204	8	8
Brisbane	176	180	6	6
CI Total	389	384	14	14

Air New Zealand (London Heathrow)				
	S13	S14	S13	S14
Los Angeles	420	420	14	14
NZ Total	420	420	14	14

Total transits for destinations served by more than one airline				
	S13	S14	S13	S14
Sydney	633	624	22	22
Brisbane	596	600	20	20

Total Transit Flights				
	S13	S14	S13	S14
Total Transit Flights	2,069	2,064	70	70

Transit Routes - Seats



Emirates (Dubai)	Seasonal		Peak Week	
	S13	S14	S13	S14
Sydney	205,380	205,380	6,846	6,846
Melbourne	205,380	205,380	6,846	6,846
Brisbane	148,680	205,380	4,956	6,846
EK Total	559,440	616,140	18,648	20,538

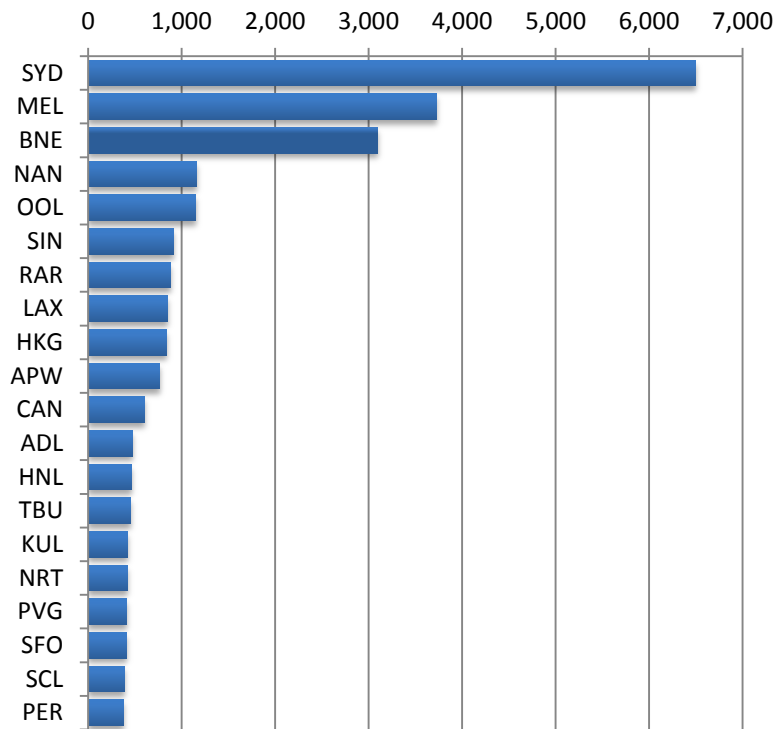
China Airlines (Taipei)				
	S13	S14	S13	S14
Sydney	54,032	62,628	2,456	2,456
Brisbane	40,217	55,260	1,842	1,842
CI Total	94,249	117,888	4,298	4,298

Air New Zealand (London Heathrow)				
	S13	S14	S13	S14
Los Angeles	101,896	139,108	4,648	4,648
NZ Total	101,896	139,108	4,648	4,648

Total transits for destinations served by more than one airline				
	S13	S14	S13	S14
Sydney	259,412	268,008	9,302	9,302
Brisbane	188,897	260,640	6,798	8,688

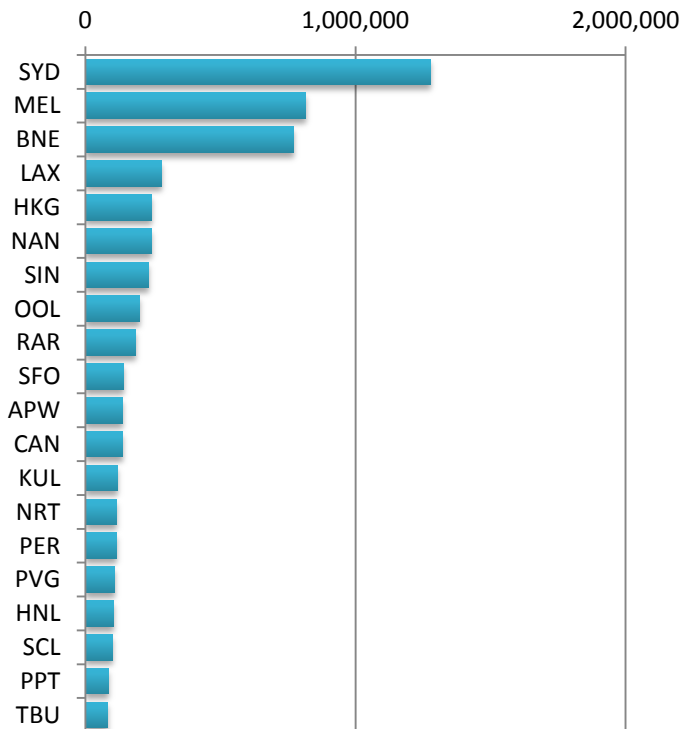
Total Transit Seats				
	S13	S14	S13	S14
Total Transit Seats	755,585	873,136	27,594	29,484

Air Transport Top 20 Movements by Destination



Destination	ATM'S
SYD	6,500
MEL	3,721
BNE	3,093
NAN	1,161
OOL	1,152
SIN	910
RAR	877
LAX	853
HKG	839
APW	762
CAN	600
ADL	475
HNL	465
TBU	456
KUL	419
NRT	418
PVG	415
SFO	414
SCL	386
PER	377

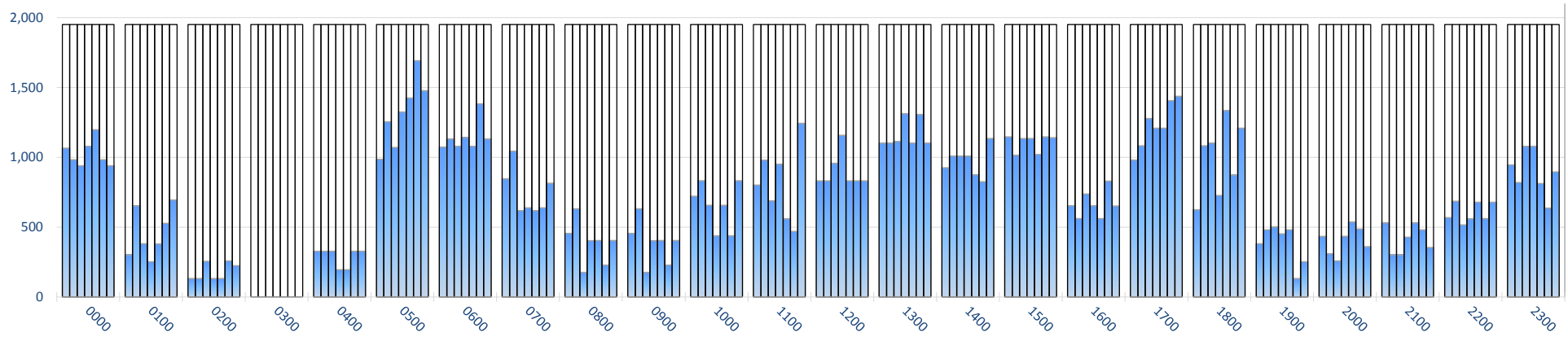
Air Transport Top 20 Seats by Destination



Destination	SEATS
SYD	1,277,364
MEL	816,179
BNE	771,616
LAX	281,964
HKG	246,236
NAN	245,042
SIN	231,954
OOL	200,667
RAR	184,327
SFO	141,540
APW	138,796
CAN	136,800
KUL	118,158
NRT	115,172
PER	114,434
PVG	108,450
HNL	105,640
SCL	99,840
PPT	84,388
TBU	82,188

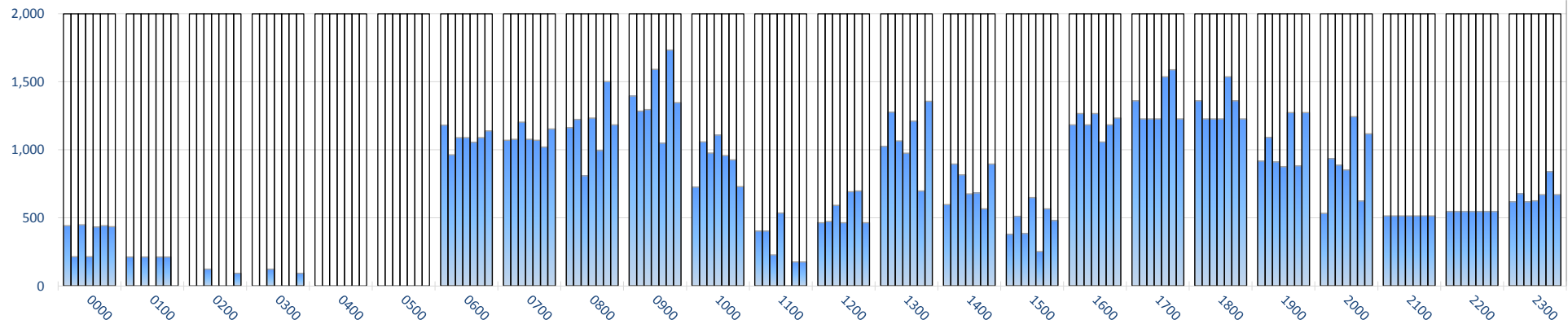
INTERNATIONAL TERMINAL ARRIVALS (PER 60 MINUTES, ROLLING EVERY 5 MINUTES)

Peak Week Movements per Hour - All times LOCAL



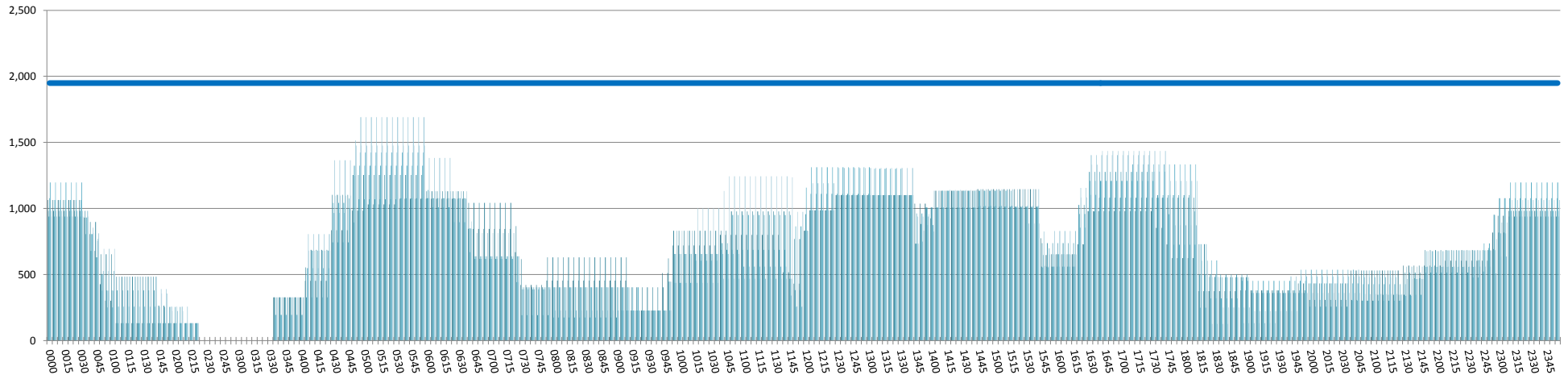
INTERNATIONAL TERMINAL DEPARTURES (PER 60 MINUTES, ROLLING EVERY 5 MINUTES)

Peak Week Movements per Hour - All times LOCAL



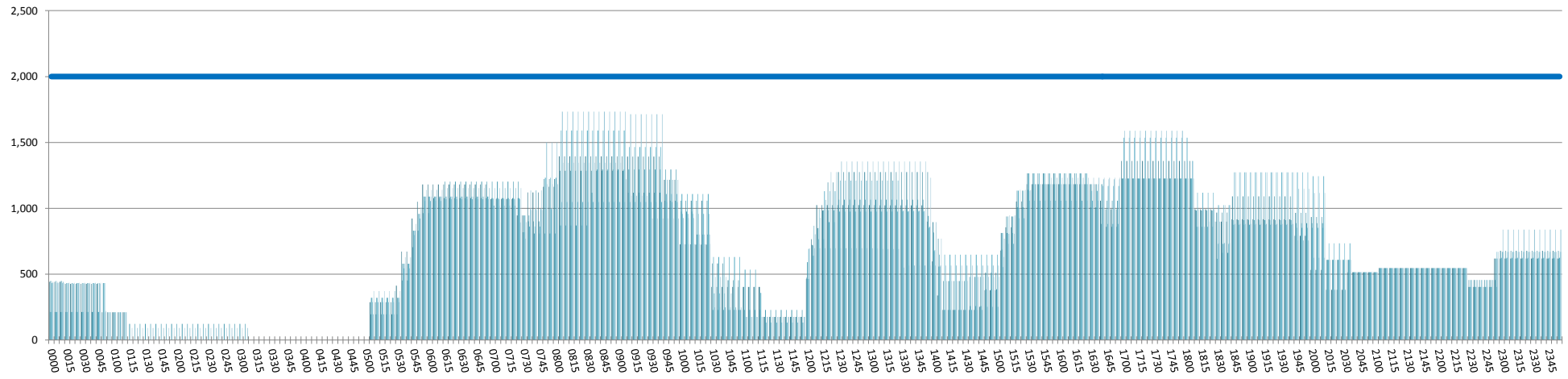
INTERNATIONAL TERMINAL ARRIVALS (PER 60 MINUTES, ROLLING EVERY 5 MINUTES)

Peak Week Movements per Hour - All times LOCAL



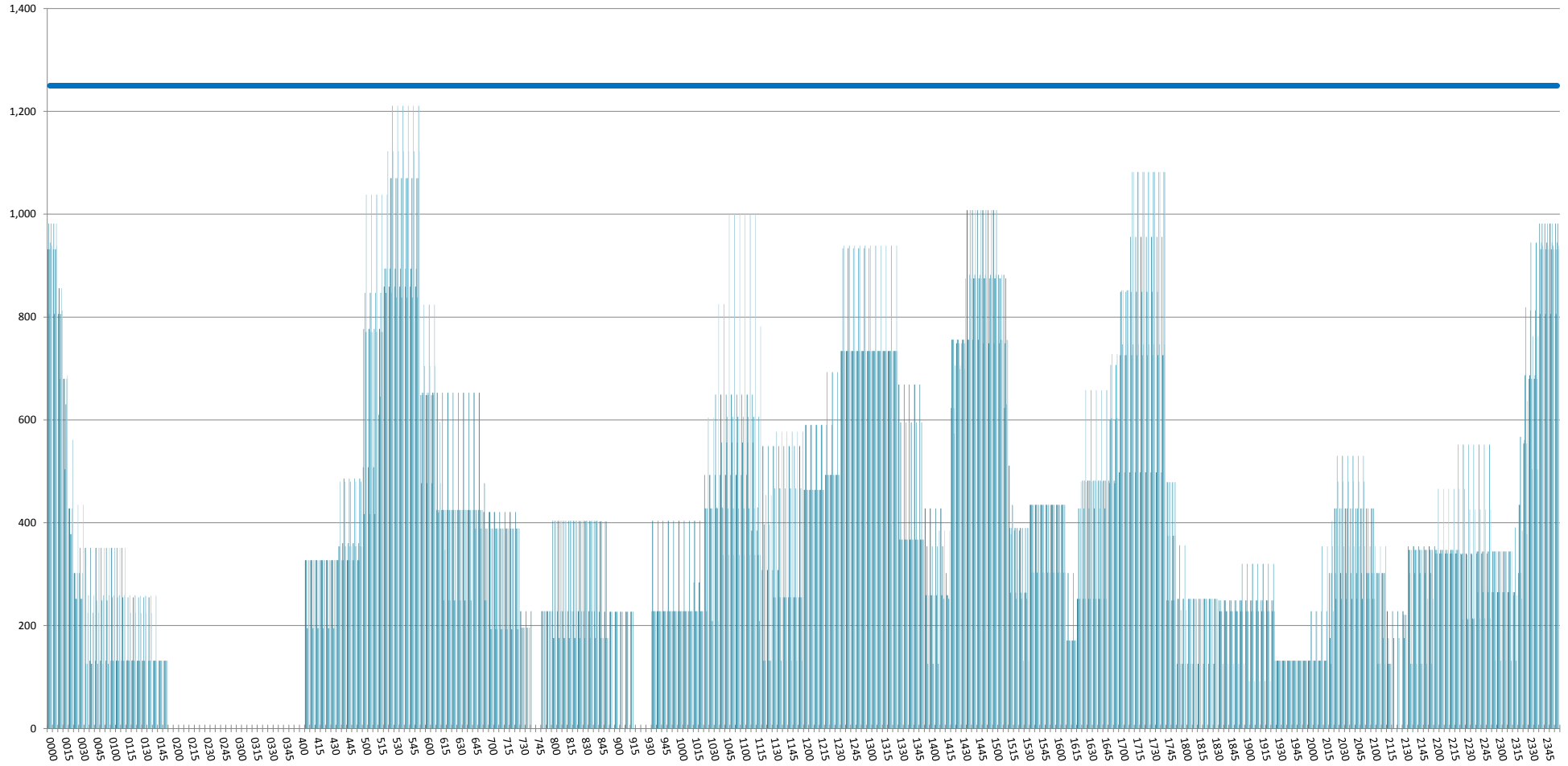
INTERNATIONAL TERMINAL DEPARTURES (PER 60 MINUTES, ROLLING EVERY 5 MINUTES)

Peak Week Movements per Hour - All times LOCAL



INTERNATIONAL TERMINAL ARRIVALS (PER 30 MINUTES, ROLLING EVERY 5 MINUTES)

Peak Week Movements - All times LOCAL



GLOSSARY OF TERMS

Air Transport Movement (ATM)	A scheduled or charter passenger or freight aircraft movement.
Allocation	The allocation of slots such that demand is constrained to fit within declared scheduling limits.
Common Travel Area (CTA)	Services to or from the Republic of Ireland and the Channel Islands.
Demand	The unconstrained demand for slots, prior to any schedule adjustments.
Passenger ATM	A scheduled or charter <u>passenger</u> aircraft movement (ie, excluding all-cargo aircraft movements).
Scheduling Limits	Limiting parameters declared by the Airport Operator used in the coordination process.
Seats	The number of seats based on the aircraft configuration advised by the airline.
Peak Week	The Peak Week for S14 is 14-20 July 2014
Data Snapshot	All data used for this report was as held 26 March 2014

GUIDE TO HISTOGRAMS

The histograms show the pattern of traffic by time of day against the appropriate scheduling limit. Each time period consist of seven columns representing the days-of-week, Monday through Sunday.