

Stansted Airport (STN)

Winter 2020/21 (W20)



Initial Coordination Report

Report Date: Wed 03-Jun-2020

Headlines

	W20 Init Coord	vs. W19 Init Coord	vs. W20 Hist (SHL)
Total Air Transport Movements (Passenger & Freight)	73,859	▼ -15.4%	▲ 9.8%
Total Passenger Air Transport Movements	68,230	▼ -16.4%	▲ 11.8%
Total Passenger Air Transport Movement Seats	12,617,786	▼ -17.0%	▲ 11.3%
Average Seats per Passenger Air Transport Movement	184.93	▼ -0.7%	▼ -0.5%
Percentage of allocated slots cleared as requested (OK)	98%		

Contents

Page	Content
2	Runway Scheduling Limits
3	Coordinator's Report
4	Peak Week - Initial Coordination Analysis
5	ATM Allocation by Operator (Full season and Peak Week Comparison)
6	Peak Week - Allocation and Slot Adjustment Distribution by Operator
7	Significant Route Changes
8	Full Season - ATM Analysis
9	Full Season - PATM Seats Analysis
10	Full Season - Terminal Analysis
11	Full Season - Aircraft Size Analysis
12	Full Season - Seasonality
13	Peak Week - Initial Hourly Runway Demand
14	Peak Week - Hourly Runway Allocation
15	Peak Week - Hourly Runway Allocation Comparison (W20 Init Coord vs. W19 Init Coord)
16	Peak Week - Hourly Runway Allocation Comparison (W20 Init Coord vs. W20 Hist (SHL))
17	Peak Week Histogram - Departure Passengers (T60) - All Terminals - All Operators
18	Peak Week Histogram - Departure Passengers (T60/15) - All Terminals - All Operators
19	Peak Week Histogram - Departure Passengers (T120/15) - All Terminals - All Operators
20	Peak Week Histogram - Arrival Passengers (T60) - 1I - All Operators
21	Peak Week Histogram - Arrival Passengers (T60/15) - 1I - All Operators
22	Glossary

W19 scheduling season runs from Sun 27-Oct-2019 to Sat 28-Mar-2020 (154 days).

W20 scheduling season runs from Sun 25-Oct-2020 to Sat 27-Mar-2021 (154 days).

Disclaimer

No warranty whether expressed or implied as to the completeness, accuracy, fitness for purpose, or satisfactory quality is given by ACL regarding the information in this report, which is provided by third parties. Accordingly, ACL excludes all liability with regard to such data.

The contents of this report may not be reproduced without the written consent of ACL.

Coordinator's Report



Total demand	73,927	slots		
Total slots allocated	73,859	slots	99.91%	of total demand
Number of slots cleared OK	72,312	slots	97.91%	of total slots cleared

Slots adjusted (not OK) due to:

RUNWAY constraints	1,051	slots	67.9%	of total slots adjusted
TERMINAL constraints	452	slots	29.2%	of total slots adjusted
STAND constraints	-	slots	0.0%	of total slots adjusted
NIGHT constraints	-	slots	0.0%	of total slots adjusted
OTHER constraints	-	slots	0.0%	of total slots adjusted
ARR/DEP TURNAROUND feasibility	44	slots	2.8%	of total slots adjusted

Executive Summary

Total allocation for the Winter 2020 season was 73,859 slots, a decrease of 15.4% in comparison to Winter 2019 initial coordination, this was due to high speculative overbidding in Winter 2019, but a 9.8% increase compared to Winter 2019 historic. 68 slots were not allocated due to being adhoc. 97.91% of slots were cleared to their requested times.

Runway Constraints

- Arrivals hourly demand reached a peak of 29 in the 2200 hour and 27 in the 2300 hour.
- Departures hourly demand reached a peak of 26 in the 0800 hour.
- Totals hourly demand reached a peak of 42 in the 0800 hour.

Terminal Constraints

- Arrivals hourly demand reached a peak of 5,133 from 2230 to 2325.
- Departures hourly demand reached a peak of 5,229 from 0630 to 0725.
- Departures two hourly demand reached a peak of 9,485 from 0600 to 0755.

Stand Constraints

No Stand Constraint issues.

Night Constraints

No Night Constraint issues.

Other Constraints

No Other Constraint issues.

Arr/Dep Turnaround Feasibility

- 44 slots were re-coordinated due to turnaround feasibility

Peak Week - Initial Coordination Analysis



Operator	W20 HISTORIC SLOTS				HISTORIC RECLAIM STATISTICS				NEW SLOT REQUESTS						Total Demand at Initial Submissions	Total Allocation (SAL)	% of demand with a slot allocated	
	Historic slots	Lost Histories (NBO & MU)	Undeclared Histories	Reclaimed Histories	Incl. Time Change	Incl. Seat Increase	Incl. Day change	Incl. A>D or D>A swap	Demand - New Requests	Allocated - Year Round Incumbent	Allocated - Year Round New Entrant	Allocated - New Incumbent	Allocated - New Entrant	Allocated - "Fill-in"				
Air Atlanta Icelandic	-	-	-	-	0.0%	0.0%	0.0%	0.0%	-	-	-	-	-	-	-	-	-	-
Air India	20	14	-	6	16.7%	0.0%	0.0%	0.0%	-	-	-	-	-	-	-	6	6	100.0%
Air Moldova	10	2	-	8	0.0%	0.0%	0.0%	0.0%	2	-	-	-	2	-	-	10	10	100.0%
Albawings	6	4	2	4	0.0%	0.0%	0.0%	0.0%	4	-	-	-	4	-	-	8	8	100.0%
Arkea	-	-	-	-	0.0%	0.0%	0.0%	0.0%	-	-	-	-	-	-	-	-	-	-
Asiana Airlines	4	-	-	4	0.0%	0.0%	0.0%	0.0%	-	-	-	-	-	-	-	4	4	100.0%
ASL Airlines Belgium	8	-	-	8	0.0%	0.0%	0.0%	0.0%	-	-	-	-	-	-	-	8	8	100.0%
ASL Airlines Ireland	-	-	-	-	0.0%	0.0%	0.0%	0.0%	-	-	-	-	-	-	-	-	-	-
Atlas Air	4	4	-	-	0.0%	0.0%	0.0%	0.0%	-	-	-	-	-	-	-	-	-	-
AtlasGlobal	14	14	-	-	0.0%	0.0%	0.0%	0.0%	-	-	-	-	-	-	-	-	-	-
Aurigny Air Services	8	-	-	8	0.0%	0.0%	0.0%	0.0%	4	-	-	-	4	-	-	12	12	100.0%
Austrian Airlines	2	-	-	2	0.0%	100.0%	0.0%	0.0%	-	-	-	-	-	-	-	2	2	100.0%
BA Cityflyer	6	-	-	6	16.7%	0.0%	0.0%	0.0%	-	-	-	-	-	-	-	6	6	100.0%
CargolucAir	14	14	-	-	0.0%	0.0%	0.0%	0.0%	-	-	-	-	-	-	-	-	-	-
Cargolux	-	-	-	-	0.0%	0.0%	0.0%	0.0%	-	-	-	-	-	-	-	-	-	-
China Southern	8	-	-	8	12.5%	0.0%	0.0%	0.0%	2	-	-	-	2	-	-	10	10	100.0%
Corendon Airlines Europe	-	-	-	-	0.0%	0.0%	0.0%	0.0%	-	-	-	-	-	-	-	-	-	-
Easylet	362	-	6	356	28.4%	10.7%	0.0%	0.0%	18	-	-	-	18	6	-	374	374	100.0%
Easylet Europe	-	-	-	-	0.0%	0.0%	0.0%	0.0%	2	-	-	-	2	-	-	2	2	100.0%
Egypt Air	6	6	-	-	0.0%	0.0%	0.0%	0.0%	-	-	-	-	-	-	-	-	-	-
Emirates	28	-	-	28	0.0%	0.0%	0.0%	0.0%	-	-	-	-	-	-	-	28	28	100.0%
Enter Air	-	-	-	-	0.0%	0.0%	0.0%	0.0%	-	-	-	-	-	-	-	-	-	-
Ethiad Airways	-	-	-	-	0.0%	0.0%	0.0%	0.0%	-	-	-	-	-	-	-	-	-	-
European Air Transport (DHL)	20	-	-	20	0.0%	0.0%	0.0%	0.0%	10	-	-	-	10	-	-	30	30	100.0%
Eurowings	-	-	2	-	2.0%	0.0%	0.0%	0.0%	-	-	-	-	-	-	-	2	2	100.0%
Federal Express	100	26	-	74	10.8%	0.0%	1.4%	0.0%	10	10	-	-	-	-	-	84	84	100.0%
FlyBosnia	6	6	-	-	0.0%	0.0%	0.0%	0.0%	-	-	-	-	-	-	-	-	-	-
Indigo	-	-	-	-	0.0%	0.0%	0.0%	0.0%	-	-	-	-	-	-	-	-	-	-
Jet2.com	146	3	32	111	24.3%	0.0%	0.0%	0.0%	41	-	-	-	40	8	-	152	151	99.3%
Lauda Motion	28	-	2	26	0.0%	0.0%	0.0%	0.0%	2	-	-	-	2	-	-	28	28	100.0%
Loganair	22	-	-	22	100.0%	100.0%	0.0%	0.0%	6	6	-	-	-	-	-	28	28	100.0%
LOT Polish Airlines	-	-	-	-	0.0%	0.0%	0.0%	0.0%	14	-	-	-	14	-	-	14	14	100.0%
Lufthansa	-	-	-	-	0.0%	0.0%	0.0%	0.0%	-	-	-	-	-	-	-	-	-	-
Martinair	2	2	-	-	0.0%	0.0%	0.0%	0.0%	-	-	-	-	-	-	-	-	-	-
Pegasus Airlines	58	-	1	59	57.6%	0.0%	0.0%	0.0%	17	11	-	-	6	-	-	76	76	100.0%
Peoples Vientiane	2	2	-	-	0.0%	0.0%	0.0%	0.0%	-	-	-	-	-	-	-	-	-	-
Qatar Airways	14	4	-	10	0.0%	0.0%	0.0%	0.0%	-	-	-	-	-	-	-	10	10	100.0%
Royal Air Maroc	2	2	-	-	0.0%	0.0%	0.0%	0.0%	-	-	-	-	-	-	-	-	-	-
Ryanair	2,181	-	80	2,101	12.4%	0.0%	0.0%	0.0%	211	-	-	-	211	-	-	2,312	2,312	100.0%
SAS Scandinavian	14	-	-	14	0.0%	0.0%	0.0%	0.0%	4	-	-	-	4	-	-	18	18	100.0%
Thomas Cook (UK)	-	-	-	-	0.0%	0.0%	0.0%	0.0%	-	-	-	-	-	-	-	-	-	-
Titan Airways	26	9	-	17	0.0%	0.0%	0.0%	0.0%	5	-	-	-	5	-	-	22	22	100.0%
TUI Airways	17	1	2	14	7.1%	0.0%	0.0%	0.0%	4	-	-	-	4	-	-	18	18	100.0%
Turkish Airlines	8	-	-	8	75.0%	0.0%	0.0%	0.0%	14	-	-	-	14	-	-	22	22	100.0%
Tus Airways	-	-	-	-	0.0%	0.0%	0.0%	0.0%	14	-	-	-	14	-	-	14	14	100.0%
UPS Airlines	36	8	-	28	28.6%	0.0%	0.0%	0.0%	-	-	-	-	-	-	-	28	28	100.0%
Ural Airlines	8	-	-	8	0.0%	0.0%	0.0%	0.0%	-	-	-	-	-	-	-	8	8	100.0%
West Atlantic Cargo	30	-	-	30	0.0%	0.0%	0.0%	0.0%	20	-	-	-	20	-	-	50	50	100.0%
Wideroe	10	4	-	6	0.0%	0.0%	0.0%	0.0%	-	-	-	-	-	-	-	6	6	100.0%
Wizz Air	-	-	-	-	0.0%	0.0%	0.0%	0.0%	-	-	-	-	-	-	-	-	-	-
TOTAL	3,230	125	117	2,988	15.7%	2.1%	0.0%	0.0%	404	27	-	362	14	14	3,392	3,391	100.0%	

Air Transport Movement Allocation by Operator

Comparison between W20 Hist (SHL) vs. W20 Init Coord



Operator	FULL SEASON ALLOCATION								PEAK WEEK ALLOCATION							
	W19 ATMs	W20 ATMs	+/- change	W20 Rank	W19 Seats	W20 Seats	+/- change	W20 Rank	W19 ATMs	W20 ATMs	+/- change	W20 Rank	W19 Seats	W20 Seats	+/- change	W20 Rank
Air Atlanta Icelandic	44	-	-44	33	-	-	0	24	-	-	0	32	-	-	0	24
Air India	266	132	-134	25	68,096	33,792	-34,304	11	20	6	-14	25	5,120	1,536	-3,584	11
Air Moldova	220	192	-28	21	39,600	34,560	-5,040	10	10	10	0	19	1,800	1,800	0	10
Albawings	144	144	0	24	18,432	18,432	0	17	6	8	2	22	768	1,024	256	16
Arkia	-	-	0	33	-	-	0	24	-	-	0	32	-	-	0	24
Asiana Airlines	88	88	0	28	-	-	0	24	4	4	0	28	-	-	0	24
ASL Airlines Belgium	176	176	0	22	-	-	0	24	8	8	0	22	-	-	0	24
ASL Airlines Ireland	27	-	-27	33	-	-	0	24	-	-	0	32	-	-	0	24
Atlas Air	88	-	-88	33	-	-	0	24	4	-	-4	32	-	-	0	24
AtlasGlobal	308	-	-308	33	62,832	-	-62,832	24	14	-	-14	32	2,856	-	-2,856	24
Aurigny Air Services	176	264	88	18	12,672	19,008	6,336	16	8	12	4	18	576	864	288	17
Austrian Airlines	32	32	0	30	4,608	5,568	960	21	2	2	0	29	288	348	60	23
BA Cityflyer	92	93	1	27	9,016	9,114	98	19	6	6	0	25	588	588	0	18
CargoLogicAir	308	-	-308	33	-	-	0	24	14	-	-14	32	-	-	0	24
Cargolux	122	88	-34	28	-	-	0	24	-	-	0	32	-	-	0	24
China Southern	176	220	44	19	-	-	0	24	8	10	2	19	-	-	0	24
Corendon Airlines Europe	-	-	0	33	-	-	0	24	-	-	0	32	-	-	0	24
EasyJet	7,020	8,313	1,293	2	1,164,780	1,402,682	237,902	2	362	374	12	2	60,012	63,026	3,014	2
EasyJet Europe	-	10	10	31	-	1,860	1,860	22	-	2	2	29	-	372	372	21
Egypt Air	132	-	-132	33	-	-	0	24	6	-	-6	32	-	-	0	24
Emirates	616	616	0	8	218,064	218,064	0	5	28	28	0	8	9,912	9,912	0	5
Enter Air	-	-	0	33	-	-	0	24	-	-	0	32	-	-	0	24
Ethiad Airways	52	-	-52	33	-	-	0	24	-	-	0	32	-	-	0	24
European Air Transport (DHL)	438	657	219	7	-	-	0	24	20	30	10	7	-	-	0	24
Eurowings	10	10	0	31	1,800	1,800	0	23	-	2	2	29	-	360	360	22
Federal Express	2,101	1,848	-253	4	-	-	0	24	100	84	-16	4	-	-	0	24
FlyBosnia	130	-	-130	33	17,940	-	-17,940	24	6	-	-6	32	828	-	-828	24
Indigo	-	-	0	33	-	-	0	24	-	-	0	32	-	-	0	24
Jet2.com	2,419	2,874	455	3	457,346	543,186	85,840	3	146	151	5	3	27,594	28,539	945	3
Lauda Motion	604	616	12	8	110,898	110,880	-18	6	28	28	0	8	5,139	5,040	-99	6
Loganair	484	616	132	8	15,972	30,184	14,212	13	22	28	6	8	726	1,372	646	13
LOT Polish Airlines	-	308	308	16	-	32,648	32,648	12	-	14	14	16	-	1,484	1,484	12
Lufthansa	-	-	0	33	-	-	0	24	-	-	0	32	-	-	0	24
Martinair	44	-	-44	33	-	-	0	24	2	-	-2	32	-	-	0	24
Pegasus Airlines	1,275	1,672	397	5	240,975	316,008	75,033	4	58	76	18	5	10,962	14,364	3,402	4
Peoples Viennaline	32	-	-32	33	2,432	-	-2,432	24	2	-	-2	32	152	-	-152	24
Qatar Airways	308	220	-88	19	-	-	0	24	14	10	-4	19	-	-	0	24
Royal Air Maroc	44	-	-44	33	-	-	0	24	2	-	-2	32	-	-	0	24
Ryanair	46,184	50,622	4,438	1	8,728,776	9,567,558	838,782	1	2,181	2,312	131	1	412,209	436,968	24,759	1
SAS Scandinavian	308	396	88	14	55,440	71,280	15,840	7	14	18	4	14	2,520	3,240	720	8
Thomas Cook (UK)	-	-	0	33	-	-	0	24	-	-	0	32	-	-	0	24
Titan Airways	534	470	-64	13	18,988	6,060	-12,928	20	26	22	-4	12	1,212	404	-808	20
TUI Airways	288	366	78	15	54,432	69,174	14,742	8	17	18	1	14	3,213	3,402	189	7
Turkish Airlines	176	484	308	12	-	57,288	57,288	9	8	22	14	12	-	2,604	2,604	9
Tus Airways	-	308	308	16	-	30,184	30,184	13	-	14	14	16	-	1,372	1,372	13
UPS Airlines	792	616	-176	8	-	-	0	24	36	28	-8	8	-	-	0	24
Ural Airlines	114	176	62	22	18,240	28,160	9,920	15	8	8	0	22	1,280	1,280	0	15
West Atlantic Cargo	660	1,100	440	6	-	-	0	24	30	50	20	6	-	-	0	24
Wideroe	220	132	-88	25	17,160	10,296	-6,864	18	10	6	-4	25	780	468	-312	19
Wizz Air	-	-	0	33	-	-	0	24	-	-	0	32	-	-	0	24
TOTAL	67,252	73,859	6,607		11,338,499	12,617,786	1,279,287		3,230	3,391	161		548,535	580,367	31,832	

Operators with 0 'ATMs' in both W20 Hist (SHL) & W20 Init Coord schedules are included in the table due to appearing in the W19 Init Coord schedule (either with/without allocated slots).

Peak Week - Allocation and Slot Adjustment Distribution by Operator

Schedule: W20 Init Coord



Operator	W20 allocated ATMs	SLOT ADJUSTMENTS (MINUTES OFF REQUESTED TIME)														Requests with NO slot allocated	
		0	5	10	15	20	25	30	35	40	45	50	55	60	>60		
Air Atlanta Icelandic	-																-
Air India	6	100.0%	0.0%	0.0%	0.0%	0.0%	0.0%	0.0%	0.0%	0.0%	0.0%	0.0%	0.0%	0.0%	0.0%	0.0%	-
Air Moldova	10	100.0%	0.0%	0.0%	0.0%	0.0%	0.0%	0.0%	0.0%	0.0%	0.0%	0.0%	0.0%	0.0%	0.0%	0.0%	-
Albawings	8	100.0%	0.0%	0.0%	0.0%	0.0%	0.0%	0.0%	0.0%	0.0%	0.0%	0.0%	0.0%	0.0%	0.0%	0.0%	-
Arkia	-																-
Asiana Airlines	4	100.0%	0.0%	0.0%	0.0%	0.0%	0.0%	0.0%	0.0%	0.0%	0.0%	0.0%	0.0%	0.0%	0.0%	0.0%	-
ASL Airlines Belgium	8	100.0%	0.0%	0.0%	0.0%	0.0%	0.0%	0.0%	0.0%	0.0%	0.0%	0.0%	0.0%	0.0%	0.0%	0.0%	-
ASL Airlines Ireland	-																-
Atlas Air	-																-
AtlasGlobal	-																-
Aurigny Air Services	12	100.0%	0.0%	0.0%	0.0%	0.0%	0.0%	0.0%	0.0%	0.0%	0.0%	0.0%	0.0%	0.0%	0.0%	0.0%	-
Austrian Airlines	2	100.0%	0.0%	0.0%	0.0%	0.0%	0.0%	0.0%	0.0%	0.0%	0.0%	0.0%	0.0%	0.0%	0.0%	0.0%	-
BA Cityflyer	6	83.3%	16.7%	0.0%	0.0%	0.0%	0.0%	0.0%	0.0%	0.0%	0.0%	0.0%	0.0%	0.0%	0.0%	0.0%	-
CargoLogicAir	-																-
Cargolux	-																-
China Southern	10	100.0%	0.0%	0.0%	0.0%	0.0%	0.0%	0.0%	0.0%	0.0%	0.0%	0.0%	0.0%	0.0%	0.0%	0.0%	-
Corendon Airlines Europe	-																-
Easyjet	374	99.2%	0.5%	0.3%	0.0%	0.0%	0.0%	0.0%	0.0%	0.0%	0.0%	0.0%	0.0%	0.0%	0.0%	0.0%	-
Easyjet Europe	2	100.0%	0.0%	0.0%	0.0%	0.0%	0.0%	0.0%	0.0%	0.0%	0.0%	0.0%	0.0%	0.0%	0.0%	0.0%	-
Egypt Air	-																-
Emirates	28	100.0%	0.0%	0.0%	0.0%	0.0%	0.0%	0.0%	0.0%	0.0%	0.0%	0.0%	0.0%	0.0%	0.0%	0.0%	-
Enter Air	-																-
Etiihad Airways	-																-
European Air Transport (DHL)	30	100.0%	0.0%	0.0%	0.0%	0.0%	0.0%	0.0%	0.0%	0.0%	0.0%	0.0%	0.0%	0.0%	0.0%	0.0%	-
Eurowings	2	100.0%	0.0%	0.0%	0.0%	0.0%	0.0%	0.0%	0.0%	0.0%	0.0%	0.0%	0.0%	0.0%	0.0%	0.0%	-
Federal Express	84	100.0%	0.0%	0.0%	0.0%	0.0%	0.0%	0.0%	0.0%	0.0%	0.0%	0.0%	0.0%	0.0%	0.0%	0.0%	-
FlyBosnia	-																-
Indigo	-																-
Jet2.com	151	90.1%	5.3%	1.3%	1.3%	0.0%	0.0%	0.0%	0.0%	0.0%	0.0%	1.3%	0.0%	0.0%	0.7%	0.0%	1
Lauda Motion	28	100.0%	0.0%	0.0%	0.0%	0.0%	0.0%	0.0%	0.0%	0.0%	0.0%	0.0%	0.0%	0.0%	0.0%	0.0%	-
Loganair	28	85.7%	14.3%	0.0%	0.0%	0.0%	0.0%	0.0%	0.0%	0.0%	0.0%	0.0%	0.0%	0.0%	0.0%	0.0%	-
LOT Polish Airlines	14	50.0%	0.0%	50.0%	0.0%	0.0%	0.0%	0.0%	0.0%	0.0%	0.0%	0.0%	0.0%	0.0%	0.0%	0.0%	-
Lufthansa	-																-
Martinair	-																-
Pegasus Airlines	76	100.0%	0.0%	0.0%	0.0%	0.0%	0.0%	0.0%	0.0%	0.0%	0.0%	0.0%	0.0%	0.0%	0.0%	0.0%	-
Peoples Viennaline	-																-
Qatar Airways	10	100.0%	0.0%	0.0%	0.0%	0.0%	0.0%	0.0%	0.0%	0.0%	0.0%	0.0%	0.0%	0.0%	0.0%	0.0%	-
Royal Air Maroc	-																-
Ryanair	2,312	98.2%	0.8%	0.1%	0.2%	0.0%	0.1%	0.0%	0.0%	0.0%	0.0%	0.1%	0.0%	0.2%	0.0%	0.2%	-
SAS Scandinavian	18	100.0%	0.0%	0.0%	0.0%	0.0%	0.0%	0.0%	0.0%	0.0%	0.0%	0.0%	0.0%	0.0%	0.0%	0.0%	-
Thomas Cook (UK)	-																-
Titan Airways	22	100.0%	0.0%	0.0%	0.0%	0.0%	0.0%	0.0%	0.0%	0.0%	0.0%	0.0%	0.0%	0.0%	0.0%	0.0%	-
TUI Airways	18	100.0%	0.0%	0.0%	0.0%	0.0%	0.0%	0.0%	0.0%	0.0%	0.0%	0.0%	0.0%	0.0%	0.0%	0.0%	-
Turkish Airlines	22	100.0%	0.0%	0.0%	0.0%	0.0%	0.0%	0.0%	0.0%	0.0%	0.0%	0.0%	0.0%	0.0%	0.0%	0.0%	-
Tus Airways	14	100.0%	0.0%	0.0%	0.0%	0.0%	0.0%	0.0%	0.0%	0.0%	0.0%	0.0%	0.0%	0.0%	0.0%	0.0%	-
UPS Airlines	28	100.0%	0.0%	0.0%	0.0%	0.0%	0.0%	0.0%	0.0%	0.0%	0.0%	0.0%	0.0%	0.0%	0.0%	0.0%	-
Ural Airlines	8	100.0%	0.0%	0.0%	0.0%	0.0%	0.0%	0.0%	0.0%	0.0%	0.0%	0.0%	0.0%	0.0%	0.0%	0.0%	-
West Atlantic Cargo	50	98.0%	0.0%	0.0%	0.0%	0.0%	0.0%	0.0%	0.0%	2.0%	0.0%	0.0%	0.0%	0.0%	0.0%	0.0%	-
Wideroe	6	100.0%	0.0%	0.0%	0.0%	0.0%	0.0%	0.0%	0.0%	0.0%	0.0%	0.0%	0.0%	0.0%	0.0%	0.0%	-
Wizz Air	-																-
TOTAL	3,391	98.0%	1.0%	0.4%	0.2%	0.0%	0.1%	0.0%	0.0%	0.1%	0.0%	0.1%	0.1%	0.0%	0.2%	0.0%	1

Operators with 0 'allocated ATMs' and 0 'Requests with NO slot allocated' in W20, are included in this list due to having slots allocated in either W19 Init Coord or W20 Hist (SHL) schedules.

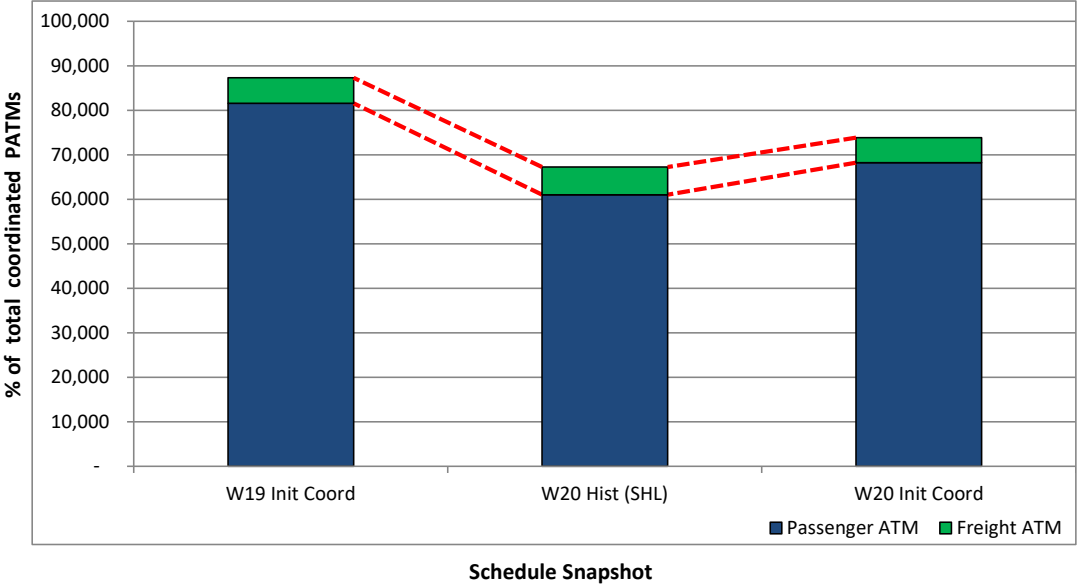
Significant Route Changes

Operator	Category	Description of change from W19 schedule to W20 schedule
Air India	NEW	New route to ATQ
Arkia	CANCELLED	Cancelled all operations to TLV
AtlasGlobal	CANCELLED	Cancelled all operations to IST
BA Cityflyer	NEW	New route to BER
BA Cityflyer	CANCELLED	Cancelled all operations to TXL
CargoLogicAir	CANCELLED	Cancelled all operations at STN (ATL, FRA, LCK, ORD)
China Southern	CHANGE	Increased operations to CAN by 66 ATMs
Corendon Airlines Europe	CANCELLED	Cancelled all operations to RAK
European Air Transport (DHL)	NEW	New routes to CDG and MXP
European Air Transport (DHL)	CANCELLED	Cancelled all operations to BGY and EMA
Eurowings	CANCELLED	Cancelled all operations to CGN, HAJ and MUC and reduced SZG from 132 ATMs to 10 ATMs
Federal Express	CANCELLED	Cancelled all operations to EWR
Indigo	CANCELLED	Cancelled all operations to DEL
Jet2.com	NEW	New routes to INN and FDH
Jet2.com	CANCELLED	Cancelled all operations to IBZ, MAH and REU
Lauda Motion	CANCELLED	Cancelled all operations to INN and RIX
LOT Polish Airlines	NEW	New route to BUD
Martinair	CANCELLED	Cancelled all operations to AMS and BOG
Pegasus Airlines	NEW	New routes to AYT and ESB
Peoples Viennaline	CANCELLED	Cancelled all operations to ACH
Qatar Airways	CANCELLED	Cancelled all operations to LUX
Ryanair	NEW	New routes to BER, CLJ, KSC and LIN
Ryanair	CANCELLED	Cancelled all operations to AHO, BE, BZR, CFE, CFU, CHQ, EDI, FNI, GRO, HHN, IBZ, LEI, LEJ, LUZ, NRN, PED, PUY, RHO, SXB and ZAD
SAS Scandinavian	NEW	New route to LLA
TUI Airways	NEW	New route to SID
TUI Airways	CANCELLED	Cancelled all operations to HRG
Turkish Airlines	NEW	New routes to ESB, IST and SAW
Tus Airways	NEW	New route to LCA
Ural Airlines	NEW	New route to DME
Ural Airlines	CANCELLED	Cancelled all operations to ZIA
West Atlantic Cargo	NEW	New route to BFS
Wizz Air	Cancelled	Cancelled all operations at STN

Full Season - ATM Analysis



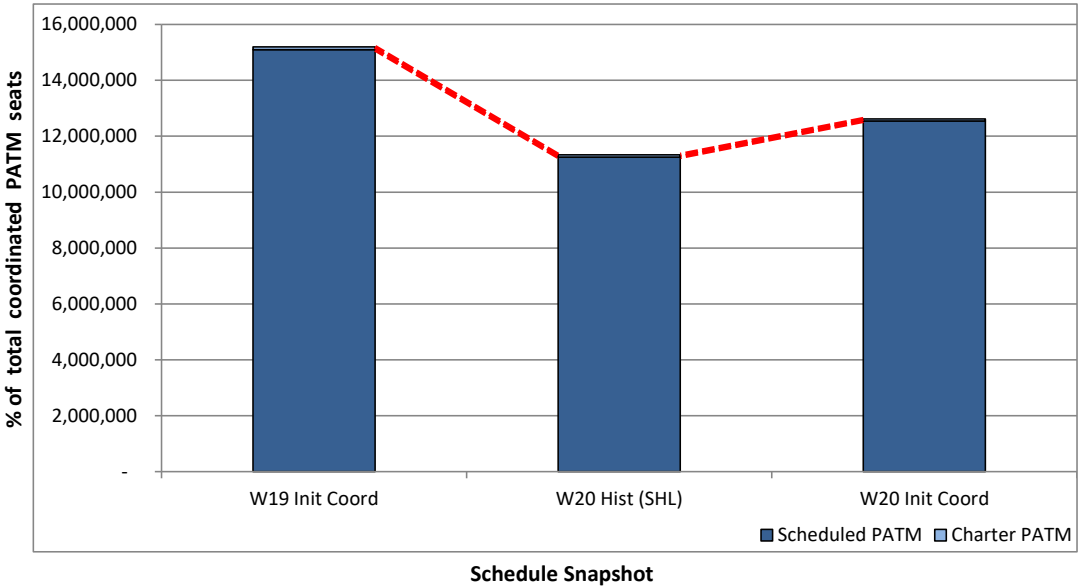
Total ATMs: Passenger ATMs vs. Freight ATMs



Full Season - PATM Seats Analysis



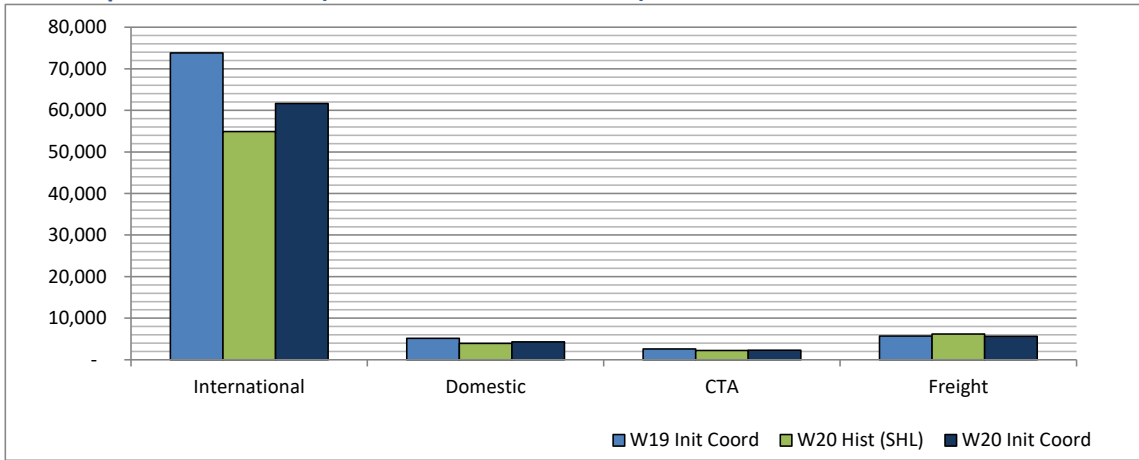
Total Passenger ATM seats: Scheduled vs. Charter



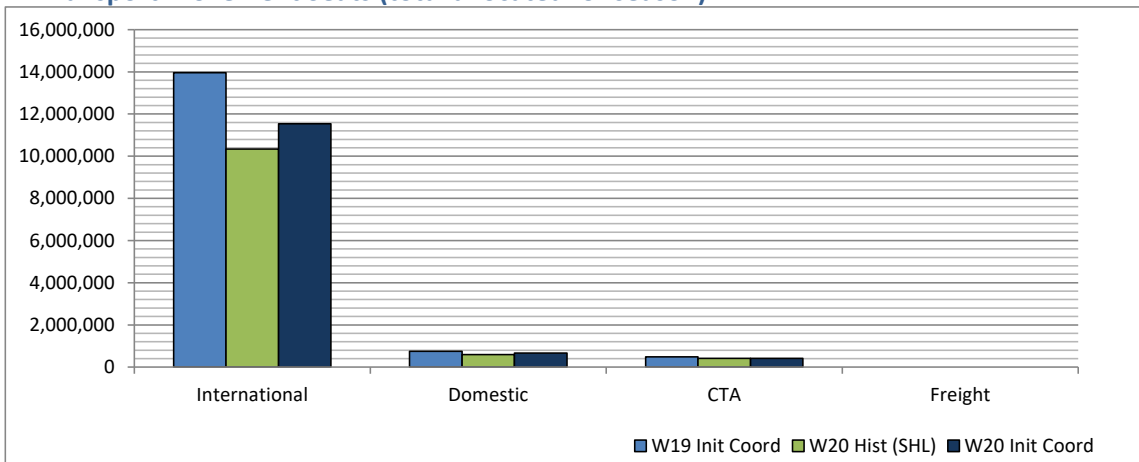
Full Season - Terminal Analysis



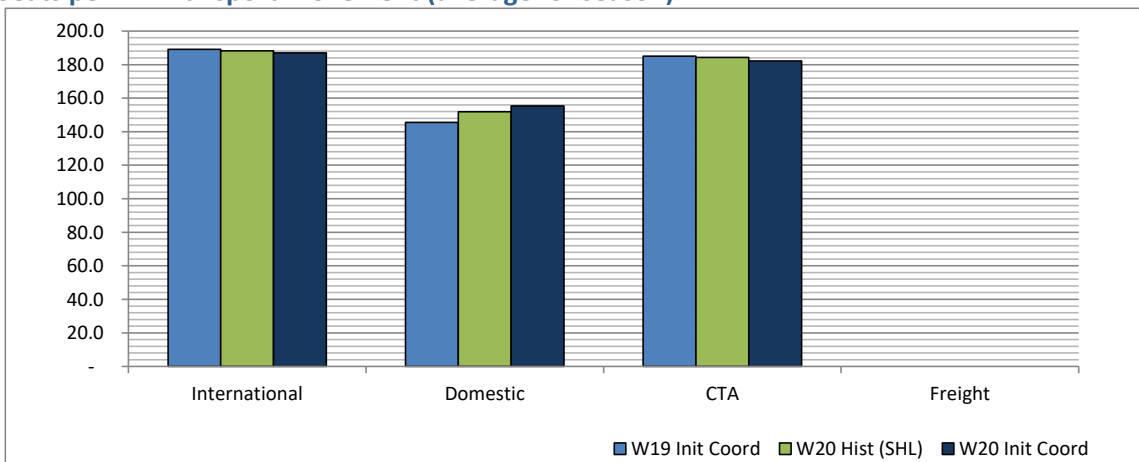
Air Transport Movements (total allocated for season)



Air Transport Movement Seats (total allocated for season)



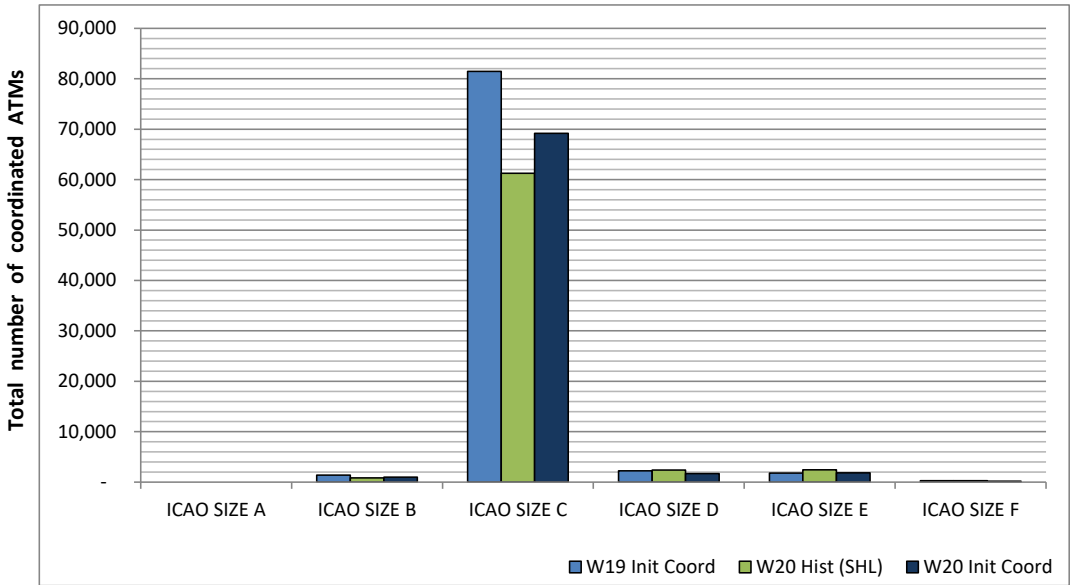
Seats per Air Transport Movement (average for season)



Full Season - Aircraft Size Analysis

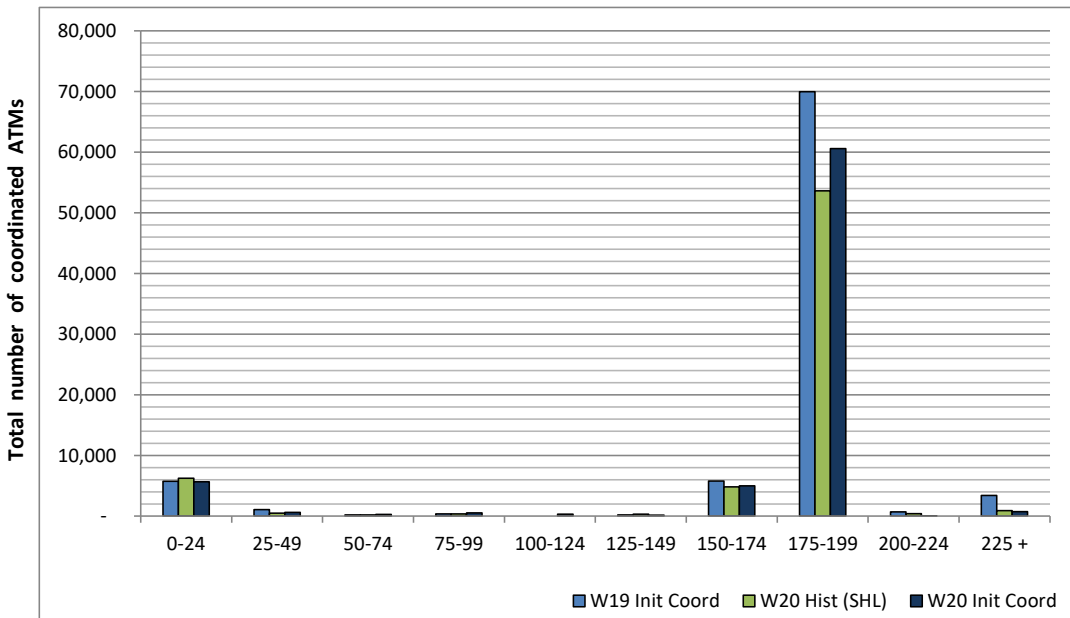


ICAO size designation



Note: See Glossary for definitions of ICAO SIZE groupings

Air Transport Movement seat distribution

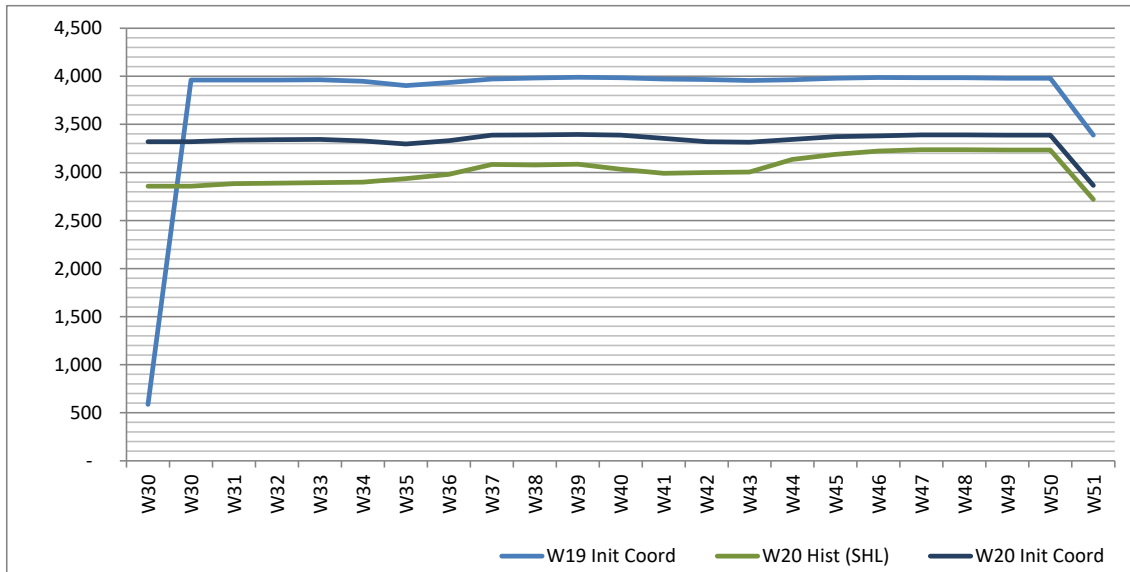


Note: FREIGHT-ONLY services with 0 seats are included in the first seat band '0-24'

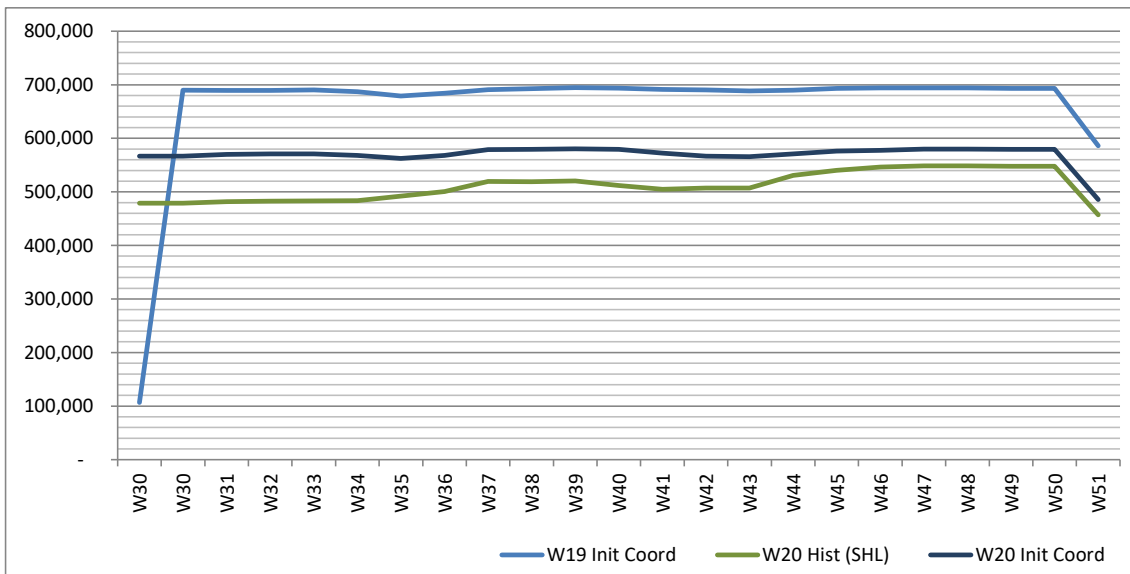
Full Season - Seasonality



Air Transport Movements by week of season



Air Transport Movement Seats by week of season



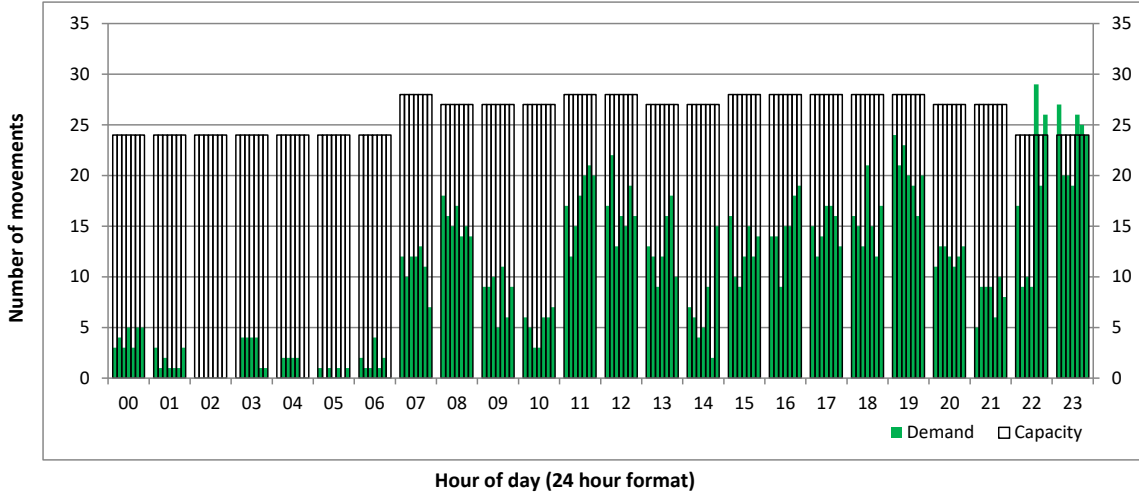
Peak Week - Initial Hourly Runway Demand

Schedule: W20 Init Coord



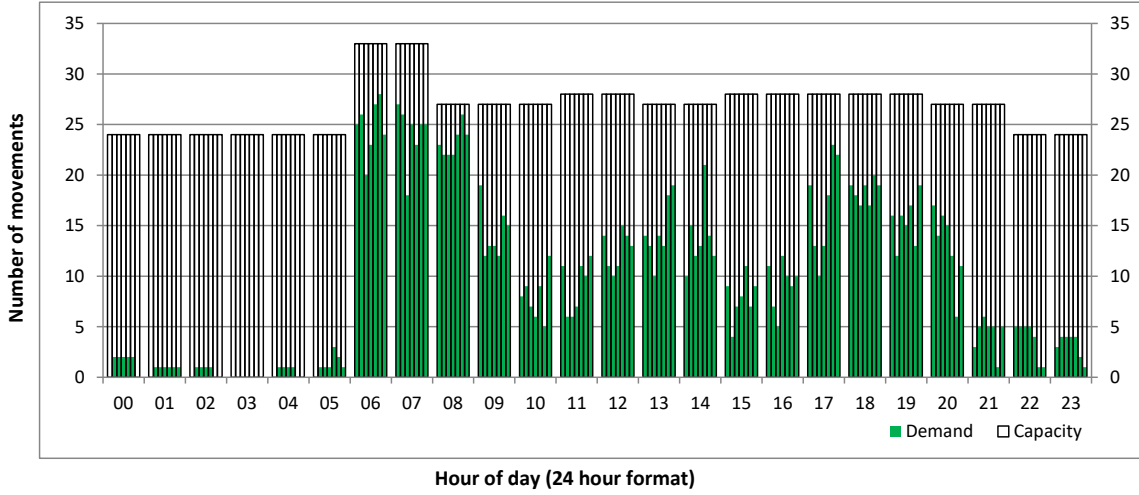
Hourly Arrival Demand

Time: UTC



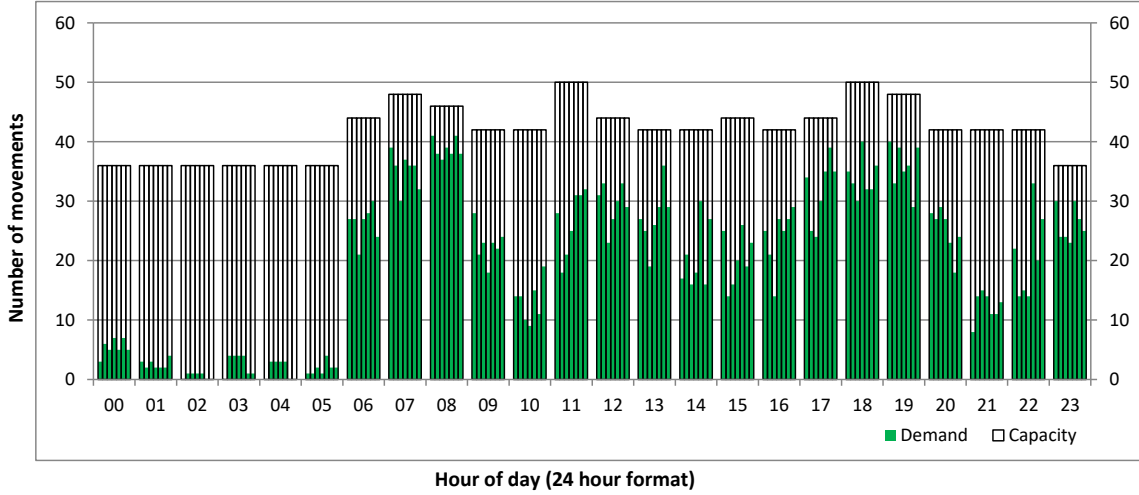
Hourly Departure Demand

Time: UTC



Combined Hourly Arrival & Departure (Total) Demand

Time: UTC



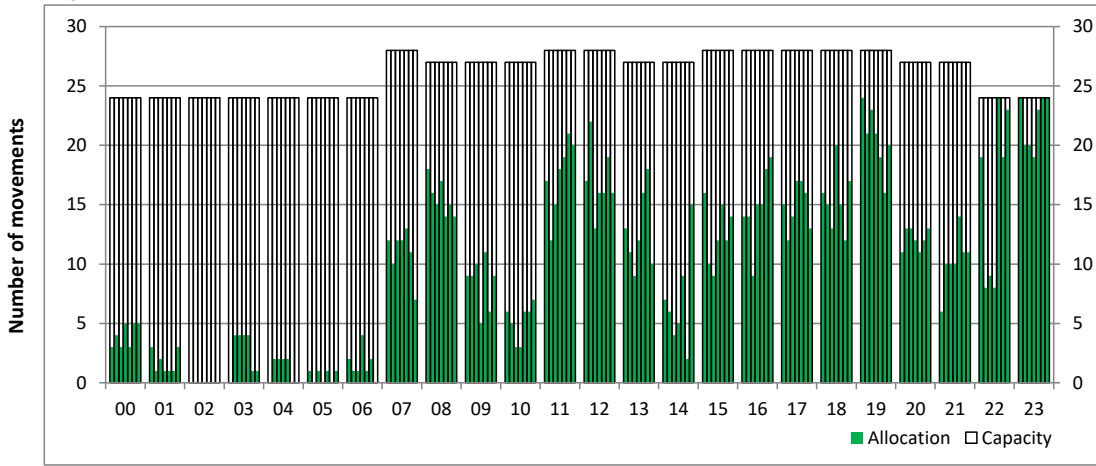
Peak Week - Hourly Runway Allocation

Schedule: W20 Init Coord



Hourly Arrival Allocation

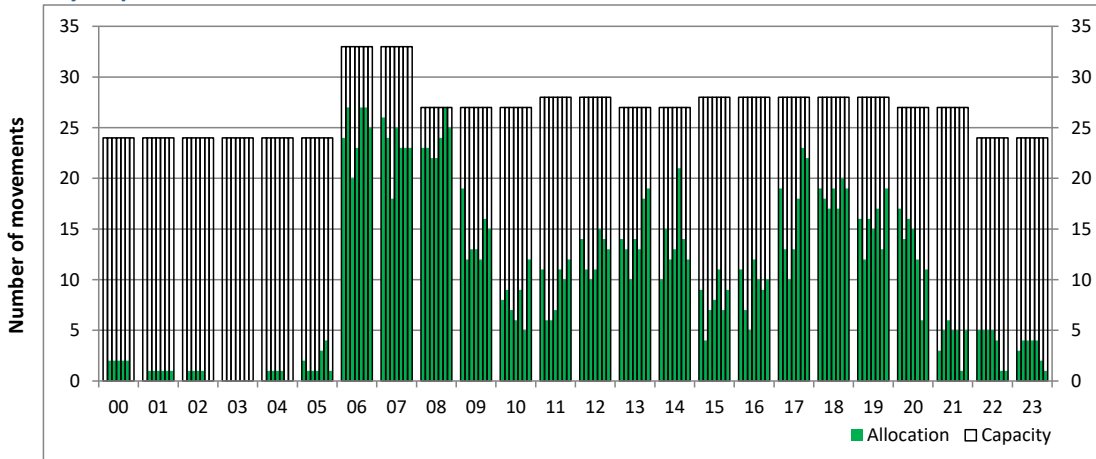
Time: UTC



Hour of day (24 hour format)

Hourly Departure Allocation

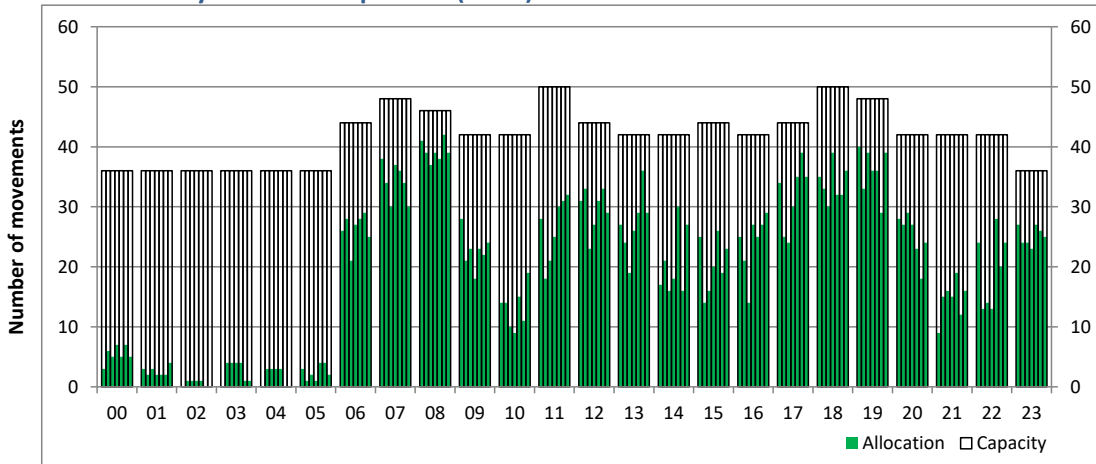
Time: UTC



Hour of day (24 hour format)

Combined Hourly Arrival & Departure (Total) Allocation

Time: UTC



Hour of day (24 hour format)

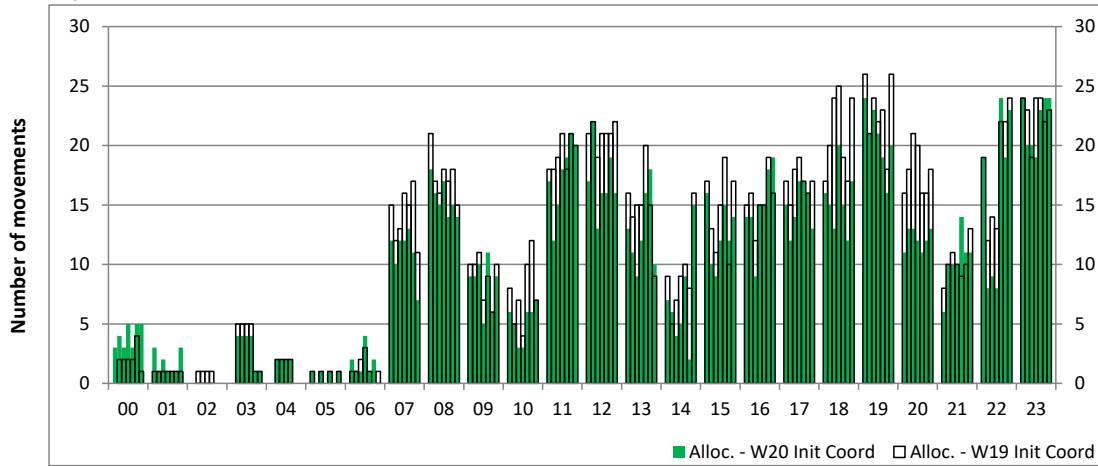
Peak Week - Runway Allocation Comparison

Comparison of W20 Init Coord vs. W19 Init Coord



Hourly Arrival Allocation

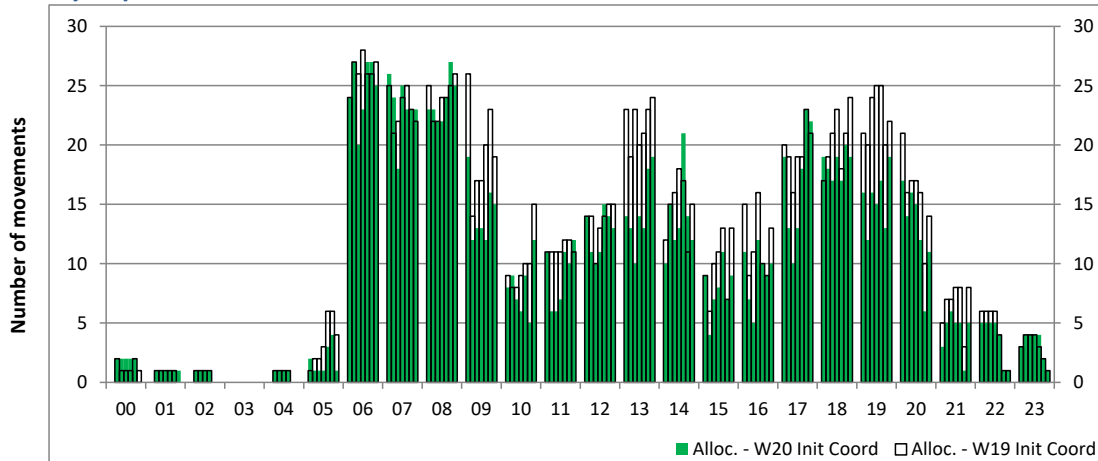
Time: UTC



Hour of day (24 hour format)

Hourly Departure Allocation

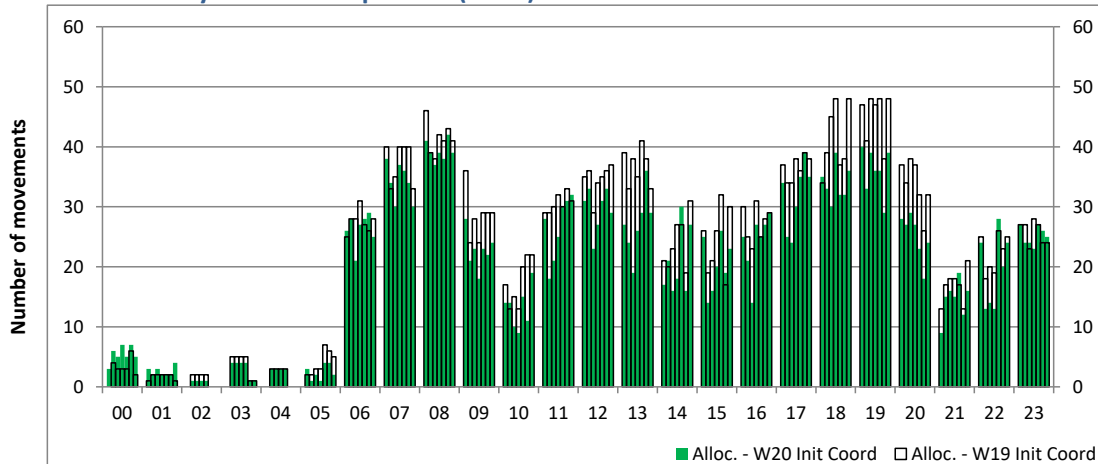
Time: UTC



Hour of day (24 hour format)

Combined Hourly Arrival & Departure (Total) Allocation

Time: UTC



Hour of day (24 hour format)

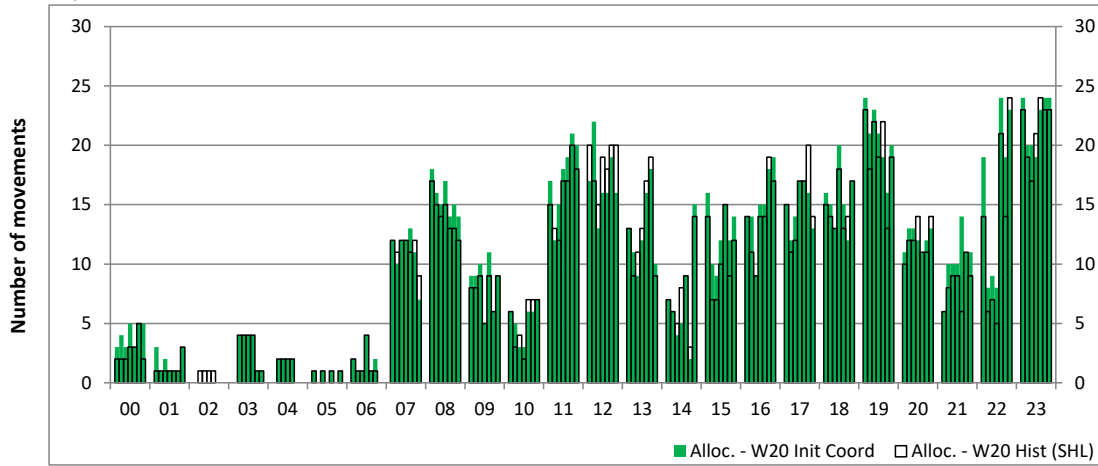
Peak Week - Runway Allocation Comparison

Comparison of W20 Init Coord vs. W20 Hist (SHL)



Hourly Arrival Allocation

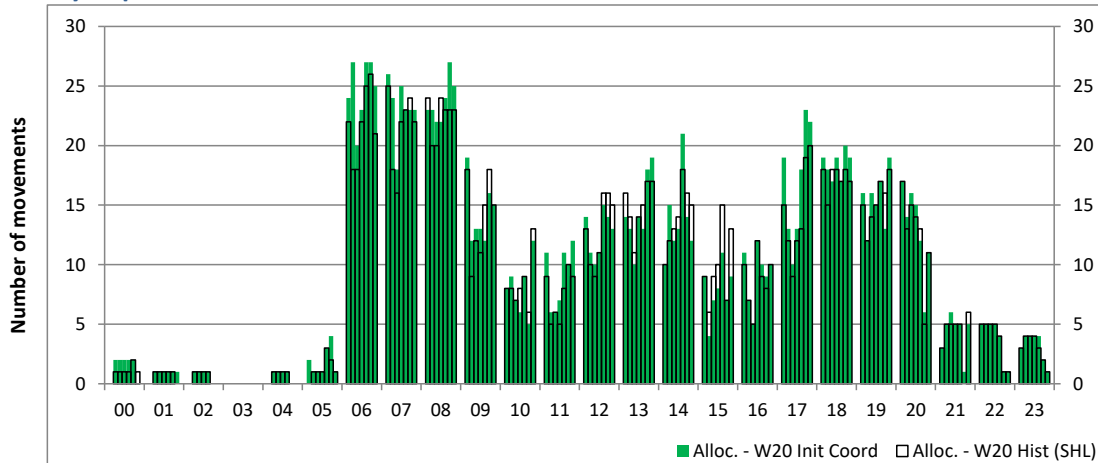
Time: UTC



Hour of day (24 hour format)

Hourly Departure Allocation

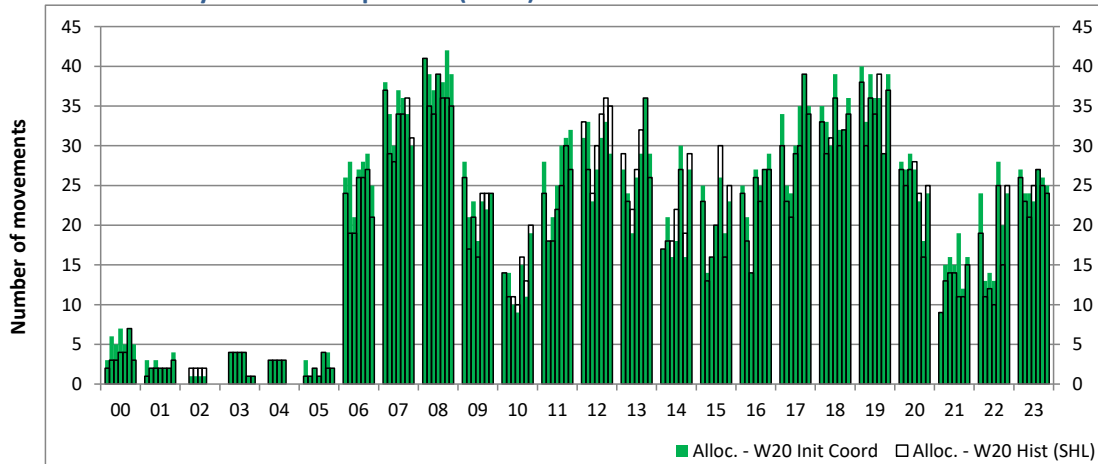
Time: UTC



Hour of day (24 hour format)

Combined Hourly Arrival & Departure (Total) Allocation

Time: UTC



Hour of day (24 hour format)

Peak Week - Passengers Histogram

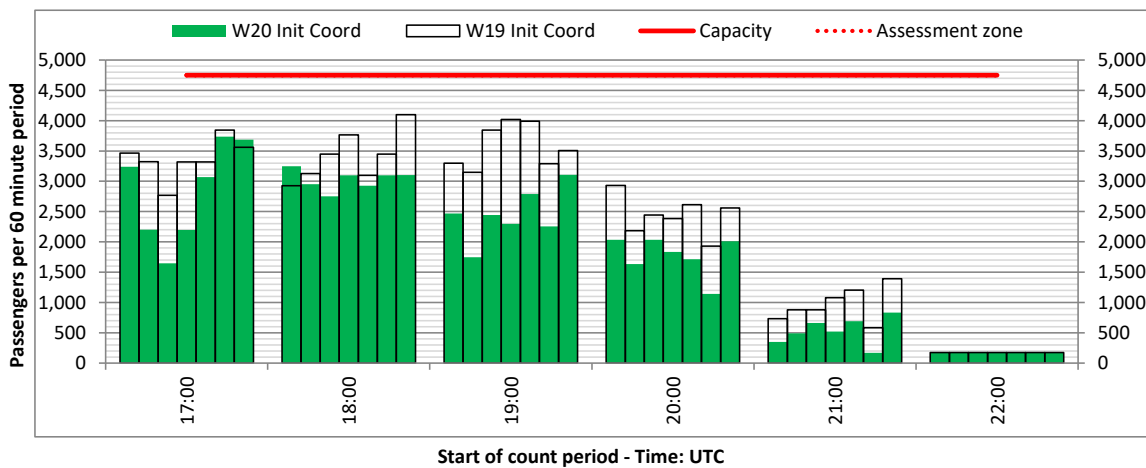
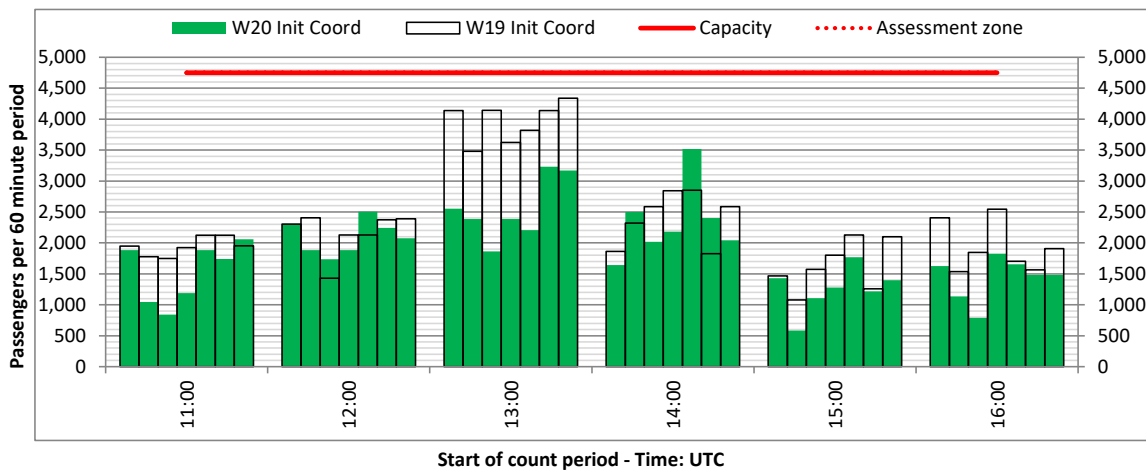
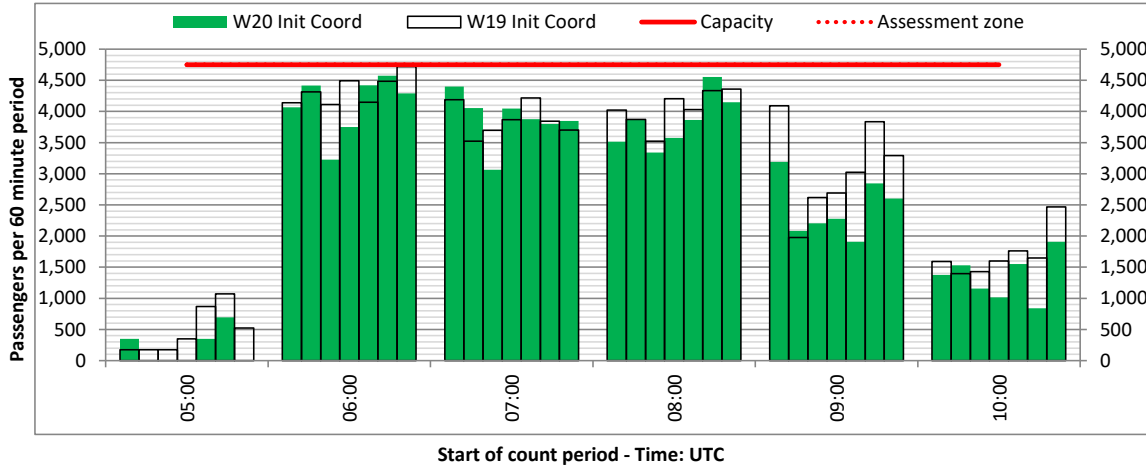
DEPARTURE - 60 minute count rolling every 60 mins (T60)



Terminals: All Terminals

Operators: All Operators

Days: 1234567



Peak Week - Passengers Histogram

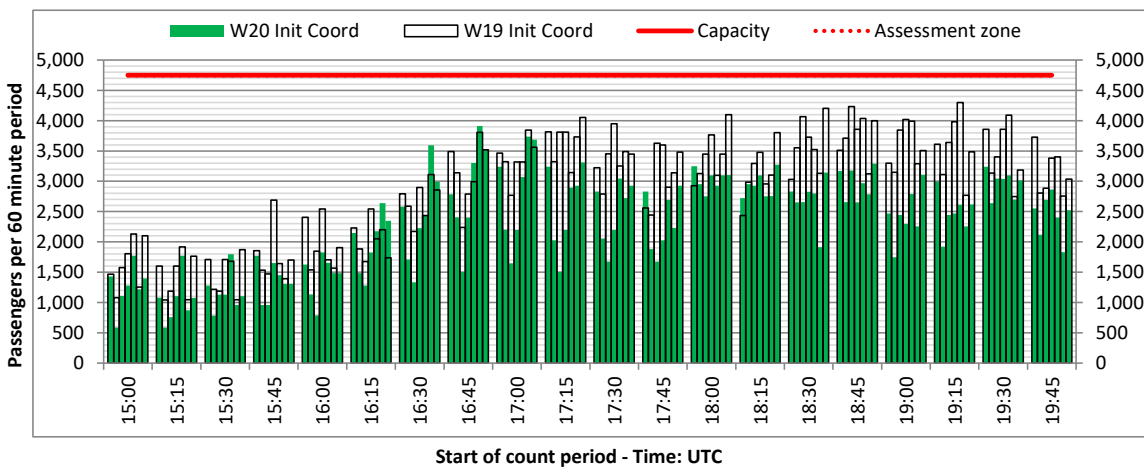
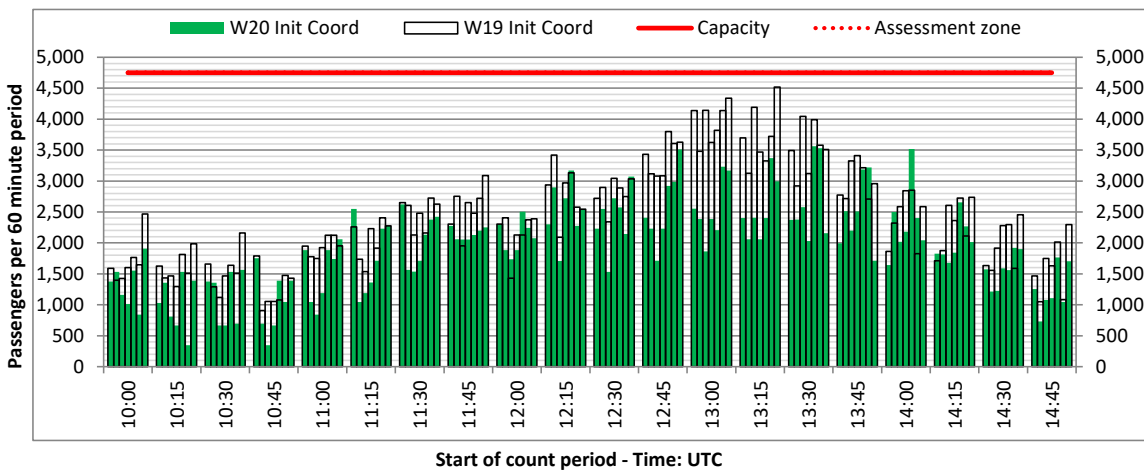
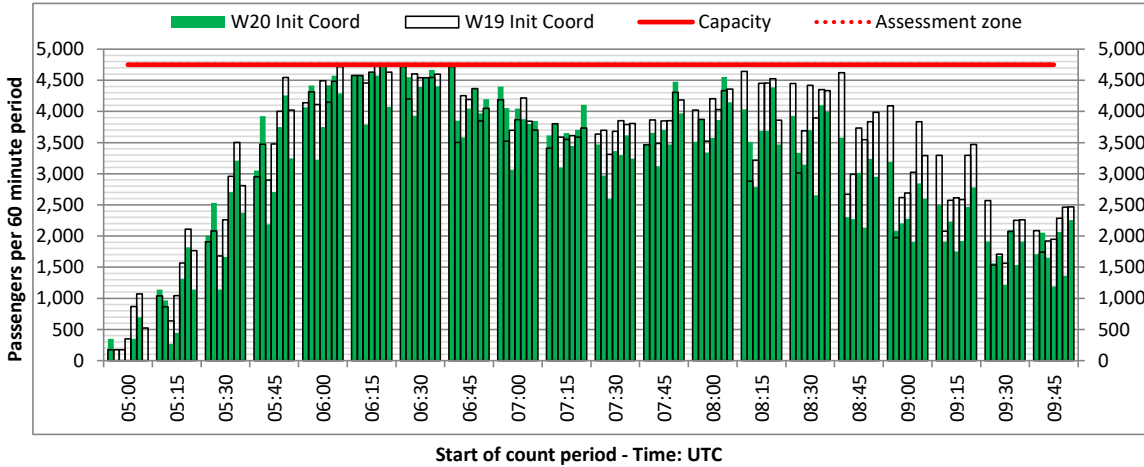
DEPARTURE - 60 minute count rolling every 15 mins (T60/15)



Terminals: All Terminals

Operators: All Operators

Days: 1234567



Peak Week - Passengers Histogram

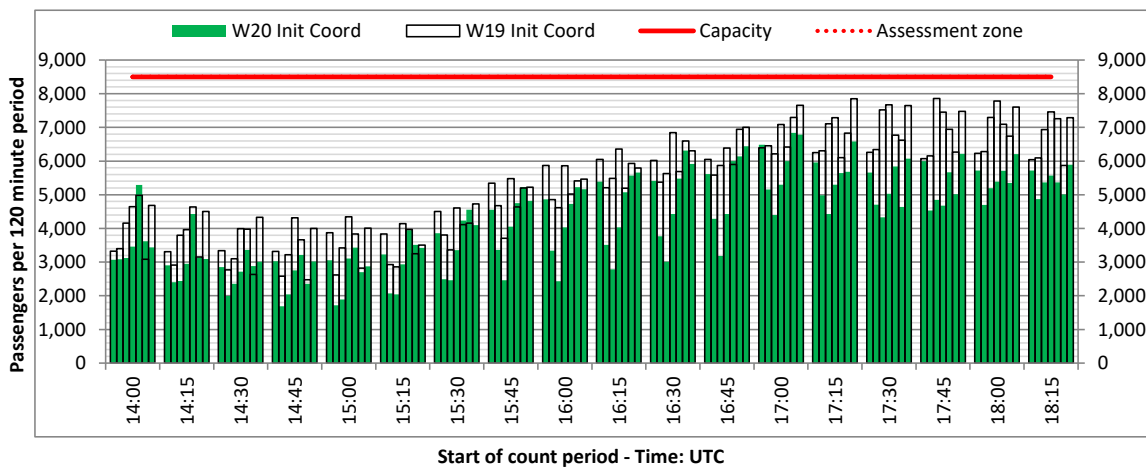
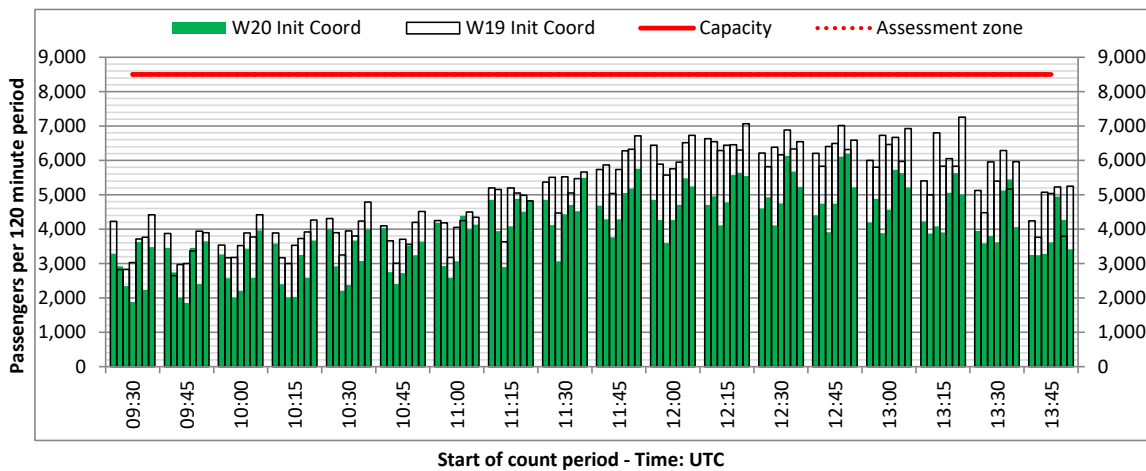
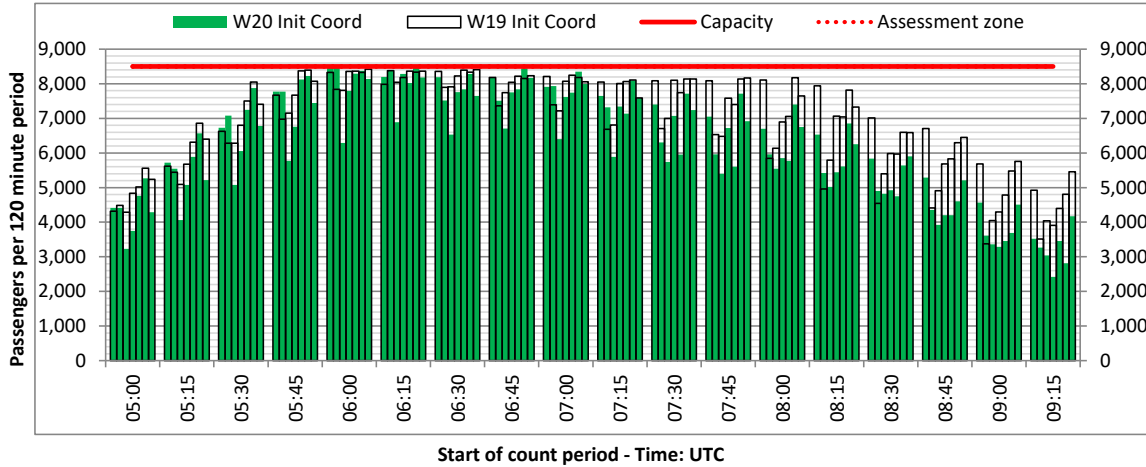
DEPARTURE - 120 minute count rolling every 15 mins (T120/15)



Terminals: All Terminals

Operators: All Operators

Days: 1234567



Peak Week - Passengers Histogram

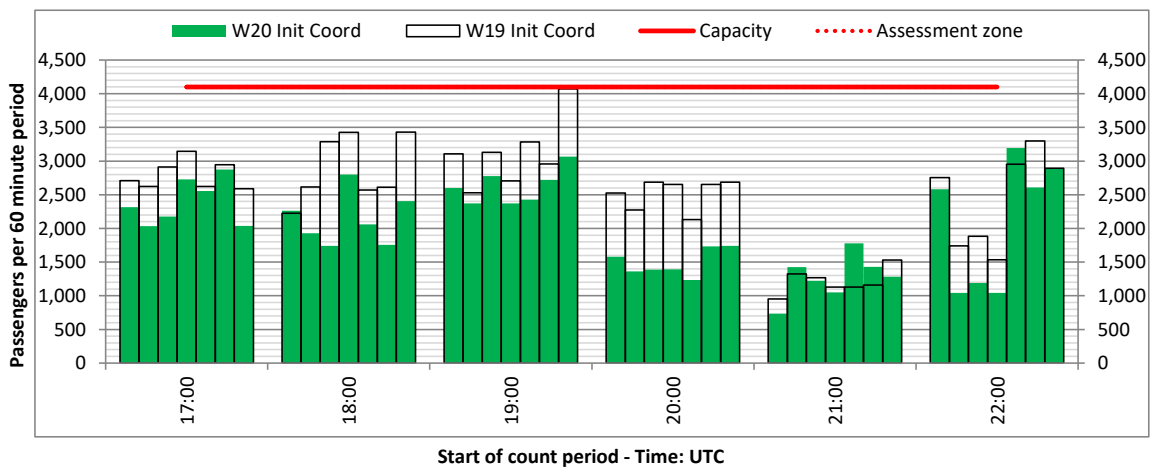
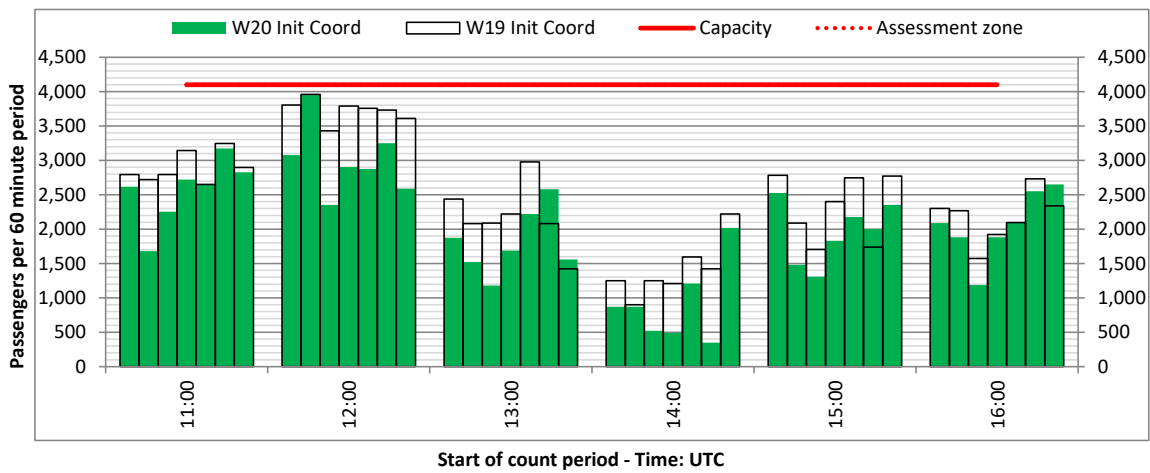
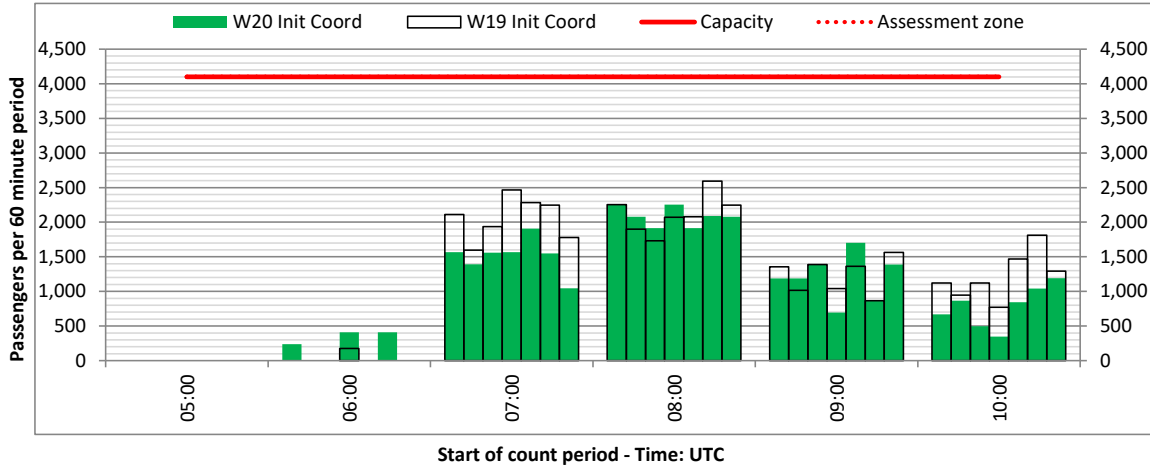
ARRIVAL - 60 minute count rolling every 60 mins (T60)



Terminals: 11

Operators: All Operators

Days: 1234567



Peak Week - Passengers Histogram

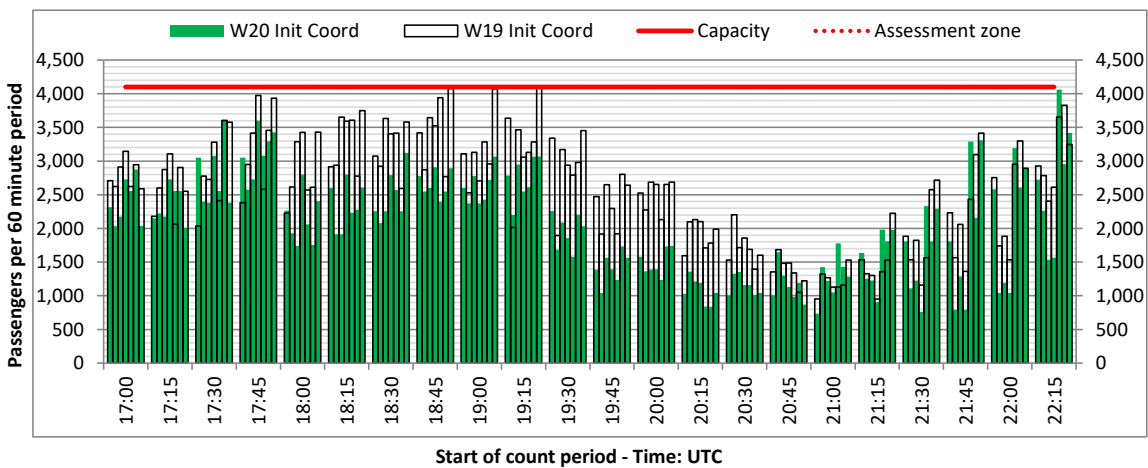
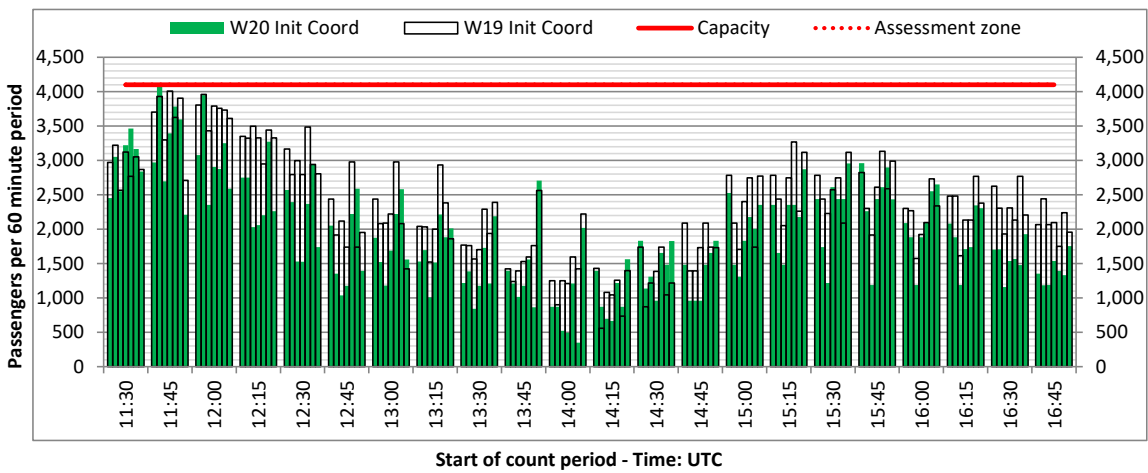
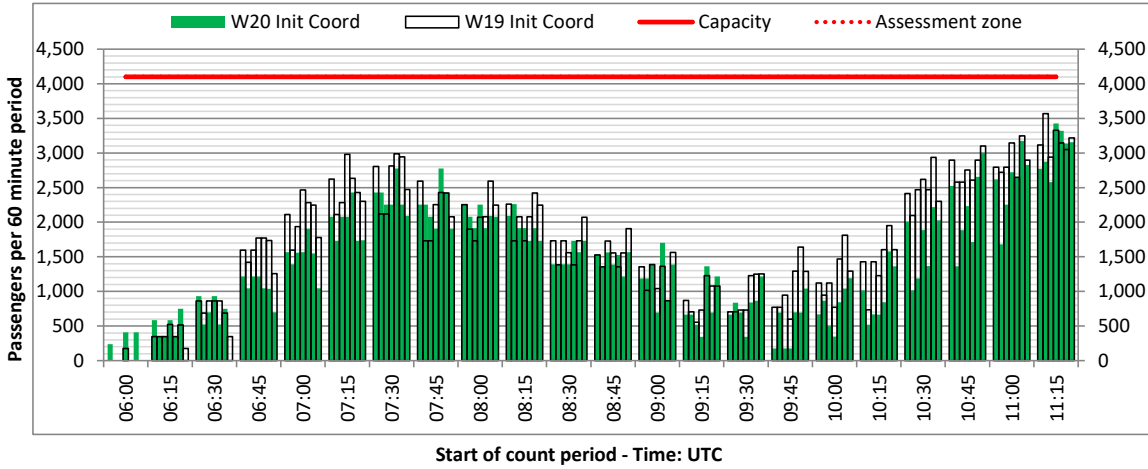
ARRIVAL - 60 minute count rolling every 15 mins (T60/15)



Terminals: 11

Operators: All Operators

Days: 1234567



Glossary



Air Transport Movement (ATM)	Any aircraft movement which is either a scheduled or chartered passenger or cargo flight.
Common Travel Area (CTA)	Origin or Destination is in Republic of Ireland or the Channel Islands.
Demand	Unconstrained demand before any schedule adjustments have been made.
"Fill-in"	These are gaps in a historic series of slots which the carrier requests to "Fill-in" at Initial Submissions - Fill-ins will be recognisably part of the historic series and will have the same flight details to qualify as a "Fill-in".
Hist (SHL)	Snapshot of historic schedule rolled over from end of the previous equivalent season - as advised to airlines in the SHLs.
ICAO Size A	Aircraft with wingspan between 0.00m - 14.99m.
ICAO Size B	Aircraft with wingspan between 15.00m - 23.99m.
ICAO Size C	Aircraft with wingspan between 24.00m - 35.99m.
ICAO Size D	Aircraft with wingspan between 36.00m - 51.99m.
ICAO Size E	Aircraft with wingspan between 52.00m - 64.99m.
ICAO Size F	Aircraft with wingspan between 65.00m - 80.00m.
Init Coord	Snapshot of schedule immediately after Initial Coordination is completed - as advised to airlines in the SALs.
Passenger Air Transport Movement (PATM)	Any aircraft movement which is either a scheduled or chartered passenger flight.
Start	Snapshot of schedule shortly before the start of the scheduling season (exact date given below where used).
Time: Local	Times shown are in LOCAL time for the airport/scheduling season.
Time: UTC	Times shown are in Universal Time Constant (UTC).

Data snapshot descriptions

W19 Init Coord	W19 schedule as cleared on Mon 03-Jun-19.
W20 Hist (SHL)	W20 schedule as cleared on Fri 27-Mar-20.
W20 Init Coord	W20 schedule as cleared on Fri 29-May-20.
Peak Week	Peak week for W19 is Mon 28-Oct-19 to Sun 03-Nov-19. Peak week for W20 is Mon 28-Dec-20 to Sun 03-Jan-21.

For ACL use

	Airport-Season-Branch-Resource	From date	To date	Time
Full Season Rep 1	STN-W19-SAL Premerge-Standard	Sun 27-Oct-2019	Sat 28-Mar-2020	UTC
Full Season Rep 2	STN-W20-SHL-Standard	Sun 25-Oct-2020	Sat 27-Mar-2021	UTC
Full Season Rep 3	STN-W20-SAL Premerge-Standard	Sun 25-Oct-2020	Sat 27-Mar-2021	UTC
	Airport-Season-Branch-Resource	From date	To date	Time
Peak Week Rep 1	STN-W19-SAL Premerge-Standard	Mon 28-Oct-2019	Sun 03-Nov-2019	UTC
Peak Week Rep 2	STN-W20-SHL-Standard	Mon 22-Feb-2021	Sun 28-Feb-2021	UTC
Peak Week Rep 3	STN-W20-SAL Premerge-Standard	Mon 28-Dec-2020	Sun 03-Jan-2021	UTC