

Initial Coordination Report

Report Date: Fri 12-Jun-2020

Headlines

	W20 Init Coord	vs. W19 Init Coord	vs. W20 Hist (SHL)
Total Air Transport Movements (Passenger & Freight)	83,115	▲ 0.7%	▲ 24.5%
Total Passenger Air Transport Movements	82,763	▲ 0.7%	▲ 24.7%
Total Passenger Air Transport Movement Seats	14,137,107	▼ -1.3%	▲ 22.6%
Average Seats per Passenger Air Transport Movement	170.8	▼ -2.0%	▼ -1.7%
Percentage of allocated slots cleared as requested (OK)	95.6%		

Contents

Page	Content
2	Runway Scheduling Limits
3	Peak Week - Initial Coordination Analysis
4	ATM Allocation by Operator (Full season and Peak Week Comparison)
5	Peak Week - Allocation and Slot Adjustment Distribution by Operator
6	Significant Route Changes
7	Full Season - ATM Analysis
8	Full Season - PATM Seats Analysis
9	Full Season - Terminal Analysis
10	Full Season - Aircraft Size Analysis
11	Full Season - Seasonality
12	Peak Week - Initial Hourly Runway Demand
13	Peak Week - Hourly Runway Allocation
14	Peak Week - Hourly Runway Allocation Comparison (W20 Init Coord vs. W20 Hist (SHL))
15	Peak Week Histogram - Departure Passengers (T120/15) - T1 - All Operators
16	Peak Week Histogram - Departure Passengers (T60/15) - T1 - All Operators
17	Peak Week Histogram - Arrival Passengers (T60/15) - T1 - All Operators
18	Peak Week Histogram - Departure Passengers (T120/15) - T2 - All Operators
19	Peak Week Histogram - Departure Passengers (T60/15) - T2 - All Operators
20	Peak Week Histogram - Arrival Passengers (T60/15) - T2 - All Operators
21	Peak Week Histogram - Departure Passengers (T120/15) - T3 - All Operators
22	Peak Week Histogram - Departure Passengers (T60/15) - T3 - All Operators
23	Peak Week Histogram - Arrival Passengers (T60/15) - T3 - All Operators
24	Glossary

W19 scheduling season runs from Sun 27-Oct-2019 to Sat 28-Mar-2020 (154 days).

W20 scheduling season runs from Sun 25-Oct-2020 to Sat 27-Mar-2021 (154 days).

Disclaimer

No warranty whether expressed or implied as to the completeness, accuracy, fitness for purpose, or satisfactory quality is given by ACL regarding the information in this report, which is provided by third parties. Accordingly, ACL excludes all liability with regard to such data.

The contents of this report may not be reproduced without the written consent of ACL.

Peak Week - Initial Coordination Analysis



Operator	W20 HISTORIC SLOTS				HISTORIC RECLAIM STATISTICS				NEW SLOT REQUESTS						Total Demand at Initial Submissions	Total Allocation (SAL)	% of demand with a slot allocated
	Historic slots	Lost Histories (N80 & MU)	Unclaimed Histories	Reclaimed Histories	Incl. Time Change	Incl. Seat Increase	Incl. Day change	Incl. A>D or D>A swap	Demand - New Requests	Allocated - Year Round Incumbent	Allocated - Year Round New Entrant	Allocated - New Incumbent	Allocated - New Entrant	Allocated - "Fill-in"			
Aegean Airlines	4	-	-	4	0.0%	0.0%	0.0%	0.0%	2	-	-	-	2	-	6	6	100.0%
Aer Lingus	42	-	-	42	0.0%	0.0%	0.0%	0.0%	12	-	-	12	-	54	54	100.0%	
Air France	42	-	-	42	100.0%	38.1%	0.0%	0.0%	14	-	-	14	-	56	56	100.0%	
Air Transat	2	-	-	2	50.0%	0.0%	0.0%	0.0%	4	-	-	-	2	6	6	100.0%	
American Airlines	12	-	-	12	0.0%	0.0%	0.0%	0.0%	2	-	-	2	-	14	14	100.0%	
Aurigny Air Services	28	-	-	28	0.0%	0.0%	0.0%	0.0%	-	-	-	-	-	28	28	100.0%	
Austrian Airlines	12	-	2	14	0.0%	71.4%	0.0%	0.0%	-	-	-	-	2	14	14	100.0%	
BA Cityflyer	8	-	-	8	0.0%	0.0%	0.0%	0.0%	-	-	-	-	-	8	8	100.0%	
Biman Bangladesh	6	-	-	6	0.0%	0.0%	0.0%	0.0%	-	-	-	-	-	6	6	100.0%	
Blue Islands	-	-	-	-	0.0%	0.0%	0.0%	0.0%	70	14	56	-	-	70	70	100.0%	
British Airways	92	-	-	92	33.7%	64.1%	0.0%	0.0%	30	-	-	30	-	122	122	100.0%	
Brussels Airlines	38	-	-	38	0.0%	47.4%	0.0%	0.0%	-	-	-	-	-	38	38	100.0%	
Cathay Pacific	14	-	-	14	100.0%	0.0%	0.0%	0.0%	-	-	-	-	-	14	14	100.0%	
Eastern Airways	-	-	-	-	0.0%	0.0%	0.0%	0.0%	46	-	-	46	-	46	46	100.0%	
EasyJet	517	1	6	522	15.7%	24.1%	0.0%	0.0%	111	2	-	109	6	633	633	100.0%	
EasyJet Europe	14	-	-	14	0.0%	28.6%	0.0%	0.0%	-	-	-	-	-	14	14	100.0%	
EasyJet Switzerland	2	-	-	2	0.0%	0.0%	0.0%	0.0%	-	-	-	-	-	2	2	100.0%	
El Al Israel Airlines	2	2	-	-	0.0%	0.0%	0.0%	0.0%	-	-	-	-	-	-	-	-	-
Emirates	42	-	-	42	0.0%	0.0%	0.0%	0.0%	-	-	-	-	-	42	42	100.0%	
Enter Air	4	-	4	-	0.0%	0.0%	0.0%	0.0%	-	-	-	-	-	-	-	-	-
Ethiopian Airlines	8	-	-	8	0.0%	0.0%	0.0%	0.0%	-	-	-	-	-	8	8	100.0%	
Ethiopian Airways	28	-	-	28	0.0%	0.0%	0.0%	0.0%	-	-	-	-	-	28	28	100.0%	
Eurowings	46	-	-	46	0.0%	0.0%	0.0%	0.0%	2	-	-	2	-	48	48	100.0%	
Federal Express	16	-	-	16	0.0%	0.0%	0.0%	0.0%	-	-	-	-	-	16	16	100.0%	
Finnair	28	-	-	28	0.0%	0.0%	0.0%	0.0%	-	-	-	-	-	28	28	100.0%	
Flybe	565	10	3	558	50.0%	10.0%	0.0%	0.0%	22	-	-	22	3	580	580	100.0%	
Freebird Airlines	2	-	-	2	0.0%	0.0%	0.0%	0.0%	2	-	-	2	-	4	4	100.0%	
Hainan Airlines	6	-	-	6	0.0%	0.0%	0.0%	0.0%	-	-	-	-	-	6	6	100.0%	
Iberia Express	6	-	-	6	0.0%	0.0%	0.0%	0.0%	-	-	-	-	-	6	6	100.0%	
Icelandair	14	-	-	14	0.0%	0.0%	0.0%	0.0%	-	-	-	-	-	14	14	100.0%	
Jet2.com	196	4	4	196	31.6%	9.2%	0.0%	0.0%	36	-	-	36	4	232	232	100.0%	
KLM Royal Dutch Airlines	80	-	-	80	15.0%	2.5%	0.0%	0.0%	16	-	-	16	-	96	96	100.0%	
Loganair	46	16	-	30	80.0%	0.0%	0.0%	0.0%	22	22	-	-	-	52	52	100.0%	
Lufthansa	118	-	-	118	32.2%	13.6%	5.9%	0.0%	-	-	-	-	-	118	118	100.0%	
Luxair	-	-	-	-	0.0%	0.0%	0.0%	0.0%	8	-	-	8	-	8	8	100.0%	
Norwegian	18	-	-	18	0.0%	0.0%	0.0%	0.0%	-	-	-	-	-	18	18	100.0%	
Oman Air	14	2	-	12	0.0%	0.0%	0.0%	0.0%	2	-	-	2	-	14	14	100.0%	
Pegasus Airlines	14	-	-	14	42.9%	0.0%	0.0%	0.0%	-	-	-	-	-	14	14	100.0%	
PIA Pakistan International	18	-	-	18	0.0%	0.0%	0.0%	0.0%	-	-	-	-	-	18	18	100.0%	
Qatar Airways	42	-	-	42	16.7%	0.0%	0.0%	0.0%	-	-	-	-	-	42	42	100.0%	
Royal Air Maroc	4	-	-	4	50.0%	50.0%	0.0%	0.0%	2	-	-	2	-	6	6	100.0%	
Ryanair	502	4	-	498	7.2%	0.0%	0.0%	0.0%	135	-	-	135	-	633	633	100.0%	
SAS Scandinavian	84	8	-	76	0.0%	21.3%	0.0%	0.0%	4	-	-	4	-	80	80	100.0%	
Saudia	10	-	-	10	100.0%	0.0%	0.0%	0.0%	-	-	-	-	-	14	14	100.0%	
Singapore Airlines	20	-	-	20	0.0%	0.0%	0.0%	0.0%	4	-	-	4	-	20	20	100.0%	
Stobart Air	58	-	-	58	0.0%	0.0%	0.0%	0.0%	52	-	-	52	-	110	110	100.0%	
Sun-Air	30	2	-	28	10.7%	0.0%	0.0%	0.0%	-	-	-	-	-	28	28	100.0%	
Swiss International	28	-	-	28	50.0%	21.4%	0.0%	0.0%	-	-	-	-	-	28	28	100.0%	
Tap Air Portugal	14	-	14	-	0.0%	0.0%	0.0%	0.0%	14	-	-	-	14	42	42	100.0%	
Titan Airways	2	-	-	2	0.0%	0.0%	0.0%	0.0%	-	-	-	-	-	2	2	100.0%	
TUI Airways	147	1	1	145	16.6%	11.0%	0.0%	0.0%	29	-	-	29	1	174	174	100.0%	
Turkish Airlines	28	-	-	28	25.0%	0.0%	0.0%	0.0%	-	-	-	-	-	28	28	100.0%	
Tus Airways	-	-	-	-	0.0%	0.0%	0.0%	0.0%	4	-	-	4	-	4	4	100.0%	
United Airlines	14	-	-	14	7.1%	0.0%	0.0%	0.0%	-	-	-	-	-	14	14	100.0%	
Virgin Atlantic	40	-	-	40	0.0%	0.0%	0.0%	0.0%	-	-	-	-	-	40	40	100.0%	
Vueling	14	-	-	14	0.0%	0.0%	0.0%	0.0%	6	-	-	6	-	20	20	100.0%	
TOTAL	3,141	50	24	3,115	22.3%	11.7%	0.2%	0.0%	651	38	56	539	18	3,766	3,766	100.0%	

Air Transport Movement Allocation by Operator

Comparison between W20 Hist (SHL) vs. W20 Init Coord



Operator	FULL SEASON ALLOCATION								PEAK WEEK ALLOCATION							
	W19 ATMs	W20 ATMs	+/- change	W20 Rank	W19 Seats	W20 Seats	+/- change	W20 Rank	W19 ATMs	W20 ATMs	+/- change	W20 Rank	W19 Seats	W20 Seats	+/- change	W20 Rank
Aegean Airlines	76	118	42	50	12,180	19,488	7,308	47	4	6	2	45	696	1,044	348	45
Aer Lingus	1,114	1,184	70	13	193,772	205,952	12,180	15	42	54	12	13	7,308	9,396	2,088	15
Air France	924	1,232	308	12	147,224	214,148	66,924	13	42	56	14	12	6,692	9,734	3,042	13
Air Transat	80	152	72	44	21,968	32,908	10,940	42	2	6	4	45	500	1,194	694	43
American Airlines	284	308	24	35	62,806	72,072	9,266	31	12	14	2	33	2,808	3,276	468	32
Aurigny Air Services	596	616	20	23	42,912	44,352	1,440	39	28	28	0	22	2,016	2,016	0	39
Austrian Airlines	242	296	54	41	31,600	51,504	19,904	38	12	14	2	33	1,600	2,436	836	38
BA Cityflyer	123	123	0	49	12,054	12,054	0	49	8	8	0	42	784	784	0	48
Biman Bangladesh	72	132	60	46	21,456	39,336	17,880	40	6	6	0	45	1,788	1,788	0	40
Blue Islands	-	1,540	1,540	11	-	104,720	104,720	24	-	70	70	11	-	4,760	4,760	24
British Airways	2,024	2,684	660	6	339,460	509,740	170,280	7	92	122	30	6	15,430	23,170	7,740	7
Brussels Airlines	836	836	0	21	135,036	150,480	15,444	19	38	38	0	21	6,138	6,840	702	19
Cathay Pacific	308	308	0	35	99,092	95,960	-3,132	25	14	14	0	33	4,676	3,920	-756	27
Eastern Airways	-	946	946	16	-	68,112	68,112	33	-	46	46	16	-	3,312	3,312	31
EasyJet	10,939	14,252	3,313	1	1,934,034	2,585,866	651,832	2	517	633	116	1	91,332	114,790	23,458	2
EasyJet Europe	292	328	36	33	52,992	63,164	10,172	35	14	14	0	33	2,544	2,702	158	35
EasyJet Switzerland	32	44	12	52	4,992	6,864	1,872	51	2	2	0	53	312	312	0	53
El Al Israel Airlines	44	-	-44	55	7,304	-	-7,304	54	2	-	-2	55	332	-	-332	54
Emirates	924	924	0	17	538,076	538,076	0	6	42	42	0	17	24,458	24,458	0	6
Enter Air	60	-	-60	55	11,070	-	-11,070	54	4	-	-4	55	738	-	-738	54
Ethiopian Airlines	176	176	0	42	26,532	26,532	0	43	8	8	0	42	1,206	1,206	0	42
Etihad Airways	616	616	0	23	206,976	206,976	0	14	28	28	0	22	9,408	9,408	0	14
Eurowings	1,044	1,056	12	15	160,464	162,624	2,160	17	46	48	2	15	7,032	7,392	360	17
Federal Express	352	352	0	32	-	-	0	54	16	16	0	32	-	-	0	54
Finnair	616	616	0	23	120,736	107,184	-13,552	23	28	28	0	22	5,488	4,872	-616	23
Flybe	12,138	12,765	627	3	966,918	1,013,282	46,364	4	565	580	15	3	44,810	46,036	1,226	4
FlyEgypt	14	-	-14	55	2,604	-	-2,604	54	-	-	0	55	-	-	0	54
Freebird Airlines	24	40	16	53	3,060	4,500	1,440	53	2	4	2	51	180	360	180	52
Hainan Airlines	132	132	0	46	38,544	38,544	0	41	6	6	0	45	1,752	1,752	0	41
Iberia Express	132	132	0	46	23,760	23,760	0	44	6	6	0	45	1,080	1,080	0	44
Icelandair	308	308	0	35	56,364	56,364	0	37	14	14	0	33	2,562	2,562	0	37
Jet2.com	3,378	4,928	1,550	4	689,272	1,015,226	325,954	3	196	232	36	4	40,356	47,564	7,208	3
KLM Royal Dutch Airlines	1,568	2,112	544	9	277,052	346,324	69,272	9	80	96	16	9	13,764	16,040	2,276	9
Loganair	1,018	1,172	154	14	48,754	71,696	22,942	32	46	52	6	14	2,206	3,186	980	33
Lufthansa	2,596	2,596	0	7	441,540	443,344	1,804	8	118	118	0	7	20,070	20,152	82	8
Luxair	-	176	176	42	-	13,376	13,376	48	-	8	8	42	-	608	608	49
Norwegian	396	396	0	30	73,656	73,656	0	30	18	18	0	30	3,348	3,348	0	30
Oman Air	308	308	0	35	82,236	82,236	0	28	14	14	0	33	3,738	3,738	0	28
Pegasus Airlines	296	312	16	34	55,944	58,968	3,024	36	14	14	0	33	2,646	2,646	0	36
PIA Pakistan International	396	396	0	30	155,628	155,628	0	18	18	18	0	30	7,074	7,074	0	18
Qatar Airways	924	924	0	17	332,024	332,024	0	10	42	42	0	17	15,092	15,092	0	10
Royal Air Maroc	88	142	54	45	10,032	20,598	10,566	45	4	6	2	45	456	864	408	47
Ryanair	10,840	13,955	3,115	2	2,048,760	2,637,495	588,735	1	502	633	131	1	94,878	119,637	24,759	1
SAS Scandinavian	1,636	1,760	124	10	285,070	313,720	28,650	11	84	80	-4	10	14,582	14,260	-322	11
Saudia	220	308	88	35	65,560	91,784	26,224	26	10	14	4	33	2,980	4,172	1,192	25
Singapore Airlines	440	440	0	28	111,320	111,320	0	22	20	20	0	28	5,060	5,060	0	22
Stobart Air	1,276	2,420	1,144	8	91,872	171,952	80,080	16	58	110	52	8	4,176	7,816	3,640	16
Sun-Air	658	616	-42	23	21,056	19,712	-1,344	46	30	28	-2	22	960	896	-64	46
Swiss International	616	646	30	22	83,204	91,116	7,912	27	28	28	0	22	3,782	3,928	146	26
Tap Air Portugal	388	923	535	19	62,100	116,758	54,658	21	14	42	28	17	2,220	5,312	3,092	21
Titan Airways	30	30	0	54	6,060	6,060	0	52	2	2	0	53	404	404	0	50
TUI Airways	3,025	4,001	976	5	750,340	1,003,100	252,760	5	148	174	26	5	36,507	43,739	7,232	5
Turkish Airlines	616	616	0	23	117,040	117,040	0	20	28	28	0	22	5,320	5,320	0	20
Tus Airways	-	88	88	51	-	8,624	8,624	50	-	4	4	51	-	392	392	51
United Airlines	308	308	0	35	65,912	65,912	0	34	14	14	0	33	2,996	2,996	0	34
Virgin Atlantic	886	886	0	20	328,286	235,676	-92,610	12	40	40	0	20	14,798	10,640	-4,158	12
Vueling	308	440	132	28	55,440	79,200	23,760	29	14	20	6	28	2,520	3,600	1,080	29
TOTAL	66,737	83,115	16,378		11,532,144	14,137,107	2,604,963		3,142	3,766	624		543,603	639,084	95,481	

Operators with 0 'ATMs' in both W20 Hist (SHL) & W20 Init Coord schedules are included in the table due to appearing in the W19 Init Coord schedule (either with/without allocated slots).

Peak Week - Allocation and Slot Adjustment Distribution by Operator

Schedule: W20 Init Coord



Operator	W20 allocated ATMs	SLOT ADJUSTMENTS (MINUTES OFF REQUESTED TIME)														Requests with NO slot allocated	
		0	5	10	15	20	25	30	35	40	45	50	55	60	>60		
Aegean Airlines	6	100.0%	0.0%	0.0%	0.0%	0.0%	0.0%	0.0%	0.0%	0.0%	0.0%	0.0%	0.0%	0.0%	0.0%	0.0%	-
Aer Lingus	54	100.0%	0.0%	0.0%	0.0%	0.0%	0.0%	0.0%	0.0%	0.0%	0.0%	0.0%	0.0%	0.0%	0.0%	0.0%	-
Air France	56	96.4%	0.0%	0.0%	0.0%	0.0%	3.6%	0.0%	0.0%	0.0%	0.0%	0.0%	0.0%	0.0%	0.0%	0.0%	-
Air Transat	6	100.0%	0.0%	0.0%	0.0%	0.0%	0.0%	0.0%	0.0%	0.0%	0.0%	0.0%	0.0%	0.0%	0.0%	0.0%	-
American Airlines	14	100.0%	0.0%	0.0%	0.0%	0.0%	0.0%	0.0%	0.0%	0.0%	0.0%	0.0%	0.0%	0.0%	0.0%	0.0%	-
Aurigny Air Services	28	100.0%	0.0%	0.0%	0.0%	0.0%	0.0%	0.0%	0.0%	0.0%	0.0%	0.0%	0.0%	0.0%	0.0%	0.0%	-
Austrian Airlines	14	100.0%	0.0%	0.0%	0.0%	0.0%	0.0%	0.0%	0.0%	0.0%	0.0%	0.0%	0.0%	0.0%	0.0%	0.0%	-
BA Cityflyer	8	100.0%	0.0%	0.0%	0.0%	0.0%	0.0%	0.0%	0.0%	0.0%	0.0%	0.0%	0.0%	0.0%	0.0%	0.0%	-
Biman Bangladesh	6	100.0%	0.0%	0.0%	0.0%	0.0%	0.0%	0.0%	0.0%	0.0%	0.0%	0.0%	0.0%	0.0%	0.0%	0.0%	-
Blue Islands	70	97.1%	2.9%	0.0%	0.0%	0.0%	0.0%	0.0%	0.0%	0.0%	0.0%	0.0%	0.0%	0.0%	0.0%	0.0%	-
British Airways	122	91.0%	3.3%	0.0%	2.5%	0.0%	0.0%	0.8%	0.0%	0.0%	0.0%	0.0%	0.0%	0.8%	1.6%	0.0%	-
Brussels Airlines	38	100.0%	0.0%	0.0%	0.0%	0.0%	0.0%	0.0%	0.0%	0.0%	0.0%	0.0%	0.0%	0.0%	0.0%	0.0%	-
Cathay Pacific	14	100.0%	0.0%	0.0%	0.0%	0.0%	0.0%	0.0%	0.0%	0.0%	0.0%	0.0%	0.0%	0.0%	0.0%	0.0%	-
Eastern Airways	46	100.0%	0.0%	0.0%	0.0%	0.0%	0.0%	0.0%	0.0%	0.0%	0.0%	0.0%	0.0%	0.0%	0.0%	0.0%	-
EasyJet	633	97.5%	1.9%	0.5%	0.2%	0.0%	0.0%	0.0%	0.0%	0.0%	0.0%	0.0%	0.0%	0.0%	0.0%	0.0%	-
EasyJet Europe	14	100.0%	0.0%	0.0%	0.0%	0.0%	0.0%	0.0%	0.0%	0.0%	0.0%	0.0%	0.0%	0.0%	0.0%	0.0%	-
EasyJet Switzerland	2	100.0%	0.0%	0.0%	0.0%	0.0%	0.0%	0.0%	0.0%	0.0%	0.0%	0.0%	0.0%	0.0%	0.0%	0.0%	-
Emirates	42	100.0%	0.0%	0.0%	0.0%	0.0%	0.0%	0.0%	0.0%	0.0%	0.0%	0.0%	0.0%	0.0%	0.0%	0.0%	-
Ethiopian Airlines	8	100.0%	0.0%	0.0%	0.0%	0.0%	0.0%	0.0%	0.0%	0.0%	0.0%	0.0%	0.0%	0.0%	0.0%	0.0%	-
Etihad Airways	28	100.0%	0.0%	0.0%	0.0%	0.0%	0.0%	0.0%	0.0%	0.0%	0.0%	0.0%	0.0%	0.0%	0.0%	0.0%	-
Eurowings	48	100.0%	0.0%	0.0%	0.0%	0.0%	0.0%	0.0%	0.0%	0.0%	0.0%	0.0%	0.0%	0.0%	0.0%	0.0%	-
Federal Express	16	100.0%	0.0%	0.0%	0.0%	0.0%	0.0%	0.0%	0.0%	0.0%	0.0%	0.0%	0.0%	0.0%	0.0%	0.0%	-
Finnair	28	100.0%	0.0%	0.0%	0.0%	0.0%	0.0%	0.0%	0.0%	0.0%	0.0%	0.0%	0.0%	0.0%	0.0%	0.0%	-
Flybe	580	91.7%	5.7%	1.0%	0.7%	0.0%	0.2%	0.0%	0.3%	0.0%	0.2%	0.2%	0.0%	0.0%	0.0%	0.0%	-
Freebird Airlines	4	100.0%	0.0%	0.0%	0.0%	0.0%	0.0%	0.0%	0.0%	0.0%	0.0%	0.0%	0.0%	0.0%	0.0%	0.0%	-
Hainan Airlines	6	100.0%	0.0%	0.0%	0.0%	0.0%	0.0%	0.0%	0.0%	0.0%	0.0%	0.0%	0.0%	0.0%	0.0%	0.0%	-
Iberia Express	6	100.0%	0.0%	0.0%	0.0%	0.0%	0.0%	0.0%	0.0%	0.0%	0.0%	0.0%	0.0%	0.0%	0.0%	0.0%	-
Icelandair	14	100.0%	0.0%	0.0%	0.0%	0.0%	0.0%	0.0%	0.0%	0.0%	0.0%	0.0%	0.0%	0.0%	0.0%	0.0%	-
Jet2.com	232	97.0%	1.3%	1.7%	0.0%	0.0%	0.0%	0.0%	0.0%	0.0%	0.0%	0.0%	0.0%	0.0%	0.0%	0.0%	-
KLM Royal Dutch Airlines	96	97.9%	2.1%	0.0%	0.0%	0.0%	0.0%	0.0%	0.0%	0.0%	0.0%	0.0%	0.0%	0.0%	0.0%	0.0%	-
Loganair	52	94.2%	0.0%	0.0%	5.8%	0.0%	0.0%	0.0%	0.0%	0.0%	0.0%	0.0%	0.0%	0.0%	0.0%	0.0%	-
Lufthansa	118	100.0%	0.0%	0.0%	0.0%	0.0%	0.0%	0.0%	0.0%	0.0%	0.0%	0.0%	0.0%	0.0%	0.0%	0.0%	-
Luxair	8	87.5%	12.5%	0.0%	0.0%	0.0%	0.0%	0.0%	0.0%	0.0%	0.0%	0.0%	0.0%	0.0%	0.0%	0.0%	-
Norwegian	18	100.0%	0.0%	0.0%	0.0%	0.0%	0.0%	0.0%	0.0%	0.0%	0.0%	0.0%	0.0%	0.0%	0.0%	0.0%	-
Oman Air	14	100.0%	0.0%	0.0%	0.0%	0.0%	0.0%	0.0%	0.0%	0.0%	0.0%	0.0%	0.0%	0.0%	0.0%	0.0%	-
Pegasus Airlines	14	100.0%	0.0%	0.0%	0.0%	0.0%	0.0%	0.0%	0.0%	0.0%	0.0%	0.0%	0.0%	0.0%	0.0%	0.0%	-
PIA Pakistan International	18	100.0%	0.0%	0.0%	0.0%	0.0%	0.0%	0.0%	0.0%	0.0%	0.0%	0.0%	0.0%	0.0%	0.0%	0.0%	-
Qatar Airways	42	100.0%	0.0%	0.0%	0.0%	0.0%	0.0%	0.0%	0.0%	0.0%	0.0%	0.0%	0.0%	0.0%	0.0%	0.0%	-
Royal Air Maroc	6	100.0%	0.0%	0.0%	0.0%	0.0%	0.0%	0.0%	0.0%	0.0%	0.0%	0.0%	0.0%	0.0%	0.0%	0.0%	-
Ryanair	633	91.2%	0.9%	1.3%	0.9%	0.3%	0.5%	0.2%	0.9%	0.3%	0.3%	0.3%	0.5%	0.0%	2.4%	0.0%	-
SAS Scandinavian	80	100.0%	0.0%	0.0%	0.0%	0.0%	0.0%	0.0%	0.0%	0.0%	0.0%	0.0%	0.0%	0.0%	0.0%	0.0%	-
Saudia	14	100.0%	0.0%	0.0%	0.0%	0.0%	0.0%	0.0%	0.0%	0.0%	0.0%	0.0%	0.0%	0.0%	0.0%	0.0%	-
Singapore Airlines	20	100.0%	0.0%	0.0%	0.0%	0.0%	0.0%	0.0%	0.0%	0.0%	0.0%	0.0%	0.0%	0.0%	0.0%	0.0%	-
Stobart Air	110	98.2%	0.9%	0.9%	0.0%	0.0%	0.0%	0.0%	0.0%	0.0%	0.0%	0.0%	0.0%	0.0%	0.0%	0.0%	-
Sun-Air	28	100.0%	0.0%	0.0%	0.0%	0.0%	0.0%	0.0%	0.0%	0.0%	0.0%	0.0%	0.0%	0.0%	0.0%	0.0%	-
Swiss International	28	96.4%	3.6%	0.0%	0.0%	0.0%	0.0%	0.0%	0.0%	0.0%	0.0%	0.0%	0.0%	0.0%	0.0%	0.0%	-
Tap Air Portugal	42	100.0%	0.0%	0.0%	0.0%	0.0%	0.0%	0.0%	0.0%	0.0%	0.0%	0.0%	0.0%	0.0%	0.0%	0.0%	-
Titan Airways	2	100.0%	0.0%	0.0%	0.0%	0.0%	0.0%	0.0%	0.0%	0.0%	0.0%	0.0%	0.0%	0.0%	0.0%	0.0%	-
TUI Airways	174	98.3%	0.0%	0.0%	1.1%	0.0%	0.0%	0.0%	0.6%	0.0%	0.0%	0.0%	0.0%	0.0%	0.0%	0.0%	-
Turkish Airlines	28	100.0%	0.0%	0.0%	0.0%	0.0%	0.0%	0.0%	0.0%	0.0%	0.0%	0.0%	0.0%	0.0%	0.0%	0.0%	-
Tus Airways	4	100.0%	0.0%	0.0%	0.0%	0.0%	0.0%	0.0%	0.0%	0.0%	0.0%	0.0%	0.0%	0.0%	0.0%	0.0%	-
United Airlines	14	100.0%	0.0%	0.0%	0.0%	0.0%	0.0%	0.0%	0.0%	0.0%	0.0%	0.0%	0.0%	0.0%	0.0%	0.0%	-
Virgin Atlantic	40	100.0%	0.0%	0.0%	0.0%	0.0%	0.0%	0.0%	0.0%	0.0%	0.0%	0.0%	0.0%	0.0%	0.0%	0.0%	-
Vueling	20	100.0%	0.0%	0.0%	0.0%	0.0%	0.0%	0.0%	0.0%	0.0%	0.0%	0.0%	0.0%	0.0%	0.0%	0.0%	-
TOTAL	3,766	95.9%	1.7%	0.6%	0.5%	0.1%	0.2%	0.1%	0.2%	0.1%	0.1%	0.1%	0.1%	0.0%	0.5%	-	

Operators with 0 'allocated ATMs' and 0 'Requests with NO slot allocated' in W20, are included in this list due to having slots allocated in either W19 Init Coord or W20 Hist (SHL) schedules.

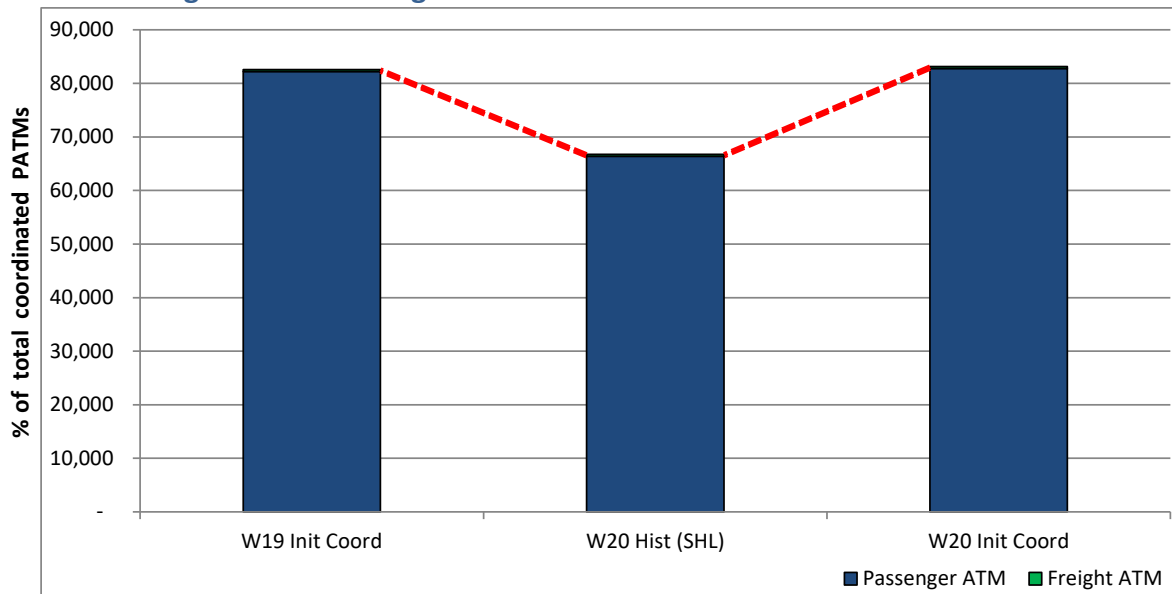
Significant Route Changes

Operator	Category	Description of change from W19 schedule to W20 schedule
Air France	CHANGE	Increase CDG from three to four per day with new nightstopper. 2115/0605z.
Air Transat	CHANGE	Increase YYZ two to four per week.
American Airlines	CHANGE	B787-8 on daily PHL. W19 was B767-300 Nov-Jan.
Austrian Airlines	CHANGE	Increase VIE from five to six per week.
Biman Bangladesh	CHANGE	Backfill three per week DAC/ZYL that started Jan20.
Blue Islands	NEW	New twice per day EXT and three per day SOU cont from S20, with ATR72. (T3 allocated)
British Airways	CHANGE	Increase LHR from seven to nine per day, new 1035/1125z and 2205/0715z.
Cathay Pacific	CHANGE	Dec/Jan/Feb A350-1000 and other dates A350-900.
Eastern Airways	NEW	New four per day SOU with ATR72.(T3 allocated)
EasyJet	CHANGE	FCO and SSH cont from S20, some summer sun cont into Nov. (x18 based a/c).
El Al Israel Airlines	CANCELLED	No submission for W20.
Enter Air	CANCELLED	No submission, W19 was part based B737-800 HRG and BJL.
Ethiopian Airlines	CHANGE	Submitted as four per week via BRU as in W19, S20 from July is direct.
Flybe	CHANGE	Applied for historic slots but carrier ceased operations Mar20. Operating licence still valid at this time.
Hainan Airlines	CHANGE	Historic three per week applied for A330.
Jet2.com	CHANGE	New route LIS cont from S20.
KLM Royal Dutch Airlines	CHANGE	Increase six to seven per day to AMS, new 2000/2045z
Loganair	NEW	New twice per day ABZ with ATR72 cont from S20.
Luxair	NEW	New four per week LUX cont from S20 with DHC8-400.(T3 allocated)
Royal Air Maroc	CHANGE	Increase two to three per week with four over xmas.
Ryanair	CHANGE	New routes BRU, POZ, VNO. Cont from S20 BVA, CPH, GRO, KIR, PSA. (up to x15 based aircraft, more flying around weekends than weekdays - Summer is normally x12based).
SAS Scandinavian	CHANGE	New SVG cont from S20 and increase on BGO as S20.
Saudia	CHANGE	Increase JED from five to seven per week.
Tap Air Portugal	CHANGE	Increase x7pw to x21pw, new overnight 2255/0500z EMB190.
TUI Airways	CHANGE	New route BJL. VRA goes yearround
Tus Airways	NEW	New proposed twice per week LCA cont from S20, with Sukhoi jet SU9!(T1 allocated)
Virgin Atlantic	CHANGE	All services operated by A330 and no B747-400's.
Vueling	CHANGE	Increase BCN seven to ten per week.

Full Season - ATM Analysis

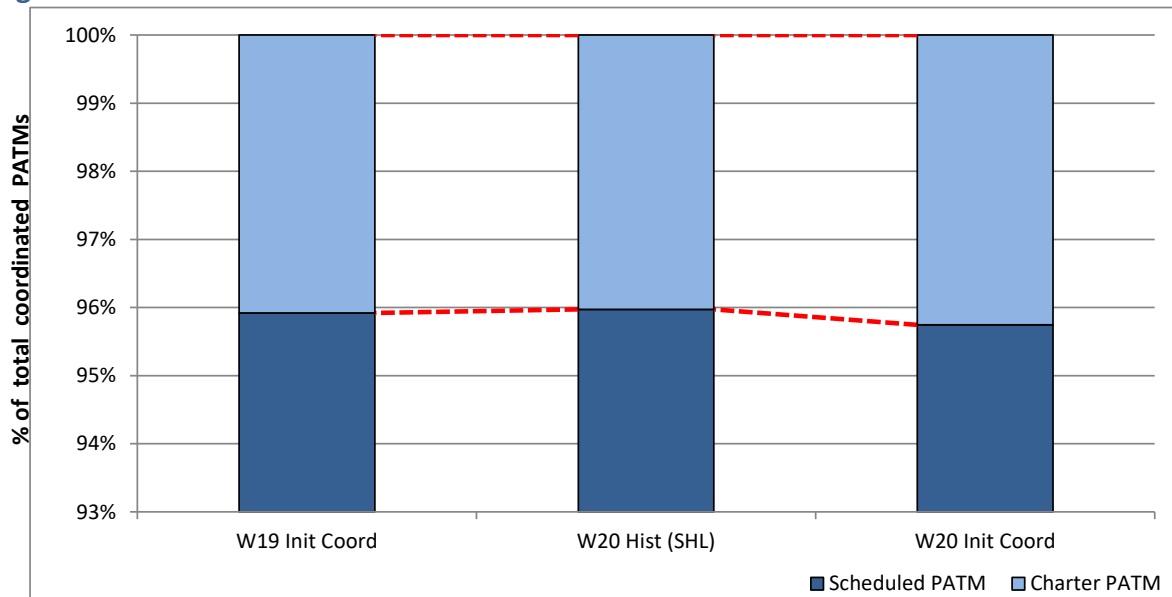


Total ATMs: Passenger ATMs vs. Freight ATMs



Schedule Snapshot

Passenger ATMs: Scheduled vs. Charter

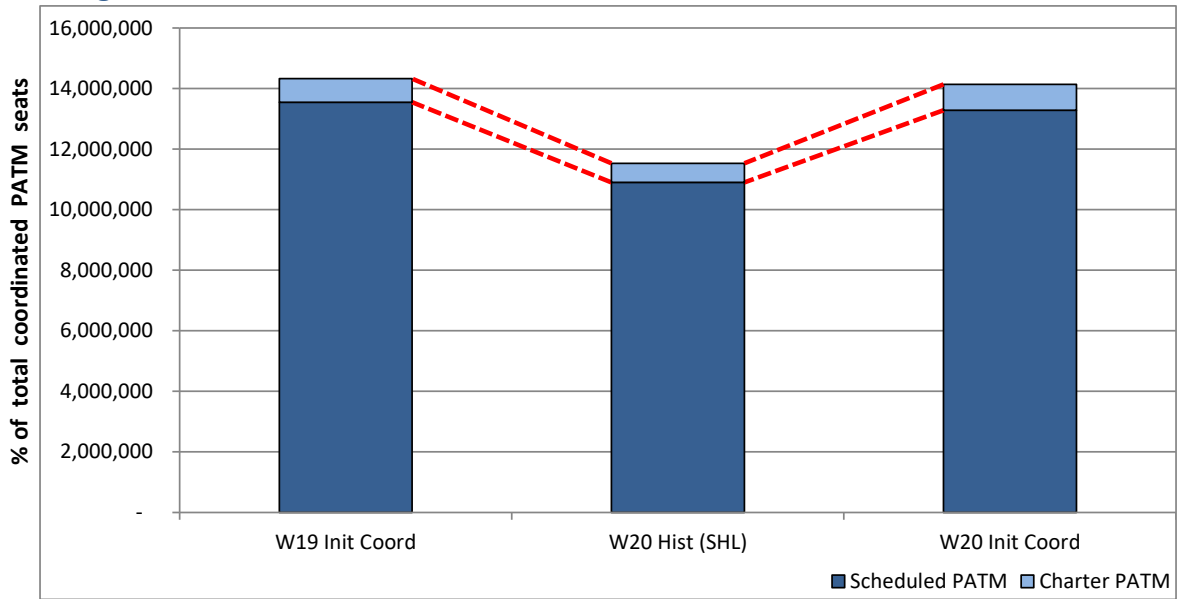


Schedule Snapshot

Full Season - PATM Seats Analysis

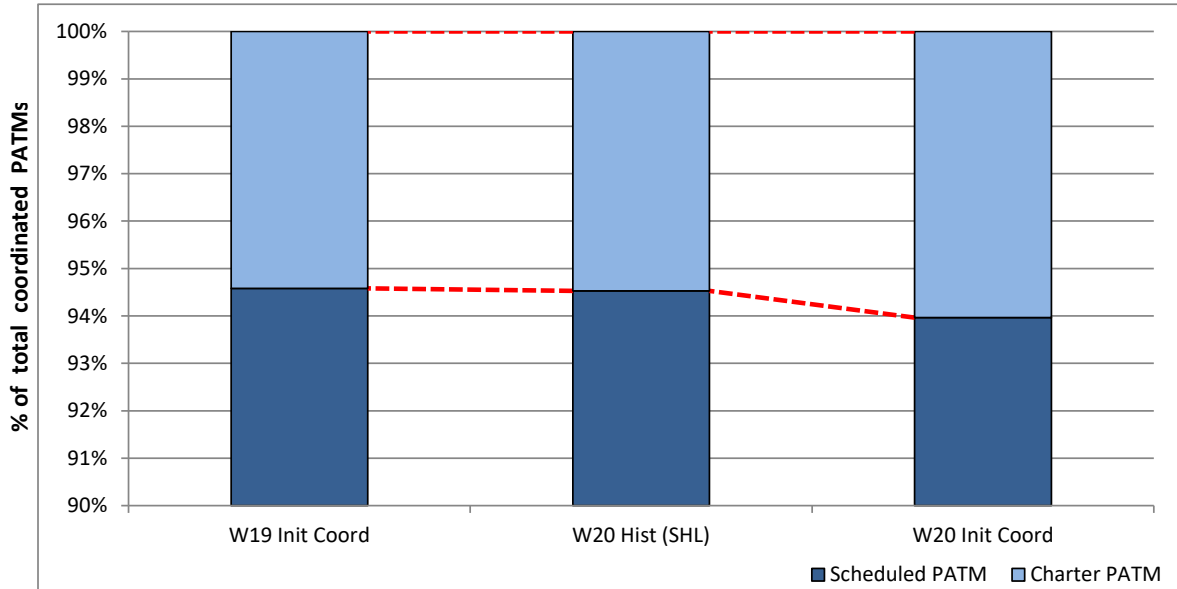


Total Passenger ATM seats: Scheduled vs. Charter



Schedule Snapshot

Passenger ATM seats: Scheduled vs. Charter

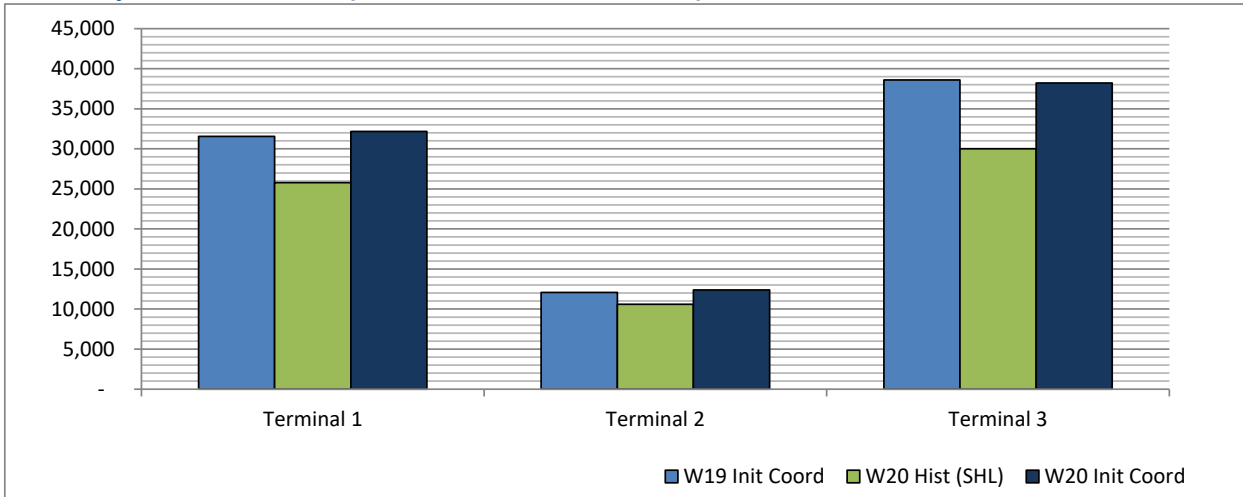


Schedule Snapshot

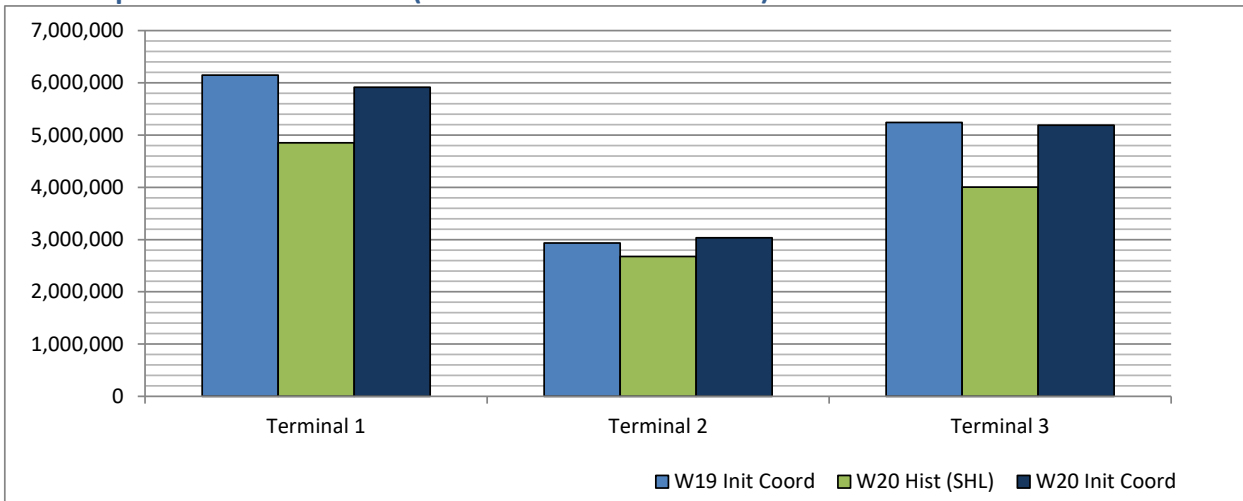
Full Season - Terminal Analysis



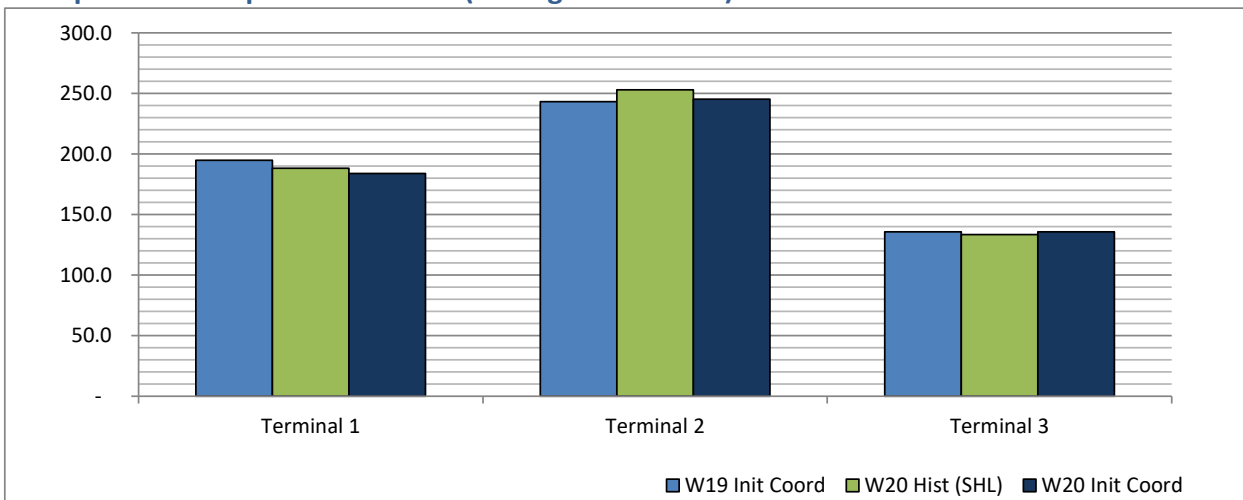
Air Transport Movements (total allocated for season)



Air Transport Movement Seats (total allocated for season)



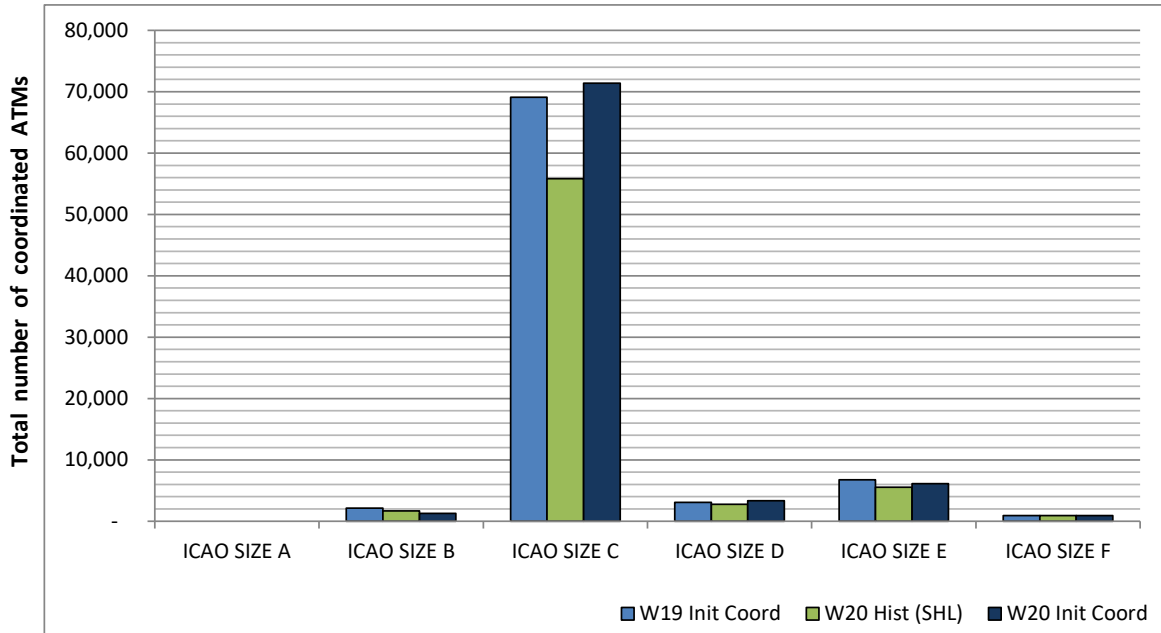
Seats per Air Transport Movement (average for season)



Full Season - Aircraft Size Analysis

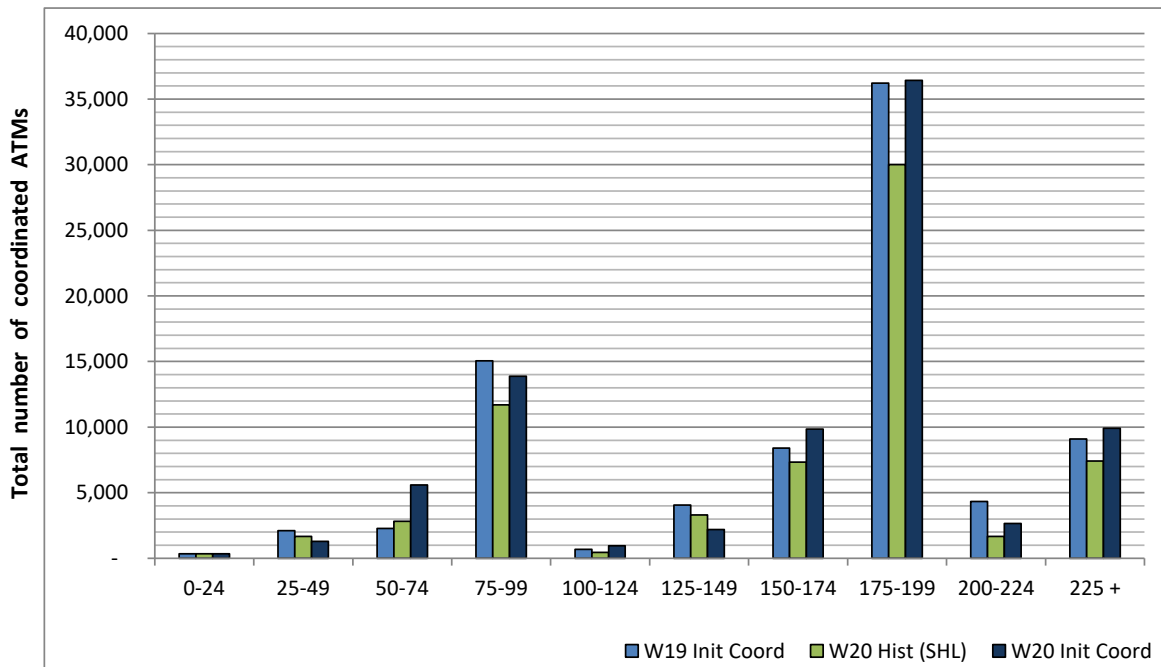


ICAO size designation



Note: See Glossary for definitions of ICAO SIZE groupings

Air Transport Movement seat distribution

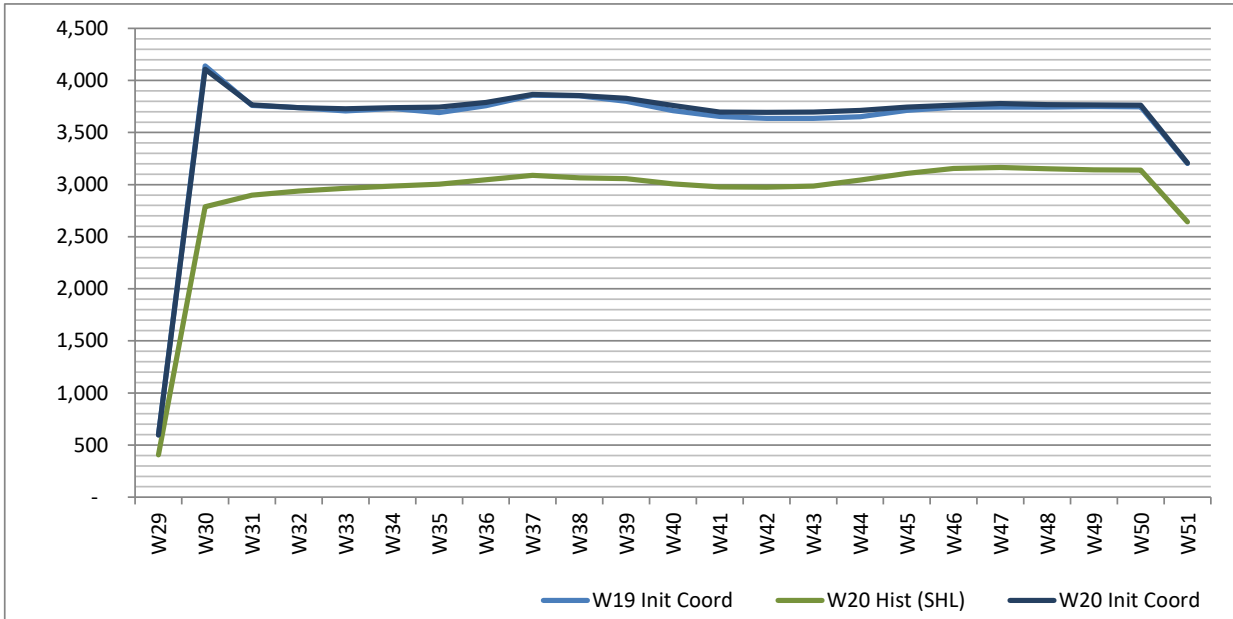


Note: FREIGHT-ONLY services with 0 seats are included in the first seat band '0-24'

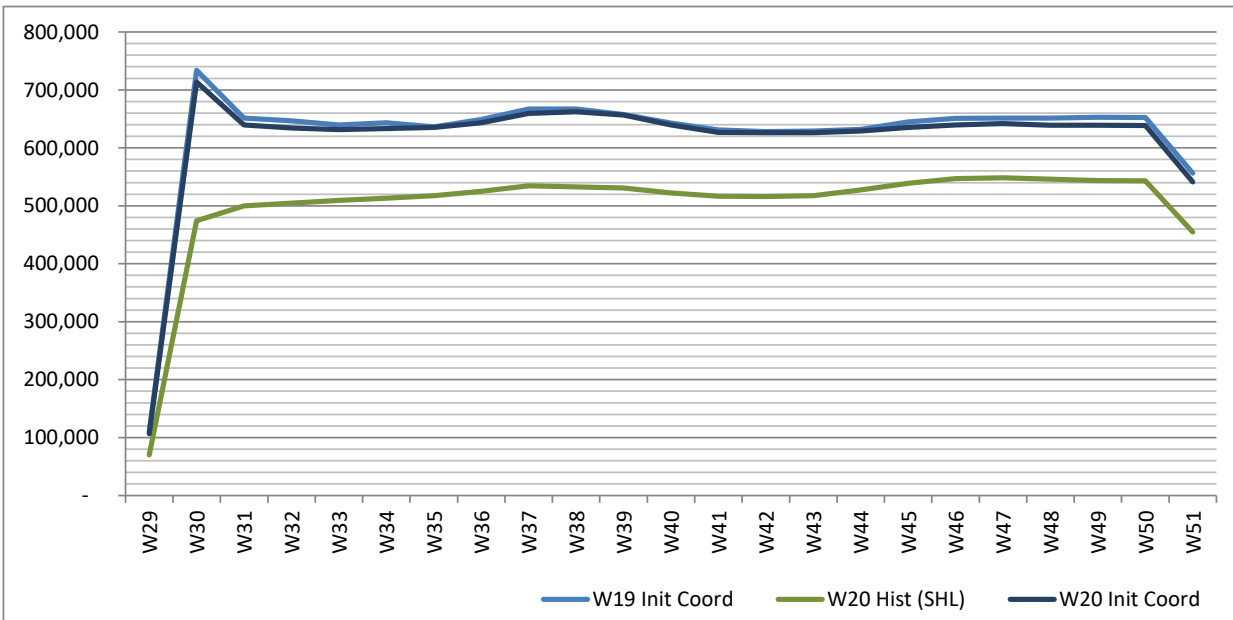
Full Season - Seasonality



Air Transport Movements by week of season



Air Transport Movement Seats by week of season



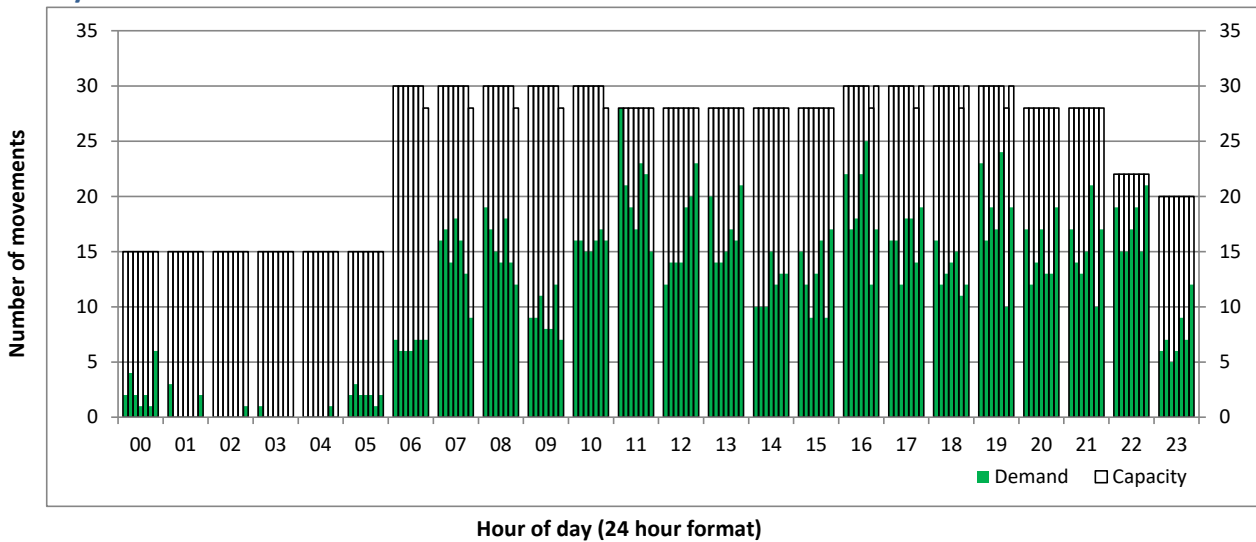
Peak Week - Initial Hourly Runway Demand

Schedule: W20 Init Coord



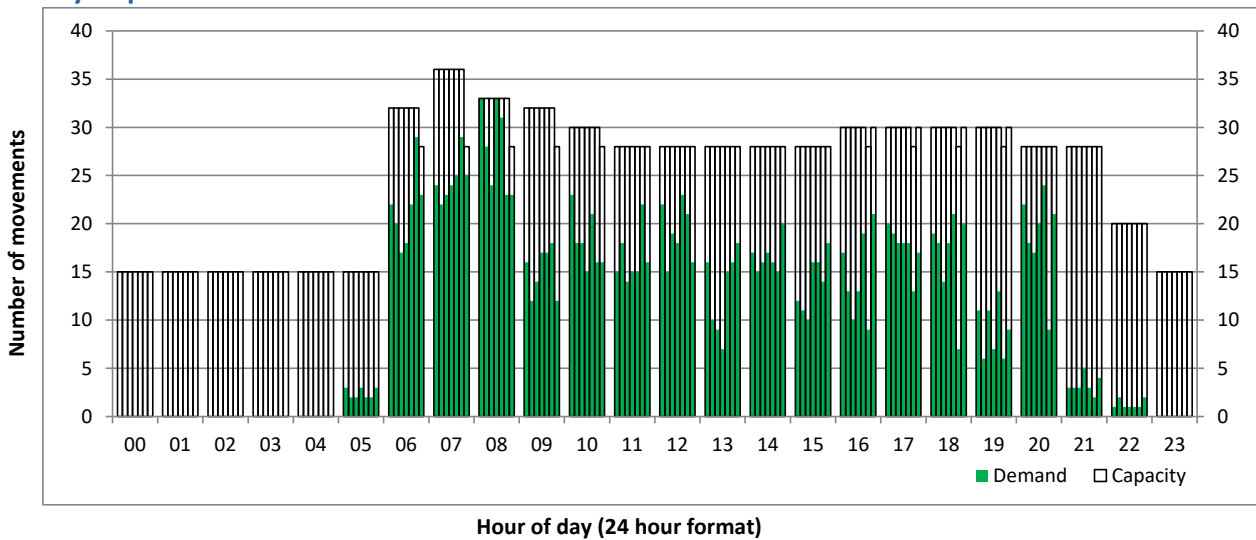
Hourly Arrival Demand

Time: UTC



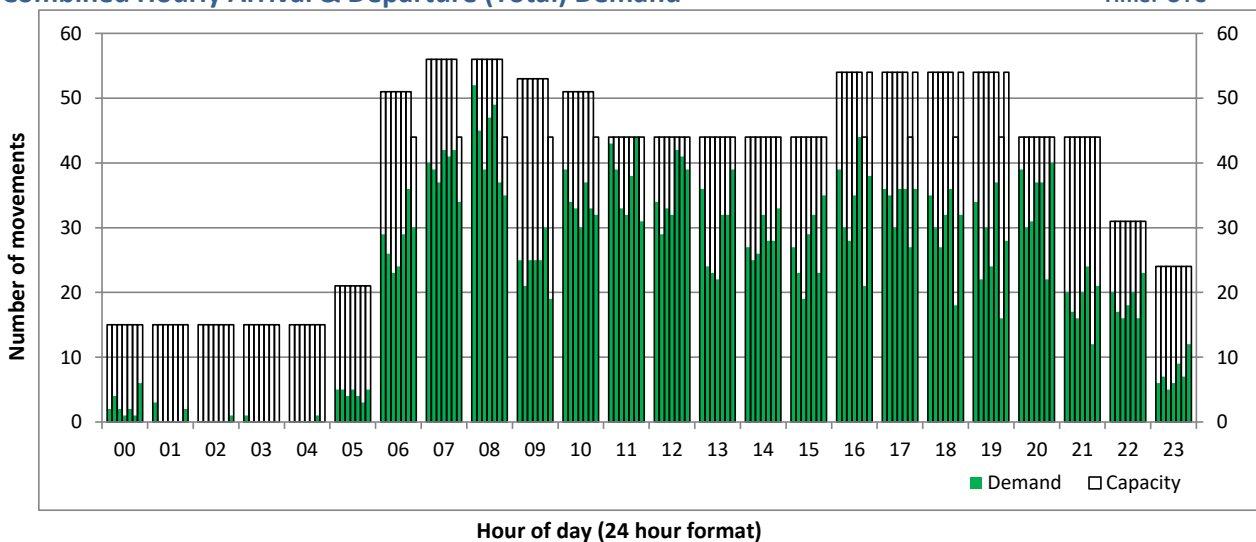
Hourly Departure Demand

Time: UTC



Combined Hourly Arrival & Departure (Total) Demand

Time: UTC



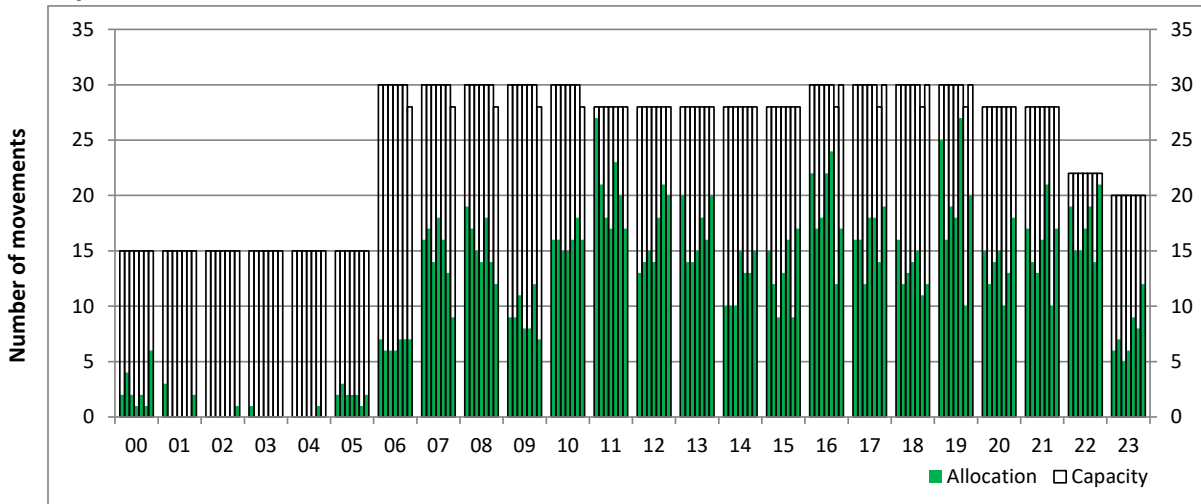
Peak Week - Hourly Runway Allocation

Schedule: W20 Init Coord



Hourly Arrival Allocation

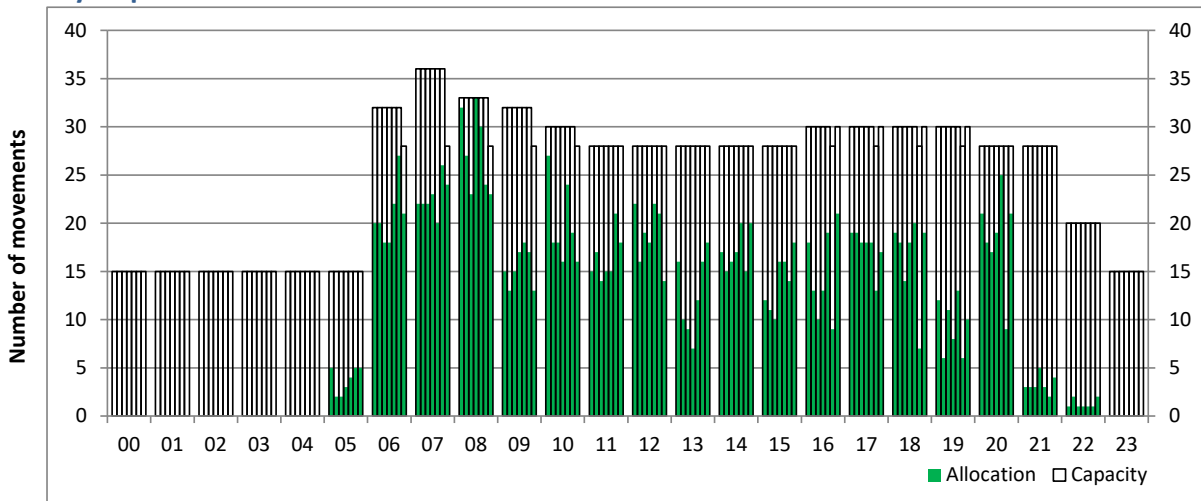
Time: UTC



Hour of day (24 hour format)

Hourly Departure Allocation

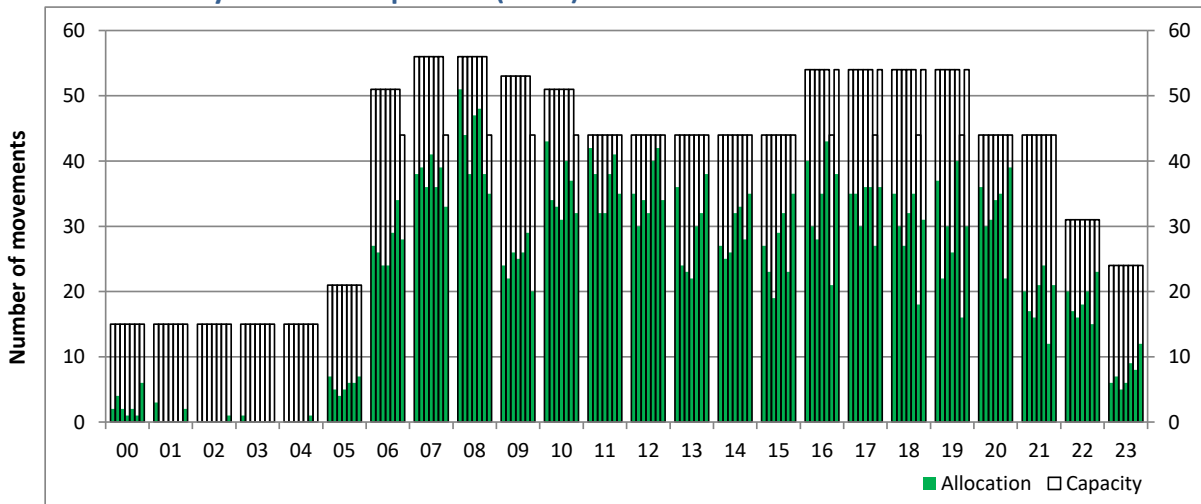
Time: UTC



Hour of day (24 hour format)

Combined Hourly Arrival & Departure (Total) Allocation

Time: UTC



Hour of day (24 hour format)

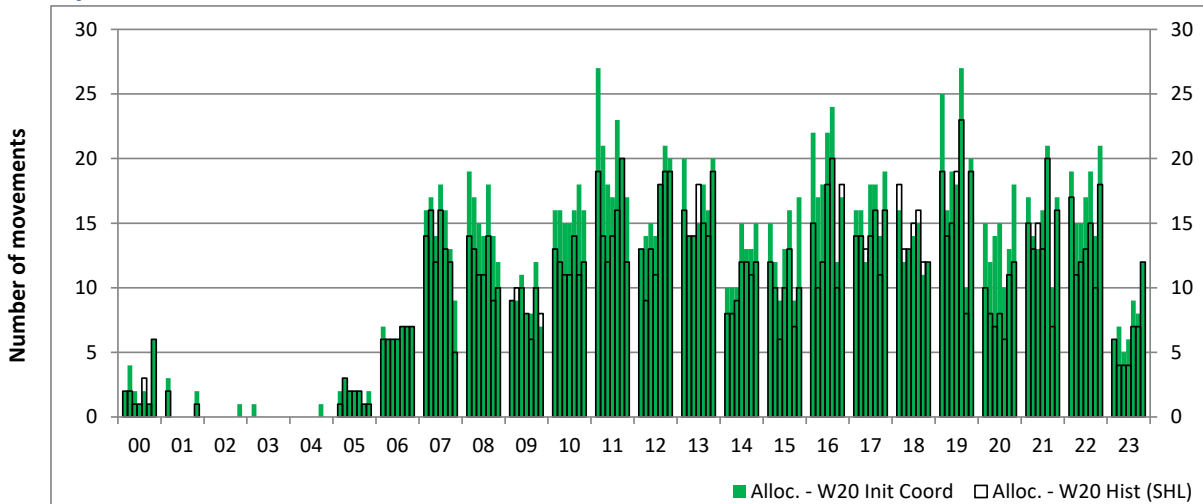
Peak Week - Runway Allocation Comparison

Comparison of W20 Init Coord vs. W20 Hist (SHL)



Hourly Arrival Allocation

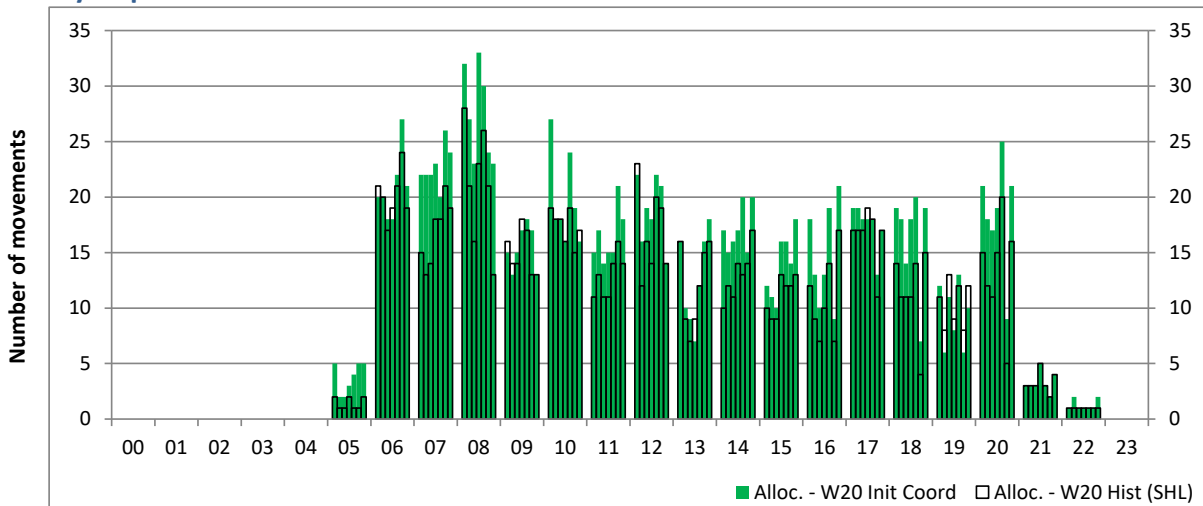
Time: UTC



Hour of day (24 hour format)

Hourly Departure Allocation

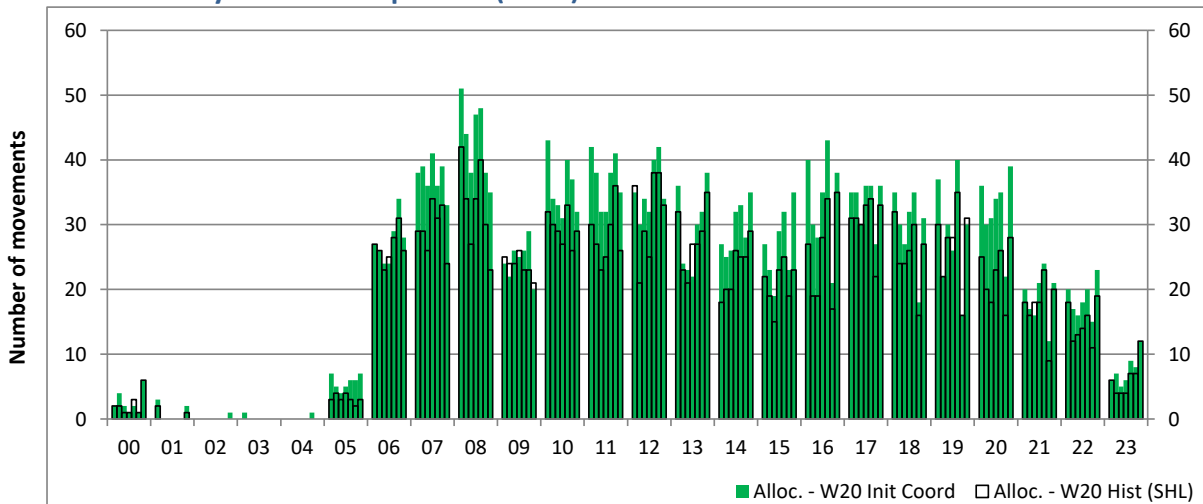
Time: UTC



Hour of day (24 hour format)

Combined Hourly Arrival & Departure (Total) Allocation

Time: UTC



Hour of day (24 hour format)

Peak Week - Passengers Histogram

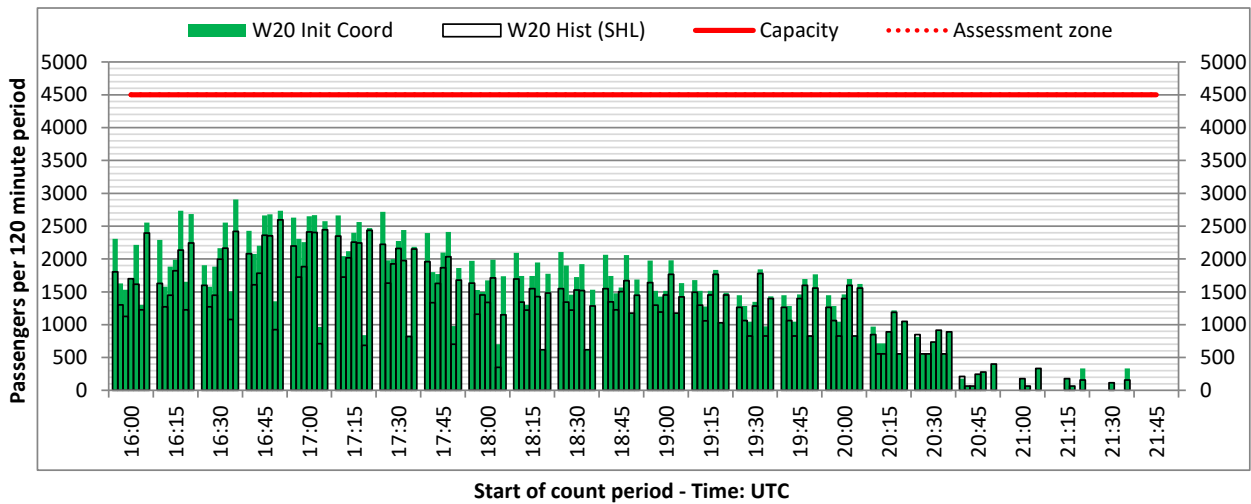
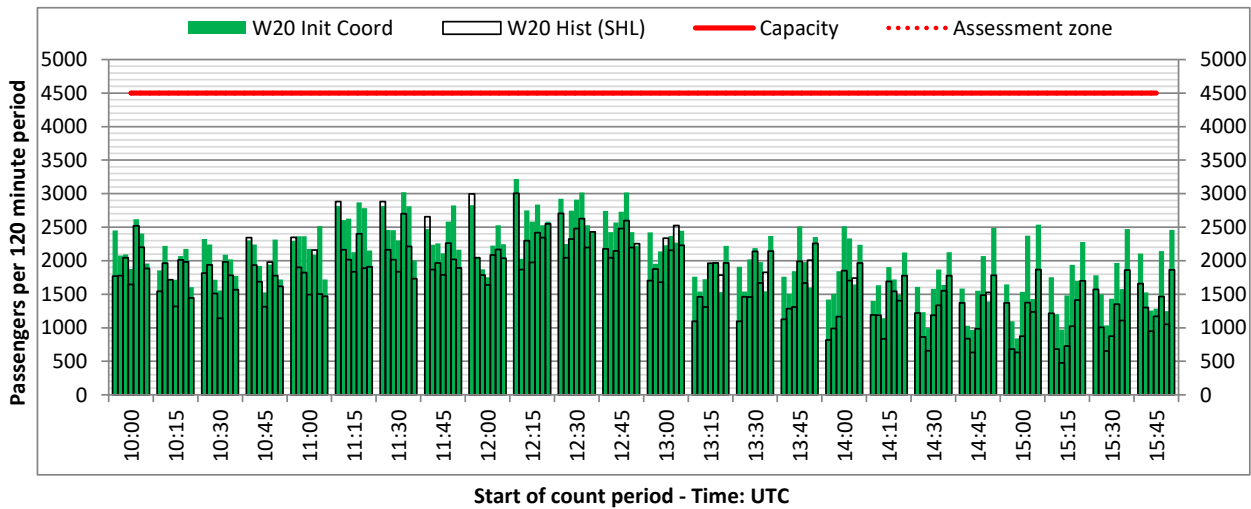
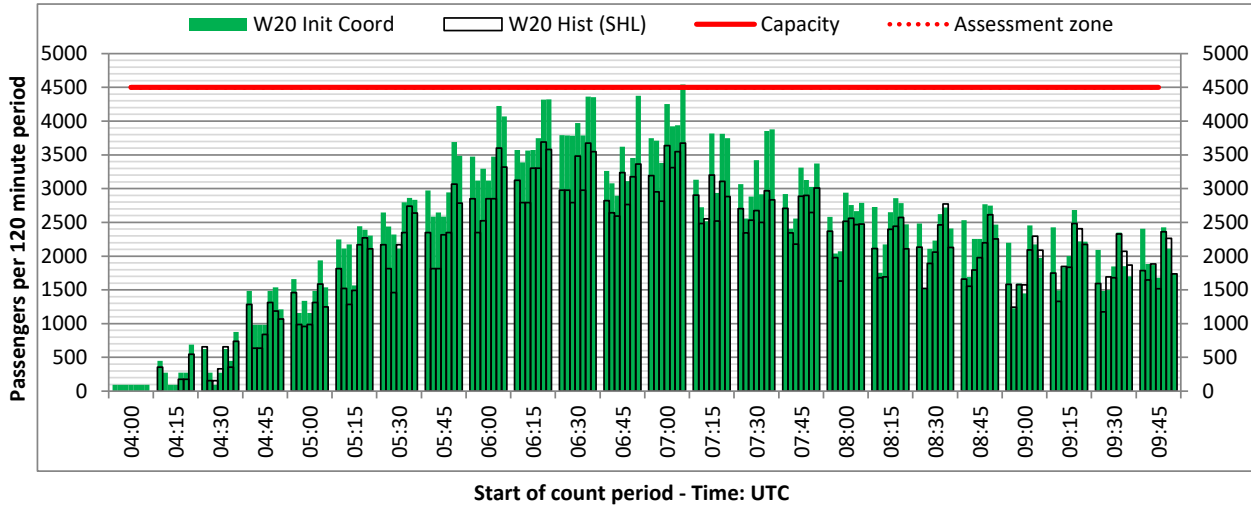
DEPARTURE - 120 minute count rolling every 15 mins (T120/15)



Terminals: T1

Operators: All Operators

Days: 1234567



Peak Week - Passengers Histogram

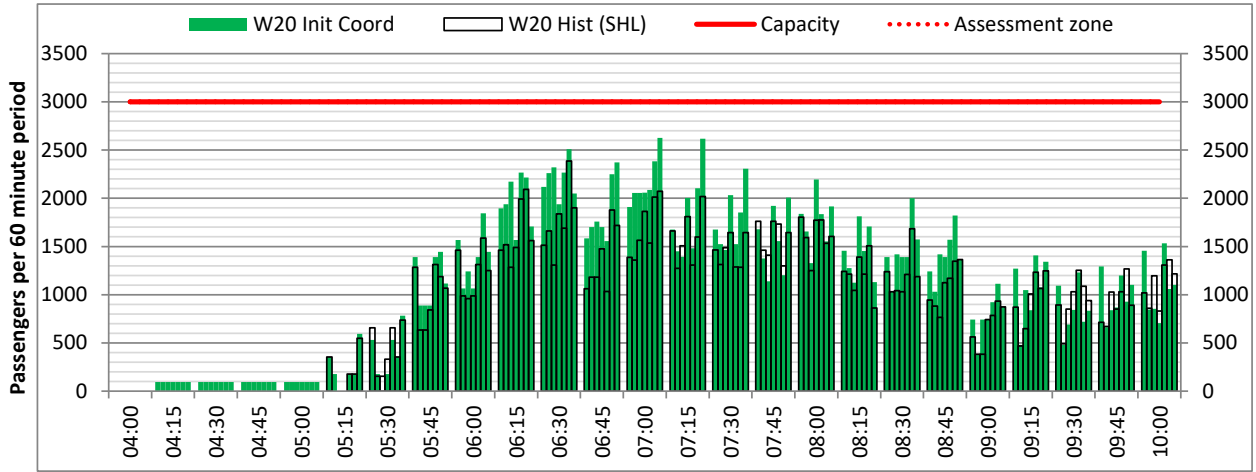
DEPARTURE - 60 minute count rolling every 15 mins (T60/15)



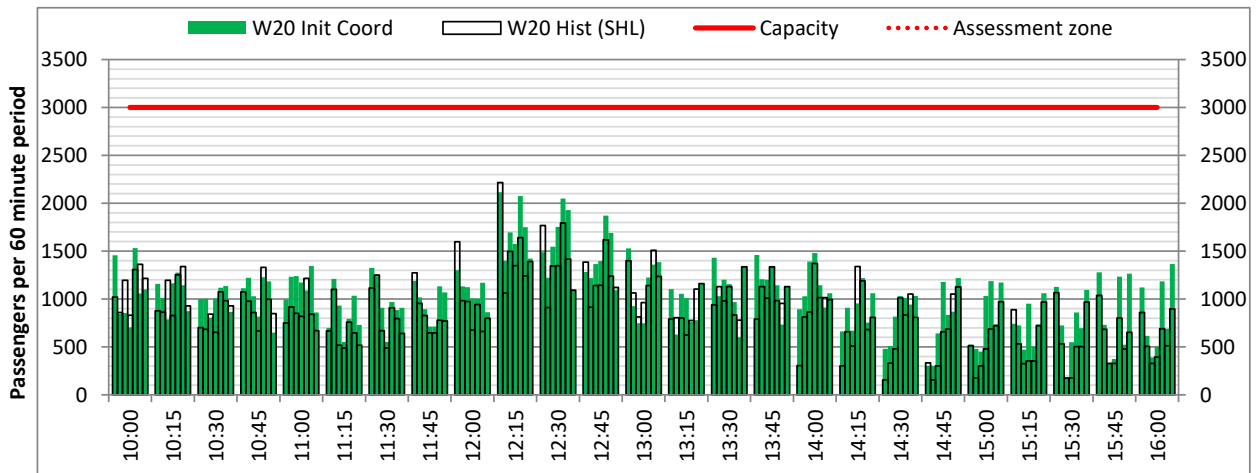
Terminals: T1

Operators: All Operators

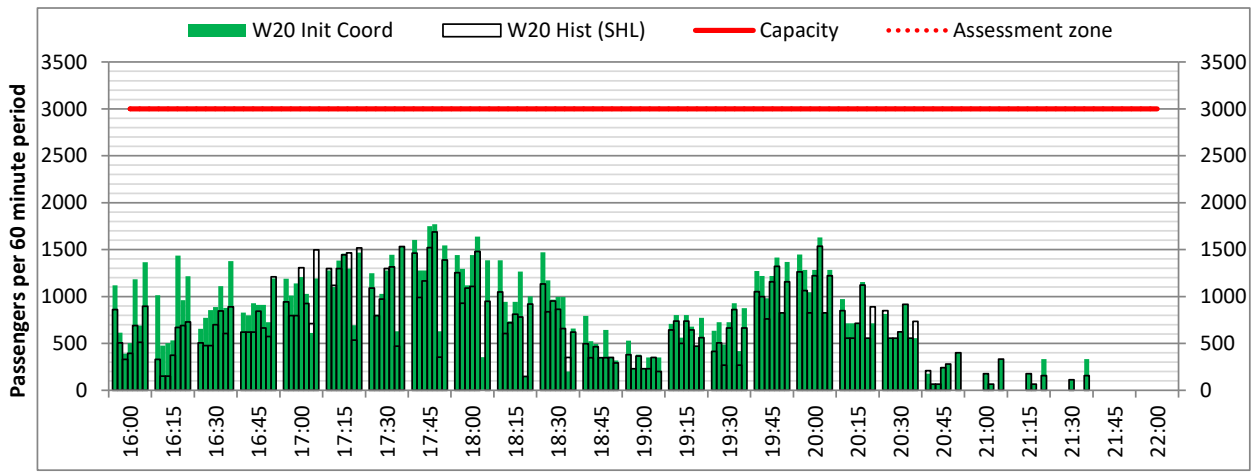
Days: 1234567



Start of count period - Time: UTC



Start of count period - Time: UTC



Start of count period - Time: UTC

Peak Week - Passengers Histogram

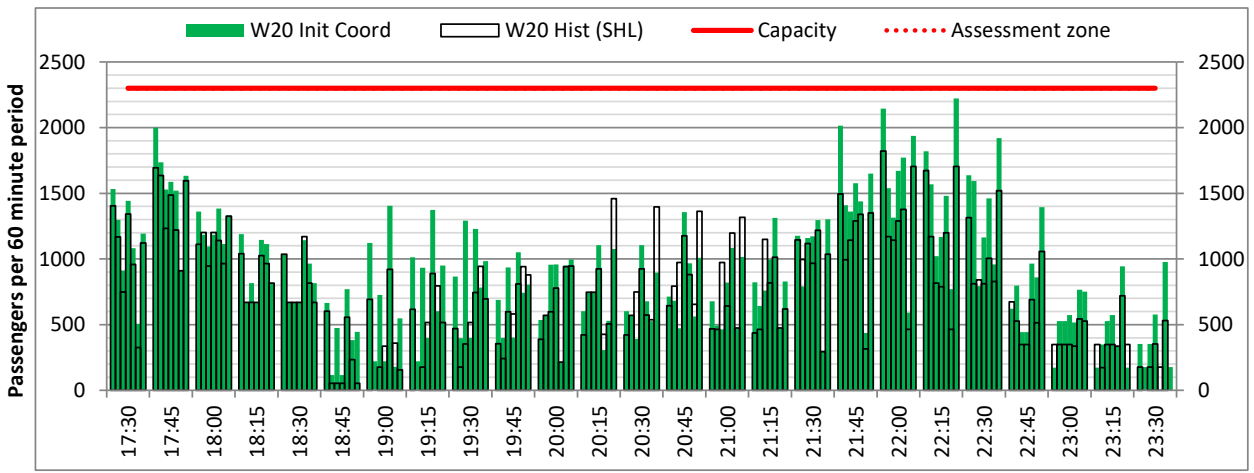
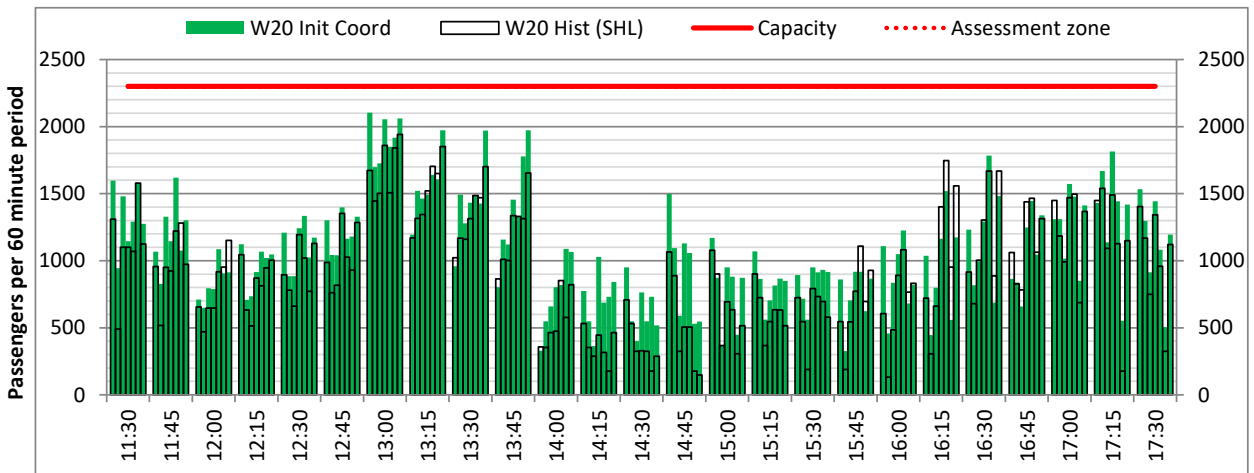
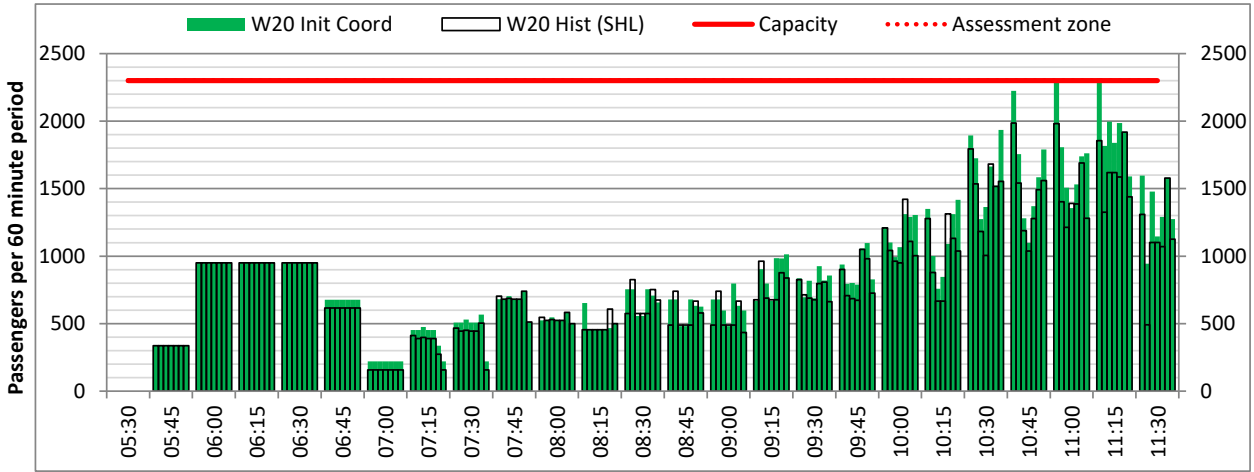
ARRIVAL - 60 minute count rolling every 15 mins (T60/15)



Terminals: T1

Operators: All Operators

Days: 1234567



Peak Week - Passengers Histogram

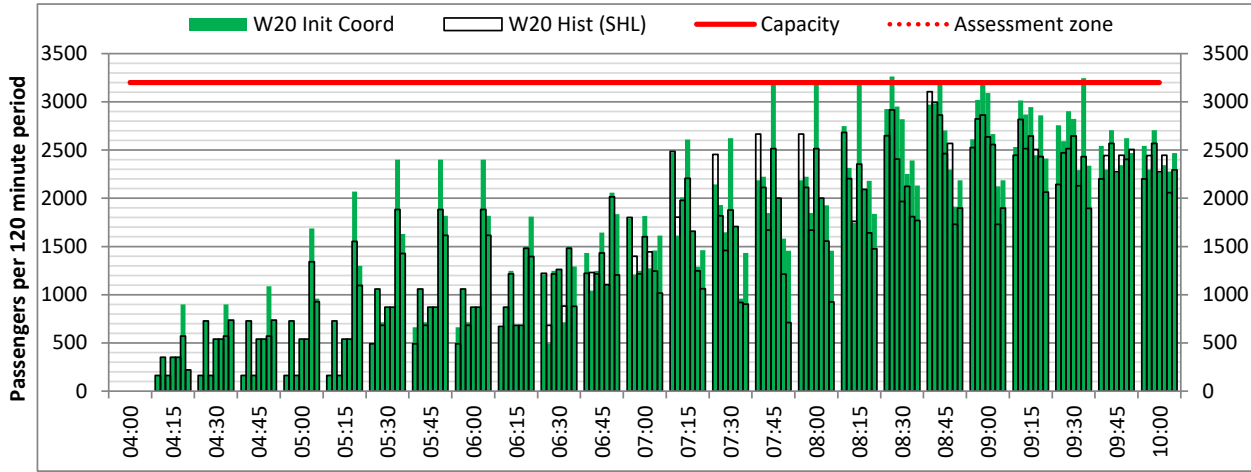
DEPARTURE - 120 minute count rolling every 15 mins (T120/15)



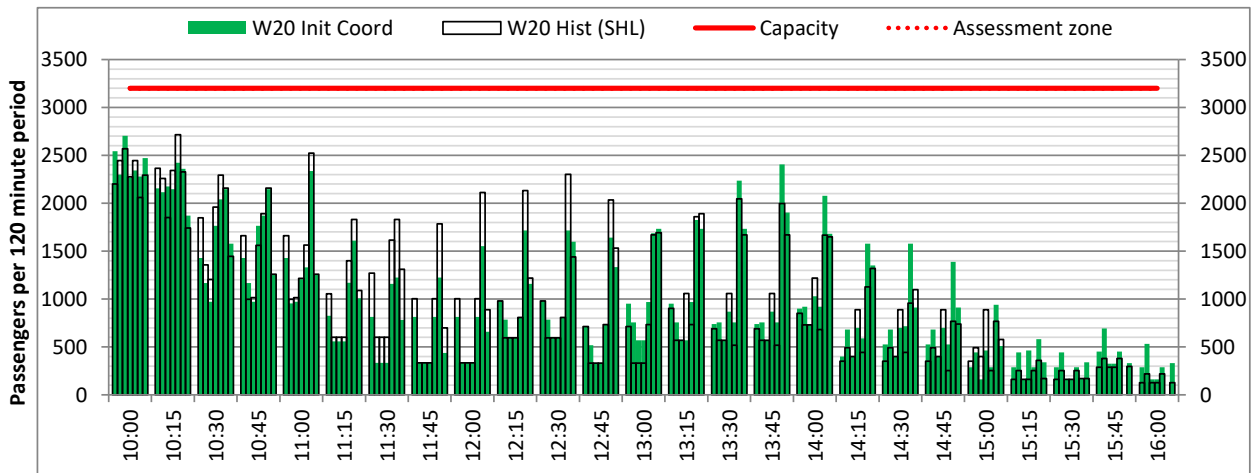
Terminals: T2

Operators: All Operators

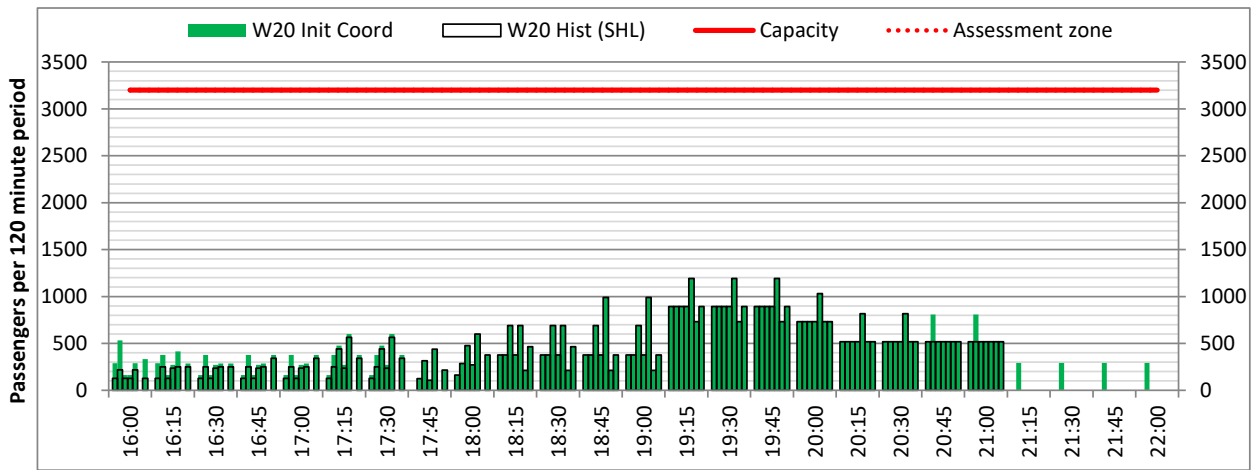
Days: 1234567



Start of count period - Time: UTC



Start of count period - Time: UTC



Start of count period - Time: UTC

Peak Week - Passengers Histogram

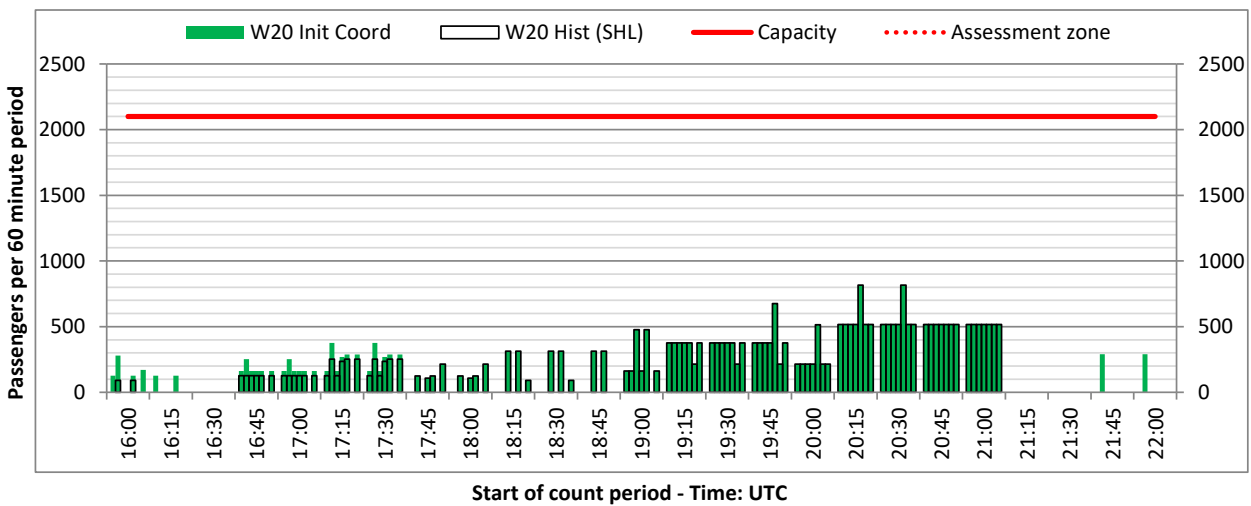
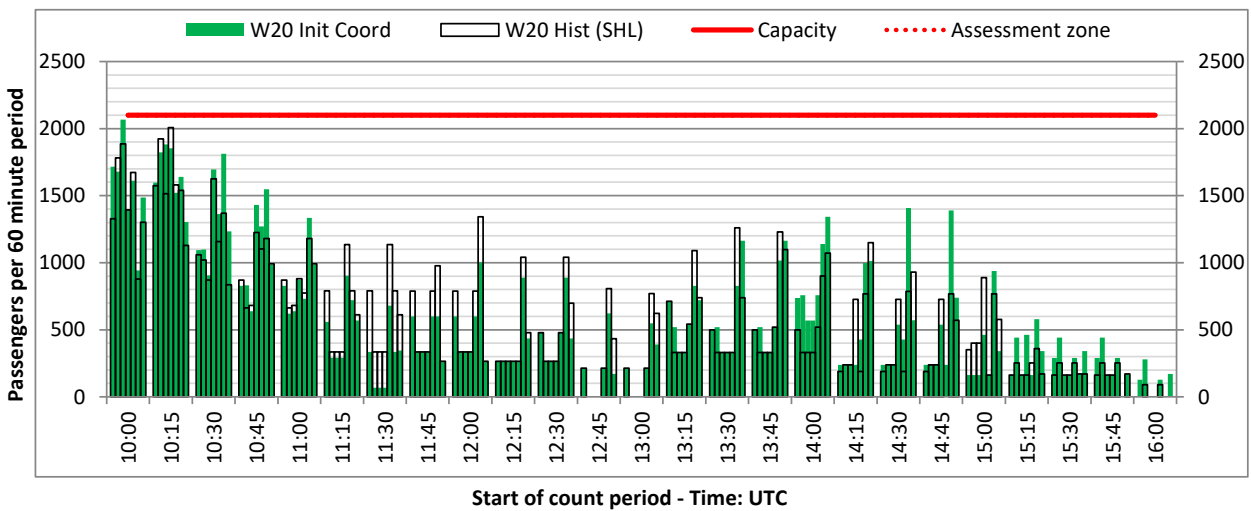
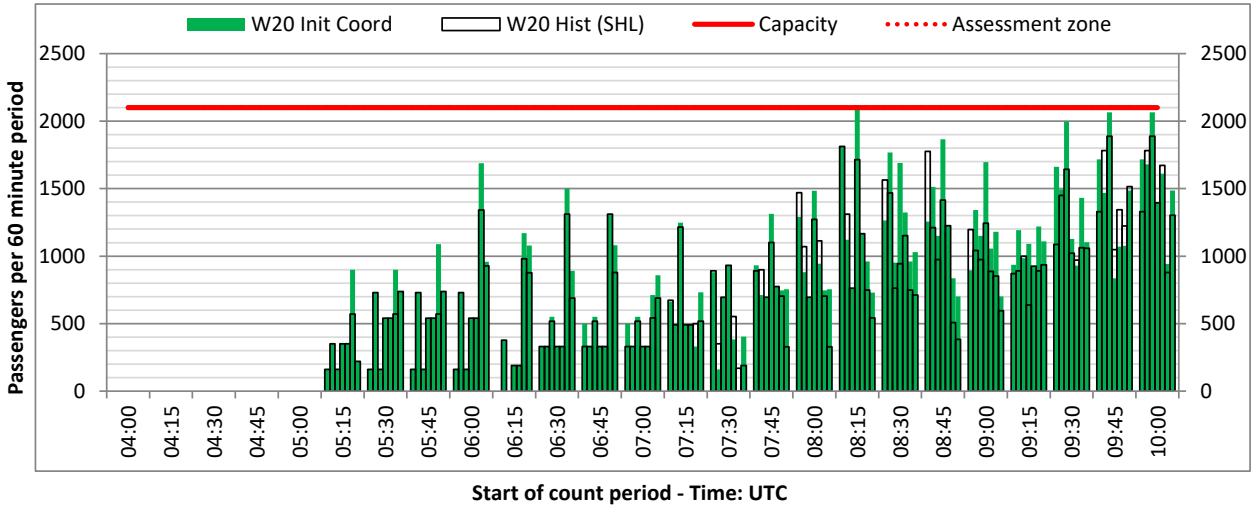
DEPARTURE - 60 minute count rolling every 15 mins (T60/15)



Terminals: T2

Operators: All Operators

Days: 1234567



Peak Week - Passengers Histogram

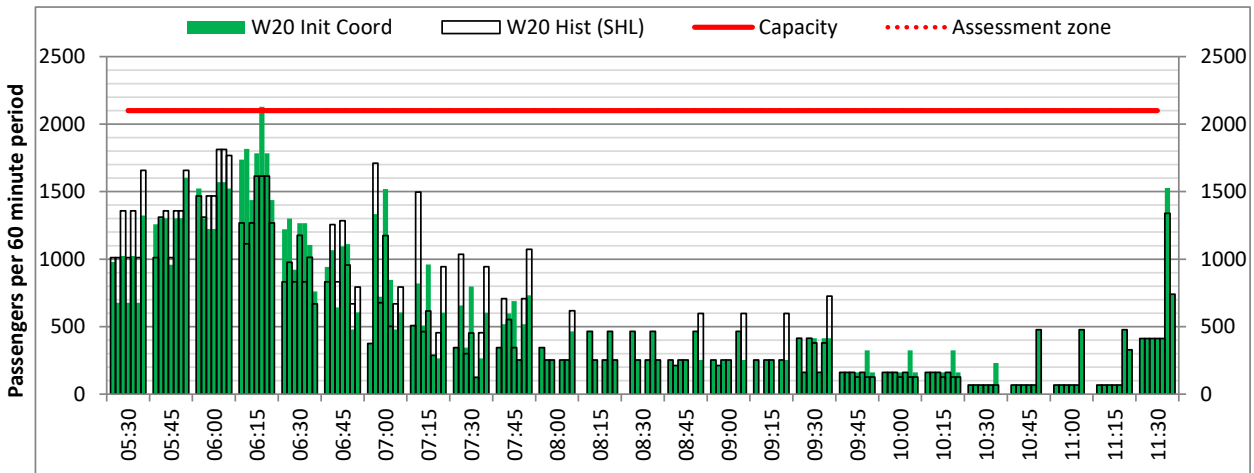
ARRIVAL - 60 minute count rolling every 15 mins (T60/15)



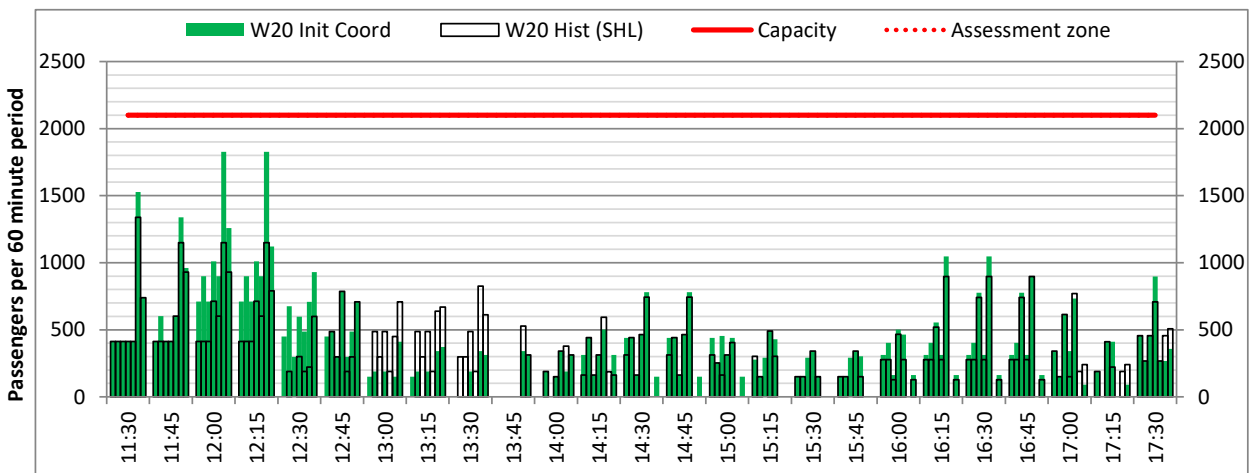
Terminals: T2

Operators: All Operators

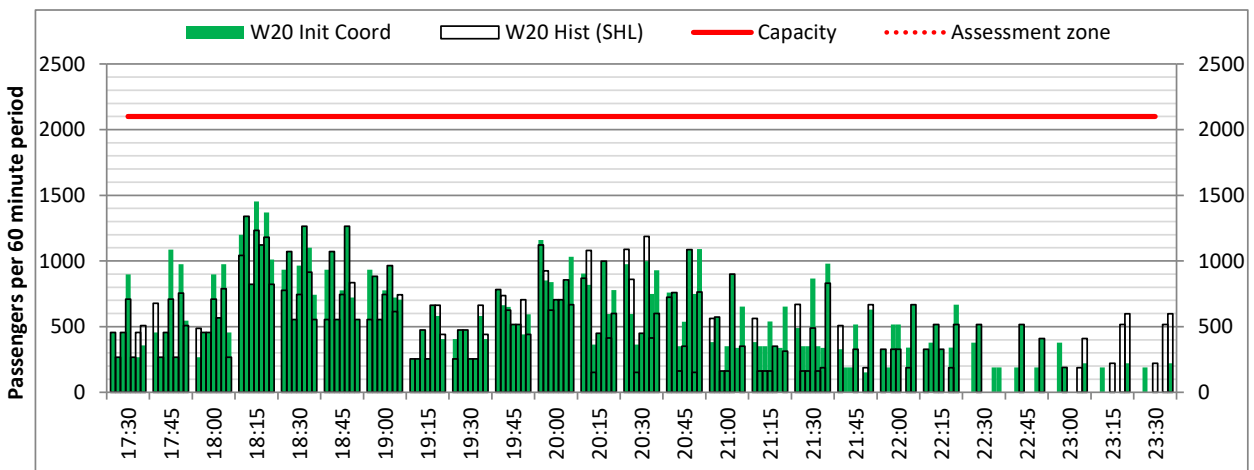
Days: 1234567



Start of count period - Time: UTC



Start of count period - Time: UTC



Start of count period - Time: UTC

Peak Week - Passengers Histogram

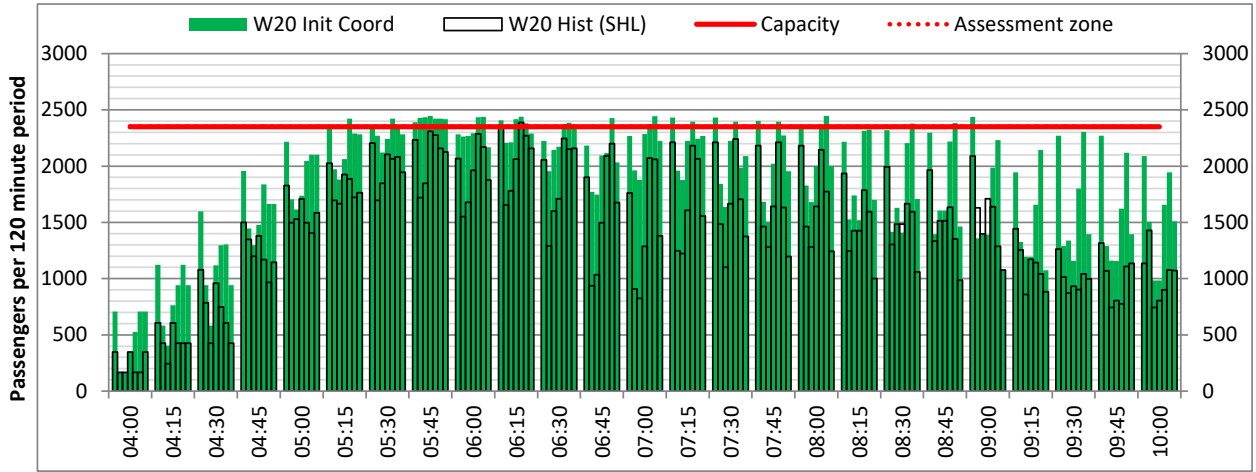
DEPARTURE - 120 minute count rolling every 15 mins (T120/15)



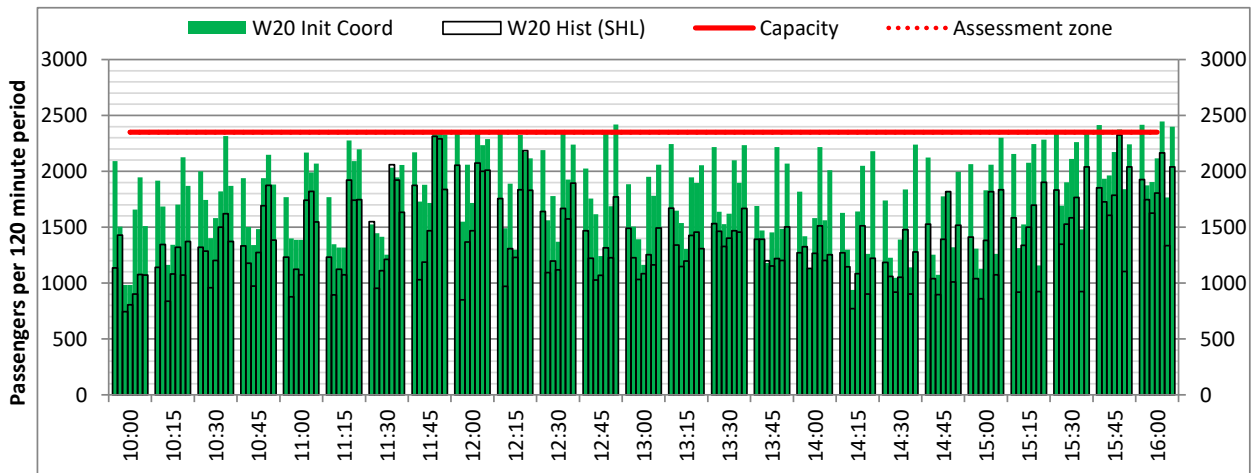
Terminals: T3

Operators: All Operators

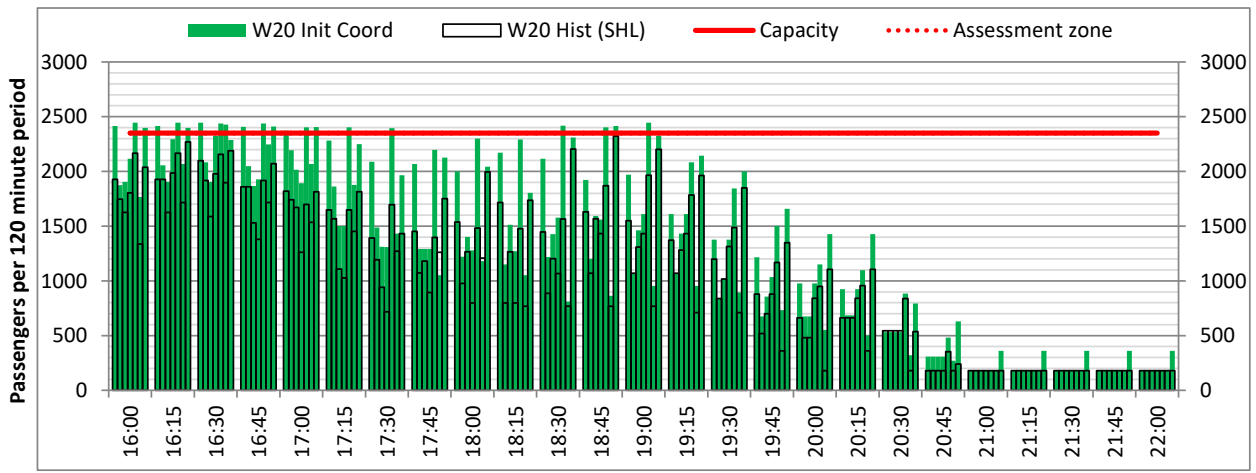
Days: 1234567



Start of count period - Time: UTC



Start of count period - Time: UTC



Start of count period - Time: UTC

Peak Week - Passengers Histogram

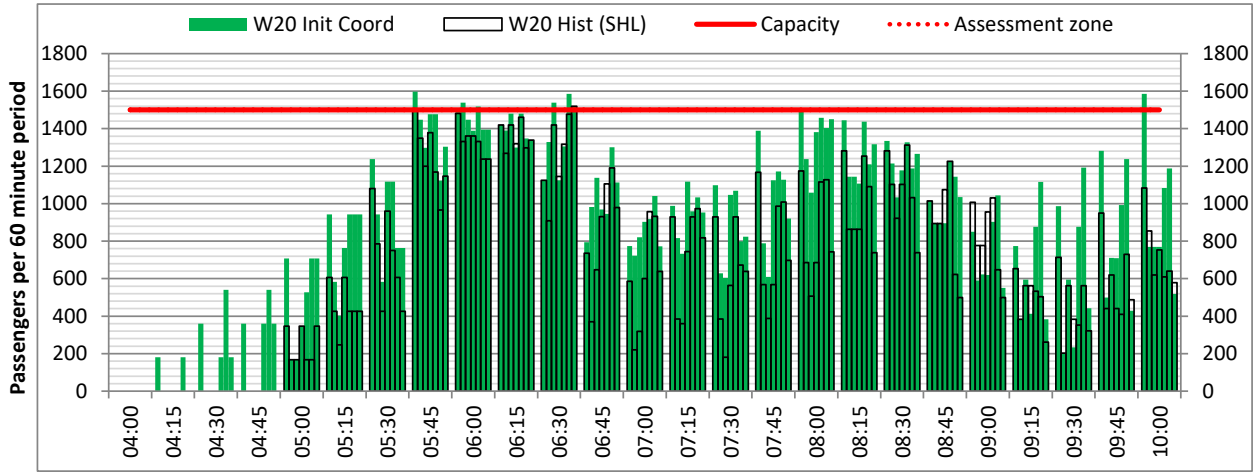
DEPARTURE - 60 minute count rolling every 15 mins (T60/15)



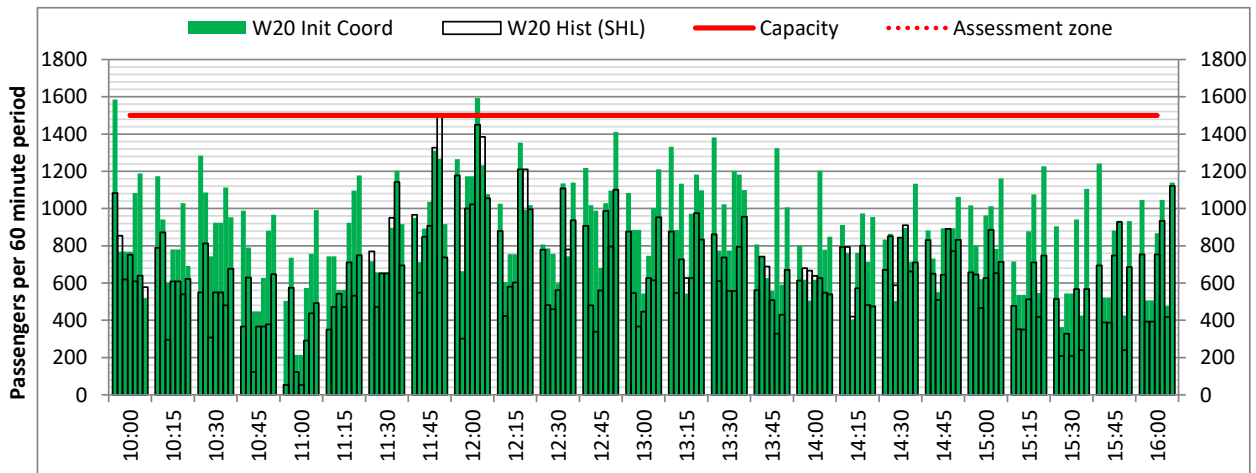
Terminals: T3

Operators: All Operators

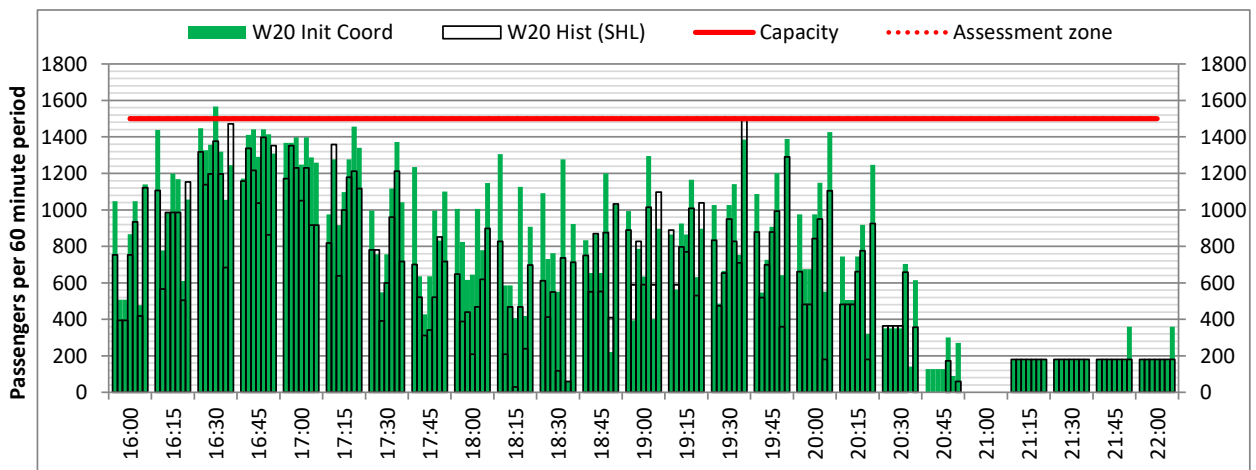
Days: 1234567



Start of count period - Time: UTC



Start of count period - Time: UTC



Start of count period - Time: UTC

Peak Week - Passengers Histogram

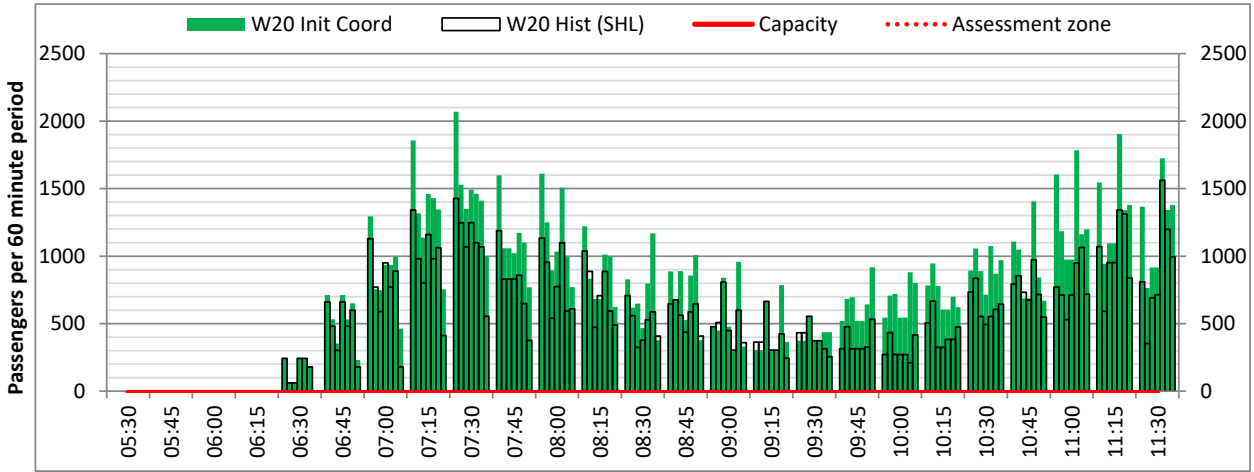
ARRIVAL - 60 minute count rolling every 15 mins (T60/15)



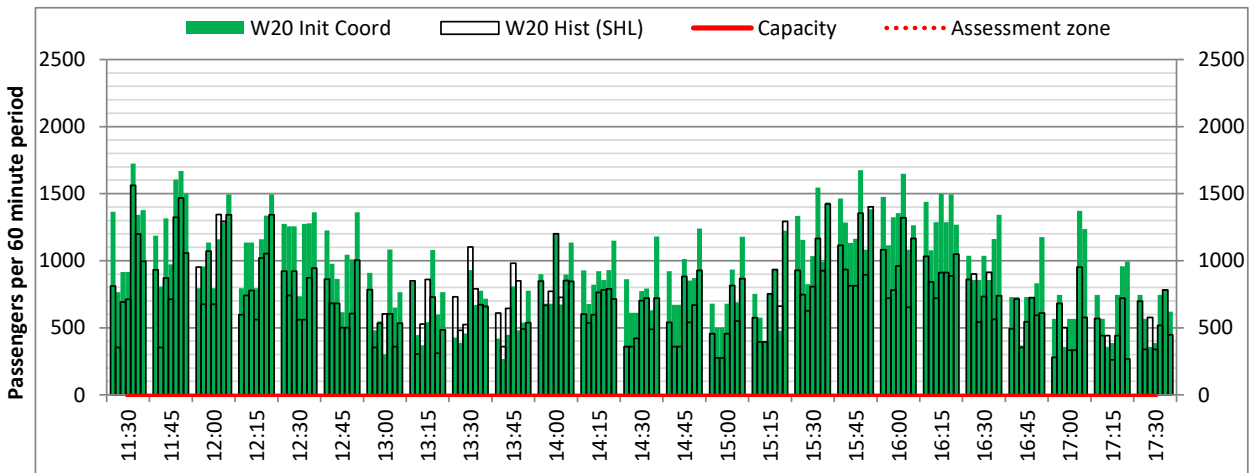
Terminals: T3

Operators: All Operators

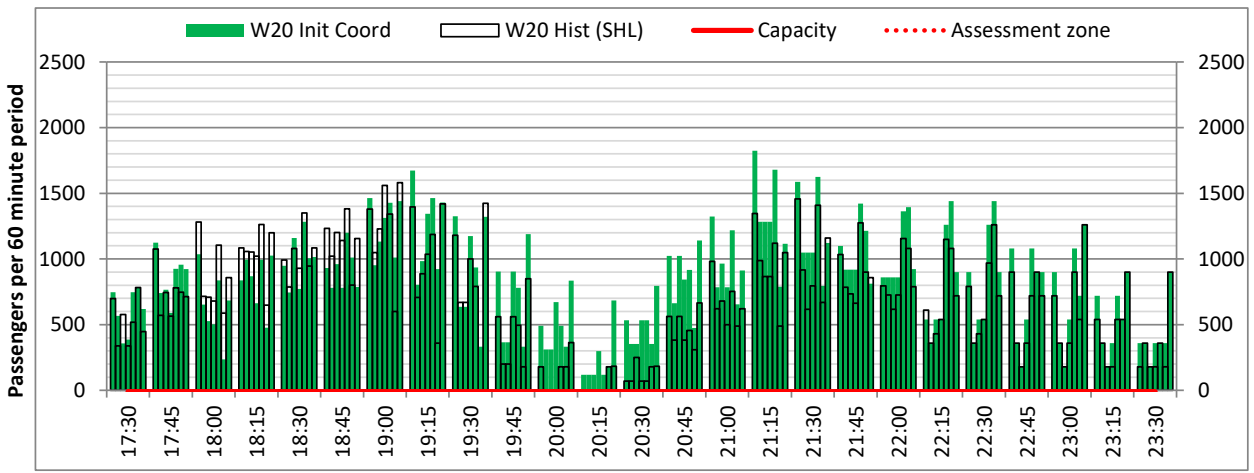
Days: 1234567



Start of count period - Time: UTC



Start of count period - Time: UTC



Start of count period - Time: UTC

Air Transport Movement (ATM)	Any aircraft movement which is either a scheduled or chartered passenger or cargo flight.
Common Travel Area (CTA)	Origin or Destination is in Republic of Ireland or the Channel Islands.
Demand	Unconstrained demand before any schedule adjustments have been made.
"Fill-in"	These are gaps in a historic series of slots which the carrier requests to "Fill-in" at Initial Submissions - Fill-ins will be recognisably part of the historic series and will have the same flight details to qualify as a "Fill-in".
Hist (SHL)	Snapshot of historic schedule rolled over from end of the previous equivalent season - as advised to airlines in the SHLs.
ICAO Size A	Aircraft with wingspan between 0.00m - 14.99m.
ICAO Size B	Aircraft with wingspan between 15.00m - 23.99m.
ICAO Size C	Aircraft with wingspan between 24.00m - 35.99m.
ICAO Size D	Aircraft with wingspan between 36.00m - 51.99m.
ICAO Size E	Aircraft with wingspan between 52.00m - 64.99m.
ICAO Size F	Aircraft with wingspan between 65.00m - 80.00m.
Init Coord	Snapshot of schedule immediately after Initial Coordination is completed - as advised to airlines in the SALs.
Passenger Air Transport Movement (PATM)	Any aircraft movement which is either a scheduled or chartered passenger flight.
Start	Snapshot of schedule shortly before the start of the scheduling season (exact date given below where used).
Time: Local	Times shown are in LOCAL time for the airport/scheduling season.
Time: UTC	Times shown are in Universal Time Constant (UTC).

Data snapshot descriptions

W19 Init Coord	W19 schedule as cleared on Fri 07-Jun-19.
W20 Hist (SHL)	W20 schedule as cleared on Tue 07-Apr-20.
W20 Init Coord	W20 schedule as cleared on Fri 05-Jun-20.

Peak Week	Peak week for W19 is Mon 02-Mar-20 to Sun 08-Mar-20. #VALUE!
------------------	---

For ACL use

	Airport-Season-Branch-Resource	From date	To date	Time
Full Season Rep 1	MAN-W19-Init Coord Rpt-Standard	Sun 27-Oct-2019	Sat 28-Mar-2020	UTC
Full Season Rep 2	MAN-W20-SHL-Standard	Sun 25-Oct-2020	Sat 27-Mar-2021	UTC
Full Season Rep 3	MAN-W20-Init Coord Rpt-Standard	Sun 25-Oct-2020	Sat 27-Mar-2021	UTC
	Airport-Season-Branch-Resource	From date	To date	Time
Peak Week Rep 1	MAN-W19-Init Coord Rpt-Standard	Mon 02-Mar-2020	Sun 08-Mar-2020	UTC
Peak Week Rep 2	MAN-W20-SHL-Standard	Mon 08-Mar-21	#VALUE!	UTC
Peak Week Rep 3	MAN-W20-Init Coord Rpt-Standard	Mon 08-Mar-21	#VALUE!	UTC