

Start of Season Report

Report Date: Fri 27-Mar-2020

Headlines

	S20 Start	vs. S19 Start	vs. S19 End
Total Air Transport Movements (Passenger & Freight)	107904	▼ -16.2%	▼ -13.9%
Total Passenger Air Transport Movements	107544	▼ -16.2%	▼ -14.0%
Total Passenger Air Transport Movement Seats	21520598	▼ -8.1%	▼ -5.1%
Average Seats per Passenger Air Transport Movement	200.11	▲ 9.7%	▲ 10.3%
Percentage of allocated slots cleared as requested (OK)	99%		

Contents

Page	Content
2	Runway Scheduling Limits
2	Peak Week - Initial Coordination Analysis
3	ATM Allocation by Operator (Full season and Peak Week Comparison)
3	Peak Week - Allocation and Slot Adjustment Distribution by Operator
4	Full Season - ATM Analysis
5	Full Season - PATM Seats Analysis
6	Full Season - Terminal Analysis
7	Full Season - Aircraft Size Analysis
8	Full Season - Seasonality
9	Peak Week - Hourly Runway Demand
10	Peak Week - Hourly Runway Allocation
11	Peak Week Histogram - Departure Passengers (T120/15) - T1 - All Operators
12	Peak Week Histogram - Departure Passengers (T60/15) - T1 - All Operators
13	Peak Week Histogram - Arrival Passengers (T60/15) - T1 - All Operators
14	Peak Week Histogram - Arrival Passengers (T30/15) - T1 - All Operators
15	Peak Week Histogram - Departure Passengers (T120/15) - T2 - All Operators
16	Peak Week Histogram - Departure Passengers (T60/15) - T2 - All Operators
17	Peak Week Histogram - Arrival Passengers (T60/15) - T2 - All Operators
18	Peak Week Histogram - Arrival Passengers (T30/15) - T2 - All Operators
19	Peak Week Histogram - Departure Passengers (T120/15) - T3 - All Operators
20	Peak Week Histogram - Departure Passengers (T60/15) - T3 - All Operators
21	Peak Week Histogram - Arrival Passengers (T60/15) - T3 - All Operators
22	Glossary

S19 scheduling season runs from Sun 31-Mar-2019 to Sat 26-Oct-2019 (210 days).

S20 scheduling season runs from Sun 29-Mar-2020 to Sat 24-Oct-2020 (210 days).

Disclaimer

No warranty whether expressed or implied as to the completeness, accuracy, fitness for purpose, or satisfactory quality is given by ACL regarding the information in this report, which is provided by third parties. Accordingly, ACL excludes all liability with regard to such data.

The contents of this report may not be reproduced without the written consent of ACL.

Runway Scheduling Limits



Declared Hourly Movement Capacity

S19 Arrivals								Change: S19 to S20								S20 Arrivals							
Hour	Mon	Tue	Wed	Thu	Fri	Sat	Sun	Hour	Mon	Tue	Wed	Thu	Fri	Sat	Sun	Hour	Mon	Tue	Wed	Thu	Fri	Sat	Sun
UTC	1	2	3	4	5	6	7	UTC	1	2	3	4	5	6	7	UTC	1	2	3	4	5	6	7
00	15	15	15	15	15	15	15	00								00	15	15	15	15	15	15	15
01	15	15	15	15	15	15	15	01								01	15	15	15	15	15	15	15
02	15	15	15	15	15	15	15	02								02	15	15	15	15	15	15	15
03	15	15	15	15	15	15	15	03								03	15	15	15	15	15	15	15
04	15	15	15	15	15	15	15	04								04	15	15	15	15	15	15	15
05	30	30	30	30	30	30	30	05								05	30	30	30	30	30	30	30
06	30	30	30	30	30	30	30	06								06	30	30	30	30	30	30	30
07	33	33	33	33	33	33	33	07								07	33	33	33	33	33	33	33
08	32	32	32	32	32	32	32	08								08	32	32	32	32	32	32	32
09	32	32	32	32	32	32	29	09								09	32	32	32	32	32	32	29
10	32	32	32	32	32	32	29	10								10	32	32	32	32	32	32	29
11	32	32	32	32	32	32	29	11								11	32	32	32	32	32	32	29
12	32	32	32	32	32	32	32	12								12	32	32	32	32	32	32	32
13	32	32	32	32	32	32	32	13								13	32	32	32	32	32	32	32
14	32	32	32	32	32	32	32	14								14	32	32	32	32	32	32	32
15	32	32	32	32	32	29	32	15								15	32	32	32	32	32	29	32
16	33	33	33	33	33	29	33	16								16	33	33	33	33	33	29	33
17	32	32	32	32	32	29	32	17								17	32	32	32	32	32	29	32
18	32	32	32	32	32	29	32	18								18	32	32	32	32	32	29	32
19	32	32	32	32	32	28	32	19								19	32	32	32	32	32	28	32
20	28	28	28	28	28	28	28	20								20	28	28	28	28	28	28	28
21	26	26	26	26	26	26	26	21								21	26	26	26	26	26	26	26
22	26	26	26	26	26	26	26	22								22	26	26	26	26	26	26	26
23	15	15	15	15	15	15	15	23	2	2	2	2	2	2	2	23	17	17	17	17	17	17	

S19 Departures								Change: S19 to S20								S20 Departures							
Hour	Mon	Tue	Wed	Thu	Fri	Sat	Sun	Hour	Mon	Tue	Wed	Thu	Fri	Sat	Sun	Hour	Mon	Tue	Wed	Thu	Fri	Sat	Sun
UTC	1	2	3	4	5	6	7	UTC	1	2	3	4	5	6	7	UTC	1	2	3	4	5	6	7
00	15	15	15	15	15	15	15	00								00	15	15	15	15	15	15	15
01	15	15	15	15	15	15	15	01								01	15	15	15	15	15	15	15
02	15	15	15	15	15	15	15	02								02	15	15	15	15	15	15	15
03	15	15	15	15	15	15	15	03								03	15	15	15	15	15	15	15
04	15	15	15	15	15	15	15	04								04	15	15	15	15	15	15	15
05	42	42	42	42	42	42	42	05								05	42	42	42	42	42	42	42
06	37	37	37	37	37	37	37	06								06	37	37	37	37	37	37	37
07	35	35	35	35	35	35	35	07								07	35	35	35	35	35	35	35
08	32	32	32	32	32	32	32	08								08	32	32	32	32	32	32	32
09	32	32	32	32	32	32	29	09								09	32	32	32	32	32	32	29
10	32	32	32	32	32	32	29	10								10	32	32	32	32	32	32	29
11	32	32	32	32	32	32	29	11								11	32	32	32	32	32	32	29
12	32	32	32	32	32	32	32	12								12	32	32	32	32	32	32	32
13	32	32	32	32	32	32	32	13								13	32	32	32	32	32	32	32
14	32	32	32	32	32	32	32	14								14	32	32	32	32	32	32	32
15	32	32	32	32	32	29	32	15								15	32	32	32	32	32	29	32
16	32	32	32	32	32	29	32	16								16	32	32	32	32	32	29	32
17	34	34	34	34	34	29	34	17								17	34	34	34	34	34	29	34
18	32	32	32	32	32	29	32	18								18	32	32	32	32	32	29	32
19	32	32	32	32	32	26	32	19								19	32	32	32	32	32	26	32
20	26	26	26	26	26	26	26	20								20	26	26	26	26	26	26	26
21	20	20	20	20	20	20	20	21								21	20	20	20	20	20	20	20
22	15	15	15	15	15	15	15	22								22	15	15	15	15	15	15	15
23	15	15	15	15	15	15	15	23								23	15	15	15	15	15	15	15

S19 Totals								Change: S19 to S20								S20 Totals							
Hour	Mon	Tue	Wed	Thu	Fri	Sat	Sun	Hour	Mon	Tue	Wed	Thu	Fri	Sat	Sun	Hour	Mon	Tue	Wed	Thu	Fri	Sat	Sun
UTC	1	2	3	4	5	6	7	UTC	1	2	3	4	5	6	7	UTC	1	2	3	4	5	6	7
00	15	15	15	15	15	15	15	00								00	15	15	15	15	15	15	15
01	15	15	15	15	15	15	15	01								01	15	15	15	15	15	15	15
02	15	15	15	15	15	15	15	02								02	15	15	15	15	15	15	15
03	15	15	15	15	15	15	15	03								03	15	15	15	15	15	15	15
04	21	21	21	21	21	21	21	04								04	21	21	21	21	21	21	21
05	56	56	56	56	56	56	56	05								05	56	56	56	56	56	56	56
06	58	58	58	58	58	58	58	06								06	58	58	58	58	58	58	58
07	61	61	61	61	61	61	61	07								07	61	61	61	61	61	61	61
08	57	57	57	57	57	57	52	08								08	57	57	57	57	57	52	52
09	57	57	57	57	57	57	46	09								09	57	57	57	57	57	46	46
10	57	57	57	57	57	57	46	10								10	57	57	57	57	57	46	46
11	57	57	57	57	57	57	46	11								11	57	57	57	57	57	46	46
12	57	57	57	57	57	57	57	12								12	57	57	57	57	57	57	57
13	57	57	57	57	57	57	57	13								13	57	57	57	57	57	57	57
14	57	57	57	57	57	57	57	14								14	57	57	57	57	57	57	57
15	57	57	57	57	57	46	57	15								15	57	57	57	57	57	46	57
16	58	58	58	58	58	46	58	16								16	58	58	58	58	58	46	58
17	59	59	59	59	59	46	59	17								17	59	59	59	59	59	46	59
18	57	57	57	57	57	46	57	18								18	57	57	57	57	57	46	57
19	57	57	57	57	57	46	57	19								19	57	57	57	57	57	46	57
20	40	40	40	40	40	40	40	20								20	40	40	40	40	40	40	40
21	31	31	31	31	31	31	31	21								21	31	31	31	31	31	31	31
22	26	26	26	26	26	26	26	22								22	26	26	26	26	26	26	26
23	15	15	15	15	15	15	15	23	2	2	2	2	2	2	2	23	17	17	17	17	17	17	17

Air Transport Movement Allocation by Operator

Comparison between S19 End vs. S20 Start



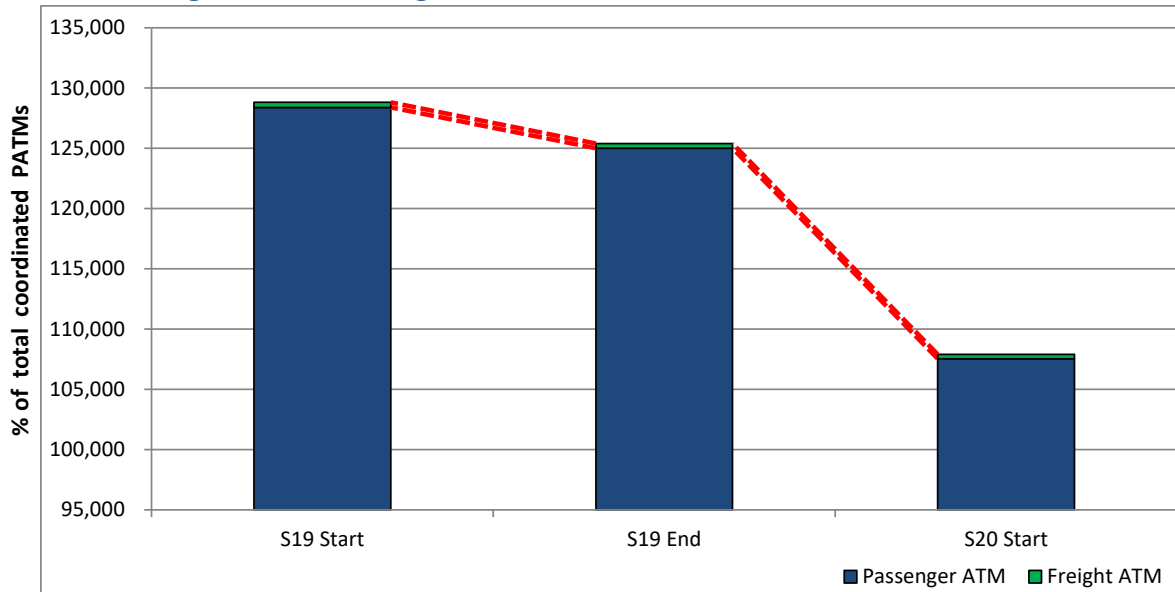
Operator	FULL SEASON ALLOCATION						PEAK WEEK ALLOCATION									
	S19 ATMs	S20 ATMs	+/- change	S20 Rank	S19 Seats	S20 Seats	+/- change	S20 Rank	S19 ATMs	S20 ATMs	+/- change	S20 Rank	S19 Seats	S20 Seats	+/- change	S20 Rank
Adria Airways	36	-	-36	62	3,248	-	-3,248	61	2	-	-2	58	140	-	-140	57
Aegean Airlines	165	150	-15	52	28,567	26,100	-2,467	48	6	6	0	49	1,044	1,044	0	49
Aer Lingus	3,134	3,144	10	6	351,560	354,568	3,008	11	104	104	0	6	11,340	11,340	0	12
Air Arabia Maroc	84	-	-84	62	14,616	-	-14,616	61	2	-	-2	58	348	-	-348	57
Air Canada	214	242	28	42	60,348	68,244	7,896	33	12	14	2	30	3,384	3,948	564	24
Air France	1,242	1,260	18	12	197,224	204,852	7,628	15	42	42	0	12	7,160	7,184	24	14
Air Malta	42	118	76	54	7,560	20,520	12,960	53	2	4	2	54	360	696	336	53
Air Transat	374	402	28	32	125,882	134,072	8,190	20	16	16	0	29	5,452	5,432	-20	18
airBaltic	-	240	240	43	-	34,800	34,800	45	-	8	8	45	-	1,160	1,160	45
AlbaStar	17	-	-17	62	3,118	-	-3,118	61	-	-	0	58	-	-	0	57
American Airlines	422	420	-2	29	90,749	90,060	-689	29	14	14	0	30	2,926	2,926	0	32
Aurigny Air Services	826	840	14	16	58,516	60,480	1,964	36	28	28	0	16	2,016	2,016	0	39
Austrian Airlines	418	423	5	28	53,350	61,080	7,730	35	14	14	0	30	1,788	2,016	228	39
Balkan Holidays Air Ltd	137	170	33	50	23,270	30,600	7,330	46	8	10	2	42	1,440	1,800	360	42
Belavia Belarusian Airlines	30	30	0	57	3,754	4,194	440	57	-	2	2	56	-	296	296	56
Biman Bangladesh	-	180	180	48	-	53,640	53,640	39	-	6	6	49	-	1,788	1,788	44
British Airways	2,811	2,920	109	7	404,914	481,939	77,025	8	102	104	2	6	14,322	16,623	2,301	8
Brussels Airlines	1,137	1,298	161	11	169,363	197,058	27,695	17	38	44	6	11	5,904	6,672	768	17
Cathay Pacific	412	400	-12	33	125,336	133,600	8,264	21	14	14	0	30	3,920	4,676	756	21
Corendon Airlines	-	230	230	46	-	43,470	43,470	43	-	10	10	42	-	1,890	1,890	41
Delta Air Lines	-	220	220	47	-	36,080	36,080	44	-	14	14	30	-	2,296	2,296	36
EasyJet	16,804	19,095	2,291	2	3,009,846	3,434,970	425,124	3	608	668	60	2	109,362	120,528	11,166	3
EasyJet Europe	396	400	4	33	71,172	74,340	3,168	31	14	14	0	30	2,532	2,604	72	33
El Al Israel Airlines	121	174	53	49	19,402	28,884	9,482	47	6	6	0	49	972	996	24	50
Emirates	1,169	1,260	91	12	677,578	733,740	56,162	6	41	42	1	12	23,843	24,458	615	6
Enerjet Air	33	-	-33	62	5,940	-	-5,940	61	2	-	-2	58	360	-	-360	57
Enter Air	12	26	14	58	2,268	4,914	2,646	56	-	-	0	58	-	-	0	57
Ethiopian Airlines	236	239	3	45	34,248	57,817	23,569	38	8	8	0	45	1,240	2,488	1,248	34
Ethihad Airways	840	840	0	16	275,326	282,240	6,914	13	28	28	0	16	8,890	9,408	518	13
Eurowings	1,054	834	-220	21	163,440	150,120	-13,320	19	36	28	-8	16	5,672	5,040	-632	20
Federal Express	353	360	7	35	-	-	0	61	12	12	0	38	-	-	0	57
Finnair	841	840	-1	16	135,568	125,314	-10,254	22	28	28	0	16	5,234	4,332	-902	22
Flybe	19,375	-	-19,375	62	1,635,805	-	-1,635,805	61	629	-	-629	58	51,752	-	-51,752	57
FlyEgypt	6	-	-6	62	1,116	-	-1,116	61	-	-	0	58	-	-	0	57
Freebird Airlines	23	276	253	41	4,140	47,520	43,380	42	-	12	12	38	-	2,160	2,160	37
Hainan Airlines	240	240	0	43	70,080	70,080	0	32	8	8	0	45	2,336	2,336	0	35
Iberia Express	241	298	57	39	43,294	53,640	10,346	39	8	10	2	42	1,440	1,800	360	42
Icelandair	326	284	-42	40	54,436	52,684	-1,752	41	10	6	-4	49	1,188	1,098	-90	46
Iraqi Airways	60	60	0	56	11,100	11,100	0	55	2	2	0	56	370	370	0	55
Jet2.com	13,124	15,881	2,757	3	2,815,039	3,521,327	706,288	2	520	665	145	3	112,630	148,716	36,086	1
KLM Royal Dutch Airlines	2,450	2,460	10	9	349,226	353,268	4,042	12	81	82	1	9	11,570	11,756	186	11
Loganair	2,084	1,256	-828	14	95,952	61,544	-34,408	34	71	42	-29	12	3,337	2,058	-1,279	38
Lufthansa	3,194	3,514	320	5	509,641	565,402	55,761	7	108	118	10	5	17,146	18,984	1,838	7
Luxair	-	300	300	38	-	22,800	22,800	52	-	12	12	38	-	912	912	51
Norwegian	298	320	22	37	55,272	59,520	4,248	37	14	18	4	27	2,604	3,348	744	30
Nouvelair Tunisie	3	134	131	53	531	23,718	23,187	51	-	6	6	49	-	1,062	1,062	48
Oman Air	410	420	10	29	118,080	120,960	2,880	23	14	14	0	30	4,032	4,032	0	23
Pegasus Airlines	298	581	283	26	56,040	110,015	53,975	25	22	20	-2	24	4,140	3,780	-360	26
PIA Pakistan International	514	540	26	27	193,956	212,220	18,264	14	18	18	0	27	6,818	7,074	256	15
Qatar Airways	1,196	1,244	48	15	334,926	448,696	113,770	9	42	42	0	12	11,796	15,092	3,296	9
Royal Air Maroc	118	110	-8	55	13,764	13,134	-630	54	4	4	0	54	456	546	90	54
Ryanair	20,736	22,033	1,297	1	3,919,015	4,163,931	244,916	1	698	750	52	1	131,922	141,738	9,816	2
SAS Scandinavian	2,455	2,518	63	8	363,004	399,796	36,792	10	88	92	4	8	12,972	14,466	1,494	10
Saudia	292	332	40	36	87,000	98,936	11,936	28	10	12	2	38	2,980	3,576	596	28
Singapore Airlines	600	600	0	24	151,800	151,800	0	18	20	20	0	24	5,060	5,060	0	19
SUN-AIR	784	763	-21	23	25,088	24,416	-672	49	30	24	-6	23	960	768	-192	52
Swiss International	822	840	18	16	111,546	102,920	-8,626	27	28	28	0	16	3,716	3,424	-292	29
TAP Air Portugal	754	804	50	22	120,058	116,080	-3,978	24	26	28	2	16	4,284	3,840	-444	25
Thomas Cook (UK)	8,313	-	-8,313	62	2,003,972	-	-2,003,972	61	362	-	-362	58	88,283	-	-88,283	57
Titan Airways	208	9	-199	59	42,072	1,762	-40,310	58	2	-	-2	58	360	-	-360	57
TUI Airways	9,002	11,194	2,192	4	2,143,028	2,589,240	446,212	4	356	465	109	4	84,865	105,185	20,320	4
Turkish Airlines	821	840	19	16	171,904	201,180	29,276	16	28	28	0	16	5,854	6,706	852	16
United Airlines	420	420	0	29	99,022	89,880	-9,142	30	14	14	0	30	3,360	2,996	-364	31
Virgin Atlantic	2,039	2,110	71	10	808,974	772,813	-36,161	5	71	80	9	10	27,391	28,784	1,393	5
Vueling	590	600	10	24	104,696	108,000	3,304	26	20	20	0	24	3,528	3,600	72	27
Westjet	-	162	162	51	-	23,788	23,788	50	-	8	8	45	-	1,072	1,072	47
TOTAL	125,393	107,904	-17,489		22,677,609	21,520,598	-1,157,011		4,491	3,936	-555		826,799	789,996	-36,803	

Operators with 0 'ATMs' in both S19 End & S20 Start schedules are included in the table due to appearing in the S19 Start schedule (either with/without allocated slots).

Full Season - ATM Analysis

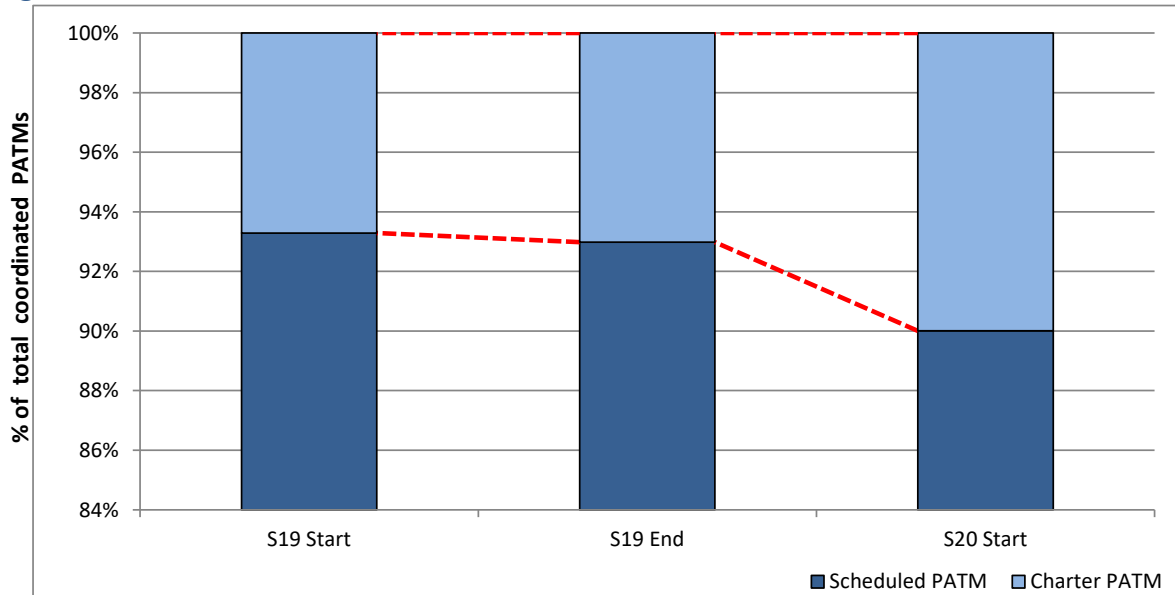


Total ATMs: Passenger ATMs vs. Freight ATMs



Schedule Snapshot

Passenger ATMs: Scheduled vs. Charter

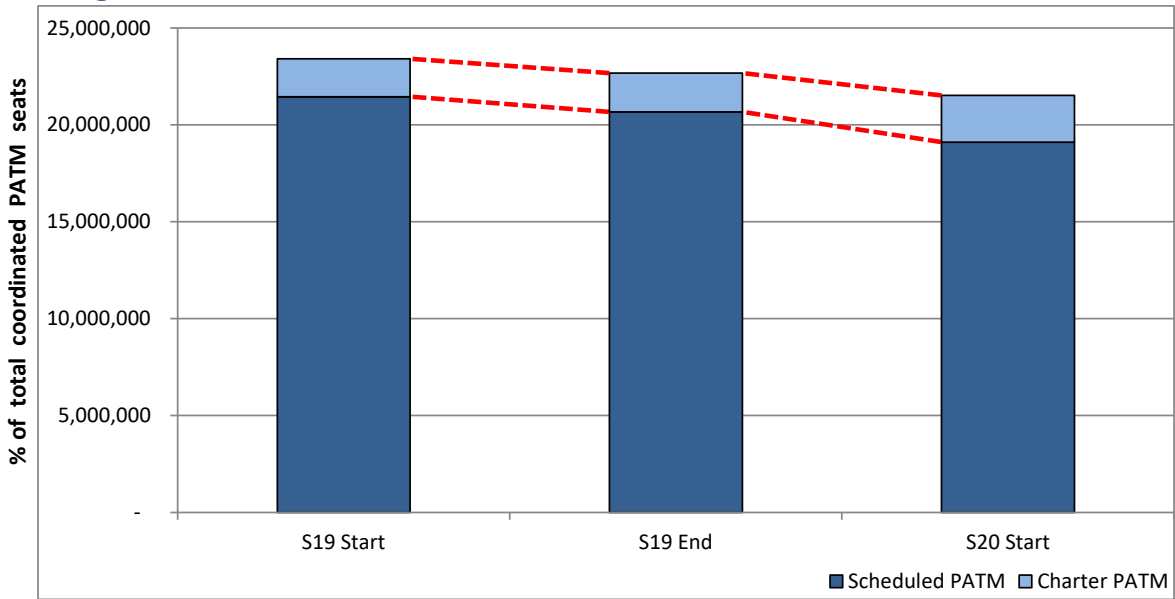


Schedule Snapshot

Full Season - PATM Seats Analysis

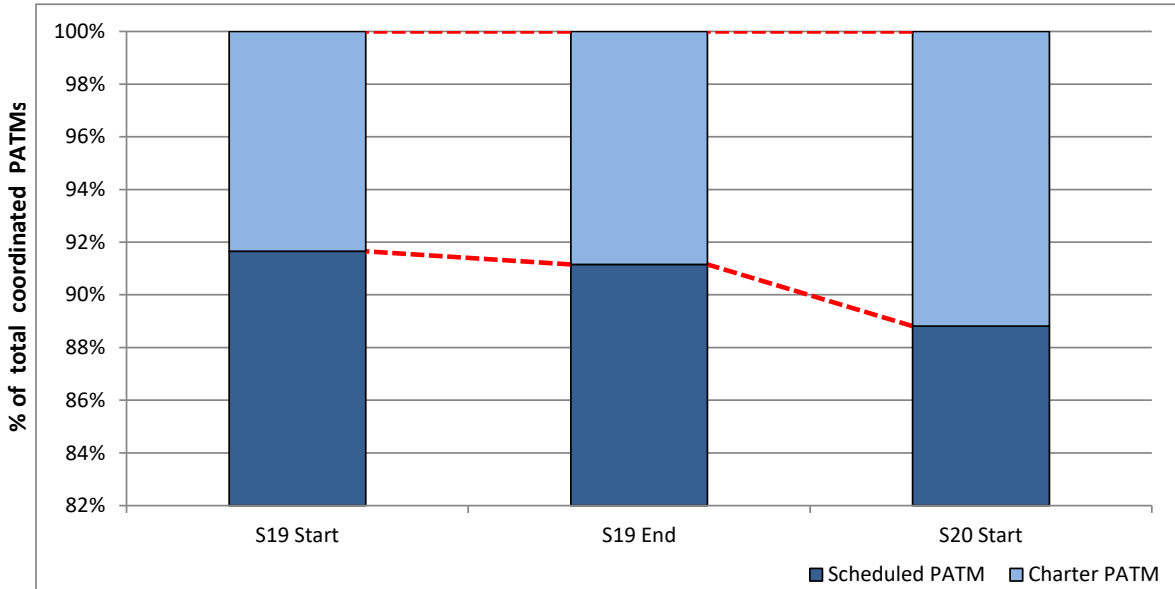


Total Passenger ATM seats: Scheduled vs. Charter



Schedule Snapshot

Passenger ATM seats: Scheduled vs. Charter

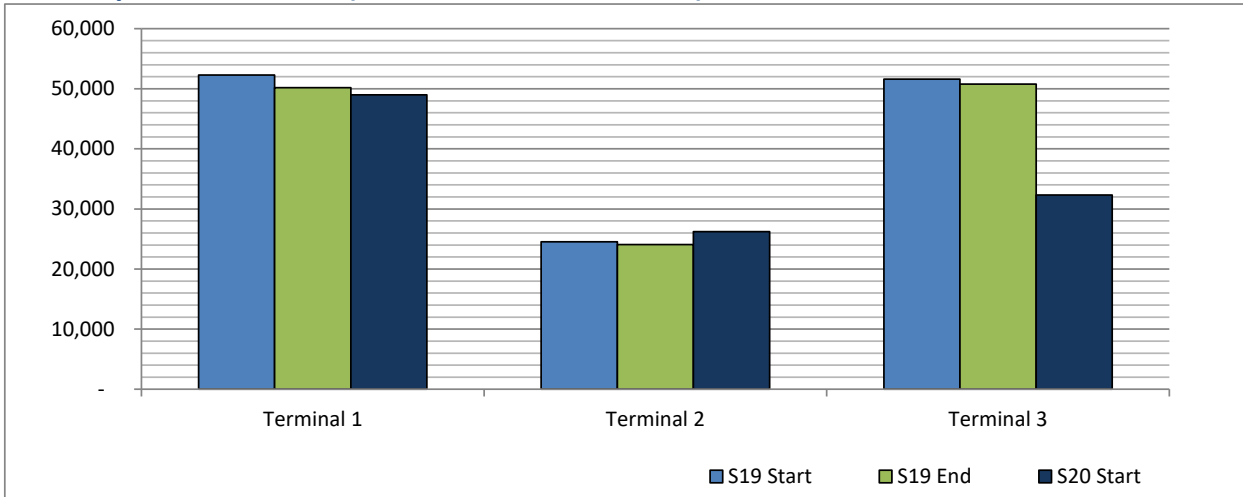


Schedule Snapshot

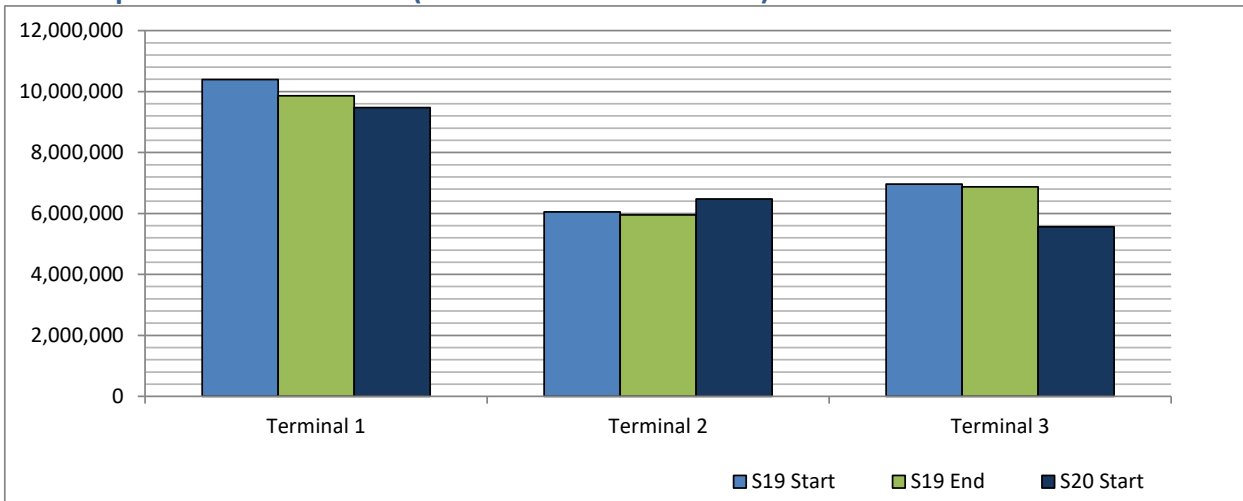
Full Season - Terminal Analysis



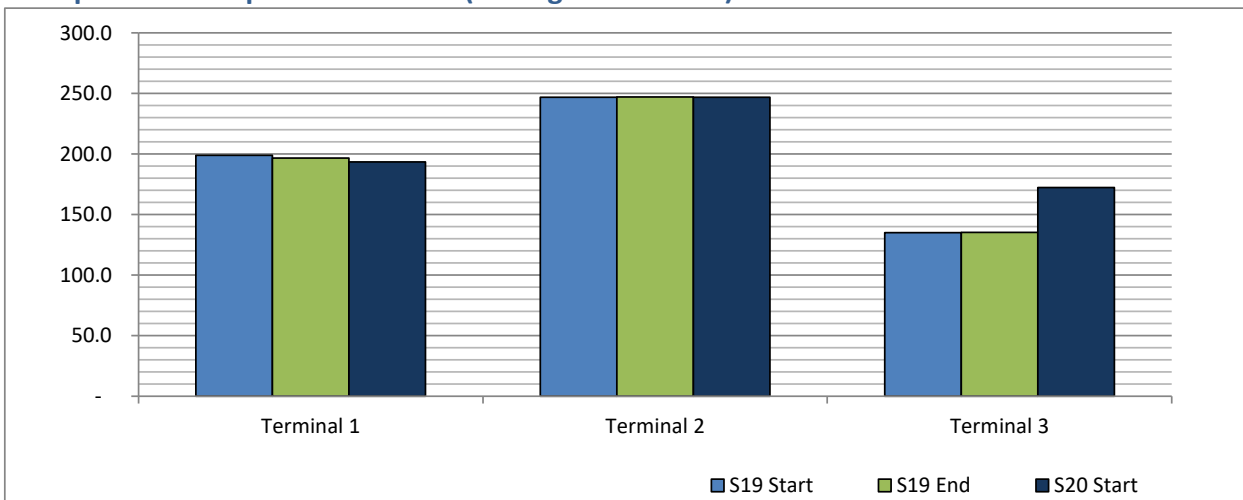
Air Transport Movements (total allocated for season)



Air Transport Movement Seats (total allocated for season)



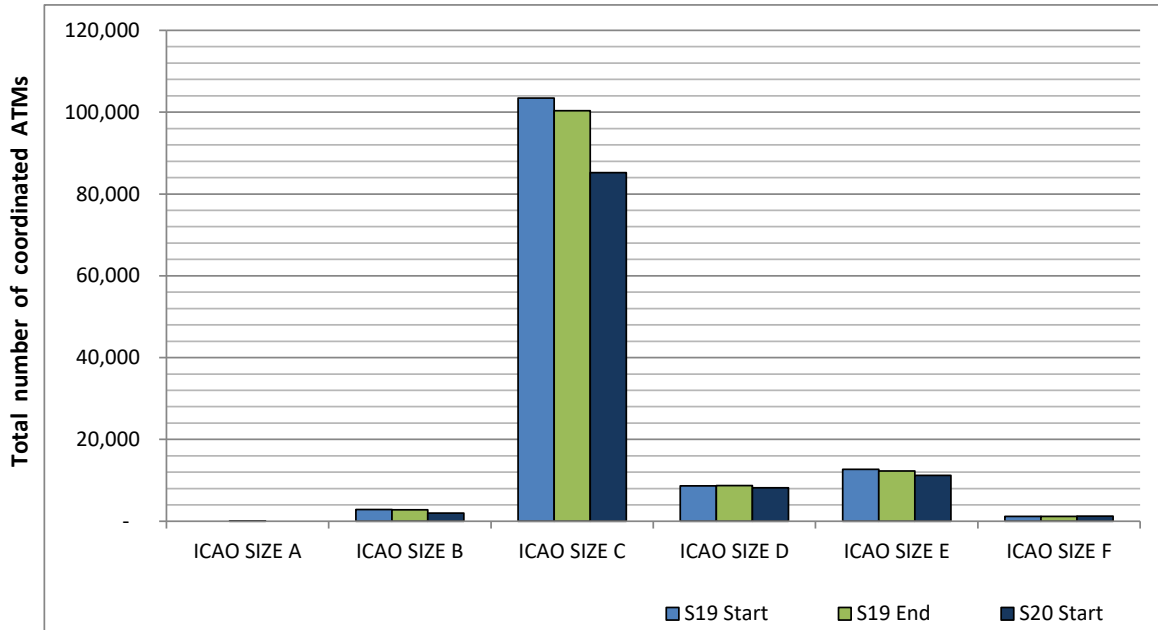
Seats per Air Transport Movement (average for season)



Full Season - Aircraft Size Analysis

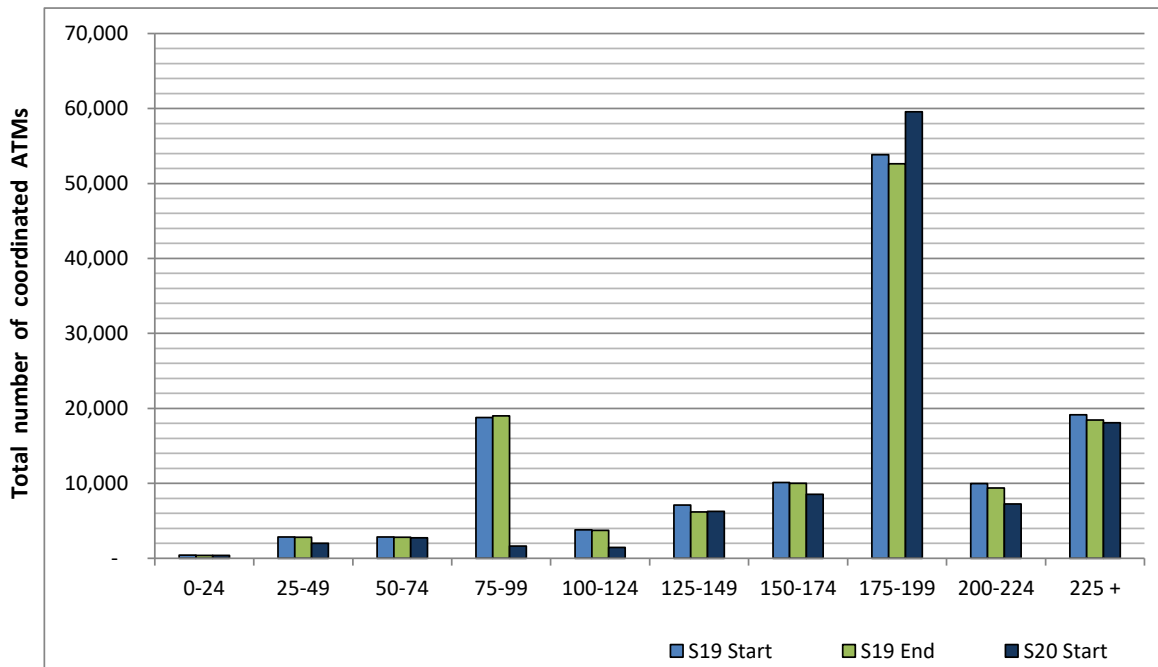


ICAO size designation



Note: See Glossary for definitions of ICAO SIZE groupings

Air Transport Movement seat distribution

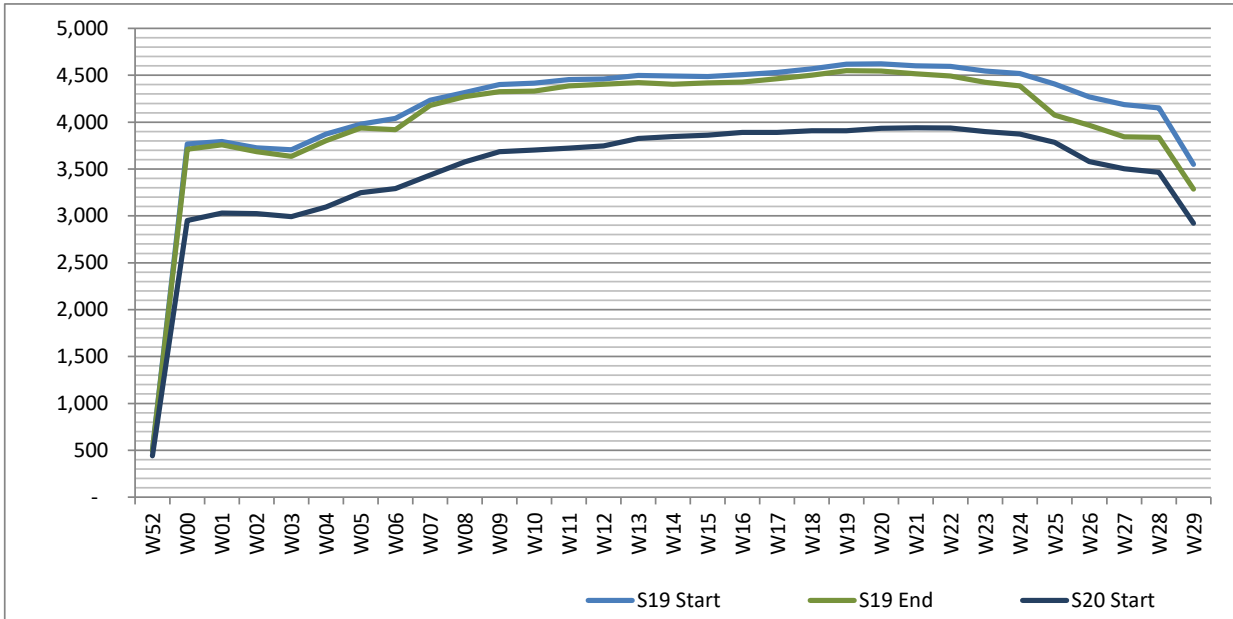


Note: FREIGHT-ONLY services with 0 seats are included in the first seat band '0-24'

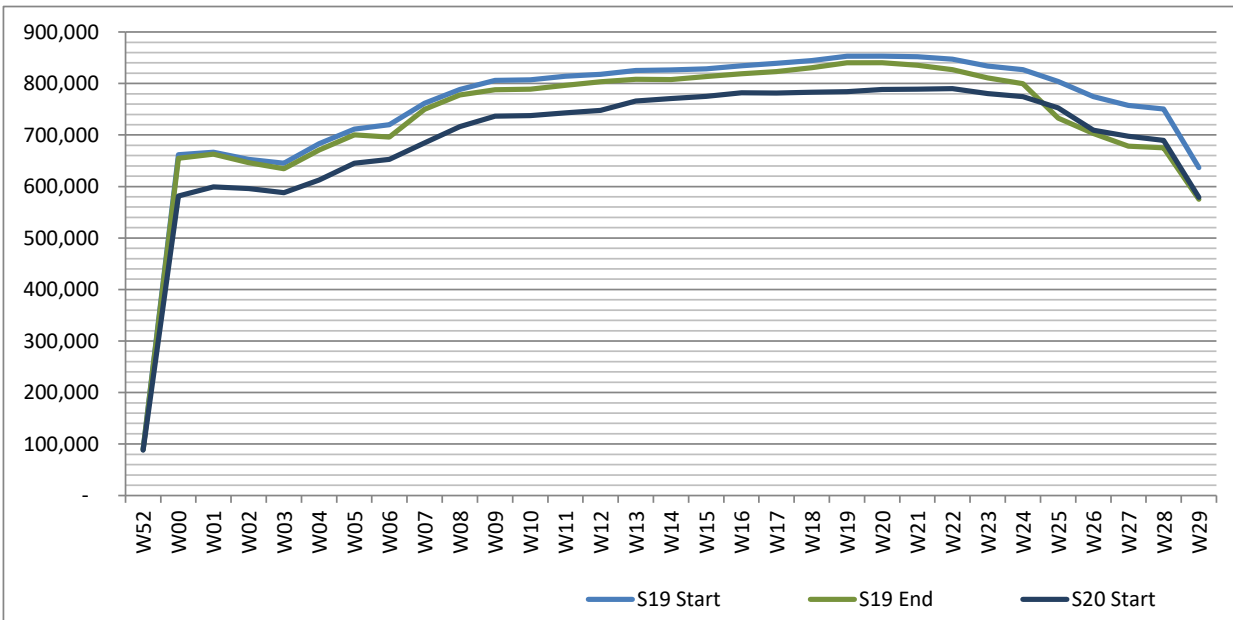
Full Season - Seasonality



Air Transport Movements by week of season



Air Transport Movement Seats by week of season



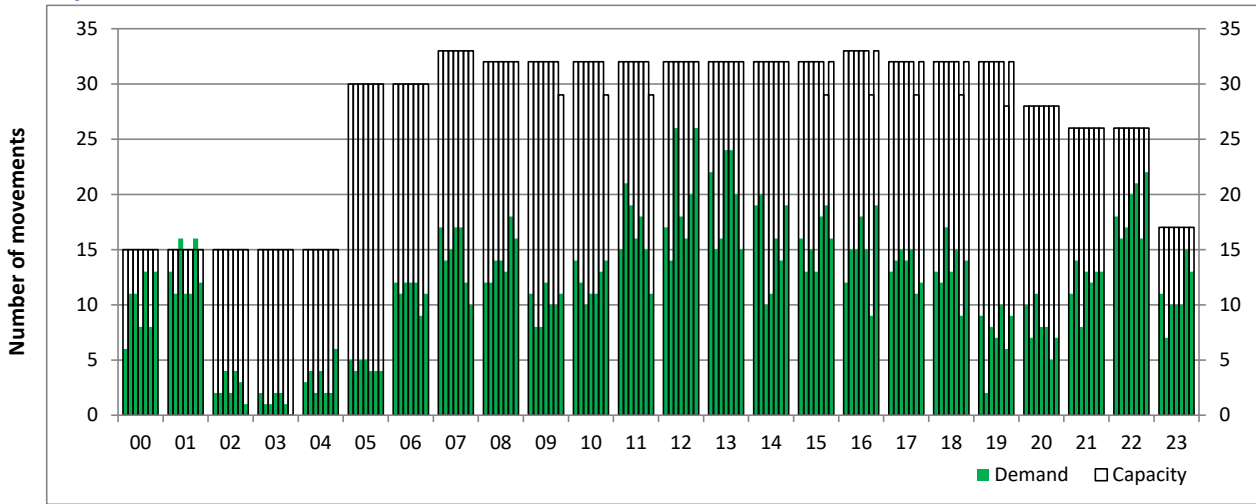
Peak Week - Hourly Runway Demand

Schedule: S20 Start



Hourly Arrival Demand

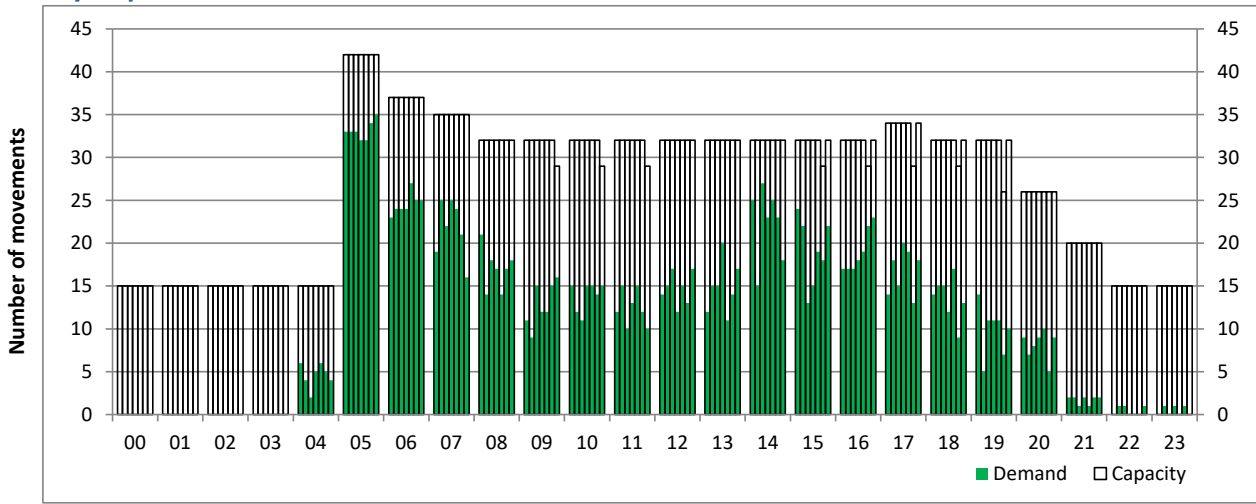
Time: UTC



Hour of day (24 hour format)

Hourly Departure Demand

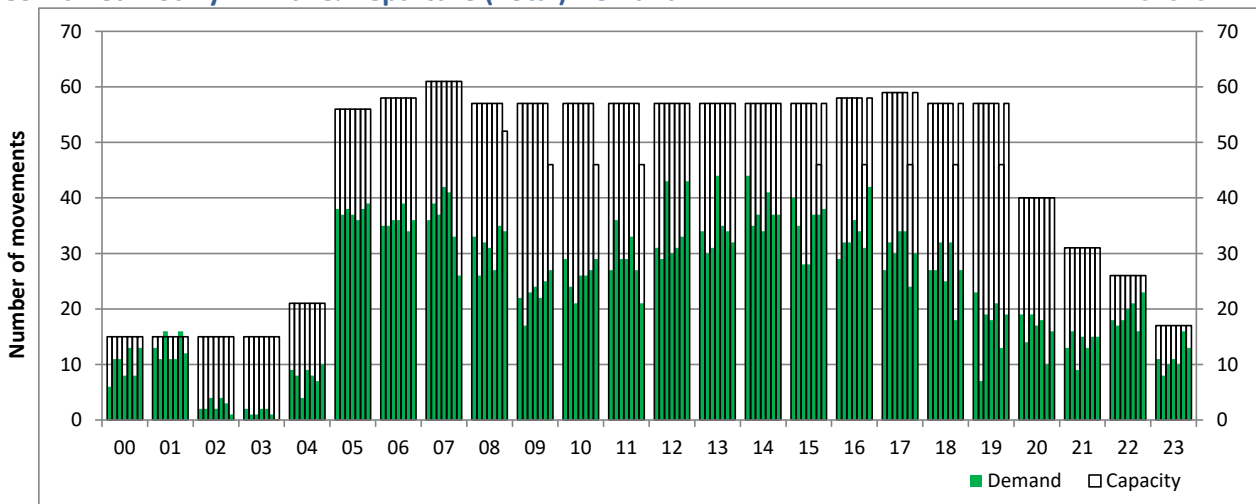
Time: UTC



Hour of day (24 hour format)

Combined Hourly Arrival & Departure (Total) Demand

Time: UTC



Hour of day (24 hour format)

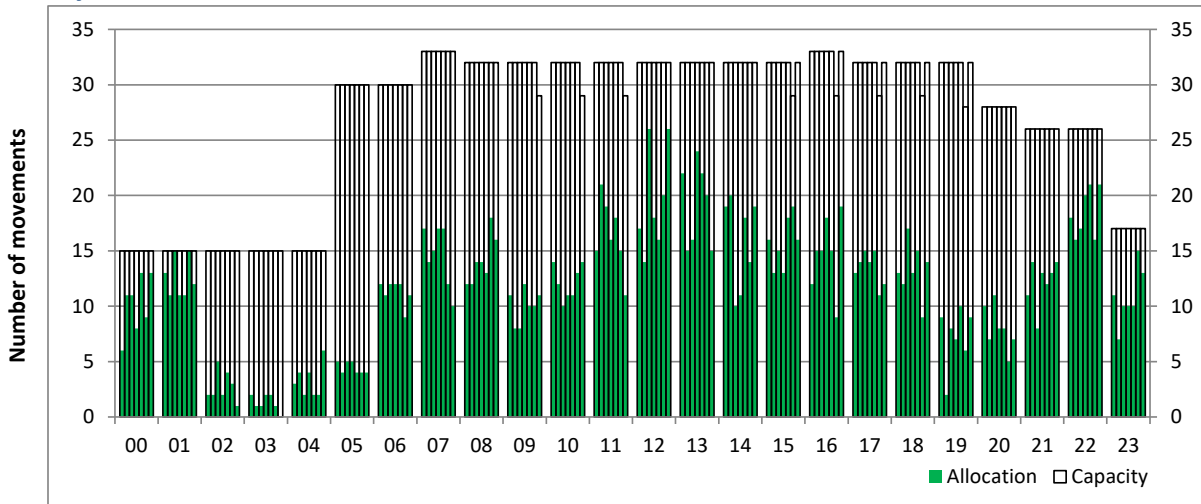
Peak Week - Hourly Runway Allocation

Schedule: S20 Start



Hourly Arrival Allocation

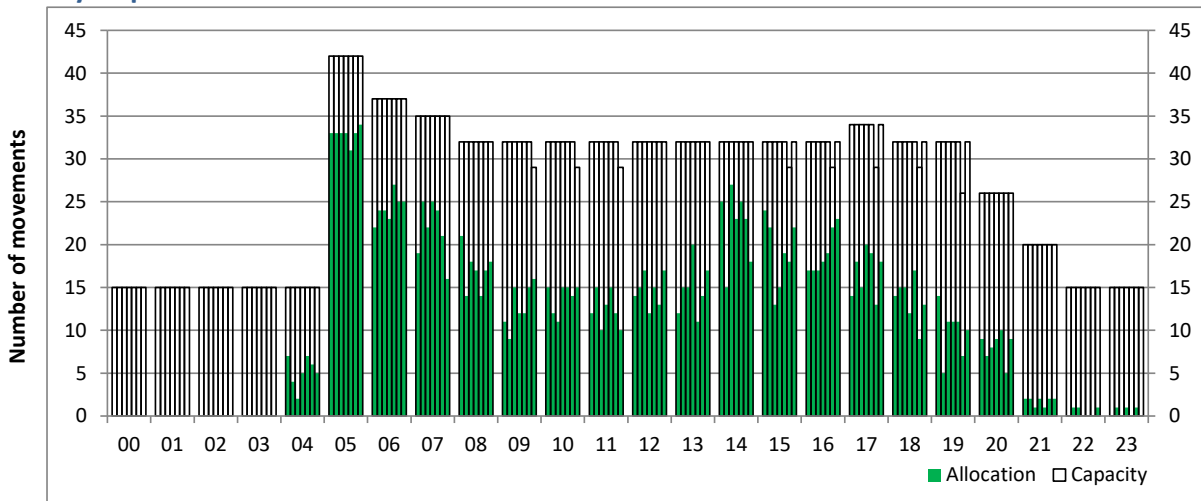
Time: UTC



Hour of day (24 hour format)

Hourly Departure Allocation

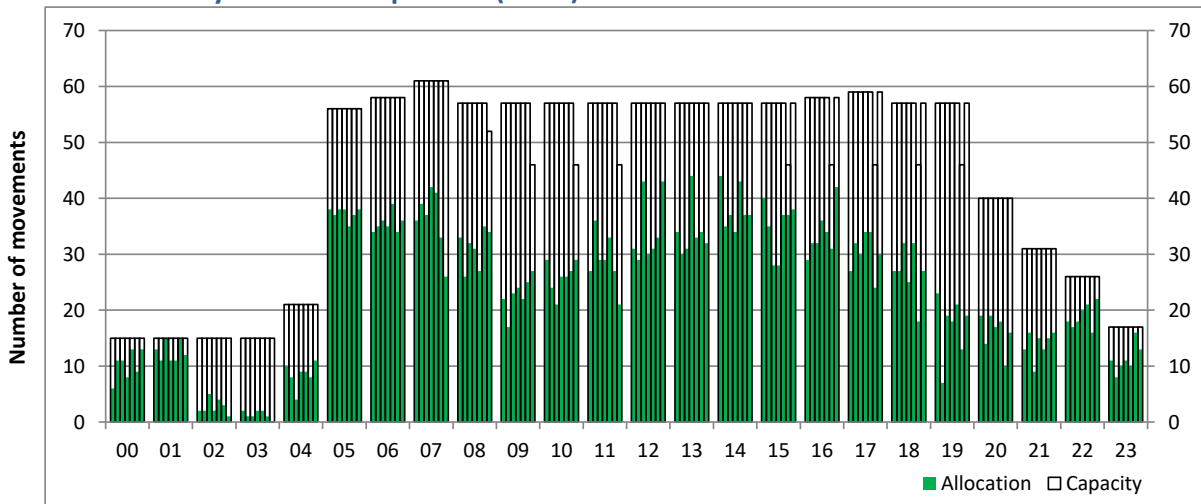
Time: UTC



Hour of day (24 hour format)

Combined Hourly Arrival & Departure (Total) Allocation

Time: UTC



Hour of day (24 hour format)

Peak Week - Passengers Histogram

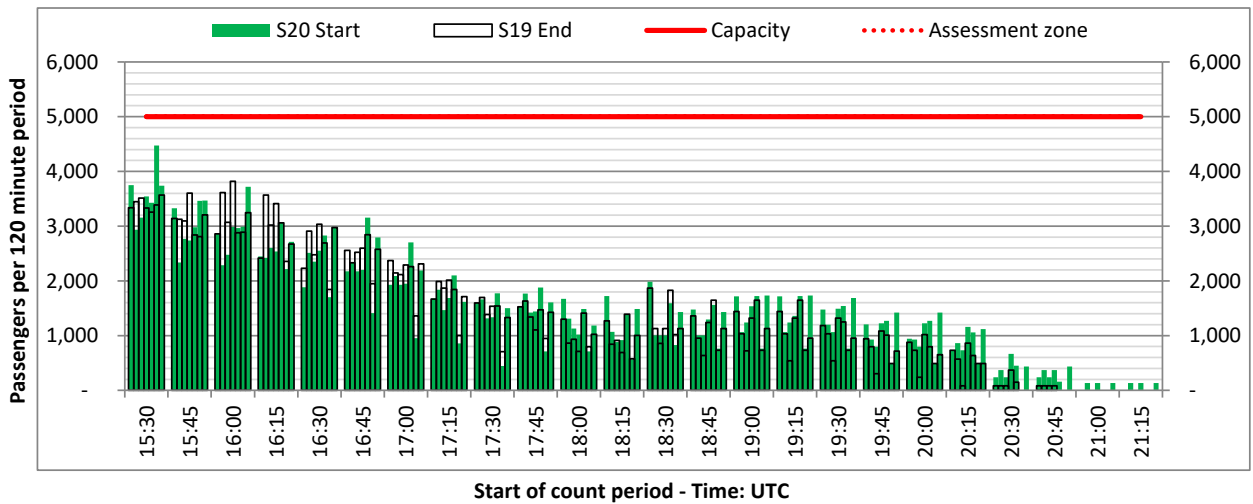
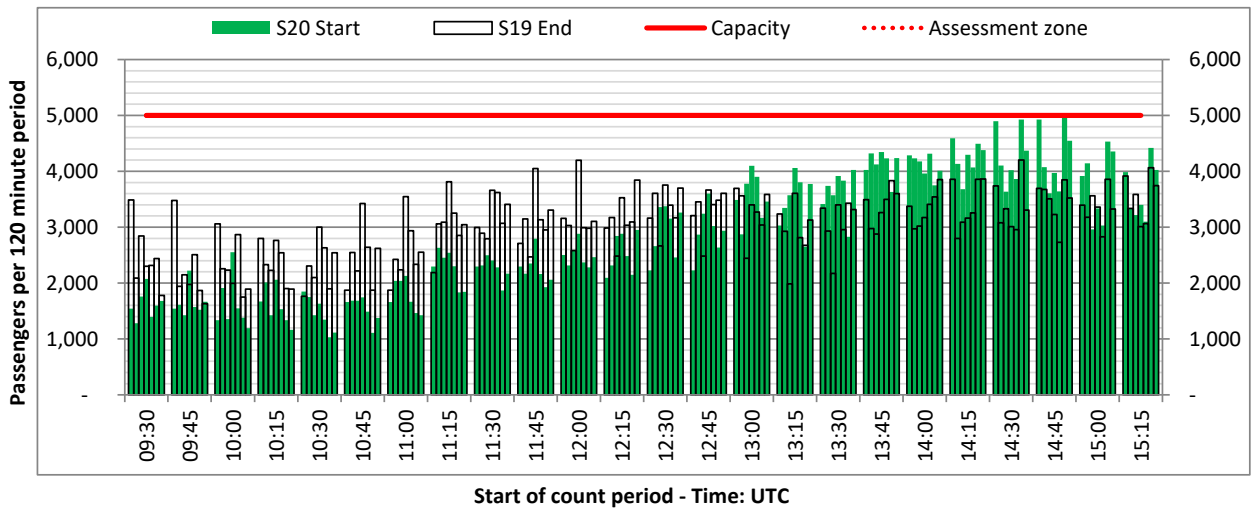
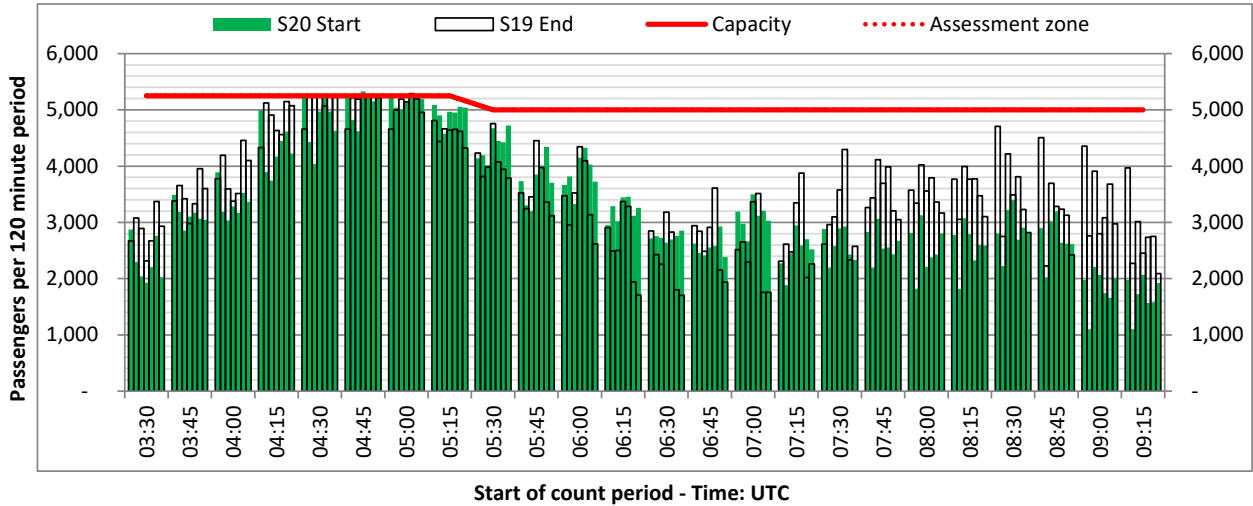
DEPARTURE - 120 minute count rolling every 15 mins (T120/15)



Terminals: T1

Operators: All Operators

Days: 1234567



Peak Week - Passengers Histogram

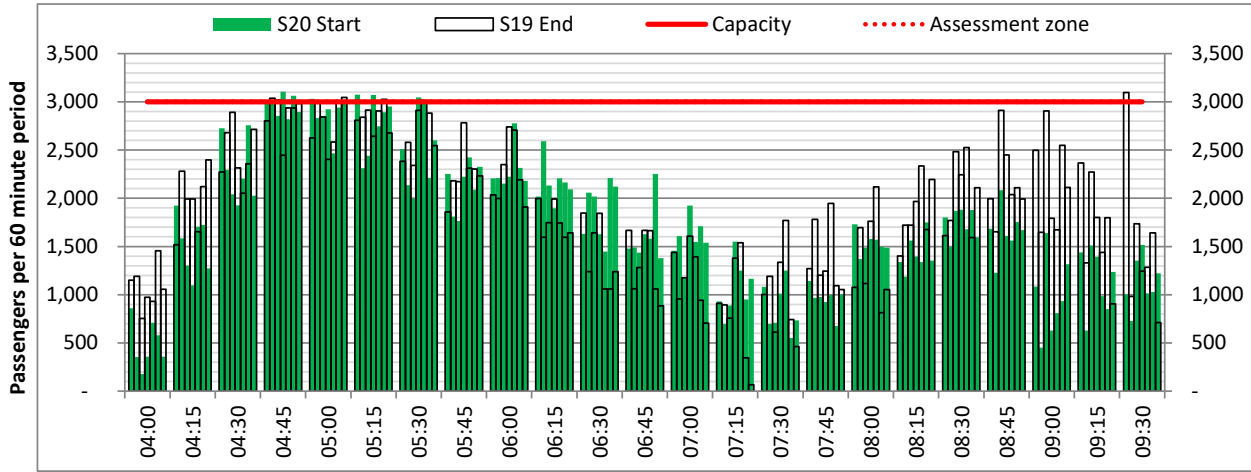
DEPARTURE - 60 minute count rolling every 15 mins (T60/15)



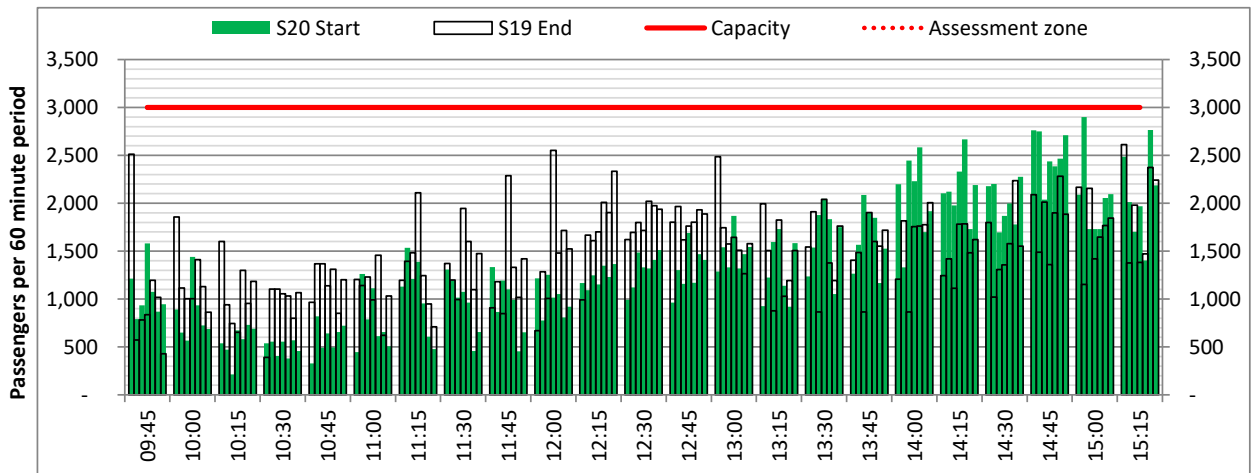
Terminals: T1

Operators: All Operators

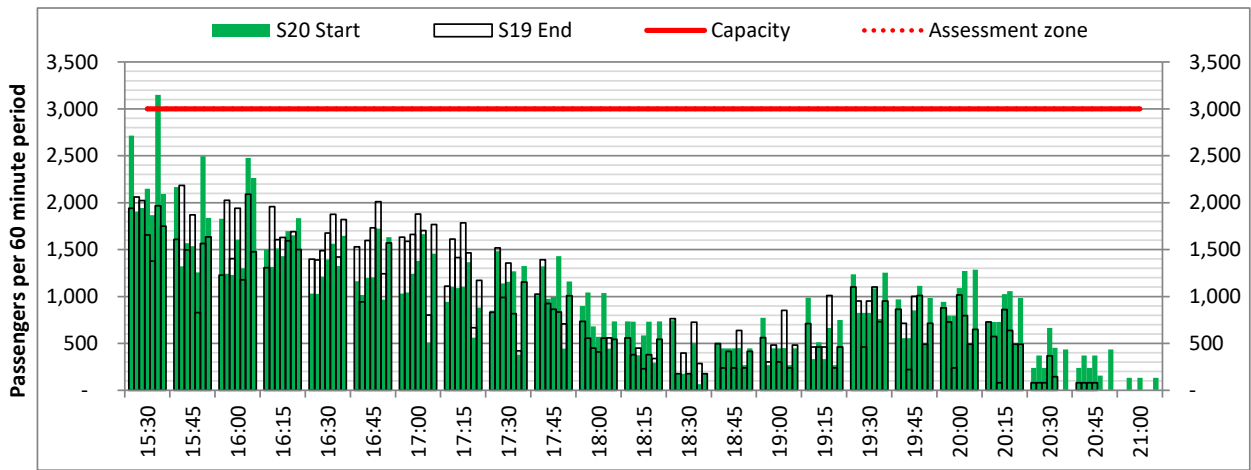
Days: 1234567



Start of count period - Time: UTC



Start of count period - Time: UTC



Start of count period - Time: UTC

Peak Week - Passengers Histogram

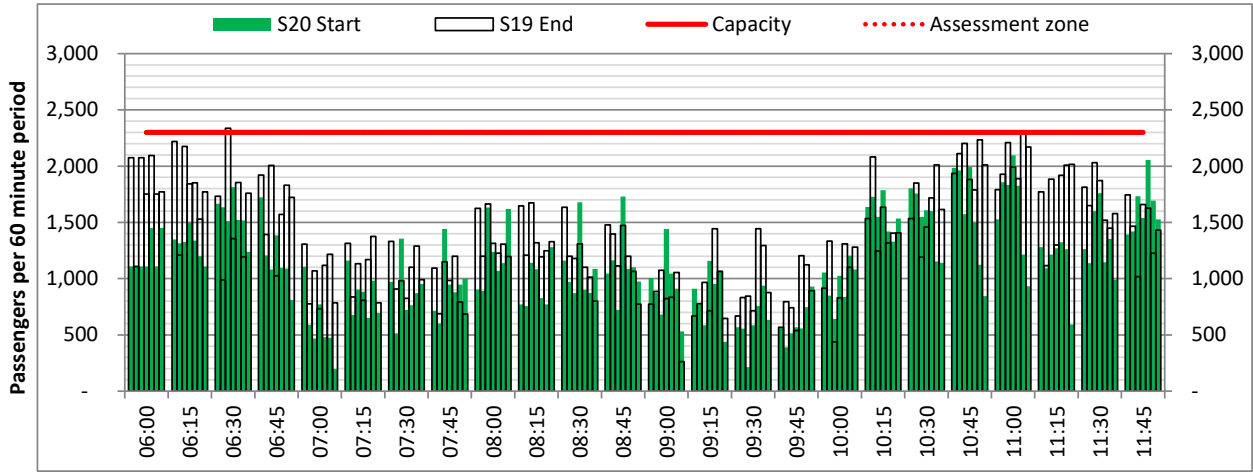
ARRIVAL - 60 minute count rolling every 15 mins (T60/15)



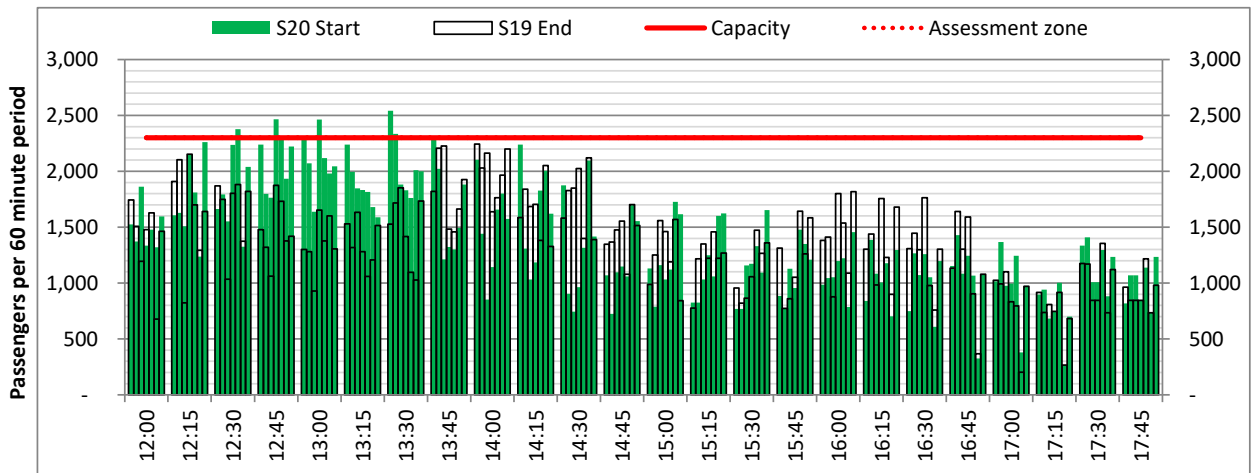
Terminals: T1

Operators: All Operators

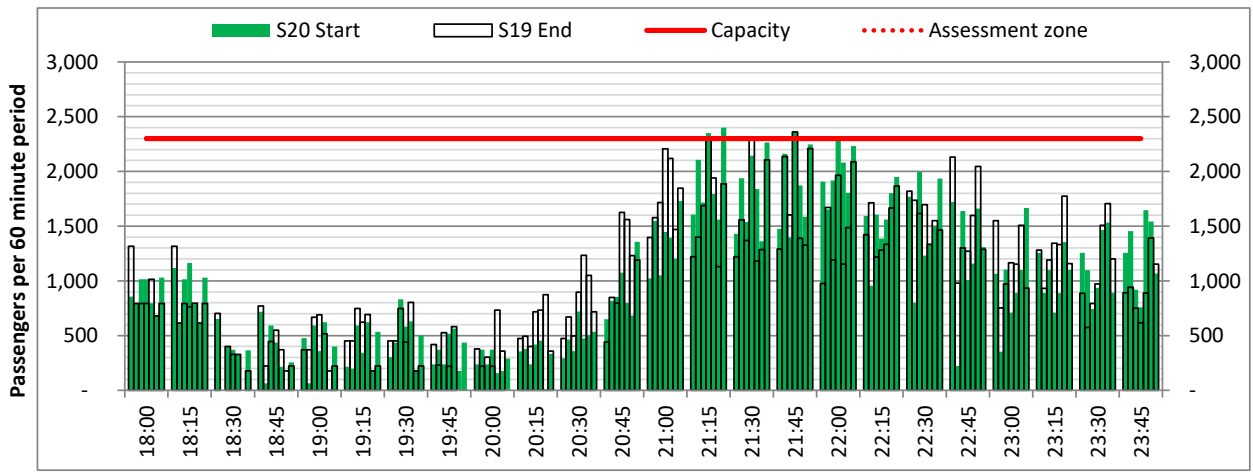
Days: 1234567



Start of count period - Time: UTC



Start of count period - Time: UTC



Start of count period - Time: UTC

Peak Week - Passengers Histogram

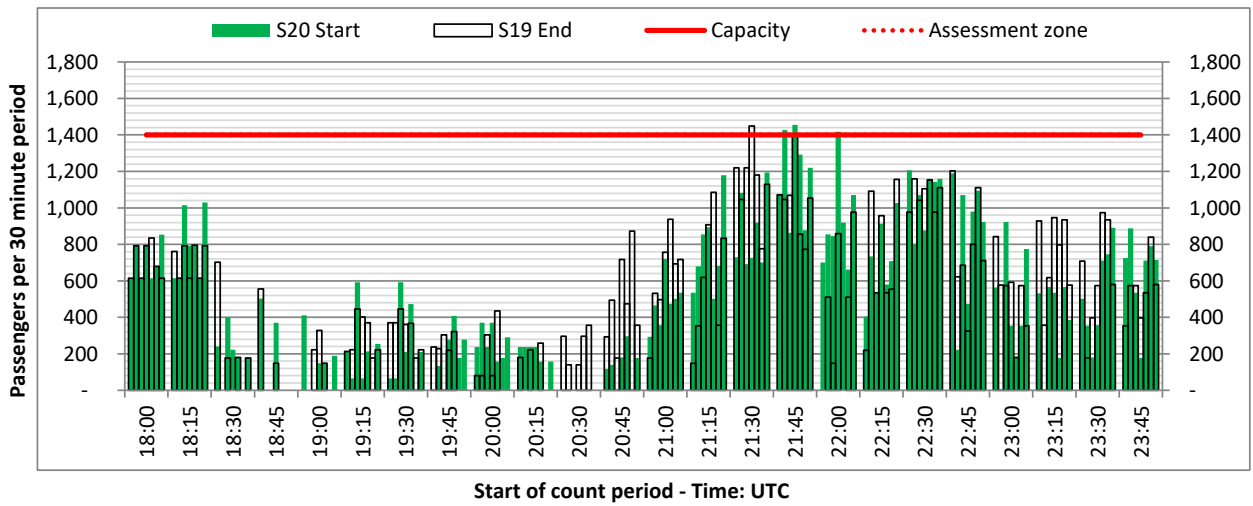
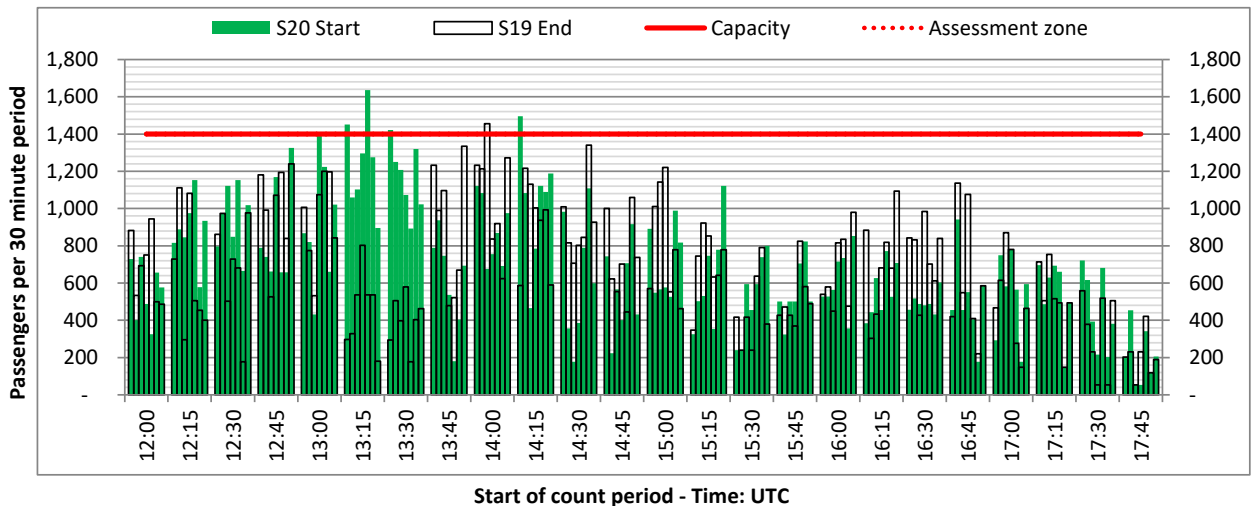
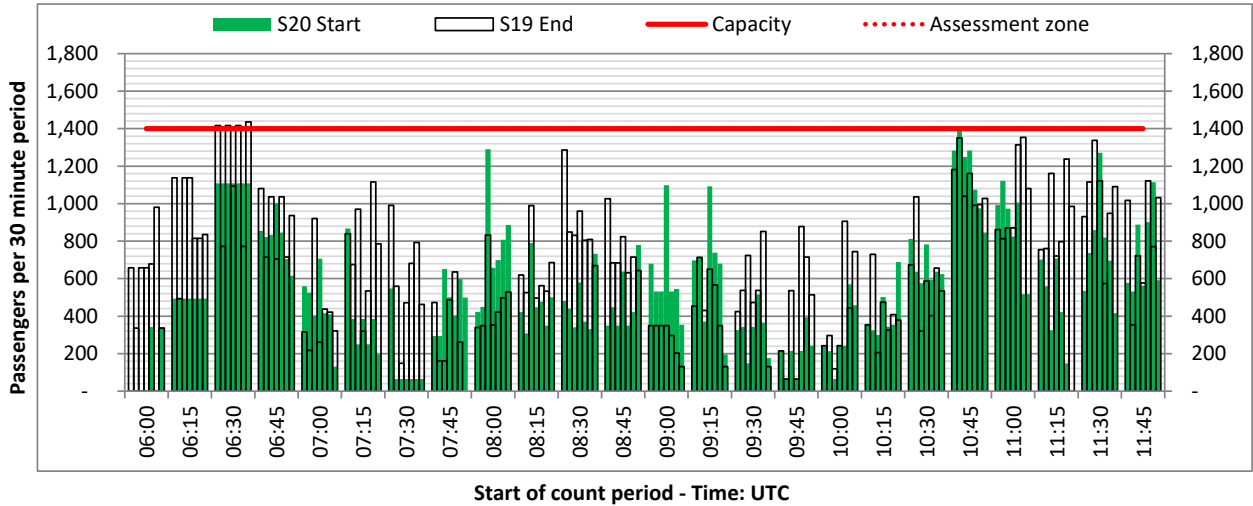
ARRIVAL - 30 minute count rolling every 15 mins (T30/15)



Terminals: T1

Operators: All Operators

Days: 1234567



Peak Week - Passengers Histogram

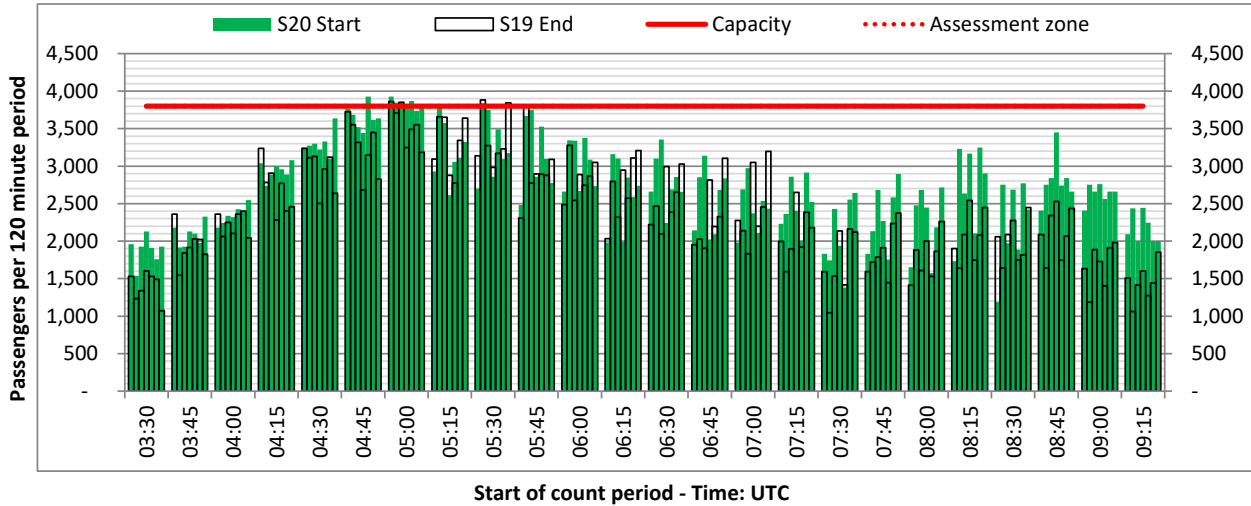
DEPARTURE - 120 minute count rolling every 15 mins (T120/15)



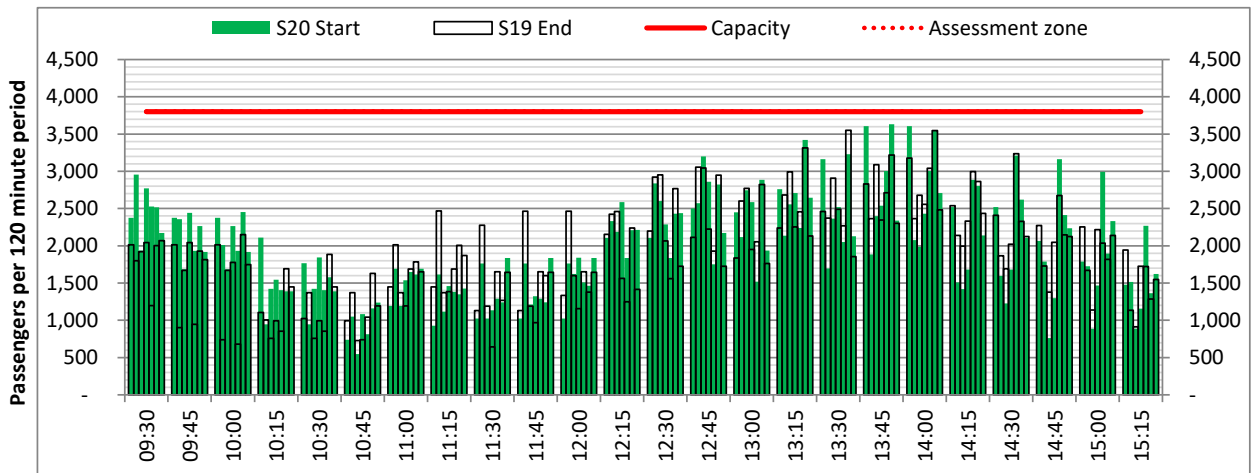
Terminals: T2

Operators: All Operators

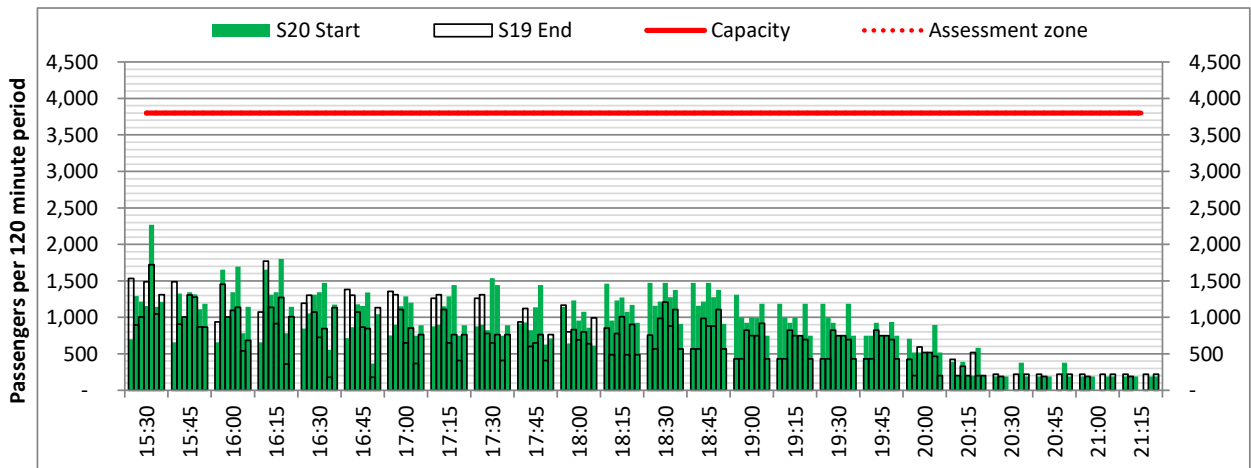
Days: 1234567



Start of count period - Time: UTC



Start of count period - Time: UTC



Start of count period - Time: UTC

Peak Week - Passengers Histogram

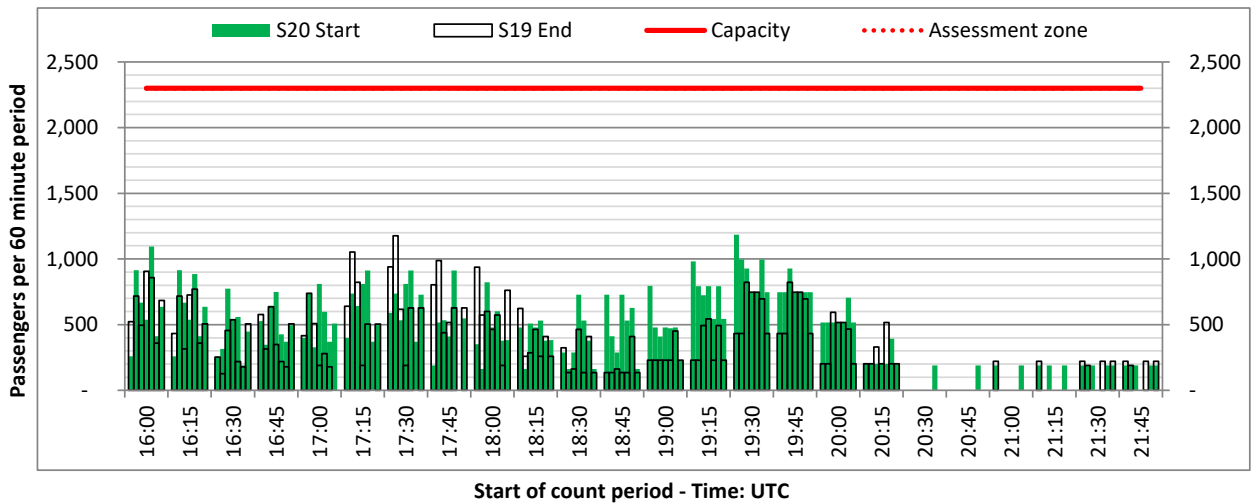
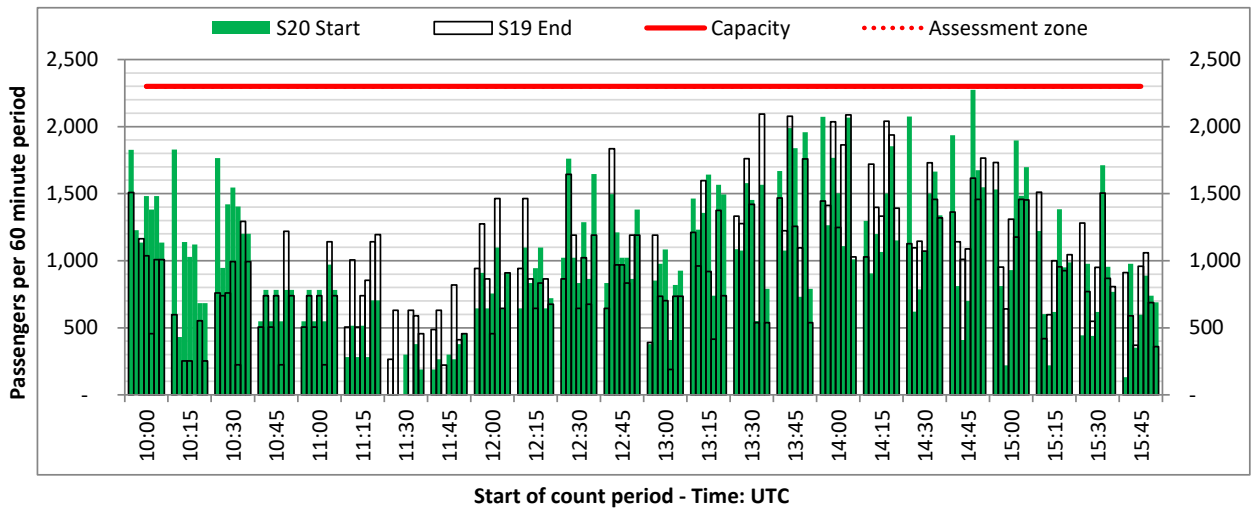
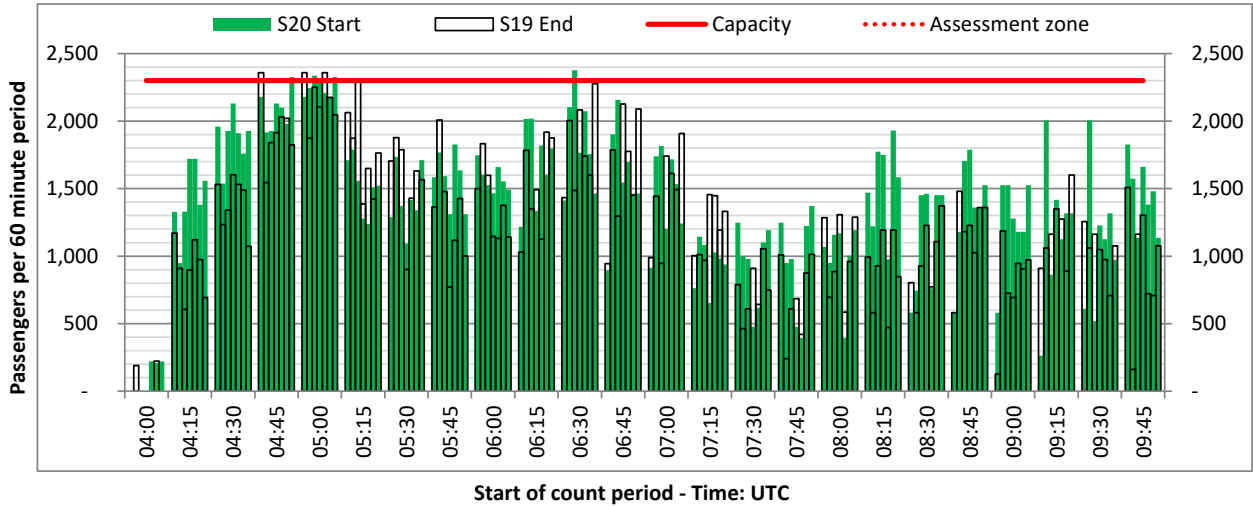
DEPARTURE - 60 minute count rolling every 15 mins (T60/15)



Terminals: T2

Operators: All Operators

Days: 1234567



Peak Week - Passengers Histogram

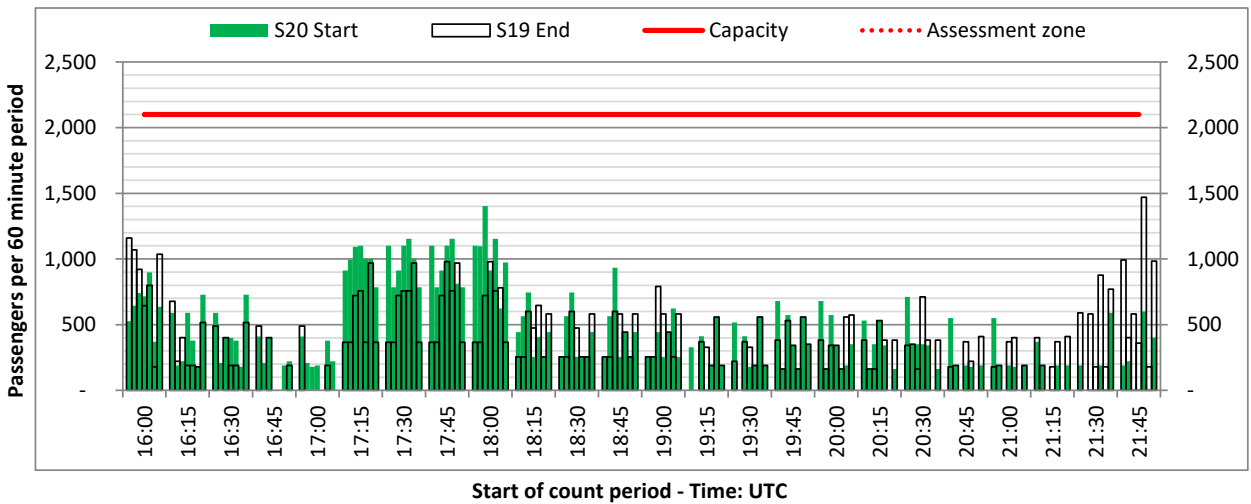
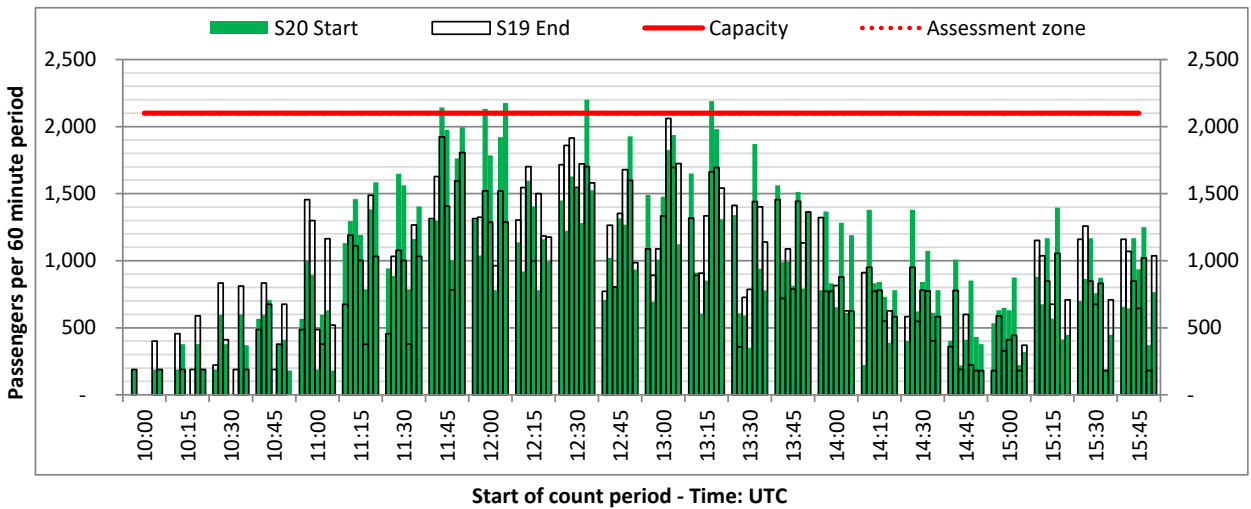
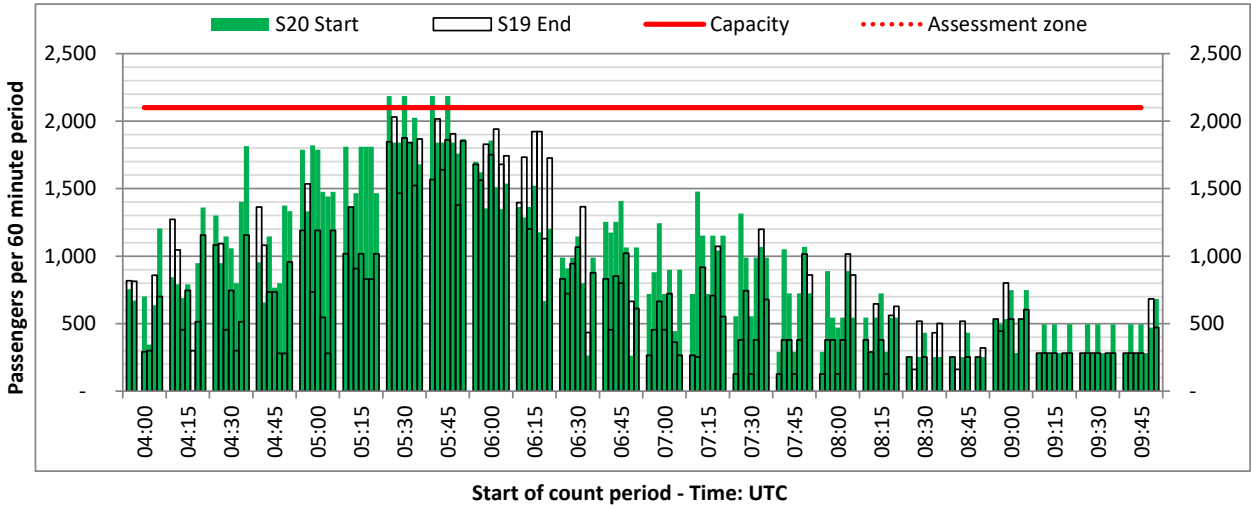
ARRIVAL - 60 minute count rolling every 15 mins (T60/15)



Terminals: T2

Operators: All Operators

Days: 1234567



Peak Week - Passengers Histogram

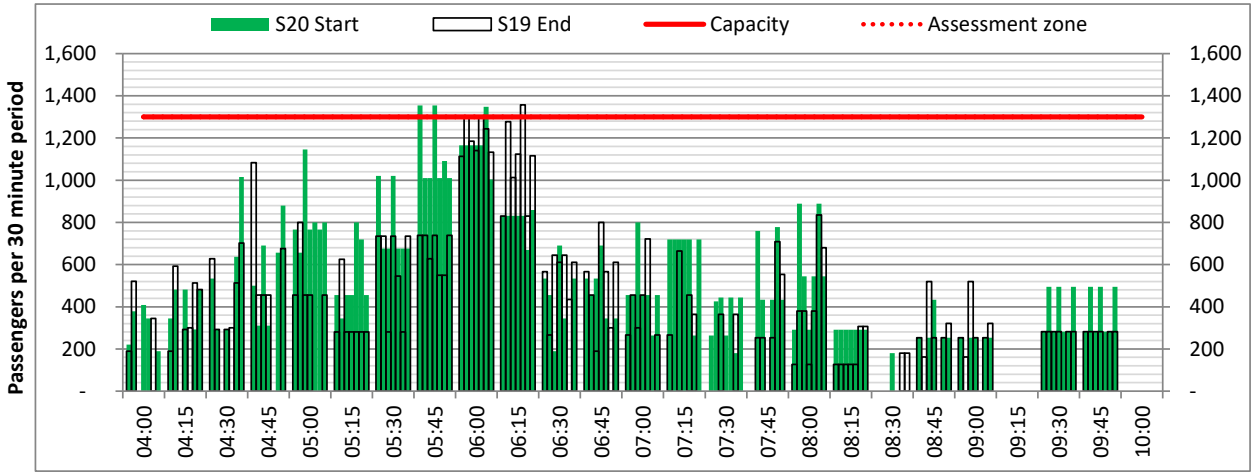
ARRIVAL - 30 minute count rolling every 15 mins (T30/15)



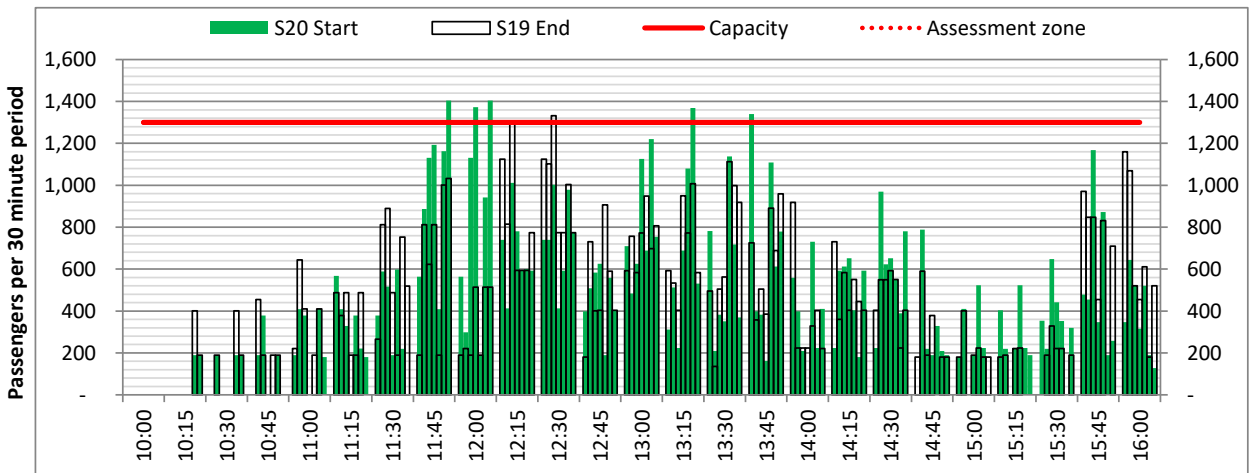
Terminals: T2

Operators: All Operators

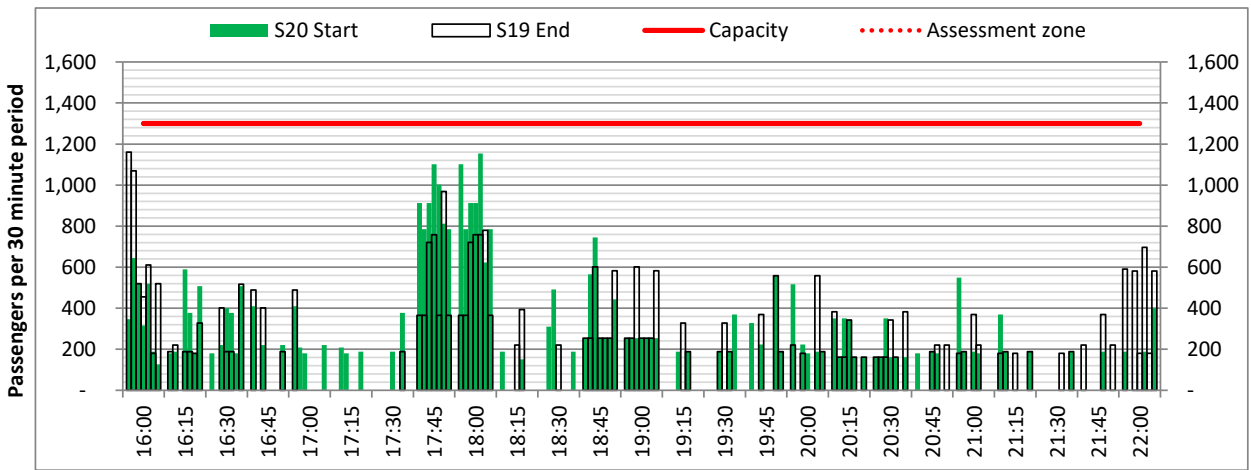
Days: 1234567



Start of count period - Time: UTC



Start of count period - Time: UTC



Start of count period - Time: UTC

Peak Week - Passengers Histogram

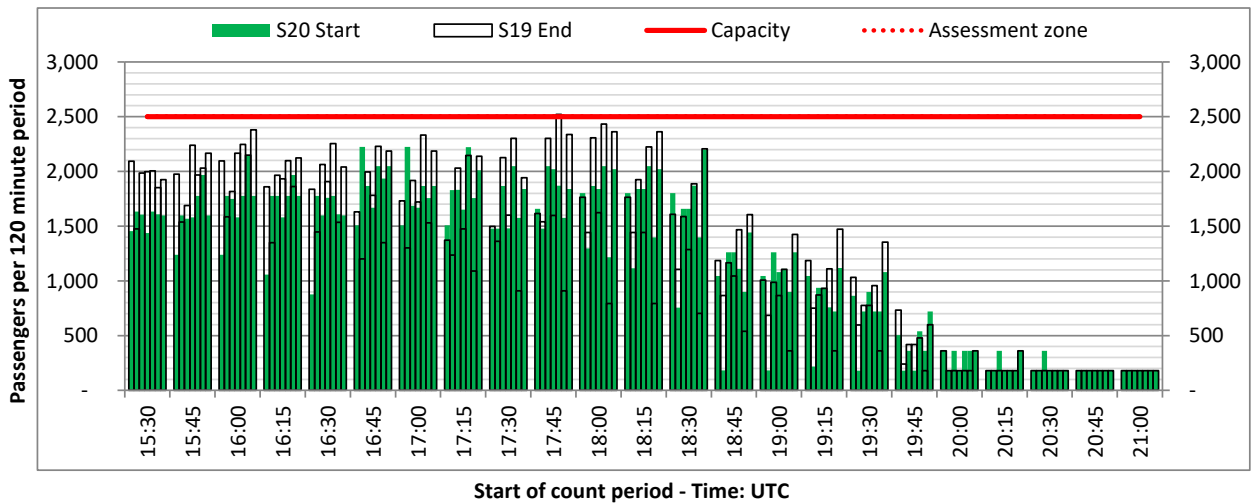
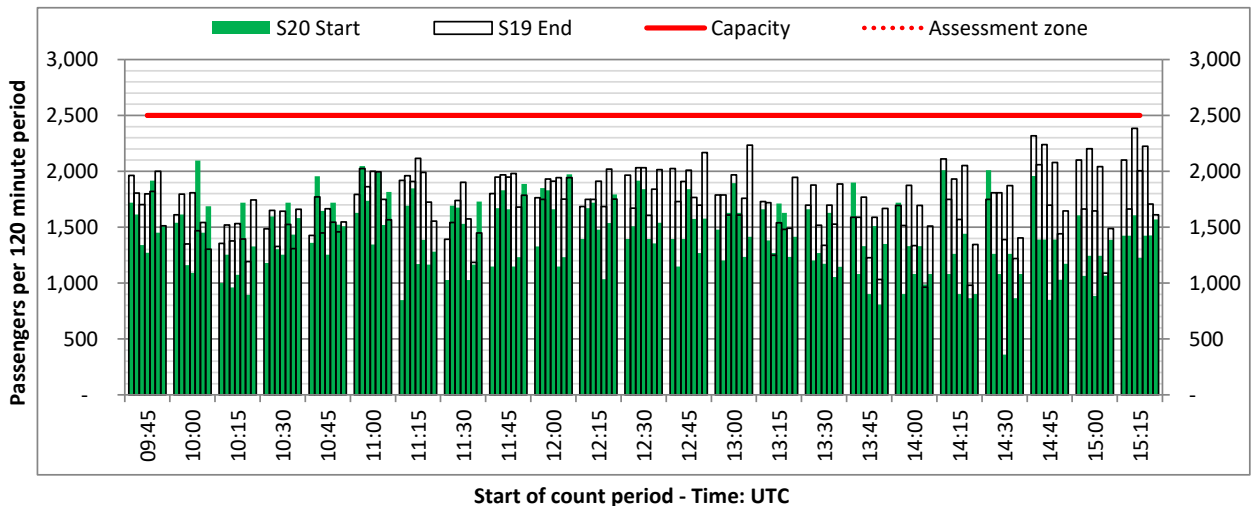
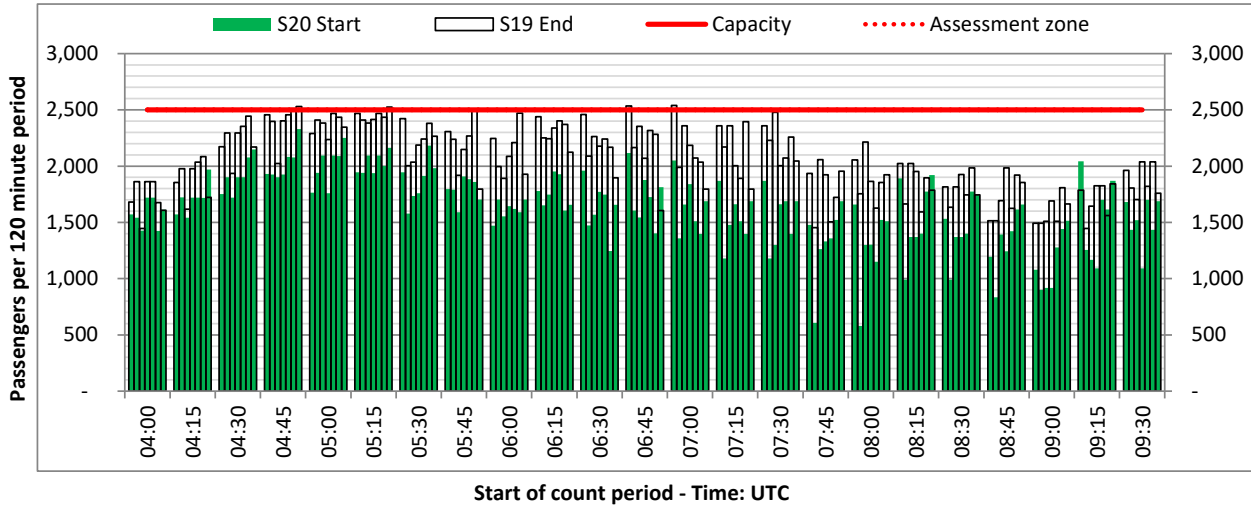
DEPARTURE - 120 minute count rolling every 15 mins (T120/15)



Terminals: T3

Operators: All Operators

Days: 1234567



Peak Week - Passengers Histogram

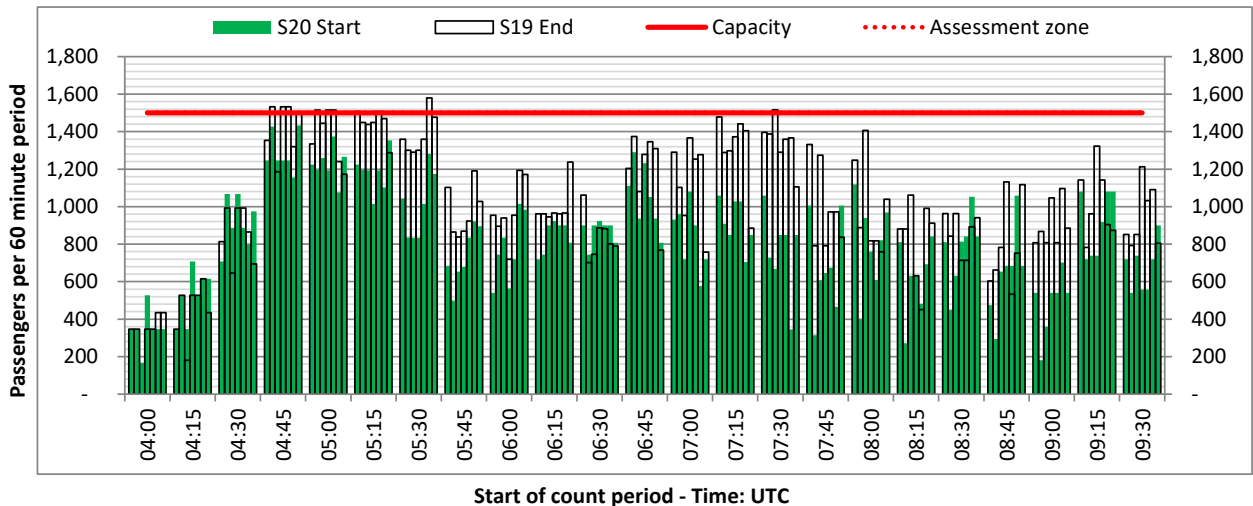
DEPARTURE - 60 minute count rolling every 15 mins (T60/15)



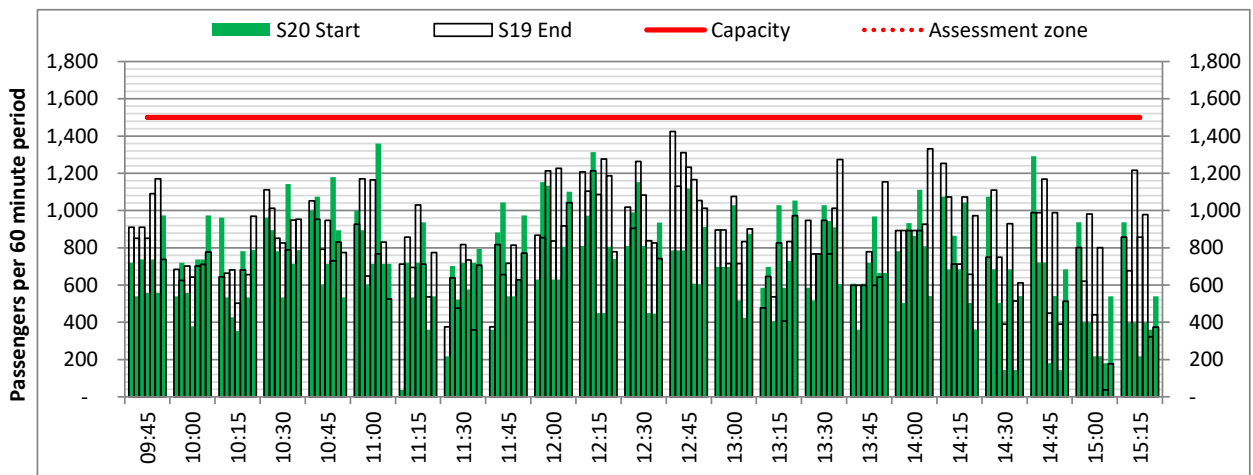
Terminals: T3

Operators: All Operators

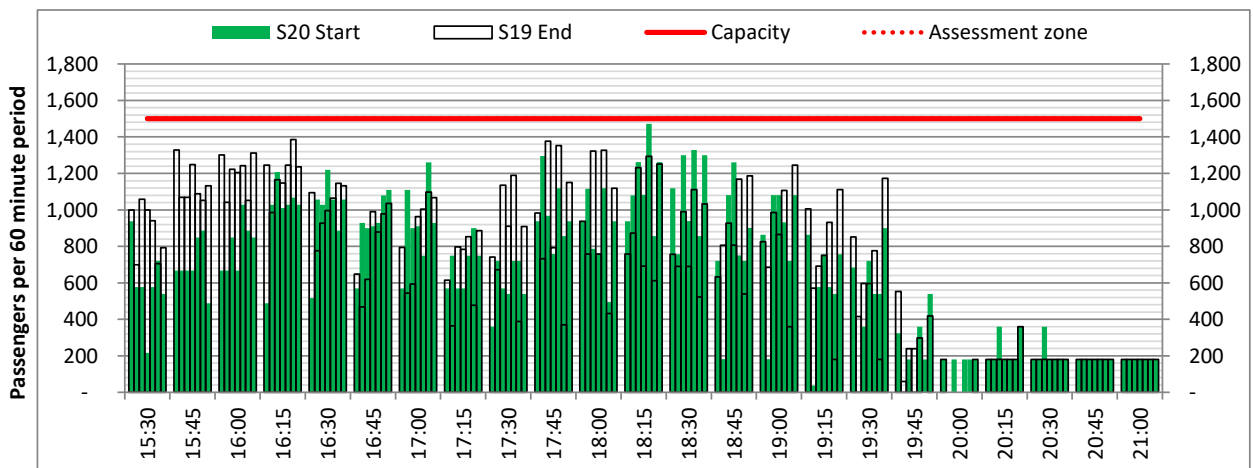
Days: 1234567



Start of count period - Time: UTC



Start of count period - Time: UTC



Start of count period - Time: UTC

Peak Week - Passengers Histogram

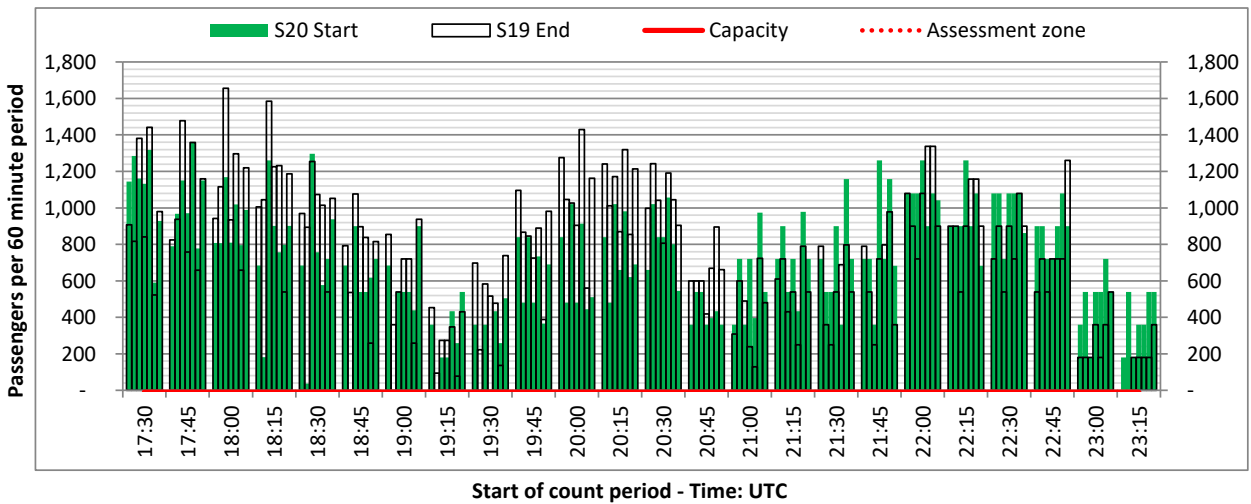
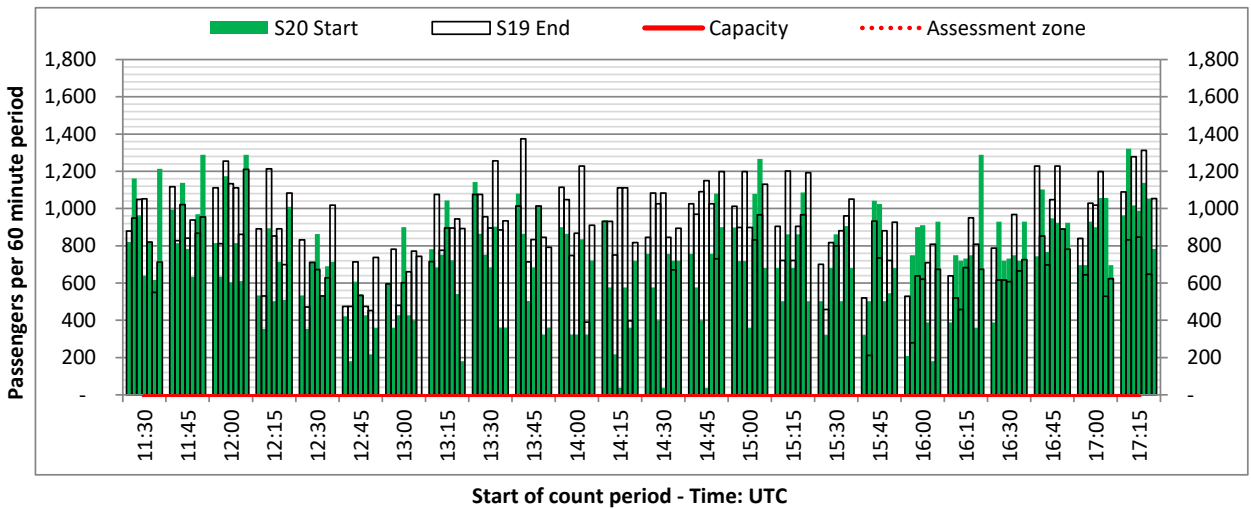
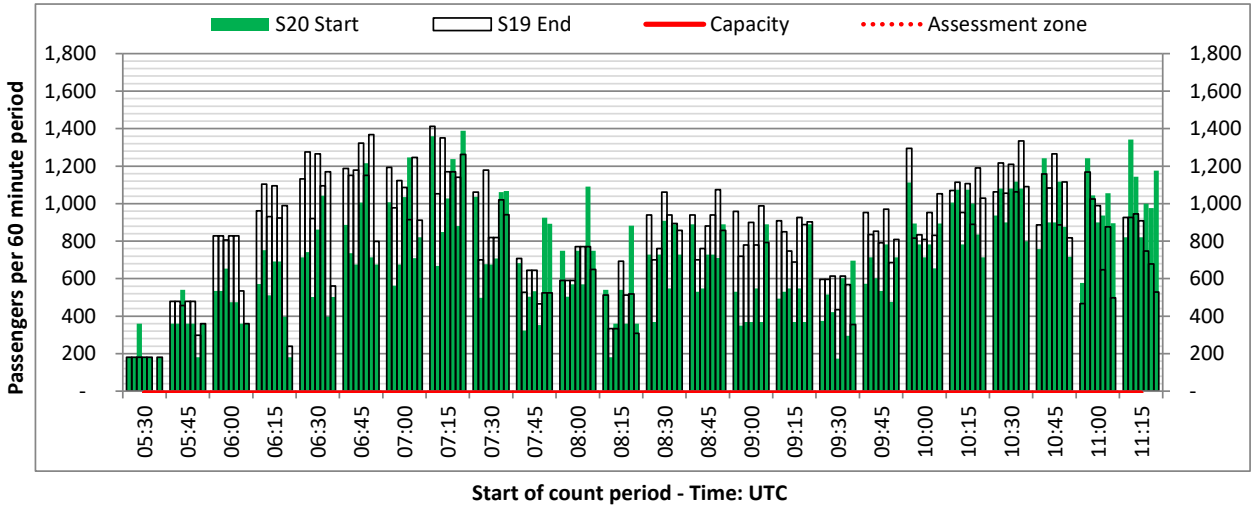
ARRIVAL - 60 minute count rolling every 15 mins (T60/15)



Terminals: T3

Operators: All Operators

Days: 1234567



Glossary



Air Transport Movement (ATM)	Any aircraft movement which is either a scheduled or chartered passenger or cargo flight.
Common Travel Area (CTA)	Origin or Destination is in Republic of Ireland or the Channel Islands.
Demand	Unconstrained demand before any schedule adjustments have been made.
"Fill-in"	These are gaps in a historic series of slots which the carrier requests to "Fill-in" at Initial Submissions - Fill-ins will be recognisably part of the historic series and will have the same flight details to qualify as a "Fill-in".
Hist (SHL)	Snapshot of historic schedule rolled over from end of the previous equivalent season - as advised to airlines in the SHLs.
ICAO Size A	Aircraft with wingspan between 0.00m - 14.99m.
ICAO Size B	Aircraft with wingspan between 15.00m - 23.99m.
ICAO Size C	Aircraft with wingspan between 24.00m - 35.99m.
ICAO Size D	Aircraft with wingspan between 36.00m - 51.99m.
ICAO Size E	Aircraft with wingspan between 52.00m - 64.99m.
ICAO Size F	Aircraft with wingspan between 65.00m - 80.00m.
Init Coord	Snapshot of schedule immediately after Initial Coordination is completed - as advised to airlines in the SALs.
Passenger Air Transport Movement (PATM)	Any aircraft movement which is either a scheduled or chartered passenger flight.
Start	Snapshot of schedule shortly before the start of the scheduling season (exact date given below where used).
Time: Local	Times shown are in LOCAL time for the airport/scheduling season.
Time: UTC	Times shown are in Universal Time Constant (UTC).

Data snapshot descriptions

S19 Start	S19 schedule as cleared on Wed 20-Mar-19.
S19 End	S19 schedule as cleared on Tue 04-Sep-18.
S20 Start	S20 schedule as cleared on Tue 10-Mar-20.

Peak Week	Peak week for S19 is Mon 02-Sep-19 to Sun 08-Sep-19. Peak week for S20 is Mon 31-Aug-20 to Sun 06-Sep-20.
------------------	--

For ACL use

	Airport-Season-Branch-Resource	From date	To date	Time
Full Season Rep 1	MAN-S19-SOS Report-Standard	Sun 31-Mar-2019	Sat 26-Oct-2019	UTC
Full Season Rep 2	MAN-S19-Live-Standard	Sun 31-Mar-2019	Sat 26-Oct-2019	UTC
Full Season Rep 3	MAN-S20-SOS Report-BASELINE	Sun 29-Mar-2020	Sat 24-Oct-2020	UTC
	Airport-Season-Branch-Resource	From date	To date	Time
Peak Week Rep 1	MAN-S19-SOS Report-Standard	Mon 02-Sep-2019	Sun 08-Sep-2019	UTC
Peak Week Rep 2	MAN-S19-Live-Standard	Mon 02-Sep-2019	Sun 08-Sep-2019	UTC
Peak Week Rep 3	MAN-S20-SOS Report-BASELINE	Mon 31-Aug-2020	Sun 06-Sep-2020	UTC