



WELLINGTON INTERNATIONAL AIRPORT

WLG

S20 Start of Season Report (International Traffic)

Key Statistics	S19 Operated	S20 Start of Season	Percentage Change
Air Transport Movements	4,089	2,829	▼ -30.8%
Total Seats	727,071	507,539	▼ -30.2%
Seats per Passenger ATM	178	179	

Contents	Page
Movements and Seats by Service Type	2
Peak Week Departure Frequencies by Carrier	3
Airlines by ATM's and Seats	4
Destinations by ATM's and Seats	5
Total Movements by Week	6
International Terminal - Passengers per 60/30 Minutes	7
Glossary	8

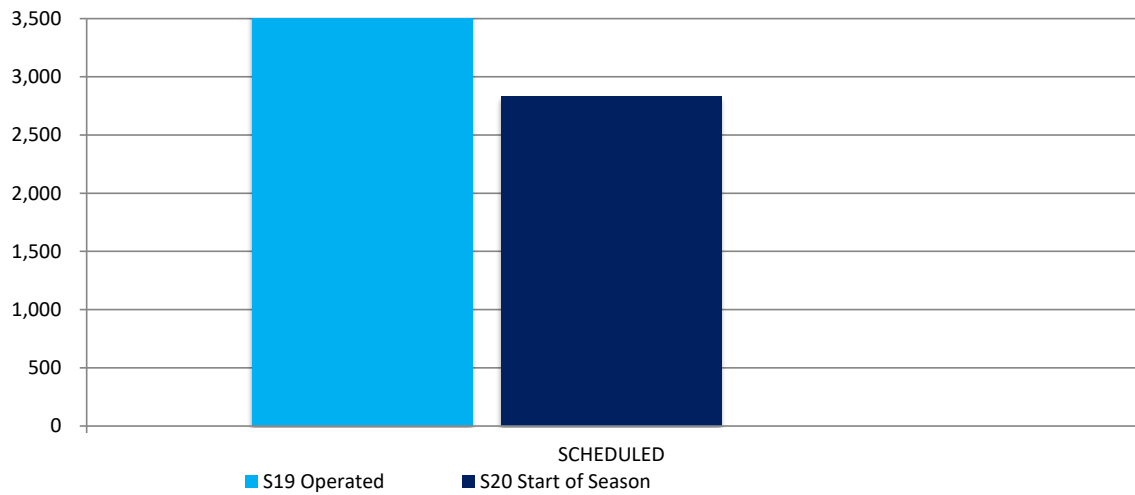
Data in this report is current as of 26 March 2020

PLEASE NOTE DUE CORONAVIRUS SCHEDULES ARE BEING ADJUSTED AT SHORT NOTICE

No warranty whether expressed or implied as to the completeness, accuracy, fitness for purpose, or satisfactory quality is given by ACL regarding the information in this report, which is provided by third parties. Accordingly, ACL excludes all liability with regard to such data.

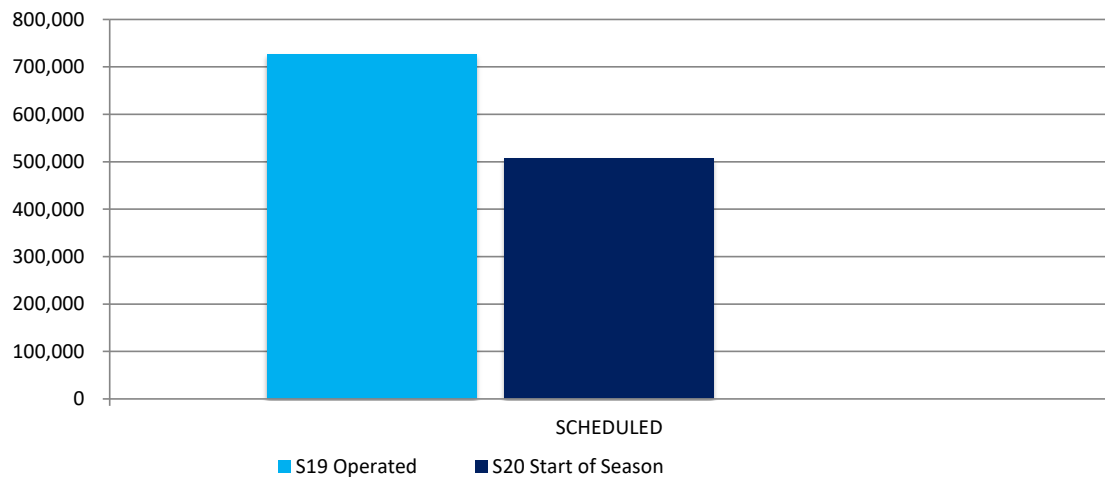
The contents of this report may not be reproduced without the written consent of ACL.

Full Season ATMs by Service Type



	S19 Operated	S20 Start of Season	% CHANGE	
SCHEDULED	4,089	2,829	▼	-30.8%
TOTAL	4,089	2,829	▼	-30.8%

Full Season Seats by Service Type



	S19 Operated	S20 Start of Season	% CHANGE	
SCHEDULED	727,071	507,539	▼	-30.2%
TOTAL	727,071	507,539	▼	-30.2%

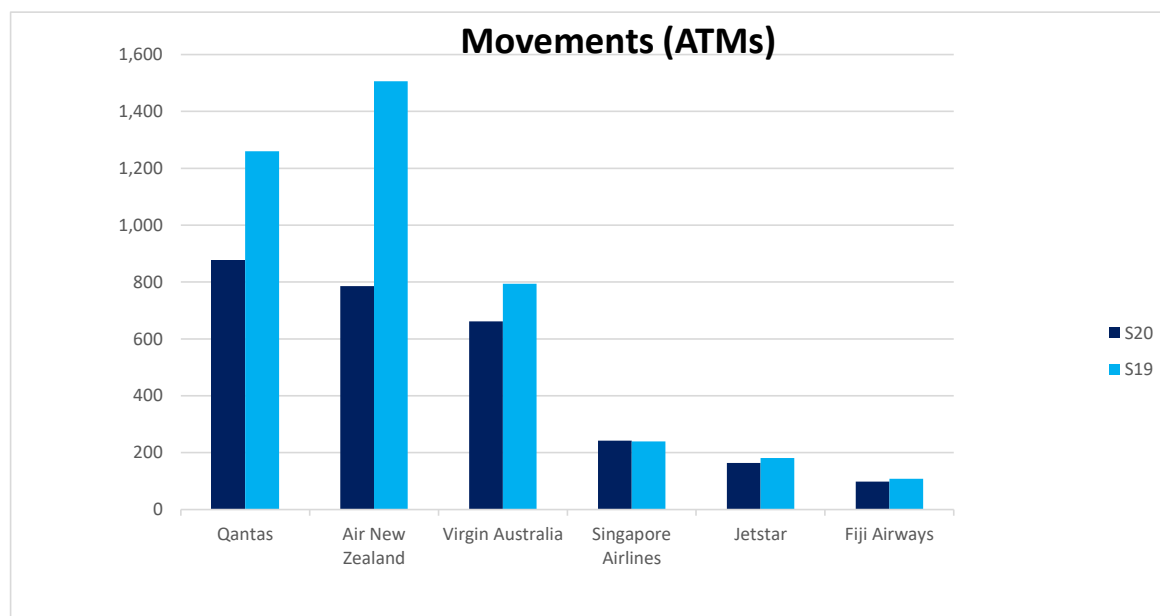
WELLINGTON INTERNATIONAL AIRPORT

PEAK WEEK DEPARTURE FREQUENCIES - BY CARRIER

OPERATOR				AIRPORT		S19		S20		SEATS +/-		ATMS +/-	
						SEATS	ATMS	SEATS	ATMS				
FJ	Fiji Airways	NAN	Nadi International	324	2	324	2	0	0				
FJ Total				324	2	324	2	0	0				
JQ	Jetstar Airways	OOL	Gold Coast Coolangatta	558	3	1,116	6	558	3				
JQ Total				558	3	1,116	6	558	3				
NZ	Air New Zealand	BNE	Brisbane International	840	5	825	5	-15	0				
		MEL	Melbourne	837	5	825	5	-12	0				
		NAN	Nadi International	379	2	495	3	116	1				
		SYD	Sydney Kingsford Smith	2,010	12	2,016	12	6	0				
NZ Total				4,066	24	4,161	25	95	1				
QF	Qantas	MEL	Melbourne	1,218	7	1,218	7	0	0				
		SYD	Sydney Kingsford Smith	2,436	14	2,436	14	0	0				
QF Total				3,654	21	3,654	21	0	0				
SQ	Singapore Airlines	SIN	Singapore Changi	1,064	4	1,265	5	201	1				
SQ Total				1,064	4	1,265	5	201	1				
VA	Virgin Australia Airlines	BNE	Brisbane International	1,584	9	2,288	13	704	4				
		SYD	Sydney Kingsford Smith	704	4	1,584	9	880	5				
VA Total				2,288	13	3,872	22	1,584	9				

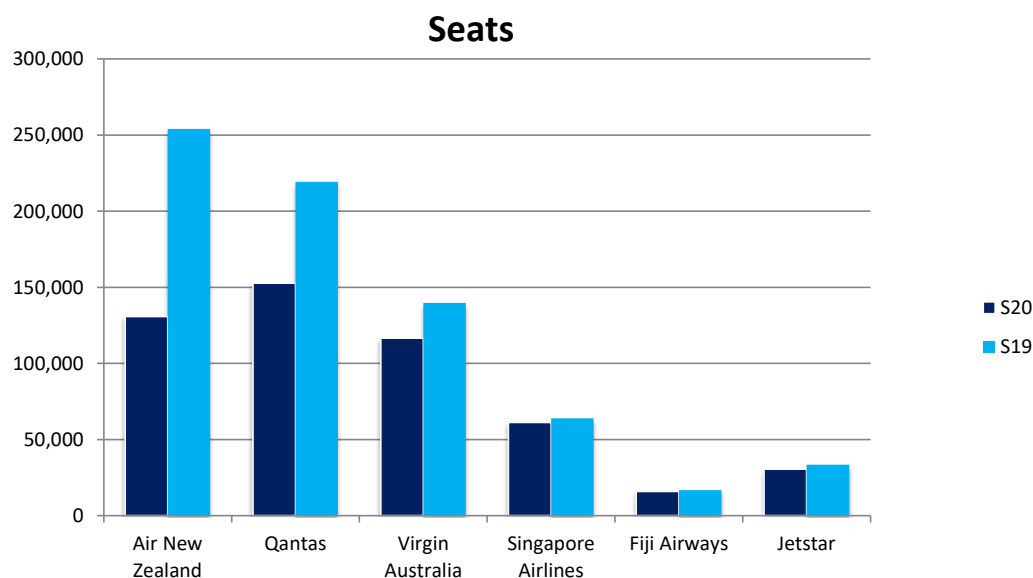
Airlines by Air Transport Movements (ATMs)

Airline	S20	S19	Diff
Qantas	877	1,260	-30%
Air New Zealand	786	1,506	-48%
Virgin Australia	662	794	-17%
Singapore Airlines	242	240	1%
Jetstar	164	181	-9%
Fiji Airways	98	108	-9%



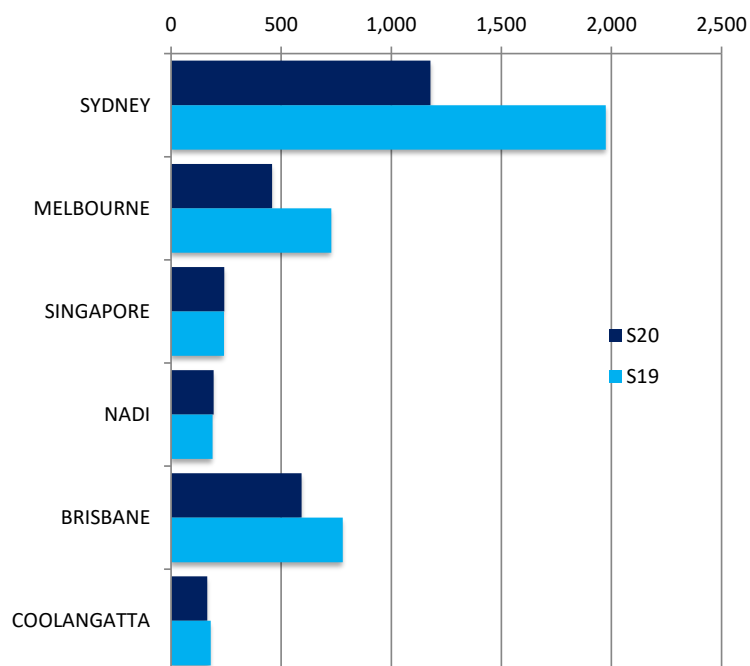
Airlines by Air Seats

Airline	S20	S19	Diff
Air New Zealand	130,791	253,989	-49%
Qantas	152,598	219,234	-30%
Virgin Australia	116,512	139,744	-17%
Singapore Airlines	61,226	63,840	-4%
Fiji Airways	15,908	16,784	-5%
Jetstar	30,504	33,480	-9%



Air Transport Movements by Destination

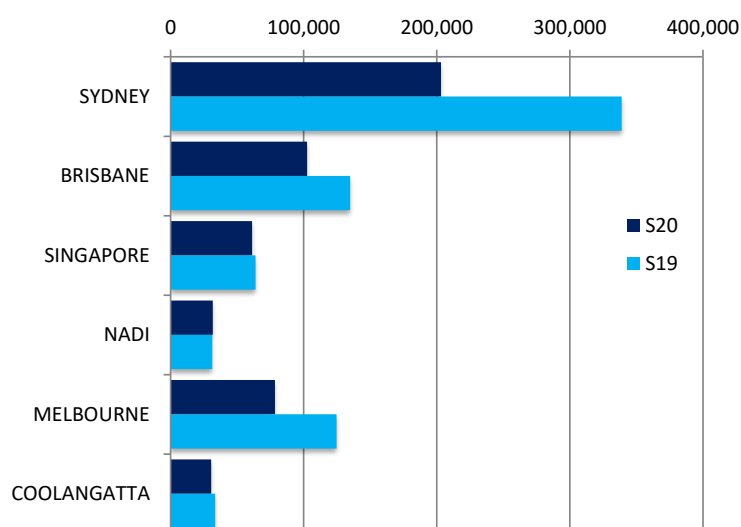
Movements by Destination



Destination	S20	S19	Diff
SYDNEY	1,178	1,974	-40%
MELBOURNE	459	728	-37%
SINGAPORE	242	240	1%
NADI	193	188	3%
BRISBANE	593	779	-24%
COOLANGATTA	164	180	-9%

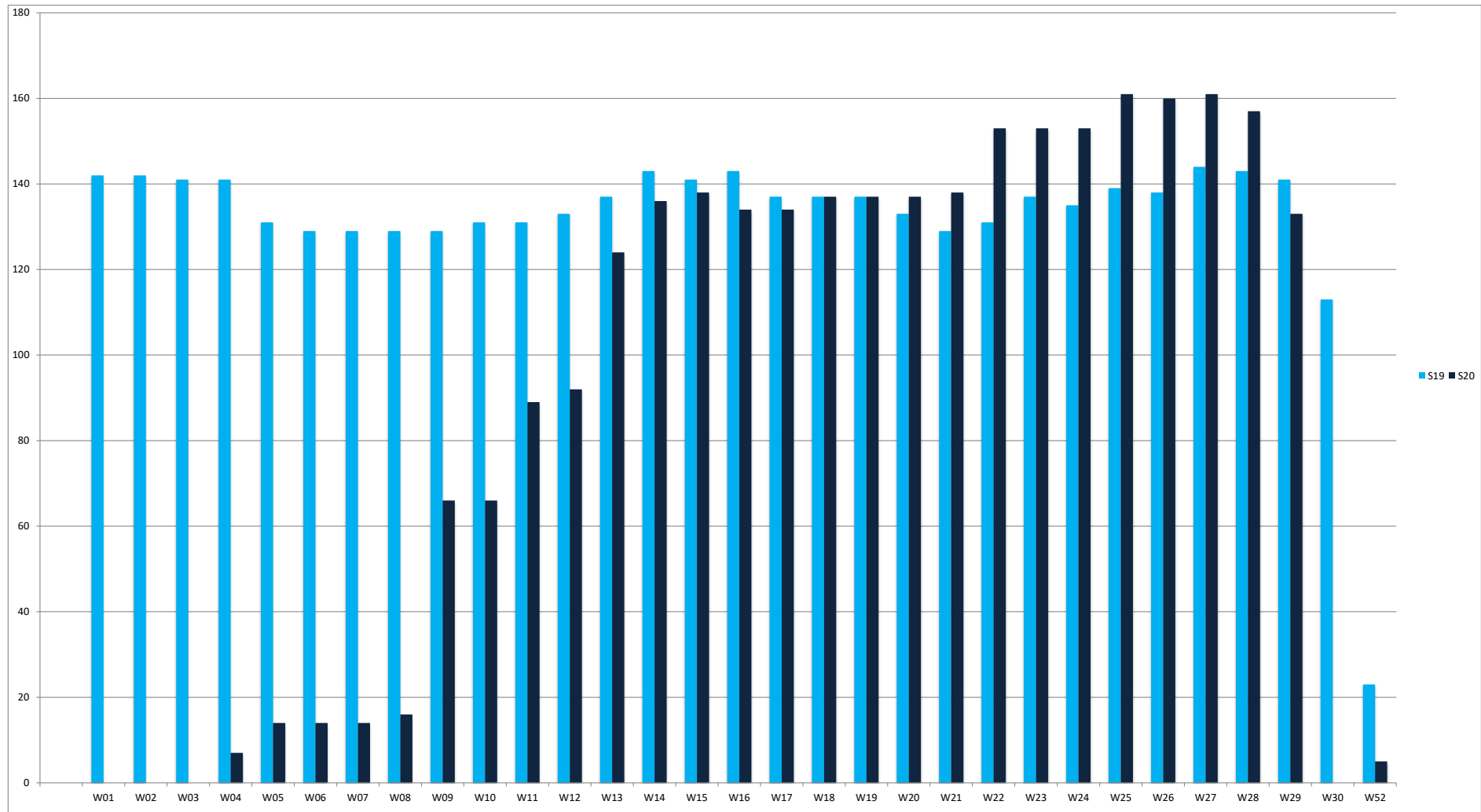
Air Transport Seats by Destination

Seats by Destination



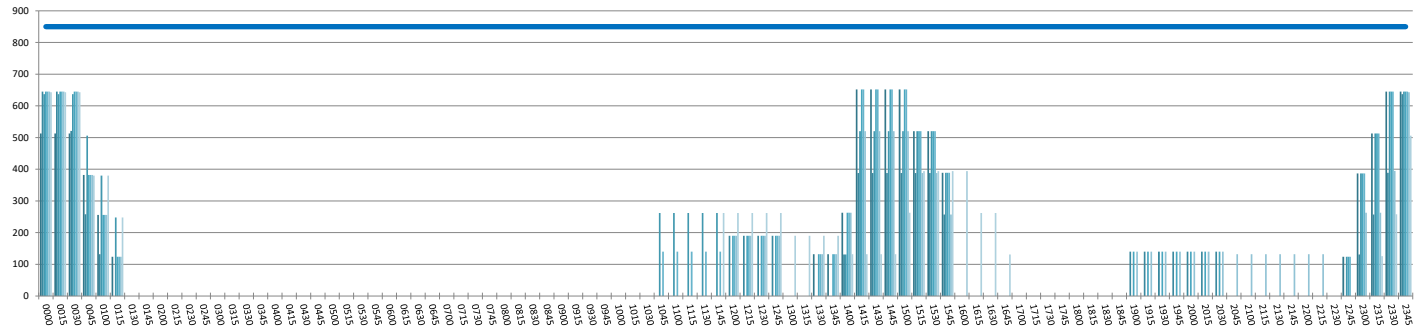
Destination	S20	S19	Diff
SYDNEY	203,232	338,821	-40%
BRISBANE	102,583	134,899	-24%
SINGAPORE	61,226	63,840	-4%
NADI	31,598	31,280	1%
MELBOURNE	78,396	124,751	-37%
COOLANGATTA	30,504	33,480	-9%

Air Transport Movements by Week for W18 vs W19 Season Start



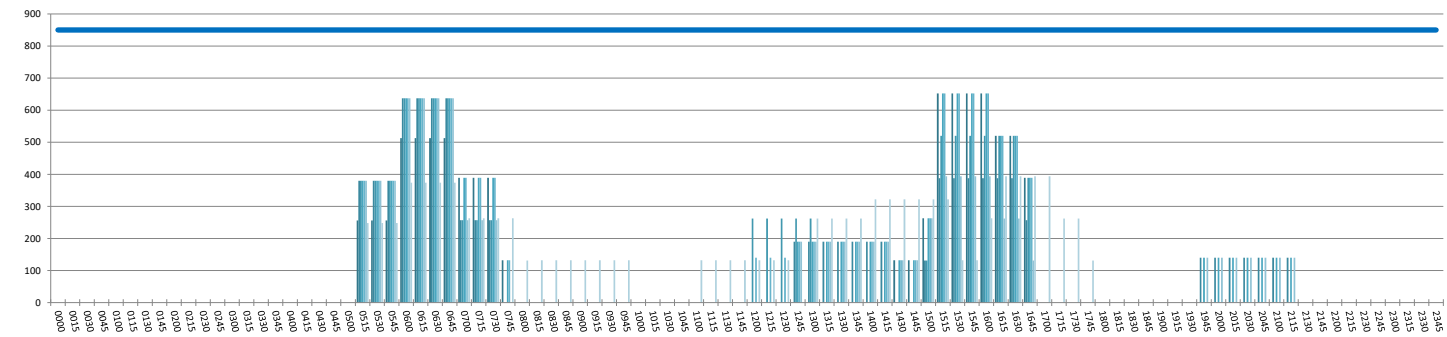
INTERNATIONAL TERMINAL ARRIVALS UTILISATION PER 60 MINUTES (ROLLING EVERY 15 MINUTES)

Peak Week Movements per Hour - All times LOCAL



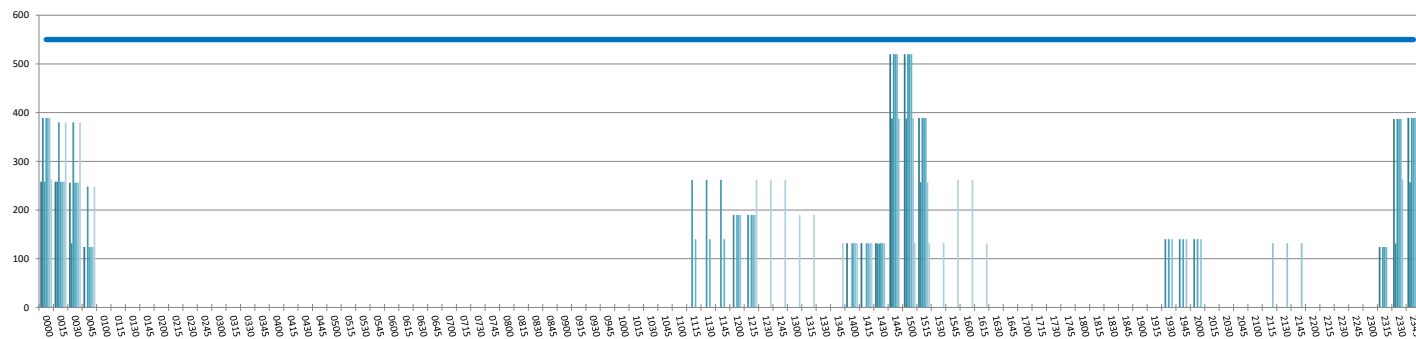
INTERNATIONAL TERMINAL DEPARTURES UTILISATION PER 60 MINUTES (ROLLING EVERY 15 MINUTES)

Peak Week Movements per Hour - All times LOCAL



INTERNATIONAL TERMINAL ARRIVALS UTILISATION PER 30 MINUTES (ROLLING EVERY 15 MINUTES)

Peak Week Movements per Hour - All times LOCAL



GLOSSARY OF TERMS

Air Transport Movement (ATM)	A scheduled or charter passenger or freight aircraft movement.
Allocation	The allocation of slots such that demand is constrained to fit within declared scheduling limits.
Passenger ATM	A scheduled or charter <u>passenger</u> aircraft movement (ie, excluding all-cargo aircraft movements).
Scheduling Limits	Limiting parameters declared by the Airport Operator used in the coordination process.
Seats	The number of seats based on the aircraft configuration advised by the airline.
Peak Week	21 to 27 September 2020
Data Snapshot	All data used for this report was as held 26 March 2020

GUIDE TO HISTOGRAMS

The histograms show the pattern of traffic by time of day against the appropriate scheduling limit. Each time period consist of seven columns representing the days-of-week, Monday through Sunday.