

### Start of Season Report

Report Date: Wed 25-Mar-2020

#### Headlines

	S20 Start	vs. S19 Start	vs. S19 End
Total Air Transport Movements (Passenger & Freight)	28,597	▲ 7.4%	▲ 7.0%
Total Passenger Air Transport Movements	27,877	▲ 8.9%	▲ 8.4%
Total Passenger Air Transport Movement Seats	4,019,559	▲ 8.0%	▲ 6.7%
Average Seats per Passenger Air Transport Movement	144	▼ -0.8%	▼ -1.6%
Percentage of allocated slots cleared as requested (OK)	98.7%		

#### Contents

Page	Content
2	Runway Scheduling Limits
3	Coordinator's Report
4	ATM Allocation by Operator (Full season and Peak Week Comparison)
5	Peak Week - Allocation and Slot Adjustment Distribution by Operator
6	Significant Route Changes
7	Full Season - ATM Analysis
8	Full Season - PATM Seats Analysis
9	Full Season - Terminal Analysis
10	Full Season - Aircraft Size Analysis
11	Full Season - Seasonality
12	Peak Week - Hourly Runway Allocation
13	Peak Week - Hourly Runway Allocation Comparison (S20 Start vs. S19 End)
14	Peak Week Histogram - Departure Passengers (T120/15) - All Terminals - All Operators - 0000-1145z
15	Peak Week Histogram - Departure Passengers (T120/15) - All Terminals - All Operators - 1200-2045z
16	Peak Week Histogram - Arrival Passengers (T60/15) - Non-Schengen - All Operators - 0500-2245z
17	Peak Week Histogram - Departure Movements (R45/5) - All Terminals - All Operators - 0200-0455z
18	Peak Week Histogram - Departure Movements (R45/5) - All Terminals - All Operators - 1000-1455z
19	Peak Week Histogram - Departure Movements (R45/5) - All Terminals - All Operators - 1500-1755z
20	Peak Week Histogram - Departure Movements (R45/5) - Schengen - All Operators - 0200-0455z
21	Peak Week Histogram - Departure Movements (R45/5) - Schengen - All Operators - 1000-1255z
22	Peak Week Histogram - Departure Movements (R45/5) - Schengen - All Operators - 1500-1655z
23	Peak Week Histogram - Departure Movements (R45/5) - Non-Schengen - All Operators - 0200-0455z
24	Peak Week Histogram - Departure Movements (R45/5) - Non-Schengen - All Operators - 0700-1100z
25	Peak Week Histogram - Departure Movements (R45/5) - Non-Schengen - All Operators - 1500-1755z
26	Glossary

S19 scheduling season runs from Sun 31-Mar-2019 to Sat 26-Oct-2019 (210 days).

S20 scheduling season runs from Sun 29-Mar-2020 to Sat 24-Oct-2020 (210 days).

#### Disclaimer

No warranty whether expressed or implied as to the completeness, accuracy, fitness for purpose, or satisfactory quality is given by ACL regarding the information in this report, which is provided by third parties. Accordingly, ACL excludes all liability with regard to such data.

The contents of this report may not be reproduced without the written consent of ACL.

# Runway Scheduling Limits



## Declared Hourly Movement Capacity

S19 Arrivals								Change: S19 to S20								S20 Arrivals							
Hour	Mon	Tue	Wed	Thu	Fri	Sat	Sun	Hour	Mon	Tue	Wed	Thu	Fri	Sat	Sun	Hour	Mon	Tue	Wed	Thu	Fri	Sat	Sun
UTC 00	5	5	5	5	5	5	5	UTC 00	2	2	2	2	2	2	2	UTC 00	7	7	7	7	7	7	7
01	5	5	5	5	5	5	5	01	2	2	2	2	2	2	2	01	7	7	7	7	7	7	7
02	5	5	5	5	5	5	5	02	2	2	2	2	2	2	2	02	7	7	7	7	7	7	7
03	13	13	13	13	13	13	13	03								03	13	13	13	13	13	13	13
04	13	13	13	13	13	13	13	04								04	13	13	13	13	13	13	13
05	13	13	13	13	13	13	13	05								05	13	13	13	13	13	13	13
06	13	13	13	13	13	13	13	06								06	13	13	13	13	13	13	13
07	13	13	13	13	13	13	13	07								07	13	13	13	13	13	13	13
08	13	13	13	13	13	13	13	08								08	13	13	13	13	13	13	13
09	13	13	13	13	13	13	13	09								09	13	13	13	13	13	13	13
10	13	13	13	13	13	13	13	10								10	13	13	13	13	13	13	13
11	13	13	13	13	13	13	13	11								11	13	13	13	13	13	13	13
12	13	13	13	13	13	13	13	12								12	13	13	13	13	13	13	13
13	13	13	13	13	13	13	13	13								13	13	13	13	13	13	13	13
14	13	13	13	13	13	13	13	14								14	13	13	13	13	13	13	13
15	13	13	13	13	13	13	13	15								15	13	13	13	13	13	13	13
16	13	13	13	13	13	13	13	16								16	13	13	13	13	13	13	13
17	13	13	13	13	13	13	13	17								17	13	13	13	13	13	13	13
18	13	13	13	13	13	13	13	18								18	13	13	13	13	13	13	13
19	13	13	13	13	13	13	13	19								19	13	13	13	13	13	13	13
20	13	13	13	13	13	13	13	20								20	13	13	13	13	13	13	13
21	5	5	5	5	5	5	5	21	2	2	2	2	2	2	2	21	7	7	7	7	7	7	7
22	5	5	5	5	5	5	5	22	2	2	2	2	2	2	2	22	7	7	7	7	7	7	7
23	5	5	5	5	5	5	5	23	2	2	2	2	2	2	2	23	7	7	7	7	7	7	7

S19 Departures								Change: S19 to S20								S20 Departures							
Hour	Mon	Tue	Wed	Thu	Fri	Sat	Sun	Hour	Mon	Tue	Wed	Thu	Fri	Sat	Sun	Hour	Mon	Tue	Wed	Thu	Fri	Sat	Sun
UTC 00	5	5	5	5	5	5	5	UTC 00	2	2	2	2	2	2	2	UTC 00	7	7	7	7	7	7	7
01	5	5	5	5	5	5	5	01	2	2	2	2	2	2	2	01	7	7	7	7	7	7	7
02	5	5	5	5	5	5	5	02	2	2	2	2	2	2	2	02	7	7	7	7	7	7	7
03	13	13	13	13	13	13	13	03								03	13	13	13	13	13	13	13
04	13	13	13	13	13	13	13	04								04	13	13	13	13	13	13	13
05	13	13	13	13	13	13	13	05								05	13	13	13	13	13	13	13
06	13	13	13	13	13	13	13	06								06	13	13	13	13	13	13	13
07	13	13	13	13	13	13	13	07								07	13	13	13	13	13	13	13
08	13	13	13	13	13	13	13	08								08	13	13	13	13	13	13	13
09	13	13	13	13	13	13	13	09								09	13	13	13	13	13	13	13
10	13	13	13	13	13	13	13	10								10	13	13	13	13	13	13	13
11	13	13	13	13	13	13	13	11								11	13	13	13	13	13	13	13
12	13	13	13	13	13	13	13	12								12	13	13	13	13	13	13	13
13	13	13	13	13	13	13	13	13								13	13	13	13	13	13	13	13
14	13	13	13	13	13	13	13	14								14	13	13	13	13	13	13	13
15	13	13	13	13	13	13	13	15								15	13	13	13	13	13	13	13
16	13	13	13	13	13	13	13	16								16	13	13	13	13	13	13	13
17	13	13	13	13	13	13	13	17								17	13	13	13	13	13	13	13
18	13	13	13	13	13	13	13	18								18	13	13	13	13	13	13	13
19	13	13	13	13	13	13	13	19								19	13	13	13	13	13	13	13
20	13	13	13	13	13	13	13	20								20	13	13	13	13	13	13	13
21	5	5	5	5	5	5	5	21	2	2	2	2	2	2	2	21	7	7	7	7	7	7	7
22	5	5	5	5	5	5	5	22	2	2	2	2	2	2	2	22	7	7	7	7	7	7	7
23	5	5	5	5	5	5	5	23	2	2	2	2	2	2	2	23	7	7	7	7	7	7	7

S19 Totals								Change: S19 to S20								S20 Totals							
Hour	Mon	Tue	Wed	Thu	Fri	Sat	Sun	Hour	Mon	Tue	Wed	Thu	Fri	Sat	Sun	Hour	Mon	Tue	Wed	Thu	Fri	Sat	Sun
UTC 00	10	10	10	10	10	10	10	UTC 00	4	4	4	4	4	4	4	UTC 00	14	14	14	14	14	14	14
01	10	10	10	10	10	10	10	01	4	4	4	4	4	4	4	01	14	14	14	14	14	14	14
02	10	10	10	10	10	10	10	02	4	4	4	4	4	4	4	02	14	14	14	14	14	14	14
03	26	26	26	26	26	26	26	03								03	26	26	26	26	26	26	26
04	26	26	26	26	26	26	26	04								04	26	26	26	26	26	26	26
05	26	26	26	26	26	26	26	05								05	26	26	26	26	26	26	26
06	26	26	26	26	26	26	26	06								06	26	26	26	26	26	26	26
07	26	26	26	26	26	26	26	07								07	26	26	26	26	26	26	26
08	26	26	26	26	26	26	26	08								08	26	26	26	26	26	26	26
09	26	26	26	26	26	26	26	09								09	26	26	26	26	26	26	26
10	26	26	26	26	26	26	26	10								10	26	26	26	26	26	26	26
11	26	26	26	26	26	26	26	11								11	26	26	26	26	26	26	26
12	26	26	26	26	26	26	26	12								12	26	26	26	26	26	26	26
13	26	26	26	26	26	26	26	13								13	26	26	26	26	26	26	26
14	26	26	26	26	26	26	26	14								14	26	26	26	26	26	26	26
15	26	26	26	26	26	26	26	15								15	26	26	26	26	26	26	26
16	26	26	26	26	26	26	26	16								16	26	26	26	26	26	26	26
17	26	26	26	26	26	26	26	17								17	26	26	26	26	26	26	26
18	26	26	26	26	26	26	26	18								18	26	26	26	26	26	26	26
19	26	26	26	26	26	26	26	19								19	26	26	26	26	26	26	26
20	26	26	26	26	26	26	26	20	4	4	4	4	4	4	4	20	26	26	26	26	26	26	26
21	10	10	10	10	10	10	10	21	4	4	4	4	4	4	4	21	14	14	14	14	14	14	14
22	10	10	10	10	10	10	10	22	4	4	4	4	4	4	4	22	14	14	14	14	14	14	14
23	10	10	10	10	10	10	10	23	4	4	4	4	4	4	4	23	14	14	14	14	14	14	14

# Coordinator's Report



Total demand	28,597	slots		
Total slots allocated	28,597	slots	100.00%	of total demand
Number of slots cleared OK	28,226	slots	98.70%	of total slots cleared

### Slots adjusted (not OK) due to:

RUNWAY constraints	-	slots	0.0%	of total slots adjusted
TERMINAL constraints	366	slots	98.7%	of total slots adjusted
STAND constraints	-	slots	0.0%	of total slots adjusted
NIGHT constraints	-	slots	0.0%	of total slots adjusted
OTHER constraints	-	slots	0.0%	of total slots adjusted
ARR/DEP TURNAROUND feasibility	5	slots	1.3%	of total slots adjusted

## Executive Summary

Total demand for the Summer 2020 season is 28,597 slots, an increase of 7.5% when compared to the start of S19 and an increase of 7% in comparison to the end of S19 season. Total number of seats has increased to 4,019,559, a change of 8% when compared to the start of S19 and 6.7% in comparison to the end of the S19 season. The main capacity issue is the morning terminal two-hour constraint.

## Runway Constraints

No Runway Constraint issues.

## Terminal Constraints

- 366 slots have been adjusted due to terminal constraints. 248 departures due to the T120 two hourly constraint, 69 due to the T60 one hour constraint and 30 due to terminal Gates.

## Stand Constraints

Due to planned terminal development works, overnight parking at Vilnius is subject to prior permission only for Summer 20

## Night Constraints

No Night Constraint issues.

## Other Constraints

No Other Constraint issues.

## Arr/Dep Turnaround Feasibility

- 5 slots have been adjusted to ensure the correct ground time has been allocated

# Air Transport Movement Allocation by Operator

Comparison between S19 End vs. S20 Start



Operator	FULL SEASON ALLOCATION								PEAK WEEK ALLOCATION							
	S19 ATMs	S20 ATMs	+/- change	S20 Rank	S19 Seats	S20 Seats	+/- change	S20 Rank	S19 ATMs	S20 ATMs	+/- change	S20 Rank	S19 Seats	S20 Seats	+/- change	S20 Rank
Aero4M	2	-	-2	29	98	-	-98	27	-	-	0	24	-	-	0	23
Aeroflot	1,230	1,243	13	7	164,541	139,550	-24,991	8	42	42	0	7	5,632	4,648	-984	10
Air Serbia	2	-	-2	29	288	-	-288	27	-	-	0	24	-	-	0	23
airBaltic	3,769	5,286	1,517	1	380,434	563,334	182,900	3	124	178	54	1	12,856	19,186	6,330	3
AMC Aviation (Poland)	71	86	15	23	13,419	16,254	2,835	22	1	2	1	22	189	378	189	22
Arkia	-	-	0	29	-	-	0	27	-	-	0	24	-	-	0	23
ASL Airlines France	-	-	0	29	-	-	0	27	-	-	0	24	-	-	0	23
AtlasGlobal	8	-	-8	29	1,680	-	-1,680	27	-	-	0	24	-	-	0	23
Austrian Airlines	401	420	19	16	48,120	60,480	12,360	14	12	14	2	16	1,440	2,016	576	15
Belavia Belarusian Airlines	420	510	90	14	29,568	38,760	9,192	17	14	18	4	14	908	1,368	460	17
Blue Panorama Airlines	8	-	-8	29	2,152	-	-2,152	27	-	-	0	24	-	-	0	23
Brussels Airlines	280	322	42	17	39,480	45,402	5,922	15	10	12	2	17	1,410	1,692	282	16
Carpatair	2	-	-2	29	200	-	-200	27	-	-	0	24	-	-	0	23
Corendon Airlines	153	226	73	18	28,710	42,714	14,004	16	8	7	-1	19	1,512	1,323	-189	18
Corendon Airlines Europe	1	6	5	26	189	1,134	945	25	-	-	0	24	-	-	0	23
Enter Air	67	8	-59	25	12,492	1,512	-10,980	24	8	-	-8	24	1,470	-	-1,470	23
European Air Transport (DHL)	586	596	10	12	-	-	0	27	20	20	0	13	-	-	0	23
Finnair	1,247	1,200	-47	8	108,530	101,848	-6,682	12	40	40	0	8	3,632	3,828	196	12
Freebird Airlines	263	210	-53	19	47,340	37,800	-9,540	18	18	12	-6	17	3,240	2,160	-1,080	14
Getjet	2,189	2,338	149	5	394,834	420,840	26,006	4	84	84	0	5	15,120	15,120	0	4
Holiday Europe	1	106	105	22	219	22,902	22,683	21	-	2	2	22	-	438	438	21
Lauda Motion	-	180	180	20	-	32,418	32,418	19	-	6	6	20	-	1,080	1,080	20
LOT Polish Airlines	3,181	2,738	-443	4	290,826	289,508	-1,318	5	112	92	-20	4	10,420	9,728	-692	5
Lufthansa	1,136	1,134	-2	9	187,822	195,048	7,226	6	38	38	0	9	6,180	6,536	356	7
Norwegian	448	480	32	15	83,292	89,280	5,988	13	16	16	0	15	2,976	2,976	0	13
Onur Air	213	553	340	13	45,874	121,107	75,233	10	12	24	12	12	2,556	5,256	2,700	8
RAF-Avia	-	4	4	27	-	-	0	27	-	-	0	24	-	-	0	23
Ryanair	3,949	3,998	49	2	746,361	755,622	9,261	1	128	132	4	2	24,192	24,948	756	1
SAS Scandinavian	1,663	1,918	255	6	149,654	168,784	19,130	7	68	78	10	6	6,120	6,864	744	6
SmartLynx Airlines	-	14	14	24	-	2,520	2,520	23	-	-	0	24	-	-	0	23
SmartLynx Airlines Estonia	14	-	-14	29	2,536	-	-2,536	27	-	-	0	24	-	-	0	23
Smartwings Polska	-	122	122	21	-	23,058	23,058	20	-	6	6	20	-	1,134	1,134	19
SunExpress	18	-	-18	29	3,402	-	-3,402	27	-	-	0	24	-	-	0	23
Titan Airways	-	2	2	28	-	64	64	26	-	-	0	24	-	-	0	23
Transaviabaltika	300	-	-300	29	-	-	0	27	10	-	-10	24	-	-	0	23
Travel Service	1	-	-1	29	189	-	-189	27	-	-	0	24	-	-	0	23
Travel Service Polska	27	-	-27	29	5,103	-	-5,103	27	-	-	0	24	-	-	0	23
Turkish Airlines	785	822	37	10	113,903	116,070	2,167	11	28	28	0	10	4,094	3,960	-134	11
Ukraine International	917	718	-199	11	164,001	129,240	-34,761	9	28	28	0	10	4,908	5,040	132	9
Volotea Airlines	1	-	-1	29	156	-	-156	27	-	-	0	24	-	-	0	23
Wizz Air	3,354	3,357	3	3	700,220	604,310	-95,910	2	112	114	2	3	23,960	20,520	-3,440	2
Yan Air	12	-	-12	29	1,824	-	-1,824	27	-	-	0	24	-	-	0	23
Yanair	8	-	-8	29	1,152	-	-1,152	27	-	-	0	24	-	-	0	23
<b>TOTAL</b>	<b>26,727</b>	<b>28,597</b>	<b>1,870</b>		<b>3,768,609</b>	<b>4,019,559</b>	<b>250,950</b>		<b>933</b>	<b>993</b>	<b>60</b>		<b>132,815</b>	<b>140,199</b>	<b>7,384</b>	

Operators with 0 'ATMs' in both S19 End & S20 Start schedules are included in the table due to appearing in the S19 Start schedule (either with/without allocated slots).

# Peak Week - Allocation and Slot Adjustment Distribution by Operator



Schedule: S20 Start

Operator	S20 allocated ATMs	SLOT ADJUSTMENTS (MINUTES OFF REQUESTED TIME)														Requests with NO slot allocated
		0	5	10	15	20	25	30	35	40	45	50	55	60	>60	
Aeroflot	42	100.0%	0.0%	0.0%	0.0%	0.0%	0.0%	0.0%	0.0%	0.0%	0.0%	0.0%	0.0%	0.0%	0.0%	-
airBaltic	178	100.0%	0.0%	0.0%	0.0%	0.0%	0.0%	0.0%	0.0%	0.0%	0.0%	0.0%	0.0%	0.0%	0.0%	-
AMC Aviation (Poland)	2	100.0%	0.0%	0.0%	0.0%	0.0%	0.0%	0.0%	0.0%	0.0%	0.0%	0.0%	0.0%	0.0%	0.0%	-
Austrian Airlines	14	100.0%	0.0%	0.0%	0.0%	0.0%	0.0%	0.0%	0.0%	0.0%	0.0%	0.0%	0.0%	0.0%	0.0%	-
Belavia Belarusian Airlines	18	100.0%	0.0%	0.0%	0.0%	0.0%	0.0%	0.0%	0.0%	0.0%	0.0%	0.0%	0.0%	0.0%	0.0%	-
Brussels Airlines	12	100.0%	0.0%	0.0%	0.0%	0.0%	0.0%	0.0%	0.0%	0.0%	0.0%	0.0%	0.0%	0.0%	0.0%	-
Corendon Airlines	7	100.0%	0.0%	0.0%	0.0%	0.0%	0.0%	0.0%	0.0%	0.0%	0.0%	0.0%	0.0%	0.0%	0.0%	-
Enter Air	-															-
European Air Transport (DHL)	20	100.0%	0.0%	0.0%	0.0%	0.0%	0.0%	0.0%	0.0%	0.0%	0.0%	0.0%	0.0%	0.0%	0.0%	-
Finnair	40	100.0%	0.0%	0.0%	0.0%	0.0%	0.0%	0.0%	0.0%	0.0%	0.0%	0.0%	0.0%	0.0%	0.0%	-
Freebird Airlines	12	100.0%	0.0%	0.0%	0.0%	0.0%	0.0%	0.0%	0.0%	0.0%	0.0%	0.0%	0.0%	0.0%	0.0%	-
Getjet	84	97.6%	0.0%	1.2%	0.0%	1.2%	0.0%	0.0%	0.0%	0.0%	0.0%	0.0%	0.0%	0.0%	0.0%	-
Holiday Europe	2	100.0%	0.0%	0.0%	0.0%	0.0%	0.0%	0.0%	0.0%	0.0%	0.0%	0.0%	0.0%	0.0%	0.0%	-
Lauda Motion	6	100.0%	0.0%	0.0%	0.0%	0.0%	0.0%	0.0%	0.0%	0.0%	0.0%	0.0%	0.0%	0.0%	0.0%	-
LOT Polish Airlines	92	100.0%	0.0%	0.0%	0.0%	0.0%	0.0%	0.0%	0.0%	0.0%	0.0%	0.0%	0.0%	0.0%	0.0%	-
Lufthansa	38	100.0%	0.0%	0.0%	0.0%	0.0%	0.0%	0.0%	0.0%	0.0%	0.0%	0.0%	0.0%	0.0%	0.0%	-
Norwegian	16	100.0%	0.0%	0.0%	0.0%	0.0%	0.0%	0.0%	0.0%	0.0%	0.0%	0.0%	0.0%	0.0%	0.0%	-
Onur Air	24	62.5%	4.2%	0.0%	0.0%	4.2%	0.0%	0.0%	0.0%	0.0%	0.0%	0.0%	0.0%	4.2%	25.0%	-
Ryanair	132	99.2%	0.0%	0.0%	0.8%	0.0%	0.0%	0.0%	0.0%	0.0%	0.0%	0.0%	0.0%	0.0%	0.0%	-
SAS Scandinavian	78	100.0%	0.0%	0.0%	0.0%	0.0%	0.0%	0.0%	0.0%	0.0%	0.0%	0.0%	0.0%	0.0%	0.0%	-
Smartwings Polska	6	100.0%	0.0%	0.0%	0.0%	0.0%	0.0%	0.0%	0.0%	0.0%	0.0%	0.0%	0.0%	0.0%	0.0%	-
Transaviabaltika	-															-
Travel Service Polska	-															-
Turkish Airlines	28	100.0%	0.0%	0.0%	0.0%	0.0%	0.0%	0.0%	0.0%	0.0%	0.0%	0.0%	0.0%	0.0%	0.0%	-
Ukraine International	28	100.0%	0.0%	0.0%	0.0%	0.0%	0.0%	0.0%	0.0%	0.0%	0.0%	0.0%	0.0%	0.0%	0.0%	-
Wizz Air	114	99.1%	0.0%	0.9%	0.0%	0.0%	0.0%	0.0%	0.0%	0.0%	0.0%	0.0%	0.0%	0.0%	0.0%	-
<b>TOTAL</b>	<b>993</b>	<b>98.7%</b>	<b>0.1%</b>	<b>0.2%</b>	<b>0.1%</b>	<b>0.2%</b>	<b>0.0%</b>	<b>0.0%</b>	<b>0.0%</b>	<b>0.0%</b>	<b>0.0%</b>	<b>0.0%</b>	<b>0.0%</b>	<b>0.1%</b>	<b>0.6%</b>	<b>-</b>

Operators with 0 'allocated ATMs' and 0 'Requests with NO slot allocated' in S20, are included in this list due to having slots allocated in either S19 Start or S19 End schedules.

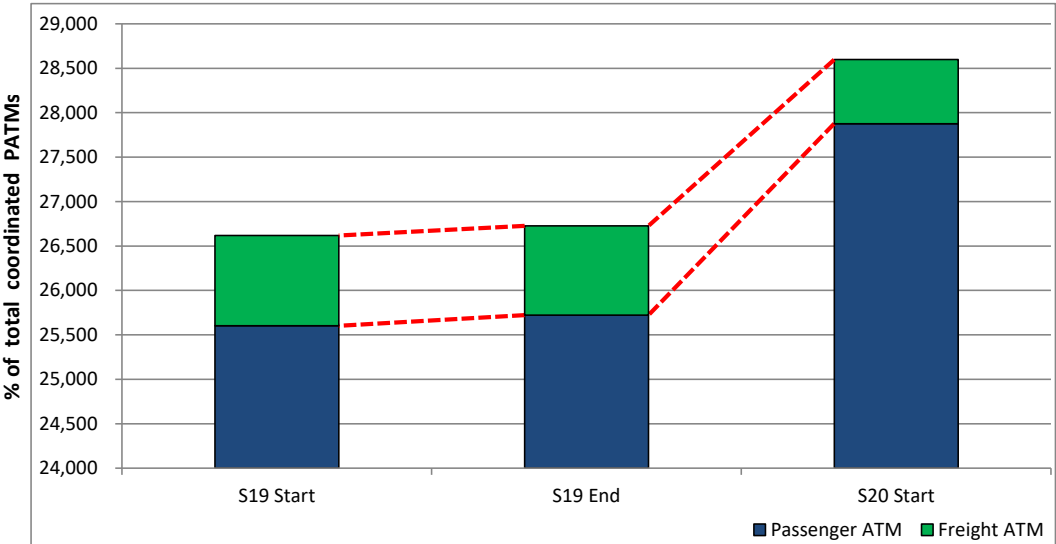
## Significant Route Changes

Operator	Category	Description of change from S19 schedule to S20 schedule
airBaltic	<b>NEW</b>	2 x weekly frequencies to Zurich (ZRH), Gothenburg (GOT), Dubrovnik (DBV) and Rijeka (RJK)
airBaltic	<b>NEW</b>	3 x weekly frequency to Hamburg (HAM)
airBaltic	CHANGE	Increased weekly frequency to Berlin Tegel (TXL)
airBaltic	CHANGE	Increased weekly frequency to Munich (MUC)
airBaltic	CHANGE	Increased weekly frequency to Riga (RIX)
airBaltic	CHANGE	Increased weekly frequency to Tallinn (TLL)
AMC Aviation (Poland)	<b>NEW</b>	Part season weekly services to Palermo (PMO) and Zakinthos (ZTH)
AMC Aviation (Poland)	<b>CANCELLED</b>	Part season weekly frequencies to Corfu (CFU) and Tirana (TIA)
Austrian Airlines	<b>NEW</b>	3 x weekly frequency to Vienna (VIE)
Belavia Belarusian Airlines	CHANGE	Increased weekly frequency to Minsk (MSQ)
Corendon Airlines	<b>NEW</b>	Service to Antalya (AYT)
Corendon Airlines	<b>CANCELLED</b>	Service to Antalya (AYT)
Getjet	CHANGE	Increased services to Burgas (BOJ), Antalya (AYT) and Varna (VAR)
Holiday Europe	<b>NEW</b>	Part season weekly frequencies to Hurghada (HRG) Sharm El Sheikh (SSH) Heraklion (HER) and Bourgas (BOJ)
Lauda Motion	<b>NEW</b>	3 x weekly frequency to Vienna (VIE)
LOT Polish Airlines	<b>CANCELLED</b>	Service to Tallinn (TLL)
Onur Air	CHANGE	Increased weekly frequency to Antalya (AYT)
Onur Air	<b>CANCELLED</b>	Part season weekly frequency to Bodrum (BJV)
Ryanair	<b>NEW</b>	Services to Southend (SEN), Kharkiv (HRK) and Tel Aviv (TLV)
Ryanair	CHANGE	Increased weekly frequency to Dublin (DUB)
Ryanair	<b>CANCELLED</b>	Services to Leeds (LBA), Cologne (CGN), Amman (AMM) and Nuremberg (NUE)
SAS Scandinavian	CHANGE	Increased service to Stockholm Arlanda (ARN)
SmartLynx Airlines Estonia	<b>NEW</b>	Part season fortnightly service to Madrid (MAD)
Transaviabaltika	<b>CANCELLED</b>	5 x weekly frequency to Minsk (MSQ)
Travel Service Polska	<b>NEW</b>	1 x weekly frequency to Kavala (KVA)
Travel Service Polska	<b>NEW</b>	1 x weekly frequency to Tirana (TIA)
Turkish Airlines	CHANGE	Decreased service to Antalya (AYT)
Turkish Airlines	CHANGE	Increased service to Istanbul (IST)
Wizz Air	<b>NEW</b>	Services to Southend (SEN), Saint Petersburg (LED), Yerevan (EVN) and Zaporizhia (OZH)
Wizz Air	CHANGE	Decreased service to London Luton (LTN)
Wizz Air	<b>CANCELLED</b>	Services to Athens (ATH), Keflavik (KEF)

# Full Season - ATM Analysis

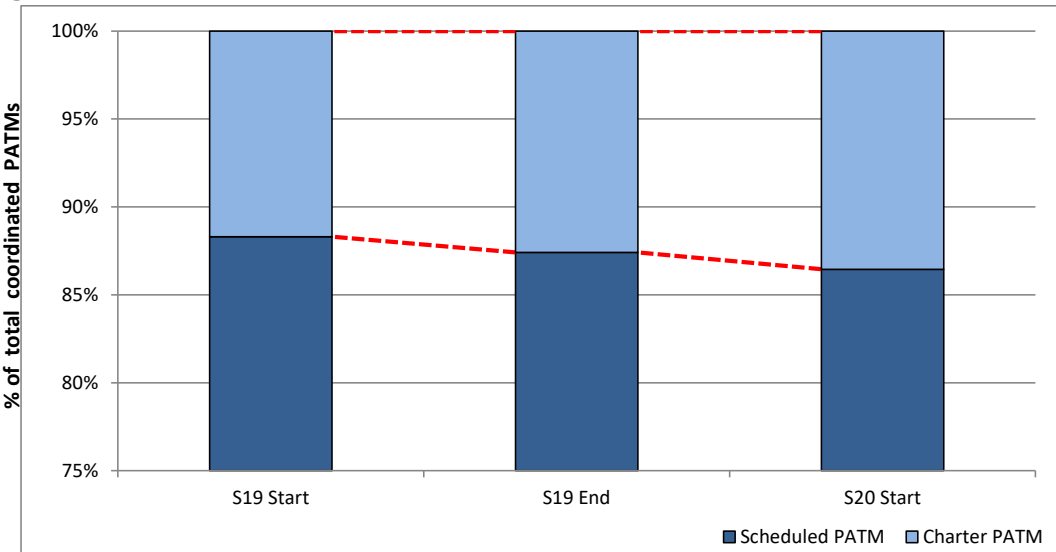


## Total ATMs: Passenger ATMs vs. Freight ATMs



Schedule Snapshot

## Passenger ATMs: Scheduled vs. Charter

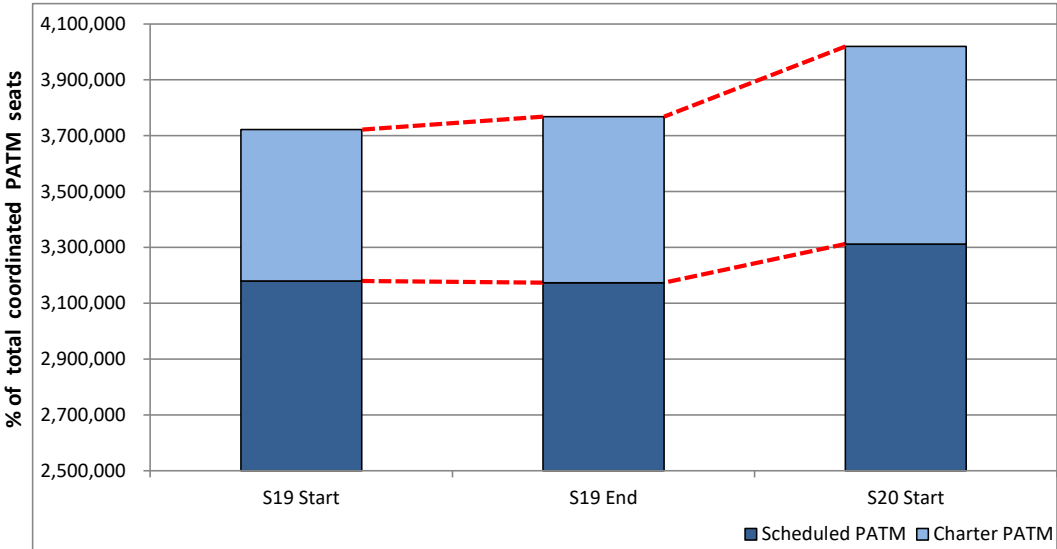


Schedule Snapshot

# Full Season - PATM Seats Analysis

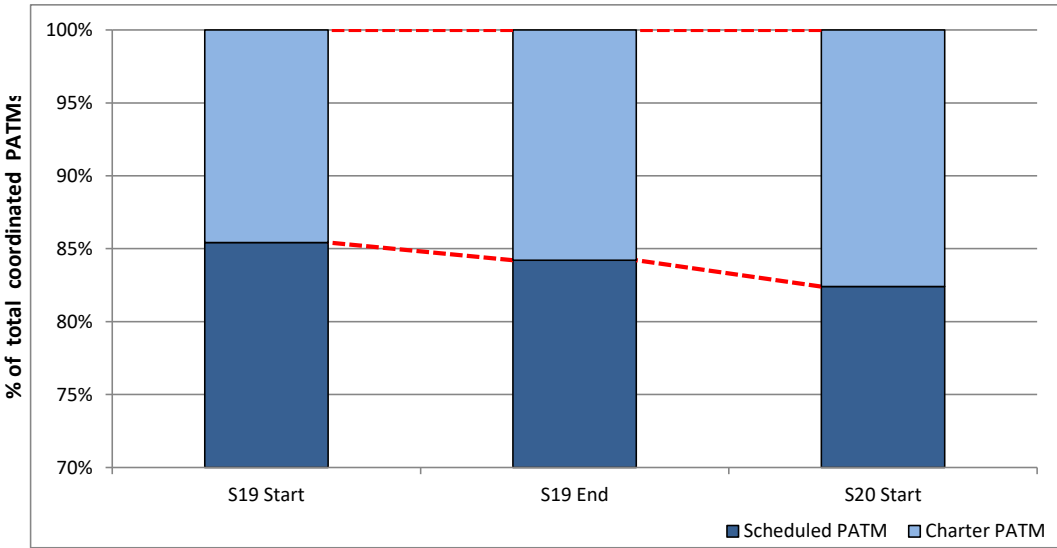


**Total Passenger ATM seats: Scheduled vs. Charter**



**Schedule Snapshot**

**Passenger ATM seats: Scheduled vs. Charter**



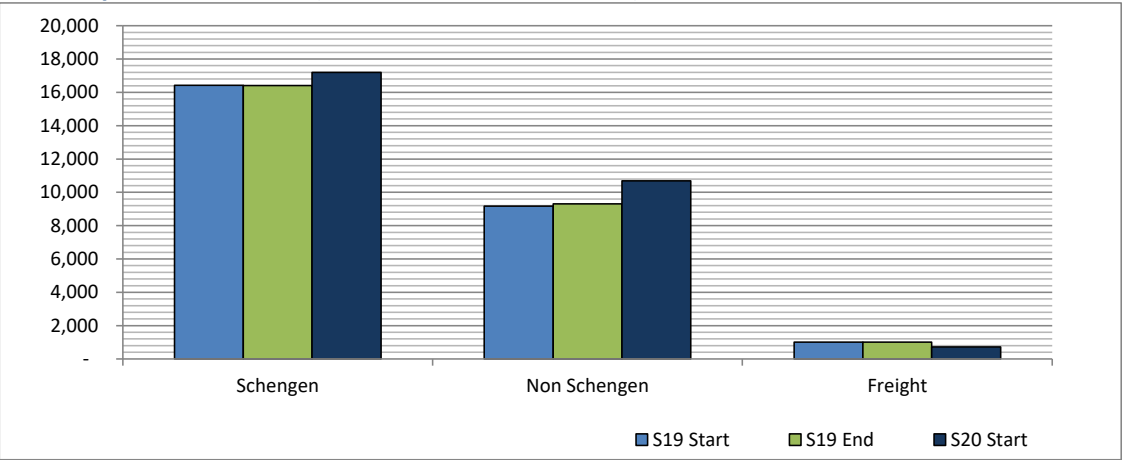
**Schedule Snapshot**



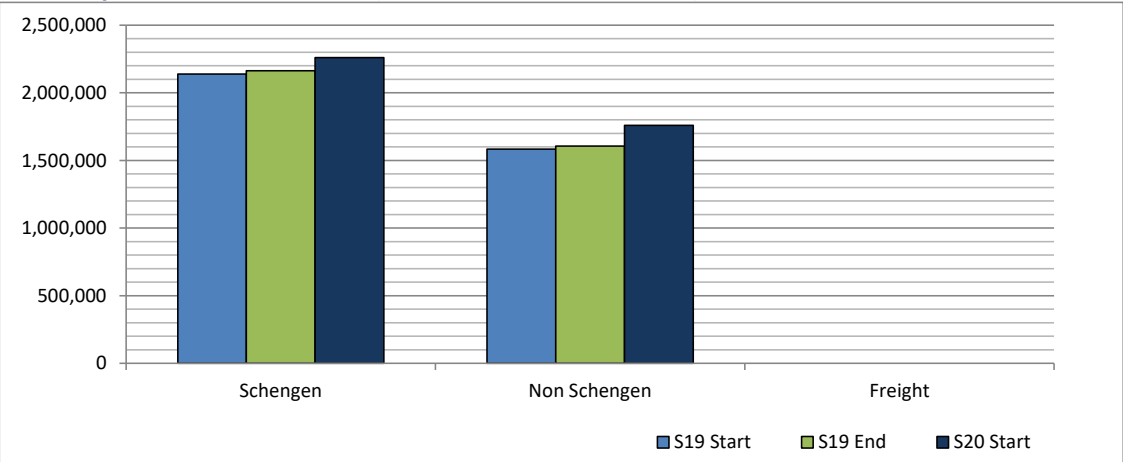
# Full Season - Terminal Analysis



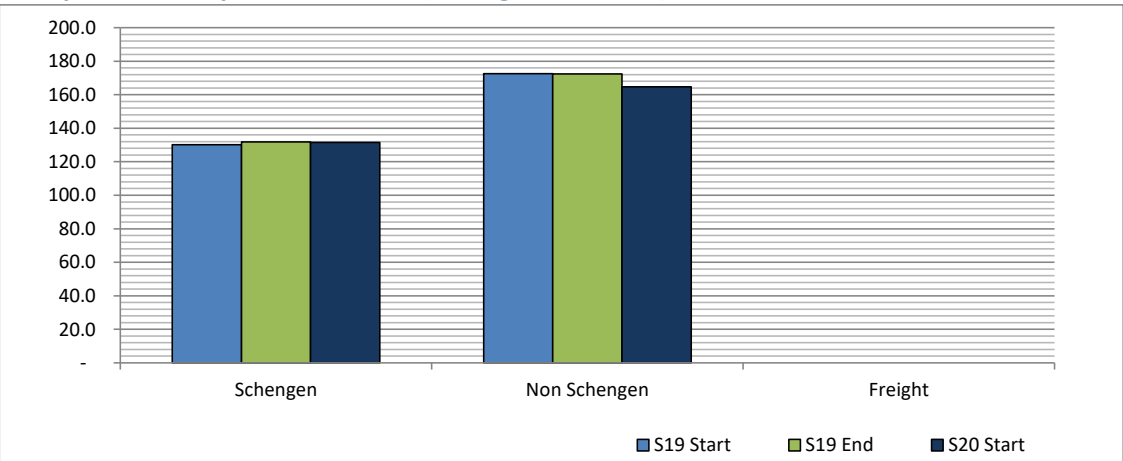
**Air Transport Movements (total allocated for season)**



**Air Transport Movement Seats (total allocated for season)**



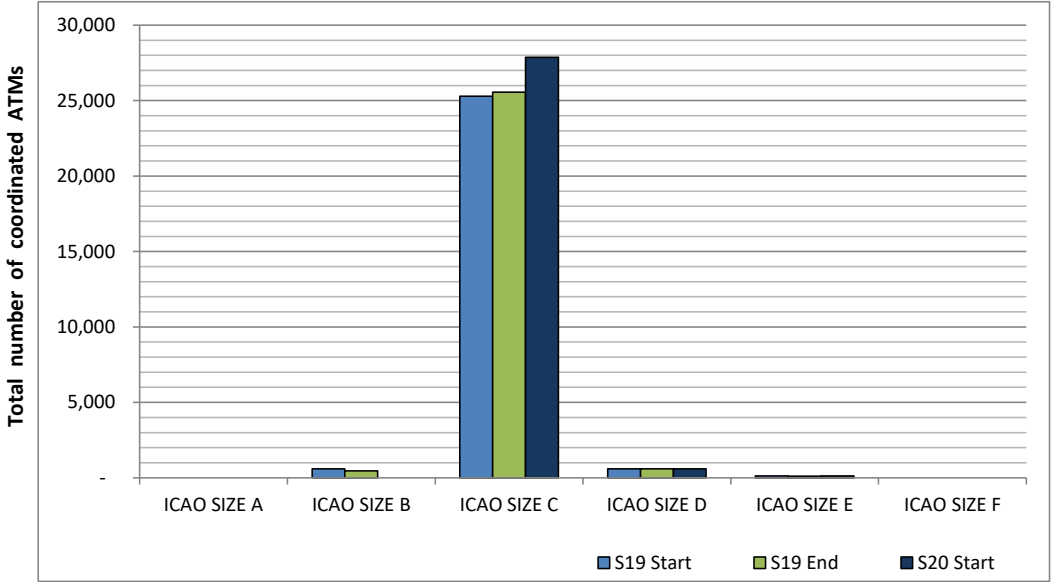
**Seats per Air Transport Movement (average for season)**



# Full Season - Aircraft Size Analysis

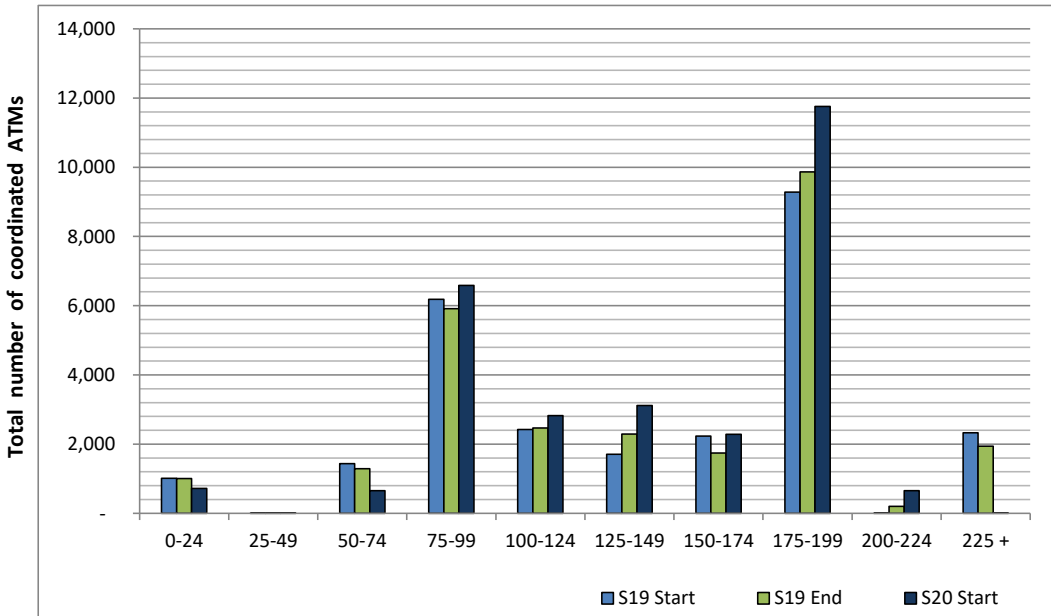


## ICAO size designation



Note: See Glossary for definitions of ICAO SIZE groupings

## Air Transport Movement seat distribution

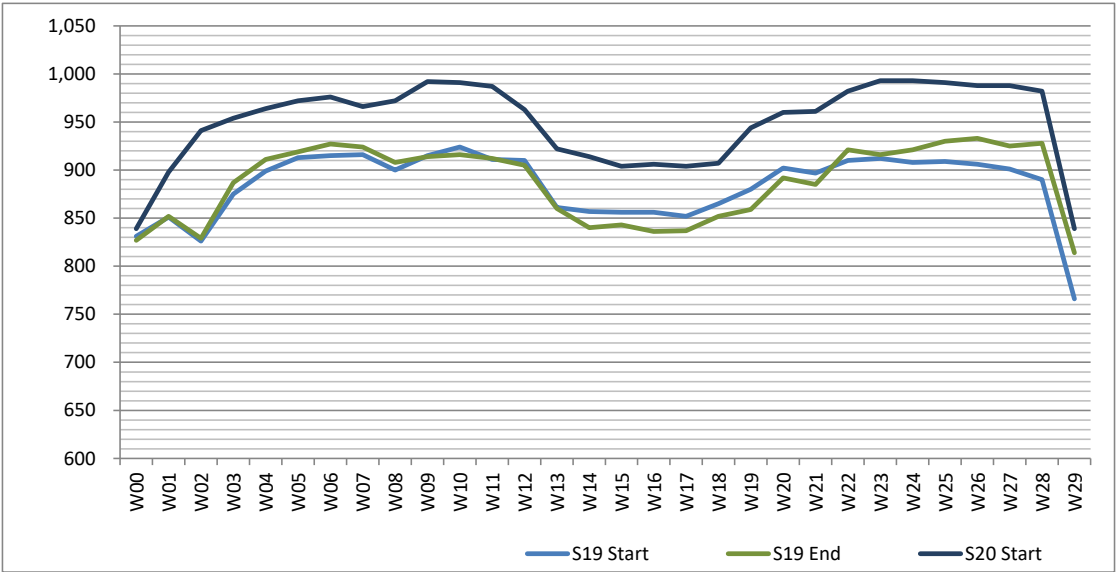


Note: FREIGHT-ONLY services with 0 seats are included in the first seat band '0-24'

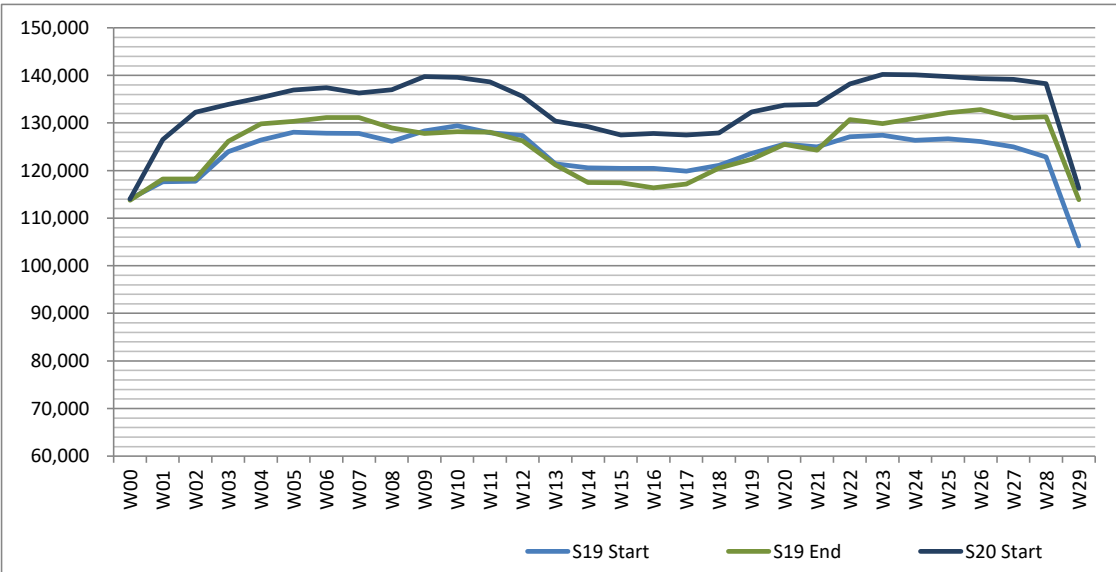
# Full Season - Seasonality



Air Transport Movements by week of season



Air Transport Movement Seats by week of season



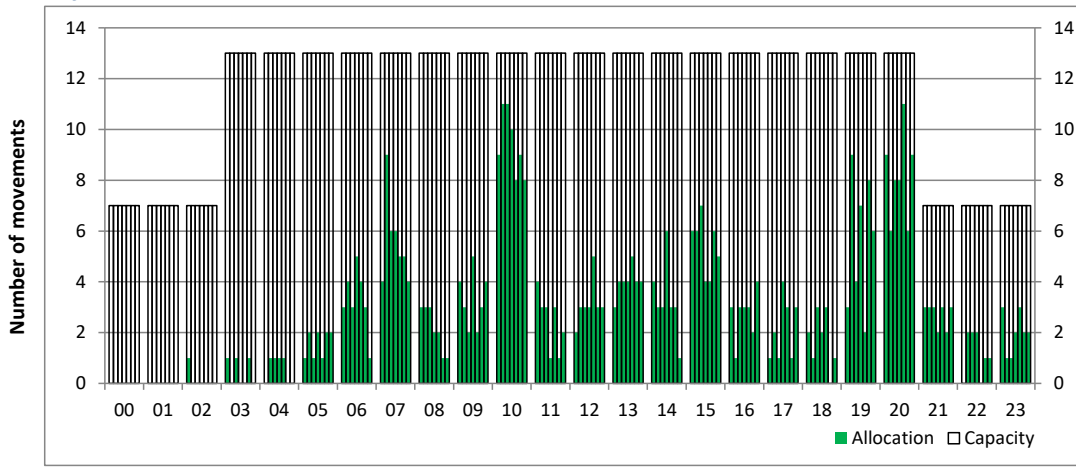
# Peak Week - Hourly Runway Allocation

Schedule: S20 Start



## Hourly Arrival Allocation

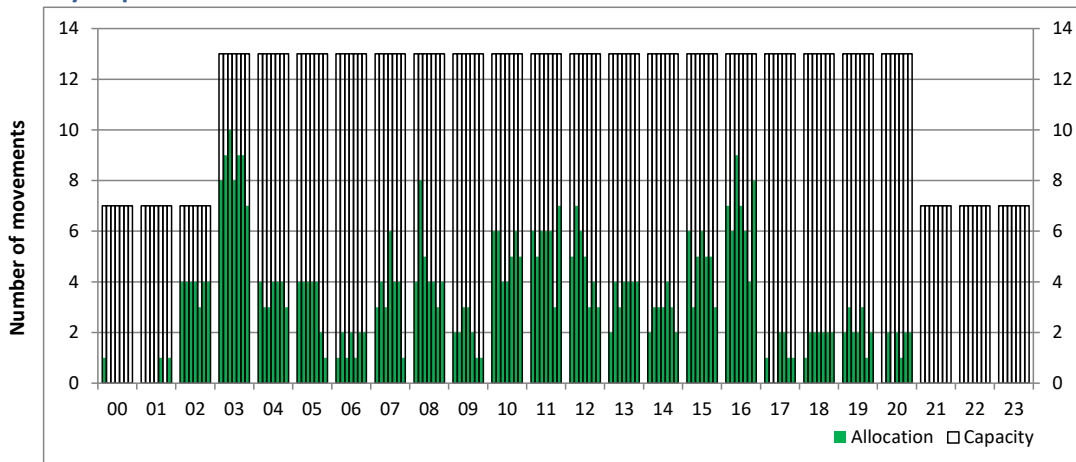
Time: UTC



Hour of day (24 hour format)

## Hourly Departure Allocation

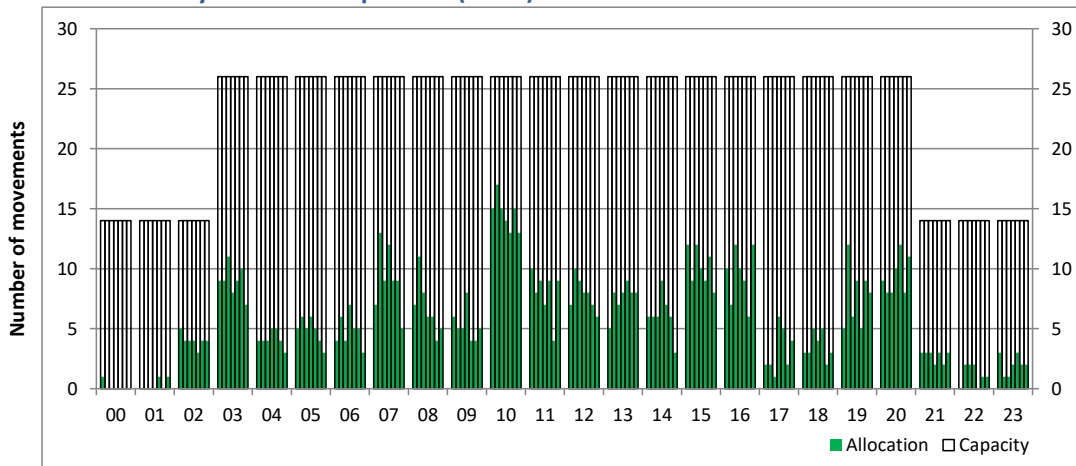
Time: UTC



Hour of day (24 hour format)

## Combined Hourly Arrival & Departure (Total) Allocation

Time: UTC



Hour of day (24 hour format)

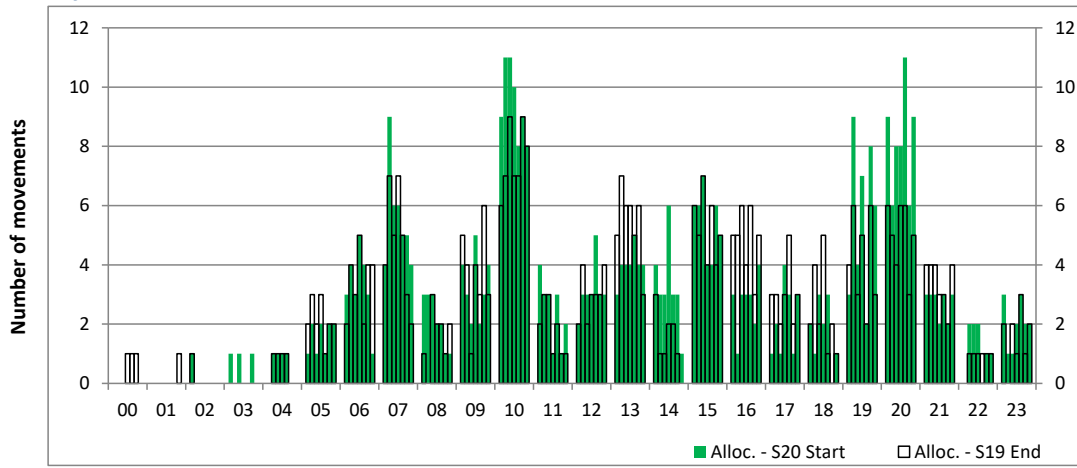
# Peak Week - Runway Allocation Comparison

Comparison of S20 Start vs. S19 End



## Hourly Arrival Allocation

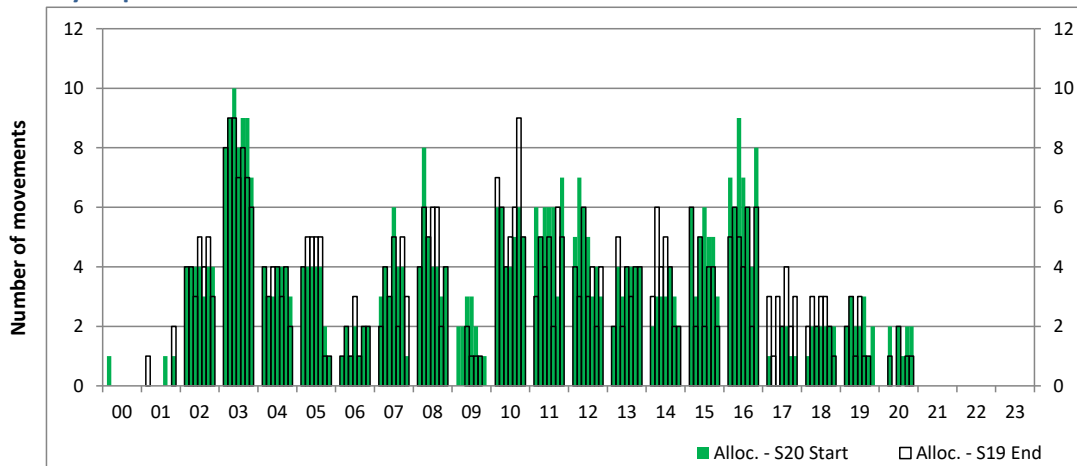
Time: UTC



Hour of day (24 hour format)

## Hourly Departure Allocation

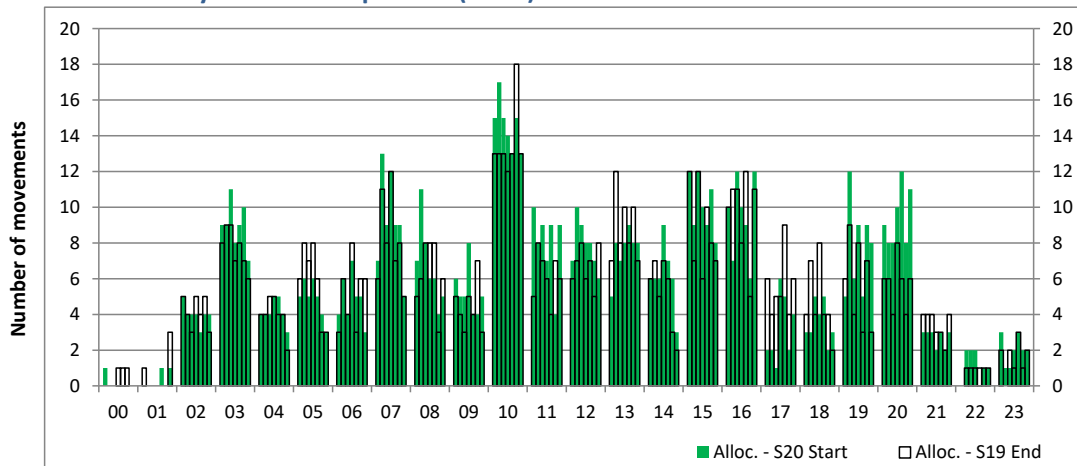
Time: UTC



Hour of day (24 hour format)

## Combined Hourly Arrival & Departure (Total) Allocation

Time: UTC



Hour of day (24 hour format)

# Peak Week - Passengers Histogram

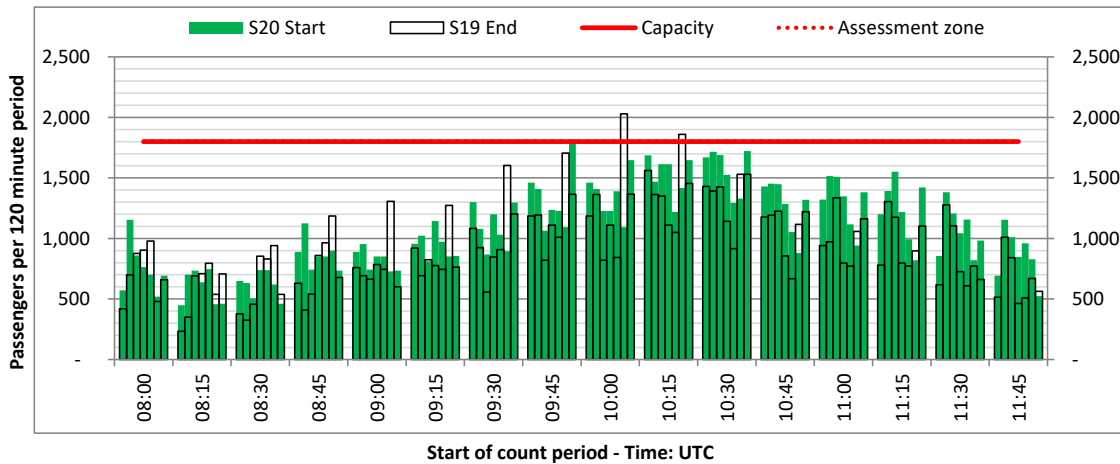
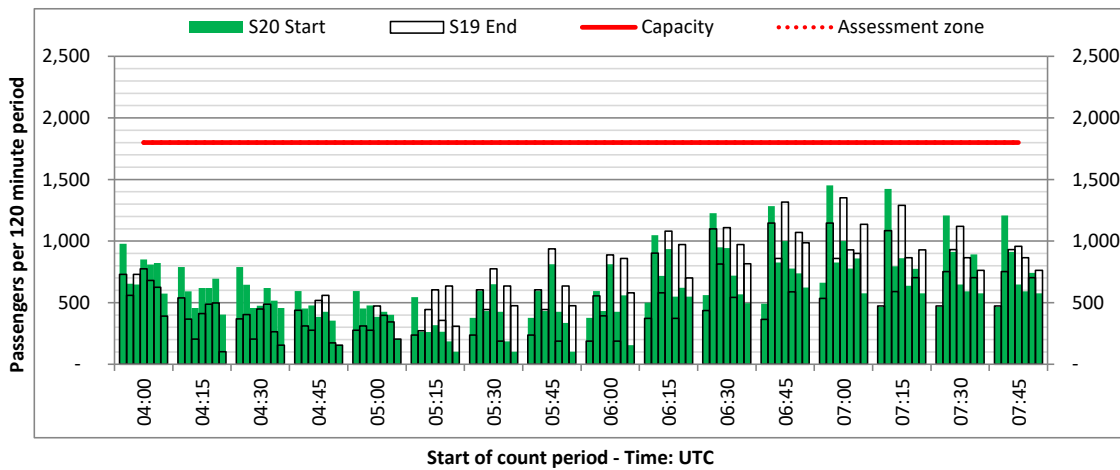
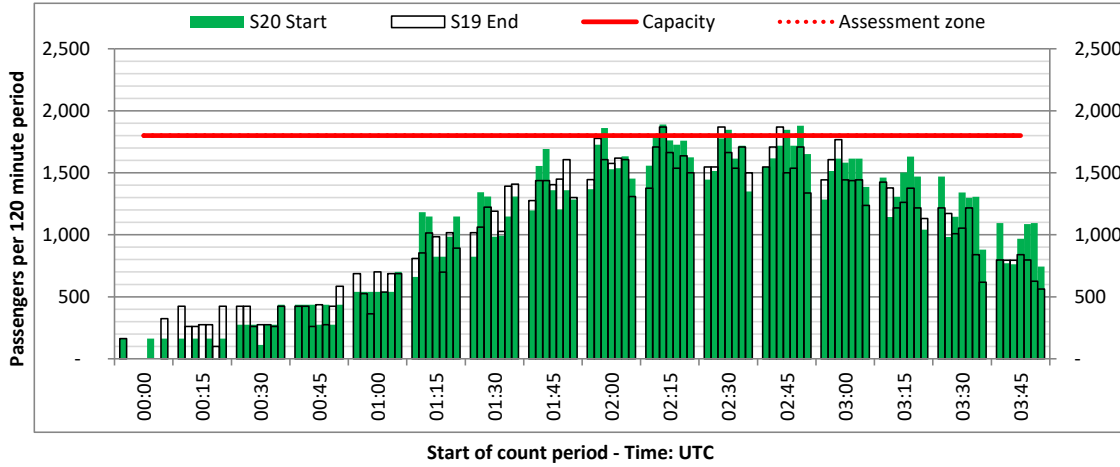
DEPARTURE - 120 minute count rolling every 15 mins (T120/15)



Terminals: All Terminals

Operators: All Operators

Days: 1234567



# Peak Week - Passengers Histogram

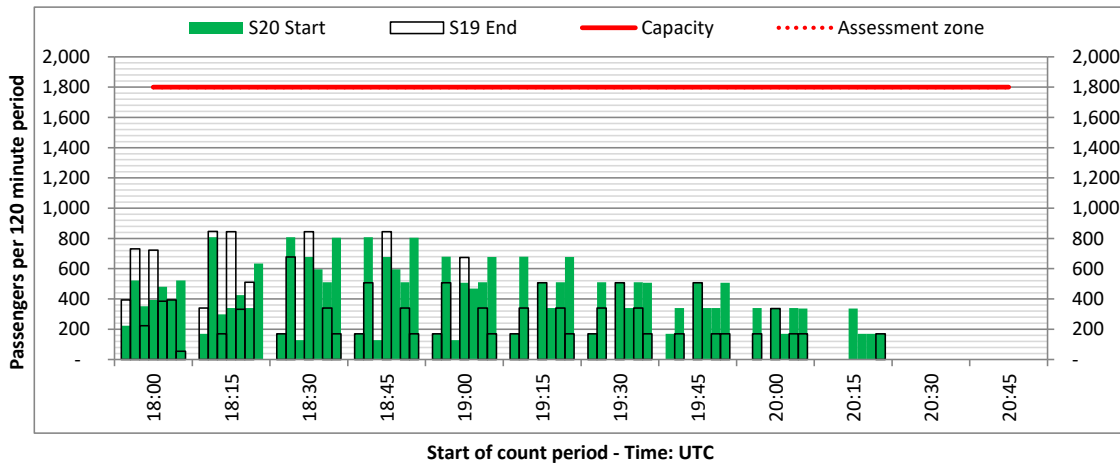
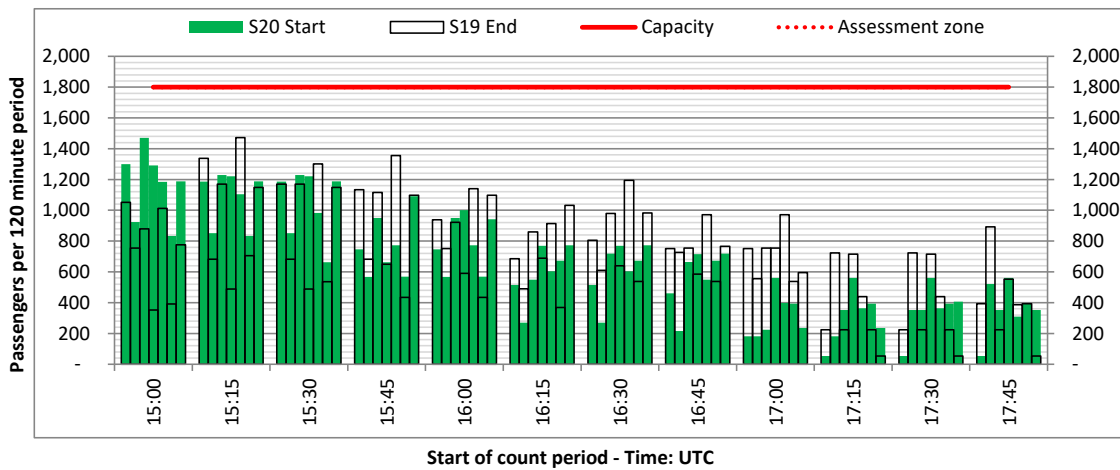
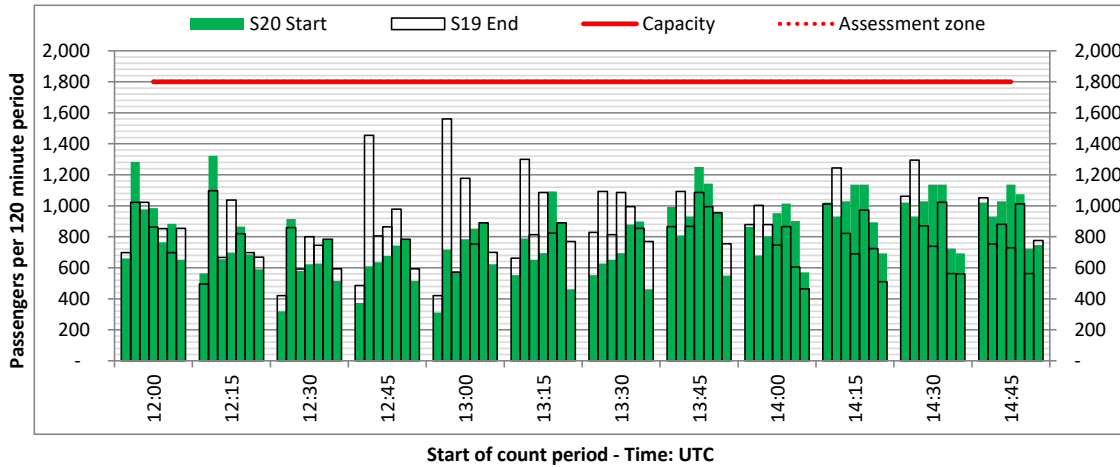
DEPARTURE - 120 minute count rolling every 15 mins (T120/15)



Terminals: All Terminals

Operators: All Operators

Days: 1234567



# Peak Week - Passengers Histogram

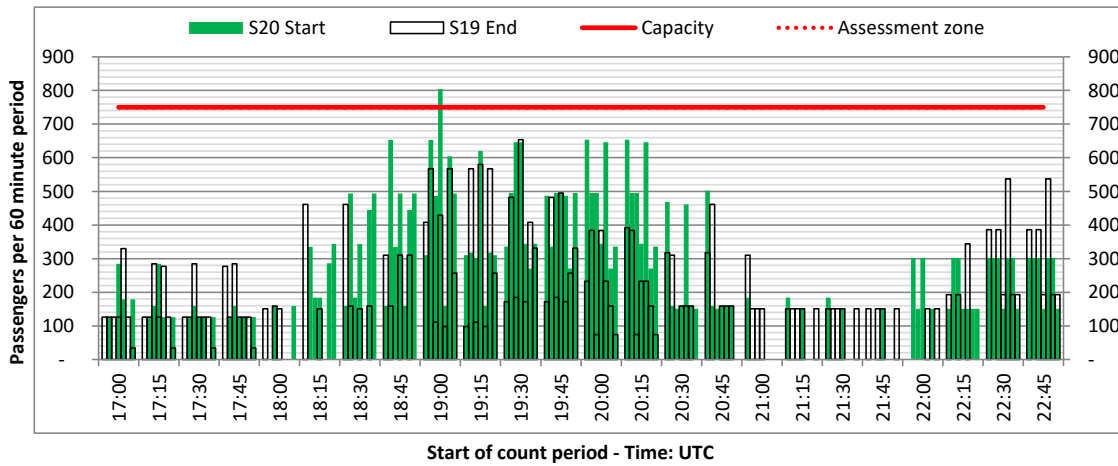
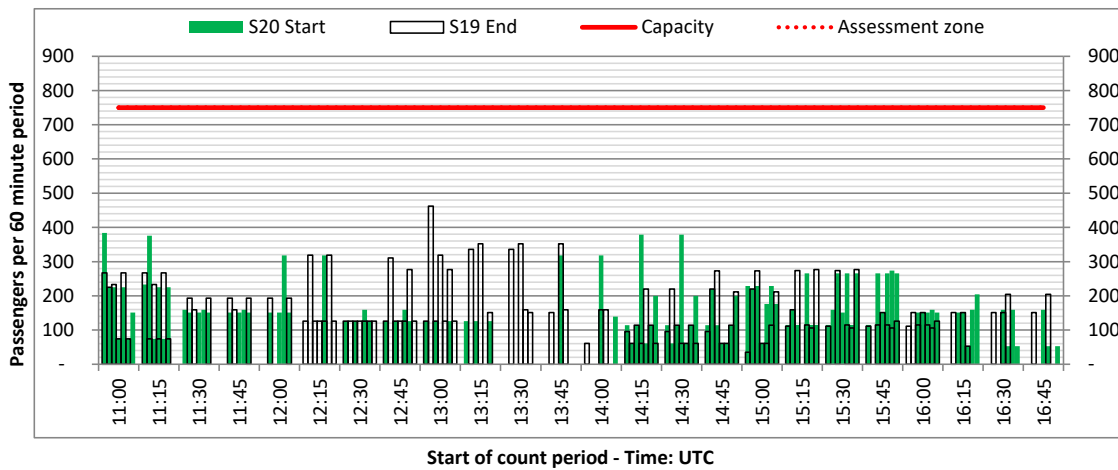
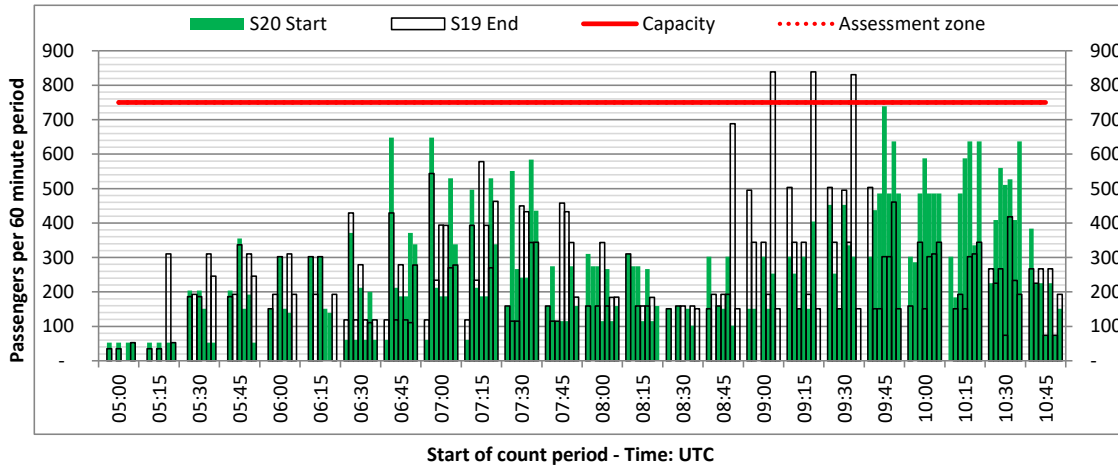
ARRIVAL - 60 minute count rolling every 15 mins (T60/15)



Terminals: Non-Schengen

Operators: All Operators

Days: 1234567





# Peak Week - Movements Histogram

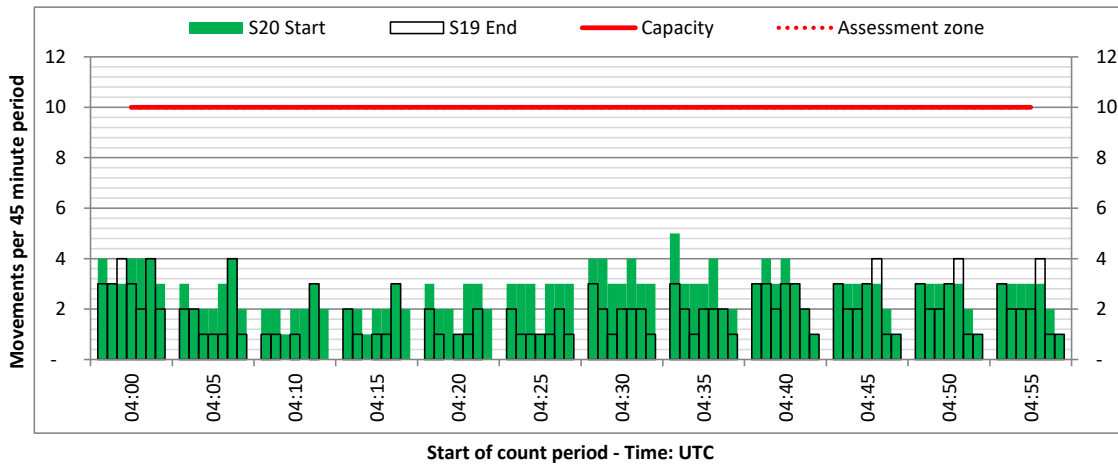
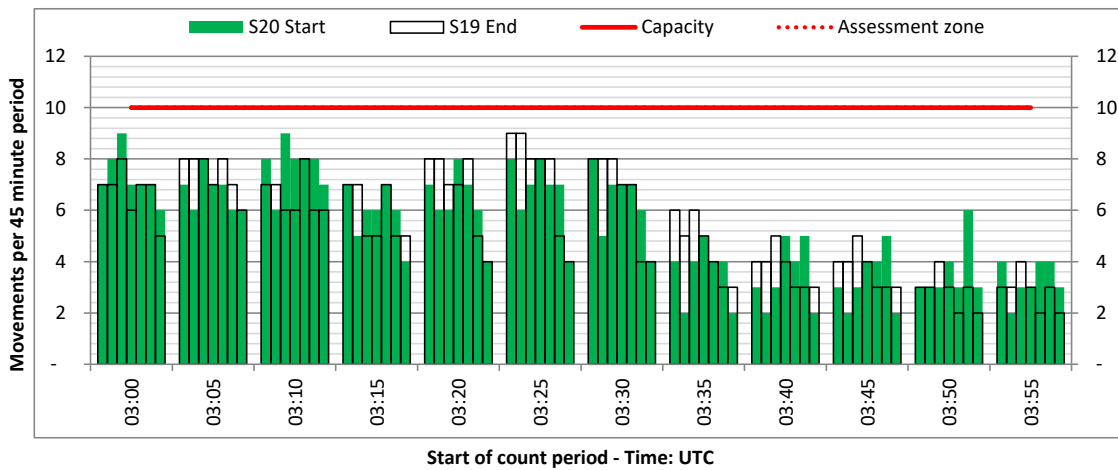
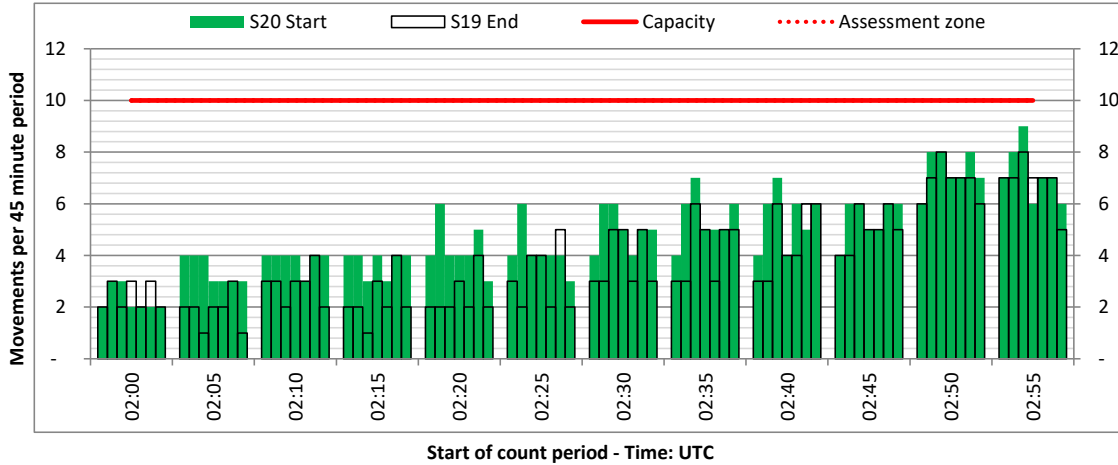
DEPARTURE - 45 minute count rolling every 5 mins (R45/5)



Terminals: All Terminals

Operators: All Operators

Days: 1234567



# Peak Week - Movements Histogram

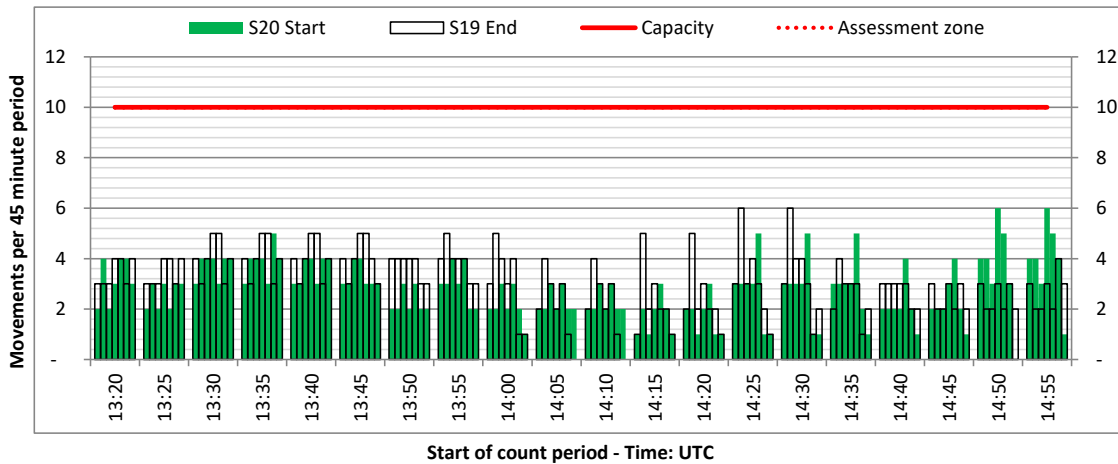
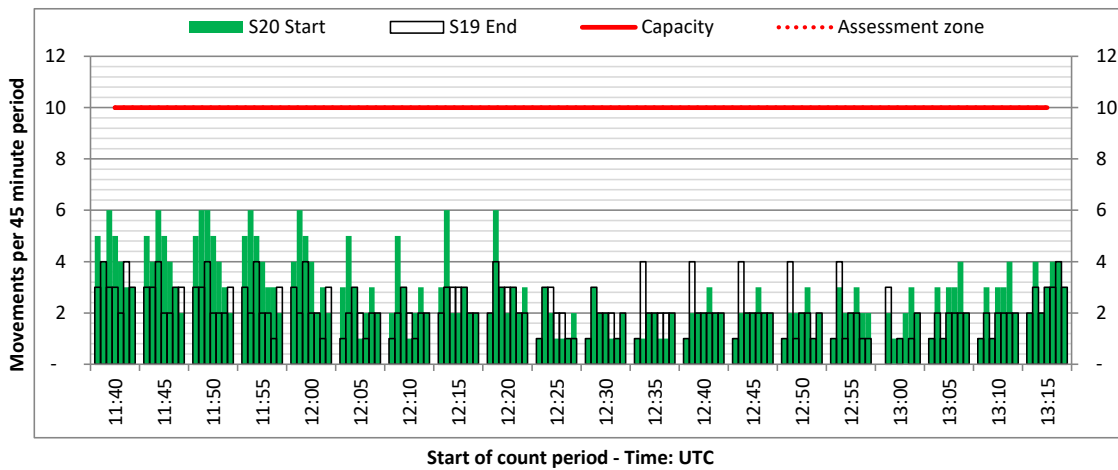
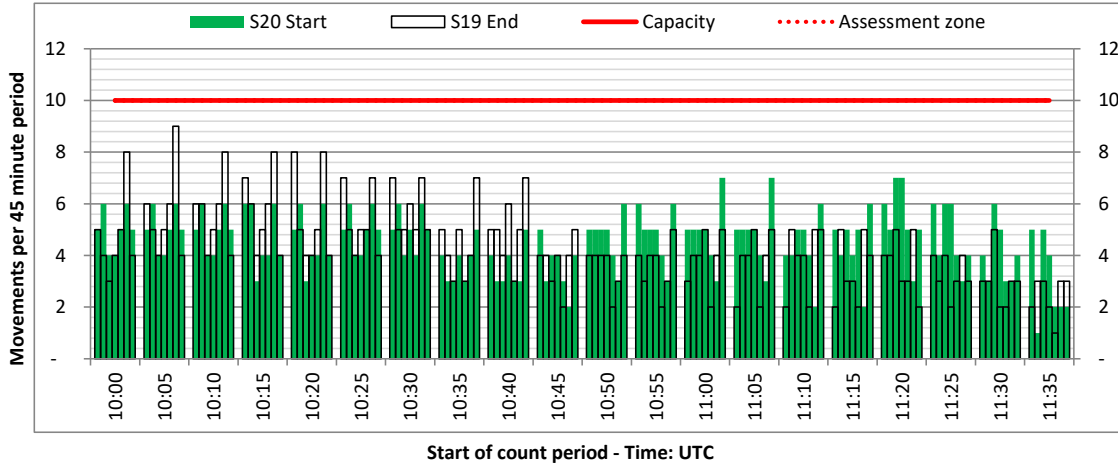
DEPARTURE - 45 minute count rolling every 5 mins (R45/5)



Terminals: All Terminals

Operators: All Operators

Days: 1234567



# Peak Week - Movements Histogram

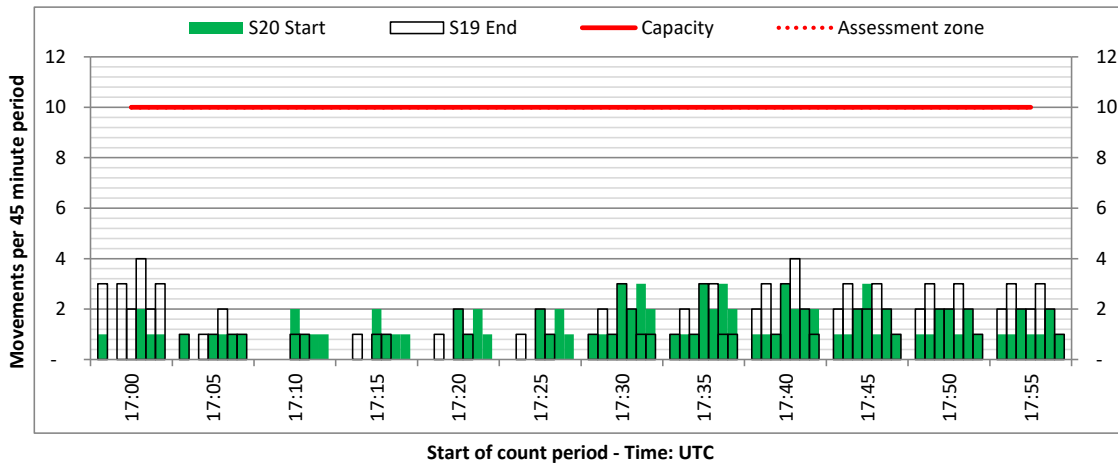
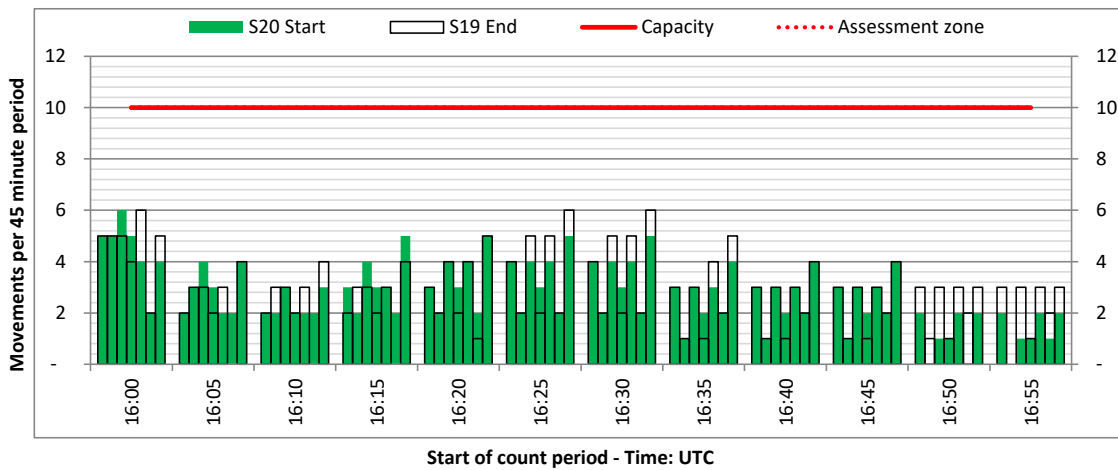
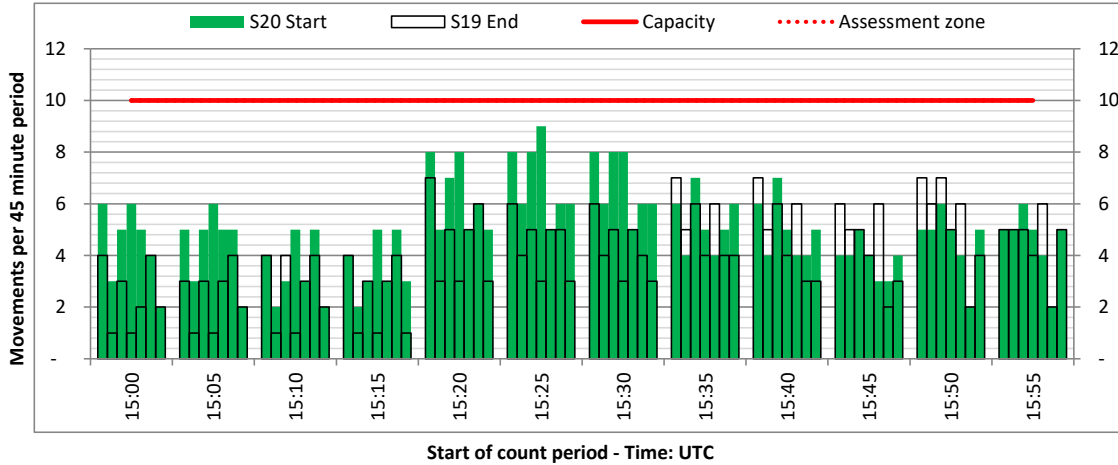
DEPARTURE - 45 minute count rolling every 5 mins (R45/5)



Terminals: All Terminals

Operators: All Operators

Days: 1234567



# Peak Week - Movements Histogram

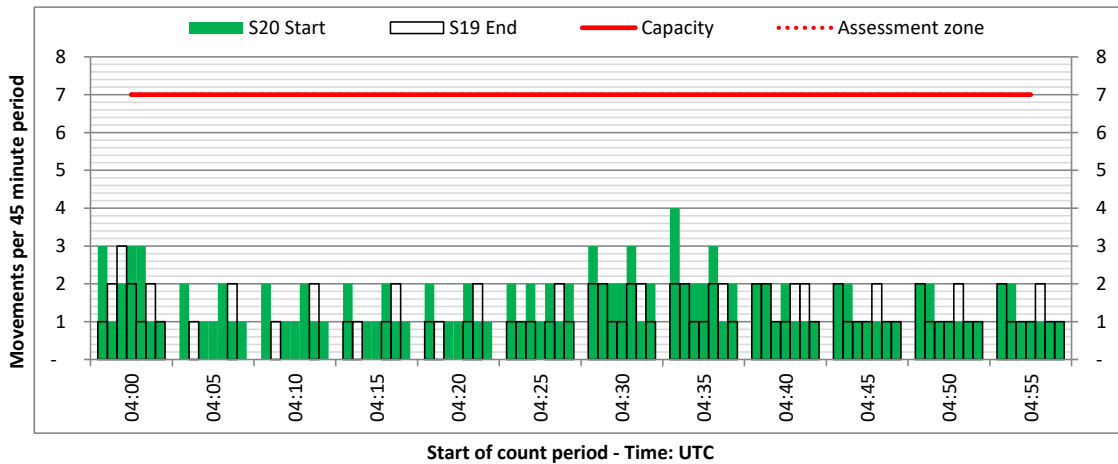
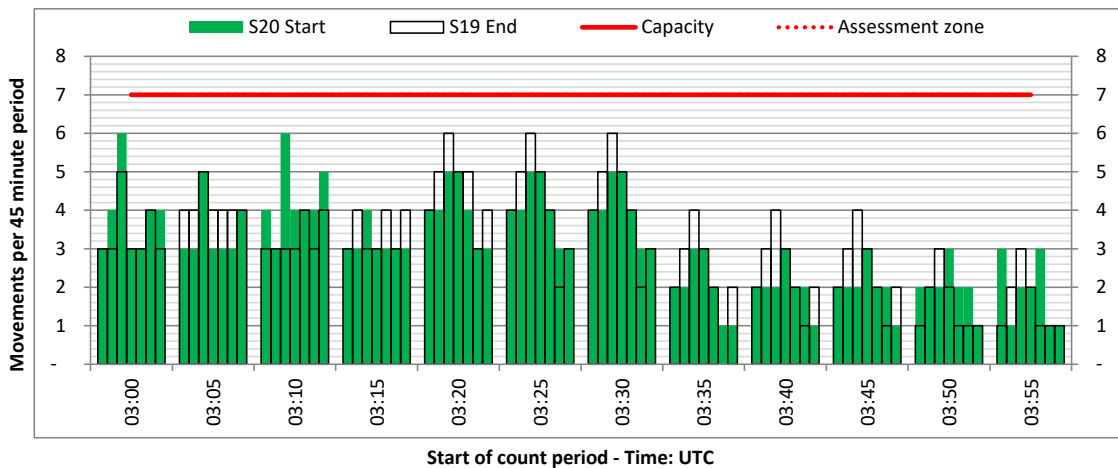
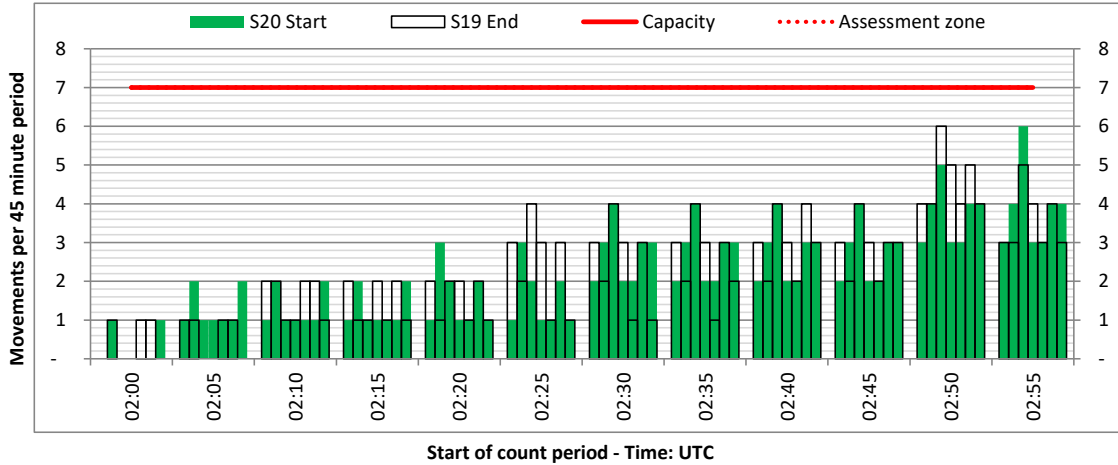
DEPARTURE - 45 minute count rolling every 5 mins (R45/5)



Terminals: Schengen

Operators: All Operators

Days: 1234567



# Peak Week - Movements Histogram

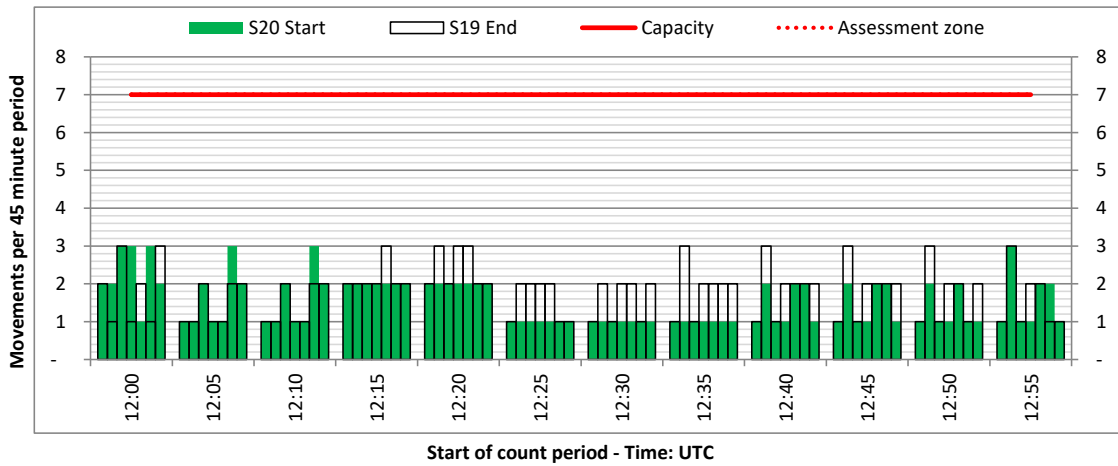
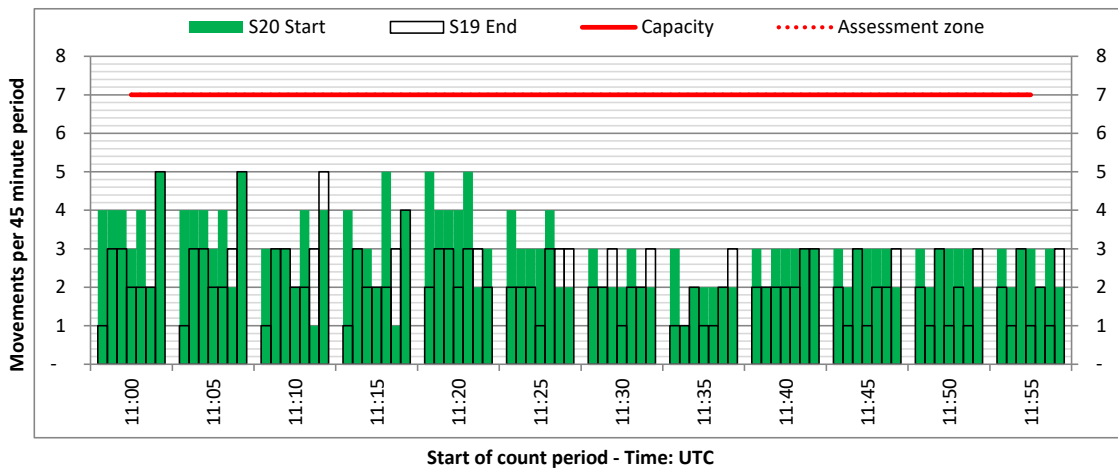
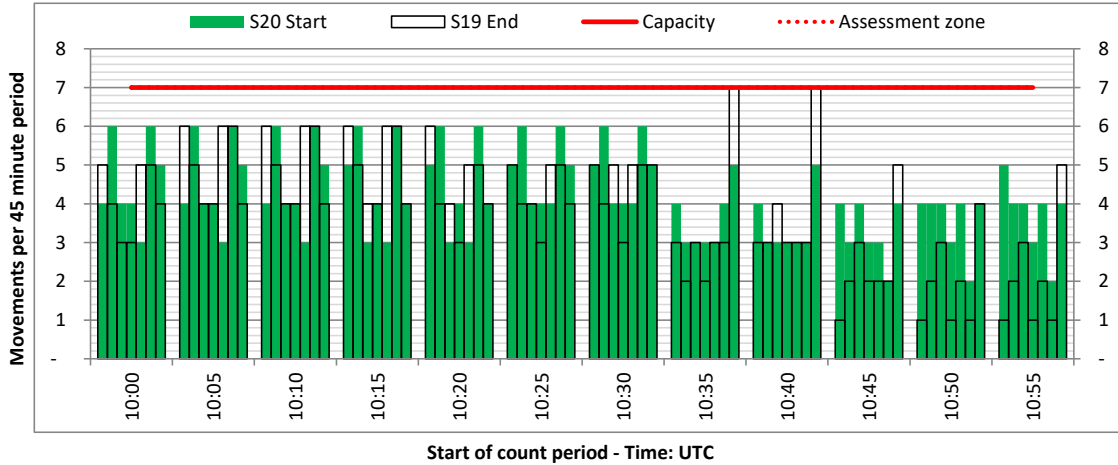
DEPARTURE - 45 minute count rolling every 5 mins (R45/5)



Terminals: Schengen

Operators: All Operators

Days: 1234567



# Peak Week - Movements Histogram

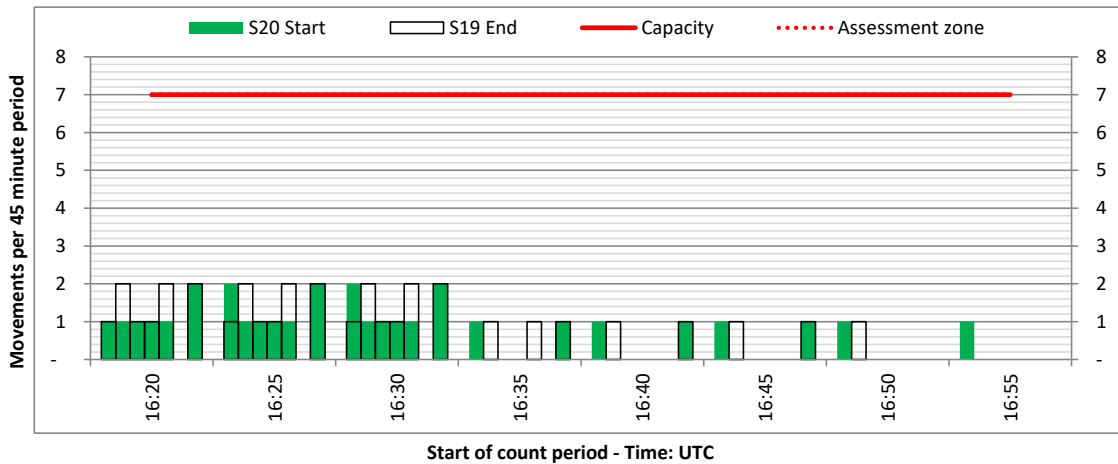
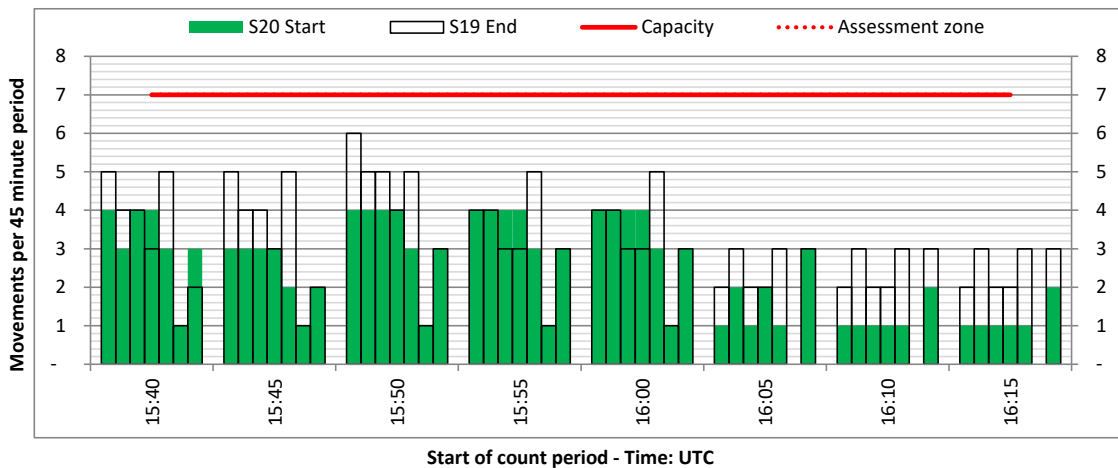
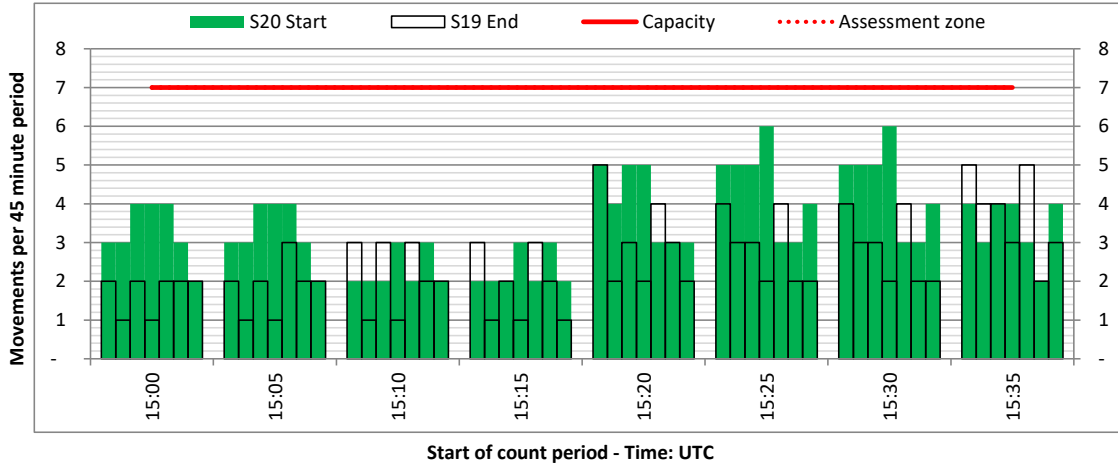
DEPARTURE - 45 minute count rolling every 5 mins (R45/5)



Terminals: Schengen

Operators: All Operators

Days: 1234567



# Peak Week - Movements Histogram

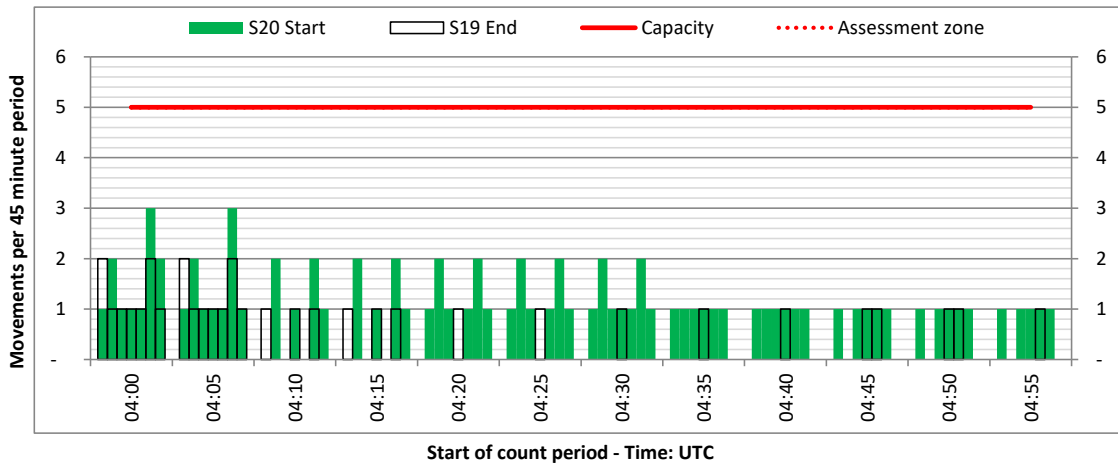
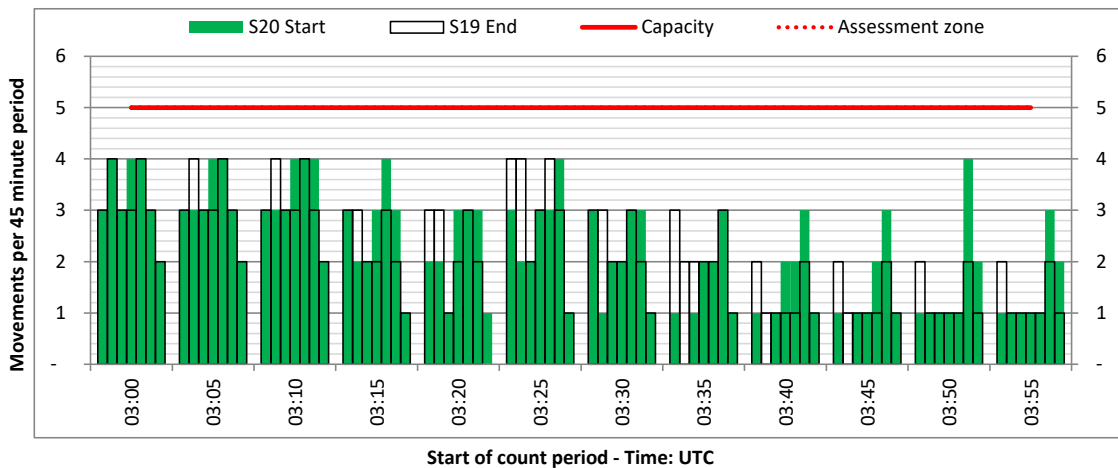
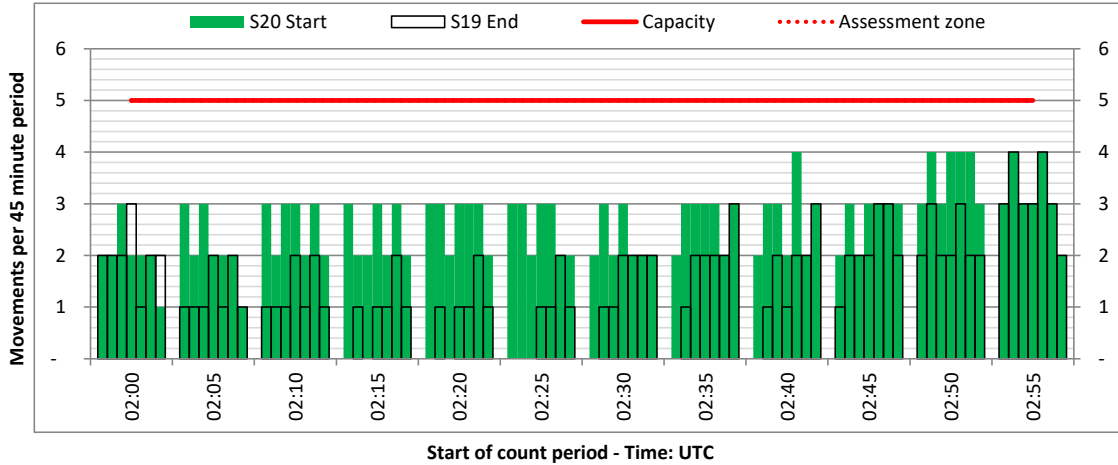
DEPARTURE - 45 minute count rolling every 5 mins (R45/5)



Terminals: Non-Schengen

Operators: All Operators

Days: 1234567



# Peak Week - Movements Histogram

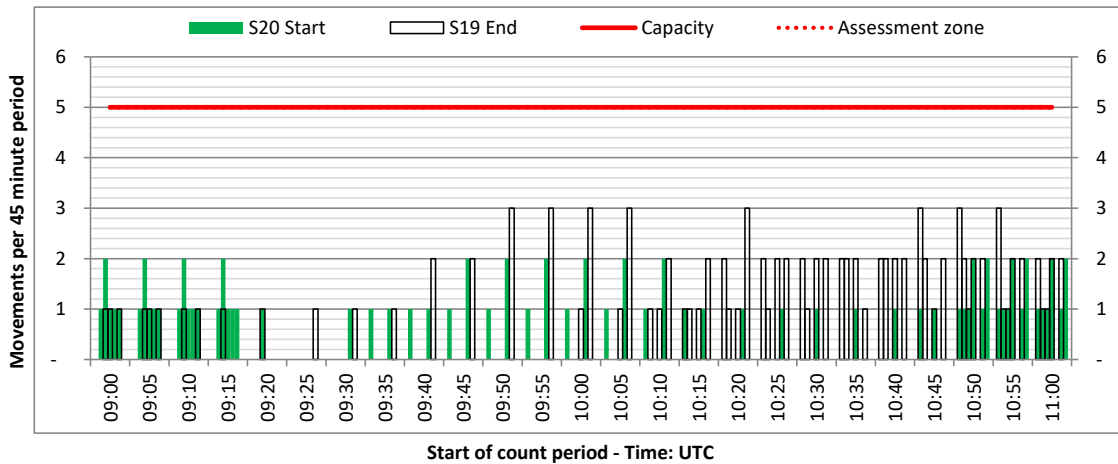
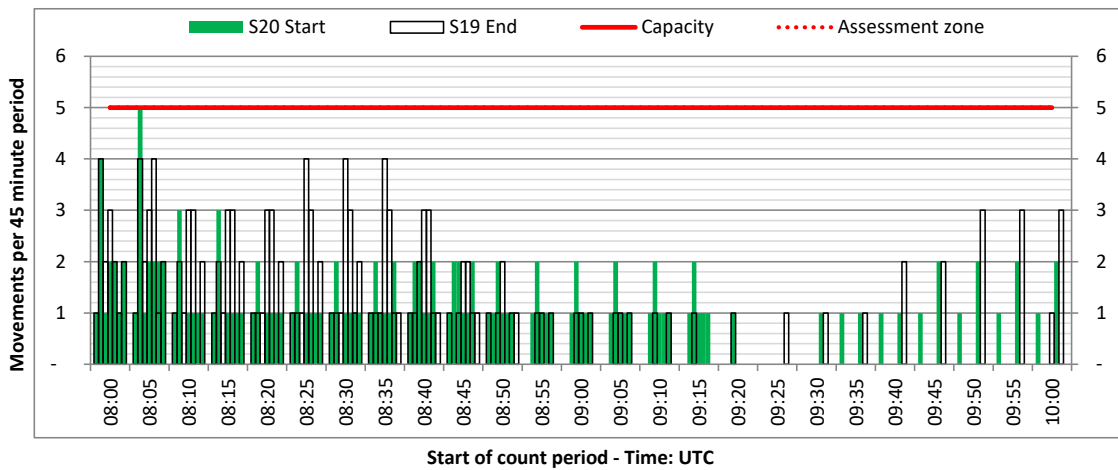
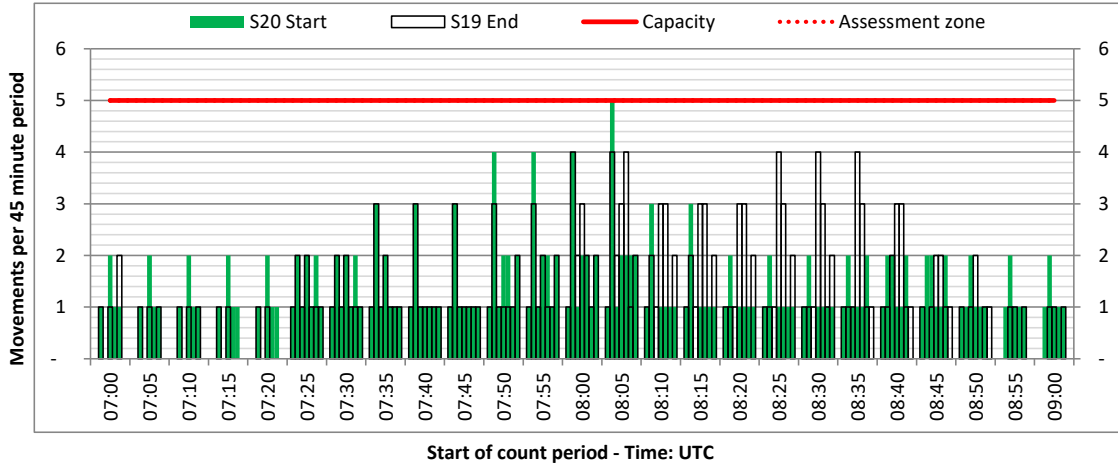
DEPARTURE - 45 minute count rolling every 5 mins (R45/5)



Terminals: Non-Schengen

Operators: All Operators

Days: 1234567





# Peak Week - Movements Histogram

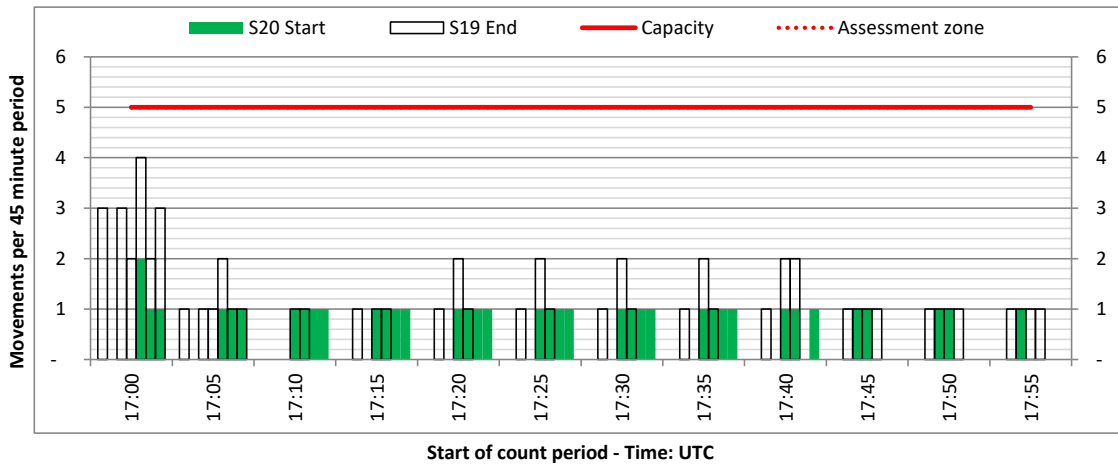
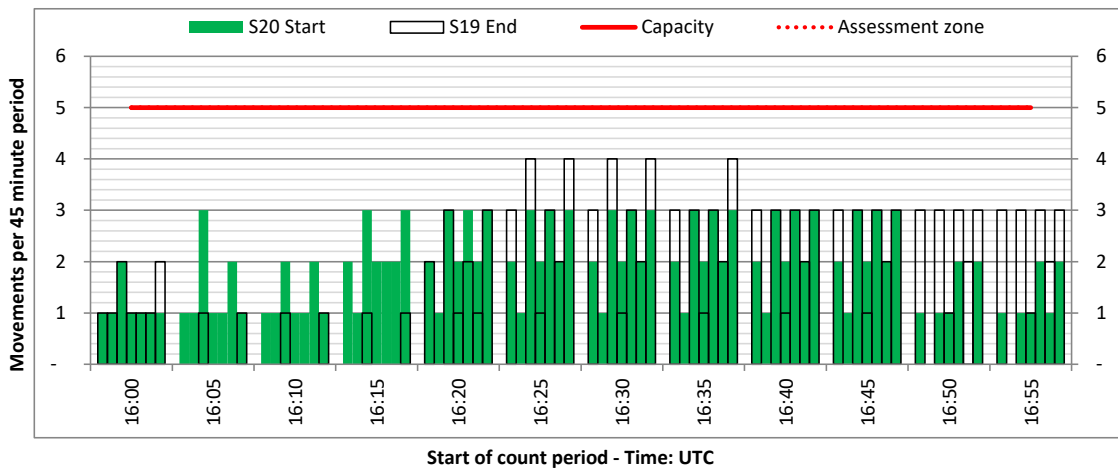
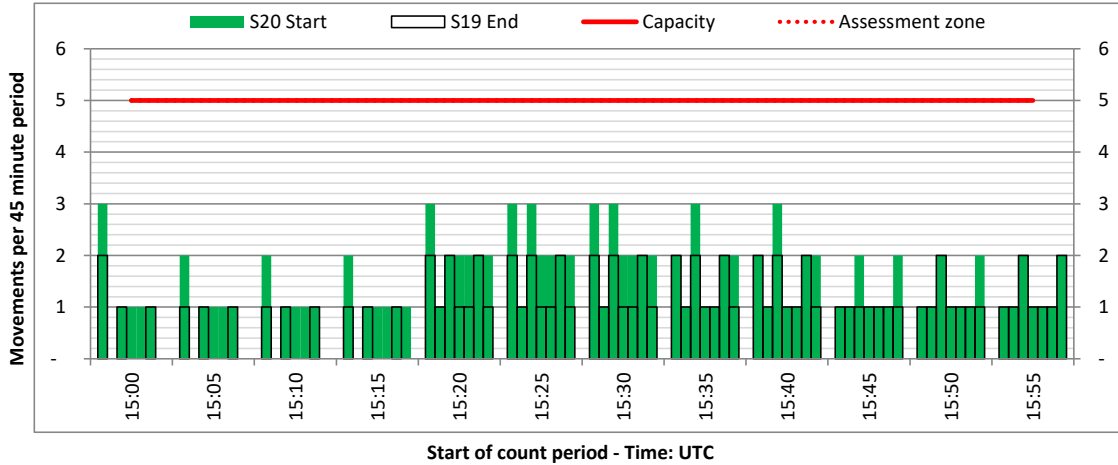
DEPARTURE - 45 minute count rolling every 5 mins (R45/5)



Terminals: Non-Schengen

Operators: All Operators

Days: 1234567



<b>Air Transport Movement (ATM)</b>	Any aircraft movement which is either a scheduled or chartered passenger or cargo flight.
<b>Common Travel Area (CTA)</b>	Origin or Destination is in Republic of Ireland or the Channel Islands.
<b>Demand</b>	Unconstrained demand before any schedule adjustments have been made.
<b>"Fill-in"</b>	These are gaps in a historic series of slots which the carrier requests to "Fill-in" at Initial Submissions - Fill-ins will be recognisably part of the historic series and will have the same flight details to qualify as a "Fill-in".
<b>Hist (SHL)</b>	Snapshot of historic schedule rolled over from end of the previous equivalent season - as advised to airlines in the SHLs.
<b>ICAO Size A</b>	Aircraft with wingspan between 0.00m - 14.99m.
<b>ICAO Size B</b>	Aircraft with wingspan between 15.00m - 23.99m.
<b>ICAO Size C</b>	Aircraft with wingspan between 24.00m - 35.99m.
<b>ICAO Size D</b>	Aircraft with wingspan between 36.00m - 51.99m.
<b>ICAO Size E</b>	Aircraft with wingspan between 52.00m - 64.99m.
<b>ICAO Size F</b>	Aircraft with wingspan between 65.00m - 80.00m.
<b>Init Coord</b>	Snapshot of schedule immediately after Initial Coordination is completed - as advised to airlines in the SALs.
<b>Passenger Air Transport Movement (PATM)</b>	Any aircraft movement which is either a scheduled or chartered passenger flight.
<b>Start</b>	Snapshot of schedule shortly before the start of the scheduling season (exact date given below where used).
<b>Time: Local</b>	Times shown are in LOCAL time for the airport/scheduling season.
<b>Time: UTC</b>	Times shown are in Universal Time Constant (UTC).

---

### Data snapshot descriptions

<b>S19 Start</b>	S19 schedule as cleared on Sat 30-Mar-19.
<b>S19 End</b>	S19 schedule as cleared on Sat 26-Oct-19.
<b>S20 Start</b>	S20 schedule as cleared on Fri 13-Mar-20.
<b>Peak Week</b>	Peak week for S19 is Mon 30-Sep-19 to Sun 06-Oct-19. Peak week for S20 is Mon 07-Sep-20 to Sun 13-Sep-20.

---

### For ACL use

	Airport-Season-Branch-Resource	From date	To date	Time
Full Season Rep 1	VNO-S19-Start-Standard	Sun 31-Mar-2019	Sat 26-Oct-2019	UTC
Full Season Rep 2	VNO-S19-Live-Standard	Sun 31-Mar-2019	Sat 26-Oct-2019	UTC
Full Season Rep 3	VNO-S20-SOS Report-Standard	Sun 29-Mar-2020	Sat 24-Oct-2020	UTC

	Airport-Season-Branch-Resource	From date	To date	Time
Peak Week Rep 1	VNO-S19-Start-Standard	Mon 30-Sep-2019	Sun 06-Oct-2019	UTC
Peak Week Rep 2	VNO-S19-Live-Standard	Mon 30-Sep-2019	Sun 06-Oct-2019	UTC
Peak Week Rep 3	VNO-S20-SOS Report-Standard	Mon 07-Sep-2020	Sun 13-Sep-2020	UTC