

Stansted Airport (STN)

Summer 2020 (S20)



Start of Season Report

Report Date: Tue 24-Mar-2020

Headlines

	S20 Start	vs. S19 Start	vs. S19 End
Total Air Transport Movements (Passenger & Freight)	115,353	▼ -3.4%	▲ 0.1%
Total Passenger Air Transport Movements	108,487	▼ -3.5%	▼ 0.0%
Total Passenger Air Transport Movement Seats	20,366,069	▼ -2.5%	▲ 1.2%
Average Seats per Passenger Air Transport Movement	188	▲ 1.0%	▲ 1.2%
Percentage of allocated slots cleared as requested (OK)	98%		

Contents

Page	Content
2	Runway Scheduling Limits
3	ATM Allocation by Operator (Full season and Peak Week Comparison)
4	Significant Route Changes
5	Full Season - ATM Analysis
6	Full Season - PATM Seats Analysis
7	Full Season - Terminal Analysis
8	Full Season - Aircraft Size Analysis
9	Full Season - Seasonality
10	Peak Week - Hourly Runway Demand
11	Peak Week - Hourly Runway Allocation
12	Peak Week - Hourly Runway Allocation Comparison (S20 Start vs. S19 Start)
13	Peak Week - Hourly Runway Allocation Comparison (S20 Start vs. S19 End)
14	Peak Week Histogram - Departure Passengers (T60) - All Terminals - All Operators
15	Peak Week Histogram - Departure Passengers (T60/15) - All Terminals - All Operators
16	Peak Week Histogram - Departure Passengers (T120/15) - All Terminals - All Operators
17	Peak Week Histogram - Arrival Passengers (T60) - 1I - All Operators
18	Peak Week Histogram - Arrival Passengers (T60/15) - 1I - All Operators
19	Glossary

S19 scheduling season runs from Sun 31-Mar-2019 to Sat 26-Oct-2019 (210 days).

S20 scheduling season runs from Sun 29-Mar-2020 to Sat 24-Oct-2020 (210 days).

Disclaimer

No warranty whether expressed or implied as to the completeness, accuracy, fitness for purpose, or satisfactory quality is given by ACL regarding the information in this report, which is provided by third parties. Accordingly, ACL excludes all liability with regard to such data.

The contents of this report may not be reproduced without the written consent of ACL.

Runway Scheduling Limits



Declared Hourly Movement Capacity

S19 Arrivals								Change: S19 to S20								S20 Arrivals							
Hour	Mon	Tue	Wed	Thu	Fri	Sat	Sun	Hour	Mon	Tue	Wed	Thu	Fri	Sat	Sun	Hour	Mon	Tue	Wed	Thu	Fri	Sat	Sun
00	24	24	24	24	24	24	24	00								00	24	24	24	24	24	24	24
01	24	24	24	24	24	24	24	01								01	24	24	24	24	24	24	24
02	24	24	24	24	24	24	24	02								02	24	24	24	24	24	24	24
03	24	24	24	24	24	24	24	03								03	24	24	24	24	24	24	24
04	24	24	24	24	24	24	24	04								04	24	24	24	24	24	24	24
05	24	24	24	24	24	24	24	05								05	24	24	24	24	24	24	24
06	28	28	28	28	28	28	28	06								06	28	28	28	28	28	28	28
07	25	25	25	25	25	25	25	07								07	25	25	25	25	25	25	25
08	24	24	24	24	24	24	24	08								08	24	24	24	24	24	24	24
09	25	25	25	25	25	25	25	09	2	2	2	2	2	2	2	09	27	27	27	27	27	27	27
10	28	28	28	28	28	28	28	10								10	28	28	28	28	28	28	28
11	28	28	28	28	28	28	28	11								11	28	28	28	28	28	28	28
12	24	24	24	24	24	24	24	12	4	4	4	4	4	4	4	12	28	28	28	28	28	28	28
13	24	24	24	24	24	24	24	13	4	4	4	4	4	4	4	13	28	28	28	28	28	28	28
14	28	28	28	28	28	28	28	14								14	28	28	28	28	28	28	28
15	28	28	28	28	28	28	28	15								15	28	28	28	28	28	28	28
16	28	28	28	28	28	28	28	16								16	28	28	28	28	28	28	28
17	30	30	30	30	30	30	30	17								17	30	30	30	30	30	30	30
18	28	28	28	28	28	28	28	18								18	28	28	28	28	28	28	28
19	27	27	27	27	27	27	27	19								19	27	27	27	27	27	27	27
20	24	24	24	24	24	24	24	20	3	3	3	3	3	3	3	20	27	27	27	27	27	27	27
21	31	31	31	31	31	31	31	21								21	31	31	31	31	31	31	31
22	31	31	31	31	31	31	31	22								22	31	31	31	31	31	31	31
23	24	24	24	24	24	24	24	23								23	24	24	24	24	24	24	24

S19 Departures								Change: S19 to S20								S20 Departures							
Hour	Mon	Tue	Wed	Thu	Fri	Sat	Sun	Hour	Mon	Tue	Wed	Thu	Fri	Sat	Sun	Hour	Mon	Tue	Wed	Thu	Fri	Sat	Sun
00	24	24	24	24	24	24	24	00								00	24	24	24	24	24	24	24
01	24	24	24	24	24	24	24	01								01	24	24	24	24	24	24	24
02	24	24	24	24	24	24	24	02								02	24	24	24	24	24	24	24
03	24	24	24	24	24	24	24	03								03	24	24	24	24	24	24	24
04	24	24	24	24	24	24	24	04								04	24	24	24	24	24	24	24
05	35	35	35	35	35	35	35	05								05	35	35	35	35	35	35	35
06	33	33	33	33	33	33	33	06								06	33	33	33	33	33	33	33
07	33	33	33	33	33	33	33	07								07	33	33	33	33	33	33	33
08	28	28	28	28	28	28	28	08								08	28	28	28	28	28	28	28
09	25	25	25	25	25	25	25	09	2	2	2	2	2	2	2	09	27	27	27	27	27	27	27
10	28	28	28	28	28	28	28	10								10	28	28	28	28	28	28	28
11	28	28	28	28	28	28	28	11								11	28	28	28	28	28	28	28
12	24	24	24	24	24	24	24	12	4	4	4	4	4	4	4	12	28	28	28	28	28	28	28
13	24	24	24	24	24	24	24	13	4	4	4	4	4	4	4	13	28	28	28	28	28	28	28
14	28	28	28	28	28	28	28	14								14	28	28	28	28	28	28	28
15	28	28	28	28	28	28	28	15								15	28	28	28	28	28	28	28
16	28	28	28	28	28	28	28	16								16	28	28	28	28	28	28	28
17	30	30	30	30	30	30	30	17								17	30	30	30	30	30	30	30
18	28	28	28	28	28	28	28	18								18	28	28	28	28	28	28	28
19	28	28	28	28	28	28	28	19								19	28	28	28	28	28	28	28
20	24	24	24	24	24	24	24	20	3	3	3	3	3	3	3	20	27	27	27	27	27	27	27
21	24	24	24	24	24	24	24	21								21	24	24	24	24	24	24	24
22	24	24	24	24	24	24	24	22								22	24	24	24	24	24	24	24
23	24	24	24	24	24	24	24	23								23	24	24	24	24	24	24	24

S19 Totals								Change: S19 to S20								S20 Totals							
Hour	Mon	Tue	Wed	Thu	Fri	Sat	Sun	Hour	Mon	Tue	Wed	Thu	Fri	Sat	Sun	Hour	Mon	Tue	Wed	Thu	Fri	Sat	Sun
00	36	36	36	36	36	36	36	00								00	36	36	36	36	36	36	36
01	36	36	36	36	36	36	36	01								01	36	36	36	36	36	36	36
02	36	36	36	36	36	36	36	02								02	36	36	36	36	36	36	36
03	36	36	36	36	36	36	36	03								03	36	36	36	36	36	36	36
04	36	36	36	36	36	36	36	04								04	36	36	36	36	36	36	36
05	47	47	47	47	47	47	47	05								05	47	47	47	47	47	47	47
06	50	50	50	50	50	50	50	06								06	50	50	50	50	50	50	50
07	50	50	50	50	50	50	50	07								07	50	50	50	50	50	50	50
08	41	41	41	41	41	41	41	08	1	1	1	1	1	1	1	08	42	42	42	42	42	42	42
09	41	41	41	41	41	41	41	09	1	1	1	1	1	1	1	09	42	42	42	42	42	42	42
10	50	50	50	50	50	50	50	10								10	50	50	50	50	50	50	50
11	46	46	46	46	46	46	46	11								11	46	46	46	46	46	46	46
12	45	45	45	45	45	45	45	12	3	3	3	3	3	3	3	12	48	48	48	48	48	48	48
13	45	45	45	45	45	45	45	13								13	45	45	45	45	45	45	45
14	44	44	44	44	44	44	44	14								14	44	44	44	44	44	44	44
15	47	47	47	47	47	47	47	15	1	1	1	1	1	1	1	15	48	48	48	48	48	48	48
16	47	47	47	47	47	47	47	16								16	47	47	47	47	47	47	47
17	50	50	50	50	50	50	50	17								17	50	50	50	50	50	50	50
18	50	50	50	50	50	50	50	18								18	50	50	50	50	50	50	50
19	42	42	42	42	42	42	42	19								19	42	42	42	42	42	42	42
20	38	38	38	38	38	38	38	20	4	4	4	4	4	4	4	20	42	42	42	42	42	42	42
21	38	38	38	38	38	38	38	21	4	4	4	4	4	4	4	21	42	42	42	42	42	42	42
22	36	36	36	36	36	36	36	22								22	36	36	36	36	36	36	36
23	36	36	36	36	36	36	36	23								23	36	36	36	36	36	36	36

Air Transport Movement Allocation by Operator

Comparison between S19 End vs. S20 Start



Operator	FULL SEASON ALLOCATION								PEAK WEEK ALLOCATION							
	S19 ATMs	S20 ATMs	+/- change	S20 Rank	S19 Seats	S20 Seats	+/- change	S20 Rank	S19 ATMs	S20 ATMs	+/- change	S20 Rank	S19 Seats	S20 Seats	+/- change	S20 Rank
Agean Airlines	-	2	2	46	-	348	348	35	-	-	0	38	-	-	0	28
Aeroneus	5	-	-5	55	480	-	-480	43	-	0	38	-	-	-	0	28
Aigle Azur	6	-	-6	55	1,080	-	-1,080	43	-	0	38	-	-	-	0	28
Air Atlanta Icelandic	2	-	-2	55	-	-	0	43	-	0	38	-	-	-	0	28
Cargolux	128	120	-8	32	-	-	0	43	4	4	0	33	-	-	0	28
Air Corsica	352	266	-86	23	63,360	47,976	-15,384	14	14	12	-2	22	2,520	2,160	-360	14
Air Europa	27	-	-27	55	5,022	-	-5,022	43	2	-	-2	38	372	-	-372	28
Air India	1	360	359	20	377	92,160	91,783	9	-	12	12	22	-	3,072	-3,072	11
Air Moldova	326	340	14	24	62,438	59,016	-3,422	38	12	14	2	38	2,560	2,436	-124	12
Air Nostrum	5	-	-5	55	500	-	-500	43	-	-	0	38	-	-	0	28
GoFly	-	-	0	55	-	-	0	43	-	-	0	38	-	-	0	28
Air Senegal SA	-	108	108	35	-	18,144	18,144	24	-	6	6	28	-	1,008	1,008	23
Air Serbia	-	-	0	55	-	-	0	43	-	-	0	38	-	-	0	28
Air Taxi Europe (Germany)	1	-	-1	55	-	-	0	43	-	-	0	38	-	-	0	28
AirBridgeCargo	22	-	-22	55	-	-	0	43	-	-	0	38	-	-	0	28
AlbaStar	4	2	-2	46	680	378	-302	34	-	-	0	38	-	-	0	28
Albawings	92	126	34	30	11,776	16,128	4,352	25	6	8	2	26	768	1,024	256	22
Antonov Airlines	2	-	-2	55	-	-	0	43	-	-	0	38	-	-	0	28
Arkefly	4	-	-4	55	738	-	-738	43	-	-	0	38	-	-	0	28
Arkea	144	2	-142	46	31,024	284	-30,740	37	5	-	-5	38	1,095	-	-1,095	28
Asiana Airlines	176	120	-56	32	-	-	0	43	6	4	-2	33	-	-	0	28
ASL Airlines Belgium	26	-	-26	55	-	-	0	43	-	-	0	38	-	-	0	28
ASL Airlines France	12	1	-11	50	1,617	149	-1,468	41	-	-	0	38	-	-	0	28
Atlas Air Inc	128	120	-8	32	-	-	0	43	4	4	0	33	-	-	0	28
AtlasGlobal	416	-	-416	55	83,102	-	-83,102	43	14	-	-14	38	2,856	-	-2,856	28
Atran Aviatrans Cargo	4	-	-4	55	-	-	0	43	-	-	0	38	-	-	0	28
Aurigny Air Services	404	420	16	15	28,128	30,240	2,112	19	14	14	0	18	1,008	1,008	0	23
Azerbaijan Airlines	2	6	4	42	420	1,290	870	32	-	-	0	38	-	-	0	28
Balkan Holidays Air Ltd	-	16	16	39	-	2,520	2,520	30	-	2	2	36	-	360	360	26
Blue Panorama Airlines	2	-	-2	55	336	-	-336	43	-	-	0	38	-	-	0	28
British Airways	389	415	26	17	38,078	40,670	2,592	16	16	16	0	16	1,568	1,568	0	17
Bulgarian Air Charter	1	-	-1	55	164	-	-164	43	-	-	0	38	-	-	0	28
CAL Cargo Air Lines	2	-	-2	55	-	-	0	43	-	-	0	38	-	-	0	28
Cargolift	4	-	-4	55	-	-	0	43	-	-	0	38	-	-	0	28
Cargolux Germany	1	-	-1	55	-	-	0	43	-	-	0	38	-	-	0	28
CargotecAir	71	-	-71	55	-	-	0	43	2	-	-2	38	-	-	0	28
Carpatair	1	3	2	44	100	300	200	36	-	-	0	38	-	-	0	28
China Southern	236	302	66	22	-	-	0	43	8	10	2	24	-	-	0	28
Cobrex Trans	-	170	170	28	-	30,600	30,600	18	-	6	6	28	-	1,080	1,080	21
Corendon Airlines Europe	3	-	-3	55	567	-	-567	43	-	-	0	38	-	-	0	28
CSA Czech Airlines	-	2	2	46	-	140	140	42	-	-	0	38	-	-	0	28
Danish Air Transport	2	-	-2	55	344	-	-344	43	1	-	-1	38	172	-	-172	28
Dubai Air Wing	6	-	-6	55	-	-	0	43	-	-	0	38	-	-	0	28
Easylet	12,247	12,338	91	2	2,100,942	2,100,408	-534	3	401	414	13	3	68,724	71,166	2,442	3
Easylet Europe	40	40	0	37	7,200	7,080	-120	26	-	-	0	38	-	-	0	28
Egypt Air	4	180	176	26	-	-	0	43	-	6	6	28	-	-	0	28
El Al Israel Airlines	-	173	173	27	-	28,736	28,736	20	-	10	10	28	-	1,660	1,660	16
Emirates	627	840	213	9	221,578	297,360	75,782	5	28	28	0	38	9,996	9,912	-84	6
Enter Air	15	19	4	38	2,835	3,591	756	28	-	-	0	38	-	-	0	28
Ethiad Airways	13	-	-13	55	231	-	-231	43	-	-	0	38	-	-	0	28
European Air Transport (DHL)	530	538	8	13	-	-	0	43	16	18	2	14	-	-	0	28
Eurowings	612	-	-612	55	106,920	-	-106,920	43	24	-	-24	38	4,320	-	-4,320	28
Evelop Airlines	4	-	-4	55	1,552	-	-1,552	43	-	-	0	38	-	-	0	28
Federal Express	2,233	2,282	49	5	-	-	0	43	69	76	7	5	-	-	0	28
Finnair	-	-	0	55	-	-	0	43	-	-	0	38	-	-	0	28
Flybe	2	-	-2	55	236	-	-236	43	-	-	0	38	-	-	0	28
FlyBosnia	6	-	-6	55	852	-	-852	43	-	-	0	38	-	-	0	28
Freebird Airlines	2	362	360	19	360	65,160	64,800	12	-	20	20	13	-	3,600	3,600	8
Getjet	-	151	151	29	-	46,357	46,357	15	-	6	6	28	-	1,842	1,842	15
Hi Fly Malta	2	-	-2	55	942	-	-942	43	-	-	0	38	-	-	0	28
Hifly	7	-	-7	55	2,308	-	-2,308	43	-	-	0	38	-	-	0	28
Indigo	-	-	0	55	-	-	0	43	-	-	0	38	-	-	0	28
Israir	-	11	11	40	-	1,980	1,980	31	-	-	0	38	-	-	0	28
Jet Time Airways	4	-	-4	55	592	-	-592	43	-	-	0	38	-	-	0	28
Jet2.com	9,528	10,944	1,416	3	1,858,955	2,152,315	293,360	2	380	454	74	2	74,397	89,222	14,825	2
Jota Aviation	14	-	-14	55	1,058	-	-1,058	43	1	-	-1	38	97	-	-97	28
La Compagnie	1	-	-1	55	74	-	-74	43	-	-	0	38	-	-	0	28
Lauda Motton	780	780	0	38	142,740	140,940	-1,800	26	26	0	38	4,680	-	-4,680	18	
Loganair	1,426	-	-1,426	55	59,550	-	-59,550	43	47	-	-47	38	1,951	-	-1,951	28
Lufthansa	4	-	-4	55	-	-	0	43	-	-	0	38	-	-	0	28
Luxair	2	1	-1	50	372	186	-186	40	-	-	0	38	-	-	0	28
Maleth-Aero	16	-	-16	55	2,364	-	-2,364	43	2	-	-2	38	294	-	-294	28
Martinair	50	4	-46	43	-	-	0	43	-	-	0	38	-	-	0	28
Miami Air International	1	0	-1	55	168	-	-168	43	-	-	0	38	-	-	0	28
Montenegro Airlines	-	-	0	55	-	-	0	43	-	-	0	38	-	-	0	28
Nesos	1	-	-1	55	186	-	-186	43	-	-	0	38	-	-	0	28
Norwegian Air UK Ltd.	2	-	-2	55	98	-	-98	43	-	-	0	38	-	-	0	28
Pan European	1,969	2,710	741	6	372,039	512,190	140,151	6	87	99	12	38	16,383	18,711	2,328	4
Peoples Vietnamline	1	-	-1	55	76	-	-76	43	-	-	0	38	-	-	0	28
Privilege Style	5	-	-5	55	1,126	-	-1,126	43	-	-	0	38	-	-	0	28
Qatar Airways	327	480	153	14	358	-	-358	43	10	16	6	16	-	-	0	28
Qatar Executive	1	-	-1	55	13	-	-13	43	-	-	0	38	-	-	0	28
Ryanair	75,413	74,319	-1,094	1	14,253,051	14,045,774	-207,277	1	2,483	2,473	-10	1	469,287	467,374	-1,913	1
SAS Scandinavian	284	404	120	18	44,772	72,864	28,092	10	10	18	8	14	1,596	3,258	1,662	10
Saudia	4	-	-4	55	-	-	0	43	-	-	0	38	-	-	0	28
Saxon Air Charter LTD	1	1	0	50	-	-	0	43	-	-	0	38	-	-	0	28
Silk Way Airlines	1	-	-1	55	-	-	0	43	-	-	0	3				

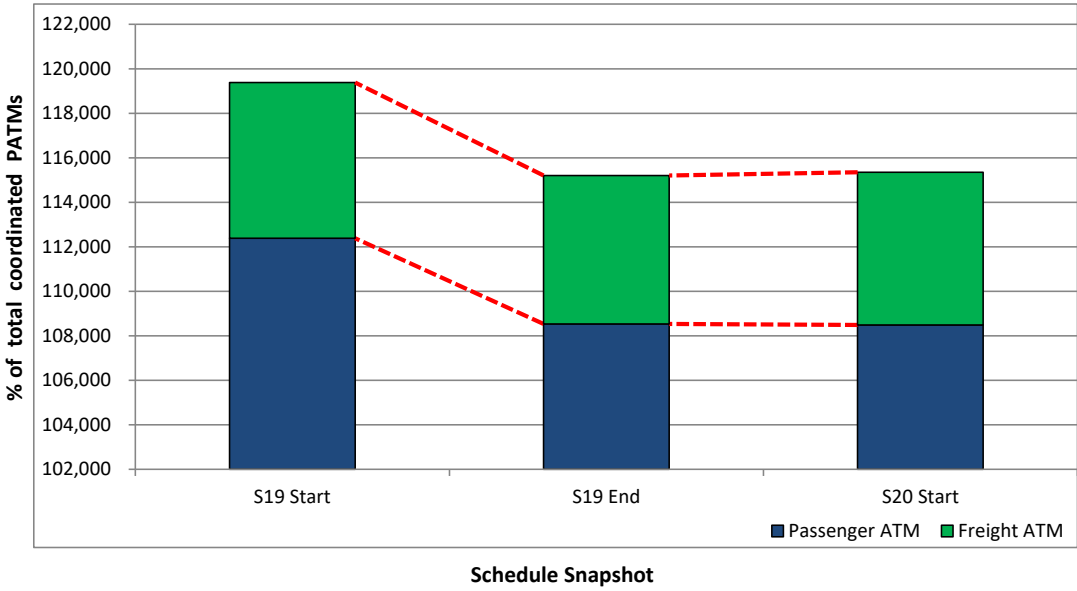
Significant Route Changes

Operator	Category	Description of change from S19 schedule to S20 schedule
Air Europa	CANCELLED	Cancelled route to PMI
Air India	NEW	New routes to ATQ and BOM
Air Senegal S.A	NEW	New route to DSS
Balkan Holidays Air Ltd	NEW	New route to BOJ
Cobrex Trans	NEW	New route to KIV
Egypt Air	NEW	New route to CAI
El Al Israel Airlines	NEW	New route to TLV
European Air Transport (DHL)	NEW	New route to MXP
Federal Express	NEW	New route to KIX
Federal Express	CANCELLED	Cancelled route to EWR, HAJ and ICN
Freebird Airlines	NEW	New routes to AYT and DLM
Getjet	NEW	New route to ACC and ACCBGI
Jet2.com	NEW	New route EGC, JMK, JSI, JTR, KLX, LRH, PVK, RMU, TIV, ZAD
Loganair	CANCELLED	Cancelled route to DND and LDY
Pegasus Airlines	NEW	New routes to AYT, DLM and ESB
Ryanair	NEW	New routes to CIJ, DRS, ESU, KSC and TER
Ryanair	CANCELLED	Cancelled route NRN, NUE, PED, RDZ and SXB
SAS Scandinavian	NEW	New route OSL
TACV - Cabo Verde Airlines	NEW	New route to SID
Titan Airways	NEW	New route to LXS
Titan Airways	CANCELLED	Cancelled route to RMU
Tunisair	NEW	New route to TUN
Turkish Airlines	NEW	New route to ESB and SAW
Turkish Airlines	CANCELLED	Cancelled route to ESB
Turkmenistan Airlines	NEW	New route to ASB
TUS AIRWAYS	NEW	New route to LCA
UPS Airlines	CANCELLED	Cancelled route to WAW
Ural Airlines	NEW	New route to DME
Wideroe	CANCELLED	Cancelled route to KRS

Full Season - ATM Analysis



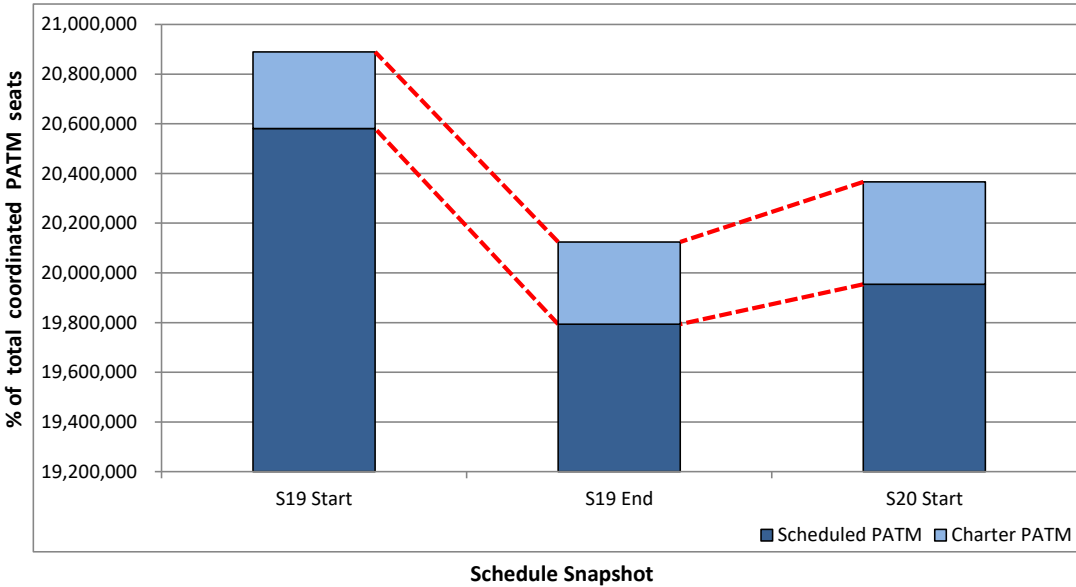
Total ATMs: Passenger ATMs vs. Freight ATMs



Full Season - PATM Seats Analysis



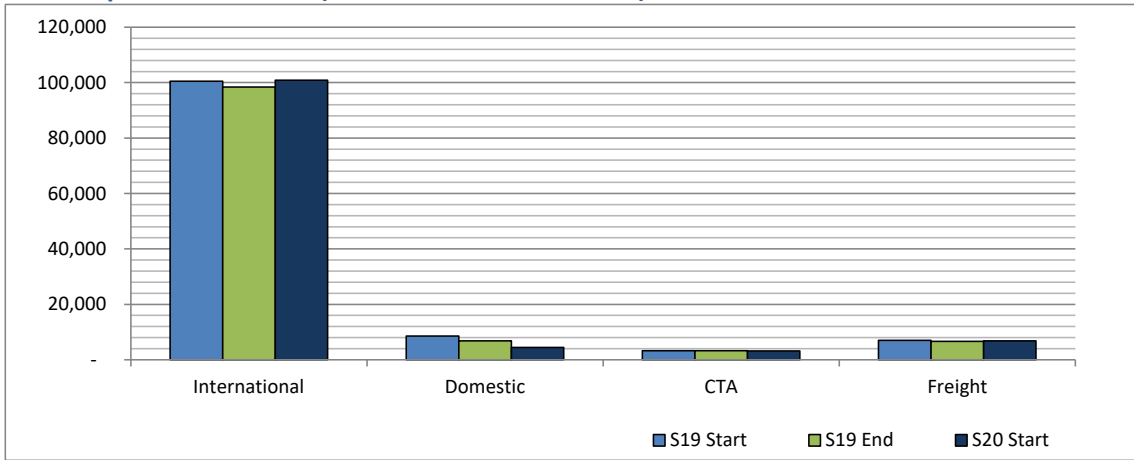
Total Passenger ATM seats: Scheduled vs. Charter



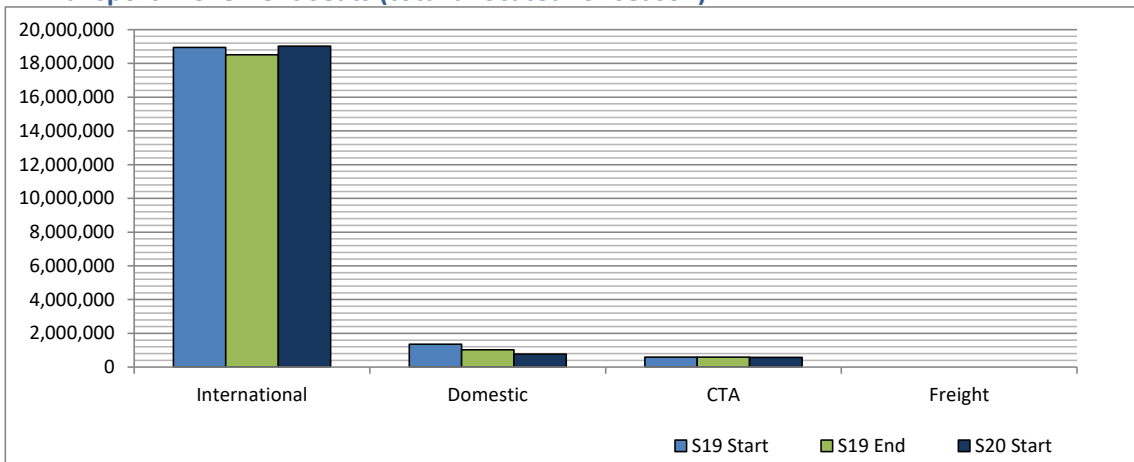
Full Season - Terminal Analysis



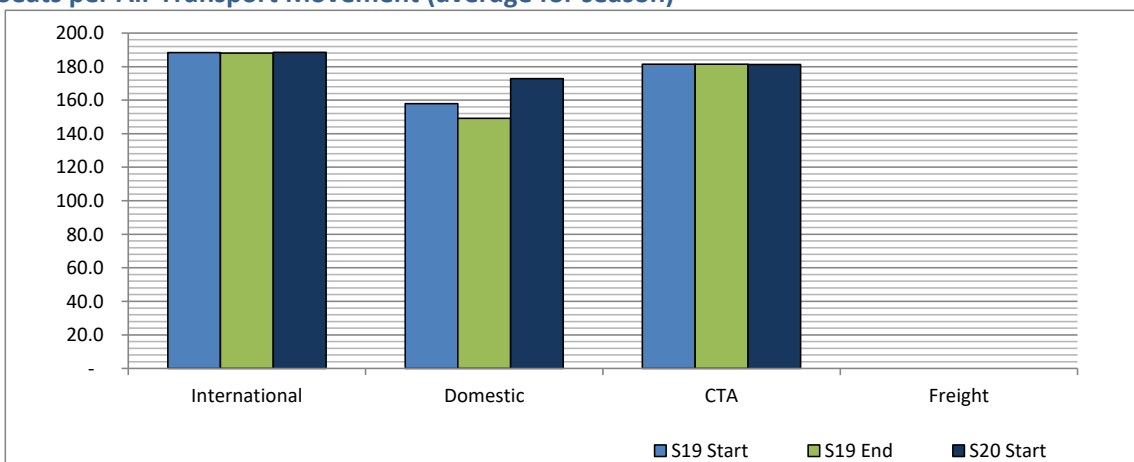
Air Transport Movements (total allocated for season)



Air Transport Movement Seats (total allocated for season)



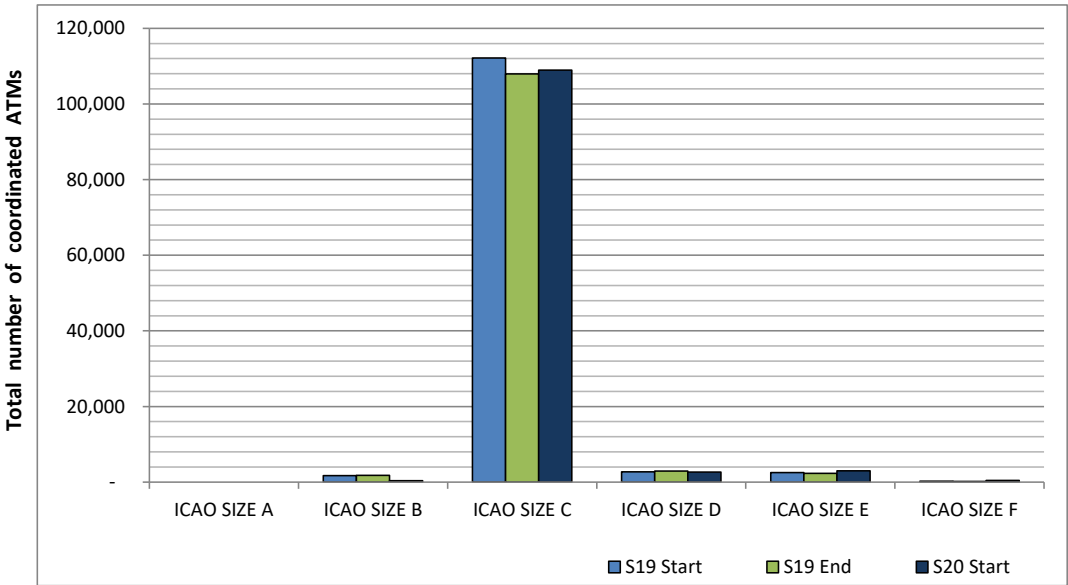
Seats per Air Transport Movement (average for season)



Full Season - Aircraft Size Analysis

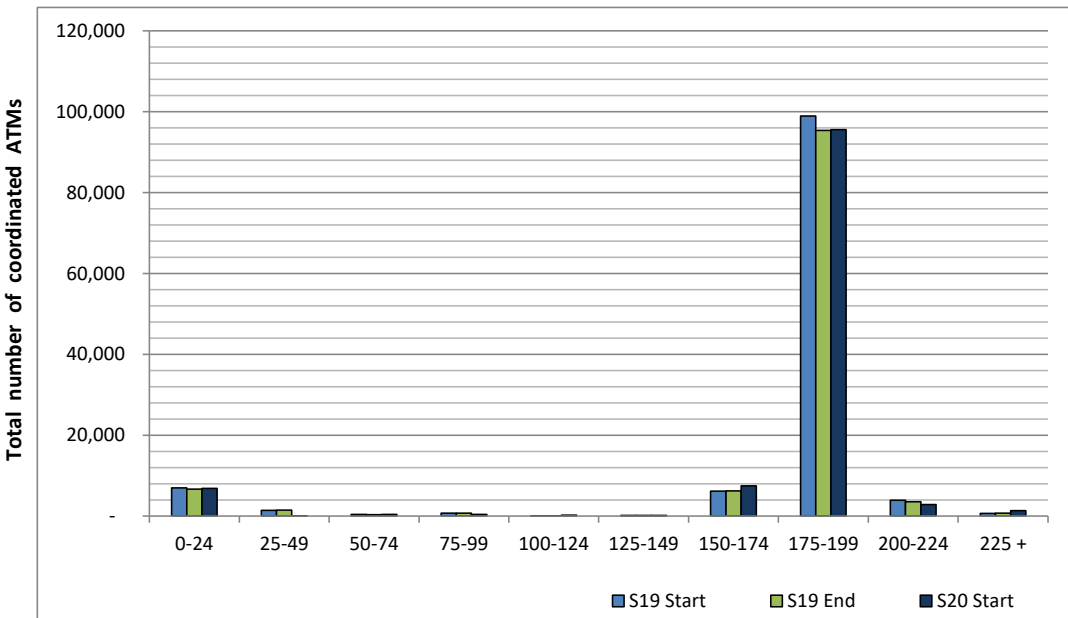


ICAO size designation



Note: See Glossary for definitions of ICAO SIZE groupings

Air Transport Movement seat distribution

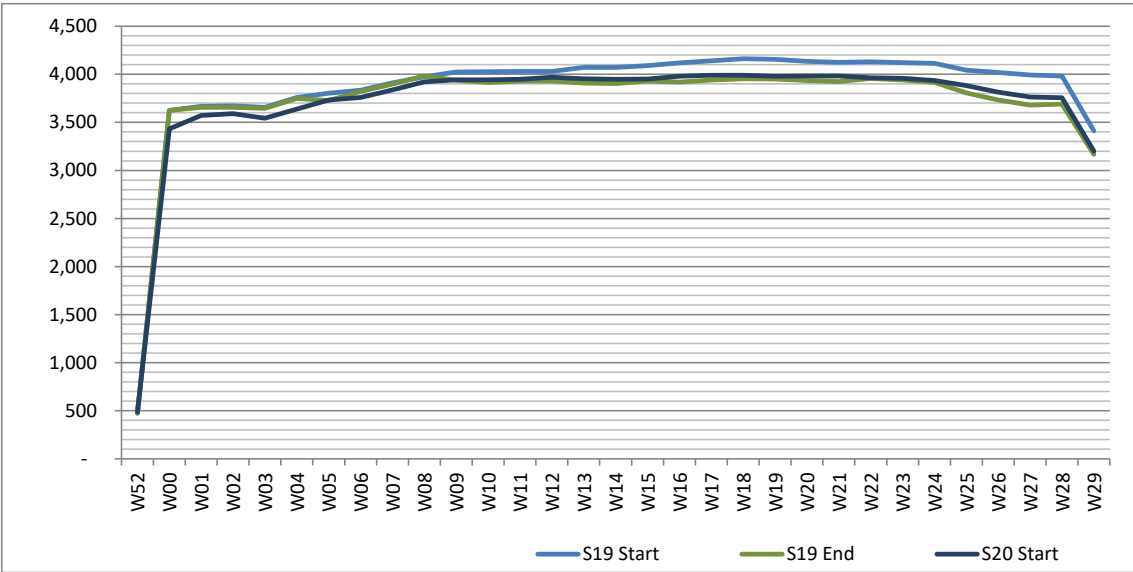


Note: FREIGHT-ONLY services with 0 seats are included in the first seat band '0-24'

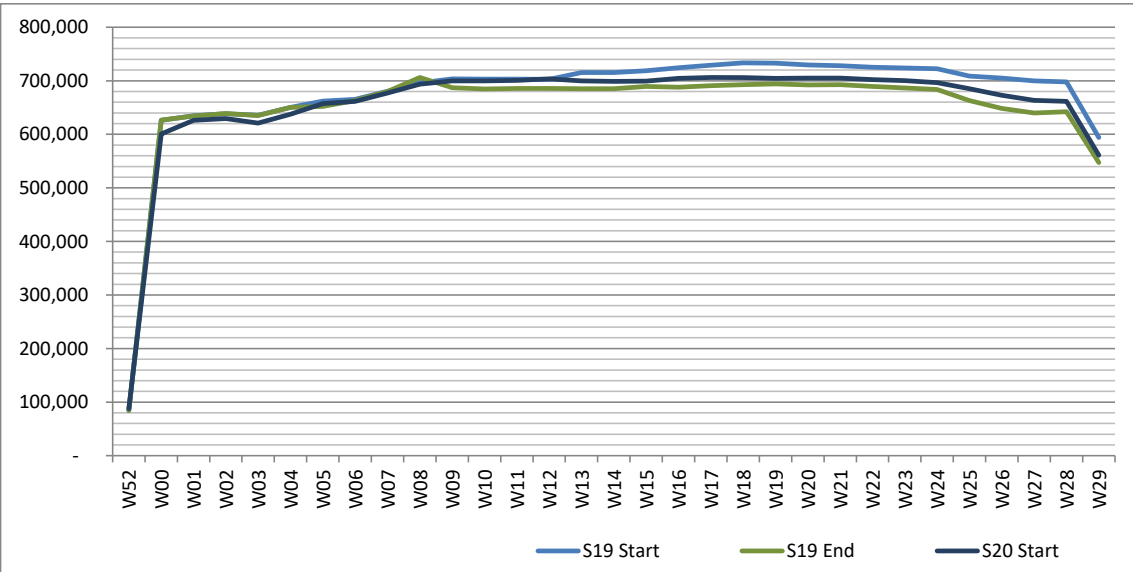
Full Season - Seasonality



Air Transport Movements by week of season



Air Transport Movement Seats by week of season



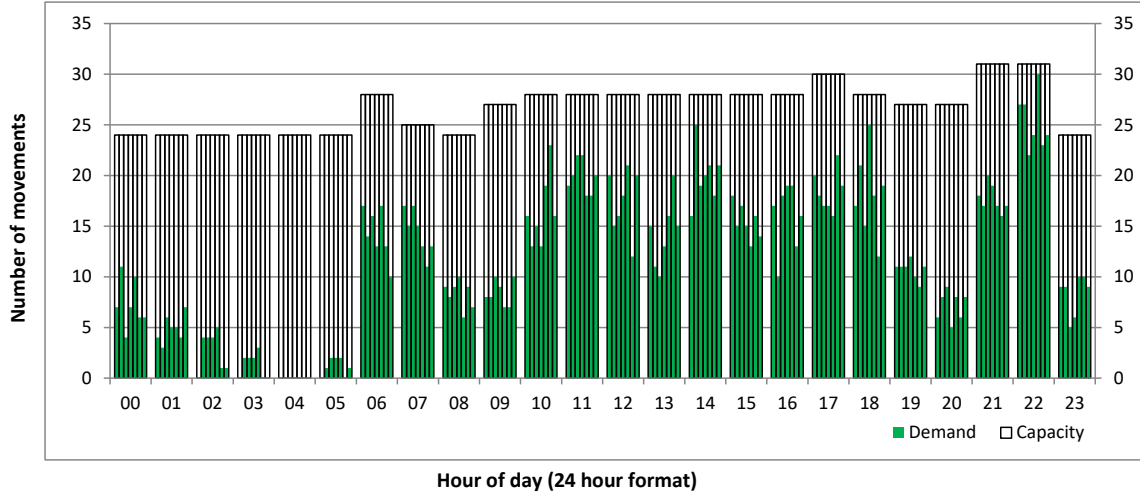
Peak Week - Hourly Runway Demand

Schedule: S20 Start



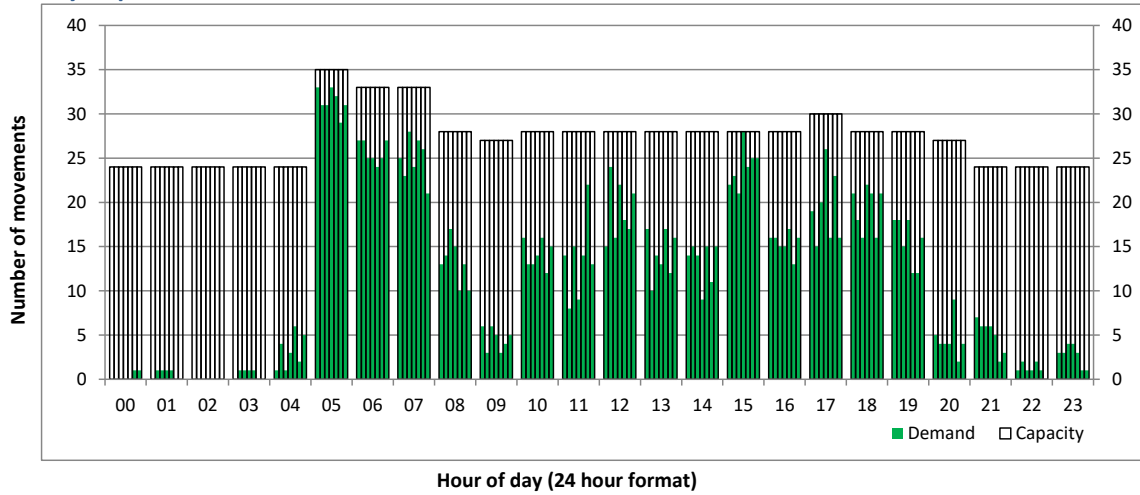
Hourly Arrival Demand

Time: UTC



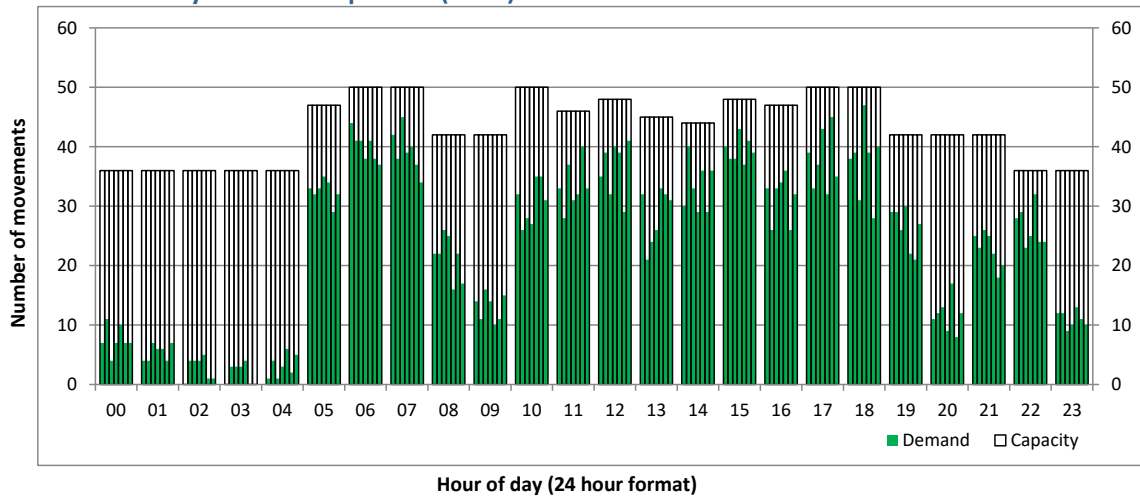
Hourly Departure Demand

Time: UTC



Combined Hourly Arrival & Departure (Total) Demand

Time: UTC



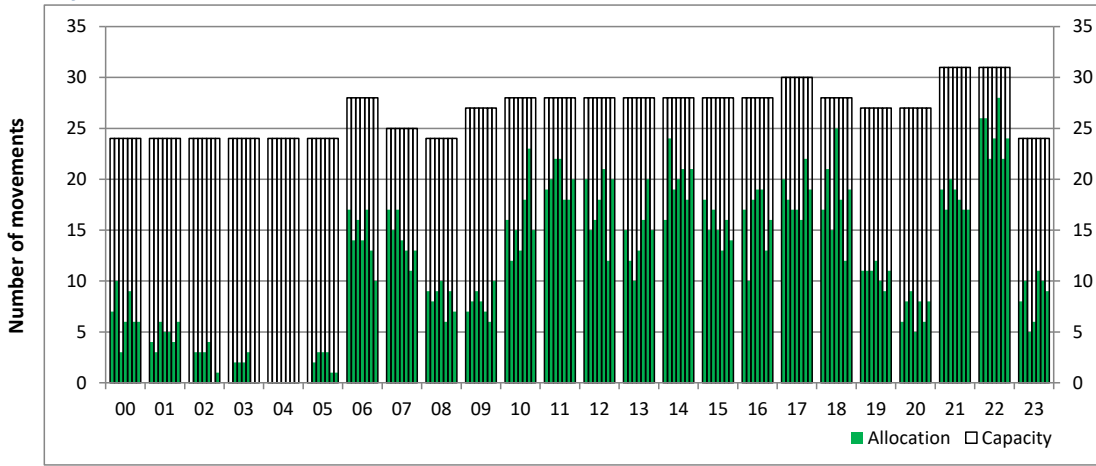
Peak Week - Hourly Runway Allocation

Schedule: S20 Start



Hourly Arrival Allocation

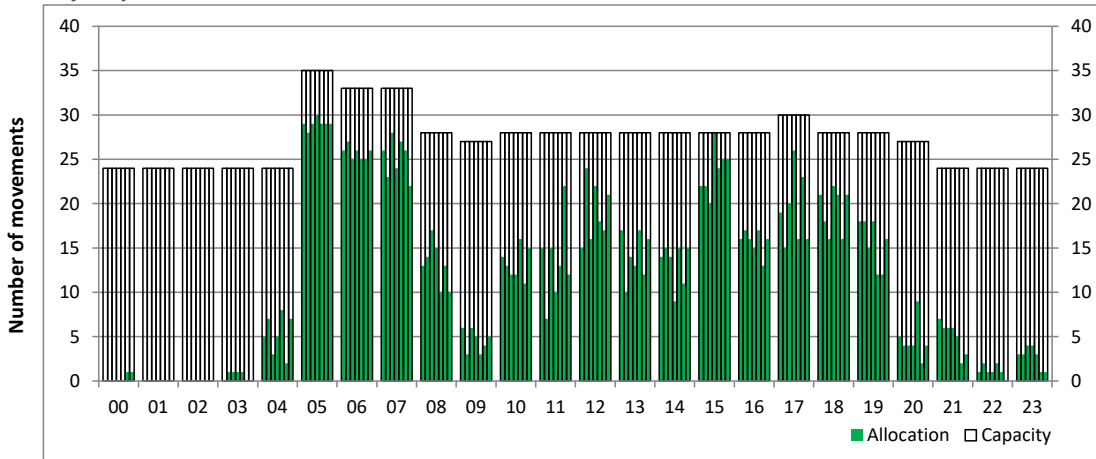
Time: UTC



Hour of day (24 hour format)

Hourly Departure Allocation

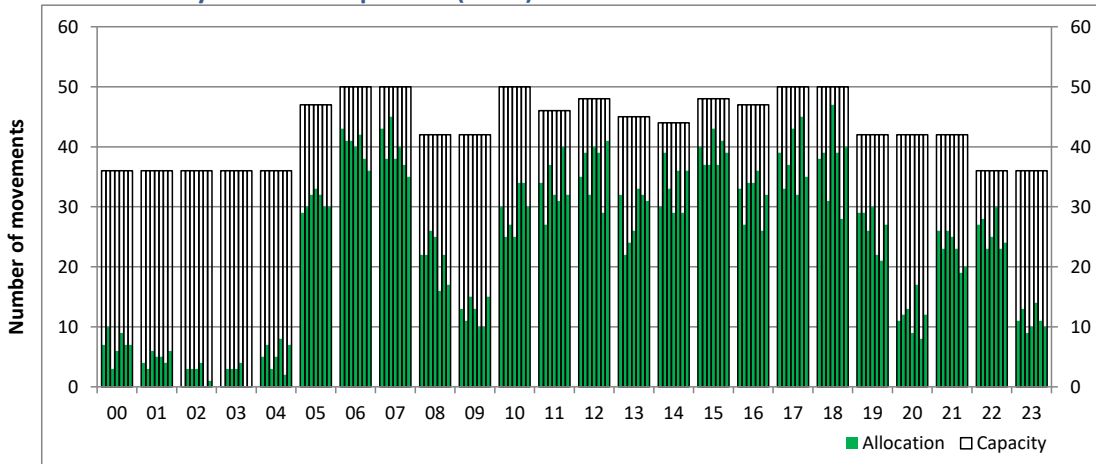
Time: UTC



Hour of day (24 hour format)

Combined Hourly Arrival & Departure (Total) Allocation

Time: UTC



Hour of day (24 hour format)

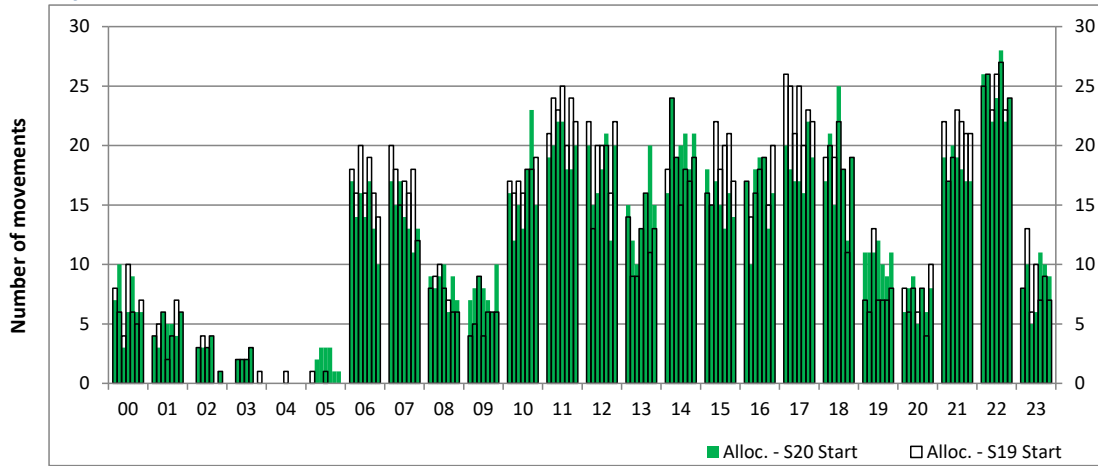
Peak Week - Runway Allocation Comparison

Comparison of S20 Start vs. S19 Start



Hourly Arrival Allocation

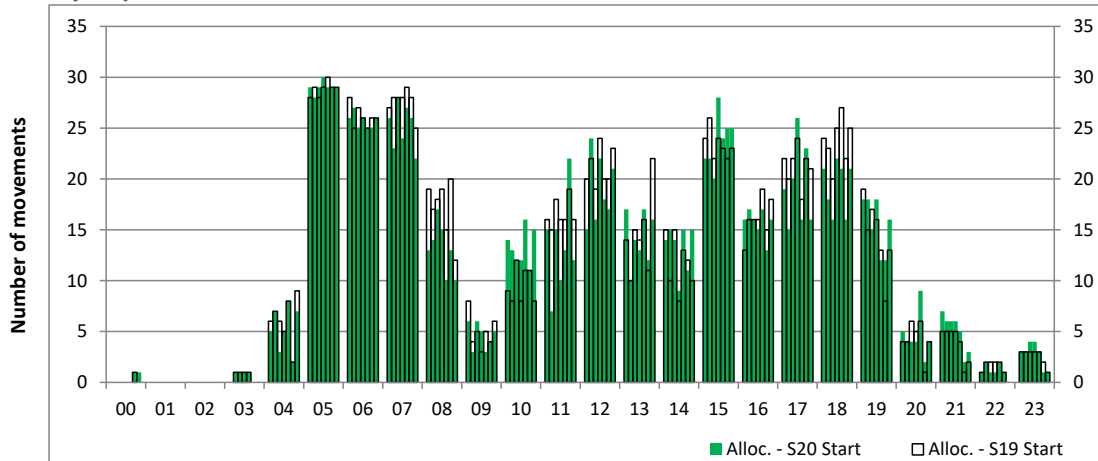
Time: UTC



Hour of day (24 hour format)

Hourly Departure Allocation

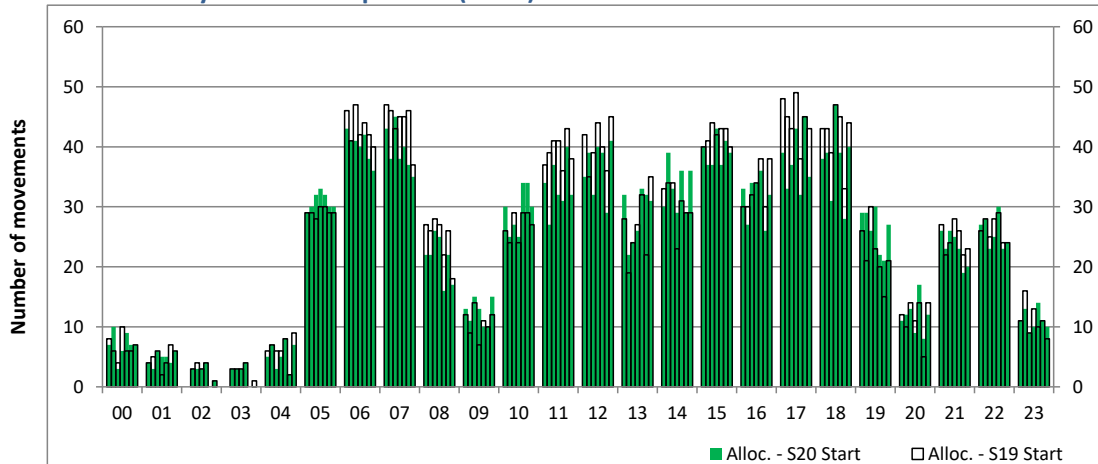
Time: UTC



Hour of day (24 hour format)

Combined Hourly Arrival & Departure (Total) Allocation

Time: UTC



Hour of day (24 hour format)

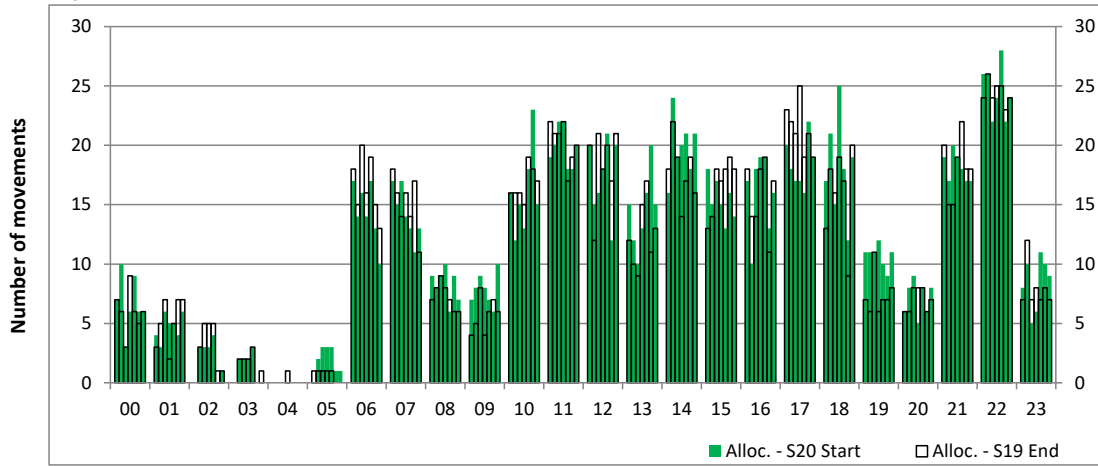
Peak Week - Runway Allocation Comparison

Comparison of S20 Start vs. S19 End



Hourly Arrival Allocation

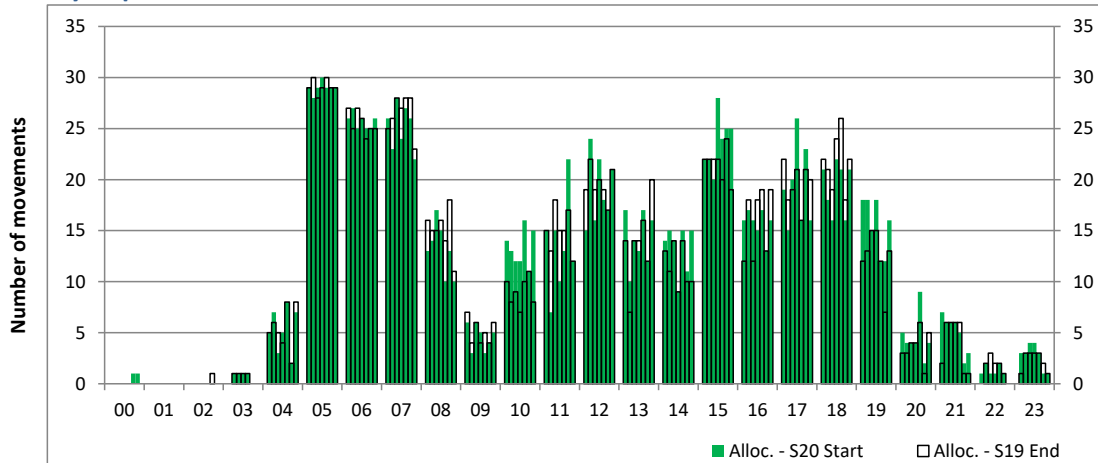
Time: UTC



Hour of day (24 hour format)

Hourly Departure Allocation

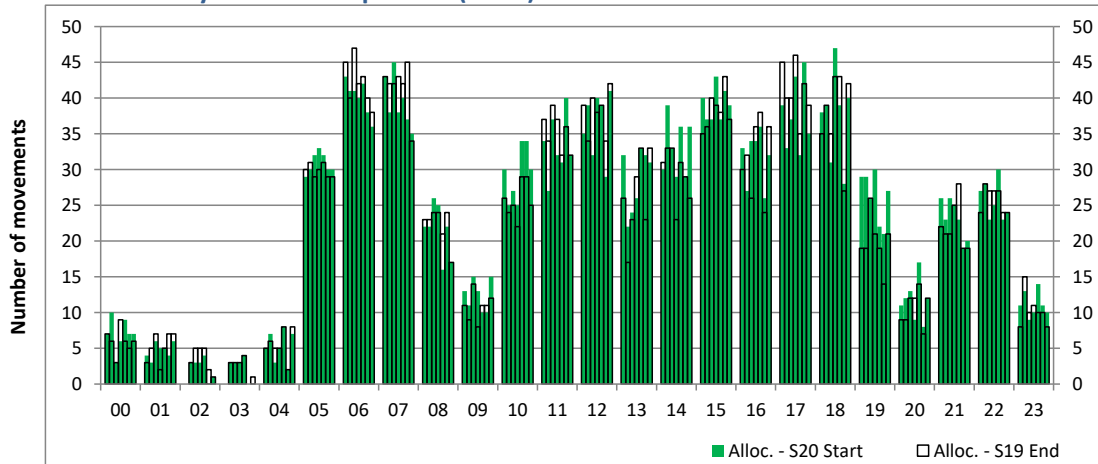
Time: UTC



Hour of day (24 hour format)

Combined Hourly Arrival & Departure (Total) Allocation

Time: UTC



Hour of day (24 hour format)

Peak Week - Passengers Histogram

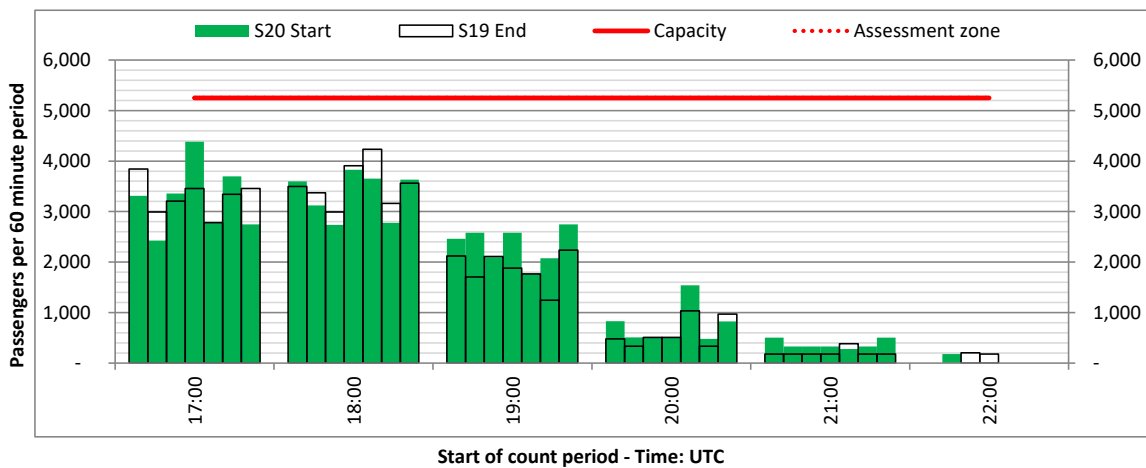
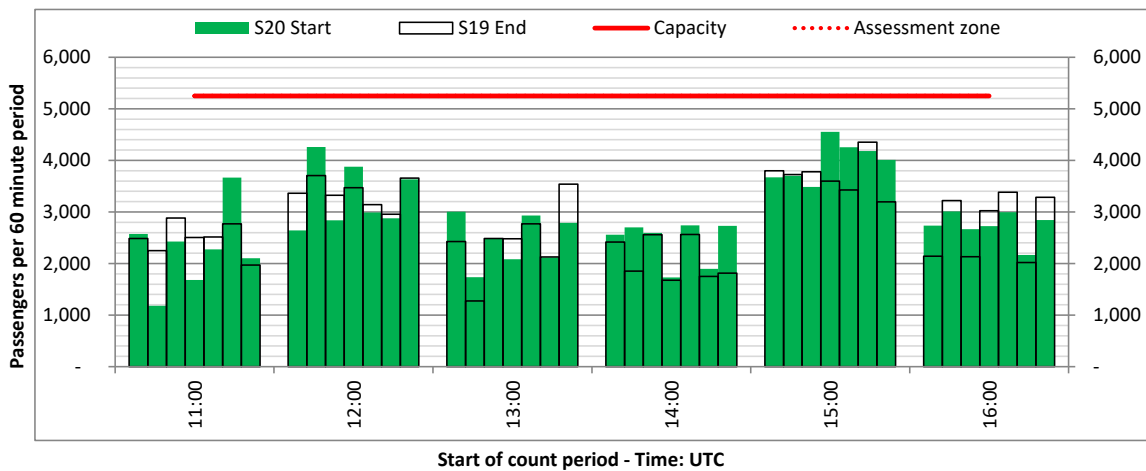
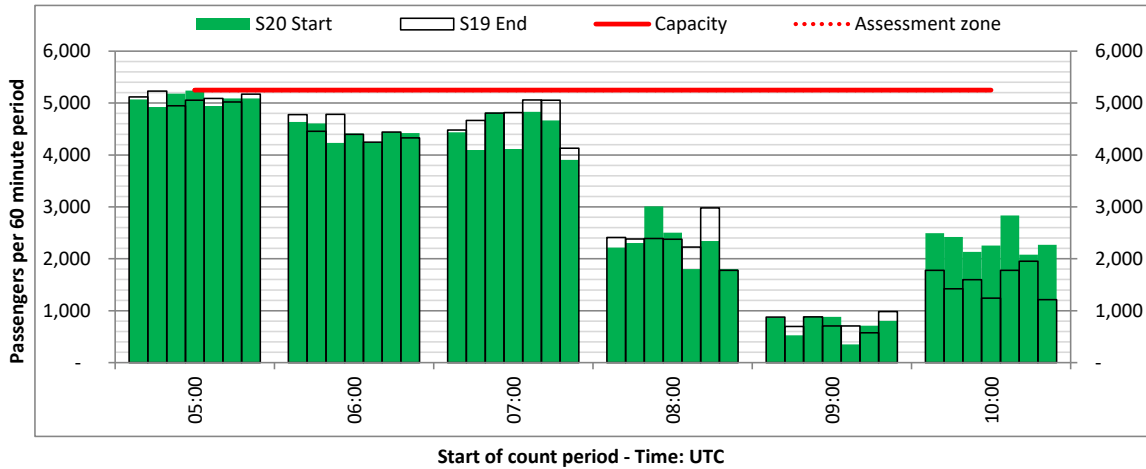
DEPARTURE - 60 minute count rolling every 60 mins (T60)



Terminals: All Terminals

Operators: All Operators

Days: 1234567



Peak Week - Passengers Histogram

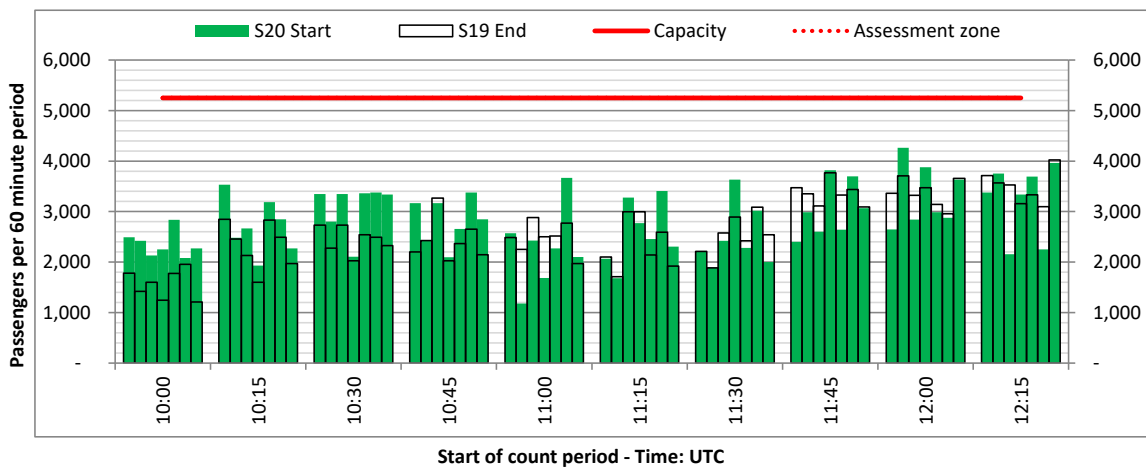
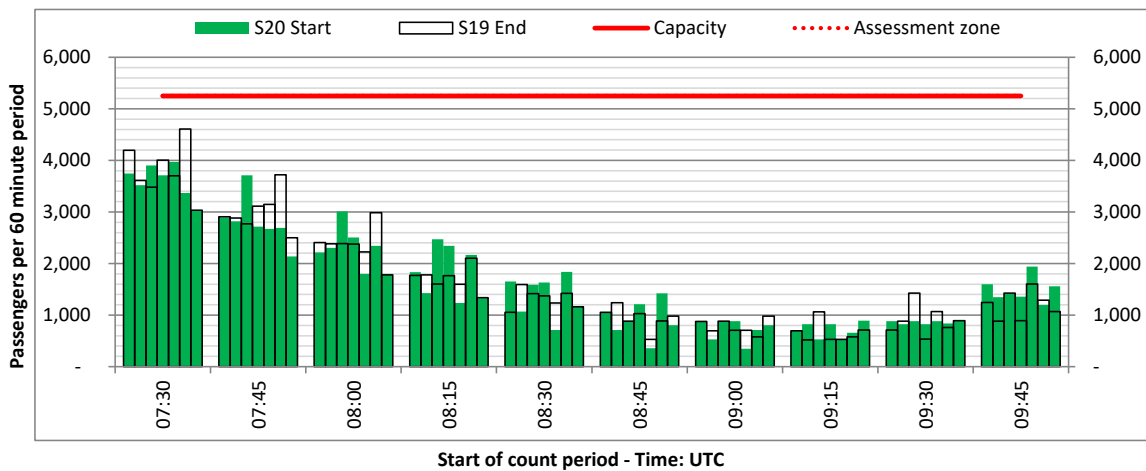
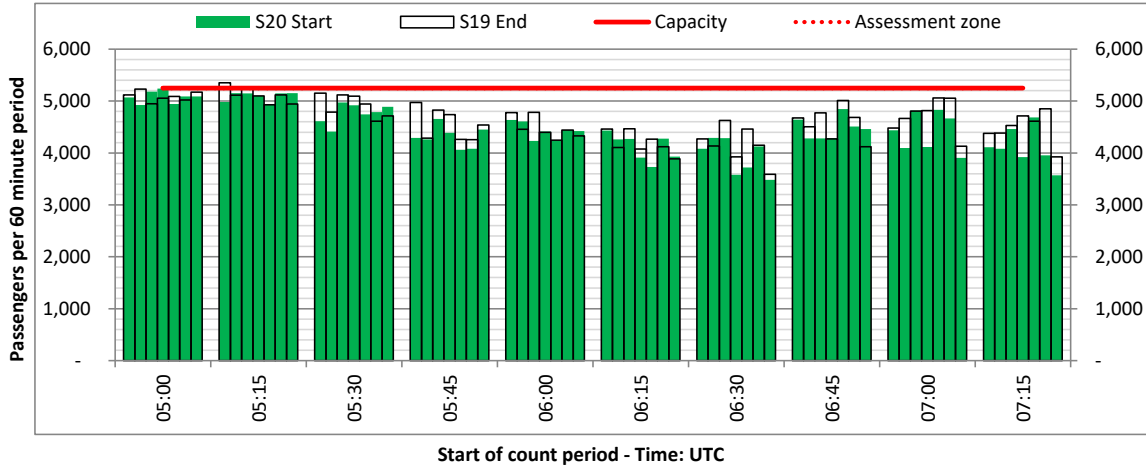
DEPARTURE - 60 minute count rolling every 15 mins (T60/15)



Terminals: All Terminals

Operators: All Operators

Days: 1234567



Peak Week - Passengers Histogram

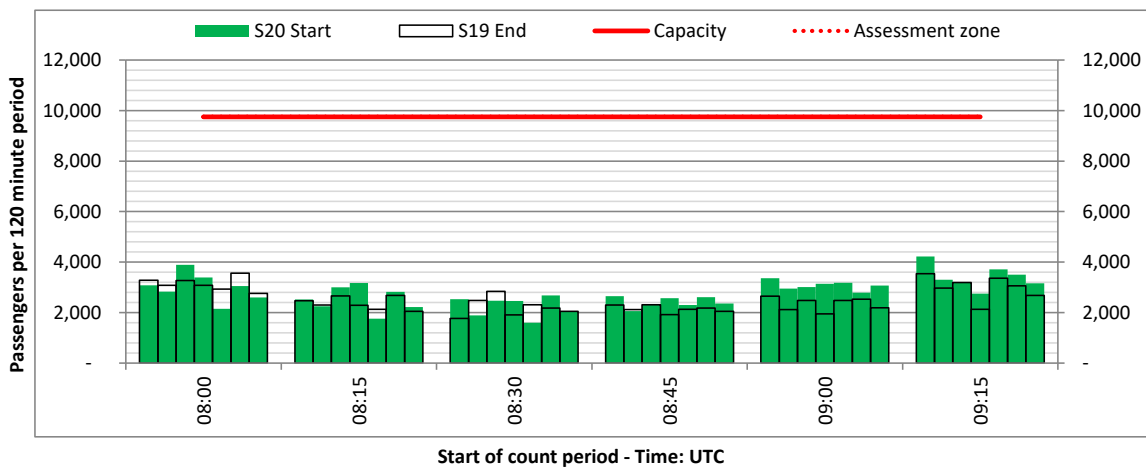
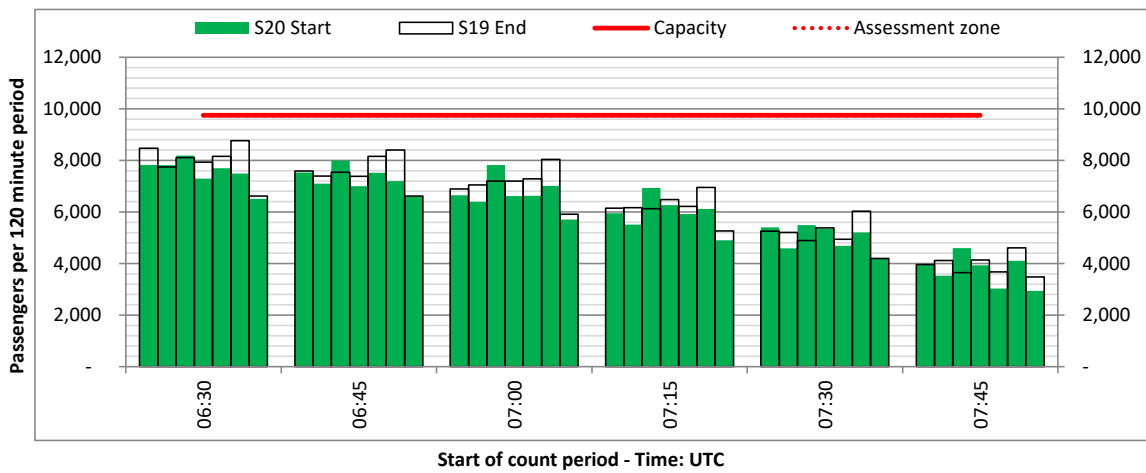
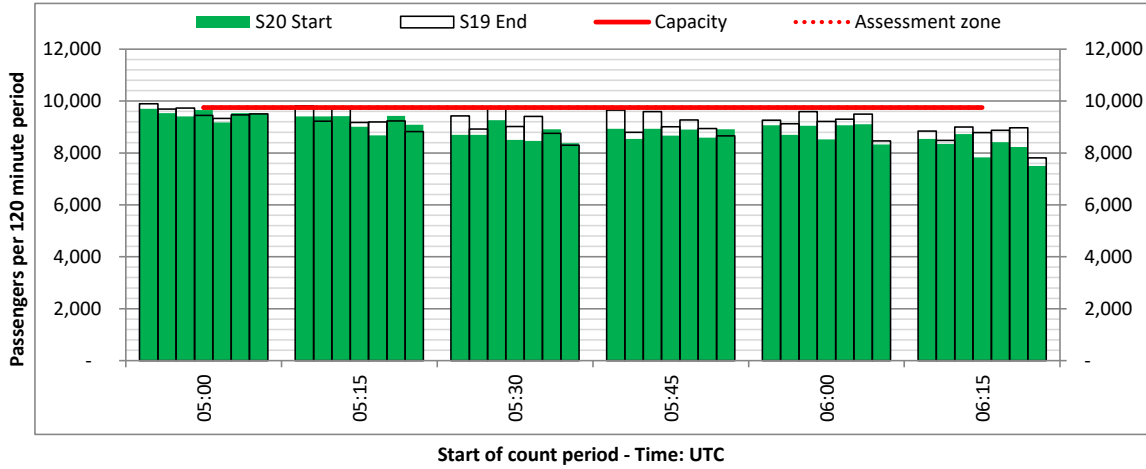
DEPARTURE - 120 minute count rolling every 15 mins (T120/15)



Terminals: All Terminals

Operators: All Operators

Days: 1234567



Peak Week - Passengers Histogram

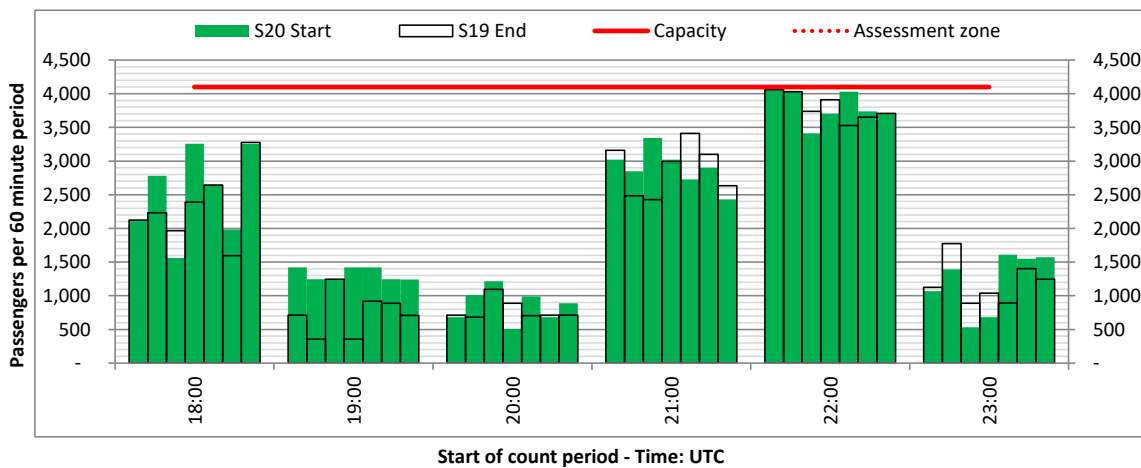
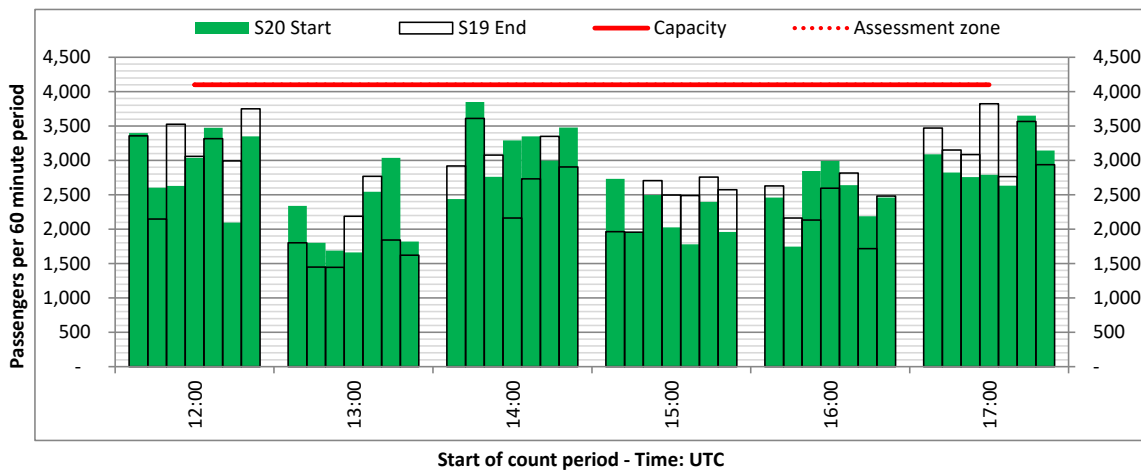
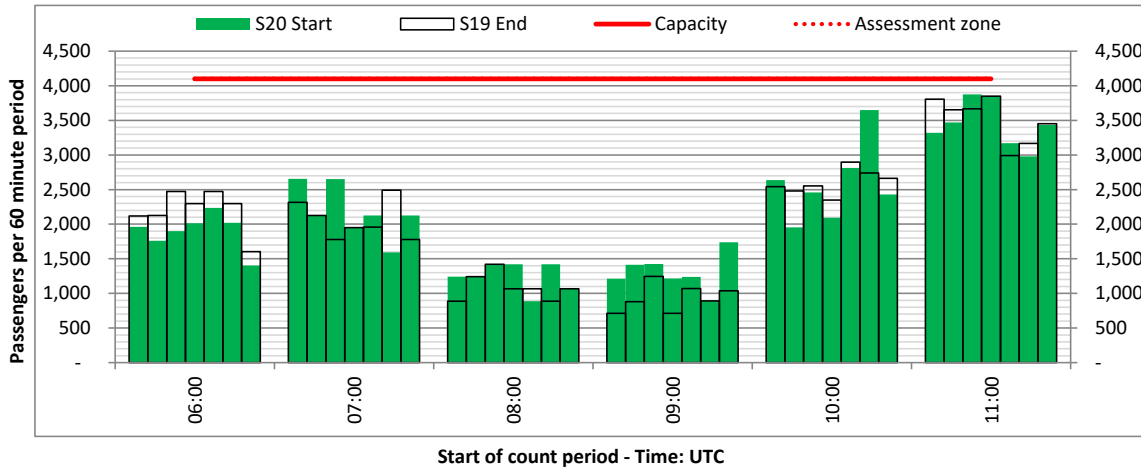
ARRIVAL - 60 minute count rolling every 60 mins (T60)



Terminals: 11

Operators: All Operators

Days: 1234567



Peak Week - Passengers Histogram

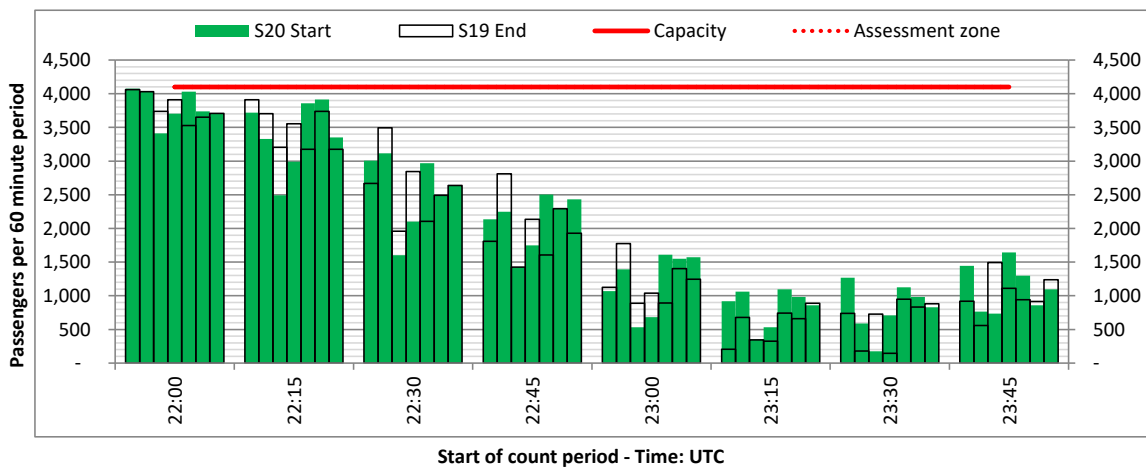
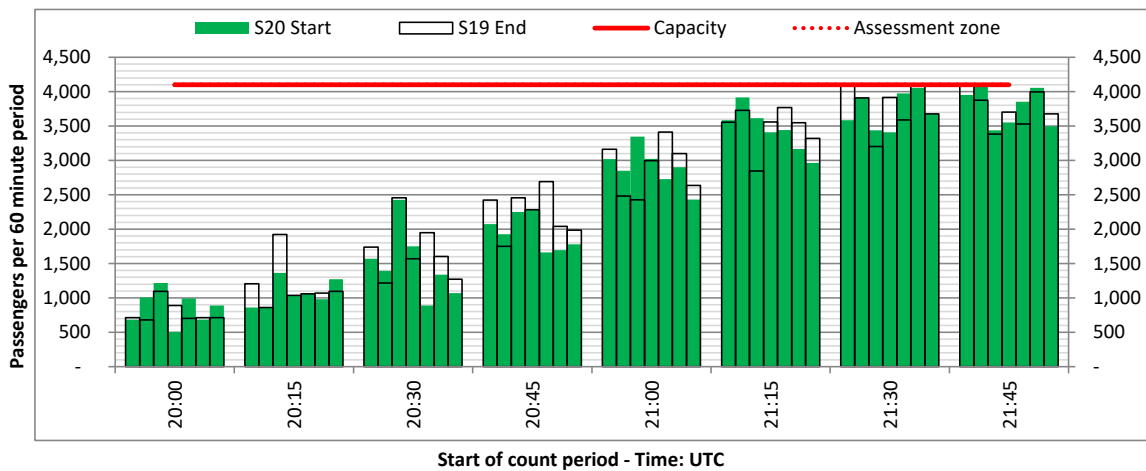
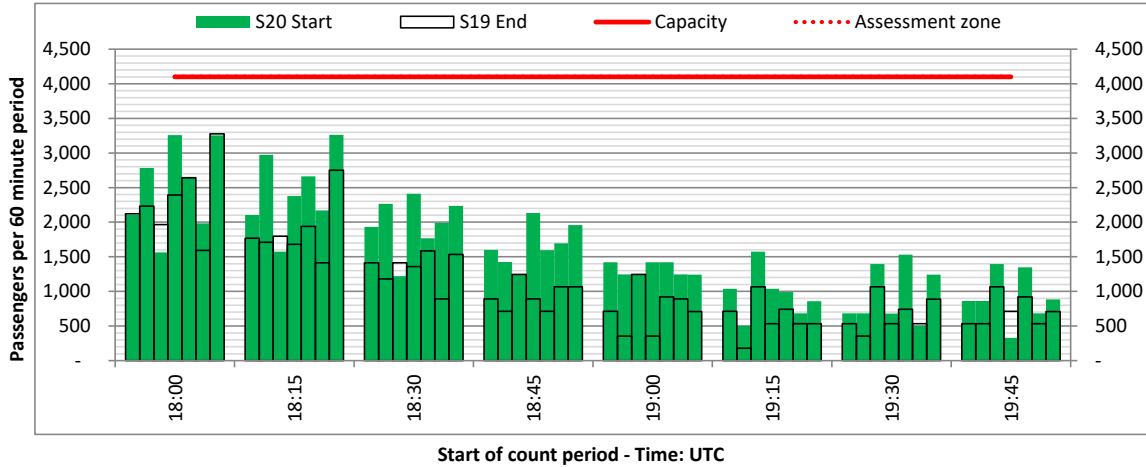
ARRIVAL - 60 minute count rolling every 15 mins (T60/15)



Terminals: 11

Operators: All Operators

Days: 1234567



Glossary



Air Transport Movement (ATM)	Any aircraft movement which is either a scheduled or chartered passenger or cargo flight.
Common Travel Area (CTA)	Origin or Destination is in Republic of Ireland or the Channel Islands.
Demand	Unconstrained demand before any schedule adjustments have been made.
"Fill-in"	These are gaps in a historic series of slots which the carrier requests to "Fill-in" at Initial Submissions - Fill-ins will be recognisably part of the historic series and will have the same flight details to qualify as a "Fill-in".
Hist (SHL)	Snapshot of historic schedule rolled over from end of the previous equivalent season - as advised to airlines in the SHLs.
ICAO Size A	Aircraft with wingspan between 0.00m - 14.99m.
ICAO Size B	Aircraft with wingspan between 15.00m - 23.99m.
ICAO Size C	Aircraft with wingspan between 24.00m - 35.99m.
ICAO Size D	Aircraft with wingspan between 36.00m - 51.99m.
ICAO Size E	Aircraft with wingspan between 52.00m - 64.99m.
ICAO Size F	Aircraft with wingspan between 65.00m - 80.00m.
Init Coord	Snapshot of schedule immediately after Initial Coordination is completed - as advised to airlines in the SALS.
Passenger Air Transport Movement (PATM)	Any aircraft movement which is either a scheduled or chartered passenger flight.
Start	Snapshot of schedule shortly before the start of the scheduling season (exact date given below where used).
Time: Local	Times shown are in LOCAL time for the airport/scheduling season.
Time: UTC	Times shown are in Universal Time Constant (UTC).

Data snapshot descriptions

S19 Start	S19 schedule as cleared on Sun 31-Mar-19.
S19 End	S19 schedule as cleared on Mon 28-Oct-19.
S20 Start	S20 schedule as cleared on Tue 10-Mar-20.
Peak Week	Peak week for S19 is Mon 05-Aug-19 to Sun 11-Aug-19. Peak week for S20 is Mon 03-Aug-20 to Sun 09-Aug-20.

For ACL use

	Airport-Season-Branch-Resource	From date	To date	Time
Full Season Rep 1	STN-S19-Start-Standard	Sun 31-Mar-2019	Sat 26-Oct-2019	UTC
Full Season Rep 2	STN-S19-End-Standard	Sun 31-Mar-2019	Sat 26-Oct-2019	UTC
Full Season Rep 3	STN-S20-SOS-Standard	Sun 29-Mar-2020	Sat 24-Oct-2020	UTC
	Airport-Season-Branch-Resource	From date	To date	Time
Peak Week Rep 1	STN-S19-Start-Standard	Mon 05-Aug-2019	Sun 11-Aug-2019	UTC
Peak Week Rep 2	STN-S19-End-Standard	Mon 26-Aug-2019	Sun 01-Sep-2019	UTC
Peak Week Rep 3	STN-S20-SOS-Standard	Mon 03-Aug-2020	Sun 09-Aug-2020	UTC