

# Luxembourg Airport (LUX)

Summer 2020 (S20)



## Start of Season Report

Report Date: Thu 26-Mar-2020

### Headlines

	S20 Start	vs. S19 Start	vs. S19 End
Total Air Transport Movements (Passenger & Freight)	38,139	▼ -6.3%	▼ -4.8%
Total Passenger Air Transport Movements	30,827	▼ -7.3%	▼ -6.4%
Total Passenger Air Transport Movement Seats	3,655,921	▼ -4.8%	▼ -5.0%
Average Seats per Passenger Air Transport Movement	119	▲ 2.7%	▲ 1.5%
Percentage of allocated slots cleared as requested (OK)	93.15%		

### Contents

Page	Content
2	Runway Scheduling Limits
3	ATM Allocation by Operator (Full season and Peak Week Comparison)
4	Peak Week - Allocation and Slot Adjustment Distribution by Operator
5	Significant Route Changes
6	Full Season - ATM Analysis
7	Full Season - PATM Seats Analysis
8	Full Season - Terminal Analysis
9	Full Season - Aircraft Size Analysis
10	Full Season - Seasonality
11	Peak Week - Hourly Runway Demand
12	Peak Week - Hourly Runway Allocation
13	Peak Week - Hourly Runway Allocation Comparison (S20 Start vs. S19 Start)
14	Peak Week - Hourly Runway Allocation Comparison (S20 Start vs. S19 End)
15	Peak Week Histogram - Arrival Passengers (T60/30) - All Terminals - All Operators
16	Peak Week Histogram - Departure Passengers (T60/30) - All Terminals - All Operators
17	Peak Week Histogram - Arrival Passengers (T60/30) - 1I - All Operators
18	Peak Week Histogram - Departure Passengers (T60/30) - 1I - All Operators
19	Peak Week Histogram - Arrival Passengers (T60/30) - 1D - All Operators
20	Glossary

S19 scheduling season runs from Sun 31-Mar-2019 to Sat 26-Oct-2019 (210 days).

S20 scheduling season runs from Sun 29-Mar-2020 to Sat 24-Oct-2020 (210 days).

### Disclaimer

No warranty whether expressed or implied as to the completeness, accuracy, fitness for purpose, or satisfactory quality is given by ACL regarding the information in this report, which is provided by third parties. Accordingly, ACL excludes all liability with regard to such data.

The contents of this report may not be reproduced without the written consent of ACL.



# Air Transport Movement Allocation by Operator

Comparison between S19 End vs. S20 Start



Operator	FULL SEASON ALLOCATION								PEAK WEEK ALLOCATION							
	S19 ATMs	S20 ATMs	+/- change	S20 Rank	S19 Seats	S20 Seats	+/- change	S20 Rank	S19 ATMs	S20 ATMs	+/- change	S20 Rank	S19 Seats	S20 Seats	+/- change	S20 Rank
Aegean Airlines	120	152	32	19	20,880	24,948	4,068	14	4	6	2	17	696	984	288	14
Aero4M	8	-	-8	26	391	-	-391	22	2	-	-2	20	97	-	-97	16
Air Alsie A	2	-	-2	26	128	-	-128	22	-	-	0	20	-	-	0	16
Air Chathams	4,813	4,535	-278	2	-	-	0	22	165	155	-10	2	-	-	0	16
Air France	2	-	-2	26	286	-	-286	22	-	-	0	20	-	-	0	16
Air Nostrum	-	4	4	21	-	400	400	19	-	-	0	20	-	-	0	16
Air Serbia	2	-	-2	26	288	-	-288	22	-	-	0	20	-	-	0	16
airBaltic	-	4	4	21	-	580	580	18	-	-	0	20	-	-	0	16
Alitalia	602	460	-142	13	53,144	46,000	-7,144	12	24	24	0	11	2,184	2,400	216	10
Avanti Air	2	-	-2	26	200	-	-200	22	-	-	0	20	-	-	0	16
Azerbaijan Airlines	2	-	-2	26	292	-	-292	22	-	-	0	20	-	-	0	16
Blue Islands	7	-	-7	26	296	-	-296	22	7	-	-7	20	296	-	-296	16
British Airways	776	1,057	281	8	139,680	183,315	43,635	5	26	40	14	8	4,680	6,914	2,234	5
Cargolux	-	-	0	26	-	-	0	22	-	-	0	20	-	-	0	16
Carpatair	4	-	-4	26	400	-	-400	22	-	-	0	20	-	-	0	16
Cavok Air	-	-	0	26	-	-	0	22	-	-	0	20	-	-	0	16
China Airlines	179	180	1	16	-	-	0	22	6	6	0	17	-	-	0	16
EasyJet	238	236	-2	15	42,468	41,376	-1,092	13	8	8	0	15	1,428	1,428	0	13
EasyJet Europe	1,292	1,474	182	7	231,870	268,444	36,574	3	46	54	8	7	8,256	9,918	1,662	3
Emirates	118	180	62	16	-	-	0	22	4	6	2	17	-	-	0	16
Enter Air	6	4	-2	21	1,134	756	-378	16	-	-	0	20	-	-	0	16
Fly Jet	1	-	-1	26	-	-	0	22	-	-	0	20	-	-	0	16
Flybe	232	-	-232	26	19,836	-	-19,836	22	6	-	-6	20	508	-	-508	16
Georgian Airways	4	-	-4	26	430	-	-430	22	-	-	0	20	-	-	0	16
Hahn Air Lines GMBH	100	18	-82	20	800	144	-656	21	4	-	-4	20	32	-	-32	16
JetNetherlands	4	-	-4	26	168	-	-168	22	-	-	0	20	-	-	0	16
Klasjet	1	-	-1	26	-	-	0	22	-	-	0	20	-	-	0	16
KLM Royal Dutch Airlines	1,409	1,512	103	6	129,524	139,032	9,508	6	48	64	16	6	4,464	5,920	1,456	6
LOT Polish Airlines	615	592	-23	11	47,122	48,544	1,422	11	22	22	0	12	1,648	1,804	156	12
Lufthansa	3,284	2,966	-318	4	309,764	249,219	-60,545	4	115	118	3	3	11,889	9,912	-1,977	4
Luxair	18,804	16,652	-2,152	1	1,944,365	1,706,867	-237,498	1	653	686	33	1	67,839	70,916	3,077	1
Maleth-Aero	6	-	-6	26	699	-	-699	22	-	-	0	20	-	-	0	16
Nyxair	1	-	-1	26	-	-	0	22	-	-	0	20	-	-	0	16
Pan Europeenne	1	4	3	21	37	196	159	20	-	-	0	20	-	-	0	16
Qatar Airways	1,323	1,987	664	5	-	-	0	22	46	66	20	5	-	-	0	16
RAF-Avia	1	-	-1	26	-	-	0	22	-	-	0	20	-	-	0	16
Ryanair	2,760	3,016	256	3	521,640	570,024	48,384	2	96	106	10	4	18,144	20,034	1,890	2
SAS Scandinavian	-	162	162	18	-	14,580	14,580	15	-	8	8	15	-	720	720	15
Sky Gates Cargo	2	-	-2	26	-	-	0	22	-	-	0	20	-	-	0	16
Sky Taxi	2	-	-2	26	68	-	-68	22	-	-	0	20	-	-	0	16
Smartwings	-	4	4	21	-	756	756	16	-	-	0	20	-	-	0	16
SprintAir	2	-	-2	26	66	-	-66	22	-	-	0	20	-	-	0	16
Sundair	1	-	-1	26	144	-	-144	22	-	-	0	20	-	-	0	16
Swiss International	1,106	1,000	-106	9	145,452	124,678	-20,774	7	38	38	0	9	4,840	4,740	-100	7
TAP Air Portugal	832	598	-234	10	127,726	95,864	-31,862	8	28	28	0	10	4,332	4,476	144	8
Trade Air	3	-	-3	26	327	-	-327	22	-	-	0	20	-	-	0	16
Transavia	2	-	-2	26	378	-	-378	22	-	-	0	20	-	-	0	16
TUI fly Belgium	5	-	-5	26	945	-	-945	22	-	-	0	20	-	-	0	16
Turkish Airlines	400	378	-22	14	66,032	63,026	-3,006	10	14	14	0	14	2,282	2,334	52	11
UNI-TOP AIRLINES	268	-	-268	26	-	-	0	22	10	-	-10	20	-	-	0	16
Valljet	3	-	-3	26	150	-	-150	22	-	-	0	20	-	-	0	16
Volotea Airlines	302	534	232	12	40,354	77,172	36,818	9	10	20	10	13	1,374	2,872	1,498	9
Vulkan Air	9	-	-9	26	-	-	0	22	-	-	0	20	-	-	0	16
<b>TOTAL</b>	<b>39,656</b>	<b>37,709</b>	<b>-1,947</b>		<b>3,847,484</b>	<b>3,655,921</b>	<b>-191,563</b>		<b>1,382</b>	<b>1,469</b>	<b>87</b>		<b>134,989</b>	<b>145,372</b>	<b>10,383</b>	

Operators with 0 'ATMs' in both S19 End & S20 Start schedules are included in the table due to appearing in the S19 Start schedule (either with/without allocated slots).

# Peak Week - Allocation and Slot Adjustment Distribution by Operator

Schedule: S20 Start



Operator	S20 allocated ATMs	SLOT ADJUSTMENTS (MINUTES OFF REQUESTED TIME)														Requests with NO slot allocated	
		0	5	10	15	20	25	30	35	40	45	50	55	60	>60		
Agean Airlines	6	100.0%	0.0%	0.0%	0.0%	0.0%	0.0%	0.0%	0.0%	0.0%	0.0%	0.0%	0.0%	0.0%	0.0%	0.0%	-
Air Chathams	155	95.5%	0.6%	0.6%	1.3%	0.0%	0.6%	0.0%	0.0%	0.0%	0.0%	0.0%	0.0%	0.0%	1.3%	0.0%	-
Alitalia	24	100.0%	0.0%	0.0%	0.0%	0.0%	0.0%	0.0%	0.0%	0.0%	0.0%	0.0%	0.0%	0.0%	0.0%	0.0%	-
British Airways	40	100.0%	0.0%	0.0%	0.0%	0.0%	0.0%	0.0%	0.0%	0.0%	0.0%	0.0%	0.0%	0.0%	0.0%	0.0%	-
Cargolux Italia S.p.A	13	84.6%	0.0%	15.4%	0.0%	0.0%	0.0%	0.0%	0.0%	0.0%	0.0%	0.0%	0.0%	0.0%	0.0%	0.0%	-
China Airlines	6	100.0%	0.0%	0.0%	0.0%	0.0%	0.0%	0.0%	0.0%	0.0%	0.0%	0.0%	0.0%	0.0%	0.0%	0.0%	-
EasyJet	8	100.0%	0.0%	0.0%	0.0%	0.0%	0.0%	0.0%	0.0%	0.0%	0.0%	0.0%	0.0%	0.0%	0.0%	0.0%	-
EasyJet Europe	54	90.7%	1.9%	3.7%	0.0%	0.0%	0.0%	0.0%	3.7%	0.0%	0.0%	0.0%	0.0%	0.0%	0.0%	0.0%	-
Emirates	6	100.0%	0.0%	0.0%	0.0%	0.0%	0.0%	0.0%	0.0%	0.0%	0.0%	0.0%	0.0%	0.0%	0.0%	0.0%	-
KLM Royal Dutch Airlines	64	100.0%	0.0%	0.0%	0.0%	0.0%	0.0%	0.0%	0.0%	0.0%	0.0%	0.0%	0.0%	0.0%	0.0%	0.0%	-
LOT Polish Airlines	22	100.0%	0.0%	0.0%	0.0%	0.0%	0.0%	0.0%	0.0%	0.0%	0.0%	0.0%	0.0%	0.0%	0.0%	0.0%	-
Lufthansa	118	100.0%	0.0%	0.0%	0.0%	0.0%	0.0%	0.0%	0.0%	0.0%	0.0%	0.0%	0.0%	0.0%	0.0%	0.0%	-
Luxair	686	88.9%	3.4%	3.6%	2.0%	0.6%	0.3%	0.1%	0.3%	0.1%	0.0%	0.0%	0.0%	0.3%	0.3%	0.0%	-
Qatar Airways	66	100.0%	0.0%	0.0%	0.0%	0.0%	0.0%	0.0%	0.0%	0.0%	0.0%	0.0%	0.0%	0.0%	0.0%	0.0%	-
Ryanair	106	90.6%	1.9%	3.8%	1.9%	0.0%	0.0%	0.0%	0.0%	0.0%	0.0%	0.0%	0.0%	0.0%	1.9%	0.0%	-
SAS Scandinavian	8	100.0%	0.0%	0.0%	0.0%	0.0%	0.0%	0.0%	0.0%	0.0%	0.0%	0.0%	0.0%	0.0%	0.0%	0.0%	-
Swiss International	38	100.0%	0.0%	0.0%	0.0%	0.0%	0.0%	0.0%	0.0%	0.0%	0.0%	0.0%	0.0%	0.0%	0.0%	0.0%	-
TAP Air Portugal	28	85.7%	0.0%	0.0%	0.0%	0.0%	0.0%	7.1%	7.1%	0.0%	0.0%	0.0%	0.0%	0.0%	0.0%	0.0%	-
Turkish Airlines	14	100.0%	0.0%	0.0%	0.0%	0.0%	0.0%	0.0%	0.0%	0.0%	0.0%	0.0%	0.0%	0.0%	0.0%	0.0%	-
Volotea Airlines	20	90.0%	0.0%	0.0%	0.0%	0.0%	0.0%	0.0%	10.0%	0.0%	0.0%	0.0%	0.0%	0.0%	0.0%	0.0%	-
<b>TOTAL</b>	<b>1,482</b>	<b>92.8%</b>	<b>1.8%</b>	<b>2.3%</b>	<b>1.2%</b>	<b>0.3%</b>	<b>0.2%</b>	<b>0.2%</b>	<b>0.5%</b>	<b>0.1%</b>	<b>0.0%</b>	<b>0.0%</b>	<b>0.0%</b>	<b>0.1%</b>	<b>0.4%</b>	<b>-</b>	

Operators with 0 'allocated ATMs' and 0 'Requests with NO slot allocated' in S20, are included in this list due to having slots allocated in either S19 Start or S19 End schedules.

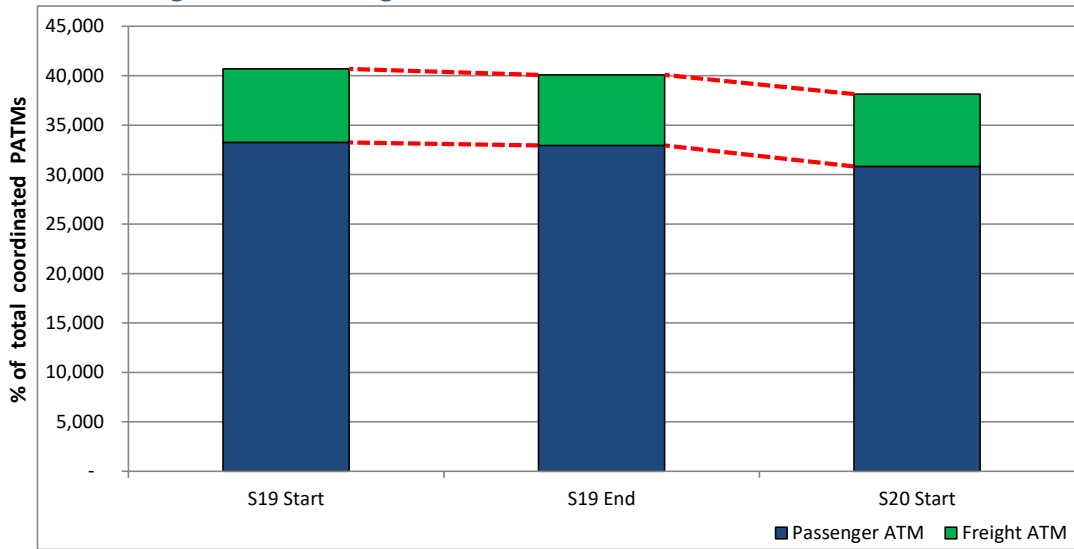
## Significant Route Changes

Operator	Category	Description of change from S19 schedule to S20 schedule
Alitalia	CHANGE	Increased routes to Milan Linate (LIN).
Alitalia	<b>CANCELLED</b>	Stopped operating the Milan Malpensa (MXP) service.
British Airways	CHANGE	Increased the London Heathrow (LHR) route.
Cargolux	CHANGE	Decreased routes to Zhengzhou (CGO) and to Sao Paulo (VCP).
Cargolux	CHANGE	Increased services to Rio De Janeiro (GIG), Chicago (ORD), Singapore (SIN) and to Taipei (TPE).
Cargolux	<b>CANCELLED</b>	Stopped operating to to Beirut (BEY) and to Kuala Lumpur (KUL).
EasyJet	CHANGE	Decreased the Milan Malpensa (MXP) route.
EasyJet	CHANGE	Increased services to Porto (OPO) and to Berlin (SXF).
Flybe	<b>CANCELLED</b>	Stopped operating every route due to bankruptcy.
Hahn Air Lines GMBH	CHANGE	Decreased the Dusseldorf (DUS) service.
KLM Royal Dutch Airlines	CHANGE	Increased the Amsterdam (AMS) route.
Luxair	CHANGE	Decreased services to Frankfurt (FRA) and to Munich (MUC).
Luxair	<b>NEW</b>	Introduced new routes to Brindisi (BDS), Florence (FLR) and to Montpellier (MPL).
Luxair	CHANGE	Decreased services to Bari (BRI), Paris Charles De Gaulle (CDG), Copenhagen (CPH), Dublin (DUB), Rome Fiumicino (FCO), Geneva (GVA), Hamburg (HAM), London City (LCY), Madrid (MAD), Munich (MUC), Milan (MXP), Berlin (TXL) and to Vienna (VIE).
Luxair	CHANGE	Increased services to Enfidha (NBE).
Qatar Airways	<b>NEW</b>	Introduced a new service to Santiago (SCL).
Qatar Airways	CHANGE	Decreased services to Atlanta (ATL) and to Chicago (ORD).
Qatar Airways	CHANGE	Increased routes to Dallas (DFW), Doha (DOH) and to New York (JFK).
Ryanair	<b>NEW</b>	Introduce a new route to Budapest (BUD).
Ryanair	CHANGE	Decreased the Berlin (TXL) route.
Ryanair	CHANGE	Increased the Toulouse (TLS) service.
SAS Scandinavian	<b>NEW</b>	Introduced a new route to Stockholm (ARN).
Swiss International	CHANGE	Decreased the Zurich (ZRH) route.
TAP Air Portugal	CHANGE	Decreased services to Lisbon (LIS) and to Porto (OPO).
UNI-TOP AIRLINES	<b>CANCELLED</b>	Stopped operating to Wuhan (WUH).
Volotea Airlines	CHANGE	Increased routes to Alicante (ALC) and to Venice (VCE).

# Full Season - ATM Analysis

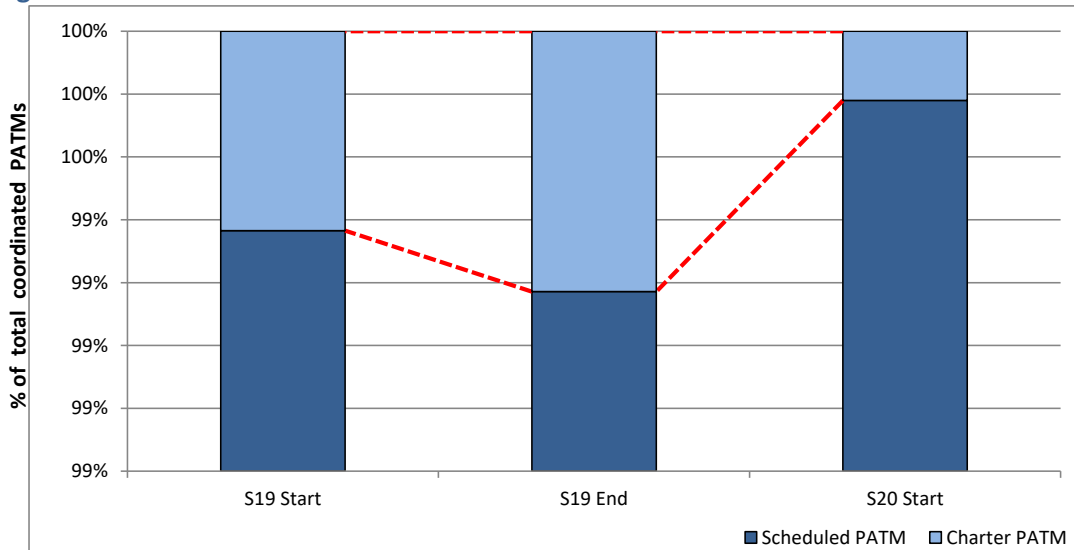


## Total ATMs: Passenger ATMs vs. Freight ATMs



Schedule Snapshot

## Passenger ATMs: Scheduled vs. Charter

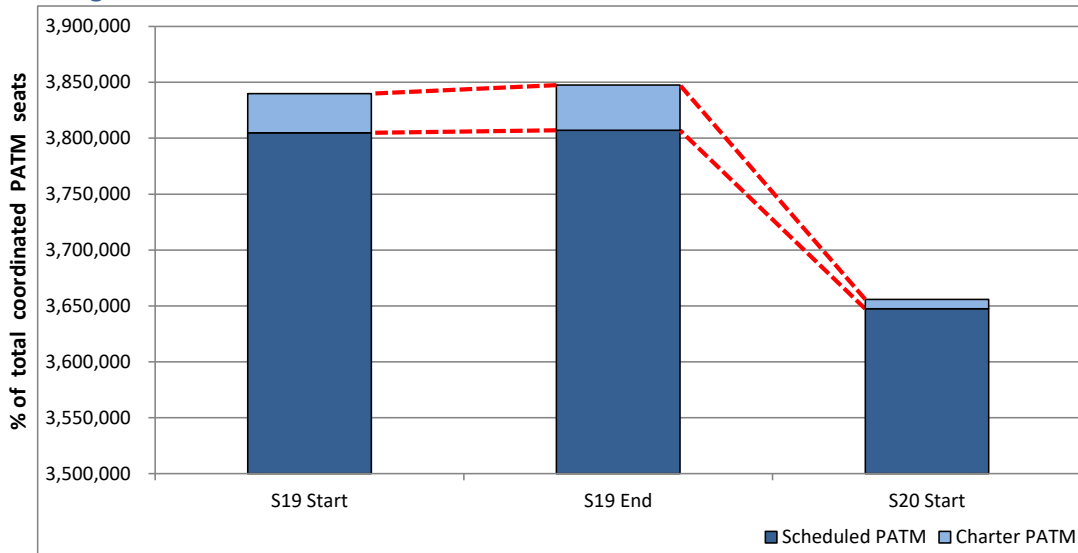


Schedule Snapshot

# Full Season - PATM Seats Analysis

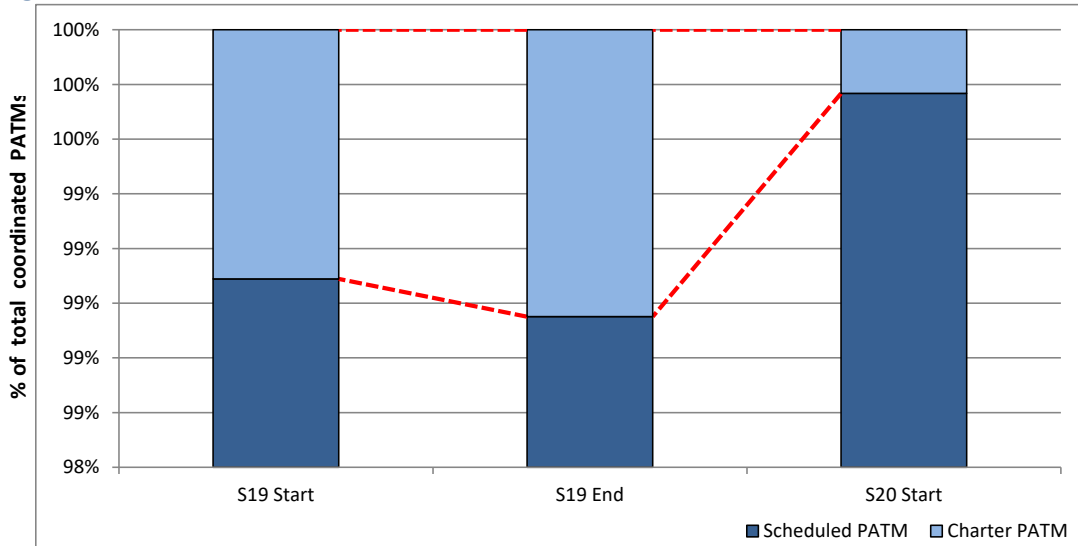


## Total Passenger ATM seats: Scheduled vs. Charter



Schedule Snapshot

## Passenger ATM seats: Scheduled vs. Charter

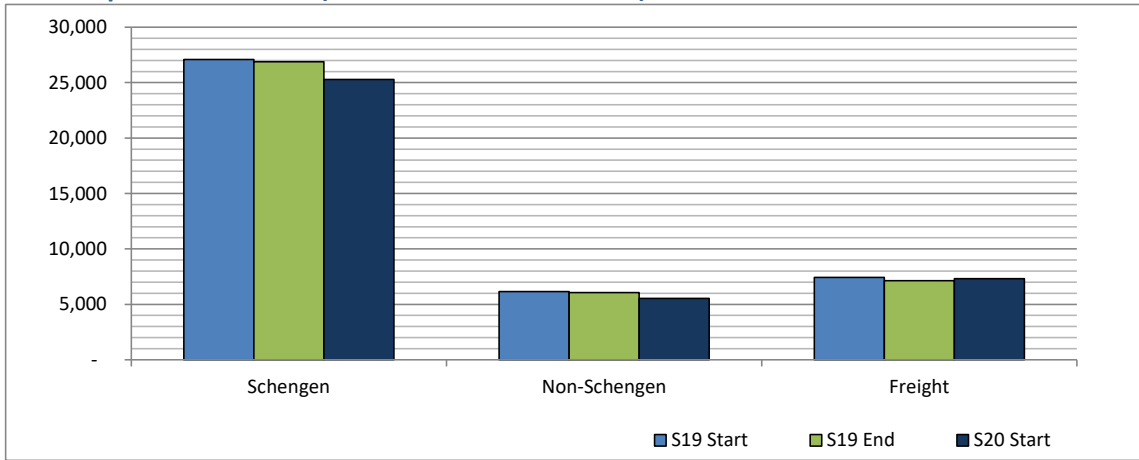


Schedule Snapshot

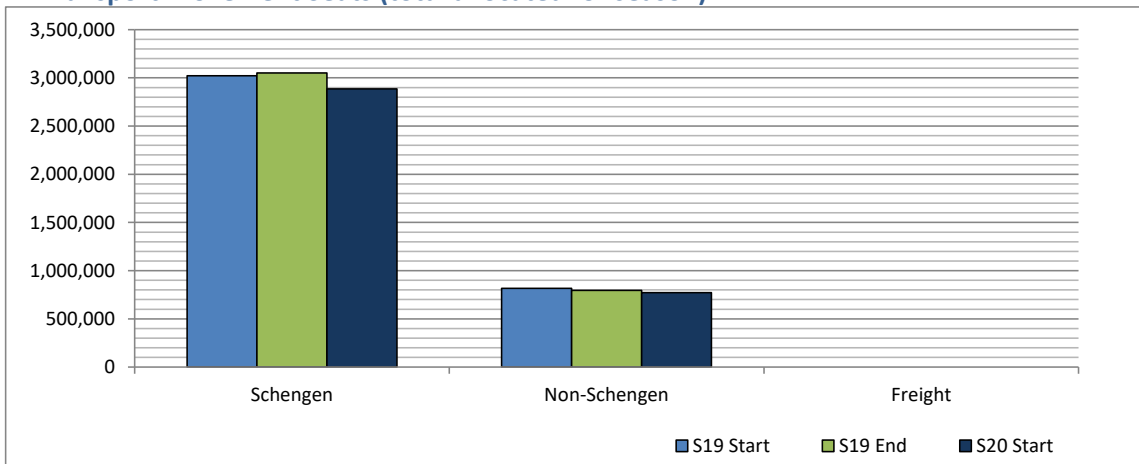
# Full Season - Terminal Analysis



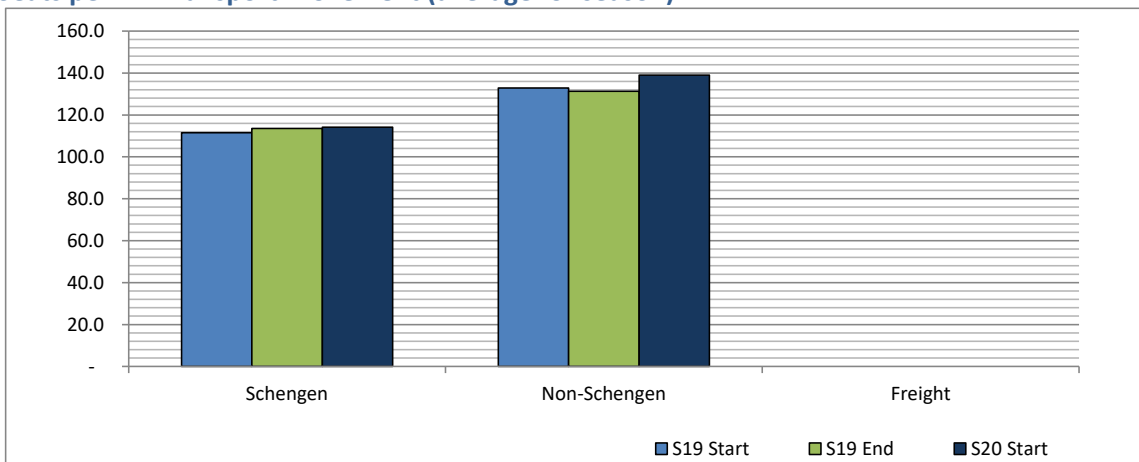
## Air Transport Movements (total allocated for season)



## Air Transport Movement Seats (total allocated for season)



## Seats per Air Transport Movement (average for season)

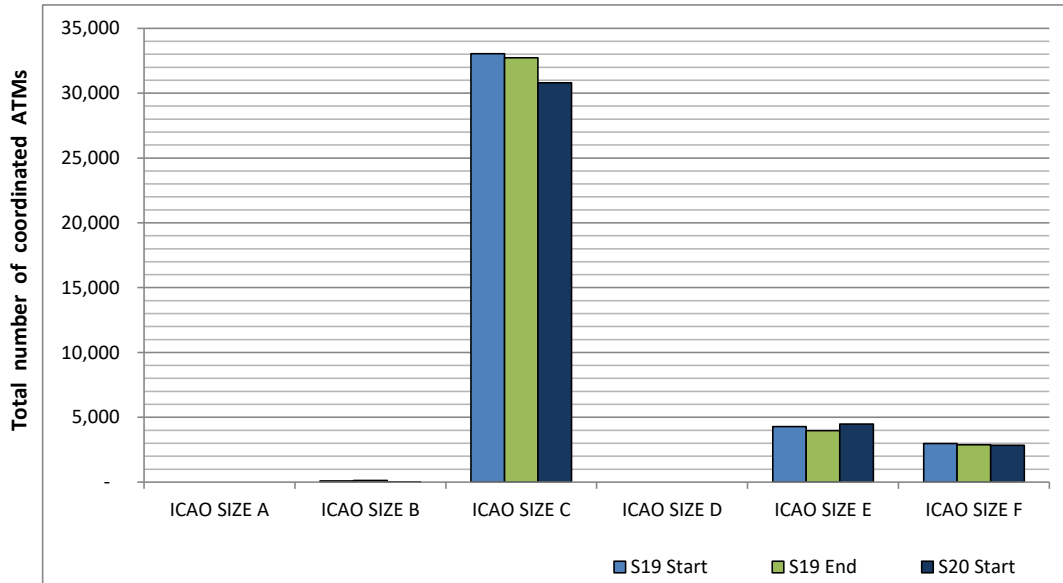




# Full Season - Aircraft Size Analysis

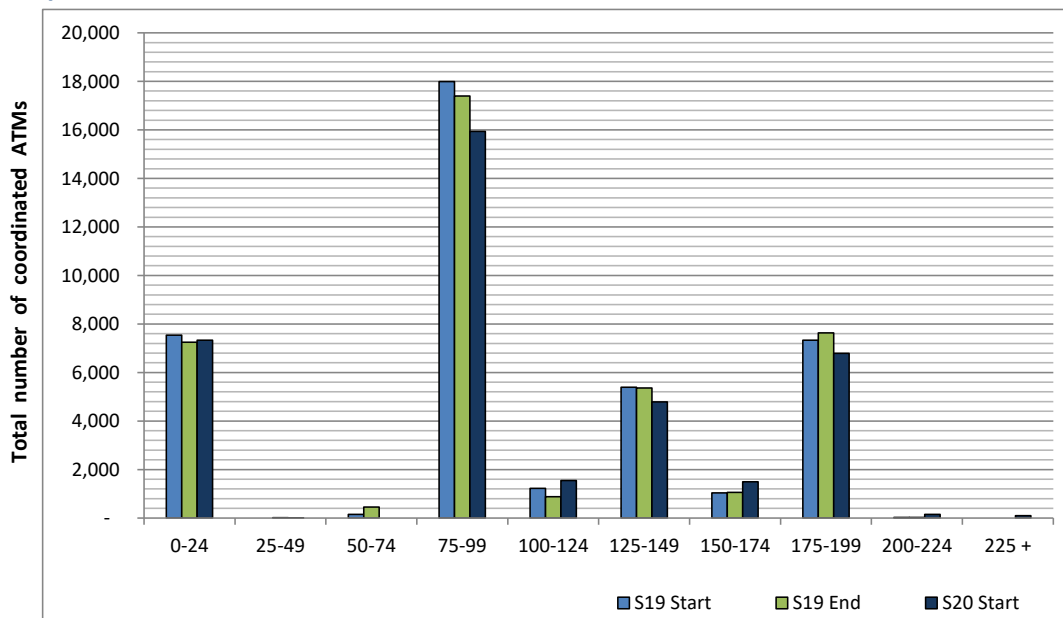


## ICAO size designation



Note: See Glossary for definitions of ICAO SIZE groupings

## Air Transport Movement seat distribution

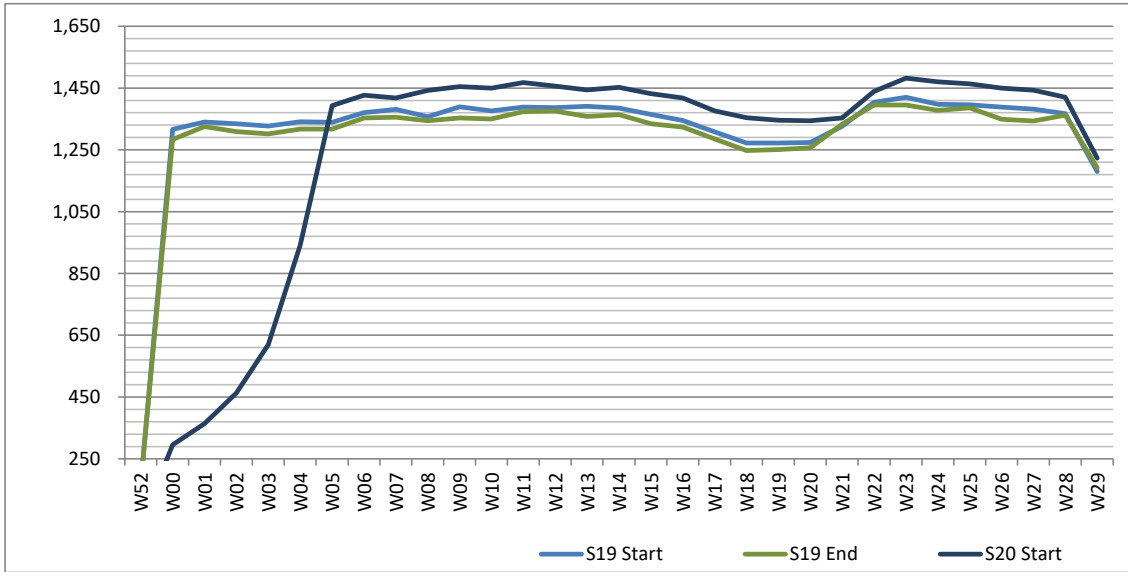


Note: FREIGHT-ONLY services with 0 seats are included in the first seat band '0-24'

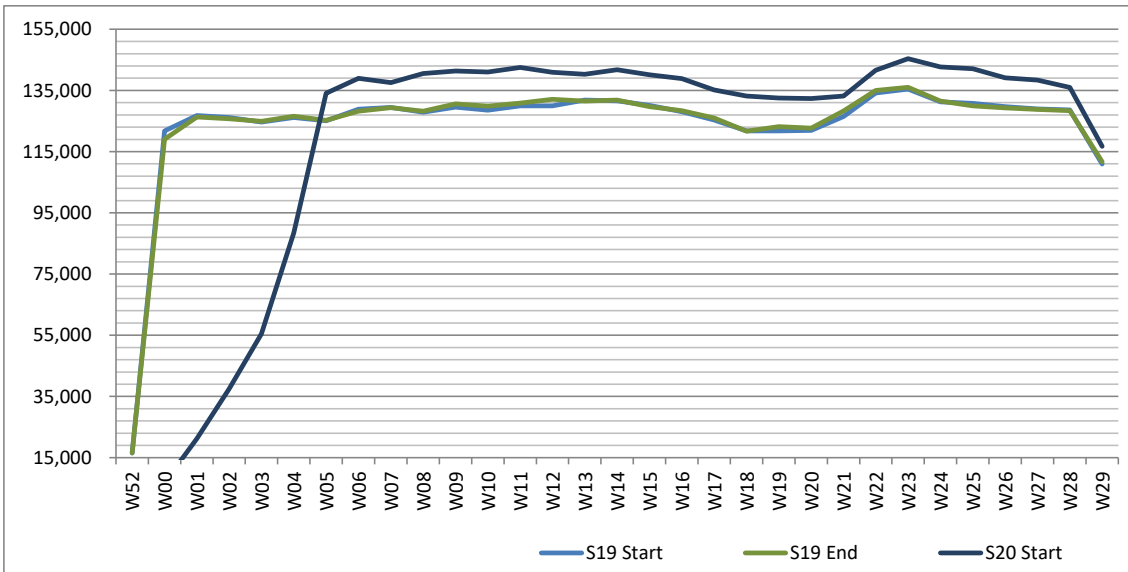
# Full Season - Seasonality



Air Transport Movements by week of season



Air Transport Movement Seats by week of season



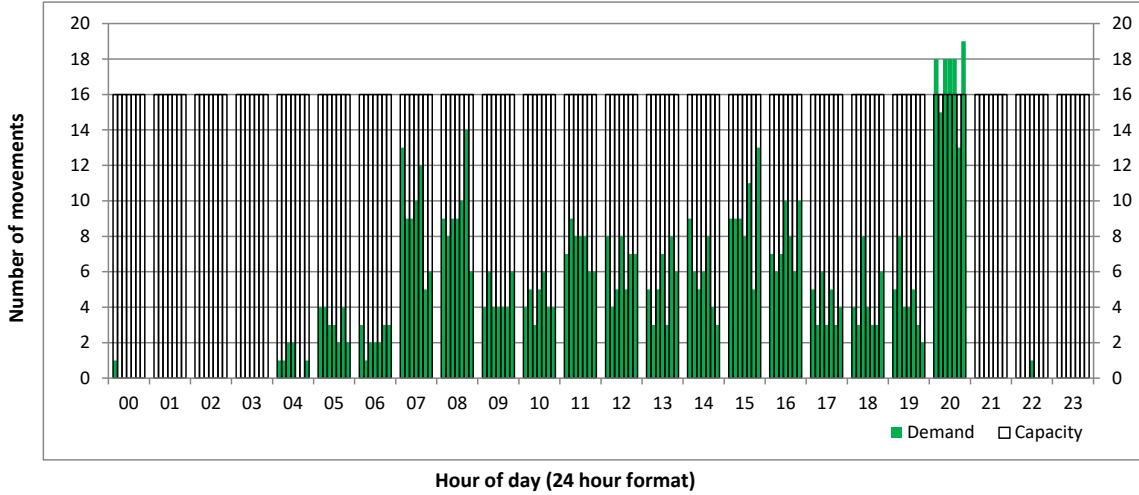
# Peak Week - Hourly Runway Demand

Schedule: S20 Start



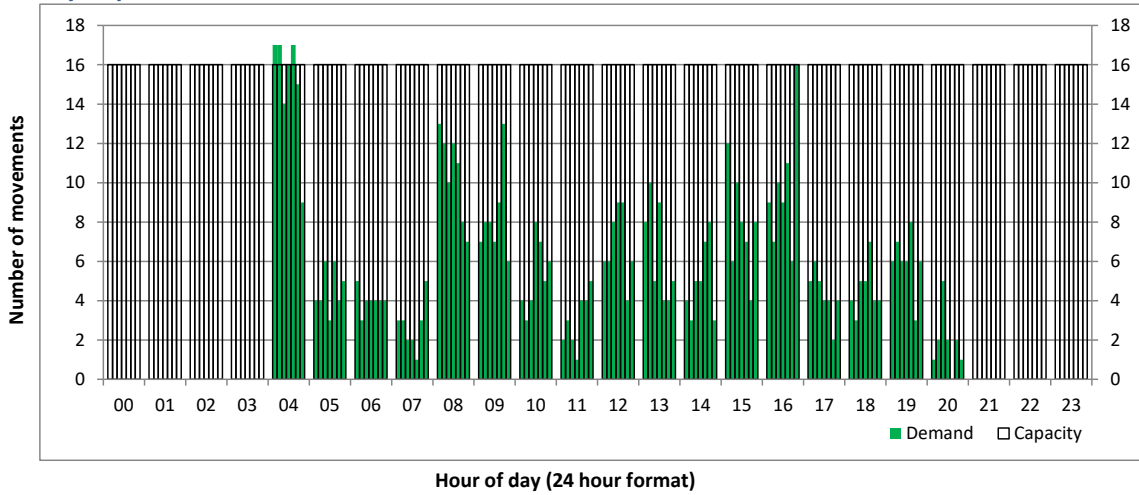
## Hourly Arrival Demand

Time: UTC



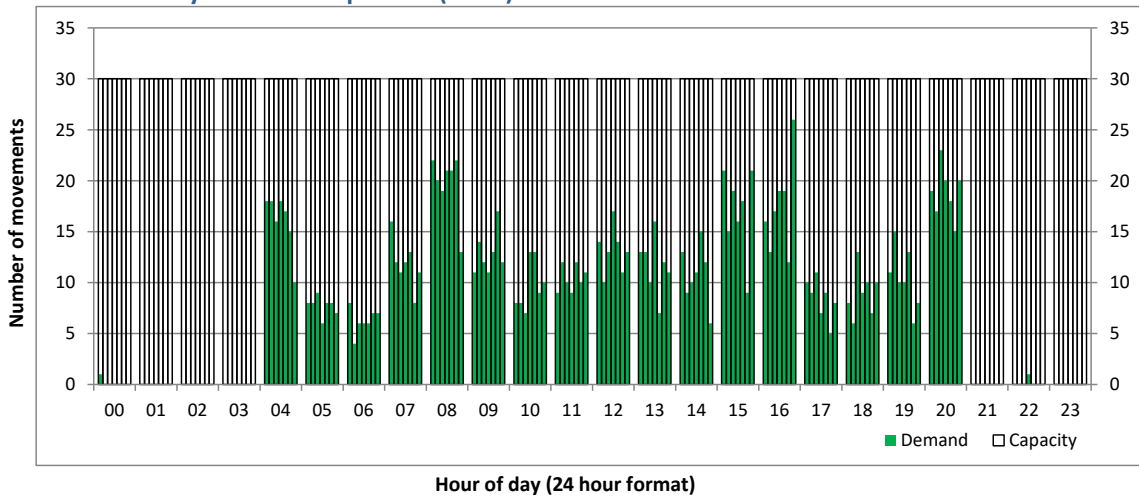
## Hourly Departure Demand

Time: UTC



## Combined Hourly Arrival & Departure (Total) Demand

Time: UTC



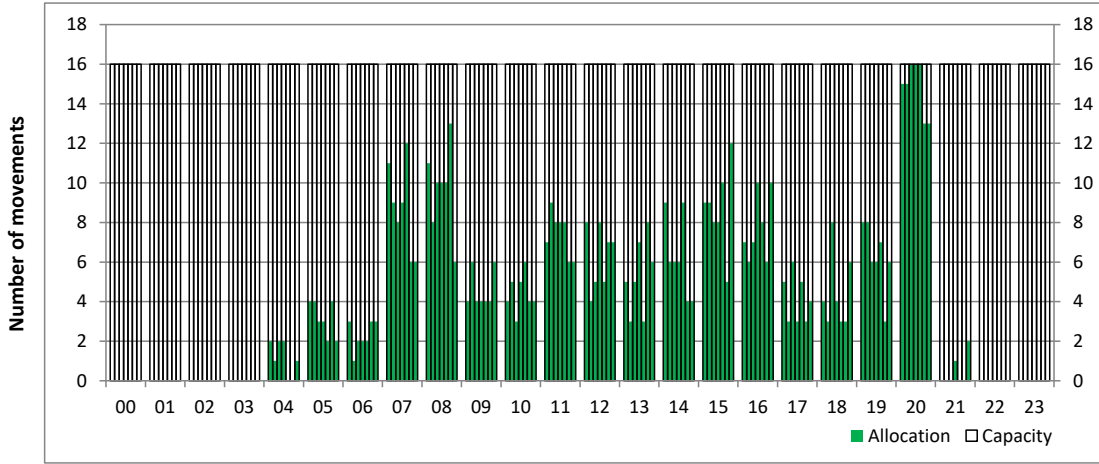
# Peak Week - Hourly Runway Allocation

Schedule: S20 Start



## Hourly Arrival Allocation

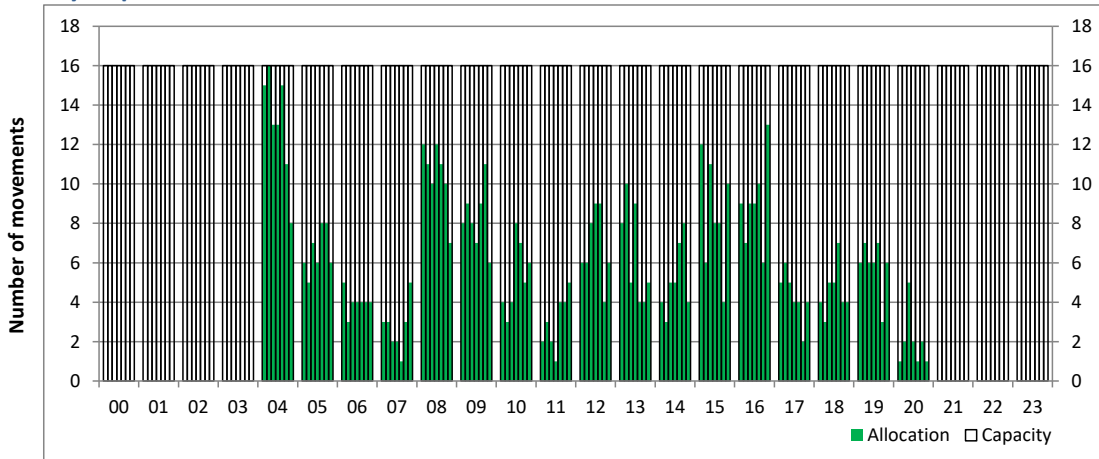
Time: UTC



Hour of day (24 hour format)

## Hourly Departure Allocation

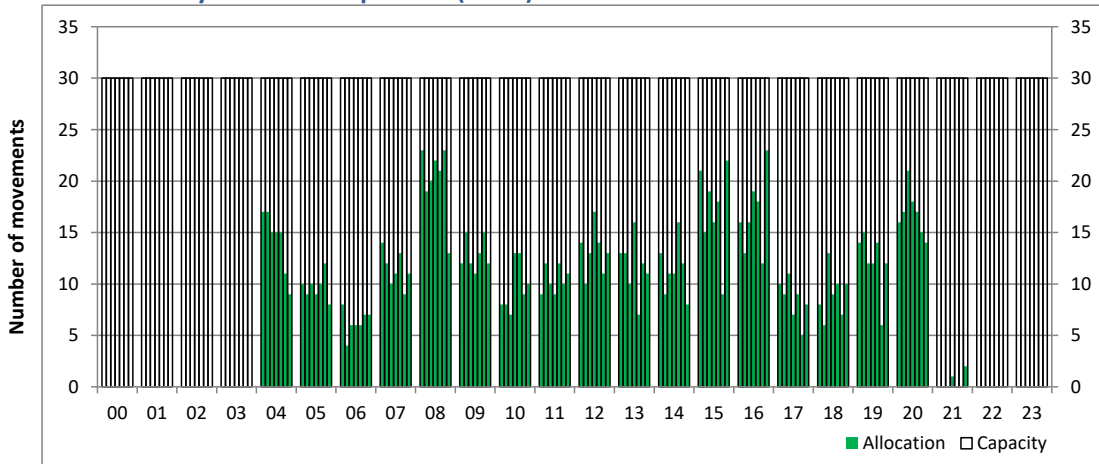
Time: UTC



Hour of day (24 hour format)

## Combined Hourly Arrival & Departure (Total) Allocation

Time: UTC



Hour of day (24 hour format)

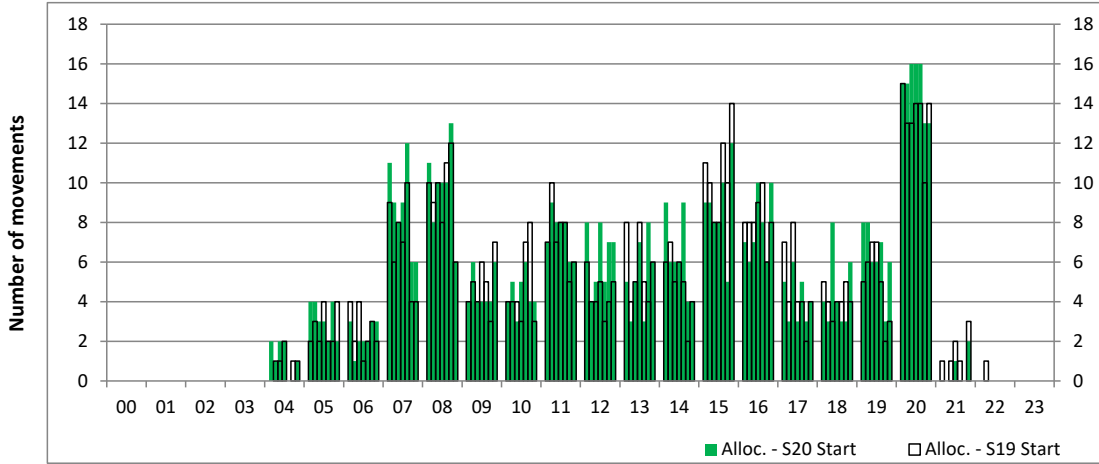
# Peak Week - Runway Allocation Comparison

Comparison of S20 Start vs. S19 Start



## Hourly Arrival Allocation

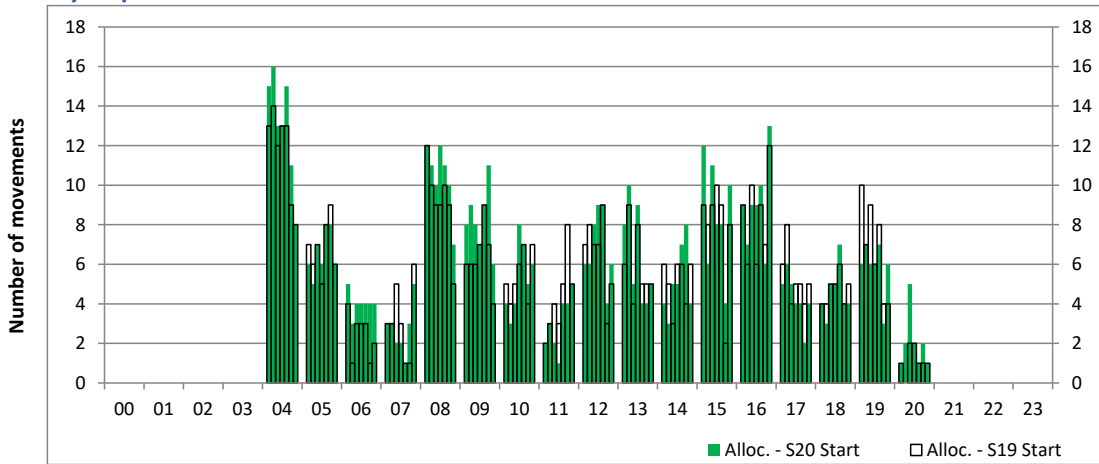
Time: UTC



Hour of day (24 hour format)

## Hourly Departure Allocation

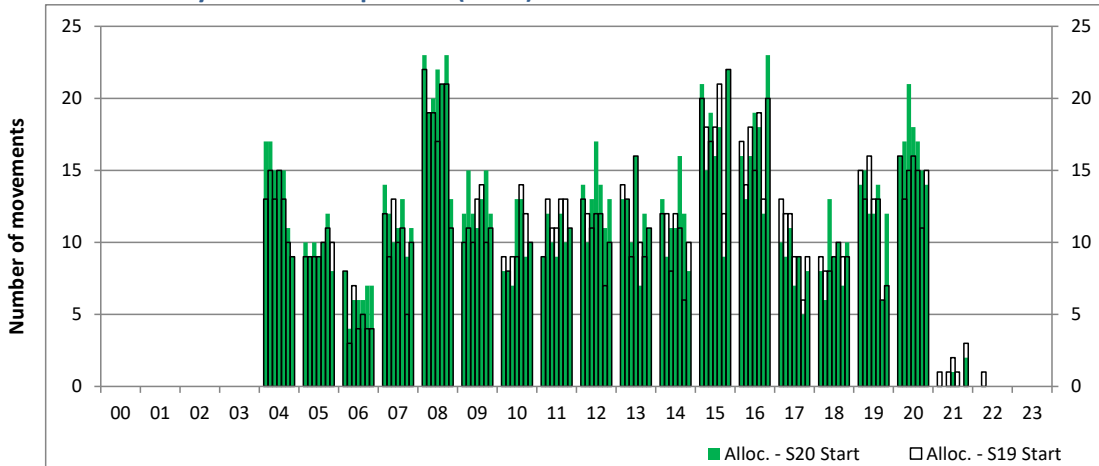
Time: UTC



Hour of day (24 hour format)

## Combined Hourly Arrival & Departure (Total) Allocation

Time: UTC



Hour of day (24 hour format)

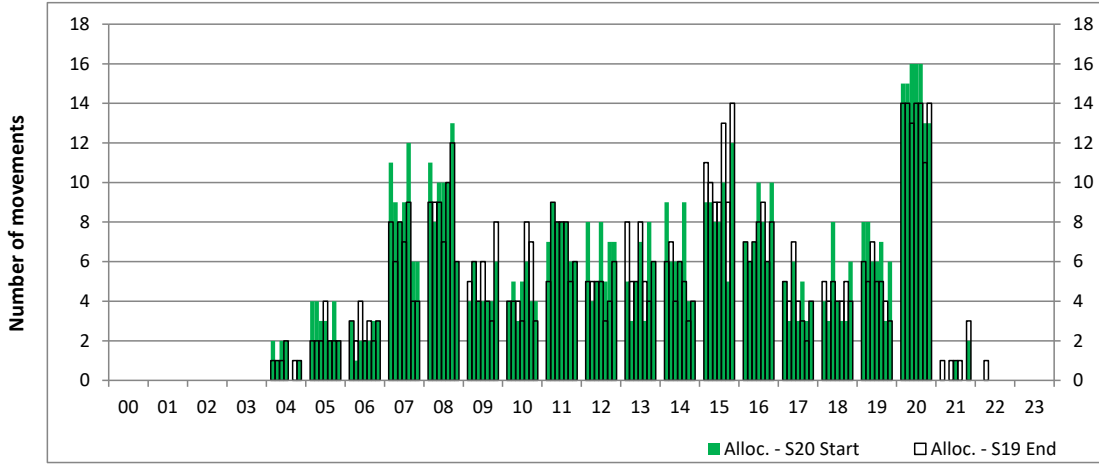
# Peak Week - Runway Allocation Comparison

Comparison of S20 Start vs. S19 End



## Hourly Arrival Allocation

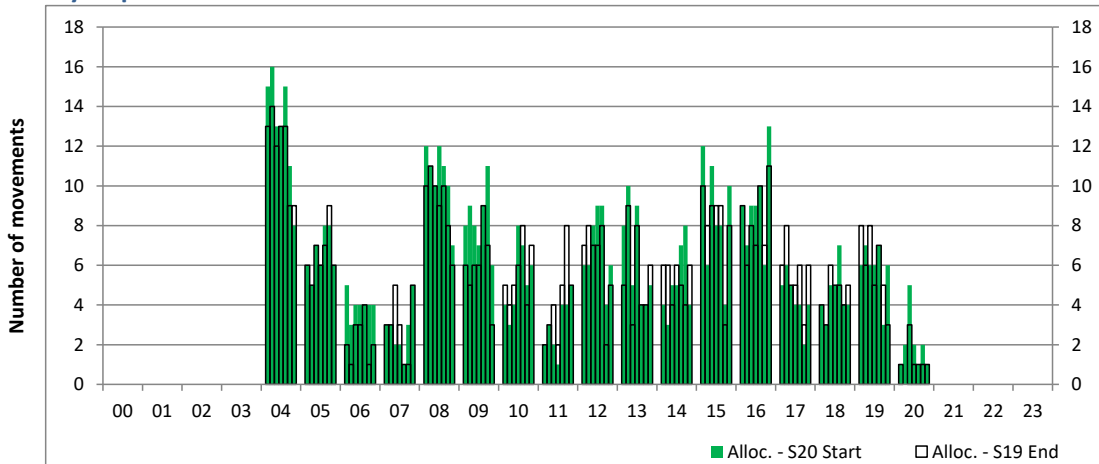
Time: UTC



Hour of day (24 hour format)

## Hourly Departure Allocation

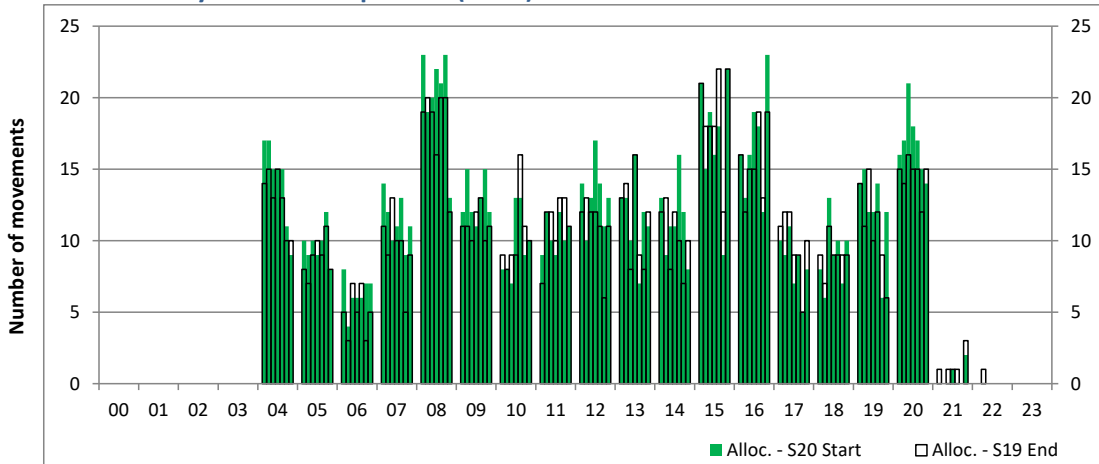
Time: UTC



Hour of day (24 hour format)

## Combined Hourly Arrival & Departure (Total) Allocation

Time: UTC



Hour of day (24 hour format)

# Peak Week - Passengers Histogram

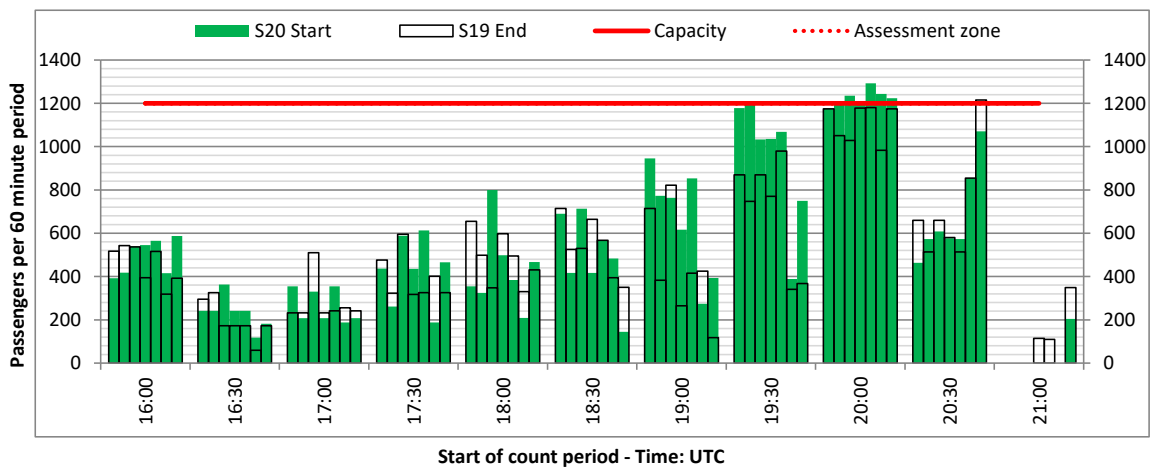
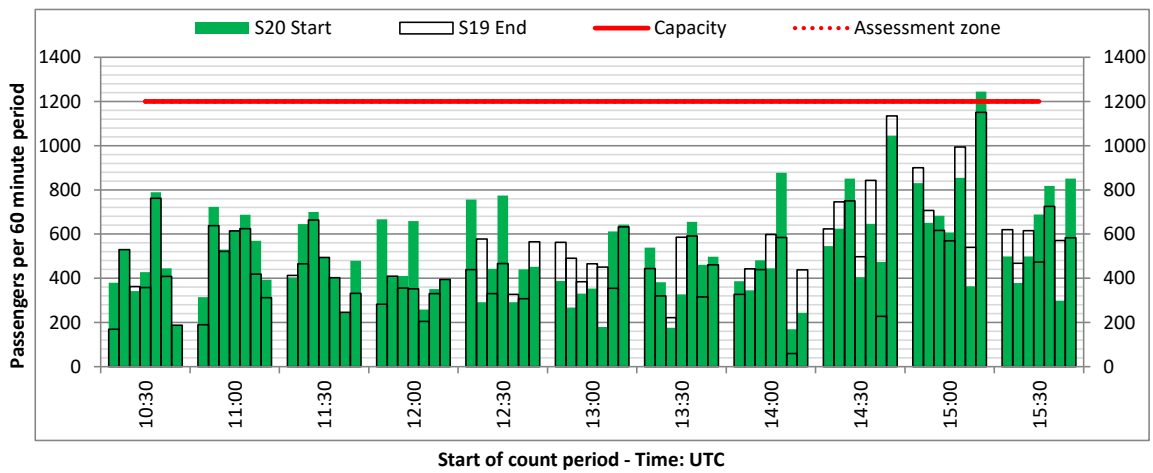
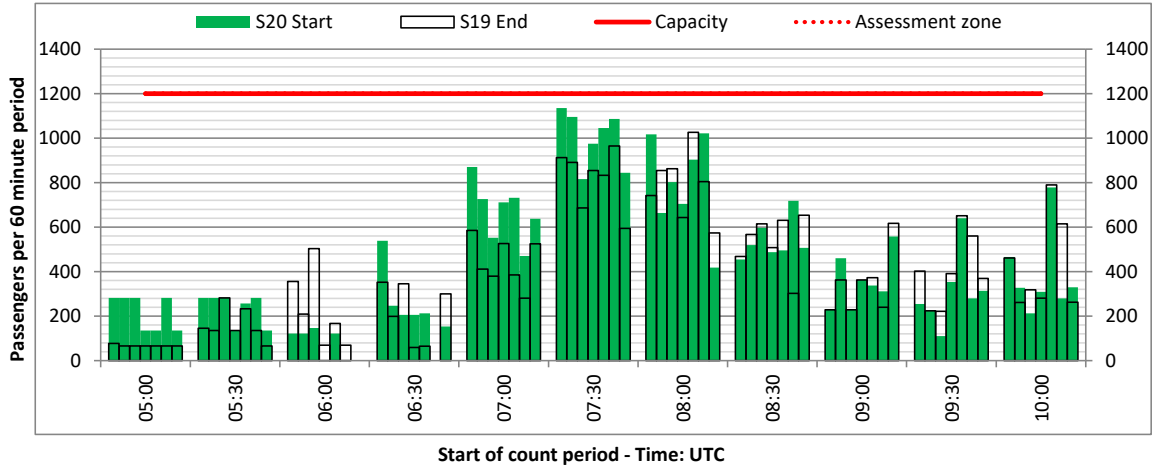
ARRIVAL - 60 minute count rolling every 30 mins (T60/30)



Terminals: All Terminals

Operators: All Operators

Days: 1234567



# Peak Week - Passengers Histogram

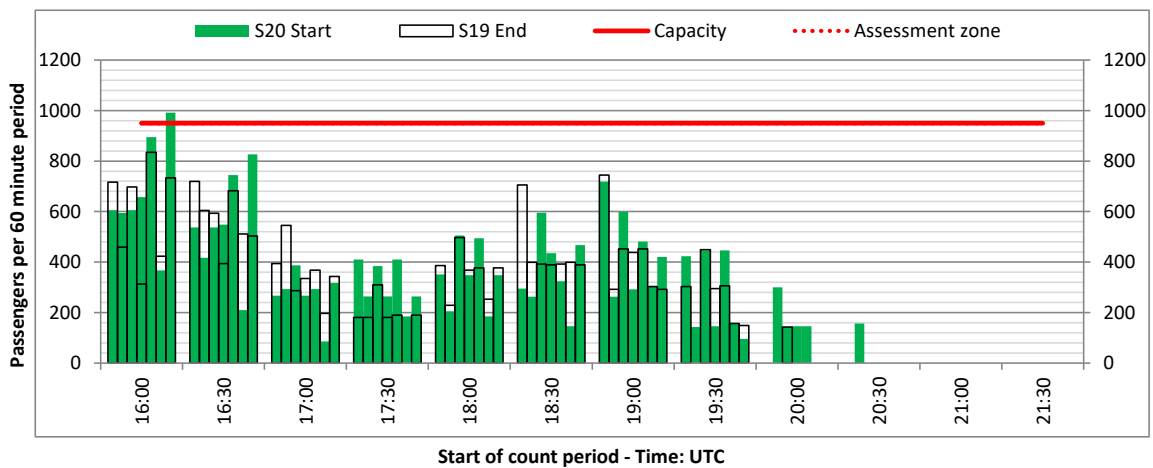
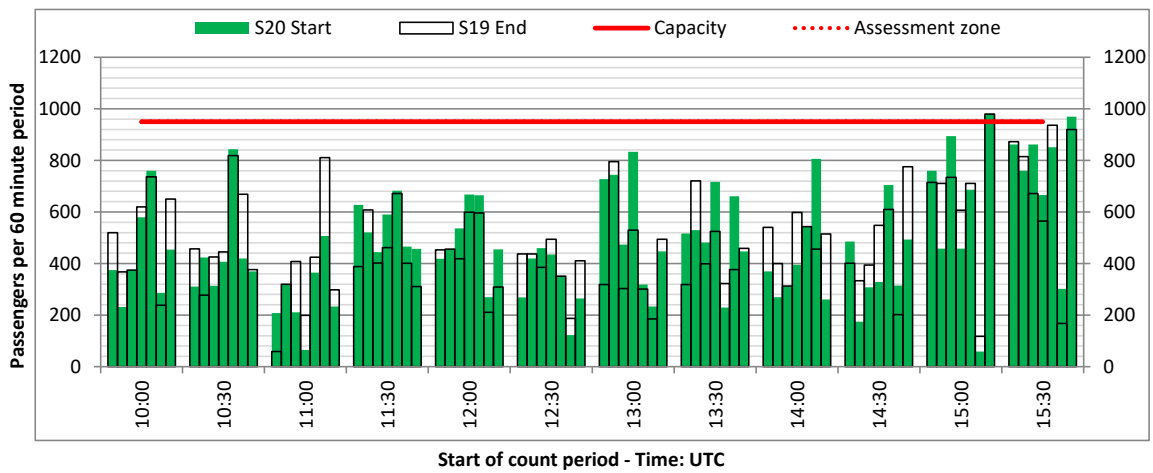
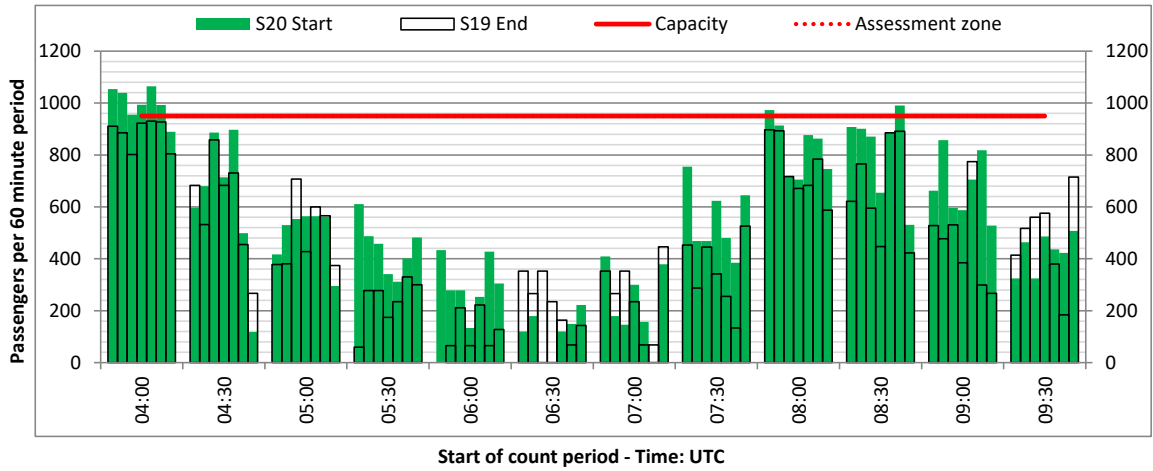
DEPARTURE - 60 minute count rolling every 30 mins (T60/30)



Terminals: All Terminals

Operators: All Operators

Days: 1234567





# Peak Week - Passengers Histogram

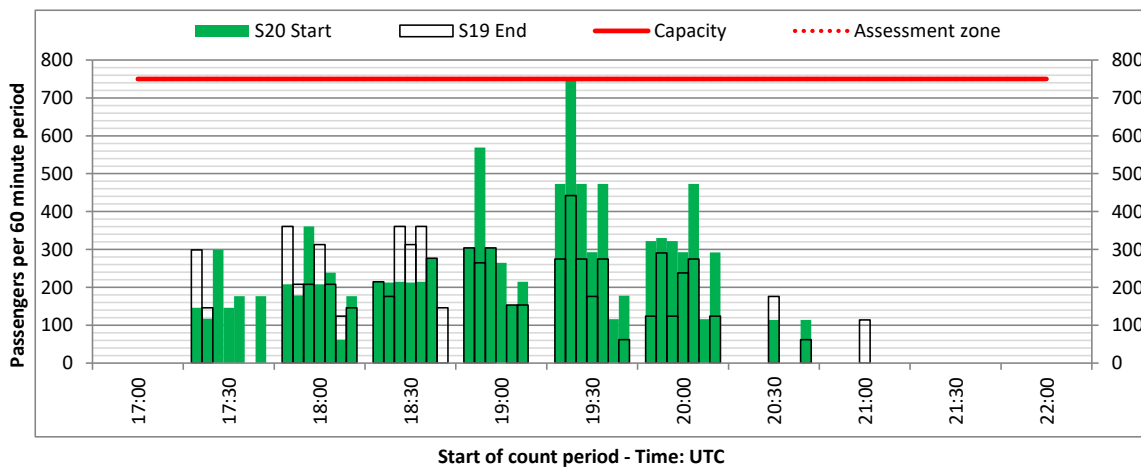
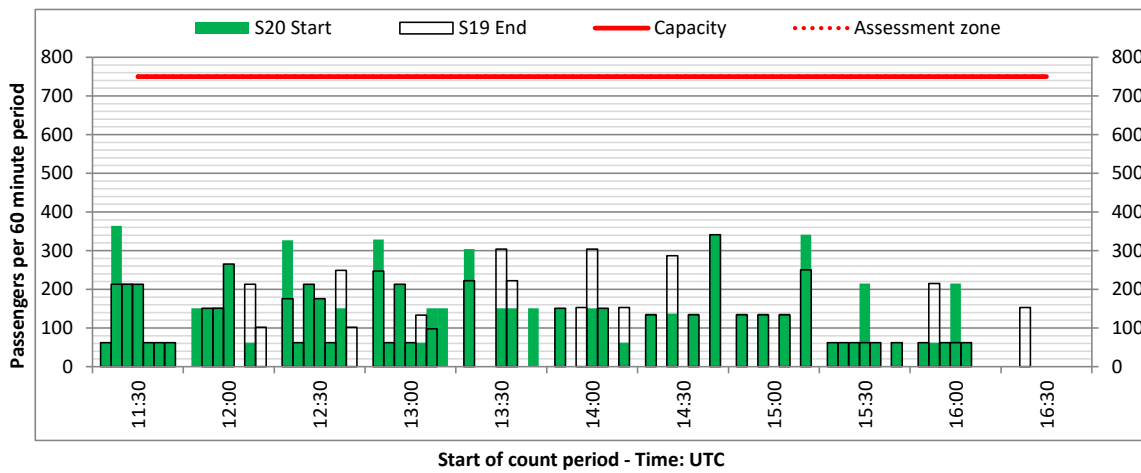
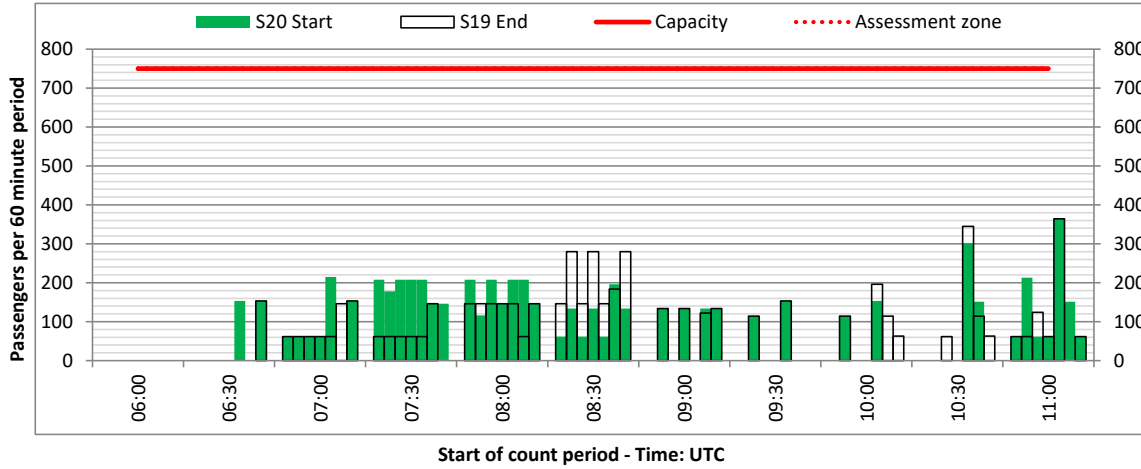
ARRIVAL - 60 minute count rolling every 30 mins (T60/30)



Terminals: 1I

Operators: All Operators

Days: 1234567



# Peak Week - Passengers Histogram

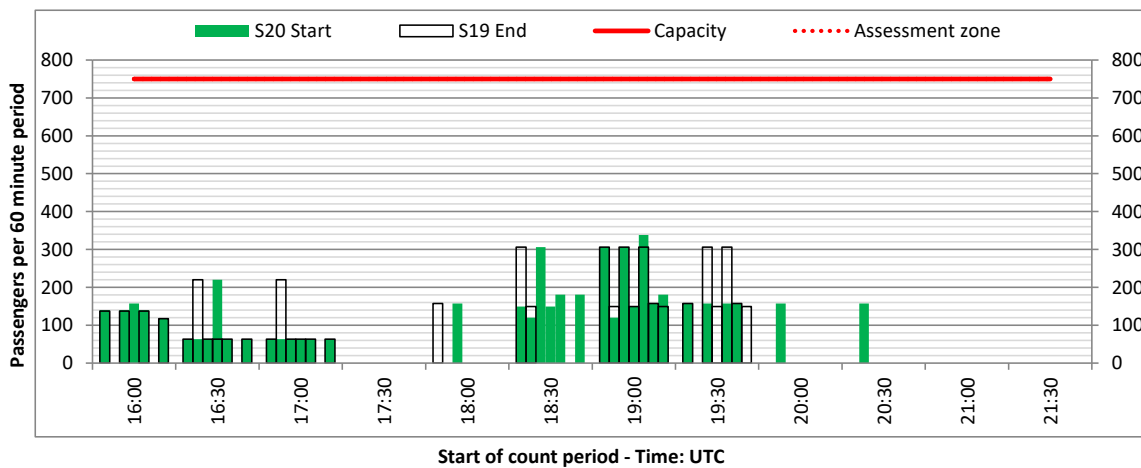
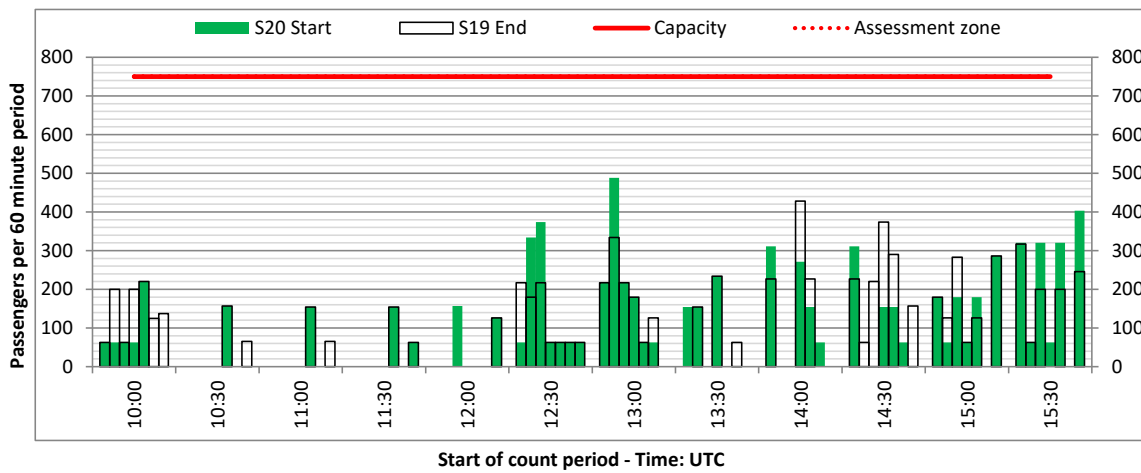
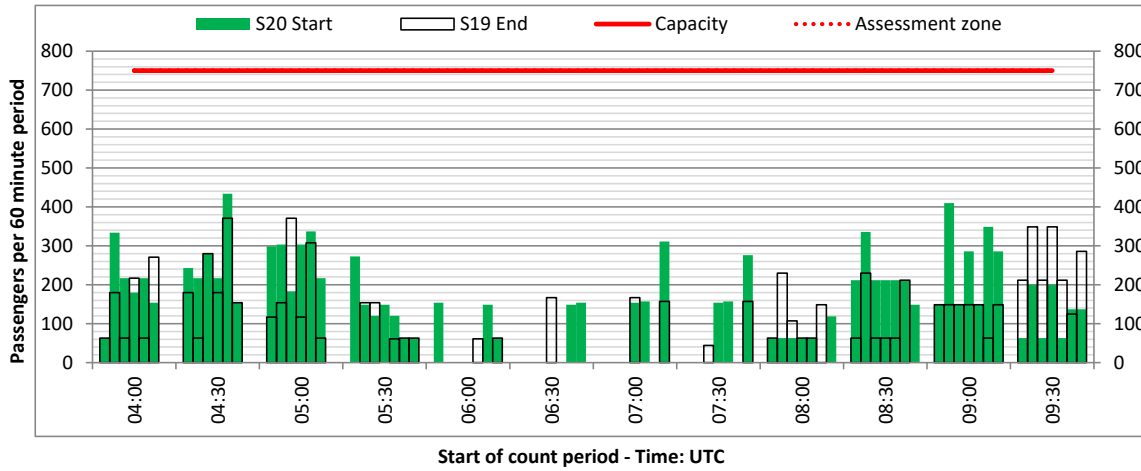
DEPARTURE - 60 minute count rolling every 30 mins (T60/30)



Terminals: 1I

Operators: All Operators

Days: 1234567



# Peak Week - Passengers Histogram

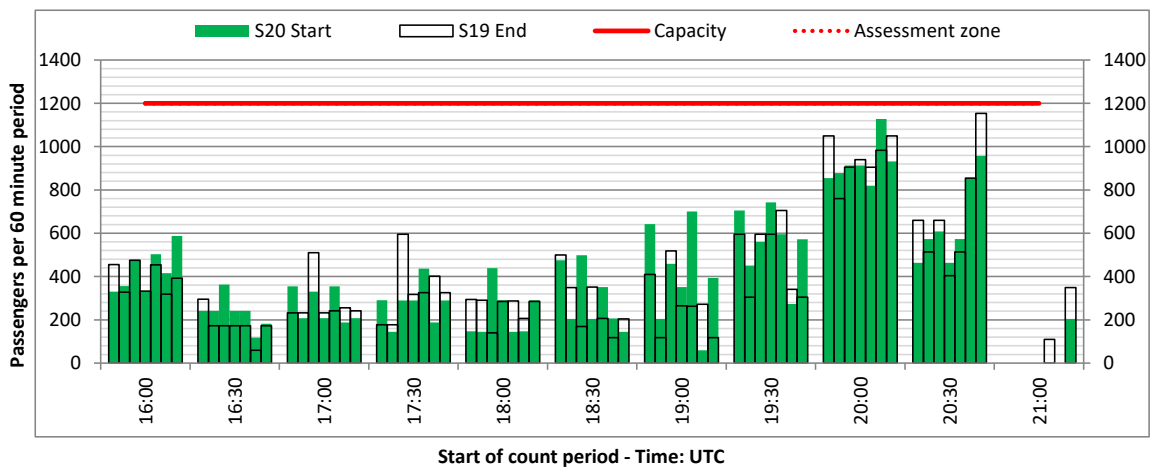
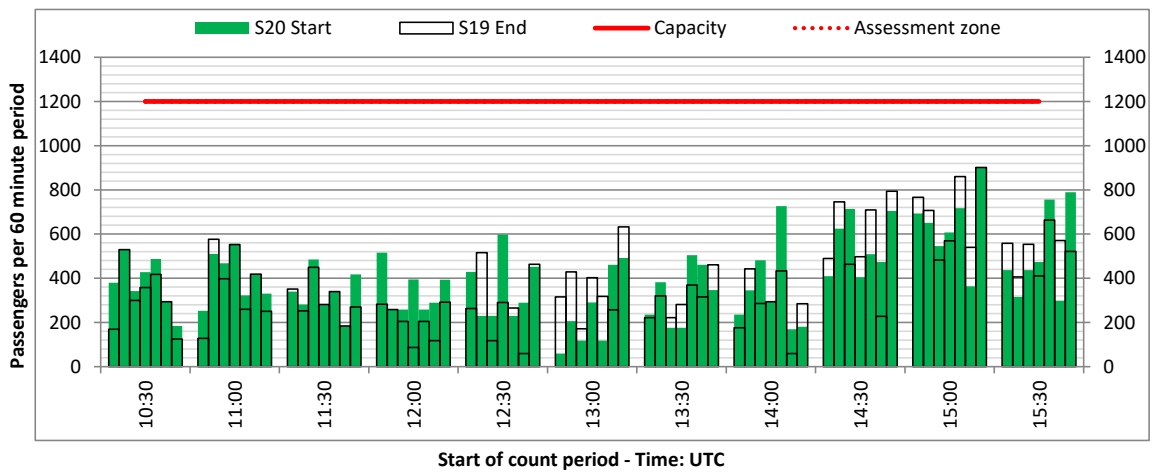
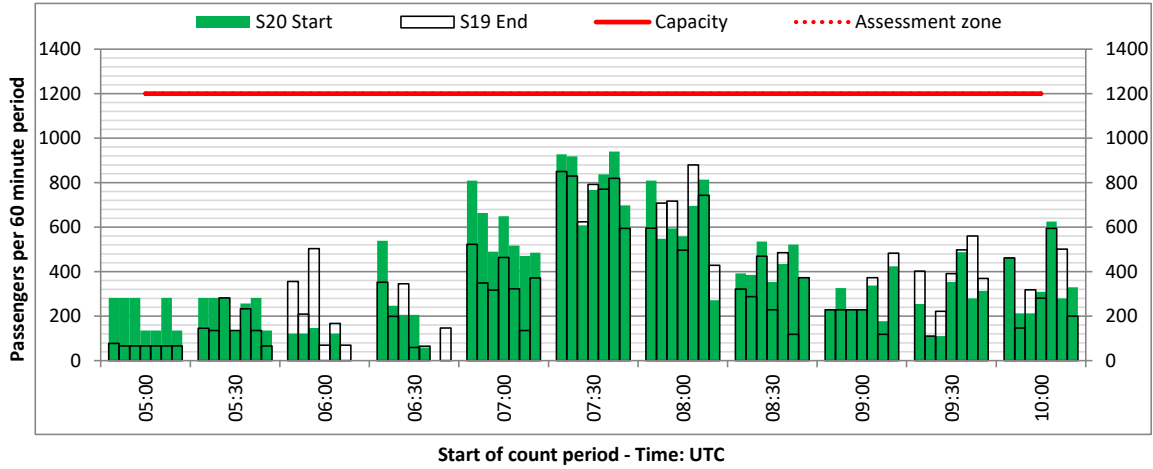
ARRIVAL - 60 minute count rolling every 30 mins (T60/30)



Terminals: 1D

Operators: All Operators

Days: 1234567



# Glossary



<b>Air Transport Movement (ATM)</b>	Any aircraft movement which is either a scheduled or chartered passenger or cargo flight.
<b>Common Travel Area (CTA)</b>	Origin or Destination is in Republic of Ireland or the Channel Islands.
<b>Demand</b>	Unconstrained demand before any schedule adjustments have been made.
<b>"Fill-in"</b>	These are gaps in a historic series of slots which the carrier requests to "Fill-in" at Initial Submissions - Fill-ins will be recognisably part of the historic series and will have the same flight details to qualify as a "Fill-in".
<b>Hist (SHL)</b>	Snapshot of historic schedule rolled over from end of the previous equivalent season - as advised to airlines in the SHLs.
<b>ICAO Size A</b>	Aircraft with wingspan between 0.00m - 14.99m.
<b>ICAO Size B</b>	Aircraft with wingspan between 15.00m - 23.99m.
<b>ICAO Size C</b>	Aircraft with wingspan between 24.00m - 35.99m.
<b>ICAO Size D</b>	Aircraft with wingspan between 36.00m - 51.99m.
<b>ICAO Size E</b>	Aircraft with wingspan between 52.00m - 64.99m.
<b>ICAO Size F</b>	Aircraft with wingspan between 65.00m - 80.00m.
<b>Init Coord</b>	Snapshot of schedule immediately after Initial Coordination is completed - as advised to airlines in the SALs.
<b>Passenger Air Transport Movement (PATM)</b>	Any aircraft movement which is either a scheduled or chartered passenger flight.
<b>Start</b>	Snapshot of schedule shortly before the start of the scheduling season (exact date given below where used).
<b>Time: Local</b>	Times shown are in LOCAL time for the airport/scheduling season.
<b>Time: UTC</b>	Times shown are in Universal Time Constant (UTC).

---

## Data snapshot descriptions

<b>S19 Start</b>	S19 schedule as cleared on Wed 27-Mar-19.
<b>S19 End</b>	S19 schedule as cleared on Tue 04-Sep-18.
<b>S20 Start</b>	S20 schedule as cleared on Thu 26-Mar-20.
<b>Peak Week</b>	Peak week for S19 is Mon 09-Sep-19 to Sun 15-Sep-19. Peak week for S20 is Mon 07-Sep-20 to Sun 13-Sep-20.

---

## For ACL use

	Airport-Season-Branch-Resource	From date	To date	Time
Full Season Rep 1	LUX-S19-SOS Report-Standard	Sun 31-Mar-2019	Sat 26-Oct-2019	UTC
Full Season Rep 2	LUX-S19-Live-Standard	Sun 31-Mar-2019	Sat 26-Oct-2019	UTC
Full Season Rep 3	LUX-S20-SOS Report-Standard	Sun 29-Mar-2020	Sat 24-Oct-2020	UTC
	Airport-Season-Branch-Resource	From date	To date	Time
Peak Week Rep 1	LUX-S19-SOS Report-Standard	Mon 09-Sep-2019	Sun 15-Sep-2019	UTC
Peak Week Rep 2	LUX-S19-Live-Standard	Mon 02-Sep-2019	Sun 08-Sep-2019	UTC
Peak Week Rep 3	LUX-S20-SOS Report-Standard	Mon 07-Sep-2020	Sun 13-Sep-2020	UTC