

Edinburgh Airport (EDI)

Summer 2020 (S20)



Start of Season Report

Report Date: Wed 25-Mar-2020

Headlines

	S20 Start	vs. S19 Start	vs. S19 End
Total Air Transport Movements (Passenger & Freight)	64,547	▼ -21.4%	▼ -19.1%
Total Passenger Air Transport Movements	61,982	▼ -21.4%	▼ -19.3%
Total Passenger Air Transport Movement Seats	10,081,063	▼ -11.7%	▼ -9.3%
Average Seats per Passenger Air Transport Movement	163	▲ 12.3%	▲ 12.4%
Percentage of allocated slots cleared as requested (OK)	99.69%		

Contents

Page	Content
2	Runway Scheduling Limits
3	ATM Allocation by Operator (Full season and Peak Week Comparison)
4	Peak Week - Allocation and Slot Adjustment Distribution by Operator
5	Significant Route Changes
6	Full Season - ATM Analysis
7	Full Season - PATM Seats Analysis
8	Full Season - Terminal Analysis
9	Full Season - Aircraft Size Analysis
10	Full Season - Seasonality
11	Peak Week - Hourly Runway Allocation
12	Peak Week - Hourly Runway Allocation Comparison (S20 Start vs. S19 End)
13	Peak Week Histogram - Departure Passengers (T60/15) - All Terminals - All Operators
14	Peak Week Histogram - Departure Passengers (T60/15) - All Terminals - All Operators
15	Peak Week Histogram - Arrival Passengers (T60/15) - 11 - All Operators
16	Peak Week Histogram - Arrival Passengers (T60/15) - 11 - All Operators
17	Peak Week Histogram - Arrival Passengers (T60/15) - 1D - All Operators
18	Peak Week Histogram - Arrival Passengers (T60/15) - 1D - All Operators
19	Glossary

S19 scheduling season runs from Sun 31-Mar-2019 to Sat 26-Oct-2019 (210 days).

S20 scheduling season runs from Sun 29-Mar-2020 to Sat 24-Oct-2020 (210 days).

Disclaimer

No warranty whether expressed or implied as to the completeness, accuracy, fitness for purpose, or satisfactory quality is given by ACL regarding the information in this report, which is provided by third parties. Accordingly, ACL excludes all liability with regard to such data.

The contents of this report may not be reproduced without the written consent of ACL.

Runway Scheduling Limits



Declared Hourly Movement Capacity

S19 Arrivals								Change: S19 to S20								S20 Arrivals							
Hour	Mon	Tue	Wed	Thu	Fri	Sat	Sun	Hour	Mon	Tue	Wed	Thu	Fri	Sat	Sun	Hour	Mon	Tue	Wed	Thu	Fri	Sat	Sun
00	20	20	20	20	20	20	20	00								00	20	20	20	20	20	20	20
01	20	20	20	20	20	20	20	01								01	20	20	20	20	20	20	20
02	20	20	20	20	20	20	20	02								02	20	20	20	20	20	20	20
03	20	20	20	20	20	20	20	03								03	20	20	20	20	20	20	20
04	20	20	20	20	20	20	20	04								04	20	20	20	20	20	20	20
05	15	15	15	15	15	15	15	05								05	15	15	15	15	15	15	15
06	15	15	15	15	15	15	15	06								06	15	15	15	15	15	15	15
07	22	22	22	22	22	22	22	07								07	22	22	22	22	22	22	22
08	22	22	22	22	22	22	22	08								08	22	22	22	22	22	22	22
09	22	22	22	22	22	22	22	09								09	22	22	22	22	22	22	22
10	22	22	22	22	22	22	22	10								10	22	22	22	22	22	22	22
11	22	22	22	22	22	22	22	11								11	22	22	22	22	22	22	22
12	22	22	22	22	22	22	22	12								12	22	22	22	22	22	22	22
13	22	22	22	22	22	22	22	13								13	22	22	22	22	22	22	22
14	22	22	22	22	22	22	22	14								14	22	22	22	22	22	22	22
15	22	22	22	22	22	22	22	15								15	22	22	22	22	22	22	22
16	22	22	22	22	22	22	22	16								16	22	22	22	22	22	22	22
17	22	22	22	22	22	22	22	17								17	22	22	22	22	22	22	22
18	22	22	22	22	22	22	22	18								18	22	22	22	22	22	22	22
19	22	22	22	22	22	22	22	19								19	22	22	22	22	22	22	22
20	25	25	25	25	25	25	25	20								20	25	25	25	25	25	25	25
21	25	25	25	25	25	25	25	21								21	25	25	25	25	25	25	25
22	25	25	25	25	25	25	25	22								22	25	25	25	25	25	25	25
23	20	20	20	20	20	20	20	23								23	20	20	20	20	20	20	20

S19 Departures								Change: S19 to S20								S20 Departures							
Hour	Mon	Tue	Wed	Thu	Fri	Sat	Sun	Hour	Mon	Tue	Wed	Thu	Fri	Sat	Sun	Hour	Mon	Tue	Wed	Thu	Fri	Sat	Sun
00	15	15	15	15	15	15	15	00								00	15	15	15	15	15	15	15
01	15	15	15	15	15	15	15	01								01	15	15	15	15	15	15	15
02	15	15	15	15	15	15	15	02								02	15	15	15	15	15	15	15
03	15	15	15	15	15	15	15	03								03	15	15	15	15	15	15	15
04	15	15	15	15	15	15	15	04								04	15	15	15	15	15	15	15
05	28	28	28	28	28	28	28	05								05	28	28	28	28	28	28	28
06	28	28	28	28	28	28	28	06								06	28	28	28	28	28	28	28
07	25	25	25	25	25	25	25	07								07	25	25	25	25	25	25	25
08	25	25	25	25	25	25	25	08								08	25	25	25	25	25	25	25
09	25	25	25	25	25	25	25	09								09	25	25	25	25	25	25	25
10	25	25	25	25	25	25	25	10								10	25	25	25	25	25	25	25
11	25	25	25	25	25	25	25	11								11	25	25	25	25	25	25	25
12	25	25	25	25	25	25	25	12								12	25	25	25	25	25	25	25
13	25	25	25	25	25	25	25	13								13	25	25	25	25	25	25	25
14	25	25	25	25	25	25	25	14								14	25	25	25	25	25	25	25
15	25	25	25	25	25	25	25	15								15	25	25	25	25	25	25	25
16	25	25	25	25	25	25	25	16								16	25	25	25	25	25	25	25
17	25	25	25	25	25	25	25	17								17	25	25	25	25	25	25	25
18	25	25	25	25	25	25	25	18								18	25	25	25	25	25	25	25
19	25	25	25	25	25	25	25	19								19	25	25	25	25	25	25	25
20	15	15	15	15	15	15	15	20								20	15	15	15	15	15	15	15
21	15	15	15	15	15	15	15	21								21	15	15	15	15	15	15	15
22	15	15	15	15	15	15	15	22								22	15	15	15	15	15	15	15
23	15	15	15	15	15	15	15	23								23	15	15	15	15	15	15	15

S19 Totals								Change: S19 to S20								S20 Totals							
Hour	Mon	Tue	Wed	Thu	Fri	Sat	Sun	Hour	Mon	Tue	Wed	Thu	Fri	Sat	Sun	Hour	Mon	Tue	Wed	Thu	Fri	Sat	Sun
00	24	24	24	24	24	24	24	00								00	24	24	24	24	24	24	24
01	24	24	24	24	24	24	24	01								01	24	24	24	24	24	24	24
02	24	24	24	24	24	24	24	02								02	24	24	24	24	24	24	24
03	24	24	24	24	24	24	24	03								03	24	24	24	24	24	24	24
04	24	24	24	24	24	24	24	04								04	24	24	24	24	24	24	24
05	42	42	42	42	42	42	42	05								05	42	42	42	42	42	42	42
06	42	42	42	42	42	42	42	06								06	42	42	42	42	42	42	42
07	42	42	42	42	42	42	42	07								07	42	42	42	42	42	42	42
08	42	42	42	42	42	42	42	08								08	42	42	42	42	42	42	42
09	42	42	42	42	42	42	42	09								09	42	42	42	42	42	42	42
10	42	42	42	42	42	42	42	10								10	42	42	42	42	42	42	42
11	42	42	42	42	42	42	42	11								11	42	42	42	42	42	42	42
12	42	42	42	42	42	42	42	12								12	42	42	42	42	42	42	42
13	42	42	42	42	42	42	42	13								13	42	42	42	42	42	42	42
14	42	42	42	42	42	42	42	14								14	42	42	42	42	42	42	42
15	42	42	42	42	42	42	42	15								15	42	42	42	42	42	42	42
16	42	42	42	42	42	42	42	16								16	42	42	42	42	42	42	42
17	42	42	42	42	42	42	42	17								17	42	42	42	42	42	42	42
18	42	42	42	42	42	42	42	18								18	42	42	42	42	42	42	42
19	42	42	42	42	42	42	42	19								19	42	42	42	42	42	42	42
20	40	40	40	40	40	40	40	20								20	40	40	40	40	40	40	40
21	40	40	40	40	40	40	40	21								21	40	40	40	40	40	40	40
22	40	40	40	40	40	40	40	22								22	40	40	40	40	40	40	40
23	24	24	24	24	24	24	24	23								23	24	24	24	24	24	24	24

Air Transport Movement Allocation by Operator

Comparison between S19 End vs. S20 Start



Operator	FULL SEASON ALLOCATION								PEAK WEEK ALLOCATION							
	S19 ATMs	S20 ATMs	+/- change	S20 Rank	S19 Seats	S20 Seats	+/- change	S20 Rank	S19 ATMs	S20 ATMs	+/- change	S20 Rank	S19 Seats	S20 Seats	+/- change	S20 Rank
2EXCEL AVIATION	2	-	-2	51	112	-	-112	47	-	-	0	42	-	-	0	38
Aegean Airlines	116	124	8	34	20,184	21,576	1,392	32	4	6	2	33	696	1,044	348	30
Aer Lingus	3,533	2,726	-807	6	254,376	196,272	-58,104	8	120	116	-4	6	8,640	8,352	-288	8
Aero4M	2	-	-2	51	74	-	-74	47	-	-	0	42	-	-	0	38
Air Canada	131	106	-25	37	36,942	29,892	-7,050	30	8	8	0	31	2,256	2,256	0	26
Air Corsica	-	1	1	48	-	180	180	44	-	-	0	42	-	-	0	38
Air France	836	803	-33	13	112,378	115,377	2,999	15	28	28	0	15	4,104	4,042	-62	18
Air Lubo	2	-	-2	51	320	-	-320	47	-	-	0	42	-	-	0	38
Air Nostrum	-	3	3	45	-	300	300	42	-	-	0	42	-	-	0	38
AlbaStar	4	3	-1	45	674	567	-107	40	-	-	0	42	-	-	0	38
Alitalia	26	26	0	40	4,680	3,744	-936	36	2	2	0	38	360	288	-72	26
American Airlines	414	336	-78	23	72,864	59,136	-13,728	23	14	14	0	23	2,464	2,464	0	23
ASL Airlines Belgium	300	300	0	26	-	-	0	47	10	10	0	29	-	-	0	38
ASL Airlines France	3	1	-2	48	441	149	-292	45	-	-	0	42	-	-	0	38
ASL Airlines Ireland	2	-	-2	51	296	-	-296	47	-	-	0	42	-	-	0	38
Atlantic Airways	120	120	0	36	18,240	18,720	480	33	4	4	0	36	576	636	60	33
Austrian Airlines	1	-	-1	51	144	-	-144	47	-	-	0	42	-	-	0	38
Avanti Air	1	-	-1	51	100	-	-100	47	-	-	0	42	-	-	0	38
Balkan Holidays Air Ltd	69	68	-1	38	12,310	12,240	-70	34	4	4	0	36	720	720	0	32
British Airways	8,866	7,855	-1,011	3	1,217,670	1,216,794	-876	3	281	276	-5	3	39,080	42,920	3,840	3
Brussels Airlines	781	698	-83	15	109,284	98,418	-10,866	18	26	26	0	19	3,560	3,666	106	19
Bulgarian Air Charter	2	-	-2	51	328	-	-328	47	-	-	0	42	-	-	0	38
CARGO AIR	1	-	-1	51	-	-	0	47	-	-	0	42	-	-	0	38
Carpatair	7	4	-3	43	700	400	-300	41	-	-	0	42	-	-	0	38
Danish Air Transport	10	10	0	42	820	680	-140	38	-	-	0	42	-	-	0	38
Delta Air Lines	626	642	16	18	105,168	105,288	120	17	28	28	0	15	4,704	4,592	-112	17
EasyJet	14,090	15,083	993	1	2,534,454	2,612,070	77,616	1	471	512	41	1	84,786	88,490	3,704	1
EasyJet Europe	1,665	1,472	-193	9	310,836	267,560	-43,276	6	56	50	-6	9	10,386	8,962	-1,424	6
EasyJet Switzerland	520	536	16	20	93,120	93,156	36	19	16	16	0	22	2,856	2,736	-120	21
Edelweiss Air	250	314	64	25	45,000	56,520	11,520	24	10	14	4	23	1,800	2,500	700	22
Emirates	374	232	-142	29	132,544	83,520	-49,024	21	14	14	0	23	4,956	5,040	84	16
Enter Air	16	-	-16	51	3,024	-	-3,024	47	3	-	-3	42	567	-	-567	38
European Air Transport (DHL)	406	328	-78	24	-	-	0	47	13	11	-2	28	-	-	0	38
Eurowings	765	504	-261	21	135,420	90,720	-44,700	20	32	20	-12	20	5,700	3,600	-2,100	20
Finnair	404	236	-168	28	55,458	30,166	-25,292	29	18	18	0	21	2,360	2,342	-18	25
FLEXFLIGHT APS	-	-	0	51	-	-	0	47	-	-	0	42	-	-	0	38
FLUGFELAG ISLANDS hf	6	-	-6	51	456	-	-456	47	-	-	0	42	-	-	0	38
Fly Compass	3	-	-3	51	480	-	-480	47	-	-	0	42	-	-	0	38
Flybe	13,592	-	-13,592	51	1,069,946	-	-1,069,946	47	466	-	-466	42	36,668	-	-36,668	38
Great Dane Airlines	60	14	-46	41	6,780	1,652	-5,128	37	4	2	-2	38	376	236	-140	37
Hainan Airlines	222	-	-222	51	64,824	-	-64,824	47	8	-	-8	42	2,336	-	-2,336	38
Iberia Express	194	198	4	32	34,920	35,640	720	26	12	12	0	27	2,160	2,160	0	27
Jet Time Airways	2	1	-1	48	296	148	-148	46	-	-	0	42	-	-	0	38
Jet2.com	4,206	3,921	-285	5	795,026	741,069	-53,957	4	164	168	4	5	30,996	31,752	756	4
Jota Aviation	5	-	-5	51	477	-	-477	47	-	-	0	42	-	-	0	38
KLM Royal Dutch Airlines	1,790	1,580	-210	7	306,866	270,888	-35,978	5	70	70	0	7	11,224	11,200	-24	5
Lauda Motion	-	168	168	33	-	30,276	30,276	28	-	6	6	33	-	1,080	1,080	29
Loganair	5,642	5,022	-620	4	185,788	217,341	31,553	7	197	195	-2	4	6,350	8,646	2,296	7
Lufthansa	1,018	1,118	100	10	188,186	194,586	6,400	9	34	42	8	10	6,384	7,294	910	10
Maleth-Aero	3	2	-1	47	364	296	-68	43	-	-	0	42	-	-	0	38
Norwegian	964	858	-106	12	178,944	159,438	-19,506	11	32	34	2	12	5,940	6,318	378	13
Nouvelair Tunisie	-	42	42	39	-	7,434	7,434	35	-	2	2	38	-	354	354	35
Peoples Viennaline	1	-	-1	51	76	-	-76	47	-	-	0	42	-	-	0	38
ProAir Aviation GmbH	2	-	-2	51	100	-	-100	47	-	-	0	42	-	-	0	38
Qatar Airways	532	674	142	16	150,556	190,742	40,186	10	20	28	8	15	5,660	7,924	2,264	9
Ryanair	12,223	12,750	527	2	2,310,147	2,409,546	99,399	2	394	430	36	2	74,466	81,258	6,792	2
SAS Scandinavian	679	628	-51	19	101,932	108,444	6,512	16	30	32	2	13	3,852	5,310	1,458	15
Star Air	292	296	4	27	-	-	0	47	10	10	0	29	-	-	0	38
Sundair	1	-	-1	51	144	-	-144	47	1	-	-1	42	144	-	-144	38
Titan Airways	5	4	-1	43	1,010	638	-372	39	1	2	1	38	202	404	202	34
Transavia	3	220	217	30	567	34,222	33,655	27	-	6	6	33	-	894	894	31
Transavia France	162	124	-38	34	30,600	22,556	-8,044	31	4	-	-4	42	756	-	-756	38
Travel Service	1	-	-1	51	189	-	-189	47	-	-	0	42	-	-	0	38
TUI Airways	674	672	-2	17	129,162	128,784	-378	14	28	28	0	15	5,514	5,514	0	14
TUI fly Belgium	4	-	-4	51	756	-	-756	47	-	-	0	42	-	-	0	38
Turkish Airlines	411	382	-29	22	67,555	66,508	-1,047	22	14	14	0	23	2,412	2,436	24	24
United Airlines	1,006	904	-102	11	170,014	152,776	-17,238	13	42	42	0	10	7,098	7,098	0	11
UTAir	4	-	-4	51	704	-	-704	47	-	-	0	42	-	-	0	38
Vueling	241	202	-39	31	43,386	36,360	-7,026	25	8	8	0	31	1,440	1,440	0	28
West Atlantic Cargo	1,506	1,488	-18	8	-	-	0	47	52	51	-1	8	-	-	0	38
Wideroe	2	-	-2	51	156	-	-156	47	-	-	0	42	-	-	0	38
Wizz Air	-	748	748	14	-	158,274	158,274	12	-	30	30	14	-	6,454	6,454	12
WOW Air	-	-	0	51	-	-	0	47	-	-	0	42	-	-	0	38
TOTAL	79,801	64,547	-15,254		11,118,368	10,081,063	-1,037,305		2,753	2,389	-364		384,549	372,442	-12,107	

Operators with 0 'ATMs' in both S19 End & S20 Start schedules are included in the table due to appearing in the S19 Start schedule (either with/without allocated slots).

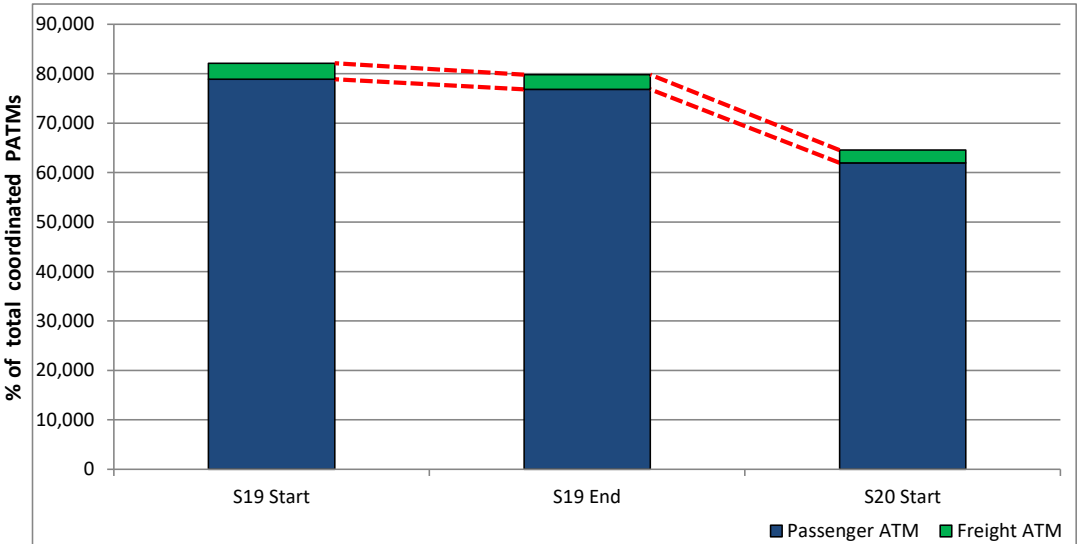
Significant Route Changes

Operator	Category	Description of change from S19 schedule to S20 schedule
Aer Lingus	CHANGE	Decreased the Dublin (DUB), Cork (ORK) and Shannon (SNN) services.
American Airlines	CHANGE	Decreased the Philadelphia (PHL) route
British Airways	CHANGE	Decreased the London City (LCY), Gatwick (LGW) and Heathrow (LHR) services.
Brussels Airlines	CHANGE	Decreased the Brussels (BRU) service.
EasyJet	NEW	Introduced new routes to Birmingham (BHX), Catania (CTA), Gibraltar (GIB) and to Verona (VRN).
EasyJet	CHANGE	Decreased the Amsterdam (AMS) route.
Edelweiss Air	CHANGE	Increased the Zurich (ZRH) service.
Emirates	CHANGE	Decreased the Dubai (DXB) route.
Eurowings	CHANGE	Decreased the Dusseldorf (DUS) route.
Eurowings	CANCELLED	Stopped operating the Munich (MUC) service.
Finnair	CHANGE	Decreased the Helsinki (HEL) service.
Flybe	CANCELLED	Stopped operating every route due to bankruptcy.
Hainan Airlines	CANCELLED	Stopped operating the Dublin (DUB) and Beijing (PEK) routes, thus stopped operating to EDI.
Jet2.com	NEW	Introduced a new route to Izmir (ADB).
Jet2.com	CHANGE	Decreased services to Malaga (AGP) and Faro (FAO).
Jet2.com	CHANGE	Increased the Dalaman (DLM) route.
Jet2.com	CANCELLED	Stopped operating routes to Budapest (BUD) and Almeria (LEI).
KLM Royal Dutch Airlines	CHANGE	Decreased routes to Amsterdam (AMS).
Lauda Motion	NEW	Introduced a new service to Vienna (VIE).
Loganair	NEW	Introduced new routes to Esbjerg (EBJ), East Midlands (EMA), Hanover (HAJ) and to Southampton (SOU).
Loganair	CHANGE	Decreased routes to Kirkwall (KOI), Shetland Islands (LSI) and to Norwich (NWI).
Loganair	CHANGE	Increased the Stornoway (SYR) service.
Loganair	CANCELLED	Stopped operating the Aberdeen (ABZ), Islay Glenegedale (ILY) and Wick (WIC) routes.
Lufthansa	CHANGE	Decreased the Frankfurt (FRA) service.
Lufthansa	CHANGE	Increased the Munich (MUC) route.
Norwegian	CHANGE	Decreased the Copenhagen (CPH) route.
Nouvelair Tunisie	NEW	Introduced a new route to Enfidha (NBE).
Qatar Airways	CHANGE	Increased the Doha (DOH) route.
Ryanair	NEW	Introduced routes to Bydgoszcz (BZG) and Bucharest (OTP).
Ryanair	CHANGE	Decreased routes to Dublin (DUB) and Gerona (GRO).
Ryanair	CHANGE	Increased services to Alicante (ALC), Milan (BGY), Budapest (BUD), Gdansk (GDN), Krakow (KRK), Neiderrhein (NRN), Porto (OPO), Prague (PRG), Riga (RIX), Berlin (SXF) and to Modlin (WMI).
Ryanair	CANCELLED	Stopped operating the London Stansted (STN) service.
Transavia	NEW	Introduced Rotterdam (RTM) service.
TUI Airways	NEW	Introduced new route to Antalya (AYT).
TUI Airways	CANCELLED	Stopped operating Rhodes (RHO) service).
United Airlines	CHANGE	Decreased the Newark (EWR) route.
Wizz Air	NEW	Introduced new services to Budapest (BUD), Gdansk (GDN), Bucharest (OTP) and to Warsaw (WAW).

Full Season - ATM Analysis

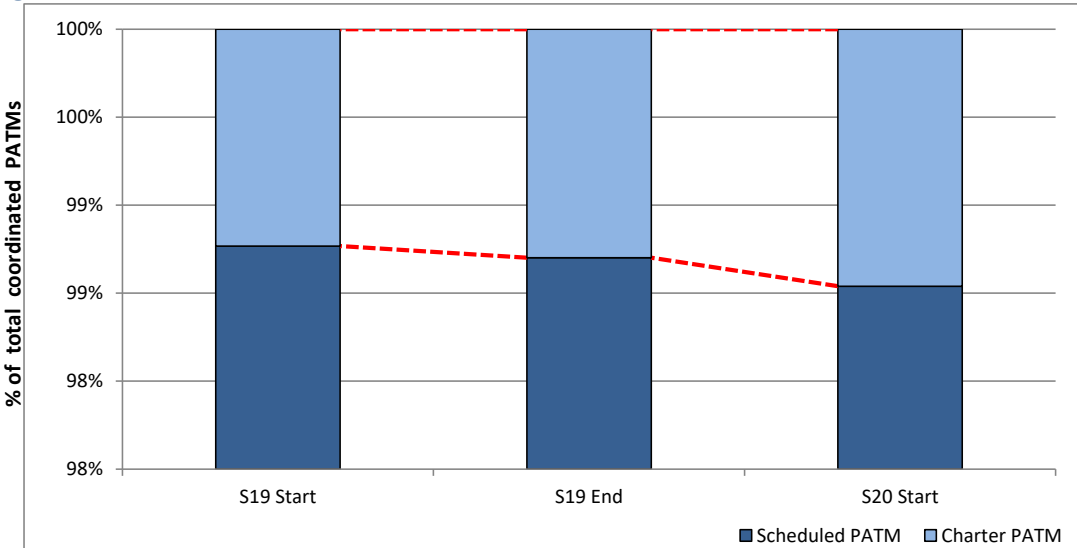


Total ATMs: Passenger ATMs vs. Freight ATMs



Schedule Snapshot

Passenger ATMs: Scheduled vs. Charter

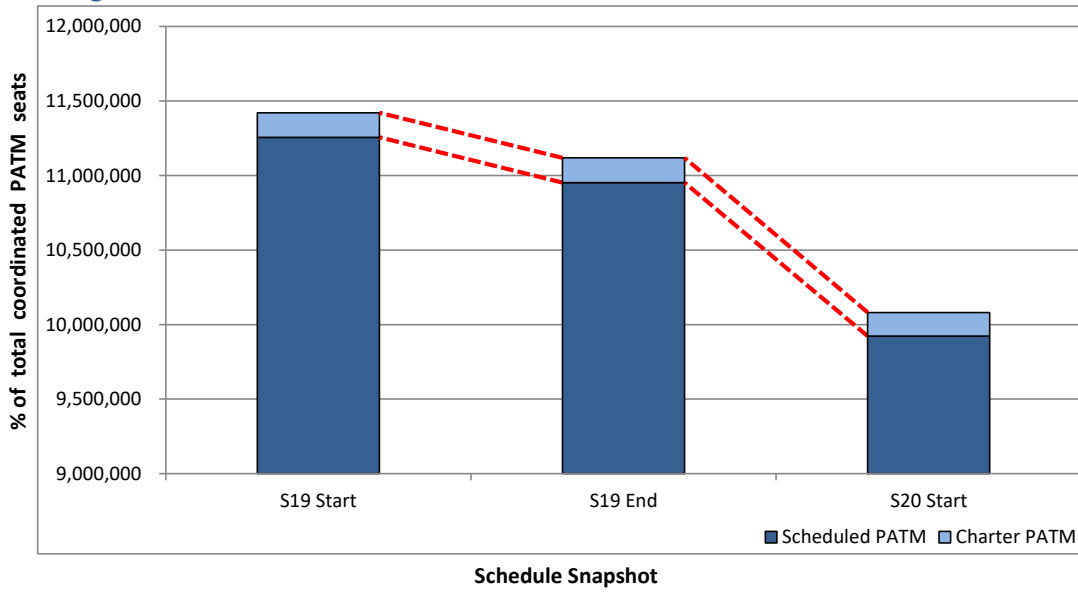


Schedule Snapshot

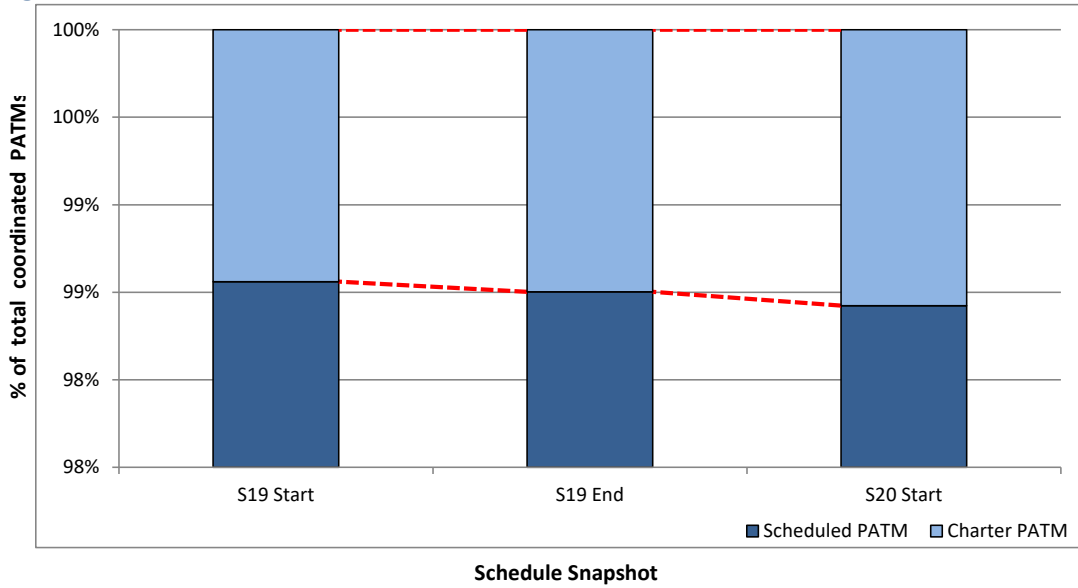
Full Season - PATM Seats Analysis



Total Passenger ATM seats: Scheduled vs. Charter



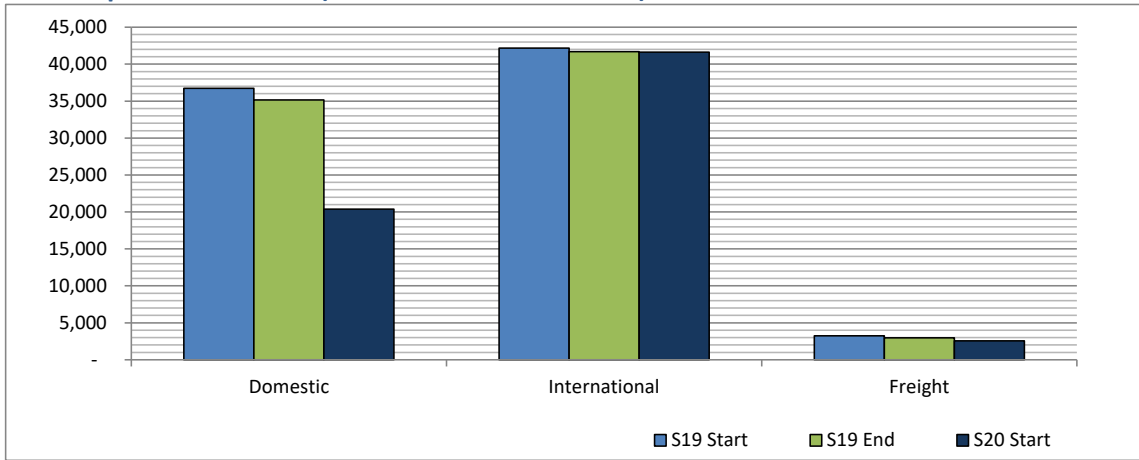
Passenger ATM seats: Scheduled vs. Charter



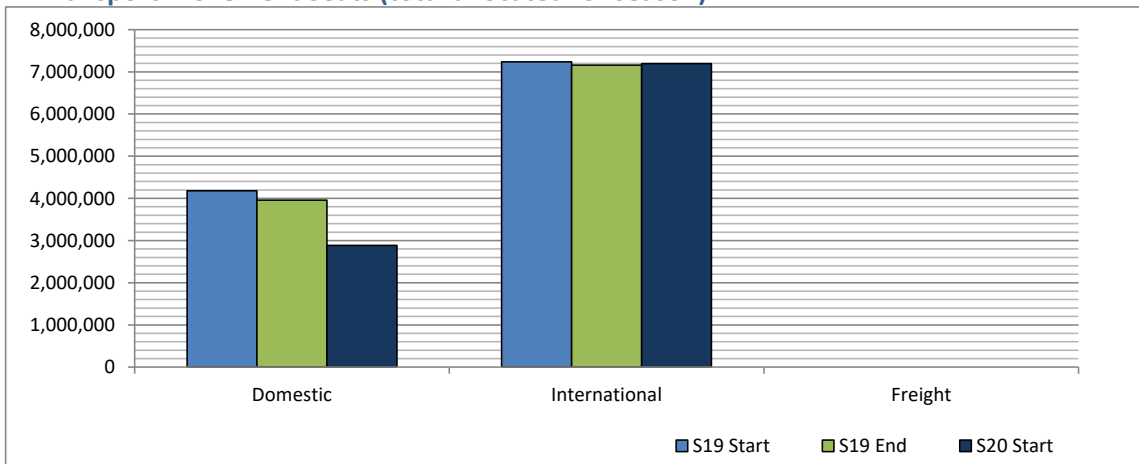
Full Season - Terminal Analysis



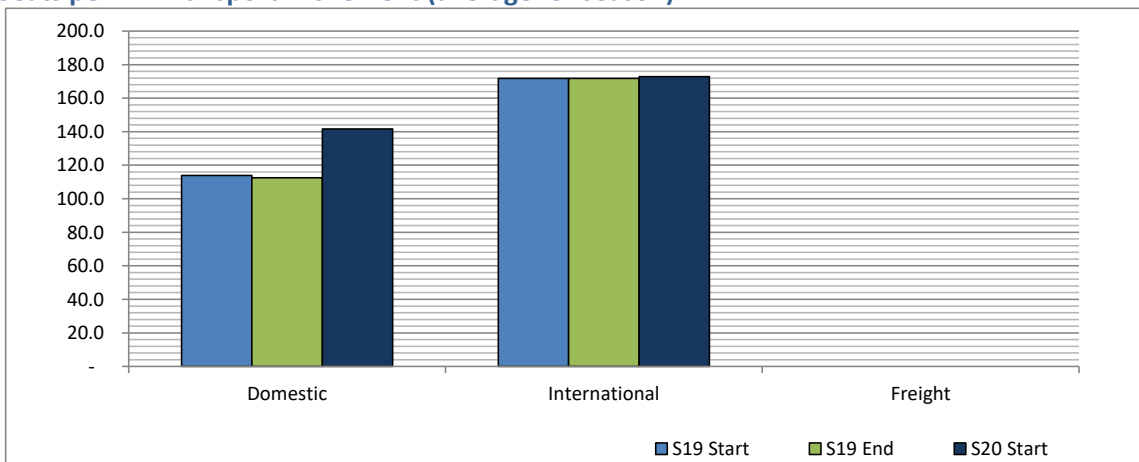
Air Transport Movements (total allocated for season)



Air Transport Movement Seats (total allocated for season)



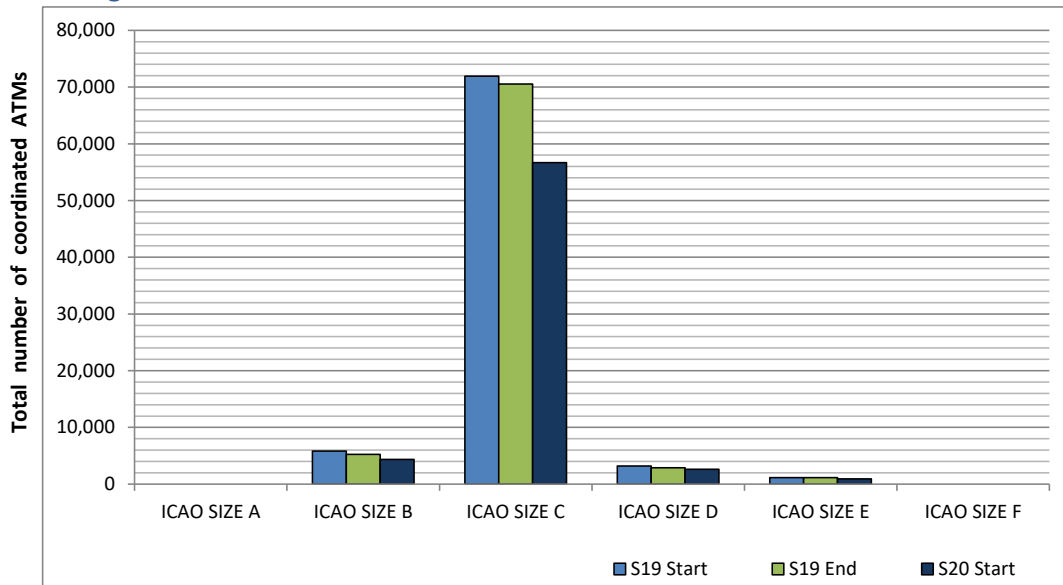
Seats per Air Transport Movement (average for season)



Full Season - Aircraft Size Analysis

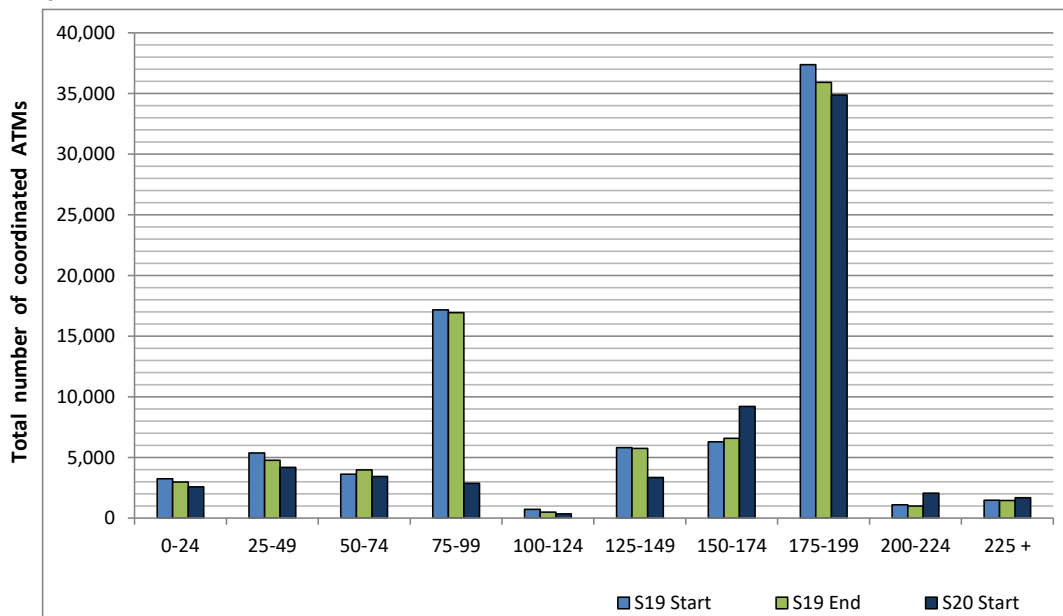


ICAO size designation



Note: See Glossary for definitions of ICAO SIZE groupings

Air Transport Movement seat distribution

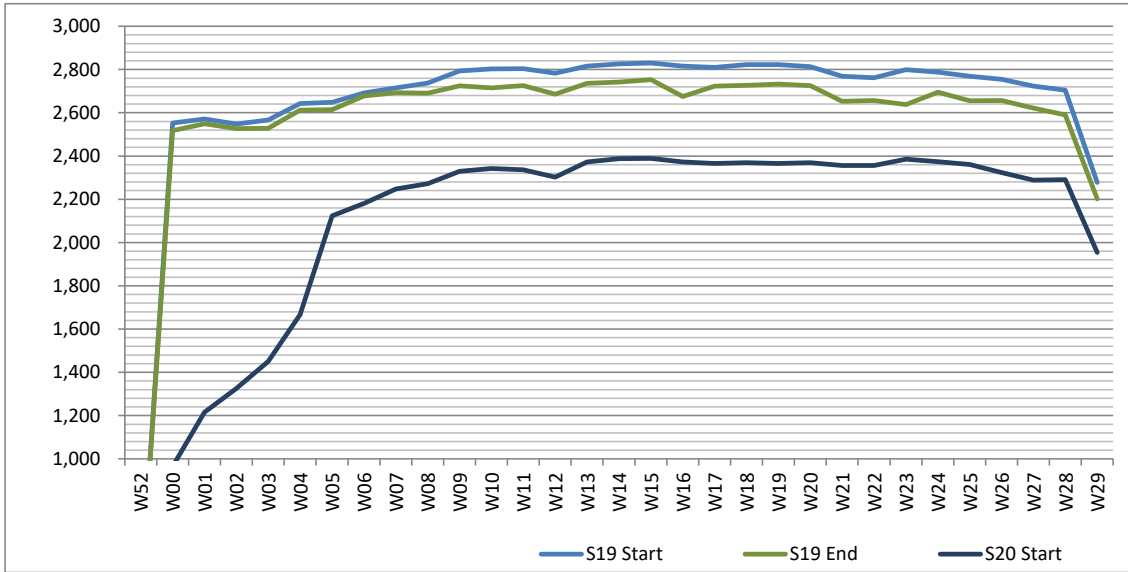


Note: FREIGHT-ONLY services with 0 seats are included in the first seat band '0-24'

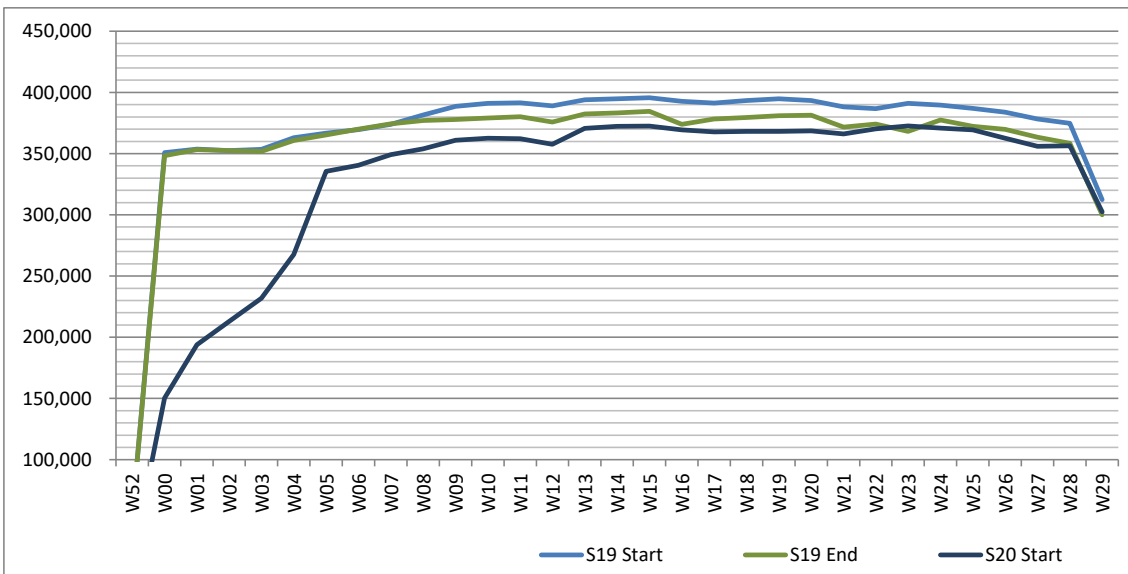
Full Season - Seasonality



Air Transport Movements by week of season



Air Transport Movement Seats by week of season



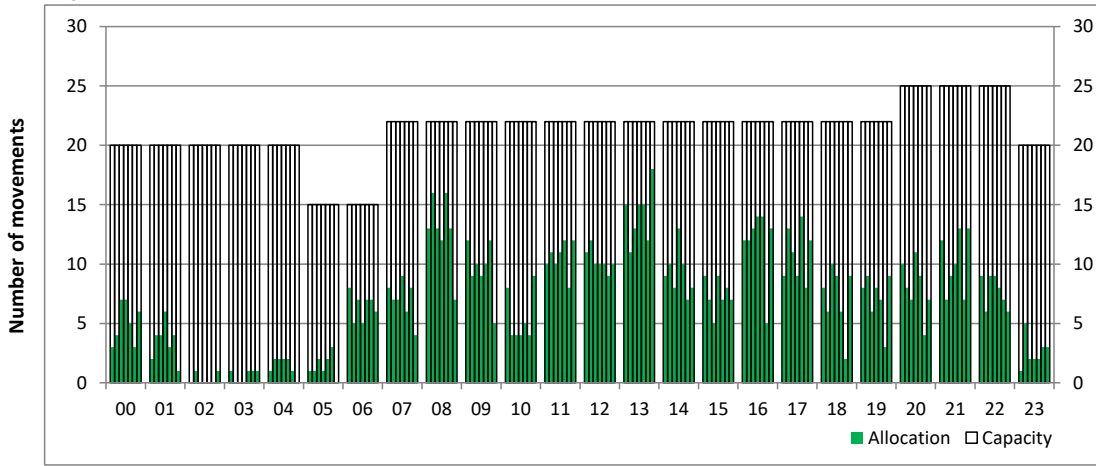
Peak Week - Hourly Runway Allocation

Schedule: S20 Start



Hourly Arrival Allocation

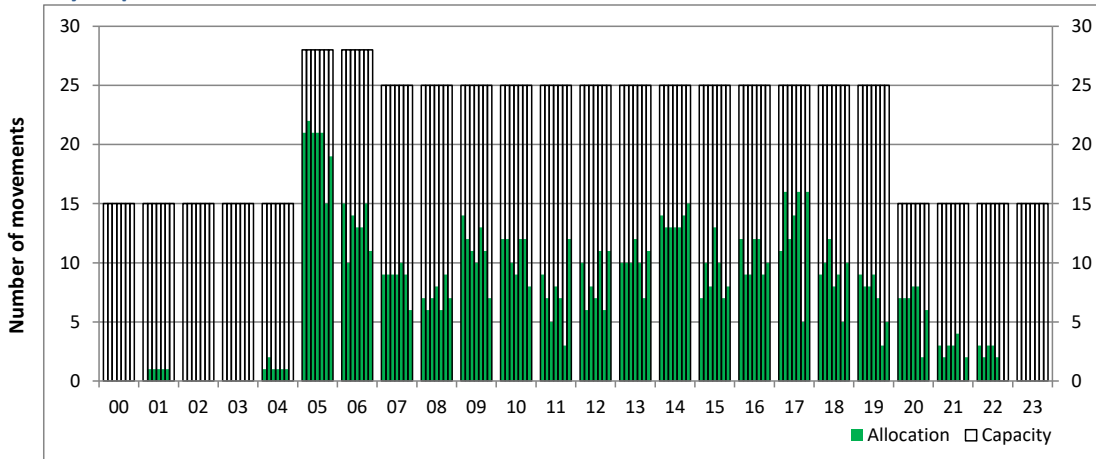
Time: UTC



Hour of day (24 hour format)

Hourly Departure Allocation

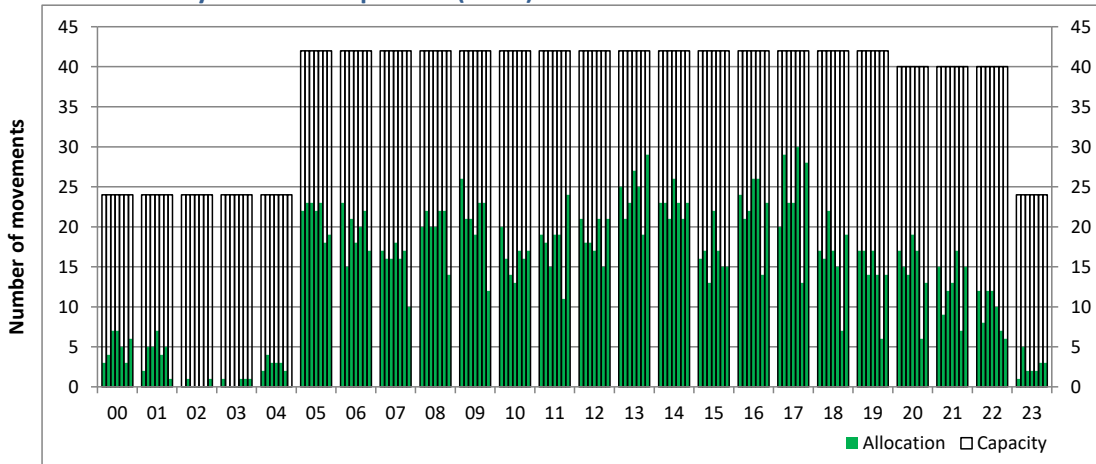
Time: UTC



Hour of day (24 hour format)

Combined Hourly Arrival & Departure (Total) Allocation

Time: UTC



Hour of day (24 hour format)

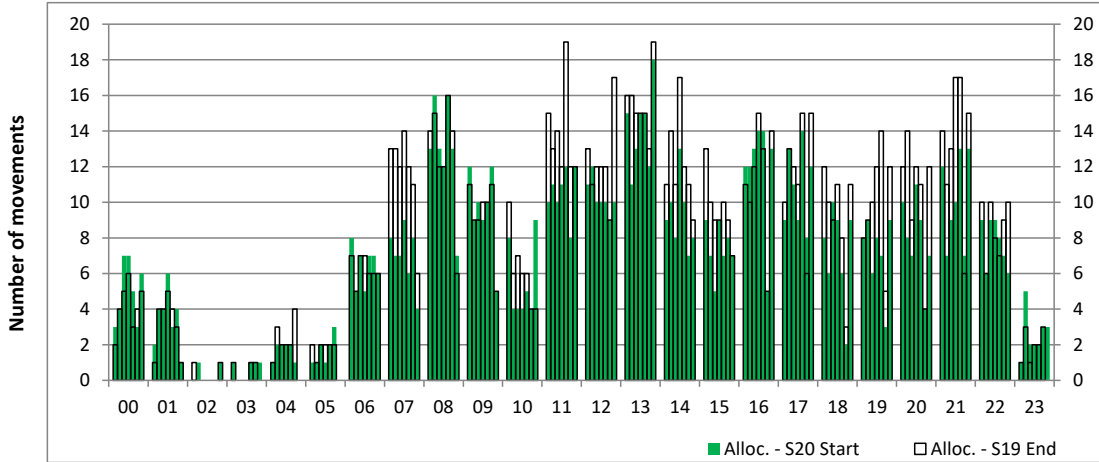
Peak Week - Runway Allocation Comparison

Comparison of S20 Start vs. S19 End



Hourly Arrival Allocation

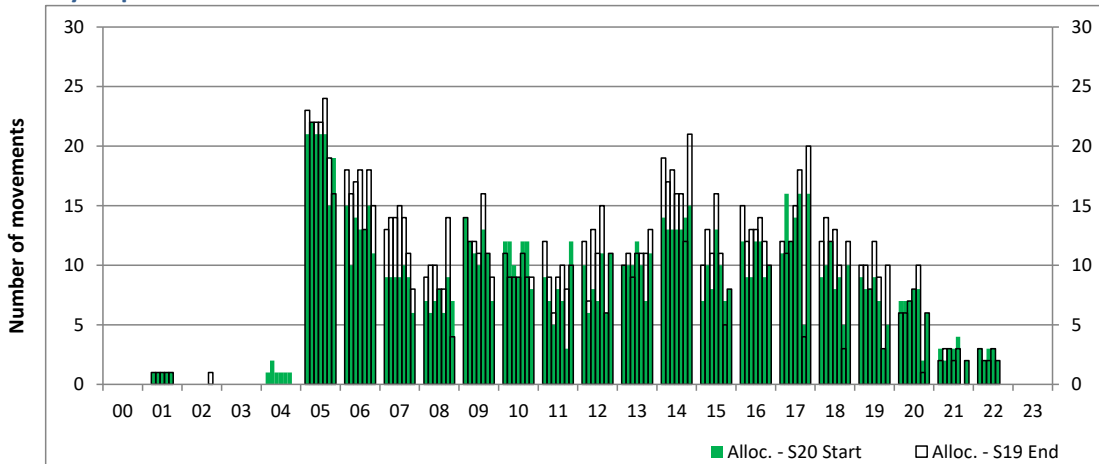
Time: UTC



Hour of day (24 hour format)

Hourly Departure Allocation

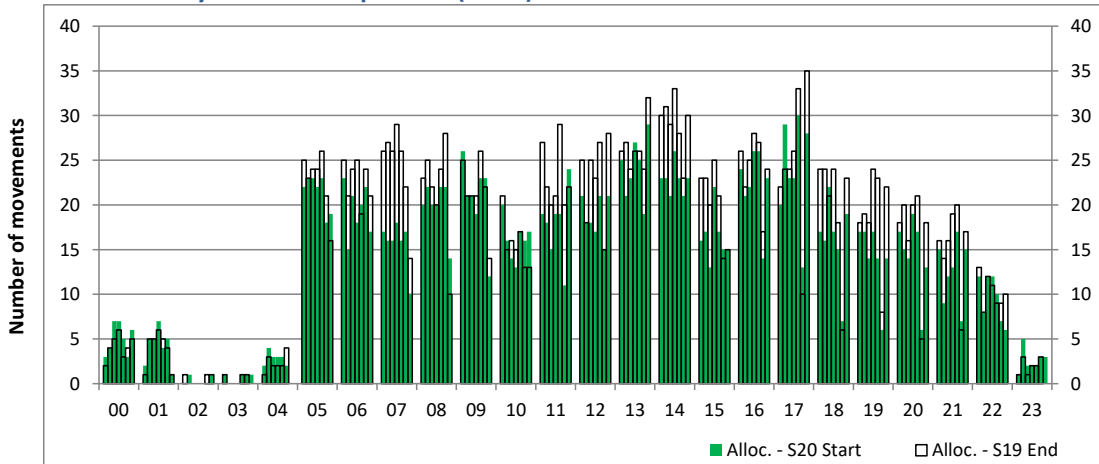
Time: UTC



Hour of day (24 hour format)

Combined Hourly Arrival & Departure (Total) Allocation

Time: UTC



Hour of day (24 hour format)

Peak Week - Passengers Histogram

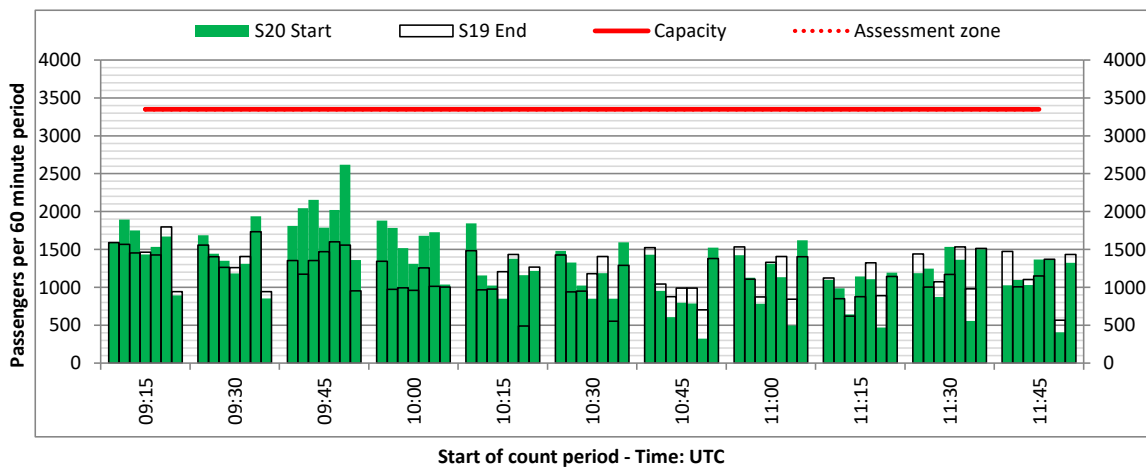
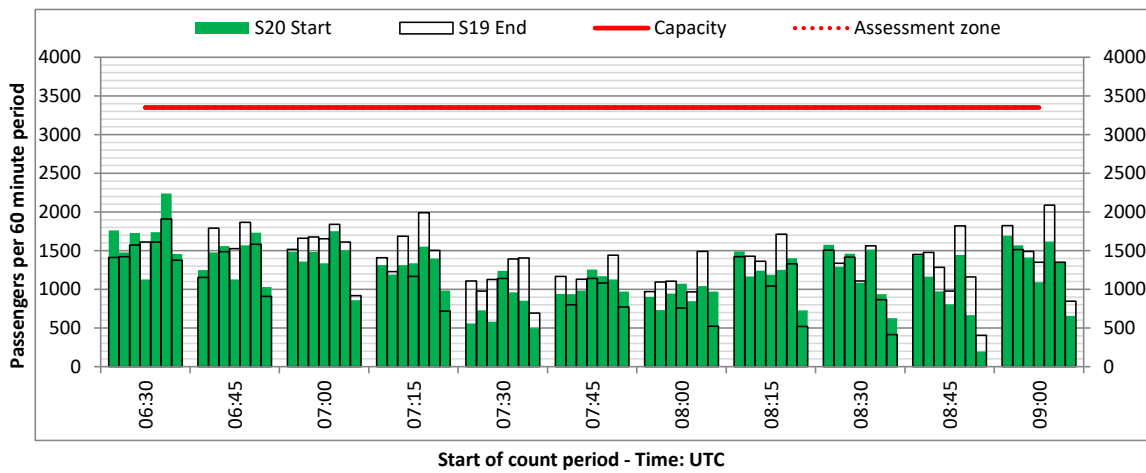
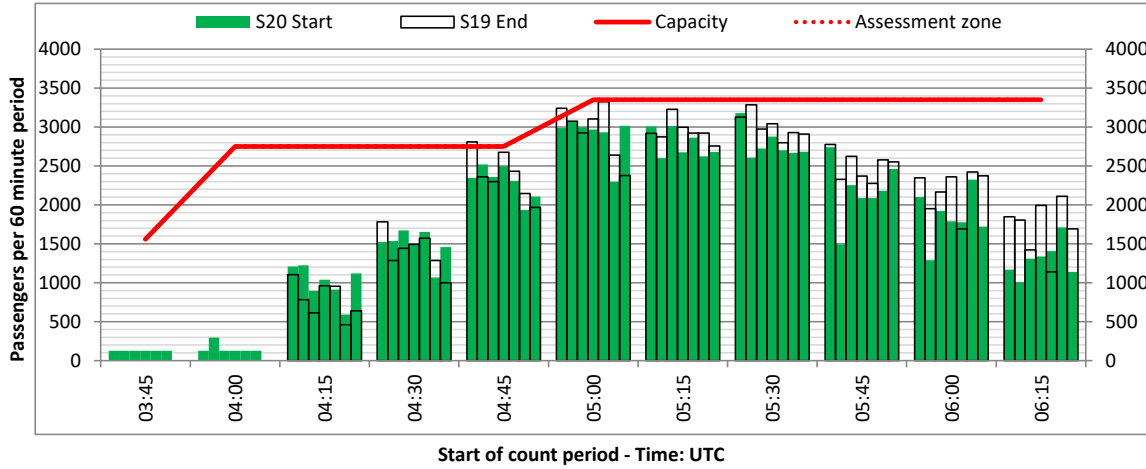
DEPARTURE - 60 minute count rolling every 15 mins (T60/15)



Terminals: All Terminals

Operators: All Operators

Days: 1234567



Peak Week - Passengers Histogram

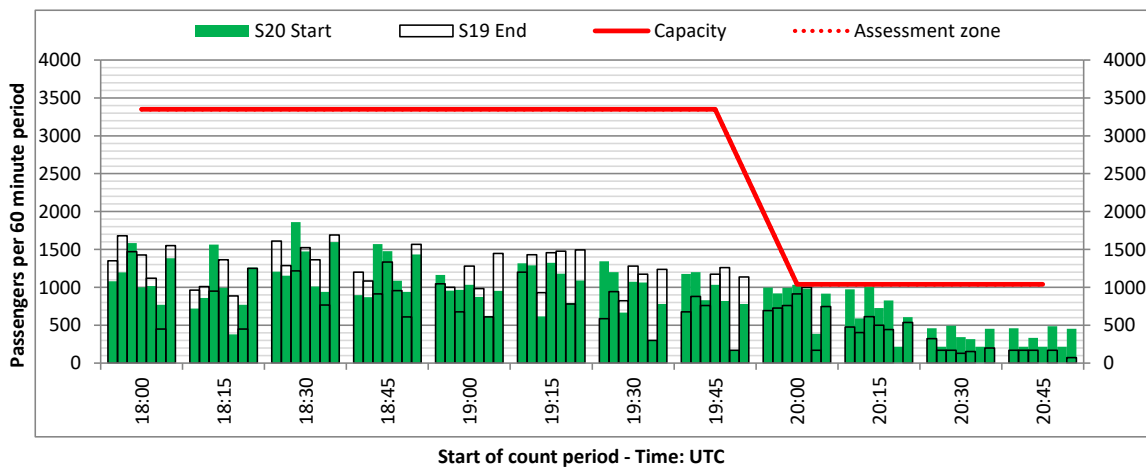
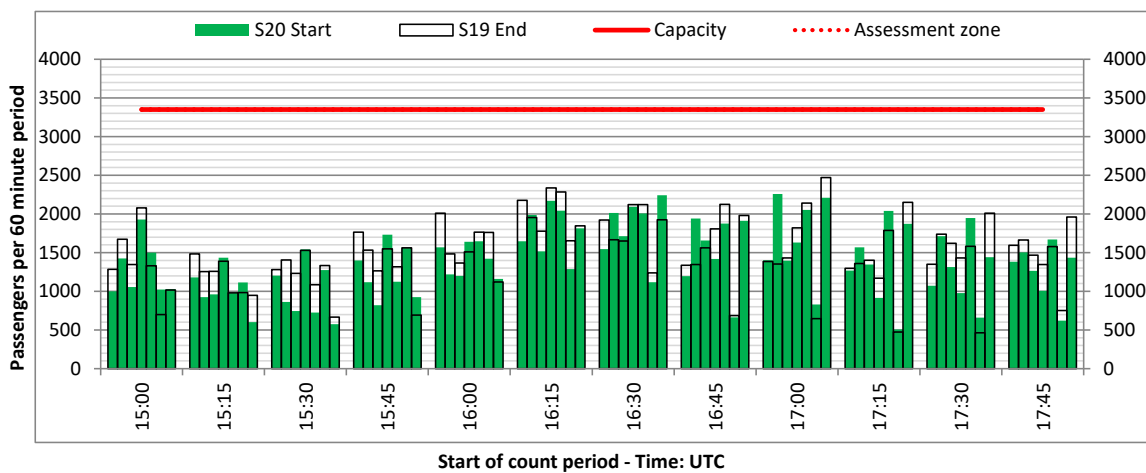
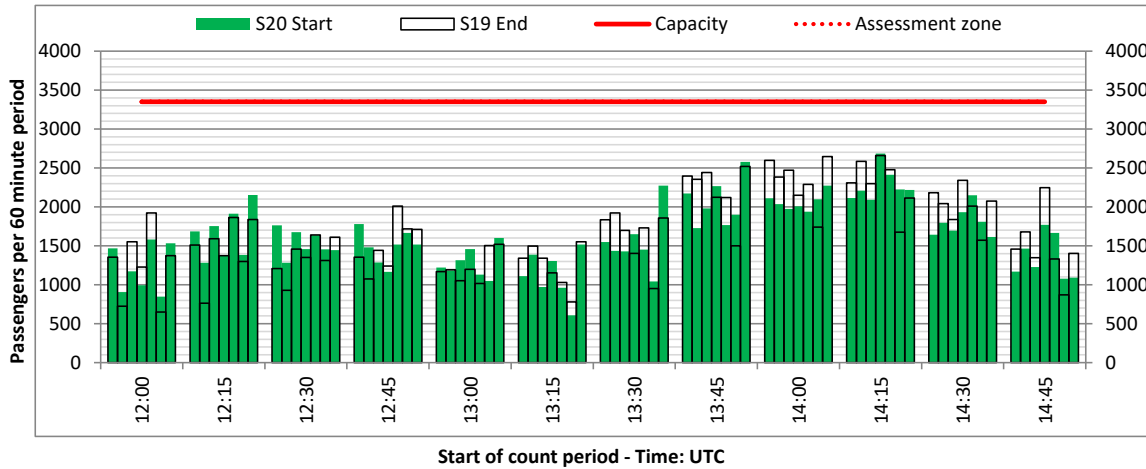
DEPARTURE - 60 minute count rolling every 15 mins (T60/15)



Terminals: All Terminals

Operators: All Operators

Days: 1234567



Peak Week - Passengers Histogram

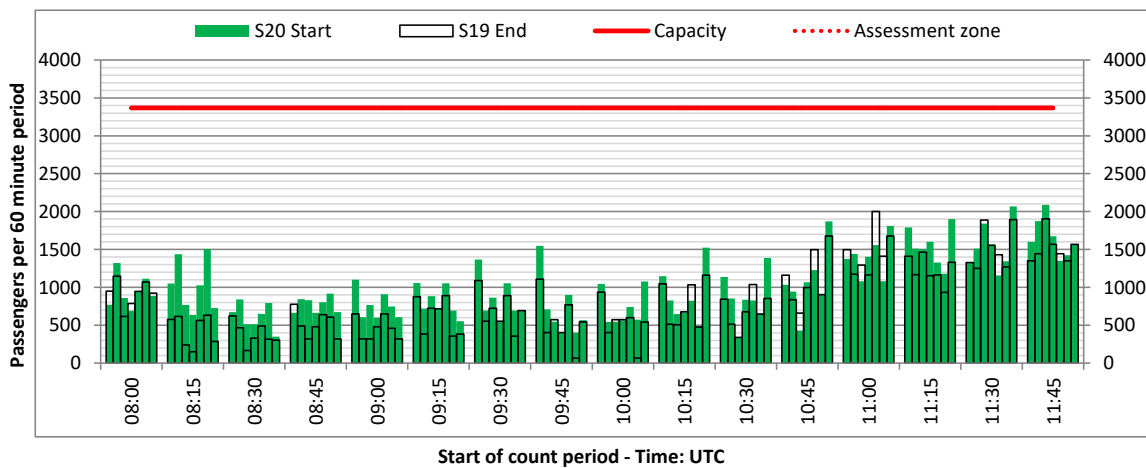
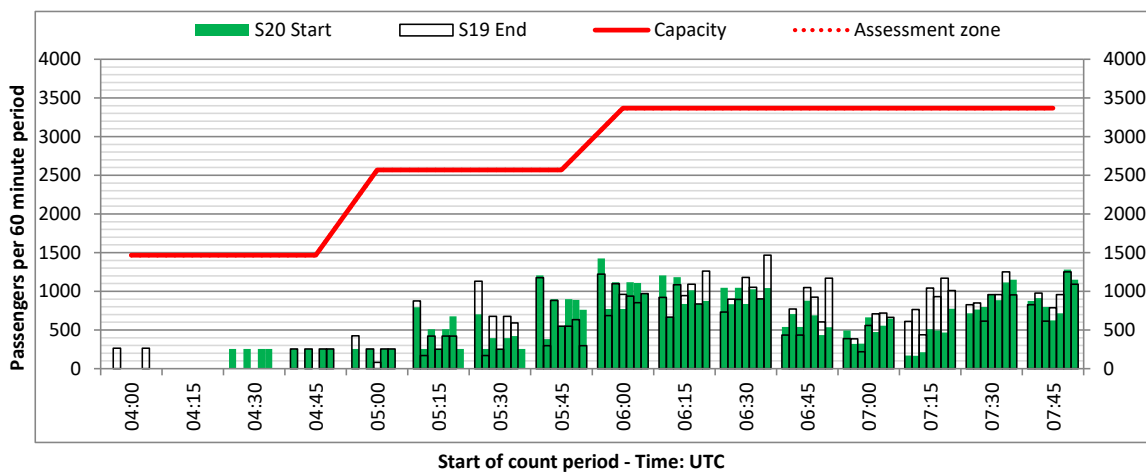
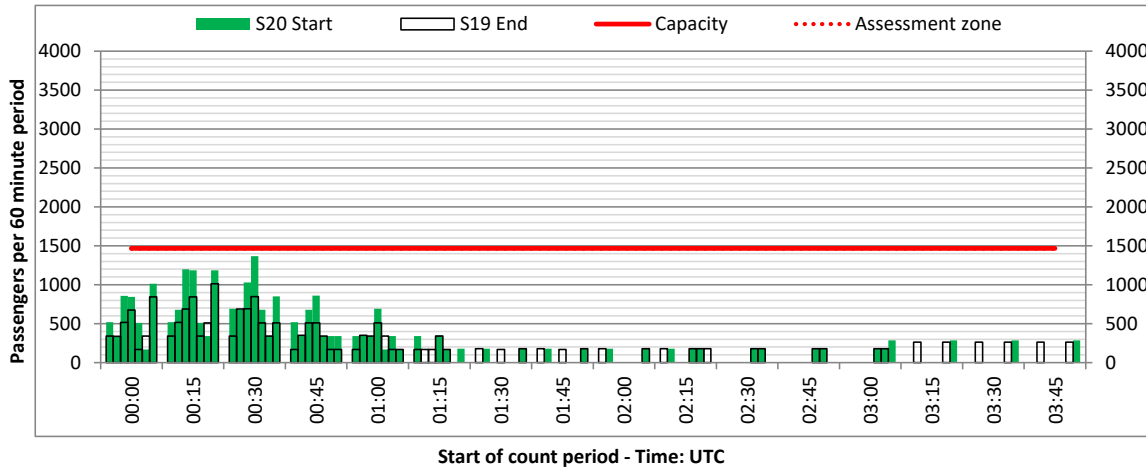
ARRIVAL - 60 minute count rolling every 15 mins (T60/15)



Terminals: 1I

Operators: All Operators

Days: 1234567



Peak Week - Passengers Histogram

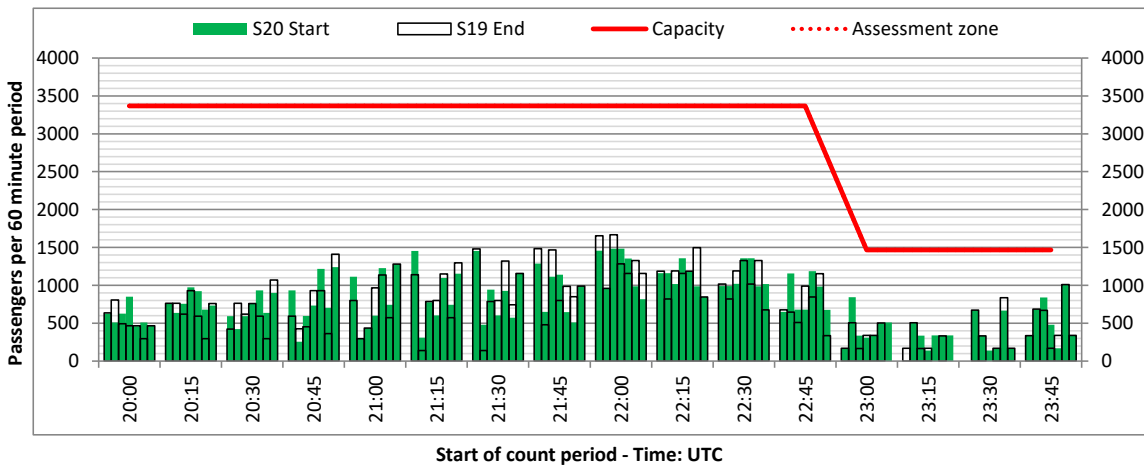
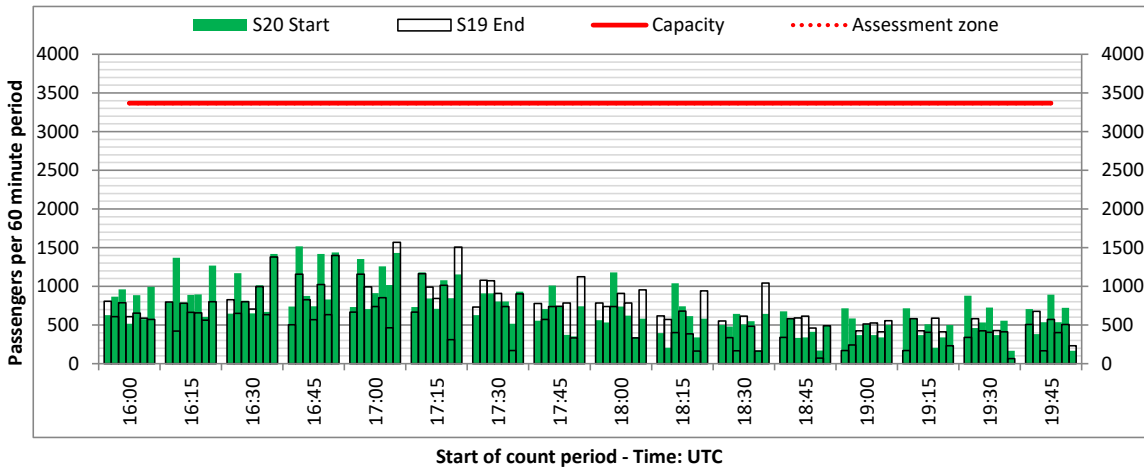
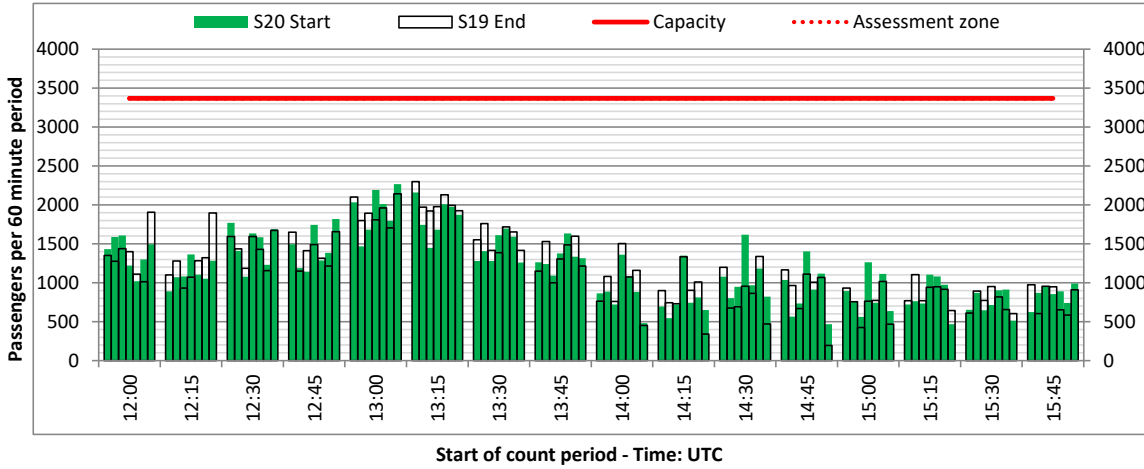
ARRIVAL - 60 minute count rolling every 15 mins (T60/15)



Terminals: 1I

Operators: All Operators

Days: 1234567



Peak Week - Passengers Histogram

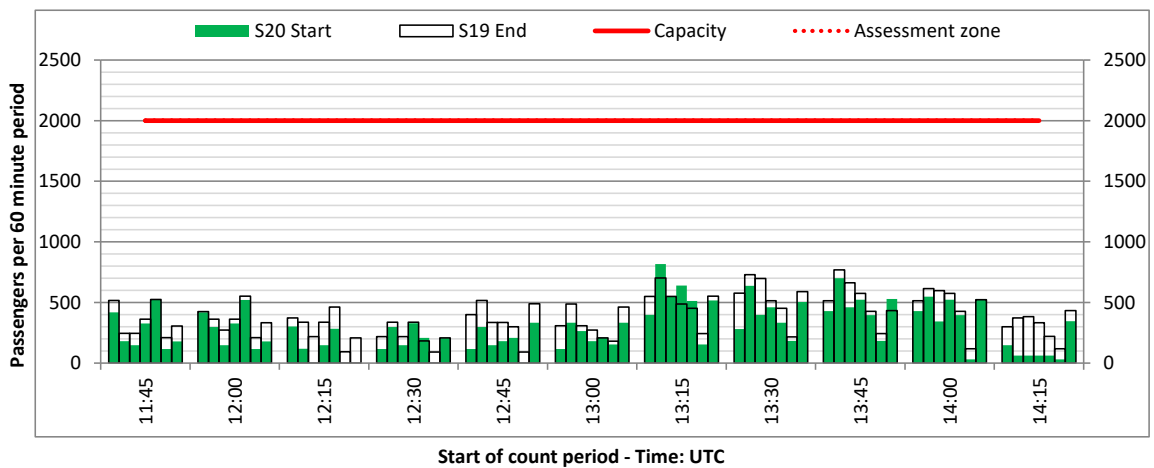
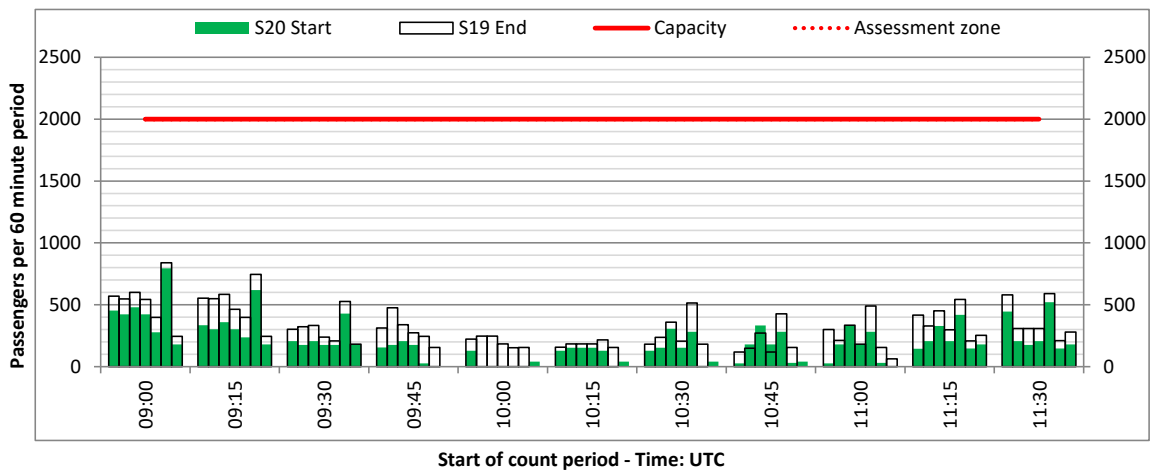
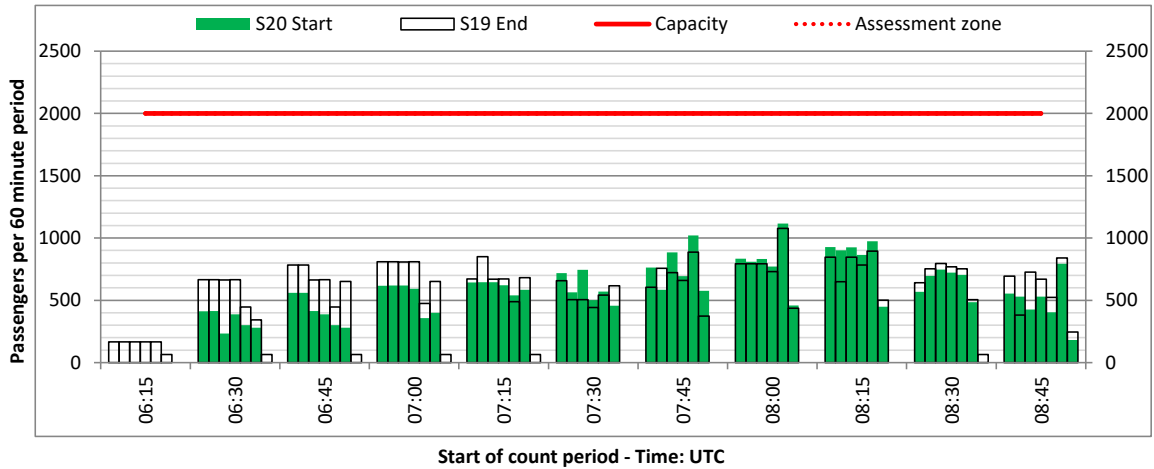
ARRIVAL - 60 minute count rolling every 15 mins (T60/15)



Terminals: 1D

Operators: All Operators

Days: 1234567



Peak Week - Passengers Histogram

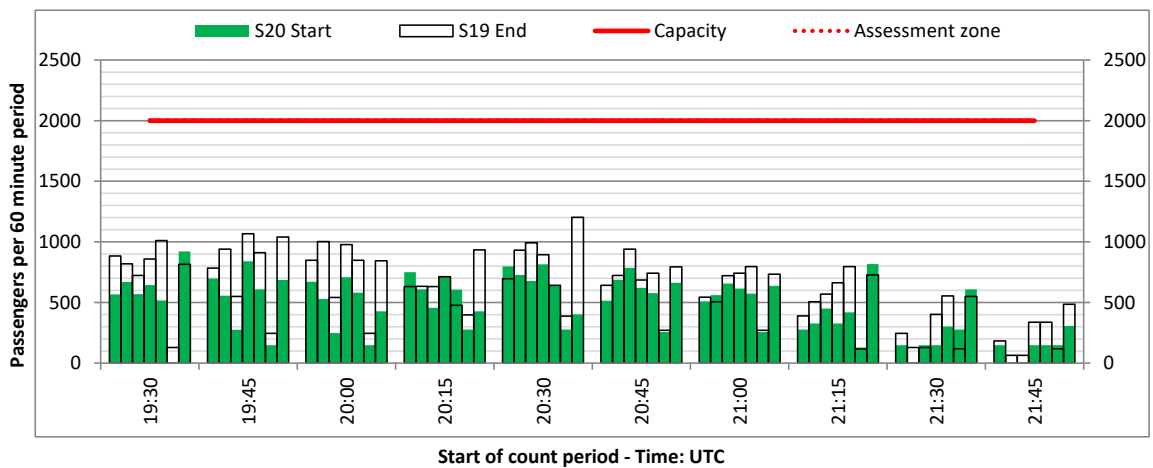
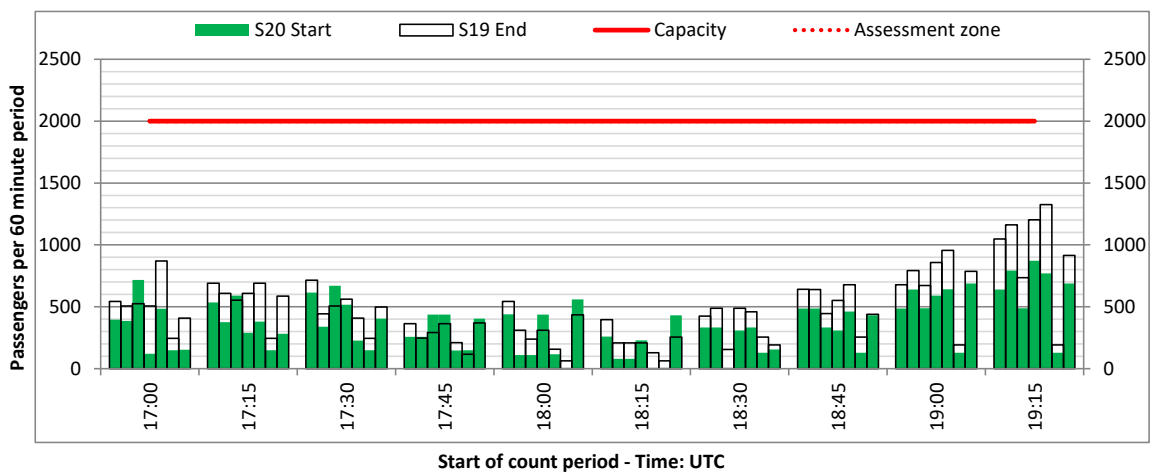
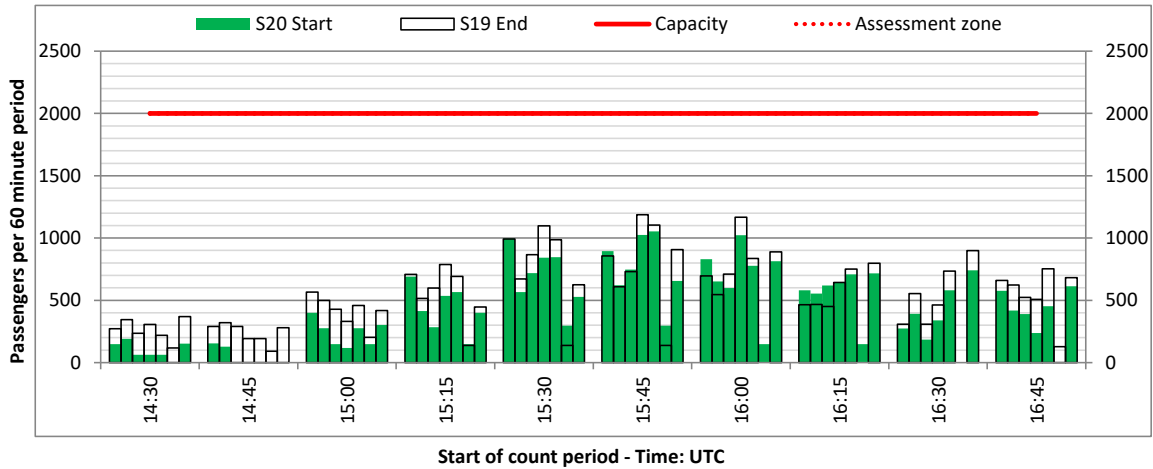
ARRIVAL - 60 minute count rolling every 15 mins (T60/15)



Terminals: 1D

Operators: All Operators

Days: 1234567



Glossary



Air Transport Movement (ATM)	Any aircraft movement which is either a scheduled or chartered passenger or cargo flight.
Common Travel Area (CTA)	Origin or Destination is in Republic of Ireland or the Channel Islands.
Demand	Unconstrained demand before any schedule adjustments have been made.
"Fill-in"	These are gaps in a historic series of slots which the carrier requests to "Fill-in" at Initial Submissions - Fill-ins will be recognisably part of the historic series and will have the same flight details to qualify as a "Fill-in".
Hist (SHL)	Snapshot of historic schedule rolled over from end of the previous equivalent season - as advised to airlines in the SHLs.
ICAO Size A	Aircraft with wingspan between 0.00m - 14.99m.
ICAO Size B	Aircraft with wingspan between 15.00m - 23.99m.
ICAO Size C	Aircraft with wingspan between 24.00m - 35.99m.
ICAO Size D	Aircraft with wingspan between 36.00m - 51.99m.
ICAO Size E	Aircraft with wingspan between 52.00m - 64.99m.
ICAO Size F	Aircraft with wingspan between 65.00m - 80.00m.
Init Coord	Snapshot of schedule immediately after Initial Coordination is completed - as advised to airlines in the SALs.
Passenger Air Transport Movement (PATM)	Any aircraft movement which is either a scheduled or chartered passenger flight.
Start	Snapshot of schedule shortly before the start of the scheduling season (exact date given below where used).
Time: Local	Times shown are in LOCAL time for the airport/scheduling season.
Time: UTC	Times shown are in Universal Time Constant (UTC).

Data snapshot descriptions

S19 Start	S19 schedule as cleared on Mon 11-Mar-19.
S19 End	S19 schedule as cleared on Tue 04-Sep-18.
S20 Start	S20 schedule as cleared on Tue 24-Mar-20.
Peak Week	Peak week for S19 is Mon 15-Jul-19 to Sun 21-Jul-19. Peak week for S20 is Mon 13-Jul-20 to Sun 19-Jul-20.

For ACL use

	Airport-Season-Branch-Resource	From date	To date	Time
Full Season Rep 1	EDI-S19-Final SOS Report-Standard	Sun 31-Mar-2019	Sat 26-Oct-2019	UTC
Full Season Rep 2	EDI-S19-Live-Standard	Sun 31-Mar-2019	Sat 26-Oct-2019	UTC
Full Season Rep 3	EDI-S20-SOS Report-Standard	Sun 29-Mar-2020	Sat 24-Oct-2020	UTC
	Airport-Season-Branch-Resource	From date	To date	Time
Peak Week Rep 1	EDI-S19-Final SOS Report-Standard	Mon 15-Jul-2019	Sun 21-Jul-2019	UTC
Peak Week Rep 2	EDI-S19-Live-Standard	Mon 15-Jul-2019	Sun 21-Jul-2019	UTC
Peak Week Rep 3	EDI-S20-SOS Report-Standard	Mon 13-Jul-2020	Sun 19-Jul-2020	UTC