

# Dubai International Airport (DXB)

Summer 2020 (S20)



## Start of Season Report

Report Date: Fri 27-Mar-2020

### Headlines

	S20 Start	vs. S19 Start	vs. S19 End
Total Air Transport Movements (Passenger & Freight)	253,974	▲ 9.6%	▲ 25.1%
Total Passenger Air Transport Movements	249,239	▲ 9.6%	▲ 25.1%
Total Passenger Air Transport Movement Seats	72,439,954	▲ 6.8%	▲ 18.4%
Average Seats per Passenger Air Transport Movement	291	▼ -2.5%	▼ -5.4%
Percentage of allocated slots cleared as requested (OK)	97%		

### Contents

Page	Content
2	Runway Scheduling Limits
3	ATM Allocation by Operator (Full season and Peak Week Comparison)
4	Significant Route Changes
5	Full Season - ATM Analysis
6	Full Season - PATM Seats Analysis
7	Full Season - Aircraft Size Analysis
8	Full Season - Seasonality
9	Peak Week - Hourly Runway Allocation
10	Peak Week - Hourly Runway Allocation Comparison (S20 Start vs. S19 Start)
11	Peak Week - Hourly Runway Allocation Comparison (S20 Start vs. S19 End)
12	Peak Week Histogram - Arrival Movements (R10) - All Terminals - All Operators
13	Peak Week Histogram - Arrival Movements (R10) - All Terminals - All Operators
14	Peak Week Histogram - Arrival Movements (R10) - All Terminals - All Operators
15	Peak Week Histogram - Departure Movements (R10) - All Terminals - All Operators
16	Peak Week Histogram - Departure Movements (R10) - All Terminals - All Operators
17	Peak Week Histogram - Departure Movements (R10) - All Terminals - All Operators
18	Peak Week Histogram - Arrival Passengers (T60) - Terminal 1 - All Operators
19	Peak Week Histogram - Departure Passengers (T60) - Terminal 1 - All Operators
20	Peak Week Histogram - Arrival Passengers (T60) - Terminal 2 - All Operators
21	Peak Week Histogram - Departure Passengers (T60) - Terminal 2 - All Operators
22	Peak Week Histogram - Arrival Passengers (T60) - Terminal 3 - All Operators
23	Peak Week Histogram - Departure Passengers (T60) - Terminal 3 - All Operators
24	Peak Week - Declaration Usage Analysis
25	Peak Week - Primary Constraints by Terminal
26	Peak Week - Code F Arrivals and Departures
27	Peak Week - Nac Utilisation View
28	Glossary

S19 scheduling season runs from Sun 31-Mar-2019 to Sat 26-Oct-2019 (210 days).

S20 scheduling season runs from Sun 29-Mar-2020 to Sat 24-Oct-2020 (210 days).

### Disclaimer

No warranty whether expressed or implied as to the completeness, accuracy, fitness for purpose, or satisfactory quality is given by ACL regarding the

The contents of this report may not be reproduced without the written consent of ACL.

# Runway Scheduling Limits



## Declared Hourly Movement Capacity

S19 Arrivals								Change: S19 to S20								S20 Arrivals							
Hour	Mon	Tue	Wed	Thu	Fri	Sat	Sun	Hour	Mon	Tue	Wed	Thu	Fri	Sat	Sun	Hour	Mon	Tue	Wed	Thu	Fri	Sat	Sun
UTC	1	2	3	4	5	6	7	UTC	1	2	3	4	5	6	7	UTC	1	2	3	4	5	6	7
00	34	34	34	34	34	34	34	00								00	34	34	34	34	34	34	34
01	37	37	37	37	37	37	37	01								01	37	37	37	37	37	37	37
02	37	37	37	37	37	37	37	02								02	37	37	37	37	37	37	37
03	28	28	28	28	28	28	28	03								03	28	28	28	28	28	28	28
04	25	25	25	25	25	25	25	04								04	25	25	25	25	25	25	25
05	25	25	25	25	25	25	25	05								05	25	25	25	25	25	25	25
06	25	25	25	25	25	25	25	06								06	25	25	25	25	25	25	25
07	35	35	35	35	35	35	35	07								07	35	35	35	35	35	35	35
08	36	36	36	36	36	36	36	08								08	36	36	36	36	36	36	36
09	35	35	35	35	35	35	35	09								09	35	35	35	35	35	35	35
10	26	26	26	26	26	26	26	10								10	26	26	26	26	26	26	26
11	20	20	20	20	20	20	20	11								11	20	20	20	20	20	20	20
12	20	20	20	20	20	20	20	12								12	20	20	20	20	20	20	20
13	22	22	22	22	22	22	22	13								13	22	22	22	22	22	22	22
14	29	29	29	29	29	29	29	14								14	29	29	29	29	29	29	29
15	35	35	35	35	35	35	35	15								15	35	35	35	35	35	35	35
16	35	35	35	35	35	35	35	16								16	35	35	35	35	35	35	35
17	36	36	36	36	36	36	36	17								17	36	36	36	36	36	36	36
18	34	34	34	34	34	34	34	18								18	34	34	34	34	34	34	34
19	35	35	35	35	35	35	35	19								19	35	35	35	35	35	35	35
20	35	35	35	35	35	35	35	20								20	35	35	35	35	35	35	35
21	26	26	26	26	26	26	26	21								21	26	26	26	26	26	26	26
22	24	24	24	24	24	24	24	22								22	24	24	24	24	24	24	24
23	23	23	23	23	23	23	23	23								23	23	23	23	23	23	23	23

S19 Departures								Change: S19 to S20								S20 Departures							
Hour	Mon	Tue	Wed	Thu	Fri	Sat	Sun	Hour	Mon	Tue	Wed	Thu	Fri	Sat	Sun	Hour	Mon	Tue	Wed	Thu	Fri	Sat	Sun
UTC	1	2	3	4	5	6	7	UTC	1	2	3	4	5	6	7	UTC	1	2	3	4	5	6	7
00	26	26	26	26	26	26	26	00								00	26	26	26	26	26	26	26
01	22	22	22	22	22	22	22	01								01	22	22	22	22	22	22	22
02	22	22	22	22	22	22	22	02								02	22	22	22	22	22	22	22
03	40	40	40	40	40	40	40	03								03	40	40	40	40	40	40	40
04	41	41	41	41	41	41	41	04								04	41	41	41	41	41	41	41
05	41	41	41	41	41	41	41	05								05	41	41	41	41	41	41	41
06	40	40	40	40	40	40	40	06								06	40	40	40	40	40	40	40
07	24	24	24	24	24	24	24	07								07	24	24	24	24	24	24	24
08	30	30	30	30	30	30	30	08								08	30	30	30	30	30	30	30
09	33	33	33	33	33	33	33	09								09	33	33	33	33	33	33	33
10	36	36	36	36	36	36	36	10								10	36	36	36	36	36	36	36
11	25	25	25	25	25	25	25	11								11	25	25	25	25	25	25	25
12	25	25	25	25	25	25	25	12								12	25	25	25	25	25	25	25
13	25	25	25	25	25	25	25	13								13	25	25	25	25	25	25	25
14	31	31	31	31	31	31	31	14								14	31	31	31	31	31	31	31
15	29	29	29	29	29	29	29	15								15	29	29	29	29	29	29	29
16	25	25	25	25	25	25	25	16								16	25	25	25	25	25	25	25
17	27	27	27	27	27	27	27	17								17	27	27	27	27	27	27	27
18	27	27	27	27	27	27	27	18								18	27	27	27	27	27	27	27
19	23	23	23	23	23	23	23	19								19	23	23	23	23	23	23	23
20	22	22	22	22	22	22	22	20								20	22	22	22	22	22	22	22
21	26	26	26	26	26	26	26	21								21	26	26	26	26	26	26	26
22	39	39	39	39	39	39	39	22								22	39	39	39	39	39	39	39
23	37	37	37	37	37	37	37	23								23	37	37	37	37	37	37	37

S19 Totals								Change: S19 to S20								S20 Totals							
Hour	Mon	Tue	Wed	Thu	Fri	Sat	Sun	Hour	Mon	Tue	Wed	Thu	Fri	Sat	Sun	Hour	Mon	Tue	Wed	Thu	Fri	Sat	Sun
UTC	1	2	3	4	5	6	7	UTC	1	2	3	4	5	6	7	UTC	1	2	3	4	5	6	7
00	60	60	60	60	60	60	60	00								00	60	60	60	60	60	60	60
01	59	59	59	59	59	59	59	01								01	59	59	59	59	59	59	59
02	59	59	59	59	59	59	59	02								02	59	59	59	59	59	59	59
03	65	65	65	65	65	65	65	03								03	65	65	65	65	65	65	65
04	66	66	66	66	66	66	66	04								04	66	66	66	66	66	66	66
05	66	66	66	66	66	66	66	05								05	66	66	66	66	66	66	66
06	65	65	65	65	65	65	65	06								06	65	65	65	65	65	65	65
07	59	59	59	59	59	59	59	07								07	59	59	59	59	59	59	59
08	66	66	66	66	66	66	66	08								08	66	66	66	66	66	66	66
09	66	66	66	66	66	66	66	09								09	66	66	66	66	66	66	66
10	57	57	57	57	57	57	57	10								10	57	57	57	57	57	57	57
11	40	40	40	40	40	40	40	11								11	40	40	40	40	40	40	40
12	40	40	40	40	40	40	40	12								12	40	40	40	40	40	40	40
13	40	40	40	40	40	40	40	13								13	40	40	40	40	40	40	40
14	55	55	55	55	55	55	55	14								14	55	55	55	55	55	55	55
15	64	64	64	64	64	64	64	15								15	64	64	64	64	64	64	64
16	60	60	60	60	60	60	60	16								16	60	60	60	60	60	60	60
17	63	63	63	63	63	63	63	17								17	63	63	63	63	63	63	63
18	61	61	61	61	61	61	61	18								18	61	61	61	61	61	61	61
19	58	58	58	58	58	58	58	19								19	58	58	58	58	58	58	58
20	57	57	57	57	57	57	57	20								20	57	57	57	57	57	57	57
21	47	47	47	47	47	47	47	21								21	47	47	47	47	47	47	47
22	63	63	63	63	63	63	63	22								22	63	63	63	63	63	63	63
23	60	60	60	60	60	60	60	23								2							

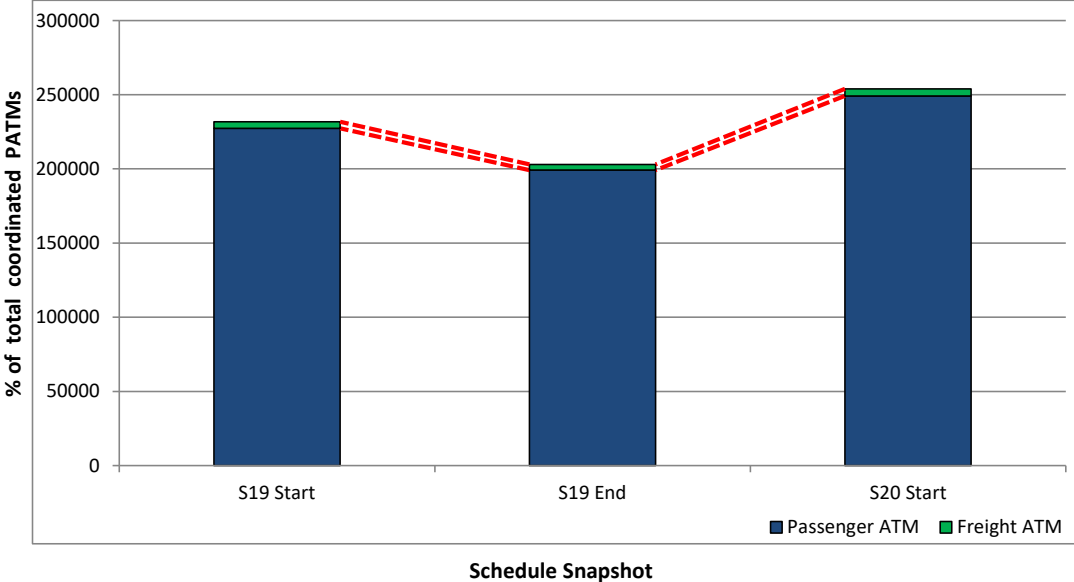


## Significant Route Changes



Operator	Category	Description of change from S19 schedule to S20 schedule
AeroLogic	CHANGE	Increased services to HKG, LEJ
Air India	CHANGE	Increased services to BLR, BOM, CCU, DEL, IDR, VTZ
Air India Express	CHANGE	Increased Service to IXE
British Airways	CHANGE	Increase service to LHR
Cham Wings Airlines	<b>NEW</b>	Service to DAM
China Southern	CHANGE	Increased service to CAN, PKX, SZX, URC, WUH
DHL Aviation	CHANGE	Increased service to BAH, DWC
Emirates	CHANGE	Increased services to DMM, DAC, DPS, HKT, JED, KHI, RUH, SIN, STN
Federal Express	CHANGE	Increased service to BLR, CGN, CDG, JNB
flyadeal	<b>NEW</b>	Service to JED, RUH
Flydubai	CHANGE	Increased service to ELQ, FRU, GYD, JED, KWI, MCT, SAW, SJJ, VKO
GoAir	CHANGE	Increased service to CNN
Indigo	CHANGE	Increased Service to AMD, ATQ, BOM, CCI, CCU, COK, DEL, IXC, MAA
Iran Air	<b>NEW</b>	Service to AWZ, BUZ, LRR
Iran Air	CHANGE	increased service to BND, IKA, SYZ
Jazeera Airways	CHANGE	Increased service to KWI
Oman Air	CHANGE	Increased service to MCT
Oman Air	CHANGE	Service to SLL
PIA Pakistan International	<b>NEW</b>	Service to LYP, MUX, SKT
PIA Pakistan International	CHANGE	Increased service to ISB, KHI, PEW
Sichuan Airlines	CHANGE	Increased services to HGH
Spicejet	CHANGE	Increased service to BOM

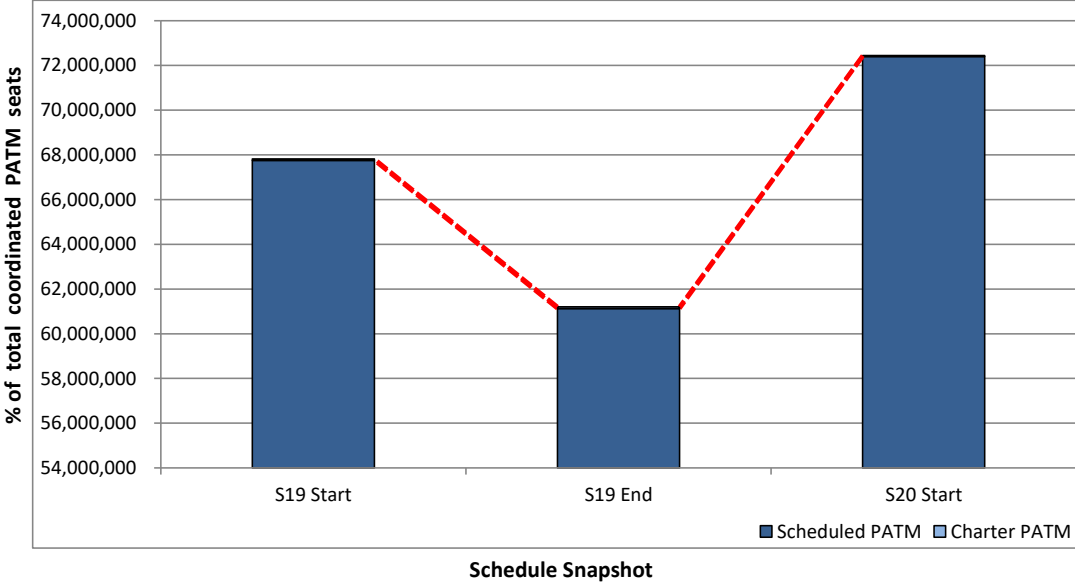
Total ATMs: Passenger ATMs vs. Freight ATMs



# Full Season - PATM Seats Analysis



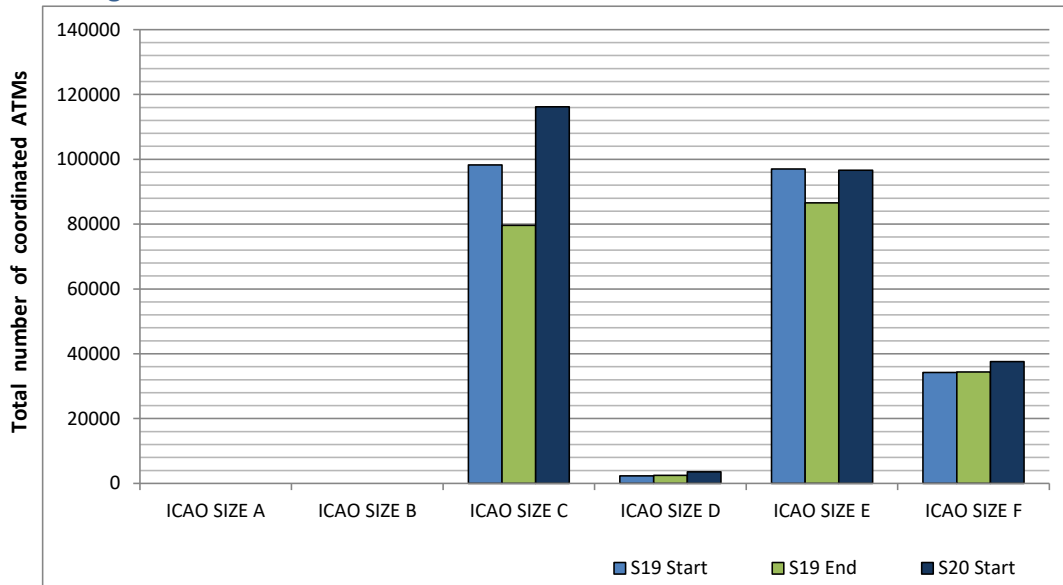
Total Passenger ATM seats: Scheduled vs. Charter



# Full Season - Aircraft Size Analysis

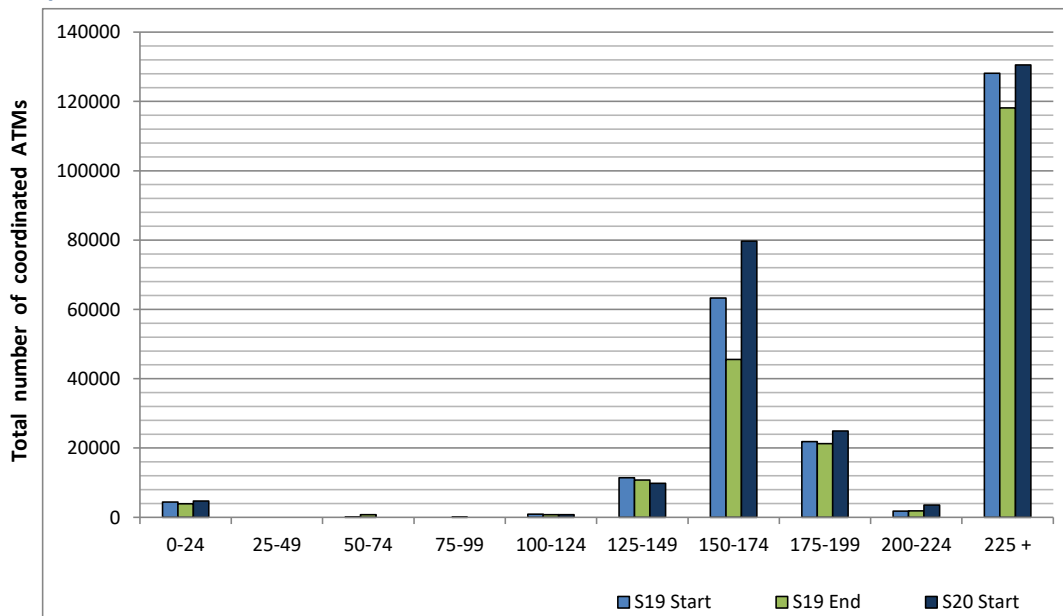


## ICAO size designation



Note: See Glossary for definitions of ICAO SIZE groupings

## Air Transport Movement seat distribution

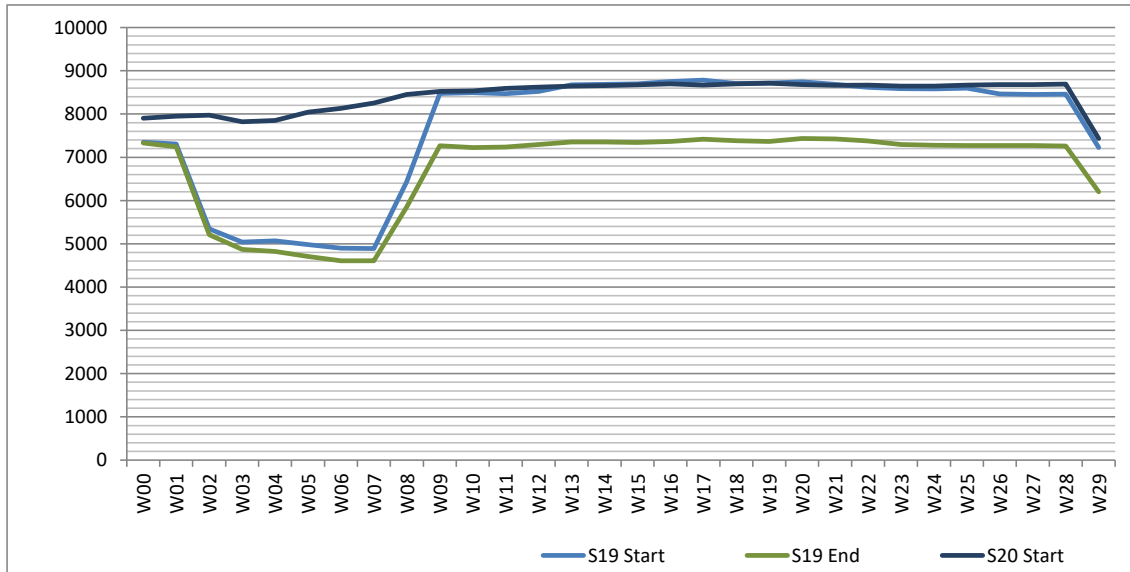


Note: FREIGHT-ONLY services with 0 seats are included in the first seat band '0-24'

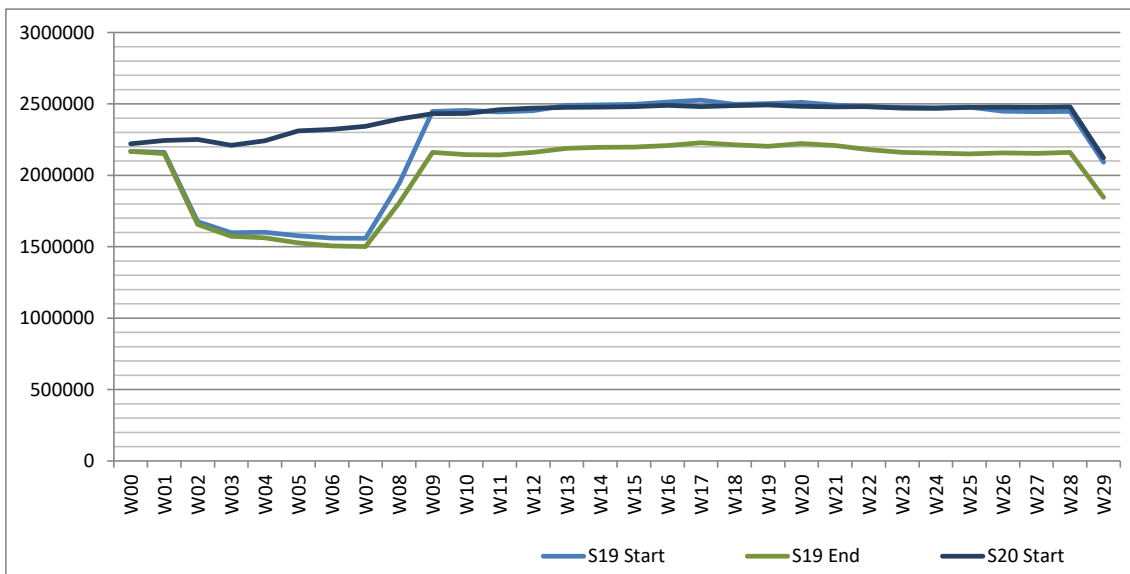
# Full Season - Seasonality



Air Transport Movements by week of season



Air Transport Movement Seats by week of season





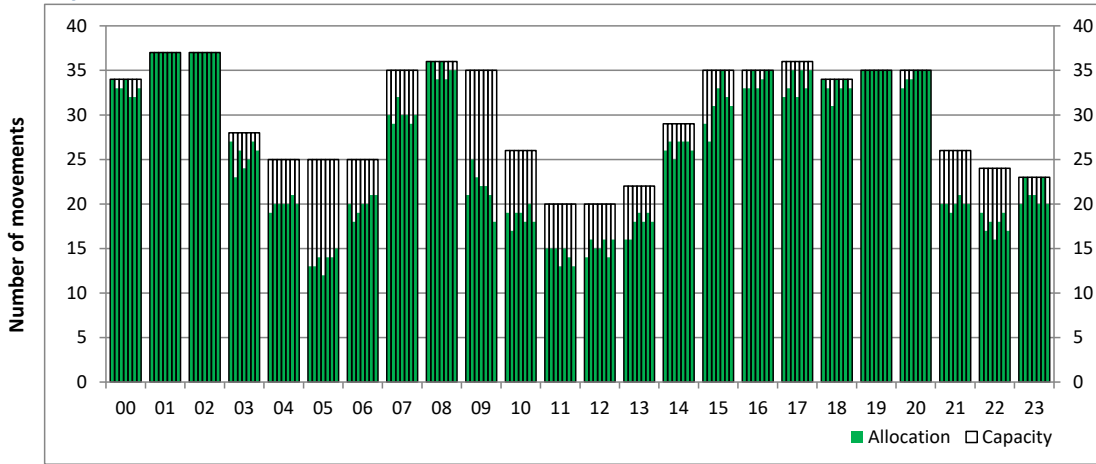
# Peak Week - Hourly Runway Allocation

Schedule: S20 Start



## Hourly Arrival Allocation

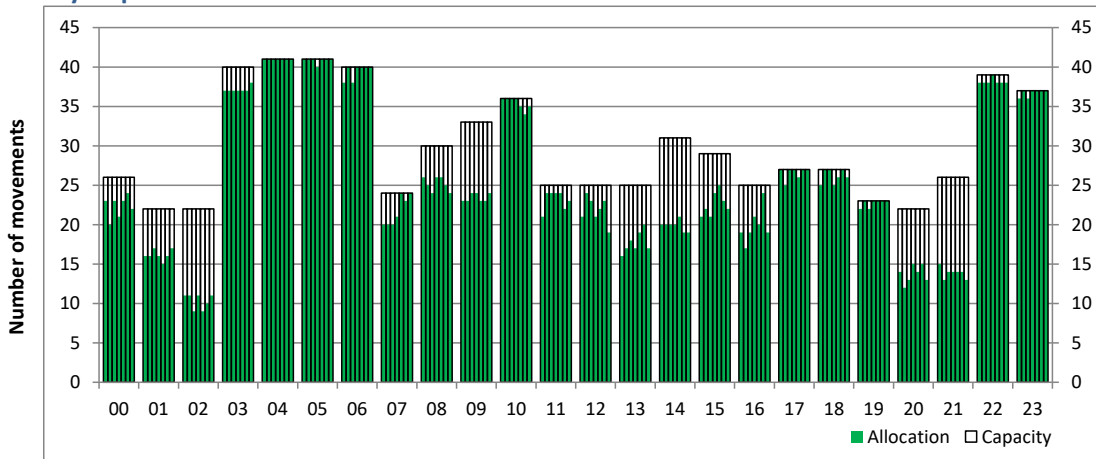
Time: UTC



Hour of day (24 hour format)

## Hourly Departure Allocation

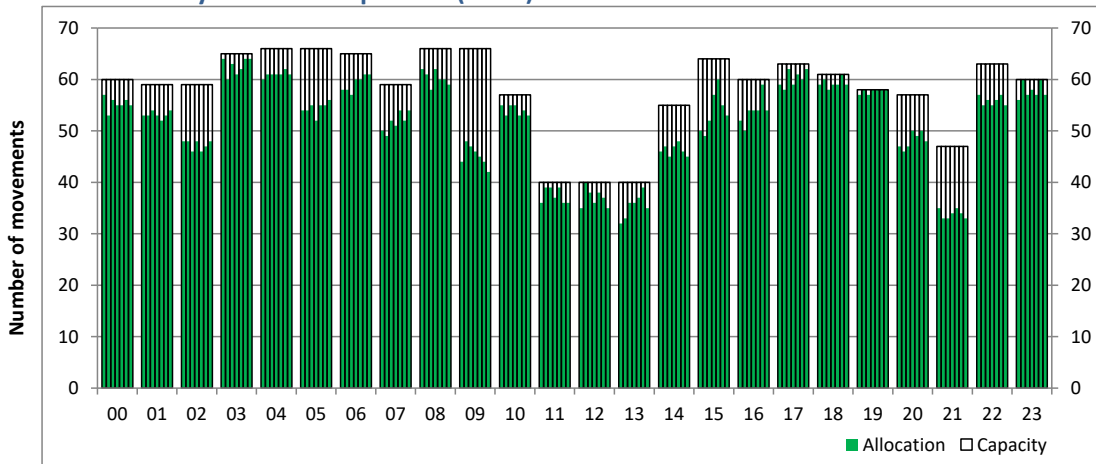
Time: UTC



Hour of day (24 hour format)

## Combined Hourly Arrival & Departure (Total) Allocation

Time: UTC



Hour of day (24 hour format)

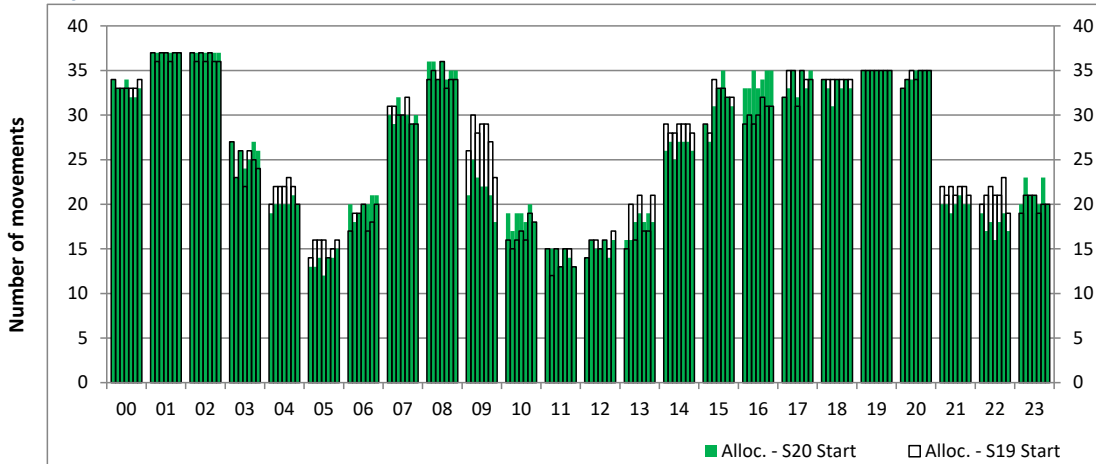
# Peak Week - Runway Allocation Comparison



Comparison of S20 Start vs. S19 Start

## Hourly Arrival Allocation

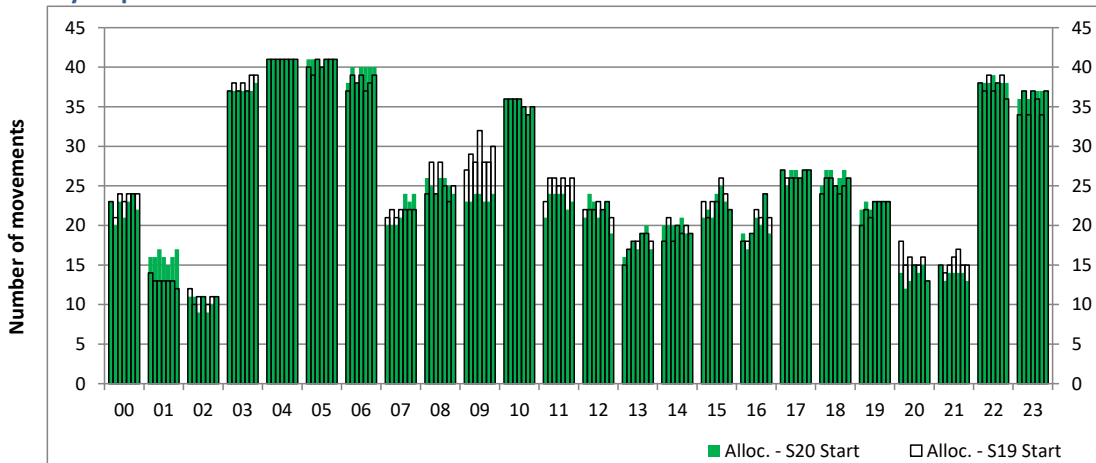
Time: UTC



Hour of day (24 hour format)

## Hourly Departure Allocation

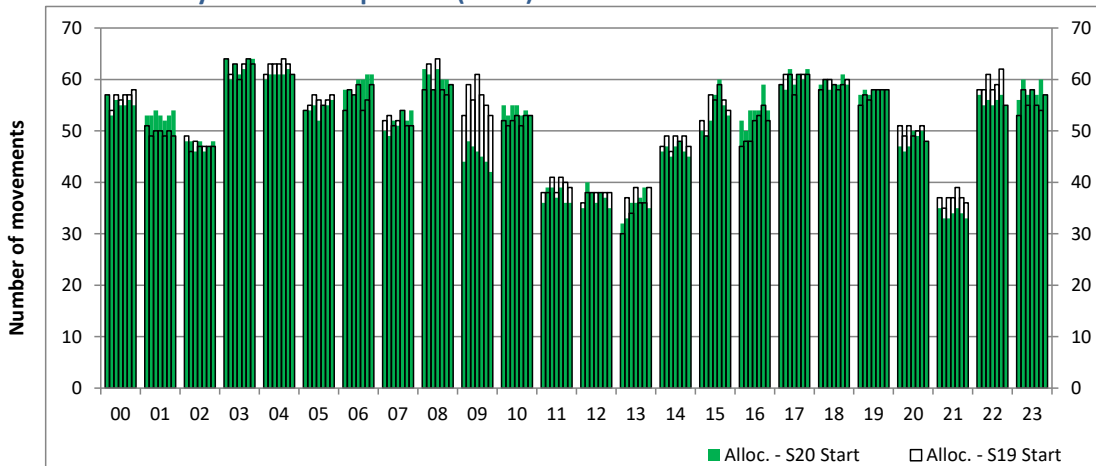
Time: UTC



Hour of day (24 hour format)

## Combined Hourly Arrival & Departure (Total) Allocation

Time: UTC



Hour of day (24 hour format)

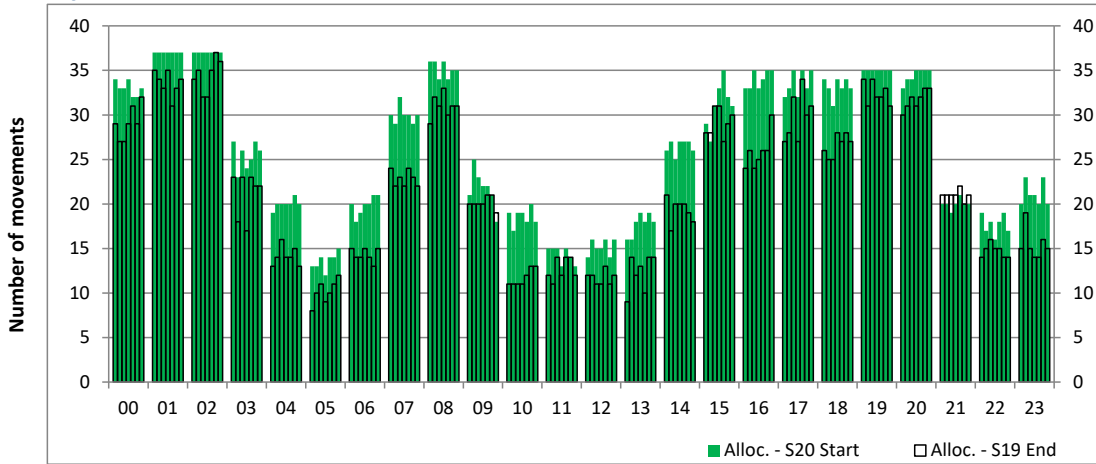
# Peak Week - Runway Allocation Comparison



Comparison of S20 Start vs. S19 End

## Hourly Arrival Allocation

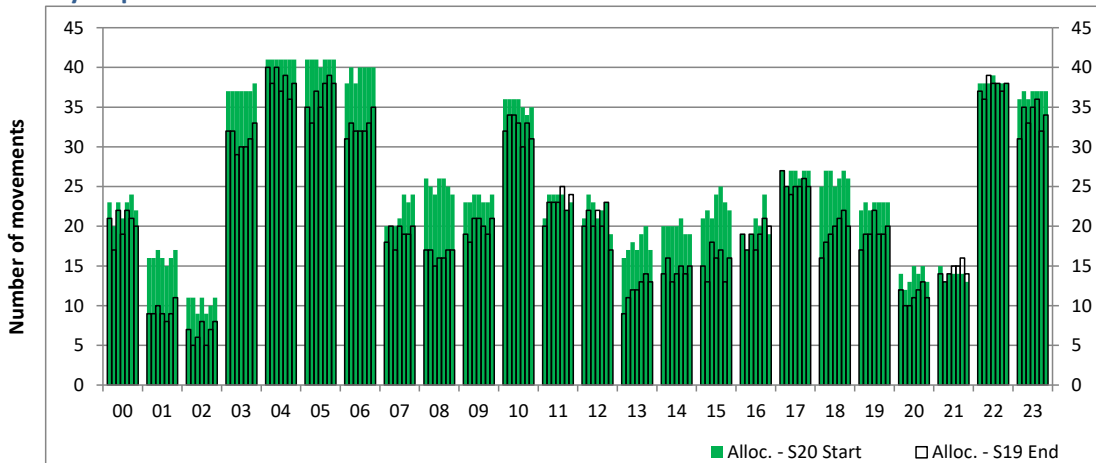
Time: UTC



Hour of day (24 hour format)

## Hourly Departure Allocation

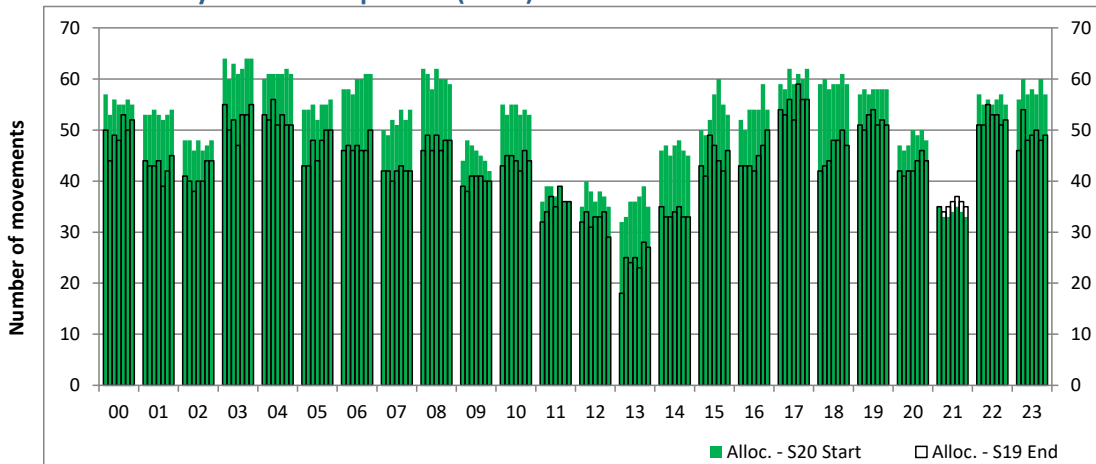
Time: UTC



Hour of day (24 hour format)

## Combined Hourly Arrival & Departure (Total) Allocation

Time: UTC



Hour of day (24 hour format)

# Peak Week - Movements Histogram

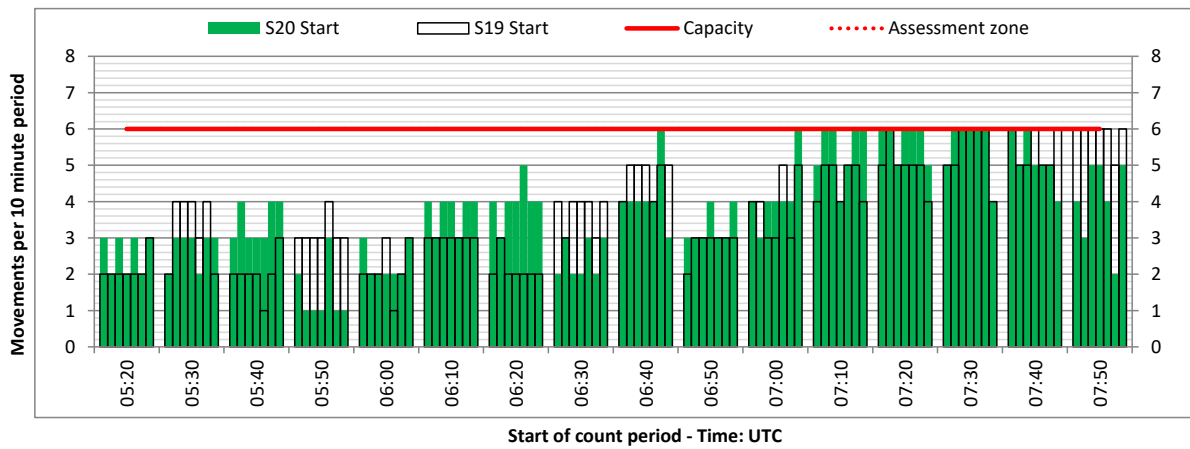
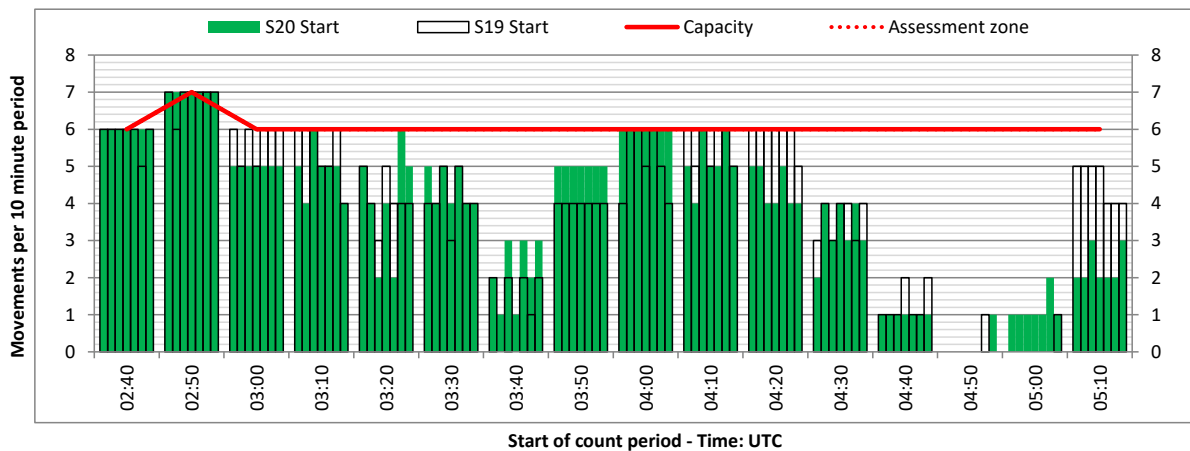
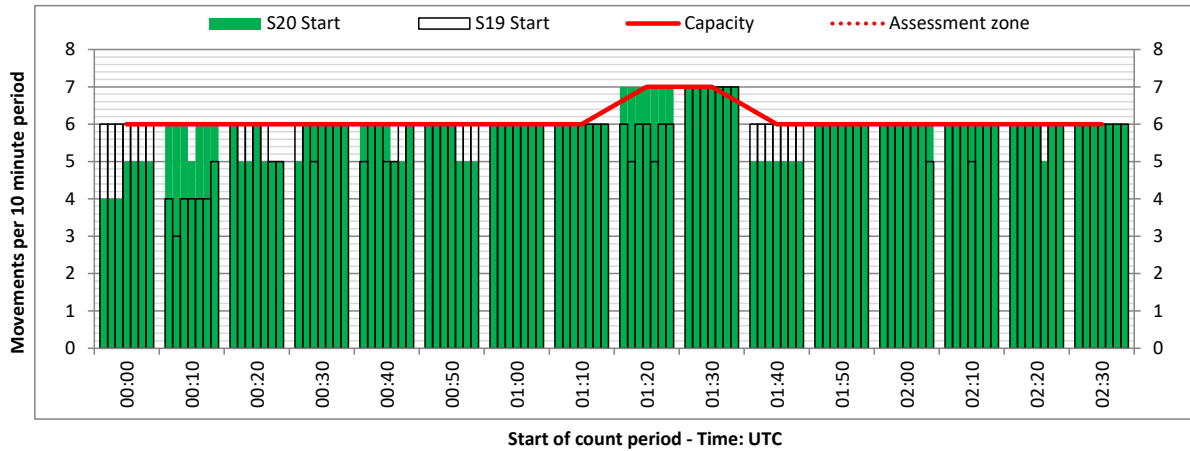
ARRIVAL - 10 minute count rolling every 10 mins (R10)



Terminals: All Terminals

Operators: All Operators

Days: 1234567



# Peak Week - Movements Histogram

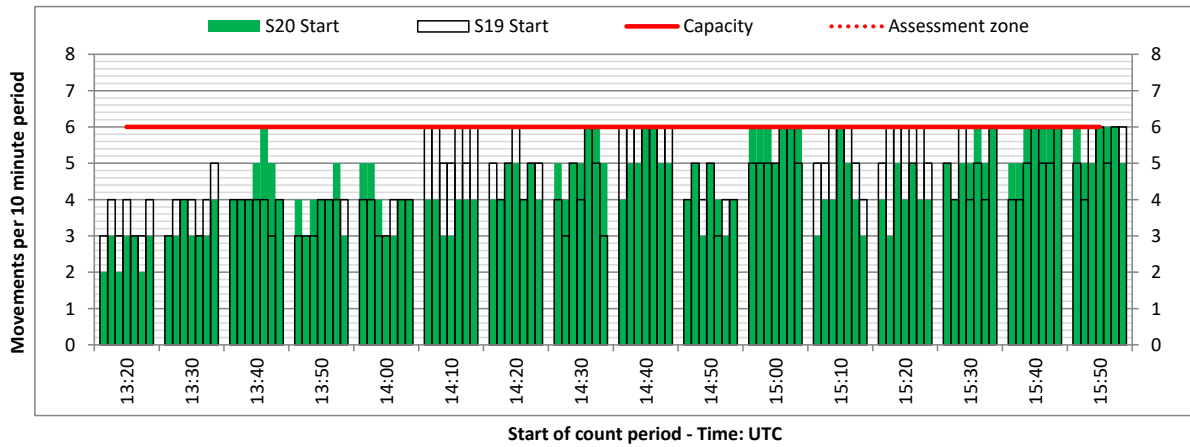
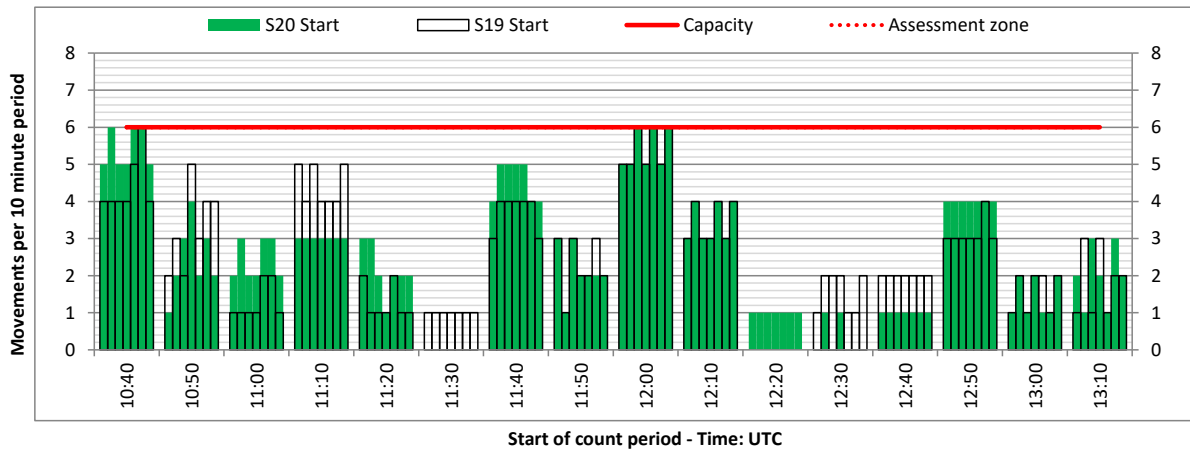
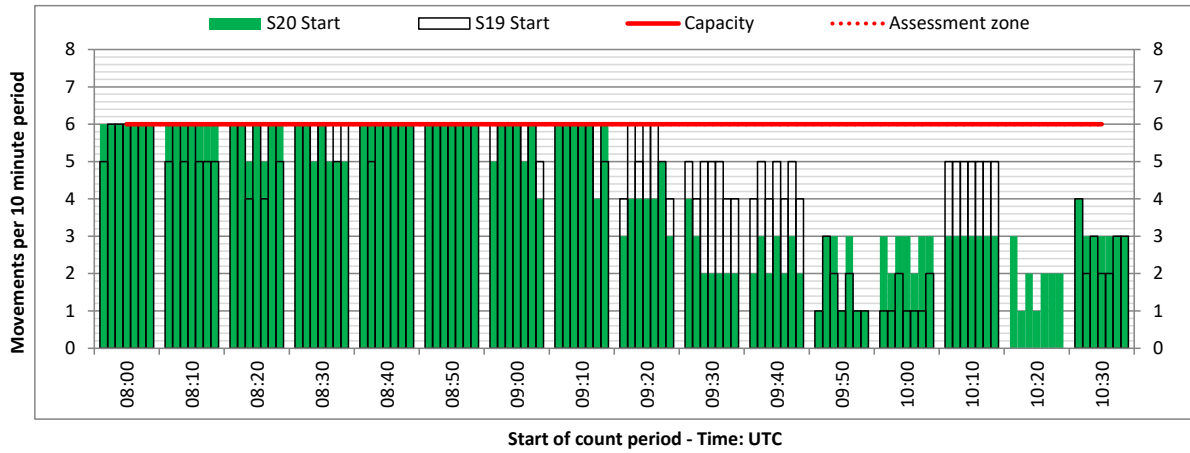
ARRIVAL - 10 minute count rolling every 10 mins (R10)



Terminals: All Terminals

Operators: All Operators

Days: 1234567



# Peak Week - Movements Histogram

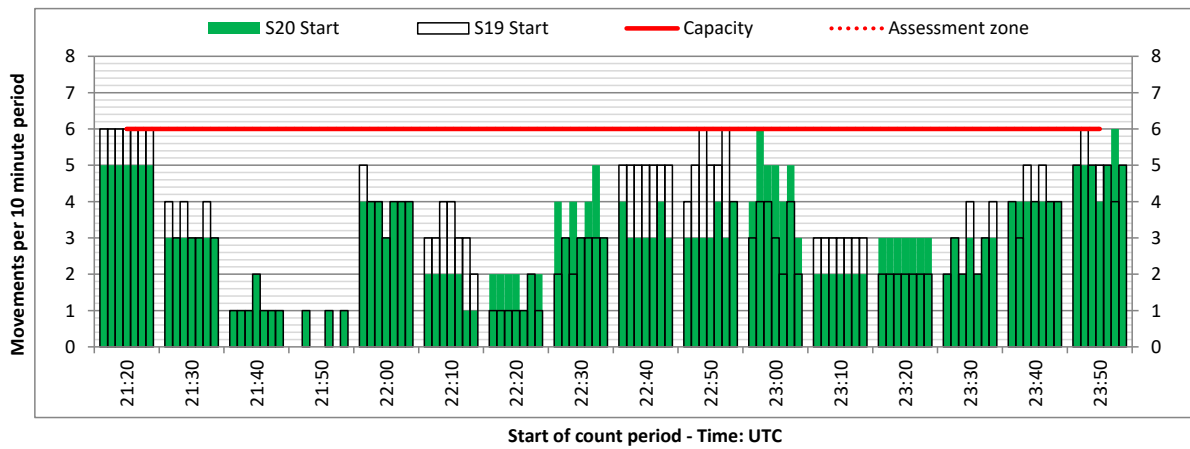
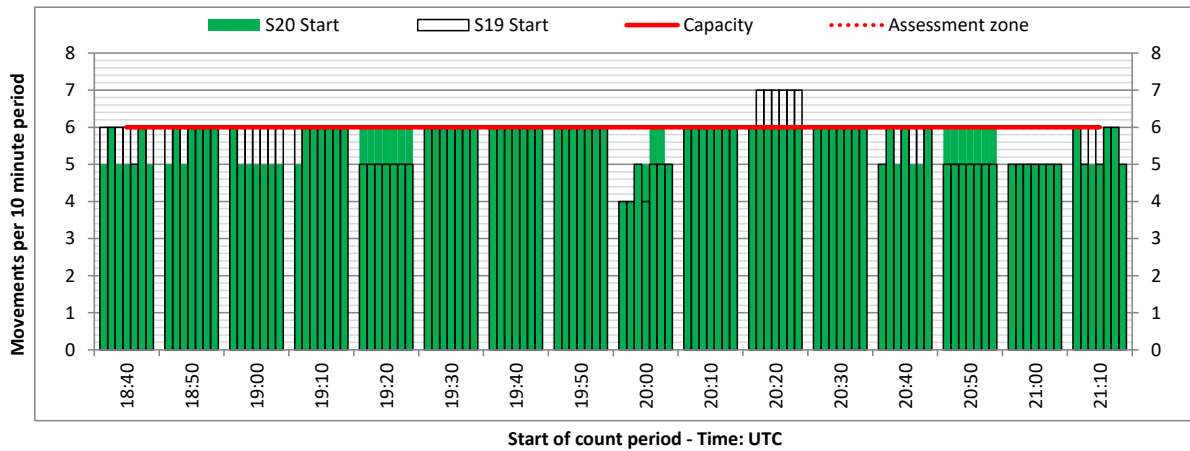
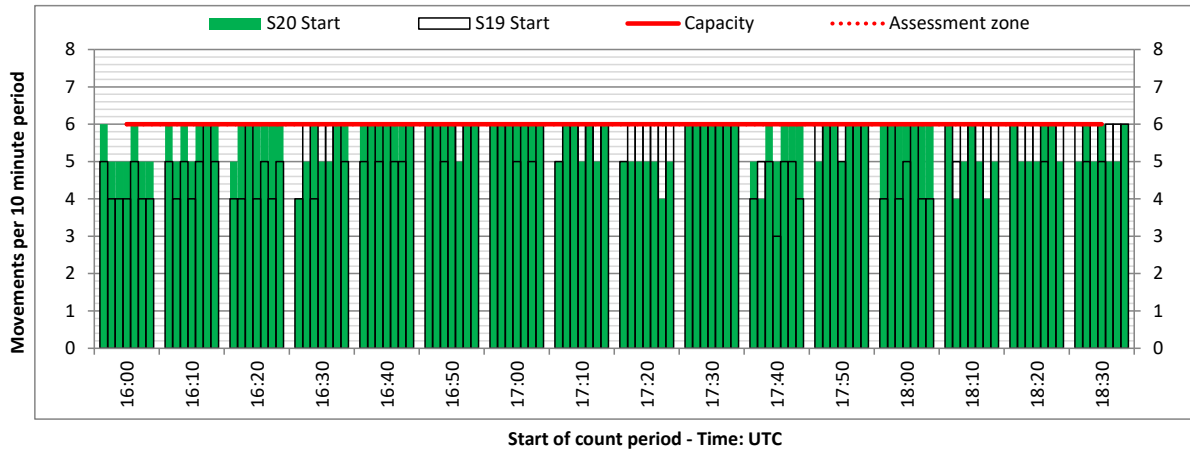
ARRIVAL - 10 minute count rolling every 10 mins (R10)



Terminals: All Terminals

Operators: All Operators

Days: 1234567



# Peak Week - Movements Histogram

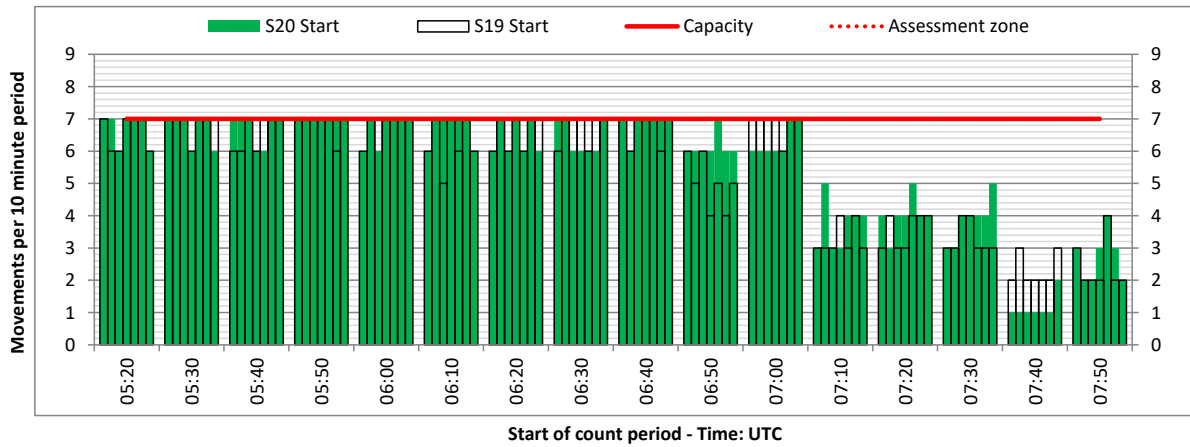
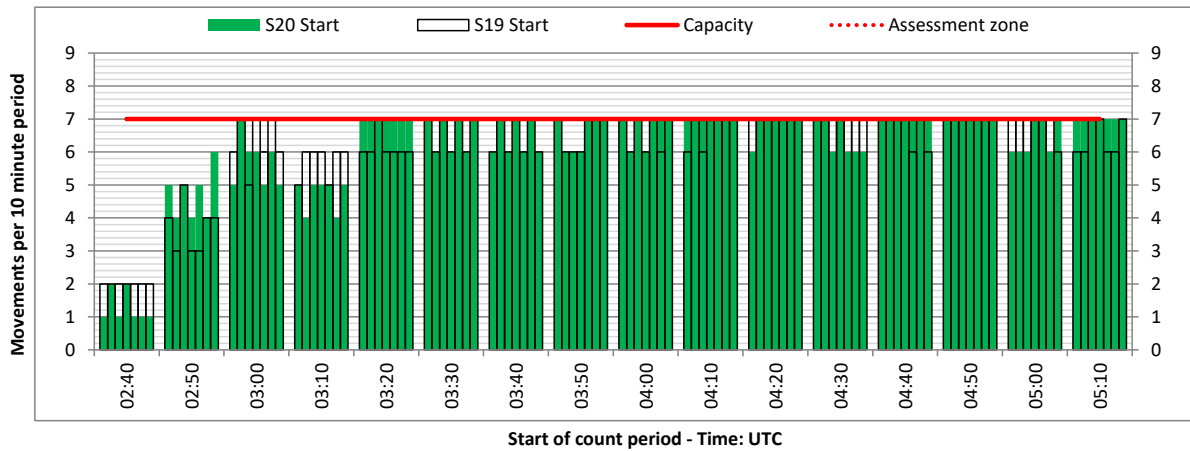
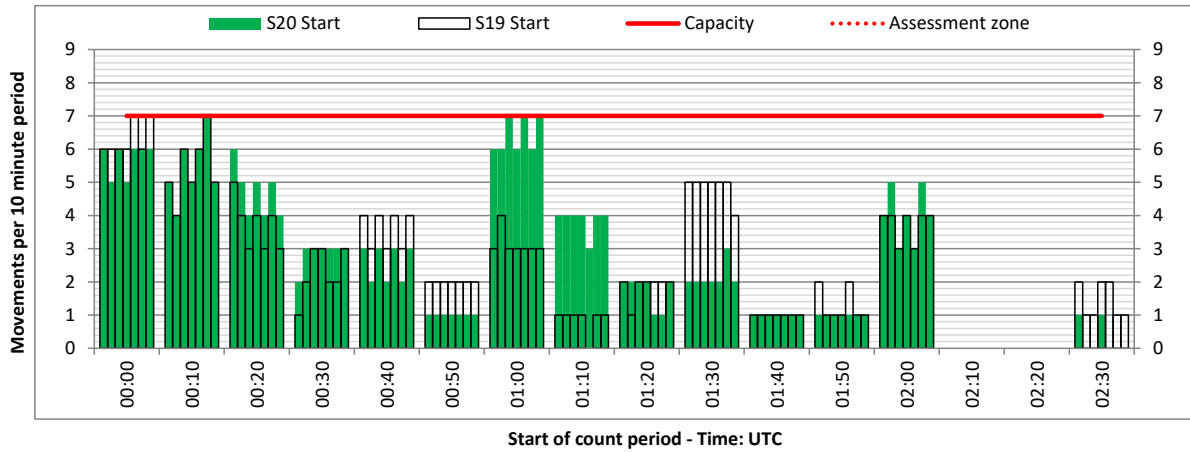
DEPARTURE - 10 minute count rolling every 10 mins (R10)



Terminals: All Terminals

Operators: All Operators

Days: 1234567



# Peak Week - Movements Histogram

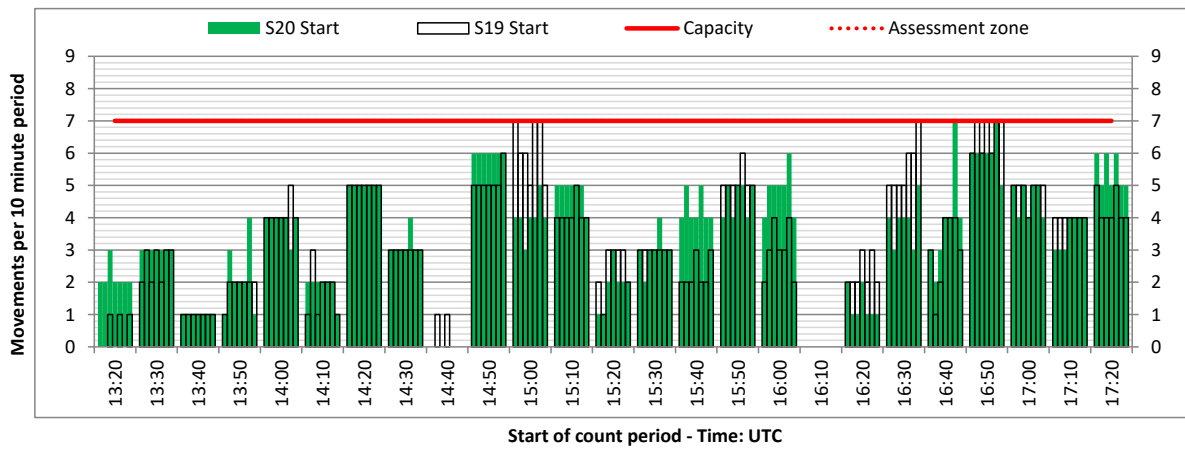
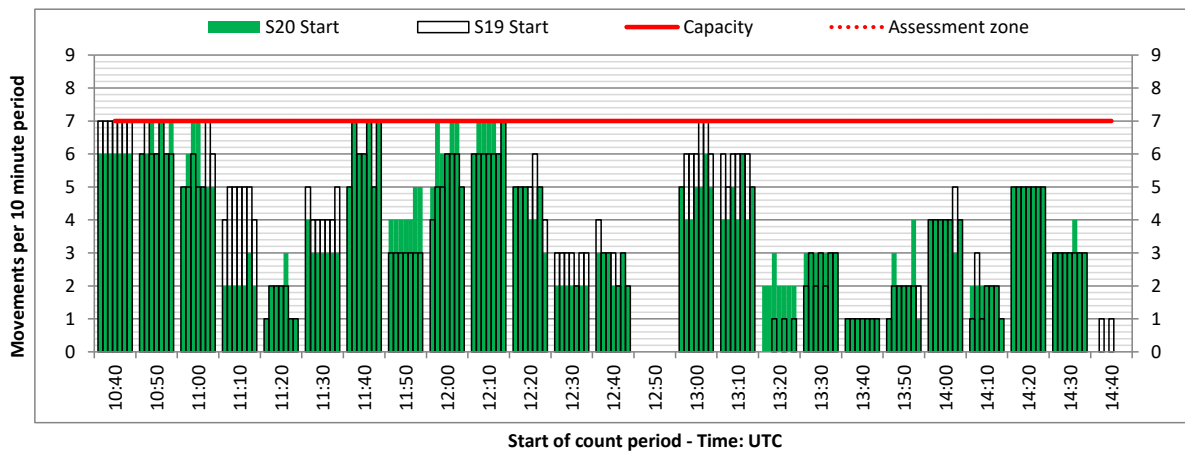
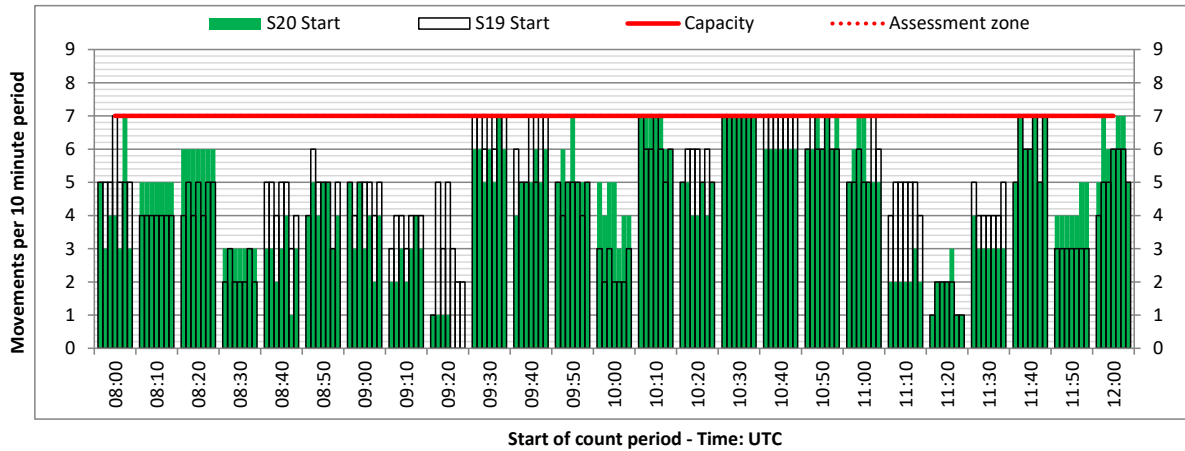
DEPARTURE - 10 minute count rolling every 10 mins (R10)



Terminals: All Terminals

Operators: All Operators

Days: 1234567





# Peak Week - Movements Histogram

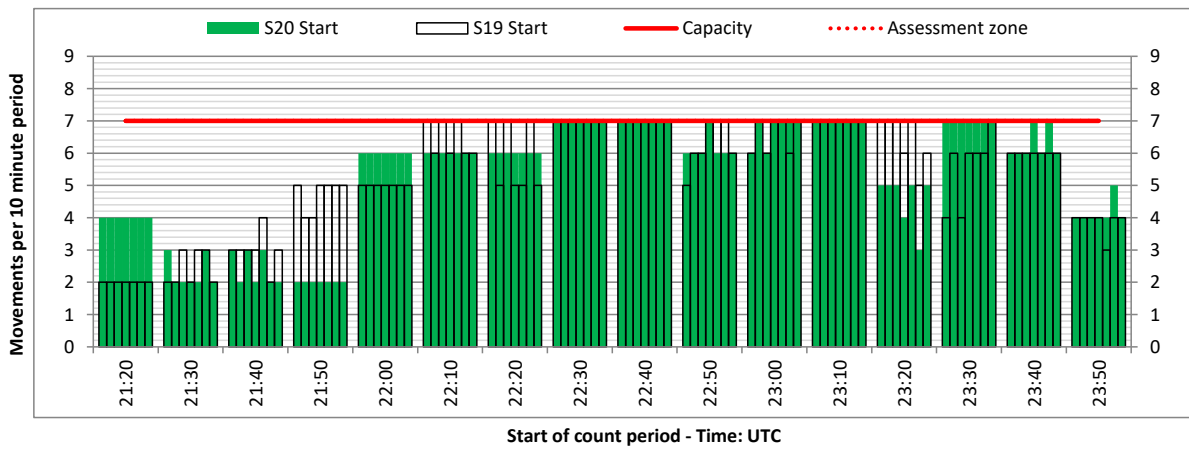
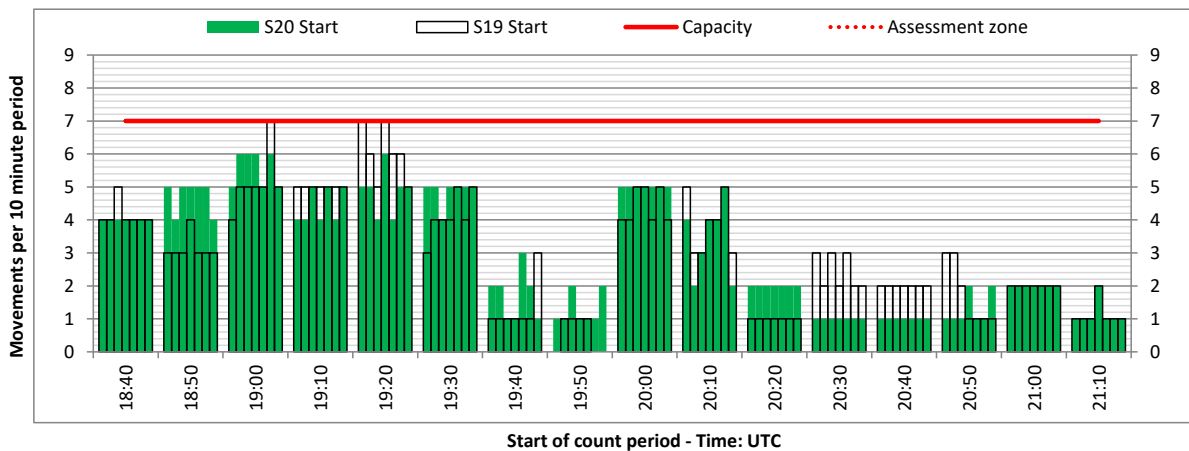
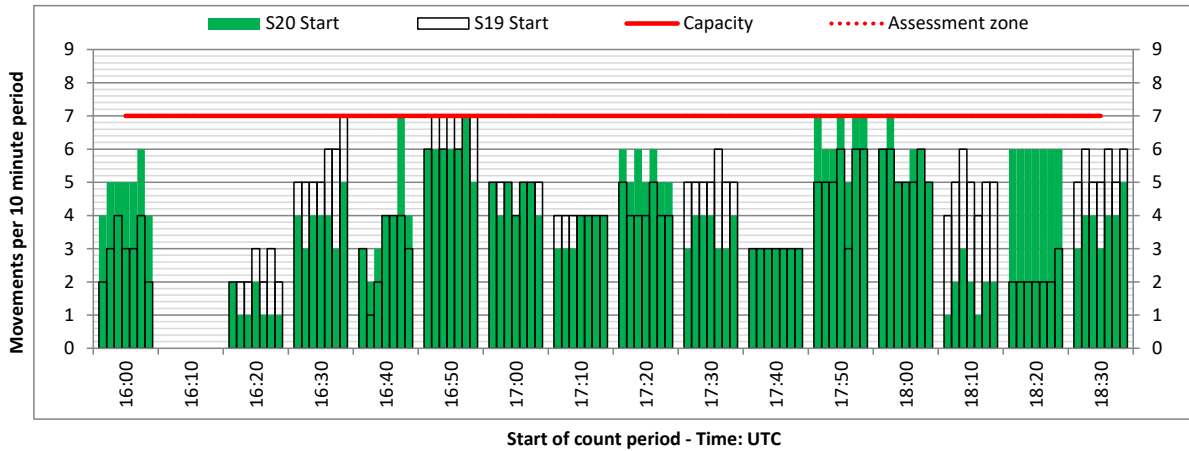
DEPARTURE - 10 minute count rolling every 10 mins (R10)



Terminals: All Terminals

Operators: All Operators

Days: 1234567



# Peak Week - Passengers Histogram

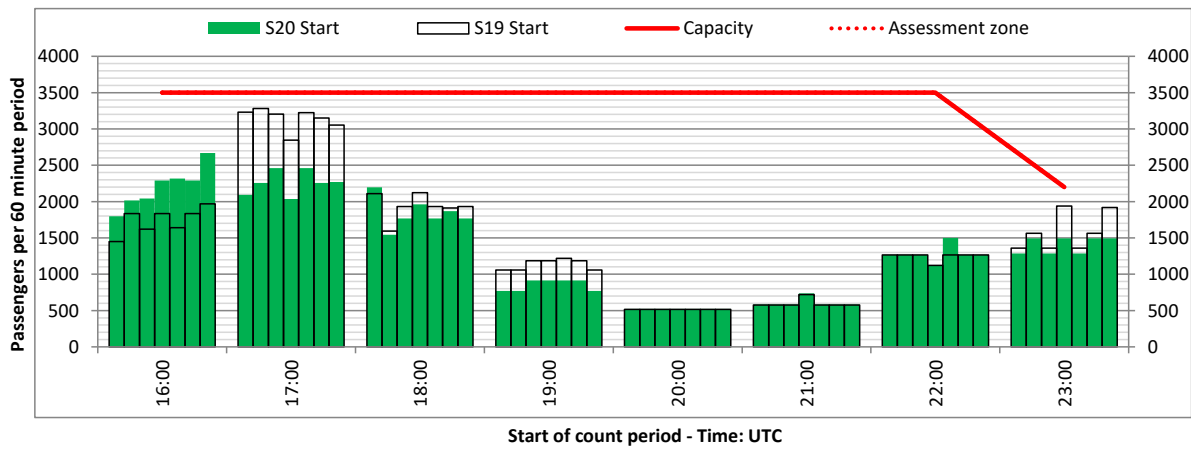
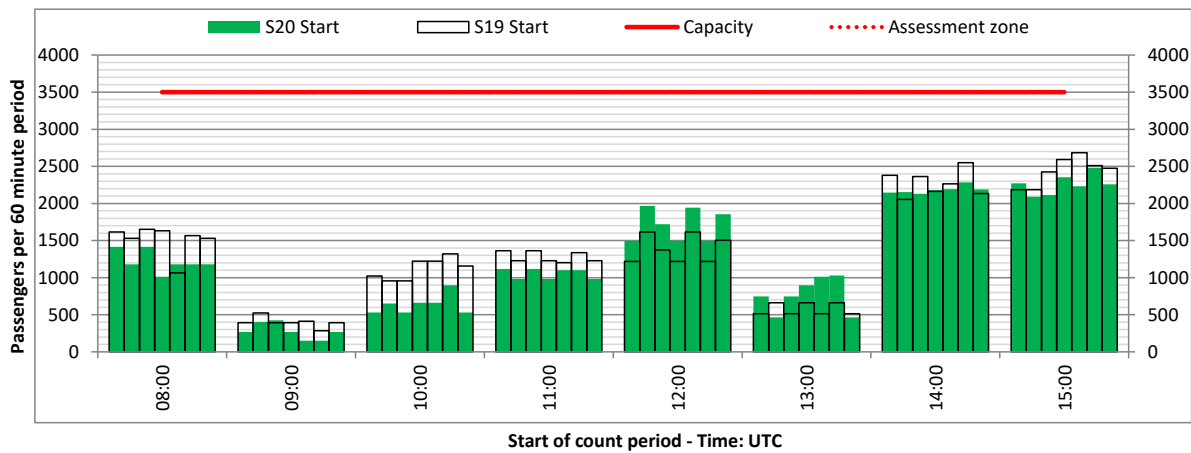
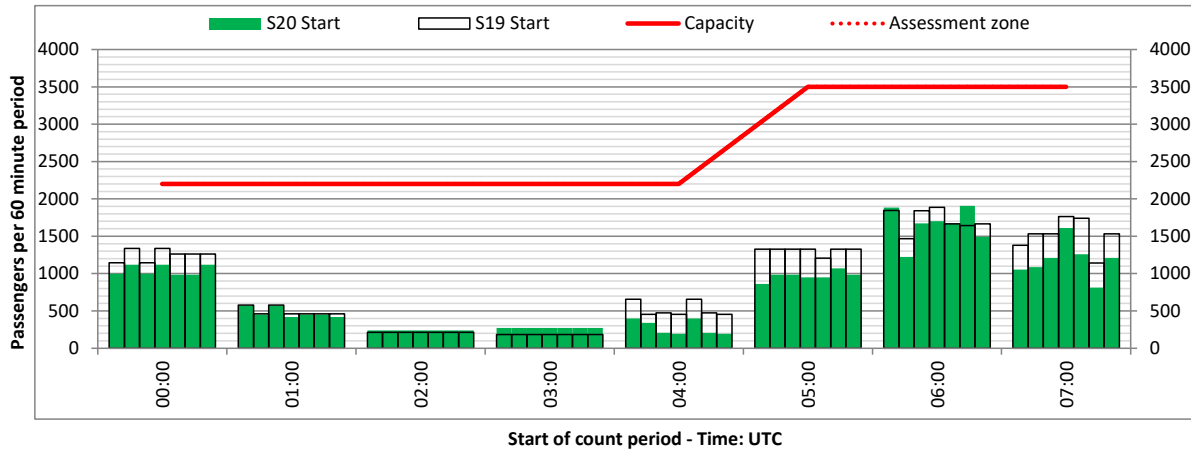
ARRIVAL - 60 minute count rolling every 60 mins (T60)



Terminals: Terminal 1

Operators: All Operators

Days: 1234567



# Peak Week - Passengers Histogram

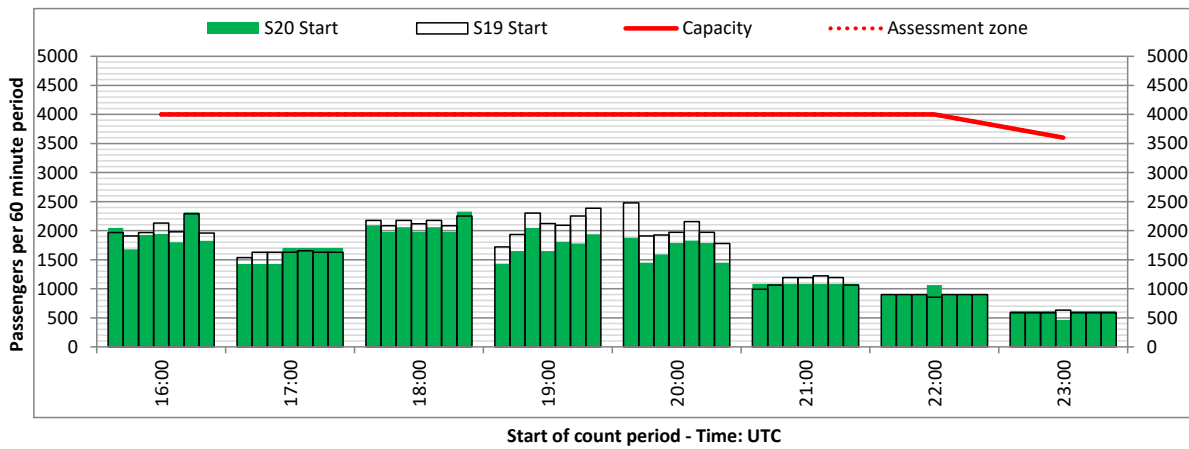
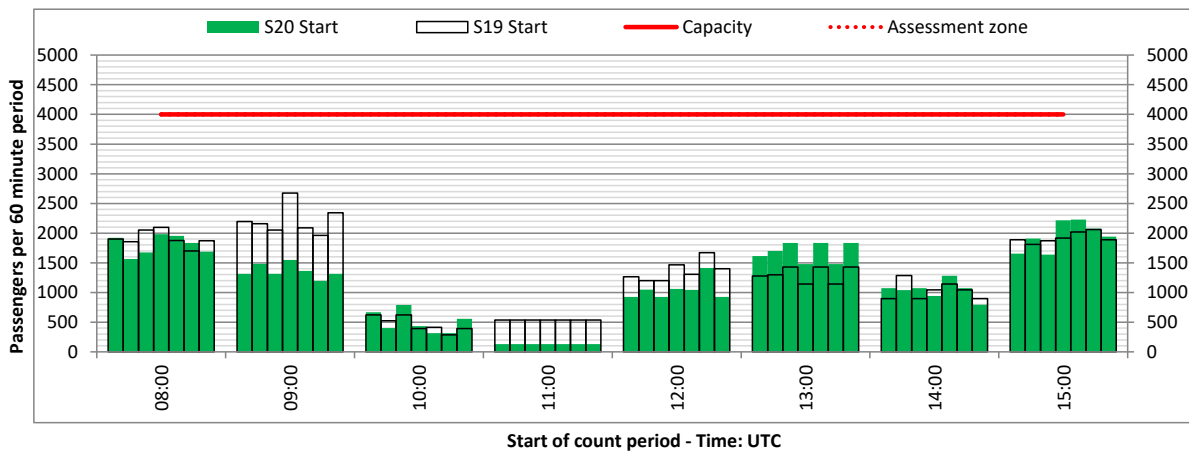
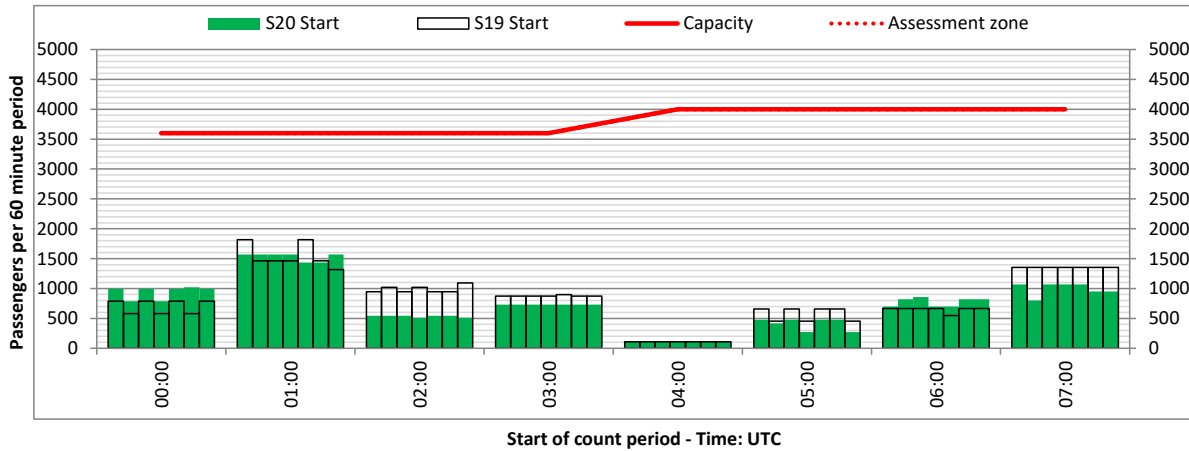
DEPARTURE - 60 minute count rolling every 60 mins (T60)



Terminals: Terminal 1

Operators: All Operators

Days: 1234567



# Peak Week - Passengers Histogram

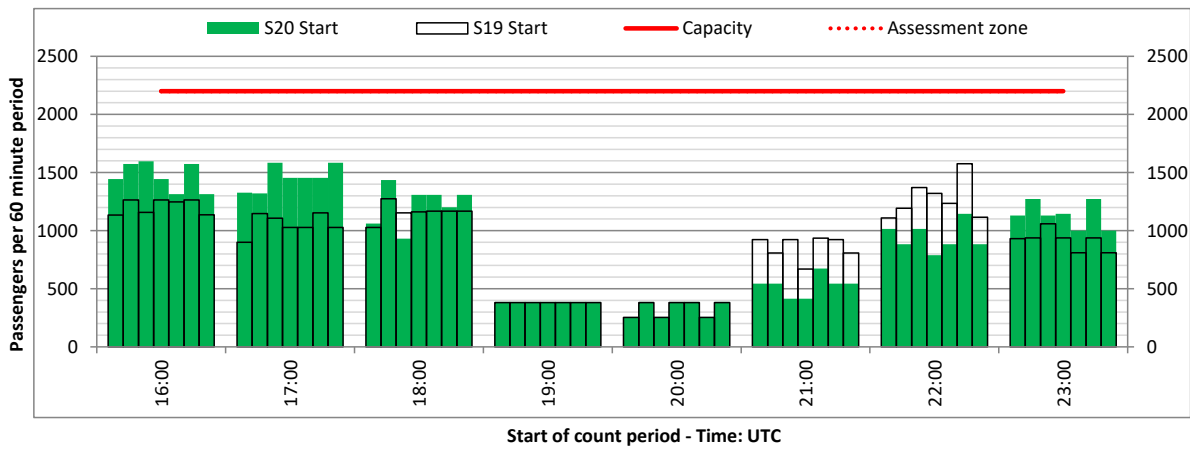
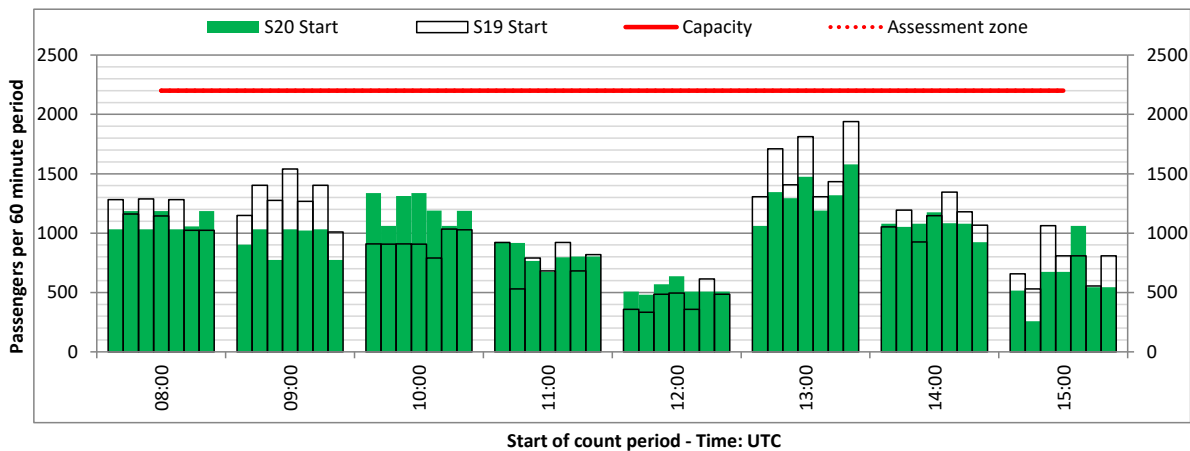
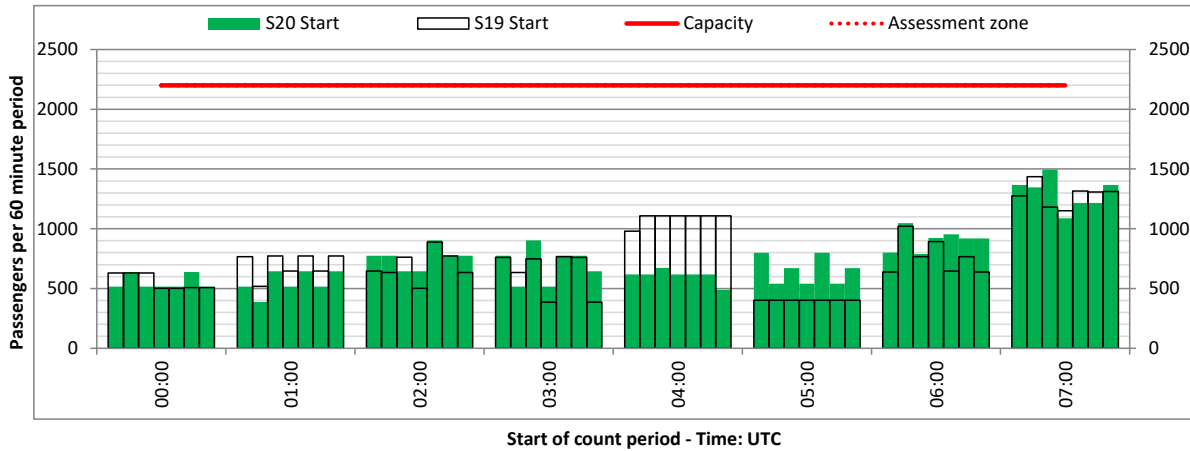
ARRIVAL - 60 minute count rolling every 60 mins (T60)



Terminals: Terminal 2

Operators: All Operators

Days: 1234567



# Peak Week - Passengers Histogram

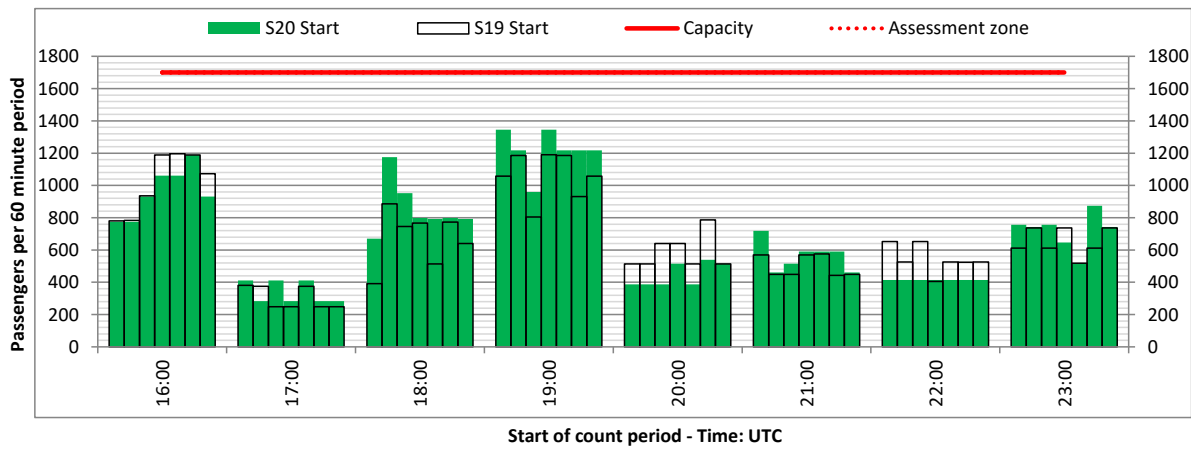
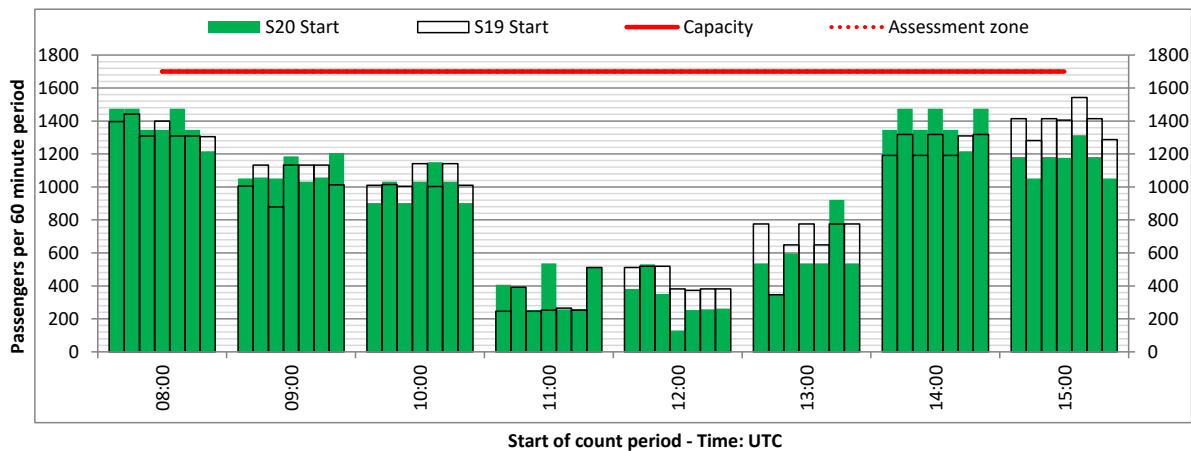
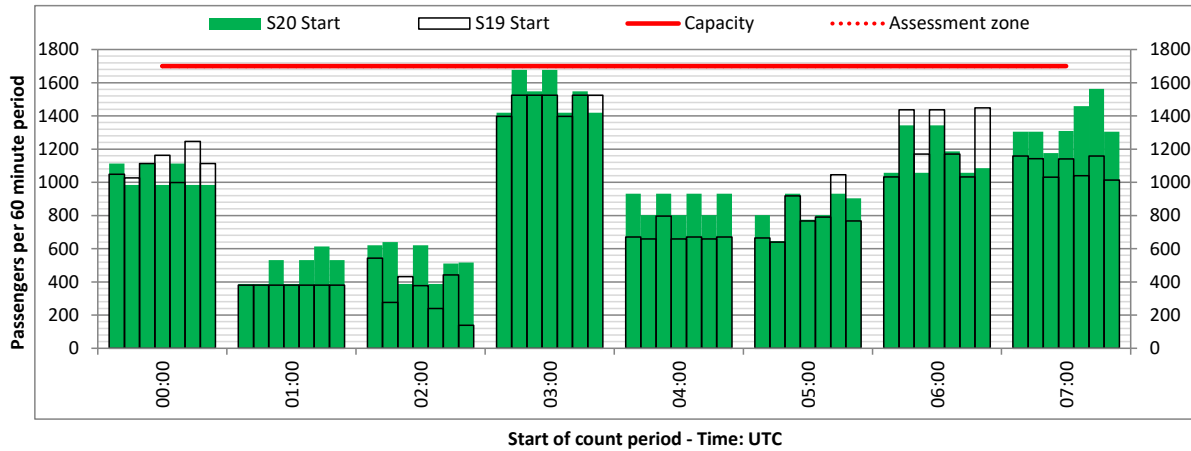
DEPARTURE - 60 minute count rolling every 60 mins (T60)



Terminals: Terminal 2

Operators: All Operators

Days: 1234567



# Peak Week - Passengers Histogram

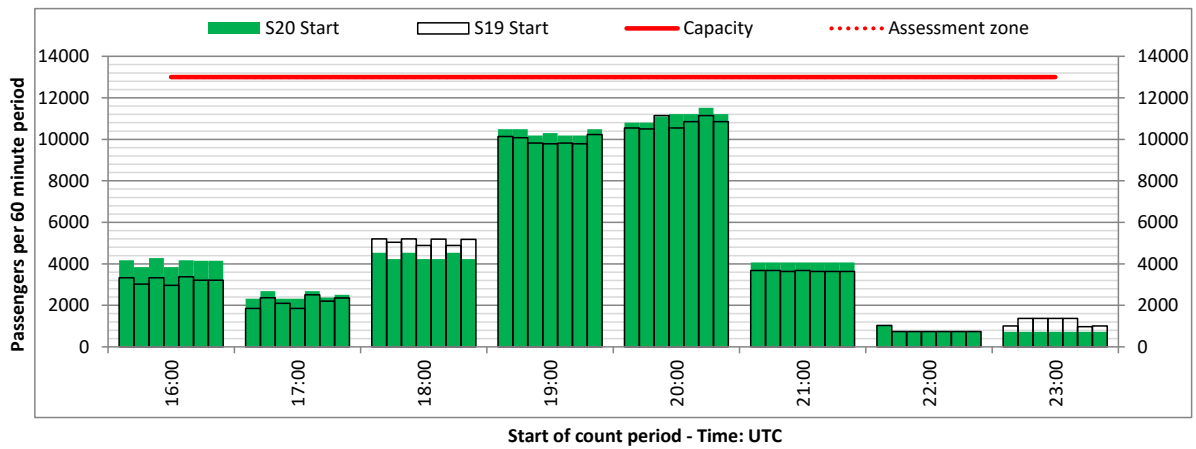
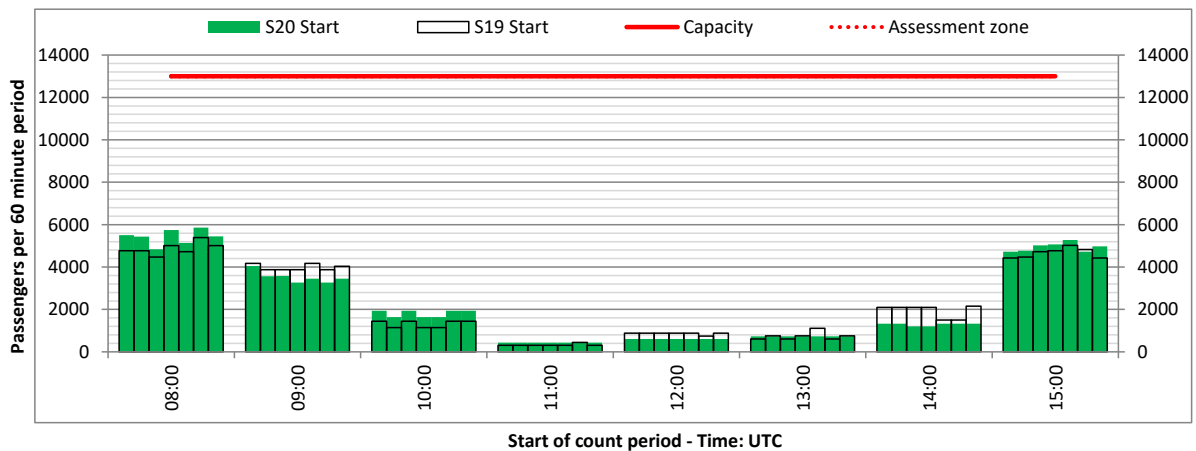
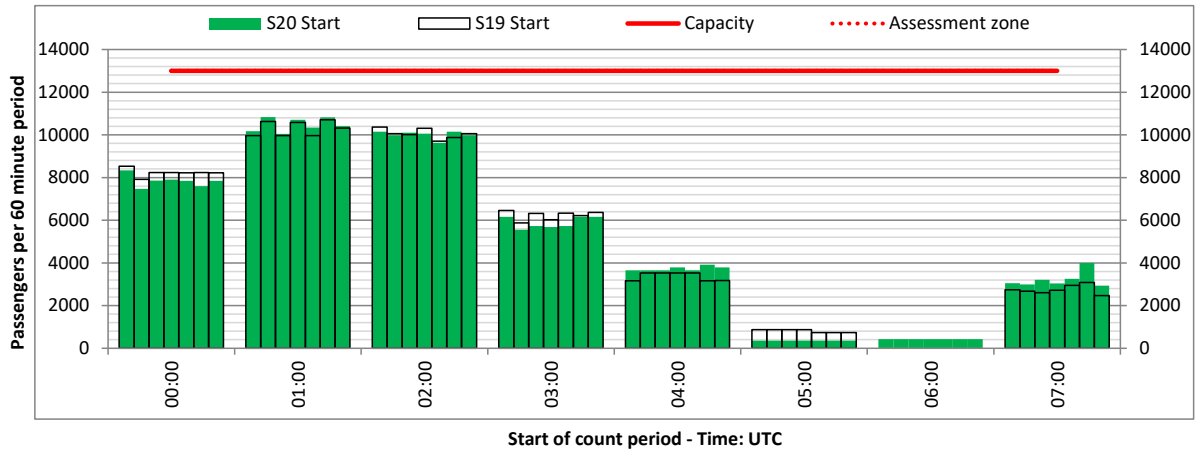
ARRIVAL - 60 minute count rolling every 60 mins (T60)



Terminals: Terminal 3

Operators: All Operators

Days: 1234567



# Peak Week - Passengers Histogram

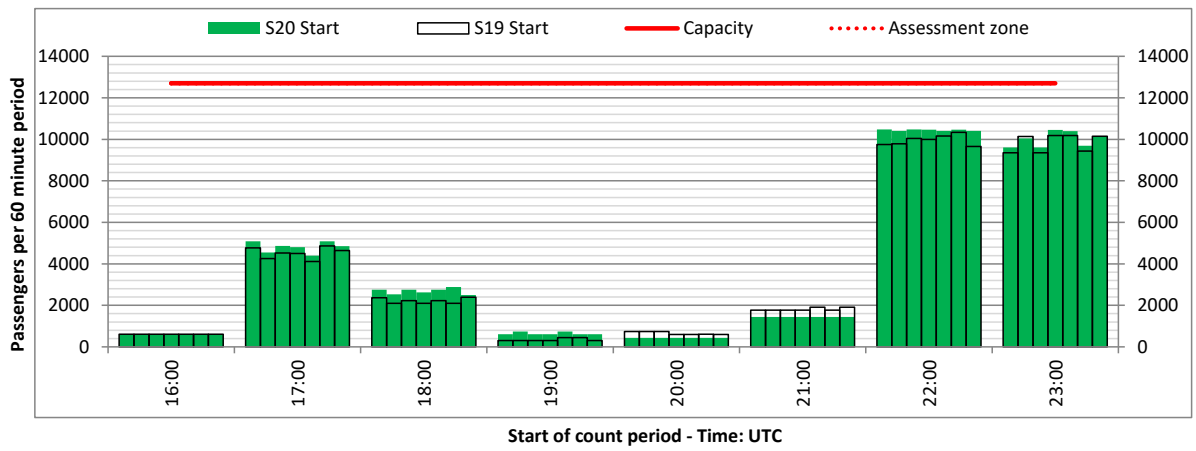
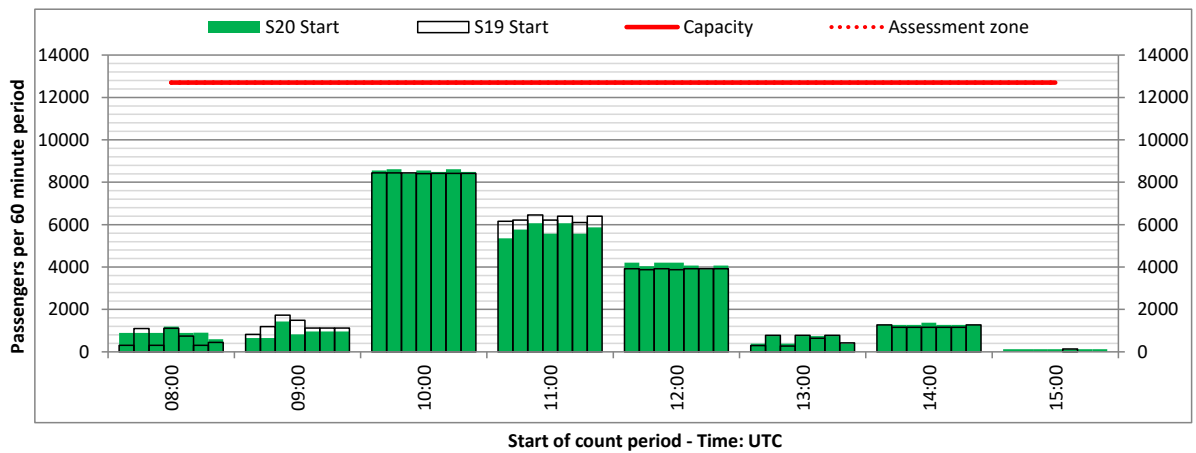
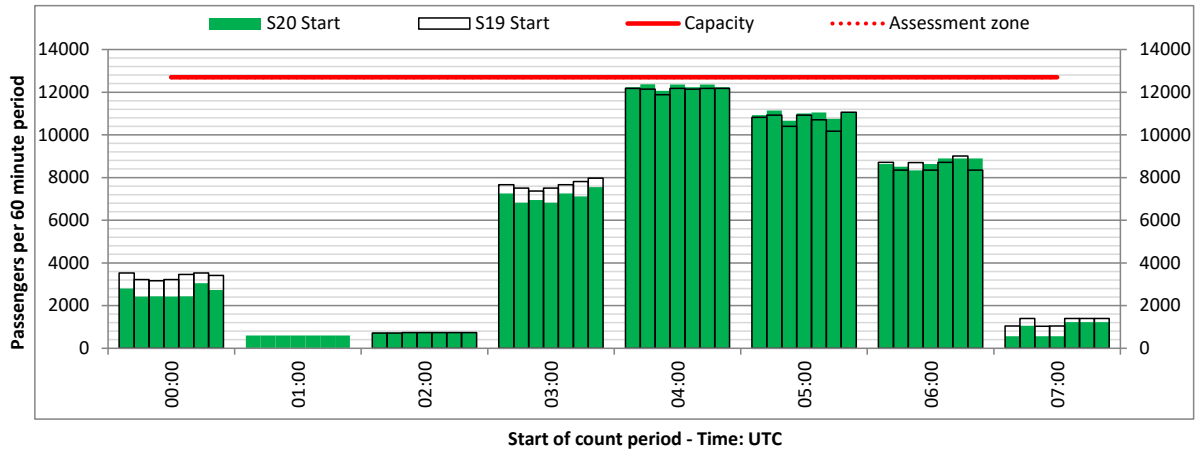
DEPARTURE - 60 minute count rolling every 60 mins (T60)



Terminals: Terminal 3

Operators: All Operators

Days: 1234567



**Maximum**

Time UTC	0	100	200	300	400	500	600	700	800	900	1000	1100	1200	1300	1400	1500	1600	1700	1800	1900	2000	2100	2200	2300
<b>Arrivals</b>																								
Max. Arrival	100%	100%	100%	96%	84%	60%	84%	91%	100%	71%	77%	75%	80%	86%	93%	100%	100%	97%	100%	100%	100%	81%	79%	100%
<b>Departures</b>																								
Max. Departure	92%	77%	50%	95%	100%	100%	100%	100%	87%	73%	100%	96%	96%	80%	68%	86%	96%	100%	100%	100%	68%	58%	100%	100%
<b>Totals</b>																								
Max. Total	95%	92%	81%	98%	94%	85%	94%	92%	94%	73%	96%	98%	100%	98%	87%	94%	98%	98%	100%	100%	88%	74%	90%	100%

**Average**

Time UTC	0	100	200	300	400	500	600	700	800	900	1000	1100	1200	1300	1400	1500	1600	1700	1800	1900	2000	2100	2200	2300
<b>Arrivals</b>																								
Average Arrival	97%	100%	100%	91%	80%	54%	79%	86%	98%	62%	71%	71%	76%	81%	91%	89%	97%	93%	97%	100%	98%	77%	74%	92%
<b>Departures</b>																								
Average Departure	86%	73%	47%	93%	100%	100%	99%	90%	84%	71%	98%	93%	87%	71%	64%	78%	79%	98%	97%	99%	62%	53%	98%	99%
<b>Totals</b>																								
Average Total	92%	90%	80%	96%	92%	82%	91%	88%	91%	68%	95%	94%	93%	89%	84%	84%	90%	95%	97%	100%	84%	72%	89%	96%



## Primary Constraints by Terminal - Peak Week



Arrival/Departure	OK	R60	R10	GRD	AA	T60	T180	Grand Total
A	4245	51	62	10	7			4375
D	4212	51	25	11		2	4	4305
<b>Grand Total</b>	<b>8457</b>	<b>102</b>	<b>87</b>	<b>21</b>	<b>7</b>	<b>2</b>	<b>4</b>	<b>8680</b>

Percentage	OK	R60	R10	GRD	AA	T60	T180	Grand Total
A	97.0%	1.2%	1.4%	0.2%	0.2%	0.0%	0.0%	100.0%
D	97.8%	1.2%	0.6%	0.3%	0.0%	0.0%	0.1%	100.0%

Time UTC	0	100	200	300	400	500	600	700	800	900	1000	1100	1200	1300	1400	1500	1600	1700	1800	1900	2000	2100	2200	2300	Grand Total
1I	92	84	35	28	17	58	114	112	136	78	49	46	104	97	135	174	149	151	145	99	72	64	92	87	2218
OK	73	77	35	28	16	48	101	108	136	77	49	40	97	96	134	157	128	142	145	99	72	64	78	87	2087
R60	19	7					4	2		1		6	6	1	1	17	9	2						7	82
R10						2	9	1									3	7							22
GRD					1	8		1					1				9								20
AA																							7		7

Time UTC	0	100	200	300	400	500	600	700	800	900	1000	1100	1200	1300	1400	1500	1600	1700	1800	1900	2000	2100	2200	2300	Grand Total
2I	82	55	70	121	74	78	108	139	131	109	118	62	46	98	128	93	129	94	110	84	42	54	67	91	2183
OK	82	53	65	121	70	65	107	126	125	106	117	61	45	93	128	91	118	91	110	84	34	54	67	91	2104
R10		1	2		3	8		10	6			1		3		1	10	3			8				56
R60					1	5	1	2		3			1	1		1	1								16
T180			3											1											4
T60		1						1																	2
GRD										1															1

Time UTC	0	100	200	300	400	500	600	700	800	900	1000	1100	1200	1300	1400	1500	1600	1700	1800	1900	2000	2100	2200	2300	Grand Total
3I	202	227	225	289	329	237	190	90	146	100	204	139	101	46	61	103	99	175	160	215	223	119	225	216	4121
OK	197	227	224	289	328	237	190	89	146	100	204	139	101	46	61	103	99	173	160	215	223	119	225	216	4111
R10	5		1		1													2							9
R60								1																	1

Time UTC	0	100	200	300	400	500	600	700	800	900	1000	1100	1200	1300	1400	1500	1600	1700	1800	1900	2000	2100	2200	2300	Grand Total
FRT	11	6	1		7	8	2	21	9	29	7	14	8	5		5		1		6			7	11	158
OK	11	6	1		7	8	2	21	9	29	7	14	5	5		5		1		6			7	11	155
R60													3												3

Runway Reason Code	
R60	60 Min Runway Availability
R30	30 Min Runway Availability
R10	10 Min Runway Availability

Other Reason Code	
AA	Apron Capacity
GRA	Arr Affected by Dep
GRD	Arr Affected by Dep
GA	Gate capacity

Peak Week Code F Arrivals and Departures



Time UTC	0	100	200	300	400	500	600	700	800	900	1000	1100	1200	1300	1400	1500	1600	1700	1800	1900	2000	2100	2200	2300	Grand Total	
Code F Arrivals	73	77	63	35	24			14	7	22	14	4				49	35		21	77	109	21	12		657	
Emirates	73	77	63	35	22			12	7	21	14					49	35		21	77	109	21	7		643	
1	10	11	9	5	3			2	1	3	2					7	5		3	11	15	3	1		91	
2	10	11	9	5	3			2	1	3	2					7	5		3	11	15	3	1		91	
3	10	11	9	5	3			1	1	3	2					7	5		3	11	15	3	1		90	
4	10	11	9	5	3			2	1	3	2					7	5		3	11	16	3	1		92	
5	11	11	9	5	3			1	1	3	2					7	5		3	11	16	3	1		92	
6	11	11	9	5	4			2	1	3	2					7	5		3	11	16	3	1		94	
7	11	11	9	5	3			2	1	3	2					7	5		3	11	16	3	1		93	
UPS					2			2		1		4												5		14
1								1																		1
2												1												1		2
3												1												1		2
4												1												1		2
5												1												1		2
6										1														1		2
7					2			1																1		3
Time UTC	0	100	200	300	400	500	600	700	800	900	1000	1100	1200	1300	1400	1500	1600	1700	1800	1900	2000	2100	2200	2300	Grand Total	
Code F Departures	19		7	35	119	75	63	8	1	1	71	26	28	4	7			14	14			7	77	68	644	
Emirates	14		7	35	119	75	63	7			70	25	28		7			14	14			7	77	68	630	
1	2		1	5	17	10	9	1			10	3	4		1			2	2			1	11	9	88	
2	2		1	5	17	11	9	1			10	3	4		1			2	2			1	11	10	90	
3	2		1	5	17	10	9	1			10	3	4		1			2	2			1	11	9	88	
4	2		1	5	17	11	9	1			10	4	4		1			2	2			1	11	10	91	
5	2		1	5	17	11	9	1			10	4	4		1			2	2			1	11	10	91	
6	2		1	5	17	11	9	1			10	4	4		1			2	2			1	11	10	91	
7	2		1	5	17	11	9	1			10	4	4		1			2	2			1	11	10	91	
UPS	5							1	1	1	1	1		4												14
1										1																1
2														1												1
3	1													1												2
4	1													1												2
5	1													1												2
6	1											1														2
7	1							1	1		1															4
Grand Total	92	77	70	70	143	75	63	22	8	23	85	30	28	4	7	49	35	14	35	77	109	28	89	68	1301	

# NAC Utilisation View - Peak Week Arrivals and Departures Combined R60 and R10 Availability



ARRIVALS							
UTC	1	2	3	4	5	6	7
0	0	1	1	0	1	1	1
10	0	0	0	0	0	0	0
20	0	1	1	0	1	1	1
30	0	0	0	0	0	0	0
40	0	0	0	0	0	0	0
50	0	0	0	0	1	1	1
100	0	0	0	0	0	0	0
110	0	0	0	0	0	0	0
120	0	0	0	0	0	0	0
130	0	0	0	0	0	0	0
140	0	0	0	0	0	0	0
150	0	0	0	0	0	0	0
200	0	0	0	0	0	0	0
210	0	0	0	0	0	0	0
220	0	0	0	0	0	0	0
230	0	0	0	0	0	0	0
240	0	0	0	0	0	0	0
250	0	0	0	0	0	0	0
300	1	1	1	1	1	1	1
310	1	2	0	1	1	1	2
320	1	2	2	2	3	0	1
330	1	2	1	2	1	1	2
340	1	5	2	4	3	1	2
350	1	1	1	1	1	1	1
400	0	0	0	0	0	0	0
410	1	2	0	1	1	0	1
420	1	1	2	2	1	2	2
430	4	2	3	2	3	2	3
440	5	5	5	5	5	4	5
450	6	5	5	5	5	4	5
500	4	4	4	4	5	4	4
510	4	4	3	4	4	4	3
520	3	4	3	4	3	4	3
530	4	3	3	3	4	3	3
540	3	2	3	3	3	2	2
550	4	5	5	5	3	5	5
600	3	4	4	4	4	4	3
610	2	3	2	2	3	2	2
620	2	3	2	2	1	2	2
630	4	3	4	4	3	4	3
640	2	2	2	2	2	0	3
650	3	3	3	2	3	3	2
700	2	3	2	2	2	2	0
710	1	0	0	2	1	0	0
720	0	0	1	0	0	0	1
730	1	0	0	0	0	0	2
740	0	1	0	1	1	1	2
750	2	3	1	1	2	4	1

DEPARTURES							
UTC	1	2	3	4	5	6	7
0	1	2	1	2	1	1	1
10	1	2	1	1	1	0	2
20	1	2	3	2	3	2	3
30	2	4	3	4	3	2	4
40	2	5	3	4	3	2	4
50	2	5	3	4	3	2	4
100	1	1	0	1	0	1	0
110	2	2	2	3	4	3	3
120	5	5	4	5	5	5	5
130	5	5	4	5	5	4	5
140	5	5	4	6	6	5	5
150	5	5	4	6	6	5	5
200	3	2	4	3	4	2	3
210	7	7	7	7	7	7	7
220	7	7	7	7	7	7	7
230	6	7	7	6	7	7	7
240	6	5	6	5	6	6	6
250	2	3	2	3	2	3	1
300	2	0	1	1	2	1	2
310	2	0	2	0	2	3	2
320	0	0	0	0	0	0	0
330	0	1	0	1	0	1	0
340	1	0	1	0	1	0	1
350	0	1	1	1	0	0	0
400	0	0	0	0	0	0	0
410	0	0	0	0	0	0	0
420	0	0	0	0	0	0	0
430	0	0	0	0	0	0	0
440	0	0	0	0	0	0	0
450	0	0	0	0	0	0	0
500	0	0	0	0	0	0	0
510	0	0	0	0	0	0	0
520	0	0	0	0	0	0	0
530	0	0	0	1	0	0	0
540	0	0	0	1	0	0	0
550	0	0	0	0	0	0	0
600	1	0	1	0	0	0	0
610	1	0	0	0	0	0	0
620	1	0	1	0	0	0	0
630	0	0	1	0	0	0	0
640	0	0	0	0	0	0	0
650	1	0	1	0	0	0	0
700	1	1	1	1	0	0	0
710	4	2	4	3	0	1	0
720	3	4	3	3	0	1	0
730	4	4	3	3	0	1	0
740	4	4	4	3	0	1	0
750	4	4	4	3	0	1	0

<b>Air Transport Movement (ATM)</b>	Any aircraft movement which is either a scheduled or chartered passenger or cargo flight.
<b>Common Travel Area (CTA)</b>	Origin or Destination is in Republic of Ireland or the Channel Islands.
<b>Demand</b>	Unconstrained demand before any schedule adjustments have been made.
<b>"Fill-in"</b>	These are gaps in a historic series of slots which the carrier requests to "Fill-in" at Initial Submissions - Fill-ins will be recognisably part of the historic series and will have the same flight details to qualify as a "Fill-in".
<b>Hist (SHL)</b>	Snapshot of historic schedule rolled over from end of the previous equivalent season - as advised to airlines in the SHLs.
<b>ICAO Size A</b>	Aircraft with wingspan between 0.00m - 14.99m.
<b>ICAO Size B</b>	Aircraft with wingspan between 15.00m - 23.99m.
<b>ICAO Size C</b>	Aircraft with wingspan between 24.00m - 35.99m.
<b>ICAO Size D</b>	Aircraft with wingspan between 36.00m - 51.99m.
<b>ICAO Size E</b>	Aircraft with wingspan between 52.00m - 64.99m.
<b>ICAO Size F</b>	Aircraft with wingspan between 65.00m - 80.00m.
<b>Init Coord</b>	Snapshot of schedule immediately after Initial Coordination is completed - as advised to airlines in the SALs.
<b>Passenger Air Transport Movement (PATM)</b>	Any aircraft movement which is either a scheduled or chartered passenger flight.
<b>Start</b>	Snapshot of schedule shortly before the start of the scheduling season (exact date given below where used).
<b>Time: Local</b>	Times shown are in LOCAL time for the airport/scheduling season.
<b>Time: UTC</b>	Times shown are in Universal Time Constant (UTC).

---

### Data snapshot descriptions

<b>S19 Start</b>	S19 schedule as cleared on Sun 31-Mar-19.
<b>S19 End</b>	S19 schedule as cleared on Sun 27-Oct-19.
<b>S20 Start</b>	S20 schedule as cleared on Tue 10-Mar-20.
<b>Peak Week</b>	Peak week for S19 is Mon 29-Jul-19 to Sun 04-Aug-19. Peak week for S20 is Mon 10-Aug-20 to Sun 16-Aug-20.

---

### **For ACL use**

	Airport-Season-Branch-Resource	From date	To date	Time
Full Season Rep 1	DXB-S19-Start-Standard	Sun 31-Mar-2019	Sat 26-Oct-2019	UTC
Full Season Rep 2	DXB-S19-End-Standard	Sun 31-Mar-2019	Sat 26-Oct-2019	UTC
Full Season Rep 3	DXB-S20-SOS-Standard	Sun 29-Mar-2020	Sat 24-Oct-2020	UTC
	Airport-Season-Branch-Resource	From date	To date	Time
Peak Week Rep 1	DXB-S19-Start-Standard	Mon 29-Jul-2019	Sun 04-Aug-2019	UTC
Peak Week Rep 2	DXB-S19-End-Standard	Mon 22-Jul-2019	Sun 28-Jul-2019	UTC
Peak Week Rep 3	DXB-S20-SOS-Standard	Mon 10-Aug-2020	Sun 16-Aug-2020	UTC