

AI Maktoum International Airport (DWC)

Summer 2020 (S20)



Start of Season Report

Report Date: Fri 27-Mar-2020

Headlines

	S20 Start	vs. S19 Start	vs. S19 End
Total Air Transport Movements (Passenger & Freight)	9,101	▼ -48.4%	▼ -41.4%
Total Passenger Air Transport Movements	2,775	▼ -72.5%	▼ -66.5%
Total Passenger Air Transport Movement Seats	591,378	▼ -68.5%	▼ -61.0%
Average Seats per Passenger Air Transport Movement	213	▲ 14.6%	▲ 16.6%
Percentage of allocated slots cleared as requested (OK)	100%		

Contents

Page	Content
2	Runway Scheduling Limits
3	ATM Allocation by Operator (Full season and Peak Week Comparison)
4	Significant Route Changes
5	Full Season - ATM Analysis
6	Full Season - PATM Seats Analysis
7	Full Season - Aircraft Size Analysis
8	Full Season - Seasonality
9	Peak Week - Hourly Runway Allocation
10	Peak Week - Hourly Runway Allocation Comparison (S20 Start vs. S19 Start)
11	Peak Week - Hourly Runway Allocation Comparison (S20 Start vs. S19 End)
12	Peak Week - Primary Constraints by Terminal
13	Peak Week - Nac Utilisation View
14	Peak Week Histogram - Arrival Movements (R10) - All Terminals - All Operators
15	Peak Week Histogram - Arrival Movements (R10) - All Terminals - All Operators
16	Peak Week Histogram - Arrival Movements (R10) - All Terminals - All Operators
17	Peak Week Histogram - Departure Movements (R10) - All Terminals - All Operators
18	Peak Week Histogram - Departure Movements (R10) - All Terminals - All Operators
19	Peak Week Histogram - Departure Movements (R10) - All Terminals - All Operators
20	Peak Week Histogram - Arrival Passengers (T60) - All Terminals - All Operators
21	Peak Week Histogram - Departure Passengers (T60) - All Terminals - All Operators
22	Peak Week - Declaration Usage Analysis
23	Peak Week - Primary Constraints by Terminal
24	Peak Week - Nac Utilisation View
25	Glossary

S19 scheduling season runs from Sun 31-Mar-2019 to Sat 26-Oct-2019 (210 days).

S20 scheduling season runs from Sun 29-Mar-2020 to Sat 24-Oct-2020 (210 days).

Disclaimer

No warranty whether expressed or implied as to the completeness, accuracy, fitness for purpose, or satisfactory quality is given by ACL regarding the information in this report, which is provided by third parties. Accordingly, ACL excludes all liability with regard to such data.

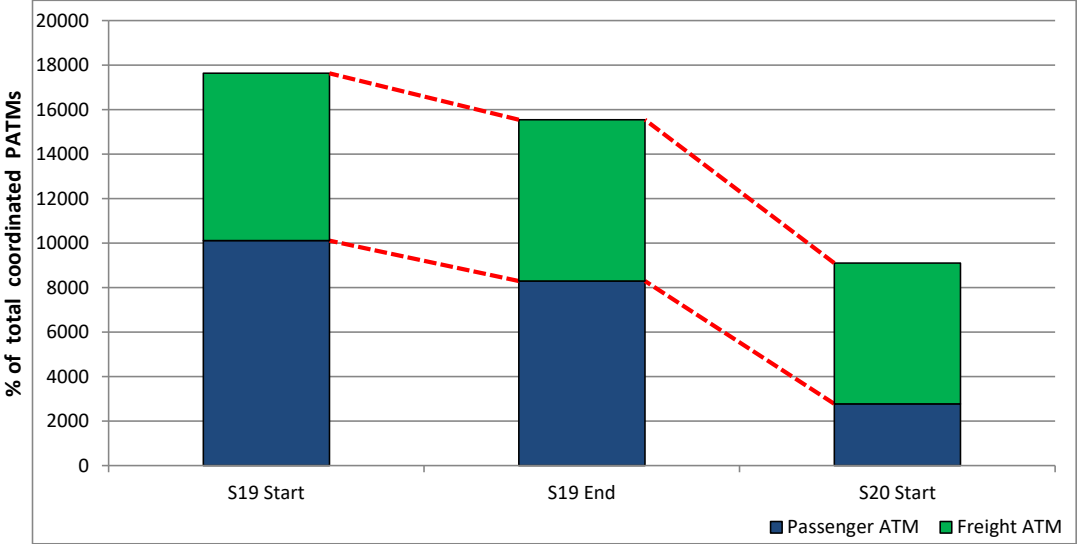
The contents of this report may not be reproduced without the written consent of ACL.

Significant Route Changes



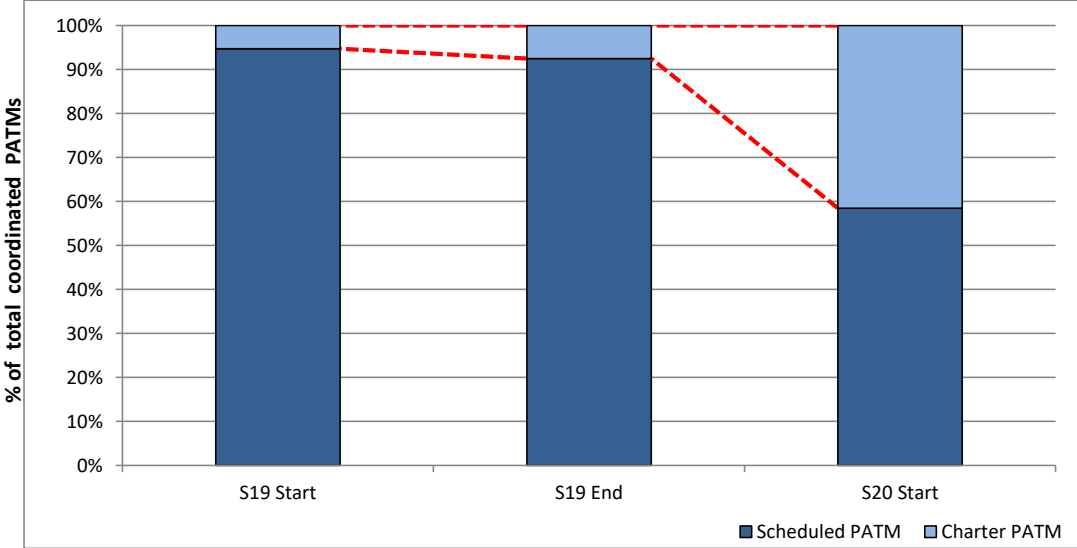
Operator	Category	Description of change from S19 schedule to S20 schedule
Aeroflot	CHANGE	Increased services to SVO
Azee Air	NEW	Services to AQJ, DHF, EBL
Azur Air Russia	CHANGE	Increased services to IKT, KJA, KRR, LED, SVX
Cargolux Airlines	NEW	Services to HGK, KUL, LUX
China Airlines	CANCELLED	Services to AMS, TPE
DHL Aviation	CHANGE	Increased flights to ADD, BEW
Emirates	CHANGE	Increased services to BLR, CAN, FRA, HAN, HKG, LHR, MEX, MST, ORD, SGN
Emirates	CHANGE	Increased services to TPE, UIO, VCP
Etihad Airways	CANCELLED	Services to HAN, HKG, SGN
Europe Air	CANCELLED	Services to AUH, BGW, BSR, DHF, EBL, HEA, KDH, LAW, OAI
Federal Express	CANCELLED	Services to CAN, CDG, SIN
Flydubai	CHANGE	Increased services to AMM, BEY
Flydubai	CANCELLED	Services to AHB, CMB, DMM, ELQ, FRU, JED, KBL, KHI, KWI, MCT, MED
Flydubai	CANCELLED	Services to MUX, RUH, SKT, TIF
Holiday Europe	NEW	Services to BSL, LEJ, MUC, NUE, SXF
I FLY	NEW	Services to KZN, SVX, UFA, VKO
ikar Airlines LLC	NEW	Services to KRR, KUF, KZN, SVO, SVX, UFA
Indigo	CANCELLED	Services to AMD, AMM, BOM, CCK, COK, DEL, HYD, IXC, MAA, TRV
Nordwind Airlines	NEW	Services to KRR, KUF, KZN, SVO, SVX, UFA
Pobeda Airlines LLC	NEW	Services to VKO
Silk Way West Airlines	CANCELLED	Services to GYD
Turkish Airlines	CHANGE	Increased services to HAN, ISL

Total ATMs: Passenger ATMs vs. Freight ATMs



Schedule Snapshot

Passenger ATMs: Scheduled vs. Charter

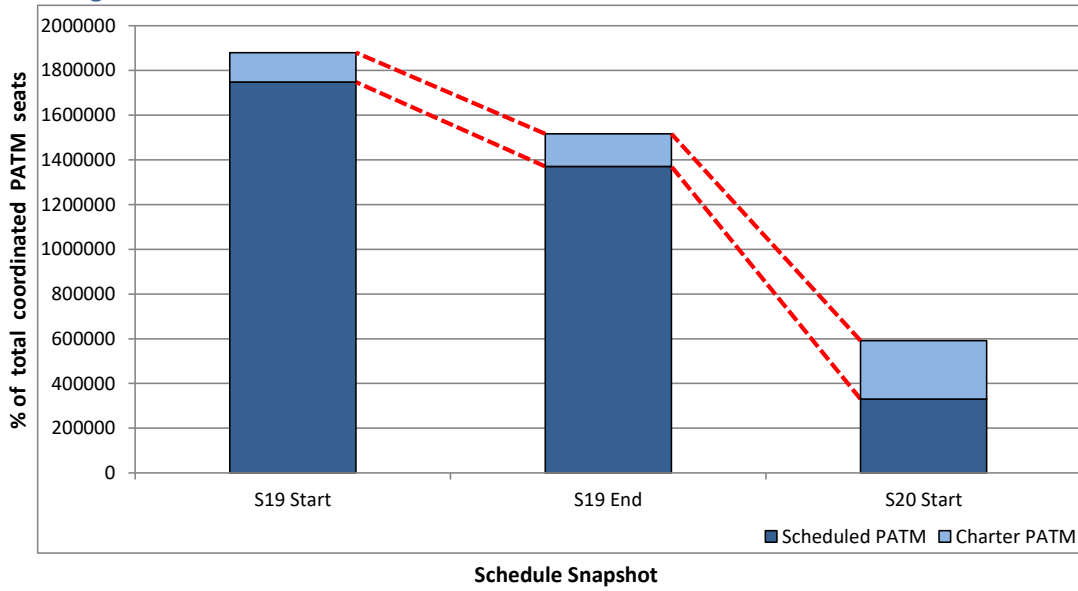


Schedule Snapshot

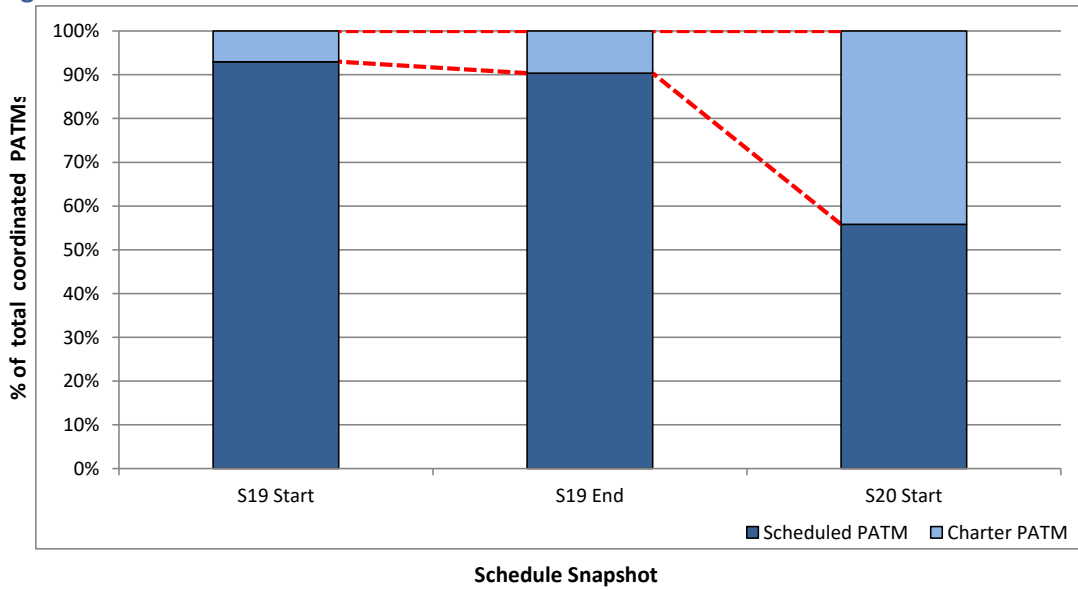
Full Season - PATM Seats Analysis



Total Passenger ATM seats: Scheduled vs. Charter



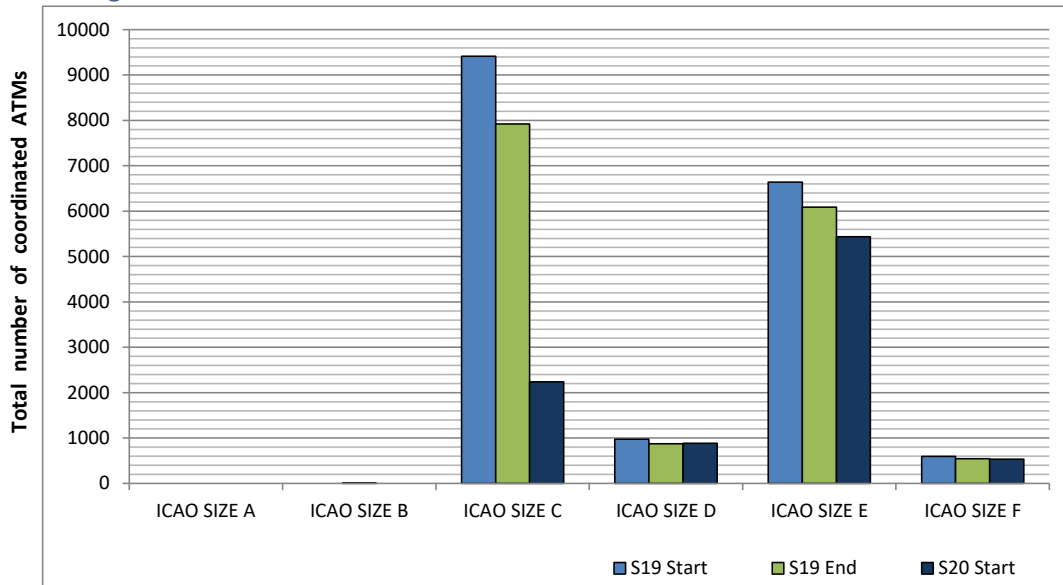
Passenger ATM seats: Scheduled vs. Charter



Full Season - Aircraft Size Analysis

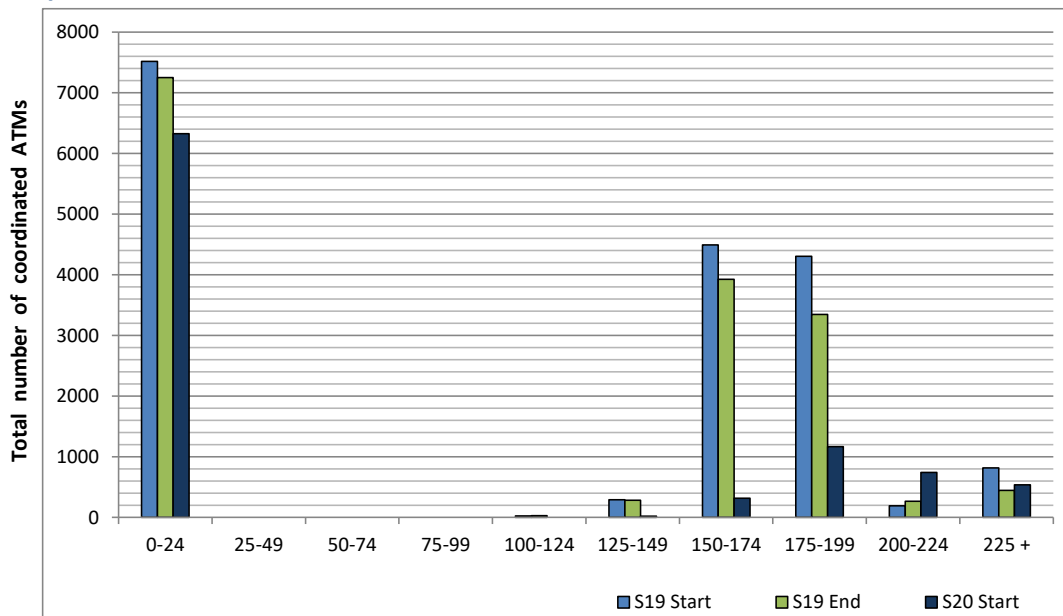


ICAO size designation



Note: See Glossary for definitions of ICAO SIZE groupings

Air Transport Movement seat distribution

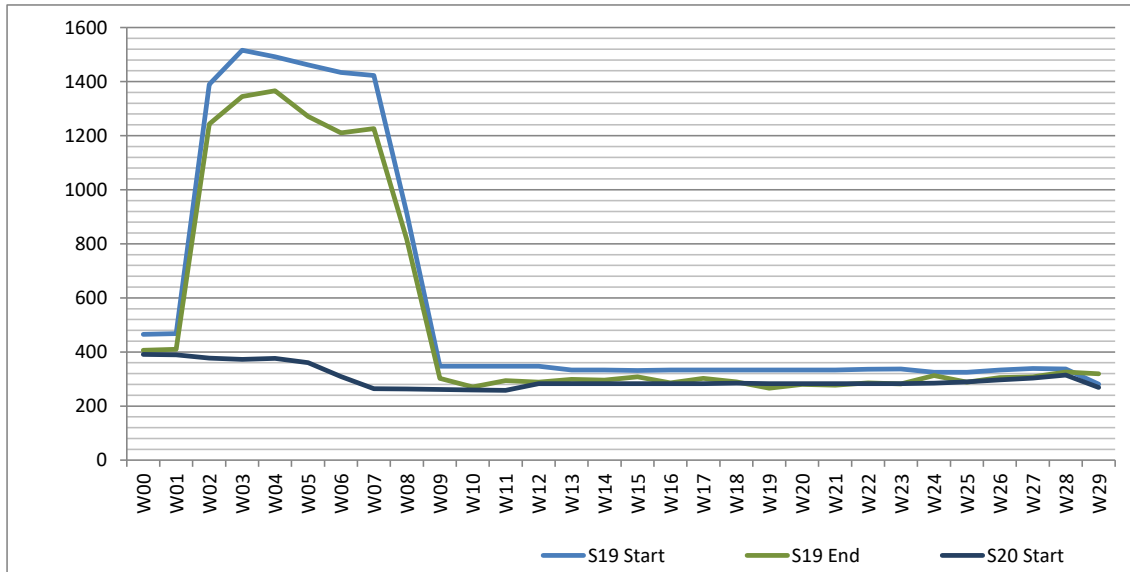


Note: FREIGHT-ONLY services with 0 seats are included in the first seat band '0-24'

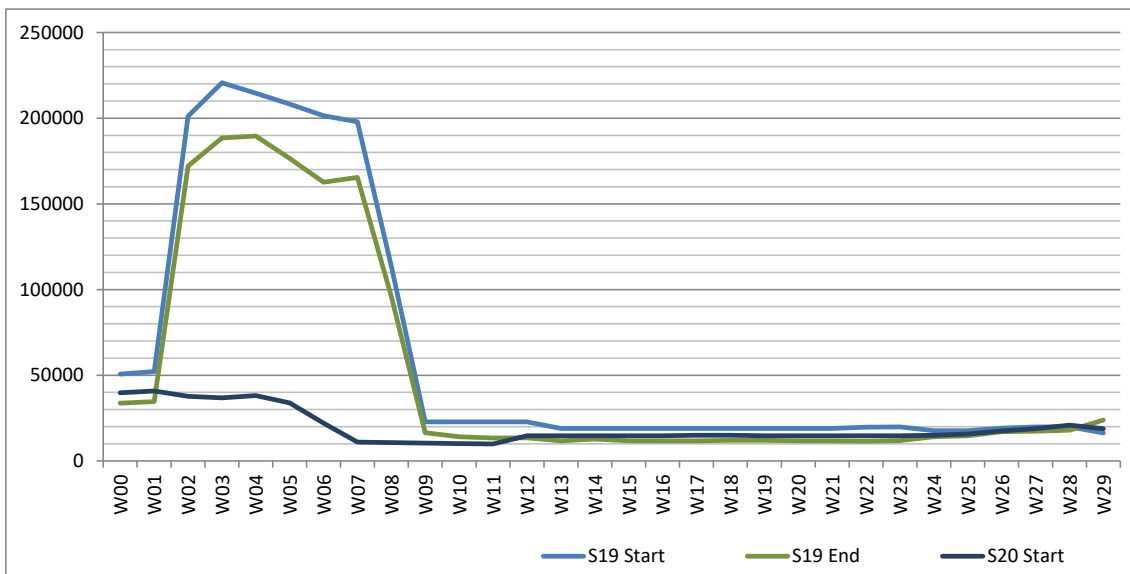
Full Season - Seasonality



Air Transport Movements by week of season



Air Transport Movement Seats by week of season



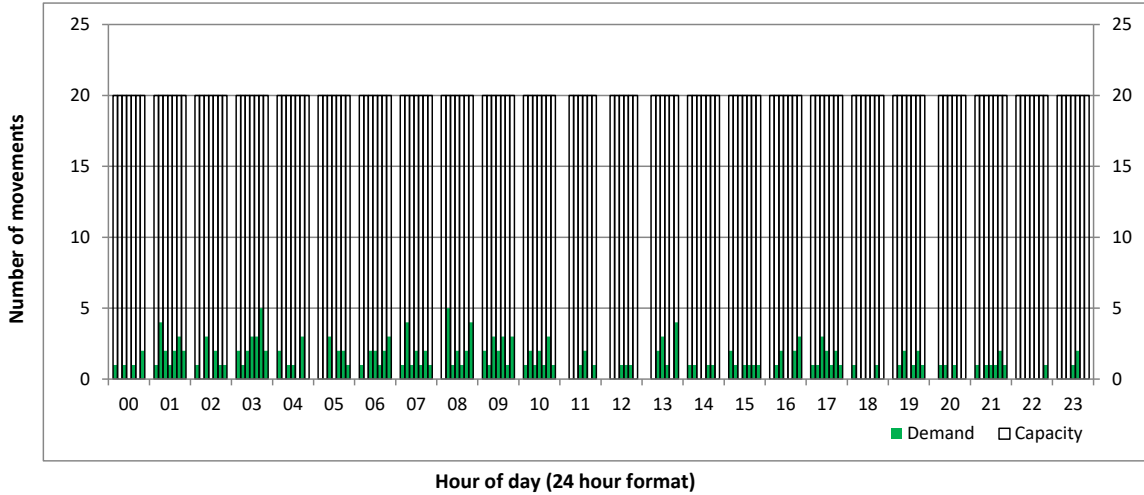
Peak Week - Hourly Runway Demand

Schedule: S20 Start



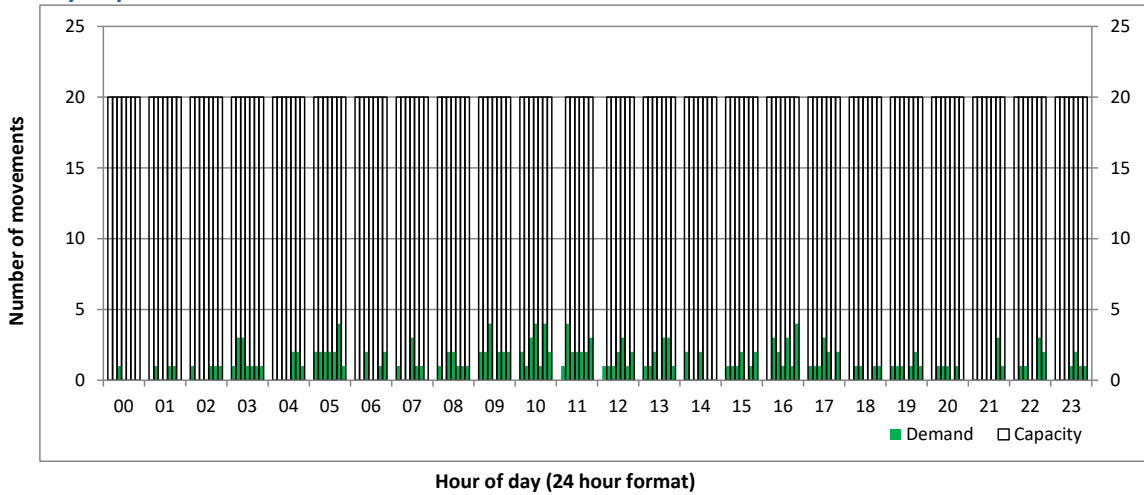
Hourly Arrival Demand

Time: UTC



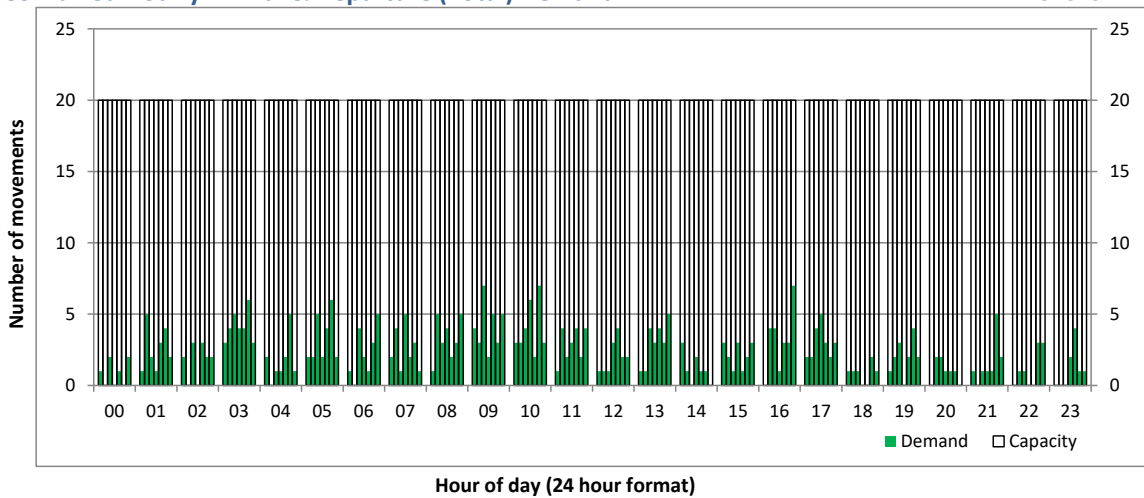
Hourly Departure Demand

Time: UTC



Combined Hourly Arrival & Departure (Total) Demand

Time: UTC



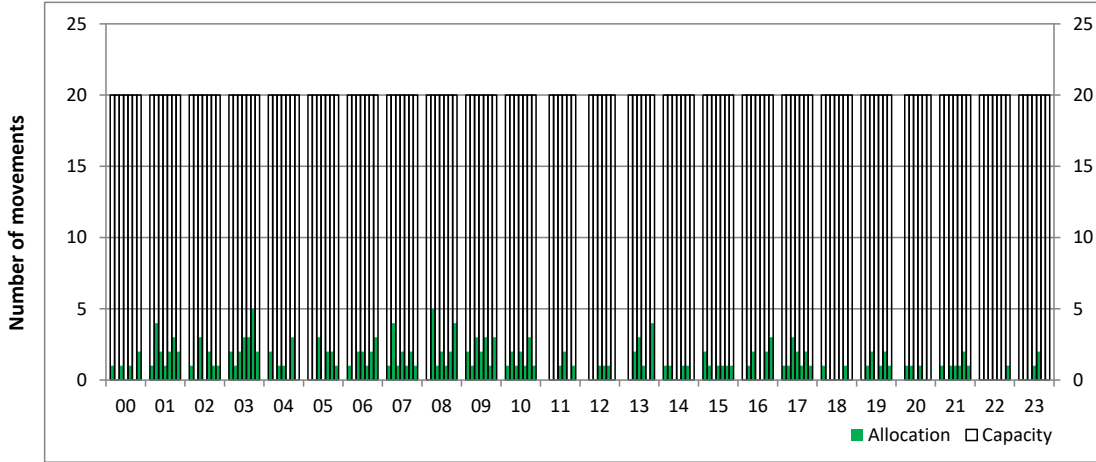
Peak Week - Hourly Runway Allocation

Schedule: S20 Start



Hourly Arrival Allocation

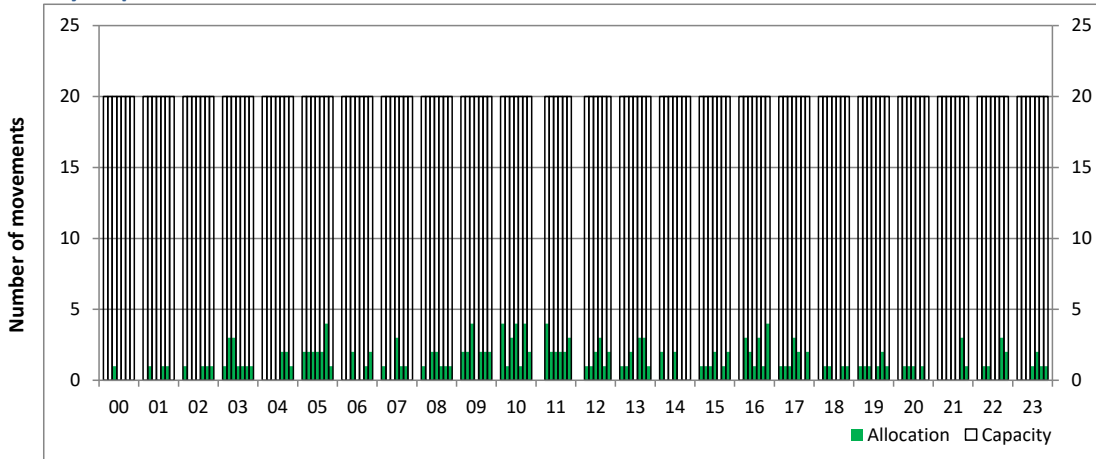
Time: UTC



Hour of day (24 hour format)

Hourly Departure Allocation

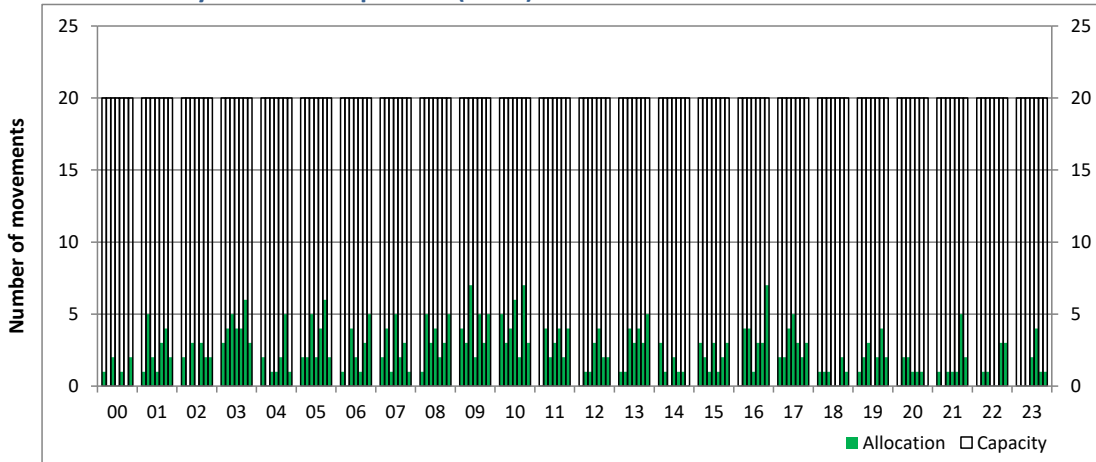
Time: UTC



Hour of day (24 hour format)

Combined Hourly Arrival & Departure (Total) Allocation

Time: UTC



Hour of day (24 hour format)

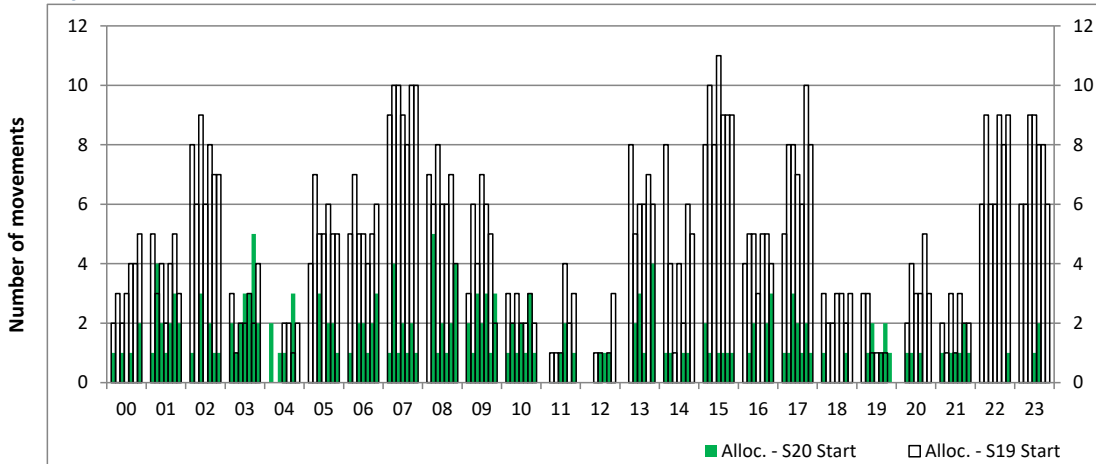
Peak Week - Runway Allocation Comparison

Comparison of S20 Start vs. S19 Start



Hourly Arrival Allocation

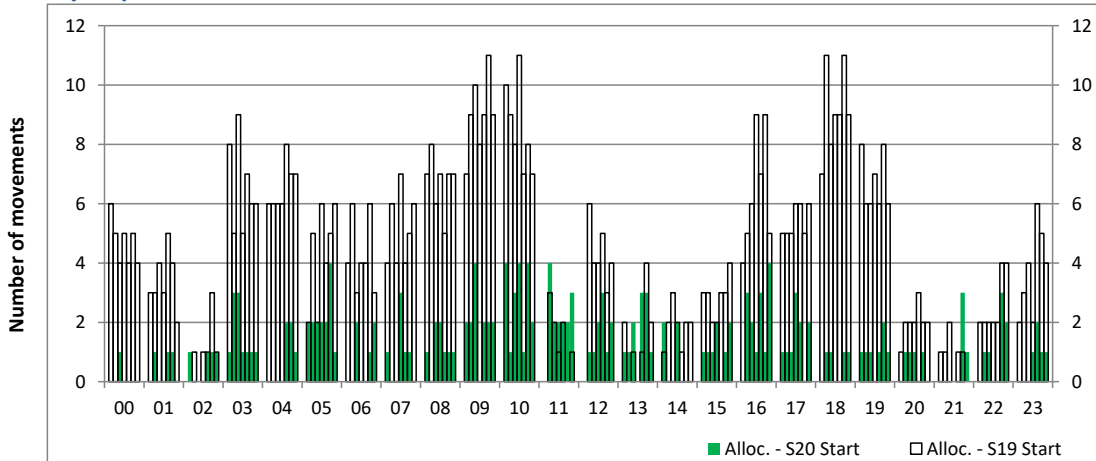
Time: UTC



Hour of day (24 hour format)

Hourly Departure Allocation

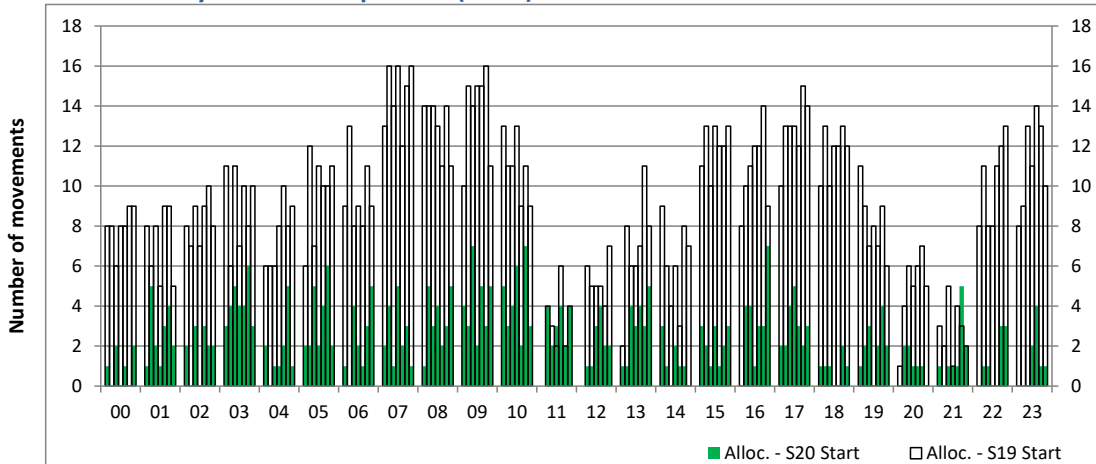
Time: UTC



Hour of day (24 hour format)

Combined Hourly Arrival & Departure (Total) Allocation

Time: UTC



Hour of day (24 hour format)

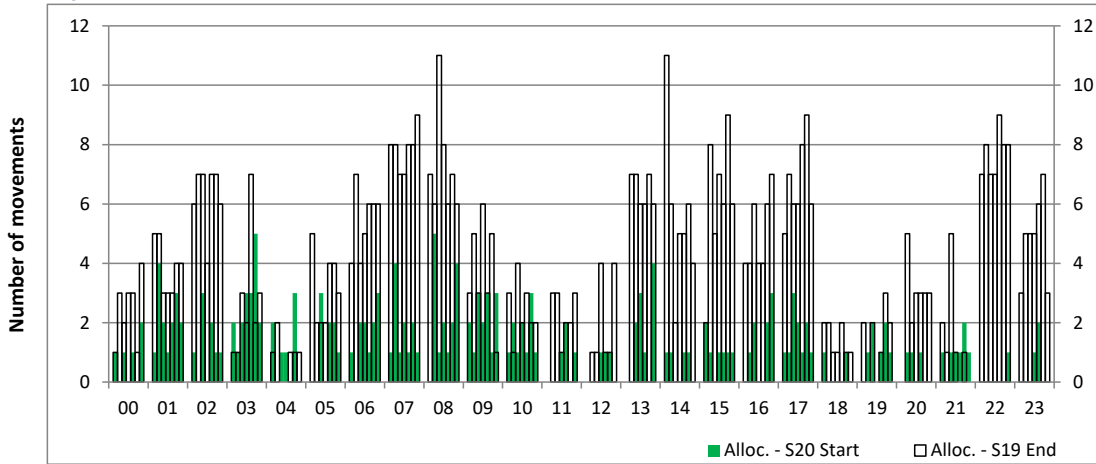
Peak Week - Runway Allocation Comparison



Comparison of S20 Start vs. S19 End

Hourly Arrival Allocation

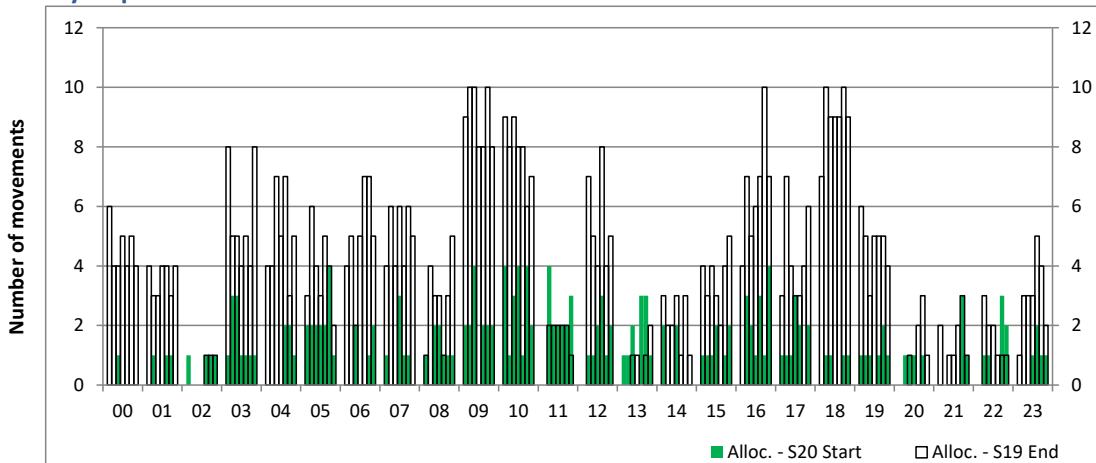
Time: UTC



Hour of day (24 hour format)

Hourly Departure Allocation

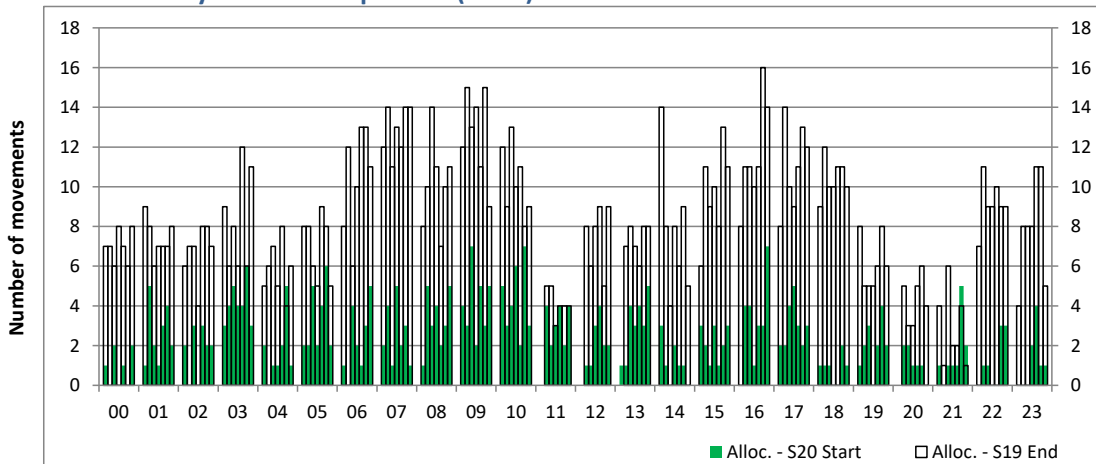
Time: UTC



Hour of day (24 hour format)

Combined Hourly Arrival & Departure (Total) Allocation

Time: UTC



Hour of day (24 hour format)

Peak Week - Movements Histogram

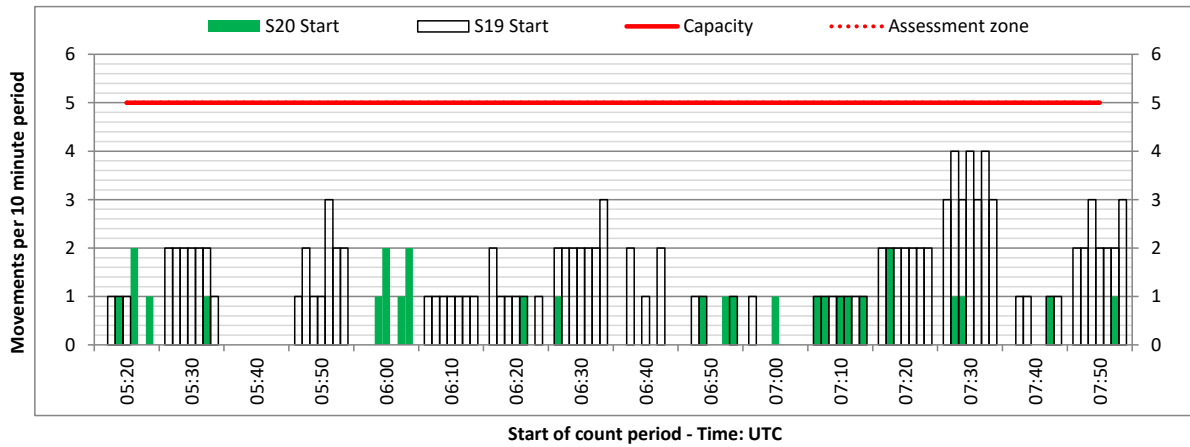
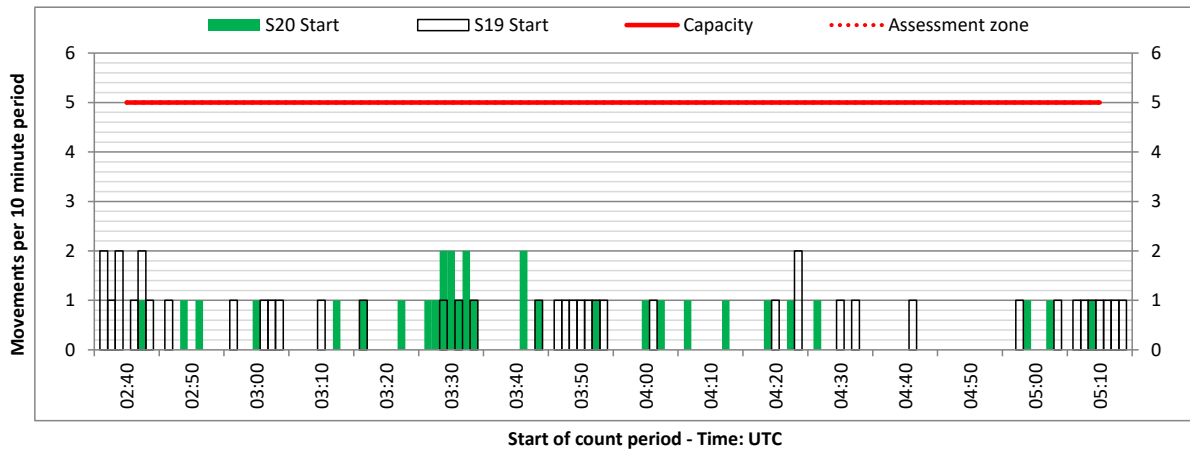
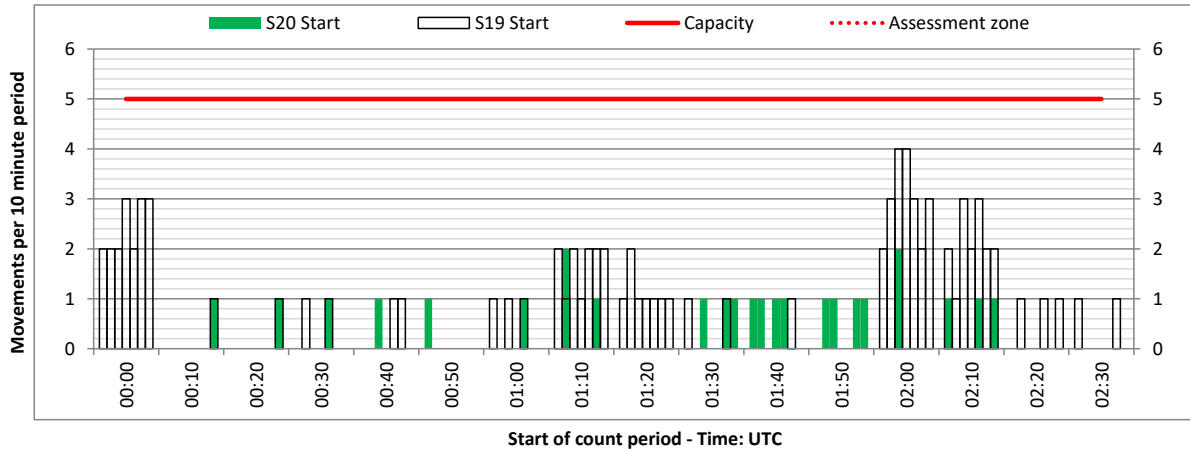
ARRIVAL - 10 minute count rolling every 10 mins (R10)



Terminals: All Terminals

Operators: All Operators

Days: 1234567



Peak Week - Movements Histogram

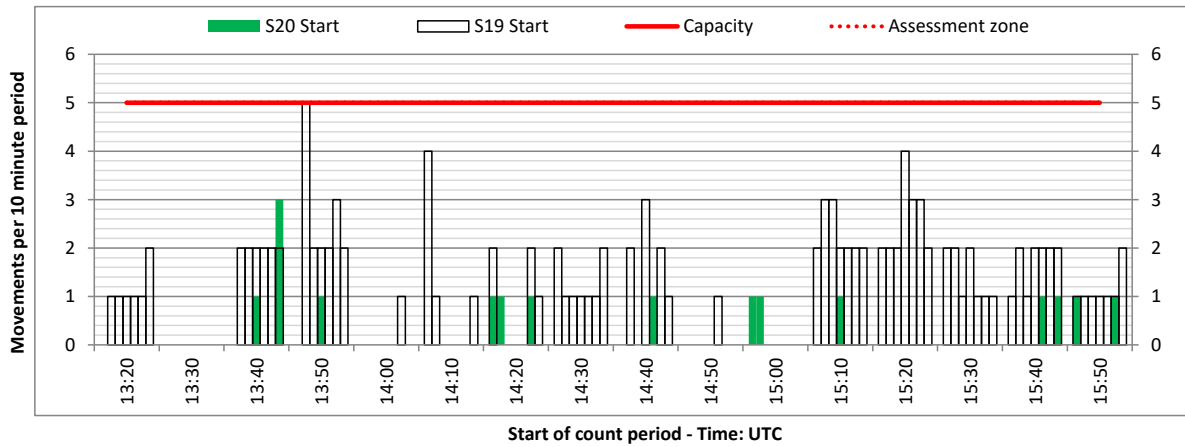
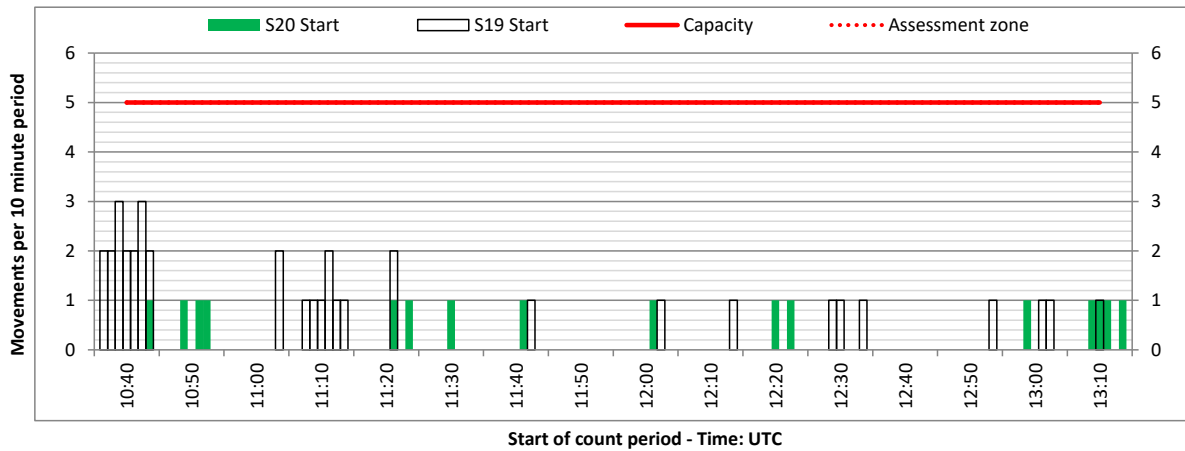
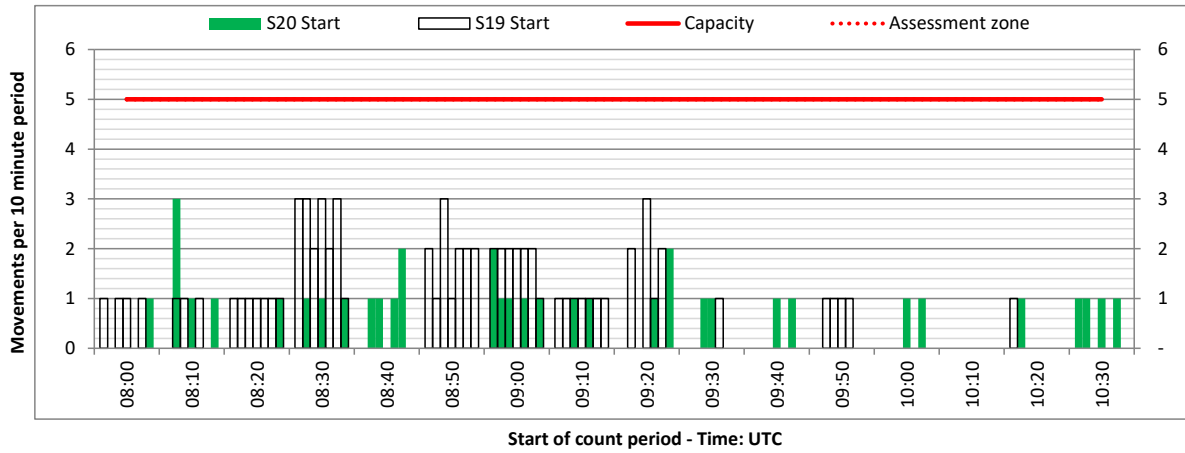
ARRIVAL - 10 minute count rolling every 10 mins (R10)



Terminals: All Terminals

Operators: All Operators

Days: 1234567



Peak Week - Movements Histogram

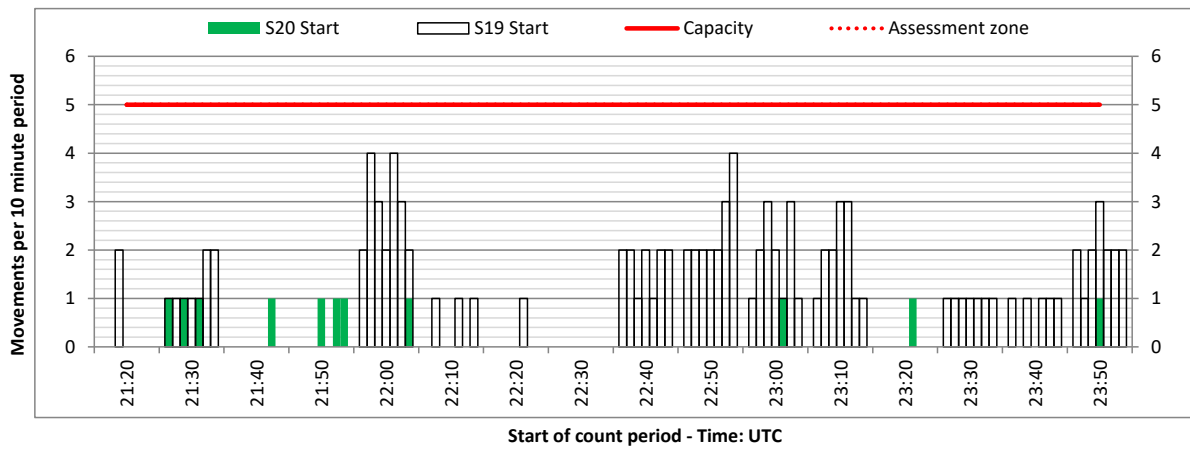
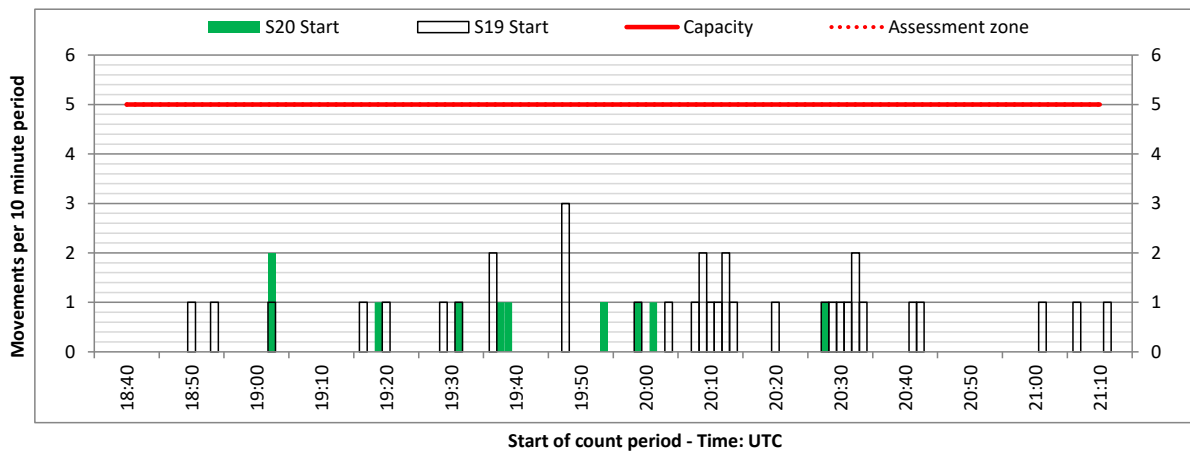
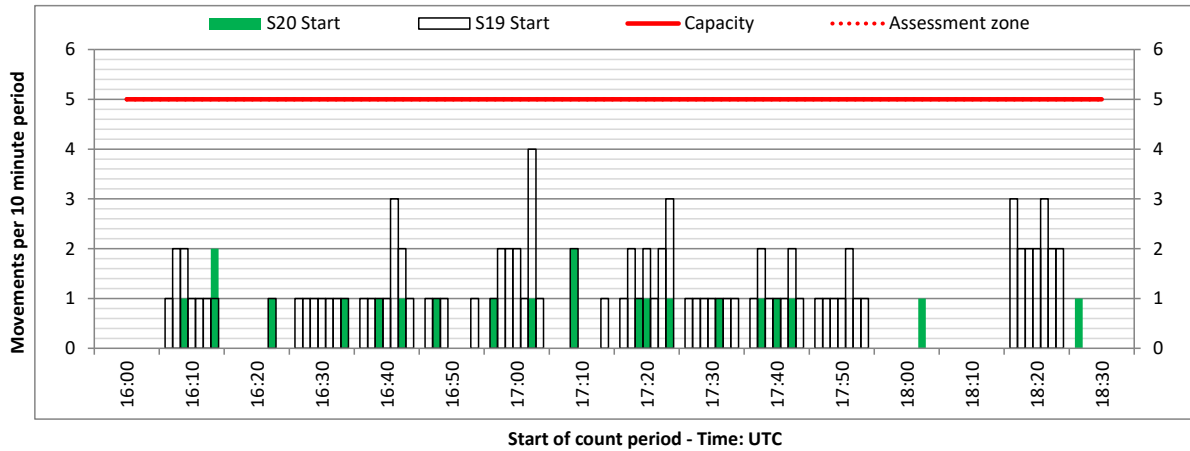
ARRIVAL - 10 minute count rolling every 10 mins (R10)



Terminals: All Terminals

Operators: All Operators

Days: 1234567



Peak Week - Movements Histogram

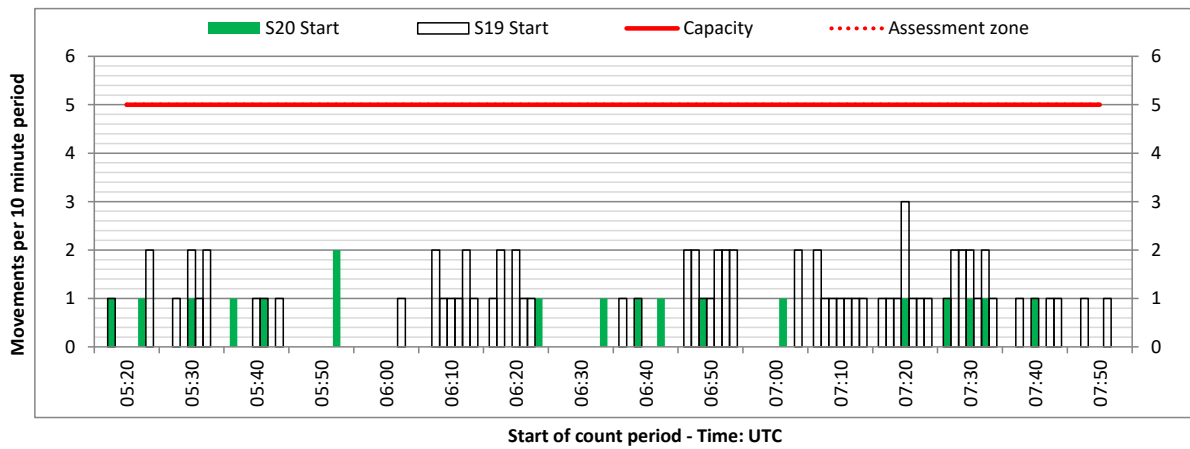
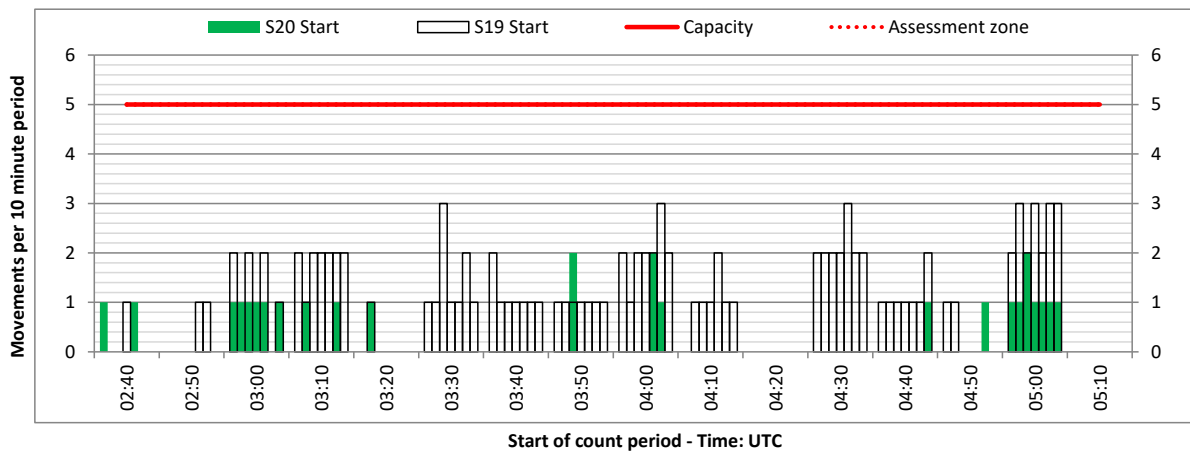
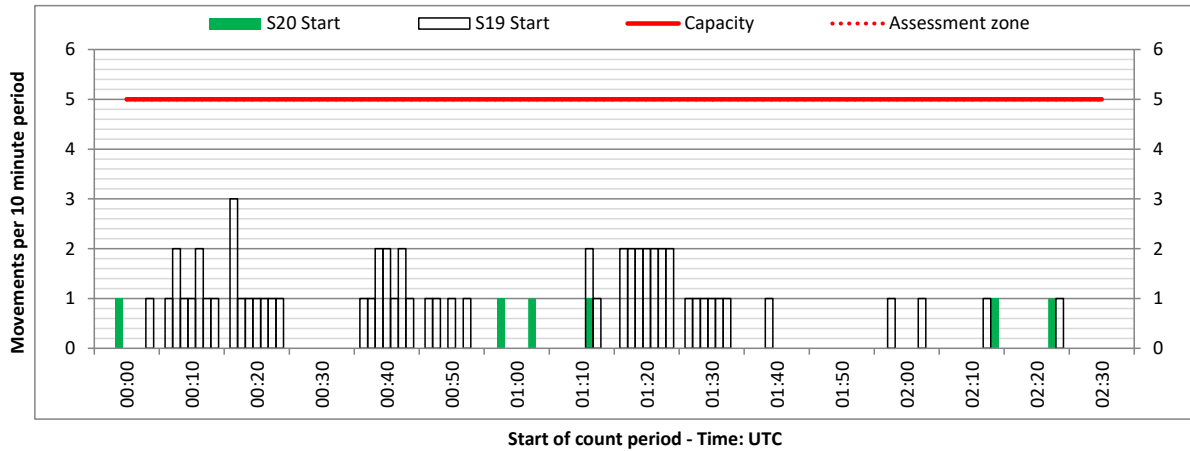
DEPARTURE - 10 minute count rolling every 10 mins (R10)



Terminals: All Terminals

Operators: All Operators

Days: 1234567



Peak Week - Movements Histogram

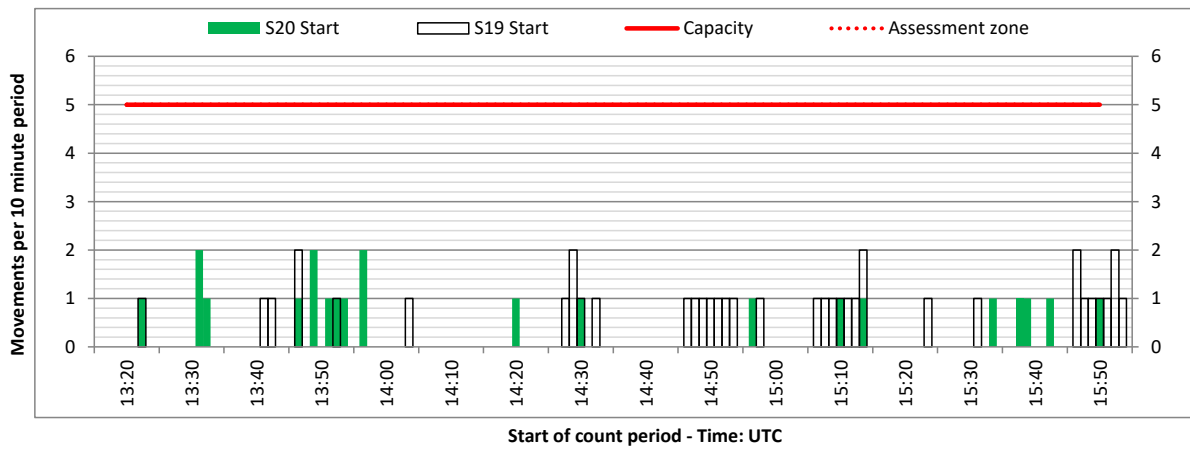
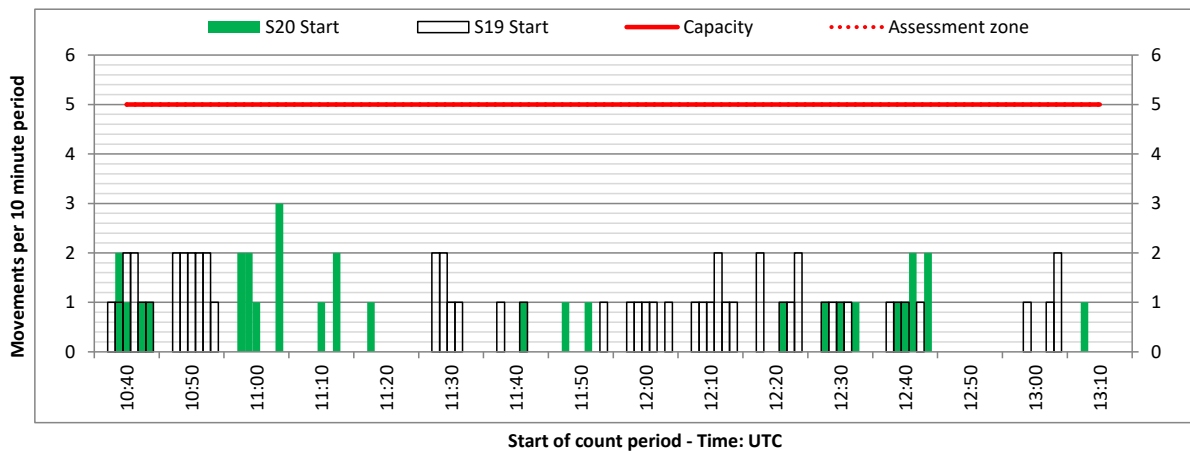
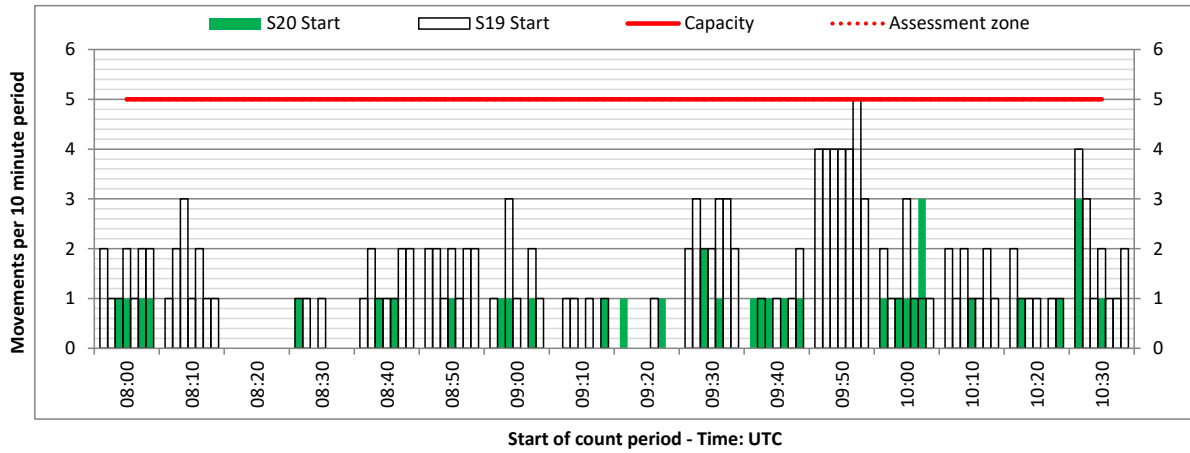
DEPARTURE - 10 minute count rolling every 10 mins (R10)



Terminals: All Terminals

Operators: All Operators

Days: 1234567



Peak Week - Movements Histogram

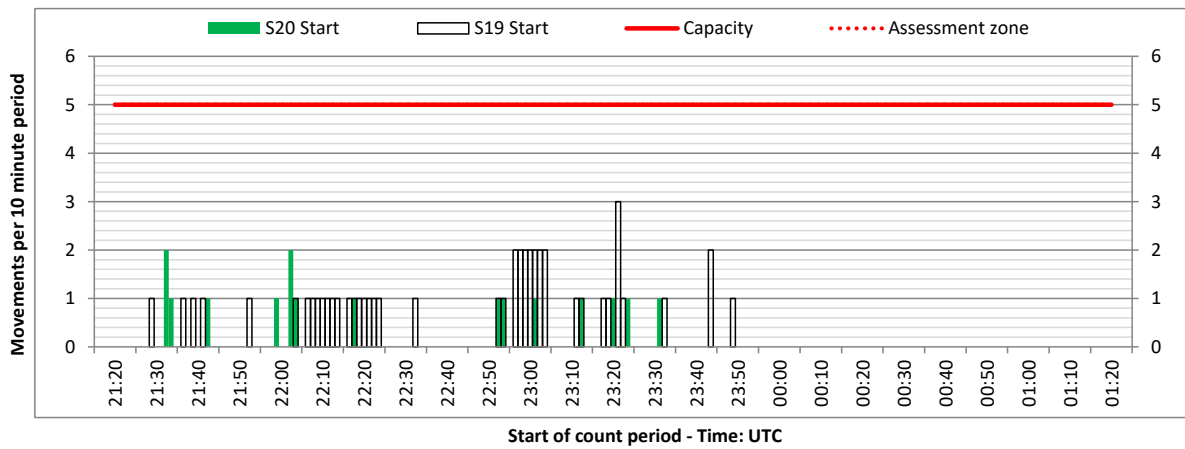
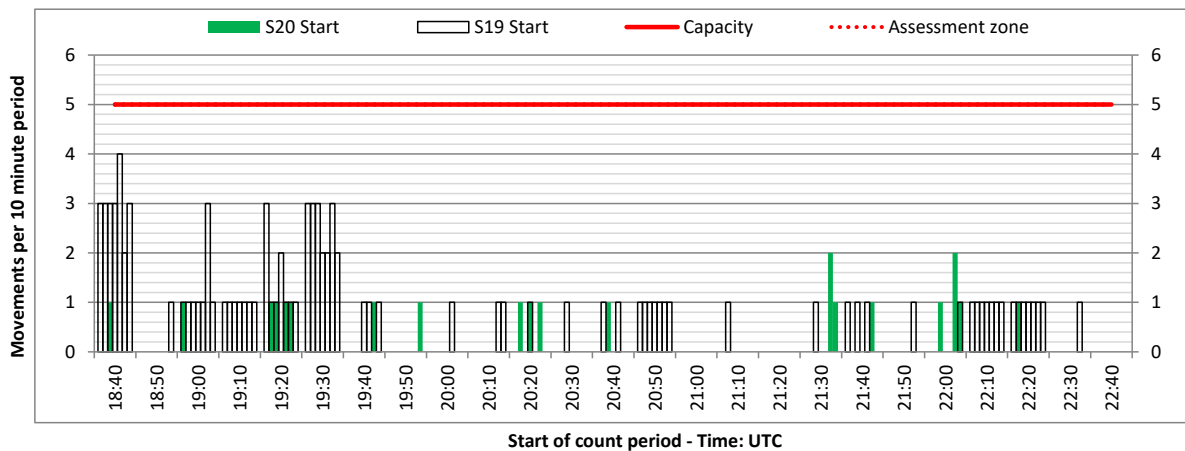
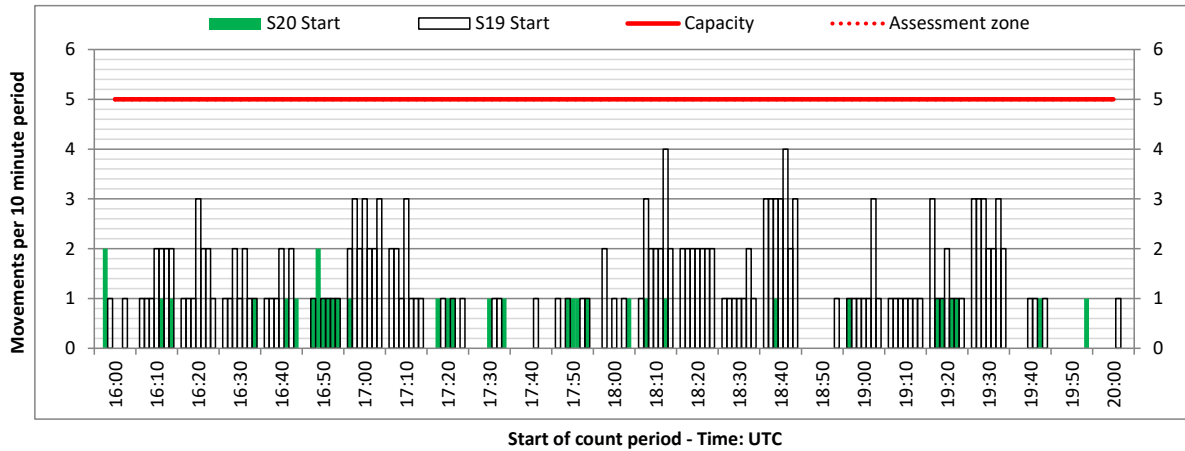
DEPARTURE - 10 minute count rolling every 10 mins (R10)



Terminals: All Terminals

Operators: All Operators

Days: 1234567



Peak Week - Passengers Histogram

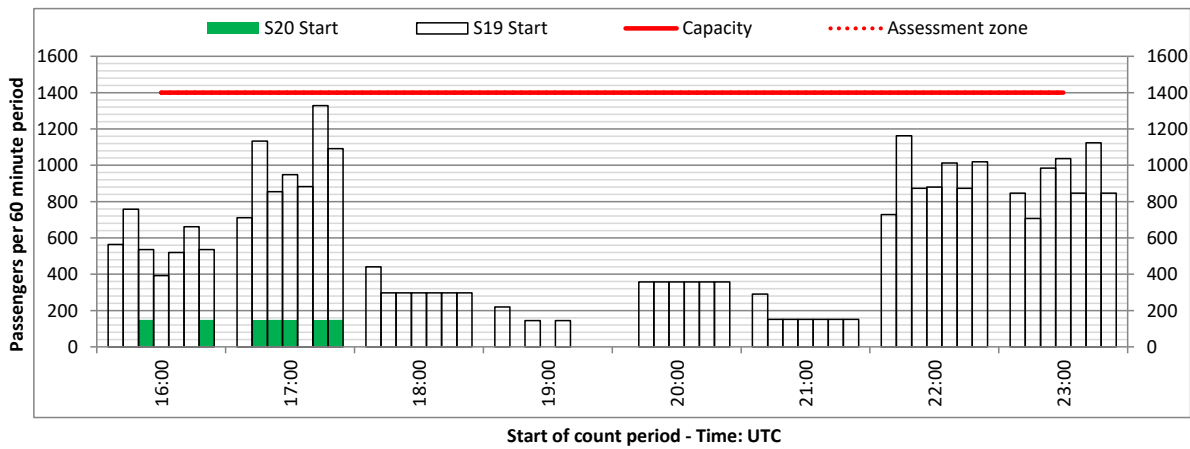
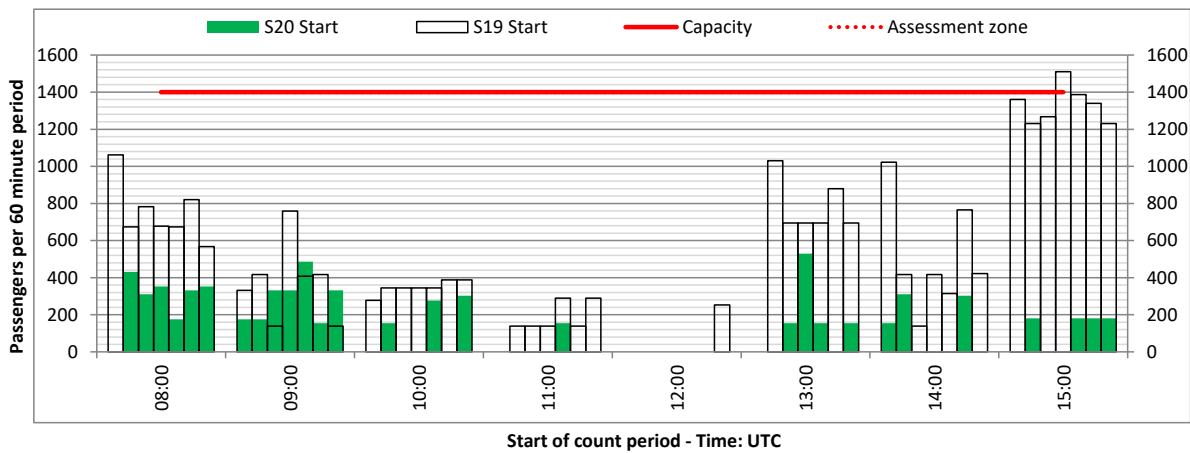
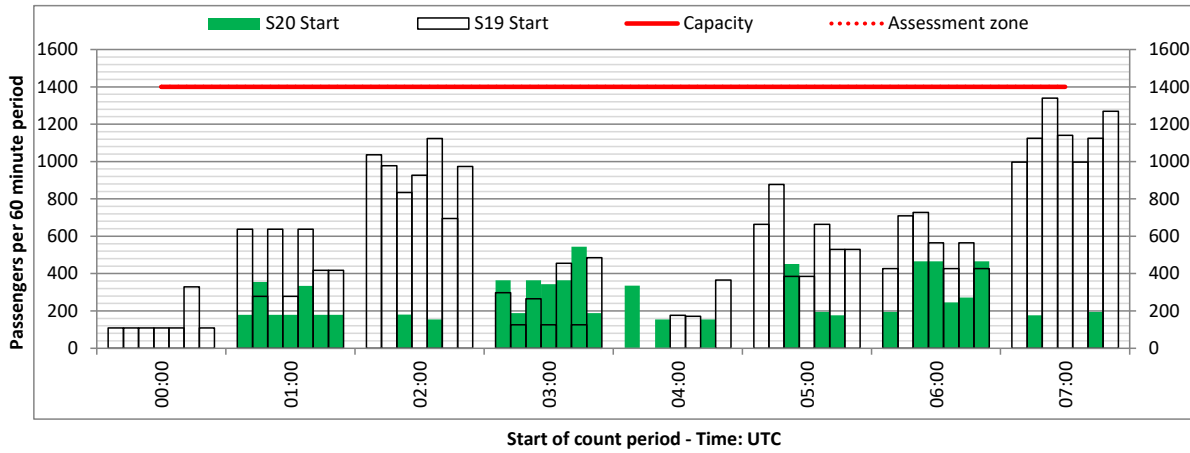
ARRIVAL - 60 minute count rolling every 60 mins (T60)



Terminals: All Terminals

Operators: All Operators

Days: 1234567



Peak Week - Passengers Histogram

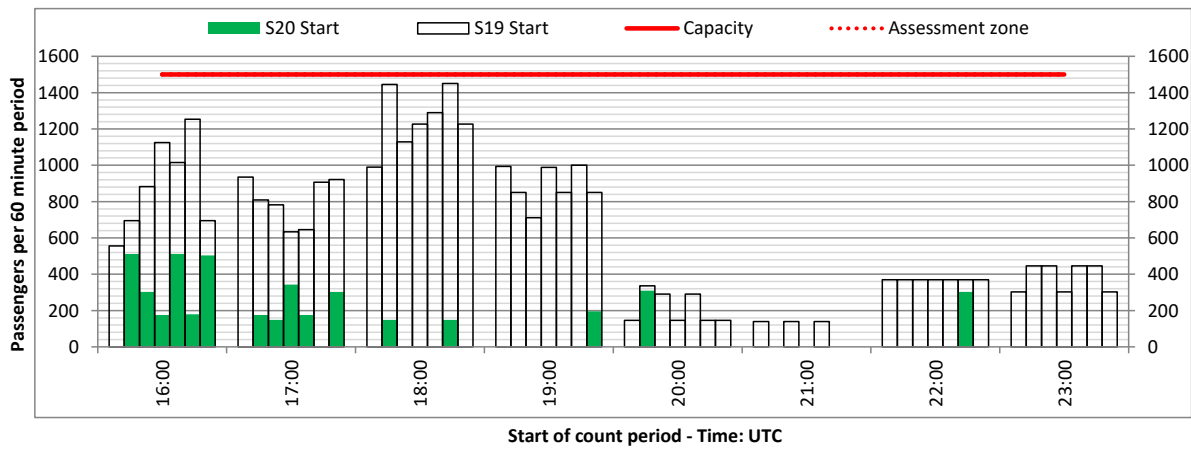
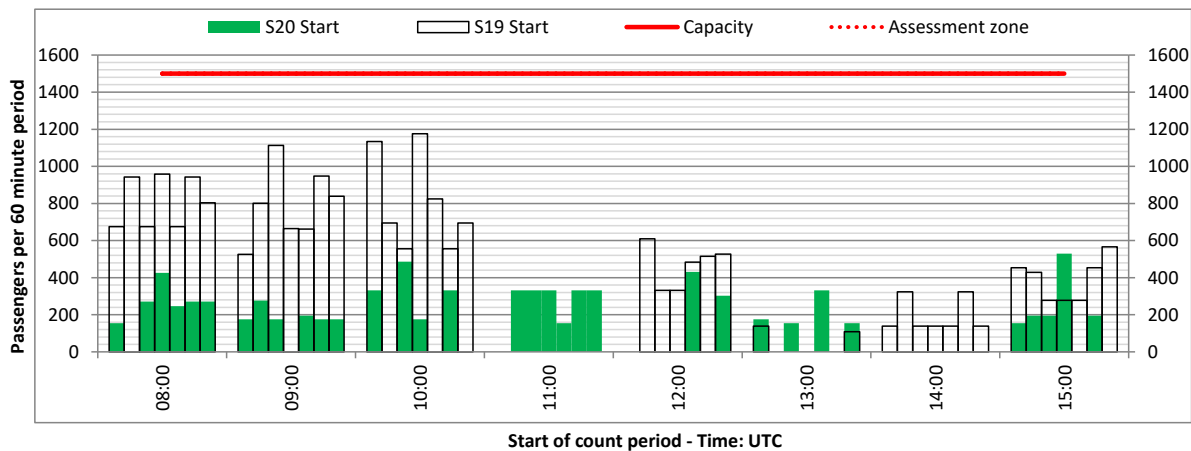
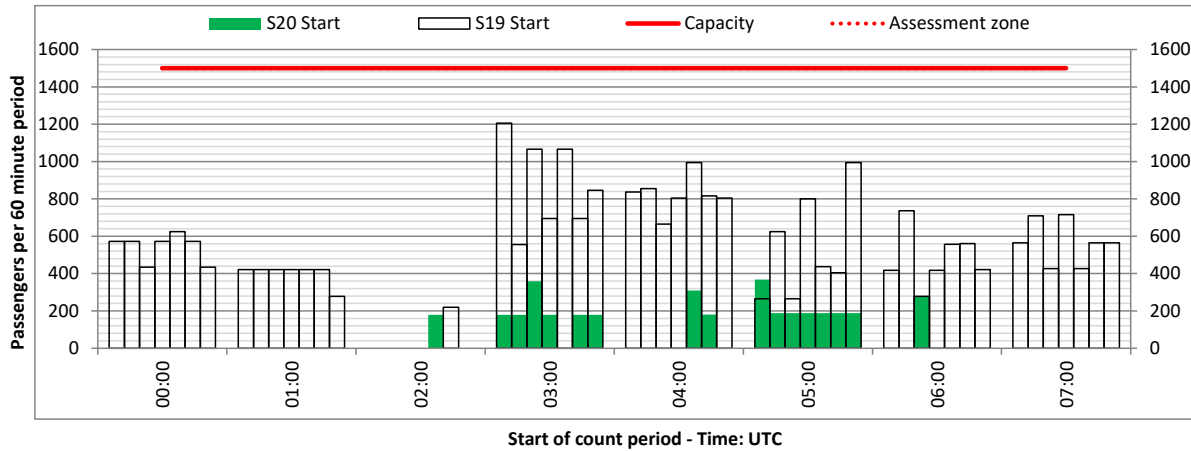
DEPARTURE - 60 minute count rolling every 60 mins (T60)



Terminals: All Terminals

Operators: All Operators

Days: 1234567



Maximum

Time UTC	0	100	200	300	400	500	600	700	800	900	1000	1100	1200	1300	1400	1500	1600	1700	1800	1900	2000	2100	2200	2300
Arrivals																								
Max. Arrival	10%	20%	15%	25%	15%	15%	15%	20%	25%	15%	15%	0%	0%	0%	5%	10%	15%	15%	5%	10%	0%	10%	5%	10%
Departures																								
Max. Departure	5%	5%	5%	15%	10%	20%	10%	15%	10%	20%	20%	0%	0%	15%	10%	10%	20%	15%	5%	10%	5%	15%	15%	10%
Totals																								
Max. Total	10%	25%	15%	30%	25%	30%	25%	25%	25%	35%	35%	20%	20%	25%	15%	15%	35%	25%	10%	20%	10%	25%	15%	20%

Average

Time UTC	0	100	200	300	400	500	600	700	800	900	1000	1100	1200	1300	1400	1500	1600	1700	1800	1900	2000	2100	2200	2300
Arrivals																								
Average Arrival	4%	11%	6%	13%	5%	6%	8%	9%	11%	11%	8%	0%	0%	0%	3%	5%	6%	8%	1%	5%	0%	5%	1%	2%
Departures																								
Average Departure	1%	2%	3%	8%	4%	11%	4%	4%	6%	10%	14%	0%	0%	8%	3%	6%	10%	7%	3%	5%	3%	3%	5%	4%
Totals																								
Average Total	4%	13%	9%	21%	9%	16%	11%	13%	16%	21%	21%	14%	9%	15%	6%	11%	16%	15%	4%	10%	5%	8%	6%	6%

Primary Constraints by Terminal - Peak Week



Arrival/Departure	OK	R60	GRD	T60	CF	Grand Total
A	194		1			195
D	191	1		1	1	194
Grand Total	385	1	1	1	1	389

Percentage	OK	R60	GRD	T60	CF	Grand Total
A	99.5%	0.0%	0.5%	0.0%	0.0%	100.0%
D	98.5%	0.5%	0.0%	0.5%	0.5%	100.0%

Time UTC	0	100	200	300	400	500	600	700	800	900	1000	1100	1200	1300	1400	1500	1600	1700	1800	1900	2000	2100	2200	2300	Grand Total
1		9	3	20	7	12	10	2	17	18	10	12	3	10	3	10	15	12	2	1	1		1		178
OK		9	3	20	7	12	10	2	17	18		12	3	10	3	9	14	12	2	1	1		1		174
R60											1														1
T60																	1								1
GRD																1									1
CF											1														1

Time UTC	0	100	200	300	400	500	600	700	800	900	1000	1100	1200	1300	1400	1500	1600	1700	1800	1900	2000	2100	2200	2300	Grand Total
FRT	6	9	9	9	5	11	6	16	6	11	20	7	10	11	5	5	7	9	4	13	6	11	7	8	211
OK	6	9	9	9	5	11	6	16	6	11	20	7	10	11	5	5	7	9	4	13	6	11	7	8	211

Runway Reason Code	
R60	60 Min Runway Availability
R30	30 Min Runway Availability
R10	10 Min Runway Availability

Other Reason Code	
AA	Apron Capacity
GRA	Arr Affected by Dep
GRD	Arr Affected by Dep
GA	Gate capacity

Peak Week Code F Arrivals and Departures



Time UTC	0	100	200	300	400	500	600	700	800	900	1000	1100	1200	1300	1400	1500	1600	1700	1800	1900	2000	2100	2200	2300	Grand Total	
Code F Arrivals	0	2				1			1				1				1				1		2		9	
Cathay Pacific									1				1								1		1		2	
4																							1		1	
6																					1				1	
Airbridge Cargo Airlines Ltd						1											1								2	
2																	1								1	
6						1																			1	
Cargolux Italia S.p.A		1																								1
2		1																								1
Cargolux Airlines		1							1				1												1	4
3		1																								1
4													1													1
5																								1		1
7									1																	1
Code F Departures	0	4	0	4	0	0	0	0	0	0	2	0	0	0	2	0	0	0	0	2	2	0	0	2	18	
Cathay Pacific		1																							1	2
5		1																								1
6																									1	1
Airbridge Cargo Airlines Ltd																				1	1					2
2																				1						1
6																					1					1
Cargolux Italia S.p.A				1																						1
2				1																						1
Cargolux Airlines		1		1							1				1											4
3				1																						1
4															1											1
6		1																								1
7											1															1
Grand Total		2		2							1				1					1	1			1	9	

NAC Utilisation View - Peak Week Arrivals and Departures Combined R60 and R10 Availability



ARRIVALS							
UTC	1	2	3	4	5	6	7
0	5	5	5	5	5	5	5
10	5	5	5	5	5	5	4
20	5	5	5	5	5	5	4
30	5	5	5	5	4	5	5
40	5	5	4	5	5	5	5
50	4	5	5	5	5	5	5
100	5	5	5	5	4	5	5
110	5	3	5	5	5	4	5
120	5	5	5	5	5	5	5
130	5	5	4	5	5	4	4
140	4	4	4	4	4	5	5
150	5	4	4	5	5	4	4
200	5	5	3	5	5	5	5
210	4	0	5	5	4	5	4
220	5	5	5	5	5	5	5
230	5	5	5	5	5	5	5
240	5	5	5	5	5	4	5
250	5	5	4	5	4	5	5
300	5	5	5	4	5	5	5
310	5	5	5	5	5	4	5
320	4	5	5	5	5	4	5
330	4	4	3	3	4	3	4
340	5	5	5	5	3	5	4
350	5	5	5	5	5	4	5
400	5	5	5	4	5	4	5
410	4	5	5	5	5	4	5
420	5	5	4	5	5	4	5
430	4	5	5	5	5	5	5
440	5	5	5	5	5	5	5
450	5	5	5	5	5	5	5
500	5	5	4	5	5	4	5
510	5	5	4	5	5	5	5
520	5	5	4	5	3	5	4
530	5	5	5	5	5	4	5
540	5	5	5	5	5	5	5
550	5	5	5	5	5	5	5
600	5	5	4	3	5	4	3
610	5	5	5	5	5	5	5
620	5	5	5	5	4	5	5
630	4	5	5	5	5	5	5
640	5	5	5	5	5	5	5
650	5	5	4	5	5	4	4
700	5	5	5	4	5	5	5
710	4	4	5	4	4	5	4
720	5	3	5	5	5	5	5
730	5	4	4	5	5	5	5
740	5	5	5	5	5	4	5
750	5	5	5	5	5	4	5

DEPARTURES							
UTC	1	2	3	4	5	6	7
0	5	5	4	5	5	5	5
10	5	5	5	5	5	5	5
20	5	5	5	5	5	5	5
30	5	5	5	5	5	5	5
40	5	5	5	5	5	5	5
50	5	5	5	5	5	5	5
100	5	4	5	5	5	4	5
110	5	5	5	5	4	5	5
120	5	5	5	5	5	5	5
130	5	5	5	5	5	5	5
140	5	5	5	5	5	5	5
150	5	5	5	5	5	5	5
200	5	5	5	5	5	5	5
210	5	5	5	5	5	5	4
220	5	5	5	5	4	5	5
230	5	5	5	5	5	5	5
240	4	5	5	5	4	5	5
250	5	5	5	5	5	5	5
300	4	4	4	4	4	5	4
310	5	0	5	0	5	4	5
320	5	4	5	5	5	5	5
330	5	5	5	5	5	5	5
340	5	5	5	5	5	5	5
350	5	5	3	5	5	5	5
400	5	5	5	5	3	4	5
410	5	5	5	5	5	5	5
420	5	5	5	5	5	5	5
430	5	5	5	5	5	5	5
440	5	5	5	5	5	5	4
450	5	5	5	5	5	4	5
500	4	4	3	4	4	4	4
510	5	5	5	5	5	5	5
520	5	4	5	5	5	4	5
530	5	5	5	4	5	5	5
540	4	5	5	5	4	5	5
550	5	5	5	5	5	3	5
600	5	4	5	4	5	4	5
610	5	5	5	5	5	5	5
620	5	5	5	5	5	5	4
630	5	5	5	5	5	5	4
640	5	5	4	5	5	4	5
650	5	5	4	5	5	5	5
700	5	5	5	5	4	5	5
710	5	5	5	5	5	5	5
720	5	5	5	4	5	5	5
730	4	5	5	4	5	4	5
740	5	5	5	4	5	5	5
750	5	5	5	5	5	5	5

Glossary



Air Transport Movement (ATM)	Any aircraft movement which is either a scheduled or chartered passenger or cargo flight.
Common Travel Area (CTA)	Origin or Destination is in Republic of Ireland or the Channel Islands.
Demand	Unconstrained demand before any schedule adjustments have been made.
"Fill-in"	These are gaps in a historic series of slots which the carrier requests to "Fill-in" at Initial Submissions - Fill-ins will be recognisably part of the historic series and will have the same flight details to qualify as a "Fill-in".
Hist (SHL)	Snapshot of historic schedule rolled over from end of the previous equivalent season - as advised to airlines in the SHLs.
ICAO Size A	Aircraft with wingspan between 0.00m - 14.99m.
ICAO Size B	Aircraft with wingspan between 15.00m - 23.99m.
ICAO Size C	Aircraft with wingspan between 24.00m - 35.99m.
ICAO Size D	Aircraft with wingspan between 36.00m - 51.99m.
ICAO Size E	Aircraft with wingspan between 52.00m - 64.99m.
ICAO Size F	Aircraft with wingspan between 65.00m - 80.00m.
Init Coord	Snapshot of schedule immediately after Initial Coordination is completed - as advised to airlines in the SALs.
Passenger Air Transport Movement (PATM)	Any aircraft movement which is either a scheduled or chartered passenger flight.
Start	Snapshot of schedule shortly before the start of the scheduling season (exact date given below where used).
Time: Local	Times shown are in LOCAL time for the airport/scheduling season.
Time: UTC	Times shown are in Universal Time Constant (UTC).

Data snapshot descriptions

S19 Start	S19 schedule as cleared on Mon 04-Mar-19.
S19 End	S19 schedule as cleared on Thu 31-Oct-19.
S20 Start	S20 schedule as cleared on Tue 10-Mar-20.

Peak Week	Peak week for S19 is Mon 22-Apr-19 to Sun 28-Apr-19. Peak week for S20 is Mon 06-Apr-20 to Sun 12-Apr-20.
------------------	--

For ACL use

	Airport-Season-Branch-Resource	From date	To date	Time
Full Season Rep 1	DWC-S19-Start-Standard	Sun 31-Mar-2019	Sat 26-Oct-2019	UTC
Full Season Rep 2	DWC-S19-END-Standard	Sun 31-Mar-2019	Sat 26-Oct-2019	UTC
Full Season Rep 3	DWC-S20-SOS-Standard	Sun 29-Mar-2020	Sat 24-Oct-2020	UTC
	Airport-Season-Branch-Resource	From date	To date	Time
Peak Week Rep 1	DWC-S19-Start-Standard	Mon 22-Apr-2019	Sun 28-Apr-2019	UTC
Peak Week Rep 2	DWC-S19-END-Standard	Mon 29-Apr-2019	Sun 05-May-2019	UTC
Peak Week Rep 3	DWC-S20-SOS-Standard	Mon 06-Apr-2020	Sun 12-Apr-2020	UTC