

Stansted Airport (STN)

Summer 2020 (S20)



Initial Coordination Report

Report Date: Mon 04-Nov-2019

Headlines

	S20 Init Coord	vs. S19 Init Coord	vs. S20 Hist (SHL)
Total Air Transport Movements (Passenger & Freight)	136,055	▼ -2.0%	▲ 12.4%
Total Passenger Air Transport Movements	128,365	▼ -2.8%	▲ 13.0%
Total Passenger Air Transport Movement Seats	24,250,804	▼ -1.5%	▲ 15.0%
Average Seats per Passenger Air Transport Movement	188.92	▲ 1.3%	▲ 1.8%
Percentage of allocated slots cleared as requested (OK)	90%		

Contents

Page	Content
2	Runway Scheduling Limits
3	Coordinator's Report
4	Peak Week - Initial Coordination Analysis
5	ATM Allocation by Operator (Full season and Peak Week Comparison)
6	Peak Week - Allocation and Slot Adjustment Distribution by Operator
7	Significant Route Changes
8	Full Season - ATM Analysis
9	Full Season - PATM Seats Analysis
10	Full Season - Terminal Analysis
11	Full Season - Aircraft Size Analysis
12	Full Season - Seasonality
13	Peak Week - Initial Hourly Runway Demand
14	Peak Week - Hourly Runway Allocation
15	Peak Week - Hourly Runway Allocation Comparison (S20 Init Coord vs. S19 Init Coord)
16	Peak Week - Hourly Runway Allocation Comparison (S20 Init Coord vs. S20 Hist (SHL))
17	Peak Week Histogram - Departure Passengers (T60) - All Terminals - All Operators
18	Peak Week Histogram - Departure Passengers (T60/15) - All Terminals - All Operators
19	Peak Week Histogram - Departure Passengers (T120/15) - All Terminals - All Operators
20	Peak Week Histogram - Arrival Passengers (T60) - 1I - All Operators
21	Peak Week Histogram - Arrival Passengers (T60/15) - 1I - All Operators
22	Peak Week Histogram - Arrival Passengers (T60/15) - 1I - All Operators
23	Glossary

S19 scheduling season runs from Sun 31-Mar-2019 to Sat 26-Oct-2019 (210 days).

S20 scheduling season runs from Sun 29-Mar-2020 to Sat 24-Oct-2020 (210 days).

Disclaimer

No warranty whether expressed or implied as to the completeness, accuracy, fitness for purpose, or satisfactory quality is given by ACL regarding the information in this report, which is provided by third parties. Accordingly, ACL excludes all liability with regard to such data.

The contents of this report may not be reproduced without the written consent of ACL.

Runway Scheduling Limits



Declared Hourly Movement Capacity

S19 Arrivals								Change: S19 to S20								S20 Arrivals							
Hour	Mon	Tue	Wed	Thu	Fri	Sat	Sun	Hour	Mon	Tue	Wed	Thu	Fri	Sat	Sun	Hour	Mon	Tue	Wed	Thu	Fri	Sat	Sun
UTC 00	24	24	24	24	24	24	24	00								00	24	24	24	24	24	24	24
01	24	24	24	24	24	24	24	01								01	24	24	24	24	24	24	24
02	24	24	24	24	24	24	24	02								02	24	24	24	24	24	24	24
03	24	24	24	24	24	24	24	03								03	24	24	24	24	24	24	24
04	24	24	24	24	24	24	24	04								04	24	24	24	24	24	24	24
05	24	24	24	24	24	24	24	05								05	24	24	24	24	24	24	24
06	28	28	28	28	28	28	28	06								06	28	28	28	28	28	28	28
07	25	25	25	25	25	25	25	07								07	25	25	25	25	25	25	25
08	24	24	24	24	24	24	24	08								08	24	24	24	24	24	24	24
09	25	25	25	25	25	25	25	09	2	2	2	2	2	2	2	09	27	27	27	27	27	27	27
10	28	28	28	28	28	28	28	10								10	28	28	28	28	28	28	28
11	28	28	28	28	28	28	28	11								11	28	28	28	28	28	28	28
12	24	24	24	24	24	24	24	12	4	4	4	4	4	4	4	12	28	28	28	28	28	28	28
13	24	24	24	24	24	24	24	13	4	4	4	4	4	4	4	13	28	28	28	28	28	28	28
14	28	28	28	28	28	28	28	14								14	28	28	28	28	28	28	28
15	28	28	28	28	28	28	28	15								15	28	28	28	28	28	28	28
16	28	28	28	28	28	28	28	16								16	28	28	28	28	28	28	28
17	30	30	30	30	30	30	30	17								17	30	30	30	30	30	30	30
18	28	28	28	28	28	28	28	18								18	28	28	28	28	28	28	28
19	27	27	27	27	27	27	27	19								19	27	27	27	27	27	27	27
20	24	24	24	24	24	24	24	20	3	3	3	3	3	3	3	20	27	27	27	27	27	27	27
21	31	31	31	31	31	31	31	21								21	31	31	31	31	31	31	31
22	31	31	31	31	31	31	31	22								22	31	31	31	31	31	31	31
23	24	24	24	24	24	24	24	23								23	24	24	24	24	24	24	24

S19 Departures								Change: S19 to S20								S20 Departures							
Hour	Mon	Tue	Wed	Thu	Fri	Sat	Sun	Hour	Mon	Tue	Wed	Thu	Fri	Sat	Sun	Hour	Mon	Tue	Wed	Thu	Fri	Sat	Sun
UTC 00	24	24	24	24	24	24	24	00								00	24	24	24	24	24	24	24
01	24	24	24	24	24	24	24	01								01	24	24	24	24	24	24	24
02	24	24	24	24	24	24	24	02								02	24	24	24	24	24	24	24
03	24	24	24	24	24	24	24	03								03	24	24	24	24	24	24	24
04	24	24	24	24	24	24	24	04								04	24	24	24	24	24	24	24
05	35	35	35	35	35	35	35	05								05	35	35	35	35	35	35	35
06	33	33	33	33	33	33	33	06								06	33	33	33	33	33	33	33
07	33	33	33	33	33	33	33	07								07	33	33	33	33	33	33	33
08	28	28	28	28	28	28	28	08								08	28	28	28	28	28	28	28
09	25	25	25	25	25	25	25	09	2	2	2	2	2	2	2	09	27	27	27	27	27	27	27
10	28	28	28	28	28	28	28	10								10	28	28	28	28	28	28	28
11	28	28	28	28	28	28	28	11								11	28	28	28	28	28	28	28
12	24	24	24	24	24	24	24	12	4	4	4	4	4	4	4	12	28	28	28	28	28	28	28
13	24	24	24	24	24	24	24	13	4	4	4	4	4	4	4	13	28	28	28	28	28	28	28
14	28	28	28	28	28	28	28	14								14	28	28	28	28	28	28	28
15	28	28	28	28	28	28	28	15								15	28	28	28	28	28	28	28
16	28	28	28	28	28	28	28	16								16	28	28	28	28	28	28	28
17	30	30	30	30	30	30	30	17								17	30	30	30	30	30	30	30
18	28	28	28	28	28	28	28	18								18	28	28	28	28	28	28	28
19	28	28	28	28	28	28	28	19								19	28	28	28	28	28	28	28
20	24	24	24	24	24	24	24	20	3	3	3	3	3	3	3	20	27	27	27	27	27	27	27
21	24	24	24	24	24	24	24	21								21	24	24	24	24	24	24	24
22	24	24	24	24	24	24	24	22								22	24	24	24	24	24	24	24
23	24	24	24	24	24	24	24	23								23	24	24	24	24	24	24	24

S19 Totals								Change: S19 to S20								S20 Totals							
Hour	Mon	Tue	Wed	Thu	Fri	Sat	Sun	Hour	Mon	Tue	Wed	Thu	Fri	Sat	Sun	Hour	Mon	Tue	Wed	Thu	Fri	Sat	Sun
UTC 00	36	36	36	36	36	36	36	00								00	36	36	36	36	36	36	36
01	36	36	36	36	36	36	36	01								01	36	36	36	36	36	36	36
02	36	36	36	36	36	36	36	02								02	36	36	36	36	36	36	36
03	36	36	36	36	36	36	36	03								03	36	36	36	36	36	36	36
04	36	36	36	36	36	36	36	04								04	36	36	36	36	36	36	36
05	47	47	47	47	47	47	47	05								05	47	47	47	47	47	47	47
06	50	50	50	50	50	50	50	06								06	50	50	50	50	50	50	50
07	50	50	50	50	50	50	50	07								07	50	50	50	50	50	50	50
08	41	41	41	41	41	41	41	08	1	1	1	1	1	1	1	08	42	42	42	42	42	42	42
09	41	41	41	41	41	41	41	09	1	1	1	1	1	1	1	09	42	42	42	42	42	42	42
10	50	50	50	50	50	50	50	10								10	50	50	50	50	50	50	50
11	46	46	46	46	46	46	46	11								11	46	46	46	46	46	46	46
12	45	45	45	45	45	45	45	12	3	3	3	3	3	3	3	12	48	48	48	48	48	48	48
13	45	45	45	45	45	45	45	13								13	45	45	45	45	45	45	45
14	44	44	44	44	44	44	44	14								14	44	44	44	44	44	44	44
15	47	47	47	47	47	47	47	15	1	1	1	1	1	1	1	15	48	48	48	48	48	48	48
16	47	47	47	47	47	47	47	16								16	47	47	47	47	47	47	47
17	50	50	50	50	50	50	50	17								17	50	50	50	50	50	50	50
18	50	50	50	50	50	50	50	18								18	50	50	50	50	50	50	50
19	42	42	42	42	42	42	42	19								19	42	42	42	42	42	42	42
20	38	38	38	38	38	38	38	20	4	4	4	4	4	4	4	20	42	42	42	42	42	42	42
21	38	38	38	38	38	38	38	21	4	4	4	4	4	4	4	21	42	42	42	42	42	42	42
22	36	36	36	36	36	36	36	22								22	36	36	36	36	36	36	36
23	36	36	36	36	36	36	36	23								23	36	36	36	36	36	36	36

Coordinator's Report



Total demand	137,882	slots		
Total slots allocated	136,055	slots	98.67%	of total demand
Number of slots cleared OK	122,045	slots	89.70%	of total slots cleared

Slots adjusted (not OK) due to:

RUNWAY constraints	3,723	slots	26.6%	of total slots adjusted
TERMINAL constraints	8,970	slots	64.0%	of total slots adjusted
STAND constraints	-	slots	0.0%	of total slots adjusted
NIGHT constraints	420	slots	3.0%	of total slots adjusted
OTHER constraints	-	slots	0.0%	of total slots adjusted
ARR/DEP TURNAROUND feasibility	897	slots	6.4%	of total slots adjusted

Executive Summary

Total demand for the Summer 2020 season was 137,627 slots, a decrease of 3% compared to Summer 2019 initial coordination. 1,827 slots were not slotted due to being adhoc or significantly off-slot due to terminal constraints. 89.7% of slots were cleared to their requested times.

Runway Constraints

- Total hourly runway demand reached a peak at 58 in the 0700 and 1800 hour, 53 in the 0600 hour, 50 in the 1500 hour and 38 in the 2200 hour. Arrivals hourly runway demand reached a peak of 36 in the 2200 hour and 33 in the 1800 hour. Departures hourly runway demand reached a peak of 44 during the 0500 hour, 35 during the 0600 hour, 38 in the 0700 hour and 29 in the 1500 hour.
- The 15-minute runway sub-constraint demand hit 18 between 0500-0515 for departures, 13 at 1815-1830 for arrivals and 19 at 0700-0715 for total.

Terminal Constraints

- Departures peak reached a maximum utilisation of 7,695 in the hour 0500-0600. The rolling two-hour constraint reached a maximum utilisation of 13,219 passengers from 0500-0700.
- Arrivals hourly constraint peaked at 6,092 between 2200-2300.

Stand Constraints

No Stand Constraint issues.

Night Constraints

- The demand for Night Slots for S20 was 10,300 movements and 5624.75 QC. Total allocated night slots for S20 was 7,804 movements and 4496.26 QC. 2,496 movements were not able to obtain a nightslot due to capacity. Of these movements, 2,076 were not slots and the remaining 420 were allocated a day slot.

Other Constraints

No Other Constraint issues.

Arr/Dep Turnaround Feasibility

- 897 slots were adjusted due to turnaround feasibility

Peak Week - Initial Coordination Analysis



Operator	S20 HISTORIC SLOTS				HISTORIC RECLAIM STATISTICS				NEW SLOT REQUESTS						Total Demand at Initial Submissions	Total Allocation (SAL)	% of demand with a slot allocated
	Historic slots	Lost Histories (NBO & MU)	Unclaimed Histories	Reclaimed Histories	Incl. Time Change	Incl. Seat Increase	Incl. Day change	Incl. A+D or D+A swap	Demand - New Requests	Allocated - Year Round Incumbent	Allocated - Year Round New Entrant	Allocated - New Incumbent	Allocated - New Entrant	Allocated - "Fill-in"			
Air Corsica	14	-	-	14	71.4%	0.0%	0.0%	0.0%	2	-	-	2	-	-	16	16	100.0%
Air Europa	2	-	-	2	0.0%	0.0%	0.0%	0.0%	-	-	-	-	-	-	2	2	100.0%
Air India	-	-	-	-	0.0%	0.0%	0.0%	0.0%	6	6	-	-	-	-	6	6	100.0%
Air Moldova	12	-	-	12	16.7%	0.0%	0.0%	0.0%	-	-	-	-	-	-	12	12	100.0%
Airest	10	10	-	-	0.0%	0.0%	0.0%	0.0%	-	-	-	-	-	-	-	-	-
Albawings	6	6	-	-	0.0%	0.0%	0.0%	0.0%	6	-	-	6	-	-	6	6	100.0%
Arkia	8	-	2	-	83.3%	0.0%	0.0%	0.0%	-	-	-	-	-	-	6	6	100.0%
Asiana Airlines	6	-	-	6	66.7%	0.0%	0.0%	0.0%	-	-	-	-	-	-	6	6	100.0%
ASL Airlines Belgium	-	-	-	-	0.0%	0.0%	0.0%	0.0%	8	8	-	-	-	-	8	8	100.0%
Atlas Air Inc	6	4	-	2	0.0%	0.0%	0.0%	0.0%	2	-	-	2	-	-	4	4	100.0%
AtlasGlobal	14	-	-	14	0.0%	0.0%	0.0%	0.0%	-	-	-	-	-	-	14	14	100.0%
Aurigny Air Services	14	-	-	14	0.0%	0.0%	0.0%	0.0%	-	-	-	-	-	-	14	14	100.0%
BA Cityflyer	16	-	-	16	18.8%	0.0%	0.0%	0.0%	6	-	-	6	-	-	22	22	100.0%
Balkan Holidays Air Ltd	2	2	-	-	0.0%	0.0%	0.0%	0.0%	-	-	-	-	-	-	-	-	-
BMI Regional	-	-	-	-	0.0%	0.0%	0.0%	0.0%	-	-	-	-	-	-	-	-	-
CargolucAir	14	14	-	-	0.0%	0.0%	0.0%	0.0%	4	-	-	4	-	-	4	4	100.0%
Cargolux	6	2	-	4	0.0%	0.0%	0.0%	0.0%	-	-	-	-	-	-	4	4	100.0%
China Southern	8	-	-	8	25.0%	0.0%	0.0%	0.0%	4	-	-	4	-	-	12	12	100.0%
Cobalt Air	-	-	-	-	0.0%	0.0%	0.0%	0.0%	-	-	-	-	-	-	-	-	-
Corendon Airlines	2	2	-	-	0.0%	0.0%	0.0%	0.0%	14	-	-	-	14	-	14	14	100.0%
Easylet	435	1	2	436	11.9%	8.3%	0.0%	0.0%	26	-	-	26	-	2	462	462	100.0%
Easylet Europe	2	-	-	2	0.0%	100.0%	0.0%	0.0%	-	-	-	-	-	-	2	2	100.0%
Emirates	28	-	-	28	25.0%	100.0%	0.0%	0.0%	-	-	-	-	-	-	28	28	100.0%
European Air Transport (DHL)	18	-	-	18	11.1%	0.0%	0.0%	0.0%	9	-	-	1	-	-	27	19	70.4%
Eurowings	24	-	-	24	0.0%	0.0%	0.0%	0.0%	-	-	-	-	-	-	24	24	100.0%
Federal Express	74	-	-	74	1.4%	0.0%	0.0%	0.0%	8	8	-	-	-	-	82	82	100.0%
Freebird Airlines	-	-	-	-	0.0%	0.0%	0.0%	0.0%	-	-	-	-	-	-	-	-	-
Indigo	28	28	-	-	0.0%	0.0%	0.0%	0.0%	14	-	-	14	-	-	14	14	100.0%
Jet2.com	381	-	3	384	46.6%	16.9%	2.3%	0.0%	92	-	-	74	-	3	476	458	96.2%
Lauda Motion	26	-	-	26	73.1%	0.0%	0.0%	0.0%	16	-	-	16	-	-	42	42	100.0%
Loganair	48	-	26	22	0.0%	0.0%	0.0%	0.0%	-	-	-	-	-	-	22	22	100.0%
Martinair	2	-	-	2	0.0%	0.0%	0.0%	0.0%	-	-	-	-	-	-	2	2	100.0%
Montenegro Airlines	-	-	-	-	0.0%	0.0%	0.0%	0.0%	-	-	-	-	-	-	-	-	-
Nouvelair Tunisie	-	-	-	-	0.0%	0.0%	0.0%	0.0%	4	-	-	4	-	-	4	4	100.0%
Pegasus Airlines	65	-	-	65	60.0%	0.0%	0.0%	0.0%	6	-	-	-	6	-	71	71	100.0%
Qatar Airways	12	-	-	12	66.7%	0.0%	0.0%	0.0%	-	-	-	-	-	-	12	12	100.0%
Ryanair	2,669	-	-	2,669	22.0%	0.8%	0.0%	0.0%	326	-	-	290	-	-	2,995	2,959	98.8%
Ryanair UK	-	-	-	-	0.0%	0.0%	0.0%	0.0%	18	-	-	-	18	-	18	18	100.0%
SAS Scandinavian	14	-	-	14	0.0%	100.0%	0.0%	0.0%	10	-	-	10	-	-	24	24	100.0%
Thomas Cook (UK)	86	24	-	62	0.0%	0.0%	0.0%	0.0%	-	-	-	-	-	-	62	62	100.0%
Titan Airways	12	5	1	6	0.0%	0.0%	0.0%	0.0%	21	-	-	20	-	-	27	26	96.3%
Travel Service	-	-	-	-	0.0%	0.0%	0.0%	0.0%	-	-	-	-	-	-	-	-	-
TUI Airways	56	-	-	56	7.1%	1.8%	0.0%	0.0%	-	-	-	-	-	-	56	56	100.0%
Turkish Airlines	8	-	-	8	100.0%	0.0%	0.0%	0.0%	-	-	-	-	-	-	8	8	100.0%
Tus Airways	-	-	-	-	0.0%	0.0%	0.0%	0.0%	14	-	-	14	-	-	14	14	100.0%
UPS Airlines	-	-	4	32	12.5%	0.0%	0.0%	0.0%	4	-	-	4	-	-	36	36	100.0%
Ural Airlines	36	-	-	36	0.0%	0.0%	0.0%	0.0%	8	-	-	-	8	-	8	8	100.0%
Vueling	-	-	-	-	0.0%	0.0%	0.0%	0.0%	26	-	-	26	-	-	26	26	100.0%
West Atlantic Cargo	50	-	-	50	2.0%	0.0%	0.0%	0.0%	-	-	-	-	-	-	50	50	100.0%
Wideroe	14	-	-	14	100.0%	0.0%	0.0%	0.0%	-	-	-	-	-	-	14	14	100.0%
WOW Air	-	-	-	-	0.0%	0.0%	0.0%	0.0%	-	-	-	-	-	-	-	-	-
TOTAL	4,228	98	28	4,102	23.2%	4.1%	0.2%	0.0%	654	22	-	523	46	5	4,756	4,693	98.7%

Air Transport Movement Allocation by Operator

Comparison between S20 Hist (SHL) vs. S20 Init Coord



Operator	FULL SEASON ALLOCATION								PEAK WEEK ALLOCATION							
	S20 ATMs	S20 ATMs	+/- change	S20 Rank	S20 Seats	S20 Seats	+/- change	S20 Rank	S20 ATMs	S20 ATMs	+/- change	S20 Rank	S20 Seats	S20 Seats	+/- change	S20 Rank
Air Corsica	352	394	42	26	63,360	70,920	7,560	17	14	16	2	20	2,520	2,880	360	14
Air Europa	18	18	0	43	3,348	3,348	0	30	2	2	0	41	372	372	0	29
Air India	-	180	180	33	-	46,080	46,080	21	-	6	6	33	-	1,536	1,536	21
Air Moldova	330	330	0	29	58,602	58,602	0	19	12	12	0	27	2,158	2,158	0	19
Airest	46	-	-46	44	-	-	0	31	10	-	-10	44	-	-	0	31
Albawings	180	180	0	33	23,040	23,040	0	26	6	6	0	33	768	768	0	26
Arkia	182	154	-28	36	39,858	31,456	-8,402	24	8	6	-2	33	1,752	1,234	-518	23
Asiana Airlines	180	180	0	33	-	-	0	31	6	6	0	33	-	-	0	31
ASL Airlines Belgium	-	240	240	30	-	-	0	31	-	8	8	30	-	-	0	31
Atlas Air Inc	180	120	-60	37	-	-	0	31	6	4	-2	37	-	-	0	31
AtlasGlobal	420	420	0	20	85,680	85,680	0	14	14	14	0	21	2,856	2,856	0	16
Aurigny Air Services	420	420	0	20	30,240	30,240	0	25	14	14	0	21	1,008	1,008	0	25
BA Cityflyer	412	578	166	16	40,376	56,644	16,268	20	16	22	6	16	1,568	2,156	588	20
Balkan Holidays Air Ltd	16	-	-16	44	2,880	-	-2,880	31	2	-	-2	44	360	-	-360	31
BMI Regional	-	-	-	44	-	-	0	31	-	-	0	44	-	-	0	31
CargoLogicAir	420	120	-300	37	-	-	0	31	14	4	-10	37	-	-	0	31
Cargolux	180	120	-60	37	-	-	0	31	6	4	-2	37	-	-	0	31
China Southern	240	360	120	27	-	-	0	31	8	12	4	27	-	-	0	31
Cobalt Air	-	-	0	44	-	-	0	31	-	-	0	44	-	-	0	31
Corendon Airlines	58	420	362	20	10,962	79,380	68,418	15	2	14	12	21	378	2,646	2,268	17
Corendon Airlines Europe	-	-	0	44	-	-	0	31	-	-	0	44	-	-	0	31
EasyJet	12,834	13,564	730	2	2,197,392	2,344,368	146,976	3	435	462	27	2	74,412	79,758	5,346	3
EasyJet Europe	60	60	0	41	10,800	11,160	360	29	2	2	0	41	360	372	12	29
Emirates	656	850	194	11	233,844	437,880	204,036	4	28	28	0	11	9,996	14,476	4,480	4
Enter Air	-	-	0	44	-	-	0	31	-	-	0	44	-	-	0	31
European Air Transport (DHL)	540	570	30	17	-	-	0	31	18	19	1	18	-	-	0	31
Eurowings	710	710	0	12	127,800	127,800	0	10	24	24	0	14	4,320	4,320	0	12
Federal Express	2,280	2,460	180	4	-	-	0	31	74	82	8	4	-	-	0	31
FlyBosnia	28	-	-28	44	4,200	-	-4,200	31	-	-	0	44	-	-	0	31
Freebird Airlines	-	-	0	44	-	-	0	31	-	-	0	44	-	-	0	31
Indigo	348	420	72	20	77,256	143,220	65,964	9	28	14	-14	21	6,216	4,774	-1,442	9
Jet2.com	9,591	11,874	2,283	3	1,875,589	2,357,808	482,219	2	381	458	77	3	74,488	90,678	16,190	2
Lauda Motion	794	1,274	480	8	142,920	233,640	90,720	7	26	42	16	9	4,680	7,704	3,024	8
Loganair	1,430	660	-770	14	59,510	21,780	-37,730	27	48	22	-26	16	2,000	726	-1,274	27
Martinair	60	60	0	41	-	-	0	31	2	2	0	41	-	-	0	31
Montenegro Airlines	-	-	0	44	-	-	0	31	-	-	0	44	-	-	0	31
Nouvelair Tunisie	-	88	88	40	-	15,576	15,576	28	-	4	4	37	-	708	708	28
Pegasus Airlines	1,894	2,070	176	5	357,966	391,230	33,264	5	65	71	6	5	12,285	13,419	1,134	5
Qatar Airways	338	340	2	28	-	-	0	31	12	12	0	27	-	-	0	31
Ryanair	78,746	87,904	9,158	1	14,888,242	16,627,008	1,738,766	1	2,669	2,959	290	1	504,601	559,667	55,066	1
Ryanair UK	-	540	540	18	-	102,060	102,060	12	-	18	18	19	-	3,402	3,402	13
SAS Scandinavian	420	530	110	19	63,000	95,550	32,550	13	14	24	10	14	2,100	4,344	2,244	11
Thomas Cook (UK)	1,693	1,121	-572	9	347,260	231,380	-115,880	8	86	62	-24	6	17,920	13,040	-4,880	6
Titan Airways	337	680	343	13	29,520	68,400	38,880	18	12	26	14	12	1,260	2,880	1,620	14
Travel Service	-	-	0	44	-	-	0	31	-	-	0	44	-	-	0	31
TUI Airways	1,500	1,526	26	6	283,230	288,414	5,184	6	56	56	0	7	10,575	10,584	9	7
Turkish Airlines	220	240	20	30	-	-	0	31	8	8	0	30	-	-	0	31
Tus Airways	-	420	420	20	-	79,380	79,380	15	-	14	14	21	-	2,646	2,646	17
UPS Airlines	1,080	1,080	0	10	-	-	0	31	36	36	0	10	-	-	0	31
Ural Airlines	-	240	240	30	-	44,400	44,400	22	-	8	8	30	-	1,480	1,480	22
Virgin Atlantic	-	-	0	44	-	-	0	31	-	-	0	44	-	-	0	31
Vueling	-	620	620	15	-	111,600	111,600	11	-	26	26	12	-	4,680	4,680	10
West Atlantic Cargo	1,500	1,500	0	7	-	-	0	31	50	50	0	8	-	-	0	31
Wideroe	328	420	92	20	25,584	32,760	7,176	23	14	14	0	21	1,092	1,092	0	24
WOW Air	-	-	0	44	-	-	0	31	-	-	0	44	-	-	0	31
TOTAL	121,021	136,055	15,034		21,082,459	24,250,804	3,168,345		4,228	4,693	465		740,045	838,364	98,319	

Operators with 0 'ATMs' in both S20 Hist (SHL) & S20 Init Coord schedules are included in the table due to appearing in the S19 Init Coord schedule (either with/without allocated slots).

Peak Week - Allocation and Slot Adjustment Distribution by Operator

Schedule: S20 Init Coord



Operator	S20 allocated ATMs	SLOT ADJUSTMENTS (MINUTES OFF REQUESTED TIME)													Requests with NO slot allocated		
		0	5	10	15	20	25	30	35	40	45	50	55	60		>60	
Air Corsica	16	81.3%	6.3%	0.0%	0.0%	0.0%	0.0%	12.5%	0.0%	0.0%	0.0%	0.0%	0.0%	0.0%	0.0%	0.0%	-
Air Europa	2	100.0%	0.0%	0.0%	0.0%	0.0%	0.0%	0.0%	0.0%	0.0%	0.0%	0.0%	0.0%	0.0%	0.0%	0.0%	-
Air India	6	50.0%	0.0%	0.0%	0.0%	0.0%	50.0%	0.0%	0.0%	0.0%	0.0%	0.0%	0.0%	0.0%	0.0%	0.0%	-
Air Moldova	12	100.0%	0.0%	0.0%	0.0%	0.0%	0.0%	0.0%	0.0%	0.0%	0.0%	0.0%	0.0%	0.0%	0.0%	0.0%	-
Airest	-	-	-	-	-	-	-	-	-	-	-	-	-	-	-	-	-
Albawings	6	66.7%	0.0%	0.0%	0.0%	0.0%	0.0%	0.0%	0.0%	0.0%	33.3%	0.0%	0.0%	0.0%	0.0%	0.0%	-
Arkia	6	100.0%	0.0%	0.0%	0.0%	0.0%	0.0%	0.0%	0.0%	0.0%	0.0%	0.0%	0.0%	0.0%	0.0%	0.0%	-
Asiana Airlines	6	100.0%	0.0%	0.0%	0.0%	0.0%	0.0%	0.0%	0.0%	0.0%	0.0%	0.0%	0.0%	0.0%	0.0%	0.0%	-
ASL Airlines Belgium	8	0.0%	0.0%	0.0%	0.0%	0.0%	0.0%	0.0%	0.0%	0.0%	0.0%	0.0%	0.0%	0.0%	100.0%	0.0%	-
Atlas Air Inc	4	100.0%	0.0%	0.0%	0.0%	0.0%	0.0%	0.0%	0.0%	0.0%	0.0%	0.0%	0.0%	0.0%	0.0%	0.0%	-
AtlasGlobal	14	100.0%	0.0%	0.0%	0.0%	0.0%	0.0%	0.0%	0.0%	0.0%	0.0%	0.0%	0.0%	0.0%	0.0%	0.0%	-
Aurigny Air Services	14	100.0%	0.0%	0.0%	0.0%	0.0%	0.0%	0.0%	0.0%	0.0%	0.0%	0.0%	0.0%	0.0%	0.0%	0.0%	-
BA Cityflyer	22	77.3%	9.1%	0.0%	4.5%	4.5%	0.0%	0.0%	0.0%	0.0%	0.0%	0.0%	0.0%	0.0%	0.0%	4.5%	-
Balkan Holidays Air Ltd	-	-	-	-	-	-	-	-	-	-	-	-	-	-	-	-	-
BMI Regional	-	-	-	-	-	-	-	-	-	-	-	-	-	-	-	-	-
CargoLogicAir	4	100.0%	0.0%	0.0%	0.0%	0.0%	0.0%	0.0%	0.0%	0.0%	0.0%	0.0%	0.0%	0.0%	0.0%	0.0%	-
Cargolux	4	100.0%	0.0%	0.0%	0.0%	0.0%	0.0%	0.0%	0.0%	0.0%	0.0%	0.0%	0.0%	0.0%	0.0%	0.0%	-
China Southern	12	100.0%	0.0%	0.0%	0.0%	0.0%	0.0%	0.0%	0.0%	0.0%	0.0%	0.0%	0.0%	0.0%	0.0%	0.0%	-
Cobalt Air	-	-	-	-	-	-	-	-	-	-	-	-	-	-	-	-	-
Corendon Airlines	14	85.7%	0.0%	0.0%	0.0%	0.0%	0.0%	0.0%	0.0%	0.0%	0.0%	14.3%	0.0%	0.0%	0.0%	0.0%	-
EasyJet	462	96.8%	0.9%	0.0%	0.0%	0.0%	0.2%	0.0%	0.0%	0.0%	0.4%	0.4%	0.0%	0.0%	1.3%	0.0%	-
EasyJet Europe	2	100.0%	0.0%	0.0%	0.0%	0.0%	0.0%	0.0%	0.0%	0.0%	0.0%	0.0%	0.0%	0.0%	0.0%	0.0%	-
Emirates	28	75.0%	0.0%	0.0%	25.0%	0.0%	0.0%	0.0%	0.0%	0.0%	0.0%	0.0%	0.0%	0.0%	0.0%	0.0%	-
European Air Transport (DHL)	19	100.0%	0.0%	0.0%	0.0%	0.0%	0.0%	0.0%	0.0%	0.0%	0.0%	0.0%	0.0%	0.0%	0.0%	0.0%	8
Eurowings	24	100.0%	0.0%	0.0%	0.0%	0.0%	0.0%	0.0%	0.0%	0.0%	0.0%	0.0%	0.0%	0.0%	0.0%	0.0%	-
Federal Express	82	100.0%	0.0%	0.0%	0.0%	0.0%	0.0%	0.0%	0.0%	0.0%	0.0%	0.0%	0.0%	0.0%	0.0%	0.0%	-
Freebird Airlines	-	-	-	-	-	-	-	-	-	-	-	-	-	-	-	-	-
Indigo	14	0.0%	0.0%	0.0%	0.0%	0.0%	0.0%	0.0%	0.0%	0.0%	0.0%	0.0%	0.0%	100.0%	0.0%	0.0%	-
Jet2.com	458	83.4%	6.3%	0.9%	1.7%	0.9%	0.7%	0.9%	0.2%	0.2%	0.0%	0.2%	0.0%	0.4%	4.1%	0.0%	18
Lauda Motion	42	45.2%	4.8%	0.0%	4.8%	0.0%	0.0%	0.0%	0.0%	0.0%	0.0%	0.0%	7.1%	0.0%	38.1%	0.0%	-
Loganair	22	100.0%	0.0%	0.0%	0.0%	0.0%	0.0%	0.0%	0.0%	0.0%	0.0%	0.0%	0.0%	0.0%	0.0%	0.0%	-
Martinair	2	100.0%	0.0%	0.0%	0.0%	0.0%	0.0%	0.0%	0.0%	0.0%	0.0%	0.0%	0.0%	0.0%	0.0%	0.0%	-
Montenegro Airlines	-	-	-	-	-	-	-	-	-	-	-	-	-	-	-	-	-
Nouvelair Tunisie	4	100.0%	0.0%	0.0%	0.0%	0.0%	0.0%	0.0%	0.0%	0.0%	0.0%	0.0%	0.0%	0.0%	0.0%	0.0%	-
Pegasus Airlines	71	93.0%	0.0%	0.0%	0.0%	0.0%	0.0%	0.0%	2.8%	0.0%	0.0%	2.8%	1.4%	0.0%	0.0%	0.0%	-
Qatar Airways	12	91.7%	8.3%	0.0%	0.0%	0.0%	0.0%	0.0%	0.0%	0.0%	0.0%	0.0%	0.0%	0.0%	0.0%	0.0%	-
Ryanair	2,959	91.1%	2.0%	1.0%	0.7%	0.5%	0.5%	0.4%	0.2%	0.1%	0.5%	0.2%	0.1%	0.2%	2.5%	0.0%	36
Ryanair UK	18	44.4%	11.1%	0.0%	0.0%	5.6%	0.0%	0.0%	0.0%	0.0%	0.0%	0.0%	0.0%	0.0%	38.9%	0.0%	-
SAS Scandinavian	24	83.3%	8.3%	0.0%	0.0%	0.0%	0.0%	8.3%	0.0%	0.0%	0.0%	0.0%	0.0%	0.0%	0.0%	0.0%	-
Thomas Cook (UK)	62	100.0%	0.0%	0.0%	0.0%	0.0%	0.0%	0.0%	0.0%	0.0%	0.0%	0.0%	0.0%	0.0%	0.0%	0.0%	-
Titan Airways	26	34.6%	0.0%	0.0%	0.0%	0.0%	3.8%	23.1%	0.0%	0.0%	7.7%	3.8%	0.0%	0.0%	26.9%	0.0%	1
Travel Service	-	-	-	-	-	-	-	-	-	-	-	-	-	-	-	-	-
TUI Airways	56	100.0%	0.0%	0.0%	0.0%	0.0%	0.0%	0.0%	0.0%	0.0%	0.0%	0.0%	0.0%	0.0%	0.0%	0.0%	-
Turkish Airlines	8	75.0%	0.0%	0.0%	25.0%	0.0%	0.0%	0.0%	0.0%	0.0%	0.0%	0.0%	0.0%	0.0%	0.0%	0.0%	-
Tus Airways	14	71.4%	0.0%	0.0%	14.3%	0.0%	0.0%	0.0%	0.0%	0.0%	14.3%	0.0%	0.0%	0.0%	0.0%	0.0%	-
UPS Airlines	36	100.0%	0.0%	0.0%	0.0%	0.0%	0.0%	0.0%	0.0%	0.0%	0.0%	0.0%	0.0%	0.0%	0.0%	0.0%	-
Ural Airlines	8	0.0%	0.0%	0.0%	0.0%	0.0%	0.0%	0.0%	0.0%	0.0%	0.0%	0.0%	50.0%	0.0%	50.0%	0.0%	-
Vueling	26	30.8%	0.0%	0.0%	0.0%	61.5%	0.0%	0.0%	0.0%	0.0%	0.0%	0.0%	0.0%	0.0%	7.7%	0.0%	-
West Atlantic Cargo	50	100.0%	0.0%	0.0%	0.0%	0.0%	0.0%	0.0%	0.0%	0.0%	0.0%	0.0%	0.0%	0.0%	0.0%	0.0%	-
Wideroe	14	85.7%	0.0%	0.0%	0.0%	0.0%	0.0%	0.0%	0.0%	0.0%	0.0%	0.0%	0.0%	14.3%	0.0%	0.0%	-
WOW Air	-	-	-	-	-	-	-	-	-	-	-	-	-	-	-	-	-
TOTAL	4,693	89.5%	2.2%	0.7%	0.7%	1.0%	0.5%	0.5%	0.2%	0.1%	0.5%	0.3%	0.3%	0.2%	3.3%	0.0%	63

Operators with 0 'allocated ATMs' and 0 'Requests with NO slot allocated' in S20, are included in this list due to having slots allocated in either S19 Init Coord or S20 Hist (SHL) schedules.

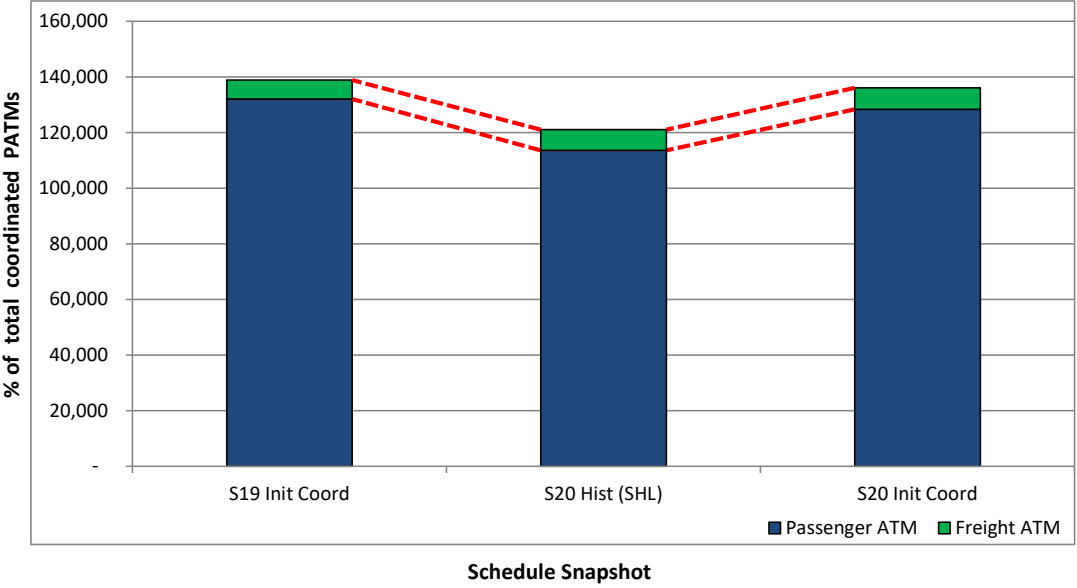
Significant Route Changes

Operator	Category	Description of change from S19 schedule to S20 schedule
Air India	NEW	New service to ATQ
ASL Airlines Belgium	NEW	New service to LGG
Corendon Airlines	NEW	New service to AYT
Indigo	NEW	New service to DEL
Lauda Motion	CHANGE	Increase in flights to VIE
Loganair	CANCELLED	Cancelled service to LDY
Nouvelair Tunisie	NEW	New service to NBE
Ryanair UK	NEW	New services to AYT, BJV and DLM
Tus Airways	NEW	New service to LCA
Ural Airlines	NEW	New service to ZIA
Vueling	NEW	New services to CDG and LCG
West Atlantic Cargo	NEW	New service to BFS

Full Season - ATM Analysis



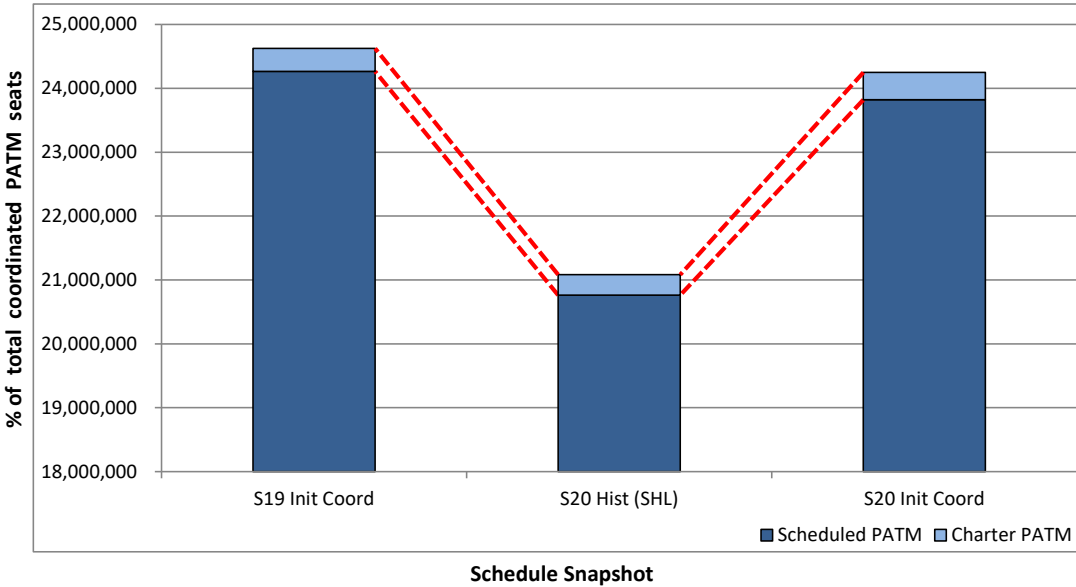
Total ATMs: Passenger ATMs vs. Freight ATMs



Full Season - PATM Seats Analysis



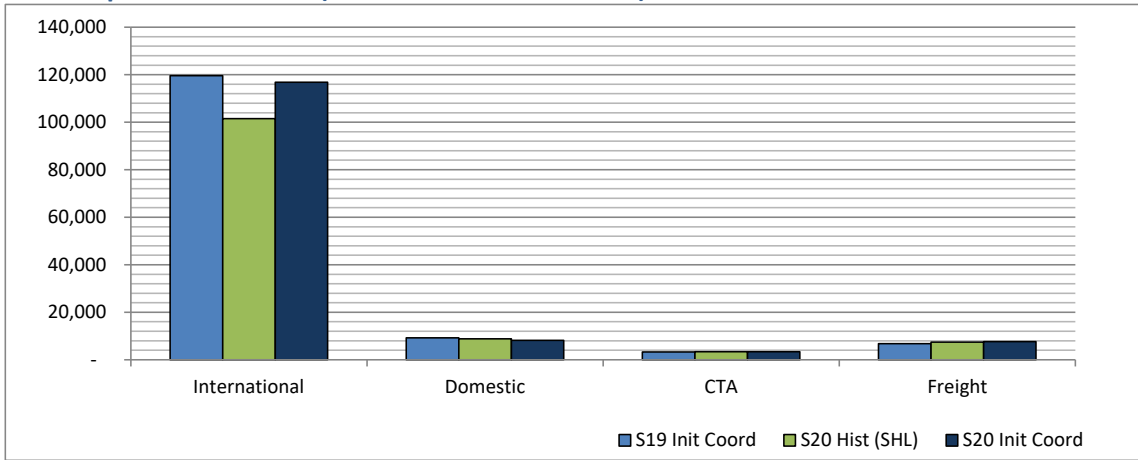
Total Passenger ATM seats: Scheduled vs. Charter



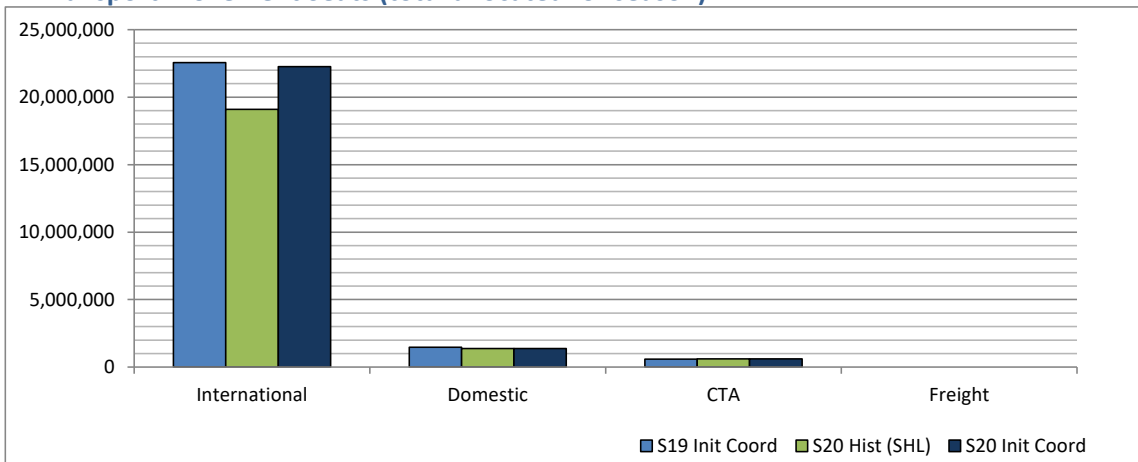
Full Season - Terminal Analysis



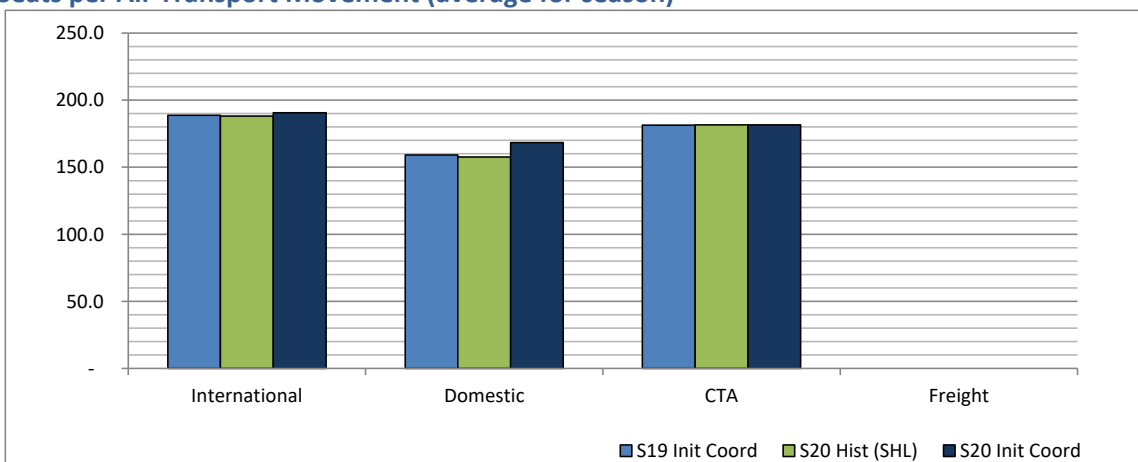
Air Transport Movements (total allocated for season)



Air Transport Movement Seats (total allocated for season)



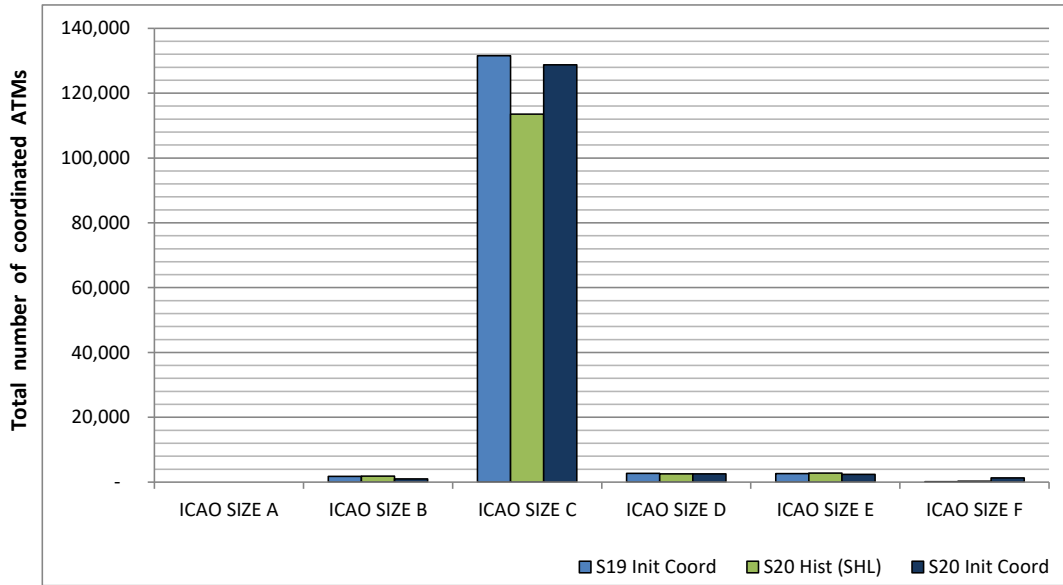
Seats per Air Transport Movement (average for season)



Full Season - Aircraft Size Analysis

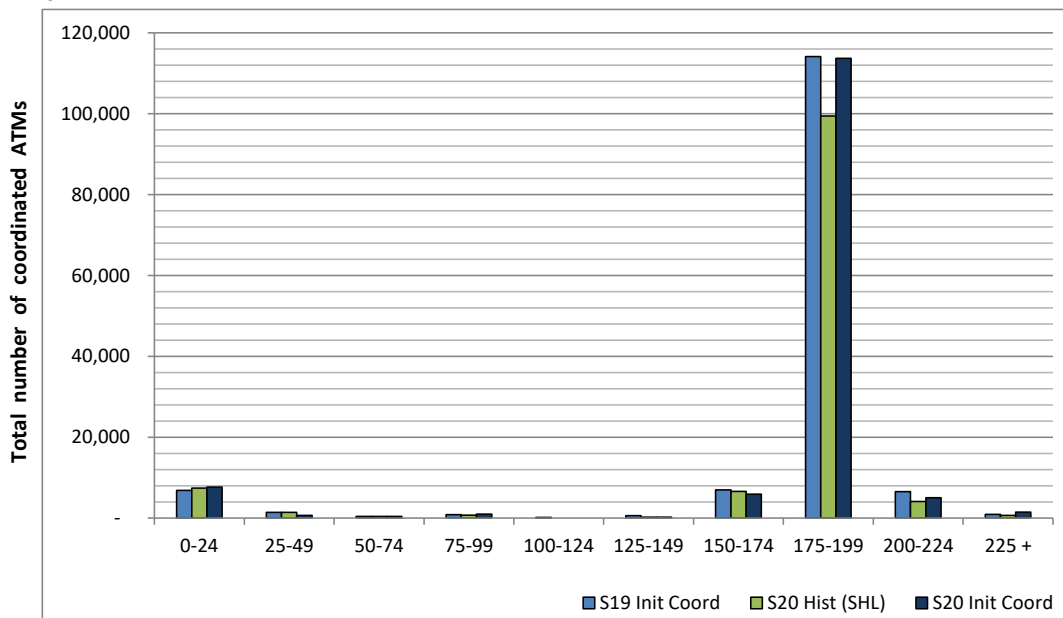


ICAO size designation



Note: See Glossary for definitions of ICAO SIZE groupings

Air Transport Movement seat distribution

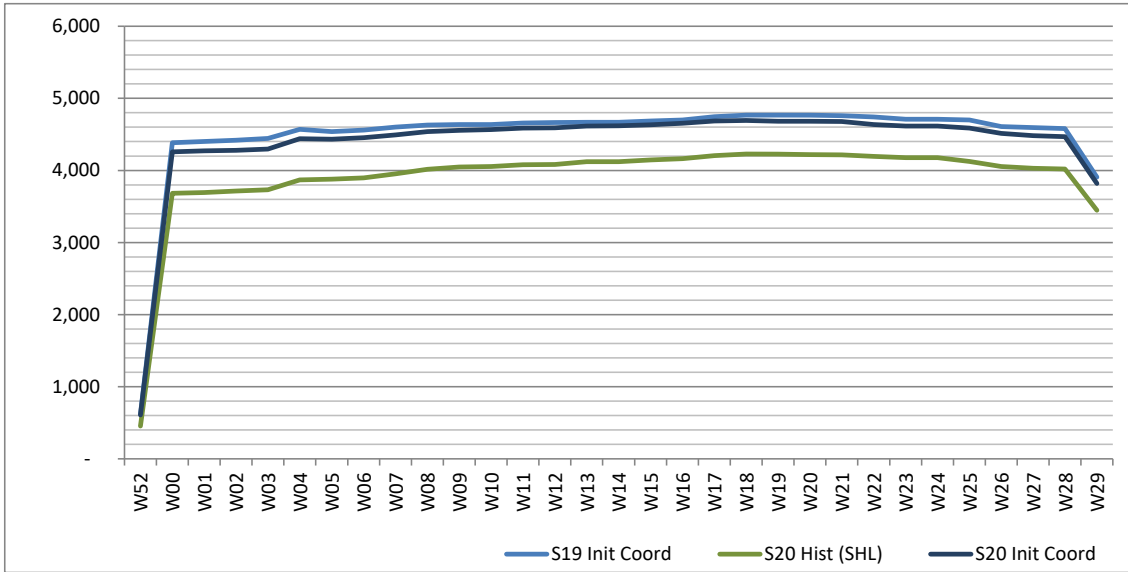


Note: FREIGHT-ONLY services with 0 seats are included in the first seat band '0-24'

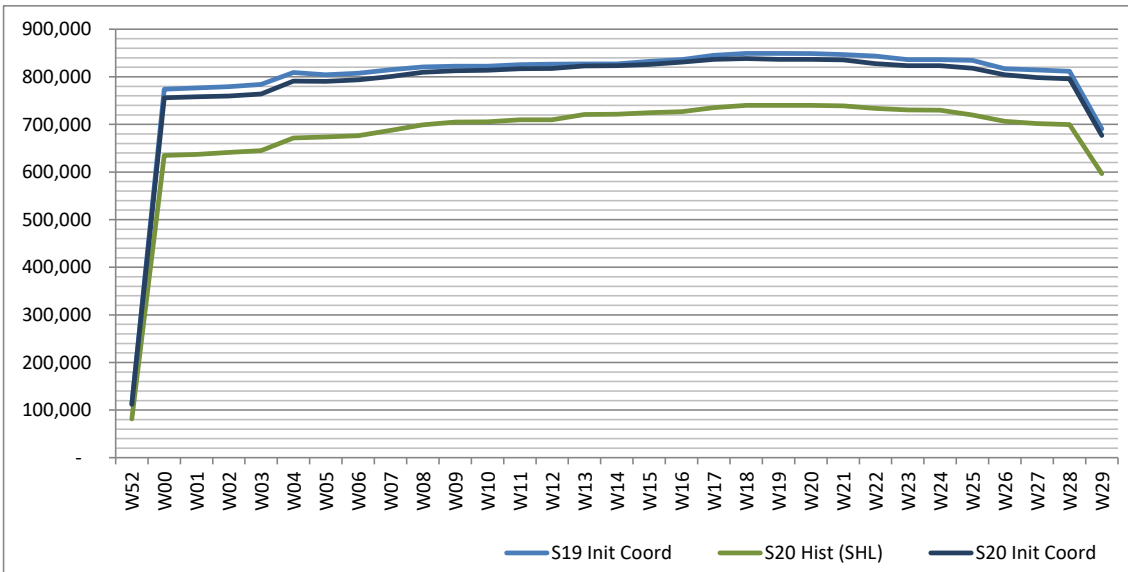
Full Season - Seasonality



Air Transport Movements by week of season



Air Transport Movement Seats by week of season



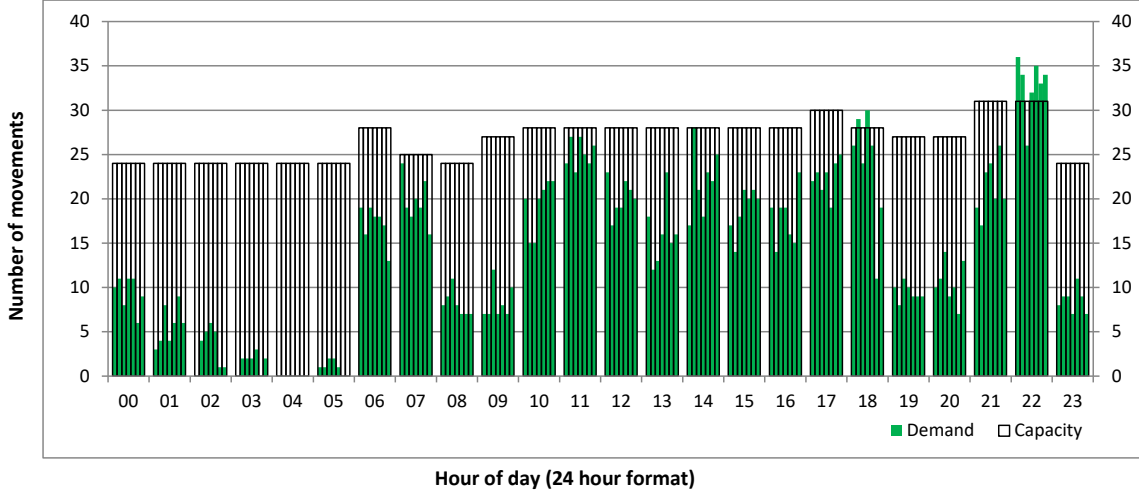
Peak Week - Initial Hourly Runway Demand

Schedule: S20 Init Coord



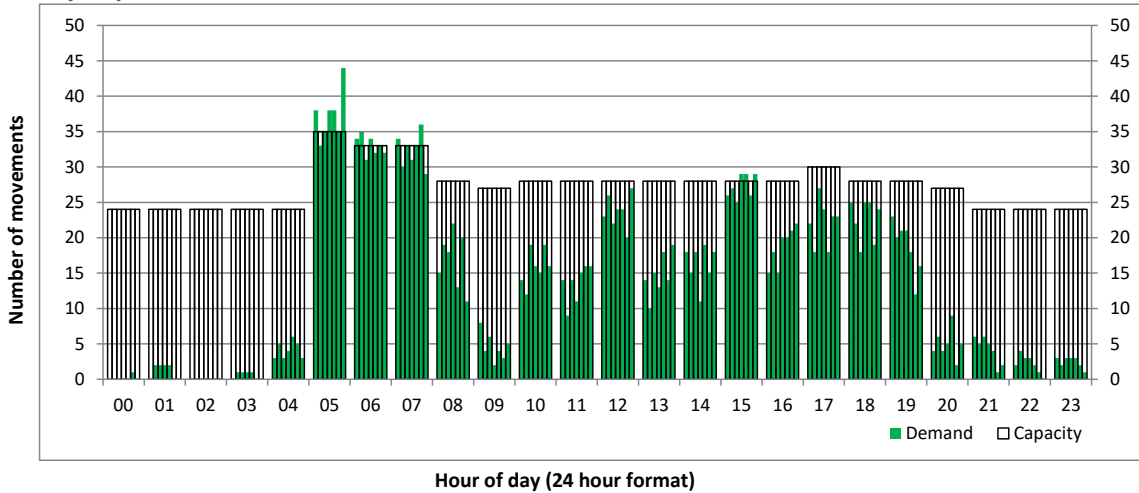
Hourly Arrival Demand

Time: UTC



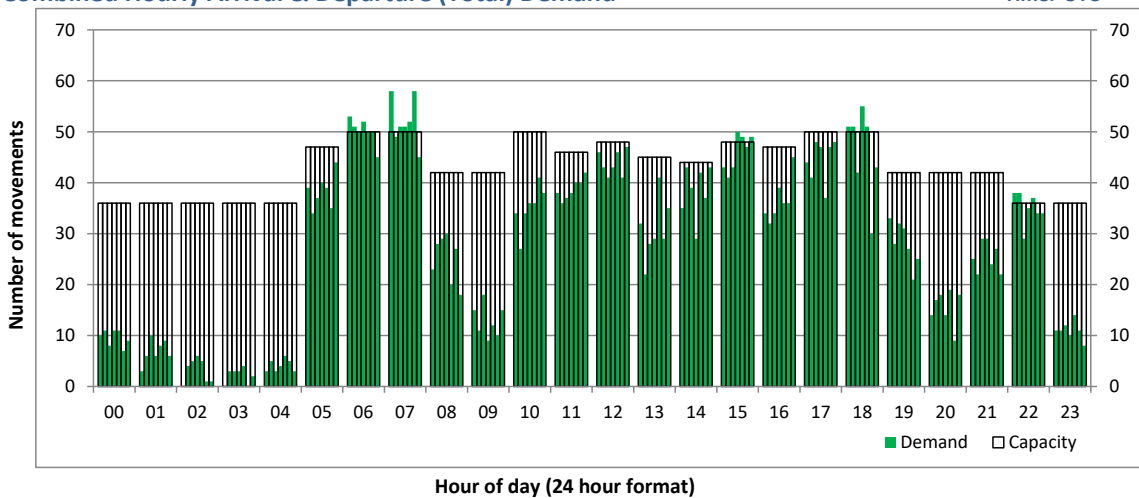
Hourly Departure Demand

Time: UTC



Combined Hourly Arrival & Departure (Total) Demand

Time: UTC



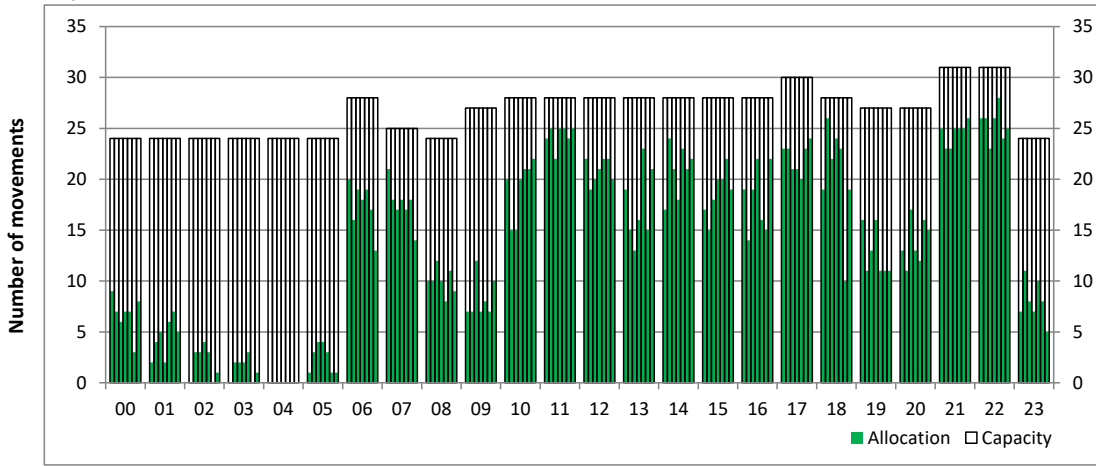
Peak Week - Hourly Runway Allocation

Schedule: S20 Init Coord



Hourly Arrival Allocation

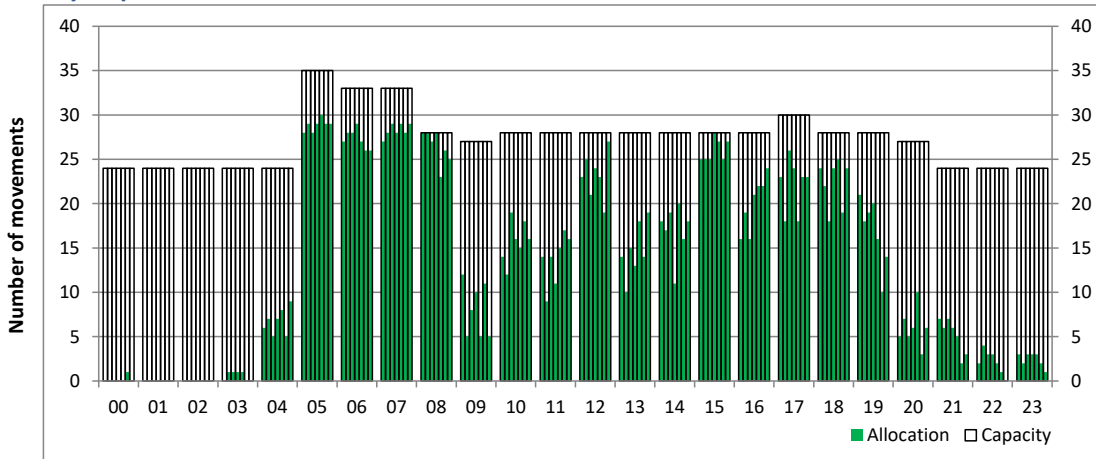
Time: UTC



Hour of day (24 hour format)

Hourly Departure Allocation

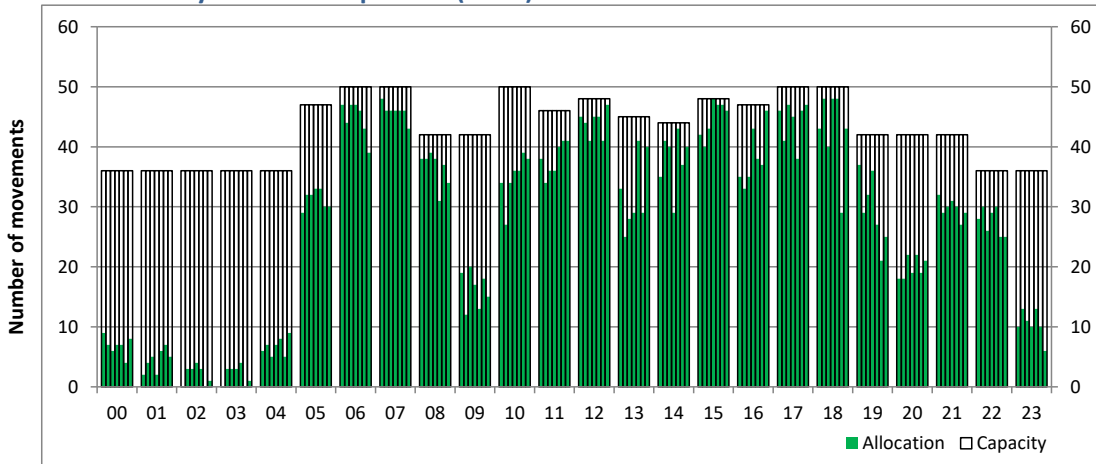
Time: UTC



Hour of day (24 hour format)

Combined Hourly Arrival & Departure (Total) Allocation

Time: UTC



Hour of day (24 hour format)

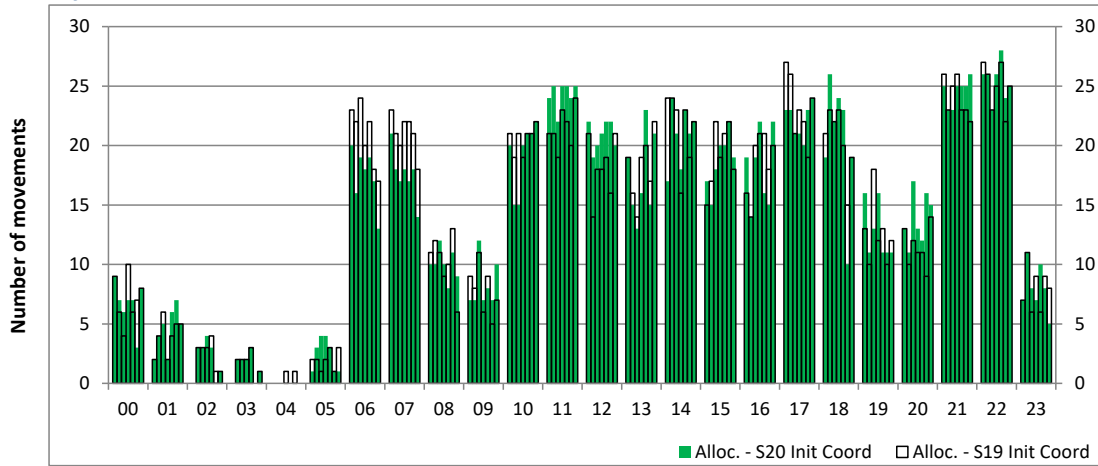
Peak Week - Runway Allocation Comparison

Comparison of S20 Init Coord vs. S19 Init Coord



Hourly Arrival Allocation

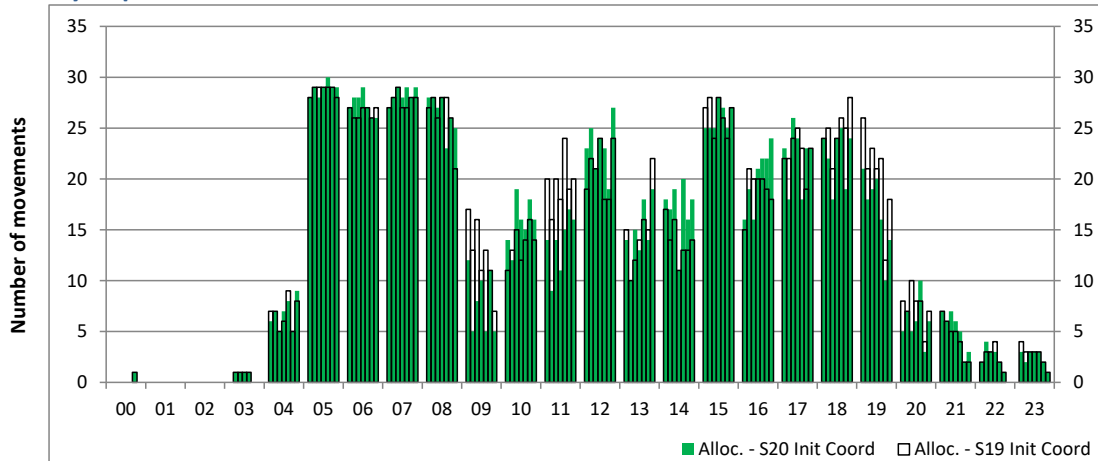
Time: UTC



Hour of day (24 hour format)

Hourly Departure Allocation

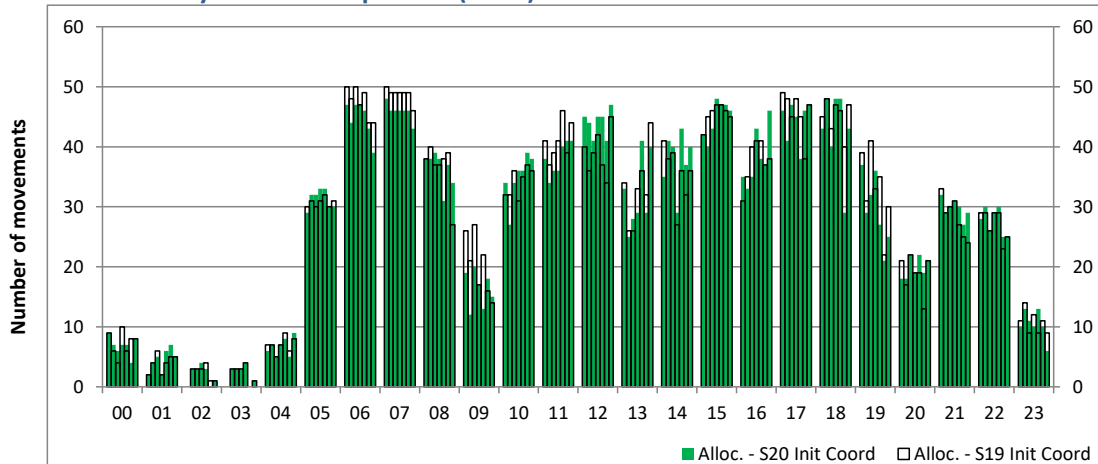
Time: UTC



Hour of day (24 hour format)

Combined Hourly Arrival & Departure (Total) Allocation

Time: UTC



Hour of day (24 hour format)

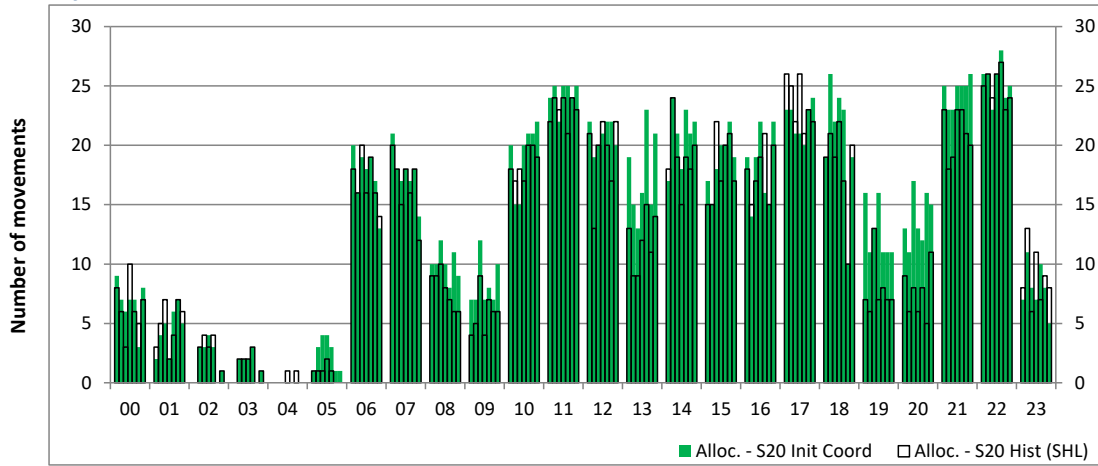
Peak Week - Runway Allocation Comparison

Comparison of S20 Init Coord vs. S20 Hist (SHL)



Hourly Arrival Allocation

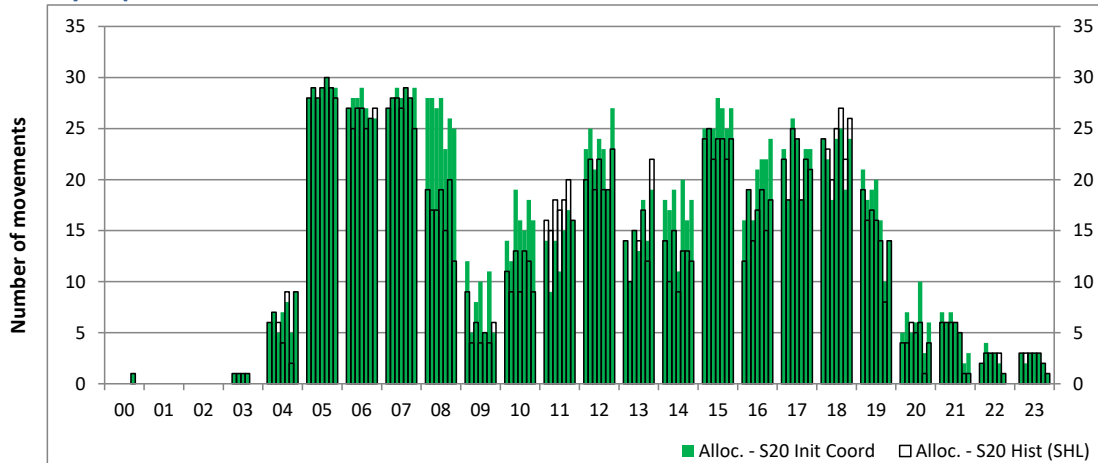
Time: UTC



Hour of day (24 hour format)

Hourly Departure Allocation

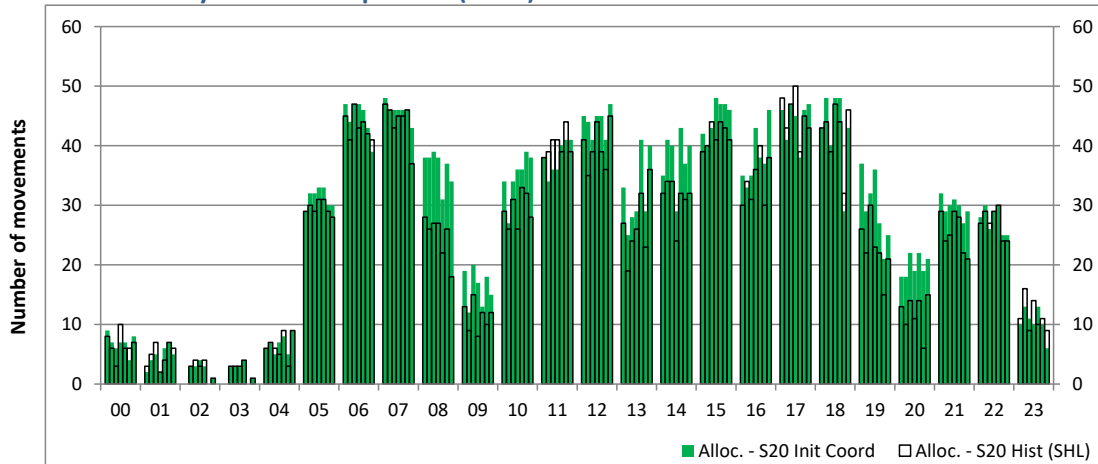
Time: UTC



Hour of day (24 hour format)

Combined Hourly Arrival & Departure (Total) Allocation

Time: UTC



Hour of day (24 hour format)

Peak Week - Passengers Histogram

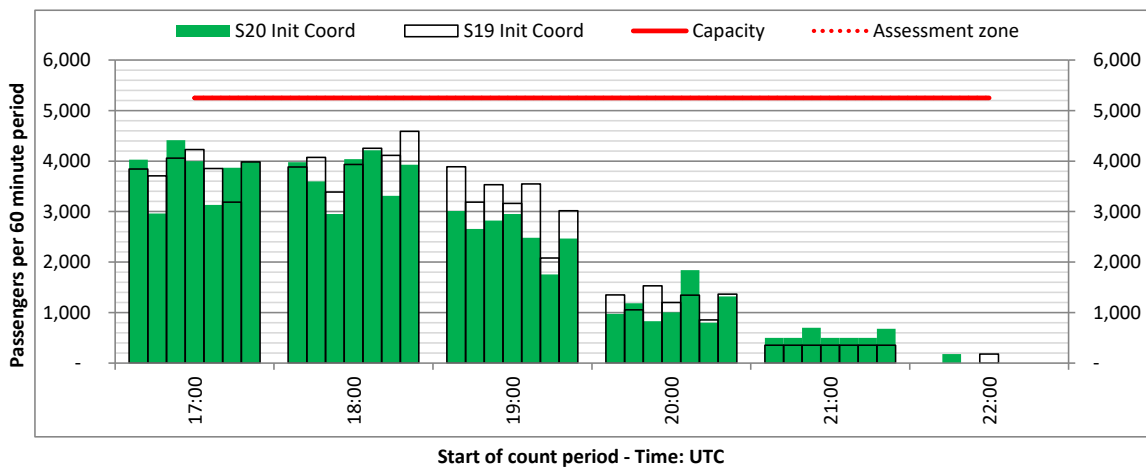
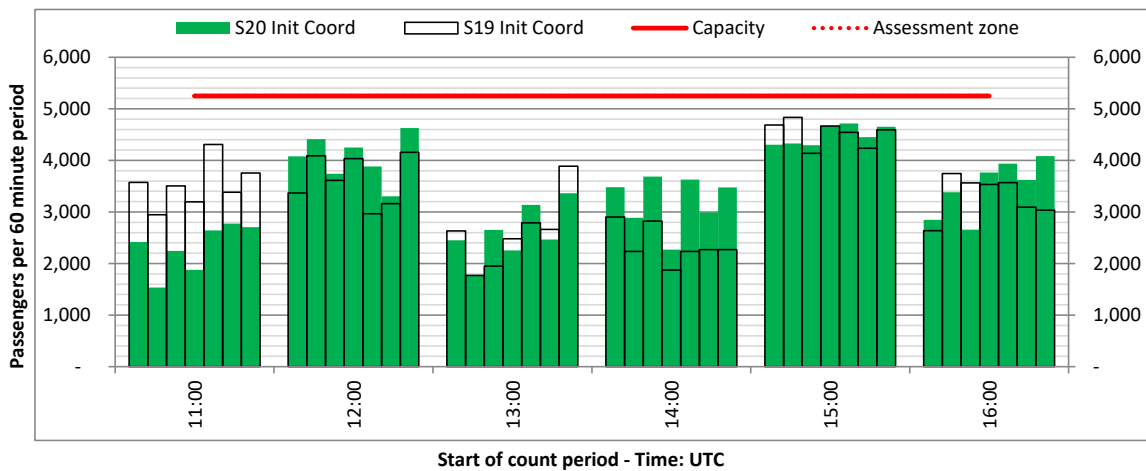
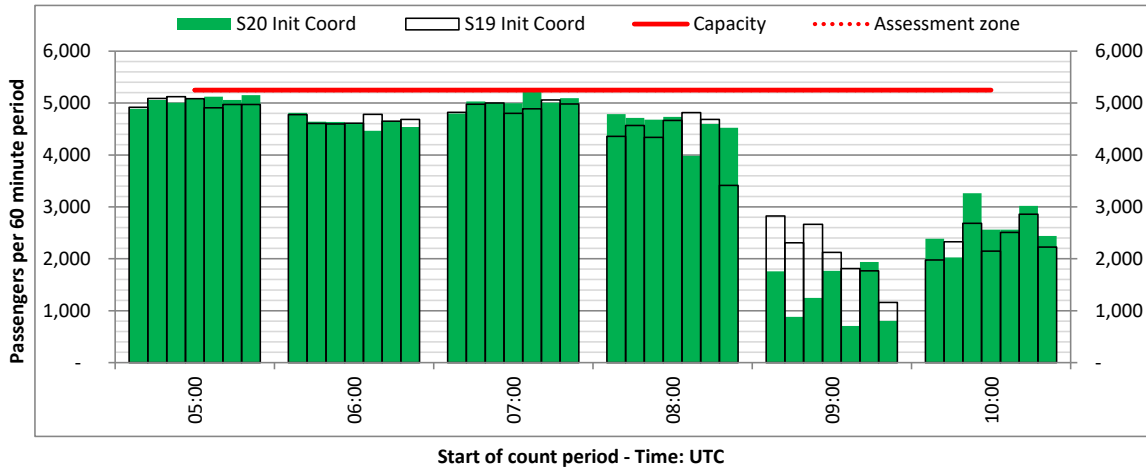
DEPARTURE - 60 minute count rolling every 60 mins (T60)



Terminals: All Terminals

Operators: All Operators

Days: 1234567



Peak Week - Passengers Histogram

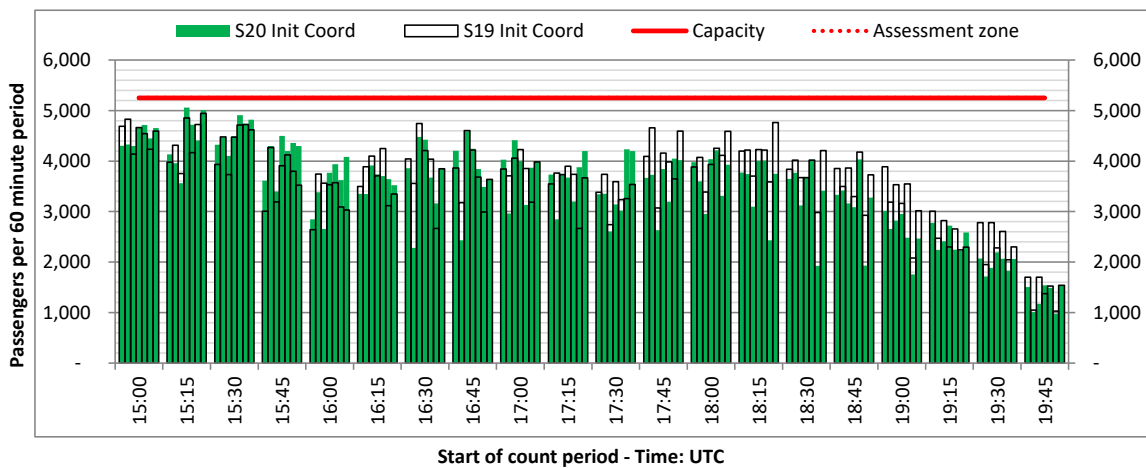
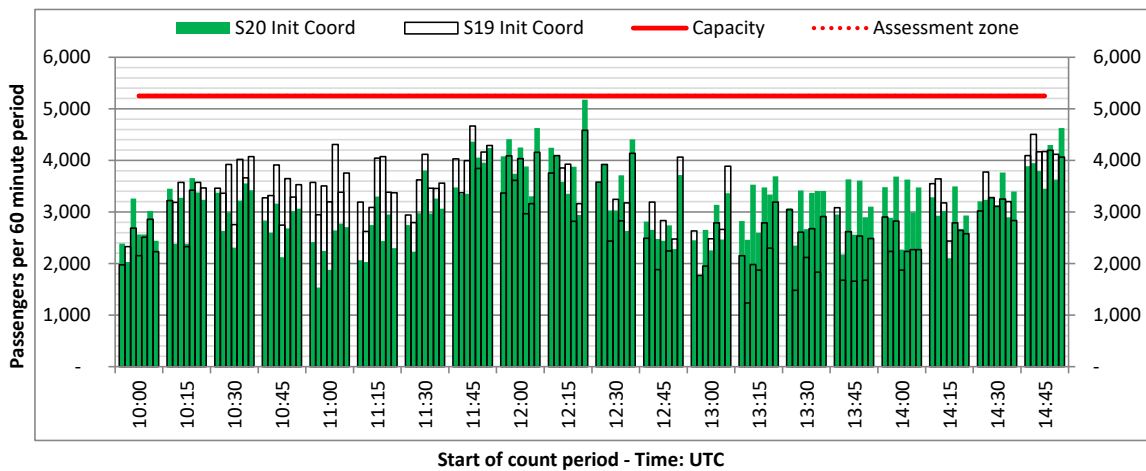
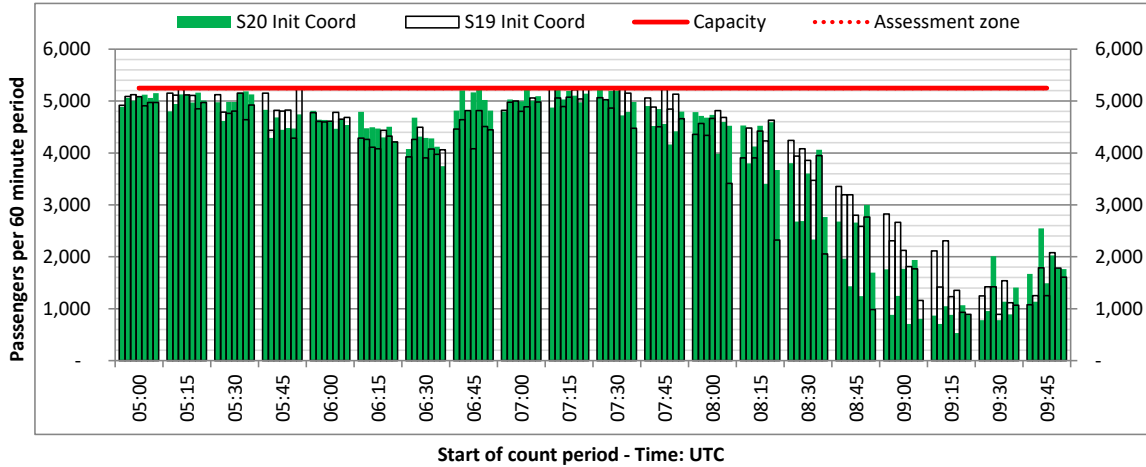
DEPARTURE - 60 minute count rolling every 15 mins (T60/15)



Terminals: All Terminals

Operators: All Operators

Days: 1234567



Peak Week - Passengers Histogram

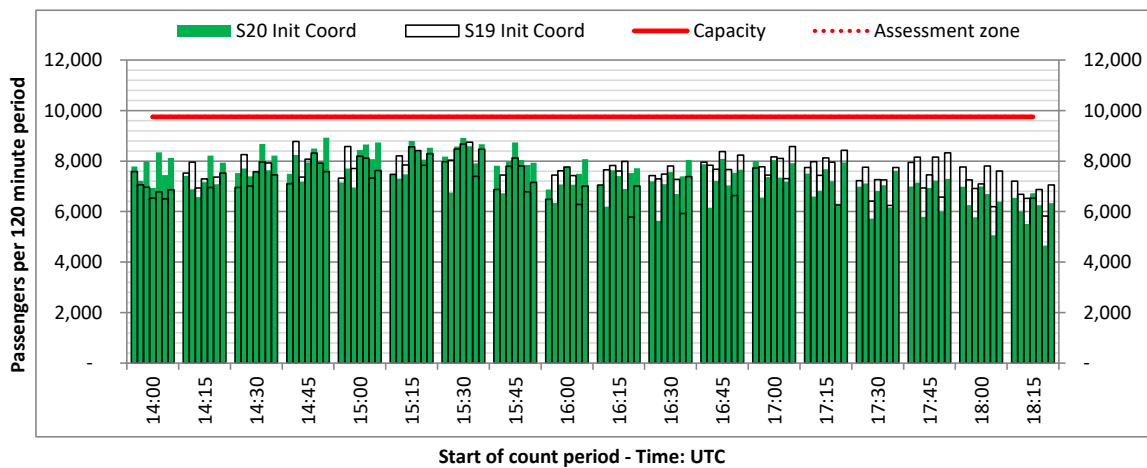
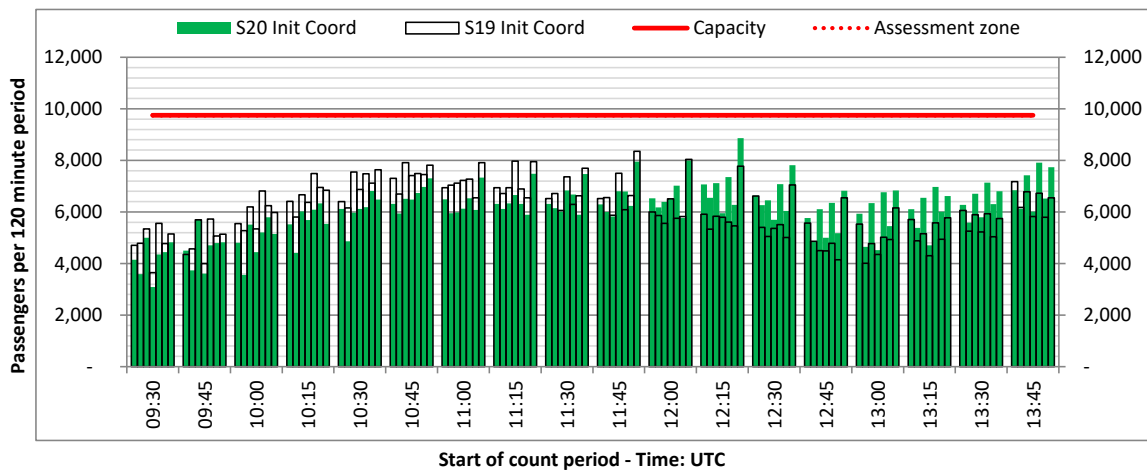
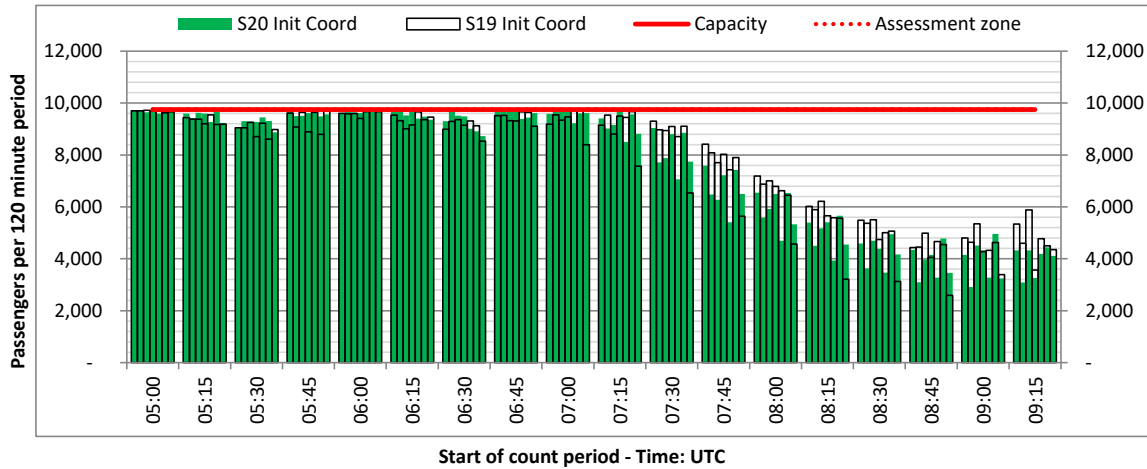
DEPARTURE - 120 minute count rolling every 15 mins (T120/15)



Terminals: All Terminals

Operators: All Operators

Days: 1234567



Peak Week - Passengers Histogram

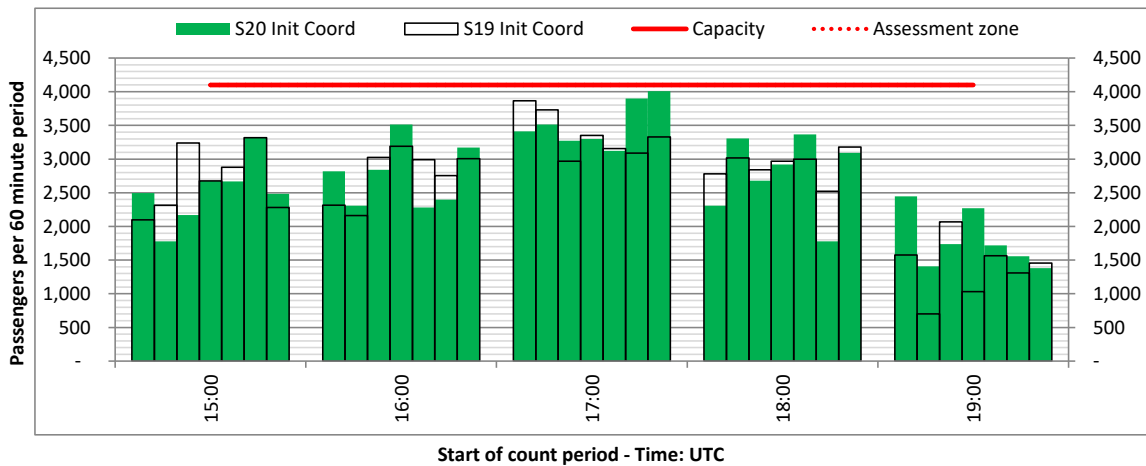
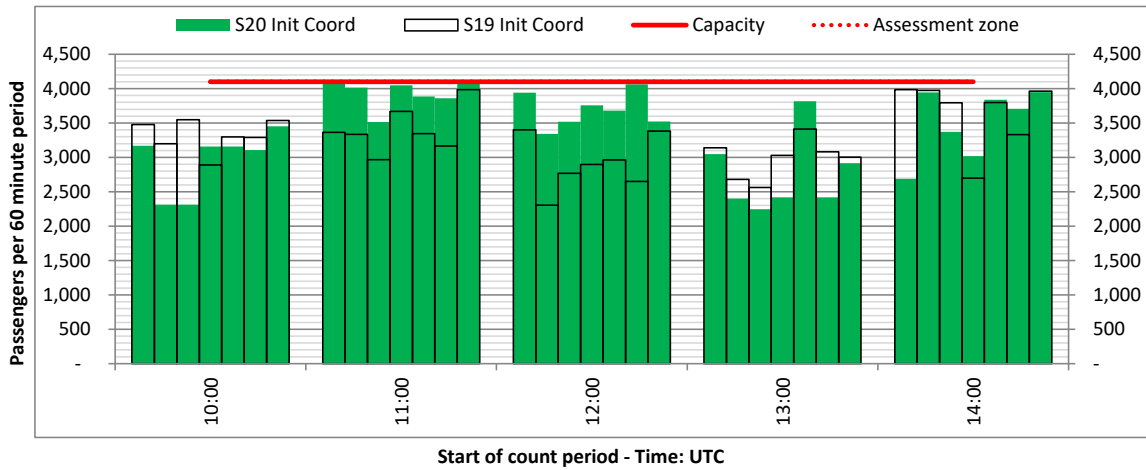
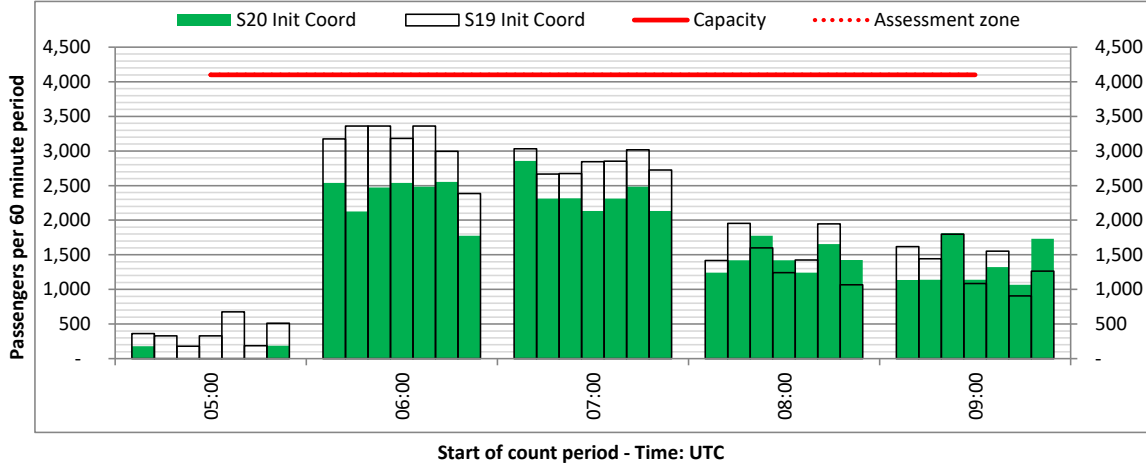
ARRIVAL - 60 minute count rolling every 60 mins (T60)



Terminals: 11

Operators: All Operators

Days: 1234567



Peak Week - Passengers Histogram

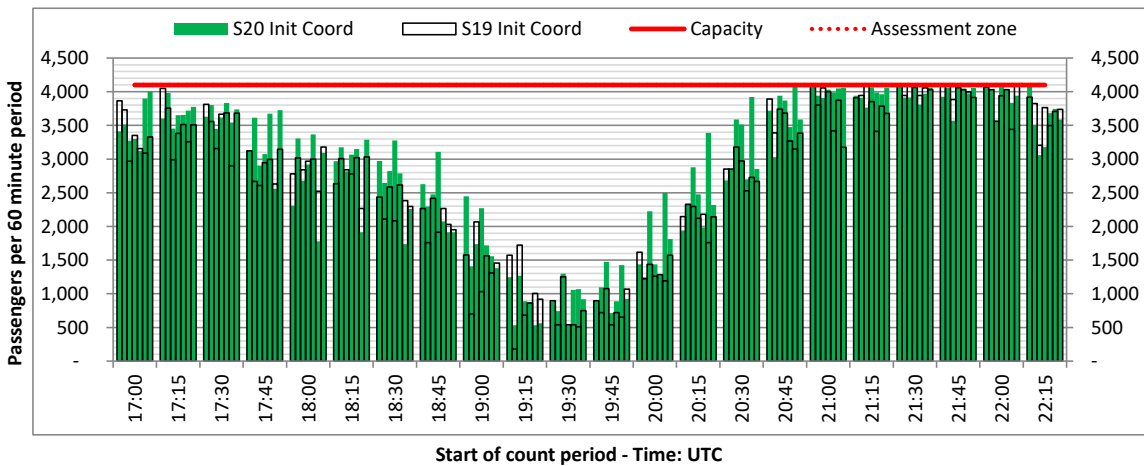
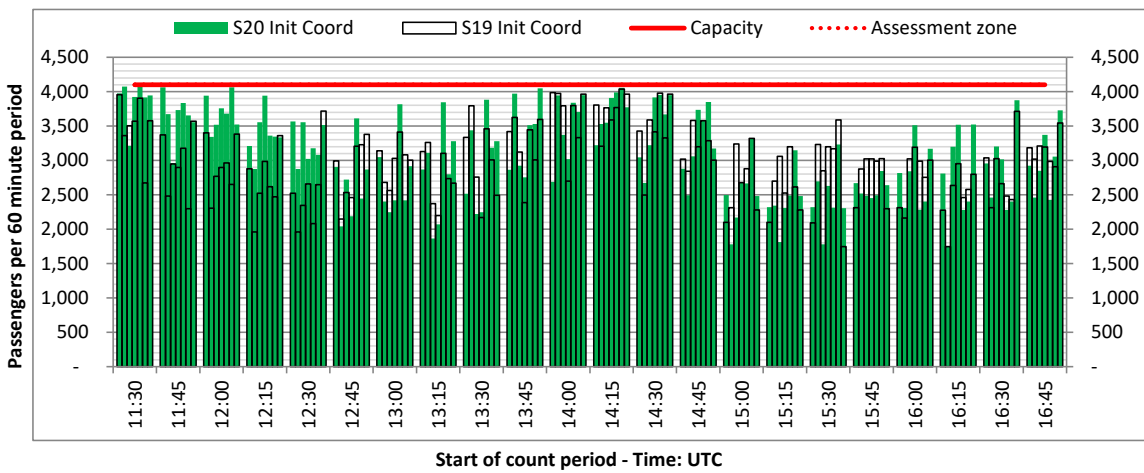
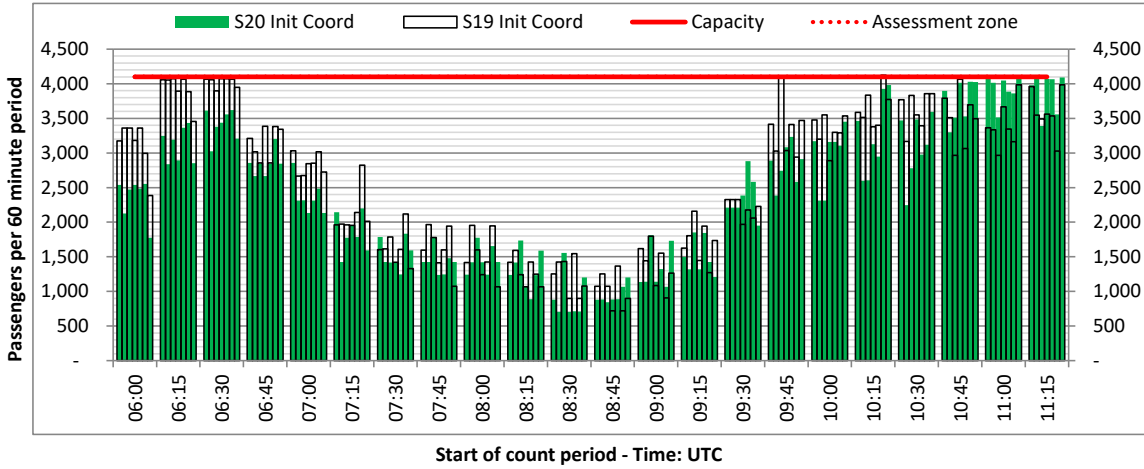
ARRIVAL - 60 minute count rolling every 15 mins (T60/15)



Terminals: 11

Operators: All Operators

Days: 1234567



Peak Week - Passengers Histogram

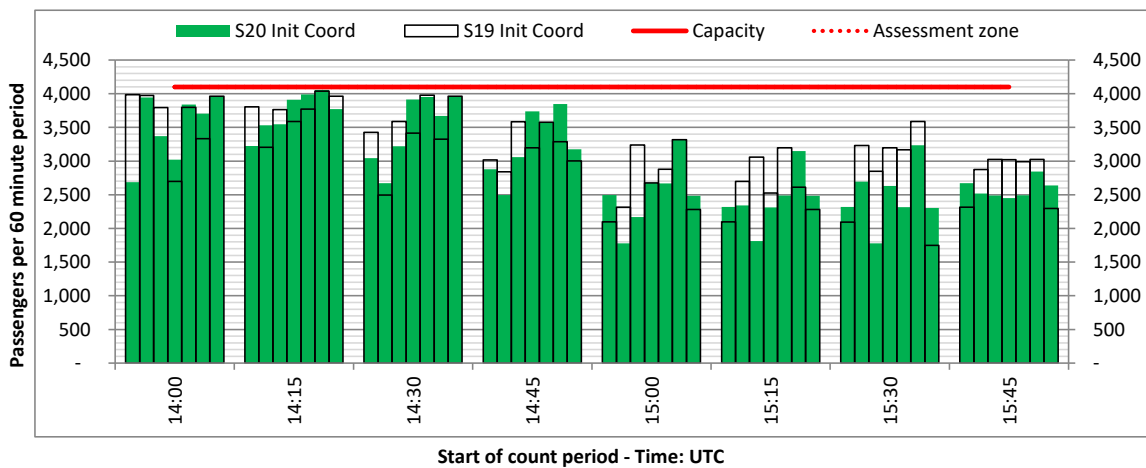
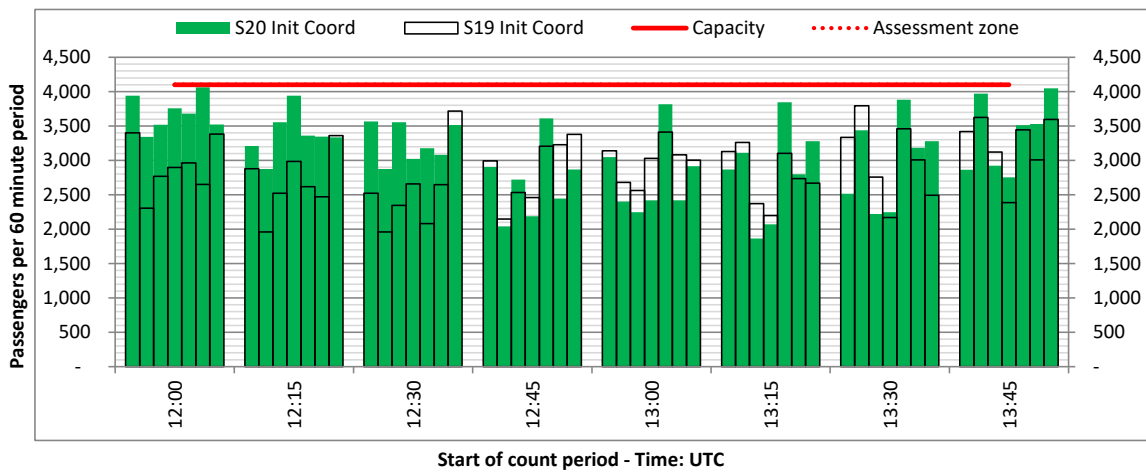
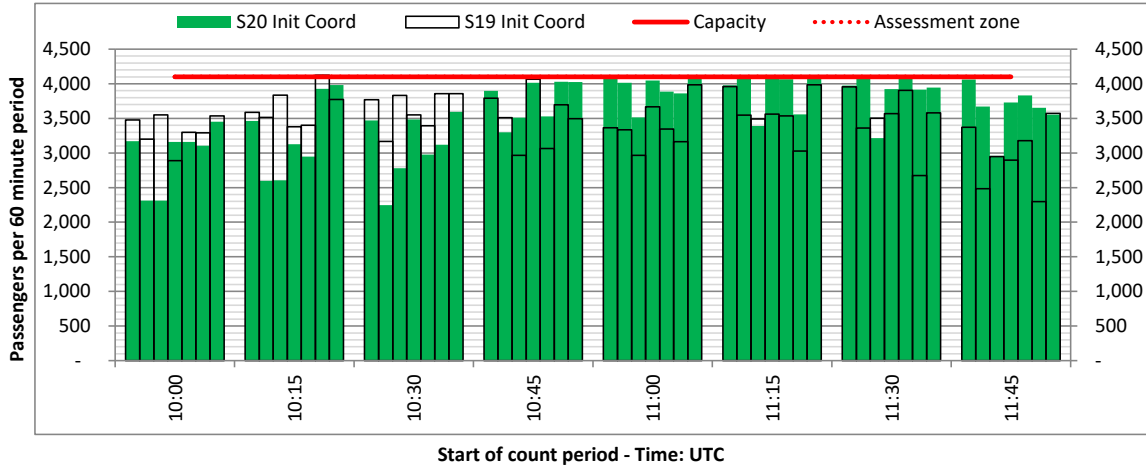
ARRIVAL - 60 minute count rolling every 15 mins (T60/15)



Terminals: 11

Operators: All Operators

Days: 1234567



Air Transport Movement (ATM)	Any aircraft movement which is either a scheduled or chartered passenger or cargo flight.
Common Travel Area (CTA)	Origin or Destination is in Republic of Ireland or the Channel Islands.
Demand	Unconstrained demand before any schedule adjustments have been made.
"Fill-in"	These are gaps in a historic series of slots which the carrier requests to "Fill-in" at Initial Submissions - Fill-ins will be recognisably part of the historic series and will have the same flight details to qualify as a "Fill-in".
Hist (SHL)	Snapshot of historic schedule rolled over from end of the previous equivalent season - as advised to airlines in the SHLs.
ICAO Size A	Aircraft with wingspan between 0.00m - 14.99m.
ICAO Size B	Aircraft with wingspan between 15.00m - 23.99m.
ICAO Size C	Aircraft with wingspan between 24.00m - 35.99m.
ICAO Size D	Aircraft with wingspan between 36.00m - 51.99m.
ICAO Size E	Aircraft with wingspan between 52.00m - 64.99m.
ICAO Size F	Aircraft with wingspan between 65.00m - 80.00m.
Init Coord	Snapshot of schedule immediately after Initial Coordination is completed - as advised to airlines in the SALs.
Passenger Air Transport Movement (PATM)	Any aircraft movement which is either a scheduled or chartered passenger flight.
Start	Snapshot of schedule shortly before the start of the scheduling season (exact date given below where used).
Time: Local	Times shown are in LOCAL time for the airport/scheduling season.
Time: UTC	Times shown are in Universal Time Constant (UTC).

Data snapshot descriptions

S19 Init Coord	S19 schedule as cleared on Thu 01-Nov-18.
S20 Hist (SHL)	S20 schedule as cleared on Mon 28-Oct-19.
S20 Init Coord	S20 schedule as cleared on Mon 28-Oct-19.

Peak Week	Peak week for S19 is Mon 05-Aug-19 to Sun 11-Aug-19. Peak week for S20 is Mon 03-Aug-20 to Sun 09-Aug-20.
------------------	--

For ACL use

	Airport-Season-Branch-Resource	From date	To date	Time
Full Season Rep 1	STN-S19-SAL Premerge-Standard	Sun 31-Mar-2019	Sat 26-Oct-2019	UTC
Full Season Rep 2	STN-S20-SHL-Standard	Sun 29-Mar-2020	Sat 24-Oct-2020	UTC
Full Season Rep 3	STN-S20-SAL Premerge-Standard	Sun 29-Mar-2020	Sat 24-Oct-2020	UTC
	Airport-Season-Branch-Resource	From date	To date	Time
Peak Week Rep 1	STN-S19-SAL Premerge-Standard	Mon 05-Aug-2019	Sun 11-Aug-2019	UTC
Peak Week Rep 2	STN-S20-SHL-Standard	Mon 03-Aug-2020	Sun 09-Aug-2020	UTC
Peak Week Rep 3	STN-S20-SAL Premerge-Standard	Mon 03-Aug-2020	Sun 09-Aug-2020	UTC