

### Initial Coordination Report

Report Date: Wed 20-Nov-2019

#### Headlines

	S20 Init Coord	vs. S19 Init Coord	vs. S20 Hist (SHL)
Total Air Transport Movements (Passenger & Freight)	<b>156802</b>	▲ <b>9.2%</b>	▲ <b>21.5%</b>
Total Passenger Air Transport Movements	<b>156442</b>	▲ <b>9.2%</b>	▲ <b>21.6%</b>
Total Passenger Air Transport Movement Seats	<b>29544028</b>	▲ <b>12.1%</b>	▲ <b>25.8%</b>
Average Seats per Passenger Air Transport Movement	<b>188.85</b>	▲ <b>2.7%</b>	▲ <b>3.5%</b>
Percentage of allocated slots cleared as requested (OK)	<b>91%</b>		

#### Contents

Page	Content
2	Runway Scheduling Limits
3	Peak Week - Initial Coordination Analysis
4	ATM Allocation by Operator (Full season and Peak Week Comparison)
5	Peak Week - Allocation and Slot Adjustment Distribution by Operator
6	Significant Route Changes
7	Full Season - ATM Analysis
8	Full Season - PATM Seats Analysis
9	Full Season - Terminal Analysis
10	Full Season - Aircraft Size Analysis
11	Full Season - Seasonality
12	Peak Week - Initial Hourly Runway Demand
13	Peak Week - Hourly Runway Allocation
14	Peak Week Histogram - Departure Passengers (T120/15) - T1 - All Operators
15	Peak Week Histogram - Departure Passengers (T60/15) - T1 - All Operators
16	Peak Week Histogram - Arrival Passengers (T60/15) - T1 - All Operators
17	Peak Week Histogram - Departure Passengers (T120/15) - T2 - All Operators
18	Peak Week Histogram - Departure Passengers (T60/15) - T2 - All Operators
19	Peak Week Histogram - Arrival Passengers (T60/15) - T2 - All Operators
20	Peak Week Histogram - Departure Passengers (T120/15) - T3 - All Operators
21	Peak Week Histogram - Departure Passengers (T60/15) - T3 - All Operators
22	Peak Week Histogram - Arrival Passengers (T60/15) - T3 - All Operators
23	Glossary

**S19 scheduling season runs from Sun 31-Mar-2019 to Sat 26-Oct-2019 (210 days).**

**S20 scheduling season runs from Sun 29-Mar-2020 to Sat 24-Oct-2020 (210 days).**

#### Disclaimer

No warranty whether expressed or implied as to the completeness, accuracy, fitness for purpose, or satisfactory quality is given by ACL regarding the information in this report, which is provided by third parties. Accordingly, ACL excludes all liability with regard to such data.

The contents of this report may not be reproduced without the written consent of ACL.



Peak Week - Initial Coordination Analysis



Operator	S20 HISTORIC SLOTS			HISTORIC RECLAIM STATISTICS					NEW SLOT REQUESTS						Total Demand at Initial Submissions	Total Allocation (SAL)	% of demand with a slot allocated		
	Historic slots	Lost Historic (NB0 & MU)	Unclaimed Historic	Reclaimed Historic	Incl. Time Change	Incl. Seat Increase	Incl. Day change	Incl. A+D or D+A swap	Demand - New Requests	Allocated - Year Round Incumbent	Allocated - Year Round New Entrant	Allocated - New Incumbent	Allocated - New Entrant	Allocated - "Fill-in"					
Adria Airways	2	-	2	-	0.0%	0.0%	0.0%	0.0%	-	-	-	-	-	-	-	-	-	-	
Aegean Airlines	6	-	-	6	33.3%	0.0%	0.0%	0.0%	-	-	-	-	-	-	-	-	6	6	100.0%
Aer Lingus	38	-	-	38	63.2%	0.0%	0.0%	0.0%	-	-	-	-	-	-	-	-	38	38	100.0%
Air Arabia Maroc	2	-	2	-	0.0%	0.0%	0.0%	0.0%	-	-	-	-	-	-	-	-	-	-	-
Air Canada	14	-	-	14	0.0%	0.0%	0.0%	0.0%	-	-	-	-	-	-	-	-	14	14	100.0%
Air Europa	-	-	-	-	0.0%	0.0%	0.0%	0.0%	-	-	-	-	-	-	-	-	-	-	-
Air France	42	-	-	42	100.0%	0.0%	0.0%	0.0%	-	-	-	-	-	-	-	-	42	42	100.0%
Air Malta	2	-	-	2	100.0%	0.0%	0.0%	0.0%	2	-	-	-	2	-	-	-	4	4	100.0%
Air Transat	16	-	-	16	25.0%	0.0%	12.5%	0.0%	-	-	-	-	-	-	-	-	16	16	100.0%
airBaltic	-	-	-	-	0.0%	0.0%	0.0%	0.0%	8	-	-	-	8	-	-	-	8	8	100.0%
Alitalia	-	-	-	-	0.0%	0.0%	0.0%	0.0%	14	-	-	-	14	-	-	-	14	14	100.0%
American Airlines	14	-	-	14	50.0%	0.0%	0.0%	0.0%	-	-	-	-	-	-	-	-	14	14	100.0%
Aurigny Air Services	28	-	-	28	0.0%	0.0%	0.0%	0.0%	-	-	-	-	-	-	-	-	28	28	100.0%
Austrian Airlines	14	-	-	14	0.0%	100.0%	0.0%	0.0%	-	-	-	-	-	-	-	-	14	14	100.0%
BA Cityflyer	24	-	-	24	29.2%	0.0%	0.0%	0.0%	-	-	-	-	-	-	-	-	24	24	100.0%
Balkan Holidays Air Ltd	8	2	2	8	0.0%	0.0%	0.0%	0.0%	2	-	-	-	2	-	-	-	10	10	100.0%
Biman Bangladesh	-	-	-	-	0.0%	0.0%	0.0%	0.0%	8	-	-	-	8	-	-	-	8	8	100.0%
British Airways	78	-	-	78	7.7%	46.2%	0.0%	0.0%	-	-	-	-	-	-	-	-	78	78	100.0%
Brussels Airlines	38	-	-	38	0.0%	0.0%	0.0%	0.0%	-	-	-	-	-	-	-	-	38	38	100.0%
Cathay Pacific	14	-	-	14	50.0%	100.0%	0.0%	0.0%	-	-	-	-	-	-	-	-	14	14	100.0%
Corendon Airlines	-	-	4	4	0.0%	0.0%	0.0%	0.0%	28	-	-	-	28	-	-	-	32	32	100.0%
Delta Air Lines	-	-	-	-	0.0%	0.0%	0.0%	0.0%	14	-	-	-	14	-	-	-	14	14	100.0%
EasyJet	612	-	1	613	37.4%	9.5%	0.3%	0.0%	158	1	-	152	-	35	-	-	771	766	99.4%
EasyJet Europe	14	-	-	14	0.0%	100.0%	0.0%	0.0%	-	-	-	-	-	-	-	-	14	14	100.0%
El Al Israel Airlines	6	-	-	6	66.7%	66.7%	0.0%	0.0%	2	-	-	-	2	-	-	-	8	8	100.0%
Emirates	42	-	-	42	33.3%	0.0%	0.0%	0.0%	-	-	-	-	-	-	-	-	42	42	100.0%
Enerjet Air	2	-	2	-	0.0%	0.0%	0.0%	0.0%	-	-	-	-	-	-	-	-	-	-	-
Ethiopian Airlines	8	-	-	8	0.0%	0.0%	0.0%	0.0%	-	-	-	-	-	-	-	-	8	8	100.0%
Etihad Airways	28	-	-	28	50.0%	50.0%	0.0%	0.0%	-	-	-	-	-	-	-	-	28	28	100.0%
Eurowings	36	-	-	36	0.0%	50.0%	0.0%	0.0%	-	-	-	-	-	-	-	-	36	36	100.0%
Federal Express	12	-	-	12	33.3%	0.0%	0.0%	0.0%	-	-	-	-	-	-	-	-	12	12	100.0%
Finnair	28	-	-	28	0.0%	100.0%	0.0%	0.0%	-	-	-	-	-	-	-	-	28	28	100.0%
Flybe	672	2	11	659	34.3%	7.3%	0.0%	0.0%	5	-	-	5	-	-	-	-	664	664	100.0%
FlyEgypt	-	-	8	8	0.0%	0.0%	0.0%	0.0%	-	-	-	-	-	-	-	-	8	8	100.0%
Freebird Airlines	-	-	-	-	0.0%	0.0%	0.0%	0.0%	32	-	-	-	32	-	-	-	32	32	100.0%
Hainan Airlines	8	-	-	8	0.0%	0.0%	0.0%	0.0%	-	-	-	-	-	-	-	-	8	8	100.0%
Iberia Express	8	-	-	8	100.0%	0.0%	0.0%	0.0%	2	-	-	-	2	-	-	-	10	10	100.0%
Icelandair	10	-	4	14	100.0%	0.0%	0.0%	0.0%	2	-	-	-	2	-	-	-	16	16	100.0%
Indigo	-	-	-	-	0.0%	0.0%	0.0%	0.0%	28	-	-	28	-	-	-	-	28	28	100.0%
Iraqi Airways	2	-	-	2	0.0%	0.0%	0.0%	0.0%	-	-	-	-	-	-	-	-	2	2	100.0%
Jet2.com	519	2	287	804	26.5%	17.9%	0.0%	0.0%	163	-	-	139	-	6	-	-	967	943	97.5%
Juneau Airlines	-	-	-	-	0.0%	0.0%	0.0%	0.0%	6	-	-	-	6	-	-	-	6	6	100.0%
KLM Royal Dutch Airlines	82	-	-	82	0.0%	0.0%	8.5%	0.0%	-	-	-	-	-	-	-	-	82	82	100.0%
Lozanair	74	3	8	63	55.6%	0.0%	0.0%	0.0%	12	-	-	12	-	-	-	-	75	75	100.0%
LOT Polish Airlines	-	-	-	-	0.0%	0.0%	0.0%	0.0%	24	-	-	-	24	-	-	-	24	24	100.0%
Lufthansa	108	-	-	108	79.1%	13.0%	0.0%	0.0%	10	10	-	-	-	-	-	-	118	118	100.0%
Norwegian	14	-	-	14	85.7%	0.0%	0.0%	0.0%	4	-	-	4	-	-	-	-	18	18	100.0%
Nouvelair Tunisie	-	-	-	-	0.0%	0.0%	0.0%	0.0%	4	-	-	-	4	-	-	-	4	4	100.0%
Oman Air	14	-	7	21	0.0%	0.0%	0.0%	0.0%	-	-	-	-	-	-	-	-	21	21	100.0%
Pegasus Airlines	16	-	-	16	12.5%	81.3%	0.0%	0.0%	-	-	-	-	-	-	-	-	16	16	100.0%
PIA Pakistan International	20	4	2	18	66.7%	0.0%	0.0%	0.0%	2	-	-	-	2	-	-	-	20	20	100.0%
Qatar Airways	42	-	-	42	33.3%	66.7%	0.0%	0.0%	-	-	-	-	-	-	-	-	42	42	100.0%
Royal Air Maroc	4	-	-	4	100.0%	100.0%	0.0%	0.0%	-	-	-	-	-	-	-	-	4	4	100.0%
DYAL KHMER AIRLINES CO LTD	-	-	-	-	0.0%	0.0%	0.0%	0.0%	18	-	-	-	18	-	-	-	18	18	100.0%
Ryanair	705	1	7	711	20.5%	0.0%	0.0%	0.0%	143	-	-	143	-	-	-	-	854	852	99.8%
SAS Scandinavian	90	-	-	90	26.7%	11.1%	0.0%	0.0%	18	-	-	18	-	-	-	-	108	108	100.0%
Saudia	10	-	10	-	0.0%	0.0%	0.0%	0.0%	10	-	-	-	10	-	-	-	10	10	100.0%
Singapore Airlines	20	-	-	20	0.0%	0.0%	0.0%	0.0%	-	-	-	-	-	-	-	-	20	20	100.0%
SmartLynx Airlines	-	-	-	-	0.0%	0.0%	0.0%	0.0%	56	-	-	-	56	43	-	-	56	43	76.8%
Stobart Air	66	-	-	66	31.8%	0.0%	0.0%	0.0%	-	-	-	-	-	-	-	-	66	66	100.0%
SUN-AIR	30	-	-	30	0.0%	0.0%	0.0%	0.0%	-	-	-	-	-	-	-	-	30	30	100.0%
Swiss International	28	-	-	28	0.0%	0.0%	0.0%	0.0%	-	-	-	-	-	-	-	-	28	28	100.0%
TAP Air Portugal	26	-	2	28	50.0%	50.0%	0.0%	0.0%	-	-	-	-	-	-	-	-	28	28	100.0%
Thai Airways	-	-	14	14	0.0%	0.0%	0.0%	0.0%	-	-	-	-	-	-	-	-	14	14	100.0%
Thomas Cook (UK)	374	15	359	-	0.0%	0.0%	0.0%	0.0%	-	-	-	-	-	-	-	-	-	-	-
Titan Airways	2	-	1	3	0.0%	0.0%	0.0%	0.0%	-	-	-	-	-	-	-	-	3	3	100.0%
Transavia France	-	-	-	-	0.0%	0.0%	0.0%	0.0%	4	-	-	-	-	4	-	-	4	4	100.0%
TUI Airways	365	-	26	391	26.1%	15.3%	1.0%	0.0%	100	-	-	100	-	-	-	-	491	491	100.0%
Turkish Airlines	28	-	-	28	50.0%	0.0%	0.0%	0.0%	-	-	-	-	-	-	-	-	28	28	100.0%
United Airlines	14	-	-	14	50.0%	0.0%	0.0%	0.0%	-	-	-	-	-	-	-	-	14	14	100.0%
Virgin Atlantic	74	2	42	114	46.5%	0.0%	0.0%	0.0%	52	-	-	52	-	3	-	-	166	165	99.4%
<b>TOTAL</b>	<b>4,573</b>	<b>31</b>	<b>17</b>	<b>4,559</b>	<b>30.0%</b>	<b>11.8%</b>	<b>0.3%</b>	<b>0.0%</b>	<b>931</b>	<b>11</b>	<b>-</b>	<b>673</b>	<b>205</b>	<b>44</b>	<b>-</b>	<b>5,490</b>	<b>5,445</b>	<b>99.2%</b>	



# Peak Week - Allocation and Slot Adjustment Distribution by Operator

Schedule: S20 Init Coord



		SLOT ADJUSTMENTS (MINUTES OFF REQUESTED TIME)															Requests with <b>NO</b> slot allocated
Operator	S20 allocated ATMs	0	5	10	15	20	25	30	35	40	45	50	55	60	>60		
Agean Airlines	6	100.0%	0.0%	0.0%	0.0%	0.0%	0.0%	0.0%	0.0%	0.0%	0.0%	0.0%	0.0%	0.0%	0.0%	0.0%	-
Aer Lingus	38	100.0%	0.0%	0.0%	0.0%	0.0%	0.0%	0.0%	0.0%	0.0%	0.0%	0.0%	0.0%	0.0%	0.0%	0.0%	-
Air Canada	14	100.0%	0.0%	0.0%	0.0%	0.0%	0.0%	0.0%	0.0%	0.0%	0.0%	0.0%	0.0%	0.0%	0.0%	0.0%	-
Air France	42	83.3%	16.7%	0.0%	0.0%	0.0%	0.0%	0.0%	0.0%	0.0%	0.0%	0.0%	0.0%	0.0%	0.0%	0.0%	-
Air Malta	4	100.0%	0.0%	0.0%	0.0%	0.0%	0.0%	0.0%	0.0%	0.0%	0.0%	0.0%	0.0%	0.0%	0.0%	0.0%	-
Air Transat	16	100.0%	0.0%	0.0%	0.0%	0.0%	0.0%	0.0%	0.0%	0.0%	0.0%	0.0%	0.0%	0.0%	0.0%	0.0%	-
airBaltic	8	100.0%	0.0%	0.0%	0.0%	0.0%	0.0%	0.0%	0.0%	0.0%	0.0%	0.0%	0.0%	0.0%	0.0%	0.0%	-
Alitalia	14	100.0%	0.0%	0.0%	0.0%	0.0%	0.0%	0.0%	0.0%	0.0%	0.0%	0.0%	0.0%	0.0%	0.0%	0.0%	-
American Airlines	14	100.0%	0.0%	0.0%	0.0%	0.0%	0.0%	0.0%	0.0%	0.0%	0.0%	0.0%	0.0%	0.0%	0.0%	0.0%	-
Aurigny Air Services	28	100.0%	0.0%	0.0%	0.0%	0.0%	0.0%	0.0%	0.0%	0.0%	0.0%	0.0%	0.0%	0.0%	0.0%	0.0%	-
Austrian Airlines	14	100.0%	0.0%	0.0%	0.0%	0.0%	0.0%	0.0%	0.0%	0.0%	0.0%	0.0%	0.0%	0.0%	0.0%	0.0%	-
BA Cityflyer	24	100.0%	0.0%	0.0%	0.0%	0.0%	0.0%	0.0%	0.0%	0.0%	0.0%	0.0%	0.0%	0.0%	0.0%	0.0%	-
Balkan Holidays Air Ltd	10	100.0%	0.0%	0.0%	0.0%	0.0%	0.0%	0.0%	0.0%	0.0%	0.0%	0.0%	0.0%	0.0%	0.0%	0.0%	-
Biman Bangladesh	8	87.5%	0.0%	0.0%	0.0%	12.5%	0.0%	0.0%	0.0%	0.0%	0.0%	0.0%	0.0%	0.0%	0.0%	0.0%	-
British Airways	78	100.0%	0.0%	0.0%	0.0%	0.0%	0.0%	0.0%	0.0%	0.0%	0.0%	0.0%	0.0%	0.0%	0.0%	0.0%	-
Brussels Airlines	38	100.0%	0.0%	0.0%	0.0%	0.0%	0.0%	0.0%	0.0%	0.0%	0.0%	0.0%	0.0%	0.0%	0.0%	0.0%	-
Cathay Pacific	14	92.9%	7.1%	0.0%	0.0%	0.0%	0.0%	0.0%	0.0%	0.0%	0.0%	0.0%	0.0%	0.0%	0.0%	0.0%	-
Corendon Airlines	32	96.9%	3.1%	0.0%	0.0%	0.0%	0.0%	0.0%	0.0%	0.0%	0.0%	0.0%	0.0%	0.0%	0.0%	0.0%	-
Delta Air Lines	14	100.0%	0.0%	0.0%	0.0%	0.0%	0.0%	0.0%	0.0%	0.0%	0.0%	0.0%	0.0%	0.0%	0.0%	0.0%	-
EasyJet	766	88.6%	2.9%	1.0%	0.5%	1.4%	0.0%	0.5%	0.3%	0.1%	0.1%	0.1%	0.0%	0.5%	3.8%	5	
EasyJet Europe	14	100.0%	0.0%	0.0%	0.0%	0.0%	0.0%	0.0%	0.0%	0.0%	0.0%	0.0%	0.0%	0.0%	0.0%	0.0%	-
El Al Israel Airlines	8	100.0%	0.0%	0.0%	0.0%	0.0%	0.0%	0.0%	0.0%	0.0%	0.0%	0.0%	0.0%	0.0%	0.0%	0.0%	-
Emirates	42	100.0%	0.0%	0.0%	0.0%	0.0%	0.0%	0.0%	0.0%	0.0%	0.0%	0.0%	0.0%	0.0%	0.0%	0.0%	-
Ethiopian Airlines	8	100.0%	0.0%	0.0%	0.0%	0.0%	0.0%	0.0%	0.0%	0.0%	0.0%	0.0%	0.0%	0.0%	0.0%	0.0%	-
Etihad Airways	28	75.0%	25.0%	0.0%	0.0%	0.0%	0.0%	0.0%	0.0%	0.0%	0.0%	0.0%	0.0%	0.0%	0.0%	0.0%	-
Eurowings	36	100.0%	0.0%	0.0%	0.0%	0.0%	0.0%	0.0%	0.0%	0.0%	0.0%	0.0%	0.0%	0.0%	0.0%	0.0%	-
Federal Express	12	100.0%	0.0%	0.0%	0.0%	0.0%	0.0%	0.0%	0.0%	0.0%	0.0%	0.0%	0.0%	0.0%	0.0%	0.0%	-
Finnair	28	100.0%	0.0%	0.0%	0.0%	0.0%	0.0%	0.0%	0.0%	0.0%	0.0%	0.0%	0.0%	0.0%	0.0%	0.0%	-
Flybe	664	95.9%	2.6%	0.5%	0.3%	0.2%	0.0%	0.0%	0.0%	0.0%	0.2%	0.2%	0.0%	0.0%	0.3%	-	
FlyEgypt	8	100.0%	0.0%	0.0%	0.0%	0.0%	0.0%	0.0%	0.0%	0.0%	0.0%	0.0%	0.0%	0.0%	0.0%	0.0%	-
Freebird Airlines	32	100.0%	0.0%	0.0%	0.0%	0.0%	0.0%	0.0%	0.0%	0.0%	0.0%	0.0%	0.0%	0.0%	0.0%	0.0%	-
Hainan Airlines	8	100.0%	0.0%	0.0%	0.0%	0.0%	0.0%	0.0%	0.0%	0.0%	0.0%	0.0%	0.0%	0.0%	0.0%	0.0%	-
Iberia Express	10	80.0%	20.0%	0.0%	0.0%	0.0%	0.0%	0.0%	0.0%	0.0%	0.0%	0.0%	0.0%	0.0%	0.0%	0.0%	-
Icelandair	16	100.0%	0.0%	0.0%	0.0%	0.0%	0.0%	0.0%	0.0%	0.0%	0.0%	0.0%	0.0%	0.0%	0.0%	0.0%	-
Indigo	28	100.0%	0.0%	0.0%	0.0%	0.0%	0.0%	0.0%	0.0%	0.0%	0.0%	0.0%	0.0%	0.0%	0.0%	0.0%	-
Iraqi Airways	2	100.0%	0.0%	0.0%	0.0%	0.0%	0.0%	0.0%	0.0%	0.0%	0.0%	0.0%	0.0%	0.0%	0.0%	0.0%	-
Jet2.com	943	90.8%	3.0%	1.5%	1.2%	0.0%	0.3%	0.4%	0.3%	0.0%	0.4%	0.5%	0.2%	0.3%	0.4%	24	
Juneau Airlines	6	100.0%	0.0%	0.0%	0.0%	0.0%	0.0%	0.0%	0.0%	0.0%	0.0%	0.0%	0.0%	0.0%	0.0%	0.0%	-
KLM Royal Dutch Airlines	82	100.0%	0.0%	0.0%	0.0%	0.0%	0.0%	0.0%	0.0%	0.0%	0.0%	0.0%	0.0%	0.0%	0.0%	0.0%	-
Loganair	75	96.0%	1.3%	0.0%	0.0%	2.7%	0.0%	0.0%	0.0%	0.0%	0.0%	0.0%	0.0%	0.0%	0.0%	0.0%	-
LOT Polish Airlines	24	100.0%	0.0%	0.0%	0.0%	0.0%	0.0%	0.0%	0.0%	0.0%	0.0%	0.0%	0.0%	0.0%	0.0%	0.0%	-
Lufthansa	118	100.0%	0.0%	0.0%	0.0%	0.0%	0.0%	0.0%	0.0%	0.0%	0.0%	0.0%	0.0%	0.0%	0.0%	0.0%	-
Norwegian	18	100.0%	0.0%	0.0%	0.0%	0.0%	0.0%	0.0%	0.0%	0.0%	0.0%	0.0%	0.0%	0.0%	0.0%	0.0%	-
Nouvelair Tunisie	4	100.0%	0.0%	0.0%	0.0%	0.0%	0.0%	0.0%	0.0%	0.0%	0.0%	0.0%	0.0%	0.0%	0.0%	0.0%	-
Oman Air	21	100.0%	0.0%	0.0%	0.0%	0.0%	0.0%	0.0%	0.0%	0.0%	0.0%	0.0%	0.0%	0.0%	0.0%	0.0%	-
Pegasus Airlines	16	100.0%	0.0%	0.0%	0.0%	0.0%	0.0%	0.0%	0.0%	0.0%	0.0%	0.0%	0.0%	0.0%	0.0%	0.0%	-
PIA Pakistan International	20	100.0%	0.0%	0.0%	0.0%	0.0%	0.0%	0.0%	0.0%	0.0%	0.0%	0.0%	0.0%	0.0%	0.0%	0.0%	-
Qatar Airways	42	100.0%	0.0%	0.0%	0.0%	0.0%	0.0%	0.0%	0.0%	0.0%	0.0%	0.0%	0.0%	0.0%	0.0%	0.0%	-
Royal Air Maroc	4	100.0%	0.0%	0.0%	0.0%	0.0%	0.0%	0.0%	0.0%	0.0%	0.0%	0.0%	0.0%	0.0%	0.0%	0.0%	-
OYAL KHMER AIRLINES CO LTD	18	50.0%	0.0%	0.0%	0.0%	0.0%	0.0%	0.0%	0.0%	0.0%	0.0%	0.0%	0.0%	0.0%	50.0%	-	
Ryanair	852	90.5%	4.6%	0.9%	0.5%	0.6%	0.6%	0.1%	0.2%	0.1%	0.0%	0.4%	0.4%	0.1%	0.9%	2	
SAS Scandinavian	108	100.0%	0.0%	0.0%	0.0%	0.0%	0.0%	0.0%	0.0%	0.0%	0.0%	0.0%	0.0%	0.0%	0.0%	0.0%	-
Saudia	10	50.0%	0.0%	0.0%	0.0%	50.0%	0.0%	0.0%	0.0%	0.0%	0.0%	0.0%	0.0%	0.0%	0.0%	0.0%	-
Singapore Airlines	20	100.0%	0.0%	0.0%	0.0%	0.0%	0.0%	0.0%	0.0%	0.0%	0.0%	0.0%	0.0%	0.0%	0.0%	0.0%	-
SmartLynx Airlines	43	74.4%	9.3%	2.3%	2.3%	4.7%	0.0%	2.3%	2.3%	0.0%	0.0%	0.0%	0.0%	0.0%	2.3%	13	
Stobart Air	66	89.4%	10.6%	0.0%	0.0%	0.0%	0.0%	0.0%	0.0%	0.0%	0.0%	0.0%	0.0%	0.0%	0.0%	0.0%	-
SUN-AIR	30	100.0%	0.0%	0.0%	0.0%	0.0%	0.0%	0.0%	0.0%	0.0%	0.0%	0.0%	0.0%	0.0%	0.0%	0.0%	-
Swiss International	28	100.0%	0.0%	0.0%	0.0%	0.0%	0.0%	0.0%	0.0%	0.0%	0.0%	0.0%	0.0%	0.0%	0.0%	0.0%	-
TAP Air Portugal	28	100.0%	0.0%	0.0%	0.0%	0.0%	0.0%	0.0%	0.0%	0.0%	0.0%	0.0%	0.0%	0.0%	0.0%	0.0%	-
Thai Airways	14	0.0%	50.0%	0.0%	0.0%	0.0%	0.0%	0.0%	50.0%	0.0%	0.0%	0.0%	0.0%	0.0%	0.0%	0.0%	-
Thomas Cook (UK)	-	-	-	-	-	-	-	-	-	-	-	-	-	-	-	-	-
Titan Airways	3	100.0%	0.0%	0.0%	0.0%	0.0%	0.0%	0.0%	0.0%	0.0%	0.0%	0.0%	0.0%	0.0%	0.0%	0.0%	-
Transavia France	4	100.0%	0.0%	0.0%	0.0%	0.0%	0.0%	0.0%	0.0%	0.0%	0.0%	0.0%	0.0%	0.0%	0.0%	0.0%	-
TUI Airways	491	85.7%	7.7%	1.2%	1.0%	0.8%	0.4%	0.6%	0.4%	0.2%	0.4%	0.0%	0.2%	0.2%	1.0%	-	
Turkish Airlines	28	78.6%	0.0%	21.4%	0.0%	0.0%	0.0%	0.0%	0.0%	0.0%	0.0%	0.0%	0.0%	0.0%	0.0%	0.0%	-
United Airlines	14	100.0%	0.0%	0.0%	0.0%	0.0%	0.0%	0.0%	0.0%	0.0%	0.0%	0.0%	0.0%	0.0%	0.0%	0.0%	-
Virgin Atlantic	165	85.5%	8.5%	1.2%	2.4%	0.0%	0.6%	1.2%	0.0%	0.0%	0.0%	0.0%	0.0%	0.0%	0.6%	0.0%	1
<b>TOTAL</b>	<b>5,445</b>	<b>91.7%</b>	<b>3.6%</b>	<b>0.9%</b>	<b>0.6%</b>	<b>0.6%</b>	<b>0.2%</b>	<b>0.3%</b>	<b>0.3%</b>	<b>0.1%</b>	<b>0.1%</b>	<b>0.2%</b>	<b>0.1%</b>	<b>0.2%</b>	<b>1.1%</b>	<b>45</b>	

Operators with 0 'allocated ATMs' and 0 'Requests with NO slot allocated' in S20, are included in this list due to having slots allocated in either S19 Init Coord or S20 Hist (SHL) schedules.

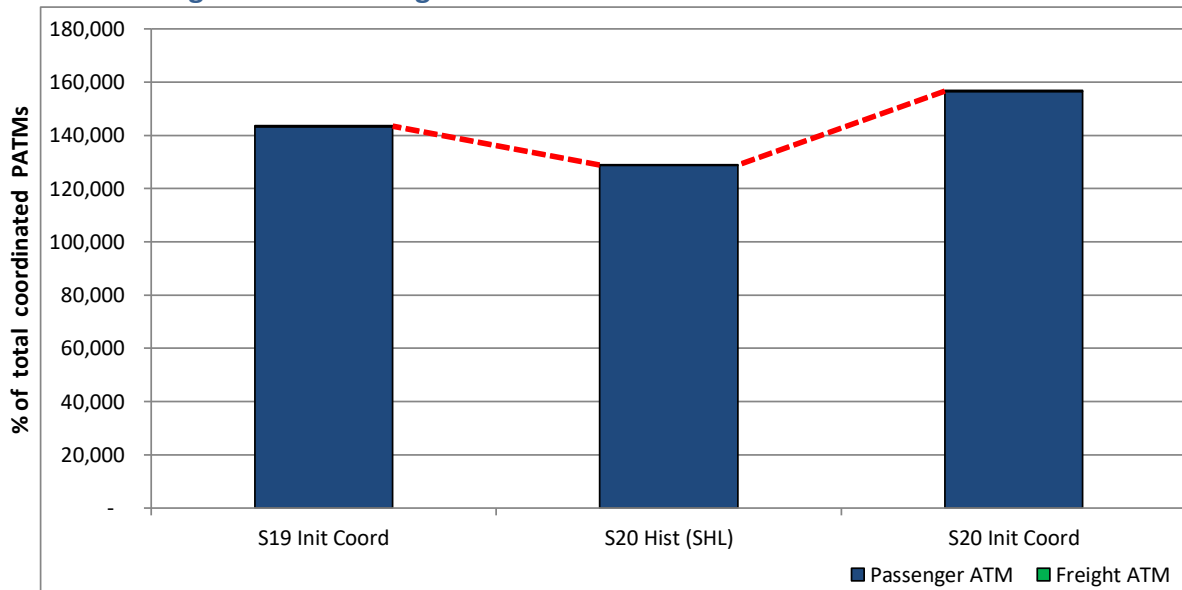
# Significant Route Changes



Operator	Category	Description of change from S19 schedule to S20 schedule
Adria Airways	<b>CANCELLED</b>	Weekly LJU operated in S19 but not S20. Airline ceased operations.
Air Arabia Maroc	<b>CANCELLED</b>	Weekly AGA service now cancelled. Service ended Oct19.
Air Malta	CHANGE	Increase MLA from once to twice per week.
Air Baltic	<b>NEW</b>	New four per week RIX (Riga) with A220-300 (145seats) Mon, Wed, Fri & Sun 1600/1640z. T2 allocated.
Alitalia	<b>NEW</b>	Proposed daily LIN with A320 1120/1210z, AZ228/9, T2 allocated.
American Airlines	CHANGE	PHL remains B767-300 on daily PHL. B787-8 ops Jan-Mar but returns to B767-300 for S20.
Austrian Airlines	CHANGE	Equipment upgrade from EMB190 to A319 on daily VIE.
Biman Bangladesh	<b>NEW</b>	New DAC/SYL service starts 05Jan three per week but increase to four per week for S20 with B787-9. Mon, Tue, Thu & Sun 1140/1345z. T2 allocated.
Cathay Pacific	CHANGE	A350-1000 was used peak season only S19 but held all season S20.
Corendon Airlines	<b>NEW</b>	Daily AYT and nine per week BJV with B737-800.
Delta Air Lines	<b>NEW</b>	Delta return to MAN with new daily BOS with B757-200 (164seats) 0815/1030z 22May-08Sep. Partner Virgin operated BOS in S19. T2 allocated.
EasyJet	<b>NEW</b>	Four additional based aircraft submitted to increase from x17 to x21. x19 likely due terminal capacity. No GOA. LPA & VRN cont from W19. New MAH. Plus back fill and extra freq. +40% seat growth vs S19 based on x21 a/c.
Fly Ernest	<b>CANCELLED</b>	Weekly VRN charter op in S19 for TUI. Not held for S20.
Flybe	CHANGE	New route daily STR and daily ZZJ (domestic dest tba). Growth on AMS and NQY. Routes cancelled are EFL, GLA, LRH, MXP, NTE, PVK, RNS, TLS. Overall seat capacity -3%.
FlyEgypt	<b>NEW</b>	New weekly four per week HRG charters with B737-800 Mon, Tue, Fri & Sat 1010/1110z. T1 allocated.
Freebird Airlines	<b>NEW</b>	Proposed new AYT and DLM charters both eight per week with A320. T2 allocated.
Iberia Express	CHANGE	Increase MAD from four to five per week.
Icelandair	CHANGE	Increase KEF from seven to eight per week with new Sunday evening service.
Indigo	<b>NEW</b>	Proposed daily BOM 1750/1950z and DEL 1725/1925z with A330-300 (341seats). T2 allocated. Carrier does not currently operate widebody aircraft but plans to in the future.
Jet2.com	<b>NEW</b>	Increase from x19 to x24 based aircraft plus a B737-800 changes to B757 and B757 to a 3rd A330-200. All Thomas Cook slots transferred to Jet2. New routes PVK, TIV and ZAD. Terminal split was 50/50 in S19 but will be more in T1 for S20. Seat growth +118% due to MT slot transfer, significant reductions to be made from some unwated MT slots.
Juneyao Airlines	<b>NEW</b>	New three per week PVG (Shanghai) with B787-9 (324seats) via HEL. Mon, Wed & Fri 0730/0900z, Flt no. HO1655/6. T1 allocated.
Loganair	CHANGE	NWI returns from two to three per day, more SY. No BGO, KOI or LSI.
LOT Polish Airlines	<b>NEW</b>	Proposed twice per day WAW with EMB190 (118seats), 0835/0920z and 1605/1650z. T1 allocated.
Lufthansa	CHANGE	Increase MUC from x3 to x4 per day as W19.
Norwegian	<b>NEW</b>	New twice weekly BGO cont from W19.
Nouvelair Tunisie	<b>NEW</b>	Proposed new four per week NBE May-Oct with A320, Wed, Fri, Sat & Sun. T1 allocated.
PIA Pakistan International	CHANGE	New route SKT (Sialkot) weekly on Tuesdays, ISB increase six to seven per week, LHE remains twice per week. All B777-300.
Qatar Airways	CHANGE	Equipment upgrade on morning and lunchtime service from A350-900 to B777-300, evening remains B787-8. Seat growth +34%
Ryanair	<b>NEW</b>	One extra based aircraft (13th) Additional non-based flying too. New routes AYT, BJV, BVA, CPH, CTA, DLM, KIR, LRH, NOC, OSL, OUD, PFO, PSA, SZZ. Routes con from W19 are KTW, MXP, PRG. some slots held as RK (Ryanair UK) to Turkish destinations. Seat growth +23% vs S19. Several additional based aircraft were submitted at initial coordination but have since been cancelled, terminal capacity in T3 was not available.
SAS Scandinavian	<b>NEW</b>	New twice weekly SVG cont from W19, ARN increase two to three per day, BGO up two to three per week. Slots for AAR submitted but route ends Jan20.
SmartLynx Airlines	<b>NEW</b>	Proposed two based A321's operating x28 weekly charters series May-Oct. Slot1 0425z deps held due terminal capacity. T1 allocated.
TAP Air Portugal	CHANGE	Increase LIS from x13 to x14pw.

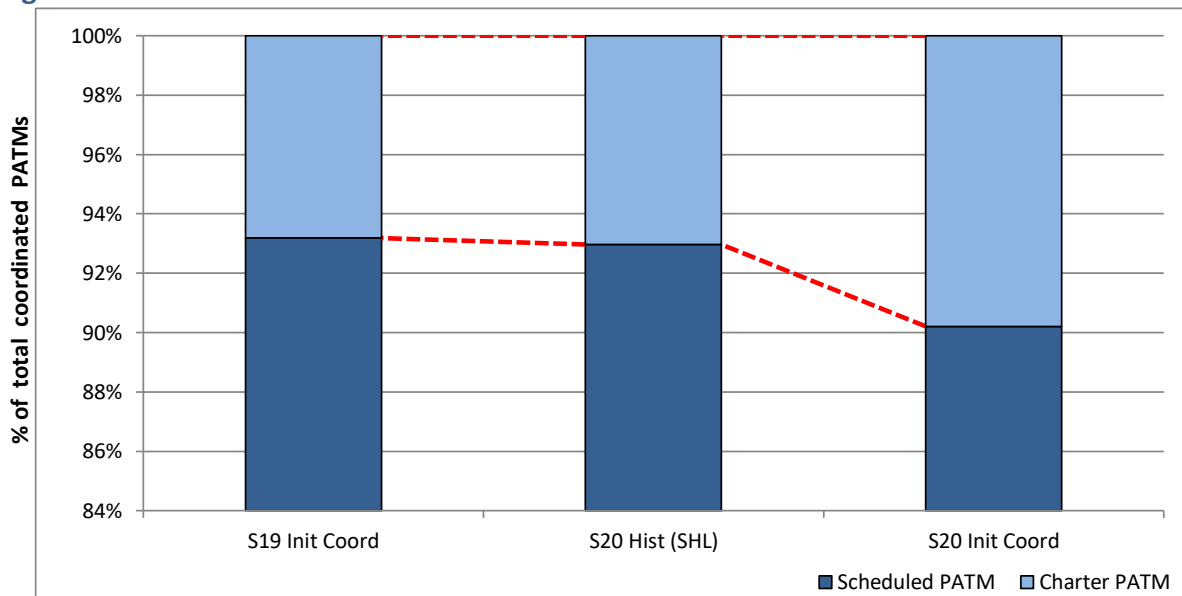
Thai Airways	NEW	Proposed new BKK service TG976/7 with A350-900 (321seats) 0525/1215z, slots held daily but likely four per week from July. T2 allocated.
Thomas Cook (UK)	CANCELLED	Sadly ceased operations Sep19 with loss of ten A320/321 and seven A330's. All slots transferred to Jet2.com.
Transavia France	NEW	Proposed new twice weekly ORY (Orly) Fri & Sun with B737-800 1745/1830z. T2 allocated.
TUI Airways	NEW	Increase from x14 to x19 based aircraft, new B787-9 on longhaul five days per week that was standby a/c in S19, shorthaul B787-8 goes away but five narrow bodies come in. CCC new and RMF cont from W19, no VCE. Seat growth +44% vs S19.
Turkish Airlines	CHANGE	Remains x14pw but seven of the services operate A330-300 rather than three in S19, three in morning and four in afternoon, remainder on A321.
Virgin Atlantic	CHANGE	Increase from six to seven based aircraft, increases on BGI, LAS and MCO. No BOS which switches to Delta. Some additional slots held as ZZF.

## Total ATMs: Passenger ATMs vs. Freight ATMs



Schedule Snapshot

## Passenger ATMs: Scheduled vs. Charter



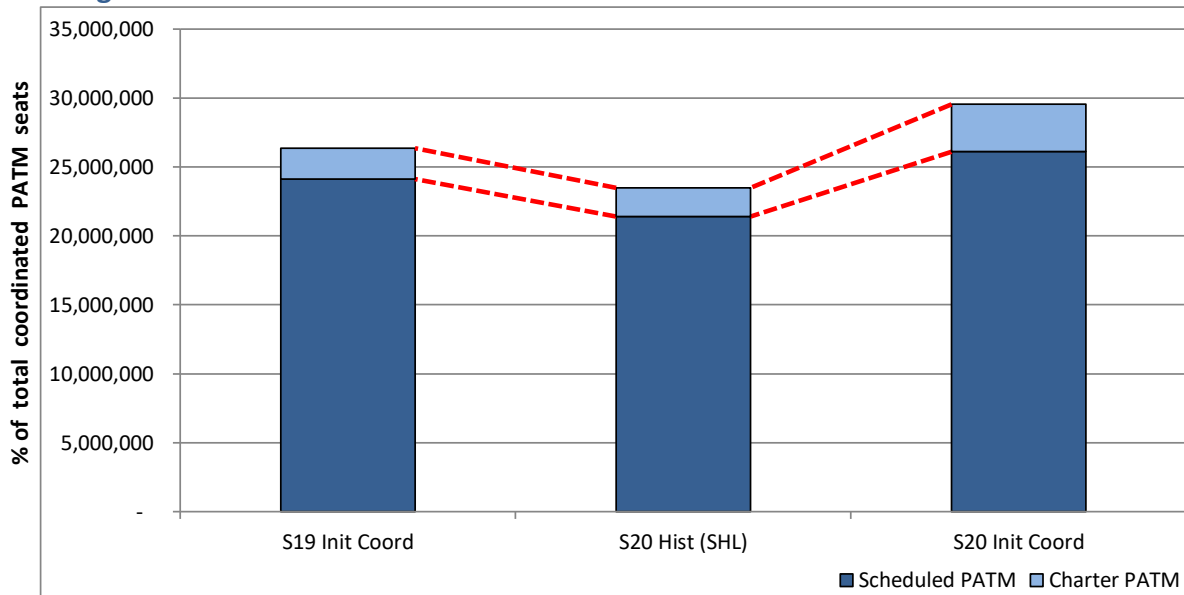
Schedule Snapshot



# Full Season - PATM Seats Analysis

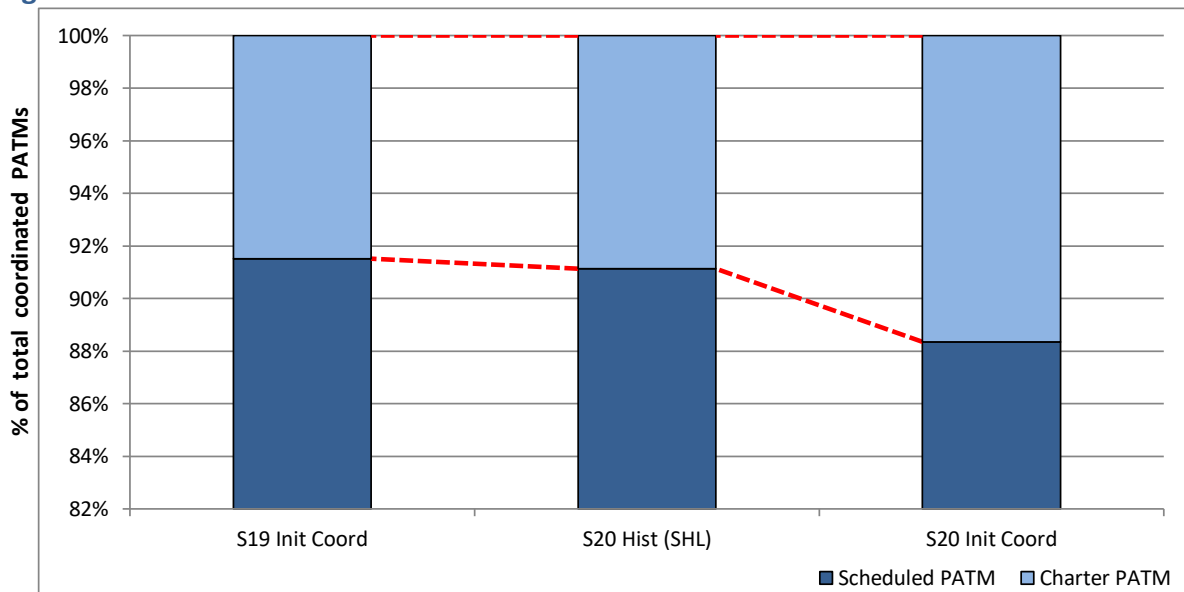


## Total Passenger ATM seats: Scheduled vs. Charter



Schedule Snapshot

## Passenger ATM seats: Scheduled vs. Charter

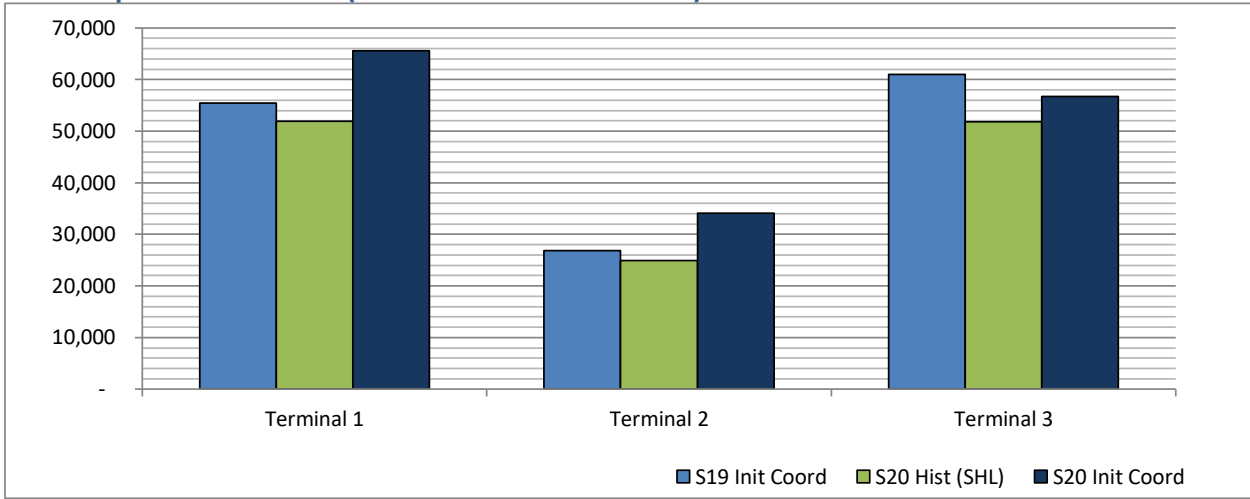


Schedule Snapshot

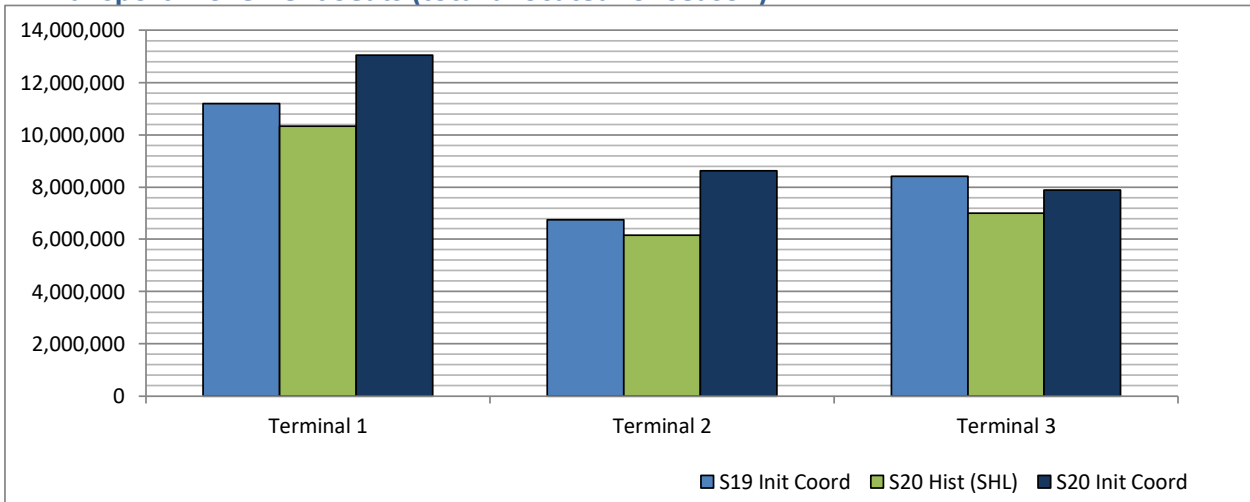
# Full Season - Terminal Analysis



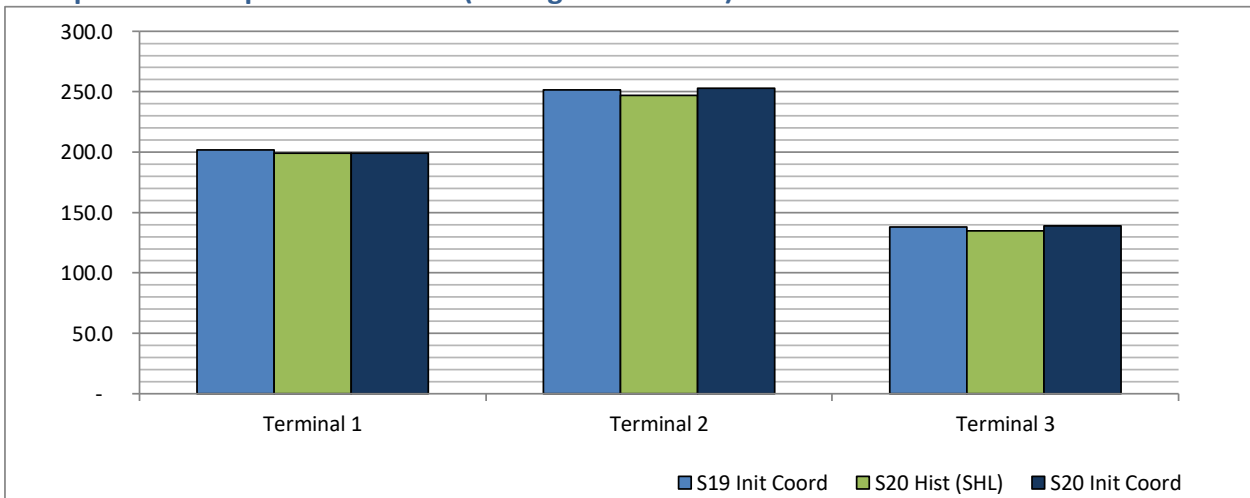
## Air Transport Movements (total allocated for season)



## Air Transport Movement Seats (total allocated for season)



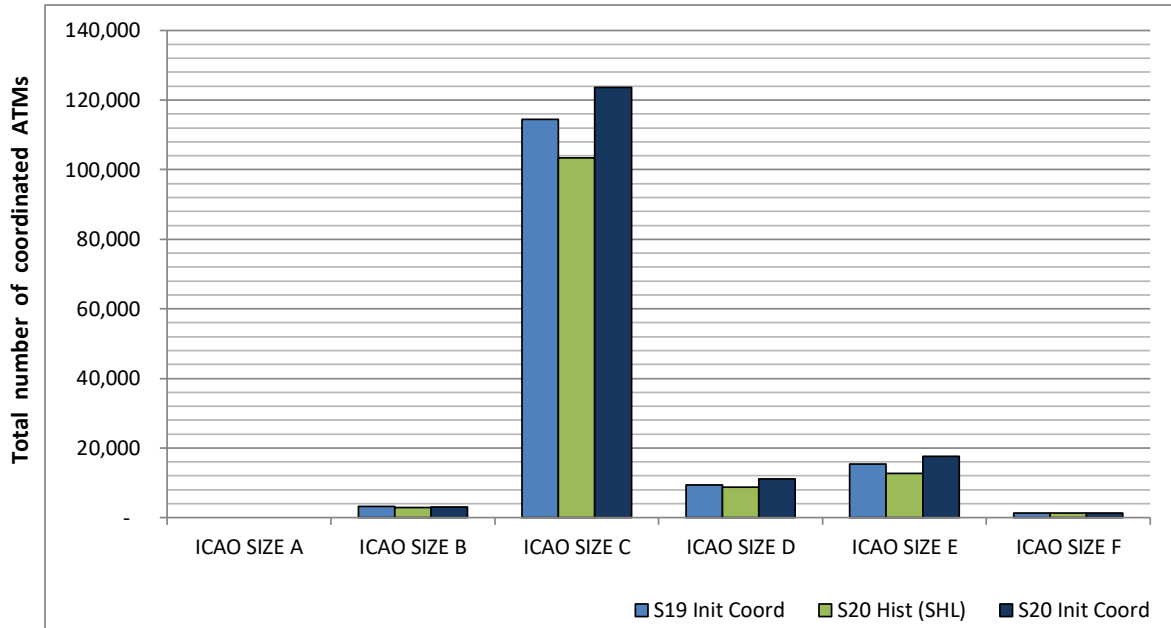
## Seats per Air Transport Movement (average for season)



# Full Season - Aircraft Size Analysis

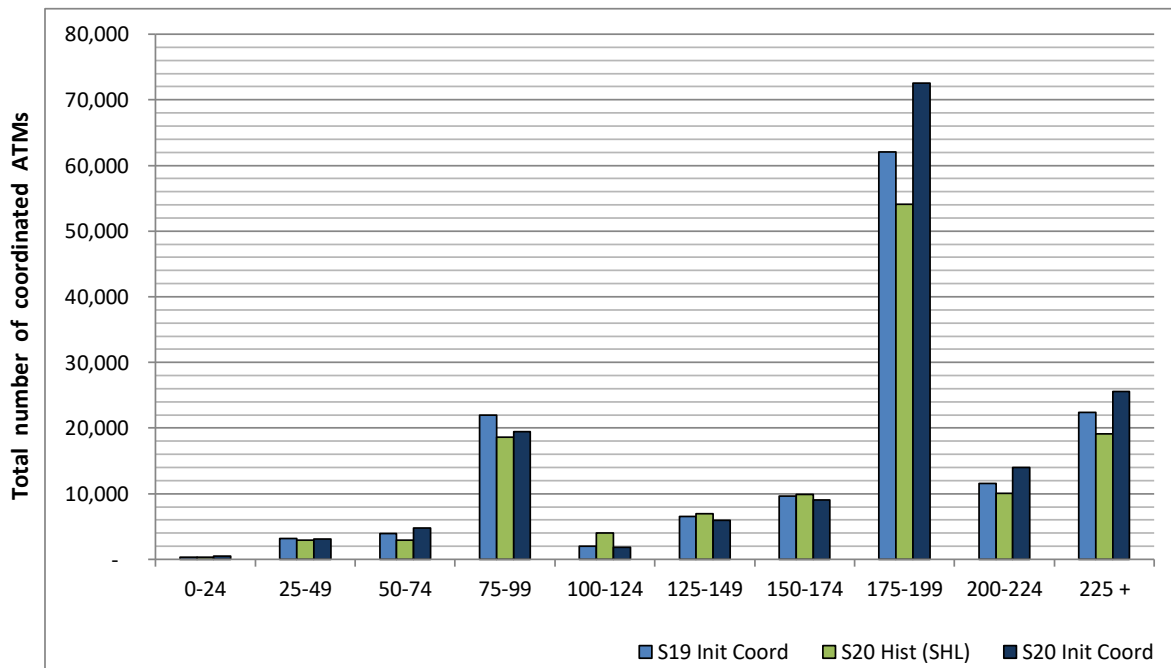


## ICAO size designation



Note: See Glossary for definitions of ICAO SIZE groupings

## Air Transport Movement seat distribution

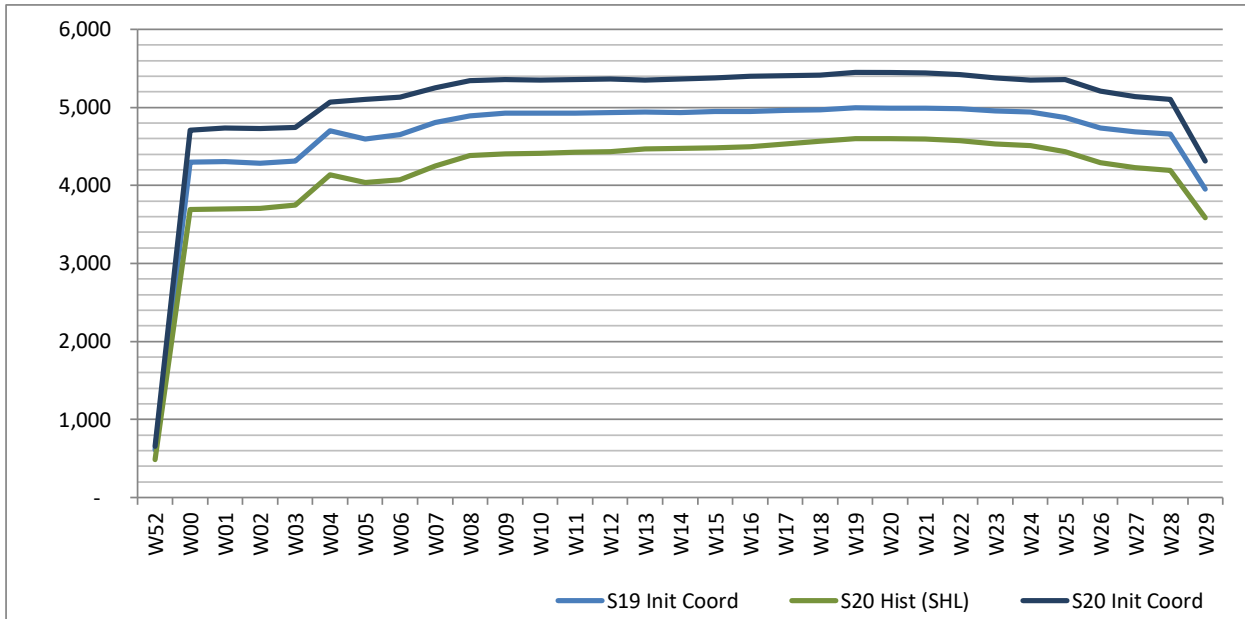


Note: FREIGHT-ONLY services with 0 seats are included in the first seat band '0-24'

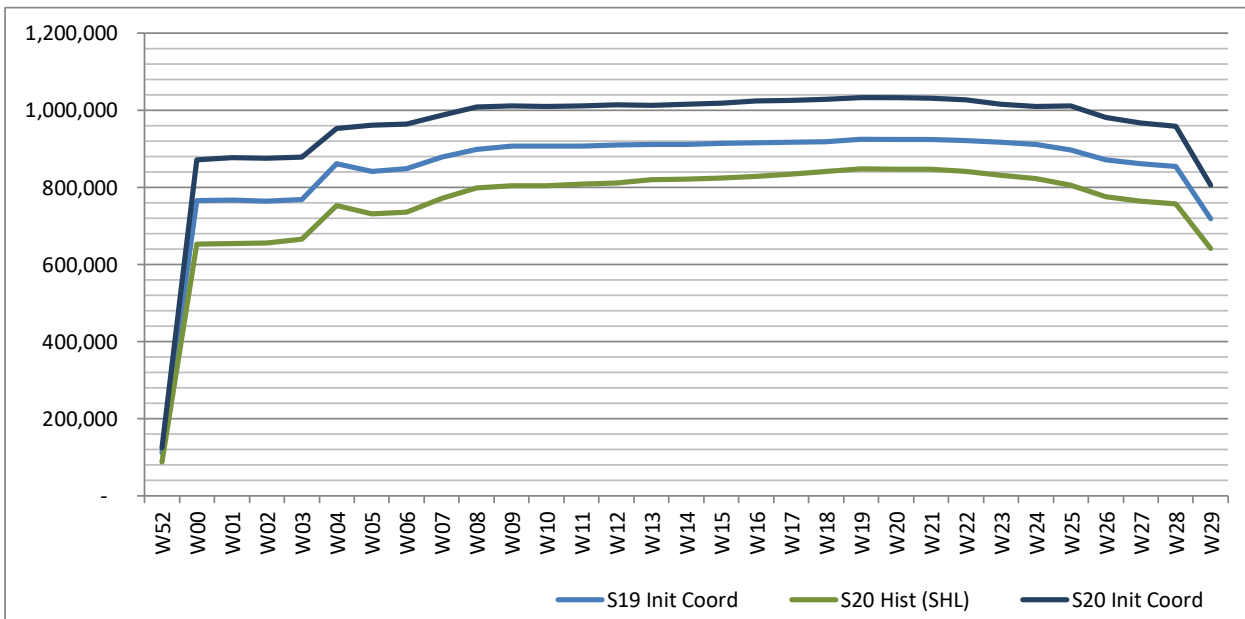
# Full Season - Seasonality



## Air Transport Movements by week of season



## Air Transport Movement Seats by week of season



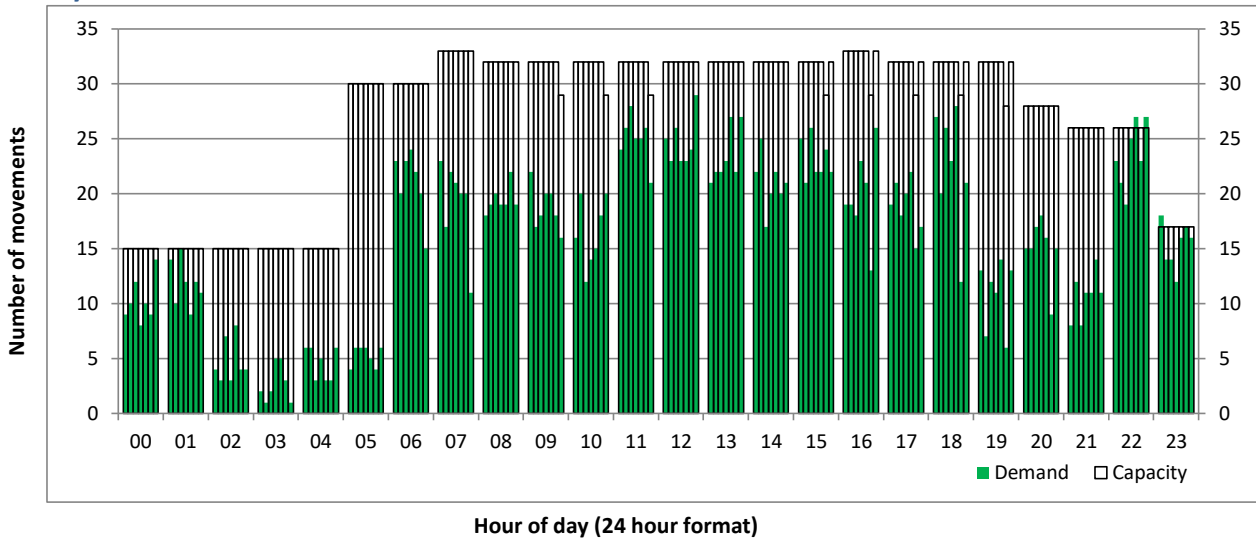
# Peak Week - Initial Hourly Runway Demand

Schedule: S20 Init Coord



## Hourly Arrival Demand

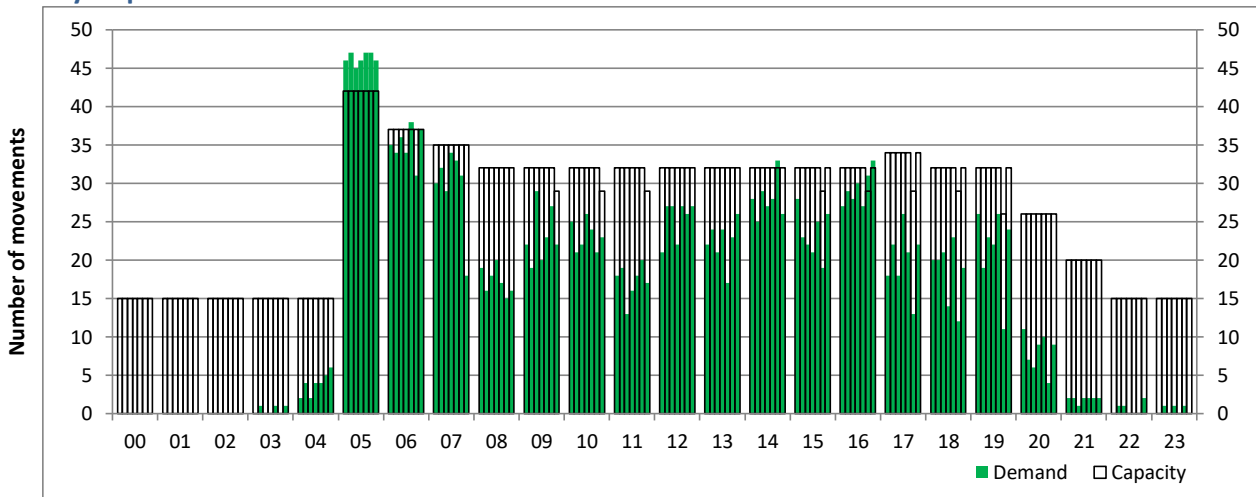
Time: UTC



Hour of day (24 hour format)

## Hourly Departure Demand

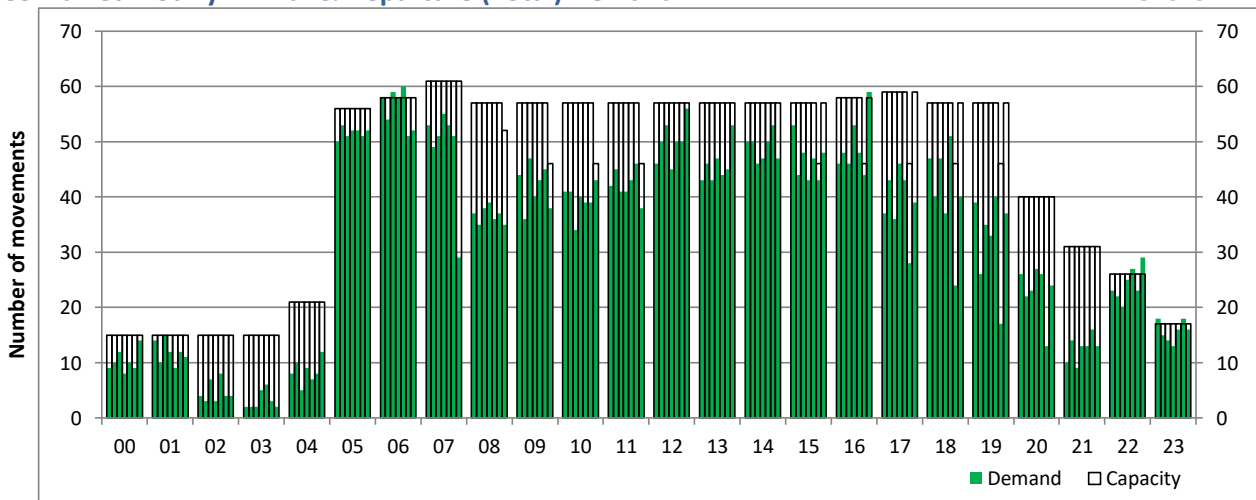
Time: UTC



Hour of day (24 hour format)

## Combined Hourly Arrival & Departure (Total) Demand

Time: UTC



Hour of day (24 hour format)

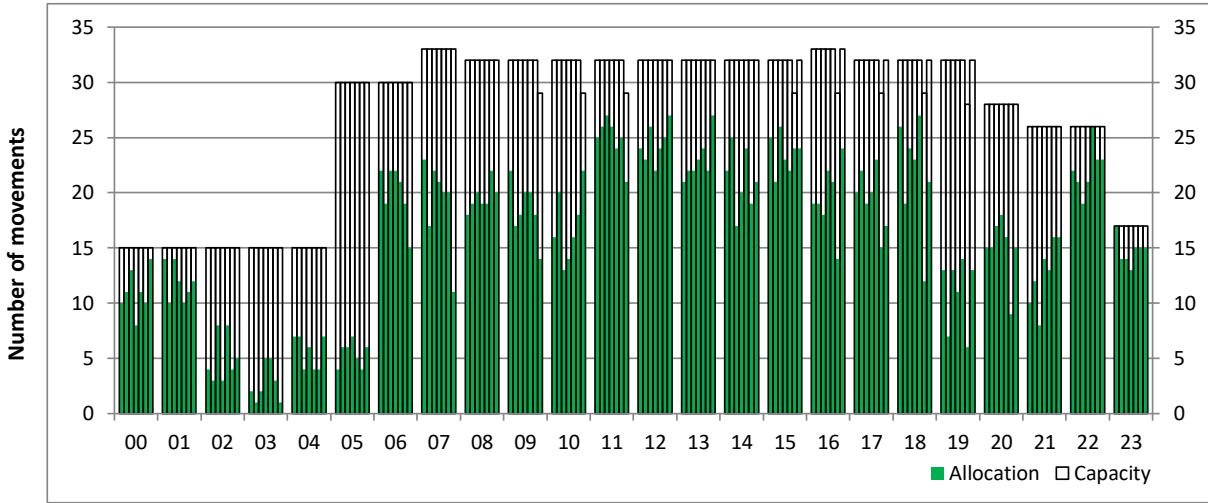
# Peak Week - Hourly Runway Allocation

Schedule: S20 Init Coord



## Hourly Arrival Allocation

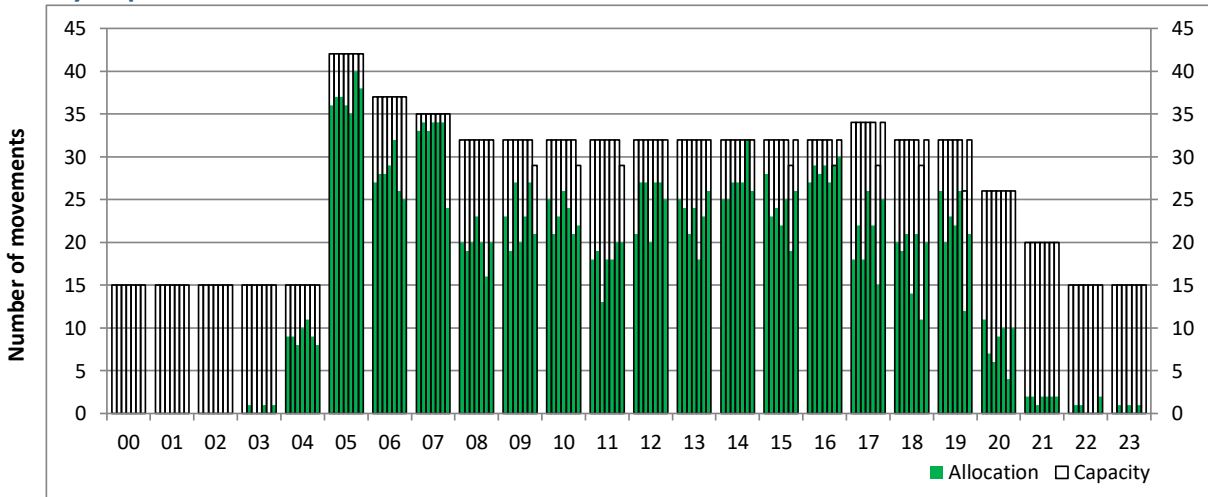
Time: UTC



Hour of day (24 hour format)

## Hourly Departure Allocation

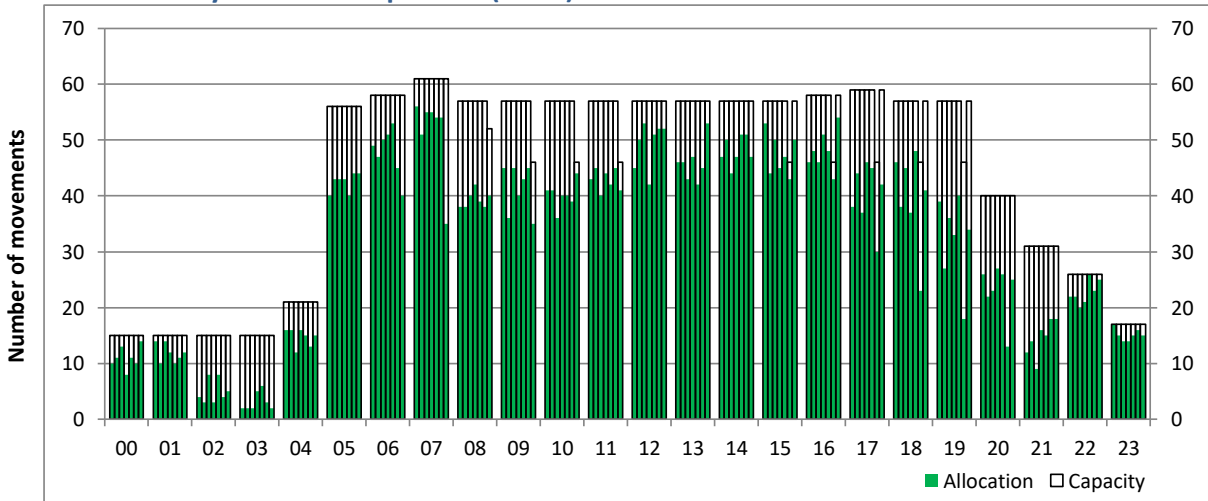
Time: UTC



Hour of day (24 hour format)

## Combined Hourly Arrival & Departure (Total) Allocation

Time: UTC



Hour of day (24 hour format)

# Peak Week - Passengers Histogram

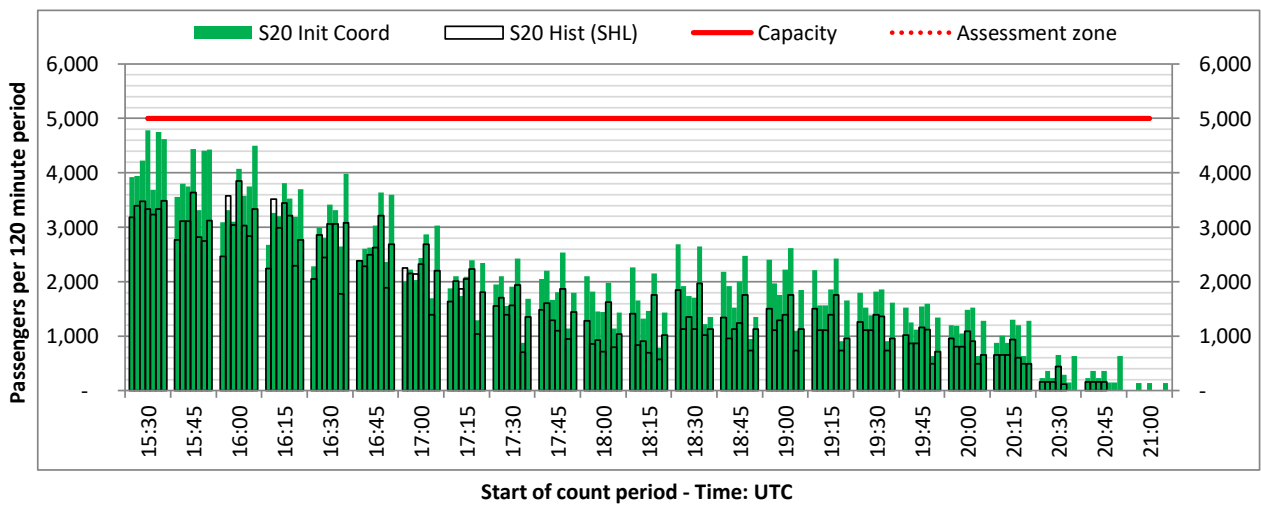
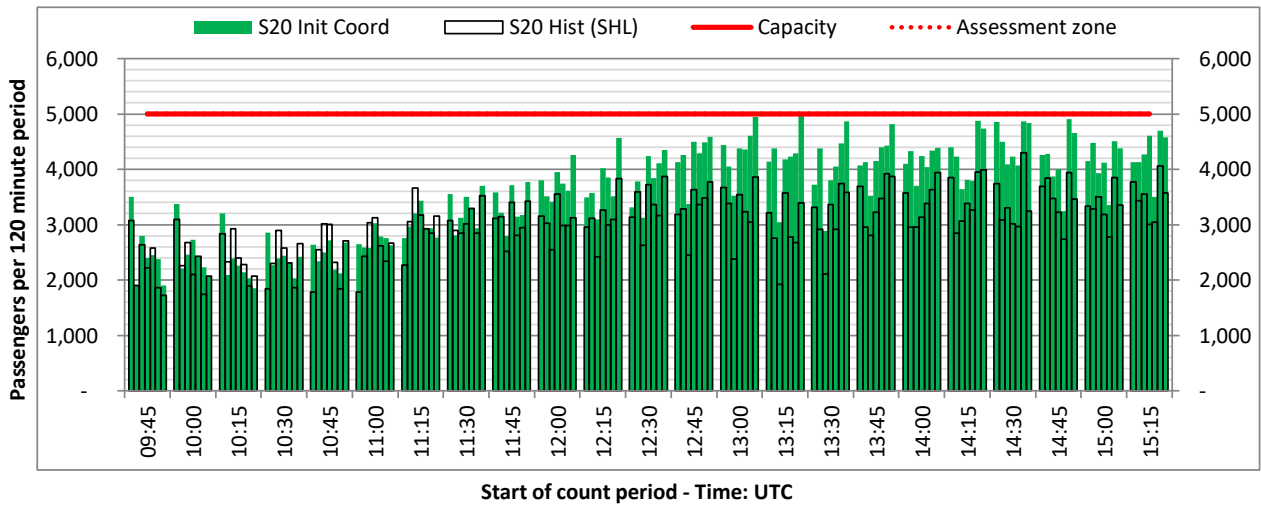
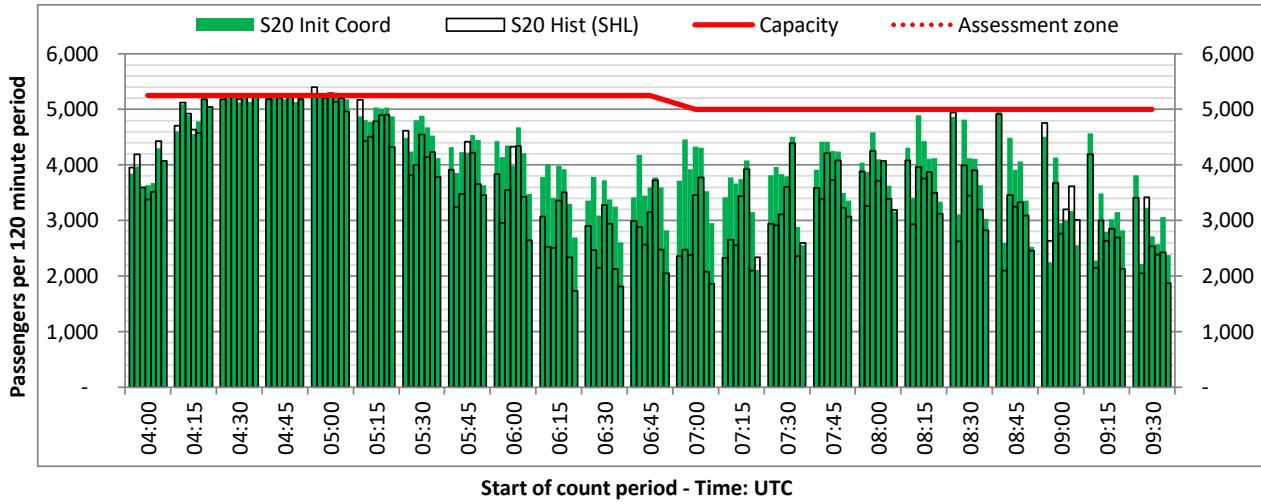
DEPARTURE - 120 minute count rolling every 15 mins (T120/15)



Terminals: T1

Operators: All Operators

Days: 1234567



# Peak Week - Passengers Histogram

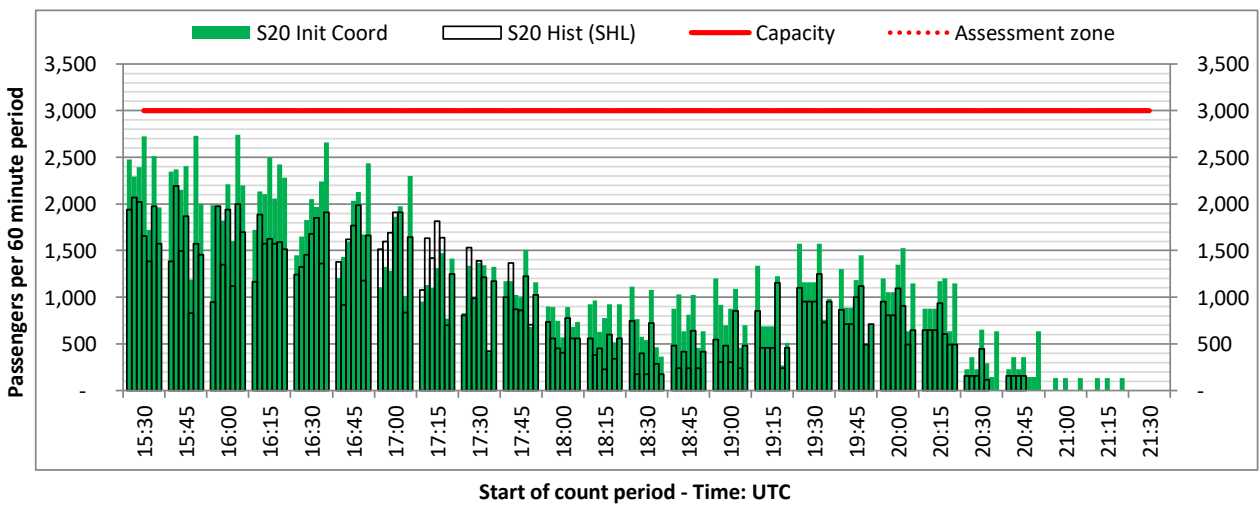
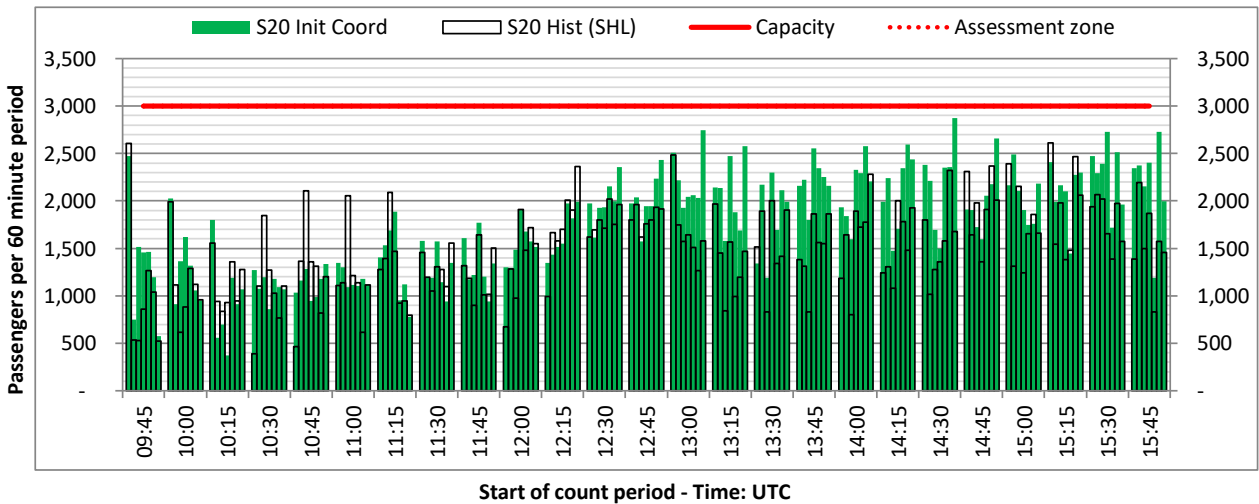
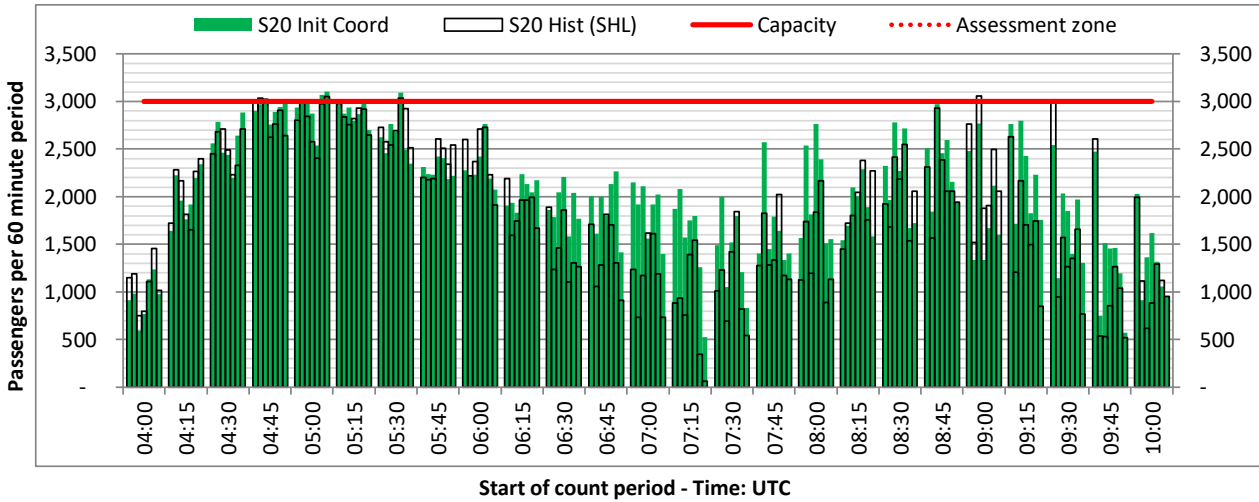
DEPARTURE - 60 minute count rolling every 15 mins (T60/15)



Terminals: T1

Operators: All Operators

Days: 1234567





# Peak Week - Passengers Histogram

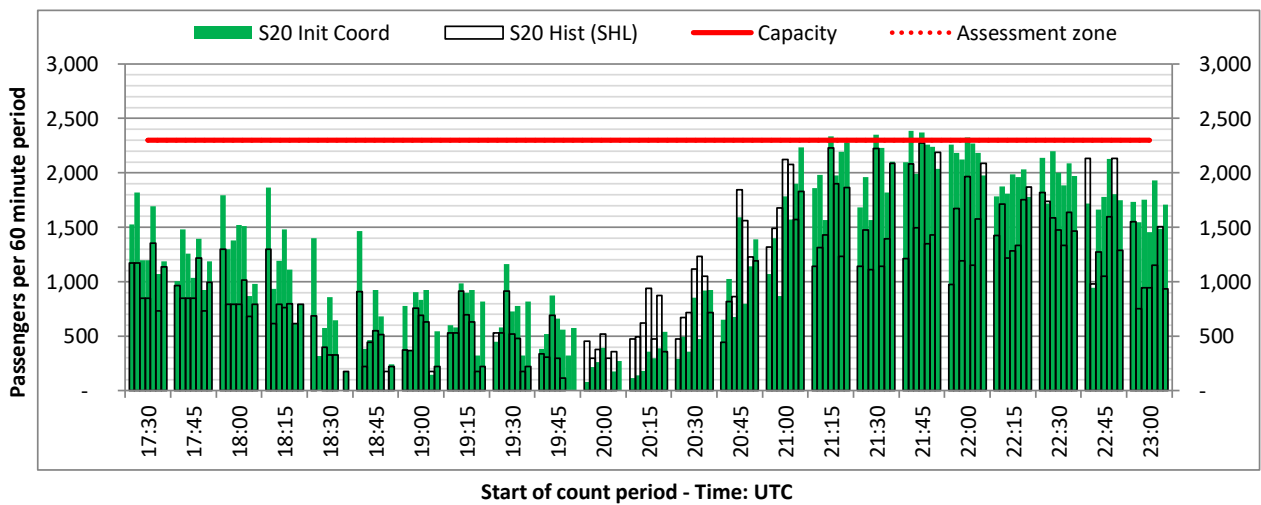
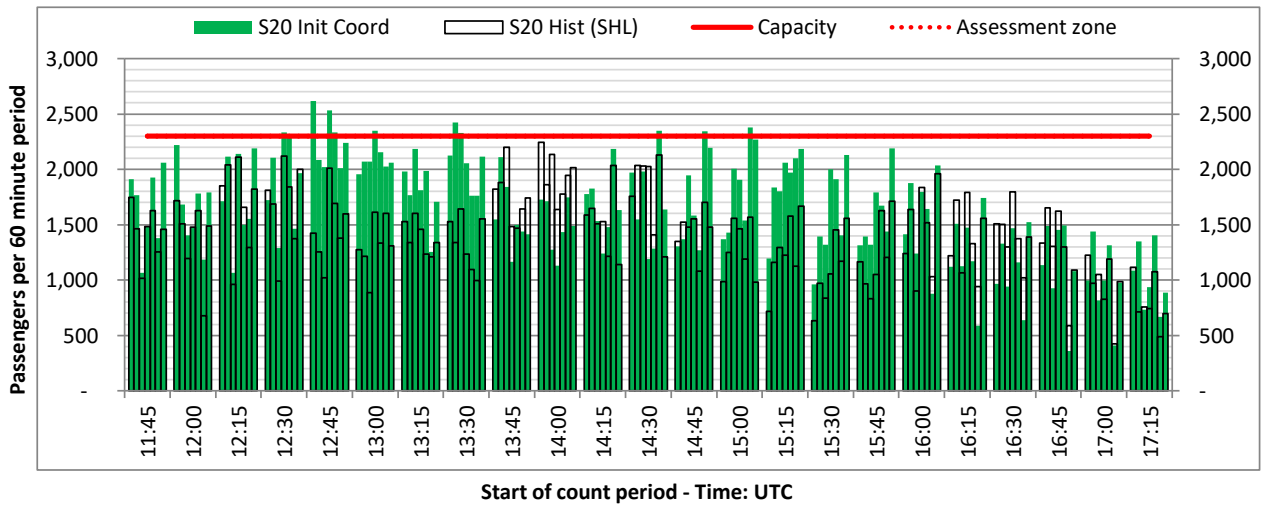
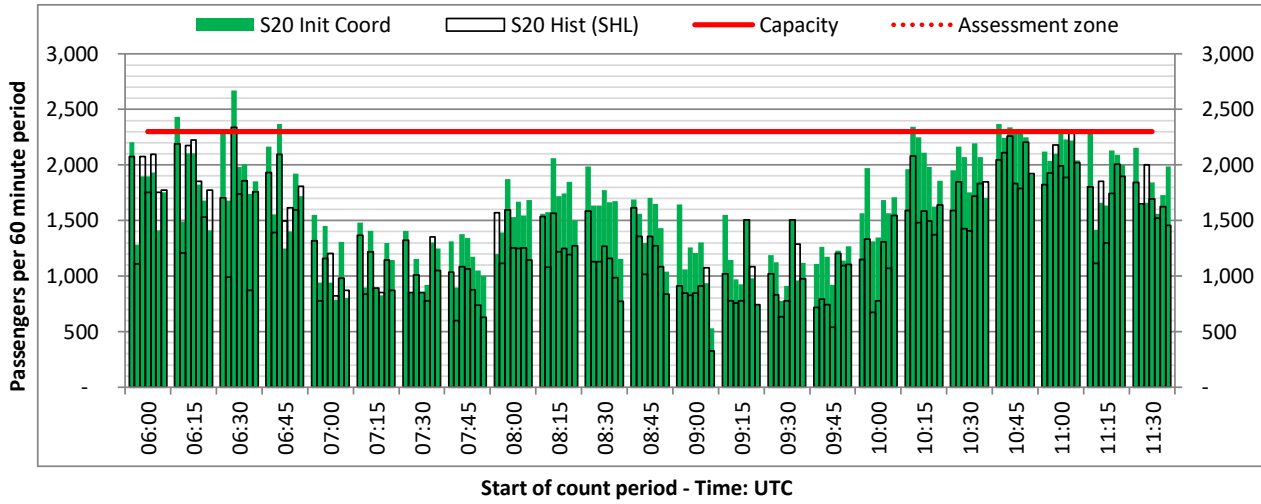
ARRIVAL - 60 minute count rolling every 15 mins (T60/15)



Terminals: T1

Operators: All Operators

Days: 1234567



# Peak Week - Passengers Histogram

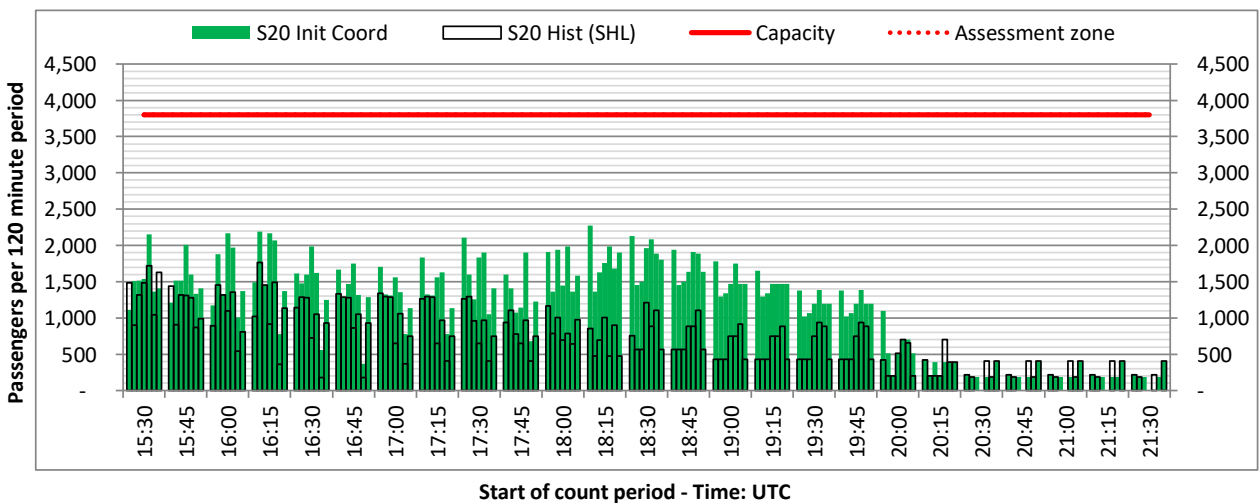
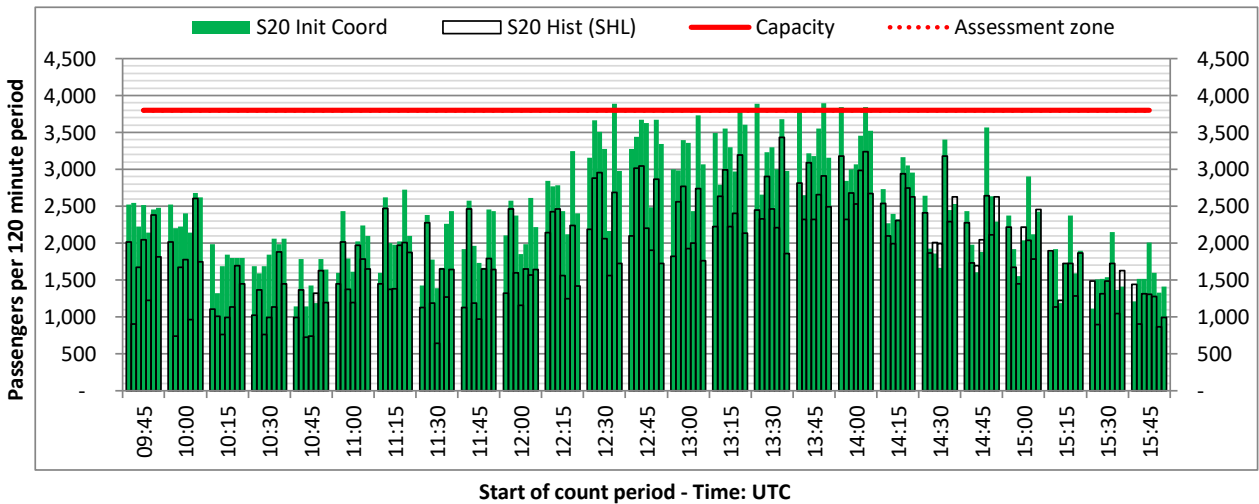
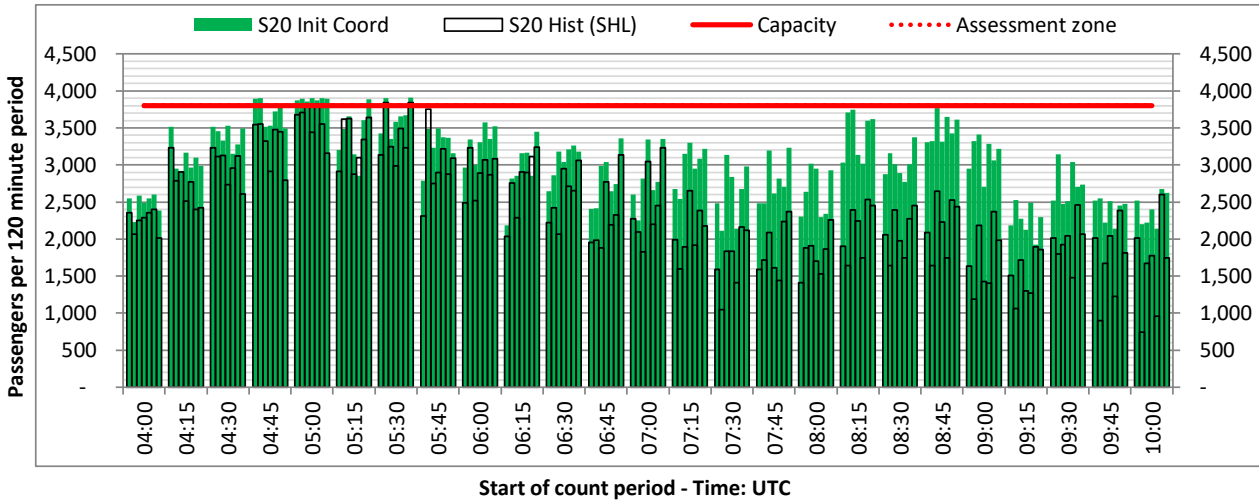
DEPARTURE - 120 minute count rolling every 15 mins (T120/15)



Terminals: T2

Operators: All Operators

Days: 1234567



# Peak Week - Passengers Histogram

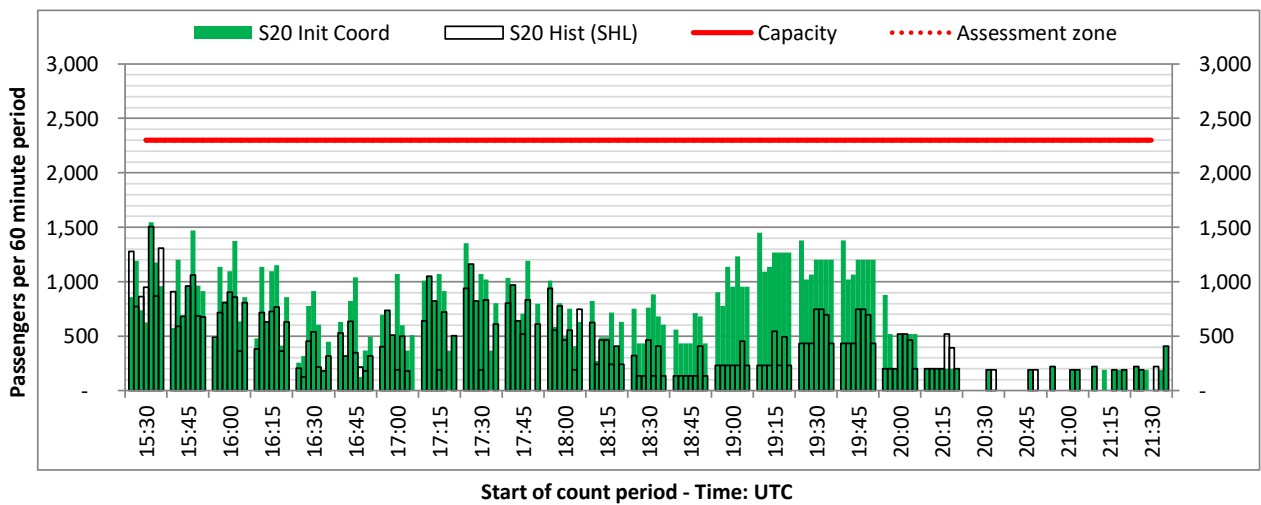
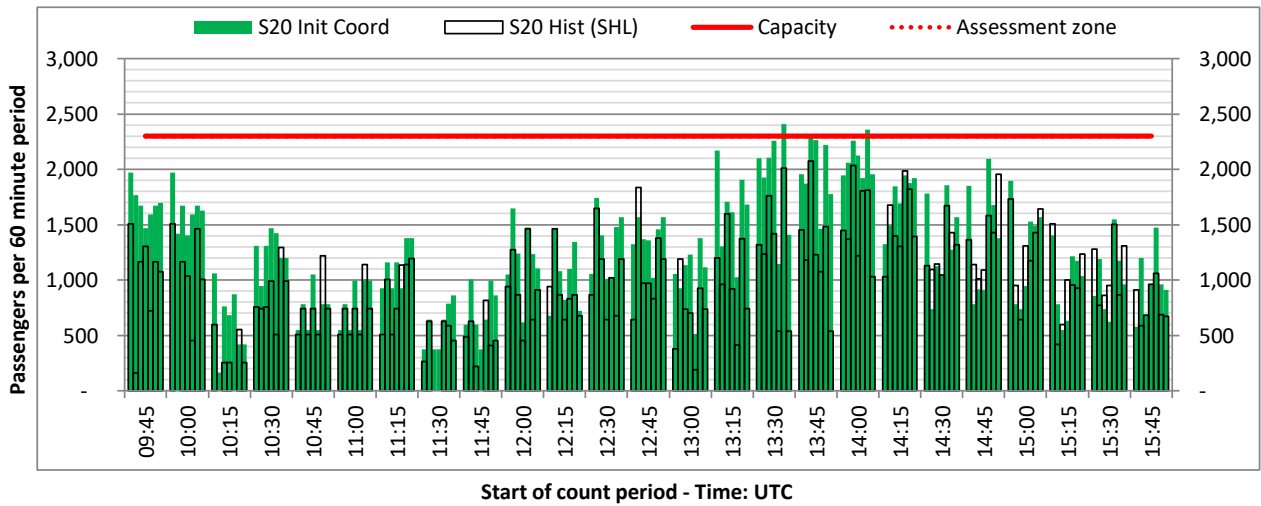
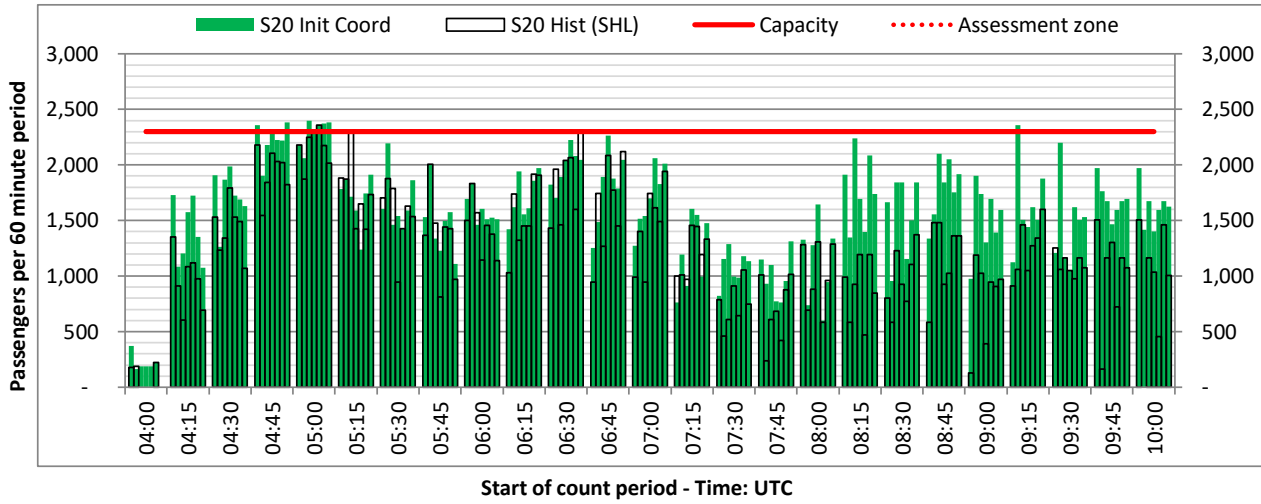
DEPARTURE - 60 minute count rolling every 15 mins (T60/15)



Terminals: T2

Operators: All Operators

Days: 1234567



# Peak Week - Passengers Histogram

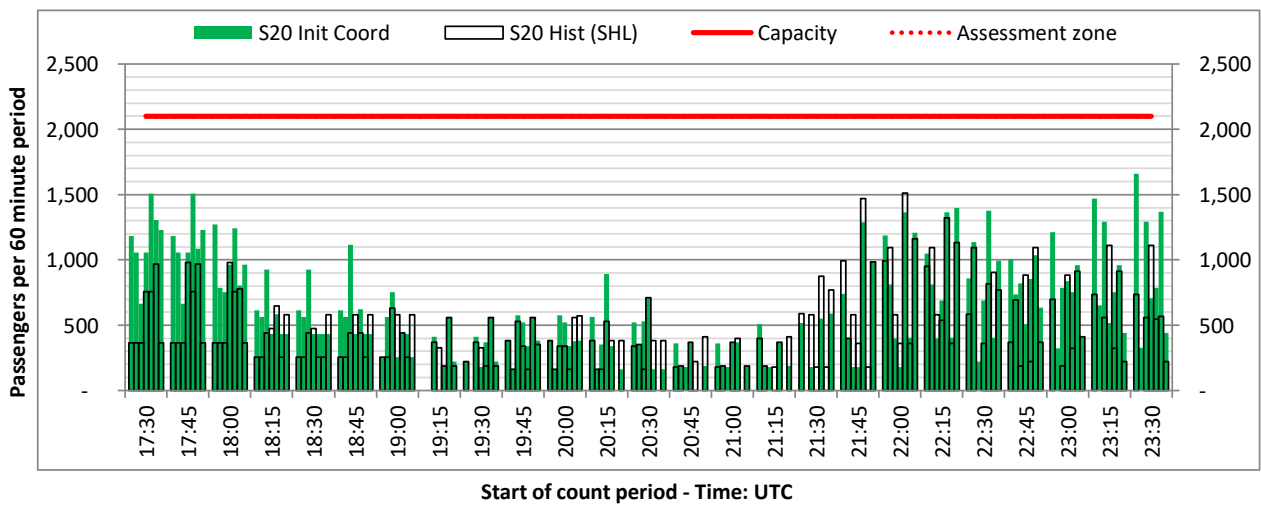
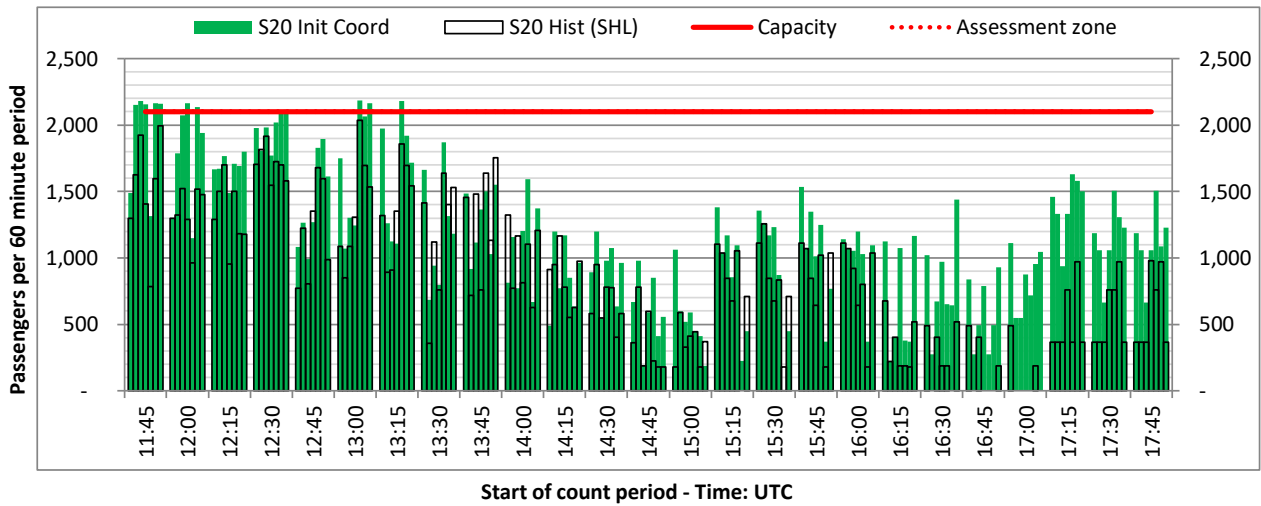
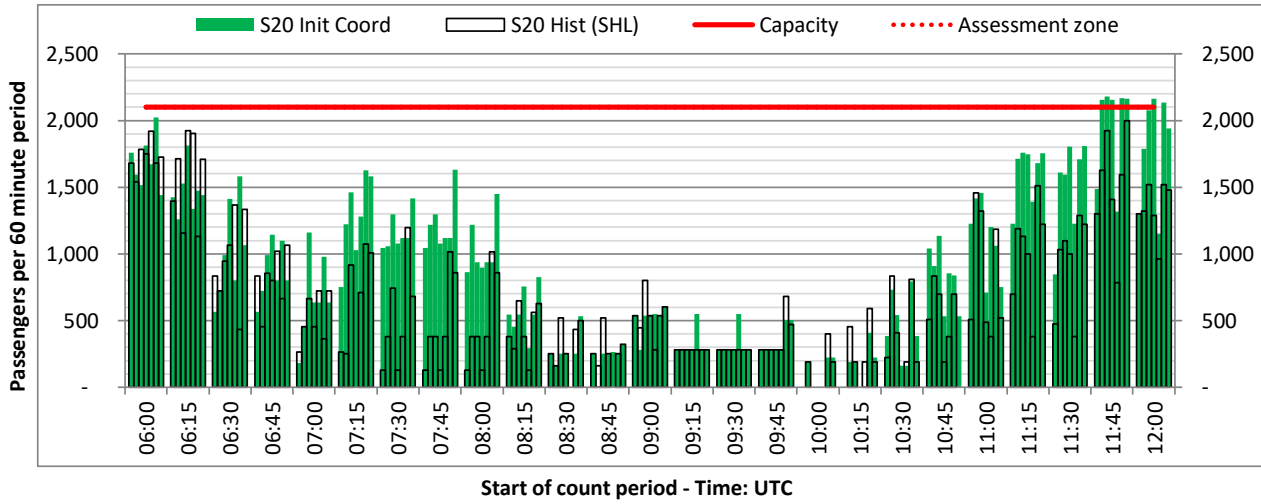
ARRIVAL - 60 minute count rolling every 15 mins (T60/15)



Terminals: T2

Operators: All Operators

Days: 1234567



# Peak Week - Passengers Histogram

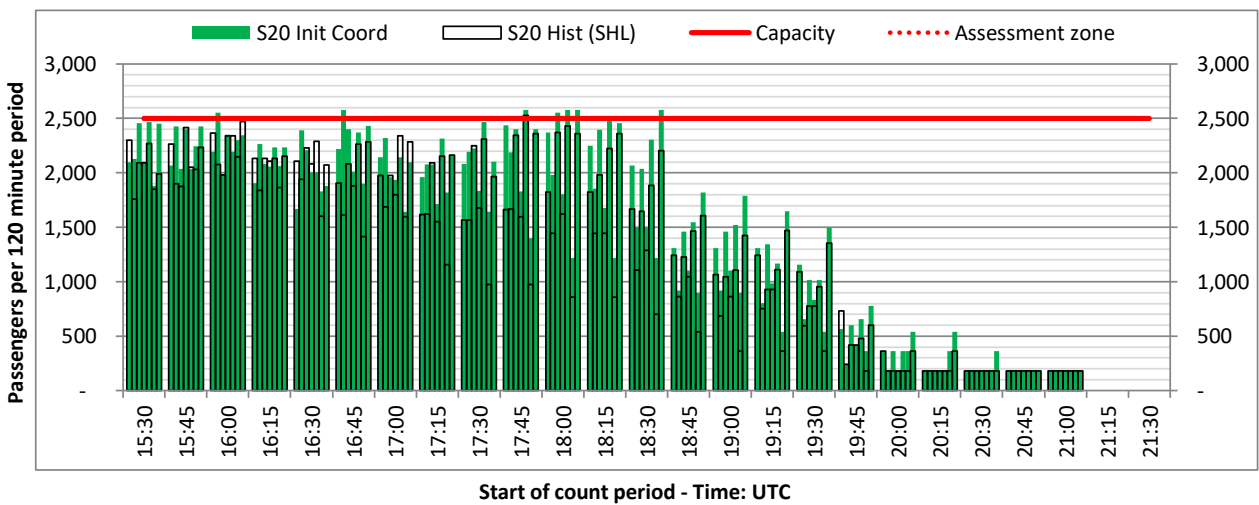
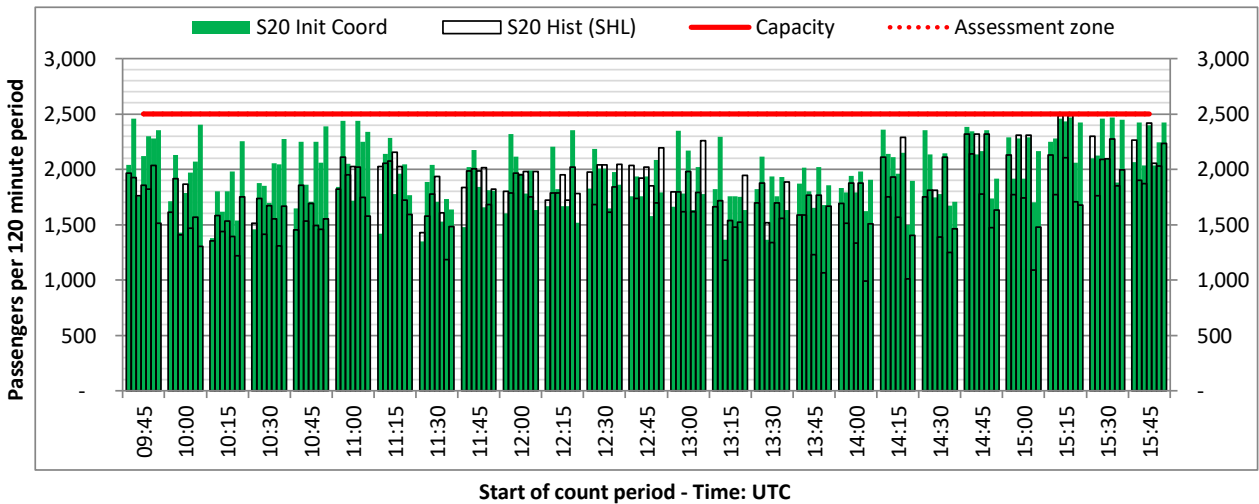
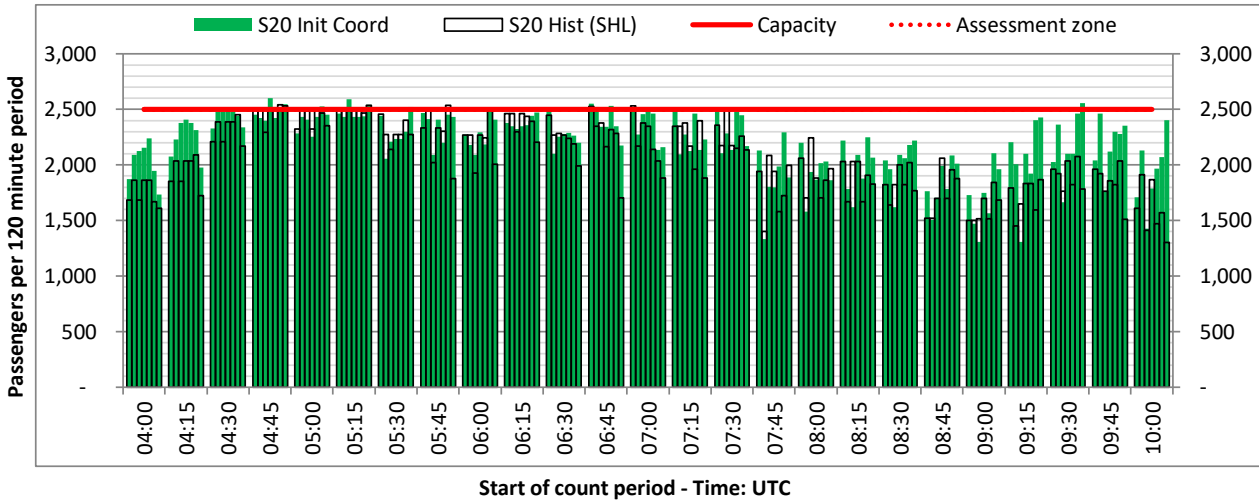
DEPARTURE - 120 minute count rolling every 15 mins (T120/15)



Terminals: T3

Operators: All Operators

Days: 1234567



# Peak Week - Passengers Histogram

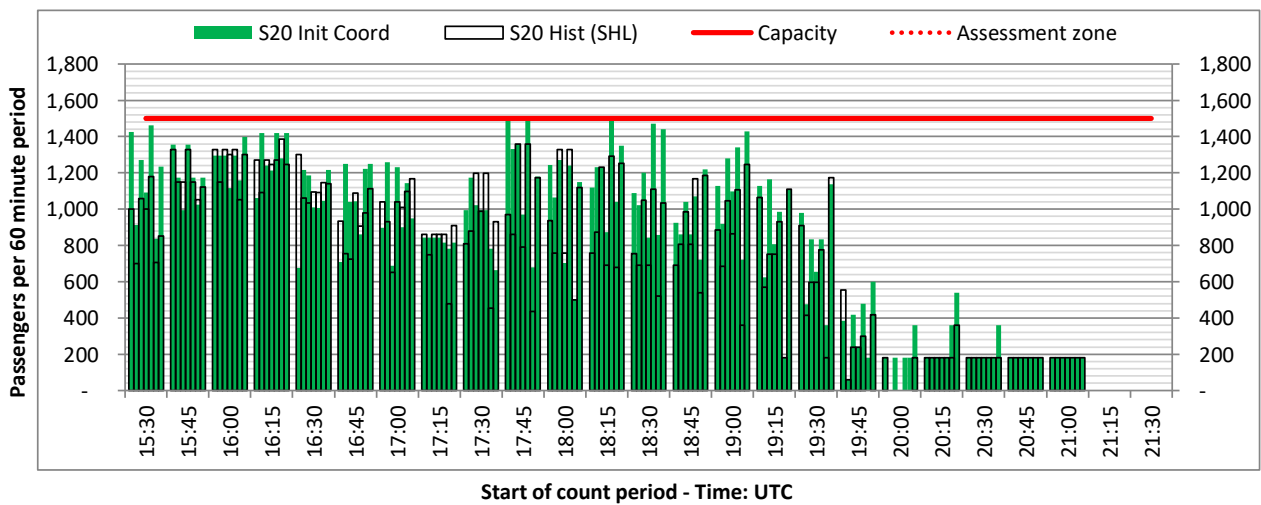
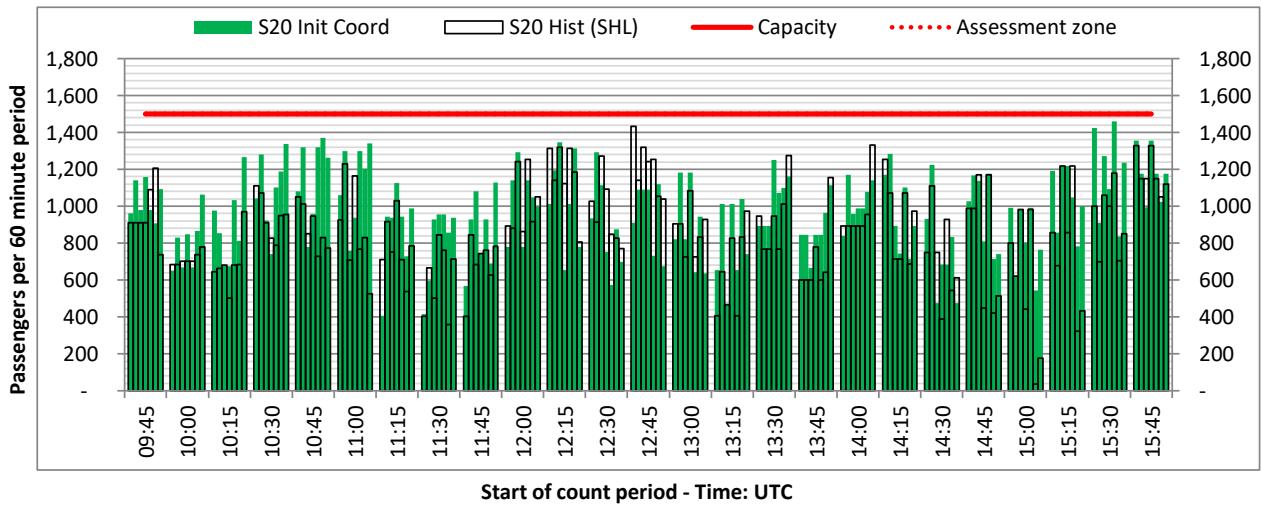
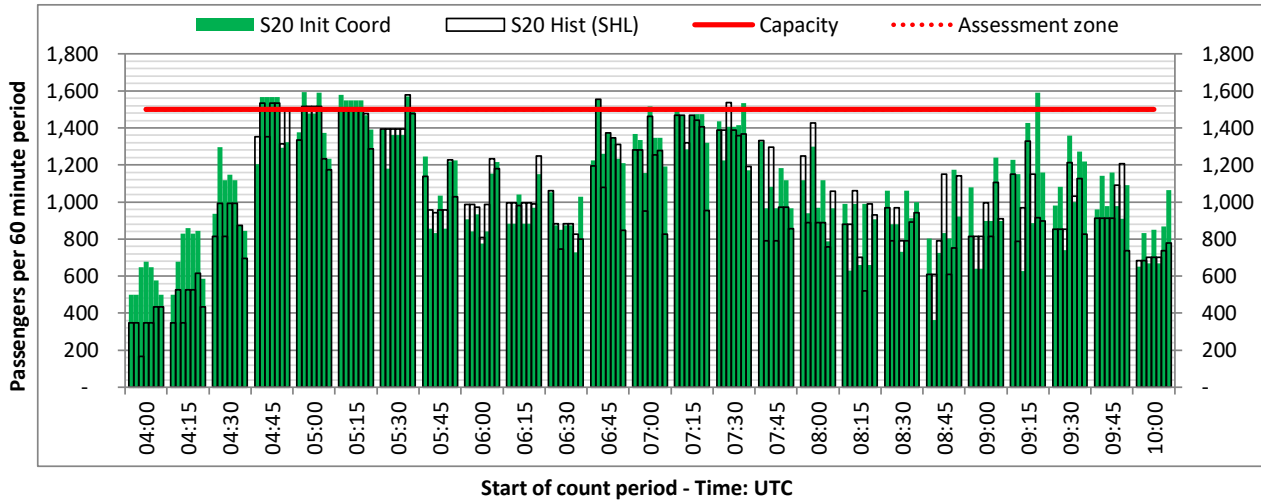
DEPARTURE - 60 minute count rolling every 15 mins (T60/15)



Terminals: T3

Operators: All Operators

Days: 1234567



# Peak Week - Passengers Histogram

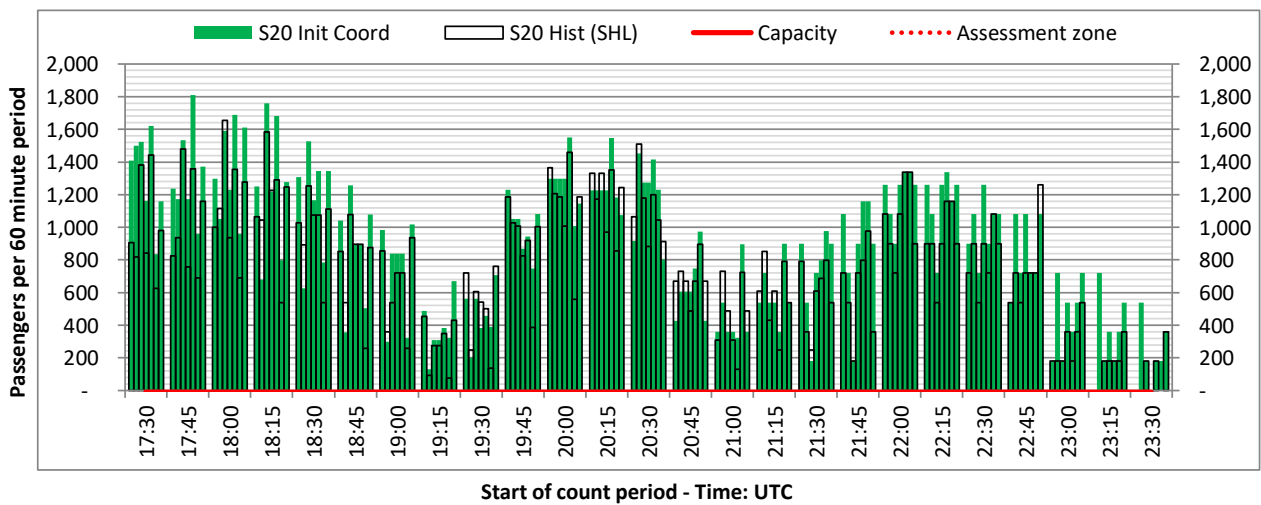
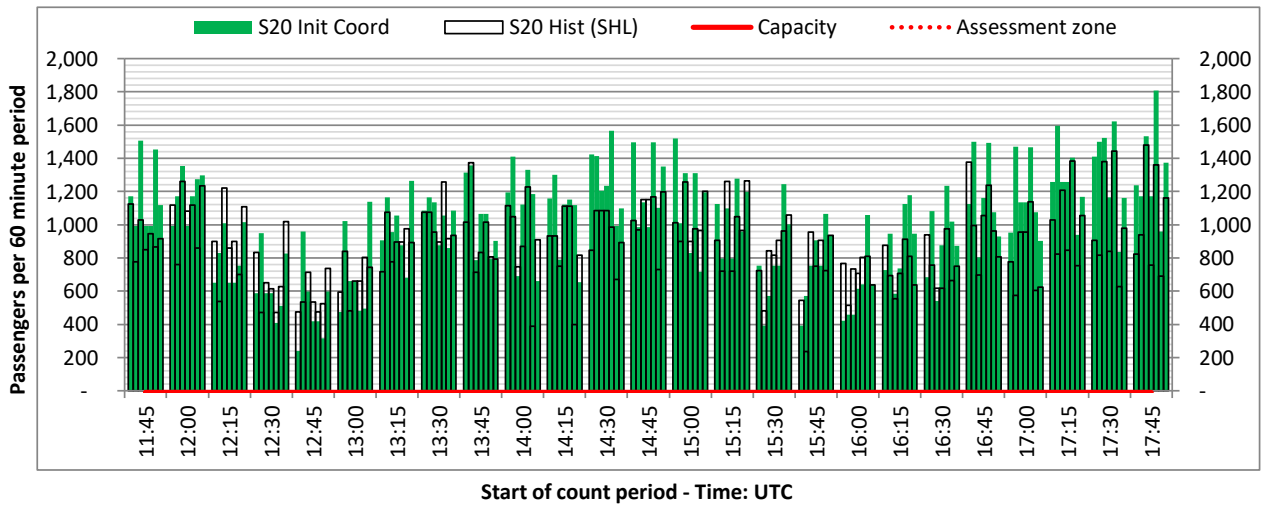
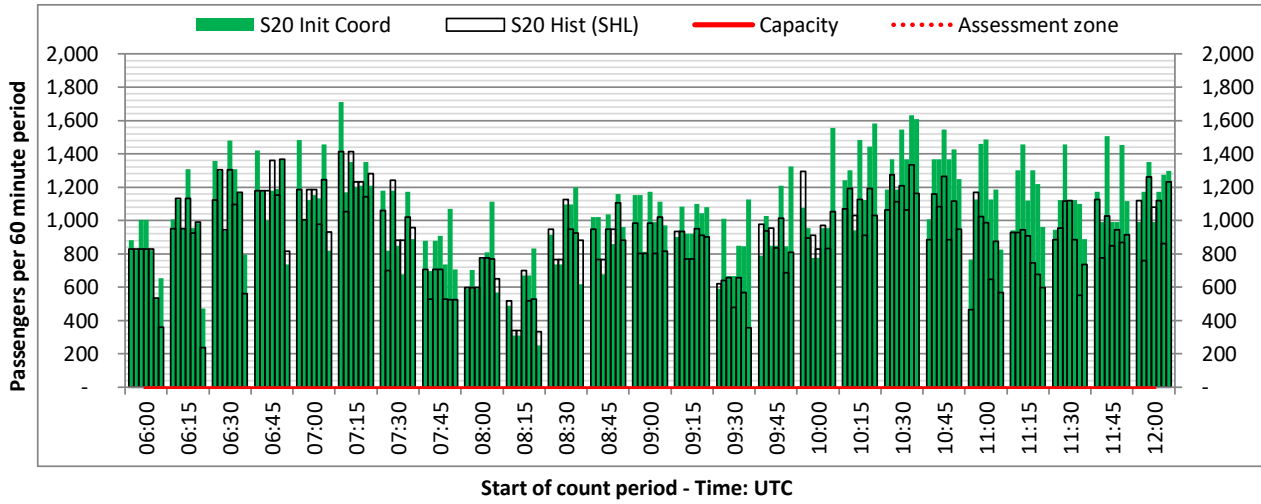
ARRIVAL - 60 minute count rolling every 15 mins (T60/15)



Terminals: T3

Operators: All Operators

Days: 1234567



# Glossary



<b>Air Transport Movement (ATM)</b>	Any aircraft movement which is either a scheduled or chartered passenger or cargo flight.
<b>Common Travel Area (CTA)</b>	Origin or Destination is in Republic of Ireland or the Channel Islands.
<b>Demand</b>	Unconstrained demand before any schedule adjustments have been made.
<b>"Fill-in"</b>	These are gaps in a historic series of slots which the carrier requests to "Fill-in" at Initial Submissions - Fill-ins will be recognisably part of the historic series and will have the same flight details to qualify as a "Fill-in".
<b>Hist (SHL)</b>	Snapshot of historic schedule rolled over from end of the previous equivalent season - as advised to airlines in the SHLs.
<b>ICAO Size A</b>	Aircraft with wingspan between 0.00m - 14.99m.
<b>ICAO Size B</b>	Aircraft with wingspan between 15.00m - 23.99m.
<b>ICAO Size C</b>	Aircraft with wingspan between 24.00m - 35.99m.
<b>ICAO Size D</b>	Aircraft with wingspan between 36.00m - 51.99m.
<b>ICAO Size E</b>	Aircraft with wingspan between 52.00m - 64.99m.
<b>ICAO Size F</b>	Aircraft with wingspan between 65.00m - 80.00m.
<b>Init Coord</b>	Snapshot of schedule immediately after Initial Coordination is completed - as advised to airlines in the SALs.
<b>Passenger Air Transport Movement (PATM)</b>	Any aircraft movement which is either a scheduled or chartered passenger flight.
<b>Start</b>	Snapshot of schedule shortly before the start of the scheduling season (exact date given below where used).
<b>Time: Local</b>	Times shown are in LOCAL time for the airport/scheduling season.
<b>Time: UTC</b>	Times shown are in Universal Time Constant (UTC).

---

## Data snapshot descriptions

<b>S19 Init Coord</b>	S19 schedule as cleared on Fri 16-Nov-18.
<b>S20 Hist (SHL)</b>	S20 schedule as cleared on Wed 04-Sep-19.
<b>S20 Init Coord</b>	S20 schedule as cleared on Thu 19-Sep-19.

<b>Peak Week</b>	Peak week for S19 is Mon 02-Sep-19 to Sun 08-Sep-19. Peak week for S20 is Mon 31-Aug-20 to Sun 06-Sep-20.
------------------	--

---

## **For ACL use**

	Airport-Season-Branch-Resource	From date	To date	Time
Full Season Rep 1	MAN-S19-Post IATA-Standard	Sun 31-Mar-2019	Sat 26-Oct-2019	UTC
Full Season Rep 2	MAN-S20-SHL-Standard	Sun 29-Mar-2020	Sat 24-Oct-2020	UTC
Full Season Rep 3	MAN-S20-Initial Coord Rpt-Standard	Sun 29-Mar-2020	Sat 24-Oct-2020	UTC

	Airport-Season-Branch-Resource	From date	To date	Time
Peak Week Rep 1	MAN-S19-Post IATA-Standard	Mon 02-Sep-2019	Sun 08-Sep-2019	UTC
Peak Week Rep 2	MAN-S20-SHL-Standard	Mon 31-Aug-2020	#VALUE!	UTC
Peak Week Rep 3	MAN-S20-Initial Coord Rpt-Standard	Mon 31-Aug-2020	Sun 06-Sep-2020	UTC