

Start of Season Report

Report Date: Wed 23-Oct-2019

Headlines

| | W19 Start | vs. W18 Start | vs. W18 End |
|---|-------------------|----------------|----------------|
| Total Air Transport Movements (Passenger & Freight) | 78,494 | ▲ 6.2% | ▲ 11.7% |
| Total Passenger Air Transport Movements | 76,300 | ▲ 5.9% | ▲ 11.3% |
| Total Passenger Air Transport Movement Seats | 10,669,935 | ▲ 12.8% | ▲ 21.3% |
| Average Seats per Passenger Air Transport Movement | 139.8 | ▲ 6.6% | ▲ 9.0% |
| Percentage of allocated slots cleared as requested (OK) | 95.0% | | |

Contents

| Page | Content |
|------|---|
| 2 | Runway Scheduling Limits |
| 3 | ATM Allocation by Operator (Full season and Peak Week Comparison) |
| 4 | Peak Week - Allocation and Slot Adjustment Distribution by Operator |
| 5 | Significant Route Changes |
| 6 | Full Season - ATM Analysis |
| 7 | Full Season - PATM Seats Analysis |
| 8 | Full Season - Terminal Analysis |
| 9 | Full Season - Aircraft Size Analysis |
| 10 | Full Season - Seasonality |
| 11 | Peak Week - Hourly Runway Demand |
| 12 | Peak Week - Hourly Runway Allocation |
| 13 | Peak Week - Hourly Runway Allocation Comparison (W19 Start vs. W18 Start) |
| 14 | Peak Week - Hourly Runway Allocation Comparison (W19 Start vs. W18 End) |
| 15 | Coordinated QC and Night Movements |
| 16 | Peak Week Histogram - Arrival Movements (R10) - All Terminals - All Operators |
| 17 | Peak Week Histogram - Arrival Movements (R10) - All Terminals - All Operators |
| 18 | Peak Week Histogram - Departure Movements (R10) - All Terminals - All Operators |
| 19 | Peak Week Histogram - Departure Movements (R10) - All Terminals - All Operators |
| 20 | Peak Week Histogram - Arrival Passengers (T60/10) - All Terminals - All Operators |
| 21 | Peak Week Histogram - Arrival Passengers (T60/10) - All Terminals - All Operators |
| 22 | Peak Week Histogram - Arrival Passengers (T60/10) - 1D Schengen - All Operators |
| 23 | Peak Week Histogram - Arrival Passengers (T60/10) - 1D Schengen - All Operators |
| 24 | Peak Week Histogram - Arrival Passengers (T60/10) - 1I Non Schengen - All Operators |
| 25 | Peak Week Histogram - Arrival Passengers (T60/10) - 1I Non Schengen - All Operators |
| 26 | Peak Week Histogram - Arrival Passengers (T30/10) - 1I Non Schengen - All Operators |
| 27 | Peak Week Histogram - Arrival Passengers (T30/10) - 1I Non Schengen - All Operators |
| 28 | Peak Week Histogram - Departure Passengers (T60/10) - All Terminals - All Operators |
| 29 | Peak Week Histogram - Departure Passengers (T60/10) - All Terminals - All Operators |
| 30 | Peak Week Histogram - Departure Passengers (T60/10) - 1D Schengen - All Operators |
| 31 | Peak Week Histogram - Departure Passengers (T60/10) - 1D Schengen - All Operators |
| 32 | Peak Week Histogram - Departure Passengers (T60/10) - 1I Non Schengen - All Operators |
| 33 | Peak Week Histogram - Departure Passengers (T60/10) - 1I Non Schengen - All Operators |
| 34 | Peak Week Histogram - Departure Passengers (T30/10) - 1I Non Schengen - All Operators |
| 35 | Peak Week Histogram - Departure Passengers (T30/10) - 1I Non Schengen - All Operators |
| 36 | Glossary |

W18 scheduling season runs from Sun 28-Oct-2018 to Sat 30-Mar-2019 (154 days).

W19 scheduling season runs from Sun 27-Oct-2019 to Sat 28-Mar-2020 (154 days).

Disclaimer

No warranty whether expressed or implied as to the completeness, accuracy, fitness for purpose, or satisfactory quality is given by ACL regarding the information in this report, which is provided by third parties. Accordingly, ACL excludes all liability with regard to such data.

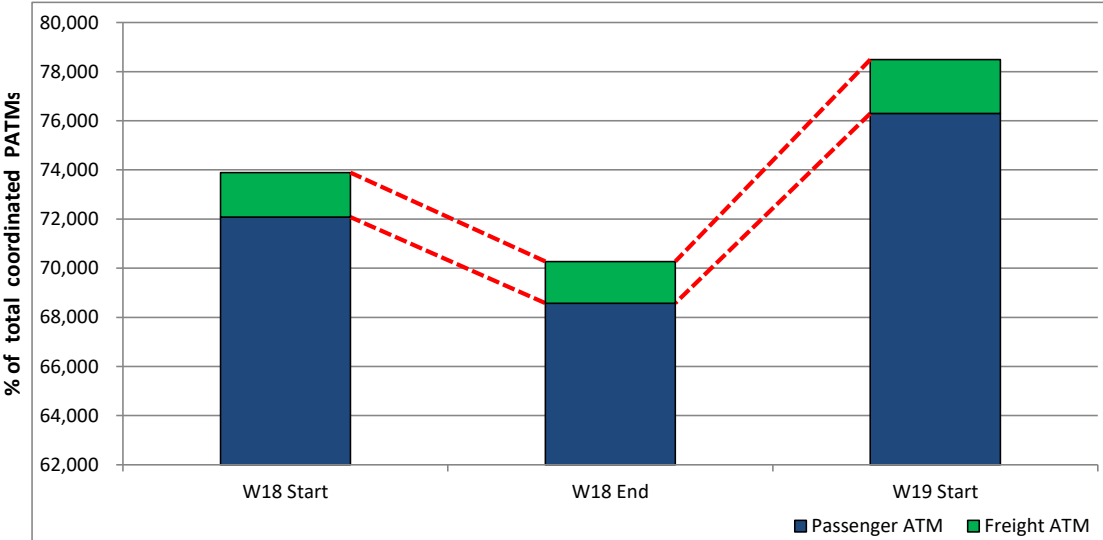
The contents of this report may not be reproduced without the written consent of ACL.

Significant Route Changes



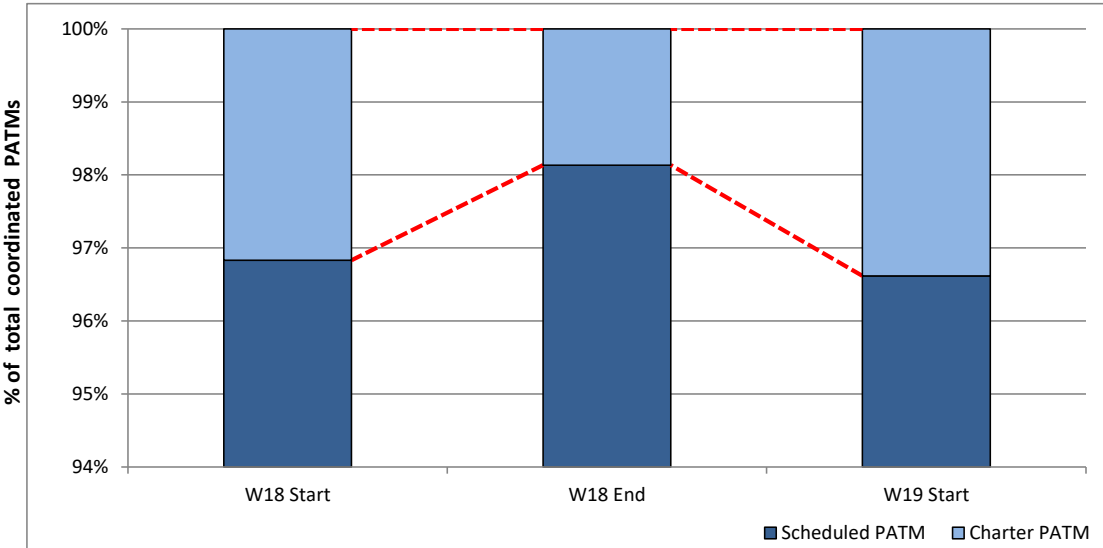
| Operator | Category | Description of change from W18 schedule to W19 schedule |
|------------------------|-----------|---|
| AMC Aviation (Poland) | NEW | 1 x weekly service to Gran Canaria (LPA) |
| AMC Aviation (Poland) | NEW | 1 x weekly service to Lanzarote (ACE) |
| Arkefly | CANCELLED | 1 x fortnightly service to Cancun (CUN) |
| Arkefly | CANCELLED | 1 x fortnightly service to Montego Bay (MBJ) |
| Arkefly | CANCELLED | Fortnightly service to Punta Cana (PUJ) |
| Blue Panorama Airlines | NEW | 1 x part weekly service to Krabi (KBV) |
| Blue Panorama Airlines | NEW | 1 x part weekly service to Male (MLE) |
| Blue Panorama Airlines | NEW | 1 x weekly service to Cabo Verde (SID) |
| Blue Panorama Airlines | NEW | 1 x weekly service to Cayo Coco (CCC) |
| Blue Panorama Airlines | NEW | 1 x weekly service to Cuba (SNU) |
| Blue Panorama Airlines | NEW | 1 x weekly service to Muscat (SLL) |
| Blue Panorama Airlines | NEW | 1 x weekly service to Rome (FCO) |
| Blue Panorama Airlines | NEW | 1 x weekly service to Zanzibar (ZNZ) |
| CSA Czech Airlines | CHANGE | Increased frequency to Prague (PRG) |
| EasyJet | CANCELLED | 4 x weekly service to Gatwick (LGW) |
| EasyJet | CANCELLED | 7 x weekly service to Berlin (TXL) |
| EasyJet Switzerland | CANCELLED | 4 x weekly service to Geneva (GVA) |
| Finnair | CHANGE | Increased frequency of 7 x weekly to Helsinki (HEL) |
| LOT Polish Airlines | NEW | 12 x weekly service to Bydgoszcz (BZG) |
| LOT Polish Airlines | NEW | 3 x weekly service to Beirut (BEY) |
| LOT Polish Airlines | NEW | 4 x weekly service to Beijing (PKX) |
| LOT Polish Airlines | NEW | 5x weekly service to Delhi (DEL) |
| LOT Polish Airlines | CHANGE | Additional 6 x weekly service to Lublin (LUZ) |
| LOT Polish Airlines | CANCELLED | 4 x weekly service to Moscow (DME) |
| Norwegian | CANCELLED | 2 x part weekly service to Malaga (AGP) |
| Qatar Airways | CHANGE | Increased frequency of 2 x weekly to Doha (DOH) |
| Regional Jet OU | NEW | 14 x weekly service to Tallinn (TLL) |
| Ryanair | CANCELLED | 6 x part weekly service to Szczecin (SZZ) |
| Travel Service Polska | NEW | 3 x weekly service to Tel Aviv (TLV) |
| Turkish Airlines | CHANGE | 1 x weekly service to Istanbul (IST) |
| Wizz Air | NEW | 4 x weekly service to Edinburgh (EDI) |

Total ATMs: Passenger ATMs vs. Freight ATMs



Schedule Snapshot

Passenger ATMs: Scheduled vs. Charter

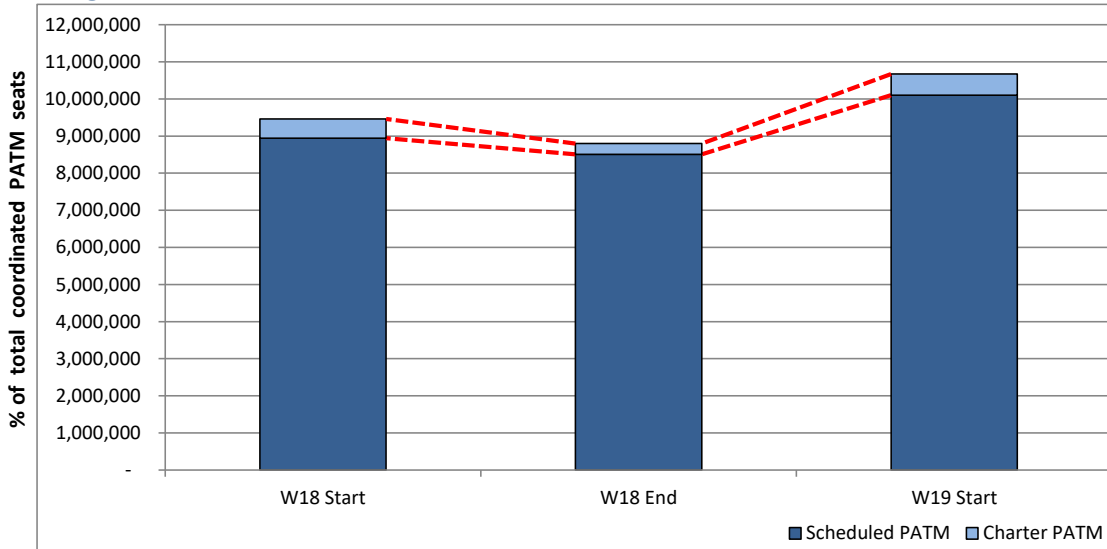


Schedule Snapshot

Full Season - PATM Seats Analysis

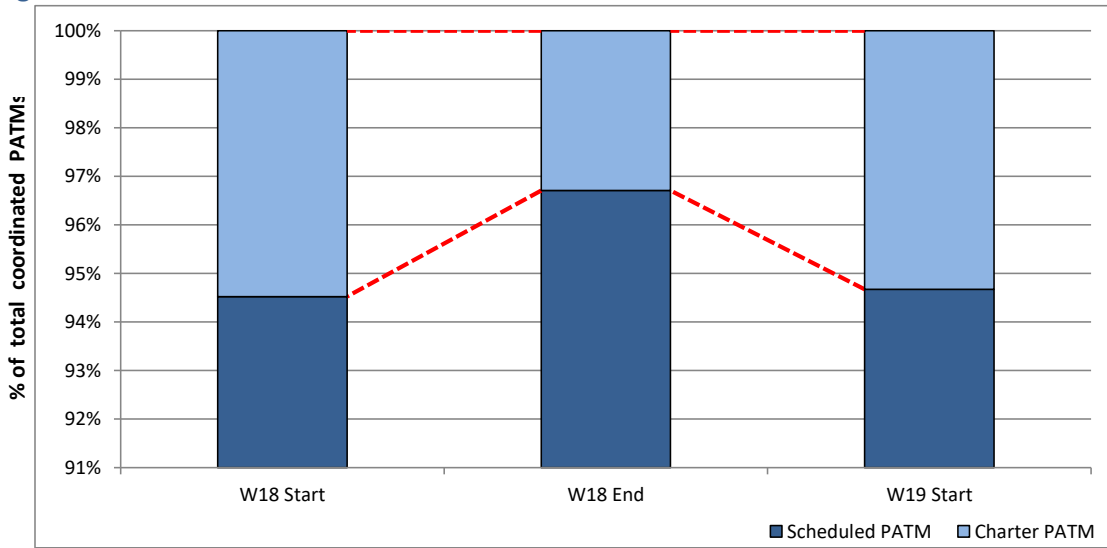


Total Passenger ATM seats: Scheduled vs. Charter



Schedule Snapshot

Passenger ATM seats: Scheduled vs. Charter

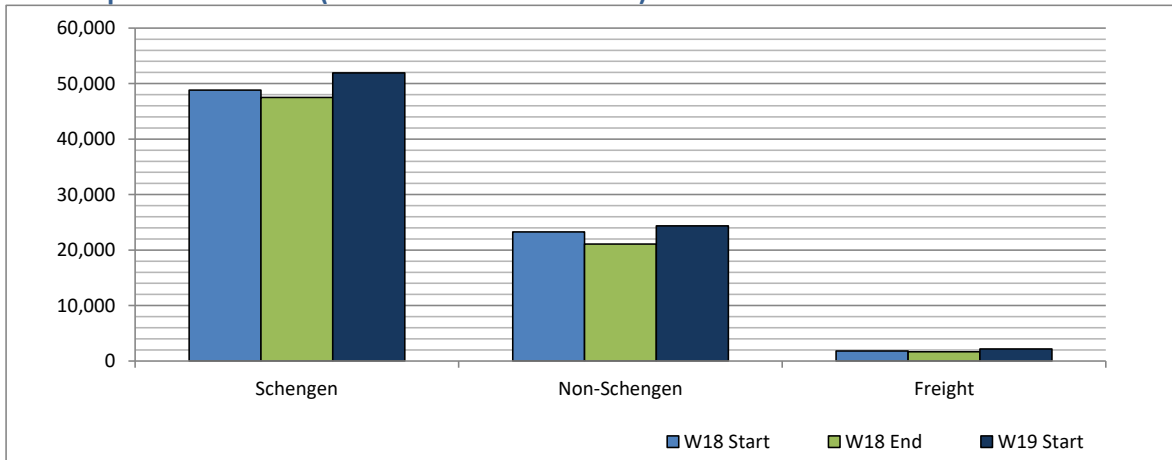


Schedule Snapshot

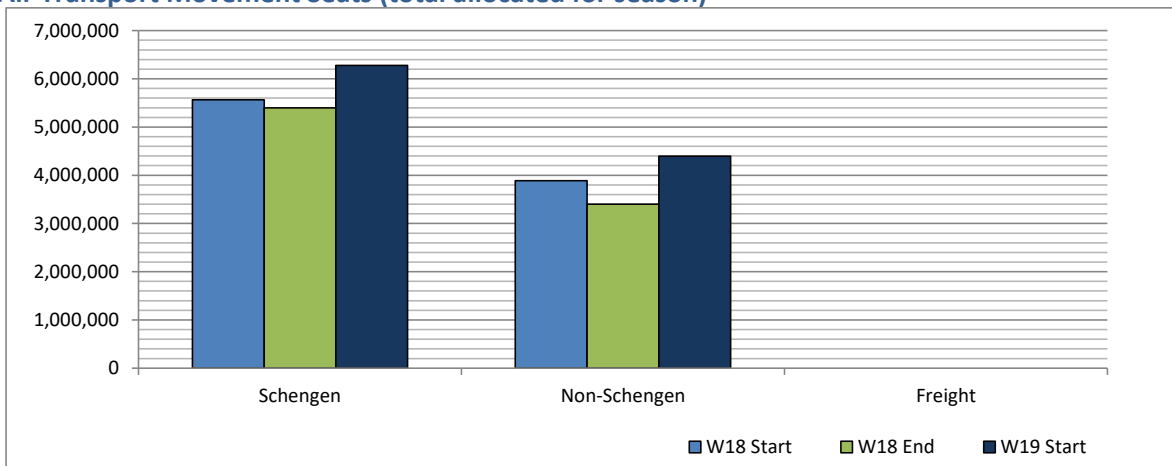
Full Season - Terminal Analysis



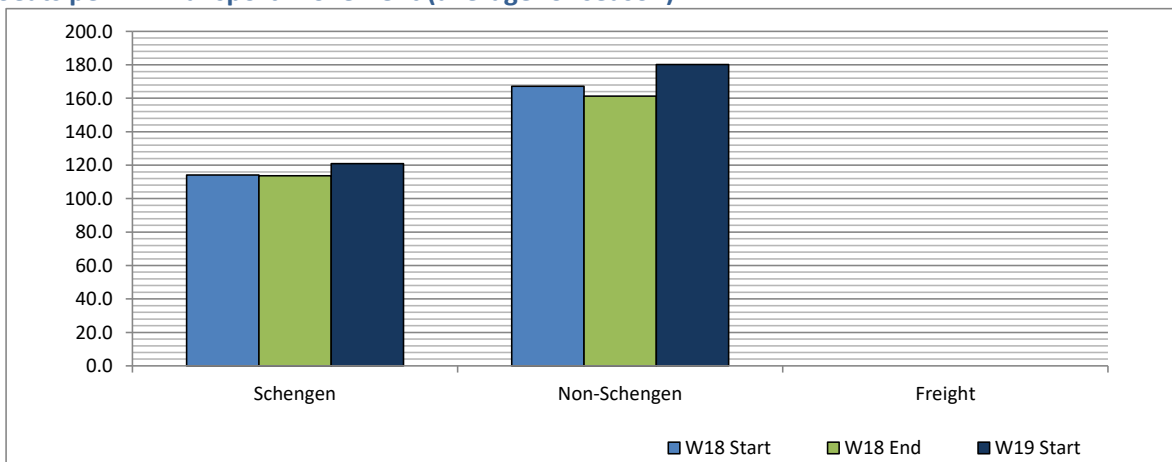
Air Transport Movements (total allocated for season)



Air Transport Movement Seats (total allocated for season)



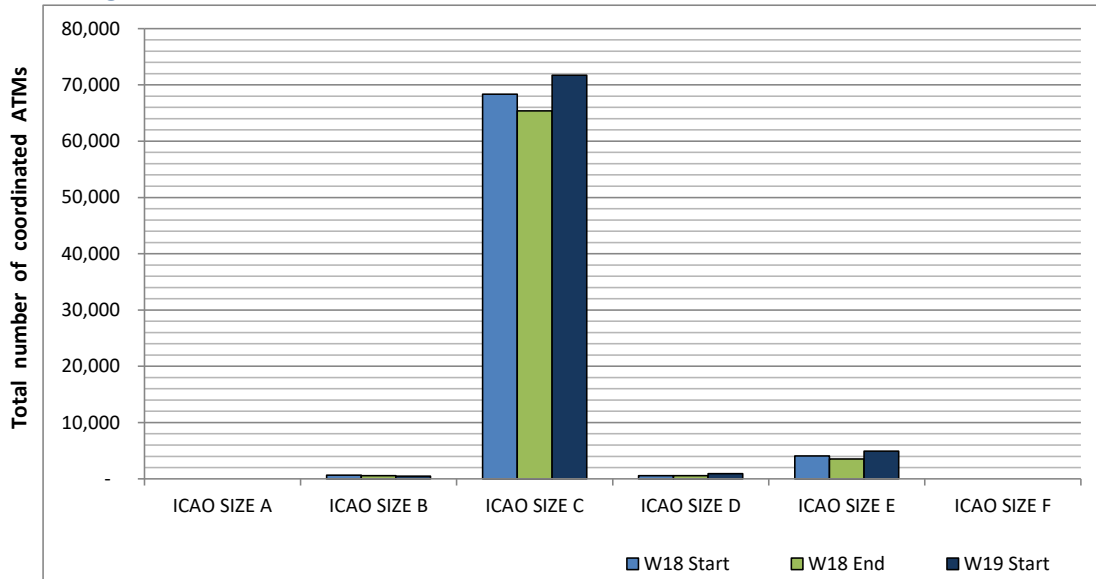
Seats per Air Transport Movement (average for season)



Full Season - Aircraft Size Analysis

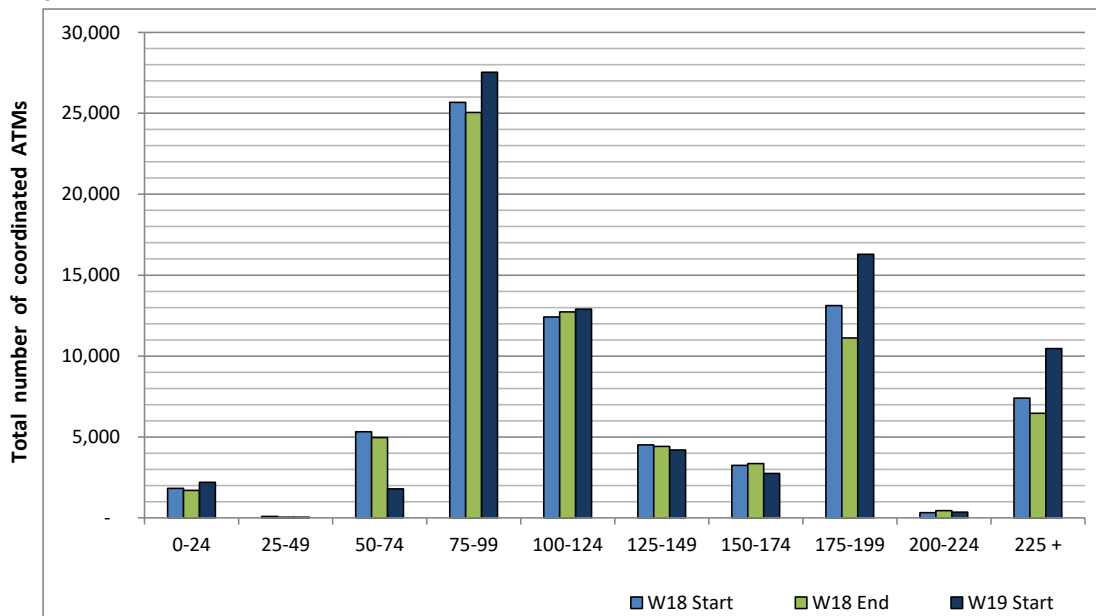


ICAO size designation



Note: See Glossary for definitions of ICAO SIZE groupings

Air Transport Movement seat distribution

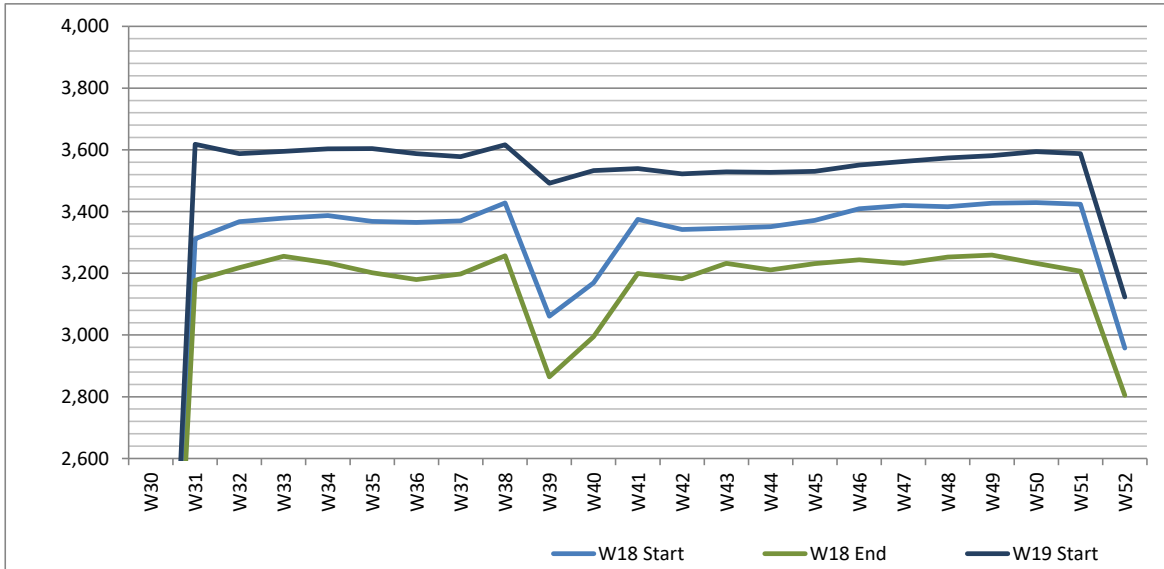


Note: FREIGHT-ONLY services with 0 seats are included in the first seat band '0-24'

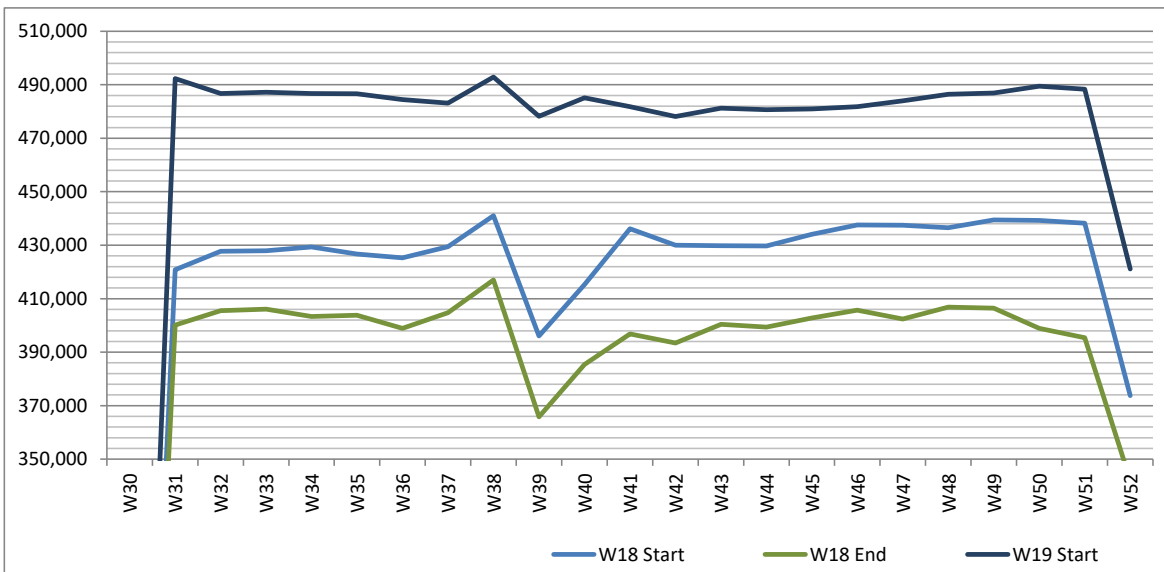
Full Season - Seasonality



Air Transport Movements by week of season



Air Transport Movement Seats by week of season



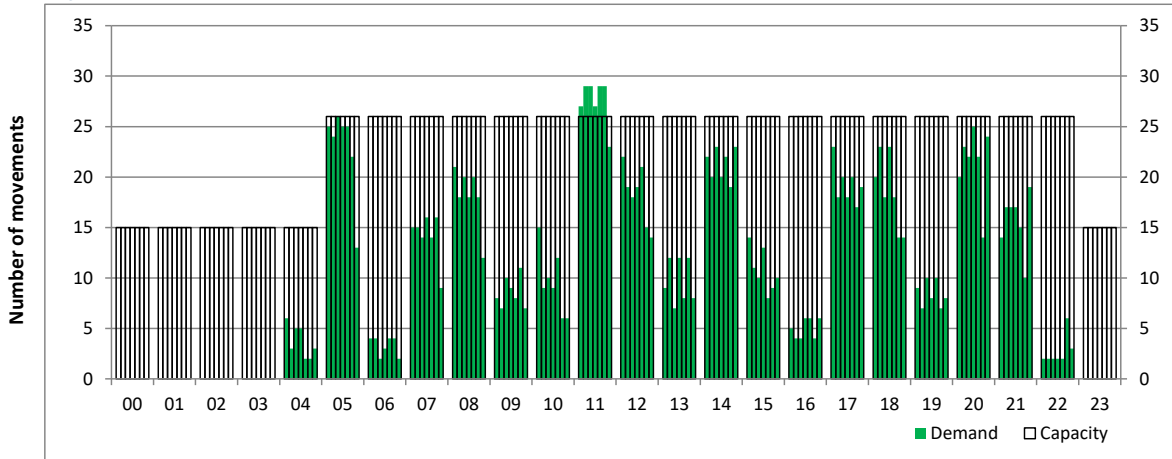
Peak Week - Hourly Runway Demand

Schedule: W19 Start



Hourly Arrival Demand

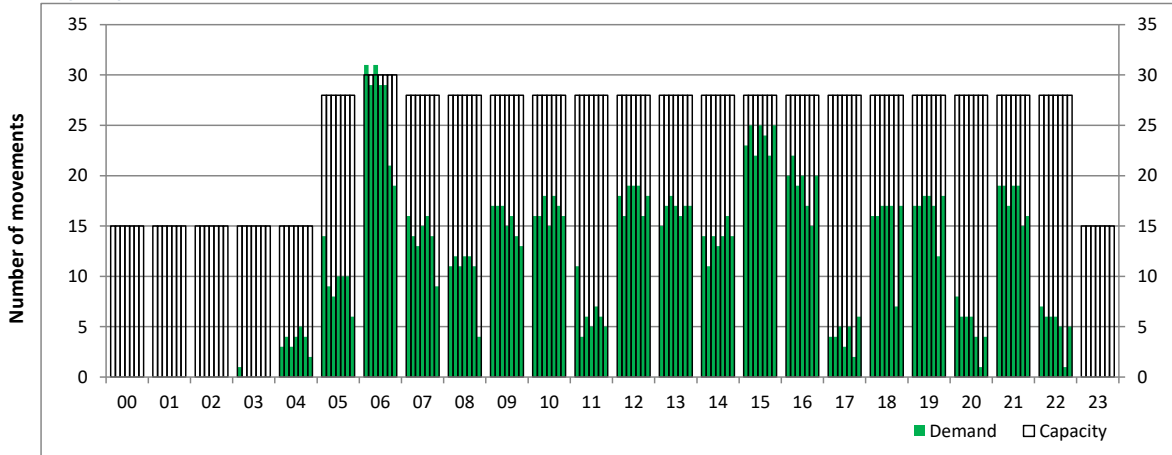
Time: UTC



Hour of day (24 hour format)

Hourly Departure Demand

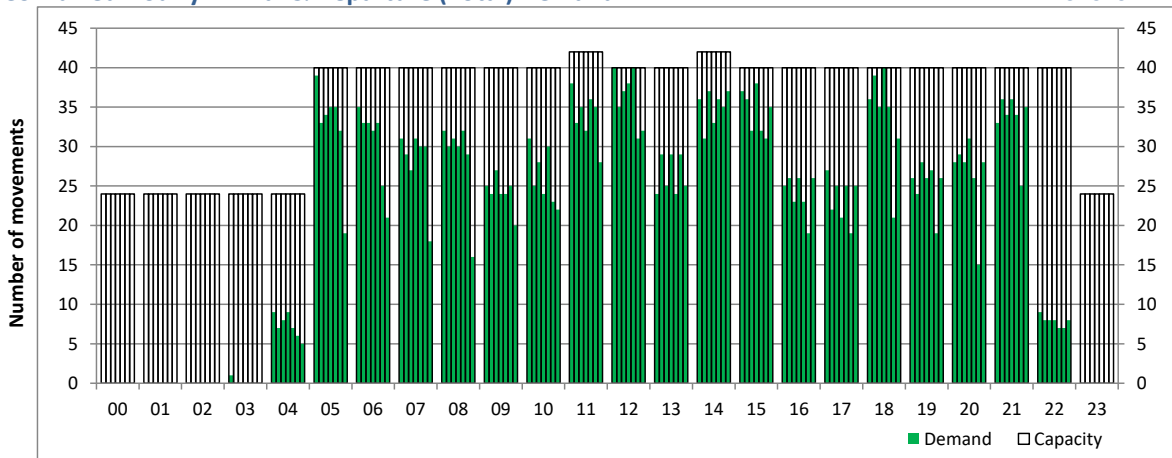
Time: UTC



Hour of day (24 hour format)

Combined Hourly Arrival & Departure (Total) Demand

Time: UTC



Hour of day (24 hour format)

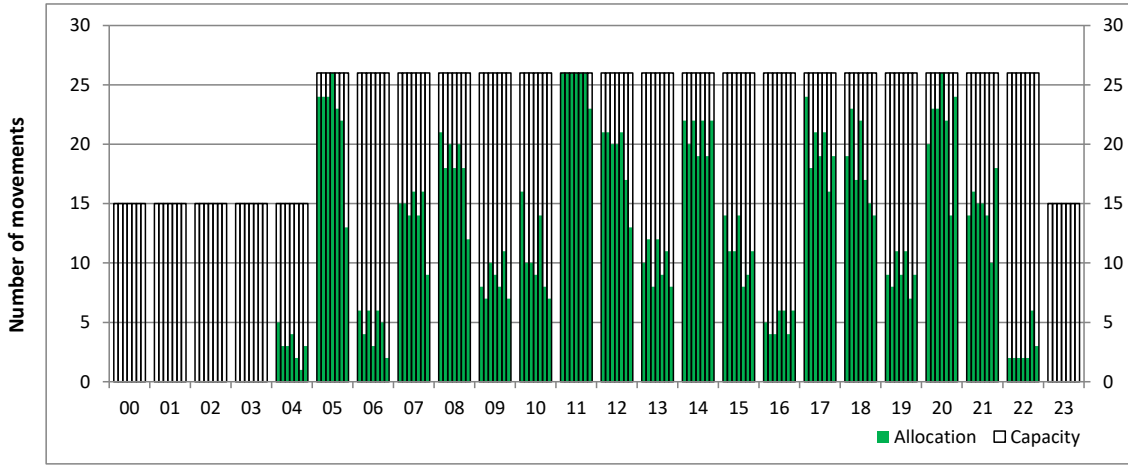
Peak Week - Hourly Runway Allocation

Schedule: W19 Start



Hourly Arrival Allocation

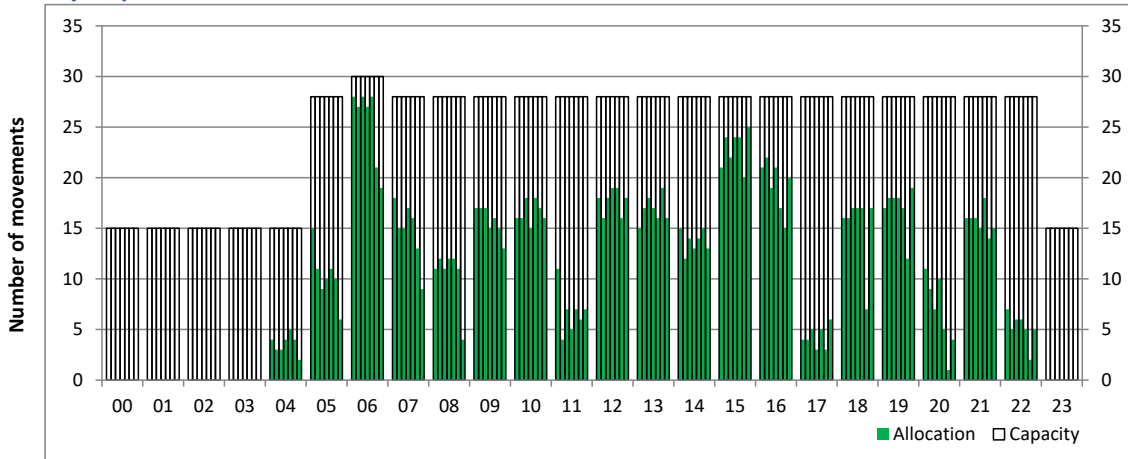
Time: UTC



Hour of day (24 hour format)

Hourly Departure Allocation

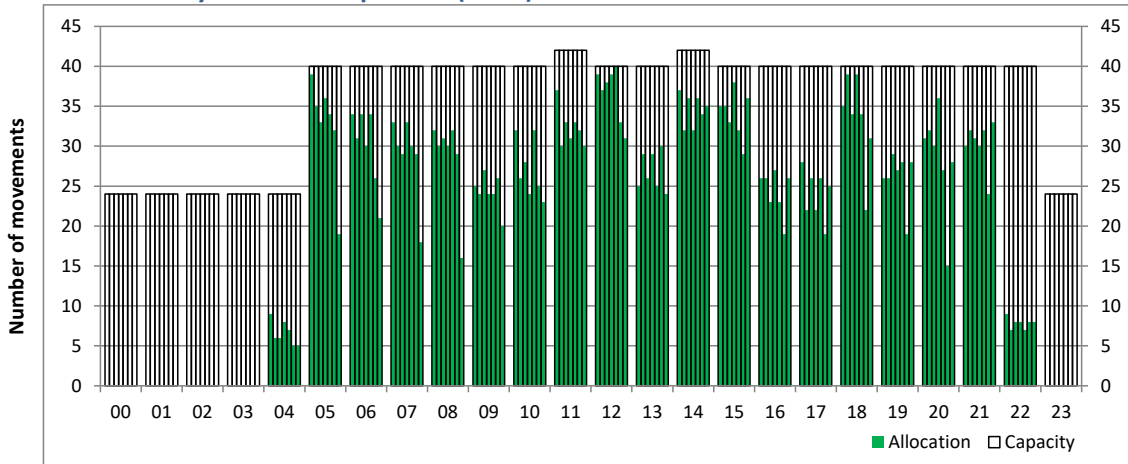
Time: UTC



Hour of day (24 hour format)

Combined Hourly Arrival & Departure (Total) Allocation

Time: UTC



Hour of day (24 hour format)

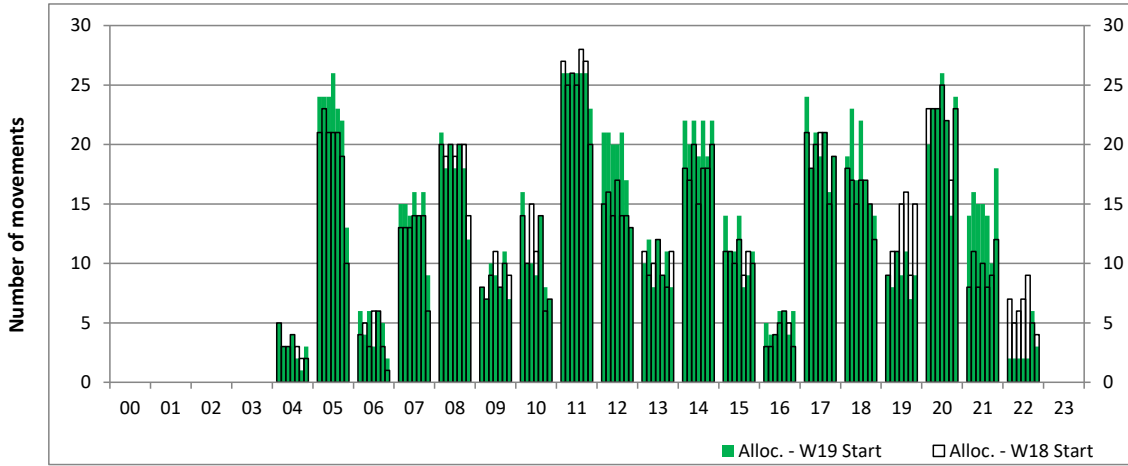
Peak Week - Runway Allocation Comparison

Comparison of W19 Start vs. W18 Start



Hourly Arrival Allocation

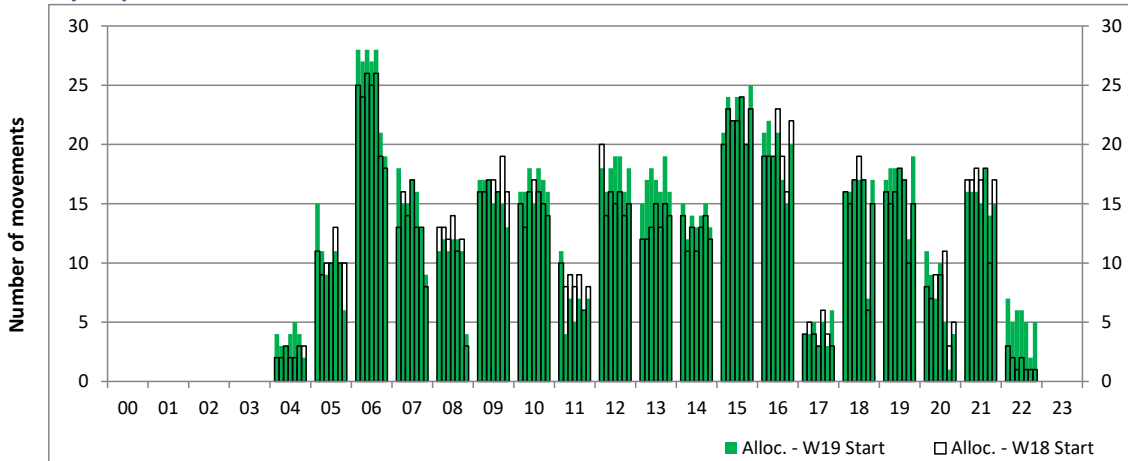
Time: UTC



Hour of day (24 hour format)

Hourly Departure Allocation

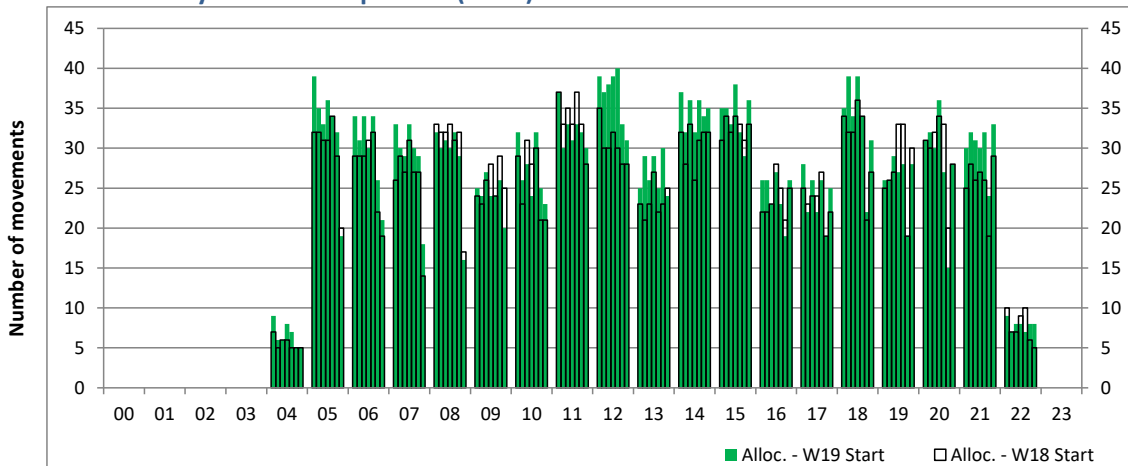
Time: UTC



Hour of day (24 hour format)

Combined Hourly Arrival & Departure (Total) Allocation

Time: UTC



Hour of day (24 hour format)

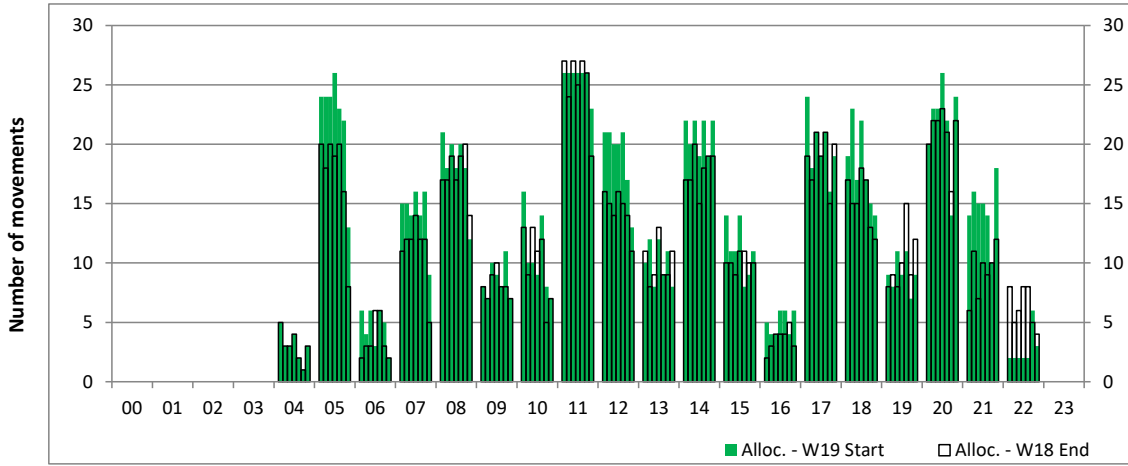
Peak Week - Runway Allocation Comparison

Comparison of W19 Start vs. W18 End



Hourly Arrival Allocation

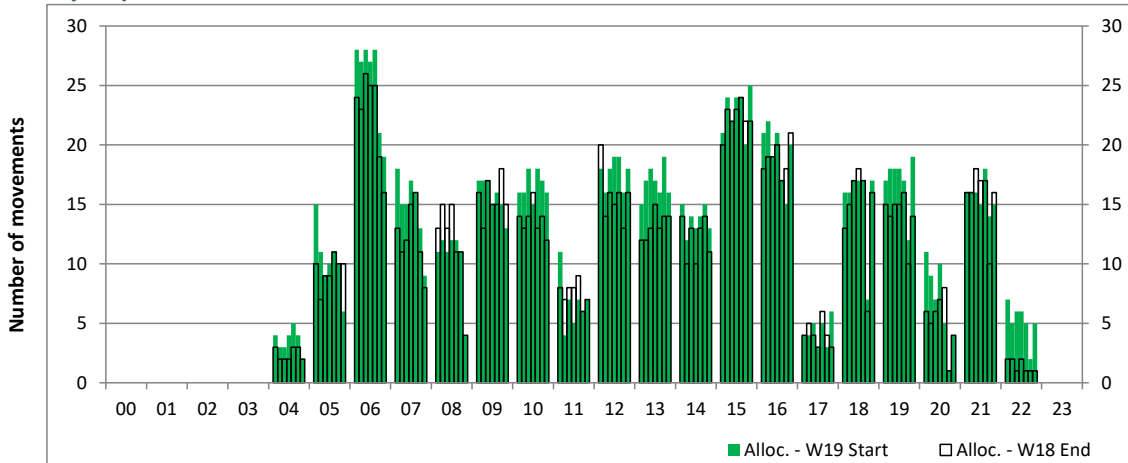
Time: UTC



Hour of day (24 hour format)

Hourly Departure Allocation

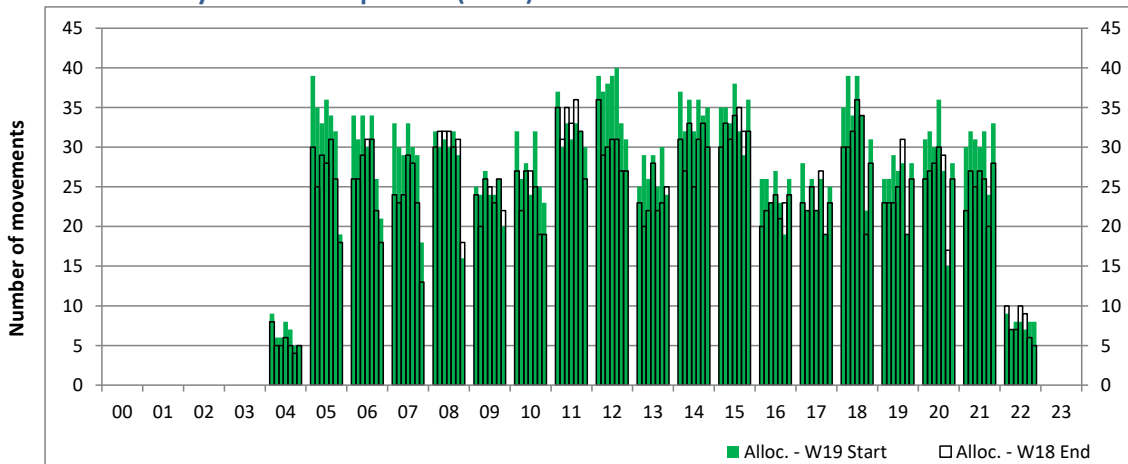
Time: UTC



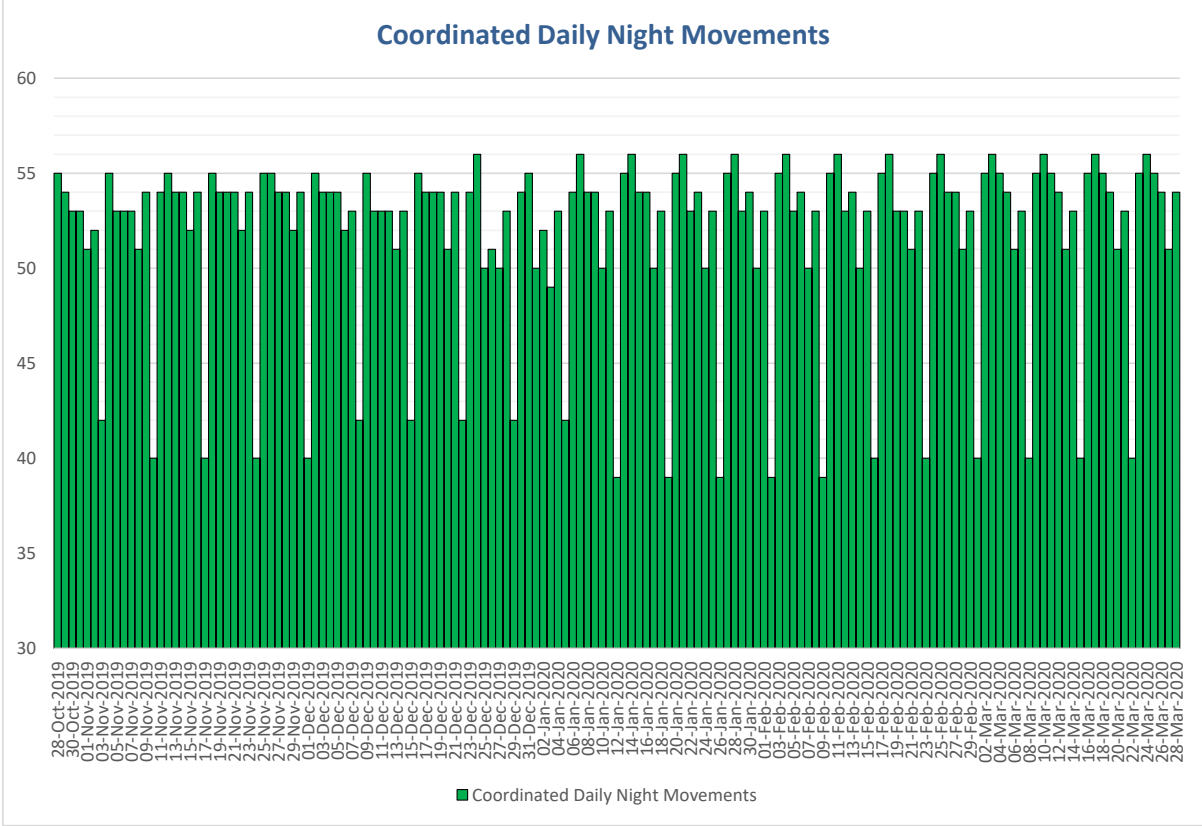
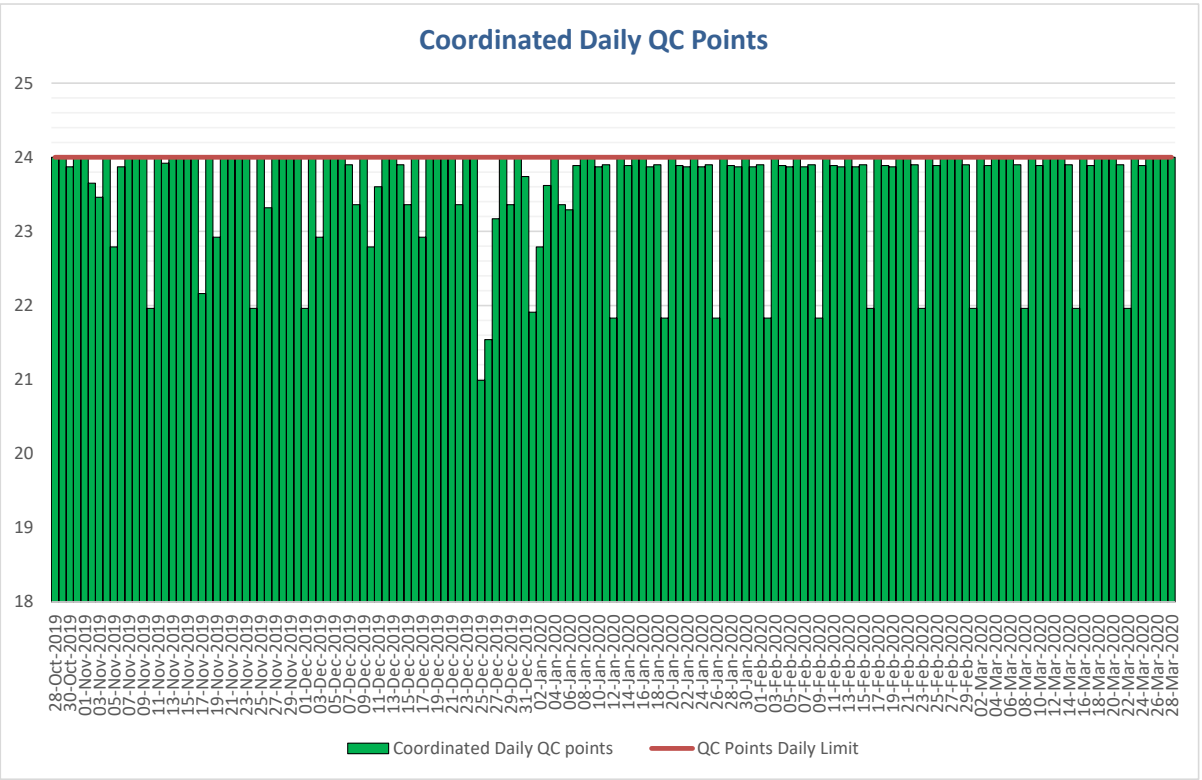
Hour of day (24 hour format)

Combined Hourly Arrival & Departure (Total) Allocation

Time: UTC



Hour of day (24 hour format)



Peak Week - Movements Histogram

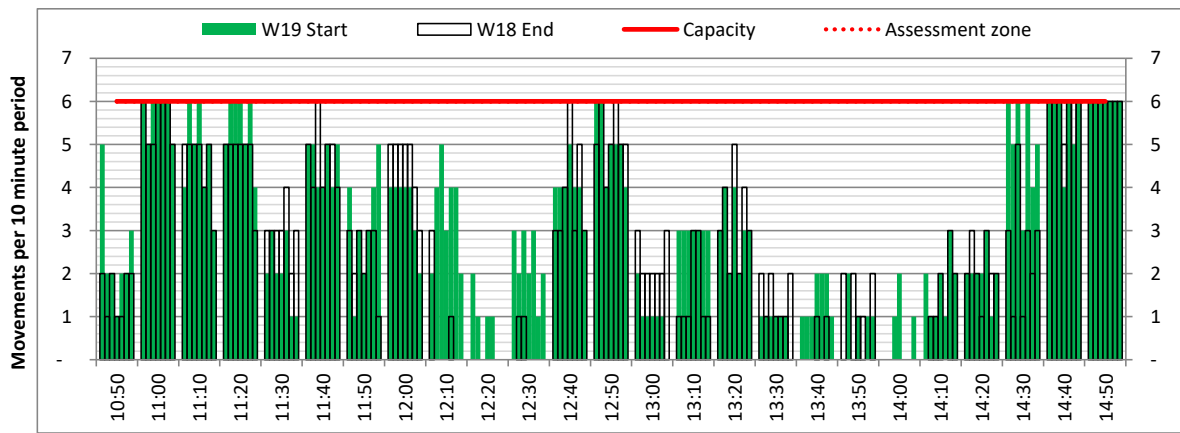
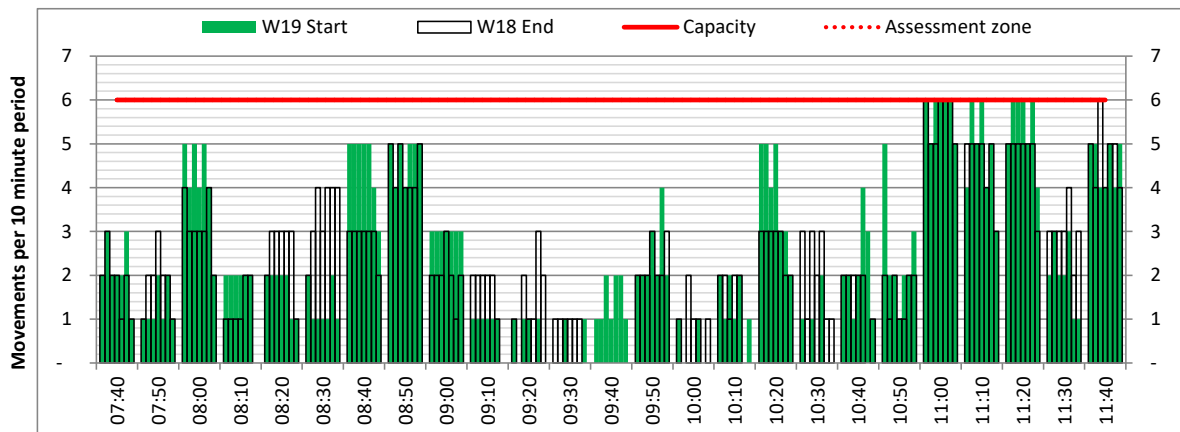
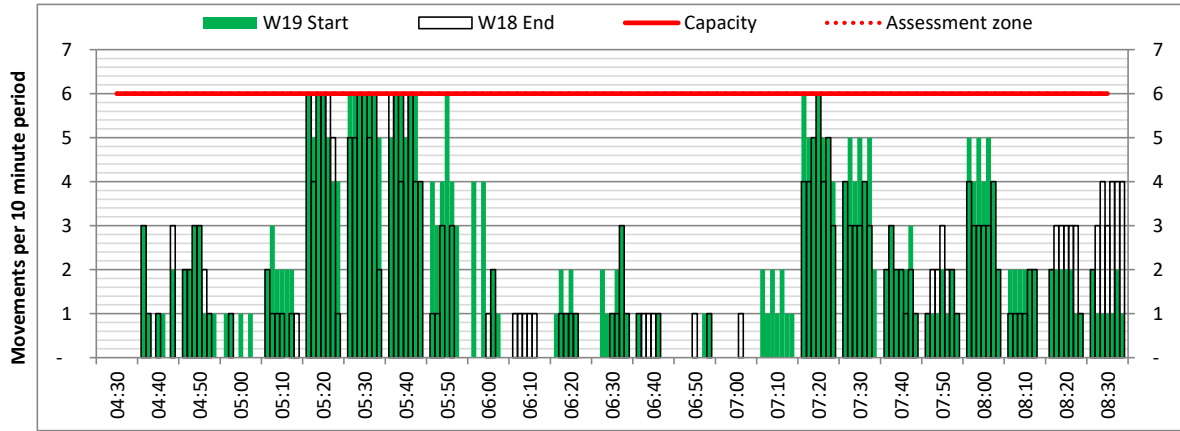


ARRIVAL - 10 minute count rolling every 10 mins (R10)

Terminals: All Terminals

Operators: All Operators

Days: 1234567



Peak Week - Movements Histogram

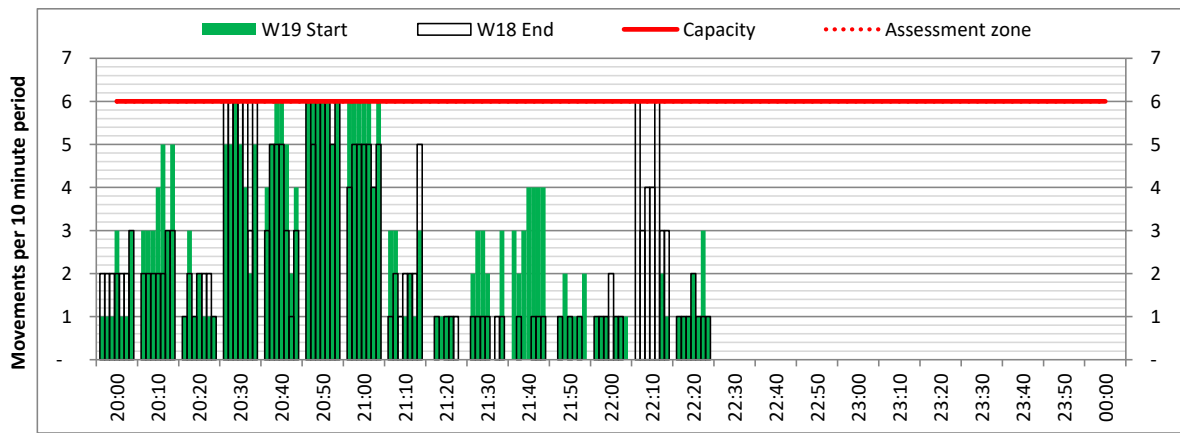
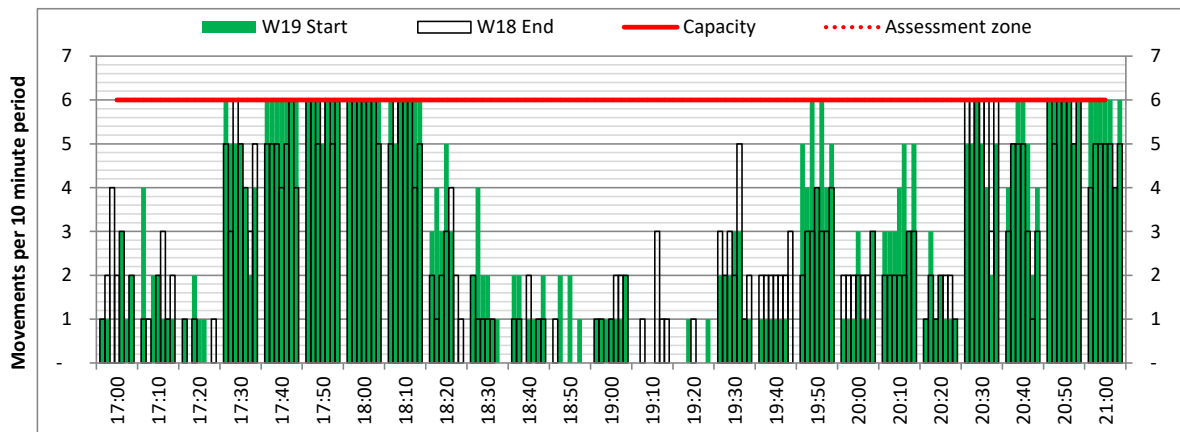
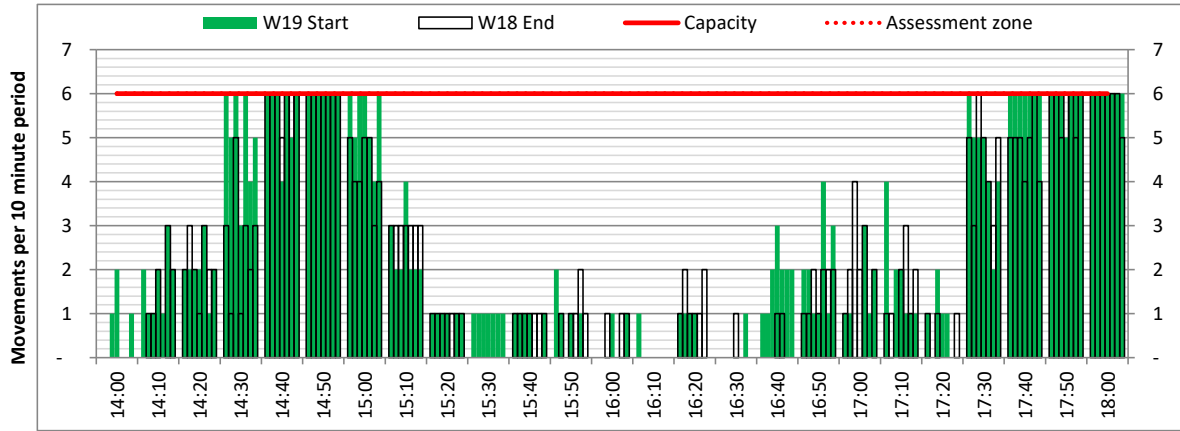


ARRIVAL - 10 minute count rolling every 10 mins (R10)

Terminals: All Terminals

Operators: All Operators

Days: 1234567



Peak Week - Movements Histogram

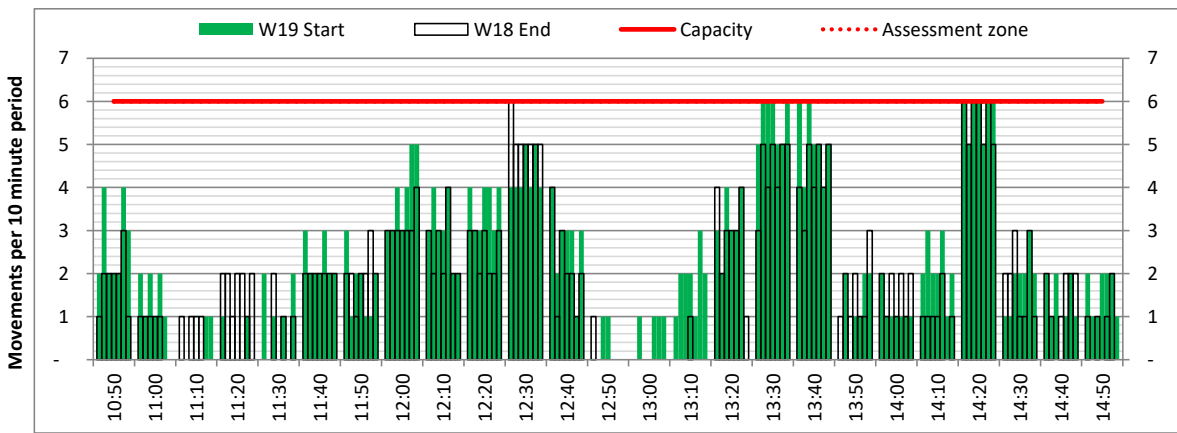
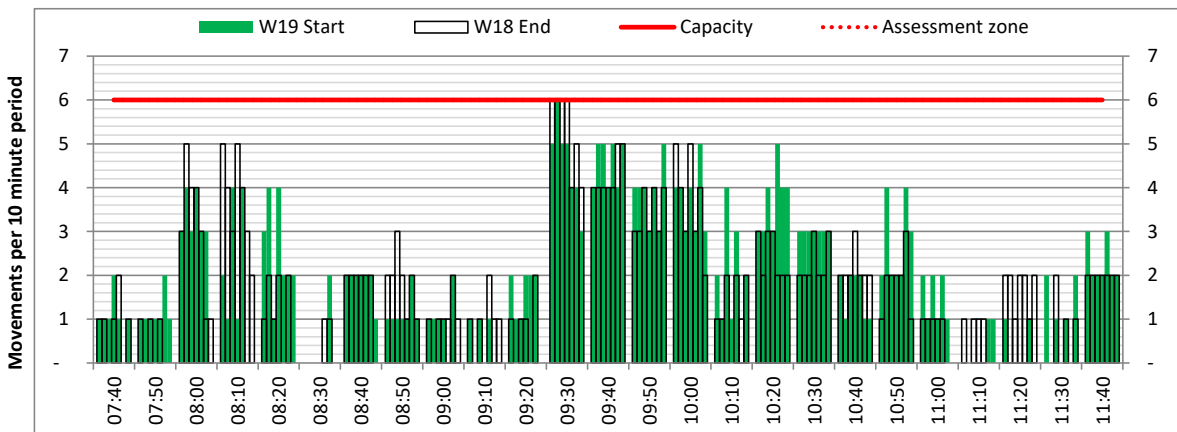
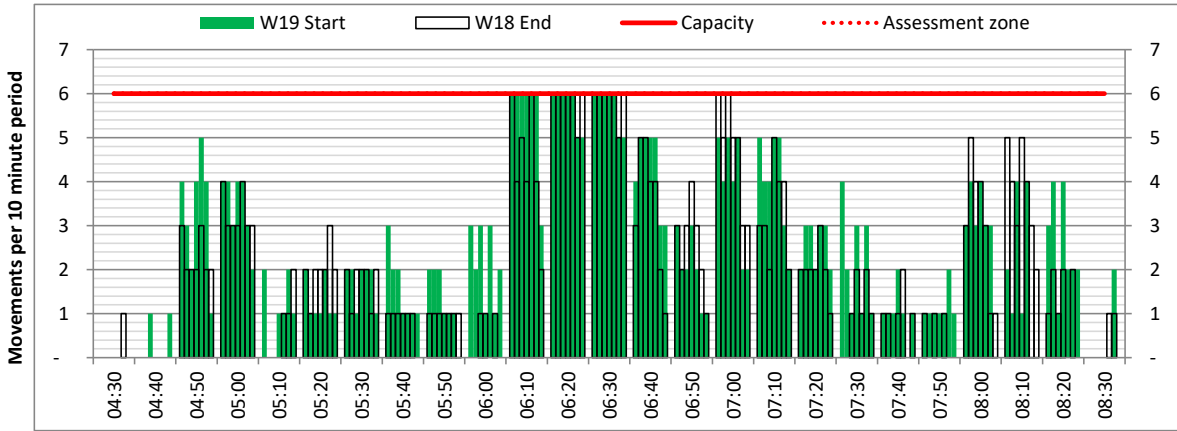


DEPARTURE - 10 minute count rolling every 10 mins (R10)

Terminals: All Terminals

Operators: All Operators

Days: 1234567



Peak Week - Movements Histogram

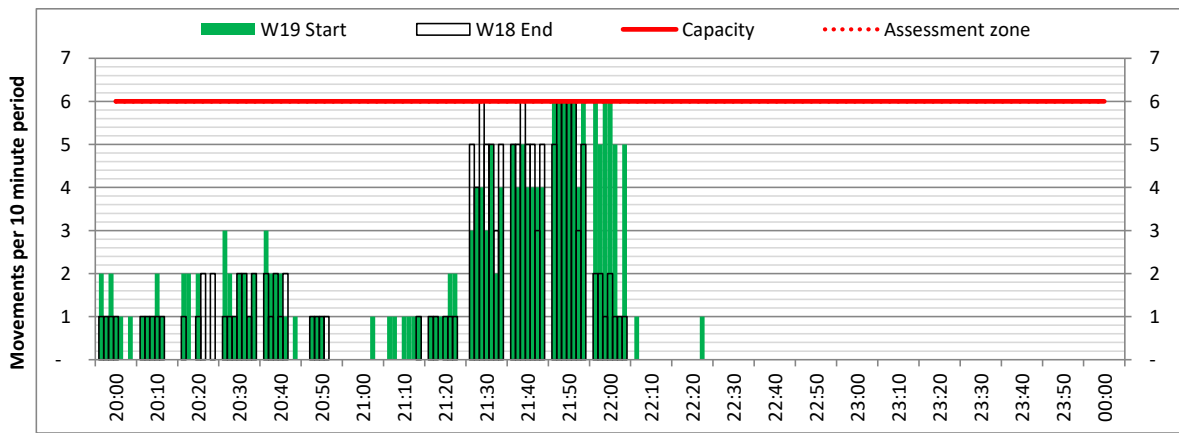
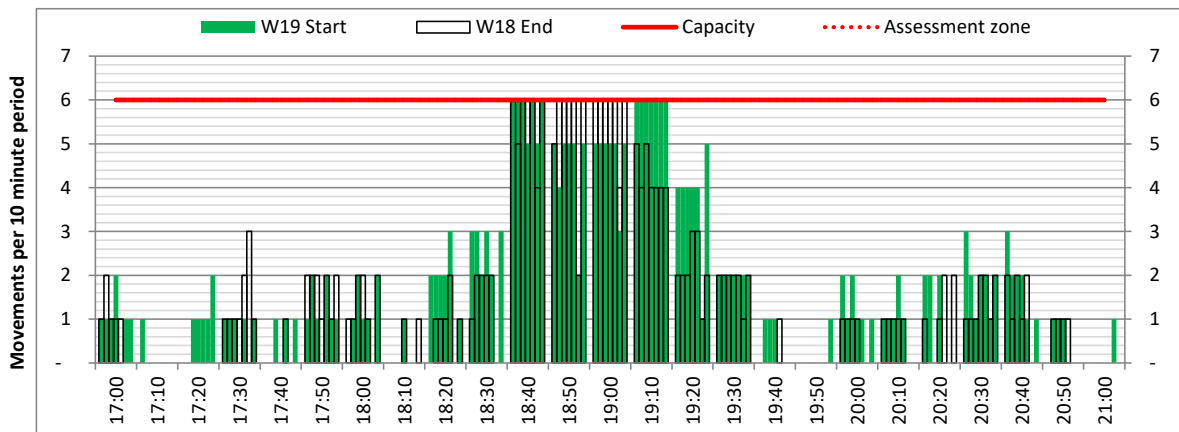
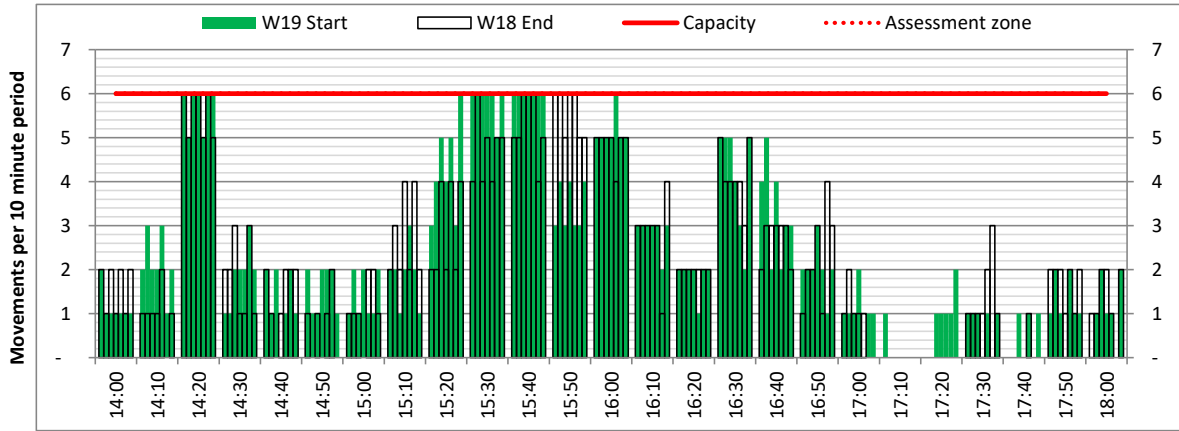


DEPARTURE - 10 minute count rolling every 10 mins (R10)

Terminals: All Terminals

Operators: All Operators

Days: 1234567



Peak Week - Passengers Histogram

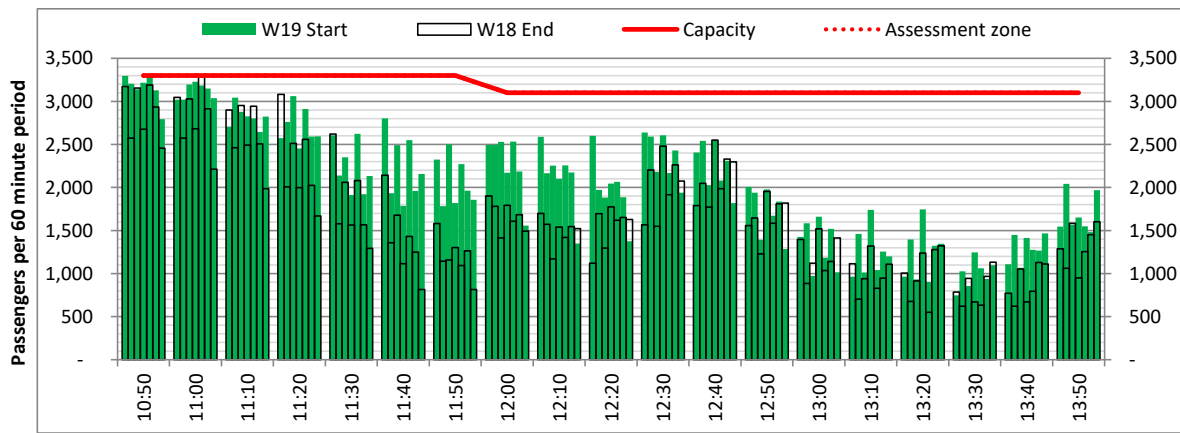
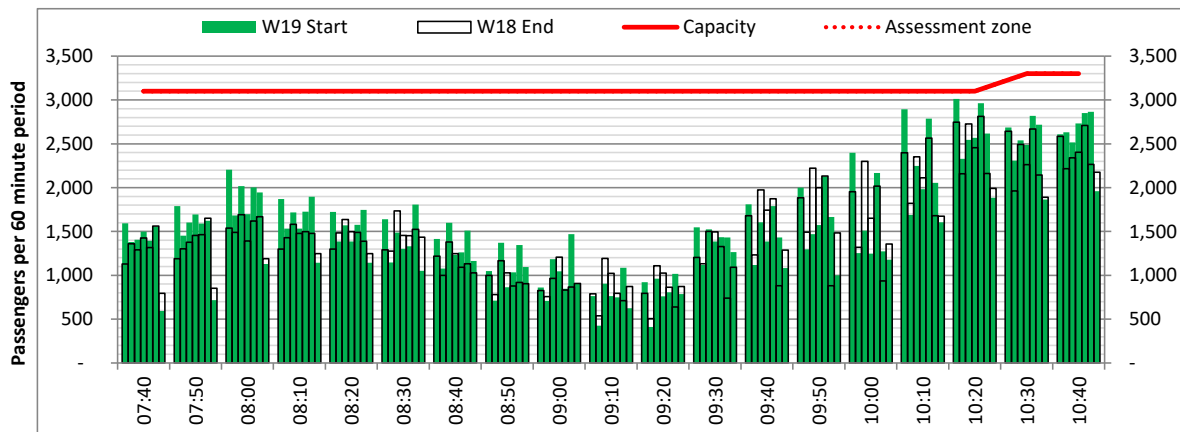
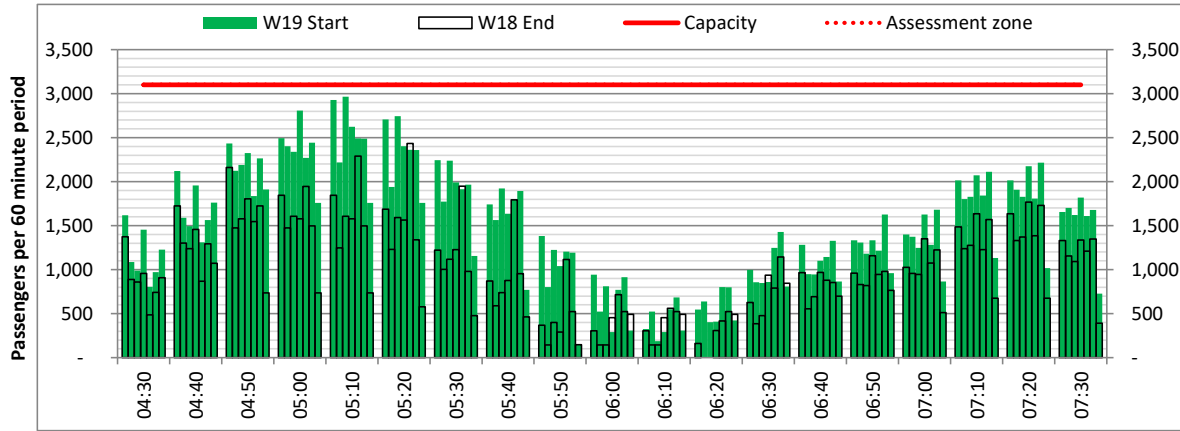


ARRIVAL - 60 minute count rolling every 10 mins (T60/10)

Terminals: All Terminals

Operators: All Operators

Days: 1234567



Peak Week - Passengers Histogram

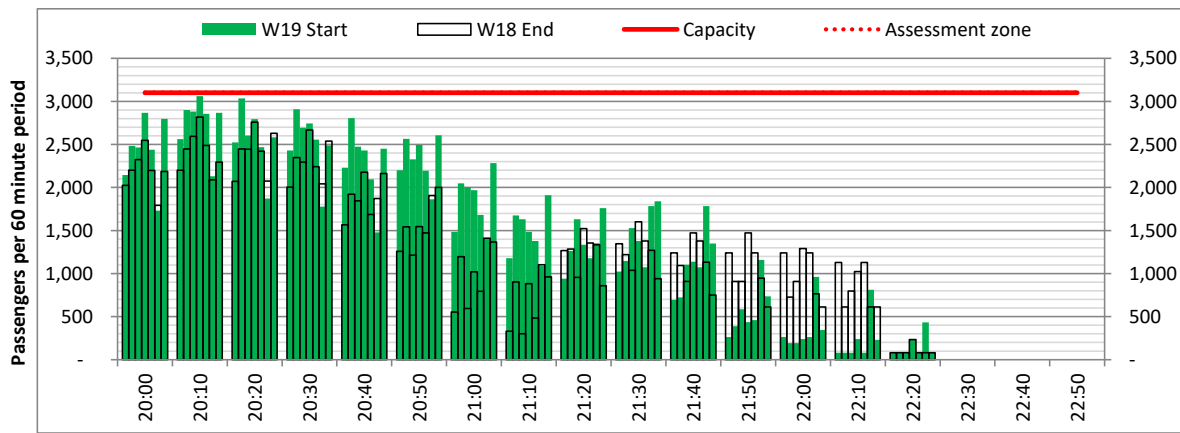
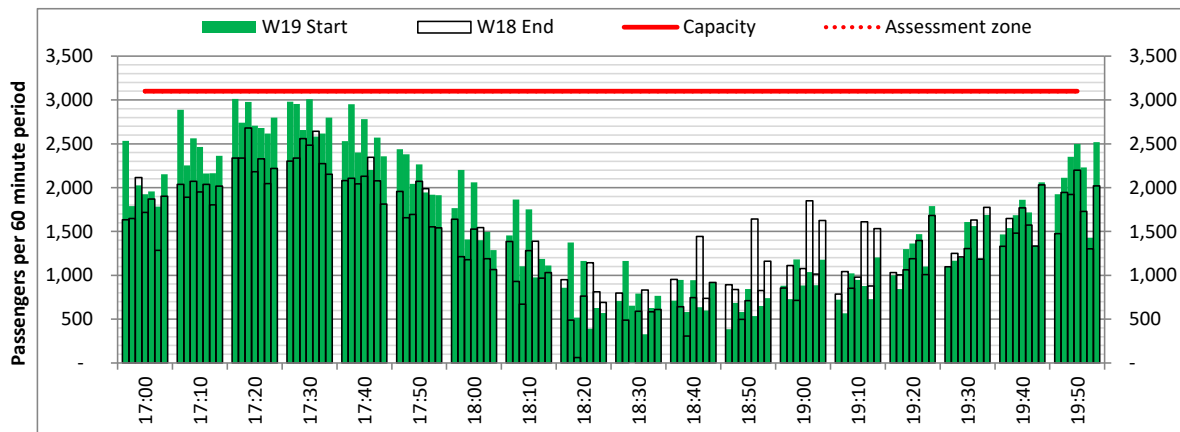
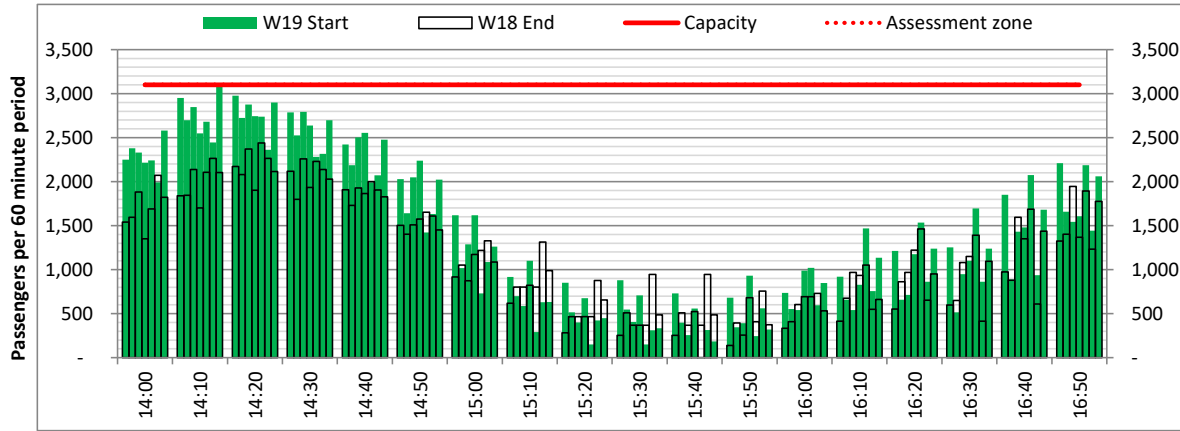


ARRIVAL - 60 minute count rolling every 10 mins (T60/10)

Terminals: All Terminals

Operators: All Operators

Days: 1234567



Peak Week - Passengers Histogram

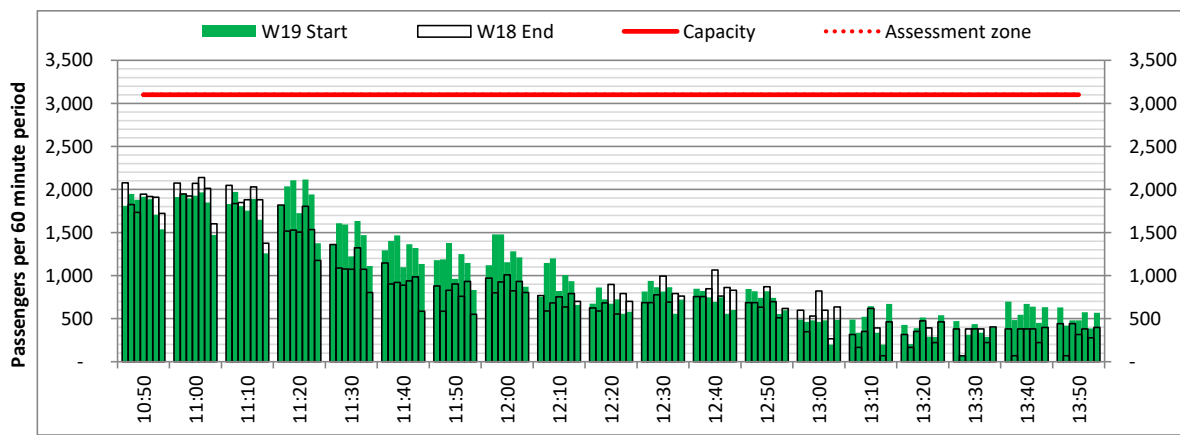
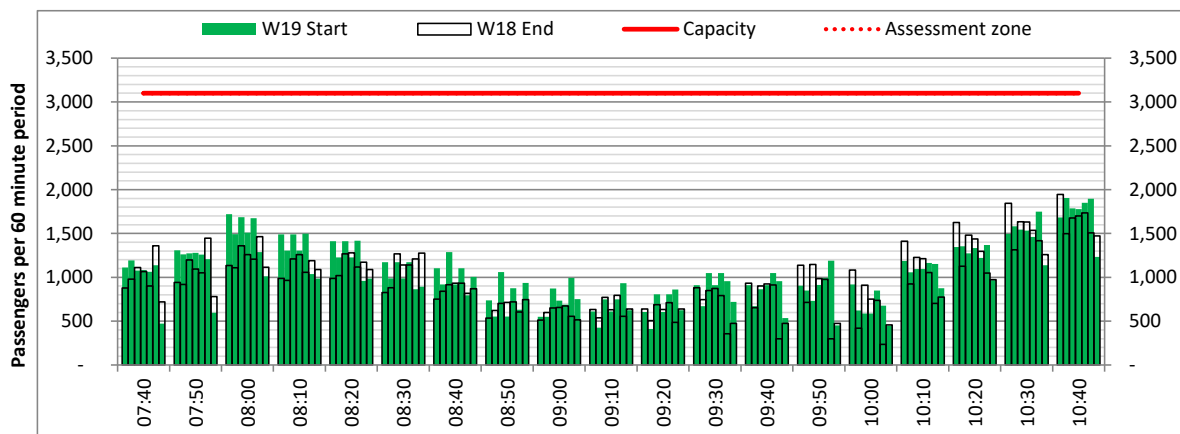
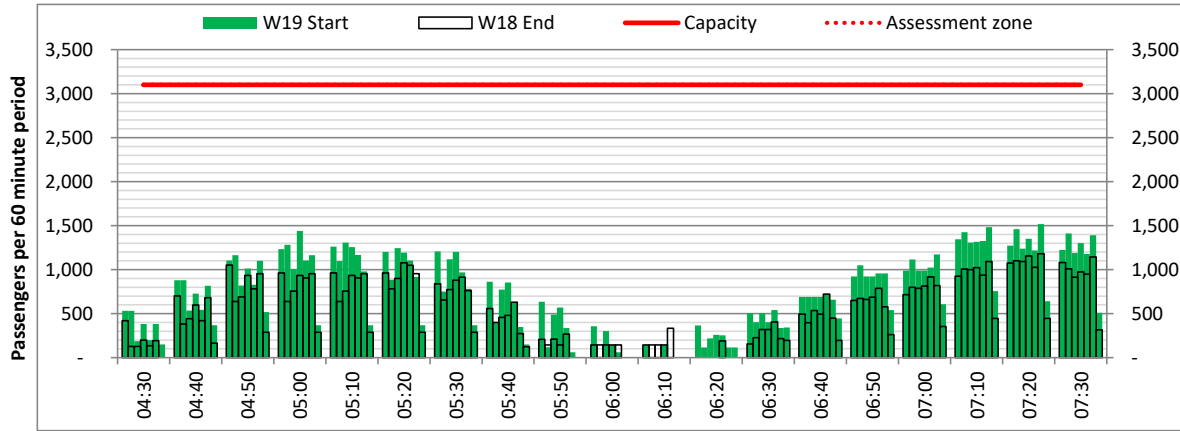


ARRIVAL - 60 minute count rolling every 10 mins (T60/10)

Terminals: 1D - Schengen

Operators: All Operators

Days: 1234567



Peak Week - Passengers Histogram

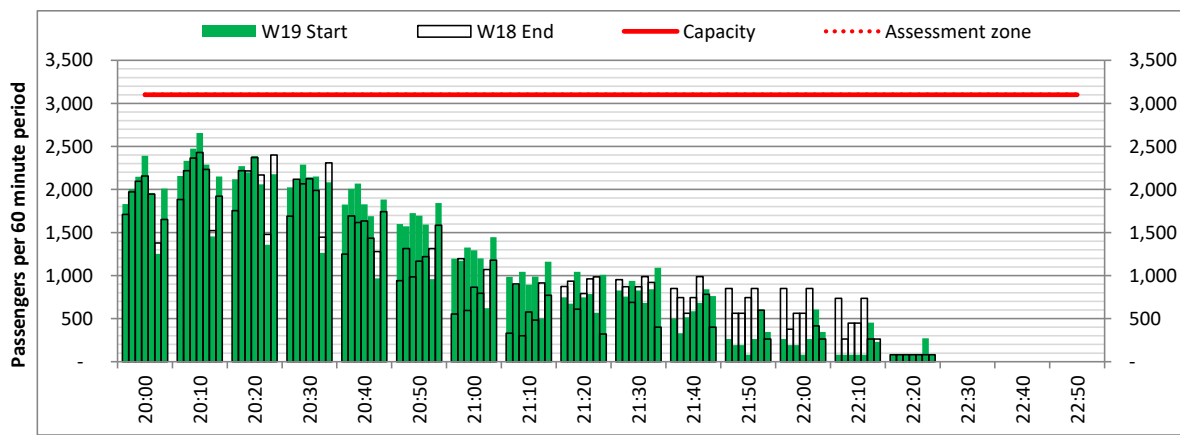
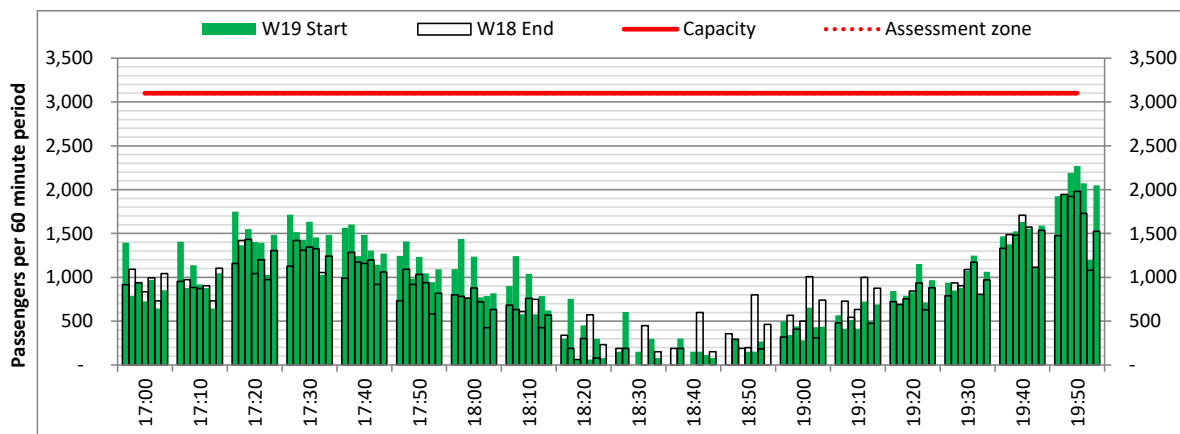
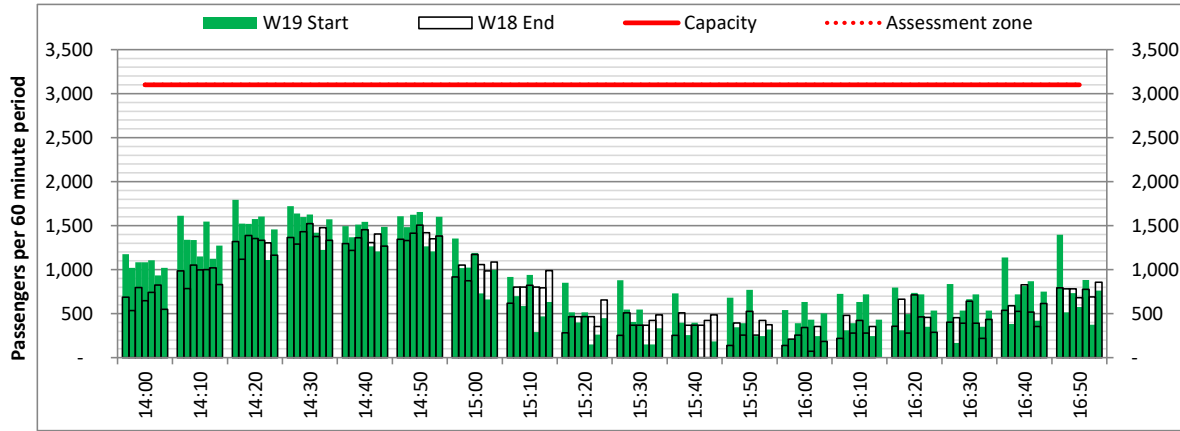


ARRIVAL - 60 minute count rolling every 10 mins (T60/10)

Terminals: 1D - Schengen

Operators: All Operators

Days: 1234567



Peak Week - Passengers Histogram

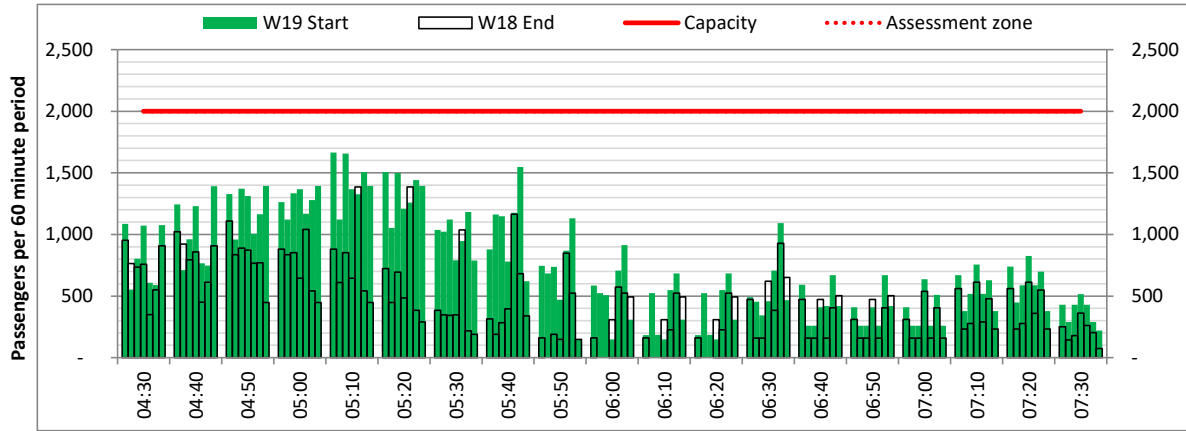


ARRIVAL - 60 minute count rolling every 10 mins (T60/10)

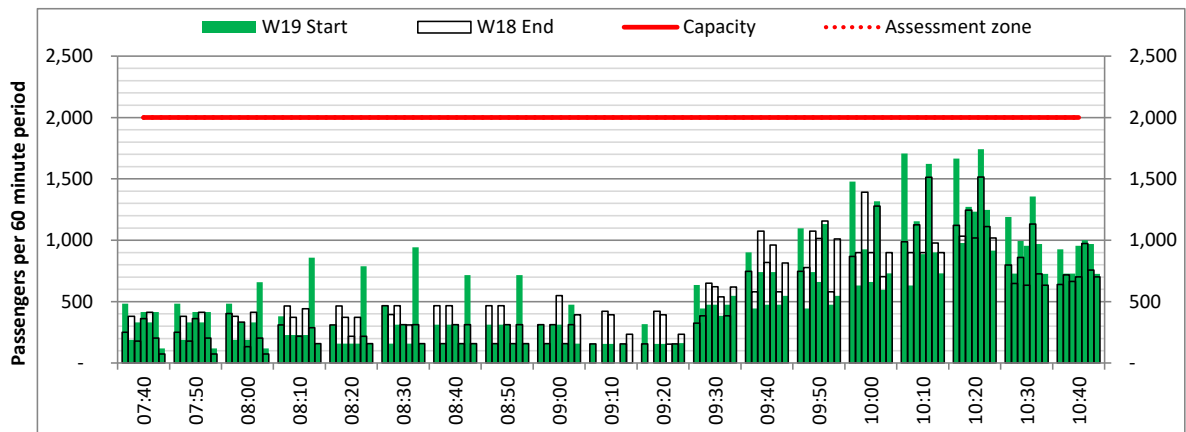
Terminals: 1I - Non Schengen

Operators: All Operators

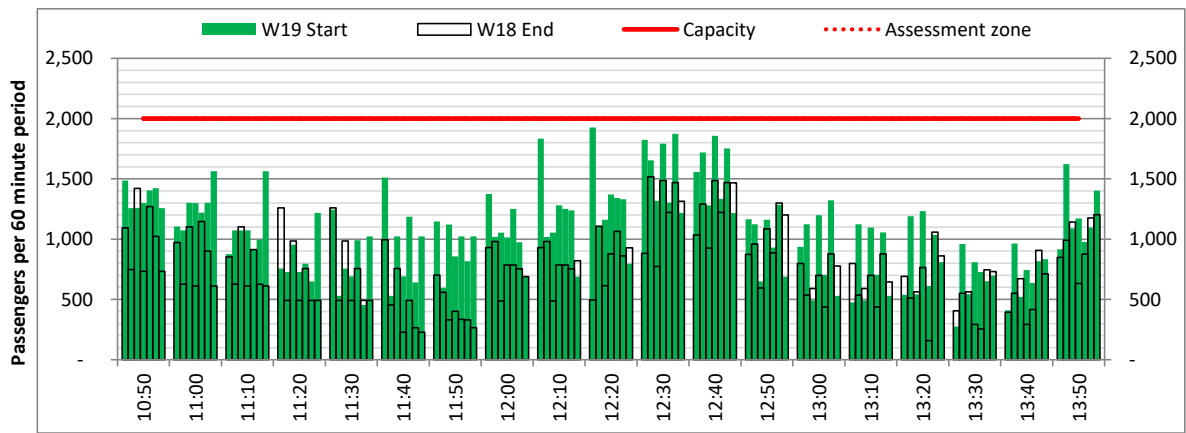
Days: 1234567



Start of count period - Time: UTC



Start of count period - Time: UTC



Start of count period - Time: UTC

Peak Week - Passengers Histogram

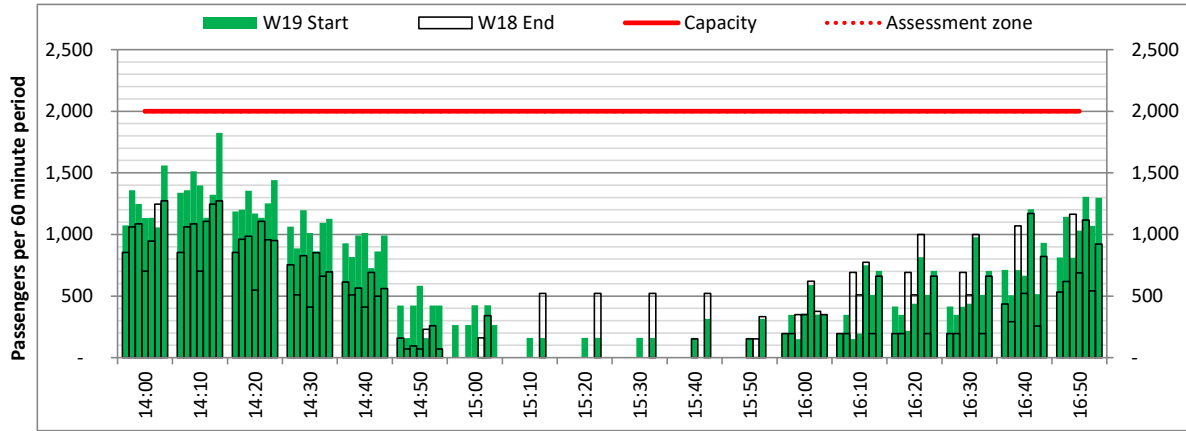
ARRIVAL - 60 minute count rolling every 10 mins (T60/10)



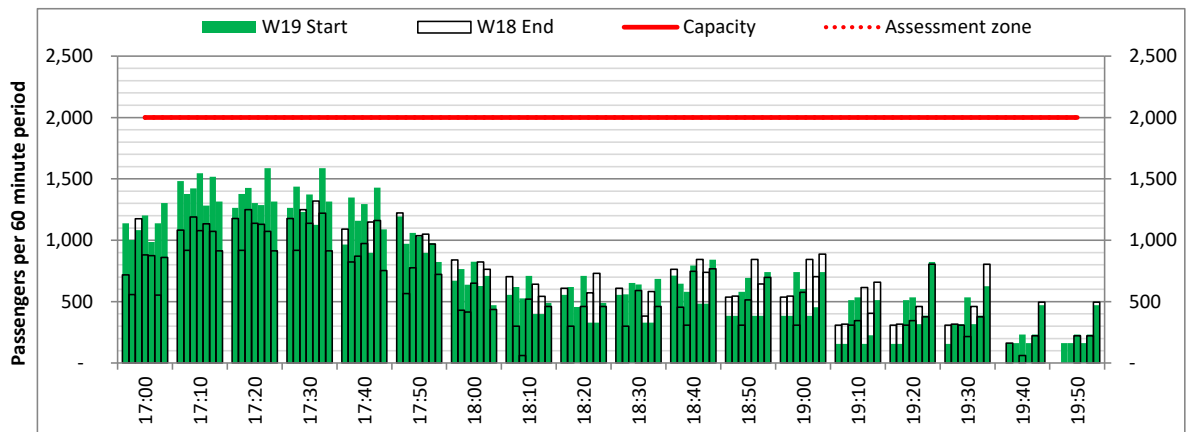
Terminals: 1I - Non Schengen

Operators: All Operators

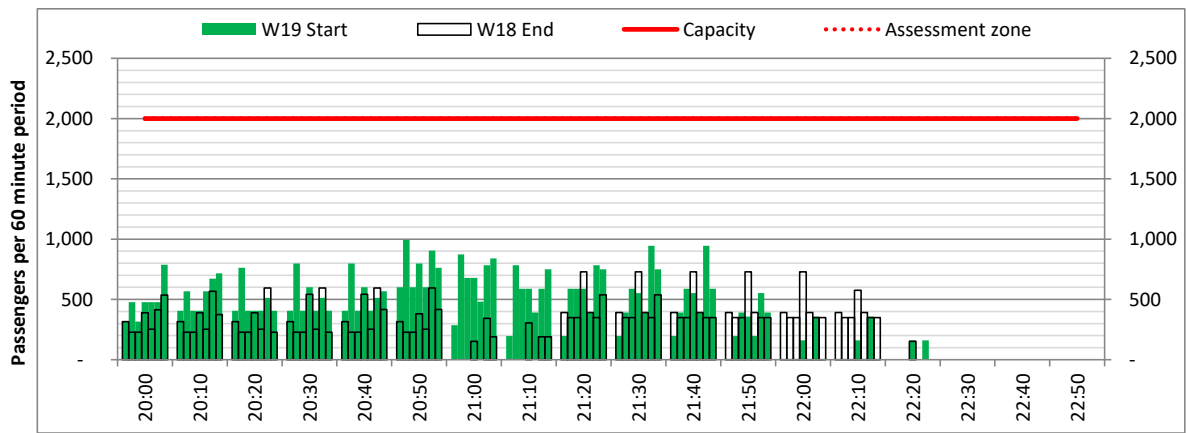
Days: 1234567



Start of count period - Time: UTC



Start of count period - Time: UTC



Start of count period - Time: UTC

Peak Week - Passengers Histogram

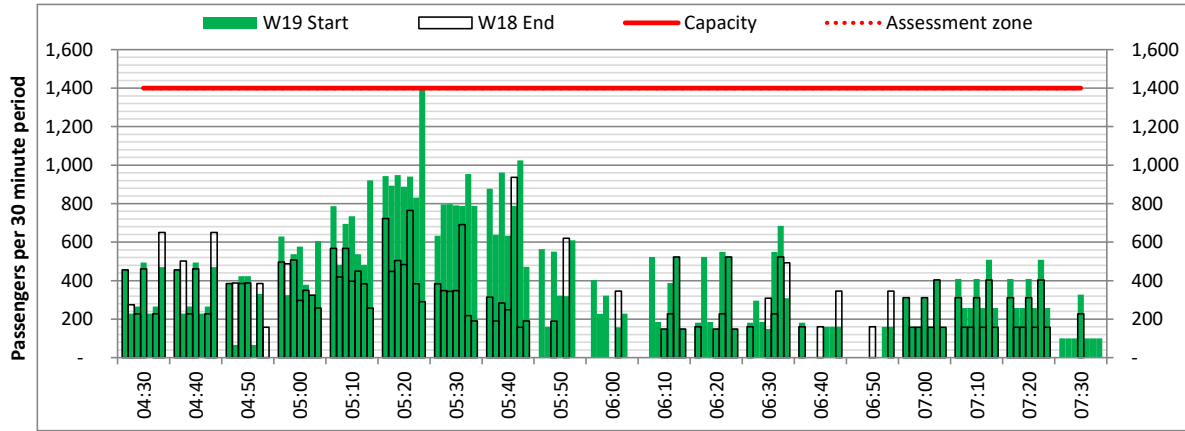


ARRIVAL - 30 minute count rolling every 10 mins (T30/10)

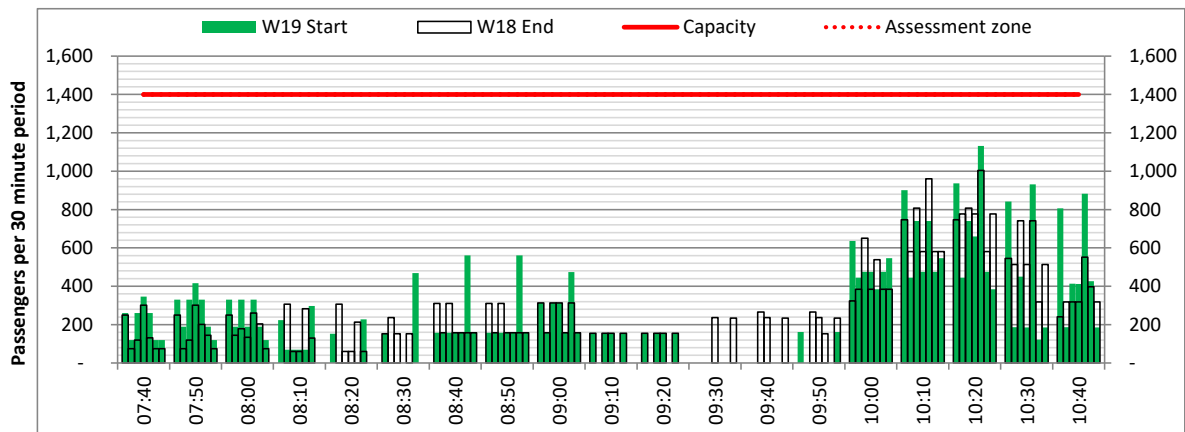
Terminals: 1I - Non Schengen

Operators: All Operators

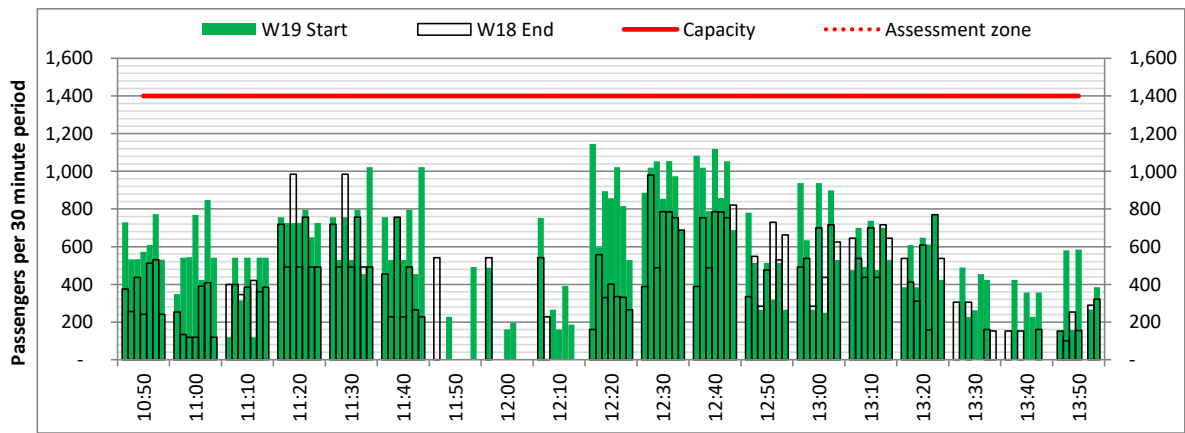
Days: 1234567



Start of count period - Time: UTC



Start of count period - Time: UTC



Start of count period - Time: UTC

Peak Week - Passengers Histogram

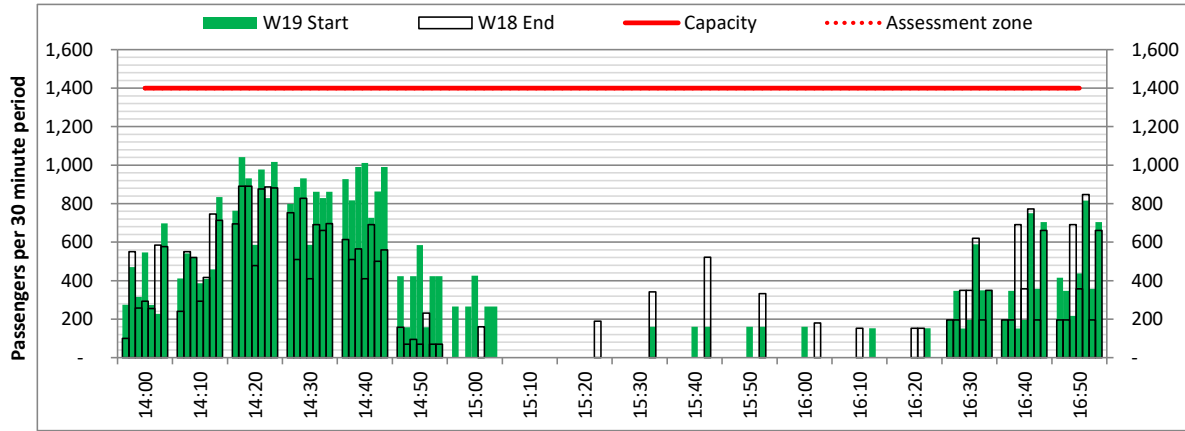
ARRIVAL - 30 minute count rolling every 10 mins (T30/10)



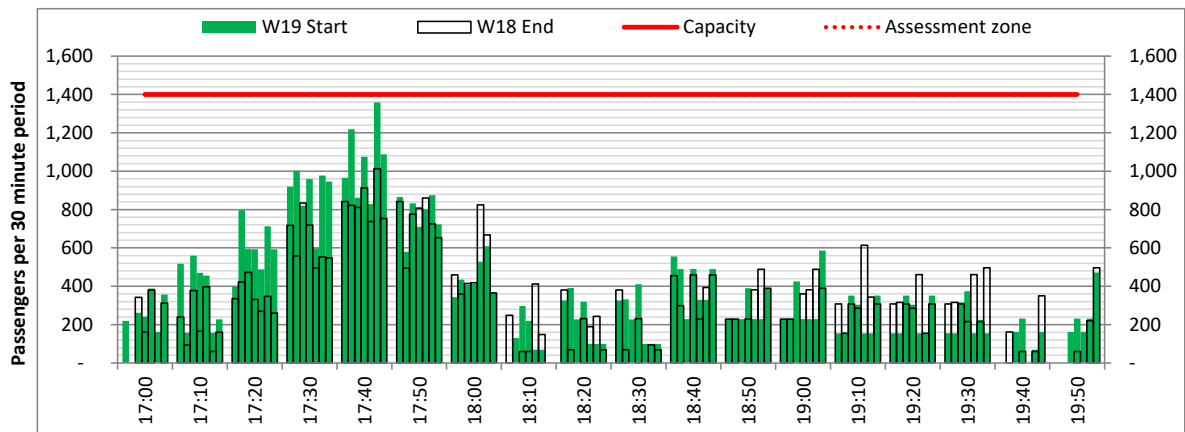
Terminals: 1I - Non Schengen

Operators: All Operators

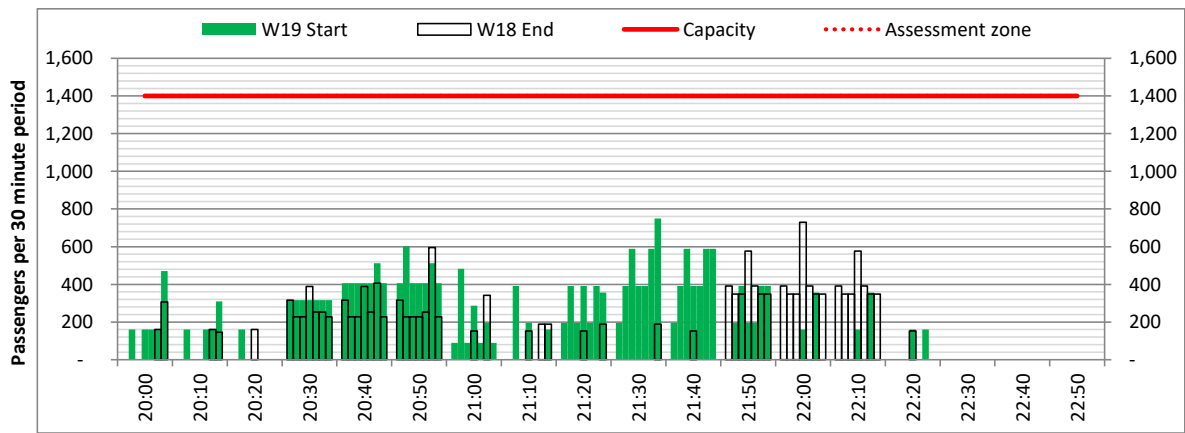
Days: 1234567



Start of count period - Time: UTC



Start of count period - Time: UTC



Start of count period - Time: UTC

Peak Week - Passengers Histogram

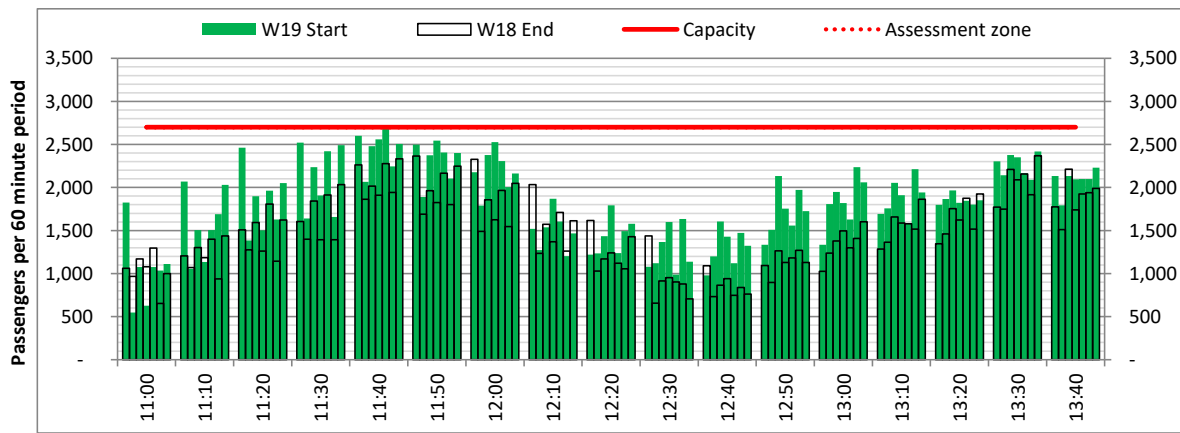
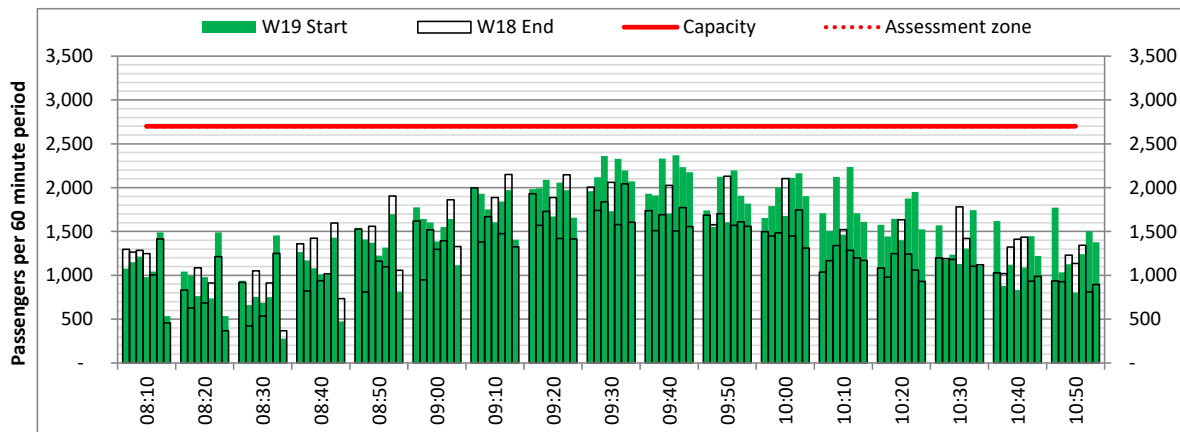
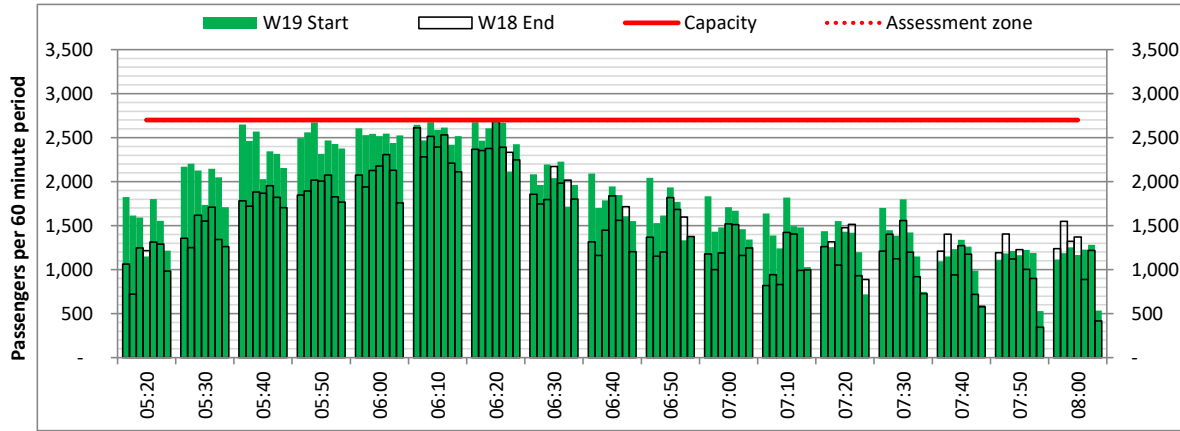
DEPARTURE - 60 minute count rolling every 10 mins (T60/10)



Terminals: All Terminals

Operators: All Operators

Days: 1234567



Peak Week - Passengers Histogram

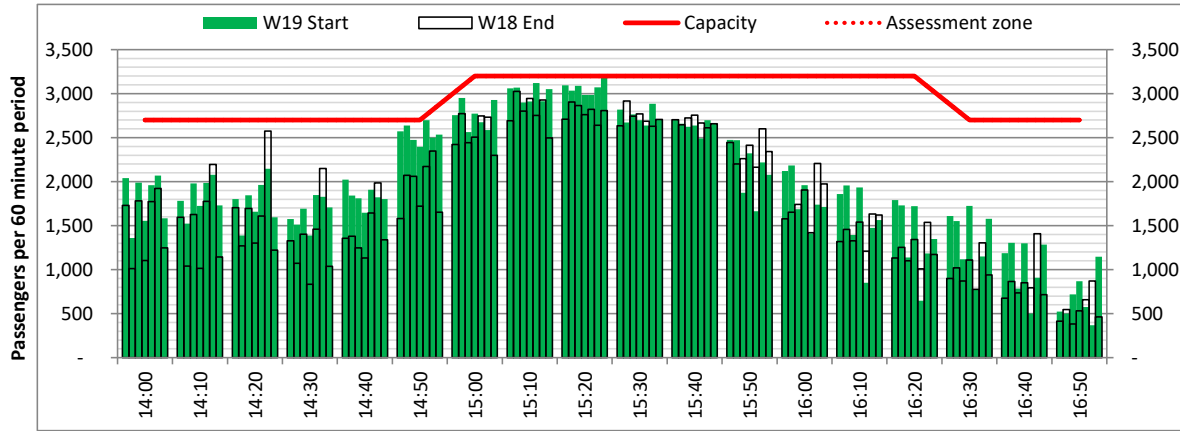


DEPARTURE - 60 minute count rolling every 10 mins (T60/10)

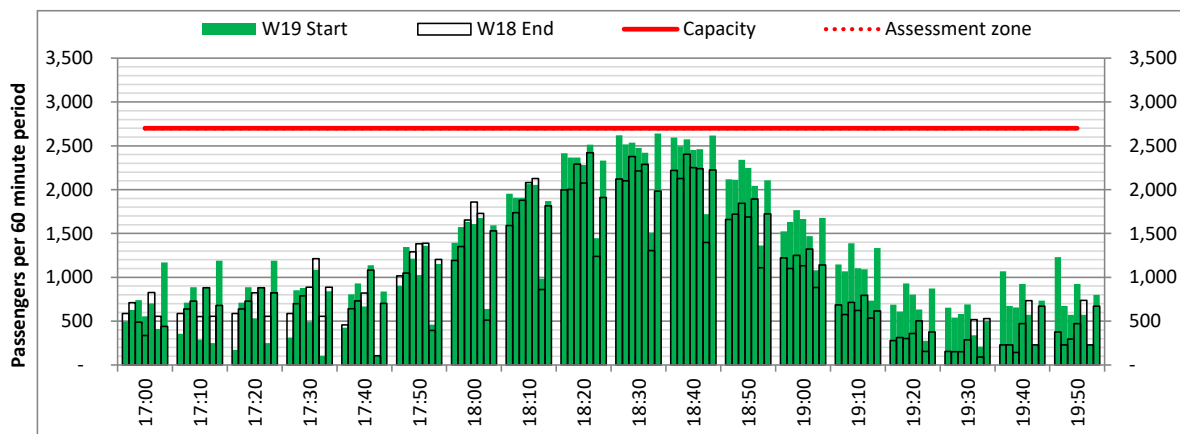
Terminals: All Terminals

Operators: All Operators

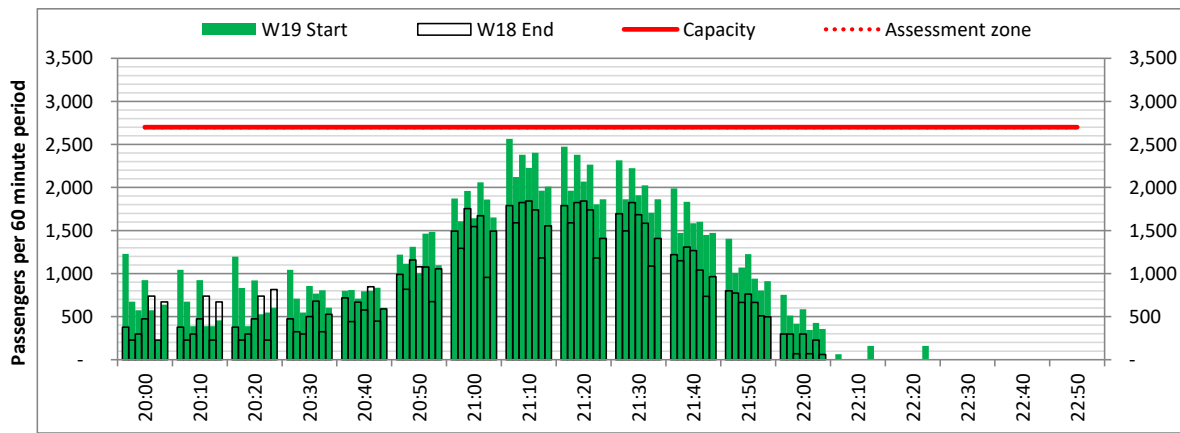
Days: 1234567



Start of count period - Time: UTC



Start of count period - Time: UTC



Start of count period - Time: UTC

Peak Week - Passengers Histogram

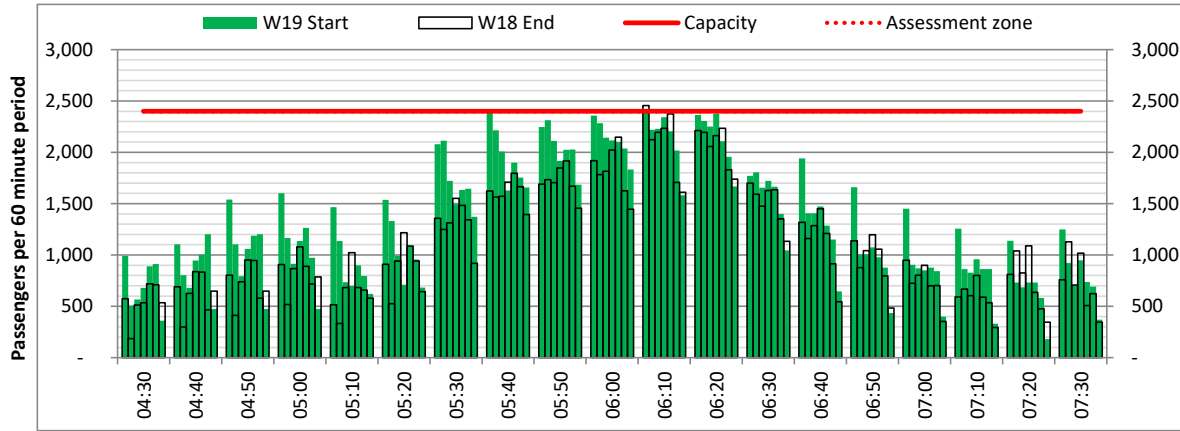


DEPARTURE - 60 minute count rolling every 10 mins (T60/10)

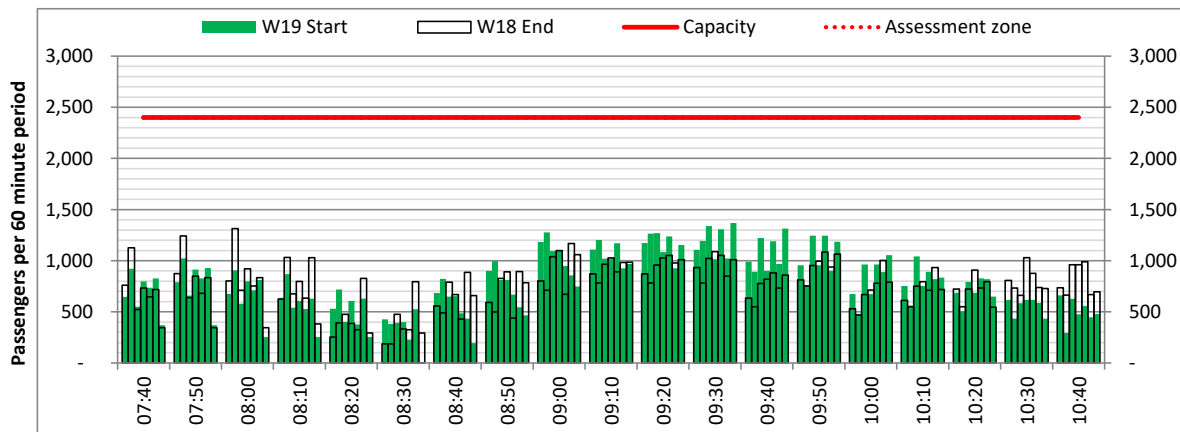
Terminals: 1D - Schengen

Operators: All Operators

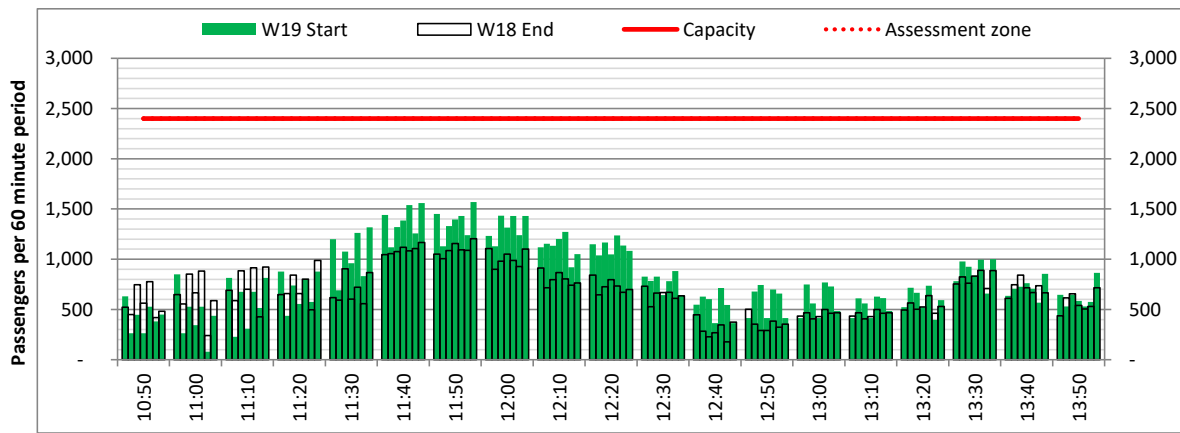
Days: 1234567



Start of count period - Time: UTC



Start of count period - Time: UTC



Start of count period - Time: UTC

Peak Week - Passengers Histogram

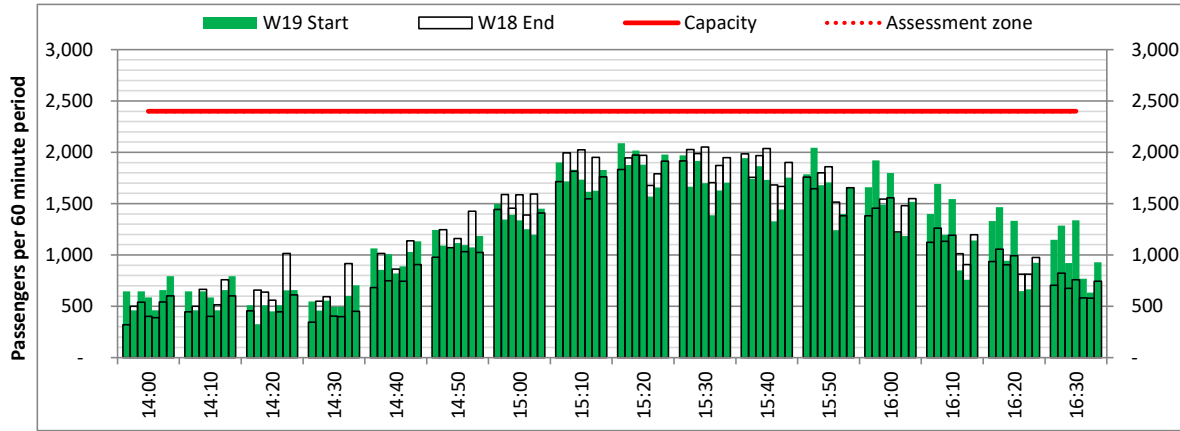


DEPARTURE - 60 minute count rolling every 10 mins (T60/10)

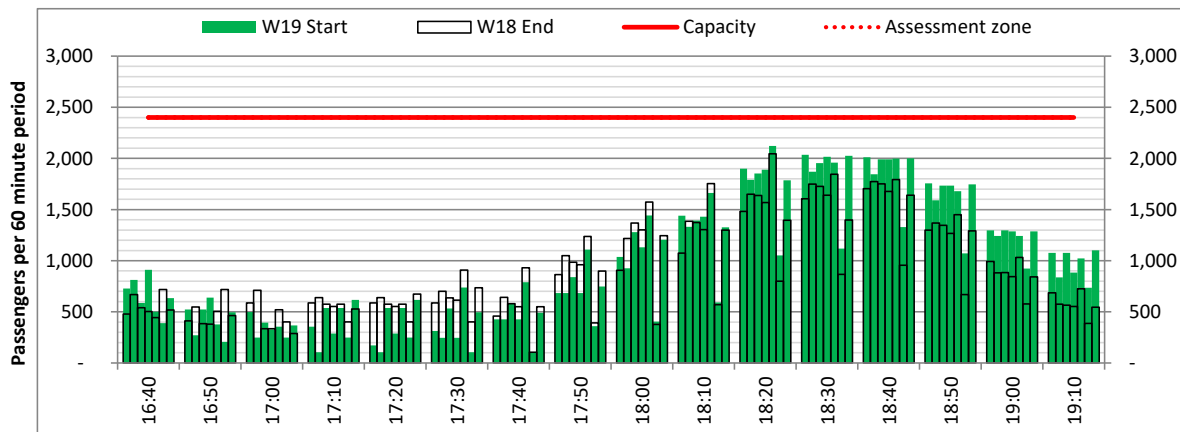
Terminals: 1D - Schengen

Operators: All Operators

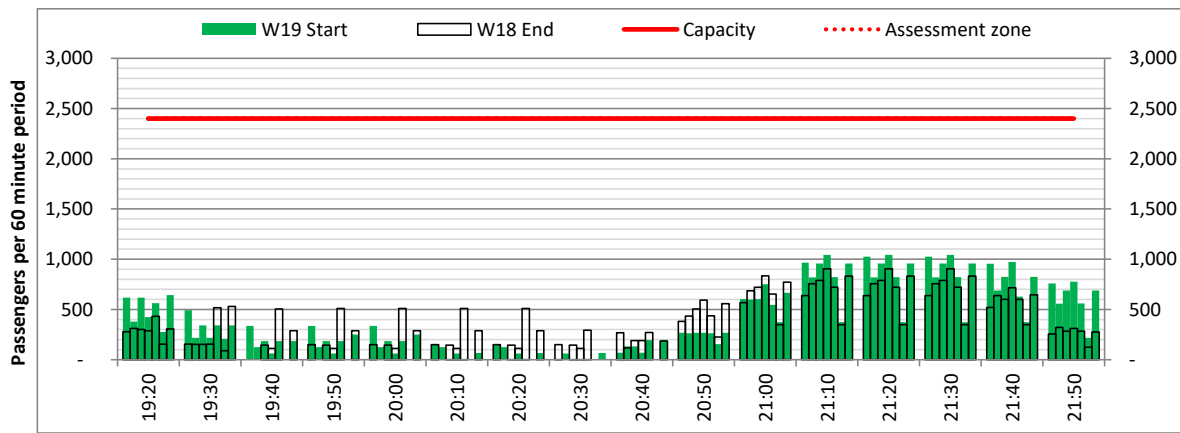
Days: 1234567



Start of count period - Time: UTC



Start of count period - Time: UTC



Start of count period - Time: UTC

Peak Week - Passengers Histogram

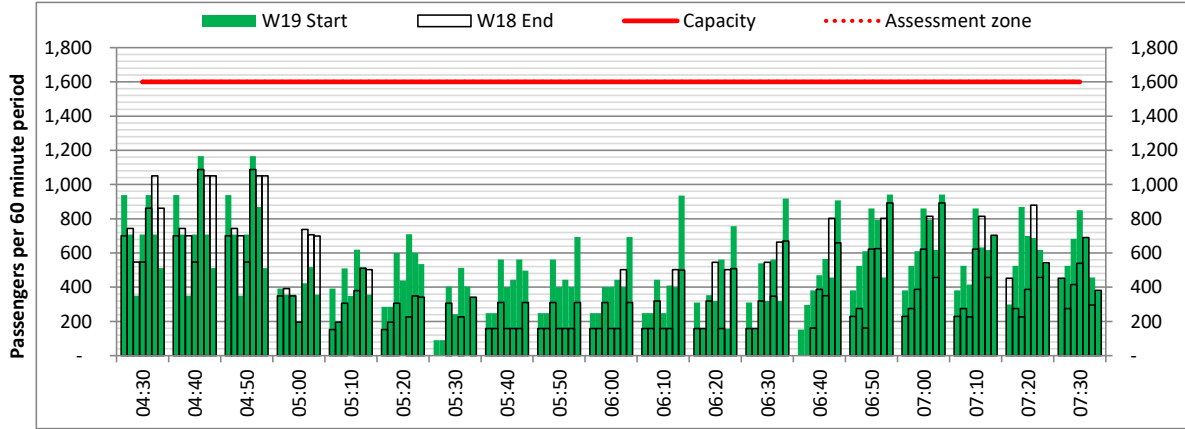


DEPARTURE - 60 minute count rolling every 10 mins (T60/10)

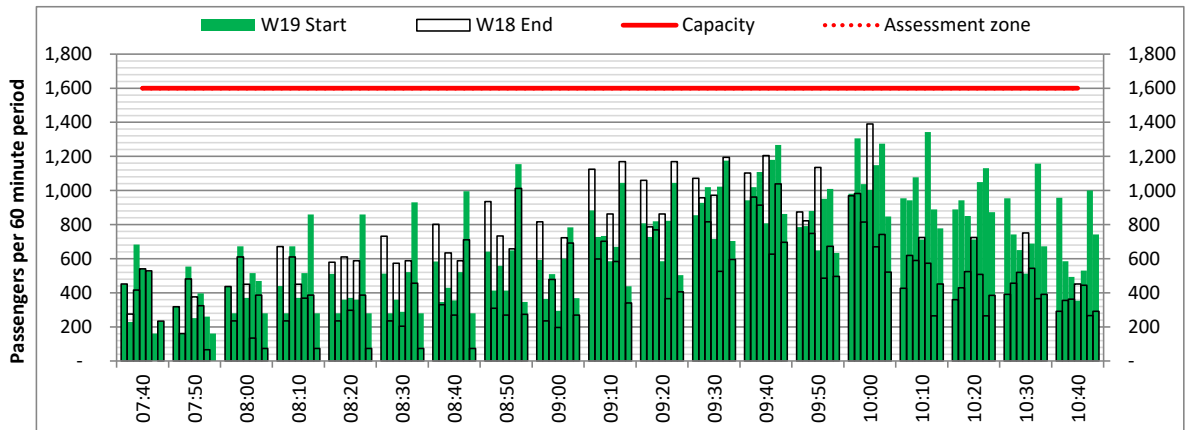
Terminals: 1I - Non Schengen

Operators: All Operators

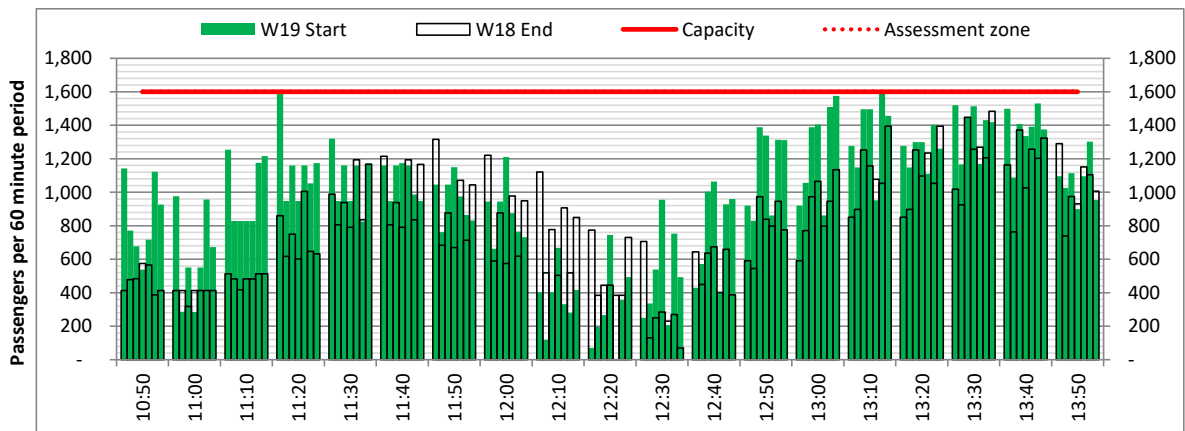
Days: 1234567



Start of count period - Time: UTC



Start of count period - Time: UTC



Start of count period - Time: UTC

Peak Week - Passengers Histogram

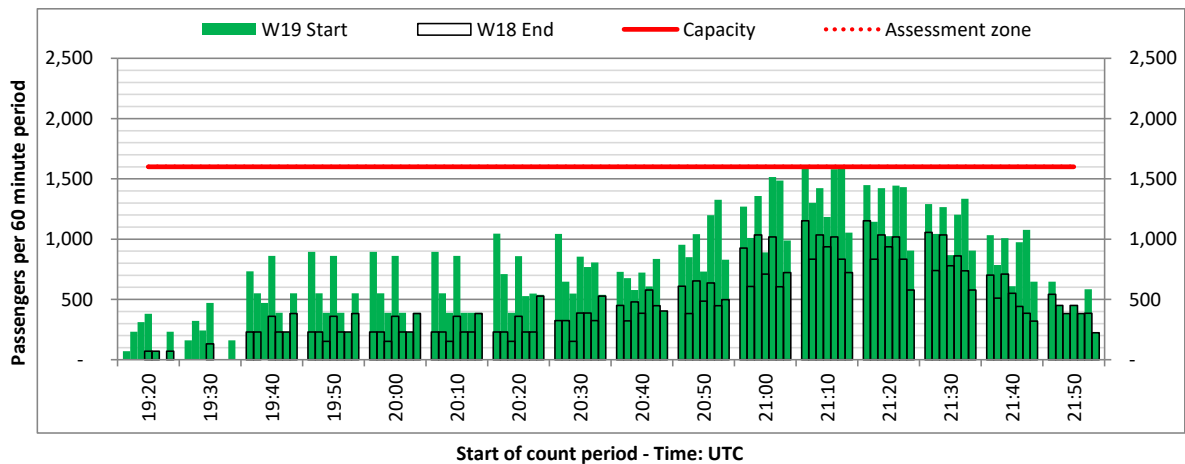
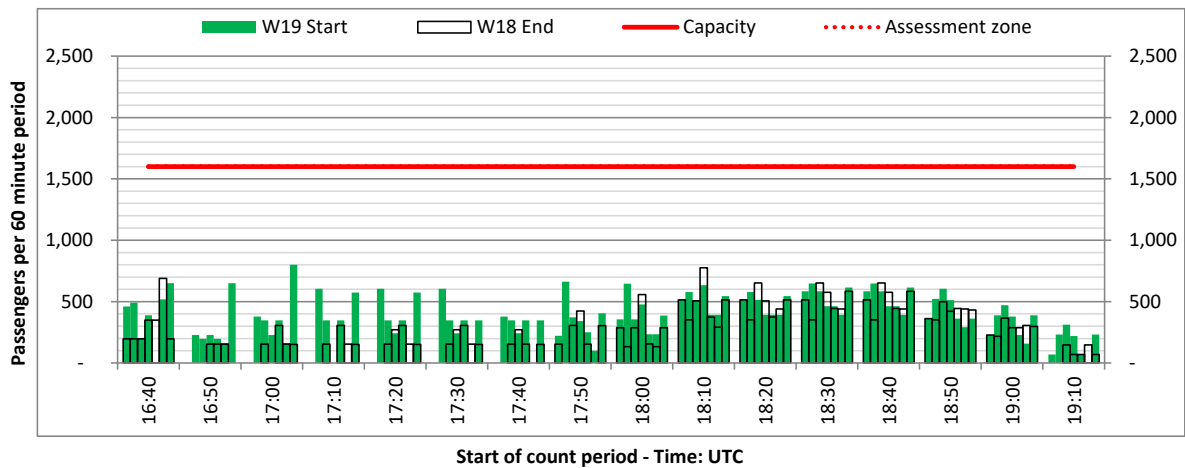
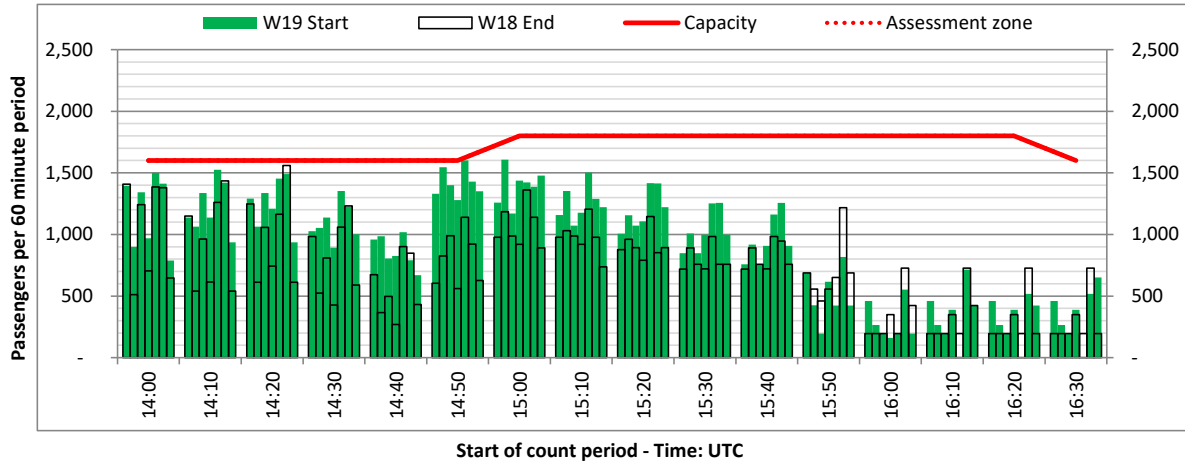


DEPARTURE - 60 minute count rolling every 10 mins (T60/10)

Terminals: 1I - Non Schengen

Operators: All Operators

Days: 1234567



Peak Week - Passengers Histogram

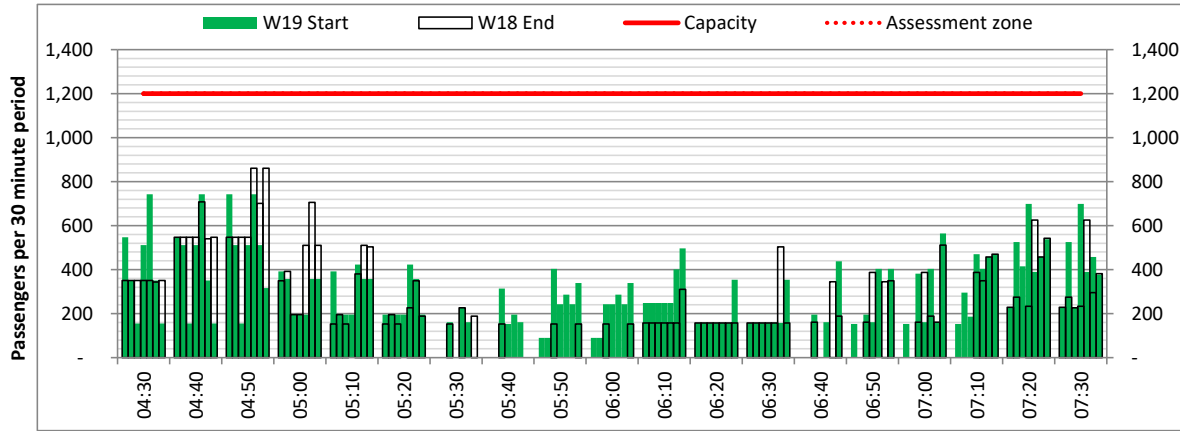
DEPARTURE - 30 minute count rolling every 10 mins (T30/10)



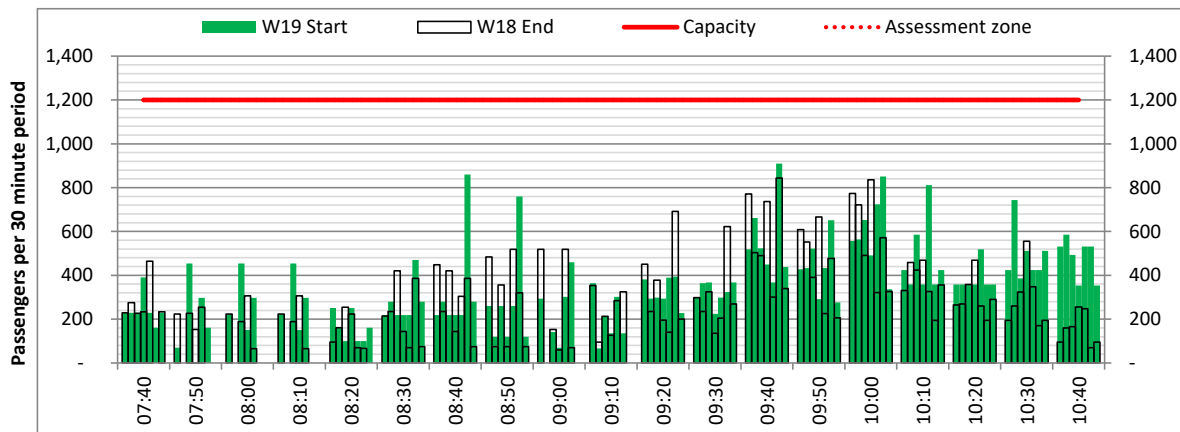
Terminals: 1I - Non Schengen

Operators: All Operators

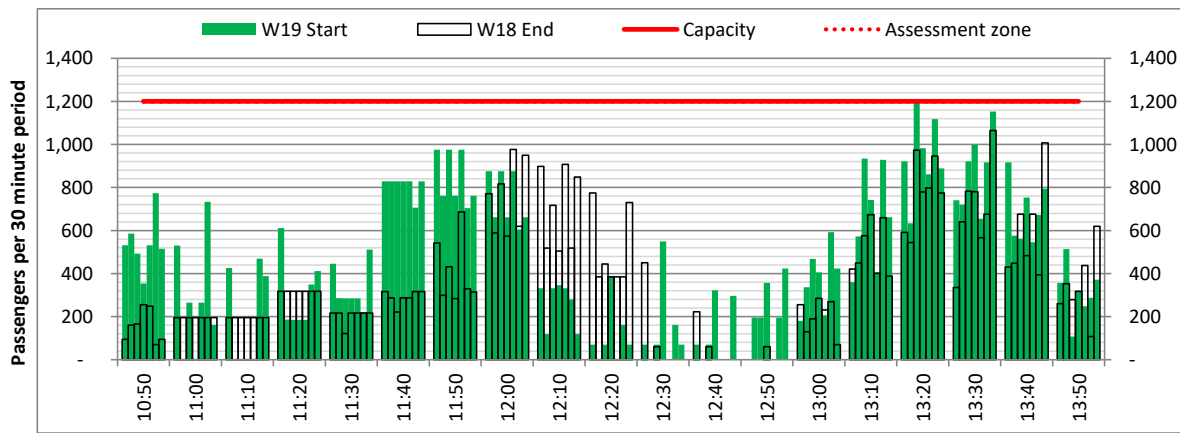
Days: 1234567



Start of count period - Time: UTC



Start of count period - Time: UTC



Start of count period - Time: UTC

Peak Week - Passengers Histogram

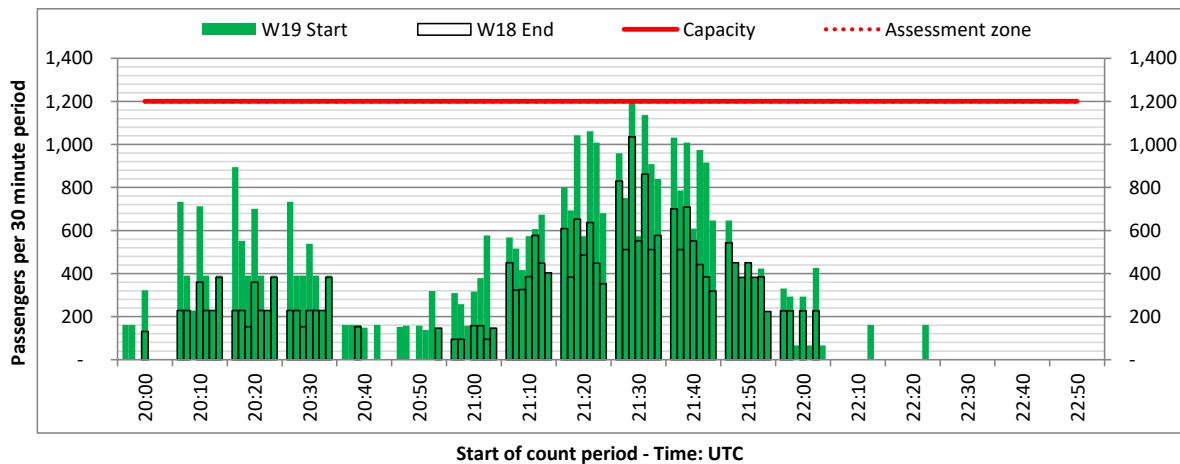
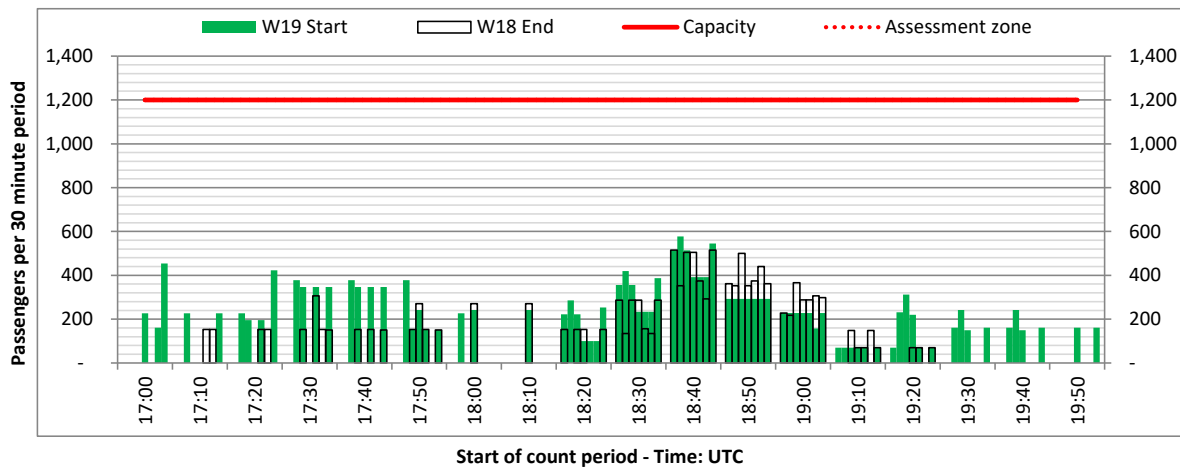
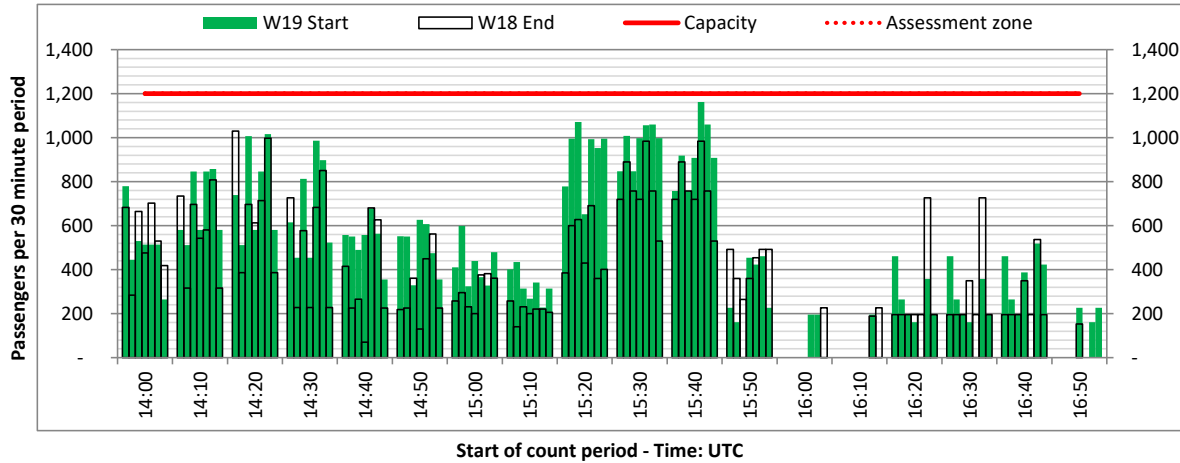


DEPARTURE - 30 minute count rolling every 10 mins (T30/10)

Terminals: 1I - Non Schengen

Operators: All Operators

Days: 1234567



| | |
|--|--|
| Air Transport Movement (ATM) | Any aircraft movement which is either a scheduled or chartered passenger or cargo flight. |
| Common Travel Area (CTA) | Origin or Destination is in Republic of Ireland or the Channel Islands. |
| Demand | Unconstrained demand before any schedule adjustments have been made. |
| "Fill-in" | These are gaps in a historic series of slots which the carrier requests to "Fill-in" at Initial Submissions - Fill-ins will be recognisably part of the historic series and will have the same flight details to qualify as a "Fill-in". |
| Hist (SHL) | Snapshot of historic schedule rolled over from end of the previous equivalent season - as advised to airlines in the SHLs. |
| ICAO Size A | Aircraft with wingspan between 0.00m - 14.99m. |
| ICAO Size B | Aircraft with wingspan between 15.00m - 23.99m. |
| ICAO Size C | Aircraft with wingspan between 24.00m - 35.99m. |
| ICAO Size D | Aircraft with wingspan between 36.00m - 51.99m. |
| ICAO Size E | Aircraft with wingspan between 52.00m - 64.99m. |
| ICAO Size F | Aircraft with wingspan between 65.00m - 80.00m. |
| Init Coord | Snapshot of schedule immediately after Initial Coordination is completed - as advised to airlines in the SALs. |
| Passenger Air Transport Movement (PATM) | Any aircraft movement which is either a scheduled or chartered passenger flight. |
| Start | Snapshot of schedule shortly before the start of the scheduling season (exact date given below where used). |
| Time: Local | Times shown are in LOCAL time for the airport/scheduling season. |
| Time: UTC | Times shown are in Universal Time Constant (UTC). |

Data snapshot descriptions

| | |
|------------------|--|
| W18 Start | W18 schedule as cleared on Sun 21-Oct-18. |
| W18 End | W18 schedule as cleared on Tue 17-Apr-18. |
| W19 Start | W19 schedule as cleared on Tue 08-Oct-19. |
| Peak Week | Peak week for W18 is Mon 17-Dec-18 to Sun 23-Dec-18. Peak week for W19 is Mon 28-Oct-19 to Sun 03-Nov-19. |

For ACL use

| | Airport-Season-Branch-Resource | From date | To date | Time |
|-------------------|--------------------------------|-----------------|-----------------|------|
| Full Season Rep 1 | WAW-W18-SOS Report-Standard | Sun 28-Oct-2018 | Sat 30-Mar-2019 | UTC |
| Full Season Rep 2 | WAW-W18-Live-Standard | Sun 28-Oct-2018 | Sat 30-Mar-2019 | UTC |
| Full Season Rep 3 | WAW-W19-SOS Report-Standard | Sun 27-Oct-2019 | Sat 28-Mar-2020 | UTC |
| | Airport-Season-Branch-Resource | From date | To date | Time |
| Peak Week Rep 1 | WAW-W18-SOS Report-Standard | Mon 17-Dec-2018 | Sun 23-Dec-2018 | UTC |
| Peak Week Rep 2 | WAW-W18-Live-Standard | Mon 17-Dec-2018 | Sun 23-Dec-2018 | UTC |
| Peak Week Rep 3 | WAW-W19-SOS Report-Standard | Mon 28-Oct-2019 | Sun 03-Nov-2019 | UTC |