

### Start of Season Report

Report Date: Thu 03-Oct-2019

#### Headlines

	W19 Start	vs. W18 Start	vs. W18 End
Total Air Transport Movements (Passenger & Freight)	<b>83,498</b>	▼ -3.9%	▼ -1.2%
Total Passenger Air Transport Movements	<b>81,810</b>	▼ -3.6%	▼ -1.1%
Total Passenger Air Transport Movement Seats	<b>14,055,112</b>	▼ -4.2%	▼ -1.2%
Average Seats per Passenger Air Transport Movement	<b>172</b>	▼ -0.6%	▼ -0.1%
Percentage of allocated slots cleared as requested (OK)	<b>98.6%</b>		

#### Contents

Page	Content
2	Runway Scheduling Limits
3	ATM Allocation by Operator (Full season and Peak Week Comparison)
4	Peak Week - Allocation and Slot Adjustment Distribution by Operator
5	Significant Route Changes
6	Full Season - ATM Analysis
7	Full Season - PATM Seats Analysis
8	Full Season - Terminal Analysis
9	Full Season - Aircraft Size Analysis
10	Full Season - Seasonality
11	Peak Week - Hourly Runway Demand
12	Peak Week - Hourly Runway Allocation
13	Peak Week - Hourly Runway Allocation Comparison (W19 Start vs. W18 Start)
14	Peak Week - Hourly Runway Allocation Comparison (W19 Start vs. W18 End)
15	Peak Week Histogram - Departure Passengers (T60/10) - Terminal 1 - All Operators
16	Peak Week Histogram - Arrival Passengers (T60/10) - Terminal 1 - All Operators
17	Peak Week Histogram - Departure Passengers (T60/10) - Terminal 2 - All Operators
18	Peak Week Histogram - Arrival Passengers (T60/10) - Terminal 2 - All Operators
19	Peak Week Histogram - Arrival Passengers (T60/10) - Terminal 2 - All Operators
20	Glossary

**W18 scheduling season runs from Sun 28-Oct-2018 to Sat 30-Mar-2019 (154 days).**

**W19 scheduling season runs from Sun 27-Oct-2019 to Sat 28-Mar-2020 (154 days).**

#### Disclaimer

No warranty whether expressed or implied as to the completeness, accuracy, fitness for purpose, or satisfactory quality is given by ACL regarding the information in this report, which is provided by third parties. Accordingly, ACL excludes all liability with regard to such data.

The contents of this report may not be reproduced without the written consent of ACL.





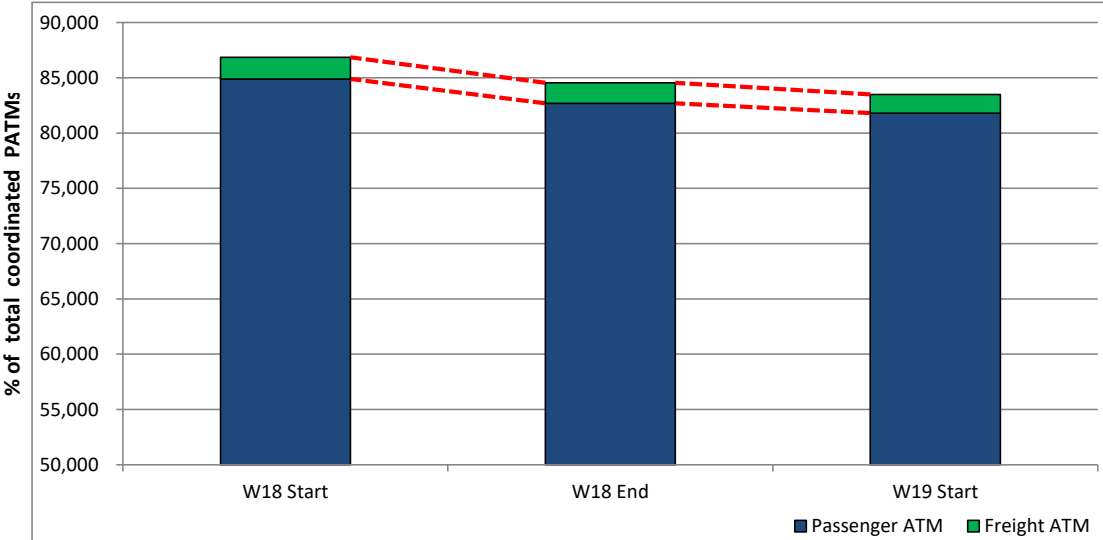


## Significant Route Changes



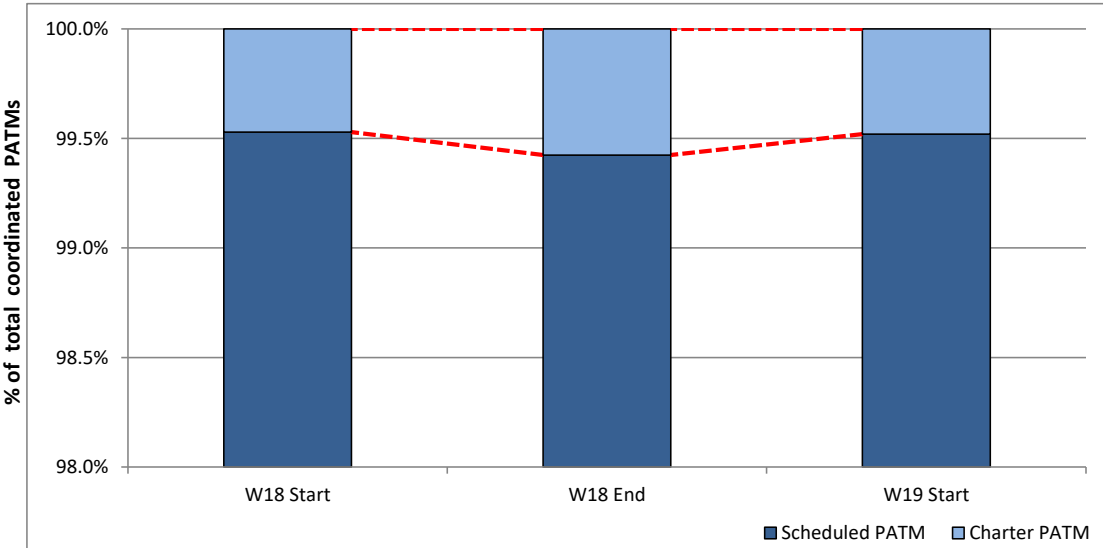
Operator	Category	Description of change from W18 schedule to W19 schedule
Aegean Airlines	CHANGE	Increase Athens service
Aegean Airlines	<b>CANCELLED</b>	Heraklion service
Aer Lingus	<b>NEW</b>	Minneapolis service
Aer Lingus	CHANGE	Decrease Aberdeen, Lanzarote, Barcelona, Bordeaux, Faro, Frankfurt services
Aer Lingus	CHANGE	Decrease Lisbon, Milan Malpensa, Toulouse, Vienna services
Aer Lingus	CHANGE	Increase Boston, Brussels, Edinburgh, Leeds Bradford services
Aeroflot	CHANGE	Decrease Moscow service
Air Arabia Maroc	<b>CANCELLED</b>	Agadir service
airBaltic	<b>NEW</b>	Riga service
Airest	<b>CANCELLED</b>	Birmingham and Karlsruhe services
Cathay Pacific	<b>CANCELLED</b>	Hong Kong service
Croatia Airlines	<b>NEW</b>	Zagreb service
Delta Air Lines	<b>NEW</b>	Boston service
Ethiopian Airlines	<b>CANCELLED</b>	Los Angeles service
Etihad Airways	CHANGE	Decrease Abu Dhabi services
Eurowings	CHANGE	Increase Dusseldorf service
Eurowings	<b>CANCELLED</b>	Cologne service
Finnair	CHANGE	Increase Helsinki service
Flybe	CHANGE	Increase Cardiff service
Flybe	<b>CANCELLED</b>	Doncaster/Sheffield and Southend services
Freebird Airlines	<b>NEW</b>	Dubrovnik service
Hainan Airlines	<b>CANCELLED</b>	Beijing, Shenzhen services
Icelandair	CHANGE	Increase Keflavik service
Lauda Motion	CHANGE	Increase Vienna service
Loganair	<b>NEW</b>	Carlisle service
Lufthansa	CHANGE	Decrease Frankfurt service
Lufthansa	CHANGE	Increase Munich service
Luxair	CHANGE	Decrease Luxembourg service
Norwegian	CHANGE	Decrease Stockholm service
Norwegian	CHANGE	Increase Oslo service
Norwegian	<b>CANCELLED</b>	Copenhagen, Helsinki, Providence, Newburgh Stewart services
Ryanair	<b>NEW</b>	Billund, Bordeaux, Bournemouth, Gothenburg, Kiev, Lublin services
Ryanair	<b>NEW</b>	Milan Malpensa, Southend services
Ryanair	CHANGE	Decrease Barcelona, Basel, Bratislava, Hamburg, London Gatwick services
Ryanair	CHANGE	Decrease Munich, Bucharest, Sofia, London Stansted services
Ryanair	CHANGE	Increase Florence, Toulouse, Vence services
Ryanair	CHANGE	Increase Malaga, Bydgoszcz, Cologne Bonn, Rome Ciampino, Lisbon services
Ryanair	<b>CANCELLED</b>	Stuttgart services

## Total ATMs: Passenger ATMs vs. Freight ATMs



Schedule Snapshot

## Passenger ATMs: Scheduled vs. Charter

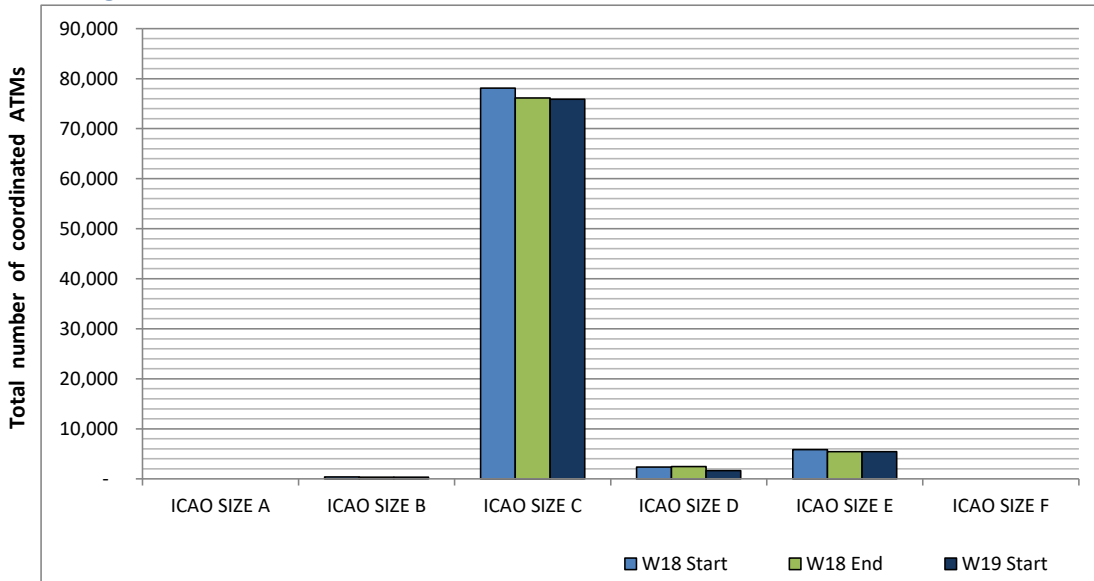


Schedule Snapshot

# Full Season - Aircraft Size Analysis

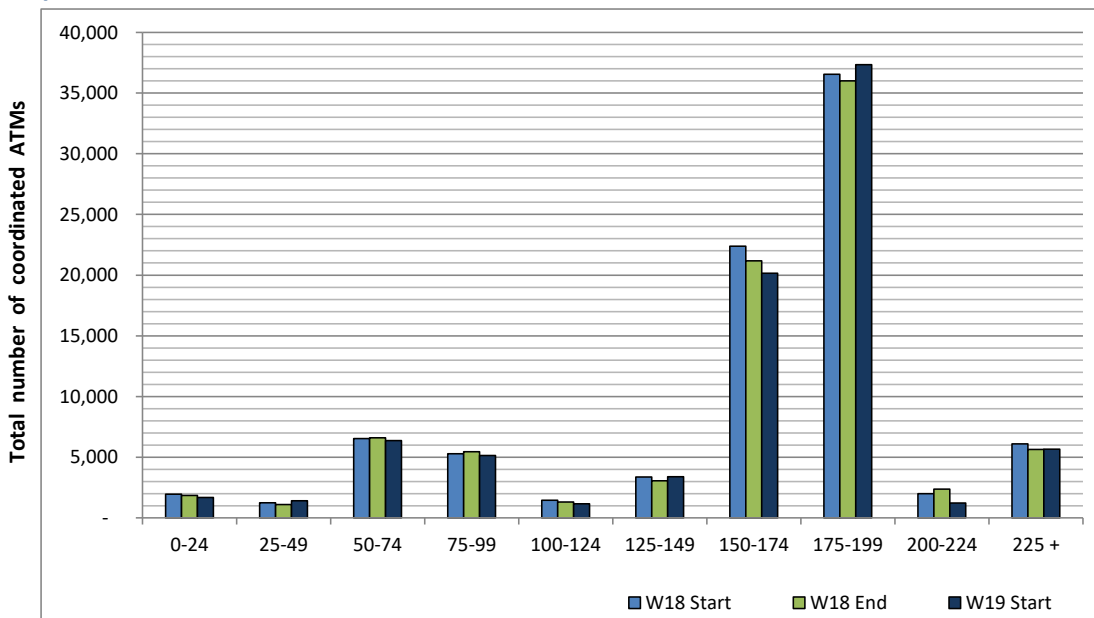


## ICAO size designation



Note: See Glossary for definitions of ICAO SIZE groupings

## Air Transport Movement seat distribution

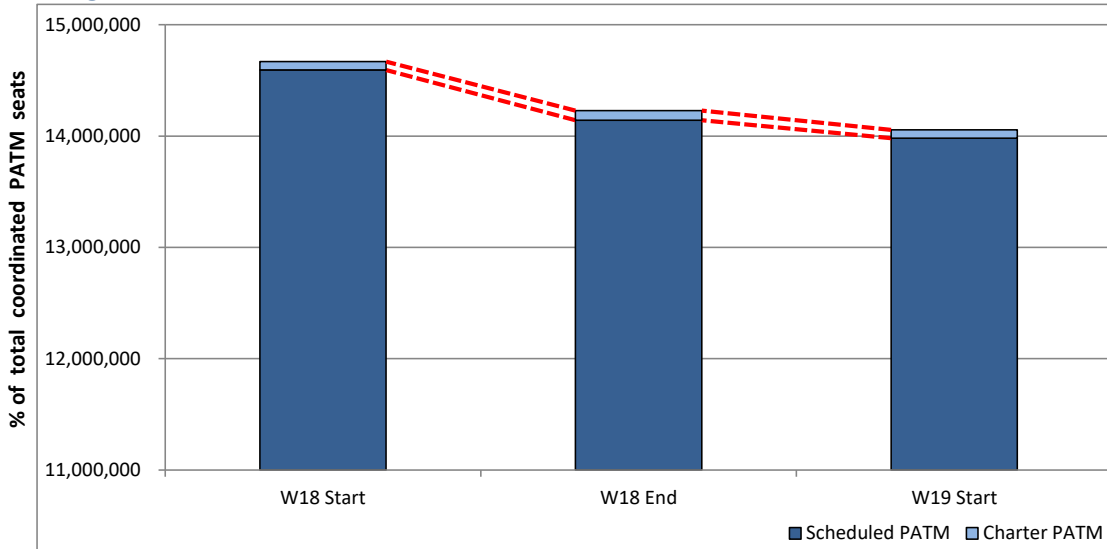


Note: FREIGHT-ONLY services with 0 seats are included in the first seat band '0-24'

# Full Season - PATM Seats Analysis

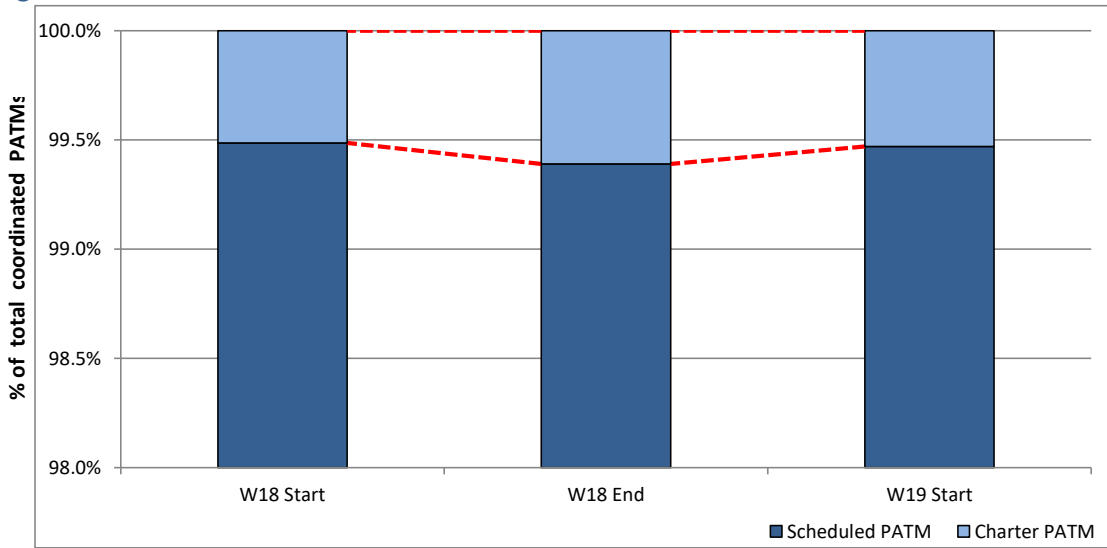


**Total Passenger ATM seats: Scheduled vs. Charter**



**Schedule Snapshot**

**Passenger ATM seats: Scheduled vs. Charter**



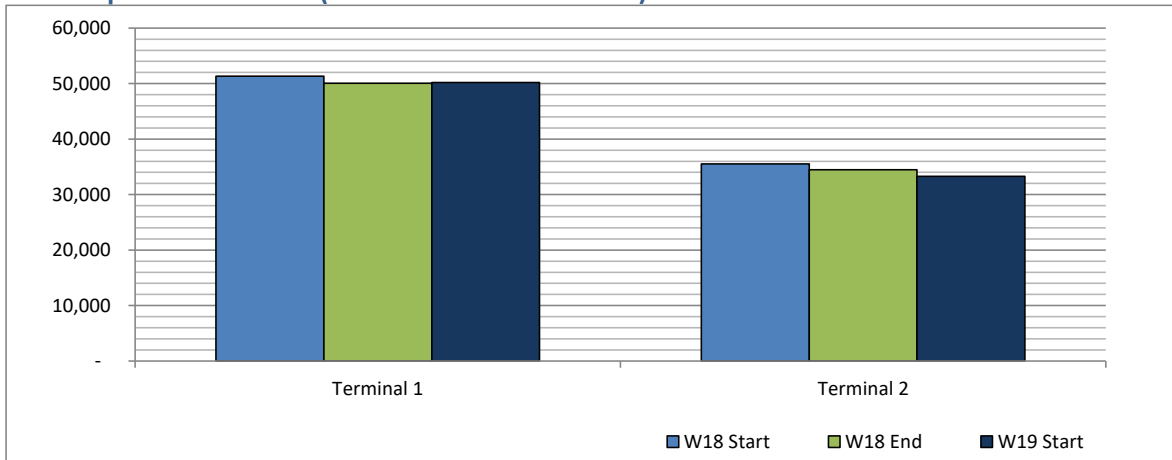
**Schedule Snapshot**



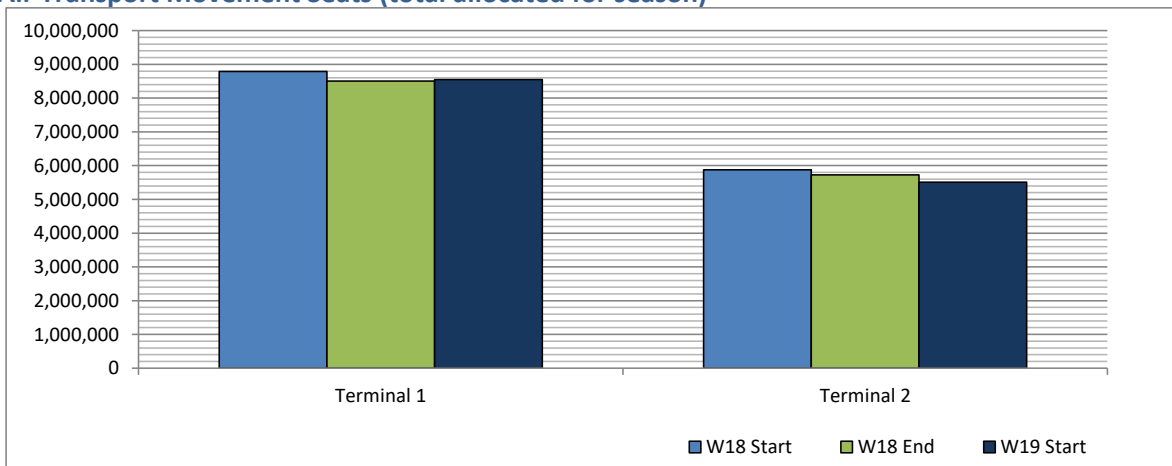
# Full Season - Terminal Analysis



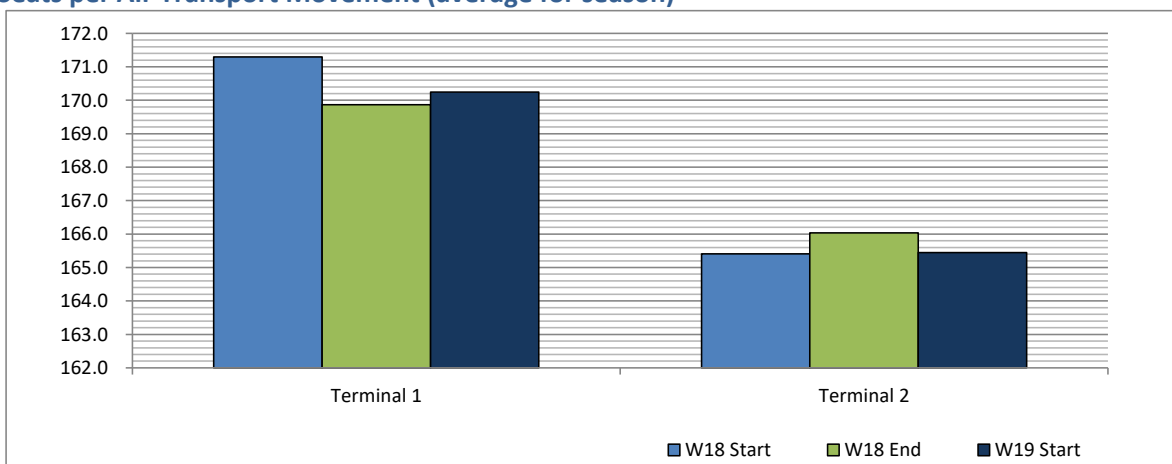
**Air Transport Movements (total allocated for season)**



**Air Transport Movement Seats (total allocated for season)**



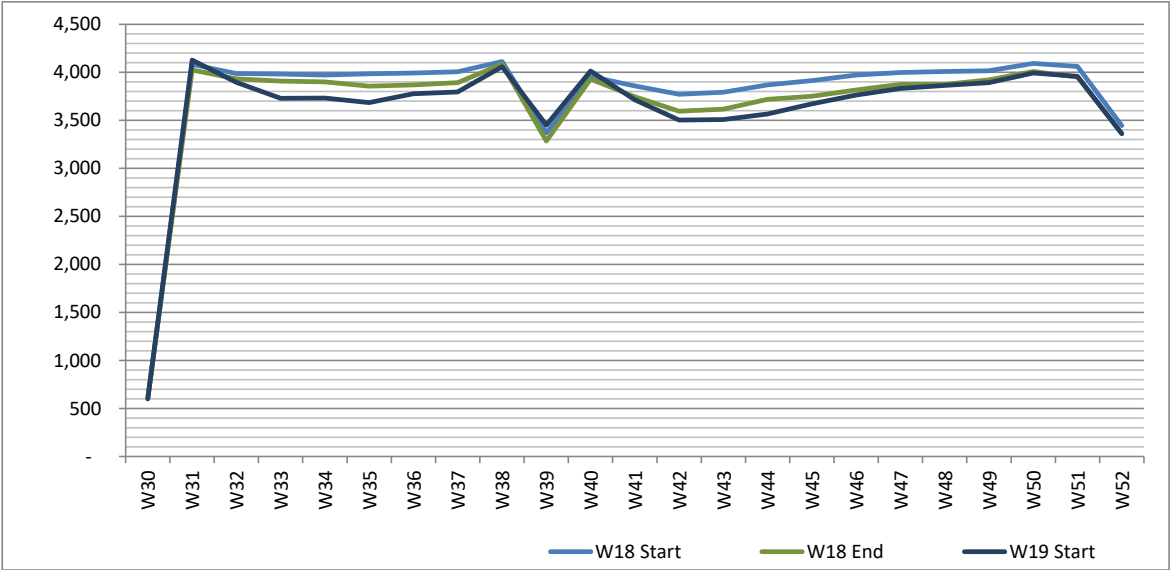
**Seats per Air Transport Movement (average for season)**



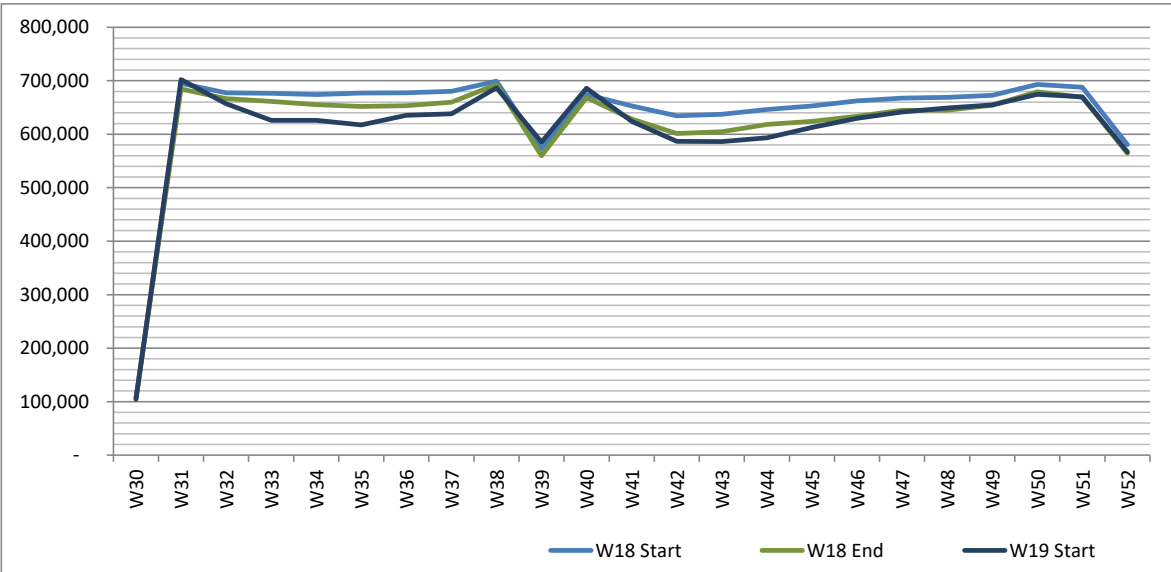
# Full Season - Seasonality



Air Transport Movements by week of season



Air Transport Movement Seats by week of season



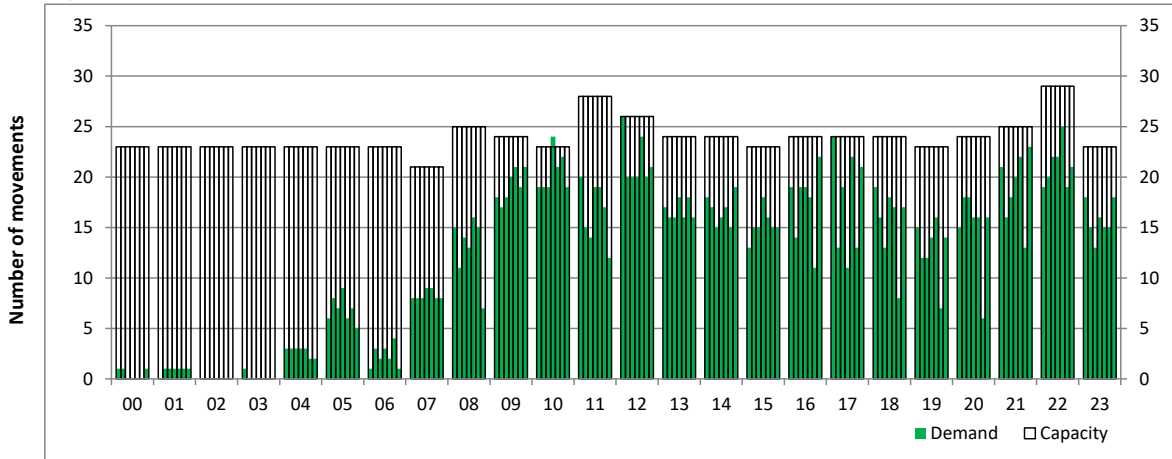
# Peak Week - Hourly Runway Demand

Schedule: W19 Start



## Hourly Arrival Demand

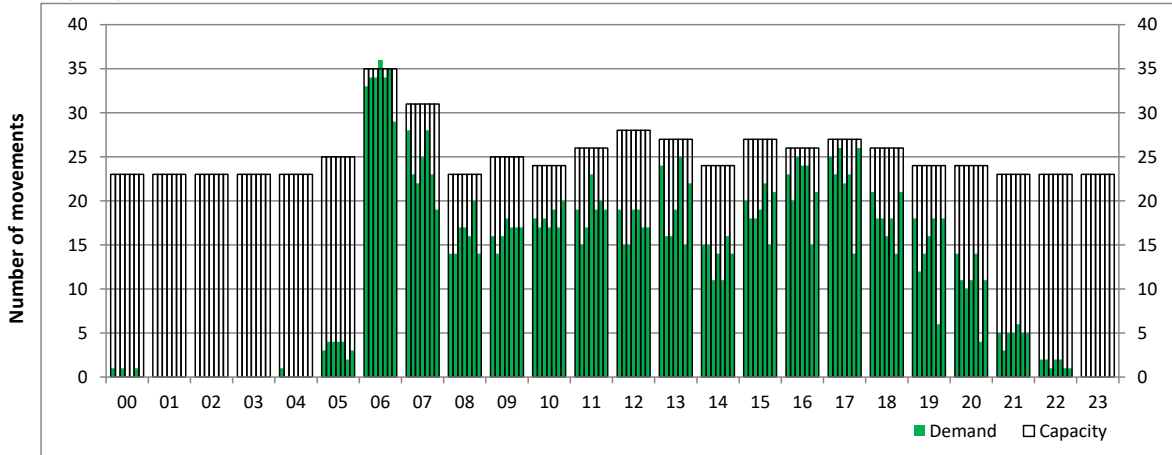
Time: UTC



Hour of day (24 hour format)

## Hourly Departure Demand

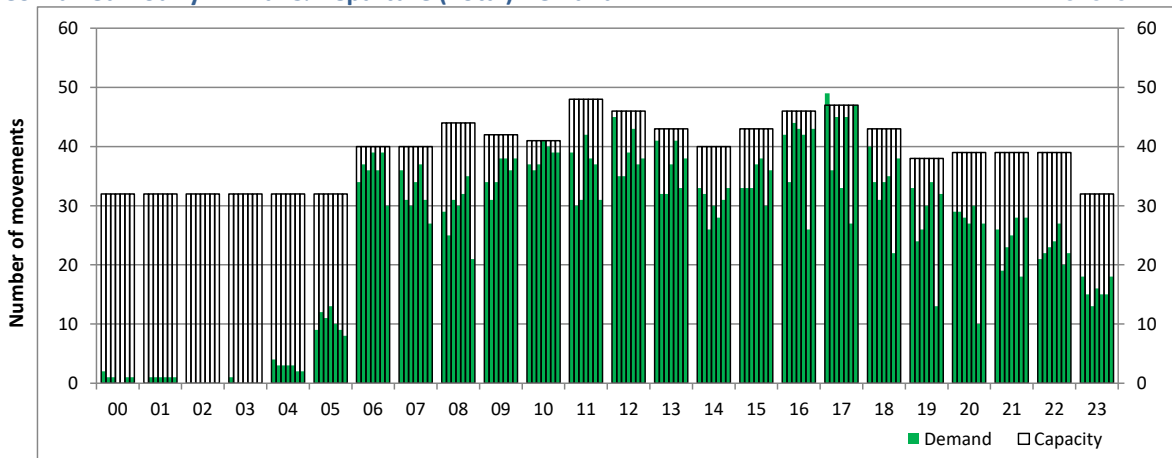
Time: UTC



Hour of day (24 hour format)

## Combined Hourly Arrival & Departure (Total) Demand

Time: UTC



Hour of day (24 hour format)

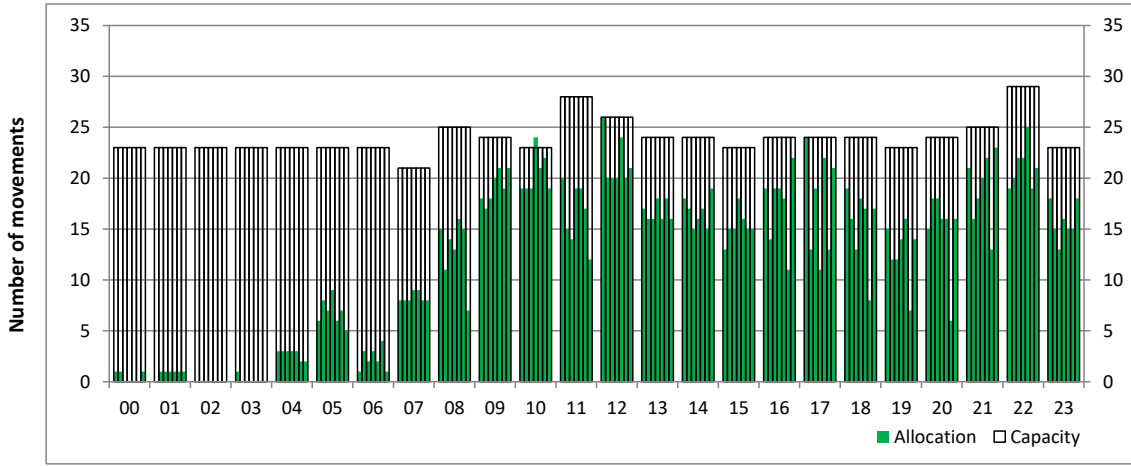
# Peak Week - Hourly Runway Allocation

Schedule: W19 Start



## Hourly Arrival Allocation

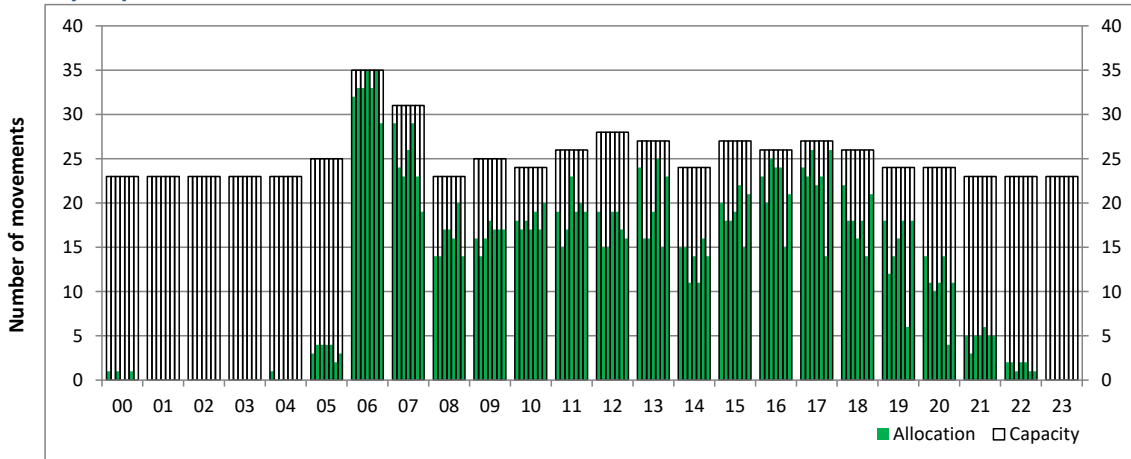
Time: UTC



Hour of day (24 hour format)

## Hourly Departure Allocation

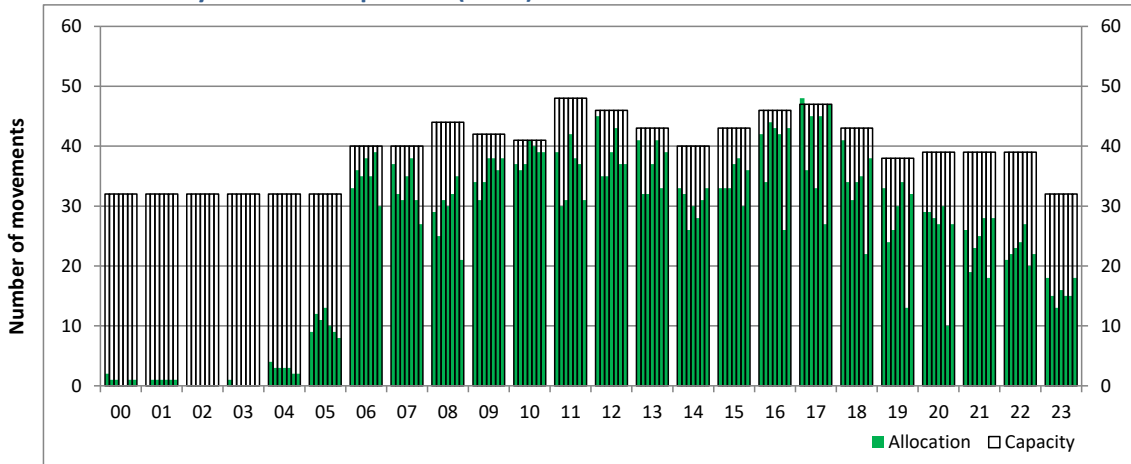
Time: UTC



Hour of day (24 hour format)

## Combined Hourly Arrival & Departure (Total) Allocation

Time: UTC



Hour of day (24 hour format)

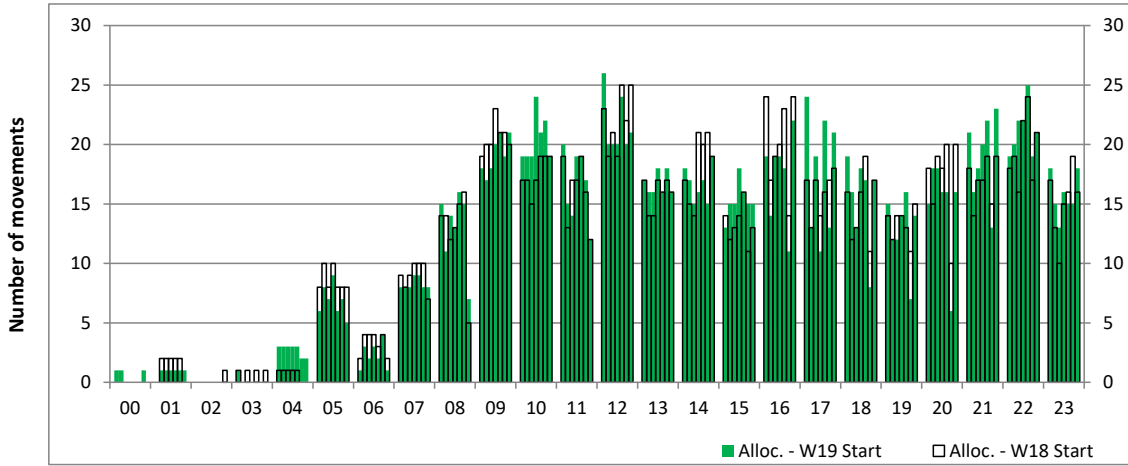
# Peak Week - Runway Allocation Comparison

Comparison of W19 Start vs. W18 Start



## Hourly Arrival Allocation

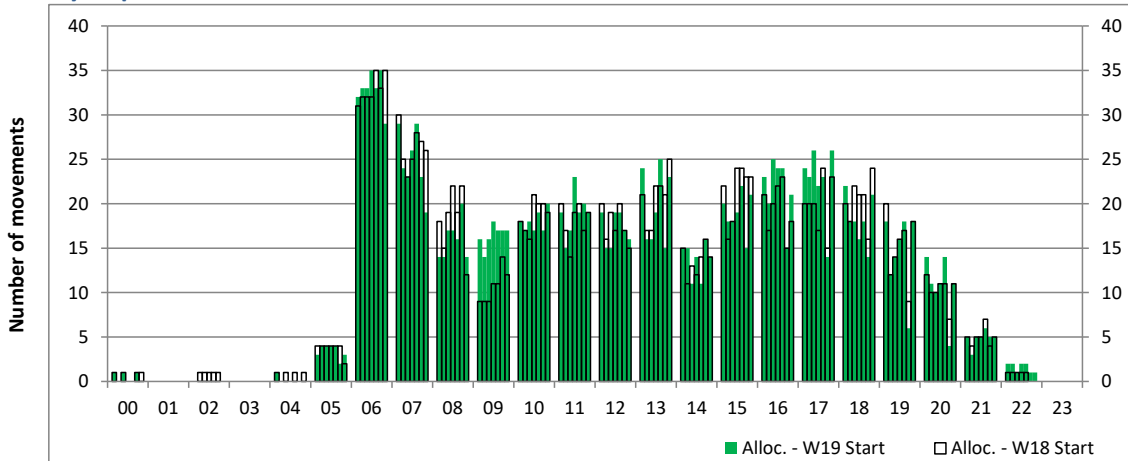
Time: UTC



Hour of day (24 hour format)

## Hourly Departure Allocation

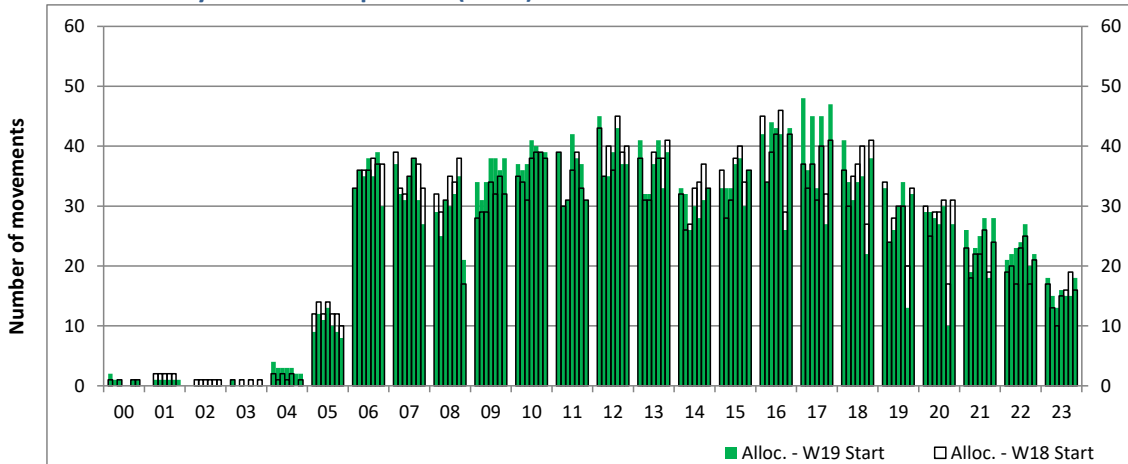
Time: UTC



Hour of day (24 hour format)

## Combined Hourly Arrival & Departure (Total) Allocation

Time: UTC



Hour of day (24 hour format)

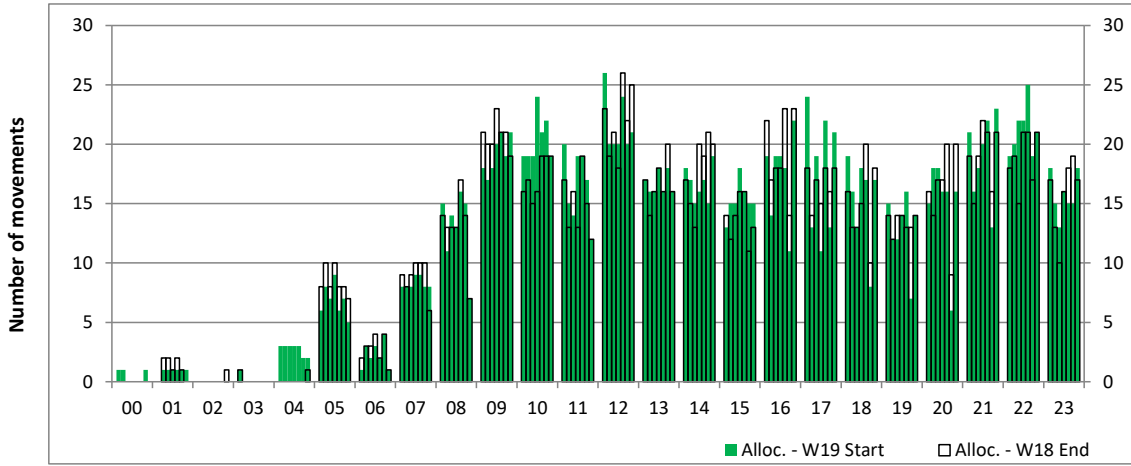
# Peak Week - Runway Allocation Comparison

Comparison of W19 Start vs. W18 End



## Hourly Arrival Allocation

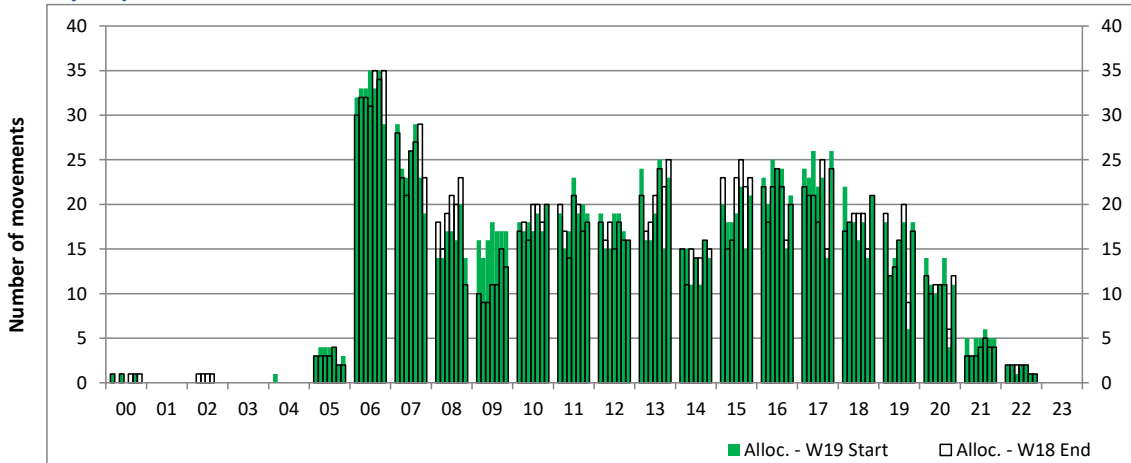
Time: UTC



Hour of day (24 hour format)

## Hourly Departure Allocation

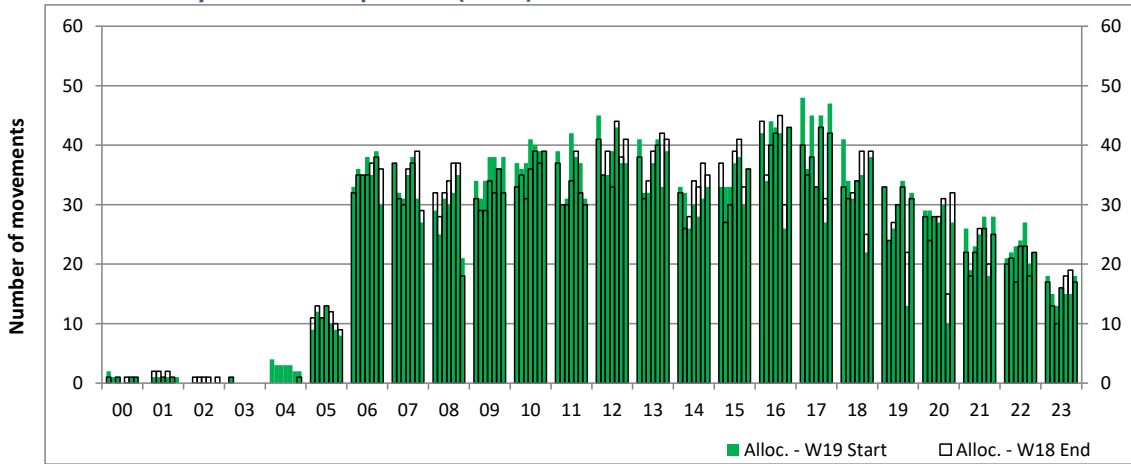
Time: UTC



Hour of day (24 hour format)

## Combined Hourly Arrival & Departure (Total) Allocation

Time: UTC



Hour of day (24 hour format)

# Peak Week - Passengers Histogram

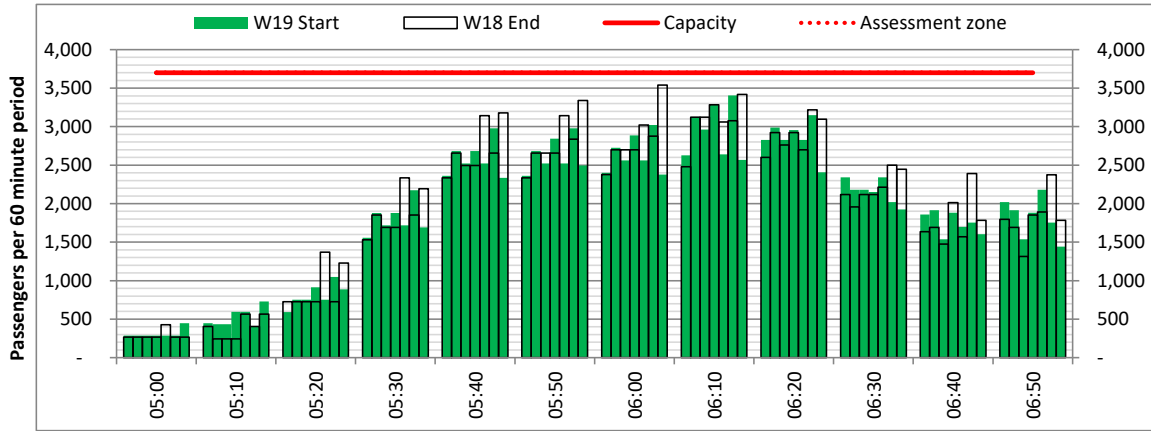
DEPARTURE - 60 minute count rolling every 10 mins (T60/10)



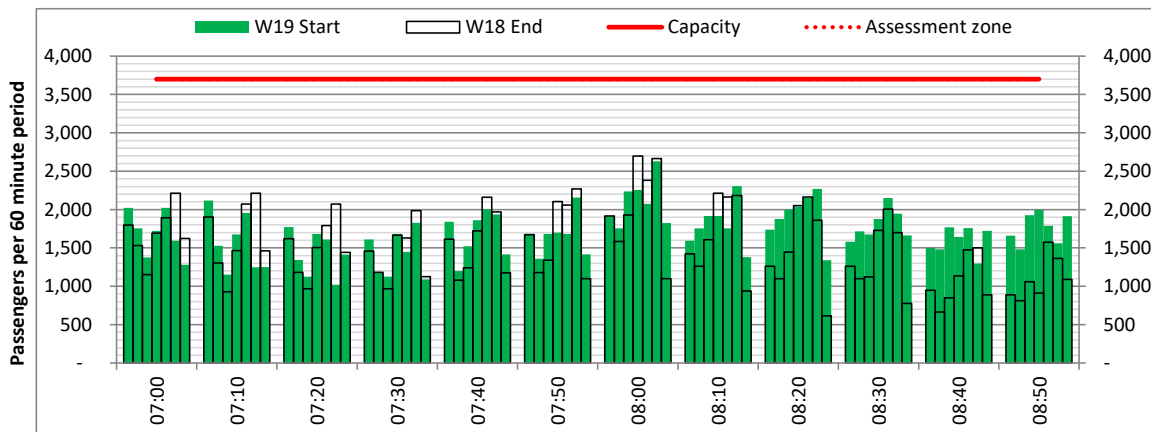
Terminals: 1

Operators: All Operators

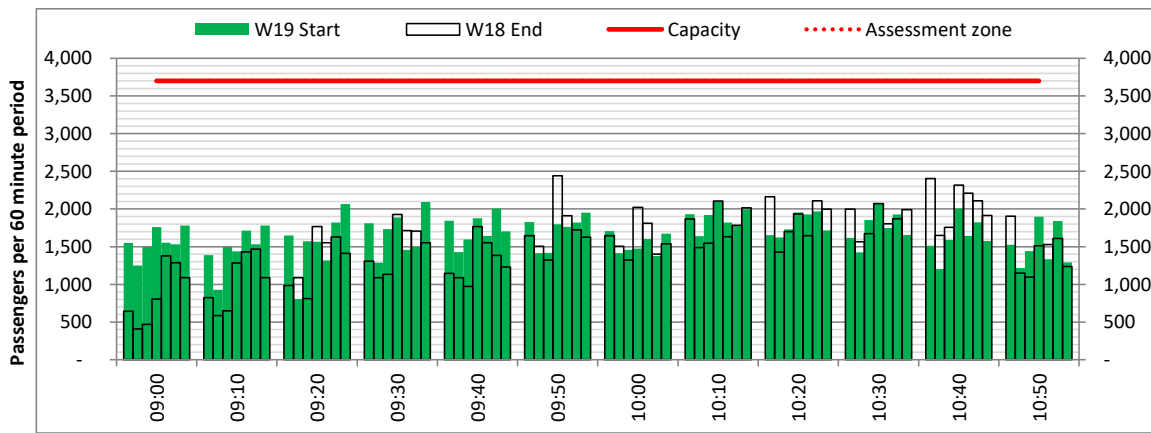
Days: 1234567



Start of count period - Time: UTC



Start of count period - Time: UTC



Start of count period - Time: UTC

# Peak Week - Passengers Histogram

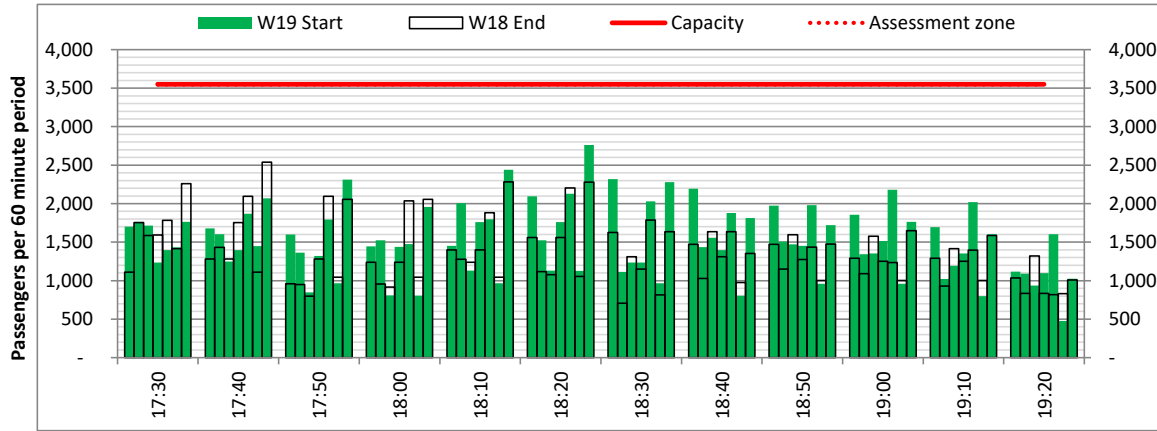
ARRIVAL - 60 minute count rolling every 10 mins (T60/10)



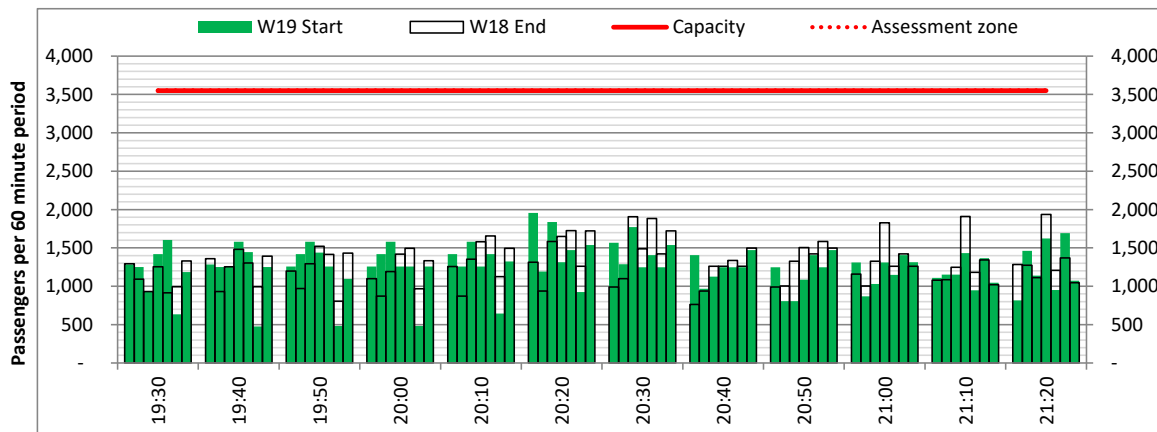
Terminals: 1

Operators: All Operators

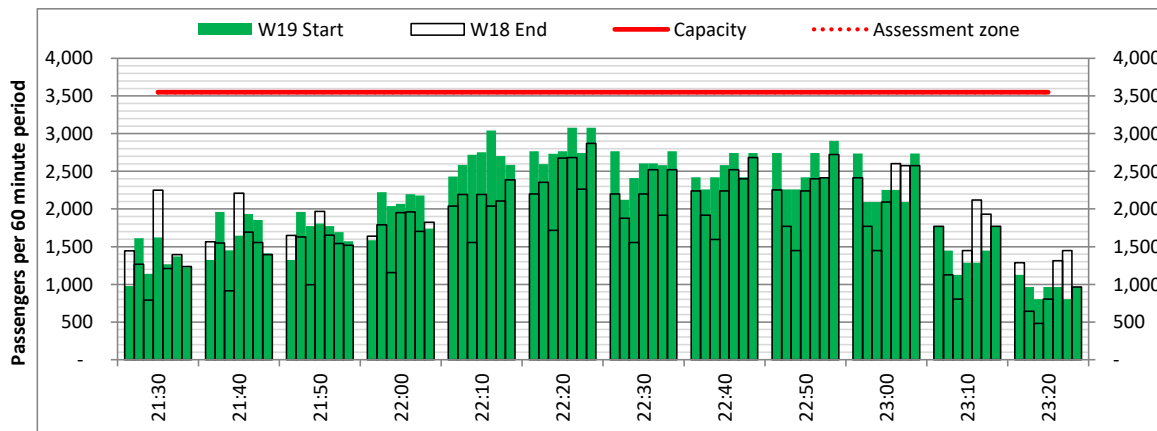
Days: 1234567



Start of count period - Time: UTC



Start of count period - Time: UTC



Start of count period - Time: UTC



# Peak Week - Passengers Histogram

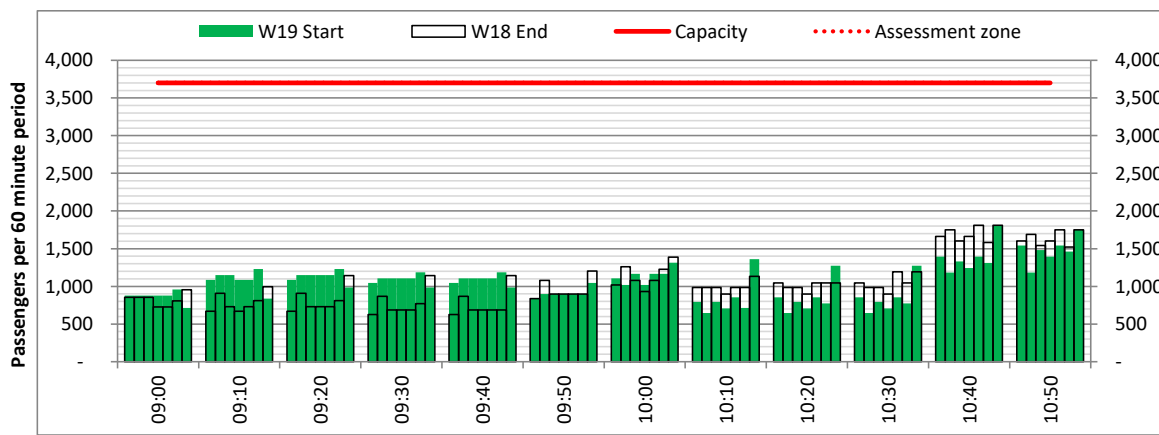
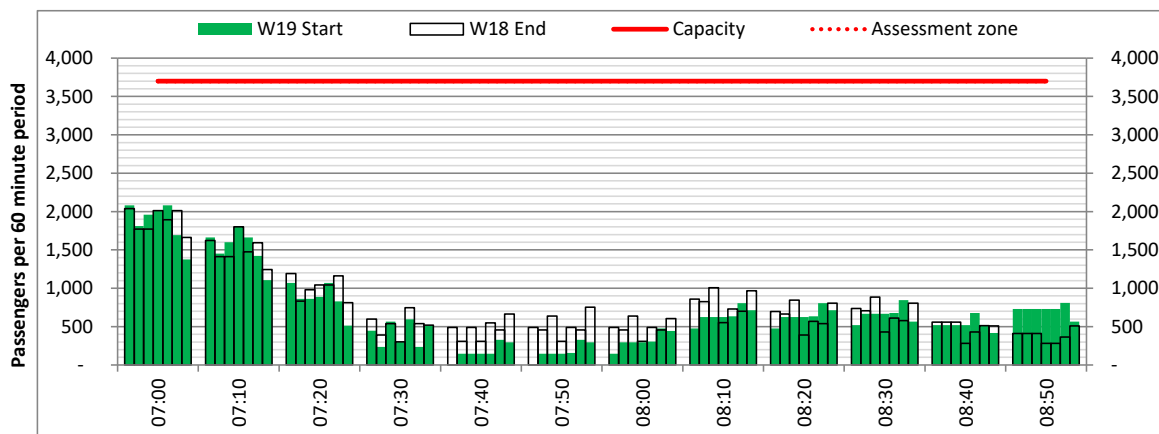
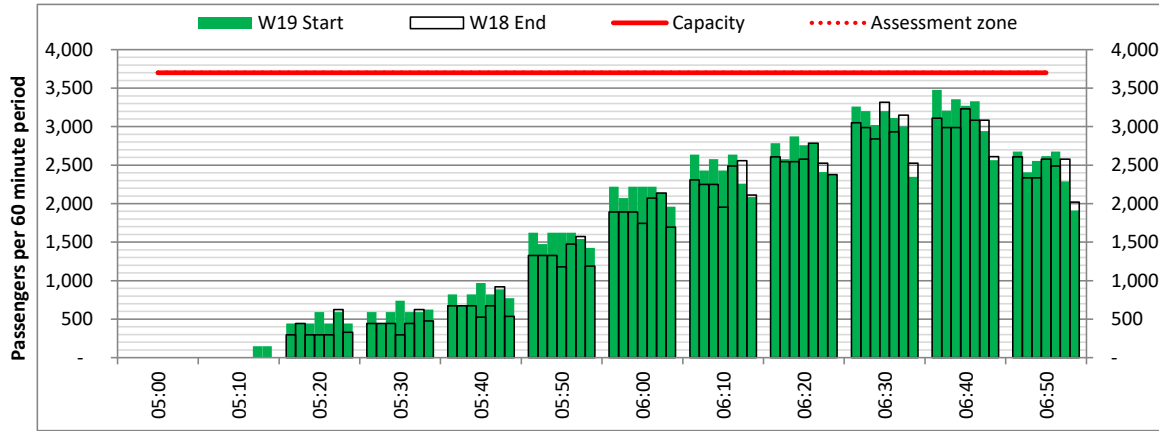
DEPARTURE - 60 minute count rolling every 10 mins (T60/10)



Terminals: 2

Operators: All Operators

Days: 1234567



# Peak Week - Passengers Histogram

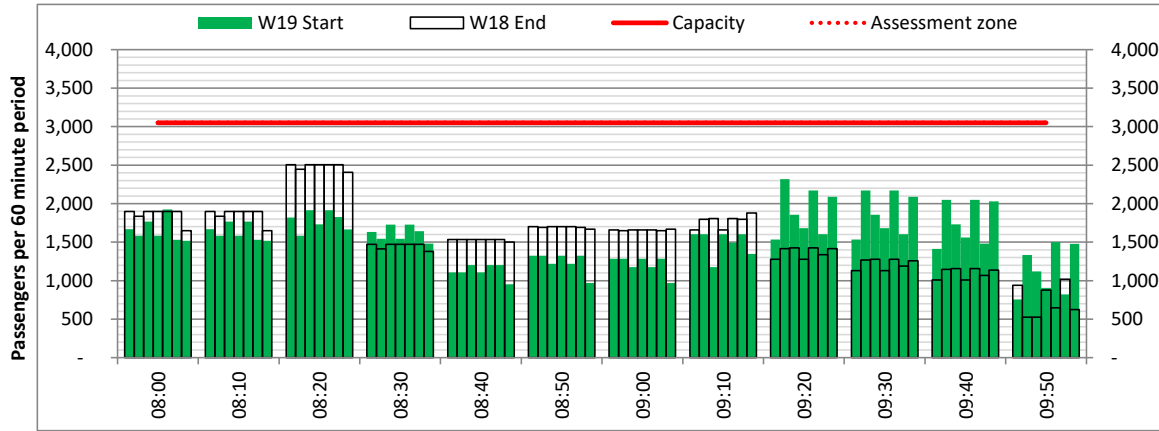
ARRIVAL - 60 minute count rolling every 10 mins (T60/10)



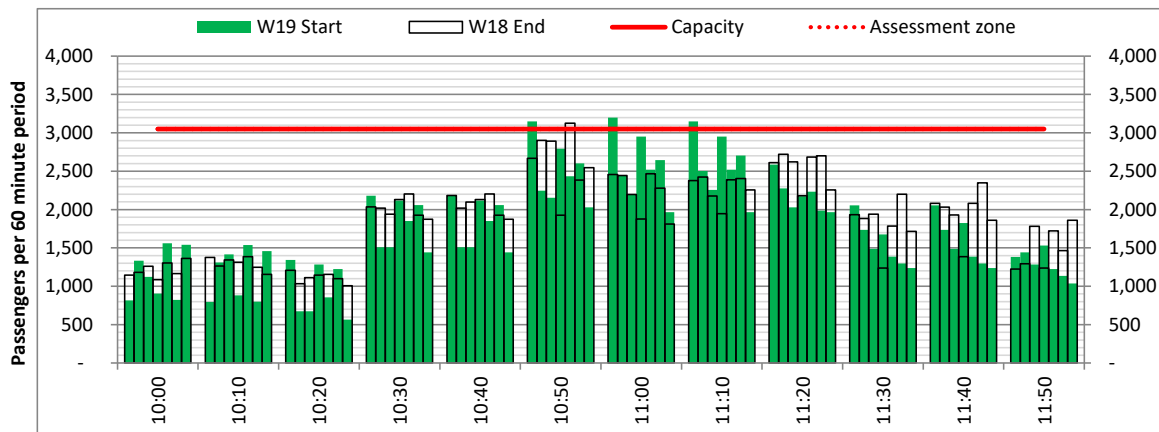
Terminals: 2

Operators: All Operators

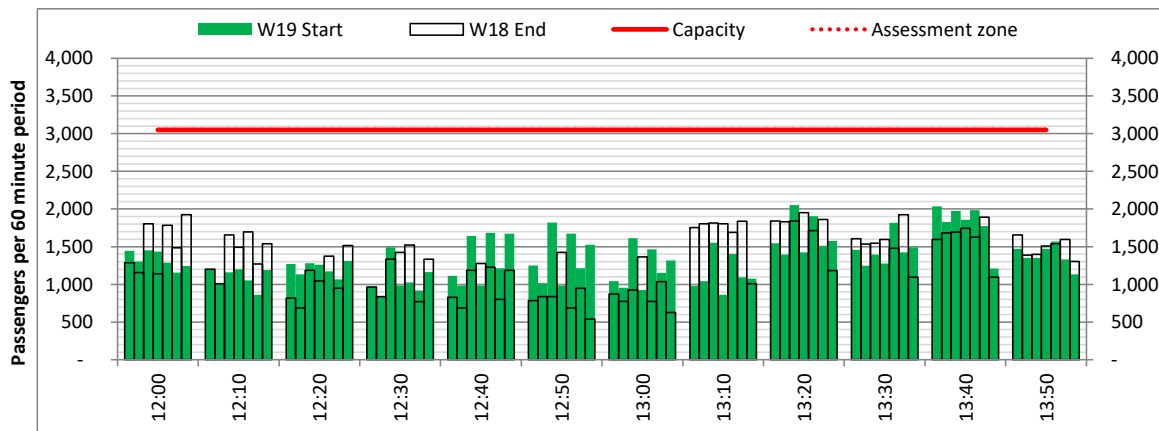
Days: 1234567



Start of count period - Time: UTC



Start of count period - Time: UTC



Start of count period - Time: UTC

# Peak Week - Passengers Histogram

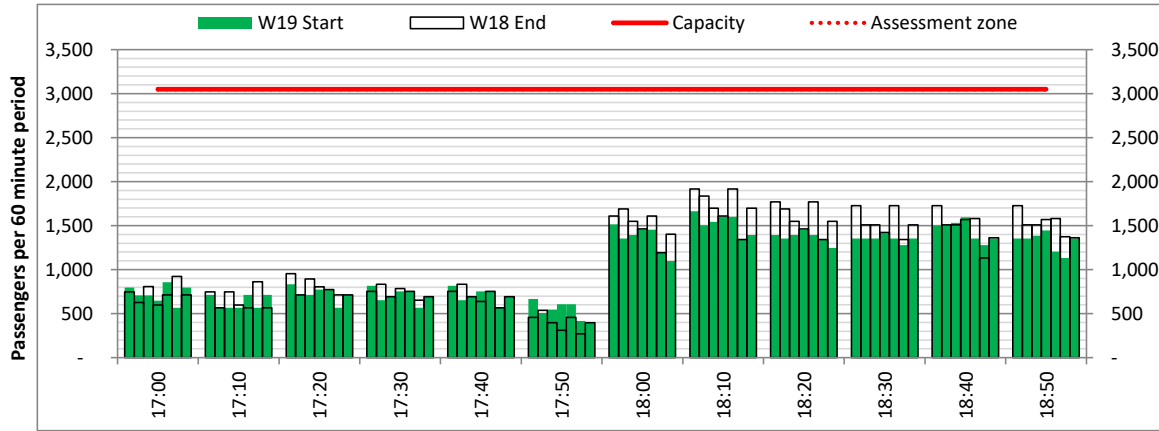
ARRIVAL - 60 minute count rolling every 10 mins (T60/10)



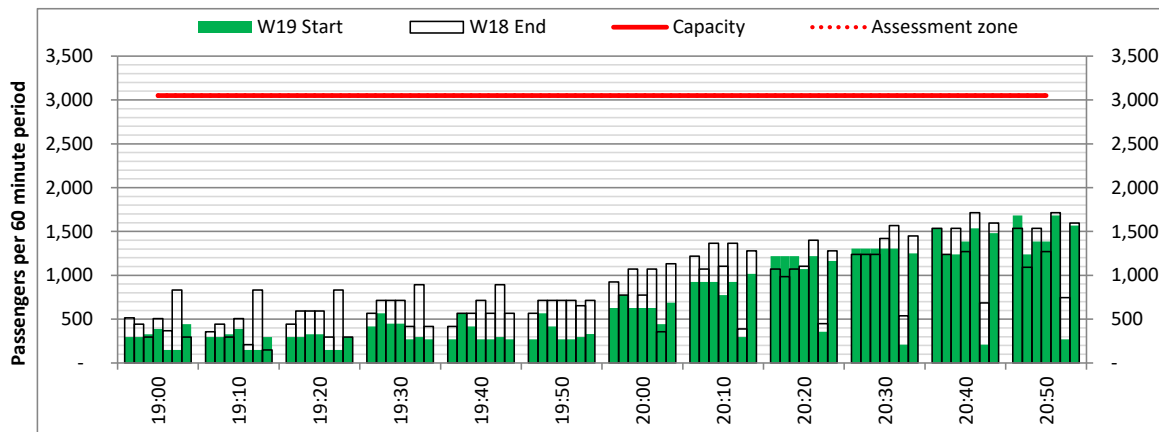
Terminals: 2

Operators: All Operators

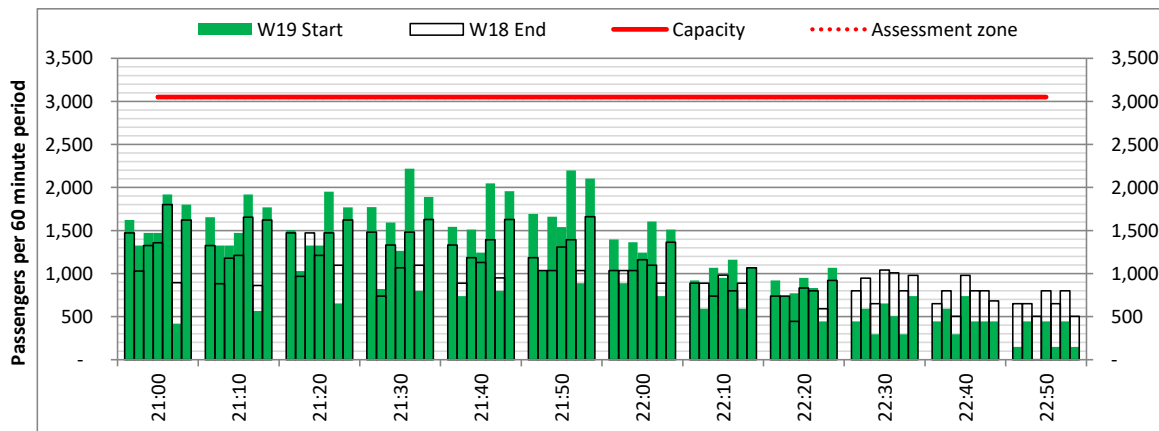
Days: 1234567



Start of count period - Time: UTC



Start of count period - Time: UTC



Start of count period - Time: UTC

<b>Air Transport Movement (ATM)</b>	Any aircraft movement which is either a scheduled or chartered passenger or cargo flight.
<b>Common Travel Area (CTA)</b>	Origin or Destination is in Republic of Ireland or the Channel Islands.
<b>Demand</b>	Unconstrained demand before any schedule adjustments have been made.
<b>"Fill-in"</b>	These are gaps in a historic series of slots which the carrier requests to "Fill-in" at Initial Submissions - Fill-ins will be recognisably part of the historic series and will have the same flight details to qualify as a "Fill-in".
<b>Hist (SHL)</b>	Snapshot of historic schedule rolled over from end of the previous equivalent season - as advised to airlines in the SHLs.
<b>ICAO Size A</b>	Aircraft with wingspan between 0.00m - 14.99m.
<b>ICAO Size B</b>	Aircraft with wingspan between 15.00m - 23.99m.
<b>ICAO Size C</b>	Aircraft with wingspan between 24.00m - 35.99m.
<b>ICAO Size D</b>	Aircraft with wingspan between 36.00m - 51.99m.
<b>ICAO Size E</b>	Aircraft with wingspan between 52.00m - 64.99m.
<b>ICAO Size F</b>	Aircraft with wingspan between 65.00m - 80.00m.
<b>Init Coord</b>	Snapshot of schedule immediately after Initial Coordination is completed - as advised to airlines in the SALs.
<b>Passenger Air Transport Movement (PATM)</b>	Any aircraft movement which is either a scheduled or chartered passenger flight.
<b>Start</b>	Snapshot of schedule shortly before the start of the scheduling season (exact date given below where used).
<b>Time: Local</b>	Times shown are in LOCAL time for the airport/scheduling season.
<b>Time: UTC</b>	Times shown are in Universal Time Constant (UTC).

---

### Data snapshot descriptions

<b>W18 Start</b>	W18 schedule as cleared on Thu 20-Sep-18.
<b>W18 End</b>	W18 schedule as cleared on Mon 05-Mar-18.
<b>W19 Start</b>	W19 schedule as cleared on Thu 26-Sep-19.
<b>Peak Week</b>	Peak week for W18 is Mon 17-Dec-18 to Sun 23-Dec-18. Peak week for W19 is Mon 28-Oct-19 to Sun 03-Nov-19.

---

### **For ACL use**

	Airport-Season-Branch-Resource	From date	To date	Time
Full Season Rep 1	DUB-W18-SOS Report-Standard	Sun 28-Oct-2018	Sat 30-Mar-2019	UTC
Full Season Rep 2	DUB-W18-Live-Standard	Sun 28-Oct-2018	Sat 30-Mar-2019	UTC
Full Season Rep 3	DUB-W19-SOS Report-Standard	Sun 27-Oct-2019	Sat 28-Mar-2020	UTC
	Airport-Season-Branch-Resource	From date	To date	Time
Peak Week Rep 1	DUB-W18-SOS Report-Standard	Mon 17-Dec-2018	Sun 23-Dec-2018	UTC
Peak Week Rep 2	DUB-W18-Live-Standard	Mon 17-Dec-2018	Sun 23-Dec-2018	UTC
Peak Week Rep 3	DUB-W19-SOS Report-Standard	Mon 28-Oct-2019	Sun 03-Nov-2019	UTC