

Initial Coordination Report

Report Date: Fri 28-Jun-2019

Headlines

	W19 Init Coord	vs. W18 Init Coord	vs. W19 Hist (SHL)
Total Air Transport Movements (Passenger & Freight)	90,101	▲ 2.4%	▲ 18.2%
Total Passenger Air Transport Movements	88,429	▲ 2.9%	▲ 19.2%
Total Passenger Air Transport Movement Seats	12,695,293	▲ 11.4%	▲ 28.5%
Average Seats per Passenger Air Transport Movement	143.56	▲ 8.3%	▲ 7.9%
Percentage of allocated slots cleared as requested (OK)	83%		

Contents

Page	Content
2	Runway Scheduling Limits
3	Peak Week - Initial Coordination Analysis
4	ATM Allocation by Operator (Full season and Peak Week Comparison)
5	Peak Week - Allocation and Slot Adjustment Distribution by Operator
6	Significant Route Changes
7	Full Season - ATM Analysis
8	Full Season - PATM Seats Analysis
9	Full Season - Terminal Analysis
10	Full Season - Aircraft Size Analysis
11	Full Season - Seasonality
12	Peak Week - Initial Hourly Runway Demand
13	Peak Week - Hourly Runway Allocation
14	Peak Week - Hourly Runway Allocation Comparison (W19 Init Coord vs. W18 Init Coord)
15	Peak Week - Hourly Runway Allocation Comparison (W19 Init Coord vs. W19 Hist (SHL))
16	Coordinated vs Actual Night Movements
17	Peak Week Histogram - Arrival Movements (R10) - All Terminals - All Operators
18	Peak Week Histogram - Arrival Movements (R10) - All Terminals - All Operators
19	Peak Week Histogram - Departure Movements (R10) - All Terminals - All Operators
20	Peak Week Histogram - Departure Movements (R10) - All Terminals - All Operators
21	Peak Week Histogram - Arrival Passengers (T60/10) - Schengen - All Operators
22	Peak Week Histogram - Arrival Passengers (T60/10) - Schengen - All Operators
23	Peak Week Histogram - Departure Passengers (T60/10) - Schengen - All Operators
24	Peak Week Histogram - Departure Passengers (T60/10) - Schengen - All Operators
25	Peak Week Histogram - Arrival Passengers (T60/10) - Non-Schengen - All Operators
26	Peak Week Histogram - Arrival Passengers (T60/10) - Non-Schengen - All Operators
27	Peak Week Histogram - Departure Passengers (T60/10) - Non-Schengen - All Operators
28	Peak Week Histogram - Departure Passengers (T60/10) - Non-Schengen - All Operators
29	Peak Week Histogram - Arrival Passengers (T30/10) - Non-Schengen - All Operators
30	Peak Week Histogram - Arrival Passengers (T30/10) - Non-Schengen - All Operators
31	Peak Week Histogram - Departure Passengers (T30/10) - Non-Schengen - All Operators
32	Peak Week Histogram - Departure Passengers (T30/10) - Non-Schengen - All Operators
33	Peak Week Histogram - Arrival Passengers (T60/10) - All Terminals - All Operators
34	Peak Week Histogram - Arrival Passengers (T60/10) - All Terminals - All Operators
35	Peak Week Histogram - Departure Passengers (T60/10) - All Terminals - All Operators
36	Peak Week Histogram - Departure Passengers (T60/10) - All Terminals - All Operators
37	Glossary

W18 scheduling season runs from Sun 28-Oct-2018 to Sat 30-Mar-2019 (154 days).

W19 scheduling season runs from Sun 27-Oct-2019 to Sat 28-Mar-2020 (154 days).

Disclaimer

No warranty whether expressed or implied as to the completeness, accuracy, fitness for purpose, or satisfactory quality is given by ACL regarding the information in this report, which is provided by third parties. Accordingly, ACL excludes all liability with regard to such data.

The contents of this report may not be reproduced without the written consent of ACL.

Runway Scheduling Limits



Declared Hourly Movement Capacity

W18 Arrivals								Change: W18 to W19								W19 Arrivals							
Hour	Mon	Tue	Wed	Thu	Fri	Sat	Sun	Hour	Mon	Tue	Wed	Thu	Fri	Sat	Sun	Hour	Mon	Tue	Wed	Thu	Fri	Sat	Sun
UTC	1	2	3	4	5	6	7	UTC	1	2	3	4	5	6	7	UTC	1	2	3	4	5	6	7
00	26	26	26	26	26	26	26	00	-11	-11	-11	-11	-11	-11	-11	00	15	15	15	15	15	15	15
01	26	26	26	26	26	26	26	01	-11	-11	-11	-11	-11	-11	-11	01	15	15	15	15	15	15	15
02	26	26	26	26	26	26	26	02	-11	-11	-11	-11	-11	-11	-11	02	15	15	15	15	15	15	15
03	26	26	26	26	26	26	26	03	-11	-11	-11	-11	-11	-11	-11	03	15	15	15	15	15	15	15
04	26	26	26	26	26	26	26	04	-11	-11	-11	-11	-11	-11	-11	04	15	15	15	15	15	15	15
05	28	28	28	28	28	28	28	05	-2	-2	-2	-2	-2	-2	-2	05	26	26	26	26	26	26	26
06	26	26	26	26	26	26	26	06								06	26	26	26	26	26	26	26
07	26	26	26	26	26	26	26	07								07	26	26	26	26	26	26	26
08	26	26	26	26	26	26	26	08								08	26	26	26	26	26	26	26
09	26	26	26	26	26	26	26	09								09	26	26	26	26	26	26	26
10	26	26	26	26	26	26	26	10								10	26	26	26	26	26	26	26
11	28	28	28	28	28	28	28	11	-2	-2	-2	-2	-2	-2	-2	11	26	26	26	26	26	26	26
12	26	26	26	26	26	26	26	12								12	26	26	26	26	26	26	26
13	26	26	26	26	26	26	26	13								13	26	26	26	26	26	26	26
14	28	28	28	28	28	28	28	14	-2	-2	-2	-2	-2	-2	-2	14	26	26	26	26	26	26	26
15	26	26	26	26	26	26	26	15								15	26	26	26	26	26	26	26
16	26	26	26	26	26	26	26	16								16	26	26	26	26	26	26	26
17	26	26	26	26	26	26	26	17								17	26	26	26	26	26	26	26
18	26	26	26	26	26	26	26	18								18	26	26	26	26	26	26	26
19	26	26	26	26	26	26	26	19								19	26	26	26	26	26	26	26
20	28	28	28	28	28	28	28	20	-2	-2	-2	-2	-2	-2	-2	20	26	26	26	26	26	26	26
21	26	26	26	26	26	26	26	21								21	26	26	26	26	26	26	26
22	26	26	26	26	26	26	26	22								22	26	26	26	26	26	26	26
23	26	26	26	26	26	26	26	23	-11	-11	-11	-11	-11	-11	-11	23	15	15	15	15	15	15	15

W18 Departures								Change: W18 to W19								W19 Departures							
Hour	Mon	Tue	Wed	Thu	Fri	Sat	Sun	Hour	Mon	Tue	Wed	Thu	Fri	Sat	Sun	Hour	Mon	Tue	Wed	Thu	Fri	Sat	Sun
UTC	1	2	3	4	5	6	7	UTC	1	2	3	4	5	6	7	UTC	1	2	3	4	5	6	7
00	28	28	28	28	28	28	28	00	-13	-13	-13	-13	-13	-13	-13	00	15	15	15	15	15	15	15
01	28	28	28	28	28	28	28	01	-13	-13	-13	-13	-13	-13	-13	01	15	15	15	15	15	15	15
02	28	28	28	28	28	28	28	02	-13	-13	-13	-13	-13	-13	-13	02	15	15	15	15	15	15	15
03	28	28	28	28	28	28	28	03	-13	-13	-13	-13	-13	-13	-13	03	15	15	15	15	15	15	15
04	28	28	28	28	28	28	28	04	-13	-13	-13	-13	-13	-13	-13	04	15	15	15	15	15	15	15
05	28	28	28	28	28	28	28	05								05	28	28	28	28	28	28	28
06	30	30	30	30	30	30	30	06								06	30	30	30	30	30	30	30
07	28	28	28	28	28	28	28	07								07	28	28	28	28	28	28	28
08	28	28	28	28	28	28	28	08								08	28	28	28	28	28	28	28
09	28	28	28	28	28	28	28	09								09	28	28	28	28	28	28	28
10	28	28	28	28	28	28	28	10								10	28	28	28	28	28	28	28
11	28	28	28	28	28	28	28	11								11	28	28	28	28	28	28	28
12	28	28	28	28	28	28	28	12								12	28	28	28	28	28	28	28
13	28	28	28	28	28	28	28	13								13	28	28	28	28	28	28	28
14	28	28	28	28	28	28	28	14								14	28	28	28	28	28	28	28
15	30	30	30	30	30	30	30	15	-2	-2	-2	-2	-2	-2	-2	15	28	28	28	28	28	28	28
16	28	28	28	28	28	28	28	16								16	28	28	28	28	28	28	28
17	28	28	28	28	28	28	28	17								17	28	28	28	28	28	28	28
18	28	28	28	28	28	28	28	18								18	28	28	28	28	28	28	28
19	28	28	28	28	28	28	28	19								19	28	28	28	28	28	28	28
20	28	28	28	28	28	28	28	20								20	28	28	28	28	28	28	28
21	28	28	28	28	28	28	28	21								21	28	28	28	28	28	28	28
22	28	28	28	28	28	28	28	22								22	28	28	28	28	28	28	28
23	28	28	28	28	28	28	28	23	-13	-13	-13	-13	-13	-13	-13	23	15	15	15	15	15	15	15

W18 Totals								Change: W18 to W19								W19 Totals							
Hour	Mon	Tue	Wed	Thu	Fri	Sat	Sun	Hour	Mon	Tue	Wed	Thu	Fri	Sat	Sun	Hour	Mon	Tue	Wed	Thu	Fri	Sat	Sun
UTC	1	2	3	4	5	6	7	UTC	1	2	3	4	5	6	7	UTC	1	2	3	4	5	6	7
00	38	38	38	38	38	38	38	00	-14	-14	-14	-14	-14	-14	-14	00	24	24	24	24	24	24	24
01	38	38	38	38	38	38	38	01	-14	-14	-14	-14	-14	-14	-14	01	24	24	24	24	24	24	24
02	38	38	38	38	38	38	38	02	-14	-14	-14	-14	-14	-14	-14	02	24	24	24	24	24	24	24
03	38	38	38	38	38	38	38	03	-14	-14	-14	-14	-14	-14	-14	03	24	24	24	24	24	24	24
04	38	38	38	38	38	38	38	04	-14	-14	-14	-14	-14	-14	-14	04	24	24	24	24	24	24	24
05	40	40	40	40	40	40	40	05								05	40	40	40	40	40	40	40
06	40	40	40	40	40	40	40	06								06	40	40	40	40	40	40	40
07	38	38	38	38	38	38	38	07	2	2	2	2	2	2	2	07	40	40	40	40	40	40	40
08	40	40	40	40	40	40	40	08								08	40	40	40	40	40	40	40
09	40	40	40	40	40	40	40	09								09	40	40	40	40	40	40	40
10	38	38	38	38	38	38	38	10	2	2	2	2	2	2	2	10	40	40	40	40	40	40	40
11	42	42	42	42	42	42	42	11								11	42	42	42	42	42	42	42
12	40	40	40	40	40	40	40	12								12	40	40	40	40	40	40	40
13	38	38	38	38	38	38	38	13	2	2	2	2	2	2	2	13	40	40	40	40	40	40	40
14	42	42	42	42	42	42	42	14								14	42	42	42	42	42	42	42
15	40	40	40	40	40	40	40	15								15	40	40	40	40	40	40	40
16	38	38	38	38	38	38	38	16	2	2	2	2	2	2	2	16	40	40	40	40	40	40	40
17	38	38	38	38	38	38	38	17	2	2	2	2	2	2	2	17	40	40	40	40	40	40	40
18	40	40	40	40	40	40	40	18								18	40	40	40	40	40	40	40
19	38	38	38	38	38	38	38	19	2	2	2	2	2	2	2	19	40	40	40	40	40	40	40
20	38	38	38	38	38	38	38	20	2	2	2	2	2	2	2	20	40	40	40	40	40	40	40

Peak Week - Initial Coordination Analysis



Operator	W19 HISTORIC SLOTS				HISTORIC RECLAIM STATISTICS				NEW SLOT REQUESTS						Total Demand at Initial Submissions	Total Allocation (SAI)	% of demand with a slot allocated	
	Historic slots	Lost Histories (NB0 & MU)	Undeclared Histories	Reclaimed Histories	Incl. Time Change	Incl. Seat Increase	Incl. Day change	Incl. A+0 or D+A swap	Demand - New Requests	Allocated - Year Round Incumbent	Allocated - Year Round New Entrant	Allocated - New Incumbent	Allocated - New Entrant	Allocated - "Fill-in"				
Adria Airways	6	6	-	-	0.0%	0.0%	0.0%	0.0%	-	-	-	-	-	-	-	-	-	
Aegean Airlines	8	-	2	10	100.0%	0.0%	0.0%	0.0%	2	-	2	-	-	-	-	12	12	100.0%
Aer Lingus	-	-	4	4	75.0%	0.0%	0.0%	0.0%	-	-	-	-	-	-	-	4	4	100.0%
Aeroflot	42	-	-	42	0.0%	33.3%	0.0%	0.0%	-	-	-	-	-	-	-	42	42	100.0%
Air Arabia	6	6	-	-	0.0%	0.0%	0.0%	0.0%	-	-	-	-	-	-	-	-	-	-
Air Cairo	12	4	-	8	0.0%	0.0%	0.0%	0.0%	4	-	-	4	-	-	-	12	12	100.0%
Air China	6	-	-	6	0.0%	0.0%	0.0%	0.0%	-	-	-	-	-	-	-	6	6	100.0%
Air France	42	-	-	42	7.1%	52.4%	0.0%	0.0%	-	-	-	-	-	-	-	42	42	100.0%
airBaltic	24	-	-	24	0.0%	0.0%	0.0%	0.0%	-	-	-	-	-	-	-	24	24	100.0%
Alitalia	14	-	-	14	0.0%	0.0%	0.0%	0.0%	-	-	-	-	-	-	-	14	14	100.0%
AMC Aviation (Poland)	-	-	-	-	0.0%	0.0%	0.0%	0.0%	8	-	-	8	-	-	-	8	8	100.0%
ASL Airlines Belgium	10	-	-	10	0.0%	0.0%	0.0%	0.0%	-	-	-	-	-	-	-	10	10	100.0%
Austrian Airlines	36	-	-	36	50.0%	100.0%	0.0%	0.0%	-	-	-	-	-	-	-	36	36	100.0%
Belavia Belarusian Airlines	18	4	-	14	0.0%	0.0%	0.0%	0.0%	-	-	-	-	-	-	-	14	14	100.0%
Blue Panorama Airlines	-	-	4	4	0.0%	0.0%	0.0%	0.0%	12	-	-	12	-	-	-	16	16	100.0%
British Airways	26	-	-	26	0.0%	53.8%	0.0%	0.0%	2	-	-	2	-	-	-	28	28	100.0%
Brussels Airlines	26	-	4	30	0.0%	0.0%	0.0%	0.0%	6	-	-	-	6	-	-	36	36	100.0%
Corendon Airlines	-	-	-	-	0.0%	0.0%	0.0%	0.0%	-	-	-	-	-	-	-	-	-	-
Corendon Airlines Europe	4	4	-	-	0.0%	0.0%	0.0%	0.0%	-	-	-	-	-	-	-	-	-	-
CSA Czech Airlines	26	-	8	34	5.9%	35.3%	0.0%	0.0%	-	-	-	-	-	10	-	34	34	100.0%
EasyJet	22	-	-	22	63.6%	0.0%	0.0%	0.0%	2	-	-	2	-	-	-	24	24	100.0%
EasyJet Switzerland	14	-	-	14	7.1%	42.9%	0.0%	0.0%	-	-	-	-	-	-	-	14	14	100.0%
El Al Israel Airlines	10	-	2	12	16.7%	100.0%	0.0%	0.0%	-	-	-	-	-	-	-	12	12	100.0%
Emirates	28	14	-	14	50.0%	0.0%	0.0%	0.0%	-	-	-	-	-	-	-	14	14	100.0%
Enter Air	93	64	2	31	6.5%	0.0%	0.0%	0.0%	23	-	-	23	-	7	-	54	54	100.0%
European Air Transport (DHL)	18	8	-	10	20.0%	0.0%	0.0%	0.0%	8	-	-	8	-	-	-	18	18	100.0%
Eurowings	-	-	-	-	0.0%	0.0%	0.0%	0.0%	-	-	-	-	-	-	-	-	-	-
Federal Express	8	-	-	8	0.0%	0.0%	0.0%	0.0%	-	-	-	-	-	-	-	8	8	100.0%
Finnair	28	-	-	28	92.9%	42.9%	0.0%	0.0%	14	14	-	-	-	-	-	42	42	100.0%
Flydubai	14	14	-	-	0.0%	0.0%	0.0%	0.0%	-	-	-	-	-	-	-	-	-	-
Genex	10	-	-	10	0.0%	0.0%	0.0%	0.0%	-	-	-	-	-	-	-	10	10	100.0%
KLM Royal Dutch Airlines	42	-	-	42	4.8%	0.0%	0.0%	0.0%	-	-	-	-	-	-	-	42	42	100.0%
LOT Polish Airlines	2,230	46	7	2,191	31.5%	42.1%	0.0%	0.0%	527	202	-	324	-	36	-	2,718	2,718	100.0%
Lufthansa	98	-	-	98	71.4%	10.2%	0.0%	0.0%	-	-	-	-	-	-	-	98	98	100.0%
Nordica	-	-	-	-	0.0%	0.0%	0.0%	0.0%	28	-	28	-	-	-	-	28	28	100.0%
Norwegian	20	4	2	18	16.7%	0.0%	0.0%	0.0%	-	-	-	-	-	-	-	18	18	100.0%
Nouvelair Tunisie	4	4	-	-	0.0%	0.0%	0.0%	0.0%	-	-	-	-	-	-	-	-	-	-
Onur Air	4	4	-	-	0.0%	0.0%	0.0%	0.0%	2	-	-	2	-	-	-	2	2	100.0%
Qatar Airways	42	10	-	32	6.3%	25.0%	0.0%	0.0%	10	-	-	10	-	-	-	42	42	100.0%
Ryanair	12	12	-	-	0.0%	0.0%	0.0%	0.0%	-	-	-	-	-	-	-	-	-	-
SAS Scandinavian	54	24	7	37	56.8%	78.4%	0.0%	0.0%	10	-	-	10	-	-	-	47	47	100.0%
Small Planet Airlines Poland	24	20	4	-	0.0%	0.0%	0.0%	0.0%	-	-	-	-	-	-	-	-	-	-
SprintAir	10	-	-	10	0.0%	0.0%	0.0%	0.0%	-	-	-	-	-	-	-	10	10	100.0%
SprintAir Cargo	10	-	-	10	0.0%	0.0%	0.0%	0.0%	-	-	-	-	-	-	-	10	10	100.0%
SunExpress	2	-	2	-	0.0%	0.0%	0.0%	0.0%	-	-	-	-	-	-	-	-	-	-
Swiss International	38	-	-	38	0.0%	0.0%	0.0%	0.0%	-	-	-	-	-	-	-	38	38	100.0%
TAP Air Portugal	14	-	-	14	71.4%	14.3%	0.0%	0.0%	4	-	4	-	-	-	-	18	18	100.0%
Travel Service	8	4	-	4	50.0%	0.0%	0.0%	0.0%	6	-	-	6	-	-	-	10	10	100.0%
Travel Service Polska	73	53	-	20	20.0%	0.0%	0.0%	0.0%	64	-	-	64	-	4	-	84	84	100.0%
TUI Netherlands	4	-	4	-	0.0%	0.0%	0.0%	0.0%	-	-	-	-	-	-	-	-	-	-
Turkish Airlines	12	-	-	12	83.3%	0.0%	0.0%	0.0%	2	2	-	-	-	-	-	14	14	100.0%
Ukraine International	28	4	-	24	33.3%	8.3%	0.0%	0.0%	4	4	-	-	-	-	-	28	28	100.0%
UPS Airlines	18	-	8	10	80.0%	80.0%	0.0%	0.0%	-	-	-	-	-	-	-	10	10	100.0%
Vueling	-	-	-	-	0.0%	0.0%	0.0%	0.0%	-	-	-	-	-	-	-	-	-	-
Wizz Air	250	34	22	238	89.1%	34.5%	0.4%	0.0%	136	23	-	113	-	7	-	374	374	100.0%
TOTAL	3,548	343	-	46	3,251	34.8%	36.6%	0.0%	0.0%	874	245	34	588	6	64	4,125	4,125	100.0%

Air Transport Movement Allocation by Operator

Comparison between W19 Hist (SHL) vs. W19 Init Coord



Operator	FULL SEASON ALLOCATION								PEAK WEEK ALLOCATION							
	W19 ATMs	W19 ATMs	+/- change	W19 Rank	W19 Seats	W19 Seats	+/- change	W19 Rank	W19 ATMs	W19 ATMs	+/- change	W19 Rank	W19 Seats	W19 Seats	+/- change	W19 Rank
Adria Airways	132	-	-132	45	9,328	-	-9,328	38	6	-	-6	44	424	-	-424	37
Aegean Airlines	198	252	54	32	34,452	43,848	9,396	28	8	12	4	30	1,392	2,088	696	27
Aer Lingus	20	20	0	44	3,480	3,480	0	37	-	4	4	42	-	696	696	35
Aeroflot	914	924	10	6	135,318	134,904	-414	9	42	42	0	7	6,384	6,132	-252	10
Air Arabia	72	-	-72	45	12,096	-	-12,096	38	6	-	-6	44	1,008	-	-1,008	37
Air Cairo	264	264	0	30	45,936	45,936	0	26	12	12	0	30	2,088	2,088	0	27
Air China	132	132	0	41	31,284	31,284	0	34	6	6	0	41	1,422	1,422	0	34
Air France	924	924	0	6	153,780	170,588	16,808	7	42	42	0	7	6,990	7,754	764	8
airBaltic	528	528	0	19	40,128	40,128	0	31	24	24	0	19	1,824	1,824	0	31
Alitalia	308	308	0	24	55,440	55,440	0	23	14	14	0	25	2,520	2,520	0	23
AMC Aviation (Poland)	-	176	176	39	-	33,264	33,264	33	-	8	8	39	-	1,512	1,512	33
ASL Airlines Belgium	220	220	0	33	-	-	0	38	10	10	0	33	-	-	0	37
Austrian Airlines	792	792	0	12	71,808	137,808	66,000	8	36	36	0	13	3,264	6,264	3,000	9
Belavia Belarusian Airlines	396	308	-88	24	43,208	38,808	-4,400	32	18	14	-4	25	1,964	1,764	-200	32
Blue Panorama Airlines	44	306	262	29	11,924	82,314	70,390	19	-	16	16	24	-	4,304	4,304	18
British Airways	572	616	44	16	91,564	119,372	27,808	12	26	28	2	16	4,162	5,426	1,264	12
Brussels Airlines	608	792	184	12	85,728	111,672	25,944	13	26	36	10	13	3,666	5,076	1,410	13
Corendon Airlines	-	-	0	45	-	-	0	38	-	-	0	44	-	-	-	37
Corendon Airlines Europe	86	-	-86	45	16,254	-	-16,254	38	4	-	-4	44	756	-	-756	37
CSA Czech Airlines	598	618	20	15	35,744	42,380	6,636	29	26	34	8	15	1,512	2,380	868	26
EasyJet	468	490	22	20	83,184	85,032	1,848	18	22	24	2	19	3,912	4,176	264	19
EasyJet Switzerland	302	308	6	24	51,072	54,648	3,576	24	14	14	0	25	2,364	2,484	120	24
El Al Israel Airlines	234	264	30	30	37,080	45,012	7,932	27	10	12	2	30	1,576	2,046	470	29
Emirates	544	308	-236	24	216,648	131,824	-84,824	10	28	14	-14	25	11,032	5,992	-5,040	11
Enter Air	1,564	1,214	-350	5	295,197	229,446	-65,751	6	93	54	-39	5	17,556	10,206	-7,350	6
European Air Transport (DHL)	388	396	8	21	-	-	0	38	18	18	0	21	-	-	0	37
Eurowings	-	-	0	45	-	-	0	38	-	-	0	44	-	-	0	37
Federal Express	176	176	0	39	-	-	0	38	8	8	0	39	-	-	0	37
Finnair	616	924	308	6	64,856	107,888	43,032	15	28	42	14	7	2,948	4,904	1,956	15
Flydubai	276	-	-276	45	48,024	-	-48,024	38	14	-	-14	44	2,436	-	-2,436	37
Genex	220	220	0	33	-	-	0	38	10	10	0	33	-	-	0	37
KLM Royal Dutch Airlines	908	923	15	10	101,888	103,388	1,500	17	42	42	0	7	4,704	4,704	0	17
LOT Polish Airlines	48,214	59,736	11,522	1	5,279,935	7,372,391	2,092,456	1	2,230	2,718	488	1	244,308	335,573	91,265	1
Lufthansa	2,156	2,156	0	3	324,368	296,164	-28,204	4	98	98	0	3	14,744	13,462	-1,282	4
Nordica	-	616	616	16	-	54,208	54,208	25	-	28	28	16	-	2,464	2,464	25
Norwegian	452	396	-56	21	84,708	73,788	-10,920	20	20	18	-2	21	3,738	3,354	-384	20
Nouvelair Tunisie	80	-	-80	45	14,160	-	-14,160	38	4	-	-4	44	708	-	-708	37
Onur Air	58	58	0	42	10,908	10,908	0	35	4	2	-2	43	720	438	-282	36
Qatar Airways	868	924	56	6	249,032	260,876	11,844	5	42	42	0	7	12,096	11,858	-238	5
Ryanair	262	-	-262	45	49,518	-	-49,518	38	12	-	-12	44	2,268	-	-2,268	37
SAS Scandinavian	834	698	-136	14	77,500	120,960	43,460	11	54	47	-7	6	4,860	8,136	3,276	7
Small Planet Airlines Poland	435	-	-435	45	78,300	-	-78,300	38	24	-	-24	44	4,320	-	-4,320	37
SprintAir	372	220	-152	33	-	-	0	38	10	10	0	33	-	-	0	37
SprintAir Cargo	220	220	0	33	-	-	0	38	10	10	0	33	-	-	0	37
SunExpress	20	30	10	43	3,780	5,670	1,890	36	2	-	-2	44	378	-	-378	37
Swiftair	10	-	-10	45	-	-	0	38	-	-	0	44	-	-	0	37
Swiss International	836	836	0	11	121,220	105,776	-15,444	16	38	38	0	12	5,510	4,808	-702	16
TAP Air Portugal	308	396	88	21	52,272	68,904	16,632	21	14	18	4	21	2,376	3,132	756	21
Travel Service	168	218	50	38	31,752	41,202	9,450	30	8	10	2	33	1,512	1,890	378	30
Travel Service Polska	1,469	1,822	353	4	361,413	412,686	51,273	3	73	84	11	4	17,853	18,996	1,143	3
TUI Netherlands	94	-	-94	45	25,850	-	-25,850	38	4	-	-4	44	1,100	-	-1,100	37
Turkish Airlines	264	308	44	24	52,316	59,268	6,952	22	12	14	2	25	2,378	2,694	316	22
Ukraine International	614	616	2	16	107,612	110,044	2,432	14	28	28	0	16	4,908	5,002	94	14
UPS Airlines	396	220	-176	33	-	-	0	38	18	10	-8	33	-	-	0	37
Vueling	10	-	-10	45	1,800	-	-1,800	38	-	-	0	44	-	-	0	37
Wizz Air	5,570	8,228	2,658	2	1,175,600	1,853,984	678,384	2	250	374	124	2	52,850	84,272	31,422	2
TOTAL	76,214	90,101	13,887		9,877,465	12,695,293	2,817,828		3,548	4,125	577		462,531	581,841	119,310	

Operators with 0 'ATMs' in both W19 Hist (SHL) & W19 Init Coord schedules are included in the table due to appearing in the W18 Init Coord schedule (either with/without allocated slots).

Peak Week - Allocation and Slot Adjustment Distribution by Operator



Schedule: W19 Init Coord

Operator	W19 allocated ATMs	SLOT ADJUSTMENTS (MINUTES OFF REQUESTED TIME)														Requests with NO slot allocated	
		0	5	10	15	20	25	30	35	40	45	50	55	60	>60		
Adria Airways	-																-
Aegean Airlines	12	50.0%	0.0%	0.0%	0.0%	0.0%	0.0%	0.0%	50.0%	0.0%	0.0%	0.0%	0.0%	0.0%	0.0%	0.0%	-
Aer Lingus	4	100.0%	0.0%	0.0%	0.0%	0.0%	0.0%	0.0%	0.0%	0.0%	0.0%	0.0%	0.0%	0.0%	0.0%	0.0%	-
Aeroflot	42	100.0%	0.0%	0.0%	0.0%	0.0%	0.0%	0.0%	0.0%	0.0%	0.0%	0.0%	0.0%	0.0%	0.0%	0.0%	-
Air Arabia	-																-
Air Cairo	12	100.0%	0.0%	0.0%	0.0%	0.0%	0.0%	0.0%	0.0%	0.0%	0.0%	0.0%	0.0%	0.0%	0.0%	0.0%	-
Air China	6	100.0%	0.0%	0.0%	0.0%	0.0%	0.0%	0.0%	0.0%	0.0%	0.0%	0.0%	0.0%	0.0%	0.0%	0.0%	-
Air France	42	92.9%	0.0%	0.0%	0.0%	0.0%	0.0%	7.1%	0.0%	0.0%	0.0%	0.0%	0.0%	0.0%	0.0%	0.0%	-
airBaltic	24	100.0%	0.0%	0.0%	0.0%	0.0%	0.0%	0.0%	0.0%	0.0%	0.0%	0.0%	0.0%	0.0%	0.0%	0.0%	-
Alitalia	14	100.0%	0.0%	0.0%	0.0%	0.0%	0.0%	0.0%	0.0%	0.0%	0.0%	0.0%	0.0%	0.0%	0.0%	0.0%	-
AMC Aviation (Poland)	8	75.0%	0.0%	0.0%	0.0%	25.0%	0.0%	0.0%	0.0%	0.0%	0.0%	0.0%	0.0%	0.0%	0.0%	0.0%	-
ASL Airlines Belgium	10	100.0%	0.0%	0.0%	0.0%	0.0%	0.0%	0.0%	0.0%	0.0%	0.0%	0.0%	0.0%	0.0%	0.0%	0.0%	-
Austrian Airlines	36	100.0%	0.0%	0.0%	0.0%	0.0%	0.0%	0.0%	0.0%	0.0%	0.0%	0.0%	0.0%	0.0%	0.0%	0.0%	-
Belavia Belarus Airlines	14	100.0%	0.0%	0.0%	0.0%	0.0%	0.0%	0.0%	0.0%	0.0%	0.0%	0.0%	0.0%	0.0%	0.0%	0.0%	-
Blue Panorama Airlines	16	43.8%	6.3%	18.8%	0.0%	0.0%	0.0%	0.0%	0.0%	6.3%	6.3%	0.0%	0.0%	0.0%	0.0%	18.8%	-
British Airways	28	92.9%	0.0%	0.0%	0.0%	0.0%	0.0%	0.0%	0.0%	0.0%	0.0%	0.0%	0.0%	0.0%	0.0%	7.1%	-
Brussels Airlines	36	100.0%	0.0%	0.0%	0.0%	0.0%	0.0%	0.0%	0.0%	0.0%	0.0%	0.0%	0.0%	0.0%	0.0%	0.0%	-
Corendon Airlines	-																-
Corendon Airlines Europe	-																-
CSA Czech Airlines	34	100.0%	0.0%	0.0%	0.0%	0.0%	0.0%	0.0%	0.0%	0.0%	0.0%	0.0%	0.0%	0.0%	0.0%	0.0%	-
EasyJet	24	91.7%	0.0%	0.0%	0.0%	0.0%	0.0%	0.0%	0.0%	0.0%	0.0%	0.0%	0.0%	0.0%	0.0%	8.3%	-
EasyJet Switzerland	14	100.0%	0.0%	0.0%	0.0%	0.0%	0.0%	0.0%	0.0%	0.0%	0.0%	0.0%	0.0%	0.0%	0.0%	0.0%	-
El Al Israel Airlines	12	83.3%	0.0%	0.0%	0.0%	0.0%	0.0%	0.0%	16.7%	0.0%	0.0%	0.0%	0.0%	0.0%	0.0%	0.0%	-
Emirates	14	100.0%	0.0%	0.0%	0.0%	0.0%	0.0%	0.0%	0.0%	0.0%	0.0%	0.0%	0.0%	0.0%	0.0%	0.0%	-
Enter Air	54	79.6%	0.0%	5.6%	0.0%	7.4%	3.7%	0.0%	0.0%	0.0%	0.0%	1.9%	0.0%	0.0%	1.9%	0.0%	-
European Air Transport (DHL)	18	50.0%	0.0%	5.6%	0.0%	0.0%	0.0%	0.0%	0.0%	0.0%	0.0%	0.0%	0.0%	0.0%	0.0%	44.4%	-
Eurowings	-																-
Federal Express	8	100.0%	0.0%	0.0%	0.0%	0.0%	0.0%	0.0%	0.0%	0.0%	0.0%	0.0%	0.0%	0.0%	0.0%	0.0%	-
Finnair	42	76.2%	0.0%	9.5%	0.0%	0.0%	0.0%	4.8%	0.0%	0.0%	2.4%	2.4%	0.0%	4.8%	0.0%	0.0%	-
Flydubai	-																-
Genex	10	100.0%	0.0%	0.0%	0.0%	0.0%	0.0%	0.0%	0.0%	0.0%	0.0%	0.0%	0.0%	0.0%	0.0%	0.0%	-
KLM Royal Dutch Airlines	42	95.2%	0.0%	0.0%	0.0%	0.0%	0.0%	0.0%	0.0%	0.0%	0.0%	0.0%	4.8%	0.0%	0.0%	0.0%	-
LOT Polish Airlines	2,718	87.6%	1.7%	1.9%	0.7%	0.9%	0.5%	0.6%	0.2%	0.5%	0.7%	0.3%	0.5%	0.4%	0.4%	3.4%	-
Lufthansa	98	91.8%	1.0%	3.1%	0.0%	0.0%	0.0%	0.0%	0.0%	0.0%	0.0%	0.0%	4.1%	0.0%	0.0%	0.0%	-
Nordica	28	71.4%	0.0%	0.0%	0.0%	21.4%	0.0%	0.0%	7.1%	0.0%	0.0%	0.0%	0.0%	0.0%	0.0%	0.0%	-
Norwegian	18	100.0%	0.0%	0.0%	0.0%	0.0%	0.0%	0.0%	0.0%	0.0%	0.0%	0.0%	0.0%	0.0%	0.0%	0.0%	-
Nouvelair Tunisie	-																-
Onur Air	2	0.0%	0.0%	0.0%	0.0%	0.0%	0.0%	0.0%	0.0%	0.0%	0.0%	0.0%	0.0%	0.0%	100.0%	0.0%	-
Qatar Airways	42	76.2%	0.0%	4.8%	0.0%	7.1%	0.0%	0.0%	4.8%	0.0%	0.0%	0.0%	0.0%	0.0%	0.0%	7.1%	-
Ryanair	-																-
SAS Scandinavian	47	95.7%	0.0%	0.0%	0.0%	0.0%	0.0%	0.0%	0.0%	0.0%	0.0%	0.0%	0.0%	0.0%	0.0%	4.3%	-
Small Planet Airlines Poland	-																-
SprintAir	10	100.0%	0.0%	0.0%	0.0%	0.0%	0.0%	0.0%	0.0%	0.0%	0.0%	0.0%	0.0%	0.0%	0.0%	0.0%	-
SprintAir Cargo	10	100.0%	0.0%	0.0%	0.0%	0.0%	0.0%	0.0%	0.0%	0.0%	0.0%	0.0%	0.0%	0.0%	0.0%	0.0%	-
SunExpress	-																-
Swiss International	38	100.0%	0.0%	0.0%	0.0%	0.0%	0.0%	0.0%	0.0%	0.0%	0.0%	0.0%	0.0%	0.0%	0.0%	0.0%	-
TAP Air Portugal	18	55.6%	16.7%	0.0%	5.6%	0.0%	0.0%	0.0%	0.0%	0.0%	0.0%	0.0%	0.0%	0.0%	0.0%	22.2%	-
Travel Service	10	80.0%	0.0%	0.0%	0.0%	0.0%	0.0%	0.0%	0.0%	10.0%	0.0%	0.0%	0.0%	10.0%	0.0%	0.0%	-
Travel Service Polska	84	52.4%	1.2%	3.6%	1.2%	4.8%	8.3%	2.4%	6.0%	1.2%	4.8%	1.2%	4.8%	1.2%	7.1%	0.0%	-
TUI Netherlands	-																-
Turkish Airlines	14	100.0%	0.0%	0.0%	0.0%	0.0%	0.0%	0.0%	0.0%	0.0%	0.0%	0.0%	0.0%	0.0%	0.0%	0.0%	-
Ukraine International	28	67.9%	3.6%	7.1%	0.0%	14.3%	0.0%	0.0%	0.0%	0.0%	0.0%	0.0%	0.0%	0.0%	0.0%	7.1%	-
UPS Airlines	10	100.0%	0.0%	0.0%	0.0%	0.0%	0.0%	0.0%	0.0%	0.0%	0.0%	0.0%	0.0%	0.0%	0.0%	0.0%	-
Vueling	-																-
Wizz Air	374	64.4%	6.1%	3.5%	3.5%	2.4%	0.8%	1.1%	1.1%	2.1%	1.1%	0.8%	0.3%	1.9%	11.0%	0.0%	-
TOTAL	4,125	85.0%	1.8%	2.1%	0.8%	1.4%	0.8%	0.6%	0.7%	0.6%	0.7%	0.3%	0.6%	0.5%	4.1%	0.0%	-

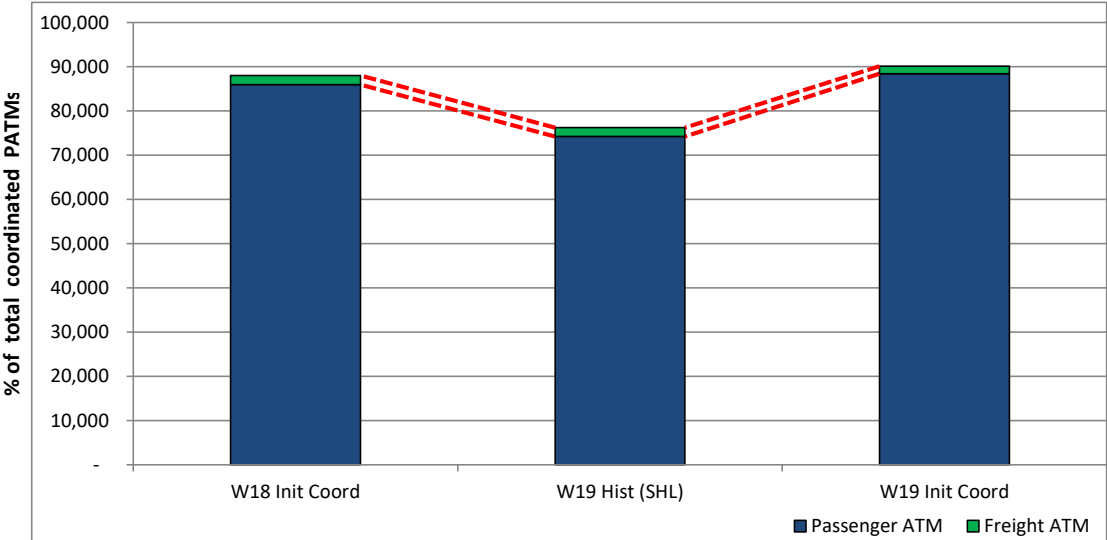
Operators with 0 'allocated ATMs' and 0 'Requests with NO slot allocated' in W19, are included in this list due to having slots allocated in either W18 Init Coord or W19 Hist (SHL) schedules.

Significant Route Changes



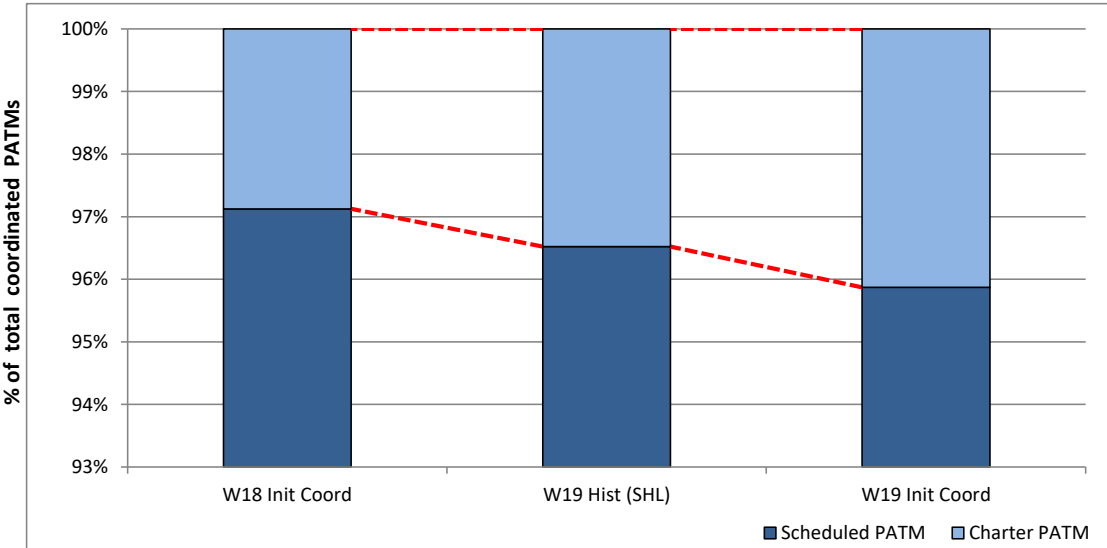
Operator	Category	Description of change from W18 schedule to W19 schedule
Brussels Airlines	CHANGE	Increased service to Brussels
Finnair	CHANGE	Increased service to Helsinki
LOT Polish Airlines	NEW	Service to Szczecin
LOT Polish Airlines	CHANGE	Increased service to Belgrade, Budapest, Bydgoszcz, Cluj, Cancun
LOT Polish Airlines	CHANGE	Increased service to Dubrovnik, Delhi, Zielona Gora and Chisinau
LOT Polish Airlines	CHANGE	Increased service to Dubrovnik, Delhi, Zielona Gora and Chisinau
LOT Polish Airlines	CHANGE	Increased service to Kosice, Ljubljana, Lublin, Port Louis and Beijing
LOT Polish Airlines	CHANGE	Increased service to Poznan, Skopje, Podgorica, Venice, Vienna and Zagreb
Nordica	CHANGE	Increased service to Tallin
Ryanair	CANCELLED	Service to Szczecin
TAP Air Portugal	CHANGE	Increased service to Lisbon
Travel Service	NEW	Service to Tel Aviv
Wizz Air	NEW	Service to Zagreb and Grenoble
Wizz Air	CHANGE	Increased service to Barcelona, Bari, Basel, Budapest, Rome and Reykjavik
Wizz Air	CHANGE	Increased service to Kutaisi

Total ATMs: Passenger ATMs vs. Freight ATMs



Schedule Snapshot

Passenger ATMs: Scheduled vs. Charter

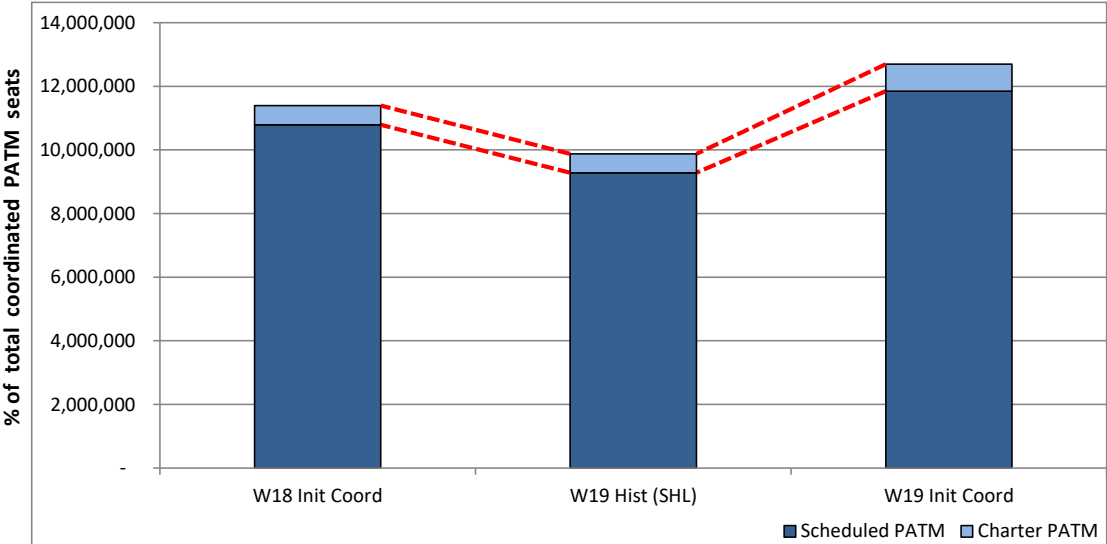


Schedule Snapshot

Full Season - PATM Seats Analysis

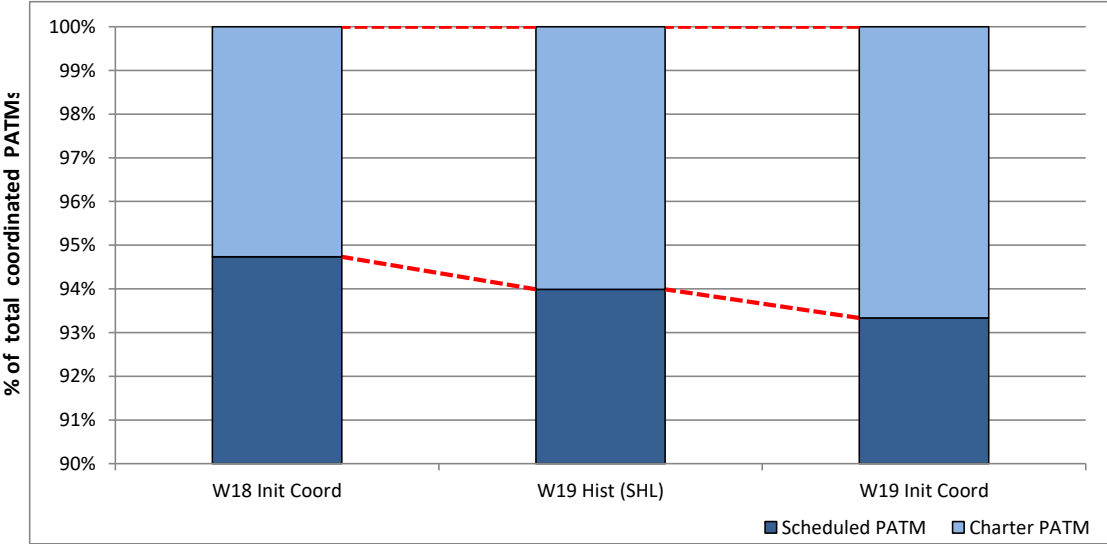


Total Passenger ATM seats: Scheduled vs. Charter



Schedule Snapshot

Passenger ATM seats: Scheduled vs. Charter

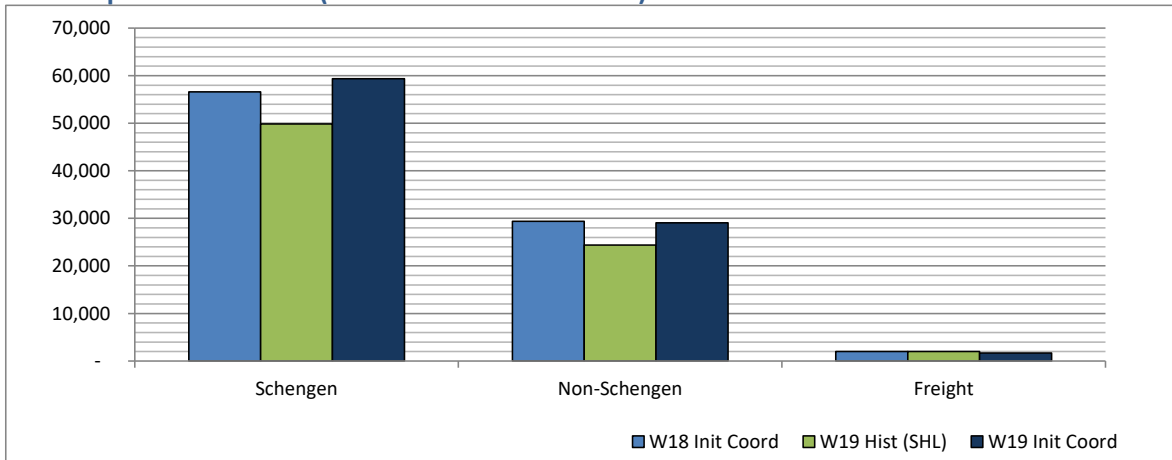


Schedule Snapshot

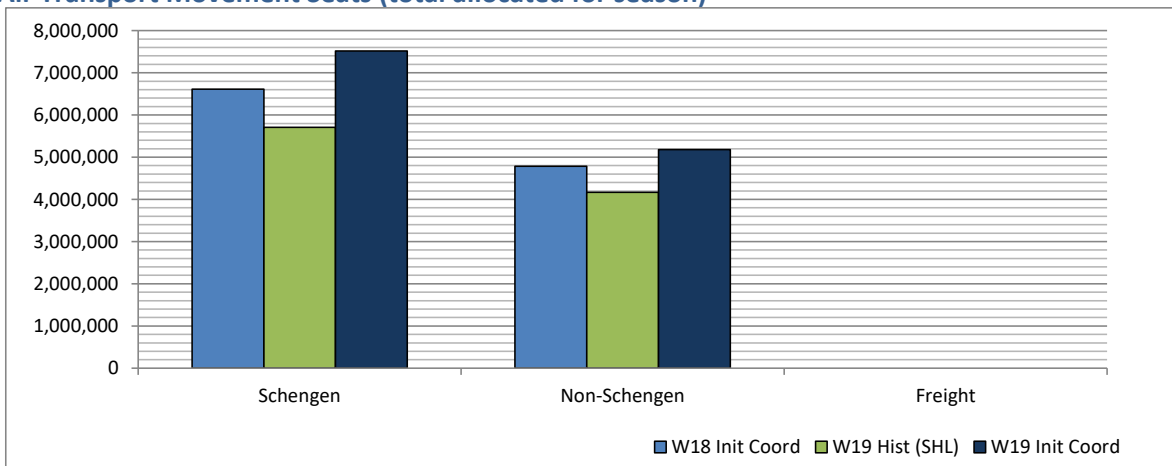
Full Season - Terminal Analysis



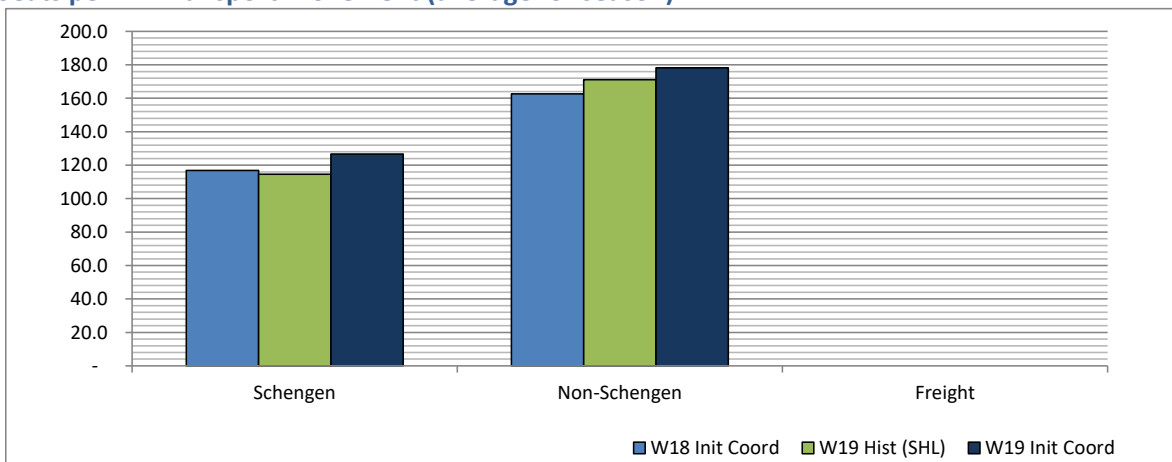
Air Transport Movements (total allocated for season)



Air Transport Movement Seats (total allocated for season)



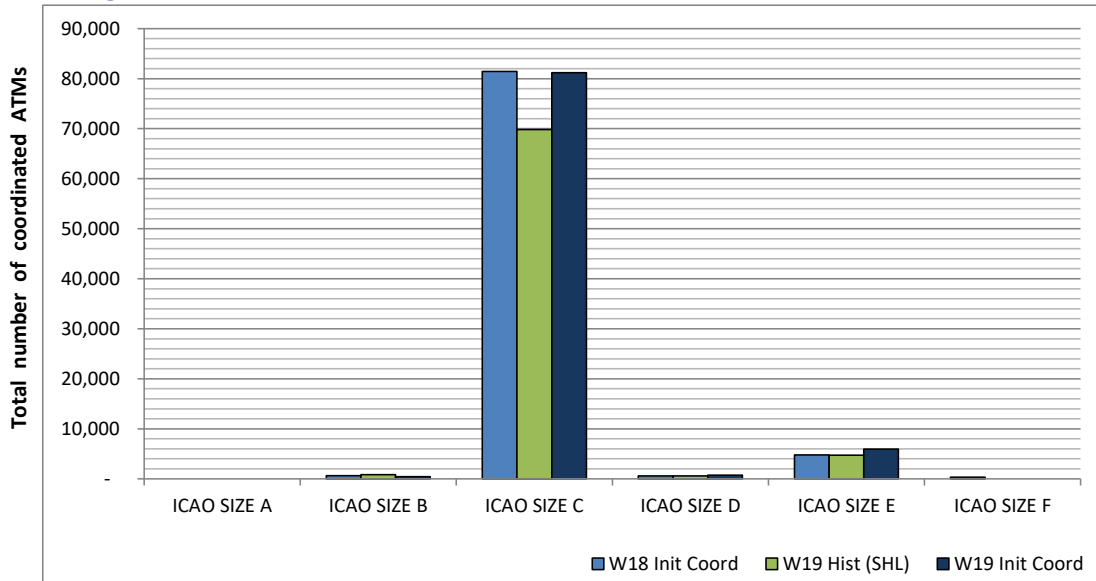
Seats per Air Transport Movement (average for season)



Full Season - Aircraft Size Analysis

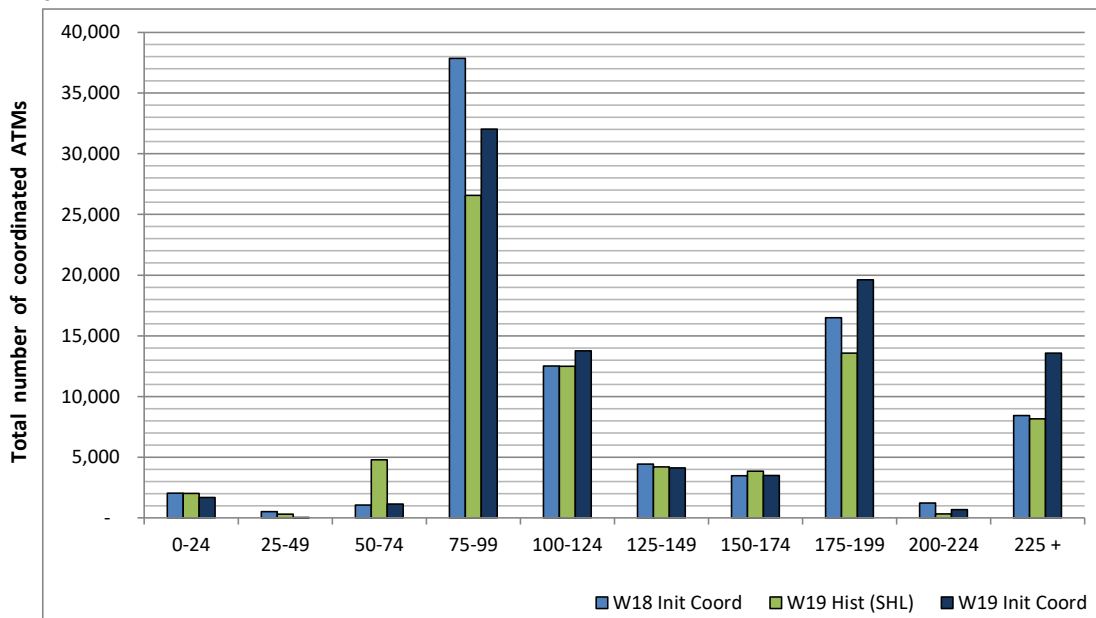


ICAO size designation



Note: See Glossary for definitions of ICAO SIZE groupings

Air Transport Movement seat distribution

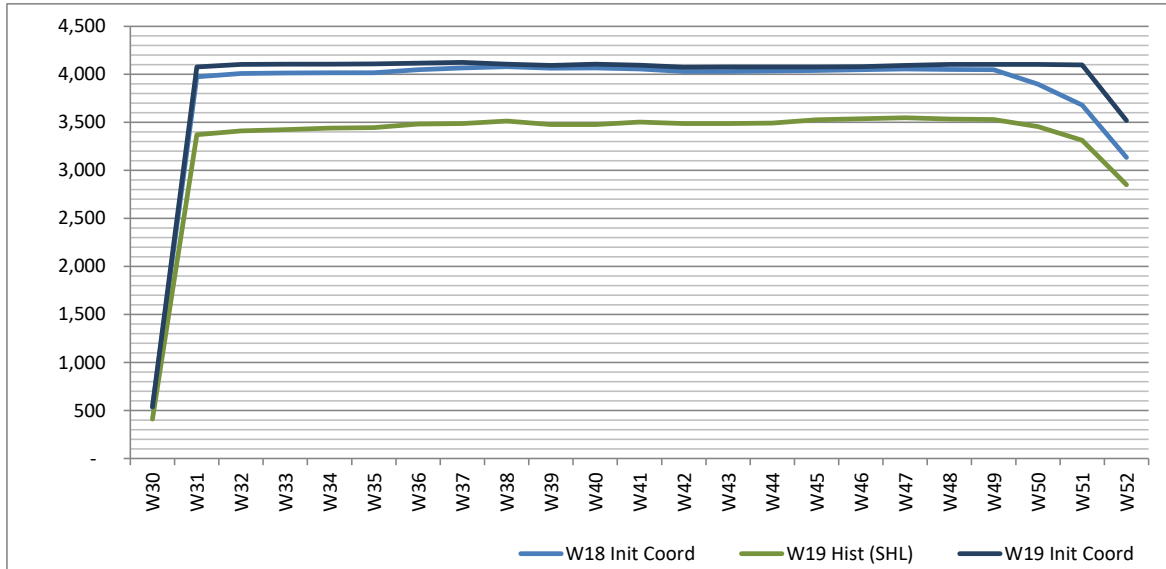


Note: FREIGHT-ONLY services with 0 seats are included in the first seat band '0-24'

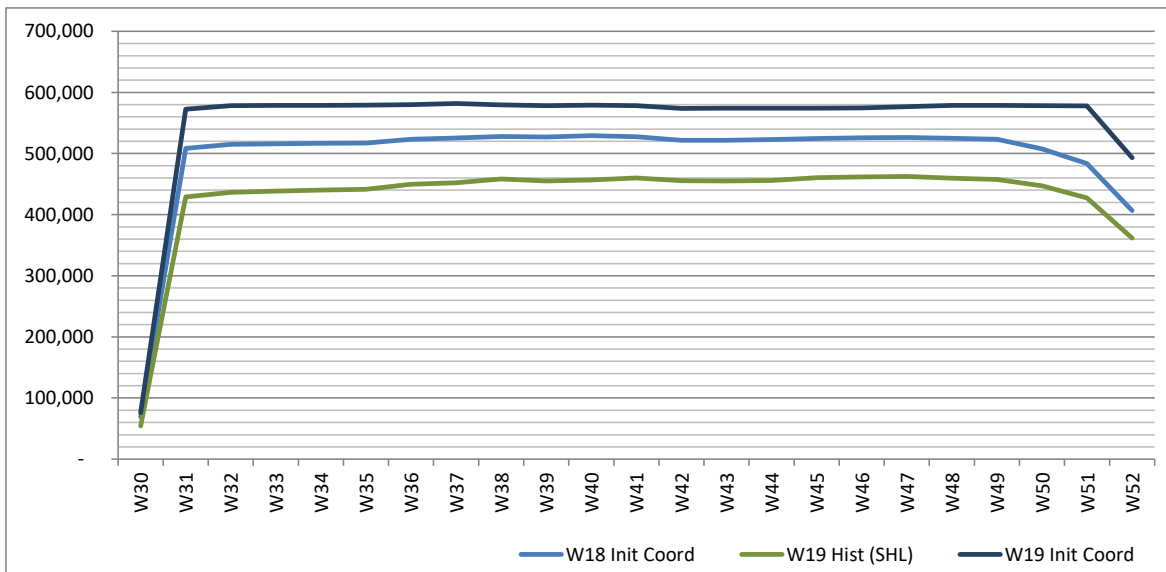
Full Season - Seasonality



Air Transport Movements by week of season



Air Transport Movement Seats by week of season



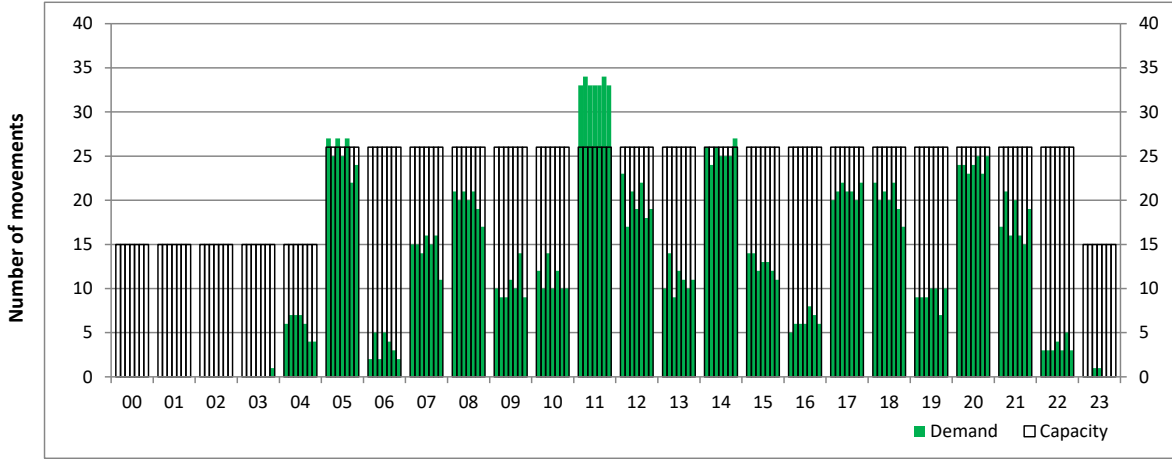
Peak Week - Initial Hourly Runway Demand

Schedule: W19 Init Coord



Hourly Arrival Demand

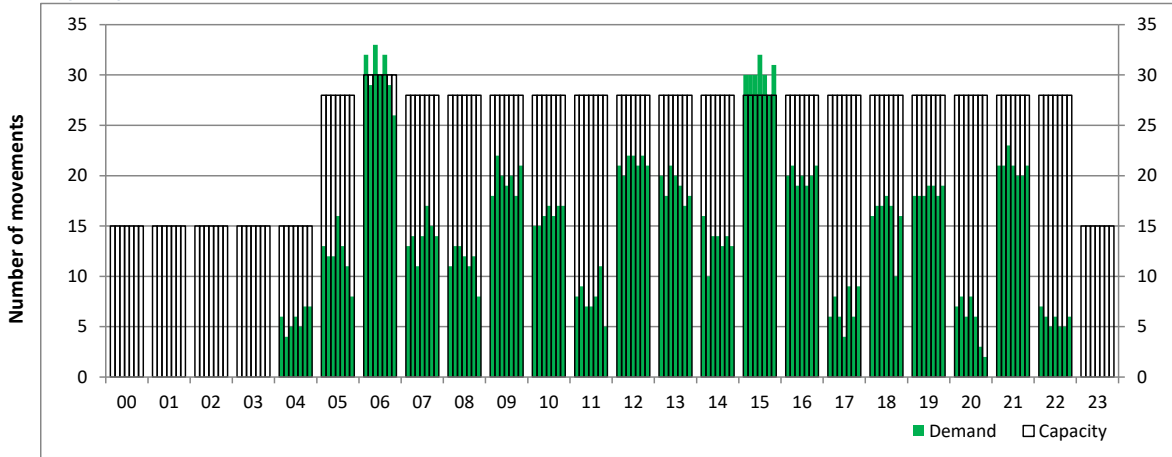
Time: UTC



Hour of day (24 hour format)

Hourly Departure Demand

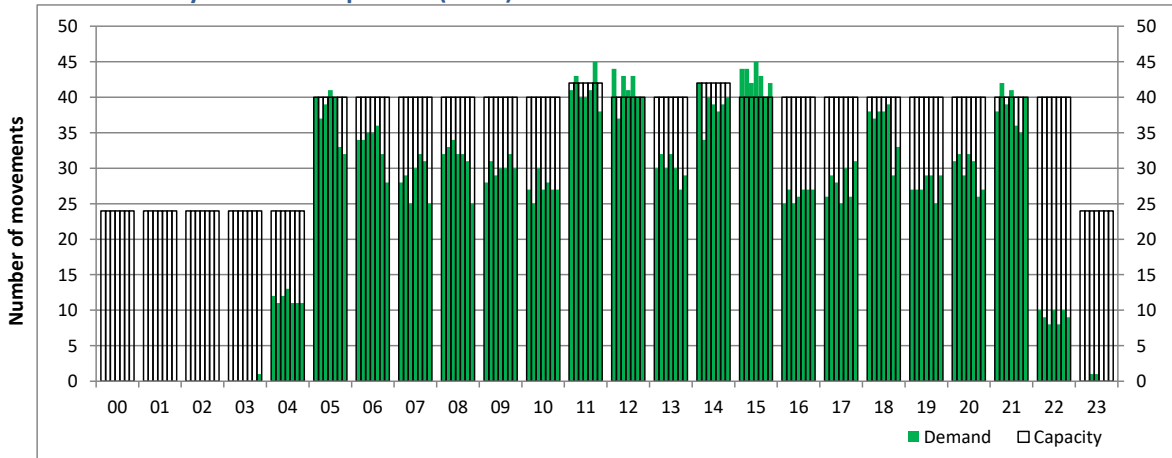
Time: UTC



Hour of day (24 hour format)

Combined Hourly Arrival & Departure (Total) Demand

Time: UTC



Hour of day (24 hour format)

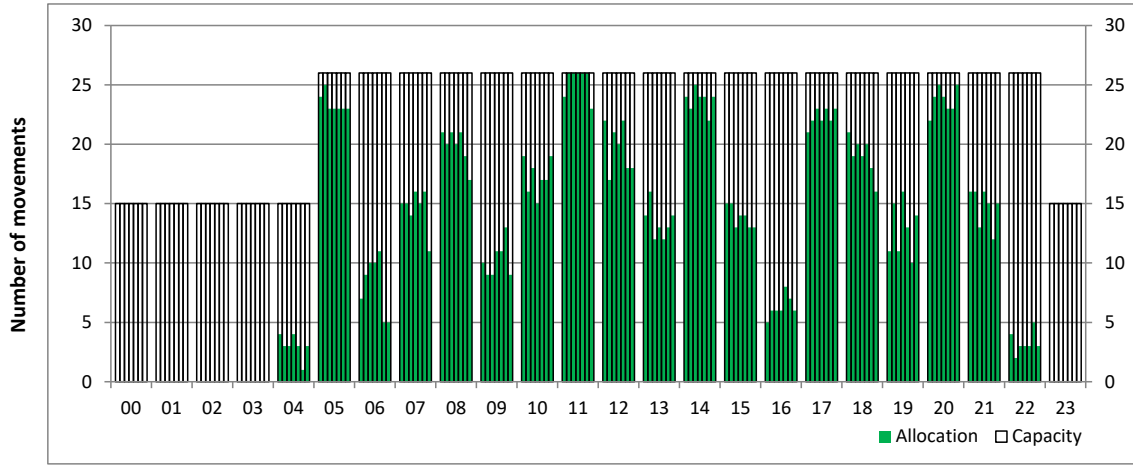
Peak Week - Hourly Runway Allocation

Schedule: W19 Init Coord



Hourly Arrival Allocation

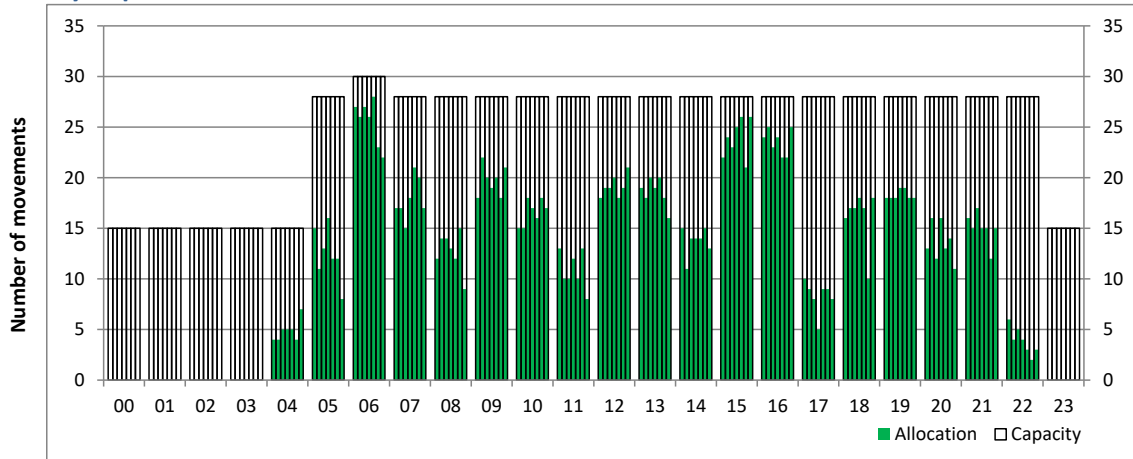
Time: UTC



Hour of day (24 hour format)

Hourly Departure Allocation

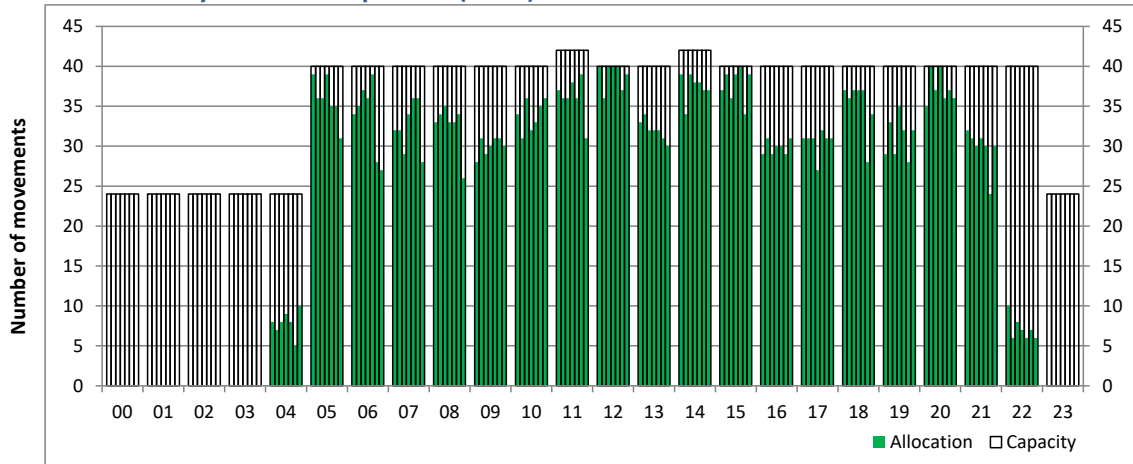
Time: UTC



Hour of day (24 hour format)

Combined Hourly Arrival & Departure (Total) Allocation

Time: UTC



Hour of day (24 hour format)

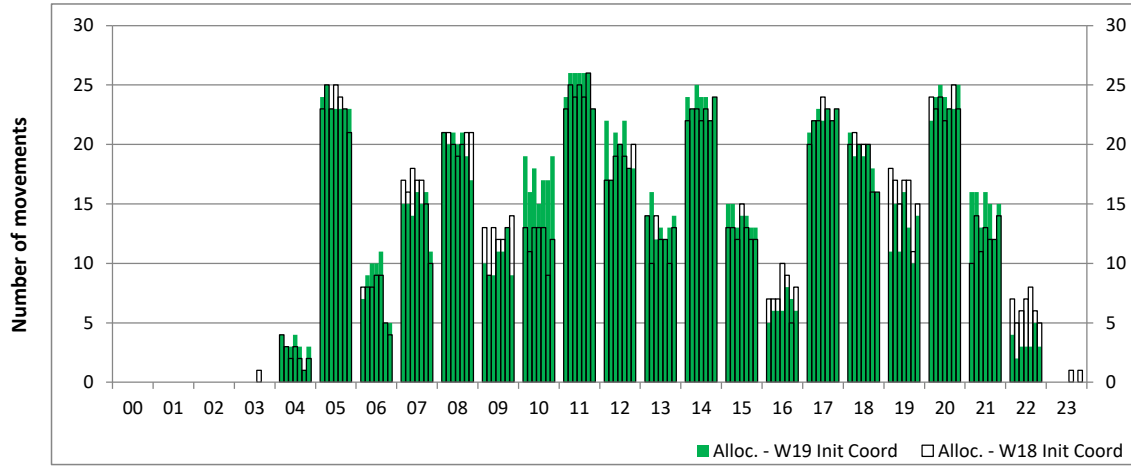
Peak Week - Runway Allocation Comparison

Comparison of W19 Init Coord vs. W18 Init Coord



Hourly Arrival Allocation

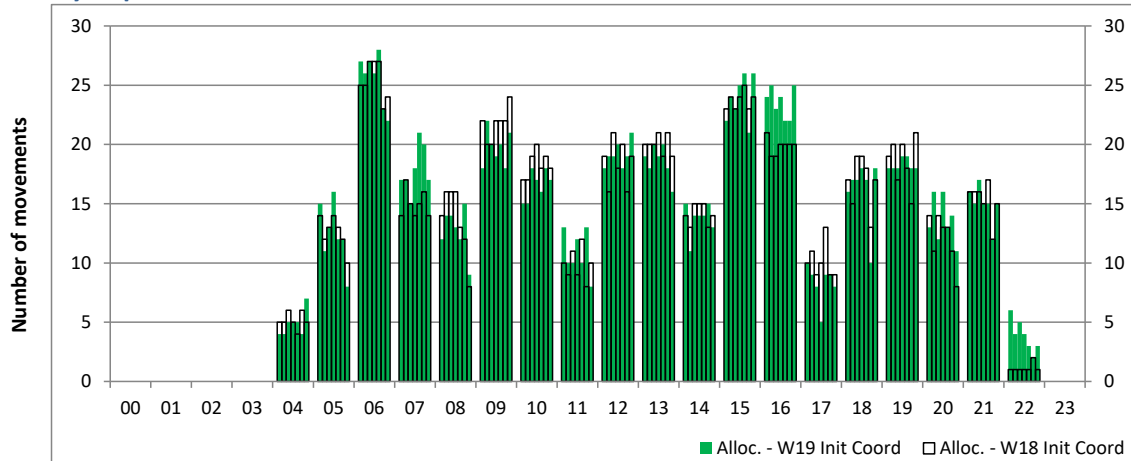
Time: UTC



Hour of day (24 hour format)

Hourly Departure Allocation

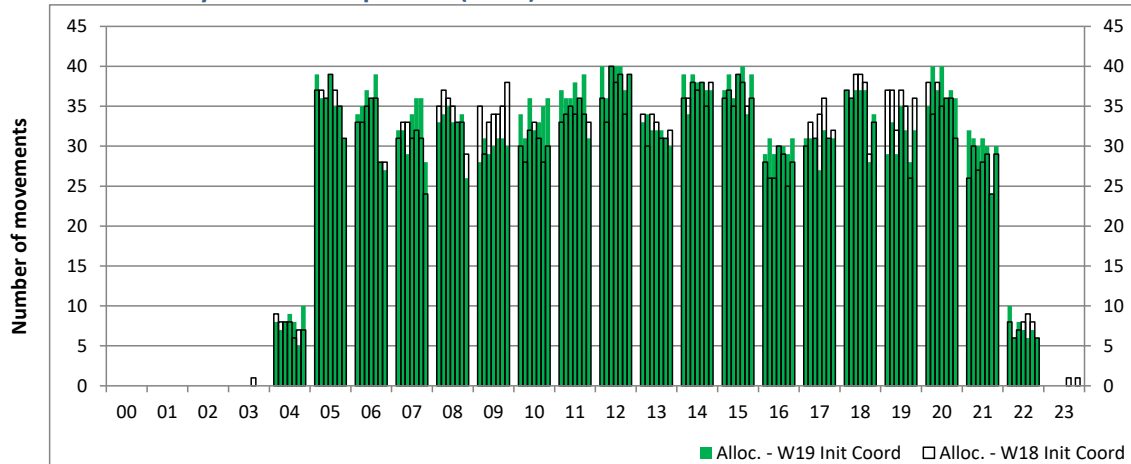
Time: UTC



Hour of day (24 hour format)

Combined Hourly Arrival & Departure (Total) Allocation

Time: UTC



Hour of day (24 hour format)

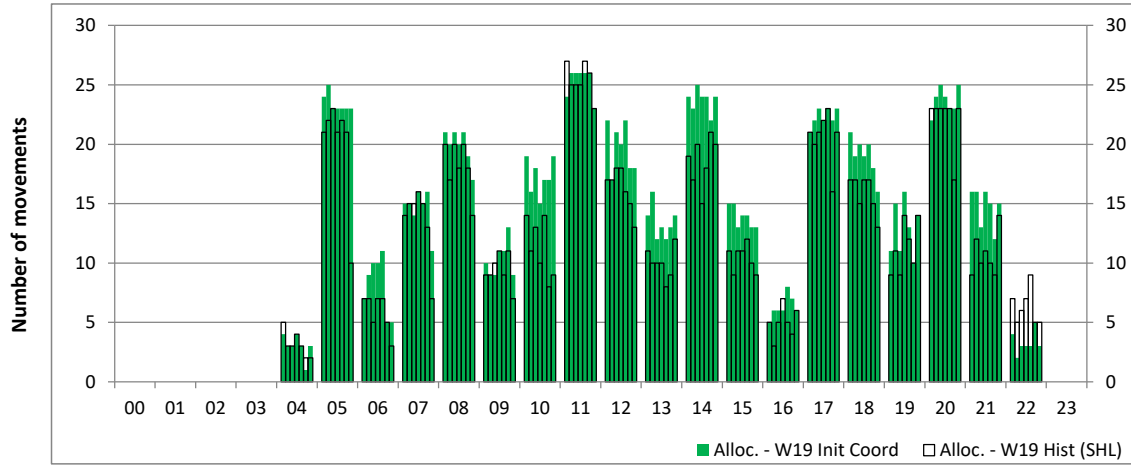
Peak Week - Runway Allocation Comparison

Comparison of W19 Init Coord vs. W19 Hist (SHL)



Hourly Arrival Allocation

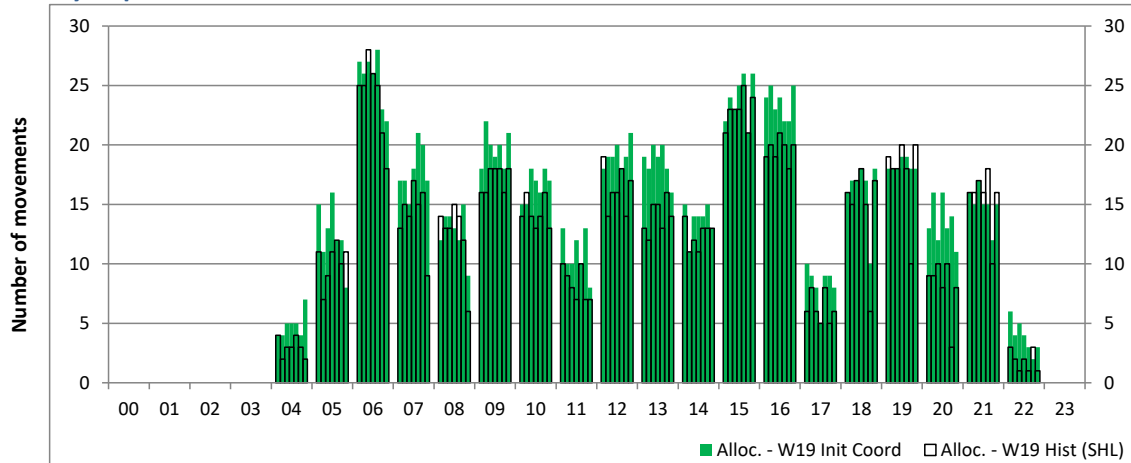
Time: UTC



Hour of day (24 hour format)

Hourly Departure Allocation

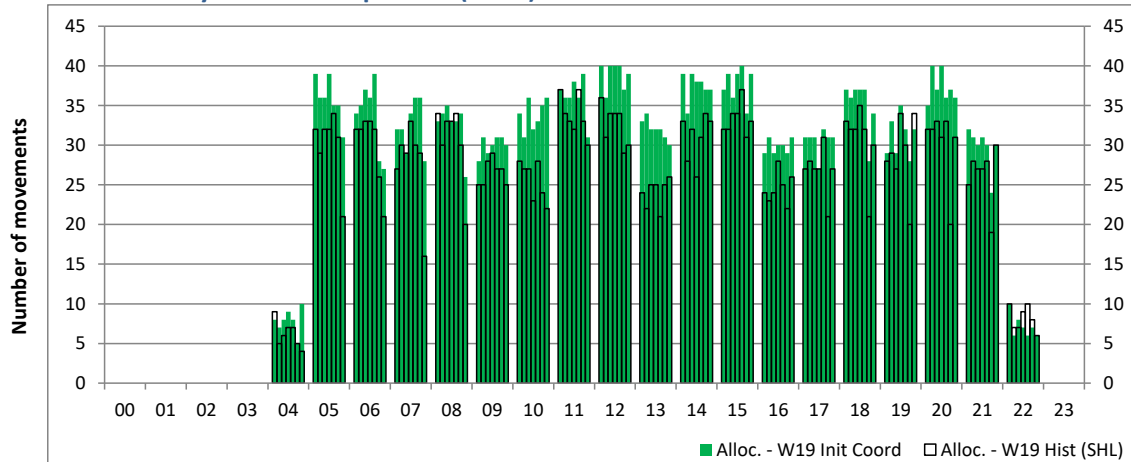
Time: UTC



Hour of day (24 hour format)

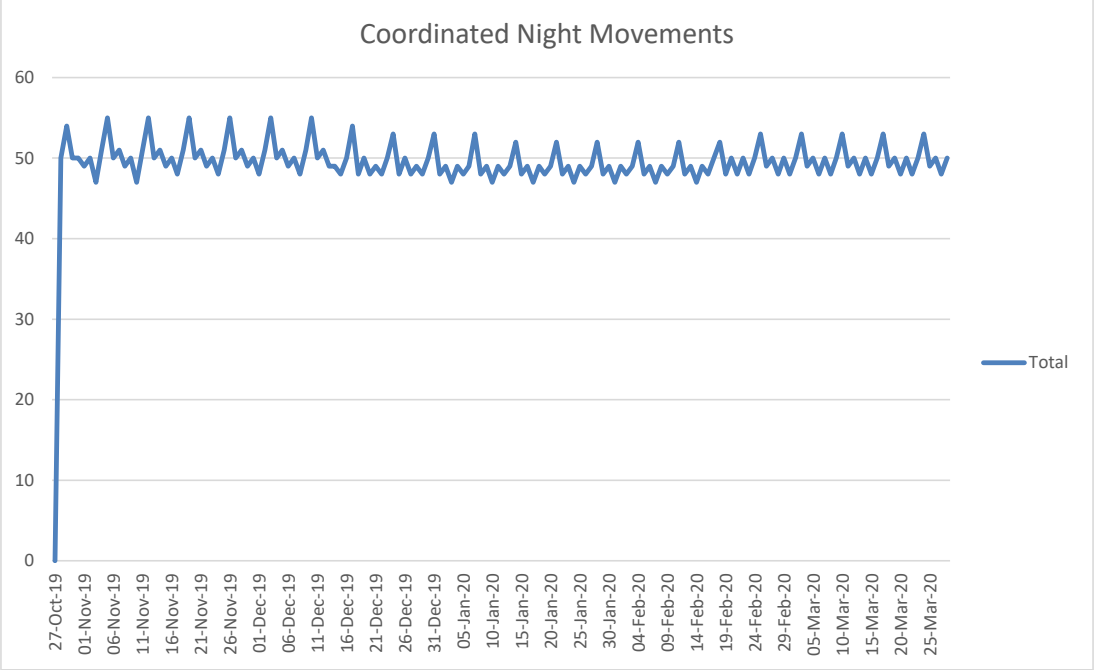
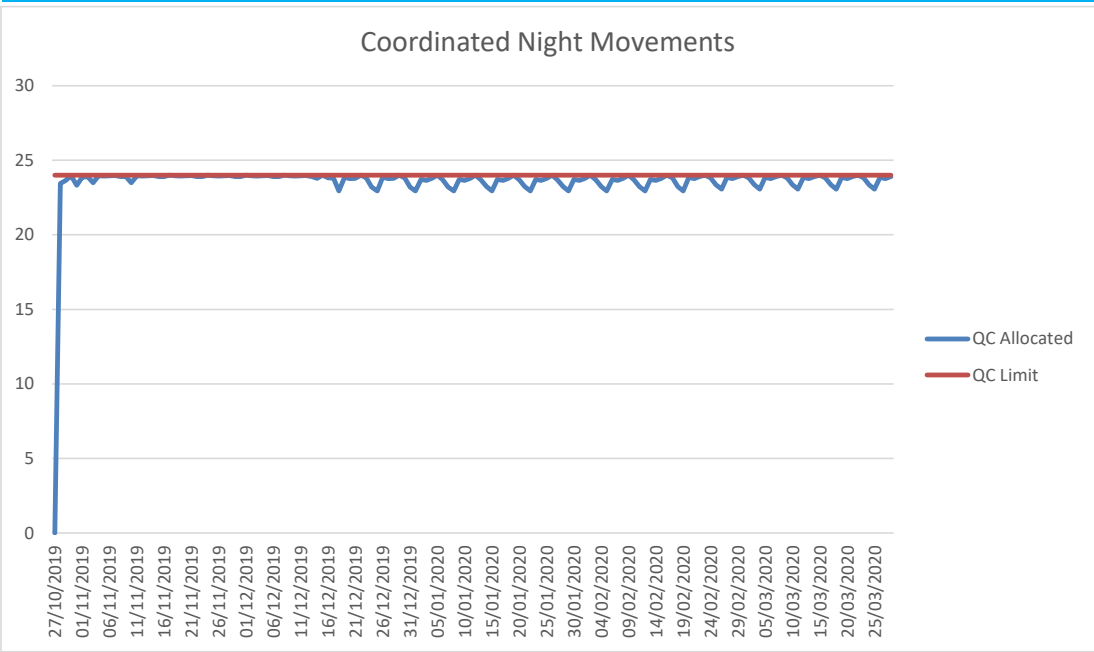
Combined Hourly Arrival & Departure (Total) Allocation

Time: UTC



Hour of day (24 hour format)

Coordinated vs Actual Night Movements



Peak Week - Movements Histogram

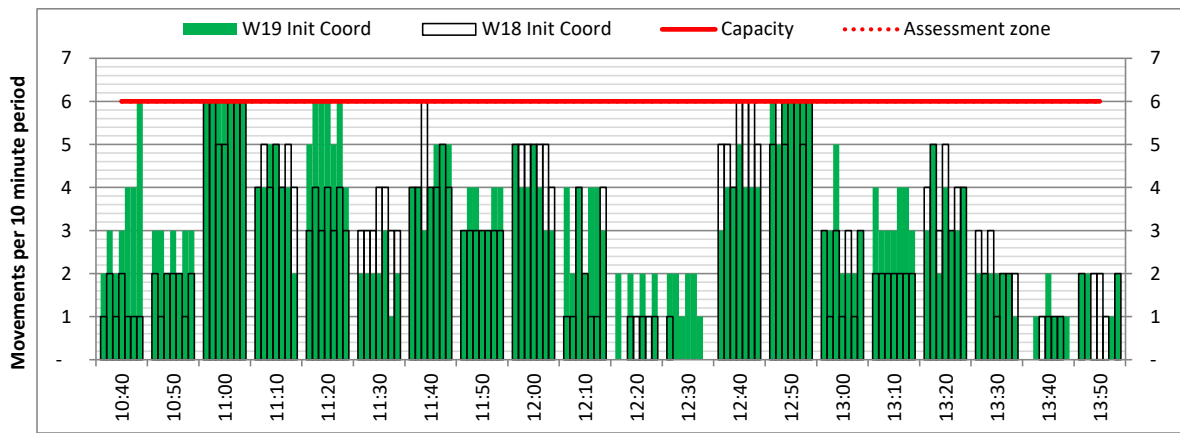
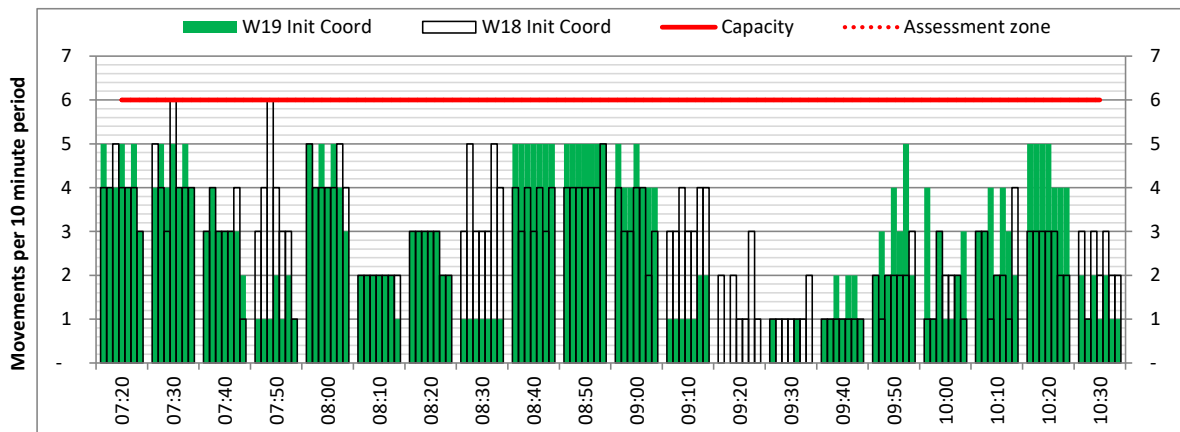
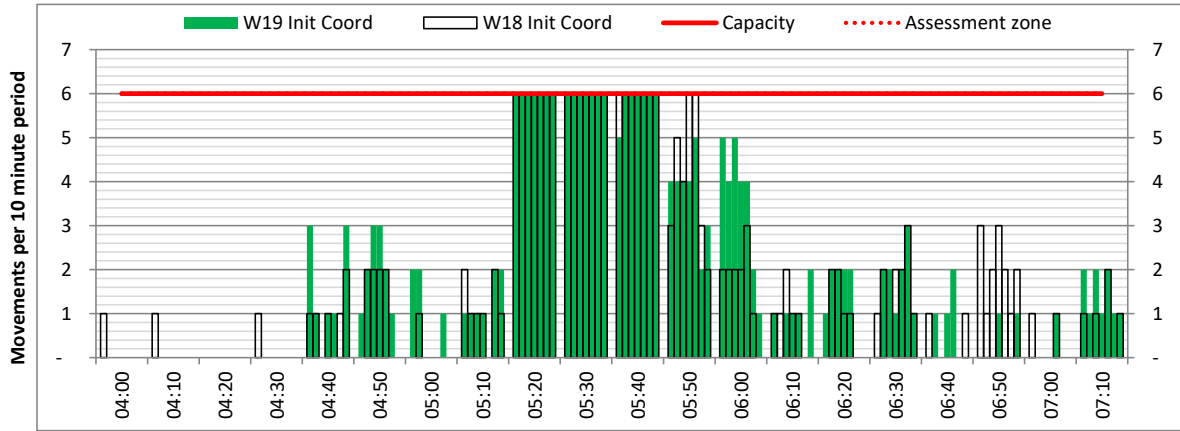


ARRIVAL - 10 minute count rolling every 10 mins (R10)

Terminals: All Terminals

Operators: All Operators

Days: 1234567



Peak Week - Movements Histogram

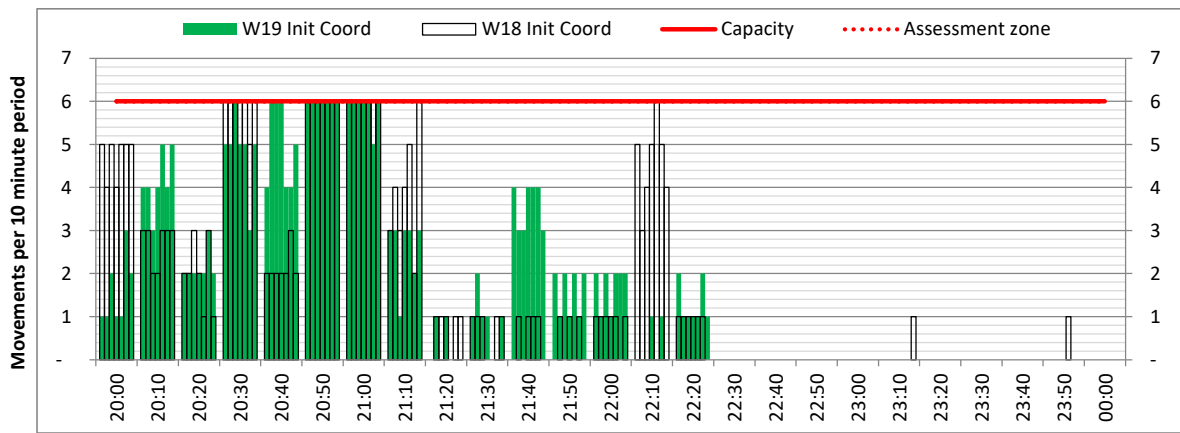
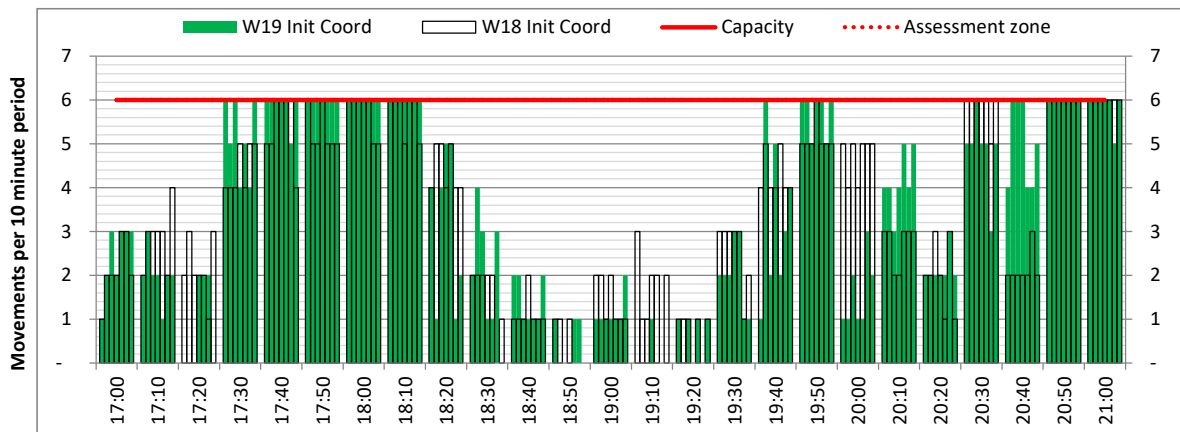
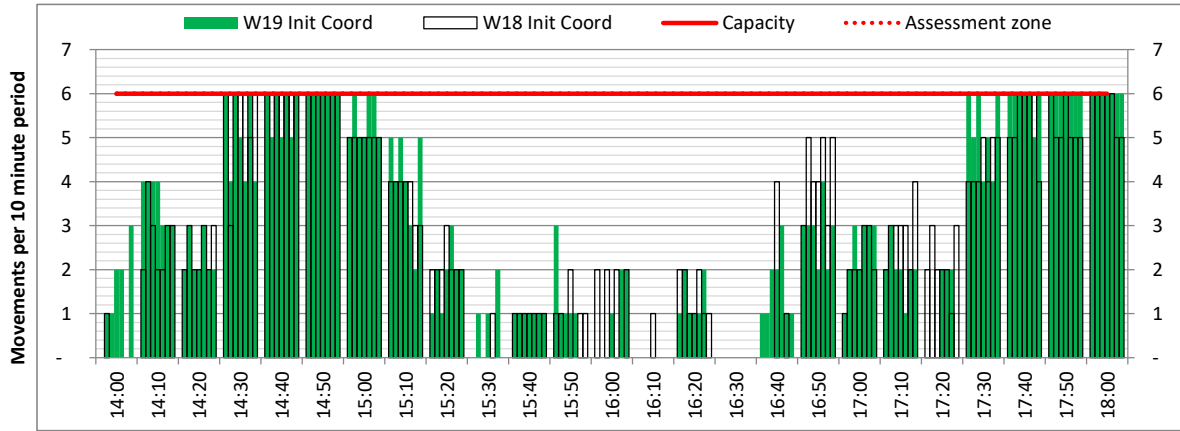


ARRIVAL - 10 minute count rolling every 10 mins (R10)

Terminals: All Terminals

Operators: All Operators

Days: 1234567



Peak Week - Movements Histogram

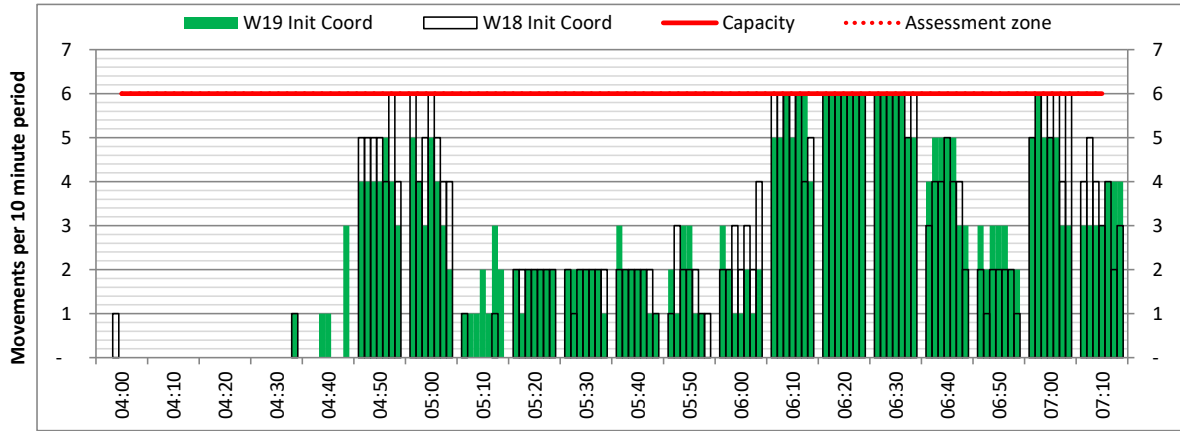


DEPARTURE - 10 minute count rolling every 10 mins (R10)

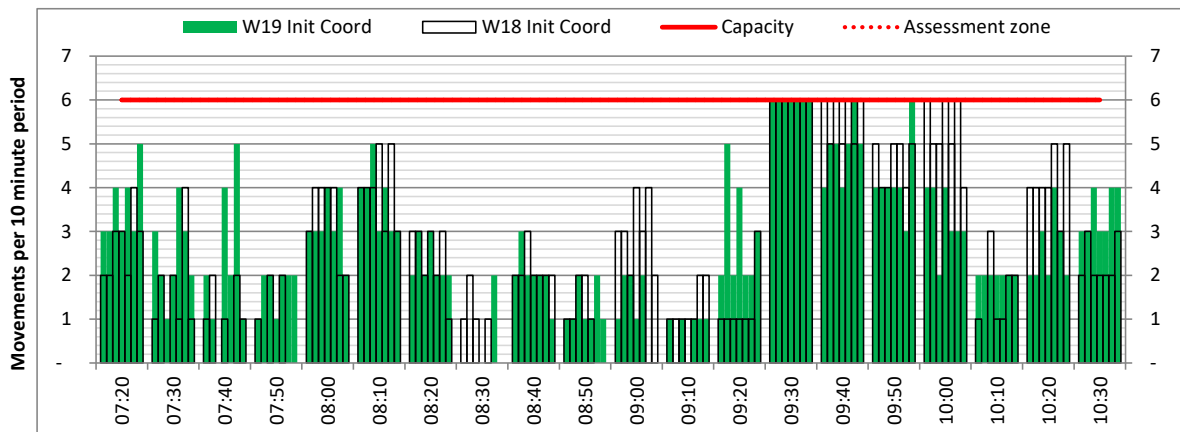
Terminals: All Terminals

Operators: All Operators

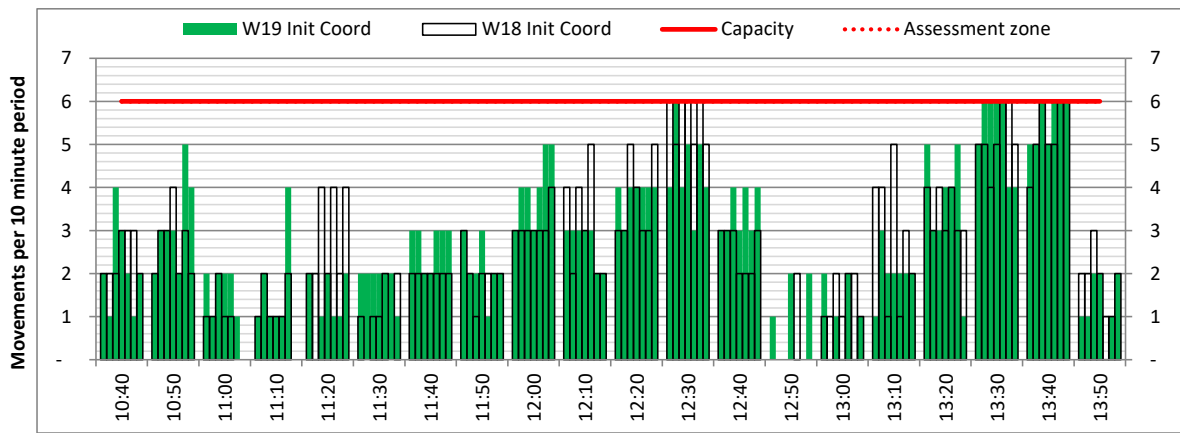
Days: 1234567



Start of count period - Time: UTC



Start of count period - Time: UTC



Start of count period - Time: UTC

Peak Week - Movements Histogram

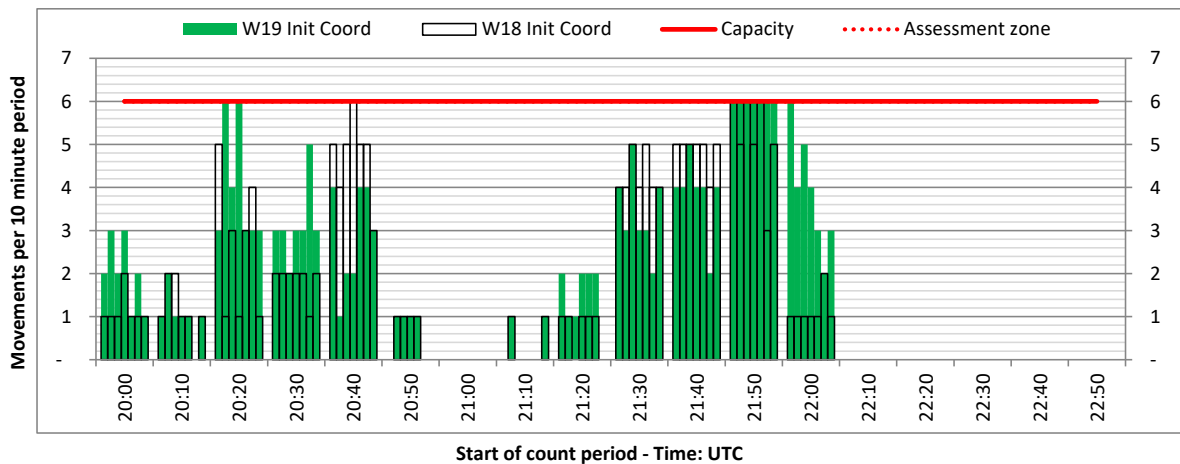
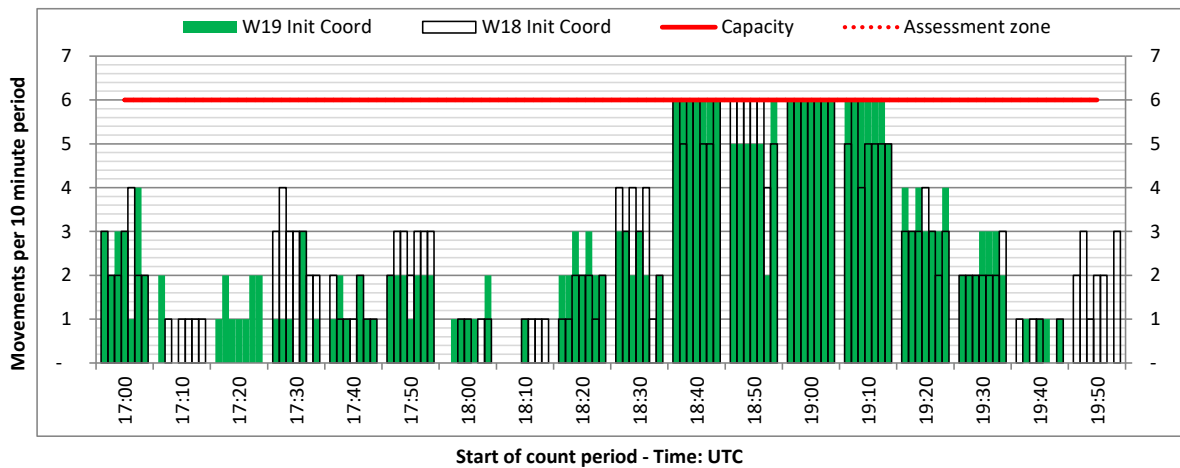
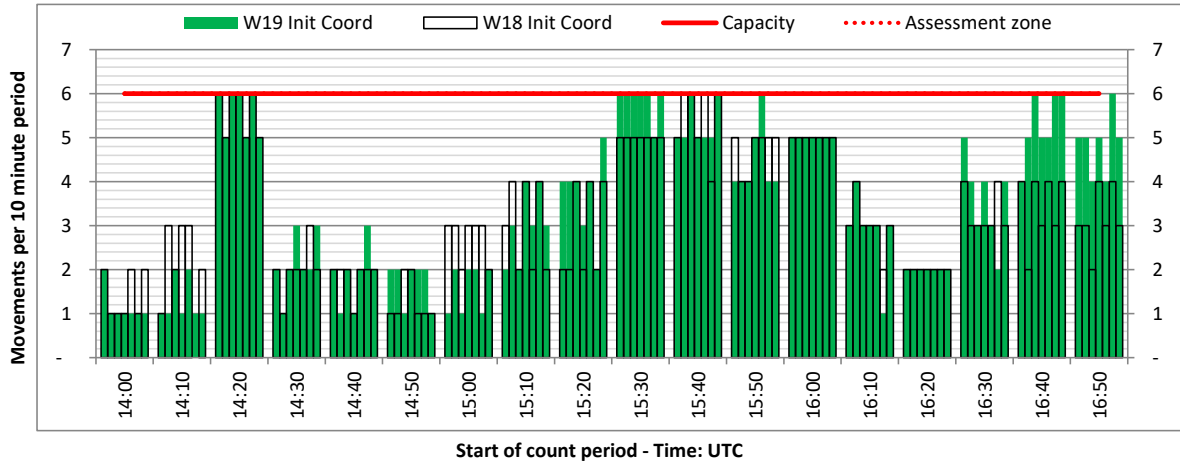
DEPARTURE - 10 minute count rolling every 10 mins (R10)



Terminals: All Terminals

Operators: All Operators

Days: 1234567



Peak Week - Passengers Histogram

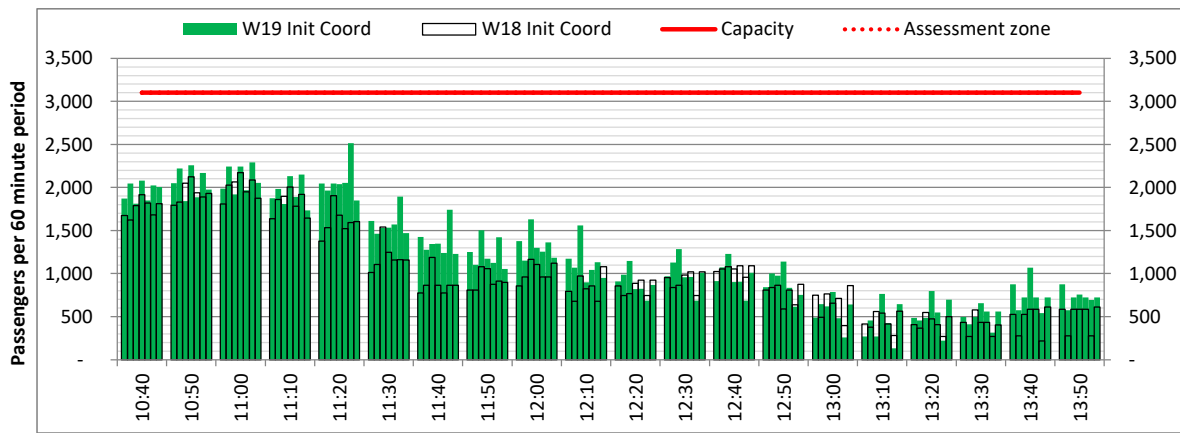
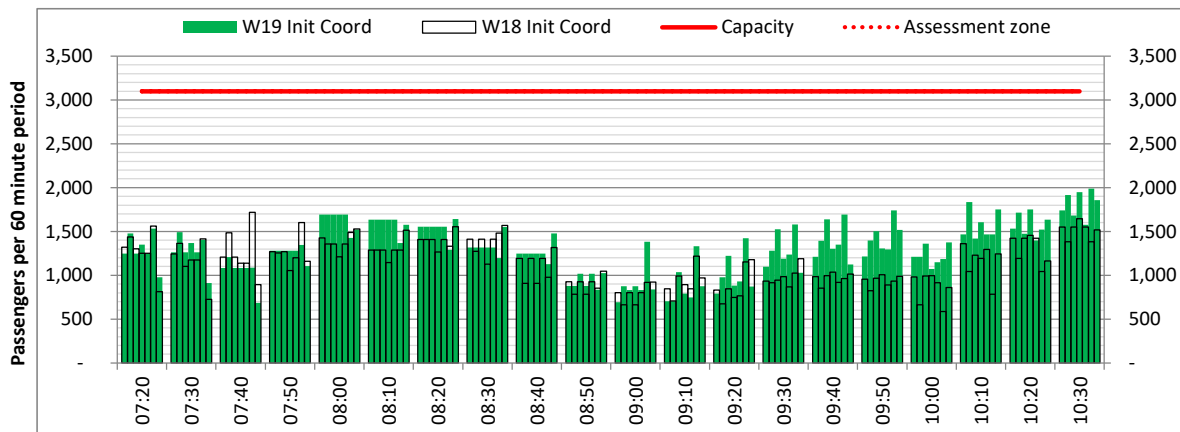
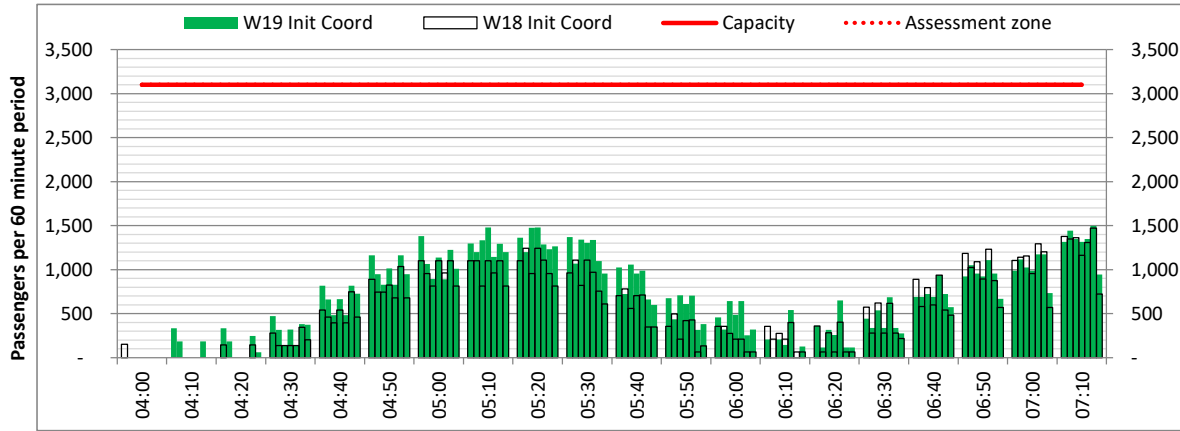
ARRIVAL - 60 minute count rolling every 10 mins (T60/10)



Terminals: Schengen

Operators: All Operators

Days: 1234567



Peak Week - Passengers Histogram

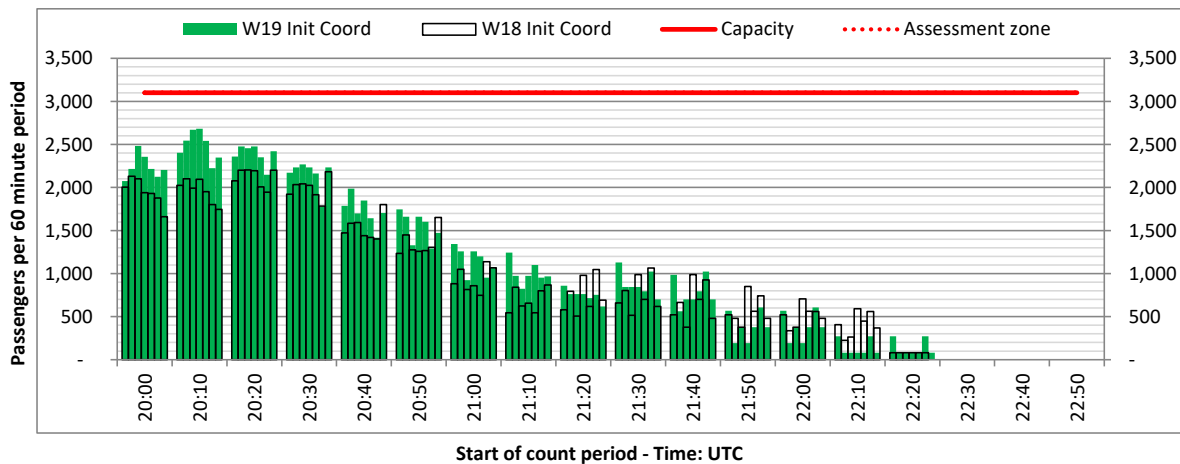
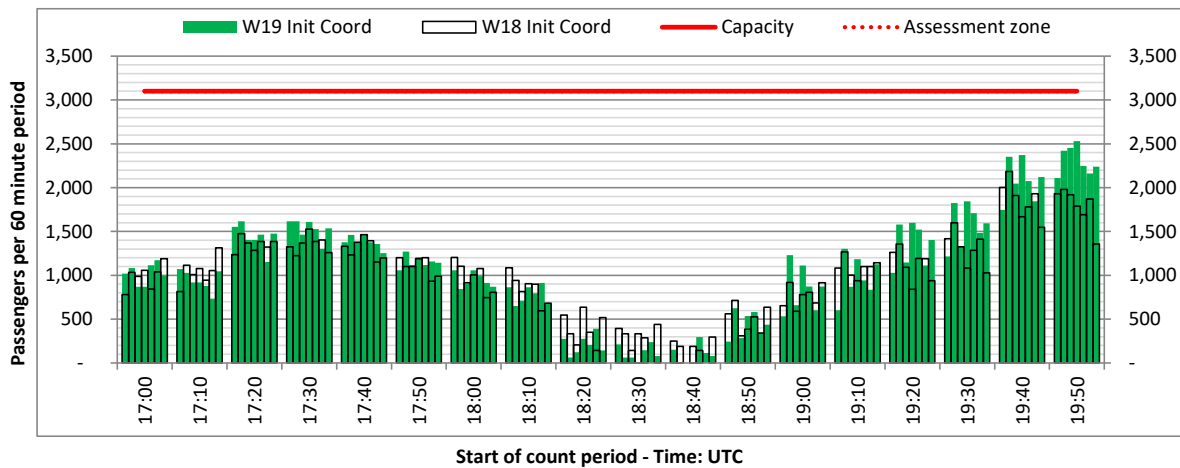
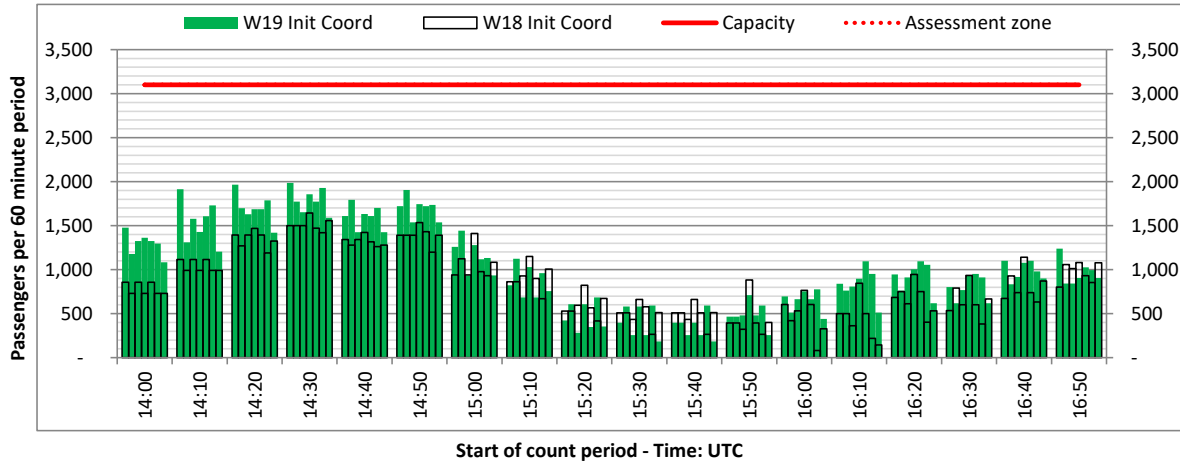
ARRIVAL - 60 minute count rolling every 10 mins (T60/10)



Terminals: Schengen

Operators: All Operators

Days: 1234567



Peak Week - Passengers Histogram

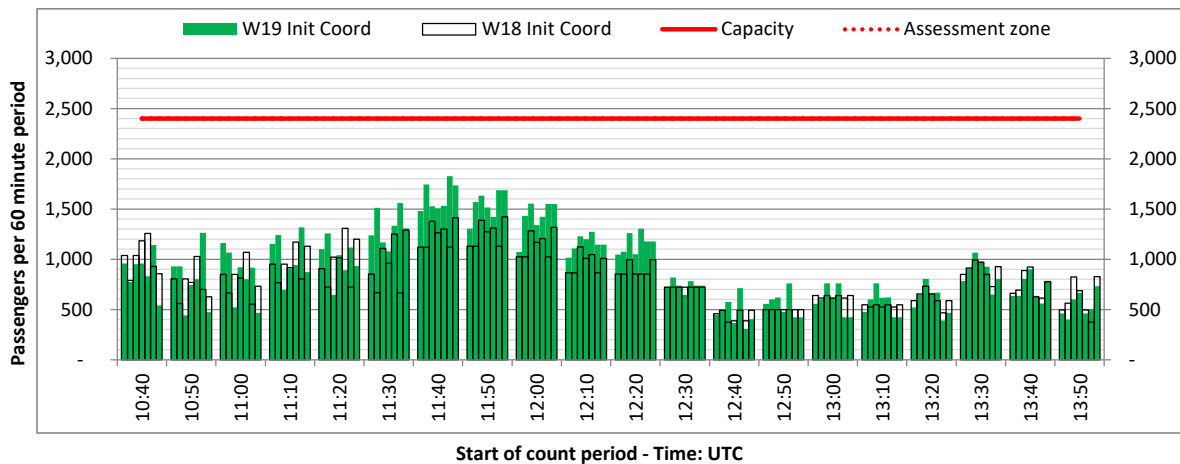
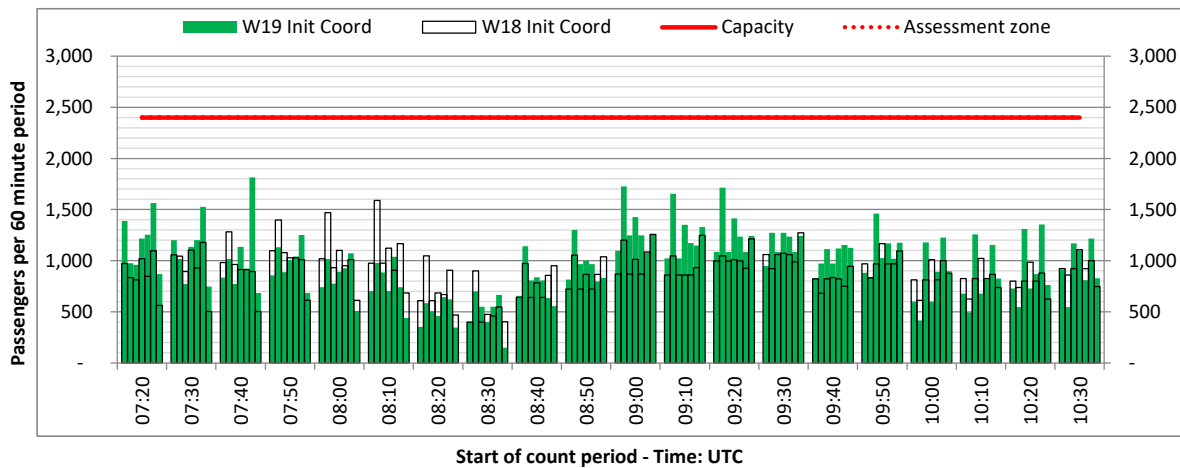
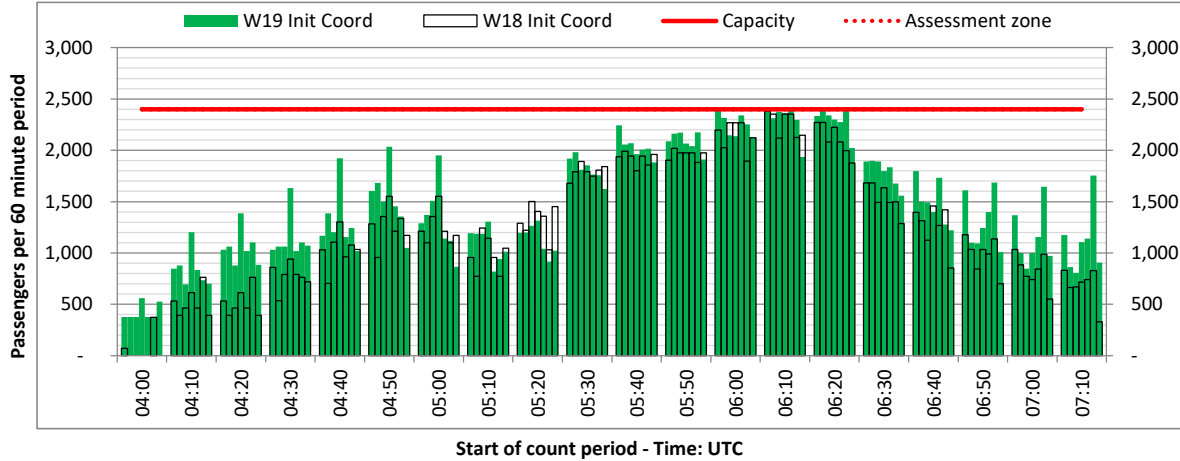
DEPARTURE - 60 minute count rolling every 10 mins (T60/10)



Terminals: Schengen

Operators: All Operators

Days: 1234567



Peak Week - Passengers Histogram

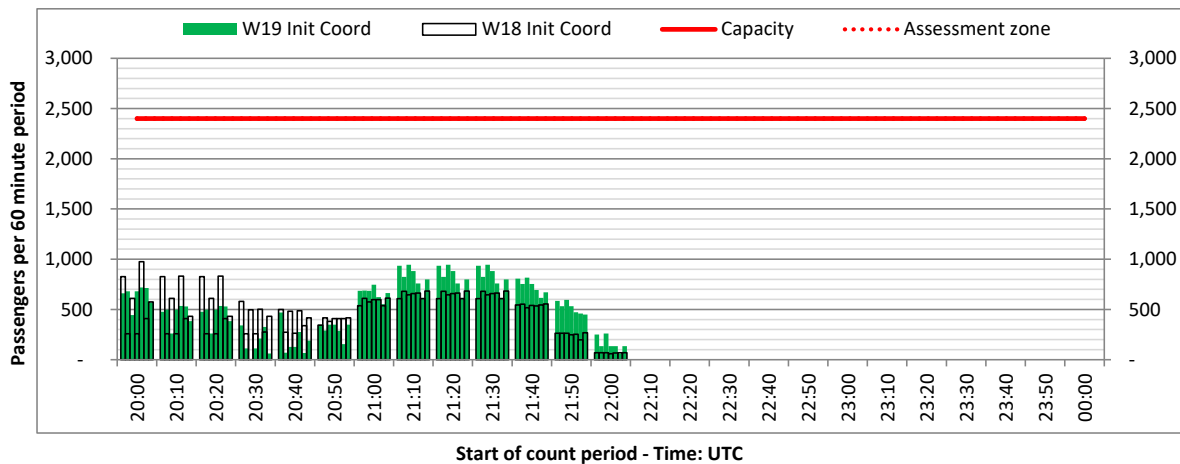
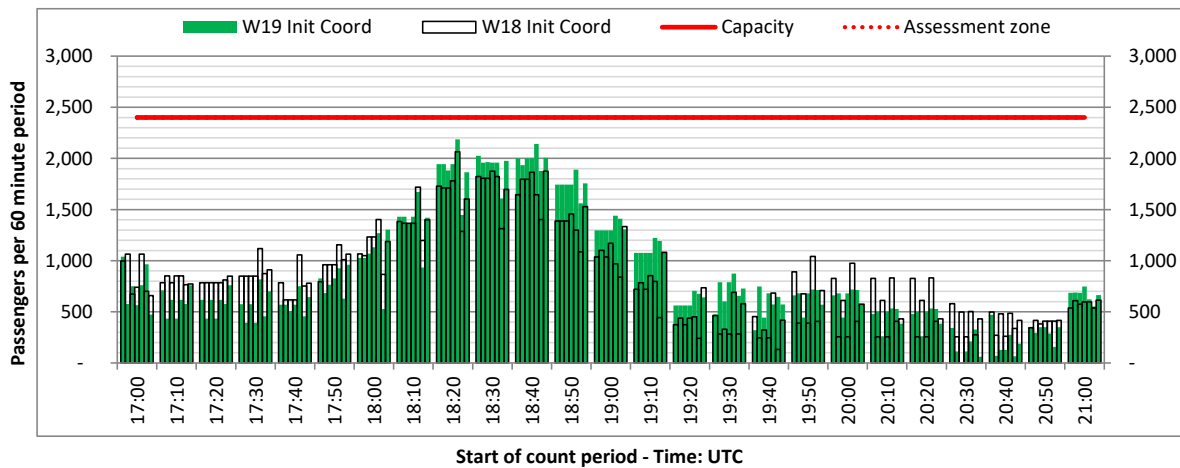
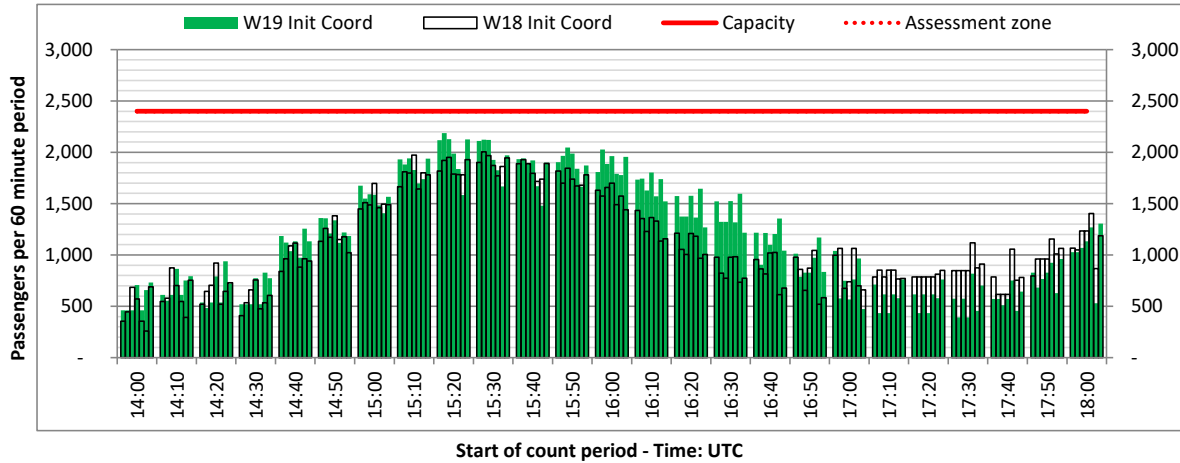


DEPARTURE - 60 minute count rolling every 10 mins (T60/10)

Terminals: Schengen

Operators: All Operators

Days: 1234567



Peak Week - Passengers Histogram

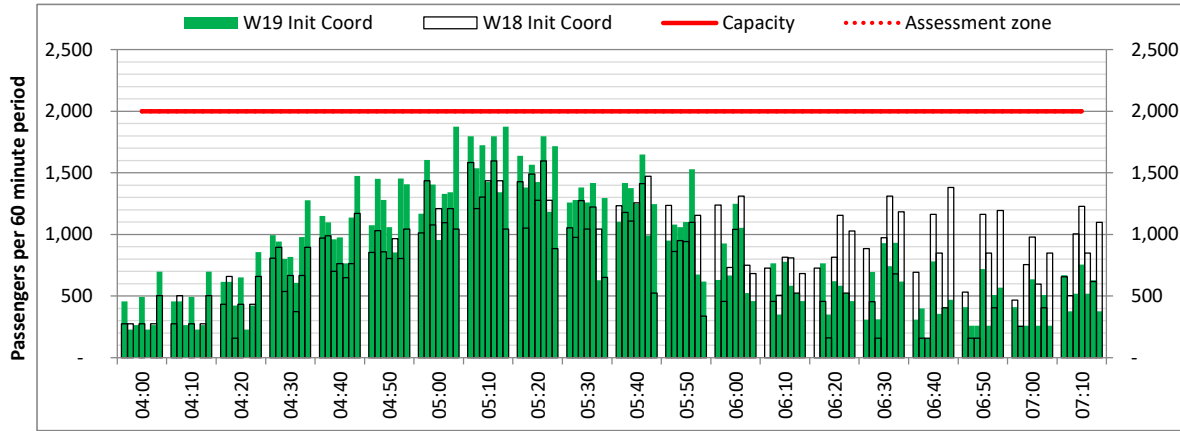


ARRIVAL - 60 minute count rolling every 10 mins (T60/10)

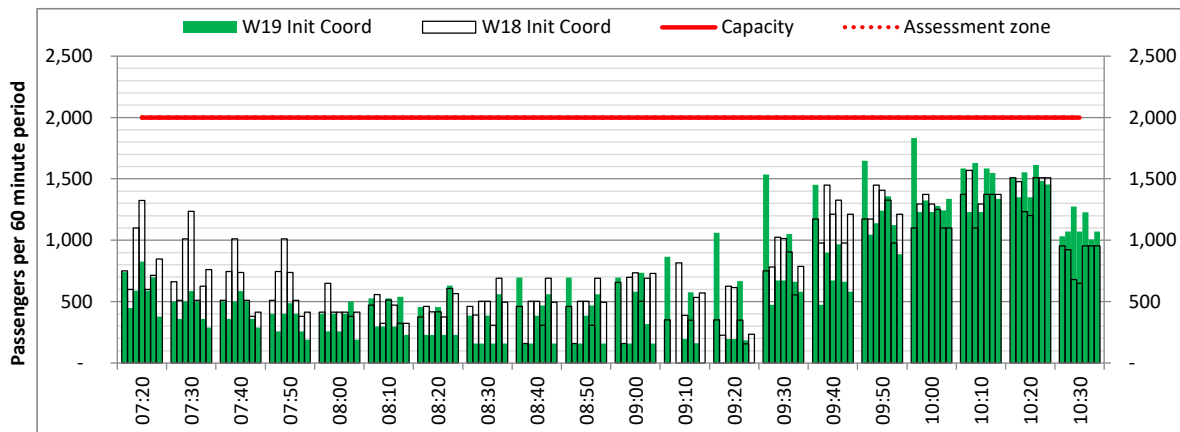
Terminals: Non-Schengen

Operators: All Operators

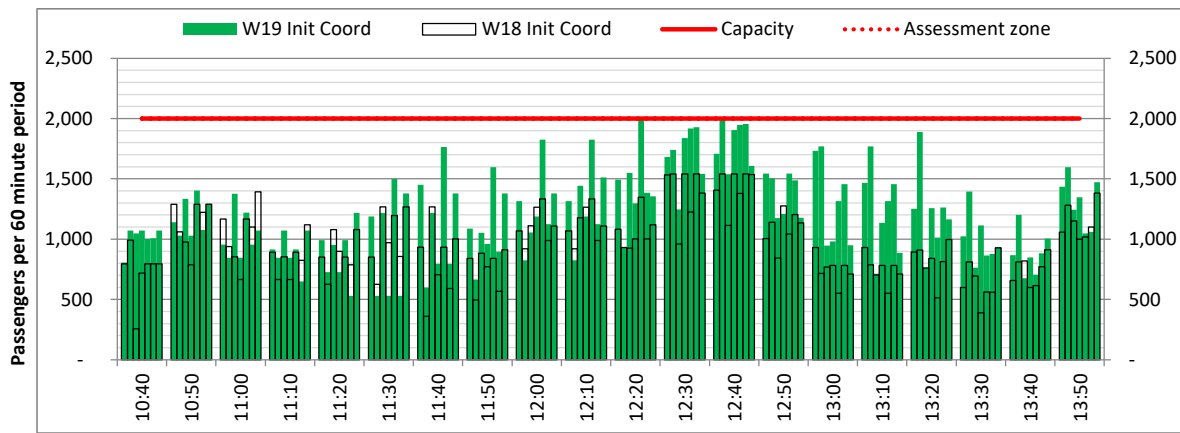
Days: 1234567



Start of count period - Time: UTC



Start of count period - Time: UTC



Start of count period - Time: UTC

Peak Week - Passengers Histogram

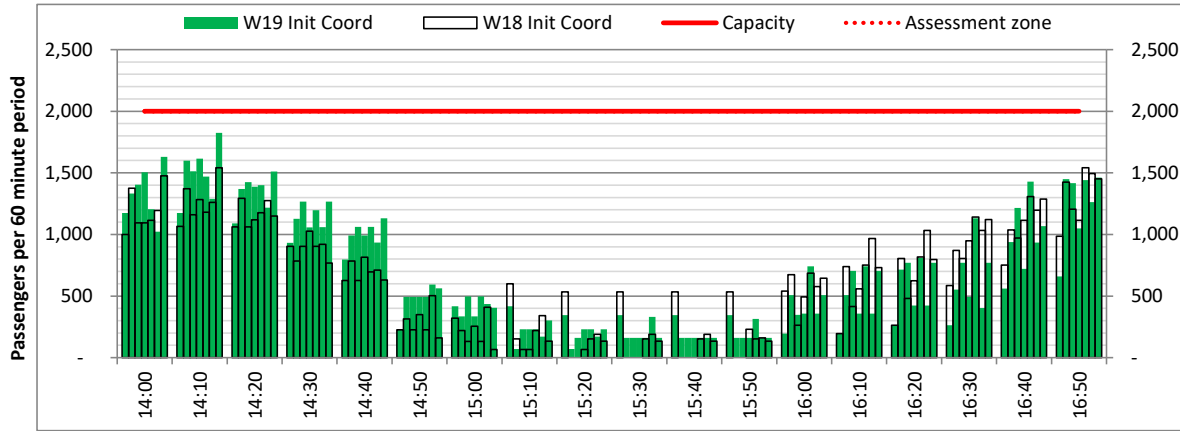
ARRIVAL - 60 minute count rolling every 10 mins (T60/10)



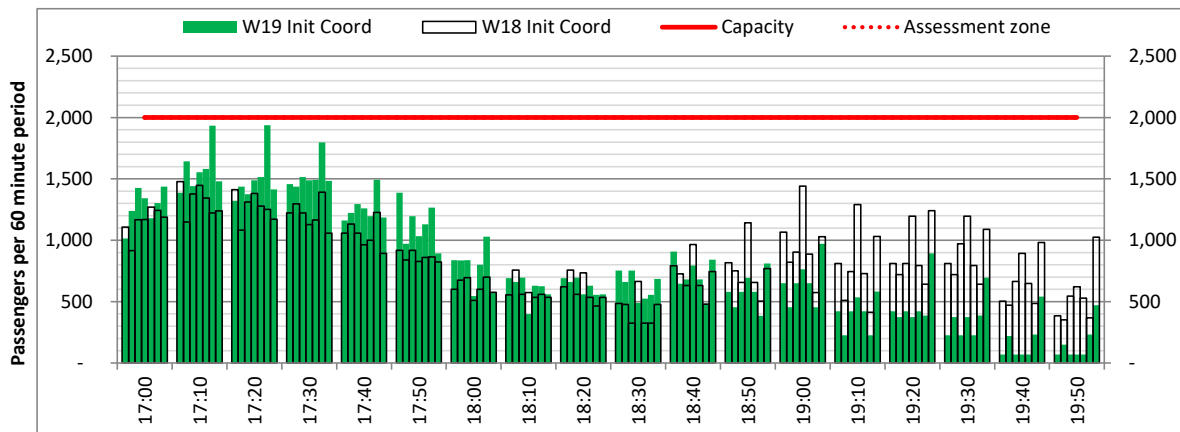
Terminals: Non-Schengen

Operators: All Operators

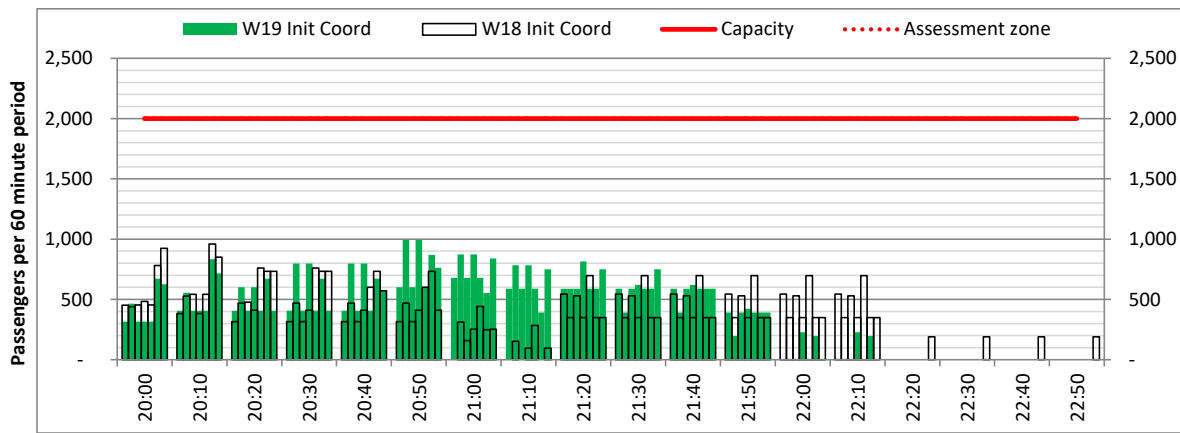
Days: 1234567



Start of count period - Time: UTC



Start of count period - Time: UTC



Start of count period - Time: UTC

Peak Week - Passengers Histogram

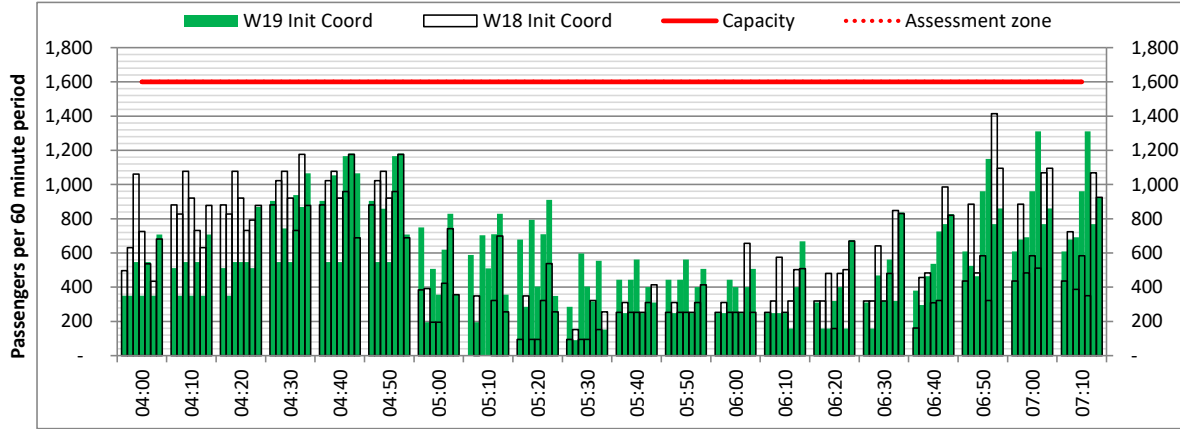
DEPARTURE - 60 minute count rolling every 10 mins (T60/10)



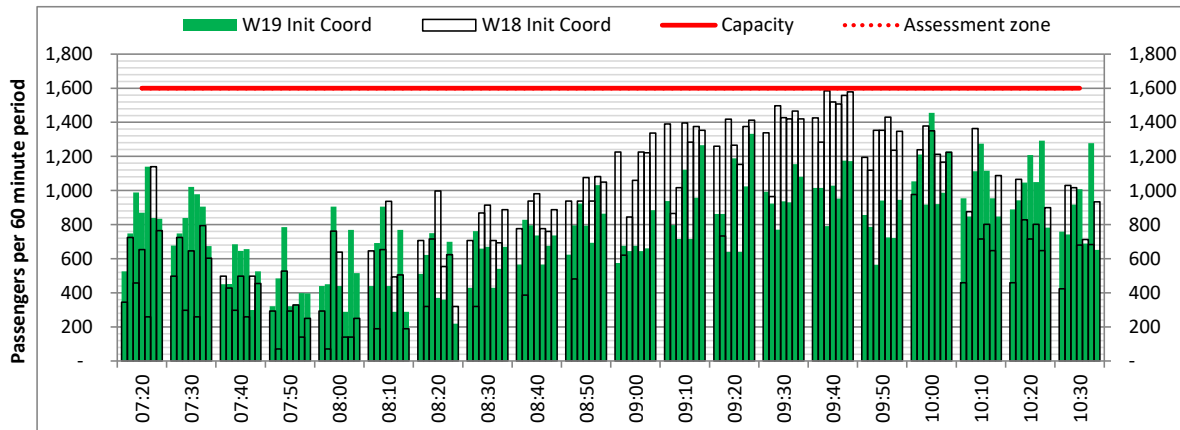
Terminals: Non-Schengen

Operators: All Operators

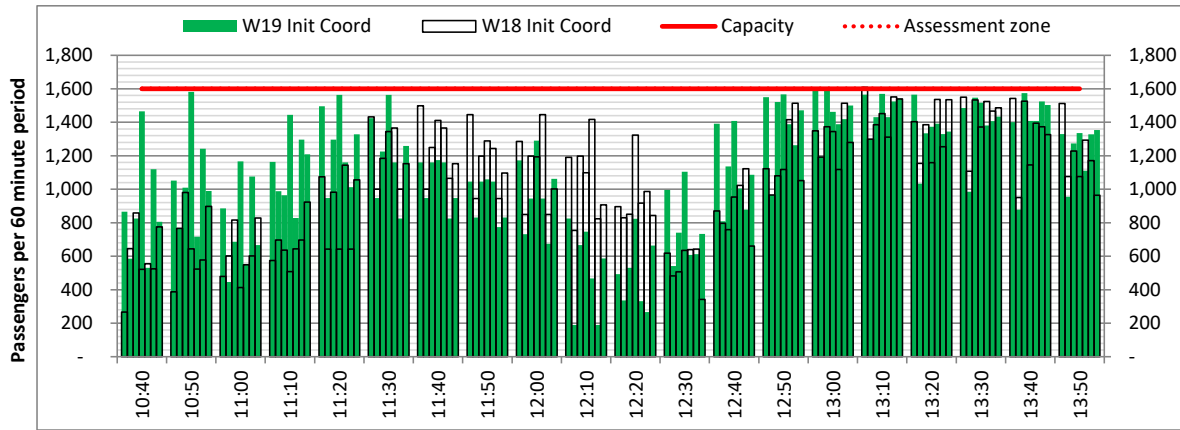
Days: 1234567



Start of count period - Time: UTC



Start of count period - Time: UTC



Start of count period - Time: UTC

Peak Week - Passengers Histogram

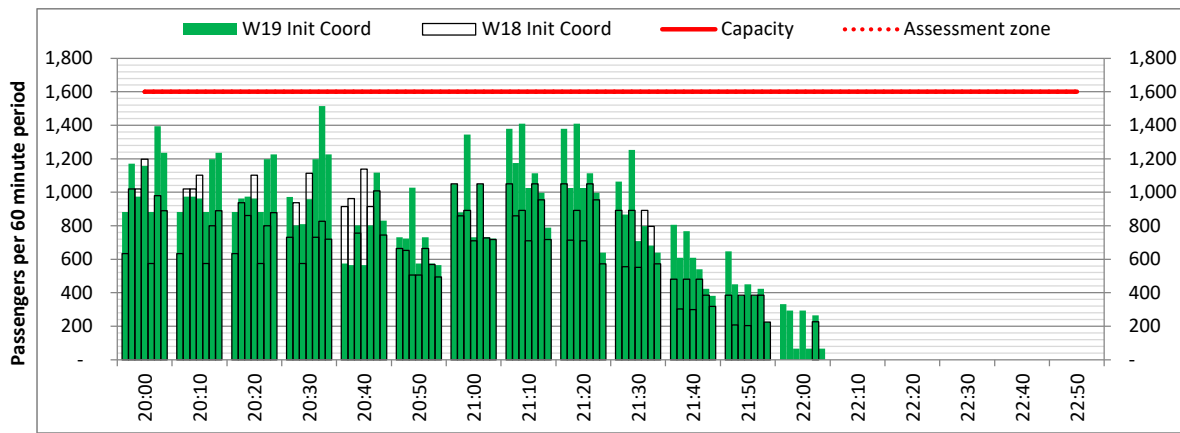
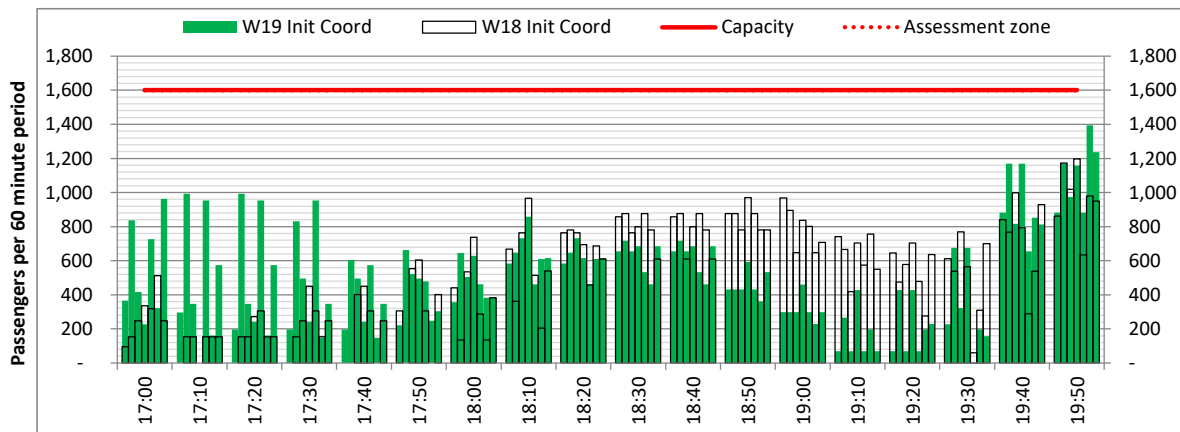
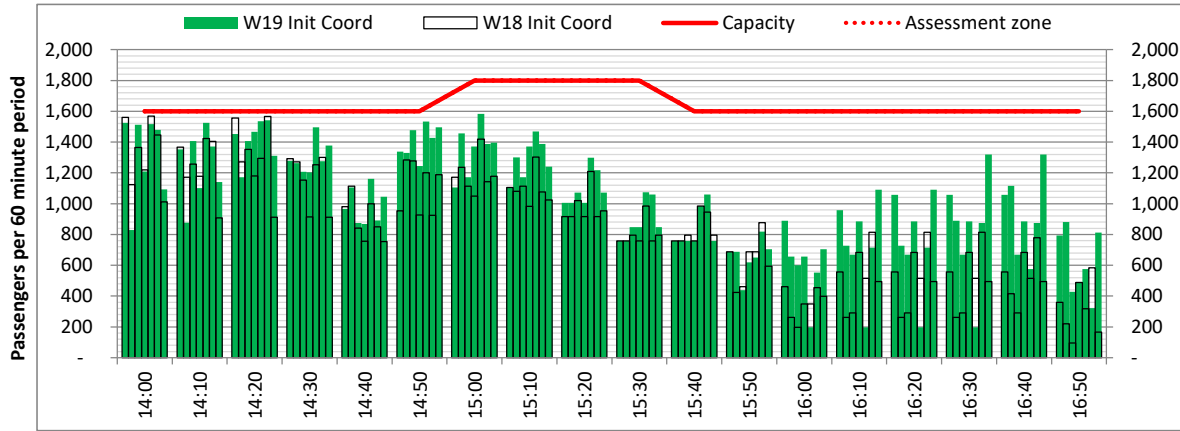


DEPARTURE - 60 minute count rolling every 10 mins (T60/10)

Terminals: 11

Operators: All Operators

Days: 1234567



Peak Week - Passengers Histogram

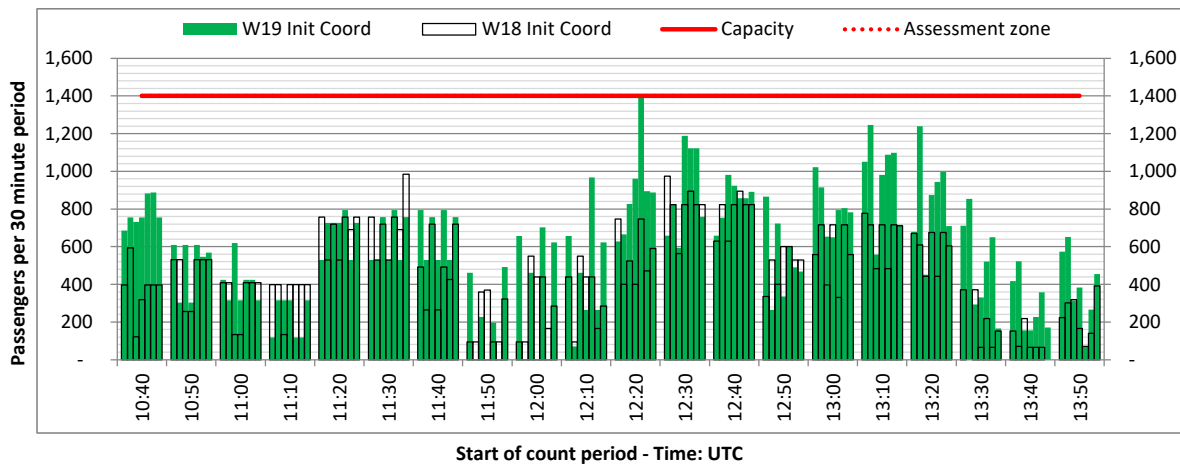
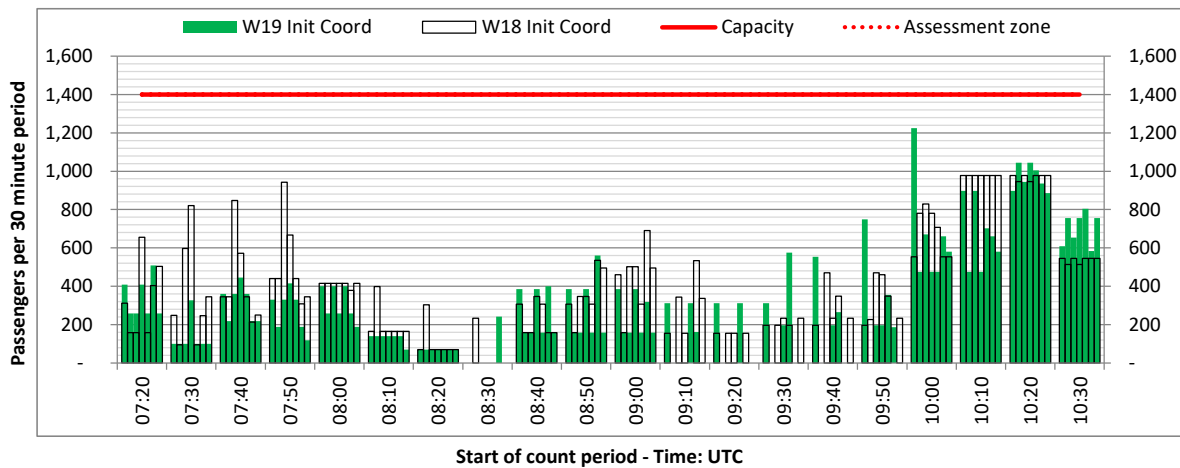
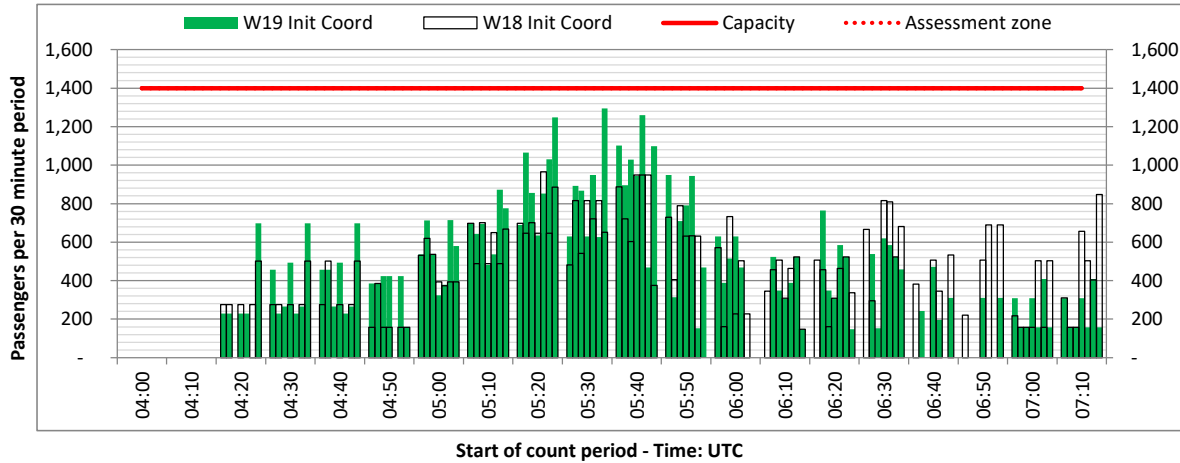
ARRIVAL - 30 minute count rolling every 10 mins (T30/10)



Terminals: Non-Schengen

Operators: All Operators

Days: 1234567



Peak Week - Passengers Histogram

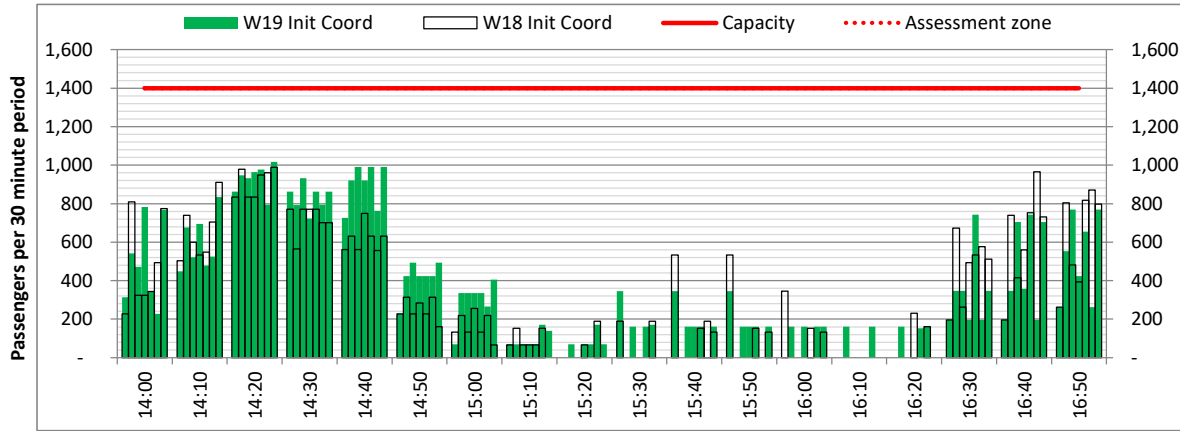


ARRIVAL - 30 minute count rolling every 10 mins (T30/10)

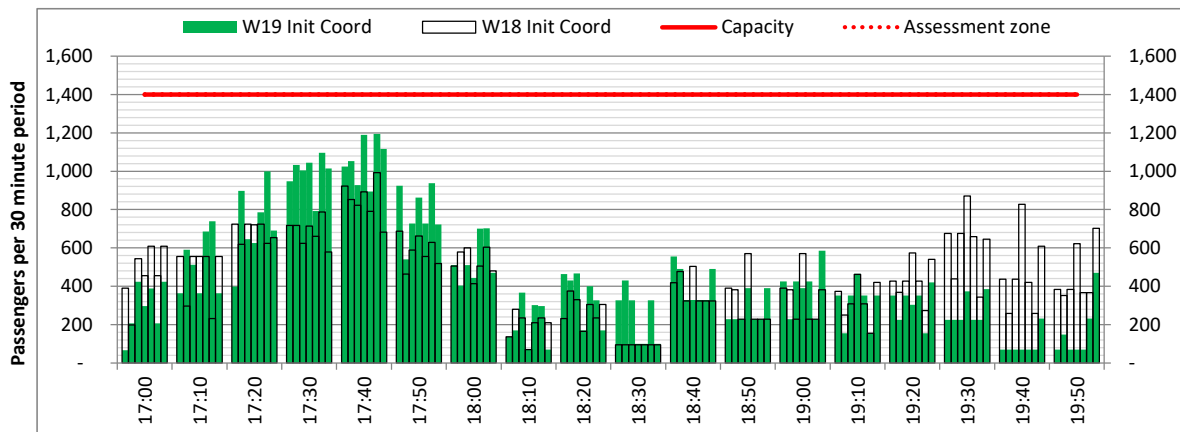
Terminals: Non-Schengen

Operators: All Operators

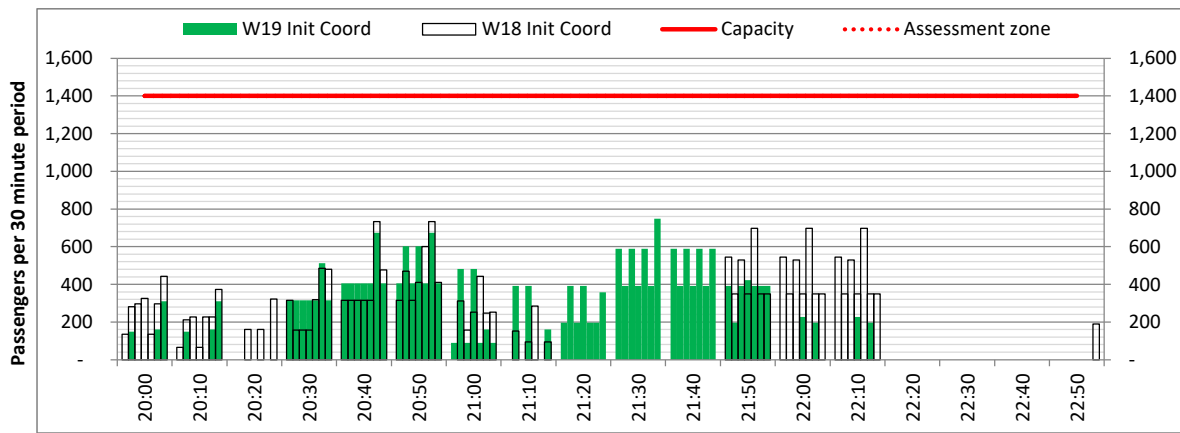
Days: 1234567



Start of count period - Time: UTC



Start of count period - Time: UTC



Start of count period - Time: UTC

Peak Week - Passengers Histogram

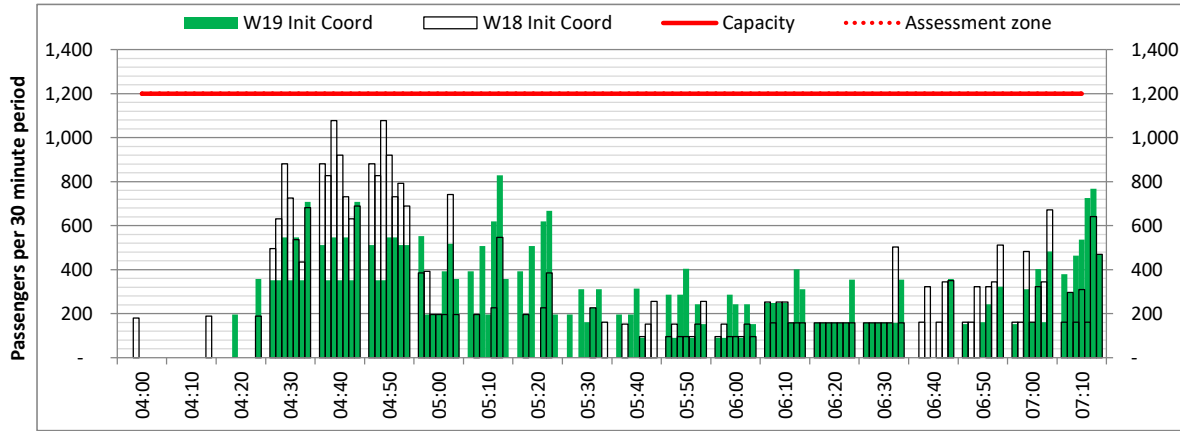
DEPARTURE - 30 minute count rolling every 10 mins (T30/10)



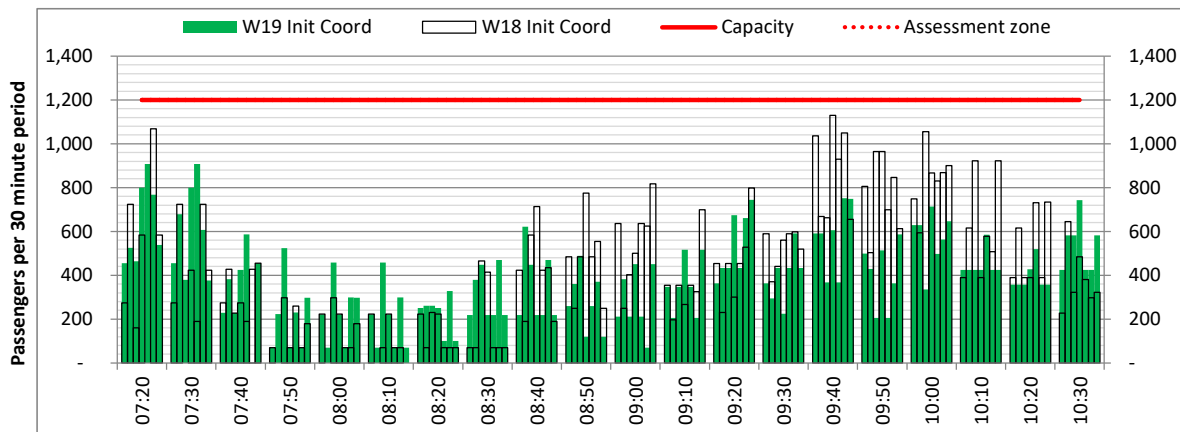
Terminals: Non-Schengen

Operators: All Operators

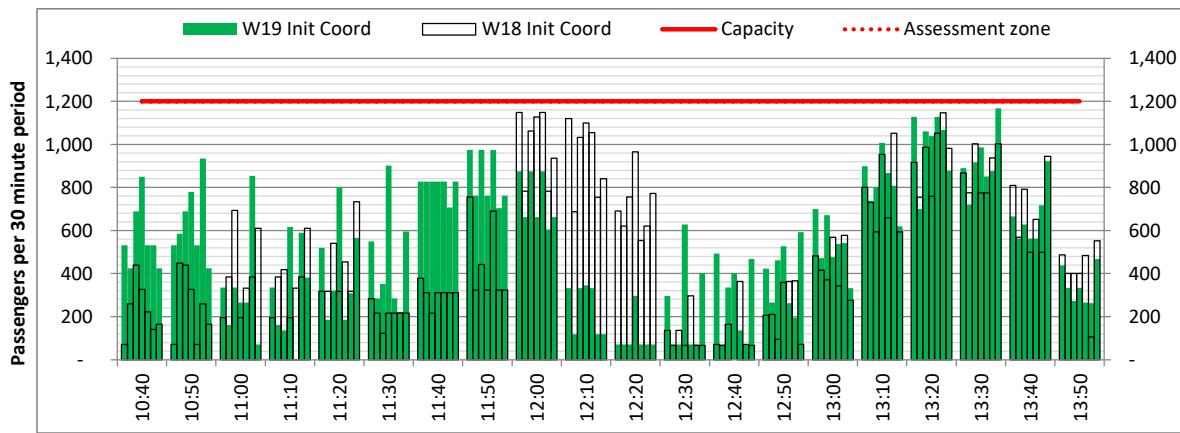
Days: 1234567



Start of count period - Time: UTC



Start of count period - Time: UTC



Start of count period - Time: UTC

Peak Week - Passengers Histogram

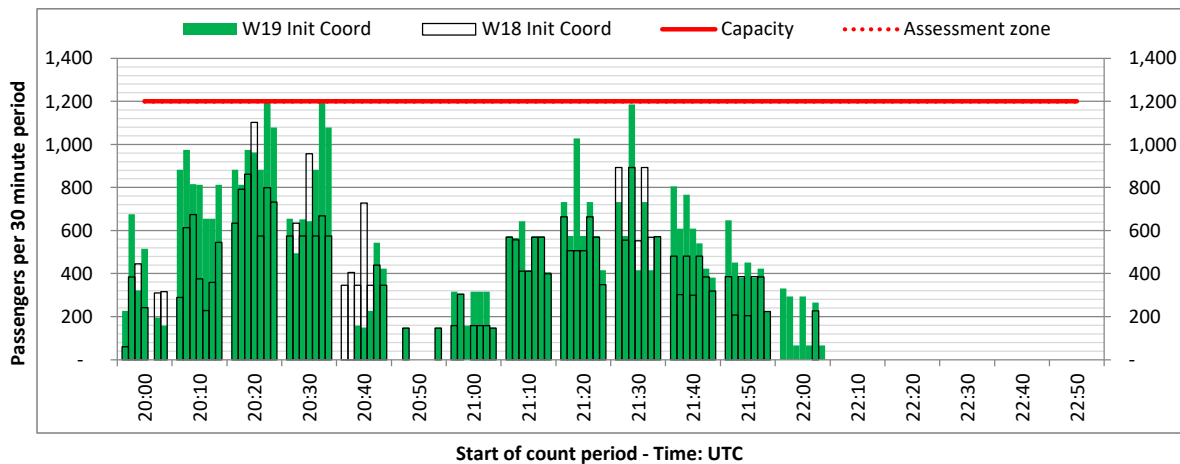
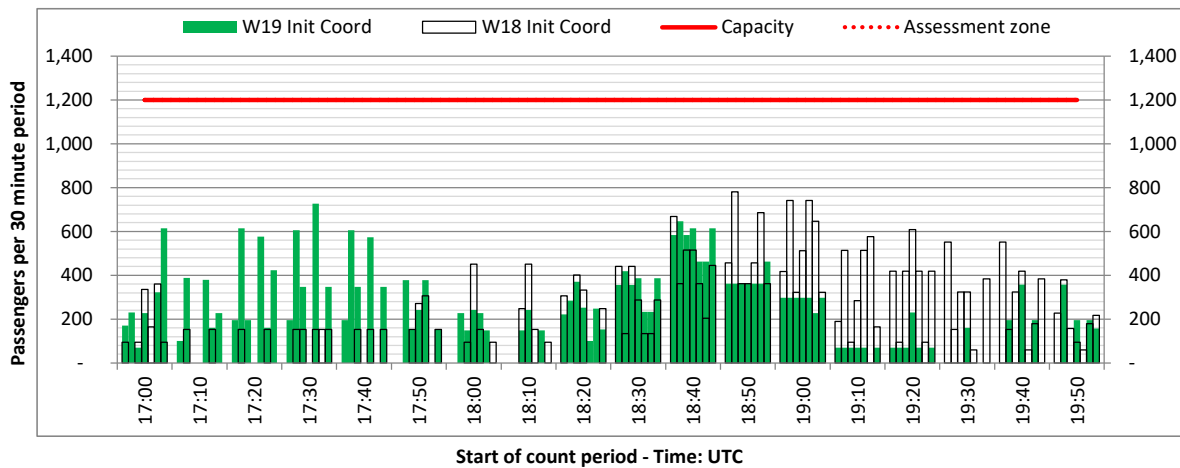
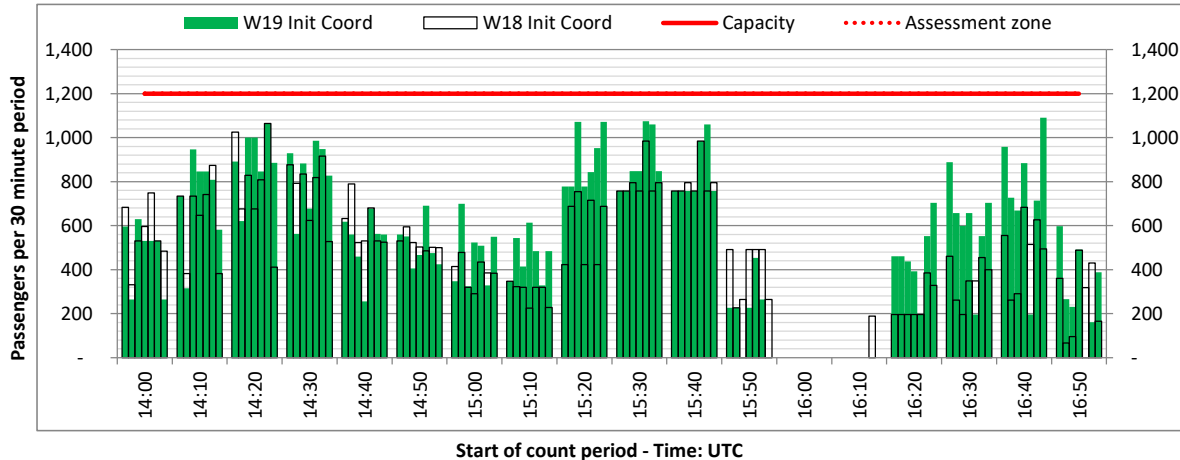


DEPARTURE - 30 minute count rolling every 10 mins (T30/10)

Terminals: Non-Schengen

Operators: All Operators

Days: 1234567



Peak Week - Passengers Histogram

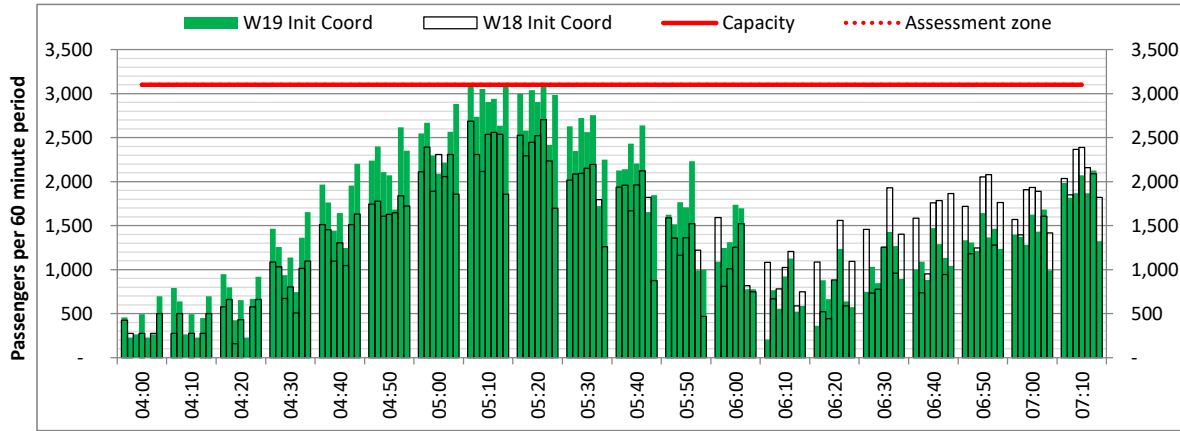
ARRIVAL - 60 minute count rolling every 10 mins (T60/10)



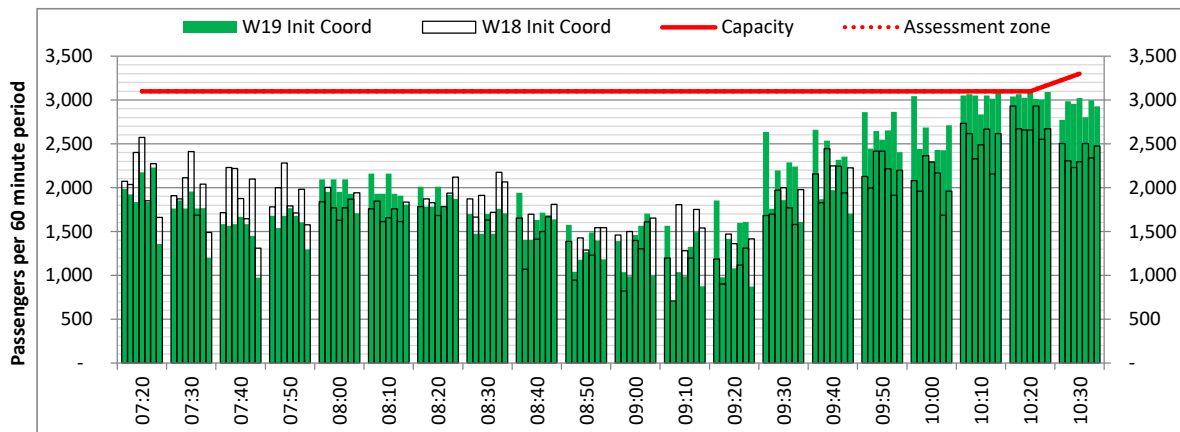
Terminals: All Terminals

Operators: All Operators

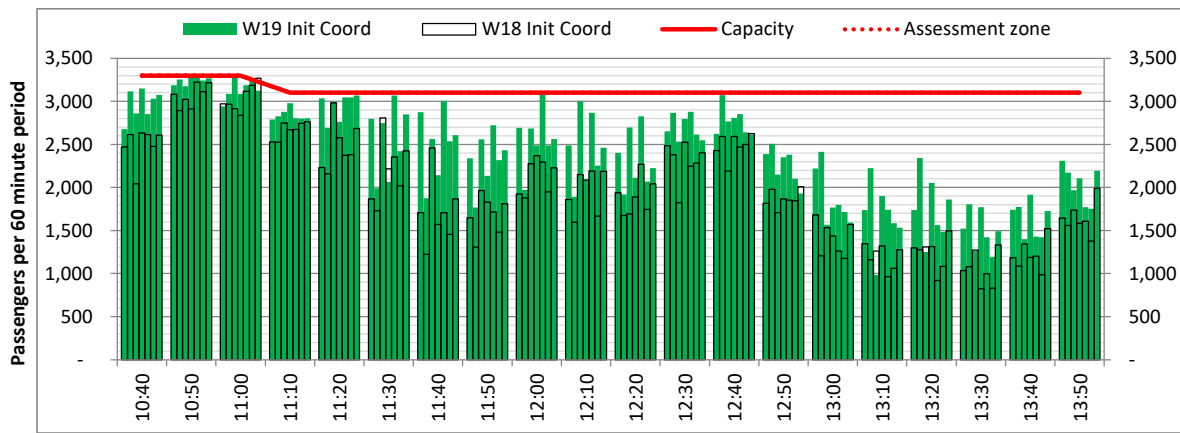
Days: 1234567



Start of count period - Time: UTC



Start of count period - Time: UTC



Start of count period - Time: UTC

Peak Week - Passengers Histogram

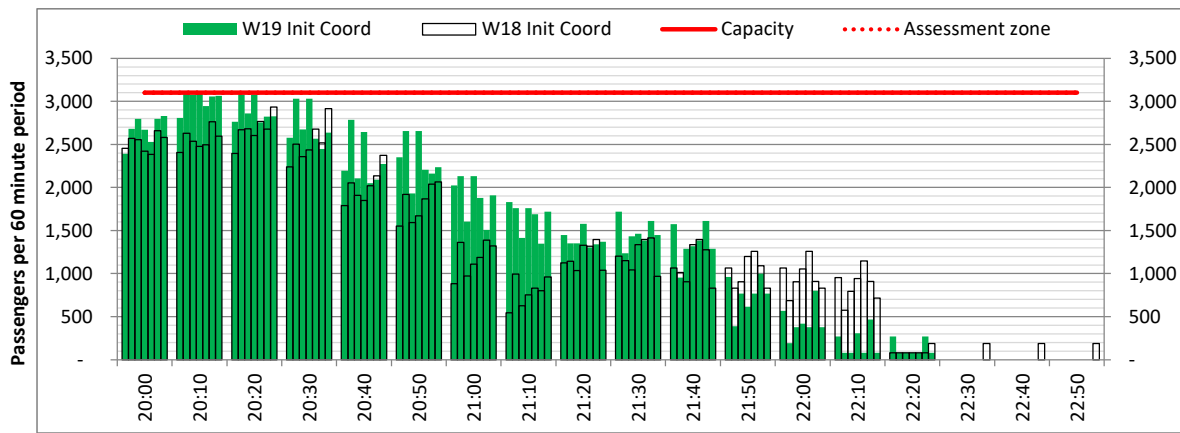
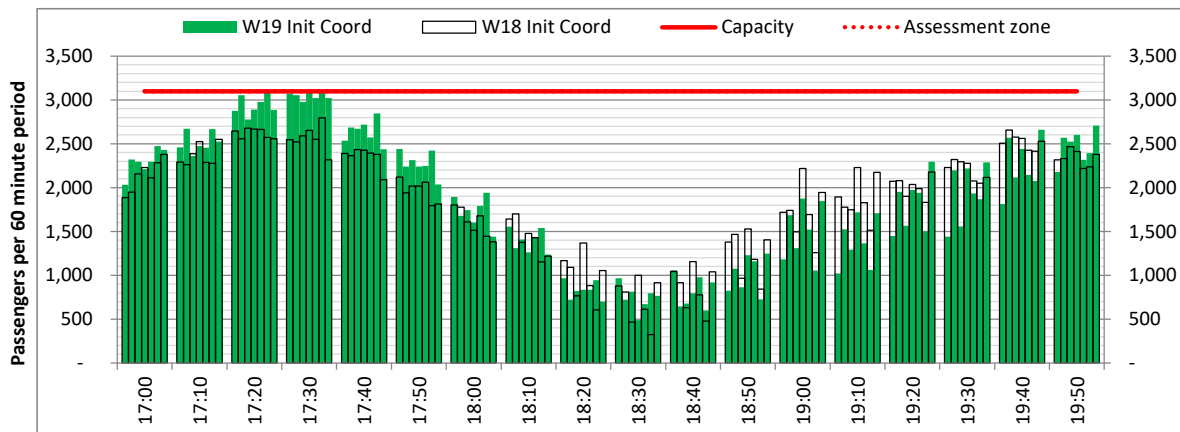
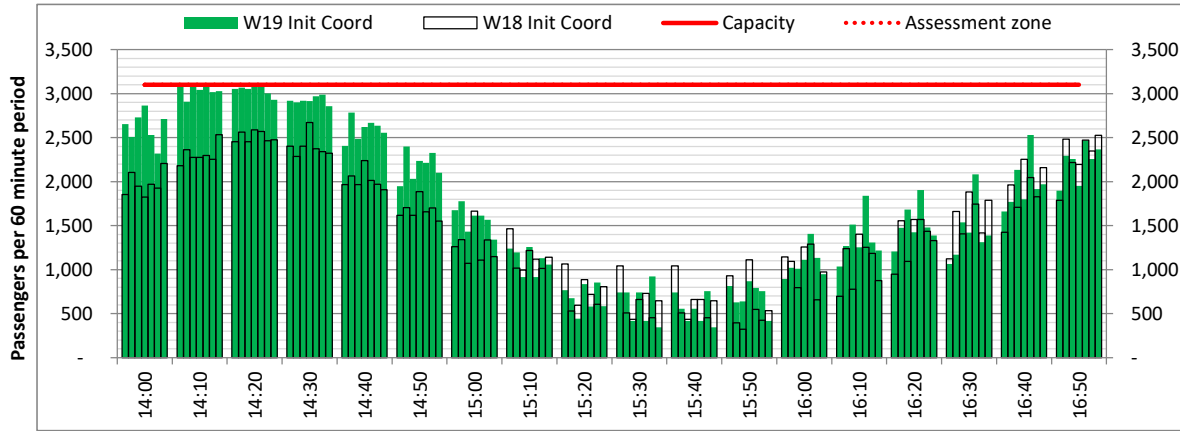


ARRIVAL - 60 minute count rolling every 10 mins (T60/10)

Terminals: All Terminals

Operators: All Operators

Days: 1234567



Peak Week - Passengers Histogram

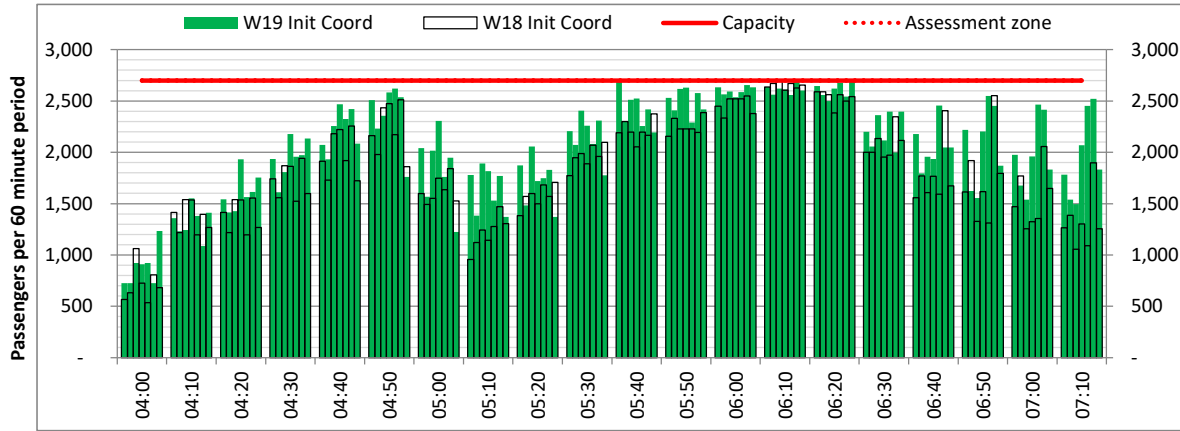
DEPARTURE - 60 minute count rolling every 10 mins (T60/10)



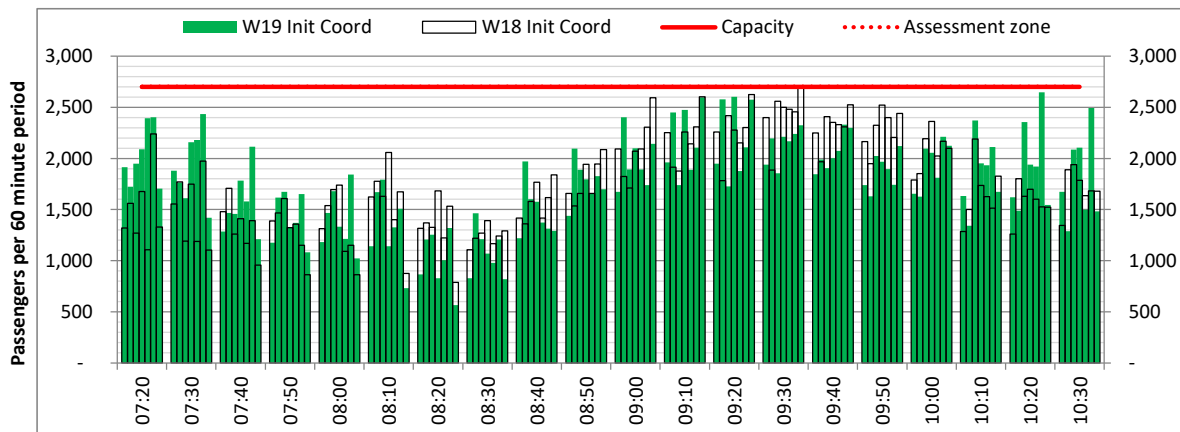
Terminals: All Terminals

Operators: All Operators

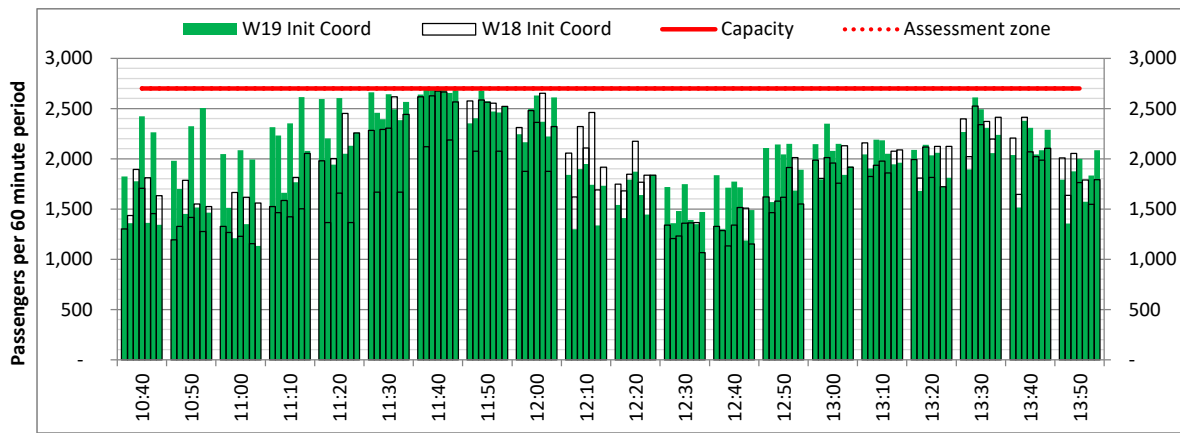
Days: 1234567



Start of count period - Time: UTC



Start of count period - Time: UTC



Start of count period - Time: UTC

Peak Week - Passengers Histogram

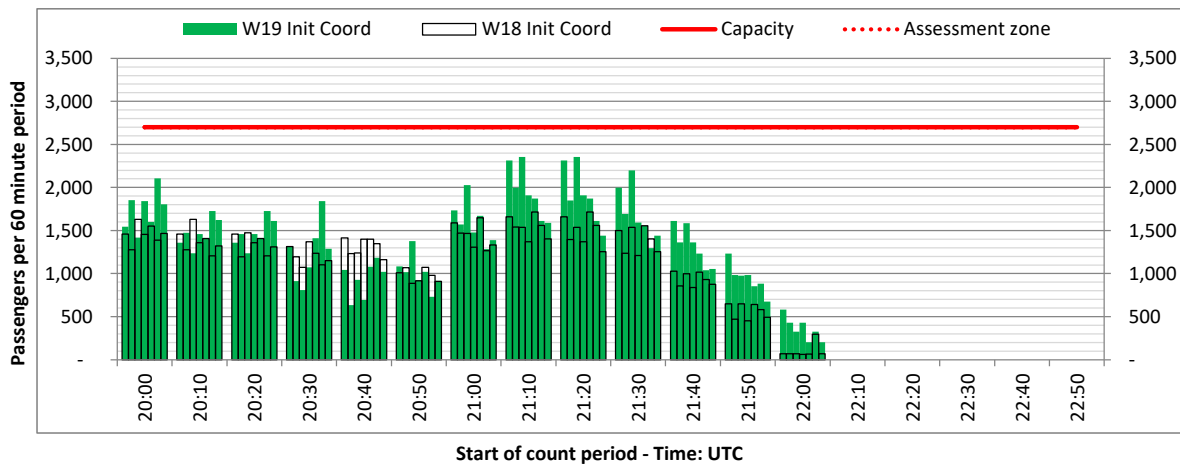
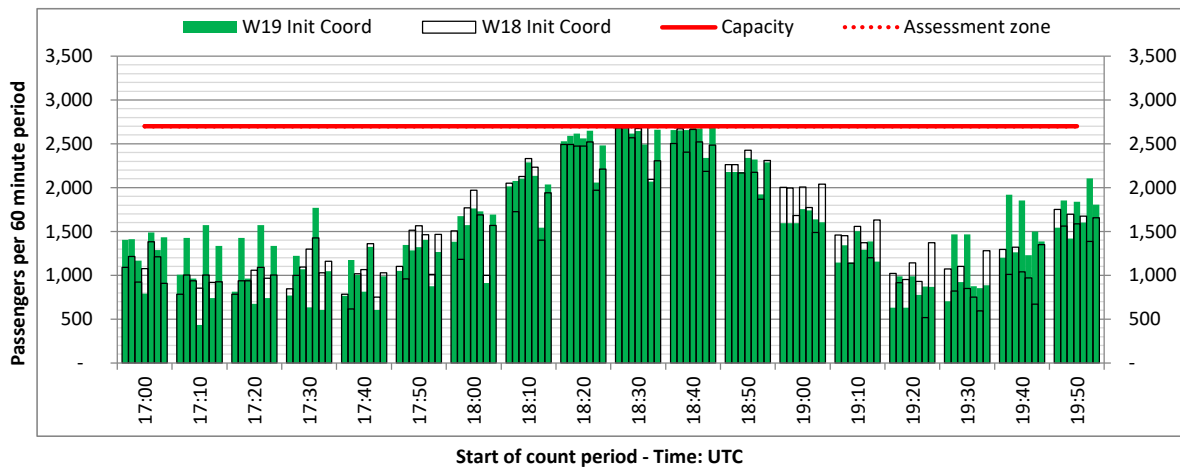
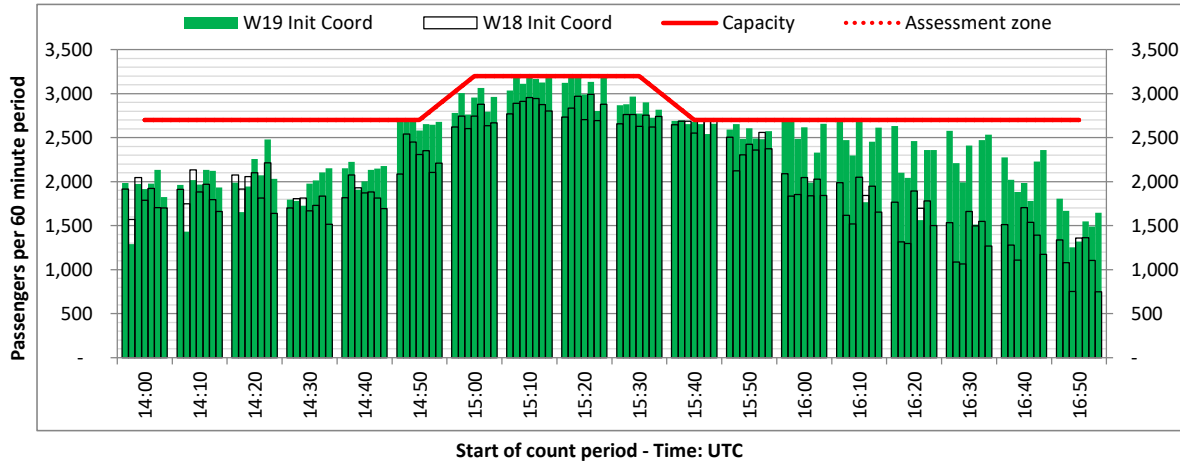
DEPARTURE - 60 minute count rolling every 10 mins (T60/10)



Terminals: All Terminals

Operators: All Operators

Days: 1234567



Air Transport Movement (ATM)	Any aircraft movement which is either a scheduled or chartered passenger or cargo flight.
Common Travel Area (CTA)	Origin or Destination is in Republic of Ireland or the Channel Islands.
Demand	Unconstrained demand before any schedule adjustments have been made.
"Fill-in"	These are gaps in a historic series of slots which the carrier requests to "Fill-in" at Initial Submissions - Fill-ins will be recognisably part of the historic series and will have the same flight details to qualify as a "Fill-in".
Hist (SHL)	Snapshot of historic schedule rolled over from end of the previous equivalent season - as advised to airlines in the SHLs.
ICAO Size A	Aircraft with wingspan between 0.00m - 14.99m.
ICAO Size B	Aircraft with wingspan between 15.00m - 23.99m.
ICAO Size C	Aircraft with wingspan between 24.00m - 35.99m.
ICAO Size D	Aircraft with wingspan between 36.00m - 51.99m.
ICAO Size E	Aircraft with wingspan between 52.00m - 64.99m.
ICAO Size F	Aircraft with wingspan between 65.00m - 80.00m.
Init Coord	Snapshot of schedule immediately after Initial Coordination is completed - as advised to airlines in the SALs.
Passenger Air Transport Movement (PATM)	Any aircraft movement which is either a scheduled or chartered passenger flight.
Start	Snapshot of schedule shortly before the start of the scheduling season (exact date given below where used).
Time: Local	Times shown are in LOCAL time for the airport/scheduling season.
Time: UTC	Times shown are in Universal Time Constant (UTC).

Data snapshot descriptions

W18 Init Coord	W18 schedule as cleared on Wed 06-Jun-18.
W19 Hist (SHL)	W19 schedule as cleared on Thu 18-Apr-19.
W19 Init Coord	W19 schedule as cleared on Thu 06-Jun-19.
Peak Week	Peak week for W18 is Mon 17-Dec-18 to Sun 23-Dec-18. Peak week for W19 is Mon 09-Dec-19 to Sun 15-Dec-19.

For ACL use

	Airport-Season-Branch-Resource	From date	To date	Time
Full Season Rep 1	WAW-W18-SAL Premerge-Standard	Sun 28-Oct-2018	Sat 30-Mar-2019	UTC
Full Season Rep 2	WAW-W19-SHL-Standard	Sun 27-Oct-2019	Sat 28-Mar-2020	UTC
Full Season Rep 3	WAW-W19-SAL Premerge-Standard	Sun 27-Oct-2019	Sat 28-Mar-2020	UTC
	Airport-Season-Branch-Resource	From date	To date	Time
Peak Week Rep 1	WAW-W18-SAL Premerge-Standard	Mon 17-Dec-2018	Sun 23-Dec-2018	UTC
Peak Week Rep 2	WAW-W19-SHL-Standard	Mon 17-Feb-2020	Sun 23-Feb-2020	UTC
Peak Week Rep 3	WAW-W19-SAL Premerge-Standard	Mon 09-Dec-2019	Sun 15-Dec-2019	UTC