

# Stansted Airport (STN)

Winter 2019/20 (W19)



## Initial Coordination Report

Report Date: Mon 17-Jun-2019

### Headlines

	W19 Init Coord	vs. W18 Init Coord	vs. W19 Hist (SHL)
Total Air Transport Movements (Passenger & Freight)	<b>87,297</b>	▲ <b>11.7%</b>	▲ <b>20.3%</b>
Total Passenger Air Transport Movements	<b>81,578</b>	▲ <b>12.0%</b>	▲ <b>21.5%</b>
Total Passenger Air Transport Movement Seats	<b>15,195,163</b>	▲ <b>13.7%</b>	▲ <b>23.0%</b>
Average Seats per Passenger Air Transport Movement	<b>186</b>	▲ <b>1.6%</b>	▲ <b>1.2%</b>
Percentage of allocated slots cleared as requested (OK)	<b>95%</b>		

### Contents

Page	Content
2	Runway Scheduling Limits
3	Coordinator's Report
4	Peak Week - Initial Coordination Analysis
5	ATM Allocation by Operator (Full season and Peak Week Comparison)
6	Peak Week - Allocation and Slot Adjustment Distribution by Operator
7	Significant Route Changes
8	Full Season - ATM Analysis
9	Full Season - PATM Seats Analysis
10	Full Season - Terminal Analysis
11	Full Season - Aircraft Size Analysis
12	Full Season - Seasonality
13	Peak Week - Initial Hourly Runway Demand
14	Peak Week - Hourly Runway Allocation
15	Peak Week - Hourly Runway Allocation Comparison (W19 Init Coord vs. W18 Init Coord)
16	Peak Week - Hourly Runway Allocation Comparison (W19 Init Coord vs. W19 Hist (SHL))
17	Peak Week Histogram - Departure Passengers (T60) - All Terminals - All Operators
18	Peak Week Histogram - Departure Passengers (T60/15) - All Terminals - All Operators
19	Peak Week Histogram - Departure Passengers (T120/15) - All Terminals - All Operators
20	Peak Week Histogram - Arrival Passengers (T60) - 1I - All Operators
21	Peak Week Histogram - Arrival Passengers (T60/15) - 1I - All Operators
22	Glossary

W18 scheduling season runs from Sun 28-Oct-2018 to Sat 30-Mar-2019 (154 days).

W19 scheduling season runs from Sun 27-Oct-2019 to Sat 28-Mar-2020 (154 days).

### Disclaimer

No warranty whether expressed or implied as to the completeness, accuracy, fitness for purpose, or satisfactory quality is given by ACL regarding the information in this report, which is provided by third parties. Accordingly, ACL excludes all liability with regard to such data.

The contents of this report may not be reproduced without the written consent of ACL.

# Runway Scheduling Limits



## Declared Hourly Movement Capacity

W18 Arrivals								Change: W18 to W19							W19 Arrivals								
Hour	Mon	Tue	Wed	Thu	Fri	Sat	Sun	Hour	Mon	Tue	Wed	Thu	Fri	Sat	Sun	Hour	Mon	Tue	Wed	Thu	Fri	Sat	Sun
UTC	1	2	3	4	5	6	7	UTC	1	2	3	4	5	6	7	UTC	1	2	3	4	5	6	7
00	24	24	24	24	24	24	24	00								00	24	24	24	24	24	24	24
01	24	24	24	24	24	24	24	01								01	24	24	24	24	24	24	24
02	24	24	24	24	24	24	24	02								02	24	24	24	24	24	24	24
03	24	24	24	24	24	24	24	03								03	24	24	24	24	24	24	24
04	24	24	24	24	24	24	24	04								04	24	24	24	24	24	24	24
05	24	24	24	24	24	24	24	05								05	24	24	24	24	24	24	24
06	24	24	24	24	24	24	24	06								06	24	24	24	24	24	24	24
07	28	28	28	28	28	28	28	07								07	28	28	28	28	28	28	28
08	27	27	27	27	27	27	27	08								08	27	27	27	27	27	27	27
09	27	27	27	27	27	27	27	09								09	27	27	27	27	27	27	27
10	27	27	27	27	27	27	27	10								10	27	27	27	27	27	27	27
11	28	28	28	28	28	28	28	11								11	28	28	28	28	28	28	28
12	28	28	28	28	28	28	28	12								12	28	28	28	28	28	28	28
13	27	27	27	27	27	27	27	13								13	27	27	27	27	27	27	27
14	27	27	27	27	27	27	27	14								14	27	27	27	27	27	27	27
15	28	28	28	28	28	28	28	15								15	28	28	28	28	28	28	28
16	28	28	28	28	28	28	28	16								16	28	28	28	28	28	28	28
17	28	28	28	28	28	28	28	17								17	28	28	28	28	28	28	28
18	28	28	28	28	28	28	28	18								18	28	28	28	28	28	28	28
19	28	28	28	28	28	28	28	19								19	28	28	28	28	28	28	28
20	27	27	27	27	27	27	27	20								20	27	27	27	27	27	27	27
21	27	27	27	27	27	27	27	21								21	27	27	27	27	27	27	27
22	24	24	24	24	24	24	24	22								22	24	24	24	24	24	24	24
23	24	24	24	24	24	24	24	23								23	24	24	24	24	24	24	24

W18 Departures								Change: W18 to W19							W19 Departures								
Hour	Mon	Tue	Wed	Thu	Fri	Sat	Sun	Hour	Mon	Tue	Wed	Thu	Fri	Sat	Sun	Hour	Mon	Tue	Wed	Thu	Fri	Sat	Sun
UTC	1	2	3	4	5	6	7	UTC	1	2	3	4	5	6	7	UTC	1	2	3	4	5	6	7
00	24	24	24	24	24	24	24	00								00	24	24	24	24	24	24	24
01	24	24	24	24	24	24	24	01								01	24	24	24	24	24	24	24
02	24	24	24	24	24	24	24	02								02	24	24	24	24	24	24	24
03	24	24	24	24	24	24	24	03								03	24	24	24	24	24	24	24
04	24	24	24	24	24	24	24	04								04	24	24	24	24	24	24	24
05	24	24	24	24	24	24	24	05								05	24	24	24	24	24	24	24
06	33	33	33	33	33	33	33	06								06	33	33	33	33	33	33	33
07	33	33	33	33	33	33	33	07								07	33	33	33	33	33	33	33
08	27	27	27	27	27	27	27	08								08	27	27	27	27	27	27	27
09	27	27	27	27	27	27	27	09								09	27	27	27	27	27	27	27
10	27	27	27	27	27	27	27	10								10	27	27	27	27	27	27	27
11	28	28	28	28	28	28	28	11								11	28	28	28	28	28	28	28
12	28	28	28	28	28	28	28	12								12	28	28	28	28	28	28	28
13	27	27	27	27	27	27	27	13								13	27	27	27	27	27	27	27
14	27	27	27	27	27	27	27	14								14	27	27	27	27	27	27	27
15	28	28	28	28	28	28	28	15								15	28	28	28	28	28	28	28
16	28	28	28	28	28	28	28	16								16	28	28	28	28	28	28	28
17	28	28	28	28	28	28	28	17								17	28	28	28	28	28	28	28
18	28	28	28	28	28	28	28	18								18	28	28	28	28	28	28	28
19	28	28	28	28	28	28	28	19								19	28	28	28	28	28	28	28
20	27	27	27	27	27	27	27	20								20	27	27	27	27	27	27	27
21	27	27	27	27	27	27	27	21								21	27	27	27	27	27	27	27
22	24	24	24	24	24	24	24	22								22	24	24	24	24	24	24	24
23	24	24	24	24	24	24	24	23								23	24	24	24	24	24	24	24

W18 Totals								Change: W18 to W19							W19 Totals								
Hour	Mon	Tue	Wed	Thu	Fri	Sat	Sun	Hour	Mon	Tue	Wed	Thu	Fri	Sat	Sun	Hour	Mon	Tue	Wed	Thu	Fri	Sat	Sun
UTC	1	2	3	4	5	6	7	UTC	1	2	3	4	5	6	7	UTC	1	2	3	4	5	6	7
00	36	36	36	36	36	36	36	00								00	36	36	36	36	36	36	36
01	36	36	36	36	36	36	36	01								01	36	36	36	36	36	36	36
02	36	36	36	36	36	36	36	02								02	36	36	36	36	36	36	36
03	36	36	36	36	36	36	36	03								03	36	36	36	36	36	36	36
04	36	36	36	36	36	36	36	04								04	36	36	36	36	36	36	36
05	36	36	36	36	36	36	36	05								05	36	36	36	36	36	36	36
06	44	44	44	44	44	44	44	06								06	44	44	44	44	44	44	44
07	48	48	48	48	48	48	48	07								07	48	48	48	48	48	48	48
08	46	46	46	46	46	46	46	08								08	46	46	46	46	46	46	46
09	42	42	42	42	42	42	42	09								09	42	42	42	42	42	42	42
10	42	42	42	42	42	42	42	10								10	42	42	42	42	42	42	42
11	50	50	50	50	50	50	50	11								11	50	50	50	50	50	50	50
12	44	44	44	44	44	44	44	12								12	44	44	44	44	44	44	44
13	42	42	42	42	42	42	42	13								13	42	42	42	42	42	42	42
14	42	42	42	42	42	42	42	14								14	42	42	42	42	42	42	42
15	44	44	44	44	44	44	44	15								15	44	44	44	44	44	44	44
16	42	42	42	42	42	42	42	16								16	42	42	42	42	42	42	42
17	44	44	44	44	44	44	44	17								17	44	44	44	44	44	44	44
18	50	50	50	50	50	50	50	18								18	50	50	50	50	50	50	50
19	48	48	48	48	48	48	48	19								19	48	48	48	48	48	48	48
20	42	42	42	42	42	42	42	20								20	42	42	42	42	42	42	42
21	42	42	42	42	42	42	42	21								21	42	42	42	42	42	42	42
22	42	42	42	42	42	42	42	22								22	42	42	42	42	42	42	42
23	36	36	36	36	36	36	36	23								23	36	36	36	36	36	36	36

# Coordinator's Report



Total demand	<b>87,412</b> slots		
Total slots allocated	<b>87,297</b> slots	<b>99.87%</b> of total demand	
Number of slots cleared OK	<b>82,886</b> slots	<b>94.95%</b> of total slots cleared	

### Slots adjusted (not OK) due to:

RUNWAY constraints	<b>2,138</b> slots	<b>48.5%</b> of total slots adjusted
TERMINAL constraints	<b>1,855</b> slots	<b>42.1%</b> of total slots adjusted
STAND constraints	- slots	<b>0.0%</b> of total slots adjusted
NIGHT constraints	- slots	- of total slots adjusted
OTHER constraints	- slots	- of total slots adjusted
ARR/DEP TURNAROUND feasibility	<b>418</b> slots	<b>0</b> of total slots adjusted

## Executive Summary

Total allocation for the Winter 2019 season was 87,297 slots, an increase of 11.7% in comparison to Winter 2018 initial coordination and 20.3% increase from Winter 2018 historics. 119 slots were not allocated due to being adhoc. 94.95% of slots were cleared to their requested times.

## Runway Constraints

- Arrivals hourly demand reached a peak of 29 in 1900 hour and 30 in the 2300 hour.
- Departures hourly demand reached a peak of 29 in 0800
- Totals hourly demand reached a peak of 51 in 0800, 51 in 1900

## Terminal Constraints

- Arrivals hourly demand reached a peak of 4276 from 1145-1240, 4333 from 1845-1940, 5046 from 2300-2355
- Departures hourly demand reached a peak of 6459 from 0615-0710
- Departures 2 hourly demand reached a peak of 10,523 from 0600-0655

## Stand Constraints

No Stand Constraint issues.

## Night Constraints

No Night Constraint issues.

## Other Constraints

No Other Constraint issues.

## Arr/Dep Turnaround Feasibility

- 418 slots were re-coordinated due to turnaround feasibility

# Peak Week - Initial Coordination Analysis



Operator	W19 HISTORIC SLOTS				HISTORIC RECLAIM STATISTICS				NEW SLOT REQUESTS						Total Demand at Initial Submissions	Total Allocation (SAL)	% of demand with a slot allocated
	Historic slots	Lost Histories (NBO & MU)	Unclaimed Histories	Reclaimed Histories	Incl. Time Change	Incl. Seat Increase	Incl. Day change	Incl. A+O or D+A swap	Demand - New Requests	Allocated - Year Round Incumbent	Allocated - Year Round New Entrant	Allocated - New Incumbent	Allocated - New Entrant	Allocated - "Fill-in"			
Air Moldova	10	-	-	10	0.0%	0.0%	0.0%	0.0%	-	-	-	-	-	-	10	10	100.0%
Albawings	-	-	-	-	0.0%	0.0%	0.0%	0.0%	6	-	-	6	-	-	6	6	100.0%
Arkia	6	6	2	-	0.0%	0.0%	0.0%	0.0%	4	-	-	4	-	-	6	6	100.0%
Asiana Airlines	4	-	-	4	0.0%	0.0%	0.0%	0.0%	-	-	-	-	-	-	4	4	100.0%
ASL Airlines Belgium	8	-	-	8	0.0%	0.0%	0.0%	0.0%	-	-	-	-	-	-	8	8	100.0%
Atlas Air Inc	4	-	-	4	0.0%	0.0%	0.0%	0.0%	-	-	-	-	-	-	4	4	100.0%
AtlasGlobal	14	-	-	14	0.0%	0.0%	0.0%	0.0%	-	-	-	-	-	-	14	14	100.0%
Aurigny Air Services	8	-	-	8	0.0%	0.0%	0.0%	0.0%	-	-	-	-	-	-	8	8	100.0%
Austrian Airlines	2	-	2	-	0.0%	0.0%	0.0%	0.0%	-	-	-	-	-	-	-	-	-
BA Cityflyer	6	-	6	-	0.0%	0.0%	0.0%	0.0%	-	-	-	-	-	-	-	-	-
BMI Regional	-	-	-	-	0.0%	0.0%	0.0%	0.0%	-	-	-	-	-	-	-	-	-
CargoLogicAir	4	4	-	-	0.0%	0.0%	0.0%	0.0%	10	-	-	10	-	-	10	10	100.0%
Cargolux	6	6	-	-	0.0%	0.0%	0.0%	0.0%	4	-	-	4	-	-	4	4	100.0%
China Southern	8	-	-	8	0.0%	0.0%	0.0%	0.0%	-	-	-	-	-	-	8	8	100.0%
Cobalt Air	-	-	-	-	0.0%	0.0%	0.0%	0.0%	-	-	-	-	-	-	-	-	-
Easylet	372	3	4	373	19.6%	16.6%	0.0%	0.0%	31	-	-	31	-	68	404	404	100.0%
Emirates	14	-	-	14	50.0%	0.0%	0.0%	0.0%	14	-	14	-	-	-	28	28	100.0%
Ethihad Airways	8	8	-	-	0.0%	0.0%	0.0%	0.0%	-	-	-	-	-	-	-	-	-
European Air Transport (DHL)	22	2	-	20	20.0%	0.0%	0.0%	0.0%	8	-	-	8	-	-	28	28	100.0%
Eurowings	60	-	-	60	8.3%	13.3%	0.0%	0.0%	-	-	-	-	-	-	60	60	100.0%
Federal Express	82	-	1	81	7.4%	0.0%	3.7%	0.0%	9	-	-	9	-	-	90	90	100.0%
Jet2.com	118	8	33	77	55.8%	1.3%	0.0%	0.0%	55	-	-	55	-	2	132	132	100.0%
Lauda Motion	32	-	4	28	53.6%	0.0%	0.0%	0.0%	46	-	-	46	-	-	74	74	100.0%
Loganair	58	10	-	48	0.0%	0.0%	0.0%	0.0%	-	-	-	-	-	26	48	48	100.0%
Martinair	2	2	-	-	0.0%	0.0%	0.0%	0.0%	2	-	-	2	-	-	2	2	100.0%
Pegasus Airlines	50	-	2	48	14.6%	0.0%	0.0%	0.0%	10	10	-	-	-	-	58	58	100.0%
Peoples Viennaline	4	4	-	-	0.0%	0.0%	0.0%	0.0%	-	-	-	-	-	-	-	-	-
Pobeda Airlines LLC	8	2	6	-	0.0%	0.0%	0.0%	0.0%	-	-	-	-	-	-	-	-	-
Primera Air	-	-	-	-	0.0%	0.0%	0.0%	0.0%	-	-	-	-	-	-	-	-	-
Qatar Airways	12	3	1	10	90.0%	0.0%	0.0%	0.0%	-	-	-	-	-	-	10	10	100.0%
Ryanair	2,354	123	13	2,218	14.2%	0.0%	0.0%	0.0%	464	-	-	464	-	19	2,682	2,682	100.0%
SAS Scandinavian	-	-	-	-	0.0%	0.0%	0.0%	0.0%	14	14	-	-	-	-	14	14	100.0%
Thomas Cook (UK)	-	-	-	-	0.0%	0.0%	0.0%	0.0%	46	-	-	-	-	-	46	-	0.0%
Titan Airways	24	-	4	20	0.0%	0.0%	0.0%	0.0%	-	-	-	-	-	-	20	20	100.0%
TUI Airways	18	-	5	13	23.1%	0.0%	0.0%	0.0%	24	-	-	1	-	-	37	14	37.8%
Turkish Airlines	6	-	-	6	33.3%	0.0%	0.0%	0.0%	-	-	-	-	-	-	6	6	100.0%
UPS Airlines	28	4	8	32	50.0%	0.0%	0.0%	0.0%	4	-	-	4	-	-	36	36	100.0%
Ural Airlines	-	-	-	-	0.0%	0.0%	0.0%	0.0%	8	-	-	8	-	-	8	8	100.0%
West Atlantic Cargo	30	-	-	30	0.0%	0.0%	0.0%	0.0%	-	-	-	-	-	-	30	30	100.0%
Wideroe	16	8	-	8	25.0%	0.0%	0.0%	0.0%	2	-	-	2	-	-	10	10	100.0%
Wizz Air	-	-	-	-	0.0%	0.0%	0.0%	0.0%	126	-	-	126	-	-	126	126	100.0%
<b>TOTAL</b>	<b>3,398</b>	<b>193</b>	<b>61</b>	<b>3,144</b>	<b>16.2%</b>	<b>2.3%</b>	<b>0.1%</b>	<b>0.0%</b>	<b>887</b>	<b>24</b>	<b>14</b>	<b>780</b>	<b>-</b>	<b>115</b>	<b>4,031</b>	<b>3,962</b>	<b>98.3%</b>

# Air Transport Movement Allocation by Operator

Comparison between W19 Hist (SHL) vs. W19 Init Coord



Operator	FULL SEASON ALLOCATION								PEAK WEEK ALLOCATION							
	W19 ATMs	W19 ATMs	+/- change	W19 Rank	W19 Seats	W19 Seats	+/- change	W19 Rank	W19 ATMs	W19 ATMs	+/- change	W19 Rank	W19 Seats	W19 Seats	+/- change	W19 Rank
Air Moldova	220	220	0	18	37,752	37,752	0	14	10	10	0	18	1,716	1,716	0	13
Albawings	18	132	114	27	3,060	16,896	13,836	19	-	6	6	26	-	768	768	17
Arkia	108	88	-20	30	23,760	18,832	-4,928	17	6	6	0	26	1,320	1,284	-36	15
Asiana Airlines	88	88	0	30	-	-	0	25	4	4	0	29	-	-	0	19
ASL Airlines Belgium	176	176	0	22	-	-	0	25	8	8	0	22	-	-	0	19
Atlas Air Inc	88	88	0	30	-	-	0	25	4	4	0	29	-	-	0	19
AtlasGlobal	308	308	0	16	62,832	62,832	0	10	14	14	0	15	2,856	2,856	0	9
Aurigny Air Services	176	176	0	22	12,672	12,672	0	20	8	8	0	22	576	576	0	18
Austrian Airlines	32	32	0	35	4,608	4,608	0	22	2	-	-2	33	288	-	-288	19
BA Cityflyer	92	93	1	29	9,016	9,114	98	21	6	-	-6	33	588	-	-588	19
BMI Regional	-	-	0	38	-	-	0	25	-	-	0	33	-	-	0	19
CargoLogicAir	88	220	132	18	-	-	0	25	4	10	6	18	-	-	0	19
Cargolux	132	88	-44	30	-	-	0	25	6	4	-2	29	-	-	0	19
China Southern	176	176	0	22	-	-	0	25	8	8	0	22	-	-	0	19
Cobalt Air	-	-	0	38	-	-	0	25	-	-	0	33	-	-	0	19
Corendon Airlines Europe	-	14	14	37	-	2,646	2,646	23	-	-	0	33	-	-	0	19
EasyJet	7,583	8,438	855	2	1,228,818	1,404,708	175,890	2	372	404	32	2	60,192	67,464	7,272	2
Egypt Air	54	-	-54	38	-	-	0	25	-	-	0	33	-	-	0	19
Emirates	308	616	308	12	109,032	218,064	109,032	8	14	28	14	12	4,956	9,912	4,956	8
Enter Air	-	-	0	38	-	-	0	25	-	-	0	33	-	-	0	19
Ethiad Airways	206	-	-206	38	-	-	0	25	8	-	-8	33	-	-	0	19
European Air Transport (DHL)	484	615	131	13	-	-	0	25	22	28	6	12	-	-	0	19
Eurowings	1,320	1,320	0	7	231,000	231,000	0	7	60	60	0	7	10,500	10,500	0	7
Federal Express	1,800	1,980	180	5	-	-	0	25	82	90	8	5	-	-	0	19
Indigo	-	176	176	22	-	39,072	39,072	13	-	-	0	33	-	-	0	19
Jet2.com	1,997	2,956	959	3	377,433	559,284	181,851	4	118	132	14	3	22,302	25,068	2,766	4
Lauda Motion	664	1,644	980	6	130,656	295,920	165,264	5	32	74	42	6	6,312	13,320	7,008	5
Loganair	664	1,056	392	9	24,792	44,000	19,208	12	58	48	-10	9	2,490	2,000	-490	12
Lufthansa	-	-	0	38	-	-	0	25	-	-	0	33	-	-	0	19
Martinair	44	44	0	34	-	-	0	25	2	2	0	32	-	-	0	19
Pegasus Airlines	1,066	1,286	220	8	201,474	243,054	41,580	6	50	58	8	8	9,450	10,962	1,512	6
Peoples Viennaline	48	32	-16	35	3,648	2,432	-1,216	24	4	-	-4	33	304	-	-304	19
Pobeda Airlines LLC	176	-	-176	38	33,264	-	-33,264	25	8	-	-8	33	1,512	-	-1,512	19
Primeria Air	-	-	0	38	-	-	0	25	-	-	0	33	-	-	0	19
Qatar Airways	230	220	-10	18	-	-	0	25	12	10	-2	18	-	-	0	19
Ryanair	51,616	59,027	7,411	1	9,755,424	11,156,103	1,400,679	1	2,354	2,682	328	1	444,906	506,898	61,992	1
SAS Scandinavian	-	308	308	16	-	55,440	55,440	11	-	14	14	15	-	2,520	2,520	11
Swiss International	-	-	0	38	-	-	0	25	-	-	0	33	-	-	0	19
Thomas Cook (UK)	-	-	0	38	-	-	0	25	-	-	0	33	-	-	0	19
Titan Airways	502	534	32	14	12,524	18,988	6,464	16	24	20	-4	14	808	-	-808	19
TUI Airways	349	394	45	15	65,961	74,466	8,505	9	18	14	-4	15	3,402	2,646	-756	10
Turkish Airlines	132	132	0	27	-	-	0	25	6	6	0	26	-	-	0	19
UPS Airlines	638	792	154	10	-	-	0	25	28	36	8	10	-	-	0	19
Ural Airlines	-	176	176	22	-	32,560	32,560	15	-	8	8	22	-	1,480	1,480	14
West Atlantic Cargo	660	660	0	11	-	-	0	25	30	30	0	11	-	-	0	19
Wideroe	350	220	-130	18	27,300	17,160	-10,140	18	16	10	-6	18	1,248	780	-468	16
Wizz Air	-	2,772	2,772	4	-	637,560	637,560	3	-	126	126	4	-	28,980	28,980	3
<b>TOTAL</b>	<b>72,593</b>	<b>87,297</b>	<b>14,704</b>		<b>12,355,026</b>	<b>15,195,163</b>	<b>2,840,137</b>		<b>3,398</b>	<b>3,962</b>	<b>564</b>		<b>575,726</b>	<b>689,730</b>	<b>114,004</b>	

Operators with 0 'ATMs' in both W19 Hist (SHL) & W19 Init Coord schedules are included in the table due to appearing in the W18 Init Coord schedule (either with/without allocated slots).

# Peak Week - Allocation and Slot Adjustment Distribution by Operator



Schedule: W19 Init Coord

Operator	W19 allocated ATMs	SLOT ADJUSTMENTS (MINUTES OFF REQUESTED TIME)													Requests with NO slot allocated			
		0	5	10	15	20	25	30	35	40	45	50	55	60		>60		
Air Moldova	10	100.0%	0.0%	0.0%	0.0%	0.0%	0.0%	0.0%	0.0%	0.0%	0.0%	0.0%	0.0%	0.0%	0.0%	0.0%	0.0%	-
Albawings	6	100.0%	0.0%	0.0%	0.0%	0.0%	0.0%	0.0%	0.0%	0.0%	0.0%	0.0%	0.0%	0.0%	0.0%	0.0%	0.0%	-
Arkia	6	100.0%	0.0%	0.0%	0.0%	0.0%	0.0%	0.0%	0.0%	0.0%	0.0%	0.0%	0.0%	0.0%	0.0%	0.0%	0.0%	-
Asiana Airlines	4	100.0%	0.0%	0.0%	0.0%	0.0%	0.0%	0.0%	0.0%	0.0%	0.0%	0.0%	0.0%	0.0%	0.0%	0.0%	0.0%	-
ASL Airlines Belgium	8	100.0%	0.0%	0.0%	0.0%	0.0%	0.0%	0.0%	0.0%	0.0%	0.0%	0.0%	0.0%	0.0%	0.0%	0.0%	0.0%	-
Atlas Air Inc	4	100.0%	0.0%	0.0%	0.0%	0.0%	0.0%	0.0%	0.0%	0.0%	0.0%	0.0%	0.0%	0.0%	0.0%	0.0%	0.0%	-
AtlasGlobal	14	100.0%	0.0%	-	0.0%	0.0%	0.0%	0.0%	0.0%	0.0%	0.0%	0.0%	0.0%	0.0%	0.0%	0.0%	0.0%	-
Aurigny Air Services	8	100.0%	0.0%	-	0.0%	0.0%	0.0%	0.0%	0.0%	0.0%	0.0%	0.0%	0.0%	0.0%	0.0%	0.0%	0.0%	-
Austrian Airlines	-	-	-	-	-	-	-	-	-	-	-	-	-	-	-	-	-	-
BA Cityflyer	-	-	-	-	-	-	-	-	-	-	-	-	-	-	-	-	-	-
BMI Regional	-	-	-	-	-	-	-	-	-	-	-	-	-	-	-	-	-	-
CargoLogicAir	10	90.0%	0.0%	0.0%	0.0%	10.0%	0.0%	0.0%	0.0%	0.0%	0.0%	0.0%	0.0%	0.0%	0.0%	0.0%	0.0%	-
Cargolux	4	75.0%	0.0%	0.0%	0.0%	0.0%	0.0%	25.0%	0.0%	0.0%	0.0%	0.0%	0.0%	0.0%	0.0%	0.0%	0.0%	-
China Southern	8	100.0%	0.0%	0.0%	0.0%	0.0%	0.0%	0.0%	0.0%	0.0%	0.0%	0.0%	0.0%	0.0%	0.0%	0.0%	0.0%	-
Cobalt Air	-	-	-	-	-	-	-	-	-	-	-	-	-	-	-	-	-	-
EasyJet	404	98.3%	0.5%	0.7%	0.0%	0.2%	0.0%	0.0%	0.0%	0.0%	0.0%	0.0%	0.2%	0.0%	0.0%	0.0%	0.0%	-
Emirates	28	100.0%	0.0%	0.0%	0.0%	0.0%	0.0%	0.0%	0.0%	0.0%	0.0%	0.0%	0.0%	0.0%	0.0%	0.0%	0.0%	-
Ethiad Airways	-	-	-	-	-	-	-	-	-	-	-	-	-	-	-	-	-	-
European Air Transport (DHL)	28	100.0%	0.0%	0.0%	0.0%	0.0%	0.0%	0.0%	0.0%	0.0%	0.0%	0.0%	0.0%	0.0%	0.0%	0.0%	0.0%	-
Eurowings	60	100.0%	0.0%	0.0%	0.0%	0.0%	0.0%	0.0%	0.0%	0.0%	0.0%	0.0%	0.0%	0.0%	0.0%	0.0%	0.0%	-
Federal Express	90	100.0%	0.0%	0.0%	0.0%	0.0%	0.0%	0.0%	0.0%	0.0%	0.0%	0.0%	0.0%	0.0%	0.0%	0.0%	0.0%	-
Jet2.com	132	78.8%	6.1%	0.0%	0.0%	3.8%	0.0%	2.3%	0.8%	0.0%	0.8%	0.8%	0.8%	0.8%	0.8%	5.3%	-	-
Lauda Motion	74	87.8%	1.4%	1.4%	0.0%	0.0%	1.4%	5.4%	0.0%	0.0%	2.7%	0.0%	0.0%	0.0%	0.0%	0.0%	0.0%	-
Loganair	48	100.0%	0.0%	0.0%	0.0%	0.0%	0.0%	0.0%	0.0%	0.0%	0.0%	0.0%	0.0%	0.0%	0.0%	0.0%	0.0%	-
Martinair	2	100.0%	0.0%	0.0%	0.0%	0.0%	0.0%	0.0%	0.0%	0.0%	0.0%	0.0%	0.0%	0.0%	0.0%	0.0%	0.0%	-
Pegasus Airlines	58	100.0%	0.0%	0.0%	0.0%	0.0%	0.0%	0.0%	0.0%	0.0%	0.0%	0.0%	0.0%	0.0%	0.0%	0.0%	0.0%	-
Peoples Viennaline	-	-	-	-	-	-	-	-	-	-	-	-	-	-	-	-	-	-
Pobeda Airlines LLC	-	-	-	-	-	-	-	-	-	-	-	-	-	-	-	-	-	-
Primera Air	-	-	-	-	-	-	-	-	-	-	-	-	-	-	-	-	-	-
Qatar Airways	10	100.0%	0.0%	0.0%	0.0%	0.0%	0.0%	0.0%	0.0%	0.0%	0.0%	0.0%	0.0%	0.0%	0.0%	0.0%	0.0%	-
Ryanair	2,682	95.3%	1.2%	0.6%	0.7%	0.4%	0.2%	0.0%	0.2%	0.1%	0.1%	0.4%	0.1%	0.1%	0.1%	0.7%	-	-
SAS Scandinavian	14	100.0%	0.0%	0.0%	0.0%	0.0%	0.0%	0.0%	0.0%	0.0%	0.0%	0.0%	0.0%	0.0%	0.0%	0.0%	0.0%	-
Thomas Cook (UK)	-	-	-	-	-	-	-	-	-	-	-	-	-	-	-	-	-	46
Titan Airways	20	100.0%	0.0%	0.0%	0.0%	0.0%	0.0%	0.0%	0.0%	0.0%	0.0%	0.0%	0.0%	0.0%	0.0%	0.0%	0.0%	-
TUI Airways	14	100.0%	0.0%	0.0%	0.0%	0.0%	0.0%	0.0%	0.0%	0.0%	0.0%	0.0%	0.0%	0.0%	0.0%	0.0%	0.0%	23
Turkish Airlines	6	100.0%	0.0%	0.0%	0.0%	0.0%	0.0%	0.0%	0.0%	0.0%	0.0%	0.0%	0.0%	0.0%	0.0%	0.0%	0.0%	-
UPS Airlines	36	100.0%	0.0%	0.0%	0.0%	0.0%	0.0%	0.0%	0.0%	0.0%	0.0%	0.0%	0.0%	0.0%	0.0%	0.0%	0.0%	-
Ural Airlines	8	0.0%	100.0%	0.0%	0.0%	0.0%	0.0%	0.0%	0.0%	0.0%	0.0%	0.0%	0.0%	0.0%	0.0%	0.0%	0.0%	-
West Atlantic Cargo	30	100.0%	0.0%	0.0%	0.0%	0.0%	0.0%	0.0%	0.0%	0.0%	0.0%	0.0%	0.0%	0.0%	0.0%	0.0%	0.0%	-
Wideroe	10	100.0%	0.0%	0.0%	0.0%	0.0%	0.0%	0.0%	0.0%	0.0%	0.0%	0.0%	0.0%	0.0%	0.0%	0.0%	0.0%	-
Wizz Air	126	77.8%	11.1%	0.0%	0.0%	0.0%	0.0%	0.0%	0.0%	0.0%	0.0%	0.0%	0.0%	0.0%	0.0%	11.1%	-	-
<b>TOTAL</b>	<b>3,962</b>	<b>94.8%</b>	<b>1.6%</b>	<b>0.5%</b>	<b>0.5%</b>	<b>0.5%</b>	<b>0.2%</b>	<b>0.2%</b>	<b>0.2%</b>	<b>0.1%</b>	<b>0.1%</b>	<b>0.3%</b>	<b>0.1%</b>	<b>0.1%</b>	<b>1.0%</b>	<b>69</b>		

Operators with 0 'allocated ATMs' and 0 'Requests with NO slot allocated' in W19, are included in this list due to having slots allocated in either W18 Init Coord or W19 Hist (SHL) schedules.

# Significant Route Changes

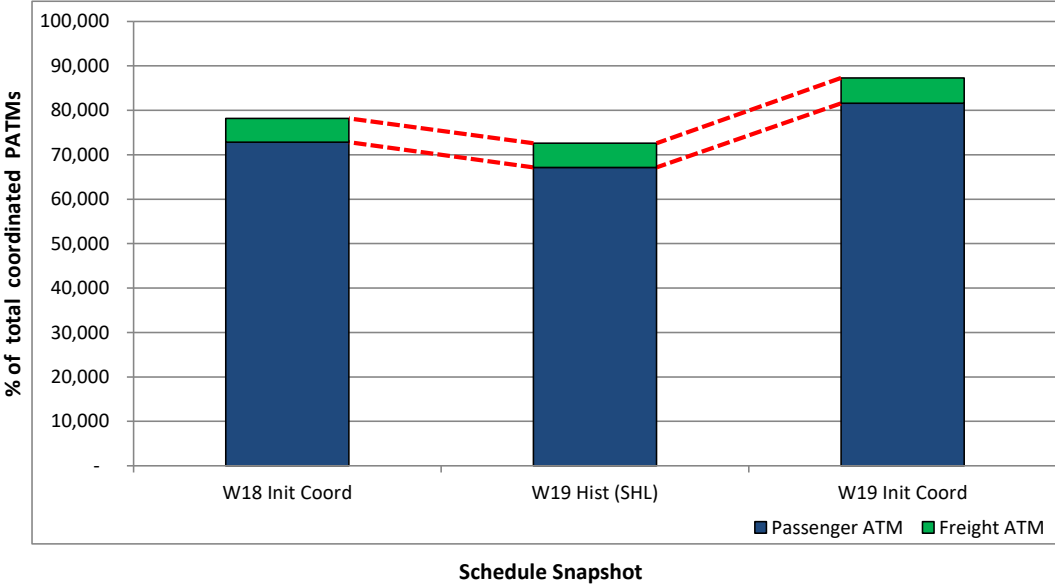


Operator	Category	Description of change from W18 schedule to W19 schedule
Albawings	<b>NEW</b>	Route to TIA
CargoLogicAir	<b>NEW</b>	New 1 x weekly from LCK
CargoLogicAir	<b>NEW</b>	New 2 x weekly from ORD
EasyJet	<b>NEW</b>	Routes to BJV, CDG, DBV, DLM, TLV, ZTH, HRG
EasyJet	<b>CANCELLED</b>	Route to KEF
Emirates	CHANGE	Additional daily to DXB
European Air Transport (DHL)	<b>NEW</b>	Route to BGY, BRU, CGN
Eurowings	<b>CANCELLED</b>	Routes to STR, VIE
Federal Express	<b>NEW</b>	Route to EWR, ICN, HKG
Indigo	<b>NEW</b>	Route to DEL
Jet2.com	<b>NEW</b>	Route to CFU, MLA, ENF
Jet2.com	CHANGE	Additional services to ACE, AYT, GVA, PFO, TFS
Lauda Motion	<b>NEW</b>	Route to RIX
Lauda Motion	CHANGE	Additional services to VIE
Loganair	<b>NEW</b>	Route to LDY (replaces BMI Regional)
Pegasus Airlines	CHANGE	Additional services to SAW
Peoples Viennaline	<b>NEW</b>	Route to ACH
Qatar Airways	<b>NEW</b>	Route to BRU, LUX
Ryanair	<b>NEW</b>	Routes to AHO, BVE, BZR, CFE, CFU, CHQ, FNI, GRO, IBZ, PUY, RHO, SXB, VCE, ZAD, RMU, DRS, DLE, ESU
Ryanair	CHANGE	Additional services to WMI, BCN, MAD, NAP, OTP, AGP, KRK, FRA, ORK, RAK, TRN, KUN, BLL, BTS, NOC
Ryanair	<b>CANCELLED</b>	Routes to PGF, TSF
SAS Scandinavian	<b>NEW</b>	Route to CPH
TUI Airways	<b>NEW</b>	Route to CMF, HRG
Turkish Airlines	<b>NEW</b>	Cargo route to ADB, ISL
UPS Airlines	<b>NEW</b>	Route to CDG, HKG
Ural Airlines	<b>NEW</b>	Route to ZIA
Wizz Air	<b>NEW</b>	Route to ZZF

# Full Season - ATM Analysis



## Total ATMs: Passenger ATMs vs. Freight ATMs

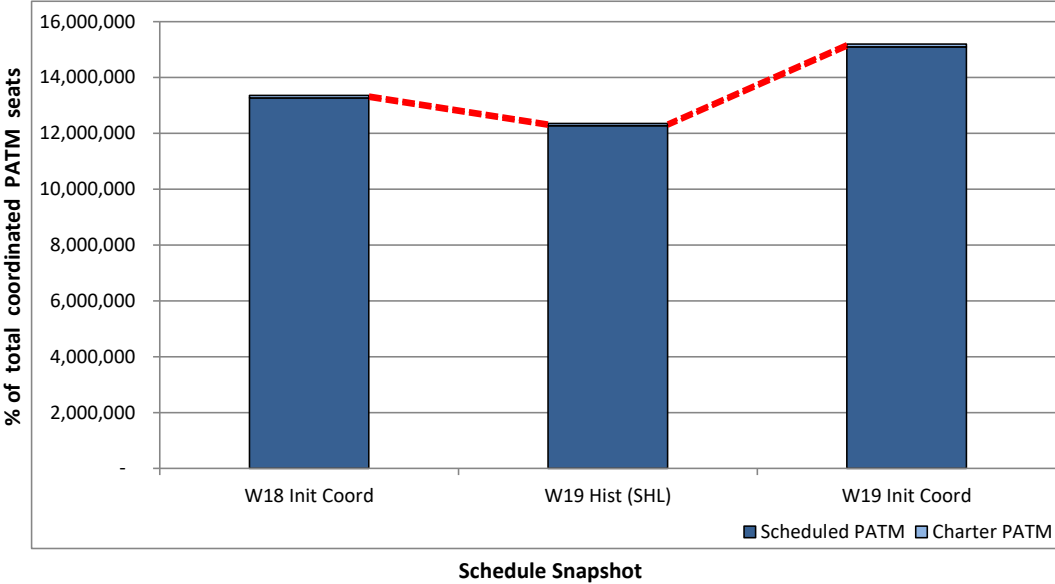




# Full Season - PATM Seats Analysis



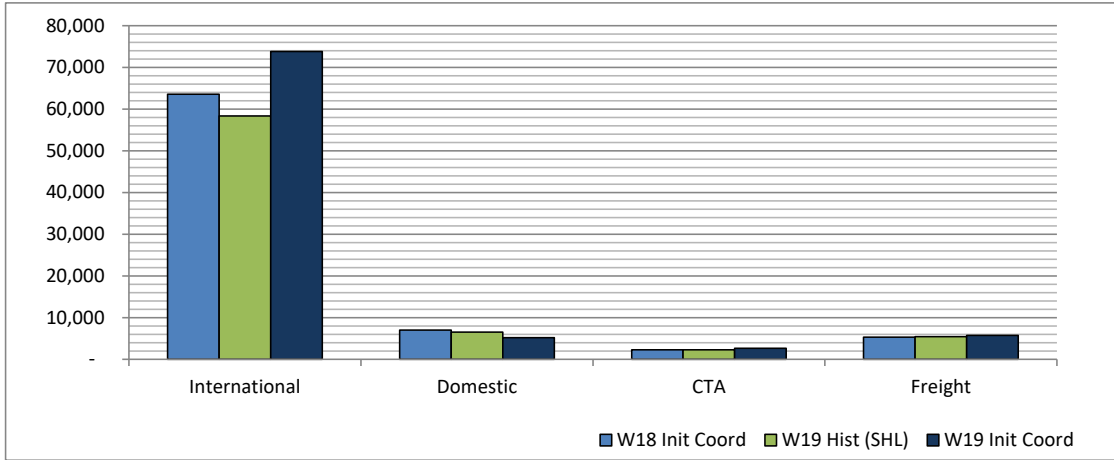
Total Passenger ATM seats: Scheduled vs. Charter



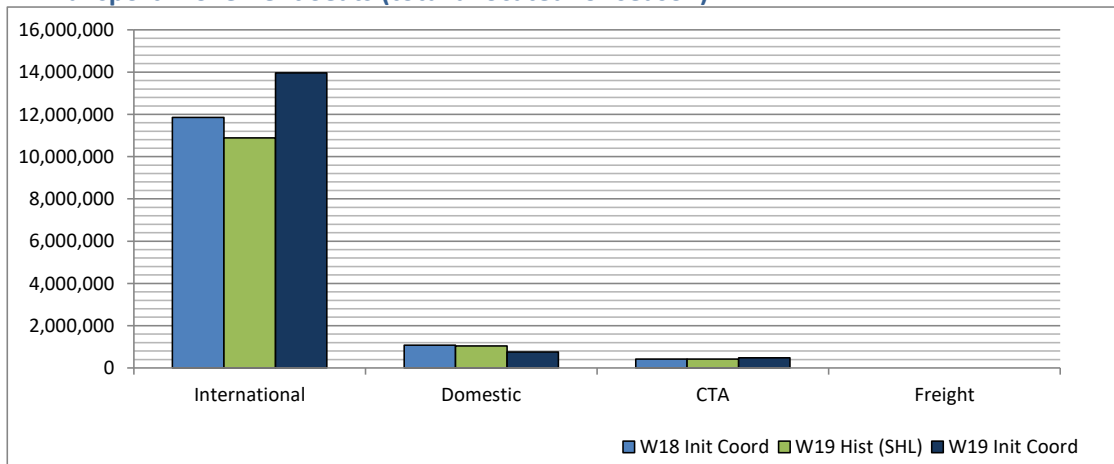
# Full Season - Terminal Analysis



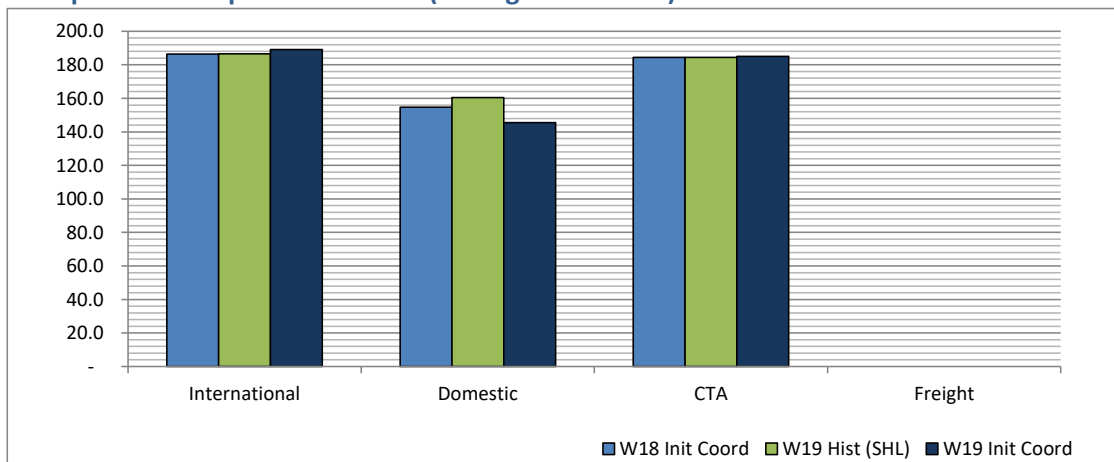
## Air Transport Movements (total allocated for season)



## Air Transport Movement Seats (total allocated for season)



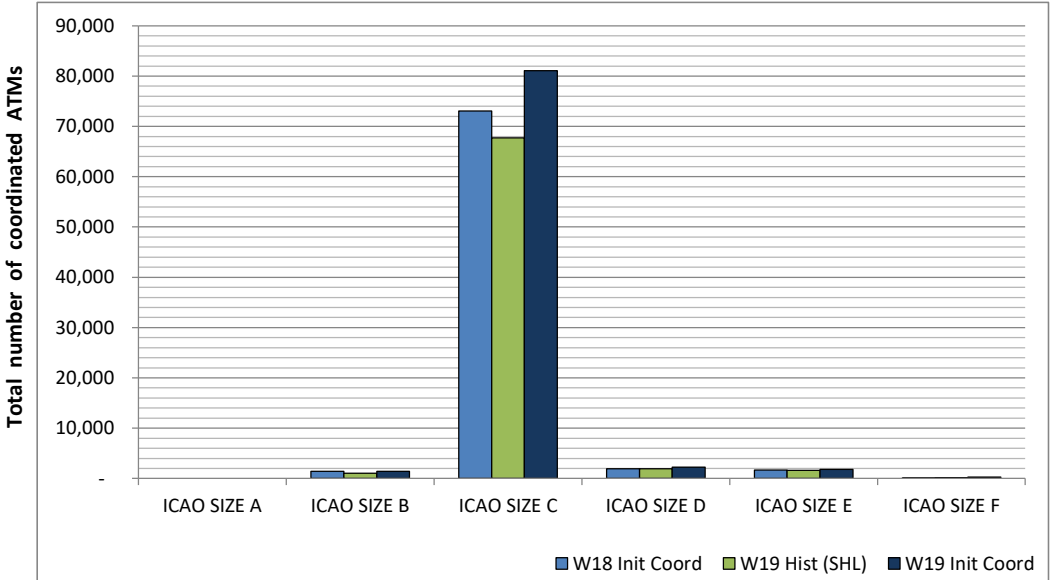
## Seats per Air Transport Movement (average for season)



# Full Season - Aircraft Size Analysis

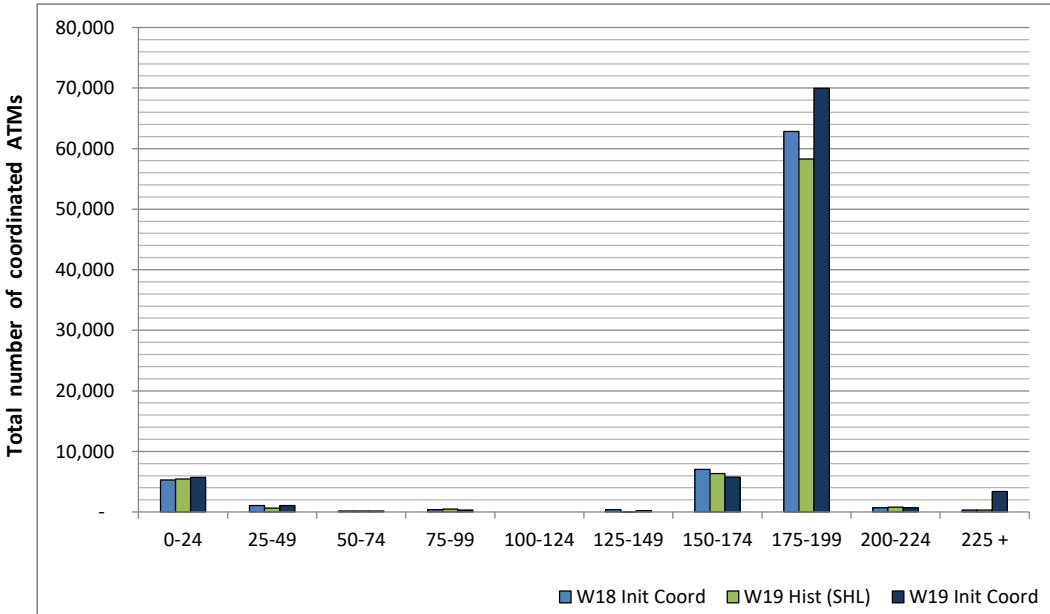


## ICAO size designation



Note: See Glossary for definitions of ICAO SIZE groupings

## Air Transport Movement seat distribution

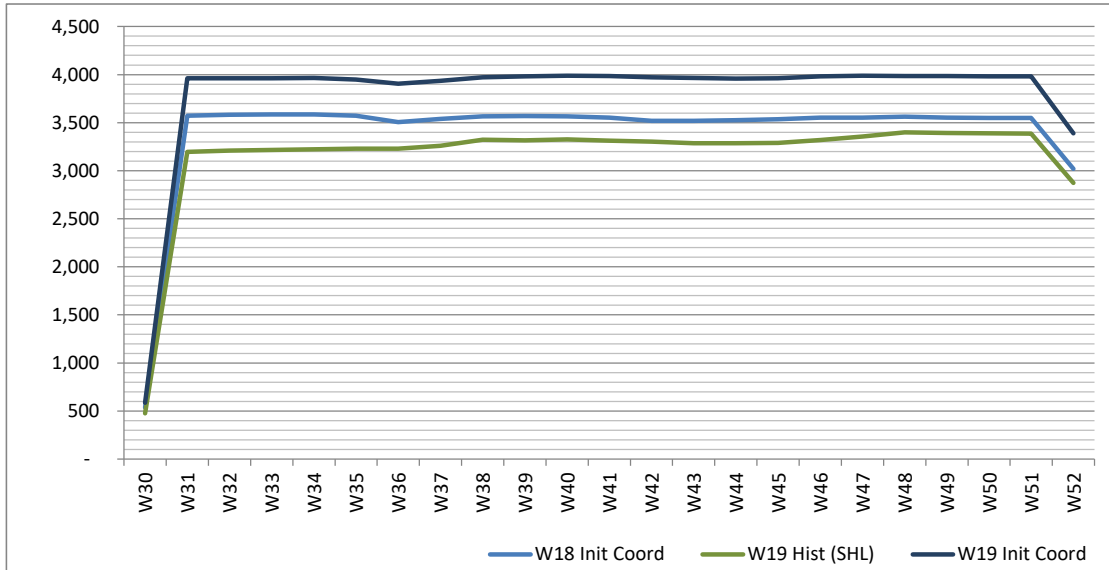


Note: FREIGHT-ONLY services with 0 seats are included in the first seat band '0-24'

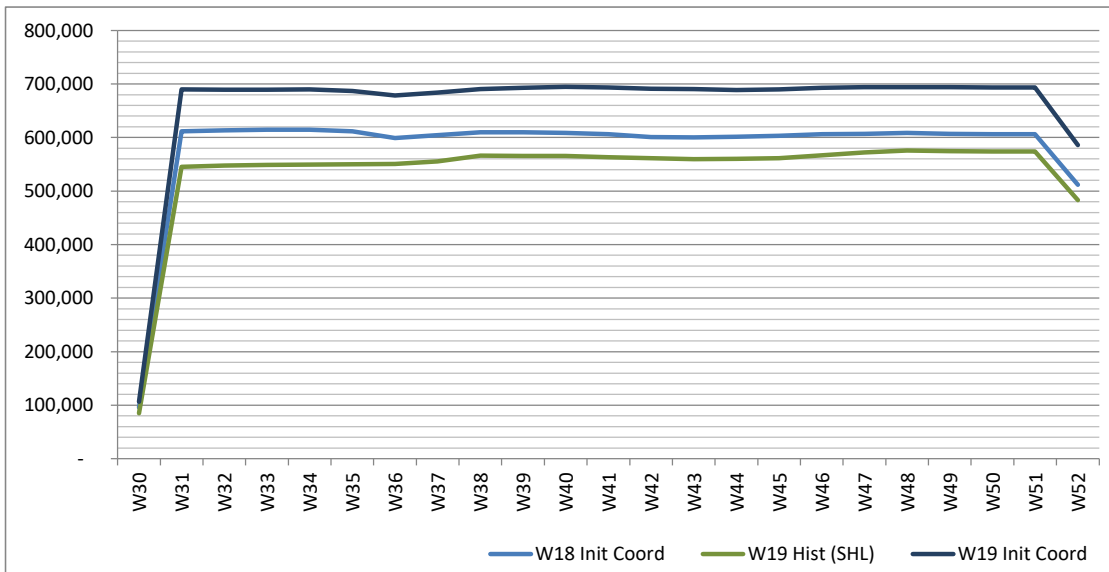
# Full Season - Seasonality



Air Transport Movements by week of season



Air Transport Movement Seats by week of season



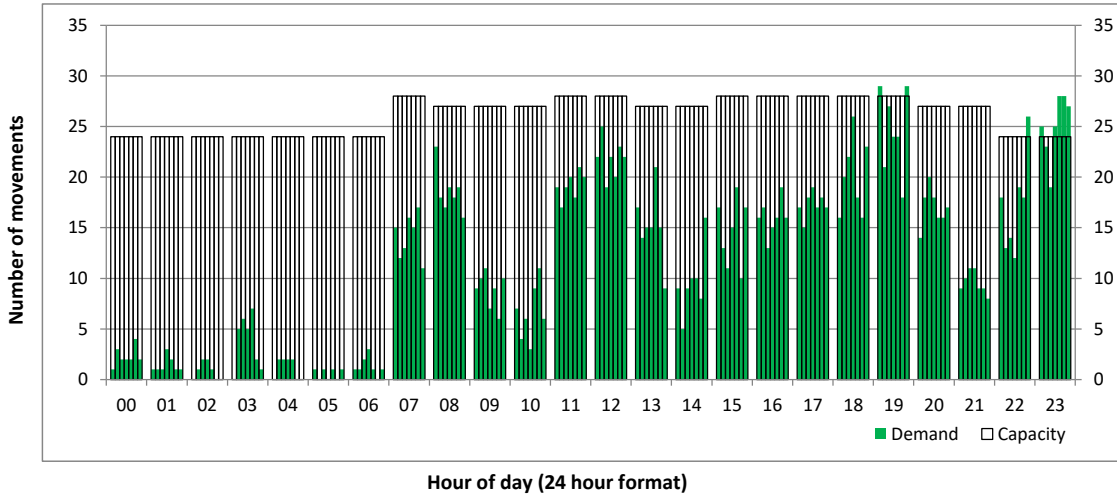
# Peak Week - Initial Hourly Runway Demand

Schedule: W19 Init Coord



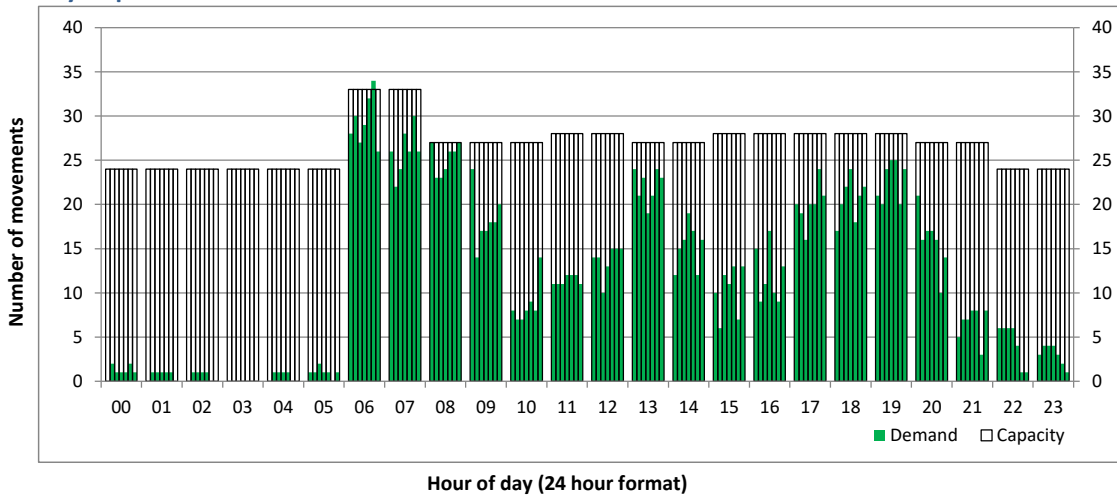
## Hourly Arrival Demand

Time: UTC



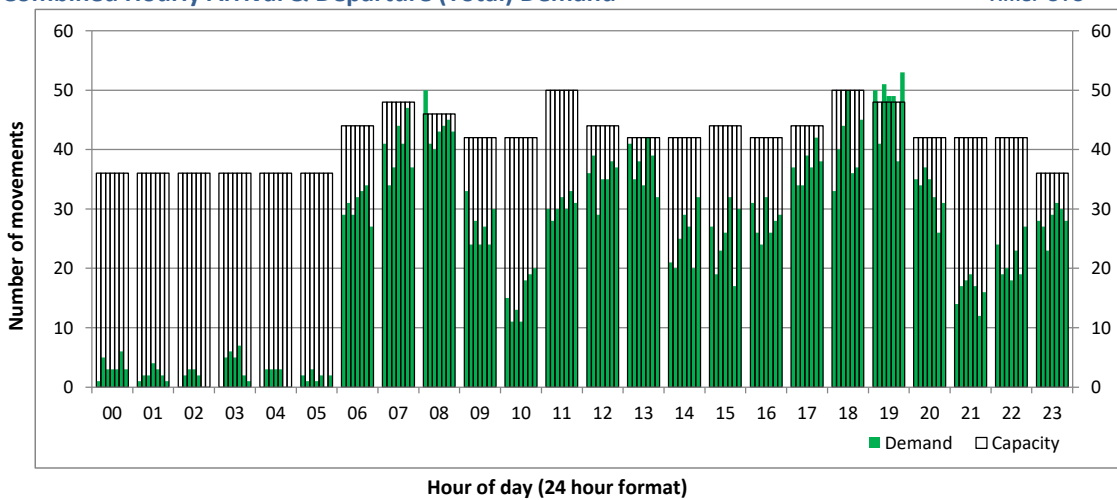
## Hourly Departure Demand

Time: UTC



## Combined Hourly Arrival & Departure (Total) Demand

Time: UTC



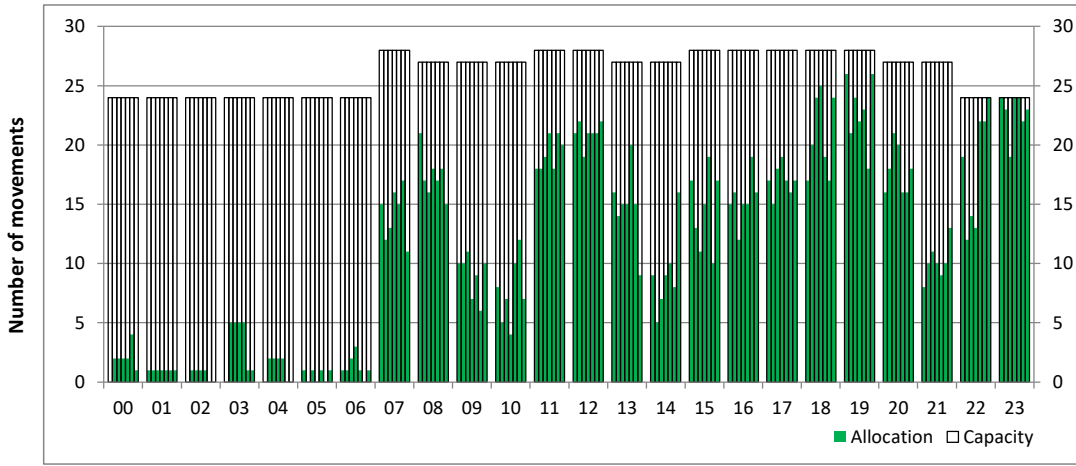
# Peak Week - Hourly Runway Allocation

Schedule: W19 Init Coord



## Hourly Arrival Allocation

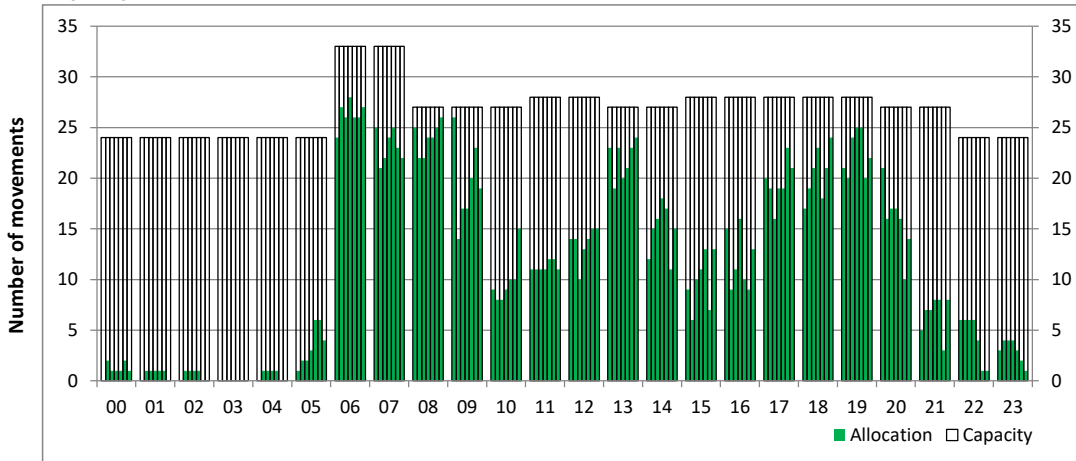
Time: UTC



Hour of day (24 hour format)

## Hourly Departure Allocation

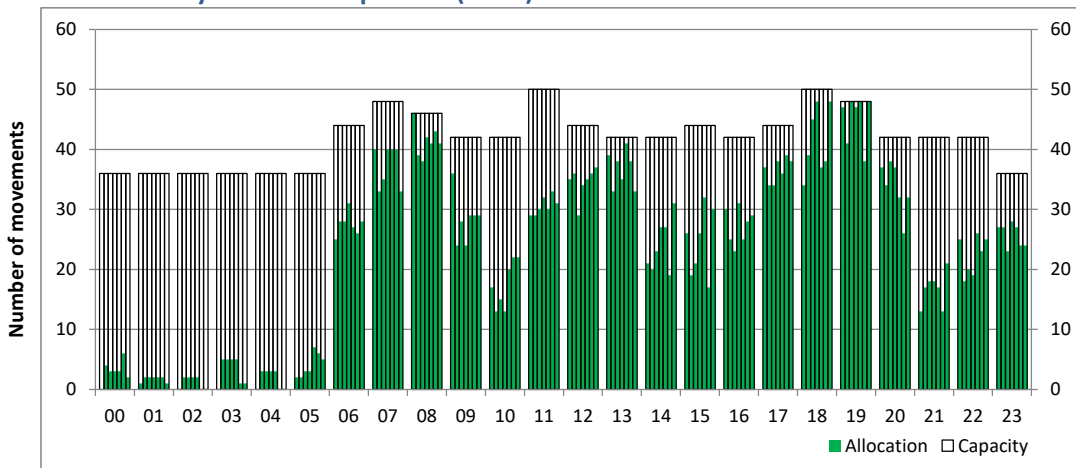
Time: UTC



Hour of day (24 hour format)

## Combined Hourly Arrival & Departure (Total) Allocation

Time: UTC



Hour of day (24 hour format)

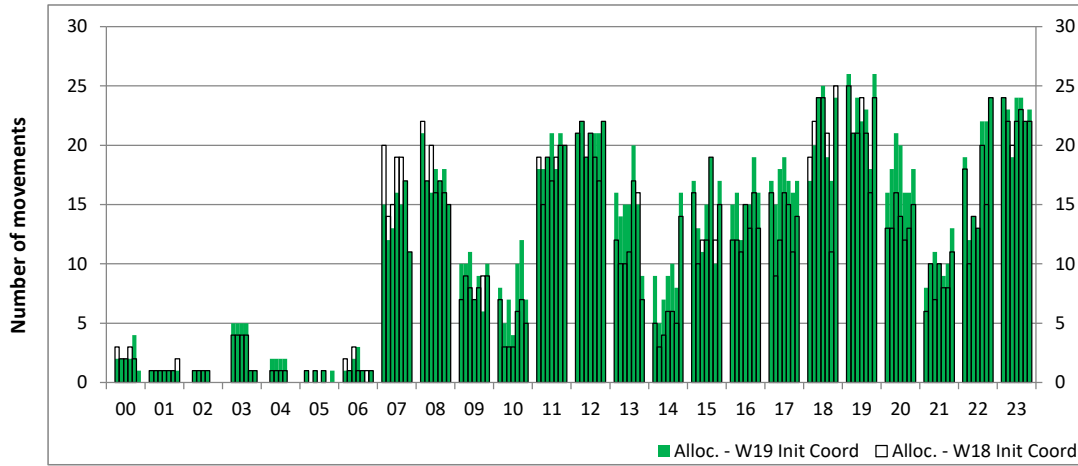
# Peak Week - Runway Allocation Comparison



Comparison of W19 Init Coord vs. W18 Init Coord

## Hourly Arrival Allocation

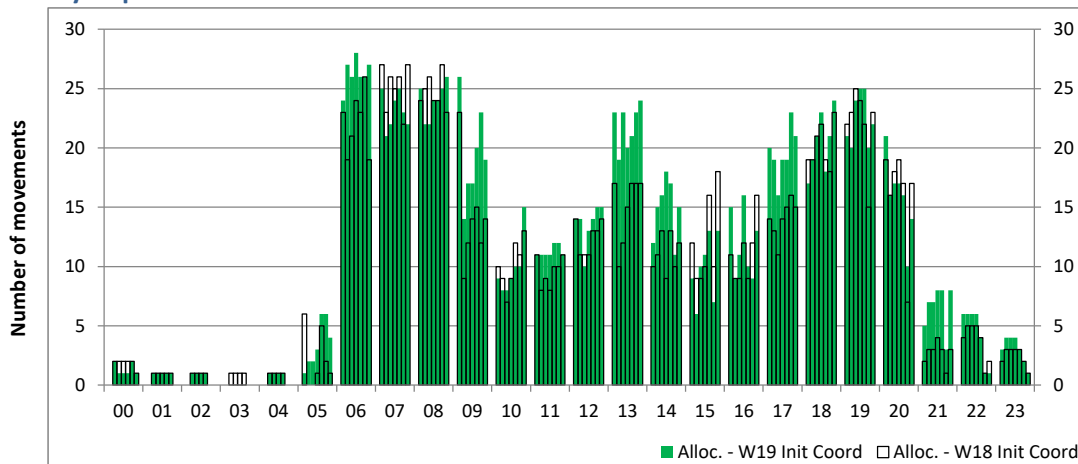
Time: UTC



Hour of day (24 hour format)

## Hourly Departure Allocation

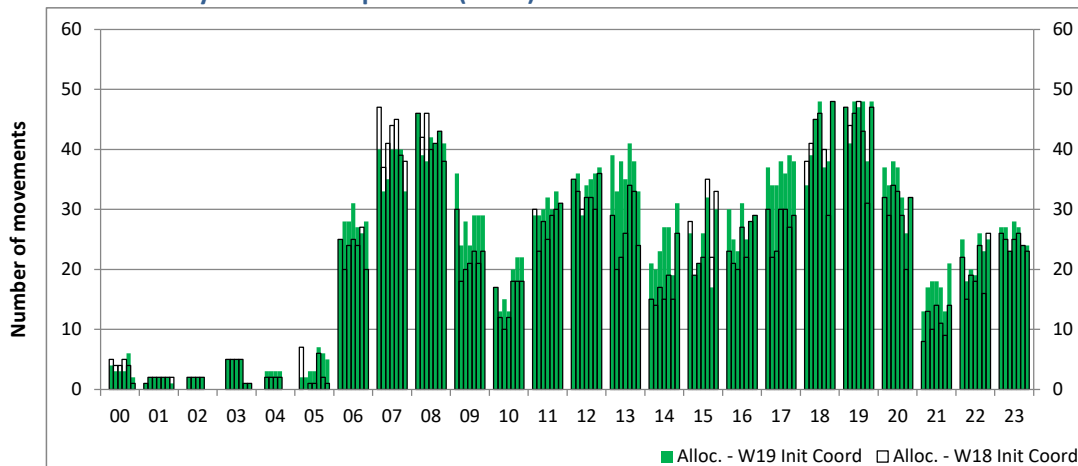
Time: UTC



Hour of day (24 hour format)

## Combined Hourly Arrival & Departure (Total) Allocation

Time: UTC



Hour of day (24 hour format)

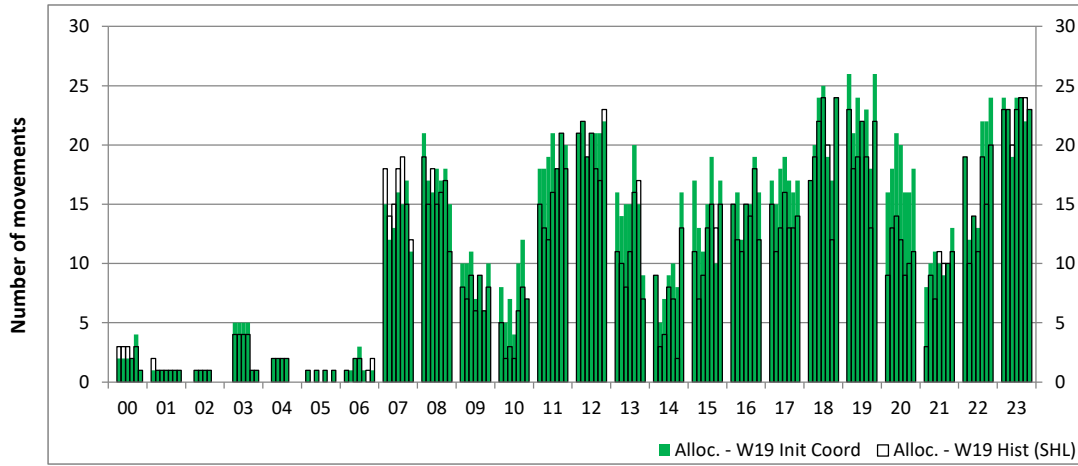
# Peak Week - Runway Allocation Comparison



Comparison of W19 Init Coord vs. W19 Hist (SHL)

## Hourly Arrival Allocation

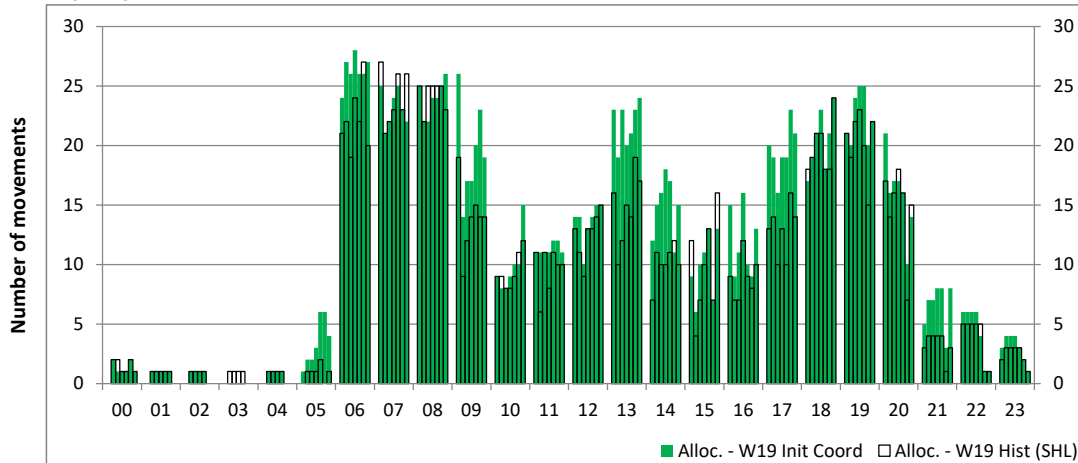
Time: UTC



Hour of day (24 hour format)

## Hourly Departure Allocation

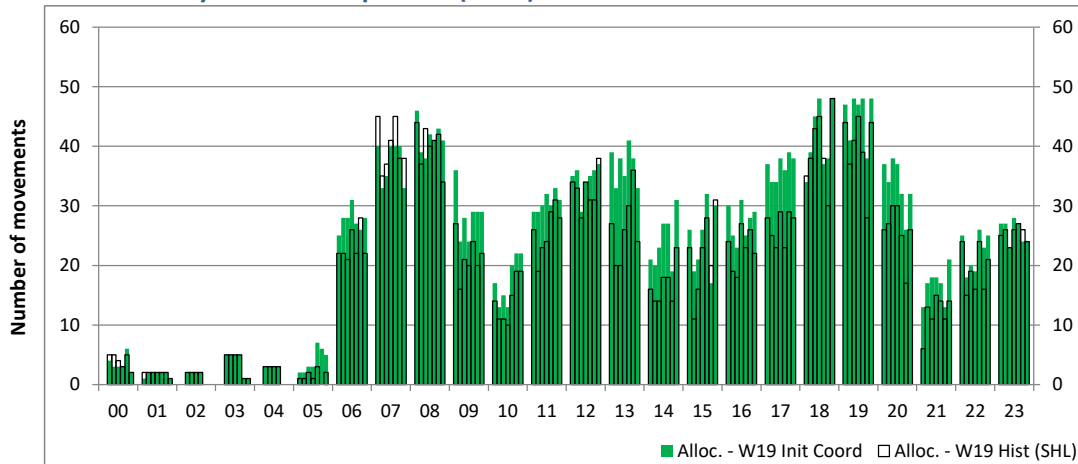
Time: UTC



Hour of day (24 hour format)

## Combined Hourly Arrival & Departure (Total) Allocation

Time: UTC



Hour of day (24 hour format)



# Peak Week - Passengers Histogram

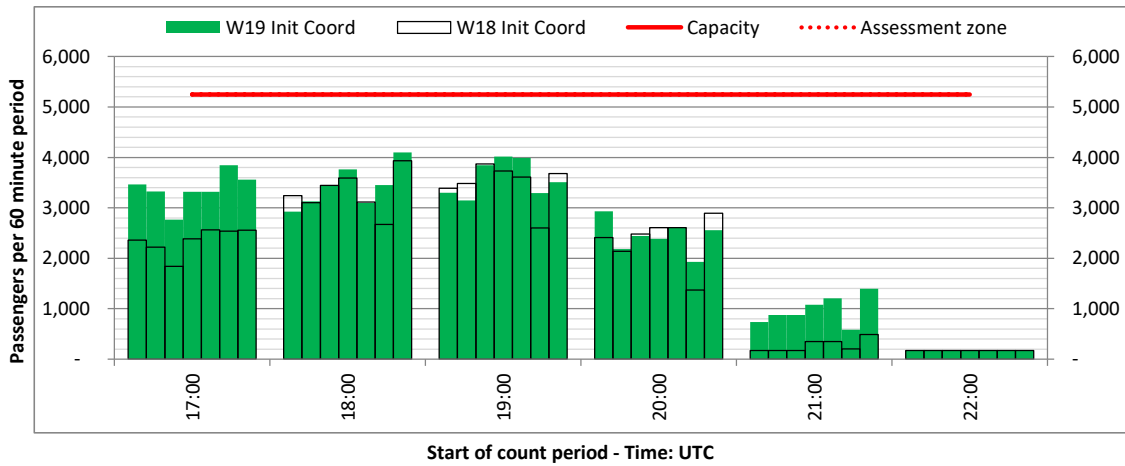
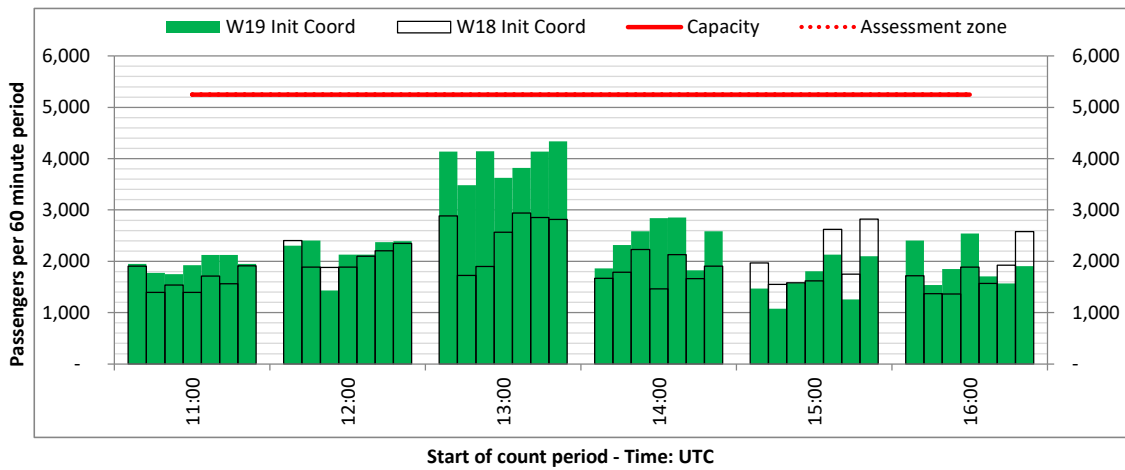
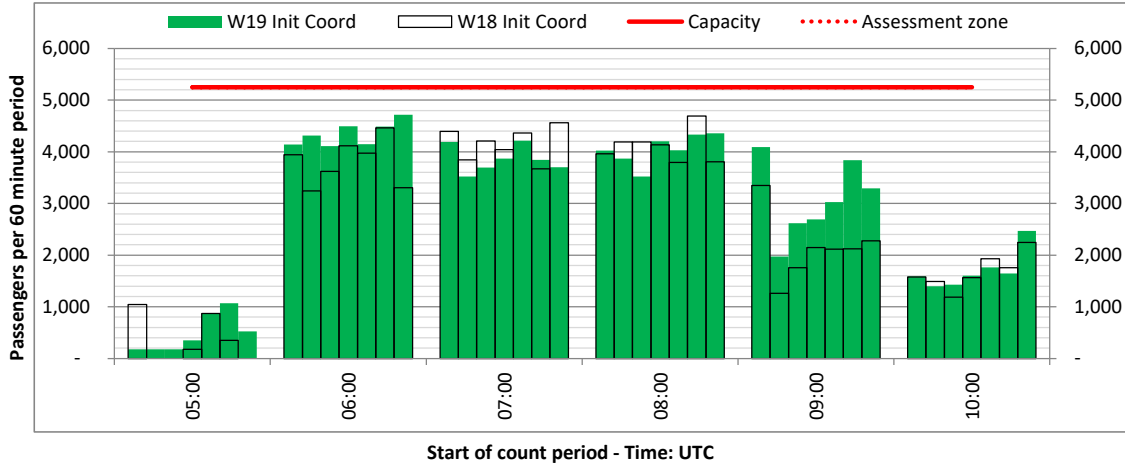
DEPARTURE - 60 minute count rolling every 60 mins (T60)



Terminals: All Terminals

Operators: All Operators

Days: 1234567



# Peak Week - Passengers Histogram

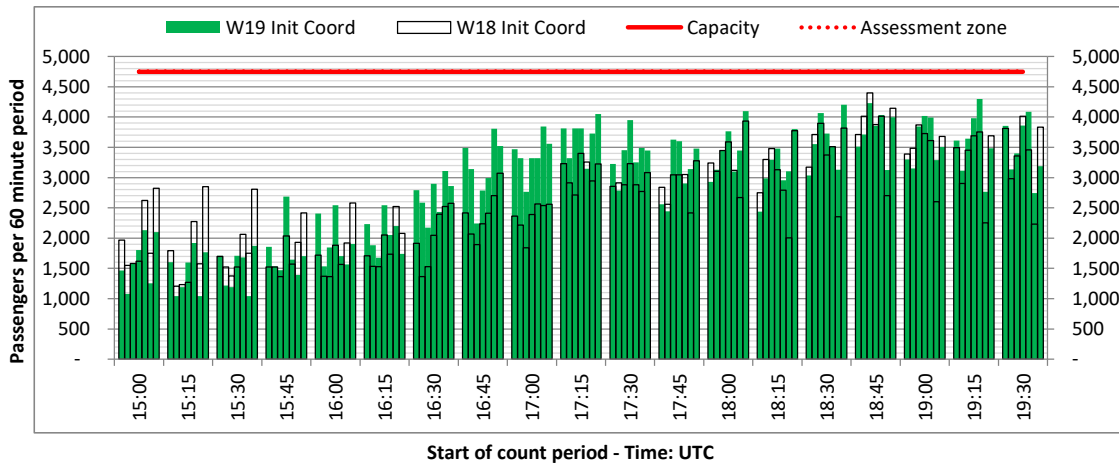
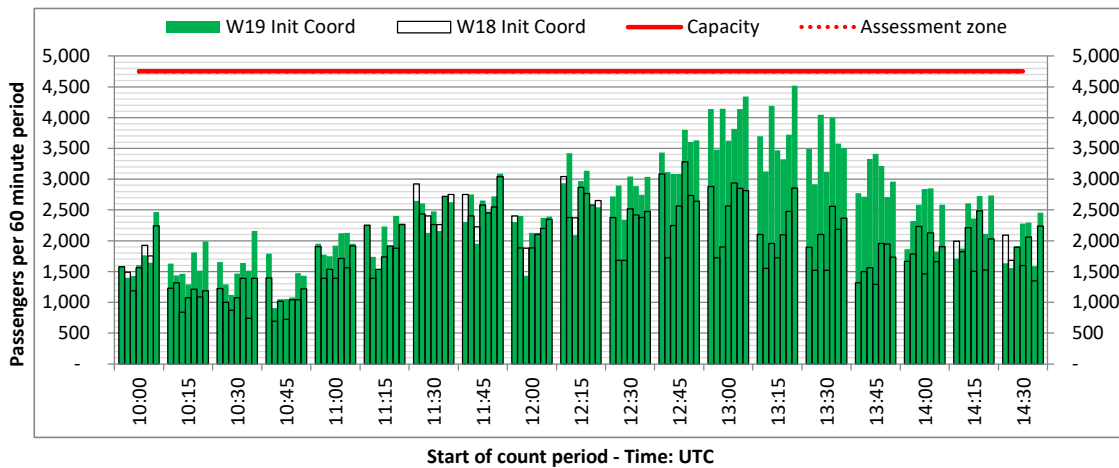
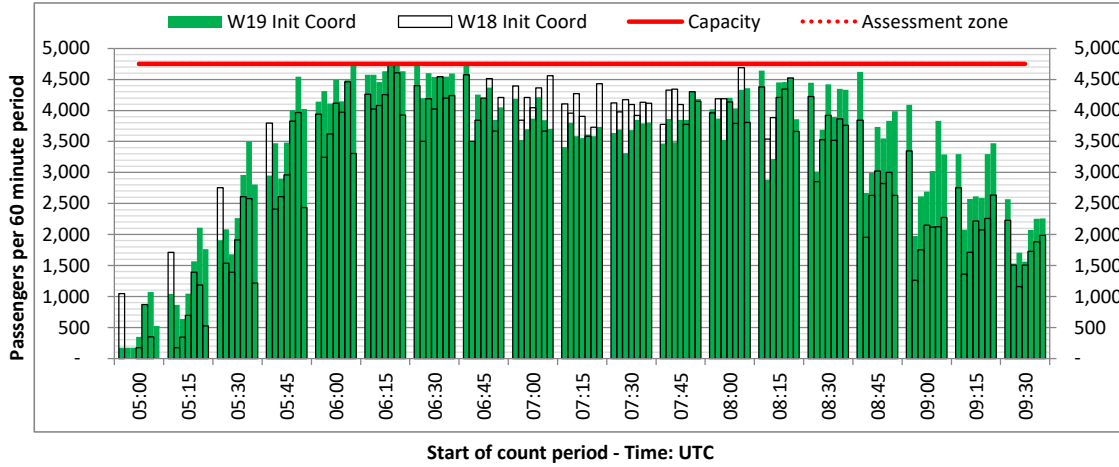


DEPARTURE - 60 minute count rolling every 15 mins (T60/15)

Terminals: All Terminals

Operators: All Operators

Days: 1234567



# Peak Week - Passengers Histogram

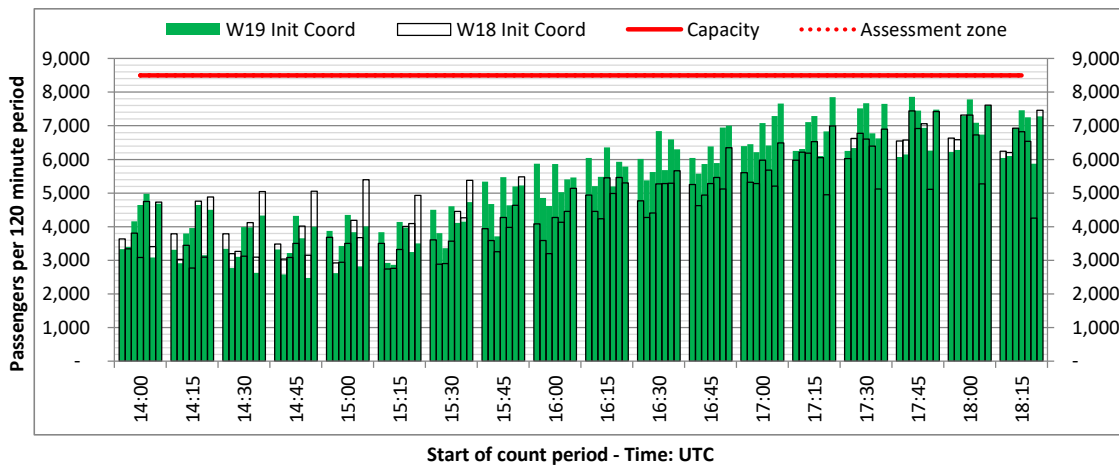
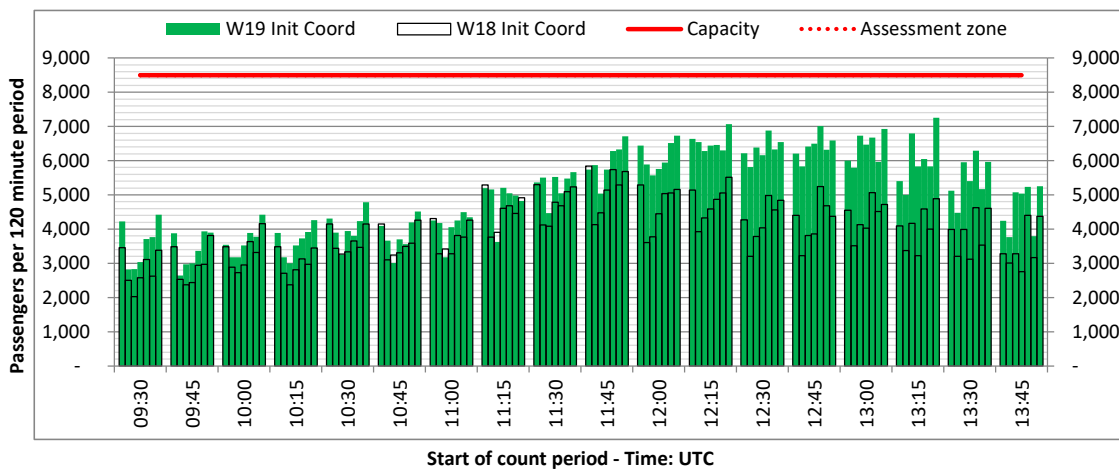
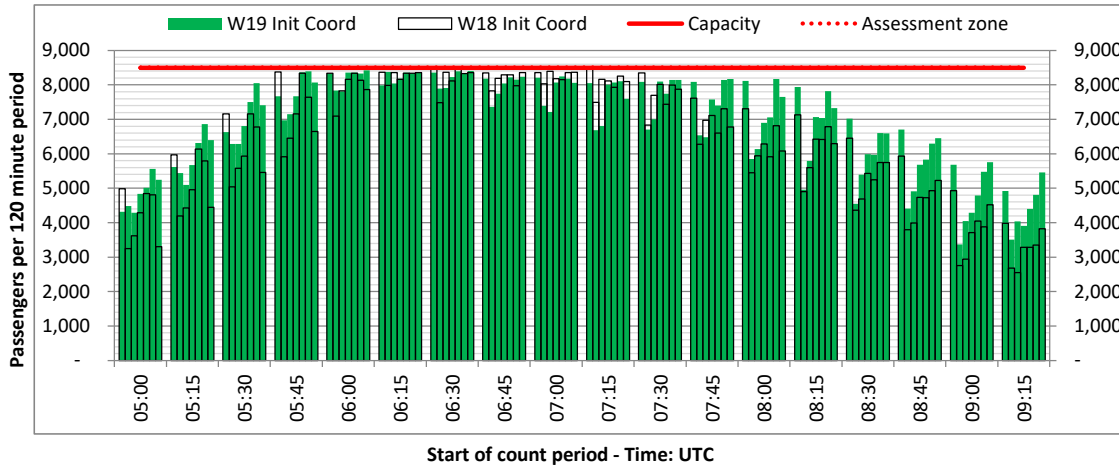
DEPARTURE - 120 minute count rolling every 15 mins (T120/15)



Terminals: All Terminals

Operators: All Operators

Days: 1234567



# Peak Week - Passengers Histogram

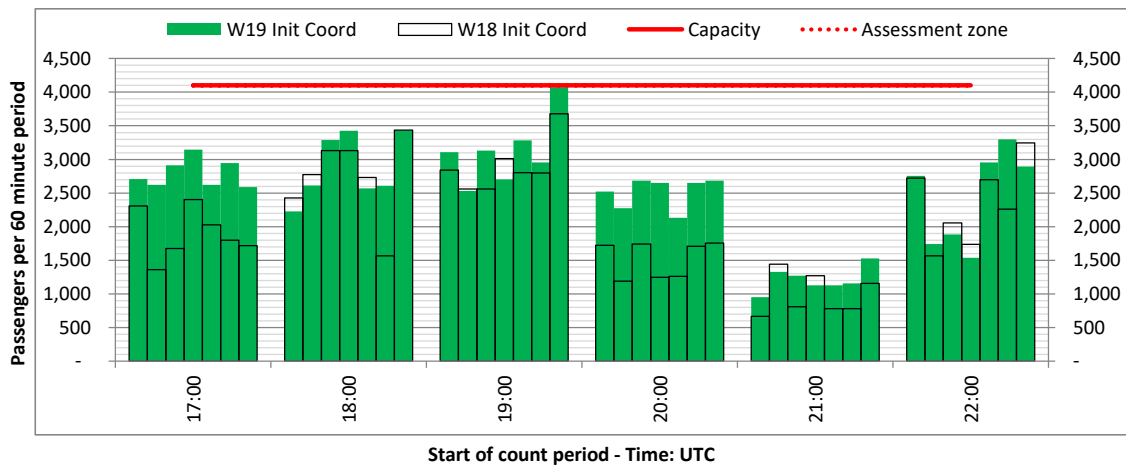
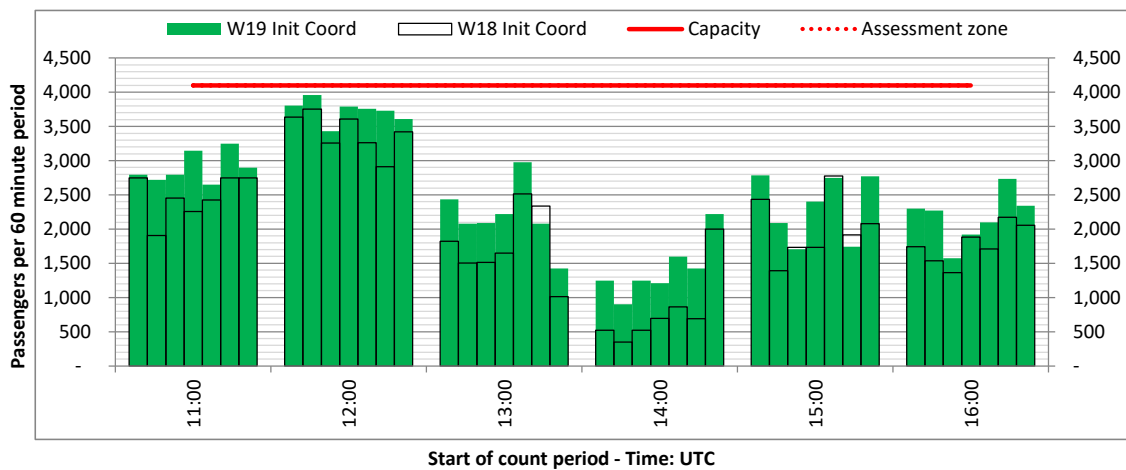
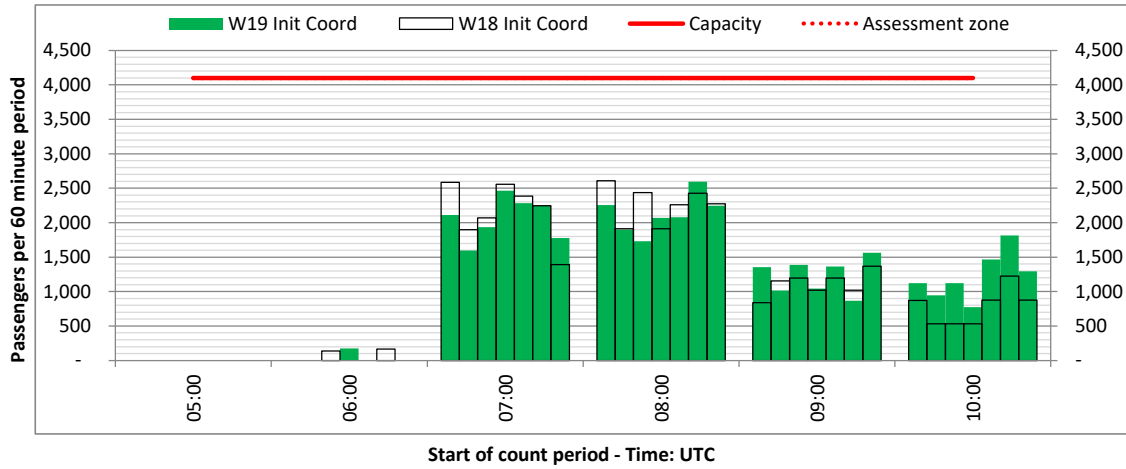
ARRIVAL - 60 minute count rolling every 60 mins (T60)



Terminals: 11

Operators: All Operators

Days: 1234567



# Peak Week - Passengers Histogram

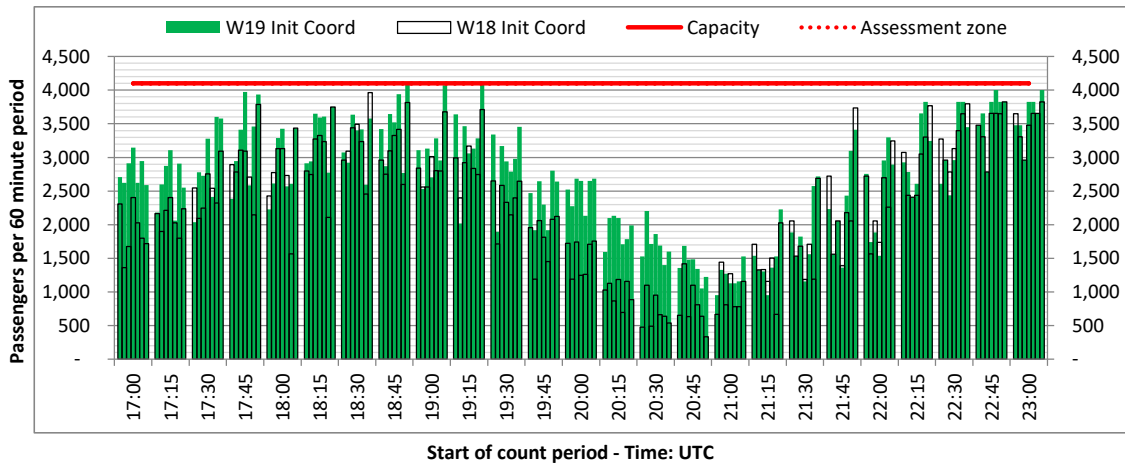
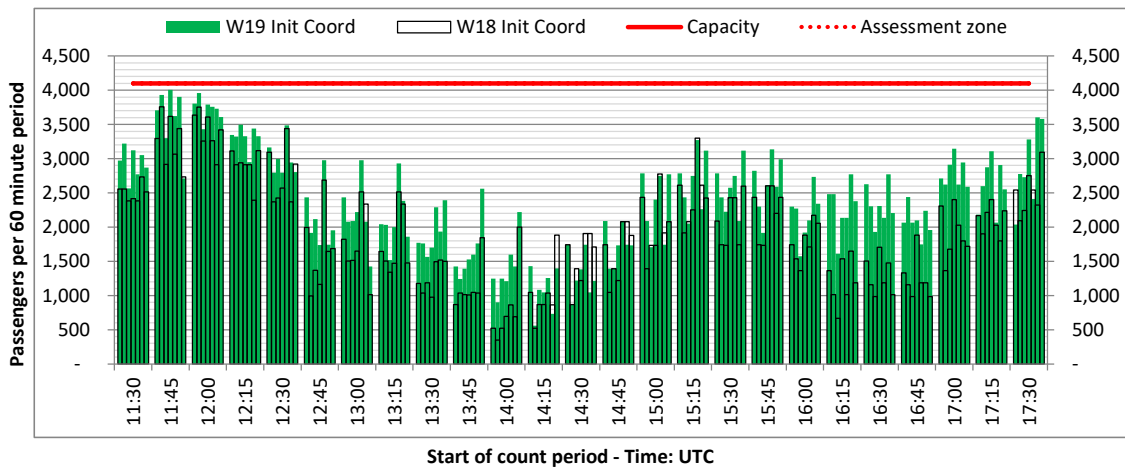
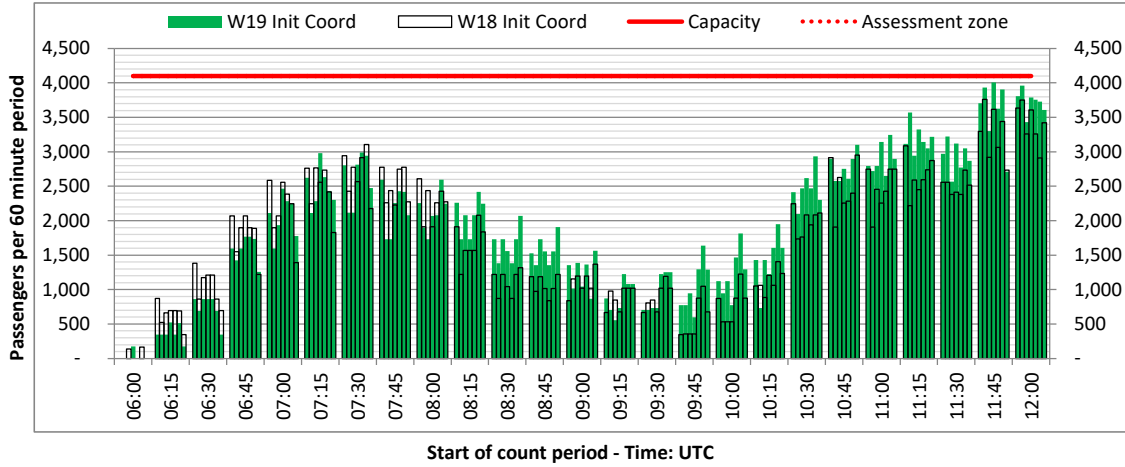


ARRIVAL - 60 minute count rolling every 15 mins (T60/15)

Terminals: 11

Operators: All Operators

Days: 1234567



# Glossary



<b>Air Transport Movement (ATM)</b>	Any aircraft movement which is either a scheduled or chartered passenger or cargo flight.
<b>Common Travel Area (CTA)</b>	Origin or Destination is in Republic of Ireland or the Channel Islands.
<b>Demand</b>	Unconstrained demand before any schedule adjustments have been made.
<b>"Fill-in"</b>	These are gaps in a historic series of slots which the carrier requests to "Fill-in" at Initial Submissions - Fill-ins will be recognisably part of the historic series and will have the same flight details to qualify as a "Fill-in".
<b>Hist (SHL)</b>	Snapshot of historic schedule rolled over from end of the previous equivalent season - as advised to airlines in the SHLs.
<b>ICAO Size A</b>	Aircraft with wingspan between 0.00m - 14.99m.
<b>ICAO Size B</b>	Aircraft with wingspan between 15.00m - 23.99m.
<b>ICAO Size C</b>	Aircraft with wingspan between 24.00m - 35.99m.
<b>ICAO Size D</b>	Aircraft with wingspan between 36.00m - 51.99m.
<b>ICAO Size E</b>	Aircraft with wingspan between 52.00m - 64.99m.
<b>ICAO Size F</b>	Aircraft with wingspan between 65.00m - 80.00m.
<b>Init Coord</b>	Snapshot of schedule immediately after Initial Coordination is completed - as advised to airlines in the SALs.
<b>Passenger Air Transport Movement (PATM)</b>	Any aircraft movement which is either a scheduled or chartered passenger flight.
<b>Start</b>	Snapshot of schedule shortly before the start of the scheduling season (exact date given below where used).
<b>Time: Local</b>	Times shown are in LOCAL time for the airport/scheduling season.
<b>Time: UTC</b>	Times shown are in Universal Time Constant (UTC).

---

## Data snapshot descriptions

<b>W18 Init Coord</b>	W18 schedule as cleared on Mon 03-Jun-19.
<b>W19 Hist (SHL)</b>	W19 schedule as cleared on Wed 03-Apr-19.
<b>W19 Init Coord</b>	W19 schedule as cleared on Mon 03-Jun-19.

<b>Peak Week</b>	Peak week for W18 is Mon 29-Oct-18 to Sun 04-Nov-18. Peak week for W19 is Mon 28-Oct-19 to Sun 03-Nov-19.
------------------	--

---

## For ACL use

	Airport-Season-Branch-Resource	From date	To date	Time
Full Season Rep 1	STN-W18-SAL Premerge-Standard	Sun 28-Oct-2018	Sat 30-Mar-2019	UTC
Full Season Rep 2	STN-W19-SHL-Standard	Sun 27-Oct-2019	Sat 28-Mar-2020	UTC
Full Season Rep 3	STN-W19-SAL Premerge-Standard	Sun 27-Oct-2019	Sat 28-Mar-2020	UTC

	Airport-Season-Branch-Resource	From date	To date	Time
Peak Week Rep 1	STN-W18-SAL Premerge-Standard	Mon 29-Oct-2018	Sun 04-Nov-2018	UTC
Peak Week Rep 2	STN-W19-SHL-Standard	Mon 24-Feb-2020	Sun 01-Mar-2020	UTC
Peak Week Rep 3	STN-W19-SAL Premerge-Standard	Mon 28-Oct-2019	Sun 03-Nov-2019	UTC