

Initial Coordination Report

Report Date: Fri 14-Jun-2019

Headlines

	W19 Init Coord	vs. W18 Init Coord	vs. W19 Hist (SHL)
Total Air Transport Movements (Passenger & Freight)	82567	▲ 1.8%	▲ 16.4%
Total Passenger Air Transport Movements	82215	▲ 1.9%	▲ 16.4%
Total Passenger Air Transport Movement Seats	14325483	▲ 4.1%	▲ 17.3%
Average Seats per Passenger Air Transport Movement	174.24	▲ 2.1%	▲ 0.7%
Percentage of allocated slots cleared as requested (OK)	95%		

Contents

Page	Content
2	Runway Scheduling Limits
3	Peak Week - Initial Coordination Analysis
4	ATM Allocation by Operator (Full season and Peak Week Comparison)
5	Peak Week - Allocation and Slot Adjustment Distribution by Operator
6	Significant Route Changes
7	Full Season - ATM Analysis
8	Full Season - PATM Seats Analysis
9	Full Season - Terminal Analysis
10	Full Season - Aircraft Size Analysis
11	Full Season - Seasonality
12	Peak Week - Initial Hourly Runway Demand
13	Peak Week - Hourly Runway Allocation
14	Peak Week - Hourly Runway Allocation Comparison (W19 Init Coord vs. W19 Hist (SHL))
15	Peak Week Histogram - Departure Passengers (T120/15) - T1 - All Operators
16	Peak Week Histogram - Departure Passengers (T60/15) - T1 - All Operators
17	Peak Week Histogram - Arrival Passengers (T60/15) - T1 - All Operators
18	Peak Week Histogram - Departure Passengers (T120/15) - T2 - All Operators
19	Peak Week Histogram - Departure Passengers (T60/15) - T2 - All Operators
20	Peak Week Histogram - Arrival Passengers (T60/15) - T2 - All Operators
21	Peak Week Histogram - Departure Passengers (T120/15) - T3 - All Operators
22	Peak Week Histogram - Departure Passengers (T60/15) - T3 - All Operators
23	Peak Week Histogram - Arrival Passengers (T60/15) - T3 - All Operators
24	Glossary

W18 scheduling season runs from Sun 28-Oct-2018 to Sat 30-Mar-2019 (154 days).

W19 scheduling season runs from Sun 27-Oct-2019 to Sat 28-Mar-2020 (154 days).

Disclaimer

No warranty whether expressed or implied as to the completeness, accuracy, fitness for purpose, or satisfactory quality is given by ACL regarding the information in this report, which is provided by third parties. Accordingly, ACL excludes all liability with regard to such data.

The contents of this report may not be reproduced without the written consent of ACL.

Runway Scheduling Limits



Declared Hourly Movement Capacity

W18 Arrivals								Change: W18 to W19								W19 Arrivals							
Hour	Mon	Tue	Wed	Thu	Fri	Sat	Sun	Hour	Mon	Tue	Wed	Thu	Fri	Sat	Sun	Hour	Mon	Tue	Wed	Thu	Fri	Sat	Sun
00	15	15	15	15	15	15	15	00								00	15	15	15	15	15	15	15
01	15	15	15	15	15	15	15	01								01	15	15	15	15	15	15	15
02	15	15	15	15	15	15	15	02								02	15	15	15	15	15	15	15
03	15	15	15	15	15	15	15	03								03	15	15	15	15	15	15	15
04	15	15	15	15	15	15	15	04								04	15	15	15	15	15	15	15
05	15	15	15	15	15	15	15	05								05	15	15	15	15	15	15	15
06	30	30	30	30	30	30	28	06								06	30	30	30	30	30	30	28
07	30	30	30	30	30	30	28	07								07	30	30	30	30	30	30	28
08	30	30	30	30	30	30	28	08								08	30	30	30	30	30	30	28
09	30	30	30	30	30	30	28	09								09	30	30	30	30	30	30	28
10	30	30	30	30	30	30	28	10								10	30	30	30	30	30	30	28
11	28	28	28	28	28	28	28	11								11	28	28	28	28	28	28	28
12	28	28	28	28	28	28	28	12								12	28	28	28	28	28	28	28
13	28	28	28	28	28	28	28	13								13	28	28	28	28	28	28	28
14	28	28	28	28	28	28	28	14								14	28	28	28	28	28	28	28
15	28	28	28	28	28	28	28	15								15	28	28	28	28	28	28	28
16	30	30	30	30	30	28	30	16								16	30	30	30	30	30	28	30
17	30	30	30	30	30	28	30	17								17	30	30	30	30	30	28	30
18	30	30	30	30	30	28	30	18								18	30	30	30	30	30	28	30
19	30	30	30	30	30	28	30	19								19	30	30	30	30	30	28	30
20	28	28	28	28	28	28	28	20								20	28	28	28	28	28	28	28
21	28	28	28	28	28	28	28	21								21	28	28	28	28	28	28	28
22	22	22	22	22	22	22	22	22								22	22	22	22	22	22	22	22
23	20	20	20	20	20	20	20	23								23	20	20	20	20	20	20	20

W18 Departures								Change: W18 to W19								W19 Departures							
Hour	Mon	Tue	Wed	Thu	Fri	Sat	Sun	Hour	Mon	Tue	Wed	Thu	Fri	Sat	Sun	Hour	Mon	Tue	Wed	Thu	Fri	Sat	Sun
00	15	15	15	15	15	15	15	00								00	15	15	15	15	15	15	15
01	15	15	15	15	15	15	15	01								01	15	15	15	15	15	15	15
02	15	15	15	15	15	15	15	02								02	15	15	15	15	15	15	15
03	15	15	15	15	15	15	15	03								03	15	15	15	15	15	15	15
04	15	15	15	15	15	15	15	04								04	15	15	15	15	15	15	15
05	15	15	15	15	15	15	15	05								05	15	15	15	15	15	15	15
06	32	32	32	32	32	32	28	06								06	32	32	32	32	32	32	28
07	36	36	36	36	36	36	28	07								07	36	36	36	36	36	36	28
08	33	33	33	33	33	33	28	08								08	33	33	33	33	33	33	28
09	32	32	32	32	32	32	28	09								09	32	32	32	32	32	32	28
10	30	30	30	30	30	30	28	10								10	30	30	30	30	30	30	28
11	28	28	28	28	28	28	28	11								11	28	28	28	28	28	28	28
12	28	28	28	28	28	28	28	12								12	28	28	28	28	28	28	28
13	28	28	28	28	28	28	28	13								13	28	28	28	28	28	28	28
14	28	28	28	28	28	28	28	14								14	28	28	28	28	28	28	28
15	28	28	28	28	28	28	28	15								15	28	28	28	28	28	28	28
16	30	30	30	30	30	28	30	16								16	30	30	30	30	30	28	30
17	30	30	30	30	30	28	30	17								17	30	30	30	30	30	28	30
18	30	30	30	30	30	28	30	18								18	30	30	30	30	30	28	30
19	30	30	30	30	30	28	30	19								19	30	30	30	30	30	28	30
20	28	28	28	28	28	28	28	20								20	28	28	28	28	28	28	28
21	28	28	28	28	28	28	28	21								21	28	28	28	28	28	28	28
22	20	20	20	20	20	20	20	22								22	20	20	20	20	20	20	20
23	15	15	15	15	15	15	15	23								23	15	15	15	15	15	15	15

W18 Totals								Change: W18 to W19								W19 Totals							
Hour	Mon	Tue	Wed	Thu	Fri	Sat	Sun	Hour	Mon	Tue	Wed	Thu	Fri	Sat	Sun	Hour	Mon	Tue	Wed	Thu	Fri	Sat	Sun
00	15	15	15	15	15	15	15	00								00	15	15	15	15	15	15	15
01	15	15	15	15	15	15	15	01								01	15	15	15	15	15	15	15
02	15	15	15	15	15	15	15	02								02	15	15	15	15	15	15	15
03	15	15	15	15	15	15	15	03								03	15	15	15	15	15	15	15
04	15	15	15	15	15	15	15	04								04	15	15	15	15	15	15	15
05	21	21	21	21	21	21	21	05								05	21	21	21	21	21	21	21
06	51	51	51	51	51	51	44	06								06	51	51	51	51	51	51	44
07	56	56	56	56	56	56	44	07								07	56	56	56	56	56	56	44
08	56	56	56	56	56	56	44	08								08	56	56	56	56	56	56	44
09	53	53	53	53	53	53	44	09								09	53	53	53	53	53	53	44
10	51	51	51	51	51	51	44	10								10	51	51	51	51	51	51	44
11	44	44	44	44	44	44	44	11								11	44	44	44	44	44	44	44
12	44	44	44	44	44	44	44	12								12	44	44	44	44	44	44	44
13	44	44	44	44	44	44	44	13								13	44	44	44	44	44	44	44
14	44	44	44	44	44	44	44	14								14	44	44	44	44	44	44	44
15	44	44	44	44	44	44	44	15								15	44	44	44	44	44	44	44
16	54	54	54	54	54	54	54	16								16	54	54	54	54	54	54	54
17	54	54	54	54	54	54	54	17								17	54	54	54	54	54	54	54
18	54	54	54	54	54	54	54	18								18	54	54	54	54	54	54	54
19	54	54	54	54	54	54	54	19								19	54	54	54	54	54	54	54
20	44	44	44	44	44	44	44	20								20	44	44	44	44	44	44	44
21	44	44	44	44	44	44	44	21								21	44	44	44	44	44	44	44
22	31	31	31	31	31	31	31	22								22	31	31	31	31	31	31	31
23	24	24	24	24	24	24	24	23								23	24	24	24	24	24	24	24

Peak Week - Initial Coordination Analysis



Operator	W19 HISTORIC SLOTS				HISTORIC RECLAIM STATISTICS				NEW SLOT REQUESTS						Total Demand at Initial Submissions	Total Allocation (SAL)	% of demand with a slot allocated	
	Historic slots	Lost Histories (N80 & MU)	Unclaimed Histories	Reclaimed Histories	Incl. Time Change	Incl. Seat Increase	Incl. Day change	Incl. A-D or DSA swap	Demand - New Requests	Allocated - Year Round Incumbent	Allocated - Year Round New Entrant	Allocated - New Incumbent	Allocated - New Entrant	Allocated - "Fill-in"				
Aegean Airlines	2	2	-	4	0.0%	0.0%	0.0%	0.0%	-	-	-	-	-	-	4	4	100.0%	
Aer Lingus	54	2	-	2	51.9%	0.0%	0.0%	0.0%	-	-	-	-	-	-	54	54	100.0%	
Air Arabia Maroc	4	-	-	2	100.0%	0.0%	0.0%	0.0%	2	-	-	-	2	-	4	4	100.0%	
Air France	42	-	-	-	83.3%	100.0%	0.0%	0.0%	-	-	-	-	-	-	42	42	100.0%	
Air Transat	4	-	-	-	50.0%	0.0%	0.0%	0.0%	-	-	-	-	-	-	4	4	100.0%	
Alitalia	-	-	-	-	0.0%	0.0%	0.0%	0.0%	14	-	-	14	-	-	14	14	100.0%	
American Airlines	12	-	-	2	100.0%	0.0%	0.0%	0.0%	-	-	-	-	-	-	14	14	100.0%	
Anisec	-	-	-	-	0.0%	0.0%	0.0%	0.0%	10	-	-	10	-	-	10	10	100.0%	
Aurigny Air Services	28	-	-	-	0.0%	0.0%	0.0%	0.0%	-	-	-	-	-	-	28	28	100.0%	
Austrian Airlines	12	-	-	4	0.0%	0.0%	0.0%	0.0%	-	-	-	-	-	-	16	16	100.0%	
BA Cityflyer	8	-	-	1	0.0%	0.0%	0.0%	0.0%	1	-	-	1	-	-	8	8	100.0%	
British Airways	118	-	-	-	25.4%	14.4%	0.0%	0.0%	-	-	-	-	-	-	118	118	100.0%	
Brussels Airlines	38	-	-	-	0.0%	21.1%	0.0%	0.0%	-	-	-	-	-	-	38	38	100.0%	
Cathay Pacific	14	-	-	-	50.0%	0.0%	0.0%	0.0%	-	-	-	-	-	-	14	14	100.0%	
Corendon Airlines Europe	2	2	-	-	0.0%	0.0%	0.0%	0.0%	2	-	-	2	-	-	2	2	100.0%	
EasyJet	496	4	-	12	25.6%	13.9%	0.0%	0.0%	38	-	-	38	-	21	542	542	100.0%	
EasyJet Switzerland	2	-	-	-	50.0%	0.0%	0.0%	0.0%	-	-	-	-	-	-	2	2	100.0%	
El Al Israel Airlines	-	-	-	-	0.0%	0.0%	0.0%	0.0%	4	-	-	-	4	-	4	4	100.0%	
Emirates	42	-	-	-	33.3%	0.0%	0.0%	0.0%	-	-	-	-	-	-	42	42	100.0%	
Ethiopian Airlines	8	-	-	8	50.0%	0.0%	0.0%	0.0%	-	-	-	-	-	-	8	8	100.0%	
Ethihad Airways	28	-	-	-	0.0%	50.0%	0.0%	0.0%	-	-	-	-	-	-	28	28	100.0%	
Eurowings	48	-	-	-	29.2%	0.0%	0.0%	0.0%	-	-	-	-	-	-	48	48	100.0%	
Federal Express	16	-	-	-	25.0%	0.0%	0.0%	0.0%	-	-	-	-	-	-	16	16	100.0%	
Finnair	28	-	-	-	0.0%	0.0%	0.0%	0.0%	-	-	-	-	-	-	28	28	100.0%	
Flybe	609	24	-	9	34.3%	13.0%	0.0%	0.0%	76	-	-	76	-	-	670	670	100.0%	
Freebird Airlines	-	-	-	-	0.0%	0.0%	0.0%	0.0%	2	-	-	-	2	-	2	2	100.0%	
Hainan Airlines	6	-	-	-	0.0%	0.0%	0.0%	0.0%	-	-	-	-	-	-	6	6	100.0%	
Iberia Express	4	-	-	2	33.3%	66.7%	0.0%	0.0%	-	-	-	-	-	-	6	6	100.0%	
Icelandair	14	2	-	2	100.0%	0.0%	0.0%	0.0%	-	-	-	-	-	-	14	14	100.0%	
Iraqi Airways	2	-	-	-	0.0%	0.0%	0.0%	0.0%	-	-	-	-	-	-	2	2	100.0%	
Jet Airways	10	-	-	-	0.0%	0.0%	0.0%	0.0%	-	-	-	-	-	-	10	10	100.0%	
Jet2.com	195	2	-	7	18.8%	15.6%	0.0%	0.0%	25	-	-	25	-	13	211	211	100.0%	
KLM Royal Dutch Airlines	68	-	-	1	0.0%	0.0%	0.0%	0.0%	13	12	-	1	-	-	82	82	100.0%	
Lauda Motion	-	-	-	-	0.0%	0.0%	0.0%	0.0%	4	-	-	4	-	-	4	4	100.0%	
Loganair	58	2	-	-	10.7%	35.7%	0.0%	0.0%	12	-	-	12	-	-	68	68	100.0%	
Lufthansa	108	-	-	-	54.6%	24.1%	0.0%	0.0%	10	-	-	10	-	-	118	118	100.0%	
Norwegian	16	-	-	2	61.1%	11.1%	0.0%	0.0%	2	-	-	2	-	-	20	20	100.0%	
Oman Air	14	-	-	-	0.0%	0.0%	0.0%	0.0%	-	-	-	-	-	-	14	14	100.0%	
Pegasus Airlines	-	-	-	-	0.0%	0.0%	0.0%	0.0%	10	-	10	-	-	-	10	10	100.0%	
PIA Pakistan International	18	-	-	-	0.0%	0.0%	0.0%	0.0%	-	-	-	-	-	-	18	18	100.0%	
Qatar Airways	36	-	-	6	0.0%	33.3%	0.0%	0.0%	-	-	-	-	-	-	42	42	100.0%	
Royal Air Maroc	6	4	-	2	0.0%	0.0%	0.0%	0.0%	4	-	-	4	-	-	4	4	100.0%	
Ryanair	488	-	-	2	490	12.2%	0.0%	0.0%	203	-	-	190	-	-	693	680	98.1%	
SAS Scandinavian	70	-	-	4	66	24.2%	0.0%	0.0%	14	-	-	14	-	-	80	80	100.0%	
Saudia	10	-	-	-	100.0%	0.0%	0.0%	0.0%	-	-	-	-	-	-	10	10	100.0%	
Singapore Airlines	20	-	-	-	0.0%	0.0%	0.0%	0.0%	-	-	-	-	-	-	20	20	100.0%	
Spicejet	-	-	-	-	0.0%	0.0%	0.0%	0.0%	14	-	-	-	-	-	14	-	0.0%	
Stobart Air	58	-	-	-	3.4%	0.0%	0.0%	0.0%	-	-	-	-	-	-	58	58	100.0%	
SUN-AIR	30	1	-	2	27	0.0%	0.0%	0.0%	3	-	-	3	-	-	30	30	100.0%	
Swiss International	28	-	-	-	28	0.0%	0.0%	0.0%	-	-	-	-	-	-	28	28	100.0%	
TAP Air Portugal	24	-	-	-	24	58.3%	0.0%	0.0%	4	-	-	-	4	-	28	28	100.0%	
Thomas Cook (UK)	153	10	-	6	149	19.5%	26.2%	0.0%	13	-	-	13	-	2	162	162	100.0%	
Titan Airways	2	-	-	-	2	0.0%	0.0%	0.0%	-	-	-	-	-	-	2	2	100.0%	
TUI Airways	164	7	-	6	151	25.2%	24.5%	2.6%	0.0%	11	-	11	-	-	162	162	100.0%	
Turkish Airlines	28	-	-	-	28	50.0%	0.0%	0.0%	-	-	-	-	-	-	28	28	100.0%	
United Airlines	14	-	-	-	14	50.0%	100.0%	0.0%	0.0%	-	-	-	-	-	14	14	100.0%	
Virgin Atlantic	28	-	-	4	24	41.7%	0.0%	0.0%	15	-	-	15	-	-	39	39	100.0%	
Vueling	14	-	-	-	14	100.0%	0.0%	0.0%	-	-	-	-	-	-	14	14	100.0%	
TOTAL	3,301	62	-	26	3,265	25.4%	12.6%	0.1%	0.0%	506	12	10	445	12	36	3,771	3,744	99.3%

Air Transport Movement Allocation by Operator

Comparison between W19 Hist (SHL) vs. W19 Init Coord



Operator	FULL SEASON ALLOCATION							PEAK WEEK ALLOCATION								
	W19 ATMs	W19 ATMs	+/- change	W19 Rank	W19 Seats	W19 Seats	+/- change	W19 Rank	W19 ATMs	W19 ATMs	+/- change	W19 Rank	W19 Seats	W19 Seats	+/- change	W19 Rank
Aegean Airlines	84	102	18	47	10,788	16,530	5,742	46	2	4	2	47	174	696	522	48
Aer Lingus	1,168	1,176	8	13	203,232	204,624	1,392	15	54	54	0	13	9,396	9,396	0	15
Air Arabia Maroc	88	88	0	49	15,312	15,312	0	48	4	4	0	47	696	696	0	48
Air France	924	924	0	15	137,896	160,776	22,880	17	42	42	0	15	6,268	7,308	1,040	17
Air Transat	88	90	2	48	22,000	22,828	828	44	4	4	0	47	1,000	1,000	0	44
Alitalia	-	308	308	32	-	44,352	44,352	36	-	14	14	32	-	2,016	2,016	37
American Airlines	292	308	16	32	72,124	68,422	-3,702	30	12	14	2	32	2,964	3,276	312	30
Anisec	-	144	144	43	-	25,920	25,920	41	-	10	10	39	-	1,800	1,800	40
Aurigny Air Services	604	616	12	22	43,488	44,352	864	36	28	28	0	21	2,016	2,016	0	37
Austrian Airlines	240	340	100	31	31,360	43,360	12,000	38	12	16	4	30	1,600	2,080	480	36
BA Cityflyer	103	123	20	46	10,094	12,054	1,960	51	8	8	0	43	784	784	0	46
British Airways	2,582	2,582	0	8	468,073	434,523	-33,550	9	118	118	0	7	21,375	19,850	-1,525	9
Brussels Airlines	836	836	0	19	128,172	135,036	6,864	19	38	38	0	19	5,826	6,138	312	19
Cathay Pacific	308	308	0	32	95,960	99,092	3,132	24	14	14	0	32	3,920	4,676	756	23
Corendon Airlines Europe	14	14	0	57	1,330	2,646	1,316	56	2	2	0	53	190	378	188	53
EasyJet	10,861	12,247	1,386	3	1,921,728	2,165,952	244,224	2	496	542	46	3	87,750	95,802	8,052	2
EasyJet Switzerland	38	44	6	53	5,928	6,864	936	53	2	2	0	53	312	312	0	54
El Al Israel Airlines	-	88	88	49	-	14,608	14,608	49	-	4	4	47	-	664	664	50
Emirates	924	924	0	15	538,076	538,076	0	7	42	42	0	15	24,458	24,458	0	7
Enter Air	-	11	11	58	-	2,079	2,079	57	-	-	0	58	-	-	0	57
Ethiopian Airlines	136	176	40	42	18,360	23,760	5,400	42	8	8	0	43	1,080	1,080	0	42
Ethihad Airways	616	616	0	22	218,988	227,304	8,316	14	28	28	0	21	9,954	10,332	378	14
European Air Transport (DHL)	-	-	0	59	-	-	0	58	-	-	0	58	-	-	0	57
Eurowings	1,056	1,056	0	14	162,624	162,624	0	16	48	48	0	14	7,392	7,392	0	16
Federal Express	352	352	0	30	-	-	0	58	16	16	0	30	-	-	0	57
Finnair	616	616	0	22	120,736	120,736	0	20	28	28	0	21	5,488	5,488	0	20
Flybe	13,198	14,779	1,581	2	1,072,776	1,194,596	121,820	3	609	670	61	2	49,948	54,192	4,244	3
Freebird Airlines	16	43	27	55	1,440	5,040	3,600	55	-	2	2	53	-	180	180	56
Hainan Airlines	132	132	0	44	38,544	38,544	0	40	6	6	0	45	1,752	1,752	0	41
Iberia Express	88	132	44	44	15,444	23,760	8,316	42	4	6	2	45	702	1,080	378	42
Icelandair	308	308	0	32	56,364	56,364	0	33	14	14	0	32	2,562	2,562	0	33
Iraqi Airways	44	44	0	53	6,600	6,600	0	54	2	2	0	53	300	300	0	55
Jet Airways	220	220	0	40	55,880	55,880	0	34	10	10	0	39	2,540	2,540	0	34
Jet2.com	3,196	4,226	1,030	4	635,646	861,964	226,318	6	195	211	16	4	39,017	43,099	4,082	4
KLM Royal Dutch Airlines	1,496	1,803	307	9	267,784	311,508	43,724	11	68	82	14	9	12,172	14,168	1,996	11
Lauda Motion	-	88	88	49	-	15,840	15,840	47	-	4	4	47	-	720	720	47
Loganair	1,262	1,456	194	12	53,126	66,064	12,938	31	58	68	10	11	2,446	3,092	646	31
Lufthansa	2,376	2,602	226	7	394,724	442,326	47,602	8	108	118	10	7	17,942	20,070	2,128	8
Norwegian	352	440	88	27	65,604	82,104	16,500	28	16	20	4	27	2,982	3,732	750	28
Oman Air	308	308	0	32	82,236	82,236	0	27	14	14	0	32	3,738	3,738	0	27
Pegasus Airlines	-	224	224	39	-	42,336	42,336	39	-	10	10	39	-	1,890	1,890	39
PIA Pakistan International	396	396	0	29	155,628	155,628	0	18	18	18	0	29	7,074	7,074	0	18
Qatar Airways	792	924	132	15	258,764	295,378	36,614	13	36	42	6	15	11,762	14,070	2,308	12
Royal Air Maroc	142	88	-54	49	16,188	13,068	-3,120	50	6	4	-2	47	684	594	-90	51
Ryanair	10,749	14,965	4,216	1	2,031,561	2,828,385	796,824	1	488	680	192	1	92,232	128,520	36,288	1
SAS Scandinavian	1,396	1,736	340	10	249,092	302,142	53,050	12	70	80	10	10	12,324	13,832	1,508	13
Saudia	220	220	0	40	65,560	65,560	0	32	10	10	0	39	2,980	2,980	0	32
Singapore Airlines	440	440	0	27	111,320	111,320	0	23	20	20	0	27	5,060	5,060	0	27
Spicejet	-	-	0	59	-	-	0	58	-	-	0	58	-	-	0	57
Stobart Air	1,652	1,596	-56	11	118,192	114,272	-3,920	22	58	58	0	12	4,176	4,176	0	25
SUN-AIR	632	660	28	20	20,224	21,120	896	45	30	30	0	20	960	960	0	45
Swiss International	626	646	20	21	89,010	90,766	1,756	26	28	28	0	21	3,980	3,928	-52	26
TAP Air Portugal	528	616	88	22	82,280	96,624	14,344	25	24	28	4	21	3,740	4,392	652	24
Thomas Cook (UK)	3,144	3,640	496	5	758,364	905,041	146,677	4	153	162	9	5	35,462	39,996	4,534	5
Titan Airways	30	41	11	56	6,060	7,908	1,848	52	2	2	0	53	404	404	0	52
TUI Airways	3,437	3,604	167	6	770,722	874,328	103,606	5	164	162	-2	5	36,724	39,296	2,572	6
Turkish Airlines	616	616	0	22	117,040	117,040	0	21	28	28	0	21	5,320	5,320	0	21
United Airlines	308	308	0	32	52,052	73,920	21,868	29	14	14	0	32	2,366	3,360	994	29
Virgin Atlantic	638	869	231	18	290,290	320,551	30,261	10	28	39	11	18	12,740	14,343	1,603	10
Vueling	284	308	24	32	51,120	55,440	4,320	35	14	14	0	32	2,520	2,520	0	35
TOTAL	70,956	82,567	11,611		12,215,904	14,325,483	2,109,579		3,301	3,744	443		569,252	651,578	82,326	

Operators with 0 'ATMs' in both W19 Hist (SHL) & W19 Init Coord schedules are included in the table due to appearing in the W18 Init Coord schedule (either with/without allocated slots).

Peak Week - Allocation and Slot Adjustment Distribution by Operator

Schedule: W19 Init Coord



Operator	W19 allocated ATMs	SLOT ADJUSTMENTS (MINUTES OFF REQUESTED TIME)														Requests with NO slot allocated	
		0	5	10	15	20	25	30	35	40	45	50	55	60	>60		
Aegean Airlines	4	100.0%	0.0%	0.0%	0.0%	0.0%	0.0%	0.0%	0.0%	0.0%	0.0%	0.0%	0.0%	0.0%	0.0%	0.0%	-
Aer Lingus	54	63.0%	37.0%	0.0%	0.0%	0.0%	0.0%	0.0%	0.0%	0.0%	0.0%	0.0%	0.0%	0.0%	0.0%	0.0%	-
Air Arabia Maroc	4	100.0%	0.0%	0.0%	0.0%	0.0%	0.0%	0.0%	0.0%	0.0%	0.0%	0.0%	0.0%	0.0%	0.0%	0.0%	-
Air France	42	100.0%	0.0%	0.0%	0.0%	0.0%	0.0%	0.0%	0.0%	0.0%	0.0%	0.0%	0.0%	0.0%	0.0%	0.0%	-
Air Transat	4	75.0%	25.0%	0.0%	0.0%	0.0%	0.0%	0.0%	0.0%	0.0%	0.0%	0.0%	0.0%	0.0%	0.0%	0.0%	-
Alitalia	14	100.0%	0.0%	0.0%	0.0%	0.0%	0.0%	0.0%	0.0%	0.0%	0.0%	0.0%	0.0%	0.0%	0.0%	0.0%	-
American Airlines	14	100.0%	0.0%	0.0%	0.0%	0.0%	0.0%	0.0%	0.0%	0.0%	0.0%	0.0%	0.0%	0.0%	0.0%	0.0%	-
Anisec	10	50.0%	0.0%	50.0%	0.0%	0.0%	0.0%	0.0%	0.0%	0.0%	0.0%	0.0%	0.0%	0.0%	0.0%	0.0%	-
Aurigny Air Services	28	100.0%	0.0%	0.0%	0.0%	0.0%	0.0%	0.0%	0.0%	0.0%	0.0%	0.0%	0.0%	0.0%	0.0%	0.0%	-
Austrian Airlines	16	100.0%	0.0%	0.0%	0.0%	0.0%	0.0%	0.0%	0.0%	0.0%	0.0%	0.0%	0.0%	0.0%	0.0%	0.0%	-
BA Cityflyer	8	100.0%	0.0%	0.0%	0.0%	0.0%	0.0%	0.0%	0.0%	0.0%	0.0%	0.0%	0.0%	0.0%	0.0%	0.0%	-
British Airways	118	99.2%	0.8%	0.0%	0.0%	0.0%	0.0%	0.0%	0.0%	0.0%	0.0%	0.0%	0.0%	0.0%	0.0%	0.0%	-
Brussels Airlines	38	100.0%	0.0%	0.0%	0.0%	0.0%	0.0%	0.0%	0.0%	0.0%	0.0%	0.0%	0.0%	0.0%	0.0%	0.0%	-
Cathay Pacific	14	100.0%	0.0%	0.0%	0.0%	0.0%	0.0%	0.0%	0.0%	0.0%	0.0%	0.0%	0.0%	0.0%	0.0%	0.0%	-
Corendon Airlines Europe	2	100.0%	0.0%	0.0%	0.0%	0.0%	0.0%	0.0%	0.0%	0.0%	0.0%	0.0%	0.0%	0.0%	0.0%	0.0%	-
EasyJet	542	97.8%	1.7%	0.4%	0.0%	0.0%	0.0%	0.2%	0.0%	0.0%	0.0%	0.0%	0.0%	0.0%	0.0%	0.0%	-
EasyJet Switzerland	2	100.0%	0.0%	0.0%	0.0%	0.0%	0.0%	0.0%	0.0%	0.0%	0.0%	0.0%	0.0%	0.0%	0.0%	0.0%	-
El Al Israel Airlines	4	100.0%	0.0%	0.0%	0.0%	0.0%	0.0%	0.0%	0.0%	0.0%	0.0%	0.0%	0.0%	0.0%	0.0%	0.0%	-
Emirates	42	100.0%	0.0%	0.0%	0.0%	0.0%	0.0%	0.0%	0.0%	0.0%	0.0%	0.0%	0.0%	0.0%	0.0%	0.0%	-
Ethiopian Airlines	8	100.0%	0.0%	0.0%	0.0%	0.0%	0.0%	0.0%	0.0%	0.0%	0.0%	0.0%	0.0%	0.0%	0.0%	0.0%	-
Ethihad Airways	28	100.0%	0.0%	0.0%	0.0%	0.0%	0.0%	0.0%	0.0%	0.0%	0.0%	0.0%	0.0%	0.0%	0.0%	0.0%	-
Eurowings	48	100.0%	0.0%	0.0%	0.0%	0.0%	0.0%	0.0%	0.0%	0.0%	0.0%	0.0%	0.0%	0.0%	0.0%	0.0%	-
Federal Express	16	100.0%	0.0%	0.0%	0.0%	0.0%	0.0%	0.0%	0.0%	0.0%	0.0%	0.0%	0.0%	0.0%	0.0%	0.0%	-
Finnair	28	100.0%	0.0%	0.0%	0.0%	0.0%	0.0%	0.0%	0.0%	0.0%	0.0%	0.0%	0.0%	0.0%	0.0%	0.0%	-
Flybe	670	93.7%	5.2%	0.3%	0.0%	0.0%	0.0%	0.0%	0.1%	0.6%	0.0%	0.0%	0.0%	0.0%	0.0%	0.0%	-
Freebird Airlines	2	100.0%	0.0%	0.0%	0.0%	0.0%	0.0%	0.0%	0.0%	0.0%	0.0%	0.0%	0.0%	0.0%	0.0%	0.0%	-
Hainan Airlines	6	100.0%	0.0%	0.0%	0.0%	0.0%	0.0%	0.0%	0.0%	0.0%	0.0%	0.0%	0.0%	0.0%	0.0%	0.0%	-
Iberia Express	6	100.0%	0.0%	0.0%	0.0%	0.0%	0.0%	0.0%	0.0%	0.0%	0.0%	0.0%	0.0%	0.0%	0.0%	0.0%	-
Icelandair	14	50.0%	50.0%	0.0%	0.0%	0.0%	0.0%	0.0%	0.0%	0.0%	0.0%	0.0%	0.0%	0.0%	0.0%	0.0%	-
Iraqi Airways	2	100.0%	0.0%	0.0%	0.0%	0.0%	0.0%	0.0%	0.0%	0.0%	0.0%	0.0%	0.0%	0.0%	0.0%	0.0%	-
Jet Airways	10	100.0%	0.0%	0.0%	0.0%	0.0%	0.0%	0.0%	0.0%	0.0%	0.0%	0.0%	0.0%	0.0%	0.0%	0.0%	-
Jet2.com	211	93.8%	1.4%	2.8%	0.5%	0.0%	0.9%	0.5%	0.0%	0.0%	0.0%	0.0%	0.0%	0.0%	0.0%	0.0%	-
KLM Royal Dutch Airlines	82	97.6%	1.2%	0.0%	1.2%	0.0%	0.0%	0.0%	0.0%	0.0%	0.0%	0.0%	0.0%	0.0%	0.0%	0.0%	-
Lauda Motion	4	100.0%	0.0%	0.0%	0.0%	0.0%	0.0%	0.0%	0.0%	0.0%	0.0%	0.0%	0.0%	0.0%	0.0%	0.0%	-
Loganair	68	94.1%	0.0%	5.9%	0.0%	0.0%	0.0%	0.0%	0.0%	0.0%	0.0%	0.0%	0.0%	0.0%	0.0%	0.0%	-
Lufthansa	118	99.2%	0.8%	0.0%	0.0%	0.0%	0.0%	0.0%	0.0%	0.0%	0.0%	0.0%	0.0%	0.0%	0.0%	0.0%	-
Norwegian	20	90.0%	5.0%	5.0%	0.0%	0.0%	0.0%	0.0%	0.0%	0.0%	0.0%	0.0%	0.0%	0.0%	0.0%	0.0%	-
Oman Air	14	100.0%	0.0%	0.0%	0.0%	0.0%	0.0%	0.0%	0.0%	0.0%	0.0%	0.0%	0.0%	0.0%	0.0%	0.0%	-
Pegasus Airlines	10	70.0%	30.0%	0.0%	0.0%	0.0%	0.0%	0.0%	0.0%	0.0%	0.0%	0.0%	0.0%	0.0%	0.0%	0.0%	-
PIA Pakistan International	18	100.0%	0.0%	0.0%	0.0%	0.0%	0.0%	0.0%	0.0%	0.0%	0.0%	0.0%	0.0%	0.0%	0.0%	0.0%	-
Qatar Airways	42	100.0%	0.0%	0.0%	0.0%	0.0%	0.0%	0.0%	0.0%	0.0%	0.0%	0.0%	0.0%	0.0%	0.0%	0.0%	-
Royal Air Maroc	4	100.0%	0.0%	0.0%	0.0%	0.0%	0.0%	0.0%	0.0%	0.0%	0.0%	0.0%	0.0%	0.0%	0.0%	0.0%	-
Ryanair	680	88.8%	2.2%	1.0%	0.1%	1.2%	0.6%	0.1%	0.4%	0.3%	0.0%	0.4%	0.4%	0.3%	4.0%	4.0%	13
SAS Scandinavian	80	100.0%	0.0%	0.0%	0.0%	0.0%	0.0%	0.0%	0.0%	0.0%	0.0%	0.0%	0.0%	0.0%	0.0%	0.0%	-
Saudia	10	100.0%	0.0%	0.0%	0.0%	0.0%	0.0%	0.0%	0.0%	0.0%	0.0%	0.0%	0.0%	0.0%	0.0%	0.0%	-
Singapore Airlines	20	100.0%	0.0%	0.0%	0.0%	0.0%	0.0%	0.0%	0.0%	0.0%	0.0%	0.0%	0.0%	0.0%	0.0%	0.0%	-
Spicejet	-	-	-	-	-	-	-	-	-	-	-	-	-	-	-	-	14
Stobart Air	58	100.0%	0.0%	0.0%	0.0%	0.0%	0.0%	0.0%	0.0%	0.0%	0.0%	0.0%	0.0%	0.0%	0.0%	0.0%	-
SUN-AIR	30	100.0%	0.0%	0.0%	0.0%	0.0%	0.0%	0.0%	0.0%	0.0%	0.0%	0.0%	0.0%	0.0%	0.0%	0.0%	-
Swiss International	28	100.0%	0.0%	0.0%	0.0%	0.0%	0.0%	0.0%	0.0%	0.0%	0.0%	0.0%	0.0%	0.0%	0.0%	0.0%	-
TAP Air Portugal	28	75.0%	25.0%	0.0%	0.0%	0.0%	0.0%	0.0%	0.0%	0.0%	0.0%	0.0%	0.0%	0.0%	0.0%	0.0%	-
Thomas Cook (UK)	162	98.1%	0.6%	1.2%	0.0%	0.0%	0.0%	0.0%	0.0%	0.0%	0.0%	0.0%	0.0%	0.0%	0.0%	0.0%	-
Titan Airways	2	100.0%	0.0%	0.0%	0.0%	0.0%	0.0%	0.0%	0.0%	0.0%	0.0%	0.0%	0.0%	0.0%	0.0%	0.0%	-
TUI Airways	162	97.5%	1.9%	0.0%	0.6%	0.0%	0.0%	0.0%	0.0%	0.0%	0.0%	0.0%	0.0%	0.0%	0.0%	0.0%	-
Turkish Airlines	28	100.0%	0.0%	0.0%	0.0%	0.0%	0.0%	0.0%	0.0%	0.0%	0.0%	0.0%	0.0%	0.0%	0.0%	0.0%	-
United Airlines	14	100.0%	0.0%	0.0%	0.0%	0.0%	0.0%	0.0%	0.0%	0.0%	0.0%	0.0%	0.0%	0.0%	0.0%	0.0%	-
Virgin Atlantic	39	100.0%	0.0%	0.0%	0.0%	0.0%	0.0%	0.0%	0.0%	0.0%	0.0%	0.0%	0.0%	0.0%	0.0%	0.0%	-
Vueling	14	100.0%	0.0%	0.0%	0.0%	0.0%	0.0%	0.0%	0.0%	0.0%	0.0%	0.0%	0.0%	0.0%	0.0%	0.0%	-
TOTAL	3,744	94.6%	2.9%	0.8%	0.1%	0.2%	0.2%	0.1%	0.1%	0.1%	0.1%	0.1%	0.1%	0.1%	0.7%	27	

Operators with 0 'allocated ATMs' and 0 'Requests with NO slot allocated' in W19, are included in this list due to having slots allocated in either W18 Init Coord or W19 Hist (SHL) schedules.

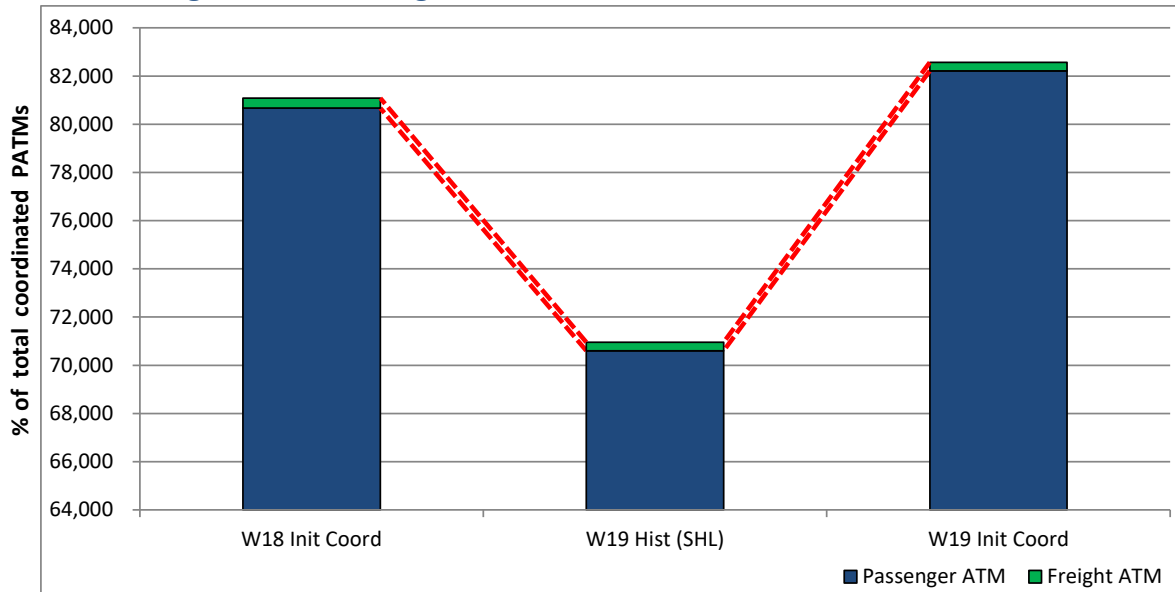
Significant Route Changes

Operator	Category	Description of change from W18 schedule to W19 schedule
Aegean Airlines	CHANGE	Increase ATH from once to twice per week.
Alitalia	NEW	New daily LIN (Milan Linate) with A319 1150/1240z. Terminal one initially allocated.
American Airlines	CHANGE	PHL to operate with B767-300 to 07Jan and B787-8 from 08Jan. W18 was A330-200.
Anisec	NEW	New five per week SZG from 19Dec Mon, Wed, Thu, Fri, Sun 1000/1050z with A320. Vueling partner so Terminal three allocated.
Austrian Airlines	CHANGE	Increase VIE from four to seven per week with EMB195.
Cathay Pacific	CHANGE	A350-1000 for a longer period Dec to Mar. W18 was Dec-Feb.
EasyJet	NEW	New destinations JER, NCE, XRY cont from S19. Plus some ZZFs tbc. Fifteen based aircraft, W18 was x14 and S19 is x17 based.
El Al Israel Airlines	NEW	New TLV twice per week with B737-800, started May19 three per week.
Etihad Airways	CHANGE	B787-10 on morning service and B777-300 afternoon. W18 was B787-9 and B777-300.
Flybe	CHANGE	CDG increase four to five per day, DUS up three to four per day and NQY once to twice per day. New weekly SZG ski charter. Remains seven based aircraft.
Iberia Express	CHANGE	Increase MAD from two to three per week.
Icelandair	CHANGE	Increase KEF from six to seven per week, new on Weds with B757s..
Jet Airways	CHANGE	Historic five per week BOM applied for but service currently suspended.
Jet2.com	CHANGE	A330-200 remains all Winter, new route CGN for series of adhoc charters.
KLM Royal Dutch Airlines	CHANGE	Increase AMS from five to six per day, new 1955/2040z Mon-Fri&Sun.
Lauda Motion	NEW	New twice weekly RIX (Riga) Tue and Sat with A320 0810/0845z - Ryanair partner so Terminal three allocated.
Loganair	NEW	New route LDY cont from S19, INV stays x3, NWI x2 (no BGO)
Lufthansa	CHANGE	Increase MUC from three to four per day, new 1305/1355z Mon-Fri.
Norwegian	NEW	New twice weekly BGO Mon and Fri.
Pegasus Airlines	NEW	New five per week SAW (Sabiha Gokcen) cont from S19.
Qatar Airways	CHANGE	Increase x18 to x21 per week to DOH as per S19.
Ryanair	NEW	Increase eight to fourteen based aircraft (S19 is x12 based). New destinations cont from S19 are BLL, BOD, CAG, CHQ, GOT, GRO, IBZ, KBP, MRS, NTE, PDL, RAK, REU, RHO, SKG . New routes KTW, MXP, PRG.
SAS Scandinavian	NEW	New route AAR cont from S19, OSL increase seven to nine per week.
Spicejet	NEW	New daily BOM (Mumbai) with A330-300 0755/0935z - Terminal two allocated.
Stobart Air	CHANGE	Historic SEN slots applied for but service ended Jan19.
TAP Air Portugal	CHANGE	Increase LIS from x11 to x14 per week.
TUI Airways	NEW	New route RMF (Marsa Alam) is reinstated, weekly series on Weds.
United Airlines	CHANGE	Upgrade daily EWR from B757-200 to B767-400 as per S19.
Virgin Atlantic	CHANGE	Increase JFK from three per week to daily.

Full Season - ATM Analysis

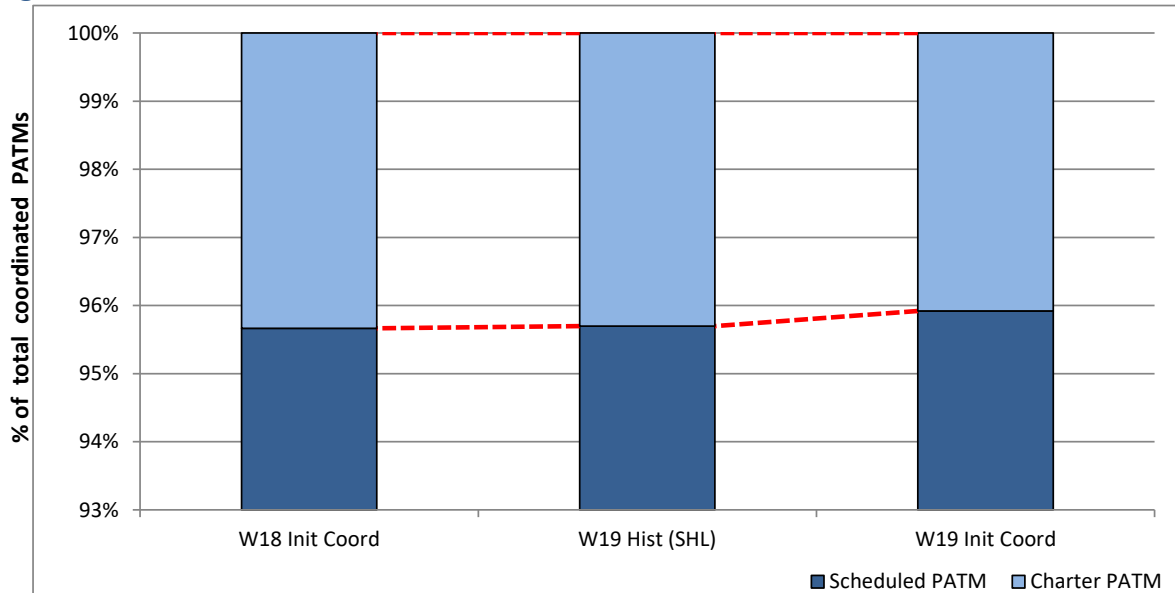


Total ATMs: Passenger ATMs vs. Freight ATMs



Schedule Snapshot

Passenger ATMs: Scheduled vs. Charter

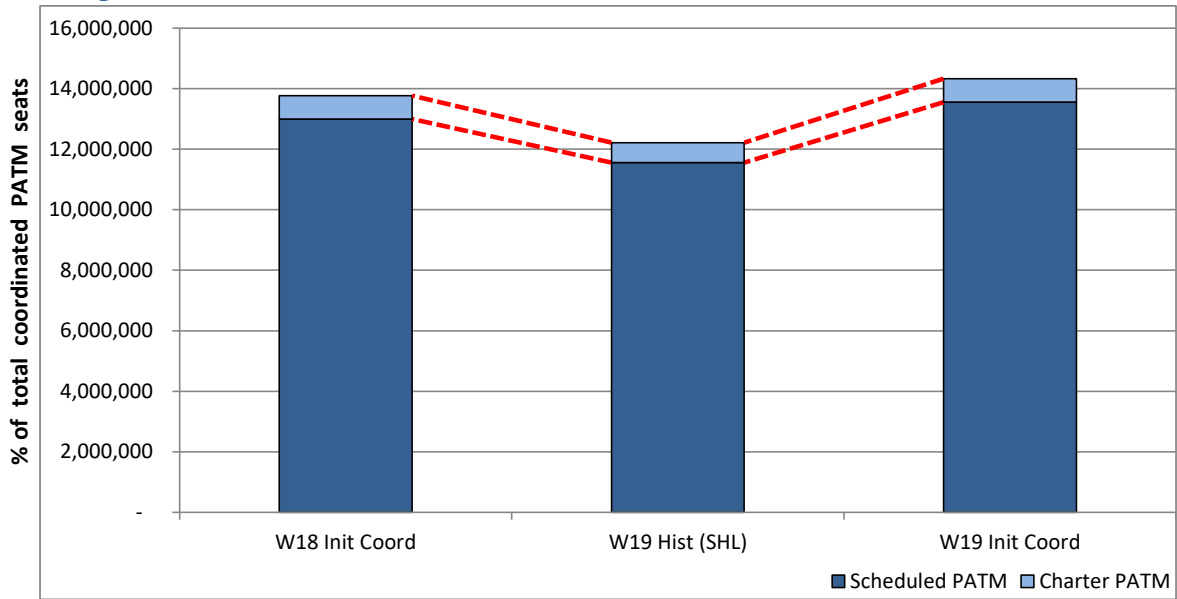


Schedule Snapshot

Full Season - PATM Seats Analysis

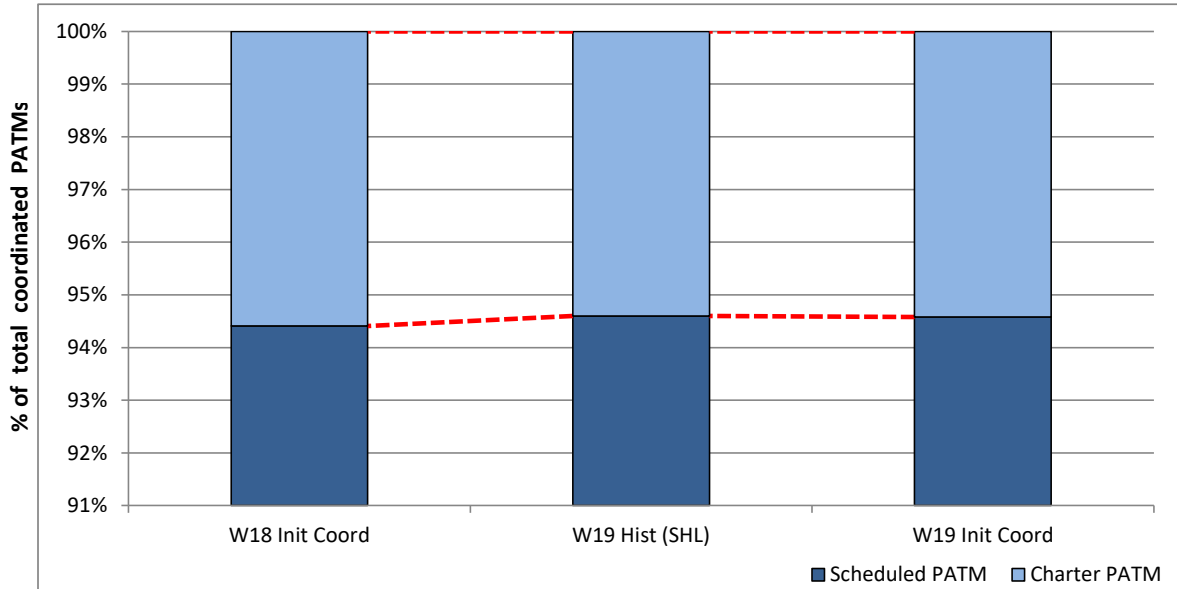


Total Passenger ATM seats: Scheduled vs. Charter



Schedule Snapshot

Passenger ATM seats: Scheduled vs. Charter

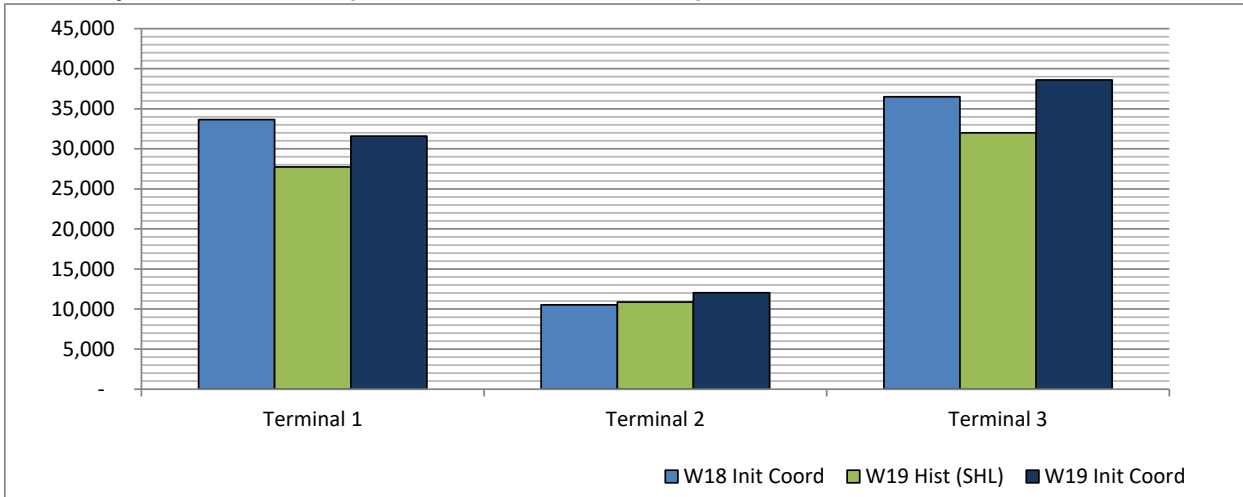


Schedule Snapshot

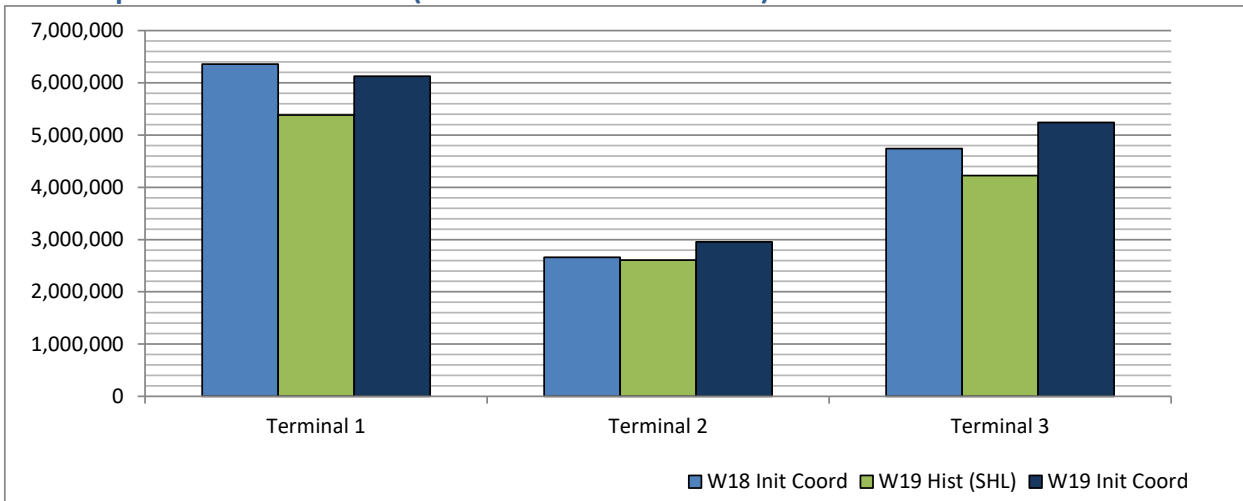
Full Season - Terminal Analysis



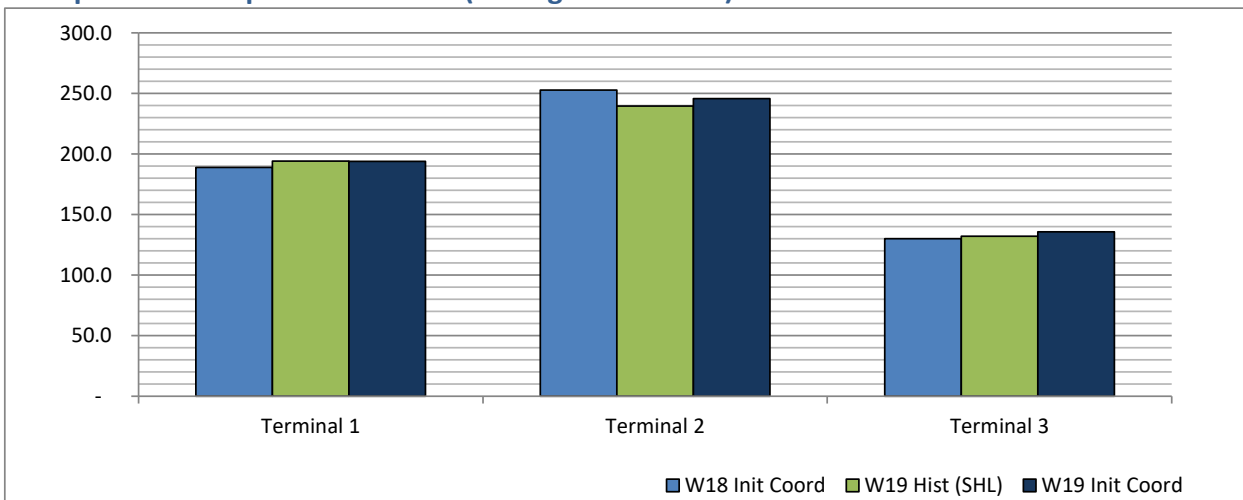
Air Transport Movements (total allocated for season)



Air Transport Movement Seats (total allocated for season)



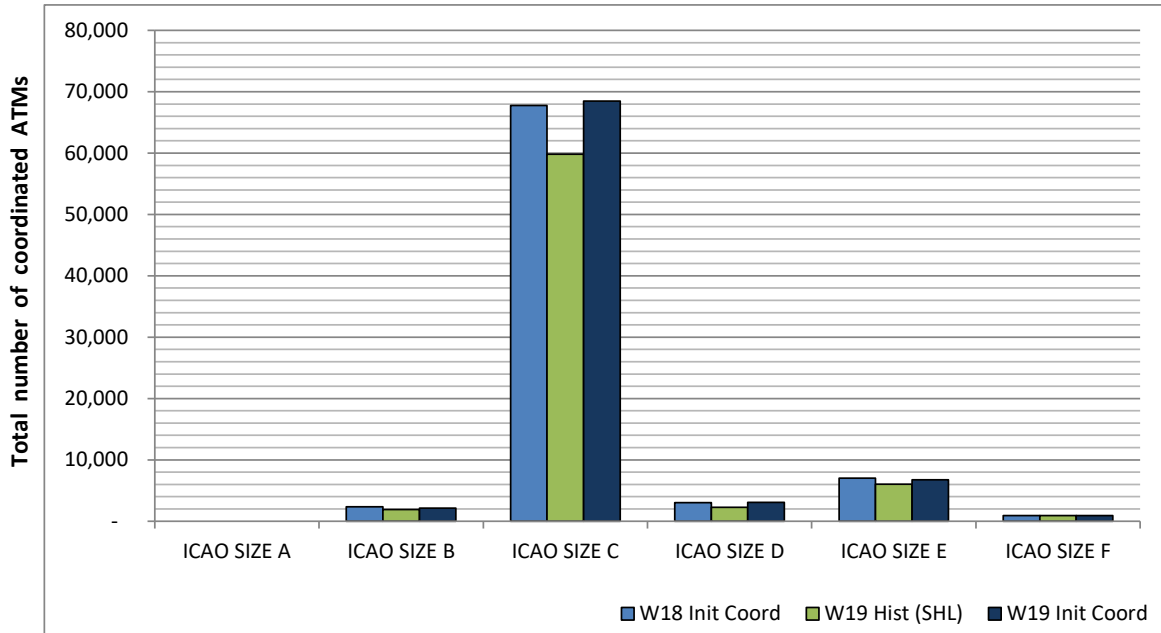
Seats per Air Transport Movement (average for season)



Full Season - Aircraft Size Analysis

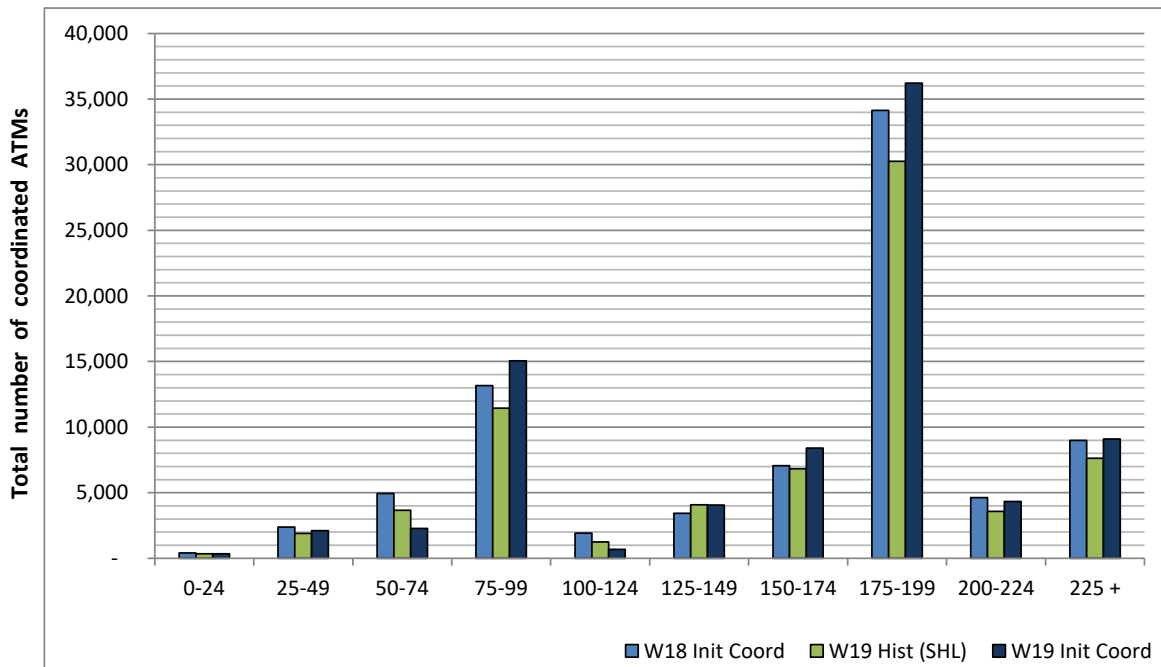


ICAO size designation



Note: See Glossary for definitions of ICAO SIZE groupings

Air Transport Movement seat distribution

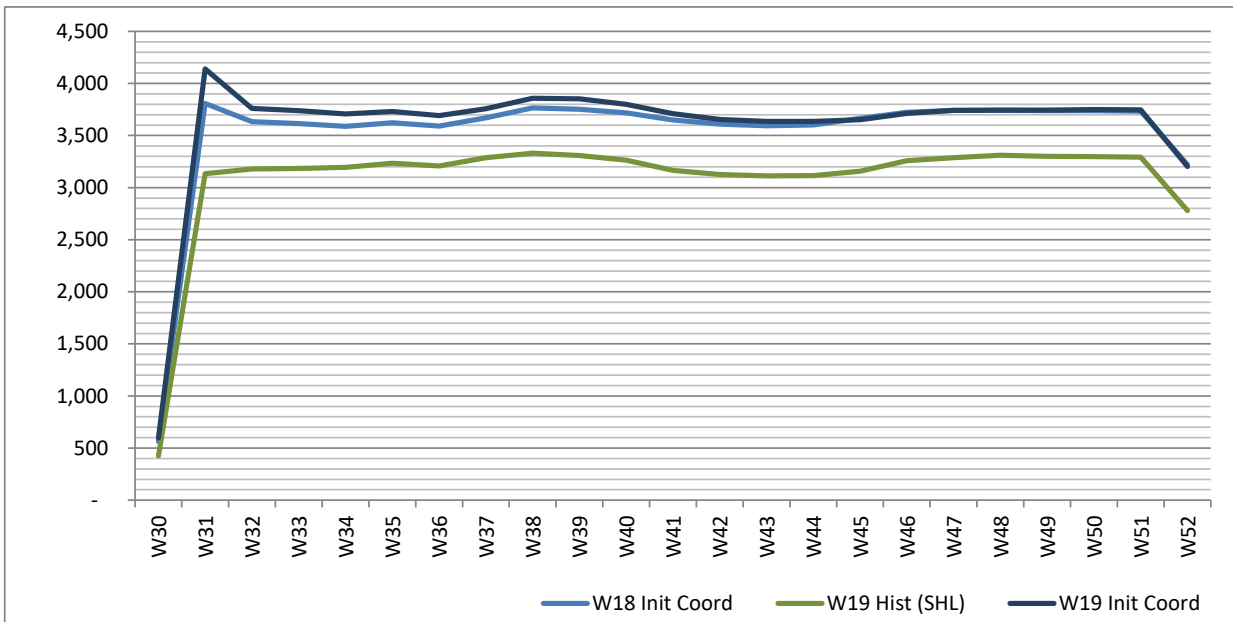


Note: FREIGHT-ONLY services with 0 seats are included in the first seat band '0-24'

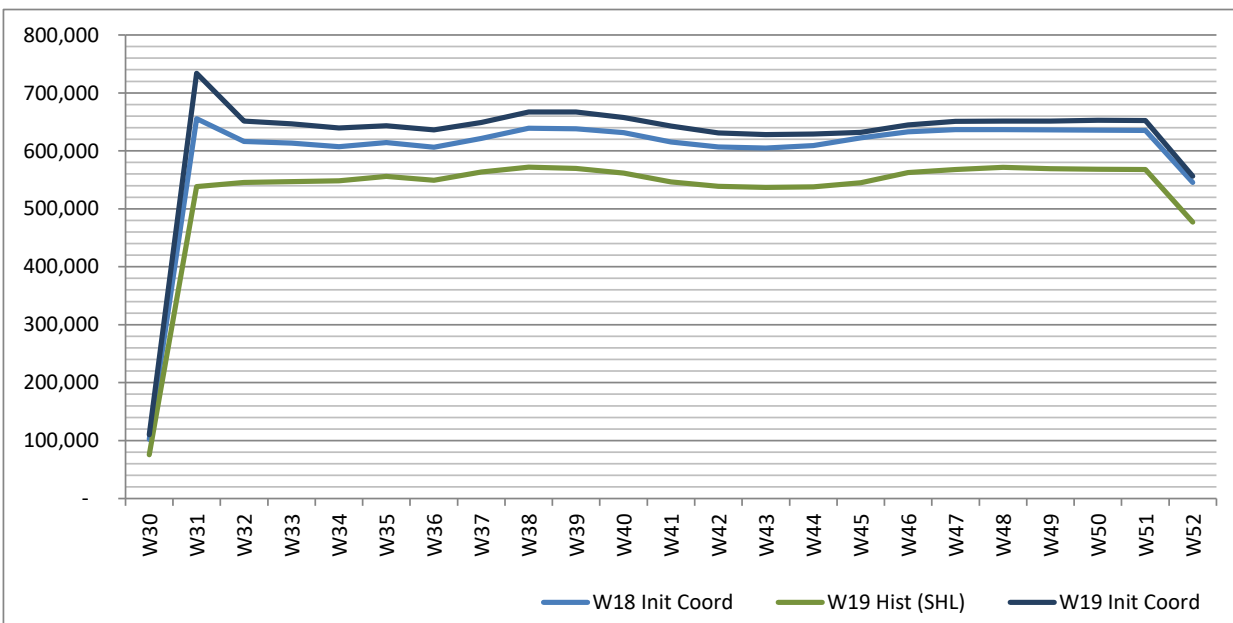
Full Season - Seasonality



Air Transport Movements by week of season



Air Transport Movement Seats by week of season



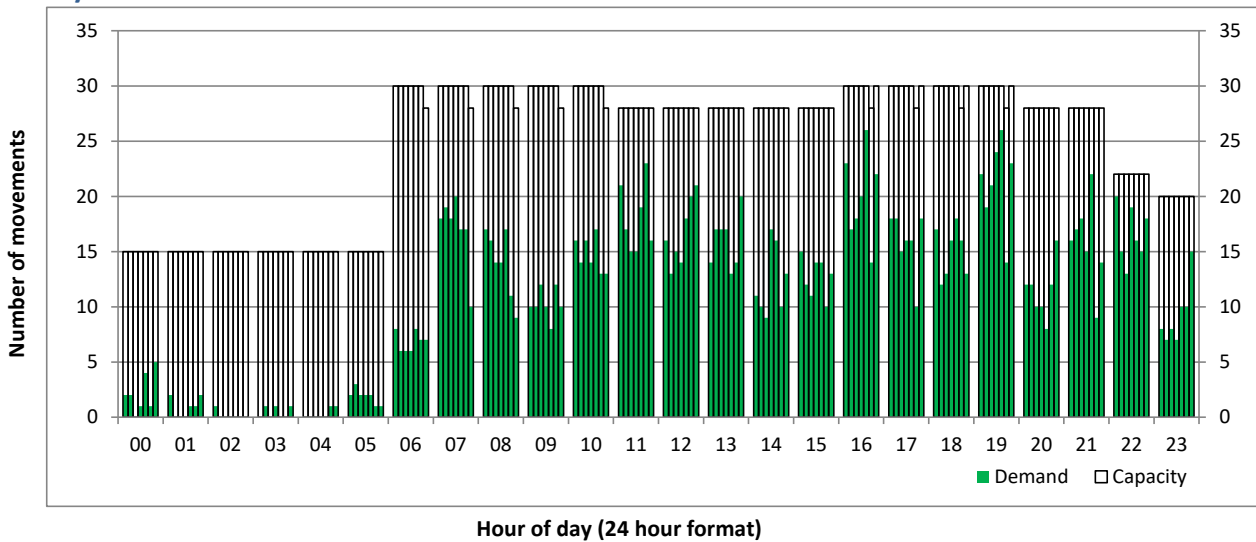
Peak Week - Initial Hourly Runway Demand

Schedule: W19 Init Coord



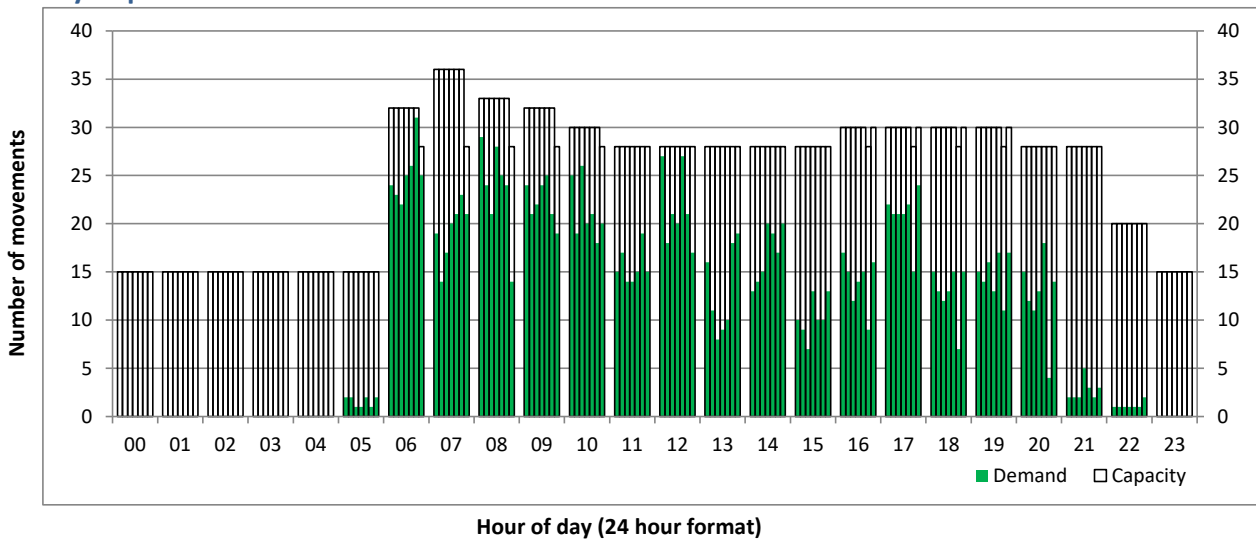
Hourly Arrival Demand

Time: UTC



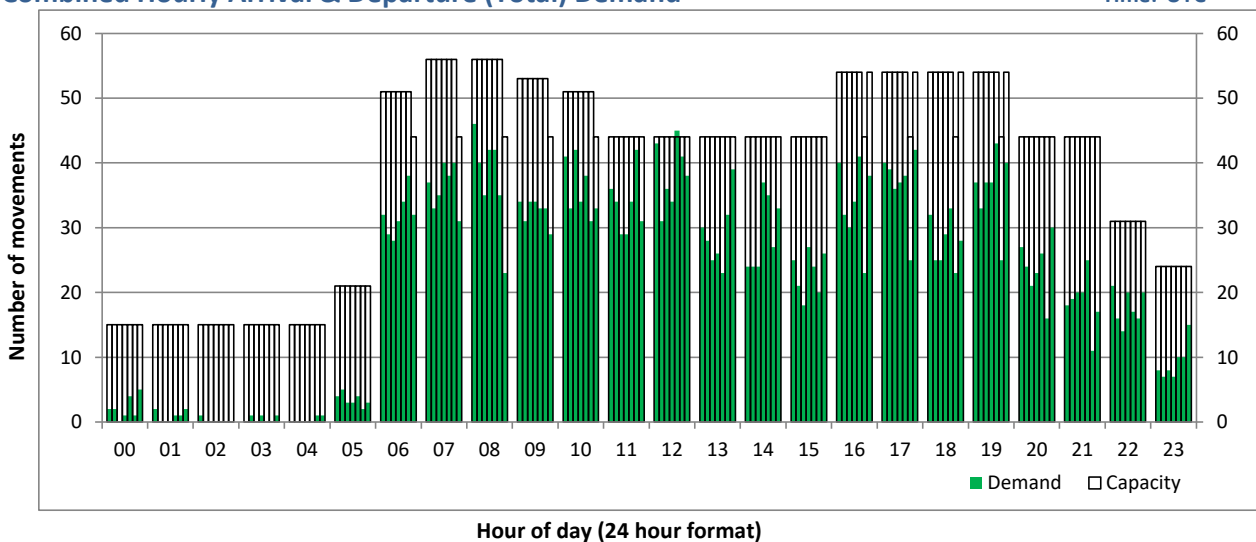
Hourly Departure Demand

Time: UTC



Combined Hourly Arrival & Departure (Total) Demand

Time: UTC



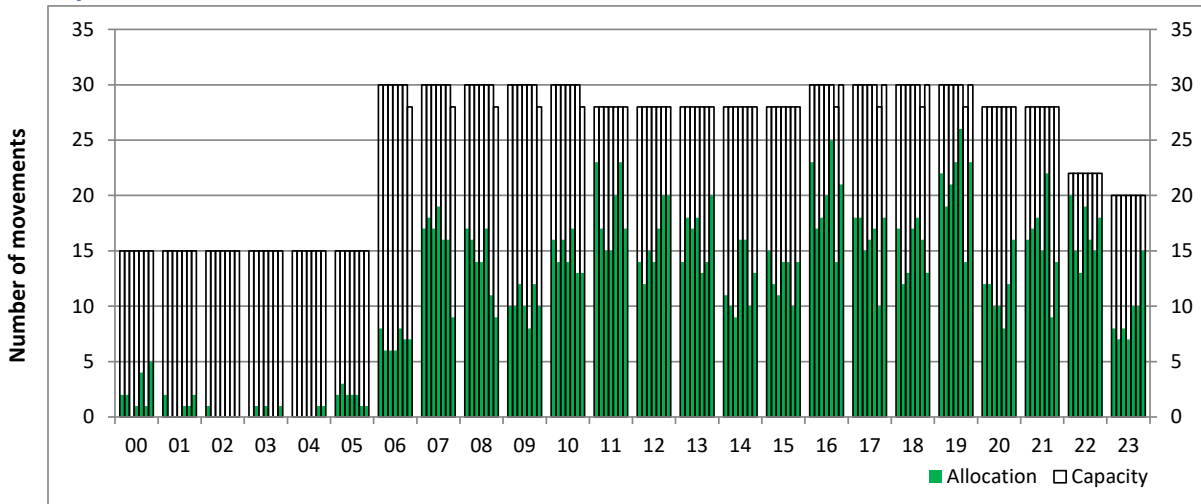
Peak Week - Hourly Runway Allocation

Schedule: W19 Init Coord



Hourly Arrival Allocation

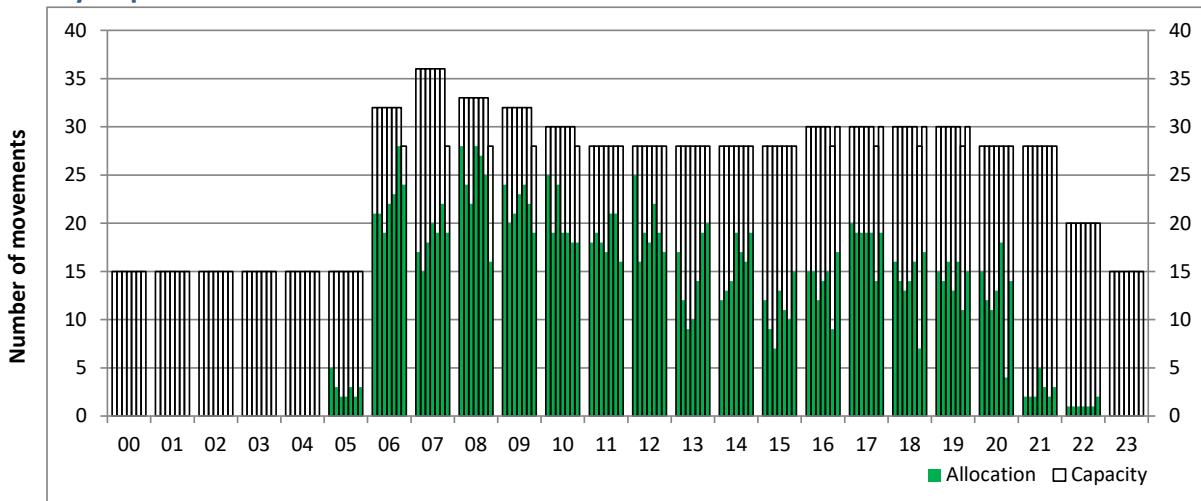
Time: UTC



Hour of day (24 hour format)

Hourly Departure Allocation

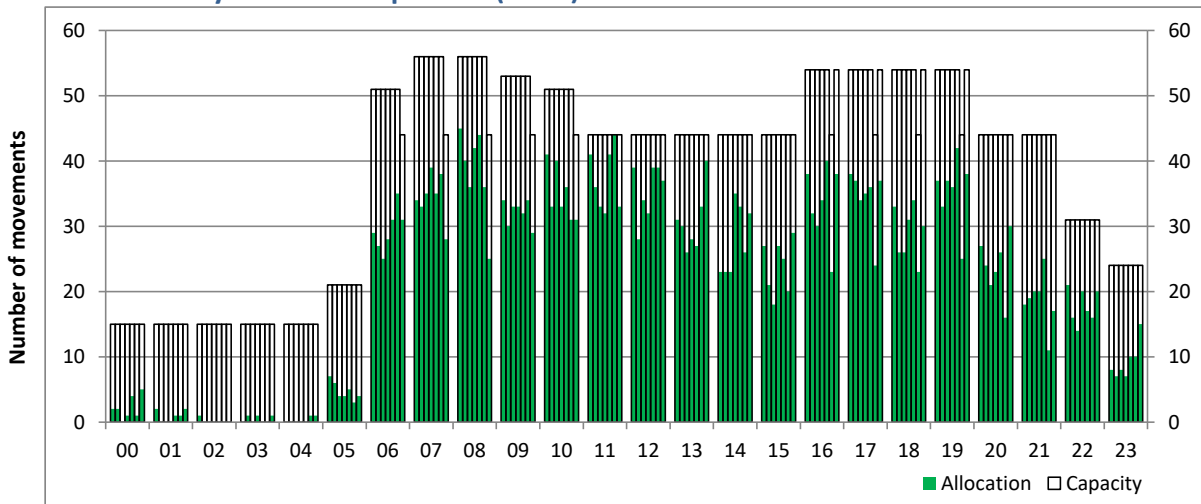
Time: UTC



Hour of day (24 hour format)

Combined Hourly Arrival & Departure (Total) Allocation

Time: UTC



Hour of day (24 hour format)

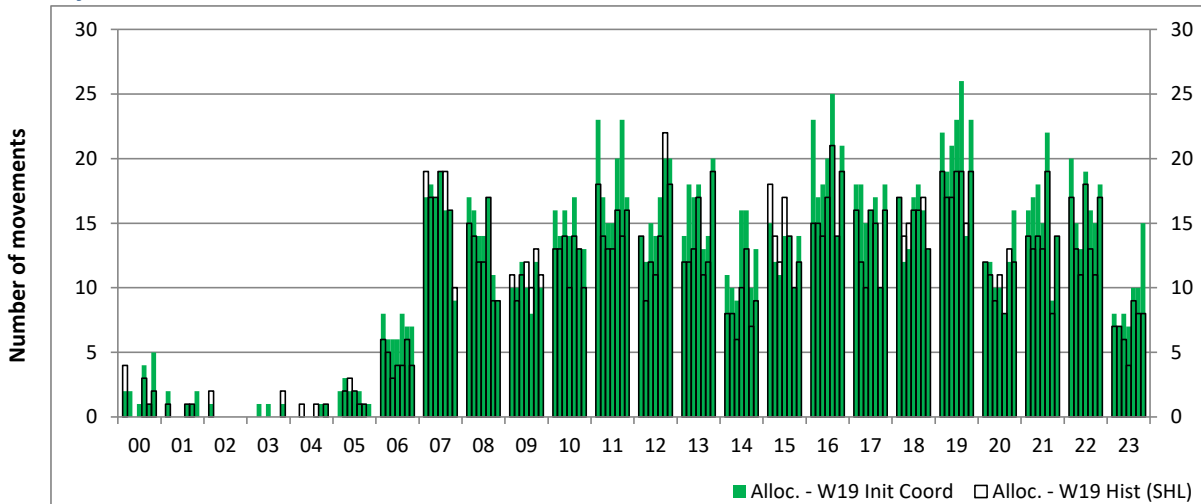
Peak Week - Runway Allocation Comparison

Comparison of W19 Init Coord vs. W19 Hist (SHL)



Hourly Arrival Allocation

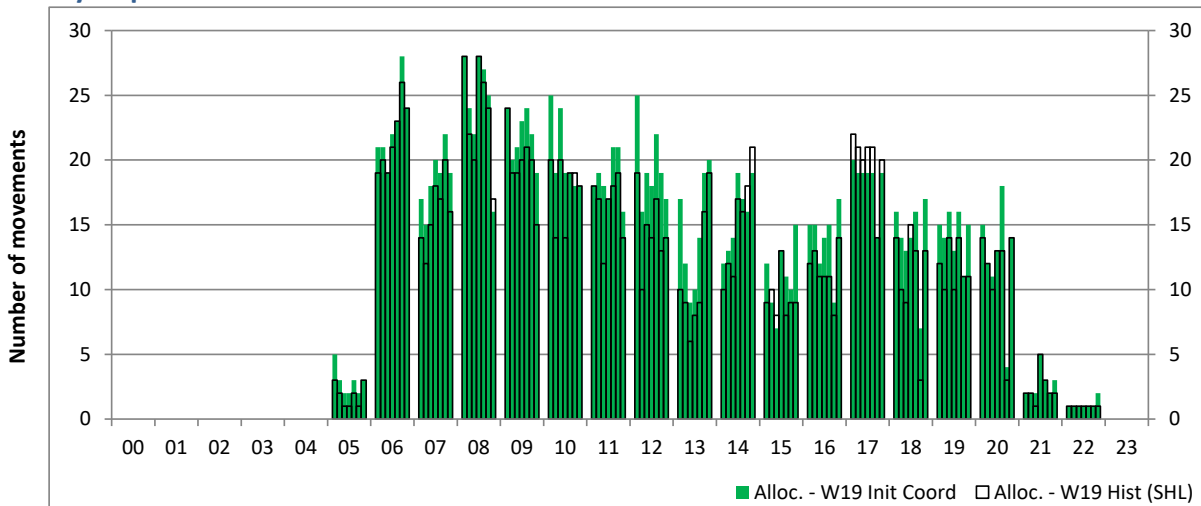
Time: UTC



Hour of day (24 hour format)

Hourly Departure Allocation

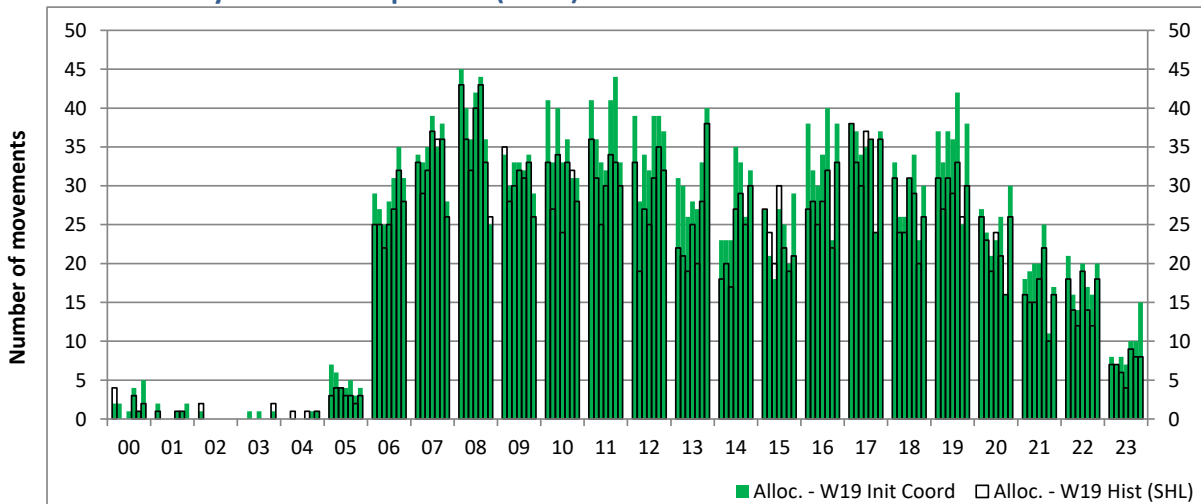
Time: UTC



Hour of day (24 hour format)

Combined Hourly Arrival & Departure (Total) Allocation

Time: UTC



Hour of day (24 hour format)

Peak Week - Passengers Histogram

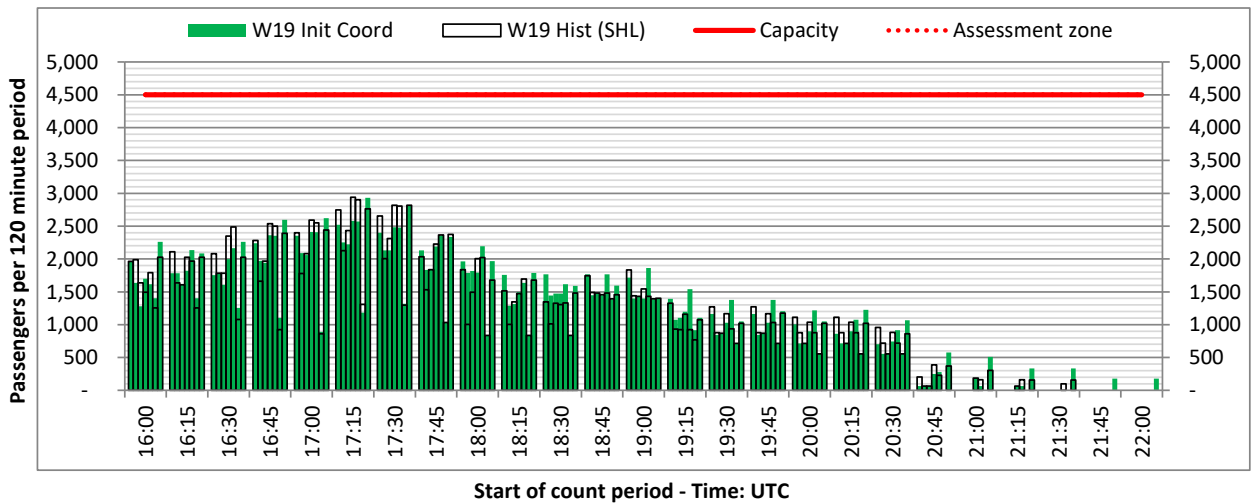
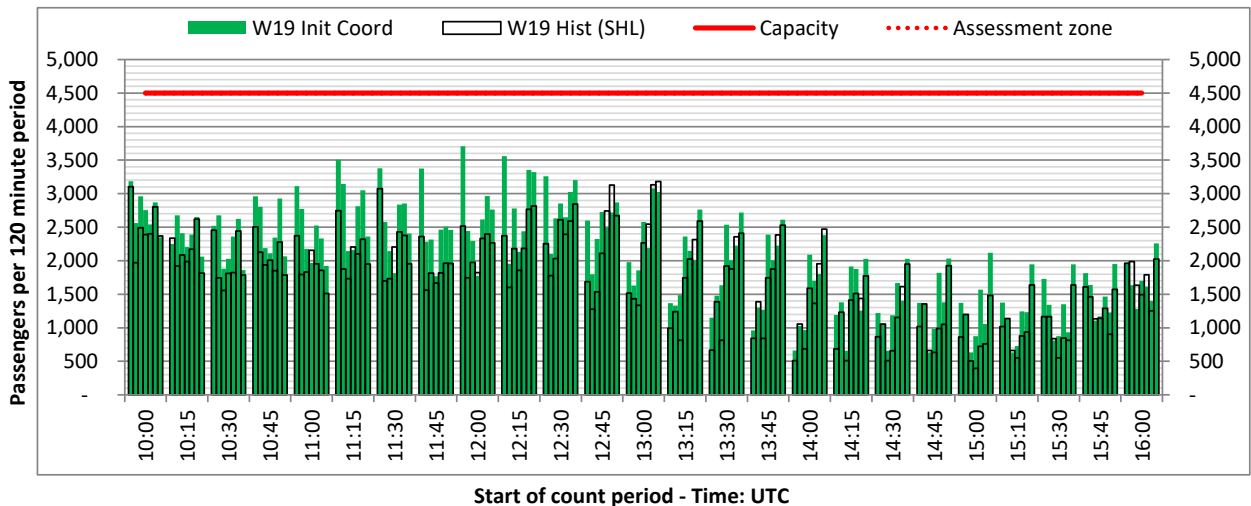
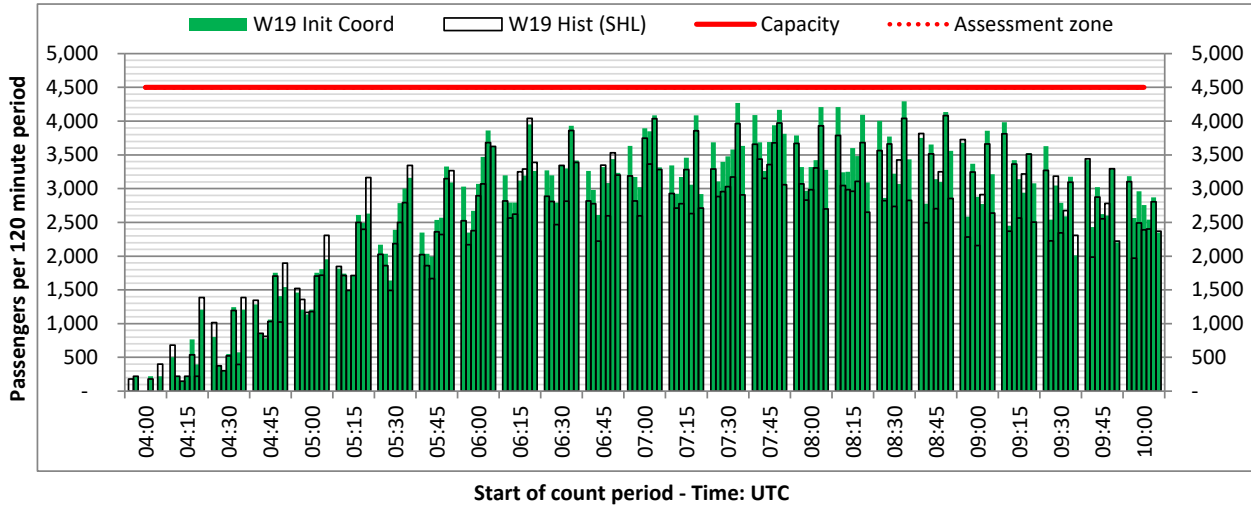
DEPARTURE - 120 minute count rolling every 15 mins (T120/15)



Terminals: T1

Operators: All Operators

Days: 1234567



Peak Week - Passengers Histogram

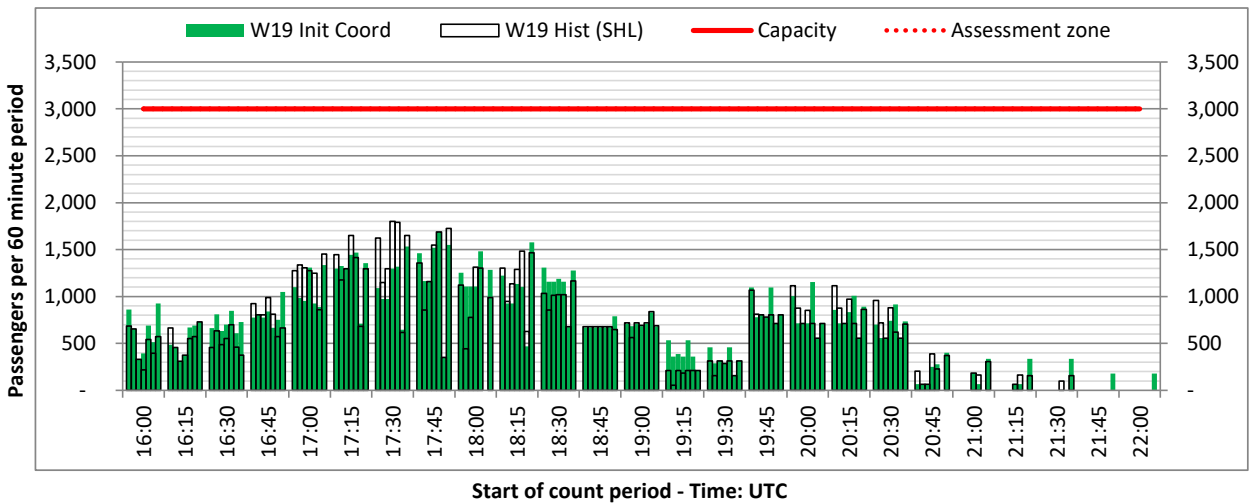
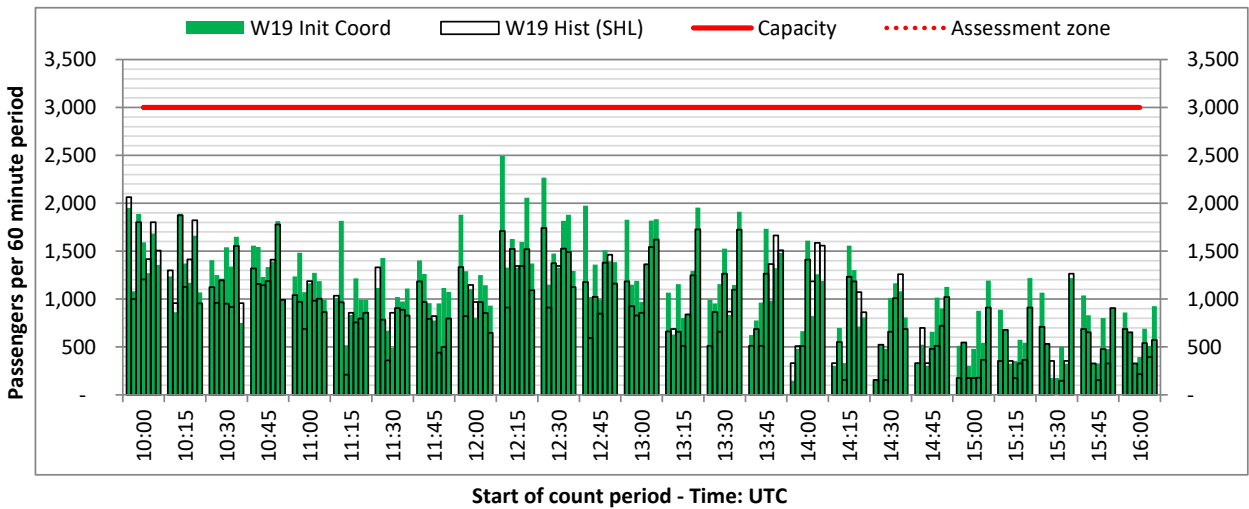
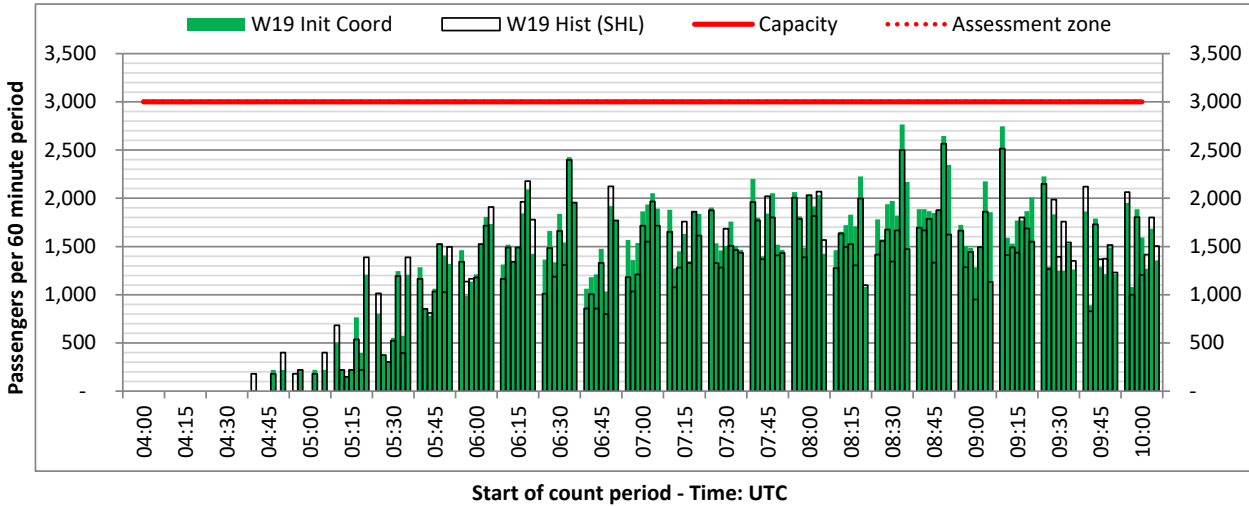
DEPARTURE - 60 minute count rolling every 15 mins (T60/15)



Terminals: T1

Operators: All Operators

Days: 1234567



Peak Week - Passengers Histogram

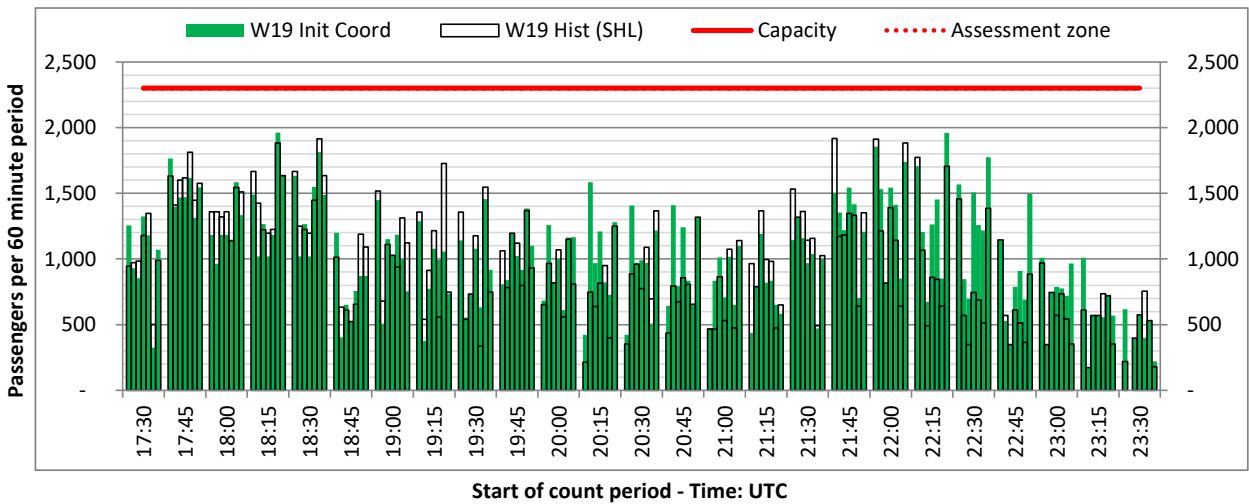
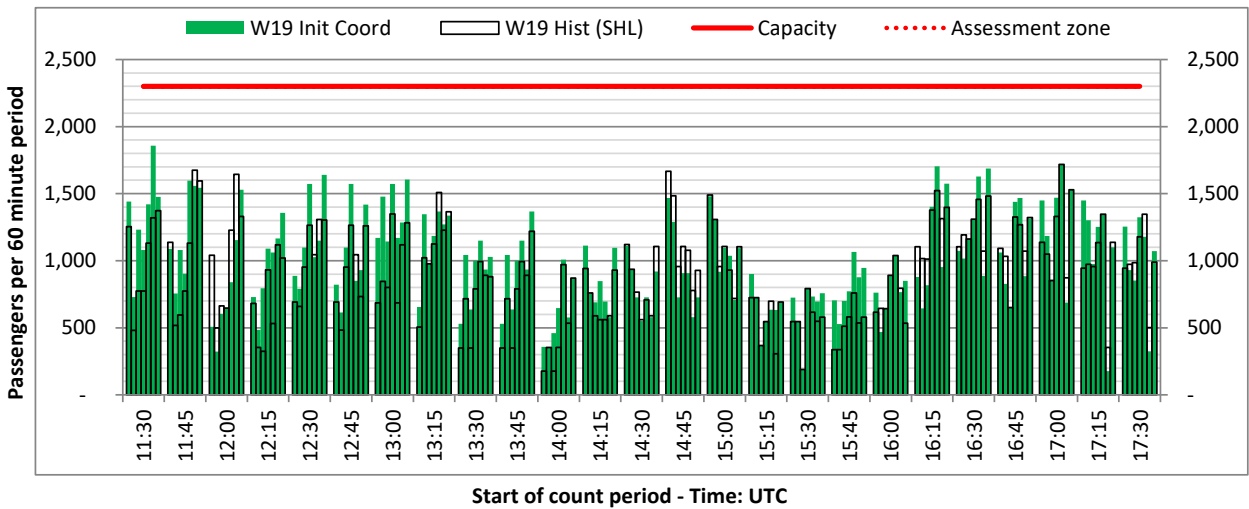
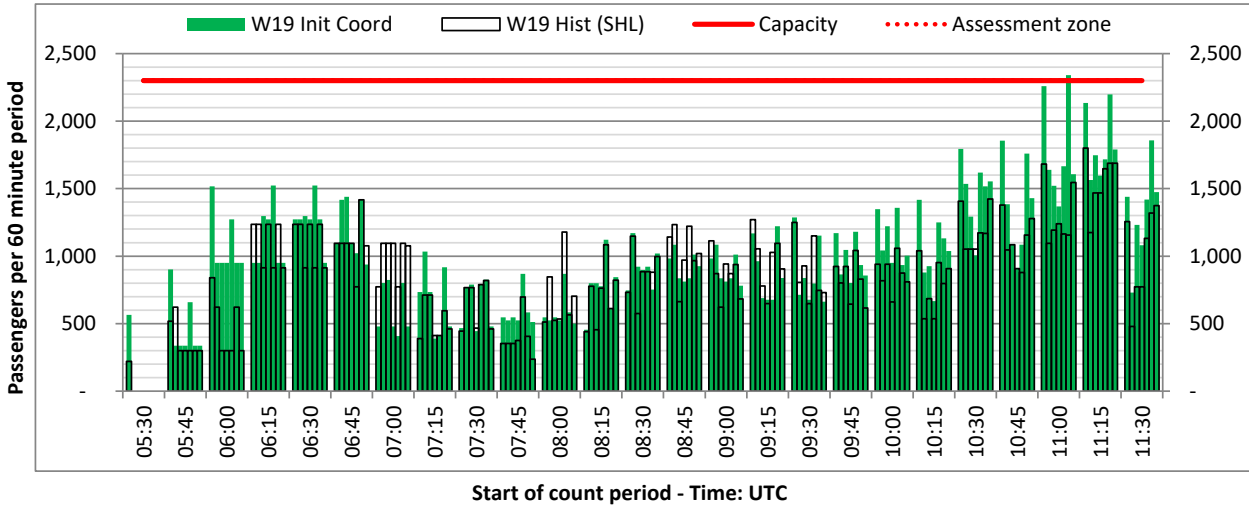
ARRIVAL - 60 minute count rolling every 15 mins (T60/15)



Terminals: T1

Operators: All Operators

Days: 1234567



Peak Week - Passengers Histogram

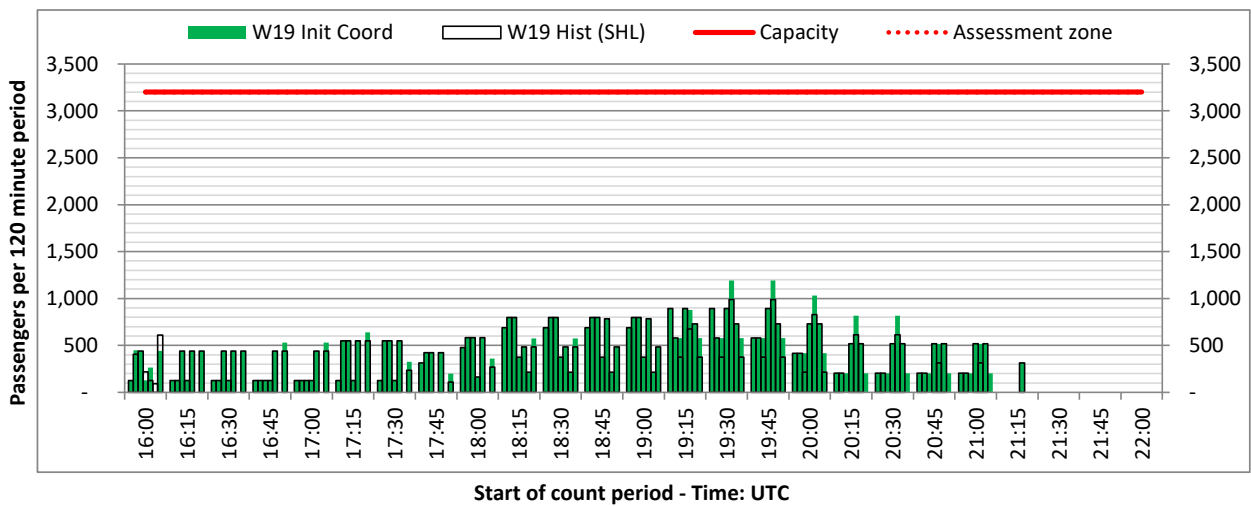
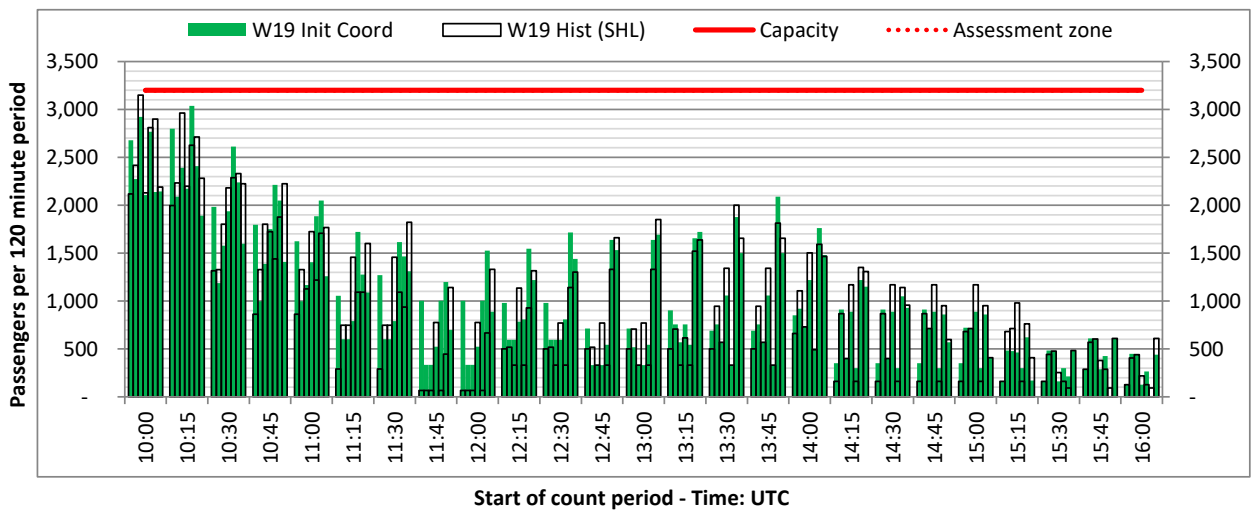
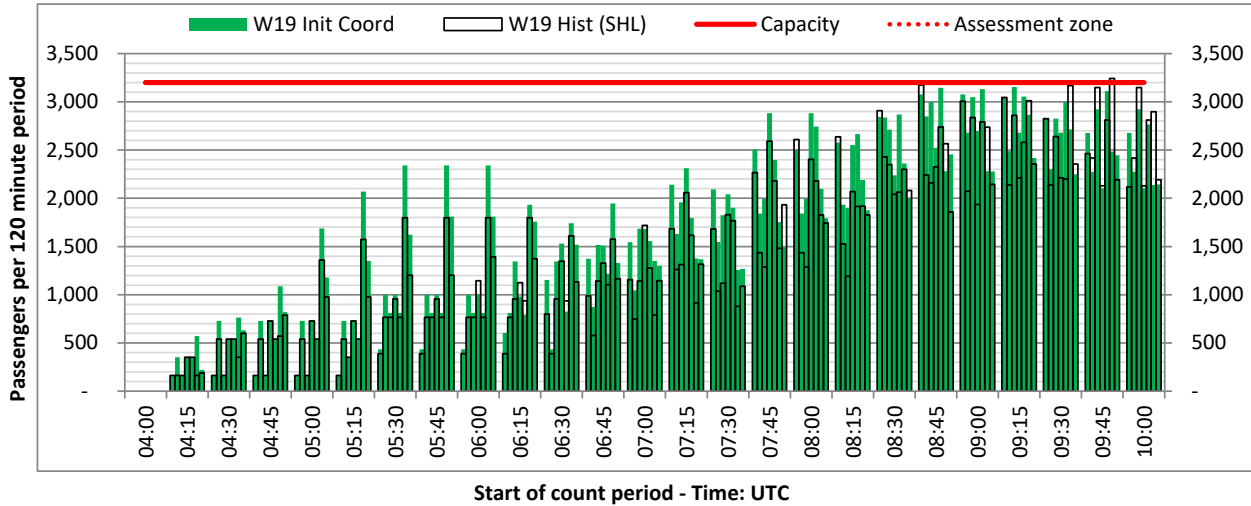
DEPARTURE - 120 minute count rolling every 15 mins (T120/15)



Terminals: T2

Operators: All Operators

Days: 1234567



Peak Week - Passengers Histogram

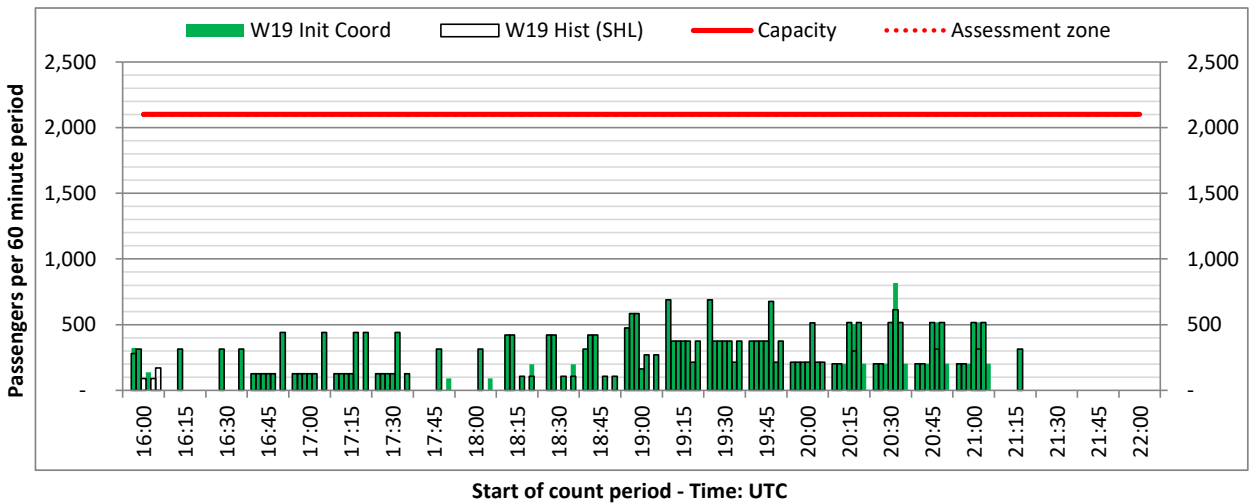
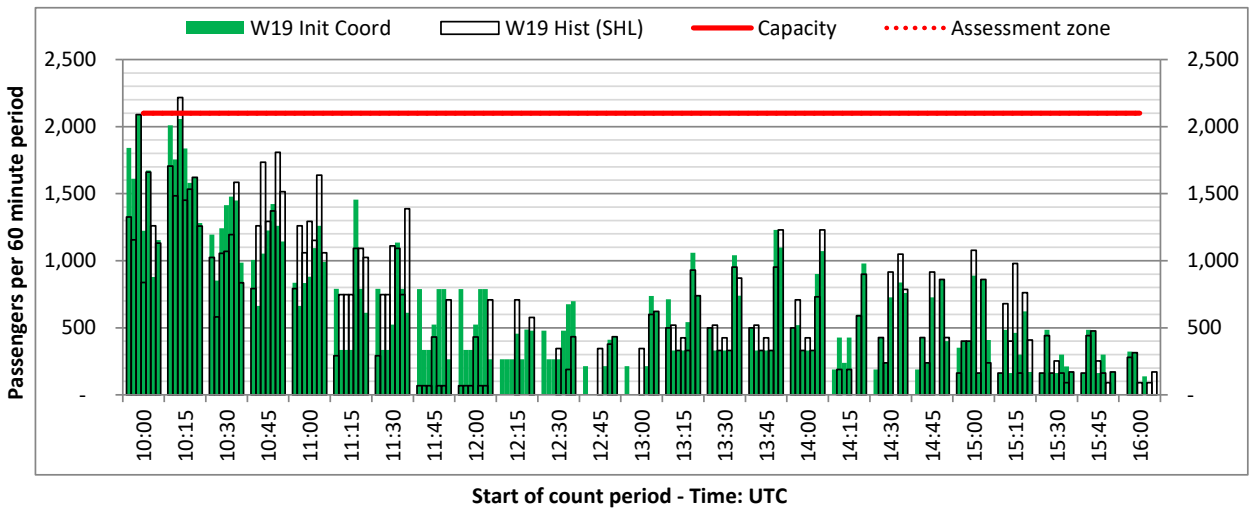
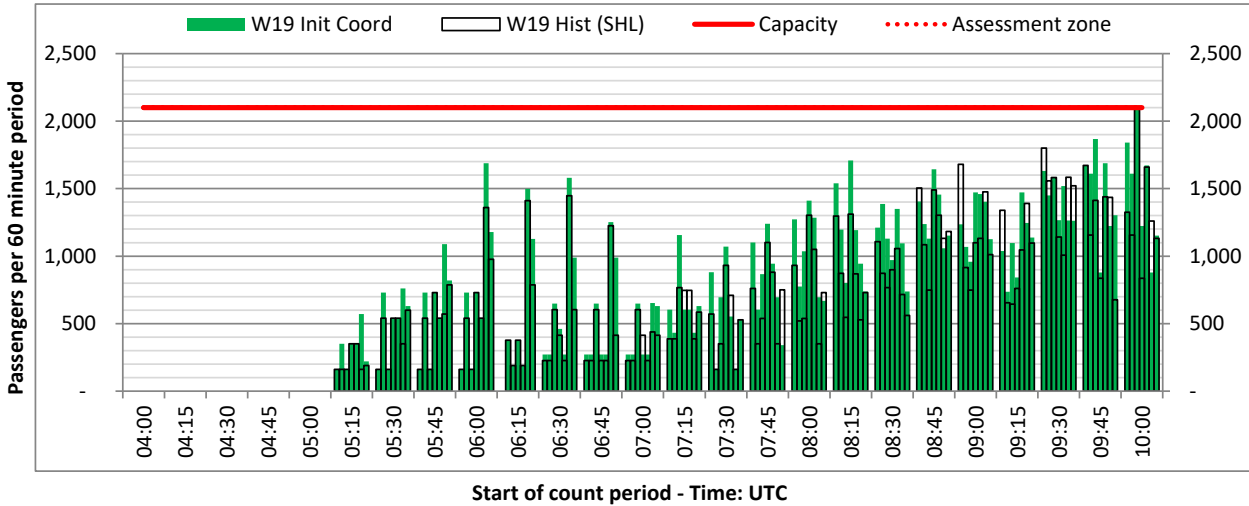
DEPARTURE - 60 minute count rolling every 15 mins (T60/15)



Terminals: T2

Operators: All Operators

Days: 1234567



Peak Week - Passengers Histogram

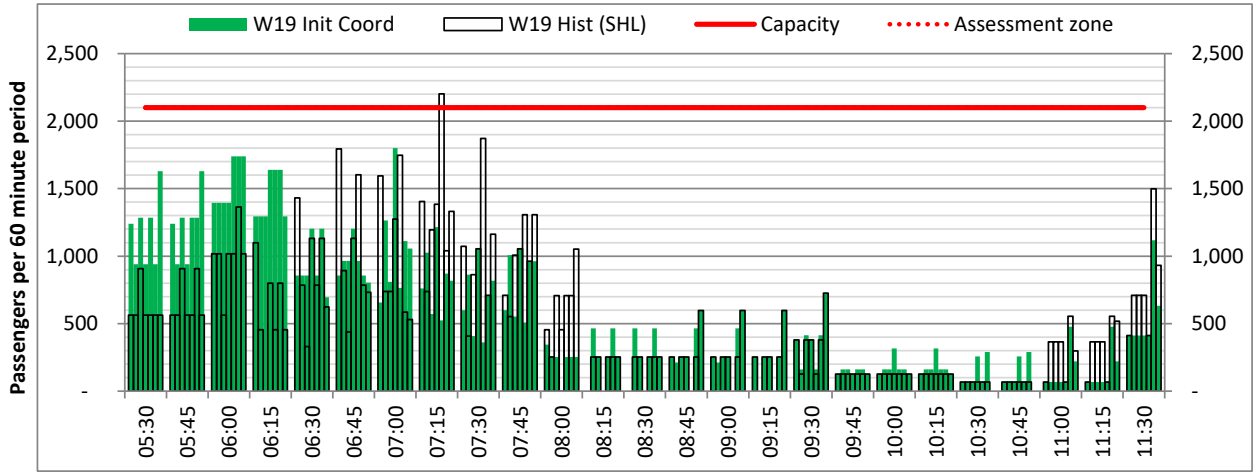
ARRIVAL - 60 minute count rolling every 15 mins (T60/15)



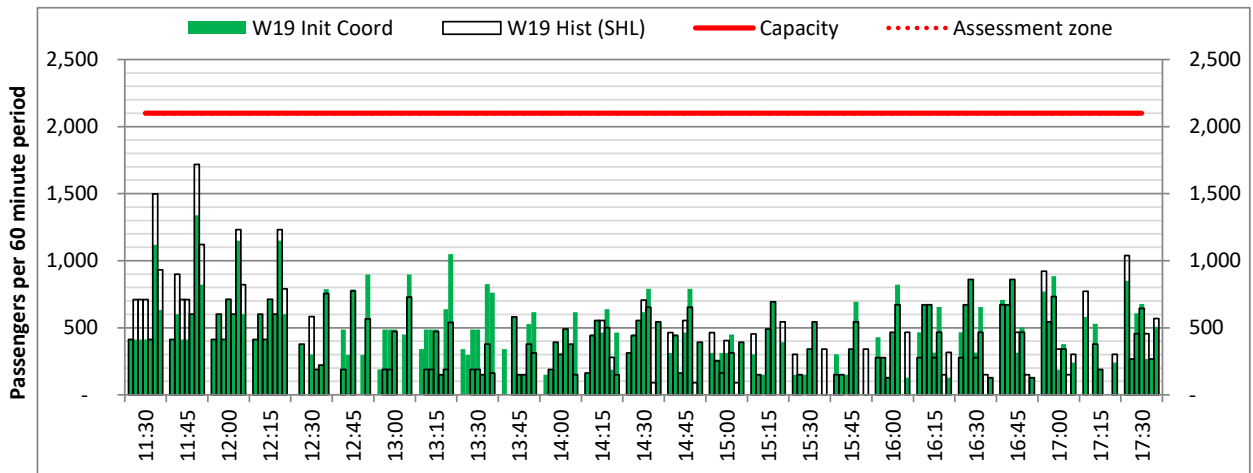
Terminals: T2

Operators: All Operators

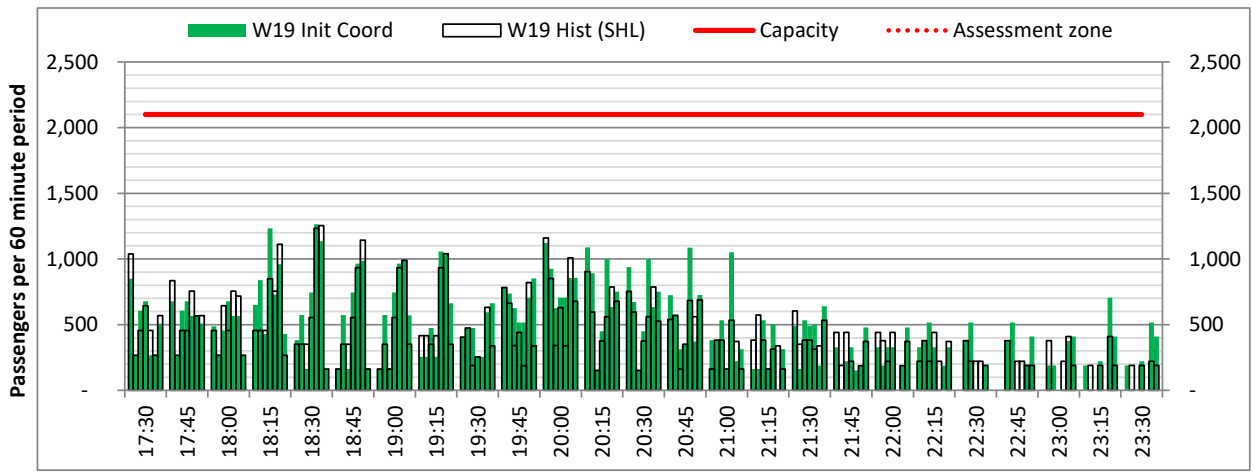
Days: 1234567



Start of count period - Time: UTC



Start of count period - Time: UTC



Start of count period - Time: UTC

Peak Week - Passengers Histogram

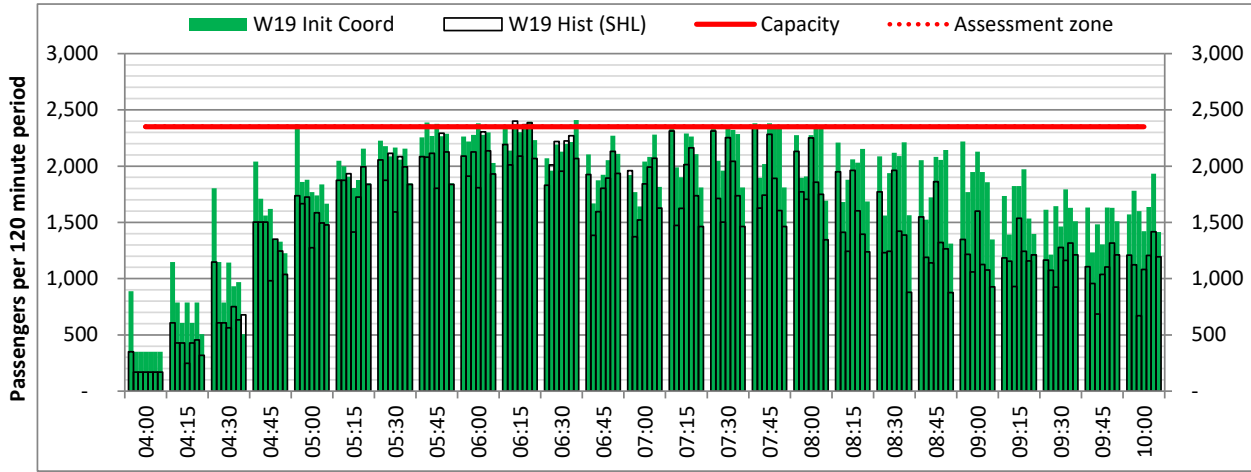
DEPARTURE - 120 minute count rolling every 15 mins (T120/15)



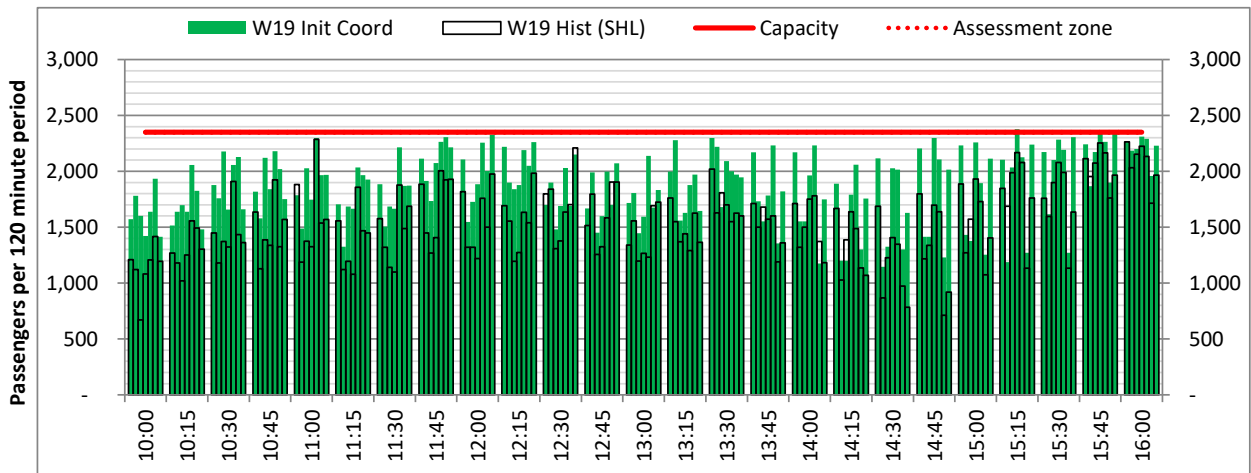
Terminals: T3

Operators: All Operators

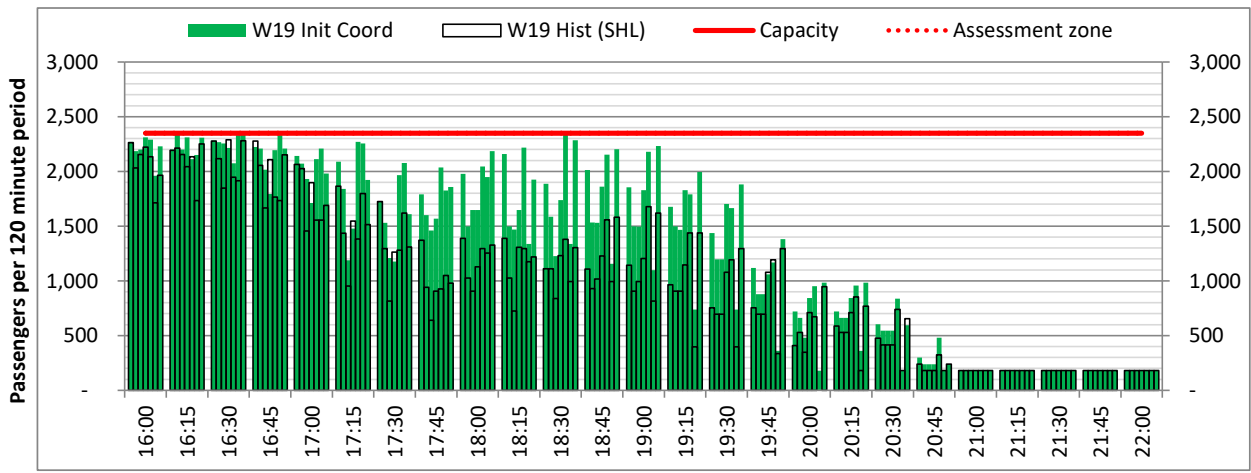
Days: 1234567



Start of count period - Time: UTC



Start of count period - Time: UTC



Start of count period - Time: UTC

Peak Week - Passengers Histogram

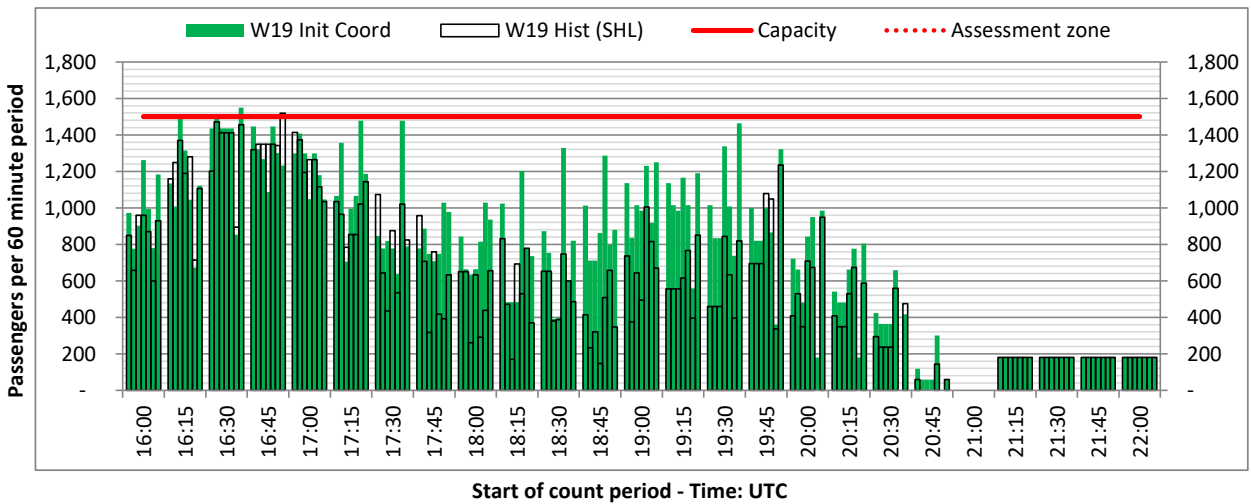
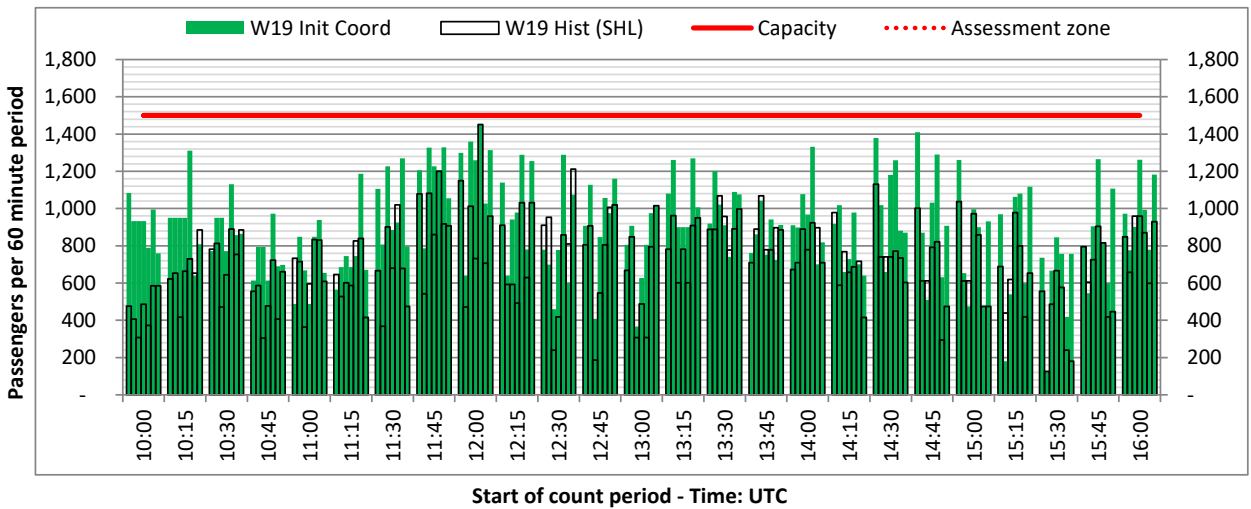
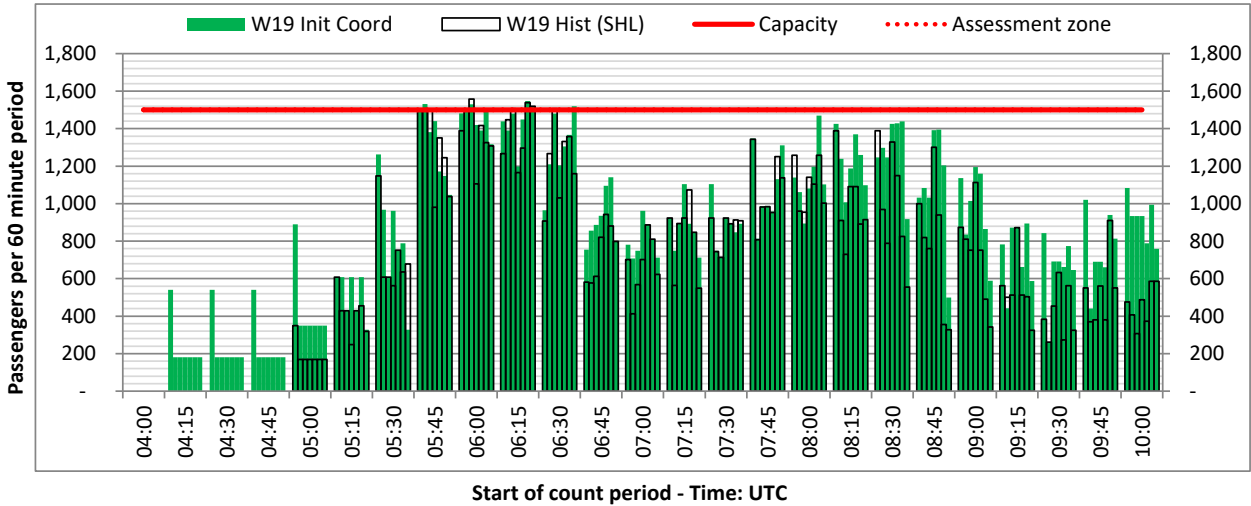
DEPARTURE - 60 minute count rolling every 15 mins (T60/15)



Terminals: T3

Operators: All Operators

Days: 1234567



Peak Week - Passengers Histogram

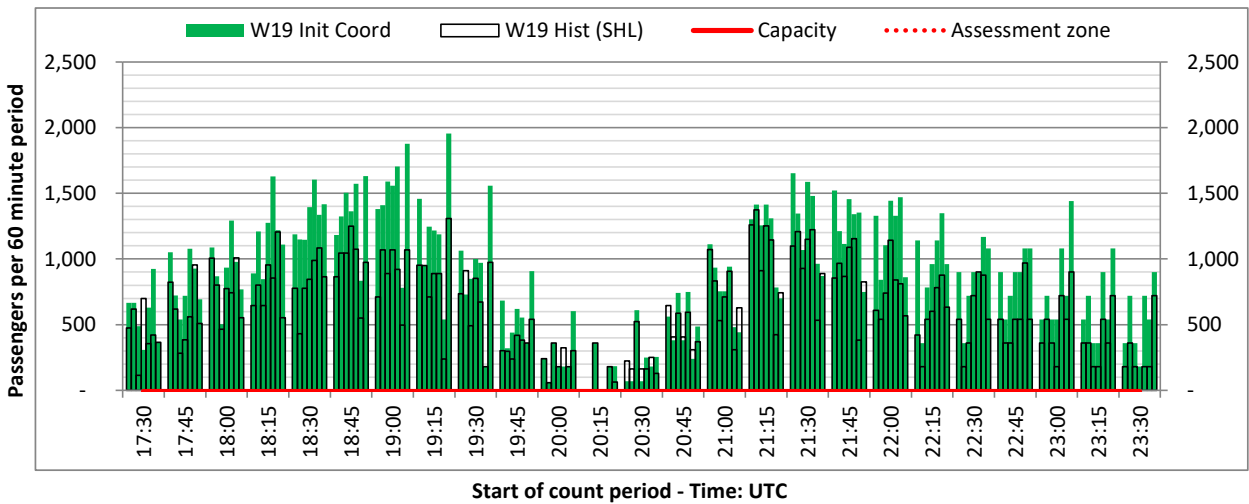
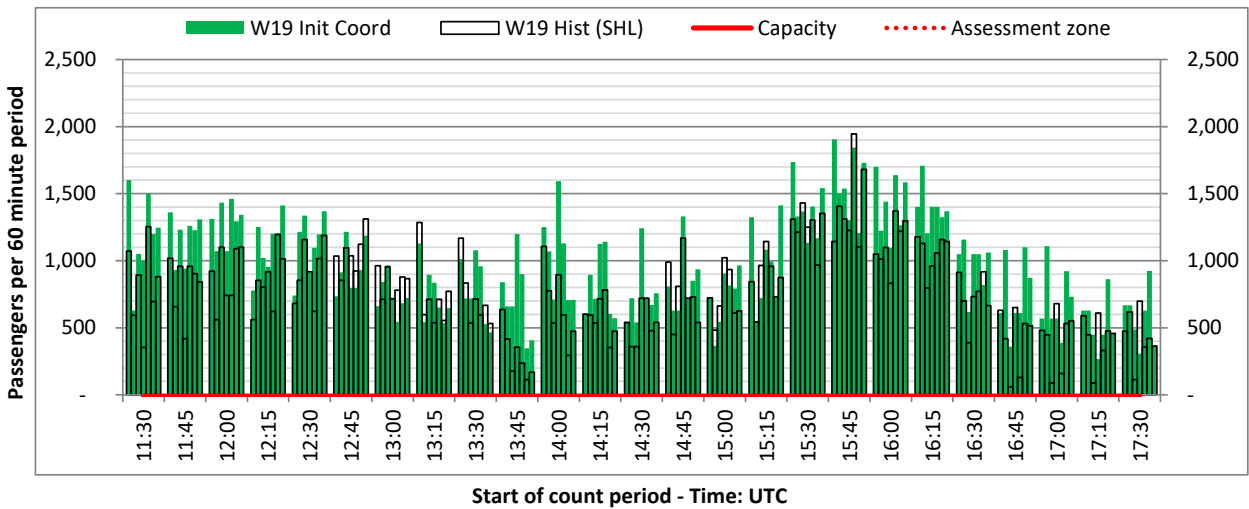
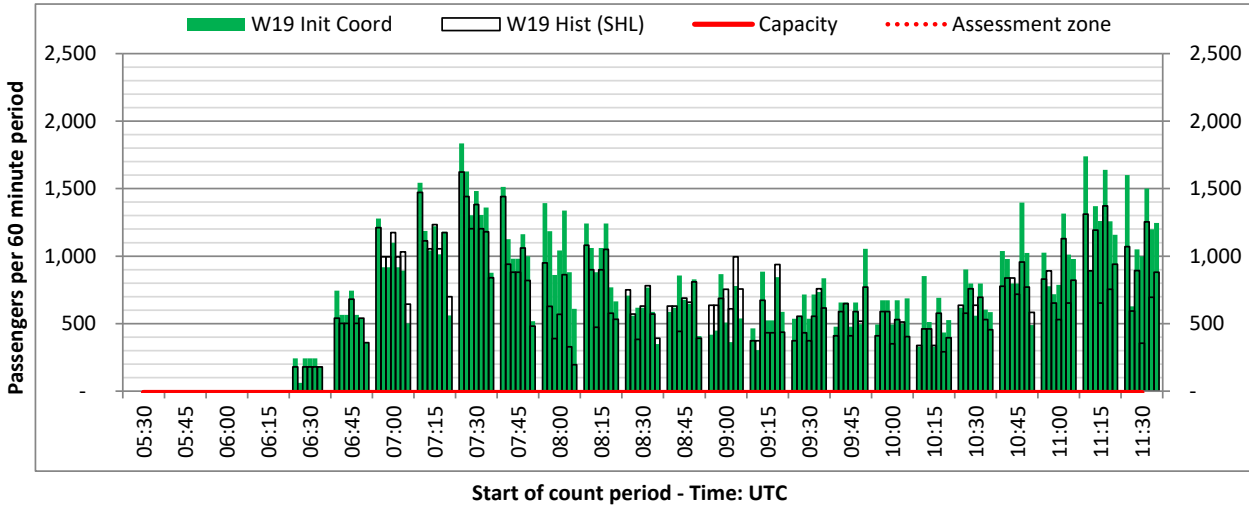
ARRIVAL - 60 minute count rolling every 15 mins (T60/15)



Terminals: T3

Operators: All Operators

Days: 1234567



Glossary



Air Transport Movement (ATM)	Any aircraft movement which is either a scheduled or chartered passenger or cargo flight.
Common Travel Area (CTA)	Origin or Destination is in Republic of Ireland or the Channel Islands.
Demand	Unconstrained demand before any schedule adjustments have been made.
"Fill-in"	These are gaps in a historic series of slots which the carrier requests to "Fill-in" at Initial Submissions - Fill-ins will be recognisably part of the historic series and will have the same flight details to qualify as a "Fill-in".
Hist (SHL)	Snapshot of historic schedule rolled over from end of the previous equivalent season - as advised to airlines in the SHLs.
ICAO Size A	Aircraft with wingspan between 0.00m - 14.99m.
ICAO Size B	Aircraft with wingspan between 15.00m - 23.99m.
ICAO Size C	Aircraft with wingspan between 24.00m - 35.99m.
ICAO Size D	Aircraft with wingspan between 36.00m - 51.99m.
ICAO Size E	Aircraft with wingspan between 52.00m - 64.99m.
ICAO Size F	Aircraft with wingspan between 65.00m - 80.00m.
Init Coord	Snapshot of schedule immediately after Initial Coordination is completed - as advised to airlines in the SALs.
Passenger Air Transport Movement (PATM)	Any aircraft movement which is either a scheduled or chartered passenger flight.
Start	Snapshot of schedule shortly before the start of the scheduling season (exact date given below where used).
Time: Local	Times shown are in LOCAL time for the airport/scheduling season.
Time: UTC	Times shown are in Universal Time Constant (UTC).

Data snapshot descriptions

W18 Init Coord	W18 schedule as cleared on Fri 08-Jun-18.
W19 Hist (SHL)	W19 schedule as cleared on Tue 09-Apr-19.
W19 Init Coord	W19 schedule as cleared on Sun 07-Apr-19.

Peak Week	Peak week for W18 is Mon 04-Mar-19 to Sun 10-Mar-19. Peak week for W19 is Mon 02-Mar-20 to Sun 08-Mar-20.
------------------	--

For ACL use

	Airport-Season-Branch-Resource	From date	To date	Time
Full Season Rep 1	MAN-W18-Init Coord Rpt-Standard	Sun 28-Oct-2018	Sat 30-Mar-2019	UTC
Full Season Rep 2	MAN-W19-SHL-Standard	Sun 27-Oct-2019	Sat 28-Mar-2020	UTC
Full Season Rep 3	MAN-W19-Init Coord Rpt-Standard	Sun 27-Oct-2019	Sat 28-Mar-2020	UTC
	Airport-Season-Branch-Resource	From date	To date	Time
Peak Week Rep 1	MAN-W18-Init Coord Rpt-Standard	Mon 04-Mar-2019	Sun 10-Mar-2019	UTC
Peak Week Rep 2	MAN-W19-SHL-Standard	Mon 02-Mar-2020	Sun 08-Mar-2020	UTC
Peak Week Rep 3	MAN-W19-Init Coord Rpt-Standard	Mon 02-Mar-2020	Sun 08-Mar-2020	UTC