

QUEENSTOWN INTERNATIONAL AIRPORT

ZQN

S19 Start of Season Report

Key Statistics	S18 Operated	S19 Season Start	Percentage Change
Air Transport Movements	9,615	10,700	▲ 11%
Total Seats	1,528,082	1,736,692	▲ 14%
Seats per Passenger ATM	159	162	

Contents	Page
Airline Rank by ATM's and Seats	2
Aircraft Type Rankings by ATM's and Seats	3
Peak Week Departure Frequencies by Carrier	4
Destination Rankings by ATM's and Seats	5
Runway Peak Week Utilisation	6
Domestic Terminal Peak Week Utilisation	7
International Terminal Peak Week Utilisation	8
Total Terminal Peak Week Utilisation	9
Glossary	10

****S18 numbers adjusted down to 31 weeks to match S19**

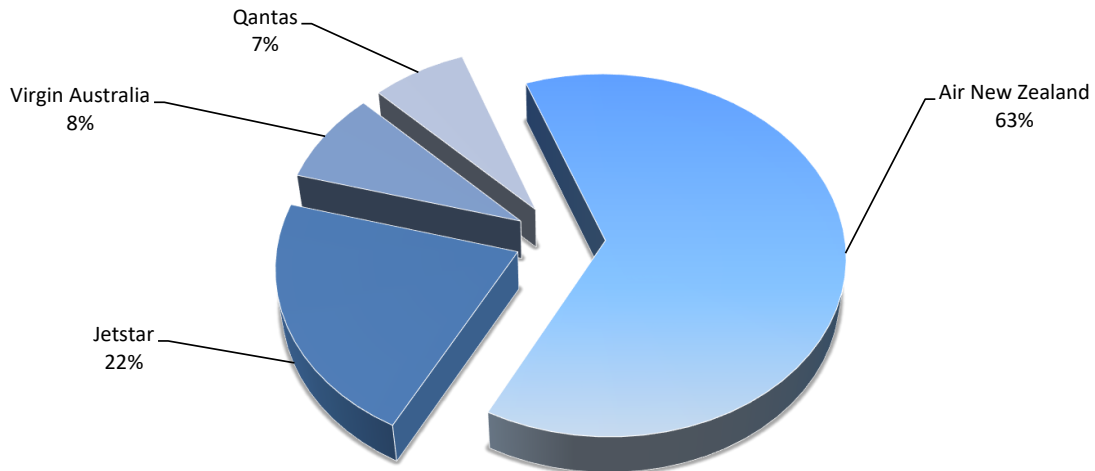
Data in this report is current as of 25 March 2019

No warranty whether expressed or implied as to the completeness, accuracy, fitness for purpose, or satisfactory quality is given by ACL regarding the information in this report, which is provided by third parties. Accordingly, ACL excludes all liability with regard to such data.

The contents of this report may not be reproduced without the written consent of ACL.

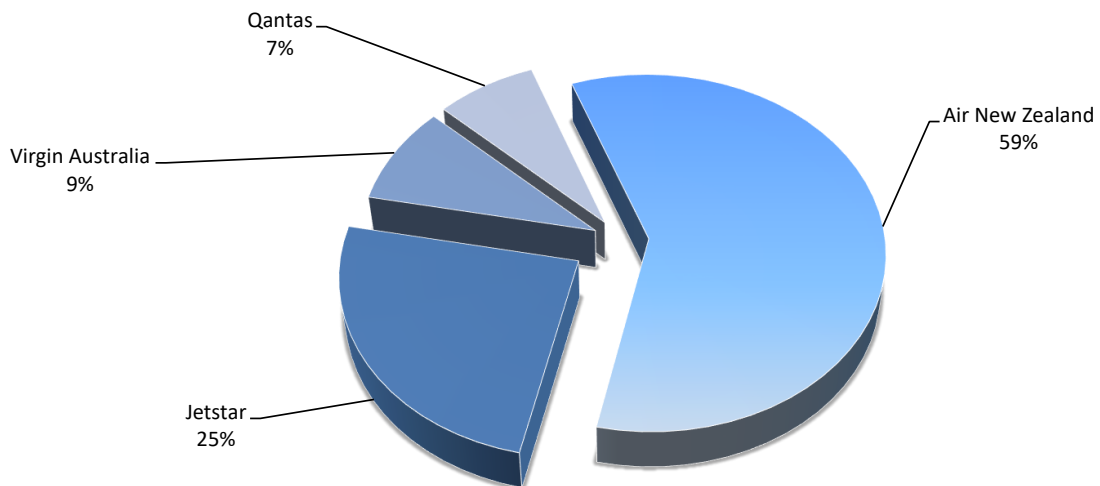
Airlines by Air Transport Movements (ATMs)

Airline	Movements
Air New Zealand	6,774
Jetstar	2,302
Virgin Australia	878
Qantas	746



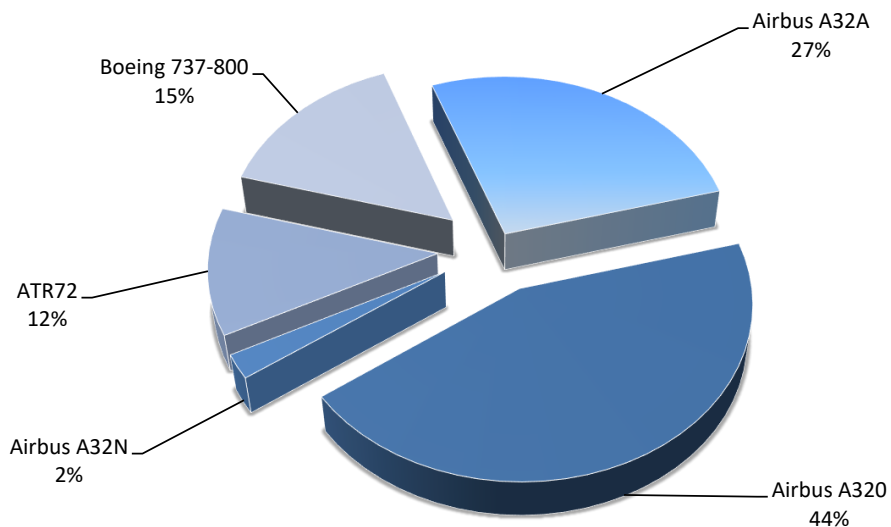
Airlines by Seats

Airline	Seats
Air New Zealand	1,024,540
Jetstar	428,172
Virgin Australia	154,176
Qantas	129,804



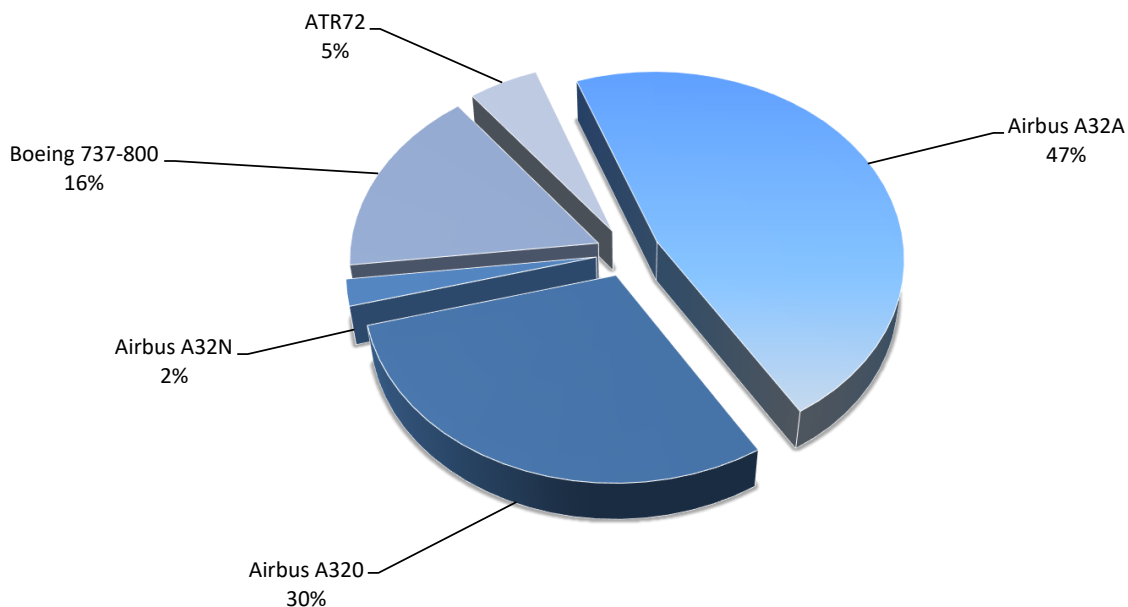
Aircraft Types by Air Transport Movements (ATMs)

Airline	Movements
Airbus A32A	2,824
Airbus A320	4,746
Airbus A32N	240
ATR72	1,266
Boeing 737-800	1,624



Aircraft Types by seats

Airline	Seats
Airbus A32A	811,224
Airbus A320	515,868
Airbus A32N	39,600
Boeing 737-800	283,980
ATR72	86,020

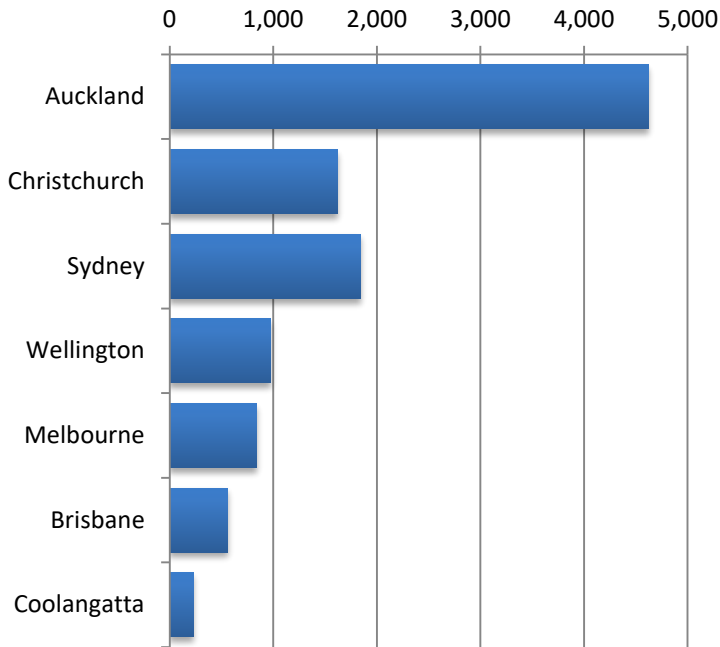


QUEENSTOWN INTERNATIONAL AIRPORT

PEAK WEEK DEPARTURE FREQUENCIES - BY CARRIER

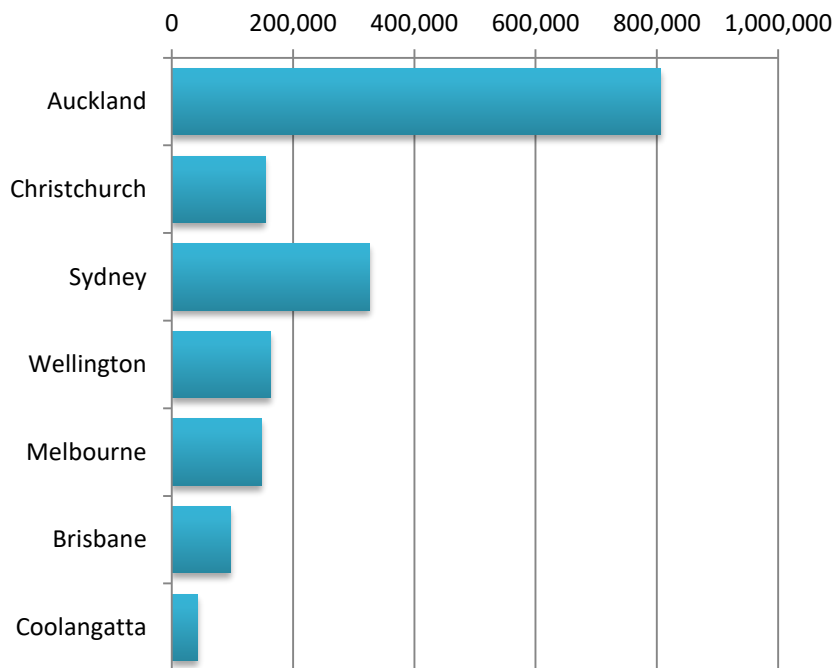
OPERATOR	AIRPORT	S18		S19		SEATS +/-	ATMS +/-		
		SEATS	ATMS	SEATS	ATMS				
JQ	Jetstar	AKL	Auckland International	2,880	16	3,534	19	654	3
		MEL	Melbourne	1,260	7	1,302	7	42	0
		OOL	Gold Coast Coolangatta	720	4	744	4	24	0
		SYD	Sydney Kingsford Smith	1,260	7	2,604	14	1,344	7
		WLG	Wellington International	540	3	558	3	18	0
JQ Total				6,660	37	8,742	47	2,082	10
NZ	Air New Zealand	AKL	Auckland International	11,115	65	13,167	77	2,052	12
		BNE	Brisbane International	0	0	501	3	501	3
		CHC	Christchurch International	2,831	28	2,625	28	-206	0
		MEL	Melbourne	1,512	9	1,338	8	-174	-1
		SYD	Sydney Kingsford Smith	2,016	12	1,665	10	-351	-2
		WLG	Wellington International	2,530	16	2,462	15	-68	-1
NZ Total				20,004	130	21,758	141	1,754	11
QF	Qantas	BNE	Brisbane International	348	2	348	2	0	0
		MEL	Melbourne	0	0	522	3	522	3
		SYD	Sydney Kingsford Smith	1,740	10	2,262	13	522	3
QF Total				2,088	12	3,132	18	1,044	6
VA	Virgin Australia	BNE	Brisbane International	1,936	11	1,760	10	-176	-1
		MEL	Melbourne	0	0	704	4	704	4
		SYD	Sydney Kingsford Smith	1,232	7	1,232	7	0	0
VA Total				3,168	18	3,696	21	528	3

Air Transport Movements by Destination



Destination	ATM'S
Auckland	4,624
Christchurch	1,625
Sydney	1,844
Wellington	976
Melbourne	842
Brisbane	562
Coolangatta	226

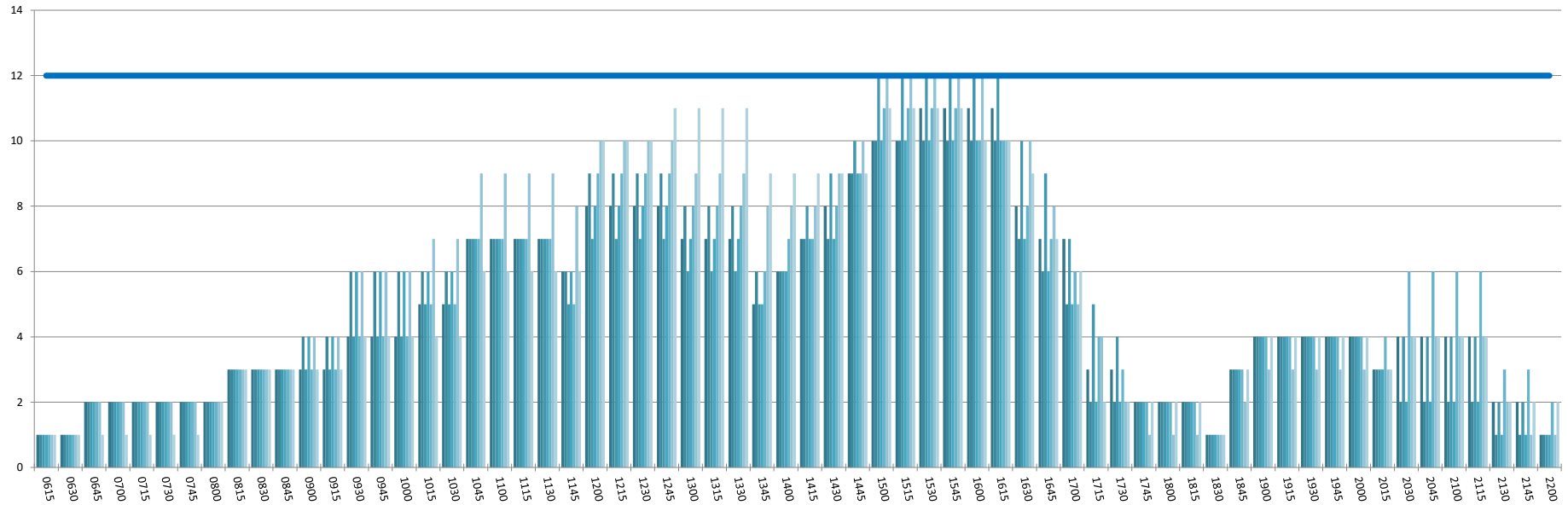
Air Transport Seats by Destination



Destination	SEATS
Auckland	805,872
Christchurch	153,898
Sydney	325,694
Wellington	163,210
Melbourne	148,200
Brisbane	97,714
Coolangatta	42,036

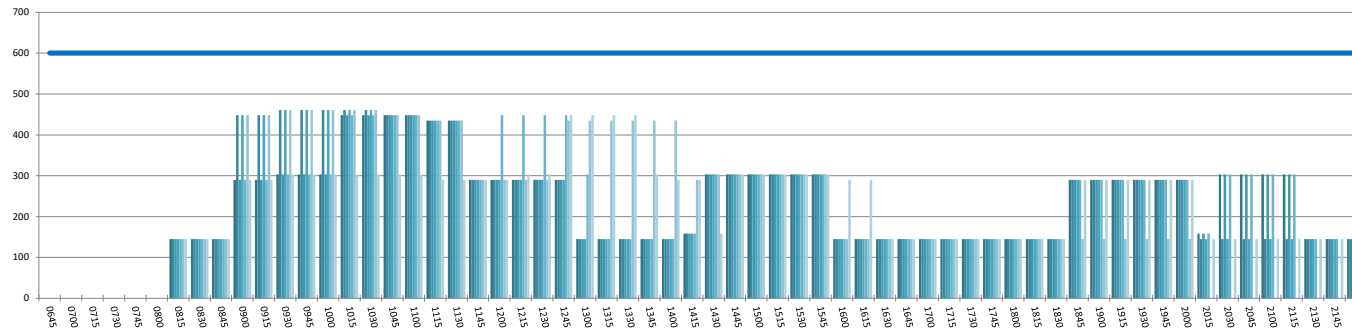
RUNWAY TOTAL UTILISATION PER 60 MINUTES (ROLLING EVERY 15 MINUTES)

Peak Week Movements per Hour - (17 to 23 Dec 2018) - All times LOCAL



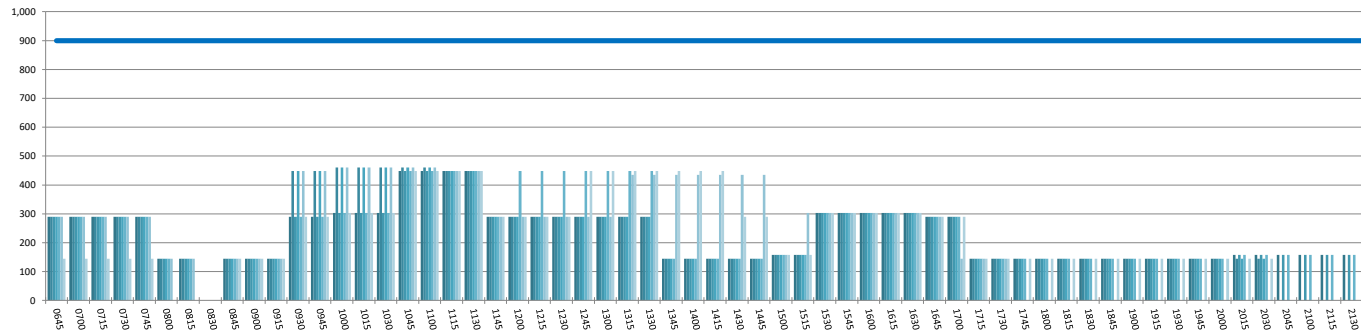
DOMESTIC TERMINAL ARRIVALS UTILISATION PER 60 MINUTES (ROLLING EVERY 15 MINUTES)

Peak Week Movements per Hour - All times LOCAL



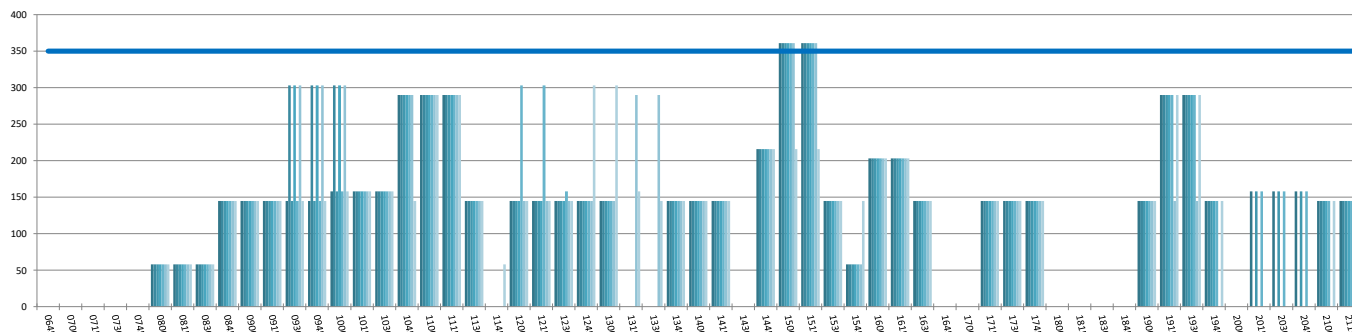
DOMESTIC TERMINAL DEPARTURES UTILISATION PER 60 MINUTES (ROLLING EVERY 15 MINUTES)

Peak Week Movements per Hour - All times LOCAL



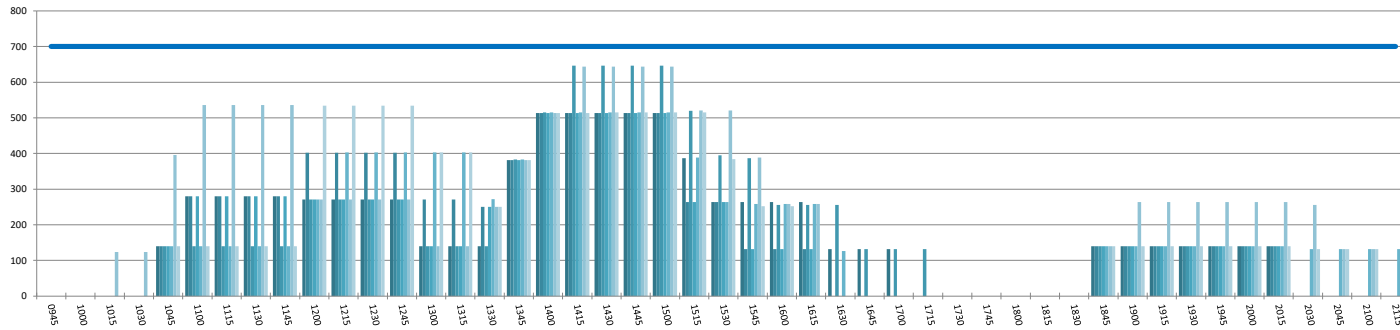
DOMESTIC TERMINAL ARRIVALS UTILISATION PER 30 MINUTES (ROLLING EVERY 15 MINUTES)

Peak Week Movements per Hour - All times LOCAL



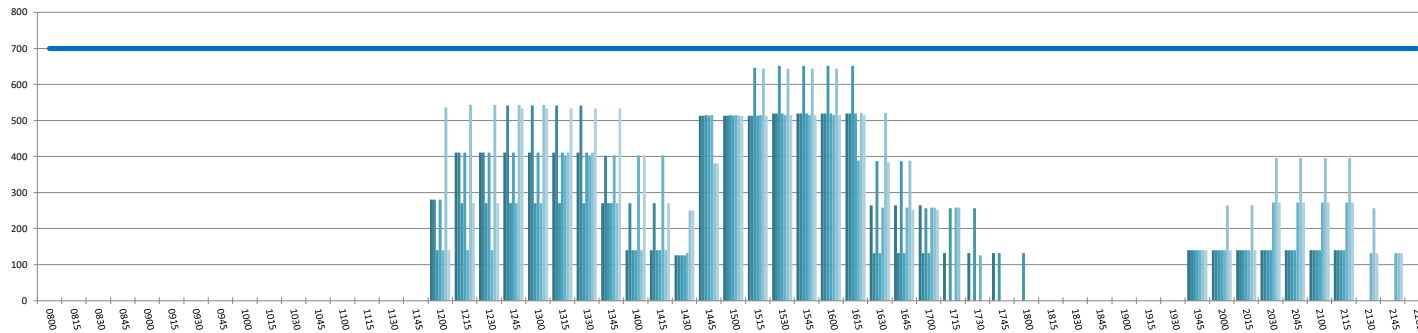
INTERNATIONAL TERMINAL ARRIVALS UTILISATION PER 60 MINUTES (ROLLING EVERY 15 MINUTES)

Peak Week Movements per Hour - All times LOCAL



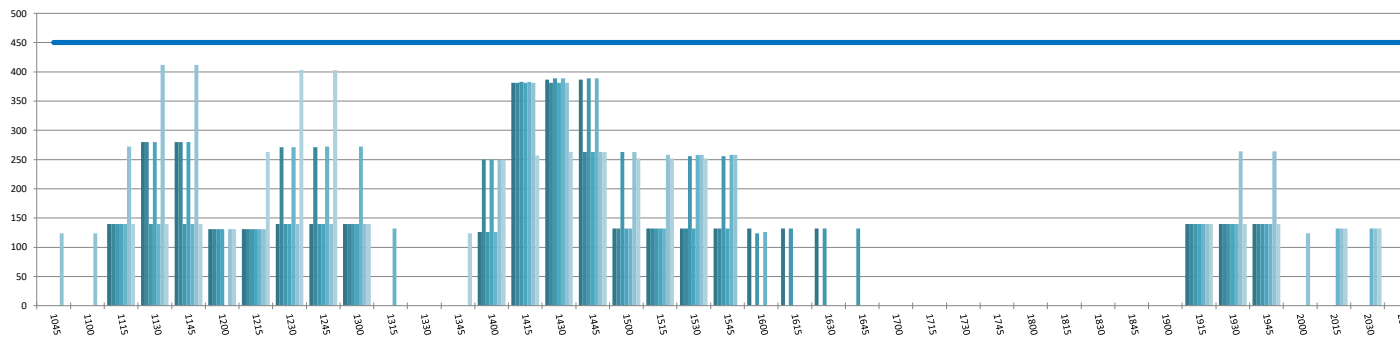
INTERNATIONAL TERMINAL DEPARTURES UTILISATION PER 60 MINUTES (ROLLING EVERY 15 MINUTES)

Peak Week Movements per Hour - All times LOCAL



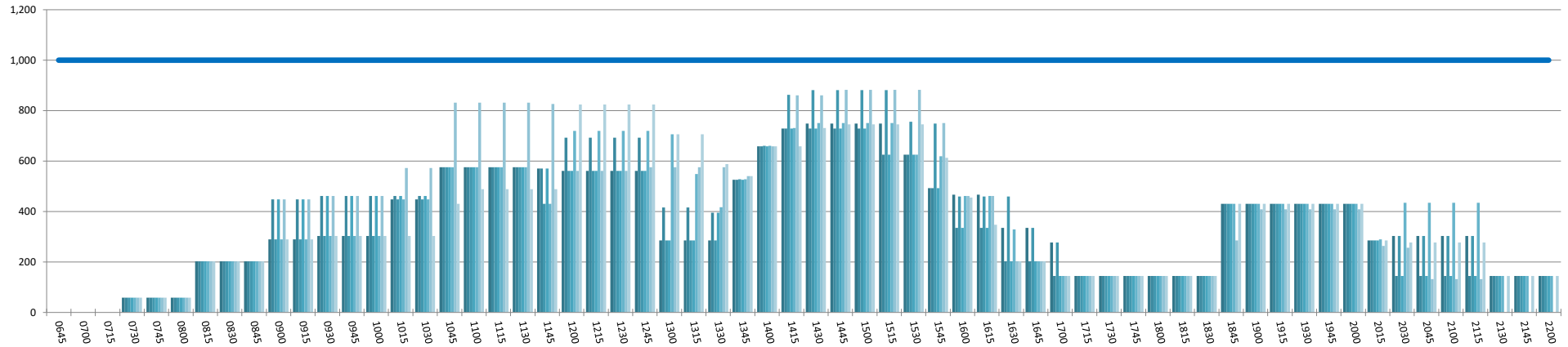
INTERNATIONAL TERMINAL ARRIVALS UTILISATION PER 30 MINUTES (ROLLING EVERY 15 MINUTES)

Peak Week Movements per Hour - All times LOCAL



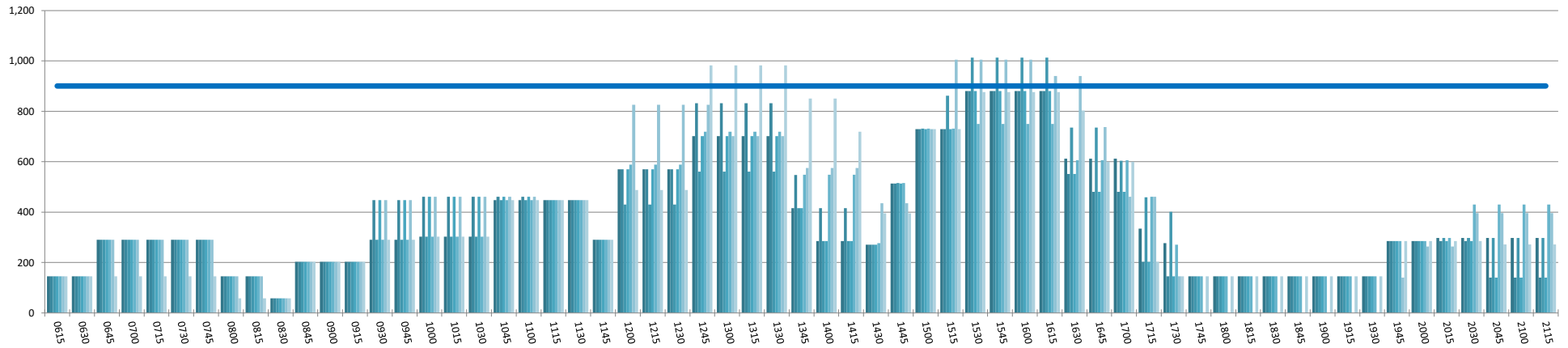
ENTIRE TERMINAL PASSENGER ARRIVALS UTILISATION PER 60 MINUTES (ROLLING EVERY 15 MINUTES)

Peak Week Movements per Hour - All times LOCAL



ENTIRE TERMINAL PASSENGER DEPARTURES UTILISATION PER 60 MINUTES (ROLLING EVERY 15 MINUTES)

Peak Week Movements per Hour - All times LOCAL



GLOSSARY OF TERMS

Air Transport Movement (ATM)	A scheduled or charter passenger or freight aircraft movement.
Allocation	The allocation of slots such that demand is constrained to fit within declared scheduling limits.
Common Travel Area (CTA)	Services to or from the Republic of Ireland and the Channel Islands.
Passenger ATM	A scheduled or charter <u>passenger</u> aircraft movement (ie, excluding all-cargo aircraft movements).
Scheduling Limits	Limiting parameters declared by the Airport Operator used in the coordination process.
Seats	The number of seats based on the aircraft configuration advised by the airline.
Peak Week	15 to 21 July 2019
Data Snapshot	All data used for this report was as held 25 March 2019

GUIDE TO HISTOGRAMS

The histograms show the pattern of traffic by time of day against the appropriate scheduling limit. Each time period consist of seven columns representing the days-of-week, Monday through Sunday.