



# WELLINGTON INTERNATIONAL AIRPORT WLG

## S19 Season Start of Season Report (International Traffic)

Key Statistics	S18 Operated	S19 Start of Season	Percentage Change
Air Transport Movements	3,650	3,895	▲ 6.7%
Total Seats	649,570	694,585	▲ 6.9%
Seats per Passenger ATM	178	178	

Contents	Page
Movements and Seats by Service Type	2
Peak Week Departure Frequencies by Carrier	3
Airlines by ATM's and Seats	4
Destinations by ATM's and Seats	5
Total Movements by Week	6
International Terminal - Passengers per 60 Minutes	7
Glossary	8

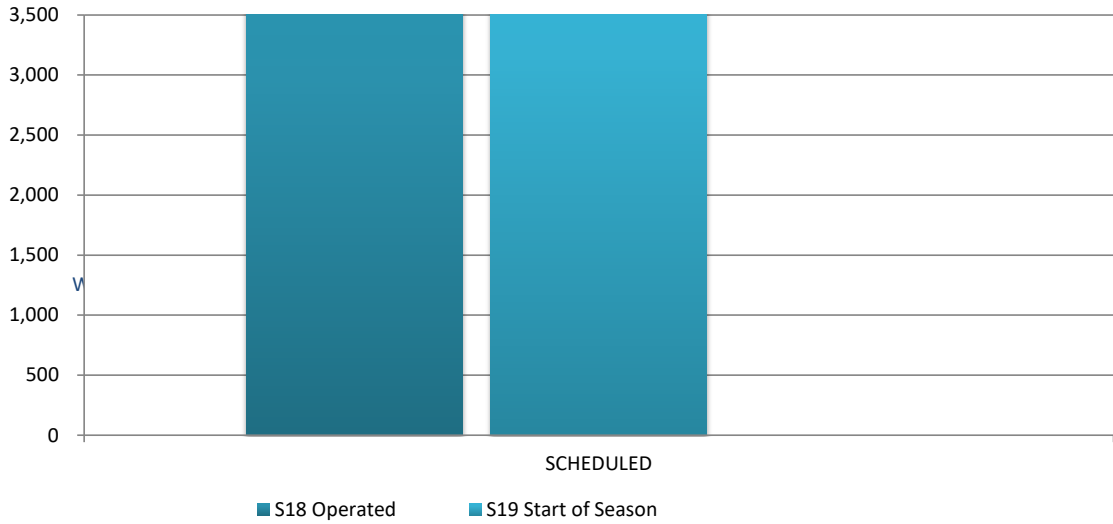
**\*\*S18 numbers adjusted down to 31 weeks to match S19**

Data in this report is current as of 25 March 2019

No warranty whether expressed or implied as to the completeness, accuracy, fitness for purpose, or satisfactory quality is given by ACL regarding the information in this report, which is provided by third parties. Accordingly, ACL excludes all liability with regard to such data.

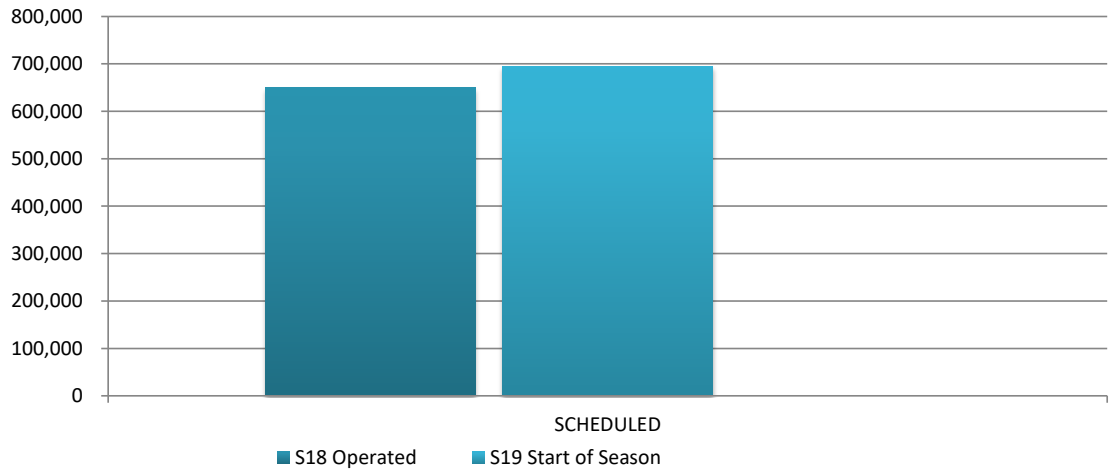
The contents of this report may not be reproduced without the written consent of ACL.

## Full Season ATMs by Service Type



	S18 Operated	S19 Start of Season	% CHANGE
<b>SCHEDULED</b>	3,650	3,895	▲ 6.7%
<b>TOTAL</b>	3,650	3,895	▲ 6.7%

## Full Season Seats by Service Type



	S18 Operated	S19 Start of Season	% CHANGE
<b>SCHEDULED</b>	649,570	694,585	▲ 6.9%
<b>TOTAL</b>	649,570	694,585	▲ 6.9%

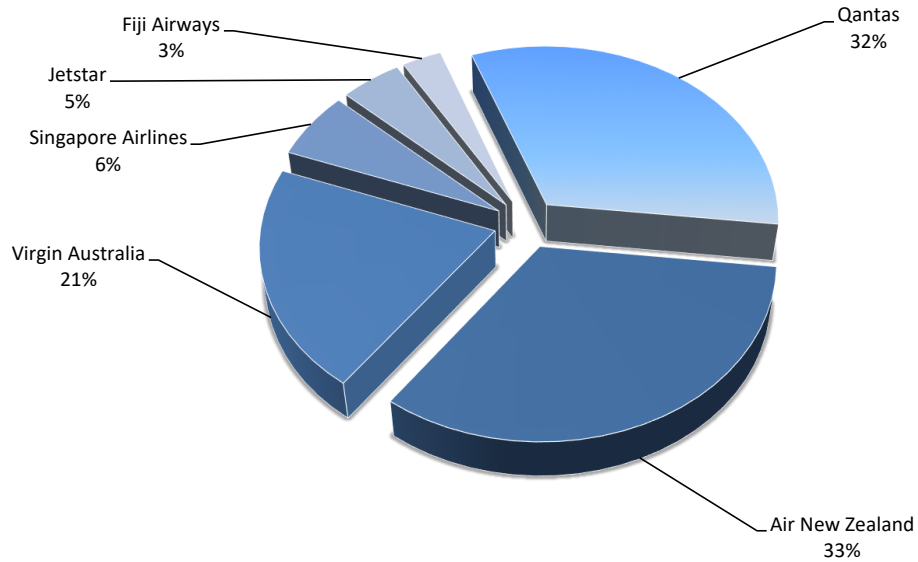
## WELLINGTON INTERNATIONAL AIRPORT

### PEAK WEEK DEPARTURE FREQUENCIES - BY CARRIER

	OPERATOR	AIRPORT		S18		S19		SEATS +/-	ATMS +/-
				SEATS	ATMS	SEATS	ATMS		
FJ	Fiji Airways	NAN	Nadi International	448	3	446	3	-2	0
FJ Total				448	3	446	3	-2	0
JQ	Jetstar	OOL	Gold Coast Coolangatta	540	3	558	3	18	0
JQ Total				540	3	558	3	18	0
NZ	Air New Zealand	BNE	Brisbane International	0	0	837	5	837	5
		MEL	Melbourne	1,008	6	840	5	-168	-1
		NAN	Nadi International	504	3	504	3	0	0
		SYD	Sydney Kingsford Smith	1,680	10	1,680	10	0	0
NZ Total				3,192	19	3,861	23	669	4
QF	Qantas	MEL	Melbourne	1,218	7	1,218	7	0	0
		SYD	Sydney Kingsford Smith	2,436	14	2,436	14	0	0
QF Total				3,654	21	3,654	21	0	0
SQ	Singapore Airlines	SIN	Singapore Changi	1,064	4	1,064	4	0	0
SQ Total				1,064	4	1,064	4	0	0
VA	Virgin Australia	BNE	Brisbane International	2,288	13	1,584	9	-704	-4
		SYD	Sydney Kingsford Smith	0	0	880	5	880	5
VA Total				2,288	13	2,464	14	176	1

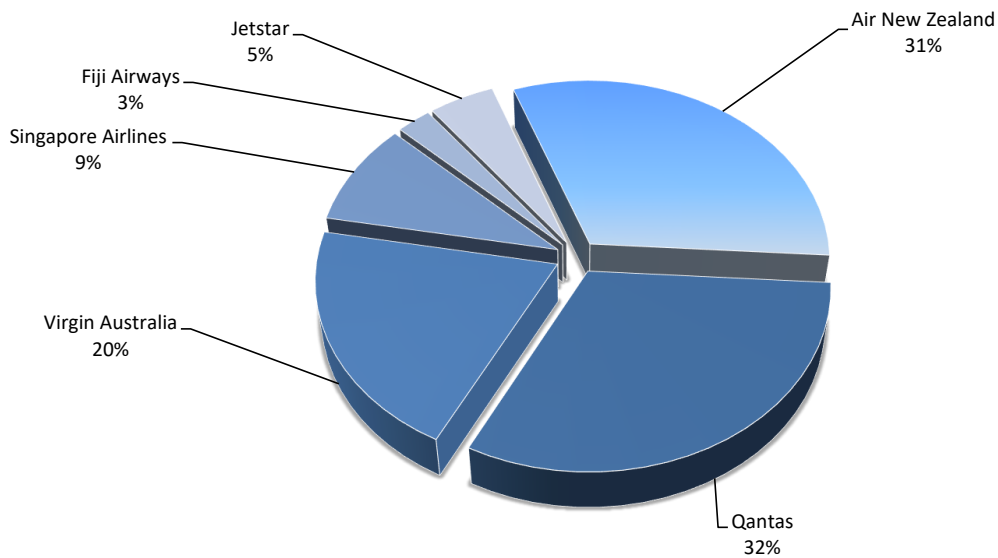
## Airlines by Air Transport Movements (ATMs)

Airline	S19 Movements	S18	Diff
Qantas	1,260	1,261	0%
Air New Zealand	1,297	1,098	18%
Virgin Australia	802	747	7%
Singapore Airlines	240	240	0%
Jetstar	180	190	-5%
Fiji Airways	116	114	2%

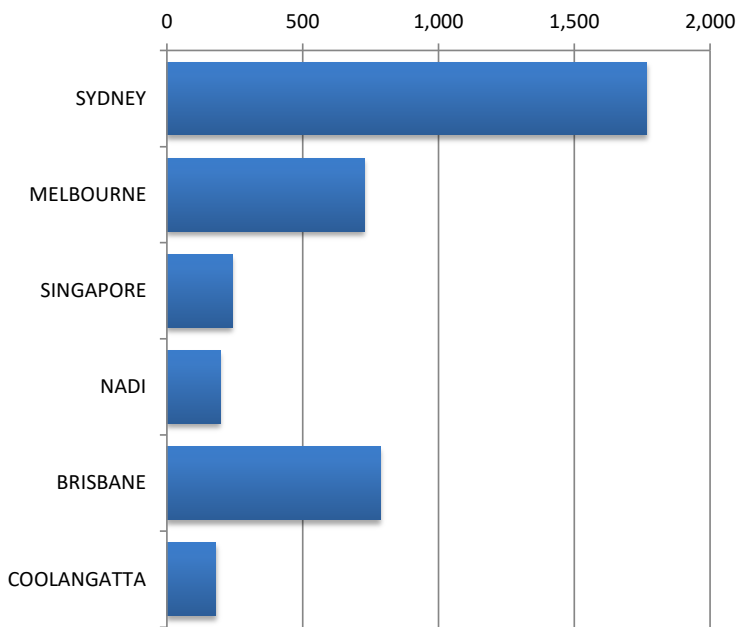


## Airlines by Air Seats

Airline	S19 Seats	S18	Diff
Air New Zealand	219,127	184,396	19%
Qantas	219,234	219,468	0%
Virgin Australia	141,152	131,285	8%
Singapore Airlines	63,840	63,907	0%
Fiji Airways	17,752	16,511	8%
Jetstar	33,480	34,003	-2%

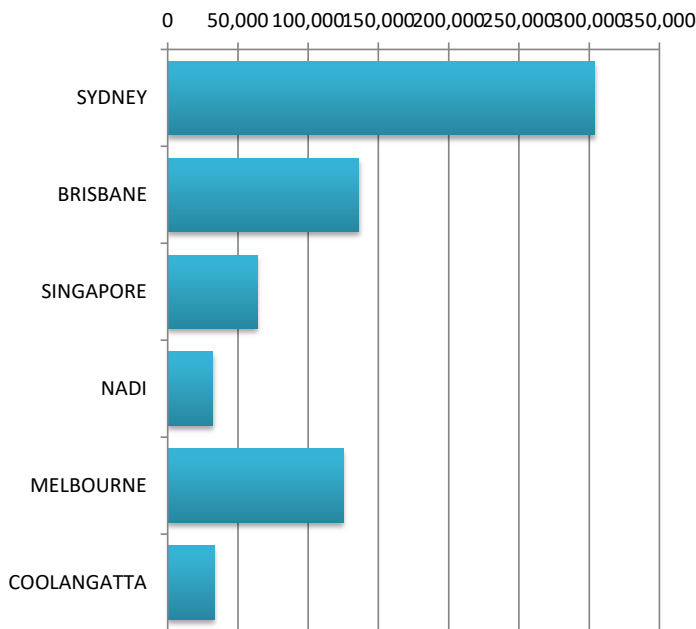


## Air Transport Movements by Destination



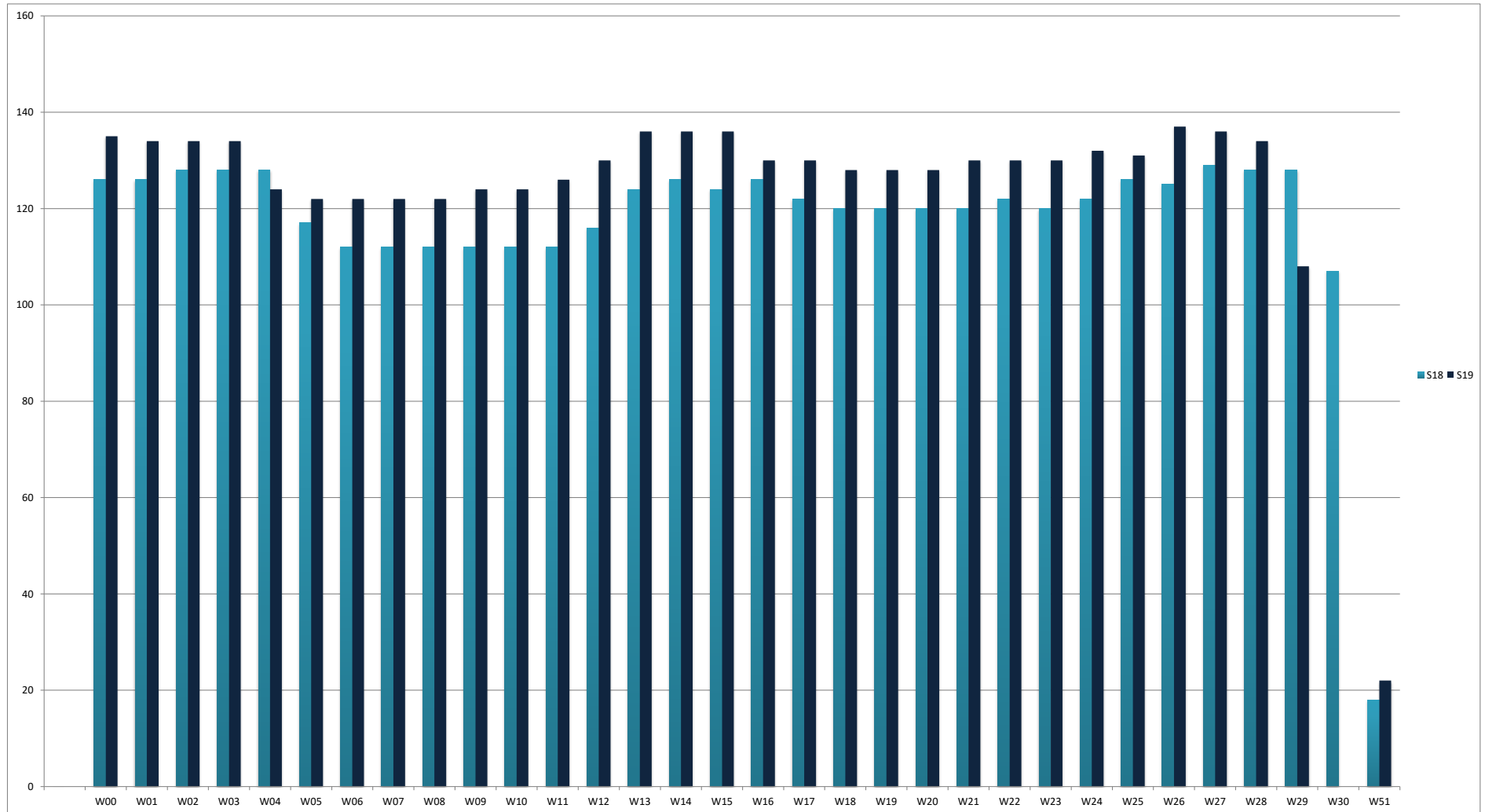
Destination	S19 ATM'S	S18	Diff
SYDNEY	1,766	1,493	18%
MELBOURNE	728	791	-8%
SINGAPORE	240	240	0%
NADI	196	192	2%
BRISBANE	785	746	5%
COOLANGATTA	180	189	-5%

## Air Transport Seats by Destination



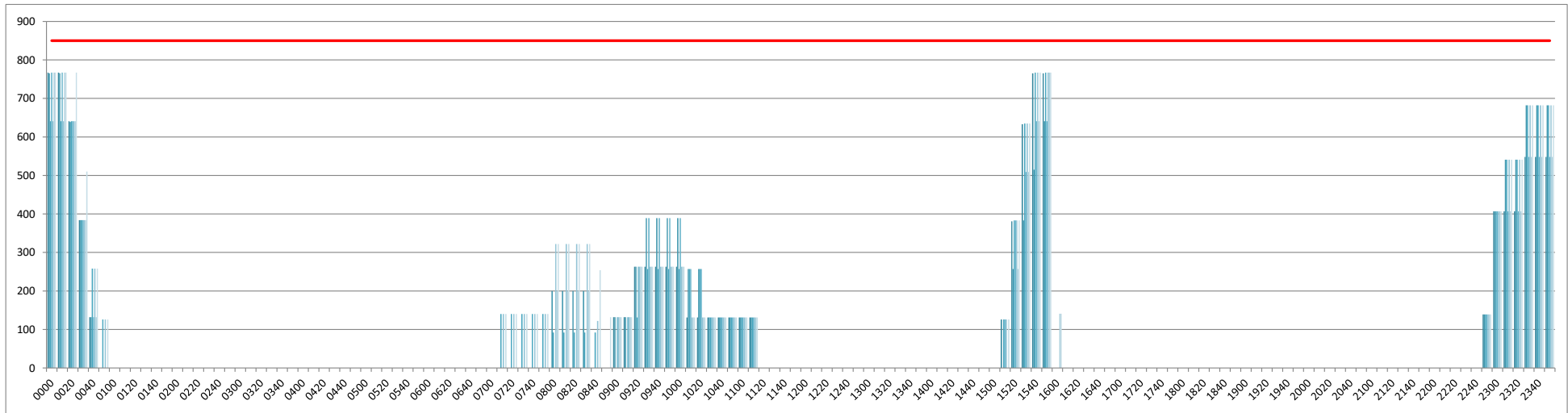
Destination	S19 SEATS	S18	Diff
SYDNEY	304,028	255,680	19%
BRISBANE	135,955	131,285	4%
SINGAPORE	63,840	63,907	0%
NADI	32,098	29,531	9%
MELBOURNE	125,184	135,164	-7%
COOLANGATTA	33,480	34,003	-2%

## Air Transport Movements by Week for W17 vs W18 Season



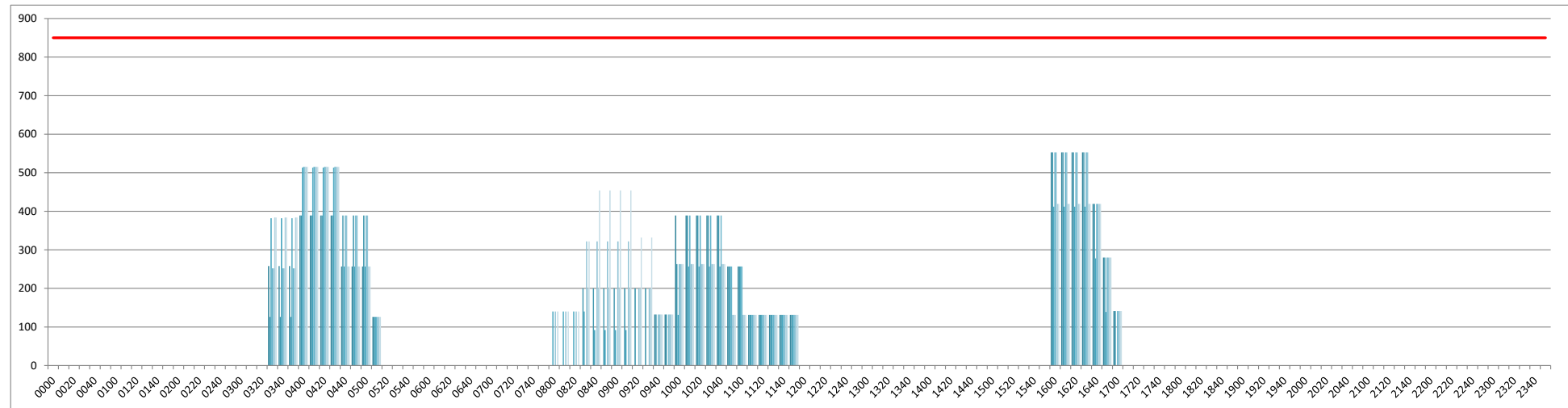
## INTERNATIONAL TERMINAL ARRIVALS (PER 60 MINUTES)

Week Movements per Hour - All times LOCAL



## INTERNATIONAL TERMINAL DEPARTURES (PER 60 MINUTES)

Week Movements per Hour - All times LOCAL



## GLOSSARY OF TERMS

---

<b>Air Transport Movement (ATM)</b>	A scheduled or charter passenger or freight aircraft movement.
<b>Allocation</b>	The allocation of slots such that demand is constrained to fit within declared scheduling limits.
<b>Passenger ATM</b>	A scheduled or charter <u>passenger</u> aircraft movement (ie, excluding all-cargo aircraft movements).
<b>Scheduling Limits</b>	Limiting parameters declared by the Airport Operator used in the coordination process.
<b>Seats</b>	The number of seats based on the aircraft configuration advised by the airline.
<b>Peak Week</b>	Week 15 to 21 July 2019
<b>Data Snapshot</b>	All data used for this report was as held 25 March 2019

### GUIDE TO HISTOGRAMS

---

The histograms show the pattern of traffic by time of day against the appropriate scheduling limit. Each time period consist of seven columns representing the days-of-week, Monday through Sunday.